

SEPTEMBER 28
er Meals
m Topic
Thomas was
the September
the Town and
the Demonstration
home.
ident, Mary Lane
during the busi-
g. Plans were
membership
the month of
members discoun-
bake sale and
held October 1
Council in the
ing on main street
1.
Freezer Meats
c of the program
Home Demon-
Vivian Warming
present were
Iva White, Dr.
Gwen Young
Nedra Hays,
aker, Vivian

The Spearman Reporter



MARKET	
Wheat	\$1.23
Milo	1.57
Soybeans	2.25
Corn	1.00
Oats	.70
Barley	.80

VOLUME 59, NO. 45

THE SPEARMAN REPORTER, Hansford County Texas, 79081

THURSDAY, OCTOBER 3, 1968

EAGLES EDGE LYNX 21-19

The Spearman Lynx and the Canyon Eagles put on a game for Joe Kerbel and his boys at the Buffalo Bowl, in Friday night, as the flying Eagles out-lasted Spearman Lynx 21-19 in one of the finest games ever seen by the area.

Following a large crowd in college bowl, Spearman couldn't get any of the lead that it takes to win a game. Canyon jumped into an early lead, in the first quarter and the Lynx came back in the second quarter to almost tie that game.

Canyon scored early in the quarter, as result of a fumble on the 22! Canyon for extra point was 7-0 and the Eagles jumped to an early 7 point lead, 7-0 left in the quarter. As the 1st quarter ended, the Lynx scored again, and the important extra pt. 14-0 as the quarter.

Canyon kicked to Spearman in the 2nd quarter, and the Lynx drove the Lynx back 13 yard line, on 4th and 17 to go. The ball entered over the kickers and Canyon tackled the Lynx on the 14 yard line. Canyon again scored on their try from scrimmage, but the Lynx were guilty of holding the touch-down was 14-0.

Canyon kicked to Spearman in the 2nd quarter, and the Lynx drove the Lynx back 13 yard line, on 4th and 17 to go. The ball entered over the kickers and Canyon tackled the Lynx on the 14 yard line. Canyon again scored on their try from scrimmage, but the Lynx were guilty of holding the touch-down was 14-0.

At this stage of the game, most Spearman fans were in shock, wondering what had happened to our defense, and with no offense at all! However, the Lynx came back in the second quarter, took command of the game, and with one more play, would have tied the game at half-time.

After the Lynx got a big break on Canyon's touchdown being called back, it seemed to ignite them. Spearman jumped into an early lead, in the first quarter and the Lynx came back in the second quarter to almost tie that game.

Canyon scored early in the quarter, as result of a fumble on the 22! Canyon for extra point was 7-0 and the Eagles jumped to an early 7 point lead, 7-0 left in the quarter. As the 1st quarter ended, the Lynx scored again, and the important extra pt. 14-0 as the quarter.

Canyon kicked to Spearman in the 2nd quarter, and the Lynx drove the Lynx back 13 yard line, on 4th and 17 to go. The ball entered over the kickers and Canyon tackled the Lynx on the 14 yard line. Canyon again scored on their try from scrimmage, but the Lynx were guilty of holding the touch-down was 14-0.

failed, and the Lynx lost this heart-breaker to a fine Canyon Team 21-19.

STATISTICS
Lynx Canyon
19 1st downs 14
17 Passes Att. 5
8 Passes Comp. 2
138 Yds. Passing 27
177 Yds. Rushing 193

Milo Still Too Wet
A few loads of maize continues to trickle into local elevators this week but on the most part the grain is still too wet to cut.

Tommy Reger however, delivered several loads Monday to McClellan Grain Co. which tested 13.73. The cutting that is being done is very spotted and comes from fields planted with early varieties of milo.

Equity elevators received three loads Saturday with a high moisture content, 15.80. Copeland, manager at Equity, said he had dumped some 10,000 bushels of Soy Beans, which seemed to be the only crop dry enough to harvest as yet!

B & B Grain Co. received 3 loads Monday with a 15.50 moisture test and the same was true at Speartex Grain where the few loads coming in the first of the week proved to be too wet.

Milo farmers are in a 'betwixt & between' situation for the maize, before it can be harvested, needs a good frost. Yet, a too-early frost would prove drastic to some of the grain at this time.

About two weeks ago maize fields seemed to be shaping up for an early harvest, when all at once sucker heads began to show up in abundance. This second-growth grain will have to dry out before fields can be harvested.

The Farm Bureau is badly in need of more office space and has asked that the Chamber find a new location as soon as possible.

The office will be housed in the building at 217 main street which is owned by Wright Hale. The move is planned for early November.

CITY BUDGET IS ADOPTED
City Councilmen gave final approval Monday night to a \$449,325.00 budget for fiscal year 1968-69, which represents a \$41,000.00 increase over last year's budget.

The budget included a \$5,500.00 increase in appropriations to the salary fund, a \$9,000.00 increase in the cost of gas due to the recent rate hike by the supplier, and an evaluation gain in ad valorem taxes. The major cause of the \$41,000 increase is due to the recent water & sewer bonds approved by voters in an election held last April, plus an operation increase due to rises in prices for materials, supplies, etc.

Higher Tax Hit Texans Oct. 3
Texas began paying an additional penny on the dollar in sales taxes Wednesday, October 2. That's when the 1 percent increase in the sales tax voted by the legislature this summer took effect.

The new rate is 1 cent on sales of 17-49 cents, 2 cents on sales of 50-83 cents and 3 cents on transactions of from 84 cents to \$1.16.

AB ABSTON BEST PUTTER
Winners of the weekly putting tournaments which have been held each Tuesday throughout the summer, met for the final matches, Tuesday evening at the golf course.

Championship putter for the summer was Ab Abston who won Tuesday evening with a par score for 54 holes of putting. Mr. Abston received a \$24.00 merchandise certificate.

Weekly winners who entered in the championship tournament were: James Salinas, Bruce Brown, Bus Sims, Vivian Sims, Bertha Salinas, Bud King, Don Hudgins, Granville Boyd, Pete Fisher, Dr. Hackley, L. M. Womble, Junior Salinas, Lee Keys, Charlie Patton, Tony Harper, Lloyd Gilley, Nita Henry, Don Smith, Tony Harper and Ab Abston.

Golf Club members are invited to participate in a Scotch Doubles Tournament this Saturday, Oct. 5. Tee off time is set at 4:30 for the 9-hole contest. Entry fee is \$1 each.

Sewer Bid Let Soon
City Manager, Darce Foshee said Monday that work is progressing rapidly on the new water well and pump system located in the south east part of Spearman. Foundations are being laid this week for the huge water storage facilities.

Foshee said that city aldermen plan to let bids on the new sewer plant sometime in early November. These water and sewer improvements for the City of Spearman were approved by voters in the \$250,000 bond election held last April.

Panel To Discuss Discipline Problems
Perhaps the most outstanding program scheduled for P-TA this year will take place at 7:30 p. m. Monday Oct. 7 when a panel of professional people and law enforcement officials will discuss Juvenile Delinquency and Discipline problems in today's world.

Appearing on the panel will be Hansford County Sheriff J. B. Cooke, City Attorney Richard Countiss, District Probation Officer, John Stevens of Borger, High School Principal Kenneth Mc-

CHAMBER BANQUET DATE SET
The Board of Directors of the Spearman Chamber of Commerce met in the chamber office September 26 to set the date for the annual banquet.

The banquet has been scheduled for November 12, Tuesday, in the high school cafeteria. The speaker will be Kenneth Wyatt of Tulsa. Mr. Wyatt, a retired Methodist minister is a very inspirational and personable speaker. His addresses are very versatile and quite hilarious.



LIBRARY MOVE PLANNED--Mrs. J. H. Perdue, Librarian at the Kilgore Memorial Library in Dumas, met with Hansford County Library committee member here Tuesday to help them plan book shelf placement in the new library. Mrs. Perdue, seated right, goes over plans with Mrs. Tom Eter, Mrs. Dick Kilgore, Mrs. Bill Massie and Mrs. Robert Hall. The old quarters in the basement of the court house will be vacated this week. The moving of books and shelving to the new Library begins today, Thursday.

Panel To Discuss Discipline Problems

Perhaps the most outstanding program scheduled for P-TA this year will take place at 7:30 p. m. Monday Oct. 7 when a panel of professional people and law enforcement officials will discuss Juvenile Delinquency and Discipline problems in today's world.

Appearing on the panel will be Hansford County Sheriff J. B. Cooke, City Attorney Richard Countiss, District Probation Officer, John Stevens of Borger, High School Principal Kenneth Mc-

Chamber Office To Relocate

The Chamber of Commerce will soon be moving its office to a new location on main street.

City Budget IS ADOPTED

City Councilmen gave final approval Monday night to a \$449,325.00 budget for fiscal year 1968-69, which represents a \$41,000.00 increase over last year's budget.

The budget included a \$5,500.00 increase in appropriations to the salary fund, a \$9,000.00 increase in the cost of gas due to the recent rate hike by the supplier, and an evaluation gain in ad valorem taxes. The major cause of the \$41,000 increase is due to the recent water & sewer bonds approved by voters in an election held last April, plus an operation increase due to rises in prices for materials, supplies, etc.

Major expense items are anticipated as: Administration \$13,504.00; Public Safety \$47,157.34; Fire Department \$5,505.00; Health and Sanitation \$28,315.96; Street Department \$25,021.92; Community Building \$300.00; Swimming pool \$775.00; Systems office \$31,256.08; Utilities (purchases, maintenance, etc) \$166,189.00; Park funds \$3,700.00 plus another \$127,000.00 for bonds, warrants and interest.

Walter Windom Wins Grid Guessing Game

The football contest this week revealed that most of the guesses missed on the Texas-Tech University-Suray-Booker; and the Claude games.

The entry blanks were filled with 10 entries each, six missing 8 and one missing 10. Our missed only one guess: Walter Windom missed the Iowa game; Jody Beth missed the Texas-Tech game; Slim Cates missed the Sanford-Claude game; and Ronnie Gibson missed the Texas-Tech game.

Walter Windom won the contest with a 20-19 score. His sister Jody Beth missed the second place with a 14-7 score guess. Slim Cates is 13-7.

Those missing only two guesses in the past week's contest included Gene Cudd.

Scotch Doubles Golf Tourney This Saturday

Golf Club members are invited to participate in a Scotch Doubles Tournament this Saturday, Oct. 5. Tee off time is set at 4:30 for the 9-hole contest. Entry fee is \$1 each.

Ladies Golf Tournament Set For Wed.

There is to be a Ladies Golf Tournament for local members of the Golf Club, Wednesday, October 9. Tee off time 9:00 a. m. with 18 holes of play. Prizes will be given for 1st and 2nd place flight winners.

Chamber Office To Relocate

The Chamber of Commerce will soon be moving its office to a new location on main street.

Training At John Sealy

Rita Ann Johnson MT (ASCP) entered Blood Bank School at John Sealy Hospital in Galveston Oct. 1. This school is an approved center for training Medical Technologists (ASCP) who wish to be certified as Blood Bank Technologists by the committee on Education of the American Association of Blood Banks and the Registry to Medical Technologists of the American Society of Clinical Pathologists.

St Graders To Attend 1/2 Day All Next Week

All parents of first grade students were notified this week by Elementary school principal Allen Alford that the students will be dismissed at 1:30 each day Monday thru Friday beginning October 7.

Principal Alford said all grade teachers will be attending afternoon conferences with parents regarding pupil progress for the first six weeks of school. These conferences with parents will be scheduled appointments. Alford said he expects ALL parents to attend these briefings to understand how their child is doing and how they can work with their children. First grade students will be dismissed at 1:30 so that parents with students riding buses may pick up their children or let them remain at school until busses run.

Samuel L. Abston, USN, will via plane Sunday to return aboard the USS MCCAFFREY, docked at Charleston, N. C. Sam and his wife Patty returned the past week visiting parents Mr. and Mrs. E. C. Abston of Spearman.

MIRACLE SPACE SHIP FOR CITY PARK---City Aldermen Monday night voted to purchase this piece of playground equipment for the city park located in the Blodgett-Linn addition. The first piece of equipment in a long-range plan to erect an Astro City in that park, will cost \$1,650.00, installed. A towering 33' high from the concrete base to the tip of the nose cone, the Space Ship is designed for climbing, sliding or perhaps an imaginary trip into space! A wave slide provides a quick, safe descent back to earth. The 2800-lb. structure covers a ground space of 8' x 21'.





Let Me See ... by Sybil

Woe the business world, woe the housewives who will have to miss their soap operas for a few days...

day and perhaps several days next week fans will be glued to the boob tube (or radio) if they are unfortunate enough not to be working where there is a TV set close by.

Before I forget, I do want to thank everyone who sent me flowers and cards and even called to see me at Hansford Hospital...

So, not only Wednesday, but Thursday, Saturday, Sunday...

Boston.

Noticed where the ladies who attended the state Home Demonstration convention were all presented with an Aloe plant.

Several weeks ago when we took aunt Bessie back home, all the people down that way were already familiar with the plant.

So if Billy don't decide to auction off his Texas Tech football tickets & ice away the hard cash for posterity, I might decide to sell pieces of Eddie Faye's Aloe plant and get rich quick!

We motored down to Lubbock for the Texas Tech-

Texas football game Saturday evening. Unlike Slim and Mary Cates who had room reservations but no tickets...

We, along with the other fifty thousand fans, enjoyed the game. The evening was beautiful. But man, that mob of people and cars all trying to get away from Jones stadium is a riot.

If you are wondering about

all the activity you see going on at the small stone building located at 301 W. Kenneth, its Jettie Lou Davis who is getting ready to open an Antique shop there. I can hardly wait.

I've got a secret for all you fat gals who would like to lose some weight... join the dieter's club. Those women know how to get rid of excess baggage.

Among cityans attending the football game in Lubbock Saturday night were: Mr. and Mrs. Wesley Garnett Sr., Mrs. Louene Hutchison, Mr. and Mrs. Allen Ricketts, Mr. and Mrs. T. C. Kitchens, Mr. and Mrs. J. D. Helms and family, Mr. and Mrs. Slim Cates and the Richard Holtons.

Couple Celebrate 50th Anniversary

The Heritage room of the First National Bank of Panhandle was the setting for the afternoon reception honoring Mr. and Mrs. O. D. Riggs of Panhandle, on the occasion of the couples golden wedding anniversary.

Hosts included the couples sons and daughters. Mrs. C. J. Webber of Panhandle, Olen Riggs of Ojai, California, Mrs. J. R. Errington and Donald R. Riggs.

The former Miss Peal Hance and Mr. Riggs were married September 28, 1918 at Erick, Oklahoma. They moved to Hansford county in 1925, then to Pantex, Texas near Amarillo in 1942.

Several friends from Spearman attended the reception.

Mr. and Mrs. W. T. Weatly visited over the weekend in Clarendon with their daughter and family. Mr. and Mrs. Oran Burton and children.



THE SPEARMAN REPORTER P. O. Box 458, 213 Main Street, Spearman, Texas 79081 William M. Miller, Editor & Publisher

Successor to the Hansford Headlight, Published Thursday each week in Spearman, Texas 79081

THE SPEARMAN REPORTER Published every Thursday at Spearman, Texas. Second class postage paid at Spearman Post Office, 79081

Subscription Rate--Hansford, adjoining counties \$7.00 yr. Other points, \$5.00 or in combination with The Hansford Plainsman, \$9.00 yr.

Advertising rates on request.

Mr. and Mrs. J.C. Jackson where in Houston last week, where he attended an AADC meeting.

Mrs. Alma Wood from Shamrock visited last week with her sister. Mrs. Jesse Womble.

DEL MONTE ROUND-UP SALE



Del Monte Grape or ORANGE DRINK 46 oz. Can 4 for 98¢

Del Monte Bluelake GREEN BEANS Cut 303 Size Can 4 for 98¢

Del Monte Fruit Cocktail 46 oz. Can 4 for 98¢

Del Monte Blended Sweet PEAS 303 can 4 for 88¢

Del Monte Tomato CATSUP Large 20 oz. Bottle 3 for 98¢

Del Monte Tomato Juice 46 oz. Can 3 for 98¢ PINEAPPLE Del Monte Crushed No. 2 can 3 for 88¢

Del Monte Golden CORN Cream or Whole Kernel 303 size can 4 for 88¢

Del Monte Chunk TUNA Flat Can 3 for 78¢

SUGAR 49¢ Imperial Cane "Thereafter" 59¢ 5 lb. Bag First Bag

Kraft Margarine Parkay Yellow Quarters lb. 27¢

Gladiola FLOUR 5 lb. Bag 45¢

CRISCO OIL All Vegetable 24 oz. Bottle 49¢

BOTIQUE KLEENEX Facial Tissue 140-2 ply Colors 29¢

Energy 'all purpose' Giant Size Detergent 49¢

Folgers Vac. Pac. COFFEE lb. 73¢ Can

Lanes Party Time Mellorine Half Gallon 39¢

Sara Lee Pecan COFFEE CAKE Frozen Large Ring 59¢

Duncan Hines Layer CAKE MIXES Box 29¢

USDA CHOICE BEEF T-BONE STEAK



USDA Choice Top Round STEAK Boneless Lb. \$1.29

USDA Choice Boneless Sirloin STEAK lb. \$1.19

Boneless Dimer STEAKS Lb. \$1.29

Country Style Meaty Fork Backbone Lb. 79¢

USDA Choice Boneless Sirloin tip ROAST lb. 98¢

Fresh Pork Cutlets Lb. 79¢

Deekers All meat Jumbo FRANKS lb. 49¢

USDA Choice Beef RIBS Lb. 29¢

Raths Racorn BACON Smoked Sliced lb. 49¢

Cudahys Bar-S HAMS Boneless Fully Cooked Defatted 9 to 11 lb. lb. 98¢

BANANAS 9¢ Central America Golden - Ripe Lb.

New Mexico Fresh Sweet POTATOES Lb. 15¢

U. S. NO. 1 Colorado Red or Golden Delicious APPLES Lb. 15¢

Sweet and Juicy Italian PLUMS Lb. 15¢

Jackpot promotion with \$200.00 prize and list of winners including Mrs. Earl Archer, Shirley Ayers, Colleen Schaefer, etc.

Brown Blankets advertisement for \$3.49 with features like 'COZY WARM BLANKETS ARE 72x90 DELUXE SIZE ALLERGY FREE GUARANTEED MOTH PROOF, WASHABLE 55% NYLON, BLENDED SCIENTIFICALLY FOR WARMTH WITHOUT WEIGHT AND AVAILABLE IN 6 ASSORTED COLORS WITH 5" ACETATE BINDING & POLY BAG'.

CHILDREN OF CLUB MEMBERS PRESENT MUSICAL PROGRAM

The Spearman Music Club, member of the Texas and National Federated Music Clubs, met Tuesday evening September 23 in the HD Club with Mrs. Pat Cates and Mrs. Russell Townsend as guests.

Mrs. Raforod Clark, vice president, presided over the business meeting.

The program for the evening was presented by children of the club members. Misses Angela and Teresa Oakes sang a song skit narrated by Mrs. McLane Schaefer. Miss Angela Schaefer presented a solo and Miss Julie Schaefer played a piano solo.

Members present were Mrs. Desimone, Kenneth Mc-Jack Oakes, Rae Sanders, Mrs. Schaefer, Tom Sutton, Mrs. Wilbanks, Dean Leigh-

nor, Bill Turner, R. N. Bell and the hostesses. There was one guest present, Mrs. Carl Scroggs.

The next meeting of the Spearman Music Club will be on October 8th.

Mr. and Mrs. Dennis Jones and Mr. and Mrs. Wade Tackitt attended funeral services in Panhandle Sunday for their nephew Lawrence Tackitt. While in Panhandle they stopped by to visit with Mr. and Mrs. O. D. Riggs who were celebrating their golden wedding anniversary.

How many "Ditty Bags" do you want to fill?



Hospital

Patients in Hansford Hospital are Ada Chambers, Marg Green, Ruth Garner, Ellen Groves, Betty Hill & son, Connie Pancake, Cora Parks, Nettie Phelps, Helen Prachar, Carl Tucker, Elizabeth Underwood, Mary Garcia & son, Willie Lee Jones, Bill Hunter, Dee Lynn Beaver.

Dismissed were Steve Tindell, Robert Burks, Anita Rios & daughter, Syble Miller, Joe Fackler, Deanna Beaver, Cora Babbs, Marg Green.

ART AUCTION NOVEMBER 17

The next meeting of the Spearman art class will be held in the new library building in Spearman on Oct. 7 at 7:00 p. m.

Members are asked to bring tables and chairs to the meeting.

The class is sponsoring an art auction at the library building on November 17 in order to raise funds to improve the upstairs part of the new library.

Dord Fitz will donate an art pastel to be given away at the auction. Tickets will be sold for this drawing.

SS Class Had Salad Supper

The Charity Sunday School Class of the Baptist Church met in the fellowship hall of the church, the night of September 26 for a salad supper.

President of the class, Patsy Gates, conducted a short business meeting and brought the evenings devotional.

Members present were: Wanda Widener, Patsy Gates, Wanda Archer, June Jackson, Betty Thomas, Barbara Reger, Louise Hawkins, Virginia Fowler, Sue Owens, Donna Helms, Nora Baca, LeAlta Smith, Dorothy Wooley and the teacher, Minnie Weaver

Mike Murrell Member A&M Singing Cadets

COLLEGE STATION---Mike Murrell of Gruver is a newly auditioned member of the Singing Cadets, Texas A&M University's all-male glee club.

Murrell, son of William R. Murrell, Gruver, is a freshman nuclear engineering major at A&M and will sing first tenor.

He will perform with the Singing Cadets in 1968-69 appearances at the 1968 Miss Teenage America Pageant in Fort Worth and concerts at Fort Hood, San Antonio, Houston and on campus.

Four students auditioned for each of 23 positions filled in the 59 member choral group.

CCD Program Is Underway

The beginning of another Confraternity of Christian Doctrine programs has begun in Gruver for the 1968-69 school year.

Lay teachers, members of the Sacred Heart Church, include Mrs. C. A. Davis Jr., Mrs. Andrew Bort and Mrs. Joseph Batenhorst. All report a good turn out of students for the CCD program.

The ON OUR WAY series by W. H. Sadlier is being used together with the Intermediate Volume No. 4 of Witness Magazine.

BRIDGE PARTIES

BLUE MONDAY BRIDGE

Mrs. Vester Hill was hostess for the September 30 meeting of the Blue Monday Bridge Club.

High scorer for the day was Mrs. Pope Gibner.

Those attending were Mmes. Jesse Womble, Major Lackey, Willie Seitz, Bill Gandy, F. J. Daily, Sam Graves, Deta Blodgett, Pope Gibner and the hostess.

64 Texans on FB Tour

TOKYO, Japan--For Texas farmers not yet accustomed even to daylight savings time, the long jet flight from Texas to Tokyo -- crossing nine time zones enroute--can be downright devastating to the human "inner clock."

What this means--in plain language--is that many of the farmers and ranchers and their wives on the TFB-sponsored world tour get awful sleepy in the daytime--and wake up hours before breakfast--just because their "inner clocks" are set to Texas time. But, despite being a little bleary-eyed, the 64 Texans on the tour are becoming oriented to the Orient.

What they see in Japan is an aggressive, hard-working people with a rising standard of living. They observe an island nation of 100 million people with less land area than California, a mountain-

ous country of delicate beauty where only 16% of the land is capable of agricultural production. What this would seem to add up to is a growing market for Texas--produced grain sorghum, wheat, rice, cotton, poultry and livestock products. The tour members will have a clearer picture of market potential when they are briefed by U. S. embassy officials later on. They expect also to meet with buyers for a large import firm here.

The Texas Farm Bureau tour group--comprised mostly of farmers and ranchers and their wives--is on the first leg of a 31-day, around-the-world market-inspection, sightseeing and goodwill tour. After Japan, they are scheduled to visit Hong Kong, the Philippines, Thailand, India, Lebanon, Israel, Greece and Rome.

In our journey thus far, we have witnessed first hand some of the startling improvements made in transportation in recent years. We were whisked by jet to Tokyo via Los Angeles and Honolulu in just 16 hours flying time--an unthinkable feat just 15 years ago. And yet the big, sleek jets cross the ocean now with the casualness of a bus ride across central Texas.

Here in Japan, we have seen what may be the forerunner of rapid surface transportation--especially between populous urban areas. I'm speaking of the super-swift, 130-MPH KODAMA (Echo) trains that travel at 30-minute intervals, both ways, between Osaka and Tokyo.

Imagine travelling by train between Dallas and Houston--a distance of some 300 miles--in just 2 hrs. and 50 minutes! That's the equivalent of what we did on one ride from Kyoto to Tokyo. The "silver bullet"--as it is sometimes called--makes only two stops between Osaka and Tokyo--and Kyoto, where we stayed the first 2 1/2 days in Japan--and Nogyoya. The "bullet" runs on a tight schedule, and only stops about three minutes at each place to take on and discharge passengers. As a matter of fact, we had to send our heavy luggage ahead the night before by truck so we could board with only our small hand luggage. The "bullet" waits for no one.

The train trip from Osaka-Kyoto to Tokyo takes you through a fairland of rural loveliness. For mile after fleeting mile you view an unfolding panorama of rural Japan. It is a country of verdant hills, rice paddies and row upon row of manicured tea plants. And yet, you are never out of sight of human habitation. The farm

houses in the small villages are only seconds apart, and you rush through many, many towns and cities. There are 25 million Japanese living along the 300-mile route of the Kodama train. This is one fourth of the total population of this teeming island. When you arrive in Tokyo and step from the train into the vast labyrinth of Tokyo Station, it is like being immersed in a sea of humanity--a veritable ant hill of scurrying figures. For this is Tokyo-city of more than 11 million people--largest metropolis in the world. Of this you have no doubt.

smallest since 1895 and only half of 1961-65 average. Record corn and sorghum grain output pushed the feed grain total to a new high. Food grain production increased 14 percent above 1966. Oil crops continued to increase, primarily because of a rise in soybean output.

Labor used on farms in the United States totaled 7.4 billion man-hours in 1967. This explains the economist was lower than any previous year and 1.4 percent less than in 1966. Farm output per man-hour in 1967 rose more than 6 percent from a year earlier. The increase in livestock production per man-hour was greater than for crops. Fewer farm workers in 1967 supplied food and other farm products to an increased domestic population. Each farm worker in 1967 supplied 42 domestic and foreign consumers with their needed agricultural products.

The total volume of inputs in 1967 was nearly 2 percent larger than in 1966, says Parker. Agriculture in the United States, he says, is increasingly dependent on the non-farm sectors of the economy for production inputs. The record high volume of purchased inputs in 1967 was 24 percent greater than in 1967-59. The volume of non-purchased inputs has decreased 19 percent since 1957-59. Inputs used in agriculture in 1967, however,

were more productive than in 1966. Farm output per unit of input in 1967 was about 2 percent greater than in 1966 and 8 percent greater than in 1957-59.

Mr. and Mrs. Jack Whitson and Mrs. Jack Whitson and Mrs. Fronye Close recently visited Mrs. Whitson's sister, Mrs. S. J. Bollinger in Natural Dam, Ark.

Mr. and Mrs. Roger Dobbs and children of Madison, Wis. were here this week visiting his grandfather, Mr. and Mrs. W. R. Shaull.

Mr. and Mrs. Kenneth and son Larry attended the Tri State Fair and visited in Amarillo Saturday and Sunday of the past week.

Weekend visitors in the Leland Wood home were the parents of Mrs. Wood, Mr. and Mrs. Caroll Harrington of Luther, Texas.

Mr. and Mrs. E. J. Copeland and their daughter Mrs. Bob Leland of Denver and Mrs. H. C. Brown of Perryton visited last week in the home of Mr. and Mrs. Kim Copeland in Austin.

SEND-OUT THIS ADVERTISEMENT NOW!

Your son may be next in the draft and you may want to send a cake

CAKE-TO-VIETNAM

Send to Military Men Anywhere in the World

"Angel Food Cake Bomb" PACKED - IN - POPCORN

To bake the cake in a new extra-strong-foil U.S. Patented pan, put the cake pan in a poly bag, then into a strong corrugated box, stuff the corners tight with popcorn, then we ship it via air (overnight) to A.P.O. Postmaster and it is delivered as far away as Vietnam in one week at peak of flavor. The boys enjoy the popcorn (6 parts) as much as the cake.

Send Parcel Post Label

PLEASE PRINT!

Name _____
 Serial Number _____
 Theatre of War or Occupation: (Check One)
 Vietnam Europe
 Korea Other
 Fleet - P.O.
 A.P.O. Postmaster: San Francisco (Check One) New York

Enclose \$2.00 Cash or Check for \$2.10 (Our bank charges on small checks). We Pay the Postage.

To: LUKER - "The Angel King"

104 Railroad Street, Buckley, Illinois 60918

We Ship Cake to Kids in College, Too!

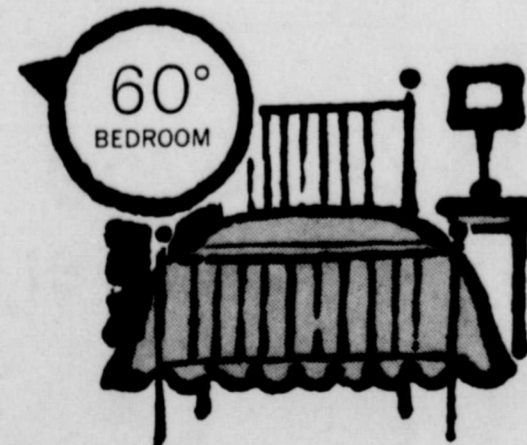


72° LIVING

Individual room-by-room temperature control when you choose electric heating



80° BATH



60° BEDROOM

With baseboard, wall or ceiling electric heating units, individual room thermostats automatically keep the temperature at the precise level that you select for that room. Each room is independently controlled and heated. You may raise or lower the temperature in any room yet not affect the temperature in the remaining rooms. So when you build or remodel, check into the advantages of clean, flameless electric heating with room-by-room comfort control... the ultimate in comfort for every individual.

COMMUNITY PUBLIC SERVICE

Your Electric Light & Power Company

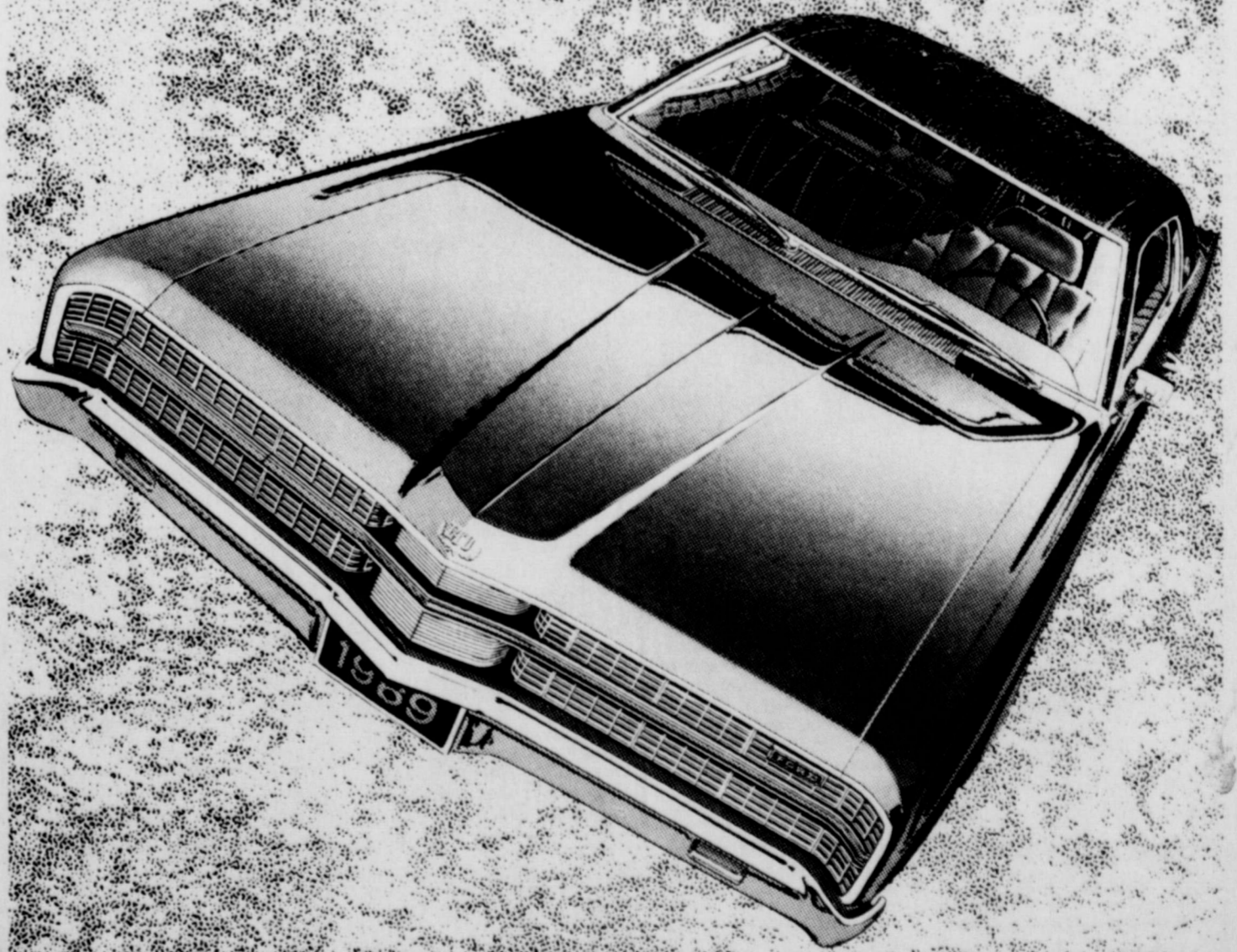


EASY ON THE EYES
EASY ON THE WALLS

STERLING 12 PAINT

White House Lumber Co.

GUESS WHO?



GIVE UP?

FORD DIVISION/FORD MOTOR COMPANY
 Chrysler Imperial... a longer wheelbase than Chevrolet.
 Cadillac... more front legroom and headroom than
 It's the 1969 LTD by Ford... with a track as wide as

GET HIP!!
READ THE
WANT ADS



For Your
Insurance Needs
See Your
Farm Bureau

TOMMY GOOCH
Phone 659-3131
Spearman, Texas

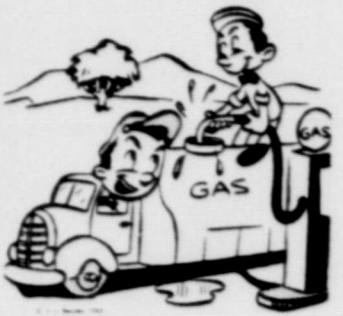


106 E. Kenneth

**SERVICES
COMMENTS**

Loren Simmons

What should NOT be heard by LITTLE EARS... should NOT be said by BIG MOUTHS.



Hurry And Fill Her Up, I'm Going To

Simmons Chevron

U. S. Highway 15, South
Phone 659-9945
We Give Bumper Stamps

Everett E. Greene Agency

Real Estate
Loans
Insurance
Phone 659 2587-Box 143
Spearman, Texas

B. M. A.

**INSURANCE
E. K. Snider
Canyon, Texas**

Life, Hospital A.H. Junior Accident

CUMMINGS

Refrigeration And Air

Conditioning
Phone 659 2721
Phone 659 2441

Gordon Cummings

Boxwell Bros.

Funeral Home

and
Flower Shop

Day-Night Phone 659 2212
Spearman, Texas

PANHANDLE VETERINARY CLINIC

Southwest of Spearman
Phone 659-2100
8:30 a.m. to 5 p.m.

T. R. LATTA, D. V. M.
H. B. RINKER, D. V. M.

Hansford Lodge

1040
A. F. & A. M.

Regular Communication
2nd, and 4th Monday of each Month
Coy Palmer, W. M.
Cecil Batton, Secy.

WHITE HOUSE LUMBER CO.

Building & Plumbing Supplies

Phone 659-2821

Dead Animals Removed

Call Collect 338-7312

Guymon Rendering Co.

Guymon, Oklahoma

Our appliance service man is in Spearman Tuesdays and Thursdays. Service calls should be in a day before service is desired. Sears, Plains Shopping Center, 659-2573. 19T-rtm

SERVICE MITCHES from 3-12 inches any desired depth. S.D. Jones, 659-2809, Harold Snaver 659-3474. 49-rtm

FOR SALE
For Sale - Childcraft Books, 15 volumes. Just like New. Call 2029. 44t-rtm

ULCERS - Try Rexall Antacid Liquid, Spearman Drug, 659-2226. 19-rtm

FOR SALE: 2 bedroom brick at 720 Gibner Drive. One & 3/4 baths. Kitchen-den combination. Built-ins. Dishwasher. Phone 659-2514 or Area 806, 383-7856. Rtn-36

FOR SALE: Toy Silver Poodle Puppies. AKC registered. Call 658-4736, Booker. 40T-rtm

FOR SALE: Approx. 5,000 ft. of 7/16 in. flexible wire line ideal for corrals, 2¢ per foot. Phone 659-3436. 41S-rtm

TRACTS FOR SALE: joining Spearman, with electricity, water, etc. See Cecil Crawford, box 96. 36-rtm

FOR SALE: Small 5-room house. Like rent, \$60.00 per month. See L. S. McLain, 659-2464. 44t-4TP

FOR SALE: Dinette Set and Bedroom Suite. Ph. 659-2797, 109 W. 12th. 45T-2tp

FOR SALE: 2-1967 Grain Truck. 1-1965 10x50 Mobil Home. Dale Davis, Gruver hwy. Ph. 2489. 44T-rtm

SALE
At 903 S. Bernice, Wed., Oct. 2 from 1-5 and Friday, October 4 from 1-5, Saturday Oct. 5 from 9-6. Presented by Mrs. O. R. Latham and Mrs. Bill Wilmeth. Top quality clothes and shoes at low prices including household items, materials and carpet remnants. 44S-2tc

CATTLE TRAILER FOR SALE. 40 foot American Snider & Pearson Texaco Sta. Ph. 659-9972. 44S-rtm

BEAUTIFUL PICTURE FRAME MOLDING
We frame any size picture or painting. C & B Studio, Spearman. 34-rtm

FOR SALE: Singer Touch & Sew. Guaranteed. Makes zigzag patterns, buttonholes, winds bobbin in machine. Will take older machine on trade. 15 payments of \$5.20 a month. Write Credit Manager, Illi Pattie, Wichita, Kan. 45T-2tc

FOR RENT

For Rent - 2-bedroom house, 112 S. Endicott. Phone 352 6574, Amarillo. 44S-rtm

FOR RENT: Furnished, clean, air conditioned, TV's available. Downtown Apts. Phone 2269. 10T-rtm

FOR RENT: -Furnished apt. 806 S. Bernice St. Telephone 659-2652. 2-rtm

For Rent - 2 room furnished apartment. Ideal for one person. 813 S. Haney, phone 659-2689. 45T-rtm

FOR SALE OR RENT: Unfurnished 2 bedroom house. Call 659-2119. 44S-rtm

HOUSE FOR RENT: Unfurnished. Newly decorated. Call 3116 or 2661. 45T-rtm

WANTED

Wanted - Woman wool presser Experience not necessary. Thomas Cleaners. 44S-rtm.

WANTED: Housecleaning and baby sitting. 659-2074. 103 S. Drensen. 43T-rtm

WANTED: Service station attendant. Steady job. Apply in person. Snider & Pearson Texaco. 44S-rtm

\$100.00 Weekly, full time, car necessary. Train now for good Fall and Christmas business at Spearman and surrounding towns. For interview call 659-2731. 44t-2tc.

LEGAL NOTICE

CITY OF SPEARMAN, TEXAS NOTICE TO BIDDERS

Sealed bids will be received at the office of the City of Spearman, Texas until 8:00 p.m. Monday, October 14, 1968 for the purchase of two (2) pickups with the following specifications: 1968 Model 1/2 Ton, wide bed Long wheelbase Standard 6 cylinder engine 4 speed transmission-11 inch clutch

Rear springs-minimum 1250# Front springs-standard Deluxe fresh air heater and defroster Heavy duty radiator Rear hitch Oil bath cleaner 15 inch wheels

Tires-760 x 15, 4 ply, 2 standard tires, 3 mud grips Color-optional Bid on all standard equipment plus above specifications. No trade in.

The factory price sticker shall remain with these vehicles, and the city shall have the right to inspect these vehicles before being accepted, and reject the same if not in compliance with the specifications.

The City reserves the right to accept or reject any and all bids or waive any informality in the bid or accept any bid regardless.

By order of the Mayor and City Council of the City of Spearman, Texas this 30th day of September 1968.

s/ Dr. D. E. Hackley Mayor
s/ Darce Foshee City Secretary 45T-46Tc

CITY OF SPEARMAN, TEXAS NOTICE TO BIDDERS

Sealed bids will be received at the office of the City of Spearman, Texas until 8:00 p.m. Monday, October 14, 1968 for the purchase of a Police Cruiser with the following specifications: Eight Cylinder, 1969 Model, 4 Door Sedan, Color-White Minimum Horsepower 250-

For use with regular grade gasoline Cubic inch displacement-minimum 350, Maximum 400 Radiator-Heavy Duty Battery-Heavy duty, 70 amp. 66 plate

45 Amp. Alternator Oil Filter-sufficient for size of engine Transmission-3 speed, automatic, heavy duty Heavy duty springs-front Heavy duty shocks-front Stabilizer bar

Heavy duty axle-front and rear Heavy duty brakes Wheels-15 inch wheels, 7:60 x 15, 4 ply, black tubeless tires

Speedometer-Factory calibrated to 2 per cent accuracy Front seat-Heavy duty springs, cushion, extra foam pad Rear seat-heavy duty Seat upholstery-vinyl Windshield-tinted glass Floor mats-heavy duty, front and rear

Seat belts, 2 for front seat, retractable type Instrument panel-padded Heater-fresh air heater and defroster Sun visors-2 Spotlights-2, left side with

clear lens, right side with red lens, mounted Mirrors-1 inside mounted, 1 outside mounted on left side Lights-backup lights Radio noise suppression kit Windshield wipers-2 speed electric with washer Factory air conditioner Unit must not be a "Compact" or small size vehicle

The factory sticker designating the special equipment on this car shall remain with car, and the city shall have the right to inspect this car before being accepted, and reject same if not in compliance with the specifications.

Bidder is requested to quote bid on cash purchase, and alternate bid with trade-in of a 1966 Model 4 door Ford Sedan presently owned by City. The City reserves the right to accept or reject any and all bids or waive any informality in the bid or accept any bid regardless.

By order of the Mayor and City Council of the City of Spearman, Texas this 30th day of September 1968.

s/ Dr. D. E. Hackley Mayor
s/ Darce Foshee City Secretary 45T-46Tc

Classified Advertising Rates
effective May 1, 1964. Classified ads 4 cents per word for each insertion with Minimum charge of 60¢. Minimum of 75¢ for classified ads that are charged. Blind ads, double rates.



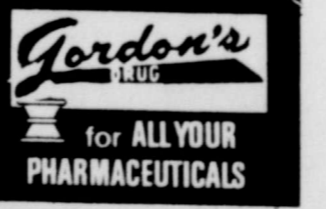
THE BEAUTY SPOT

The very young teenage girl has been neglected by many cosmetic firms when it comes to a line of cosmetics just for her. But Clairol has thought of her at last and has come out with a wonderful line of cosmetics called "California Girl". It's made for oily, dry or normal complexions-even those with minor skin blemishes.

First young teenager, it's important to keep that skin of yours CLEAN! California Girls "Deep Diving Cleanser" is perfect to cleanse deep down into those sluggish clogged up pores and wash them out like new. Just froth it on-add water, massage your face good then splash it all off with warm water. To follow up this routine drench cotton with California Girls "Pacific Ocean Fresh Up Lotion"- splash it merrily across your face. It awakens every pore and further chases away dirt and oil. Next California Girl insists that you smooth on their "Dew Good Moisture Balm."-this is like applying a moisturizing protective shield over that clean face.

Then comes the thrill of it all "Make Up." Would you believe that "California Girl" makes make up base, pressed powder, and lipstick just for you! Their lipsticks come in such yummy shades as Lemon Polish, Sunsew Orange, Teddy Bear Beige, Ski and many many more plus lip gloss.

California Girls complete line of cosmetics has some ingredients from the ocean-but they wouldn't divulge their secret even to us. COSMETIC TIP-Teenagers don't overdo the cosmetic bit --just enough to look sweet.



holt news

Mr. and Mrs. Bill Frederick of Houston recently visited their daughter, Mr. and Mrs. Mike Holt.

Mmes. Ray Moore, Marvin Jones and Medlin Patterson were hostesses to a baby shower Friday afternoon September 27, honoring Kerri Ann, the daughter of Mr. & Mrs. Mike Holt. The shower was in the home of Mrs. Moore. Due to sickness Mrs. Moore couldn't be present, so her daughter, Mrs. Dick Doyle of Gruver served in her mothers place. Beautiful corsages of arrangements of baby socks and flowers were given to the two grandmothers, Mrs. Bill Frederick of Houston and Mrs. Fred Holt, and also corsages were given to the two great grandmothers, Mrs. Hazel Loftin of Spearman, and Mrs. Berda Holt. Gifts were given to the honoree and refreshments were served to Mmes. Jack Vanderburg, Hazel Loftin, Britt Jarvis and William of Spearman, Dick Doyle of Gruver, Marvin Jones, Medlin Patterson, Fred Holt, Raymond Kirk, Bertha Jenkins, Owen Pendergraft, Doyle Jackson, Berda Holt, Mike Holt, O. C. Holt, Maude Rosson, and Bill Frederick of Houston.

Mr. and Mrs. Bruce Fiedler of Denver were weekend guests of her parents, Mr. and Mrs. C. W. Kirk and other relatives.

Mr. and Mrs. Phil Jenkins have been vacationing, sight seeing and enjoying the fall foliage of Colorado, especially Grand Junction, Colorado Springs and Durango. Sunday Kathy Jenkins of WTSC of Canyon, Mr. and Mrs. Phil Jenkins visited Mr. and Mrs. Wally Pearson of Amarillo.

Mr. and Mrs. Jack Witson of Spearman and Mrs. Froyne Close spent the weekend visiting relatives in Arkansas.

Mr. and Mrs. Bob Tevebaugh of Claude were Sunday afternoon callers of her mother, Mrs. Bertha Jenkins and Mr. and Mrs. C. W. Kirk.

Carroll J. Richards of Ft. Riley, Kansas, has been visiting his parents, Mr. and Mrs. Wesley Jenkins. Mrs. Jenkins had surgery last week in the Shattuck Memorial Hospital. She is getting along as well as could be expected and may get to come home soon.

Mr. and Mrs. Doyle Jackson and boys enjoyed a Sunday Fish Fry dinner with his parents, Mr. and Mrs. Dan Jackson. Then Sunday afternoon callers were Mr. and Mrs. Bob Phelps and family of Fargau, Okla., and Mr. and Mrs. Ira Harbour and boys.

Glyde Thompson of Blair, Okla., is in Okla. City Hospital and is improving. James Stephen of Borger had a heart attack Sunday and is in the hospital at Dalhart. He is getting along as well as could be expected. He is a brother of Mrs. Phil Jenkins.

ARTS AND CRAFTS
Mrs. Sada Hoskins was hostess to the Friday, Sept. 27 meeting of the Arts and Crafts Guild of Spearman.

Guild members present for the painting session were Mmes. F. J. Dailly, Clay Gibner, Kiff White, Ned Turner and Guy Fuller.

Mrs. Pope Gibner will be hostess to the Guild, Friday, October 4, in her home.

Workshop To Brief Area Auto Dealers On Buying Public

Franchised new car dealers, bankers and finance company officials from the North Plains area will meet Tuesday, October 8, at the Holiday Inn West in Amarillo, announced H. C. Pittman, Executive Vice President of the Texas Automobile Dealers Association.

TADA is hosting the one-day Workshop to brief auto dealers and finance members of the giant trade association on the latest developments affecting the motor vehicle buying public.

Pittman indicated the auto dealers would discuss proposed changes in the administration of new car warranties so that the new car buyer would receive better service. In addition to the warranty session, the dealers will be briefed on the wage and hour changes which go into effect soon. A discussion will also be held on Safety Standards with which Texas dealers comply, according to Pittman.

TADA officials who will attend include F. M. Culbertson, Culberson-Stowers Chevrolet in Pampa, TADA Director, and R. W. Stowers, also of Culberson-Stowers Chevrolet, member of the TADA Insurance Committee.

PROPOSED AMENDMENTS ANALYZED

Proposed amendment No. 10, one of fourteen to be decided by voters in the general election Nov. 5, would add a new Section 1-j to Article VIII permitting the legislature to authorize a refund on the tax paid on the first sale in this state of cigars and tobacco products which are subsequently sold at retail within the corporate limits of Texarkana, Texas, or any incorporated city or town in Texas contiguous to Texarkana. Obviously, the purpose of the proposed amendment is to permit Texarkana, Texas, and contiguous incorporated cities or towns in Texas to compete with Texarkana, Arkansas, where there is no tax on the sale of cigars and tobacco products.

Border areas of Texas, whether adjoining neighboring states or the Republic of Mexico, are often placed at a disadvantage in the sale of certain products taxable in Texas but not taxable even a step away in alien territory. Section 1 of Art. VIII of the Texas constitution provides in part: "Taxation shall be equal and uniform". The only recourse in providing exceptions to this provision is by constitutional amendment. The proposed amendment would be applicable only in the Texas portion of Texarkana.

ARGUMENT FOR: If adopted, amendment 10 would be purely local in its effect. It would benefit merchants of Texarkana, Texas, which constitutes approximately 2/3 of the Texarkana Standard Metropolitan area, without detriment to the majority of those selling cigars and tobacco products in other parts of the state. The revenues lost to Texas from the tax refunds authorized by the proposed amendment would be minimal, while Texas retailers of cigars and tobacco in Texarkana, Texas, would be able to compete favorably with those in the Arkansas district. The tax exemption proposed by Amendment 10 would have the bonus effect of stimulating the entire economy of Texarkana, Texas, which would regain profits on a wide variety of other goods now purchased by Texas citizens journeying to Texarkana.

Arkansas sector of the city to avoid payment of taxes on tobacco products.



FIRE DEPT. TO RECEIVE TRAINING --- W. B. Dorman, Texas A&M Engineering-Extension service instructor representing the Firemen Training School, will conduct a basic course in fire fighting and evolution for the local fire department. Acting fire marshal Bob Ragsdale said the local dept. will meet the next five Thursday nights for classes of pump theory and operation, sizeup and attach, forcible entry ventilation, ladders and advanced and other practices.

ARGUMENT AGAINST: If the proposed Amendment No. 10 should be adopted, merchants in all areas of the state now losing business to out-of-state competitors because of Texas tax inequities would doubtless seek the equal competition benefits obtained by the Texarkana, Texas, tobacco retailers.



SCATTER PINS

9-26-68

TEAM	WON	LOST
Sanders Farms	9	3
Anthony Elect.	8	4
G & G	7	5
Gruver Mtr.	7	5
Berry's	3	9
Baker-Taylor	2	10

HIGH TEAM SERIES

G & G	1683
Sanders	1649
Baker-Taylor	1559

TEAM GAME

G & G	587
Berry's	576
Baker-Taylor	575

HIGH INDIVIDUAL SERIES

Lon Harvey	587
V. Sanders	468
Jane Meek	429

HIGH INDIVIDUAL GAME

Harvey	213
Harvey	202
V. Sanders	178

PIN BENDERS

9-27-68

TEAM	WON	LOST
Bowl Mor	10	6
Brook Ins.	9	6
McClellan Grain	9	7
Harvey's Aerial	8	8
Beauty by Mary K.	8	8
Thomas Cleaners	7	8
Vernons	6	9
Farm Bureau Ins.	5	10

HIGH TEAM SERIES

Bowl Mor	1302
McClellan Grain	1238
Harvey's Aerial	1201

HIGH TEAM GAME

Bowl Mor	459
Bowl Mor	453
McClellan Grain	436

HIGH INDIVIDUAL SERIES

Patty Spoonemore	475
Rita Reed	468
Opal Wallin	437

HIGH INDIVIDUAL GAME

Rita Reed	186
Patty Spoonemore	179
Lou Harvey	168

News From The Pioneer Manor

Vernon Martin from Colton Springs and his mother, Mrs. Martin of Amarillo called on the home Monday to visit with Leon Bowling. Leon enjoyed visits from Rev. and Mrs. G. Ott on Friday and from Mrs. Curlee of Gruver Sept. 30.

Mrs. J. D. Helms called on the Manor Wednesday to give speech therapy assistance to Mr. H. L. Boyd.

Mr. and Mrs. H. L. Boyd have had several visitors throughout the week: Mrs. Mack Dorch of Morse, Luan Schad, and Mr. and Mrs. Billy Jarvis.

Mr. and Mrs. Willis Hardy of Perryton visited Thursday with Elder J. B. Hardy and with Mr. and Mrs. Vernie Caldwell.

Myrtle Bernstein of Gruver called Wednesday and again on Sunday to visit with her mother, Mary Brandvik.

Mr. and Mrs. A. P. Hembree, Paul Anna & Connie of Sunray came over Tuesday to visit his mother Mrs. Basell Hembree. Gene and Alma Hembree visited her Saturday.

Mr. and Mrs. Leonard Latham of Perryton visited Saturday with Mrs. Lillie Latham.

Mrs. K. L. West is visiting her mother Mrs. Williams in Kingston, Oklahoma this week.

GET THE JUMP ON CHRISTMAS

now showing
AVON'S
new gift line

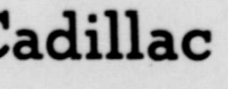
MARY COLE
1029 Drensen Ph. 659-2203

TRAYS

METAL & WOODEN
Dorothy's Novelties
912 S. Bernice

Call Us Collect at 806-274-5266 for Information on Sales, Parts or Service

BORGER MOTOR COMPANY, INC.
Third and Weatherly



Cadillac
Borger, Texas
"WE TRY HARDER"
Owner-Manager
BILL WRISTEN

WHAT IS THE "COST" OF AN AUTOMOBILE?
First of all, it is the "trade difference" or cash you pay between the car you are trading in and the one you are buying. BUT are you paying a low trade difference with a high finance or insurance charge? Do you compare the finance charges (including life, health and accident) the same way you compare the features of the various cars you are thinking of buying? But are you taking into consideration of cost of being able to get your new car, truck or pickup serviced by capable technicians? This cost is sometimes hidden from sight until you need GOOD warranty adjustment and then you cannot get it done. We invite you to compare all of the costs of trading for your next automobile.

WE INVITE COMPARISON OF OUR "COSTS".

"WE TRY HARDER"

SPRING WHEAT IS FAILURE SAYS P G C CHEMIST

By "Nick" Vilim Chief Chemist Producers Grain Corp. This year, SPRING WHEATS were sold to some of our farmers at high prices, with the promise of their high yielding potential, and with assurance of their quality and blending ability.

We have collected samples of these wheats, grown in 1968, from three Experimental Stations, and from farms in each area of Texas. SUCCESS or FAILURE of these claims must be measured by the ACTUAL RESULTS, and, my results show that spring wheats have been a FAILURE in Texas.

It is economically unsound to try to raise spring wheat in our, or any other, winter wheat territory. Our farmers have always wanted wheat varieties that mature early, and SPRING WHEATS, sown in mid February or early in March, cannot mature until mid July or later, and that is when the elements take their toll of any kind of wheat.

These Spring Wheats were planted and raised under excellent conditions, with plenty of moisture before and after planting. We also had mostly cool nights.

Well authenticated reports say, that in the North Panhandle late frosts got many of them, and what was left, the greenbugs got. In other areas, with plentiful rains, the weeds outgrew them, and when ready for harvest, was so weedy that the farmers were forced to mow them, rake them, and

use for feed. The Spring Wheats that were harvested were far below expectations, as to yield, on dryland and under irrigation, and as to physical and chemical analysis.

Test Weight of the grain was low, from 51# to 57# per bushel, putting them into a low grade, under inspection. Extraction on the mill was low, that is, it produced less flour than our winter wheats. The flour had a dirty grey color, carrying through into the bread.

ASH content, or MINERAL MATTER, was extremely high, from .480 to .630 with an average of .556.

Our better winter wheats are .390 to .400 ash.

These factors make SPRING WHEATS entirely UNACCEPTABLE to the mills and bakers. DOUGH MIXING TIME was from 7 to 10 minutes, with an average of 8.1 minutes in the mixer, to bring the dough to an optimum mix. Since our better varieties of WINTER WHEATS need not more than 3 1/2 to 4 minutes to reach an optimum mix, these spring wheats would NOT be acceptable as blending wheat, for one would be overmixed and the other undermixed when blended together, and cause trouble for baker, especially in the continuous mix method of baking.

In comparison, our better variety Winter Wheats made excellent yields, as much as 60 to 70 bushels per acre in many places, under irrigation, and with comparable yields on dryland, with high test

weight, 60# or better, making it a #1 wheat.

The stronger Winter Wheat varieties, Tascosa and Sturdy have a very good baking quality, and are acceptable to the mills and bakers.

Based on our results, we do NOT recommend SPRING WHEATS for seeding in TEXAS or the SOUTHWEST, as they show that they possess UNDESIRABLE milling and baking qualities.



Bogle In Vietnam

VIETNAM—Marine Private First Class Ronald G. Bogle, 20, son of Mr. and Mrs. Arnold J. Bogle of 105 S. Endicott, Spearman, Tex., is helping to provide aviation support to Marine units while serving with the First Marine Aircraft Wing in Vietnam.

His unit is a part of the Third Marine Amphibious Force. As a member of the wing he also helps to support other U. S. and Allied ground forces operating in the republic.

His unit is also engaged in a civic action program designed to assist the Vietnamese people in completing self-help projects, such as the building of wells, culverts, small bridges and schools. Equipment and materials are made available through the Marine Corps Reserve Civic Action Fund.

COUNCIL MEMBERS ENJOY FALL FASHION SHOWING

The Happy Homes HD Club presented the devotional for the regular monthly meeting of the Home Demonstration Council, in the Club room, September 24.

Committee reports were given and officers for the coming year were elected. The new Chairman for the council will be Mrs. W. B. Barnes; Vice Chairman, Mrs. L. W. Rosenbaum; Secretary, Mrs. F. W. Thomas; Treasurer, Mrs. Larry Hays.

The bazaar and bake sale, scheduled for Saturday, October 5 in the Jim Neely building on Main Street was discussed and the date for the annual meeting of the county HD Clubs was set for October 22. The meeting will begin at 10:00 a. m. with a salad luncheon being served at noon. The program will be at 1:00 with Mr. Ed Howk of the Spearman Schools in charge of entertainment.

A Woman of the Year plaque with engraved names of all those who have received this honor will be dedicated along with a year book plaque. The Council announced it will take orders for pecans

Noted Writer To Speak Here

A silver tea, sponsored by the Spearman Study Club, will be held for the public, Monday, October 7 at 2:00 p. m. in the HD Club room.

Featured speaker for the tea will be Evelyn Pierce Nace, noted writer from Pampa, Texas. Mrs. Nace was born and reared in Kansas, receiving her BA Degree from Park College in Missouri. She did her graduate work at Northwestern University at Evanston, Illinois. Mrs. Nace has been writing all her life and sold her first short story in 1937. Last year she changed to writing paper back books and has already sold 6. She has two full time jobs, one of course being an author and the other is as her husband's insurance secretary, therefore she has her typewriter with her constantly. Mrs. Nace states that something new is happening to her all the time and her speeches are always up to date. She will be speaking on her career as a writer.

The collection of silver received at the tea will be used by the Spearman Study Club for their various community projects. Everyone is invited to attend and take part in working for these worthwhile projects as well as to enjoy the address by this fine writer.

7th Party For Kelly Shaver

Kelly Shaver was honored with a party on her 7th birthday by her mother, Mrs. Harold Shaver, Saturday afternoon at 3:00, September 28 in her home.

Guests at the party were given favors of Hawaiian leis and bracelets and served ice cream, cake and punch for refreshments. The children played games for entertainment.

Those attending were Beth Sheppard, Stephanie Floyd, Wanda Jones, Margie Schubert, Charlynn Rhea, Jeanie McClellan and the honoree, Kelly Shaver.

As a national average, the cost of water is \$10 to \$20 an acre foot. This compares to \$22,000 an acre foot for petroleum or \$1,000,000 for one acre foot of milk.

BOY SCOUT NEWS

Mr. and Mrs. Louie Howerter of Wichita, Kansas were weekend visitors in the Harold Howerter home. Ricky Howerter who is attending college in Canyon was also home for the weekend.

Troop 51 of the Boy Scouts met Monday evening, September 30 in the Veterans Memorial building with leaders Harry Stumpf and Bill Innis.

Fourteen new Tenderfoot scouts signed up with four others receiving papers making a total of 18 new scouts in Troop 51.

The next campout for the troop will be the weekend of October 12 and 13.

How many "Ditty Bags" do you want to fill?

What's Going On In HANSFORD County

THIS WEEK

TODAY, THURSDAY, OCTOBER 3

4:00 p. m. - Spearman 8th vs. Borger, at Borger
5:00 p. m. - Gruver Jr. Hi vs. Sunray, at Sunray
6:30 p. m. - Spearman B Team vs. Panhandle, there
7:00 p. m. - Gruver B Team vs. Sunray, there

TOMORROW, FRIDAY, OCTOBER 4

7:30 p. m. - Cancer meeting, First State Bank
8:00 p. m. - Spearman Varsity vs. Stratford, there
8:00 p. m. - Gruver Varsity vs. Booker, at Gruver

SATURDAY, OCTOBER 5

9:00 a. m. - Christmas Bazaar and Bake Sale sponsored by Home Demonstration Clubs, at 217 Main
9:30 a. m. - Girl Scout Garage Sale, 22 S. Endicott
7:30 p. m. - Gruver PTA sponsors the Hill Top Singers, Gruver Auditorium.

SUNDAY, OCTOBER 6

3:00 p. m. - 5:00 p. m. - Gruver Fine Arts Club invite you to OPEN HOUSE honoring Freda Sheets, Gruver Library.

MONDAY, OCTOBER 7

2:00 P. M. - Spearman Study Club invites you to a Silver Tea, with Guest Speaker, Evelyn Pierce Nace, noted author.
8:00 p. m. - Square Dance Club invites you for Free Square Dance Lessons, 217 Main.

What's Going On At HANSFORD Implement Co.

THIS WEEKS USED SPECIALS

John Deere 6 Section Rotary Hoe, with Hitch, \$275

THIS WEEKS NEW MACHINERY NEWS

We have ONLY one John Deere #95 Diesel Combine left. This combine has a 20' Platform, Variable Speed Reel, John Deere Factory Installed Cab. Serviced and ready to go to the Maize Field.

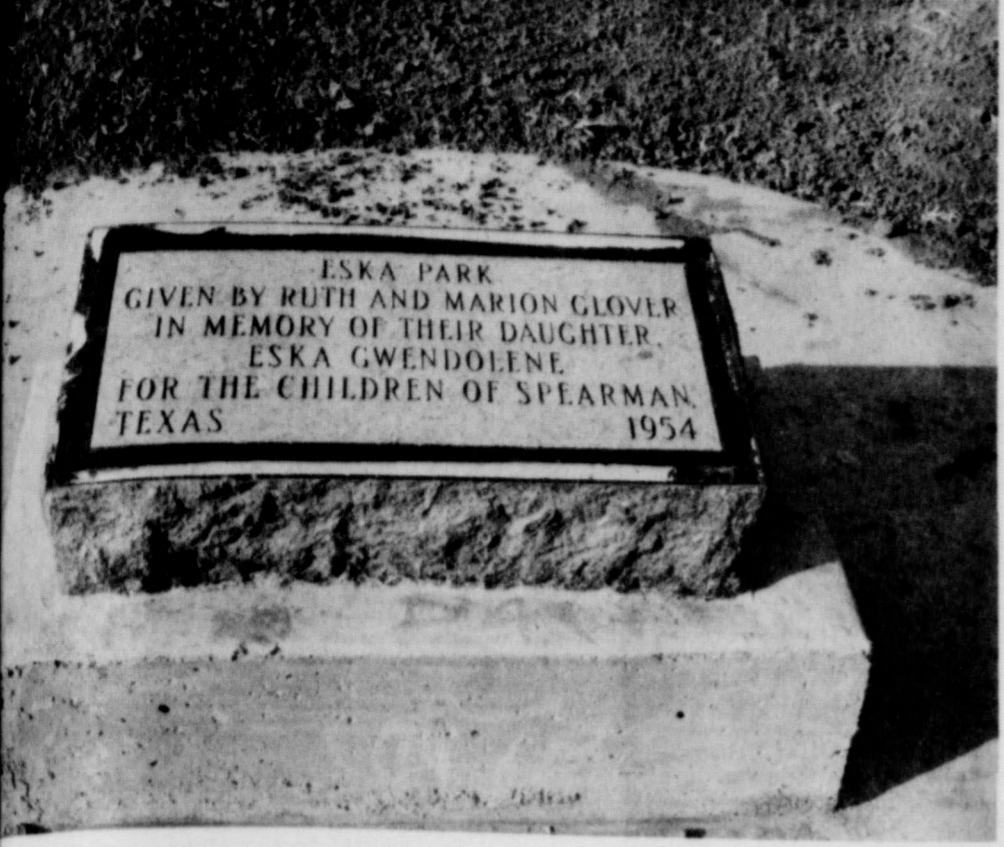


HANSFORD IMPLEMENT CO.

Sales - JOHN DEERE - Service

Phone 659-2712

Borger Highway Spearman, Texas



PARK MEMORIAL STONE SET--Mr. and Mrs. Marion Glover, former Spearman residents, were here last week from Evant, Texas to erect the memorial marker at ESKA Park. The Grovers donated this land located at the south end of Archer Street, for a City Park in 1954, and named it in memory of their daughter ESKA Gwendolene. The City plowed up the grounds last week and will re-seed the park with a mixture of playground grass.

Mr. and Mrs. J. W. Brown returned from a 3 weeks stay in California. They had their two sons, Wayne and Ray in San Maria, Calif. with Helen and Dave in El Paso.

B&P Women Met Thursday

The local Business and Professional Women's Club met in the hospitality room of the First State Bank, Thursday evening, September 26 at 7:30.

After the business session, Mrs. Susie Hand presented the program on "Credit".

Members attending the meeting were: Belle Crawford, Emma Collins, Sammie Bishop, Faye Palmer, Evelyn Mackie, Mary Lou Wysong, Hazel Jackson, Mae Floyd, Mabel Edwards and Susie Hand.

Mrs. Mabel Edwards will be hostess in her home for the Oct. 10 meeting.

Agent Presents Demonstration

Mrs. Joe Smith was hostess to the September 27 meeting of the Spearman Home Demonstration Club, with chairman Mrs. H. H. Crooks presiding.

The devotional was given by Mrs. A. D. Reed. The county Home Demonstration agent, Vivian Warminski, presented the program on cooking frozen foods with a demonstration of a hamburger-rice skillet meal. Miss Warminski handed out food guides to members present.

Members attending were Mrs. Virgil Hull, Frank Davis, W. H. Tarbox, B. J. Garnett, A. D. Reed, W. A. Schubert, E. S. Up-tergrove, Claude Jackson, John Kenney and the hostess.

THREE GREAT GASOLINES

WASHING GREASING TIRE BALANCING

ROAD SERVICE THE SIGN OF OILS and GREASES

FRIENDLY SERVICE, QUALITY PRODUCTS

WORLD'S FINEST MOTOR OIL

ALTON'S GULF SERVICE
Pho. 659-2422
Retail

ELLSWORTH OIL COMPANY
Pho. 659-3033
Wholesale

Putting-you-firsts:

(A quick tour of some of the thoughtful new features the 1969 Chevrolets offer that other cars in Chevrolet's field don't.)

Headlight washers

You push the windshield washer knob and hold it, and your headlights come clean.

Fluid is diverted to two jet nozzles at each light lens. (Outer lights only on duals.)

The spray removes up to 80% of accumulated dirt.

The feature is standard on 1969 Corvettes. It comes with the hidden headlights available on Camaro, Caprice and Kingswood Estate Wagons. It is available on all other models except Corvair.

Heated glass

In a moment your rear window will self-defrost.

Because we've built onto it a network of tiny ceramic strips capable of heating the entire surface.

Fog and frost disappear quickly and quietly. You just flick a switch.

The heated rear window is available on the 1969 Caprice Coupe and Impala Custom Coupe.

Pushbutton tire chains

You press a button on the instrument panel and the rear tires get a shot of "liquid tire chain."

You spin your wheels once, wait a moment, and you're off—with traction you wouldn't believe possible on slick ice, or packed snow.

Available on all 1969 big Chevrolets.

Steering wheel lock

When you own a car as desirable as the 1969 Chevrolet, you don't take chances.

When you leave it, you lock it. Not just the doors.

You lock the ignition, steering wheel and transmission lever, too.

Our new lock on the steering column takes care of all that.

Standard on all 1969 Chevrolets, Chevelles, Chevy Novas, Camaros and Corvettes.

Power steering plus

The 1969 Caprice, Impala and Camaro are available with a new type of power steering.

Variable-ratio power steering. What it does is give you faster steering with fewer turns of the wheel.

Variable-ratio power steering is particularly helpful in short, full turns.

And parking becomes unbelievably easy. You'll see.

Walk-in wagons

The tailgate swings open like a door on most of our 1969 station wagons.

Which in itself is no big deal. But wait, there's more.

We've built a concealed step into the rear bumper.

You simply step up, over, and in.

(The way we build our wagons, you can do it without bumping your head, and without acrobatics.)

Walk into a wagon soon at your Chevrolet dealer's.

'69 Impala Custom Coupe



Putting you first, keeps us first.



Prices Good thru Sat. while Quantities Last

T.G.&Y.

5¢ TO 10¢ STORES

LOOK WHAT 119 Main \$1.00 WILL BUY Spearman.

JERGENS 16 Oz. Lotion With Dispenser \$1.59 Value \$1.00	Brach's Chocolate Covered MORNINGSIDE CHERRIES 2 \$1.00 Boxes For
Teflon Lined 10" FRY PAN \$2.49 BUY \$1.00	"Tom Scott" MIXED NUTS 13 Oz. Size 2 CANS FOR \$1.00
AQUA NET OR JUST WONDERFUL HAIR SPRAY 13 oz. Size Values to 98¢ 2 \$1.00	70 yd. Skein AUNT LYDIAS RUG YARN Compare at 39¢ 4 For \$1.00

Island Pictures Shown To Group

The Fine Arts Department of the Twentieth Century Club of Spearman met September 26, at 2:30 p. m. in the Presbyterian Church with Mrs. V. N. King as hostess.

Presiding officer, Mrs. Lewis Koerselman, conducted the business meeting. The Fine Arts Club will sell placemats at the Pot'pourri sale with \$1.00 of the \$3.00 price going into the Library building fund. The placemats sold as a set of six, have famous scenes of Texas on them. The sale of the mats is a project of the Texas Federated Twentieth Century Clubs.

Saturday, October 5, Mrs. Harold Shaver will host a Con Stan Party in the HD Club room from 2:00 to 3:00 p. m. with 10% of the proceeds going to the Library Fund, another project of the Fine Arts Club.

The theme of the days program was Texas Heritage. Program director for the day, Mrs. Joe Novak, presented Mrs. Lewis Koerselman who gave the presentation of "The Wild Charm of Padre Island", a visual tour of the island via slides.

Members present were Mmes. C. U. Pope, L. S. McLain, Lewis Koerselman, Harold Shaver, George Buzzard, Joe Novak, Jack McWhirter, F. A. Lyon, Sr., Wesley Garnett, Sr., Tom Sutton, Bill Masie and the hostess.

GIRL SCOUT BENEFIT SALE

The Spearman Neighborhood of the Girl Scouts will have a garage sale Saturday, October 5 beginning at 9:30 a. m. at the Scout House, 22 S. Endicott. Proceeds from the sale will go for a floor furnace and to pay utilities on the Scout House.

Anyone wishing to donate anything for the sale may bring it by the Scout House at the above address between the hours of 4 and 5 p. m. Monday through Thursday.

Home Science Group Hears Library Report

The Home Science Department of the Twentieth Century Club of Spearman met September 26 with Mrs. C. A. Kleeburger.

Mrs. G. R. Kilgore, reporting for the library committee, said the library will be moving into its new home in the very near future and will hold an open house shortly thereafter.

Mrs. Davis asked for volunteers to assist with the Thrift Shop sale for October 5, and said that Mrs. Larry Irlbeck will host a Con-Stan party there the same day.

Mrs. Davis also encouraged members to collect objects for the pot'pourri sale to be staged Sunday afternoon October 27 at the community building.

Members enjoyed a program of colored slides with narration on Wild Charms of Padre Island.

Mesdames in attendance included: Wayne Hutchison, Guy Fuller, Fred Holt, H.H. Chevalier, Frank Davis, D.E. Spoonemore, Jack Vanderburg, Everett Tracy, Johnnie Lee, G. R. Kilgore, O.C. Holt, Joe Trayler, J.R. Stump, Larry Irlbeck and the hostess. The next meeting will be October 10 with Mrs. J. R. Keim.

Products Party Benefits Library

The Twentieth Century Club of Spearman is sponsoring a Con-Stan products party Saturday from 2-5 p. m. in the HD Clubroom. Ten percent of all sales will go to benefit the Hansford Library.

Items to be displayed for sale includes ladies fashions, and personal items, Nutri-metics cosmetics, household products and the line of vitamin and mineral foods. This line of merchandise is exclusive and features some special sales on fashion clothing.

The public is invited to the party Saturday.

Vernon Attends Vets Conference

AUSTIN, TEXAS, Johnny P. Vernon, Veterans County Service Officer for Hansford County attended the 21st Annual Statewide Rehabilitation Conference for Veterans Service Officers, which was held at the Austin Hotel in Austin, Texas, Sept. 23-26.

This Conference was conducted by the Veterans Affairs Commission of Texas, in cooperation with the American Legion, Disabled American Veterans, Veterans of Foreign Wars, Veterans of World War I, and the Veterans County Service Officers Association of Texas. The purpose of the meeting was to offer Service Officers from the entire state of Texas an opportunity to gain first-hand knowledge of recently enacted legislation dealing with benefits to veterans and their dependents and survivors. Topics discussed during the four-day Conference included disability compensation and pension, Government insurance, GI loans, Education and training for veterans and children, hospitalization and medical treatment, and veterans employment and reemployment rights.

Conducted annually, this conference serves as an in-service course of training for all National, State, County, Post and Chapter Veterans Service Officers.

Bond Goal

49% Complete

According to a report received today from Mr. C. A. Gibner, Chairman of the Hansford County Savings Bond Committee, the sales of United States Savings Bonds and Freedom Shares in Hansford County during the month of August totaled \$6,036. Sales during the first eight months totaled \$43,778 and this is 49% of the 1968 goal of \$90,000.

Sales in Texas during the month of August totaled \$14,390,299 which is an increase of 3.8 per cent over the same period of 1967. January-August sales reached a new high in the state totaling \$121,220,421--an increase of 8.2 per cent over January-August sales during 1967.

Nationally, sales of Series E and H Bonds and Freedom Shares were the best for any August in 13 years and total cash sales for the January-August period amounted to \$3,430 million for 62.3 per cent of the National goal.

Executive Council To Have Booth

The Executive Council of the Spearman P-TA met Oct. 1 at 9 a. m. in the teacher's lounge at the Junior High School.

Mrs. George Bollinger, president, presided and called for various committee reports. The membership committee reported 235 members and said the membership drive will be extended to enlist those who would still like to join P-TA.

The Oct. 7th meeting was announced. This will be a panel discussion pertaining to Disciplinary topics.

As a money making project, the PTA will provide a booth at the Halloween Carnival. Everyone is encouraged to see Miss Vivian Warminski and help with the booth.

Everyone was urged to put P-TA in its proper place and cooperate with the school in "building a better world for our children."



Five squares of dancers enjoyed dancing to the calling of Roy Johnson from Amarillo last Saturday night. Visitors from Spearman, Fritch, Borger, Phillips, Stinnett, Amarillo and Perryton were present.

There will be a club meeting after the dance October 12 and all members are urged to be present.

Robert Adamson will call the dance Oct. 12. On Oct. 26, Roger Thompson from Amarillo will be calling.

Everyone is invited to attend the dances at 217 main street, Spearman.

District Officer To Conduct PTA Course Oct. 3

Mrs. Buren Pruitt of Borger, District PTA president, will conduct a parliamentary course, Thursday, October 3, in the junior high cafeteria. The meeting will begin at 9 a. m.

PTA workers should attend this meeting, but anyone interested in the course will be welcomed. Area PTA officers and workers are expected for the parliamentary course.

P-TA Notes

A P-TA Parliamentary Course will be held Thursday, Oct. 3 at 9 a. m. in the Junior High Cafeteria. This will be led by the District President.

Friday, Oct. 4 at 9:30 a. m. the County PTA Council will meet in the Home Ec room at the High School.

Monday, Oct. 7 is regular PTA meeting at 7:30 p. m. in Junior High auditorium. The meeting will be a panel discussion on Discipline. Everyone is welcome.

All lifetime PTA member's names are needed. Anyone who is a member or knows of members, call Mrs. Myron Self at 659-3051.

Shower Honors New Arrival

Mrs. Mike Holt and baby daughter, Kerri Ann, were honored with a baby shower Friday afternoon, September 27 in the home of Mrs. Ray Moore.

Hostesses for the event were Mmes. Ray Moore, Dick Doyle, Medlin Patterson and Marvin Jones.

Corsages were presented to the honoree, to the maternal grandmother, Mrs. Fredrick of Houston, to the paternal grandmother, Mrs. Fred Holt, and to great-grandmothers, Mrs. A. F. Loftin and Mrs. B. C. Holt.

Gifts were displayed on a table centered with an arrangement of pink roses and white orchids. Approximately fifteen guests were served by the hostesses.

Hockey Team Training At Ontario Camp

Brantford, Ontario, the site of the Amarillo Wranglers' first training camp, is a town of almost 60,000 residents located in central Ontario. It is just 65 miles from Toronto and about 80 miles from Buffalo.

The players will be divided into three groups with each unit working out once a day. Two hour practice sessions will be held at 9:00 AM, 11:00 AM and 1:00 PM at the Brantford Civic Centre.

The Civic Center has a seating capacity of 3,000 and has standing room for 500. It was completed in the spring of 1967 and is the home base for the Brantford Junior "B" team of the Ontario Hockey Association.

Amarillo Wranglers' General Manager Jack Button announced today that all 36 home games Amarillo's new professional ice hockey team play at the new Civic Center will start at 7:45 PM.

"After very careful consideration we decided on 7:45 as a starting time for, what we consider two important reasons," explained Button.

"First, since our schedule calls for us to play at home on various nights of the week, we felt a standard starting time would avoid confusion on the part of the fans, and, after all, they are our most important consideration.

"Secondly, we are quite proud that in professional hockey we can almost guarantee the fans the game will

take about two hours and five minutes from start to finish. This means, with a 7:45 PM time, fans will be out of the Coliseum and on their way home before ten o'clock.

Tony Hester and Danny Womble were home over the weekend from Phillips University in Enid, Okla. They attended the Lynx football game in Canyon Friday nite.

Dance Lessons Begin Oct. 7

Anyone interested in learning to Square Dance is invited to attend a free course which begins October 7. Instructor will be Aaron Love. The meeting place is 217 Main St. 8 p. m. Monday Oct. 7.

We are very pleased to exhibit for your pleasure paintings - - by

Ruth Hutton's Oil Painting Class

Exhibit Hangs thru October in our show rooms on the Mall

BEEDY FURNITURE CO.

Plains Shopping Center

Jones-Blair's 40th Anniversary Paint Sale

HURRY! SALE ENDS OCTOBER 5

SATIN-X LATEX WALL PAINT	SUNDIAL PREMIUM QUALITY HOUSE PAINT	POLYFLEX LATEX HOUSE PAINT
One-Coat Coverage. Guaranteed Washable. Dries in 30 Minutes. No Painty Odor. Clean up with Water.	Mildew, Fume Resistant. Self-Cleaning Sunfast Colors. Stay clean and Bright. Premium Quality.	Dries in 30 Min. Clean up with Water. Sunfast Colors. Cover brick and other masonry surfaces.
Regularly \$0.00 Sale Price \$4.77	Regularly \$0.00 Sale Price \$5.94	Regularly \$0.00 Sale Price \$5.37

HURRY! SALE ENDS OCTOBER 5

You've been putting us on for 40 years
With Jones-Blair Paints, the beauty is...the beauty lasts.

Foxworth Gailbraith Lumber Co.
206 Andrews 659-2333

NOW OPEN FOR BUSINESS Boyd's Engine Service

Complete Auto Service any Make or Model

All Repairs Guaranteed

ROY GENE BOYD AND JESSE BOYD

Mechanics
Ph. 659-3613
102 Kenneth
Spearman

Lay Away The Gift

Your Family will Enjoy

LA-Z-BOY

Chairs with a flair for people who care

The Perfect Gift for Christmas

Your early selection will insure prompt delivery for Christmas.

20% Off

A La-Z-Boy RECLINA-ROCKER from the CHARTER GROUP, will add many hours of comfortable living to your home. For rocking, TV viewing or full bed napping, there isn't anything quite like a La-Z-Boy. And, with 20 styles and hundreds of decorator fabrics to choose from, many treated with Scotchgard Repeller, you'll be able to select the chair that will best harmonize with your room decor.

Yes, for giving or getting, La-Z-Boy is the "Chair with a flair for people who care." Come in today... see our display of La-Z-Boys... find out how really good looking and comfortable a reclining chair can be.

Terms To Suit You!

Rocking
Lounging
TV Viewing
Full Bed Reclining

Boedy FURNITURE CO.

SPEARMAN, TEXAS PLAINS SHOPPING CENTER

Groceries

Meats

Phone 659-2224
119 N. Bernice

Cates Grocery

A COMPLETE LINE OF PHILLIPS

OILS, GAS, TIRES,
BATTERIES AND
FARM FERTILIZERS

**GOLDEN SPREAD
SALES CO.**



COME AND EAT

WITH US

BEFORE THE GAME

**PLAINS
RESTAURANT**

1969 MODELS



1969 DELTA 88 ROYALE Holiday Coupe

**EXCEL
CHEVROLET-OLDS**

WE WILL CLEAN ALL

OF YOUR

COLD
WEATHER

CLOTHING

THOMAS CLEANERS



FOOTBALL CONTEST WIN! VALUABLE MERCHANDISE PRIZES

FIRST PRIZE SECOND PRIZE
\$10 00 \$5 00

Get in on the fun! Anyone can win; you don't have to be a football expert. Just fill out the entry form below, or pick one up from any participating sponsor. Simply check the teams you think will win. No scores, please. Then, deposit your entry in an official contest box in sponsors' place of business. Enter as often as you wish, every week—enter today!

DEPOSIT ENTRY FORM WITH A FIRM LISTED

NOTHING TO BUY! — ENTER TODAY!

ENTER
BEFORE
1 P.M. FRIDAY

CONTEST RULES

Weekly contests are open to every-one except employees and families of this newspaper. Entries are to be judged by the newspaper staff. All decisions are final and in case of tie the prize money will be divided. Entries must be submitted on the official forms as printed in the paper or obtainable at the newspaper office or sponsoring firms. Entries must be turned in at the newspaper office or one of the sponsoring firms before 1 p. m. Friday. Winners names will be published in the following Thursday edition of the paper.

R. L. McClellan & Sons Inc.

QUALITY FARM MACHINERY

J.I. CASE ALLIS CHALMERS
KRAUSE DEMPSTER



IRRIGATION PUMPS

"40 YEARS OF SERVICE TO FARMERS"

SPEARMAN, TEXAS

659-2343

J. L. BROCK, AGENCY

**Sacks & Sacks
Of Food Bargains**

Support the Lynx

Go to the Game



**Seed Cleaning
& Treating**

Wheat Seed

Bonded & Insured

B & B Grain

**Headquarters
For All Your
Men & Boys
Clothing**



WE HAVE ALL

SCHOOL SUPPLY NEEDS



OFFICIAL ENTRY FORM

NAME _____ ADDRESS _____

CITY _____ STATE _____

JUST CHECK THE WINNER ()

- | | | | |
|------------------------|-------------------|--------------------|------------------------|
| CANADIAN () | CLARENDON () | RICE () | TENNESSE U. () |
| GRUYER () | BOOKER () | SMU () | NORTH CAROLINA ST. () |
| SANFORD-FRITCH () | PANHANDLE () | TEXAS A&M () | FLORIDA STATE () |
| SUNRAY () | KEYS () | COLORADO STATE () | TEXAS TECH () |
| WHITE DEER () | MCLEAN () | DALLAS () | ST. LOUIS () |
| WTSU () | MONTANA STATE () | HOUSTON () | MIAMI () |
| OKLA. STATE U. () | TEXAS () | | |
| UNIVERSITY OF ARK. () | TCU () | | |
| BAYLOR () | LOUISIANA () | | |

TIE BREAKER SPEARMAN _____ STRATFORD _____
PUT SCORE OF TIE-BREAKER GAME

NO JOB TO
LARGE OR SMALL

WE DO EARTH MOVING

THINGS

JR. LUSBY CATS



Wes-Tex Grain
and
Community Fertilizer

WAYMON ETHEREEDGE BOX 1020
DEALER SPEARMAN TEXAS
IN GULF PRODUCTS 79081

**YOUR GULF
FERTILIZER
DISTRIBUTOR**

JOHN DEERE

THE LONG GREEN LINE

**HANSFORD
IMPLEMENT**



New Officers For DECA

by Ronnie Burke
The Spearman Chapter of DECA met Thursday, Sept. 26, 1968, to elect officers: President, Stanley Hudson; Vice-President, Donald Burkhardt; Secretary, Sharor Tope; Treasurer, Diane Bogle; Reporter, James Standerfer; Parliamentarian, Jerry Hawkins; Sergeant at Arms, Ronald Wilkerson.
There are 12 members in DECA this year, which consists of 3 girls and 9 boys. We as DECA members appreciate each and every businessman backing us in the Distributive Education Program. We feel with your support we will have a very profitable year.



In a 10:00 o'clock assembly, October 1, nine students were inducted into the National Honor Society. After the reading of the purposes of the organization, Randy Collard, president, presented pins and certificates to Karen Baggerly, Mike Cox, Sandra Fowler, David Holland, Jan Jones, DeAnna Sheets, Sandra Shufeldt, Steve Spoonemore and Randy Weston.

Biology Class Makes Molecule

By Randy Day
Mr. Barkowsky's Biology I students have constructed a giant DNA molecule, which is now on display in the Biology Room.
Each student constructed four basic pair of molecules which were then connected. It is 35 feet long, and 8 inches in diameter.
DNA is a large molecule which exists in the nucleus of each cell. It is the basic material found in the chromo-

somes. Its importance is the control of the activity of the cell and insurance that each cell will duplicate itself exactly.
The Biology I classes have been studying the various aspects of the cell and the molecules associated with the activities of the cell.

Mr. and Mrs. K. L. West recently returned home from a five week visit with their son Arlie and daughter Mrs. Bob Pressnell in Washington state.

LYNX WILL MEET STRATFORD

by P. A. Lyon
The Spearman Lynx will play the Stratford Elks this Friday in Stratford. Stratford has won one game and lost two while Spearman has won two games and lost one. The Lynx hope to get back on the winning trail this week after loosing to Canyon last Friday. A hard hitting game is expected, and everyone should go and cheer the Lynx on to victory.

Banana Pudding
Hot Rolls-Butter
Milk
High School Meat Choice
Braised Beef, Mushroom Sauce
FRIDAY, OCT. 11
Juicy Burger or
Oven Fried Liver-Bread
Potato Gems-Catsup
Buttered Corn
Orange Whip
Spice Cake
Milk

State President Visits F FA

by R. Booth
Bill Sarpolis, Texas Future Farmers of America president visited Spearman High School Tuesday to speak in an assembly to the students.
In the past four weeks, Bill has traveled over 10,000 miles and spoken to 21,000 people. Bill graduated from Boys Ranch in 1967 and he attended Clarendon Jr. College last year.

Community Night At Waka School

The Waka Community Night was held Saturday evening, September 28 with a large crowd in attendance. The monthly event, sponsored by the Waka P-TA, was hosted by the steering committee selected by the P-TA president, Mrs. Sandra Ladd. The next Community Night will be November 23 with October's meeting being canceled due to a Fun Night sponsored by the P-TA on October 26.
During the evening, pitch, 42, and children's games were enjoyed by the families. Cookies, punch and coffee were served by the host and hostesses, Mess. and Mmes: David Wilson, Phillip Turner, Clyde Yeary and Dean Leighner.

Mrs. E. J. Copeland and Mrs. H. C. Brown spent a few days last week in Denver. They returned Mrs. Bob Leand, who had been visiting here, to her home and stayed a few days.

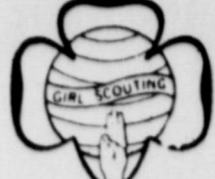
PSC Enrollment Up Over 1967

The enrollment at Panhandle State College for the 1968 fall term was up 5.6%. The college has an enrollment of 1338 as compared to 1267 last year as announced by Miss Helen Muller, Registrar.
Of the 1338 enrolled at Panhandle State there are 861 men and 477 women. The leading state represented in enrollment is Oklahoma with Texas County, Cimarron County and Beaver County, in that order, as leading in Oklahoma.
Leading representation from other states is Texas with 174 students with Kansas second at 127 enrolled. The state of Colorado is third with New Mexico fourth.
Leading states represented outside of the five-state area with enrollment was Pennsylvania with 15 students and Connecticut with 10 students.

School Lunch Menus

- MONDAY, OCT. 7
Corn dogs-Mustard
Buttered Potatoes
Cabbage-Pineapple Slaw
Peach Halves
Honey-Peanut Butter
Hot Rolls-Butter
Milk
High School Meat Choice
Breaded Catfish Steaks
- TUESDAY, OCTOBER 8
Tacos
Seasoned Pinto Beans
Dill Pickle Spears
Chopped Lettuce-Tomatoes
Jet Set Gelatin
Applesauce Cake
Bread Milk
High School Meat Choice
Tuna Salad Sandwich
- WEDNESDAY, OCTOBER 9
Grilled Cheese Sandwich
Beef, Vegetable Stew
Celery Sticks
Fruit Cup with Orange
Frosted Brownies
Milk
High School Meat Choice
Burritos-Bread
- THURSDAY, OCTOBER 10
Chicken Pie
Mashed Potatoes
Buttered Spinach
Carrot Sticks

Values to Hold



Worlds to Explore

Second year Brownies met Monday September 30 in the Scout House with leaders Mrs. Don Bowen and Mrs. Wendell Prentiss. Pam Grayson served refreshments to the 18 Brownies attending.
The girls practiced the flag ceremony with the help of Mrs. Marcus Larson and Mrs. Betty Davis and their daughters.

Brownies attending were Julie Douglas, Leslie Groves, Cherise Partridge, Pam Grayson, Denise Ware, Teri Prentiss, Kim Rinker, Angela Williams, Leanne Biles, Kellie Simpson, Jan Fowler, Gerri Lynn Keardrick, Terrie Bowen, Donna Schmehr, Teresa Neal, Cindy Lesly, Cindy Gressett, LaVon Kunselman.

The monthly neighborhood meeting of Girl Scout Leaders was held Tuesday October 1 in the Scout House.
Leaders attending were Jo Biddle, Barbara Moran, Judy Martin, Joyce Lackey, Betty Davis, Patty Sheppard, Nellie Buschman, Jo Larson, Melba Rook and Alene Crawford. Gladys Hull of Guymon also attended.
Plans were made for a leaders cook out to be held November 5th at the Scout House at 22 S. Endicott.

Troop 34 of the Spearman Girl Scouts met Tuesday afternoon October 1st at the Scout House, with leaders Alene Crawford, Bea Ellsworth and Melba Rook.
Girls attending were Sarah Loe, Susie Bowers, Susie Gregg, Tammy Rook, Kate Crawford, Colette Smith, Colleen Smith, Stephanie Reed, Rhoda Bingham.
The Scouts made posters and put them in the local stores advertising the rummage sale to be held Saturday. This is part of their service project and applies on the sign of the arrow badge.

Vacancies Exist In Academies

New applicants for the Army, Air Force and Navy academies still have time to take the Civil Service exams scheduled for early October and November, according to Congressman Bob Price.
Price said that vacancies exist in the classes beginning in June, 1969 for West Point, Annapolis, Air Force and Merchant Marine.
Exams are scheduled in Annapolis and other Panhandle communities on October 5 and November 9.
"Those nominated as a result of the Civil Service exam will then compete in a battery of tests given by the services," Price said.
In addition to the principals selected on this basis for each vacancy many of the alternates who qualify will also be selected by the services for other vacancies, Price added.

RCA

World Series COLOR TV



Big-screen Color in a Colonial Consolette
Space-saving cabinet fits almost anywhere. Thrill to unsurpassed Color realism on the glare-proof, big-screen picture tube. 25,000-volt chassis delivers bright, high-contrast pictures. Automatic chroma control keeps color intensity the way you want it. Automatic color purifier.



The Quincy GL615



A.F.T. takes the guesswork out of fine tuning
Luxury-feature Color TV with Automatic Fine Tuning, A.F.T. electronically pinpoints correct signal on both VHF and UHF channels. Transformer-powered 25,000-volt chassis features Solid State components in several key circuits. New Vista® VHF and Solid State UHF tuners. Solid State color demodulator. Lighted channel indicators.

GL628

NOW! 2 YEAR PICTURE TUBE WARRANTY for RCA COLOR TV

RCA warrants the original retail price of the picture tube. RCA will refund the original retail price of the picture tube if it is found to be defective within two years from the date of purchase. This warranty is void if the picture tube is damaged by accident, misuse, or neglect. This warranty does not cover the cost of labor and transportation charges. See your RCA dealer for complete details. © 1968 RCA Corporation.

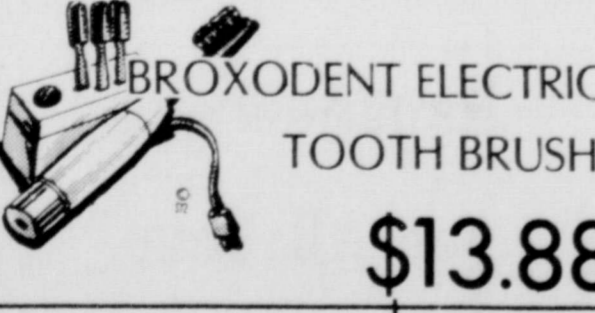
106 E. Kenneth

314 MAIN
PHONE
659-2141

Gordon's DRUG SPEARMAN, TEXAS



PACQUINS HAND LOTION WITH DISPENSER
REG. 98¢ 59¢

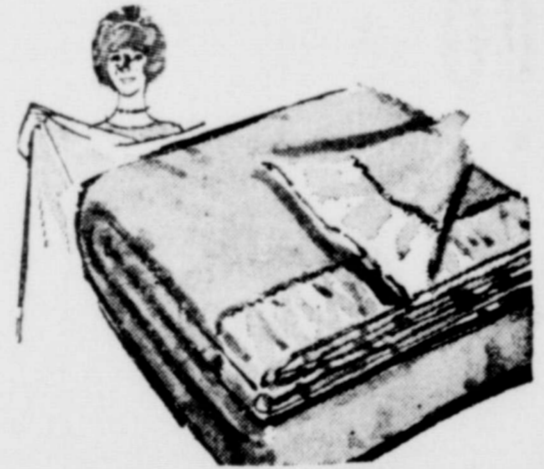


BROXODENT ELECTRIC TOOTH BRUSH
\$13.88



TAMPEX 40 count \$1.29

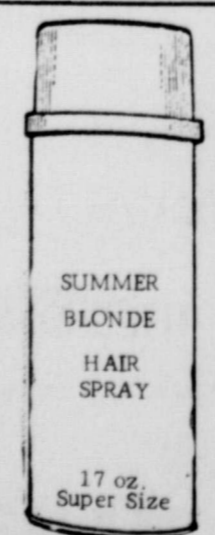
ELECTRIC BLANKETS



Double Bed Assorted Colors 1 year guarantee \$9.95

BARBASOL REG. Shave Cream 98¢ aerosol 39¢

POLAROID COLOR FILM no. 108 \$3.99

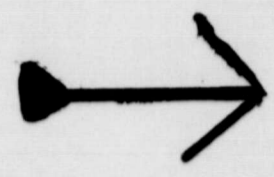


SUMMER BLONDE HAIR SPRAY 17 oz. Super Size 39¢

SAVE
YOUR PRESCRIPTION COMPOUNDED QUICKLY AND ACCURATELY AT THE LOWEST COST TO YOU.

Let Us Wash

YOUR



The Spearman Girls Basketball Team

will sponsor a car wash

this Sat., Oct. 4th At

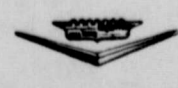
Alton's Gulf Service

7:30 a.m. till 9:00 p.m.

Proceeds go to buying new travel Attire

for this years Basketball team

This Advertisement Sponsored by:

<p>WHEATHEART FEEDERS Perryton, Texas</p>	<p>DR. HACKLEY, MAYOR</p>	<p>CANTRELL'S FLYING SERVICE INC. Spearman, Texas AERIAL SPRAYING Phone 659-3135</p>	<p>SPEARMAN SUPER SERVICE Box 565 Phone 659-3414</p>
<p>S. & P. OIL COMPANY Morse, Texas</p>	<p>MORSE OIL COMPANY Morse, Texas</p>	<p>BORGER MOTOR CO. </p>	<p>BAKER & TAYLOR DRILLING COMPANY</p>
<p>FIRST NATIONAL BANK Perryton, Texas</p>	<p>THE SPEARMAN REPORTER THE HANSFORD PLAINSMAN</p>	<p>Boxwell Bros. Your FTD Florist Flowers For All Occasions</p>	<p>Plastic Irrigation Pipe Lock-Seal Concrete Pipe Gifford - Hill Western Inc. Spearman, Texas</p>

ies Exist
idemies
its for the
e and Navy
have time to
service exams
trly October
according to
b Price.
t vacancies
ses beginning
or West Point
Force and
e.
cheduled in Am-
Panhandle
October 5
ated as a re-
Service exams
te in a bat-
en by the ser-
id.
the principals
basis for each
f the alter-
y will also be
services for
Price added.

!
UBE
TY
TV

NEED TO CHECK FLOW OF RURAL PEOPLE TO CITIES

A bi-district meeting of the Farmers Home Administration will be held at the Holiday Inn West in Amarillo on Sept. 24-25 according to County Supervisor Robert J. Holloway.

Louis on how to check the flow of rural people into urban areas will be discussed by the State Office Staff. Mr. Wayne Nelson, President of the Young Farmers Association of Texas will be a guest speaker.

Administration office will be closed Sept. 24-25 due to the meeting. Those attending from Perryton will be Bob Holloway and Becky Newman.

Mr. Holloway said that through 138 county offices, the Farmers Home Administration in Texas will loan about \$130 million to rural families and communities this fiscal year.

Last year, about \$60 million was loaned for operating expenses. Over 4,100 rural Texans received loans to improve or construct homes. More than 660 farmers became land owners through the FHA Farm Ownership loan program, and nearly 250 Texas communities received FHA loans to build or expand water systems, sewer systems, recreation projects and grazing associations.



EXPERIENCED!
Outstanding lawyer. Former mayor of Hillsboro; former State Senator; former Secretary of State. Fully qualified.

RE-ELECT FOR A SECOND TERM

CRAWFORD MARTIN ATTORNEY GENERAL

Pd. Pol. Ad. Crawford Martin for Attorney General, Searcy Braswell, State Chmn.

Be Safe When Removing Spots

COLLEGE STATION-- Home remedies for removing spots and stains with solvents can prove to be a very costly affair, warns Mrs. Doris Myers, Extension home management specialist with Texas A&M University.

Carbon tetrachloride, who has masqueraded as a friend for doing home cleaning jobs, can be disastrous if it is inhaled or spilled on the skin. The early signs of damage are headache and dizziness. If exposure is concentrated, lung congestion and liver and kidney damage can be fatal.

The Food and Drug Administration as officially acknowledged that safer cleaning agents work just as well as carbon tetrachloride and recently began the necessary steps to stop its interstate shipment for sale to retail customers.

Be sure all home remedies for cleaning are safe. Mrs. Myers. Why take any unnecessary risks by using a solvent that has been proven risky?

Ag Report

World agricultural output hit a record high last year, and per capita agricultural production in less developed areas went up 5 to 6 percent from the 1966 level.

There are highlights from the Economic Research Service's annual report.

The report reviews such items as production gains in less developed countries, world grain supplies, India's agricultural recovery, the Middle East conflict, the devalued pound sterling, competition for the Japanese market, and changes in cotton output.

Single copies of the World Agricultural Situation, FAER 38, are available free on postcard request from the Office of Information, U. S. Department of Agriculture, Washington, D. C. 20250. Please use your ZIP code.

Prison Rodeo

The Prison Rodeo is held each Sunday in October in the prison's million-dollar stadium near downtown Huntsville, beginning at 2 p.m.

In addition to the thrilling convict contests, this year's star-studded cast of guest stars will include an all-American group of the nation's top western-style entertainers.

Ray Price will open the rodeo series on October 6, followed by Loretta Lynn on October 13, Sonny James on October 20, and closing with Hank Thompson on October 27.

Other added attractions booked by prison rodeo officials include Candy Barr, a well-known night club entertainer, who at one time was an inmate at the Goree Unit.

hour show. Net proceeds from ticket sales go to an inmate fund which is used in a prison-wide treatment program for the benefit of nearly 13,000 inmates of the Texas Department of Corrections.

Save The Soil

If anything makes sense in this time of turmoil, it is the increasing efforts by farmers to take good care of their soil. Actually, the lives of both humans and the lesser forms of animals depend upon it.

Standing with our two feet on the ground, we see the earth as a pretty big place. Now, our space men get a different view of it. It isn't really so big when you look at it in terms of the universe.

And all our food and fiber comes from a sheet of topsoil that covers only about a tenth of the earth's land surface. This sheet, which averages only about 7 inches in depth, is the storehouse of plant nutrients needed to feed and clothe us.

We must keep that nutrient balance healthy.

DORCAS CLASS HAD FISH FRY

The Dorcas Sunday School of the Baptist Church enjoyed a fish fry Tuesday evening, October 24 in the home of Mrs. J. D. Helms.

Chairmen for the class were Mmes. Jackie Vardell, Joe Rhea and George Jackson. After the meal Wesley Gamm Jr., brought the devotional "Family Worship".

Bruce Ayers, minister of and education for the Christian Church, entertained the with several vocal and guitar lectures.

Attending were Messrs. Mmes. Lloyd Gilley, James Lindsey, Hal Sargent, rel McCoy, Bobby Archer, Galbreath, Lawton Guller, Reddick, Wesley Garner, Mmes. Bill Porter, Noah Quill Hand, Billy Joe Rhea, and Mrs. B. T. Shoemaker. Ayers, congressional candidate from Hartley, Dick Brown, the hosts.

BETTER FOOD FOR LESS IDEAL FOOD STORES

Bar-5 Fully Cooked HAMs

SHANK PORTION	BUTT PORTION	SHANK HALF	BUTT HALF	Boneless, Half or Whole
Lb. 49¢	Lb. 55¢	Lb. 59¢	Lb. 65¢	Lb. \$1.09

PRICES EFFECTIVE FROM SAT., OCT. 5, 1968. LIMIT RIGHTS RESERVED.

BAR-5 Sliced Bacon 1-Lb. Pkg. **79¢**

MEADOWDALE Skinless Franks 1-Lb. Pkg. **59¢**

OSCAR MAYER Skinless Franks 1-Lb. Pkg. **69¢**

OSCAR MAYER ASSORTED Luncheon Meats 8-Oz. Pkg. **49¢**

CAMELOT Fish Sticks 8 oz. Pkg. **45¢**

Wilson Certified BACON 2 lb. Pkg. **\$1.39**

Swifts Proten Rolled & Tied BONELESS RUMP ROAST 1-Lb. **98¢**

Swifts Proten Boneless SIRLOIN TIP ROAST 1-Lb. **98¢**

Swifts Proten Center Cuts BONELESS CHUCK ROAST 1-Lb. **89¢**

BONELESS PORK ROAST 1-Lb. **69¢**

CLEARFIELD LONGHORN CHEESE Lb. **69¢**

TESCOTT LONGHORN CHEESE Lb. **69¢**

BROOKFIELD LONGHORN CHEESE Lb. **79¢**

IMPORTED GOUDA CHEESE Lb. **69¢**

CHEESE FOOD KRAFT VELVEETA 2-Lb. Pkg. **88¢**

KRAFT AMERICAN OR PIMENTO—SINGLE 12-Oz. Pkg. 59¢

KRAFT MIDGET Longhorn Cheese 1-Lb. Pkg. **79¢**

FAIRMONT CHOCOLATE MILK 2 Qt. Ctns. **49¢**

IDEAL Cottage Cheese 2-Lb. Ctn. **53¢**

MARGARINE GOLDEN 2 1-Lb. Pkgs. **25¢**

Colgate Palmolive Cleaning SALE!

NEW, MILD PALMOLIVE LIQUID 22-Oz. Btl. **69¢**

AJAX LIQUID 40-Oz. Btl. **93¢**

AXION GIANT SIZE 79¢

BANQUET ALL VARIETIES MEAT DINNERS 3 11-Oz. Pkgs. **\$1.00**

SARA LEE Mix or Match Sale!

PECAN COFFEE CAKE 12-Oz. Pkg. **79¢** EA.

CARMEL PECAN ROLLS 14-Oz. Pkg. **79¢** EA.

CHERRY DANISH 14-Oz. Pkg. **79¢** EA.

BIRDS EYE AWAKE 3 9-Oz. Cans **\$1.00**

Chef Boy Ar Dee CHEESE PIZZA 15-Oz. Pkg. **49¢**

CHEF BOY AR DEE Sausage Pizza 16-Oz. Pkg. **69¢**

CHEF BOY AR DEE Pepperoni Pizza 16-Oz. Pkg. **79¢**

Camelot Coffee 1-Lb. Can **63¢**

Comstock Sliced Apples 3 No. 2 Cans **\$1.00**

Ranch Style Blackeye Peas 2 300 Cans **29¢**

Fisher's Asst. Salted Nuts 3 39¢ Sizes **\$1**

Marlin S.S. Razor Blades Pkg. Of 10 **58¢**

Napkins — Reg. or Super

Modess 12-Ct. Pkg. 3 Boxes **\$1.00**

MAXWELL HOUSE COFFEE Choice of Grinds 1-Lb. Can **73¢**

DEL MONTE PINEAPPLE CRUSHED, SLICED OR CHUNK 3 No. 2 Cans **\$1.00**

STAR-KIST CHUNK TUNA 6 1/2-Oz. Can **29¢**

SCOTT VIVA NAPKINS ASSORTED COLORS 150 Ct. Pkgs. **29¢**

SMUCKER'S Goober Jelly 18-Oz. Jar **69¢**

MUSSELMAN'S Applesauce 5 303 Cans **\$1.00**

HEINZ Tomato Ketchup 26-Oz. Btl. **47¢**

HEINZ Chili Sauce 12-Oz. Btl. **39¢**

FOR WAFFLES OR PANCAKES Log Cabin Syrup 36-Oz. Btl. **97¢**

SEA NORTH SALMON NO. 1 CAN **69¢**

SCOTT PAPER TOWELS 3 JUMBO ROLLS **\$1.00**

PLAY IDEAL'S FUN & MONEY GAME Sure-THINGO PHASE II

AND WIN UP TO \$1,000.00 Cash

\$100 - \$20 - \$10 - \$5 - \$1

Now We Have 4 \$1000.00 Winners

Elsie John Fairview, Oklahoma

Mrs. Robert Campbell Guymon, Oklahoma

Mrs. Paul Duren Dalhart, Texas

Mrs. Gary Brankel Guymon, Oklahoma

Punch Detergent GIANT BOX **69¢**

NEW POWER FORMULA AJAX CLEANSER 40-Oz. CAN **25¢**

PALMOLIVE GOLD BAR SOAP BATH SIZE BARS 2 **49¢**

FAB DETERGENT KING SIZE **\$1.39**

PINEAPPLE JUICE DEL MONTE 46-OZ. CAN **29¢**

PURINA DOG CHOW 25-LB. BAG **\$2.99**

5-LB. BAG 69¢

IDEAL'S LIME SHERBET 1/2-Gal. CTN. **49¢**

WASHINGTON FANCY RED DELICIOUS APPLES 4 LBS. **\$1.00**

FANCY JONATHAN APPLES 4-LB. BAG **49¢**

U.S. NO. 1 RUSSET POTATOES 10-LB. BAG **49¢**