

The Terry County Herald

VOLUME 17.

BROWNFIELD, TERRY COUNTY, TEXAS, FRIDAY SEPTEMBER 30, 1921

NUMBER 10

TERRY COUNTY--EGYPT OF THE WEST

There is no better subject for the writer than TERRY COUNTY, for it has been our home for nearly thirteen years, and if there is nothing unforeseen in her life, we expect to be planted in her aluvial bosom when the time comes for us to be put out of sight. Another thing, which is a real personal satisfaction, is that we have had good health from inhaling her ozonic atmosphere, and drinking the pure limpid waters of her underground ocean. Then, again, we have enjoyed the prosperity along with her prosperous, and the adversity in the time of adversity with her citizens—but we have been mostly prosperous for which we are thankful. There is not a man, woman or child in the entire county that has been here any time but loves Terry county and will boast, and show you her possibilities. The knocking element is such a wee

small minority and generally transient, that their presence is hardly felt. Terry County citizens are patriotic, they know they have a great county with glorious future possibilities, and they are not afraid for the world to know it. When we headed this piece—Terry County, the Egypt of the west—we knew there would be people who will wonder about that. They can think of that ancient county only as the symbol of darkness, or as dark as Egypt, as the old saying goes, but a historians both sacred and otherwise will tell you that Egypt is a bright country, and only one time when the servant of God (Moses) cast a shadow over that land, was it dark. Biblical scholars know that even though our father Abraham was given the land of Canaan, known as the land of milk and honey, that he had to make hot

tracts every once in awhile to Egypt to buy CORN. Our county is now recognized far and wide as the land of CORN, and hundreds of cars are shipped out annually. All of Terry and a goodly portion of the adjoining counties produce wonderful corn, but it is also a recognized fact that Terry county is the heart and center of that production.

Dear reader, we want you to just put on your study cap for a moment and think where the most costly agricultural lands in the United States are situated. Are they in the cotton section of the black lands of Ellis and adjoining counties in Texas? Are they in the rolling wheat field of Nebraska and Kansas? No, they are in the CORN section of Illinois and Iowa. In these sections also, you will find the finest homes, the finest cities, churches, schools, and the most liter-

ate people in the United States. They have no single advantage over Terry County. We have many over them—climate, water and health, however are the main ones, and no long, cold winters.

When the writer first landed in old Terry more than twelve years ago, the farmers had just learned that the county was almost sure for corn every year. What few farmers there were would laugh in your face when one mentioned raising cotton, and were frank to admit that the springs were too late, and frost to early—but other venturesome farmers arrived and refuted this unproven theory. It is every year producing an average amount of cotton with the best cotton sections of the south, and our cotton farmers will stand behind this assertion. But our farmers have never followed the one crop idea. Not even last year, when cotton was 30 cents in early spring, did they go batty over cotton and plant the whole creation in that plant. But they produced hundreds of cars of corn, gathered it themselves, and while the market was low on corn, our bank statements were higher during the corn selling season—January, February and March, than at any other time of the year.

Most of the "one-horse" farmers were planting a little maize and sorghum when we came here, and as no market for either existed, they fed it to a few broom-tailed, mustangs, razor-backed hogs and cattle of questionable breeds. What a change to-day! The breed of horse has been almost miraculously changed with the introduction of registered sires. The

tion of Terry County without being in reach of a good school.

CHURCHES—You will be able to find the church you are affiliated with handy almost anywhere in this county, with good singing and Sunday Schools going on and upward, especially the leading protestant denominations. The Baptist, Methodist, the Presbyterian, Church of Christ, the Christian church and Holiness people. All of these are well represented and have faithful followings. Terry county people like to go to church and are law abiding, for instance.

COURTS—District Court meets in Brownfield in May and October, using about two days each term, and these are mostly civil cases. There is rarely a true bill returned. County Court meets four times a year, but most of the time no jury is summoned. Commissioner's Court meets each month, but their business of course is looking after the affairs of the county in a financial way.

LODGES—You will also find your favorite lodge here, as the Masons have both a blue and chapter lodge in Brownfield; also Eastern Star, the Odd Fellows are well organized here also, with Rebekah lodge in conjunction. There are several W.O.W. lodges in the county.

The principal crops are corn, cotton, maize, kaifir, cane, broomcorn, sudan and peanuts, in the order named. They all do well here, and each farmer has a supply of each from his farm and nearly always finds a market for at least some of them. No Terry county farmer follows the one crop idea, and are therefore prosperous and happy and the children have

WHAT WILL YOU BE WHEN YOU ARE 65?

YOU WILL BE AHEAD OR BEHIND THE GAME. THAT IS CERTAIN. BUT IT ALL DEPENDS ON WHAT YOU DO NOW.

OF THE AVERAGE 100 PEOPLE, JUST 1 IS WEALTHY AT 65; ONLY THREE ARE WELL-TO-DO; MERELY 6 ARE LIVING ON THEIR INCOMES; 34 ARE LIVING ON FRIENDS AND CHARITY; 36 DIE BEFORE REACHING THEIR 65TH BIRTHDAY. IT IS EASY TO TELL WHO HAD A BANK ACCOUNT.

THE ODDS ARE AGAINST YOU 87 TO 1 UNLESS YOU SAVE A LITTLE EVERY DAY. YOUR SAVINGS SHOULD BE SO PROTECTED THAT YOU WOULD NEVER LOOSE A DOLLAR.

"NO DEPOSITOR IN A STATE BANK IN TEXAS HAS EVER LOST A DOLLAR"

BROWNFIELD STATE BANK "A GUARANTY FUND BANK"



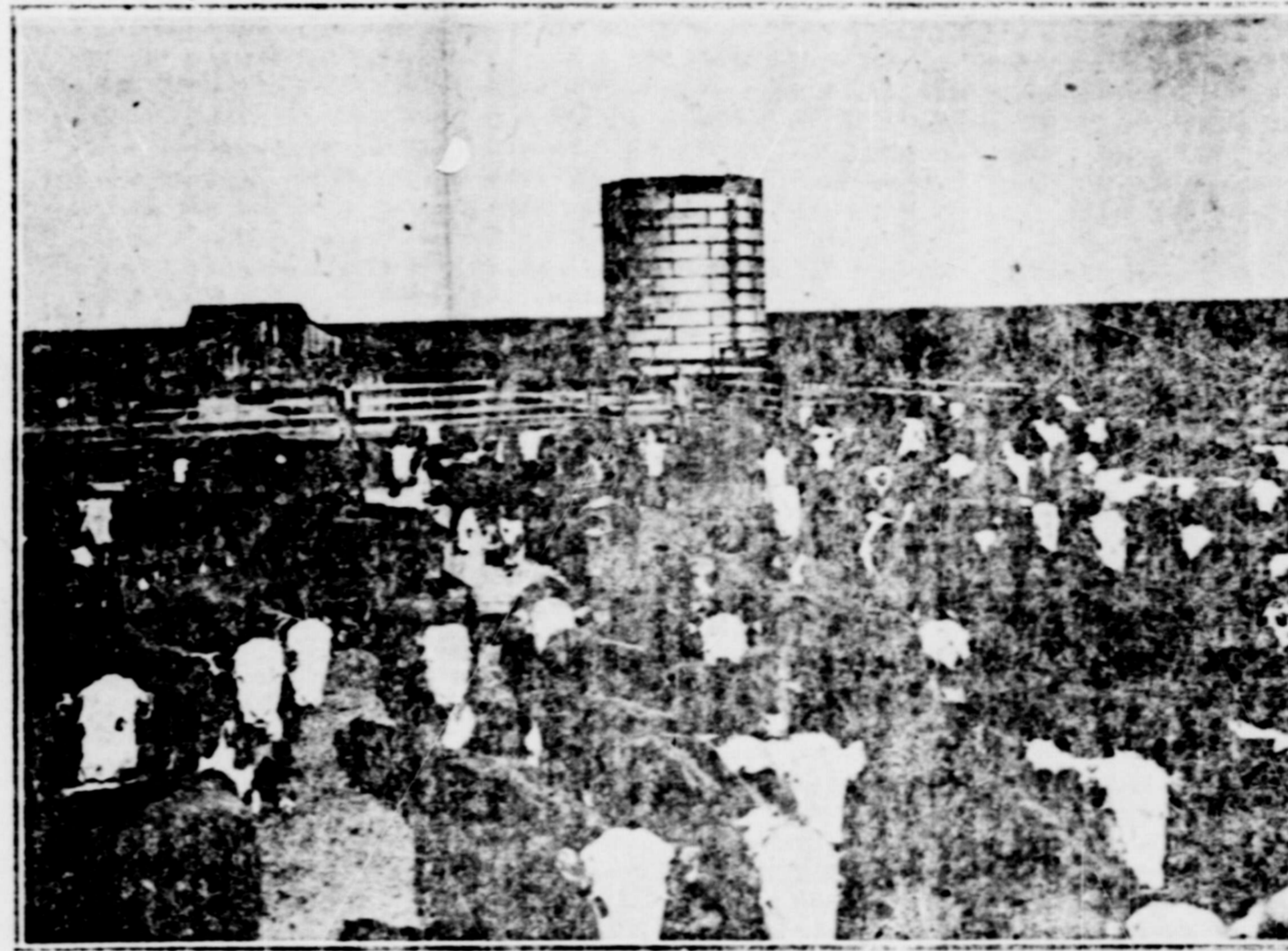
JUST RECEIVED!

A new stock of the Celebrated Perfection Clothes for Boys; the Suits with two pair of Pants. Also new Oxfords and Shoes for the whole family.

BIRD & DEAN FAMILY OUTFITTERS

Brownfield

Texas



FATTENING THEM ON THE F. W. PROCTOR FARM AND RANCH.

part. Yes we have sandstorms in the spring; all of west Texas or any other prairie country does, but every time we have one, some point in our own State or adjoining states have a twister. Which is worse? No one was ever killed in a sand storm. We will take the occasional duster that will chigger chills and niggers. But man, the summers and autumns are echoes from paradise. There is the glorious sunshine almost every day, the un-hindered breezes gently floating over the verdant prairie, laden with the sweet perfume of native blossoms and prairie grass. Every night the gentle zephyrs play hide and seek through the rooms, and before morning, even in July you are in the blanket, unless you are a very tough old nut. Now these cool nights are the secret of our most uninterupted corn production.

Our water, which lies about an average of 100 feet under the ground, is almost chemically pure for the reason that it is supposed to be melted snow from the Rockies that percolated in its long course over beautiful pebbles. It being sheet water, it is therefore inextinguishable. No pump and engine has ever been able to face one of these wells. What is known as the cap rock has to be drilled thru to reach this water, and therefore it is not easily contaminated from the surface. You don't have to witch for water in Terry; its wherever you wish to put down your well. Isn't that worth something?

The rainfall has always been ample for crops here. The government rain gauge which has been established for seven years show a rainfall of better than 21 inches. The smallest amount being 10 inches in 1917. This precipitation is very evenly distributed in the growing season, from May till October, eight-tenths of the fall being in those months. There are no creeks or rivers, therefore every drop of water that falls here is retained in the red clay subsoil—stored for future needs.

Our experience at fairs has been one of prime importance. Away back in 1909, the Terry County Fair was organized, and has been pulled off about the same time each year, and it is probably the oldest county fair on the plains. The first fair was held at Gouzen, the oldest town in the county, and after it was over the idea of carrying it to Dallas Fair was then talked, but was greatly discouraged, but the main boosters, including the late Judge Galber, who showed and others, said that even if we did not get a prize, the advertising would be worth the money. It went and we got a number of first and second prizes. An exhibit was then carried almost every year up to date, with the exception of 1918 and last year. There being no Dallas Fair in 1918 on account of the war department using the grounds for training purposes, and we have taken down our share of prizes each year. The first exhibit (1909) was carried overland to Big Springs and shipped, that then being our nearest railway. Latter it was shipped from Lubbock, until 1917, at which time we got a railroad. In 1919 we took 21 first and second prizes.

Our exhibit was carried to the Amarillo Fair one year, and we took a big string of ribbons even on fruits.

(Continued on page 2.)



HAVE YOU EVER FIGURED IT OUT THIS WAY?

The danger of buying goods away from home is more than the fact that they are not always as represented; there's sure to be a long delay, and possible dissatisfaction when the goods actually arrive. And, besides, your own home merchant can make you a better price on anything you buy than you can obtain elsewhere.

Be a home booster--It helps you and it helps us; and remember WE'RE ALWAYS RIGHT HERE TO BACK UP EVERYTHING WE SELL WITH OUR GUARANTEE OF ABSOLUTE SATISFACTION.

Come in and make yourself at home.

Holgate-Endersen Hardware Co.
BROWNEFIELD, TEXAS

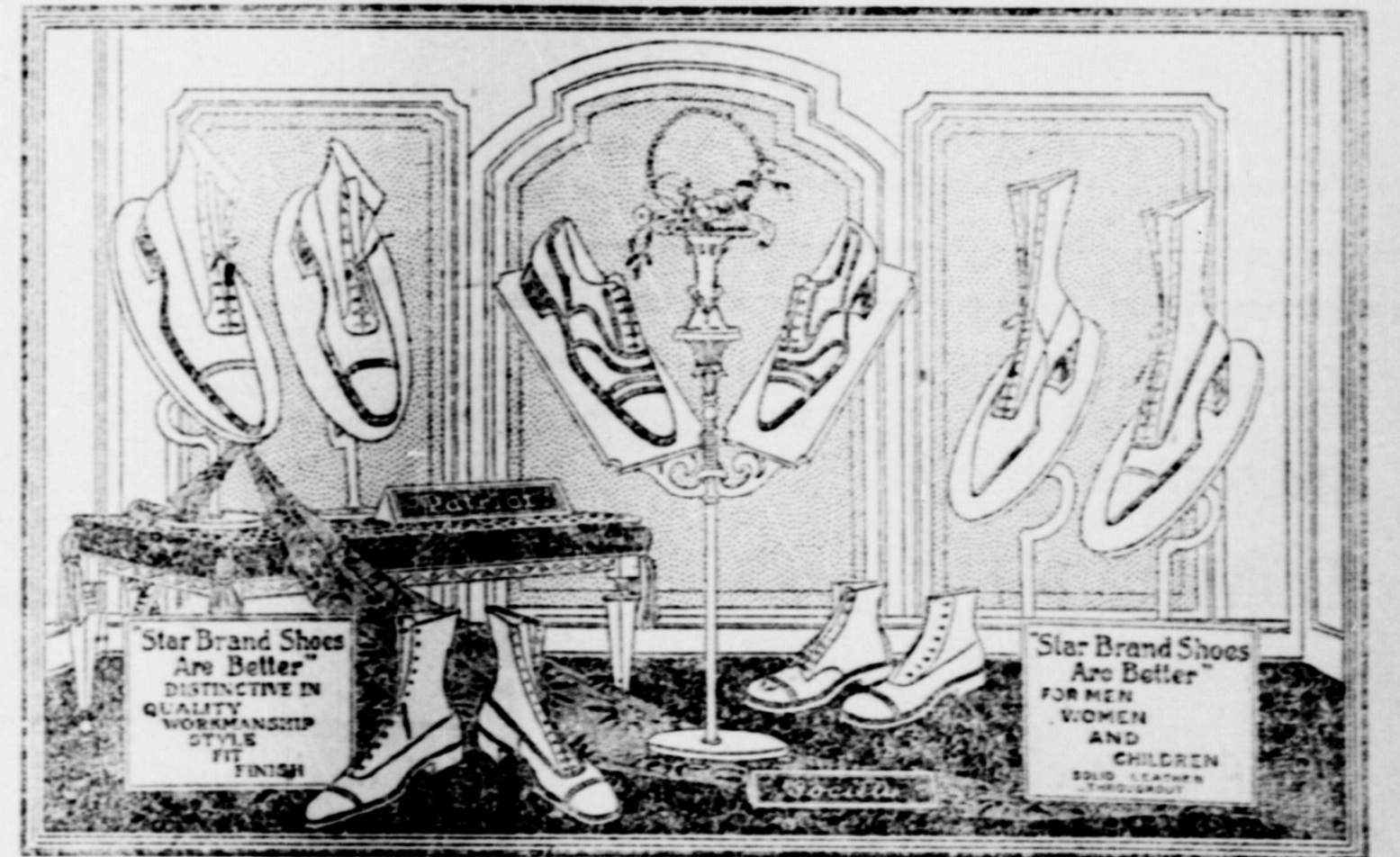
cattle are uniform in color and breed even where thousands roam the same pasture, and the hogs will average with any southern country, where farming exists. Feeding is still going on, but the rations are more balanced with the addition of new cereals and peanuts, etc. Many cars of corn, as well as cattle and horses are now shipped out each year.

SCHOOLS—There are four independent school districts in Terry, all being good ones, though not too large. They are Brownfield, Gomez, Tokios and Union. The latter has two Ford buses which bring the children from long distances. There are about 15 common school districts in the county, employing one and two teachers. It will be remembered that under the new constitutional amendments that were adopted last year, the stingy limit has been taken of the amount of taxes common schools were under, and without an exception, every common school district in Terry county, has raised their taxes from 50c to \$1. on the \$100 valuation, most of them being for the latter figure. Besides many of them have issued bonds for modern school buildings and equipment in order to qualify for State aid. There is one \$15,000 school building as an example about 10 miles from Brownfield that had about 15 school-rooms when the building was proposed, and at its completion they had around 100. This is what a good school will do for even a sparsely settled country. Nothing but first class instructors are employed in any of them. You cannot settle in any por-

a good show for an education. The society is the best, for it is a combination of the southern hospitality, thoroughly hospitable with the western frankness. You will feel at home the minute you arrive in old Terry. The glad hand of welcome is yours, and just leave your locks and keys at your old home. There is no need for them here. Everything "stands wide open. There are no negroes, Mexicans or other objectionable foreigners. Therefore there is no fear or distrust of neighbors.

When it comes to soils, those of Terry county are so varied that the most exacting prospector will find just what he wants in a small area. Or if he wants a variety of soils, lots of times he will be able to get the whole thing under a 160 acre tract. These soils range from a dark chocolate loam with just enough sand in them to turn well on down through the so-called mixed breeds to the deep sands that know no corn failures. All these lands are underlaid with the rich, dark red clay subsoil that hold water like a jug. No hardpan or shales.

The climate is bracing the year around being some three thousand feet above sea level. The winters are usually the driest part of the year, but with an occasional snow. Even with the thermometer around the zero mark, you will not notice the cold much more than you will around the freezing point in more humid countries. The famous blizzards you have read of in novels and seen in the movies are pure fiction for the most



EVERYONE KNOWS THE QUALITY OF "STAR BRAND SHOES." THE PRICE YOU PAY IS THE THING TO CONSIDER NOW COME IN AND LET US SHOW YOU.

"STAR BRAND SHOES ARE BETTER."

A. B. COOK & SON

PHONE 15

END YOUR TROUBLES

HAVE YOU EVER HEARD ABOUT JONES' TOUR. WELL HIS TROUBLES WERE ALL ON ACCOUNT OF HIS MOTOR OILS--BUT HIS TROUBLES WERE ENDED WHEN HE FOUND SINCLAIR IN THE QUART SEALED CANS. ASK FOR A JONES BOOKLET.

FOR PURE SINCLAIR OILS CALL NO. 5

HOME OIL COMPANY

A. J. STRICKLIN, Editor and Prop.
Subscription Rates: One year, \$1.50;
Six Months, 75c; Three Months, 40c.
Advertising Rates on Application.

The American Red Cross is to hold a general convention at Columbus, O. October 4 to 8th.

The Lubbock Avalanche issued an edition last week with 132 pages advertising the South Plains and the South Plains Fair to be held there the 5-5th next week. It was probably the largest paper ever put out on the Plains. The Terry County section of 8 pages was real good.

The Station Stationer advises the business men of his town against the traveling solicitor, saying that with good cotton crops and neat price for same, these gentry would soon be in evidence; in fact were already appearing. Of times a local man could solicit for the same article one minute and be followed closely by the traveling man, who would get the order. This occurred with the Herald not many days hence.

The incident of the Lubbock boys getting pinched at Miami for winking as they passed through that town—the wink seeming to be a bootlegger's sign that "I have it on me boys" in that town, reminds us of a local occurrence. It seems that a local youth with more gab than discretion but into a stranger in a big car, one day recently, and asked him point blank, without batting an eye if he (the stranger) was a bootlegger, and receiving no immediate reply, informed the stranger that if he was, he had better look sharp as our officers were landing on them every few days. It is said the stranger threw 'er in high and shook the dust from his—ties.

TOKIO TALKINGS
By Grasshopper.

Another big rain Saturday night filled the lakes full and assured us of winter grass.

C. W. Water and sons, Guy and Glenn, spent Saturday night at A. V. Taylor's.

Sunday School as usual; elected new officers, and changed back to 2 p.m. instead of 10 a.m.

The singing class is still doing good work, and hope they will still continue to do so.

A. V. Taylor and son, Ray, have begun making syrup.

There are several binders remaining in the neighborhood. Saving the feed crop seems to be good policy.

John Lane, brother to S. F. Lane, was up from Mitchell county last week, visiting and looking after business in this part of the country.

School is progressing nicely. The Misses Ferguson from Tahoka are teaching.

Wilborn Pippin is on the sick list, and not able to walk without help. Hope he will be better soon.

ALL KINDS of fruit and vegetables in season, at Bros. & Bros.

LUBBOCK PASTOR WITH PRESBYTERIANS NEXT SUN

Everybody is cordially invited to hear Rev. A. E. Miller next Sunday at the Presbyterian church. Mr. Miller is pastor of the First Presbyterian church at Lubbock. He will bring an inspiring message. Come!

WHY NOT drive a real car. The new price on the Overland makes it but a bit higher than a jitney. Ask J. F. Winston to demonstrate.

An inch rain fell here Sunday night according to the government gauge.

TERRY COUNTY--EGYPT OF THE WEST CONTINUED

against the irrigated districts of the shallow water belts and New Mexico. Last year Terry was the banner county of the south plains at Lubbock, taking first prize.

In this connection we want to say a few words on the fruit and truck growing possibilities of Terry. Go into any orchard that has any care worth mentioning, and you are at once struck with the healthy, smooth bark of the trees. Peach trees do not play out in a few years from the effects of alkali like the do in most sections of Texas; there being plenty of peach trees in the county more than 20 years old. Anything that grows on vines, like grapes, melons, peas, beans, squash, pumpkins, etc. do extra well. Grapes hang themselves and bear every year.

Shipments from Terry county will show any one the varied products and shows that our farmers are getting an income the year round. Not just in the fall. The following table shows the shipments out of the station at Brownfield alone from September 1st, 1920 to June 1921 inclusive and these statistics are from an entirely reliable source:

Cattle	140 cars
Horses	4 cars
Sheep	4 cars
Goats	1 car
Hogs	14 cars
Hogs and calves (mixed)	2 cars
Swine	43 cars
Cotton seed	19 cars
Corn	190 cars
Broom corn	1 car
Wheat	5 cars
Wheat Shucks	4 cars
Melons	6 cars
Peas	1 car
Miscellaneous	83 cars
Immigrants	37 cars
Total	549 cars

Ten thousand Five Hundred passengers paid fares.

We understand that this does not include express, such as poultry, eggs, butter, cream, and hundreds of other odds and ends that go out daily. Last fall thousands of pounds of turkey chickens were shipped from the Terry county farms and ranches. These express shipments are daily occurrences and no thought is taken of the daily amounts or yearly amounts, but indeed they amount to a living to all farmers who try to have something for sale.

Terry county had a population of 48 in 1900; in 1910 it had grown to 1,474, and by 1920, there was a population of nearly 2,000 according to the Federal Census. The county was named in honor of Col. Frank Terry, noted Texas Ranger and Confederate Soldier. Please be so kind in making calculations of the amounts being shipped out, to please compare the population with your section, also, and remember but a little more than half of these 2,000 people live on the farm. In other words, there are about 50 farms in Terry county.

In the year 1917, hardly any of the farmers that worked their land well but made enough to run the farm, but the grass was good and tens of thousands of head of stock were shipped in from other sections of west Texas to be grazed. By 1918, the drought had got to its best in most of West Texas, but old Terry made plenty to do the county, shipped out about 50 cars of corn, maize and other feeds besides a few cars of planting seed to the regions of Central West Texas so they could plant their 1919 crops.

Some people wonder why we have not made more rapid progress in populating the country since getting a railroad, but it must be remembered that we got our railroad in 1910 right in the middle of the World War and closely followed by the wide spread drought. The population today is in

the neighborhood of 3,000 souls. Now a little about land values. If you want close into town, you will of course have to pay accordingly; also if you are looking for improvements, you have to pay handsomely for that. But still the prices seem insignificant compared with prices you are probably used to. So improved places range from \$15.00 to \$65.00 per acre, and the unimproved lands from \$8.00 to \$25.00, according to distance from town and grade of land.

Several big natural lakes in the east part of the county are rich in potash, and some day may be developed, but even if they do not, the county has some of the best agricultural lands in the world, lots of good water and a magnificent climate to back it.

Brownfield is the county seat of the county; it is forty-five miles southwest from Lubbock, being on one of the many Santa Fe branches that are net-working the South Plains. It of course makes direct connection with the main lines in that city, giving us a direct outlet for our products. It is an incorporated city, with a live bunch of city dads, that are going to

put the town on the map. It now has about 1000 population, a chamber of commerce affiliated with the West Texas Chamber of Commerce. It has three dry goods stores, 7 groceries, 3 big lumber yards, two banks (state and national) with good capital and resources, two well equipped garages, a feed and fuel company, two wholesale oil stations, three barber shops, a racket store, a furniture store, two hardware stores, two drug stores, a sanitarium, a very small jail, a mattress factory, two grist mills, a good \$40,000 brick school building with ten teachers and 350 students, four of the six organized churches have buildings and land agents to numerous to mention; a modern newspaper plant and the best hand made boot shop in the entire west, a good meat market, a tin and blacksmith shop.

Meadow, the only other railroad point in the county has a bank, lumber yard, a number of business houses and three organized churches, a good school building and surrounded by a very rich agricultural region.

Gomez, one of the oldest towns in the county, has a postoffice, 2 stores, good school building and three organized churches each with its own

branch line from the city of Lubbock crossing through the center of Terry county, and extending to Seagraves in the northern edge of the County of Gaines. This company prior to extending their line through this section, purchased several thousand acres of land in the southern part of Terry county, and the balance in Gaines county. This land surrounds the townsite of Seagraves, named such in honor of the official of the company who was a factor in extending the road and who is head of the Santa Fe Development Company.

This road leaves the city of Lubbock from the northwest corner of the townsite and crosses a small corner of the county of Hockley, passing through the towns of Ropesville and Meadow, and Brownfield the County seat of Terry county. The length of the branch line which serves the counties of Hockley, Terry and Gaines is seventy-five miles. The town of Brownfield has succeeded in securing a large amount of trade out of Gaines county, Yoakum county and the eastern part of New Mexico. Seagraves draws trade from eastern portion of New Mexico that is closer to it than Brownfield. Several large firms in the town of Brownfield cater

There is mixed soils in Terry county and they are distinguishable from the growth produced on raw lands; the tight or firm soils similar to Lubbock, Crosby and Lynn counties produce short grass and very little of the growth of mesquite or catclaws. Real sandy lands in the Terry county section produce a large growth of mesquite, not heavy nor numerous, but large, and evidence of sage grass and sage brush. There has been found to be some difficulty in farming the very sandy lands of this section, because those who farmed had not the experience and were unaware of the spring winds which oftentimes killed out the young crops. That condition is changing rapidly and the farmers are beginning to wait until after the spring winds have passed before planting. On this sandy land corn does best and great crops have been raised within the past few years. It is also on this extremely sandy land where the big Terry county melons come from. From a general experience with the sandy lands of Terry county the writer can truthfully state that for safety and regularity of crops, there are no better lands on the Plains.

In the northern portion of Terry county, that community known as Meadow will be found the choicest lands of Terry County. Here the soil bears a heavy growth of cat-claw and the old timer of the South Plains know from experience that where the cat-claw growth is heaviest is where the best farm are located. The soil is a firm mixture of sand and heavier soils and besides being sandy enough to aid in the preservation of moisture is strong enough to produce the best grasses and the finest crops.

The Brownfield postoffice is the distributing point of many little offices, such as Seagraves, Meadow, Gomez, Taylor, Harris, Pleasant and Broncho, Texas and Tatum and McDonald, N. M. We are therefore so situated as to be in touch with a very large territory.

The South Plains Telephone Company, a home institution, covers the county neatly, and has an outlet via Lubbock with distant points. The Western Union Telegraph Co. also maintains an office here.

The West Texas Gas Co. has one of its most modern plants here. Seagraves and Meadow also have good gas but not on such large scales.

We have farmers here that have continuously farmed the Terry county lands for from 12 to 20 years, and they will bear witness that nothing in this article has been overblown.

If you are interested and want to keep well posted, send one dollar and fifty cents for one year of this paper, or 75 cents for six months, or 40 cents for three months. It is not a fly by night paper, but has been here for 16 years doing business at the same old stand.

If there is any further information you want, address the Chamber of Commerce at Brownfield, Texas, who will gladly answer your inquiry.

STOP THAT ITCHING. Use the reliable Blue Star Remedy for all skin diseases and foot troubles such as Itch, Eczema, Poison Oak, Red Bugs, Old Sores, Sores on Children, Prickly Heat. Sold on a guarantee by J. L. Randall.

PROGRAM OF GAINES CO. SECOND ANNUAL FAIR

Editors Note: This should have been printed last week but did not reach us until Thursday afternoon, after the Herald had gone to press, but we print it any way just to show the reader what our bustling neighbor was doing.

To be held at Seagraves, Sept. 29th and 30th, 1921.

First Day's Features—Forenoon, Live Stock and Farm Exhibits, School Parade.

Afternoon, Bull Game, Goat Roping, Steer Roping, (Professional ropers hand-capped).

Second Day—Forenoon, Live Stock and Farm Exhibits, Speaking by Famous Orators.

Dinner and old fashioned Barbecue—FREE.

Afternoon, Calf Branding, Bronco Busting, Wild Cow Milking.

Two whole days of fun, entertainment and instruction. Gaines county invites her neighboring counties to make it a day for the progress and upbuilding of the South Plains.



M. B. SAWYER'S APPLE ORCHARD

the New Mexico trade and much freighting is done from that place. Brownfield has a cotton gin which has ginned cotton hauled out from New Mexico by wagon a distance of seventy-five miles. The large feed houses in that city supply the cattlemen from Eastern New Mexico with feeds for cattle during the winter months. Coal is handled by various houses in Brownfield, but principally by the large lumber yards and people from the west purchase the bigger portion of their fuel from Brownfield Lumber and fence materials find a market in the eastern portion of New Mexico and the shipping pens at Brownfield afford the nearest place for shipment of cattle for many large ranches. Thus, it is seen that Brownfield has a big aid in the building of many people of a very large territory.

Terry county lands are similar to portions to that of other lands of the South Plains, but taken as a whole the soil of Terry county contains a larger portion of sand than does any other counties of Lubbock, Lynn and Crosby, while Gaines county on the south has more sand than Terry. This sandy land is by no means a



THRESHING SCENE ON BURNETT BROS. RANCH

handicap, instead, it provides one of the sweet crop soils to be found. Corn does exceedingly well in the sandy land and also other crops, but the sandy lands of the South Plains taken as a whole are more sure of good corn crops year in and year out than are some of the more firm soils. Terry county and the communities served by Brownfield and Seagraves have established an enviable record for raising corn and it is no uncommon event for Terry county to carry off Blue Ribbons at the State Fair with her samples of this crop.

The Tokio postoffice has a store and a good three teacher school. Harris postoffice has a store and a good school nearby.

Written in the Lubbock Avalanche had the following to say in its recent South Plains Fair Edition:

"Terry county joins Lubbock county on the southwest, the county of Yoakum lies between lines between Terry and the east line of New Mexico; Lynn county joins Terry on the east and Gaines county on the south. The Santa Fe railroad recently built



GRAPE VINES EVERYWHERE

Terry County Our First Choice

The editor has asked us to testify to the great possibilities of Terry Co. The members of this firm have farmed in various portions of Texas before coming here, and they have farmed for several years in Terry County, and can therefore say truthfully that they had rather farm in Terry County; do business in Terry County, and live in Terry County than any place they have tried. Come and see for yourself, and call in to see us when here.

Lewis Brothers & Company

HARRIS HAPPENINGS
By Sand Bar.

Had another good rain Saturday night, which freshened things up very nicely.

Our mail time has changed from 3:30 p. m. to 9 a. m.

Bert Clare and family visited at Brownfield, Saturday and Sunday.

Messrs. Williams, Taylor and McMillan shipped some cattle to Kansas City last week.

F. M. Ellington and family spent Saturday and Sunday with relatives at Meadow.

Miss Fern Harris is attending H.S. at Brownfield.

Our school began Monday with 8 pupils enrolled—all girls.

Miss Ethel Harris was on the sick list last week.

The French school started Monday with J. A. Taylor as teacher.

(This Week) J. E. Fitzgerald branded and vaccinated Thursday.

Mrs. Glen Harris and little daughter, Miss Thelma Fern, are spending a few days with Mr. and Mrs. W. H. Harris.

Mrs. McMillan spent Thursday with Mrs. Harris.

Miss Leta May and Duesy French, left Thursday morning for Tahoka where they will enter High School.

W. H. Harris went to Brownfield Tuesday.

Clarence Rollins and family, Dewey Murphy and family, and F. M. Ellington and family, spent Sunday with S. T. Murphy and family.

BROTHERS & Brothers will pay the highest market price for your poultry, eggs and cream.

Mr. Eulous, car inspector for the Santa Fe at El Paso, was here last week and as he was a former printer, he had to come in and get a whiff of printer's ink. He was looking out for a farm to rent as he aims to quit railroading. To many lay offs and strikes to suit him.

IF YOU want a real car, get an Overland at the new price of \$725.00. See J. F. Winston.

CICERO-SMITH LUMBER Co.

WILL APPRECIATE YOUR TRADE

CICERO SMITH LUMBER CO.
Brownfield, Texas

YOUR--- TRADE APPRECIATED

We want to serve you during 1921, for your Drugs, Sundries and Medicines, Jewelry, Eye Glasses and your School Supplies. Come in when in need of anything in our line.

Randal's Drug Store

INSURANCE?

...Yes, I write it—
Life,
Fire,
Hail,
Cyclone,
Health,
Accident,
Disability,
Automobile,
Bonds of all kinds,
In Standard High Class Old Line Companies.
"Insure anything,
Against everything."

J. F. WINSTON
"The Insurance Service Man."
Brownfield, Texas

MAGNOLIA PETROLEUM COMPANY

Will appreciate your business

CHESTER GORE, Mgr.

LOOK BEFORE YOU LEAP

APPEARANCES ARE OFTEN DECEITFUL. WHAT MAY APPEAR TO BE A PERFECTLY SOUND LEGITIMATE BUSINESS PROPOSITION MAY HAVE HIDDEN AWAY SOMEWHERE THE GERMS OF FINANCIAL DISASTER. THE SAME IS EQUALLY TRUE REGARDING THE PURCHASE OF REAL ESTATE, AND UNLESS YOU TAKE THE PRECAUTION WHEN BUYING PROPERTY OF THIS KIND TO CONSULT A SPECIALIST ON ABSTRACTS OF TITLES YOU ARE LIABLE TO FIND YOURSELF IN POSSESSION OF VARIOUS TROUBLES.

WHEN IT IS POSSIBLE TO BUY ABSOLUTE SAFETY IN THIS RESPECT AT THE VERY SMALL COST OF AN ABSTRACT OF TITLE, ISN'T IT FOLLY TO NEGLECT THIS PRECAUTION?

COME IN AND TALK IT OVER WITH US.

C. B. RAMBO, Abstracter
BROWNFIELD, (Terry County) TEXAS

Yes
it's toasted, of course. To seal in the flavor—



Alexander's Drug

O.K. Many Home Builders

HAVE PUT THEIR STAMP OF APPROVAL ON OUR SERVICE

THE MANY HOMES THAT WE HAVE HELPED TO PLAN AND BUILD IN BROWNFIELD ARE THE EVIDENCE OF THE FAITH BUILDERS HAVE IN US AND THE ATTRACTION OF MANY OF THESE BUILDINGS IS A SOURCE OF MUCH SATISFACTION TO US, IN THAT THEY STAND AS MONUMENTS TO OUR EFFORTS, REFLECTING OUR USEFULNESS TO THIS COMMUNITY.

IF YOU ARE THINKING OF BUILDING YOU WILL FIND OUR DISPLAY OF PHOTOS AND PLANS BOTH INTERESTING AND HELPFUL.

IT IS ALWAYS A PLEASURE TO SERVE YOU.

A. G. McAdams Lumber Co.

"THE PLACE WHERE IT IS ENTIRELY SAFE TO TRADE"

Brownfield, Texas

Sanitary Barber Shop

Service and courtesy is our motto.

Bynum Bros.

—You'll never go wrong on—

GOODRICH TIRES

BEST IN THE LONG RUN

Fabric and Silvertowns

THE BRICK GARAGE

Roy Harris, Prop. Brownfield

We Do Abstracting Only.

We have the oldest and most complete and up-to-date set of abstract books in the county. We do our work personally. Have no other job or position to take part of our time. We know how and will do work that will stand the test anywhere.

GUARANTY ABSTRACT & TITLE CO.

W. B. DOWNING, Sec. I. C. BURGESS, Mgr.
Brownfield State Bank Building
Brownfield, Texas



See me for best Georgia Marble and Granite Monuments best work and Material.

J. F. WINSTON

Brownfield, Texas

MEADOW BRIEFS

By Aesculapius
After a few weeks vacation, in the which the writer has been wrestling with the problem of providing a place to hibernate during the coming winter, we will again take up the task of reporting Meadow.

Brooks Brothers have just built a house and are now installing a mill and auto repair shop. The mill is badly needed, and it is hoped that it will secure patronage to justify the outlay.

Messrs. J. J. Nettles and N. Bell and Mr. Ellington have shipped cattle the past week.

Misses Merle Jones and Frances Moorehead have gone away to school—the first to Abilene Christian College and the latter to the Canyon Normal.

Roscoe Moorehead and family are off for a visit to Stephenville to see relatives and take in the fair. Our people are getting ready to take part in the County Fair at Brownfield, and the South Plains Fair at Lubbock. The stuff accumulated so far, looks as fine as seen at Dallas some years ago. Verily Terry county has the best lands on the earth.

The Commercial Club was honored by a visit of several officials of the Santa Fe railroad a few days since. We have just received the special edition of the Lubbock Avalanche. It is quite large and rather expensive to distribute. However, it does full justice to the Plains country.

LUBBOCK BOOSTER HERE

LAST FRIDAY
Word was received here last Thursday that the Lubbock Chamber of Commerce would be here 50 strong some time Friday morning, and early Friday morning the business men of the town got busy toward showing the neighbors a nice time and a real old western welcome.

An indefinite amount of melons were provided, and lunch at local hotels would have been provided if the visitors would have agreed to stay until the noon hour. We understand they latter wished they had stayed.

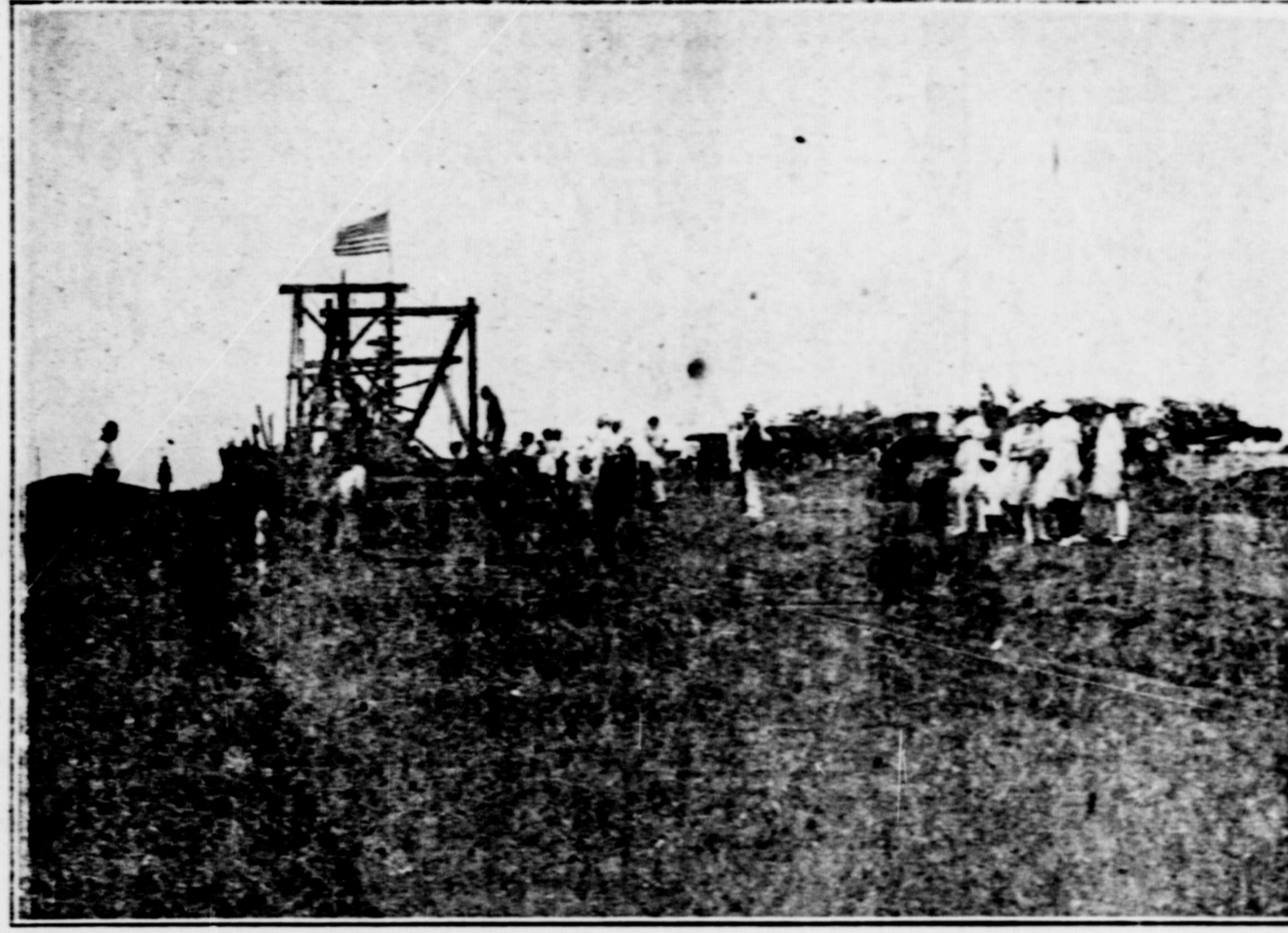
Upon arriving, their band gave us a nice selection of music, including "Dixie" by request of an ex-Confederate soldier, then Mayor Geo. W. Neill, in his usual humorous fashion, bid the neighbors a hearty welcome, and informed them that Lubbock was fortunately situated for a fair, having a great agricultural country like old Terry near it. He touched the hearts of the assembly when he informed it that we considered the South Plains Fair as "our fair" too.

Hon. Roscoe Wilson responded in a happy vein for the visitors, saying he was glad we called it our fair, for indeed it was, being named so as to include all the South Plains. He said he could not help being partial to Terry, as he had to come here to get his wife. The visitors were then invited to feed themselves on melons.

It now being eleven o'clock, the visitors headed for Lamesa, to return by O. Donnet, Tahoka and Wilson.

turned to our home and stayed all night and re-assembled early next morning at the Santa Fe Hotel, had breakfast and left overlaid by cars for Lubbock. This was the saddest morning of all, for our fathers, mothers, sisters, brothers, and a few had sweethearts loved us and we loved them, just like common ordinary people do. At Lubbock we boarded a soldiers' train for Camp Travis; had lots of fun on the way, hands played, people shouted, pretty girls gave us pleasant smiles, etc., and then we landed at that place you call Camp Travis. Here we found plenty of the comedy passing the first inspection which took about a day. Most of the boys had not carried extra clothing, the weather was warm and some complete uniforms consisted of nothing more than a heavy pair of boots, on sock overalls. The amount of baggage per man varied from a tooth brush to a steamer trunk.

The first day we were assigned to different companies and soon found out that patriotism was a good thing to talk and shout about but that we had left our democracy at home. We were issued two blankets and a sack which we filled with straw that served as a "feather" bed for nine long, weary months. The first day's drilling was a trying one, and ended after many reproofs, given freely by hard-boiled officers and non-coms, and the destruction of a pair of Nettles' for me. The next morning I could hardly un-track when the bugle called for Homer. After breakfast (which



WHEN THE IRON RAIL ENTERED BROWNFIELD JUNE 16, 1917

LOCAL DENTIST RECEIVES UP-TO-DATE GAS MACHINE

We are pleased to announce that the dental office of Dr. H. H. Hughes located at the sanitarium, has just installed a gas machine. The editor noticed some more unpacking there one day this week and upon inquiry was informed that his long looked for gas machine was being installed. It having just arrived. We went to and took a look at the beautiful machine that cost hundreds of dollars, and which makes dental surgery almost or altogether painless.

This bustling dentist wants Brownfield people to have just as good attention when they need it as city people. The only thing that keeps him from installing an E-ray machine and Electric sterilizer, and other laboratory equipment for lack of electrical current.

Will the people of Brownfield see to it that he has these currents?

MY EXPERIENCE IN THE GREAT WORLD WAR

By H. R. Winston
In response to the petition printed in the Herald last week, I will try to do my best, as the editor says he is willing to print same.

It may be before this is over, there will be another petition to stop me, as anything that I might write will be incomplete because a fellow country member everything, and most soldier boys have tried to forget what happened in those two years, but here goes.

On September 18th, 1917, 18 single Territes assembled at the Courthouse and joined Uncle Sam's army, and then spent the balance of the day wrestling and boxing on the streets of Brownfield; some here received their first wounds, as well as civilians, but about the worst casualty was that "Sinnie" Williams left Jim Lewis with a fractured rib. Then we re-

ceived of good old hash, syrup, cold light bread, black coffee, and water) I managed to introduce myself to the commanding officer, who was more merciful than I expected, and issued me a pair of size No. 10 shoes, and after trying them on and feeling of my toes, declared them a snug fit. They were two sizes too large, and I resented to carry that extra weight, but I had to take them with a reproach that my feet would swell, that I had left Democracy at home and was now in the army. I was then rushed to the doctors who examined me again, vaccinated me for small-pox in the left arm, and took what in the right against typhoid fever, repeated the last twice in 20 days, the company clerk lost my service card and I had to wait three more. Might say right here that the service the doctors gave in the army ought to be complimented, for if you get scratched up they paint you with iodine, and if you are sick they give you castor oil and salts mixed, and mark you "DUTY." They said they had some fine doctors over in the hospitals for operations, but I decided that if I had to be operated on, I had rather remain in my barracks and just die a natural death, but there was some as fine doctors as the country could produce at Camp Travis.

We were given lectures by the Y. M. C. A., who told us to cut out so much talking and not write back to the folks about it, and in a week or so, we were located better, and every thing would work out alright, and that we would be contented, and would like it, and sure enough we did learn to like it better when we began to draw our large checks for \$100 per day and can say it was not much worse than working on a ranch at \$25 or \$30 per month if they would leave a little of the "having-out" off and if a fellow could quit when he wanted to, Hal ha!

Hemstitching

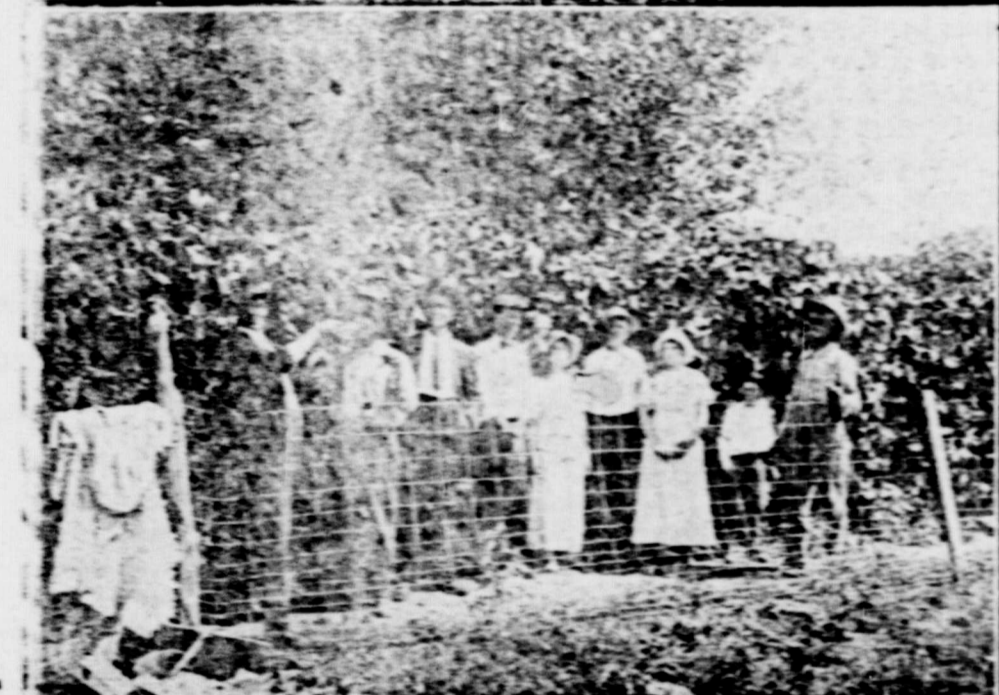
Dumas sisters have installed a Hemstitching Machine in the balcony of Lewis Brothers & Co. Store. Bring us your work. We guarantee to satisfy. Mail orders given prompt attention. Rates 15c per yard.

W. A. Bell and Jim Lewis, two of our business men got out one day this week and got together \$400 to carry an exhibit from Terry County to the Dallas Fair. At a latter meeting five local men were chosen to go with the exhibit to talk up Terry. After the Dallas Fair is over, the West Texas Chamber of Commerce has agreed to carry it to the Louisiana State Fair at Shreveport; then to the Waco Cotton Palace, and then to the Houston Fair.

CANDIES of all kinds at Brothers & Brothers, and they are fresh too.

Clyde Lewis, manager of Lewis Brothers Store, returned last week from Rotan, where he has been buying cotton.

BROTHERS & Brothers will appreciate their grocery orders.



FRIENDS SAMPLING HIS TERRY CO. GRAPES

Births: To Mr. and Mrs. Charlie Prof. H. D. Heath, principal of the Duncan, a girl Sept. 15th. To Mr. and Mrs. I. A. Lowe, a girl Sept. 28th. Meadow school, was in to see us last Saturday.



SAMPLING THE JUICY PEACHES

COST OF PRODUCING THE 1921 COTTON CROP

Compiled by A. W. Kinard and approved and issued by George B. Terrell, Commissioner of Agriculture. This cost is based upon reports from farmers from 45 counties who kept the cost of producing this crop. It includes cost of cotton seed for planting, the cost of breaking the land, chopping and cultivating at the present prices of labor until the crop was laid by.

One dollar for 100 pounds is allowed for picking and 40 cents per 100 pounds for ginning. The total cost of labor, including picking, ginning and wrapping amounts to 19 1/2 cents per pound, based on the government estimate yield of 101 pounds of lint cotton per acre for Texas. Adding to this interest on investment, wear and tear of tools and teams, taxes and other necessary depreciation, we have a total average cost of 25 1/2 cents per pound—the cost of producing this crop.

This is a conservative estimate. Those who produce more than one-fifth of a bale per acre will receive a profit on a price of 25 1/2 cents per pound, but those who produce less than one-fifth of a bale per acre will not get cost of production.

It is not my purpose to advise the farmers what price they should take for their cotton, but any price under 25 cents will not cover the cost of production and any profit on their labor and investment. The government estimate of 7,007,000 bales is the shortest crop in 20 years, when 7,151,000 bales were made (practically the same as this crop), and it should bring 25 cents or more.

The farmers should organize for the purpose of securing the cost of production and a profit on labor investment, as all other business interests do, and they should not increase the acreage next year because the price has advanced, but should reduce the acreage to the bare necessities of the mills, and the consumption capacity, the purchasing power of the people, in order to secure a profitable price. They should not be required to produce the necessities of life for less than cost.

Farming must pay of the nation will perish.

KEEP YOUR MONEY AT HOME. Don't forget that J. B. King will have a full line of nursery stock this fall. Lots of this stock will be grown here in Terry County. Don't risk ordering from an outside nursery when you can select from a full line of stock and get what you want. Prices right and trees guaranteed to be live and healthy.

School is moving along as nice and smooth as one ever saw.

BAKER GUNS

For fifty years known to the trade as the best for service.



\$48.00 to \$365.00

Send for BAKER BOOK-LET describing the entire line.

Baker Gun Company
314 Broadway, New York

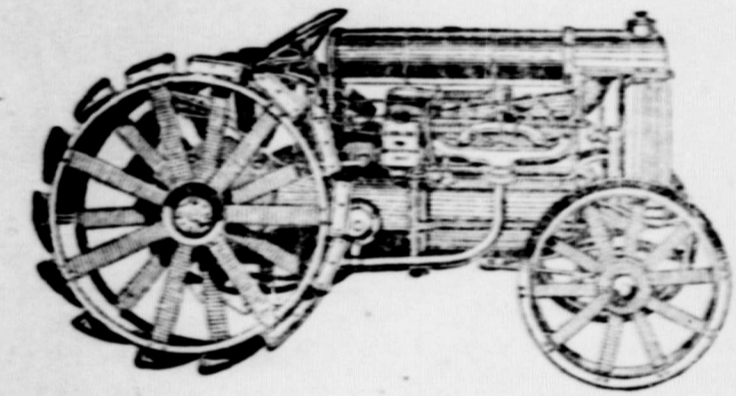
Watch for our next story--
"THE CLAN CALL"--a very thrilling story of the people of the mountain sections of Tennessee. Starts in an early issue. Get the first chapter.

Comfortable Shoes

OLD SHOES ARE LIKE OLD FRIENDS--ONE HATES TO GIVE THEM UP. BRING YOUR OLD SHOES TO US AND WE WILL MAKE THEM LIKE NEW--WE TAKE OUT ALL THE OLDNESS BUT THE COMFORT.

T. A. NOWELL, The Repair Man

LET US DEMONSTRATE



Mr. Farmer, do you want a Fordson Tractor demonstration right on your own farm? If so, come in and talk to us about the matter.

We do not claim the impossible for this servicable little tractor, but it is the best tractor made of anything, any where near the same price.

TUDOR SALES CO.

BROWNFIELD TEXAS

30 Days Free Trial

Free trial when you buy a Ranger--the best known as well as the best looking one. Try the Ranger for 30 days. We will refund your money if it does not suit you perfectly. No trial does not cost you a cent.

12 Months to Pay

If you do not find it convenient to pay cash, you can secure possession and use of your Ranger for 12 months and pay for it in 12 easy \$10 monthly payments. Outstanding balance of cash balances and 6% interest.

Direct from Factory to You

We make 44 styles, sizes and colors of Rangers in our three model factories, and sell them direct. Our Mail Order Department shipping for the needs of millions of homes in all parts of the country. We have been established in Chicago 20 years. In the Ranger line there is a style and size to fit every taste and any pocket book. You can't equal the bargain or price of our Rangers.

Tires

Special lamps, horns, parts, repairs, and equipment of all kinds, ready to ship in your own home. Everything for bicycles and in the bicycle line, ready for prompt delivery.

Rider Agents Wanted

in all parts of the country. Send for our special Factory-to-Rider literature and full particulars of the 30 days free trial and easy payment terms.

Send No Money

Use coupon or postal note and we will ship you a Ranger bicycle for 30 days free trial and easy payment terms.

MEAD CYCLE CO.

6 N. Canal St., Chicago, U.S.A.



44 styles, colors and sizes in the famous Ranger line--Roadster, Standard, Safety, Sport, and many others. All frames made of light alloy. Leaning back for easy riding. Wide tires. Wide tread. Wide tread. Wide tread.

MEAD CYCLE CO.
6 N. Canal St., Chicago, U.S.A.

THE FIRST NATIONAL BANK --SERVICE--

WE TAKE A PERSONAL INTEREST IN OUR CUSTOMERS AND STUDY THEIR INDIVIDUAL NEEDS TO THE END THAT WE MAY SERVE THEM BETTER.

LET US HELP YOU PUT YOUR CROP OVER!



CARE OF THE MOUTH AND TEETH

Infected gums, teeth, tooth-sockets, or tonsils, may poison the whole body. A little money spent occasionally to have the teeth cleaned, or the throat inspected, is cheaper than to lay off from work and pay doctor bills from rheumatism or stomach trouble or appendicitis, or other serious troubles that come from tooth and mouth infection.

Eat some hard crusty food every day to give the jaws vigorous exercise and promote proper chewing and flow of saliva.

Clean the teeth after each meal, if possible, but especially at night before retiring.

A tooth brush is better for your health than patient medicines, which never cure and only mask pain.

The occasional use of precipitated chalk and daily use of pure soap as a dentifrice will render tooth pastes unnecessary.

Tooth pastes and powders have no advantage over this simple and inexpensive measure.

Tartar can be brushed off when first deposited. It cannot accumulate and harden if the teeth are properly and regularly cleaned.

To make certain, visit the dentist every three to six months, and have the teeth inspected, and sealed if it be necessary.

Cavities ought not to form in well cared for teeth, but few teeth are always well cared for.

Have the dentist watch for small cavities. Do not wait for tooth aches. If there is much gold work—crowns, caps, etc.—in the mouth, have the dentist make sure that there is no infection that there is no infection around or under them. X-ray of such teeth is always a wise measure of precaution. More than 60 per cent of such teeth X-rayed have shown infection.

If there is present fever, rheumatism, joint trouble, stomach trouble, or obscure chronic disease of any kind, have X-ray taken to find out whether infection or roots are present.

ONE HUNDRED Dollar reduction on Overland 5 passenger tourist car. Don't take a makeshift when you can get a real car for a little more money. Let J. F. Winston show you.

HELP YOUR LOCAL PAPER

Don't make fun of your local paper. It has possibilities of being as good as any in the country—and remember it reflects the community in which it is published, and is the one product that goes to far places bearing the town trade mark. It deserves the best you can give of active support and sympathetic understanding.

Give the editor news whether it benefits you or not. Don't ask him to print it on the front page and just the exact way you handed it in.

Don't worry lest the editor makes too much money. If he is prosperous he'll be foolish enough to give his community a better paper; that's the editor's ambition—that's why he engages in the publicity business.

Tell him when he has a good paper. You are willing to congratulate your preacher on a good sermon, and your merchant on an attractive window display. The editor is no less grateful for a word of praise.

Make it a point to visit his print shop and learn of its difficulties and complexities. At least to learn that will give you a more charitable attitude. The paper should not be the product of the editor entirely, but of all those who are interested in it as friends, contributors, readers and advertisers.—Southland Farmer.

SEE those new Aluminum goods at the Brownfield Hardware.

If you do not find the serial story in this week's issue it has been crowded out by fair dope, but will be in the next issue.

Two wood stoves for sale. See Prof. J. D. Shaw, Phone 91.

The Womens Missionary Society of the Baptist Church, will serve pies and cakes at their booth on the Fair Grounds, Saturday, October, 1st.

MOORE BROS. of Lubbock for auto tops and curtains, made or repaired.

Miss Lois Brownfield received a wire from a school in Kansas last week asking her to come and teach music. She left immediately.

FOR SALE or trade a 5 room house, unfinished, concrete foundation; lot 50x100 feet, located good. J.A. Gamble



YOU DON'T HAVE TO QUIT RAISING COTTON WHEN YOU GET TO TERRY

THOSE new Aluminum goods at the Brownfield Hardware, are cheap! cheap!! cheap!!!



ELBERTA PEACHES 12 INCHES IN CIRCUMFERENCE.

DOLLS! dolls! from 5 to 50c at the Racket Store.

We are glad to announce that the city of Brownfield gets to entertain the next District Singing Convention which meets here the 3rd Saturday night and Sunday in next May. A strong delegation went after it and got it. Both Plainview and Tahoka wanted it, but Lubbock voted for us, and we landed it.

Do you need glasses? See Prof. J. D. Shaw about it.

Jessie May, local jeweler left last week for Houston, to enter a government hospital to be treated for a hurt received while in the army.

BROTHERS & Brothers buys the best canned food put up to protect their customers.

You can now renew your Star-Telegram through the Herald until Dec. 1st for only \$1.10. Bargain Days then open, and we are promised lower prices than last year.

Don't forget that the County Singing Convention meets at Gomez the 3rd Saturday night and Sunday in next May.

Don't worry lest the editor makes too much money. If he is prosperous he'll be foolish enough to give his community a better paper; that's the editor's ambition—that's why he engages in the publicity business.

SEE those new Aluminum goods at the Brownfield Hardware.

If you do not find the serial story in this week's issue it has been crowded out by fair dope, but will be in the next issue.

Two wood stoves for sale. See Prof. J. D. Shaw, Phone 91.

The Womens Missionary Society of the Baptist Church, will serve pies and cakes at their booth on the Fair Grounds, Saturday, October, 1st.

MOORE BROS. of Lubbock for auto tops and curtains, made or repaired.

Miss Lois Brownfield received a wire from a school in Kansas last week asking her to come and teach music. She left immediately.

FOR SALE or trade a 5 room house, unfinished, concrete foundation; lot 50x100 feet, located good. J.A. Gamble

WE BUILD A BRIDGE

ACROSS THE OBSTACLES WHICH MIGHT COME IN YOUR PATH IN ARRANGING TO BUILD THAT HOME OR BUYING BUILDING MATERIAL.

We have a number of plans of cosy homes from which to select your building, different kinds of lumber for any and all occasions, and our service is given to you free and with satisfaction both to you and ourselves.

"THE PROOF OF THE PUDDING IS IN THE EATING."

Call us.

HIGGINBOTHAM-BARTLETT CO.

Brownfield, Texas

October. The Gomez people are determined to make this the best singing ever pulled off in the county. We will have more to say about it as the time approaches.

BROTHERS & Brothers delivers your groceries to your kitchen.

Robert Welch, manager of the Cicero Smith Lumber yard at Meadow, was down to see home folks Tuesday night.

FOR SALE or trade a 5 room house, unfinished, concrete foundation; lot 50x100 feet, located good. J.A. Gamble

A large crowd of ex-soldiers, headed by Chaplain J. E. Anderson, who delivered the memorial address, attended the funeral of Otto Allen at Pridde, Sunday. The funeral was under auspices of the Lamesa Legion. The body arrived via Galveston and San Antonio.

Albert Curry is an entered apprentice at the Herald office now, and has the makings for a good printer and maybe editor and publisher later.

J. A. Miller, prominent north side farmer was in this week with cotton and said he would make 25 bales.

Word was received by relatives here Friday night that a little child by the name of Cook at Lubbock one year old had been run over by a freight train. It had an ugly scalp wound, but attending physicians now have hopes for its recovery.

COUNTY JUDGE'S ORDER

The State of Texas, County of Terry.

Whereas, on the 16th day of Sept. 1921, there was presented to me a petition, asking for an election to be ordered in Hunter School District No. 12, to determine whether or not there shall be levied an additional tax of 50 cents on the \$100.00 valuation of property in said district, for the purpose of supplementing the available school fund of said district and for local maintenance purposes. Said petition bearing the requisite number of signatures, and in every respect in conformity with law.

Now, therefore, I, E. J. Broughton, County Judge of Terry County, Texas, do hereby order that an election be held at the school house in said district on the 13th day of October, 1921, as said district is established by the County Board of Trustees of Terry County on the 13th day of September, 1919, which is recorded in Book 1 at page 5 of the Minutes of said Board of Trustees, to determine whether a majority of the property paying voters of the district desire to additionally tax themselves for the purpose of supplementing the Available School Fund of said district and for local maintenance purposes, and to determine whether the Commissioner's Court of said County shall be authorized to levy, assess and collect annually a tax of and at the rate of 50 cents on the \$100.00 valuation of taxable property in said district for said purposes.

A. J. Bryan is hereby appointed presiding officer for said election and he shall select two judges and two clerks to assist him in holding the same, and shall within ten days after said election, make due returns there of to the Commissioner's Court, as is required by law for holding a general election.

The ballots for the election shall have written or printed thereon the following:

"For the Tax."

"Against the Tax."

All persons who are legally qualified voters of this State and of this County, and who are resident property tax paying voters in said district shall be entitled to vote at said election.

The Sheriff of this County shall give notice of said election by giving notice three weeks before the election by publication in some newspaper published in said County, that has been published for more than one year last past, and by posting notices in three places for three weeks before said election.

Dated this Sept. 16th, 1921.
D. J. BROUGHTON,
County Judge, Terry County, Texas

CITATION BY PUBLICATION

The State of Texas.—To the Sheriff or any Constable of Yoakum County, Greeting:

You are hereby commanded to summon the unknown Stockholders of the Stonewall State Bank, a defunct corporation, and the heirs and legal representatives of the Stonewall State Bank, whose names are unknown, by making publication of this Citation once in each week for four consecutive weeks previous to the return day hereof; in some newspaper published in your county, if there be a newspaper published therein, but if not, then in a newspaper published in the nearest county to Yoakum county, where a newspaper is published, to appear at the next regular term of the District Court of Yoakum county, to be held at the Court House thereof, in

Plains, Texas, on the 3rd Monday in October, A. D. 1921, the same being the 17th day of October, A. D. 1921, then and there to answer a petition filed in said Court on the 31st day of August, A. D. 1921, in suit, numbered on the docket of said Court, No. 169, wherein J. K. Shipman is plaintiff and Sam Stockton, the Stamford Gas & Electric Company, the unknown stockholders of the Stonewall State Bank, (a defunct corporation,) and the heirs and legal representatives of the unknown stockholders of said Stonewall State Bank are defendants, and Plaintiff's cause of action being a suit in trespass to try title for the recovery of the East Half of Survey 27th Block D, Certificate No. 316, John H. Gibson, located in Yoakum County, Texas; also Plaintiff pleads and seeks judgement for said tract of land by the three and five year statutes of limitation.

Herein fail not, but have before said Court, at its aforesaid next regular term, this writ with your return hereon, showing how you have executed the same.

Given under my hand and the seal of said Court, at office in Plains, this 1st day of August, A. D. 1921.

W. H. HAGUE, Clerk,
District Court, Yoakum County

CITATION BY PUBLICATION

The State of Texas.—

To the Sheriff or any constable of Terry County, Greeting:

You are hereby commanded to summon Benj. H. Wisdom, Mrs. Belle Wisdom, F. W. Colby, John T. McElroy, Mrs. Mammie McElroy, James B. Morgan and Borna Powell, and each and all of the heirs, of each and all of the above named persons, deceased, whose names of which unknown heirs are unknown, by making publication of this Citation once in each week for four consecutive weeks, previous to the return day hereof, in some newspaper published in your county, if there be a newspaper published therein, but if not, then in the county where a newspaper is published, to be and appear at the next regular term of the District Court of Terry County, to be held at the Court House thereof in Brownfield, on the 8th Monday after the 1st Monday in September, A. D. 1921, the same being the 31st day of October, A. D. 1921, then and there to answer a petition filed in said Court on the 24th day of September, 1921, in a suit numbered on the docket of said Court, No. 682, wherein Adam Limbach and Mrs. Martin Limbach are plaintiffs, and Benj. H. Wisdom, Mrs. Belle Wisdom, F. W. Colby, Anna L. Colby, Jno. T. McElroy, James B. Morgan, Mammie McElroy and Borna Powell, and each and all of the heirs of each and all of the above named defendants, deceased, the names of which heirs are unknown (and each and all of which heirs are defendants) are Defendants said petition alleging:

That Plaintiff, on the January 1st, 1921, were lawfully seized and possessed, and holding in fee simple title 640 acres of land in Terry County, Texas, known as survey No. 29 in Block D-11, Cert. 31, issued to Stone Kyle & Kyle as grantee, located about 12 miles N. W. from Brownfield. That in addition to claiming said land in fee simple, they plead the five and ten year statute of limitation, under duly registered deeds. That Defendants unlawfully deposited Plaintiffs about January 1st, 1921, and whatever claim or interest Defendants are asserting, that the deed recorded in Vol. 5 at page 574, conveys no title, creates a claim on Plaintiffs' title, and should be annulled. Plaintiffs pray judgement removing cloud from title, annulment of said deed, possession of said land, cost of suit and such other relief as they may be entitled to.

Herein fail not, but have before the said Court on the first day of the next term thereof this writ with your return thereon, showing how you have executed the same.

Witness, H. R. Winston, Clerk of the District Court of Terry County.

Given under my hand and seal of said Court, in the city of Brownfield, this 24th day of September, 1921.

H. R. WINSTON,
Clerk of the District Court, Terry County, Texas.

ROAD NOTICE TO NON-RESIDENT LAND OWNERS

State of Texas, Terry County.—We, the undersigned Jury of Freeholders, citizens of said Terry County, Texas, duly appointed by the Commissioners Court of Terry County, Texas, at its September term, 1921, to view and establish a first class road from the southwest corner Sec. No. 3, Block M; thence east 3 miles to the northwest corner Sec. No. 40, Block O; thence south 3 miles to the southwest corner, Sec. No. 42 in Block O; thence East 2 miles to the southeast corner, Sec. No. 31, Block O; thence south 2 miles to the County line; and having thence E. 2 miles to the southeast corner hereby give notice that we will, on

the 5th day of November, 1921, assemble at Brownfield, Texas, and thence proceed to survey, locate, view, mark out and establish said road beginning at the southwest corner of section No. 3 in Block "M".

Thence east a distance of 3 miles to the N. W. corner of Section No. 40 in Block O; along the South lines of Sections Nos. 3 and 2 in Block M, and No. 22 in Block C-39; and along the north Section lines of sections Nos. 24 in Block C-38 and 9 and 21 in Block C-39; thence South a distance of 3 miles following the west section lines of Sections Nos. 40, 41 and 42 in Block O; and along the east section lines of Sections Nos. 20 and the N. part of 19 in Block C-39; to the southwest corner of section 42 in Block O; and thence east a distance of two miles following the south section lines of Nos. 42 and 31 in Block O; thence along the north lines of Sections Nos. 22 and 21 in Block C-41, to the southeast corner of section No. 31 in Block O; thence due south a distance of 2 Miles following the east section lines of Nos. 21 and 20, in Block C-41, and the west lines of Sections Nos. 14 and 15 in Block C-41 to the county line.

And we do hereby notify H. P. Saunders, H. H. Holt, Bessie M. Holt, J. H. Edwards, J. P. Brooks, S. R. Allen, J. L. Hayley, W. H. Maxwell, A. R. Hayley, A. L. Huie, I. A. Booth, C. S. Appell, Della Albrington, J. H. Marrs and T. G. Marks and any and all persons owning lands through which said road may run, that we will at the same time proceed to assess the damages incidental to the opening and establishment of said road when they may, either by person or by agent or attorney, present to us a written statement of the amount of damages, if any, claimed by them.

Witness our hands this 22nd day of September, A. D. 1921.
Jno. C. Scudday, Jr., W. P. Forbes, Ben Brammon, Tom Glover and A.W. Enderson.

CITATION BY PUBLICATION

The State of Texas.—

To the Sheriff or any Constable of Terry County, Greeting:

You are hereby commanded to summon H. Wampler, if living, and if dead, the unknown heirs of H. Wampler, deceased, their heirs and legal representatives, by making publication of this Citation once a week for four consecutive weeks previous to the return day hereof, in some newspaper published in your county, if there be a newspaper published therein, but if not, then in any newspaper published in the 72nd Judicial District, to appear at the next regular term of the District Court of Terry County, to be held at the Court House thereof, in Brownfield, on the 11th Monday in October, 1921, then and there to answer a petition filed in said Court on the 27th day of September, 1921, in a suit numbered on the docket of said Court, No. 683, wherein J. S. Welby is Plaintiff and H. Wampler, if living, and if dead the unknown heirs of H. Wampler, deceased, their heirs and legal representatives, are Defendants, and said petition alleging that on Sept. 1st, 1921, the plaintiff was and ever since has been and still is the equitable owner in fee simple and as such owner at all times above alleged and now, was and is as such owner entitled to the title and possession of the following described tract of land situated in Terry county, Texas, and described as follows, to-wit: The north-west 1/4 of survey No. 140, of Block D-11, certificate No. 49, containing 160 acres; that on the day and year last aforesaid, the defendant unlawfully entered upon the possession of said premises and dispossessed the plaintiff therefrom and still continues to unlawfully withhold from the plaintiff, the title and possession of said premises. Plaintiff further pleads the five and ten year statutes of limitation in the peaceable, quiet and adverse possession of said premises, cultivating, using and enjoying the same, and claiming the same under deeds duly conveying said premises to the plaintiff and whose estate he holds, duly registered in the records of deeds in the County Clerk's Office in said Terry County, Texas, and paying all taxes thereon for said time, and praying that plaintiff have judgement for the title and possession of said premises against defendant, his heirs and unknown heirs of any that may be deceased and that plaintiff's title may forever be quieted and set at rest, and for general relief.

Herein fail not, but have before said Court at its aforesaid next regular term, this writ with your return thereon, showing how you have executed the same.

Witness H. R. Winston, Clerk of the District Court of Terry County.

Given under my hand and seal of said Court at my office in Brownfield, this 29th day of September, 1921.

H. R. WINSTON,
District Clerk, Terry County.

T. L. TREADAWAY, M. D.
H. A. CASTLEBERRY, M. D.
Physicians and Surgeons
Office Over State Bank
General practice, Obstetrics, Medical Gynecology and Minor Surgery.
Office Phone 38.
Dr. Treadaway's Res. No. 18.
Dr. Castleberry's Res. is 2 rings on 502.
Brownfield, Texas

BROWNFIELD SANITARIUM
Brownfield, Texas
Branch Office: Seagraves, Tex.
Equipped for Medical, Surgical and Obstetrical cases.
Dr. W. N. Lemmon,
General Practice, Obstetrics, Diseases of Women and General Surgery.
Dr. J. R. Lemmon,
General Practice, Laboratory Examinations and Assistant Surgeon.
Eyes tested for glasses.

DR. H. H. HUGHES
Dental Surgeon
Office at the Brownfield Sanitarium.
Brownfield, Texas

THE LUBBOCK SANITARIUM
A Modern Fireproof Building
Equipped for Medical and Surgical Cases—X-Ray and Pathological Laboratories
Dr. J. T. Krueger
General Surgery
Dr. J. T. Hutchinson
Eye, Ear, Nose and Throat
Dr. M. C. Overton
General Medicine
Dr. O. F. Peehler
General Medicine
Anne D. Logan, R. N. Superintendent
Mamie A. Davis, R. N. Asst. Supt.
Helen E. Griffith, R. N. Dietitian
C. E. Hunt, Business Mgr.
A chartered Training School is conducted by Miss Anne D. Logan, R. N., Superintendent. Bright, healthy young women who desire to enter may address Miss Logan

Brownfield Camp No. 1909
Meets 2 and 4th Saturday night in the Odd Fellows Hall.
Visiting Sovereigns Welcome.
J. T. May, C. C.
I. C. Burgess, Clerk.

N. R. MORGAN
Atty-At-Law
Will announce location of office later.
Brownfield, Texas

TO THE PUBLIC:
Owing to the hard times and that prices have all come down I have cut the price of my work in my barber shop as follows: Shaves, 15c; Hair Cuts, 25c; all other barber work in proportion.
FRANK TURNER, Prop.

City Tailor Shop
First class tailor work of all kinds.
W. A. Bynum Prop.

LIST YOUR PROPERTY
During the dull season of the land business we want to get in touch with every individual in Terry and adjoining counties that has property for sale. See us when in town.
SHELTON-COOK LAND COMPANY
BROWNFIELD TEXAS

R. L. GRAVES
Atty-At-Law
Practice in all the courts of the States of Texas and New Mexico. Office in Court House.
Brownfield, Texas

JOE J. MCGOWAN
Atty-At-Law
Office in the State Bank Building
Brownfield, Texas