

 <p>BEEF LIVER FRESH SLICED RICH IN MINERALS LB. 69¢</p>	 <p>PORK CHOPS Family Pack Quarter Loins LB. 93¢</p>	 <p>TURKEYS HONEY SUCKLE USDA GRADE A 12 LBS. AND UP LB. 69¢</p>	 <p>CHUCK ROAST USDA CHOICE BEEF BLACK CUT LB. 59¢</p>	 <p>Sliced BACON SIGMAN Hickory Smoked LB. PKG. 1³⁸</p>		
<p>RIB PORK CHOPS LEAN CENTER CUTS LB. 1⁴⁹</p>	<p>LOIN PORK CHOPS LEAN T-BONE CUTS LB. 1⁵⁹</p>	<p>DINNER HAMS PEYTONS HONEY DIPPED HALF OR WHOLE LB. 1⁹⁹</p>	<p>JALAPENO FRANKS GLOVERS CHUCK WAGON 12 OZ. PKG. 69¢</p>	<p>JALAPENO BOLOGNA GLOVERS CHUCK WAGON SLICED 12 OZ. PKG. 69¢</p>	<p>JALAPENO SALAMI GLOVERS CHUCK WAGON SLICED 12 OZ. PKG. 69¢</p>	<p>WHOLE FRYERS GRADE A LB. 43¢</p>



CHICKEN OF THE SEA TUNA
6 1/4 OZ. CANS
49¢

KOUNTRY FRESH MARGARINE
SOFT LB. TUB
59¢

KIMBELL SALAD DRESSING
QT.
89¢

FRED FRIENDLY INVITES YOU TO VISIT US FOR THE BEST BUYS IN TOWN

Prices Effective Apr., 21, 22, 23, 1975
WE ACCEPT USDA FOOD STAMPS
BIG SPRING ONLY

FOODWAY DISCOUNT FOODS

WE'LL GLADLY REDEEM YOUR USDA FOOD STAMPS!

Punch Detergent 64 Oz. 88¢
Palmolive Liquid 32 Oz. 88¢
Ajax Cleanser 14 Oz. 29¢

GREEN GIANT CORN ON THE COB 4 EARS **69¢**

French Fries 32 Oz. 49¢
Whipped Topping 10 Oz. 59¢
Orange Juice 6 Oz. 4/\$1

DEL MONTE CORN
Cream Style
17 OZ. CANS **3 FOR 1**

Philadelphia CREAM CHEESE
12 OZ. **67¢**

SHASTA POP
12 OZ. CANS **6 FOR 99¢**

TROPHY STRAWBERRIES
SLICED FROZEN
10 OZ. **3 FOR \$1**

KIM FERTILIZER 50 LB. BAG 10-5-5 **4⁹⁹**
STEER MANURE 40 LB. BAG **99¢**

KOLD COUNTRY PIZZA (Cheese - Hamburger - Sausage - Pepperoni) 13 oz. **79¢**
KIMBELL PINTO BEANS 4 LB. BAG **\$1⁴⁹**

YOU... HAVE A FRIEND AT FOODWAY!

Chili with Beans	Swift 15 Oz.	57¢
Daytime Diapers	Kimbe 30 Ct.	2.39
Bathroom Tissue	Charm 4 Roll	78¢
Thermo Kups		59¢
Detergent	Val (Mini) 22 Oz.	59¢
Spray Starch	Easy On 22 Oz.	84¢
Lysol Spray	14 Oz.	1.79
Biscuits	Pillsbury (Sweet Milk or Buttermilk) 8 Oz.	18¢
Velveeta Cheese	Jalapeno 1 Lb.	1.03
Cheese Slices	Kraft Deluxe (Amer. or Pimento) 12 Oz.	1.19
Zest Bar Soap	Reg. Big Roll	35¢
Teri Towels	29¢	2/99¢
Milk	Kountry Fresh 1 Gal.	1.59
Kotex	Regular/Supper 12 Ct.	59¢
Lawn Fertilizer	Kim 10-10-5 50 Lb.	4 ⁹⁹
Cascade	35 Oz.	99¢
Fudge Brownies	Betty Crocker 22 1/2 Oz.	1.39
Macaroni & Cheese Dinner	Golden Grain 7 1/2 Oz.	4/\$1

BIG K FLOUR 25 LB. BAG **\$2⁹⁹**

ITALIAN SWISS COLONY WINE RUBY, GOLD PINK Madria Madria Sangria 1/2 Gal. **2.99**
MILLER LIGHT BEER 4 pk. 12 oz. Cans **1.75**
Pabst Blue Ribbon Beer 12 PK. **2.49**

DIAMOND CUT GREEN BEANS 16 Oz. **4 FOR 1**
WISHBONE DRESSING (Italian-Deluxe French - Thousand Island) 8 OZ. **57¢**

DAWN LIQUID 22 Oz. **86¢**
CLOROX LIQUID BLEACH 1/2 Gal. **54¢**

MARYLAND CLUB COFFEE LB. CAN **99¢**
KOUNTRY FRESH EGGS GRADE A MEDIUM DOZEN **55¢**

GREEN GIANT MUSHROOMS Whole or Sliced Glass Jar 2 1/2 Oz. **3 FOR \$1**

WISHBONE DRESSING (Italian-Deluxe French - Thousand Island) 8 OZ. **57¢**

DAWN LIQUID 22 Oz. **86¢**
CLOROX LIQUID BLEACH 1/2 Gal. **54¢**

CLOROX LIQUID BLEACH 1/2 Gal. **54¢**

KOUNTRY FRESH TEXAS STYLE BISCUITS 10 CT. **3 FOR \$1**

ANJOU PEARS GOOD EATING LB. **29¢**

EGG PLANT LB. **25¢**

WATERMELON HALF OR WHOLE LB. **15¢**

ORANGES CALIFORNIA NAVEL LB. **5 FOR \$1**

POTATOES #1 RED OR RUSSET 10 LB. BAG **69¢**

BEST FOOD BUYS IN TOWN

21 APR 21

CROSSWORD PUZZLE

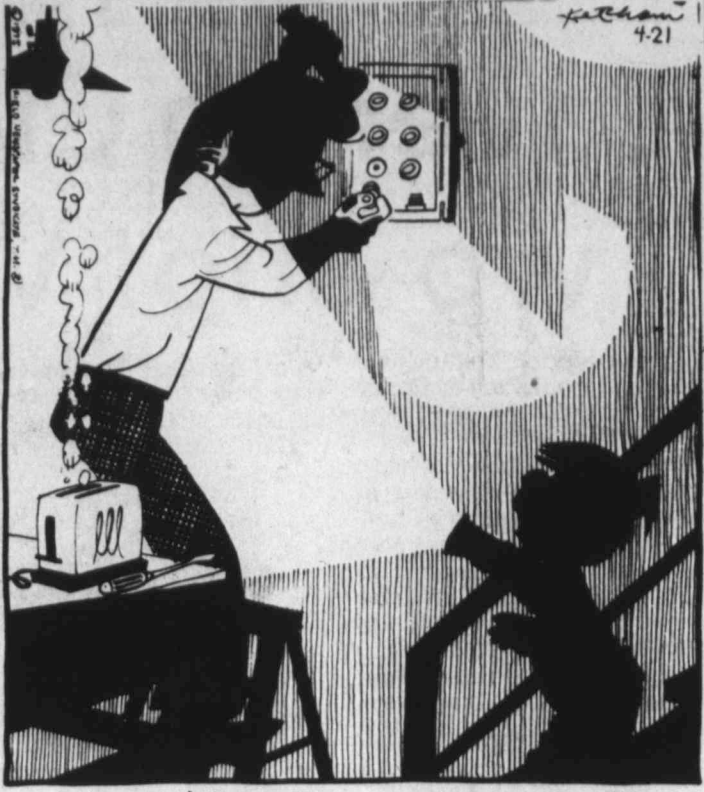
- ACROSS
- 1 Wings
 - 5 Leading
 - 10 Elec. units
 - 14 Spy's missives
 - 16 - avis
 - 17 Prevailing flow
 - 18 Mortgage
 - 19 Calif. fort
 - 20 Pours
 - 21 Past, e.g.
 - 22 In itself
 - 23 - de Leon
 - 24 Carved gem
 - 27 Greek temple
 - 29 Ranch work-er: abbr.
- 31 Construction piece
- 32 Decide
- 34 Cryptogram org.
- 35 What the dieter wants to be
- 37 Trains
- 39 Core: abbr.
- 40 Emulates
- 41 Cicero
- 42 Image
- 43 C.I.A. predecessor
- 44 Roman or Chatterton
- 45 Music signs
- 46 Downs or salts
- 48 Waters

Solution to Saturday's Puzzle:

1	2	3	4	5	6	7	8	9	10	11	12	13
14	15	16	17	18	19	20	21	22	23	24	25	26
27	28	29	30	31	32	33	34	35	36	37	38	39
40	41	42	43	44	45	46	47	48	49	50	51	52
53	54	55	56	57	58	59	60	61	62	63	64	65

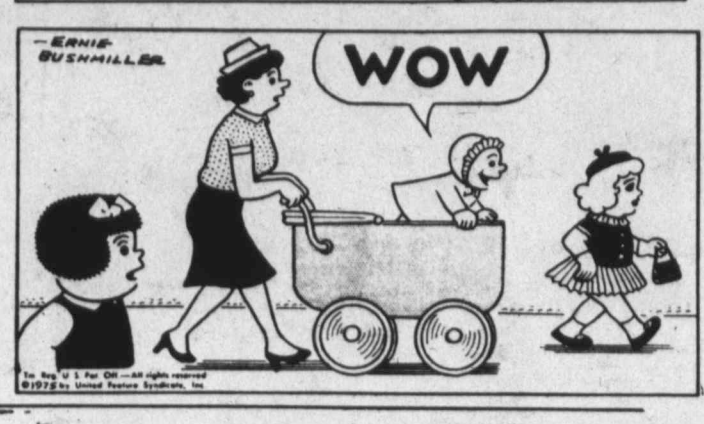
1	2	3	4	5	6	7	8	9	10	11	12	13
14	15	16	17	18	19	20	21	22	23	24	25	26
27	28	29	30	31	32	33	34	35	36	37	38	39
40	41	42	43	44	45	46	47	48	49	50	51	52
53	54	55	56	57	58	59	60	61	62	63	64	65

DENNIS THE MENACE



"MOM WANTS TO KNOW WHAT YOU THINK YOU'RE DOIN' DOWN HERE."

NANCY



JUMBLE

Unscramble these four Jumbles, one letter to each square, to form four ordinary words.

UNORM

DARNB

DROBIF

WURPAD

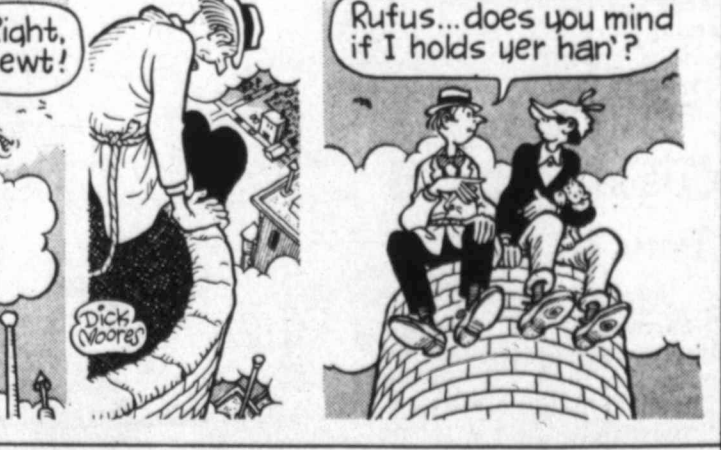
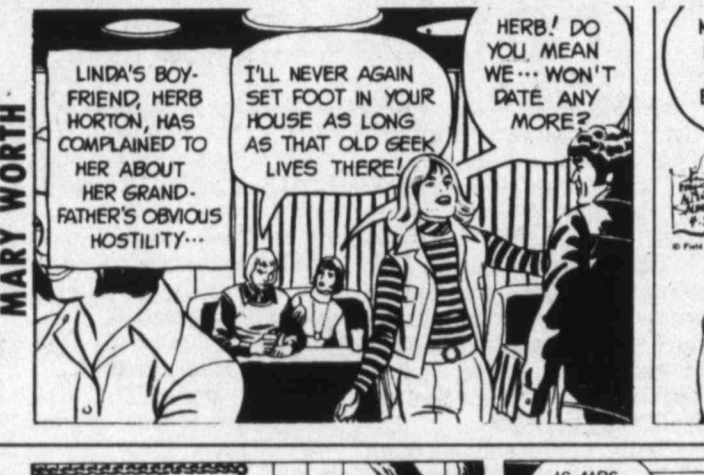
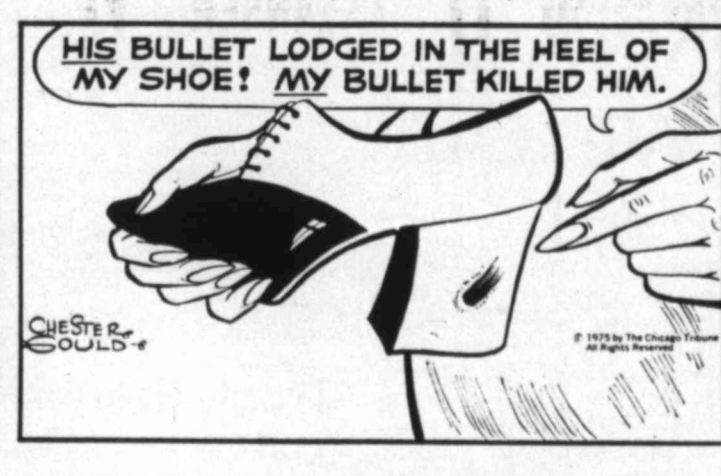
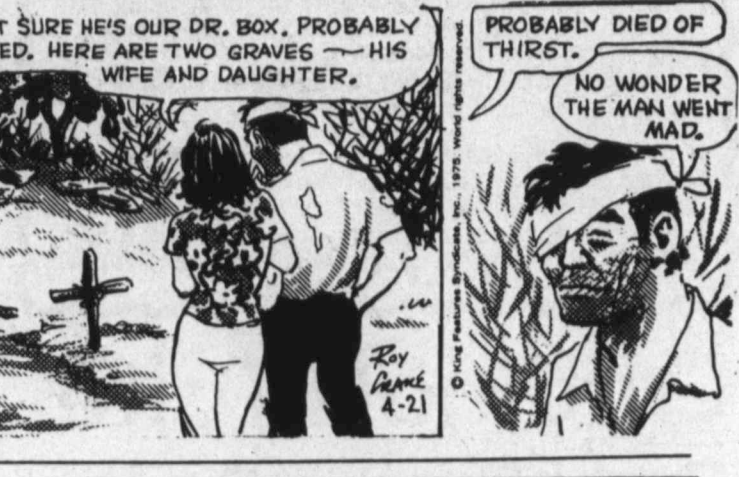
Print the SURPRISE ANSWER here

Now arrange the circled letters to form the surprise answer, as suggested by the above cartoon.

(Answers tomorrow)

Saturday's Jumbles: HAREM CHOIR MEMORY EXCITE

Answers: What a "sound return" on an investment sometimes turns out to be-- A MERE ECHO



PRESIDENT JOHN B. TO SP...
 PERF...
 FR...
 SU...

FURR'S BIG



SHOWER OF VALUES!

WE REDEEM USDA FOOD STAMPS

PRICES EFFECTIVE THRU 4-23-75



CALIFORNIA GROWN 1 1/2 GRADE GALLON POT. EACH

Watermelon

15 TO 18 LB. AVG. EA. **2²⁹**

ROSE BUSHES

4⁹⁹

PINEAPPLE

SUGAR LOAF EA. **49¢**

SQUASH

YELLOW LB. **39¢**

CORN

FANCY FLA. EA. **6/1⁰⁰**

EGG PLANT

GLOSSY BLACK LB. **25¢**

SIRLOIN STEAK

FURR'S PROTEIN LB. ADV. SPECIAL **1¹⁹**

ROUND STEAK

FURR'S PROTEIN LB. ADV. SPECIAL **1¹⁹**

RIB STEAK

FURR'S PROTEIN LB. ADV. SPECIAL **1¹⁹**

CHUCK STEAK

FURR'S PROTEIN LB. ADV. SPECIAL **89¢**

RANCH STEAK

FURR'S PROTEIN LB. ADV. SPECIAL **1⁰⁹**

CLUB STEAK

FURR'S PROTEIN, LB. **1⁴⁹**

FAMILY STEAK

FURR'S PROTEIN BONELESS, LB. **1¹⁹**

T-BONE STEAK

FURR'S PROTEIN, LB. **1⁵⁹**

RUMP ROAST

FURR'S PROTEIN, LB. **1¹⁹**

RIB ROAST

FURR'S PROTEIN LARGE END, LB. **1¹⁹**

CATFISH FILLETS

BONELESS PAN READY LB. **1¹⁹**

SWISS STEAK

FURR'S PROTEIN, ROUND BONE ARM, LB. **1¹⁹**

BOLOGNA

FARM PAC SLICED 12-OZ. PKG. **69¢**

STEW MEAT

FURR'S PROTEIN BONELESS, LEAN, LB. **1¹⁹**

FISH STICKS

MR. BOSTON 2-LB. PKG. **99¢**

TURBOT

FILLET LB. **98¢**

GROUND BEEF

FRESH GROUND, LB. **79¢**

CRISCO

SHORTENING 3-LB. CAN **1⁸⁹**

JOY

LIQUID DETERGENT FOR DISHES, 22-OZ. **69¢**

TEA

FOOD CLUB INSTANT 3-OZ. JAR **1²⁹**

BEETS

STOKELY'S SLICED OR CUT, NO. 303 **4/1⁰⁰**

BEANS

FOOD CLUB GREEN, CUT NO. 303 CAN **3/89¢**

TOWELS

GALA ASSORTED **58¢**

SPINACH

DEL MONTE NO. 303 CAN **4/1⁰⁰**

PEACHES

CALA RIPE NO. 2 1/2 CAN **55¢**

FRUIT COCKTAIL

DEL MONTE NO. 303 CAN **43¢**

SUGAR

IMPERIAL 5-LB. **1⁷⁷** FABRIC SOFTENER TOPCO 64-OZ. **99¢**

DOUBLE GOLD BOND STAMPS WEDNESDAY!

WITH \$2.50 PURCHASE OR MORE

TASTER'S CHOICE

COFFEE, FREEZE DRIED, 4-OZ. **1⁶³**
DECAFFEINATED 4-OZ. **1⁶⁹**

★ YOU PAY THE LOWER PRICE AT FURR'S
★ WE WILL NOT CHANGE A PRICE ON A MARKED CAN OR PACKAGE EXCEPT TO LOWER THE PRICE.
★ ONCE PRICED . . . ALWAYS PRICED.

KRAFT DRESSING

1000 ISLAND 16-OZ.

89¢

TOPCO CLEANSER

14-OZ. CAN SIZE

5/1⁰⁰

PARKAY MARGARINE SQUEEZE

LB. **79¢**

COMET CLEANSER

21-OZ. **39¢**

WE RESERVE THE RIGHT TO LIMIT QUANTITIES

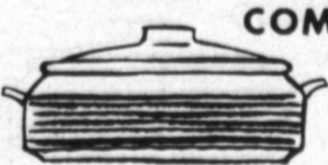
COUNTRYSTONE Acapulco & Spice DINNERWARE

this weeks feature...



DINNER PLATE EACH **59¢**

NO PURCHASE REQUIREMENT Good Thru 4-23-75



COMPLETER ITEM **COVERED CASSEROLE \$6⁹⁹**

Frozen Food Favorites

CREAM PIES

TOP FROST 14-OZ. **59¢**

POTATOES

GAYLORD'S KRINKLE CUT, FRESH FROZEN, 2-LB. PKG. **39¢**

CORN ON COB

TOP FROST, FRESH FROZEN, 4-EAR PACKAGE **79¢**

WHIP TOPPING

TOP FROST 10 1/2-OZ. **59¢**

TOP CREST ALUMINUM FOILWARE
ELECTRIC BURNER BIB, 4-CT. PKG., GAS BURNER BIB, 5-CT. PKG., 9-INCH PIE PAN, 5-CT. PKG., LOAF PAN, 3-CT., 9-INCH ROUND CAKE PAN, 4-CT., SQUARE CAKE PAN, 3-CT. PKG.
YOUR CHOICE **2/1⁰⁰**

3-CUP SIFTER
FOLEY MANUFACTURING COMPANY TRIGGER ACTION HANDLE **1⁰⁰**

TOPCO PEROXIDE
TOPCO HYDROGEN PEROXIDE SOLUTION 16-OZ. SIZE **4/1⁰⁰**

WIRING DEVICES
TOPCREST - ELECTRICAL GRAY VINYL GROUNDING ADAPTER BROWN VINYL CUBE TAP - YOUR CHOICE **3 FOR 1⁰⁰**

ALCOHOL BEACON ISOPROPYL, 16-OZ. 4/1⁰⁰
COSMETIC PUFFS TOPCO 260-CT. 2/1⁰⁰

COOKING UTENSILS
CHOICE OF THESE BLACK HANDLED CHROME PLATED UTENSILS
2 TINE FORK, BASTING SPOON, SLOTTED SPOON, SMALL CAKE TURNER, SLOTTED HAMBURGER TURNER, LONG HANDLE TURNER, CHROME PLATED COIL BEATER, 6-PIECE MEASURING SPOON SET
your choice **2/1⁰⁰**

TOPCREST HOUSEHOLD GADGETS
JUICER, POLY DISHWASHER SAFE, KITCHEN FUNNEL, ALUMINUM WHITE NYLON SPATULA, SPOON OR SLOTTED SPOON
YOUR CHOICE **3/1⁰⁰**

COUPON
FOX PHOTO SILK-FINISH KODACOLOR SPECIAL
ANY KODACOLOR ROLL UP TO 12 EXPOSURES DEVELOPED AND PRINTED
\$2⁵⁹ EA. 20 exp. \$3.59
COUPON MUST ACCOMPANY ORDER
OFFER EXPIRES 4-28-75 Excluding 110 & foreign film

SHOP Furr's MIRACLE PRICES

The American Cancer Society States:

53 million living Americans will get Cancer. Cancer will cost the American People \$3 Billion This Year.

NOW YOU CAN GET THIS \$100,000 CANCER POLICY FOR \$3.25 A MONTH AT ANY AGE... \$4.90 a month for the entire family, regardless of size

An Important Message from

Harry T. Dozor, President
Union Fidelity
Life Insurance Company

The facts concerning cancer are indeed frightening. According to the American Cancer Society, 1 out of 4 living Americans will eventually have cancer (2 out of every 3 families; a total of 53,000,000). This year Cancer will cause one death every 90 seconds. It is now the second leading cause of death in our country. Cancer is killing more of our women between the ages of 30 and 54 and taking the lives of more of our school children than any other single disease. To make things worse, the statistics show that many forms of cancer are on the rise.

Breast cancer is estimated to increase by 21% — about 16,000 new cases this year — and will again strike more women than any other form of cancer. Lung cancer in men is up by more than 1400% in the past forty years (from 4,900 cases in 1934 to 67,000 cases in 1974) and is going up steadily in women.

Cancer can, and does strike anyone . . . no one is immune. The chances are very high that your family will not escape this most dreaded disease . . . and the financial crises that accompanies it.

The resources of our great nation have brought forth modern medical miracles which are saving thousands and thousands of people every year. The disease of Cancer is a good example. Just a few years ago anyone having the disease was doomed. But now there is hope.

New procedures and treatment are saving thousands more each year . . . 1,500,000 Americans now living have been cured of cancer. And we're all thankful. But the special care, treatment and procedures needed by the Cancer patient are very expensive. So expensive, that many families are financially hurt by the costs not covered by basic hospitalization.

As a national leader in direct-to-the-consumer insurance we felt obligated to design a Cancer policy to help you with the crippling costs of Cancer . . . and at a price that every family can afford. I'm proud to say this policy meets both tests . . . \$100,000 of Cancer Protection at \$3.25 a month for any age . . . and \$4.90 a month for your entire family, no matter what size.

I urge you to consider this Policy which can help keep you and your family from financial catastrophe.

Harry T. Dozor

UFL \$100,000 CANCER POLICY BENEFITS

We'll pay the full benefits stated, directly to you or anyone you choose, regardless of any benefits you may get from Medicare, Group Insurance or any other plan.

HOSPITAL CONFINEMENT: \$60 PER DAY... for the first 7 consecutive days . . . \$40 per day thereafter. (After 90 consecutive days of hospitalization, see Extended Hospital Benefits.)

SURGICAL: MAXIMUM OF \$500 PER OPERATION... no limit on number . . . in or out of the hospital.

PHYSICIAN: UP TO \$10 PER DAY... Maximum of \$600, for in-hospital care by a physician or surgeon, other than surgeon performing surgery.

NURSING: UP TO \$24 PER DAY... Maximum of \$600 for special care by an RN or LPN in the hospital.

X-RAY-RADIUM-COBALT THERAPY: UP TO \$1000... for X-ray, radium or cobalt treatment . . . even as an out-patient.

ANESTHESIA: UP TO \$70... for each internal operation; \$30 for skin cancer operation. No limit on number of operations . . . in or out of the hospital.

BLOOD AND PLASMA: UP TO \$300... for charges incurred for blood and plasma . . . even as an out-patient. No maximum on benefits for leukemia.

DRUGS AND MEDICINES: 10% OF HOSPITAL BENEFITS... up to \$250 for actual charges incurred for drugs and medicines.

AMBULANCE: UP TO \$500... for transportation to and from a hospital, limited to \$50 for each confinement period.

EXTENDED HOSPITAL BENEFITS — Cancer Policy benefits actually increase after you've been hospitalized past 90 days. Even though your basic benefits are exhausted, you needn't worry. This is when you'll be paid 100% of all actual hospital charges, up to \$5000 a month (\$167 a day) beginning on the 91st day of continuous hospitalization . . . with no deduction for benefits you've already received. Benefits will be paid until discharge from the hospital . . . or until you've collected a total of \$100,000 in benefits.

DEFINITION OF CANCER — A disease manifested by the presence of a malignant tumor characterized by the uncontrolled growth and spread of malignant cells, the invasion of tissue or leukemia.

GUARANTEED RENEWABILITY — Guaranteed renewable for life regardless of physical condition. Premium rates are guaranteed never to be increased individually . . . but only if changed on all policies of this form number in your state of residence.

EXCEPTIONS AND LIMITATIONS — Cancer Policy basic and extended hospital benefits shall not exceed \$100,000. And will be paid for up to 3 years from date of diagnosis, (except Ala.) for each covered person. Coverage will terminate on any insured person when maximum benefits have been paid.

Loss resulting from cancer first contracted before the policy effective date, or first diagnosed by a qualified pathologist during the first 120 days the policy is in force is not covered; nor is confinement in any institution where you're not required to pay in the absence of insurance; or any U.S. Government hospital or Veteran's Hospital for the treatment of members or ex-members of the armed forces.

ACT WITHOUT DELAY...

You've seen the frightening cancer statistics. The chances are very high that you or one of yours will get cancer. You know that life-saving treatment costs a lot of money. So the crucial decision is in your hands alone . . . no agent will call on you. The UFL Cancer Policy can give you the protection you must have. But it's up to you to act now.

We'll issue an in-force policy in your name, as soon as we receive your application. (Persons who have, or have had cancer, cannot be covered). Send no money now. You'll have 21 days to examine your policy and make sure it's everything we've said it is. To continue this fine coverage, simply send us your premium payment. Of course, if you don't send it within 21 days you will have no coverage.

You can feel confident dealing with Union Fidelity, a leader in direct-to-the-consumer insurance services. As a V.I.P. service to you, we'll supply you with a Toll Free phone number so you can personally speak with a trained insurance specialist, who will get you the answers you want — fast. It's your free Insurance Hotline, Direct to the Company.

We urge you to send your application now . . . Tomorrow could be one day too late.

While you were reading this message, according to American Cancer Society statistics, approximately 4 to 10 people died of Cancer.

ONE RATE FOR ALL AGES • NO AGE LIMIT

ALL AGES INDIVIDUAL				ALL AGES FULL FAMILY			
Monthly	Quarterly	Semi-Annual	Annual	Monthly	Quarterly	Semi-Annual	Annual
\$3.25	\$9.25	\$18.50	\$37.00	\$4.90	\$14.20	\$28.40	\$56.80

Note to Folks 65 and Over: Benefits are paid to you in addition to any benefits you may get from Medicare.

FULL FAMILY PLAN: Includes main insured, spouse and all unmarried dependent children to age 21 . . . 23 if a full time student. If children are included, all future children will be automatically covered at birth at no additional premium.

THE UFL CANCER POLICY COVERS CANCER, HODGKINS DISEASE AND LEUKEMIA

SEND NO MONEY - MAIL YOUR APPLICATION TO: UNION FIDELITY LIFE INSURANCE COMPANY

16th & Sansom Streets • P.O. Box 2032 • Philadelphia, Pa. 19103

PLEASE CHECK INDIVIDUAL ALL FAMILY

APPLICATION FOR FORM 1-2140 UNION FIDELITY LIFE INSURANCE COMPANY • TREVOSÉ, PENNSYLVANIA (PLEASE PRINT) 108015-4

Name Mr. _____ Mrs. _____ Miss _____ FIRST MIDDLE INITIAL LAST (IF YOU ARE A MARRIED WOMAN—USE YOUR OWN FIRST NAME)

Address _____ (STREET OR R. D. NO.)

City _____ State _____ Zip _____

Date of Birth _____ MONTH DAY YEAR Age _____ Sex Male Female

List all dependents to be covered under this Plan: (DO NOT include name that appears above. Use separate sheet if necessary).

NAME (Please Print)	RELATIONSHIP	SEX	DATE OF BIRTH			AGE
			MONTH	DAY	YEAR	
1.						
2.						
3.						
4.						

Check here if you want Coverage for your Children.

REPRESENTATION & AGREEMENT OF POLICYHOLDER: I hereby represent that to the best of my knowledge, information, and belief, no person to be insured under this policy has now or has ever had cancer in any form, except: _____ who is to be excluded from the coverage of the policy.

SIGNATURE _____ DATE _____
02204-47-7 Sign - Do Not Print