

PRICE 10c

PRICE 10c

# BIG SPRING HERALD

BIG SPRING, TEXAS (79720) MONDAY, DECEMBER 9, 1974

VOL. NO. 47 NO. 163

14 PAGES 2 SECTIONS

## Turkey-Aid Bill Is In Deep Fat

WASHINGTON (AP) — The foreign aid program is headed for a Senate-House tangle over aid to Turkey in the face of a move in the House to shut off that aid immediately.

House Republicans planned to caucus on the troubled bill today. Secretary of State Henry A. Kissinger was to go before the House Foreign Affairs Committee later today to appeal for approval of the aid program.

House rejection of the \$2.6 billion foreign aid bill would not kill the program. It could still be funded under a stop-gap continuing resolution to leave its fate up to the new Congress convening in January.

But Rep. Benjamin S. Rosenthal, D-N.Y., a leader of the move to cut off U.S. military aid to Turkey, effective Tuesday, vowed to try to place a cutoff clause in any such continuing resolution.

The Senate voted last week to delay the Turkish aid cutoff until Feb. 14. But Rosenthal

said he will oppose delay unless Kissinger can assure that progress is being made in negotiations to get Turkey's occupation forces out of Cyprus.

"Unless some significant event takes place, there's no basis for compromise," Rosenthal said in a telephone

interview from the Democratic mini-convention at Kansas City.

Rosenthal said he will move first to keep the Tuesday deadline for Turkish aid cutoff in the \$2.6 billion foreign aid authorization bill scheduled for House action Tuesday.

## Listerine's Claims Are Hard To Swallow

WASHINGTON (AP) — A Federal Trade Commission official declared today that Listerine may kill germs by the millions but the largest selling U.S. mouthwash does not relieve colds or sore throats.

Administrative law judge Alvin L. Berman, who presided over a two-year-old case stemming from a commission complaint that Listerine had been falsely advertised, issued an order requiring Listerine's manufacturer to refrain from cold relief claims for the mouthwash and to include a disclaimer in any Listerine ad for two years.

The disclaimer would say: "Contrary to prior advertising of Listerine, Listerine will not prevent or cure colds or sore throats, and Listerine will not be beneficial in the treatment of cold symptoms or sore throats."

Berman's order is not final, however. It can be appealed to the full five-member commission. Warner-Lambert Co., the manufacturer, said it would appeal even to the courts if necessary.

Listerine has been marketed since 1875 for relief of such maladies as colds, sore throats, bad breath and dandruff.

## Sniper Nabbed

LITTLE ROCK, Ark. (AP) — Police apprehended a gunman early today who had fired five shots from a railroad bridge tower where he barricaded himself for more than 10 hours.

Police said the man, who identified himself as Barry Shirley, 26, of Jennings, La., had a gunshot wound in the abdomen when two officers climbed the tower to get him down. Police said Shirley told them he had shot himself.

Police Sgt. Bob Marshall said officers had not returned the gunman's fire. Only one minor injury was reported among the group on the ground.

Officers had tossed tear gas canisters into the tower before going up. They said the man, who identified himself as a former Air Force captain, threw down a rifle and a pistol before the officers began their ascent. Other weapons were found in the tower, police said.

About 45 policemen had surrounded the tower for about 10 hours in fr freezing temperatures Sunday night and early today.

## Decline In U. S. Moral Leadership Criticized

WASHINGTON (AP) — Prime Minister Pierre Elliot Trudeau of Canada says the United States has suffered "a decline of moral leadership," but remains in a predominant position of leadership among nations.

"I mean that the mood in the world over the past few years has been one of less acceptance of the overwhelming moral and political and economic leadership of the United States," Trudeau said in a copyrighted interview with U.S. News & World Report. He added that "the period of uncertainty over the past year or so in the United States has also resulted in a decline of moral leadership."

But Trudeau said the decline has not been enough to produce "a great vacuum" and is not necessarily dangerous.

He also said he didn't expect a trade war between Canada and the United States. "We can't win a war with the United States, whether it be trade or economic or military, or any other kind. So we don't want a war with the United States," he said.

## Business Crimes Sapping Country

WASHINGTON (AP) — The nation's businesses will lose an estimated \$20.3 billion because of crimes this year, equal to \$137 for every adult in the country, the Commerce Department reported today.

The total loss last year was \$15.7 billion. The total includes losses from such crimes as shoplifting, burglary, vandalism, bad checks and employee theft.

It also includes the cost of crime prevention measures by business, estimated at \$3.9 billion.

But the Commerce Department pointed out in a special report on business crime that most businesses absorb little of their crime losses, passing them along instead as higher prices for their goods.

Retailers, especially department and clothing stores, will suffer the biggest crime loss this year, an estimated \$5.8 billion. The report said shoplifting

was a major crime, especially for retail stores, but indicated that theft by employees is an underestimated problem.

It cited problems from such employe crimes as under-recording prices on cash registers by sales, personnel favors given to friends, theft from shipping departments, padded payrolls and accounting fraud, and kickbacks to buyers.

## HO! HO! HO! WHERE?

'Tis not the season to be jolly.

One irate woman called the city police at 1:09 a.m. Sunday and complained, "There is music playing, people dancing and people drinking." She then hung up.

Since she did not give a location of all this merriment, the police took no action.

## Fem Who Lost 4 Gets 6

SAN JOSE, Calif. (AP) — Undaunted by the loss of quadruplets last year, Charlotte Lange continued to take a fertility drug. Now she has given birth to sextuplets and the five tiny survivors are clinging to life in respirators.

"They're all normally formed, all pretty little babies," said Dr. James Harrow, director of newborn services at Valley Medical Center. "But their condition is guarded. It's going to be up and down this week."

The infants — slightly more than three months premature — started their procession into the world at 6:36 a.m. Sunday at O'Connor Hospital. Officials referred to the new arrivals as babies A through F. The smallest, a boy, died about four hours after birth.

Mrs. Lange, 26, of San Jose, was in excellent condition, according to hospital spokesman Mike Maurer. He said she was in labor 7½ hours before giving birth to two girls and four boys ranging in weight from 1 pound, 15 ounces to 2½ pounds.

The five survivors were transferred to the Neonatal Center at nearby Valley Medical Center. Spokesman Carl Heintze said they were placed in respirators because of hyaline membrane problems, a common disorder among premature babies in which the lungs have difficulty absorbing oxygen.

The father, Alvin Lange, 31, an armored car security guard, was described as "shocked and tired" after the long hospital ordeal. He brought his wife to the hospital after she went into labor Saturday night in the 27th week of pregnancy.

Mrs. Lange rested in her flower-filled room, attended by her mother, Mrs. James Duty, and her pregnant sister, Leslie Perry, 23. "It's kind of scary," the new mother said. "All I'm thinking about now is bringing them home and getting the family started. Originally I had hoped for four kids."

Mrs. Lange and her husband have a three-bedroom home.

"This is going to mean an awful lot of babysitting," Mrs. Duty said. "When Charlotte lost the four last year we said, 'try again.' Well, here we are with more than we bargained for. If they live we'll be very happy."

Maurer said Mrs. Lange had been taking the fertility drug Pergonal and according to her doctor, Vincent Nola, was due to deliver March 13.

"Doctor Nola told me there would probably be four babies," Mrs. Lange was quoted as saying. "When the fifth one was born, I was completely shocked."

## Cheer Fund Gets Gifts

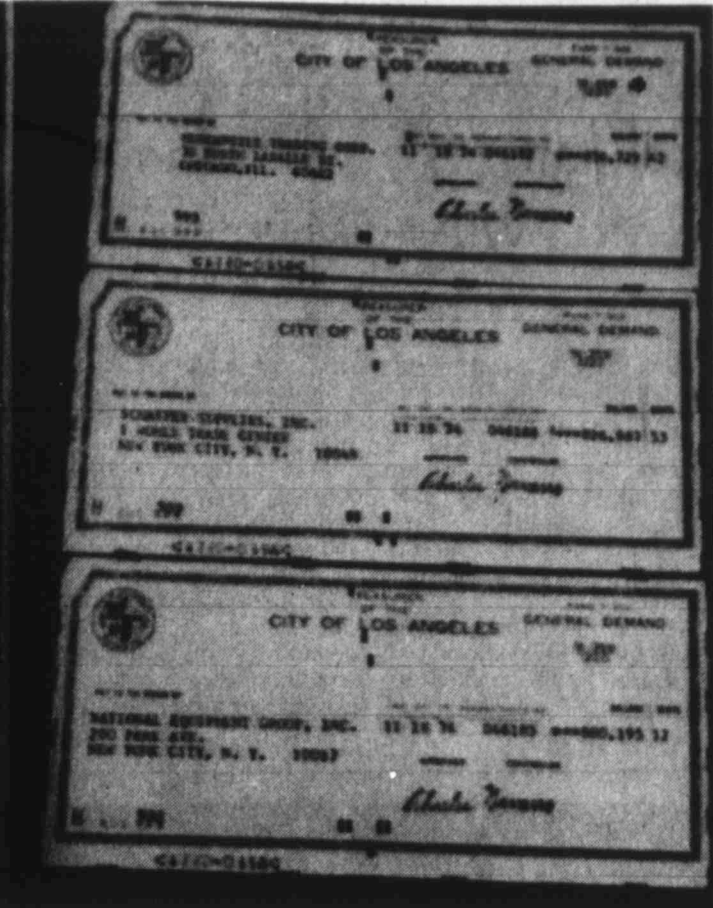
Two friends of previous years started the ball rolling today for the Christmas Cheer appeal.

But it's going to take a lot more pushing to get there before Christmas because time is short. If you can share, please send in your gift as soon as possible as the Herald can gratefully acknowledge it.

Mrs. David Waldo Jones sent in \$5, and Mr. and Mrs. Herbert E. Heath, 609 Colgate, sent in \$10 in lieu of local cards.



FRAUD PLOT UNCOVERED — Los Angeles County District Attorney Joseph Busch holds three checks (left) at press conference in Los Angeles Saturday where he announced the uncovering of a plot to defraud the city of Los Angeles of \$2.5 million through city checks to phony



corporate accounts. At right is closeup of the checks. The district attorney's office said Bernard Robert Howard of Yonkers, N.Y. and Morton Bernard Freeman of Palos Verdes, Calif., have been arrested and three others are being sought.

# Demos Boasting Of Closer Ties

KANSAS CITY (AP) — With ringing declarations of restored brotherhood, Democrats have sent their leaders back to Washington or home states to make good on promises to attack the

nation's problems. But two of the party's leading presidential possibilities already were soft-pedaling the key plank in an economic program adopted by the unpre-

cedented Democratic miniconvention — strong economic controls. Sens. Lloyd M. Bentsen Jr. of Texas and Birch Bayh of Indiana said in television appearances Sunday they

considered wage-price controls a "last resort" in the economic battle. Meanwhile, back at the convention hall, Rep. Richard Fulton, D-Tenn., chairman of an economic panel, said delegates were agreed that "some form of price and perhaps wage controls are necessary."

The return to the practical side of politics followed a euphoric finale to the miniconvention which adopted a party charter, endorsed an economic platform for the Democratic Congress and showed more unity than the Democrats have exhibited since the days of Franklin D. Roosevelt.

The economic package adopted Friday night was based on speeches by Democratic leaders from Capitol Hill. It called for controls on prices and all forms of income, tax reform, strict energy conservation, credit rationing, national health insurance and public service jobs.

The charter banished the quota system which had divided the party bitterly in 1972. It was replaced with a mandatory recruiting program called "affirmative action" to bring women, minorities and other traditionally under-represented groups into the party.

The first constitution ever adopted by an American political party also bans discrimination, outlaws win-ner-take-all primaries, reforms delegate selection procedures for national conventions, opens all party meetings to the public and makes the national party supreme over state parties.

The real test of the new affirmative action substitute for quotas will come when the Compliance Review Commission rules on state programs and spells out what programs will satisfy the new rules.

## BONE CANCER FIGHT Injections Of Sex Hormones May Help

PITTSBURGH (AP) — Doctors here think injections of sex hormones may offer help against the rare and deadly form of bone cancer which has afflicted the son of Sen. Edward Kennedy, D-Mass.

Dr. James H. McMaster, head of the University of Pittsburgh's orthopedic research laboratory, said the disease, osteosarcoma, has appeared, in tests he has conducted, to be halted by doses of female sex hormones estradiol and progesterone.

Osteosarcoma is a malignant tumor of the bones which strikes about 1,900 adolescents a year in the United States, killing 85 per cent of them within two years.

"Now our findings need to be confirmed," McMaster said of his 3½-year study. "Now it's time for the National Cancer Institute to get involved."

In addition to studying and treating eight young victims of the disease, McMaster said he had researched 53 known patients in the last 20 years at Presbyterian and Children's hospitals here.

"A major research program would probably take three years to get some kind of conclusive results," he said, "because osteosarcoma has an 85 per cent mortality rate within

24 months. So we'd need to look at results over a three-year period to see how successful our ideas are."

The findings were reported to the American College of Surgeons Oct. 22, and are outlined in the Dec. 9 issue of the Journal of the American Medical Association. Starting in January, McMaster and his team began administering female sex hormones to eight youngsters. All were terminal and considered to be beyond the help of surgical treatment.

Statistically, three should have died by now, but six have survived. The patients in the study all had reached their anticipated height, and the tumor had apparently made their growth rates go haywire. When the hormones were administered, McMaster said, the bone development ended.

McMaster said the treatment appears to have arrested the cancer's spread in three of the six patients.

But McMaster warned his studies may not provide a final answer in the fight against osteosarcoma.

"The findings need to be confirmed," he repeated. "Don't make it too hopeful. Parents in this situation are very vulnerable and will grasp at any straws

## Decline Of Rural Medics Continues

SACRAMENTO, Calif. (AP) — The trend toward more doctors in the cities and fewer in the country probably will continue for

another 10 years unless steps are taken, the Rand Corporation said today.

Among numerous

recommendations, Rand said perhaps the physicians themselves — whose mean annual income is \$45,000 nationwide — should be required to pay more of the cost of educating doctors.

The private Santa Monica research firm made two studies under a \$31 million contract with the California Health Department.

The studies said the number of doctors continues to grow, but California suffers from poor distribution.

Also, few of the rural doctors practice in the primary health care fields such as family care, pediatrics, internal medicine, obstetrics and gynecology, the studies said. Among the recommendations:

—Medical training for persons from rural areas because studies show that doctors from rural areas tend to practice in rural areas.

—Paramedical workers for rural physicians.

—Television or computer linkups for rural doctors to metropolitan centers.

—Centrally located rural clinics.

—A possible increase by the University of California in medical school tuition and loan plans.

He said liberal loan and long repayment plans would help shift the load to doctors.



ON WAY TO SCHOOL — Both vehicles were en route to local schools when this accident occurred at 8:20 a.m. at 6th and State. The vehicle at the left was headed toward the high school and was driven by Karen Elaine Spears. The station wagon at the right was driven by Mrs.

Barbara Sneed Bronaugh and she had a load of elementary children. Laurie Brown, 8, received a severe laceration on her forehead. Miss Spears was issued a citation for running a red light.



(AP WIREPHOTO)

SLAIN — The body of Danielle Hunter, 8, was found under a pile of leaves in Rockaway Township, N.J., Saturday. An unidentified 13-year-old neighbor boy was arrested three hours after the body was found 100 yards behind her house. Danielle was last seen about 5 p.m. Friday when she left the home of a neighbor three doors from her home.



13 SHOPPING DAYS TILL CHRISTMAS

9

DECEMBER

9



### Economist Says Government Control Will Fall Short

COLLEGE STATION, Tex. (AP) — An economist from Texas A&M, Phil Gramm, said Saturday that government control of land will fall short because of failures by the government to predict accurately, produce efficiently and eliminate outside factors such as pollution and urban sprawl.

He was one of the speakers at the Assembly on Land Use sponsored by the Texas Real Estate Research Center at A&M.

More than 100 delegates are to adopt Sunday a proposed land use policy drafted from small group meetings this weekend.

Delegates represent almost every phase of the land issue from banking and industry to government and private landowners.

Gramm said free market adjustments, based on economics instead politics, would either adjust for major problems or would

correct mistakes as soon as possible because of the cost.

He said it is a myth that local government could have any control in implementing a nationally-required land use policy. Such legislation is expected to be passed in the next session of Congress.

Gramm cited several examples of past government failures to regulate effectively or efficiently.

It has cost the consumer about \$16 billion in price increases, he said, to continue interstate commerce regulation. But at the same time the Interstate Commerce Commission, at the peak of the fuel crisis, refused he said, to let truckers take alternate routes that would reduce driving distance 48 per cent.

### Two Tied In Race

By The Associated Press

The New Hampshire Ballot Law Commission took away three votes from each of the state's two U.S. Senate contenders Saturday, keeping the two in a apparent tie.

The tie had existed since Friday, when the commission, which certifies elections, had taken nine votes away from John A. Durkin, a Democrat, and given one to Rep. Louis C. Wyman, a Republican. Durkin had led by 10 votes after the official recount last

week.

Additional hearings on contested ballots will be held next week. On Friday, a federal judge had turned down Durkin's attempt to block further hearings.

In another recount, Sen. Milton R. Young, a Republican, picked up three votes Saturday as the recount in North Dakota's Senate race continued.

Young, whose lead has been dwindling since the official recount began, led Democrat William Guy by 145 votes with the recount from more than half the state's counties completed.

In Ohio, a recount will begin next week into the gubernatorial race between Democratic Gov. John J. Gilligan and former

Republican Gov. James A. Rhodes.

#### The Big Spring Herald

Published Sunday morning and weekday afternoons except Saturday by Big Spring Herald, Inc., 710 Scurry St.

Subscription rates: By carrier in Big Spring \$2.50 monthly and \$30.00 per year. By mail in Texas \$2.75 monthly and \$33.00 per year; plus state and local taxes; outside Texas \$3.00 monthly and \$36.00 per year, plus state and local taxes where applicable. All subscriptions payable in advance.

The Associated Press is exclusively entitled to the use of all news dispatches credited to it or not otherwise credited to the paper, and also the local news published herein. All rights for republication of special dispatches are also reserved.

Second class postage paid at Big Spring, Texas.

### The Hall-Bennett Memorial Hospital

is pleased to announce the return to the Staff on or about  
**December 1, 1974, of**  
**Dr. L. H. Affleck**  
In the practice of Internal Medicine.

**WE REDEEM USDA FOOD STAMPS**

WE RESERVE THE RIGHT TO LIMIT QUANTITIES

## COMPARE LOW EVERYDAY PRICES Plus SPECIALS! SAFEWAY

<p><b>Tomato Soup</b> Town House. Safeway Special!</p> <p>10.75-oz. Can <b>10¢</b> (Limit 6, Please)</p>	<p><b>Meat Pies</b> Spare Time. Frozen Safeway Big Buy!</p> <p>6-oz. Pkg. <b>19¢</b></p>	<p><b>Bath Soap</b> Truly Fine. Deodorant Bar Safeway Big Buy!</p> <p>Bath Bar <b>22¢</b></p>	
<p><b>Orange Juice</b> Scotch Treat. Frozen Safeway Big Buy!</p> <p>6-oz. Can <b>19¢</b></p>	<p><b>Paper Napkins</b> Northern. Safeway Big Buy!</p> <p>60-Ct. Pkg. <b>22¢</b></p>	<p><b>Tomato Sauce</b> Town House. Safeway Big Buy!</p> <p>8-oz. Can <b>17¢</b></p>	
<p><b>Canned Biscuit</b> Mrs. Wright's Safeway Big Buy!</p> <p>10-Ct. Can <b>12¢</b></p>	<p><b>Cleanser</b> Powder. White Magic Safeway Big Buy!</p> <p>14-oz. Can <b>17¢</b></p>	<p><b>Dog Food</b> Old Pal. Thrifty! Safeway Big Buy!</p> <p>15-oz. Can <b>11¢</b></p>	

PRICES EFFECTIVE T

TOP CAU COR BRE BRO

FRUIT

**ANOTHER BREAK FOR SAFEWAY CUSTOMERS!**

**WE PLEDGE: ONCE A CAN OR PACKAGE IS PRICE-MARKED... WE WILL NOT RAISE ITS PRICE!**

When we are forced to make a price increase, cans and packages which are already price-marked will be sold out at the old price.

When a price is lowered, all sales will be at the new lower price. Cans and packages bearing the former higher price will also be marked with the new price.

When a can or package shows more than one price mark, you pay the lowest price.

NOTE: Items on which the timing of price changes is controlled by law are excepted from this policy.

U.S.D.A. FOOD STAMP COUPONS Gladly Accepted

<p><b>Pure Mustard</b> 19¢ Town House —9-oz. Jar</p> <p><b>Tomatoes</b> Gardenide 10-oz. Can 22¢</p> <p><b>Pork &amp; Beans</b> Town House 16-oz. Can 26¢</p> <p><b>Canned Milk</b> Lucerne, Evaporated 12-oz. Can 25¢</p> <p><b>Tomato Catsup</b> Highway 14-oz. Bottle 32¢</p> <p><b>Potted Meat</b> Wilson 5.5-oz. Can 33¢</p>	<p><b>Paper Towels</b> 39¢ Truly Fine. —145-Ct. Roll</p> <p><b>Aluminum Foil</b> Kitchen Craft, 12 Inches Wide 25-Pk. Roll 33¢</p> <p><b>Sandwich Bags</b> Kitchen Craft 50-Ct. Pkg. 44¢</p> <p><b>Clear Wrap</b> Kitchen Craft, 12 Inches Wide 100-Pk. Roll 43¢</p> <p><b>Windex Spray</b> With Sprayr 8-oz. Bottle 39¢</p> <p><b>Liquid Bleach</b> White Magic 1/2-Gal. Plastic 42¢</p>
---	---

Guaranteed to Please!

**Sliced Bacon** 98¢  
Capitol Brand. Full of Flavor! —1-Lb. Pkg.

**Sliced Beef Liver** Skinned and Deveined —Lb. 79¢

**Pork Loin Chops** Assorted, Family Pack —Lb. 89¢

**Premium Ground Beef** Freshly Ground! —Lb. 98¢

**Beef Short Ribs** USDA Choice Grade Heavy Beef Plate —Lb. 49¢

**Beef for Stew** Boned-in, Pre-Boiled —Lb. \$1.19

**Boneless Brisket** Tri-Tip, USDA Choice Grade Heavy Beef —Lb. \$1.25

**Top Sirloin Steak** Boneless, USDA Choice Heavy Beef Loin —Lb. \$2.25

**Loin Strip Steak** Boneless, USDA Choice Heavy Beef —Lb. \$2.40

**Smorgas Pac** —Lb. \$1.39

**Eckrich Sausage** —Lb. \$1.39

**Lunch Meat** Safeway Sliced Beef Bologna —Lb. 45¢

**Safeway Wieners** —Lb. 59¢

**Beef Wieners** —Lb. 89¢

**Sliced Bologna** —Lb. 89¢

**Pork Loin Ribs** Country Style —Lb. 89¢

**Link Sausage** —Lb. 79¢

**Safeway Bacon** —Lb. \$1.09

**Armour Bacon** —Lb. \$1.25

**FRESH FRYERS**

USDA Inspected Grade 'A' (Cut-up 47¢) Whole **39¢**

Garden Fresh!

**Cabbage** 8¢  
Solid Green Heads! Crisp and Tender!  
—Lb.

**Delicious Apples** 29¢  
Golden, Extra Fancy! —Lb.

**D'Anjou Pears** Fancy, Washington State —Lb. 37¢

**Mincemeat** Berden's Condensed 9-oz. Pkg. 79¢

**Seedless Raisins** Town House 12-oz. Pkg. 79¢

**Delicious Apples** Red, Extra Fancy! 3-Lb. Bag 85¢

**Glace Fruit Mix** Per Baking! 1-Lb. Pkg. 89¢

**Fire Logs** Artificial Safeway Brand —Each 89¢

**Yellow Corn** 2 for 25¢  
Fresh, Full Ears, Each

**Green Onions** New Crop! —Bunch 17¢

**Red Radishes** Crunchy! —Each 17¢

**Cucumbers** Green, For Salads! —Each 19¢

**Bell Peppers** Green, Mild Flavor! —Each 19¢

**Texas Yams** Baked or Candied! —Lb. 27¢

**Clip-Top Turnips** Purple Top —Lb. 29¢

**Juice Oranges** US #1, Texas. Rich in Vitamin 'C'! 4 Lb. Bag **59¢**

**Russet Potatoes** Economy Pack. Best for Baking! 20 Lb. **\$1.39**

Pillsbury Flour Enriched—10-Lb. Bag \$2.13	Lasagna Sara Lee, Frozen—12-oz. Pkg. \$1.13	Breakfast Drinks Wagon, Grape & Orange 32-oz. Glass 43¢
Cake Decorators Pillsbury—6/2-oz. Each 77¢	Sara Lee Ravioli Beef or Chicken—11-oz. Pkg. 91¢	Bake Cups Bondware—85-Ct. Pkg. 20¢
Pillsbury Potatoes Honey Jack Mashed, 24-Serving—16-oz. Box 99¢	Little Friskies Dry Pet Food—22-oz. Box 59¢	Snack Plates 6-Inch, Bondware—100-Ct. \$1.21
Banana Bread Mix Pillsbury—12.5-oz. Box 75¢	Vanilla Extract Adams—1/2-oz. Bottle 44¢	Coffee Rich Non-Dairy—16-oz. Ctn. 37¢
Karo Syrup Waffle & Pancake—First Bottle 54¢	Cornbread Mix Oldes Times—16-oz. Box 49¢	Maxwell House Coffee 3-Lb. Can \$2.44
Macaroni & Cheese Sara Lee, Frozen—8-oz. Pkg. 61¢	Ocean Perch Fillets Booth—16-oz. Pkg. \$1.04	Bisquick Baking Mix—40-oz. Pkg. 99¢

<p>Snowy-White, All Vegetable!</p> <p><b>Crisco Shortening</b></p> <p>For All Your Baking and Frying!</p> <p>3-Lb. Can <b>\$2.07</b></p>	<p>Hall's</p> <p><b>Cough Formula</b></p> <p>3-oz. Bottle <b>\$1.29</b></p>	<p>Rich Lather!</p> <p><b>Zest</b></p> <p>Aqua Deodorant Bar</p> <p>Bath Bar <b>33¢</b></p>
--	---	---

Prices Effective Mon., Tues. & Wed., December 9, 10 & 11, in Big Spring, Tex. Sales in Retail Quantities Only!

SAFEWAY

© Copyright 1960, Safeway Stores, Incorporated.

SAVE EVERY DAY AT SAFEWAY

RED CHERRIES 8 OZ. PARADISE

MINCE MEAT NON SUCR 9 OZ.

TUN EGG PUM PEAC TOM PEAC TOWELS

CHRIST BOW

BURNWICK GIANT BAG OF 25 BOWS





# FREEZER FILL-UP

PRICES EFFECTIVE THRU 12-11-74

<b>Orange Juice</b>		
TEXSUN 6-OZ.	19¢	
<b>WAFFLES</b>		
TOP FROST FRESH FROZEN 10-OZ. PKG.	3/\$1	
<b>TOPPING</b>	59¢	TOP FROST, WHIPPED, FRESH FROZEN 10-OZ. PACKAGE
<b>CAULIFLOWER</b>	3/\$1	DAYLORD, FRESH FROZEN 3-OZ. PACKAGE
<b>CORN on COB</b>	79¢	TOP FROST, FRESH FROZEN 4-EAR PKG.
<b>BREAD DOUGH</b>	49¢	MEAD'S FROZEN 2-LB. PKG.
<b>BROCCOLI</b>	29¢	TOP FROST, FRESH FROZEN CHOPPED 10-OZ. PACKAGE

<b>CHUCK STEAK</b>	FURR'S PROTEN LB.	ADV SPECIAL	89¢	
<b>RANCH STEAK</b>	FURR'S PROTEN SEVEN BONE CUT LB.	ADV SPECIAL	98¢	
<b>ARM ROAST</b>	FURR'S PROTEN ROUND BONE LB.	ADV SPECIAL	\$1.09	
<b>SHORT RIBS</b>	FURR'S PROTEN DELUXE, FOR BAR-B-Q, LB.	ADV SPECIAL	69¢	
<b>GROUND BEEF</b>	FRESH DAILY LB.	ADV SPECIAL	79¢	
<b>SIRLOIN STEAK</b>	FURR'S PROTEN LB.	ADV SPECIAL	\$1.09	
<b>ROUND STEAK</b>	FURR'S PROTEN, LB.	\$1.09	<b>SAUSAGE</b> FARM PAC SKINLESS LINKS, 12-OZ PKGS.	85¢
<b>T-BONE STEAK</b>	FURR'S PROTEN, LB.	\$1.49	<b>FRANKS</b> OSCAR MAYER, OR BEEF, LB.	\$1.22
<b>CLUB STEAK</b>	FURR'S PROTEN, LB.	\$1.39	<b>BOLOGNA</b> OSCAR MAYER, ALL 8-OZ. PKGS.	74¢
<b>RIB STEAK</b>	FURR'S PROTEN, LB.	\$1.09	<b>BOLOGNA</b> OSCAR MAYER ALL 12-OZ. PKGS.	\$1.09

<b>FRUIT CAKE INGREDIENTS</b>		<b>WHITE SYRUP</b> BLACKBURN
RED CHERRIES 8 OZ. PARADISE	89¢	GIANT BOX 10¢ OFF LABEL \$1.13
MINCE MEAT NON SUCH 9 OZ.	68¢	
PITTED DATES	79¢	
DROME DARY 16 OZ.	79¢	
PINEAPPLE WEDGES NAT. 8 OZ.	83¢	

<b>TUNA</b> FOOD CLUB CHUNK STYLE NO. 1/2 CAN	49¢
<b>EGGS</b> MEDIUM FARM PAC	65¢
<b>PUMPKIN</b> FOOD CLUB No. 303	3/69¢
<b>PEACHES</b> VAL VITA NO. 2 1/2 CAN	49¢
<b>TOMATOES</b> CALA RIPE NO. 303 CAN	3/89¢
<b>PEARS</b> FOOD CLUB NO. 2 1/2	69¢
<b>TOWELS</b> TOPCO LARGE ROLL	48¢

**TIDE** **DOUBLE GOLD BOND STAMPS WEDNESDAY!**

YOU ALWAYS PAY THE LOWER PRICE AT FURR'S

Cans and Packages that show more than one price... YOU PAY THE LOWER PRICE. As price increases occur, all pre-marked product on our shelves will be sold at the marked price until that supply is exhausted. During the year many prices are lowered due to supply. When prices are lowered you receive the savings immediately. Product bearing the old higher price will be marked with the new lower price. You can see the savings... YOU PAY THE LOWER PRICE. Note: The only exceptions to our pricing policy is when price change timing is controlled by law ONCE PRICED... ALWAYS PRICED

<b>Farm Fresh Produce</b>	
<b>TOMATOES</b> SALAD SIZE LB.	39¢
<b>GRAPEFRUIT</b> TEXAS RUBY RED LB.	17¢
<b>ORANGES</b> NAVEL ARIZ. LB.	4/88¢
<b>WALNUTS</b> 74 CROP LB.	49¢
<b>GRAPES</b> CALIFORNIA, RED EMPEROR, LB.	39¢
<b>MUMS</b> ASSORTED COLORS EA.	\$3.29
<b>ICEBERG LETTUCE</b> CALIF. LB.	26¢
<b>AVOCADOS</b> CALIF. MED. SIZE EACH	4/\$1

<b>CHRISTMAS BOWS</b> BURNWICK GIANT BAG OF 25 BOWS	59¢	<b>LIGHTED TREE TOPS</b> 11 MINIATURE FLASHING LIGHTS DECORATED TINSEL STAR DESIGN EACH	\$1.59	<b>TINSEL GARLAND</b> CARD OF 12 3-IN, 2-PLY 15 FT. LONG GOLD, SILVER RED & GOLD	39¢	<b>ELECTRIC CURLING IRONS</b> BY STANDARD	\$3.49	<b>SINUTAB SINUS TABLETS</b> PKG.	\$1.49	<b>TOOTH PASTE</b> COLGATE 9-OZ SUPER SIZE 15¢ OFF	84¢	<b>VITAMINS</b> ONE-A-DAY, WITH IRON, 60-CT	\$1.89
<b>GIFT WRAP</b> FLAT SHEETS 83 SQ FT. 20 SHEETS	79¢	<b>MINIATURE ORNAMENTS</b> 25MM GLASS ASS'T COLORS	39¢	<b>ORNAMENT BALLS</b> CHRISTMAS SATIN SPUN 2 1/2" SIZE SOLID AND ASS'T COLORS PKG OF 18	\$1.89	<b>PEPTO BISMOL</b> LIQUID 8-OZ	89¢	<b>RAZOR BLADES</b> WILKINSON BONDED	\$1.49				

9  
D  
E  
C  
9







# CHRISTMAS TREES

THE MOST COMPLETE SELECTION OF CHRISTMAS TREES IN ALL WEST TEXAS.  
 SCOTCH PINE, BALSAM, DOUGLASS FIR, SPRUCE — AND 1000 FRESH TREES ARRIVED SATURDAY WITH SNOW STILL ON THEM!  
 and the most complete and elegant selection of the fine paper and decorations

## MUSIC BOXES

DON AND C. G. GOT CARRIED AWAY ON THESE OVER 300 FROM WHICH TO CHOOSE

FROM \$4.95 UP

## HAMS

WILSON BONELESS 3 LB CAN

\$3.59

## FLOUR

GOLD MEDAL 5-LB. BAG

79¢

## CATSUP

HUNTS 14 OZ. BOTTLE

3 FOR \$1

## NORTHERN TOWELS

JUMBO ROLL

39¢

YOU WON'T BELIEVE THIS — BUT WE HAVE OVER 200 KINDS

## TOYS

VALUES TO \$2.98 YOUR CHOICE, EA. ... 88¢

JUST ARRIVED — THE MOST ELEGANT CARDS TO BE HAD — FROM \$1.00 BOX — KAY CREST CHRISTMAS CARDS — HALF PRICE!

# POTATOES

RUSSET 10 LB POLYBAG

59¢

## CORN

WHITE SWAN 16-OZ. CAN

4 FOR \$1

## CAKE MIXES

SWANS DOWN ASST'D BOX

39¢

## GRAPES

RED EMPEROR LB.

23¢

## SPINACH

HUNTS 15-OZ. CAN

5 FOR \$1

## CABBAGE

FRESH GREEN LB.

5¢

## YELLOW ONIONS

NEW CROP

7 1/2¢

# JEWEL

SHORTENING, 42 OZ. CAN

1 49

## CUCUMBERS

FRESH CRISP LB.

7 1/2¢

## BUTTER BEANS

SEASIDE 16-OZ. CAN

4 FOR \$1

## AVOCADOS

CALIF. CALAVOS EACH

9¢

## PEARS

GOOD DAY GIANT 29 OZ. CAN

39¢

## TOMATOES

VINE RIPE LB.

25¢

## COLUMBIA BACON

1 LB. PKG.

59¢

## FRUIT COCKTAIL

HUNTS 15 OZ. CAN

3 FOR \$1

JUST ARRIVED! REESE CHEESE SETS — PRESERVE SETS — GOURMET SETS — HUNDRED OF 'EM FROM \$2.95

## GREEN BEANS

RENOWN 305 CAN

4 FOR \$1

## CLUB STEAK

OUR PRICE LB.

WHY PAY MORE? LB.

99¢

## APRICOTS

GOOD DAY BIG 29 OZ. CAN

39¢

## ROUND STEAK

WHY PAY MORE? LB.

99¢

## PEAS

MISSION 303 CAN

4 FOR \$1

## SIRLOIN STEAK

WHY PAY MORE? LB.

99¢

GRADE "A" SMALL

## EGGS

DOZ. 49¢

## T-Bone STEAK

\$1.39 LB

## FRYERS

GRADE A FRESH DRESSED LB.

41¢

## CHUCK ROAST

NEW LOW PRICE

79¢

DOUBLE ON ALL PURCHASES

FRESH SHELLLED RAW

## PEANUTS

LB 99¢ FROM GORMANI

## ROUND ROAST

NEW LOW PRICE LB.

89¢

## RUMP ROAST

NEW LOW PRICE LB.

89¢

## GROUND BEEF

NEW LOW PRICE LB.

79¢

ELEGANT! GIFTS BY THE SCORE

Leaded Glass Radios China Porcelain Things Appliances More Things Drop In And Find That Special Something!

BILTMORE 12-OZ. CAN

## LUNCHEON MEAT

3 FOR \$1

VAN CAMP — REG. CAN

## VIENNA SAUSAGE

29¢

BLACKEYES ALLEN 15-OZ. CAN

5 FOR \$1

BEEF RIBS LB 39¢

## PINTO BEANS

NEW CROP U.S. NO 1 SACK YOUR OWN LB

39¢

CHILI ARMOUR GIANT NO. 2 CAN

79¢

POT PIES SPARE TIME ASSTD

6 FOR \$1

# TIDE

KING SIZE 49 OZ. BOX

99¢

## PEACHES

HUNTS 300 CAN

3 FOR \$1

# NEWSOMS

BIG TEX — GIANT 46-OZ. CAN

## GRAPEFRUIT JUICE

39¢

DOUBLE on all purchases

MON — TUES — WED

9

DEC

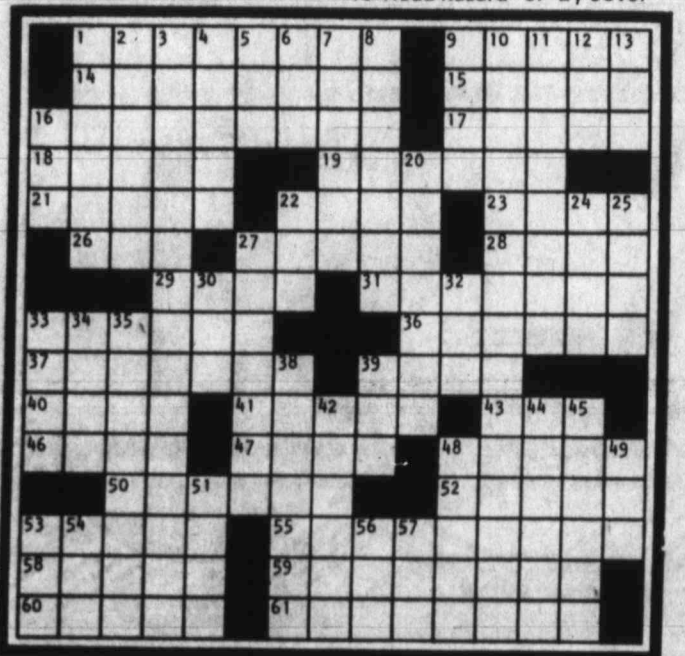
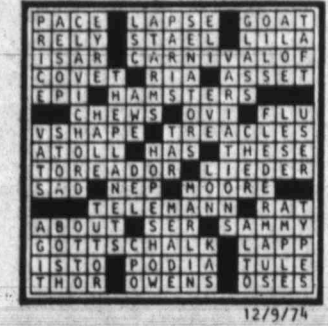
9



# CROSSWORD PUZZLE

- ACROSS**
- 1 Loud mouths
  - 9 He has a way
  - 14 Light chat
  - 15 Gina's coins
  - 16 Giving and taking
  - 17 Vitriols
  - 18 Trial's tag-along
  - 19 Slings
  - 21 Ericson and Ericson
  - 22 Hammer part
  - 23 Indians
  - 26 Embattled jet. abbr.
  - 27 Intermediate
  - 28 Hayworth
  - 29 Gangster
  - 31 Abilities
  - 33 Backward, gob style
  - 36 Delhi cash
  - 37 Most intense
  - 38 Utah's lily
  - 40 Jail
  - 41 Recorded
  - 43 Gov't. industry org.
  - 46 Connelly or Anthony
  - 47 Jacket is backward
  - 48 Night lights
  - 50 Fits pals
  - 52 Play part
  - 53 Cirrus
  - 55 It has ups and downs
  - 58 Arab beauty
  - 59 African rabbits
  - 60 Dined
  - 61 Fence-sit DOWN
  - 1 Hair-raiser
  - 2 Survey man
  - 3 Hors de combat
  - 4 Addicts
  - 5 Land. abbr.
  - 6 Silkworm
  - 7 Hair tinters
  - 8 Portion
  - 9 Winged
  - 10 "Having wonderful time" item
  - 11 Untouched
  - 12 Lass's pal
  - 13 Road hazard
  - 16 Barbara-Goddies
  - 20 Came close
  - 22 Foot. prof.
  - 24 Feminine ending
  - 25 Cheeky chatter
  - 27 Frankenstein?
  - 30 Smelter's concern
  - 32 Tow
  - 33 Biblical goof-up
  - 34 Edom site
  - 35 Uproots
  - 38 Ragged raiment
  - 39 Japanese money
  - 42 Hot spiced milk drink
  - 44 College board bills
  - 45 Melodic
  - 48 It is tossed
  - 49 Title
  - 51 A clamor
  - 53 Guevara
  - 54 Mauna
  - 56 USN title
  - 57 By Jove!

Solution to Saturday's Puzzle:



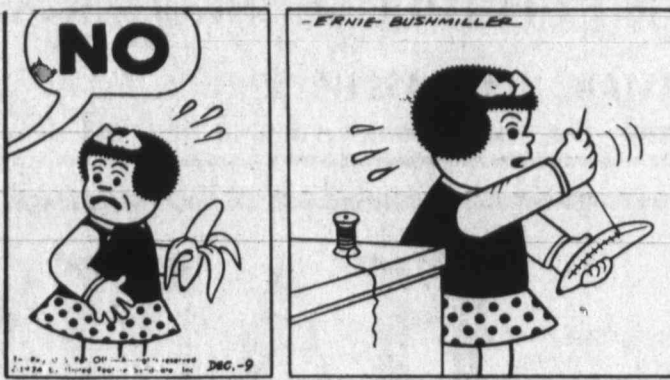
## DENNIS THE MENACE



"I WOULDN'T TAKE A MILLION DOLLARS FOR YOU." "TAKE IT! I'LL RUN AWAY AN' COME BACK!"

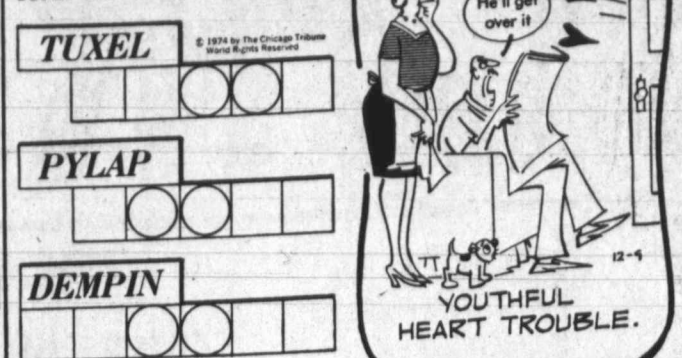


## NANCY



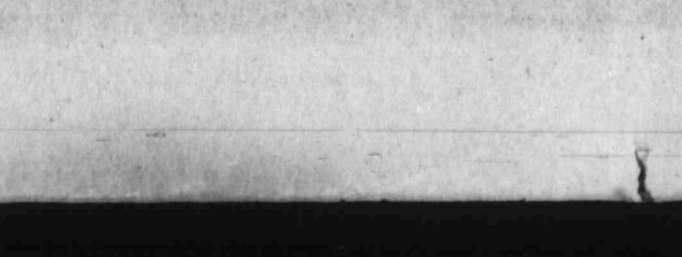
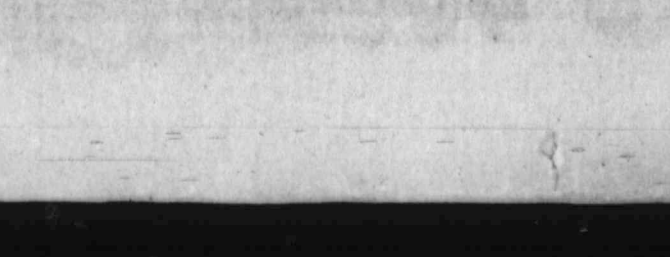
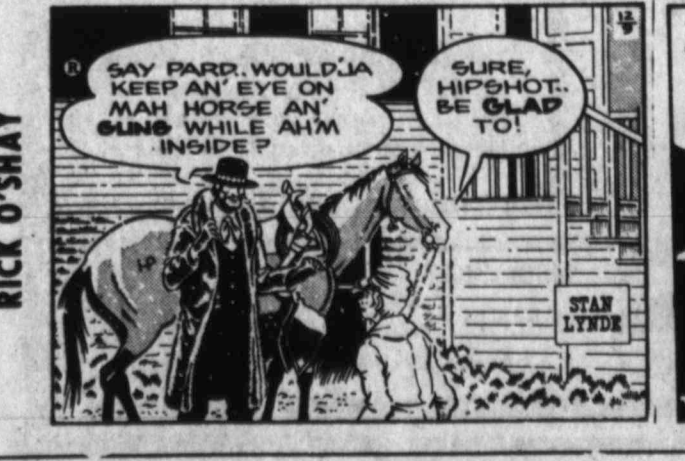
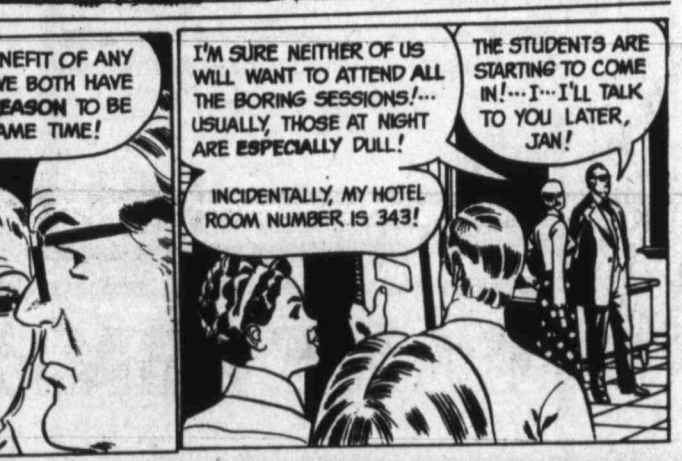
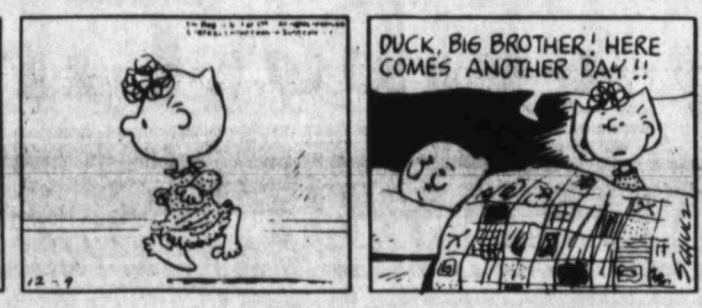
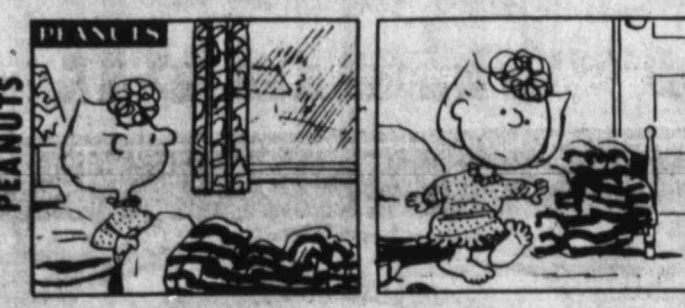
## JUMBLE

Unscramble these four Jumbles, one letter to each square, to form four ordinary words.



Print the SURPRISE ANSWER here

Saturday's Jumbles: OPERA VALVE ISLAND THRASH  
Answer: Why he didn't understand about the new roof—it was OVER HIS HEAD



Payton  
**FRA**  
Meat or Beef  
12 OZ. PKG.

ARM R  
CHILI M

Texas Hol  
FRUIT  
20 OZ.

3

Pabst Bl  
12 Pk. 12 Oz.  
Andre C  
Fifth.....


Prices Effective Dec  
Sweet Pickl  
Peas.....  
Raisins.....  
Marshmell  
Chili.....  
Crackers.....  
Nabisco Sn  
Lawn Bag  
Biscuits.....  
Egg Nog.....  
Longhorn C  
Whipped Tr  
Spiced Pea  
Crushed Pin  
Pumpkin.....

LE  
Fresh Crip  
Heads  
LB.



 <p><b>FRANKS</b> Meat or Beef 12 OZ. PKG. <b>69¢</b></p>	 <p><b>CHUCK STEAK</b> 7-Bone Cut USDA CHOICE LB. <b>98¢</b></p>	 <p><b>CHUCK ROAST</b> USDA CHOICE BLADE CUT LB. <b>78¢</b></p>	 <p><b>Slab BACON</b> LB. Pkg. <b>95¢</b></p>	 <p><b>LUNCH MEATS</b> Peytons Sliced Bologna Salami or Spiced Luncheon LB. Pkg. <b>99¢</b></p>
--	---	---	--	--

<b>ARM ROAST</b> ..... USDA Choice Beef Round Bone Shoulder Cut LB. <b>98¢</b>	<b>STEW MEAT</b> ..... Lean Cubes of USDA Choice Beef LB. <b>129</b>
<b>CHILI MEAT</b> ..... Lean Coarse Ground Beef LB. <b>108</b>	<b>BEEF LIVER</b> ..... Rich in Minerals LB. <b>79¢</b>
	<b>PORK CHOPS</b> ..... Family Pak Quarter Loin LB. <b>114</b>



**FOODWAY DISCOUNT FOODS**

<b>FRUIT CAKE</b> 20 OZ. <b>119</b>	<b>PINTO BEANS</b> 4 LB BAG <b>179</b>	<b>EGGS</b> GRADE AA LARGE DOZEN <b>75¢</b>	<b>CHOCOLATE FLAVORED CHIPS</b> 12 OZ. <b>79¢</b>
<b>CRANBERRY SAUCE</b> 16 OZ. CAN <b>3 FOR \$1</b>	<b>CREAM CHEESE</b> 3 OZ. <b>15¢</b>	<b>CRESCENT ROLLS</b> 8 OZ. CANS <b>3 FOR \$1</b>	<b>FLOUR</b> 10 LB. <b>169</b>
<b>CAT FOOD</b> 6 OZ. CANS <b>5 FOR \$1</b>			

**Mateus ROSE** FIFTH **279**

**Pabst Blue Ribbon** 12 Pk. 12 Oz. **239**

**Andre Cold Duck** Fifth **188**

**FOODWAY COUPON**

**CARNATION GRATED TUNA** 6 1/4 Oz. **39¢**

First Purchase with S-25 Coupon Thereafter Reg. Price 64¢ Ea.

Expires Dec. 11, 1974

**FOODWAY COUPON**

**KOUNTRY FRESH ICE CREAM** 1/2 Gal. **79¢**

First Purchase with S-16 Coupon Thereafter Reg. Price 94¢

Expires Dec. 11, 1974

**Jeno's PIZZA** **89¢**

**Mrs Smith's PUMPKIN PIES** 8 In. **99¢**

**Wholesum ORANGE JUICE** 6 Oz. **5/\$1**

**Morton POT PIES** All Flavors 8 Oz. **4/\$1**

**Kold Kountry HASH BROWNS** 2 Lb. **64¢**

**Kold Kountry TATER TOTS** 2 Lb. **69¢**

**FOODWAY COUPON**

**Dr. Pepper** 6 Pk. 10 Oz. **69¢**

First Purchase With S-25 Coupon Thereafter 94¢

Expires Dec. 11, 1974

**FOODWAY COUPON**

**KRAFT VELVEETA CHEESE** 2 Lb. **149**

First Purchase with S-20 Coupon Thereafter Reg. Price 1.59

Expires Dec. 11, 1974

- Prices Effective Dec. 9, 10, 11, 1974 2500 South Gregg
- Sweet Pickles
  - Peas
  - Raisins
  - Marshmallows
  - Chili
  - Crackers
  - Nabisco Snacks
  - Lawn Bag
  - Biscuits
  - Egg Nog
  - Longhorn Cheese
  - Whipped Topping
  - Spiced Peaches
  - Crushed Pineapple
  - Pumpkin

- Heinz 16 Oz. **59¢**
- Kountry Kist 16 Oz. **3/89¢**
- Del Monte Golden 8 Oz. **49¢**
- Kraft Jet Puff 10 Oz. **39¢**
- Swift w/Beans 15 Oz. **57¢**
- Fire Side Salline Lb. **42¢**
- Asst. (Crackers) **69¢**
- Kimbell .5 Ct. **89¢**
- Kraft Pillsbury Butt. 8 Oz. **16¢**
- Gandy's Qt. **69¢**
- Kountry Fresh Midget Horns Lb. **139**
- Rich 8 Oz. **3/100**
- Del Monte 2 1/2 Oz. **97¢**
- Kimbell 20 Oz. **45¢**
- Del Monte 29 Oz. **59¢**

- Cheese Pizza
- Sweet Potatoes
- Stewed Tomatoes
- Green Chillies
- Apple Jelly
- Peanut Spread
- Roka Dressing
- Eagle Brand Milk
- Spaghetti Sauce Mix
- Long Spaghetti
- Wild Rice
- Oysters
- Potted Meat
- Napkins
- Disinfectant Cleaner
- Bleach

- FOLGERS INSTANT COFFEE** 10 Oz. **219**
- Kraft 17 1/2 Oz. **73¢**
  - Sugary Sam 17 Oz. **43¢**
  - Hart's 15 Oz. **35¢**
  - Mt. Pass 4 Oz. **3/\$1**
  - Kimbell 10 Oz. **41¢**
  - Koogee 12 Oz. **69¢**
  - Kraft 8 Oz. **71¢**
  - 15 Oz. **49¢**
  - Ragu 32 Oz. **127**
  - Skinner's 12 Oz. **43¢**
  - Uncle Ben's 5 Oz. **79¢**
  - Whole 8 Oz. **69¢**
  - Armour 3 Oz. **4/89¢**
  - Zee Mix N Match 160 Ct. **47¢**
  - Lysol 28 Oz. **103**
  - Kalex Liquid Gal. **59¢**

 <p><b>LETTUCE</b> Fresh Crisp Heads LB. <b>19¢</b></p>	 <p><b>SUNKIST TANGERINES</b> LB. <b>19¢</b></p>	 <p><b>BANANAS</b> EXTRA FANCY LB. <b>12¢</b></p>	 <p><b>ORANGES</b> 5 LB. BAG <b>79¢</b></p>	 <p><b>AVOCADOS</b> For Salads and Dips EACH <b>25¢</b></p>
--	---	---	--	--

**THE BEST FOOD BUYS IN TOWN**

9 DEC 9





# County Is Seeking Tractor Sans Bid

County Commissioners Court this morning voted to try to obtain a replacement road tractor without entertaining formal bids through newspaper ads.

County Commissioners Court this morning voted to try to obtain a replacement road tractor without entertaining formal bids through newspaper ads.

missioner Simon (Cy) Terrazas mentioned. City Manager Harry Nagel won county approval of a federal program for improving streets including some extending outside city limits.

**SIMON SUED** — The government of India has filed a \$1.5 million damage suit against millionaire investor and art collector Norton Simon, above, alleging he bought a rare religious idol knowing it was stolen from India.

Neel Barnaby, county engineer, requested the emergency purchase, because, without a working road tractor to pull the trailer, "we don't have any way of moving some of this equipment."

**Saturday Is 'Soup Day'** Saturday has been declared Soup Day in Big Spring and youths from immaculate Heart of Mary Catholic Church will be collecting a specific brand label to qualify for educational equipment.

**ROAD PROJECTS** In his report of county road department work, Barnaby said an east-west road had been opened in the Tubb Addition south of Big Spring.

## 4 Felons Escape

**LOWELL, Fla. (AP)** — A statewide search was under way today for four women armed with knives who took a switchboard operator hostage and escaped in a prison van from the Florida Correctional Institution.

## Odessan Dies

**MIDLAND** — John Albert Sikes, 23, of Odessa died Saturday night when a pickup truck he was operating went out of control on a county road and overturned in a cotton field east of Midland.

## Neighbor's Quick Work May Have Salvaged Man's Life

**MOUTH-TO-MOUTH** resuscitation offered by a neighbor, Hilliard Ditmore, is credited with salvaging the life of Robert Cheatham of 2809 Lawrence Street about 7:20 a.m., today.

## Girl Taking Rabies Shots

Efforts to find a "big, white" dog who bit 16-year-old Terry McFarland at her home at 2602 E. 16th St., recently haven't been successful but Terry's father, William, says he is overwhelmed by the number of people who have volunteered to help in the search.



(AP WIREPHOTO) INVESTIGATION TARGET, PAPER SAYS — According to the Chicago Tribune's Sunday editions, Hugh Hefner, publisher of Playboy Magazine, is a prime target of a federal narcotics investigation.

# Sick, Elderly Bilked In Insurance Scheme

**SAN ANTONIO, Tex. (AP)** — Seven insurance companies in Texas are under investigation in connection with a fraud scheme in which the sick and elderly reportedly have been bilked of hundreds of thousands of dollars, the San Antonio Express-News has reported.

**UNCOVERED** Investigators have uncovered some evidence that some insurance companies, their agents and possibly certain state insurance officials are involved, the Express-News said.

Two men found guilty of selling fraudulent insurance policies to senior citizens have been given five and seven-year jail sentences.

## DEATHS

**Percy Owen** KERRVILLE — The Rev. Percy Owen, 85, of Kerrville, died in Hill Top Village Saturday night after a lengthy illness.

**Mr. Patterson** Charles (Eak) Patterson, 88, was dead on arrival Sunday at 10 a.m. at a Big Spring hospital.

**Roy L. Overton** Graveside services will be held at 10 a.m. Wednesday in Trinity Memorial Park for Roy Lynn Overton, infant son of Mr. and Mrs. David Overton, the baby was stillborn at a local hospital at 9:36 p.m. Sunday.

**Rev. Owen** was pastor of the Coahoma Presbyterian Church in the 1940s. Memorial services will be at 4 p.m. Tuesday at the First Presbyterian Church with funeral arrangements directed by Plummer Funeral Home.

**Services** will be at 2 p.m. Tuesday in the Nalley-Pickle Rosewood Chapel. The Rev. O. D. Robertson, pastor of the Church of God in Big Spring, and the Rev. Robert Taylor, pastor of Apostolic Faith Church of Big Spring, will officiate.

**Survivors** include the parents; a brother, Davis Glen, of the home; grandparents, including Jerry Lynn Green, Sand Springs, Glen Roy Overton, Phoenix, Ariz., and Mr. and Mrs. V. C. Rigdon, Big Spring.

**Mr. Owen** was born March 17, 1889 in Tanglewood. He was a World War I veteran and was a Presbyterian minister serving Kerrville area for the past 20 years.

**Survivors** include a daughter, Mrs. Mary Edna Rodgers of Big Spring; a son, Alex Junior Patterson of Big Spring; a brother, Albert Patterson of Terrell, Okla.; 12 grandchildren and 16 great-grandchildren.

**Great-grandparents** include Mrs. Samantha Permenter Snyder; Mr. and Mrs. O. L. Green, Sand Springs; Mr. and Mrs. J. J. Overton, Big Spring, and C. E. Henry, Coahoma, and a great-great grandmother, Mrs. A. C. Henry, Coahoma.

**Mr. Owen** was a member of the Church of God. Mrs. Patterson died Aug. 21, 1951. Survivors include a daughter, Mrs. Mary Edna Rodgers of Big Spring; a son, Alex Junior Patterson of Big Spring; a brother, Albert Patterson of Terrell, Okla.; 12 grandchildren and 16 great-grandchildren.

**Survivors** include his wife, four sons, Rev. Joe M. Owens of San Antonio and Rev. Jan W. Owen of Louisville, Kent., C. P. Owen and James H. Owen, both of San Diego, Calif.; three sisters, Mrs. O. B. Hutchinson of Austin, Miss Anna

**Survivors** include a daughter, Mrs. Mary Edna Rodgers of Big Spring; a son, Alex Junior Patterson of Big Spring; a brother, Albert Patterson of Terrell, Okla.; 12 grandchildren and 16 great-grandchildren.

**William McFarland** said his family was in the debt of all who had called to offer condolences for his daughter's problems and volunteer offers of help.

**Survivors** include his wife, four sons, Rev. Joe M. Owens of San Antonio and Rev. Jan W. Owen of Louisville, Kent., C. P. Owen and James H. Owen, both of San Diego, Calif.; three sisters, Mrs. O. B. Hutchinson of Austin, Miss Anna

**Survivors** include a daughter, Mrs. Mary Edna Rodgers of Big Spring; a son, Alex Junior Patterson of Big Spring; a brother, Albert Patterson of Terrell, Okla.; 12 grandchildren and 16 great-grandchildren.

**Survivors** include his wife, four sons, Rev. Joe M. Owens of San Antonio and Rev. Jan W. Owen of Louisville, Kent., C. P. Owen and James H. Owen, both of San Diego, Calif.; three sisters, Mrs. O. B. Hutchinson of Austin, Miss Anna

**Survivors** include a daughter, Mrs. Mary Edna Rodgers of Big Spring; a son, Alex Junior Patterson of Big Spring; a brother, Albert Patterson of Terrell, Okla.; 12 grandchildren and 16 great-grandchildren.

**Survivors** include a daughter, Mrs. Mary Edna Rodgers of Big Spring; a son, Alex Junior Patterson of Big Spring; a brother, Albert Patterson of Terrell, Okla.; 12 grandchildren and 16 great-grandchildren.

**Fieldcrest**  
WARM BLANKETS . . . FOR THE HOMEMAKER

**Crusader Electric Blankets** . . . on a beautiful array of colors. Twin size **27.00**; Full size, single control **30.00**; Full size dual control, **34.00**; Queen size, dual control **45.00**; King size, dual control **63.00**

**Windsong Thermal**, 100 per cent polyester thermal weave with 5" nylon taffeta binding. Double size **14.00**; King Size **22.00**

**Velvet Touch** an incredibly soft velvety blanket that gives warmth without weight because nylon fibers are bonded to a foam base. Double **25.00**, King **35.00**

Linens, Second Level

your **BANKAMERICARD** welcome

master charge

IN ADDITION TO OUR REGULAR CHARGE ACCOUNTS WE ARE NOW HONORING BANKAMERICARD AND MASTER CHARGE CREDIT CARDS.

# BIG



COMMUNITY Howard County bangles. The girls are Sandra Boyd, Susan Sr

# Stat To A

By The Associated Inflation and problems reflect average consume bills also aff governments. Bu officials survey Associated Pre state governm really begin t squeeze for a year Since state l prepared on a basis, July 1-J current econom and rate of inflat taken into acc budgets were di spring.

However, the Department Sunday that th state tax reven didn't keep up i prices. Tax i 50 states totale in 1974 compa billion the pr This was a rise cent compared cent jump in p

# Most C Report

CHARLESTC (AP) — Most o Mine Workers' coal miners we to work today, of full product mines in almost There were o reports of abser midnight shifts, shifts since the Nov. 12. A ne contract was a week by 56 per voting during th process.

**HA**

Best 1200 E. 4th





**COMMUNITY UPLIFT** — Members of the Order of the Rainbow gathered on the Howard County courthouse square Saturday to decorate a tree with Christmas bangles. The tree had been donated by Mr. and Mrs. Grady Jones. From the left, the girls are Sandra Dickenson, Mary Jane Wright, Rhonda Riley, Kerrie Knox, Emily Boyd, Susan Smith and Jill Odom. The policeman in attendance was John Minnick.

## States Are Slow To Absorb Blow

Inflation and economic problems reflected in the average consumer's grocery bills also affect state governments. But most state officials surveyed by The Associated Press believe state governments won't really begin to feel the squeeze for a year or more.

Since state budgets are prepared on a fiscal year basis, July 1-June 30, the current economic situation and rate of inflation were not taken into account when budgets were drawn up last spring.

However, the Commerce Department reported Sunday that the growth of state tax revenues for 1974 didn't keep up with the rise in prices. Tax income for all 50 states totaled \$74.1 billion in 1974 compared to \$68.1 billion the previous year. This was a rise of only 8.9 per cent compared to a 10.9 per cent jump in prices for the same period.

This means that the surpluses projected in most state budgets for the current fiscal year will have a tendency to evaporate. And drawing up the 1975-76 budgets in coming months will force many states to choose between raising taxes or cutting services.

"We are looking at a rather tight budget situation the rest of this year and all of next year," said Florida Budget Director Wallace Henderson.

Gov.-elect Richard D. Lamm of Colorado said the national economic situation "gives a message to all of us. This is a time for extreme caution."

Officials from some states said increased taxes or changed tax structures may be necessary to meet inflation-related problems. Most states rely heavily on sales taxes for revenue.

## Most Of Miners Are Reporting For Work

CHARLESTON, W. Va. (AP) — Most of the United Mine Workers' 120,000 soft coal miners were returning to work today, the first day of full production in most mines in almost a month.

There were only scattered reports of absences from the midnight shifts, the first full shifts since the strike began Nov. 12. A new three-year contract was approved last week by 56 per cent of those voting during the ratification process.

Some, mostly in Indiana and Illinois, said they would remain off the job until the UMW's construction workers had signed a contract with the Association of Bituminous Contractors.

Joe Smith, a pit boss at Peabody Coal Co.'s Latta mine near Jasonville, Ind., said construction workers picketed there.

"We called our men back to work. But the ABC men were picketing and they didn't get back in," he said. He added that Peabody's Dugger mine was also picketed "but I don't know if it's happening elsewhere."

Picket lines were formed outside a few Illinois mines Friday by some construction workers, one of whom placed a newspaper ad asking miners to remain home in sympathy until a settlement is reached.

UMW President Arnold Miller had requested construction workers not to interfere with returning miners, adding that the union could be liable for damages. Although members of the UMW, the 4,400 construction workers are covered by a separate contract.

District 11 President Don Gibson said negotiations on a construction workers contract are close to success and said he is optimistic remaining problems can be worked out.

The new contract includes an estimated 64 per cent increase in salaries and benefits, raising miners' pay scales immediately from \$42-\$50 a day to \$46-\$55.

**MISS YOUR PAPER?**  
If you should miss your Big Spring Herald, or if service should be unsatisfactory, please telephone.  
Circulation Department  
Phone 263-7231  
Open until 6:30 p.m.  
Mondays through Fridays  
Open Sundays Until  
10:00 a.m.

**HAMBURGERS!**  
**HAMBURGERS!**  
10 VARIETIES TO SELECT  
45c TO \$1.20  
COMETRY 'EM!  
Best Burger Circle J Drive In  
1200 E. 4th Call In Orders  
CLOSED ON SUNDAY

## European Leaders Meeting

PARIS (AP) — Common Market leaders gathered today for a two-day summit conference. A key question was whether France was ready to join the others in accepting the United States proposal for a common front against the oil exporting countries.

The other eight members of the European Economic Community have generally endorsed Washington's proposal that the major oil consumers unite for eventual price negotiations with the Arabs and other members of the Organization of Petroleum Exporting Countries.

France has refused to join such a consumers' club, seeks separate deals with the oil states and urges holding an immediate conference of consumers, producers and developing nations.

French Foreign Minister Jean Sauvagnargues told newsmen Sunday he thought the conference "will not discuss the energy question at length" because "the differences are between the French and American points of view," and this would be dealt with fully when President in Ford meets French President Valery Giscard d'Estaing in Martinique next Saturday.

Sauvagnargues spoke to newsmen after West German Chancellor Helmut Schmidt returned from Washington and talked by telephone with Giscard. The fact that the French were not going to press their European partners for support was taken by some diplomats to indicate that Schmidt may have worked out a compromise.

The energy question is just one of the tough problems that the Market leaders face in Paris. The nine — Britain, France, West Germany, Ireland, Italy, Belgium, the Netherlands, Luxembourg and Denmark — are expected also to consider more frequent meetings and a pledge to work more closely on economic matters.

The agenda does not include Britain's bid for cheaper membership terms in the Market, but conference sources said Prime Minister Harold Wilson is determined to bring up the subject. France and some of the other members are against any change.

In New York state, Gov.-elect Hugh L. Carey has called for a hiring freeze on state employees and has indicated it may be necessary to impose a 2½ per cent income tax surcharge despite his campaign pledge not to raise taxes.

In California, legislative analyst A. Alan Post said: "We may have to have some tax increases in the future because our costs are going to go up more rapidly than our revenues."

Some states will be looking for places to trim programs rather than raise taxes, with prime targets for cutbacks being state social services, highway maintenance and higher education.

Survivors include his wife, Doris, and daughter, Mrs. Wanda Davis of Dallas.

Funeral services will be at 2 p.m. Sunday at the Cook-Walden Funeral Home.



(AP WIREPHOTO)

**LOSES VOTE** — Exiled King Constantine lost his bid to return to the Greek Throne, as voters overwhelmingly rejected a proposal Sunday to restore the 142-year-old monarchy and chose instead a republican form of government with a president as chief of state. Constantine and his family currently are living in exile in Britain.

## Monarchy Rejected In Vote

ATHENS, Greece (AP) — The Greeks have rejected the monarchy for the third time in this century, and parliament is expected to name a provisional president within two weeks.

With 92 per cent of the vote in Sunday's plebiscite counted, the government said 2.8 million, or 68.8 per cent, voted for Greece to continue as a republic, while 1.3 million, or 31.2 per cent, voted for the return of 34-year-old King Constantine.

Almost 25 per cent of the eligible voters did not vote.

The leading candidate for the provisional presidency, a largely figurehead post, is former premier Panayiotis Kanellopoulos, 72.

He will be replaced in a national election. But before that is held Premier Constantine Caramanlis will submit a new constitution or constitutional amendments to parliament defining the presidential powers.

It is not known yet whether he will propose a strong presidency with policy-making powers, like the American and French presidencies, or a weak figurehead, with policy as well as government administration remaining the province of the premier elected by parliament.

Whatever Caramanlis proposes is certain to be approved since his New Democracy party has a majority of almost three to one in parliament. If he chooses a strong presidency, he is expected to run for the post himself and to get it.

There was no immediate comment on the outcome of the plebiscite from ex-King Constantine.

## Odd Incidents Claim Victims Over Weekend

Shootings crowded traffic accidents as the leading cause of violent death in Texas this weekend, and several bizarre incidents also took their toll.

Late Sunday 18 persons were dead, including seven in shootings, four in traffic, two in a fire and five others by miscellaneous causes.

The count included deaths occurring between 6 p.m. Friday and midnight Sunday. Among those who died were:

William M. Kaiser, 22, was found shot to death Sunday at a Houston lounge. Police said the shooting will be referred to a grand jury.

Opal Sellers Hardin, 53, died early Sunday of a gunshot wound she suffered Saturday night at her trailer home in Houston. Police said the shooting followed an argument. No charges were filed immediately.

Reginald James Rayson, 20, of Houston, was killed during a shootout with Houston police late Saturday night at a lounge. Officers said a man had held six customers captive in the lounge and threatened to kill them unless he got \$400 in cash.

W.A. Courtney, 16, of Fort Worth, died early Saturday as he and a companion, Ronnie Loge, 15, camped in a back yard tool shed heated by a gas stove. Loge's father found the boys unconscious when he tried to awaken them Saturday morning.

The dead youth's 15-year-old companion was hospitalized in critical condition.

Ernest Jefferson, 55, of Fort Worth was shot to death early Saturday in front of a cafe he operated. He reportedly had argued with a customer earlier.

An unidentified man believed to be in his 20s was found dead in a deserted area of south Fort Worth Saturday morning. Police said there was blood on his head and his pockets had been turned inside out.

A 48-year-old Houston man, James Heavey, was shot to death Friday night as he waited for a friend on a street in East Houston.

Jerry S. Garrett, 40, of Silsbee, was killed Saturday at Beaumont when a fork on the lift machine he was repairing lowered. His head was crushed, police said.

Ora Bell Bradley, 82, of Tolar, was killed Saturday when the car she was driving collided with a semi-trailer truck at the intersection of Texas 201 and U.S. 377.

A Bastrop man died Saturday night in a shootout

with Bastrop County Sheriff Jimmy Nutt. The victim was identified as Bobby Joe Easley.

A Sweetwater man was shot to death Saturday at a cafe he operated there. The victim was Lupe Martinez, 43.

Roosevelt wagoner, 36, died Saturday in Dallas of cuts he apparently received when he was knocked through a plate glass window during an argument with another man.

Ramiro Guerra Alaniz, 25, of Sinton was found stabbed to death in front of a motel at Seymour early Saturday.

A 33-year-old Odessa man, John Albert Sikes, was killed early Saturday when

the pickup truck he was driving went out of control and overturned in a cotton field 1½ miles east of Midland.

Willie Lee Jones, 42, of Houston was killed Sunday morning in a head-on auto crash on Interstate 45 just north of downtown Houston.

The bodies of two persons, burned so badly no sex or age could be determined immediately, were found in the ruins of a fire-gutted apartment in Houston late Sunday.

Firefighters said the bodies were found in the middle of an upstairs room of the two-story frame building. An autopsy was scheduled today.

**GIFT OF GOOD FOOD**  
A GIFT BOOK  
\$5 \$10 \$15 \$20  
AVAILABLE AT CASHIER

**CAFETERIAS**  
We will be closed at 2 p.m. Dec. 24 and Christmas Day.  
Regular hours resume Dec. 26. Happy Holiday!

If you are self-employed there is an opportunity to have \$7,500 of this year's income 100% tax deductible through the recently amended Keogh Act.

Numerous investment vehicles will qualify — and be retroactive to January 1, 1974. For further information contact:

**Edward D. Jones & Co.**  
Member New York Stock Exchange Inc.  
managing firm in Dallas, Texas, Ph. 357-3300

**DAN WILKINS**  
Please send me complete information on the recently amended Keogh Act.  
Name \_\_\_\_\_ Address \_\_\_\_\_  
Phone \_\_\_\_\_ City \_\_\_\_\_ State \_\_\_\_\_ Zip \_\_\_\_\_

**Anthony's**  
C. R. ANTHONY CO.

**MEN'S FASHION KNIT SHIRTS**  
Assorted Colors & Sizes  
Reg. 3.99 **2 FOR \$5.00**

**One Large Group FLANNEL SHIRTS**  
Permanent Press Long Tail  
Regular 5.99 **NOW ONLY \$3.99** SHOP NOW  
To 6.89

**MEN'S & BOY'S SOCKS**  
ASSORTED COLORS  
**2 PAIR 77c**

**Pizza inn**  
AMERICA'S FAVORITE PIZZA

**Giant Pizza**  
See Coupon Offer Below.

A "GET TO KNOW US" OFFER  
Example: Buy one giant sausage pizza \$4.45  
Large sausage pizza free with coupon -0-  
(Tax and Drink Extra) TOTAL \$4.45

BRING THIS COUPON

**FREE** SPT-21 **Pizza inn**

With this coupon, buy any giant, large or medium pizza at regular price and receive one pizza of the next smaller size with equal number of ingredients FREE! One coupon per visit, please.

Valid Thru DEC. 15, '74

**Share a pizza today...**  
1702 GREGG PHONE 263-1381

**Pizza inn**  
AMERICA'S FAVORITE PIZZA

9

DECC

9



# Hoisted On His Own Petard

For years Rep. Wilbur Mills, as chairman of the powerful Ways and Means Committee of the House, has wielded tremendous power on the Congress, not only by his influence in writing tax legislation, but in naming personnel to the various committees.

to his keen disappointment from his ill-starred dream to inject himself as a presidential contender.

could turn into a flood. Just what happens awaits the convening of the new Congress in January, but the results of the Democrat caucus this week in weakening his powers demonstrate that never again will things be the same.

Whether Rep. Mills indeed is suffering from an exhaustion or a deteriorating physical and mental capability is conjectural, although many of his long-time associates think this is the case. They date it back to his midwinter conference here this week after his long journey to the Far East two weeks ago.

Recession or no, there are some things Americans will not do without. Happily, one such item is public television broadcasting.

scriptions. Stations in Hartford and other Connecticut cities raised triple the amount last month as compared with a year ago. And Boston's WGBH gathered in more than \$34,000 as compared with \$157,000 in 1973.

## Gobbledygook

### Around The Rim

Tommy Hart

Many a person in this country is making a cozy living because he or she has mastered the art of speaking and writing in government language, which is quite unlike the King's English as we learned it in school and certainly alien to conversant vernacular.

their words, even at times when they don't truly understand them themselves.

SOMETIMES I THINK the government sends a lot of its people to school to become idiots.

ANALYZE WHAT ALMOST any politician is saying these days and what you come up with is unadulterated drivel.

THOSE WHO HAVE mastered the art of complying with the government was of writing directives have, of course, mastered the art of doubletalk.

Clarify simply will not do. Anything written simply will not clear Central Filing until the report has been placed in its proper bureaucratic framework.

ALL GOVERNMENT communications should be made out of wheat. They then could at least be boiled down and eaten by people who are getting little but lip service and much too much of that.

## Intoxication Tests Valid

Fred was haled into court on a charge of drunk driving, after a blood test showed an alcoholic content of more than 15 per cent.

BUT IN HIS defense, Fred argued that such a presumption was unconstitutional.

HOWEVER, the court upheld the presumption and found Fred guilty as charged.

THE IDEA OF a presumption of intoxication, at a certain alcoholic level in the blood, has spread nationwide. Almost invariably, it has been held to be constitutional.

Bill Moyers' Report

NEW YORK (AP) — This weekend Bill Moyers takes off for a week of meetings in connection with "Bill Moyers' Foreign Report," a new public TV series on international affairs that will start Jan. 16.

FOR MOYERS, 40, it's back to the weekly grind he left last spring when he folded his Emmy award-winning "Bill Moyers' Journal" after a three-season run on public TV to simply rest and think.

WHAT OTHERS SAY

A decision by the House ways and means committee, if sustained through the entire congressional process, will give added incentive to the thrifty and build up the supply of funds available for construction loans.

THE WEEKLY series will cost about \$875,000, \$500,000 of which comes from the German Marshall Fund, a Washington-based, American-run foundation set up in 1972 by the German government with a \$10-million grant.

DEAR DR. THOSTESON: Will you please explain the difference between roughage, bulk and fiber content of foods, with various examples?

Also, I know that a diverticulum is a bulge. When it is in the intestine, which way is the bulge, inward or outward? — K.L.H.

DEAR ABBY: My "P.S." I am "Miserable." I am 1 and 20 years old and I just found out I'm a lesbian.

## "Follow That Car!" - Yes Sir!

Robert Novak

ST. LOUIS — Unfairly or not, the thimbleful of Republican governors and governors-elect who survived the Democratic landslide of Nov. 5 were outraged that President Ford could not make a brief appearance at their midwinter conference here this week after his long journey to the Far East two weeks ago.

INDEED, INTENSIVE negotiations had started in mid-November with low-level White House aides to arrange a visit by Mr. Ford that would lend Presidential endorsement to party-rebuilding efforts.

THIS NON-APPEARANCE by a President who was sharply criticized for travelling to real estate conventions in Las Vegas added to the funeral gloom at the governors' conference.

chief liaison with the governors, rushed to a pay phone here with an SOS to the White House.

THE GOVERNORS' unhappiness with Mr. Ford goes beyond reviving the Republican party. They believe he is spending far too much time on foreign travel at a time of deepening recession and general economic crisis at home.

MILLIKEN'S REELECTION by 114,000 votes against multiple adversity in the depression-threatened automobile state was a stunning offset to his party's national disaster.

SEA HUNT' SONS

NEW YORK (AP) — When his two sons were still in school, Lloyd Bridges never tried to dampen their enthusiasm for acting.

THE OLDER BRIDGES, here to drum up a little publicity for the show, was a bit weary, having sat up the previous night counseling Beau on the latter's role in a coming Broadway play, "Who's Who in Hell."

NO, BECAUSE I love it myself and I've always loved acting," he said.

THE NATIONAL Education Association must be hard up for members: It keeps trying to press-gang Texas teachers into its ranks.

N. M. Clerk Wrote English

LOVINGTON, N.M. (AP) — Apparently an Illinois resident believed only the Spanish language is spoken in New Mexico.

ROUGHAGE AND BULK

DEAR DR. THOSTESON: Will you please explain the difference between roughage, bulk and fiber content of foods, with various examples?

THE BIG SPRING HERALD



## Cleavage Ever Wider

John Cuniff

NEW YORK (AP) — Big business quite likely will find itself in direct opposition to many proposals in the Democratic party's "economic recovery" program.

Profits, the executives argue, were distorted by inflation, aren't likely to continue two years in a row, and are actually depressed in terms of the return on investment.

Because of this, they claim it is increasingly difficult to attract investment capital. And without that capital, they say, industry cannot fulfill the production demands made upon it.

DEAR DR. THOSTESON: Will you please explain the difference between roughage, bulk and fiber content of foods, with various examples?

Also, I know that a diverticulum is a bulge. When it is in the intestine, which way is the bulge, inward or outward? — K.L.H.

DEAR ABBY: My "P.S." I am "Miserable." I am 1 and 20 years old and I just found out I'm a lesbian.

DEAR ABBY: My "P.S." I am "Miserable." I am 1 and 20 years old and I just found out I'm a lesbian.

DEAR ABBY: My "P.S." I am "Miserable." I am 1 and 20 years old and I just found out I'm a lesbian.

Advertisement for The Big Spring Herald, including contact information for W.S. Pearson, Harold Canning, Oliver Cofer, Bob Rogers, Joe Pickle, Tommy Hart, and Gene Kimble. The ad also includes the newspaper's address and phone number.

A devotion for today, featuring a prayer and a reflection on the boldness of Peter and John. The text includes a prayer for God's help in setting up in a world full of Thy glory.





HOSTESSES for the annual holiday punch party at Big Spring Country Club for members of the Ladies Golf Association and their guests were members of the LGA executive board. Pictured, from left, are Mrs. Garner McAdams, treasurer; Mrs. Clarence Peters, president; Mrs. M. A. Snell and Mrs. Roy Dayton.

## Golf Association Has Punch Party Friday

Ladies Golf Association members and their guests gathered at Big Spring Country Club Friday morning to attend a punch party which preceded the December luncheon.

The traditional event is sponsored by the LGA, with officers serving as hostesses.

The officers, who complete their term this month, are Mrs. Clarence Peters, president; Mrs. Hayes Stripling Sr., vice president; Mrs. Pete Cook, secretary; and Mrs. Garner McAdams, treasurer.

Luncheon hostesses were Mrs. M. A. Snell, chairman;

## BSP Ball Slated In February

Planning for the Valentine Ball in February continued when Beta Sigma Phi City Council met Thursday evening in the Chamber of Commerce conference room with Mrs. Roe Fulgham, president, presiding.

The ball will be held Feb. 8 in the new fair barn. It will be open to the public at a charge of \$8 per couple for advance tickets, or \$10 at the door. Music will be by the "New Light." As in the past, each chapter's "sweetheart" will be introduced at the brief program which is held during intermission. Letters of invitation have been mailed to chapters in Stanton and Lamesa.

Mrs. Clay LaRoche was appointed chairman for a puppet show which the council will sponsor March 21, 1975. Further details will be announced later.

Alpha Kappa Omicron hosted the meeting. The Jan. 2 meeting will be held in the chamber offices, with Beta Omicron Chapter as the host group.

## Pie Pastry

For ease in placing pastry in pie plate, roll the pastry onto the rolling pin and then gently unroll the pastry over the pie plate.

## Altrusans Hear Holiday Music

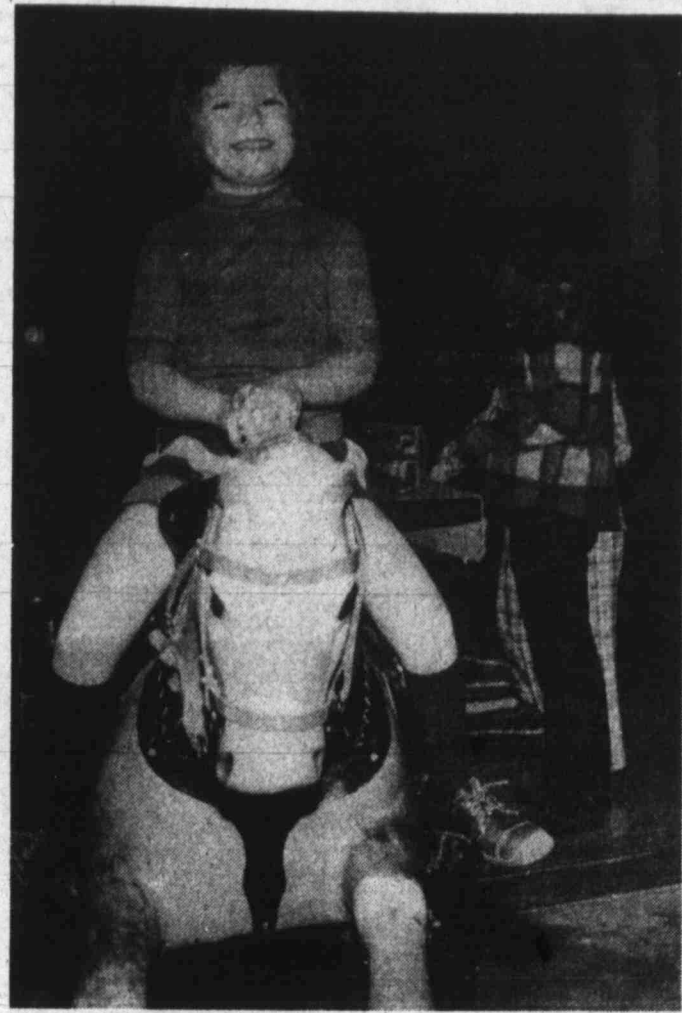
Sixteen guests joined Altrusa Club members for a holiday luncheon Thursday at Big Spring Country Club where the program featured music by Harlen Thornton, artist-in-residence and staff accompanist at Howard College. Kenneth Baker, who accompanied him at the drums, is a music major at Howard College, specializing in percussion and piano.

Thornton's piano styles range from Bach to ragtime, jazz and popular theater music. A graduate of the University of Texas, he taught French and Russian at Howard College 1963-67 and taught at Ricker College in Houlton, Maine, 1968-72. While in the east, he played professionally with summer stock theater.

The invocation was by Mrs. Norman Read, and Mrs. Margaret Michael, president, was the presiding officer. Making up the program committee were Mrs. Coy Nalley, Miss Jeanette Barnett and Mrs. Dorothy Ragan. Miss Barnett introduced Thornton.

Club members presented a gift certificate to Mrs. Michael, and other gifts were presented to members and guests. After the social hour, the meeting closed with the singing of "Silent Night." Mrs. Brookie Martin served as pianist.

Seasonal decorations accented the dining tables.



(Photo By Danny Valdes)

## Seagraves Luncheon Attracts Local Group

Over 150 volunteers, Big Spring State Hospital staff members and friends of the hospital attended a Christmas luncheon for volunteers in the Seagraves Community Building Thursday hosted by personnel from the Gaines County Mental Health Unit.

Attending from BSSH were Dr. Preston Harrison, superintendent; Chaplain Lee Butler, Jack Stovall, Out-Reach Clinic director; Jim Baum, Volunteer Council chairman; and, from Volunteer Services, Mrs. Sonya Swindell, Mrs. Genie Crooks, Mrs. Billee Smith and Mrs. Margaret Baum. Other cities represented by volunteers were Colorado City, Lamesa and Seminole.

On display were Christmas gifts and accessories made by Gaines County volunteers, which will be brought to BSSH.

Highlighting the program, which included remarks by Dr. Harrison, Mayor Pro Tem Bill Burt of Seagraves and State Representative E. L. Sharp, was a "Friend of the Hospital" award presented to Mrs. Janie Johnson, clerk at the Gaines County Mental Health Unit, who was cited for having 2,500 hours logged in volunteer service at BSSH.

Also, the women will assist in distributing Christmas cards and money to patients at the Veterans Administration Hospital at 7 p.m., Dec. 16. Every patient receives a card and \$1 from funds raised by the sale of poppies.

Mrs. Farrell Hamill was accepted for membership. The next regular meeting will be at 8 p.m., Dec. 18 in the Legion Home.

## Legion Home Will Be Site Of Party

Holiday activities were firm up at a Thursday meeting of the American Legion Auxiliary in the Legion Home. Mrs. Troy Melton presided, and Rocky Vieira, Legion commander, spoke briefly in expressing appreciation to the women for a dinner which they hosted for the Legion members.

The auxiliary will sponsor a party for members' children at 1:30 p.m., Dec. 22, with Mrs. Jim Wiley as chairman. Refreshments

will be served, and "Santa" will make an appearance.

Also, the women will assist in distributing Christmas cards and money to patients at the Veterans Administration Hospital at 7 p.m., Dec. 16. Every patient receives a card and \$1 from funds raised by the sale of poppies.

Mrs. Farrell Hamill was accepted for membership. The next regular meeting will be at 8 p.m., Dec. 18 in the Legion Home.

## Shower Honors Future Bride

Miss Debra Blackshear, future bride of Ricky Lloyd, was honored at a gift shower Thursday evening in the home of Mrs. Bill Draper, 2400 Cindy. There were 15 hostesses.

The honoree, attired in a floor-length green velvet dress with high neckline trimmed in ecru lace, was presented an orchid corsage. Bronze mum corsages were presented to her mother, Mrs. H. C. Blackshear, her

fiance's mother, Mrs. J. L. Lloyd Jr.; and his grandmother, Mrs. J. L. Lloyd Sr.

Refreshments were served from a table covered with an ecru lace cloth and appointed were silver. The centerpiece was a silver candelabrum arranged with gold carnations and bronze daisy mums.

Miss Blackshear and Lloyd will be married Dec. 27 in the College Baptist Church.



## Dear Abby

### Four Year's Later She's Not Miserable

DEAR ABBY: Will you do me (and countless thousands of teen-aged girls) a tremendous favor and re-run the letter and your reply from your column of September 6, 1968?

I wrote it, and now I want to write a "P.S." Thank you.

DEAR "D": With pleasure: "DEAR ABBY: I am a 14-year-old girl and my problem is my mother. I hate her. It may sound terrible to you, but I really hate her. I used to think I would get over it, but I know now I never will.

Sometimes I think I will go out of my mind if she doesn't quit picking on me. I never do anything to suit her. She doesn't like my clothes, my hair, my friends or anything. My friends are not bums, either. They are good kids and they aren't wild or on pot or anything like that, but my mother says they look like hippies, and they aren't.

Please help me, Abby, before I run away from home. I cry myself to sleep at night because my mother is so hateful. If I babysit, she makes me put the money in the bank. (Other girls can buy records or do whatever they want with the money they earn.)

Don't tell me to talk to my father. He's always on her side. And don't tell me my mother "loves" me and is only doing things for my own good. If you print my letter, don't sign my name or I'll get killed."

MISERABLE IN PHOENIX "DEAR MISERABLE: Your letter doesn't shock me at all. I receive many such letters each week. Almost every normal teen-ager alternately loves and hates his parents.

It's not easy to be criticized, restricted, corrected, and disciplined day in and day out. But parents who really love their children, prove it by consistently letting their children know what is expected of them. Parents who are "soft" and permissive rear confused, insecure children.

I don't expect you to agree with me today, but keep this letter and read it again three years from now, and then you'll understand it perfectly. Good luck, dear. You're lucky. You are loved."

DEAR ABBY: Now, for my "P.S." I am no longer "Miserable." I am grateful. I am 20 years old, Abby, and I just found that clipping tucked away in my 1968 diary. I am "cleaning out my closets" because I am going to be married next June, and I'll be moving.)

set extra high standards for me because they loved me and wanted me to be proud of myself.

I am saving a copy of that clipping to show my daughter if I am ever lucky enough to have one, because I intend to raise my daughter just like my mother raised me, and she may "hate" me for the same reasons I "hated" my mother.

I am graduating from college in June, and marrying a wonderful young man on the following Saturday.

How can I thank you? "D" IN PHOENIX DEAR "D": You already have. Thanks for writing. Honey, and may all life's blessings be yours.

## R. Reeder Given Plaque

Roy Reeder of Big Spring was presented a plaque Thursday evening during the quarterly meeting of the board of trustees of Hendricks Memorial Hospital, Abilene.

Mr. and Mrs. Reeder were among the 90 persons who attended the annual Christmas party and banquet where Reeder was cited for his service to the hospital. Reeder recently resigned after serving as a trustee for eight years.

During the business session, Oliver Howard, president of the Citizens National Bank, was elected

chairman of the board. He succeeds Lynn Cook, who had held the post for three years. Six members left the board, and six new members were named to fill those posts.

President of the hospital is Boone Powell Jr., son-in-law of Dr. and Mrs. John Hogan of Big Spring.

Members were informed that O. T. Brewster, club manager, had tendered his resignation, as of Feb. 1, 1975, and applications are being taken to fill his position.

Guests were Mrs. Jim Raoul, Mrs. Wanda Griffith and Mrs. Cecil McDonald.

## Returns Home

Mrs. Paula Bishop and daughter, Paula, have returned to their home in Lampasas after visiting Mrs. Bishop's sister, Mrs. D. H. Griffith, and brother, Cecil Long, and family.

**Have Furniture Will Deliver**  
**Carter's Furniture**  
202 Scurry

**Ladies Christmas Special**  
Patti Blow Dry Combs, Reg. \$22.95 ... \$19.95  
Professional Blow Dryers, Reg. \$29.95 ... \$24.95  
Thermo Curling Irons, Reg. \$19.95 ... \$16.95  
Travel Mate Blow Dryers, Reg. 19.95 \$16.95  
Professional Hair Brushes, Reg. \$1.95 . \$1.25

These Prices While Present Stock Lasts!

**The Academy Of Hair Design**  
Town & Country Center 267-8220

**Need A Perm? Call 263-8194 Mary's Beauty Center**

General Electric makes the giving greater!

# Super Stocking Stuffers

Major Appliances and Television

**GE 15.6 cu. ft. 2-DOOR, NO-FROST REFRIGERATOR-FREEZER**

- 4.3 cu. ft. freezer section!
- Power-Saver Switch!
- See-thru adjustable meatkeeper, crispers!

Only **\$389<sup>95</sup>**  
Model TBF-15DR

**GE 2-SPEED, 4-CYCLE FILTER-FLO® WASHER with Exclusive GE MINI-BASKET™**

- 5 Wash/Rinse temperature combinations!
- 4 Water Level settings!
- Bleach Dispenser!

Only **\$279<sup>95</sup>**  
Model WWA-7400P

**GE MULTI-TEMPERATURE AUTOMATIC DRYER with Permanent Press Special Care!**

- 3 temperature selections!
- Cycle Signal helps eliminate waiting, watching!

Only **\$189<sup>95</sup>**  
Model DDE 6200P  
Gas Model DDG 6280P—\$229.95

**GE 2-CYCLE, CONVERTIBLE DISHWASHER with 3 Level Wash Action**

- Built-in Soft Food Disposer
- Dual Detergent Dispenser
- Custom Wood Top available at extra cost.

Only **\$219<sup>95</sup>**  
Model GSC-411

**GE RANGE with P-7® SELF-CLEANING OVEN SYSTEM**

- Picture Window Oven Door
- Fluorescent Cooktop Light
- Digital Clock
- Oven Timer, Minute Timer!

Only **\$379<sup>95</sup>**  
Model J351R

**GE 25" diagonal SOLID-STATE MODULAR COLOR TV**

- 100% Solid State "Energy Saver" Chassis—uses less power than comparable "tube type" sets.
- Black Matrix Spectra-Brite™ IV Picture Tube
- One Touch Color™ System
- 70-Position Solid-State UHF Tuner
- Cable Ready™ Antenna Connector!

Only **\$599<sup>95</sup>**  
Model MB9207PN/DS

Prices and terms optional with dealer. All models may not be available at all dealers.

# Wheat Furn. & App. Co.

115 East 2nd. 267-5722

9  
D  
E  
C  
9



CLASSIFIED INDEX
General classification arranged alphabetically with sub-classifications listed numerically under each.

HOUSES FOR SALE A2
KENTWOOD FOR sale by owner, three bedroom, two bath brick...

HOUSES FOR SALE A2
TWO BEDROOM house, carpet, 10x12 storm cellar, \$10,000, central heat, call 263-4120.

HOUSES FOR SALE A2
BUSINESS LOT FOR SALE
Over 100 ft. frontage on busy E. 4th St. (No. 4th area). Retired couple must sell. The price is right. Will take most priced home in trade. Listed by Modern Real Estate Agency, Call Charlotte at 263-0277 after 5 p.m. & weekends.

HOUSES FOR SALE A2
WRAP IT UP FOR XMAS
and live happily ever after in this attractive 3 bdrm. 2 1/2 bath, brick, in Kentwood. Low 20's. Immed. possession.

HOUSES FOR SALE A2
YULE LOVE
in the comfort and convenience of this lovely home, only minutes from town. Arrange Xmas tree in big den. Raise your own turkeys, pigs or whatever you care to raise. Price reduced to \$22,500.00.

HOUSES FOR SALE A2
DON'T WAIT FOR XMAS
move in this 3 bdrm. home for only \$35,800.00 cash and \$121.00 mo. No. 300 Webb.

HOUSES FOR SALE A2
JUST TIE A BOW AROUND ME!
the nearest xmas pkg. yet. 3 bdr. brk. in College Park area. Near College, Schools and Shopping Center.

HOUSES FOR SALE A2
HO! HO! HO!
invest your money wisely in this 740 acre ranch. Located about 35 mi. fr. B.S.

HOUSES FOR SALE A2
BY OWNER: three bedroom and den or four bedroom brick home with rental, centrally located, Mid 20's. Call 263-2607 weekdays, 267-2620 after 5:00 and weekends.

HOUSES FOR SALE A2
FIND YOUR NAME
Listed in The Classified Pages For ONE FREE MOVIE PASS
NOW SHOWING AT THE RITZ
DEVIL'S TRIANGLE and CHARIOTS OF THE GODS

HOUSES FOR SALE A2
NOVA DEAN RHODES
Patricia Butts Off. 263-2450 800 Lancaster 267-8958 Brenda Riffey 263-2103

HOUSES FOR SALE A2
3-FULL BATHS
If you know what I know, you'll see the resale value & sq. ft. at once. Call the realtor at 263-4120.

HOUSES FOR SALE A2
SHAFFER
2600 Birdwell 263-8231

HOUSES FOR SALE A2
COX Real Estate
1700 MAIN
Office 263-1988 Home 263-2062

HOUSES FOR SALE A2
WARREN REAL ESTATE
1207 Douglas Ph. 263-2061

HOUSES FOR SALE A2
MARY SUTER
1001 LANCASTER 267-6919

HOUSES FOR SALE A2
McDONALD REALTY
611 Main 263-7415

HOUSES FOR SALE A2
Acoustical
ACOUSTICAL CEILING, sprayed, giltered or plain. Room, entire house. James Taylor, 363-2621 after 4:00.

HOUSES FOR SALE A2
Carpet Cleaning
BROOKS CARPET - Upholstery 17 years experience in Big Spring, not a sideline. Free estimates. 907 East 16th. 263-2900

HOUSES FOR SALE A2
Office Supplies
THOMAS TYPEWRITER & OFFICE SUPPLY 101 Main 267-6421

HOUSES FOR SALE A2
Roofing
WILL DO Roofing, composition \$4 per sq. yard, metal \$7.00 per sq. yard. Best hours to call after 4:00 p.m. - 263-2200

HOUSES FOR SALE A2
H & H Roofing Co.
1204 W. 3rd 267-2174

HOUSES FOR SALE A2
Electrical
PETTUS ELECTRIC - master electrician and motor winding with quality. 2nd to none. 263-6442, 107 Goidad.

HOUSES FOR SALE A2
House Moving
CHARLES HOOD House Moving
N. Birdwell Lane 263-4547

HOUSES FOR SALE A2
Mufflers
MUFFLERS & TAIL PIPE SHOP
Installation Available Gasoline Lawn Mower Engines Repair WESTERN AUTO 504 Johnson

HOUSES FOR SALE A2
Tree Service
TREE SERVICE Pruning - Trimming - Removal. For more information call 263-2922.

Who's Who For Service
Let Experts Do It! Depend on the "Who's Who" Business and Service Directory

Who's Who For Service
3 bedroom, one bath, brick, corner lot. \$16,000. 263-8223 after 4:00 p.m.

Who's Who For Service
Castle Real Estate Office
805 East 3rd 263-4401 Wally & Cliffs Slate 263-2469

Who's Who For Service
McDONALD REALTY
611 Main 263-7415

Who's Who For Service
WARREN REAL ESTATE
1207 Douglas Ph. 263-2061

Who's Who For Service
MARY SUTER
1001 LANCASTER 267-6919

Who's Who For Service
McDONALD REALTY
611 Main 263-7415

Who's Who For Service
WARREN REAL ESTATE
1207 Douglas Ph. 263-2061

Who's Who For Service
MARY SUTER
1001 LANCASTER 267-6919

TO LIST YOUR BUSINESS OR SERVICE IN WHO'S WHO FOR SERVICE, Call...

263-7331

263-8223

263-7415

263-2061

263-7415

263-2061

263-7415

263-2061

HOROSCOPE

WEDNESDAY, DEC. 11, 1974
GENERAL TENDENCIES: Take no chances today of any kind and avoid the temptation to work deviant angles...

HOUSES FOR SALE A-2

MARIE ROWLAND
Office 263-2591 2101 Scurry 263-2571

Mobile Homes A-12

FROM TOWN N' COUNTRY
Introducing DelMonico in mediterranean decor. Raised front 1 1/2 bdrms, 1 1/2 baths, sculptured carpet...

Recreational C-3

HUNTING DEER, Quail and Turkey. For more information phone (915) 728-3322 Colorado City, Texas.

HOME REAL ESTATE

JEFF BROWN REALTOR GRI
103 Permian Bldg. 263-4663 Virginia Turner 263-2198

HOUSES FOR SALE A-2

REEDER REALTORS
EQUAL HOUSING OPPORTUNITY MULTIPLE LISTING SERVICE
506 E. 4th 267-8268

HOUSES FOR SALE A-2

HOUSES FOR SALE A-2
2 Bedroom, some furniture. Small guest house near base. Total price \$5,000.00

Mobile Homes A-12

CHAPARRAL MOBILE HOMES
SALES & PARK
I.S. 20 East of Snyder HWY. SOME USED & REPO HOMES

Recreational C-3

ESTABLISHED RECREATION center, near new Brunswick pool tables, best football machine, 900+ ft. open air, call 263-2620 or 263-0891 after 8:00.

HOUSES FOR SALE A2

YOUR HOME FOR THE HOLIDAYS
move right into this attractively decorated 3 bdrm. home, Den w/ fireplace. Convenient to school near Webb.

HOUSES FOR SALE A-2

HOLIDAY ENTERTAINING
will be a pleasure in this roomy Kentwood home. Big den, sep. liv. rm., 2 bdr., 2 1/2 bath, utility rm., dbl. gar. Well landscaped. \$30,000.

Mobile Homes A-12

QUIET COUNTRY LIVING
on fenced 10 acres in Silver Heels. Choice location. 3 Bedroom brick-2 bath, Large den, 4 ft. wood burning fireplace, drapes, carpet, separate living room. Large double garage with large storage table. Inside water system. Covered patio. IMMEDIATE POSSESSION

Recreational C-3

RENTALS
ROOM AND Board, Reasonable. Down town. For active retirees. Palmer House, 2nd and Runnels.

HOUSES FOR SALE A2

BE OUR GUEST
A walk thru - will convince you this 3 bdrm. 2 1/2 bath, brick in IT. Minutes from town on acreage.

HOUSES FOR SALE A-2

HIGHLAND HOLIDAYS
Brand new on the market, ivy executed, heated home on Merry 3, 2,175 sq. ft. liv. area. 3 huge bdrms, 2 1/2 baths. Professionally landscaped yard. 2 car garage. Inside water supply. Shag carpet den w/ frg. Roomy kit has all fix. inc. Covered patio. Upper 40's

Mobile Homes A-12

COOK & TALBOT
1900 SCURRY 267-2529

Recreational C-3

COUNTRY CLUB PARK
3/4 MILE S. AMERICAN LEGION ON COUNTRY CLUB ROAD

HOUSES FOR SALE A2

NOVA DEAN RHODES
Patricia Butts Off. 263-2450 800 Lancaster 267-8958 Brenda Riffey 263-2103

HOUSES FOR SALE A-2

FREE TURKEY
in your own home on this 10 acre site. This Silver Heels home would like you to be its family this holiday season. 3 bdrms, 2 1/2 baths, vaulted ceiling in den. Firpl. bit in O.R. Hurry!

Mobile Homes A-12

BRICK ON ALABAMA
3 Nice bdrms, sep. den, bit in range & oven. Crpl'd & drp. patio, inc. frg. stor. all for \$17,500.

Recreational C-3

WESTERN HILLS
Cust bit 3 extra lg bdrms, 1 1/2 bath, walk in closets, kit & den comb w/crpt fric. 11x21 game rm, just the thing for kids. Livy landscaped yd, owner will carry 1/2 of the papers for 9 per cent int.

HOUSES FOR SALE A2

EXPENSIVE YES?
If you know what I know, you'll see the resale value & sq. ft. at once. Call the realtor at 263-4120.

HOUSES FOR SALE A-2

SHAFFER
2600 Birdwell 263-8231

Mobile Homes A-12

WARREN REAL ESTATE
1207 Douglas Ph. 263-2061

Recreational C-3

WARREN REAL ESTATE
1207 Douglas Ph. 263-2061

HOUSES FOR SALE A2

3-FULL BATHS
If you know what I know, you'll see the resale value & sq. ft. at once. Call the realtor at 263-4120.

HOUSES FOR SALE A-2

SHAFFER
2600 Birdwell 263-8231

Mobile Homes A-12

WARREN REAL ESTATE
1207 Douglas Ph. 263-2061

Recreational C-3

WARREN REAL ESTATE
1207 Douglas Ph. 263-2061

HOUSES FOR SALE A2

3-FULL BATHS
If you know what I know, you'll see the resale value & sq. ft. at once. Call the realtor at 263-4120.

HOUSES FOR SALE A-2

SHAFFER
2600 Birdwell 263-8231

Mobile Homes A-12

WARREN REAL ESTATE
1207 Douglas Ph. 263-2061

Recreational C-3

WARREN REAL ESTATE
1207 Douglas Ph. 263-2061

HOUSES FOR SALE A2

3-FULL BATHS
If you know what I know, you'll see the resale value & sq. ft. at once. Call the realtor at 263-4120.

HOUSES FOR SALE A-2

SHAFFER
2600 Birdwell 263-8231

Mobile Homes A-12

WARREN REAL ESTATE
1207 Douglas Ph. 263-2061

Recreational C-3

WARREN REAL ESTATE
1207 Douglas Ph. 263-2061

HOUSES FOR SALE A2

3-FULL BATHS
If you know what I know, you'll see the resale value & sq. ft. at once. Call the realtor at 263-4120.

HOUSES FOR SALE A-2

SHAFFER
2600 Birdwell 263-8231

Mobile Homes A-12

WARREN REAL ESTATE
1207 Douglas Ph. 263-2061

Recreational C-3

WARREN REAL ESTATE
1207 Douglas Ph. 263-2061

HOUSES FOR SALE A2

3-FULL BATHS
If you know what I know, you'll see the resale value & sq. ft. at once. Call the realtor at 263-4120.

HOUSES FOR SALE A-2

SHAFFER
2600 Birdwell 263-8231

Mobile Homes A-12

WARREN REAL ESTATE
1207 Douglas Ph. 263-2061

Recreational C-3

WARREN REAL ESTATE
1207 Douglas Ph. 263-2061

HOUSES FOR SALE A2

3-FULL BATHS
If you know what I know, you'll see the resale value & sq. ft. at once. Call the realtor at 263-4120.

HOUSES FOR SALE A-2

SHAFFER
2600 Birdwell 263-8231

Mobile Homes A-12

WARREN REAL ESTATE
1207 Douglas Ph. 263-2061

Recreational C-3

WARREN REAL ESTATE
1207 Douglas Ph. 263-2061

HOUSES FOR SALE A2

3-FULL BATHS
If you know what I know, you'll see the resale value & sq. ft. at once. Call the realtor at 263-4120.



4749 SIZES 8-20 by Anne Adams

Now—the all-girl shirtdress with a graceful, feminine flare to the 8-gore skirt beneath a nipped waist. Choose a silk print, glowing solids. Printed Pattern 4749: Misses' Sizes 8, 10, 12, 14, 16, 18, 20. Size 12 (bust 34) takes 3 1/2 yards 45-inch fabric. Send \$1.00 for each pattern. Add 25¢ for each pattern for first-class mail and special handling. Send to Anne Adams c/o Big Spring Herald.

Vertical advertisements on the right edge of the page, including 'HILLSI TRAILER', 'STORM SHEET', 'ACREAGE', 'TRAILER SF', 'IS 20 AT FM 263-278', 'EAST OF BIG', 'DISCO 2309', 'WA R MINIM', 'Consecut 1 Count 24 letter', 'One day - 31', 'Two days - 31', 'Three days - 31', 'Four days - 31', 'Five days - 31', 'Six days - 31', 'Clip and m free', 'My ad shou', 'ATTACH', 'FIELD TEC In T', 'If you are r Engineering p have technica minicomputers compatible car David Callahan', 'We offer exce benefits and a e xtensive field', 'HILLSI TRAILER', 'STORM SHEET', 'ACREAGE', 'TRAILER SF', 'IS 20 AT FM 263-278', 'EAST OF BIG'.



HOLIDAY GIFT GUIDE

GIBSON'S DISCOUNT CENTER 2309 SCURRY - BIG SPRING

THE SCHICK HOT LATHER MACHINE



13.99

BUY YOUR CHRISTMAS GIFTS AT CECIL THIXTON MOTORCYCLE AND BICYCLE SHOP

WESTERN AUTO C.B. Antennas & Johnson-Pace-Midland Truetone TV & Radio

TO PLACE YOUR AD IN THIS GUIDE CALL 263-7331

ESTAH'S FLOWERS AND GIFTS City Wide Delivery FTD member, flowers wired anywhere

AL'S BAR-B-QUE 411 West 4th 263-6465 "We smoke Turkeys and Hams"

JUST IN TIME FOR CHRISTMAS Lots of glassware, carnival, opescent and pattern, also genuine Indian jewelry and old jewelry.

Dependable USED CARS

73 TRAIL BOSS 19 ft. fully self-contained motorhome... 1971 CHEVROLET full ton pickup... 1970 CHRYSLER New Yorker... 70 PONTIAC Bonneville 4-door... 71 TOYOTA Corolla station wagon... 74 BUICK Wildcat 4-door sedan... 69 BUICK Lesabre, 2-door hardtop... 72 MERCURY Comet, standard transmission... 73 CHEVROLET Nova 2-door... 74 CHEVROLET Chevy Super 1-ton Cab... 73 PLYMOUTH Fury station wagon... DEWEY RAY "Big Spring's Quality Dealer"

SMITH AUTOMATIC TRANSMISSION

USED CARS

HUGE SELECTION... 70 PONTIAC Bonneville 4-door... 71 TOYOTA Corolla station wagon... 74 BUICK Wildcat 4-door sedan... 69 BUICK Lesabre, 2-door hardtop... 72 MERCURY Comet, standard transmission... 73 CHEVROLET Nova 2-door... 74 CHEVROLET Chevy Super 1-ton Cab... 73 PLYMOUTH Fury station wagon... DEWEY RAY

BOB BROCK FORD'S GIGANTIC STOCK REDUCTION

BOB BROCK FORD

Want-Ad-O-Gram

WANT AD RATES MINIMUM CHARGE 3 Lines Consecutive Insertions

YOUNG REACH 10,500 HOMES AND WE'LL PAY THE POSTAGE!

HERALD WANT AD DEPARTMENT P.O. DRAWER 1431 BIG SPRING, TEXAS 79720

FIELD SERVICE TECHNICIANS In The Big Spring, Texas Area

HILLSIDE TRAILER SALES STORM SHELTERS, ACREAGE AND TRAILER SPACES

CB RADIO SALES MOBILE OR BASE RADIOS LINEARS AND ANTENNAS

INSTRUCTION PIANO AND organ lessons one block from College Heights and Goliad

Household Goods L-4 New baby bed \$59.95 Natural wood finish High chair \$19.95 New Spanish Oak bookshelves \$34.95

SEE US FOR YOUR FARM NEEDS ARSENIC ACID Gallon \$3.40 We now have limited supply of Fertilizer

BIG SPRING HARDWARE 115 MAIN 267-5265 SEWING MACHINES - Bernine and New Home Machines

CHRISTMAS SALE SAVE 10 to 20 PER CENT ON PIANOS ORGANS GUITARS AMPLIFIERS

Trucks for Sale M-4 FOR SALE, 1973 Chevrolet 1/2 ton, pickup, loaded, extra nice, low mileage

Garage Sale L-10 BOOKS, WESTERN, gothic, harlequin, mystery, romance, science fiction, etc. and up to 1600 Lancaster.

Merchandise L-16 METAL ROOFING material - 23 1/2 inch X 35 inch X .009 aluminum

WINNEDAG KAP COVER Large Stock Pickup Camper Covers! Discount Prices!

USE HERALD WANT ADS

Wanted: Truck Driver

Harry Dent Steps Down

WASHINGTON (AP) - Harry J. Dent, reportedly under investigation in connection with a secret political fund

DEALER COST All remaining new 1974 Saabs, fully loaded and ready for delivery at DEALER'S COST.

TOO LATE TO CLASSIFY NICE FOUR rooms, one bathroom, dining area, carpet, drapes, central heat, 1407 Virginia 1100, 267-7144



# Committee Is Working Hard To Raise Funds For Celebration

WASHINGTON (AP) — That commission was replaced by the bicentennial administration earlier this year.

Congress started a \$10-million-a-year funding program to carry the project through 1976, but that covers only administrative costs, grants to the states and planning and development money.

The original commission, after failing to provide a national bicentennial focal point through a world's fair, designated Philadelphia, Boston, Washington and Miami as official bicentennial cities, but no special money has been voted for them to pay for preparations.

The focus of the celebration planned by the bicentennial administration is a series of individual events and programs that would cover the country, providing activities convenient to all parts of the nation.

Most are in the advanced planning stages and need only sponsorship and money to get on the road.

Although the bicentennial agency has been criticized by groups who say the celebration is becoming too commercial, the organization says it has no other way to put on the show.

But, similar to educational television, there are no commercials. The sponsor can brag all he wants about what he is doing, but the product itself doesn't carry his label.

The bicentennial administration works from a list of projects which it considers significant and in need of funding and looks for sponsors among corporations, trade and professional associations, religious groups, service clubs and labor unions.

Despite the generally depressed economy, officials say the initial response has been good.

The biggest so far was announced Dec. 2, when the J.C. Penney Co. unveiled a program to create a collection of American music and present a complete set of scores to every high school band and choral group in the country. The price tag was reported at \$2 million.

Already American Express, working through the U.S. Park Service, has paid \$120,000 for refurbishing the Statue of Liberty.

The first Bicentennial project emanating from Washington to reach the launching stage is a traveling exhibition on U.S. origins as seen through the lives of Benjamin Franklin and Thomas Jefferson. It opens in Paris Jan. 10 with the support of \$500,000 from IBM.

State and local agencies, long ago despaired of help from Washington, have been using the same system with success. The Boston Bicentennial alone has raised \$1 million from private sources.

The Salada Tea Co. paid for a full-size replica of a ship from the Boston Tea Party, and the John Hancock Insurance Co. is financing an information center.

The Ethan Allen furniture company is supporting the major activity of the Vermont observance, a \$100,000 mobile unit which carries the state Bicentennial headquarters and exhibits about the state.

In Mississippi, the Masonite Corp. is funding a three-year program to take the Johnny Horizon cleanup and conservation program into every elementary school classroom in the state.

Pennsylvania Bell telephone system is financing pageants at Carpenter's Hall during summer months re-enacting life and events in Philadelphia at the time of American independence.

But other programs wait in the wings, where they are likely to remain unless private corporations agree to pay the fare.

The project to restore the South Street Seaport in New York City to its original state still needs another million dollars. A project to bring a flotilla of sailing ships for the Bicentennial needs \$411,000.

The bicentennial administration is looking for \$10 million for a light and sound program for the U.S. Capitol. It wants \$162,000 for a world conference on religious liberty and \$48,000 for an Eagle Scout encampment.

The Smithsonian Institution, a government organization with federal funds, still needs another \$1.2 million in private money for its series of traveling exhibitions.

The National Park Service is improving many Revolutionary sites, including long-neglected battlefields, for the Bicentennial but needs private money to finish the job.

Private funding is sought to provide living history programs in the parks, such as replicas of revolutionary military encampments with soldiers in uniforms, guns and tents.

### Tax Discussion Is Set Monday

City, county, school and college representatives are expected to attend a meeting 2 p.m. Monday to discuss joint tax appraisal work.

Scene of the meeting will be the County Commissioners Courtroom.

Also, the commissioners court plans to discuss a federal-state street improvement program.

**RITZ THEATRE**  
TONIGHT & TUESDAY  
OPEN 5:15 RATED G  
DOUBLE FEATURES  
**'The Devil's Triangle'**

**CHARIOTS OF THE GODS?**  
TECHNICOLOR  
Released by Sun International Productions, Inc. ©

**R/70 THEATRE**  
TONIGHT & TUESDAY  
OPEN 7:15 RATED X  
DOUBLE FEATURE  
**'Vixon'**  
AND  
**'Cherry & Harry & Raquel'**  
RATED X

**JET DRIVE-IN**  
TONIGHT & TUESDAY  
OPEN 6:30 RATED R

**MONIQUE**  
A ONE GIRL  
TECHNICAL  
GANG...  
on either  
side of the bed!

**HOT PANTS HOLIDAY**

**NOW OPEN**  
Under New Management  
**CRYSTAL CAFE**  
Now Owned By  
**Mr. & Mrs. Albert Rodriguez**  
Your Patronage Will Be Appreciated

**COLLEGE PARK Cinema**  
263-1417

**"BRAVO 'LE SEX SHOP'"**

FEATURES 7:00 AND 8:35 P.M.

"Enjoy! This delightful movie makes hash of the pornographers and casually cuts to bits the pseudo-sophisticates who have been hailing pornography in films as a new art."  
—Frances Taylor, Long Island Press

LATE SHOW 10:15 P.M.  
FRIDAY ONLY

**Title Proves Misnomer: Club Updates Its Name**

ALBANY, Ore. (AP) — Students enrolled in Wastewater Technology courses at Linn-Benton Community College have changed the name of their campus club.

It used to be known as "The Wastewater Renovators." Now club members have decided to call themselves "The Efficient Society."

**ANDERSON MUSIC CO.**  
Everything in Music  
Since 1927  
113 Main Ph. 263-2491

*the lyric beauty of luxurious lingerie*





**VASSARETTE robe of Cord d'Allure, the new Velvour corduroy of brushed Dacron polyester. Shirt style with tab collar and drop shoulder. In blue spruce or frosted red. Sizes P-S-M-L. 30.00**

**VASSARETTE firesider with Cord d'Allure polyester corduroy yoke or Velvour polyester. Concealed in-seam pockets, decorative brass ring zipper pull. In American Beauty Rose or Sapphire Blue. Sizes 8-16. 25.00**

**Pom Pom Slipper By Vassarette**  
A gift she'll love on Christmas morning! To coordinate with our nylon tricot sleepwear. Washable, fast drying. 4.00

Smooth and sleek plunge front gown with shaped bodice, tie back. Antron III nylon tricot in bluetie, soft yellow, pale peach. Easy care. Sizes P-S-M-L. 14.00

Use Your BankAmericard Master Charge Lay Away Rite-On-Line Our Own Charge

For Larger Selection We Invite Your Browsing...

**Swartz** both shops

PRICE 10c

THAT CHRISTMAS seasonal look that moisture was m... hour. Last night

WASHINGTON President may and shipyard construction of of says Interior Morton. Matched by president Association of predicted the and other in competition vestment cap of a coming materials em day of p preparation f energy policy

No B...

By TROY BR... Texas is enjoy stantially better t the rest of the na present recession Spring is exp substantially bet than the rest of t according to th unemployment fig other key indicator Unemployment Spring edged up cent from 0.8 per ago while the Tex rate jumped up sl 3.8 per cent a year per cent for Nationwide, th employment rate is cent. The trend fo typical Texas reaa national economy may not boom as other parts of the in recession, it recede so much eit Other indicators retail sales, bank and building is b Big Spring, and th sales are holding as compared to re FEVER JOE The Big Spri employment rates than surrounding Midland-Odessa increase from 2.3 2.6 per cent in the Abilene showed from 2.2 to 1.9 per past year; Lubbo increase from 2.0 cent in the past yo Angelo showed from 2.8 to 2.4 year.