

BIG SPRING HERALD

Price 10¢

Vol. 46 No. 266

Big Spring, Texas (79720), Monday, April 8, 1974

16 Pages 2 Sections

Price 10¢



(Photo by Danny Valdes)

IN TRAINING FOR A SPECIAL DAY — Robbie Jo, 5 years old, and Dana Kay Dolan, 3, daughters of Mr. and Mrs. LeRoy Dolan of Sterling City Route, Big Spring, stock up on a few candy eggs for the Easter holidays just ahead. The two children look as if they're old hands at egg-hunting.

Ranch Foreman Dies In Unusual Mishap

Edward B. Hughes, 53, ranch foreman for Judge A. G. Mitchell of Big Spring, was killed about 8:20 a.m., Sunday at the Wulgen Ranch 15 miles south of Colorado City when his foot became entangled in his rope and he was dragged by his horse.

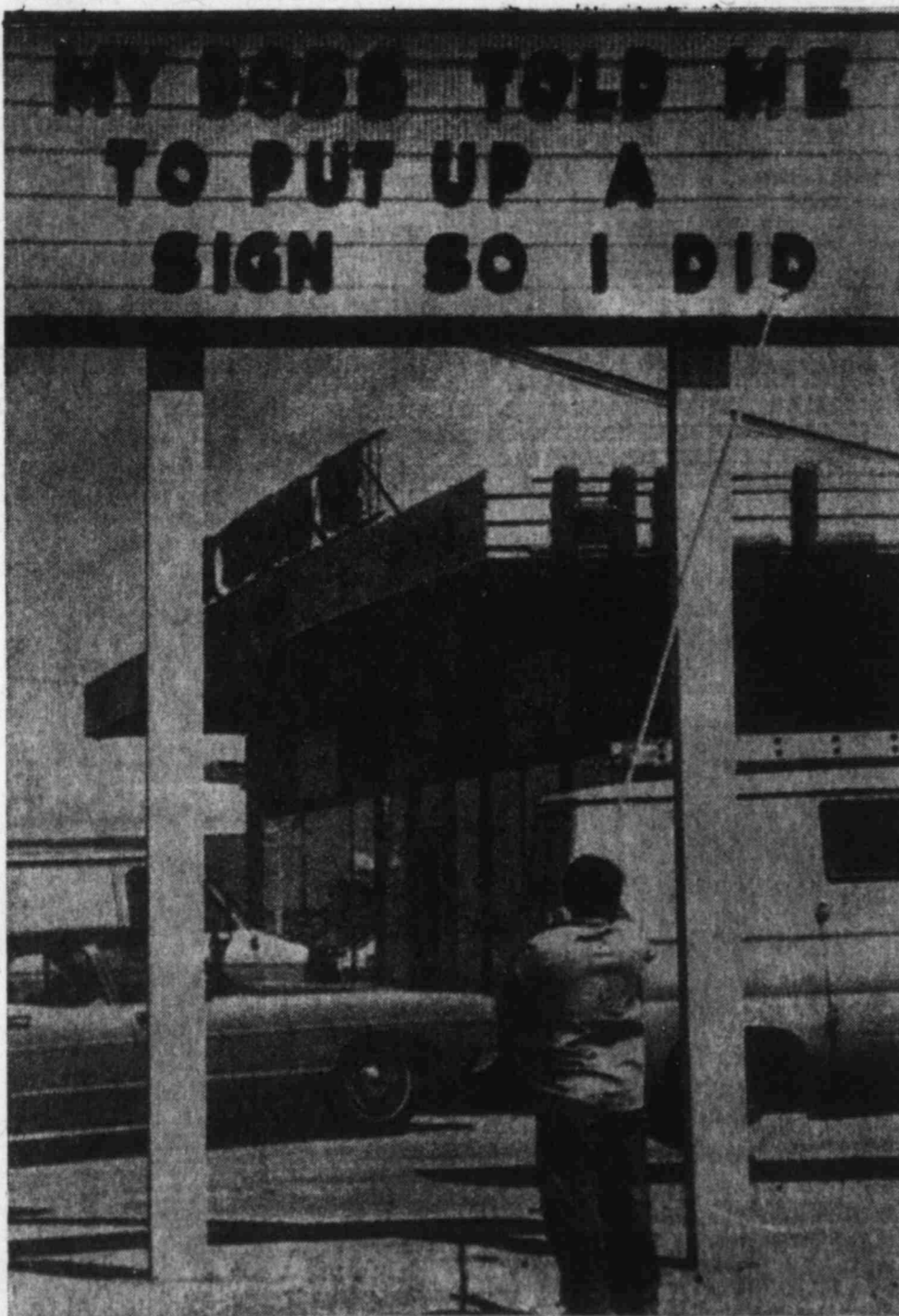
Mitchell, Don Seawright and Hughes were roping cattle to doctor the animals' eyes. Mitchell reported that Hughes "dropped his rope on the ground and when he dismounted, he stepped into the nose and the horse spooked and took off. Hughes' head hit a post and by the time I got the horse stopped, it was too late."

Justice of the Peace Leonard Henderson of Colorado City rendered a verdict of "accidental death." Funeral services are pending at Mason Funeral Home in Mason.

Hughes was born July 17, 1920, in Llano. He had worked as a ranch hand on many Texas ranches and had been in Mitchell County since February.

Fight Flames

WILBERFORCE, Ohio (AP) — Fire raced through a floor of the student union building at tornado-torn Central State University here today before being extinguished, the Ohio National Guard reported.



(AP WIREPHOTO)

JUST FOLLOWING ORDERS — Raymond Gonzales was told by his boss to put up a new sign in front of a tire company in Carrollton, a suburb of Dallas. Gonzales did the job.

Nixon Signs \$2.30 Hour Minimum Pay Measure

WASHINGTON (AP) — President Nixon today signed a bill that will bring the minimum wage to \$2.30 an hour for millions of American workers by Jan. 1, 1978.

Nixon signed the measure at his desk in the Oval Office, with Secretary of Labor Peter J. Brennan seated alongside.

In a White House statement, Nixon said, "Although I have some reservations about portions of this legislation, its basic purpose — to increase the minimum wage for working men and women of this country — deserves the support of all Americans."

The new law expands minimum wage coverage to an additional seven million workers. Some 49.4 million workers already were covered by minimum wage legislation.

Nixon vetoed a similar minimum wage bill last year.

Nixon objected to the 1973 minimum wage bill

as being inflationary and because it did not include a youth differential permitting a lower rate for teenagers.

The 1974 bill, approved by Congress last month, contains only minor changes from the one Nixon vetoed.

It does not contain a youth differential but it does liberalize the present law slightly on employment of students, permitting them to work part-time — not more than 20 hours a week — at 85 per cent of the regular wage floor.

FIRST TIME

The latest bill would bring domestics under the wage and hour laws for the first time and repeals overtime pay exemptions now in effect in several industries.

It also tightens present law on child labor on farms and extends the scope of the law aimed at discrimination against elderly persons.

For 36 million workers covered under the 1966

minimum wage law, the schedule calls for an increase to \$2 by May 1, \$2.10 by Jan. 1, 1975, and \$2.30 by Jan. 1, 1976.

For some 19 million workers, mostly retail and service employees covered under the new bill the schedule calls for \$1.90 on May 1; \$2 on Jan. 1, 1975; \$2.20 on Jan. 1, 1976; and \$2.30 by Jan. 1, 1977.

JAN. 1, 1978

For 750,000 farm workers, who now have a wage floor of \$1.30 an hour, the minimum wage would go to \$1.60 on May 1; \$1.80 on Jan. 1, 1975; \$2 on Jan. 1, 1976; \$2.20 on Jan. 1, 1977 and \$2.30 on Jan. 1, 1978.

The new bill extends coverage under the minimum wage law to five million federal, state and local employees one million domestics; 600,000 additional retail store employees; 120,000 additional service industry workers; and 25,000 additional farm workers.

Hearst Wants 'To Get It Together'

HILLSBOROUGH, Calif. (AP) — Saying he wants "to get it together," Randolph A. Hearst has slipped quietly away to Mexico where he will consider what to do next to win freedom for his kidnapped daughter.

"He doesn't really want to be in this house and he doesn't know what to do, so he is going somewhere where he can think about it a little more," said a nephew William Randolph Hearst III.

THREE-DAY PASS

Meanwhile, American Indian Movement leader Dennis Banks said he has agreed to try contacting the terrorist, Symbionese Liberation Army to arrange a reunion for the Hearsts with their daughter Patricia.

"(Randolph Hearst) asked me if I would begin a national appeal to the SLA with hopes of arranging a meeting between AIM, Patty and the Hearsts," Banks said in a telephone interview from St. Paul, Minn.

"The idea was to see if she could be given a three-day pass, a 24-hour pass or a week pass so she could spend some time with the family. After that she would be free to return to the SLA," he said.

Hearst, his wife, Catherine, and two of their five daughters, Virginia Bosworth, 24, and Anne Hearst, 18, departed before dawn Sunday and flew from San Francisco to La Paz, a fishing resort on the tip of Baja California, said the pilot of the jet chartered by the Hearsts.

The Hearst nephew said they would be gone four days but would return immediately pending any new developments in the case.

WASHINGTON (AP) — Detective Anthony T. Ulasewicz probed the private lives of more than a dozen senators and other political figures in 50 separate investigations during President Nixon's first term, Sen. Lowell P. Weicker Jr. says.

POLITICAL DIRT

Weicker, a member of the Senate Watergate committee, said he has obtained White House files showing the full scope of the activities of the former New York City detective, who told the panel last summer his primary mission at the White House was to probe allegations of "political dirt."

The Connecticut Republican said he also has uncovered White House memos showing the "improper and perhaps illegal use of actual tax return information, both of individuals and of organizations."

He was to testify on his findings today at a hearing convened by three Senate subcommittees investigating the extent of political spying by the federal government.

Weicker said that among the records he has obtained are memos showing the White House obtained from the Internal Revenue Service "sensitive case files" on a large number of individuals, including several prominent entertainers.

The list includes the names of Frank Sinatra and Sammy Davis Jr., both of whom endorsed the President's 1972 reelection campaign.

It also includes the name of California Republican Gov. Ronald Reagan.

Others on the list provided by

GOP SEN. WEICKER CLAIMS:

White House Used Tax Data To Protect Actor John Wayne



(AP WIREPHOTO)

DENIES IRS FAVORS — John Wayne, above, says he has sent Sen. Lowell Weicker, R-Conn., a telegram denying the senator's contention he got favors from the Internal Revenue Service.

Weicker are comedian Jerry Lewis, actors Peter Lawford, Richard Boone and Fred MacMurray and comedienne Lucille Ball and her husband, Gary Morton.

SENSITIVE FILE

Weicker said he also has documents to confirm that the White House used IRS tax data "to protect friends of the White House, such as evangelist Billy Graham and actor John Wayne."

In Newport Beach, Calif., Wayne told reporters he had never asked for or received favors from IRS. He said: "I'm sending a telegram to that

s.o.b. I just thought you'd like to hear what it's going to say."

"Sen. Weicker, for your information I have never asked for, nor have I received, IRS favors, nor have I needed them. What I need is protection from cheap politicians like you."

The Ulasewicz investigations, Weicker said, included background probes into the lives of the most politically prominent Democrats who contended for their party's 1972 presidential nomination.

These include Alabama Gov. George C. Wallace; New York

City Mayor John V. Lindsay; and Sens. Edmund S. Muskie, D-Maine, Hubert H. Humphrey, D-Minn., and Edward M. Kennedy, D-Mass.

Documents released at the time of the Watergate hearings showed Ulasewicz, working out of the White House but on the payroll of Herbert Kalmbach, then President Nixon's personal lawyer, conducted his own investigation of Kennedy's role in the drowning of Mary Jo Kopechne.

The memos indicated he discovered no useful information.

Foreign Policy Part Of Defense

WASHINGTON (AP) — The Nixon administration has elevated foreign policy into a major part of its Watergate defense, maintaining that Nixon's continuation in office is considered essential by most world leaders.

The crucial role played by Nixon in insuring international progress was portrayed by high White House officials following the President's return from Paris Sunday.

Alexander M. Haig Jr., Nixon's chief of staff, said the weekend in Paris for a memorial service honoring the late French President Georges Pompidou was encouraging in several ways.

"It was very evident that European leaders and world lead-

ers with whom the President met continued to look to the United States and President Nixon as an essential factor in efforts to develop a structure for a stable international environment," he said.

Other officials told reporters on Nixon's plane during the return from Paris that the world leaders clearly want the President to stay in office because they feel a rapport with him.

These officials said many other international leaders also have domestic problems, although of a different character.

Because of this empathy, Nixon is admired for what they believe is his courage, and is deeply respected because they see he continues to function effectively in world matters.

The World At-A-Glance

DETROIT (AP) — The federal Environmental Protection Agency is planning to circulate simplified gasoline mileage data as an easy-to-use guide for buyers of 1975-model cars. The EPA has been releasing fuel economy figures for two years, but the current system is too difficult for the average consumer to use, says Eric Stork, deputy director of the agency. He says under a new plan still on the drawing board, similar car models with the same weight and engine size would be grouped together for convenience. A by-product of the plan will be increased accuracy because unlike the current procedure, figures will be based on tests performed on more than one car of the model designated, Stork said.

ATLANTIC CITY, N.J. (AP) — New studies on rats suggest a possible lead toward prevention and cure of "essential" hypertension, the commonest form of high blood pressure. "Essential" hypertension means high blood pressure of unknown cause, although prevailing theory points to

changes in the automatic nervous system and certain glandular systems. But researchers M. Sarmir Amer and Gordon R. McKinney of Mead-Johnson in Evansville, Ind., say studies on hypertensive rats show the cause may instead be traced to metabolic defects in the smooth muscle of blood vessel walls. They say their discovery may lead to a new approach to treatment of high blood pressure. Currently the malady is treated with drug that simply lowers the blood pressure. In future, patients may be treated with a drug that acts on the blood vessel muscle defect to prevent high blood pressure before it occurs, the researchers said.

PARIS (AP) — The Gaullist party's central committee has endorsed former Premier Jacques Chaban-Delmas' presidential candidacy in the election May 5. But at least two other leading politicians — National Assembly President Edgar Faure and Finance Minister Valery Giscard d'Estaing — are expected to contend with him for the anti-Left vote.



(AP WIREPHOTO MAP)

ARTILLERY DUELS CONTINUE — Map locates the Golan Heights in Syria where Israeli and Syrian forces continued artillery and tank fire against each other's positions for the 28th straight day today.



(Photo by Danny Valdez)

COME AND GET IT! — This phrase was a chapter heading in the late Shine Phillips' book about Big Spring. The early kitchen will be a special exhibit. Agnes Currie, one of The Heritage Museum's directors, pours a cup of boiled coffee for Gerri Atwell, curator. At right is a mannequin clad as a pioneer housewife.

Museum Exhibit Offers Abundance Of Flavor

There's more flavor in the new Heritage Museum exhibit than in a spice cabinet. Tied to the late Shine Phillips' widely-acclaimed book, "Big Spring — Casual Biography of a Prairie Town," the exhibit opened today under the theme of "Shine on Big Spring." Phillips was a druggist here for half a century.

wagon wheel, chuckwagon box and early-day photos. "She's Been Taken Bad, Doc," spotlights Dr. Will Barnett's old medicine bag. "Law and Order," as with several other exhibits, makes use of a H. W. Caylor painting, and Ralph W. Baker's six gun.

saddles and riata from the 1890 days. Still another blockbuster is the "Come and Get It" corner depicting a kitchen with its safe (cabinet), old stove, a complete table setting, a mannequin housewife, and all sorts of conveniences like a hand coffee grinder.

'Petty Cash' Funds Given Airing By Commissioners

Petty cash became more than a petty issue when the county commissioners heard a review of the auditing report this morning. Representatives from the accounting firm of Thorburn and Green submitted a letter to the court that discusses a surplus of \$25 in the Justice of the Peace Place 1 fund. JP Walter Grice told the court that since they had no tickets to show it belonged to the county that he had kept the "no-mans" money because the justices of the peace put their own funds into petty cash.

Justice of the Peace Gus Ochotorenca told the court that the JPs desperately needed a petty cash fund. The commissioners then began to question other departments and discovered that the tax assessor's office had taken funds from within their own account and kept them as petty cash. The district clerk's office had county funds for petty cash

but that the JPs and the county clerk had put up their own. Mrs. Pauline Petty, county clerk, said she was satisfied with the system because in her office it was a small amount with no problems. The court then voted to set up \$50 cash funds and lock boxes for the three JPs, including the one in Coahoma, with each JP to keep his petty cash funds separate from the other.

Israel Plane Gunned Down

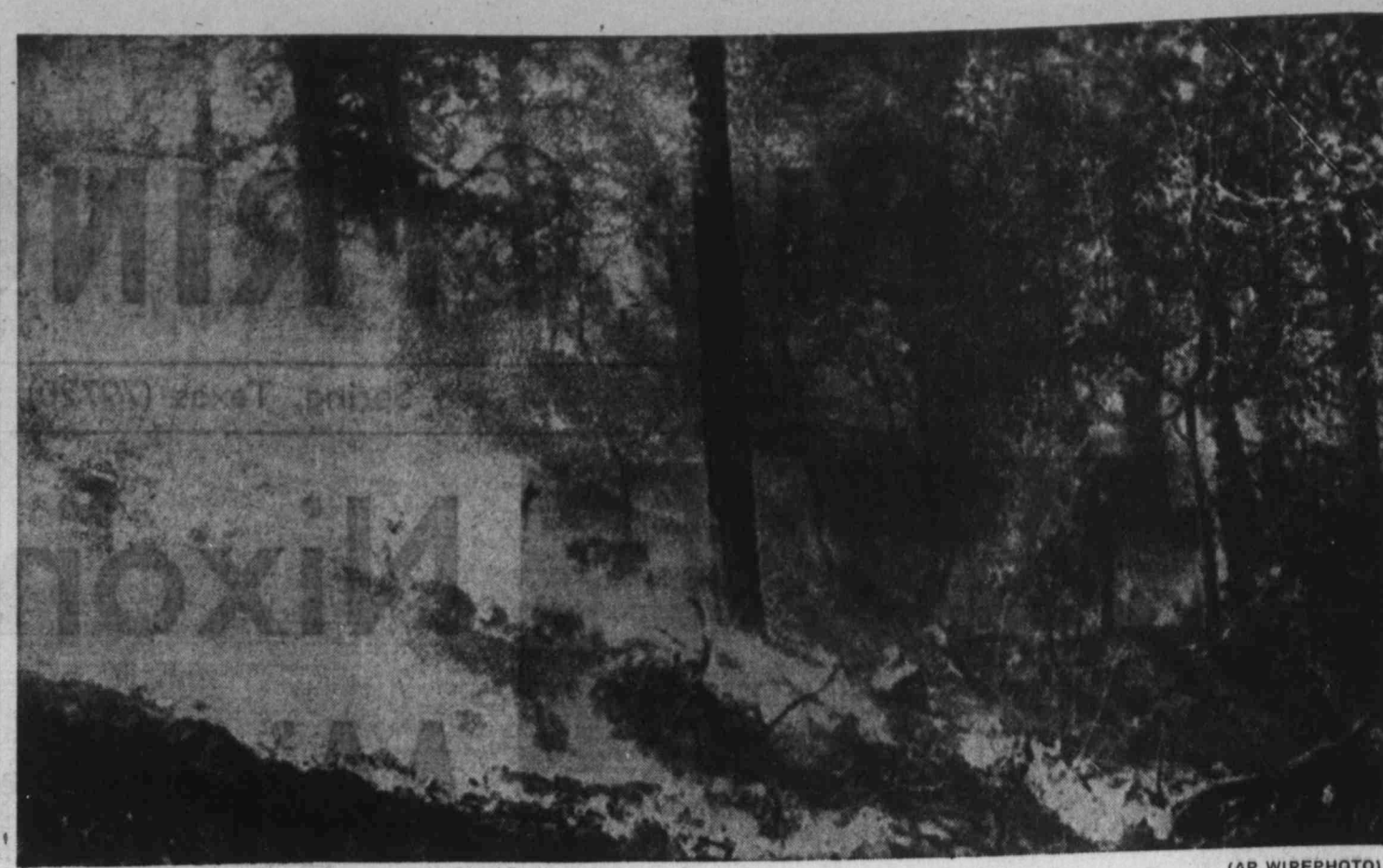
Artillery and tank fire blazed along the 40-mile Golan front again today, and Syria claimed its air defense system shot down an Israeli plane "when an enemy formation penetrated our air space over Mt. Hermon."

Syria also said its forces battled all night with Israeli troops trying to overrun Syrian positions on Mt. Hermon, but Israel denied this.

It was the third day fighting was reported on the 9,000-foot slopes at the northern end of the truce line, and the 28th straight day of clashes on the Israeli-Syrian front.

MARKETS

Table with columns for STOCKS and various company names and their stock prices. Includes companies like Volume, Index, Industrials, Utilities, American Airlines, etc.



(AP WIREPHOTO)

DRY FOREST BURNS — Flames, smoke and charred trees have blackened more than 13,000 acres of what had been the green but extremely dry Agua Chiquita Canyon of the Lincoln National Forest in the south-central New Mexico

Sacramento Mountains. More than 200 area residents fled in front of the flames Saturday, and many came back to burned out houses.

Election Returns On Board Agenda

Electing board officers and canvassing the school board election returns was to highlight the meeting of the school board today at 5:15 p.m. at the board meeting room.

More Than 200 Residents Flee Forest Fire In N. M.

WEED, N.M. (AP) — Fire fighters watched shifting winds today as they worked to hold a Lincoln National Forest fire to the 13,000 acres it's already blackened.

"Every time the wind shifts, what had been the back or side, and we have a new front line to fight," said a Forest Service spokesman, Frank Carroll. A wind shift during the week-end that brought gusts up to 40 miles an hour out of the north caused trouble on the southern flank of the burn.

SPOT FIRES

"There's a lot of heavy logging slash, tops of trees and such, south of the line and sparks kept jumping the fire line on that side," Carroll said. The winds died down during the night and more than 200 fire fighters worked to reinforce their fire lines. Day crews total more than 400 men.

More than 200 residents of the area. No injuries were reported by area residents. Four fire fighters were treated for minor burns and smoke inhalation.

Airplanes that were grounded Saturday by strong winds, were up most of Sunday and again this morning, dropping fire-retardant chemicals on the fire. Roads into Weed and Sacramento remained closed because of the continuing danger, police spokesmen said.

MISHAPS

Fleeing ahead of the flames

Fryrear's Crystal Ball Is Accurate

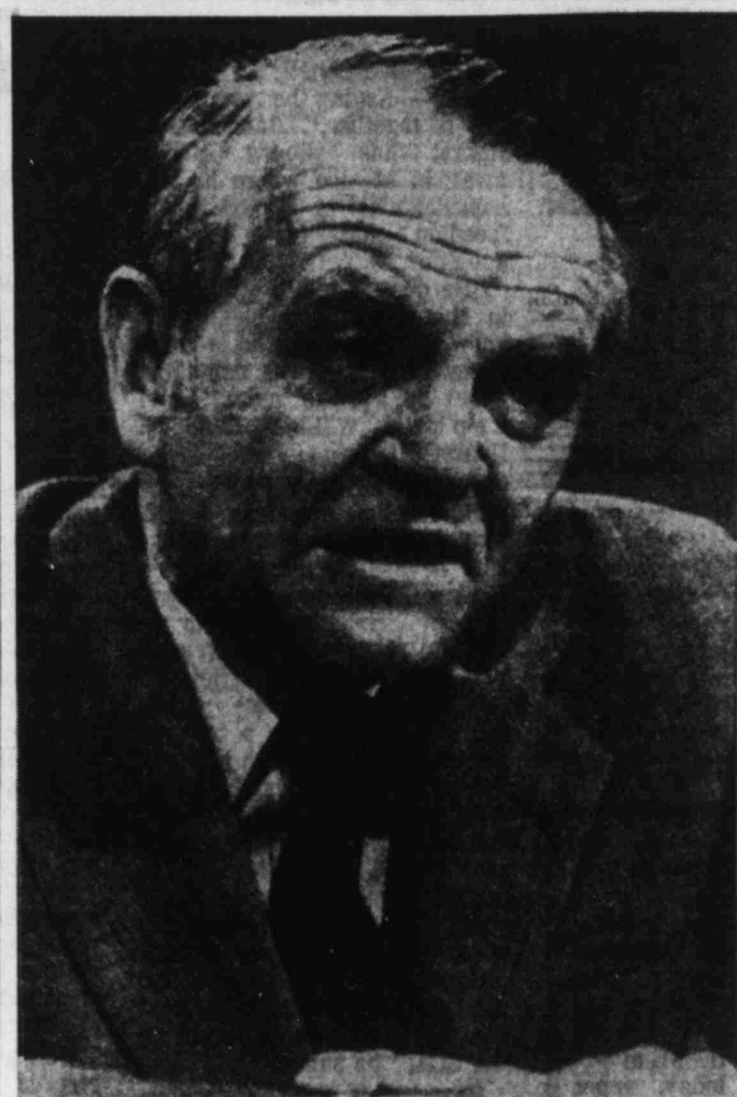
An entire weekend of sandstorms convinced Big Spring citizens that "It's going to be a dusty spring."

Bill Fryrear at Big Spring Experiment Station, tallied the Saturday and Sunday storms as 23 and 24 with a predicted 77 for the entire year of 1974.

One Good Turn Is Disastrous

Oscar Manuel Juarez, of Kermit, a United States citizen pled guilty recently and was fined \$800 in the United States Magistrate Court in Pecos for aiding and abetting illegal Mexican nationals to evade inspection by Immigration Officers.

Juarez had taken a load of hay to a farm near Kermit, where he met eight illegal aliens. He agreed to transport them to a farm near Roswell, N.M., if they would unload the hay. They did so.



(AP WIREPHOTO)

TALKS ABOUT NIXON'S TAX RETURNS — Donald C. Alexander, commissioner of the Internal Revenue Service, talks with newsmen prior to his appearance on CBS' "Face the Nation" program Sunday from Washington. Alexander said that no cause had been found for leveling a fraud charge against President Nixon in preparation of income taxes.

VANDALISM

Six windows and two screens worth \$50 destroyed at immaculate Heart of Mary Church Sunday.

Runoff Due In Odessa Election

ODESSA — A runoff election will be necessary to decide Places 1 and 2 on the Odessa College board of trustees. In Saturday balloting, Dick Sivals with 1,222 and Bill Masterson with 1,140 were the top two for Place 1. Karl Tichey with 1,642 and incumbent Joe Girou with 1,267 were the leading contenders for Place 2. Gary Furman won Place 3 unopposed with 3,065 votes.

THEFTS

J. Barrett, 4103 Connally, lost two 8-track tape cartridges and pack of cigarettes from car. Value of stolen goods, \$13.13.

A \$100 window was broken in Mrs. Robert Jones' car to steal imitation fur coat and \$4 straw hat, both man's wear.

Jack T. Earl of Stockton, Calif. reported several items taken from his car.

Mrs. Pauline Sparkman, 3807 W. 80, lost unknown amount of cash taken from her home.

A boys' bike stolen from Highland South Carnival belonged to Henry Spears, 2205 S. Main.

A bronze '71 Monte Carlo left a truck stop without paying for \$5 of gas.

WEATHER

Table showing weather forecasts for various cities: Big Spring, Amarillo, Chicago, Denver, Fort Worth, Houston, Los Angeles, Miami, New Orleans, Richmond, San Francisco, Washington, D.C.



Figures Show Low Temperatures Expected Until Tuesday Morning. Isotherms Indicated. Contour Lines Represent Isotherms.

WEATHER FORECAST — Showers or rain are forecast today for the Atlantic coastal states with snowflurries expected for the lower Great Lakes and New England. Colder temperatures are expected. Rain and showers are forecast for the Northwest. Warm weather is forecast for the Southwest.

HC Board Name Fac

Howard Coll Tuesday will can returns Saturday unofficial results McGibbon and Ji returned by wide m

Ritz The

SPECIAL MA TODAY A TUESDAY

OPEN 12:45 FE 1:00 & 2: RATED

THE NEPTUN FACTORY BEN GAZZARA WETTE PALMER PIDGEON ENE PAWNSHON PRINTS B 20th CENTURY FOX

Ritz The

TONIGHT & TUESDAY

OPEN 5:00 — FE 5:30 7:30 RATED

Love Me

R/70 The

TONIGHT & TUESDAY RATED I FEATURES 7:30

LIZ TAYLOR HENRY FONDA "ASH WEDNESDAY"

Jet Drive

TONIGHT & TUESDAY OPEN 7:30

DOUBLE FEATURE

The Most Wonderful Day of My Life

The Godfather of Nore

PLUS 2nd FEATURE CLAUDIA JENKINS PLAYBOY MAGAZINE PLAYMATE OF THE YEAR

UNHOLY ROLLERS

RITZ THEATRE STARTS WEDNESDAY Super Disney Fairy

DAD FLIPS OUT!

WALT DISNEY PRODUCTION SUPER

TECHNICAL SUPER

Walt Disney Super

HC Board Will Name Faculty

Howard College trustees Tuesday will canvass election returns Saturday in which unofficial results show K. H. McGibbon and Jimmy Taylor returned by wide margins.

Ritz Theatre

SPECIAL MATINEE TODAY AND TUESDAY

OPEN 12:45 FEATURES 1:00 & 2:50 RATED G



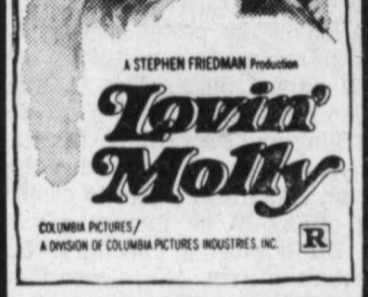
THE NEPTUNE FACTOR
BEN GAZZARA YVETTE MIMELIX
WALTER PIDGEON ERNEST BORGNINE
PANAVISION PRINTS BY DE LUXE

Ritz Theatre

TONIGHT & TUESDAY

EVENING SHOWINGS

OPEN 5:00 - FEATURES 5:30 7:30 9:30 RATED R



R/70 Theatre

TONIGHT & TUESDAY RATED R

FEATURES 7:30 & 9:30
LIZ TAYLOR HENRY FONDA
"ASH WEDNESDAY"

Jet Drive-In

TONIGHT & TUESDAY OPEN 7:30 RATED R

DOUBLE FEATURE
The Most Dreaded Of All The Dealers In Death!



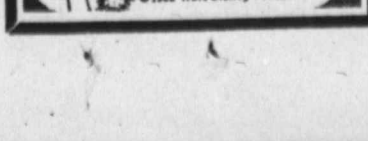
PLUS 2nd FEATURE
CLAUDIA JENNINGS
PLAYBOY MAGAZINE PLAYMATE OF THE YEAR
UNHOLY ROLLERS

RITZ THEATRE

STARTS WEDNESDAY Super Disney Family Fun!



WALT DISNEY PRODUCTIONS SUPERDAD
TECHNICOLOR
© 1973 Walt Disney Productions



ROCK MUSIC FANS — Some of the estimated 200,000 rock music fans are gathered in the infield of the Ontario Motor Speedway Saturday for a rock music festival called "California Jam." They watched and listened to different rock groups perform. Girl in center is using binoculars to spot her favorite group.

Delaying Moves Foreseen At Mass Murders Hearing

SAN ANTONIO, Tex. (AP) — A youth accused of six of 27 homosexual murders discovered last August in Houston faced a pre-trial hearing today, but defense delaying tactics were likely.

Dial said he expects to rule on the admissibility of 10 oral statements Henley gave police men after his arrest Aug. 8 in Pasadena, Tex., and before he saw a lawyer on Aug. 10.

Gray, who filed a blizzard of motions during the Houston pre-trial hearing, said he will follow a similar strategy in San Antonio.

'California Jam' Brings In The Loot

ONTARIO, Calif. (AP) — Some 200,000 music fans thronged to the "California Jam" rock festival during the weekend for a concert that police said "went off very well."

For the promoters, ABC Entertainment, the extravaganza may gross more money than any other concert of its kind.

Similar events at Woodstock in 1969 and Watkins Glen last year, both in New York, drew larger crowds. However, gate-crashing at Ontario Motor Speedway wasn't as much of a problem as it had been elsewhere, authorities said.

At \$10 a ticket, the advance price paid by more than 167,000 concert-goers, and \$15 paid at the gate by the rest, "California Jam" should gross about \$2 million. The previous box office record was \$1.5 million grossed by promoters of the Watkins Glen festival.

Spokesmen for ABC Entertainment deferred comment on the financial success until later in the week.

WRITTEN STATEMENT

Brooks, charged in four deaths, will be tried after Henley, Dist. Atty. Carol Vance said. Henley will be tried first.

SANITY HEARING

Both the prosecution and de-

FIRES

Grass at FM 700 near Budweiser complex on Sunday.



PLACE IN ZONE MEET — Joe Millaway displays his third-place trophy won in the boys' divisions of the Optimist zone oratorical competition Saturday in Midland. Julie Davidson exhibits her runner-up trophy in the girls division. The two young people won the local eliminations sponsored here by the Morning Optimists.

2. COLLEGE PARK Cinema
263-1417
NOW SHOWING
DOORS OPEN 7:00
FEATURE AT 7:10 and 9:10
BUTCH & THE KID ARE BACK!
Just for the fun of it!
PAUL NEWMAN ROBERT REDFORD KATHARINE ROSS.
"BUTCH CASSIDY AND THE SUNDANCE KID"
Panavision® • Color by DeLuxe®

City Council Faces Busy Agenda At Tuesday Meet

City councilmen meet Tuesday at 9 a.m. to canvass the election results and elect a mayor pro-tem. The mayor is elected by the people under the new charter regulations.

Please return to Box 802, papers, glasses & purse taken from Red Capri on 6th Street Monday night.

The Big Spring Herald
Publishes Sunday morning and weekday afternoons except Saturdays by Big Spring Herald, Inc., 710 Scurry St.
Second class postage paid at Big Spring, Texas.
Subscription rates: By carrier in Big Spring, \$2.10 monthly and \$25.20 per year. By mail within 150 miles of Big Spring, \$2.25 monthly and \$27.00 per year; beyond 150 miles of Big Spring, \$2.60 monthly and \$31.20 per year. All subscriptions payable in advance.

EVEN IF SCRIMPED ON MEAT It Cost Family Of Four \$43.10 Per Week To Eat

WASHINGTON (AP) — New government figures today show it cost a family of four at least \$43.10 per week to eat in February even if it scrimped on meat and served plenty of beans and potatoes. The figure was \$8.10 higher than a year ago.

Each of the three food plans rose sharply from January to February. The low-cost plan rose \$1.40 per week, the moderate \$1.60 and the liberal budget \$2.

As of July 1, a four-member poor family can get \$150 per month in stamps, reflecting the February cost of the economy diet. Currently the allocation is \$142 per month, a level set on Jan. 1.

The increase was for a so-called low-cost food budget compiled by the Agriculture Department. Although its cost went up 23 per cent from February 1973, other plans for more affluent families rose proportionately less.

A fourth budget is the "economy" plan, a bare-bones meal guide used for computing the government's food stamp allocations. It provided menus costing \$34.40 per week in February, up \$6.40 from a year earlier or a gain of about 23 per cent.

Under law, the department must make semiannual adjustments in food stamp allocations to reflect higher eating costs. Until Congress changed it last year, the practice had been to adjust stamp allocations only once a year.

The USDA announced a week ago a 5.6 per cent boost in food stamp allocations for a four-member household beginning July 1, based on the February economy food budget.

The economy food budget is not considered an adequate nutritional guide by many authorities. Even USDA says in one report that "a homemaker needs considerable skill and interest in buying and preparing food" if the economy plan is used.

Jurors Return To Weigh Verdict In Fraud Trial

DALLAS (AP) — A federal jury was to continue its deliberations today in the stock fraud and conspiracy trial of two former Texas officials and a Dallas businessman.

Defense lawyer Emmett Colvin told the jurors the government's case was "the most despicable thing I've ever seen in a courtroom. They've tried to perpetrate a fraud on you."

Before recessing after five hours of deliberation Saturday, the jury asked to see documents and charts entered as evidence and to hear portions of earlier testimony.

The three defendants are accused of using unregistered stock of RIC International, Inc. as collateral for large bank loans. Hoover is accused of one count of fraud, Carr and Osorio each are accused of four counts of fraud and conspiracy.

The panel was to resume at 9:30 a.m. its consideration of the case of former Texas Atty. Gen. Waggoner Carr, former state insurance commissioner John Osorio and businessman David Hoover.

Carr, acting as co-counsel in his own defense, also attacked the government's case, saying, "Brother, if they get away with something like that, none of us is safe."

In closing arguments Friday

ANDERSON MUSIC CO.
Everything in Music Since 1927
113 Main Ph. 263 2491

CHIROPRACTIC HELPS! NAUSEA
87.2% — WELL, OR MUCH IMPROVED
HALVARD HANSEN, D.C.
1004 ELEVENTH PLACE PH. 263-3324

Lasso can iron out many of the weed problems in Texas* cotton.



Including pigweed. Lasso controls pigweed like nobody's business, along with many other annual grasses and broadleaf weeds. You get good control that gives your Texas* cotton a better chance of becoming the kind of crop you're hoping to pick.

And Lasso is convenient to use. You don't have to incorporate. Put it on in a band, right behind your planter. Carryover? With Lasso, that's one thing you'll never have to worry about, because Lasso has no carryover. And if your cotton happens to be hailed out, you can still make a good crop of corn or soybeans, because Lasso is cleared for both of those crops.

Talk to your neighbors who've used Lasso. See if their experience doesn't confirm what we're saying. Then plan to use Lasso to iron out some of the weed problems in your cotton.



As with all agricultural products, read the Lasso label carefully before using.
*Lasso is recommended for cotton in only certain Texas counties. Check the label or ask your farm dealer for information about the specific list of counties.

8 APR 8

 <p>RIB ROAST USDA CHOICE BEEF 5th, 6th & 7th Rib Oven Ready LB. 1 09</p>	 <p>SPARE RIBS Lean and Meaty Lb. 99¢</p>	 <p>CHUCK ROAST USDA Choice Blade Cut Lb. 89¢</p>	 <p>Boneless HAMS Peyton's Water added Half, Whole, Sliced LB. 1 29</p>	 <p>PEYTONS DEL NORTE BACON Hickory Smoked Sliced LB. PKG. 89¢</p>
--	--	---	--	---

SODA POP
Big Red, Frosty Root Beer, Mt. Dew
49¢
1/2 GAL

Link Sausage
Arm Roast

Oscar Mayer For Easier Breakfast, Lb. **1 39**
USDA Choice Round Bone Shoulder Cut, Lb. **1 09**
Boneless Hams
N.Y. Cut Steaks

Peyton's Honey Dipped Half or Whole, Lb. **1 99**
USDA Choice Beef Lb. **2 69**

Rit "Tweety" **EGG COLORING**
PKG. **49¢**

EASTER CANDY
Spiced Jelly Bird Eggs 7 Lb. Pkg. **45¢**
Marshmallow Chicks & Rabbits 11 Oz. Pkg. **39¢**
Peanut Butter Eggs 9 Oz. Pkg. **75¢**
Hide N Seek Eggs (Individually Wrapped) 7 Oz. Pkg. **35¢**

FOODWAY DISCOUNT FOODS
PRICES EFFECTIVE APR. 8, 9, 10, 1974

NEFT FRESH **EGGS**
Grade A Small DOZ. **39¢**

KOUNTRY FRESH MARGARINE
SOFT LB. TUB **39¢**

Cake Mixes or Frosting Mix Kimball..... **39¢**
Reynolds Wrap Foil Heavy Duty 18" x 25' Roll..... **59¢**
Pitted Ripe Olives Lindsay Medium-300 Can..... **49¢**
Miniature Marshmallows Kraft-10 1/2 Oz..... **31¢**

SUGARY SAM YAMS
30 OZ. **49¢**

Kold Kountry **FRENCH FRIES**
2 Lb. **65¢**

Gillette Soft & Dry **DEODORANT**
8 OZ. **1 39**

Van Camp TUNA
3 1/4 OZ. **3 FOR \$1**

Heinz RELISHES
3 9 1/4 OZ. **1**

Kold Kountry **ORANGE JUICE**
12 OZ. **47¢**

BEER
FALSTAFF 12-OZ. CANS 6-PACK **99¢**

WINE
MATUES ROSE FIFTH **\$2 59**

SINGER SEWING SERIES
dressmaking with knits part 2

SINGER SEWING SERIES
for Home and Fashion
Section One And Section Two
FREE THIS WEEK
With Grocery Purchase
DELUXE 3-RING BINDER/INDEX **\$1 99**

TROPHY FROZEN STRAWBERRIES
Morton's Mince or Pumpkin Pies 10 OZ. **3 10 1**
20-oz. **3 FOR \$1 00**

Kold Kountry Whipped Toppings 10-oz. **49¢**
Kold Kountry Green Beans 20-oz. Pkg. **65¢**
Banquet Dinners 16 1/2-oz. **39¢**
(Spaghetti & Mt. Balls, Beans & Franks, Mac. & Cheese)

TOMATOES
FRESH LB. **23¢**

Fresh STRAWBERRIES
Calif. PT. Basket **49¢**

For Your Salad Bowl
Salad Bowl Lettuce
Red Leaf Lettuce
Butter Lettuce
EACH **19¢**

BANANAS
EXTRA FANCY LB. **10¢**

PORTALES YAMS
LB. **15¢**

AVOCADOS
Ripe for Salads EACH **29¢**

BIG K FLOUR
5 LB. BAG **79¢**

Head & Shoulders SHAMPOO
(Tube-Jar Lotion) Family Size **1 29**
DETERGENT WISK Heavy Duty Gal. **2 98**

STA-PUFF Fabric Softener
Fresh Mint 22-oz. Btl. **89¢**
VEL 1-Gal. **39¢**

KIMBELL CHARCOAL
10 LB. BAG **69¢**

8
A
P
R

8

BIG SPRING EMPLOYMENT AGENCY
 QUALIFIED JOBS
 Qualified Applicants
 PERMANENT BLDG.
 267-2535

Saddle Tanks For Pickups
 40 Gallon Capacity
 And All Types Of Tanks
 Will Fit Chev., Dodge, Ford, GMC,
 Long Wide Bed

DEALER FOR LINCOLN
 Fiberglass Toppers
 To Fit All Models
 Pickups, Long or Short
 Write or Call

Marshall Day Body Shop
 Sand Springs, Tex.
 Rt. 1, Box 318
 Big Spring, Texas 267-5249

Jaye's Flowers
 1013 Gregg
 267-2571

WE DO HAVE
 SEIBERLING
 "SEALED-AIR"
 Puncture-Proof
 TUBES
CREIGHTON TIRE CO.
 601 Gregg Dial 267-7021

RENT CARPET SHAMPOOER
 \$1 a day with purchase of
BLUE LUSTRE
 Big Spring Hardware Co.
 117 Main 267-5265

Alternator Starter
 Generator
 Sales & Service On
 All Makes Cars,
 Trucks — Foreign and
 Heavy Duty Equipment
BIG SPRING AUTO-ELECTRIC
 3313 E. Highway 80
 263-4175
 24-Hr. Service
 7 Days A Week

● PREFCAST CONCRETE
 PARTIO ACCESSORIES
 ● CONCRETE BLOCKS
 ● TOOLS & MAS. BLADES
 ● ALL FIREPLACE ACCESSORIES
 ● SEPTIC TANKS AND FEED TROUGHS
 Simplify Your Concrete Jobs
 Call 267-6348
Clyde McMahon
 READY MIX CONCRETE

LEE'S Rental Center And Fixit Shop
 Where You Can Rent Almost Anything
 E-Z HAUL RENTAL
 Leland Pierce, Owner
 1686 MARCY
 Phone 263-6925



News of Big Spring Business and Industry

Big Spring (Texas) Herald, Mon., April 8, 1974 7A



GREENHOUSE GIFT SHOP
D & M GARDEN CENTER
 Open Daily 9 - 5:30
 3209 W. Hwy. 80 Phone 263-4788

THOMAS
 TYPEWRITER AND OFFICE SUPPLIES
 Office Equipment and Supplies
 101 Main Dial 267-6621

HOME OF:
 Schwinn Bicycles
 Harley Davidson Motorcycles
 Sales & Service
CECIL THIXTON
 Motorcycle & Bicycle Shop
 908 W. 3rd

To Report Telephone Out of Order
 Dial "0"
 Ask for Repair Service
 Wes-Tex Telephone Co-Operative, Inc.
 Stanton, Texas

One Day Processing of Kodacolor Film
Keaton Kolor
 1309 Gregg

Piper Flight Center
 AIR AMBULANCE
 FLIGHT INSTRUCTION
 RENTALS CHARTERS
 Big Spring Aircraft, Inc.
 Howard County Airport
 263-8444
 Piper Sales & Service

Professional PHARMACY
 267-2546
 Drive-In Window
 10th & Main St.

Drive-In Prescription Window
 Hearing Aid Batteries
Carver Pharmacy
 310 E. 9th 263-7417

Bennett's PHARMACY
 Drive-In Prescription Service
 305 W. 16th 263-1751

HOME REAL ESTATE
 JEFF BROWN, Realtor
 Periman Building 3-HOME

Things Hopping Around Highland T.G. & Y. Store

Things are hopping out at T.G.&Y. at Highland Mall. It may be because they have such a wide selection of stuffed Easter bunnies. They also have a colorful and varied selection of Easter baskets, chocolate eggs and assorted Easter candies.

If you are looking for an item to brighten up Easter for your child or grandchild, drop out to Highland to T.G.&Y. They also have postal facilities if you wish to mail an Easter surprise to your grandchild or a special Easter greeting card to somebody.

If you're still doing some last minute sewing for Easter, by all means drop by their fabric section or check for other sewing needs. In fact, T.G.&Y. offers a wide selection of needs for the home and the family. There are school and office supply needs,

utensils, men's, women's and children's departments, toys, and appliances as well as the Fabric Center. When you're just needing to catch up on things you need around the house, drop by the T.G.&Y. store for a browsing and shopping tour.



EASTER SELECTION ... Pearl Cantu looks it over

Shaklee Home Products Are Sold By Local Distributors In Big Spring

Shaklee Products keep the household and commercial concern basically clean with such items Basic-H (dishwasher), Basic-I (rug), Basic-D (dishwasher), Basic-R (rug), Basic-I (industrial) and others, according to Mrs. Lambert Misk, local distributor. "Basic H is not only excellent as a household cleaner but will kill that bathtub ring," Mrs. Misk added. "When used with SAC in a certain attachment or detergent the growth of mildew in the shower stall, she further claimed. The complete line of Shaklee Food-Supplements include such items as Instant Protein, Vita-Lea, Vita-E and others. Mrs. Misk pointed out that they are natural body builders prompting digestion, circulation, and "give energy for this fast life we all live today." "To add the personal touch," Miss Misk stated, "We have a complete line of Louve Cosmetics for the ladies, Shaklee Golden Manor for men and Small-Wonder for the small fry." These biologically assimilated natural SHAKLEE products can be purchased from the following distributors: Mr. and Mrs. Lambert Misk, telephone 263-7276; Mr. and Mrs. Manasco, 263-6573; Mr and Mrs. E. G. Newcomer 263-4578; Mr. and Mrs. Maxie Cole 267-7668; Mr. and Mrs. James Curry, 267-6489; and Mr. and Mrs. Earl Newcomer, 353-4891.



DISCUSSION — Mr. and Mrs. J. Don Manasco and Mrs. Lambert Misk discuss the need and importance for using Shaklee Algacidal Control (SAC) in swimming pools for killing algae and other harmful bacteria that cause ear and eye infections.

T.G.&Y. FAMILY CENTER
 COLLEGE PARK SHOPPING CENTER
 Professional Flower Arranging for any occasion.

Nalley-Pickle Funeral Home
 Understanding Service Built Upon Years of Service
 A Friendly Counsel In Hours of Need
 906 Gregg Dial 267-6331

GIBSON'S
 Discount Center
 A True Discount Center Where "All" Items Are Discounted.
 2309 SCURRY
 Open 9 A.M. To 10 P.M.

5.39% Yield ON PASSBOOK ACCOUNTS
 5.25% RATE.
BIG SPRING SAVINGS
 Interest Compounded Daily — Payable Quarterly

Urbitty Memorial Park

T.G.&Y.
 HIGHLAND SHOPPING CENTER
 U.S. POSTAL SUBSTATION
 Mon.-Sat. 9-9

HESTER & ROBERTSON
 MECHANICAL CONTRACTORS, INC.
 Carrier
 North Birdwell Lane — 263-8342

ELECTRICAL WORK
 Residential, Commercial
HASTON ELECTRIC
 109 Gollad 267-5103
 GENE HASTON, Owner

MEMBER FEDERAL RESERVE BANK
THE STATE NATIONAL BANK
 BIG SPRING, TEXAS.

Tired? No Energy?
try SHAKLEE
 Instant Protein & Food Supplements
 Also try:
 Our Basic H Organic Cleaner & Beauty Treatment Products.
 Stop pollution with SHAKLEE products. Ask about our business plan.
 263-4578 or 263-7276

CARTER FURNITURE
 HAS THE BEST SELECTION OF SPANISH AND EARLY AMERICAN FURNITURE IN TOWN
 202 SCURRY
 CALL 267-6278

For Gifts Unusual and Unique
 Do come looking
 At **Inland Port 213**
 213 Main

Now 5% INTEREST
 Compounded Quarterly
 On Your Savings at
SECURITY STATE BANK

ELOISE PERSONALIZED HAIR FASHIONS
 SPECIALIZING IN BLOW CUTS & MEN'S HAIR CUTS
 WE HANDLE THE COMPLETE LINE OF REDKEN PRODUCTS
 1907 Birdwell 267-5025

BERNARD'S SHOE STORE
 SHOES FOR ENTIRE FAMILY
 Also Handbags & Hosiery
 Mon.-Fri.—10 A.M.-5:30 P.M.
 Sat. 10 A.M.-6 P.M.
 208 Main 263-1263

MONTGOMERY WARD
 Auto Service Hours: 8 A.M. to 5 P.M.
 HIGHLAND CENTER
AUTO SERVICE SPECIAL
 6001
Complete Lube Job and Oil Change!
 We'll Put In 5 Qts. Heavy Duty Oil and Lubricate Your Car To Help Keep It Running Smoothly.
4.00
 MOST U.S. CARS

8 APR 8

Pays you cash in addition to any other insurance.

Now! \$30-a-day lifetime hospital insurance protection for any age, any size family.

Pays you, your insured wife and children \$30 a day to help pay for hospital bills.

With inflation, hospital bills may be bigger than you expected. This plan helps pay for what your basic hospitalization insurance may not cover. And it pays the same \$30 a day when your insured wife or youngsters are hospitalized.

No limit to number of days you're covered.

As long as your policy continues in force, you get \$30 a day for every day you're hospitalized for a covered sickness or accident. We pay cash benefits directly to you unless you say otherwise.

Pays you from the first day of each covered hospitalization.

You're fully covered for accidents, starting on the very day your policy is issued. You are not covered for new sicknesses until your policy is 30 days old. However, this is a one-time-only waiting period. After that, any new sickness is covered immediately.

Pays you 50% more cash benefits for cancer and heart attacks.

These are among the most costly diseases to treat. That's why we increase your daily cash benefits 50%—to \$45 a day—when you or an insured member of your family are hospitalized for cancer (including Leukemia and Hodgkin's Disease) or heart attack (acute myocardial infarction, coronary thrombosis and coronary occlusion).

We guarantee to issue you a policy.

We will issue your policy and put it in force as soon as we receive your Enrollment Form. You have 10 days in which you can examine it. If you change your mind, simply return the policy within the 10-day period, and we will refund your money in full. Naturally, you can only have one policy of this type with the company.

There's no automatic rate increase when you reach 65, no decrease in your benefits.

When you reach 65, you continue to pay the same rate based on your age when you enrolled. And you're still eligible for the full \$30-a-day benefits. What a comfort at the age when you may need protection the most.

Renewal provision. We cannot drop you or raise your rates because of age, health or number of claims.

This policy offers you benefit protection for life. As long as your premiums are paid, you can count on \$30-a-day benefits when hospitalized for a covered sickness or accident—even if such hospitalization lasts the rest of your life. The only way we can change a rate or cancel a policy is if we do the same for every policy in the state where you live.

\$30 a day for maternity.

Having a baby can be just as expensive as any other cause of hospitalization. So, after your policy is 10 months old, Physicians Mutual pays \$30 a day when your insured wife is hospitalized for pregnancy or any consequence thereof.

Pays double benefits when you and your wife are hospitalized at the same time due to accidents.

When you and your wife are both insured—and hospitalized at the same time because of an automobile or other accident—you collect double benefits: \$60 a day each—\$120 for both.

You can purchase this valuable protection by mail with confidence.

Our company has been run by doctors since 1902. More than 1 million Americans of all ages, in all walks of life, are covered by various Physicians Mutual hospital insurance plans. Last year, we paid more than \$44 million in benefits to our policyholders.

Here's what the plan does not cover.

- Sickness is not covered during the first 30 days that your policy is in force. After this one-time-only waiting period, new sicknesses are covered immediately.
- Pre-existing conditions are not covered for one year after your policy is put in force. (Pre-existing conditions are health problems that became evident or were medically treated before the effective date of your policy.) From then on, a health condition you have now or have had before will be covered the same as any new condition for hospitalization commencing one year after your policy is issued.
- Not covered is hospitalization due to alcoholism, drug addiction or any condition for which you get Workmen's Compensation or Employers Liability Law benefits.
- Pregnancy or any consequence thereof is not covered unless your wife is also insured under the plan and your policy has been in force for 10 months.
- The plan does not cover confinement in convalescent, extended-care or self-care units of hospitals, in nursing homes, and in Federal hospitals.
- New-born infants are not covered for hospital "well baby" care. Additions to your family, however, are covered automatically at birth for all other covered sicknesses and accidents if your present child or children are insured under the plan.
- Hospital confinement due to mental disorders is not fully covered. Physicians Mutual will pay you half-benefits . . . \$15 a day . . . for up to 4 weeks when hospital confinement is due to a mental disorder. And you can collect half-benefits for as long as 4 weeks again if you are hospitalized for the same condition after you have resumed your normal activities for 6 months.

Mail your Enrollment Form today without fail.

To get \$30-a-day lifetime hospital insurance protection, fill out this brief Enrollment Form, and mail it with your first month's premium. That's all it takes to start you and your family toward the security of knowing there'll be \$30 a day coming in each and every day of covered hospitalization as long as your policy remains in force! Remember, the cost of hospital care is going up, up, up. This plan helps you fight inflation, while you're protecting yourself and your family.

ACT NOW: You cannot be covered until we receive this form!

NEW:

Pays equal benefits...\$30 a day...for you, your wife and the youngsters.

No limit to the cash benefits you can collect as long as your policy remains in force.

No limit to the number of covered days when you're hospitalized.

No rate increase when you turn 65, and no cut in your daily cash benefits.

FOR EXAMPLE: You would get \$210 for 7 days in the hospital . . . \$900 for 30 days . . . and so on, with no end to the amount you would collect. With this kind of money, you might not have to touch your savings . . . or borrow . . . to pay expenses your basic hospitalization doesn't fully cover. Read the details now. Then enroll today, using the Enrollment Form on this page.

\$1 ENROLLS YOU, YOUR WHOLE FAMILY IN THIS NEW PLAN FOR THE FIRST MONTH.

This pays not only for you, but for every member of your family you wish insured no matter how many there are. The table below shows the monthly renewal rate.

REMEMBER: Your monthly rate never goes up as you move from one age bracket to the next.

Monthly Renewal Rates	YOUR PRESENT AGE	INDIVIDUAL COVERAGE (Male or Female)	FOR YOUR WIFE,* ADD ON
	Under 35	\$ 6.95	\$ 3.30
35-49	9.00	4.85	
50-64	11.20	6.60	
65 and over	16.90	8.35	

*Use husband's age for husband-and-wife coverage.

To insure all of your children, simply add \$ 2.05 to your monthly renewal rate. The plan covers all of your children from birth to 21 years of age who are unmarried and live at home. New additions to your family are then covered automatically at birth except for "well baby" care, and at no increase in the monthly cost.

FILL OUT AND MAIL THIS ENROLLMENT FORM NOW. NO SALESMAN WILL CALL.

Physicians Mutual Hospital Indemnity Policy
ENROLLMENT FORM NO. 4012-44

INSURED'S NAME Mr. Mrs. Miss First Middle Initial Last

ADDRESS Street or RD#

CITY STATE ZIP

AGE DATE OF BIRTH Month Date Year SEX: MALE FEMALE

Check here if you want coverage for your wife. Her First Name Middle Initial Date of Birth Mo. Day Yr.

Check here if you want coverage for your children.

I have enclosed my first month's premium of \$1.00 and hereby apply to Physicians Mutual Insurance Company, Omaha, Nebraska, for the Hospital Indemnity Policy, Form P340 Series. I understand the policy is not in force until actually issued, and that benefits will not be paid for pre-existing conditions (old health problems) unless confinement begins one year after the issue date.

Signed Insured's Signature. Please SIGN—Do Not Print Date _____

FORM E-340-A-76-X 344-1013A Rev. 3/15/74

Please make check or money order payable to:
Physicians Mutual Insurance Co., 115 South 42nd Street, Omaha, Nebraska 68131

Physicians Mutual Insurance Company
115 South 42nd Street, Omaha, Nebraska 68131

B
SECTION
Bris
To
HOUSTON (A
Dolph Briscoe
nation's school
education to bu
to keep school

SAFE
Hu
A sure w
their fav
you get
removed
Guarant
Yo

LISTERINE
A sure w
their fav
you get
removed
Guarant
Yo

Ora
Sunkist Navel
Sweet & Juicy
Green
Red R
Loc
Collard
Fresh C
Crunch
Leaf L

Brim
MAXI

BIG SPRING HERALD

SECTION B

BIG SPRING, TEXAS, MONDAY, APRIL 8, 1974

SECTION B

Briscoe Urges School Trustees To Develop Ties With Industry

HOUSTON (AP)—Texas Gov. Dolph Briscoe has urged the nation's school boards to gear education to business needs and to keep school control at the local level.

"Too many of our high school and college graduates are completing their education without the knowledge or skills to make

them employable," Briscoe told the 34th annual convention of the National School Boards Association Sunday.

"With increasing frequency

the development of business and industry is being impeded by an inadequate supply of needed personnel."

The governor also said "the

erosion of local control" of public schools must be halted.

"In my opinion one of the greatest threats to the continued development of our system of public education is the many constraints placed on the local policy-making process," Briscoe said.

He challenged school board members to adopt a system of accountability in their districts.

"If public schools are to close the widening credibility gaps, a system of evaluation must be built into all public school programs," he said.

Barbara D. Reimers, NSBA president and a trustee from Branford, Conn., told the board members she believes every school district needs input from teachers.

Migrants To Get Gasoline Help

WASHINGTON (AP) — The Agriculture Department says it will help assure migrant farm workers enough gasoline this season to follow crop harvests northward.

Do Your FALSE TEETH Drop, Slip, or Fall?

Don't keep worrying about your false teeth dropping at the wrong time. A denture adhesive can help. FASTEETH gives dentures a longer, firmer, stickier hold. Makes eating more enjoyable. For more security and comfort, use FASTEETH Denture Adhesive Powder. Dentures that fit are essential to health. See your dentist regularly.

Ask Your Wife to Dinner

(and bring along the kids)



You've got a great meal comin' when you come into FURR'S

CAFETERIAS

SAFEWAY

LOW PRICES EVERY DAY Plus SPECIALS!



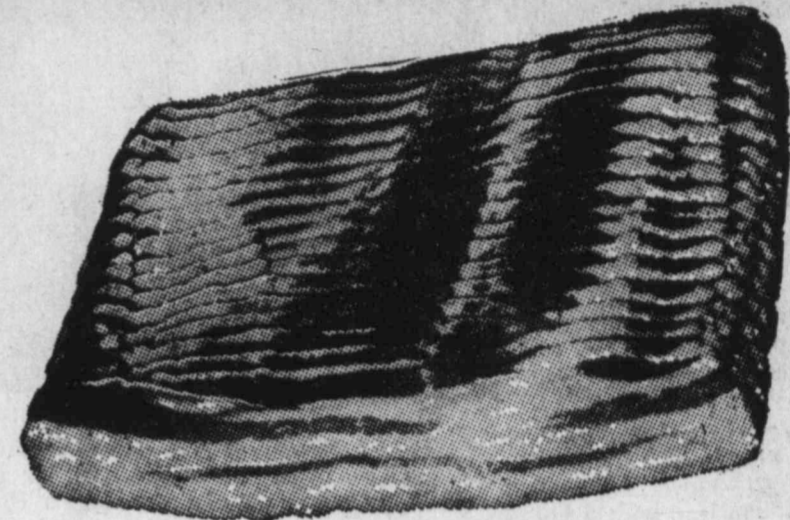
we welcome FOOD STAMP SHOPPERS

Bacon 85¢
Sliced Slab, Rindless (Safeway Bacon No. 1 Quality—1-Lb. Pkg.) —Lb.

Beef Short Ribs 49¢
Plate USDA Choice Grade Heavy Beef —Lb.

Ground Beef 88¢
Regular, Safeway (2-Lb. Chub \$1.75) —Lb.

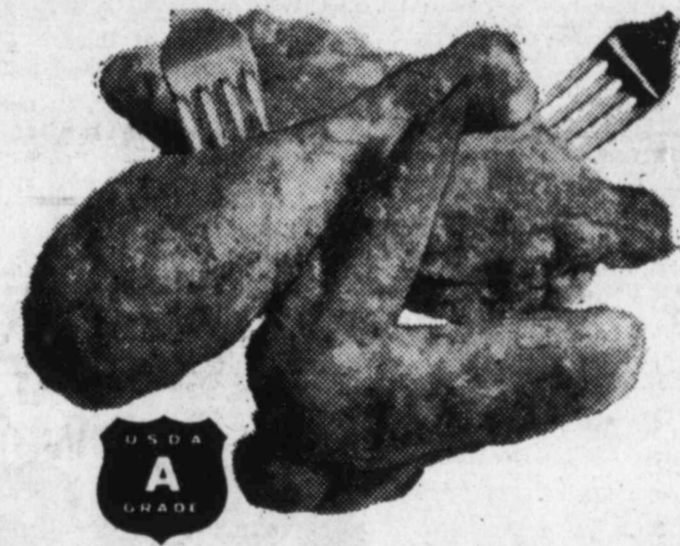
Beef Rib Steak \$1.19
Small End, USDA Choice Grade Heavy Beef (Beef Rib Roast Large End—Lb. \$1.09) —Lb.



- Finest Quality Meats!**
- Armour Bacon 1-Lb. \$1.08
 - Rath Bacon 1-Lb. \$1.08
 - Link Sausage 1-Lb. 79¢
 - Canned Ham 3-Lb. \$4.49
 - Canned Ham 5-Lb. \$6.98
 - Boneless Ham Halves, Swift's Premium Hostess —Lb. \$1.98

- Safeway Meats Are Guaranteed!**
- Chicken Hens Fresh, Under 7-Lbs. USDA Insp. Grade 'A' —Lb. 49¢
 - Lean Ground Beef Freshly Ground! —Lb. \$1.19
 - Boneless Ham *Halves or *Nuggets, Safeway, Smoked —Lb. \$1.89
 - Sliced Bologna Safeway, Large Size *Regular or *Thick 1-Lb. Pkg. 98¢
 - Chipped Meats Safeway, Thin Sliced 3-oz. Pkg. 45¢

Hungry For a Juicy Steak?
A sure way to please your family or that man in your life is to serve their favorite cuts of tender, juicy full-flavored Beef. At Safeway you get USDA Choice Grade Heavy Beef, with excess fat and bone removed. You'll go home with the famous Safeway Money-Back Guarantee of Full Satisfaction. That's what makes Safeway... **Your People-to-People Store!**



FRYERS 39¢
Fresh, USDA Inspected Grade 'A' (Cut-up, Regular—Lb. 47¢)
Whole —Lb.

Lunch Meat 45¢
Safeway, Sliced *Beef Bologna *Sliced *Olive *Macaroni & Cheese *Pickle-Pimiento 4-oz. Pkg.
Wieners 69¢
Safeway, Tender! (Hot Dogs Armour 5oz.—12-oz. Pkg. 75¢) 12-oz. Pkg.

Listerine 49¢
Antiseptic. Safeway Special! 7-oz. Bottle

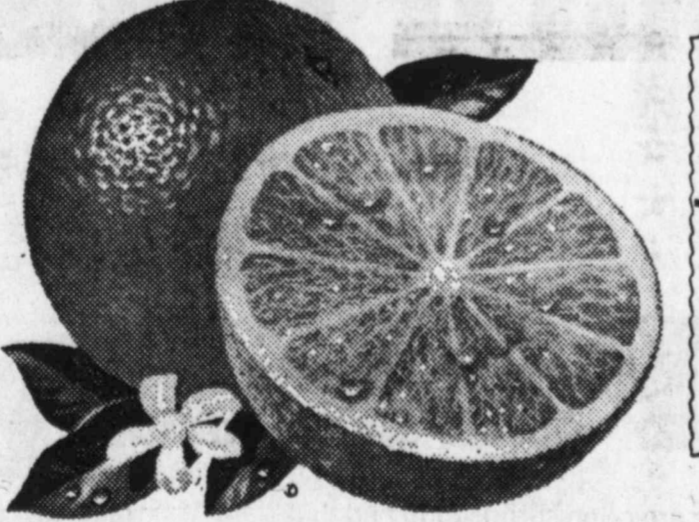
Aspirin 18¢
Tablets, Safeway. Safeway Big Buy! 100-Ct. Bottle

Cake Mix 15¢
Py-O-My, Easy! Safeway Reg. Big Buy! Pkg.

Can Pop 10¢
Snowy Peak. Refreshing! Safeway Big Buy! 12-oz. Can

Garden Fresh Fruits and Vegetables!

Oranges 19¢
Sunkist Navel, California Sweet & Juicy! Great Snacks! —Lb.
Green Onions 10¢
New Crop —Bunch
Red Radishes 10¢
Tasty! —Bunch



Honeydew 59¢
Melons, Large Size —Each
Pineapples 59¢
Cayenne Variety —Each

Loaded With Vitamins!

- Collard Greens Rich in Minerals! —Bunch 19¢
- Fresh Carrots Safeway, For Vitamin 'A'! 2-Lb. Bag 29¢
- Crunchy Celery California, Long Shank —Each 29¢
- Leaf Lettuce Green, Large Size —Each 29¢

Cucumbers 19¢
Firm & Fresh! —Each
Red Cabbage 19¢
For Colorful Salads! —Lb.
Artichokes 33¢
California, New Crop! —Each

Compare Safeway Variety!

- White Onions US #1, Medium Size —Lb. 19¢
- Yellow Squash New Crop, Tender! —Lb. 39¢
- Blackeye Peas A Hearty Dish! 12-oz. Cans 39¢
- Orange Juice Safeway, Pure 1/2-Gal. Decan. 89¢

Everyday Low Prices!

- Detergent Parade, Gets Clothes Clean! —49-oz. Box 57¢
- Liquid Bleach White Magic Gallon Pastic 39¢
- Trash Can Liners Kitchen Craft 30-Gal. Size 10-Ct. Pkg. 69¢
- Paper Plates Brocade, 9-Inch 100-Ct. Pkg. 58¢

Money-Saving Values!

- Mouthwash Safeway, Refreshing! —16-oz. Bottle 38¢
- Toothpaste Safeway Brand 7-oz. Tube 57¢
- Toothbrushes Safeway Brand —Each 39¢

Brim Coffee \$1.44
Freeze-Dried, Decaffeinated 4-oz. Jar

Soft & Dri \$1.49
Anti-Perispirant 8-oz. Can

Miss Breck Hair Spray 79¢
13-oz. Can

Shampoo Head & Shoulders \$1.29
4-oz. Tube \$1.35
*7-oz. Bottle \$1.29 | *5-oz. Jar \$1.47

Corn Muffin Mix 33¢
Jiffy 2 1/2-oz. Pkg.

- Spaghetti & Meatballs Autes—15-oz. Can 44¢
- Dinner Nopkins Kitchens—50-Ct. Pkg. 34¢
- Pre-Wash Faultless—14-oz. Can 78¢
- Spray Starch Faultless—22-oz. Can 69¢
- Unsalted Mazola Margarina—16-oz. Pkg. 67¢
- Macaroni & Cheese Casserole, Stouffer's—12-oz. Pkg. 59¢
- Stouffer's Souffle *Corn *Spinach, Frozen—12-oz. Pkg. 59¢
- Cup Cakes Stouffer's *Yellow *Devil's Fudge, Frozen—10-oz. Pkg. 79¢
- Field's Pecan Pie Frozen—32-oz. Pkg. \$1.88

WEXFORD CRYSTAL TABLE TUMBLER 39¢

TOPAZ STONWARE WEEKLY FEATURE SOUP/CEREAL BOWL 49¢
WITH EACH \$3.00 PURCHASE

Prices Effective Mon., Tues. & Wed., April 8, 9 & 10, in Big Spring, Tex. No Sales to Dealers.

SAFEWAY
© Copyright 1974, Safeway Stores, Incorporated.

8 APR 8

NEW LOW PRICE

BETTER BEEF FOR LESS MONEY

FOOD STAMPS WELCOME AT NEWSOMS—Double Green Stamps - Mon.-Tues.-Wed.

ROUND STEAK NEW LOW PRICE **LOOK!** **99¢** LB...

CLUB STEAK NEW LOW PRICE **LOOK!** **99¢** LB.....

CHUCK ROAST NEW LOW PRICE **LOOK!** **79¢** LB.....

SIRLOIN STEAK NEW LOW PRICE **LOOK!** **99¢** LB.....

T-BONE STEAK NEW LOW PRICE **LOOK!** **\$1.79** LB.....

BACON COLUMBIA 1-LB. SLICED **59¢** LB. **EXTRA LEAN Ground Chuck** Lb. **99¢**

FRYERS **39¢** **WHY PAY MORE?** **FRESH DRESSED** LB.

FROZEN FOODS
PERCH BONELESS FILLETS, 1-LB. PKG. **79¢**
SHRIMP COCKTAILS 4-Oz. Glass **3 FOR \$1**
TV DINNERS BANQUET 9 VARIETIES **2 FOR \$1**
ORANGE JUICE Bright & Early 12-OZ. CAN ... **3 FOR \$1**
POT PIES SPARETIME, 3 VARIETIES 6-OZ. PKG. **6 FOR \$1**

CANTALOUPE Vine Ripe **3 FOR \$1**

FRIED CHICKEN **\$1** **SPECIAL TUES. WED. EACH** FRIED TO A CRISP GOLDEN BROWN IN THE KOUNTRY KITCHEN

ONIONS NEW CROP YELLOW LB. **7 1/2¢**
POTATOES 10-LB. PLIO BAG **\$1.15**
CABBAGE FRESH GREEN, LB. **5¢**

DOUBLE STAMPS MON.-TUES.-WED.

GREEN BEANS GREEN GIANT CUT 303 CAN **4 CANS \$1**

TOMATOES WHITE SWAN WHOLE - PEELED 16-OZ. CAN **4 CANS \$1**

SPINACH DEL MONTE 303 CAN **4 CANS \$1**

PORK & BEANS KOUNTY KIST 15-OZ. CAN **6 FOR \$1**

GREEN GIANT 17-OZ. CAN PEAS **4 FOR \$1**

AVOCADOS FRESH GREEN **2 FOR 29¢**

HOMINY VAN CAMP GIANT 20-OZ. CAN **5 FOR \$1**

FRUIT COCKTAIL DEL MONTE 16-OZ. CAN **3 FOR \$1**

BEETS DEL MONTE 16-OZ. CAN **4 For \$1**

BEDDING PLANTS

JUST ARRIVED — OVER 8000 FROM WHICH TO CHOOSE — GROUND COVERS
 • FLOWERING PLANTS • BORDER PLANTS — HOUSE PLANTS — GRAPE — STRAWBERRY — ASPARAGUS — RHUBARB — GERANIUMS — MUMS — MARIGOLDS — IMPATIENS — COLEUS — THOUSANDS 'N THOUSANDS!

EGGS GRADE A SMALL DOZEN **39¢**

GREEN BEANS GREEN GIANT WHOLE, 17-OZ. CAN **3 FOR \$1**

BIG TEXAS — GIANT 46-OZ. CAN GRAPEFRUIT JUICE ... **39¢**

NEWSOMS

8

APR

8

DENNIS THE MENACE



"AN' AFTWARDS WE TOASTED NUSHMELONS!" "MARSHMALLOWS."

JUMBLE—that scrambled word game

Unscramble these four Jumbles, one letter to each square, to form four ordinary words.

MAHRE

YOVIR

FREPER

PROOCE

Print the SURPRISE ANSWER here

Now arrange the circled letters to form the surprise answer, as suggested by the above cartoon.

(Answers tomorrow)

Saturday's Jumble: EIGHT JOKER COMMON BECAME
Answers: How to avoid being an outsider—ENTER

Crossword Puzzle

ACROSS

1 "Jug of wine and thou" man
5 O.T. false
9 Weathercock
13 Male name, meaning "dog"
15 Consequently
16 Swear
17 Actress
18 Meadow
19 Got up
20 Florida resort
22 Backbones
23 Sawbucks

DOWN

1 Geese in Genoa
2 Mia or Cass
3 Winged
4 Comparative
5 Slugs
6 Region
7 Turkish official
8 Behold!
9 Alternates
10 Shakespeare's river
11 Proboscis
12 Sheepish females

ACROSS

24 Be soporific
25 Latin American Indians
28 Dolley and James
32 Twins' Tony
33 Savage
34 Compete
35 Paragon
36 — de France
37 Sage or maca
39 Compass point
40 Bowling alleys
42 Stropped
43 Late in flowering
45 Lovers

DOWN

14 Long season starting now
19 — bring May doubleheaders
21 — and offs
22 Fountain drink
24 Reveals
25 Reaches
26 Unaccompanied
27 Passenger
28 Scuffle
29 Sheepish antelope
30 More likable
31 Plants
33 Helsinki
38 Idaho products
41 Right-hand man
44 Harangues
45 Do, on the Dea
47 Sporty fabric
48 Liquify
49 Century plant
50 Gainer, e.g.
51 Beget
52 You bet!
53 Indian
54 Holy benches
56 Gluten
59 Note

Solution to Saturday's Puzzle:

1	2	3	4	5	6	7	8	9	10	11	12
13				14				15			16
17								18			19
20								21			22
23											
25	26	27						28			29
30								31			32
33								34			35
36								37			38
39								40			41
42								43			44
45								46			47
48	49	50						51			52
53								54			55
56								57			58
59								60			61
62								63			64

PEANUTS



NANCY



DICK TRACY



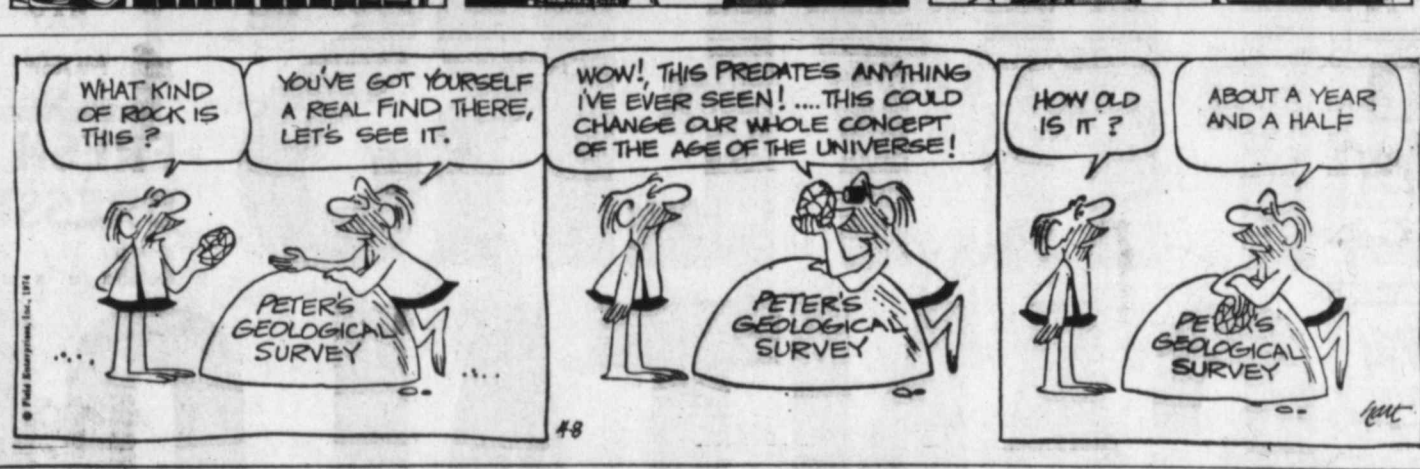
MARY WORTH



REX MORGAN



B.C.



BLONDIE



BEEBLE BAILEY



ANDY CAPP



WIZARD OF ID



BUZZ SAWYER



GASOLINE ALLEY



L'L ABNER



RICK O'SHAY



SNUFFY SMITH



Prices In This Ad Are Effective Thru 4-10-74

BAN CAE ORA POT GRE ASE DRE SPI TEA REL PIC OLI CHI BROWNI

WHY A-GIR PARTY



SPRING SAVING

Prices In This Ad Are Effective Thru 4-10-74

CARROTS	TOP FRESH FANCY, 1-LB. CELLO BAG	2 FOR 29¢
CELERY	CALIFORNIA FINEST PASCAL STALK, EACH	22¢
BANANAS	CENTRAL AMERICAN GOLDEN RIPE LB.	10¢
CABBAGE	TEXAS GREEN LB.	8¢
ORANGES	CALIFORNIA FINEST NAVAL, LB.	4 FOR 1.00
POTATOES	ALL PURPOSE RUSSETS 10-LB. BAG	\$1.56

BEEF ROAST	FURR'S PROTEN SHOULDER LB.	Advertised Special	89¢
CHUCK ROAST	FURR'S PROTEN LB.	Advertised Special	79¢
RANCH STEAK	FURR'S PROTEN LB.	ADVERTISED SPECIAL	93¢
GROUND BEEF	FRESH GROUND LB.	ADVERTISED SPECIAL	83¢
DELUXE RIBS	FOR BAR-B-QUE FURR'S PROTEN LB.	ADVERTISED SPECIAL	69¢
STEW MEAT	FURR'S PROTEN LEAN CUBES LB.	ADVERTISED SPECIAL	98¢
SIRLOIN STEAK	Furr's Proten Lb.		98¢
ROUND STEAK	Furr's Proten Lb.		98¢
T-BONE STEAK	Furr's Proten Lb.		\$1.45
FRYERS	Fresh, Whole USDA Inspected, Lb.		39¢
FRANKS	Frontier 12-oz. Package		69¢
SMOKED SAUSAGE	Eckrich Lb.		\$1.49

GREEN BEANS	FOOD CLUB CUT, NO. 303 CAN	3 FOR 69¢
ASPARAGUS	FOOD CLUB, ALL GREEN CUT, NO. 300 CAN	48¢
DRESSING	KRAFT FRENCH 3-OZ. BOTTLE	3 FOR \$1.00
SPINACH	FOOD CLUB NO. 303 CAN	3 FOR 69¢
TEA	INSTANT NESTEA OR LIPTON 3-OZ.	1.19
RELISH	DEL MONTE SWEET RELISH 7 3/4-OZ. JAR	3 FOR \$1.00
PICKLES	HEINZ HAMBURGER DILL 16-OZ.	39¢
OLIVES	FOOD CLUB VANZANILLA 5-OZ. JAR	55¢
CHIPS	FARM PAC POTATO PACKAGE	58¢
BROWNIE MIX	Duncan Hines 23-oz. Pkg.	73¢
HI-C DRINKS	Ass'd. Flavors 46-oz. Can.	38¢



DUE TO THE CRITICAL PAPER SHORTAGE...
Furr's is unable to acquire enough shopping bags to meet our customer's needs. You can help us solve this problem by bringing your bags back so that we may re-use these bags for your purchase. Your help will be appreciated by Furr's Super Markets.

GOLDEN CORN
FOOD CLUB CREAM STYLE OR WHOLE KERNEL, NO. 303 CAN

3 FOR 69¢

Frozen Food Favorites

APPLE PIES	TOP FROST, FRESH FROZEN, 26-OZ., EACH	73¢
LEMONADE	TOP FROST, FRESH FROZEN, 12-OZ. CAN	26¢
POT PIES	TOP FROST, FRESH FROZEN, BEEF, CHICKEN, OR TURKEY 3-OZ. PACKAGE	29¢
WAFFLES	Top Frost, Fresh Frozen, 10-oz.	31¢

ICE CREAM

FARM PAC SQUARE CARTON	1/2-GAL.	78¢
TOMATOES	Food Club No. 303	4/\$1.00
BEANS	Ranch Style No. 300	29¢
FABRIC SOFTENER	TOPCO 1/2-Gal. Size	69¢
PEANUT BUTTER	FOOD CLUB Smooth or Crunch 18-oz.	67¢

FURNITURE POLISH

Topco 14-oz. Aerosol

49¢



ANOTHER EXCLUSIVE FROM FURR'S!

Why-Wear-A-Girdle Panty Hose by Slendo

Sheer Multi-Filament Legs and Control Panty. Ribbed Control Panty gently slims & trims tummy & hips. Luxuriously Sheer Multi-filament nylon legs. Sewn-on waistband. Flat Knit Legs. Makes Panty Hose obsolete. Nationally advertised for \$1.69

\$1.49

SPECIAL INTRODUCTORY PRICES GOOD THRU APRIL 13, 1974

Holeproof Ampton® Sheer All Nude Panty Hose Sandalfoot, 2 sizes fit all, 5 beautiful shades, Reg. 99¢, pair

66¢

Our Own Holeproof Knee-Hi Nylon Hose 4 Beautiful Colors. 1 size fits all. Pr. **3/\$1.00**

PHILLIPS

Milk of Magnesia Reg. or Mint 12-oz. Btl.

89¢ ea

CONTAC

12-HOUR RELIEF

99¢

CAPSULES 10-COUNT PACKAGE

DEODORANT

Dial - Regular or Powder 14-oz. Size

\$1.19

Final Net HAIR SPRAY

12-OZ. SIZE

\$1.59

MR. BUBBLE Bubble Bath Beads 2-oz. Box

44¢

MOUTHWASH Oraltone Pt. Bl.

29¢

SHOP Furr's MIRACLE PRICES

8
A
P
R
8

Deaths From Violence Maintaining Low Ebb

By The Associated Press

Deaths from violence are maintaining a welcome low ebb in Texas.

During the weekend the toll from 6 p.m. Friday to midnight Sunday amounted to 15 fatalities — 12 in traffic accidents, two in a plane crash and one fatal shooting.

These were among the victims:

Rocky Lynn Wilson, 15, of Comanche was killed and a companion injured critically Sunday in a one-car accident six miles north of Comanche in Texas 16. Wilson's companion was Marion Ricky Millos. Officers said the car ran off the highway and overturned.

GO-CART CRASH

Two children, both under 5, were killed Sunday in a one-car accident 10 miles east of Chillicothe. The parents, Mr. and Mrs. Henry McCoy of Killeen, were injured.

Kenneth R. Shaffer, 49, of Houston was killed Sunday when a go-cart crashed through

double glass doors at a door. Shaffer, his teen-age son and another youth were taking turns riding the vehicle on a Houston parking lot.

Jerry Lee Bates, 23, of Houston was shot to death at a residence Sunday. Police said the shooting capped Bates' argument with two other men.

Two Dallas men died Saturday when their airplane crashed near Sherman in North Texas. They were Charles Lobert, 34, and Donald B. Dreyfuss, 36.

CAR FLIPS

Travis Darol Phillips, 28, of Arcadia died late Saturday when his car left Farm Road 2004 eight miles southeast of Angleton in Southeast Texas.

Investigators said Ylario Perez Hernandez, 30, of Kingsbury died Saturday when his car overturned on Sarm Road 1339 about two miles east of Texas 123 near Seguin in South Central Texas.

Dewayne Raymond Gerber, 25, of Umbarger was killed

about 3 a.m. Saturday when his car overturned about seven miles southwest of Bushland in the Panhandle.

Two Longbranch men died early Saturday when their car flipped into a deep ravine after leaving Texas 315 about nine miles east of Mount Enterprise in East Texas. Officers identified the men as Riley Boatley, 28, and Jess T. Kinds, 37, both of Longbranch.

Two Dallas soldiers suffered fatal injuries Sunday night in suburban DeSoto en route back to Ft. Hood—Leonard Anderson, 18, who died before reaching a hospital and Bobby Don Monroe, 19, who succumbed at 4:30 a.m. today. Officers said their car apparently tried to pass another on the right and hit a truck parked at the side of Interstate 35.

Two Dallas soldiers suffered fatal injuries Sunday night in suburban DeSoto en route back to Ft. Hood—Leonard Anderson, 18, who died before reaching a hospital and Bobby Don Monroe, 19, who succumbed at 4:30 a.m. today. Officers said their car apparently tried to pass another on the right and hit a truck parked at the side of Interstate 35.

PLUNGE KILLS

Lydia Gibson, 42, of San Antonio was killed Sunday when the bicycle she was riding ran off a county road and plunged over a cliff 25 miles west of New Braunfels.

Ode No Longer Lyric Poem In New Crossword Puzzle

A new breed of crossword puzzle starts today on Page 4-B of the Herald.

"THE Crossword Puzzle," as it is called, has been running continuously for decades in many of the big papers of the country. Experts rate it as a more challenging puzzle than

the one that has faced readers up to now.

The major difference is in the wording of the definitions, or clues. There is an attempt to vary them so that the same old definitions don't appear day after day. For example, the word "ode," which seems to be in every second

puzzle, is usually defined as "Lyric poem." The new puzzle is more likely to give the clue as "Keats' work." The solver must first identify Keats and then his form — two challenges for the price of one. "THE Crossword Puzzle" also injects humor and some lively slang into the clues.

Bridge Test

BY CHARLES H. GOREN
© 1974, The Chicago Tribune

BRIDGE QUIZ ANSWERS

Q. 1—Both vulnerable, as South you hold:
♠8 ♥AJ6 ○AQJ ♣K109732

The bidding has proceeded:
South West North East
1 ♣ Pass 1 ♠ Pass
2 ♣ Pass 2 ♠ Pass
?

What do you bid now?
A.—Pass. This looks like a complete misfit, and one more bid could get you overboard. While it is true that you have reasonable protection in the unbid suits and a better than minimum opener, no trump would be hazardous since your club suit is too weak to develop as a source of tricks.

Q. 2—Neither vulnerable, as South you hold:
♠Q10 ♥AK73 ○KQJ92 ♣K5

The bidding has proceeded:
South West North East
1 ○ Pass 1 ♠ Pass
?

What do you bid now?
A.—This is a close decision between two no trump and a reverse to two hearts, with a slight preference for the former. This hand falls a point short of the textbook requirements for a jump rebid in no trump (19 points), but as compensation you have a good five-card suit and the fitting Q-10 in partner's suit. If the hand belongs in hearts, partner can introduce the suit as his next turn.

Q. 3—As South, vulnerable, you hold:
♠52 ♥AK543 ○AQ98 ♣A8

The bidding has proceeded:
North East South West
Pass Pass 1 ♥ Pass
4 ♥ Pass ?

What do you bid now?
A.—Five diamonds. Partner's leap to game after an initial pass shows a hand that re-values to a full opening bid in support of hearts, so you are in the slam zone. To ask for aces is unsound when you hold a weak doubler, so you should make a try in your second suit. If partner can do no more than return to five hearts, give in.

Q. 4—Both vulnerable, as South you hold:
♠AJ10932 ♥6 ♣KQ9854

East opens the bidding with one heart. What action do you take?
A.—Bid two clubs. This is an unusual action, but it is designed to save space and to permit you to mention both your suits conveniently. The auction could be

as high as four hearts when next it is your turn to bid, and had you overcalled one spade originally, you might now have to show your clubs at the five-level.

Q. 5—As South, vulnerable, you hold:
♠A102 ♥AKQJ10 ○J8 ♣KJ3

The bidding has proceeded:
South West North East
1 ♥ Pass 2 ○ Pass
3 ♥ Pass 5 ○ Pass
?

What do you bid now?
A.—Partner can hardly have less than a solid seven-card diamond suit, which is all you need to make a slam. Don't contemplate a grand slam, because partner cannot have the ace of clubs as well. To protect your club holding you should play the hand, so the safest contract is six no trump, the we sympathize if you don't want to give up 130 honors and contract for six hearts.

Q. 6—Both vulnerable, as South you hold:
♠Q7 ♥J32 ○10872 ♠10654

The bidding has proceeded:
North East South West
1 ♠ 2 ♥ Pass Pass
Dble. Pass ?

What action do you take?
A.—Two spades. We would decline partner's request that we bid our "best" in the interests of economy. Partner surely has a five-card suit, so our support is barely adequate. Don't even think of passing unless you like seeing the opponents score overtricks. Note that partner's double is for takeout since you have not yet bid.

Q. 7—Neither vulnerable, as South you hold:
♠94 ♥6 ○AQ8763 ♣7542

The bidding has proceeded:
West North East South
1 ♠ 2 ♥ Pass ?

What action do you take?
A.—Pass. Partner didn't invite you into the auction, so there is no reason why you should enter of your own accord. There is no reason to assume that partner is in trouble and needs you to rescue him, or that the hand will play better in diamonds.

Q. 8—Neither vulnerable, as South you hold:
♠AJ10 ♥Q2 ○KJ76 ♣K1065

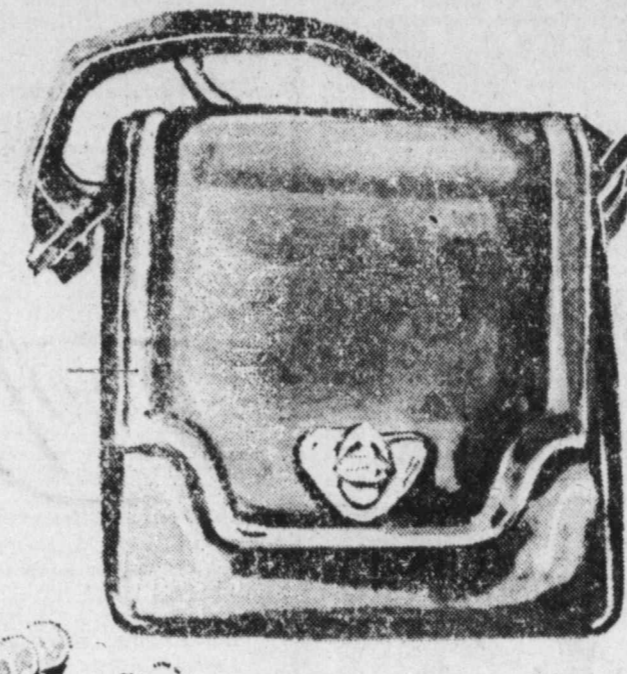
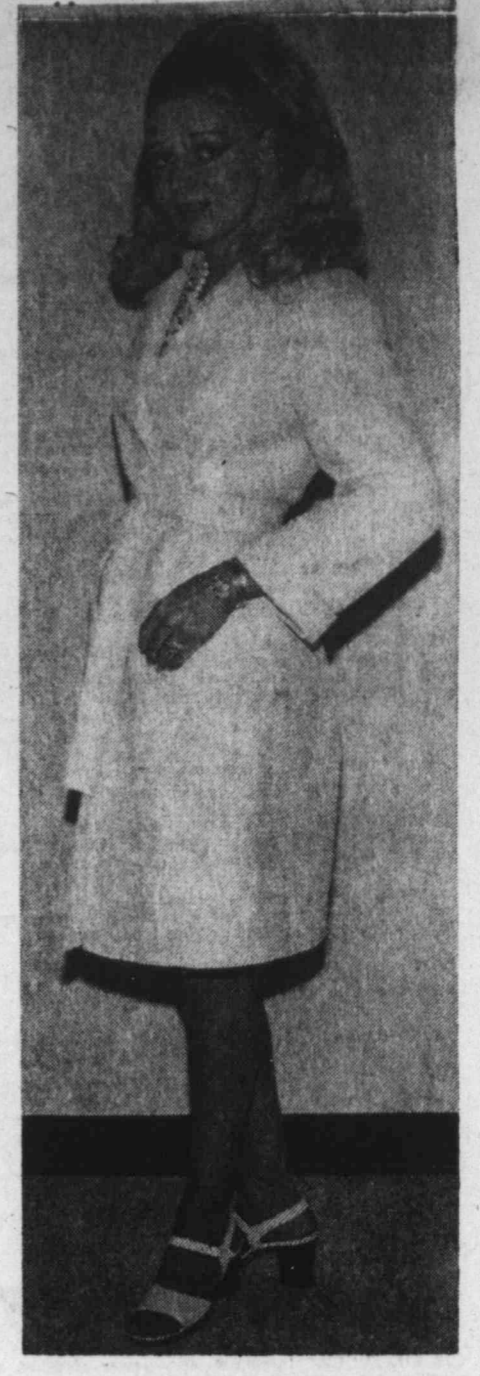
The bidding has proceeded:
West North East South
1 ♠ 2 ♥ Pass ?

What action do you take?
A.—Three no trump. Obviously, you want to be in game with your strong hand, and there is no need for finesse. Bid what you think you can make!

Fashions For Your Easter...

for these cool evenings, our basket-weave coat to cover your lovely spring fashions. Of washable polyester in Easter lily white.

60.00



Choose From

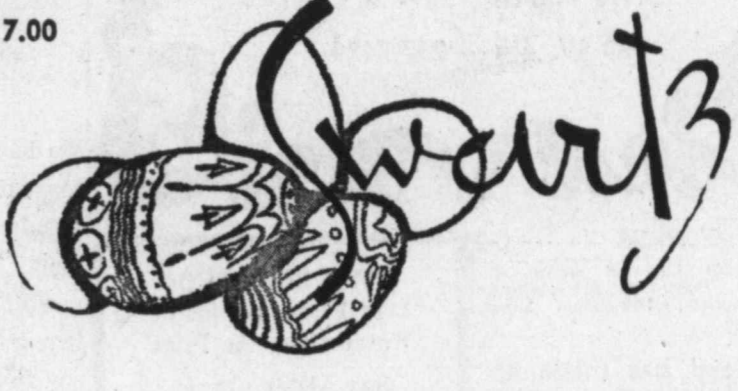
... lustrous beads, sparkling chains and earrings and many more jeweled looks. In white, pastels and wood.

from 5.00

Easter Trimmings

... new spring accessories to accent your Easter outfit. Bags to complement you and whatever you're wearing.

Handbags, from 7.00



Hemphill-Wells



"Count"
Black patent/grey suede
Brown patent and suede
14.95 and 15.95

Handsome
Brown/tan 15.95

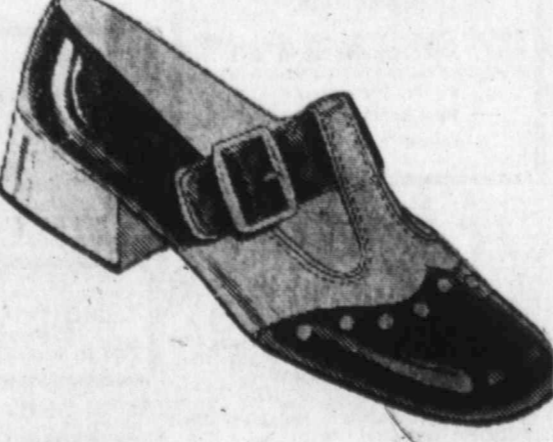
Sensation
Black or white patent 13.95



"Champion"
Brown/tan 11.95



"Tango"
White 14.95



T-Time
Navy and white patent 13.00

For Easter...

SIMPLEX SHOES for girls and boys

Young boys and girls are just as fashion conscious as big people... so when your little ones ask for "cool" shoes like the kids down the street, you know you'll find them here with the Simplex name inside... come in today and choose their favorite styles for Sunday best, school or play wear.

COKERS

SPECIALS MON., TUES. AND WED.

Eat with the
SERVING THE FINEST FOOD TO THE FINEST PEOPLE SINCE 1934

Breakfast
OMELETS

Western cheese, ham or ham and cheese,
hash browns, toast and coffee 1.25

Evening Specials

Mexican Dinner 1.49	Tacos \$1.49
Green Enchiladas 1.49	Enchiladas with Chili 1.69

Call Lonnie or Leonard to Reserve The Party Room for Special Groups Dial 267-2218