

Hesperian-Beacon

"Celebrating 103 Years of Floyd County News"

Thursday, January 28, 1999

©The Floyd County Hesperian-Beacon

Floydada, Texas 79235 (USPS 202-680)

Volume 103 Number 4

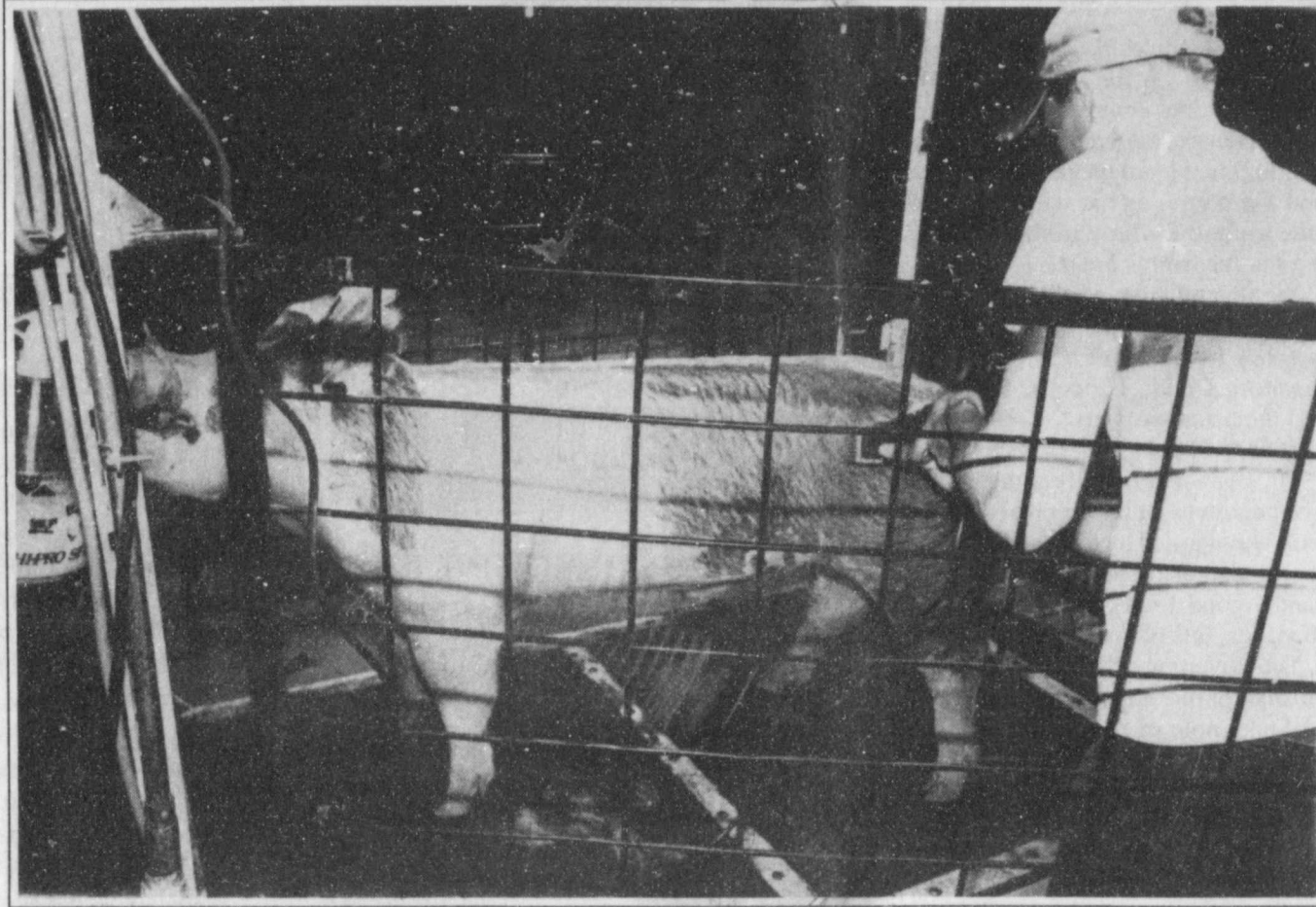
Abell-Hanger Foundation gives \$50,000 Challenge to County Library

The Abell-Hanger Foundation has approved a challenge grant of \$50,000 to the Friends of the Floyd County Library. The grant is conditioned on the recipient organization's success in raising an additional \$150,000 from other private sources by December 31, 1999. The grant money and all qualifying funds raised in response would be used for the construction of a new Floyd County Library and Learning Resource Center.

The Abell-Hanger Foundation was created by George Thomas Abell and his wife Gladys Hanger Abell to carry on the philanthropic endeavors they pursued during their lifetimes. A highly successful oilman, George Abell believed that business success was important, not just for the money, but because of the opportunity it provided to do things for the community, the country, and for mankind. His wife Gladys, a descendant of a pioneer Tarrant County family, shared this vision.

In the fiscal year ending in June, 1998, the Abell-Hanger Foundation dispersed over 6.5 million dollars in grant money, to bring the Foundation's cumulative total since 1954 to over 82.5 million dollars. For FY 1998, the Foundation's primary focus was on Human Services with almost 47 per cent, and Education, with over 27 per cent, of the total grant monies awarded.

"It is an honor for the Friends of the Floyd County Library to accept the challenge of the Abell-Hanger Foundation," said Amy Hollums, chairman of the Friends of the Floyd County Library Board. "Meeting this challenge will insure that construction of the new library can get underway on or before the year 2000. Floyd County citizens need to step out now, in a big way to meet this challenge. Let's make the new library a reality, not just a distant dream."



GETTING READY FOR THE SHOW-Floydada High School Student, Ty Hendrix, was shaving and grooming his Cross breed hog Tuesday afternoon. This was in preparations for the swine judging of the Floyd County Livestock Show to begin Saturday, January 30th at the Ag barns.

Friends "Challenged" again

The Floyd County Friends Unity Center has received its second challenge grant that will enable the multi-purpose building project to meet its Phase One construction goal of \$600,000.

Nick Long, President of Floyd County Friends, announced the organization received notification from the J.E. and L.F. Mabee Foundation on January 19th. The Unity Center presently has \$374,000 in assets, and the Mabee Foundation said it would contribute \$100,000 when the capital campaign reaches \$500,000. The challenge to raise an additional \$126,000 is good until January 13, 2000.

"We just completed the initial challenge from the James and Eva Mayer Foundation on December 7th, and we are back on the time clock again,"

Long noted. The Mayer challenge was for 6 months from June until December 31, 1998 for an identical \$100,000 contribution.

"The Floyd County Friends are very grateful to the Mabee Foundation because they are holding the light at the end of tunnel for a project that has been underway for nearly four years," Long added. "We've already met a challenge once, and the organization is confident we will succeed again. We are optimistic more than ever that construction will begin in 1999!" The 27,000 square foot facility will be located in Muncy to serve Floydada, Lockney, and all of Floyd County.

To date the Floyd County Friends have received six grants totaling \$140,000, and the Mabee Foundation grant will be the seventh one to increase the amount to \$240,000 from

private foundations and corporate giving programs. Dora Ross is the organization's grant writing chairman, and is responsible for the research of foundation guidelines for potential prospects. Shawnda Foster handles the detailed financial reports that are significant in the grants, and Long takes care of verbal communication with the potential donors. The entire Organization has been beneficial with its relentless fund-raising endeavors to keep the momentum going. Long said, "This group is made up of a bunch of winners with the needs of both Floydada and Lockney at heart."

The remaining membership of Floyd County Friends includes: Melissa Long, Tom Ross, Jody Foster, Martin and Robin Stoerner, Kenny and De Chance, Mike and Ginger

Continued On Page 2

Youth will compete at County Stock Show

The Floyd County Junior Livestock Show will kick off, for the 55th time, this Friday, January 29th.

All swine and lambs must be in the barn and weight cards must be turned in to the respective barn superintendents by 6:00 p.m.

The judging begins Saturday morning, at 8:00 a.m., with the lamb show. Fifty lambs have been entered in the show. They will be judged by Kyle Smithwick, of San Angelo.

Swine judging will follow the lambs and is scheduled to begin at 12:00 p.m. Dirk Aaron, Extension Agent of Lamb County will judge 228 swine.

Steers must be in place by 9:00 a.m.

on Saturday, and ready for weigh-in at 10:00 a.m.

Sunday morning, at 8:00 a.m. there will be a brief devotional in the steer barn.

Eleven heifers will be judged by Hereford ag teacher, Bill Bender, beginning at 10:00 a.m.

Bender will also judge 60 steers beginning at 1:00 p.m.

The Buyer's Luncheon will be held on Monday, February 1, at Babe's Steak Barn in Floydada. The luncheon will run from 11:00 a.m. until noon.

The Premium Sale will be held Monday, at 1:00 p.m.

Extension agent reports on yield averages of crops

By J.D. Ragland, CEA-AG

1998 crops have been gathered in Floyd County and county yield averages pertaining to various crops have been collected. All figures are based on a per acre basis.

Irrigated cotton this year only made about 500 pounds, down 200 from last year. What little bit of dryland that was stripped only made approximately 199 pounds, down 150 from 1997.

Sorghum crop was not much better. Irrigated produced 2,500 pounds, off 3,000 pounds from last years crop. Dryland had 1,000 pounds, down 2,000 compared to 1997.

Surprisingly enough both irrigated and dryland wheat were slightly better than in 1997. Irrigated produced 60 bushels and dryland was 25. Both

up were about 10 bushels.

Irrigated corn was around 15,000 pounds--down about 5,000 from 1997. Soybeans only made about 30 bushels a drop of about 10 from last year.

Our newest crop in Floyd County for '98 was peanuts. Only 700 acres were planted for the first time and yields were not as expected. Only about 2,500 pounds were produced. We were hoping for 4,000.

The main crop Floyd County is nationally know for, of course, pumpkins, had an excellent year. They were the best quality ever grown and the yield was up about 2,000 pounds, making about 20,000 pounds compared to 18,000 last year.

Continued On Page 9

FISD asks for community input into plans for changing grade levels among campuses

By Alice Gilroy

FISD principals and Superintendent Jimmie Collins are urging parents to express their opinions on the proposed changes in the Duncan, R.C. Andrews, and Jr. High campuses.

The district is considering moving the 3rd grade class from Duncan Elementary to R.C. Andrews, and moving the 6th graders from Andrews to the Junior High School.

Although teachers and principals appear to be in favor of the changes, input is needed before the scheduled vote at the Feb. 11 board meeting.

"When we started discussing the possibility of changes the first thing we did was ask our teachers for their input and concerns," said Collins. "They were very appreciative and have been very helpful."

"We are not trying to push anything through and we want to be up front on the issue. Up to this point, I haven't had anyone come to me and say they did not like the idea."

"I believe it will be a positive thing

for the district," said Junior High Principal Monty Hysinger. "It will share the student/teacher load throughout the campuses."

All the principals agreed the move would be beneficial for each campus in the area of TAAS test and campus averaging.

"At Duncan, 3rd graders are the only children taking the TAAS tests (in reading and math)," said Duncan Principal Bob Campbell. "It isolates that grade because there is no one else accountable. Each campus is able to average all their grades together to come up with a campus TAAS average. Usually, the more grades you have to average in--the better chance your average will be higher."

Andrews Principal David Hutton agreed. "At Andrews the 4th graders take the TAAS writing test for the first time," said Hutton. "However, the preparation for the test begins in the 3rd grade. If the 3rd grade moves to our building it could make it easier to work across grade levels."

The addition of 3rd graders to Andrews would not create space problems because the proposal would have the 6th grade class moving out of Andrews to the Junior High.

Junior High Principal Monty Hysinger sees several benefits in bringing the 6th grade to his campus. "We have a good band facility and it is only getting used for 2 periods. We can use the facility for possibly 4 periods now. The band directors will also have to only work 2 campuses instead of 3."

The move will also give the Junior High more students. The campus currently has an enrollment of 140 7th and 8th graders. With the addition of the 6th grade the enrollment would increase by 80-90 students.

"Our building can handle the increase easily," said Hysinger. "At one time, since I've been principal, we had an enrollment of 210."

"In the late 70's," said Collins, "the Junior High campus had an enrollment of 256--and there were no por-

table buildings."

"Our labs will facilitate the increase," said Hysinger. "With a little remodeling and not much expense we could come up with five more classrooms."

The set-up of 6th, 7th, and 8th grade on the same campus is the most common across the state. It is referred to as a middle school.

"I have had one parent express concerns with the Junior High students," said Hysinger. "I reminded him that 6th graders in with 7th and 8th grade students is not as much of a jump as the 9th graders in with seniors."

The current enrollment at Duncan Elementary is 410-415 students. The loss of 3rd grade would drop the enrollment down to approximately 310-320. Principal Campbell sees this as a positive move.

"We will be able to move the Early Childhood and Pre K classes out of the portable buildings and back into

Continued On Page 2

LISD decides to use art building for ISS

Board extends contract for Superintendent

By Neta Marble

LOCKNEY--The Lockney Independent School Board met Thursday, January 14. They approved a contract extension for Superintendent Raymond Lusk, made a decision on the building for the ISS students, and heard a report from Charlotte Mitchell on the reading program.

Board members conducted an evaluation of Superintendent Lusk and the recommendation was made to extend his contract through another year. His present contract runs two more years and the addition of the year will extend the contract through 2002.

The board has worked for several months on a location for the In-School Suspension program. Several locations have been looked at and none quite met the guidelines needed, or were too costly.

Board members discussed and then approved the renovating of the present art department building for the use of the I.S.S. program and moving the art department into the high school building.

The wall between the old chemistry and biology labs will be removed and this space adapted for the art department. They will have as much

space and more storage as the present building.

Students who are in suspension will remain in their building and have no contact with other students. Cubicles will be built for them to work independently of each other and meals will be delivered to them.

Charlotte Mitchell, counselor at Lockney Elementary School, gave a report to the board on the new required Grades 1 and 2 Texas Primary Reading Inventory. This is a test, required by the state, to show the strengths and weaknesses of the students at that

level.

A school board training session will be held this month to bring the board members up to date on legislative issues and policy updates. A representative from the Region 17 Education Service Center will lead the session.

Administrators reported that the second semester was up and running and things seem busier than ever.

In regular business before the board the minutes of the previous meeting were read and approved, the current bills were approved for payment and the financial report reviewed.

Brag Page Deadline

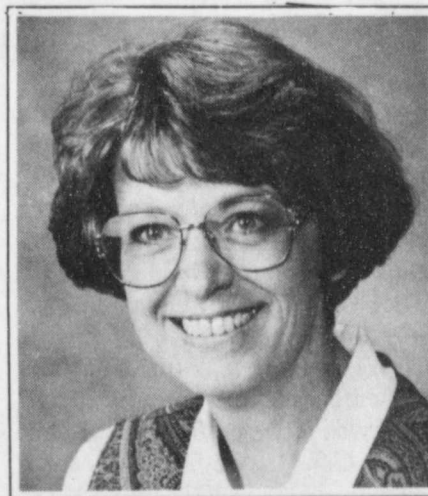
The Valentine issue with the popular Brag Pages will be published Feb. 11.

Anyone wishing to put a photo of their child, grandchild, or any other loved one, should have the pictures to the Hesperian-Beacon offices in Floydada or Lockney, by February 4th, at 5:00 p.m.

The cost for 1-3 children in a heart frame is \$10.00. If there are four or more people in the picture the cost will be \$15.00 per frame.

Each photo will be placed in a heart-shaped frame and will appear with the person's name, age, parents names, and grandparents names. There is no age limit for persons in the photograph. Photos may be color or black and white. Photos of any size will be accepted. This office can either enlarge or reduce the photos.

Beth Eckert promoted to Vice President at FNB Floydada



BETH ECKERT

FLOYDADA--Tom Farris, chairman and president of the First National Bank of Floydada has announced the promotion of Beth Eckert to Vice President and Compliance Officer.

Eckert is a native of Wisconsin, and has been associated with the Floydada bank since 1981 when she and her husband, Dinks, moved to Floydada. He is employed by Southwestern Bell. They have one son, Robert, a student at West Texas A&M.

Beth has worked extensively in both operations and lending areas as compliance officer and internal auditor.

1999 Lockney City Elections

Positions on Ballot: 1-Mayor At Large; 1-Councilmember for District 4; 1-Councilmember for District 5

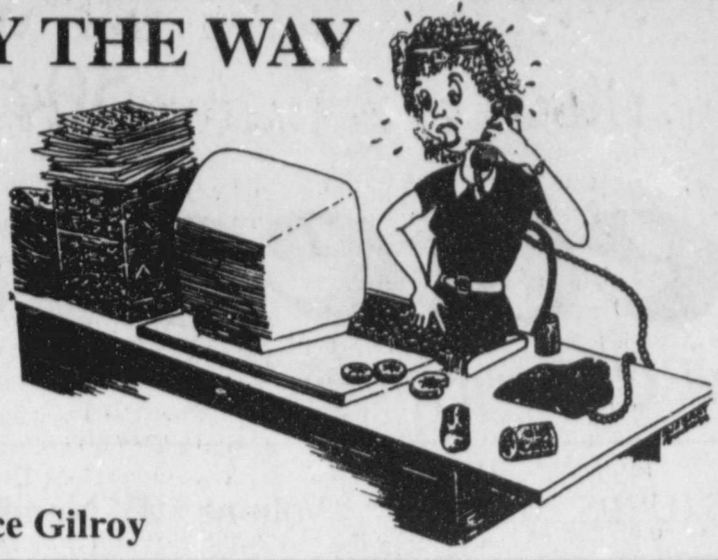
Feb. 15:
First Day for Candidate to file for place on ballot.

March 17:
Last day for Candidate to file for place on ballot.
(by 5:00 p.m.)

April 14-April 27:
Early Voting in Person at City Hall
(7 a.m. - 6 p.m., Mon.-Fri.)

May 1:
Election Day at Lockney City Hall
(7 a.m. - 7 p.m.)

BY THE WAY



By Alice Gilroy

Here are some odds and ends to clean up my desk.

You Know You're Out of College When:

Your salary is less than your tuition. You have to pay your own credit card bill.

Mac & Cheese no longer counts as a well-balanced meal.

You haven't seen a soap opera in over a year.

8:00 a.m. is not early.

You have to file your own taxes.

You hear your favorite song on the elevator at work.

You start watching the weather channel.

You can no longer take shots, and smoking gives you a sinus.

You go from 130 days of vacation time to 7.

Gambling Statistics

Americans gamble more money each year than they spend on groceries.

More than \$600 billion is wagered legally in the U.S. annually.

Five to 8 percent of American adolescents are already addicted to gambling.

More money is spent on gambling

in the state of Mississippi than on all retail sales combined.

Nevada ranks first in the nation in suicide, first in divorce, first in high school dropouts, first in homicide against women, is in the top one-third in child abuse, and dead-last in voter participation.

I've had the following story on my desk since this summer. I cut it out of the Lubbock Avalanche Journal. Many of you have probably already seen it.

It concerns Madame Tussaud's traveling wax exhibition in Australia. The exhibit features 110 figures—one of them is of Pres. Clinton.

It seems the organizers of the exhibit had to sew the zipper shut on the trousers of the Clinton figure because visitors have been undoing it.

Before they decided to sew up the zipper, security guards had to check on the "state of Clinton's trousers every couple of hours to avoid embarrassment."

Maybe we wouldn't be in this mess if those guards had worked in the White House.

The deadline for bringing in your Bag Page pictures is February 4th!



A view from The Lamplighter

By Ken Towery

The burning question up in Washington, at the moment, is whether witnesses will be called to testify at the perjury and obstruction trial of William Jefferson Clinton, President of these United States. By the time this gets in print the decision will probably already be made by our Senators. Our guess is that a few witnesses will be called.

One intriguing question, however, is what to do about Mr. Clinton. No doubt, he will be afforded the opportunity to testify, if he chooses to do so.

But how could his testimony have any bearing on the outcome of the trial? If he does come down to the well of the Senate, he would have to raise his right hand and promise, with God and the nation as his witness, to tell "the truth, the whole truth, and nothing but the truth," again.

We all remember what happened the last time he did that. Who would admit they believe him now, other than Senators Dodd, Toricelli, Kennedy, and the usual suspects?

Mr. Bush is off and running, again. The beginning of his second four-year term was marked by all the hoopla that befits the occasion, with crowds, bands, good food (we are told), and speeches, lots of speeches.

The governor said the right things, mostly, for one hoping the Legislature will take note of his recent landslide vote, as well as one positioning himself for a run against Al (the bore) Gore as his opponent in year 2000. Mr. Bush dwelt heavily on the "character" thing, obviously anticipating what may well be the overriding issue as Mr. Gore, of necessity, endorses and defends the Clinton presidency.

The Governor is in a dicey situation. The nation's press, and the nation's politicians, are watching closely. A disastrous legislative session could have disastrous results for what now appears to be a sure thing. If we had to bet, we would wager he will do well on both fronts.

The other guy who's on the hot seat at the moment is Rick Perry, the new Lt. Governor. This state's Senators, like Senators everywhere, are a jealous lot whether Democrat or Republican, they are jealous of their prerogatives, jealous of their turf, jealous of their status and stature. It will be an entirely new experience for Rick.

Friends receive "Challenge" again

Continued From Page 1
Mathis, Billy and Sherry Colston, David and Darlee Foster, Lindan and D'Lyn Morris John and Karen Quebe, Jon and Elaine LaBaume, Coy LaBaume, Hulon and Anne Carthel, J.D. and Angela Ragland and Gregg and Cris Taylor.

"We want to thank everyone who has supported us since March 1995 because every dollar has been important, and the overall response of the county has helped us." The next major fund-raiser is the 4th annual Benefit Gala on March 27th at the Lockney Elementary Cafetorium.

Thank you, Sue Hardy

keeping a modicum of peace and harmony among so many prima donas. He will have to walk a fine line, but he has demonstrated through years of service in the House of Representatives and as the state's Commissioner of Agriculture, that he's up to the task. We hope so, for most voters in Floyd County have generally supported him...

Moving on. We note a small piece of information floated recently by Associated Republicans of Texas, of which we are a nominal member. (We don't give much money, but we have, since the founding of ART, been an ardent supporter. Mostly we just give moral support, since we have always thought Texas would benefit from a strong two-party system rather than continue under the monolithic one party system we grew up with in South Texas.

PHIL GRAMM
DUTY, CONSCIENCE AND IMPEACHMENT
By U.S. SEN. PHIL GRAMM



U.S. SEN. PHIL GRAMM

From the beginning of the House's impeachment debate, I have believed that the best statement a senator could make was no statement at all, and I have tried to follow that approach. However, in the face of rising calls for the Senate to short-circuit the constitutional process by substituting censure for impeachment, I feel that it is necessary to express a view on how the Senate should proceed.

I strongly believe that the Senate's commitment must be to a fair, constitutional process and not to any given outcome.

It seems to me that the Senate has a clear, constitutional obligation to vote on whether the President is guilty or not guilty of the two articles of impeachment adopted in the House. Having been presented with articles of impeachment by the House, the Senate is now responsible for fully performing a difficult and historic function.

In the entire history of America under the Constitution, the Senate has never failed to vote guilty or not guilty on articles of impeachment.

In 15 such cases, the Senate held 15 trials and voted at the conclusion of every one. History's lone exception was a judge who resigned before the trial could be convened. Sometimes the Senate has voted guilty and sometimes the Senate has voted not guilty, but it has always voted.

At any rate, our information from ART is that five "plaintiff's" lawyers (5) gave the Texas Democratic Party One Million, seven hundred and twenty five thousand dollars between July 1, 1998 and October 27, 1998.

That is three months. And that, translated, is \$1,725,000, which is a lot of money to a country newspaper. More, for instance, than we might make if we were in business here at the Hesperian for the next 100 years, and if the postal rates didn't go up again and again, and again, and if the price of paper didn't go up again, and again, which is a forlorn hope.

The five lawyers who gave the money were five "tobacco" lawyers who owed their employment in the tobacco matter to out going Texas Attorney General Dan Morales. In order that they may get proper recognition, and thanks, from Democratic fans in the Legislature, we will note that the five were Walter Umphrey, (\$410,000), John O'Quinn (\$400,000),

John Eddie Williams (\$330,000), Harold Nix (\$335,000), and Wayne Reaud (only \$250,000). There's probably very few people in Floyd County, much less the state of Texas, who have given as much. Especially for a losing cause.

Certain aspects of this matter contain more than a little irony. True, the friends of Morales will divy up several billion dollars they got in the "settlement." And if Morales hasn't got his by now, he will. (No irony there.) The irony comes in when we remember that our former Governor, Ms. Ann Richards, is out there making a mint by lobbying for the tobacco companies, and the lawyers who are making a mint off tobacco are the same ones who supported her so strongly when she was Governor. What are all these folks going to do for a living when the tobacco cow goes dry?

If history is any guide, in due course the cow will calve, and the milk will start flowing again.

The Constitution requires nothing less, and our duty and conscience should require nothing more.

I fear that punishing the President through a censure procedure in lieu of following the constitutional process would dangerously erode the foundations of our democracy. The framers of our Constitution selected impeachment as the only process available to Congress for dealing with presidential misconduct. They did so, I believe, to carefully separate legislative, judicial and executive powers. That bright line of separation has been crucial to the functioning of American democracy on countless occasions when one branch of government was sorely tempted to encroach on the authority of another.

We must not erode the Constitution in a way that is contemplated in censure because we must not open the door to punishment through censure every time a Supreme Court justice displeases one party or the other, or an administration official offends Congress.

Finally, the effect of censure pales next to what has already occurred. No condemnation which the Senate could vote would carry the historical weight of the censure already embodied in the resolutions of impeachment. The Clinton Presidency stands indelibly tarnished, and will be remembered as such regardless of how a Senate trial concludes. Thus, a censure resolution is both superfluous and a poor precedent.

As much as everyone may wish to put this matter behind us, constitutional government has in the past and does now impose costs. The cost of adhering to the Constitution, however, has always been small compared with the benefit.

(EDITOR'S NOTE: Sen. Gramm wants to hear from you on this and other issues facing Texans. To send him your views, please write him at 370 Russell, Washington, D.C., 20510. To learn more about what's happening in Washington, you may also wish to visit Sen. Gramm's Web site at gramm.senate.gov)

Letter to the Editor

Dear Editor:

I am writing regarding last Commissioners Court session with PAC Director Bruce Ballou and the hospital building.

I feel the PAC Director and the County Commissioners should be looking at finding grant money to purchase the hospital building, if that is the facility they want, at a fair appraised market value. I don't feel the building should be given to them. If they lease/purchase the building, what are the taxpayers going to be responsible for on the building. Will we have to replace the boiler and pipes which are bad?

Tommy Farris stated that in 1993 a lot of money was spent on the building, but not on those two problems. The taxpayers were not ask if we wanted to spend that money in 1993 and then not open the hospital. The money was spent and then the hospital was closed with no one but the hospital board voting.

Many of us have wanted the hospital building to be used, but in the past whenever it was looked at, the idea was passed. Why now is there such an urgency for the building to be uti-

lized?

Tommy Farris is correct in the statement the hospital building is a nice building and should be used for something. But not at the taxpayers expense of "donating" the building to PAC, or anyone else.

We could have had an Assisted Daily Living facility in that building. We still could and the town as well as the county would certainly benefit from such an establishment.

I strongly urge the County Commissioners and the Hospital Board not to move so quickly the taxpayers are once again left without a vote. The time has been coming for a long time for our tax money to be spent according to be benefit of the entire community.

I realize Tommy Farris stated the Hospital Board was operated under legislation. I just want him and the hospital board to remember where the money came from and who has been financing the repairs and "remodeling" on the hospital building from the beginning. I do believe the Taxpayers are the ones.

Floyd County Grand Jurors indict nine

In District Court, January 22, Floyd County Grand Jurors handed down nine indictments.

Indicted were:

Jesus Ascencio, Sr., 59, of Lockney, for the 1st Degree Felony of Possession with Intent to Deliver A Controlled Substance. The offense was committed September 29, 1998;

Maria Ascencio, 55, of Lockney, was charged with the same--Possession with Intent to Deliver A Controlled Substance;

Juana Ascencio, 56, of Lockney, was charged with the State Jail Felony of Tampering with a Governmental Record which occurred on April 23, 1998;

Manuel Fierros, 40, of Lockney, charged with the State Jail Felony of Tampering With a Governmental Record which occurred on March 11, 1998;

Conrad L. Henderson, 76, of Plainview, for the 3rd degree felony of Assault on a Public Servant. The offense occurred on Oct. 16, 1998;

Nick Joiner, 18, of Lockney, for the State Jail Felony of Criminal Mischief of a Value of \$1,500 or More, but Less Than \$20,000, which occurred on August 29, 1998;

Mike Pena, Jr., 39, of Ralls, for the 3rd degree felony of Driving While Intoxicated. The offense occurred on Nov. 13, 1998;

Patricia Posada, 28, of Floydada, for the State Jail Felony, of Tampering With a Governmental Record, which occurred on April 6, 1998;

Tina Weeks, 29, of Floydada, for the State Jail Felony of Tampering With a Governmental Record, which occurred on April 6, 1998.

County Court

In County Court January 21, 1999: Manuel Arredondo, 22, of Floydada, pled guilty to the Oct. 17, 1997 charge of Burglary of a Vehicle. He was fined \$500.00 plus court costs and sentenced to 60 days in jail.

Rick Garcia, 34, of Floydada, pled guilty to a October 22, 1998 charge of DWI-2nd. He was fined \$750.00 and sentenced to 9 months in jail which was probated for 2 years.

Rudy Gene Gloria, 21, of Lockney, pled guilty to the Dec. 22, 1998 charge of Unlawful Carrying a Weapon. He was fined \$200.00 plus court costs.

James Robert Kemp, 45, of Post, pled guilty to a September 18, 1998 charge of DWI. He was fined \$600.00 plus court costs and sentenced to 180 days in jail which was probated for 2 years.

Camilo Lopez, 21, of Lockney, pled guilty to a Dec. 22, 1998 charge of DWI. He was fined \$600.00 plus court costs and sentenced to 180 days in jail which was probated for 2 years.

Robert Luna, 34, of Floydada, pled guilty to a January 30, 1998 charge of Criminal Trespass. He was sentenced to 60 days in jail plus court costs.

Samuel Ochoa, 39, of Floydada, pled guilty to a Dec. 22, 1998 charge of DWI. He was fined \$600.00 plus court costs and sentenced to 180 days in jail which was probated for two years.

The August 28, 1998 DWI charge against Troy Dean Turley, 36, of Lockney, was dismissed.

Bibiano Olivas Urquidez, of Mexico, pled guilty to a Dec. 22, 1998 charge of DWI. He was fined \$600.00 plus court costs and sentenced to 60 days in jail. He was also deported.

FISD plans changes on campus

Continued From Page 1
school," said Campbell.

"The music department would move to the portable building where Pre-K and Pre-K 2 are now. This would give Mrs. Finley a classroom as well as a music room.

"In the music room they could dance, practice choir, etc. without having to rearrange the room. The music class would be moved out of the cafeteria. This would help because now we have music the same time as lunch."

Campbell also proposed that Room 102 become a learning lab for Pre-K and Kindergarten classes. Room 113 would become a learning lab for 1st and 3rd grade classes.

Third grade teachers did express concern over whether the 3rd grade class would be departmentalized (students change classes for instructions), or self-contained (stay with one teacher for all courses).

Some Duncan teachers questioned whether they could bring their classroom furniture to Andrews and would there be 3rd grade AR and Blue Bonnett Reading Materials available for them to purchase at Andrews Library.

Teachers voiced concern over avail-

able computer labs for third graders, computers in classrooms, storage, and who would teach the GT program.

Collins and the principals agreed that many of the problems could be worked out ahead of time and others would be handled as they arose.

"The kids will adjust within two weeks," said Collins. "The teachers will take longer."

Public comments are being sought on the proposed changes. A school board vote will be taken Feb. 11th.



Good Luck Stock Show Exhibitors!!



LANEY & STOKES
LAWYERS
600 Ash Street
Plainview

Universal Fidelity Insurance Company
of Duncan, Oklahoma
offers Medicare Supplements & final expense burial policies.
Call Gail Ballou
806-794-6583

Deadline for all advertising and news is 3:00 p.m. Tuesday.
Weddings, club reports and other society news over two weeks old at submission will not be printed.

THE FLOYD COUNTY HESPERIAN-BEACON
(USPS 202-680)
Published weekly each Thursday at 111 East Missouri Street, Floydada, Texas 79235. Periodical postage paid at Floydada, Texas 79235.
For more information call 806-983-3737 or 806-652-3318 Monday-Friday, 8:00-5:00.
Yearly subscription rates: Floyd, Swisher, Hale, Motley, Briscoe, and Crosby Counties, \$16.00; Other in-state counties, \$18.00; Out of state, \$19.00. Senior Citizens may deduct \$1.00.
POSTMASTER: Send change of addresses to: The Floyd County Hesperian-Beacon, 111 E. Missouri, Floydada, Texas 79235.
Regular Publication Deadline: Lockney - 5:00 p.m. Monday; Floydada - 3:00 p.m. Tuesday.
Advertising rates: \$2.95 per column inch non-commissionable.
Classified Advertising: 20¢ per word with a \$2.50 minimum for up to 10 words.
Ken Towery Owner
Alice Gilroy Publisher & Editor

YES!
GOEN & GOEN WRITES Life Insurance
Come in for a Quote
102 E. California, Floydada 983-3524

Floydada City Council pays off water projects bill and discusses future projects

By Darwin Robinson

The Floydada City Council met last Tuesday, January 19th, and voted to pay the final water projects' bill of \$43,363.00 to Adams Well Service.

This included labor, pumps and both wells pumping and certified by state standards. The motion was made by Councilman Eric Cornelius and seconded by Councilman Albert Hill and unanimously passed.

The councilmen discussed the possibility of hiring a Lubbock firm that serves as a watchdog for the community in things involving city code violations. This would include vacant lots (weeds), junk vehicles and old buildings.

The firm would rewrite city ordinances and codes that are not in compliance with Texas State Laws. The firm would charge \$25.00 per hour, \$9.00 per notice and .31 cents per mile.

No action was taken, but most members wanted a representative of the firm to come to a future meeting and further explain their services.

Councilman Clar Schacht made the motion to continue the financial services of Edd V. Henderson, CPA for the budget year of 1998/1999. It was seconded by Councilman Cornelius and unanimously passed.

A conflicting name change by A. Kay Howard Consultants to A & J Howco Services was approved by the council. Another corporation in Texas had this same name. This company takes care of the city's grant transfers.

Councilman Cornelius made the motion to sell a city lot (Original Township - Floydada/Block 3 - Tract 5) to Craig Gilly for \$250.00, the appraised value. The lot is located just north of the Coop Gin and just west of the old railroad tracks.

The motion was seconded by Councilman Sheldon Sue and it was unanimously approved. It was stated that a module repair shop possibly would be built on the lot.

City Manager Gary Brown discussed the electric projects affecting Floydada on his recent trip to Austin concerning a bill on deregulation.

Also, Brown referred to the ground breaking ceremony in Lubbock of the West Texas Municipal Power Agency.

Their newly installed generator is supposed to ensure more reliable and economical electric power to Floydada, Lubbock, Brownfield and Tulia.

A 1999 engineering services contract with Parkhill, Smith & Cooper was turned down by the council after discussion. All the members were in agreement not to commit themselves to one firm, but to consider them on a project by project basis.

Councilman Jon Nielson made the motion. It was seconded by Councilman Hill and passed unanimously.

After much discussion, the council was very much in favor of an idea being proposed to all the Floyd County boards. The idea being to meet on a regular basis and discuss and exchange information concerning current projects or future projects.

All boards from Lockney and Floydada would be involved, such as, the Chamber of Commerce, the Commissioners Courts, the Hospital Boards and the City Boards.

The council approved a motion by Councilman Schacht and seconded by Councilman Sue to set public hearing dates on Community Block Grants, both present and future.

Next scheduled council meeting, February 16th, at 7:30 P.M., and 7:40 P.M., was chosen for this. It will be to close out the 1996 TCDP water project and discuss future projects.

City Manager Brown said, "I will have department heads at next month's meeting or at least have their recommendations."

Concerning 1999/2000 projects to be considered, Brown stated, "Following state guidelines, we probably need to look at sewer projects. We're talking about a dozen manholes to be put in and about eight ones overhauled."

"Bobby (Fire Chief Welborn) thinks the sewer project should be next, since we have our water supply in pretty good shape."

There was a lengthy discussion about the city's 1982 track loader that needs repairs.

Brown said, "What we've got has to go to the shop and it won't be cheap. The Caterpillar people came out with a lease/purchase deal, with a new track loader with a Universal bucket, for between \$2100 and \$2200 per month."

This involves a seven year payout

and a five year warranty. Brown further explained "after ten or five years there will be a buy-back of an unknown amount."

"A lot of counties are starting to do this even on their road graders every five years."

"A new track loader would cost around \$125,000.00."

Councilman Cornelius asked for an estimate on fixing up the old one, while Councilman Dale Lawson stated, "We've spent about all the money we can on it."

It was pointed out that in 1997 the city spent \$15,000.00 repairing the loader, compared to \$5,200.00 in 1998.

Maintenance Supervisor Julian Alaniz told the council, "The bucket needs fixing now and there are ten other things wrong that also need repairing."

"The rollers and the track need work or replacing and the motor has no power and it is using oil."

"Let's get an estimate on trading in the old loader," Mayor Hulon Carthel suggested.

Councilman Schacht said, "It's time to do something. It is seventeen years old and when you start working on CAT equipment, it cost a lot of money."

Mayor Brown reported on the city landfill pits. "We have been able to get a pit of about 350' dug at the landfill. It took us about five days to complete."

"We have started moving dirt on the next pit that will be about 700' long. If it digs as fast as the first pit, we should accomplish opening about 1100' of pit for less than \$15,000.00."

"This is in comparison to \$42,000.00, if we had done it by contract."

No action was taken on this matter. Brown gave a brief report on strict criminal liability in the state concerning the Open Meetings Act.

"If there are two of you (council members or school board members) talking about official business, you may be up for litigation. Six months in jail and \$500.00 for each thing you did wrong could be your punishment, if someone reports it."

The council took no action on the report and adjourned.



LOWE'S DONATES TO LISD--(L-R) Lockney's Lowe's Manager Nick Muniz presented High School Principal James Poole with a \$650.00 check to be used for college scholarships. During May 1998, Lowe's Round Up for charity raised over \$25,000.00. This money was raised in large part because of Lowe's cus-

tomers. Because of this, Lowe's is donating various amounts of money to the school districts in which they have stores. This money is going to be used for college scholarships for graduating seniors. All school district except for Lubbock and Ector counties received \$650.00.

Staff Photo

Commissioners approve use of county equipment to dig Floydada landfill pit

By Darwin Robinson

A split vote, in a special called Commissioners Court meeting, January 21st, approved the use of Precinct #4 equipment to help the city dig a new pit at the Floydada landfill site.

"We can help the city save some money and it will give my employees some extra winter work," Commissioner Jon Jones said.

Jones made the motion of permission, "for one time only," to Precinct 4 to assist the city, with county equipment, in the digging of a new landfill pit. The price per hour would be determined upon the completion of the job.

The second was made by Commis-

sioner Lennie Gilroy. The motion carried by a two to one margin with Commissioner Ray Nell Bearden voting against the motion. Commissioner George Taylor was not present at the meeting.

"Who will be responsible if the county's equipment (the dirt scrapper) breaks down on this job?" Bearden asked.

Jones responded, "Then the county would be completely responsible."

"As long as this is on a one time basis, then I will be for it," Gilroy added.

Also, Gilroy made the comment of concern for those people who bid on these jobs and make their living in this

business. Other business taken care of by the commissioners was the approval of two farm contracts and the voiding of one. These involve the filling in of washes for soil conservation purposes.

Another split vote came with the approval of mandatory drug testing of all county employees with Commercial Drivers Licenses by Allied Compliance Services.

Commissioners Gilroy and Bearden voted in favor of it, but Commissioner Jones voted against it.

Jones commented that he felt each employer could take care of that themselves.

The meeting was adjourned.

Heed warnings of heart attack

According to the American Heart Association, coronary heart disease is the single largest killer in the United States.

To reduce your risk of heart attack, the AHA says: Stop smoking; control high blood pressure; eat a low-saturated-fat, low cholesterol diet; be physically active; and maintain a healthy weight.

Know the warning signs of heart attack:

(1) Uncomfortable pressure, fullness, squeezing or pain in the center of your chest lasting more than a few minutes. (2) Pain may spread to the shoulders, neck, or arms. (3) Chest discomfort with light-headedness, fainting, sweating, nausea or shortness of breath also may occur.

If you have these symptoms, the AHA says, "Don't wait. Immediately call the emergency service or have someone drive you to the nearest hospital."

Strokes
Strokes are the No. 1 cause of serious long-term disability and the 3rd leading cause of death.

Warning signs of stroke are:
(1) Sudden weakness or numbness of the face, arm, or leg on one side of the body. (2) Sudden dimness or loss of vision, particularly in one eye. (3) Loss of speech, or trouble talking or understanding speech. (4) Sudden, severe headaches with no apparent cause. (5) Unexplained dizziness, unsteadiness or sudden falls, especially along with any of the previous symptoms.

Family Support Group
For Alzheimers & other related diseases
January 28th, 1999
at 6:00 p.m.
at the First Methodist Church in Floydada
Call Kiki Wilcox at 983-3704
Floydada Rehab & Care Center
for more information

Wind Chill Table

Source: National Weather Service, NOAA, U.S. Commerce Dept.

Both temperature and wind cause heat loss from body surfaces. A combination of cold and wind makes a body feel colder than the actual temperature. The table shows for example, that a temperature of 20 degrees Fahrenheit, plus a wind of 20 miles per hour, causes a body heat loss equal to that in -10 degrees with no wind. In other words, the wind makes 20 degrees feel like -10 degrees.

TEMP (°F)	WINDSPEED MPH								
	5	10	15	20	25	30	35	40	45
35°	33	22	16	12	8	6	4	3	2
30°	27	16	9	4	1	-2	-4	-5	-6
25°	21	10	2	-3	-7	-10	-12	-13	-14
20°	16	3	-5	-10	-15	-18	-20	-21	-22
15°	12	-3	-11	-17	-22	-25	-27	-29	-30
10°	7	-9	-18	-24	-29	-33	-35	-37	-38
5°	0	15	-25	-31	-36	-41	-43	-45	-46
0°	-5	22	-31	-39	-44	-49	-52	-53	-54
-5°	-10	27	-38	-46	-51	-56	-58	-60	-62
-10°	-15	34	-45	-53	-59	-64	-67	-69	-70
-15°	-21	40	-51	-60	-66	-71	-74	-76	-78
-20°	-26	46	-58	-67	-74	-79	-82	-84	-85
-25°	-31	52	-65	-74	-81	-86	-89	-92	-93
-30°	-36	58	-72	-81	-88	-93	-97	-100	-102
-35°	-42	64	-78	-88	-96	-101	-105	-107	-109
-40°	-47	71	-85	-95	-103	-109	-113	-115	-117
-45°	-52	77	-92	-103	-110	-116	-120	-123	-125

Wind speeds greater than 45 mph have little additional chilling effect.

the WILSON AGENCY

119 W. College, Lockney - 652-1106
Your One Stop Health Insurance Shop
Representing

Fortis - Golden Rule
Blue Cross/Blue Shield of Texas

FARM-HOME-AUTO-LIFE-HEALTH-CROP

The Floyd County Hesperian-Beacon 1999 VALENTINE BRAG PAGES

Will be published
Thursday, February 11.

In order to prepare this annual special section for printing, our deadline for submission of Valentine photos and information must be no later than 5:00 p.m., Thursday, February 4th.

Cost for having your Valentine included will be \$10.00 for a small heart (1-3 people in photo), or \$15.00 for a large heart (4 or more people in photo).

Please bring your photo, the child's name, age, parents, grandparents, great grandparents, and great great grandparents to:

111 E. Missouri in Floydada

or

116 S. Main in Lockney

Before 5:00 p.m. Thursday, February 4



BIRTHDAYS CELEBRATED-The Floydada Rehab and Care Center celebrated four birthdays this month. They are: (l-r) David Campbell, Skeeter Willis, Neva Calahan and Ike Gilbert. Staff Photo

Rest Home celebrates Birthday's

By Lorilla Bradley

January is a month
With, often, lots of snow
But birthday's we will celebrate
And let the north wind blow!
A lovely lady we now honor
Her name is Neva Calahan...
Shes always "spic and span!"
Mr. Campbell we salute...
...He's counting 80 years...
Whatever this one brings along
We hope it's filled with cheers!
Mrs. Willis we now greet...
...She counts from '31...
May days be filled with what she
needs
Along with lots of fun!
We welcome David Gilbert
...On this his special day...

May every year inpassing
Be better all the way!
We welcome Mr. McDaniel
...His years are 85...
We hope each day is pleasant
And for that we will strive!

Thursday, January 21, was birthday time at the Floydada Rehab and Care Center with members of the City Park Church of Christ hosting the festivities. The honorees were seated in the lobby of the home. Each one wore a lovely corsage, or a boutonniere, compliments of Williams Florist and Card Shop.

The Hesperian photographer came for the picture taking. The poem: was

read and all joined in singing the Happy Birthday Song. Each honoree was given a lovely basket containing things they could use in every day living. Also a small birthday cake.

Visiting with Mrs. Calahan were Mel and Marjorie Holcomb, guests of Mrs. Willis were her daughters Darlene Carr and Patty McHam. Mr. Mc Daniel's visitors were daughter Elaine and husband Jon LaBaume along with a grandson and great grandson Clint and Zane Hunt.

The next celebration will be Thursday, February 18, at 3:00 p.m. You are invited to be with your friends and loved ones at that time.

Floyd County Lifestyles

Lawson hosts 1934 Study Club

By Marie Warren

The 1934 Study Club met Tuesday, January 19th, in the home of Mrs. Queen Annie Lawson with Mrs. Frieda Simpson as co-hostess.

The meeting was called to order by the president, Mrs. Nell McClung. The Roll Call was a special trip I have enjoyed. Twelve members answered roll call.

The Club Collect was led by Mrs. Marie Warren. The minutes of the previous meeting were read and approved.

A thank you note was read from Mrs. Billie Jordon to our club thank-

ing us for nominating her for the Woman of Distinction Award. Willie Mae Ferguson introduced Dr. Charles Craig, our speaker for the evening.

Dr. Craig gave a very interesting and informative program of slides and stories of his trip to China with his sister. Dr. Craig's sister, Mrs. Leonora Adams, is a retired missionary with the Home Mission Board. She makes her home in Hawaii and does volunteer work with the Hawaiian Baptist Convention. Dr. Craig also showed us films and told of his trip to the historical Monument Arizona and other points of interest in Hawaii.

The program chairman, Mrs. Ferguson, reported that the fellowship hall of the First Baptist Church would be available for the next meeting of the 1934 Study Club which will be guest night.

Twelve members and two guests enjoyed delicious refreshments prepared by the hostesses. Members present were: Betsy Dempsey, Eva Parker, Wilma Gowens, Marie Warren, Nell McClung, Effie Foster, Lorene Newberry, Wanda Turner, Willie Mae Ferguson, Flora McNeill, Queen Annie Lawson, Frieda Simpson, and our two guests, Dr. Craig and Mrs. Alice Baker.

Lockney Senior Citizen News

By Gladys Ragle

Well, we are nearly to the end of January and so far it has been what I would call a mild winter. We had a little taste of winter last Friday, but it didn't last very long.

Lockney community lost another outstanding citizen with the passing from this life of Willis Reynolds. He had indeed been a very integral part of this community for many years. Our sympathy goes out to his family. The center is enjoying the beauti-

ful flowers that were given to them by a family of this community. Thanks so much. Bernice Kent has agreed to take care of them for the present time.

The center has some new directors: Gladys Bobbitt, Claude Brown and Gene Newton. Hold over directors are: E.L. Brotherton, Jr., Jerry and Elsa Cooper and Jody Baccus.

"Weekly Words of Wisdom"
Giving the extra mile puts you miles ahead of your competition. You always find time to do the things you

really want to do.

MENU

February 1-5

Monday-Salmon Patties, vegetable, salad, dessert.

Tuesday-Spaghetti, vegetable, salad, dessert.

Wednesday-Chicken fried steak, vegetable, salad, dessert.

Thursday-Soft beef tacos, vegetable, salad, dessert.

Friday-Meat loaf, vegetable, salad, dessert.

Floydada Senior Citizen News

By Margarette Word

The center is open Monday through Friday. If you plan on eating lunch please call the center at 983-2032 by 10:00 a.m. If you are 60 years or older this center is for you.

Dr. Keith and June Patzer spent several days in Las Vegas, Nevada. Dr. Patzer and his son Dr. Bart Patzer of Austin attended a seminar. Kellye and June shopped. They all also attended some shows.

Recently Deeta Odam's cousin Wayne and Vada Lue Miller from Duncanville, Ga. and their son Kenneth Miller from Lubbock visited Deeta.

Last weekend Deeta Odam went to Hale Center to visit her daughter

Virginia Waits and her youngest daughter Karen and Tony Rastetter and children and Decota's great granddaughter, 8 year old Heather Siewert. All from San Angelo and granddaughter, Debra Rushing, and her son Michael from Plainview were all in Hale Center too.

Our sympathy to the family of Hershel Hammonds.

Our sympathy to Francis Sheppard on the loss of her husband.

Jean Jones fell and broke a hip. She had surgery Monday the 18th.

Leona Mayo had hip surgery. Jerry Bradford broke some bones in a foot.

Thought For The Week---
History never looks like history

when you are living through it. John Gardner

MENU

February 1-5

Monday-Meatloaf, corn, green beans, wheat roll, dry jello salad.

Tuesday-Salmon or Tuna patty, macaroni and cheese, mixed vegetables, cornbread, chocolate pudding.

Wednesday-Roasted chicken, scallop potatoes, spinach, wheat roll, frosted vanilla cake.

Thursday-Mexican beef and potato stew (carne con papas) mixed vegetables, (colache) pina colada pudding flour tortilla.

Friday-Roast beef, roasted potatoes, carrots, tossed salad/French, cinnamon Roll or cake.

Lockney Health and Rehab News

By Rebecca Rodriguez A.D.

Hello to everyone from Lockney Health and Rehabilitation Center. We are on the last week of January already. The Superbowl will be on Sunday.

Last week we celebrated National Activity Professionals Week. I was presented with a gift certificate from Furr's Cafeteria. It was from all the residents and staff at our facility. I want to thank all of you from the bottom of my heart. I really enjoy working with everyone.

I would like to share some quotes:

1. Many people will walk in and out of your life, but only true friends will leave footprints in your heart.

2. To handle yourself, use your head, to handle others, use your heart.

3. Anger is only one letter short of danger.

4. He who loses money, loses much. He who loses a friend, loses more. He who loses faith, loses all.

5. Learn from the mistakes of others. You can't live long enough to make them all yourself!

This is all for now...Until later...



NAPLES
Dr. Robert and Karen Naples, of Mount Pleasant, South Carolina are proud to announce the arrival of their son, Andrew Lloyd, born January 16, 1999 in Charleston, South Carolina. Andrew Lloyd weighed in at 7 pounds and 19 1/2 inches long.

Andrew has one sister Caroline Rae.

Grandparents are Melvin and Janei Lloyd, of Floydada and Ruth Naples, of Clear Lake and Bob Naples, of Houston. Great Grandparents are Betty Boren, of Floydada, Ella Lloyd, of Lubbock and Ellen Holt, of Pasadena.

Advertising pays off.

Recipe of the Week

Girl Scout Chocolate Mint Cheesecake

Crust Ingredients:

1 cup Girl Scout Thin Mint cookie crumbs (crumb in a blender, a few cookies at a time)

1/4 cup granulated sugar

3 tablespoons butter, softened

Filling Ingredients:

2 lbs. cream cheese, softened

1 cup granulated sugar

5 eggs

1 tsp. peppermint extract

1 cup heavy cream

1/2 cup chopped Girl Scout Thin

Mint cookies

1/2 cup chopped Andes candies

Topping Ingredients:

1 cup semi sweet chocolate pieces

1/2 cup heavy cream

Pan: 10 inch springform pan

Crust: In a medium sized bowl, combine the Girl Scout Thin Mint cookie crumbs, sugar, and butter.

Blend well with fingers. Press onto the bottom of a well buttered springform pan. Chill in the freezer or refrigerator for about 30 minutes.

Filling: In a large bowl, beat the cream cheese until smooth and whipped. Add sugar. Mix. Add eggs one at a time, beating well after each addition. Add peppermint extract and heavy cream, blend until smooth and creamy. Stir in candies and cookies. Pour mixture into the chilled pan. Place the pan inside a larger pan containing one inch of water and bake in a preheated 325 oven for 1 1/2 hours.

Turn oven off, open door, leave cheesecake in oven 1/2 hour. Remove and cool completely (refrigerate overnight).

Topping: In a small saucepan, place whipping cream and semi sweet chocolate pieces. Heat over medium heat until chips are melted. Stir frequently. Remove from heat after it just comes to a boil. Let cool 1/2 hour. Pour over cooled cheesecake. Refrigerate.

SHAKLEE
983-5246

New ideas for Fabric Softner

Eliminate static electricity from your television screen; Since fabric softener sheets such as bounce are designed to help eliminate static cling, wipe your television screen with a used sheet of Bounce to keep dust from resettling.

Dissolve soap scum from shower doors; clean with a used fabric softener sheet.

Freshen the air in your home; place an individual sheet in a drawer or hang one in the closet.

Prevent thread from tangling; run a threaded needle through a sheet of fabric softener to eliminate the static cling on the thread before sewing.

Eliminate static cling from pantyhose; rub a damp, used sheet of fabric softener over the hose.

Prevent musty suitcases; place an individual fabric softener sheet inside empty luggage before storing.

Freshen the air in your; place a sheet of fabric softener under the front seat.

Brag Page Deadline

The Valentine issue with the popular Brag Pages will be published Feb. 11. Anyone wishing to put a photo of a loved one in the paper should have the photo to the Hesperian-Beacon offices in Lockney or Floydada, by Feb. 4th, at 5:00 p.m. The cost for 1-3 children in a heart frame is \$10.00. If there are 4 or more people in the photo the cost will be \$15.00. Photos may be color or black and white and any size.

Last Chance for big savings

75% off

Fall & Winter Merchandise

The Yellow Brick Road

117 S. Main
Lockney
652-2848

Free Gift Wrapping
MasterCard & Visa

HOURS
CLOSED MONDAYS
Tues.-Fri. 10:00-5:30
Sat. - 10:00 - 4:00

DUKE'S DODADS IS NOW OPEN



Come and see us
at our
new location --

Kirk and Sons

New Hours:
Monday - Saturday
8:00 - 6:00



Family Growing?

Let me help measure your growing insurance needs with a State Farm Family Insurance Checkup.

See Agent:
NICK LONG
201 California, Floydada
983-3441

State Farm Insurance Companies
Home Offices: Bloomington, Illinois

The Country Preacher

By Pastor Darwin Robinson

A COLD WINTER BAPTISM- It was March 1964 and there were three waiting baptisms, but the weather was cold.

Our little 100 year old church building had a bell tower, but no baptistry. This meant that our 'baptistry' was the nearby river flowing through the Battlecreek valley in East Tennessee.

Battlecreek valley is located some 50 miles northwest of Chattanooga on the Nashville highway. In autumn when the leaves change, it is one of the most beautiful places in America.

Ice storms and snow storms are very commonplace in this area during the winter months and the smaller rivers and streams freeze over.

So this was our dilemma. The candidates were ready, and this particular Sunday, it was sunny and bright. We thought the water would be warm.

That was my first mistake. My second mistake was that one of the candidates was my oldest son, Dean, and he has not forgiven me yet.

Following the morning service the entire congregation of about 50 drove over to the nearby river. I parked my 'bus load' just beyond the narrow wooden bridge and we walked down to the river.

After pulling off my shoes and touching my toes in the super cold, spring-fed, water, I knew we were in for a cold baptism.

We sang a couple of hymns, I prayed for warmth, and then into the flowing icy-cold water we went. We all began shivering as soon as we got about waist deep.

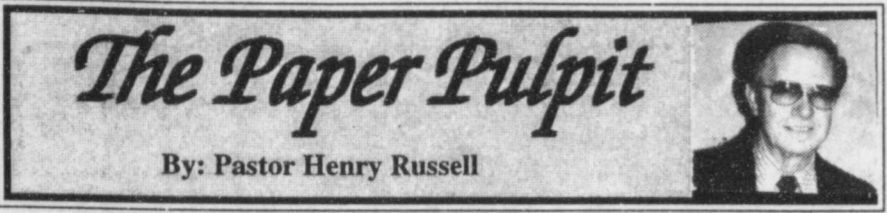
My voice was 'shorting out' as I tried to tell the people on the bank what I was doing, as if they didn't know.

The first young lady I 'put under' the cold waters came up speechless. The second lady, of the large size variety, came up shouting, not of the Spirit, but of the cold -- "Oh, its freezing!"

By this time my poor little son had waited so long that he was turning blue. I quickly 'dipped him' and led him to shore to his anxiously waiting mother. He really hasn't been the same since.

I was reminded of that verse somewhere in the Bible that says, "Many are called, but a few are chosen", or something like that.

MORAL TO THE STORY: *If you make a convert to your idea, then you must be ready to rescue him when he follows you.*



The Paper Pulpit

By: Pastor Henry Russell

"THE PARABLE OF THE FOOTBALL GAME"

Jesus often spoke to His followers by parables to get their attention. (Matt. 13:34) A parable is an earthly story with a Heavenly meaning. If Jesus were telling a modern day parable about His church...I wonder if it might go something like this...

My church is likened unto a football game...with opportunity for the Super Bowl! The stands were filled. Excitement was high. It was the FIRST QUARTER. The home team to receive the ball. A problem arises. "Let's just send in the Coach by himself to play. We'll sit on the bench and cheer him on. He's used to this kind of thing."

The game must be played. The poor coach goes in all by himself to do all he can do. Without any help...he is sacked...trampled badly. How he needs others to help him. He can't score, nor stop the other team from scoring. He is finally carried off the field. The score is looking badly. (Even Jesus Himself said... "Pray...the Lord of harvest would send forth laborers into the field.")

It's the SECOND QUARTER!

By this time at least the team is on the field. They realize, if they are going to win, they must be in their places. They huddle...and they huddle...and they huddle. The whistle is blown. "Delay of game. Five yards penalty." Again they huddle and they huddle and they huddle. Loud boos are coming from the fans. "Why are you waiting so long? You are farther from the goal than you were." The team defends their actions by answering back, "We enjoy just being with our group and the good fellowship. And besides, we don't want to get hurt...we'll just stay in our own little huddle." (The Captain of the church would say to us today, "Work, for the night is coming when no man can work.")

THIRD QUARTER!

It's looking better. At least they are lined up to go forward. The quarterback is giving the signals. He looks to his right, then to his left. Just before the ball is snapped, a fight breaks out among the home team. The opposing team is now really laughing at them. The crowd is about ready to leave if they can't beat this. (Surely we can hear the words of Jesus, "A house divided against itself will fall.") The score is bad...and I mean...really bad!!

FOURTH QUARTER!

If we are ever going to do something, we'd better do it now! The team is lined up. There's the snap. The quarterback steps back to pass. He has a receiver down field. There's a touchdown! The other team seems stunned...they are driven back...They will have to punt. Our team scores again...and again...and another! The game is over. WE WON!!!!

What happened??? What made the change???

The coach called time out to reason and encourage his team. "It's going to take all of us doing our part. A huddle to make plans is great, now...let's go into action! Let's not fight among ourselves, but realize the hour is late. We can win! We must win! Do it my way, and I will build my church, and the gates of Hell shall not prevail against it! One day, we will gather home for a great celebration. We may talk about how rough it was, and what we had to do that changed the score. But believe me...it will be worth it all!!!"



"What Turns a Woman Off"

By Ron Trusler

PART 2 OF 4

By Ron Trusler

The first article in this series listed 4 traits in a man that generally do not appeal to a woman--1) Indecisiveness, 2) Control, 3) Sabotage and 4) Jealousy. Now, for a few more.

5. BLAMING AND COMPLAINING

Men who do not take responsibility for their own lives need an alibi to explain why they are unhappy. They spend much of their time and energy blaming other people or events. They see themselves as a victim. (For example, "if I was only raised differently; if my wife was more supportive; if I was younger; luckier; has a better boss, and etc.")

6. SELF-IMPORTANCE

Women are turned off by men who are wrapped up with their own self-importance. These men are the ones who are always talking about themselves, their ideas and opinions. They are always right and has done everything everyone else has and has done it better.

Gentlemen, if you are not willing to listen to her talk about what she has encountered during the day, you will not be able to hear when she has other important things to say. She will not be willing to tell you her deepest feelings and a distance and coldness will arise in the relationship.

7. ALL WORK AND NO PLAY...

"...Makes Jack a dull boy" and a dull mate. Ambition is good. It helps you get ahead but if it pushes out play, the life is empty. There must be a balance between earning power and "playing" power. You can become powerful by learning to play. Do some

simple things together. It does not have to be big things. Watch a sunset or a sunrise together. Take a golf or tennis lesson together. Play some home games.

8. NEEDING TO LOVE

This one can be complicated. There is a big difference between choosing to be in a relationship and needing to be in one. DESPERATION is a turn of to most women. She wants to know you are a complete human being with or without her. Desperation to please a woman says he has either not developed himself or has given up on himself in an effort to be loved by her. No matter how strong, successful and independent a woman is, she is still looking for a man she can respect, look up and admire.

There is nothing wrong with being dependent on each other to a point. A man or woman can be both independent and dependent. It is a healthy balance to know that you can enjoy dependence on your mate because of trust and also, know that when you have to, you can be independent.

9. INSENSITIVITY

Have you seen men who touch their spouses inappropriately in public? When he does this, he has compromised her, shamed and embarrassed her. Women do not want to be treated as sex objects. There is not a woman alive who does not want the world to know that the man she is with, respects her.

If you have recognized yourself in any of these traits, in the last two articles, you can change your behavior. Recognizing and admitting it is the biggest step. Ask your spouse for some assistance.

Floyd County Church Directory

<p>AIKEN BAPTIST CHURCH Henry Martin, Pastor Sunday School 10:00 a.m. Morning Worship 11:00 a.m. Evening Worship 6:00 p.m. Wednesday: Bible Study 7:30 p.m. *****</p>	<p>FIRST BAPTIST CHURCH 401 S. Main, Floydada Anthony D. Sisemore, Pastor Michael Holster Music/Adm./Sr. Adults Les Reed, Interim Youth Dir. Sunday: Instrumental Ensemble... 8:30 a.m. Church-wide Pre-Sunday School Fellowship... 9:00 a.m. Sunday School 9:30 a.m. Morning Worship 10:45 a.m. Celestial Ringers 4:45 p.m. Discipleship Training, Nursery, Mission Friends, Team Kid, Bible Drill, Youth Drama and Adult Bible Study 5:00 p.m. Evening Worship 6:00 p.m. Wednesday: Children's Choir 4:00 p.m. Evening Meal 6:00 p.m. Prayer Time (All Ages) ... 6:30 p.m. Nursery, Preschool Choir, RA's, GA's Sanctuary Choir, Youth Bible Study, Adult Bible Study... 7:00 p.m. Sanctuary Choir 7:00 p.m. *****</p>	<p>GRANT CHAPEL CHURCH OF GOD IN CHRIST John Williams, Pastor Sunday School 10:00 a.m. Monday Worship 11:00 a.m. Evening Service 7:30 p.m. Tuesday: Prayer Service 8:00 p.m. Wednesday Service 7:30 p.m. *****</p>	<p>SOUTH PLAINS BAPTIST CHURCH Ernest Stewart, Pastor Sunday School 10:00 a.m. Morning Worship 11:00 a.m. *****</p>
<p>BETHANY BAPTIST CHURCH 607 W. Lee St., Floydada J.D. Young, Pastor Sunday School 10:00 a.m. Morning Worship 11:00 a.m. Evening Worship 6:00 p.m. Wednesday Evening Prayer Meeting 7:00 p.m. *****</p>	<p>BIBLE BAPTIST CHURCH 810 S. 3rd, Floydada Darwin Robinson, Pastor Sunday: Sunday School 10:00 a.m. Morning Worship 10:45 a.m. Prayer Meeting 6:00 p.m. Evening Worship 6:30 p.m. Wednesday: Evening Services 7:30 p.m. *****</p>	<p>MAIN STREET CHURCH OF CHRIST Lockney Russell Harris, Minister Bible Study 9:30 a.m. Morning Worship 10:30 a.m. Evening Worship 6:00 p.m. Wednesday: Ladies Bible Class 9:30 a.m. Bible Study 7:30 p.m. *****</p>	<p>SPANISH ASSEMBLY OF GOD TEMPLE GETSEMANI 308 Mississippi Rev. Alejandro Ruiz Jr. 983-2864 or 983-5286 Sunday School 10:00 a.m. Morning Worship 11:00 a.m. Evening Evangelistic Service 6:00 p.m. Wednesday: Family Night 7:30 p.m. *****</p>
<p>CALVARY BAPTIST CHURCH Floydada Glenn Truett, Pastor Sunday School 9:45 a.m. Morning Worship 11:00 a.m. Bible Study 6:00 p.m. Evening Worship 6:00 p.m. Wednesday Evening 7:00 p.m. *****</p>	<p>CARR'S CHAPEL Service Every Sunday: Morning Worship 9:00 a.m. Sunday School 10:30 a.m. *****</p>	<p>MT. ZION BAPTIST CHURCH Floydada Rev. Ralph Jackson Sunday School 10:00 a.m. Morning Worship 11:00 a.m. BTU 6:00 p.m. Evening Worship 7:00 p.m. Wednesday: Mid-Week Prayer 7:00 p.m. Thursday: Bible Study 7:00 p.m. *****</p>	<p>ST. MARY MAGDALEN CATHOLIC CHURCH Floydada Father John Olig Deacon Ricky Vasquez Sunday Mass 11:30 a.m. Tuesday Mass 6:30 p.m. Wednesday Mass 6:30 p.m. Rosary recited 1/2 hour before each Mass Phone: 983-5878 *****</p>
<p>CHURCH OF CHRIST West College & Third, Lockney Frank Duckworth, Evangelist Morning Worship 10:30 a.m. Evening Worship 5:30 p.m. Wednesday Service 8:00 p.m. *****</p>	<p>CITY PARK CHURCH OF CHRIST Floydada Sunday: Bible Study 9:30 a.m. Morning Worship 10:30 a.m. Evening Worship 6:00 p.m. Wednesday: Bible Study 7:30 p.m. (Summer 8:00 p.m.) *****</p>	<p>NEW SALEM PRIMITIVE BAPTIST CHURCH Floydada Sunday: Congregational Singing 10:30 a.m. Morning Worship 11:00 a.m. 3rd Sunday, Elder Don Martin 4th Sunday, Tom Taylor *****</p>	<p>TEMPLO BAUTISTA SALEM Lockney Pedro Reyes, Interim Pastor Sunday School 9:45 a.m. Worship Service 11:00 a.m. Christian Training 5:00 p.m. Evening Worship 6:00 p.m. Wednesday: Prayer Meeting 7:30 p.m. *****</p>
<p>FRIENDSHIP CHAPEL CME Floydada Rev. James Jenkins Sunday 9:45 a.m. Morning Service 11:00 a.m. Wednesday: Bible Study 8:00 p.m. *****</p>	<p>GRACE FELLOWSHIP CHURCH 211 N. Main, Lockney Interdenominational Church Rev. Farril De Foor, Pastor Sunday School 9:45 a.m. Morning Worship 11:00 a.m. Evening Worship 6:00 p.m. Wednesday Service 7:00 p.m. Christian Counseling Available *****</p>	<p>POWER OF PRAISE FULL GOSPEL CHURCH Rev. Manuel Rendon, Pastor 704 N. Main, Lockney 652-3704 Sunday Services 10:00 a.m. Sunday Evening 5:00 p.m. Wednesday 7:30 p.m. Friday - Youth Service 7:00 p.m. *****</p>	<p>TEMPLO BETHEL SPANISH ASSEMBLY OF GOD Washington and 1st St. Lockney 652-2181 Gabriel W. Ortiz, Pastor Olga L. Martinez, Youth Pastor Sunday School 9:45 a.m. Morning Worship 11:00 a.m. Evening Worship 5:00 p.m. Wednesday Service 7:30 p.m. *****</p>
<p>EVANS CHAPEL BAPTIST CHURCH Rev. G.A. Blocker Sunday School 10:00 a.m. Morning Worship 11:00 a.m. Afternoon Worship 2:00 p.m. Training Union 6:00 p.m. Evening Worship 7:00 p.m. Wednesday: Prayer Meeting 7:00 p.m. *****</p>	<p>FIRST UNITED METHODIST CHURCH Floydada Wendell Horn, Pastor Sunday School 9:45 a.m. Morning Worship 11:00 a.m. Youth Fellowship 5:00 p.m. Evening Worship 6:00 p.m. *****</p>	<p>PRIMER IGLESIA BAUTISTA Lockney Pedro Villareal, Pastor Sunday School 9:45 a.m. Worship Service 11:00 a.m. Training Union 5:00 p.m. Evening Service 6:00 p.m. Wednesday Service 7:30 p.m. G.A.'s 7:30 p.m. Ambassadors 7:30 p.m. Fellowship Luncheon - 1st Sunday of Month; Music Worship; Last Sunday with evening service *****</p>	<p>TEMPLO EVANGELICO PENTECOSTAL CHURCH 515 E. Missouri, Floydada Sunday School 9:45 a.m. Evening Worship 5:00 p.m. Wednesday Service 7:00 p.m. *****</p>
<p>FIRST ASSEMBLY OF GOD CHURCH 701 W. Missouri, Floydada Vance Mitchell, Pastor Sunday School 9:45 a.m. Morning Worship 10:50 a.m. Sunday Evening Evangelistic 6:00 p.m. Wednesday: Night Service 7:00 p.m. *****</p>	<p>FRIENDSHIP CHAPEL CME Floydada Rev. James Jenkins Sunday 9:45 a.m. Morning Service 11:00 a.m. Wednesday: Bible Study 8:00 p.m. *****</p>	<p>PRIMERA IGLESIA BAUTISTA Floydada Rev. Lupe Rando Sunday School 9:45 a.m. Morning Worship 10:55 a.m. Evening Worship 6:00 p.m. Wednesday Evening 7:00 p.m. *****</p>	<p>TEMPLO LIBERTAD 203 SE 2nd, Lockney 652-2793 Pastor Juan A. Gutierrez Wednesday Evening 7:30 p.m. Sunday School 5:00 p.m. Sunday Worship 5:00 p.m. *****</p>
<p>SAN JOSE CATHOLIC CHURCH Lockney Jim McCartney, Pastor Wednesday: Communion Service 8:00 p.m. Sunday Mass 11:30 a.m. *****</p>	<p>SAN JOSE CATHOLIC CHURCH Lockney Jim McCartney, Pastor Wednesday: Communion Service 8:00 p.m. Sunday Mass 11:30 a.m. *****</p>	<p>SAN JOSE CATHOLIC CHURCH Lockney Jim McCartney, Pastor Wednesday: Communion Service 8:00 p.m. Sunday Mass 11:30 a.m. *****</p>	<p>TEMPLO NUEVA VIDA Rev. Herman Martinez 308 W. Tennessee, Floydada Sunday School 10:00 a.m. Prayer Service 2:00 p.m. Evening Worship 5:00 p.m. Tuesday: Evening Service 7:30 p.m. Thursday Service 7:30 p.m. *****</p>

This page is brought to you by the following sponsors:

<p>Barwise Gin Barwise Community 983-2737</p>	<p>Goen & Goen Insurance 102 E. California 983-3524</p>	<p>Oden Chevrolet-Olds 221 S. Main - Floydada - 983-3787</p>	<p>TRINITY LUTHERAN CHURCH Providence Community on FM 2301 293-3009 Interim Pastor - Melinda Morton Sunday School & Adult Bible Class... 10:00 a.m. Worship Service 11:00 a.m. *****</p>
<p>Cargill Hybrid Seeds 652-3339, Aiken</p>	<p>Floyd County Hesperian-Beacon 111 E. Missouri, Floydada - 983-3737 120 S. Main, Lockney - 652-3318</p>	<p>Pay-n-Save 210 N. Main - Lockney 652-2293</p>	<p>WEST SIDE CHURCH OF CHRIST Floydada 983-3548 Sunday Worship 10:30 a.m. Sunday Evening 6:00 p.m. Wednesday 7:00 p.m. *****</p>
<p>City Auto 201 E. Missouri - Floydada 983-3767</p>	<p>Lighthouse Electric Coop Floydada- 983-2184</p>	<p>Payne Family Pharmacy 200 S. Main, Floydada, 983-5111</p>	<p>SUNSHINE PUMP Oliver Clark Box 266, Lockney, Tx. 79241 652-3792 Mobile 774-4412</p>
<p>Clark Pharmacy 320 N. Main - Lockney 652-3353</p>	<p>Lockney Co-op Gin Lockney - 652-3377</p>	<p>Schacht Flowers, Jewelry & Gifts 112 W. Poplar, Lockney, 652-2385</p>	
<p>Davis Lumber 102 E. Shurbet - Lockney 652-3385</p>	<p>Lockney Ins. Agency 105 N. Main - Lockney - 652-3347</p>	<p>Sunshine Pump Oliver Clark Box 266, Lockney, Tx. 79241 652-3792 Mobile 774-4412</p>	
<p>Garcia's OK Tire Store 308 S. Main - Floydada - 983-3370 511 1st - Olton, Tx. - 285-7796</p>	<p>Moore-Rose-White Funeral Home 329 W. Calif., Floydada, 983-2525 402 S. Main, Lockney, 652-2211</p>		

Attend the Church of Your Choice on Sunday.

SPORTS



1998-99 LJHS 7TH GRADE LADY SHORTHORNS--Members of the 7th grade girls basketball team are (l-r, back row) Coach Lisa Schumacher, Laci Durham, Britta McDonald, Melissa Hernandez, Amanda Hancock, Cheryl Reed, Tiffany Taylor, Jessica Ochoa; (l-r, front row) Rachel Vega, manager; Cammy Lass, RoseAnna Castillo, MARI Cruz Ramirez, and Hannah Rockwell, manager. Photo by Bobby Hall

Lockney Basketball Report

**LOCKNEY 33
NEW DEAL 25**
The Lockney JV girls basketball team beat New Deal in a hard fought game.
Elizabeth Torres led the scoring with three field goals and six free throws scoring 12 points.
Karlton Hooten scored 9 points and Cris Amador with 6 points. Also adding to the score were Susie Tambunga with 1 and Lexi Jones and Holly Arjona with 2 points each.
SCORES BY QUARTERS
Lockney 3 9 11 13
New Deal 7 13 21 25

**LOCKNEY 36
FLOYDADA 33**
The Lockney JV girls squeaked by the girls from Floydada on January 15th, 36-33.
Elizabeth Torres had 3 field goals for 6 points and 5 free throws for a total of 11 points. Cris Amador had 4 field goals for 8 points and Shayla Brewer scored 5 points. Karlton Hooten scored 3 points and Lexi Jones made 2 points.
SCORES BY QUARTERS
Lockney 11 18 25 36
Floydada 14 23 23 33

**LOCKNEY 18
IDALOU 26**
The Lockney 9th grade girls fell to Idalou January 12th, 18-26.
Alana Galloway was high scorer with 3 field goals for 6 points and 2 free throws totaling 8 points. Vanessa Walker and Jett Gilly scored 4 points each and Amber Wood added 2 points.
SCORES BY QUARTERS
Lockney 4 6 10 18
Idalou 9 14 21 26

**LOCKNEY 32
IDALOU 24**
The Lockney 8th grade girls beat Idalou in the Longhorn Gym January 18th.
Sabrina Gross was the leading scorer with 3 field goals for 6 points and 1 free throw totaling 7 points. Jane Hrbacek, Jalie Dietrich, Ashlie Cuellar and Laci Schumacher all added 5 points each to the score. Leslie Cuellar scored 3 points and Vanessa Luebano added 2 points.
SCORES BY QUARTERS
Lockney 9 16 21 21
Floydada 3 8 17 24

**LOCKNEY 12
IDALOU 28**
The Lockney 7th grade girls fell to Idalou January 18th, 12-28.
Melissa Hernandez and Tiffany Taylor were the leading scorers for this game with 4 points each. Mandy Hancock and Jessica Ochoa added 2 points each.
SCORES BY QUARTER
Lockney 2 8 8 12
Idalou 8 14 21 28

**LOCKNEY 35
IDALOU 42**
The Lockney JV girls fell to Idalou in a physical game January 12th.
Karlton Hooten was the leading scorer with 4 field goals for 8 points and 4 free throws for a total of 12 points. Shayla Brewer scored 7 points, Cris Amador scored 6 points, Elizabeth Torres added 4 points, Lexi Jones 3 points and Holly Arjona 2 points.
SCORES BY QUARTERS
Lockney 11 21 30 35
Idalou 5 19 31 42

**LOCKNEY 24
ABERNATHY 53**
The Lockney JV girls slipped to Abernathy in their January 19th game.
Elizabeth Torres led the scoring with 8 points. Cris Amador added 7 points and Lexi Jones added 5 points. Karlton Hooten made 1 field goal for 2 points.
SCORES BY QUARTERS
Lockney 6 12 15 24
Abernathy 16 31 52 63

Lady Horns down by one in game with New Deal

LOCKNEY--The Lady Horns lost to the New Deal Lady Lions 53-52. They were behind one point when the final buzzer sounded in the Lion's gym January 22.
Brandy Collins led the scoring for the Lady Horns. She scored 17 points with 7 field goals and 3 free throws. She had 7 offensive and 8 defensive rebounds, 5 deflections, and 1 steal to her credit.
Nicole Mosley added 14 points to the scoreboard. She made 2 three-point and 4 two-point field goals. She had 2 offensive and 1 defensive rebounds and 2 deflections.

Dana Martinez made 12 points with 1 three-point and 2 two-point field goals and 5 free throws. She had 1 offensive rebound, 3 deflections, 3 steals and 3 assists.
Courtney Cummings contributed 4 points with 2 field goals. She had 1 offensive rebound, 2 steals and 1 assist.
Tessa Davis sank 2 free throws for 2 points. She made 2 deflections.
Jenna Ford contributed 2 defensive rebounds and 1 steal.
SCORES BY QUARTERS
Lockney 4 14 12 22-52
New Deal 10 10 18 15-53

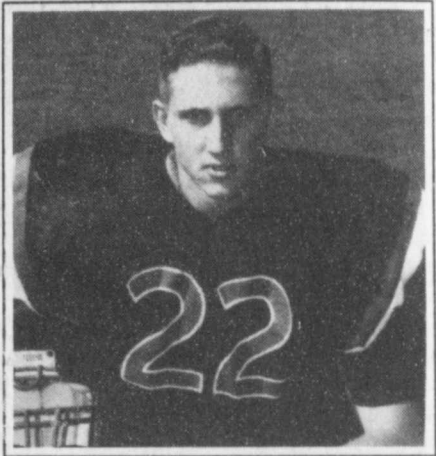
Abernathy slips past Lady Horns with a score of 35-32

LOCKNEY--The Lady Horns were behind by three points when the buzzer ended the game played in Longhorn Gym January 19.
Tessa Davis put 10 points on the scoreboard to lead the scoring for the Lady Horns. She made 3 field goals and 4 free throws. She had 4 offensive and 1 defensive rebounds, 1 deflection, 1 steal and 1 assist.
Eight points each were made by Brandy Collins and Jenna Ford. Both sank 3 field goals and 2 free throws. Collins had 1 offensive and 1 defensive rebounds 1 deflection and 4

steals. Ford had 2 offensive and 4 defensive rebounds, 3 deflections and 2 assists.
Meradith Burson contributed 4 points with 2 free throws. She had 1 defensive rebound to her credit.
Nicole Mosley made 1 field goal for 2 points. She had 1 offensive and 2 defensive rebounds, 1 deflection and 1 steal.
Brooke Hooten contributed 1 defensive rebound, and 1 steal.
SCORES BY QUARTERS
Lockney 14 5 5 8-32
Abernathy 12 8 6 9-35

Lusk invited to play in Down Under Bowl

LOCKNEY--Thad Lusk has been selected to play in the eleventh annual Down Under Bowl in Australia this summer.
"I am looking forward to going to Australia. I know that my opportunity is due to the training I had from my high school coaches. It will be exciting," Thad commented.
Lusk has played football for the Lockney Longhorns during his high school career. He was a member of the 1997 Longhorn team advancing to the State 2A Quarter Finals. He was named 3-AA All District Honorable Mention Linebacker that year.
In 1998 Lusk was named to the 7-AA All District team as 1st Team Offensive Tight-end and 1st Team Defensive Linebacker.
Lusk will be working to earn money to cover expenses to this Bowl



and will appreciate any opportunities for employment. He will be conducting local fund raising activities and will be selling chances to win two round-trip tickets to Australia.
Lusk is a senior at Lockney High School and the son of Raymond and Martha Sue Lusk.



LITTLE LONGHORNS SELECTED: Named as Little Longhorns for the week of January 18-22 at Lockney Elementary School are: (l-r, back row) Gabriel Ortiz, Bethany Dietrich, Natalie Castro, Desiree Sanchez, Andrea Balderas; (l-r, row 3) Allen Aultman, Lucas Hall, Luis Bernal, Maria Sanchez, Eric Flores, Jackson Taylor; (l-r, row 2) Alesha Vasquez, Kayla Thomas, Anna Sherman, Desiree DeLeon, Adrian Michael Luna, Timothy Padilla; (l-r, front row) Travis Thornton, Ruben Valdez, Rex Mathis, Luis Luna, Daniel Smith, Kelli Guerra, Courtney Edwards, Crystal Carrillo, and Brazos Williams. Staff Photo



LITTLE LONGHORNS SELECTED--Chosen as Little Longhorns for the week of January 25-29 at Lockney Elementary School are (l-r, back row) Nathan Hancock, Brandon Wilson, Dustin Deckard, Jon Sherman, Benita Valles, Ruben Pesina Jr.; (l-r, row 3) Myra Ascencio, Ruben Guerra, Brandi Ventura, Staci Green, Annabelle Gonzales, Enrique Ascencio, Anjelica Fierros; (l-r, row 2) Joshua Lerma, Caitlynn Wylie (look at pix - this isn't right) (l-r, front row) Sarah Ascencio, Katie Bice, Sabrina Guerrero, Devin Caballero, Matthew Rendon, Cindy Maris, Delores Luna, Haley Dickerson, and Christopher Franco. Staff Photo

Thanks for Reading the Floyd County Hesperian-Beacon

Give The Gift They Will Thank You For All Year Long

For the price of a one year subscription your present will be delivered every week!

In County Subscription: \$16.00
(Floyd, Briscoe, Motley, Swisher, Hale and Crosby counties)

Out of County: \$18.00
Out of State: \$19.00

The Lockney Junior Class will be serving a meal at the Concession Stand during both the Floydada and New Deal games

Chicken & Beef Enchiladas with Rice, Beans and Drink \$4.00

Homemade Ice Cream 75¢ a serving

Floyd County 4-H Sponsored

STOCK SHOW DANCE

Saturday
January 30, 1999
7:30 - 11:30 p.m.
Duncan Elementary School
\$5.00 per person

Extra, Extra Photo Savings!

FREE 2nd Set!

3" DUCKWALL'S Prints
OR
4" or 5" Kodak Prints

Every Tuesday & Saturday!

DUCKWALL'S

Open daily 9:00 a.m. - 6:00 p.m.
Sunday 1:00 - 6:00 p.m.

114-118 E. California, Floydada

Lockney Math/Science Team place at Shallowater

LOCKNEY--Members of the Lockney High School Math/Science team traveled to Shallowater on January 16 to participate in their competition.

Melanie Huggins received the Top Physics Awards by placing 2nd in

Students and their places are as follows: Math; She also placed 9th in Calculator and 7th in Science.

Danny Huggins placed 5th in Science, 5th in Number Sense, and 3rd in Math. Kacie Young placed 6th in Calcula-

tor and 9th in Science. David Martinez placed 5th in Calculator, 4th in Number Sense and 9th in Math. Jessie Ledesma placed 6th in Calculator. Mrs. Carol Kelly is sponsor of the Math/Science team.

Works of Lockney art students selected

LOCKNEY--The 1999 West Texas Regional Scholastic Art Award Competition was held this week at Wayland Baptist University. Over 1350 artworks from 35 school districts competed with 451 being selected to be hung in the exhibit.

Thirty-eight works by students of Lisa Mosley at Lockney Junior High and High School were selected.

Gold Key Awards were given to Jeffrey Hunter, Nicole Mosley, Frank Guerrero, Jeremy Stapp, Tyler Snow, Michelle Smith, Lacey Aston, Leslie Cuellar, and Cameron Kemp. These winners will advance on to National

Scholastic Art Competition in New York City later this spring.

In addition, a graphic design by Jeffrey Hunter was selected as one of the five best works in the show and received an American Vision Award.

Silver Keys were awarded to Bobbie Mann (2) Noelia Balderas, Daniel Banda, Kenzie Stapp, Nicole Mosley, Jordan Lambert, Katie Westfall, Lacey Aston, Jeremy Stapp, Kelly Crawford, Tessa Stapp, Alana Gallaway, Velvet Johnson, Jalie Dietrich, Rusty Keaton, April Dorman, Janee Hrbacek, and Todd

Cotham.

Honorable Mention awards were given to Jeffrey Hunter (3) Nicole Mosley (2), Matt Smith, Jessica Gilly, Luke Baker, Calvin Collins, Josh Quebe, Marc Wilson, and Chad Johnson.

An awards ceremony was held Saturday, January 23, at 2:00 p.m. in the basement of Mabee Learning Resource Center on the campus of Wayland Baptist University in Plainview with the opening of the exhibit to follow in the gallery. The exhibit will continue through February 12.



FLOYDADA--Joni Smith, 21, recently graduated from the American Airlines Flight Academy. Her home base is Chicago, Illinois. She is the daughter of Stacey Burge and Victor Smith. She is a 1995 graduate of Floydada High School.

Huggins named to Honor Band

LOCKNEY--Melanie Huggins, freshman at Lockney High School, has been selected to participate in the Association of Texas Small School Bands (ATSSB) Honor Band.

This band is composed of students who competed in tryouts in December. The ATSSB Honor Band is the first step towards the All State Band. There are 92 students in this year's Honor Band and 21 of these have gone on to become members of the All State Band.

Being a member of the ATSSB Honor Band is a very prestigious honor for a freshman student. Miss Huggins was also a member of the Junior High All Region Band during her 7th and 8th grade years.

The concert for the Honor Band will be at 3:15 on Saturday, January 30th at Monterey High School in Lubbock. The band will be under the direction



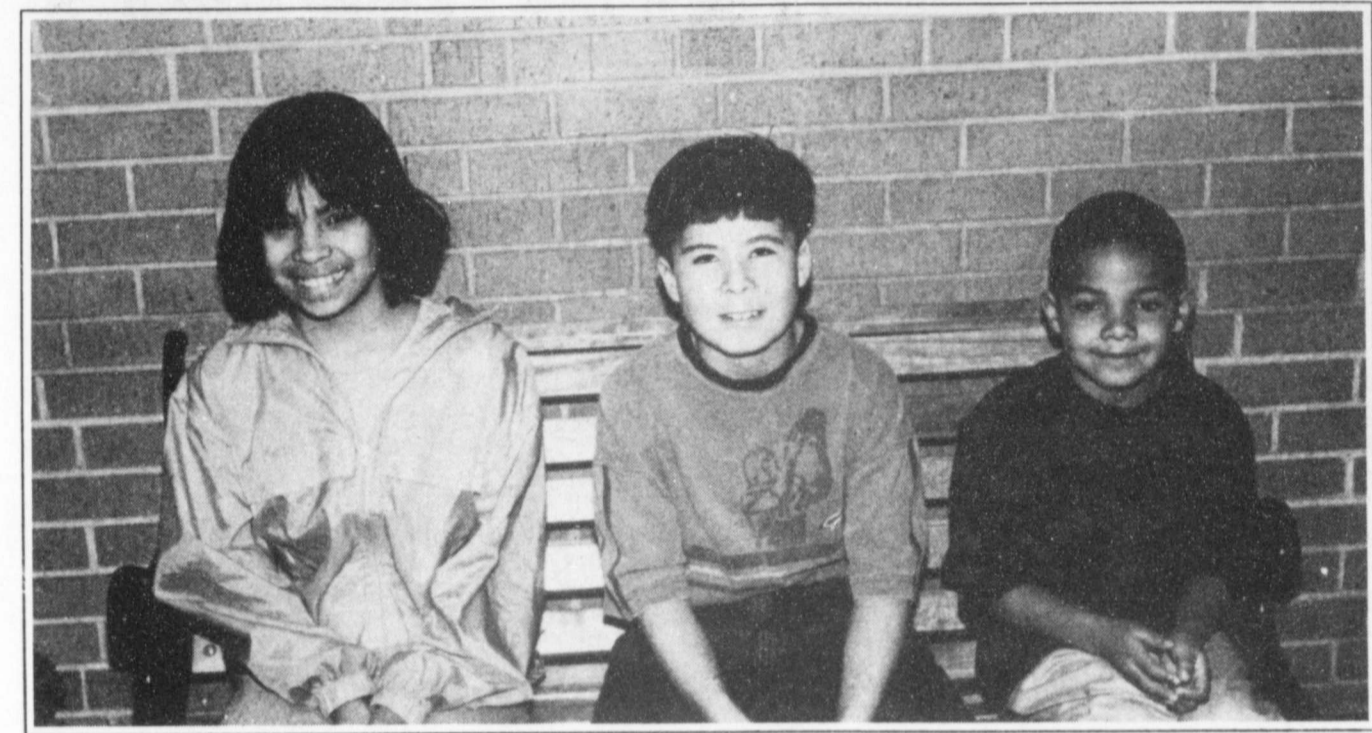
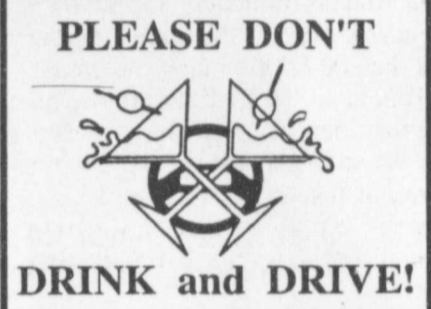
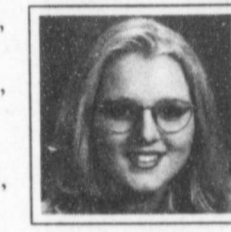
of Tim Kelley, director of the Wayland Baptist University Band. Everyone is invited to the concert. Miss Huggins is the daughter of Jim and Carol Huggins of Lockney.

JHS Senior '99 Spotlight

Gabriel Rodriguez is the son of Carmelita and Jesus A. Rodriguez. His most significant accomplishment is "beating Lockney and getting the trophy back." Gabriel's favorite book is White Fang and his favorite hobby is drawing. He hopes to attend college and train to be diesel mechanic and open his own shop.

Nikki Coronado is the daughter of Erma Carver and Rick Meyers. Nikki feels her most significant accomplishment is graduating from high school. Her favorite television show is "Party of Five" and "Dharma and Greg." Her favorite food is macaroni and cheese. After graduation Nikki plans to go to cosmetology school and take care of her family.

Tamisha Burks is the daughter of Linda Ratliff. Tamisha believes her most significant accomplishments are doing all her work, remaining in the top half of her class, and not giving up when things became difficult. Her favorite comic strip is "Calvin" and her favorite song is "I'm in your hands." Tamisha plans to attend West Texas at Canyon, going on to law school, and being a part-time child care worker.



CEI LAB PALS SELECTED--Students selected as the week of January 11-18 were Sasha Jimenez, Paul C.E.I. Computer Lab Pals at Lockney Elementary for Lopez and Saul Gomez. Staff Photo

Lockney School Menu

- February 2-5 Tuesday**
Breakfast-Sausage, cereal, toast, juice, milk.
Lunch-Corn chip pie or BBQ on bun, pinto beans, fruit, spinach, cornbread, milk.
- Wednesday**
Breakfast-Pancakes/syrup, cereal, toast, juice, milk.
Lunch-Turkey/gravy or grilled cheese, mashed potatoes/gravy, tossed salad, fruit cobbler, milk, hot rolls.
- Thursday**
Breakfast-Rice, sausage, toast, juice, milk, cereal.
Lunch-Spaghetti/meat sauce, corn, salad, fruit, milk, Italian bread.
- Friday**
Breakfast-Cinnamon Roll, cereal, toast, juice, milk.
Lunch-Sloppy Joe or P.B.J. sandwich, fries, fruit, celery, carrots, milk.

Floydada School Menu

- FEBRUARY 2-5 Tuesday**
Breakfast-Sausage, toast, milk, juice.
Lunch-Chicken fried steak, mashed potatoes, green beans, peaches, hot roll, milk.
- Wednesday**
Breakfast-Cinnamon toast, milk, juice.
Lunch-Vegetable soup, pimento cheese sandwiches, crackers, fruit cup, milk.
- Thursday**
Breakfast-Pancakes, syrup, milk, juice.
Lunch-Beef/cheese chalupas, pinto beans, tossed salad, jello, cornbread, milk.
- Friday**
Breakfast-Cereal, graham crackers, milk, juice.
Lunch-Bar B Q on bun, french fries, tossed salad, fruit, milk.

Junior Board of Directors met in January

The West Texas Junior Board of Directors met January 14 at the First National Bank in Lockney. The meeting was called to order by CEO Lacey Aston and Secretary April Gunter read the minutes of the previous meeting.

A tour of the bank was given by Judy Jackson.

Ronnie Hardin, president FNB,

Lockney, introduced Dr. Gary Mangold, a medical doctor at W.J. Mangold Memorial Hospital and Cogdell Clinic in Lockney. He told those present how he became a doctor and the opportunities available for new people in the medical field. Dr. Mangold answered several questions asked by board members.

Directors present at the meeting were Shonda Smith, John Dunavant,

Lindi Miller, Adam Moore, Nathan Pinkerton, Dara Ramsey, Nathan Blount, Meredith Schacht, Lacey Aston, Candelario Rodriguez, April Gunter, Josh Breedlove and Lindsey Jennings.

Others attending the meeting were Ronnie Hardin, Mark Hodges, Stacey Burge, Kyle Fuston, Judy Jackson, Missy Minick and DeLoris McWilliams.

Quebe received the Davidson Scholarship

LOCKNEY--Gretchen Quebe received the C.J. Davidson Scholarship for 1998-99. She is the daughter of John and Karen Quebe of Lockney.

Each year the College of Human Sciences at Texas Tech University awards almost \$300.00 in Scholarships to worthy young men and

women who wish to prepare for exciting careers.

Awards range from \$200.00 to \$2,000.00 for each recipient. Programs in the college include human development, family studies, early childhood, marriage and family therapy, substance abuse studies, fam-

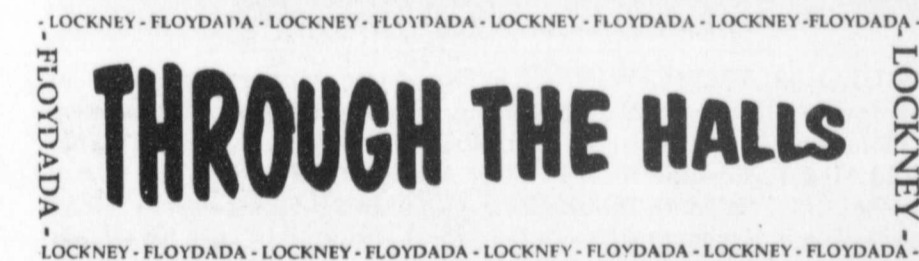
ily financial planning, merchandising, fashion design, interior design, environmental design and consumer economics, food and nutrition/dietetics, family and consumer science education, restaurant, hotel and institutional management (RHIM) and graduate degree studies.

Noland qualified for Dean's list at McMurry University

FLOYDADA--Jennifer A. Noland a Freshman Multidisciplinary Studies III major received a 3.5 average this semester. This qualified her for the Dean's List at McMurry University.

To qualify for the Dean's List, a stu-

dent must have at least a 3.5 GPA and take 12 or more credit hours. To qualify for Dean's Honor Roll, a student must have at least a 3.5 GPA and take from 6 to 11 credit hours.



R.C. ANDREWS ACCELERATED READERS--Shown above are the 100 and 200 point excellent readers treated at Dairy Queen. (l-r) Daniel Houchin (100 pts), Meghan Graham (200 pts), April Arevalo (200 pts), Rachel Griffin (100 pts), Kristan Lackey (100 pts) and Esther Martinez (100 pts). The reading program is sponsored by First National Bank of Floydada. Staff Photo



POISON PREVENTION POSTER WINNERS--Walmart sponsored a regional poster contest, which included Plainview and surrounding towns. R.C. Andrews Elementary of Floydada had a total of 41 entries. Two fourth grade students placed second and third. (l-r) Ms. Elida Garza (Nurse), Tomas L. Hernandez (3rd Place), Casey Campbell (2nd Place) and Gail Hail (Art Teacher). Staff Photo

Diploma
High School INVITATIONS Available
 Prices start at \$42.90 per hundred
SCHACHT
 Flowers, Jewelry, & Gift
 112 W. Poplar, Lockney 652-2385
 8:30 - 5:30 Mon. - Sat.
 "It is Our Pleasure to Serve You"

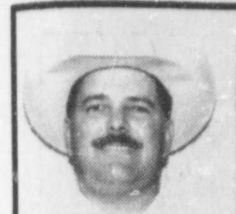
LAB PALS CHOSEN--C.E.I. Computer Lab Pals chosen for the week of January 25-30 at Lockney Elementary School are Andrea Balderas and Sasha Jimenez. Staff Photo

ESTATE AUCTION
 Mr. Richard Mahagan Estate - Lockney, Texas
 Mr. Ronnie Mahagan - Executor
 Saturday, January 30, 1999 - Sale Time: 1:00 p.m.
 Broadway Auction House • 704 Broadway • Plainview, Tx.
 Inspection Date: Friday, January 29 • 1 p.m. to 6 p.m.
 Due to the death of Mr. Mahagan, the following will be sold at public auction

FURNITURE & TV's	1 - RCA TV - 26" Color w/Remote	1 - Roadmaster Treadmill (electric w/gauges)
1 - Entertainment Cabinet	1 - RCA/TV - 13" Color w/remote	1 - Red Devil Portable Vac
4 - Padded Dining Chairs (w/casters)	2 - Dresser/Hutch (3 (nice)	1 - Lot Old Picture Frames
3 - Beige Barca-loungers	1 - Maple Chair	1 - Oil Painting by Ward
2 - Amber Swivel Rockers	1 - Maple Quilt Rack	1 - Oil Painting by Ruff
1 - Corner Shelf	1 - Humidifier	1 - Knives, Pots, Pans, Pillows, Linens, Utensils, Rugs, Books, Ice Chests, Telephones, Clocks, Tools and Much More
1 - Tulip Pole Lamp	1 - Speed Queen Washer/Dryer	LAWN MOWER & EQUIPMENT
1 - Wood Cabinet	1 - Speed Queen Washer/Dryer	1 - John Deere Riding Mower - STX 30
1 - Bevel Mirror 50X30	1 - Roaster - Hamilton Beach	1 - John Deere Weed Eater
1 - 4 pc Cane Design Bdrm. Suite - Full (Includes bed, mattress, & box springs, wardrobe)	1 - Humidifier	1 - Craftsman Spreader
1 - 4 pc Pine Bedroom Suite - Queen (includes bookcase headboard, w/ glass inlay, 12 under drawers, mattress & box springs)	GLASSWARE	1 - Lawn Sweeper
1 - 6 pc. "Thomasville" bedroom suite - King (includes headboard, mattress & box springs, 2 night stands	Vision Ware, Dishes, Figurines, Glasses, Bowls, Glass Lamps, Colored Glass & More!	1 - 12 Volt - 5 gal. Sprayer
1 - Quilt Rack & Shelf - 8'	MISCELLANEOUS	1 - Wheel Barrow
	1 - Set Luggage - Amer. Tour.	1 - Shop Vac
		1 - Lot Fishing Equipment
		1 - Lot Lawn Tools

TERMS & CONDITIONS: Cash day of sale. Everything will be sold AS-IS without warranty or guarantee. Any announcement made on sale day will take precedence over any printed matter in regard to this auction. Please bring your own checkbook. Lunch will be available.

Sale Conducted By:
McNutt Auction Service
 Larry McNutt, TX. 7881
 Ronnie Thornton, TX. 9644
 Loyd Robertson, TX. 12120
 Bus. 806-293-7792
 806-296-2031
 Res. 806-293-3365
 806-296-9508



Floyd County Extension News

By J.D. Ragland Agent - Ag

Continued From Page 1
The dry conditions affected everything and all yields were down. 1998 was a tough year for all production. Along with low prices, producers here are trying to remain positive and are currently gearing up for the 1999 growing season. We all hope it can only be better than 1998.

Other activities ongoing in Floyd County are: On January 9th we held local stock shows in both Floydada and Lockney. January 19th we held the annual Caprock Cotton Conference at the Plains Baptist Assembly Camp located south of Floydada. January 29th thru February 1st

Floyd County Junior Livestock Show will take place and February 2nd thru the 6th is the Ft. Worth Stock Show.

When I get home from Ft. Worth my boss is coming over February 8th for my Performance Review. Well I don't know how I'll do but I can tell ya my performance will have been extremely busy.

Wish us luck at upcoming shows as we will need it. As I've always said, it takes a pretty good one and a whole lot of luck!

Well I've jabbered long enough. Ya'll come to see us! Til next time. Howdy, cause I just hate to say goodbye!

Recovery in cotton prices not expected until 2000-2001

By Tim W. McAlamy
Department of Agriculture
Cotton producers and the entire cotton industry are unlikely to see any substantial recovery in cotton prices until the 2000-2001 marketing year, said William B. Dunavant, chairman of the board and chief executive officer of Dunavant Enterprises, at the 1998 Beltwide Cotton Conference.

"I cannot remember a time in my career when all segments of the industry were under the financial strain that we are experiencing today," Dunavant said. "And unfortunately, I cannot see a light at the end of the tunnel until at least the 2000-2001 marketing year."

"This is a year of flat exports, disastrous fiber quality and low prices. The Asian financial crisis hit our shores in the form of cheap textile imports—imports that are cutting into domestic consumption and depressing prices."

A 13.7 million bale U.S. crop, domestic consumption of only 10.4 million bales and exports of only 3.9 million bales to date leaves little hope for higher short-term prices, he said. Lowering world carry over stocks remain the key to the higher prices, Dunavant said.

"We began this marketing year with world carry-over of 38.9 million bales. We (Dunavant Enterprises) believe world production will come in around 83.4 million bales and that world consumption will amount to 83.9 million bales," he said. "Even if we can reduce U.S. carry-over stocks from 3.9 million to 3.7 million bales, it won't be enough to move prices substantially higher. The key to higher prices is getting China to permanently reduce its cotton stocks."

"At the same time we must remain competitive with other major cotton exporting nations such as Australia and Argentina. And we must strive to improve our market share (sales) to countries such as Monaco and Turkey. If our (Dunavant) figures pan out, world carry-over should drop from 38.9 to 38.4 million bales during this marketing year -- a step in the right direction."

Dunavant expects U.S. cotton acres in 1999 to total about 13.2 million acres with total production of about 17 million bales. He also looks for 1999 domestic consumption of 11 million bales and exports of about 5.5



FLOYD COUNTY NEWS

Panhandle location of water quality project

By Beth Barbee
To protect the water quality of the Panhandle, experts from the Texas Agricultural Extension Service and the Texas Agricultural Experiment Station have joined with state and federal agencies and local landowners to conduct the Tierra Blanca Creek demonstration project.

"What we are attempting to do is persuade local producers to voluntarily implement Best Management Practices (BMPs) into their daily operations by demonstrating the programs' positive effects and benefits," said Dr. Brent Auvermann, assistant professor and environmental quality engineer at the Texas A&M Research and Extension Center in Amarillo.

BMPs include efficient irrigation, reduced tillage, integrated pest management, manure management, rotational grazing, vegetative filter strips and water quality management plans. Most of the demonstrations are sited in Farmer, Deaf Smith and Randall counties.

"There is a laundry list of BMPs, and those of us involved in the project are trying to do a good job of helping farmers manage their feedlots, irrigate more effectively and so forth," Auvermann said.

Lanny McDonald, water quality assistant for the Extension Service and project director, routinely gives tours of the demonstration sites.

"This is a constant demonstration

project," McDonald said. "We're showing neighboring producers how these scientifically proven practices work in the field."

"It is taking known technology and practices, and proving through demonstration that these ideas work," Auvermann said.

In conjunction with adoption of BMPs, farmers and ranchers are also being encouraged to join the water quality management plan.

The plans list practices the farmers promise to do to ensure ground water quality. They are filed and approved through the Texas State Soil and Water Conservation Board.

"The benefits are two-fold," Auvermann said. "First of all, the state board agrees to participate in cost sharing to enable the producer to follow the plan. For example, cost of installing terraces would be split. Secondly, the farmer is automatically immune from any water quality complaints his neighbor may have if he is following the plan."

Funds to support the Tierra Blanca Creek project are allocated by the federal government through the Clean Water Act to help diminish the effects of non-point source pollution.

"Point source pollution comes from one major source like a factory, plant or feedlot," Auvermann said. "Non-point source is everything else, like highway runoff and by-products of agricultural land."

Is glass half full or half empty

Is the glass half empty or half full? It's the answer to that question depends on whether you're a pessimist or optimist. The same "half empty/half full" holds true when folks in agriculture are asked if the North American Free Trade Agreement has helped or hurt our industry.

There are those who point out that with NAFTA, increased competition and new market forces are playing a big role in how we sell our commodities and how much we're getting for them. Often lost to these naysayers is the point that many NAFTA backers — myself included — always believed would occur if our products were allowed to compete in a free and fair marketplace. Texas agricultural commodities are proving their worth in countries around the world.

In 1997, agricultural exports from Texas to all countries continued to boom with cotton (\$564 million), live animals and meat (\$655 million), and feed grains

(\$330 million) leading the charge. And while many countries are now offering stronger competition, these same countries are also proving to be markets where more and more Texas products are being or will be bought.

Thomas Spraying

MODERN TECHNOLOGY - COUNTRY VALUES



PRECISION AIR APPLICATION FOR ALL YOUR DRY FERTILIZER AND WHEAT SEEDING NEEDS.

Danny Thomas
Lockney, Tx. 79241

(806)652-2152

(806)983-0247 (mobile)

FARM AUCTION

Sale Date - February 2

Location - 4 miles North of Lockney
Bobby McCormick & Charles Huffman

Consignments Welcome

for Consignments CONTACT:

Ronnie Thornton - TX#9644 - Sales Rep.
Lockney & Floydada Area
Home: 806-296-2031
Mobile: 806-983-7404

Call to consign your equipment

Five Star Auctioneers
OFFICE: (806) 296-0379
P. O. BOX 1030 - PLAINVIEW, TEXAS 79073-1030

AUCTION

Wednesday, February 3, 1999 - Sale Time: 10:00 a.m.

LOCATED: From Plainview, Tx, 5 miles North on I-27 (Exit 56), Then 2 Miles West on F.M. 788; Or From Edmonson, Tx, 1 Mile Southeast on Hwy. 194, Then 7/12 Miles East on F.M. Hwy 788; Or From Kress, Tx, 6 Miles South on I-27 (Exit 56), Then 2 Miles West on F.M. 788

Elmer Koening, Kenneth Sjogren, Joe & Mark Leach - Owners

Telephone: Elmer Koening (806) 296-6032 Or Kenneth Sjogren (806) 296-2110, Or Joe Leach (806) 296-9344
Or Jimmy Reeves (806) 864-3362, Or Jim Sumners (806) 864-3611, Or Mervin Evans (806) 864-3721

NOTE: Most of The Equipment Will Have The Owner's Initials Next To Them In Case You Need More Information
We Are Retiring From Farming and Will Sell The Following At Public Auction:

- TRACTORS, FRONT END LOADER** —
1-1996 John Deere 9100 M.F.W.D. Diesel Tractor, Cab, A/C, Hdr, Radio, P/S Trans, T.H., Wts. Q.H., 14.9x24 Front Rubber, 18.4x46 Rear Rubber, 1,570 Hrs. Nice, EK
1-1990 John Deere 4950 M.F.W.D. Diesel Tractor, Cab, A/C, Hdr, Radio, P/S Trans, T.H., Wts. Q.H., 16.9x28 Front Rubber, 18.4x42 Rear Rubber, Duall, 5,919 Hrs. JL
2-1981 John Deere 4640 Diesel Tractor, Cab, A/C, Hdr, Radio, P/S Trans, D.H., Wts. Q.H., 18.4x28 Rubber, 1W7,315 Hrs., Radio, P/S Trans, T.H., Wts. Q.H., 18.4x28 Rubber, EK
1-1978 John Deere 4640 Diesel Tractor, Cab, A/C, Hdr., Radio, P/S Trans, T.H., Wts. Q.H., 18.4x28 Rubber, EK
1-1975 John Deere 4400 Diesel Tractor, Cab, A/C, Hdr., Radio, P/S Trans, D.H., Wts. Q.H., 18.4x28 Rubber, 5,834 Hrs., Nice, KS
1-1958 International 350 LPG Utility Tractor, W.F.
1-John Deere 158 Hyd Front End Loader, 7 Bucket
- COTTON EQUIPMENT** —
1-1997 John Deere 7450 Self Propelled 4 Row Cotton Stripper, Cab, A/C, Hdr., Hyostol, Burr Extractor, Like New W/470 Machine Hrs., 564 Eng. Hrs., EK
1-John Deere 263 Bush Cotton Stripper W/Basket, EK
1-Big 12, 32' Cotton Module Builder, Cab, EK
1-Bush Hog 32' Cotton Module Builder, Cab, JL
1-Caldwell T.A. Boll Buggy, JL
- COMBINES, CORNHED, ALL CROP HEAD, GRAIN CARTS** —
1-1984 John Deere 8820 Turbo Diesel Combine, Cab, A/C, Hyostol, J.D. 230, 30' Header W/Flipcup Reel, EK
1-John Deere 884, 8 Row Cornhead, EK
1-John Deere 454, 4 Row All Crop Header, EK
1-John Deere 444, 4 Row Cornhead, Nice, JL
1-1981 Massey-Ferguson 850 Diesel Combine, Cab, A/C, Hdr., Radio, Hyostol, Monitor, 21,140 Rubber, 24' Header W/Lynd Row Harvester, 2,063 Hrs., Shredded, No Corn, Nice, KS
1-1974 John Deere 7700 Diesel Combine, Cab, A/C, Hdr., Posi-Tone Belt Drive, J.D. 24' Quick Tach Header, 1 Owner, Shredded & Clean, JL
1-M.F. 24' Pickup Reel W/Hyd Motor
1-M.F. 24' Metal Ball Reel
1-Bush Header Adapter
2-Roll-A-Cone Pickup Attachments, 4 Row & 7 Row Set
1-Lynch 7 Row Harvester Attachment
2-ABL 425 Bu. Grain Carts
2-Big 12, 400 Bu. Grain Carts
2-S.M. Header Trailers
- TRUCKS, GRAIN TRAILER** —
1-1977 Chevrolet C-65 T.A. Grain Truck, 427 Eng., 5 Sp-2 Sp., 24' Metal Grain Bed, TG Host, 9,000 Rubber, JL
1-1973 Chevrolet C-65 T.A. Grain Truck, Eng., 5 Sp-2 Sp., 22' Metal Grain Bed, T/C Host, EK
1-1980 Chevrolet T.A. Grain Truck, 427 Eng., 5 Sp-2 Sp., Air Brakes, King 22' Metal Grain Bed, T/C Host, 10,000 Rubber, JL
1-1970 Chevrolet T.A. Grain Truck, 427 Eng., 5 Sp-2 Sp., 24' Metal Grain Bed, T/C Host, 10,000 Rubber, EK
1-1983 Chevrolet S.A. Grain Truck, V-8 Eng., 4 Sp-2 Sp., King 16' Metal Grain Bed, Host, 8,25x20 Rubber, KS
1-1962 Chevrolet S.A. Grain Truck, 6 Cyl. Eng., 4 Sp-2 Sp., 16' Metal Grain Bed, T/C Host, EK
1-1960 Chevrolet S.A. Grain Truck, V-8 Eng., 4 Sp-2 Sp., 15' Grain Bed, 8,25x20 Rubber, KS
1-Rhoman G/N Hopper Bottom T.A. Grain Trailer, EK
- MILITARY JEEP, PICKUPS** —
1-1952 Willys M38 Military Jeep, Original Paint W/Military Markings, Tires Like New, 23,526 Miles, Everything Original Except Seat Cushions - You Won't Find One Better, EK
1-1982 GMC 1/2 Ton Pickup, 6.2 Diesel Eng., AT, P/S, PB, L.W.B., Needs Repairs, EK
1-1979 Chevrolet 1/2 Ton Pickup, 350 Eng., AT, L.W.B., Needs Repairs, EK
1-1978 Ford 1/2 Ton Pickup, 300 Eng., AT, S.W.B., Good Work Pickup, EK
1-1973 Chevrolet 1/2 Ton Pickup, 350 Eng., AT, P/S, PB, L.W.B., B.
- EQUIPMENT** —
2-John Deere 7300 Max Emerge Vacuum 3-pt., 8 Row Planters, Monitor, V-Disc Units, Insecticide Boxes, EK & KS
1-John Deere 3-pt., 8 Row Double Row Planter, 4x7' Bar, 6' Rollers, Spray Attachment, G.W.D., KS
1-Litton 3-pt., 8 Row Rolling Cultivator, 5'7" Bar, 5 Tine Gangs, G.W., Tines Show Very Little Wear, EK
- 1-Solcor 75, 3-pt., 8 Row Rolling Cultivator, Big Bar, 5 Tine Gangs, G.W., Nice W/Very Little Wear, KS
1-John Deere RM 3-pt., 8 Row Cultivator, 5'7" Bar, G.W., Coulters, G.W., Spray Attachment, KS
1-Bigham Bros. 3-pt., 8 Row Stiff Shank Cultivator, T.S.B., L.T.M., G.W.
1-Hamby 3-pt., 8 Row Hyd. Rodweeder Rig, T.S.B., L.T.M., Cleanouts, G.W.
1-Hamby 3-pt., 8 Row PTO Rodweeder Rig, D.S.B., L.T.M., 1,000 RPM, Cleanouts, G.W., KS
1-Hamby 3-pt., 40' H.F.W. Rotary Hoes, EK
1-John Deere 400, 3-pt., 28' Rotary Hoes, KS
1-3-pt., 8 Row Scraper Rig W/Ace Skimmers, J.D. Rolling Fenders
1-Hamby 3-pt., 8 Row Split Bed Roller, D.S.B., L.T.M., G.W., Cleanouts, KS
1-Hamby 3-pt., 8 Row A.A. Fertilizer Rig, D.S.B., L.T.M., G.W., John Blue Nitrolator, Hyd. Cutoff, P.H., Cleanouts, KS
1-S&S 3-pt., 8 Row A.A. Fertilizer Rig, T.S.B., G.W., John Blue Nitrolator, Hyd. Cutoff, P.H., Cleanouts, EK
1-Bigham Bros. 3-pt., 21' A.A. Fert. Rig, D.S.B., L.T.M., G.W.
1-Bigham Bros. 3-pt., 4 Row Stalkcutter W/Stalk Puller, V-Disc Units Behind, T.S.B., Nice Rig, KS
1-Crest D.T. 36' H.F.W. Spring Shank Field Cultivator W/Krause Trailers, Nice, JL
1-Johnson 3-pt., 30' Spring Shank Field Cultivator, G.W., Lift Mulch Harrow, EK
1-Hamby 3-pt., 28' Spring Shank Field Cultivator, T.S.B., L.T.M., D.G.W., Lift Mulch Harrow Units, Clean, KS
1-Stearing D.T. 36' Soil Packer, 1'18" & 2'10" Units W/Hyd. Hitch, JL
1-International 760 D.T. 20' Front Dbl. C.C., S.D., Clean, KS
1-Tye 3-pt., 20', 30" Front Dbl. P.W., D.D.
1-John Deere 3-pt., 8 Row Scraper Rig W/Ace Skimmers, KS
1-John Deere 3-pt., RIG, 6 Row Cultivator
1-Crest H 480 D.T. 24' H.F.W. Tandem Disc, Nice, Very Little Wear, KS
1-Massey 800 D.T. 24' H.F.W. Tandem Disc, EK
1-International 760 D.T. 18' Offset Disc, Nice, KS
1-BLM D.T. 15' Chisel/Chopper, JL
1-Hamby 3-pt., 21' Shank Chisel/Sweep Plow, T.S.B., L.T.M., 6 Hole G.W.
1-Roll-A-Cone 21' Lift Mulch Harrow
1-Hamby 3-pt., 21' Shank Chisel/Sweep Plow, T.S.B., L.T.M., D.G.W., Noble Lift Harrow, KS
1-Hamby 3-pt., 21' Shank Chisel/Sweep Plow, T.S.B., L.T.M., H.D. 6 Hole G.W. W/10 Yeller Spring Loaded Coulters, Noble Lift Mulch Harrow
1-Eversman 600 D.T. & Yard Dirt Scraper/Mover
1-International 760 D.T. 3 Wheeler Spot Sprayers
1-Big Ox 3-pt., 8 Row Spray Bar, D.S.B., L.T.M., G.W.
1-Hamby 3-pt., 21' Ripper Plow, Adjustable Shanks, T.S.B., G.W., 1'x3" Shanks, KS
1-John Deere 737 D.T. 4 Row Shredder, C.C., KS
1-Rhino 1310, 3-pt., 4 Row Shredder, Tail Wheels, EK
1-John Deere F355A, 41" Spinner Mouldboard, Nice, KS
1-Big 12, 4 Bottom Mouldboard Plow/Clobuster
1-3-pt., 5 Shank Turn Row Plow, 1'x3" Shanks
2-Rhino 1500, 3-pt., 10' Blades, Cyl. Control, EK & KS
2-Eversman 3-pt., 5' V-Discers, Cyl. Control, EK & KS
1-3-pt. Onion Blade
1-Serveis 3-pt., 2 Row Shredder
1-Litton 3-pt., 4 Row Rolling Cultivator
1-3-pt., 8 Shank Chisel Plow
1-3-pt., 28' Spring Boom
1-Ace P.T.O. Spray Pump
1-Lot Ace Spray Pumps
2-Chemical Poly Tanks W/12 Volt Pumps
16-Brandt Spray Units W/Hoses
1-Lot Spray Nozzles & Drop Nozzles
- SPRAY EQUIPMENT** —
1-John Deere 112L Spot Sprayer, Hydrostat
3-Hooks-Kawassa 250, 3 Wheeler Spot Sprayers
1-Hamby 3-pt., 8 Row Spray Bar, D.S.B., L.T.M., G.W.
1-Set Wylie Twin 200 Gal. Poly Spray Tank W/Belly Mt. Frame
1-Wylie 1 M. 200 Gal. Poly Spray Tank
1-Set Twin 150 Gal. Poly Spray Tanks W/Belly Mt. Saddle
1-Wylie 3-pt., 200 Gal. Poly Spray Tank W/28' Spray Boom
1-Snyder 300 Gal. Poly Spray Tank
2-3-pt., 28' Spring Boom
1-Lot Ace Spray Pumps
2-Wylie 12 Volt Spot Sprayers
2-Chemical Poly Tanks W/12 Volt Pumps
1-Red Ball Hooded Spray Shields
1-Lot Spray Nozzles & Drop Nozzles
- IRRIGATION** —
1-1995 John Deere 4039T, 3.9 Liter, 4 cyl. Turbo Diesel Irrigation Engines, EK
1-G.E. 100 HP VHS Elec. Well Motor, Never Ran Since Being Rewound
- 1-Larry-Somer 75 HP VHS Elec. Well Motor
1-100 HP Horizon Elec. Well Motor
3-Elec. Well Motor Panel Boxes
4-Cher. 282 Irrigation Engines, KS
2-Ford 300 Irrigation Engines
1-Oldsmobile 455 Irrigation Engine
1-Lot Well Motor Driveshafts
6-Inject-O-Meter 110 Volt Injection Pumps, Mixing Tank, 1-Waligator, JL
34-Jts. 6'x20' Gated Pipe, 30' Rows, Cast Ends, KS
50-Jts. 6'x20' Gated Pipe, 40' Rows, 18' Openings, JL
250-Jts. 6'x20' Gated Pipe, 30' Rows, Cast Ends, KS
16-Jts. 6'x20' Flowline
1-J. 10'x20' Flowline
4-Jts. 4'x20' Flowline
22-Waterman 12'x6" Hydrants
4-Solar Ties Solar Surge Valves, 2'x6" & 2'x8"
4-Waterman 10'x8" Hydrants
4-Waterman 10'x6" Hydrants
1-Large Lot T.L. Slip, Slip, End Caps
1-Lot Irrigation Tubes, 1'x1, 1'x2, 2'x1
- TRACTOR & TOOLBAR MAKEUPS** —
1-Hamby 28' T.S.B. Tool Carrier, 6 Row Extended
1-S.M. 28' S.S.B. Tool Carrier
2-Tye 28' D.S.B. Tool Carriers, 1-6 Row Extended
2-Roll-A-Cone 4 Row Rollers, 12'
1-Ban Cat. III Quick Hitch
1-Lot Deere Cat. III Quick Hitches
1-Set Hamby Hyd. Row Markers
2-Sets Hamby Hyd. Row Markers
3-Sam Stevens Row Dikars
9-J.D. V-Bed Levelers For J.D. Max Emerge Planters
2-Sets S&S Gauge Wheels
3-Sets Hamby Gauge Wheels
8-Row Tye Dice Bedder Units
1-Set R.A.C. Dtl. Guide Cones
2-Rodweeder Rods
3-Hamby PTO Rodweeder Boots, 1,000 RPM
1-Lot Lillian Rolling Cultivator Front Tine Units
1-Lot Lillian Rolling Cultivator Searing Off Discs
6-Hamby Scraper Units, 4'x7' Bar
1-Lot J.D. Rotary Hoes Parts
1-Lot Hamby Shanks/Coulters
1-Large Lot Hamby Rotary Hoes
1-Lot J.D. & Hamby Rolling Fenders
1-Lot Hamby 1'x3" Shanks & Clamps
1-Lot Hamby 5/8"x2" Shanks & Clamps
2-Hamby Adj. Pul Hitches
1-Lot Hamby Toolbar Spacers
1-Lot Hamby 1'x2' Flat, Shanks W/Hoses
2-John Blue Nitrolators W/Hoses
1-Lot Hamby 3 Pt., 3-pt. Hitches
9-S-S Spring Loaded & Porton Furrow Drags
1-Lot Hyd. Cylinders
8-R.A.C. Cultivator Fenders
1-Lot Hamby Rotary Hoes
14-Water Furrow Ballees
2-Hamby Rodweeder gearboxes
1-Lot J.D. 825 Mulch Spreaders
1-Lot Sweeps, Busters, Disc Blades, New & Used
- TRAILERS, TANKS** —
1-1,000 Gal. Poly Tank Water Trailer, 2,500 Gal. Tanks W/2' Pump & Gas Eng.
1-2,000 Gal. Poly Tank Water Trailer, 3,400 Gal. Tanks W/Pump & Gas Eng.
1-500 Gal. T.A. Fuel Trailer W/GPI 12 Volt Pump
1-300 Gal. Fuel Tank Mounted On 4 Wheel Trailer Chassis W/Tuffall 12 Volt Pump & Toolbox
1-24' Metal Flatbed Trailer
1-S.M. 24' Lowboy Trailer, Big 12 Chassis
1-Cobey Trailer Chassis
- LIVESTOCK EQUIPMENT** —
1-S.M. Portable Loading Chute
1-S.M. 16' Adjustable Loading Chute
68-5'x12' Metal Stock Panels
1-20' Various Size Metal Stock Panels & Gates
1-Lot 6" Column Pipe Posts
60-Crescote Posts
1-S.M. Hyd. Wire Flier
- NON-COLLATERAL** —
1-Carolina Metal Band Saw
2-Portable Air Compressors, Gas Eng.
1-Large LPG Shop Heater
1-Wooden Parts Bin
120-Sacks Of A/D Cottonseed
2-Bicycles
1-Large Lot Items Too Numerous To Mention
- NOTE: This Sale Has Some Of The Nicest & Cleanest J.D. & Hamby Equipment You Will Find. Hope To See You There.
NOTE: Any Announcement Sale Day Takes Precedence

Tye Grass Drills & Paratills for lease
Abel Prewitt Co.
Ralls, Tx.
253-2243

A Glance At The MARKETS
Closing Commodity Prices:
COTTON . . . Mar . . . 58.50
WHEAT . . . Mar . . . 2.55
MILO . . . Mar . . . 3.24
CORN . . . Mar . . . 3.77
SOYBEANS . Jan . . . 4.30
Source: Producer's Coop Elevator & Floydada Coop Elevator
Sponsored by Zimatic Dealers:
Rhoderick Irrigation
800-878-2584

Ferguson Spraying
Office: 608 E. Houston, Floydada 983-2474
Larry Ferguson Joe Hinkle
Mobile . . . 983-1820 Mobile . . . 983-7058
Home . . . 983-3820 Home . . . 983-5608

Cantwell Irrigation Pipe Co.
Experience brings quality work the first time and every time!
• Aluminum Pipe & Supplies
• Dumptruck And Backhoe Service
• Western Ag Dealer
• 140 Years Of Combined Experience In Pipeline Work
Shorty Cantwell 292-1175 - Mobile Plainview
Randy Ware 774-4987 - Mobile Plainview
Cy Freeman 627-7438 - Mobile Tulla - 995-3187
Call us for Irrigation Pipe Needs
NOW is the TIME
105 E. 24th, Plainview Office - 806-293-2506

PRODUCER'S COOPERATIVE ELEVATOR
983-2821 - Floydada
983-3770 - Dougherty
FIRST NATIONAL BANK OF FLOYDADA
Floydada 983-3717
FLOYDADA COOPERATIVE GINS, INC.
Floydada 983-2884

Five Star Auctioneers
P. O. BOX 1030
PLAINVIEW, TEXAS 79073-1030
OFFICE PHONE: (806) 296-0379
MERVIN W. EVANS (806) 864-3721
JIM SUMNERS (806) 864-3611
JIMMY REEVES (806) 864-3362
NOT RESPONSIBLE FOR ACCIDENTS
WE ARE AGENTS AND AGENTS ONLY
NOTE: PLEASE BRING YOUR OWN CHECK BOOK
— Terms of Sale: CASH —
All Accounts Settled Day Of Sale
Lunch Will Be Available

Obituaries

JESSE ALMARAZ
Rosary for Jesse Leubano Almaraz, 35, of Crosbyton was held at 7:00 p.m. Tuesday, January 26, 1999 in the San Jose Catholic Church.

Services were held at 11:00 a.m. Wednesday, January 27, 1999 in the San Jose Catholic Church. Reverend Glenn Rosendale officiated.

Burial was in the Crosbyton Cemetery under the direction of Adams Funeral Home.

He died Monday, January 25, 1999 in University Medical Center.

Almaraz was born on June 18, 1963 in Crosbyton. He married Diane Marquez on September 5, 1985 in Crosbyton. He was a member of the San Jose Catholic Church. He attended Crosbyton schools.

Survivors include his wife; a son, Jesse of Crosbyton; his mother, Hilaria Almaraz of Crosbyton; five brothers, Pete and David, both of Crosbyton, Henry and Daniel, both of Idalou and Arturo of Lubbock; and a sister, Cynthia DeLeon of Lockney.

A. KENTON DAVIS

Funeral services were held Saturday, January 23, 1999, at 3:00 p.m. in the Montgomery Blvd. Church of Christ with Minister Bruce Thweatt officiating. Interment followed at Sunset Memorial Park.

Mr. Davis was preceded in death by his wife of 33 years, Betty Davis in 1982, his father, Mason Davis in 1977, and brother, Ed Davis.

Mr. Davis served his country during World War II, having served with the U.S. Coast Guard. He was a pilot for over 50 years, and was a longtime member of Quiet Birdman. He was a member of Montgomery Blvd. Church of Christ, and the Kiwanis Club where he served as a past president. He retired in 1987 from Don Ward and Company.

Davis, a resident of Albuquerque for over 40 years and formerly of Sterley, born in Westover and died on Thursday, January 21, 1999.

He is survived by his wife of 16 years, Rosalie Davis of the family home; children, Carolyn McCloud and husband, Ken of Albuquerque, Layne Davis of Palouse, WA, and Paula Chisholm and husband, Tim of Breckenridge; step children, David Mettauer and wife, Sandy of Palestine, John Mettauer of Oklahoma City, OK and Mark Mettauer and wife, Linda

of Denver, CO; mother, Fannie Davis of Hale Center; a sister, Kathryn Smith of Hale Center and 3 brothers, Jerry Davis, of Sterley, Loy Davis of Clarendon and Thurman Davis of Del Rio; 15 grandchildren and 3 great grandchildren.

In lieu of flowers, memorial contributions may be made to the Albuquerque Christian Children's Home, 5700 Winter Haven Rd. NW, Albuquerque, NM 87120, or to the Boys and Girls Ranch of NM, 6209 Hendrix NE, Albuquerque, NM 87110. French Mortuary, 10500 Lomas Blvd. NE.

INEZ FULTS

Graveside services for Inez Fults, 86, of Amarillo were held at 2:30 p.m. Monday, January 25, 1999 in Graveside West Park Cemetery. Reverend Nathan L. Stone officiated.

Burial was under the direction of Gilliland-Watson Funeral Home. She died Saturday, January 20, 1999 in Georgia Manor Nursing Home.

She was born on July 10, 1910 in Fannin County. She married Romie Fults on December 12, 1928 in Ladonia. She was a homemaker.

Survivors include three sons, Benny of Amarillo, Robert of Pattonville and Harold of Hereford; two daughters, Mary Miller of Midland and Belle Vinson of Floydada; a sister, Gladys Duncan of Ladonia; 17 grandchildren and many great-grandchildren.

RUTH GILLILAND

Funeral services for Ruth Gilliland of Floydada are pending at Moore-Rose-White Funeral Home of Floydada.

HERSCHEL DALE HAMMONDS

Graveside services for Herschel Dale Hammonds, 85, of Floydada were held at 10:00 a.m. Monday, January 25, 1999 at the Floydada Cemetery. Reverend James M. Hunton, pastor of La Sierra Baptist Church in Riverside, California, officiated.

Services were under the direction of Moore-Rose-White Funeral Home of Floydada.

Hammonds died Wednesday, January 20, 1999 at Floydada Rehabilitation and Care Center.

He was born on May 20, 1913 in Floydada to the late John Ingram Hammonds and Hope Elizabeth

Duncan Hammonds. He was a lifelong resident of Floydada. He attended Floydada Schools. He was a retired farmer and a former member of Masonic Lodge #712 in Floydada. He was also a member of the First Baptist Church in Floydada.

Survivors include one daughter, Lynda Hunton of Riverside, California; two brothers, Ralph Hammonds of Dallas and Jim Hammonds of Los Altos, California; three grandchildren and four great-grandchildren.

The family suggest memorials be made to Floydada Rehabilitation and Care Center, 925 W. Crockett, Floydada, Texas 79235 or to the Gideon's International, c/o Jerry Etter, 1210 19th Street, Lubbock, Texas 79401.

VALLIE SHULTZ

Funeral services for Vallie Shultz, 90, of Clovis were held at 10:00 a.m. Monday, January 25, 1999 in the Wheeler Mortuary Chapel. Reverend Sammie Rink officiated.

Burial was held at 3:30 p.m. Monday, January 25, 1999 in the Floydada Cemetery.

She died Wednesday, January 20, 1999 in Plains Regional Medical Center.

She was born on June 19, 1908 in Leonard. She married Bonnie Shultz on December 4, 1926 in Floydada. He died in 1980. She moved to Floydada from Denison. She was a seamstress for several years. She moved to Portales in 1980.

Survivors include a son, Charles of Vacaville, California; two daughters, Gloria Ann "Sug" Knox of Portales and the Reverend Sammie Rink of Mansfield, Arkansas; eight grandchildren and five great-grandchildren.

Our hearts are so full of thanks to each of you who supported us with prayers, visits and calls during our loved one's stay in the hospital. Thank you for continued prayers, the wonderful dinner served at church, food brought to the home, flowers, and memorial gifts. The pastoral visits by Bro. Harold Abney and Bro. Don Hill were truly an encouragement to our family. The services were wonderful. Thanks to Dr. Stewart, the faithful nurses and all the staff of the hospital for their ministry to Billy. We can only repay you by sharing with others in their times of need.

Families of Williams H. (Billy) Reagan
Billy Dean and Nancy Reagan
Donna and Kenny Mosler
Sandra and Cal Damarest.

The Lightfoot Family would like to express their sincere appreciation to our family's many relatives and friends for all the visits, cards, flowers, food, prayers and memorials and calls during the death of our beloved husband and father, Travis Lightfoot. May each of you receive the same kind of love and care, which was bestowed upon us at this time of sorrow in our life. God Bless each of you.

Letha Lightfoot
Billy and Nita Joe Carmock
Kenneth and Gayle Lightfoot
Mike and Bonnie Lightfoot
Brad & Ricky Carmack
Tonya and Kelsey Lightfoot
Brandon and Brian Lightfoot

We would like to thank all of our family and friends for all of their sympathy and support during our loss of Patrick D. Monroe. A special thanks to Reverend Harold Abney, Phillip Cotham, Zelta Ellison and the congregation of the First Baptist Church of Lockney.

The Monroe Family
and The VanZandt Family

Words cannot express our heartfelt appreciation for the many phone calls, flowers, food and cards we received during the loss of our loved one. May God bestow his richest blessings upon each of you.

The Family of Robert (Bob) Bradford
Elsie Bradford
Weldon and Mary Emert
Brad Emert
Tad and Carrie Terrell

Family and friends are so precious. Our earnest appreciation is extended to each individual who remembered our dear dad by attending memorial services, visiting the funeral home, sending flowers, memorials, food, cards, phone calls, by visiting with us at the time of our loss and especially for the prayers. We are equally appreciative of numerous acts of kindness toward our parents during their golden years and during their illnesses. God bless each of you.

Jim and Beth Reynolds
Janie and Bo Baughman
and other family of Willis Reynolds

This Week's Announcements

WHIRLWIND BOOSTER CLUB
The Floydada Whirlwind Booster club will hold a meeting on Thursday, February 4th at 7:00 p.m. in the High School Cafeteria. Everyone is encouraged to attend.

FLOYDADA 4-H CLUB
Floydada 4-H Club will be meeting Thursday, January 28 at 7:00 p.m. at the Massie Activity Center. (old clothing for SOS)

LOCKNEY ATHLETIC BOOSTERS
Lockney Athletic Boosters will meet Thursday, February 4 at 7:00 p.m. in the lobby of Longhorn Gym. All parents are encouraged to attend.

FLOYD COUNTY 4-H STOCK SHOW DANCE
The Floyd County 4-H will be sponsoring a Stock Show Dance Saturday, January 30, 1999 at the Duncan Elementary School from 7:30 p.m. - 11:30 p.m. Admission is \$5.00 per person.

BLOOD PRESSURE CLINIC
A free blood pressure clinic is held in the community room of the First National Bank in Floydada every Tuesday from 9 a.m. to 11 a.m. Everyone is welcome.

ALCOHOLICS ANONYMOUS
Alcoholics Anonymous and Al-Anons meet each Tuesday night in Floydada at 8:00 p.m. Anyone wanting the loving fellowship of men and women who can share their experience, strength and hope is welcome. Meetings are at 111 North Wall, a block north of the courthouse. Anyone interested can call 983-3635 or 652-3546.

BLOOD PRESSURE AND GLUCOSE TESTING
Free blood pressure and glucose testing is held every other Thursday from 9 to 11 a.m. at the Lockney Care Center. Everyone is welcome.

LOCKNEY AA
Open meetings of Alcoholics Anonymous in Lockney will be Fridays, at 8 p.m., at Grace Fellowship Church, across from the hospital. If you are worried about your drinking, or someone else's, we understand, we care, and we want to help. Phone 652-3546 or 652-2280.



FORMER LOCKNEY-BEACON OWNER, WILLIS REYNOLDS DIES



Memorial services for Willie Reynolds, 86, a Lockney resident for almost half a century, were conducted at 10:00 a.m. Friday, January 22, 1999 in the First Baptist Church of Lockney. The Reverend Harold Abney, pastor, officiated.

The eulogy was given by his five grandchildren: Randy Reynolds of Lubbock, Rhonda Bownds of Garland, Scott Baughman of Fort Worth, Terri Baughman of Granbury and Jami Hobgood of Canyon.

Serving as pallbearers were grandsons Randy Reynolds, Scott Baughman, Kenneth Bownds, Jerry Slemmons and Mark Hobgood and a friend, W.L. Carthel. Members of the Lockney Senior Citizens were honorary pallbearers.

Interment was made in Plainview Memorial Park beside his wife, Bernice, who died January 25, 1996. Directing arrangements was Moore-Rose-White Funeral Home of Lockney. Mr. Reynolds was believed to be the area's oldest printer before closing Lockney Printing in 1997. He owned the area's last totally hot-type printing plant.

He died at 4:37 a.m. Wednesday, January 20, 1999 in Covenant Health Systems (formerly Methodist Hospital) in Lubbock, where he had been a patient since January 5, 1999.

An owner of The Lockney Beacon until 1970, he was a stockholder in Blanco Offset Printing in Floydada at the time of his death.

Honored by First Baptist Church on Fathers Day 1998 as the oldest father in attendance, Mr. Reynolds had been a member of the church for 49 years.

He and the former Bernice Jackson were married in the First Baptist Church parsonage in Ralls on September 23, 1934. The couple celebrated its 61st wedding anniversary prior to her death.

Mr. Reynolds purchased an interest in The Lockney Beacon and moved his family to Lockney in February 1950. Prior to that time, he was a co-owner of The Tulia Herald.

A charter director and member of Lockney Senior Citizens, he was charter member of Lockney Lions Club and also formerly held membership in Lockney Chamber of Commerce, Lockney Rotary Club, Panhandle Press Association and Texas Press Association.

Born on February 20, 1912 in Tioga (Grayson County), Texas, James Willis Reynolds moved to Tulia in 1929, when he entered the printing/newspaper business.

Surviving Mr. Reynolds are: one son and daughter-in-law, Jim and Beth Reynolds of Tulia; one daughter and son-in-law, Janie and Bo Baughman of Canyon; one sister, Velma Mye of Canyon; one foster sister, Doris Kooch of Wyoming; five grandchildren; and 10 great-grandchildren, Brooke Baughman, Micalyn Slemmons, Brandon Bownds, Bobby Bownds, Jake Sherwood, Matt Slemmons, Travis Reynolds, Dylan Sherwood, Jared Braughman and Megan Hobgood.

Preceding him in death were his parents, J.H. and Daisy Scoggins Reynolds and a sister, Ruby Hungate.

The family suggests memorials be to First Baptist Church in Lockney or Lockney Senior Citizens.

Keep Up With Your Local News
Subscribe to the Floyd County Hesperian-Beacon
It Will Be Delivered To Your Home!
In County: \$16.00 Out of County: \$17.00 Out of State: \$18.00
Senior Citizens Receive \$1.00 Discount

AUCTION

Tuesday, February 2, 1999 — Sale Time: 10:00 a.m.
LOCATED: Lockney, Texas, 4 Miles North On Hwy. 378.
BOBBY McCORMICK, CHARLES HUFFMAN & OTHERS — Owners
Telephone: Bobby (806) 652-2522 (Night), Or Charles (806) 652-3570 (Night), Or Ronnie Thornton (806) 296-2031
Bobby & Charles Are Retiring And The Following Will Be Sold At Public Auction:

<p>TRACTORS — 1-1989 John Deere 4755 M.F.W.D. Diesel Tractor, Cab, A/C, Hrs., Radio, P.S., Wts. Q.H., 18.4R42 Rubber, T.H., 4,456 Hrs., 1 Owner, SN F001976, Nice 1-1989 John Deere 4555 M.F.W.D. Diesel Tractor, Cab, A/C, Hrs., Radio, P.S., Wts. Q.H., 18.4R42 Rubber, T.H., 4,016 Hrs., 1 Owner, SN F001919, Nice 1-1982 John Deere 4440 Diesel Tractor, Cab, A/C, Hrs., Radio, Q/R Trans., 18.4x38 Rubber, Like New, 5,600 Hrs., SN 440H05992RW, Nice, 1 Owner, Shredded</p> <p>COTTON EQUIPMENT — 1-1994 John Deere 7445 Diesel Cotton Stripper, 4 Row, Cab, A/C, Hrs., Radio, Fan Hr. 621, Orthman Guidance System, SN 7445X0-16133, Nice, Shredded 1-Bush Hog 32' Module Builder, Cab 1-Caldwell '2 Bale' Roll Buggy</p> <p>SPRAYERS — 1-Humphreys Hydra Trac 3 Wheel, 3 Seat Spray Buggy, 18 HP Kohler Motor, Used One Season 1-Big Boy Truck Sprayer, 3 Wheel, 18 HP B&S Eng.</p> <p>GRAIN TRUCK, GRAIN CARTS — 1-1954 Chevrolet Grain Truck, 2 Ton, Wood Bed, No Hoist 1-Wimore 400 Bu. Grain Buggy 2-Big 12, 500 Bu. Grain Carts</p> <p>FARM EQUIPMENT — 1-1994 John Deere 7300 Max Emerge 8 Row Planter, 40" W/Factory Sprayer, Incorporator Tines, Monitor, Shredded & Nice 1-John Deere 7100 Plateless Planter W/ Bed Roller & J.D. Monitor 1-John Deere 1610 31' Home W/Harrow 1-Bigham Bros. Parallel 6 Row, G.W., 7-1/2" Shanks 1-Cruibuster / Hamby Chisel Cropper, #980441 1-IHC 485 Tandem, F.W., New Bearings & 24' Discs 1-Bigham Bros. 21' Super Bar Sweep Plow, D.G. 1-J.D. 235 Tandem, 21', F.W. 2-John Deere 400, 12' Row Rotary Hoe, Stack Wings, G.W. 1-Hamby 12 Row, 40" H.F. Cultivator, 3 G.W., D.B., 1-1/2" Shanks, Fert. Pump, 4x4 Bar 1-Hamby 12 Row H.F. Field Cultivator, 2 G.W., D.B. W/Harrow 1-Lilliston 12 Row, 3-pt. Rolling Cultivator, 2 Sets G.W., H.F. 1-Roll-A-Cone 8 Row Lister, Markers, 4x7" Bar, L.T.M., 2 Coulters, G.W., 8-1/2" Shanks & Clamps 1-Beth-Hashita 75, 8 Row Rolling Cultivator, 3-pt., G.W., 7x7" Bar 1-Hamby 8 Row Rowweeder, T-4x4 Bar, 18-1/2" Shanks & Clamps, 2 Sets G.W., Continental Rotor-Matic Series C Hyd. Fertilizer Applicator 2-Hamby 3-pt. Cultivators, T.S.B., L.T.M., 40-1/2" Shanks & Clamps, 2 Sets G.W. 1-Hamby 3-pt. Chisel Plow, T.S.B., L.T.M., D.G.W., 13 Shank 1-John Deere 1418, 4 Row Shredder, 3-pt., G.W. 1-John Deere 10', 3-pt. Blade, H.D.</p>	<p>1-Big Rhino 1540, 3-pt., 10' Blade, H.D. 1-Tye 6 Row, 3-pt. Grain Drill, 8" Space, Orange 1-Sam Stevens 3-pt., 16 Row, 40' Sandlighter, Fold Up, Like New 1-MAW 1828, 8 Row, 3-pt. Rotary Hoe, G.W. 1-John Deere 825, 3-pt., 12 Row, 30" Row Crop Cultivator, G.W., 2 Coulters, 4x7" Bar 1-FMC 3-pt., 8 Row, 40' Sidelwinder, D.G.W. W/Orthman Asst. Wheels 1-John Deere 825, 3-pt., 8 Row, 40' Row Crop Cultivator 1-John Deere 3-pt., 8 Row, 40' Disc Bedder W/S.M. Markers, D.G., 4x7" Bar 1-Hamby 9 Row, 40' Lister, 1-1/2" Shanks, G.W., Coulters, D.S.B. W/S.M. Markers 1-Hamby 8 Row, 3-pt. Fertilizer Rig, 9 Heavy Duty Shanks, G.W., 3-pt., D.S.B. 1-Sam Stevens 8 Row, 3-pt. Stalkcutter, Single Blade 1-Servis 1310 Shredder, 4 Row, D.T. 1-S&S 8 Row, 40', 3-pt. Cultivator, D.S.B., 1-1/2" Shanks, G.W. 1-S&S 8 Row, 40' Bed Roller, D.S.B., 12' Roller, 9-1/2" Cleanouts, G.W. 1-Hamby 15', 3-pt. Hoemes, T.S.B., 1 W/Noble Rake, 1 W/R.A.C. Rake 1-Evensman 3-pt., 6 V-Ditcher W/2 Cylinders 1-Noble 40' Spring Tooth Harrow, D.T., Fold Up 1-Tye 21', 3-pt. Hoeme, T.S.B., L.T.M., D.G.W. 1-John Deere 400, 8 Row Rotary Hoe 1-Tye 3-pt. Cleanout Plow, D.S.B., L.T.M., G.W. 1-Bush Hog "Squealer" 2 Row, 3-pt. Shredder, 540 RPM 1-Bush Hog 2 Row, 3-pt. Shredder, 540 RPM 1-Hamby 3-pt. Turn Row Plow, T.S.B., 8 Shanks 1-Hamby 8 Row, 3-pt. Cultivator Bar, T.S.B., Spray Rig, 300 Gal. Wylie Tank & Saddle, H.D. Ace Pump, Controls 1-John Deere 4 Bottom Breaking Plow, Two-Way 1-John Deere 1610 D.T. Wheat Drill 1-Evensman 3-pt. V-Ditcher 1-John Deere 4 Row, 3-pt. Cultivator, Diamond Bar, G.W. 1-John Deere 4 Row Lister, Diamond Bar, J.D. G.W. 1-Tye 5 Row, 3-pt. Lister, 4x4 Front Bar, Diamond Back Bar, 5 J.D. Lister Bottoms 1-Graham Hoeme 3-pt., 9 Shank 1-Hamby 3-pt., 9 Shank Ripper, T.S.B., G.W., Midwest Harrow 1-Tye 6 Row, 3-pt. Rowweeder, T.S.B., Hyd. Markers, G.W. 1-Tye 3-pt. Stubble Mulcher, D.S.B., 5 Shank, G.W. 1-Hamby 5 Shank, 3-pt. Stubble Mulcher, T.S.B. 1-S.M. D.T. 6 Row Bed Roller, 24' Roller 1-Hamby 3-pt., 14' Cultivator, D.S.B. 1-S.M. 6 Row, 3-pt. Bed Roller D.S.B., 20" Roller 1-D.T. 2 Row Rood Cotton Machine 1-Ford 3-pt. Scoop</p> <p>IRRIGATION — 2-Chevrolet 292 Irrigation Motors, Runs 1-Dobbe Floating Pit Pump, 7 1/2 HP, 3 Phase, No Panel, 1 Yr. On New Porcons 1-Dobbe Floating Pit Pump, 5 HP, Single Phase, No Panel 1-Dobbe Floating Pit Pump, 5 HP, Single Phase W/Panel</p>	<p>1-Floating Pit Pump, 7 1/2 HP, Single Phase, No Panel 80-Jts. 7x20' Gated Pipe, 40' Rows 72-Jts. 6x20' Gated Pipe, 40' Rows 1-Lot Hydrants, 12x7" 1-Lot Fittings: Lx, Tx, F's 1-Lot Approx. 70 Jts. Scrap Gated Pipe 1-Lot Irrigation Tubes, 1 1/2" & 2" 1-Surge Valve 4-Gated Pipe Trailers</p> <p>LIVESTOCK TRAILERS, TRAILERS, TANKS — 1-Kaylan 6x20' Gooseneck Covered Top Livestock Trailer 1-16 Covered Top Stock Trailer 1-16 Utility Trailer W/Ramps 1-1945, 38' Temple Flat Bed, 10,00x20 Rubber, SN TM9-892-38' 1-1981, 40' Trail Model Flat Bed, 65,000 G.V.W.R., 11R24.5 Rubber, SN 1PTF717375600013 1-Big 12 Trailer Chassis 1-2 Wheel Pickup Bed 1-2 Wheel Jeep Trailer 1-2 Wheel Winch Trailer W/4 Ton Yale Chain Hoist 1-Big 12, 1,000 Gal. Water Trailer & Pump 1-350 Gal. Propane Tank On Trailer 1-500 Gal. Propane Tank 2-110 Gal. Diesel Tanks 2-Wylie 250 Gal. Tanks W/Saddle, Pump, Controls 2-Wylie 250 Gal. Tanks W/Saddles 1-1,500 Gal. FG Water Tank</p> <p>TOOLBAR MAKEUPS — 12-Pipe Fenders 1-2 Wheel Fenders 1-Lot Orchard Shanks 1-Set Gaage Wheels 1-Set Coulters 12-Knifing Shoes 1-Lot J.D. Rotary Hoe Tines 1-Ace Hyd. Pump 1-Midwest 21' Harrow 2-Guide Cones 1-Roll-A-Cone 8 Row Marker 1-Quick Hitch 1-Set Duars 1-S.M. 12 Row Spring Boom 9-Lorenzo Spring Loaded Water Furrows 6-IH 295 Bed Planters 1-Mr. Pickup Grille Guard, For 1992 Chev. & Up 1-Lot Items Too Numerous To Mention</p> <p>SHOP EQUIPMENT — 1-Ingersoll-Rand 1 1/2 HP, 110 V Air Compressor 1-12 V Pickup Air Compressor, New Motor 1-Metal Shop Table 1-Wood Work Bench 1-Bolt Bin, Metal</p> <p>NOTE: Any Announcement Sale Day Takes Precedence</p>
---	---	--

Thank you for reading the Hesperian-Beacon

Five Star Auctioneers
P. O. BOX 1030
PLAINVIEW, TEXAS 79073-1030
OFFICE PHONE: (806) 296-0379

MERVIN W. EVANS (806) 864-3721
JIM SUMMERS (806) 864-3611
JIMMY REEVES (806) 864-3362

NOT RESPONSIBLE FOR ACCIDENTS
WE ARE AGENTS AND AGENTS ONLY
NOTE: PLEASE BRING YOUR OWN CHECK BOOK
Terms of Sale: Cash, Personal or Business Check, Cashier's Check
All Accounts Settled Day of Sale - Lunch Will Be Available

THE CLASSIFIEDS

AUTOMOTIVE FOR SALE

1995 CHEVROLET SILVERADO extended cab. 43,000 miles. 983-6456-114 J.B. Avenue. 2-4p

FOR SALE--1989 Mercury Sable 4 door. Low mileage. 983-2318. 1-28p

BUILDING MATERIALS

STEEL BUILDINGS, new, must sell. 30x40x12 was \$10,200, now \$6,990; 40x60x12 was \$16,400, now \$9,990; 50x100x16 was \$27,590, now \$19,990; 60x200x16 was \$58,760, now \$39,990. Call 1-800-406-5126. 1-28p

ESTATE SALE

WANDA BAKER ESTATE SALE--One Day Only. Saturday, January 30th from 9:00 a.m. - 4:00 p.m. Proceeds to benefit the First United Methodist Church Stinebaugh Cottage. 1-28c

FARM EQUIPMENT FOR SALE

8 ROW STALKCUTTER, 6 blade, bearings, covered. McGowen. 983-1290. 2-18p

FARMS/RANCHES FOR SALE

80 ACRES OF IRRIGATED FARM-LAND--2 irrigation wells and 1 house well. 3 miles North of Cone; 1/2 mile West of highway. Call 806-983-3081. 1-28p

320 ACRES OF IRRIGATED LAND in McCoy Community. Two wells and all mineral rights included. Larry S. Jones, Broker, 983-2151. tfn

HAVE BUYERS FOR CRP land in Floyd and surrounding counties. Call Turner Real Estate at 983-2635. tfn

HIGHWAY FRONTAGE 219 ACRES semi-irrigated farm at \$375.00 per acre. Located 8 miles west of Silverton and 7.5 miles south of Lockney on Highway 387 and 1 mile west on Kress Highway; or 15.5 miles north of Lockney on Silverton Highway 387 and 1 mile west on Kress Highway at junction of County Road #3. Call 806-347-2248. tfn

FOR RENT OR SALE

Lockney
3 BEDROOM APARTMENT IN LOCKNEY--Call Bobby Pinner 652-2301 or 652-2272. 1-28p

GARAGE SALES

Floydada
529 W. JACKSON-FLOYDADA--Hand and Power tools, fishing equipment, gas and electric heaters, 2 ton floor jack, air tank, color TV, dishes, tool boxes, chain saw, dryer, and small refrigerator. Saturday, January 30th from 8:30 a.m. - 5:00 p.m. 1-28p

HAY FOR SALE

FOR SALE: HYBRID SUDAN. Round bales. By bale or ton. 806-983-2969. 1-28c

HELP WANTED

FULL-TIME FARMHAND--Proficient in row irrigation. Must have references. Must speak and understand English. Call 983-2470 after 5:00 p.m. tfn

BUSINESS OFFICE MANAGER: Accounts receivable, accounts payable, accounts payroll. Appointment Only-652-3375. 2-4c

FULLTIME HOME HEALTH RN needed. Comparable salary with benefits. Contact Freda Bartlett at 806-675-2352. Crosbyton Hospital Home Health. 1-28c

MACKENZIE MUNICIPAL WATER AUTHORITY is taking applications for the position of manager. Send resume to Route 1, Box 14, Silverton, Texas 79257. For more information. Call 806-633-4318. Deadline is 2-15-99. 1-28c

HOUSES FOR SALE

Floydada
NICE HOUSE FOR SALE--Central air and heat. Owner will carry note with downpayment. Call 983-2797. tfn

BY OWNER: BRICK 3 BEDROOM. 2 bath, 2 car garage. Central heat and air. Fireplace with cellar and metal storage building. Good location. 801 W. Mesquite. Call 983-3284 or 983-2048 (after 5:00 p.m.). tfn

THE MOST UNIQUE HOME in Floydada with the most secure environment. Three bedroom, two and one-half baths, indoor garden area, double fireplace and separate guest quarters. Not only can you live here, but also have income potential at the same time. For your private showing call Larry at 983-2151. tfn

FOR SALE BY OWNERS: 3 bedroom, 2 bath, 2 car garage with workcenter, central heat and air, covered cellar with lots of storage, fenced backyard with it's own water well. Located in beautiful neighborhood. 825 W. Kentucky. Call 983-2203. tfn

NICE 2 BEDROOM, 2 BATH, double garage. Brick home with fireplace on Ralls Highway.--- PRICED TO SELL--- 2 bedroom, 1 bath, fireplace, Mississippi Street; -3 Commercial Properties; -160 acres irrigated farm on highway near town. Call Sam Hale, Hale Insurance and Real Estate, 106 S. Main, Floydada, 983-3261. tfn

WEST FLOYDADA--Good location! Four bedroom, two baths, two car garage and more. This home is a great family home. Call Jones Enterprises, Broker at 983-2151. tfn

ONE BLOCK FROM DUNCAN SCHOOL--This 3 bedroom home would make a great starter home. Call Jones Enterprises, Broker at 983-2151. tfn

MISCELLANEOUS

SPRING AND HAIL STORMS ARE just around the corner. 12x20 carport kit, ready to easily assemble. \$675.00 while supply lasts. MC, VISA. Call 983-3121 for details. 1-28c

HOUSE SETTLING?--Cracks in the walls, ceilings, or bricks? Free estimates and inspection. Childers Brothers 1-800-299-9563. 7-1p

RCA 25" COLOR Trak console TV - Call 983-2797. 1-28p

SERVICES

EXPERIENCED LADY WILL DO PRIVATE duty care for elderly. Full or parttime. Call 983-2709 -leave message. 2-4p

SAW SHARPENING: John Morgan - 114 W. Locust, Box 1133, Lockney. Phone 652-2407. 2-4p

MARTIN'S SMALL ENGINE REPAIR--Repairing small engines is our specialty. 219 S. Main, Lockney. Call 652-2017. 1-28c

LARRY OGDEN AUCTIONEERING--Estates, Farm, Ranch, Business, Liquidations, State Licensed and Bonded. (806) 983-5808. TX. #9240. tfn

STORAGE FOR RENT

INSIDE STORAGE for R.V.'s, boats, cars. Call Russell Equipment 983-3535. tfn

FLOYDADA FORD MERCURY

WE RENT CARS

SPRAY IN BEDLINERS

WINDOW CHIP REPAIR

YOUR ACCESSORY HEADQUARTERS

Bumpers, grill guards, nerf bars, steps, toolboxes, headache racks, hitches, trailer hook-ups and much more.

GOOSENECK INSTALLATION

FLOYDADA FORD-MERCURY 983-3761

SPRINKLER SERVICES SPECIAL !!!

Gearbox oil change - \$20.00 p/tower - Includes Oil

ALSO AVAILABLE

Service and Parts - (any brand Pivot)

10 YEARS EXPERIENCE

Call--- 983-3724 or 983-5931
Mobile ---- 983-7000

ADAMSON REAL ESTATE

2703 24th St. Plainview 293-5212
http://www.texasonline.net/Adamson

Rusty Wilson, Lockney.....652-1106
Tom or Francis Adamson.....296-7228
Rob or Cecilia Wilson.....293-5722
Laura Simmons.....684-2576

205 S.W. 7th, LOCKNEY--Brick, 2 bedroom with basement, central heat and air, large kitchen, dining and family area. garage.....\$ 67,000.00

407 S.W. 3rd, LOCKNEY--Nice 2 bedroom, 1 bath, great starter home, attached garage, central heat, cellar.....\$ 38,000.00

618 S. MAIN, LOCKNEY--3 bed, 1 3/4 bath, garage, basement.....\$ 38,500.00

HOME IN COUNTRY: 3 bedroom home with 43.64 acres, barn, pipe fencing, show animal facilities, landscaped. Central h/a. Double garage, on pavement. South Plain.....\$ 107,000.00

COUNTRY HOME ON PAVEMENT: 3-1-2, large family room, dining room, cellar, central heat/air, between Lockney and Floydada.....\$ 36,000.00

DEADLINE FOR ALL NEWS AND ADVERTISING IS TUESDAY AT 3:00 P.M.

Thank you for reading Hesperian-Beacon

POOLE WELL SERVICE

Complete Irrigation Well Service
Simmons Pumps
High Speed Bailing
704 Matador Highway
983-2285 983-5610
Business Residence

CAPROCK IRRIGATION SYSTEMS

Irrigation & Well Service

- * Submersible
- * New Gould Pumps

983-8095

ADAMS WELL SERVICE

Complete Irrigation Service
5 Year Warranty, Domestic Pump
High Speed Bailing

720 N. 2nd
983-5003

SCRIPT PRINTING & OFFICE SUPPLY

- * Commercial Printing
- * Office Supplies & Furniture
- * Business Machines

108 S. Main Floydada 983-5131

CRH SYSTEMS

116 W. California
983-2445 983-3151

"For All Your Computer Needs"
Visit Our Showroom
Everyday Low Prices

ECONOMICAL STORAGE TRY BARKER'S

Jewel Box Mini-Storage and save your time and money
Phone 652-2642
Corner Main & Locust Lockney, Texas
Barker Building

Brag Page Deadline

The Valentine issue with the popular Brag Page will be published February 11.

Anyone wishing to put a photo of their child, grandchild, or any other loved one, should have the pictures to the Hesperian-Beacon offices in Floydada or Lockney, by February 4th at 5 p.m.

The cost of 1-3 children in a heart is \$10.00. If there are four or more people in the picture the cost will be \$15.00 per frame.

Each photo will be placed in a heart-shaped frame and will appear with the person's name, age, parents names, and grandparents names. There is no age limit for persons in the photograph. Photos may be color or black and white. Photos of any size will be accepted. This office can either enlarge or reduce the photos.

PUBLIC NOTICE

NOTICE TO BIDDERS

Sealed proposals addressed to Sharon Hunt, Administrator, Lockney General Hospital District, Lockney, Texas 79241, hereinafter called "Owner" will be received for the H.V.A.C. Renovations for W.J. Mangold Memorial Hospital in strict accordance with the plans, specifications and contract documents which have been prepared by Higgins & May, Inc., Consulting Engineers. Bid documents may be obtained from the Hospital Administrator or Higgins & May, Inc., 1518 34th Street, Lubbock, Texas 79405.

Bids will be received until 2:00 p.m. February 4, 1999 at the office of the Administrator, Lockney, Texas, at which time all bids will be publicly opened and read aloud. Any bids received after closing time will be returned unopened. Bids shall be enclosed in sealed opaque envelopes addressed to the Owner and shall be identified with the project name and the bidder's name.

1-28, 2-4c

NOTICE OF MEETING

The Floyd County Central Appraisal District will holds its regular Board of Directors meeting at 9:00 a.m. Thursday, February 4, 1999 at 104 E. California.

1-28c

NO. 5446

THE ESTATE OF \$ IN THE PROBATE COURT
NOLA BISHOP \$
DECEASED \$ FLOYD COUNTY, TEXAS

NOTICE TO CREDITORS

Notice is hereby given that original Letters Testamentary for the Estate of Nola Bishop were issued on January 7, 1999 under Docket No. 5446, pending in the County Court of Floyd County, Texas, to: Lyndell Roberts and Nancy Cross.

Claims may be presented in care of the attorney for the Estate addressed as follows:

Representative,
Estate of Nola Bishop
c/o Jennifer B. Horn
Attorney at Law
Post Office Box 189
Floydada, Texas 79235

All persons having claims against this Estate which is currently being administered are required to present them within the time and in the manner prescribed by law.

Dated this 21st day of January, 1999.

Jennifer B. Horn
Attorney for Applicant

1-28c

TEXAS STATEWIDE CLASSIFIED ADVERTISING NETWORK

TexSCAN

TexScan Week of Jan. 24, 1999
BUSINESS OPPORTUNITIES

AVON PRODUCTS - START your own business. Work flexible hours. Enjoy unlimited earnings. Call toll free 1-888-942-4053. \$20 start-up.

DRIVERS WANTED

CONTINENTAL EXPRESS NEEDS OTR & Regional drivers. Voted among the top 10 small carriers. Paid benefits. 90-95% no-touch freight. 1-800-727-4374. EOE. 1-800-695-4473.

DRIVEK - C/O-O. Super Regional! Better miles, better home time! Better call today! Call for information. Class A CDL required. Arnold Transportation, 1-800-454-2887.

DRIVER COVENANT TRANSPORT *Coast to coast runs* Teams start 35c-37c. *\$1,000 sign-on bonus for experienced company drivers. For experienced drivers and owner operators: 1-800-441-4394. Graduate students: 1-800-338-6428.

DRIVER - FLATBED. EARN up to .34c mile. Medical, Dental & Life, 401(K). Consistent miles. Midwest or 48 states. 3 years OTR * 1 year flatbed. Combined Transport. 1-800-637-4407.

DRIVERS: NEW TRUCK Purchase program. Own a 1999 Freightliner in 30 months. No money down. Driver & COO positions also available. New pay/benefits. Call 1-800-888-0203.

DRIVERS - OWNER OPERATORS. Feel like you're in neutral? No Canada, NYC & NE. Minimum 23 year with 1 year OTR CDL w/Hazmat. Paschall Truck Lines. 1-800-848-0405.

DRIVERS - OWNER OPERATORS wanted. Regional fleet. Home most weekends. Long haul available. Mostly Midwest/Southeast. Company positions available. 1-800-888-0203.

DRIVERS - START AT 34c/mile! *2,500-3,000 miles/week. *100% conventional sleepers. *Benefits & bonus program. *Mostly no touch/Drop & Hook. Call OTRX today! 1-800-423-6939.

DRIVER - SOLOS START up to 36c/mile. Teams up to 38c/mile. \$10,000 longevity bonus, too! Must be 23 with six months OTR experience. Vernon Sawyer. 1-888-829-9565.

DRIVERS WANTED: PROFESSIONAL OTR T/T drivers. 1 year experience. Only the highly motivated, safety oriented need apply. We offer: Big trucks-big hoods, big mileage and more. For more information on our 48-state operation: Call Elite Express at 1-800-441-4318.

DRIVERS/OTR - A \$700 sign-on! Up To 36 CPM. Conventional 6 months OTR. Great OW/OP plan. SML. 1-800-533-4765.

RAPID FREIGHT OF Texas is seeking OTR drivers. Minimum 1 year experience. Class A CDL with HazMat required. Call recruiting 1-800-299-7274, ext. 21 or ext. 41.

WE NEED PROFESSIONAL owner operators to haul our loads. 1993 or newer tractors, please.

NOTICE: While most advertisers are reputable, we cannot guarantee their products or services advertised. We urge our readers to use caution and when in doubt, contact your local Better Business Bureau for information about the company before sending money.

Call this Newspaper to Advertise Statewide and Regionally or Call 512-477-6755.

80c all miles. Company paid plates. Call 1-800-843-8308 or 3384.

CONNER TRANSPORT, INC. 1-800-522-5545. Fort Worth carrier needs experienced F/B drivers/owner operators to run midwest southeast or regionally. Good pay-home weekly. Great teamwork!!!

DRIVER/OWNER OPERATOR. A new O/O plan! Up to 88 cpm w/540 tarp pay. Paid base plates & permits. Call today! 1-800-635-8669, ext TX-01A.

EDUCATIONAL TRAINING

AIM HIGH. UP to \$9,000 enlistment bonus, if you qualify! Air Force training and education can help you reach your goals. For an information packet, call 1-800-423-USAF or visit www.airforce.com.

COMPANY-SPONSORED TRAINING & First year income \$35K - Stevens Transport - OTR drivers wanted! Non-experienced or experienced. 1-800-333-8595. EOE.

FREE TRUCK DRIVER Training with no contracts or paybacks. Call now 1-888-209-0617.

TRI-STATE SEMI Driver Training, Inc. *Job placement assistance before training. *Tuition loans available, no credit check. *17-day training* 3001 N145, Palmer, TX. *Call 1-888-854-7364.

EMPLOYMENT

ENGINEER, JOHNSON COUNTY Rural Water Supply, Cleburne. PE license, knowledge of public water systems regulations. Proven experience in project design for supply, pumping and distribution applications. Proficient in CAD, Hydraulic System Modeling, and other computer applications. JCRWSC offers an excellent benefits plan. Hiring range up to \$42,000. Send resume by 02-05-99 to: General Manager, P.O. Box 509, Cleburne, TX. 76033-0509.

FINANCIAL SERVICES

A DEBT-FREE LIFE! Confidential help. Cut monthly payments. Reduce interest. Stop collection calls. Avoid bankruptcy. Nation's largest nonprofit: Genesis Credit Management. 24 hours, 1-800-317-9971.

ARE YOU DROWNING in debt? Debt relief. free, immediate, confidential. Consolidate payments, lower interest. Call 1-888-BILL-FREE or 1-888-245-5373. American Credit Counselors. Non-profit.

AVOID BANKRUPTCY Debt consolidation. Stop collection calls. Cut monthly payments to 50%. Eliminate finance charges. Fast approval. National Consolidators. 1-800-270-9894.

CONSOLIDATE BILLS: LOW rates, no front fees. Bad credit accepted, bankruptcy accepted. 24-hour approval. Global Financial Network. 1-877-378-0424, toll free.

FINANCING AVAILABLE. Good or bad credit for farm, homes, refinance. Cash out or purchase money. Prior bankruptcy - OK. fast approval. Money Tree Financial Corporation. 1-800-987-5529.

OVER YOUR HEAD in debt? Credit cards/bills? *Cut payments up to 60%!!! *Maintain good credit. *Free consultation 1-800-556-1548. www.newhorizon.org. Licensed, bonded, non-profit, National Co.

\$5WE BUY \$5 *Seller financed notes *Insurance settlements *Land note portfolios. Colonial Financial. 1-800-969-1200, ext. 42.

OIL & GAS ROYALTIES

OIL & GAS ROYALTY Owners, Packard Energy Group pays top prices for your royalties. Give John a call toll free 1-800-722-3863.

FOR SALE

CARS \$100 - \$500. Police Impounds: Honda's, Toyota's Chevy's, Jeep's and Sport Utility Vehicles. Call now. List fee. 1-800-772-7470 ext. 7183.

*I PLAN TO SHOCK my competition and my customers by giving the lowest prices and the highest service ever seen in Telecom history!" declares Robert Gutierrez, President of Sierra. Call or write for free educational information. 1-713-688-8545 or Sierra, 1213 West Loop North, Ste 180, Houston, TX. 77055.

PURPLE MARTIN BIRD Houses, 12-family: \$29.95 & S/H. Telescopic poles/accessories available. Great gift idea!! Free catalog. Order today! Call 1-800-764-8688. www.purplemartin.net.

STEEL BUILDINGS SALE: 5,000+ sizes. 40x60x14, \$7,821; 50x75x14, \$10,324; 50x100x16, \$13,663; 60x100x16, \$15,236. Mini-storage buildings, 40x180, 36 units, \$17,818. Free brochures. Sentinel Buildings, www.sentinelbuildings.com 1-800-327-0790, ext. 79.

WOLFF TANNING BEDS. Tan at home. Buy direct and save! Commercial/Home units from \$199.00. Low monthly payments. Free color catalog. Call today, 1-800-842-1310.

HEALTH

METABOLIFE 356 DISTRIBUTOR. \$37 a bottle + \$2 shipping/handling. Lose weight, increase energy. Call Sandra @ 1-903-586-4350. 1-888-330-6946. Visa/Master Card accepted.

PETS/LIVESTOCK

FOR PENNIES MORE, get latest technology in liquid winners. HAPPY JACK LIQUID-VICT delivers actives better than older formulas. TSC tractor supply & County Coops. www.happyjackinc.com.

REAL ESTATE

84 ACRES SOUTHWEST Menard County, borders large ranch. Native and exotic game. \$655/acre. Owner terms. 1-830-257-5572.



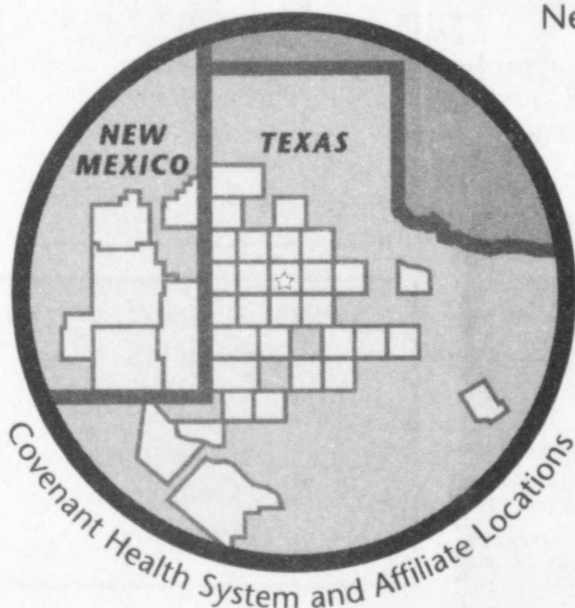
IT TAKES 344 PARTNERS TO BECOME YOUR ONE SOURCE FOR HEALTH CARE.

The new year brought a new name for both Methodist Hospital and St. Mary Hospital. It also signals the formation of the region's most comprehensive network of health care services for the more than 1 million people in West Texas and Eastern New Mexico--Covenant Health System. Behind the 'Covenant' name

is much more than three Lubbock hospitals: Covenant Medical Center, Covenant Medical Center-Lakeside and Covenant Children's Hospital. The Covenant family now includes a regional network of partners working together:

- 25 regional hospitals
- 55 neighborhood centers
- 249 physicians
- 12 home health offices and
- AeroCare, our air ambulance service.

Together we represent one health care team dedicated to the idea of caring for the whole person--body, mind and spirit.



COVENANT MEDICAL CENTER
3615 19TH STREET • (806) 792-1011

COVENANT MEDICAL CENTER - LAKESIDE
4000 24TH STREET • (806) 796-6000

COVENANT CHILDREN'S HOSPITAL
3606 21ST STREET • (806) 784-5040

Your one choice for health care.
COVENANT
HEALTH SYSTEM

A Ministry of St. Mary Hospital & Lubbock Methodist Hospital System

Covenant Health System and Affiliates

Texas

Abernathy
Covenant Family Healthcare Center

Andrews
Covenant Family Healthcare Center

Anson
Anson General Hospital

Big Spring
Malone & Hogan Clinic
Total Home Health Care

Brownfield
Brownfield Regional Medical Center
Covenant Family Healthcare Center
West Texas Family Physicians

Colorado City
Mitchell County Hospital

Comanche
Comanche Community Hospital

Crosbyton
Covenant Family Healthcare Center
Crosbyton Clinic Hospital
Total Home Health Care

Denver City
Covenant Family Healthcare Center
Yoakum County Hospital

Farwell
Covenant Family Healthcare Center

Floydada
Total Home Health Care

Fort Stockton
Pecos County Memorial Hospital

Hamlin
Hamlin Memorial Hospital

Hereford
Covenant Family Healthcare Center

Iraan
Pecos County General Hospital

Knox City
Knox County Hospital

Lamesa
Covenant Family Healthcare Center
Medical Arts Hospital

Levelland
Covenant Family Healthcare Center
Covenant Hospital Levelland
Total Home Health Care

Littlefield
Covenant Family Healthcare Center
Lamb Healthcare Center
Lamb County Medical Associates
Total Home Health Care

Lubbock
Covenant Medical Center
Covenant Medical Center-Lakeside
Covenant Children's Hospital

AeroCare
Covenant Family Healthcare Centers (8)
Covenant Healthcare Centers (16)
Covenant Maternal Fetal Consultants
Covenant New Reflections
Covenant School of Nursing
Medical Arts Clinic
Methodist Medical Group
St. Mary Medical Group
The Lubbock Heart Group
Total Home Health Care
Total Home Medical Equipment
Total Home Nursing
Total Home Pharmacy

Midland
Total Home Health Care

Monahans
Ward Memorial Hospital

Morton
Cochran Memorial Hospital

Muleshoe
Covenant Family Healthcare Center
Muleshoe Family Medicine Clinic
Muleshoe Area Medical Center

Pecos
Reeves County Hospital

Plainview
Covenant Family Healthcare Center
Covenant Hospital Plainview
Total Home Health Care

Post
Garza Family Health Center
Total Home Health Care

Rotan
Fisher County Hospital

Seminole
Seminole Memorial Hospital

Snyder
Cogdell Memorial Hospital
Covenant Family Healthcare Center

Spur
Total Home Health Care

Stamford
Stamford Memorial Hospital

Tulia
Covenant Family Healthcare Center
Swisher Memorial Hospital

New Mexico

Carlsbad
Covenant Family Healthcare Center

Clovis
Covenant Family Healthcare Center

Hobbs
Covenant Family Healthcare Center
Covenant Healthcare Center

Ft. Sumner
DeBaca General Hospital

Lovington
Nor-Lea General Hospital

Roswell
Covenant Family Healthcare Centers (2)