

**A view from
The
Lamplighter
By Ken Towery**

What a strange week up in our nation's capitol. One might even be tempted to pick a different word, like "odd", or "unusual", even "queer." In reality it was all the above.

First, there was the matter of the President and House Speaker Newt Gingrich appearing on T.V. up in New Hampshire, where the President had gone seeking votes, and the Speaker had gone for a peek at moose, he said. Both found what they were hoping for: T.V. cameras. There they were, appearing very civil, shaking hands, agreeing that something needed to be done to change things. Even an audience stacked with the President's nominal supporters applauded, and said good things to reporters afterward.

All in all it looked like the President had scored a coup. Here he was championing, or coming close to championing, those things he championed when he ran for the job three years ago. He returned to Washington riding a wave of favorable reaction from any number of political observers. Then all heck broke loose.

Congressional Democrats, who, with the President's encouragement, had latched on to the theme that Republican efforts to downsize government and balance the budget were cruel and heartless, were furious at the prospect they saw unfolding before them. But they hadn't seen anything yet. Next came the President's newest budget, (it was his second of the year, his first having been turned down in the Senate on a vote of 99-0). In the new budget Mr. Clinton accepted the general thrust of Republican efforts, he just said he wanted to take a little longer to get there, and do it a little differently.

Then Congressional Democrats, or at least those who were not completely speechless, let loose with cries of outrage. Mr. Obey, the Wisconsin Democrat and former powerful committee chairman, opined that "anyone who can follow this White House is smarter than I." And that was about the mildest reaction among Democrats. One even suggested that Pennsylvania Avenue, closed recently to vehicular traffic as a means of insuring the President's safety, ought "to be reopened."

Sam Donaldson, the T.V. reporter, was predictably upset by what he saw as Mr. Clinton's double-cross of liberalism. After all, how could his buddies in Congress properly attack Republican budget cutting efforts if the leader of the Party cut the ground from under them. He even suggested Mr. Clinton may face a challenge from within his own party. In fact, he seemed to suggest it wouldn't be a bad idea.

The Republicans, quite naturally, crossed their fingers, put their tongues in cheek, and welcomed Mr. Clinton's conversion. Perhaps they remembered, from experience, that this latest position might also be subject to change, quickly.

But that wasn't the end of the President's troubles for the week. Plowing a little more ground (in anticipation of the 1996 vote harvest) Mr. Clinton invited a group of homosexuals to the White House for a chat and picture taking. It was, no doubt, to be a gay, joyous, occasion. Only problem was that some members of the security detail evidently weren't on the program, and hadn't gotten the message. They donned latex gloves before welcoming the visitors. Needless to say, that humiliated the homosexuals, which in turn upset the President, and which "infuriated" the White House staff.

Apologies were made all around. To make amends, Mr. Clinton appointed one of his "principal" deputies to be the new, official, "liaison" with the homosexual community, to work with a designated spokesman from that community to advise our President of their concerns. That seemed to get the President off the hook, slightly. Even Barney Frank, the rather odd Congressman from Massachusetts, tended to blame society, rather than the White House, for the embarrassment. The entire episode, he told the nation on T.V., merely reflected the "homophobic" nature of American society. My, My.

Otherwise things went on about as usual. Fighting flared again in Bosnia, the President backed off (a little) from

Continued On Page 2

Hospital agrees to house Floyd County Day Care Caprock approves contract with UMC

By Juanita Stepp
FLOYDADA -- A unanimous vote of the board of trustees for Caprock Hospital District approved the execution of a lease and an interlocal agreement with University Medical Center/Texas Tech Health Sciences Center during the regular session held on June 20.

The final draft of the contracts were

presented by board president Tom Farris. He told those present that UMC had assumed operation of the clinic on June 5, 1995.

The five year agreements involved three basic items according to Farris. First, that UMC/TTHSC would assume all financial responsibility for the operation of Cogdell Clinic as of the first part

of June. Second, that Caprock Hospital District would receive an annual lease payment in the amount of \$24,240 divided into twelve monthly payments. Third, that the accounts receivable from clinic operations prior to June will remain the property of CHD although UMC will collect the accounts, retaining 20 percent and giving 80 percent to

CHD.

He emphasized the fact that indigent health care is not a part of the agreements and will remain the responsibility of Caprock Hospital District. The district will still be responsible for paying the appraisal district for assessing and collecting taxes, providing insurance and maintenance on the hospital

and clinic buildings and for paying the Floydada Emergency Medical Services subsidy.

The contracts, which run from June, 1995 through June 5, 2000, were approved on a motion by J. R. Turner with a second by Carmel Eastham. Voting in favor were Turner, Eastham, Farris, Rob

Continued On Page 8



FAVORITE TEACHER AND STAR PUPIL--(L-R) Bennie Leibfried still enjoys an occasional visit with one of her first students, and star pupil from the Newland school, Edna Queen.



NEWLAND 1924-25 CLASS--(Back row, l-r) Wylie West, Dick Furrow, Reynold Sanders (brother to teacher Bennie Sanders Leibfried), unknown, Teacher Bennie Sanders, Orville Custer, Cecil Queen, unknown, Elbert Custer;

Newland school remembered

By Alice Gilroy

FLOYDADA--Although she is 78 years old, Edna Patton still remembers her first grade teacher, Bennie Sanders Leibfried, and the lessons she learned in her one room school house in the community of Newland.

Although Bennie is now 90 years old, she still lives alone in her Floydada home and enjoys an occasional visit with her former student, Edna.

"I was in the first class Bennie taught," said Edna. "I started school at Newland, in 1924, when I was seven years old. Bennie was only eighteen."

"She taught everyone in the same room and the students ranged in ages from 7-18."

Edna, who was formerly Edna Queen, walked one mile to Newland with her brother, Cecil. The Queen's had moved to Floyd County from Oklahoma.

"My father farmed on the halfs for the Freeman ranch," said Edna. "We stayed there for two years and then moved to the community of Antelope (six miles south of Dougherty). I went to school there for two years before moving again and attending the Baker school."

Edna married C.O. Patton. He was killed in a tragic accident after only 7 years of marriage and Edna has been a

widow ever since. She moved to Floydada in 1947.

"The first thing I learned at Newland school was the Lord's Prayer," said Edna. "I also remember learning the 'month poem'—30 days has September."

Bennie was born January 2, 1905 in Parker County. She moved to Floyd County in 1922 and began her first year of teaching at the Newland School in 1924. She taught two years at Newland, taking a break long enough to marry, Lorin Leibfried in 1925. After 70 years of marriage, Lorin passed away earlier this year.

According to school records at The Floyd County Museum, Bennie was paid \$660 salary for the school year. The Museum also had school records on Newland students. A record of Edna Queen's work showed very good grades and a comment from the teacher. "This girl is very studious," said Bennie, "and is my star pupil. She has more hundreds than any of the others."

The Newland School was located two miles southwest of present day Dougherty.

Records show that W.D. Newell deeded five acres of land for a school in 1917, but the school wasn't built until

1922 on the Freeman estate.

Prior to the building of Newland, school was held in private homes in the community.

According to an article submitted to the Floyd County History Book, by Mrs. Maurice Campbell, "Dr. Freeman opened up a vast amount of land for farming and brought in a number of families from Oklahoma to farm the land. He also built small two-room houses for them."

"The one-room brick school had two storage rooms. One was used for a coat room and the other for storage. In 1925 another room was added and a second teacher."

"The new room was also used for an auditorium and for church on Sunday."

"The school was heated by a pot-bellied coal stove and the first to arrive in the morning would build a fire. There was a windmill on the grounds and water was brought in in a bucket. The children furnished their own drinking cups."

Campbell wrote that the school had outdoor restrooms (two-holers). The children brought their lunches to school in a sack or syrup bucket, and arrived by horse or on foot.

According to Campbells recollection

Continued On Page 8

Citizens invited to July 4th party at Pay-N-Save

FLOYDADA--They only missed one year due to construction, but Lowe's Pay-N-Save will be coming back with a 4th of July bang and their traditional Floydada 4th celebration at the local Pay-N-Save parking lot.

The store will feature great bargains all day, July 4, and activities and free food on the parking lot.

Beginning at 6:30 a.m. Lowe's employees will be on the lot serving a free breakfast of eggs, sausage, coffee and orange juice. Breakfast is open to everyone but the serving line will close at 8:30 a.m.

Gail Veach and a live band will begin their performance at 8:00 a.m. and will play until shortly after lunch.

Beginning at 11:00 a.m., more food will be available with a bargain of 5 hot dogs for \$1.00 and cokes for 25¢. Hotdogs and cokes will be sold until 1:00 p.m.

There will be lots of drawings for free gifts inside Lowe's and the children will be delighted at the cartoon characters who will be visiting Pay-N-Save.

Making an appearance will be: Power Ranger, Lion King, Pocahontas, Flintstones, Chester Cheetah and a friendly ghost.

Tests located in school offices

TAAS tests now available for parents review

The State of Texas has made copies of the 1995 Texas Assessment of Academic Skills Tests available for review by parents this summer. The tests, those taken by students during the 1994-95 school year, are being released in answer to numerous requests from parents who want to know what is on the tests.

Lockney Independent School District Superintendent Raymond Lusk has indicated that copies of the test will be available at the Lockney schools. Any parent who would like to see the tests can contact the school and make arrangements to view the tests.

Floydada ISD Superintendent Jerry Cannon says that the test will be available in the office of each school and at

the administrative offices downtown. Anyone who would like to see the test is urged to come by and review them. Cannon also said that FISD Schools will make copies of the test for parents to take home if such a request is made by a parent.

Both administrators are urging parents to take this opportunity to see what their children are being tested on and to see the basic form the 1995-96 TAAS Tests will take. The questions will be different, but the test format should remain virtually the same.

It is hoped that letting parents know what is on the tests will help them to assist their children in preparing for the

tests. Parents are encouraged to work with school personnel in helping their children to prepare and take the test. The combined efforts of all concerned are needed in order to make sure the students

perform at their maximum abilities on the test material according to school personnel.

Sample questions from each of the 1995 TAAS tests are included in Section

B of this issue of the Hesperian-Beacon. Answers to the example questions printed will be found on Page 3, Section B.

Continued on Page 1, Section B

Chamber plans Old Fashioned Saturday

LOCKNEY--Members of the board of directors for the Lockney Chamber of Commerce met Tuesday and began making plans for Lockney's Old Fashioned Saturday.

The event will be held on Saturday, August 26th on Main Street.

Featured event will be the state finals

for the winners of the Texas State Pedal Pullers contests. First and second place winners of pulls which have been held around the state are eligible for the finals.

Other attractions include entertainment, games, arts, crafts and food booths and the street dance to be held

that night.

Booth space will be available on both sides of Main Street for the arts, crafts and food booths. Marilyn Anderson will be in charge of the booths.

Anyone who would like to be a part of the entertainment is asked to contact

Continued On Page 8

BY THE WAY!

BY
ALICE
GILROY



Sometimes I think the world has gone crazy.

I sit down to read the daily paper and the news just hogs my mind.

So many of the stories are so weird and I've come to the conclusion if these stories were just ignored by the media (I don't count) maybe some of the weirdness would go away.

For instance—I'm tired of these stupid surveys that money is spent on. If we quit publishing the stupid results maybe the money for them would stop flowing so easily.

I heard a radio commentator telling everyone about a survey he had just read. The survey found out that very poor people had worse dreams than very rich people.

It probably took an out-of-work rocket scientist to figure that one out. And besides (and I don't mean to be insensitive)—WHO CARES!!

I just read another story this week and I foresee another stupid study that is going to have to be done to solve the imagined problem.

It seems that Clarence Lackey's lawyers think he has been on death row too long. Considering that he has been on death row for 17 years, I don't think anyone would argue that he has not been there too long. The problem seems to be what everyone wants to do about it.

The lawyers for Lackey want him to be released because he has been there too long, and they think it's cruel to leave someone there for that long. Never mind that the only reason he is still there is because that 14 of his 17 years were spent on mandatory automatic appeals.

His lawyers say Lackey is the victim of cruel and unusual punishment because of his lengthy stay on death row. They say he has suffered stress.

One death row inmate testifying on Lackey's behalf, said, "When you're on death row you tend to not make any plans at all."

The same inmate said he was lonely

and depressed. A corrections consultant (whatever that is) testified that waiting to be executed causes stress, pressure and anxiety.

I'm not sure—but I bet this corrections consultant is also an out-of-work rocket scientist.

It's all kind of sad. I think from now on when they sentence someone to death the judge needs to spell out what death means to these people a little better.

Considering the fact that they are in court for snuffing out someone else's life—someone who probably was making plans for their future—I just think these inmates probably don't really appreciate the word—DEATH.

I think the judge needs to say something like, "You have been sentenced to death. That means you shouldn't make any plans for your future. If all goes well and you don't file any appeals and your lawyers don't think of stupid reasons to keep you alive—you'll be dead. You may get depressed and have a little stress. But if you deny your appeals, you'll get it over sooner and you will be less stressed out—because you'll be DEAD. You won't be alive anymore—you will be stress free."

Sorry—back to the stupid study.

After the corrections consultant testified about the stress and anxiety caused by death row, the news story said the Assistant Texas Attorney General, John Jacks, countered during cross examination that the consultants testimony stemmed from personal observations and reading—not on clinical research.

Poor Jacks. Now he's gone and done it. Now we are going to have to have clinical research to see if these death row inmates are really depressed and if they have indeed cancelled their future plans.

Don't you just wish the Assistant Attorney General could say, "Who cares if Lackey is stressed out. If we could think of something harsher to do to him—we would."

Then the judge could say, "Yeah—that's right. Case dismissed."

Floydada Police Report

Floydada Police were called to a home in the 200 block of E. Marivena, June 4, at 3:22 a.m. in reference to a Domestic Violence/Assault.

A woman at the residence complained to police that her husband had hit her in the face. Alfredo Martinez, 23, was arrested and charged with Assault.

June 12, police were called to Perry's Variety Store in reference to a shoplifting complaint. Officers detained four

juveniles, (three girls and one boy) ranging in ages of 13, 8, 9 and 9.

Officers also found stolen items from Producers and Second Chance Resale Shop. The juveniles were released to their parents and the case was turned over to juvenile authorities.

June 18, at 12:40 a.m., Floydada police noticed a vehicle with a defective headlight. According to police reports, when the officer attempted to stop the vehicle the driver accelerated and would not stop.

The report said, the driver pulled the vehicle into his driveway, jumped out and attempted to open the back door of his residence with the key. The driver resisted the officer's efforts to arrest him.

Police subsequently arrested, Antonio Mendoza, 41, of Floydada, and charged him with DWI, Evading and Resisting.

According to Police Chief James Hale, "a sister to Mendoza, Mary Enriquez, 36, interfered with the officer and was arrested for Interference with the

Duties of a Police Officer."

June 19, at 11:15 p.m., police received a complaint from a man that someone had poured an unknown liquid on his Cadillac Fleetwood while it was parked on the east side of town. The liquid ruined the paint on the car.

Also on June 19, police observed a GMC pickup in the 300 block of E. Houston being driven without tail lights. The car was stopped and the driver, Michael Todd Cooper, was subsequently arrested and charged with Driving With License Suspended.

Lockney Police Report

LOCKNEY—On Saturday, June 17 the Lockney Police Department investigated a hit and run accident involving a fixed object. A utility pole and stop sign on Locust Street were damaged. The incident is still under investigation.

Also on Saturday, June 17 a local man was arrested for DWI, Disorderly Conduct and Theft of a cordless phone from a backyard.

Courtroom Activities

After a two day trial in the 110th District Court, June 13-14, a jury found Reyes Castaneda Jr., 32, of Floydada, guilty of the 1st Degree Felony of Injury to a Person over 65. The offense occurred on January 8, 1995.

Castaneda had the option to choose sentencing by Judge Randy Hollums or sentencing by the jury. He chose Judge Hollums and sentencing date has been set for Friday, June 23.

Castaneda could receive 5-99 years and up to a \$10,000 fine.

Castaneda is already on Felony Probation out of Plainview. He had been found guilty, Oct. 29, 1992, for Possession of Marijuana. He was sentenced to 5 years in TDC which was probated to 3 years.

Plainview has filed an application to revoke his probation.

Also on district court, probation was revoked on Kirk Dewayne McDonald, 25, of Lockney, on Monday, June 19.

McDonald had been on probation for Aggravated Assault which occurred on April 22, 1994. He had been sentenced to four years probated for 4 years, and a \$250 fine.

His probation was revoked for failure to report and other technical violations.

Also in District Court, Pete Zamora Jr., 25, of Oklahoma pled guilty to Felony DWI. The offense occurred on Oct. 12, 1994.

He was sentenced to 5 years probation, a \$500 fine and 10 days in jail. His driver's license was also suspended for one year.

In county court, Frank Castro, 29, of Lockney, was charged with DWI on June 15. There was no disposition on this case.

Lamplighter

Continued From Page 1

she stirred some batter, or something, for charity while T.V. cameras rolled. Then she left without cleaning up the mess.

Meanwhile the new Governor was signing bills left by the Legislature. He seemed happier than she did.

the policy he announced last week concerning that unhappy land, the Jews bulldozed a few more Palestinian homes in Israel, three Israeli soldiers were killed while "patrolling" in Lebanon, John Doe #2 was found, (and let go), an earthquake hit Greece, 70 or 80 were killed in fighting in southern Russia, the usual number of Americans were mugged or murdered in our cities, the O.J. Simpson industry continued doing its thing for the nation's criminal justice system (as well as the nation's economy) and Ross Perot visited Washington again.

In Austin, our former Governor, now a well paid adviser to those willing to pay for her advice, tried her hand in the kitchen. Under the watchful eye of a male chef at one of the local eateries,

THE FLOYD COUNTY
HESPERIAN-BEACON
(USPS 202-680)

Published weekly each Thursday at 111 East Missouri Street, Floydada, Texas 79235. Second class postage paid at Floydada, Texas 79235.

Yearly subscription rates: Floyd, Swisher, Hale, Motley, Briscoe, and Crosby Counties, \$16.00. Other in-state counties, \$18.00. Out of state, \$19.00. Senior Citizens deduct \$1.00. POSTMASTER: Send change of addresses to: The Floyd County Hesperian-Beacon, 111 E. Missouri, Floydada, Texas 79235.

Regular Publication Deadline: Lockney - 5:00 p.m. Monday; Floydada - 3:00 p.m. Tuesday

Advertising rates are \$2.80 per column inch non-commissionable and \$3.25 per column inch commissionable.

Classified Advertising rate is 20¢ per word with a \$2.50 minimum for up to 12 words.

For more information call 806-983-3737 or 806-652-3318 Monday - Friday, 8:00 - 5:00.

Ken Towery Owner
Alice Gilroy Publisher & Editor

House Leveling & Floor Bracing

Do You Have Loose Floors,
Cracked Walls, Doors That Stick?

CALL 1-800-687-5276
For Free Estimates. All Work Guaranteed.
24 Hr. Answering Service

TEXAS GIANT FIREWORKS

BUY 1 GET 1 FREE

MINI BOMBS
EXCLUSIVELY AT THESE STANDS!
Reg. \$1.00 Each
On Sale 3 for \$1

KILLER BEES
\$2 BOX OF 4
Reg. \$6.00 Box
SAVE \$4

Black Cat
BLACK CAT FIRECRACKERS
BUY 1 GET 1 FREE!

M-60 2" FIRECRACKERS
Reg. 20¢ Each
6 for 25¢

MORNING GLORY
Reg. 6 for 75¢
6 for 25¢

THESE SPECIALS' PRICES ARE NOT BUY 1 GET 1 FREE!

SMALL SUNFLOWER
Reg. \$1.80 a Dozen
50¢ a Dozen

GROUND BLOOM FLOWER
Reg. \$1.25 Pkg.
50¢ Pkg.

FAMILY ASSORTMENT PACKAGES: FROM \$5.95 to \$69.95

IN FLOYDADA:
Hwy. 70 Northwest side of hwy.

RATTLESNAKE ROUND-UP!

ALLSUP'S

Every Ticket Can Win!

Win A 1995 Ford F-150 Super Cab XLT!

Plus Weekly Drawings To Win Free Gas For A Year!

SAVE ON PEPSI-COLA SOFT DRINKS

3 Liter Bottles **\$1.69**

12 oz. 6 pack Cans **\$1.59**

SUNNY-TIME SAVING SOLARAY SUNGLASSES

GET **\$1.00 OFF ANY PAIR!**

<p>ALLSUP'S BREAKFAST BURRITO FOR ONLY 99¢</p> <p>Ham, Egg, & Cheese or Sausage, Egg, & Cheese</p>	<p>ALLSUP'S CORN DOGS 299¢ FOR</p>	<p>ALL FLAVORS GATORADE DRINKS 16 OZ. 79¢</p>
<p>SAVE ON ALL FLAVORS CORN NUTS 2 OZ BAG 299¢ FOR</p>	<p>WILSON MEAT FRANKS 12 OZ. 69¢</p>	<p>OZARKA SPRING WATER 33.8 OZ. 99¢</p>
<p>PEARSON'S PEANUT NUT ROLL 2.5 OZ. 299¢ FOR</p>	<p>\$50.00 WORTH OF GASOLINE FREE!!!</p> <p>TAKE THIS COUPON TO BIG COUNTRY FORD 2400 MABRY DR. CLOVIS, NEW MEXICO 88101. IF YOU PURCHASE A NEW VEHICLE BEFORE AUGUST 19, 1995 YOU WILL RECEIVE \$50.00 WORTH OF FREE GASOLINE COURTESY OF ALLSUP'S.</p>	

No Purchase Necessary. Game begins May 28, 1995 and ends August 18, 1995. Official Rules and game piece available at participating ALLSUP'S locations or by sending a SASE to "RATTLESNAKE ROUND-UP", P.O. Box 1277, Lynnwood WA 98046-1277 by August 18, 1995. Game open to legal NM, OK and TX residents. Void where prohibited.

Get Your Rattlesnake Round-Up Ticket At Allsup's!

Fire Department reports to Council



TROOPER JESSE VALDEZ

Valdez named new DPS Trooper for Floyd County

DPS Trooper Jesse Valdez has reported for work to Floyd County.

His first official day on the job was Thursday, June 15. Some folks have already seen the new face patrolling the county's highways with another trooper, Marty Lucke.

Valdez will be moving to Floydada this week and already has plans to make the city his home for a long time.

He was born and raised in Seminole and graduated from Seminole High School, with honors, in 1989.

He attended Lubbock Christian University for one semester and then graduated from South Plains College, July

1991, with an Associate degree in Criminal Justice.

In 1992 Valdez went to work for the Lubbock County Sheriff's office as a deputy jailer. After two years he left and entered the DPS Academy in 1994.

Floyd County will be the first assignment for Valdez since leaving the academy. He will train for 24 weeks by riding with Trooper Lucke and then Valdez will be on his own.

He married his wife, Reyetas, Oct. 22, 1993. They have a six year old girl, Vanessa. She is a Home Health Care nurse and is currently working an internship with Adult Protective Services.

By Juanita Stepp

FLOYDADA — Members of the Floydada City Council heard an annual report from the Floydada Volunteer Fire Department during the regular council session held June 15. Carroll Simms and Larry Guthrie presented the report, detailing the activities of the department which operates under the auspices of the City of Floydada.

Simms told the council that there are 22 volunteers in the department including two trained arson investigators, a paramedic and two emergency medical technicians. The members have a combined total of 274 years of experience at this time.

Simms reported that the department responded to 101 fire alarms during the year. Seventy-two of those calls were from outside the city limits of Floydada. Forty-nine were in response to reported grass fires, mostly involving CRP land. The average response time from dispatch to arrival at the scene for the department including out of town runs was 10.7 minutes. Estimated damage for the 101 fires was placed at about \$100,000.00.

Simms told the council that the city would need to look at purchasing a new fire vehicle in the next year or two as one of those currently being used in nearing the maximum age allowed for reduced key rates on insurance. The key rate is tied to the training and performance of the local fire department as well as to the condition and age of the equipment utilized by the department.

Representatives of the department asked that the city consider making some sort of arrangement for contributing to a volunteer firemen's retirement fund on behalf of the Floydada volunteers. Some local volunteers have more than 20 years of service on the department. Contributions to a retirement fund would allow them to draw a small retirement in return for their many years of dedicated service to the town. Simms indicated that this might also serve as an incentive in recruiting new members for the department.

Other items included on the agenda for action during the Thursday evening session included:

... Minutes from meetings held on May 18, 1995 and on June 5, 1995 were presented and approved by the council.

... Payment of monthly bills was authorized following the review of financial statements for the month of May.

... A motion by Council member Clar Schacht called for approval of a new air conditioning service rate rider being offered by Energas. The motion was seconded by Councilman Eric Cornelius and approved by unanimous vote.

The new service will be in effect for air conditioning consumption from May through September for all customers that install new natural gas air conditioning equipment after July 1, 1995. The rate rider represents a decrease in existing rates for customers who take the service.

... Council members agreed to a proposal to be submitted to the Floydada/Plainview Railroad Company concerning the disposal of railroad right of way through the city. Floydada is proposing that the railroad give the city deed to the land involved "as is" providing the taxes are paid and current. The city would then cleanup the property, removing the old ties, rails and other remains of the railroad.

... Ruben DeLeon, owner of the defunct business Ruben's Drive-In Grocery on Houston Street, came before the council during the public forum to request city assistance in cleaning up the debris from the building which was heavily damaged by wind on June 2. He will be offered some help in collecting and disposing of the debris according to City Manager Gary Brown. The city will also make an effort to help DeLeon locate assistance through other programs as well.

... Brown, Mayor Hulon Carthel, and City Secretary Sharon Quisenberry will be the signatures of record authorized to sign checks for the 1994 TCDP water grant project. Designation of those eligible to sign is required by the TDC in order to participate in the program.

... Council members approved a draft copy of the annual contract for property appraisal, tax assessment and collection with the Floyd County Central Appraisal District. Mayor Hulon Carthel will present the final version to the appraisal district board at their meeting on July 3.

... Quisenberry presented a request that the council authorize bid taking for a new, upgraded computer system to handle the city billing process for utilities. The current system cost \$69,223.00 in 1988 and was expected to be adequate for a period of five to seven years said Quisenberry. The city is now into the seventh year of using the program and is

beginning to experience difficulties in interfacing between computers and programs.

Motion to take bids on a new system, including software and hardware with the cost estimated at \$68,000.00, was made by Councilman Leroy Burns and seconded by Councilman Albert Hill. All voted in favor.

... A resolution was considered by the council to approve an application by SPS to implement experimental indus-

trial interruptible rates effecting large industrial customers. The council approved the resolution after determining that there are no customers in Floydada which would be adversely affected by the experimental rate.

Motion to approve the resolution was made by Schacht and seconded by Hill. All voted in favor.

... The final item discussed at the meeting was the upcoming budget process. No action was taken on the matter at this time.

Commissioners Court begins annual budgeting process

By Juanita Stepp

Members of the Floyd County Commissioners Court began the annual budgeting process by reviewing requests from elected county officials at a June 19 morning session. Appearing before the court to present requests were County Clerk Margaret Collier, District Clerk Barbara Edwards, County Treasurer Mary Shurbet, Sheriff Charles Overstreet, Tax Assessor/Collector Penny Golightly and Precincts 1 & 4 Justice of the Peace Tim Burge.

Each answered questions concerning their budget requests for the year beginning October 1. No budget request worksheet has been received from Precinct 2 & 3 Justice of the Peace Dottie Stansell according to County Judge Bill Hardin.

The majority of the requests for next year involved travel and expenses to

attend training for particular offices. Most elected officials are required to accumulate continuing education credits each year or bi-annual period. Escalating costs of travel and overnight accommodations as well as meals has left the previous budget allocations for such events falling short.

Continued On Page 8

The big city is a nice place to shop.
But shopping here is nicer.
Money spent here creates jobs and builds the community.
When you want to buy, check our ads;
When you want to sell, use our pages.

LARGE Hanging Baskets!
From \$5.95
Petunias, Impatiens, Pansies, Moss Rose, Begonias, assorted Ivys, & much more!

Joe's
100 S. Main
Floydada
8:30 - 5:30
Mon-Fri
Sat 10:00 - 3:00

LUNCH IS SERVED!
Try our leftovers for your evening meal - Call for details!

Thursday, June 22nd
Mexican Casserole
Pineapple Pie

Friday, June 23rd
Spaghetti/Meatballs
Assorted Desserts

Monday, June 26th
Chicken & Dressing
Banana Supreme

Tuesday, June 27th
Ham & Veggies
Fruit Cobbler

Wednesday, June 28th
Italian Meat Loaf
Choco Silk Pie

Thursday, June 29th
Lasagna
Carrot Cake

****We will be closed June 30th through July 4th****
Lamplighter Inn
102 S. 5th, Floydada
983-3035
"Visit Our Parlour Gift Shop!"

Stockholders and Friends are invited to the

38th Annual Stockholders Meeting

of

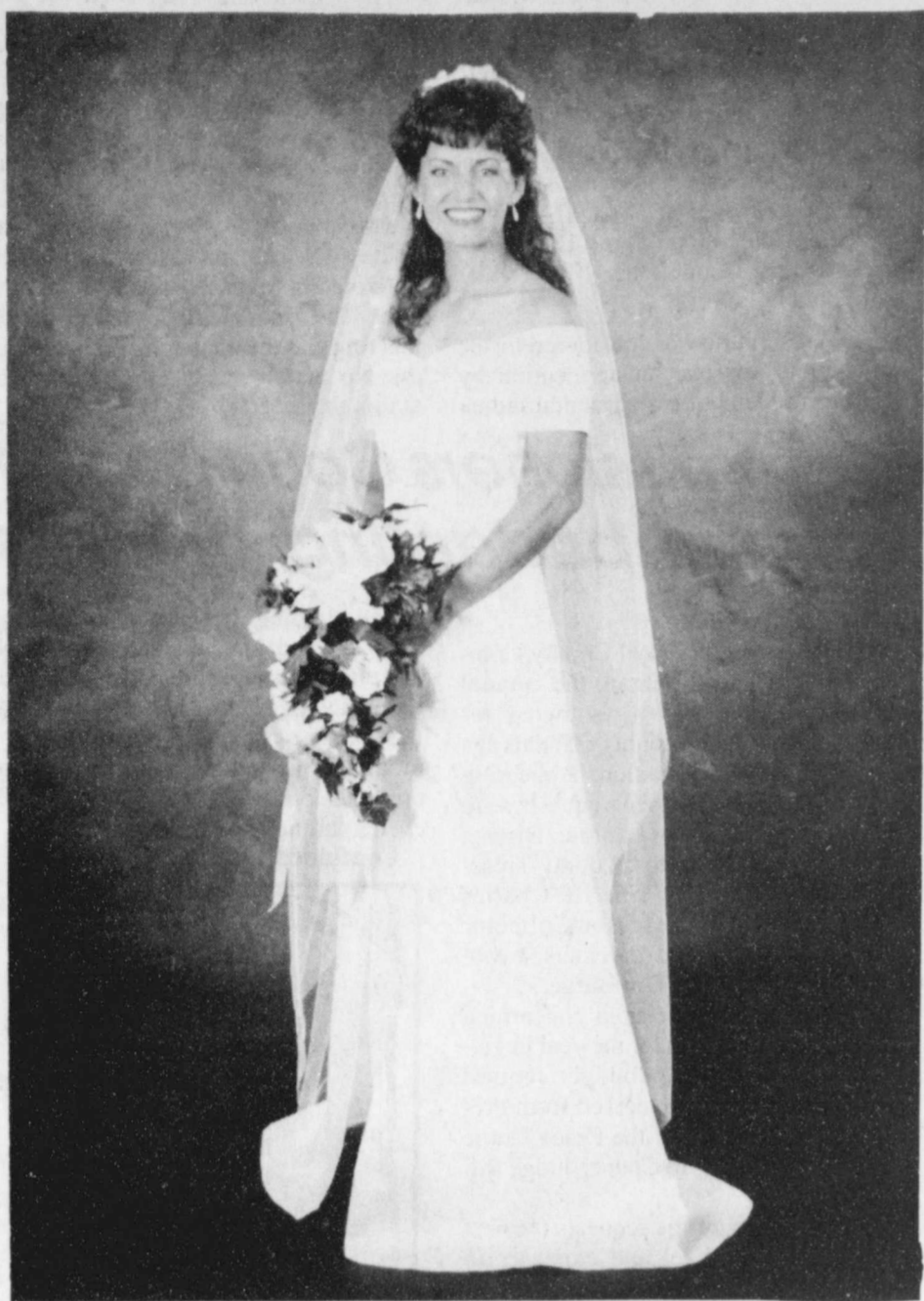
LOCKNEY COOPERATIVES

Saturday, June 24 7:30 p.m.

Lockney Elementary School Cafetorium

Two (2) Directors will be elected
Business Session
Catered Meal
Dividend Checks will be distributed

Workman and Norfleet marry in traditional setting



MRS. DAVID NORFLEET
(nee Lesley Workman)

Courtesy Photo

Lesley Workman of Plainview and David Norfleet of Hart were united in marriage on Saturday, June 17, 1995. The traditional wedding ceremony was held at 11:00 a.m. on Saturday, June 17.

The couple repeated their vows in the First Baptist Church of Plainview where they met. Dr. Travis Hart, pastor of the church, officiated.

Lesley was given in marriage by her father. She is the daughter of Velda Eldora Workman of San Francisco, California and Jerry Workman of Lockney, Texas.

David is the son of Mr. and Mrs. John Norfleet of Plainview.

Serving as bridesmaids were the groom's daughters, Amber and Abby Norfleet of Charlotte, North Carolina and Hart.

The groom's father, John Norfleet, was his best man.

Wayne Workman, son of the bride, was the ring bearer.

Ushering the guests to their seats were Jeff Workman of Cincinnati, Ohio, brother of the bride; Blake Barton of Plano, cousin of the bride; Dee Johns of Crane, brother-in-law of the groom; and Brent Barton of Lubbock, cousin of the bride.

The bride wore a dress she had designed and which was made by Renada Jack of Plainview. The underdress was an off-the-shoulder sheath of white cotton sateen with an off-the-shoulder overdress of the same fabric. It featured a covered button front closure and a flowing skirt. The veil was of white illusion and was covered with 32 white silk satin roses hand sewn by the bride's mother.

She carried a gathered bouquet of cream and blush roses accented with lilies and ivy.

The bridesmaids wore blue cotton sateen underdresses with sheer white

organza overdresses. The bodices were accented with pin tucks. White crocheted lace adorned the sleeves and skirt. Blue cotton sateen sashes highlighted their waists.

Music was presented by Mrs. Mary Jane King, organist, and soloist Donna Wallace sang "The Battle Hymn of Love" and "The Lord's Prayer."

The bride and groom hosted the reception which was held at the Broadway Street Park in Plainview. A barbecue meal was served by the Chuckwagon Restaurant.

For traveling the bride chose a beige linen suit with a long six button jacket.

Following a wedding trip to San Francisco the couple will be at home on the Norfleet family farm northeast of Olton.

The bride graduated from the Convent of the Sacred Heart High School, attended the University of Texas at Austin and is a 1995 graduate of Wayland Baptist University.

The groom graduated from Olton High School, attended North Texas State University and Wayland Baptist University.

WEDDING COURTESIES

A cowboy shower was held at Leal's Restaurant in Plainview. Honorees attending were the bride-to-be, Lesley; the groom-to-be, David; daughters-of-the-groom, Amber Norfleet, and Abby Norfleet; and son-of-the-bride, Wayne Workman.

Also in attendance were all the members of the "Bar-None Rodeo Drill Team".

A white crushed satin nightgown and robe was the gift to the bride-to-be.

Hostesses were Zenita Rowland, Sheila Westbrook, Sherita Hatch, Rhonda Obenhouse, Donna Noel, Pat Medlin, Dondi Wilmet, Beverly Hendon, Sherri Cheyne, Tammy Rimmer and Debbie Belk.

Sister Martha Swertner celebrates 50th Jubilee

St. Mary Chaplain Sister Martha Schwertner, CSI, celebrated her 50th Jubilee on Wednesday, June 14, 1995. A special mass was held at 1:30 p.m. in the St. Mary of the Plains Hospital Chapel, with a reception following in the Arnett Room.

She has seven brothers, two sisters and two half-sisters, most of whom live in the South Plains area. One brother, August, lives in the Sandhill Community of Floyd County. A brother, Tim Schwertner, serves as Monsignor of St. Alice Catholic Church in Plainview and a brother, Joseph Schwertner, is a permanent deacon of St. Peter and Paul Catholic Church in Dumas.

Sister Martha, who was born in Jarrell, Texas, joined the Sisters of St. Joseph of Orange at the age of 16.

"I really knew I wanted to be a Sister when I was 14 years old," Sister Martha said. "When I was 16, my mother had

her tonsils out at St. Mary Hospital and told the Sisters about me."

"After visiting with Sister Inez Valdez, she asked if I wanted to go back to the motherhouse in California with Rev. Mother Louis," Sister said. "I was so excited. When we told my mother she was in shock. It was the hardest thing for us to tell my father."

Sister Martha received the Habit on July 2, 1945. She made Final Vows on August 15, 1952. After several years of service in California, Sister Martha returned to Texas to teach art, physical education and preschool at Christ the King School in Lubbock.

In 1975, Sister Martha joined St. Mary Hospital to work as an Occupational Therapy assistant in the area of mental health. She studied Therapeutic Recreation Therapy at Golden West College in Huntington Beach, California and completed a practicum at St. Jude Hospital, Fullerton, California, in Rehabilitation.

Sister Martha returned to St. Mary Hospital in 1979, where she worked as a Registered Therapeutic Recreation Technician for six years. In December of 1984, she joined the Pastoral Care Department. After training in Clinical Pastoral Education at Methodist Hospital and in California, Sister Mary returned to St. Mary Hospital where she currently provides pastoral care services to patients, families and employees in the obstetrics/gynecology, pediatrics (including pediatric and neonatal intensive care) and outpatient areas.

Pocahontas
is here
Payne
Pharmacy
200 S. Main, Floydada
983-5111

SHAKLEE
983-5246

GOING OUT OF BUSINESS SALE

SAVE 10% TO 75% ON OUR ENTIRE STOCK*

Men's Wear	Lingerie
Children's Wear	Handbags
Home Furnishings	Linens
Ladies Wear	Gifts
Children's Shoes	Accessories
Misses & Jr. Dresses	Ladies Shoes

*Estee Lauder and Aramis not on sale
Doors open at 9:30 a.m.

Marse & Son

Westview in Plainview

*WestView Center, Plainview

Garza and Castaneda united in marriage

Jane Garza and Reyes Castaneda, Jr. were united in marriage June 19 at the Floyd County Courthouse. The Justice of the Peace performed the ceremony.

Garza and Castaneda both attended Floydada High School.

She is the daughter of Estella and Joe

Garza, Sr. and is employed by the Portales Public Health Office.

He is the son of Herlinda and Reyes Castaneda, Sr.

Those attending the ceremony were Gilbert Lamas, Norma Balboa and Herlinda Castaneda.

Floyd County Lifestyles

Floydada Senior Citizen Menu

June 26-30

Monday, June 26 - Beef Stroganoff with noodles, peas and carrots, kraut salad, hot roll, baked apples

Tuesday, June 27 - Roast beef, brown gravy, potatoes, carrots, tossed salad with French dressing, wheat roll

Wednesday, June 28 - Ham salad sandwich, tater tots, broccoli, cheese sauce, carrot cake

Thursday, June 29 - Roasted chicken, scallop potatoes, spinach, tossed salad with Ranch dressing, wheat roll, ABP dessert

Friday, June 30 - Hot dog on a bun, cheese, onion, relish, pork and beans, marinated vegetables, pineapple gelatin

Look Who's New!



NASH
Paul, Stephanie, and Sarah Elizabeth Nash of Lubbock joyfully announce the birth of Rachel Elizabeth Leigh Nash on June 3, 1995, at 3:09 a.m. She weighed 7 lbs. 13 oz. and was 21 1/2 inches long.

Her grandparents are Pete and Pauline Nash of Floydada and Bob and Eloise Schreiner of Lubbock.

BE A GOOD NEIGHBOR

Bridal Selection for:

Regina Ware and Tim Nelson
Samantha Salazar and John David Young
Becky Porter and Sam Fortenberry
Christina Martinez and Billy Villarreal

are available at the...

True Value Bridal Gift Registry

inside

CAPROCK Motor Parts & Hardware

114 W. California, Floydada 983-2865

Hale's Semi-Annual Shoe Sale

Sale starts Friday, June 23 at 9:00 a.m.

Sizzling Bargains

EASY SPIRIT SALE

PUMPS - Infatuation and Primo - reg. 68.95 NOW... 49.00
WALKING SHOES
Mach 1... reg. 73.95 NOW... 59.99 - White Only
API... reg. 64.95 NOW... 54.99 - White Only
JOURNEY - reg. 64.95... NOW... 54.99 - White Only
MOTION... reg. 71.95... NOW... 59.99 - Black or Navy
HIGH ROAD... reg. 38.95... NOW... 29.99 - White Canvas

DEXTER SALE

COMFORT SANDALS - 3 styles in 5 colors
reg. 49.95... NOW... 34.99
LOAFERS in Waxy Tan w/Kiltie or Waxy Tan/Forest Green w/ Tassel
reg. 62.00... NOW... 49.99

ROCKPORT SALE

Comfort Fashion Flats
in Navy or Grey Nubuck and Cordovan Calfskin
reg. 80.00... NOW... 34.99

ANNIE SALE

Skimmer Pump
in Black Patent, Black, White, Gold, Silver, Navy and Red
NOW... 14.99
Dress Pump
in Black, Navy, White & Bone
NOW... 14.99

Lots of Other Bargains Too Numerous To Mention!

112 E. California, Floydada
983-2388

TONY LAMA BOOT SALE

Black Bullhides, Black Calf, Peanut Brittle Shark, Bullhide Cutting Horse Styles in Brown or Tan.
ALL... \$15.00 off

CORSINA SANDALS

Black Stretch Dress SANDALS
reg. 32.00... NOW... 23.99
Tan Stretch Casual
reg. 26.98... NOW... 19.99
White, Navy & Brown
reg. 24.98... NOW... 19.99

JOYCE

High-Heel Eelskin Pumps
reg. 41.95... NOW... 29.99
Black - Copper - Old Gold Lo-Heel Dress Pump
Red, White, Black Patent, and Bone
reg. 39.99... NOW... 29.99

EASTLAND

All Loafers... 25% off
Chukka Boots... \$10.00 off

SAS

Black Siesta or Classic
reg. 59.90... NOW... 49.90
Friday & Saturday Only

AEROSOLE FLATS

Black or Chalk
reg. 32.99... NOW... 24.99

KEDS SALE

Leather Oxford-NOW 34.99
Canvas Oxford - NOW 19.99
Canvas Oxford - w/Embroidery - NOW 19.99
Lace or Slip-on

\$10.00 off all RED WING Shoes and Boots

TONY LAMA ROPERS
Black... \$10.00 off

SAS
Men's Styles All \$15.00 off
Amigo-Ace-Time Out

EASTLAND
Casual Styled Shoes & Boots
All... \$15.00 off

DEXTER
Dress Loafers-Boat Shoes & Boots
All... 15% off

NUNN BUSH Loafers
Black or Brown
reg. 49.95... NOW 34.95

ROCKPORT Shoes
All Styles... \$15.00 off

NIKE SALE

Sport Sandals
Air Nehalem. NOW- 59.99
Air Terra... NOW-49.99
Air Deschutz. NOW-49.99
Selway... NOW-39.99
Tapajos... NOW-39.99
Air Jordan... NOW- 99.99
Air Max 2 Uptempo... NOW-99.99
Lots of other Kids and Mens Styles -Drastically Reduced

RAFTERS
Sport Sandals
Nylon Tops
All... 11.99

Lockney Senior Citizen News

By Gladys Ragle

Our crowd Thursday night was a little short with only 38 in attendance. Some were gone and others were sick so maybe things will get back to normal soon and everyone will be back.

On Wednesday we were glad to have John L. Riley and his daughter Martha Wynn to eat and visit with us. John L. and Elizabeth and their daughters were residents of our community until they retired and moved to Ingraham, Texas. Elizabeth is not well and is in a private care facility and was not able to come with them.

Martha Wynn is a teacher and coach in Barrow, Alaska; Sandy their other daughter, is a teacher in a town in the Houston area.

Marie Wylie seems to be improving and we hope to see her back with us soon.

M.H. (Shorty) Hartman was able to return home on Saturday and says he is doing better. We wish for him a speedy recovery and look forward to seeing him back at the Center soon.

Bernice Reynolds continues in intensive care in the hospital in Amarillo. She has been upgraded to the one nurse to three patients section. She will have to undergo more surgery when she is able.

Don't forget, membership dues should be paid by July 1, 1995. Weekly Words of Wisdom: "Those who are at peace with themselves are much more likely to make friends with others."

MENU June 26-30

Monday: Meatloaf, vegetables, salad, dessert

Tuesday: Spaghetti, vegetables, salad, dessert

Wednesday: Chicken fried steak, vegetables, salad, dessert

Thursday: Fried chicken, vegetables, salad, dessert

Friday: Hamburger steak, vegetables, salad, dessert

Meals served with coffee, tea and rolls

The menu is subject to change.

Lemons and Vasquez united in marriage



MRS. STEVEN VASQUEZ
(nee Jessica Jo Lemons)

Portrait by Wilson Photography

Jessica Lemons and Steven Vasquez pledged their wedding vows June 17, 1995 in Lockney at the Church of Christ. Frank Duckworth, evangelist, officiated in the double ring ceremony.

The bride is the daughter of Linda Lemons of Plainview and Marvin Lemons of Plainview.

The groom is the son of Refugio and Pauline Vasquez of Lockney.

She was escorted to the altar and given in marriage by her father.

The bride wore a wedding gown handmade by her grandmother, Jo Carthel. The gown which was candlelight in color, featured fitted long lace sleeves accented with pearls and sequins. The Cathedral length, satin detachable train, was also trimmed with lace, pearls and sequins.

Attending the bride as matron of honor was her sister Diana Lemons. Bridesmaids were Dawn Wodarski and Daisy Blanco, friends of the bride and groom; Esmerelda Cisneros, Connie Rodriguez and Rachel Vasquez, sisters of the groom. Their dresses were floor length black taffeta with elbow length sleeves. A candlelight colored bow and floor length streamers outlined the low-cut V back.

Wesley Teeter served as best man. Groomsmen were Eric Gunler, friend of the bride and groom; Danny Vasquez and Refugio Vasquez, brothers of the groom; Cory Lemons, and David Lemons, brothers of the bride.

Jason Bybee, Kip Holt, Richard Lauderdale, and Jeffery Sutterfield, friends of the bride and groom ushered the guests to their seats.

Kayla Smith and Karlee Smith lit the candles. They are cousins of the bride.

After a wedding trip to Cancun, Mexico the couple will make their home in Lubbock.

The groom is a graduate of Lockney High School and Methodist Hospital School of Nursing. He is currently employed by Methodist Hospital.

The bride is a graduate of Lockney High School and Methodist Hospital School of Nursing.

PRE-NUPTIAL COURTESIES

A bridal shower was held on May 7 in the home of Connie Rodriguez of Lockney. The gift to the couple was a vacuum cleaner.

A second shower was given at the Church of Christ at West College and Third in Lockney on May 13. Hostesses were Barbara Cunyus and Bettye Jackson. The couple received a Sunbeam mixer.

Special guests were Jo Carthel, grandmother of the bride and Vickie Rendon, grandmother of the groom.

Ring bearers were Johyn Vasquez and Devon Rodriguez, nephews of the groom.

Twyla Gallaway, cousin of the bride registered guests.

Decorations in the church were designed and created by the groom's mother, Pauline Vasquez.

The reception was held in the Fellowship Hall of the church.

The cake on the bride's table was frosted in white and decorated with fresh flowers.

The groom's cake was chocolate.

A fruit table accented with a fountain was designed by the bride's brother, Cory Lemons.

We Salute In Floydada

HAPPY BIRTHDAY

Thursday, June 22: James Osborn, Erbey Molinar, Jr., Ester Cabellero
Friday, June 23: Derek Cheek, Elizabeth Cuellar, Jon Paul Chavarria

Saturday, June 24: Janie Cuevas, Bettye Chowning
Sunday, June 25: Ronnie Smith, Ashley Juarez, Marcos Antino Sanchez
Monday, June 26: Dylan Campbell, Gloria Basaldia, Rudy Adam Arellano

Tuesday, June 27: Linda Mendoza, Luis Romero, McCrae McCormick
Wednesday, June 28: Helen Griggs, Dora Garcia, Doris Nixon, Stanley Hall

HAPPY ANNIVERSARY

Thursday, June 22: Lori and Mark Gilly
Friday, June 23: Matty and Margie Martinez
Monday, June 26: Mando and Rhoda Morales

Nichols and Hardin recite wedding vows

Kimberly Brett Nichols and Glenn Edward Hardin were united in marriage on June 3, 1995, at the First Baptist Church in Lockney. The groom's uncle, Rev. Danny Jackson, pastor First Baptist Church in Morton performed the ceremony.

The bride is the daughter of Lonny and Carol Nichols of Longford, KS. The groom is the son of Ronnie and Shirley Hardin of Lockney.

The bride who was given away by her father, wore an ivory full length silk gown with a lace bodice and pearl buttons accenting the back. She wore her great maternal grandparents wedding band and her mother's pearl necklace and earrings given to the bride on her wedding day. She carried a bouquet of small ivory roses and mums adorned with tulle and greenery.

The altar was decorated with spiral candlebras with greenery and tulle. There were floral arrangements in brass pots on each side of the altar containing ivory flowers and greenery. Tulle bows decorated the pews.

Melissa Rass, sister of the bride from Sturgeon Bay, WI, served as maid of honor. She wore a peach tea length dress with an empire waistline. Bridesmaids were Ali Rass and Megan Rass both nieces of the bride of Sturgeon Bay, WI. They wore calico floral peach and ivory colored dresses with ivory collars.

Ronnie Hardin, father of the groom, served as best man. Skee Hardin, son of the groom from Floydada, served as groomsmen.

Ushers for the evening were Randy Kinder of Winchester, VA, Josh Nichols, of Longford, KS, both brothers

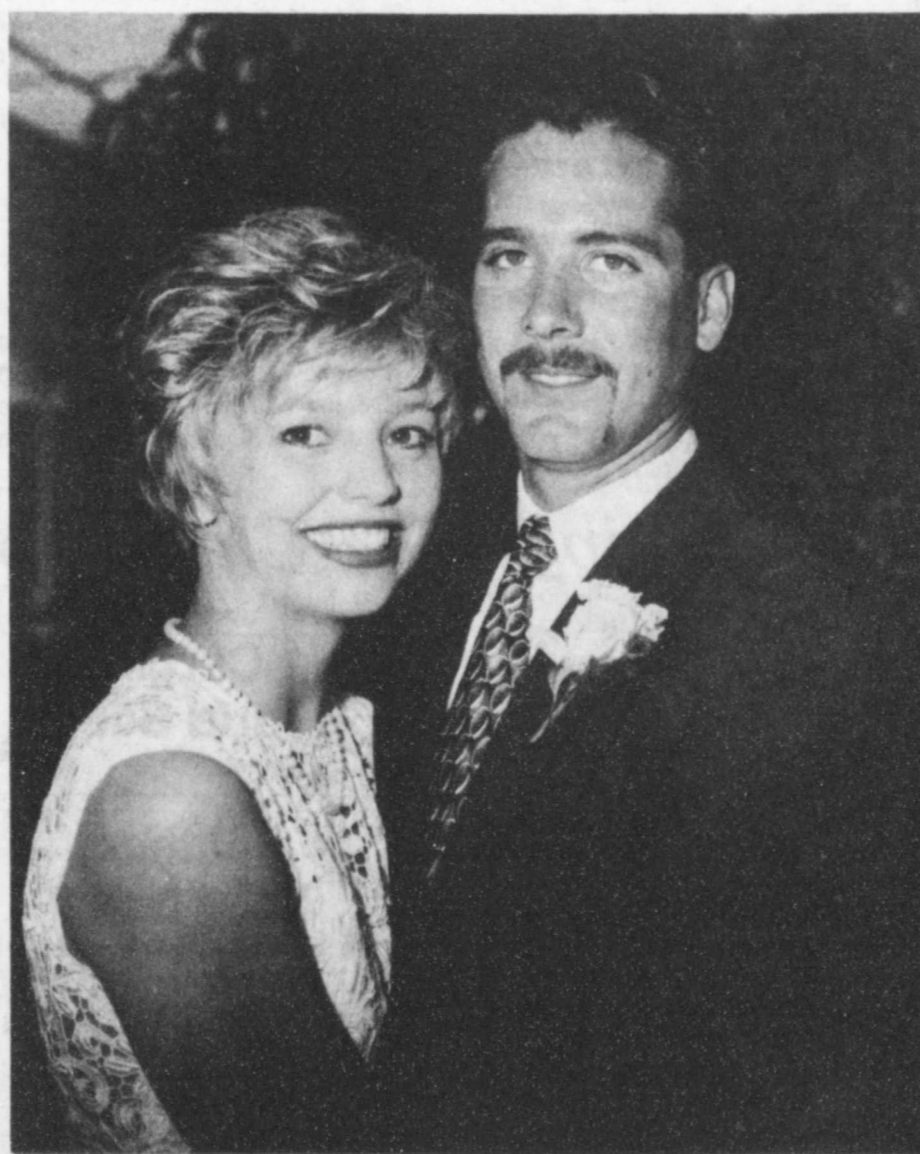
of the bride; and Sammy Hardin, brother of the groom from Sherman, TX.

Mrs. Terry Ellison sang "Keeper of the Stars" and played the traditional wedding march.

A reception was hosted by the parents of the bride and groom in the garden room of the First Baptist Church.

After a wedding trip to Cozumel, Mexico the couple will be at home in

Canyon, Tx. The bride is a graduate of Minneapolis High School, Minneapolis, KS, and attended South Plains College, where she received her Associates Degree. The groom is a graduate of Lockney High School and South Plains College, where he also received an Associates Degree. He is presently attending West Texas A&M University in Canyon.



MR. AND MRS. GLENN EDWARD HARDIN
(nee Kimberly Brett Nichols)

Courtesy Photo

The big city is a nice place to shop, but shopping here is nicer. Money spent here creates jobs and builds the community. When you want to buy, check our ads; When you want to sell, use our pages.

When you want to buy, check our ads; When you want to sell, use our pages.

Bridal selections available for...

Regina Ware and Tim Nelson
Tami Nabors and Scott Smith
Cindy Mulder and Trent Hilliard
Samantha Salazar and John Young
Christina Martinez and Billy Villarreal
Pam Lockwood and Craig Cooke

Payne HEALTHY MART Pharmacy
200 S MAIN ST
FLOYDADA TX 79235-2726

**The Lockney Class of '95's
Project Graduation**

was a tremendous success thanks to the donations of cash and merchandise by the following businesses and individuals:

Jim Doucette	Feather Your Nest
Lockney's Lions Club	Walmart
Lockney Rotary Club	United
First Baptist Church	Dairy Queen
Il Penserso Jr. Study Club	Lockney Oil & Butane
PTA	Margaret's Jewelry
Shear Country	Lee's Home and Auto & Video
Tye Company	Pay-N-Save
Mangold Memorial Hospital	Tanya Covington-Beauticontrol
Davis Lumber	Debbie Montandon-Mary Kay
Main Street Pizza	The Basket Case
Gebo's	Heart's Desire
Ziegler's	Target
Schacht Flowers & Gifts	

We appreciate your generosity in helping provide a safe, fun, drug-free party for the graduating seniors and their guests!

The Parents of the Class of '95

**Crosbyton Clinic Hospital
Home Health**

Where We Still Believe In Making House Calls

"There's a house whose rooms I know by heart."
"Where I tended the garden and read my books."
"Where dreams were dreamt and memories made."
"Where children grew up and I grew old."
"There's a house where life was lived."
"A house where I belong."

"NEIGHBORS HELPING NEIGHBORS"

675-2352
1-800-224-2352

--- SMALL TOWN PRICES ---
Generation's Antiques & Collectiblers
118 W. California, Floydada 983-6433
Shown by Appointment - 983-5118
Thursdays & Fridays 9:30 a.m. - 5:30 p.m.
Come by and check us out!

ANNIVERSARY SALE
Ends June 30

Memories of Yesterday... 40% off
Miss Martha's Collection... 40% off
10k & 14k Jewelry... 40% off
All Silks... 40% off
Many Gift Items... 50% - 60% off

SCHACHT
Flowers, Jewelry & Gifts
112 W. Poplar 652-2385
8:30 - 5:30 Mon. - Sat.
"OUR PLEASURE IS TO SERVE YOU"



TAMIE NABORS AND SCOTT SMITH

Nabors and Smith

Tamie Nabors and Scott Smith announce their engagement and approaching marriage July 22, at 6:00 p.m. at the First Baptist Church in Floydada.

The bride is the daughter of Irma Nabors of Lubbock and Loyd Nabors of Cordell, Okla.

The groom is the son of Iantha Smith of Lubbock and Gene Smith of Oklahoma City, Okla. He is also the grandson of Louis and Virginia Pyle of Floydada.

Miss Nabors graduated from Bovina High School and has a degree from Texas Tech University. She is currently the Director of Sales and Catering for the Sheraton Inn in Lubbock.

Mr. Smith, formerly of Floydada, graduated from Friendship High School and attended South Plains College. He is currently working at Lubbock Beverage Co. All friends are invited to attend the ceremony and reception.

We Salute In Lockney

**June 15-21
HAPPY BIRTHDAY**
Thursday, June 15: G.M. Webb, Orlando Mondragon, John Kennedy, Alice Ford
Friday, June 16: Rodney Smith, Lori Ann Garcia, Jeri Ann Rexrode
Saturday, June 17: Lynn Smith, Cindy Hunter, Ann McCormick, Brenda Poole, Allen Martin
Sunday, June 18: Efrén Perez, Sr., Amber Nuncio
Monday, June 19: George Taylor, Sayla Barnes, Kim Teeter, Troy Bigham
Tuesday, June 20: Martha Becerra, Laura Wilson, Ed Hull
Wednesday, June 21: Rusty Wilson, Roman Salas, Laura Emert

HAPPY ANNIVERSARY
Thursday, June 15: Lennie and Alice Gilroy
Friday, June 16: Lonny and Karen Hooten
Sunday, June 18: Dale and D'Lee Powell, Mr. and Mrs. Tommy Davis
Tuesday, June 20: Chris and Pam Fulton
(These were inadvertently left out of the paper last week. Our apologies)

**June 22-28
HAPPY BIRTHDAY**
Thursday, June 22: Nino Garcia, Jr.
Friday, June 23: Carla Robnett
Saturday, June 24: Jasmine Rodriguez, Savannah Ascencio, Jackie Spencer
Sunday, June 25: Mary Gaskins
Monday, June 26: Maria Nuncio, Zulema Ballejo, Sunny Hammit
Tuesday, June 27: Juanita Henderson, Audrie Ann Arjona
Wednesday, June 28: Amy Vega, Lexi Miller, Fernandez Martinez, Guin Bailey, Rachelle Young

HAPPY ANNIVERSARY
Thursday, June 22: Mr. and Mrs. Ricky Mosley
Friday, June 23: Mr. and Mrs. Johnny Reynaga
Saturday, June 24: Simon and Olga Martinez
Monday, June 26: Mr and Mrs. Eddie Garza, Terry and Zelda Ellison, Justin and Renee Adams, Heath and Jeri Ann Rexrode, John and Kana Kennedy
Tuesday, June 27: Robin and Lori Satterwhite
Wednesday, June 28: Larry and Sunny Hammit

For Your Insurance

Auto
Home
Life
Health
Disability
Farm/Ranch
Boats
RV's
Retirement
Renters
Church

SEE...
**NICK LONG
INSURANCE**

201 W. California
Floydada, Texas
(806)983-3441

Floyd County Church Directory

AIKEN BAPTIST CHURCH
Sunday School 10:00 a.m.
Morning Worship 11:00 a.m.
Evening Worship 6:00 p.m.
Wednesday:
Bible Study 7:30 p.m.

**APOSENTO ALTO
DE PENTECOSTAL**
203 SE 2nd & College
Lockney 652-2204
Chon Sepulveda, Pastor
Wednesday Evening 7:30 p.m.
Sunday School 10:00 a.m.
Sunday Worship 5:00 p.m.

BIBLE BAPTIST CHURCH
810 S. 3rd, Floydada
Darwin Robinson, Pastor
Sunday:
Sunday School 10:00 a.m.
Morning Worship 10:45 a.m.
Prayer Meeting 6:00 p.m.
Evening Service 6:30 p.m.
Wednesday:
Evening Services 8:00 p.m.

**CALVARY
BAPTIST CHURCH**
Floydada
Claude Porter, Pastor
Sunday School 9:45 a.m.
Morning Worship 11:00 a.m.
Bible Study 6:00 p.m.
Evening Worship 6:00 p.m.
Wednesday Evening 7:00 p.m.

CARR'S CHAPEL
Service Every Sunday:
Morning Worship 9:00 a.m.
Sunday School 10:30 a.m.
No Evening Services

CHURCH OF CHRIST
West College & Third,
Lockney
Frank Duckworth, Evangelist
Morning Worship 10:30 a.m.
Evening Worship 5:30 p.m.
Wednesday Service 8:00 p.m.

**CITY PARK
CHURCH OF CHRIST**
Floydada
Gene McCarty, Minister
Sunday:
Bible Study 9:30 a.m.
Morning Worship 10:30 a.m.
Evening Worship 6:00 p.m.
Wednesday:
Bible Study 7:30 p.m.
(Summer 8:00 p.m.)

**EVANS CHAPEL
BAPTIST CHURCH**
Rev. G.A. Blocker
Sunday School 10:00 a.m.
Morning Worship 11:00 a.m.
Afternoon Worship 2:00 p.m.
Training Union 6:00 p.m.
Evening Worship 7:00 p.m.
Wednesday:
Prayer Meeting 7:00 p.m.

**FIRST ASSEMBLY
OF GOD CHURCH**
Floydada
Vance Mitchell, Pastor
Sunday School 9:45 a.m.
Morning Worship 10:50 a.m.
Sunday Evening
Evangelistic 6:00 p.m.
Wednesday:
Night Service 7:30 p.m.

FIRST BAPTIST CHURCH
Floydada
Rev. Howell E. Farnsworth Jr.
Pastor
Michael Holster
Music/Adm./Sr. Adults
Marlon Pritchard, Students/Ed.
Sunday:
Sunday School 9:45 a.m.
Morning Worship 11:00 a.m.
Discipleship Training 5:45 p.m.
Evening Worship 7:00 p.m.
Wednesday:
Children's Choirs 4:00 p.m.
Evening Meal 6:00 p.m.
R.A.'s & G.A.'s 6:45 p.m.
Preschool Choir 6:45 p.m.
Prayer Meeting 7:00 p.m.
Youth Bible Study 7:00 p.m.
Adult Choir 7:45 p.m.

FIRST BAPTIST CHURCH
Lockney
Harold Abney, Pastor
Les Reed, Youth Minister
Kent Lloyd, Music Minister
Sunday:
Sunday School 9:45 a.m.
Morning Worship 10:45 a.m.
Discipleship Training 6:00 p.m.
Kids of The King
Children's Choir 6:00 p.m.
Evening Worship 7:00 p.m.
Wednesday:
Prayer Meeting 7:00 p.m.
Youth Activities 7:00 p.m.
R.A.'s and G.A.'s 7:00 p.m.
Pre-School Choir 7:00 p.m.
Adult Choir 8:00 p.m.
3rd Saturdays:
Men's Breakfast 7:00 a.m.
1st Tuesday and 3rd Mondays:
Baptist Women 3:00 p.m.

**FIRST UNITED
METHODIST CHURCH**
Floydada
Clark Williams, Pastor
Sunday School 9:45 a.m.
Morning Worship 11:00 a.m.
Youth Fellowship 5:00 p.m.
Evening Worship 6:00 p.m.

FRIENDSHIP CHAPEL CME
Floydada
Rev. James Jenkins
Sunday 9:45 a.m.
Morning Service 11:00 a.m.
Wednesday:
Bible Study 8:00 p.m.

**GRACE FELLOWSHIP
CHURCH**
211 N. Main, Lockney
Interdenominational Church
Rev. Ted Samples, Pastor
Sunday School 9:45 a.m.
Morning Worship 11:00 a.m.
Evening Worship 7:00 p.m.
Wednesday Service 7:00 p.m.

**GRANT CHAPEL
CHURCH OF GOD
IN CHRIST**
John Williams, Pastor
Sunday School 10:00 a.m.
Monday Worship 11:00 a.m.
Evening Service 7:30 p.m.
Tuesday:
Prayer Service 8:00 p.m.
Wednesday Service 7:30 p.m.

IGLESIA DEL REY JESUS
404 E. 6th St., Lockney
Lupe Banda, Pastor
Sunday School 10:00 a.m.
Evening Service 6:00 p.m.
Tuesday:
Youth Service 7:30 p.m.

**MAIN STREET
CHURCH OF CHRIST**
Lockney
Ed Hull, Minister
Bible Study 9:30 a.m.
Morning Worship 10:30 a.m.
Evening Worship 6:00 p.m.
Wednesday:
Ladies Bible Class 9:30 a.m.
Bible Study 7:30 p.m.

**MT. ZION
BAPTIST CHURCH**
Floydada
Rev. Ralph Jackson
Sunday School 10:00 a.m.
Morning Worship 11:00 a.m.
BTU 6:00 p.m.
Evening Worship 7:00 p.m.
Wednesday:
Mid-Week Prayer 7:00 p.m.
Thursday:
Bible Study 7:00 p.m.

**NEW SALEM PRIMITIVE
BAPTIST CHURCH**
Floydada
Jim Jackson, Pastor
Sunday: Congregational
Singing 10:30 a.m.
Morning Worship 11:00 a.m.

**PRIMER IGLESIA
BAUTISTA**
Lockney
Pedro Villareal, Pastor
Sunday School 9:45 a.m.
Worship Service 11:00 a.m.
Training Union 5:00 p.m.
Evening Service 6:00 p.m.
Wednesday Service 7:30 p.m.
G.A.'s 7:30 p.m.
Ambassadors 7:30 p.m.
Fellowship Luncheon -
1st Sunday of Month
Music Worship -
Last Sunday with evening service

**PRIMERA MISION
BAUTISTA**
Floydada
Rev. Lupe Rando
Sunday School 9:45 a.m.
Morning Worship 10:55 a.m.
Evening Worship 6:00 p.m.
Wednesday Evening 7:00 p.m.
1st Wed. Organization Night

**SAN JOSE
CATHOLIC CHURCH**
Lockney
Msgr. Tim Schwertner, Pastor
Wednesday:
Communion Service 8:00 p.m.
Sunday Mass 11:30 a.m.

**SOUTH PLAINS
BAPTIST CHURCH**
Ernest Stewart, Pastor
Sunday School 10:00 a.m.
Morning Worship 11:00 a.m.

**SPANISH ASSEMBLY OF
GOD TEMPLO
GETSEMANI**
308 Mississippi
Rev. Thomas G. Lopez
Sunday School 10:00 a.m.
Morning Worship 11:00 a.m.
Evening Evangelistic
Service 6:00 p.m.
Wednesday:
Family Night 7:30 p.m.

**ST. MARY MAGDALEN
CATHOLIC CHURCH**
Floydada
Father Ricardo Salditos
Sunday Mass 11:30 a.m.
Weekday Masses 7:30 p.m.
(Tuesday, Thursday, Saturday)
Office & Rectory Phone: 983-5878

**TEMPLO BAUTISTA
SALEM**
Lockney
Pedro Reyes, Interim Pastor
Sunday School 9:45 a.m.
Worship Service 11:00 a.m.
Christian Training 5:00 p.m.
Evening Worship 6:00 p.m.
Wednesday:
Prayer Meeting 7:30 p.m.

**TEMPLO BETHEL
SPANISH
ASSEMBLY OF GOD**
Washington and 1st St.
Lockney 652-2181
Armando Pinales, Pastor
Sunday School 9:45 a.m.
Morning Worship 11:00 a.m.
Evening Worship 5:00 p.m.
Wednesday Service 7:30 p.m.

**TEMPLO EVANGELICO
PENTECOSTAL CHURCH**
Natividad Luna, Pastor
515 E. Missouri, Floydada
Sunday School 9:45 a.m.
Evening Worship 5:00 p.m.
Wednesday Service 7:00 p.m.

TEMPLO NUEVA VIDA
Rev. Herman Martinez
308 W. Tennessee
Sunday School 10:00 a.m.
Sunday Prayer Service 2:00 p.m.
Evening Worship 5:00 p.m.
Tuesday:
Evening Service 7:30 p.m.
Thursday Service 7:30 p.m.

**TEMPLO PODER DE LA
ALABANZA PENTECOSTAL**
Rev. Manuel Rendon, Pastor
704 N. Main, Lockney
652-3704
Sunday Services 10:00 a.m.
Sunday Evening 5:00 p.m.
Wednesday 7:30 p.m.

TRINITY CHURCH
500 W. Houston Floydada
Interdenominational Church
Glenn Wachob, Pastor
983-5499
Sunday School 9:45 a.m.
Morning Worship 10:50 a.m.
Sunday Evening 6:00 p.m.
Wednesday: Family Night 7:00 p.m.
Victory In Jesus Radio Broadcast
Sunday Mornings 8:30 a.m.
KFL 95.3 FM & KAWA 900 AM

**TRINITY
LUTHERAN CHURCH**
Providence Community
on FM 2301 293-3009
Rev. Arthur P. Biese, Pastor
Sunday School &
Adult Bible Class. . . 10:00 a.m.
Worship Service 11:00 a.m.

**WEST SIDE
CHURCH OF CHRIST**
Floydada 983-3548
Sunday Worship 10:30 a.m.
Sunday Evening 6:00 p.m.
Wednesday 7:00 p.m.

Barwise Gin
Barwise Community
983-2737

**Cargill
Hybrid Seeds**
652-3339 Aiken

City Auto
201 E. Missouri, Floydada
983-3767

Clark Pharmacy
320 N. Main, Lockney
652-3353

Davis Lumber
102 E. Shurbet, Lockney
652-3385

**Feather
Your Nest**
120 S. Main, Lockney 652-2491

**Garcia's
OK Tire Store**
308 S. Main, Floydada 983-3370

**Goen & Goen
Insurance**
102 E. California 983-3524

**Lighthouse
Electric Coop**
Matador Hwy, Floydada 983-2184

**Lockney
Co-op Gin**
West of City, Lockney 652-3377

**Moore-Rose-White
Funeral Home**
329 W. Calif., Floydada 983-2525
402 S. Main, Lockney 652-2211

**Oden
Chevrolet-Olds**
221 S. Main, Floydada 983-3787

Pay-n-Save
210 N. Main, Lockney
652-2293

**Payne Family
Pharmacy**
200 S. Main, Floydada 983-5111

**Plains
Electric Co.**
106 S. Main, Lockney 652-2133

**Schacht
Flowers, Jewelry & Gifts**
112 W. Poplar, Lockney 652-2385

The Basket Case
103 S. Main, Lockney
652-2757

**Wilson
Aerial Spray**
Lockney 652-2719



TRINITY CHURCH
500 W. Houston, Floydada
983-5499 or 983-6118
Welcomes You
Sunday School 9:45 a.m.
Morning Worship 10:50 a.m.
Sunday Evening 6:00 p.m.
Wed. Family Night 7:00 p.m.
Pastor & Mrs. Glenn Wachob
VICTORY IN JESUS RADIO BROADCAST
Airing Every Sunday Morning at 8:30 a.m.
KFL 95.3 FM - KAWA 900 AM - CABLE TV CHANNEL 2

Floydada Senior Citizens News



CELEBRATING BIRTHDAYS—Celebrating their birthdays during the month of June are right to left, Doris Hillin, Ruby Hobbs, Thelma Jones, and Jennelda Fulton. Not pictured is Ellen Galloway.

Nursing Home celebrates birthdays

June is such a special month...
It brings so many things...
Vacations, playtime, all the rest...
It just flies by on "wings!"

Mrs. Galloway we honor
For all her many years,
She's such a lovely lady
Let's give her love and "cheers!"

Thelma Jones we're greeting
...Her years are 84...
We wish her Happy Birthday
With many, many more!

We welcome Doris Hillin
At this her special time...
She is so nice and helpful...
To all she is so kind!

We greet our Mrs. Fulton
...A lady nice to know...
Just stop in for a visit

And you will say it's so!

Another one we honor
Is Mrs. Ruby Hobbs...
And when it comes to parties
She likes the fun in "Gobs!"

Let's serenade these ladies
With the same old Birthday Song
So get your "vocals" ready
And come out good and strong!

The ladies of City Park Church of Christ hosted the monthly birthday party at the Floydada Nursing Home on Thursday, June 15th.

Corsages from William's Florist were presented to the honorees Mrs. Galloway, Thelma Jones, Doris Hillin, Jennelda Fulton and Ruby Hobbs.

The honorees, guests and residents were served angel food cake, white icing cake and strawberry punch.

By Margarette Word
The center is open from 8:00 a.m. to 4:00 p.m. each Monday through Friday. If you plan to eat lunch, please call before 10:00 a.m. so they can prepare enough food. They start serving at 11:30 a.m. The phone number is 983-2032.

Tuesday, June 14th, was Flag Day. Bobby Gilliland and his Boy Scout Troop #357 are so faithful to put these flags out. This is a money making project for them and it is so nice to see so many flags waving in the wind all over town. It makes me feel good about my country. So many of our loved ones have lost their lives so that we may enjoy the freedom we have today. Thank you leaders and Boy Scouts for a job well done.

Meryl and Doris Roberts from Sulphur Springs, Texas, spent the weekend with her sister, Letha and Travis Lightfoot.

Glenna Orman had two grandchildren graduate from Texas Tech. They were Shane Orman of Plainview and Keeley Orman of Pampa, Texas.

Mattie Wester, Hollis and Jo Payne recently attended the funeral of Charles (Chuck) Norwood of Vigo Park.

Bill and Clorene Holladay have a new great-grandson, Zachery Davis Holladay whose parents are Dustin Davis and Heather Holladay of Amarillo. Zachery's grandparents are Donnie and Gwen Holladay of Amarillo. Zachery has a big sister, Megan.

R. G. Dunlap's daughter, Becky of Harlingen Rio Grande Valley was in Floydada spending a few days with her father. She went home on Tuesday, after Father's Day. Becky said she was very impressed with the improvements we had made to the center. She remem-

bered it "in the before" and she sure did like the "after" much better.

Elizabeth Armstrong has been in Lubbock taking care of her sister-in-law, Benja Johnston McKenney of Clovis, New Mexico, who has had knee surgery for the fourth time and will have more surgery later.

The "Singles" met at the center last Saturday evening. There were over 20 in attendance. A good meal, fellowship and games were enjoyed by all.

Sunday, at the First United Methodist Church Adult Sunday School Class, E. J. and Navolia Kenslow walked in. They moved sometime ago to Denton to be near their children. We enjoyed seeing them and hope they get to come back real often. We miss them.

Sunday afternoon, I called Lena Mae

and Olin Watson who have recently moved to Midland. Olin, on Monday, June 19th, is to have back surgery and we wanted to let them know we were thinking about them during this stressful time. Our prayer is for a speedy recovery and that his pain will go away. Tuesday I called and found that Olin's surgery went real well. The doctor found the spurs and the nerve causing Olin's problem. The doctor assures him he will be free of pain now.

McCoy Community Reunion will be July 17th at Lighthouse Electric. Anyone living at McCoy now or in the past or in the surrounding communities are especially invited. The more that attend, the more fun it will be. If you are a friend of those in that area, you are invited, too. They are working hard to make this a great reunion. Mark your calendar for July 17th and make a special effort to be there.

John Key and Madge West spent several days at Lake Brownwood fishing. Their daughter, Ann and Kenneth Bean have a cabin on the lake. They really enjoyed the lake and fellowship, but they didn't have very good luck in fishing.

Dell Yandell has just returned after spending two weeks in Hawaii where her son, Lane and family live.

Mr. and Mrs. Talmage Linch ate lunch at the center, Monday, July 19. Mrs. Linch has been very ill recently and she is on a walker now, but is able to be out. She looks real good and seems to be improving.

Last Thursday night, Virginia Waits of Hale Center was in Floydada visiting her mother, Deota Odam. Deota's sister, Odessa Cage of Lubbock, was also here and spent the night.

Our sympathy to the family of Ken Bishop, Jr. When Mr. Bishop operated the appliance store, where Fred Thayer's accounting office is now, my family

bought a console T.V. As of today, we are still using that T.V. and that's been 28 years ago.

Remember to pray for one another and especially for those who are lonely, in need and are ill. Some have had surgery, taking chemo and radiation.

Thought for the Week—Ever notice that the only vacant parking space is always on the other side of the street—Doug Larson.

Strike Oil From Your Diet.

A diet high in fats and oils may lead to certain cancers.

AMERICAN CANCER SOCIETY 1-800-ACS-2345

Goen & Goen has the commercial insurance you need. We have package policies that can give you more coverage in one policy and save you money at the same time.

GOEN & GOEN

"SERVING YOU FOR OVER 65 YEARS"

102 E. California, Floydada
806-983-3524

Project Graduation Night adds a memorable ending for the Lockney Class of '95

By Lisa Mosley

Twenty-nine members of the Lockney High School graduating class and their guest were participants in an all-night drug-free graduation party at the Radisson Hotel in Amarillo following the graduation ceremonies on May 26.

The fifty students and their sponsors left at 11:00 p.m. to travel to Amarillo for a night filled with swimming, video games, movies, playing pool and dancing.

Each senior in attendance received a bag of door prizes donated by various businesses and individuals with five major prizes including a television, a microwave, a boom box with CD player, a rolling carry-on case, and a Coca-Cola throw being given to five lucky winners.

"We were overwhelmed by the response of the community to this project," said coordinator Debbie Wiley.

"We only began working on this a couple of weeks before graduation after some of the parents indicated an interest in a project of this type for the students."

Even the response by the students was better than anticipated.

"Because of it being something new in Lockney, we were hoping that at least fifteen of the 39 seniors would participate," said Kay Abney, a parent volunteer. "We were thrilled when 29 of them signed up and included 21 guests."

Parents who helped transport and chaperone the evening included Buddy and Debbie Wiley, Ricky and Lisa Mosley, Harold and Kay Abney, Dickie and Debbie McCarty and Bill Hunter.

Plans are already being considered for Project Graduation '96.

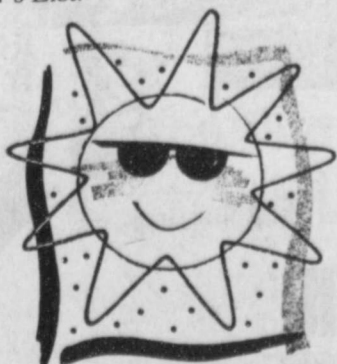
Six from Floydada are on West Texas A&M Dean's List

During the spring 1995 semester, six Floydada students were among the 697 West Texas A&M University students who were named to the 1995 spring semester Dean's List.

One hundred and ninety-five students were named to the President's List.

Students on the Dean's List achieved GPA's of at least 3.25 with a minimum of 12 undergraduate hours.

Roxene L. Brown, senior mathematics major; Nathan A. Davis, freshman, public administration major; Amy B. Gilly, sophomore art major; Cory G. Peel, junior pre-vet medicine major; Thedra M. Reynolds, senior reading major; and Kenneth C. Wilson, junior physics major, were all named to the Dean's List.



It's hot outside!!

Larry R. Karrh, M.D.

2222 WEST 24th STREET, STE. 1
PLAINVIEW, TEXAS 79072
Telephone (806) 293-5169

To All Our Patients and Friends:

The past few years have seen dramatic changes in the practice of medicine in this country, and Plainview certainly has been no exception. Our local hospital has undergone three changes in management. In addition, terms such as "HMO," "PPO" and "managed care" have become almost household words in recent months, dramatically changing the manner in which our office does business.

Throughout this time, our office has been able to meet the challenges brought about by change and has continued to provide each of you with the quality family health care you have come to expect from us. The changes have, however, placed an increasingly large burden upon my office staff, my family and myself. This has led us to pursue alliances with other health care institutions in order to ensure our survival in this "new market" and best position ourselves to meet your health care needs.

As a result of lengthy discussions, we are proud to announce our association with St. Mary Family Healthcare Centers effective July 1, 1995. We believe this association will ensure our ability to continue to provide health care to all our established patients as well as others whom we have not been able to serve in the past. We feel our alliance with St. Mary—one of the region's most trusted health care providers—will give our patients, my office staff, my family and myself the greatest security and assurance of continued quality medical care into the 21st century.

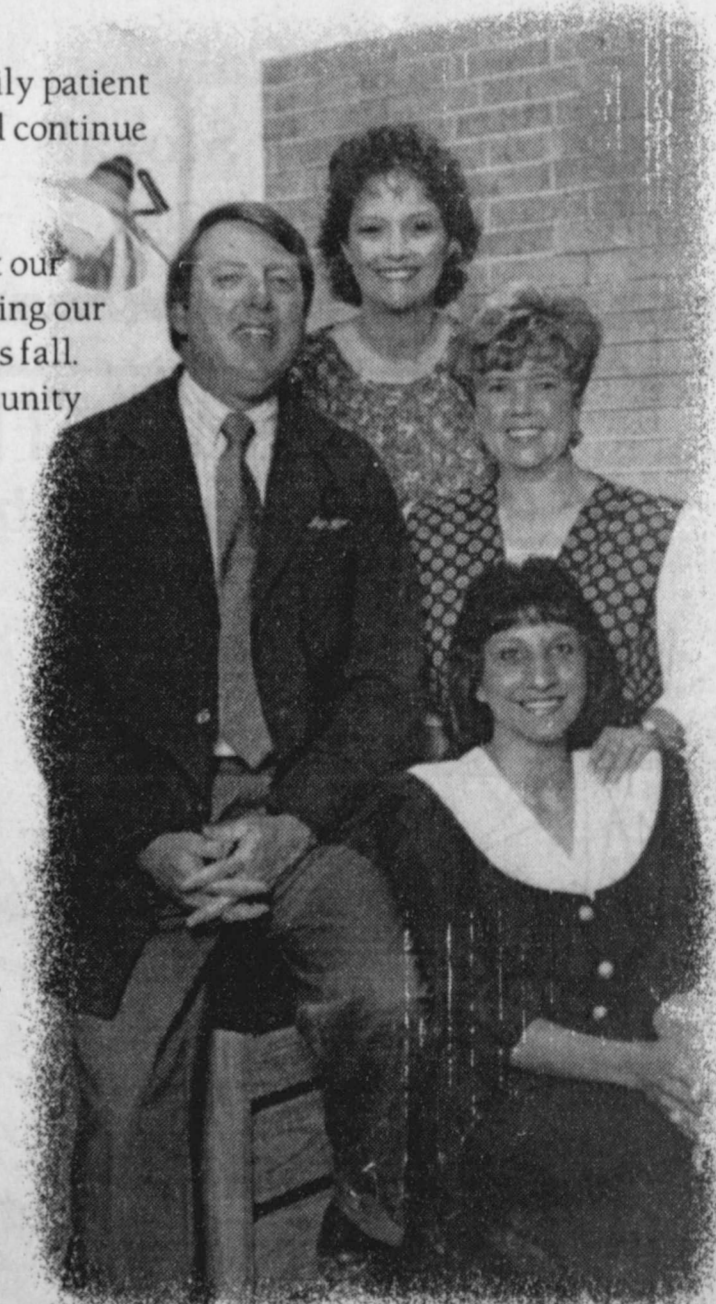
This change will only affect the business portion of our office operation. Daily patient care, hospital care and/or referral patterns will remain the same, and we will continue to work to strengthen and stabilize Plainview's medical community.

For the next several months we will continue to conduct business as usual at our current location at 2222 West 24th Street, Suite 1. We will, however, be moving our offices to the new St. Mary Family Healthcare Center at 3409 Olton Road this fall. We greatly appreciate your ongoing support and anxiously await the opportunity to be of continued service to you.

Sincerely,

Larry R. Karrh, M.D., D.A.B.F.P., D.A.B.Q.A.U.R.P.

Jan Newman, L.V.N.
Dr. Karrh
Renee Rowell, L.V.N.
Alva Gonzales, L.V.N.





FATHERS DAY CELEBRATION -- Youngsters and oldsters and some in-betweeners enjoyed food, fun and games at the Lockney Care Center Fathers Day Celebration on Sunday, June 18. -- Staff Photo

Hospital approves UMC contract

Continued From Page 1
Heflin, and Denise Payne.

Board members also agreed to negotiate a one-year contract for allowing Floyd County Day Care to occupy the unused east wing of the hospital building. Farris stated that he felt the \$300.00 the day care offered to pay as monthly rent was "inadequate." He indicated that he would like to have the rent payment cover the basic cost incurred by the district for the utilities, maintenance, and insurance applicable to that portion of the building.

Denise Doucette, a board member for the day care, told the gathering that this was all the day care could afford to pay. "During the summer, enrollment is down and we have also lost many children because parents are uncomfortable with the day care being located in the same building as the alternative school," said Doucette.

"We do not want to get into the business of subsidizing a local day care," said Farris. "I think having the day care here must be viewed as a public service type thing, but we cannot use tax money to offset the cost."

Board members and day care representatives agreed to negotiate a contract for one year at \$300.00 per month, the current rent paid to Floydada ISD for facilities at Della Plains School building. This will be reconsidered at the end of one year when actual costs involved in housing the day care can be determined and after enrollment has a chance to increase following the move.

Motion to negotiate the contract was made by Eastham and seconded by Heflin. All voted in favor. The motion also included committing \$2,500.00 of district funds toward renovations needed in order to accommodate the day care. Day care will pay an equal amount as will UMC according to the motion.

Other items handled at the session included:

... Approval of the minutes of the meetings held on May 10 and May 16. Motion for the action was made by Heflin and seconded by Eastham. All voted in favor.

... Board members approved continuing the payment on two pieces of leased

equipment now being used in the clinic. The district will pay off the leases and retain ownership of the lab equipment. Motion was made by Heflin and seconded by Payne. All voted in favor.

... A motion by Payne with a second by Turner was unanimously approved authorizing Bob Ericson to provide bookkeeping services for the district at a monthly cost of \$125.00.

... Board members approved accepting a bid by Kyle Smith of Goen & Goen Insurance for liability coverage on the hospital building at a cost of \$3,302.00 per year. The coverage will include the area to be leased to Floyd County Day Care and will be effective when day care moves in. Motion was made by Heflin and seconded by Turner. All voted for the motion.

... The board agreed to accept the withdrawal of a property bid previously approved. Karen Houchin has withdrawn her bid to purchase lots owned by the taxing entities. Motion for the action was made by Payne, seconded by Heflin and approved by unanimous vote.

... Eastham made the motion to approve the contract with the Floyd County central Appraisal District for appraising, assessing, and collecting taxes on behalf of the district. The motion was seconded by Turner and approved unanimously. Cost of the services was placed at \$18,097.00 for this year.

... Board president Farris reported that the district has \$196,000.00 in the bank and has monthly bills totaling \$21,000.00 to pay this month. He indicated that accounts receivable for clinic operations as of May 31, 1995 total \$213,000.00.

Turner made the motion to pay bills and accept financial reports. It was seconded by Heflin and approved by unanimous vote of board members present.

... Ericson presented his clinic administrators report, stating the immigration process for the new doctor are progressing. He said that information had been received indicating that applications made in April would be processed in July so the physician should be able to begin work in mid to late July.

He also told the board that graveling

a roadway behind the hospital to facilitate a better traffic pattern would cost approximately \$2,400.00. Using asphalt would make the cost about \$3,300 according to Ericson. No action was taken on the matter at this time.

The final item on the report was that the change over from CHD operation of the clinic to UMC administration of the clinic has been going well. "Everything has been handled efficiently and everyone is viewing the change on a real positive note," said Ericson.

Attending the early morning session in addition to board members Farris, Eastham, Turner, Heflin and Payne were Ericson, Dr. Antoine Albert, Betty Fuller, Denise Doucette, Kyle Smith, Joe Stepp, Ralph Jackson, and the Hesperian-Beacon reporter.

County begins work on budget

Continued From Page 1

Other requests which came up with any frequency were for extra help in the various offices and for general salary increases.

The Sheriff requested funding to cover purchase of a new vehicle for the department and hiring of an additional deputy to allow for better coverage of the county. He also requested funds to purchase three radar units for deputy sheriff units.

Overstreet also told the court that it needs to consider raising the charges to other counties for housing prisoners on their behalf. Cost of maintaining the jail and of caring for prisoners has risen to the point that current charges are not covering the total expense incurred by the county.

Other items considered by the court included the approval of four farm work contracts and authorization for deputization of Shane Dollar. Dollar will be replacing Greg Pierce who recently resigned as a Floyd County Deputy. Motion for the deputization came from

Old Fashioned Saturday slated

Continued From Page 1

Doyle Dipprey at the Lockney Library from 1:00 to 5:00 p.m.

Members also voted to order new tinsel and lights for the Christmas decorations. Any group who would like to help with this project is asked to contact Judy Jackson or Marilyn Anderson. A date will be set later to work on the decorations and everyone is invited to come and help with the repair work.

A report was given by Marilyn Anderson on the brochures of Lockney that are being worked up and will soon be printed. Listed on the brochure will be regular events held throughout the year, names of businesses, churches, the hospital and nursing home, clubs and organizations as well as other items of interest.

The annual chamber banquet was discussed and tabled until the next

Two 4-H members earn scholarships

Two Floyd County 4-H members received a total of \$2,250 in scholarships recently.

Misty LaShay Bertrand, daughter of Randy and Connie Bertrand of Floydada, received a \$1,250 scholarship from the Federal Land Bank Associations of Texas. She is a 10-year member of the Floydada 4-H club.

Mark Todd Terrell, son of Buster and Linda Terrell of Lockney, received a \$1,000 scholarship from the National Farm Life Insurance Co. He is a 10-year member of the Lockney 4-H club.

Bertrand, who plans to attend San Angelo State University, graduated from Floydada High School. Her honors include a National Congress Trip to Chicago; Floyd County Gold Star; Floyd County Gold Star Scholarship; Danforth "I Dare You" Award; First Place in State Recreation Record Book; First Place in State Share-the-Fun competition; District First Place Foods Record Book; Outstanding Jr. Record Book; 4-H Sweetheart.

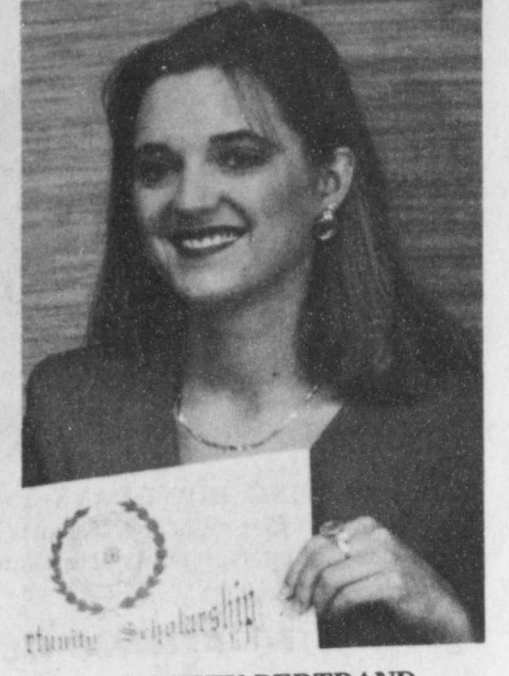
Her planned double major is animal science and communications.

Terrell, who plans on attending Texas Tech University, is a graduate of Lockney High School. His honors include Floyd County 4-H Gold Star recipient; 3rd place in Method Demonstration at 4-H Roundup; participated in Texas 4-H Congress; 1st Vice-President of Lockney 4-H club; served on Floyd County and District 2 4-H councils; alternate state record book winner; best county record book; state 4-H Five-Star Archery Matches—received 10th place; State Recreation Team Leader Training-2 years.

His planned major is Journalism with an emphasis on Photo-Journalism.



MARK TERRELL



MISTY BERTRAND

Newland School remembered

Continued From Page 1

tions, there was a very small enrollment and the school only ran about seven months.

"One amusing incident, remembered by one of the teachers," wrote Campbell, "was sending one of the boys to the cloak room for discipline and he cut all the buttons off the teacher's coat."

Other teachers at Newland were: Mrs. Phillips, Mrs. Castlebury, Lela Swain and Miss McKinney.

The school disbanded in the spring of 1929 to consolidate with a new school that was built in the new town of Dougherty. "The last day of school at Newland was an exciting one as everyone walked over to Dougherty to see the first passenger train come through, going to Floydada," wrote Campbell. "Several local people went to Quannah just to ride on the train and several rode from Floydada back to Dougherty."

According to Museum records, the students enrolled at the beginning of the

school year Dec. 1, 1924, were: Elbert Custer, Orville Custer, Dick Furrow, Stella Furrow, J.W. Harrison, Milton Harrison, Cecil Queen, Edna Queen, Blanch West, Pearl West, Rosa West, Bertie White, Chester White, Mildred White, Reynold Sanders, Luella Lincoln, Darrell Croft, Daphnea Croft, Lowell Thompson, Wylie West, Lois Lemon, Viola Lemon, Leona Lemon, Jessie Thompson, Leonard Carden, Loran Dobbs, S.J. Furrow, Melvin Worley and Ollie Carden.

Submersible Turbine
LAVY'S PUMP SERVICE
LEON LAVY, Owner
Silvertown
Day Phone 823-2061 Night Phone 823-2188
Windmills
House Wells Irrigation Wells

!! ATTENTION !!

Farmers

Follow wheat or lost cotton with
SOUTHERN PEAS

Contracts available for
Black-eyes and other Peas.

CONTACT: Peas, Inc.
210-569-2140

We pay freight

Rhoderick Irrigation Inc.

Your Local Lindsey Zimmatic Dealer
1-800-878-2584



Now's the best time to see your Zimmatic® dealer about the industry's leading irrigation system. Because during Zimmatic's Summer Savings Days we'll not only give you a top-quality Vise Grip® and leather holder when you get a quote, we'll even let you choose a great deal if you purchase between June 1, 1995, and June 30, 1995, and take delivery by September 30, 1995:

*\$200 rebate per tower with June or July delivery
*150 rebate per tower with August delivery
*100 rebate per tower with September delivery

or
*7.95% low interest financing for 5 years with just 5% down
or
*Interest-free financing until March 1, 1996

See your Zimmatic dealer for a quote and your FREE Vise Grips

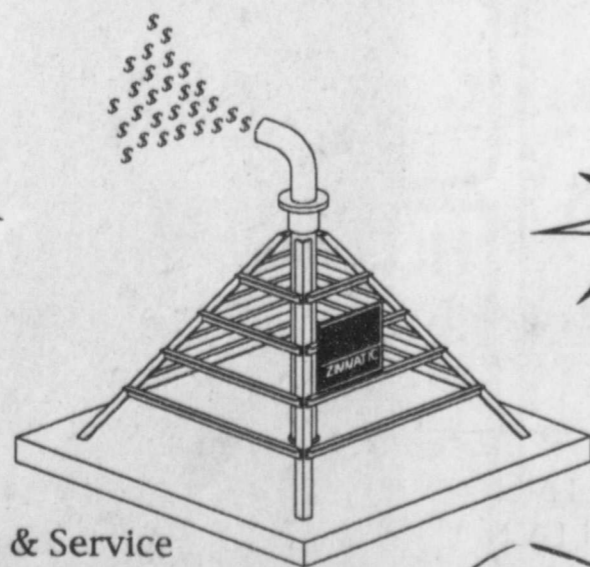
ZIMMATIC®
Built To Be The Leader.

Stovall Spot Spraying



Call
Larry Stovall
983-5327

ZIMMATIC The Raining Champion



For The Best In Sales & Service
Hi Plains Irrigation
806-285-2673
800-687-3133

Covering Castro, Hale, Floyd & Swisher
Interest program and rebate program can not be combined

Call for Hot Summer Deals
Delvin Bybee 806-652-3179 Home
806-774-3066 Mobile
Lockney

HEALTH INSURANCE
to help pay hospital-surgical bills
CALL NICK LONG 983-3441
State Farm Mutual Automobile Insurance Company Home Office Bloomington, Illinois

PRODUCER'S COOPERATIVE ELEVATOR

983-2821 - FLOYDADA
983-3770 - DOUGHERTY

FIRST NATIONAL BANK OF FLOYDADA



FLOYDADA 983-3717

RUSSELL'S EQUIPMENT & SUPPLY

Russell's

FLOYDADA 983-3751

FLOYDADA COOPERATIVE GINS, INC.



FLOYDADA 983-2884

Floyd County ranks sixth in cotton production

By Shawn Wade
Plains Cotton Growers, Inc.
Final statistics on the 1994 cotton crop show the Texas High Plains managed to put together back-to-back 3 million plus bale crops. The figures indicate the area produced 3,067,200 480-lb. bales in 1994.

As usual several High Plains counties ranked as top cotton producing counties in the state. In fact the top 11 counties were all located on the Texas High Plains. They are: 1. Gaines, 2. Hale, 3. Lubbock, 4. Terry, 5. Lamb, 6. Floyd, 7. Hockley, 8. Crosby, 9. Lynn, 10. Dawson, 11. Yoakum.

According to Lubbock-based Plains Cotton Growers (PCG) abandonment of the 1994 crop totaled only 6 percent and the crop's weighted average yield came to 482 pounds per harvested acre. The abandonment figure reflects a total of only 184,800 acres lost during the season out of 3.219 million acres planted to the fiber crop.

Expectations for the 1995 crop becoming a third 3 million-plus bale crop are still out there, says PCG Executive Vice President Donald Johnson.

Johnson acknowledges, however, that early planted cotton, especially in the southern areas of the High Plains, is hard to find and that recent weather has significantly muddled the complexion of the entire High Plains crop.

"To be honest we really do not have a good feel for how this years crop is doing," explains Johnson. "The crops condition runs the gamut from just planted all the way through cotton with five true leaves and nobody appears to be able to predict where the 1995 crop is headed."

The 1994 crop figures were obtained from the Texas Agricultural Statistics Services (TASS).

The following table shows 1994 planted and harvested acres, as well as total production in 480-pound net bales for each of the 25 PCG counties.

1994-Crop Upland Cotton Texas High Plains
Source: Texas Agricultural Statistics Service

	Acres Planted	Acres Harvested	Yield per Acre Harvested	Total Bales
Bailey	89,600	84,800	454	57,900
Briscoe	40,400	38,900	387	31,400
Borden	28,700	22,600	159	7,500
Castro	57,700	52,300	770	83,900
Crosby	201,100	194,100	477	193,000
Cochran	130,300	124,500	469	119,000
Dawson	238,500	221,900	303	140,100
Deaf Smith	4,800	4,100	885	5,100
Dickens	30,300	29,300	274	16,700
Floyd	174,600	169,300	619	218,200
Gaines	288,100	262,400	613	335,300
Garza	36,700	35,300	273	20,100
Hale	212,800	205,200	710	303,400
Hockley	239,500	230,700	439	210,800
Howard	90,800	86,300	265	47,600
Lamb	174,400	166,600	646	234,900
Lubbock	259,100	250,100	529	275,700
Lynn	245,300	233,200	313	151,900
Martin	112,100	101,500	308	65,100
Midland	30,300	27,800	345	20,000
Motley	32,000	30,700	186	11,900
Parmer	56,700	44,400	741	68,500
Swisher	68,700	62,700	692	90,400
Terry	246,200	234,100	491	129,200
Yoakum	30,300	27,800	345	20,000
Totals & Averages	3,219,800	3,035,000	482	3,067,200

Section 18 labeling clears use of Furadan 4F

The Texas Department of Agriculture (TDA) requested a Section 18 Specific Exemption for use of Furadan 4F on Texas cotton for aphid control. The Environmental Protection Agency (EPA), recognizing that Furadan 4F may currently provide the only reasonable and effective pest management tool for aphid infestations that are uniquely severe, has approved TDA's request. Producers must realize that EPA has great concerns for potential bird kills and acute toxicity problems for workers that can be associated with Furadan 4F use. Therefore EPA has issued the following guidelines and restrictions for use of Furadan 4F as a foliar application in Texas. This listing is not complete. Furadan 4F users are advised to read a copy of the section 18 labeling. This labeling must be in the user's possession at the time of application.

South Texas continues to have problems with beet armyworms and aphids, with a sprinkling of loopers to boot. Beet armyworm problems have concentrated in the drier areas and appear to be moving slowly upstate. The worst of the Valley problems appear to be over. From what I have read or heard, South Texas' beet armyworm and aphid infestation levels have not come near the levels we experienced here in 1980 and 1991, respectively. Best treatments for beet armyworms in tests conducted in South Texas this year have been Lorsban and Dimilin, Confirm and Pirate. The first treatment is labeled, the second treatment has a Section 18 Crisis Exemption and has been cleared for 12 counties in South Texas and 2 counties in Far West Texas. The third treatment is not labeled and can not be used on cotton at this time unless a Section 18 is applied for and granted by EPA. Thus far beet armyworms have not infested our young cotton fields, even though some earlier pheromone traps caught high numbers of moths.

Call the Extension Office for a copy of Section 18 labeling.

Have a great day!

COUNTY CORNER. . .By Jim Bob Reynolds, CEA-AG

As we all know this year's cotton crop is slow coming out of the starting gate, with most cotton only in the 2-3 true leaf stage. We are currently running about 3 weeks behind what we would consider a "normal" year. Recent wet, cool conditions, along with scattered hail storms has also greatly reduced, and in some instances, even eliminated out cotton crop.

Historically, cotton planted after June 10 does not have a very high potential at harvest time. Many producers have or may want to consider planting an alternative crop such as grain sorghum.

Cotton producers who incorporated Treflan or Prowl, or applied Probe, Caparol, Cotoran, or Karmex as a pre-emergence herbicide, will be running the risk of crop injury on grain sorghum. This is especially true on sandier soils where the herbicide tends to move deeper than on tighter soils. This depends upon the amount of herbicide used and rain received.

The problem of herbicide residue can be circumvented on the heavier soils with a buster planter, set to displace the top four or five inches of soil to estab-

lish a herbicide free zone. This works especially well for Prowl and Treflan due to their low leachability potential. Other pre-emergence herbicides used in cotton are more soluble and may move more deeply in the soil profile, thus making it more difficult to establish a herbicide free zone.

As these herbicides move downward they become more diluted, thus decreasing the potential for injury to sorghum. Past experience has suggested that removal of the top 4-5" of soil will greatly

reduce the possibility of herbicide injury.

Hybrid selection is, also, an important consideration. Sorghum planting may range from late April to early July, depending on the maturity class of the hybrid. In general, a full-season hybrid should not be planted after June 10 and the cut-off date for a medium-to-late maturity hybrid would be June 20-31. Producers, also, need to be aware that late-planted sorghum that midge infestation and other insects may be a problem.

Custom Pesticide Application



Larry Ferguson

Home:983-3820

Mobile:983-1820



REBATES

PURCHASE
June 1 to June 30, 1995
Delivery
By September 30, 1995

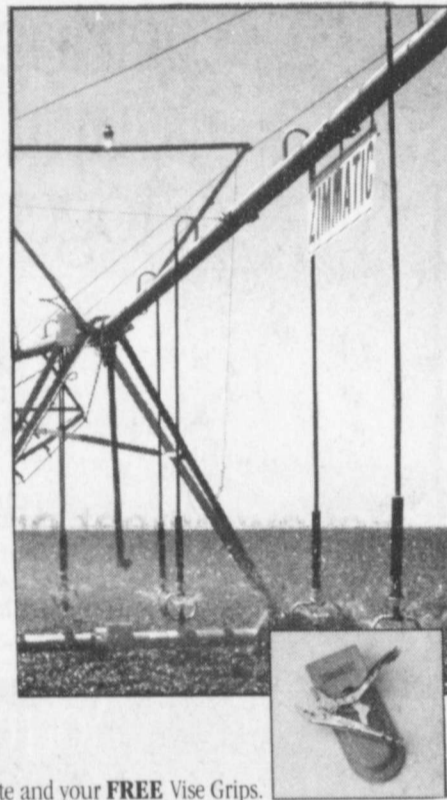
REBATE
\$200 PER TOWER
June Or July Delivery

\$150 PER TOWER
August Delivery

\$100 PER TOWER
September Delivery

OR
7.95% INTEREST For
5 Years with 5% down

OR
INTEREST-FREE
FINANCING
Until March 1, 1996



See your Zimmatic dealer for a quote and your FREE Vise Grips.

IRRIGATORS, INC.

RALLS AIKEN
Jim Boydston Lindan Morris
Ralls-806-253-3175 Lockney-806-652-2270
Mobile-806-657-7823 Mobile-806-292-0746



Brown's Implement

Ralls Highway Phone 983-2281 Floydada, Texas

We are your authorized Case-IH Dealer

Case IH
Lease Tractors
Diesel Powered
Irrigation Engines

Lee Spiders
Orthman
Great Plains

Quality Assured
Case-IH Parts

Service by Trained
Professionals

NICHOLS
Cultivator Sweeps
6" to 30"

Hyd. Hose Repair

Bigham Bros.
Roll-A-Cone
Sam Stevens
Lorenzo Mfg.

---NOW IN STOCK---

Ace Pumps - Replacement parts for Sprayers
T-Jet Tips, Pump Repair Kits and more



REINKE

IRRIGATION SYSTEMS

Summer Soakin' DEALS

REBATE!

\$1200**

REBATE!

\$1000**

**Based on a new Reinke 8 tower system.

On Systems Delivered By:
JUNE 1 - JUNE 30

On Systems Delivered By:
JULY 1 - JULY 31

OR

5 yr. Loan
8.25%

7 yr. Loan
8.90%

Fixed APR
Low down payment of \$150 per tower
First payment due January 1, 1996

OR

8.75%

PICK-A-DATE LEASE

NO DOWN PAYMENT!
YOU PICK THE DATE OF FIRST PAYMENT!

Up to 1/1/97

LIMITED TIME / QUANTITY OFFER. Subject to change without notice - financing (available only in U.S.A.) subject to credit approval. Certain restrictions apply. For your nearest REINKE dealer, call 1-800-888-7251

See Your Local REINKE Dealer:

Payne Irrigation
RR 1 - Box 222, Ralls, TX., (806) 253-2521
Representative: Tim McWilliams

P.O. Box 566 • Deshler, Nebraska 68340 • (402) 365-7251

a generation ahead!

Garza Theatre to present Harley Sadler Tent Show

It has been almost fifty years since the bright lights of the legendary Harley Sadler Tent Show illuminated show lots in Floydada, Post, Lubbock and other West Texas communities. However, the magic of the Sadler name and the traditions of that early form of entertainment live on through a yearly revival at Post's historic Garza Theatre.

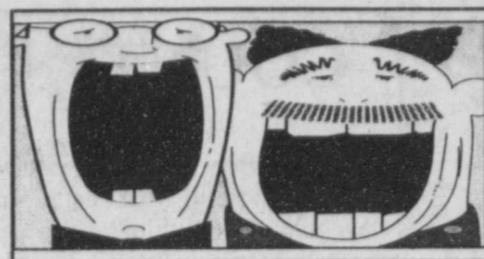
The sixth annual "A Harley Sadler Show" is scheduled to open in Post on June 29. Billed as "A Tent Show Experience Under the Roof of the Garza Theatre," the show will be presented every Thursday, Friday, and Saturday evenings at 7:45 p.m. In what has become a yearly event each July, the show will run through Sunday, July 30.

A hand-picked group of Garza Theatre regulars has been assembled to make the re-creation as authentic as possible. Jeremy Danial, a talented Slaton High School junior, has been selected to portray the role of "Sputters." His maternal great-grandfather was Bud Richard Sadler, Harley Sadler's cousin.

When Jeremy dons the makeup and appears in the "Sputter" wardrobe, the Sadler family resemblance is unmistakable.

Lubbock television and radio personality Jane-Prince-Jones is managing director. For the fourth year she will again be assisted in the re-creation by Bill and Dell Gray of Floydada. Gray, who was born on a tent show and spent over twenty years in the repertoire business, will assist in the technical direction and assume his first role on the Garza stage. Mrs. Gray is musical director and will coordinate the vaudeville entertainment.

True to Harley Sadler tradition, the 1995 production will include lively band music, between-the-acts vaudeville, and the ever popular prize candy sale. The only thing missing from the original version will be the tent itself. Advance reservations for the month-long run are recommended and can be made by calling (806) 495-4005. Group rates are available.



This Week's Announcements

PRESSURE CANNER TESTING CLINIC

A pressure canner testing clinic will be held Saturday, June 17, from 9:00-2:00 at the County Extension Office. Cost to have your pressure canner tested is \$5.00. Call 983-2806 to register.

4-H RECORDBOOK TRAINING

A County 4-H Recordbook Training will be held Friday, June 16, from 6:30-8:30 p.m. at the County Extension Office. All 4-H'ers, parents, and leaders are urged to attend.

FLOYDADA SINGLES MEET

Floydada Singles will meet Saturday, June 17th at 6 p.m. at the Senior Citizens Building. Hostesses will be Grace Grundy, Lila Kendrick and Willie McCormick.

LOCKNEY 1985 CLASS REUNION

We are trying to locate the following classmates for our 1985 Class Reunion. If you know the whereabouts of Terry Mathis, Minerva Torrez, and Sandra Garcia, please contact Cindy Cooper Stanford at 652-3153.

SALVATION ARMY

Salvation Army Store in Lockney is open. They are in need of anything usable, including appliances. They appreciate everyone's cooperation and donations.

BLOOD PRESSURE CLINIC

Free blood pressure clinic is held in the community room of the First National Bank in Floydada every Tuesday from 9 a.m. to 11 a.m. Everyone is welcome.

VETERANS OFFICER

Veterans Service Officer Ralph Jackson is available in the county courtroom on Friday afternoons from 1:00 to 5:00 p.m.

FHS GRADUATION TAPES

If you left blank cassettes to have senior activities and graduation taped, call Mrs. Hambright, 983-2304, to arrange picking them up.

FHS CLASS OF 1975

The FHS Class of 1975 will celebrate its 20th reunion, Friday and Saturday, June 30 and July 1, at the Holiday Inn in Lubbock Plaza, 3201 South Loop 289. You are invited to come and visit Sarady, 11:30-1:30 at Bryan Kastman Park, Nashville and South Loop 289, or Saturday at 9:30 p.m. at the Holiday Inn. For more information call Karen Alldredge Klein at (806)791-4651.

ST. MARY MAGDALEN JAMAICA

St. Mary Magdalen Catholic Church will be having their annual Jamaica at the Courthouse Square on Sunday, July 9. From 11 a.m. to 6 p.m. There will be food, games and live entertainment. Proceeds will go to the churches new building fund.

FFA BOOSTER CLUB MEETING

The FFA Booster Club will meet on June 23, at 7:30 p.m. at the Ag Building at Floydada High School. Everyone is encouraged to attend.

ALCOHOLICS ANONYMOUS

Alcoholics Anonymous and Al-Anons meet each Tuesday night at 8:00 p.m. Anyone wanting the loving fellowship of men and women who can share their experience, strength and hope are welcome. Meetings are held in the County Extension Building, at the north end of the building. Anyone interested may call 983-3635 or 652-3546.

AL-ANON

Group meetings for relatives of alcoholics and drug addicts are held each Monday and Friday at 12 noon and on Wednesday's at 8:00 p.m., in the Haynes Building, 812 West 8th St., in Plainview. For more information call 293-1433 or (800) 945-4928.

AMERICAN RED CROSS CPR/FIRST AID CLASS

An American Red Cross CPR/First Aid Class will be held on Saturday, July 8, from 8 a.m. to 5 p.m. at First United Methodist Church in Floydada. Cost is \$25.00 and includes book, handouts, and certificates. To register or for more information call Sharon Hinton at 983-2581.

WEATHER

Courtesy of Energas			
DATE	HIGH	LOW	
JUNE 14	94	69	
JUNE 15	90	65	
JUNE 16	86	65	
JUNE 17	82	66	
JUNE 18	85	67	
JUNE 19	98	69	
JUNE 20	90	69	

Obituary

META NORRELL

Funeral services for Meta Gesina Norrell, 86, were at 4 p.m. Friday, June 16, 1995, in St. Paul's Lutheran Church with the Rev. David Jeske, pastor, officiating. Burial was in Rose Hill Cemetery in Tulia by Wood-Dunning Funeral Home.

Mrs. Norrell died at 8:10 a.m. Wednesday, June 14, 1995, in Heritage Home.

She was born Meta Lindemann on February 15, 1909, in Floyd County. She attended Whitfield school and she

and her husband farmed in the Whitfield Community. She was a homemaker and a member of St. Paul's Lutheran Church. She moved to Plainview in 1965. She married C.C. Norrell on June 23, 1940, in the Providence Community. He died in January 1993.

Survivors include three sons, R.C. Norrell and Stewart Norrell, both of Plainview, and Virgil Norrell of Fort Worth; nine grandchildren and 19 great-grandchildren.

The family suggests memorials to the Lutheran Hour, or to Meals on Wheels.

ATTENTION RNs!

Earn Extra Cash!

\$45 per visit, plus mileage!

IV therapy company has immediate need for part time IV skilled RNs to perform IV administration visits in Floydada and surrounding areas. No minimum or maximum visits, most visits 30 minutes to one hour in length.

Qualified candidates submit resumes to:

Theresa Forgrave, Director

700 N. Grant, Ste. 305

Odessa, TX 79761

1-800-240-1287

INFUSION MANAGEMENT SYSTEMS, INC.

Equal Opportunity Employer

HONEST STRAIGHT FORWARD

The way we've been doing it for 34 years!

Come by or call to experience the only way we know how to do business!!

GM PROGRAM USED VEHICLES

Just a sample - many more to choose from.

1994 MODELS

PONTIAC	WAS	NOW
GRAND AM SE SEDAN	\$12,500	\$10,500
GRAND AM SE COUPE	\$12,600	\$10,600
GRAND PRIX SE SEDAN	\$14,300	\$12,300

BUICK	WAS	NOW
SKYLARK CUSTOM SEDAN	\$12,400	\$10,400
REGAL CUSTOM COUPE	\$13,300	\$11,300
REGAL CUSTOM SEDAN	\$14,300	\$12,300

GMC	WAS	NOW
SAFARI EXT. MINI-VAN	\$16,400	\$15,400

CHEVROLET	WAS	NOW
CAVALIER SEDAN	\$18,400	\$ 8,400
CORSICA SEDAN	\$11,000	\$ 8,999

CADILLAC	WAS	NOW
SEDAN De VILLE (16K)	\$25,400	\$23,400

1995 MODELS

BUICK	WAS	NOW
CENTURY SEDAN	\$14,400	\$13,400
REGAL CUSTOM SEDAN	\$16,000	\$13,999

City Auto, Inc.

Floydada Buick - Pontiac - GMC 983-3767



Farm Equipment - Shop Equipment - Tools

Saturday June 24, 1995 10:00 a.m.

Absolute Auction for Lee Burton

DIRECTIONS: From Floydada, Texas 6 miles East on Hwy. 62-70 toward Matador to FM 602 then North 6 miles to Auction site at end of pavement.

TRACTORS & FARM EQUIPMENT

- 1979 Allis Chalmers 7045 Diesel Tractor 5655 hours, power director trans., cab, a/c, duals, quick hitch, front weights, 18.4-38 good rubber, excellent front rubber, dual remote hyd. S/N 70452936. This tractor has been well cared for. Kept in the barn.
- Sears 12/6 HP Garden Tractor 42" underbelly mower, 3-pt. Hitch, there are 3 1-row plows to fit this tractor, also hitch to pull 2 5 HP Murray Mowers.
- 1987 New Style Brush Hog 13168 4-row Shredder excellent condition
- Roll-A-Cone 21' Spring Tooth Sweep Plow
- Hamby 7-shank Stubble Mulch Plow
- Shopmade 3-pt Lift
- IH 6-row Rotary Hoe
- 260 Gallon Fuel Trailer on Colby Trailer, 12 volt fuel pump
- 3-pt Spray rig with flush back nozzles
- 500 gallon fuel tank on stand with diesel fuel
- 3-Point scaffold unit
- 200 Gallon Fiberglass Spray Tank
- Wylie 25 Gallon 12 volt Spray Tank
- Wylie 6-row Spray Rig
- 260 Gallon Fuel Trailer on Colby Trailer, 12 volt fuel pump

(Many other items and misc. Farm Equipment, sweeps, clamps, tires & wheels, etc.)

WELDER & SHOP EQUIPMENT

- MillerDialarc AC/DC Welder w/100' leads Rod box, lot rod, lot welding supplies
- Speedaire 2-HP Air Compressor with 30 gallon upright tank, Lot air hose, air chucks
- Sears 2-Ton Hyd. Floor Jack
- Craftsman over/under Tool Cabinet
- Lot Shop Tables and Bench w/ various casters, vises etc.
- Chicago 17" 16 speed 3/4 HP Drill Press 5/8" chuck
- Makita 12" Cutoff Saw
- Dayton 3/4 HP Grinder
- 3 Wheel stand for above 3 power tools with electric power, light, and tool holder
- HD 1/2" Drill Press, old black-smith style
- Victor Cutting Torch w/private oxy bottle and 2 wheel dolly
- Barth Shear
- 75# Anvil w/stand
- Cherry Picker Hoist
- Stewart Warner Tach
- Lot Shop Stools
- Lot Racks and Shelving
- Shop Heater
- Lot misc. small shop items

This is a complete shop there are too many items to list

POWER & HAND TOOLS

- Craftsman 1/2" Torque Wrench
- CP 1720 Zip Gun Air Chisel
- 3/8" Air Ratchet
- B&D Sander
- Lot SK large box End Wrenches
- Set John Deere 3/4" Drive Sockets & Ratchet has flex handle and extra pieces in toolbox
- Large Lot Wrenches, Hammer, Hand Tools
- Set Crow foot Wrenches
- 1/2" Air Impact
- Lot Wheel/Pully Pullers Proto OTC etc.
- Antique Post Vise
- Copper Flaring Tool
- Lot C Clamps

NOT CLASSIFIED

- 10 Speed Mountain Bike
- Antique Tools, Cream Cans, Furniture, others
- Large lot Parts, Filters, Bolts, Bolt Bins
- Many Unique Items to numerous to mention
- Lot new and scrap Iron
- Lot Racks and Stands

THIS IS A PARTIAL LISTING

AUCTIONEER'S NOTE: Mr. Burton took very good care of his equipment. The items in this auction are very good quality and in above average condition. Due to the selling of his home, this equipment will be sold to the highest bidder. Please be on time as many choice items will be sold early. TERMS and CONDITIONS are the same as usual.

TIM ASSITER & ASSOCIATES AUCTIONEERS

P.O. Box 70, Floydada, Texas 79235 806-983-2511 or 806-983-3611 TX LIC 11550



Subscription Reminders

Due to the rising cost of postage rates, The Floyd County Hesperian-Beacon will no longer be mailing out second reminders for subscriptions. One Subscription Notice will be mailed out at the first of the month to subscribers whose subscription is expiring that month.

Names of any subscribers who have not renewed by the third week of the month will be listed under this standing headline as a reminder for those wishing to renew their subscription.

All subscriptions expire on the 30th day of each respective month, except February when subscriptions expire on the 28th day of the month.

JUNE REMINDERS

- | | |
|------------------------|--------------------|
| FLOYDADA & OUT-OF-TOWN | Mike Holster |
| Preston Badgett | Cliff Hopper |
| Imogene Baird | Larry Wayne Jones |
| Jerry Battey Jr. | Robert W. Logan |
| Greg Bishop | Isabell Pena |
| John Brown | Tammy Reese |
| Bill Bybee | Mark Sanders |
| Fred Byrd | Jack Schaeffer |
| John Campbell | John Speer |
| David Carr | Emogene Stansell |
| Sandy Carr | Betty Stevenson |
| Jackie Elliott | Joe Willmon |
| Deryl C. Evans | Verlon Wright |
| Weldon Fannon | |
| Gary Faries | LOCKNEY |
| Leon Ferguson | Donnie Bybee |
| Ray Ford | Robert Lee Daniels |
| Loree Hammitt | David Frizzell |
| Tammy Hawkins | Neil Langley |
| Aaron Hendricks | W.C. Mercer J.C. |
| Randy Hollums | Boyce Mosley |
| | Annela Staples |

Need help getting your insurance act together?

Give us a call for your free Allstate Protection Review

J & K INSURANCE
121 W. California, Floydada 983-3284
620 S. Main, Lockney 652-3386

JIM MARTIN PHYLIS HARRIS

You're in good hands. Allstate

PUBLIC NOTICE

REQUEST FOR BIDS ON TEXAS HIGHWAY CONSTRUCTION

Sealed proposals for 17.792 miles of recycle flex base, widen & 2 est on FM 97 from SH 207 to FM 1065 covered by MMP 740-2-24 and from FM 1065 to Motley C/L covered by MMP 707-3-5 in Floyd County, will be received at the Texas Department of Transportation, Austin, until 1:00 p.m., July 6, 1995, and then publicly opened and read.

Plans and specifications, including minimum wage rates as provided by Law, are available for inspection at the office of Merlin O. Bennett, Area Engineer, Plainview, Texas, and at the Texas Department of Transportation, Austin, Texas. Bidding proposals are to be requested from the Construction and Maintenance Division, 200 East Riverside Drive Austin, Texas 78704-1205. Plans are available through commercial printers in Austin, Texas, at the expense of the bidder.

The Texas Department of Transportation hereby notifies all bidders that it will insure that bidders will not be discriminated against on the ground of race, color sex or national origin, in having full opportunity to submit bids in response to this invitation, and in consideration for an award.

Usual rights reserved.

6-22, 6-29c

REQUEST FOR BIDS ON TEXAS HIGHWAY CONSTRUCTION

Sealed proposals for 157.258 miles of emulsified asphalt seal at various locations on US 385, US 70, US 180, SH 194, BI 27-U, US 84, LP 289, US 62, US 87, US 60, SH 214 & SH 86 covered by CPM 226-6-24, CPM 145-7-30, CPM 294-1-30, CPM 145-4-28, CPM 439-5-20, CPM 67-9-26, CPM 52-4-38, CPM 53-3-16, CPM 53-1-87, CPM 783-1-74, CPM 783-1-75, CPM 131-2-33, CPM 131-1-46, CPM 68-1-44, CPM 53-18-28, CPM 168-2-23, CPM 461-8-16, CPM 52-1-31, CPM 227-7-31, CPM 303-1-41, CPM 67-2-45, CPM 380-3-18 and CPM 380-1-59 in Castro, Floyd, Gaines, Hale, Lamb, Lynn, Lubbock, Parmer, Yoakum, Terry and Swisher County, will be received at the Texas Department of Transportation, Austin, until 1:00 P.M., July 6, 1995, and then publicly opened and read.

Plans and specifications, including minimum wage rates as provided by Law, are available for inspection at the office of Ronald C. Seal, Area Engineer, Lubbock, Texas, and at the Texas Department of Transportation, Austin, Texas. Bidding proposals are to be requested from the Construction and Maintenance Division, 200 East Riverside Drive, Austin, Texas 78704-1205. Plans are available through commercial printers in Austin, Texas, at the expense of the bidder.

The Texas Department of Transportation hereby notifies all bidders that it will insure that bidders will not be discriminated against on the ground of race, color, sex or national origin, in having full opportunity to submit bids in response to this invitation, and in consideration for an award.

Usual rights reserved.

6-22, 6-29c

THE CLASSIFIEDS

AUTOS FOR SALE

1966 FORD GALAXY 500—For sale. \$1,000 as is, two air conditioners. 983-6416.
6-22p

FOR RENT

Floydada
2 BEDROOM TRAILER HOUSE, for rent. Couple or single only. 983-2797.
6-22p

HELP WANTED

CUSTODIAN—Must be willing to work evening shift (1:30-10:00 p.m.) To apply, please contact: Superintendent's office, Lockney ISD, Lockney, Texas. Applications accepted until July 7, 1995.
6-22c

HOUSES FOR SALE

Lockney
NICE TWO BEDROOM, 2 bath, brick home. Large storage. Shown by appointment only. Sam Hale Real Estate, Floydada. 983-3261.
tfc

PERSONAL

ANYONE INTERESTED in a class action suit against The Floyd County Appraisal District call 983-1726 after 8:00 p.m.
6-22p

SERVICES

TIME TO SPRAY your yard for weeds. Emerit Spraying Service. 652-3116 after 6 P.M.
tfc

BEDDING PLANTS FOR SALE

NOW AT JOE'S—Bedding plants, house plants. 8:30-5:30 daily, 10:00-3:00 Saturday. 100 S. Main, Floydada.
tfc

GARAGE SALES

Floydada
GARAGE SALE—618 W. Jackson. Friday and Saturday. Lots of miscellaneous.
6-22p

WANTED—Certified nurses aides needed for home health. Must have two years nursing home or home health experience and be willing to travel. Send resume to THHC, P.O. Box 131, Plainview, TX, 79072.
6-22p

4 BEDROOM, 1 bath, large lot, new carpet, two carports. 702 West U.S. Highway 70. 652-2737.
tfc

REDUCE: Burn off fat while you sleep. Take OPAL tablets and E-Vap Diuretic. Available at Payne Family Pharmacy.
7-20p

DON'S MUFFLER SHOP - All types of exhaust work, pickup and delivery, free estimates. We accept Discover Card. 210 W. California, Floydada, TX, 983-2273. Out of town call 1-800-866-3670.
tfc

BUSINESS OPPORTUNITY

OWN YOUR OWN apparel or shoe store, choose: jeans/sportswear, bridal, lingerie, women's wear, ladies, men's, large sizes, infant, petite, dancewear/aerobic, maternity, or accessories store. Over 2000 name brands. \$25,900 to \$37,900. Inventory, training, fixtures, grand opening, etc. Can open 15 days. Mr. Loughlin (612) 888-6555.
6-22p

YARD SALE—Friday, 8 to 5. 816 W. Jackson. Nintendo games, coffee table, clothes, misc.
6-22p

TEMPORARY JOB—Begins July 10, assist with field applied research. Up to 40 hours/week. Must have valid drivers license. Contact Floyd County Extension Office at 983-2806. EOE.
6-22c

LAWN MOWERS, STRING TRIMMERS—Now 20% OFF at **JOE'S Mowers & More**, 100 S. Main, Floydada. 983-5050. Bedding plants, house plants, lawn & garden supplies.
tfc

IS IT COINCIDENTAL that taxes went up the same time the new gymnasium bid was let.
6-22p

SHARKEY'S TREE SERVICE
Trees, Shrubs, Bushes
Trimming - Removal - Haul Off
Stump Removal/Lots Cleaned
Professional-Experienced-Honest
983-5663.
6-29c

CARDS OF THANKS

Dear Friends,
I want to thank each and everyone of you for all of the kindness shown to me during my illness.

The visits and phone calls have meant so much to me. The flowers cards, and food has been deeply appreciated.

A special thanks to Bro. Harold for everything.

Each of you are so special to me and I love all of you. God Bless You.
Georgia Gallaway
6-22p

We want to express our appreciation for those of you that bought food to our home. Cards, memorials and calls at the death of our dear sister Daisy. We want to thank those that attended the graveside service and to thank Rev. Glenn Wachob. May God Bless each of you.
Mrs. Travis Parr and family
Mr. Billy Jack Eudy
Mr. John Eudy and family
6-22p

We would like to say "Thank You" to each one of you for your prayers, visits, calls, cards and flowers while Glenn was in the hospital and since coming home. Thanks to the Lord, and your prayers he is doing great now.
Glenn and Ila White
6-22p

For the varied expressions of love, support, and sympathy from so many in our community, we express our appreciation.
Thanks,
Joe Cumbie and Family
6-22p



Tex SCAN
Statewide Classified Advertising Network
More than 300 Texas newspapers for \$250. Call this newspaper for details.

Probasco Flying Service
Office at Floydada Municipal Airport
983-2314 or 983-5061
AERIAL PESTICIDE APPLICATION
Nights Call: Mitch Probasco, 983-2368, or Jimmy Cervantes, 983-2657

STUDENT EXCHANGE
WONDERFUL FAMILY EXPERIENCE. Scandinavian, European, South American, Asian high school exchange students arriving in August. Become a host family, call Cindy 817-467-1417, 9-5 or 1-800-SIBLING.

FOR SALE
BOWHUNTING EQUIPMENT
BOWHUNTERS discount warehouse, America's largest archery supplier, stocks over 5,000 bowhunting items at 20-40% off retail. Call 1-800-735-2697 for free 160 page catalog.

STEEL BUILDINGS: SUMMER sale. Painted walls, 5,000+ sizes, 30x40x10, \$4,775; 40x60x14, \$8,345; 50x60x14, \$9,890; 50x75x12, \$10,832; 60x80x14, \$13,626; 60x100x16, \$17,017. Free brochures. Sentinel Buildings. 1-800-327-0790.

FABRICS-REUPHOLSTERY-SLIPCOVER-Drapery Fabrics. From any source at wholesale prices. Call with MFG. pattern and color 1-800-729-8839 24 hours. Established 1931. Only first quality.

COMPUTER CLOSEOUTS. IBM or compatible, warranties. 286's \$399, 386's \$699, 486's \$899, plus shipping. Leasing available \$29 month. Free software with order. 1-800-699-1398. Visa/MC.

SINGLETON SUPPLY METAL BUILDINGS: 24x30x10, \$3,050; 30x40x10, \$4,200; 30x60x12, \$5,995; 40x75x12, \$8,150; 50x100x14, \$12,550. Call for other sizes. Mini-warehouse systems. Competitive pricing. Fast delivery. 1-800-299-6464.

PRESSURE CLEANERS NEW PSI 1300 \$249, 2500 \$599, 3500 \$899 - Honda 3500 \$1,099. Factory direct, tax-free, prompt delivery. Call 24-hrs free catalog 1-800-333-WASH (9274).

DRIVERS WANTED
MELTON TRUCK LINES, new KW conventionals, hiring qualified OTR drivers. Average 29.8¢ per mile. Medical, dental, 401K, rider passes. Get home policy. 1-800-599-9913, Perry Elliot.

DRIVER- GET THE most out of driving! OTR/reefer, average pay \$600+/wk, 2,500 mi/wk, regular home time, new equipment & top notch benefits. Burlington Motor Carriers: 1-800-JOIN-BMC. EOE.

DRIVERS: FLATBED 48 state OTR. Assigned new conventionals. Competitive pay, benefits. \$1,000 sign on bonus, rider program, flexible time off. Call Roadrunner Trucking 1-800-876-7784.

ATTENTION DRIVER TEAMS, \$15,000 in bonus, paid monthly, quarterly & yearly, plus top mileage pay, 401(K) plan, \$500 sign-on bonus. Other paid benefits: "vacation" health & life "dead head" "notel/flyover" "loading & unloading, Covenant Transport, solos and teams call 1-800-441-4394/915-852-3357, students and driving school grads., call 1-800-338-6428.

DRIVERS/0/0 - LEASE program - no money down. Must meet company DOT requirements. Late model walk-in conventionals. We're on the move! Call 1-800-927-0431.

REAL ESTATE
TIMESHARE UNITS and campground memberships. Distress sales - cheap! Worldwide selections. Call Vacation Network U.S. and Canada 1-800-543-6173. Free rental information 305-563-5586.

GOT A CAMPGROUND membership or timeshare? We'll take it. America's most successful resort resale clearinghouse. Call Resort Sales information toll free hotline 1-800-423-5967.

SOUTH COLORADO LAND bargain. 160AC - \$49,900. Beautiful rolling meadows & woods, spectacular 360 degree views of Spanish peaks, Sangre De Cristo's, tons of wildlife including elk and big horn sheep, long county road frontage, owner terms. Call Majors Ranch 719-742-5207.

\$295 PER ACRE. 50 acres, Rocksprings - Del Rio, good cover, lots of deer and turkey. \$1,475 down, 10% interest, 15 years, \$143/month. 210-792-4953.

HEALTH
MILITARY RETIREE - CHAMPUS supplement will pay the 25% allowed, plus 100% of all excess charges. For brochure call 1-800-627-2824 Ext. 259.

20/20 WITHOUT GLASSES! Safe, rapid, non-surgical, permanent restoration in 6-8 weeks. Airline pilot developed, doctor approved. Free information by mail: 1-800-422-7320, 406-961-5570, FAX 406-961-5577. Satisfaction guaranteed.

RAPID WEIGHT LOSS. "Only \$17.95" burns fat * calories * stops hunger. Lose 3-5 pounds/week. Money back guarantee. Call for information: United Pharmaceutical 1-800-733-3288, (C.O.D.'s accepted).

LEGAL SERVICES
COMPLICATIONS NORPLANT IMPLANTS or breast lactation drug Parlodel, call 1-800-833-9121. Free legal consultation. Carl Waldman, board certified Personal Injury Trial Law Texas, Beaumont, Houston.

BUSINESS OPPORTUNITY
FRIENDLY TOYS AND gifts has openings for demonstrators in your area. Part-time hrs., full-time pay, over 800 items. Celebrating our 40th anniversary. Call 1-800-488-4875.

WORK SMART, NOT HARD. Invest \$100 in new innovative Telecommunications project and earn top \$\$\$\$. For tape \$5 to: PPC #06T1, P.O. Box 280 821, San Francisco, CA 94128.

ATTN: HOME IMPROVEMENT specialists. Profit from area crime with great new door security products. Easily installed while selling your regular product/service. Not a franchise. Initial inventory only \$690.00. 1-800-521-6711.

BE YOUR OWN boss! NOVUS windshield repair franchise. 2,500 operations worldwide. Investment from \$18,000. Dynamic, growing industry. Low overhead. 8 days factory training. Field support. Financing available. Dave Dales, 1-800-328-1117.

VACATION
BRANSON, MISSOURI VACATION certificates... \$89 for limited time. Includes deluxe accommodations for two adults, 4 days/3 nights, two show tickets, lake, golf, entertainment nearby. Free breakfast. 1-800-275-6009. Some conditions apply.

FINANCIAL SERVICES
RECEIVING PAYMENTS on property sold? We pay cash for real estate notes, deeds of trust, and land contracts... nationwide! Highest prices paid. Texas based. 1-800-446-3690.

WE PAY CASH for owner-financed real estate notes - since 1965. Call Jeff or Tom at 1-800-501-3622.

VENTURE GROWTH SOURCES. Money sources for start up businesses, growth, development & expansion. For free info call: 915-264-6652.

WE BUY NOTES secured by real estate. Have you sold property and financed the sale for the buyer? Turn your note into cash. 1-800-969-1200.

FREE DEBT CONSOLIDATION. Immediate relief! Too many debts? Overdue bills? Reduce monthly payments 30%-50%. Eliminate interest. Stop collection callers. Restore credit. NCCS, nonprofit. 1-800-955-0412.

BIG MAC STORAGE
Boats, personal, or auto
Each unit 11 ft. x 30 ft.
\$36.50 per month
Night phone 806-652-2755
Mobile 774-4302

Script Printing & Office Supply
* Commercial Printing
* Office Supplies & Furniture
* Business Machines
108 S. Main Floydada 983-5131

ECONOMICAL STORAGE
TRY BARKER'S
Jewel Box Mini-Storage
and save your time and money.
Phone 652-2642
Corner Main & Locust Lockney, Texas
Barker Building

CRH SYSTEMS
116 W. California
983-2445 983-3151
"For All Your Computer Needs"
Visit Our Showroom
Everyday Low Prices

POOLE WELL SERVICE
Complete Irrigation Well Service.
*Simmons Pumps*High Speed Bailing*
407 E. Houston
983-2285 983-5610
Business Residence

ADAMS WELL SERVICE
Complete Irrigation Service
5 Year Warranty, Domestic Pump
720 N. 2nd
983-5003

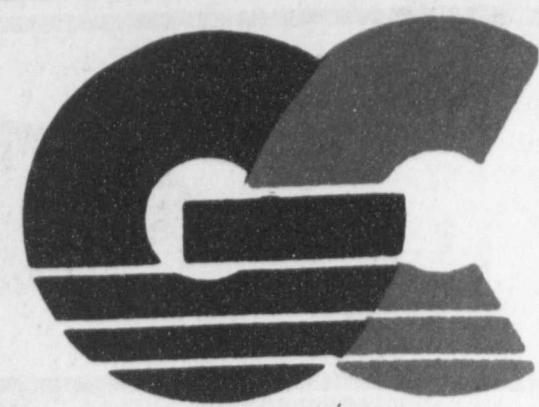
Diamond Industrial Supply Co., Inc.
Sprockets Phone Days 296-7418 U Joints
Chain Nights 296-1200 or 296-7828 Oil Seals
V Belts 1014 Broadway, Plainview, Texas O Rings
Sheave SFC BCA Timken Bower Wisconsin
"We Appreciate Your Business More"

FURNITURE RESTORATION
*Are you thinking of buying new furniture?
Will it upset your budget?
It won't if you consider having your furniture refinished.*
Call For Estimate
Rush and Cane Seating - Veneering
Old Trunks Completely Restored
J.R. Steele 900 Braidfoot, Silvertown 823-2097

PUBLIC NOTICE
PUBLIC NOTICE
Caprock Community Action Assn., Inc. received funding through Texas Department of Housing and Community Affairs to assist eligible families in your area with weatherization to their homes. To obtain details and eligibility requirements, contact your local Caprock Community Action Office, 806-983-3134.
6-22c

NOTICE TO BIDDERS
The Commissioners' Court of Floyd County will accept sealed bids until 10:00 a.m., July 10, 1995, for the sale of the following:
1971 "970" Case Tractor Colwell Shredder
1968 "1030" Case Tractor Wisconsin Dozer Trailer
2 Row Service Shredder 3pt. Junk Metal
2 Row Woods Shredder 3pt.
INSTRUCTIONS:
All bids should be delivered to the County Judge's office, Floyd County Courthouse, Room 105, Floydada, from 8:30 a.m. to 5:00 p.m., Monday thru Friday. Bids shall be sealed when presented and will be opened at the above time and date.
Contact Connie Bearden at 806-983-5052 or call or come by County Barn, 303 E. Mississippi, Floydada, 806-983-3224 to see equipment.
Payment shall be made in cash. Floyd County reserves the right to accept or reject any or all bids and right to waive all formalities.
COMMISSIONERS COURT, FLOYD COUNTY, TX
BY: WILLIAM D. HARDIN, County Judge
6-22, 6-29, 7/6c

NOTICE OF ALL PERSONS HAVING CLAIMS AGAINST THE ESTATE OF J. S. HALE, DECEASED
NOTICE IS HEREBY GIVEN that original Letters Testamentary for the Estate of J. S. Hale, Deceased, were issued on June 15, 1995, in Docket No. 5302, pending in the County Court of Floyd County, Texas, to:
Mrs. Mary K. Hale
Route 3, Box 154
Floydada, TX 79235
All persons having claims against this Estate which is currently being administered are hereby required to present them within the time and in the manner prescribed by law. The representative of the referenced Estate has directed that any such claims shall be presented to the following:
T. Mike Field, Attorney for
The Estate of J. S. Hale, Deceased
CLIFFORD, FIELD, KRIER, MANNING, GREAK, & STONE, P.C.
2112 Indiana Avenue
Lubbock, TX 79410
DATED this 15th day of June, 1995.
T. MIKE FIELD, Attorney for the
Estate of J. S. Hale,
CLIFFORD, FIELD, KRIER, MANNING,
GREAK & STONE, P.C.
2112 Indiana Avenue
Lubbock, Tx 79410
6-22c



GRAND OPENING

UNCLE'S CONVENIENCE STORE

902 N. Second Floydada

Saturday, June 24th, 1995

9:00 a.m. - 3:00 p.m.

Drawings for
Free Gas
from new
GasCard applications

Specials on Phillips 66 Super Clean Gasolines
& Phillips 66 Farm Lubricants

Free
Suckers
&
Balloons

Hot dog,
chips
& coke
50¢

Drawings for
Free Six Flags tickets
& other items

Drawings for
Free Farm Lubricants

Drawing for
Farm nurse
tank lease

Check out these in-store specials!

Special
Fuel
Prices

*Coke or Pepsi - \$1.69 6 pk. 12 oz. cans

*Frito 69¢ Grab Bags - 3/\$1

*Borden's Chocolate & Homogenized Milk - 2 pints/89¢

*Borden's Ice Cream Sandwiches - 5/\$1

24 hour service
available for
credit card
gas customers

WEST TEXAS GAS, INC.

(Formerly Brooks Oil)



902 N. Second Floydada 983-5532

MASTERCARD, VISA, DISCOVER, AMERICAN EXPRESS, DINERS CLUB, GASCARD, PHILLIPS 66, & MOST OTHER CREDIT CARDS ACCEPTED

1995 TAAS test examples

EXIT LEVEL EXAM 10TH GRADE & UP

WRITING

Read each passage and decide which type of error, if any, appears in each underlined section. Mark the letter for your answer.

"The British are coming!" This cry made Paul Revere a Revolutionary war hero. Few people, however know of another longer and more dangerous ride. It was made by sixteen-year-old Sybil Ludington, who also rode all night to warn of an impending British attack.

On April 25 1777, British soldiers stormed Danbury, Connecticut, and destroyed weapons and supply storehouses. Colonel Ludington, the American commander, faced a hard decision. He needed to alert his troops, but if he rode to gather them, he might not return in time to fight.

Despite her father's fears for her safety, Sybil saddled her horse and raced into the night. Riding forty miles, twenty-six more than Revere, she gathered the volunteers to fight the British. Sybil's courage and determination helped the colonists force the British back to their ships.

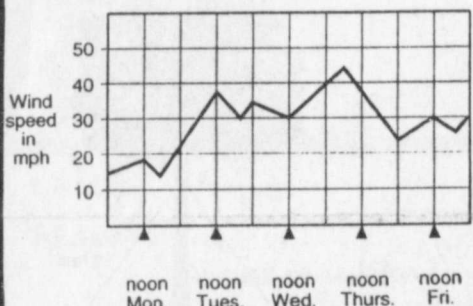
- 13 F Spelling error
G Capitalization error
H Punctuation error
J No error
- 14 A Spelling error
B Capitalization error
C Punctuation error
D No error
- 15 F Spelling error
G Capitalization error
H Punctuation error
J No error
- 16 A Spelling error
B Capitalization error
C Punctuation error
D No error
- 17 F Spelling error
G Capitalization error
H Punctuation error
J No error
- 18 A Spelling error
B Capitalization error
C Punctuation error
D No error
- 19 F Spelling error
G Capitalization error
H Punctuation error
J No error

Page 9

MATH

23 The graph shows the wind speeds recorded at various times each day for the week.

THE CITY'S WIND SPEED FOR THIS WEEK



Which statement is best supported by the given data?

- F The wind speed increased steadily from Wednesday noon until late Thursday.
- G There was no time during the week when the wind speed was more than 40 miles per hour.
- H The highest and lowest wind speeds of the week occurred on Thursday.
- J After Monday, the wind speed was never less than 20 miles per hour.
- K The wind speed was never less than 25 miles per hour.

READING

A Cooperative Effort

How to get beached whales back into the ocean has not been an easy problem for marine scientists to solve. Even more perplexing to these experts is what causes whales to swim ashore in the first place. What follows is an account of the successful rescue and eventual release of three pilot whales, a species of small whales. This operation required the cooperation of various groups of people and added to the growing body of knowledge about the rescue of stranded marine animals.

The Rescue

On December 3, 1986, Greg Early, the associate curator of animal care at the New England Aquarium in Boston, learned that a group of whales was swimming in shallow waters dangerously close to First Encounter Beach in Eastham, Massachusetts. As supervisor, Early grabbed his emergency medical kit, and within two hours he was looking at thirty beached pilot whales.

A team of scuba divers, community volunteers, and aquarium workers had gathered at the beach. Because other whales were continuing to swim toward a two-mile stretch of the beach, the first priority was obvious. Early directed the volunteers to keep the swimming whales together and to herd them back toward deep water.

Next, the scientists turned their attention to the whales that had moved ashore. Since whales' bodies are not structured to function on land, Early was concerned with the body processes of the beached whales. On land the tremendous weight of a whale's body, usually supported by water, presses down on the whale's internal organs. This compression of the whale's heart, lungs, and circulatory system causes blood to flow more slowly, and the whale's body temperature drops.

The rescuers poured water over the beached whales to help keep their bodies at an even temperature. Meanwhile, Early began collecting samples of the whales' blood to gather information about the condition of each animal. As he worked, he discovered two young whales that had become separated from their mothers. He determined that the only way to save these whales, later named Notch and Baby, was to take them to a tank at the aquarium. Two days later, a third whale, Tag, joined Notch and Baby at the aquarium.

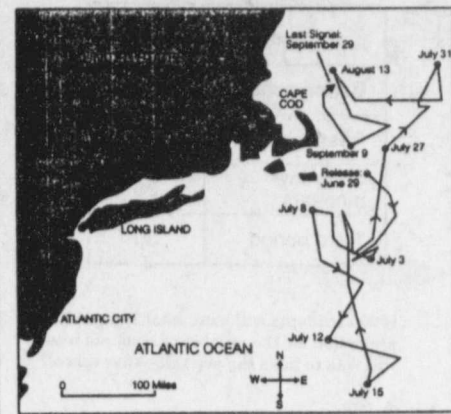
Release

After five months, the three whales had gained between 150 and 300 pounds each. The whales also played with one another and swam together as a group, which meant that they would have a chance to survive in the wild. Although a group of small whales had never before been rescued, treated, and returned to the ocean, Early and the others decided to plan the whales' release.

The National Oceanic and Atmospheric Administration offered the use of its research vessel *Albatross IV* to transport the whales to deep water. Next, a researcher from the aquarium flew a light plane along the Atlantic coast, searching for a pod of whales for Tag, Notch, and Baby to join. He soon located a cluster of pilot whales swimming about ninety miles south of Cape Cod.

On June 29, Tag, Notch, and Baby were placed in slings and lowered into whale-size crates on *Albatross IV*. Meanwhile, a marine biologist attached radio tags to the three huge mammals before they were released.

TAG'S ROUTE



Signals from the radio tags allowed scientists to keep track of the whales for about four months after their release. Because Tag also wore a special transmitter, the whales were tracked by satellite as well. The map shows Tag's route in the months

following the release. Based on temperature readings from the satellite, the scientists know Tag was following an underwater current.

Though the causes of stranding behavior are still unknown, the rescue operation taught scientists much about the transport, release, and swimming patterns of whales. Perhaps more importantly, the cooperative effort that was involved served as an example of the good that can occur when people work together.

1 Greg Early decided to take Notch and Baby to the aquarium because they —

- A had been injured during the stranding
B were unusual specimens
C were too young to swim
D had been separated from their mothers

2 The threat to the survival of adult beached whales is mostly caused by —

- F loss of body weight
G accelerated heartbeat
H the whales' body structure
J airborne diseases

3 What was the first thing that the emergency team did when it got to First Encounter Beach?

- A Poured water over the beached whales to help maintain their body temperatures
B Collected samples of the whales' blood
C Attached radio transmitters to the whales to keep track of them
D Guided the swimming whales back toward the ocean

4 Based on information in the passage, Greg Early can be described as —

- F wealthy
G knowledgeable
H secretive
J impatient

5 What is the main idea of the passage?

- A The successful rescue, rehabilitation, and release of three stranded whales were achieved with the cooperation of scientists, divers, and volunteers.
B Modern scientific technology allowed scientists to track Tag's route after his release on June 29, 1987.
C When a whale is on land, its tremendous weight, which is usually supported by water, presses down on its internal organs and eventually affects the flow of its blood.
D Three whales rescued from a Massachusetts beach were released into the Atlantic Ocean on June 29, 1987.

6 Based on information in the passage and the map, the reader can conclude that Tag —

- F eventually returned to the place where he had been released
G traveled hundreds of miles in the three months after his release
H traveled north after his release
J headed alone immediately after his release

Page 48

GO ON

Page 49

GO ON

WRITTEN COMPOSITION

Some people believe that Texas high schools would be safer if each high school had a full-time police patrol at the school. What is your position concerning this issue? Write a letter to the editor of your local newspaper stating your position and supporting it with convincing reasons. Be sure to explain your reasons in detail.

25 The chart shows the lengths of the world's 5 longest rivers.

WORLD'S LONGEST RIVERS

River	Length (miles)
Amazon	4000
Chang Jiang	3964
Ob-Irtysh	3362
Huang	2903
Nile	4160

What is the median length of the rivers?

- F 4160 mi
G 3964 mi
H 3362 mi
J 2903 mi

Please note that items 21-60 have five answer choices.

21 How much greater is the highway mileage from Pinto to Pine Needle than the highway mileage from Pinto to Aida?



- F 3 mi
G 13 mi
H 23 mi
J 43 mi
K 48 mi

34 At a department store, jeans normally priced at \$45 were 25% off, and shirts normally priced at \$24 were 10% off. Before tax, which number sentence could be used to find S, the amount saved in dollars on 1 shirt and 1 pair of jeans?

- A $S = 45 + \frac{24}{10}$
B $S = \frac{45}{25} - (24)(0.10)$
C $S = \frac{45}{25} - \frac{24}{10}$
D $S = (0.25)(45) + (0.10)(24)$
E $S = (25)(45) + (10)(24)$

GRADE 6

READING

Who were the first Texans?

The first people to live in Texas probably were not native to the area. Long before any recorded history, during the last great Ice Age, a land bridge must have formed between Asia and Alaska. The first people to live in North America then crossed this land bridge. They slowly made their way between glaciers seeking warmer areas to the south. Figure 1 shows the routes used by these early people. Scientists who study artifacts, or objects, left by past civilizations call these primeval people Paleo-Americans, or Old Americans.

Ancient Discoveries

It was once thought that the first Texans were Indians. The discovery of many artifacts and bones on the limestone plateaus of Texas, however, led archaeologists to believe that a migratory people lived here earlier. Modern techniques have been used by these scientists to date an 8,000-year-old human fossil found near Midland, Texas.

How the Old Americans Lived

The Old Americans who entered Texas were probably very hardy, though it is likely they did not live to more than twenty years of age. They were able to make tools and create symbols. They made fire and wore animal skins and fur clothing. Their

tools were made from flint and bone, and they left many chipped spearheads. Their artifacts have been found all over the High Plains, from Abilene to the banks of the Pedernales River.

These early Texans, like all people of the Ice Age, were hunters. One favorite hunting area was the Staked Plain, or Llano Estacado, at that time a rich grassland. Many interesting animals, now extinct, roamed the plains. There were mammoths and bison that were twice the size of modern buffalo. The Old Americans must have been brave, since they trapped these great animals and then killed them with only flint-tipped spears. The meat was then roasted in huge ovens carved in the limestone.

The End of the Old Americans

The Paleo-Americans lived on the Great Plains for many thousands of years. The land, however, eventually changed. The glaciers moved back toward the north, rivers and lakes changed, and the climate became hotter and drier. The Ice Age, or Pleistocene Epoch, ended. It is thought that these first Texans changed over thousands of years and became the people we now know as American Indians.

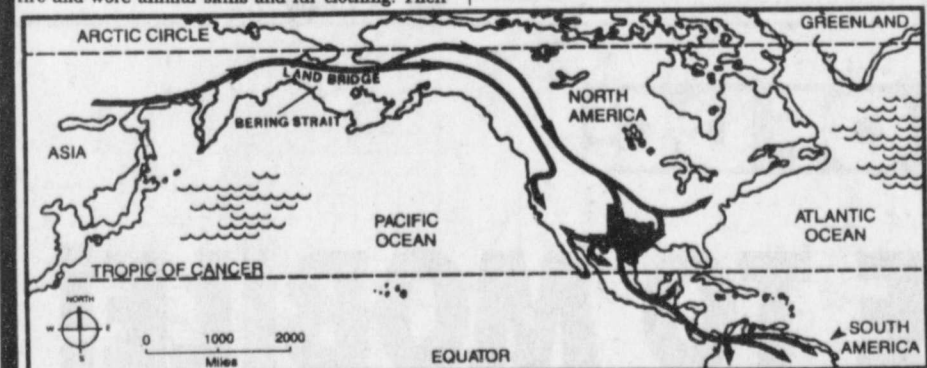


Figure 1. Routes used by Paleo-Americans

Page 28

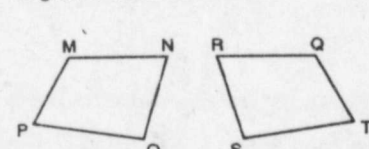
- 13 What is the main idea of this passage?
- A The first people in Texas were hunters who crossed a land bridge from Asia to North America.
B During the great Ice Age, Paleo-Americans migrated south in search of warmer climates.
C Archaeologists have used modern techniques to study the artifacts and bones of Old Americans.
D The Paleo-Americans lived in Texas for a long time and gradually died out.
- 14 What probably caused the change in the Paleo-Americans?
- F The disappearance of animals
G The end of the Ice Age
H The migration of other groups of people
J The discovery of artifacts
- 15 Which of these is a FACT presented in the passage?
- A The tools of early Texans were made from flint and bone.
B The Paleo-Americans lived to an old age on the Staked Plain.
C Paleo-Americans grew crops on the rich grasslands.
D The first Texans were to be admired for their strength and endurance.
- 16 When the author says, "It was once thought that," he is letting you know that this idea is —
- F important only to some people
G still believed by scientists
H no longer believed
J a fact about ancient people
- 17 The Paleo-Americans moved south after crossing into North America because they were —
- A following the glaciers
B hunting
C looking for other people
D seeking warmth
- 18 The Staked Plain area was a favorite hunting place of the Ice Age people because —
- F it was warmer than the glaciers
G the area had caves in which to sleep
H the rich grassland attracted animals
J there were many lakes and streams

Page 29

GO ON

MATH

15 Quadrilaterals MNOP and QRST are congruent. Which statement is true?



- F \overline{MP} is congruent to \overline{QT}
G \overline{NO} is congruent to \overline{QT}
H \overline{MN} is congruent to \overline{ST}
J \overline{MP} is congruent to \overline{RS}

16 The first row of the choir has 6 singers, the second row has 9 singers, and the third row has 12 singers. If this pattern continues, how many singers will the sixth row have?

- A 14
B 18
C 21
D 24

18 A standard-size soft drink can contains about —

- A 12 ounces
B 12 cups
C 12 pints
D 12 quarts

35 A cookie recipe calls for 4 cups of flour and makes 32 big cookies. Claire wants to make just 24 cookies. Which number sentence could be used to find F, the number of cups of flour needed to make the cookies?

- F $\frac{4}{32} = \frac{F}{24}$
G $\frac{F}{8} = \frac{24}{32}$
H $\frac{F}{32} = \frac{4}{24}$
J $\frac{4}{8} = \frac{F}{32}$
K $\frac{8}{24} = \frac{F}{32}$

37 A boarding kennel uses 258 cases of dog food each month. If there are 24 cans in each case, which is the best estimate of the number of cans the kennel uses each month?

- F 9000
G 8000
H 6000
J 3000
K 2000

39 The Moreno family plans to go bowling. The price per game is \$2.25 per adult and \$1.60 per child. They plan to bowl 1 game each. If there are 2 adults and 3 children, which sentence could be used to find T, the total cost in dollars for the family to bowl?

- F $T = (2 \times \$2.25) + (3 \times \$1.60)$
G $T = (2 \times \$2.25) \times (3 \times \$1.60)$
H $T = (\$2.25 + \$1.60) \times 5$
J $T = (3 \times \$2.25) + (2 \times \$1.60)$
K $T = (\$2.25 \times \$1.60) + 5$



PAINT SALE

You've tried the rest,
now try the best!

PREMIUM PAINT BY VALSPAR



\$19.99 \$15.99 \$12.99

We can match practically any color,
no matter which brand you have.

Kirk and Sons
North side of the Square Floydada

GRADE 8 WRITING

The population of eastern bluebirds was once rapidly declining. Then a man discovered how to replace their vanishing habitat this discovery helped the bluebirds to survive and thrive.

Vincent Bauldry spent years studying bluebirds. He found that their most successful nesting places in nature, such as stumps, open fence posts, and hollow trees. He designed nest boxes that were very different from the typical birdhouse. They were at least a foot deep and very narrow. They had an open top covered by a screen. His open design discouraged sparrows, which prefer dark, enclosed spaces, from taking over the nest.

Mr. Bauldry's bird boxes were successful. They resembled the real places bluebirds like to build nests.

- 23 F Then a man discovered how to replace their vanishing habitat. And helped the bluebirds to survive and thrive.
- G Then a man discovered how to replace their vanishing habitat. This discovery helped the bluebirds to survive and thrive.
- H Then a man discovered how to replace their vanishing habitat, this discovery helped the bluebirds to survive and thrive.
- J Correct as is
- 24 A He found that their most successful nesting places in nature were stumps, open fence posts, and hollow trees.
- B He found that their most successful nesting places were in nature, these were in stumps, open fence posts, and hollow trees.
- C He found in nature their most successful nesting places. Places such as stumps, open fence posts, and hollow trees.
- D Correct as is
- 25 F They were at least a foot deep and a very narrow open top covered by a screen.
- G They were at least very narrow, and they had an open top covered by a screen.
- H They were at least a foot deep and very narrow with an open top covered by a screen.
- J They were at least a foot deep and very narrow, so an open top was covered by a screen.
- 26 A Mr. Bauldry's bird boxes were successful, but they resembled the real places bluebirds like to build nests.
- B Mr. Bauldry's bird boxes were successful because they resembled the real places bluebirds like to build nests.
- C Mr. Bauldry's bird boxes resembled successful bluebirds that like to build nests.
- D Mr. Bauldry's bird boxes were successful, although they resembled the real places bluebirds like to live.

Page 11

GO ON

WRITTEN COMPOSITION

Summer is not like other seasons of the year. Think about what you like and do not like about summer. Write a composition for your teacher explaining both what you like about summer and what you do not like about it. Be sure to explain your ideas in detail.

GRADE 7 READING

Mind Journeys Book Club

Welcome, New Member!
Here is your introductory selection list of paperback fiction books from Mind Journeys Book Club. Each book costs only three dollars, with no additional shipping or handling fees.
Your membership card is also enclosed. Each time you order a book from Mind Journeys, place a check mark in one of the boxes on your card. When all ten boxes are filled, you are entitled to select a FREE bonus book and send the card to us instead of payment! We will send you a new card with your bonus book.

Introductory Selection List

- | | |
|-------------------------------------------------------------------------------------------------------------------------------------------------------------------------------------------------------------------------------------------------------------------------------------------------------------------------------------------------------------------------------------------------------------------------------------------------------------------------------------------------------------------------------------------------------------------------------------------------------------------------------------------------------------------------------------------------------------------------------------------------------------------------------------------------------------------------------------------------------------------------------------------------------------------------------------------------------------------------------------------------------------------------------------------------------------------------------------------------------------------------------------------------------------------------------------------------------------------------------------------------------------------------------------------------------------------------------------------------------------------------------------------------------------------------------------|----------------------------------------------------------------------------------------------------------------------------------------------------------------------------------------------------------------------------------------------------------------------------------------------------------------------------------------------------------------------------------------------------------------------------------------------------------------------------------------------------------------------------------------------------------------------------------------------------------------------------------------------------------------------------------------------------------------------------------------------------------------------------------------------------------------------------------------------------------------------------------------------------------------------------------------------------------------------------------------------------------------------------------------------------------------------------------------------------------------------------------------------------------------------------------------------------------------------------------------------------------------------------------------------------------------------------------------------------------------------------------------------|
| <p>General Fiction</p> <p>F112. <i>A Pocketful of Wishes</i>, by David Roth. Timothy has a hard time adjusting to life in a new town, and his mind fills with wishes. Will they come true?</p> <p>F323. <i>The Hardest Decision Ever</i>, by Camila Malvina. What is Olivia's difficult decision, and how will she make up her mind?</p> <p>F744. <i>Signs of Friendship</i>, by Elizabeth Derry. When a deaf girl her own age moves in next door, Danica decides to learn sign language.</p> <p>F875. <i>Except for Anthony</i>, by Leroy Jameson. Everyone in Anthony's family is athletic — except for Anthony. Will he ever find a sport he can play?</p> <p>F920. <i>Learning to Laugh</i>, by Benton Gardner. Sara feels sad a lot of the time. She longs to be happy again. Will the special person who befriends her alter her life?</p> <p>Mystery</p> <p>M220. <i>Gina to the Rescue</i>, by Fiona Parrish. When Gina finds out that her friend Jamie's dog is missing, she is determined to help him find it. But how?</p> <p>M274. <i>Mystery at Spoonhandle Creek</i>, by Edwin Marsh. Rachel's first summer camp experience is filled with mystery. Will she and her new friends find the source of those strange nighttime noises?</p> <p>M288. <i>Case of the Disappearing Bats</i>, by Cal Whitmore. It's not furry bats, but baseball bats, that are disappearing in this amusing mystery tale.</p> | <p>Fantasy and Science Fiction</p> <p>S178. <i>Muji and Chessira Fall to Earth</i>, by Nioclassa Baines. Muji and Chessira of the planet Exandriku are enjoying a space ride in a borrowed Zippenship when it goes out of control and sends them spinning to our planet!</p> <p>S202. <i>Vinny Vimmel's Amazing Stupendous Discovery</i>, by George Davies. Working with his chemistry set, Vinny creates an unusual substance. What are its powers?</p> <p>S690. <i>Cassandra's Castle</i>, by Estrella Davila. One night, Cassandra goes to sleep and dreams that she lives in a castle hundreds of years ago. But is it just a dream?</p> <p>Historical Fiction</p> <p>H264. <i>Minnie and Lily Face the Frontier</i>, by Charleen Stevens. It's the early 1800s. Minnie Williams and her daughter, Lily, want to head West, but people say it's too dangerous for women alone. What will they do?</p> <p>H529. <i>Bartolomeo's Quest</i>, by Juan de la Cruz. In 17th-century Spain, young Bartolomeo Castilla sets out on a journey to find his true path in life. Will his search bring him the happiness he seeks?</p> <p>H676. <i>Elisabeth's Wild Pony</i>, by Sophie Tarvin. In long-ago Scotland, Elisabeth Stewart befriends an injured wild pony on the moors near her home. What adventures and people will they encounter as they travel through the moors?</p> |
|-------------------------------------------------------------------------------------------------------------------------------------------------------------------------------------------------------------------------------------------------------------------------------------------------------------------------------------------------------------------------------------------------------------------------------------------------------------------------------------------------------------------------------------------------------------------------------------------------------------------------------------------------------------------------------------------------------------------------------------------------------------------------------------------------------------------------------------------------------------------------------------------------------------------------------------------------------------------------------------------------------------------------------------------------------------------------------------------------------------------------------------------------------------------------------------------------------------------------------------------------------------------------------------------------------------------------------------------------------------------------------------------------------------------------------------|----------------------------------------------------------------------------------------------------------------------------------------------------------------------------------------------------------------------------------------------------------------------------------------------------------------------------------------------------------------------------------------------------------------------------------------------------------------------------------------------------------------------------------------------------------------------------------------------------------------------------------------------------------------------------------------------------------------------------------------------------------------------------------------------------------------------------------------------------------------------------------------------------------------------------------------------------------------------------------------------------------------------------------------------------------------------------------------------------------------------------------------------------------------------------------------------------------------------------------------------------------------------------------------------------------------------------------------------------------------------------------------------|

Page 32

GO ON

MATH

- 10 During a winter day in northeastern Siberia, the temperature can vary 10° in either direction from the daily average of -59° Fahrenheit. Which number line shows this range of temperatures?
- A
- B
- C
- D
- 44 Tara spent \$8.79 at the store. If she gave the clerk a \$10 bill, how much change should she have received?
- A \$1.21
B \$1.31
C \$2.21
D \$2.31
E Not Here
- 46 At sunset the temperature was 6 degrees. By 11 P.M. the temperature had fallen 14 degrees. What was the temperature at 11 P.M.?
- A 8°
B -2 1/3°
C -8°
D -20°
E Not Here
- 48 Irene is helping to prepare 84 Thanksgiving gift baskets. Her part of the job is to put 1.2 pounds of mixed nuts in each basket. How many pounds of mixed nuts does she need?
- A 1.2 lb
B 70 lb
C 90.8 lb
D 100.8 lb
E Not Here

MATH

- 15 The ratio of oil to gasoline for a lawn mower is 1 part oil to 20 parts gasoline. How many liters of oil should be used with 40 liters of gasoline?
- F 1/20 L
G 19/20 L
H 1 L
J 2 L
- 19 Soft drinks come in 2-liter and 3-liter bottles. How many milliliters are in a 3-liter bottle?
- F 300 mL
G 1000 mL
H 2000 mL
J 3000 mL
- 25 F They were at least a foot deep and a very narrow open top covered by a screen.
G They were at least very narrow, and they had an open top covered by a screen.
H They were at least a foot deep and very narrow with an open top covered by a screen.
J They were at least a foot deep and very narrow, so an open top was covered by a screen.
- 26 Students were scheduled to vote during fifth period on when to have the next pep rally. The chart shows the results of a random sampling of a group of students before the actual voting.
- | Time | Number of Votes |
|------------------|-----------------|
| Before school | 0 |
| After school | 100 |
| Saturday morning | 20 |
| Third period | 30 |
- If 900 students will vote, what is a good prediction for the number of students who will vote to have the pep rally after school?
- A 90
B 180
C 300
D 600
E 900
- 27 Arturo usually answers correctly 8 out of 10 problems on Mr. Benchley's quizzes. If Mr. Benchley lengthens the quizzes to 30 questions, which proportion could be used to find x, the number of questions Arturo might be expected to answer correctly?
- F 10/30 = x/8
G 10/8 = x/30
H 2/x = 10/30
J 8/10 = x/30
K 8/x = 10/30
- 28 Fernando's family drove 109 miles in 1 hour 50 minutes. Approximately how many miles per hour did the family average?
- A 35 mph
B 40 mph
C 45 mph
D 55 mph
E 70 mph
- 29 A school club wants to buy 100 apples to sell to students. Apples cost \$0.89 per pound and weigh approximately 1/2 pound each. A good estimate for the cost of the apples is between —
- F \$40.00 and \$50.00
G \$50.00 and \$60.00
H \$60.00 and \$70.00
J \$70.00 and \$80.00
K \$80.00 and \$90.00
- 30 Rosie selected 10 items at the grocery store that ranged in price from \$1.29 to \$4.19. Which was a reasonable total for her purchases?
- A \$5.48
B \$12.80
C \$24.30
D \$42.00
E \$54.80

GO ON

GRADE 5 READING

Portraits of American History: Tecumseh

On March 9, 1768, an American Indian boy was born to the wife of a Shawnee chief. This boy was to become one of the most famous Native Americans in history. He was given the name Tecumseh, meaning "Shooting Star." He grew to be a tall, good-looking young man who was very smart. He was also very good at sports. Even at an early age, Tecumseh was recognized by the tribal elders as an exceptional boy.

Tecumseh became a great warrior, showing both bravery and leadership. He was taught to speak English by a man captured by the Shawnee. As Tecumseh grew older, he became more and more admired by the Shawnees and by other tribes.

In 1795 Tecumseh established a new village on the banks of Deer Creek, in what is now the state of Ohio. While living there, Tecumseh took part in a hunting contest with the other members of the tribe. The deer that were taken during their hunt were to be used as food for the village during the coming winter. Although many of the hunters took as many as twelve deer, Tecumseh showed that he was the greatest hunter when he returned with the hides of thirty deer.

Many Native Americans believed that Tecumseh was able to tell the future. In 1802 for example, he prophesied that in the middle of the night the Earth would shake, great trees would fall, streams would change their courses to run backward, and great lakes would appear where none had been before. At 2:30 A.M. on December 16,

1811, an earthquake struck along the Ohio River. Just as Tecumseh had predicted, whole forests fell, and new streams appeared where none had flowed before. Houses and bridges fell down, the ground split open, and the Mississippi River flowed backward for a time. A huge section of ground near the Tennessee-Kentucky border sank and was filled with water. Today, this place is known as Reelfoot Lake.

As a chief, Tecumseh is best known for uniting several tribes of Indians and organizing a great American Indian confederacy. (See Figure 1.) He wanted to preserve the ways of the Indians and stop the movement of settlers into Indian lands. He died fighting with the British against the Americans in the War of 1812. After his death, the Shawnee Indians buried Tecumseh with great respect and honor in a secret place.



Figure 1. Major Indian Tribes of the Early 1800s. Shaded areas show tribes that joined Tecumseh's confederacy.

- 22 In 1802 Tecumseh predicted —
- F an earthquake
G a war
H a tornado
J a famine
- 23 Which of these is the best summary of the passage?
- A No Indian has ever been more respected than the famous Shawnee chief, Tecumseh.
B Tecumseh was a legendary Shawnee chief whose bravery and leadership enabled him to form a great union of Indian tribes.
C His ability to tell the future made Tecumseh one of the most admired Indians of his time.
D Because of his great hunting skills, Tecumseh was able to persuade other Indians to join his confederacy and defeat the Americans.
- 24 According to Figure 1, which of these tribes joined Tecumseh's confederacy?
- F Seneca
G Kickapoo
H Mohawk
J Miami

- 25 Which of these happened last?
- A Tecumseh's prediction of an earthquake came true.
B Tecumseh fought against the Americans in the War of 1812.
C Tecumseh established a village on Deer Creek.
D Tecumseh learned to speak English from a man captured by the Shawnee.
- 26 Tecumseh became known as a great hunter because —
- F the earthquake he predicted improved hunting in the area
G his new settlement called Deer Creek encouraged more animals to come to the area
H his name, "Shooting Star," gave him special hunting skills
J he killed more deer than other hunters in a contest

MATH

- 35 A grocery store recycled 140 pounds of plastic per day for 2 weeks. Which number sentence could be used to find the number of pounds of plastic the store recycled?
- F $(140 \div 7) \times 2 = \square$
G $(140 \times 7) \times 2 = \square$
H $(140 - 7) \times 2 = \square$
J $(140 + 7) \times 2 = \square$
K $(140 \times 7) \div 2 = \square$
- 38 Debbie weighed herself while holding her cat and found that their combined weight was 83 pounds. When she weighed herself alone, her weight was 72 pounds. Which number sentence could be used to find W, the weight of her cat in pounds?
- A $W + 83 = 72$
B $W - 72 = 83$
C $W = 83 - 72$
D $W = 83 + 2$
E $2 \times W = 83 + 2$

39 A wire is tied from each side of a tree to a stake in the ground to keep the tree straight while it is young. A line of symmetry can be drawn through the tree.

What is the length of the piece of wire AB?

F 2 ft J 8 ft
G 4 ft K 16 ft
H 6 ft

You are invited to attend...
NCA JUNIOR CHEER CAMP
ENROLL TODAY!

Your NCA JR. CHEER CAMP is brought to you by:
Camp Location: Lockney High Gym
Contact: Pam Fulton
Phone: 806-652-2219
Camp Code: YLOCK2 Fee: \$55
Date: June 26-28
Time: 9:00 a.m. - 3:30 p.m.

CHEERLEADING, FRIENDS, & FUN!
Make new friends & have fun as you learn cheers, chants, dances, jumps, partner stunts, pyramids, & safety.

EVERYONE IS A WINNER!
Everyone receives awards, a camp certificate, & a Spirit Book packed with cheers, chants & more!

WHO MAY ATTEND
Anyone ages 7 to 13! Coaches attend FREE & receive special training and a complete coaching book.

REGISTER TODAY! CALL 1-800-NCA-2WIN

Page 33

GO ON

THE POWER OF DC!

20¢/MIN. MOBILE TO MOBILE!

As a Digital Cellular customer, you can talk to other Digital Cellular customers for just 20¢ per minute! (Both parties must be within the DC home area.) So if you own a business with multiple cellular phones, your people can talk to each other for less money per minute per phone! It's just one more way The Power of DC is making cellular phone communication easier, more efficient and more economical than ever. Contact your local Digital Cellular dealer today and put The Power of DC to work for you!

IN FLOYDADA: City Auto, Inc. • 201 E. Missouri • 806/983-3767 Oden Chevrolet-Olds • 221 S. Main • 806/983-3789

Digital Cellular OF TEXAS

Box 53118 • Lubbock, Texas 79453 • 1-800-662-8805 • 806-924-5432

GRADE 4
WRITING

Trees are necessary they have many uses. For example, this paper came from a tree. Trees are even more important to us in other ways. We would have difficulty living on Earth. Without any trees. We use trees every time we take a breath. Trees take in carbon dioxide. Trees give off oxygen. People need this oxygen to breathe.

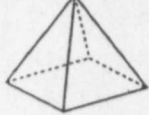
- 8 A Trees are necessary. Having many uses.
B Trees are necessary and have many uses.
C Trees are necessary. With many uses.
D No mistake
- 9 F We would have difficulty. Living on Earth without any trees.
G We would have difficulty living on Earth, we would have difficulty without any trees.
H We would have difficulty living on Earth without any trees.
J No mistake
- 10 A Trees take in carbon dioxide and give off oxygen.
B Carbon dioxide and oxygen are what trees take in and give off.
C Trees take in carbon dioxide or give off oxygen.
D Carbon dioxide and oxygen are taken in and given off by trees.

Page 9

GO ON

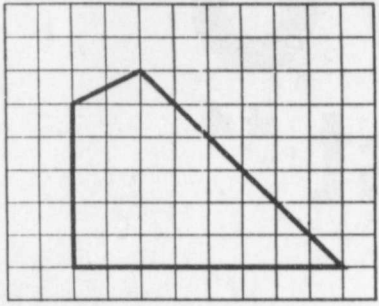
MATH

6 How many faces does the pyramid have?



- A 4
B 5
C 6
D 8

7 Which is the best estimate of the area of the polygon drawn on the grid?



- F 48 square units
G 35 square units
H 29 square units
J 25 square units

8 For Parents' Night, Sid was asked to bring cookies. Each package he bought contained 19 cookies. Which of these is the best estimate of the number of cookies in 20 packages?

- A 100
B 200
C 300
D 400

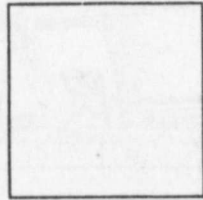
9 Jon is decorating eggshells to sell for \$3 per dozen. He plans to fill 30 cartons with 12 eggshells in each carton. Which number sentence could be used to find the number of empty eggshells he will need?

- A $20 \times 12 \times \$3 = \square$
B $20 \div 12 = \square$
C $20 + 12 = \square$
D $20 \times 12 = \square$

10 Fran's foot is about 9 inches long. She measured 12 lengths of her foot between her bed and her closet. Which is a reasonable number of inches from her bed to her closet?

- F Less than 25 inches
G Between 25 and 90 inches
H Between 90 and 130 inches
J Between 130 and 150 inches

11 Mr. Forrest put a fence around his square garden. He put up 36 feet of fencing.



What is the length of each side of his garden?

- A 8 ft
B 9 ft
C 72 ft
D 144 ft

READING

Circus Queen of Texas

Long ago in the town of El Paso, a circus train rolled into the depot. Everybody in town was there at the station to watch the workers from the "Mollie A. Bailey Show" unload the animals and big tents. For most of the onlookers, this was their first sight of elephants, camels, and bears. The crowd cheered as "Aunt Mollie" stepped onto the back platform of the train. She was a pretty lady, dressed in beautiful clothes.

In the early 1900s Mollie Bailey was one of the best known and most loved women in Texas. Her circus entertained people in small Texas towns for almost forty years.

Mollie was born in Alabama. When she was a young woman, she went to see a circus performance. There she met and fell in love with a man who played in the circus band. Mollie and Gus were married and soon formed a show of their own. They moved to many different places before settling in Texas. Over the years Mollie and Gus had nine children. Many of them worked in the circus. Later Mollie took over the job of managing the circus when Gus had to quit because of illness. She was the first woman ever to own and run a circus successfully.

As the railroad grew in Texas, the circus was able to travel to more small Texas towns. The "Mollie A. Bailey Show" was known for good entertainment. At one time there were sixty people working for Mollie's circus. Mollie's children sang and played in the band. They also trained ponies, dogs, and canaries and performed as clowns and high-wire walkers. Besides the family acts, the circus had clowns, musicians, and other performers. Even so, it never cost more than thirty-five cents for adults and twenty-five cents for children to see the show.

Page 44

GO ON

"Circus Queen of Texas"

1858	Gus and Mollie start the "Bailey Family Troupe"
1879	The Bailey Circus is begun
1883	The Southern Pacific Railroad connects El Paso and Houston
1887	The circus name is changed to the "Mollie A. Bailey Show"
1900	The "Mollie A. Bailey Show" includes 60 people
1914	Mollie Bailey retires

- 7 In this passage, the word depot means —
A town square
B train station
C tent
D small town
- 8 According to the passage, Mollie Bailey spent much of her life —
F traveling
G training animals
H teaching
J writing stories
- 9 Which of these is the best summary of this passage?
A Mollie Bailey had a large family and was liked by people everywhere she went.
B Mollie Bailey's circus gave Texas people a chance to see wild animals in the early 1900s.
C Mollie Bailey made a lot of money with her traveling circus.
D Mollie Bailey brought circus entertainment to people in small Texas towns during the early 1900s.
- 10 You can tell from the story that Gus once worked as a —
F musician
G clown
H announcer
J engineer
- 11 In this passage, the word onlookers means people who —
A have seen something before
B are watching something
C have forgotten something
D are making fun of something

WRITTEN COMPOSITION

Pretend that one day when you are walking to the park with your best friend, you meet the strangest baby animal you have ever seen. "Please help me," it cries, and you decide to help it.

Write a story all about what happens when you decide to help the baby animal.

Lockney Junior High Honor Roll

6th Six Weeks

SIXTH GRADE

"A"
Holli Carthel, Karlon Hooten, Jeffrey Hunter, Melissa Schaeffer, Desha Smith

"B"
Brittany Aston, Erika Bryant, Tyler Bybee, Aaron Dietrich, Gabriel Gonzales, Chase Graves, Lexi Jones, Dina Ledesma, Esmaralda Luna, Lindsey Mathis, Traci McQuhae, Kelsey Schumacher, Heath Stoerner.

SEVENTH GRADE

"A"
Meradith Burson, Allyson Clark, Courtney Cummings, Dominique Guerrero, Brooke Hooten, Danny Huggins, Adam Jones, Kristen Kellison, Lauren Mangold, David Martinez, Nicole Mosley, Brandon Prather.

"B"
Kevin Auifill, Shayla Brewer, Fany Cruz, Tessa Davis, Yara Guerrero, Kaci Jo Howerton, Jordan Lambert, Sharyl McMurtrey, Josh Quebe, Arasely Ramirez, Jenal Rodriguez, Rolf Sherman, Susie Tambunga, Eric Villarreal, Isabell Villarreal, Brandi Wright, Aaron

McPherson, Shane Summers.

EIGHTH GRADE

"A"
Lindi Miller, Kenzie Stapp, Michelle Stapp, Jeremy Stapp, Tessa Stapp, Marc Wilson.

"B"
Eddie Amaya, Lacey Aston, Daniel Banda, Noelia Balderas, Amy Davis, Ryan Graves, Hank Henderson, Abel Luna, Thad Lusk, Sarah Martin, Dana Martinez, Tori Minnick, Lilia Mondragon, Brett McQuhae, Carolyn Pinales, Jalie Robnett, Ana Zavala, Chris Mayo, Roxanne Soliz.

GRADE 3
READING

What is it like to travel on a ship?

Mike and his dad usually go to visit his grandmother in Anchorage, Alaska, for their vacation, but this year they did something different. Mike kept the following diary of their trip.

June 13th

We left Haines, Alaska, today and will reach Seattle, Washington, in three more days. At the bottom of this page is a map of our route. Our ship is big and very nice. It has a snack bar where they serve hamburgers, french fries, and other food. There are video games right next to the dining room. I've made some new friends, too. Bill is from Fairbanks, Alaska, and is moving to Seattle. His brother's name is Daniel. Today we saw a whale. The park ranger on our ship told everyone where to look. At first the whale looked like a log in the water. Then it blew spray into the air and everyone got excited. Some people took pictures. The whale was too far away for my camera, so Dad took a picture.

June 14th

Today the ship stopped in Sitka, Alaska, for the day. Sitka used to be a Russian town. We watched some people in

Russian costumes dance, and we visited a museum. Outside of the museum, there were wooden totem poles carved by Alaskan Indians. Inside were Indian baskets and clothing and other neat old relics from the 1800s. After visiting the museum, we rode in a bus to an old fort. I'm glad Bill and Daniel were with me. We had fun.

June 15th

Today I saw the place on the ship where Bill and Daniel have been staying. Their family has been sleeping in a tent on the back deck! There are many other families there, too. The deck area has heaters in the ceiling to keep everyone warm. It's just like camping out, only on a ship. Bill and Daniel say it's great.

Tomorrow we reach Seattle. I can't wait!

14 The word relics in this diary means —

- homes
 objects
 ideas
 people

15 What is the main idea of this diary?

- The friendship among some boys
 Three days during a journey
 A whale-watching adventure
 An old Alaskan town

16 Where is the diary being written?

- In a tent in the forest
 In Fairbanks, Alaska
 In Seattle, Washington
 On a ship

17 Which of these happened on June 13th?

- Seeing the whale
 Going to the museum
 Watching the dancers
 Seeing the tents

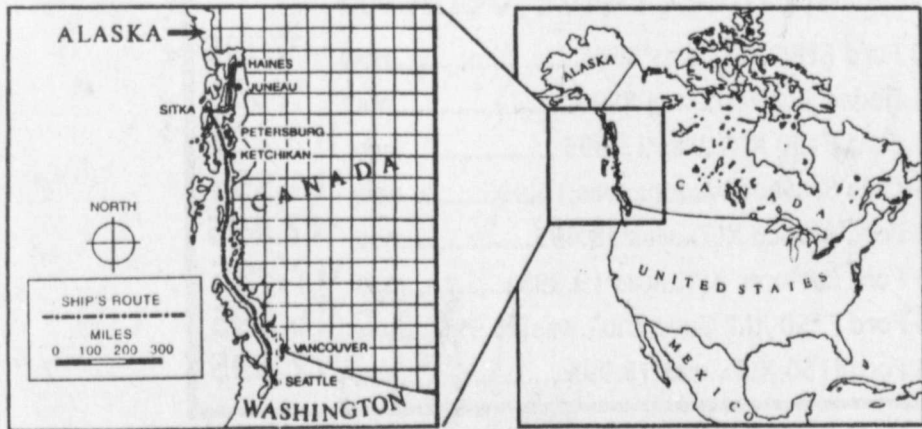


Figure 1. Map of the Ship's Route

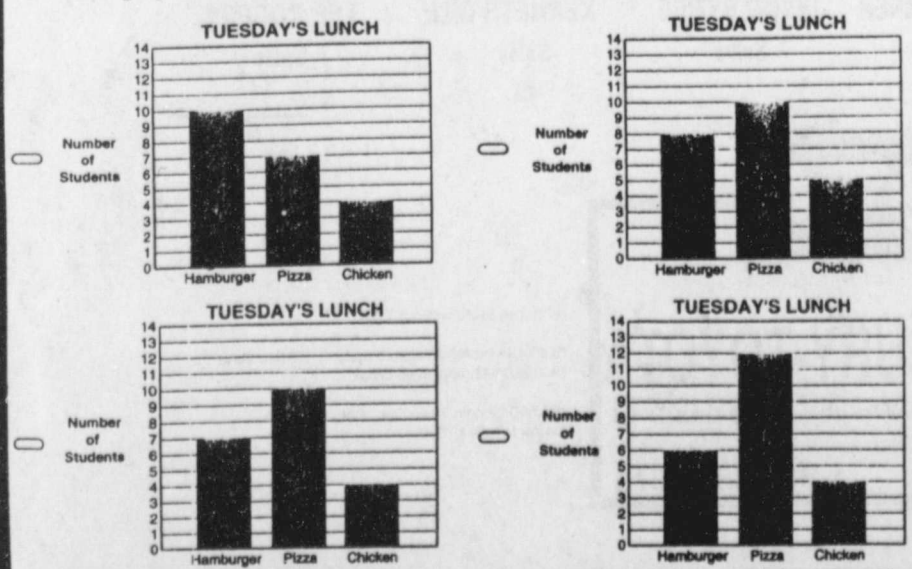
MATH

20 The chart shows the number of students in Miriam's class who ate each type of food for lunch on Tuesday.

TUESDAY'S LUNCH

Type of Food	Hamburger	Pizza	Chicken
Number of Students	7	10	4

Which graph below matches the facts given in the chart? Mark your answer.



4 What is the missing number in the number pattern? Mark your answer.
3, 6, 12, \square , 48, ...

- 15
 18
 24
 30

5 Which number sentence is in the same family of facts as

$4 \times 7 = 28$?

Mark your answer.

- $4 + 7 = 11$
 $28 - 7 = 21$
 $7 + 7 = 14$
 $28 \div 7 = 4$

Araujo named to South Plains College Dean's Honor List

LOCKNEY—Michelle Araujo of Lockney has been named to the Dean's Honor List for the spring 1995 semester at South Plains College.

"The President and Dean's Honor Lists are a means to recognize the efforts of many students for the hard work and effort they have put into their studies at South Plains College," said Dr. James Taylor, SPC vice president for academic

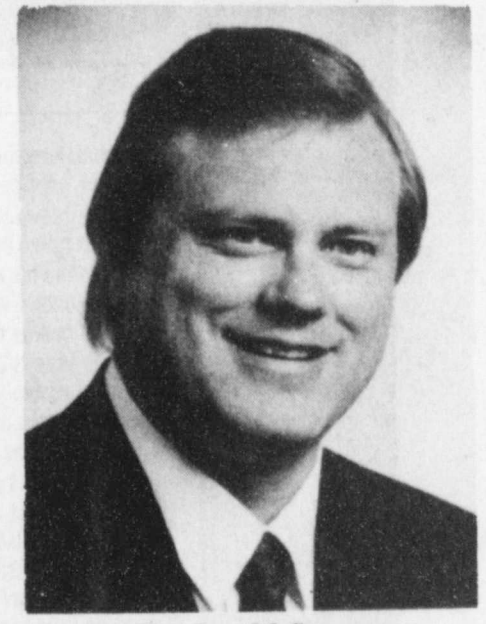
and student affairs.

Students on the President's Honor List must maintain a perfect 4.0 or straight A grade point average while carrying a minimum full-time load of 12 semester hours.

Students on the Dean's List must maintain a minimum of 3.25 GPA with the same number of hours.

Reliable
Stable
Experienced
Accessible
Family Care

at



Dr. Jerald Swanson

Floydada Chiropractic Clinic

127 W. California, St.
Floydada
(Across from R Photography)

983-6256

Emergency Phone - 293-0916

Hours: Tuesday & Thursday - 8:30 - 6:00
Saturday - 9:00 - Noon

Free Initial
Exam &
Consultation

- Neck And Back Pain
- Workers Compensation
- Auto Accidents
- Sports Injury

Medicare & Medicaid Assignments Accepted
Most Insurance Accepted
Easy Payment Plans
New Patients Welcome

**Answer
key
for
tests**

GRADE 10

WRITING

13. G
14. C
15. J
16. C
17. G
18. D
19. H
20. H
21. H
22. J
23. J
24. D

READING

1. D
2. H
3. D
4. G
5. A
6. G

GRADE 8

WRITING

23. C
24. F
25. D
26. F
27. K
28. D
29. F
30. C

GRADE 7

READING

10. F
11. B
12. J
13. D
14. H
15. A
16. G
17. A
18. A
19. A
20. A
21. B
22. D
23. H
24. B

MATH

10. A
11. B
12. D
13. D
14. H
15. A
16. G
17. A
18. A
19. A
20. B

GRADE 6

READING

13. A
14. G
15. A
16. H
17. D
18. H
19. H
20. H
21. H
22. F
23. B
24. G
25. B
26. J
27. B
28. C
29. J

GRADE 5

READING

22. F
23. B
24. G
25. B
26. J
27. B
28. C
29. J

GRADE 4

READING

7. B
8. F
9. D
10. F
11. B
12. A
13. A
14. B
15. B
16. D
17. A
18. A
19. A
20. B

GRADE 3

READING

14. B
15. B
16. D
17. A
18. A
19. A
20. B

GRADE 4

WRITING

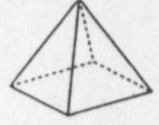

Trees are necessary they have many uses. For example, this paper came from a tree. Trees are even more important to us in other ways. We would have difficulty living on Earth. Without any trees. We use trees every time we take a breath. Trees take in carbon dioxide. Trees give off oxygen. People need this oxygen to breathe.

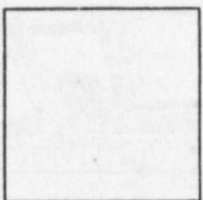
- 8 A Trees are necessary. Having many uses.
- B Trees are necessary and have many uses.
- C Trees are necessary. With many uses.
- D No mistake
- 9 F We would have difficulty living on Earth without any trees.
- G We would have difficulty living on Earth, we would have difficulty without any trees.
- H We would have difficulty living on Earth without any trees.
- J No mistake
- 10 A Trees take in carbon dioxide and give off oxygen.
- B Carbon dioxide and oxygen are what trees take in and give off.
- C Trees take in carbon dioxide or give off oxygen.
- D Carbon dioxide and oxygen are taken in and given off by trees.

Page 9

GO ON

MATH

- 6 How many faces does the pyramid have? 
- A 4
- B 5
- C 6
- D 8
- 7 Which is the best estimate of the area of the polygon drawn on the grid? 
- F 48 square units
- G 35 square units
- H 29 square units
- J 25 square units
- 8 For Parents' Night, Sid was asked to bring cookies. Each package he bought contained 19 cookies. Which of these is the best estimate of the number of cookies in 20 packages?
- A 100
- B 200
- C 300
- D 400
- 9 Jon is decorating eggshells to sell for \$3 per dozen. He plans to fill 30 cartons with 12 eggshells in each carton. Which number sentence could be used to find the number of empty eggshells he will need?
- A $30 \times 12 \times \$3 = \square$
- B $20 \div 12 = \square$
- C $20 + 12 = \square$
- D $20 \times 12 = \square$

- 27 Fran's foot is about 9 inches long. She measured 12 lengths of her foot between her bed and her closet. Which is a reasonable number of inches from her bed to her closet?
- F Less than 25 inches
- G Between 25 and 90 inches
- H Between 90 and 130 inches
- J Between 130 and 150 inches
- 28 Mr. Forrest put a fence around his square garden. He put up 36 feet of fencing. 
- A 8 ft
- B 9 ft
- C 72 ft
- D 144 ft

READING

Circus Queen of Texas

Long ago in the town of El Paso, a circus train rolled into the depot. Everybody in town was there at the station to watch the workers from the "Mollie A. Bailey Show" unload the animals and big tents. For most of the onlookers, this was their first sight of elephants, camels, and bears. The crowd cheered as "Aunt Mollie" stepped onto the back platform of the train. She was a pretty lady, dressed in beautiful clothes.

In the early 1900s Mollie Bailey was one of the best known and most loved women in Texas. Her circus entertained people in small Texas towns for almost forty years.

Mollie was born in Alabama. When she was a young woman, she went to see a circus performance. There she met and fell in love with a man who played in the circus band. Mollie and Gus were married and soon formed a show of their own. They moved to many different places before settling in Texas. Over the years Mollie and Gus had nine children. Many of them worked in the circus. Later Mollie took over the job of managing the circus when Gus had to quit because of illness. She was the first woman ever to own and run a circus successfully.

As the railroad grew in Texas, the circus was able to travel to more small Texas towns. The "Mollie A. Bailey Show" was known for good entertainment. At one time there were sixty people working for Mollie's circus. Mollie's children sang and played in the band. They also trained ponies, dogs, and canaries and performed as clowns and high-wire walkers. Besides the family acts, the circus had clowns, musicians, and other performers. Even so, it never cost more than thirty-five cents for adults and twenty-five cents for children to see the show.

Page 44

GO ON

"Circus Queen of Texas"	
1858	Gus and Mollie start the "Bailey Family Troupe"
1879	The Bailey Circus is begun
1883	The Southern Pacific Railroad connects El Paso and Houston
1887	The circus name is changed to the "Mollie A. Bailey Show"
1900	The "Mollie A. Bailey Show" includes 60 people
1914	Mollie Bailey retires

- 7 In this passage, the word depot means a —
- A town square
- B train station
- C tent
- D small town
- 8 According to the passage, Mollie Bailey spent much of her life —
- F traveling
- G training animals
- H teaching
- J writing stories
- 9 Which of these is the best summary of this passage?
- A Mollie Bailey had a large family and was liked by people everywhere she went.
- B Mollie Bailey's circus gave Texas people a chance to see wild animals in the early 1900s.
- C Mollie Bailey made a lot of money with her traveling circus.
- D Mollie Bailey brought circus entertainment to people in small Texas towns during the early 1900s.
- 10 You can tell from the story that Gus once worked as a —
- F musician
- G clown
- H announcer
- J engineer
- 11 In this passage, the word onlookers means people who —
- A have seen something before
- B are watching something
- C have forgotten something
- D are making fun of something

Answer key for tests

- GRADE 10 WRITING
- 13. G
- 14. C
- 15. J
- 16. C
- 17. G
- 18. D
- 19. H
- MATH
- 15. G
- 21. H
- 23. J
- 34. D
- READING
- 1. D
- 2. H
- 3. D
- 4. G
- 5. A
- 6. G

- GRADE 6 READING
- 13. A
- 14. G
- 15. A
- 16. H
- 17. D
- 18. H
- MATH
- 15. F
- 16. C
- 18. A
- 35. F
- 37. H
- 39. F

- GRADE 5 READING
- 22. F
- 23. B
- 24. G
- 25. B
- 26. J
- MATH
- 35. G
- 38. C
- 39. J

- GRADE 8 WRITING
- 23. C
- 24. F
- 25. D
- 26. F
- MATH
- 15. J
- 19. J
- 27. K
- 28. D
- 29. F
- 30. C

- GRADE 7 READING
- 10. F
- 11. B
- 12. J
- 13. D
- 14. H
- 15. A
- 16. G
- MATH
- 10. A
- 44. A
- 46. C
- 47. G
- 48. D

- GRADE 4 READING
- 7. B
- 8. F
- 9. D
- 10. F
- WRITING
- 8. B
- 9. H
- 10. A
- MATH
- 6. B
- 7. H
- 13. D
- 26. D
- 27. H
- 28. B
- GRADE 3 READING
- 14. B
- 15. B
- 16. D
- 17. A
- MATH
- 4. C
- 5. D
- 20. B

WRITTEN COMPOSITION

Pretend that one day when you are walking to the park with your best friend, you meet the strangest baby animal you have ever seen. "Please help me," it cries, and you decide to help it.

Write a story all about what happens when you decide to help the baby animal.

Lockney Junior High Honor Roll

6th Six Weeks

SIXTH GRADE

- "A"
 - Holli Carthel, Karlon Hooten, Jeffrey Hunter, Melissa Schaeffer, Desha Smith
- "B"
 - Brittany Aston, Erika Bryant, Tyler Bybee, Aaron Dietrich, Gabriel Gonzales, Chase Graves, Lexi Jones, Dina Ledesma, Esmerelda Luna, Lindsey Mathis, Traci McQuhae, Kelsey Schumacher, Heath Stoerner.

SEVENTH GRADE

- "A"
 - Meradith Burson, Allyson Clark, Courtney Cummings, Dominique Guerrero, Brooke Hooten, Danny Huggins, Adam Jones, Kristen Kellison, Lauren Mangold, David Martinez, Nicole Mosley, Brandon Prather.
- "B"
 - Kevin Auifill, Shayla Brewer, Fany Cruz, Tessa Davis, Yara Guerrero, Kaci Jo Howerton, Jordan Lambert, Sharyl McMurtrey, Josh Quebe, Arasely Ramirez, Jenal Rodriguez, Rolf Sherman, Susie Tambunga, Eric Villarreal, Isabell Villarreal, Brandi Wright, Aaron

McPherson, Shane Summers.

EIGHTH GRADE

- "A"
 - Lindi Miller, Kenzie Stapp, Michelle Stapp, Jeremy Stapp, Tessa Stapp, Marc Wilson.
- "B"
 - Eddie Amaya, Lacey Aston, Daniel Banda, Noelia Balderas, Amy Davis, Ryan Graves, Hank Henderson, Abel Luna, Thad Lusk, Sarah Martin, Dana Martinez, Tori Minnick, Lilia Mondragon, Brett McQuhae, Carolyn Pinales, Jalie Robnett, Ana Zavala, Chris Mayo, Roxanne Soliz.

Araujo named to South Plains College Dean's Honor List

LOCKNEY—Michelle Araujo of Lockney has been named to the Dean's Honor List for the spring 1995 semester at South Plains College.

"The President and Dean's Honor Lists are a means to recognize the efforts of many students for the hard work and effort they have put into their studies at South Plains College," said Dr. James Taylor, SPC vice president for academic

and student affairs.

Students on the President's Honor List must maintain a perfect 4.0 or straight A grade point average while carrying a minimum full-time load of 12 semester hours.

Students on the Dean's List must maintain a minimum of 3.25 GPA with the same number of hours.

GRADE 3

READING

What is it like to travel on a ship?

Mike and his dad usually go to visit his grandmother in Anchorage, Alaska, for their vacation, but this year they did something different. Mike kept the following diary of their trip.

June 13th
We left Haines, Alaska, today and will reach Seattle, Washington, in three more days. At the bottom of this page is a map of our route. Our ship is big and very nice. It has a snack bar where they serve hamburgers, french fries, and other food. There are video games right next to the dining room. I've made some new friends, too. Bill is from Fairbanks, Alaska, and is moving to Seattle. His brother's name is Daniel. Today we saw a whale. The park ranger on our ship told everyone where to look. At first the whale looked like a log in the water. Then it blew spray into the air and everyone got excited. Some people took pictures. The whale was too far away for my camera, so Dad took a picture.

June 14th
Today the ship stopped in Sitka, Alaska, for the day. Sitka used to be a Russian town. We watched some people in

Russian costumes dance, and we visited a museum. Outside of the museum, there were wooden totem poles carved by Alaskan Indians. Inside were Indian baskets and clothing and other neat old relics from the 1800s. After visiting the museum, we rode in a bus to an old fort. I'm glad Bill and Daniel were with me. We had fun.

June 15th
Today I saw the place on the ship where Bill and Daniel have been staying. Their family has been sleeping in a tent on the back deck! There are many other families there, too. The deck area has heaters in the ceiling to keep everyone warm. It's just like camping out, only on a ship. Bill and Daniel say it's great.

Tomorrow we reach Seattle. I can't wait!

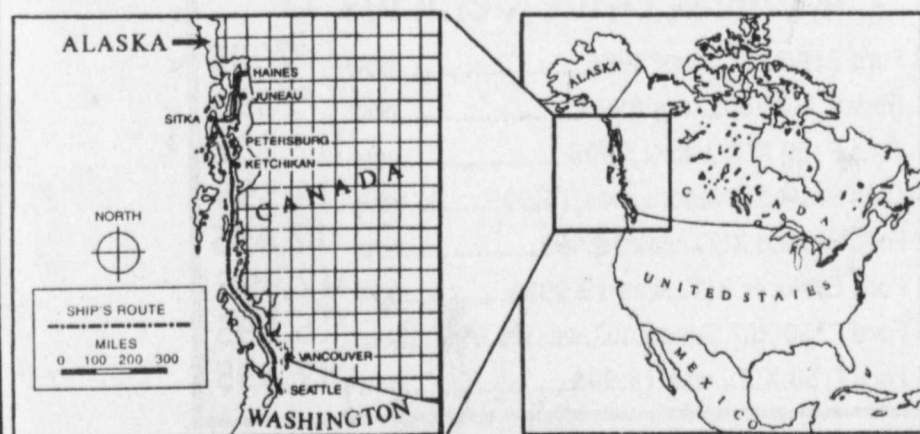


Figure 1. Map of the Ship's Route

- 14 The word relics in this diary means —
- homes
- objects
- ideas
- people

- 15 What is the main idea of this diary?
- The friendship among some boys
- Three days during a journey
- A whale-watching adventure
- An old Alaskan town

- 16 Where is the diary being written?
- In a tent in the forest
- In Fairbanks, Alaska
- In Seattle, Washington
- On a ship

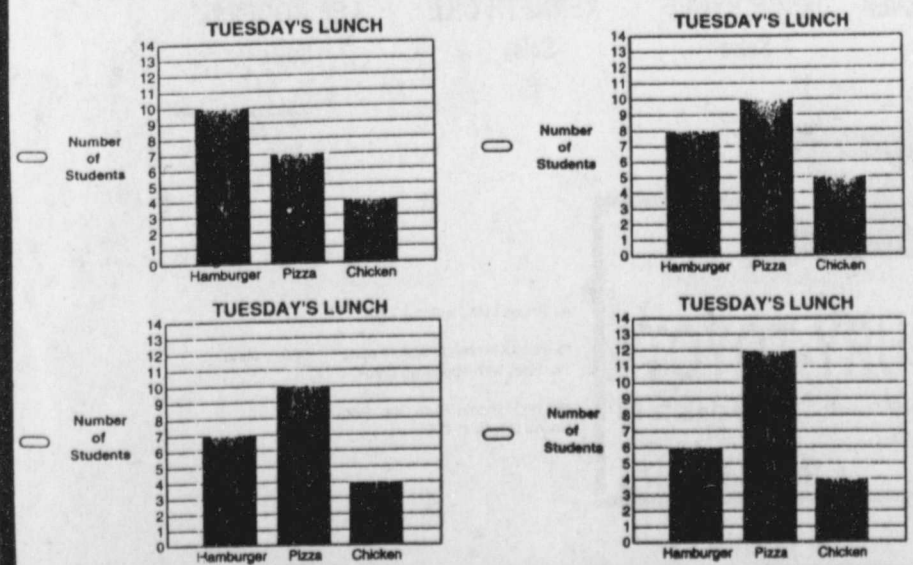
- 17 Which of these happened on June 13th?
- Seeing the whale
- Going to the museum
- Watching the dancers
- Seeing the tents

MATH

20 The chart shows the number of students in Miriam's class who ate each type of food for lunch on Tuesday.

TUESDAY'S LUNCH			
Type of Food	Hamburger	Pizza	Chicken
Number of Students	7	10	4

Which graph below matches the facts given in the chart? Mark your answer.



- 4 What is the missing number in the number pattern? Mark your answer.
- 3, 6, 12, , 48, ...
- 15
- 18
- 24
- 30

- 5 Which number sentence is in the same family of facts as $4 \times 7 = 28$?
- Mark your answer.
- $4 + 7 = 11$
- $28 - 7 = 21$
- $7 + 7 = 14$
- $28 \div 7 = 4$

Reliable Stable Experienced Accessible Family Care



Dr. Jerald Swanson

Floydada Chiropractic Clinic

127 W. California, St. Floydada (Across from R Photography)

983-6256

Emergency Phone - 293-0916

Hours: Tuesday & Thursday - 8:30 - 6:00 Saturday - 9:00 - Noon

Free Initial Exam & Consultation

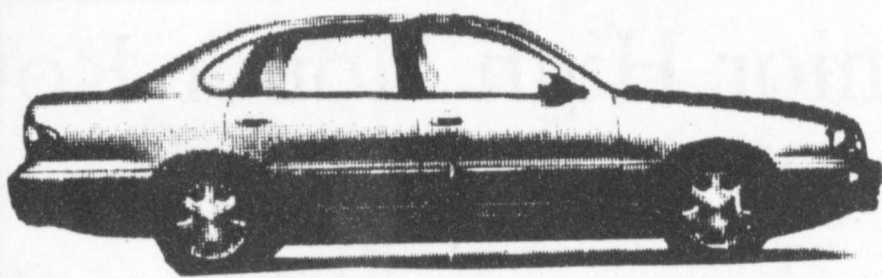
- Neck And Back Pain
- Workers Compensation
- Auto Accidents
- Sports Injury

Medicare & Medicaid Assignments Accepted Most Insurance Accepted Easy Payment Plans New Patients Welcome

33rd Annual Roundup Sale

Jack Morris
West Texas Only Ford, Lincoln, Mercury, Toyota Dealer

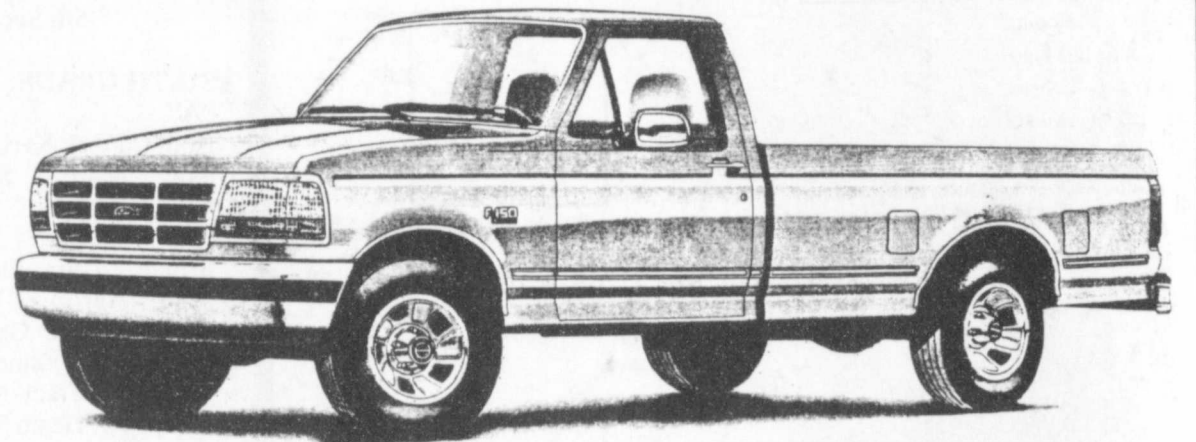
**1995
CAMRY**
4 DR.



\$238* Per Month
Several To Choose From

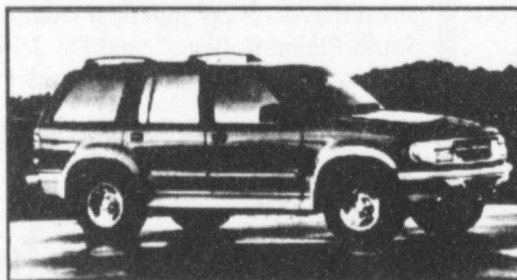
*\$2000 down plus tax, title, & license, 1st payment of \$238 and security deposit of \$250. 36 month lease, mileage limitation up to 15,000. Selling price \$18,250.

4.9%
Interest**



** F150 regular cab, 6 cylinder, 5 speed, up to 48 months.

Rebates As High As \$3,500**
Largest Inventory Ever! Over \$3 Million



- 1989 CADILLAC BROUGHAM
- 1991 CHEV. CAPRICE CLASSIC
- 1991 FORD CROWN VIC. 4 DR.
- 1992 FORD TEMPO GL 4 DR.
- 1993 FORD TAURUS GL 4 DR.
- 1993 FORD CROWN VIC. LX
- 1993 FORD TAURUS GL
- 1993 FORD TAURUS GL
- 1989 MERC. GRAND MARQUIS GS
- 1992 MERC. SABLE GS WAGON
- 1992 OLDS DELTA 88 ROVALE
- 1993 OLDS CUTALSS CIERA
- 1993 OLDS CUTALSS CIERA
- 1993 PONTIAC BONNEVILLE
- 1989 TOYOTA CRESSIDA
- 1992 TOYOTA CAMRY XLE
- 1993 FORD TAURUS GL
- 1993 FORD TAURUS GL

- 1992 MITSUBISHI GALANT
- 1992 FORD TEMPO LX
- 1991 PLYMOUTH ACCLAIM
- 1991 LINCOLN TOWN CAR SIGNATURE
- 1990 BUICK PARK AVE.
- 1992 BUICK REGAL CUSTOM
- 1992 DODGE DYNASTY
- 1991 FORD TEMPO GL
- 1994 FORD TAURUS GL
- 1992 MERCURY GRAND MARQUIS LS

★ GRADS' DELIGHTS ★

- 1993 DODGE SHADOW CPE. 5 Spd. \$ 5,995
- 1993 HONDA CIVIC EX CPE., Aut. \$ 11,995
- 1993 PONTIAC GRAND AM GT. V-6 \$ 12,995
- 1986 FORD T-BIRD CPE., V-6, Loaded \$ 4,995
- 1993 PONTIAC GRAND AM SE CPE., Auto. \$ 11,295
- 1991 FORD TEMPO GL, Auto., Loaded \$ 5,995

SUPER VALUE BUYS

1988 MERC. GRAND MARQUIS LS 4 Dr., V-8, Auto., Air All Power, Extra Clean
\$5,295

1992 FORD CROWN VICTORY LX 4 DR. V-8, Auto., Leather, All The Extras, One Owner
\$9,995

1991 FORD TEMPO GL 4 DR. Auto., Air, All Power Extra Clean, Light Blue Color
\$5,995

Tired of Fighting Those Muddy Roads? Check these Special "Round-Up" Sale Prices on 4 Wheel Drive Vehicles

- 1988 Ford F150 XLT...was\$8995.....now \$7995
- 1991 Dodge 1/2 Ton...was\$8995.....now \$7995
- 1991 Ford F150 XLT...was\$13,995.....now \$12,295
- 1991 Olds Bravada Wagon...was\$15,995.....now \$14,595
- 1992 Ford Bronco XLT...was\$18,495.....now \$17,495
- 1993 Ford Explorer XLT...was\$19,995.....now \$17,995
- 1993 Ford F150 XLT Supercab...was\$16,995.....now \$15,595
- 1995 Ford f150 XLT...was\$18,995.....now \$17,595



TED NOEL
General Manager



EASON MOORE
General Sales Mgr.



MIKE PARKER
Sales Manager



KENT ROBERTS
Used Car Mgr.



FRED HARREL
Sales



JOE RODRIGUEZ
Sales



ROBBY THRASHER
Sales



JASON BYBEE
Sales



KENNETH GILL
Sales



LEE ROGERS
Sales



**FORD
MERCURY
LINCOLN**

TOYOTA

The Best Never Rest

JACK MORRIS FORD-LINCOLN-MERCURY-TOYOTA
OLTON HIGHWAY, INTERSTATE 27, PLAINVIEW 293-2511
"If You Trade Somewhere Else, We Both Lose..."
Come See Us, It's Worth The Drive" 1-800-489-3673

All Prices listed without TTAL.
*5.9% 48 month available June 1, 1995 to June 14, 1995 with approved credit.
**\$3,500 Lincoln Town Car. Rebate \$2,500. Owner loyalty \$1,000.