

# H THE FLOYD COUNTY esperian-Beacon

35c

Thursday, August 29, 1991 ©The Floyd County Hesperian-Beacon Floydada, Texas 79235 (USPS 202-680) Volume 95 Number 35

## Preparations begin for Old Fashioned Saturday

The "Old Fashioned Saturday" has been scheduled for September 14, 1991 and will be held on Main Street in downtown Lockney. The Chamber of Commerce has announced that activities are being planned for the entire family.

Some games and events are being scheduled for the morning and various booths, exhibits and local entertainment will begin around 1:00 p.m. and continue until 6:30. Slow Motion will play for a street dance which will conclude

the days activities.

The Lockney Chamber of Commerce would like to encourage the local churches, clubs, schools and organizations to participate.

Proceeds, raised by the event, will be used for the development of the new City Park located at Main and Locust Streets.

To sign up for booth space or to obtain further information please contact Lesca Durham, or any chamber member.

## Floydada School Board gathers for public hearing

BY Juanita Stepp

Residents and taxpayers of the Floydada Independent School District appeared at a public hearing on Tuesday, August 27, to seek additional information concerning the proposed rate for the 1991 ad valorem tax. The hearing, held at 7:00 p.m. in the Fisd board meeting room, began with a brief presentation by administrative assistant Jimmie Collins which detailed the proposed tax decrease.

According to Collins the final information available from Chief Appraiser Shiela Faulkenberry places the rollback rate for Fisd taxes at 19.4 cents per \$100 assessed valuation. Collins asked the board of trustees to consider setting the tax rate at 19.3 cents.

"This would fall between the three

percent the district is allowed to raise taxes without a public hearing and the eight percent which would leave the district open to a roll back action," said Collins.

Questions from J. S. Hale, a resident of the district, prompted an explanation from the board concerning the new state mandated system of taxation involving the local school districts and the newly created County Education Districts.

Board president Charlene Brown told those present, "The state is forcing us to do this. We have no control over it. The state says we have to raise a certain amount of money and we have to set a tax rate which will raise that amount or we will lose \$2.00 in state funding for every \$1.00 we fall below the stated level of tax funds raised."

Further explanation of the CED and the manner in which the system operates brought out the fact that the state has directed the CEDs to set tax rates of at least around 72 cents per \$100 valuation. The local district must then set a rate to supplement the tax funds raised by the CED. This rate for Floydada will probably be 19.3 cents per \$100 according to Brown.

According to Collins, state funding depends on average daily attendance throughout the year in a school district and on the local tax effort. Schools

Continued On Page 3

## CED holds public hearing on budget

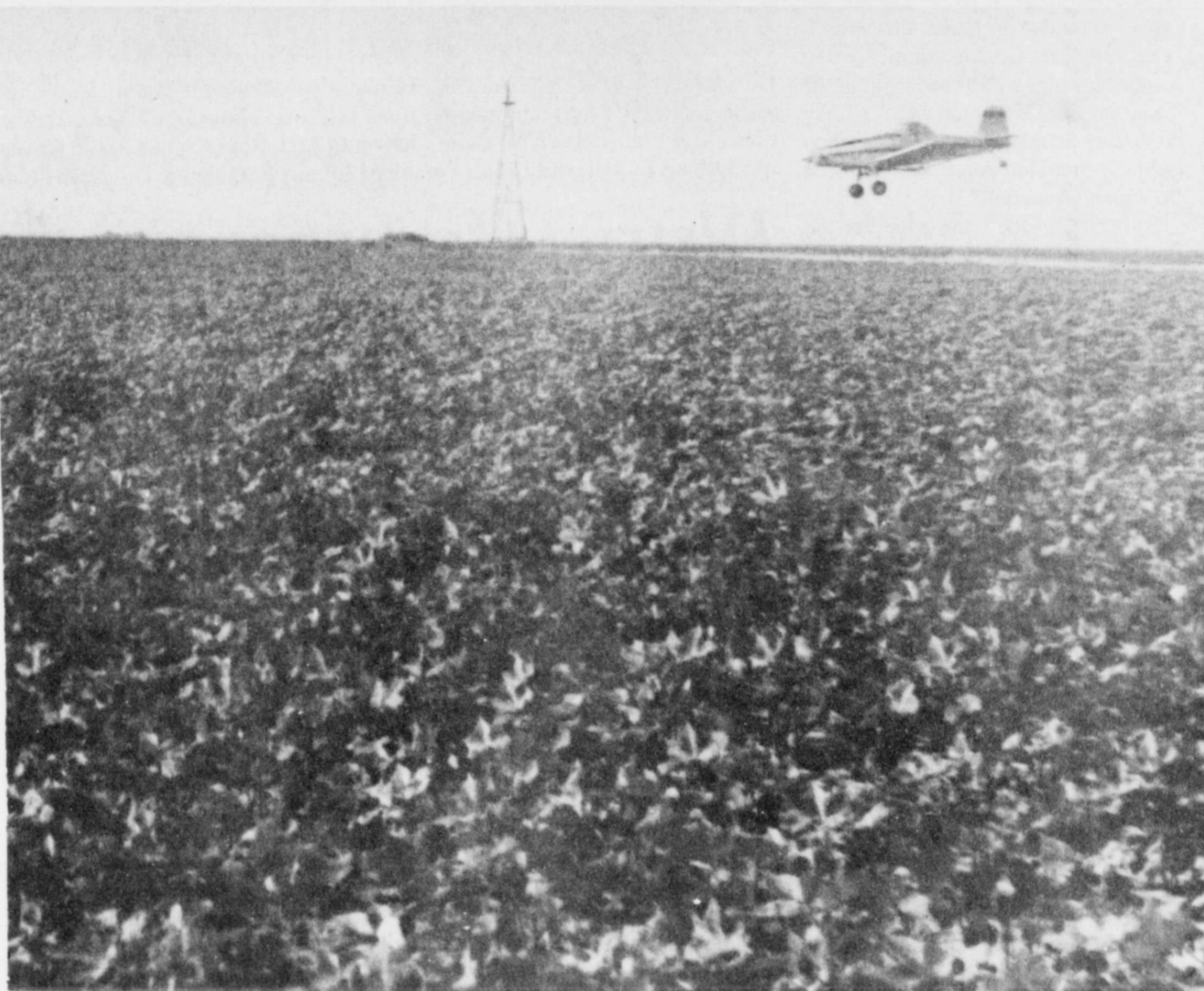
By Juanita Stepp

The Floyd County Education District Board of Trustees met in a special called session on Monday, August 26, at 8:00 p.m. for the purpose of holding a public hearing concerning the budget for the district for the coming fiscal year.

The meeting was attended by board members Michael Hinsley, Charlene Brown and Jim Martin. Board member Dickie Lambert was not present. Also in attendance were Fisd superintendent Jerry Cannon, LISD superintendent Dub Hallmark and Fisd administrative assistant Jimmie Collins.

Two others were present, Kinder Farris and C. J. Payne of the First National Bank of Floydada. The pair had requested time to address the board concerning the recent selection of a financial depository after the opening of bids by the entity. They asked that the board hear their presentation and reconsider the previous decision to utilize the Floydada Branch of the First National Bank of Floydada. The pair had requested time to address the board concerning the recent selection of a financial depository after the opening of bids by the entity. They asked that the board hear their presentation and reconsider the previous decision to utilize the Floydada Branch of the First National Bank of Floydada. The pair had requested time to address the board concerning the recent selection of a financial depository after the opening of bids by the entity. They asked that the board hear their presentation and reconsider the previous decision to utilize the Floydada Branch of the First National Bank of Floydada.

Farris and Payne presented the board with a comparison of the two bids submitted by the First National Bank of Floydada and the Floydada Branch of the First National Bank in Lockney. The comparison demonstrated that out of the 21 items on the bid, sixteen were identical and five differed. In each instance, the FNB Floydada bid was slightly better than the bid made by the other banking facility according to the figures presented by the bank representatives.



WE'RE AFTER YOU LITTLE WORMS--Dickie Lamberts sprays a field of cotton east of Lockney for bollworms. Aphids and bollworms have attacked the cotton

crop with a vengeance and spray planes can be seen all over the county from early until late. According to the sprayers the aphids are on the wane. Staff Photo

## County redistricting plans reconsidered

By Juanita Stepp

The Citizens Committee for Redistricting of Floyd County Commissioners and Justices of the Peace Precincts met in a called public session on Monday, August 26, at 7:30 p.m. The additional session was held to consider a plan submitted by Margaret Herrera for the redistricting mandated by the outcome of the 1990 Census.

The committee had previously considered two plans submitted by the Floyd County Commissioners and one plan submitted by representatives of the Texas Rural Legal Aid organization.

Plan 4 provides for the equalization of the county population among the four districts as specified by law. This plan

would also create, not one, but two precincts with a majority population of minority residents without concentrating the minority population in one precinct.

Among the other advantage to Plan four is the fact that it would only require minor alterations to the present boundaries of the four precincts. The boundaries would also be contiguous, making the business of county road work and services more efficient and effective.

Plan Four would divide county population, placed at 8497 by the census, into four groups with Precinct 1 having 2132 residents, Precinct 2 having 2099 resi-

dents, Precinct 3 having 2128 residents and Precinct 4 having 2138 residents.

The breakdown of minority residents in each precinct under Plan 4 would place minority percentages at 21 percent in Precinct 1, 31 percent in Precinct 2, 68

## County has public hearing on proposed tax increase

By Juanita Stepp

The Floyd County Courtroom was the scene of a public hearing regarding the

proposed tax increase for the 1991 ad valorem tax rate on Tuesday, August 27. The morning session allowed citizens to express their thoughts and views concerning the proposed 7.99 percent tax increase from the present rate of 33.55 cents per \$100.00 of assessed valuation to 36.54 cents per \$100.00 assessed valuation.

Continued On Page 2

According to County Judge Bill Hardin, the increase will raise approximately \$56,000 towards the total estimated operating costs of the county during the next fiscal year which begins October 1, 1991. The overall budget for the 1991-92 fiscal year is estimated at \$1,748,000.00.

This represents an increase of about \$14,000.00 over the estimated 1990-91 year end total budget expenditures of \$1,734,000.00. Exact totals will not be available until after the September 30, 1991 end of the fiscal year.

Compared to the total budget expenditures of \$1,817,000.00 made during the 1989-90 fiscal year, the current budget was a decrease of about \$83,000.00 from the previous year.

After convening the public hearing, Judge Hardin opened the floor to comments or questions. First to speak was Q. D. Williams. He said that Precinct 4 Commissioner Howard Bishop had promised not to raise taxes when he campaigned but had made the proposal to increase taxes this year. Williams then asked Bishop what had been done to try to hold down costs or to cut taxes.

Bishop denied promising not to raise taxes and stated "We have run on a shoe string the past few months to hold down costs, but we can't take anything out to be able to cut taxes."

Discussion then moved to the tax rate and property appraisal in not only Floyd County but other area counties. Williams stated that he paid taxes in seven different counties and that the appraised value of his holdings in Floyd county

Continued On Page 3

### A view from The Lamplighter

What can we say. We've always thought that eventually the Soviet Union would disintegrate, simply because the entire system was predicated on a massive lie, but nevertheless recent events there still boggle the mind. The world is different today than it was last week, and within a few weeks or months will probably be even more different. As one who was actively trying to "contain" Communist adventurism during a period when we worked for our government, and as one who has always regarded the Socialist system as inherently evil in its application, this all comes as heartening news. It has been very, very expensive for this country to hold the fort for freedom, as it were, all these years. But in the end it will have been worth it, and the rest of the world will owe us a debt of gratitude. Not that it will ever show up, but the debt will be there, nonetheless.

A little news item tucked away inside some recent newspapers caught our attention. Not so much because the information was startling in any way, but because it seems to point the way to what this nation is becoming, and at the same time explain some of the problems small towns and communities are encountering, problems that seem to escape most of our politicians.

It will come as no surprise for our readers to hear that the country has undergone a recession, from which it is now emerging, we hope. Mostly this has afflicted the Northeast, but the ripple effect has spread all across the country. Corporate profits are off, the industrial work force suffered massive layoffs, businesses have had to tighten their belts, so to speak, just to stay alive. In the face of all this, citizens have been hit by higher and higher taxes. One thing however, has remained constant. Government has gotten bigger and bigger, more and more expensive.

The figures, out of the U.S. Census Bureau and the Bureau of Labor Statistics, indicate that our governmental agencies in Austin, for instance, now employ 112,900 employees. State gov-

Continued On Page 13

Continued On Page 3



LOTS OF POTATOES!--A truckload of potatoes, driven by Jerry Leatherman of Floydada, was distributed to Floyd County residents last Thursday, after the load of 55,000 pounds was rejected by a company in Lubbock. The potatoes did not meet their requirements. Following a few phone calls to local churches and a posted sign, residents showed up with all types of containers. It took the Leatherman's approximately two days to distribute the load, which was donated by the grower, Smith Potato of Hart. --Staff photo

# By The Way

By Alice Gilroy

When I first started writing a column I worried a little bit about making people mad at me for the things I might say. I didn't worry about people misunderstanding me, because I'm usually blunt to a fault.

However, in last week's column I tried a little tongue-in-cheek editorial and I was misunderstood. I should have been more to the point.

If anyone read last week's column I came up with an idea for a Good News newspaper. I said that I wanted to start a weekly paper with nothing but Good News in it. I would decide what was good news.

I said I did not consider it good news that the United Way was not funding the Boy Scouts because of their discrimination, and I did not think it was good news that the Boy Scouts had started a new program for girls, gays and atheists.

I offended some Boy Scout folks and that was not my intention. I meant to offend United Way folks (and not the local United Way folks).

It all started when I read an AP story in the Plainview Herald (it was also published in papers all over the country). The story told of a new program, started by the Boy Scouts, called Learning For Life, that had been started (according to a Bay Area United Way spokesman), in response to the United Way withholding a \$9,000 grant to the Boy Scouts because of their discrimination against homosexuals.

The Bay Area United Way was saying this new organization could settle the debate, "because it opened the values of scouting to all young people without preconditions."

The point of the AP story was that Boy Scouts had come up with this program because of pressure from the Bay Area United Way to admit homosexuals.

Of course, that rubbed me the wrong way, so I made my comments. I did not mean it as a slap against the Boy Scouts. I have a great deal of respect for the Boy Scouts and I am sorry that they are having to fight these battles and having to deal with a local organization that is playing politics with their funds.

Since my column came out, I was asked to retract my statements. I won't necessarily retract them, but I will explain and clarify them.

I have since talked to Tim Bullock,

who is the South Plains Scout Executive. He is a very personable fellow.

He said that the original AP story was not true. It was released by the Bay Area United Way, and not by the Boy Scouts. He sent me a news release that explained the 'Learning For Life' program, which can be found elsewhere in the paper.

"The new program had been in the works for many years," said Bullock. "We did not start it because of pressure from any group. It is similar to 'in-school scouting programs that are already present. Qualifications for the leadership roles will be the same in the 'Learning For Life' organization as they are in Boy Scouts, but it will be open to public school students kindergarten through high school."

So basically- the same gripe that the Bay Area United Way has against the Boy Scouts (homosexuals not able to serve as scout leaders), they will end up having against the 'Learning For Life' organization.

"The traditional values represented in the Cub Scout, Boy Scout and Exploring programs will remain the same and will not change," said Bullock.

There is something else I need to make clear. Bullock told me that there are many different United Way chapters, seven of them are in the 20 county area of the South Plains Council. The Bay Area United Way (in California) is pressuring their local Boy Scout program and is withholding money, but our local United Way is very supportive of the Boy Scout program.

Bullock said that the United Way of Plainview and scouting have a strong, positive relationship.

I hope I've redeemed myself with the Boy Scouts. I'm not worried about re-deeming myself with the Bay Area United Way.

## Church fills roles for theatre production of "Steel Magnolias"

Auditions were held on Thursday, Aug. 22, for the upcoming production of "Steel Magnolias" in the Upstairs Theater at the Floydada First United Methodist Church.

According to director Grant Hambricht, the number and quality of the women auditioning for the six roles were beyond expectations. Hambricht also wanted to thank all of the ladies who auditioned for their time and energy.

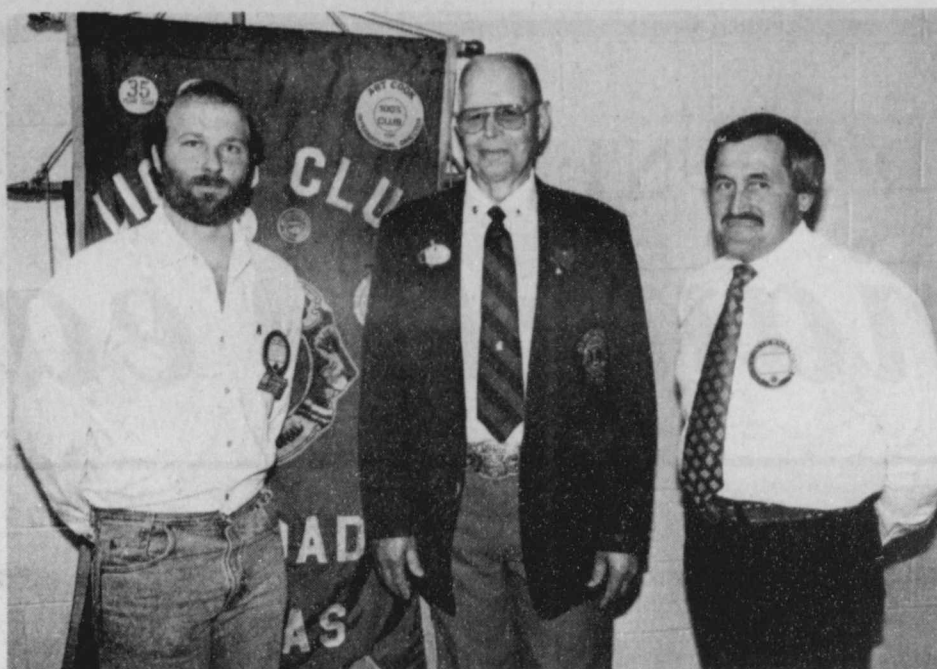
"They all did a great job, and the decisions made by the judges were not easy ones," added Hambricht.

## Floydada gears up for Jerry's Kids

Preparations for the 26th Annual Jerry Lewis Labor Day Telethon are underway, especially in Floydada. The Floydada Pledge Center will be held at the Fire Department. Tracy and Donna Webb will serve, once again, as Pledge Center Coordinators. Tracy and Donna have been volunteers for MDA for several years.

The telethon will be broadcast live from the Sahara Hotel in Las Vegas, and KLBK-TV 13 in Lubbock. Over 200 stations across the country and several stations in Canada will air this special event. The show will begin Sunday, Sept. 1, at 8 p.m. and continue 22 hours through Monday, Sept. 2, at 6 p.m. All area pledge centers, including Floydada, will close between 12 midnight and 8 a.m. Hosting this year's local portion will be Rick Gilbert and Leslie Bohl. Chris Contreras will once again be on board as co-host.

The Jerry Lewis Telethon is watched by approximately 50 million people every year and is a leader in the Nielson



GOVERNOR VISITS---The District Governor of the Floydada Lions Club visited with the Lions during their noon meeting, Thursday, August 22. Pictured here are: (Left-right) Zone Chairman Jack Robertson, District Governor Roland E. Bell, and Lion's President Johnny Summers. Staff Photo

## District Governor speaks to Floydada Lions Club

Floydada Lions Club was treated to a visit by their District Governor, during their regular noon meeting, August 22. District Governor Roland E. Bell, joined the Lions in 1961 and has had perfect attendance since joining.

Bell has served most every office on the local level and many of the district offices, before being elected as the dis-

### FLOYD DATA

D.G. and Marie Odom of Devine and Pat Lavy of Silvertown, visited in the home of Mrs. J.C. Odom, on Monday, August 26.

### FLOYD DATA

Mrs. Myria Dade of Floydada was visited by her foster son, Pat Shelby of Lubbock on Sunday, Aug. 25. Accompanying him were his two boys, Patrick and Jonathon.

trict governor in April, 1991.

Bell retired from the U.S. Postal Service in 1986, after 34 years. He was serving as Superintendent of Postal Operations at the time of his retirement.

When not doing Lions work, Governor Bell spends his time farming and raising Charlois cattle on his place just east of Littlefield.

He and his wife, Lavanda, have two sons who both live in Littlefield. They also have three grandsons and one granddaughter.

The Bells are members of the Highway Church of Christ in Littlefield, where Bell serves as the treasurer.

## Floydada Police Report

Floydada police received a complaint of a criminal mischief at an apartment in the 500 block of E. Grover.

According to police, "The apartment was torn up by the people who moved out. Damages are estimated at \$523.00. Charges are pending."

August 22, at 12:41 p.m., a resident in the 500 block of E. Grover complained of someone shooting a BB into the driver's side window and windshield of his '79 Chevrolet. Damage was estimated at \$400.00.

Also on August 22, in the 500 block of E. Grover, someone found the back door of a residence open. Some things inside were moved around, but nothing is missing at this time.

Since October 19, Oden Chevrolet has had four vehicles scratched. All the vehicles were parked on the lot across from the showroom. Damage on the vehicles was estimated at \$500.00 each.

A theft was reported on August 22, at Floydada Inn, after an argument over payment and keys were stolen from the complainant. Charges are pending.

Also on August 22, police received a report of a possible house fire in the 100 block of W. Virginia. It was discovered that the odor was coming from the 500 block of S. Main where the resident was burning a tire in his front yard. The owner was fined for burning trash in the city.

August 24, at 2:45 a.m., Raymond Lewis Beatty, 49, of Floydada, was arrested for DWI.

August 25, at 2:16 a.m., police arrested Jessie David Castillo, 19, of Floydada, for DWI.

On August 26, at 1:00 p.m. police received a report of a silvered colored Murray brand lawnmower had been

stolen from a resident in the 300 block of W. Ollie. The mower had large rear wheels.

August 27, police took a report of a theft that occurred on August 6, from a resident in the 100 block of W. Crockett. Stolen was a lawnmower, battery charger and weed eater. The value was placed at \$300.00. Charges are pending on a man from out of town.

## Redistricting plans are reconsidered

Continued From Page 1

percent; Precinct 2, 24 percent; Precinct 3, 62 percent and Precinct 4, 48 percent.

Plan 4 would create one voting district with a clear majority of minority residents as well as a clear majority of minority voters (Precinct 3) and a second voting district (Precinct 4) with a majority of minority residents and a near fifty percent 48% voting minority.

Members of the Citizens Committee present for the session included Margaret Herrera, Fidel Martinez, Joe Johnson, John Campbell and Kell Shaw. Members unable to attend were Jessie Garza and Alex Wall.

The committee voted to recommend that the Floyd County Commissioners Court adopt Plan 4 rather than the previously recommended Plan 1. This recommendation will be passed on to the Commissioners who will make a final decision at a later date. The plan ultimately adopted will be forwarded to the Justice Department for approval prior to implementation.

## Courtroom Activities

In county court, August 21, the following people pled guilty to failure to appear:

Brant W. Boling was fined \$95.00 plus court costs;

Lonnie Vance Cypert was fined \$95.00 and court costs;

James Edward Gschwerd was fined \$95.00 and court costs;

Gary Wayne Holloway was fined \$75.00 plus court costs;

Lloyd Dale Neff was fined \$95.00 plus court costs.

Also in county court, on August 22, Jason Bybee, 18, of Lockney, was charged with DWI. There was no disposition on this case.

Larry Richardson was charged on August 22, with unlawful carrying a weapon. He pled Not Guilty.

The Brian Bennett mentioned in the August 15 courtroom activities is not the Brian Bennett, 44, that currently lives in Round Rock and used to be a resident of Lockney.

## DOVE SEASON Starts Sunday, September 1st.

Be sure and get your license by Saturday, August 31st.

## KIRK AND SONS

Floydada's Huntin' Headquarters

**THE FLOYD COUNTY HESPERIAN-BEACON**  
(USPS 202-680)  
Published weekly each Thursday at 111 East Missouri Street, Floydada, Texas 79235. Second class postage paid at Floydada, Texas 79235.  
Yearly subscription rates: Floyd, Swisher, Hale, Motley, Briscoe, and Crosby Counties, \$15.00; Other in-state counties, \$17.00; Out of state, \$18.00.  
POSTMASTER: Send change of addresses to: The Floyd County Hesperian-Beacon, 111 E. Missouri, Floydada, Texas 79235.  
Ken Towery ..... Owner  
Alice Gilroy .... Publisher & Editor

**We designed this plan with you in mind.**

Agri Assurance from Business Men's Assurance (BMA) is specifically designed for farmers and ranchers and their employees.

Thanks to its flexibility, the BMA Assurance plan delivers high-quality insurance coverage at affordable prices. You have freedom to choose providers, a wide choice of out-of-pocket deductibles, 24-hour protection, plus an optional Accident Expense Benefit that pays at 100%. Other advantages include Maternity Benefit options, Group Term Life and Group Disability.

All this, from a company that's met the special needs of farmers and ranchers since 1946.

For all the details, call me today.

**David Cates**  
127-A West California  
Floydada  
806-983-2828

**BMA**  
Business Men's Assurance  
Company of America

**ALLSUP'S**

ALL VARIETIES COCA-COLA 6 pk. 12 oz. cans **1.99**

**SAUSAGE & BISCUIT** EACH **59¢** **GARDETTO SNAK-ENS** 6 OZ. PKG. **99¢**

**BOLOGNA** 16 OZ. PKG. **99¢** **NABISCO SALTINE CRACKERS** 16 OZ. BOX **99¢**

**SHURFINE CORN OIL QUARTERS MARGARINE** 16 OZ. PKG. **69¢** **TOM'S ALL VARIETIES POTATO CHIPS** REGULAR \$1.39 **\$1.09**

**ALLSUP'S HOMOGENIZED MILK** GALLON **\$1.89**

**ALLSUP'S HOT LINKS** 2 FOR **99¢** **ALL VARIETIES HERSHEY'S CANDY BARS** 3 FOR **\$1**

**Campbell's Microwave Soup** 7 3/4 oz. **69¢**

**Folger's Coffee** 13 oz. **1.99**

**Kraft Miracle Whip** 32 oz. **1.79**

**Shurfine Popcorn Microwave** **1.29**

**Allsup's Ice Cream** 1/2 gal. **.99**

**PRICES EFFECTIVE August 29 to September 5**

**Lockney and Floydada Stores**

HOT FOODS MENU		AVAILABLE AT ALL ALLSUP'S LOCATIONS	
BARBECUE BEEF SANDWICH	99¢	9 PIECE BOX CHICKEN	\$4.99
BARBECUE PORK RIBS (LB.)	\$3.99	BEEF & CHEESE CHIMICHANGA (MEAD)	\$1.19
BARBECUE WHOLE CHICKEN	\$3.99	CORN DOG DELICIOUS HAMBURGER	69¢
ALLSUP'S BURRITO	79¢	WILSON HOT LINKS	59¢
BREAKFAST BURRITO	99¢	SAUSAGE ON A STICK	99¢
BURRITO BEEF & SALSA	\$1.19	SAUSAGE & BISCUIT	\$1.59
DELICIOUS CHEESEBURGER	79¢	SAUSAGE, EGG & BISCUIT	79¢
CHICKEN FRIED STEAK	\$1.59	SAUSAGE, EGG & BISCUIT SAUTEYA	\$1.09
3 COUNT CHICKEN STRIPS	\$1.49	SAUSAGE	\$1.09
W/POTATO WEDGES/CHICKEN (2 PCS)/BISCUIT	\$1.99	4 COUNT STEAK FINGERS	\$1.00

CALL-IN ORDERS WELCOME CHECK OUR WEEKLY SPECIALS

An Authorized Agent of **D&D** "The Cellular Connection"

**3** Dub Mercer Mobile 774 7171

2315A W 5th Plainview, TX 79072 (806) 293-3937 FAX (806) 293-5242

# Lockney artists exhibit artwork

An exhibit of artwork by Lockney artists is the feature for September in the lobby of the First National Bank of Floydada. The exhibit, beginning Thursday, Aug. 29, will give the viewer an opportunity to see a beautiful variety

of art media and creativity and many favorite subjects.

Included in the exhibit are artists Jamie Kemp who does grapevine creations; Terry Keltz, oil and watercolor; Mary Montandon, portrait and landscape; Lisa Mosley, pottery and other art media; Pat Nelson, oil landscape; Bobby Pinner, wood carvings; Jonnie Quisenberry; Lisa Roberts, oil paintings; Peggy Roberts, oil paintings; Elfie Sherman, oil paintings; Kathleen Thornton, floral and still life; Jessie Tye, watercolor; Chuck Wilson, photography; Joyce Wilson, photography; Emma Collins, oil landscape.

Emma Collins and Elfie Sherman have been instrumental in helping to

coordinate the unusual exhibit which spotlights the very talented artists in the Lockney area.

"Floyd County is rich in talent, and we want to focus on the Lockney area during September. There are still other artists who, for some reason, could not show work at this time. We certainly want to have them at another time," said Martha Farris. "Also, another month, we will feature an exhibit of just Floydada artists and the surrounding area."

The community is cordially invited to view this unusual exhibit during regular working hours in the lobby of the First National Bank of Floydada through the month of September.



**BANK ARTISTS OF THE MONTH**--Lockney area artists exhibiting at the First National Bank in Floydada are (l-r) Bobby Pinner, Mary Montandon, Jessie Tye, Jami Kemp and Elfie Sherman. Also showing their work will be Terry Keltz, Lisa Mosley, Pat Nelson, Jonnie Quisen-

berry, Lisa Roberts, Peggy Roberts, Kathleen Thornton, Emma Collins and Chuck and Joyce Wilson. The artwork will be shown throughout the month of September.

Staff Photo

## This Week

### RENEW BRANDS

All county brands that have been registered for ten years need to be renewed, beginning Sept. 1, 1991 through Feb. 28, 1992.

### COUNTRY CLUB CHAMPIONSHIP

Floydada Country Club Championship tournament is scheduled for Saturday, Aug. 31, at 8:30 a.m. Women interested in participating should call Susan Simpson or Daphna Simpson. Men interested may call Danny Riddle for the times.

### WHIRLWIND BOOSTER CLUB

Whirlwind Booster Club will meet at 7 p.m. Monday, Sept. 2, at the field house.

### FLOYDADA BAND BOOSTERS

Floydada Band Boosters will meet at 7 p.m. Tuesday, Sept. 3, at the high school band hall.

### LOCKNEY QUARTERBACK CLUB

The Lockney Quarterback Club will meet Monday, September 2, at 7:30 p.m. at Lockney Junior High Cafeteria. Parents of all football boys are urged to attend. Club members ask residence for their help and support.

### PUNKIN MEETING

The Punkin Day committee will meet Thursday, Aug. 29, at 7:00 p.m. at the bank community room. Everyone is asked to attend.

### MEXICAN STAR QUILT CLASS

Keeping You in Stitches Quilting Guild will be having a Mexican Star quilt class Tuesday, Sept. 20, from 7 p.m. to 10 p.m. and Wednesday, Sept. 21, from 9 p.m. til whenever at the Methodist Church in Lockney. Cost is \$20. Call 652-2383 or 983-2160 for more information. This will be taught by Winnie Fleming of Houston.

### FLOYDADA 4-H CLUB

Floydada 4-H Club will meet at 7 p.m. Monday, Sept. 9, at the Massie Activity Center.

### COLUMBUS PROGRAM

A slide program titled "Discover Columbus in America" has been purchased by the Buffalo Grass Chapter DAR and will be available by loan to schools, civic organizations and other local groups who would like to present the program in connection with the Columbus Quincentennial, which will be celebrated across America during 1992.

Anyone interested in scheduling the program may call Nancy Marble.

### 4-H PHEASANT HUNT

Anyone interested in helping with the 4-H Pheasant Hunt may contact Randy Hancock, 652-2497; Buster Terrell, 652-3718, or Mike Mallett at the County Agent's office, 983-2806.

**INSURANCE REQUIRED**  
Effective Sept. 1, 1991, residents will have to show proof of current vehicle insurance to receive or renew a Texas Driver's License, Texas Motor Vehicle Registration (license plate), or a Texas Motor Vehicle Inspection Sticker. This was announced by Penny Gollightly, Tax Assessor-Collector.

### WEATHER

Courtesy of Energas

DATE	HIGH	LOW
Aug. 21	92	73
Aug. 22	92	68
Aug. 23	90	70
Aug. 24	90	70
Aug. 25	91	68
Aug. 26	90	69
Aug. 27	91	70

## County has public hearing on proposed tax increase

Continued From Page 1

was "higher than any of the others resulting in higher out of pocket payment of taxes in Floyd County than in any other county." He added that he had been told by "the then commissioner and the appraiser" that the appraisal was to be made as high as it could be.

L. N. Johnson told those gathered, "What scares me is that the taxes go up 8% this year, 8% next year, 8% the next, where does it end. There has to be a point where taxpayers can not pay any more."

C. L. Henderson asked Judge Hardin why he couldn't do more of his own work and not have secretaries to do it. Hardin replied that he felt it was important to have someone in the office who could tell them where they stood on the budget at any given time. He also added that Margaret Herrera serves as Veterans Service Officer in addition to her duties as the judge's secretary.

Henderson also questioned the expenses this year related to attorney fees paid to Allison & Associates. Hardin told him that the \$31,000.00 paid out was the result of the conflict between the court and Judge David Cave after the Commissioners authorized District Attorney Becky McPherson to act as County Attorney when Kenneth Bain retired.

"Said Precinct 2 Commissioner Floyd Jackson, "We were trying to save the county some money and would have saved about \$10,000.00 this year by having McPherson do this. But as it turned out, Judge Cave's handling of the matter ended up costing us more than \$30,000.00."

Precinct 1 Commissioner Connie

## CED holds hearing on budget

Continued From Page 1

Jim Martin.

As presented, the budget was in the amount of \$14,000 which will cover the cost of insurance, travel, bonds and appraisal district fees. The Floyd County Education District does not anticipate hiring any personnel as whatever needs to be done will be handled by FISC or LISD personnel. The \$14,000 will be funded by the two school districts on a 61-39 split with FISC paying 61 percent of the cost and LISD paying 39 percent of the cost based on the number of students in each school district comprising the CED.

Friday, August 30 was set as the date for a meeting to set the CED tax rate for the coming year. That session will be called for 8:00 a.m. in the board meeting room of the FISC administrative offices at 226 W. California in Floydada.

Bearden pointed out that the county has started buying diesel in bulk which results in a savings of about \$10,000.00 during the year.

Williams questioned the wisdom of voting a 3 percent salary increase for regular county full time employees at a time when the taxes have to be raised in order to do it.

Bearden replied, "They are still underpaid."

Williams then said, "I know the whole place is going to pot and we need to do all we can to hold it together, but if we just keep going up and up, there isn't going to be any one left in the county someday but a judge and four commissioners."

With the end of public comment, the court adjourned after setting a session to adopt the tax rate. That session will be held on Monday, September 9, at 10:00 a.m. in conjunction with the regular monthly session of the court.

Attending the Tuesday morning session were Judge Hardin, Commissioners Bearden, Jackson, Taylor and Bishop, Glenna Orman, Jane McAnally, Lowell Bilibrey, Q. D. Williams, L. N. Johnson, RayNell Bearden, C. L. Henderson and the Hesperian-Beacon reporter.

## FISD board has public hearing

Continued From Page 1

which do not set an adequate tax rate to raise the proper amount of money will be penalized by the loss of two dollars in state funds for each one dollar they fall under the stated amount.

Collins explained that the CED tax rates are based on the State Property Tax Board values set for the taxable property in the district. "The state then mandates the dollar figure of the taxes to be raised," added Collins. "When the CED sets a tax rate, that rate must raise the required amount of money based on the local taxable values, not the state property tax values."

School superintendent Jerry Cannon told the group, "The Floyd County Education District lost about \$23 million in tax base from the exemptions approved in the August 10 election. The extra exemptions for homestead and the elderly along with the decision not to tax non-income producing personal property. This will not affect the FISD taxing process. We will still be taxing based on the exemptions we have always offered."

If the FISD tax rate is set at 19.3 cents, seven cents of that amount will be dedicated to bonded indebtedness. Said Collins, "We will have that paid off in two years and be able to use that money in other areas."

Floydada resident Lon Davis asked for a percentage of increase estimate on the recently adopted FISD budget as compared to the budget last year.

Collins replied, "There was about a ten percent increase due to inflation and state mandated expenditures."

Martha Farris asked for an explanation of the 61-39 percent division of funds in the CED. Collins told her that the percentages are based on the number of students in each district. "Floydada has 61 percent of the students in the Floyd County Education District, so we will receive 61 percent of the CED funds. Lockney has 39 percent of the students and will receive 39 percent of the funds as they are disbursed."

No action concerning the tax rate was taken at the session. Board members set Friday, September 6 at 7:30 a.m. For a meeting to adopt a tax rate.

Attending the session were FISD board members Charlene Brown, Mi-

Carolyn Cooper was hired by the hospital board, as the new medical records director. She is originally from Slaton, but has been at the hospital in Boonesville, Arkansas for the last 13 years.

Reecer also told the board that a new computer system has been installed to expedite the medicare and medicaid claims process. "The claims will now be handled electronically."

Checks totaling \$129,000 have been received for the hospital by the state. "In April we applied for Medicaid Disproportionate Share Status," said Reecer. "We were approved and this is our payment of that share."

Reecer reported that there were 51 admissions into the hospital for the month of July and 22 deliveries.

Under new business the board approved a partially self funded insurance plan for employees, which "could potentially save money and provide better benefits for the employees," said Reecer.

The board also approved an annual performance appraisal policy for employees.

In the board meeting in July, Director Les Ferguson resigned as board president because of health problems. Claude Brown was re-appointed to the board and will also serve as the president. Brown has served three consecutive terms as director, and had not run for election to the board in the last election.

Attended the board meeting were: Directors Claude Brown, Hubert Frizzell, Ronnie Hardin, Jerry Johnson, Bill Sherman; Administrator Jeff Reecer and Controller Bryan Cook.



**HOT CAKES**  
with butter  
and syrup  
mmmmmmGood!  
Large Hot Cake Only \$1  
**Nielson's Restuarant**  
304 E. Houston 983-3464

## Mother's Day Out

**FIRST UNITED METHODIST CHURCH, Lockney, Texas**

**Pam Kettler, Director**

**EVERY Wednesday - 9-5  
BEGINNING Wednesday, September 4**

### TUITION:

- 1 Child - Member of FUMC - \$8.00
- 1 Child - Non-member FUMC - \$9.00
- 2 Children - Member FUMC - \$14.00
- 2 Children - Non-member FUMC - \$15.00

Each child needs to bring an extra set of clothes, an old shirt for painting, and something to take a nap on (mat, thick towel, etc.)

**OPEN for pre-school children only.**

**Contact for further information:  
Church - 652-2193  
Pastor - 652-3459  
Director - 652-3777**

**Interested workers are asked to contact the director.**

## Notice of Annual Meeting

### FLOYD COUNTY FARM BUREAU

**Saturday, September 7  
7:00 p.m.  
Lockney Elementary School  
Lockney**

- CATERED MEAL by River Smith's
- DOOR PRIZES
- ENTERTAINMENT for Children

**Members RSVP 983-3777 or 652-2242**

## THE RIGHT LOOK



**INCLUDES CHOOSING THE RIGHT BELT TO KEEP IT PERFECT!**



MRS. TODD HALLMARK  
—Portrait by Wilson Photography

# Stapp and Hallmark say nuptials

Shana Lynn Stapp became the bride of Jeffrey Todd Hallmark during an evening ceremony Saturday, Aug. 17, in the West College and Third Church of Christ in Lockney. Frank Duckworth, minister, officiated the couple's recitation of vows.

Parents of the couple are Mr. and Mrs. Rodger Stapp and Mr. and Mrs. W.H. Hallmark, all of Lockney.

Escorted and given in marriage by her father, the bride chose a white silk taffeta and Schiffler lace gown designed with a sweetheart neckline and short puffed sleeves on a basque bodice beaded with sequins and pearls. The full skirt, highlighted with a bow and bustle in the back, featured a detachable cathedral train. She carried a cascade bouquet arranged with fresh flowers and greenery.

Serving the bride as maid of honor was Valency Zumwalt of Lockney. Bridesmaids were Kellie Bush of Lockney, Lisa Lara of Houston and Tammi Hallmark of Plano, sister-in-law of the groom. Bridal attendants were attired in teal length floral off-the-shoulder gowns and each carried a single carnation. Cousins of the bride, Meagan Stapp and Scott Stapp, were flower girl and ring bearer.

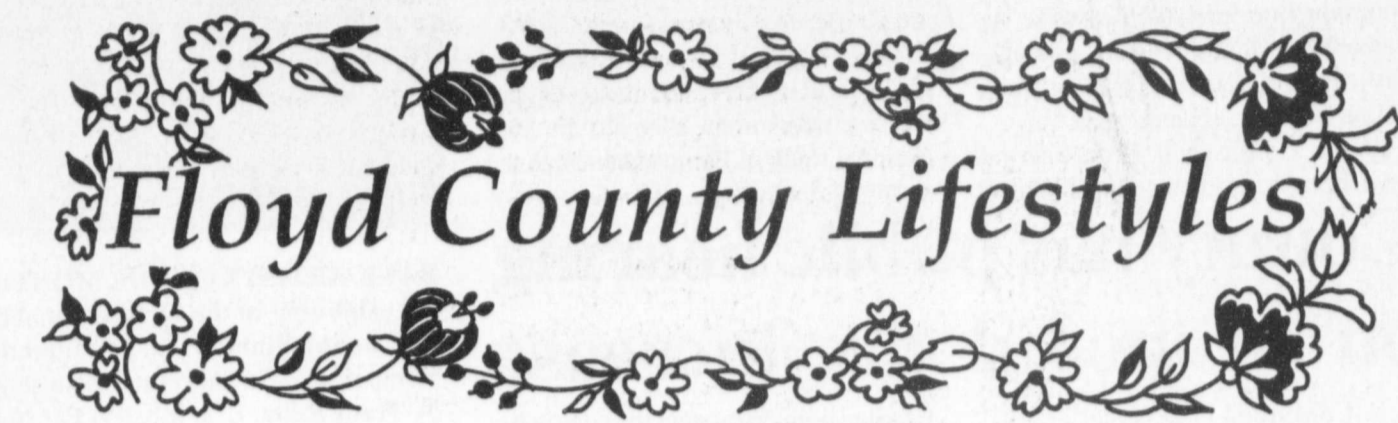
Lighting candles were Jeremy Stapp and Tyrell Stapp, brothers of the bride, and Tessa Stapp, cousin of the bride.

Acting as best man was Brent Hallmark of Plainview, brother of the groom. Groomsmen were Clay Adrian of Lubbock, Chad Frizzell of Lockney and Andy Stapp of Lockney, brother of the bride.

Kenzie Prater registered guests. Musical selections during the ceremony were vocalized by Lisa Mosley, Phil Cotham and Zeldia Ellison.

A reception followed the ceremony. Assistants were Shelley and Dee Dee Hall, cousins of the groom.

Following a wedding trip to Cancun, Mexico, the couple is residing in Lubbock. Both are graduates of Lockney High School and are students at Texas Tech University. The bride is employed by Industrial Lubricants and Hallmark is employed by Furr's Supermarket.



## Study Club celebrates 35th anniversary

Floydada's 1956 Study Club will be celebrating their 35th anniversary with a Potatoe Bake Fund Raiser at Floydada's first football game of the season, September 6.

The Tater Bake will be held before the game, from 5:30 p.m.-7:30 p.m., at the junior high cafeteria. Baked potatoes will be served with all the trimmings, salad, bread sticks and homemade pies.

The members of the 1956 Study Club will create the potatoe masterpieces and will be assisted by many other volunteers.

Money raised from the Tater Bake will be used toward community projects. Projects that the Study Club contributes to include: senior scholarship, Caprock Hospital, ambulance fund, Girlstown, Floydada Teacher Appreciation, Child Welfare Board, Floyd County Day Care, Floydada High School National Honor Society;

Floydada Nursing Home, Floyd County Library, FIDS One Act Play, FIDS Hugh O'Brien Foundation, Make A Wish Foundation, AFS Fund and the Old Settlers Day Style Show.

Twenty-eight members, presided over by current President Judy Schacht, meet once a month and hear programs focusing on conservation, education, home life, international affairs, arts and public affairs.

The goals of the organization are to "stimulate intellectual growth, encourage fellowship and to strengthen individual efforts by organization," said Vice President Melissa Long.

Thirty five years ago the Study Club was formed by charter members: Mmes. Bill Hardin, Bernie Parkey, Charles Reid, Weems Norman, Chuck Holms, Travis Jones, W.T. Conner, Fred Conner, Johnny Roberts, Bill Ware, Dan Hagood, and Betty McKinner. Mrs. Hardin was elected the first president of the Study Club.

Though not a charter member, Darlynn Hambricht, has been a member of the club since it's first year in 1956.

The current officers of the club are: Judy Schacht, president; Melissa Long,

1st vice president; Ruth Crump, 2nd vice president; Atha Sue, secretary, Sharon Rainwater, treasurer; Judy Dunlap, reporter-historian; Roxanne Bishop, custodian; and Sherce Cannon,

federation counselor.

Tickets for the upcoming Tater Bake can be purchased from any club. Adult tickets are \$3.50 and children under 12 are \$2.00.



GETTING THE WORD OUT--Members of the 1956 Study Club have been busy selling tickets and publicizing their upcoming fund raiser, a pre-game Tater Bake, September 6, from 5:30-7:30 p.m. The Study Club celebrates

their 35th anniversary this year. Shown here are: (left-right) Darlynn Hambricht, Melissa Long and Judy Schacht.

Staff Photo

## Senior Citizens News

By Thelma Jones

Sherman and Joshua Aten visited with Mattie Wester last week.

There will be a garage sale at the center Friday and Saturday, Aug. 30 and 31.

Family reunion for the family of Mrs. C.H. Wise gathered at Paducah Aug. 17. It was also a birthday celebration for Mrs. Mattie Cross, sister of Mrs. C.H. Wise. There were over 200 attending.

Mr. and Mrs. Dennis Wilks of Tulsa visited his mother, Mrs. W.J. Wilks Sunday afternoon.

Mrs. Valree Turner and Marjorie Young shopped in Plainview Monday. Sympathy to the families of Thelma Hoffman.

Mrs. Ollie DeFreeze spent several days last week visiting her grandchildren in Ralls.

Mrs. Alma Rape attended the wedding last weekend for her grandson in Houston.

Mr. and Mrs. D.C. Odom of Devine, Texas, visited Mrs. J.C. Odom. He was a cousin of J.C.'s. Monday Leon Lacy visited Mrs. Odom.

Mrs. Gladys Widner accompanied Mr. and Mrs. Jerry Solomon of Plano, Texas, on a vacation trip to Colorado last week.

## Senior Citizens Menu

Sept. 2-6

Monday: Beef and noodles, creamed potatoes, green beans, yeast roll, peach cobbler, milk, beverage choice

Tuesday: Fried chicken, rice, boiled okra, tossed salad, cornbread, orange-banana cup, milk/beverage choice

Wednesday: Red beans w/ham, steamed cabbage, peas and carrots, cornbread, tapioca, milk/beverage choice

Thursday: Lasagna/ground beef, broccoli, tossed salad, whole wheat roll, assorted cookies, milk/beverage choice

Friday: Chicken and dumplings, mixed vegetables, fresh fruit cup, cornbread, chocolate cake, milk/beverage choice

## Pathology advances improve ability to diagnose pre-cancer

An abnormal Pap smear used to mean one terrifying diagnosis: cancer. But a gynecologic cancer specialist at Baylor College of Medicine in Houston says that is not necessarily true any more.

"Thanks to advances in pathology, we have improved our ability to diagnose and treat pre-cancerous conditions in the cervix," said Dr. Alan L. Kaplan, Baylor professor of obstetrics and gynecology. "As a result, we are seeing cervical cancer rates decline."

Physicians can now detect abnormal cells in the cervical lining before cancer has time to develop, Kaplan said.

Instead of hearing the dreaded diagnosis of "cancer" when a Pap smear is judged abnormal, women are hearing doctors say "dysplasia," a term describing cell abnormalities identified with pre-cancerous conditions in the cervical lining.

Once diagnosed, most pre-cancers are easily treated in the doctor's office using a laser or a freezing procedure called cryotherapy.

However, Kaplan said, occasionally it is necessary to perform a minor surgical procedure called a cone biopsy. Most doctors do this as out-patient surgery.

"The cure rate for these pre-cancers is 100 percent and we see only a 5 to 10 percent recurrence rate," Kaplan said. "The key to keeping cervical cancer rates on the decline is making sure we get the opportunity to detect cell abnormalities early."

malities early."

Most gynecologists recommend annual Pap smears for women under age 35. Older women and those whose medical histories put them at high risk for cervical cancer should see their doctors every six to 12 months.

"A Pap smear is so simple, accurate and easy to perform," Kaplan said. "With regular Pap smears and gynecologic exams, a woman today has much less reason to worry about developing cancer than her mother did."



How To "Iron" Clothes Without The Iron

Here's an interesting wrinkle in fabric care: Using your dryer as a substitute for ironing clothes!

You can do it, say Whirlpool home economists, if your dryer has a Tumble Press Cycle. This special feature tumbles items that are dry but wrinkled for about 10 minutes in heated air, then switches to room-temperature tumble for another five to 10 minutes.

It's great for washables that have been packed into a suitcase, stored for the season in a closet or simply left too long in the dryer. Another use: Toss in that tablecloth with fold creases and show off a crease-free cloth for a special dinner.

Check the care label to make sure that items to be tumble pressed are washable. Long tumbling of woollens may shrink them. Fold, hang or use items as soon as the tumble cycle ends.

Tumble Press doesn't eliminate ironing, but it is a quick, easy alternative to touch-up ironing.

## New Arrival!

REKER

Emily Reker wishes to announce the arrival of her new brother, Adam Clay, born Aug. 22, at 8:10 a.m. He weighed 9 lbs. 7 ozs. and was 20" long.

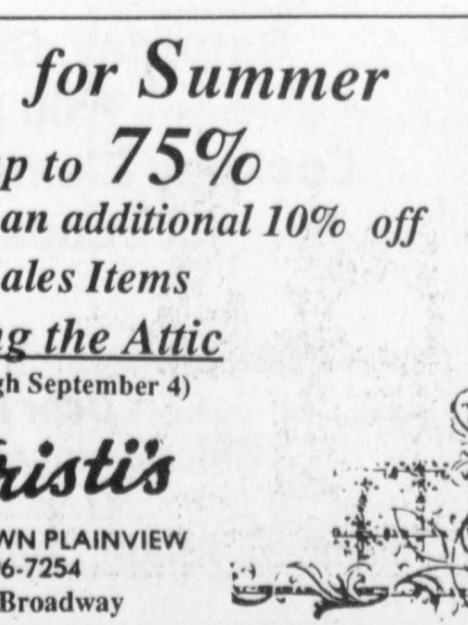
Parents of the children are Kevin and Kelli Reker of Midland.

Grandparents are Mr. and Mrs. Richard Reker of Midland and Mr. and Mrs. Ray Gene Ferguson of Floydada.

Great-grandparents are Mr. and Mrs. R.R. Ferguson of Floydada.

**Final Call for Summer**  
Savings up to 75%  
Bring in this ad for an additional 10% off  
on all Sales Items  
Including the Attic  
(Good through September 4)

**Kristi's**  
DOWNTOWN PLAINVIEW  
296-7254  
614 Broadway



614 Broadway

## J.M. Carthel family gather in Lockney

The J.M. Carthel Reunion was held Saturday, August 17, 1991 at the Lockney Community Center. Approximately 110 descendants and friends of the family were present for a noon meal, business meeting and gospel singing.

Seated at the head table were the eldest children from each of the J.M. Carthel children's families. The honorees included: Retha Belt Wofford, Lockney, family of Rose Carthel Belt; Joe Cunyus, Lockney, family of Betha Carthel Cunyus; John T. Carthel, Lockney, family of J.M. Carthel; Francis Carthel, Lockney, family of Herschel Carthel; Dee Ritchy, Amarillo, family of W.A. (Babe) Carthel; Ida V. (Mrs. Baynard) Carthel, Plainview, family of Milford Carthel; Verna Mae Steele, Lockney, family of Della Carthel Willmon.

James Carthel of Houston reported on his genealogical research including the discovery of a James Carthel christened in 1775 in Hertford County, England.

The business meeting included reports and discussion of the Carthel memorial shelter building currently

under construction at the Lockney Cemetery. President Lavrin Carthel gave special recognition to the following family members: Oldest member - John T. Carthel, Lockney, 90 years old; Youngest member - Dru Carthel, Lockney, 15 months old; Traveled greatest distance - James and Carol Carthel, Houston; Married most years - Hershel and Octavia Carthel, Lockney, 58 years; Most children and grandchildren pres-

ent - W.A. Carthels, 27.

The reunion will be held again August 15, 1992 at the Lockney Community Center.

Officers for 1992 will be Lavrin Carthel, president; A.C. Carthel, vice president; D'Lyn Morris, secretary/treasurer.

SHAKLEE  
983-5246

Bridal Selections Available for...  
**Chris and Joey Ray**  
(Nee Joey Thayer)  
**Teresa Gentry & Russell Elsenbrock**

**THOMPSON** PH. 983-5111  
HEALTHY MART PHARMACY  
200 SO. MAIN FLOYDADA, TEXAS 79235

Mrs. Ray Day announces that she has sold  
**KID'S KLOSET**  
to  
Neta Marble  
and she would like to thank her friends and customers for their support over the years.

The store will continue to bring you a fine selection of infant and childrens clothes and gift items.  
Kid's Kloset will be open Monday through Friday from 9:00 a.m. until 5:30 p.m.  
102 South Main in Floydada 983-5458

**DOVE SEASON**  
Starts Sunday, September 1st.

Be sure and get your license by **Saturday, August 31st.**

**KIRK AND SONS**  
Floydada's Huntin' Headquarters

# Duvall and Griffin exchange vows



MRS. JOSEPH RICHARD GRIFFIN III

## Floydada Nursing Home Happenings

By Jo Bryant

Hi, once again to come and share what's going on around here this past week.

Seems like Fall is in the air, doesn't it? School started and I guess a lot of you are back in the routine of things.

We would like to remind everyone that Tuesday, Sept. 3, we will be having a hot dog lunch for all the residents, staff and families. Everyone is invited.

Monday started the week as usual with Bro. Bill Wright giving the inspiring message and Irene Wexler played the piano for us. Otis Johnson lead the singing for us. In the evening, the residents had ceramics and painted a leaf.

Tuesday, Penny Giesecke came and played the piano for us. We shared John 14, "Jesus, The Way, The Truth and The Life." At 2 p.m. the ladies from the Companions 'n' Caring came and did the manicures and cut our red hearts for our Hug Day. Thanks for the supplies and making the hearts. The ladies helping were Dorothy Neff, Leona Neff, Sue Hoogstra, Tina Hoogstra, Dolores Cannon, Shirley Varner, Ola Smith.

Wednesday Ruth Hammonds and Mary Alice Davis came and assisted with the Bingo. Lennie Willis had the first Bingo. We had a full house. Bananas, marshmallow, candy, cheese

balls were the treats.

Thursday we served the breakfast burritos, thanks to everyone that bought. We ran out of everything. In the evening Marie Tardy and Gertrude Smitherman, from the Sunshine Sunday School Class from the First Baptist Church came and served the residents ice cream sandwiches and diabetic ice cream. The residents really enjoyed the ice cream. Also we want to thank the Faith Sunday School Class for the donation for the cookies for the morning coffee.

Friday, Betsy Dempsey came and gave the devotion and Charlene Alldredge played the piano for us. The residents enjoyed the singing. At 1:30 the residents went on a bus ride to Roaring Springs. Our Place treated them to some ice cream. Jose drove the bus.

Our hearts were saddened by the passing on of Mrs. Viola Riddle and Thelma Hoffman. We extend our sincere thoughts and love to all the family.

May you have a safe and happy Labor Day. Let us all be thankful for work and the health to be able to work.

Thought: "Do your best, as one approved, a Workman who has no need for regrets. And whether great or small our works of service are to serve one another"

Rhonda Guthrie, Rex Holcombe, Carolina Gomez

### HAPPY ANNIVERSARY

Thursday, Aug. 29: Mr. and Mrs. Jerry Smith, Mr. and Mrs. Randy Hollums

Friday, Aug. 30: Robert and Connie Luna, Mr. and Mrs. William Cook, Mr. and Mrs. Bill Starkey, Mr. and Mrs. Carroll J. Sims

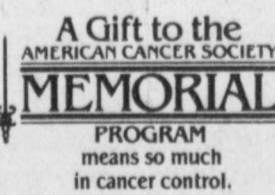
Saturday, Aug. 31: Mr. and Mrs. Rick Carpenter, Mr. and Mrs. Harold Snell

Sunday, Sept. 1: Mr. and Mrs. Johnny Pleasant

Monday, Sept. 2: Mr. and Mrs. J.W. Gilbrath

Tuesday, Sept. 3: Mr. and Mrs. Herman Graham

Wednesday, Sept. 4: Mr. and Mrs. George Wexler, Mr. and Mrs. Kendis Julian



Lauri Ann Duvall and Joseph Richard Griffin III exchanged wedding vows Saturday evening, Aug. 17, at 8:00 p.m. in the Highland Park Baptist Church in Dallas. The Rev. Mac Lake officiated at the formal candlelit double-ring ceremony.

The bride is the daughter of Mrs. Charles Wayne Curtis of Weatherford and Donald Earl Duvall of Davis, Okla. The groom is the son of Mrs. Alice Griffin and Joseph R. Griffin II of El Paso.

Grandparents of the bride are Mr. and Mrs. J.R. Belt and Mr. and Mrs. Loyd Duvall of Lockney. Grandmother of the groom is Mrs. Joseph R. Griffin of Elkhart, Indiana. Mrs. John Belt of Lubbock is the great-grandmother of the bride.

A trumpet fanfare and ringing of the church bells announced the bride as she was escorted down the white cloth lined aisle by her father in a Jim Hjelm formal designer gown of white silk shantung and French alencon lace. The sweetheart neckline accented the basque waist bodice and pleated shantung and lace, long sleeves. The full skirt and cathedral train was appliqued with flowing panels of alencon lace coming from beneath the "v'd" peplum. The entire gown was heavily encrusted with seed pearls and opulent sequins.

To complete her ensemble, the bride wore a lace and Austrian crystal headband attached to a cathedral length, illusion veil which sparkled with seed

pearls and sequins.

She carried a non-uniformed bouquet consisting of white roses from Rio de Janeiro, white lilies from Holland, and freesia from the South of France. The bouquet was backed by a small amount of English ivy and a halo of baby's breath.

Entwined in ribbon loveknots in her bouquet was the bride's maternal grandmother's wedding ring worn by three generations for her traditional "something old". Also in her bouquet was an engraved silver wedding bar given the bride by her mother for "something new". "Something borrowed" was a diamond drop worn around her neck which belongs to the bride's maternal grandmother.

She carried a white lace Belgium handkerchief with her new initials, and wore a new traditional blue garter given to her by her sister-in-law along with her mother's original wedding garter. Both bride and groom wore pennies with their birth year in their shoe for good luck.

The sanctuary was decorated with alternating pews of satin bows with a single, bridal white rose attached. The altar was covered with candlelight, accented by summer ferns and Victorian palms, and as a center focal point, an extremely large English Garden bouquet consisting of all the wonderful roses, lilies, gerbers, delphiniums, and Queen Anne's lace in light pinks with blushes to the depths of raspberry shades.

## Senior Citizens Rockins

Visiting Mabel Perkins all last week was her son and wife, Terry and Joanne Perkins of Houston.

Bill Thomas fell the first part of last week and broke his leg, he was transferred to the Veterans Hospital in Amarillo, he was able to return home Friday. Elmer Swaffer left Friday to see his brother in to see his brother in Weatherford, he returned Monday.

### NEWS

Thursday night, August 22, was potluck supper.

Thursday night, August 29, will be sandwiches, cake and ice cream.

The hostess for August was Bernice Kent. She and her helpers did a very good job, they had five Thursday night all say thanks to Bernice and all that helped in the kitchen. If you don't help, you can at least say thanks to the hostess.

September's co-hostesses are Doris Thacker and Elaine Gibson.

Some ladies have been quilting, they rolled sides Friday, so come on down and help get it quilted.

### BIRTHDAYS

September 4 - S. J. Williams  
September 5 - Harmon Handley  
September 6 - W.L. Thomas Jr., Lester Carter  
September 8 - Johnnie Kellison, Russell Smoot  
September 9 - Mary Lou Bollman

### ANNIVERSARY

September 6 - Russell and Sally Smoot

### AILING

Nora and Archie Bybee, Norman and Margaurite Caldwell, LaVerna Sams, Bill Thomas

### MENU

September 2 - 6

Monday: Let's have a Labor Day picnic!

Tuesday: Roast beef, new potatoes and green beans, coleslaw, cake

Wednesday: Baked chicken, macaroni and tomatoes, candied carrots, cobbler

### Thursday:

Spaghetti and meat sauce, green peas, kraut salad, onion roll, pie

### Friday:

Chicken fried steak, gravy, creamed potatoes, spinach, green salad, peanut butter cookies

## Lockney Hospital Report

August 17 - 24

Jessie McGhee, Lockney, adm. 8-10, dis. 8-21

Mary Hutton, Lockney, adm. 8-14, dis. 8-22

Selma Mendoza, Floydada, adm. 8-19, dis. 8-21

Versie Perry, Lockney, adm. 8-20, dis. 8-21

Marisela Rivera, Plainview, adm. 8-20, dis. 8-21

Bonnie Cage, Floydada, adm. 8-21, dis. 8-22

Marie Hooten, Plainview, continues care

Eula Mae Wilson, Floydada, continues care

Juan Trevino, Floydada, adm. 8-21, dis. 8-25

Michelle Carbajal, Lockney, continues care

Antonio Aguajo, Lockney, continues care

Rosalinda Luna, Plainview, adm. 8-22, baby girl born, dis. 8-24

Warren Payne, Quitaque, continues care

Theodora Ortegón, Plainview, continues care

Trina Ogden, Floydada, adm. 8-24, baby boy born, continues care

Sandra Reyna, Plainview, adm. 8-24, baby boy born, continues care

Eva Hernandez, Floydada, continues care

Mary Ramos, Plainview, adm. 8-25, baby girl born, continues care

Darolyn Williams, Floydada, adm. 8-24, baby girl born, continues care

Have a Nice Week!

Remember the **DOLLAR DAYS** of the past?

Beginning September 2

we will start our **FIRST MONDAY SALE**

- Selected Fabric

- Sewing Machines

- Patterns

**ALL MARKED DOWN**



**Just Sew**

2309 W. 5th  
Plainview, TX  
296-5254

## We Salute . . .

### HAPPY BIRTHDAY

Thursday, Aug. 29: Melva Dorman, Arturo Hinojosa, Emma Pate, Samantha Salazar, Cheryl Dawdy

Friday, Aug. 30: Flora McNeill, Cindy Gonzalez, Sharon Lockwood, Shane Derryberry, Misty Rowan, Joe Jones, Arturo Rivera Jr., Arturo Diaz, Angie Peralez, Jr. Ochoa, Cindy Aleman, Dale Jahay

Saturday, Aug. 31: Anthony Galvan, Joshua Emert, Adrian Pleasant, Oscar R. Castillo, Evelyn Pollan, Max Yeary, Bessie Wilson, Misty Avila, Helen Coleman, Angelo Williams

Sunday, Sept. 1: Isaac Martinez, Martin Riojas, Ramon Pena, Charles Wall Jr., Nelda Gonzalez, Marissa Hardamon, Jesse Ibarra

Monday, Sept. 2: Charles Bradford, Derrick Griggs, Diana Mendoza

Tuesday, Sept. 3: Laura Rocha, Glenn White, Ricky Vasquez, Leticia Jasso, Melanie LeCroy, Clara McGregor, Mary Ferguson

Wednesday, Sept. 4: A.C. Emert, Adam Pyle, Arturo Delgado Sr., Julio Cervera, Ricky Burns, Dalia Arvizu,

## Sherry's Dance Studio

Orientation for all students wishing to enroll in Fall Classes will be held at 4:30 p.m.

Thursday, August 29 at . . .

110 South Main Street, Lockney

**Bridal Selections Available for . . .**  
**Teresa Gentry & Russ Elsenbrock**  
**Chris and Joey Ray**  
(Nee Joey Thayer)  
**Sue's Gifts & Accessories**  
100 East California, Floydada 983-5312

**go vicki!**  
Simply the best value dresses in America

Shop Brown's in Lockney for new fall styles arriving daily. . .

**Brown's**  
DEPARTMENT STORE  
104-08 North Main Lockney, Texas

## Clubs and Organizations

### Floyd County Extension Homemakers

The Floyd County Extension Homemakers Council met Aug. 22 with vice president Jonelle Fawver presiding. Ruth Scott acted as secretary.

The club creed was read in unison and Maye Williams read "Helpful hints for those days when you are feeling older" by Peg Bracken.

Karen Miller will be the delegate to the State meeting at Austin Sept. 8-10. She read a letter from Amy Adrian, District II TEHA Director, stating that no decision had been made on the bill in State Legislature to do away with the Extension program.

Merle Mayfield read a letter from Governor Ann Richards, in reply to a letter Merle had written to her. She said she is in favor of keeping the Extension work.

Maye Williams gave the club report for the Harmony meetings since last council meeting.

Barbara Willis gave the report of the Homebuilders meetings since last council meeting.

Lucille Miller, chairman of the nominating committee, reported the names of the officers for the 1992 year as follows: Jonelle Fawver, president; Ruth Scott, vice president; Vivian Curtis, secretary; Gladys Widener, treasurer; and Merle Mayfield, reporter. The report was accepted and voted on.

Maye Williams will be the new TEHA chairman and Karen Miller, vice chairman.

### Floydada Rebekah Lodge

By Artie Webb

Tuesday night, Aug. 20, Floydada Rebekah Lodge met for their regular meeting.

Those reported ill were Ruth Gilliland's son, Bill, who lives in Abilene, and Wanda (O'Neal) Hodges, who lives in McAdoo.

The death of Jewell Reeves was reported and the charter was draped in her memory.

Barbara Gilliland and Artie Webb draped the charter as other members stood surrounding the charter. Artie Webb gave several memories of Jewell as the charter was draped.

Barbara Gilliland gave a program on a book entitled "Do It" written by John-Roger and Peter McWilliams, a guide to living your dreams. The following excerpts were taken from the book:

"Men are born to succeed, not fail." — Henry David Thoreau

"Regret for things we did can be tempered by time; It is regret for the things we did not do that is inconsolable." — Sidney J. Harris

"Do not be timid and squeamish about your action; All life is an experiment." — Ralph Waldo Emerson

"Success is simply a matter of luck, ask any failure." — Earl Wilson

"Results; Why man. I have gotten a lot of results. I know several thousand things that won't work." — Thomas A. Edison

"It is hard to fight an enemy who has outposts in your head." — Sally Kempton

An enjoyable evening was spent reminiscing and visiting.

### Alpha Sigma Upsilon

Alpha Sigma Upsilon, Chapter of Beta Sigma Phi, celebrated beginning day on August 23, at Roy's Sportsman Cafe in Quitaque.

After a delicious meal of fajitas and iced tea, the first regular meeting for this year, was called to order by President Hope Warren, with all members present and standing for opening rituals. Five members were present and four were excused absent. Minutes from the last meeting were read and approved.

New yearbooks were then presented to all members by Secretary Darolyn Snell.

Vice President Tonya Evans then presented a tentative schedule of plans for socials and Rush from the social and

**DOVE SEASON**  
Starts Sunday, September 1st.

Be sure and get your license by **Saturday, August 31st.**

**KIRK AND SONS**  
Floydada's Huntin' Headquarters

membership committees. These were approved and added to the year's calendar. Service projects were also discussed.

Plans were finalized for Rush to be held August 27, at the Lighthouse Community Room.

Meetings were then assigned for the next few months, with one member as hostess and one in charge of the program.

There being no further business, the meeting was then adjourned by President Hope Warren, with all members standing for closing rituals and mizpah.

Our next meeting will be Rush the last week in August at the Lighthouse.

### Arriba Club

By Soila Reyes

After a summer hiatus Arriba Club is on the move with new projects aimed at the teen population.

The club will co-sponsor a PAPA presentation to be held August 30, at South Plains Health Provider, 715 Amarillo, in Plainview at 7:00 p.m.

PAPA is Parenthood/Paternity Project presented by Eva Garza, Volunteer Coordinator from Attorney General Dan Morales' office in Lubbock.

PAPA is not a sex education program, but a bi-lingual presentation that strives to educate teens about the legal, financial, and social responsibility of parenthood.

PAPA is part of junior and senior high school's curriculum across Texas.

The presentation also informs single and divorced mothers on issues of paternity and child support enforcement.

Parents are encouraged to attend with their teenagers and everyone is welcome. There is no charge and refreshments and doorprizes will be provided.

Arriba will soon be electing new officers and plans to bring Teen Theatre to Lockney to present teen issues, problems and solutions.

Other co-sponsors of the PAPA Presentation are South Plains Health Provider and Texas Migrant Council.

For more information call Brenda Jimenez at 293-4253 or Soila Reyes at 293-4187. Club president Rosie Rendon may be contacted at 652-3725.

### Keeping You In Stitches

The Keeping You In Stitches Quilt Guild met in the home of Cindy Belt of Hale Center. They quilted on a Primitive Pieced Heart that Cindy designed in shades of blue and pink.

Final plans were set for the Mexican Star quilt class coming up in September. It will be held at the First United Methodist Church in Lockney on Friday night and Saturday, Sept. 20 and 21. More

information will be published in upcoming issues of The Hesperian-Beacon.

Plans were discussed that will include a quilt show during the Punkin Days celebration. The public is encouraged to enter quilts. There will be an array of prizes awarded.

The monthly blocks were won by Gay Terrell. They were red, white and blue Ohio Star blocks.

Members attending for the day were: Cindy Belt, Shawnda and Segayle Foster, Brenda Heflin, Jill Graham, Sidney Jackson, Anne Jones, Terrisu Mann, D'Lyn Morris and Gay Terrell.

### Have and Safe and Fun Labor Day!

## Appetizing Recipes

**MEXICAN BUNDLES**  
Makes 32 appetizers

1 (16-ounce) can  
Refried Beans  
2/3 cup Mild, Medium  
or Hot Thick and Chunky  
Salsa

2 cups shredded Monterey  
Jack or Cheddar cheese  
1/2 cup sliced pimiento-stuffed  
olives

2 (8-ounce) cans refrigerated  
crescent roll dough  
Sour cream, optional

In small bowl, blend re-  
fried beans, salsa, cheese and  
olives; set aside.

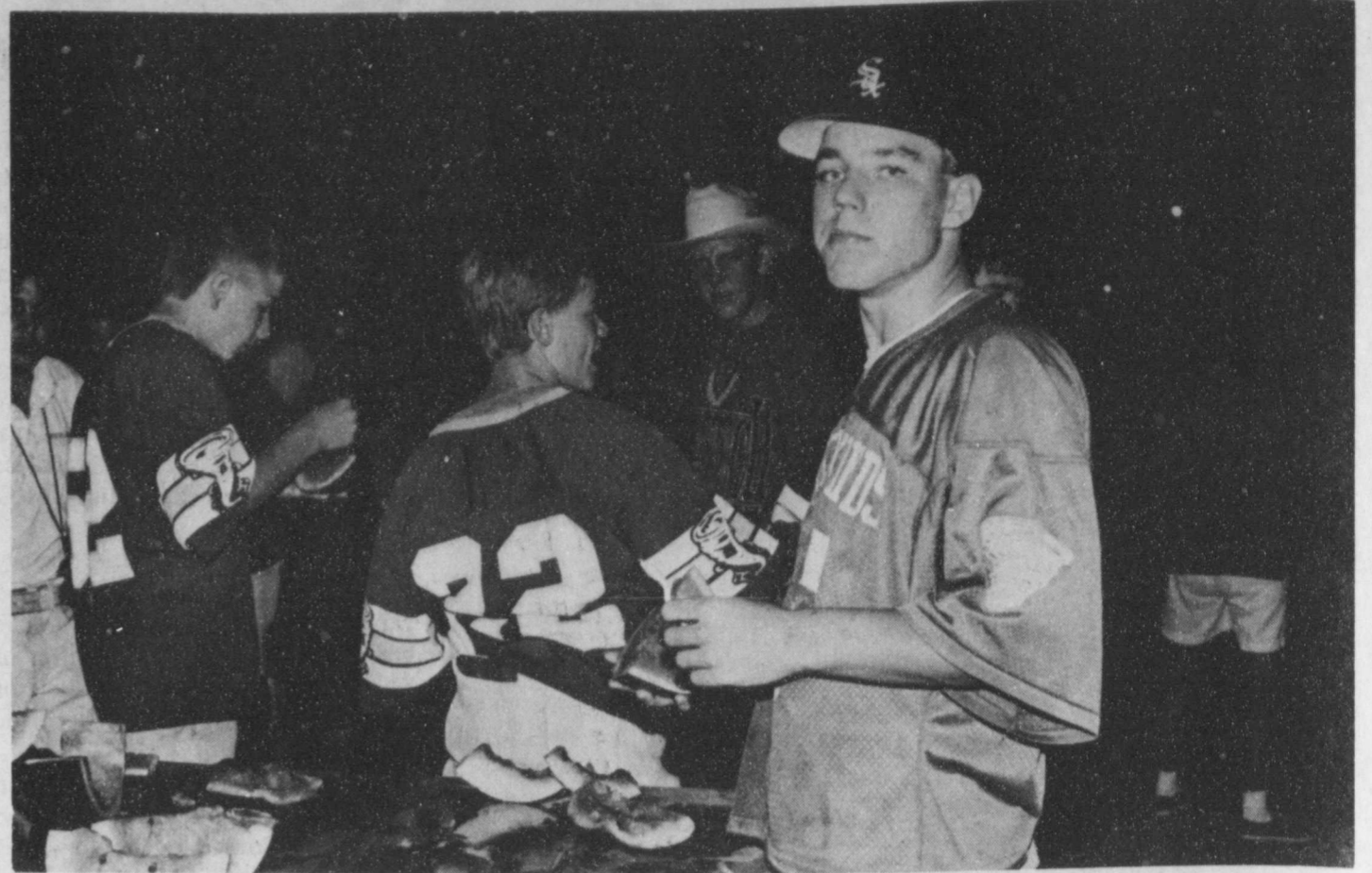
Open each can of dough and  
separate into a total of 8 rectangles;  
press diagonal perforations to seal.  
Cut each rectangle in half to form  
2 squares. Cut each square diagonally  
in half to form a total of 32  
triangles. Spoon 1 tablespoonful  
bean mixture on center of each tri-  
angle. Bring points of each triangle  
together over filling; pinch together  
at center to seal. Place on 2 large  
un-greased baking sheets. Bake at  
375°F for 13 to 15 minutes or until  
golden brown. Serve warm with  
sour cream, additional salsa or pi-  
miento-stuffed olives.

**CORN DIP CON QUESO**  
Makes 3 1/2 cups dip

2 cups shredded Monterey  
Jack or Cheddar cheese  
1 (12-ounce) jar  
Mild, Medium or Hot Thick  
and Chunky Salsa

1 (8-ounce) can whole kernel  
corn, drained

1 (8-ounce) package cream



MEET THE WHIRLWINDS -- Team members, family and fans gathered at Wester Field on August 23 to get acquainted with the 1991-92 Whirlwind football players.

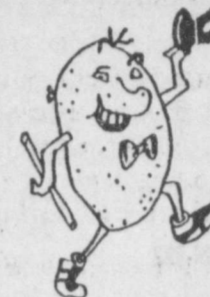
A special treat for the late summer evening was a watermelon feast after the scrimmage against Post. Staff Photo

### TATER BAKE

Sponsored by the 1956 Study Club  
**JUNIOR HIGH SCHOOL CAFETERIA**  
Floydada

Friday, September 6, 1991  
5:30 p.m. til 7:30 p.m.

Adults - \$3.50 Children Under 12 - \$2.00



## INSURANCE

... Medi-Care Supplements  
... Nursing Home  
... Home Health Care  
... Cancer &  
Life Insurance - Burial Policies

CALL: Gail Ballou  
Lubbock - 794-6583 or  
Floydada - 983-2032



**FRIENDS**  
OF THE CAPROCK

Helping Hands of the Hospital

## NOTICE OF VOTE ON TAX RATE

The Commissioners Court of Floyd County conducted a public hearing on a proposal to increase your property taxes by 7.99 percent on August 27, 1991, at 9:30 A.M.

The Commissioners Court of Floyd County is scheduled to vote on the tax rate at a public meeting to be held on September 9, 1991 at 10:00 A.M. in the County Courtroom of the Floyd County Courthouse in Floydada, Texas.

1- 10x13 (Wall Photo)  
1- 8x10  
2- 5x7  
2- 3x5  
16- King Size Wallets  
8- Regular Size Wallets

**30** Color Photos

99¢ Deposit  
\$10.00 Due at Pick up (plus tax)

**\$10.99**

WE USE KODAK PAPER

AT **SALVATION ARMY**  
401 S. Main, Lockney  
DATE: Monday, September 9  
PHOTO HOURS: 10:30-4:30

**Shugart's inc.**

Group charge 99¢ per person

**Kodak PAPER**  
for a Good Look  
FOR CREATIVE COLOR PORTRAITS

## Boy Scouts values remain firm despite news stories of changes

Local and national officials of the Boy Scouts of America called some recent accounts of changes in its organizational values "highly inaccurate."

"Some new stories about our new 'Learning for Life' have implied that Scouting is changing its values," Tim Bullock, Scout Executive said. "The traditional values represented in the Cub Scout, Boy Scout and Exploring programs are as relevant for the 1990's as they were when the movement was founded, and will not change," Bullock added.

Confusion about a change in Scouting's traditional values was the result of an announcement made last week by a local United Way chapter in California. United Way of the Bay Area issued a public statement of support for scouting's new, independent subsidiary program, "Learning for Life". In the announcement, which came prior to official introduction of the program by officials of the South Plains Council, it was implied that this new, non-traditional program marked the beginning of a changing era for values associated with Scouting. However, Chief Scout Executive Ben Love said that standards for Cub Scouts, Boy Scouts and Explorers remain unchanged. "Standards for

membership in the traditional programs of the Boy Scouts of America continue to be based upon the Scout Oath and Law," said Love. "Eligibility for 'Learning for Life' participants will be based on school enrollment requirements established by school administration," Love added.

"Learning for Life" is a partnership between teachers and Scouting that will be conducted during the school day in classrooms by teachers and other volunteers. Curriculum for the program will emphasize self esteem, ethical behavior, personal and social development, life skills and community service. "These key areas have been identified by educators and other child development of young people," said Tim Bullock. "Our goal has always been to assist in the growth of young people in America, and 'Learning for Life' provides yet another way we can play a role in building good citizens for tomorrow," added Tim Bullock.

The South Plains Council, Boy Scouts of America and the several United Ways throughout the council's 20 county area continue to work together to provide service for youth. The United Way of Plainview and Scouting have a strong, positive relationship of many years.

## Obituaries

**LAWRENCE H. BROTHERTON**  
Lawrence H. "Zeke" Brotherton, 79, of Canyon died Tuesday, August 13, 1991.

Services were at 3 p.m. Thursday, August 15, 1991, in First United Methodist Church of Canyon with the Rev. Richard Bales, pastor and the Rev. Bruce Brotherton, Methodist pastor from Shawnee, Okla., officiating. Burial was in Dreamland Cemetery by Schooler-Gordon Funeral Directors of Canyon.

Mr. Brotherton was born in Merit, he moved to a farm north of Lockney and graduated from Lockney High School. He attended West Texas State Teacher's College and earned a bachelor of science degree in 1934 and a master of arts degree in 1939. He later attended the University of Colorado in Boulder, Colo.

He married Esther Root in 1935 at Raton, N.M. He served as teacher, athletic coach and administrator at schools in Silverton, Hartley, Dalhart, Canyon, Dumas, Gruver, Adrian and Happy. He was inducted into the West Texas Hall of Athletic Champions in 1989. He was a member of the Buffalo "T" Club and the First United Methodist Church of Canyon, where he taught Sunday School classes occasionally. He was a member of Canyon Senior Citizens

Association, where he was a former president.

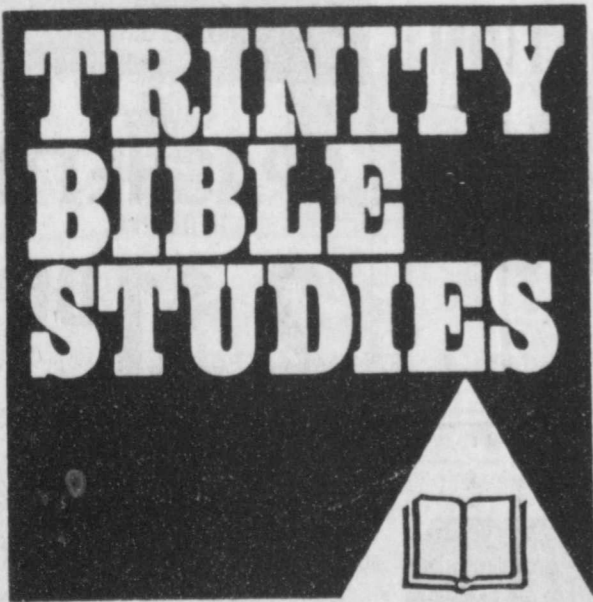
Survivors include his wife; three daughters, Alice Naas of Plano, Janie Mann of Canyon and Jan Stone of Lubbock; two sons, Larry Brotherton of Sudan and Richie Brotherton of Stratford; three sisters, Mauretta Meek of Graham, Martha Jo Boren of Petersburg and Inell Zevely of Amarillo; three brothers, Henry Brotherton of Penrose, Colo., Marvin Brotherton of Tulsa, Okla., and Bob Brotherton of Canyon; 13 grandchildren; and five great-grandchildren.

The family suggests memorials to the American Cancer Society, Canyon Senior Citizens Association or a favorite charity.

Continued On Page 14

### The Floyd County Hesperian-Beacon

remain the most economical among area papers.  
For only 280 pennies per column inch, the advertiser can place a message in 2,900 households, reaching nearly 80 percent of all Floyd County readers.



September 23 to November 25th

THE PENTATEUCH  
Course OT2

First United Methodist Church, Lockney, Texas  
Teacher - Tommie Beck

Tommie Beck, pastor of the First United Methodist Church of Lockney, announces the beginning of the third semester of Trinity Bible Study. The study will begin on Monday, September 23rd and will end on November 25th. The course is ten week (15 hours) study, meeting once each week for an hour and a half (7:00 to 8:30 p.m.). The first two were survey courses spending ten weeks each on the Old and New Testaments. The third semester will be an in-depth study on the Pentateuch or the Law of Moses.

The public is invited to take this study which is non-denominational and taking the first two semesters is not required. The cost of the study is for material only. (\$9.00 if you need the notebook and \$6.00 for the study material only.)

The purpose of the Trinity Bible Study, which was written by Frank Warden, is to study the Bible together and see what it has to say to us today. It is a disciplined study which requires homework and eighty percent attendance in class.

To enroll call or come by the church office. Deadline for enrollment is September 12th, to ensure that the course material will be available.

# CHURCH DIRECTORY

## SPANISH BAPTIST MISSION

Floydada  
Rev. Lupe Rando  
Sunday School . . . . . 9:45 a.m.  
Morning Worship . . . . . 10:55 a.m.  
Evening Worship . . . . . 6:00 p.m.  
Wednesday Evening . . . . . 7:00 p.m.  
1st Wednesday:  
Organization Night

## SPANISH ASSEMBLY OF GOD TEMPLO GETSEMANI

308 Mississippi  
Samuel Rodriguez, Pastor  
Sunday School . . . . . 10:00 a.m.  
Morning Worship . . . . . 11:00 a.m.  
Evening Evangelistic Service . . . . . 6:00 p.m.  
Wednesday:  
Family Night . . . . . 7:30 p.m.

## CARR'S CHAPEL

Service Every Sunday:  
Morning Worship . . . . . 9:30 a.m.  
Sunday School . . . . . 10:30 a.m.  
No Evening Services

## FIRST CHRISTIAN CHURCH

Rev. Robin Hoover  
Sunday School . . . . . 9:45 a.m.  
Sunday Worship . . . . . 11:00 a.m.

## FIRST ASSEMBLY OF GOD CHURCH

Floydada  
G.A. VanHoose, Pastor  
Sunday School . . . . . 9:45 a.m.  
Morning Worship . . . . . 10:50 a.m.  
Sunday Evening Evangelistic . . . . . 6:00 p.m.

## SAN JOSE CATHOLIC CHURCH

Lockney  
Father Jack Gist  
Wednesday:  
Communion Service . . . . . 8:00 p.m.  
Saturday Vigil:  
Mass of Sunday . . . . . 7:30 p.m.  
Sunday Mass . . . . . 12:30 p.m.

## ST. MARY MAGDALEN CATHOLIC CHURCH

Floydada  
Father Adolfo L. Valenzuela  
Sunday Mass . . . . . 12:30 p.m.  
Weekday Masses . . . . . 7:30 p.m.  
(Tuesday, Thursday, Saturday)  
Office & Rectory Phone:  
983-5878

## WEST SIDE CHURCH OF CHRIST

Floydada  
Sunday Worship . . . . . 10:30 a.m.  
Sunday Evening . . . . . 6:00 p.m.  
Wednesday . . . . . 7:00 p.m.

## GRACE FELLOWSHIP CHURCH

211 N. Main, Lockney  
Rev. Ted Samples, Pastor  
Sunday School . . . . . 9:45 a.m.  
Morning Worship . . . . . 11:00 a.m.  
Wednesday Service . . . . . 7:00 p.m.

## CITY PARK CHURCH OF CHRIST

Floydada  
Randall Morris, Preacher  
Sunday:  
8:15 a.m. KKYN Radio Broadcast  
Bible Study . . . . . 9:30 a.m.  
Morning Worship . . . . . 10:30 a.m.  
Evening Worship . . . . . 6:00 p.m.  
Spanish Assembl . . . . . 3:00 p.m.  
Wednesday:  
Bible Study . . . . . 7:30 p.m.

## APOSENTO ALTO DE PENTECOSTAL

203 SE 2nd & College, Lockney  
652-2204  
Chon Sepulveda, Pastor  
Wednesday Evening . . . . . 7:30 p.m.  
Sunday School . . . . . 10:00 a.m.  
Sunday Worship . . . . . 5:00 p.m.

## MAIN STREET CHURCH OF CHRIST

Lockney  
Perry Zumwalt, Minister  
Bible Study . . . . . 9:30 a.m.  
Morning Worship . . . . . 10:30 a.m.  
Evening Worship . . . . . 6:00 p.m.  
Wednesday:  
Ladies Bible Class . . . . . 9:30 a.m.  
Bible Study . . . . . 7:30 p.m.

## WEST COLLEGE CHURCH OF CHRIST

West College & Third, Lockney  
Frank Duckworth, Evangelist  
Morning Worship . . . . . 10:30 a.m.  
Evening Worship . . . . . 6:00 p.m.  
Wednesday Service . . . . . 8:00 p.m.

## TRINITY LUTHERAN CHURCH

Providence Community  
Gary Kleypas, Pastor  
Sunday School & Adult Bible Class . . . . . 10:00 a.m.  
Worship Service . . . . . 11:00 a.m.

## IGLESIA DEL REY JESUS

404 E. 6th St., Lockney  
Lupe Banda, Pastor  
Sunday School . . . . . 10:00 a.m.  
Evening Service . . . . . 6:00 p.m.  
Tuesday:  
Youth Service . . . . . 7:30 p.m.

## GRANT CHAPEL CHURCH OF GOD IN CHRIST

John Williams, Pastor  
Sunday School . . . . . 10:00 a.m.  
Monday Worship . . . . . 11:00 a.m.  
Evening Service . . . . . 7:30 p.m.  
Tuesday:  
Prayer Service . . . . . 8:00 p.m.  
Wednesday:  
Service . . . . . 7:30 p.m.

## TEMPLO BAUTISTA SALEM

Lockney  
Israel Tapia, Pastor  
Sunday School . . . . . 9:45 a.m.  
Worship Service . . . . . 11:00 a.m.  
Christian Training . . . . . 5:00 p.m.  
Evening Worship . . . . . 6:00 p.m.  
Wednesday:  
Prayer Meeting . . . . . 7:30 p.m.

## BIBLE BAPTIST CHURCH

Floydada  
Bob Chapman  
Sunday:  
Sunday School . . . . . 10:00 a.m.  
Morning Worship . . . . . 10:45 a.m.  
Prayer Meeting . . . . . 6:00 p.m.  
Evening Service . . . . . 6:30 p.m.  
Wednesday:  
Evening Services . . . . . 7:30 p.m.

## TEMPLO BETHEL SPANISH ASSEMBLY OF GOD

Washington and 1st St. Lockney - 652-2181  
Gabriel W. Ortiz, Pastor  
Olga L. Martinez, Youth Pastor

Sunday School . . . . . 9:45 a.m.  
Morning Worship . . . . . 11:00 a.m.  
Evening Worship . . . . . 5:00 p.m.  
Wednesday Service . . . . . 7:30 p.m.

## MT. ZION BAPTIST CHURCH

Floydada  
Rev. Ralph Jackson  
Sunday School . . . . . 10:00 a.m.  
Morning Worship . . . . . 11:00 a.m.  
BTU . . . . . 6:00 p.m.  
Evening Worship . . . . . 7:00 p.m.  
Wednesday:  
Mid-Week Prayer . . . . . 7:00 p.m.  
Thursday:  
Bible Study . . . . . 7:00 p.m.

## AIKEN BAPTIST CHURCH

Clay Burdette, Pastor  
Sunday School . . . . . 10:00 a.m.  
Morning Worship . . . . . 11:00 a.m.  
Evening Worship . . . . . 6:00 p.m.  
Wednesday:  
Bible Study . . . . . 7:30 p.m.

## TEMPLO NUEVA VIDA

Rev. Herman Martinez  
308 W. Tennessee  
Sunday School . . . . . 10:00 a.m.  
Sunday Prayer Service . . . . . 2:00 p.m.  
Evening Worship . . . . . 5:00 p.m.  
Tuesday:  
Ladies Prayer . . . . . 2:00 p.m.  
Evening Service . . . . . 7:30 p.m.  
Thursday Service 7:30 p.m.

## FRIENDSHIP CHAPEL CME

Floydada  
Rev. James Jenkins  
Sunday . . . . . 9:45 a.m.  
Morning Service . . . . . 11:00 a.m.  
Wednesday:  
Bible Study . . . . . 8:00 p.m.

## PRIMER IGLESIA BAUTISTA

Rev. Pedro Reyes  
Sunday School . . . . . 9:45 a.m.  
Morning Service . . . . . 11:00 a.m.  
Training Union . . . . . 6:00 p.m.  
Evening Worship . . . . . 6:00 p.m.  
Wednesday Service . . . . . 7:30 p.m.

## FIRST UNITED METHODIST CHURCH

Lockney  
Sunday School . . . . . 9:45 a.m.  
Worship Service . . . . . 10:50 a.m.  
UMY . . . . . 5:00 p.m.  
Evening Worship . . . . . 6:00 p.m.  
United Methodist Women,  
Hill Circle,  
3rd Tuesday . . . . . 9:30 a.m.  
Ruth Wesley Circle,  
2nd and 4th  
Mondays . . . . . 10:30 a.m.

## TRINITY CHURCH

500 W. Houston  
Floydada  
Sunday School . . . . . 9:45 a.m.  
Morning Worship . . . . . 11:00 a.m.  
Sunday Evening . . . . . 6:00 p.m.  
Wednesday:  
Prayer . . . . . 7:30 p.m.

## FIRST BAPTIST CHURCH

Floydada  
Rev. Howell E. Farnsworth Jr.  
Sunday:  
Sunday School . . . . . 9:45 a.m.  
Morning Worship . . . . . 11:00 a.m.  
Adult Church Training . . . . . 6:00 p.m.  
R.A.'s, G.A.'s,  
Mission Friends . . . . . 6:00 p.m.  
Evening Worship . . . . . 7:00 p.m.  
Wednesday:  
Evening Meal . . . . . 6:00 p.m.  
Acteens . . . . . 6:00 p.m.  
Prayer Meeting . . . . . 7:00 p.m.  
Youth Bible Study . . . . . 7:00 p.m.

## FIRST UNITED METHODIST CHURCH

Floydada  
Bill Wright, Pastor  
Sunday School . . . . . 9:45 a.m.  
Morning Worship . . . . . 11:00 a.m.  
Youth Fellowship . . . . . 5:00 p.m.  
Evening Worship . . . . . 6:00 p.m.

## CALVARY BAPTIST CHURCH

Floydada  
Claude Porter, Pastor  
Sunday School . . . . . 9:45 a.m.  
Morning Worship . . . . . 11:00 a.m.  
Bible Study . . . . . 6:00 p.m.  
Evening Worship . . . . . 6:00 p.m.  
Wednesday Evening . . . . . 7:00 p.m.

## FIRST BAPTIST CHURCH

Lockney  
Dr. Fred Meeks  
Interim Pastor  
Sunday School . . . . . 9:45 a.m.  
Morning Worship . . . . . 10:45 a.m.  
R.A.'s . . . . . 5:30 p.m.  
G.A.'s . . . . . 5:30 p.m.  
Church Training . . . . . 6:00 p.m.  
Evening Worship . . . . . 7:00 p.m.  
Wednesday:  
Prayer Meeting . . . . . 7:00 p.m.  
Youth Bible Study . . . . . 7:00 p.m.  
(Jr. High & High School)  
Kids of The King  
Childrens Choir . . . . . 7:00 p.m.  
Mission Friends . . . . . 7:00 p.m.  
Adult Choir . . . . . 8:00 p.m.  
Saturday:  
Men's Prayer Meet. . . . . 7:30 p.m.  
1st & 3rd Mondays:  
Baptist Women . . . . . 3:00 p.m.

## EVANS CHAPEL BAPTIST CHURCH

Rev. Sammy Holloway  
Sunday School . . . . . 10:00 a.m.  
Morning Worship . . . . . 11:00 a.m.  
Afternoon Worship . . . . . 2:00 p.m.  
Training Union . . . . . 6:00 p.m.  
Evening Worship . . . . . 7:00 p.m.  
Wednesday:  
Prayer Meeting . . . . . 7:00 p.m.

## NEW SALEM PRIMITIVE BAPTIST CHURCH

Floydada  
Jim Jackson, Pastor  
Sunday: Congregational  
Singing . . . . . 10:30 a.m.  
Morning Worship . . . . . 11:00 a.m.  
Evening Worship . . . . . 6:00 p.m.

## SOUTH PLAINS BAPTIST CHURCH

Ernest Stewart, Pastor  
Sunday School . . . . . 10:00 a.m.  
Morning Worship . . . . . 11:00 a.m.

## VICTORY BAPTIST CHURCH

Travis Curry, Pastor  
Sunday School . . . . . 10:00 a.m.  
Morning Worship . . . . . 11:00 a.m.  
Evening Worship . . . . . 7:00 p.m.  
Wednesday Service . . . . . 7:00 p.m.

### Church Directory Published Courtesy Of The Following Businesses:

#### Brown's Department Store

106 N. Main - Lockney - 652-3831

#### City Auto

201 E. Missouri - Floydada - 983-3767

#### Clark Pharmacy

320 N. Main - Lockney - 652-3353

#### Davis Lumber

102 E. Shurbet - Lockney - 652-3385

#### Garcia's OK Tire Store

308 S. Main - Floydada - 983-3370

#### Sponsor Needed

#### Lighthouse Electric Cooperative

Matador Highway - Floydada - 983-2184

#### Lockney Co-op Gin

West of City - Lockney - 652-3377

#### Lockney Insurance Agency

105 N. Main - Lockney - 652-3347

#### Moore-Rose-White Funeral Home

329 W. California - Floydada - 983-2525  
402 S. Main, Lockney - 652-2211

#### Oden Chevrolet-Olds

221 S. Main - Floydada - 983-3787

#### Pay-n-Save

210 N. Main - Lockney - 652-2293

#### Plains Electric Co.

106 S. Main - Lockney - 652-2133

#### Sponsor Needed

#### Schacht Flowers, Jewelry & Gifts

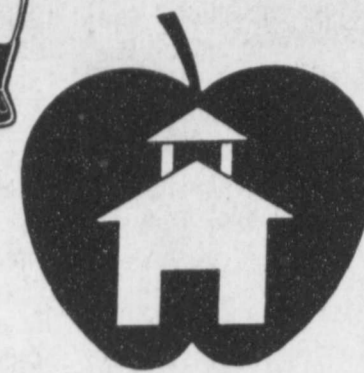
112 W. Poplar - Lockney - 652-2385

#### Thompson Pharmacy

200 S. Main - Floydada - 983-5111

#### Wilson Aerial Spraying

Lockney - 652-2719



PRICES EFFECTIVE AUGUST 25-31, 1991

GILLETTE  
**FLEX GRIP PEN**  
1 CT. PKG.  
**79¢**

STUART HALL  
**FILLER PAPER**  
200 CT. PKG.  
**3\$1**  
FOR

GILLETTE  
**WRITE BROTHERS**  
10 PACK  
**87¢**

ELMER'S  
**GLUE-ALL OR SCHOOL GLUE**  
4 OZ. BTL.  
**79¢**

GILLETTE CORRECTION  
**LIQUID PAPER**  
EACH BTL.  
**\$1.29**

16  
**BRILLIANT Crayons**  
Super Bright Colors!  
ROSE ART AMERICAN  
**CRAYONS**  
16 CT. PACK  
**59¢**

BIC  
**MECHANICAL PENCIL**  
5 CT. PACK  
**\$1.39**

SANDWICH CREME OR SHELL  
**NINJA TURTLE COOKIES**  
EACH PKG.  
**\$1.49**

NO NONSENSE  
REGULAR  
**PANTY-HOSE PAIR**  
**99¢**

MASTERLOCK  
**COMBINATION LOCK**  
REG. \$4.49  
**\$2.99**

BIC  
**CLIC STIC**  
2 CT. PACK  
**89¢**

PARKER REFILLABLE  
PEN ON A ROPE  
**SLINGER**  
EACH  
**\$2.79**

PENTEL  
**STARTER SET PENCIL**  
EACH  
**\$1.39**

QUICK GEL  
DURO NO RUN  
**SUPER GLUE**  
EACH  
**\$2.59**

110  
**POLAROID FILM**  
24 EXPOSURE  
**\$2.79**

DAVINCI  
**SPAGHETTI**  
16 OZ. PKG.  
**2 \$1.00**  
FOR

PENTECH  
PENCIL  
**GRIP STIX**  
6 CT. PKG.  
**\$1.29**

ASSORTED  
**LIL DINO DRINKS**  
8 OZ. SIZE  
**3 FOR 89¢**

EASY SWEEP  
**BROOMS OR COTTON MOPS**  
REGULAR \$5.99  
**\$4.99**

Polaroid  
Color Print Film  
**One Film**  
24 Exp.  
35 mm  
**\$2.99**

POLAROID 35 MM  
**ONE FILM**  
24 EXPOSURE  
**\$2.99**

K&M HOT ONES  
**STORAGE CASE**  
10 1/2" X 8"  
**\$1.39**

PENTECH  
**HOT SPOT HIGH-LIGHTERS**  
5 CT. PKG.  
**\$1.99**

K&M NEON  
**POLY BINDERS**  
1/2" OR 1"  
**\$1.29**

PENTEL  
**ROLL'N GLUE**  
EACH  
**\$1.19**

STUART HALL  
**THEMEBOOK**  
70 CT.  
**39¢**

GILLETTE  
**ERASER-MATE-2**  
3 CT. PKG.  
**\$1.29**





**Coca-Cola  
Dr. Pepper**  
2 LITER BTL.  
**97¢**



POTATO CHIPS  
**Lay's®**  
REGULAR \$1.59  
**99¢**



ASSTD. LAUNDRY DETERGENT  
**Ultra Tide**  
46 OZ. BOX  
**\$2.79**



ASSTD. ANGEL SOFT BATHROOM  
**Tissue**  
4 ROLL PKG.  
**89¢**

RANCH STYLE REG/W-JALAPENO  
**Beans**  
15 OZ. CAN  
**2.79¢**  
FOR

VAN CAMP'S  
**Pork & Beans**  
16 OZ. CAN  
**3 \$1**  
FOR

ASSORTED FRITO-LAY CANNISTER  
**Snacks**  
8 TO 10 OZ. CANNISTER  
**99¢**

FRENCH'S FAMILY SIZE SQZ.  
**MUSTARD** 16 OZ. BTL. **89¢**  
DEL MONTE REG/SQUEEZE  
**KETCHUP** 32 OZ. BTL. **99¢**

**GROCERY SPECIALS**

5¢ OFF LABEL LIQUID BLEACH  
**CLOROX** 99¢ GAL JUG

REYNOLD'S STANDARD FOIL 69¢ 25 FT. ROLL

COMET LONG GRAIN RICE \$1.59 42 OZ. BOX

BM PANCAKE/WH. WHEAT KRUSTEAZ 99¢ 2 LB. PKG.

ARTIFICIAL SWEETENER SWEET-N-LOW \$2.69 250 CT. PKG.

SOLO 16 OZ. PARTY CUPS 89¢ 20 CT. PKG.

SOLO 9 INCH PARTY PLATES \$1.19 15 CT. PKG.

RANCH STYLE PLAIN CHILI \$1.29 19 OZ. CAN

**YOU GET THE BEST FOR LESS!**

**FROZEN FOOD & DAIRY**

FROZEN SUNNY DELIGHT PUNCH 3 \$1 12 OZ. CANS

PILGRIM'S PRIDE CHICKEN NUGGETS/STRIPS/BRST. FILLETS/PATTIES \$1.79 9 TO 10 OZ.

BTRMLK. PANCAKES/BLUBRY/FRENCH TST. KRUSTEAZ \$1.59 19 OZ. PKG.

I CAN'T BELIEVE IT'S NOT BUTTER BANQUET ASSORTED CREAM PIES 99¢ 1 LB. PKG.

GREEN GIANT BROCC-AULI OR SANTE FE MIX \$1.39 16 OZ. PKG.

PET RITZ DEEP DISH PIE SHELLS \$1.29 2 CT. PKG.

BLUE BUNNY ASSTD. FLAVORS ICE CREAM \$1.79 1/2 GAL. CTN.

SHURFINE ASSORTED TWIN POPS 99¢ 6 CT. PKG.

SHURFINE FUDGE BARS \$1.79 6 CT. PKG.

ASSTD. FROZEN FRUIT DRINKS SUN SIP 3 \$1 12 OZ. CANS

CREAMY/CRUNCHY PEANUT BUTTER JIF \$4.19 40 OZ. JAR

SCHILLING TACO/BRN. GRAVY MIX 3 \$1 3/4 TO 1 1/2 OZ.

BARBARA DEE COOKIES-N-CREAM/CHOC. FUDGE/PNT. BTR. COOKIES \$1.39 16 OZ. PKG.

LARGE BTL. STEAK SAUCE A-1 \$2.89 10 OZ. BTL.

**SPECIALS FROM CAMPBELL'S**

FRANCO-AMERICAN ASSORTED GRAVIES 59¢ 10.25 OZ. CAN

CAMPBELL'S ASSORTED RAMEN NOODLES 2.79¢ 2.2 OZ. CUPS

CAMPBELL'S ASSORTED MICROWAVE SOUPS 69¢ 7.75 OZ. PKG.

CAMPBELL'S VEGETABLE OR VEGETARIAN VEGE. SOUP 59¢ 10.5 OZ. CAN

HOLLYWOOD PEANUT OIL \$2.19 24 OZ. BTL.

KRAFT ASSTD. BBQ SAUCE 99¢ 18 OZ. BTL.

AMERICAN BEAUTY LONG SPAGHETTI OR ELBO RONI \$2.09 48 OZ. PKG.

HIDDEN VALLEY RANCH ORIG. RANCH TAKE HEART DRESSING \$1.19 8 OZ. BTL.

PET REGULAR OR SKIM EVAPORATED MILK 59¢ 12 OZ. CAN

PURINA HI-PRO DOG FOOD \$6.89 20 LB. BAG

WHITE OR GOLD BAR SOAP SAFEGUARD \$1.69 3 BAR PACK

LIQUID LAUNDRY DETERGENT TIDE \$3.59 64 OZ. BTL.

ALL FABRIC BLEACH BIZ \$2.29 30 OZ. BOX

ASSORTED SHEET FABRIC SOFTENER BOUNCE \$1.99 36 TO 40 CT.

SMALL PACK 49¢ LB.

10 LB. BAG FRESH FRYER

**Leg Quarters** 39¢ LB.

PLANTATION TURKEY BOLOGNA 1 LB. PKG. 99¢

HEAVY GRAIN FED BEEF BNLS. STK. TOP SIRLOIN	LB.	\$2.79	MARKET CUT RED RIND LONGHORN CHEESE	LB.	\$1.99
FAMILY PACK FRYER THIGHS	LB.	49¢	PRICES PIMENTO OR JALAPENO CHEESE SPREAD	7 1/2 OZ. TUB	\$1.29
FAMILY PACK FRYER DRUMSTICKS	LB.	59¢	PRICES PIMENTO CHEESE SPREAD	14 OZ. TUB	\$2.39

CAMPBELL'S N.E. CLAM CHDR/CKN. NDL/CKN. VEGE. CHUNKY SOUP \$1.29 19 OZ. CAN

CAMPBELL'S HOME COOKIN' CHICKEN NOODLE SOUP \$1.29 19 OZ. CAN

FRANCO-AMERICAN ASSTD. WITH MEAT PASTAS 79¢ 14.75 OZ. CAN

CAMPBELL'S BROCC-CHEESE SOUP 59¢ 10.5 OZ. CAN

ASSTD. VARIETIES SPAG. SAUCE PREGO \$1.69 30 OZ. JAR

MRS. PAUL'S BATTER DIPPED FISH FILLETS \$3.29 21.2 OZ. PKG.

MRS. PAUL'S BUDGET LINE MINCED FISH STICKS \$1.19 5.1 OZ. PKG.

SWANSON PLUMP & JUICY FRIED CHICKEN \$3.19 28 OZ. PKG.

SWANSON ASSTD. HOMESTYLE RECIPE ENTREES \$1.29 5.75 TO 9 OZ.

SWANSON ASSTD. BUDGET DINNERS 99¢ 7.5 TO 11 OZ.

RED RIPE **Watermelons** \$1.79 EACH

ICEBERG HEAD LETTUCE 49¢ HEAD

RED SEEDLESS GRAPES 79¢ LB.

NEW CROP RED ONIONS 59¢ LB.

SNO-WHITE CAULIFLOWER 85¢ EACH

CALIFORNIA PEACHES 49¢ LB.

**Pay-n-Save** QUALITY AND SERVICE

PRICES EFFECTIVE AUGUST 25-31, 1991

Double Coupons Wednesday & Saturday

Floydada & Lockney

WE RESERVE THE RIGHT TO LIMIT QUANTITIES

**HEALTH & BEAUTY**

JERGEN'S REG-X-DRY FORMULA ADVANCE THERAPY LOTION \$2.29 10 OZ. BTL.

ASSORTED SUNTAN LOTIONS COPPERTONE \$5.79 4 OZ. BTL.

LIQUID IMODIUM AD \$3.79 2 OZ. BTL.

MAX. STRENGTH ALLERGY SINUS CAPSUL CAPS TYLENOL \$3.99 20 TO 24 CT.

**O'BOISIES** 89¢

Reg. \$1.29

Part I - Whirlwind Profiles

# Bill Gray's 1991 Football Forecast

By Bill Gray

The Dean Bates era of Floydada football enters its third year on September 6, when the Whirlwinds host the Crane Golden Cranes in the season opener. In Bates' two years as head coach, the 'Winds have compiled a record of fifteen victories, five defeats and one tie.

An undefeated district championship team gave Floydada its first playoff appearance in eight years in 1989. Nineteen-ninety had promise to bring more of the same, but it was not to be. The 'Winds slipped a couple of notches, finished third in District 2-3A with three victories, and produced a 5-4-1 season mark.

To most observers, 1991 would appear to be a rebuilding year as only four starters return for their senior campaign. In its pre-season selections, the Harris Poll projects Floydada behind Tulia, Littlefield and Dimmitt. Dave Campbell's Texas Football and Sam Mayo's Top of Texas both concur with these ratings, although Campbell gives the Whirlwinds some support if Tulia or Littlefield fail to live up to expectations.

Pre-season polls and projections are mainly based upon the previous year's performances, along with returning seniors and other key personnel. Some elements the "experts" failed to evaluate in their assessments of Floydada for the coming year were its BIG junior class and several projected sophomore starters.

For 1991, Floydada's crop of juniors is not only big in numbers (twenty), but outstanding in size and strength. Four of the juniors are members of the unofficial "300 Club" (Tate Harris, Michael Gilliland, Scott Crader and Todd Cage - those players close or surpassing 300 pounds in the bench press).

Sam Mayo, in his Top of Texas Football refers to Gilliland and Cage as the "Twin Tanks". Add sophomore Adam Gonzales (6'2" 241 lbs. and the fifth "300 Clubber"), and the Whirlwinds will present an 1100 lb. forward wall. Perhaps Mayo should have included a "battleship" along with the "twin tanks".

Bates' wishbone attack, with several new twists added this year, seems to be

tailor-made for diminutive senior Billy Villarreal, who has emerged as the heir-apparent at quarterback. Villarreal possesses quick hands and feet, and makes up for his size (5'4" 130 lbs.) with a solid understanding of the option offense. Senior Keith Teeple (5'6" 140 lbs.) backs up at QB, and should see a lot of playing time.

Because of the small stature of both quarterbacks, an effective passing game may be limited. All-South Plains receiver Kenneth Collins and Michael Aleman both graduated. Seniors Jaime Suarez and Rance Pernell and junior Jason Pyle were the projected wide-outs, but an early season injury to Pernell may keep him out for at least the first six weeks. Juniors Jesse Rodriguez and Jonathon Simpson round out the receiver corps-although with Pernell out, some JV'ers may get a chance on down the line.

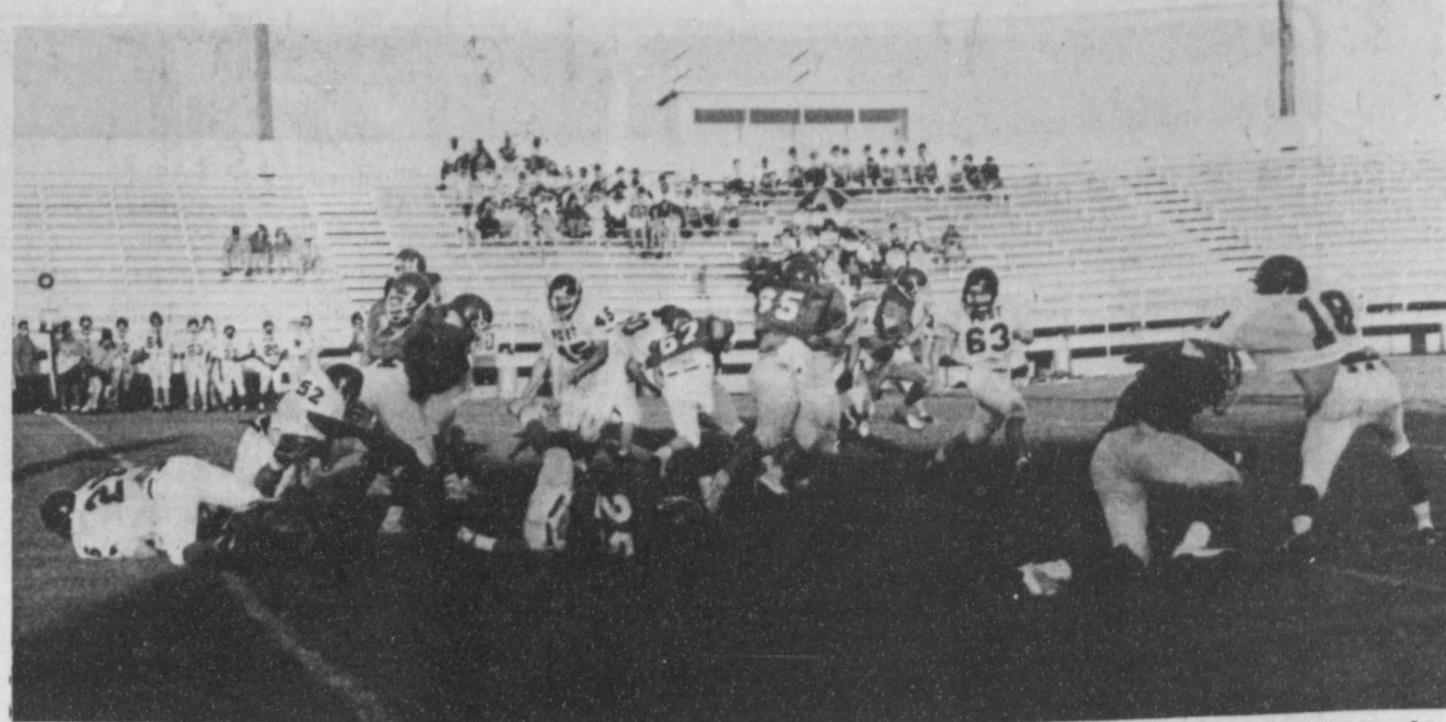
Due to the lack of experienced depth in the receivers, a two-deep stable of fleet, veteran running backs may be the answer to Floydada's passing game. All-District 2-3A performer Ruben Chavarria returns at fullback for this third varsity season, along with juniors Jammie Davis and Michael Henderson, who will fill the halfback slots. All have game-breaking abilities as runners as well as receivers. Experienced seniors Tracey Johnson (fullback), Kenneth Davis and Quincy Johnson (halfbacks) are joined by Mike Ochoa and Israel Medrano to give the 'Winds speed and

depth in the backfield.

Junior Scott Crader (6'0 195 lbs.) returns at center to anchor the offensive line. He'll be backed up by sophomore Brandon Gilliland (6'2" 185 lbs.). The "Twin Tanks" guards are juniors Michael Gilliland (5'11" 225 lbs.) and Todd Cage (5'11" 220 lbs.). Junior tackle Tate Harris (5'11" 220 lbs.) and 241 lb. sophomore Adam Gonzales solidify the offensive line. Others who will assist in the trenches include Rafael De Ochoa (212 lbs.), Wayne Wells, Rance Golightly, and Ramiro Rios.

Floydada's vaunted "50" defense should take up where it left off a year ago. Six starters return on the stopper unit that led all 3-A defenses on the South Plains in 1990. Jesse Rodriguez and Kenneth Davis return at ends. Gonzales takes over for departed Freddie Portee at right tackle, with Cage completing the front four at left tackle. The Gilliland brothers, along with Harris and Crader are more than adequate reserves on the defensive front wall.

Sophomore Rafael De Ochoa's 212 lbs. will be a big factor at nose guard. Rance Golightly is penciled in here as the back-up, and will see a lot of game time. All-South Plains defender Ruben Chavarria will be the field commander from his strongside linebacker post, with Mike Ochoa listed as number two on the depth chart. Junior Ramiro Rios will fill the weakside linebacker spot, where Israel Medrano and Tracey Johnson will also see plenty of activity.



THE 'WINDS BLAST POST -- Scrimmage action last Friday found Floydada's defense holding the Post offense to just 10 yards as the team demonstrated its prowess in pre-season play. Floydada's next exhibition will be this Friday at Lubbock-Cooper in preparation for the home season opener against Crane on September 6. Staff Photo

Jaime Suarez is the lone veteran in the defensive secondary as he returns for his senior year at the right corner. Quincy Johnson will hold down the left corner, with Keith Teeple listed as the back-up. Jammie Davis takes over at strong safety, replacing Kenneth Collins (who was All-South Plains at this position for two years.) Michael Henderson replaces graduated Michael Aleman at free safety. Davis and Henderson have big shoes to fill at the safeties, but each brings good speed and experience to the positions. Villarreal and Teeple may also see some time in the deep secondary.

Perhaps no other spots will be affected by Kenneth Collins' departure as

much as the place kicking and punting chores. There are more question marks in the kicking game than at any other positions going into the season. Rains during the early part of two-a-days were spent indoors, during the time the kicking game generally is developed. It is critical for someone to come forward in this important area before September 6.

Asked what the Whirlwinds' chance are in 1991, Coach Dean Bates commented, "We're young...awfully young, but we have good size and strength. This is the biggest, physical team we've had since we've been here. Some have noted that we're a year away, but I can't say that we aren't here this year." Bates added, "We have a lot of talent on total numbers. Our kids have to work hard to condition themselves to be able to

compete with the Canyons, Littlefields and Tulias - all larger-enrollment schools. We are small in the backfield, especially at quarterback, but the young men have good work habits and are dedicated to the program. Unless we get some people hurt at key positions, we ought to be in the thick of things right down to the wire."

This writer tends to agree with Coach Bates! The Whirlwinds WILL be in the thick of things in 1991. Contrary to the other polls and ratings, I look for the 'Winds to improve on their 5-4-1 record of a year ago. An 8-2 season will put the 'Winds into the playoffs on November 15. For a closer look, a week-by-week projection for the '91 season, and just how the 'Winds will manage that 8-2 regular season record, see next week's Floyd County Hesperian-Beacon.

## Whirlwind gibes... by bill gray



## Drivers are advised to use caution as school year begins

Vacations are ending and children are preparing to return to school. Major V.J. Cawthon, Regional Commander of the Texas Department of Public Safety says that this will create not only a change for our children, but the motoring public must also make some changes as well.

During the summer months, drivers often get out of the habit of being alert for both school zones and school buses. Major Cawthon says that now is the time to get familiar with posted school times in your area. It's important to remember that school zones can be posted by blinking yellow lights or in some areas just a sign posting the school zone times. Either way it's your duty to be alert for our young children, some of whom are attending school for the first time and others who have moved to the neighborhood during the summer months and who may be unfamiliar with the area.

State law requires drivers on the same roadway as a school bus that has stopped to load or unload school children, to stop and remain stopped until one of three things happen. The bus driver signals you to go on by, they turn off the flashing red lights, or the bus itself resumes motion. This law applies whether you are meeting the bus or whether you are going in the same direction; with the only exception being drivers on the other side of a divided highway (roadways separated by a physical median). These drivers are not required to stop when meeting the bus.

Motorist who must back their vehicles into the path of pedestrians or bicyclist should use extreme caution, noting that the driver's line of sight is very limited in backing maneuver. It's a good idea to physically inspect what's behind your vehicle prior to backing and while backing. Do it slowly and sound your horn, if necessary to ensure safety.

**DOVE SEASON**  
Starts Sunday, September 1st.

Be sure and get your license by **Saturday, August 31st.**

**KIRK AND SONS**  
Floydada's Huntin' Headquarters

## Floydada School Menu

Sept. 3-6

- Monday:**  
No School - Labor Day Holiday
- Tuesday:**  
Breakfast — Pineapple juice, cinnamon toast, milk  
Lunch — Hamburger pizza, corn, pickle spear, apple crisp, milk
- Wednesday:**  
Breakfast — Orange juice, scrambled egg, toast, milk  
Lunch — Steak fingers, gravy, mashed potatoes, green beans, pears, hot roll, milk
- Thursday:**  
Breakfast — Apple juice, pancakes, syrup, milk  
Lunch — Cheese enchiladas, pinto beans, tossed salad, jello w/whip topping, cornbread, milk
- Friday:**  
Breakfast — Grape juice, dry cereal, toast, milk  
Lunch — Hamburger w/mustard, French fries, lettuce, tomatoes, pickles, peach cobbler, milk



**FFA MEETING**--The Floydada FFA chapter had their first officer meeting Tuesday, Aug. 27, at the Pumpkin Patch. Officers are (l-r) Todd Cage, president; Keith Teeple, vice-president; Nathan Whittle, secretary; Stacy Meyers, treasurer; Josh Thayer, reporter; Jonathon Simpson, sentinel; and Branda Breed, student advisor. The officers discussed the events and activities for the upcoming school year. Special attention was paid to this year's annual fundraiser. Lots of new ideas were discussed. Members agree that, "The chapter is excited about the new year and are really looking forward to a very productive year."

## In Time For School Gift!

**School Watches**  
Mascots with school colors

only at **SCHACHT**  
Flowers, Jewelry & Gifts

112 W. Poplar 652-2385 8:30 - 5:30 Monday - Saturday  
"OUR PLEASURE IS TO SERVE YOU"



Lay-a-way now for Christmas!

## 1991 FLOYDADA WHIRLWIND FOOTBALL SCHEDULES

### VARSITY

SEPT. 6	Crane	Home	8:00
SEPT. 13	Roosevelt	Home	8:00
SEPT. 20	Lockney	There	8:00
SEPT. 27	Canyon	There	8:00
OCT. 4	Slaton	Home	8:00
OCT. 11*	Friona	Home	7:30
OCT. 18*	Dimmitt	There	7:30
OCT. 25*	Muleshoe	Home	7:30
NOV. 1*	Tulia	There	7:30
NOV. 8*	Littlefield	There	7:30

\* District Games

### J.V. AND 9TH GRADE

SEPT. 5	Littlefield	There	5:30/7:00
SEPT. 12	Roosevelt	There	5:30/7:00
SEPT. 19	J.V.	Open	
SEPT. 19	Lockney 9th	There	5:30
SEPT. 26	Canyon J.V.	Home	5:00/6:30
SEPT. 26	Post 9th	Home	
OCT. 3	Slaton	There	5:00/6:30
OCT. 10	Friona	There	5:30/7:00
OCT. 17	Dimmitt	Home	5:30/7:00
OCT. 24	Muleshoe	There	5:30/7:00
OCT. 31	Tulia	Home	5:30/7:00
NOV. 7	Littlefield	Home	5:30/7:00

## UNBELIEVABLE BARGAINS

### GM PROGRAM - USED CARS

#### WAS SALE PRICE PAYMENTS

1991 PONTIAC SUNBIRD LE CONVERTIBLE	\$11,600	\$9900	or	\$200 *
1991 PONTIAC SUNBIRD 4dr.	\$9700	\$8200	or	\$162 *
1991 PONTIAC GRAND PRIX 4dr.	\$13300	\$11800	or	\$243 *
1991 PONTIAC GRAND PRIX 2dr.	\$14100	\$12600	or	\$261 *
1991 BUICK Le SABRE 4 dr.	\$15800	\$14300	or	\$300 *
1991 BUICK PARK AVE. 4dr.	\$19800	\$18300	or	\$390 *

MANY MORE TO CHOOSE FROM!  
JUST LET US KNOW WHAT YOU WANT -  
IF WE DON'T HAVE IT, WE WILL FIND IT FOR YOU  
\* \$1000 DOWN Plus T.T.L. 12.65% 60 months - with approved credit

BUICK - PONTIAC - GMC

**CITY AUTO, INC.**

Floydada - 983-3767

# Local 4-H'ers receive top honors

By Mike Mallett, CEA-Ag.

Floyd County 4-H member, Tara Mallett, daughter of Mike and Connie Mallett, has recently been notified of her State winning 4-H Clothing and Textiles record book. Tara has been in 4-H for nine years and will be a senior at Lockney High School.

Tara's award is based on her outstanding clothing record book and is supported by the fact that she has won numerous state and national clothing awards as

a result of her 4-H clothing project.

By winning this honor, Tara will be attending National 4-H Congress in Chicago, Illinois, December 7-11. This trip is being made available by Coats & Clark, Greenville, South Carolina and Singer Sewing Company, Edison, New Jersey. Tara's record book advances to National judging where it will be competing for one of six \$1500 scholarships.

One major highlight of Tara's 4-H career is that of being the 1991 national winner of the Make It Yourself with Wool Contest. Tara is a member of the State 4-H Clothing Teen Board and has served as a teen clothing leader.

Misty Bertrand placed 4th at the State 4-H Record Book Judging. Misty is the 14 year old daughter of Randy and Connie Bertrand. She has been in 4-H for six years and will be a freshman at Floydada High School.

Her record book competed against nine other entries in the Recreation Category. This category consists of projects and competitions related to entertainment and usage of leisure time in both an activity oriented and career oriented way. One such competition Misty has participated in is Share-the-Fun on district and state levels.

Misty also participates in track, cross country, and basketball and is an honor student. She is also active through the First Methodist Church and has been a member of the cast of God's Country for three years.

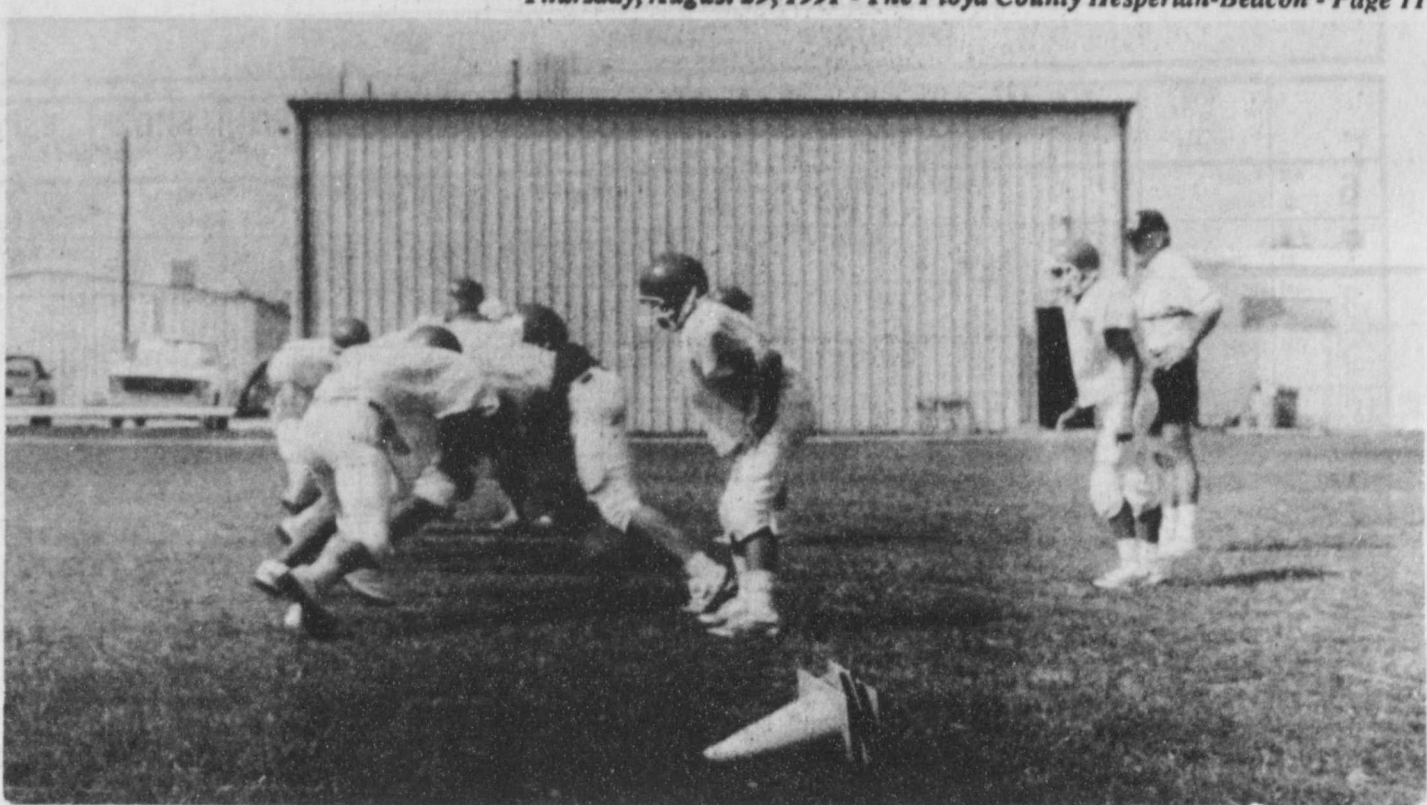


TARA MALLETT

## Scout signup set September 6 for Lockney youths

All boys interested in joining Cub Scouts or Boy Scouts in Lockney are invited to attend the "Grand Slam For Scouting" event at 7 p.m. next Thursday, Sept. 5, in the Lockney Elementary School cafeteria.

A parent or guardian must accompany each boy to sign up for Scouts.



HAMMER TIME--Workouts have intensified for the Lockney Longhorn football team as a result of their performance in the scrimmage with Crosbyton on Friday, August 23. The 'Horns are looking to bounce back in their scrimmage against New Deal. The scrimmage will be held in New Deal on Thursday, August 29 at 6:00 p.m.

Staff Photo



MISTY BERTRAND



HAYES COMPETES IN BARROW CLINIC—Cody Hayes placed second in Pork Evaluation and seventh in Live Hog Evaluation in the Junior Youth Division of the Texas Barrow Futurity Clinic. He was presented a plaque from the Texas Pork Producers. Hayes is a member of the Floyd County 4-H Club and the son of Cleatis and Betty Hayes. The three day clinic was held at College Station.

## Lockney School Menu

LOCKNEY SCHOOL MENU  
August 29 - 30

Thursday:

Breakfast - Cantaloupe, biscuit, oatmeal, milk  
Lunch - Chicken pot pie, tossed salad, biscuit, cranberries, cookies, milk

Friday:

Breakfast - Cheese, toast, banana, milk  
Lunch - Charbroiled hamburger, lettuce, tomatoes, French fried potatoes, ice cream, milk

September 3 - 6

Tuesday:

Breakfast - Cheese, streusel muffins, sausage, apples, milk  
Lunch - Pork chop patties, whole

potatoes with white sauce, coleslaw, rolls, fruit cocktail, milk

Wednesday:

Breakfast - Toast, peanut butter, apricots, milk  
Lunch - Corndogs, buttered corn, carrot salad, cherry cobbler, milk

Thursday:

Breakfast - Cereal, ham, pineapple, milk  
Lunch - Burritos, tomatoes and rice casserole, tossed salad, pinto beans, cornbread, chocolate candy, milk

Friday:

Breakfast - Cheese, Danish, banana, milk  
Lunch - Fish burger, French fried potatoes, lettuce and tomatoes, cherry cobbler, milk

## 1991 LOCKNEY LONGHORN FOOTBALL SCHEDULES

### VARSITY

SEPT. 6	Ralls	Home	8:00
SEPT. 13	Petersburg	There	8:00
SEPT. 20	Floydada	Home	8:00
SEPT. 27	Hart	Home	7:30
OCT. 4	Springlake	There	7:30
OCT. 11	Shallowater	Home	7:30
OCT. 18	Olton	There	7:30
OCT. 25	Hale Center	Home	7:30
NOV. 1	Morton	There	7:30
NOV. 8	Abernathy	There	7:30

### JUNIOR VARSITY

SEPT. 5	Ralls	There	6:00
SEPT. 12	Petersburg	Home	7:00
SEPT. 19	Floydada	There	7:30
SEPT. 26	Hart	There	7:30
OCT. 3	Springlake	Home	7:30
OCT. 10	Shallowater	There	7:30
OCT. 17	Olton	Home	7:30
OCT. 24	Abernathy	There	7:30
OCT. 31	Morton	Home	7:30
NOV. 7	Abernathy	Home	7:30

## Duvall earns archery championship



DON DUVALL

Don Duvall of Davis won the state championship in the Freestyle Class at the Bowhunter Council State Broadhead Shoot. He is the son of Mr. and Mrs. Lloyd Duvall of Lockney. Duvall grew up on a farm 4 1/2 miles southwest of Lockney and attended Plainview school.

The competition was held at Oklahoma City's Trooper Park Saturday and Sunday. Approximately 300 shooters attended with the majority shooting the Freestyle Class.

Duvall scored a 195 of a possible 200, with 19 kills and only one wound on 20 targets.

Duvall has represented Precision Shooting Equipment for the past two years and is a member of the Arbuckle Bowhunters, a local archery club.

The Arbuckle Bowhunters won third place in the team competition. The team was comprised of Duvall, Johnny McAdoo and David and Mary Mann, all of Davis.

## New immunization rules aim for better disease prevention

The Texas Department of Health (TDH) reminds all parents and school or day care administrators that immunization rules for Texas children recently have been changed. In efforts to stop recent resurgences of so-called childhood diseases, the Texas Board of Health, in both 1990 and 1991, modified existing immunization requirements.

TDH urges parents to ensure that their children's immunization records comply with those rules. Physicians and local health departments can supply detailed information about the requirements. Low-cost or free back-to-school immunizations are offered throughout the year in many Texas communities.

One of the newest immunization rule changes eases restrictions against persons other than a child's parents who seek vaccinations for children in their care. Now, parents and legal guardians may formally delegate authority for signing immunization consent forms to other adults, such as a child's grandparent.

Other recent rule changes include a mandatory second dose of measles vaccine for all Texas school children by age 12. Also, children who are younger than 5 must be vaccinated against Haemophilus influenzae type b (Hib disease), a common cause of meningitis in children, and pertussis (whooping cough).

Wes Hodgson, epidemiology coordinator for the TDH Immunization Division said, "The continuing measles outbreaks which began in 1988 underscore

the tragic results of incomplete vaccinations. In recent years, some parents failed to protect their children against vaccine-preventable diseases, while some school and day care operators failed to keep adequate records so that inadequately immunized children went unnoticed. The result has been a growing number of insufficiently immunized children and young adults—all of whom are now vulnerable to infection."

Hodgson said that state law requires all children entering Texas schools or day care to show proof of immunizations at certain ages against polio, tetanus, measles, rebecca) German or three-day measles), mumps and diphtheria. Younger children must also give proof of immunity to whooping cough and Hib disease.

"The law allows for some exceptions to these requirements," Hodgson added, "but each case must be considered individually."

He stressed that since a child's age and medical history are factors in which vaccines and "boosters" the child needs, parents should consult their family physicians about the required immunizations for each child.

Hodgson said that, beginning in 1992, college students enrolled in health related courses, and medical or dental schools will be required to have certain immunizations against rebecca, mumps, measles, tetanus, diphtheria and hepatitis B. Veterinary students will need current vaccinations against rabies.

## Teach your kids "Healthful Eating 101" this year

Nibbles don't have to be no-nos. Fast foods and snack foods can be healthful—if you use them to teach your kids good eating habits.

The American Heart Association suggests that healthy children over age two eat various foods but not consume more than 30 percent of their total calories from fat.

Your children eat high-sweet, high-fat foods because they see them a lot at social events. They're also rewarded with sweets for eating healthful foods. This sends mixed messages to your kids.

Eating habits are a central part of any culture. So try to change the culture. Producers are beginning to respond to consumer demands. They are selling more foods lower in total fat, saturated fat and cholesterol. And schools around the country are adding more low-fat items, fruits and vegetables to cafeteria menus.

Studies show children get about 20 percent of their daily saturated fat from baked goods and snacks, including chips. Companies that make chips, cookies and crackers are beginning to switch from highly saturated tropical

oils (such as coconut and palm) and lard to more healthful unsaturated vegetable oils such as soybean and canola. But you have to read food labels to find them.

Here are some AHA suggestions to encourage your children to eat more healthfully:

- \* Use ground turkey—without skin—instead of hamburger meat.
- \* Use lower-fat varieties of cheese instead of regular cheese, and low-fat or skim milk instead of whole milk.
- \* At snack time, use low-fat or non-fat yogurt and substitute low-fat cheeses for high-fat cheeses.
- \* Vary how you use fruits and vegetables for your children. Kids tend to like raw fruits and vegetables more than cooked.
- \* Help your children learn to read labels so they can find the baked goods that have unsaturated oils.
- \* Limit high-fat foods with little nutritional value—so-called "empty calorie" foods—in your child's daily diet. This is better than forcing your child onto a restricted diet that adults with weight or cholesterol problems might follow. In general, children need more daily calories than adults because they're growing. Limit the amount of saturated fat,

which comes from animal products and tropical oils.

These are just a few of the valuable food lessons you can teach your children. Give yourself a homework assignment: Contact your nearest American Heart Association for more information.

### PUBLIC NOTIFICATION OF NONDISCRIMINATION IN VOCATIONAL EDUCATION PROGRAMS

Floydada Independent School District offers vocational programs in Agriculture, Home Economics, Marketing Education and Trade and Industrial Education. Admission to these programs is based on interest, age, grade level and attendance.

It is the policy of the Floydada I.S.D. not to discriminate on the basis of race, color, national origin, sex or handicap in its vocational programs, services or activities as required by Title VI of the Civil Rights Act of 1964, as amended, Title IX of the Education Amendments of 1972, and Section 504 of the Rehabilitation Act of 1973, as amended.

It is the policy of Floydada I.S.D. not to discriminate on the basis of race, color, national origin, sex, or handicap in its employment practices as required by Title VI of the Civil Rights Act of 1964, as amended Title IX of the Education Amendment of 1972, the Age Discrimination Act of 1975, as amended, and Section 504 of the Rehabilitation Act of 1973, as amended.

The Floydada I.S.D. will take steps to assure that lack of English Language skills will not be a barrier to admission and participation in all educational and vocational programs.

For information about your rights or grievance procedure, contact the Title IX Coordinator, Jerry Cannon, 226 West California, Floydada, Texas, 79235.

**KARATE**

**KENPO STUDIO**

**CHILDREN'S CLASS**  
Monday - Wednesday - Friday  
5-6 p.m.

**New Classes Starting**  
Wednesday, September 4, 1991  
**"Limited Enrollment"**  
\$30.00 per month

Call Now... **983-3803**  
109 5th Street, Floydada, Texas

**Adults private lessons only**  
By Appointment

See Junior High Football Schedules on Page 13

# WEEKLY TELEVISION SCHEDULE

THU, AUG 29 - Weekdays - WED, SEP 4										
	TBS (4) Atlanta	KTXL (5) Lubbock	WGN (7) Chicago	KCBD (11) Lubbock	KLBK (13) Lubbock	KAMC (28) Lubbock	KJTV (33) Lubbock	HBO	SHOW	ESPN
6 AM	Varied	OH Air	Success-N-Life	NBC News at Sunrise	CBS This Morning	ABC News	Webster G.I. Joe	Movie	(Cont) Varied	(Cont) Nation's Business Today SportsCenter
7 AM	Varied	Varied	Varied	Today	Good Morning America	Tale Spin Chlp & Dale	Babar Wizard of Oz	Varied	Varied	Varied
8 AM	Varied	AM Weather	Varied	Varied	Varied	Varied	Varied	Varied	Varied	Varied
9 AM	Varied	Mr. Rogers Read Rainbow	Varied	Gerardo	Varied	Sally Jessy Raphael	Regis & Kathie Lee	Varied	Movie	Varied
10 AM	Varied	Varied	Varied	Varied	Home	Success-N-Life	Varied	Varied	Varied	Varied
11 AM	Varied	Varied	Varied	Wheel	Varied	700 Club With Pat Robertson	Varied	Varied	Varied	Varied
12 PM	Varied	Varied	Varied	News Days of Our	Varied	Judge People's Court	Varied	Varied	Varied	Varied
1 PM	Varied	Varied	Varied	Lives Another World	Varied	Joker's Wild Trump Card	Varied	Varied	Varied	Varied
2 PM	Varied	Varied	Varied	Santa Barbara	Varied	General Hospital	Varied	Varied	Varied	Varied
3 PM	Varied	Mr. Rogers	Varied	Varied	Varied	Newhart Andy Griffith	Varied	Varied	Varied	Varied
4 PM	Varied	Read Rainbow	Varied	Oprah Winfrey	Varied	Donohue	Ninja Turtle Small Wonder	Varied	Varied	Varied
5 PM	Varied	Bus. Report	Varied	News	Varied	Golden Girls ABC News	Strangers Mr. Belvedere	Varied	Varied	Varied

THURSDAY AUGUST 29										
	TBS (4) Atlanta	KTXL (5) Lubbock	WGN (7) Chicago	KCBD (11) Lubbock	KLBK (13) Lubbock	KAMC (28) Lubbock	KJTV (33) Lubbock	HBO	SHOW	ESPN
6 PM	Jeffersons Major League	MacNeil/Lehrer NewsHour	Night Court Andy Griffith	NBC News Who's Boss?	News Wheel	News Cosby Show	Star Trek	(Cont) Mov. Lisa	(Cont) Mov. Shrimp on	SportsCenter SpeedWeek
7 PM	Baseball	This Old House Victory Garden	Major League Baseball	Cosby Show Different World	Top Cops	Father Dowling Mysteries	Simpsons Roc	Varied	the Barbie	Outside the Lines
8 PM	Varied	Mystery!	Varied	Cheers Wings	Trials of Rosie O'Neill	American Detective	College Football	Mov. War of the Roses	Mov. D.O.A.	Top Rank Boxing
9 PM	Mov. Genesis II	Alive	Varied	L.A. Law	Burt Reynolds	Prime Time Live	Varied	Varied	(40) Jeff	Varied
10 PM	Mov. Dark	Body Electric Bus. Report	News Magnum, p.I.	News Tonight Show	News Hard Copy	News M*A*S*H	Varied	Mov. Women & Men 2	Cesarino Mov. Puppel	B'ball Night SportsCenter
11 PM	OH Air	County Fair	Letterman	Guinness	Nightline	Arsenio Hall	Dream On	Master II	PRCA Rodeo	Varied

FRIDAY AUGUST 30										
	TBS (4) Atlanta	KTXL (5) Lubbock	WGN (7) Chicago	KCBD (11) Lubbock	KLBK (13) Lubbock	KAMC (28) Lubbock	KJTV (33) Lubbock	HBO	SHOW	ESPN
6 PM	Jeffersons Major League	MacNeil/Lehrer NewsHour	Night Court Andy Griffith	NBC News Who's Boss?	News Wheel	News Cosby Show	Star Trek	(5:15) Spies Like Us	Mov. Catch Me If You Can	SportsCenter Major League
7 PM	Baseball	D.C. Week Wall St Week	Mov. Fighting Chance	Mov. To My Daughter	Fantastic Facts Prime Pats	Family Matters TBA	America's Most Wanted	Mov. Beetlejuice	Varied	Baseball
8 PM	Varied	Mov. MacArthur's	Mov. Missing Woman	Mov. Diamond Trap	Strangers Growing Pains	World's Greatest Shows III	Mov. Ghost	Mov. Psycho IV: The Beginning	Varied	Baseball
9 PM	Mov. White Water Summer	Children	News Major League	Hunter	20/20	Beverly Hills, 90210	busters II	(35) Mov. sez.	Major League	Varied
10 PM	OH Air	A Closer Look Bus. Report	Baseball	News Tonight Show	News Hard Copy	News M*A*S*H	Cheers Love Connection	Crypt Tales	Baseball	Varied
11 PM	Mov. One Dark Night	Austin City Limits	Olympic	Body Snatcher	Nightline	Arsenio Hall	(05) Night Rap	(20) Mov. Hit List	Varied	Varied

SATURDAY AUGUST 31										
	TBS (4) Atlanta	KTXL (5) Lubbock	WGN (7) Chicago	KCBD (11) Lubbock	KLBK (13) Lubbock	KAMC (28) Lubbock	KJTV (33) Lubbock	HBO	SHOW	ESPN
6 AM	Gunsmoke	OH Air	Larry Jones World Tom	OH Air	(Cont) Peppermint	OH Air	Webster Toxic Cr.	(05) Survival Series	(5:00) Rescue	SportsCenter Outdoor Mag.
7 AM	Bonanza	Varied	Farm Report People	Camp Cady Captain N	Muppet Babies	Winnie Pooh Bobby's World	Peter Pan Wizard of Oz	Babar Wizard of Oz	Mov. Woman of the Year	Fly Fishing Ultimate
8 AM	WCW Power Hour	Sociological	Charlando Chicago Hrt.	Gravedale High	Garfield and Friends	Ghostbusters	Jerry Kids Jerry Kids	Mov. Side Out	Varied	ESPN Outdoors Fishin' Hole
9 AM	Explorer	Ventured	Business Rpt Paid Program	Kid n' Play Chipmunks	Teen Ninja Turtle	Beetlejuice Scooby Do	Piggsgurg Pigs Tomatoes	Mov. Jailhouse Rock	Varied	Fly Fishing J. Houston
10 AM	World of Audubon	Algebra	NWA Pro Wrestling	By the Bell Paid Program	Bill & Ted	Bugs Bunny & Tweety Show	Capt. Planet Paid Program	Mov. Night Train to Kath-	Varied	Super Bowl College
11 AM	Mov. Death of Ocean View	Collectors Victory Garden	Soul Train	Home Show Bob Vila	Tennis	Showcase Home	World Wide Wrestling	mandu (45) Mov.	Mov. Dirty Dancing	GameDay Hall of Fame
12 PM	Park	Fragrant This Old House	Mov. Marked for Murder	Pollard Ford Will Soanett	Football	Mov. Footloose	Young Guns II	Varied	NASCAR Racing	Varied
1 PM	Mov. Five Desperate	New Yankee Homelime	Mov. Tulsa Kid	Olympic Showcase	Varied	Varied	Varied	Mov. Man	Mov. Forbidden Dance	Varied
2 PM	Women College	Motorweek '91 Calligraphy	Mov. Local Hero	Varied	Varied	Varied	Varied	Mov. Flashdance	Outside	Great American Race
3 PM	Football	Herbal Harvest Wilson Cooks	Varied	Tennis (Cont.)	PGA Golf	Varied	Varied	(15) Mov. Men at Work	Mov. Rescue	College Football
4 PM	Varied	Mystery!	21 Jump Street	Olympic Showcase (Cont.)	Varied	Varied	Varied	Superboy Super Force	Varied	Varied
5 PM	Varied	Mov. Split and Nature	Super Force	Health Matters NBC News	NFL Special NFL Special	Siskel & Ebert ABC News	21 Jump Street	Mov. Side Out	Mov. Reprocessed	Varied
6 PM	Major League Baseball	(Cont) Evening at Pops	Andy Griffith \$100,000	News Reporter	How Now	News Sneak Peek	Star Trek: Next	(5:00) Side Out	(Cont) Mov. Ernest	Fiball Score College Football
7 PM	Varied	Mark Russell	Mov. Under Fire	Golden Girls	Planet of the Turboids	Mov. Golden Child	COPS COPS	Mov. Godfather Part II	Mov. Dirty Dancing	Varied
8 PM	U.S. Olympic	Lawrence Walk	News	Empty Nest Dear John	Scene of the Crime	Hidden Video Best/Worst	Varied	Varied	Varied	Varied
9 PM	Gold	Austin City Limits	Major League Baseball	Sisters	Scene of the Crime	Work Force 2000	Mov. Billy Two Hats	(45) Mov.	Fiball Score	Varied
10 PM	Nights Tracks: Charibusters	Masterpiece Theatre	News Saturday Night	News American Gladi-	News	Mov. From the	Varied	Mov. Godfather, Part II	Summer Job	B'ball Night SportsCenter
11 PM	Mov. Aliens Are Coming	Sound Off OH Air	Live	Current Affair	Terrace	Comic Strip Live	Varied	(20) Super Dave	Women's Tennis	Varied

SUNDAY SEPTEMBER 1										
	TBS (4) Atlanta	KTXL (5) Lubbock	WGN (7) Chicago	KCBD (11) Lubbock	KLBK (13) Lubbock	KAMC (28) Lubbock	KJTV (33) Lubbock	HBO	SHOW	ESPN
6 AM	T & J Flintstones	OH Air	Miracles Now R. Schuller	OH Air	Sportsman Farm Report	OH Air	Big Valley	(5:15) Aloha Summer	(5:00) Good Earth	SportsCenter BodyShaping
7 AM	Flintstones Planet	Varied	Very Own Heritage	Memories	Sun. School James Robinson	Honey Hole Friend	My Secret ID Second Gen.	Babar Wizard of Oz	OWL/TV	Lee Haney Baseball Mag
8 AM	Andy Griffith Happy Days	Sesame Street	Mass Beaver	Miracles Now With Oral	Morning	Larry Jones Prophecy	Paid Program	Mov. All Dogs Go to Heaven	Jen's Place	In PGA Tour Senior PGA
9 AM	Happy Days	Mr. Rogers Read Rainbow	Star Search	Roberts Sunday Today	Lassie	Kenneth Copeland	Jesse Jackson	Mov. Batman	Mov. Music Box	SportsWeekly
10 AM	Billy Joe	Adventure	Mov. Charol	WWF Superstars	Robert Schuller	WWF Superstars	Fall Guy	Varied	Varied	Reporters SportsCenter
11 AM	Mov. Desperate	Cooking Money Week	Meet the Press NFL Live	Jimmy Johnson This is the NFL	NFL Today	D. Brinkley	Mov. Thief of Hearts	Mov. Goonies	Meet Me in	NFL GameDay
12 PM	Women	D.C. Week Wall St Week	Mov. Abductors	Olympic Showcase	NFL Football	Siskel & Ebert Spt. Follies	PGA Golf	Mov. Real Men	(35) Mov. Roustlers	NASCAR Racing
1 PM	Mov. A	McLaughlin Firing Line	Varied	Varied	Varied	Varied	Varied	Varied	Varied	Varied
2 PM	Question of Guilt	Am. Interest Amer Defense	Baseball Wk Lead-off Man	Varied	Varied	Varied	Varied	Mov. Mommie Dearest	Mov. Look Who's Talking	NASCAR Racing (Cont.)
3 PM	Tom & Jerry	Comp. Chron. Take Five	Major League Baseball	NFL Football	NFL Football	Varied	Varied	Varied	Varied	World Cup Jet Skiing
4 PM	Planet	Crafting 90s Seniors Speak	Varied	Varied	Varied	Varied	Varied	Out of World Hendersons	(55) Mov.	Baseball Tonight
5 PM	WCW Main Event	Texas Review	Twilight Zone TBA	Super Bloopers	60 Minutes	Life Goes On	Taz-Mania Parker Lewis	(5:30) All Dogs Go to Heaven	(4:55) Music Box	NFL PrimeTime
6 PM	Mov. Final Countdown	Lawrence Walk	Evening at Pops	To Be Announced	Expose Real Life	Murder, She Wrote	Funny Videos	In Living Color	Mov. Flatliners	Major League Baseball
7 PM	National Geographic Explorer	American Playhouse	Jerry Lewis MDA Telethon	Mov. Revenge of Al Capone	Jerry Lewis MDA Telethon	Varied	Varied	Married COPS	Dream On	Mov. House Party
8 PM	Varied	Varied	Varied	Varied	Varied	Varied	Varied	Varied	Varied	Varied
9 PM	Network Earth Paid Program	Blackbirds in the Sun	Jerry Lewis MDA Telethon	News Magnum, p.I.	News	News M*A*S*H	Cheers Star Trek: Next	Mov. Kickboxer	(15) Mov. Psycho	SportsCenter
10 PM	World Tomorrow	OH Air	Geo. Michael	MDA Telethon	MDA Telethon	Weekend Jam	Varied	Varied	Varied	NFL PrimeTime

## MONDAY SEPTEMBER 2

	TBS (4) Atlanta	KTXL (5) Lubbock	WGN (7) Chicago	KCBD (11) Lubbock	KLBK (13) Lubbock	KAMC (28) Lubbock	KJTV (33) Lubbock	HBO	SHOW	ESPN
6 PM	(5:05) High Plains Drifter	MacNeil/Lehrer NewsHour	(4:00) MDA Telethon	NBC News Who's Boss?	News Wheel	News Cotton Bowl	Star Trek	(5:00) Immediate	(5:00) Steel Magnolias	(Cont) SportsCenter
7 PM	Mov. China Syndrome	Labor Day Show	MDA Telethon	Fresh Prince Blossom	Evening Shade Major Dad	NFL Preview Spc.	Mov. Things Change	Mov. Look Who's Talking	Mov. Flatliners	Major League Baseball
8 PM	Varied	Labor Day Show	Major League Baseball	Mov. Maybe Baby	Murphy Brown Design Women	ABC Monday Night Football	Varied	Varied	Varied	Varied
9 PM	Mov. Places in	Varied	Varied	Varied	Northern Exposure	Varied	Hunter	HBO Comedy Hour	Mov. Pretty Woman	Varied
10 PM	Be Heart	Body Electric Bus. Report	Varied	News Tonight Show	News Hard Copy	Varied	Cheers Love Connection	Mov. Women & Men 2	Varied	B'ball Night SportsCenter
11 PM	OH Air	OH Air	News Captain Annie	News	Highlights Gunsmoke	News Night Court	Arsenio Hall	Show of Force	Mov. Race for Glory	Horse Racing

## TUESDAY SEPTEMBER 3

	TBS (4) Atlanta	KTXL (5) Lubbock	WGN (7) Chicago	KCBD (11) Lubbock	KLBK (13) Lubbock	KAMC (28) Lubbock	KJTV (33) Lubbock	HBO	SHOW	ESPN
6 PM	Hillbilly Major League	MacNeil/Lehrer NewsHour	Night Court Andy Griffith	NBC News Who's Boss?	News Wheel	News Cosby Show	Star Trek	(5:00) Arthur 2: On the Rocks	A Matter of Conscience	SportsCenter Major League
7 PM	Baseball	Nova	To Be Announced	Matlock	Rescue: 911	Full House Who's Boss?	Mov. M*A*S*H	Mov. Some Kind of Wonderful	Mov. Death Warrant	Baseball
8 PM	Varied	Who Will Teach for America?	News	In the Heat of the Night	Mov. Operation	Roseanne Coach	Varied	Varied	Comedy	Varied
9 PM	Mov. Beach Red	P.O.V.	Major League Baseball	Law & Order	Thirtysomething	Hunter	Mov. Side Out	Mov. Hollywood Tubs 2	Major League	Baseball
10 PM	Varied	Body Electric Bus. Report	Varied	News Tonight Show	News Hard Copy	News M*A*S*H	Cheers Love Connection	(50) Night Rap	(45) Mov.	Varied
11 PM	Bridge at	OH Air	Varied	Highlights Gunsmoke	Night Court Nightline	Arsenio Hall	(20) Mov. Rachel Papers	Everybody Wins	Varied	Varied

## WEDNESDAY SEPTEMBER 4

	TBS (4) Atlanta	KTXL (5) Lubbock	WGN (7) Chicago	KCBD (11) Lubbock	KLBK (13) Lubbock	KAMC (28) Lubbock	KJTV (33) Lubbock	HBO	SHOW	ESPN
6 PM	Hillbilly Major League	MacNeil/Lehrer NewsHour	Night Court Andy Griffith	NBC News Who's Boss?	News Wheel	News Cosby Show	Star Trek	Inside the NFL	(5:00) Sugarland Express	SportsCenter Great Games
7 PM	Mov. Missouri Breaks	Math... Who Needs It?	Mov. Cyranos de Bergerac	Unsolved Mysteries	Billy Graham Crusade	Dinosaurs Wander Years	Mov. Missing Link	Mov. Weekend at Bernie's	Mov. Where the Heart Is	Baseball Mag Major League
8 PM	Varied	Learning in America:	Against Odds Setafield	Quantum Leap	48 Hours	Anything Married People	Hunter	Crypt Tales Dream On	Mov. Black Rainbow	Baseball
9 PM	Mov. Invitation	Schools That Work	News	Twilight Zone Magnum, p.I.	News Tonight Show	News Hard Copy	News M*A*S*H	Cheers Love Connection	Mov. Vietnam, Texas	SportsCenter
10 PM	to a Gunfighter	Body Electric Bus. Report	Twilight Zone Magnum, p.I.	News Tonight Show	News Hard Copy	News M*A*S*H	Cheers Love Connection	Mov. Vietnam, Texas	Varied	Varied
11 PM	Varied	OH Air	S. Pacific Trail	Highlights Gunsmoke	Night Court Nightline	Arsenio Hall	Weekend	Mov. Body Games	B'ball Night NFL Yearbook	Varied

**THE BOTTOM LINE:**  
"Retailers favor newspapers"

## NOTICE OF VOTE ON TAX RATE

The Floydada Independent School District conducted a public hearing on a proposal to decrease your property taxes by 75.49 percent on August 27, 1991.

The Board of Trustees is scheduled to vote on the tax rate at a public meeting to be held on September 6, 1991 at 7:30 a.m. at the Floydada Independent School District boardroom located at 226 West California.

Truth in Taxation

# Floydada school enrollment down slightly from 1990 count

Early figures show Floydada school enrollment down by 60 students, from the September 1990 count of 1264 to the August 26, 1991 count of 1204.

"Enrollment figures will continue to increase," said Darlynn Hambricht, secretary to FISC Superintendent Jerry Cannon.

"This is still very early to get enrollment figures," said Hambricht.

The senior class this year is down by

8 students, from 70 to 62.

The largest class in FISC are the fifth graders with a total of 118 students.

Hispanic enrollment is down slightly over last year. This year there are 700 Hispanics already enrolled, representing 58% of the student body. Last year there were 748 Hispanics enrolled in September.

Anglo enrollment is down by one student, from the 1990 figure of 443, to this year's number of 442. This figure

represents 36% of the student body.

Black student enrollment is down this year, from 69 student last year to 42 Blacks this year. This is 3% of the student body.

At this time there are exactly the same amount of girl students as boys; 602 each.

The chart below shows a breakdown of race and enrollment in Floydada schools.



NEW SEWER IMPROVEMENTS -- City workers were hard at work on Friday, August 23, as they tied in a new sewer line near the intersection of Missouri Street and the

Silverton Highway. The addition to the line will serve a proposed mobile home park as well as provide better service to residents of the area. Staff Photo

## Breakdown of Floydada Enrollment by Race and School

CAMPUS	AM. INDIAN	ASIAN-OTHER	BLACK	HISPANIC	WHITE	TOTAL
<b>Duncan</b>	GIRLS/BOYS	GIRLS/BOYS	GIRLS/BOYS	GIRLS/BOYS	GIRLS/BOYS	
EARLY CHLD.	0 0	0 0	0 1	3 7	1 1	13
PRE KINDER	0 0	1 0	0 2	9 10	1 1	24
KINDER	0 0	0 0	0 2	17 24	9 15	67
FIRST	0 0	0 0	3 3	18 22	13 18	77
SECOND	0 0	0 0	3 1	25 23	15 17	84
THIRD	0 0	0 0	5 1	26 33	22 12	99
<b>TOTALS</b>	<b>0 0</b>	<b>1 0</b>	<b>11 10</b>	<b>98 119</b>	<b>61 64</b>	<b>364</b>
<b>Andrews</b>						
FOURTH	0 0	0 0	3 1	39 32	24 15	114
FIFTH	0 0	0 0	1 4	32 36	21 24	118
SIXTH	1 0	0 0	4 1	25 23	19 20	93
<b>TOTALS</b>	<b>1 0</b>	<b>0 0</b>	<b>8 6</b>	<b>96 91</b>	<b>64 59</b>	<b>325</b>
<b>Jr. High</b>						
SEVENTH	0 0	0 0	1 3	32 29	14 15	94
EIGHTH	0 0	0 0	2 1	27 29	15 12	86
<b>TOTALS</b>	<b>0 0</b>	<b>0 0</b>	<b>3 4</b>	<b>59 58</b>	<b>29 27</b>	<b>180</b>
<b>High School</b>						
NINTH	0 1	0 0	0 1	24 30	29 17	102
TENTH	0 0	0 0	3 1	35 24	12 20	95
ELEVENTH	0 0	0 0	2 3	19 13	18 21	76
TWELVTH	0 0	1 0	3 3	13 21	12 9	62
<b>TOTALS</b>	<b>0 1</b>	<b>1 0</b>	<b>8 8</b>	<b>91 88</b>	<b>71 67</b>	<b>335</b>

## Floydada School Enrollment Count Compared to 1990

SCHOOL	1991	1990
<b>DUNCAN</b>		
Early Childhood	13	9
Pre-Kindergarten	24	21
Kindergarten	67	89
First	77	83
Second	84	100
Third	99	119
<b>ANDREWS</b>		
Fourth	114	123
Fifth	118	96
Sixth	93	95
<b>JUNIOR HIGH</b>		
Seventh	94	89
Eighth	86	103
<b>HIGH SCHOOL</b>		
Ninth	102	109
Tenth	95	85
Eleventh	76	73
Twelfth	62	70

## 1991 FLOYDADA BREEZER FOOTBALL SCHEDULE

### 7TH AND 8TH GRADE

SEPT. 5	Open	----	----
SEPT. 12	Roosevelt	Home	5:30/7:00
SEPT. 19	Lockney	Home	5:30/7:00
SEPT. 26	Tulia	There	5:00/6:30
OCT. 3	Slaton	Home	5:00/6:30
OCT. 10	Friona	Home	5:30/7:00
OCT. 17	Dimmitt	There	5:30/7:00
OCT. 24	Muleshoe	Home	5:30/7:00
OCT. 31	Tulia	There	5:30/7:00
NOV. 7	Littlefield	There	5:30/7:00

## 1991 LOCKNEY SHORTHORN FOOTBALL SCHEDULE

### 7TH AND 8TH GRADE

SEPT. 5	Open	----	----
SEPT. 12	Petersburg	Home	5:00/6:00 (Scrimmage)
SEPT. 19	Floydada	There	5:00/6:15
SEPT. 26	Hart	There	5:00/6:15
OCT. 3	Springlake	Home	5:00/6:15
OCT. 10	Shallowater	Home	5:30/7:00
OCT. 17	Dimmitt	There	5:30/7:00
OCT. 24	Muleshoe	Home	5:30/7:00
OCT. 31	Tulia	There	5:30/7:00
NOV. 7	Littlefield	There	5:30/7:00

## The Lamplighter

Continued From Page 1

ement now employees 59,000 workers in Austin, 39,200 jobs are in city, county and school districts, up 5.2 percent in only one year. The same picture emerges all across America. While the private sector undergoes great privation, government continues to grow by leaps and bounds.

Only the federal government seems to be static, at the moment. That is basically because 200,000 temporary workers. Census takers, are no longer on the job.

It is no wonder that The Austin American-Statesman is constantly supporting higher and higher taxes. The more taxes people across the state pay, the more money flows to Austin. The more money flows to Austin, the bigger state government gets and the more money there is to spend in Austin. The more money there is to spend, the more retail traffic there is. The more retail traffic there is, the more advertising the local paper will receive as businesses compete for the retail dollar, if they want to stay in business. The more money the paper makes, the happier the corporate headquarters in Atlanta, Georgia, will

be. The paper's managers can dress it up any way they wish, by claiming they are driven by the purest of motives, that they merely want to see a "compassionate, caring, government", but it all comes down to self interest. They do not give a wit what happens to the people in the hinterlands, or the small towns and communities bled dry by ever increasing costs of an expanding bureaucracy.

(To be quite honest about it, those same motivations influence us here in a different direction. In addition to having a sympathetic feeling about the problems of small towns, by virtue of the fact that we grew up on a dry land farm near one, we have the self-interest angle at work. The better West Texas towns do, particularly the towns and cities in this County, the better we do. So we do everything we can to help where we can to keep local communities going forward. That includes keeping as much money in circulation here as possible. Every dollar that flows to Austin in the way of taxes, or every dollar that flows to Wal-Mart in Plainview, is one less dollar that could be used to help build the local communities, by providing jobs and opportunities for our youngsters.)

Bad as the picture is now, if we step back a few years it's even worse. Between the time LBJ began his "war on poverty" and now, the population of America has grown by some 33 percent, a good portion of which has come from immigration. During that time the federal workforce has grown by 53 percent. Local governments across the country have grown by 115 percent, and the size of state governments by 193 percent. A good portion of the state increase has come from managing programs mandated by the federal government, just as part of the increase in the size of local governments have come from programs mandated by the state and federal governments.

There is apparently no end in sight. So we suppose Mr. Bullock is right when he says the new tax bill, which calls for Texans to fork over another \$2.1 billion in taxes, is merely a stop gap measure, and that more is on the way. That will certainly be the case unless something changes. If it doesn't, we can look for still more money leaving here and flowing to Austin, and to Washington, and that much less circulating here. Being the eternal optimist, we believe things will eventually get better once the people realize what is happening.

## Southwestern Public Service files to pass fuel cost savings to customers

Southwestern Public Service Company has filed with the Public Utility Commission of Texas to credit \$11.3 million to its Texas retail customers for savings in fuel costs.

The proposed credit includes \$10.7 million in actual fuel savings and \$600,000 in interest, based on an annual rate of 11.7 percent.

A Texas residential customer using 1,000 kilowatt hours of electricity a month would receive a one-time credit of \$11.15.

SPS expects to receive swift approval on the filing, said SPS Group Manager of Rates and Regulation Gerald Diller.

"We hope to be able to apply the credit to our customers' October bills," he said. The credit would cover fuel expenses from April 1990 through June 1991.

Retail customers include residential, commercial and industrial users.

The primary factor which made the savings available to the customers, according to Diller was lower natural gas prices.

"Gas purchases for power plants made at spot prices have been extremely favorable during the past few months," Diller said. "Even our contract gas prices have been reduced."

Certain low-sulfur coal prices also have been somewhat lower, due to negotiations with suppliers.

Five SPS power plants are fueled by natural gas, two are fueled by clean, western coal. However, half the company's capacity is provided by the two coal plants.

SPS President and Chief Operating Officer Coyt Webb said the company expends significant effort to remain a low-cost producer. "The cost of fuel makes up about half of an electric bill, and our ability to control this cost is very important to our customers," Webb said.

Because other states served by SPS have forms of automatic fuel-cost adjustments, savings as they occurred already have been passed through to SPS customers in New Mexico, Oklahoma and Kansas.

## OLD-FASHIONED SERVICE IS ALIVE AND WELL



- \* Convenience
- \* Everyday Low Prices
- \* Deliver or by Mail
- \* Baby Needs
- \* Vitamins, Health Aids
- \* Sick Room, Surgical Supplies
- \* Cards, Gifts
- \* Cosmetics, Perfumes
- \* P.C.S., Blue Cross, PAID, National Guard, Welfare

## CLARK PHARMACY

DANNY CLARK

320 N. Main Pharmacy - 652-3353

Residence - 652-3712 (24 Hour Call)

The agent who insures your car and home can also protect your family's future.



For life insurance that can provide financial security for those you love, call:

Nick Long  
201 W. Calif.  
Floydada  
983-3441

State Farm  
Sells Life Insurance.  
State Farm Life Insurance Company  
Home Office: Bloomington, Illinois

YOUR NEWSPAPER  
**PEOPLE SERVING PEOPLE**

## SUPER SIZZLING PAINT SALE

POLYFLEX LATEX HOUSE PAINT

1639 GAL

DECORATOR ACRYLIC LATEX HOUSE PAINT

1239 GAL



SATIN-X INTERIOR LATEX FLAT WALL PAINT

1339 GAL

DECORATOR INTERIOR LATEX FLAT WALL PAINT

959 GAL



## HIGGINBOTHAM-BARTLETT CO.

"Quality & Service At The Right Price"

Custom Colors Slightly Higher

Sale Ends Sept. 20, 1991



Not All Items Available in All Locations

# Obituaries

Continued From Page 7

**EVERETT COLLINS**  
Graveside services for Everett Collins, 75, of Hart were at 10 a.m. Tuesday, Aug. 27, in Hart Cemetery. Burial was under the direction of Foskey Funeral Home of Dimmitt.

Mr. Collins died at 12:25 a.m. Sunday, Aug. 25, 1991, at St. Anthony's Hospital in Amarillo after a brief illness. He was born in Floyd County and lived in California until 1958, when he moved to Hart. He was a farm laborer and worked for various farms in the Hart community.

Survivors include a daughter, Loretta Rowton of Mareno Valley, Calif.; a stepson, Charles Bryant of Ceres, Calif.; and two grandchildren. The family suggests memorials to the Hart Lions Club in care of the Hale County Bank of Hart.

**JENOYCE FORD**  
Graveside services for Jenoyce Brown Ford, 68, of Farwell were at 2 p.m. Saturday, Aug. 24, in Sunset Terrace Cemetery with the Revs. W.T. Perry, a retired minister, and Rick Sullivan, pastor of First Baptist Church, officiating.

Burial was under the direction of Steed-Todd Funeral Home of Clovis, N.M.

Mrs. Ford died Wednesday night, Aug. 21, 1991, in M.D. Anderson Hospital in Houston following a lengthy illness.

She was born in Floydada. She married Ray Ford on March 26, 1946, in Clovis. A daughter, Maxine Williams, preceded her in death.

Survivors include her husband; three sons, Butch of San Marcos, Max of Clovis and Don of Fort Worth; two daughters, Connie Welch of Beaumont and Jo Carpenter of Alpine; two brothers, Harold Brown of Clovis and Joe Brown of Tulsa, Okla.; three sisters, Ruth Lofton of Sacramento, Calif., Wynelle Pipkin of Grosbeck and Ysleta Kittrell of Farwell; 16 grandchildren; and 22 great-grandchildren.

The family suggests memorials to the M.D. Anderson Cancer Center, 1515 Holcombe Blvd., Houston, TX 77030.

**THELMA HOFFMAN**  
Graveside services for Thelma Theo Hoffman, 87, of Floydada were at 2 p.m. Sunday, Aug. 25, in Floyd County Memorial Park with the Rev. Howell Farnsworth, pastor of First Baptist Church, officiating.

Burial was under direction of Moore-Rose-White Funeral Home.

She died Saturday morning, Aug. 24, 1991, in Lockney General Hospital following a lengthy illness.

Mrs. Hoffman was born April 9, 1909 in Trenton and was a longtime resident of Floyd County. She was a homemaker and a member of First Baptist Church.

Survivors include a niece, Marihelen Wason of Matador.

**FRED JAMES JONES**  
Services for Fred James Jones, 86, were at 2 p.m. Sunday, August 25, 1991, in the Goree Baptist Church with Revs. Tony Magee and Bobby King, officiating.

Burial was in the Goree Cemetery, directed by McCauley-Smith Funeral Home of Munday.

Mr. Jones died Saturday, August 24, 1991, in a Haskell hospital.

He was born in Newton County, Miss. He was a retired farmer.

He was a longtime Goree resident. He was a member of the Goree Baptist Church and the Floydada Masonic Lodge No. 712.

Survivors include a son, Wayland Jones of Floydada; two daughters, Ann Polasek of Dumas and Jean Chapman of O'Brien; five sisters, Carrie Walton of Wichita Falls, Lois Howard of Goree, Blanch Atkinson of New Deal, Fanny Bell Lambeth of Goree and Agness Stewart of Albuquerque, N.M.; a brother, E.J. Jones of Abilene; 12 grandchildren; 20 great-grandchildren; and one great-great-grandchild.

**WEIMS NORMAN**  
Services for Weims Lee Norman, 59, of Floydada were at 10 a.m. Friday, Aug. 23, in First United Methodist Church with the Rev. Bill Wright, pastor, officiating.

The Rev. Howell Farnsworth, pastor of First Baptist Church, assisted. Burial was in Floyd County Memorial Park under direction of Moore-Rose-White Funeral Home.

Mr. Norman died Tuesday, Aug. 20, 1991, in Lubbock's Methodist Hospital following an illness.

He was born Sept. 19, 1931 in Foard County and moved from Waka to Floyd County in 1936.

He married Willyne Hodges on April 2, 1985 in Floydada. He was a veteran of the U.S. Army. He was a farmer/rancher, an agricultural pilot and a professional photographer.

He was a member of the Quiet Birdman, Texas Aerial Application Association, Confederate Air Force, American Trap Shoot Association and First United Methodist Church.

A daughter, Judy Lee Norman, died in 1953.

Survivors include his wife; a daughter, Linda Norman Leheney of Arlington, Va.; a son, Bill of Prattville, Ala.; and a grandchild.

Pallbearers were Arvil Lee Campbell, Carmel Eastham, Louis Lloyd, Wayne Rainwater, Robert Ward, Dick Guest and Tommy Fondren.

The family suggests memorials to the American Cancer Society.

**ROBERT ODOM**  
Funeral services for Robert Lee Odom, 59, of Hereford, were at 2 p.m. Saturday, August 24, 1991, in Wesley United Methodist Church with the Rev. Fred Wipple, pastor of Chapel of Life Church in Albuquerque, N.M., officiating.

A private burial was held by Rex Funeral Directors of Hereford.

Mr. Odom died at 6:10 p.m. Wednesday, August 21, 1991, in Veterans Administration Medical Center in Amarillo after a lengthy illness.

He was born in Spur and moved to Hereford from El Paso in 1956. He served in the U.S. Army from 1955-1972 and was employed at Holly Sugar Co. He was a member of Wesley United Methodist Church.

He and Carol Russell were married on November 15, 1956, in Clovis, N.M.

Survivors include his wife; three sons, Russ of Hollywood, Calif., Roger of Carlsbad, Calif., and Ronny of Los Angeles, Calif.; two daughters, Tammie Odom of Las Vegas, Nev., and Jan Christman of Harker Heights; his mother, Mae Booth of Silvertown; two sisters, Marie Roberts of Dickens and Pat Lavy of Silvertown; a brother, D.G. of Devine; and a granddaughter.

**MILDRED MARTIN**  
Funeral services for Mildred Monica Martin, 75, of Lockney were at 2 p.m. Tuesday, Aug. 27, in West College and Third Street Church of Christ with Frank Duckworth, minister, and J.W. Hamby of Plainview officiating. Burial was in Flomot Cemetery by Moore-Rose-White Funeral Home.

Mrs. Martin died at 12:17 a.m. Sunday, Aug. 25, 1991, at her residence after a lengthy illness.

She was born Mildred Graves on June 6, 1916 in Plainview and had lived most of her life in Floyd County. She married Raymond Martin on Dec. 27, 1933 in Silvertown. She was a homemaker and a member of the Church of Christ.

Survivors include her husband; two daughters, Leo Kay Phillips and Patsy Patrick, both of Plainview; two sisters, Lula Collins of Deming, N.M., and Viva Hunt of Electra; a brother, James Graves of Elgin, Okla.; 14 grandchildren; and 19 great-grandchildren.

A son, Rayford, died in 1973. Pallbearers were David Jackson, W.L. Carthel, Kenneth Wofford, Bob Jarrett, Gene Belt and Boyce Mosley.

The family suggest memorials to Hospice of the Plains of Plainview.

**VIOLA RIDDLE**  
Services for Viola Beatrice Riddle, 75, of Floydada were at 2 p.m. Thursday, Aug. 22, in Burns-Smith Funeral Home with Robert James, pastor of Parkview Assembly of God, officiating. Burial was in Lubbock's Resthaven Memorial Park.

Mrs. Riddle died Tuesday morning, Aug. 20, 1991, in Floydada Nursing Home after a lengthy illness.

She was born in Cleveland, Okla., and was a longtime resident of Levelland before moving to Floydada. She married George Henry Riddle on July 20, 1931. He died in 1988.

Survivors include two sons, Robert of California and Glen of Allen, Okla.; two daughters, Mary Poteet of Floydada and Stella Weems of Lubbock; 17 grandchildren; 11 great-grandchildren; and 12 great-great-grandchildren.

Pallbearers were Robert Phillips, Bobby Morris, Scott Weems, Cecil Riddle, Terry Riddle and Don Riddle.

**ROBERTA WELCH**  
Funeral services for Roberta Welch, 73, of Plainview will be at 11 a.m. Thursday, Aug. 29, in First Baptist Church with the Rev. Travis Hart, pastor, officiating. The Rev. Leslie Welch, pastor of Seth Ward Baptist Church, will assist.

Graveside services will be at 2:30 p.m. in Memory Gardens Cemetery in Amarillo under the direction of Wood-Dunning Funeral Home of Plainview.

Mrs. Welch died at 4:30 a.m. Tuesday, Aug. 27, 1991, at her home following a lengthy illness.

She was born Roberta Walker on Nov. 18, 1917, in Lesterville, Mo. She moved to Plainview in 1970. She was a registered nurse and had nursed in Amarillo and Canyon and was public school nurse in Kress before retiring in 1979. She also had lived in Booker and McLean.

She married Nathan Lee Welch on March 4, 1944, in Leadwood, Mo.

Survivors include her husband; one son, Derrith of Cuero; one daughter, Vicki Clark of Lockney; two brothers, Dale Walker of Flat River, Mo., and Jimmie Lee Walker of Desloge, Mo.; two sisters, Opal Brown of University City, Mo., and Jewel Rentfro of Desloge, Mo.; and five grandchildren.

A son, Jeffrey, died in 1957. The family suggests memorials to Hospice of Plains or to the American Cancer Society.

**WELTON B. WINN**  
Masonic graveside services for Welton B. Winn, 69, of Brownwood were at 2:30 p.m. Friday, Aug. 23, in Mukewater Cemetery in Brown County with the Rev. R.D. Williams officiating.

He died at 6:58 p.m. Wednesday, Aug. 21, 1991, in a Brownwood nursing home following a lengthy illness.

Mr. Winn was born Dec. 29, 1921 in Brown County, Texas. A former resident of Floydada and Muleshoe, he had resided in Brownwood for the past seven years.

He was married to Mary Loyce Horsley on June 1, 1946 in Clovis, N.M.

He served with the U.S. Air Force during World War II. He was a member of the Masonic Lodge #712 in Floydada. He was a retired electrician and a Baptist.

Survivors include his wife; one daughter, LaTrece Whiting of San Antonio; one brother, Jess Winn of Muleshoe; and a granddaughter, Stephanie Whiting of San Antonio.

The Lockney and Floydada offices of the Floyd County Hesperian-Beacon will be closed Monday, September 2. The deadline for Lockney news will be Tuesday, at 12:00 noon.

**CAPADA**  
DRIVE-IN THEATRE & SNACK BAR  
FRIDAY-SATURDAY AND SUNDAY  
LIFE STINKS  
MEL BROOKS  
LESLEY ANN WARREN

**DRIVE-IN THEATRE & SNACK BAR**  
FRIDAY-SATURDAY AND SUNDAY  
LIFE STINKS  
MEL BROOKS  
LESLEY ANN WARREN

## PUBLIC NOTICE

### NOTICE OF EFFECTIVE TAX RATES

1991 Property Tax Rates in MACKENZIE WATER AUTHORITY

This notice concerns 1991 property tax rates for MACKENZIE WATER. It presents information about three tax rates. Last year's tax rate is the actual rate the taxing unit used to determine property taxes last year. This year's effective tax rate would impose the same total taxes as last year if you compare properties taxed in both years. This year's rollback tax rate is the highest tax rate the taxing unit can set before taxpayers can start tax rollback procedures. In each case these rates are found by dividing the total amount of taxes by the tax base (the total value of taxable property) with adjustments as required by state law. The rates are given per \$100 of property value.

Last year's tax rate:	\$ 116,708.97
+ Last year's operating taxes	\$ 325,819.27
= Last year's debt taxes	\$ 442,528.24
+ Last year's total taxes	\$ 160,977,899
= Last year's tax base	\$ 2752 /\$100
<b>This year's effective tax rate:</b>	
Last year's adjusted taxes (after subtracting taxes on lost property)	\$ 444,200.26
+ This year's adjusted tax base (after subtracting value of new property)	\$ 160,681,390
= This year's effective tax rate	\$ .27644 /\$100
<b>1.03 = maximum rate unless unit publishes notices and holds hearing</b>	
1.03 = maximum rate unless unit publishes notices and holds hearing	\$ .28473 /\$100
<b>This year's rollback tax rate:</b>	
Last year's adjusted operating taxes (after subtracting taxes on lost property)	\$ 117,506.46
+ This year's adjusted tax base	\$ 160,681,390
= This year's effective operating rate	\$ .07313 /\$100
+ This year's maximum operating rate	\$ .07898 /\$100
+ This year's debt rate	\$ .19602 /\$100
= This year's rollback rate	\$ .27500 /\$100

### SCHEDULE A: Unencumbered Fund Balances

The following balances will probably be left in the unit's property tax accounts at the end of the fiscal year. These balances are not encumbered by a corresponding debt obligation.

Type of Property Tax Fund	Balance
ADMINISTRATIVE OPERATION & MAINTENANCE	\$ 193,000.00
GENERAL OBLIGATION (I&S)	434,500.00

### SCHEDULE B: 1990 Debt Service

The unit plans to pay the following amounts for long-term debts that are secured by property taxes. These amounts will be paid from property tax revenues (or additional sales tax revenues, if applicable).

Description of Debt	Principal or Contract Payment to be Paid	Interest to be Paid	Other Amounts to be Paid	Total Payment
CONSTRUCTION BONDS, SER. '70	10,000.00	7,125.00	350.00	17,475.00
CONSTRUCTION BONDS, SER. '72	65,000.00	87,262.50	500.00	152,762.50
GEN. OBLIG. (I&S) SER. '82 (FHA)	5,000.00	78,500.00		83,500.00
GEN. OBLIG. (I&S) SER. '82A	35,000.00	69,720.00	75.00	104,795.00
Total required for 1990 debt service			358,532.50	
- Amount (if any) paid from funds listed in Schedule A			30,000.00	
- Excess collections last year			0	
= Total to be paid from taxes in 1990			328,532.50	
+ Amount added in anticipation that the unit will collect only 100% of its taxes in 1990			0	
= Total Debt Service Levy			328,532.50	

This notice contains a summary of actual, effective, and rollback tax rate calculations. You can inspect a copy of the full calculations at Floyd County Appraisal District.

Name of person preparing this notice: Shelia Faulkenberry  
Title: CHIEF APPRAISER  
Date prepared: AUGUST 22, 1991

TRUTH IN TAXATION 1991

**BEEF COUNTRY BASKET**  
TIME AT DAIRY QUEEN!



**\$1.99** ON SALE AUG. 19, THRU SEPT. 1, 1991  
FOUR FINGERS PLUS TAX

This week's DQ Value: a delicious Country Basket! Four steak fingers with fries, gravy and Texas toast for a low DQ price! Or six steak fingers for \$2.99! Only at Dairy Queen!

**DQ IS VALUE COUNTRY**

Reg. U.S. Pat. & Tm. Off. Am. D.Q. Corp. TM Reg. U.S. Pat. & Tm. Tx. D.Q. Coun. ©Tx. D.Q. Co. Coun. At participating Dairy Queen stores.

**DOVE SEASON**  
Starts Sunday, September 1st.

Be sure and get your license by **Saturday, August 31st.**

**KIRK AND SONS**  
Floydada's Huntin' Headquarters

**DENTURES**  
SINGLES from \$275  
UPPER & LOWER from \$495  
RELINES from \$95  
Open Monday-Saturday 8-5  
Same Day Service Upon Request  
Repairs While You Wait  
CALL 794-9191  
Jimmie D. Brown, DDS  
John Fukuda, DDS  
5206 82nd St., Lubbock

# CLASSIFIED ADVERTISING

## AUTOMOTIVE

1986 VERY PLUSH CHEVROLET Conversion Van, like new, less than 35,000 actual miles. Also, a 350 Chevrolet engine for sale. Can be seen at Ray Lee's Equipment between 8:00-6:00, ask for Gary; or call 983-3303.

'77 IMPALA, \$850.00; '79 Ford, 2 door coupe, \$850.00; '82 Caprice Station Wagon, \$1850.00. Eakin Car Lot, Ralls Hwy., 983-3616.

'82 NISSAN 200 SX, \$1800.00; '81 Chevy 1/2 ton pickup, \$1000.00; '77 Chevy 1/2 ton ice cream van, \$1200.00; '77 Ford 1/2 ton pickup/camper, \$1500.00; 983-2882.

## CARD OF THANKS

The family of Sue Stansell Rigby wish to express our deepest gratitude for the flowers, prayers, cards, visits, food and the memorials to the churches, children's homes, favorite charities and your sitting with us at the hospital.

Especially do we thank Delvin Bybee, for the beautiful memorial services he gave at the First Baptist Church in Lockney and Shallowater, the ladies of the First Baptist Church in Lockney for the wonderful food they prepared for us Monday, to Bro. Ted Samples, the churches in Lockney, Shallowater and Lubbock for your special prayers and words of comfort, the E.M.S. of Shallowater for their quick response and to the Senior Class of 1964. Knowing that so many loved her has been a comfort to us and we will always remember.

We pray that we can in some way show our love and appreciation to all of you and may God Bless each of you in a special way.

Rodney, Molly, Josh, Jon and Patti Rigby  
Pat and Dottie Stansell  
Steve and Scott Stansell  
Tim, Cindy, Julie and Tyler Stansell  
8-29p

Dear Friends,

We deeply appreciate your many expressions of kindness. Thank you for the cards, calls, visits, food and flowers. Thank you especially for your supportive prayers.

Jewel Busby  
June Collins  
Judy Norris  
8-29p

## CARD OF THANKS

The family of Weims Lee Norman wish to express our gratitude and thanks for the outpouring of concern, support and sympathy shown during his illness and upon his recent death. We are extremely touched and appreciative. We particularly wish to thank the Floydada EMS for their assistance.

Thank you,  
Willyne Norman  
Linda and Mark Leheny  
Bill, Gale and Grace Norman  
8-29p

The family of John Farmer wishes to thank our church family and each individual for the many prayers in his and the family's behalf, for the many calls, cards, visits, food brought to our home and to the church, and to the ladies who served the meals.

We thank you for the flowers and memorials, and to the men who mowed our yard in deep appreciation.

To Bro. Hal, Bill Smith and Jane McCulley for the beautiful memorial service for John, and to the pallbearers we are deeply grateful.

May God Bless each of you and thank you for your care and concern. It has made our sorrow easier to bear.

Winnie Neil  
Homer Farmer  
Gene Franklin Family  
Carolyn Jackson Family  
8-29p

## FARM EQUIPMENT

MUST SELL TWO STEEL buildings from cancellation. One is 40x40, brand new, sell for balance owed. Call Bob 1-800-552-8504.

## FARM SERVICES

WE CUSTOM MAKE AND FIT Air conditioning hoses for all types of machines. BROWN IMPLEMENT 983-2281



**FRIENDS OF THE CAPROCK**  
Helping Hands of the Hospital

Have A Nice Week!

## PUBLIC NOTICES

### NOTICE OF MEETING

A regular meeting of the Board of Directors for Floyd County Central Appraisal District will be held on Tuesday, September 3, 1991 at 9:00 a.m. in the Appraisal Office Board Room, Room 107, County Courthouse.

### PUBLIC NOTICE

The City Council of the City of Floydada will hold a Public Hearing at a Regular Meeting on September 16, 1991 at 7:30 p.m. in the Council meeting room at the City Hall, 114 W. Virginia St. to consider and adopt the proposed City Operating Budget for the fiscal period beginning October 1, 1991, and ending September 30, 1992.

### NOTICE

Lockney I.S.D. will accept bids for school foods and paper goods starting August 23 through September 12.

Bids will be addressed to W.H. Hallmark, Superintendent L.I.S.D., Box 428, Lockney, Texas 79241.

All bid specifications can be obtained at the Superintendent's office or the elementary cafeteria.

### NOTICE OF ALL PERSONS HAVING CLAIMS AGAINST THE ESTATE OF WILLIAM D. BEEDY, DECEASED

Notice is hereby given that Original Letters Testamentary upon the estate of WILLIAM D. BEEDY, Deceased, were issued to the undersigned on the 26th day of July, A.D., 1991, in the proceedings indicated below my signature hereto, which is still pending, and that I now hold such letters. All persons having claims against said estate which is being administered, in the county below named, are hereby required to present the same to me at the address below given, before such estate is closed, and within the time prescribed by law.

WINNIE J. BEEDY, EXECUTRIX OF THE ESTATE OF WILLIAM D. BEEDY, DECEASED, CAUSE NO. 5114, IN THE COUNTY COURT OF FLOYD COUNTY, TEXAS, C/O JUNG AND BRIAN ATTORNEYS, P.O. BOX 456, CROSBYTON, TEXAS 79322

## FOR RENT

HOUSE FOR RENT: Two bedroom, 2 bath, large living room and dining room, large den, 2 fireplaces, carport. Call 214-350-5215 or 818-762-2811.

OOPS - THEY DIDN'T RENT IT! 2 bedroom house in Lakeview Community with 20 acres or for sale, 675-7061.

## GARAGE SALES

FLOYDADA 916 LEONARD (2 blocks south Dairy Queen). Friday - 8-7 Furniture, appliances, lot of back-to-school clothes, etc.

## HELP WANTED

NOW TAKING APPLICATIONS for full time cook position. Apply in person. Our Place Drive Inn at 402 N. 2nd.

EXPERIENCED FARM HAND needed. Call 697-2631.

POSTAL JOBS, start \$11.41 pr hr, carriers, sorters, clerks. Excellent pay and benefits. For examination and application information call 1-206-736-7000 Ext. 8960T7, 6 a.m.-10 p.m./7 days.

AGENTS WANTED - If you can qualify, high earnings. Several opportunities. 983-2671.

POSTAL JOBS, start \$11.41 pr hr, carriers, sorters, clerks. Excellent pay and benefits. For examination and application information call 1-206-736-7000 Ext. 8960T6, 6 a.m.-10 p.m./7 days.

JOBS IN KUWAIT/SAUDI, hiring, \$37,500-\$150,000 yrlly, construction/oil refinery/medical, office/ welders/most skills. Transportation, housing. Incredible opportunities. Call 1-206-736-7000 Ext. 8960W6.

## HOUSES FOR SALE

WHOOOPS! Should have bought 903 Apollo at \$95,000. Inflation has raised price to \$96,000. 652-3702.

2/1/1 - BY OWNER, 416 W. Ollie, \$16,000, 983-5842 or 799-2579.

BRICK, 3 BEDROOM, 1 1/2 bath, den with fireplace, gameroom, basement. 101 J.B. Ave. 983-3615.

OUR HOME: 3 bedroom, isolated master, 2 baths, 2 living areas, formal dining, ceiling fans, sprinklers, well landscaped. Needs nothing but a loving family. Call Ray Reed, 983-3998.

BEAUTIFUL-BUCK GALLOWAY built 3/2/2 home. Great location. Call Sam Hale Real Estate for appointment, 983-3261.

3 BEDROOM, 2 BATH, central air, fireplace, large kitchen with island, huge master bedroom with 2 large closets, fenced, west side. Call 983-3196.

RECENTLY REPOSSESSED brick home for sale or lease in Lakeview Community. Call 983-3234 for further information.

NOW IS THE TIME TO BUY - Price reduced on several of our listings. Call Sam Hale Real Estate at 983-3261.

CLEAN, EXTRA NICE, 2 bedroom with humidifier and new central heat and air, two car garage and storm cellar. Quiet neighborhood. Must see to appreciate, 983-5207.

3 BEDROOM HOUSE for sale, shown by appointment only. 983-3474.

WE HAVE NEW LISTINGS in most parts of town. Call Sam Hale for all your Real Estate needs at 983-3261.

HOUSE FOR SALE: 328 W. California, 3 bedroom, sun room, \$12,000, 983-2169.

## HOUSES FOR SALE

3 BEDROOM, FIREPLACE, central heat and air. Possible owner financing. Price to sell. 983-2907 or 797-3576, leave message.

## HOUSES WANTED

WOULD LIKE TO BUY a home thorough owner finance or lease purchase. Call 983-3464 ask for Jon.

## IRRIGATION

IRRIGATION PRODUCTS INC. Valley Irrigation Systems 4521 Clovis Road Lubbock 765-5490 QUALITY - DEPENDABILITY

## LOTS FOR SALE

LOTS FOR SALE with 6 ft. fence. Contact Gene Watts, 817-237-1738.

## LOST & FOUND

LOST: Medium size apricot poodle. Her name is Bridgett, if seen or find her please call Ruth at 983-2797 or Del at 983-3732. Reward offered.

## MISCELLANEOUS

WHOLE HOUSE FULL of used carpet and padding. Monte Williams, 983-5699.

FLUTE FOR SALE - Call Kelli LaBaume after 5:00 p.m., 983-3334.

SHOWER GIFT - The lady who brought the blue basket with six cup towels to Angie's shower, please call 983-5351.

## BOND LANDS, INC REAL ESTATE

107 S. 5th Street P.O. Box 487  
806-983-2151 Floydada, Texas 79235-0487

General Land Services, Sales, Leases and Management

Script Printing & Office Supply  
• Commercial Printing  
• Office Supplies & Furniture  
• Business Machines  
108 S. Main Floydada 983-5131

POOLE MUFFLER & RADIATOR Sales and Installation  
Free pickup & delivery  
407 E. Houston  
983-2285

## BUDGET SEPTIC SERVICE

PUMPING - CLEANING - INSTALLATION  
"Septic service that won't cost an arm and a leg."  
Call collect for FREE ESTIMATE  
Senior Citizen Discount Available 689-2221

Joe's Snapper Lawn Mower Sales & Service  
118 S. Main, Floydada  
983-5050

ALTERNATOR & STARTER REPAIRS  
Norrell Tractor Parts  
215 S. Main 983-3417

## E & J BODY WORKS

Replacing '73-'87 Chevrolet pickup and Suburban windshields \$125.00  
983-2626  
509 N. 2nd St. Floydada

## CONCRETE WORK

All Types of Work  
Lalo and Lupe  
983-5014

## ADAMS WELL SERVICE

Complete irrigation service  
5 year warranty, domestic pump  
720 N. 2nd  
983-5003

## Joe's Locksmith Service

118 S. Main, Floydada  
983-5050

## ECONOMICAL STORAGE TRY BARKER'S

Jewel Box-Mini Storage and save your time and money.  
Phone 652-2642  
Corner Main & Locust  
Lockney, Texas  
BARKER BUILDING

## STORAGE SPACE

West Texas Mini Storage  
c/o Assiter Insurance  
206 W. California  
983-2511

## POOLE WELL SERVICE

Sales & Service on all types submersible pumps  
407 E. Houston 983-2285



## Probasco Flying Service

Office at Floydada Municipal Airport  
983-2314 or 983-5061

AERIAL PESTICIDE APPLICATION

Nights Call: Mitch Probasco, 983-2368 or Jimmy Cervantes, 983-5531

## CRH Systems

118 West California  
983-2445 983-3151  
DOS 5.0 Update & Quicken Payroll  
Visit Our Show Room  
Everyday Low Prices

## MISCELLANEOUS

JAMES LOVELL'S BIG GARDEN is ready. You Pick, We Pick, 983-2633.

BULK SEED WHEAT TRIUMPH 64, 61 test, combine run, 1990 crop, \$3.25 a bushel at farm. Call 652-3601 or 652-3351.

CARPORIS - PATIO COVERS, 10x20 carport, \$585.00. Free Estimates, 1-800-873-3271.

WANTED - HESPERIANS 1976 - 1980, one or all. Call Neta at 983-3737 or 983-3644 after 6.

LAGNIAPE VEGIES - Fresh vegetables by the pound or bushel. If order is \$10.00 or more, will deliver in Floydada. Call 983-2643.

MUSIC LESSONS in piano, organ, guitar, and piano accordion. Will begin late September. Please write Box 417, Lockney, TX 79241 or call 652-2364. Mrs. Charles L. Record.

## PETS

RED HEALER X PUPS, tails docked to give away. Call 652-2219 after 5:00 p.m.

REGISTERED COCKER SPANIELS - White with buff spots. Call 652-3547 (leave message before 6:00).

## SERVICES

CEMENT WORK - Storm cellars, floors, driveways, sidewalks, patios, porches. Dirt work, all work guaranteed, free estimates. 30 years experience. Call 296-9602.

YARDS MOWED and edged, trees and hedges trimmed and cut. Yard and flower bed tilled. Reasonable prices. Call Sharkey 983-3803.

GIBBS ROOFING & HOME REPAIRS - New roofs and will repair existing roofs of all types, 29 years experience in roofing and home repairs. Free estimates. Call Benny Gibbs, 1409 W. 25th, Plainview, 296-0352.

LET ME DO YOUR IRONING. Call 652-2331.

ALL TYPES OF CONCRETE WORK, 983-5620.

DON'S MUFFLER SHOP - All types of exhaust work, pickup and delivery, free estimates, 210 W. California, Floydada, TX, 983-2273. Out of town call 1-800-866-3670.

FOR CEMENT WORK, BACKHOE, dump truck, winch truck or day working. Call 983-5120 and leave message, Gary Bennett.

ALTERATIONS: For your alteration needs, see Florence or Linda at Mr. T's Cleaners. Hemming, tapering and other.

ELECTRICAL WORK, industrial, commercial and residential, call Randy Hancock at 652-2497.

TREE AND YARD SPRAYING - Emert's Nursery and Tree Service, 652-3116 after 6.

APPLIANCE SERVICE REPAIR: All kinds of household appliances. Call Gene Lowrance. 983-2763.

## WANTED

WANTED: Wheat pasture for fall of '91. Would like to rent one or two section dryland or semi-dry land. Call 983-2291.

Need A Home Appliance Repaired?  
Call DON PAYNE  
(806) 983-2939

82nd annual

# Halfway field day scheduled

"The 82nd annual Field Day will be held at the Texas A&M University High Plains Research Center at Halfway" announced Floyd County Extension Agent Mike Mallett. The tours are scheduled from 1:00 to 4:00 p.m. on Tuesday, September 10. The research center is located on U.S. Hwy. 70, 14 miles west of Plainview.

Sponsors of the event are the Texas Agricultural Experiment Station, Texas Agricultural Extension Service, High Plains Research Foundation, Texas Forest Service, USDA-Agricultural Research Service, Texas Tech University.

The program includes riding tours of research plots with four major stops: (1.) Farming systems and weed control—Dr. Wayne Keeling and Dr. Paul Baumann; (2.) Low Energy Precision Application (LEPA) irrigation management—Dr. William Lyle, Dr. Rose Mary Seymour, Dr. Arthur Onken; (3.) Chemigation—Jim Bordovsky, Dr. W. Pat Morrison, Eddie Bynum; (4.) Corn—Dr. Tom Archer. Walking tours will be provided at vegetable research plots, with Dr. David Bender and Dr. Leonard Pike, and the grape vineyard, with Dr. William Lippe.

The new Computer Training and Education Center will be open for display of facilities and software, and individual instruction, with Dr. Jackie Smith and Jane Green. In the computer center foyer, Dr. Kathy Volanty and Extension Service home economists

will have a display on corn processing and products. Other displays will feature the latest commercial agricultural equipment and supplies, and research

equipment such as a spoke-type fertilizer applicator, chemigation simulator, high-track soil sampler and plot sprayer, and rainfall simulator.

## COWPOKES

By Ace Reid



"What's the matter with you son, Maw and I spent 11 years tryin' to git you to eat vegetables. Now your a vegetarian and we're tryin' to git you to eat meat."

# Center to focus on biologically based alternatives

Pesticides will be the choice of last resort as a major shift in the agriculture research emphasis unfolds at a new Texas A&M University center.

"We are not giving up on pesticides, but we will assume as a research hypothesis that we have no chemicals. Then we will exhaust all biological alternatives first," said Ray Frisbie, director of the Center for Biologically Intensive Integrated Pest Management, established by the Texas A&M Board of Regents, July 26.

Integrated Pest Management, which has roots in the early 1950s, is the reduction of pest populations through the use of "all suitable techniques" in harmony. But research is changing tunes because of recent trends in the United States, Frisbie said, and biological control methods are gaining in popularity.

\* Pests — including insects, weeds and diseases — have become increasingly resistant to chemicals used for control. That means scientists are constantly trying to develop new chemicals to kill the stronger strains.

\* Costs to register new products and legislation requiring the re-registration of existing pesticides have become prohibitive for manufacturers. About \$50 million is spent to bring a new product from discovery to market, Frisbie said, and the average re-registration costs \$7 million per product.

\* Public perception, which drives policy, indicates that some 75 percent of the U.S. population are concerned about pollution and the safe use of pesticides around food, water, wildlife.

"We believe there will be even fewer pesticides in coming years, so we have to ask what are the alternatives," Frisbie said. "We already are using a lot of biological control, but we will have to do more in the future."

In the past year, the U.S. Environmental Protection Agency has approved only three new active ingredients for pest control, and all were biological compounds, according to Ray McAllister, director of regulatory affairs at the National Agricultural Chemical Association.

About one-fourth of the pesticides on the EPA list in 1988 already have been dropped by manufacturers rather than undergo the re-registration process, McAllister said.

He said a trend has been not necessarily to stop using pesticides but to develop new products that require lower application rates — perhaps one ounce rather than one pound of product.

McAllister also said that the failure of much biological control research in the past has been the lack of economic data to demonstrate whether the technique is feasible.

Frisbie said all projects at the center will involve an agricultural economist from the beginning to determine if farmers could afford to use the technique while keeping reasonable food prices.

The center will be a network to facilitate cooperative research between scientists at Texas A&M and other univer-

sities around the world, he added.

One of the first proposed projects for the center suggests that mustard plants growing among rows of cabbage may help U.S. producers safely bite back at hungry diamondback moths.

The plan is to lure the moths away from cabbage to more appealing mus-

tard stocked with natural parasites.

Frisbie said diamondback moth, the world's most prevalent cabbage pest, is a candidate for biological control research because the insect has developed resistance to every insecticide available.

For the first time in the United States, the center wants to test a method used in

# Houston Junior Livestock Show and Rodeo sets limits

Houston Livestock Show and Rodeo officials have announced major revisions in the Show's junior market auctions, putting a cap on the amount of money a junior exhibitor can receive for an animal.

The cap will not affect how much buyers may bid for the junior show champions, but any amount above the established ceilings will be put into the Houston Livestock Show and Rodeo Educational Fund. Each \$25,000 or major fraction thereof will be used for permanently endowed scholarships in the name or names designated by the buyer.

Dick Graves, president of the Houston Show, said, "The auction payoffs to some of our grand and reserve grand champion winners have become excessive in the past few years. However, we did not want to implement any type of system that would limit the enthusiasm of our bidders or the thrill of setting world records.

The established caps are:

	Grand Champion	Reserve Grand Champion	All Other Sale Animals
Steers	\$50,000	\$35,000	\$15,000
Barrows	\$25,000	\$17,500	\$7,500
Lams	\$25,000	\$17,500	\$7,500
Broilers	\$20,000	\$10,000	\$5,000
Turkeys	\$20,000	\$10,000	\$5,000

# Sticky cotton team meets

The Sticky Cotton Action Team (SCAT) continues to emphasize the importance of ongoing research projects, and additional studies, to address "sticky cotton." Honeydew sugar deposited on open bolls by aphids and whiteflies cause "sticky cotton". During the textile process, the delicate webs and strands of fiber cannot be processed into yarn because they stick to the machinery in the textile mill. Even gin machinery can be affected.

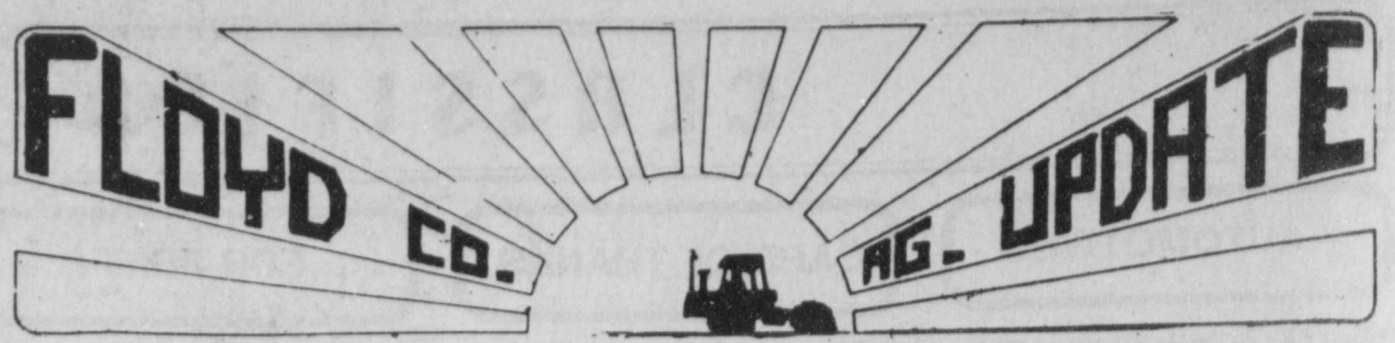
At the recent meeting, SCAT reported that sugar levels were monitored beltwide in 1990 and will be observed again in 1991 to ensure that the problem is fully defined regarding which insect and what particular sugars are involved. Specialists in sugar chemistry have been

recruited to tackle the challenge of neutralizing the effects of the honeydew deposits after they have occurred.

Meanwhile, chemical, biological and cultural control methods are being researched to prevent insect populations from reaching the critical stage. Arizona growers are funding a major portion of the work through their State Support dollars, with additional funding from Cotton Incorporated and state and federal government.

**HEALTH INSURANCE**  
CALL NICK LONG 983-3441  
State Farm Mutual Automobile Insurance Company  
Birmingham, Ala.

**ADM-PAYMASTER GINNING SERVICE**  
Quitaque 1-800-443-8702



# Stoerner vying for seat on board

September 10 is the last day for Texas grain sorghum producers to vote in the Texas Grain Sorghum Board election. Producers will elect five directors to the 15-member Texas Grain Sorghum Board (TGSB).

Elections are being in the South Texas, Panhandle, West Texas and Upper Coast districts. Directors elected to the board must be grain sorghum producers or owners of land on which sorghum is produced.

Dick Perry of Robstown, who is currently serving as TGSB chairman, is unopposed on the ballot for the one seat open in the South Texas District.

Troy Sublett of Hereford, who is seeking his second term on the board, is the only candidate listed on the ballot for the Panhandle District.

Four producers from the West Texas District are vying for the district's one seat on the board. They are Jack Cobb of Plains, Pat George of Tulia, Ernest Michalewicz of San Angelo and Martin Stoerner of Lockney.

Two seats are open in the Upper Coast District. Howard Salge of Skidmore,

also up for re-election to the board, is the only candidate nominated in that district.

Write-in candidates will also be accepted if they are bona fide producers of grain sorghum and are willing to serve on the board if elected.

TGSB administers the funds collected by the state-wide assessment on grain sorghum. The funds are used for

research, education and promotion. Anyone subject to the assessment may vote in the election.

To obtain ballots, producers may contact the TGSB office at P. O. Box 560, Abernathy, Texas 79311, (806) 298-2543. Ballots are also available from county extension offices and grain elevators. Ballots must be postmarked by September 10.

# Special efforts on line to move large supplies of beef

Now is the time to buy beef. That's the message the beef industry is passing along to consumers, since the unusually large supply of fed cattle and a sharp drop in fed cattle prices may mean lower prices for consumers.

Special promotion and information efforts, funded in part by Floyd County beef producers through investments in the national beef checkoff, are underway to help alert consumers of the good values currently available.

Promotional efforts will include the addition of a value-oriented theme to previously-scheduled network radio commercials, set to air for three weeks beginning Aug. 19. The beef industry has also enhanced its natural purchase of a special four-color ad featuring beef grilling from one placement to three, including the Aug. 19 edition of Time magazine.

Information programs will let consumers know that now may be a great time to stock up on beef products. This information will provide freezing and wrapping tips and feature steaks, which are ideal for barbecuing. In addition, the convenience of beef and its application to many fall activities, such as tailgating at football games, will be emphasized.

Efforts will also be reinforced with retail and foodservice chains, encouraging those marketing beef products to feature it more prominently. Top foodservice distributors also are being shown the benefits of more beef featur-

ing. Retail and foodservice operations will benefit from the strong consumer effort being made by the beef industry.

Some of these operations already realize their stake in the effort and are joining forces with the beef industry to step up their beef featuring. For example, McDonald's will begin a special advertising campaign on its McLean Deluxe sandwich in September and A-1 Steak Sauce will feature a September steak campaign.

Also in September, a food editor seminar in Colorado Springs, Colo., will provide media with information on beef and the abundant supply currently available.

While the checkoff can't prevent the ups and downs in the marketplace that are primarily driven by supply, says Richard Wortham, Director of Industry Relations of the Texas Beef Industry Council, it can certainly help alert consumers to good beef values when supplies are large, such as they are now.

The Texas Beef Industry Council and other industry organizations in Texas and across the country are also stepping up their efforts to provide information to consumers and those who sell beef to them.

These efforts are built on the beef checkoff programs already in place, according to Wortham. They were strategically developed, though, to quickly turn up the heat of those programs to help move product through the market channels.

# Cotton Unlimited in Post receives loan

Agriculture Commissioner Rick Perry awarded a \$2 million Texas Agricultural Finance Authority loan to Cotton Unlimited in Post — a move expected to create 150 new jobs.

The loan is part of a \$2.2 million loan package in which TAFE and the Post Economic Development Corp. are participating.

"This funding will help Cotton Unlimited create new jobs and spur economic growth in Post," said Perry, in the city to personally award the loan to Joe Pate, the company's president. "What's more, this is another important step forward in our effort to create a thriving fiber processing industry in Texas."

The loan will help Cotton Unlimited underwrite its manufacture of oil absorption material, cotton-based insulation and other products, such as disposable biodegradable diapers, blankets, tent material, casket liners and furniture stuffing. The company has worked to develop a cotton-based insulation as an alternative to fiberglass.

As America's top producer of cotton, Texas last year harvested five million bales or a third of all cotton produced in the United States. However, more than 90 percent of Texas' cotton leaves the state for processing — the stage where

value is added to the raw commodity.

"By exporting our raw commodities, we are, in effect, exporting jobs, opportunities and dollars that otherwise would go into Texans' pocketbooks," Perry said. "It's time we changed all that. It's time we kept our jobs at home."

To do that, Perry in June launched "Make it TEXAS," a new program aimed at increasing the state's level of commodity processing. Texas currently processes only 8 percent of the goods it generates. The national average is 20 percent.

"Texas is the second largest agricultural producer in America," Perry said. "We're the nation's top producer not only of cotton, but of cattle, wool and mohair and a leader in the production of a number of other commodities. So, it makes good common sense for Texas to process more of our raw food and fiber — and turn those raw commodities into jobs for Texans."

TAFE was created by the Legislature in 1987 to make or guarantee loans for agribusinesses in commodity processing and packing. Voters in 1989 gave the authority the green light to issue \$25 million in general obligation bonds to finance the loans. Sale of \$10 million of the bonds was approved in late May by

the state Bond Review Board. The first of the bonds was sold in late July.

**LETS THINK ABOUT IT... RECYCLE TODAY!**

**FLOYDADA IMPLEMENT CO.**  
MASSEY-FERGUSON  
Floydada 983-3584

**PRODUCER'S COOPERATIVE ELEVATOR**  
983-2821 - FLOYDADA  
983-3770 - DOUGHERTY

**FIRST NATIONAL BANK OF FLOYDADA**  
1ST  
Floydada 983-3717

**RUSSELL'S EQUIPMENT & SUPPLY**  
Russell's  
Floydada 983-3751

**FLOYDADA COOPERATIVE GINS INC.**  
COOP  
Floydada 983-2884

**Attention SOYBEAN PRODUCERS**  
**CONTINENTAL - COF COMPANY**  
Of Plainview is now contracting SOYBEANS for harvest delivery  
For More Information Call: 1-800-858-4094  
From 7:30 a.m. to 5:30 p.m.