

Homecoming plans are finalized

A meeting was held on July 13 in the school office to finalize plans for Homecoming 1988. Those in attendance were the Homecoming officers and committee chairmen. Homecoming 1988 will be held on September 16 and 17 with a full slate of events scheduled for the two days. Activities will begin on Friday at noon at the Floydada High School library with registration. The officers would like to strongly urge the local exes to register at this time to avoid the long lines on Saturday morning.

The pep rally will be held at the high school (either in the gym or on the patio area) at 3:15. The Lion's Club will host a pancake supper from 5:00-7:30 at the junior high school cafeteria, followed by the Floydada-Lockney game at 7:30. The teen dance will begin shortly after the game at the Massie Activity Center and continue until 1:00.

Saturday's activities begin at 9:00 for those who did not register on Friday afternoon. Registration will again be in the library at the high school. A business meeting will take place at 11:00. The meeting will include reading the minutes from the last homecoming, voting on new officers, conducting any new business and presenting the memorial service.

A lunch catered by Danny's Hens and Fins will begin after the meeting. The cost of the lunch will be \$7.00 each. Tickets will be available at the registration tables. Only those with tickets will be served. Class reunions will begin at 1:30, and organizational meetings will begin at 3:00. That evening, exes will be entertained by the music of Malfunction Junction at a dance beginning at 9:00 in the Floydada Co-op Gin barn. The dance will conclude with a breakfast from Nielson's Restaurant from 12:00 until 2:00.

Many classes are planning special receptions for their exes. If you want to plan something for your class, please contact Anne Carthel at 983-2377. A list will be compiled to announce at the game on Friday night, or during the day on Saturday. Exes are encouraged to have something special for their former classmates.

Post cards have been sent to all out-

of-town exes, and letters with the details will be mailed out in August. There will be a meeting held on August 2 to stuff envelopes to mail to all the exes. Anyone who is hosting a reception for their class and who would like to include an invitation to all their former classmates is invited to come and help get these out to mail. If you have any questions, please contact Anne Carthel.

Where's The Fire...

By Mike Reeves

The Floydada Volunteer Fire Department made two fire runs during the last week. The fire department answered a smoke scare at the Fieldon Motel on Thursday, July 7 at 7:12 a.m. No damage was reported. Twelve men and three trucks responded.

Seventeen men and four units responded to a house explosion at 210 W. Virginia on July 16. The explosion occurred at approximately 10:37 p.m. at the Alan Roy home. The source of the explosion has not been determined at this time.

Fourteen firefighters met at 7:00 Monday, July 18. Firmer practiced on the trucks as well as hose handling practice and the election of new officers.

Funds available for low income home improvement

Guadalupe Economic Services of Lubbock announces the availability of funds to make major home repairs for low-income, elderly or handicapped homeowners in the Counties surrounding Lubbock. A grant from Farmer's Home Administration is making these funds available to the rural areas.

Margy McMennamy, GESC Housing Director, states that this money can be used for such repairs as roofing, plumbing, electrical rewiring and handicap accessibility. A total of \$10,000.00 per home is available depending on the value and condition of the home before repairs are begun. Only 55% of the value can be spent for repairs and the house must be brought up to standards



They are: Chief, Larry Guthrie; 1st Assist. Chief, Bobby Welborn; 2nd Assist. Danny Nixon; 1st Captain, Carroll Simms; 2nd, Dinks Eckert; Secretary, Gary Vick; Assist. Secretary, Gary Brown; Training Officer, Allen Fondy. The 11th annual Guthrie Award recipient was Jerry Warren.

with the money invested or the house will not be considered for the program. The first \$5,000.00 is repayable in the form of a 5% loan; the remaining amount used for thermal improvements will be a grant to the homeowner.

Applicable counties are Bailey, Lamb, Floyd, Motley, Cochran, Crosby, Dickens, Castro, King, Yoakum, Terry, Lynn, Garza, Deaf Smith, Parmer, Swisher, Dawson, Hockley and Gaines. Portions of Hale Co. (excluding the City of Plainview) and the Southeast Quadrant of Lubbock County (Idalou and Slaton) are also included.

This rehab program has been in existence for two years and is coming to a close at the end of September, 1988. Anyone wishing to apply should do so immediately. Applicants must have an appointment and applications will not be taken unless the homeowner brings with him the following: (1) Proof of ownership-must be living in the home one year prior to application (2) 1987 Income Tax Returns and, (3) Copies of property tax receipts-property taxes must NOT be delinquent.

For further information or to schedule an appointment, call Ms. McMennamy or GESC Housing Counselor, Francisco Carrillo at 806-744-4416 locally or from outside Lubbock, 1-800-666-4372.

a view from The Lamplighter

By Ken Towery

Continued from Page One

costs. The rules for reporting campaign expenditures are completely different for the two races now. When Bentsen is out campaigning in Texas, will the tab be picked up by the Presidential ticket, or his Senate campaign, now brimming with ready cash? Legally it makes a big difference.

Much has been written, and said, since the choice became known, about "how a man like Bentsen, generally regarded as a moderate" could team up with Gov. Dukakis, a liberal cut from the Ted Kennedy mold. We do not believe this really posed a problem for Bentsen, although it ultimately may pose a problem for Dukakis-Bentsen. Probably nothing has split the country in recent months like the Contra thing. Dukakis has been adamantly opposed to any military aid for the Contras, while Bentsen has generally been supportive. And those followers of Dukakis who favor the Sandanistas, as opposed to the Contras, feel very strongly about their position. It could cause many of them to stay home, including many of Jackson's followers.

At any rate, as far as Texas is concerned, this has injected a note of excitement into what otherwise was proving to be an unexciting race.

Lordy, Lordy
Look Who's
40
Mike Coconougher

THE FLOYD COUNTY HESPERIAN
(USPS 2026-8000)
Published weekly each Thursday at 111 East Missouri Street, Floydada, Texas 79235. Second class postage at Floydada, Texas 79235.
SUBSCRIPTION RATES: Floyd, Crosby, Hale, Motley, Swisher and Briscoe counties, \$15.00 per year; other counties, \$17.00; out-of-state, \$18.00 per year.
POSTMASTER: Send address changes to the Floyd County Hesperian, 111 East Missouri, Floydada, Texas 79235.

Ken Towery Owner
Alice Gilroy Publisher
Neta Marble Associate Editor
Rosemary Gonzales Production Mgr.
Juanita Stepp Reporter

Burleson roping to open July 29..

Continued from Page One

ture much earlier so they can watch the wild west show.

CUTTING HORSE JUDGES WERE COWBOYS FIRST

Two former cowboys will be on hand to judge the Cutting Horse events at the Burleson Memorial Roping, both for the first time.

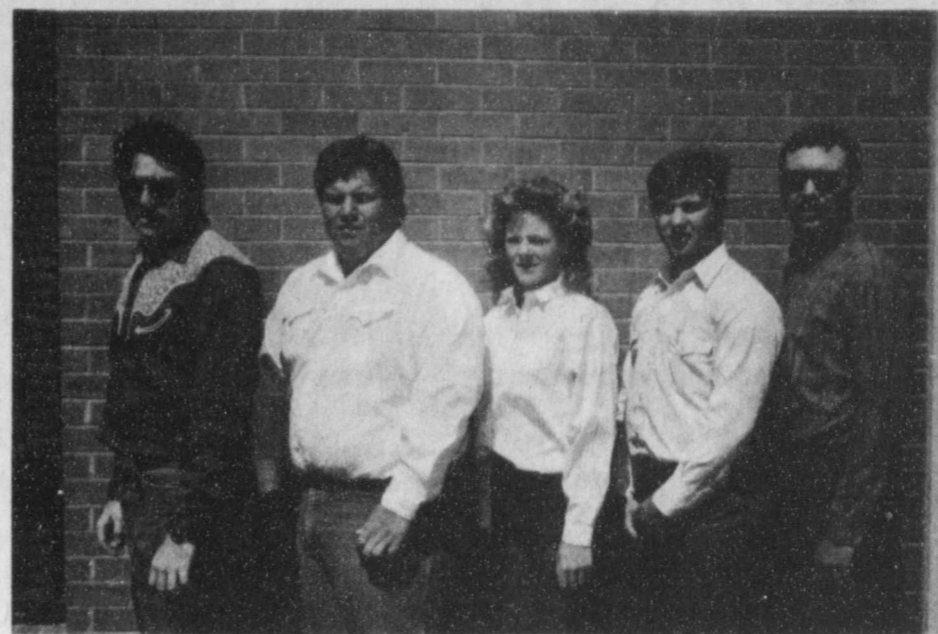
Bennett Reese of Hart was raised on a ranch in western Stonewall County. He has cowboyyed, farmed, and ranched on ranches in Texas, New Mexico, Oklahoma, and Louisiana. Reese's knowledge of horses has gained him the reputation of being a good horse judge.

Don "Smokey" Alexander, Lubbock, was raised in Silverton. He worked on a ranch in Arizona before returning to work at the JA Ranch. He was active in training cutting horses for 18 years and judged cutting horse events for years. A horse accident has semi-retired "Smokey" from full-time judging.

Caprock Hospital Report

July 12-19

Frances Collier, Floydada, adm. 7-7, continues care, Lopez
Ruth Lyles, Floydada, adm. 7-8, continues care, Hale
Melinda Castaneda, Floydada, adm. 7-8, dis. 7-12, Lopez
Nina Willis, Floydada, adm. 7-9, dis. 7-15, Hale
George Wexler, Floydada, adm. 7-10, dis. 7-12, Lopez
Carolyn Griffin, Floydada, adm 7-10, dis. 7-11, Hale
Fabian Torrez, Jr., Floydada, adm. 7-11, dis. 7-15, Lopez
Raymond Colston, Floydada, adm. 7-11, dis. 7-13, Jordan
Maria Duran, Floydada, adm. 7-12, continues care, Lopez
Jodee Breed, Floydada, adm. 7-13, dis. 7-16, Hale
Maria Nuncio, Lockney, adm. 7-13, continues care, Lopez
Gwan Wilkinson, Silverton, adm. 7-13, dis. 7-16, Hale
Mildred Franks, Floydada, adm. 7-13, dis. 7-15, Hale
Joel Santos, Floydada, adm. 7-16, trans. 7-16, Jordan
Adela Reyes, Floydada, adm. 7-18, continues care, Jordan



RANGE MANAGEMENT SCHOLARS HONORED--The four 1988 beneficiaries of the Dusty Burleson Scholarship Fund, Clarendon Junior College Ranch Management Program, are: (left to right) Matt Pugh from Keyes, Oklahoma; Jim Bob Beem from Tulia; Miss Leslie Floyd of Des Moines, New Mexico; Clint Martin of Springtown; and Jeffrey Lynn Taylor, a graduate of Sudan, Taylor, son of Gail and Willie May Gregg of Floydada, attended Floyd and Motley County Schools while his stepfather was basketball coach there. His grandfather, J.P. "Fats" Taylor is a long time rancher in the Floyd County caprock area, and was a partner in purchasing some of the land owned by the Matador Land & Cattle Co., LTD. Young Taylor is working with his grandfather during the summer.

Friends of Library report

A July 11 session of the Floyd County Commissioners Court heard a report given by Pat Zimmerman of the Floyd County Friends of the Library concerning progress being made on their project to secure a new building and more space for the Floyd County Library. That report is reprinted below.

SUBJECT: The expansion of the Floyd County Library and, if possible, the Lockney Branch. Both libraries have become severely crowded. With the help of grants for library expansion from the State of Texas and from private foundations, we hope to raise money towards this expansion.

PROGRESS MADE SINCE LAST MEETING WITH THE COURT

1. A county committee of interested people would be formed to look into the possibilities of expansion of the county libraries and to make all decisions regarding this expansion.
2. Mrs. Troye Massie agrees to donate three lots which she owns east of the courthouse on Block 73 for the construction of a new library.
3. The Friends of the Library have been in contact with representatives of the Harold Brown estate who indicate that the estate will sell an additional lot, Block 73, to the Friends of the Library giving the Friends 100 feet on Wall Street for the new library building.
4. Investigation into the status of the Floyd County Friends of the Library indicate that the Friends are incorporated, have an approval from the U.S. Government that all donations to the Friends (a non-profit organization) will be tax deductible. It was also found that

the Friends may purchase property, own property, and dispose of property which it has acquired.

4. Interest is growing in the project as several Floyd County citizens have indicated that they will help raise the money to finance the building when the finance campaign is underway.

Before the Floyd County Friends of the Library can go forward with the plans to expand the libraries, we must have an agreement from the Floyd County Commissioners Court that they will endorse the new building for the library, and the assurance from the court that they will accept the building as a gift upon its completion and will maintain it and provide for its on-going expenses.

As reported in the July 14 Hesperian, the requested assurances were forthcoming from the commissioners and the Friends may now move forward with the project confident that they are supported in their endeavors by county officials.

La Baume in Tulia parade

Kelli La Baume was invited to ride in the parade that was held recently in Tulia. The parade was in conjunction with Tulia's annual celebration.

Kelli represented the Lake Mackenzie Municipal Water Authority as she is the reigning "Miss Lake Mackenzie." Lake Mackenzie supplies water for Lockney, Silverton, Floydada and Tulia.

She also represented Floyd County, as she is also the reigning "Miss Floyd and Surrounding Counties" queen.

Weather spawns rain, storms...

Continued from Page One and clock. We will have to replace our phone and radio."

South Plains community reported 3 inches of rain, while Dwight Teple in the South Plains community received over 4 inches of rain.

At the Joe Thurston home 18 miles SE of Floydada, there was "three inches of rain in less than an hour," according to Mrs. Thurston. We got a little hail but no crop damage."

Joyce Williams reported that it took her 45 minutes to drive four miles on a dirt road in the Lakeview Community, but then she got up to her house which is down in the canyon, the rain stopped. We only got sprinkles here.

Dougherty reported 1 1/16 inches of rain, Floydada .11 inches, Lockney .6 inches and Lone Star reported 2 3/4 inches of rain.

TAX FREE BONDS
7.75%*
* To Maturity. Rate based on A rated tax free bond. Some local taxes may apply.
KEVIN FLATT
Edward D. Jones & Co.
415 BALTIMORE 293-9551

Whittle's Vittles
SWEET CORN is Ready
3 miles South of Floydada on Highway 62
983-2385 983-3626

July 88

FRIDAY 29
CUTTING HORSE EVENTS
OPEN - RANCH --NOVICE
Books Open at 10 a.m.
Cut at 11 a.m.
Entry Fee \$35
TEAM PENNING
Entry Fee \$15 per Team
Immediately Following Cutting Events

SPECIAL ATTRACTION
W P R A TEAM ROPING WOMEN PROFESSIONAL RODEO ASSOCIATION
1 for \$70
Draw for Positlon
No 3rd Loop
\$250 Added Money

Prizes to be given in each event

BUCKLES BITS HEADSTALLS TROPHIES

BURLESON MEMORIAL ROPING

SATURDAY 30
YOUTH HORSE EVENTS
Sign Up at 8 a.m. Begin at 9 a.m.

WASHER PITCH at Hay Barn
Books Open at 9 a.m.
\$20 per Team No Double Entry

WESTERN ART SHOW at Big Barn 10 a.m.

TEAM ROPINGS
Books Open 11 A.M. Rope at 1 P.M.
OPEN ----- PROGRESSIVE AFTER 1 ----- 3 For \$24
AB ----- PROGRESSIVE AFTER 1 ----- 3 FOR \$24
1 OVER 40 ----- PROGRESSIVE AFTER 1 ----- 2 FOR \$20
NOVICE ----- 2 Full Head ----- 2 For \$12
DRAW POT ----- PROGRESSIVE AFTER 1 ----- 3 For \$24

Admission \$2.00
BURLESON ARENA FLOMOT, TEXAS

SUNDAY 31
SPECIAL ATTRACTION
W P R A TEAM ROPING
1 for \$70
DRAW FOR POSITIONS
NO 3rd LOOP
\$250 ADDED MONEY
BOOKS OPEN AT 9 A.M.
ROPE AT 10 A.M.

OPEN PASTURE ROPING
4 For \$80 Limit 50 Teams
Books Open at 10 A.M.
Introduction of Ropers 11 A.M.
Rope at 1 P.M.
Enter Once
100' Score
Progressive after 2
Three legal Head Catches
Ten second penalty for 1 leg
Header must daily

WASHER PITCH QUALIFYING TOURNAMENT for WORLDS CHAMPIONSHIP in OCTOBER
DRAWING for COLTS SUNDAY JULY 31 3:00 P.M.

The effective tax rate: what it is and how it effects you

A few weeks ago, readers may have noticed a series of lengthy legal notices published in the Hesperian by the Floyd County Central Appraisal District. These notices, published annually, inform the public of the "effective tax rate" for each taxing entity. This rate is the basis for calculations by the taxing entities which will result in an adopted tax rate for the coming tax year.

EFFECTIVE TAX RATE

What does the term effective tax rate mean? Simply put, it means the tax rate which will raise approximately the same number of tax dollars raised the previous year. The effective tax rate will vary each year due to changes in appraisal values of the tax base within the taxing entity.

Keeping this in mind, taxpayers will realize that tax increases or decreases are based not on the tax rate of the previous year but on the effective tax rate calculations for the current year.

The accompanying chart specifies each of these items for the taxing entities in Floyd County at the present time.

Changes in appraisal values occur when improvements are made such as the addition of another room or a storage building. Values may also increase due to added tax base occurring with the merging of two taxing entities.

When the resulting new calculations are divergent enough, a taxing entity may be in the position of retaining the same tax rate as the previous year, but calling it an increase because that amount is over the current effective tax rate. An entity with a sizeable increase in tax base could be in the position to lower the tax rate but must then term the new lower rate an increase based on the current effective tax rate calculations.

ISDs UNIQUE

The two remaining school districts in Floyd County have encountered this unique situation this year. Due to the merging of South Plains Independent School District with Floydada Independent School District and Lockney Independent School District, each has posted an increase in tax base.

Floydada ISD proposes a reduction in the tax rate from 69 cents per \$100 valuation to 66 cents. Based on an effective tax rate of .62606 (calculated on an increased tax base of \$13,840,731), the district must call for a public hearing before approval as the 66 cent rate will exceed the 3 percent limit,

very nearly equaling the 8 percent rollback limit. This 66 cent tax rate will result in additional tax revenues of more than seven percent above the tax dollars raised with the 69 cent rate in 1987. The increased tax revenue thus raised with a lower tax rate constitutes a tax increase. Should FISD choose to retain the 69 cent rate, or even propose a 67 cent rate, they would be open to a possible rollback election procedure.

Lockney ISD proposes setting a tax rate of 72 cents per \$100 valuation according to information from the appraisal district. Based on an effective tax rate of .66801 (calculated on a tax base increased by \$3,592,664), LISD must term the 72 cent rate an increase. The school district must publish notice for a public hearing before approving the rate as it nearly meets the 8 percent increase over the current effective tax rate and will result in additional tax revenue above that received from the 1987 levy, thus constituting a tax increase.

ROLLBACK ELECTION OPTION

A rollback election forces a taxing entity to place the proposed tax rate in front of the public for voter approval. This can be done if 10 percent of

ENTITIES	TAXABLE VALUE			TAX RATE		TAX LEVY			1988 VALUE			VALUE Difference			EFFECTIVE TAX RATE		
	1987	1987	1987	1987	1988	1988	1988	1988	1988	1988	1988	1988	1988	1988	1988	1988	1988
Floydada I.S.D.	130,855,812	.69	89,678,409	134,626,543	*13,840,731	.62606	.64484	.66696									
Lockney I.S.D.	72,620,122	.70	50,834,285	76,212,786	+3,592,664	.66801	.68805	.72145									
South Plains I.S.D.	14,482,866	.7200	10,432,263	0	0	0	0	0									
Floydada City	41,433,154	.49	20,392,246	41,723,607	+296,453	.40171	.41376	.43385									
Lockney City	21,304,451	.35	7,456,558	21,718,733	+414,282	.34649	.35688	.37420									
Caprock Hospital	163,753,046	.1797	29,205,277	163,889,638	+136,392	.18059	.18600	.19504									
Lockney Gen. Hosp.	80,560,730	.2383	19,197,642	83,526,618	+2,965,888	.23056	.23747	.24900									
High Plains Water	240,101,102	.0070	16,807,078	243,152,624	+3,051,522	.00695	.00715	.00750									
Mackenzie Water	45,631,260	.2873	13,047,255	45,996,563	+365,303												
	21,304,451		6,149,811	21,718,733	+414,282												
	66,935,711		18,274,191,997	67,712,336	+776,625												
Floyd County	247,531,828	.2720	67,285,59	250,611,978	+3,080,150	.26995	.27805	.29155									

1988 high school football predictions

The predictions are out. At least the predictions of Dave Campbell's Texas Football magazine. For those of you who take stock in those predictions,

Lake report

James and Donna Edwards, Silverton caught two 3 1/4 lb. channel cats using liver and minnows at the first boat ramp.

Richard Johnson and Jerry Bennett caught 6 channel cats, total weight of 13 3/4 lbs. using minnows and perch for bait on Tule Creek.

Large mouth bass weighing 5 1/2 lbs. were caught by Bryson Wright and Shawn Miller, Amarillo at the mouth of Tule Creek.

Leroy Kitter, Amarillo caught a 2 3/4 lb. channel cat with night crawlers.

Water temperature is 79 degrees and the lake depth is 108 feet deep.

according to this magazine, Littlefield will be on top, and the second playoff spot will be fought over by Friona, Tulia and Floydada in District 2-AAA.

According to Coach Overton, "They can only look at the numbers from last year, not at what we have now. It doesn't really matter who they pick in August, it matters where you're at in November."

According to Texas Football, "Quickness is the key at Floydada." The magazine named twelve returning lettermen whom they felt could help Floydada to the title. They were: Joe Barrientos,

Rolando Cisneros, Leonard King and Shane Orman, paving the way for RBs Frank Suarez and Kenneth Collins. Other prospects are LB Danny Caballero, guard Jacob Galvan, center Adam Cates and DB Chad Quisenberry.

"We have to look toward everyone on the team," said Overton. "After the scrimmages we will have a better idea of where our strengths and weaknesses are. The district is well balanced. There are several teams that have a good chance this year and that's the way we are going into the season."

Donna Westbrook awarded scholarship

Steve Eldridge, administrator at Floydada Nursing Home has announced that Donna Westbrook has been awarded an Employee Scholarship from

Unicare Health Facilities. Floydada Nursing Home is owned and operated by Unicare Health Facilities. Unicare

Health Facilities recently established a \$250,000 scholarship fund to enable its employees to continue their education in the health care field.

The purpose of the \$250,000 scholarship program according to Eldridge, is to enable employees at all Unicare Health Facilities across the country to keep informed of the latest changes and innovations in geriatric and rehabilitative health care. Eldridge went on to say, "The \$250,000 scholarship fund is another example of Unicare Health's commitment to the very best in resident care."

Unicare Health Facilities, Inc., a Milwaukee, Wisconsin based firm owns, operates and manages nursing homes and residential care facilities (15,000 beds) in 22 states. Unicare has over 15,000 employees nationwide.

Have a nice week!

Randall G. Griffin, D.D.S.

announces the opening of his office for the practice of General Dentistry 428 W. California Floydada, Texas, 79235

Formerly the office of Andrew G. McCulley, D.D.S.

Office Hours Telephone
By Appointment 983-3350

ODEN CHEVROLET - OLDS

has a complete stock of Oldsmobile & Chevrolet passenger cars and a lot full of Chevrolet Pickups

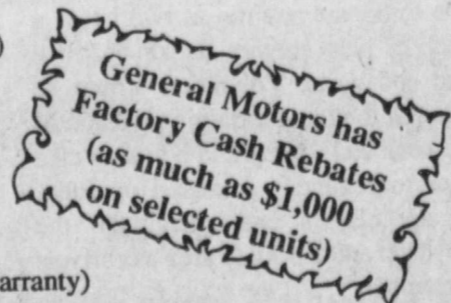
RED HOT SPECIALS

1988 Chevrolet Cavalier RS
2 door coupe S# 114192
213.83
w/500 down payment + TTL, 11.9 APR month

1988 Chevrolet S-10
S# 224856
164.36
month
w/500 down payment + TTL, 11.9 APR

USED Vehicles:

- 1985 CHEVROLET 1/2 TON PICKUP (2 years unlimited mileage warranty)
- 1985 CHEVROLET CAPRICE (2 door Sedan - all power & air)
- 1983 OLDS CUTLASS CIERRA COUPE (new overhaul on motor)
- 1986 CHEVROLET 3/4 TON PICKUP (4 speed, 4 wheel drive)
- 1984 CHEVROLET SUBURBAN (fully equipped)
- 1985 CHEVROLET MONTE CARLO (33,000 miles)
- 1986 BUICK RIVIERA (21,000 miles, still has factory warranty)
- 1985 OLDS 98 REGENCY (4 door, 1 owner, 40,000 miles, 5 yr. unlimited warranty)
- 1983 OLDS 98 (4 door sedan, extra clean)
- 1987 CHEVROLET 1/2 TON PICKUP (4 wheel drive, 27,000 miles, factory warranty)



ODEN CHEVROLET - OLDS

Mr. Goodwrench

221 S. Main 983-3787



Have a great summer!

REPORT OF CONDITION

Consolidating domestic and foreign subsidiaries of the

THE FIRST NATIONAL BANK OF FLOYDADA of FLOYDADA
Name of Bank City

in the state of TX, at the close of business on June 30, 1988
published in response to call made by Comptroller of the Currency, under title 12, United States Code, Section 161.
Charter Number 7045 Comptroller of the Currency Southwestern District

Statement of Resources and Liabilities

ASSETS

	Thousands of dollars
Cash and balances due from depository institutions:	
Noninterest-bearing balances and currency and coin	1,515
Interest-bearing balances	11,000
Securities	27,719
Federal funds sold	1,975
Securities purchased under agreements to resell	0
Loans and lease financing receivables:	
Loans and leases, net of unearned income	14,458
LESS: Allowance for loan and lease losses	567
LESS: Allocated transfer risk reserve	0
Loans and leases, net of unearned income, allowance, and reserve	13,891
Assets held in trading accounts	0
Premises and fixed assets (including capitalized leases)	239
Other real estate owned	25
Investments in unconsolidated subsidiaries and associated companies	0
Customers' liability to this bank on acceptances outstanding	0
Intangible assets	0
Other assets	915
Total assets	57,279
Losses deferred pursuant to 12 U.S.C. 1823(j)	N/A
Total assets and losses deferred pursuant to 12 U.S.C. 1823(j)	57,279

LIABILITIES

Deposits:	
In domestic offices	49,739
Noninterest-bearing	5,420
Interest-bearing	44,319
Federal funds purchased	0
Securities sold under agreements to repurchase	0
Demand notes issued to the U.S. Treasury	161
Other borrowed money	0
Mortgage indebtedness and obligations under capitalized leases	0
Bank's liability on acceptances executed and outstanding	0
Notes and debentures subordinated to deposits	0
Other liabilities	703
Total liabilities	50,603
Limited-life preferred stock	0

EQUITY CAPITAL

Perpetual preferred stock	0
Common stock	200
Surplus	500
Undivided profits and capital reserves	5,976
Total equity capital	6,676
Losses deferred pursuant to 12 U.S.C. 1823(j)	N/A
Total equity capital and losses deferred pursuant to 12 U.S.C. 1823(j)	6,676
Total liabilities, limited-life preferred stock, equity capital and losses deferred pursuant to 12 U.S.C. 1823(j)	57,279

We, the undersigned directors, attest to the correctness of this statement of resources and liabilities. We declare that it has been examined by us, and to the best of our knowledge and belief has been prepared in conformance with the instructions and is true and correct.

I, C. J. Payne
Name
Senior Vice President & Cashier
Title

of the above-named bank do hereby declare that this Report of Condition is true and correct to the best of my knowledge and belief.

Directors
Kinder, Jarvis, Jettan, Hall, Fred Zimmerman

Signature
C. J. Payne

July 13, 1988
Date



MR. AND MRS. ROBERT PEARSON

Campbell-Pearson wed in garden rites July 10

Ann Campbell and Robert David Pearson were united in marriage in a double ring ceremony Sunday, July 10 at 7 p.m. at the Lubbock Garden and Arts Center in Lubbock, with Justice of the Peace McKinley Sheperd, officiating.

Parents of the couple are Mr. and Mrs. Lynn Campbell of Floydada, Mrs. Melva Pearson of Lubbock, and Mr. Bob Pearson of Granbury. She is the granddaughter of Mr. and Mrs. J.P. Beck of Ralls and he is the grandson of Mrs. M.C. Weatherford of Lubbock.

The garden was brightly decorated with pink and blue balloons.

Presiding at the register was Nina Waller, sister of the bride. The table was draped with a white tablecloth and pink satin rosebuds containing birdseed to be thrown after the ceremony.

Traditional wedding music was recorded on tape by Dell Gray and played at the ceremony.

The bride, given in marriage by her father Lynn Campbell, wore a formal length gown of satin with an overlay bodice of satin tulips and lace with off-mutton three-quarter length sleeves. The back of the dress featured a large satin bow and train. Her veil was fashioned of iridescent tulle with a satin halo attached. The dress and veil were both fashioned by the bride.

The bridal bouquet designed on candlelight lace consisted of small silk blue and pink orchids, small pink and blue roses and rosebuds with tiny iridescent beads scattered through the bouquet. Bows and streamers were shades of pink, blue, burgandy and white satin ribbon weaved through lace.

To complete the ensemble she wore a gold necklace borrowed from a close friend, Debbie Martinez. She wore the traditional blue garter, and something old was a bracelet from her best friend, Pat Simmons. Something new was her wedding attire, something for luck was a rainbow Bible belonging to her mother.

Serving as Maid of Honor was Patti Campbell, sister of the bride of Lubbock. She wore a petal pink satin dress fitted and shaped with a dropped waistline. The tea-length skirt consisted of two layers of ruffles with a bow in back at the waist made of pink satin with pink

glitter polka-dots. She carried a smaller clutch basquet made up of the same flowers and ribbons as the bride's bouquet.

The groom wore a grey tuxedo with matching grey bow tie and cummerbund and white tuxedo shirt. Attending the groom as best man was Bob Pearson, father of the groom.

Mike Campbell, brother of the bride was usher for the ceremony.

A reception at the garden followed the ceremony. Assistants for the reception were Charlotte Campbell, mother of the bride, Melva Pearson, mother of the groom, and Patti Campbell, sister of the bride.

The cake table was draped with petal pink taffeta with white skirting. The table featured blue and white bells adorned with white iridescent beads and small white flowers and satin ribbon. Blue iridescent beads ran the length of the table woven around the

cakes and punch. The bride's cake was three-tiered, decorated with small blue and pink flowers tumbling out of white bells, with bells as a top for the cake. The groom's cake was in the shape of a guitar with German chocolate frosting. Pink and blue napkins and silverware were laid out and pink punch was served.

A party after the reception followed at the Texas Cafe & Bar in Lubbock. Hors d'oeuvres of cheeses, fruits, ham rolls, crackers, and vegetables were served. There was a jam session for the groom and all friends of the couple.

The bride is a graduate from Floydada High School and is employed at Holiday Inn South. The groom is a graduate of Lubbock High School and is employed by Commercial Electric. The couple will reside in Lubbock and plan a delayed wedding trip to Albuquerque and Santa Fe, New Mexico.

Look Who's New!

GRIGGS

Mr. and Mrs. Jay Griggs and Dustin wish to announce the arrival of a baby girl, Stacey Shea, weighing 7 lbs., 3 ozs. born July 11 at 11:20 a.m. at Methodist Hospital.

Grandparents are Mr. and Mrs. Wiley Griggs of Floydada and Mr. and Mrs. Elmo Hasha of Olton.

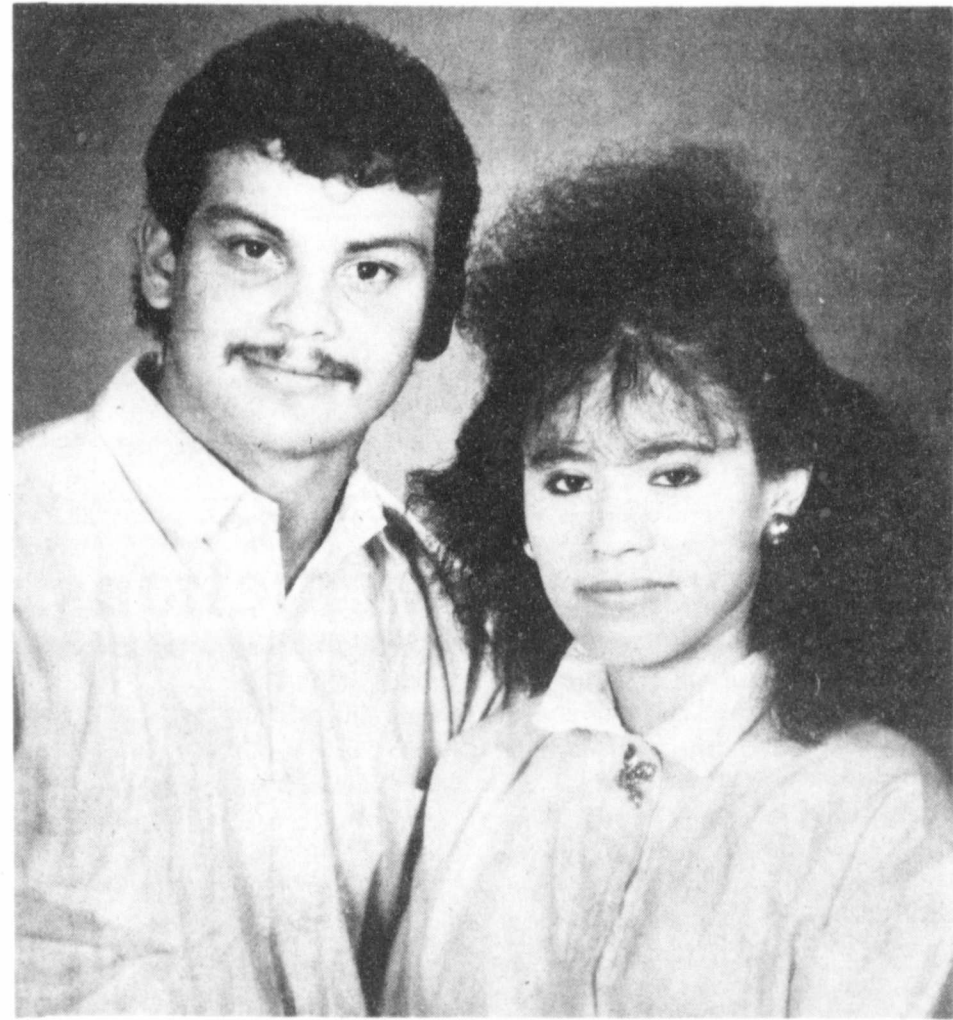
Great-grandparents are Mr. and Mrs. J.W. Harden of Chandler, Mr. and Mrs. E.M. Hasha of Olton and Faye Bearden of Olton.

This is the first girl in 52 years on the Griggs side of the family.

HOPPER

Kalli, Cliff and Kristi Hopper proudly announce the arrival of Rusty Mack, born July 16, weighing 7 lbs. 15 oz.

Grandparents are Mr. and Mrs. Richard Ward of Dougherty and Mr. and Mrs. Bill Hopper of Floydada. Great grandparents are Mr. and Mrs. Mac Ward of Dougherty, Mrs. Fay Harris of McAdoo and Mr. and Mrs. George Barkowsky of Lamesa.



TO WED AUGUST 6 — Rev. and Mrs. Herman Martinez of Plainview announce the engagement of their daughter, Leslie, to Gilbert Flores, son of Mr. and Mrs. Julio Flores Sr. of Floydada. Miss Martinez attended Plainview High School. Flores graduated from Floydada High School and attended West Texas State University. He is employed by Wal-Mart Distribution Center. The couple will exchange vows Aug. 6 at Templo Nueva Vida in Floydada.

Reading club successful

The summer reading club came to a close at the Floyd County Library on Wednesday, July 13th. Those present for the final day were treated to cookies and punch served up by Janice Lloyd and Kathy Mulder.

This summer's reading club was one of the best ever, thanks in no small measure to the excellent help given by Shea Sanders, Kayla Turner, Shayla Turner, and Amber Pyle. These young ladies did a super job providing storytelling and other activities from the 3-to-6-year-old group. The library also owes a debt of gratitude to the Dairy Queen of Floydada for generously donating coupons for free Blizzards or Fun Bunch Lunches to those children who completed the club by reading the required number of books.

In addition to receiving Dairy Queen coupons, children completing the club also received a certificate of participation with their name on it. Those who received such certificates were Bonnie Dunlap, Robert Dunlap, Amanda Fawver, Lewis Fawver, Chrystal Foster, Reagan Foster, Kenny Holmes, Erika Miller, Laura Miller, Christine Pesina,

Literary program seeking volunteers

The Floyd County Library, in an effort to begin a literacy program is now seeking individuals who are willing and able to donate as little as two hours a week to help another person learn to read and write. Volunteers would be required to attend a training session of approximately a day and a half to take place some time in August. Hopefully, literacy classes could begin in the Floydada and Lockney area as early as September.

If you would like to help someone learn to read and write and would like more information about this program, contact Sandra Crawford at the Floyd County Library at 983-3578.

Also, is you know of someone who cannot read and would like to learn, let them know about this program and encourage them to contact the library.

Corinne Pesina, Justin Reeves, and Ruth Ann Vasquez. Congratulations to these children. And thank you once again to all those who participated and made this year's reading club so successful.

Girl's Hairbows

for sale at
Kid's Kloset
Small to Large
Infants Headbands
Different Styles & Sizes
by... Laura Nutt

Warren family meets for reunion

Mrs. Leona Warren and family hosted descendants of R.E. Warren family, Saturday, July 15 at the Senior Citizens building in Floydada.

The meeting was called to order by Bill Warren of Dumas. Tom Warren, a retired minister and one of the sons of the R.E. Warrens conducted a touching memorial service in memory of loved ones of the family.

Following the invocation, a catered barbeque meal was served.

The highlight of the reunion was the debut of "Leona Warren's Hillbilly Band." After she introduced the band, her son "Caboose Billy" Bill Warren was in charge of the program. "Tinkle Fingers" (Betty Warren Ritchey) played the piano, "Thimble Thumbs Annie" (Ann Warren) played the rub board, "Blow Hard Ritchey" (Fred Ritchey) played the jug, and "Slap Happy

Martha" (Martha Warren Galloway) played the spoons. A skit "Zachariah and Peggy Jane" was well presented by Fred and Betty Ritchey. Freddy and Cindy Davis and Fred and Gail Ritchey better known as "The Out Londers" sang Elvira. Bill Warren accompanied himself on the guitar as he sang a song that his dad, Wade Warren, had sung to him, "Preacher and the Bear." An inspirational duet was sung for the group by Rena Warren and Rhonda Sperwell. The very special part on the program was presented by the great-grandchildren of Leona, Laura Ritchey, Rachel and Nathan Davis ages 2 and 3 years old. They sang Jesus Loves Me and Twinkle Twinkle Little Star.

Throughout the program Bill led the group in old familiar songs. Gag gifts were presented to the oldest man there, Bud Warren and the oldest lady, Ethel

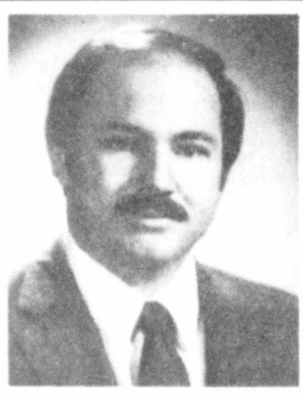
Warren. Also a gift for the one traveling the farthest distance, Carlos and Peggy Warren, Jacksonville, Florida. The sound system with five mikes and speakers was brought and operated by "Humdinger" (Robert Warren).

Following the program, group pictures were taken and the group enjoyed a tour of the Floyd County Historical Museum. Upon returning from the tour, homemade ice cream was served.

Another highlight of this occasion was an auction. Members of the family brought homemade items. Bill aptly auctioned them to the highest bidder, funds collected went into the Warren treasury for expenses of the reunion. This was enjoyed by everyone.

Out of town guests were: Y.E. and Alene McAdams, Bob and LaFaun Warren, Randell and Alene Warren, Shannon Warren, Johnny and Nancy Warren, Kelly and Melinda Odell and Brent of Lubbock; Tom and Gerry Warren, Jack and Sue Warren, W.C. Warren of Fort Worth; Jeff and Melissa Galloway, Martha Galloway, Plainview; Carlos and Peggy Warren, Jacksonville, Florida; Freddy L., Cindy, Bechy Racheal, and Nathan Davis, and Fred and Betty Ritchey, Longview; Fred, Gail, Laura and Lee Ritchey, Hallsville, Texas; Robert, Rena and Dustin Warren, Bill and Warren, Dumas; Terry and Rhonda Sperwell, Fritch, Texas; Mr. and Mrs. Bill Wright, Ralls.

From Floydada: Gordon and Darlynn Hambright, Leona Warren, Ethel Warren, Dorcie Warren, Bud Warren, and Jerry, Ginger, and Mysti Warren. Leona Warren had 25 out of 29 family members in attendance. All her children except one son-in-law who had to work out of town and one grandson, wife and baby who reside in Maine were present.



For all District 30
Steve CARRIKER
Democrat for State Senate
P.O. Box 517, Roby, TX 79841
Ph. 915-779-2295

Don't miss KRISTI'S gigantic
SIDEWALK SALE

ALSO FABULOUS SAVINGS
THROUGHOUT THE STORE

THURSDAY - FRIDAY - SATURDAY

JULY 21, 22, & 23 9:30 a.m. to 6:00 p.m.

MasterCard
Visa Welcomed

Kristi's

296-7254
618 Broadway

A Gift to the
AMERICAN CANCER SOCIETY
MEMORIAL
PROGRAM
means so much
in cancer control.



Don Castleberry
895-4613



Max Harrison
983-3044

Before the need... You need your
Farm Bureau Insurance Agent.

Liability Insurance



If it's your home or vehicle,
you're responsible for the
people who visit it or might
be injured by it. Are you
sure that you are fully
covered against such a
liability?

**TEXAS FARM BUREAU
INSURANCE**

LOCKNEY - 652-2242 FLOYDADA - 983-3777
101 S. Wall, Floydada, Texas, 79235



Clar Schacht
Agency Manager
983-2906



Kenneth Holt
652-3456

Gifts, Etc. 803 Main St.
Ralls

SUMMER CLEARANCE begins
Thursday, July 21
Infants - Childrens - Gifts

Store Hours - Mon. thru Thurs. - 8:30 - 5:00
Friday - 8:30 - 5:30, Closed Saturday

Register for

\$1,000

at

SEARS
225 Broadway Plainview, Texas

Gigantic Sidewalk Sale

See AD in LOCKNEY BEACON
for further SAVINGS

Dysart - Gooch say marriage vows Saturday

Katrina Leann Dysart and Darrell Wayne Gooch were united in marriage Saturday, July 16 at 2:00 p.m. in the Abundant Life Fellowship of God Church. The bride's father, Pastor Ron Dysart, officiated the ceremony.

Parents of the bride are Rev. and Mrs. Ronald L. Dysart. She is the granddaughter of Mr. and Mrs. C.L. Steele and Mr. and Mrs. H.L. Dysart of Redding, California. The groom is a son of Mr. and Mrs. Roger K. Gooch. He is the grandson of Mr. and Mrs. Faye Gooch,

also of Floydada.

Escorted and given in marriage by her father, the bride wore a shimmering white moire gown with a princess seamed bodice featuring a heart-shaped neckline trimmed with a hand-beaded floral trim and big puff lace sleeves. The back featured a low cut square neckline with fourteen pearl buttons trailing down the back. The kick skirt, gathering at the knees, was made of shimmering moire, dropping to a sweep train. The headpiece was a floral and beaded spray

with a floral side waterfall attached to a two-tiered beaded pouffed veil.

The bride carried a custom designed bouquet of peach and white exotic tropical flowers and pearl spray.

Serving as Matron of Honor was Tonya Gooch of Floydada. Maid of Honor was Crystal Rowley, also of Floydada. Bridesmaid was Julie Wikberg of Waxahachie, Texas. They were attired in peach moire tea-length gowns. The bodice featured heart-shaped necklines and big puff sleeves. They accented their hair with a peach hibiscus flower.

The flower girl was Karissa Dysart, sister of the bride and ring bearer was Nathan Dysart, brother of the bride.

Acting as best man was Dennis Gooch, brother of the groom. Groomsmen were Terry Fincher and David Welborn. Junior groomsmen was Ryan Welborn, cousin of the groom. Seating guests were Chris Ray and Aaron Dysart, brother of the bride.

The groom and male attendants were attired in grey tuxedos with peach accents.

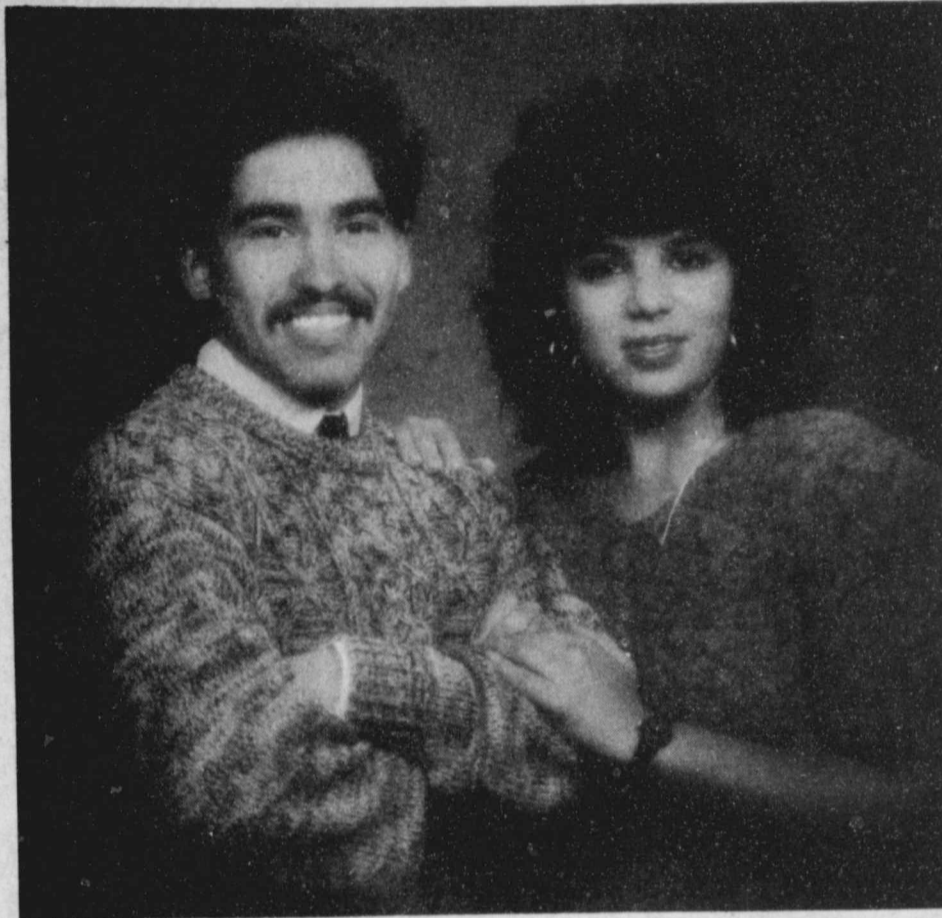
Music for the ceremony was provided by Rev. and Mrs. Gary Morton of Plainview. "If I Could Put Time In a Bottle" and "Almost Paradise", were performed by the couple, accompanied by Gary on the keyboard.

The altar area was decorated with silk plants and trees and brass candelabra entwined with peach begonias. The aisle was decorated with peach bows.

Following the wedding, a reception was held in the fellowship hall. The bride's table was covered with European imported lace, the bride's bouquet, silver candelabra and a three-tiered wedding cake that was highlighted with a water fountain and exotic tropical flowers.

The groom's table featured a chocolate cake, cowboy boot mints, and a centerpiece comprised with a spiral tropical arrangement in a ceramic cowboy boot. Toasts were made with Dr. Pepper which was chilled in a glass cowboy hat and coffee was served in a silver urn.

Following the wedding trip to Santa Fe, the couple will return to Floydada to make their home.



ENGAGEMENT ANNOUNCED—Mr. and Mrs. Raul Gonzalez are honored to announce the marriage of their son, Roger Gonzalez to Suzanne DeLeon, the daughter of Mr. and Mrs. Frank DeLeon of Floydada. The couple are both 1988 Floydada graduates. The marriage ceremony is to be held on July 26, 1988 at 3 p.m.

We Salute...

HAPPY BIRTHDAY

Thursday, July 14: Paul Vallejo, Julio Flores Jr., Dina Livingston

Friday, July 15: Adriana C. Gonzales, Wanell Peel, Kristi Julian, Luis Enrique De Ochoa

Saturday, July 16: Christina Medrano, Michael Creek, Suzanne Wyrick, Maudine Miller, Bob Hambricht

Sunday, July 17: Rita Arellano, Shondra Emert, Junior Martinez, Gloria Cuevas, Stephen Henry, Helen Johnson

Monday, July 18: Janette Garza, Wanda Thomas, Mychelle Harris, James A. McKinney, Kendis Julian, Kevin Davis

Tuesday, July 19: Crystal Dumas, Stephen Becker, Shondra Lynn Emert

Wednesday, July 20: Rowdy Derbyberry, Kay Dean Smith, Edna Duke, Charlene Brown

Thursday, July 21: Scott Redden, Brad Wilson, Mayra Mercedes Jimenez

Friday, July 22: Lucio Vasquez, Ludustria Leatherman, Andra Smith,

Janice McCandless

Saturday, July 23: Oscar Sanchez Jr. Sunday, July 24: Richard Garza, Shannon Ware, Jodi Morrison, Melinda Smith, Sylvia De Ochoa, Johnny De Ochoa

Monday, July 25: Elaine Galloway, David Isaac Vasquez, Evan Salazar, Madison Becker

Tuesday, July 26: Jonathan Cheek, Rodney Hill

Wednesday, July 27: Franklin Harris, Bud Edwards, Eddie Sanchez, Vivian Saul

HAPPY ANNIVERSARY

Thursday, July 14: Nathan and Kathy Mulder, Don and Mary Shurbet

Saturday, July 16: Larry and Penny Ogden

Monday, July 18: Mr. and Mrs. Leroy Schaffner

Tuesday, July 19: Mr. and Mrs. Elvis Parker

Wednesday, July 20: Oscar and Nora Salazar.

Friday, July 22: Bill and Dawnell Smith

Wednesday, July 27: Mr. and Mrs. Grady Walker

Floydada Rebekah Lodge holds officer installation

On Tuesday night July 12th. Clareen Borron, District Deputy President of District No. 9 and her Installing Staff of Plainview Rebekah Lodge No. 309 came to Floydada Rebekah Lodge to install the officers of Floydada lodge for the new term.

Artie Webb, Noble Grand, called the lodge to order and to the business of Installation. She then turned the meeting over to the District Deputy President, Clareen Borron, for the Installation ceremony. Lois Pool, Deputy Marshall, with her Installing Staff proceeded with the Installation. Kathy Green, was installed as the new Noble Grand. Barbara Gilliland was installed as Recording Secretary; Evalene Boyd, Treasurer; and Ethelyn Vernon, as Past Noble Grand.

Appointed Officers: Artie Webb, Warden; Valree Turner, Conductor; Ruby Davis, Chaplain; Amanda Hart, Musician; Grace Grundy, Inside Guardian; Dorothy Reeves, Outside Guardian; Loretta Burns, Right Support to Noble Grand; Elvira Stewart, Left Support to Noble Grand; Floyd Webb, Right Support to Vice Grand; Elmo Savage, Left Support to Vice Grand; Francis Graves, Right Support to Chaplain; LaVern McInosh, Left Support to Chaplain; Ruby Davis, Lodge Deputy; and Clareen Borron, District Deputy President.

Courtesy Officers: Jewell Price, Assistant Musician; Grace Grundy, Song Leader; Evalene Boyd, Degree Captain; Artie Webb, Reporter; Ruth Gilliland, Lodge Mother; and Ruby Davis, Lodge Queen.

The new Noble Grand gave her acceptance speech, thanking the Lodge for giving her the opportunity to serve as Noble Grand through this term. She promised to do her best with our love and support.

For her Theme she chose: The Key of Love and Friendship; Motto- Let Us Serve; Watchword- Be A Friend; Symbol-Gold Key; Scripture- Isaiah-C.22-V. 22-23, "And I will place on your shoulder the key of the house of David; he shall open and none shall shut; and he shall shut and none shall open. And I will fasten him like a peg in a sure place, and he will become a Throne of honor to his Father's house."

For her Colors she chose: Gold, White, and Blue; Flower-Crysanthemum; Song-Love Is The Theme; Poem-God Holds The Key; and Project-Build True Friendship.

A supper of sliced ham, vegetables, salads, cake, coffee, tea and grape juice was served before lodge opened.

Mae Ragle of Plainview lodge gave the Invocation. Everyone enjoyed a lovely evening of fellowship and visiting.



NURSING AWARD—Donna Westbrook, director of nurses, accepts the 1988 National Nursing Award on behalf of the entire nursing staff of the Floydada Nursing Home from Steve Eldridge, administrator.—Staff photo

Local nursing home wins national award

Floydada Nursing Home has been awarded with the 1988 National Nursing Award by Unicare Health Facilities, Inc., one of America's leading health care providers. Floydada was one of only six nursing homes to receive the national nursing award out of 140 possible entrants. In addition the nursing award, the Floydada Nursing Home was also nominated for the dining excellence award and the quality of life award.

Floydada Nursing Home was recognized at Unicare's 1988 National Conference, June 25-29, at Unicare's national headquarters in Milwaukee, Wisconsin, for outstanding achievement in nursing care and services. The facility was honored at the health care organization's awards banquet, where the staff of Floydada Nursing Home was presented with a plaque for its achievements.

"At Unicare, our goal is to offer our residents the highest level of care and services available," said Guy W. Smith, president of Unicare. "Floydada Nursing Home has achieved this goal by providing outstanding nursing care and services to residents through a knowledgeable and dedicated staff."

Bridal selections available for:

Tolya Hickerson - Bruce Dawson
Becky Reeves - Heath Robertson
Kim Harrison - James Bullard

THOMPSON PHARMACY
PH. 983-5111
200 SO. MAIN FLOYDADA, TEXAS 79235



MRS. DARRELL WAYNE GOOCH

Search is on for FHS exes

1900 Clarence Foster
1916 Mrs. Floyd Golden
Wanda Armstrong Baker
1920 Sabra Thagard Harmon
1922 Elna Eubank Carter
Virgie Price Shaw
P.T. Hansen Borum
1923 Willie Mae McDuff
B. Marshall
Monday, July 18: Mr. and Mrs. Leroy Schaffner
Tuesday, July 19: Mr. and Mrs. Elvis Parker
Wednesday, July 20: Oscar and Nora Salazar.
Friday, July 22: Bill and Dawnell Smith
Wednesday, July 27: Mr. and Mrs. Grady Walker

1925 Glenn R. Jones
Adria Baker
Will Boothe
Darnell G. Ayres
Nova Austin Chandler
Ovis (Bud) Awtray
J.D. Rainer
Marion Carpenter
Ernest Carter
Mildred Carter Kizziar
Marilou Crain Reynolds
Velma Deen Boothe
Lee Golithly
Lucille Montaque Taylor
Lemond Moore
Gladys Hilton Johnson
Quimby Kizziar
Dovie McKinney Rushing
Louise Jackson McPhaul

Kenneth Henry
Adelaide Scott
Beryl Nix
Gamer Surginer
Mildred Railey Finley
Opel Spence Noland
Delmar Guthrie
Macel Smith Hill
1929 Lois Williams
Sam Moore
Bernice Gresham
Donovan Spence
Lester Jameson
Theron Summerville
Margie Norton Oldham
Milton Ashton
Sarah Davis Pyron
Rudolph Green
Henry Culpepper

Anyone having information please call 983-2377, Anne Carthel.

Bridal selections available for:

Tolya Hickerson & Bruce Dawson
Becky Reeves & Heath Robertson

Sue's Gifts
and Accessories

100 E. California 983-5312

SUMMER CLEARANCE SALE

75% OFF

NO EXCHANGES -
NO REFUNDS
NO LAY-WAYS
NO ALTERATIONS

DIET CENTER

Jodi's
JUNIOR & LADIES

106 East California
Floydada, Texas

Phone: 983-2844
Store Hours 9:00 a.m. - 6:00 p.m. Monday - Saturday

Womens & Girls
Summer Clothes

are
1/2
price
at
Hale's
Department Store

Do you need MAIL ORDER convenience for your MERLE NORMAN COSMETICS?
For prompt service call: 806-293-1783
or write to: MERLE NORMAN COSMETICS
3202 Olton Road, Plainview, Texas, 79072
We honor the following Credit Cards: Visa-MasterCharge-American Express-DiscoverCard

Cedar Hill News

By Carl Lemons

Weather has finally cleared and most farmers are gingerly edging their equipment back into their wet, weedy fields. One who tried it Saturday decided it was so wet he was damaging his land and shut down until Monday.

Crop conditions continue to improve. Hoing is in full swing with many cotton fields already cleaned out. The grumpiness of some farmers indicates they also got their pockets cleaned out in the process. The average cotton field is sporting a few flowers, but peak blossom period will be the first half of August.

Peach harvest has been underway about ten days at the Charlie Starkey orchard between the county line and Flomot. The quality is good, the flavor is excellent, and the price would pay you to shop here at home. Unless Charlie has some later ripening varieties they may be nearly all gone. It might pay to call before you go.

Buzby Vegetable Farm already has home grown corn and squash, and they are keeping onions. Their black-eyed peas are blooming, better check on them the last few days of July and early August. Tomatoes, like cotton, are coming on famously.

Except for just a few acres all of Floyd County's planting of cucumbers was finished last week. Ruiz Vegetable Brokers have ruled it is too late for cantalopes. Thirty years ago I had to feed a crop of Sept./Oct. ripening cantalopes to a herd of hogs. At that time grocerymen explained how cooler weather changes people's appetites. They turn away from the cucurbits back to the meats and heavier fare.

Gladys Fortenberry and Patsy Boone made a business trip to Lubbock Friday. As they returned that evening they stopped for a revival service at Floydada's Trinity Church.

Gladys and Patsy were guests of Mattie Davis Wednesday evening and they all attended services at Mattie's church in Plainview. Gladys stayed overnight with Patsy.

Lafitte Bonnie, with wife Patsy as his participating cheering section, has spent another week-end with his mother-in-law's lawn mowers. Gladys' yard and road front have to be classed one of the better kept in the community.

Sunday night services were dismissed at the Cedar Hill Church in order that their members might attend revival services at Floydada's Trinity Church. Among those who went were the four members of Rev. Morton's family, Gladys and Imogene Fortenberry, Edna Gilley, Junior and Martha Taylor, and Durrell and Alpha Fortenberry.

Louise Durham Quilliams from West Plains, Missouri, has been in Lubbock at the bedside of her husband. Russell and Louise were visiting his sick daughter in Carlsbad, N.M. when he began to suffer severe chest discomfort. Carlsbad doctors recommended he transfer to Lubbock and he chose St. Mary of the Plains. A few tests were made there and Russel was quickly moved into I.C.U. Due to blockage of his arteries he is scheduled for treatment via the balloon method Tuesday. A team of surgeons will be waiting in the wings to perform open heart surgery if the balloon technique fails.

Louise was called here in late June because of a severe heart attack suffered by her son Jimmy Durham of Lockney. Jimmy responded to the balloon treatment and is now convalescing at home. He is following a doctor recommended program of walking, therapy, and abstinence from tobacco.

The Ruthie and W.M. Clark cabin at Lake Mackenzie was the site of a Saturday hamburger cook-out honoring Charles and Bobby Hammit and seven of their children who were visiting here

from Colorado. Among those present were Charles' mother Gertrude Hammit and Ruthie and W.M. Clark of Plainview, Carl Lee and Lois Gilley from Floydada, Edna Gilley, the Craig and Mark Gilly families from Cedar Hill, and enough others who strayed in to make a total of twenty-two.

Durrell and Alpha Fortenberry made equipment deliveries for the Excel Company to the Haskell area Friday and Saturday of last week.

Wanda Lackey DuBois answered the telephone at Craig and Gayle's home Monday morning. She was here to bring back grandchildren Cole, Cindy, and Christy who had been visiting with her for two weeks at her home in Jewett, Texas. Bill had a cutting of hay ready for harvest and couldn't get off to come just now. It's a little drier than usual at Jewett but not at all critical like it is further to the west and south.

Peet Kelley and Norma Welch brought home around three bushels of cobbler peaches from the Starkey orchard last Saturday.

Jude and Marie Strickland were early Monday morning visitors at the J.A. Welch home. They were on their way to see Russell Quilliams at St. Mary's Hospital in Lubbock and wanted to check on their Aunt Peet Kelley as they went by.

If you cannot win, make the one ahead of you break the record.



SORORITY DONATES MONEY — Melanie Beedy (left) representing Beta Sigma Phi donated \$400.00 to the Child Welfare Board. Shalane Wesley (right) of the Department of Human Services accepts the donation. —Staff photo

Senior Citizens News

By Thelma Jones

Mrs. Virginia Waits and son Jeff of Hale Center spent Tuesday with her mother, Mrs. Deota Odam.

Mrs. Mattie Wester has as her guests this week her children, Rev. and Mrs. Hollis Payne and Joey of Vigo Park, Mr. and Mrs. Edgar Boyd and family of Shallowater, Mr. and Mrs. Bruce Englert and family and his mother, Hilda Englert of New Jersey. Sunday visitors were Mr. and Mrs. Dale Harter, pastor of the first Christian Church.

Mr. Carl Tardy of Roaring Springs spent one day last week with his cousin,

Harvey Tardy.

The Senior Citizens offer their sympathy to Mrs. Andrew McCulley and family on the loss of her husband and to the children on the loss of their father.

There were 78 present Saturday for the Owens reunion at the country. All of Beady's family were present except for one son.

Remember the monthly luncheon Thursday, July 21. Come and be with us.

Carlos Scott Warren and wife Peggy of Ft. Worth were here to attend the Warren reunion Saturday. Warren spent Friday night with Ethel Warren.

Nursing Home Happenings

By Jo Bryant

Hello, well another week has passed, and it seems that summer is nearly over, and you have been having fun, mowing the grass, canning etc.?

Monday, started the week as usual, juice and coffee break. Irene Wexler came and played the piano for us, and Bro. Bill Wright from the First United Methodist Church came and shared from Matt. 6 about having no anxiety about what to eat, drink, or wear. At 2:30, the residents had rhythm band and exercise.

Tuesday, Bro. Neeley and wife Zelma came and shared Ps. 100 with us and sang some songs. At 2 p.m. we read and shared a story about George Burns, and had a snack.

Wednesday, Bro. Sammy Rodriguez, from the Assembly of God Church came and shared Ps. 37, God giving us the desires of our hearts, if we ask Him.

At 2 p.m. the residents played Bingo. Otis Johnson had the first bingo. Mary Alice Davis came and helped us. Treats were apples, oranges, and bugles.


Thursday, Helen Lipham came and played the banjo for us. At 2:30 the residents watched a movie, listened to some blue grass music and had some popcorn.

Friday, the ladies from the First Baptist Church came and shared with us. Mrs. Lillian Ross read Ps. 3, Virginia Cage opened with a prayer, and lead the singing. Evelyn Latta played the piano.

At 1:30 the residents were treated to some ice cream from MY-T Burger, and went on a bus ride to Matador. They thought the crops were so pretty and green. The residents going on the bus ride were: Florence Curry, Iva Wells, Maude Galloway, Della Halencak, Burnah Probasco, Otis Johnson, Charles Breeding and Brooks Callaway. Thanks, Wilma, for taking us.

We have a new nurse, LVN with us, by the name of Beverly Bates. She was born in Wink, Texas. She was one of three children. She married Dean Bates, a coach and teacher. They have a daughter and a son. Beverley has been a nurse for 18 years, and a teacher for 13 years. She has taught at Andrews Ward. She enjoys working in a nursing home, and enjoys hearing about the life styles of the residents, and their bits of wisdom about life.

This week's visitors were: Mr. and Mrs. Joe Whitworth, Sulphur Springs, Bro. Sammy Rodriguez, Mrs. Ted Elliott, Matador, Ann Thompson, Jeanie Lloyd, Ella Lloyd, Zelma Crump, Ruth Baker, Vanceil Crump, Matador, Ola Smith, Willie Mae Smith, May Sue, Jettie Moss, Mel and Marjorie Holcomb, Danny and Billie Willis, O'Donnell, Dave and Frances Willis, Paducah, Roxann Willis and girls, Odessa and Rudy and Wanda Halencak of Fresno, California.



SUMMER SIZZLER SALE

Now Thru Sunday, July 31

FINANCING AVAILABLE

- 90 Days Same As Cash For Quality Applicants Only
- Subject To Credit Approval By Lender
- Check Local Store For Availability

FREE!
"HOW TO BROCHURES"

Simple, easy to understand instructions guide you through various home improvement projects.

CONTRACTOR SALES

Our contractor sales/service program means personalized service from the experts for every contractor/builder/remodeler.

NEED HELP WITH YOUR PROJECT?

Our team of knowledgeable sales associates will help you plan your project from start to finish.



2"x4"x92 5/8" White Wood PREMIUM PRECUT STUDS
1.29 each (204-92-37)



1/2"x4"x8" CDX PLYWOOD SHEATHING (APA)
6.49 each (123)(748-55)



10'x8' REDWOOD DECK PACKAGE
199.84 each (835-10-99)

Steps not included. Other sizes available.

Includes Builder's Hardware To Complete The Job.

Do-It-Yourself And Save!



20 Year Self Seal Fiberglass ROOFING SHINGLES
15.84 100 sq. ft.

Class 'A' fire rated.



1/2"x4"x8" Tongue & Groove WAFERBOARD SHEATHING
5.19 each (748-76)(748-83)

FRAMING LUMBER
Clean, dry and kept under cover.

Size	10'	12'	14'	16'
2"x4"	2.09	2.34	2.99	3.39
2"x6"	3.24	3.89	4.54	5.19
2"x8"	5.14	5.69	7.09	8.14



14'x22' 1 1/2 CAR GARAGE PACKAGE
With Exterior Wood Siding
969.84 each

Other Sizes Available!
FREE Build-It-Yourself Plans With Purchase Of Each Garage Package.
Bring Us Your Size For A **FREE ESTIMATE!**



24'x24' 2 Car Garage (832-40-99) 1,539.84 each

PICK UP A PICK-UP FREE



Sponsored by Yenkin Majestic

Register to win a Chevy S-10 Pickup at your local 84 Lumber. No purchase necessary—need not be present to win. Must be at least 18 years of age to be eligible to win. One entry per person. See store for details. Winner responsible for all taxes, registration, licensing and insurance fees.

PAINT-UP With Top Quality Paints...



CLASSICOAT
Interior Latex Paint
6.99 gallon



CLASSICOAT
Interior Semi-Gloss Paint
7.99 gallon



HERITAGE 100
Exterior Latex Paint
8.99 gallon



HERITAGE
Exterior Latex Paint
7.99 gallon



52" Pacific Breeze CEILING FAN 29.99

Includes Light Kit

Political Calendar

State Senate Democrat
STEVE CARRIKER
HELEN FARABEE
CHARLES FINNELL

84th District, Texas House of Representatives Democrat
WARREN CHISUM

District Attorney
BECKY BYBEE
McPHERSON

Sheriff Democrat
FRED CARDINAL
Republican
RAY MACHA

Political ad paid for by the candidate.

DELIVERY AVAILABLE AT REASONABLE RATES

Not responsible for typographical errors. We reserve the right to limit quantities and correct inaccurate prices at point of purchase.




PLAINVIEW
2985 Dimmitt Road East
1 Block West of I-27
293-4384

Weekdays 8 a.m. - 7 p.m. Saturday 8 a.m. - 6 p.m. Sunday 12 noon - 6 p.m.
Ray McMahan - Donna Davis Joe Reay - Brad Beck - Tom Johnson

7/16"x8"x16' PRIMED TEXTURED HARDBOARD SIDING
5.99 each

12" O.C. R B & B
9.99 each



SHOP **Big Savings for You!**

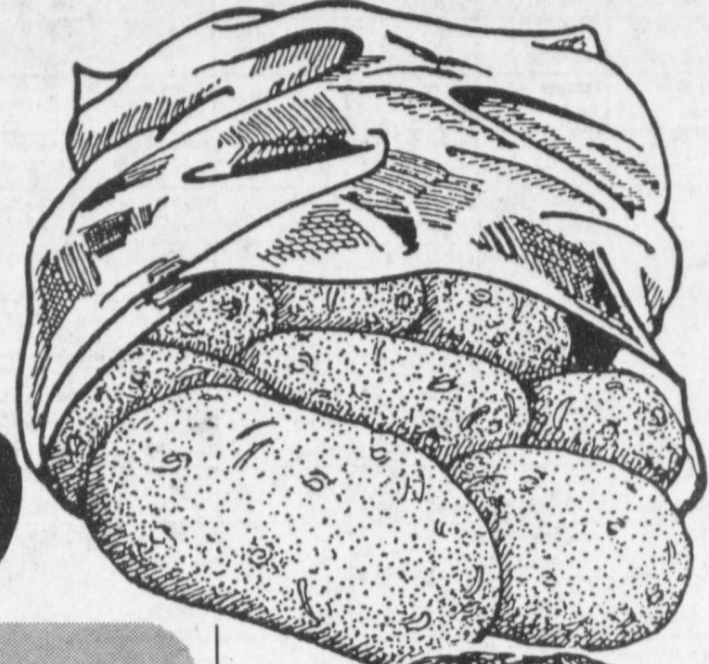
On Favorite Selections in all Departments



309 East Wall
Floydada
Mon.-Sat. 8am-9pm
Sunday 9am-8pm

Prices Effective
Thursday, July 21 thru
Wednesday, July 27, 1988

Russet Potatoes



10-Lb. Bag **.99**

Luv's Deluxe Diapers

Small-66's
Medium-48's or
Large-32's

+1% Rebate Available

8.99

Topcrest Soft White Light Bulb Sale

2 Pack 60 Watt
2 Pack 75 Watt
2 Pack 100 Watt

YOUR CHOICE

2/\$1



Bing Cherries

Washington State

1.59

Lb.

Leaf Lettuce

Red, Green, Or Butter

2/\$1

Bunch

Soft N Pretty Bath Tissue

4 Roll Pkg.

.89

Purina Dog Chow



25 Lb. Bag **6.98**

Del Monte Pineapple
In Juice Assorted

15 1/4 Oz. Can **.59**

Farm Pac Split Top Wheat Bread

24 Oz. **2/\$1**

Break Cake Carrot Cake

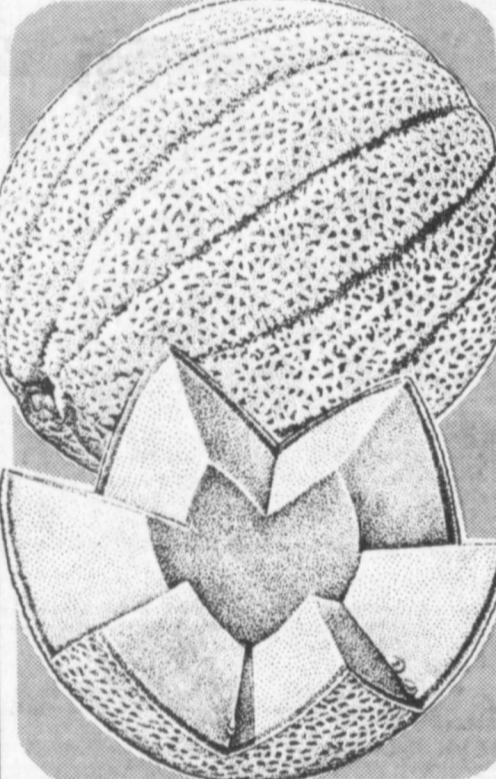
12 Ct. Pkg. **1.89**



Cragmont Soda Pop

Assorted

12 Oz. Cans **6/99**



Cantaloupes

Nice & Ripe

3 / \$1

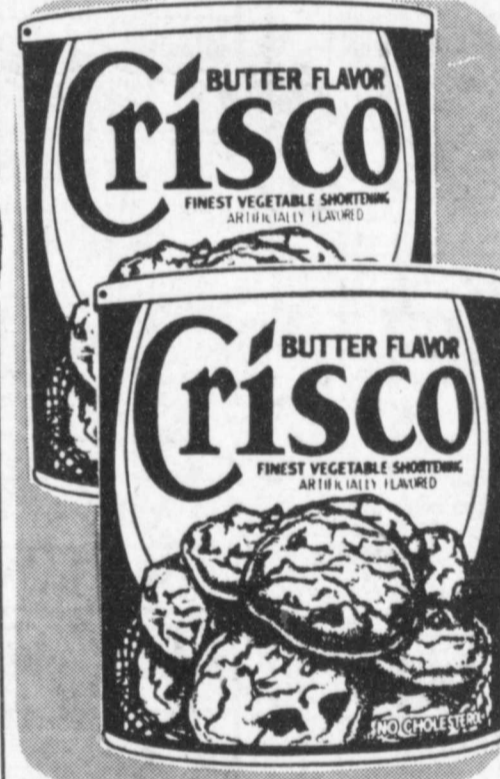
Lbs



Kraft Mayonnaise

Regular or Light

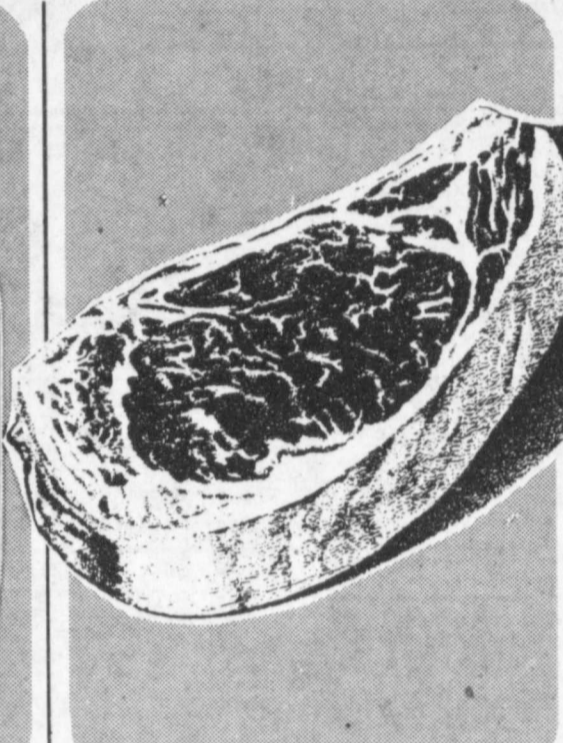
32 Oz. Jar **1.69**



Crisco Shortening

Original or Butter Recipe

3 Lb. Can **1.99**



Beef Cube Steak

Lean & Tender Waste Free Trim

Lb. **3.69**



Del Monte Catsup

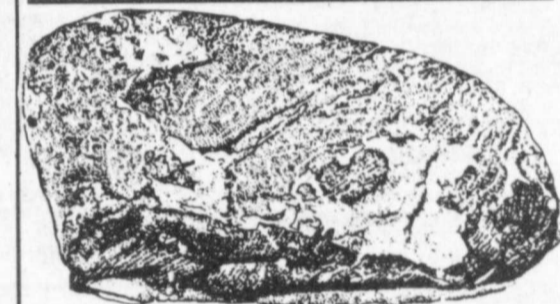
32 Oz. Btl. **.98**



Lean Ground Beef

Fresh Daily

Lb. **1.59**



Boneless Beef Brisket

Special Market Trim

Lb. **1.88**

Hill Country Turkey Ham

Boneless

Lb. **1.39**

Beef Standing Rib Roast

Large End

Lb. **2.98**

Beef Ribeye Steak

Boneless

Lb. **4.98**

Beef Cube Steak

Boneless Waste Free

Lb. **2.89**

Boneless Stew Meat

Lean Beef Cubes

Lb. **1.98**

Decker Bologna

Regular or Beef

Lb. **1.49**

Oscar Mayer Bologna

Regular or Beef 8 Oz.

1.39

Bar S Tasty Dogs

1 Lb. Pkg.

.98

Decker Sliced Bacon

12 Oz. Pkg.

1.49

UNLIMITED DOUBLE COUPONS

7 Days a Week, Shop Rite will double the value of Manufacturer's Coupons. This excludes coupons from Shop Rite and other retailers. The sum is not to exceed the value of the product. This excludes cigarette and tobacco products.

Hormel Potted Meat

3 Oz. Can **4/\$1**

Parkay Margarine

1 Lb. Qrts. **2/\$1**

Kellogg's Froot Loops

19.7 Oz. Pkg. **2.99**

Velveeta & Shells Dinner

12 Oz. Pkg. **1.09**

Mrs Bairds Split Top White Bread

24 Oz. Loaf **.89**

Borden Ice Cream

Assorted Flavors 1/2 Gal. Ctn **1.79**

Tropicana Orange Juice

Regular or Homestyle

12 Oz. Can **.98**

Farm Pac Cottage Cheese

24 Oz. Ctn. **.99**

Carnation Canned Milk

12 Oz. Can **2/\$1**

Oscar Mayer Bologna

Regular or Beef 8 Oz. **1.39**

Decker Sliced Bacon

12 Oz. Pkg. **1.49**

County crop picture explained

By C. Mark Brown
Extension Agent-Entomology

GENERAL SITUATION

Aphid populations have practically exploded in some areas. We are now seeing some cotton blooms. Some grain sorghum is in the boot, and a few fields have headed out.

COTTON

During this week, we began noticing some blooms. We are now finding some missing squares; however, square set still remains very high. I think that most of this square shed is due more to environmental conditions rather than flea-hopper damage. Since many fields have 17 to 18 squares per plant, we will be seeing some fruit load adjustment over the next few weeks.

Aphid populations have increased dramatically in our area since the recent rains. It appears that the most concentrated area for heavy aphid infestations is around Ralls and Lorenzo southward down around the Owens community. This aphid buildup occurred very early this year. We have stated in previous newsletters and radio reports that we do not know what the potential for yield loss from an early aphid infestation is. However, in the heavier infested fields, I have seen large spots of severely stunted plants due to these aphids, and I can't see any way around some delay and yield loss in these spots. We need to watch these aphid infestations carefully.

Many producers are spraying their fields right now. The best way to determine whether or not your fields have reached a critical level of aphid buildup is to walk through a large area of the field, checking randomly selected plants about every 50 to 75 paces. Take three full-sized leaves from each plant...one from the upper-third, one from the middle-third, and one from the lower-third of the plant. Count the number of aphids on each leaf and average all these counts together. This will give you a much more accurate picture of the overall aphid infestation than you can get from eyeing the cotton

from the tractor. If the average number of aphids per leaf is around 10 per plant, you need to watch the infestation closely. If you are averaging 25 or more per leaf, you should consider treatment. Remember that it is important to assess each field separately. We have seen variability in aphid numbers in our program fields...even in areas of the most concentrated activity.

We had another field this week that had relatively high bollworm counts. The field was located NW of Wake. We have seen bollworm activity in most of our program fields this week, but egg lays have been light (1600 or less per acre). My bollworm moth trap catches have been hard to interpret this year, but I would have expected this to have been the week for activity. We may be in good shape as far as early bollworm infestations go. Never-the-less, if you decide to control aphids, you should check for the presence of bollworm eggs and small larvae to prevent having to make two back-to-back applications.

Chemicals recommended for aphid control include Bidrin 8E (1.0-1.6 oz.), Cygon 4E (4-8 oz.), Dimethoate 2.67E (6-12 oz.), Swat 8E (4oz.), Curacron 6E (10.6 oz.), Lorsban 4E (8-16 oz.), parathion 4E (8-12 oz.), and methyl parathion 4E (5.3-8.0 oz.). Also, Di-Syston 8 has a supplemental labeling for cotton aphids at 1.6 oz. no later than boll opening or within 30 days of harvest.

Many of the producers in our area request wide swathing by the aerial applicators. There are certain advantages to this, in that the application is less expensive and this treatment may quite possibly be less harsh to beneficials. If wind conditions are just right, very good control can be achieved with this method, but producers should not expect 100% control. With wide-swathing, we can take care of the problem at present and may achieve good control. However, it is early in the season and there is time for re-infestation. I'm not trying to discourage this practice; I'm

just trying to make the point that if you have to treat aphids again in August, you shouldn't blame the applicator.

SORGHUM

A few fields are now in the boot stage, and I noticed a field this week that had already headed out. Greenbugs remain light in the fields we are checking, but as sorghum enters into the reproductive stages, I would expect a building in greenbug numbers. We are beginning to see a few mites in some fields, but at this time, these mite colonies also are very light.

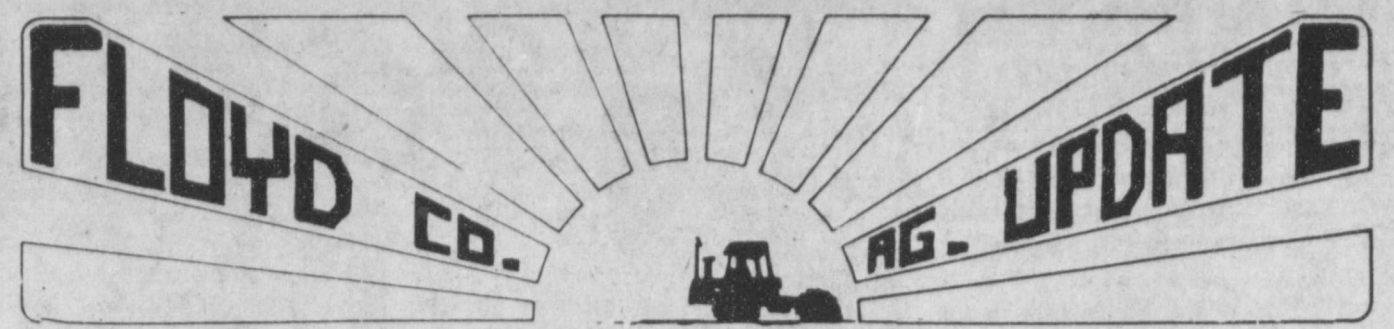
As the sorghum heads out and begins to bloom, producers will need to watch for sorghum midge. These are tiny, orange-colored flies that lay eggs in blooming florets. An orange-colored maggot hatches from the egg and feeds on the newly fertilized ovary, preventing kernal development. You'll read more about this pest in coming issues.

CORN

As corn is silking, producers need to watch for adult corn rootworm beetles. Adult western corn rootworm beetles are yellowish-tan with three black stripes running down the back. These beetles will feed on leaves, but prefer the silks. If beetle numbers reach 8 to 10 per plant, they can prune back the silks enough to hamper pollination. I have not seen any silk pruning myself this year, but we need to watch for this problem.

SCOUTING PROGRAM

We've had a time during the past two weeks maintaining a schedule because of the rain, but we've done our best to check all the program fields in a timely manner. Remember that I see a copy of the reports on the same day they were completed. If there is a critical problem, I will contact you. Please feel free to call me any time you have a question about a report. I'd be glad to visit with you about your field situation.



ONION HARVESTERS AT WORK--DeBruyn field hands were hard at work last week harvesting onions in the short dry spell. DeBruyn Produce who handles about one-half the onion production in the county "transplanted 500 acres of onion and lost 200-250 acres to weather," according to Chuck Holmes, DeBruyn produce. Staff Photo

Extension Office offers forage program

The drought in parts of Texas and in many sections of the Central United States has surfaced the need for many producers to find adequate forage to supplement cattle through this short grazing period. The Texas Agricultural Extension Service is compiling a list of producers who have hay for sale and each county office will maintain this list, which will be updated each week. If you need hay for your cattle or if you have surplus hay for sale, your County Extension agent would like to know so we can help everyone throughout the state have access to forage for their livestock.

The Floyd County Extension office will be maintaining a list of producers who have hay for sale from Floyd County. If anyone has hay for sale, please call the Extension office at 983-2806. We will need to know the kind of

hay, what kind of bales (round or square, large or small), tons, percentage crude protein, age when cut, and how it is stored. Your name, address and phone will also be needed.

This program will start as soon as possible so each county agent will need this information by Thursday, July 21. Remember, a new list of people with hay for sale will be developed each week so keep me informed of your situation. Counties with surplus hay will be listed on a statewide news release that will help bring the buyer and seller together.

The contact for Floyd County producers will be: Richie Crow-CEA-Ag., Floyd County, Courthouse-Ag. Bldg., Floydada, TX 79235. Phone number: (806)983-2806.

Everyone's cooperation is very important to the success of this operation. Please help us and your fellow livestock

producers by letting your Extension office know weekly what your hay situation is.

Educational programs conducted by the Texas Agricultural Extension Service serve people of all ages regardless of socioeconomic level, race, color, sex, religion, handicap or national origin.

Farm Bureau joins hay effort

In approximately two weeks Texas Agriculture Communications System, a Texas Farm Bureau service to member program, in cooperation with Texas Agriculture Extension Service will begin publishing a weekly listing of available hay, feed stuff, and available grazing land for drought stricken areas in Texas.

The information consisting of supplier name, location and phone number will be sent over the computer network each week. This listing will be posted in the Floyd County Farm Bureau office located at 101 S. Wall in Floydada.

Shop at Home!

FLOYDADA IMPLEMENT CO. MF Massey Ferguson Floydada 983-3584
FIRST NATIONAL BANK OF FLOYDADA Floydada 983-3717
RUSSELL'S EQUIPMENT & SUPPLY Russell's Floydada 983-3751
FLOYD COUNTY IMPLEMENT Floydada 983-3732
FLOYDADA COOPERATIVE GINS INC COOP Floydada 983-2884

Co-op bank owners vote consolidation

Officers of the 55-year-old Texas Bank for Cooperatives (TBC) made it official today in Austin. The premier lender to the state's 400 agricultural and rural utility cooperatives will merge, along with seven other Banks for Cooperatives (BCs) from across the nation, into a National Bank for Cooperatives to be headquartered in Denver, Colorado. The decision was reached on June 30 when the Bank's stockholders cast their votes with the independent auditing firm of Price Waterhouse. The consolidation vote was required by the Agricultural Credit Act of 1987.

Jack Hughes, president of TBC, said, "The result of this vote is a clear indication that our member-owners want us to keep pace with the restructuring agricultural industry and maintain their Bank as a viable financing alternative."

Official numbers were released this morning by Price Waterhouse in Denver. Of the 179 eligible voting stockholders in Texas, 112 cast a vote. Texas stockholders overwhelmingly supported the concept, voting 103 for and 9 against on the basis of one member, one vote.

The election process also required a vote based on ownership interest or equity in TBC. On this basis, 96 percent of the equity voting supported the consolidation and 4 percent were opposed.

The TBC was created by an act of Congress in 1933 as the third arm of the agricultural finance-oriented Farm Credit System. The other two arms are the Federal Land Banks, which provide long-term rural financing to producers through Federal Land Bank Associations and the Federal Intermediate Credit Banks, which provide short-term agricultural financing to farmers and ranchers through local Production Credit Associations.

"As agriculture has changed and more recently as the banking industry has come upon hard times, it has become apparent restructure and reorganization were inevitable," said Hughes.

After several studies, stockholder information meetings and numerous recommendations, a "Special Committee on BC Structure" was formed nationwide to take the issue before the System's owners. Edward Breihan, of Lubbock and a director of the TBC, served as chairman of this national committee since its inception in early 1988.

"This vote is a landmark in agricultural finance," Breihan noted. "Until

today, the BC system's organizational structure had remained essentially unaltered since the banks were established," he said.

The 11 other district Banks for Cooperatives located throughout the U.S. demonstrated similar voting patterns. The only districts voting not to merge into the National Bank for Cooperatives were Jackson, St. Paul, Springfield and Spokane. These four will remain independent banks with the option to merge with other independent BCs, other Farm Credit banks or at a later time join with the merged National Bank for Cooperatives.

Nationwide, 1,691 of the 3,118 eligible voting stockholders participated in the election, making this process one of the highest percentage voter turnouts in the Farm Credit System's history.

"It's a very exciting time. Changing the structure of the BC system presents new challenges and opportunities for the banks and their stockholders,"

Breihan said.

Although the TBC is breaking its long-standing relationship with the Federal Land Bank of Texas and the Federal Intermediate Credit Bank of Texas (now consolidated into the Farm Credit Bank of Texas), it will continue business as usual in its jointly-owned headquarters building in northeast Austin.

Hughes said, "Little effect will be felt by borrowers in Texas. We will be working diligently in the next six months to have the necessary administrative changes in place by the official consolidation date of January 1, 1989. The Bank intends to remain a competitive and dependable supplier of agricultural credit to eligible Texas agribusinesses and utilities," Hughes concluded.

The TBC provides financing to a majority of all eligible agricultural cooperatives in the state. At June 30, 1988 loan volume stood at \$377 million.



Drop by for lemonade & cookies this Saturday from 9a.m. to 5p.m.

- Black/Silver two tone
- Air Conditioner
- Tinted Glass
- Rear Step Bumper
- Speed Control
- Tilt Steering
- Argent Style Wheels

Why Pay More! **137.20**

Price \$995.00 Trade, 4000.00, Rate 13.75, 60 months



Sales Department Open Saturdays 9 a.m. - 5 p.m. Regular Hours 8 a.m. - 6 p.m.

FLOYDADA FORD MERCURY 983-3761 763-1234

FLOYDADA, TEXAS

LIFETIME SERVICE GUARANTEE

Obituaries

ANDREW G. McCULLY
 Memorial services for Dr. Andrew G. McCully, 64, of Floydada were at 2 p.m. July 18 in the First Baptist Church. Dr. Floyd C. Bradley, director of Baptist area missionaries in Plainview, officiated.
 The Rev. Howell Farnsworth, pastor, assisted.
 Dr. McCully died at 4 p.m. July 15 at his home after a lengthy illness. He had been under a doctor's care.
 Dr. McCully had been practicing dentistry for 34 years, 31 of which was in Floydada. His entire dental career in Floydada was spent at 428 W. California. He moved to Floydada in 1954 to start a practice with Dr. Thacker, later joining with Dr. Charles Craig. Dr. Craig and Dr. McCully stayed associates during most of their respective careers.

Andrew McCully did his pre-dental work at the University of Oklahoma and Oklahoma Baptist University before attending and being graduated with honors from Baylor Dental College. He was the recipient of a special award in children's dentistry.

He was a member of the Rotary Club and had served for several years as a member of the Caprock Hospital District Board of Directors. He was also a U.S. Navy Veteran.

At First Baptist Church, Dr. McCully was a teacher and served as a member of the Building Committee when the new sanctuary was erected.

McCully was born in Hartshorne, Okla., and moved from Amherst to Floyd County. He married Jane Bowling on June 22, 1951 in Bristow, Okla.

Survivors include his wife; a son, David of Lubbock; two daughters, Nan Shirley of Lubbock and Laura Chittenden of Springfield, Mo.; a sister, Mary Ruth McCully of Amarillo, and four grandchildren.

NICOLAS MONTES CASTENEDA

Nicolas Montes Casteneda formerly of South Plains died June 24, 1988 in Lerdo, Domingo, Mexico.

Memorial services are set for 7 p.m. Friday, at the South Plains Baptist Church with Rev. Tom Fisher officiating.

Services were held June 25 at the San Jose Catholic Church, Lerdo, Domingo, Mexico with Father Jose Rodriguez officiating. Interment was in San Isidro, Domingo, Mexico.

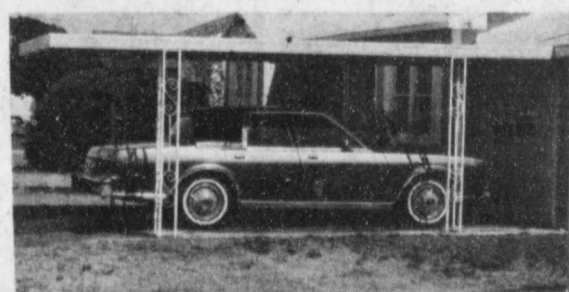
He was married to Augustina Montes, October 6, 1950.

Casteneda was a Floyd County resident since 1957, moving back to Mexico in 1987. He worked for Don, Fred, and Keith Marble for thirty years.

Survivors include his wife, Augustina; a daughter, Valentina Montes Hernandez, South Plains; a son, Serjio Montes, Fort Hancock; three stepsons Cruz Becerra, Epifanio Becerra, and Agapito Becerra, Lerdo, Domingo, Mexico; and his mother Flora Casteneda, Torreón, Mexico and several grandchildren.

Comer's
Laundry & Dry Cleaners
 Pick-up Stations
 Rudy's Barber Shop
 Lockney
 Dudley's Market
 Floydada
 Tuesday & Friday Processors
 City Steam Laundry & Plaza Cleaners
 Lubbock

CARPORTS & PATIO COVERS



- Protect your auto, van or RV from damaging hail and hot sun. Let us install a carport today.
- Install a Patio Cover early and enjoy the cool comfort of your patio all summer.
- Financing Available
- Free Estimates
- Direct From Factory to You

Call now:
 1-800-293-9526

EB-TX

7105 Olton Road Drawer 369 Plainview, Texas



NEW LIONS OFFICERS AND DIRECTORS INSTALLED--New officers and directors for Floydada Lions Club for the year 1988-89 are: (back row, left-right) Director Bill Harbin, Secretary-Treasurer Sammy Hale, Lion Tamer, J. Royce Bradshaw; Second Vice-President Eric Cornelius and President Jack Robertson; (front row, left-right) Director Dr. Rene Lopez, Director Johnny Summers, First Vice President Dinks Eckert, Director Sammy Rodriguez, and Lions Sweetheart Sharon Smith. Not pictured was Tail Twister Bill Smith. Staff Photo

Floydada Caprock Hospital Happenings

The medical staff of Caprock Hospital District had their monthly luncheon and meeting on Monday, July 11, 1988. Those attending were: Dr. Hale, Jordan, and Lopez, Leroy Schaffner, Administrator, Molly Stringer DON, Joy Bree, Medical Records Director, Susan Green, Lab Technician, Rhonda Stovall, Respiratory Technician, and Jean Jarrett, Dietary Supervisor.

Many of our staff have returned from vacations. Joy Breed and her daughters have enjoyed several days at Brownwood Lake with friends and family. The Schaffners have returned from California and Disneyland having a wonderful time. Doyle and Frances Miller spent the past weekend in Ruidoso, NM. Rhonda Stovall and Penny and her family have returned from their vacation. Ruth Aleman has been on vacation. Dr. Andy Hale and Sherry Hale entertained several of Laura's friends with a skating party celebrating Laura's 9th birthday.

After a reduction in our census over the holiday weekend, our patient load has been steadily increasing. Care Link and Flight For Life ambulance helicopters have been here several times in the past few days. One that was transported was a rattlesnake bite victim from Paton Springs. He had been brought to our ER by Motley County EMS. We want to take this opportunity to caution everyone to please be careful when mowing high grass or working around ground caves in rattlesnake country. The treatment usually prescribed for a poisonous

snake bite is to stay calm, apply ice to the bite, and if an extremity, keep the site lower than the rest of the body. Always seek medical help as soon as possible. Treatment in the hospital will most likely consist of doing a skin test to check for an allergic reaction to the antivenom serum. If there is no reaction the serum is administered intravenously. The dosage is calculated by the size of the patient and the severity and location of the bite. Several vials of antivenom must be administered. Usually this treatment occurs in the ER and the patient transferred to Lubbock.

The planning committee for our Open House and Health Fair met this past week and dates were set for July 28-29 and July 31 respectively. The lab will be doing blood levels for glucose and cholesterol. The total charge for this will be \$6.00. ValuCare members will be tested free of charge. The EMS personnel will be checking blood pressure and weight. The dietary department will have refreshments and copies of diets for various needs. Helen Teepel will be presenting diabetes material and perhaps a film at intervals during the day. Julianne Cornelius will have an area to provide information on exercise programs for all ages. The CareLink helicopter will be here July 28 around 8:00 a.m. for display. We are providing these services as courtesy to our community and we encourage you to take advantage of this.

The Hospital Auxiliary will be assisting us with the Health Fair. July 31 from 2-4 in the afternoon, we invite all of you to come and enjoy a tour of the hospital. We want to show off the new wallpaper and redecorating. The 1956 Study Club will be assisting us with the open house.

Our employee spotlight this week is Nell McClung. Nell came to work at Caprock Hospital in the business office in 1975. Troy Patton was administrator at that time. Nell was appointed administrator by the Board of Directors in 1978 when Mr. Patton resigned. She served in that capacity until 1981 when the hospital was leased to Dan Powers or YDP Corporation. This group brought in an administrator and Nell resumed working in the business office. The Hospital Board took the hospital back in 1984 and Guy Hazlett was hired as administrator. Nell worked as administrative assistant. In 1987, Nell became assistant administrator to Leroy Schaffner, our new administrator. Nell has filled many shoes here at the hospital. We appreciate her versatility and willingness to continue to help and support our hospital.

Nell was born in Floydada in the Lakeview community. Her parents, the Ray Pattons, were longtime residents of Floydada. Nell started school and graduated from Floydada High School. Nell and Bates McClung married after she graduated from high school. While

Floydada this week . . .

DATE	HIGH	LOW
July 13	94	74
July 14	92	76
July 15	93	76
July 16	92	75
July 17	96	73
July 18	98	74
July 19	84	72

RESERVED SEATS

Whirlwind fans who now have reserved stadium seats number 41-49 inclusive, row 1-15 are reminded that this section has been incorporated with the reserve seats in the middle of the stadium. Please be reminded that if you have not already come to the school administration office and made the necessary changes, do this before Aug. 1.

BUS DRIVER COURSE

A 20 hour bus driver course will be held from 6-10 p.m. Aug. 1-5 at A.B. Duncan Elementary. No refresher course is offered at this time. Contact Mrs. Dale Tyer or Assistant Administrator Jimmie Collins, Floydada Independent School District

DANCE

The public is invited to attend a dance on Friday, July 29, 1988 from 8:00 p.m. to 12:00 midnight at the Massie Activity, located at 513 West Georgia, in Floydada, Texas. Playing for the dance will be the "Caprock Country" band from Silverton, Texas. The charge will be \$5.00 per person to raise money for 4-Hers' going to Washington D.C.

SUMMER BAND

Summer band schedule for FHS Band has been announced. Freshmen students will begin rehearsals August 1 at 7:30 p.m. Rehearsals will be on Monday,

Tuesday and Thursday.

Full band rehearsals will begin August 8 at 7:30 p.m. Sectional rehearsals will be held during the day beginning August 8. These will be five days a week. Watch the newspaper for full schedules on August 4.

COMMUNITY REUNION

The annual Mt. Blanco, Lakeview and Pleasant Hill reunion is scheduled for Sunday, July 24. The site will be the Lighthouse Electric building beginning at 10 a.m. A potluck meal will be served at 1 p.m. Anyone who has ever lived in these communities is invited to attend.

OPEN HOUSE

Caprock Hospital District will have an open house Sunday, July 31 from 2 to 4 p.m. We welcome all the community to come and tour the patient area in the hospital and view the completed community-wide project of redecoration in this area. Refreshments will be served. The 1956 Study Club will be assisting the hospital staff.

HEALTH FAIR

Caprock Hospital District will have a Health Fair Thursday and Friday, July 28 and 29, from 7 a.m. to 3 p.m. each day. The following services will be offered: lab, EMS, dietary, diabetes, exercise, community services. The Hospital Auxiliary will be assisting with the Health Fair.

DIABETES CLASSES

Diabetes class meets at Caprock Hospital, in the dining room at 7 p.m. on July 28. Helen Teepel, R.N. will be directing the class.

MAMMOGRAMS

Caprock Hospital will be offering Mammograms July 26. Please call 983-2875 for an appointment.

CARD OF THANKS

The family of Grace Lemons wishes to thank all the wonderful friends and neighbors that brought food, sent flowers and cards, and had kind words for us during the time of the illness and death of our loved one. Our appreciation also to the doctors and staff of the Lockney General Hospital for their caring medical help.

Mr. Carl F. Lemons
 Marvin Lemons Family
 Phil Lemons Family
 Frances Whalley Family
 Carla Gayley Family
 7-21p

The family of Mrs. Gladys Simpson would like to express our sincere thanks for the many acts of kindness shown us during her illness and death. For the prayers, cards, memorials, flowers, phone calls and food, we are most appreciative.

A special thanks to Dr. Jordan, and the nurses and employees of Caprock Hospital for their kind and compassionate care.

Jim and Betty Simpson and family
 Jr. and Vel Simpson and family
 Virginia Holland and family
 Ruth Shaw and family
 Frieda Simpson and family

Dear Friends,
 We thank you so much for all the beautiful cards and gifts we received congratulating us on our 50th wedding anniversary. Also all the phone calls and visits and your attendance to the reception is greatly appreciated. Your friendship and love is a wonderful gift to us.

Leonard and Lahoma Matsler
 7-21p

We would like to express our appreciation to our family and friends for their kindness and help during Jane's recent surgery, stay in the hospital and while we have been home.

We enjoyed so much the visits, cards, phone calls, food and flowers.

It is such a blessing to have our great family and friends to care about us.

We love you all,
 Weldon and Jane Pruitt

We, the Lockney Women's Softball Association, would like to express our sincere thanks and gratitude to the following businesses and individuals for their services, time, and donations that were so generously given to us this year. Thanks to you our season was a complete success and a joy to put together.

We extend our appreciation to Lockney Meat Co., Jim Bob Martin, Bobby and Glenda Pinner, Cecil Pinner, Floydada Ready Mix, Lawson Rowell, Arsenio Martinez, Providence Farm Supply, Asgrow Seed, Cargill, Inc., Thompson Pharmacy, Ibarra Grocery, Lindan Morris, Isaias Garcia, Dimas Garcia, Dairy Queen, Tastee Burger, Alfred Martinez, and the City of Lockney.

Special thanks are extended to all the team sponsors and to the players.

Thanks again,
 D'Lyn Morris, president
 Susan Smith, secretary
 7-21p

protect our children...
DRIVE SAFELY

Have a Nice Week!

DON'T BE A COUCH POTATO
 GET OUT OF THE HOUSE AND ENJOY A MOVIE!

PROGRAMS ARE SUBJECT TO CHANGE WITHOUT NOTICE.

 FRIDAY-SATURDAY & SUNDAY JULY 22-23-24

JUDGE REINHOLD
 The comedy about not acting your age.

Floydada Camp of Champs

July 25 - 29, 1988
 9 a.m. to 12 p.m.

9 years old & All non-varsity Players - Boys & Girls - 9-12

Register at 9 a.m. July 25
 Floydada Junior High School Gym
 \$35.00 Registration Fee

Jill Willson

Call 983-3113 for more information

POSTAL JOBS

\$10.15/HR. STARTING • EXC. BENEFITS • JOB SECURITY

APPLY JULY 25-29 AT THE POST OFFICE

Applications will be accepted from the general public for the Rural Carrier exam July 25-29 at the Floydada, Crosbyton, Post, Slaton, Lorenzo, Lockney, Idalou, Wilson, Spur, Petersburg, and Ralls area post offices for carrier positions throughout these areas. You will have ample time to prepare for the exam after you apply. This is the final exam of this kind for 3 years, so don't miss this opportunity.

POSTAL EXAM PREPARATION PROGRAM
SCORE 95-100% OR YOUR MONEY REFUNDED

Begin preparing now. Any man or woman, regardless of age or experience, is eligible for this outstanding career. Over 100,000 people will begin new jobs with the USPS this year. Hiring is based on your exam score and competition is keen. You must usually score 95% or better to be hired. The higher your score, the sooner you can be hired.

The National Exam Center is now offering its nationally acclaimed Postal Exam Workshop in a new and revised home study format. N.E.C. is the leader in postal exam preparation, training thousands each month. Now you can get an edge on the competition by using N.E.C.'s powerful and economical POSTAL EXAM PREPARATION PROGRAM. Better than a workshop, this program is individualized, convenient, and designed to permit easy review. You'll receive:

- 20 actual practice exams with answers
- Comprehensive exam preparation manual
- Easy-to-use home study materials (over 100 pages)
- Secrets for success from actual exams
- Free follow-up consultation to answer questions
- Powerful test-taking skill builders
- Helpful study planner and progress charts

SPECIAL BONUS: Order now and receive two valuable publications FREE: *Tips for the Postal Employment Interview* and *How to Secure Government Jobs*.

NATIONAL EXAM CENTER'S GUARANTEE
 If you complete the POSTAL EXAM HOME STUDY COURSE and do not score 95% or better on the exam, your money will be refunded in full.

Order Center: Postal Training Facility, 123 N.W. 2nd Ave., Suite 309, Portland, OR 97209

TO ORDER: Send your name, address, zip code and check or money order for \$39.95 plus \$4.50 for shipping and handling (add an additional \$4.00 for UPS Air Express) to: National Exam Center, Postal Training Facility, 123 N.W. 2nd Ave., Suite 309, Portland, OR 97209. Please indicate the exam you are preparing for. All orders receive N.E.C.'s express handling service.

FOR CREDIT CARD ORDERS CALL 1-800-422-EXAM (3926)

CHECK OUT THESE WEEKLY BIG BLUE BONUS SPECIALS

BIG BLUE BONUS SPECIALS



8 QUART SUGAR SWEET
KOOL-AID \$1.39
WITH ONE FILLED BIG BLUE BONUS BOOKLET
WITHOUT BIG BLUE BONUS BOOKLET \$1.87

BIG BLUE BONUS SPECIALS



175 CT. BOX ASSORTED
KLEENEX 39¢
WITH ONE FILLED BIG BLUE BONUS BOOKLET
WITHOUT BIG BLUE BONUS BOOKLET 87¢

BIG BLUE BONUS SPECIALS



REG. \$2.69
DORITOS \$1.31
WITH ONE FILLED BIG BLUE BONUS BOOKLET
WITHOUT BIG BLUE BONUS BOOKLET \$1.79

BIG BLUE BONUS SPECIALS



BOX-96 MED./64 LGE. MED./LARGE JUMBO
PAMPERS \$19.21
WITH ONE FILLED BIG BLUE BONUS BOOKLET
WITHOUT BIG BLUE BONUS BOOKLET \$19.69

BIG BLUE BONUS SPECIALS



1 1/2 LB. LOAF TENDERCRUST WHEAT
BREAD 21¢
WITH ONE FILLED BIG BLUE BONUS BOOKLET
WITHOUT BIG BLUE BONUS BOOKLET 69¢

BIG BLUE BONUS SPECIALS



ROLL-ASSORTED SPILLMATE PAPER
TOWELS 21¢
WITH ONE FILLED BIG BLUE BONUS BOOKLET
WITHOUT BIG BLUE BONUS BOOKLET 69¢

BIG BLUE BONUS SPECIALS



SPECIAL ROAST FLAKE P&R/ADC COFFEE
FOLGERS \$1.11
WITH ONE FILLED BIG BLUE BONUS BOOKLET
WITHOUT BIG BLUE BONUS BOOKLET \$1.59

GROCERY SPECIALS

DEL MONTE REG. OR LITE FRUIT COCKTAIL 16 OZ. CAN	77¢
DEL MONTE REG. OR LITE PEACH HALVES 16 OZ. CAN	77¢
LITE HALVED/SLICED/REG. HALVES DEL MONTE PEARS 16 OZ. CAN	77¢
DEL MONTE CR./SL./CHNK./SPRS. PINEAPPLE 'N JUICE 15 OZ. CAN	67¢
28 OZ. SQUEEZE OR 32 OZ. JUG DEL MONTE CATSUP EA.	97¢
STEWED/PEELED/DICED/WEDGES DEL MONTE TOMATOES 14 1/2 OZ. CAN	57¢
DEL MONTE TOMATO SAUCE 8 OZ. CANS	4 97¢
DEL MONTE APPLE-CHERRY/PINE-GRAPEFRUIT PINE-ORANGE/STRAWBERRY BLENDED DRINKS 48 OZ. BTL.	\$1.57
PREMIUM NABISCO CRACKERS 16 OZ. BOX	89¢
DINTY MOORE BEEF STEW 15 OZ. CAN	99¢
ROAST BEEF/FILLET OF COD TOP SHELF 10 OZ. PKG.	\$2.39
BATH TISSUE NICE 'N SOFT 4 ROLL PKG.	99¢
DOW HANDI WRAP II 100 FT. ROLL	97¢

SUMMER

Pay-n-Save

QUALITY AND SERVICE

WE WILL NOT INTENTIONALLY SELL ANY GROUND BEEF UNDER 80% LEAN AND WE PLEDGE TO MAKE OUR GROUND BEEF AT LEAST TWICE A DAY.

LEAN TRIM FAMILY PAK
Pork Chops
\$1.49
LB. 8 TO 11 ASSORTED CHOPS

WRIGHT'S HICKORY SMOKED
SLICED SLAB BACON LB.
\$1.19

COUNTRY STYLE-LOTS OF MEAT PORK RIBS LB.	\$1.59	SHURFINE WHOLE HOG REG./HOT PORK SAUSAGE 2 LB. ROLL 1 LB. ROLL	\$2.75 \$1.39
SELECT LEAN TRIM CENTER CUT PORK CHOPS LB.	\$1.99	BTMK. STYLE BREADED CHICKEN BREAST TENDERS 3 LB. BOX	\$8.99
WAFER THIN BREAKFAST PORK CHOPS LB.	\$2.19	BREADED CHICKEN NUGGETS 3 LB. BOX	\$7.99
SELECT LEAN TRIM PORK STEAK LB.	\$1.49	BREADED CHICKEN PATTIES 3 LB. BOX	\$8.99

GOLDEN RIPE
Bananas
3 LBS. \$1

PECOS SWEET
CANTALOUPE
3 LBS. \$1

PRODUCE SPECIALS

FRESH WHITE ONIONS 5 LBS.	\$1.00
TOMATOES 4 PACK CELLO.	59¢
CALIFORNIA RED SWEET PLUMS LB.	79¢

ASSORTED VLASIC PICKLES 24 OZ. JAR \$1.39

VEG./VEGETARIAN VEG. CAMPBELL'S SOUP 10 1/2 OZ. CAN 39¢

KRAFT VELVEETA DINNER SHELLS 'N CHEESE 12 OZ. BOX \$1.19

FROZEN FOOD

ICE MILK/POPSICLES/FUDGESICLES BORDENS TREATS 12 CT. BOX \$1.39

LA. CREME WHIPPED TOPPING 8 OZ. CTN. 89¢

BANQUET ASSORTED CREAM PIES 14 OZ. BOX 99¢

CRINKLE CUT OR GOLDEN ORE-IDA FRIES 2 LB. BAG \$1.29

DAIRY SPECIALS

BORDENS FRUIT DRINK ONE GAL. 89¢

BORDENS SKIM MILK 1/2 GAL. CTN. 89¢

BORDENS BUTTERMILK 1/2 GAL. CTN. \$1.09

KRAFT VELVEETA 1 LB. BOX \$1.89

SHEDDS CORN OIL COUNTRY CROCK 1 LB. TUB 69¢

HEALTH & BEAUTY

FOR RELIEF BAYER ASPIRIN 100 CT. BTL. \$3.49

ASSORTED COLGATE MOUTHWASH 6 OZ. BTL. \$1.19

REGULAR OR GEL COLGATE PUMP 4.3 OZ. SIZE \$1.69

REGULAR OR SUPER KOTEX TAMPONS 24 CT. BOX \$2.99

DOUBLE STAMPS ON WEDNESDAY!
[Excluding Cigarettes]

DOUBLE COUPONS ON SATURDAY!
[Rules Posted In Store]

Floydada & Lockney

Pay-n-Save
QUALITY AND SERVICE

WE RESERVE THE RIGHT TO LIMIT QUANTITIES