

# THE FLOYD COUNTY Hesperian

25<sup>c</sup>

Thursday, June 26, 1986

©The Floyd County Hesperian

Floydada, Texas 79235

USPS 2026-8000

Volume 85

Number 26

## Wanted: plenty of sunshine

Floyd County crops are late...again! Blame it all on the volatile West Texas weather, which threw producers another curve with June moisture and, in some cases, hail.

The situation leaves farmers -- and virtually everyone else, because they depend on agriculture for their livelihood -- already realizing that favorable summer and fall weather conditions are a "must" for a successful fall harvest.

This is one of those years when people hope the time-worn adage rings true: "This country can promise more and deliver less, and promise less and deliver more."

Continuing moisture complicates the situation.

County Agricultural Extension Agent Richie Crow believes that producers in most parts of the county have an average cotton stand, although most of the crop is late. He points out that some early-planted cotton suffered from seedling disease and blight, due primarily by wet, cool temperatures.

### YOUNG COTTON LOOKS GOOD

Younger cotton "generally looks better," Crow says a few hot, dry days

a view from

### The Lamplighter

By Ken Towery

Times are indeed changing. There was a time in Texas, indeed many times, when we were treated to the spectacle of Republicans "circling the wagons." The pattern was nearly always the same. The Party Leaders would gather somewhere, usually after some particularly disconcerting news, and ask themselves "What do we do now?"

Now it is the Democrats' turn. Mark White's recent showing, in which he barely won renomination against five political unknowns, was evidently sufficient cause for a gathering of the clan in the Governor's Mansion to assess the damage. Not having been privy to the meeting, we can only rely on news accounts of the affair, relayed to the press by some of those in attendance. Fifteen Democratic Senators, including John Montford of Lubbock and Ray Farabee of Wichita Falls, were on hand to give the Governor some advice on what he needs to do if he is going to survive the challenge of former Governor Bill Clements, who is now leading White by about 15 percentage points in the polls.

In a nutshell their advice seemed to be "Talk about all the good things you have done for the people."

That ought to keep the governor busy for about three minutes. Senator Montford was quoted, after the meeting, as saying he didn't think White's problems "are unlike those of prior incumbents in Texas history. The governor gets saddled with both the blame and the praise for what the Legislature does, as Chief of State." All of which is true, of course, but it is a poor way to pass the buck, when we remember how happy Mark was upon passage of the school "reform" bill, which upset the teachers, and how elated he was when the legislature did his bidding and passed a \$4.2 billion tax bill, which upset just about everybody else. At the time, Mr. White was more than happy to take credit for the legislation, even spending hundreds of thousands of dollars in paid television advertising to remind the people of his accomplishments. It will be very difficult now for him to beg off, claiming that the whole thing was the fault of the Legislature.

The assembled Democratic Senators evidently gave the Governor an earful. Well they might. Thanks to gerry-

Continued On Page 2

### MAYOR 'FEELS BETTER'

Floydada Mayor Parnell Powell, who also serves as the municipal judge, "looks and feels better this morning," his wife told The Hesperian during a Tuesday telephone conversation. Mayor Powell is a patient in the coronary care unit at Saint Mary's of the Plains Hospital in Lubbock, where his condition remains listed as "critical." He became ill early Friday morning at his home and was taken to Caprock Hospital in Floydada and was transferred the following morning to the Lubbock medical facility, according to friends. The mayor reportedly suffered a heart seizure.

caused cotton to "perk up", although much more of this type weather is needed.

Asked about thrip problems, the Extension agent says he has not seen "extensive damage" from the pests. He attributes use of pre-plant insecticide by some producers and "early spraying" by others as having averted major thrip damage. Some were trying to save money and did not apply pre-plant insecticide, Crow adds, but when they realized a problem existed "they were

smart enough to spray."

"Acre-wise, I don't know for sure how much land has been planted to cotton in 1986," but "it's less than in recent years." Fewer cotton acres were created by the farm program and the prospect of low prices.

With wheat harvest in its latter stages, Crow believes that "there probably was more damage due to lack of early moisture and Russian wheat aphids than we realized." Generally speaking, yields were sub-par and

quality was poor. "We were two weeks late in getting after the aphids, partly due to economics," Crow analyzes.

County-wide, "averaging both dryland and irrigated wheat", yield usually averages about 20 bushels. The '86 production is below that level. "We've had some 40 bushel wheat, but we'll also had a lot that made six or eight bushels," Crow says, "and a lot more of it was the latter type."

Floyd producers devoted approximately 125,000 acres to wheat for the 1986 crop year.

### VEGETABLE ACREAGE UP

One commodity in which Crow anticipates a planting increase is vegetables. "We had about 3,500 acres last year and we could well have another 1,000 to 1,500 acres this year," he says. "I don't see much activity on pinto beans," he adds. Some areas of the South Plains are expecting to plant pinto beans this year.

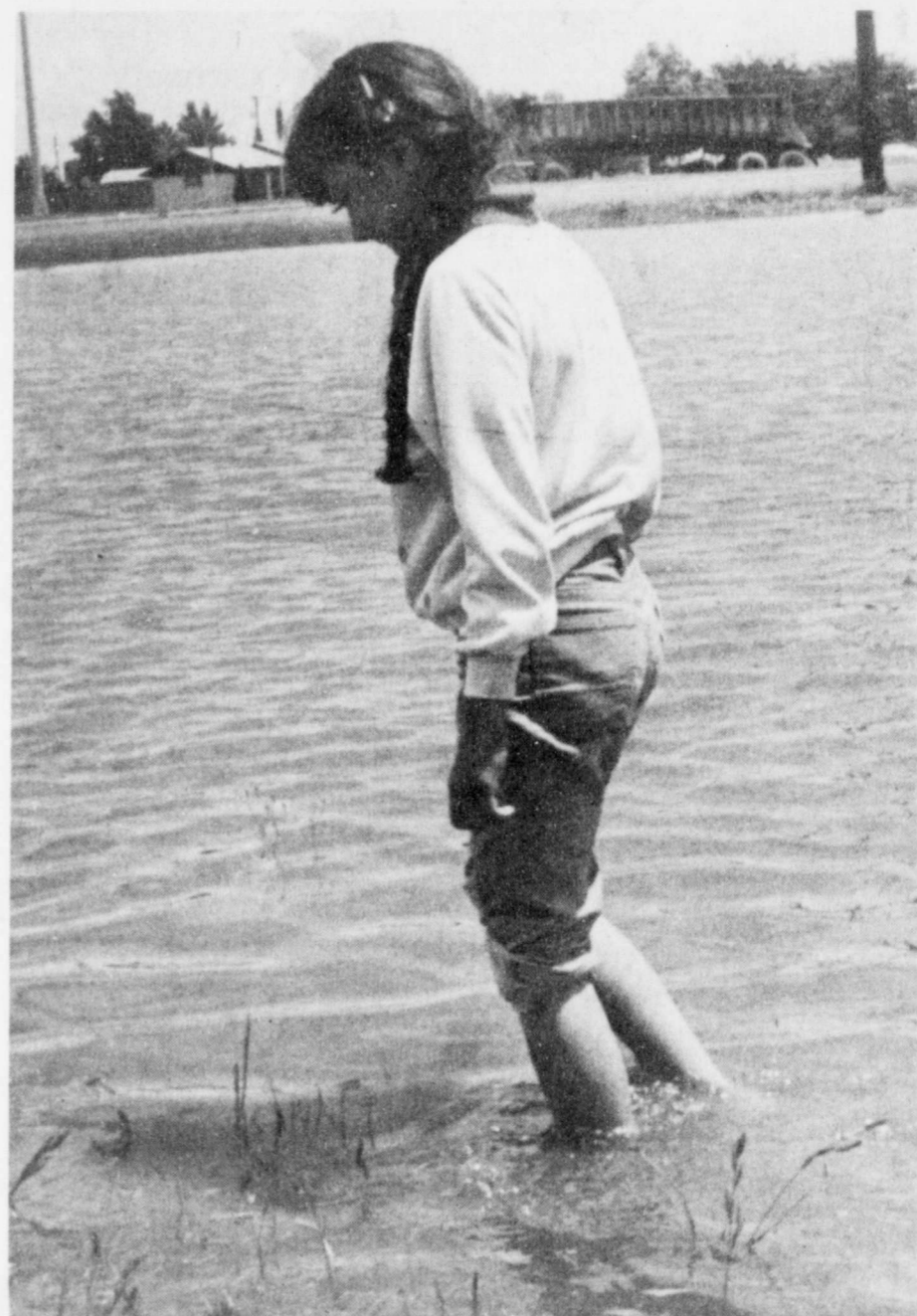
Hybrid grain sorghum could be down as much as "30 to 40 percent" from recent years, because of a lack of world demand. In addition, "I'm not hearing that much about commercial (grain sorghum) going in," the agent adds.

County milo plantings stood at some 19,000 acres last year, an increase of some 4,000 acres over 1984.

Corn is another crop with plus acreage. Floyd producers planted some 12,000 acres to corn last year, and "we could be looking at 20,000 acres this year," Crow believes.

Acreages of sunflowers and soybeans, primarily alternate crops to cotton, fluctuate greatly in this county, depending on weather damage to

Continued On Page 2



TESTING THE WATER—Ellsavet Navarrete, nine, checks out the water while paddling in a newly-formed lake in southeast Floydada following recent rains. Some local residents reported two and three inches of moisture Sunday alone. —Staff Photo

## What dry year?

8.14 inches June moisture

Until June, 1986 could have been remembered as a dry year!

But the weather trend has changed drastically this month, when "moisture has been received somewhere in the country virtually every day during June."

According to information from Jon LaBaume, Floydada had received 12.27 inches of moisture (through Sunday) during 1986. This is almost double the 20-year average of 6.37 inches from January through June, according to LaBaume.

In fact, the 8.14 inches which had been recorded in June by LaBaume through Sunday (June 22) were greater than the 20-year average for the first six months.

LaBaume gauged 2.3 inches Sunday alone, while others in Floydada measured in excess of three inches. Points just beyond the city limits had "very little" moisture that day.

"Some places in the county have received more moisture this month than my gauge had shown, and others have had a lot less," LaBaume points out.

He says only 4.13 inches fell the first five months of this year. June is not normally a high moisture month in Floyd County.

## Downturn prompts decline in valuation

In agriculture-based economies, the present downturn has taken its toll on property values. Except on persons seeking buyers, this reflects nowhere more dramatically than in the certified 1986 values compiled by the Floyd County Central Appraisal District.

Chief Appraiser Shelia Faulkenberry told The Hesperian that '86 county values total \$248,125,713. This represents a decrease of \$20.62 million when compared with the 1985 certified values

of \$268,747,569.

All 11 entities comprising the Floyd County appraisal district reflect value losses, according to figures compiled by Mrs. Faulkenberry. Affected most directly, obviously, are those whose major value is derived from the land: the four school districts, two hospital districts, High Plains Underground Water Conservation District and the county. The two towns are affected to a lesser degree for the same reason.

Mackenzie Water Authority involves only city property. Over 50 percent of Floyd County's taxable value is based on land.

### ENTITIES HARD HIT

While the county's value declined \$20.622 million, the four school districts also are hard hit. Value losses included: Dougherty Independent School District, \$787,225; Floydada Independent School District, \$9,310,786; Lockney Independ-

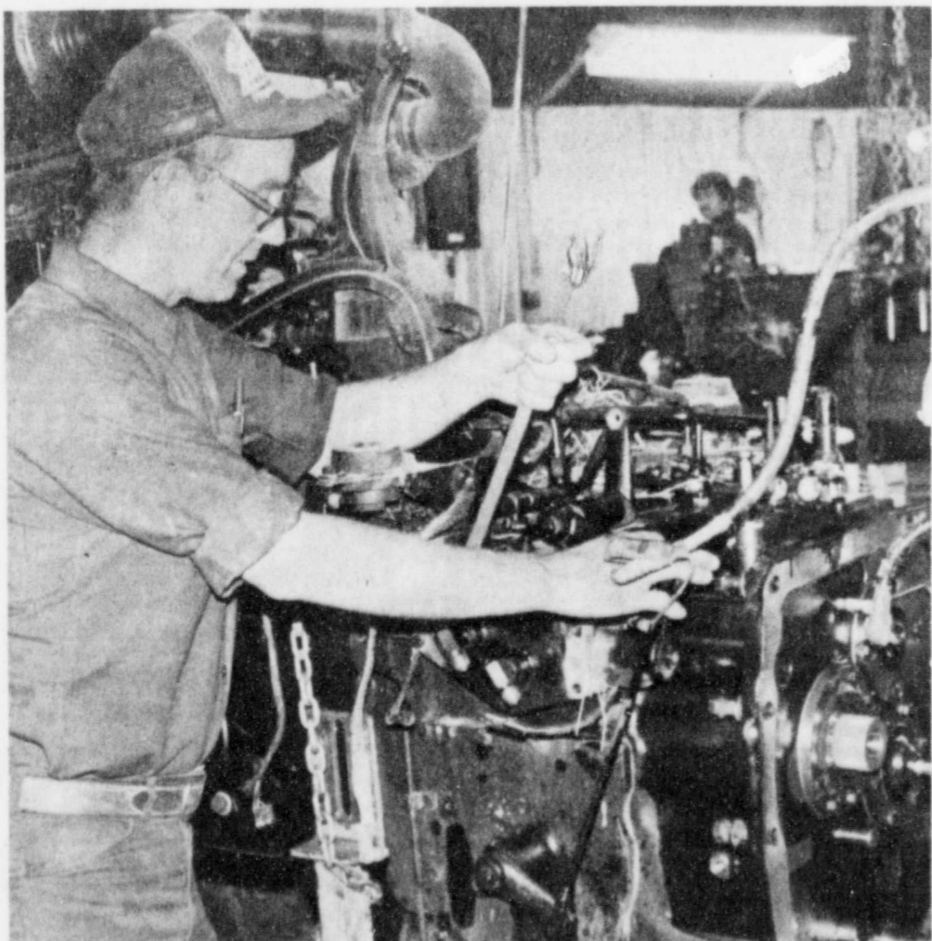
ent School District, \$8,128,339; and South Plains Independent School District, \$1,679,520.

The two hospital districts also suffered substantial property value losses: Caprock Hospital District, \$12,475,133, and Lockney General H O S P I T A L \$8,169,728.

The chief appraiser explains that property in both towns, all land and all personal property has been reappraised

Continued On Page 2

Entity	Real 1986 Values	1986 Personal Values	Total Taxable Value	Certified 1985 Value	Certified 1986 Value	Value Loss	1985 Levy	Estimated 1986 Levy	Esti. 1986 Levy Loss
Dougherty ISD	10,535,340	2,621,191	13,156,531	13,943,756	13,156,531	787,225	93,288.68	87,996.97	5,291.71
Floydada ISD	86,413,380	31,060,068	117,473,448	126,784,234	117,473,448	9,310,786	879,019.17	815,555.15	63,464.02
Lockney ISD	56,939,185	16,586,623	73,525,808	81,654,147	73,525,808	8,128,339	545,600.55	491,711.87	53,888.68
South P. ISD	10,855,930	3,655,373	14,511,303	16,190,823	14,511,303	1,679,520	100,986.84	90,540.86	10,445.98
City of Floydada	33,717,900	7,759,788	41,477,688	42,022,037	41,477,688	544,349	168,088.15	165,910.74	2,177.41
City of Lockney	16,021,400	5,535,016	21,556,416	22,002,795	21,556,416	446,379	46,206.31	45,268.97	937.34
Caprock Hospital Dist.			164,573,927	177,049,060	164,573,927	12,475,133	283,278.66	263,310.65	19,968.01
Lockney General Hos. Dist.			80,711,591	88,881,319	80,711,591	8,169,728	204,428.66	185,638.33	18,790.33
Mackenzie Water Auth.	49,739,300	17,986,573	67,725,873	68,784,998	67,725,873	1,059,125	171,710.25	169,062.17	2,648.08
High Plains Water CD			241,027,136	261,369,906	241,027,136	20,342,770	18,297.22	16,869.63	1,427.59
Floyd County	188,797,200	59,328,513	248,125,713	268,747,569	248,125,713	20,621,856	833,122.59	769,179.96	63,942.63



People at work... RAINY VARNER has been associated with Brown Implement, Inc., as a tractor mechanic for the past five years. Varner has been a Floydada resident for 25 years.

## School seeks task force volunteers

School superintendent Jerry Cannon took the opportunity of a called board meeting to report to FISD board members on the progress of the district's efforts to convert to a single member district election system for electing board members.

"Upon the recommendation of our attorney, Paul Lyle, the board needs to appoint a task force of 7 to 10 people from the district to hold hearings throughout the district," said Cannon. "The task force needs to be composed of self-starting, responsible persons who will take the job seriously and study the matter carefully."

Cannon explained that the task force needs to be appointed immediately in order to complete the necessary hearings and develop a plan for adoption by September 15, 1986. This is a necessity if a final plan is to be submitted to the Justice Department at least 120 days prior to calling the spring elections.

In an attempt to obtain a cross section of the community, the board is asking that anyone willing to be considered for appointment to the task force contact any board member or call Jerry Cannon at 983-3498.

Anyone wishing to submit their name should do so before 5:00 p.m. on Monday, June 30. A special meeting

has been called for 7:00 p.m. on June 30 to select the task force members who will work closely with attorney Lyle and Dr. Mark Turnbough, a demographic expert from El Paso, Texas, in formulating a re-district plan.

The board accepted a renegotiated bid for the exterior refinishing of the junior high, awarding the contract to Karr Tuckpointing of Texarkana, Texas, at a cost of \$21,638.

The original estimate for the work,

## City council authorizes Stewart to collect municipal court fines and fees

A resolution approved at a June 23 emergency session of the Floydada City Council was rescinded Wednesday morning when it was learned that the action authorized by the resolution would require an attorney general's opinion before implementation.

The council had approved the appointment of Justice of the Peace Lowell Bilbrey as municipal judge during the absence of Mayor Parnell Powell, who usually performs the duties of municipal judge. Powell has been hospitalized since suffering an apparent heart attack last Friday morning.

obtained in December of 1985, was \$19,288. The bid submitted in June of 1986 was \$23,939.

Assistant to the Superintendent, Jimmy Collins, contacted the company and obtained the adjusted bid which was accepted by the board on a motion by Freddie Morren, seconded by Don Hardy. The motion was approved by attending board members Bill Orman and Harvey Allen with Weldon Pruitt presiding. Charlene Brown and John Dunlap were unable to attend.

Bilbrey had agreed to accept the temporary appointment for \$200 per month compensation. On the advice of District Attorney Randy Hollums and County Attorney Kenneth Bain, Bilbrey asked that the council withhold the appointment until an attorney general opinion could be obtained as to the legality of his functioning in both capacities at the same time.

Jimmie Lou Stewart, as city secretary, is also clerk of the municipal court. As such, she is authorized to collect fines and fees as designated by the

Continued On Page 2

# This Week . . .

## WEATHER

Courtesy of Energas

June 18	82	69
June 19	84	71
June 20	86	69
June 21	83	69
June 22	82	69
June 23	85	69
June 24	86	68

## GRAIN

Courtesy of Producers

Wheat	\$2.20 per bushel
Milo	\$4.00 per 100 weight
Corn	\$4.30 per 100 weight
Soybean	\$4.40 per bushel

## ARTS ASSOC. MEETING

The Floyd Co. Arts. Association's summer meeting of members will be Sunday, June 29, at Lighthouse Electric building in Floydada. Bring a salad and join us for lunch at 12:30 p.m. All members, their families, and guests are urged to attend.

## LAMAZE CLASSES

Lamaze classes will be starting July 7. Interested persons contact Myra Poteet, RN, 983-2875.

## CLASS OF 1961 REUNION

The Floydada High School Class of 1961 will have their 25th year reunion at the Floydada Country Club on July 5. Former teachers, fellow students, parents and friends are invited to come visit with us between the hours of 10:00 a.m. and 5:00 p.m. There will be a meeting of the local members of the class on June 26, at The First National Bank of Floydada at 7:30 to finalize plans for the reunion.

## TURNROW MEETING

There will be a Turnrow meeting Thursday, June 26 at 9:00 a.m. at Scott Gin; 9:30 a.m. meet at Watson and Larry Jones farm, 11 mile east of Floydada on Matador Highway then, 3 1/2 miles south on county road.

## WOMEN'S SOFTBALL

Lockney Women's Softball tournament will be June 27 and 28. There will be a \$70.00 entry fee. For more information call: Diane Johnson, 983-2988 or Rise Ford, 652-3505.

# Downturn prompts valuation loss

Continued from Page One

for the 1986 tax roll. She points out that "basically all land and new homes" were decreased in value. The lone exception was for residences on which improvements have been made since 1980, causing their value to increase.

Not reappraised for this year's tax rolls were rural improvements. Work already is underway to reappraise this property for next year.

Commercial lots in both Floydada and Lockney were increased in the latest survey "to correct a depth factor error made in 1980." Older residences primarily have already been depreciated and have not generally decreased in value as much as newer dwellings and land.

## LAND VALUES DIP

Ag values on irrigated land was decreased an average of approximately 22 percent this year, Mrs. Faulkenberry says, and dryland approximately 11 percent. Values of "newer homes" declined in value an estimated 10-12 percent.

This is the third time that land ag values have been reduced since 1980.

## a view from

### The Lamplighter



By Ken Towery

Continued From Page 1

mandered districts, few if any of them are in trouble at the polls in November. Still, they don't want to see the head of their Party go down in flames, no matter how poorly he governs. It would be a bad omen for the future, and for their own political well-being in terms of appointments, climbing the political ladder, and things like that. So Mark can expect a fair amount of help from those in attendance, even if it is grudging, and even if they know they may end up with a knife in the back should he be reelected. It's a chance they have to take.

When the last session of the Legislature ended a number of daily newspapers did their usual post mortem on what had just transpired. Many Democratic Senators were very frank in their critical assessment of Mark White's leadership, or lack of leadership, during the session. We will spare our own Senator Farabee the embarrassment of quoting, now, the assessment he gave at that time. We will assume it will surface during the campaign, along with critical comments made by other Democratic Senators contacted by reporters, but who have nevertheless rallied around the Governor at this time.

Mr. White is evidently going to need all the help he can get. He continues to slide in the polls, of course, but that is not his principle problem. The polls are only a symptom of his problems. The polls can be reversed, but in order for that to happen the underlying problems will have to be corrected, and that is more difficult. Mr. White's principle problem, if the polls are to be believed, is that people just do not trust his word anymore. In other words, he has a credibility problem. People just discount his promises. His poor showing in the primary is a good indication of this. As we pointed out previously he received only about 34 percent of the Democratic vote in the Democratic primary in 33 counties of the South Plains. That is not a good showing for a sitting Governor in his own primary, and he did not do much better elsewhere in the state, with the exception of South Texas.

It is a long time until November, of course, and many things can happen. White is a very smooth lawyer, given to choosing his words carefully. He is an excellent campaigner. Bill Clements, on the other hand, is a rather plain-spoken individual who generally says what he means, or tries to. The result is that he sometimes shoots himself in the foot. But our reading of the mood of the electorate now is that the people would rather be led by a man with a hole in his foot, in preference to one with a hole in his credibility.

## Sr. Citizens Menu

June 30-

Monday - Meat loaf with creole sauce, blackeyed peas, carrot raisin salad, cornbread, butter, fresh fruit jello, milk

Tuesday - Ham, macaroni and cheese casserole, buttered spinach, tossed salad with dressing, roll and butter, canned plums, milk

Wednesday - Oven fried chicken, broccoli, rice, cheese casserole, cucumber and tomato salad, roll and butter, fruit cobbler, milk

Thursday - Chicken fried steak, cream gravy, mashed potatoes, carrots and peas, roll and butter, cake, tomato juice, milk

Friday - Closed

THE FLOYD COUNTY HESPERIAN (USPS 3026-0000) Published weekly each Thursday at 111 East Missouri Street, Floydada, Texas 79225. Second class postage at Floydada, Texas 79225. SUBSCRIPTION RATES: Local \$12.50 per year, out-of-trade area, \$15.50 per year. POSTMASTER: Send address changes to the Floyd County Hesperian, 111 East Missouri, Floydada, Texas 79225.

but "this year is the greatest reduction because of the farm economy."

An outside firm was engaged to appraise all Floyd County property when the county central appraisal district was founded in 1980. Values at that time were established below market value, Mrs. Faulkenberry says, although values in some South Plains counties were set then at or near market value.

The chief appraiser and her staff have made ensuing reappraisals.

In the charts she prepared for this newspaper, Mrs. Faulkenberry lists an "estimated 1986 levy." These figures are based solely on the 1985 tax rates, which may or may not be changed.

## TAX RATES UNKNOWN

The governing body of each of the 11 entities comprising the county appraisal district establishes its own tax rate after receiving values from the appraisal district. For example, trustees for each of the four schools set their rate later in the year after reviewing budgetary requirements for the ensuing year. The same situation exists for the towns, county, hospital districts, Mackenzie water authority and water conservation district.

For the public's information, The Hesperian lists the following charts-compiled by the chief appraiser. One reveals the appraisal district's figures on real and personal property for 1986 and the total taxable value for each entity. Another shows the 1985 and 1986 value and the value loss this year.

The third chart reflect the 1985 levy, the 1986 estimated levy (using the 1985 tax rates for the sake of comparison) and the estimated 1986 levy loss.

## Floydada City Council

Continued from Page One

council. She was authorized by the council to do so until such time as Powell is able to return to his duties or other arrangements are made by the council.

Presiding as Mayor Pro Tem, June 23 meeting, Wayne Russell asked the council to approve the appointment of a five member zoning commission for Floydada. Council members appointed Sam Baker, Richard Hale, Louis Anderson, Monte Williams and Ricky Burns to the commission.

Acting on the final item on the short agenda, council members Ginger Warren, Don Green, Leroy Burns and Frank Breed authorized Mayor Pro Tem Russell to sign a lease/purchase agreement for acquiring the used truck approved at the June 10 meeting.

## Crime call offers rewards

Crime Call of Floyd County is offering a \$200.00 reward for information leading to the arrest and indictment of Brenda Joyce Mitchell, a black female, who escaped from the courthouse while her attorney was consulting with an official of the court.

Anyone with information is urged to contact the sheriff's department or Crime Call at 983-5200. Callers do not have to identify themselves.

Crime Call is supported entirely by private funding and tax-deductible contributions may be

made at the First National Bank in Lockney and the First National Bank in Floydada, or checks may be mailed to Crime Call of Floyd County, Inc., 122 E. California, Floydada, Texas 79235.

Citizens are reminded that Crime Call offers rewards for information on all unsolved crimes occurring in Floyd County.

According to the board of directors, several sizable rewards have been recently paid and a fund drive is being planned to replenish the reward fund.

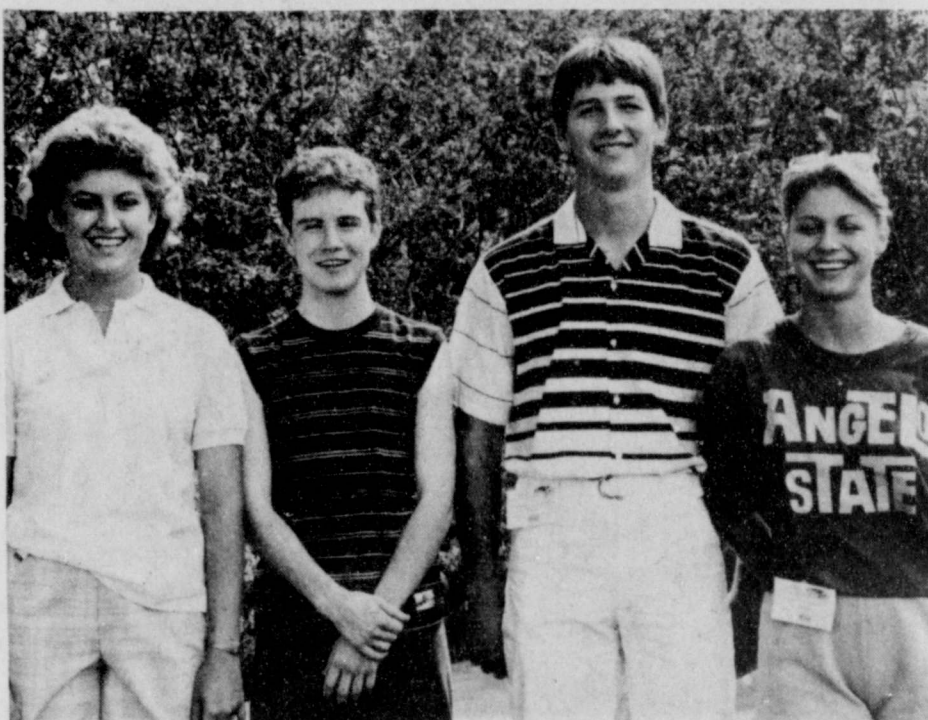


KEVIN FLATT

8% US GOVERNMENT GUARANTEED BONDS  
7.40% FEDERAL INCOME TAX-FREE MUNICIPAL BONDS  
9% IRA AND 401(K) RETIREMENT PLANS  
Interest may be subject to state and local taxes.  
Rates Expressed As Yield To Maturity.  
111 E. 7th  
293-9551



Edward D. Jones & Co.



CITIZENSHIP SEMINAR PARTICIPANTS—Alissa Hambricht, Rusty Galloway, Matt Mitchell and Julie Davis were Floyd County participants in the 24th annual Texas Farm Bureau Citizenship Seminar in San Angelo.

## Floyd teens attend citizenship seminar

More than 400 high school juniors and seniors participated in the 24th Annual Texas Farm Bureau Citizenship Seminar, June 16-20, on the campus of Angelo State University at San Angelo.

Attending the seminar from Floyd County were Alissa Hambricht, Rusty Galloway, Matt Mitchell and Julie Davis.

Purpose of the seminar is to give students a better understanding of the various forms of government, the free enterprise system and their responsibilities as citizens, according to James Gipe, TFB Citizenship Seminar coordinator. Students are sponsored through county Farm Bureaus.

Dr. L. D. Vincent, president of Angelo State, delivered welcoming comments to the students and Elvin Caraway, former state FFA president and national vice president, provided the opening address.

TFB President S. M. True and TFB Executive Director Warren Newberry were included in the program, discussing the future of agriculture and Farm

Bureau. Students also heard inspiring talks on patriotism and free enterprise from seven individuals. The speakers and their topics were:

Steve Pratt, National Center for Constitutional Studies, "The Making of America"; Dr. Sam Zakhem, vice president corporate relations, Rocky Mountain Orthodontics, Denver, Colo., "Understanding the Middle East"; Basilio Bachor, a Polish immigrant, "Understanding Communism"; Dr. Calvin Kent, director, Center for Free Enterprise, Baylor University, Waco, "Free Enterprise and You"; Fred McClure, special assistant to the president - Legislative Affairs, Washington, D.C., "The Challenge for Young Leadership"; Dr. Wayne Matthews, Family Life specialist, Oklahoma State University, Stillwater, Okla., "Citizenship and Self Esteem" and "Citizenship and the Family"; and Jack Jackson, chairman of the board, LDI corporation, Oklahoma City, Okla., "The Price of Free Enterprise".

## Sunshine needed

Continued From Page 1

cotton. A few farmers "produce these crops regularly."

The Floyd Extension agent-ag sees "no particular insect problems at present." He expects bollworm problems later due to a mild winter. "This is something I believe people better get prepared for."

## HAIL LOSSES

Farmers and homeowners in certain parts of the county have felt hail losses this spring, despite the absence of a single, major hail storm which stewed damage for miles. Some South Plains counties have experienced severe hail clouds.

"It's hard to say exactly how many acres we lost, but we have lost maybe 2,000 acres," Crow explains. "Some places we had damage, but I don't know

if it was enough to replant." Most severe hail areas have been between Lockney and Plainview and "several clouds in the Muncy area and a couple of miles south of Muncy." Hail stones also have ravaged other areas of the county.

Crow expects that replantings will be to "milo, a few beans, a few sunflowers and a little cotton."

For several weeks -- both before and during the rains -- farmers have cast wary eyes at the skies. They likely will be doing the same thing this fall.

Have a good week

CARPET • CABINET TOPS • VINYL • TILE • HARDWOOD FLOORS  
WOVEN WOODS • MINI BLINDS • CERAMIC TILE  
CUSTOM CABINET TOPS • WALLPAPER  
VERTICAL BLINDS • BRAIDED RUGS

REAGAN'S FLOOR COVERING  
We Give Everything We Got - Every Time  
FREE ESTIMATES  
510 ASH ST. PLAINVIEW, TEXAS 293-4453

ALLSUP'S Hot Links 2 FOR 99¢

CONVENIENCE STORES 30 YEARS OF SERVING YOU

ALLSUP'S Bagged Ice \$1.09 8 LB. BAG

PRICES EFFECTIVE JUNE 26-27-28, 1986

ALLSUP'S CONVENIENCE STORES

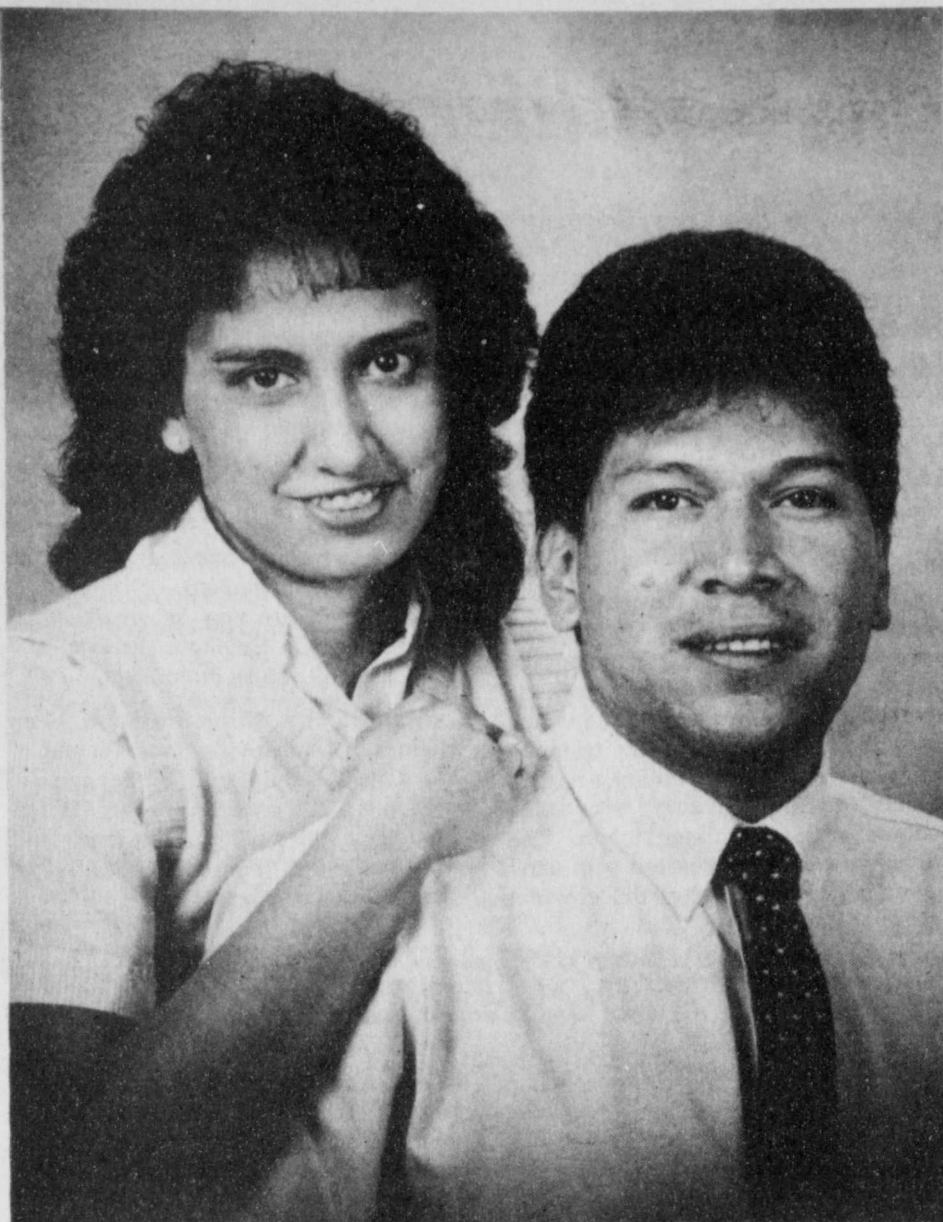
WHILE SUPPLIES LAST

THE HEAT IS ON!

ICE-MILK-HOT COOKED FOODS-CHIPS & DIPS-FILM & FLASH-COLD DRINKS-SELF SERVE GAS

<p>TOM'S REG-RIPPLED-SOUR CREAM &amp; ONION Potato Chips BAG 99¢</p>	<p>ALLSUP'S 30 YEAR COMMEMORATIVE Mug FILLED WITH YOUR FAVORITE FOUNTAIN DRINK 99¢ REFILL ONLY 49¢</p>
<p>BORDEN'S Orange Juice QUART 99¢</p>	<p>BURRITOS 2/99¢</p>
<p>BORDEN'S Cottage Cheese 12 OZ. 79¢</p>	<p>BORDEN'S GALANTE PICANTE SAUCE 16 OZ. 69¢</p>
<p>CHICKEN FRIED STEAK SANDWICH 99¢</p>	<p>BORDEN'S Ice Cream 1/2 GAL. RND. CTN. \$1.69</p>
<p>BORDEN'S FUDGE BARS OR Twin Pops 5 FOR \$1 SINGLE BARS</p>	<p>TIDE DETERGENT 42 oz. \$1.69</p>
<p>QUAKER CHEWY GRANOLA BARS 3/\$1.00</p>	<p>USE OUR Money Orders 49¢</p>
<p>COCA COLA DIET COKE \$1.99 16 oz. NR Bottle 6 PACK</p>	

## Dee Williams-Leatherman repeat nuptial vows



**COUPLE REVEAL ENGAGEMENT**—Mr. and Mrs. Pete Vallejo Jr. and Amada Hinojosa announce the engagement of their children, Belinda and Arturo. The couple plans to exchange vows on September 6, in Ralls. Belinda is a 1983 graduate of Floydada High School and is currently employed with the Hale County Attorney's Office. Arturo is a 1980 graduate of Ralls High School. He served with U.S. Marine Corp. for three years and is currently employed as assistant manager for Kwik Change in Lubbock.

### Family night scheduled at Floydada First Baptist

Parents and friends of children attending Vacation Bible School at First Baptist Church of Floydada this week are invited to attend Commencement and Family Night ceremonies on Friday night, June 27, at 7:00 p.m.

Commencement will take place in the main auditorium. Following the processional, Bible schoolers will lead the congregation in songs and pledges to the U.S. and Christian flags, and to the Bible. Each age-group department will make a brief presentation and the workers introduced.

Every child who has attended VBS will receive a certificate recognizing

their enrollment and participation. Those children who were present all five days of the school will also receive a perfect attendance seal. In addition, awards for bringing their friends during the week will be given to the children with special awards going to the boy and girl who brought the most.

Following the commencement and presentation time in the auditorium, parents and friends will be invited to visit in the children's departments to view their work done during the week, and to visit with their workers. Refreshments will also be served in the Fellowship Hall where a slide show from the week will be shown.

Nuptial vows were repeated by Dee Williams and John Clark Leatherman during a 3 p.m. wedding ceremony June 21 in the First Baptist Church of Floydada. The double ring ceremony was officiated by Bro. Howell Farnsworth, pastor, as the couple stood before an altar decorated with three seven branch candelabras in the background. Each was adorned with greenery and royal blue bows.

In the foreground of the pulpit and to each side stood a palm tree. Two brass baskets, holding arrangements of white gladiolus and white snapdragons, along with the unity candle, completed the setting.

The couple are the children of Toby and Jean Williams and Jerry and Martha Leatherman, all of Floydada.

Escorted and given in marriage by her father, the bride chose an original gown of pure white chantilly lace and slipper satin. The asymmetrical bodice featured a V-neckline outlined with a self ruffle. Her ball-gown sleeves were caught with bridal satin ribbons tied in love knots and formed a self ruffle.

A bridal satin ribbon belt was tied in the front forming a tiny lace nosegay. Her tiered ruffled lace skirt flowed into a chapel length train.

The bride wore a floral wreath crown of silk roses and dainty flowers attached to a fingertip length double veil of imported illusion.

Her cascade bouquet consisted of white roses and stephanotis interspersed with miniature blue flowers. Flowing white satin ribbon completed her arrangement.

In following tradition, as something old the bride carried with her bouquet a handkerchief belonging to the groom's great-grandmother. Something new was her attire, something borrowed was a pair of pearl earrings, belonging to the mother of the groom, and something blue was her garter.

For luck she had pennies in her shoes bearing the birth years of she and the groom.

Duffy Hinkle, sister of the bride, served as matron of honor. Bridesmaids were Ludustria Leatherman, sister of the groom of Floydada, and Rosemary Gonzales of Floydada. Bridal attendants along with flower girl, Pepper Hinkle, niece of the bride of Floydada, were all dressed in floor length gowns fashioned of royal blue matte taffeta with romantic puffed sleeves highlighted by candy box bows. The V'd drop waist basque bodice was accented in the back with a bow and flowed into a ruffled skirt.

They carried nosegays of white roses, baby's breath and miniature blue

flowers. Lace, royal blue and gray ribbon streamers fell from their bouquets.

Acting as best man was Scott McCarty of Amarillo. Wally Davis and Bobby Smith, both of Floydada, served as groomsmen. They were attired in gray suits with blue cummerbunds and bow ties.

Ring bearer, Chad Hinkle, nephew of the bride of Floydada, also wore a gray suit with blue cummerbund and bow tie.

The groom was attired in a white tuxedo.

Seating guests were Billy Gene Hinkle, brother-in-law of the bride, Mike Reeves, brother-in-law of the groom, and Gilbert Schwertner, all of Floydada.

Musical selections during the ceremony were presented by Carolyn Cheek, pianist, and Hope Crabtree, who vocalized "Say You, Say Me," and "The Lord's Prayer."

Guests were registered by Mary Lloyd of Floydada.

A reception followed in the Wall Street Parlor.

The bride's table was laid with a white lace cloth. Highlighting the setting was a three-tier wedding cake set over a fountain of flowing blue water, which was decorated with greenery and baby's breath. A bride and groom figurine on the lower layer were designed to resemble the bride and groom. Two more layers on either side were connected with stairways, decorated with greenery. The cake was decorated with blue flowers, greenery and baby's breath. Also served at the bride's table was punch, mints and nuts. Presiding were Virginia Stringer and Stacy Reeves, sister of the groom.

The groom's table featured a chocolate cake and fruit arrangement consisting of grapes, strawberries, pineapple and melon balls. Coffee was also served by Trena Wilson and Libby Anderson.

The rehearsal dinner was held the previous evening in the Fellowship Hall of the church.

Following a wedding trip to Padre

Island, the couple will reside in Floydada.

For traveling, the bride chose a pink dress with gray and white pinstripes and gray accessories.

The bride, a 1986 graduate of

Floydada High School, is employed by the Floyd County Hesperian. The groom is a 1983 graduate of Floydada High School and a 1985 graduate of Wayland Baptist University. He is employed as a mechanic for City Auto, Inc.



MRS. JOHN CLARK LEATHERMAN

### JAMAICA — CARNIVAL

At ST. MARY MAGDALEN CHURCH

June 28th 11:00 a.m. - 8:00 p.m.

There will be GAMES, PRIZES, CAKE WALK, BALLOONS, CANDY SHOP

We will have MEXICAN FOOD, AMERICAN FOOD & COKES.

Money will be used to buy a new stove and refrigerator for the Church kitchen.

# HALE'S DEPT. STORE

## Semi-Annual Sale - Shoes And Clothing

**Starts Friday - June 27 - 8:30 A.M.**

Store Closed Thursday, June 26 to prepare for Sale - Charge - Cash - Layaway - It's "Business As Usual" at Hale's Sales

<p><b>Women's Ready-To-Wear</b> <b>1/3 off</b></p> <p>BLOUSES SWIMSUITS SPORTSWEAR - Joyce - Donovan - That's Me DRESSES by Brenner &amp; J. Ellis Half-Size DRESSES COTTON GOWNS - P J's - SUMMER ROBES SLACKS LADY WRANGLER Tops &amp; Shorts SEA PALMS Tops &amp; Shorts SUMMER SWEATERS</p>	<p><b>Girl's Wear</b> <b>1/3 off</b></p> <p>DRESSES SWIMSUITS JAM SHORTS MICKEY MOUSE SHIRTS SHORTS &amp; TOPS SUNSUITS</p> <p>3-6-9-18-24 mos. 2-3-4 Toddler 4-6X and 7-14</p>	<p><b>Shoe Sale!</b></p> <p><b>Men's Super Sale - Friday &amp; Saturday ONLY!</b></p> <p>Men's Cowboy <b>BOOTS &amp; ROPERS</b> ALL \$10 off Some Reduced to 1/2 price!</p> <p>Nunn Bush <b>LOAFERS</b> Brown &amp; Black reg. \$55 - \$33 - <b>SALE \$45 to \$26</b></p> <p><b>HUSH PUPPIES</b> - \$10 off - Some More</p> <p><b>DEERSKINS</b> - \$10 off</p> <p>Men's <b>SAS</b> - \$44<sup>95</sup></p> <p><b>PORTO PED</b> Mens <b>LACE SHOES</b> - \$39<sup>95</sup> (reg. to \$65)</p> <p>Mens <b>HURACHES</b> - \$10 off</p> <p><b>Red Wing Work Shoes</b> - \$10 off</p> <hr/> <p><b>Womens SAS</b> - \$36<sup>90</sup> <b>- Friday &amp; Saturday ONLY!</b></p> <hr/> <p><b>Friday &amp; Saturday ONLY!</b> <b>Nike - Reebok - Kaepa &amp; Others - SALE</b> <b>Boys - Girls - Mens - Womens</b></p> <hr/> <p><b>FANTASTIC VALUES - CHILDRENS SHOES!</b></p> <hr/> <p><b>SUPER Bargains on Womens Shoes!</b></p> <p><b>DRESS SHOES</b> by Red Cross &amp; 9 West <b>COBBIES - SAS SANDALS - HURACHES - FLATS</b></p>	<p><b>Men's Wear</b></p> <p><b>SUITS</b> - All \$50 off</p> <p><b>SPORTCOATS</b> - 1/4 to 1/2 off</p> <p><b>Short Sleeve Western SHIRTS</b> - \$8 off</p> <p><b>Short Sleeve Dress &amp; Sport SHIRTS</b> - \$5 off</p> <p><b>Knit SHIRTS</b> - 1/4 to 1/2 off</p> <p><b>Coaches SHORTS</b> - \$3 off - <b>PANTS</b> - \$5 off</p> <p><b>SHORTS - JAMS - CASUAL - TENNIS</b> - 1/4 off</p> <p><b>Dress SLACKS</b> Haggar - Sansabelt - Hubbard 1/4 - 1/2 off</p> <hr/> <p><b>Friday &amp; Saturday Only!</b></p> <p><b>Long Sleeve Dress &amp; Sport SHIRTS</b> - \$8 off <b>Knit JEANS - Stretch DENIMS</b> - \$5 off</p> <hr/> <p><b>Hanging Bags - Luggage for Men &amp; Women</b> <b>"Super Bargains"</b></p> <hr/> <p><b>All TOTS &amp; BOYS</b> Shirts &amp; Shorts - 1/4 - 1/2 off</p> <hr/> <p><b>Men's Western Straw HATS</b> - 1/4 off <b>Western Felt HATS</b> by Resistol - \$25 off <b>Dress STRAWS &amp; Cloth CASUALS</b> - 1/4 - 1/2 off All straw casuals not on sale - already at low prices</p> <hr/> <p><b>LEVI Pre-Washed 501 JEANS</b> \$19<sup>99</sup> <b>Mens &amp; Student JEANS</b> - \$3 off - <b>Kids</b> - \$2 off</p>
<p><b>Large Rack</b> <b>PANTS - SKIRTS - JACKETS - TOPS</b> <b>1/2 Price and Less!</b></p>		<p><b>Special Group</b> <b>WRANGLERS</b> <b>- All CHIC JEANS</b> <b>1/2 price</b></p>	
<p><b>Odd's 'N' Ends Table</b> <b>HANES HOSE - PLAYTEX BRAS - GIRLS PANTIES - etc.</b> <b>Priced to Sell!</b></p>		<p><b>Special Group</b> <b>WRANGLERS</b> <b>- All CHIC JEANS</b> <b>1/2 price</b></p>	



MRS. BROOKS D. GAUTHIER

### TSTA, future homemakers assist in feeding Floyd descendants

Lighthouse Electric kitchen was the scene Saturday morning for preparation of seventy-five sack lunches for the Floyd family reunion. Dolphin Ward Floyd was the young volunteer from Gonzalez who died in the battle of the Alamo in 1836, and for whom Floyd County is named. His descendants met in Floyd County this past weekend.

Texas State Teachers Association members who helped included: Mrs. Sue Crow, Mrs. Rosemary Finley, of Duncan; Mrs. Noma Lou Rainer, of R.C. Andrews school; Mrs. Belle Vinson of junior high; and Mrs. Joyce Williams of Floydada High School.

FHA-HERO members who helped assembled ham and cheese sandwiches, chips, and cookies in brown bags were Lisa Galvan, Rachel Boyd, Stacy Rucker and Kellie Van Cleve. Mrs. Norma Welch and Mr. and Mrs. Bill Shipley also lent a hand with the lunch

preparation and helped transport it to the museum on time.

A wonderful spirit of volunteerism from the entire community helped show West Texas hospitality to the visitors. A big thanks to everyone who contributed.

### Jeff Reecer bride-elect honored

The Lockney home of Mrs. Kenneth Holt was the site for a bridal shower honoring Miss Dena Adams of Stephenville from 10-11:30 a.m. Saturday, June 21. Miss Adams and Jeff Reecer of Lockney plan to be married August 2 in Stephenville.

Receiving guests were Jackie Holt, Zora Reecer, mother of the prospective groom; the honoree, and her mother, Rudene Adams. They wore corsages of white daisies and gypsophila tied with

## Tiffany Teague and Brooks Gauthier united

Tiffany Ann Teague and Brooks D. Gauthier were married May 24 at the Cedar Ridge Evangelical Methodist Church. The bride is the daughter of Dr. and Mrs. Rodney Teague of Duncanville. Parents of the groom are Charlotte and Edward Jacobs of San Diego, California, and Buford and Suzanne Gauthier of Kennard.

The couple were married by Brad Heflin Teague, a cousin of the bride, before an altar decorated with candelabra, peach gladiolas, and greenery. A tropical garden setting adorned the altar. Candelabra with greenery were surrounded by sparkling lights in the large trees and ferns.

Greg Johnson and Scott Peterson of Duncanville sang various selections. The soundtracks from "Somewhere In Time" and "Out of Africa" were played. "Sunrise, Sunset" was sung by Sherri Mooney of Waco during the seating of the parents and grandpa-

rents. Roy Heflin Teague of Hurst, uncle of the bride, sang "The Lord's Prayer," after the couple lit the unity candle.

The bride was a vision of loveliness in a formal satin gown embellished with beaded French alencon lace trim. The bodice featured a high Victorian neckline and a sheer yoke with a jeweled lace collar. Long Genevieve sleeves were complimented with beaded lace motifs. The basque waistline elongated into a sheath skirt with a trumpet hem that extended into a flared chapel train with a scalloped lace edge. For her hair the bride chose a delicate satin hat with matching alencon lace trim and an accent of illusion and French net with a side silk flower competing a look of total elegance.

The maid of honor was the bride's twin sister, Tammy Sue Teague, of Duncanville. Bridesmaids were Sharon Rosson of Dallas, Allison Thomas,

Lindy Patterson and Brenda Ewing of Waco and Marla Weaver of Lubbock.

Best man was Jimmy Francis of Louisville, Kentucky. Groomsman were Hassan Al Shaiban of Saudi Arabia, Lance DeMarco of El Toro, California, Honore Gauthier, brother of the groom, of San Diego, California, Kent Teague, brother of the bride, of Duncanville, and Steve Dalton of Waco.

Ushers were John Dallas, cousin of the bride, of Dallas, Kent Teague and Honore Gauthier.

A reception followed the ceremony at Thorntree Country Club in DeSoto. The three-tiered wedding cake, called the Queen of Hearts, was an exquisite towering showpiece with six individual cakes beneath arched pillars trimmed with peach roses, surrounding a mound of silk flowers, ornamented with a silk bouquet with cascading ribbon. The groom's cake was decorated with marzipan fruit. The theme of the groom's

table focused on the groom's interest in hunting with a canvas-back duck decoy nestled in a background of blue and peach silk flowers.

The bride graduated from Duncanville in 1982 and graduated in 1986 from Baylor University with a degree in communications.

The groom is a 1981 graduate of Highland High School in Albuquerque, New Mexico and a 1986 graduate of Baylor University with a degree in operations management.

The couple are now on an extended honeymoon in England, France and Italy and will return June 28.

Grandparents of the bride are Alma Holmes of Duncanville, Lula Teague of Floydada and the late Riley Teague.

Brooks is the grandson of Mrs. Helen McCall of Marksville, Louisiana, and Mr. and Mrs. Penrose Gauthier of Cottonport, Louisiana.

## Chicken barbecuing season arrives in Texas

Texans enjoy backyard barbecuing and eating as much as anybody in the U.S., and chicken barbecue is an all-time favorite.

A few simple steps will enable you to enjoy mouth-watering chicken barbecue to your heart's content, says Dr. James Denton, poultry marketing specialist with the Texas Agricultural Extension Service.

Chicken barbecuing involves four basic steps. First, split the birds in half and sprinkle each half generously with salt and black pepper before placing on the pit, advises Denton. To shorten barbecuing time, cut halves into parts.

Second, make sure coals are white hot before putting the chicken on the grill. Any type of cooker can be used, but keep the coals 8 to 12 inches from the cooking rack for best results, says the specialist.

Another basic step for top-notch chicken barbecue is to use a basting

sauce during the cooking process which contains no tomato product or sugar because such sauces burn easily. A basting sauce will keep meat moist and juicy and add a desired flavor. Apply basting sauce and turn chicken halves frequently.

Denton suggests these ingredients for a basting sauce: 1 tablespoon salt, 1 teaspoon black pepper, 1 stick butter or margarine, 2 tablespoons Worcestershire Sauce and a few drops of hot sauce or red pepper. Heat the mix over a low flame until the butter or oleo melts; then add the juice of one lemon (vinegar may be substituted). Next fill the pan with water and heat but do not boil. Spices such as garlic salt or lemon pepper can be added to suit personal preference.

To top off the barbecuing process, apply a finishing sauce to the chicken about the last 20 to 30 minutes before cooking is complete. This is the most

critical time during the entire cooking process, emphasizes Denton. Check the meat carefully and turn it frequently to avoid burning the finishing sauce.

Several types of finishing sauce are available and vary from mild to hot. To prepare your own sauce (for 10 chicken halves), use the following: 1 cup cooking oil, 1 cup vinegar, 1 cup catsup, 1/4 cup sugar and 1/2 cup water. Add salt, Worcestershire Sauce, hot sauce, garlic and other seasonings to taste.

Chicken barbecue should be complete in about 1 1/2 to 2 hours. Cooking longer with less heat usually results in the most flavorful, juicy and tender barbecue. Placing the cooking rack closer than 8 inches to the coals will reduce barbecuing time, but the meat will be drier and less tender, Denton points out.

A test for doneness is to twist the drumstick which is connected to the thigh. If the joint between the thigh and drumstick is loose, the chicken is ready

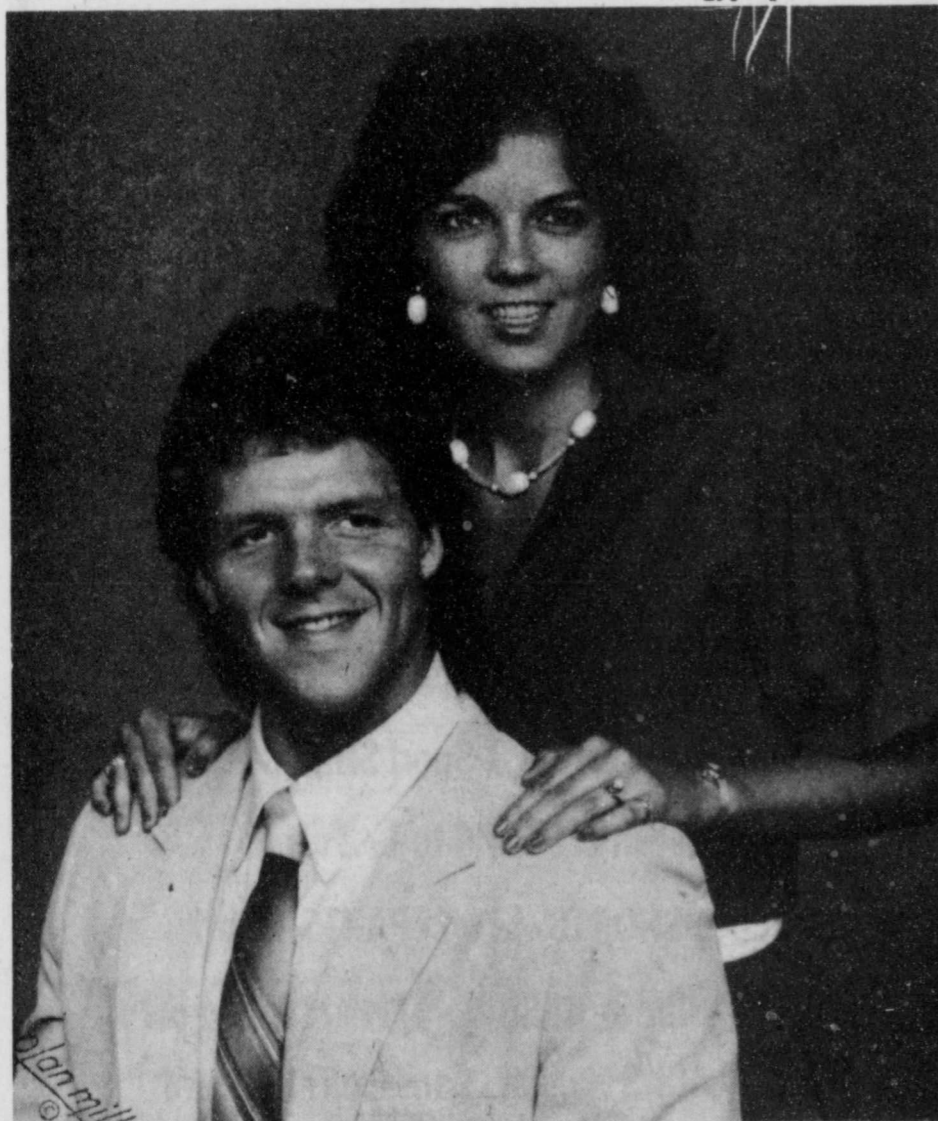
to eat. Another test is to cut into the meat at this joint. The moisture in the joint will run clear if the meat is done.

The fun part of chicken barbecuing is to develop your own secret recipe and cooking style, says Denton. The four basic steps outlined can be varied to suit your style and taste.

One variation is to debone the breast and thigh meat and marinate it overnight in the refrigerator in a mixture of 16 oz. herb-seasoned Italian-style dressing and 8 oz. picante sauce. Cook in the same manner as before while basting with the marinating sauce.

For another type of marinated chicken barbecue, Denton suggests using a soy-teriyaki (or Worcestershire) sauce marination for two-to-four hours before cooking.

Most of all, let your imagination be your guide and have fun, says the specialist. Who knows? The world's greatest barbecue chef may be in your own backyard.



**COUPLE TO MARRY**—Lubbock resident Steven Michael Kattner and Slaton Independent School District teacher Starla Ann Black have announced their plans to marry on August 2 in Lubbock. He is the son of Mr. and Mrs. Myron W. Kattner of Lubbock, former residents of Floydada. She is the daughter of Mr. and Mrs. Tom C. Black, also of Lubbock. The double ring ceremony will take place in Lubbock's First Baptist Church with Dr. D.L. Lowrie, pastor, officiating. The bride-elect graduated from Lubbock High School and Texas Tech University. She teaches at Slaton Junior High. The future groom graduated from Monterey High School and attends Texas Tech University. He is employed by Computer Buying Network of Lubbock.

pink satin.

Special guests attending included Mrs. Clara Reecer of Lockney and Mrs. Cecil Park of Stephenville, grandmothers of the couple.

The registration table held the bride's book, along with a pewter pitcher arranged with daisies and English ivy.

Julie Reecer and Heather Holt presided at the serving table. This was draped with a floor length antique white cloth. Centering the table was an antique basket holding pink geraniums and English ivy intertwined in the heart

shaped grapevine basket. Pink depression glass was used.

Anne Lee was in the gift room.

A quilted comforter was presented to the honoree by hostesses, Mmes. Carl Lee Jr., Dan Teuton, Archie Bybee, Delvin Bybee, Eddie Teeter, Travis Hulcy, Bill Sherman, Dub Dipprey, Robert McDonald, Audrey McCormick, Donnie Bybee, Jerry Cawley, Ronnie Thornton, David Frizzell, Nick Muniz, Bill Matthews, Jim Huggins, M.C. Cook, Bill Race, Claude Brown, Jerry Ford, Karen Cooper and Kenneth Holt.

## Attendants' luncheon fetes Miss Julie Morton

Excitement was in the air when bridal attendants gathered for a luncheon honoring Julie Morton at 11:30 a.m. June 14, the day of her wedding. The delightful luncheon was held in the home of Mrs. Lewis Reddy in the McCoy community.

The tables were decorated with double-tubed glass vases containing silk flowers in hues of hot pink, pink, and white and tied on two sides with hot pink satin bows, carrying out the bride's chosen colors. Heart-shaped cans with various "Precious Moments" wedding scenes painted on each, and containing hot pink, heart-shaped, white chocolate candies were favors for each guest attending.

The menu consisted of hot chicken salad, layered vegetable salad, Ratterman beans, cherry jello with applesauce and red hots, homemade cheese rolls and fresh strawberry pie.

Guests other than the honoree included Shirley Morton, Floydada; Barbara Ellison, Lockney; Diane Mitchell, Floydada; Melinda Turner, Karen Turner and Lynn Holcomb, Lubbock; Tracy Thompson, Hillsboro; Jonna Cunningham, Abernathy; Margo Donovan, Houston, and Laurie Noel, Martha Cross and Betty Morton of Plainview.

Also in attendance was Gladys Rhea of Graham, maternal grandmother of the bride.

Tracy Thompson assisted her mother, Ann Reddy, with the hostess duties.

Julie, daughter of Shirley and the late Ray Morton of Floydada, and Craig Ellison, son of Richard and Barbara Ellison of Lockney, were married at 6:30 p.m. on that same evening in the First Baptist Church, Floydada.

## WE SALUTE

### HAPPY BIRTHDAY

Thursday, June 26: Christy Castillo, Monty Seymour, Willie Zavala Sr.

Friday, June 27: Joe R. Rodriguez, Neil Langley

Saturday, June 28: Stanley Hall, Angie Briones, Dora E. Garcia, Fritz Sunday, June 29: Walter Davis, Mac Willson

Monday, June 30: Mysti Younger

Tuesday, July 1: Alicia Vargas

Wednesday, July 2: Jeff Matsler, Ronnie Wood



**AUGUST WEDDING SET**—Mr. and Mrs. Bud Rainey of Friona, former residents of Floydada, announce the engagement and approaching marriage of their daughter, Kristi Diann to Michael Ken Neill, son of Mr. and Mrs. Kenneth Neill of Friona. Kristi is a 1984 graduate of Floydada High School and is employed with Briercroft Service Corporation in Lubbock. Mike is a 1983 graduate of Friona High School and is currently attending Texas Tech University and is employed with Texas Tech's Burnett Center for Beef Cattle Research. The couple plan a 3 p.m. wedding ceremony August 30 in the First Baptist Church of Friona.

And now, pierre cardin at your wedding.

The tradition of fine design has been translated in distinctive formalwear by Pierre Cardin. Here is the ultimate expression of elegance for the sophisticated, contemporary groom with a sense of style.



**WILLIAMS FLORIST and CARD SHOP**

128 W. California  
983-5013

pierre cardin

"It's Happening Now" **SHOP OUR BIG SUMMER CLEARANCE**

BLOUSES — SWEATERS — SKIRTS  
DRESSES — PANTS — JUMP SUITS  
SHORTS — SHIRTS — SLEEPWEAR

**SAVE UP TO 50%**

**The Village Shop**

VILLAGE SHOPPING CENTER 3402B OLTON RD. PLAINVIEW

Selections available for:

Kristi Stephens - Steve Jones  
Donna Snell - Tracy Webb  
Kim Moore - Lane Cheek  
Tammy Watson - Mike Bean  
Sherese Cannon - Marty Covington  
Lisa Smith - Brian Sanders  
Kristi Rainey - Mike Neill

**Sue's Gifts & Accessories**

126 W. California 983-5312

## Daughter of former Floydada residents marries



**SPEAKER AT BREAKFAST**—Carolyn Marble presented a program on birds at the annual breakfast at Mamie's. Staff Photo

### Forty-seven guests gather for Breakfast at Mamie's

Forty-seven guests registered at Mamie's breakfast held Wednesday, June 11.

Those who served eggs, muffins, sausage rolls, coffee cakes, biscuits and jelly were Mamie Wood, Ruby Lee Higginbotham, Dot Cummings and Margaret Kitchens.

Carolyn Marble gave an interesting talk on birds. Birds common to this area, their feeding habits, migration patterns and books that are available for beginners and avid watchers.

Those present were Anelda Staples, Mildred Hamm, Pat Stewart, Lula Teague, Ruth Walker, Mae Muncy, Helen McLeod, Jettie Moss, Gleyenn

Earle Cummings, Joyce Osborne, Bobbie Kinnibrugh, Madge West, Bessie Bradford, Edythe Clarke, Lillie Mae Milton, Myrt Guest, Ruth Smitherman, Janice Julian, Sue Farnsworth, Wanda Turner, Letha Mulder, Ruby Lee Higginbotham, Bonnie Julian, Mary Corley, Nancy Marble, Sharon Shipley, Ann Hartman, Shannon Chapman, Zeldia Epperson, Peggy Roberts, Merle Mayfield, Ruth Trapp, Edith Marrs, Carlene Johnson, Mamie Wood, Juanita Teeple, Helen Teeple, Rhonda Parker, Dot Cummings, Gertrude Smitherman, Virginia Taylor, Jan Taught, Carolyn Marble, Pat Wood and Jane Bean.

Dee Ann Green and Thomas Lane Yount exchanged wedding vows at 2 p.m. May 24, 1986, in the First United Methodist Church, Kennewick, Washington. The Rev. Robert Waller performed the ceremony. The wedding date chosen by the couple was also the 30th wedding anniversary of the brides' parents, Wilton and Betty Martin Green of Kennewick, formerly from Floydada. Parents of the groom are Kenneth and Dorothy Yount of Kennewick.

For her wedding the bride chose a formal gown of champagne satin. The straight full length skirt was accented by a train and draped at the neckline extending to a full bow at the back. The rounded neckline formed a deep V-cut to midback, and puffed full length sleeves formed points at the wrist. Her capped veil was accented with seed pearls and featured a Russian blusher.

Cheryl Green, sister of the bride, was maid of honor. Bridal attendants were Karen Stevens of Bellevue, Washington; Heidi Vituns, Tacoma, Washington and Julie Showalter, Kennewick.

The bridesmaids wore tea length gowns of mauve satin featuring a drop shoulder neckline accented by a shoulder bow.

Attending the groom as best man was his brother, Tracy Yount of Kennewick. Groom honor attendants were Mark Green, of Dallas, brother of the bride, Tim Yount, Kennewick, brother of the groom and Kent Stottlemire of Pullman, Washington. The groom and groomsmen were attired in pearl grey tuxedos.

Guests attending the wedding from Texas were Susan Snellen of Dallas, Mr. and Mrs. Dick Walker and Mr. and Mrs. J.G. Martin, Jr. of Lubbock.

The bride is the granddaughter of Ann Green Wagley of Lubbock and the late Herschel Green, the late J.G. Martin and Laura Martin, and niece of Mr. and Mrs. Jake Watson, all of Floydada.

The couple graduated in May from Washington State University where she received her BBA degree in Business Management and Marketing and was a member of Kappa Alpha Theta. The groom received a degree in engineering and is employed with Rockwell Hanford Operations in Richland, Washington.

After a honeymoon on the Oregon coast, the couple will reside in Kennewick.



MR. AND MRS. THOMAS LANE YOUNT

### Baptist Senior W.M.U. meets

The First Baptist Church Senior W.M.U. of Lockney met with Melba Atkins June 16 at 3 p.m.

Mrs. Atkins directed the mission study program theme entitled, "Aging - Will We Pro-Act or Re-Act."

Jewell Fortenberry told the group about mission work in nursing homes.

Dorothy Ship spoke on what pastors were doing to minister to the aged. Cornelia Johnson told of the care houseparents do, the home mission fields and on foreign mission fields.

Pauline Sams talked about the work religious bookstores did.

Bobbie Kellison led in prayer, asking God's blessings on mission work. Emma Thomas and Pauline Sams brought the Bible Study. Neva Smith read the prayer calendar and Ann Handley lead the prayer.

Refreshments were served to: Pauline Sams, Neva Smith, Jewell Fortenberry, Emma Thomas, Dorothy Ship, Ann Handley, Bobbie Kellison, Elvira Stewart, Ruth Mitchell, Cornelia Johnson and Melba Atkins.

### B and PW installs officers

The Lockney Business and Professional Women's Club met recently in the home of Gladys Ragle to elect and install new officers for the 1986-87 year.

Installed as president as Vera Jo

### Arts Assn.

### meeting set

### June 29th

The Floyd County Arts Association, Inc. will hold it's semi-annual members meeting and annual business meeting on Sunday, June 29, at Lighthouse Electric Building in Floydada.

The meeting will begin at 12:30 p.m. with a "covered dish" salad luncheon.

The business meeting will consist of election of three new members to the board of directors, presentation of drama awards for the 1985-1986 season, and a program which will "re-cap" the past year's events, including a financial report of the corporation.

All members and their families are urged to attend and to bring prospective members with them for this celebration of the Arts Association's second birthday. Don't forget to bring a salad," officials say.

Bybee and re-elected to the offices of vice president and treasurer were Jinna Sue Turner and June McDonald, respectively. Gladys Ragle was elected as the secretary for the upcoming year.

Outgoing officers included Merle Mooney as president and Vera Jo Bybee as the secretary.

Standing committee chairmen were also elected and they include: programs, Jinna Sue Turner; finance, June McDonald; membership, Zora Reecer; public relations, May Pearl Burns; legislation, Gladys Ragle; foundation, Merle Mooney; young careerist, Nora Bybee; and sunshine, Jinna Sue Turner.

The next meeting of the B and PW Club will be July 15 at Mackenzie Park. It will be Summer Fun night for the families of the club members.

## Protect yourself from dangerous lightning

Lightning is deadly and annually kills more Americans than tornadoes and more than hurricanes and floods combined.

However, since lightning usually kills only one person at a time, lightning deaths do not attract as much attention as other weather-related fatalities.

"Lightning is particularly common with spring and summer thunderstorms in Texas, so individuals should take certain precautions during stormy weather," advises Dr. Gary Nelson, a safety engineer with the Texas Agricultural Extension Service.

"Quick thinking combined with common sense can go a long way in preventing lightning fatalities when thunderstorms are on the prowl," Nelson emphasizes.

He lists some "dos" and "don'ts" regarding lightning safety:

- Outdoors:**
- Do seek protection immediately. Safe places include a building that's protected from lightning; a large, steel-framed building; an enclosed automobile; and a large, unprotected building.
  - Don't touch any metal fences,

wires, clotheslines or pipes. In a car, keep your hands off any metal or the radio.

—Do get off your bicycle, golf cart, horse, tractor or motorcycle.

—Don't take cover under lone trees, taller trees in groves or in unprotected shelters such as those on a golf course or camp ground.

—Do head for a cave or under a cliff if you're hiking in mountains or other hilly areas.

—Don't huddle in groups; spread out a few feet from one another.

—Do head for a low spot—lower than

ground level—such as a ravine, gully or ditch, but not one that's filling with water.

—Don't remain near railroad tracks. —Do get off beaches, piers or docks and get away from pools, oceans and lakes.

—Don't swim, wade or go boating; head for land at the first signs of a thunderstorm.

—Do seek shelter in a clump of head-high trees or a thicket of small ones if you're stuck in a forested area.

—Don't stand in open spaces, since most lightning fatalities are people who are taller than their surroundings—a golfer in the middle of a fairway, a farmer in a field, a rider in open country.

—Do immediately set down golf clubs, tennis rackets, fishing poles and other metal objects that can act as lightning rods.

**Indoors:**

- Do get away from appliances and metal fixtures such as refrigerators, ranges, sinks, bathtubs, air conditioners, washing machines, clothes dryers and television sets.
- Don't use the telephone except in an emergency.

### CORRECTION

In a story concerning a sesquicentennial supper for women of City Park Church of Christ, which appeared in last week's Hesperian, Mrs. Danny Nutt was mistakenly referred to as Mrs. Mark Nutt. Names in the article were printed identically to the written copy received by this newspaper.

## Spence and Davis exchange wedding promises



MR. AND MRS. LARRY WAYNE DAVIS

Brenda Kay Spence and Larry Wayne Davis of Lockney exchanged wedding vows at 11 a.m. May 31 in J.A. Hill Chapel on the West Texas State University campus in Canyon. Church of Christ minister Bob Shepard and Catholic priest, Father Gurzynski officiated the ceremony.

The bride is the daughter of Cecil and Carlyn Cook of Fort Worth and Kenneth and Jo Spence of Sanger. Parents of the groom are Tommy and Freda Davis of Lockney.

The bride was given in marriage by her father, Kenneth R. Spence of Sanger.

Attending the bride as maid of honor was her sister, Trudy Morris of Fort Worth. Another sister, Diane Spence of Krum, Texas served as bridesmaid. Attendants were attired in matching mauve dresses.

Acting as best man was Wade Jackson of Lockney and Jimmy Smith of Canyon was groomsman. Both also served as ushers. Coy Davis, brother of the groom, was ring bearer.

Music for the ceremony was provided by pianist, Kathy Baker of Ft. Stockton.

A reception following the ceremony was held in the Methodist Center in Canyon. The wedding cake served was made by aunt of the groom, Melva Richardson of Wolforth.

Following a wedding trip to Denton and Ft. Worth, the couple is at home in Denton.

The bride is a graduate of Brewer High School and West Texas State University. She is employed with Denton State School. The groom, a Lockney High School graduate, also graduated from WTSU and is employed by KVII Channel 7 in Amarillo.

### ALBA

Lois Marler of Floydada proudly announces the birth of her granddaughter, Alison Renee Alba, daughter of Mary and Jim Alba of Lubbock.

Alison was born Tuesday, May 27, 1986 in Lubbock General Hospital at 10:42 a.m. She weighed 6 pounds 12 ounces and was 19 1/2 inches long.

Mr. and Mrs. Jim Alba of Slaton are her paternal grandparents.

### FRANKLIN

Doris and James Franklin of Lubbock are proud to announce the birth of a son, Peter August, born at 1:21 a.m. Friday, June 13 at Methodist Hospital. He weighed 8 lbs. 4 ozs. and was 21 inches long.

Peter August has an older brother, James Samuel, three years old.

Grandparents are Mr. and Mrs. August Schwertner of Floydada.

### SCOTT

Larry and Patricia Scott and Randy of Kingsville proudly announce the birth of their daughter and sister, Amanda Kate, on June 9.

Kate weighed 6 pounds 14 1/2 ounces and was 19 1/2 inches long.

Grandparents are Mrs. Zant Scott of the Harmony Community and Mr. and Mrs. W.C. Finnell of Pensacola, Florida.

### SMITH

Rodney and Susie Smith are proud to announce the arrival of their second child, a son, born at 3:43 a.m., June 16 at Lockney General Hospital.

Johnathan Colt weighed six pounds and four ounces and was eighteen and one half inches long and arrived on his fathers birthday.

Colt was welcomed home by his 20 month old brother Galen.

Grandparents include Bobby and Glenda Pinner of Lockney and Joe and Kathy Smith of Kress.

Great-grandparents include Cecil and Annie Pinner of Lockney and William Russell Sr. of Rogers, Arkansas.

**Bridal selections for:**

- Kim Moore & Lane Cheek
- Kristi Stephens & Steve Jones
- Kristi Rainey & Mike Neill
- Lisa Smith & Brian Sanders
- Donna Snell & Tracy Webb
- Sherese Cannon & Marty Covington

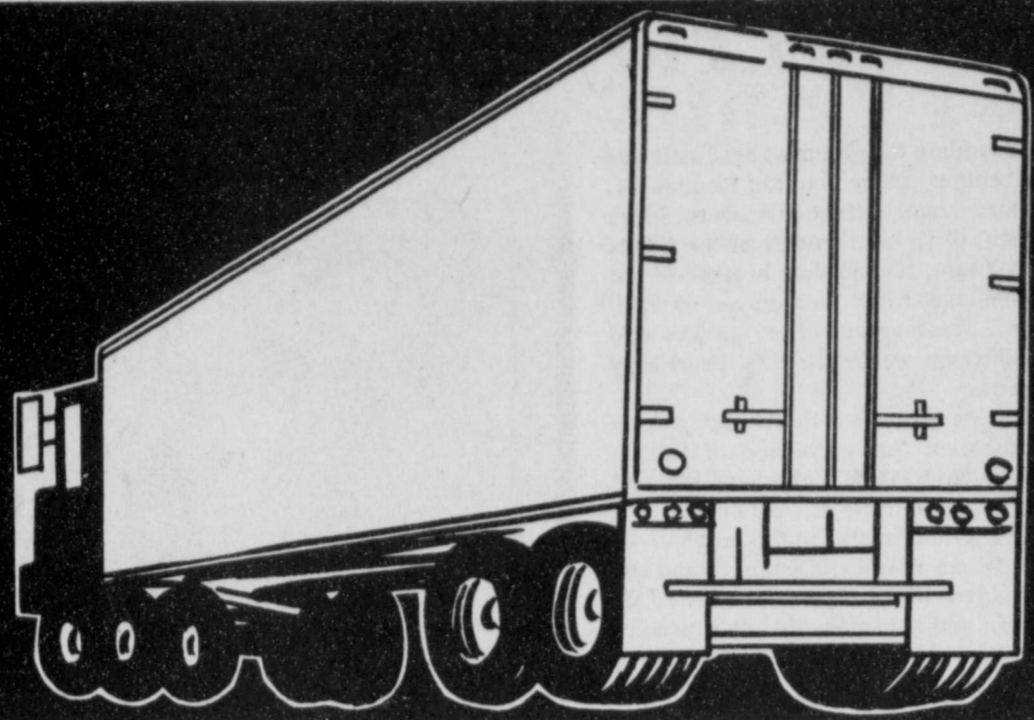
**THOMPSON PHARMACY**  
200 SO. MAIN FLOYDADA, TEXAS 79235

The J.A. BAGWELL FAMILY will have a reunion on Sunday, July 6th at the Senior Citizen Center in Dimmitt, 218 W. Jones Street. All friends and relatives are invited for a pot luck dinner at noon.

**PHOTOGRAPHS!**

All old proofs, one year old and older only \$1 each. Seniors, weddings, children and families. R. Photography. 121 W. California. Phone 983-5063.

One group SPORTSWEAR 1/3 off	<b>SUMMER CLEARANCE SALE</b>	One group Men & Boys T-SHIRTS 1/3 off
One group Ladies & Junior SPORTSWEAR 1/2 off	One group of short sleeve BLOUSES SHORTS, & PANTS 1/3 off	Men's SPORT & DRESS SHIRTS Short Sleeve 20%
Ladies & Junior DRESSES 1/2 off	MEN'S SUITS (spring & year round weight) reduced 1/3 off original price	Men & Boys SHORTS 25% off
Layaways · Mastercard-VISA <b>ANDERSON'S</b> DEPARTMENT STORE 120 West California Floydada		Small group men's lightweight SLACKS 1/2 price off (not all sizes)



# KIMBERLY-CLARK TRUCKLOAD SALE

**HILLS BROS. INSTANT COFFEE**  
4 OZ. JAR \$2.19

**Coffee**  
HILLS BROS. ALL GRINDS  
**\$2.89**  
1 LB. CAN

**Topping**  
5.6 OZ. BOX DREAM WHIP  
**\$1.19**

**GROCERY SPECIALS**  
CATTLEMAN'S ORIG. OR SMOKEY  
**B-B-Q SAUCE** 15 OZ. JAR **99¢**

8-7/8" **HEFTY PLATES** 50 CT. PKG. **\$1.19**

STRONG **HEFTY BOWLS** 30 CT. PKG. **89¢**

LIQUID **PINSOL CLEANER** 15 OZ. BTL. **\$1.19**

7" OFF LABEL **AJAX CLEANSER** 14 OZ. CANS **2.89¢**

4" OFF LABEL **DOVE SOAP** 69¢ BATH BAR

FRENCH'S **YELLOW MUSTARD** 24 OZ. BTL. **89¢**

- DEL MONTE **CATSUP** 32 OZ. BTL. **89¢**
- WELCH'S SQUEEZEABLE GRAPE **JELLY** 22 OZ. BTL. **\$1.29**
- WELCH'S SQUEEZEABLE STRAWBERRY **PRESERVES** 22 OZ. BTL. **\$1.89**
- GAINES GRAVY TRAIN **DOG FOOD** 25 LB. BAG **\$7.99**
- GAINES TASTE TE CHUNK BEEF/CHICKEN **DOG FOOD** 6.5 OZ. CAN **69¢**
- FOR LAUNDRY **WISK** GAL. JUG **\$4.89**
- PLANTERS D/R, D/R UNSALTED, COCKTAILS **PEANUTS** REGULAR OR UNSALTED 12 OZ. JAR **\$1.69**

**Tea Bags**  
24 QT. LIPTON FAMILY SIZE  
**\$1.79**

**Kool-Aid**  
2 QT. PKG. SWEETENED ASST.  
**59¢**

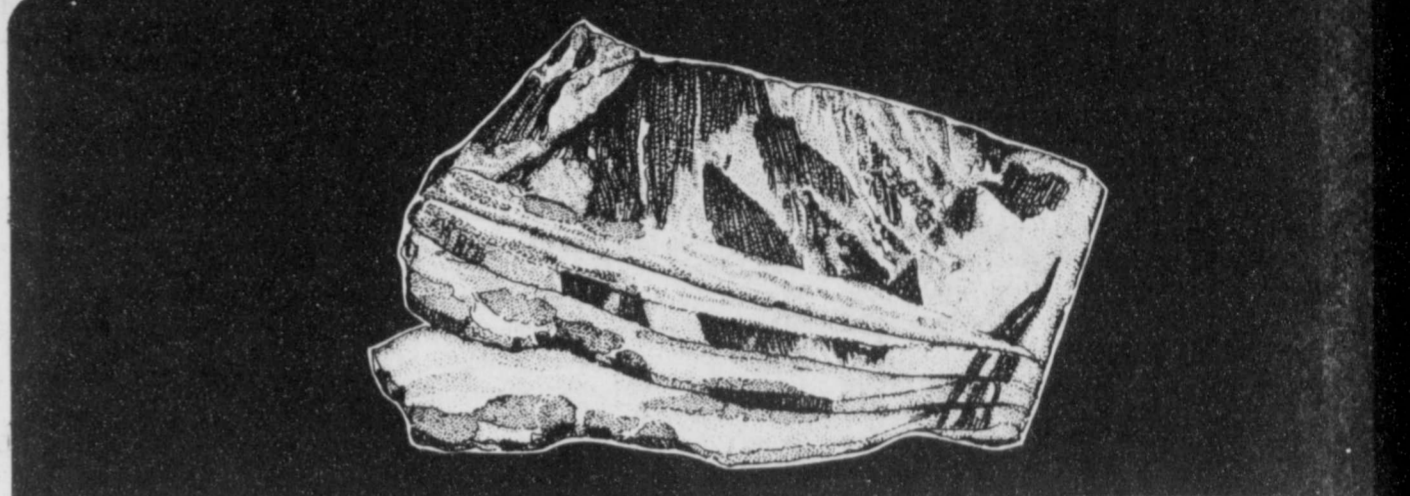
SUGAR FREE ASST. **KOOL-AID** 2 QT. PKG. **69¢**

**Kool-Aid**  
SUGAR FREE ASSORTED  
**\$2.29**  
8 QT. CTN.

- 60" OFF LABEL **SNUGGLE** 96 OZ. BTL. **\$2.99**
- LIQUID **TIDE** 64 OZ. BTL. **\$2.39**
- 60" OFF LABEL **CASCADE** 85 OZ. BOX **\$3.39**

40" off label **TIDE DETERGENT** 42 OZ. BOX **\$1.79**

- HEALTH & BEAUTY AIDS**
- EXTRA STRENGTH **TYLENOL CAPLETS** 50 CT. BTL. **\$3.79**
  - COMPLETE SKIN **LOTION** 6 OZ. BTL. **\$1.79**

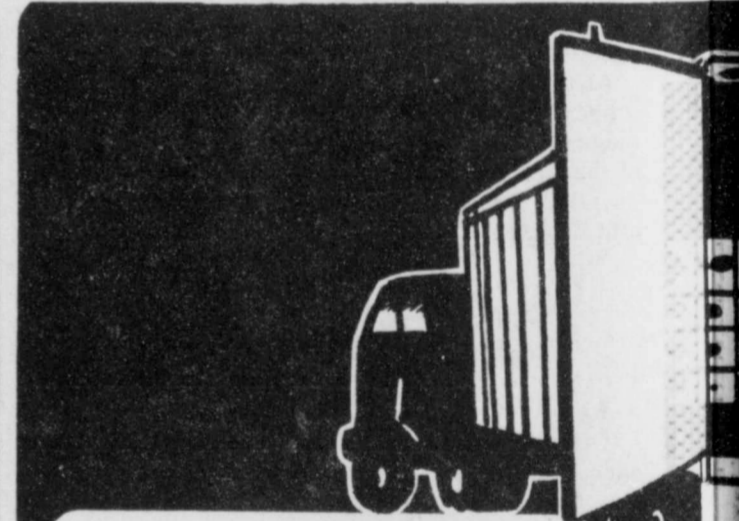


WRIGHT'S HICKORY SMOKED SLICED  
**Slab Bacon** **\$1.39** LB.

WILSON'S 20% LESS FAT SMOKED REG./POL./BEEF SAUSAGE	1 LB. PKG.	<b>\$1.99</b>
GOOCH'S MEXICAN STYLE HOT LINKS	1 LB. PKG.	<b>\$1.39</b>
PRICE SAVER CHICKEN MEAT FRANKS	1 LB. PKG.	<b>79¢</b>
PRICE SAVER CHICKEN MEAT SLICED BOLOGNA	1 LB. PKG.	<b>89¢</b>
OSCAR MAYER SLICED MEAT BOLOGNA	8 OZ. PKG.	<b>99¢</b>
OSCAR MAYER SLICED BEEF BOLOGNA	8 OZ. PKG.	<b>\$1.09</b>

Enjoy **Coke**

**Coke**  
PLUS DEPOSIT  
6 PACK 32 OZ. BTLs. **\$1.58**



## KIMBERLY-CLARK TRUCKLOAD SALE

KLEENEX **FACIAL TISSUE**  
250 CT. CTN. **87¢**

DELSEY **BATH TISSUE** 4 ROLL PKG. **97¢**

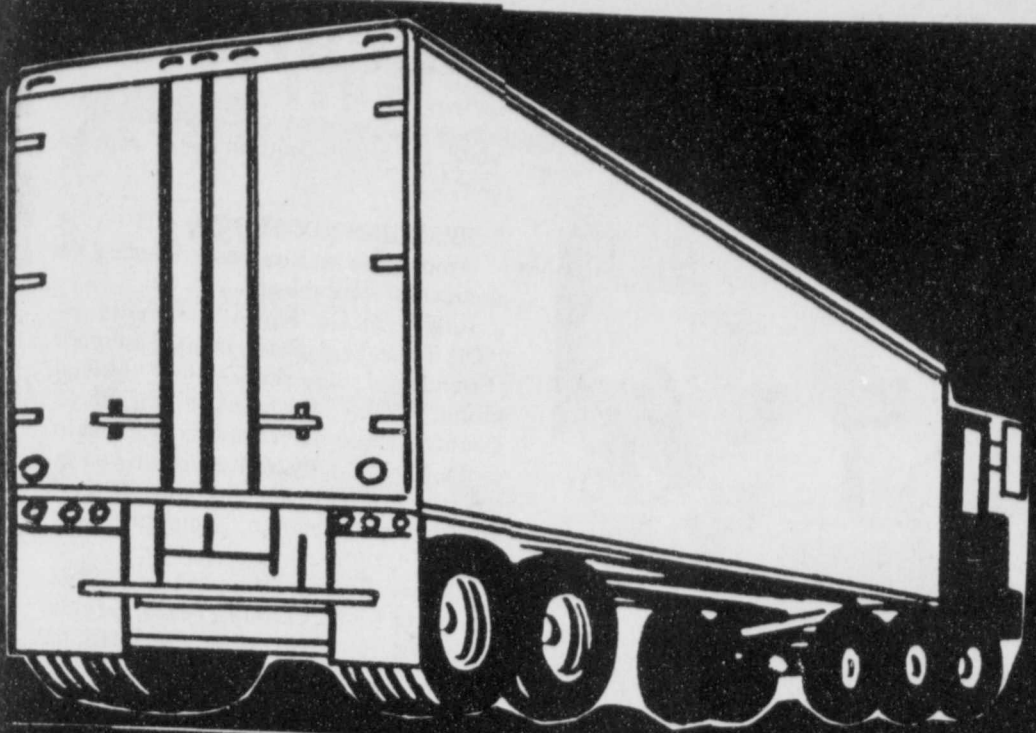
NEW FREEDOM ANYDAY **PANTI-LINERS** 26 CT. CTN. **\$1.57**

**Pay-n-Save**  
QUALITY AND SERVICE

PRICES EFFECTIVE: JUNE 23-28, 1986  
WE RESERVE THE RIGHT TO LIMIT QUANTITIES.

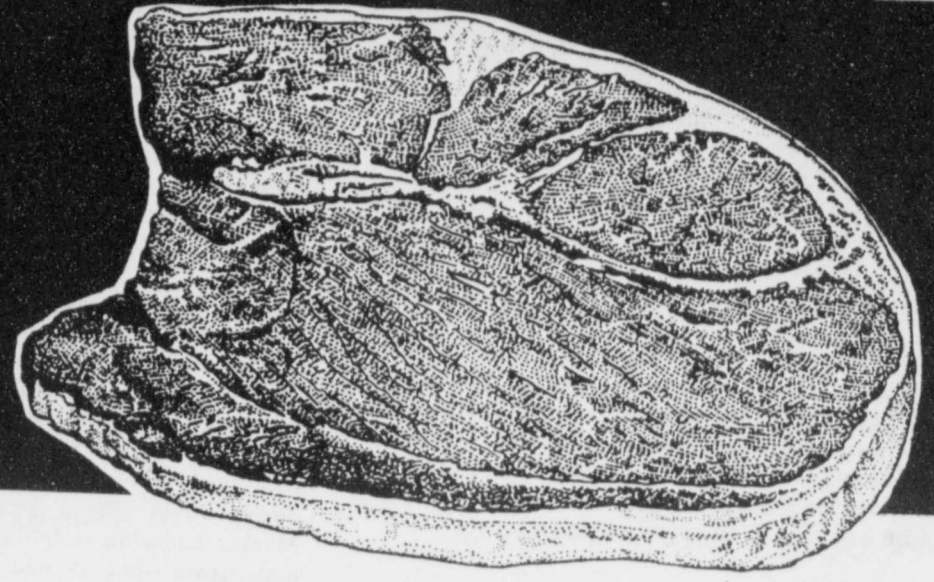
**DOUBLE STAMPS WEDNESDAY**  
**DOUBLE COUPONS SATURDAY**

FLOYDADA LOCKNEY



# Pay-n-Save

QUALITY AND SERVICE



HEAVY GRAIN FED BEEF BONELESS

## Round Steak

# \$1.89

LB.

ROYAL OAK  
**CHARCOAL**  
20 LB. BAG \$4.59

**Charcoal**  
10 LB. BAG ROYAL OAK PLUS  
**\$2.69**

REYNOLDS GIANT  
**FOIL**  
ROLL \$3.59  
12x200

**Foil**  
18x37 1/2 REYNOLDS X-HEAVY DUTY  
**\$1.59**

**Doritos**  
ALL TYPES  
**\$1.49**  
REG. \$2.19

**Van Camp's PORK AND BEANS**

**Pork & Beans**  
VAN CAMP  
**3 \$1**  
16 OZ. CANS

**Milk**  
14 OZ. CAN EAGLE BRAND  
**\$1.19**

**FROZEN FOOD & DAIRY**

DOWNYFLAKE  
**BREAKFAST WAFFLES** 12 OZ. PKG. **79¢**

KRAFT  
**LA CREME TOPPING** 8 OZ. BOWL **79¢**

**HI-DRI PAPER TOWELS**

**47¢**

ROLL

**Sevens Seas Buttermilk Dressing**  
SEVEN-SEAS BUTTERMILK  
**\$1.19**  
16 OZ. BTL.

**FROZEN & DAIRY**

BORDEN FRUIT DRINK GAL. JUG **89¢**

BORDEN HOMO MILK 1/2 GAL. CTN. **99¢**

ORIG./TOFFEE CRISPY FROSTIX QTRS. REG/LITE 6 CT. PKG. **95¢**

FLEISCHMANN'S BANQUET FRIED CHICKEN 32 OZ. BOX **\$2.79**

BANQUET CREAM PIES 14 OZ. CTN. **79¢**

WELCH'S GRAPE JUICE 12 OZ. JAR **89¢**

WELCH'S APPLE/GRAPE NATURAL JUICE 12 OZ. BTL. **89¢**

HARVEST BLEND WELCH'S JUICES 12 OZ. BTL. **89¢**

TOTINO CRISP CRUST Party Pizza **ASSORTED PIZZA** 12 OZ. CTN. **99¢**

**HUGGIES DIAPERS** BOX **\$8.87**

NEW FREEDOM THINS OR SUPER THINS 30 CT. CTN. **\$3.27**

## PRODUCE

CALIFORNIA SUN RIPE PEACHES **59¢** LB.

TEXAS ZUCCHINI OR YELLOW SQUASH **39¢** LB.

CALIFORNIA CRISPY CARROTS 1 LB. PKG. **33¢**

TEXAS GREEN CABBAGE **15¢** LB.

# Fifty-four Floyd family members from five states attend dedication

Fifty-four members of the Floyd family registered for their third reunion in Floydada, Saturday and Sunday.

Equally as important as the reunion, however, was the fact that most of the family members were visiting, for the first time, the county which was named after one of their own, Alamo veteran Dolphin Ward Floyd.

Perhaps the highlight was Saturday afternoon dedication on the Floyd County Courthouse lawn of the Texas historical marker dedicated to Dolphin Ward Floyd. Rufus Floyd of Gonzales, Tex., responded in behalf of the family during the 3 p.m. ceremony which honored his late grandfather.

County Judge Choise Smith welcomed the Floyds.

Floyd County Historical Museum and Floyd County Historical Commission sponsored the Floyd family visit for the two-day event, which has been in the planning stage for almost a year.

The Floyd family registered at the museum and toured the facility prior to a "sack lunch" at the noon hour. A tour of the courthouse followed the marker dedication. They were treated to a Saturday evening picnic, sponsored by museum directors, at Floydada Country Club.

Undaunted by a thunderstorm and rain Sunday, the family spent that day in reunion at Massie Activity Center.

Dolphin Ward Floyd was only 32 when he and other Gonzales residents responded to Lt. Col. William B. Travis' letter for help at the besieged Alamo. All 32 of the men perished.

### REGISTRATION

Floyd family members registering for the two-day event in Floydada were:

Mr. and Mrs. Robert Louis Floyd, Morris Sturdivant, Bennett and Era Floyd, all of Pine Mountain, Georgia; Joe and Shirley Elder, Scott and Walter, Viola Elder, Raleigh, North Carolina; Terry Glenn Floyd, Yatesville, Georgia; Fay H. Floyd (Mrs. Brawner), Concord, New Hampshire; Mr. and Mrs. Edward L. Floyd Jr., Atlanta, Georgia; B. Leon Elder and Jo Wilson, Burke, Virginia;

Also, Marvin Floyd, Shallowater; Russell W. Floyd, R. C. Clements, Lubbock; Dr. and Mrs. Royce Floyd, Longview; Dr. and Mrs. William N. Floyd Jr., Edith Patterson Floyd, Norene Floyd Stearns, Houston; Joe and Rena McAuliffe, McQueeney, Tex.; Mr. and Mrs. Edward Floyd, Renae Floyd, Ruben S. Floyd, Raguet H. Floyd, Gonzales, Tex.; L. H. Tidwell, Jackie Floyd Tidwell, Corpus Christi;

Also, Monette and Emmett Donnelly ("All across America in our trailer"), Mary Monette-Andre Bisset, Ermadel Floyd Hough, San Antonio; Lawrence W. Floyd, Alice Floyd, Michael Edward Floyd, LaGrange; Allen R. Floyd, Benjamin Ray Floyd, Fulton, Tex.; Beth Floyd Goff, Boerne, Tex.; Mr. and Mrs. S. F. Holmes Jr., Helen Floyd Haggard, Dallas; Joe and Mary Lee Floyd, Steve, Greg and Cathy, Baytown; Edith Floyd, Sugar Land; John Elder, Ma Deva Toshu, Liberty Hill; Linda Haggard Johnson, Winnsboro, Tex.

Family members, some of whom arrived early, came from five states: Georgia, North Carolina, New Hampshire, Virginia and Texas.

They were "very impressed and appreciative" of the Floyd County hospitality. The Hesperian was informed.

### COUNTY EFFORT

"Each community in the county helped in some phase of the reunion," according to Nancy Marble, chairperson of both the museum and historical commission. This included churches, clubs, businesses and individuals.

Members of the planning committee noted that "People from Lockney, Floydada and the rural communities combined their efforts in welcoming descendants and relatives of Dolphin Ward Floyd to Floyd County." Members of the family arrived from Pine Mountain, Ga., as early as Tuesday while others came in from Atlanta and Yatesville, Ga., Raleigh, N.C., Burke, Va., Concord, N.H., on Thursday, Friday and Saturday.

Other Floyd relatives hailed from Gonzales, LaGrange, San Antonio, Longview, Houston, Sugarland, McQueeney, Fulton, Baytown, Dallas, Winnsboro, Corpus Christi, Liberty Hill, Boerne, Shallowater and Lubbock, Tex.

The museum was decked out in red, white and blue colors and arrangements of garden and wild flowers were located throughout the museum. Myrtle Finley, Carolyn Marble, Mammie Wood and Emily Johnston furnished flowers and prepared arrangements.

Bud vases were carried to each motel room, where guests were staying, along with bowls of fresh apricots, furnished by Ruth Walker. Hospitality bags were filled with items provided by Donnell Gowens, Clar Schacht, Verna Lynn Stewart, Floydada Chamber of Commerce, Lockney Chamber of Commerce, Floyd County Hesperian, First United Methodist Church, First Baptist Church, First National Bank of Lockney and First National Bank of Floydada. The museum presented each family member a Sesquicentennial scarf.

Visitors were greeted at the Saturday morning registration by area residents. Channel 28 TV interviewed members of the family and film was aired at 6 p.m. that day.

### SATURDAY LUNCHEON

A sack lunch was prepared by TSTA members and other women in the Lighthouse Electric community room and brought to the museum, where it was served along with fresh fruit, homemade cookies and iced tea. The cookies and cakes were furnished by churches, civic organizations and individuals. Ice, tea and lemonade were provided by Rotary and Lions clubs and Alpha Sigma Upsilon. The FHA-HERO girls also assisted.

Red, white and blue cloths furnished by Gail Jackson covered tables in the east room of the museum. Tables were centered with small Texas flags and bud vases of wild flowers.

Canon Clements of Lubbock presented the visitors with an arrangement of cut flowers for the special Sesquicentennial event.

Edwina Hollums, Carolyn Jackson, Mary Lou Bollman, Henry and Olivia Hinton, Margaret Kitchens, Norma



**MARKER UNVEILED**—Rufus Floyd, spokesman for the Floyd family, and Nancy Marble, representing the Floyd County Historical Commission and the Floyd County Historical Museum, unveiled the official state marker honoring Dolphin Ward Floyd on June 21 in Floydada. In his address to the more than 100 attending the ceremony, Floyd said, "I am honored, as is the rest of the family, to be

included in this event. We are truly appreciative of the opportunity to hold our reunion in conjunction with it and I, personally, hope that other families will get together and remember where they came from and search for their roots." More than 50 members of the Floyd family came to Floydada to attend the weekend ceremony and reunion. County Judge Choise Smith and Olin Watson are pictured at right.

Welch, Olin Watson, Joyce Williams, Lila Kendrick, John K. West, Connie Galloway, Marisue and Christie Potts, Nancy Marble and Neta Marble worked throughout the week "getting the museum ready for the event."

Gordon Hambricht, Leo Cisneros and Larry Ogden provided services to help with the marker.

Following the Saturday afternoon dedication was a reception in the courthouse. Floydada Chamber of Commerce served refreshments, which included a cake made by Charlene Langley. Table decorations were provided by Williams Floral. Visitors were greeted by courthouse officials and staff and were given a tour of the offices.

### BARBECUE MEAL

The Floyd family was treated to a barbecue meal Saturday night at the country club, prepared by Richie Crow and Gary Brown. They were assisted by their families and Allen Akers.

Travis and Gladys Jones, Boyce and Inez Mosley, Choise and Kay Dean Smith, Don and Nancy Marble, Olin Watson, Joyce Williams, Norma Welch, Mary Lou Bollman and Carolyn Jackson helped host the evening.

After gathering at the Massie Activity Center on Sunday, the family began departing while some remained until Monday. Mr. and Mrs. Bennett Floyd and Mr. and Mrs. Del Hoxsie of Pine Mountain, Ga., continued on their way to Alaska. Others went to Palo Duro Canyon to view "Texas" and some family members traveled to Caprock State Park, north of Quitaque.

After the heavy downpour of rain Sunday, one man from Georgia remarked, "I've always heard Texas got about 20 inches rainfall a year and we were here the day it fell."

### SATURDAY DEDICATION

Floyd County Historical Commission and Floyd County Historical Museum presented the official Texas historical marker honoring Dolphin Ward Floyd on Saturday afternoon at the courthouse lawn. Boy Scouts led in the Pledge of Allegiance and Girl Scouts gave the Texas flag pledge before Judge Choise Smith extended the welcome and Kenneth Bain presented the history.

Olin Watson presented the marker dedication before the marker was unveiled by Rufus Floyd and Nancy Marble. Rufus Floyd responded in behalf of his family. Nancy Marble, acting in behalf of the museum, pre-

sented Sesquicentennial coin set number 36 to Rufus Floyd.

A certificate of appreciation was handed to the Floyd family by Marisue Potts. The certificate was from the General James Smith Chapter, Daughters of the Republic of Texas.

Lockney Mayor J. D. Copeland spoke the closing prayer.

State Senator Ray Farabee of the 30th District presented a Texas flag to Floyd County Historical Museum which had flown on March 6, 1986, over the state capitol. The date was special in honoring Dolphin Ward Floyd, who was born on March 6, 1804 and who died March 6, 1836 at the Alamo.

This Texas flag was flown Sunday, June 22, at Massie Activity Center, site of the Floyd family reunion.

A telegram from Senator Farabee stated: "Congratulations upon the dedication of the Dolphin Ward Floyd historical marker. I regret I can not be with you on this grand occasion. However, I have arranged for a Texas flag flown over the capitol on March 6 to be sent in commemoration of that significant day for Floyd County. I hope it expresses my deepest gratitude to all of the family and friends gathered to celebrate our state Sesquicentennial."

A letter from U.S. Representative Beau Boulter (13th District of Texas) stated: "To the relatives and descendants of Dolphin Ward Floyd and all the citizens of Floyd County: This historic occasion is one that is in keeping with the spirit of the sesquicentennial, and one that is reflective of the heroes of the Alamo and all the men who paid the ultimate price for freedom."

"The monument that is being dedicated today by the citizens of Floyd County, Texas, in memory of Dolphin Ward Floyd will stand as a reminder to those of us that we must never forget what our founding fathers went through so we can enjoy these United States of America and the great state of Texas."

"Although I am not with you today in body, my spirit and prayers are with all of you on this great occasion."

Governor Mark White forwarded a telegram which stated: "As governor of Texas, I extend my heartiest congratulations to the Floyd County Historical Museum, the family of Dolphin Ward Floyd and the citizens of Floyd County upon the dedication of the Dolphin Ward Floyd historical marker. I

state Sesquicentennial celebration."

### REMARKS RECORDED

Among remarks expressed during the dedication were these:

Judge Choise Smith (welcome) — "The Texas Legislature in 1930 adopted 'Friendship' as the state's official motto. Today the people of Floyd County extend our hands in friendship to the Floyd family and welcome you to the county that bears the name of your ancestor and relative, Dolphin Ward Floyd."

Kenneth Bain (history) — "The history of Floyd County, Texas, begins on March 6, 1804, with the birth of Dolphin Ward Floyd in North Carolina. Texas State Senate Bill #61 enacted August 21, 1876, reads, 'The County of Floyd is named in honor of D. Floyd whose name is inscribed on the monument stone of the Alamo.' Although created by law in 1876, Floyd County was not organized until May 28, 1890. Descendants of some of the county's first citizens are among those present today to welcome you to Floyd County."

Olin Watson (dedication) — "Having sacrificed his life at the Alamo 150 years ago while fighting for Texas' independence, Dolphin Ward Floyd is fully deserving of recognition by the Texas Historical Commission. On behalf of the State of Texas, the Floyd County Historical Commission is honored to dedicate this official Texas Historical Marker honoring Dolphin Ward Floyd and trusts that it will stand as a reminder of the price that was paid for our freedom by the man whose name our county proudly bears."

commend you for the significant role you have played throughout Texas history and for your contribution to our



CAROLYN JACKSON, Edwina Hollums and Norma Dean Welch assist with serving at the Floyd family reunion. Staff Photo



JOYCE WILLIAMS tells a group of girls the history of the Montgomery Ranch House in the Floyd County Historical Museum. Staff Photo



FLOYD FAMILY enjoys lunch and visiting at the museum Saturday.

**YOUR NEWSPAPER**  
Something for Everyone

Got Heating or Plumbing Problems?  
CALL  
**Holmes Plumbing**  
Austin or Steve  
Call Day or Night  
983-2251

**CAPROCK MEAT**  
*Anniversary Time*  
To celebrate our second year, on July 3rd we are giving away a  
**FULL QUARTER OF CHOICE BEEF (FREE)**  
Come by and register

**WEEKEND SPECIALS**  
All HAMBURGER PATTIES \$1<sup>00</sup> per box off  
Lean FAJITA MEAT \$2<sup>39</sup> lb.  
Fresh GROUND BEEF \$1<sup>29</sup> lb.  
*All Special Cuts Welcomed*

Trade with Floydada People (We Do.)  
807 E. Missouri 983-5033

**We worked hard to keep electricity costs down . . . and, WE DID IT!**

In the last three years, while national electric costs went up 12.7%, we held the line. Most SPS residential customers pay about the same for electricity as they did in 1983 . . . some even less.

At SPS, we will continue to do everything we can to keep the cost of electricity as low as possible.

**SPS** SOUTHWESTERN PUBLIC SERVICE COMPANY

Bert Ballengee  
Chairman and CEO



Table of TV schedules for Thursday, June 26, listing channels (WTBS, KXTX, WGN, KCB, KLBK, KAMC, KJTV, HBO, SHOW, ESPN) and programs (I Dream of Jeannie, Down To Earth, Perry Mason, etc.) with start and end times.

Table of TV schedules for Friday, June 27, listing channels (WTBS, KXTX, WGN, KCB, KLBK, KAMC, KJTV, HBO, SHOW, ESPN) and programs (I Dream of Jeannie, Down To Earth, Perry Mason, etc.) with start and end times.

HIGHLIGHTS

MORNING
9:05 (4) \*\*\* 1/2 "THE MATCH-MAKER" (1958, Comedy) Shirley Booth, Anthony Perkins. A matchmaker tries to find a proper mate for a rich, crotchety old widower.

EVENING

7:00 (7) \*\*\* "BUSTING" (1973, Drama) Elliott Gould, Robert Blake. A pair of vice cops in Los Angeles get the less-than-rewarding job of arresting the "little guys" while the real criminal masterminds go free.

9:15 (2) \*\*\* "3:10 TO YUMA" (1957, Western) Glenn Ford, Van Heflin. The witness to a holdup captures the criminal and holds him for the outgoing train.

HIGHLIGHTS

MORNING
9:05 (3) \*\*\* "LITTLE BOY LOST" (1953, Drama) Bing Crosby, Claude Dauphin. A reporter believes that a French orphan is actually his son.

EVENING

7:00 (7) \*\*\* "LITTLE MOON AND JUD MCGRAW" (1979, Western) James Caan, Stefanie Powers. An elderly Indian woman relates a tale of vengeance in the Old West.

10:30 (2) \*\*\* "KING KONG VS. GODZILLA" (1963, Science-Fiction) Michael Keith, Harry Holcomb. King and Godzilla battle it out for supremacy, destroying everything in their paths.

Table of TV schedules for Saturday, June 28, listing channels (WTBS, KXTX, WGN, KCB, KLBK, KAMC, KJTV, HBO, SHOW, ESPN) and programs (Wrestling, National Geographic Explorer, Movie: "The Paratrooper", etc.) with start and end times.

Table of TV schedules for Sunday, June 29, listing channels (WTBS, KXTX, WGN, KCB, KLBK, KAMC, KJTV, HBO, SHOW, ESPN) and programs (Bugs Bunny And Friends, Sesame Street, Andy Griffith, etc.) with start and end times.

HIGHLIGHTS

MORNING
10:05 (2) \*\*\* "THE PARATROOPER" (1954, Drama) Alan Ladd, Leo Genn. Having resigned his military rank out of guilt, a Canadian joins the paratroopers as a rookie to avoid repercussions from his past.

EVENING

7:00 (7) \*\*\* "SOYLENT GREEN" (1973, Science-Fiction) Joan Caulfield. An Army officer attempts to ward off another massacre resembling Custer's Last Stand.

11:30 (3) \*\*\* "DUEL IN THE SUN" (1947, Western) Jennifer Jones, Gregory Peck. A beautiful half-breed Indian girl touches off an explosive family feud when she comes to live in the home of a wealthy cattleman and his two sons.

HIGHLIGHTS

MORNING
9:35 (4) \*\*\* "DUEL IN THE SUN" (1947, Western) Jennifer Jones, Gregory Peck. A beautiful half-breed Indian girl touches off an explosive family feud when she comes to live in the home of a wealthy cattleman and his two sons.

AFTERNOON
12:00 (3) \*\*\* 1/2 "TRAVELS WITH MY AUNT" (1972, Comedy) Alec McCowen, Maggie Smith. Based on a novel by Graham Greene, A young man gets hauled all over Europe by his globe-trotting aunt who has a crooked scheme under her bonnet.

3:00 (7) \*\*\* 1/2 "QUIET PLEASE, MURDER!" (1943, Mystery) Robert Montgomery, Richard Widmark. Don Taylor, Navy man setting up a weather station in the Gobi Desert form a strong defense alliance against Japanese attack.

**MONDAY JUNE 30**

	4	WTBS IND	5	KYTX PBS	9	WGN IND	11	KCBD NBC	13	KLBB CBS	28	KAMC ABC	34	KJTV IND	HBO	SHOW	ESPN		
7:00		Dream Of Jeannie Bewitched		Farm Day A.M. Weather		Bozo		Today		CBS Morning News Cont'd		Good Morning America		He-Man Inspector Gadget		Movie: "My Science Project"		Nation's Business SportsCenter	
8:00		Down To Earth I Love Lucy		Sesame Street		Beverly Hillsbillies		Dukes Of Hazzard		Flintstones		Jimmy Swaggart						World Of Sports LPGA Golf Mayflower	
9:00		Movie: "Fancy Pants"		Mister Rogers Reading Rainbow		Waltons		Family Ties		\$25,000 Pyramid Card Sharks		Donahue		700 Club		Movie: "Mom, The Woman And Me"		Classic Second Round	
10:00				Magical Of Floral Painting Living With Animals		Big Valley		Wheel Of Fortune		Price Is Right		Lifestyles		Jim And Tammy				SportsLook	
11:00		Perry Mason		Masterpiece Theatre		Little House On The Prairie		Super Password Search For Tomorrow		Young And The Restless		Ryan's Hope		Richard Roberts		Movie: "The Man Who Saw Tomorrow"			Aerobics Fashion America
12:00		Movie: "The Vanquished"		Innovation		Midday		News		News As The World Turns		All My Children		Bewitched		Not News		College Lacrosse	
1:00				Racetrack		Dick Van Dyke		Another World		Capitol		One Life To Live		Big Valley		Movie: "The Muppets Take Manhattan"		"Business"	
2:00		Superfriends		Bugs Bunny And Friends		Andy Griffith		Guiding Light		General Hospital		Love Connection		Lo's Make A Deal				World Cup Soccer	
3:00		Flintstones		Sesame Street		Baseball Montreal Expos at Chicago		Jeffersons		Press Your Luck I Love Lucy		Dallas		Challenge Of The GoBots ThunderCats		Berenstein Bears Play Ball BrainGames		Roller Derby	
4:00		Safe At Home		Mister Rogers		Cuba		Price Is Right		Happening! Diffrent Strokes		Jeopardy		People's Court		Transformers G.I. Joe		Karatenia: Battle Of Atlanta	
5:00		Down To Earth		John McLaughlin Business Report				News		Boom Buddies CBS News		ABC News		Andy Griffith		I Dream Of Jeannie Beverly Hillsbillies		SportsLook Fishing	
6:00		Green Acres		MacNeil / Lehrer Newshour		Private Benjamin		News		News		News		Alice		WKRP In Cincinnati		SportsCenter Inside Baseball	
7:00		Movie: "Cross Of Iron"		River Journeys		Dempsey & Makepeace		Valerie		Scarcecrow And Mrs. King		Baseball San Diego Padres at Houston		Movie: "Plaza Suite"		Movie: "Lost In America"		U.S. Olympic Festival Special	
8:00				American Masters		Greatest American Hero		Movie: "Rearview Mirror"		Ellis Island		Astros Of New York Mets at St. Louis Cardinals				Not News			
9:00				Women		Alive From Off Center Gorgeous George							Rockford Files		Bob Dylan In Concert		Movie: "Comfort And Joy"		Diving McDonald's International Invitational
10:00				Gunslinger		Adam Smith's Money World		Soap		Wimbledon Best Of		Entertainment Tonight		M*A*S*H		Star Trek		SportsCenter	
11:00				National Geographic Explorer				Carson		Magnum, P.I.		Happy Days		Movie: "The Border"				College Soccer East-West All-Star	
12:00						For Breakfast		With David Letterman		Movie: "Great Catherine"		Eye On Hollywood More Real People		Fairborough		Movie: "Children Of The Corn"		Game	

**HIGHLIGHTS**

**MORNING**  
 9:05 (4) ★★ "FANCY PANTS" (1950, Comedy) Bob Hope, Lucille Ball. A dignified man brings culture to the Indians.  
**AFTERNOON**  
 12:05 (4) ★★ "THE VANQUISHED" (1953, Adventure) John Payne, Jan Sterling. A Civil War veteran tries to topple a town's government by exposing the corruption within it.  
**EVENING**  
 7:00 (4) ★★ "PLAZA SUITE" (1971, Comedy) Walter Matthau.

Maureen Stapleton. Based on the play by Neil Simon. A trio of romantic comedies are set in the honeymoon suite of the Plaza Hotel.  
 7:05 (4) ★★ "CROSS OF IRON" (1977, Drama) James Coburn, Maximilian Schell. Brutal warfare on the Russian front in World War II brings out the best and worst in two German officers.  
 8:00 (1) ★★ "REARVIEW MIRROR" (1984, Drama) Lee Remick, Michael Beck. An escaped killer holds a terrified woman and a baby hostage as he eludes the police on a chase through the swamps and island towns of South Carolina. (R)  
 11:30 (9) ★★ "DIAMONDS FOR BREAKFAST" (1968, Comedy) Marcello Mastroianni, Rita Tushingham. A British boutique owner enlists the support of four lovely young thieves to steal the Imperial Jewels of Russia.  
 12:10 (13) ★★ "GREAT CATHERINE" (1968, Comedy)

**TUESDAY JULY 1**

	4	WTBS IND	5	KYTX PBS	9	WGN IND	11	KCBD NBC	13	KLBB CBS	28	KAMC ABC	34	KJTV IND	HBO	SHOW	ESPN	
7:00		Dream Of Jeannie Bewitched		Farm Day A.M. Weather		Bozo		Today		CBS Morning News Cont'd		Good Morning America		He-Man Inspector Gadget		Movie: "The Corn Is Green"		Nation's Business SportsCenter
8:00		Down To Earth I Love Lucy		Sesame Street		Beverly Hillsbillies		Dukes Of Hazzard		Flintstones		Jimmy Swaggart						LPGA Golf Mayflower Classic Third Round
9:00		Movie: "Where Angels Go, Trouble Follows"		Mister Rogers Reading Rainbow		Waltons		Family Ties		\$25,000 Pyramid Card Sharks		Donahue		700 Club		Movie: "A View To A Kill"		Movie: "Lucky Night"
10:00				Heart Of The Dragon		Big Valley		Wheel Of Fortune		Price Is Right		Lifestyles		Jim And Tammy				Inside Baseball SportsLook
11:00		Perry Mason		War: A Commentary By Gwen Dyer		Little House On The Prairie		Super Password Search For Tomorrow		Young And The Restless		Ryan's Hope		Richard Roberts		Movie: "The Deep"		Aerobics Fashion America
12:00		Movie: "The Golden Moment: An Olympic Love Story"		Dining In France Computer Chronicles		Midday		News		News As The World Turns		All My Children		Bewitched		Jewels of Russia		Karatenia: Battle Of Atlanta
1:00				Story		MacNeil / Lehrer Newshour		Dick Van Dyke		Another World		Capitol		One Life To Live		Brass Ring		Bodybuilding Mr. Universe Competition
2:00		Superfriends		Adam Smith's Money World		Bugs Bunny Lead-Off Man		Santa Barbara		Guiding Light		General Hospital		Love Connection		Movie: "The Secret Deal"		Powerboat Racing Nissan Offshore 150
3:00		Flintstones		Sesame Street		Baseball Montreal Expos at Chicago		Jeffersons		Press Your Luck I Love Lucy		Dallas		Challenge Of The GoBots ThunderCats		Of N.L.M.H. "The Mysterious Stranger"		Australian Rules Football
4:00		Leave It To Beaver Rocky Road		Mister Rogers		Cuba		Price Is Right		Happening! Diffrent Strokes		Jeopardy		People's Court		Transformers G.I. Joe		Fishin' Hole
5:00				Father Knows Best Gomer Pyle		World Chronicles Business Report		News		Boom Buddies CBS News		ABC News		I Dream Of Jeannie Beverly Hillsbillies		Movie: "In Which We Serve"		SportsLook World Class Women
6:00		Green Acres		MacNeil / Lehrer Newshour		Private Benjamin		News		News		News		Alice		WKRP In Cincinnati		SportsCenter NFL Yearbook
7:00		Francisco Braves		Nova		Movie: "Sole Survivor"		A-Team		Simon & Simon		Who's The Boss? Growing Pains		Movie: "Cat People"		Movie: "Pale Rider"		Roller Derby
8:00				Comrades				Hunter		Ellis Island		Moonlighting						Wrestling
9:00				Movie: "Dollars"		News		1986		Spenser: For Hire		Rockford Files		Philip Marlowe, Private Eye		Paper Chase		
10:00				Western Squares Business Report		Soap		News		News		News		Taxi		Movie: "A View To A Kill"		Inside The PGA Tour SportsCenter
11:00				New Literacy		Carson		Simon & Simon		Nightline		Movie: "Five Days"		Movie: "Lady In A Cage"		Movie: "Viva Zapata!"		Top Rank Boxing
12:00				Movie: "That's My Boy"		With David Letterman		Movie: "Beyond Reason"		Eye On Hollywood More Real People		From Home		Movie: "The Deep"		Movie: "Something Wicked This Way Comes"		Tennis Mag. Splash '86

**HIGHLIGHTS**

**MORNING**  
 9:05 (4) ★★ "WHERE ANGELS GO, TROUBLE FOLLOWS" (1968, Comedy) Stella Stevens, Rosalind Russell. Trouble abounds when four nuns take a busload of students cross-country.  
**AFTERNOON**  
 12:05 (4) ★★ "THE GOLDEN MOMENT: AN OLYMPIC LOVE STORY" (1980, Drama) (Part 1 of 2) Stephanie Zimbalist, David Keith. A United States decathlon hopeful finds himself falling in love with a Russian gymnast during the Moscow Summer Games.  
**EVENING**  
 7:00 (9) ★★ "SOLE SURVIVOR" (1969, Drama) Vince Edwards, Richard Basehart. The lone survivor of a plane crash aids the investigation of the accident 17 years later.  
 9:35 (4) ★★ "DOLLARS" (1971, Suspense) Warren Beatty, Goldie

Hawn. Two culprits are bashed all over Germany following a bank robbery in Hamburg.  
 11:30 (9) ★★ "RAGE" (1966, Drama) Glenn Ford, Stella Stevens. A disillusioned physician in a remote Mexican village is bitten by a rabid dog and has only 48 hours to reach a medical center.  
 12:10 (13) ★★ "THAT'S MY BOY" (1951, Comedy)

**Lockney exes contest cancelled**

Due to insurance costs and liability considerations, the scheduled Lockney Longhorns exes football game, scheduled for July 18, has been cancelled, those planning the event said Tuesday afternoon.  
 Plans for the ex-Longhorn athletes' reunion on July 19 are continuing, sans the football game. Former Lockney High graders and their families are encouraged to attend.  
 The American Legion Hall in Lockney has been reserved for the event, which will center around a barbecue, game

films, and visitation. Other activities may be added.  
 "If you know of anyone who was coming just for the football game, please help us by contacting these people," says Kenneth Holt, secretary of the exes association. Jim Bob Martin is the president.  
 Two hundred and 50 letters had been forwarded to Longhorns exes. "Now we must send another 250 letters letting these people know that the game has been cancelled," officials report.  
 Holt explains that insurance last year

cost 75 cents per player for "a \$1,000 death, liability and health policy." The same coverage would have cost \$40 per individual this year.  
 The association could have signed a waiver relieving the school and association from any liability in the event of serious injury or death, the group was advised, but "the waiver would not hold in court."  
 Since football equipment was leased from the school athletic department, this would involve the school and made it liable, attorneys advised.

**Texans will get multi-million \$ tax break**

State Comptroller Bob Bullock Friday said Texans will get a multi-million dollar tax break because of a Senate vote on the federal tax overhaul bill that will permit partial deduction of state sales tax.  
 Bullock said the sales tax amendment, co-sponsored by Texas Sen. Phil Gramm and supported by Texas Sen. Lloyd Bentsen, would let Texas taxpayers deduct 60 percent of their state and local taxes in figuring federal income taxes.  
 "The sales tax provision will save Texans who use this deduction at least \$112 million. Anytime we don't have to send over \$100 million to Washington, it's good news," Bullock said.  
 Bullock said Gramm's amendment

was especially beneficial to Texas because the tax reform bill pending in the U.S. Senate originally allowed deductions for state and local income taxes.  
 "We were being penalized because we didn't have a state income tax despite the fact that we don't want an income tax," Bullock said.  
 Bullock said the amendment would save a deduction worth more than \$270

to the average Texas taxpayer who files an itemized return.  
 He said that Texans claimed an average of \$449 in sales tax deductions in 1984 and the 60 percent rule would preserve most of that deduction.  
 According to Bullock, about 27 percent of Texas taxpayers itemize on federal returns so the amendment allowing sales tax deductions will affect more than one-in-four taxpayers.

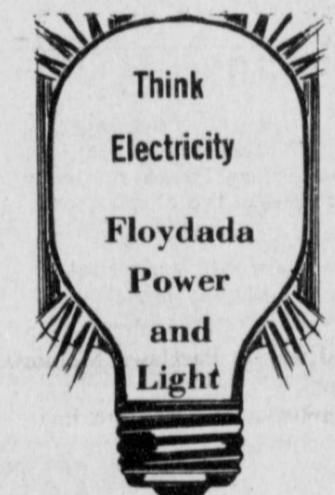
**Courtroom Activities**

In county court, June 23, four men pled guilty to DWI.  
 Martino Soto, 22, of Plainview, pled guilty to DWI and was fined \$300.00 plus court costs plus 60 days in jail probated for 18 months.  
 Hector Molina, 20, of Lockney pled guilty to DWI and was fined \$300.00 plus court costs plus 60 days in jail probated for 12 months.  
 Fredi Chon Castillo, 22, of Floydada, also pled guilty to DWI. He was fined \$300.00 plus court costs plus 60 days in jail probated for 12 months.  
 Lazaro Cedillo Vega, 30, of Petersburg, pled guilty to DWI and was fined \$300.00 plus court costs plus 60 days in jail probated for 18 months.  
 A speeding appeal was filed by Frances Crush Phillips on June 23, but there was no disposition on this case.  
 In J.P. court, the week of June 16-23, 25 misdemeanor citations were filed.

**Caprock Hospital Report**

June 17-24  
 Gladys Simpson, Floydada, adm. 4-22, continues care, Jordan  
 Irene Fuller, Floydada, adm. 5-28, continues care, Hale  
 Tommy Collins, Floydada, adm. 6-9, dis. 6-18, Lopez  
 Andres Pena, Floydada, adm. 6-9, continues care, Lopez  
 Felix Riojas, Floydada, adm. 6-11, dis. 6-22, Lopez  
 Remijon Tamayo, Floydada, adm. 6-11, dis. 6-18, Lopez  
 Ricky Adams, Petersburg, adm. 6-13, dis. 6-17, Hale  
 Nina Shurbet, Floydada, adm. 6-13, dis. 6-19, Hale  
 Josephine Rendon, Floydada, adm. 6-15, dis. 6-23, Lopez  
 Ty Christopher, Roaring Springs, adm. 6-16, dis. 6-18, Hale  
 Marilyn Buchanan, Floydada, adm. 6-16, dis. 6-23, Hale  
 Sally Sue, Floydada, adm. 6-16, continues care, Jordan  
 Mickey Alexander, Lubbock, adm. 6-17, dis. 6-19, Hale  
 David Kirk, Floydada, adm. 6-21, dis. 6-24, Lopez  
 Goldie Jacobs, Floydada, adm. 6-18, continues care, Lopez  
 Parnell Powell, Floydada, adm. 6-20, dis. 6-21, Jordan

Maria Jones, Floydada, adm. 6-20, continues care, Jordan  
 Jaime Casares, Floydada, adm. 6-20, continues care, Lopez  
 Jaime Zuniga, Floydada, adm. 6-21, dis. 6-23, Hale  
 Florentino Guerrero Jr., Floydada, adm. 6-22, continues care, Hale  
 Tyrone Henderson, Floydada, adm. 6-22, dis. 6-23, Hale  
 Emma Miller, Roaring Springs, adm. 6-22, continues care, Jordan  
 John VanHoose, Floydada, adm. 6-23, continues care, Hale  
 Lea Cuellar, Floydada, adm. 6-23, continues care, Lopez  
 Trinidad Villanueva, Floydada, adm. 6-24, continues care, Lopez



**WEDNESDAY JULY 2**

	4	WTBS IND	5	KYTX PBS	9	WGN IND	11	KCBD NBC	13	KLBB CBS	28	KAMC ABC	34	KJTV IND	HBO	SHOW	ESPN	
7:00		Dream Of Jeannie Bewitched		Farm Day A.M. Weather		Bozo		Today		CBS Morning News Cont'd		Good Morning America		He-Man Inspector Gadget		Movie: "Lost And Found"		Nation's Business SportsCenter
8:00		Down To Earth I Love Lucy		Sesame Street		Beverly Hillsbillies		Dukes Of Hazzard		Flintstones		Jimmy Swaggart						LPGA Golf Mayflower Classic Final Round
9:00		Movie: "Back Street"		Mister Rogers Reading Rainbow		Waltons		Family Ties		\$25,000 Pyramid Card Sharks		Donahue		700 Club		Movie: "Cannonball Run II"		Movie: "Cimarron"
10:00				Follows		Heart Of The Dragon		Wheel Of Fortune		Price Is Right		Lifestyles		Jim And Tammy				Celebrity Golf And Tennis SportsLook
11:00		Perry Mason		War: A Commentary By Gwen Dyer		Little House On The Prairie		Super Password Search For Tomorrow		Young And The Restless		Ryan's Hope		Richard Roberts		Movie: "Funny Lady"		Aerobics Fashion America
12:00		Movie: "The Golden Moment: An Olympic Love Story"		Dining In France Computer Chronicles		Midday		News		News As The World Turns		All My Children		Bewitched		Jewels of Russia		Karatenia: Battle Of Atlanta
1:00				Story		MacNeil / Lehrer Newshour		Dick Van Dyke		Another World		Capitol		One Life To Live		Brass Ring		Bodybuilding Mr. Universe Competition
2:00		Superfriends		Adam Smith's Money World		Bugs Bunny Lead-Off Man		Santa Barbara		Guiding Light		General Hospital		Love Connection		Movie: "The Secret Deal"		Powerboat Racing Nissan Offshore 150
3:00		Flintstones		Sesame Street		Baseball Montreal Expos at Chicago		Jeffersons		Press Your Luck I Love Lucy		Dallas		Challenge Of The GoBots ThunderCats		Of N.L.M.H. "The Mysterious Stranger"		Australian Rules Football
4:00		Leave It To Beaver Rocky Road		Mister Rogers		Cuba		Price Is Right		Happening! Diffrent Strokes		Jeopardy		People's Court		Transformers G.I. Joe		Fishin' Hole
5:00				Father Knows Best Gomer Pyle		World Chronicles Business Report		News		Boom Buddies CBS News		ABC News		I Dream Of Jeannie Beverly Hillsbillies		Movie: "In Which We Serve"		SportsLook World Class Women
6:00		Green Acres		MacNeil / Lehrer Newshour		Private Benjamin		News		News		News		Alice		WKRP In Cincinnati		SportsCenter NFL Yearbook
7:00		Francisco Braves		Nova		Movie: "Sole Survivor"		A-Team		Simon & Simon		Who's The Boss? Growing Pains		Movie: "Cat People"		Movie: "Pale Rider"		Roller Derby
8:00				Comrades				Hunter		Ellis Island		Moonlighting						Wrestling
9:00				Movie: "Dollars"		News		1986		Spenser: For Hire		Rockford Files		Philip Marlowe, Private Eye		Paper Chase		
10:00				Western Squares Business Report		Soap		News		News		News		Taxi		Movie: "A View To A Kill"		Inside The PGA Tour SportsCenter
11:00				New Literacy		Carson		Simon & Simon		Nightline		Movie: "Five Days"		Movie: "Lady In A Cage"		Movie: "Viva Zapata!"		Top Rank Boxing
12:00				Movie: "That's My Boy"		With David Letterman		Movie: "Beyond Reason"		Eye On Hollywood More Real People		From Home		Movie: "The Deep"		Movie: "Something Wicked This Way Comes"		Tennis Mag. Splash '86

**HIGHLIGHTS**

**MORNING**  
 9:05 (4) ★★ "BACK STREET" (1941, Romance) Charles Boyer, Margaret Sullivan. A married man keeps a mistress who must remain forever in the background.  
**AFTERNOON**  
 12:05 (4) ★★ "THE GOLDEN MOMENT: AN OLYMPIC LOVE STORY" (1980, Drama) (Part 2 of 2) Stephanie Zimbalist, David Keith. A United States decathlon hopeful finds himself falling in love with a Russian gymnast during the Moscow Summer Games.  
**EVENING**  
 7:00 (9) ★★ "RECKLESS" (1984, Drama) Aidan Quinn, Daryl Hannah. Conflicts arise when a troubled teen-aged biker, alienated from his alcoholic father and an outcast from society, becomes involved with a young woman from a straitlaced, middle class family.  
 9:35 (4) ★★ "DOLLARS" (1971, Suspense) Warren Beatty, Goldie

11:30 (9) ★★ "LADY



**SENIOR BIRTHDAYS**—Celebrating birthdays in June at the Floydada Senior Citizens Center were Thelma Jones (left) and George L. Smith. Smith was accompanied by his wife, Mary, and his daughter, Wynona Willis from Petersburg.

## OBITUARIES

### HENRY W. BELL

Henry W. Bell of Lubbock, one of the South Plains' centenarians, was buried in City of Lubbock Cemetery following 10 a.m. Thursday funeral rites in the First Church of the Nazarene.

Mr. Bell was the father of Leon R. Bell of Floydada.

He was claimed by death at 5:10 p.m. the previous Monday in Slaton Care Center after a lengthy illness.

A native of Horse Cave, Ky., he moved to Texas at the age of eight and married Caudellar Mae Harris on December 24, 1905 in Grayson County. The couple moved to Lubbock from Sherman.

Mrs. Bell preceded her husband in death on December 24, 1974.

A retired farmer, he was a charter member of the First Nazarene Church and helped organize the church.

Survivors include a daughter, Gladys Judd of Lubbock; two sons, Leon R. Bell of Floydada and Lowell Bell of Louisiana; 13 grandchildren; 31 great-grandchildren; and 38 great-great-grandchildren.

### MYRTA BELLE JAMES

Funeral services for Myrta Belle James, 75, of Plainview, were at 2 p.m. Wednesday in First Baptist Church chapel in Plainview with Dr. Travis Hart, pastor, and Dr. Fred Meeks of the Wayland Religion Department, officiating. Burial was in Parklawn Memorial Gardens.

Mrs. James died at approximately 12:45 p.m. Sunday at her home after a brief illness.

She was born Myrta Belle Lovvorn on July 19, 1910 in Floyd County. She grew up and attended school in the Providence community and graduated from Plainview High School.

She married Foster James on July 29, 1928 in Plainview. He died Feb. 3, 1981 in Lubbock.

After their marriage, the couple resided in Hale Center and moved to Halfway in 1931, where he operated the James Garage and farmed. She moved to Plainview in 1982.

Mrs. James was a member of the First Baptist Church and Mrs. Herring's Sunday School class, Halfway Home Demonstration Club, WMU and choir at Halfway and was a Pink Lady at Central Plains Regional Hospital. She taught the Junior Department Sunday School class for more than 30 years at Halfway.

Survivors include three daughters, Mrs. Bill (Juanita) Hamman of Plainview, Mrs. Glenn (Loretta) Rainer of De Queen, Ark., and Mrs. Virgil (Gleiva) Simmons of Austin; three sisters, Mrs. Doc (Lorene) Bennett of Hillsboro, Mrs. Leland (Exa) Dalton of Santa Barbara, Calif., and Mrs. Anthony (Evelyn) Latta of Floydada; 11 grandchildren and six great-grandchildren.

### ILEENE STOBAUGH

Services for Ileene W. Stobaugh, 82, of Lubbock and formerly of Lorenzo and Crosbyton, were at 3 p.m. Thursday, June 19, in the Lorenzo First United Methodist Church with the Rev. Kerry Hurst, pastor of Aldersgate Methodist Church in Lubbock, officiating.

Burial was in Lorenzo Cemetery under the direction of Carter-Adams Funeral Home in Ralls.

She died at 9:05 p.m. Tuesday, June 17, in St. Mary's Hospital in Lubbock following a lengthy illness.

Born in Erath County, Mrs. Stobaugh moved to Crosby County in 1914. She married John "Buck" Stobaugh on May

24, 1930 in Lockney. He died March 20, 1963.

She was Crosby County school superintendent for 12 years until retiring in 1976. She taught school in Ralls and Loteno.

A graduate of Texas Tech University, she had also attended John Tarleton State University. She was a member of the Crosbyton First United Methodist Church, Delta Kappa Gamma Teachers Association and the Order of the Eastern Star.

Survivors include a daughter, Johanna Gray of Baton Rouge, Louisiana; two grandchildren; and two great-grandchildren.

### NAOMI WHEELER

Services for Naomi Wheeler, 81, of Crosbyton were at 3 p.m. June 25 in First United Methodist Church with the Rev. Larry Ramsey, pastor, officiating.

He will be assisted by the Rev. Al Jennings, pastor of the Morton First United Methodist Church.

Burial was in Crosbyton Cemetery under the direction of Adams Funeral Home.

She died at 3 a.m. Tuesday, June 24, in Lubbock's South Park Medical Center after a brief illness.

She was born in Wise County. She married H.E. Pete Marsh in 1925. He died in 1955. She married Rex Wheeler on June 3, 1960, in Crosbyton.

She graduated from Crosbyton High School. She was a supporter of the Crosbyton Care Center and the Girls Town USA in Whiteface. She had lived in the Crosbyton area since 1917. She was a member of the First United Methodist Church.

Survivors include her husband; two stepsons, Charlie of Crosbyton and Edwin of Allen; three daughters, Melba Hines and Oleta Wheeler, both of Crosbyton, and Jody Bacus of Lockney; two brothers, H.M. Reed, Jr. and Elmer Reed, both of Lubbock; a sister, Goldie Brown of Crosbyton; ten grandchildren; and 13 great-grandchildren.

Grandsons will be pallbearers. The family suggests memorials to Girls Town USA in Whiteface.

### ABILENE WHITAKER

Services for Abilene Whitaker, 54, of Lamesa were at 2 p.m. Friday, June 20, in St. John Baptist Church with the Rev. J.H. Nelson, pastor, officiating.

Burial was in Lamesa Cemetery under the direction of Branon Funeral Home.

She died at 8:50 a.m. Wednesday, June 18, in Medical Arts Hospital after a lengthy illness.

A native of Milam County, she was a homemaker. She married Elest Whitaker in Lamesa in 1957. He died in 1970.

She had been a member of St. John Baptist Church for 20 years.

Survivors include a daughter, Vera Woodberry of Lamesa; a son, Sonny of Lamesa; two sisters, Emma Wilson of Odessa and Tommie Lee Thompson of Fort Worth; seven brothers, R.T. Shorts of Austin, Edgar Shorts of Floydada and Willie Shorts, Tom Shorts Jr., Billy Shorts, James Shorts and Willie T. Shorts, all of Fort Worth; and five grandchildren.



Remember your loved ones with a living memorial to the Caprock Hospital Auxiliary Memorial Fund. Mrs. Jane Pruitt, Treasurer, 911 West Virginia, 983-2040.

## Local Masons attend Texas research lodge

The Texas Lodge of Research held its quarterly meeting on June 20-21 at Hereford Lodge No. 849, A.F. and A.M. Featured on the June 21 program was the Anson Jones Lecture, presented by John R. Nocas, FPS, of Inglewood, California. Nocas is currently serving as president of The Philaethes Society of Washington, D.C., a widely-acclaimed Masonic research organization. An inspirational program was given on June 20 by the Honorable Ron Brinkman, Grand Secretary of the Grand Lodge of New Mexico, A.F.&A.M.

The Texas Lodge of Research is a statewide Masonic body, constituted in 1960 for the purpose of fostering Masonic research and study. Attending the Hereford meeting from Floydada were J.M. (Jimmy) Willson Jr., Past Grand Master of Texas Masons and an active member of the Texas Lodge of Research, and Mr. and Mrs. Bill Gray. Gray is currently the Worshipful Master of Floydada Lodge No. 712, A.F.&A.M.

Papers were presented on June 21 by Gray and J. Dexter Sammons, Worshipful Master of the Texas Lodge of Research. The excellent paper present-

ed by Sammons was about cattle baron Charles Goodnight, a member of Phoenix Lodge No. 275, Weatherford, Texas. Bill Gray presented his first paper to the research lodge titled, "A Masonic View of the Texan-Santa Fe Expedition of 1841." Several significant episodes of the 1841 Expedition occurred in Floyd County. An important aspect of Gray's paper is that it pinpoints the location of "Camp Resolution" in far northeastern Floyd County. Gray's documentation, along with that of Marisue Potts in her paper on the same subject, are the basis for an application to the Texas State Historical Society for the installation of a marker at the site of the camp.

As a result of the presentation of his paper, Gray was elected to active status in the Texas Lodge of Research, whose members are entitled to wear the distinctive apron patterned after that of the Grand Lodge of the Republic of Texas. The next meeting of the Texas Lodge of Research will be in San Antonio in September. A special memorial ceremony, honoring those Masons killed in the Alamo siege, will be the highlight of the San Antonio meeting.

## June birthdays celebrated

**By Lorilla Bradley**  
It's good to start the summer  
With a great big birthday "fling" ...  
With cakes and all the trimmings  
That makes us want to sing!

Mrs. Brashears we honor  
...She counts from '99...  
As as for birthday parties  
She'll always be on time!

Our Mrs. Clara Williamson  
Has slowed her pace a bit...  
But reading is her hobby  
And books sure make a "hit".

We greet our Mrs. Probasco  
...Her years are 93...  
And may her "day" be happy  
As much as it can be.

For Mrs. Jura Roberts  
...She dates from '99...  
We have the best of wishes  
For this her "special" time.

To Mrs. Faulkenberry  
Who always wears a smile...  
May life be kind and gentle  
As she takes it mile by mile.

Our Mrs. Lyles we welcome  
...Her years are 88...  
And with her birthday party  
She loves to celebrate.

Lets serenade these ladies  
With the same old birthday song...

To let them know we love them...  
So sing out good and strong!

Thursday, June 19 was birthday party time at the rest home with ladies of the City Park Church of Christ hosting the occasion. The Hesperian photographer came for the "picture taking" after which residents and guests were ushered into the dining room.

The "honor" table was laid with a white cloth and centered with a beautiful arrangement of fresh garden flowers and was a gift to Mrs. McNeeley and employees of the home. Places were marked for the honorees by special birthday cards. Each one wore a fresh corsage compliments of Williams Flower and Card Shop. The poem was read and all joined in singing the "Happy Birthday" song. A delicious refreshment plate of angel food and strawberry delight cake and a tangy fruit punch was served to residents, honorees, and guests.

Relatives helping these ladies celebrate their special time was Gladys Jones with Mrs. Roberts, Maxine Jarboe sat with Mrs. Brashears, Hazel Bradley and Lucille Sisson were guests of Mrs. Probasco, Rena Baxter and Marjorie McElyea were with Mrs. Lyle and Jo Bryant sat with Mrs. Faulkenberry. We do appreciate all of these people coming to be with their friends and loved ones.

The next party will be Thursday, July 17, 2:30 p.m. You are invited to be with us.

## Lakeview News

### By Joyce Williams

June 26  
Heavy rains fell Sunday afternoon and early Monday morning, about 1 1/2 inches total. Yet there are spots that didn't get much at all.

Mrs. Sherri Moses and two children visited Mrs. Don Harrison Monday.

The Don Harrisons visited Mr. and Mrs. Max Harrison Saturday. Miss Debbie Harrison was home from her nursing job. It was her birthday and it's a tradition in the nursing profession to have your birthday off from work.

Judge and Mrs. Choise Smith and son, Hunter, were guests at the Floyd family reunion barbecue at the Floyd-

ada Country Club Saturday night. Ritchie Crow and Gary Brown did the barbecuing.

Mrs. Verlon Wright returned home over the weekend after spending the week at the bedside of her little granddaughter, Melissa Beatty, eight months old, daughter of Cindy and Todd Beatty. The little girl was in Lubbock General Hospital with meningitis, but was pronounced well and sent home Friday.

Mr. and Mrs. Don Harrison visited Milton and Jo Harrison Friday. Jo had surgery two weeks ago at St. Mary's in Lubbock, and is doing fine now.



**CITY AUTO**—Olga Enriquez (left) and Don Washburn (right) are the coaches of the City Auto girls softball team this season. Team members include [back row, left to right] Nelda Enriquez, Marcie Vasquez, Jennifer Paty and Luann Martinez; [front row] Crystal Dumas, Missy Pernell, Monica Henderson and Amber Dumas.

**THE WHIRLWIND GOLF CLASSIC**  
[Sponsored by the FHS Senior Class of 1966]  
Saturday, 8 a.m. Shotgun, July 5, 1986

Floydada Country Club Four Man Scramble  
\$22.00 non-members, \$10.00 members

NAME \_\_\_\_\_  
TELEPHONE \_\_\_\_\_  
HANDICAP/WHAT COURSE \_\_\_\_\_  
CART REQUESTED \_\_\_\_\_ [\$6.25 extra]  
TEAM PREFERENCES [if any] \_\_\_\_\_

ENTRY DEADLINE JUNE 25TH!!!!

Mail entries to: Thumper Morgan  
4116 La Brigada  
El Paso, TX 79922

Phone inquiries: 915-595-0015 work  
915-581-7006 home



**NURSING HOME BIRTHDAYS**—Celebrating June birthdays at the Floydada Nursing Home were [left to right] Alta Probasco, Jura Roberts, Lara Brashears, Ruth Lyles and Pauline Faulkenberry. Not shown is Clara Williamson, who also has a June birthday.

## Floydada Nursing Home

### By Florence Van Hoose

Monday morning devotions were by Trinity Church. The singers were the Rev. G.A. Van Hoose, Sabrina Varner, Clara Redd, Eula Mae Wilson, Francis Rose, Yvonne Williamson, Mildred Thrasher and Elena Hopper. Rev. Van Hoose spoke about the christian's new life. In the afternoon we played "42."

Tuesday morning devotions were by Brother Neeley Richardson. "Thank you, Neeley, for the devotions and also the banana break." In the afternoon we had a good time of Bible study, sharing and prayer.

Wednesday morning devotions were by Mike Hutcheson. He spoke about love. In the afternoon Jo Bryant and Angie Reynolds came and played Bingo with us. Myra Hall bingo'ed first and also bingo'ed the most times. We want to welcome our new resident to the nursing home. She is Maude Powell from Dougherty. She joined right in and played Bingo with us today. We want

her to be happy here in the nursing home.

Thursday morning devotions were by Florence. In the afternoon we had the monthly birthday party hosted by ladies from City Park Church of Christ. Corsages were donated by Williams Florist. The honorees this month were Alta Probasco, Lara Brashears, Ruth Lyles, Jura Roberts, Pauline Faulkenberry and Clara Williamson. We surely do appreciate all those who contribute in making the birthday party a success.

Friday morning devotions were by Letha Mulder, Mrs. Withers and Freida Simpson and Mary Coreley. In the afternoon we watched a couple of good movies.

This week's visitors included: Mrs. W.B. Parrack, N.B. and Jo Ann Mooney of Dallas, Lucille Sisson, Vonceil Colston, Artie Webb, Tammy and Tracy Lloyd of Ft. Worth, Lisa Dietrich of Ft. Worth and Vertie and Marvin Cooper.

## Senior Citizens News

### By Thelma Jones

Mrs. Eva Newsome had as her guest last week her sister, Mrs. Nora Davis and son, Mont from Wichita Falls. Mrs. Newsome and Mrs. Davis went to Dimmitt to see another sister, Mrs. Lois Bartlett.

Mrs. Altha Ginn of Littlefield spent Friday night with Thelma Jones and Saturday visiting her other friends here in town.

Mr. and Mrs. J.B. Whitehead have had their daughter from Kentucky visiting with them and relatives in Lubbock.

Everyone enjoyed the luncheon last Thursday. L.D. (Britt) Britton was elected senior citizen of the year.

Burl and Helene Holt left for New York this week to visit their son, Bob. Lois Durham returned home Sunday after spending several days in Lubbock

with her children.

We are sorry to loose one of our senior citizens, Mrs. Eva Newsome, who is moving to San Antonio with her daughter. Mrs. Newsome is 94 years old and has lived in Floyd County 70 years plus.

Cecil Carter, son-in-law of Mrs. T.C. (Gertie) Hollums of Hillsboro, was killed in a plane crash Monday morning with a spraying crew. Mrs. Hollums was a former resident here.

Syble Gaylor of Lubbock spent Tuesday and Wednesday with Ruby Davis.

Mrs. Beady Owens has been visiting with her children in Arizona but has returned home.

Rebecca Smith and Britt visited Mrs. Eula Parrack Sunday afternoon.

Cora Hartline received word her nephew, J.W. Butcher passed away in Tucson, Arizona Friday morning.

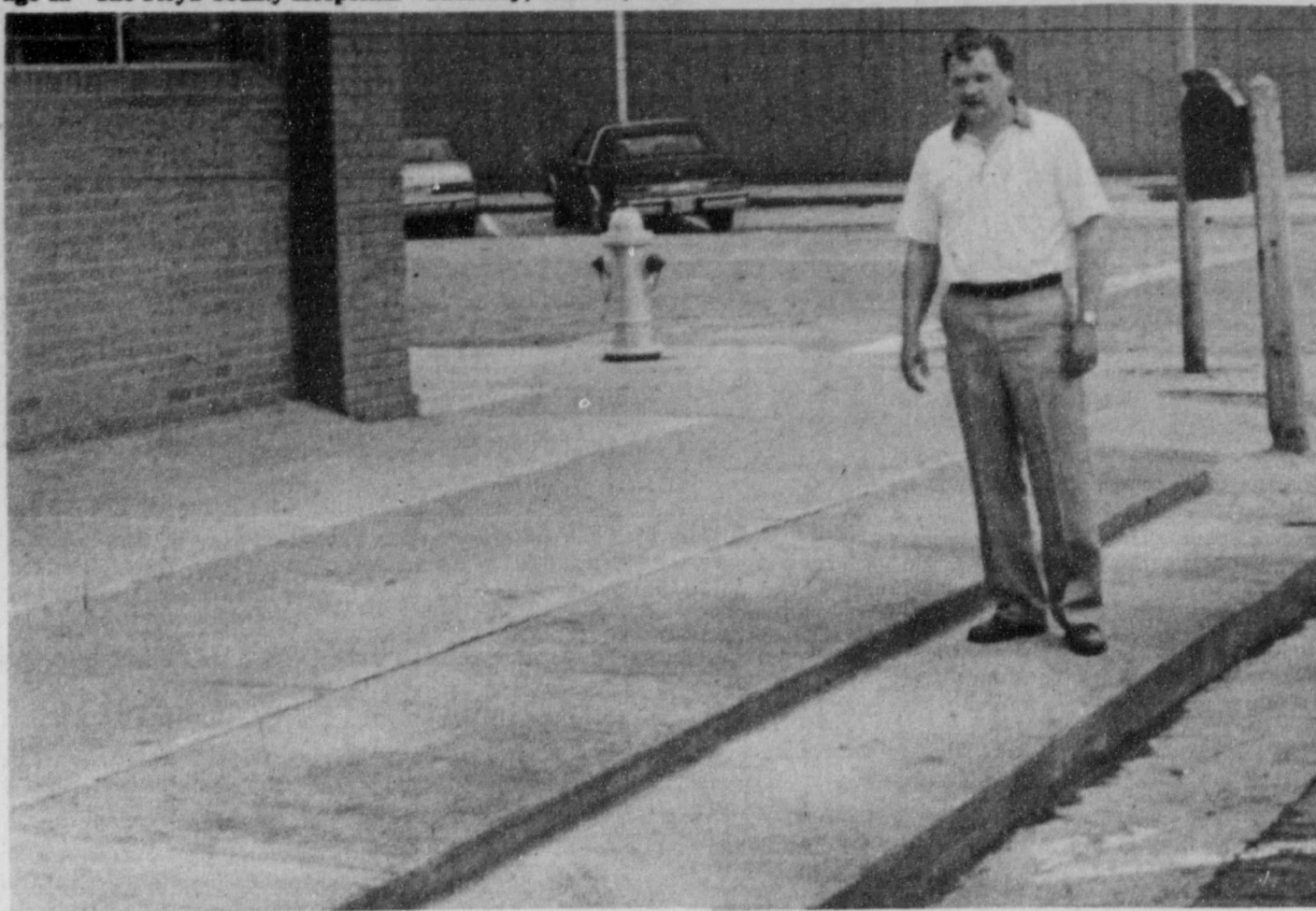


**ODEN CHEVROLET**—Dee Sanders (left) and Gayle Noland (right) coached this Oden Chevrolet T-ball team this year. Mary Lee Padgett also helped with the chore, but was unable to be present for the picture. Team members included [back row, left to right] Jennifer Noland, April Gordon, Robin Padgett, Coy Holmes and Timothy Simpson; [front row] Reagan Pernell, Shonda Smith, Joey Luna, Darrel Henderson, Victoria Cummings and Dane Sanders.

**PaPa**  
**Happy 50th Birthday**

**SIMPSON'S TREES**  
TREES of all kinds.  
SHRUBS, GROUND COVERINGS,  
UNDERGROUND SPRINKLERS,  
AND LANDSCAPING.

SCOTT SIMPSON, Owner 983-3456 Floydada, Tx, 79235



**IMPROVEMENT PROJECT**—Jerry Thompson looks over a sidewalk improvement project in front of Thompson Pharmacy. This is the latest in Floydada's clean-up, fix-up campaign this spring and summer. —Staff Photo



**FIRST NATIONAL BANK**—Gloria Mendoza, left, and Elizabeth Juarez, right, are the coaches of this season's First National Bank girls softball team. Team members pictured on the back row include Rachael Mendoza, Rhonda Garcia, Lenora Luna, Moralma Vasquez and Vicki Luna. On the front row are Patricia Juarez, Brenda Vasquez and Mary Salazar. Not pictured are Jodie Villareal and Amy Garcia.



**FLOYDADA LIVESTOCK SALES**—Joe Mack Tilson is coaching the Floydada Livestock Sales T-ball team. Team members include [back row, left to right] Brandy Hayhurst, Jacob Thrasher, Abram Gonzales and Charley Tilson; [front row] Warren Bishop, Mandi Yearly, David Bishop, Paul Ross, Justin McHam. Not pictured are Cody Stovall, Chad Turner and Batina Bailey.



**PAY-N-SAVE**—Members of the Pay-n-Save T-ball team this season are [front row, left to right] Chad Givens, Shonda Turnbow, Mindy Kelly, Tyson Whittle and Larry Hernandez; [middle row] Gabriel Rodriguez, Riley King, Jennifer Arney, Josh Lambert and Robert Bethel. Coaches include Teresa Whittle, Sheri Turnbow and Kim King. Team members not pictured are Micah Marble and Dee Campbell.



**GARY, THAYER AND BOWERS**—Members of the Gary, Thayer and Bowers girls softball team this year are [front row, left to right] Krissy Patterson, Cyan Reeves, Amber Pyle, and Debbie Koontz; [back row] Brandi Ross, Therese Sims, Sheri Covington, Lee Dunavant and Sandra Coleman. Coaches are Terry Reeves and Stan Covington. Members not pictured are Brittany Gregory, Almee Fondy and Tina Covington.



**FLOYDADA CO-OP GINS**—Floydada Co-op Gins is sponsoring this team of T-ball players coached by Rick Meyers, Linda Phillips and Ruben Barrientos. Team members are [front row, left to right] Nikki Meyers and Paul Finley; [middle row] Ruben James Barrientos, James Owens, Crystal Meyers and Melanie Phillips; [back row] Cody Gilbert, Amanda Fawver and Kyle Pierce. Members not pictured are Crystal Driver, Scott Salazar and Stephanie Emerit. Coach Erma Meyers is not pictured.

## Floydada Track Club offers summer opportunities

Floydada Track Club is a youth oriented summer program designed to allow youngsters to compete in area track meets.

Two of the three present members have competed in the Hereford YMCA TAC Junior Olympics preliminary meet and the Hershey's Meet at Dick Bivins Stadium in Amarillo.

Participating are D. G. Hollums, Tyson Edwards and Donnetra Williams.

Sponsor Randy Hollums says tentative plans call for at least three more 1986 meets: June 28, Texas Classic, Amarillo; July 12, third annual Olympian Invitational (TAAF), Lubbock; July 19, TAAF Regional Qualifying Meet, Lubbock.

There are three different certifying agencies, Hollums said, with each conducting its own area and regional

meets. There are several age divisions, including: bantam, born 1976 or later; midjet, born 1974-75; youth, born 1972-73; intermediate, born 1970-71; young men and women, 1968-69. Years of birth obviously change each year to retain the same age divisions.

Hollums says several other youngsters initially were interested in participating, but were unable to follow through for various reasons. He hopes the Floydada Track Club will involve a greater number of youngsters next summer.

## PUBLIC NOTICES

### LEGAL NOTICE

The City of Floydada is accepting bids on property and casualty insurance. A copy of the bid specifications with full instructions on bidding can be obtained at the City Secretary's office, 114 West Virginia. Bids will be accepted until 4:00 P.M., September 9, 1986. 6-26, 7-3, 7-10c

### PUBLIC NOTICE

A regular meeting of the Board of Directors for Floyd County Central Appraisal District will be held on Wednesday, July 2, 1986, at 9:00 a.m. in the Appraisal Office Board Room, Room 107, County Courthouse. 6-26c

### NOTICE OF CALCULATION OF EFFECTIVE TAX RATES

I, Shelia Faulkenberry, Chief Appraiser of the Floyd County Appraisal District, in accordance with the provisions of Sec. 26.04 and 26.08 of the Property Tax Code, have calculated the 1986 tax rates which may not be exceeded by more than three percent by the governing body without holding a public hearing as required by the code. The rates are as follows:

Dougherty I.S.D.	\$ .710 per \$100 of value
Floydada I.S.D.	\$ .746 per \$100 of value
Lockney I.S.D.	\$ .748 per \$100 of value
South Plains I.S.D.	\$ .698 per \$100 of value
Floydada City	\$ .408 per \$100 of value
Lockney City	\$ .218 per \$100 of value
Caprock Hospital	\$ .172 per \$100 of value
Lockney General Hospital	\$ .254 per \$100 of value
High Plains Water	\$ .0076 per \$100 of value
Mackenzie Water	\$ .313 per \$100 of value
Floyd County	\$ .336 per \$100 of value

Shelia Faulkenberry  
Chief Appraiser  
Floyd County Appraisal District  
Floyd County, Texas

\*complete calculations are on file in the Floyd County Appraisal District office in Room 107 of the Courthouse for inspection upon request

6-26, 7-3c

Notice of estimated unencumbered fund balance for Maintenance & Operation fund plus Interest & Sinking fund as reported by each governing body.

	Maintenance & Operation	Interest & Sinking Fund
Dougherty I.S.D.	50,248.00	
Floydada I.S.D.	1,011,000.00	13,657.00
Lockney I.S.D.	730,906.00	
South Plains I.S.D.	15,256.00	
Floydada City	115,664.95	
Lockney City	160,000.00	15,700.00
Caprock Hospital	10,000.00	
Lockney General Hospital	-0-	
Mackenzie Water	61,300.00	229,000.00
Floyd County	631,840.03	
High Plains Water	7,954.61	

Shelia Faulkenberry  
Chief Appraiser  
Floyd County Appraisal District  
Floyd County, Texas

6-26, 7-3c

### NOTICE TO BIDDERS

The Floyd County Auditor, Bobbie Hamilton, will receive bids at Room 102, Courthouse, Floydada, Texas 79235, on the following items until 10:30 a.m. July 14, 1986. Bids will then be opened and read in Commissioners' Court.

Motor Grader with trade-in of 1975 Galion 160L  
Rotary Mower, Tractor Side-mounted

Payments will be processed by the County Auditor after notification of satisfactory receipt of items. Floyd County reserves the right to award by unit cost or Total Cost Bid and to waive formalities for the best interest of Floyd County.

6-19/6-26

### NOTICE TO RECEIVE BIDS

PLAINVIEW INDEPENDENT SCHOOL DISTRICT  
July 10, 1986

The Plainview Independent School District will receive bids for the repair or purchase of the following:

- (1) Percussion Instruments for Band
- (2) Teaching Supplies
- (3) Baking Tables for Cafeterias
- (4) Food Products for Cafeterias
- (5) Library Books
- (6) Library Supplies
- (7) Magazine Subscriptions
- (8) Audio-Visual Software
- (9) Roofing at Various Buildings
- (10) Fuel Storage Tank at Bus Terminal
- (11) Sewer Line at Coronado
- (12) Carpeting at Hillcrest, Highland, & High School

Sealed bids should be returned to Mr. John O. Peck, Assistant Superintendent, Plainview I.S.D., P.O. Box 1540, Plainview, Texas 79073-1540 or delivered to Mr. Peck at the Administration Building, 912 Portland, Plainview, Texas. The bids will be received until 10:00 A.M. on Thursday, July 10, 1986, when they will be opened and tabulated. Bids received after the above deadline will be returned unopened. Bids mailed will be deemed as delivered only when they are received by Mr. Peck. The bids will be presented to the Board at their regular meeting to be held in the Administration Building at 7:30 P.M. on Thursday, July 10, 1986. At this time the contract will be let. The Board reserves the right to accept or reject any and all bids. This is a solicitation for bids and is not an offer. All bids and information received in response to this solicitation will become the property of the Plainview I.S.D.

Information concerning bid forms and specifications may be obtained by contacting Mr. Peck at the Administration Building, or by calling (806) 296-6392.

John O. Peck, Assistant Superintendent  
Plainview Independent School District  
6-26, 7-3

We'd like to introduce you to the newest spokesman for the American Heart Association.

Just as soon as he's born.

The same baby who, ten years ago, wouldn't have lived to speak his first word. But now doctors can look inside the hearts of unborn babies, detect disorders and correct them at birth. Thanks to research, he can have a healthy, normal life.

American Heart Association  
WE'RE FIGHTING FOR YOUR LIFE

**DRUNKEN DRIVING**  
Can Have Grave Consequences

JULY 1986  
**CAPADA**  
DRIVE-IN THEATRE & SNACK BAR  
FLOYDADA, TEXAS  
PHONE: 983-3743

FRIDAY-SATURDAY JUNE 27-28  
STEPHEN LANG  
JAMES REMAR  
**BAND OF THE HAND**

SUNDAY JUNE 29 ONLY  
DOLLO'S FATHER HAS BEEN SENTENCED TO DEATH IN A FOREIGN COUNTRY.  
**IRON EAGLE**  
WAITING TIME IS OVER  
LOUIS GOSSETT, JR.

FRIDAY-SATURDAY-SUNDAY JULY 4-5-6  
**POLTERGEIST II "They're back"**  
Joe Williams - Craig T. Nelson - Heather O'Rourke - Oliver Robins  
Julian Beck - Zaida Rubinstein - Will Sampson - Geraldine Fitzgerald

FRIDAY-SATURDAY JULY 11-12  
BRYAN BROWN  
...it means Special Effects

SUNDAY JULY 13 ONLY  
DENNIS QUAY  
LOUIS GOSSETT, JR.  
one will survive  
**ENEMY MINE**

FRIDAY-SATURDAY-SUNDAY JULY 18-19-20  
The system gave him a Raw Deal.  
Nobody gives him a Raw Deal.  
**SCHWARZENEGGER RAW DEAL**

COMING SOON!  
**SHORT CIRCUIT**  
COMING SOON!  
**STALLONE COBRA**  
COMING SOON!  
**TOP GUN**

**PROFESSIONAL SERVICES**

"WE SELL SLEEP" Direct Mattress Co. New or renovated. For appointment call 983-5025, Floydada.

SEWING WITH THE PERSONAL FIT. Reasonable rates. Call 983-5664.

**FARM SERVICES**

WE CUSTOM MAKE AND FIT hose for all types of machines. Brown's Implement 983-2281

**SERVICES**

WANT CARPENTER WORK: New construction, remodeling, additions, roofing, and painting. Call 455-1208 and ask for Tomas.

SANCHEZ CONCRETE: Driveways, patios, porches, sidewalks, house foundations and plaster work. Free estimate. 983-5620.

**WANTED**

WANTED TO DO: Wall-papering and inside painting. Mavis Reecer. 652-3413 TFC

**PETS FOR SALE**

FOR SALE: 2 1/2 year old registered German short hair bird dog. Call after 6 p.m. 983-2142.

FOR SALE: Registered black chow puppy. Call 652-2641 after 6:00.

**TO GIVE AWAY**

TO GIVE AWAY: 8-six week old kittens. 983-2991.

**LOST & FOUND**

LOST DOG: Small miniature Schnauzer. Gray, salt and pepper. Hair clipped recently, ears not clipped. Disappeared 11 miles south of Floydada May 30. \$150 reward to anyone who has found him or knows where he is. Call 983-2511 or 983-3611.

**STORAGE SPACE**

West Texas Mini Storage c/o Assiter Insurance 206 W. California 983-2511

**Windshields up to 40% off and a \$50 rebate on most American made cars and trucks.**

Stapp Body Shop 652-2354 or 652-3429

**LEAK REPAIR**

No job too small or large. pit digging, concrete and plastic, sewer and gas line repair, cesspool, tree trimming, landscaping and wood fence painting.

Juarez Backhoe Service 983-3393

**BISHOP PEST CONTROL**

Institutional and household pest control Mike Bishop, M.S. (806)983-2198 or 983-2870 TX. Bus. Lic. 5021 TPCL Lic. 26855

**J.P. WILLIAMS**

Ph. 652-2326 WEED CONTROL ON LAWNS INSECT CONTROL ON TREES & SHRUBS Control Of BINDWEED, RAGWEED, BLUE WEED & JOHNSON GRASS ON FARMS Joe Charles 652-2594 C.A. Lic. No. 22453 Bus. Lic. No. 3106

**MISCELLANEOUS**

ALFALFA HAY. Excellent. 983-2969. Gene Bloys.

FOR SALE: 7 piece Tell City maple dining table and chairs, matched maple coffee table and end tables, lamps, rockers, maple bedroom suite, lined oak bedroom suite, refrigerator/freezer, washer, dryer. 803 Mesquite. 6-26p

TWO TED BELL originals. Framed alike 17 1/2 x 21 1/2. \$150 each. 983-3834.

SLIGHT PAINT DAMAGE. Flashing arrow sign \$299. Lighted, non-arrow \$279! Nonlighted \$249! Free letters! Few left. See locally. 1(800)423-0163, anytime. 6-26p

1/2 PRICE TANNING: June Special!! Buy now and tan later!! ShipShape Fitness Center and Tanning Salon, 115 E. Missouri. Ph. 983-2183, Floydada. 6-26c

200 SQ. YARDS of good carpet. 983-2926. 6-26c

FIREWORKS buy one get one free. Largest selection. Save up to 70%. Open June 24-July 4, 8 a.m. to 12 p.m. Located one mile east on Matador Hwy. 7-3p

FOR SALE: 18 1/2 ft. freezer, \$225; 25 inch color TV, \$150; ping pong table, \$50; tiller, \$150. 983-3281. 6-26p

FOR SALE: used refrigerator and couch. Call 983-3632 or 983-3002. 6-26p

**MOBILE HOMES**

REPOSSESSED 14 and 16 wide mobile homes from \$99 to \$500 down, delivery included. Six months free lot rent. Call 1-800-792-0032. tfn

WHY PAY RENT! Move into a beautiful home for less than you are paying in rent. Qualify by phone 806-381-1352. Call collect. Alliance Homes Inc. 6-26c

TAKE UP PAYMENTS on 2 and 3 bedroom homes. Qualify by phone. 806-381-1352. Call collect. Alliance Homes Inc. 6-26c

1 HOUR COLOR film processing available. Pick up prints same day or next day. In-house professional processing. Thompson Pharmacy. 200 S. Main 983-5111

**W. B. EAKIN USED CAR LOT**

- 1975 Cadillac-4 dr. \$1850
  - 1978 Caprice-2 dr. \$1500
  - 77 Monte Carlo-2 dr. \$1500
  - 76 Monte Carlo-2 dr. \$1500
  - 76 Pontiac-2 dr. \$1500
  - 78 Olds 88-2 dr. \$1500
  - 80 Citation-2 dr. \$1500
  - 77 Chevy Concourse-4 dr. \$1500
- 983-3616

Before worn shocks give you a bum steer... Show your car you care. DON'S MUFFLER 983-2273

**GARAGE SALES**

ESTATE SALE: 803 Mesquite. Thursday-Saturday, 8-8. Tools, furniture, antiques, handcrafts, kitchenware, dishes, Fascination "Alpine" and miscellaneous. 6-26p

GOING OUT OF BUSINESS: Garage Sale. Friday and Saturday, 8:30 to 5:30. Sandhill store. 8 miles west of Floydada or 11 miles south of Lockney. Some groceries, nice junior girls clothes, maternity and children's clothes, play pen, too many others to mention. Lowrey home organ - MUST SELL. No reasonable offer refused. 983-3997. 6-26

HUGE GARAGE SALE at building on the Y. Friday and Saturday, 9 a.m. 6-26c

GARAGE SALE: Thursday, Friday and Saturday. 618 W. Jackson. 6-26

PORCH SALE: 736 W. Tennessee. Friday, 9:00 to 4:00. Dishes, clothes, lots of other things. 6-26p

TWO FAMILY: 109 Mae Avenue. Miscellaneous, children's clothes, girls bedspread, curtains, linens. Friday and Saturday. 8:30 till !! 6-26p

GARAGE SALE: Friday and Saturday from 9 to 5, 316 W. Lee. 6-26p

Now Open in Lockney. NTS COMMUNICATIONS OFFICE 110 N. Main Save 25 to 40% Long Distance. We sell phones. No hookup fee. Don Vernon 652-2255 652-2525

Portable disc rolling Lawson Farm Supply Inc. Floydada 983-3940

ADAMS WELL SERVICE Complete irrigation service 5 years warranty, domestic pump 720 N. 2nd 983-5003

3 BEDROOM, 2 bath, brick in Lockney. 3 BEDROOM, 2 bath brick. Central heat and air conditioning. Completely repainted, recarpeted, new roof. 6 fans on Floydada Highway. Reasonably priced. ACREAGE - 3 bedroom, 2 bath with adjoining large den, dining and kitchen. Edge of town. 29 acres with irrigation well and pump including 6" pipe. Large, almost new cellar. Priced to sell. RUSTY BACCUS REAL ESTATE 652-3395 or 652-3830

BOND LAND'S, INC. REAL ESTATE 107 S. 5th Street 806-983-2151 Dale Goen BROKER Frances Ashton OFFICE MANAGER General Land Services Sales, Leases, Management Appraisals Oil and Gas Leases

ASSITER & ASSOCIATES AUCTIONEER Tom Assiter 983-2511

**HELP WANTED**

WANTED: Boys, girls, adults to operate fireworks stand in Floydada and Lockney. 24th June to 4th of July. Write to: 8012 Seymour Highway, Wichita Falls, TX 76308. Give name, address and telephone number. 6-26p

NEEDED: Caprock Hospital District Home Care Services. Part-time and full-time RN's and LVN's to work in your own area. Send resume: Box 540, Floydada, Texas 79235. 6-26c

CAPROCK HOSPITAL DISTRICT physical therapy aide needed. On the job training. Experience preferred. Full time position. Contact Myra Poteet R.N., director of nurses, for application. 983-2875. 6-26c

**CARD OF THANKS**

The family of Grace Hamilton wish to express our appreciation for your prayers, visits, food, flowers and other acts of kindness during our mother's illness and death. The families of Thelma Jo Potts, Ruth Gray and Wilma Colston 6-26p

We would like to thank everyone who called and sent cards after Stan's accident. We appreciate all the caring and support given us in our time of need. The Stan Pierce's 6-26p

I want to thank the police, the firemen and my neighbors and family for looking for and finding my brother that was lost. God bless all of you. May Sue 6-26p

**FOR RENT**

HOUSE FOR RENT: Couple or single preferred. Newly decorated. Call 983-2855. tfn

**CLASSIFIED ADS PAY OFF!**

ALTERNATOR & STARTER REPAIRS Norrell Tractor Parts 215 S. Main 983-3417

LANDLEVELING DOESN'T COST. It pays. Landleveling, terracing, pump pits, benching. Call 983-2646 or 983-5465. Dewie Parson. tffc

ECONOMICAL STORAGE TRY BARKER'S Jewel Box-Mini Storage and save your time and money. Phone 652-2642 Corner Main & Locust Lockney, Texas. BARKER BUILDING.

Floydada Iron & Metal We buy scrap iron, junk cars, aluminum. We pick it up for you. Location-East Virginia Call-983-2305 Bus. 983-5277 Home

**BUSINESS OPPORTUNITIES**

OWN YOUR OWN jean-sportswear, ladies apparel, childrens/maternity, large sizes, petite, dancewear or accessories store. Jordache, Chic, Lee, Levi, Izod, Gitano, Guess, Calvin Klein, Sergio Valente, Evan Picone, Liz Claiborne, Members Only, Gasoline, Healthtex, Cherokee, over 1000 others. \$14,300 to \$25,900 inventory, training, fixtures, grand opening etc. Can open 15 days. Mr. Loughlin (612) 888-6555. 6-26p

**PERSONALS**

I WILL NOT BE responsible for any debts incurred by anyone other than myself after June 5, 1986. Roger Nichols. 6-26p

VISA-MASTERCARD! Get your card today. NO ONE REFUSED. Call (refundable) 1-518-459-3546 Ext. C-6685 for information. 24 hours. 7-3p

VISA-MASTERCARD! Get your card today. NO ONE REFUSED. Call (refundable) 1-518-459-3546 Ext. C-6628 for information. 24 hours. 7-3p

**FARM EQUIPMENT**

WANT TO BUY Bush Hog cotton module builders or any other brand. 405-875-2897. 7-10p

KRAUS ONE-WAY PLOW, 23 disc with power lift. Good. Phone 806-697-2437. 7-3p

CLASSIFIED RATE The Hesperian - 983-3737 or The Beacon - 652-3318

First Insertion	Per word
Second Insertion	20 cents
Minimum One 1st Insertion	15 cents
Second Insertion	\$2.50
Card of Thanks	\$1.00
Legal Notices	\$3.00
	\$2.66 per column inch

Script Printing & Office Supply \*Commercial Printing \*Office supplies & Furniture \*Business Machines 108 S. Main Floydada 983-5131

HALE INSURANCE AND REAL ESTATE Sammy Hale - Broker, 983-3261 GRADUATE OF LINCOLN APPRAISAL SCHOOL OUTSIDE CITY LIMITS, NICE 3 1/2 BRICK WITH 10 Acres land. JUST LISTED - CLOSE TO CHURCHES & TOWN, 3 bedroom, 1 bath. A REAL NICE FAMILY HOME IN STEEN ADDITION, 3/2, & fireplace. CLOSE TO DUNCAN, CLEAN 3 bedroom, 1 bath, brick. SPACIOUS HOME, WEST PART OF TOWN, 3 bedroom, 2 bath, garage. TO SETTLE ESTATE, LARGE TWO BEDROOM, close to Jr. High. ACROSS FROM CITY PARK, real nice & clean, 2 bedroom. SEVERAL NICE TWO BEDROOM, ONE BATH HOMES FOR SALE. LOW INTEREST, TIME TO BUILD, great location in Texas Addition. COMMERCIAL PROPERTY, OWNER SAYS SELL, located on Y.

LARRY S. JONES REAL ESTATE Box 27 A LIFESTYLE IN ITSELF! Large 3-2 1/2-2 exquisite home with formal living, formal dining, family room, 2-way fireplace, custom draperies, sprinkler system and many more amenities. Excellent location in west Floydada. Call for an appointment to preview this superb well built home! FANTASTIC LANDSCAPING and excellent location surround this 3 bedroom beauty. Super storage - 2,140 square feet - Lots of other amenities. \$55,000 ALMOST COUNTRY HOME! 3-1-2 on 5 acres with corrals! \$50,000 LOVELY INSIDE AND OUT! 2 bedroom with classy extras. \$42,500 SPACIOUS AND SPECIAL! 3-2 1/2-1 with fruit trees. Good area! \$35,000 A YOUNG FAMILY'S DREAM with 3 bedrooms and family room. \$35,000 LOW COST LUXURY is yours with this 3 bedroom beauty. \$31,500 PRIME CONDITION 3-1-1 with new paint, pine-paneled bedroom. \$24,000 A LITTLE BUYS A LOT in this 3 bedroom with ceiling fans. \$24,000 TRADITIONAL CHARM abounds in this two bedroom. \$20,000 CUTE AND COZY 2 bedroom on corner, super starter home! \$17,500 SOME SWEAT AND SKILL could make this place work! \$16,000 GREAT BUY on a corner lot. Two bedroom in good condition. \$14,000 CLOSE TO TOWN! Reduced price and owner is anxious! \$10,000 FARM AND RANCHES "EXCLUSIVE LISTING" Farm and ranch estate liquidation! There is one tract remaining to be sold located in southern Briscoe county, being 320 acres, with 228 acres of dry cultivated land and 92 acres of grass. Priced for a quick sale! 80 acres on Sandhill Hwy. Ideal location for a home. 160 acres of good dryland in northern Floyd County. 320 acres of irrigated land near Lakeview. Good farm! 320 acres of cultivated and grassland NE of Fairview. 40 acres near city limits. Can be subdivided and would be a good veteran land tract investment. LARRY S. JONES 983-2052 LOUISE TURNER 983-5049

**HOUSES**

3-2-2 BRICK, den, dining room, basement, 5 acres land and well with 3" submersible pump. 983-2175. tfn

HOUSE FOR SALE OR LEASE: 2 bedroom near junior high. Britt Gregory, (806)272-5732. tfn

FIVE ROOM HOUSE for sale. 2 lots. \$20,000. 102 E. Jeffie. 983-5206. 6-26p

THREE BEDROOM, 1 bath, laundry room, large living room with fireplace. 700 sq. ft., workshop or storage. By appointment only. Dale Griffin 983-3915. tfn

803 MESQUITE. Custom built spacious 3 bedroom brick, 3 baths, double garage with opener, brick storage building. Excellent location. 6-26p

NICE 2- bedroom, 2-bath home. Central heat and air, ceiling fans, mini blinds. Prefer to sell will consider renting. 983-2152. 7-17p

**AUTOMOTIVE**

1976 FLEETWOOD CADILLAC. Low mileage. Real nice car. Call 983-3627. 6-26p

AUTOMOBILE AND IRRIGATION motor repair. Call 983-2334 or come by. (Behind Don Green Auto Parts). All work guaranteed. 6-26c

1974 CHEVROLET PICKUP. Power, recent overhaul; 1983 Delta 88 Royale Oldsmobile. Call 983-2240. tfc

HARD LUCK DRIVERS Automobile Insurance. Reasonable Rates. Small Down Payment. Monthly Pay...SR22 Filings. Call David Cates. 983-3284 116 W. California tfn

3 bedroom, large den with fireplace on 2.8 acres. Several storage buildings. Call 652-3675 or 652-2657. 7 miles south of Lockney on Hwy. 378. tfn

"When business is good it pays to advertise; when business is bad you've got to advertise." Anon.

# Farmers-ranchers face unemployment tax changes

A substantial new tax liability is being faced this year by Texas farmers and ranchers: the State Unemployment Tax.

Revisions of the Texas Unemployment Compensation Act passed by the 69th Texas Legislature make many more farmers and ranchers liable for the tax this year. A variety of questions is being asked about the subject, according to Dale Goen.

Prior to this year, only agricultural employers who paid employees \$20,000 in a calendar quarter or those who had 10 or more employees in 20 different weeks during a calendar year were required to pay the tax.

The 69th legislature lowered the amount of wages and the number of employees required. New legislation particularly affects Texas farmers and ranchers growing vegetables or truck crops or using migrant labor.

Wage criteria has been lowered to \$7,500 for 1986 and will be \$6,250 next year. Employment criteria has been reduced from 10 to four this year, and dips to three next year.

Many more "small-scale farmers are now involved in unemployment tax liability," reports the Texas Employment Commission.

Good records will be indispensable in helping producers live with the new requirements, according to TEC.

A TEC official points out "If you have one migrant who works for one afternoon, you're now liable for taxes on the wages you paid him. That doesn't mean you're liable for your regular full-time employees. The law today is structured so you may owe tax only on a migrant you work a couple of weeks and not on every bit of the wages you pay. This law was passed specifically to cover seasonal and migrant farm workers and it tackles the issue."

The unemployment revision particularly affects farmers and ranchers who may hire labor for a brief period of time to meet a seasonal need, such as cotton hoeing on the High Plains.

Seasonal workers are defined as individuals who are employed in farm-ranch labor of a seasonal or temporary nature, who aren't required to be absent overnight from their permanent place of residence.

By contrast, a migrant worker is an individual employed in farm-ranch work of a seasonal or temporary nature and who is

required to be absent overnight from his permanent place of residence in order to complete the job. Any individual from Mexico who hasn't legally immigrated is always considered a migrant worker.

"Seasonal workers aren't a problem for farmers who aren't going to exceed the \$7,500 limit," points out TEC. "If you have a couple of migrants working with seasonal help, then your seasonal wages also become taxable. You don't automatically owe on seasonal workers unless you operate a truck farm, orchard or vineyard."

"You are liable to pay taxes on seasonal worker wages regardless of how minimal the amount if the work is performed specifically on a truck farm, orchard or vineyard or the seasons do the same work at the same time and location as migrants."

If only seasonal hoeing or similar activities are required, farmers can sometimes structure their operation to avoid becoming tax liable.

TEC explains that "If you know you need to avoid hiring migrant workers in order to keep from being liable for the tax, some planning ahead may be necessary. Otherwise, you

could be looking at extra accounting fees, bookkeeping problems and many other problems that arise from becoming liable to yet another agency."

Farmers or ranchers hiring workers through a labor agent may also be in for a surprise. "The labor agent is the employer and the law requires the labor agent to present evidence to the farmer or rancher that he pays the unemployment tax. However, if the labor agent does not pay the tax that's due, the farmer or rancher who contracted with the labor agent must pay the tax due on wages paid to the workers."

An employer liable for the tax must register with the TEC, report the name, Social Security number and total earnings for each employee and pay the applicable tax on each employee on a quarterly basis.

New employers in Texas start out with a 2.7 percent rate that's later adjusted. Rates go up as a result of unemployment insurance benefits being charged against an employer's account. Rates can also decrease if no claims are charged against the employer's account. TEC emphasizes that "It's imperative that

an employer protect his tax rate. You do that first of all by maintaining proper records. If someone works for you, you need to have information on when they left and the reason for separation from work. Any form of documentation is just protecting yourself.

"An employer also needs to make it a point to respond any time they're notified of a claim being filed against them."

A farmer or rancher who suspects he is liable for the tax should contact his local Texas Unemployment Commission Tax office or write TEC, Austin, Texas 78778.

Individuals who are tax liable have one month following the end of each quarter to file reports. Accurate records reflecting hirings, job separations and reasons for separation are advised. An employer is allowed only 12 days to respond to a claim against him.

Seasonal workers must be covered only if they are working for an employer whose annual payroll is \$25,000 or greater.

A farmer's family members are exempt from coverage requirements, although they may voluntarily be covered.

## Wheat poll scheduled nationwide

Failure to vote in a congressionally mandated wheat poll beginning this week will go "against the grain," organizations on both sides of the issue agree.

The U.S. Department of Agriculture has been instructed under the 1985 farm bill to poll the nation's wheat farmers whether they favor mandatory limits on production to achieve prices not lower than 125 percent of the cost of production.

The results of the poll are not binding, meaning the USDA will not be required to implement the majority decision. Nevertheless, the size of response to the poll undoubtedly will be used in future farm policy debates to foster the winning side's philosophical point of view.

Farm groups are urging wheat growers both to examine all the implications of mandatory production controls and to return the marked ballot.

Ballots were mailed this week to producers of at least 40-acres of wheat. The ballots must be returned to county ASCS offices by July 7.

Nationwide, about two million ballots will be sent. Farmers' spouses are eligible to vote in Texas because it is a community property state.

## Growers to tour fields today

Vegetable growers, seedsmen and others interested in onion production on the High Plains will tour research plots and demonstration fields in Lubbock, Hale, Floyd and Crosby counties today (Thursday).

The tour will begin at 8:30 a.m. at the Texas A&M Agricultural Research and Extension Center, north of the Lubbock airport on FM 1294, just east of the Shallowater exit on I-27. Dr. David Bender, Experiment Station research scientist, will discuss research plots at the center. Dr. Ellen Pefley of Texas Tech will report on onion research being conducted by scientists there.

Latest information on thrips control, onion irrigation, production of onion seedlings from solarized plant nurseries and soil fertility research will be presented.

The group is to tour demonstration plots on the farms of Mike Price, Hale Center; Jerrald Vinson, Floydada, and Bill Lyle, Ralls. The tour will conclude about 4:30 p.m.

## FmHA accepting emergency loan applications

Floyd and Briscoe counties have been declared eligible for Farmers Home Administration disaster emergency loans. That means, generally, that farmers who have lost at least 30 percent of their production due to the drought are eligible for FmHA loans.

"Proceeds from crop insurance and the PIK program are taken into account when determining eligibility," explains Becky Via, FmHA county supervisor.

Via is urging farmers who are interested in receiving an emergency loan to get their applications into FmHA "as soon as possible."

"We hope farmers will get their applications in early rather than waiting until near the deadline which is January 23, 1987," Via says. "The longer they wait, the more chance there is for long delays in getting their checks. If the applications come in early we can avoid backlogs and speed up the process."

FmHA office for Floyd-Briscoe counties is located at 107 W. California in Floydada. The telephone number is 806-983-2430.

In newsletters from agriculture organizations, commodity groups for the most part are noncommittal about taking a position on the poll. Grain Sorghum Producers Association, Texas Wheat Growers and the state and national Grain and Feed associations simply noted that the election was pending and urged members to vote one

way or the other.

The American Farm Bureau Federation, along with Agriculture Secretary Dick Lyng, urged a "no" vote. The American Agriculture Movement supports marking the "yes" box on the ballot.

Stay dry!



High Plains cotton producers in the 25-county area represented by Plains Cotton Growers, Inc., have signed contracts to enroll 95.8 percent of their cotton bases in the 1986 acreage reduction program.

A final report from the State Agricultural Stabilization and Conservation Service at College Station shows an aggregate base for the 25 counties of 4,707,266 acres, of which 4,508,066 were signed into the program. Producers agreed to idle at least 25 percent of the enrolled acres in return for access to non-recourse loans and deficiency payments if the 1986 average price to U.S. farmers falls below an 81-cent target.

Deficiency payments will equal the difference between the target price and the 55-cent base loan or the average farm price for the year, whichever is less. January through May prices to the farmer have averaged below the base loan, and prospects for improvement are dim, so most producers are assuming the deficiency payment rate will be the maximum 26 cents per pound. Payments are based on the payment rate times farm program yields times planted acres, with a \$50,000 payment limitation.

Although the base and enrollment figures are the obvious starting point for projecting planted acres, the task is more than a little complicated.

The 25 percent acreage reduction requirement of the 1986 program would permit a maximum planted acreage on the Plains of just over 3.38 million (75 percent of enrolled acres). But based on the ratio of maximum permitted acres to actual planted acres seen under a program with similar provisions last year, that figure logically can be reduced by about five percent to 3.2 million. Then comes the hard part.

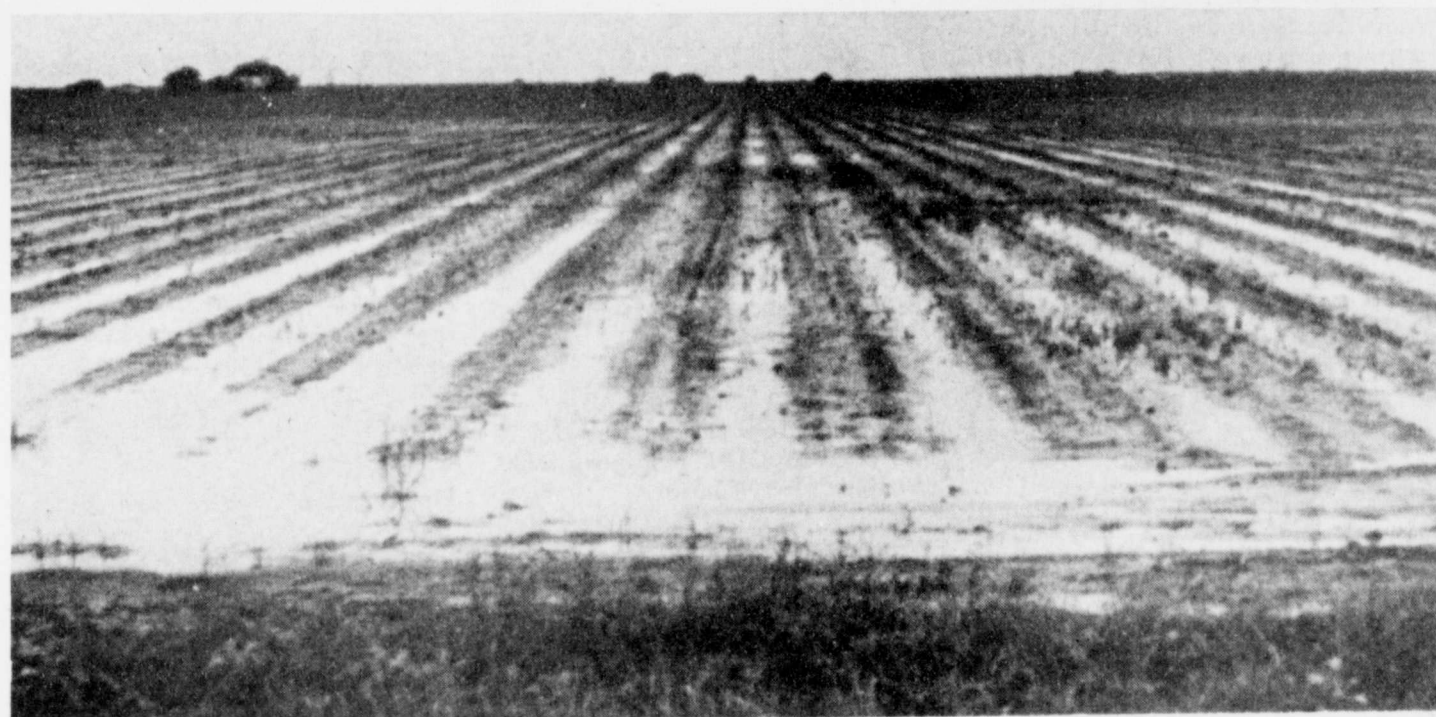
There is a new provision of the current law under which producers can elect to plant only half their permitted acres and still qualify for 92 percent of deficiency payments. How many producers will take that option, which remains open until the final acreage certification date July 15, is the big question. Some are estimating the 50-92 program feature may reduce planted acreage by another five percent, down to just over three million.

Meanwhile, thousands of planted acres have been destroyed by hail, wind, heavy rains, seedling disease and Ascochyta blight. Some will be replanted, some won't. Which leaves observers at a loss to project anything like a firm figure on acreage that will be left for harvest.

The chart below shows each county's 1986 total base cotton acreage, the number of acres enrolled, total farms with cotton bases and the number of farms enrolled:

	Total Base Acres	Acres Enrolled	Farms with Base	Farms Enrolled
Bailey	155,411	147,850	922	813
Borden	33,829	32,724	193	177
Briscoe	67,901	61,151	443	387
Castro	100,444	94,889	788	701
Cochran	172,775	168,750	584	548
Crosby	242,584	239,147	999	953
Dawson	324,834	323,231	1,606	1,562
Deaf Smith	15,836	14,396	192	152
Dickens	72,123	65,207	552	434
Floyd	250,557	231,284	1,412	1,268
Gaines	471,877	446,046	1,320	1,181
Garza	55,077	53,776	390	365
Hale	294,965	289,612	1,850	1,731
Hockley	339,202	336,783	1,596	1,563
Howard	114,491	113,426	818	777
Lamb	281,648	270,358	1,944	1,816
Lubbock	356,054	316,006	2,470	2,066
Lynn	310,799	307,008	1,401	1,330
Martin	169,918	166,752	933	886
Midland	44,212	42,884	298	259
Motley	66,948	59,265	372	297
Parmer	89,561	77,224	960	790
Swisher	122,196	117,795	889	874
Terry	370,938	357,895	1,370	1,297
Yoakum	183,086	174,607	622	550
TOTALS	4,707,266	4,508,066	24,924	22,777

The Floyd County 4-H Rifle Teams would like to thank Mac Willson of WILLSON & SON BUILDERS MART FOR LETTING US PRACTICE IN HIS WAREHOUSE We appreciate your support of 4-H Programs!



LIKE A SPONGE—Farmland is soaked "just like a sponge" following continued rains. This photo was taken south of

Floydada on Monday morning.

—Staff Photo

**Let's talk.**  
Information about your changing telephone service from Jim West, Manager-Community Relations

### SWBT sponsors wagon train

Southwestern Bell Telephone is committed to preserving our state's rich history, because we're proud of Texas' distinctive roots. They're our roots, too.

Wagon trains, like telephones, have played a key role in Texas' development. And in keeping with our Texas commitments, we recently joined in the sponsorship of the Sesquicentennial Wagon Train, through proceeds from the sale of Sesquicentennial calendars.

While we enjoy helping bring the past to life, we never lose sight of our most important job: providing Texans the best telephone service possible — advanced, futuristic telecommunications systems — today.

You might say we do just that on the wagon train. While today's wagon train riders are living a lifestyle reminiscent of the 1800's, they do have at least one edge over the pioneers who settled Texas. We've made sure today's adventurers enjoy the best of two worlds, if they want to, by providing portable payphones at campsites during their 6-month, 3,000-mile journey.

As the wagon train — longest and largest in American history — blazes a new trail across Texas, it's making modern-day history. The wagon train not only commemorates our state's 150th birthday and ancestors, but is a symbol of Texas to the world.

### A festive journey's end

On July 3 the 4-mile-long convoy of 150 wagons, 800 horses and 300 horseback riders will roll into their final campsite, Fort Worth. Not only will the "eyes of Texas" be upon them, but millions of people from around the world will also be watching.

Reporters, newsmen and camera crews from across the U.S. and world will be on-hand to cover the Texas-sized celebration planned at the end of the trail.

And we're happy to be a partner in this historic event, sharing in Texas' past, present and future.

### Teaching good phone usage

With the kids out of school for the summer, it's a good time to teach or review good phone usage, both for good manners and for security. Some of your personal emergency numbers for the youngsters during the school year will be changing now that school's out.

And we're here to help. We've got a free booklet, "Phone Use for Children," for youngsters and their parents. With a little help from Mom and Dad, this booklet can help even a pre-schooler understand the proper way to use the telephone.

The booklet shows children how to answer the telephone, what to say to callers and what to do in an emergency. It also talks about "calls that cost extra money" — like long distance or other toll calls. And it describes in words and pictures good phone manners to learn and remember.

Having good phone manners, well that's just one more thing about your children you can be proud of. But knowing they understand how to use the phone in an emergency will make your summer relaxation a lot more relaxing.

To order your free booklet, write to:  
Southwestern Bell Telephone,  
Tele-Help, P.O. Box 225265,  
Dallas, Texas 75222.  
Or call toll-free 1-800-325-2686,  
ask for ext. 80. Please allow 3 weeks for delivery.

Southwestern Bell Telephone  
Texans providing telecommunications for a growing state.

Jim West  
SW Bell Telephone  
916 Denver  
Plainview, TX 79072  
296-7493

### Caprock-Plains Federal Land Bank Association

Floydada 983-2480

### FLOYD COUNTY FARM BUREAU

Lockney 652-2242  
Floydada 983-3777

### FLOYDADA IMPLEMENT CO.

Floydada 983-3584

### FIRST NATIONAL BANK OF FLOYDADA

Floydada 983-3717

### RUSSELL'S EQUIPMENT & SUPPLY

Floydada 983-3751

### FLOYD COUNTY IMPLEMENT

Floydada 983-3732

### PATTERSON GRAIN CO.

Lockney Lone Star 652-3393

### FLOYDADA COOPERATIVE GINS INC

Floydada 983-2884