

# THE FLOYD COUNTY Hesperian

25¢

Thursday, December 5, 1985 ©The Floyd County Hesperian Floydada, Texas 79235 USPS 2026-8000 Volume 84 Number 47

a view from

## The Lamplighter

By Ken Towery

### ODDS AND ENDS FROM HERE AND THERE

We are fast approaching that time of the season when those who intend to run for public office must declare themselves. They still have a couple of months in which to jockey for position, but a great deal of that is already going on. We see by the papers, for instance, that former Representative Jack Hightower has given up on the idea of tackling Beau Boulter in a rematch, and has gone to work for Jim Mattox, of all people.

Jack was a good Congressman, by and large, but the people of this District thought he was not as good as Boulter would be, so Boulter won. Jack said a lot of people throughout the District urged him to run again for his old seat, but he evidently looked at some of the same polls we have looked at, and decided it wouldn't be a successful venture. That threw the leadership of his Party in a dither, or at least a quandary. The Amarillo paper quoted Larry Lambert, Wichita County Democratic Party chairman, as saying they were caught flat-footed by Hightower's decision, and that they didn't know who they were going to settle on. At any rate, he told the paper, their candidate would have to be from the "northern end" of the District, since the Southern end always voted heavily Democratic anyway.

That business of taking people for granted is one of the many reasons the Democrats lost the last election so thoroughly, and it is one of the reasons Beau Boulter is now our Congressman and Jack is working for Jim Mattox. Beau never made that mistake, and judging from the way he works this District, he is not about to make it.

At any rate, we wish Jack well in his new job. The Attorney General's office has been sorely lacking in both integrity and brain power. Jack ought to be able to improve the situation on both counts. Whether that will be enough to save Mattox in 1986 remains to be seen.

And in passing we might note the confusing situation down in Austin, where confusion seems to be the norm. Carol McClellon Rylander, who was appointed by Gov. Mark White to a position on the State Insurance Board, has announced that henceforth she will consider herself a Republican. Carol was Mayor of Austin for a number of years, and is considered by many to be the last good mayor that town has had. She was a reasonably conservative Mayor, presiding over a fractious bunch of liberal Councilmen. The Governor made a big deal of it when he appointed her to the Insurance Board, and there were those who thought he was doing it to get Carol out of the political pipeline, so she would not be a problem in the future. When reporters asked the Governor for comments following Carol's switch, he was speechless. Which in itself is a switch for Mark.

And in further passing: For years we have been treated to cries of outrage by the environmentalists about how all those evil companies and corporations are polluting our nation's water supply. We don't mean to make light of the matter, for it truly is serious. But the mail brings some interesting information.

The Texas Water Commission informs us that they have compiled a list of the worst water polluters in Texas. The list, according to the Commission, identifies those who "have poor operating records which have caused adverse environmental impact or whose operations are such that a great potential for environmental harm exists."

Here is the list of the worst polluters: City of Brownwood, City of Garland, City of Texarkana, Worldwide Refining and Tank Company in Amarillo, City of San Antonio, Cameron County Water Control and Improvement District, City of Corpus Christi, City of Austin, Memorial Village Water Authority in Houston, City of Houston Wrightwood Plant, Amfac Foods Monterey Inc., of Madison County, The El Paso Utilities Public Service Board Socorro Plant and the Phoenix Frozen Foods in Hidalgo County.

As pogo would say, we have finally seen the enemy, and he is us.

One more item. We hate to mention this, but the staff insists that I say something about it. But first, some background.

We ran our traps recently on what it costs us to produce this newspaper. It is one of those things a business has to undergo occasionally, just to see where we stand on the matter of income and

Continued On Page 3

## Rewards offered

A \$200.00 reward is being offered by Crime Call for information which will lead authorities to the person or persons responsible for any of three vehicle burglaries. One of the vehicles burglarized was parked at 906 W. Tennessee and another was parked at 905 W. Tennessee. C.B.'s were stolen out of both cars. The burglaries occurred on either the night of November 23 or the morning of November 24. On Friday night, November 29, another vehicle, parked at Producers Coop was burglarized. A Motorola high band radio and gasoline was stolen from this vehicle.

A reward is also being offered for any information which will lead authorities to the arrest of whoever is responsible for the burglary of the Floydada

Vegetable and Pepper, on Saturday night, November 30. Items valued at \$2,800, including a television, radio, and stereo, were stolen from the business. There was \$500.00 in damage done to the building in the effort to break in.

Crime is also offering a \$200.00 reward for information on a residential burglary, in which a stereo was stolen. The house is located in the southern part of town, and was burglarized on Wednesday, November 27, sometime during the day.

Anyone with information about these four incidents is urged to call Crime Call at 983-5200. Callers do not have to identify themselves.

Crime Call is supported entirely by private funding and tax-deductible contributions may be made at the First National Bank of Floydada. First National Bank of Lockney, or checks may be mailed to: CRIME CALL OF FLOYD COUNTY, INC., 122 E. California, Floydada, Texas 79235. Citizens are reminded that Crime Call offers rewards for information on all unsolved felony crimes occurring in Floyd County.

Acting Police Chief James Hale reminds everyone that, "With the Christmas season upon us, house and car burglaries occur more frequently. Be sure to secure your cars when leaving, and lock up your homes. The Christmas gifts are very tempting, and a purse left on your car seat can be stolen in just a few moments."

## Annual yule lighting contest is announced

The Floydada Chamber of Commerce is again sponsoring a yule lighting contest for Floydada businesses and residents. Prizes will be awarded in both categories for first, second, and third place. The contest is easy to enter. Just have the lighted decorations in place and lighted in time for the judging on the evening of December 16.

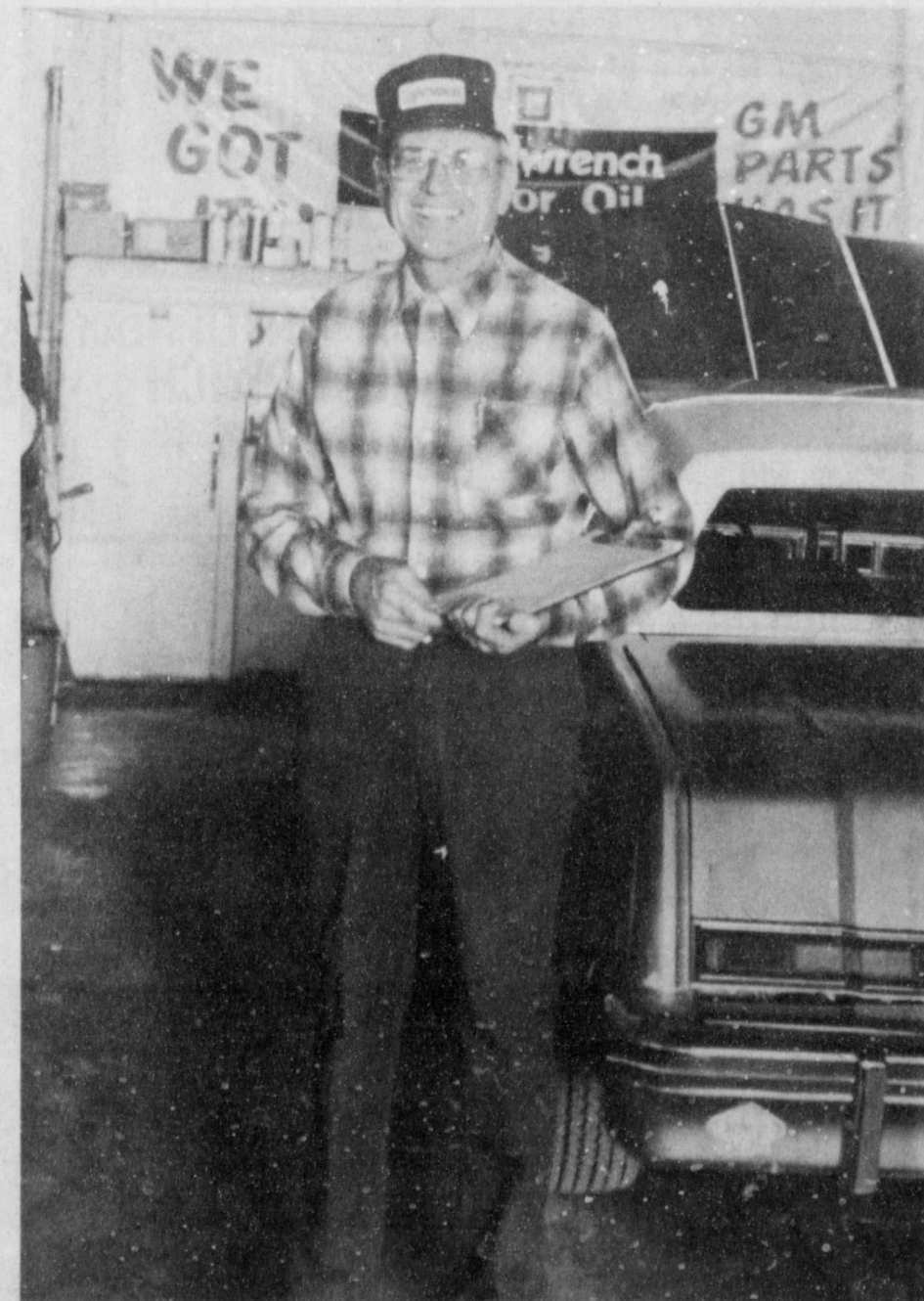
Out of town judges will tour the city after dusk to view the displays and make the decisions awarding the prizes for both business and residential scenes. Cash prizes of \$25.00 for first, \$15.00 for second, and \$10.00 for third place will be awarded in each category.

Chamber manager Nettie Ruth Whittle stated "We are excited about this year's contest. The response to our Adopt a Decoration campaign was good and we hope this is an indication that more businesses and residents will be decorating for the holidays."

Whittle also expressed the gratitude of the chamber for all the hard work put in by Connie Galloway and his crew in assembling and installing the Christmas decorations around the city.

"Everyone at the Chamber of Commerce would like to urge all the Floydada businesses and residents to demonstrate their Christmas Spirit and decorate for the holidays," said Whittle.

## People At Work...



L.B. STEWART, Service Manager at Oden Chevrolet-Olds, has helped keep the wheels turning, literally, for Floyd County folks for the past 35 years. L.B. began work for Oden as a mechanic and now is top man for the "back shop," where he is known not only for his expertise, but his friendly smile and courteous service as well. STAFF PHOTO



ANNUAL CHRISTMAS BRUNCH—Ruth McIntosh, Margie Fowler, and Nell Swinson, members of the Floydada Chapter of the American Cancer Society, discuss plans for the group's annual Christmas brunch. The event will be held Saturday, December 7, in the home of Kay Zimmerman at 522 West Kentucky. Tickets may be obtained for a \$5.00 donation from any board member or at the door. The brunch is scheduled for 9:30 a.m. to 11:30 a.m. STAFF PHOTO

## Chemical hearing slated

The agricultural producer started dealing with rules and regulations on agriculture chemicals when application standards and label changes were introduced. These regulations were initiated for the safety of those applying the chemicals and the general public. Pesticide regulations affect everyone that is involved in agriculture.

During the past two years, we in Floyd County have been involved with damage to our crops because of pesticides that have covered large acreages. This damage has created public awareness toward regulating hormone type herbicides in Floyd County. Because it is the producer that will be affected by these regulations, the County Judge and Commissioners Court of Floyd County have scheduled two public hearings to allow the producer a chance to voice his or her opinion and be a part of the regulatory process.

Representatives of the Texas Department of Agriculture have been asked to be present at these hearings to answer any questions that may arise and lend guidance to the process. The TDA representatives will help however they can to explain the advantages and disadvantages that go along with a regulated county.

The hearings will be held in the

County Courtroom, of the Floyd County Courthouse on Friday, December 6, at 9:30 a.m. and Monday, December 9, at 3:00 p.m. Notice of the hearings have been published in the local newspaper.

Many times the general public does not worry about the regulatory process until after the fact. This will be everyone's chance to become a part of the rulemaking process, as the decisions that come from these public hearings will determine the rules and regulations that we as agriculture

producers will live by. It does not matter if you are a producer, applicator, or dealer everyone is invited and encouraged to attend these hearings. I hope that by sharing this information with you the Texas Agriculture Extension Service has provided you with information that may assist you.

Educational programs conducted by the Texas Agricultural Extension Service serves people of all ages regardless of socioeconomic level, race, color, sex, religion, handicap or national origin.

## THIS WEEK

### PUBLIC HEARING

There will be a public hearing on Friday, December 6, at 9:30 a.m. in the Floyd County Courtroom to receive input on proposed changes in the Herbicide Law as it applies to Floyd County. All interested farmers, ranchers, and land owners are invited to attend.

A second hearing will be held Monday, December 9, at 3:00 p.m. in the County Courtroom. The County Commissioner will be in session during this meeting to adopt any regulations proposed.

### FLOYDADA LIONS CLUB

The Floydada Lions Club will be taking pledges Saturday, December 7, 1985 for the Texas Boys Ranch Telethon on television Channel 28. Local pledges can be called in to 983-3284 and 983-3790 or brought by the Floyd County Insurance office located at 116 W. California. The telethon will be telecast from 7:00 p.m. to 11:00 p.m. and the local telephones and office will be manned at that time.

### DEFENSIVE DRIVING COURSE

Floyd County Farm Bureau will have a Defensive Driving Course, Monday December 9th and Tuesday December 10th at the Texas A&M Extension Center from 6 p.m. to 10 p.m. each night. A fee of \$5.00 for Farm Bureau Members and \$40.00 for non-members will be charged. Classes will be limited to the first 50 people. Please contact the Floyd County Farm Bureau Office at 983-3777 or 652-2242 if you are interested.

### ENCHILADA DINNER

Floydada band enchilada dinner and Christmas concert will be held Sunday, Dec. 15. Dinner includes enchiladas, beans, salad, chips, picante sauce, dessert, coffee or tea. Price: \$3.00 for adults and \$2.00 for children under 12. Bowl of chili is \$1.00. Dinner is served in Floydada High School cafeteria from 11:30 to 1:30. Band concert starts at 2:00 in high school auditorium and admission is free.

### WEATHER

Courtesy of Energas		
DATE	HIGH	LOW
November 27	48	28
November 28	38	34
November 29	53	34
November 30	60	40
December 1	28	16
December 2	24	12
December 3	50	23

### CHRISTMAS DEADLINE

Readers and advertisers are reminded that articles, pictures, stories, ads, and letters for the special Christmas edition need to be in the Hesperian office by December 9. Contributions from all age groups are welcome. Santa letters, Christmas stories, and Christmas memories will be published for the enjoyment of all readers. The Hesperian appreciates your assistance in making this the best Christmas edition ever.

### CANCER BRUNCH

The Floydada Chapter of the American Cancer Society will hold the annual Christmas Brunch on Saturday, December 7, from 9:30 a.m. until 11:30 a.m. at 522 West Kentucky.

### MEETING REMINDERS

Tickets are on sale from any American Cancer Society board member for the annual Christmas Brunch to be held Saturday, December 7, at the home of Mrs. Fred Zimmerman, Jr. 9:30 to 11:30 a.m.

### SOCIAL SECURITY HOURS

A representative of the Social Security Administration will be working at the Floyd County Courthouse from 9:30 a.m. to 11:30 a.m. on December 11. There will be no other work day in Floyd County in December due to the Christmas holidays.

### HEY WHIRLWIND FANS,

Thursday thru Saturday the Varsity teams travel to Lorenzo. In Lorenzo, they will be playing several opponents during this tournament. To show the Winds you're behind them 100%, come on out and enjoy the action. The Winds will also be facing the Longhorns, here Tuesday night. J.V. and Varsity teams will be playing. So, come on out and support them. Everyone wear green to the game! Go Winds! Varsity Cheerleaders

## PEARL HARBOR DAY DECEMBER • 7th

### GRAIN PRICES

Courtesy of Producers Coop	
Grain	Price
Corn	\$4.45 per 100 weight
Wheat	\$2.90 per bushel
Milo	\$3.90 per 100 weight
Soybean	\$4.25 per bushel



**BEAUTY AND THE BEARD**—Miss Floydada, Kelli LaBaume, posed with Santa Claus after performing her duty of lighting the Christmas tree on the courthouse square last Monday evening. **STAFF PHOTO**

## Postmaster offers tips for holiday mailings

With a little bit of care, holiday cards and packages can arrive on time and in good shape, says Postmaster Geary Reckling.

In addition to mailing early, postal customers are urged to properly address cards and packages with the name, house number and street (or post office box) number, and the city, state and zip code reserved for the last line. Use of apartment numbers is encouraged.

"It is also a good idea to put a slip of paper with the recipient's name and address and your return address inside parcels, and be sure the addressing on the outside of the parcel includes your return address and zip code," Reckling says.

Customers are also reminded to check the size of their envelopes before mailing Christmas and other holiday cards. Letter size standards require that envelopes be at least 3 1/2 inches high and 5 inches long to be accepted for mailing.

Parcels will arrive at their intended destination in good shape if you follow a few simple suggestions:

**CUSHION:** Make sure contents are well-cushioned and there is no empty space in the box. Use crumpled newspaper around the item, including all sides, top and bottom. Commercially available foam shells or air-pocket padding also are good cushioning materials. Padded mailing bags are a good way to mail small items.

**DON'T OVERWRAP:** Just use your carton. Brown paper and twine cord are not necessary. Paper can rip, and twine can become entangled in mail processing equipment.

**SEAL PROPERLY:** Close your parcel with one of the three recommended types of tape: pressure sensitive, nylon-reinforced kraft paper, or glass-reinforced pressure sensitive. Don't use cellophane tape or masking tape -- they aren't sturdy enough. It's a good idea to

put a slip with the address and return address inside the parcel.

**AVOID SMUDGES:** Use smudge-proof ink for your addressing.

**POSITION ADDRESSES PROPERLY:** Put the recipient's address in the lower right portion of the package. Put your return address in the upper left corner of only one side of the package. Remove all other labels.

**USE ZIP CODES:** Be sure to include the zip code in both the recipient's and your address. Remember, wrong zip codes can delay the mail.

**APARTMENT NUMBERS:** Using apartment numbers or suite numbers, when you know them, helps the Postal Service deliver mail in large buildings.

**TIME IT RIGHT:** Mail early in the month and early in the day.

**USE THE RIGHT SERVICE:** Irreplaceable items, such as cash and other valuables, should be sent by Registered Mail.

**IF YOU RUN OUT OF TIME:** Priority Mail affords First-Class handling for packages weighing over 12 ounces and up to 70 pounds. Priority Mail can be sent from any post office, station or branch or through rural carriers to any address in the U.S. Delivery of Priority Mail is accomplished in two to three days anywhere in the country. Priority Mail can even be used for foreign mailings.

The service is available with insurance, return receipt, COD, certificates of mailing and Special Delivery. Customers interested in Priority Mail should contact the post office for details.



**GETTING THE MAIL OUT**—Jack Robertson, Jerry Thompson, and Monte Williams lend a helping hand to Nettie Ruth Whittle as the Floydada Chamber of Commerce prepares letters to local businesses concerning the clean up, fix up, and modernization project planned for the Texas Sesquicentennial in 1986. **STAFF PHOTO**

## Americans will spend 30.2 billion on Christmas items

Americans are no Scrooges when it comes to Christmas. This year we will spend an extra \$30.2 billion on gifts, decorations and other expenses to celebrate the holiday, nearly \$2 billion more than last year.

This comes to an average of \$126.88 for every man, woman and child in the country. It also means an after-Christmas financial hangover of \$507.52 for a "traditional" family of four or \$351 for the average household that now has about 2.7 persons.

We will buy 32 million live Christmas trees for \$640 million, according to the National Christmas Tree Association, and will spend \$150 million on artificial trees and \$500 million on lights and decorations, according to The National Ornament and Electric Light Association (NOEL) — a total of nearly \$1.3 billion. About one-third of American households will have fresh cut trees, another one-third will have artificial trees and one-third will be dark.

And once we have our trees up, we'll spend another \$30 billion or so on things to put under them.

The largest part of that money, 49.7 percent, will be spent in general merchandise and department stores, 13.4 percent will be spent in clothing

and accessory stores, 6.2 percent will be spent in food stores on the Christmas turkey and fixings and 3.7 percent will go to the local purveyor of spirits for that eggnog that we'll be making.

These estimates are based on last year's extra spending that occurred during the holiday season plus what the U.S. Chamber of Commerce sees as an increase of about 6.3 percent this year.

Of course, this is not the total amount that people will spend this season, but just the extra amount spent because of the holiday. For example, people buy food all the time, but a family of four will probably spend an extra \$31.47 of such holiday treats as fruitcake and plum pudding.

There is a flip side to this holiday spending, and that is the extra workers stores will need to help you spend your money. By the time the Christmas buying season is over, some 600,000 workers will have been hired by American retailers. The average seasonal worker will take home about \$1,059 this Christmas to help with his shopping, in addition to any discounts he may get from his employer. This will add more than \$635 million to this holiday season's spending power.

### Floydada Nursing Home Happenings

By Florence Van Hoose

Monday morning Dolores Cannon and Leona Neff were busy in the beauty shop making a lot of ladies beautiful. Monday morning devotions were by Trinity Church. The singers were Rev. G.A. Van Hoose, Dartha Westbrook, Eula Mae Wilson, Shirley and Sabrina Varner, Deanna and Amy Westbrook, and Mildred Thrasher. Rev. Van Hoose spoke about praising the Lord. In the afternoon Sabrina Varner came and played Bingo with us. Myra Hall bingo'ed the most times. The prizes were bananas, and cheese crackers. We want to thank the G.A.'s for making Thanksgiving cards and bringing fruit and singing to the residents.

Tuesday morning devotions were by Brother Neeley Richardson. We enjoyed the devotions and also the banana break. In the afternoon we had a good time of Bible study, sharing and prayer.

Wednesday morning devotions were omitted because of the holidays. In the

afternoon we had an ice cream party. Shirley Varner, Sabrina Varner, and Dolores Cannon helped us with the party.

Thursday was Thanksgiving and I was off. The residents had self directed activity. Some of the residents went out to be with their families for Thanksgiving.

Friday morning devotions were by Virginia Cage, Mrs. Withers, and Freda Simpson. Virginia led the singing and Freda brought the devotion. In the afternoon we had a staff meeting and then I caught up on paper work.

This week's visitors were: Illa B. Williams, Edna Patton, Delzie Bradford, Hazel Bradley, Bill and Dell Gray, Joey Garcia, Opal and Marion Kratzer, Lubbock, Mike Lightfoot from Hinton, Oklahoma, Scott Faulkenberry, Elvis and Lovelle Childs, Lee Moss, Sherry Robinson and Rachel from Duncan, Oklahoma, Winnie Neil, and Laura Turner.

### Senior Citizens Menu

December 5-13

Thursday—Chicken a la king on toast, buttered lima beans, 1/2 pear and American cheese salad, brownie with nuts, milk

Friday—Chicken fried steak, cream gravy, whipped potatoes, turnips and greens, roll with butter, yellow cake with icing, milk

Monday—Hamburger steak, mushroom gravy, mashed potatoes, squash casserole, corn bread with butter, ambrosia, milk

Tuesday—Pepper steak strips, buttered rice, buttered peas and carrots, roll with butter, fruit cobbler, milk

Wednesday—Oven fried chicken, cream gravy, mashed potato, buttered spinach, roll with butter, fruit cup, milk

Thursday—Turkey and dressing, giblet gravy, cranberry sauce, oriental vegetables, roll with butter, pumpkin chiffon pie, milk

Friday—Fried fish with tartar sauce/catsup, potatoes au gratin, zucchini and tomatoes, cornbread with butter, raisin cookie, milk

### THE FLOYD COUNTY HESPERIAN

[USPS 2026-8000] Published weekly each Thursday at 111 East Missouri Street, Floydada, Texas 79235. Second class postage at Floydada, Texas 79235.

SUBSCRIPTION RATES: Local \$12.50 per year, out-of-trade area, \$13.50 per year.

POSTMASTER: Send address changes to the Floyd County Hesperian, 111 East Missouri, Floydada, Texas 79235.

Ken Towery Publisher  
Alice Gilroy Editor/Advertising  
Neta Marble Associate Editor  
Rosemary Gonzales Production Mgr.  
Juanita Stepp Reporter

**Kids, Santa's getting ready so be sure and get your letters in to the Hesperian by Dec. 11.**

## Pre-Holiday SALE

ALL SIZES-GREAT SELECTION OF FRESH CHRISTMAS TREES AS LOW AS \$8.99

<p>TV SPECIAL DEL MONTE WHOLE GREEN BEANS 2 16 OZ. CANS 89¢</p>	<p>TV SPECIAL OSCAR MAYER MEAT WIENERS 16 OZ. PKG. 99¢</p>	<p>TV SPECIAL SHURFINE CS-WK GOLD CORN 17 OZ. CANS \$1</p>
<p>BORDEN'S HOMOGENIZED MILK 1/2 GAL. CTN. \$1.19</p>		<p>BORDEN'S ASSTD. FLAVORS ICE CREAM 1/2 GAL. CTN. \$1.79</p>
<p>FAST &amp; HOT SAUSAGE &amp; BISCUITS FOR 99¢</p>	<p>ALLSUP'S HOT LINKS 2 FOR 99¢</p>	<p>GREAT TASTING ONION RINGS FOR 59¢</p>
<p>PARKAY LIGHT SPREAD 2 lb. TUB 89¢</p>	<p>CHICKEN FRIED STEAK SANDWICH 99¢</p>	<p>SHURFINE SUGAR 5 lb. BAG \$1.29</p>
<p>SHURFINE AMERICAN CHEESE 24 SLICE PKG \$1.69</p>	<p>12 oz. CANS 6 PACK \$1.29</p>	<p>PEPSI-REG. OR DIET PEPSI FREE-PEPSI LIGHT</p>

PRICES EFFECTIVE Dec. 5-11

## ALLSUP'S CONVENIENCE STORES

WHILE SUPPLIES LAST

OPEN THANKSGIVING DAY  
ICE-MILK-BREAD-FRESH PRODUCE-SNACKS-BROWN & SERVE ROLLS-CHIPS & DIPS-FILM & FLASH-HOT COOKED FOODS-SELF SERVE GAS

## INSURANCE FOR YOUR HOME RANCH FARM AUTO CROPS LIFE

For help with insurance questions and needs call...

**Texas Farm Bureau Insurance**

101 S. Wall, Floydada, Texas  
Floydada 983-3777 Lockney 652-2242

<p><b>Kenneth Holt</b> 652-3456</p>	<p><b>Danny Colston</b> 983-2146</p>
<p><b>James Race</b> Agency Mgr. 652-2638</p>	<p><b>Clar Schacht</b> Career Agent 652-3449</p>





## Lakeview News

By Joyce Williams  
November 25, 1985

Mr. Holt Bishop was buried in the Lakeview Cemetery Sunday afternoon, November 24, beside his late wife, Lena. His son, Howard Bishop had gone to his father's house about 3:00 Friday afternoon. He found his father, dead of an apparent heart attack. Services were held in the First Baptist Church in Floydada. Many friends and neighbors attended from Lakeview, Mt. Blanco, Crosbyton and Floydada. His granddaughter was able to fly here from South America, where her husband is a missionary. There were many relatives present from the Bishop, Davis, Teague and other families kin to Mr. Bishop. He is survived by two children, Howard of Lakeview and Mrs. Shirley Peggram of Nazareth, as well as sisters and brothers.

The last of the house guests here for the Mooseberg anniversary party departed Tuesday. Friends from out of town included Mrs. Clarice Jemeyson of Oregon state and Mrs. Ed Winifred Lee of Austin and Matador. Others of the family included June, Tommy and Roy Sherman of Lockney; and Alice and Ken Steele. Carla, Donny, Zade and Robbie Winslow were here from Oklahoma for the ladies parents 40th wedding anniversary reception held November 10 in the Wall Street Parlour.

Mrs. O.D. Williams attended a gathering of Texas Women's Universities alumni in Lubbock Saturday afternoon at the home of Mrs. Mary Beth Foshee Scull. Guest of honor was Dr. Mary Evelyn Huey, president of the

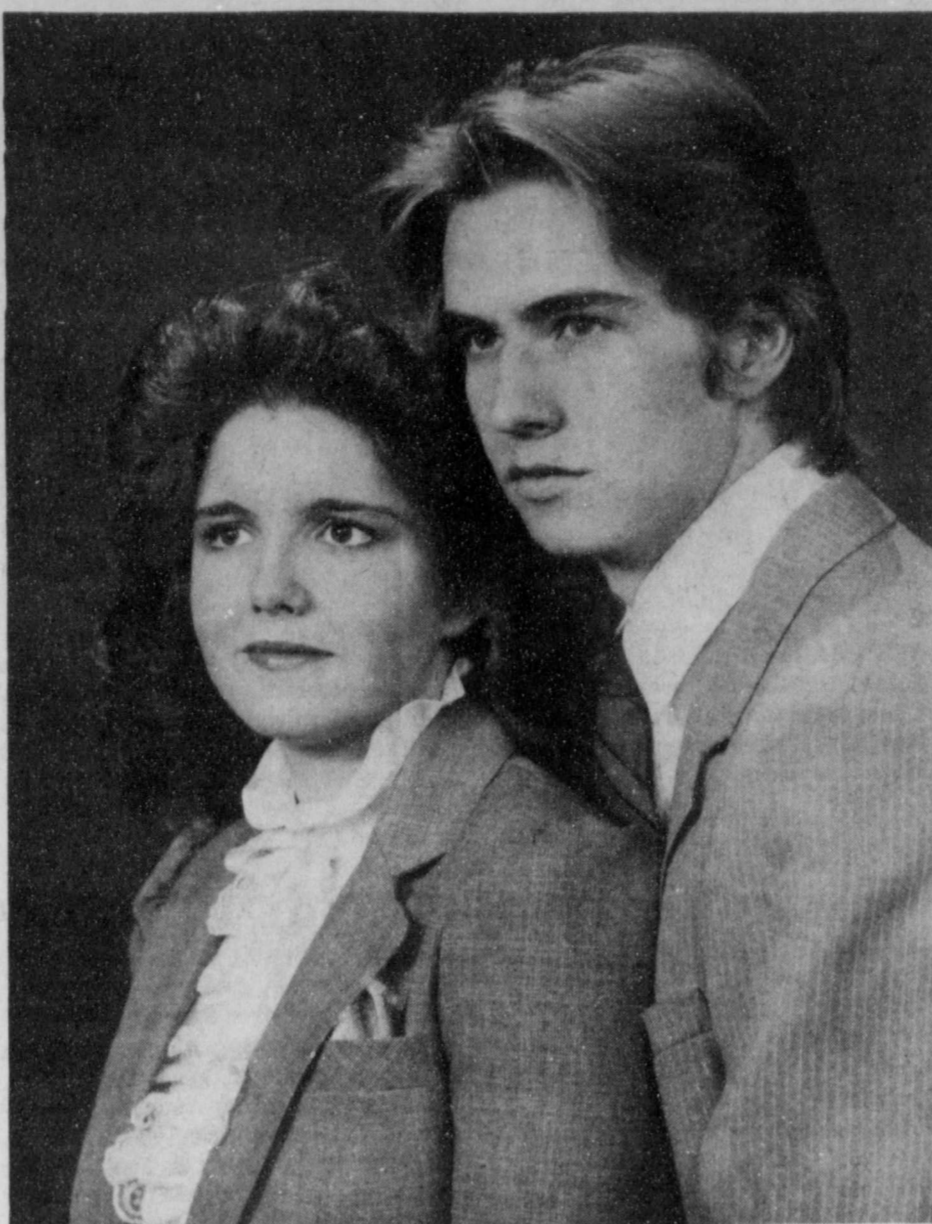
college. Dr. Huey discussed a possible effort to merge T.W.U. with North Texas University. Former students were urged to contact the women's university to help prevent the merger of the world's largest women's college with the other schools. T.W.U. is co-educational but remains predominantly a women's university with a nursing school as well as international recognition in all departments. The hostess, Mrs. Scull, is on the T.W.U. board of regents.

The Crosbyton Garden Club met this month at Casa del Sol. Georgia Mae Erickson prepared the members a noon meal on the wood cook stove in her kitchen. She was assisted by co-hostesses Dorothy Moor and Jean Appling. They served red beans and cornbread, homemade noodles, green beans, cole slaw and butter cake with lemon sauce. Sounds good, doesn't it? Lakeview fields are rimmed with mounded stacks of cotton waiting to be hauled to the gins. Roads are thick with cotton trailers and farm vehicles going to and fro. Sunny days and dry weather continue to help the harvest along.

In spite of low farm prices there is much to be thankful for this Thanksgiving. Our country is not at war and families can all be together.

December 5, 1985

Stockholders in the Roaring Springs Ranch Club are urged to attend a stockholders meeting Saturday, December 7, at 1:30 p.m. in the Motley County Courthouse of the Courthouse at Matador, Texas.



MR. AND MRS. KENNETH J. NAGLE of Clovis, New Mexico announce the engagement and approaching marriage of their daughter Tammy Lynn Nagel to Edwin Matthew Griffin, son of Mr. and Mrs. Edwin Dale Griffin of Floydada. The bride-elect is a 1982 graduate of Clovis High School and is pursuing the degree of Bachelor of Music Education at West Texas State University. The groom is a 1984 graduate of Floydada High School and is also attending West Texas State University. The wedding ceremony will be held Thursday, December 19 at First United Methodist Church in Clovis at 6:00 p.m. Friends and relatives of the couple are invited to attend.

## Toga party raises money

On Saturday, November 23, at 7:00 p.m. Alpha Sigma Upsilon met at Lighthouse Electric for a Toga Party. Members and their husbands and guests enjoyed a Roman feast that included, cheese, ham, salami, bread, fruit and punch.

In order to raise money for the sorority, each member brought a piece of lingerie to be auctioned.

Those attending were: Wayne and Janice Poteet; Larry and Rhonda Guthrie, Jimmy and Mary Ann Kelly, Jack and Karen Elliott, Debra Bailey, Sheryl Derryberry, Sharkey Lecroy, Neva West and Darrell Lamberson, Ginger Warren and Bud and Barbara Edwards.

Alpha Sigma Upsilon met at Light-

house Electric community room on October 26 to celebrate the Halloween tradition with their families. Everyone was dressed in their favorite costume.

Games such as bean bag throw, spin the bottle, balloon races and bingo were enjoyed by the whole group. Sandwiches, chips and dips, and decorated desserts were served to Bud, Barbara, Tyson Edwards, Tommy, Alice and Trina Ogden, Max, Vikki, Charla, Mandi and Brad Yeary. Jerry and Ginger Warren, Jim, Mary Ann, Shayna and Mandi Kelly, Roy, Sherri and Shonda Turnbow, Jackie, Karen, Chrissy, Brandi and Casey Elliott, Larry, Rhonda, Shonda and Chad Guthrie, Sheryl, Shane and Rowdy Derryberry, Jan and Brynn Nichols.

## Thanksgiving salad supper hosted by sorority group

The Texas Alpha Mu Delta Chapter of Beta Sigma Phi met on Tuesday, November 19, at 7:00 p.m. in the home of Kelli Reddy. After a short business meeting members prepared for a Thanksgiving salad supper hosting Alpha Sigma Upsilon. Each member brought a salad. Hostesses, Kelli Reddy, Penny Ogden and Jeanine Helms furnished dessert.

et, Karen Elliott and Mary Ann Kelly.

Alpha Mu Delta members present included: Donna Anderson, Barbara Anderson, Abby Batten, Julianne Cornelius, Debra Graham, Beth Eckert, Jeanine Helms, Tonnia Kitchens, Dara Ware, Holly Hendrix, Wendy Pierce, Penny Ogden, Laura Turner, Brenda Heflin, D'Lee Powell, Duffy Hinkle and Mitzi Nixon.

Alpha Sigma Upsilon members attending were: Vikki Yeary, Sheryl Derryberry, Rhonda Guthrie, Barbara Edwards, Sheri Turnbow, Janice Pote-

A door prize was given away by members of Alpha Mu Delta. A wooden reindeer drawn was won by Mary Ann Kelly.

## Look Who's New

### CRUMP

Kenda and Bud Crump are proud to announce the arrival of a baby boy, Cory Michael. He was born November 20, 1985, at the Methodist Hospital in Lubbock.

Cory weighed 8 lbs. 8 oz. at birth. He has two sisters, Kellye and Krista, both seven years old.

Grandparents are Jennie Pair, of Lubbock, and Mr. and Mrs. Billy Crump of Ralls.

### MARRICLE

David and Terry Marricle are the proud parents of a son, James Ryan. The young man was born at West Plains Medical Center in Muleshoe November 25 at 11:58 p.m. He weighed 7 lbs. 10 ozs. and was 19 1/2 inches long.

He has one sister, Amy, age 5. Grandparents include Mr. and Mrs. James Marricle of Floydada and Mr. and Mrs. Lawrence Stovall of San Angelo.

Great-grandmothers are Mrs. Ruth

Trapp of Floydada and Mrs. Mamie Stovall of San Angelo.

### PATILLO

Don and Sharon Pattillo were blessed with the birth of a son, Ronald Paul Pattillo, who was born at 4:09 a.m. November 25. He weighed 7 lbs. 4 ozs. and was 20 inches long.

Paternal grandmother is Mrs. Paul Pattillo of Lubbock. Maternal grandfather is Lee Burton of Floydada.

## Emert makes honor roll

Kayla Emert, daughter of Mike and Linda Emert of Floydada, was recently named to the President's Honor Roll for the fall quarter at Texas State Technical Institute.

She is a cosmetology student at TSTI. Honorees must achieve a 4.0 grade point average on a 4.0 scale.

## Motley County hosts tour

Motley County will host a Christmas Tour of Ranch and Historical Homes in Motley County on December 14 from 9:30 to 3:30 p.m. The admission fee is \$7.00.

## Homemakers hosts bazaar

The Moonlight Extension Homemakers will be hosting their seventh annual arts & crafts bazaar on Friday, December 6, and Saturday December 7, at the Bailey County Civic Center 2200 W. American Blvd. in Muleshoe, Texas.

The doors will open at noon on Friday and be open until 7:00 p.m. Saturday the bazaar will be open from 10:00 a.m. until 5:00 p.m.

The bazaar hosts exhibitors from all over the state of Texas and New Mexico. There are over 70 booths of arts & crafts items.

On Friday at noon a barbecue luncheon is served by the Jennyslippers and Saturday the annual Christmas parade will start off the day at 10:00 a.m. Following the parade Santa Claus will be at the bazaar for the rest of the day to greet the children and the Chamber of Commerce will be making pictures of Santa for the kids.

Come on over to Muleshoe and share a day of fun and do your Christmas shopping with us.

Exhibitors from our area are Nancy Hagood and Darlean's Crafts (Darlean Stoval).

**DRUNKEN DRIVING**  
Can Have Grave Consequences

Bridal selections available for:

**Teresa Pigg** (bride elect of)  
**Todd Hambright**

**Tim & Lesly Dyess**

**Laticia Timmons** (bride-elect of)  
**Terry Westbrook**

**Sue's Gifts**  
100 E. California & Accessories 983-5312

**COLONIAL HOUSE**  
will be open  
**Dec. 5 & 6**  
**Thursday & Friday**  
9 - 5  
**515 W. Ross St.**

See us for your gift giving needs

- Pangburns Chocolates
- Root Candles - all scents
- Timex & Lorus Watches
- Cologne for men and women
- Foster Grant Sunglasses
- Norelco & Remington Razors
- Curling Irons
- Electric Rollers
- Stuffed Toys
- Infants Clothes
- Glassware
- Coffee Mugs
- Jewelry
- and much, much more

We have something for everyone on your gift list.

**Byrd** PHARMAS  
Phone: 652-3353  
LOCKNEY  
FRANK BYRD

**HALE'S SHOES FOR CHRISTMAS - FOR THE WHOLE FAMILY!**

**FOR MEN** - SAS for \$49.95 - Deerstags for \$50 - NUNN BUSH LOAFERS - All leather \$39.95 - \$55 - 75 HUSH PUPPIES from \$25-\$39, Porto Ped lace oxfords at \$50. Red Wing Work Boots and oxfords from \$62-\$81 and Georgia Giant work boots at \$39 to \$45. Western Boots from \$40 to \$100 - mostly around \$65, and all-leather!

**ROPERS** - from Texas Boot at \$74.95. Make it a practical Christmas for Old Santa - shoes & boots from Hale's - good quality, good prices, good styles!

**FOR LADIES** - SAS at \$41.90 - Red Cross dress heels \$34 to \$48 and fashionable flats from 9 West - Beene Bag & Arpeggio \$29-\$39.

**FOR CHILDREN** - Western & Roper Boots, Tennis shoes and leather shoes with lots of good quality close-outs! Kids like new shoes for Christmas!

**TENNIS SHOES FOR EVERYONE!** Nike - Kaepa and now the hottest ones - Reebok! Many low priced close-outs in these. We're always your Tennis Shoe Headquarters for style & quality!

**HOUSE SHOES** from Daniel Green & Dearfoams - a Christmas Tradition!

Remember - Free Gift Wrapping at Hale's.

UP TO **65% off** everyday  
Unbeatable prices for Christmas '85.

A. Men's Pearl Tie Tack Retail \$60. COST \$24.  
B. Pearl Studs, 6.5 mm Retail \$74. COST \$29.80  
C. Rice Pearl Jackets Retail \$64. COST \$25.59  
D. 16" Pearl Necklace, 4.5-5mm Retail \$660. COST \$264.  
E. 24" Pearl Necklace, 5.5-6mm Retail \$1420. COST \$568.  
F. 30" Pearl Necklace, 6-6.5mm Retail \$2080. COST \$832.  
(not shown) 7" Pearl Bracelet, 5-5.5mm Retail \$320. COST \$128.  
(not shown) Pearl Ring, 2 Diamonds 12 ct. Retail \$480. COST \$192.

D. E. F.

While supply lasts

In Store Financing Available  
Layaway Visa MasterCard

**The Direct Source**  
ROARING SPRINGS: Downtown 248-3871 Mon. - Sat. 10:00 - 5:30 pm  
LUBBOCK: 82nd & Quaker 754-7768 Mon. - Sat. 10:00 - 5:30 pm

**THACKER JEWELRY**

## Varsity boys vs Lockney, Lubbock

Floydada's Varsity boys posted a decisive 75 to 41 victory over Lockney on November 26. High point man for the game was Joey Kemp with 16 points and eight rebounds. Alvin Cooper scored 15 points and made three rebounds. Brad Rainer made 11 points and captured six rebounds. Shannon Barbee netted 10 points and five rebounds while Rabel Contreras scored 10 points and made four rebounds. Chad Pernel made six points and five rebounds.

Meeting Lubbock Cooper in Lubbock on December 3, the Floydada Varsity posted another win. Floydada defeated

Lubbock Cooper with a score of 71-51. Floydada steadily inched the point total upward throughout the game, scoring 10 points in the first period, 25 in the second, 22 in the third, and 14 in the fourth. Lubbock Cooper scored 11 in the first quarter, 18 in the second, 8 in the third, and 14 in the fourth.

High point man for Floydada was Alvin Cooper with 23 points. Joey Kemp made 21 points and 12 rebounds. F.L. Williams racked up 10 points and 9 rebounds. Brad Rainer scored 6 and Shannon Barbee made 5 points.

The team will compete in the Lorenzo Tournament beginning today.



**8TH GRADE GIRLS BASKETBALL**—The 8th grade girls basketball team for this season consists of: [back row, left-right] Gracie Mercado, Heather Henderson, Libby Anderson, Kim Perry, Amy McCormick, and Stephanie Zimmerman. [Front row, left-right] Shannon Paty, Anita McCormick, JoLee Ellis, JoAnn Cavazos, and DeLinda Jackson. STAFF PHOTO

## Varsity girls vs Paducah, Lockney

The Floydada Varsity girls basketball team went up against the Paducah Dragonettes on November 22. The encounter left the girls with a mark in the win column as they defeated Paducah 51 to 44. Paducah scored 26 in the first half and 28 in the second half of the game. Floydada toted up 46 points in the first. Paducah scored 10 points in the first quarter, six points in the second, 12 in the third, and 16 in the fourth quarter. Floydada scored 17 points in the first quarter, 12 in the second, 11 in the third and 11 in the fourth quarter to capture the win.

Scoring for Floydada were: Paige Cannon, 14; Marissa Jones, 14; Tana Perry, 12; Tina Lara, 5; Mary Lloyd, 4; and Becky Lopez, 2. Jones and Lara each captured 8 rebounds.

The Varsity girls went to Lockney on November 27 to play the Lockney girls Varsity. The confrontation resulted in a major defeat for Lockney. Floydada outscored Lockney 60-16.

Floydada took a comfortable lead in the first quarter, scoring 19 points. 21 more were added in the second quarter, 12 in the third, and 8 more in the fourth. Lockney scored 5 points in the first period, 1 in the second, 2 in the third, and 8 in the fourth.

Individual scoring for the Floydada girls was as follows: Jones, 29; Cannon, 8; Lloyd, 8; Lara, 4; Amanda McDaniels, 3; Tana Turner, 3; Sylvia Adair, 2; Lopez, 2; and Perry, 1. Jones tied a school record for the most points in a game with her 29 points against Lockney.

The Floydada girls Varsity let Lubbock Cooper get just a bit too far ahead during the December 3 game in Lubbock. The girls lost 56 to 51 after leading the first half of the game. Floydada scored 13 in the first quarter, 17 in the second, 10 in the third, and 11 in the fourth. Lubbock Cooper scored 9 in the first period, 18 in the second, 14 in the third, and 15 in the fourth.

Scoring for Floydada were: Jones, 16; Cannon, 13; Lara, 10; Lloyd, 4; Perry, 4; McDaniel, 2; and Turner, 2. Cannon made six rebounds.

Coach Tommy Baxter stated, "Cooper is a very highly ranked team. They are picked to win their district and were picked second in the South Plains area in pre-season. We led them for most of the game but just ran out of gas at the end. As our young players develop more we will have more depth and be able to correct this."

## 9th grade girls vs Muleshoe, Tulia

Floydada's Freshman girls went up against Muleshoe on November 23. They came away the losers in a contest which ended with Muleshoe ahead 40 to 36. Scoring in this first round competition of the Floydada Boosters Club Tournament was as follows: Trish Hanna, 14; Lori Christian, 12; Shelby Ogden, 6; Martha Garcia, 3; and Blanca Medrano, 1.

The girls next faced Tulia, winning the match by a score of 36 to 30, thus earning themselves a third place finish in the tournament.

Scoring for Floydada were: Trish Hanna, 14; Shelby Ogden, 6; Martha Garcia, 6; Lori Christian, 5; Blanca Medrano, 2; Tiffany Gentry, 2; and Nehomi DeOchoa, 1.

November 25, the Freshman girls played Tulia here in Floydada. The girls defeated their opponents 31 to 21. Floydada scored nine points in the first quarter, five in the second, six in the third, and nine in the fourth. Tulia scored six in the first quarter, two in the second, four in the third and nine in the fourth quarter.

Lori Christian scored 10 points during the game and Trish Hanna scored 9, Martha Garcia made 6 points, Shelby Ogden made 3, Blanca Medrano made

2, and Tiffany Gentry made 1. Facing Idalou on December 2, the Freshman girls won 45 to 36. Floydada scored 13 points in the first period, 16 in the second, 10 in the third, and 6 in the fourth. Idalou scored 10 in the first, 9 in the second, 11 in the third, and 6 in the fourth.

Individuals scoring for Floydada were: Hanna, 12; Ogden, 12; Christian, 7; Gentry, 6; Garcia, 4; Medrano, 2; and DeOchoa, 2.

The girls now have a 3-1 record for the season and a 2-0 record in District play.



**FLOYDADA JUNIOR VARSITY GIRLS**—The Floydada High School girls Junior Varsity basketball team for 1985-86 consists of: [back row, left-right] Norma Cisneros, Shelby Ogden, Pam Woody, Pam Lockwood, Cynthia Covington, Angie Hinsley, and Trish Hanna. [Front row, left-right] Lori Christian, Daralyn Williams, Blanca Medrano, Amy Burns, Joey Thayer, and Ester Medrano. STAFF PHOTO

## JV girls vs Paducah, Lockney

Floydada's Junior Varsity girls basketball team burst into the season on November 22 with a decisive 42 to 32 victory over Paducah. Floydada scored 11 points in the first quarter, 7 in the second, 11 in the third quarter, and 13 in the fourth. Paducah started slow with eight in the first quarter, seven in the second, eight in the third, and nine in the final quarter.

Scoring for Floydada were: Pam Woody, 13; Trisha Hanna, 8; Norma Cisneros, 8; Amy Burns, 4; Esther Medrano, 4; Daralyn Williams, 2; Angie

Hinsley, 2; and Lori Christian, 1.

Playing in Lockney on November 26, the Floydada Junior Varsity girls bagged a strong victory, winning 31-19. Floydada scored eight points in the first quarter, eight in the second quarter, seven in the third quarter, and eight in the final quarter. Lockney scored four in the first period, zero in the second, six in the third, and nine in the fourth.

Scoring for Floydada were: Woody, 10; Cisneros, 8; Williams, 4; Burns, 3; Pam Lockwood, 3; Cynthia Covington, 2; and Medrano, 1.

## Caprock Hospital Report

November 20-26

Maria Duran, Floydada, adm. 10-15, dis. 11-21, Hong  
 Maria Garza, Floydada, adm. 11-12, continues care, Hong  
 Deila Faye Adams, Panhandle, adm. 11-13, dis. 11-21, Hong  
 Dood L. Damron, Matador, adm. 11-13, dis. 11-21, Hong  
 Warnie Hilton, Floydada, adm. 11-14, dis. 11-21, Hong  
 Alpha Hill, Floydada, adm. 11-15, dis. 11-21, Jordan  
 Hilda McDonald, Floydada, adm. 11-16, dis. 11-20, Jordan  
 Homer Farmer, Floydada, adm. 11-18, dis. 11-20, Hong  
 Leon McCravey, Floydada, 11-18, 11-20, Hong  
 Marion Morris, Matador, adm. 11-18, dis. 11-23, Hong  
 Ethyle Hinson, Floydada, 11-18, continues care, Jordan  
 Belinda Casas, Petersburg, adm. 11-18, dis. 11-22, Hale  
 Juanita Cooper, Matador, adm. 11-18, dis. 11-23, Hong

Leah Martinez, Ralls, adm. 11-18, dis. 11-21, Jordan  
 Peggy Medley, Floydada, adm. 11-19, dis. 11-22, Jordan  
 Jeannie Ford, Floydada, adm. 11-19, dis. 11-21, Hale  
 Claude Weathersbee, Floydada, adm. 11-20, dis. 11-22, Hale  
 Roy Baxter, Floydada, adm. 11-21, dis. 11-24, Hong  
 Juana Quintanilla, Floydada, adm. 11-21, continues care, Hong  
 Sostenes Bursiago, Floydada, adm. 11-22, continues care, Hong  
 Cecil Hagood, Floydada, adm. 11-22, dis. 11-25, Hale  
 Vivian Martin, Floydada, adm. 11-23, baby girl born 11-23, dis. 11-25, Jordan  
 Dorsey Cornell, Matador, adm. 11-25, continues care, Hong  
 Brenda Garza, Floydada, adm. 11-25, baby boy born 11-25, continues care, Hale  
 Mary Wright, Floydada, adm. 11-25, continues care, Hale

# HELP! HELP!

## The computer goofed and ordered them! Chevrolet and Oldsmobile built them -- Oden Chevrolet-Olds received them -- and we are overstocked.

If you are thinking about buying a new car or pickup and haven't received a price from Oden Chevrolet-Olds you haven't received the **BEST PRICE AVAILABLE.**

Come by Oden Chevrolet-Olds and let them prove that the above statement is true.

### ODEN CHEVROLET OLDS INC.

221 S. Main      Floydada      983-3787

## 8th grade girls vs Tulia

Floydada's 8th grade girls basketball team defeated Tulia 20 to 16 on November 25 in a game played at Floydada. Floydada scored two points in the first quarter, nine in the second quarter, three in the third quarter, and five in the fourth. Tulia scored two in the first quarter, two in the second quarter, two in the third quarter and 10 in the final quarter.

Scoring for Floydada were: Amy McCormick, 5; Anita McCormick, 4; Kim Perry, 4; Libby Anderson, 4; and Heather Henderson, 3.

## TRY FLOYDADA FIRST

84-P-21A

## Check Safety To Make The Holidays Bright

- Before hanging strings of lights, spread them on the floor and check for frayed or bare wires, cracked insulation, loose connections, and damaged plugs or light sockets.
- Check extension cords for wear or damage and don't run them across walking areas.
- Test lights before putting them on the tree. Unplug them before making repairs or replacing bulbs.
- Overloading circuits with too many lights can cause fire. Follow manufacturer's instructions about the number of lights allowed on one circuit.
- Choose a fresh, green tree, trim its base and keep it in plenty of water. If the needles are brown and break off easily, it could be a fire risk.
- If you buy an artificial tree, make sure it has been tested for flammability by Underwriters Laboratories (UL).
- Place your tree away from the fireplace or other heat sources and out of the traffic pattern.
- Never string lights on a metallic tree. Light strings with damaged insulation can electrically charge a metallic tree. Instead, shine unattached colored floodlights or spotlights on the tree.
- Always turn off lights before leaving home or going to bed. You'll save money and be safer, too.
- Never use lighted candles on a tree or near evergreens. And don't burn evergreens in the fireplace.
- Do not use inside lights on the outside. All outside lighting equipment, including lights, cords and plugs, should be waterproof and made for outdoor use. Also, hang sockets downward and don't leave a socket empty.
- When hanging lights on the rooftop or in tall trees outdoors, stay clear of electrical lines. Make sure you or your decorations don't come in contact with them.
- Should you receive a CB radio or television this Christmas, let a qualified serviceman install the CB base unit or television antenna for you. This delicate job is best left to the professionals.
- Be sure electrical toys are tested for safety. Look for the UL mark.

Wishing You A Safe, Happy Holiday

**SPS**  
SOUTHWESTERN  
PUBLIC SERVICE COMPANY

© SPS 1984 9301



**FLOYDADA HIGH SCHOOL JUNIOR VARSITY BOYS**—The Junior Varsity boys basketball team at Floydada High School this season is made up of: [back row, left-right] Sylvester Mendoza, Heath Robertson, Jason Brown, Jeff Smith, Randy Enriquez, Roel Cisneros, Pat Hazlett, and Dewayne Wall. [Front row; left-right] Ricky Benjamin, Rod Davis, Daniel Medrano, and Ralph Casillas.

STAFF PHOTO

### JV boys vs Slaton, Paducah

The Floydada Junior Varsity boys basketball team got off to a slow start this season. Their November 19 confrontation with Slaton resulted in a loss posted for the first game. Slaton outscored Floydada 54 to 47 at the game in Slaton.

Floydada scored eight points in the first quarter, 13 in the second, 12 in the third, and 14 in the fourth. Slaton scored 14 points in the first quarter, 14 in the second, 12 in the third, and 14 in the fourth.

Leading scorers for Floydada were: Heath Robertson, 14 points; Dewayne Wall, 10; Roel Cisneros, 8; and Sylvester Mendoza, 8. Leading rebounders

were Roel Cisneros with 16 and Randy Enriquez with 10.

November 22 found the team on home ground against Paducah. Floydada emerged the victor in this contest, besting Paducah 54 to 47.

Floydada scored 13 points in the first quarter, 11 in the second, 18 in the third, and 12 in the fourth. Paducah scored 20 points in the first quarter, 4 in the second, 15 in the third, and 8 in the fourth.

Leading the scoring and rebounding for Floydada were Roel Cisneros with 14 points and 10 rebounds and Randy Enriquez with 14 points and 13 rebounds.

## Weekend Basketball Tournaments Scheduled

Floydada teams will be competing in three tournaments this weekend. The Varsity boys and girls will travel to Lorenzo for the tournament there beginning Thursday. They open with Shallowater as an opponent Thursday afternoon. The girls play at 4:00 p.m. and the boys follow at 5:30.

The Junior Varsity will be competing in the Tulia Tournament the same days. Both the boys and girls teams will be playing.

Floydada's 8th grade will host a tournament here in Floydada on Friday and Saturday. Their first opponent will be Lockney on Friday night.

### 9th grade vs Muleshoe, Idalou

Playing in the Floydada Boosters Club Tournament on November 23, the Floydada Freshman boys placed third. The team lost their first game to Muleshoe 50 to 46.

Scoring in that game was as follows: Dana Cooper, 12 points; Chad Quisenberry, 11 points; Danny Caballero, 7 points; Freddy Toney, 6 points; Rolando Cisneros, 6 points; and Leonard King, 4 points. Cooper captured nine rebounds and Toney snagged eight. King and Caballero each made seven rebounds. Quisenberry was credited with four steals and Cooper made three.

Floydada beat Idalou 54 to 41 in the second matchup of the tournament. Caballero was credited with three steals during the game. Cooper rebounded 12 times, King 8, Cisneros, 6 and Toney 6.

Scoring for the game went as follows: King, 16 points; Cisneros, 13 points; Quisenberry, 9 points; Cooper, 8 points; Caballero, 5 points; Toney, 2 points; and Rusty Edwards, 1 point.

The first district game for the team came on November 25. The boys made the trip to Tulia and won the game 37 to 32. Scoring for Floydada were: Quisenberry, 13 points; King, 8 points; Cooper, 6 points; Toney, 4 points; Cisneros, 4 points; and Caballero, 2 points. Rebounds were snared by Cisneros, 8; Toney, 7; Cooper, 6; King, 5; Quisenberry, 5; and Caballero, 4. Toney was credited for five steals and Quisenberry was credited with four.

The Floydada 9th Grade boys played Idalou in Idalou on December 2. The team won the game with a score of 35-26. Scoring for Floydada were: Cisneros, 15; King, 6; Quisenberry, 6; Caballero, 4; and Cooper, 4. Cooper made 13 rebounds and Caballero received credit for 4. Four steals were made by Quisenberry.

The team now has a 3-1 record. They play next on December 9, Friday, at Littlefield.

### 8th grade boys vs Tulia, Idalou

The 8th grade boys team traveled to Tulia on Monday, November 25 to play Tulia. The boys defeated their opponent by a score of 45 to 25. Floydada led the scoring all the way scoring 12 points in the first quarter, 14 in the second, 10 in the third, and 9 in the fourth. Tulia posted eight points in the first period, six in the second, four in the third, and eight in the final period.

Frank Suarez led the scoring for Floydada with 12 points. Joe Cisneros and Grant Stovall each made 8 points. Harvey Soliz scored 6 and Shay Hearon made 4. Jesse Suarez, Eddie Sanchez, and Russell Griffin each scored two points during the game.

December 2. Floydada defeated Idalou 47 to 27. Floydada scored 17 points in the first period, 10 in the second quarter, 10 in the third and 10 in the fourth. Idalou made six points in the first quarter, 10 in the second, six in the third and five in the fourth.

Individual scoring for Floydada was as follows: Soliz, 17; Cisneros, 14; Suarez, 10; and Hearon, 6.

The team now has a 2-0 record. They play Lockney on Friday, December 6, at 8 p.m. This is the beginning of the Floydada 8th grade tournament. The tournament will be played over two days, Friday and Saturday.

## Holiday safety tips offered

Everyone looks forward to the holiday season. Unfortunately, accidents never take a holiday and can quickly turn joy into sorrow.

So make safety part and parcel of all holiday activities, says Dr. Gary Nelson, safety engineer with the Texas Agricultural Extension Service, The Texas A&M University System.

He offers these safety tips:

- \*Clear walks and steps of ice, snow or objects to make coming and going safer for guests (and your family). Shoveling snow is hard work and overexertion by older, out-of-condition or health-impaired people could lead to collapse.
- \*Before company comes, put away things that could injure small children -- matches, pesticides, medicines, sharp knives, cleaning products, firearms and power tools. Help older folks, too, by removing tripping hazards and providing ample light.

- \*Turn on outdoor lights at night when you expect company or a car drives up.
- \*Since the kitchen is usually a busy place during holidays, make sure there are no dangling small appliance cords or protruding pot handles for children to grab. Handle sharp knives with care and put them away after use.
- \*Always drive with special caution when traffic is heavy or road conditions are abnormal. Since many holiday drivers are impaired by alcohol, be alert for their driving errors.
- \*If you partake of "holiday cheer," let another drive or limit drinks to one an hour.
- \*Select a fresh Christmas tree or a flame-resistant artificial one. Set it away from heat sources and curtains. Check lightstrings for broken sockets and frayed wires. Pull the plug before retiring.

**"When business is good it pays to advertise; when business is bad you've got to advertise."**  
Anon.



**7TH GRADE GIRLS BASKETBALL**—Members of the 7th grade basketball team for 1985-86 are: [back row; left-right] Sylvia Hearon, Becky Potter, Ofella DeLaFuente, Stacy Hinsley, Pat Vallejo, Tonya Powell, Trish Pernell, and Nora Cisneros; [front row, left-right] Mary DeLaFuente, Amy Hinsley, Angie Glasscock, Melissa Strickland, Kerrie Pitts, and Mary Garcia.

STAFF PHOTO

### 7th grade girls vs Tulia

The 7th grade girls basketball team was defeated by Tulia on November 25. Playing in Floydada, the girls could muster only 29 points to Tulia's 38.

Tulia scored nine points in the first period, 10 in the second, 10 in the third, and nine in the fourth. Floydada toted

up six points in the first quarter, five in the second, 11 in the third, and seven in the fourth.

Individual scorers for Floydada were: Nora Cisneros, 9; Shelvia Hearon, 6; Angie Glasscock, 5; Trisha Pernell, 5; Amy Hinsley, 2; and Becky Porter, 2.

### 7th grade boys vs Tulia

The 7th grade boys basketball team defeated Tulia 35 to 18 in a game played in Tulia on November 25. Floydada scored four points in the first quarter, 14 in the second, nine in the third, and eight in the fourth. Tulia started off with four in the first quarter also. They

added six in the second quarter, two in the third, and six in the last quarter.

Scoring for Floydada were: Kenneth Collins, 15; Ryan Burns, 6; Brad Emert, 4; Chad Williams, 3; Mike Aleman, 3; Freddie Martinez, 2; and Eber Blakey, 2.

**COMPUTER SALE**  
**IBM**  
COMPLETE SYSTEM  
128K, 1-360K DRIVE  
RGB COLOR MONITOR

**AGRIplex COMPUTER**  
711 BROADWAY **\$599**

## Beauty Up for the Holidays with Jones-Blair Paint for Peanuts!

**Satin-x Latex WALL PAINT**

- One-Coat Coverage.
- Washable.
- Dries in 30 Minutes.
- No Painty Odor.
- Clean up with Water.
- Lead pigment free.

Reg 15<sup>41</sup> gal  
Special \$11<sup>99</sup>

**Polyflex Latex HOUSE PAINT**

- Dries in 30 Min.
- Clean up with Water.
- Sunfast Colors.
- Covers brick and other masonry surfaces.
- Lead pigment free.

Reg 18<sup>72</sup> gal  
Special \$14<sup>25</sup>



**Holiday Special**  
Receive a ONE POUND BAG of Higginbotham Peanuts with each gallon of Jones-Blair Paint

limit 5 lbs. of peanuts per customer • offer expires Dec. 31, 1985

**HIGGINBOTHAM-BARTLETT CO.**

214 S. Wall

983-2140



## Give a Floyd County Christmas!

BLAIR DAVIS FARMS INTRODUCES FOR THE '85 HOLIDAY SEASON ITS NEW GOURMET LINE, "BLOOM ON THE SAGE."

PRODUCED IN FLOYD COUNTY FROM LOCALLY GROWN FARM-FRESH VEGETABLES, OUR "BLOOM ON THE SAGE" GIFT BOXES OFFER A SAMPLING OF THREE OF OUR MOST POPULAR PRODUCTS - PICANTE

SAUCE, CHOW CHOW AND SPICED PICKLES - EACH PREPARED IN SMALL BATCH QUANTITIES FROM ORIGINAL FAMILY RECIPES.

PACKED IN A NATURAL BIRCH CRATE, THESE GIFT BOXES CAN BE MAILED TO FRIENDS EVERYWHERE - THE PERFECT WAY TO SAY "MERRY CHRISTMAS" FROM WEST TEXAS!

Dear Blair,

I AM ORDERING \_\_\_\_\_ GIFT BOXES @ \$14.95 (TAX AND POSTAGE INCLUDED) FOR A TOTAL OF \_\_\_\_\_

CHECK  VISA  MASTERCARD

NAME \_\_\_\_\_

ADDRESS \_\_\_\_\_

CITY \_\_\_\_\_ STATE \_\_\_\_\_ ZIP \_\_\_\_\_ TELEPHONE \_\_\_\_\_

FOR GIFT BOXES WITH MAIL TO FRIENDS PLEASE PRINT OR TYPE THEIR NAMES AND ADDRESSES ON THE BACK OF THIS CARD. FOR CHRISTMAS DELIVERY, PLEASE ORDER BY DECEMBER 15.



**API SCHOLARSHIP RECIPIENT**—Bobby Emert (third from right) was recently recognized as a recipient of the API Scholarship at South Plains College in Levelland. Emert, the son of Mr. and Mrs. Oliver Emert of Dougherty, is an automotive mechanics major at SPC. Pictured with him are members of the South Plains Chapter of the American Petroleum Institute who make the scholarship funds possible. They include (left to right) Charles Miller, API scholarship committee co-chairman of Levelland; Paul Musslewhite of Levelland; Larry McVay, API chapter chairman from Brownfield; Bob Raper of Levelland; and Coleman Williams, scholarship committee co-chairman from Brownfield.



**SCHOLARSHIP RECIPIENT**—Joyce Payne of Floydada [center] was recently recognized as a scholarship recipient at South Plains College in Levelland. Payne, a sophomore auto mechanics major, is the recipient of the Kenneth Kelsay Memorial Scholarship. Pictured with Payne are Claude Kirkpatrick (left), former coordinator of the program. Payne is the son of Mr. and Mrs. Hollis Payne of Floydada. The scholarship memorializes the late Kenneth Kelsay who was an instructor in auto mechanics at SPC at the time of his death.



**SCHOLARSHIP RECIPIENT**—Raymond Dunavant of Floydada and the son of Mr. and Mrs. Truman Dunavant of Bayfield, Colorado, was recently honored during South Plains College's annual Scholar Luncheon. Dunavant was honored as a Lincoln Scholar, one of the most prestigious scholarships at SPC. He is a 1980 graduate of Bayfield High School. The \$2000 scholarships are made possible through the generosity of Mrs. Retha Lincoln of Levelland and are administered by the SPC Foundation. [SPC Photo]

"When business is good it pays to advertise; when business is bad you've got to advertise."

## Hance requests new PUC commissioner

Republican gubernatorial candidate Kent Hance recently called on Governor Mark White to replace Public Utilities Commissioner Dennis Thomas with a commissioner who will devote "full time" to protecting Texas ratepayers.

Last week, it was disclosed that Thomas had used state funds, state time, state employees, and state equipment to complete his doctoral degree. The project cost the state \$2,800 in computer time alone.

"When the PUC meets, the hard-earned dollars of the working people of Texas are at stake," Hance said. "No other agency has as much effect on the daily lives of Texans. That's why anything short of full-time, fully-dedicated commissioners is unacceptable. That's why Thomas should be replaced."

Hance said he felt that Thomas, by tying up staff and his own time with a doctoral dissertation, has done great disservice to the PUC, even though he understands the whole process is technically legal.

"State agency leaders have a special responsibility to be an example to their employees," Hance said. "Dennis Thomas simply used his office to further his own education, and that's not right."

Thomas, a special assistant in Governor White's office before his PUC appointment, was forced last month to reimburse the state for travel expenses after the media disclosed that Thomas

had stayed at a luxury hotel in New York. Thomas paid \$229 per night in state funds to stay at the elegant Sherry Netherlands Hotel.

"When Governor White was running for office, he ran ads implying that he would do something about utility rates," Hance said. "I don't think that appointing a commissioner who spends his time on furthering his personal education helps in any way to keep our utility rates down."

Hance said that when elected Governor he would ask the State Legislature to immediately review the State Employees Training Act of 1969 which allows state employees to further their education at state expense.

Last summer, Governor White signed a bill tripling tuition. "Parents struggling to send their children to college may object to paying tax dollars for the doctoral degree of a state employee who makes more than \$60,000 a year," Hance said.

"I doubt that legislators had agency heads in mind when they passed this bill," Hance said. "I think Dennis Thomas has taken advantage of the spirit of the law both in his travel expenses and his use of taxpayers' money."

Hance also said that Governor White should appoint people who are more sensitive to the needs of Texans trying to pay for their children's education.

## OBITUARIES

### HATTIE FUQUA

Services for Hattie I. Fuqua, 101, were 3:00 p.m., November 30 at Moore-Rose Funeral Home with the Rev. Earl Blair officiating.

Burial was in Floydada Cemetery under the direction of Moore-Rose Funeral Home.

She died Thursday in Amarillo after a lengthy illness.

She was born in Gonzales. She married M.C. Fuqua August 26, 1900, in Hamilton. She moved to Floyd County in 1924. She was a Baptist.

Survivors include six daughters, Amelia Ashton and Grace Dunn, both of Floydada, Arma Scott of Amarillo, Dorothea Hunter and Eddie Scheibel, both of Dallas, and Sharon Fowler of Davenport, Iowa; and two sons, Truman of Cleburne and Mack of Tyler.

### WILL HAMBRIGHT

Services for Will May "Bill" Hambright, 83, of Lockney were at 2:00 p.m. November 4 at First Baptist Church with the Rev. Floyd C. Bradley, former pastor, and the Rev. Hal Farnsworth, pastor, officiating.

Burial was in the Lakeview Cemetery under the direction of Moore-Rose Funeral Home.

He died Monday morning at the Lockney Care Center after a lengthy illness.

### CARD OF THANKS

We would like to express our thanks to everyone for the prayers, visits, cards, calls and plants during my stay in the hospital.

Dirk King  
Randell and Doris King

The community-wide Thanksgiving service Sunday evening, November 24, was a wonderful example of the spirit of sharing that exists in the hearts of the people of Floydada. And since the organization known as the Floydada Spirit of Sharing was the recipient of the \$2,222 given that evening, the whole expression takes on added meaning.

All the volunteers are very grateful for every donation that was made. The past two years, written acknowledgments have been sent to the donors of gifts over a certain amount. However, we have decided that seems contrary to Christ's parable of the "widow's mite," since many of the smaller gifts may well have been as sacrificial as the larger ones.

This year we simply say, "Thank you sincerely" to every one of you who contributed as a part of your expression of thankfulness. You have given us a boost, both financially and spiritually, to look forward to another year of sharing what you have entrusted to us with persons in need in our community. 12-5C

Got Heating or Plumbing Problems? CALL  
**Holmes Plumbing**  
Austin or Steve  
Call Day or Night  
983-2251

He was born in Grandview and moved to Floyd County in 1918 from Mangum, Oklahoma. He married Ethel Alexander on June 4, 1927, in Floydada. He was a retired farmer and a member of First Baptist Church.

Survivors include his wife; three sons, B.J., Gordon and Bob, all of Floydada; a daughter, Genelle Breed of Floydada; three brothers, Frank of McLean, John of Marble Falls, Homer of Alvin; nine grandchildren; and four great-grandchildren.

### ETHYLE HINSON

Services for Ethyle Hinson, 81, were at 2:00 p.m. December 1 at First United Methodist Church with the Rev. Earl Blair, pastor, officiating.

Burial was in Floyd County Memorial Park under the direction of Moore-Rose Funeral Home.

She died Thursday at her home. Justice of the Peace Lowell Bilbrey of Floydada ruled natural causes.

She was born in Mt. Calm. She married Emmett Hinson December 24, 1921, in Mineral Wells. He died in 1965. She moved to Floyd County in 1927. She owned a gift shop in Floydada. She was a Methodist.

Survivors include two sons, Emmett Jr. of McKinney and Herschell of Dallas; a daughter, Beth Harper of Burley, Idaho; six grandchildren; and three great-grandchildren.

### JOHN (BUSTER) HOLT

John (Buster) Holt, 73, of Clifton died Saturday at a local hospital.

Services were at 4:00 p.m. December 2 at First Baptist Church, the Rev. Dean Evans and the Rev. Robert Owens officiating. Burial was at Smith Bend-Coon Creek Cemetery.

Mr. Holt was born September 29, 1912, in Bosque County. He was a farmer and rancher.

Survivors include his wife, Ruby Lee Holt of Clifton; three sons, John D. Holt of Terrell, Garry D. Holt of Clifton and Keith Holt of Aquilla; three brothers, Raymond Holt of Hereford, Burl Holt of Floydada and Wilton Holt of California; four sisters, Opal Morrison of Floydada, Faye Hulme of Clifton and Bernice Sutton and Jo Marie Maugham, both of Waco; and eight grandchildren.

Mr. and Mrs. Raymond Holt of Hereford, Mr. and Mrs. Burl Holt of Floydada, Opal Morrison of Floydada, Kenneth Holt of Lockney, Virginia Cage of Dougherty attended funeral service in Clifton, Texas.

**When Words Are Not Enough**  
Show them you are thinking of them by sending flowers.  
Flowers silently express your sympathy and provide an immediate way to let the family know you really care.

**WILLIAMS FLORIST and CARD SHOP**  
(after hours calls accepted)

Clifton Funeral Home was in charge of arrangements.

### MRS. L.E. MARSHALL

Services for Mrs. L.E. (Ella) Marshall, 76, were at 2:00 p.m. November 30 at Ninth and Columbia Church of Christ with Dean Brookshire, associate minister, and Wayne Horton, minister, officiating.

Burial was in Plainview Memorial Park under the direction of Lemons Funeral Home.

Mrs. Marshall died at 7:20 p.m. Thursday at Central Plains Regional Hospital after a brief illness.

The Plainview native married L.E. Marshall on February 19, 1926, in Roaring Springs. They moved to Plainview in 1929. She worked for the Woolworth store for many years. She was a member of the Ninth and Columbia Church of Christ and taught Sunday School at the church for 15 years.

Survivors include her husband; a daughter, Louise Haynes of Lubbock; a son, L.C. of Plainview; three sisters, Lillie Smelser and Nell Couch, both of Plainview, and Mildred Gammage of Lockney; five grandchildren; and seven great-grandchildren.

### W.M. WICKER

Services for W.M. "Dub" Wicker, 68, will be at 2:00 p.m. Thursday (today) at First Baptist Church with the Rev. Paul Anderson, pastor, officiating and the Rev. Floyd Haddock, Lynn Garrett and Gene Hawkins assisting.

Burial will be in Seminole Memorial Cemetery under the direction of Singleton Funeral Home.

He died at 10:42 p.m. Monday at Lea Regional Hospital in Hobbs, New Mexico, after a lengthy illness.

He was born in Lockney and had been a Seminole resident since 1955. He married Essie Mae Hamilton November 19, 1936, in Lockney. He was owner of the Seminole Butane Company. He was a member of First Baptist Church.

Survivors include his wife; two sons, Bobby of Seminole and Wayne of San Antonio; two sisters, Celia Walker of Plainview and Mrs. Lynn Dillion of Liberal, Kansas; a brother, Olee of Las Vegas, Nevada; four grandchildren; and a great-grandchild.

### Caprock EMS Report

11-28, 7:00 a.m., Unit 1, Responded to a call on S. 3rd.

11-28, 3:30 p.m., Unit 1, Responded to a call on Marivena.

11-28, 4:00 p.m., Unit 2, Responded to a call on W. Marivena.

11-28, 6:00 p.m., Unit 1, Responded to a call on Kentucky.

11-30, 8:00 a.m., Unit 1, Responded to a call at the Nursing Home.

11-30, 10:00 a.m., Unit 1, Transferred a patient to the hospital in Plainview.

11-30, 8:45 p.m., Unit 1, Responded to a call on W. Marivena.

A defense against cancer can be cooked up in your kitchen. Call us.  
AMERICAN CANCER SOCIETY

### CHRISTMAS TOUR of RANCH and HISTORIC HOMES in MOTLEY COUNTY

Dec. 14th 9:30 a.m. - 3:30 p.m. \$7.00

For more information call: 983-2977

Benefits will go to Motley Co. Sesquicentennial Celebration

**James Race Clar Schacht**  
Farm Bureau agents in Floyd County  
qualify for 1985  
**NATIONAL QUALITY AWARD**

James Race and Clar Schacht have qualified for the 1985 National Quality Award offered by the National Association of Life Underwriters.

James Race

Clar Schacht

The NQA Award is given annually in recognition of life insurance agents who perform a quality sales effort to the benefit of the public and the insurance agency.

**Floyd County Farm Bureau**  
101 S. Wall Floydada, Texas  
983-3777

Give a gift of fitness and/or a glowing tan.  
Christmas special good thru  
Dec. 25...  
12 tanning sessions \$52.56  
1 tanning session \$5.26

**ShipShape Fitness Center & Tanning Salon**  
call 983-2183





**NATIONAL HONOR SOCIETY INDUCTION**—Floydada High School's chapter of the National Honor Society inducted ten new members on November 27. New members include: [back row; left-right] Shannon Vinson, Sylvester Mendoza, Shan- non Barbee, Brad Rainer, and David Coronado. [Front row; left-right] Ramon Coronado, Daralyn Williams, Alyssa Hambright, Paige Cannon, and Rickey Benjamin.

STAFF PHOTO

## A CHANGE IN COMMAND

[The following, written in journalistic style, is an account of events 150 years ago this week in Texas' fight for independence from Mexico. Dates are according to the calendar of 1835-1836.]

By Fred and Eleanor Pass

With the Texas Army, November 30, 1835—General Stephen F. Austin, who commanded the Texas Army of the People for 44 days, paraded his troops and bid them goodbye this week (November 24).

Then he, along with the army's judge advocate general, Colonel William H. Wharton of Brazoria, departed for San Felipe where they will prepare for new assignments as commissioners to the United States.

In the true democratic method by which this unsworn, undisciplined army of volunteers has functioned since the day it was formed on October 11 in Gonzales, the men—colonels and privates alike—cast their ballots for commanding officer.

They chose Colonel Edward Burleson, who served as Austin's only regimental officer. In 1830 he came to Texas from Tennessee where he had

served as colonel in the state militia. Burleson enjoyed precious little "honeymoon" time as commander—only two days—before being called into battle on Thursday (November 26). It was a prairie skirmish between Texas volunteers and a detachment of Mexican soldiers who had been gathering grass for cavalry horses.

Despite momentary confusion in battle, the Texans won.

On Thursday Colonel James Bowie was heading a scouting party west of San Antonio when it encountered a Mexican army force of about 200 men with pack horses carrying loaded bags. Content of those bags was unknown to the Texans but their interest perked up at the sight. And for good reason.

They have been hearing rumors that a Mexican force is headed toward San Antonio bringing silver to cover army payrolls and other expenses. Could this be the loot?

Bowie intended to find out. He sent a runner to the Texans' camp to summon help. Then he and his small band of scouts charged the column of soldiers, and a lively battle ensued.

Help arrived in good time. But not necessarily in good order. Some men came without officers. Some officers

came without their men. General Burleson came with his father, James Burleson. They fought alongside the troops.

Upon the arrival of these men, the Mexicans abandoned their pack animals and fled into the village.

Inside the packs the Texans found, not silver, but grass.

Copyright 1985 Fred Pass



## R.C. Andrews Honor Roll

Second Six Weeks

**GRADE 4**—Travis Bailey, Heather Fondy, Elaine Gibbs, Stacey Prisk, Corinne Pesina, Lisa Caballero, Brandon Gilliland, Tanya Jones, Angie Maldonado, Crystal Sanders, Brandy Lackey, Aaron Noland, Tate Glascock, Eric Smith, Daniel Coronado, Nathan Davis, Robert Eckert, Jessie Gourdon, Kristy Hinsley, Lu Ann Martinez, Brandi Ross, Cody Paty, Esther Hong, Patricia Juarez, Tyson Edwards, and Amy Gilly.

**GRADE 5**—Mandy Bailey, Brandon

Baxter, Casey Carthel, Dedra Hardy, Traca Lemons, Todd Cage, Jayna Dunn, Chantal Patterson, Terry Reeves, Susana Segura, Wayne Wells, Jodee Breed, Stacy Ferguson, Michael Gilliland, Holly Henderson, Amber Poole, Jeremy Rubio, Jonathan Simpson, Tian Younger, Jason Bailey, Michael Brown, Rhealene Brown, Zane Colston, Scott Crader, Lori Flores, Annett Garcia, Brittany Gregory, Joe Hernandez, Roxanne Mercado, Daniel Palacios, Cory Peel, Therese Sims, Elisa Suarez, Josh Thayer, and Amanda Watson.

**GRADE 6**—Christy Benjamin, Jennifer Crow, FaLiza DeHoyos, Cynthia Garcia, Shonda Guthrie, Bertha Hernandez, Jaime Suarez, Nathan Whittle, Julio Cervera, Candy Emert, Rhoda Hernandez, Kalli Hicks, Gerardo Jasso,

Jennifer Paty, Chad Pikkarainen, Brad Wilson, Tiffany Bennett, Sylvia Caballero, Sonya Campbell, Katharine Davis, Curt Hazlett, Cynthia Jones, Elizabeth Juarez, Alan Livingston, Irene Ovalle, Christie Rowan, Billy Villarreal, and Robin Galloway.

## Social Security News

Whenever a family member dies, one of the survivors should inquire to see if social security benefits may be payable on that person's record.

It is important to apply promptly because, in some cases, benefits cannot be paid for months before the month of application. This pertains to widows and widowers who wish to start benefits before they reach 65.

If the worker has enough credit for work covered by social security, benefits can be paid to:

- \* Unmarried children under 18; 18-19 if full-time secondary students; over 18 if disabled before 22.

- \* A mother or father caring for a child under 16 or disabled.

- \* A widow or widower 60 or older.

- \* A disabled widow or widower 50-60.

- \* A dependent parent 62 or older.

A surviving divorced spouse can also receive benefits as an aged or disabled survivor if the marriage lasted 10 years or more. This time limit does not apply

to a divorced spouse caring for an eligible child under 16 or who is disabled.

In addition, there is a \$255 lump-sum death payment that can be made to an eligible widow or widower, or if none, to an entitled surviving child.

When applying, it is helpful for the person to have certain proofs available including the worker's social security card or a record of the number, proof of age for applicants, proof of marriage for widows and widowers, children's birth certificates; proof of the worker's death; Forms W-2 for the previous two years or self-employment tax returns; and proof of support for dependent parents.

Do not delay applying if all these proofs are not available. People at the Social Security office may be able to suggest substitutes.

For more information about social security survivor benefits you may contact us at 1401-B West 5th street or call us a 293-9623.

## FHA - HERO Class meets

By Noelia Huerta

The Floydada Junior High School FHA-HERO met November 27 in the homemaking classroom. The representative from the Floyd County Mental Health office spoke to the members on the destructiveness of alcoholism in the family.

The president, Mary Garza, conducted the meeting. Vice president, Lisa Delgado, handed out the yearbooks. The members read over the program for 1985-86. The treasurer, Elvia Huerta, reported \$25.00 had been received for dues.

The club is also selling all occasion gift wrapping. The members baked cakes to sell before Thanksgiving. The club wrote thank you notes to the people that helped us.

Hostesses were Mary Garza, Janie Sanches and Adela Rodriguez. They served pineapple frosted punch and strawberry layer cake. The table was covered with a red cloth. Red and white roses were the centerpiece. The red rose is the FHA flower.



American Heart Association

WERE FIGHTING FOR YOUR LIFE



**THANKSGIVING FEAST**—Ellen Enriquez's early childhood special education students celebrated Thanksgiving by dressing as pilgrims and Indians and eating a traditional Thanksgiving turkey and dressing meal with their teachers and parents on Tuesday, November 26.

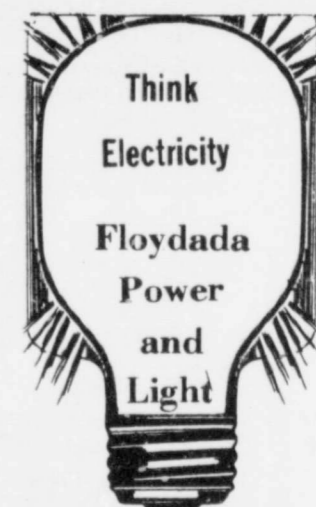
STAFF PHOTO



It is the season to buckle up... wherever you travel.

A message from this newspaper and the Texas Department of Public Safety

**PHIL'S ELECTRIC**  
24 Hour Service  
Free Estimates  
Remodeling, Repairs,  
& Rewiring.  
**983-3589**



## Floydada School Menu

December 9-13

**Monday:**  
Breakfast—Orange juice, toast, milk  
Lunch—Bar B Q meat balls, corn, broccoli w/cheese sauce, sugar cookie, hot roll, milk  
**Tuesday:**  
Breakfast—Pineapple juice, bacon, toast, milk  
Lunch—Vegetable beef soup w/ crackers, pimento cheese sandwich, fruit cup, milk  
**Wednesday:**  
Breakfast—Grape juice, hot oatmeal, cereal, toast, milk

Lunch—Spaghetti w/meat sauce, fried okra, cole slaw, oatmeal cookie, hot roll, milk  
**Thursday:**  
Breakfast—Apple juice, dry cereal, toast, milk  
Lunch—Baked chicken, mashed potatoes, green beans, pear half, hot roll, milk  
**Friday:**  
Breakfast—Orange juice, cinnamon toast, milk  
Lunch—Bar B Q on bun, French fries, tossed salad, peach cobbler, milk

**APROCK**  
**PLAINS**  
**ENTER**  
**FOR**  
**COUNSELING**

Individual, Marriage, Family and Group counseling

McClung University Center, Suite 208  
Wayland Baptist University

296-5521, Ext. 507

## FISH Now is the time for FALL stocking Hybrid Bluegill, Florida Hybrid Bass, Channel Catfish, Fathead Minnows, Hybrid Grass Carp, Black Crappie.

The Hybrid Bluegill will REACH the weight of 2½ to 3 lbs.  
We furnish your hauling containers.  
We guarantee live delivery.  
Delivery will be TUESDAY, DECEMBER 10, at the times listed for the following towns and locations.

Turkey - Setliff Mill & Elevator 8:00-9:00am 423-1221  
Silverton - Briscoe Cooperatives 10:00-11:00am 823-2080  
Tulia - Big N Farm Store 12:00-1:00pm 995-3451  
Plainview - Plainview Feed and Supply 2:00-3:00pm 296-5431  
Floydada - Producer's Coop Elevator 4:00-5:00pm 983-2821

Call your local FEED STORE to place your order or call collect: 405/777-2202

Fishery consultant & pond rotenoning available.  
Special deliveries on large ponds & lake orders

**DUNN'S FISH FARM**

P.O. Box 85

Fittstown, OK 74842

## Finally, Higher Rates on \$25,000 CD's.

Interest Compounded Daily\*

Why earn small interest on your BIG \$25,000 CD? With a minimum deposit of \$25,000 Summit Savings pays jumbo size rates on your FSLIC insured deposit.

Term	Annual Rate	Effective Annual Yield
1 Yr. or More	9.15%	9.58%
182-364 days	8.80%	9.20%
91-181 days	8.50%	8.87%
61- 90 days	8.25%	8.60%
31- 60 days	8.15%	No Compounding

\*Phone for our rates on other maturities and amounts. Rates are subject to change without notice. Substantial interest penalties required for early withdrawal. All deposits are insured to \$100,000 by FSLIC. Effective annual yield applies to deposits on which interest compounds daily. Daily compounding is available when all principal and interest are allowed to remain on deposit to maturity. Compounding is not available on deposits on which interest is withdrawn before maturity.



**SUMMIT SAVINGS ASSOCIATION**

Allen (214) 727-3302 • Littlefield (806) 385-5149 • Farwell (806) 481-3353  
Plainview (806) 293-9441 • Floydada (806) 983-3725 • Hale Center (806) 839-2469  
Matador (806) 347-2636 • Muleshoe (806) 272-5527 • Friona (806) 247-3984  
Dallas Parkway (214) 788-8166 • Plano (214) 596-1115  
Branches across Texas • Member FSLIC • Home office in Dallas, Texas

## FmHA alternatives set

The Farmers Home Administration (FmHA) has issued new regulations which spell out, in detail, the various loan servicing alternatives which may be available to farmers who are having economic difficulty, according to Texas FmHA state director J. Lynn Futch.

"All borrowers are expected to pay back their loans according to a planned repayment schedule," Futch said. "However, when that is impossible, we want borrowers to be aware of what kind of assistance may be available and under what conditions."

The servicing alternatives available to eligible borrowers include a deferral of a portion of payments for five years, reamortizing payments over a longer period of time, restructuring the debt,

or subordinating FmHA's lien position on security to another lender.

The regulations spell out how FmHA determines eligibility for various loan servicing alternatives and under what circumstances FmHA would propose to take steps to resolve delinquency or other problems.

Borrower's appeal rights are detailed as well as FmHA's agreement to continue the release of sales proceeds until final loan servicing has been determined.

The new procedures were developed to give FmHA borrowers with delinquent and problem loans clear, consistent and predictable guidelines on how their accounts will be serviced by the agency", Futch said.

## JD waivers finance

John Deere has announced new programs to waive finance charges for varying periods for major items of farm equipment purchased through the John Deere finance plan. Waiver of finance

charges reduces the interest paid during the term of a retail financing contract. If payments are required during the waiver period, the program permits a faster buildup of the buyer's equity since all such payments apply entirely to principal.

Under the newly announced program, finance charges on all used combines and new John Deere combines will be waived until the beginning of the use season in 1986, and in some cases until the beginning of the use season in 1987.

Finance charges on all over 40 PTO h.p. tractors may be waived until June 1, 1986.

Finance charges on all new and some used seasonal equipment may be waived until the beginning of the month in which the next use season begins.

### Caprock-Plains Federal Land Bank Association



Floydada 983-2480

### ADAM'S WELL SERVICE



Floydada 983-5003

### FLOYD COUNTY FARM BUREAU



Lockney Floydada 652-2242 983-3777

### FLOYDADA IMPLEMENT CO.

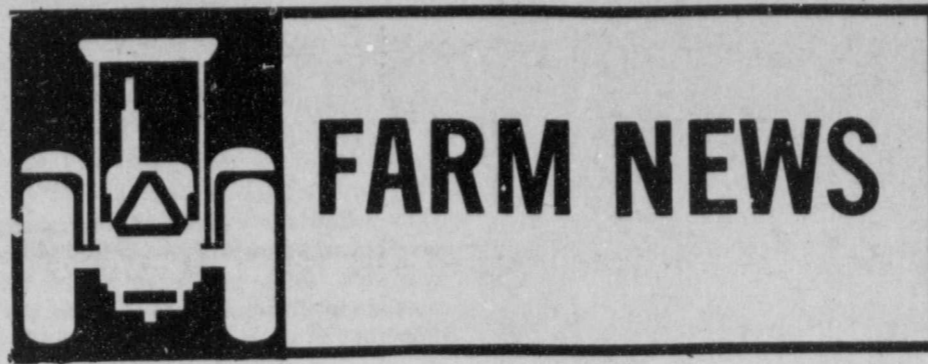


Floydada 983-3584

### Chemical Meeting

A chemical meeting will be held in the County Courtroom, Friday, December 6 at 9:30 a.m. and Monday, December 9 at 3:00 p.m. These meetings will allow the producer a chance to voice his opinion and be a part of the regulatory process.

A representative of the Texas Department of Agriculture has been asked to be present at these hearings to answer questions and lend guidance.



## Bill Powers announces for Agriculture Commissioner

Bill Powers announced that he will run as a Republican for Texas Commissioner of Agriculture.

Powers cited his lifelong experience in agriculture, from the dirt and sweat level to the policy making level. As Texas Poultry Executive Vice President for the past 16 years, he said much of his work has benefited all of Texas agriculture. He cited the Texas Right-to-Farm Act as well as his work in developing fair taxation of agricultural trucking fair and competitive.

Powers promised to bring professionalism and credibility to the Texas Department of Agriculture.

Before heading the Texas Poultry staff, Powers edited *Texas Agriculture*, the monthly publication of the Texas Farm Bureau. He received a BS degree in Ag Journalism from Texas A&M in 1965. Powers and his wife, Evelyn, who teaches first grade in the Austin schools, have two sons; Clay, 17 and Trey, 13. The family owns a cow-calf operation in Brazos County.

## Texas Farm Credit Bank outlook remains strong

Officials of the Farm Credit Banks of Texas remain confident of the Texas District's ability to withstand the adverse economic trends, even though Congress wrestles with a proposal for federal support for the Farm Credit System.

James A. Rogers, president of the Farm Credit Banks of Texas, reports that adverse national publicity has brought about some borrower loss of confidence even in the Texas District, but both loan volume and number of borrowers have remained relatively stable.

Rogers says that the Federal Land Bank of Texas countered the national trend by increasing loan volume from \$2.63 billion at the end of the third quarter in 1984 to \$2.75 billion on September 30 of this year. Reviews of 32 Texas Federal Land Bank Associations showed acceptable business remained at 95.7 percent, 8.1 percent above the national average.

Reviews of 22 of the state's 28 Production Credit Associations' loan portfolios showed an improvement of 2 percent in business classified acceptable. PCAs also showed improved credit quality in problem and loss business.

Acceptable business in the Texas Bank for Cooperatives increased to 93.2 percent, an improvement of almost 3

percent over the same time last year, compared with a 92.9 percent national average.

Rogers said that nationwide the Farm Credit System has experienced greater losses than ever before in its 69-year history due to the downward spiral of commodity and land prices. Congress now is considering legislation which would stabilize the financial condition of the Farm Credit System.

"We believe that the Farm Credit System nationwide does need government financial assistance," Rogers stated. "We, however, are asking Congress to not require so much capital of us that it would cause us to have to increase interest rates to Texas farmers and ranchers."

Interest rates in the Farm Credit Banks of Texas currently are among the lowest in the nation's 37 Farm Credit Banks.

The Farm Credit System in Texas consists of the Federal Land Bank of Texas and its 44 Federal Land Bank Associations, the Federal Intermediate Credit Bank of Texas, 28 Production Credit Associations and the Texas Bank for Cooperatives. The Texas banks and associations have approximately \$4 billion in loans outstanding to 50,000 of the state's farmers, ranchers and their cooperatives.

## Livestock market is up

Yes, Virginia, there is a Santa Claus—and yes, cattlemen, the market finally seems to be turning around.

In the coming weeks, cattlemen may have another reason to feel a bit joyous other than the approaching holiday season.

Based on a variety of reports, cattle numbers are down and that trend should last into next year. The price recovery that began a few weeks ago should continue at least until the spring, says a Texas Agricultural Extension Service livestock marketing economist.

October 1 figures show cattle and calves on feed down 12 percent, fed cattle marketings for July-September up 5 percent, cattle and calves placed on feed during July-September down 13 percent, other disappearance of animals during that same period down 25 percent, and expected fed cattle marketings for October-December down 4 percent.

"These figures suggest that the oversupply problems of the beef industry caused by larger marketings of overweight feedlot cattle are about over," Uvacek points out. "Even though slaughter weights are still running a little above a year ago, some feedlots are already selling some cattle that are not quite ready."

Uvacek feels that the reduction in feedlot placements during the July-September period is the best news for cattlemen. "This 13 percent reduction should assure light supplies of beef for the last quarter of this year and

continued lower marketings through the first quarter of 1986," says the economist.

All in all, the future is starting to look a little brighter for the beef industry, and it couldn't have come at a better time with the Christmas season approaching.

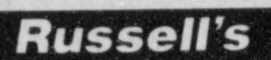
Dr. Ed Uvacek feels the latest cattle-on-feed report (covering 13 states) gives another "shot in the arm" to the cattle industry. "The number of cattle on feed has declined steadily in recent months and finally appears to be having an impact on market prices," Uvacek says.

### FIRST NATIONAL BANK OF FLOYDADA



Floydada 983-3717

### RUSSELL'S EQUIPMENT & SUPPLY



Floydada 983-3751

### FLOYD COUNTY IMPLEMENT



Floydada 983-3732

### PATTERSON GRAIN CO.

652-3393

Lockney Lone Star

### FLOYDADA COOPERATIVE GINS INC.



Floydada 983-2884

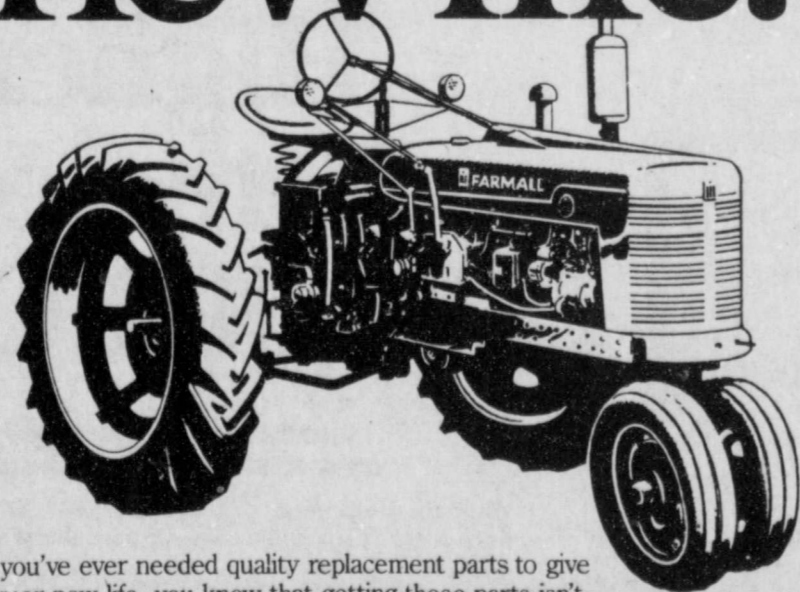
## Zaire offered wheat flour

Deputy Secretary of Agriculture John R. Norton announced that a wheat flour offer to Zaire will be the tenth initiative under the U.S. Department of Agriculture's Export Enhancement Program. As with previous announcements under this program, sales will be made at competitive world prices.

Norton said this program will give U.S. exporters the opportunity to sell up to 64,000 metric tons of wheat, flour, including a Commodity Credit Corporation bonus in the form of wheat to be provided to U.S. exporters from CCC stocks. The CCC bonus will enable U.S. exporters to compete at commercial prices in the Zaire market in response to future tenders for wheat flour.

The announcement and invitation for offers from exporters has been issued. For further information call William R. Randolph, (202) 382-9254 or Larry T. McElvain (202) 447-6225.

# We give old-timers new life.

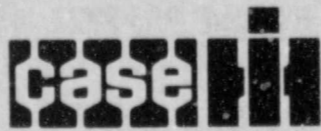


If you've ever needed quality replacement parts to give an old-timer new life, you know that getting those parts isn't always easy. That's a fact of life that J I Case is doing something about.

Call us for the parts you need for older Case or IH equipment. If we don't have them in stock, we can get them for you. J I Case has devoted an entire warehouse to stock parts for older Case and IH equipment — some built as far back as 40 years ago.

So if you're planning to give new life to an old-timer in your operation, be sure to see us. You may not be our only customer, but we'll treat you like you are.

A fresh team for today's farmer.



## Browns Implement Inc.

Ralls Highway

983-2281

## Your Co-op Gin. A Good Place to Do Business.

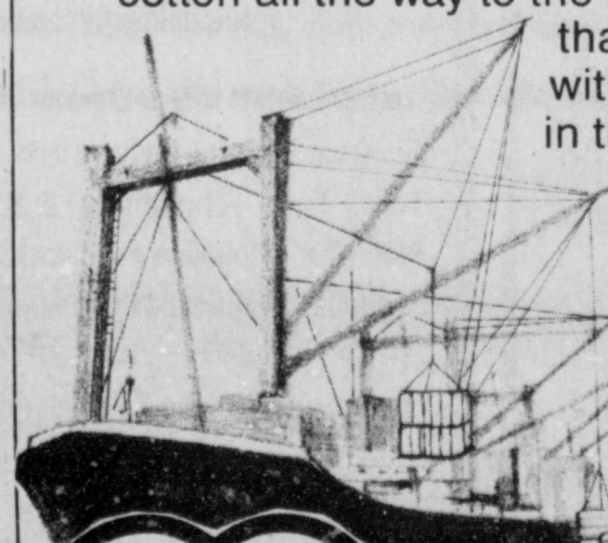
It makes sense to stay involved with your cotton after it leaves the farm. That's why taking your cotton to your co-op gin is a good idea—for a couple of reasons:

First, when you take your cotton to a co-op gin, that gin becomes a part of your business. You have a voice in how it's run and you share in the profits. The more cotton you bring, the more it pays.

But, even more importantly, when you bring your cotton to your co-op gin you become part of a system that takes your cotton all the way to the market. A system

that joins your local co-op gin with other co-op gins to give you a voice in the market. Being a part of that system is important to you now and it's even more important to the future of cotton farming.

Take your cotton to your co-op gin. After all, it's just good business to do business with yourself.



## LOCKNEY COOPERATIVES

Lockney Main Office 652-3377

South Plains 652-2582

Lockney Elevator 652-3394

Sterley Elevator 652-3103



**NOTICE OF PUBLIC HEARING**

There will be a second public hearing on Monday, December 9, 1985 at 3:00 p.m., Floyd County Courthouse, County Courtroom to receive final input and to adopt any regulations concerning a new Herbicide Law as it pertains to Floyd County. The Commissioners Court of Floyd County will be in session during this meeting to adopt any regulations proposed.

All interested farmers, ranchers and landowners are invited to attend this public hearing.

BY order of the Commissioners Court.

CHOISE SMITH, Floyd County Judge  
December 3, 1985  
12-5c

**NOTICE TO ALL PERSONS HAVING CLAIMS AGAINST THE ESTATE OF EMMA SCOTT, DECEASED**

Notice is hereby given that original Letters Testamentary for the Estate of Emma Scott, Deceased, were issued on November 22, 1985, in Cause No. 4822, pending in the County Court of Floyd County, Texas, to Mary Nina Traylor. The residence of such executrix is 400 East Locust, Lockney, Floyd County, Texas, 79235. Claims may be presented through my attorney, John R. Hollums, Floyd County Courthouse, Floydada Texas, 79235. All persons having claims against this estate which is currently being administered are required to present them within the time and in the manner prescribed by law.

DATED the 22nd day of November, A.D. 1985.

/s/ Mary Nina Traylor  
Mary Nina Traylor  
12-5c

**NOTICE OF SHERIFFS SALE**

THE STATE OF TEXAS  
COUNTY OF FLOYD

By virtue of an Order of Sale issued out of the Honorable 110TH Judicial District Court of Floyd County, on the 26th day of November 1985 by the Clerk thereof, in the case of CITY OF FLOYDADA ET AL VS. OSCAR BARRERA SR. Cause # 4431 and to me, as Sheriff, directed and delivered, I will proceed to sell, at 10:00 A.M. on the 7TH DAY OF JANUARY, 1986 which is the first Tuesday of said month, at the west door of the Courthouse of said Floyd County, in the City of FLOYDADA Texas, the following described property, to wit:

Lot 4, Block 25 of the Original Town of Floydada, Floyd County, Texas

Levied on the 26th day of November 1985 as the property of OSCAR BARRERA SR.

to satisfy a judgment amounting to \$ 1,014.12 with interest from the 23RD DAY OF JULY, 1985 at 10 per cent, per annum, and all costs of suit in favor of CITY OF FLOYDADA, MACKENZIE WATER AUTHORITY, STATE OF TEXAS AND FLOYD COUNTY AND FLOYDADA INDEPENDENT SCHOOL DISTRICT

GIVEN UNDER MY HAND THIS 2nd day of December 1985

/s/ Fred A. Cardinal  
SHERIFF FLOYD COUNTY, TEXAS

by Irene Miller DEPUTY  
12-19c

**NOTICE OF SHERIFFS SALE**

THE STATE OF TEXAS  
COUNTY OF FLOYD

By virtue of an Order of Sale issued out of the Honorable 110TH Judicial District Court of Floyd County, on the 26th day of November 1985 by the Clerk thereof, in the case of FLOYDADA INDEPENDENT SCHOOL DISTRICT, ET AL VS. A.D. PERRYMON Cause # 4423-TS and to me, as Sheriff, directed and delivered, I will proceed to sell, at 10:00 A.M. on the 7TH DAY OF JANUARY, 1986 which is the first Tuesday of said month, at the west door of the Courthouse of said Floyd County, in the City of FLOYDADA Texas, the following described property, to wit:

Lot 26 and part of Lot 25, Block 38 of the Original Town of Floydada, Floyd County, Texas

Levied on the 26th day of November 1985 as the property of

THE STATE AND HEIRS OF A. D. PERRYMON

to satisfy a judgment amounting to \$ 464.88 with interest from the 23RD DAY OF JULY, 1985 at 10 per cent, per annum, and all costs of suit in favor of CITY OF FLOYDADA, MACKENZIE WATER AUTHORITY, STATE OF TEXAS AND FLOYD COUNTY AND FLOYDADA INDEPENDENT SCHOOL DISTRICT

GIVEN UNDER MY HAND THIS 2nd day of December 1985

/s/ Fred A. Cardinal  
SHERIFF FLOYD COUNTY, TEXAS

by Irene Miller DEPUTY  
12-19c

**NOTICE OF SHERIFFS SALE**

THE STATE OF TEXAS  
COUNTY OF FLOYD

By virtue of an Order of Sale issued out of the Honorable 110TH Judicial District Court of Floyd County, on the 26th day of November 1985 by the Clerk thereof, in the case of FLOYDADA INDEPENDENT SCHOOL DISTRICT ET AL VS. W. W. PAYNE Cause # 4422-TS and to me, as Sheriff, directed and delivered, I will proceed to sell, at 10:00 A.M. on the 7TH DAY OF JANUARY, 1986 which is the first Tuesday of said month, at the west door of the Courthouse of said Floyd County, in the City of FLOYDADA Texas, the following described property, to wit:

Part of Lot 8, Block 120 of the Original Town of Floydada, Floyd County, Texas

Levied on the 26th day of November 1985 as the property of W. W. PAYNE AND THE ESTATE AND HEIRS OF W. W. PAYNE

to satisfy a judgment amounting to \$ 557.94 with interest from the 23RD DAY OF JULY, 1985 at 10 per cent, per annum, and all costs of suit in favor of CITY OF FLOYDADA, MACKENZIE WATER AUTHORITY, FLOYDADA INDEPENDENT SCHOOL DISTRICT AND STATE OF TEXAS AND FLOYD COUNTY

GIVEN UNDER BY HAND THIS 2nd day of December 1985

/s/ Fred A. Cardinal  
SHERIFF FLOYD COUNTY, TEXAS

BY Irene Miller DEPUTY  
12-19c

**NOTICE OF SHERIFFS SALE**

THE STATE OF TEXAS  
COUNTY OF FLOYD

By virtue of an Order of Sale issued out of the Honorable 110TH Judicial District Court of Floyd County, on the 26th day of November 1985 by the Clerk thereof, in the case of CITY OF FLOYDADA, ET AL VS. MID-STATE HOMES Cause # 4285 and to me, as Sheriff, directed and delivered, I will proceed to sell, at 10:00 A.M. on the 7TH DAY OF JANUARY, 1986 which is the first Tuesday of said month, at the west door of the Courthouse of said Floyd County, in the City of FLOYDADA Texas, the following described property, to wit:

TRACT I: Lot 13, Block 53 of the Original Town of Floydada Floyd County, Texas

TRACT II: Lot 6, Block 54 of the Original Town of Floydada, Floyd County, Texas

TRACT III: Lot 1, Block 102 of the Original Town of Floydada, Floyd County, Texas

TRACT IV: Lot 19, Block 2 of the Tuttle Lockney Addition to the Town of Lockney, Floyd County, Texas

Levied on the 26th day of November 1985 as the property of

MID-STATE HOMES

to satisfy a judgment amounting to 10,637.85 with interest from the 23rd day of July, 1985 at 10 per cent, per annum, and all costs of suit in favor of CITY OF FLOYDADA, FLOYDADA ISD, MACKENZIE WATER AUTHORITY, CITY OF LOCKNEY, LOCKNEY INDEPENDENT SCHOOL DISTRICT, FLOYD CO & STATE OF

GIVEN UNDER MY HAND THIS 2nd day of December 1985

/s/ Fred A. Cardinal  
SHERIFF FLOYD COUNTY, TEXAS

by Irene Miller Deputy  
12-19c

**NOTICE OF SHERIFFS SALE**

THE STATE OF TEXAS  
COUNTY OF FLOYD

By virtue of an Order of Sale issued out of the Honorable 110TH Judicial District Court of Floyd County, on the 26th day of November 1985 by the Clerk thereof, in the case of FLOYDADA INDEPENDENT SCHOOL DISTRICT, ET AL VS. HATTIE FOSTER Cause # 4554 and to me, as Sheriff, directed and delivered, I will proceed to sell, at 10:00 A.M. on the 7TH DAY OF JANUARY, 1986 which is the first Tuesday of said month, at the west door of the Courthouse following described property, to wit:

Lot 1, Block 2 of the Bartley Addition to the Town of Floydada, Floyd County, Texas

Levied on the 26th day of November 1985 as the property of

HATTIE FOSTER, THE ESTATE AND HEIRS OF HATTIE FOSTER

to satisfy a judgment amounting to \$ 326.61 with interest from the 23RD DAY OF JULY, 1985 at 10 per cent, per annum, and all costs of suit in favor of CITY OF FLOYDADA, MACKENZIE WATER AUTHORITY, FLOYDADA INDEPENDENT SCHOOL DISTRICT AND STATE OF TEXAS AND FLOYD COUNTY

GIVEN UNDER MY HAND THIS 2nd day of December 1985

/s/ Fred A. Cardinal  
SHERIFF FLOYD COUNTY, TEXAS

BY Irene Miller DEPUTY  
12-19c

**NOTICE TO RECEIVE BIDS**

PLAINVIEW INDEPENDENT SCHOOL DISTRICT  
December 12, 1985

The Plainview Independent School District will receive bids for the purchase or repair of:

(1) Food Products for Cafeterias  
(2) (A) Removal and Replacement of Insulation on Boiler at High School AND  
(B) Repair of Boiler at High School  
(3) Repair of Roofs at Ash, Lamar and College Hill  
(4) Library Books

Sealed bids should be returned to Mr. John O. Peck, Assistant Superintendent, Plainview, I.S.D., P.O. Box 1540, Plainview, Texas 79073-1540 or delivered to Mr. Peck at the Administration Building, 912 Portland, Plainview, Texas. The bids will be received until 10:00 A.M. on Thursday, December 12, 1985, when they will be opened and tabulated. Bids received after the above deadline will be returned unopened. Bids will be deemed as delivered only when they are received by Mr. Peck. The bids will be presented to the Board at their regular meeting to be held in the Administration Building at 7:30 P.M. on Thursday, December 12, 1985. At this time the contract will be let. The Board reserves the right to accept or reject any and all bids. This is a solicitation for bids and is not an offer. All bids and information received in response to this solicitation will become the property of the Plainview I.S.D.

Information concerning bid forms and specifications may be obtained by contacting Mr. Peck at the Administration Building, or by calling (806) 296-6392.

John O. Peck, Assistant Superintendent  
Plainview Independent School District  
12-7L, 11-28, 12-7F

**PUBLIC NOTICES**

**NOTICE OF SHERIFFS SALE**

THE STATE OF TEXAS  
COUNTY OF FLOYD

By virtue of an Order of Sale issued out of the Honorable 110TH Judicial District Court of Floyd County, on the 26th day of November 1985 by the Clerk thereof, in the case of CITY OF FLOYDADA ET AL VS. H.B. PEEK Cause # 4448 and to me, as Sheriff, directed and delivered, I will proceed to sell, at 10:00 A.M. on the 7TH DAY OF JANUARY, 1986 which is the first Tuesday of said month, at the west door of the courthouse of said Floyd County, in the City of FLOYDADA Texas, the following described property, to wit:

Lot 3, Block C of the Bowers-Price Addition to the Town of Floydada, Floyd County, Texas

Levied on the 26th day of November 1985 as the property of

HUGH PEEK

to satisfy a judgment amounting to \$ 4,368.81 with interest from the 23rd DAY OF JULY, 1985 at 10 per cent, per annum, and all costs of suit in favor of CITY OF FLOYDADA, MACKENZIE WATER AUTHORITY, FLOYDADA INDEPENDENT SCHOOL DISTRICT AND STATE OF TEXAS AND FLOYD COUNTY

GIVEN UNDER MY HAND THIS 2nd day of December 1985

/s/ Fred A. Cardinal  
SHERIFF FLOYD COUNTY, TEXAS

by Irene Miller DEPUTY

**DOLL AUCTION**  
**Saturday, December 7, 1985**  
**Sale Time: 10:30 AM**  
**Mrs. Bessie Lee Griffin, Owner**

Sale Site: 120 North Main in Lockney, Texas  
"The Old John Deere Building"

**NOTE:** Due to the death of Mrs. Griffin the following will be sold at Public Auction. This sale will be held inside.

*Madame Alexander Dolls,*

**DOLLS - All in original boxes**

1 - Cissette, #700	9"-11"	1 - Renoir, #1175	11" Tall
1 - Cissette, #1410	9"-11"	1 - Scarlett, #1174	11" Tall
1 - Cissette, #710	9"-11"	1 - Jenny Lind, #1171	11" Tall
1 - Cissette, #811	9"-11"	1 - Cissette in gold dress, #800	9"-11" Tall
1 - Cissette in pink formal, #800	9"-11"	1 - Antique Trunk, Early 20's,	Good Shape
1 - Cissette Ballarina, #735	9"-11"	1 - Wicker Baby Cradle w/stand	Good Shape
1 - Cissette pink rose bud formal #831	9"-11"	<b>Mark-Alexander Kins</b>	
1 - Cissette Queen, #763	9"-11"	<b>By Madame Alexander</b>	
1 - Cissette white net formal #852	9"-11"	1 - India, #775	8"
1 - Lissy Ballarina, #1214	12" tall	1 - Swedish, #492	8"
1 - Scotch, #496	8"	1 - Dutch, #491	8"
1 - Margot, #900	10"-11" tall	1 - French, #490	8"
1 - Little Genius, #317	6"	1 - Bo Peep, #783	8"
1 - Hungarian, #397	8"	1 - Tyrolean Girl, #798	8"
1 - Wendy Kins, #308	8" tall	1 - Miss Muffett, #752	8"
1 - Elise Gold Ballarina, #1816	15"	1 - Louisa "Sound of Music", #1404	12" Tall
1 - Elise Blue Ballarina, #1740	15"	1 - Carolina, #4930	14"
1 - Elise Yellow Ballarina, #1740	15"	1 - Brenda Starr, #900	12"
1 - Ecuador, #787	8"	1 - Bisque Baby	12"
1 - Margot, #920	8"-10"	1 - Walking Ginny-Kindy Crowd, #248	
1 - Swiss, #494	8"	<b>Schrade Walden Knives, Rifles,</b>	
1 - Italian, #493	8"	<b>Old World Coins</b>	
1 - Priscilla, #789	8" Tall	1 - Schrade Walden, #293	2 Bladed
1 - Christening-Little Genius, #141	6"	1 - Schrade Walden, #861	3 Bladed
<b>By Vogue</b>		2 - Schrade Walden, #209	
1 - Mary Poppins By Horseman, #92801		1 - Schrade Walden, #708B	Fish Knife
1 - Snow White, #1455	14"	1 - Schrade Walden, #787	Muskrat
<b>All Madame Alexander - Out of Boxes</b>		1 - Schrade Walden, #896K	3 Bladed
1 - Southern Belle,	8" Tall	1 - Schrade Walden, —881Y	3 Bladed
1 - Friedrich, #1107-In Box	12"	1 - Schrade Walden, #225H	2 Bladed
1 - Polish	8"	1 - Shrade Walden, Lineman Skinner	
2 - Mexico, #766 1-In Box 1-Out	8"	1 - Schrade Walden, #9S105, Ivory Handle Watermelon Knife	
2 - Spanish, #495 1-In Box 1-Out of Box	8"	2 - Uncle Henry, #227 U.H.	
1 - Amy - Little Woman Group	8"	1 - Old Timer, #150T	
1 - Marme - Little Woman Group	8"	1 - Winchester, 30-30 Rifle, Centennial '66, Gold Plated, Good Shape, Ser. #34866	
1 - Gretel	8" Tall	1 - Black Powder Thompson Hawkins, 54 cal., w/loading asst.	
1 - Russian	8"	1 - Bear Super Kodiak 50 lb. Fiberglass Bow, w/6 Alum. match Arrows - Field and hunting tips w/all asst.	
1 - Polish	8"	1 - Group of old world coins, Type Set/Date Set	
1 - Finland	8"	<b>NOTE:</b> Owner and Auctioneer not responsible for property damage or accidents.	
1 - Turkish	8"	<b>TERMS OF SALE:</b> Cash or Personal Checks Day of Sale. We act as Commission Agents only. All Merchandise sold As-Is, Where-Is.	
1 - Margaret - Bride Doll	14"	<b>AUCTIONEER'S NOTE:</b> Mrs. Griffin had collected Madame Alexander Dolls all of her life and almost all dolls are in Good Shape. Madame Alexander Dolls are still most desirable. Come out and be with us, Saturday, December 7, 10:30 A.M., Lockney, Texas.	
1 - Alice in Wonderland	10"-11" Tall	<i>Bring Your Checkbook</i> <i>Lunch Will Be Available</i>	
2 - Navajo Dolls		SALE CONDUCTED BY	
1 - Kachina Doll, Made by Pueblo Indian		<b>MOGG'S AUCTION SERVICE</b>	
1 - China Doll - No Dress		- AUCTIONEERS -	
1 - Marlene Doll w/vanity set-In Box By Marx		Rex Mogg	Larry McNutt
1 - Lot of Barbie and Ken Dolls		TXS-112-0902	TXS-066-1887
1 - Francie - Barbie Cousin		293-9106/296-5787	293-3365
1 - Barbie - Match and Mix Set		Member Texas and National Auctioneer Associations	Licensed & Bonded
1 - Barbie - Piano		Plainview, Texas	"WE HANDLE ALL TYPES OF SALES"
1 - Lot of Misc. Barbie Clothes, Other Dolls, Doll Furniture, Doll carrying cases.			
<b>In A Series of Portrettes</b>			
1 - Rebecca, #1485	14" Tall		
	dated 1968		
1 - Melinda, #1173	11" Tall		
	dated 1968		
1 - Godey, #1172	11" Tall		
	dated 1968		



# THE SAVINGS GIANT

## THE MEAT MARKET

 <b>Turkey Drumsticks</b> 39¢ Lb.	 <b>Country Style Pork Ribs</b> \$1.38	 <b>Hormel Light &amp; Lean Ham</b> Sliced, 4 Oz. \$1.09	 <b>Hormel Light &amp; Lean Turkey</b> Sliced, 4 Oz. \$1.35	 <b>Food Club Texas Style Biscuits</b> , 4 Oz. 3/\$1	 <b>Breaded Fattal Shrimp</b> 16 Oz. \$3.99	 <b>Navel Oranges</b> Calif. Finest 39¢ Lb.	 <b>Zucchini Squash</b> Medium Size 59¢ Lb.	 <b>Golden Delicious Apples</b> Wash. State Extra Fancy 48¢ Lb.	 <b>Iceberg Lettuce</b> Fancy Cello Wrap 2/\$1	 <b>Sugar Leaf Pineapples</b> Fresh From Mexico 89¢ Each	 <b>Bell Peppers</b> Fancy Large Pods 5/\$1	 <b>Calli. Lemons</b> Lots of Juice 5/\$1	 <b>Ivy Wreath With Foil</b> 5" Pot \$8.99 Each	
 <b>Hormel Sliced Bacon</b> Black Label 1 Lb. \$1.78	 <b>Country Pride Pick of the Chick</b> Grade A 1 Lb. 99¢	 <b>Food Club Longhorn Cheese</b> Cheddar or Colby Halfmoon 8 Oz. 99¢	 <b>Sandwich Mite</b> 16 Oz. \$1.59	 <b>Fisher Sandwich-Mite Cheese Slices</b> 16 Oz. \$1.59	 <b>Hormel Little Sizzlers</b> Rice or Hot 12 Oz. 99¢	 <b>Golden Ripe Bananas</b> Central American 4 LBS. \$1.00	 <b>Ruby Red Grapefruit</b> Sugar Sweet 5/\$1	 <b>Bell Peppers</b> Fancy Large Pods 5/\$1	 <b>Poinsettias</b> 6" Pot \$6.99 Each	 <b>Ivy Wreath With Foil</b> 5" Pot \$8.99 Each	 <b>Hormel Sliced Bacon</b> Black Label 1 Lb. \$1.78	 <b>Country Pride Pick of the Chick</b> Grade A 1 Lb. 99¢	 <b>Food Club Longhorn Cheese</b> Cheddar or Colby Halfmoon 8 Oz. 99¢	 <b>Sandwich Mite</b> 16 Oz. \$1.59

## GROCERIES • GROCERIES • GROCERIES

 <b>Folgers Coffee</b> All Grinds 3 Lb. \$5.99	 <b>Endust Detergent</b> Regular or Lemon 10 Oz. \$1.98	 <b>Shield Bar Soap</b> Ple Priced 35¢ 3.5 Oz. 3/\$1.00	 <b>Automatic Vanish</b> Green or Blue 12 Oz. \$1.09	 <b>Conquest Bath Tissue</b> 8 Roll \$1.69	 <b>Fresh Red Snapper Fillets</b> \$2.89 Lb.	 <b>Fresh Whole Catfish</b> \$2.39 Lb.	 <b>Morie's Smoked Goldfish</b> \$2.39 Lb.	 <b>Medium Raw Shrimp</b> \$3.39 Lb.	 <b>Jama Sea Food Shreds</b> Lb. \$3.79	 <b>Ultra Mussels</b> Lb. \$1.69
 <b>Del Monte Canned Beans</b> Soybean, Kidney, Lima, or Sweet Peas 16-17 Oz. 2/78¢	 <b>Del Monte Tomato Sauce</b> 8 Oz. 5/\$1	 <b>Del Monte Prunes</b> 16 Oz. 98¢	 <b>K-C Master Barbecue Sauce</b> All Flavors 19 Oz. 99¢	 <b>Glad Trash Bags</b> 30 Gal. 3 Ply \$2.69 Pkg.	 <b>Benihana Sweet/Sour Chicken</b> 11 Oz. \$1.69	 <b>Benihana Sweet &amp; Sour Chicken</b> 11 Oz. \$1.69	 <b>Lynden Farms Vegetables</b> 6 Flavors to Choose From 10 Oz. \$1.09	 <b>Mrs. Baird's Split Top Wheat Bread</b> 24 Oz. Loaf 89¢	 <b>Mrs. Baird's Honey Buns</b> Individual 3/\$1	 <b>Heath Farms Butter</b> 1 Lb. Loaf 59¢
 <b>Pepsi, Diet Pepsi, Diet Slice, or Slice</b> 6 Pack-12 Oz. Cans \$1.19	 <b>French's Idaho Spuds</b> 24 Servings 18 Oz. 99¢	 <b>Rotel Tomatoes &amp; Green Chilies</b> Can 39¢	 <b>Alpo Dog Food</b> 17 Oz. Label 25 Lb. \$5.99	 <b>Nabisco Oreo Dressing</b> 18 Oz. \$1.25	 <b>Nabisco Oreo Dressing</b> 18 Oz. \$1.25	 <b>Nabisco Oreo Dressing</b> 18 Oz. \$1.25	 <b>Nabisco Oreo Dressing</b> 18 Oz. \$1.25	 <b>Nabisco Oreo Dressing</b> 18 Oz. \$1.25	 <b>Nabisco Oreo Dressing</b> 18 Oz. \$1.25	 <b>Nabisco Oreo Dressing</b> 18 Oz. \$1.25



Prices are effective Wednesday, December 4th through Tuesday, December 10th, 1985.

LUBBOCK STORE LOCATIONS: ★ 5025-50th (& Slide Road) ★ 302 University (& 4th Street)