

## Whirlwind news

### HEY WHIRLWIND FANS!

The Winds will take on Perryton at the Tascosa High School Gym in Amarillo on February 21. The game starts at 7:30 p.m.

This is a very important game and we really need everyone to come out and support the Winds as



## Go Winds!!!

they go for a Bi-District victory. There will be a send off in front of the Junior High at 3:25 p.m. on Thursday. School dismissed at 3:00, so let's all get over there and show the team we are behind them.

Varsity Cheerleaders

## Defensive Driving Course

### Sessions will be held at R. C. Andrews on Monday, Tuesday, and Wednesday (February 25, 26, and 27) at 7:00 p.m.

Members will be charged the cost of materials only. Non-members will be charged the cost of materials plus a membership fee.

Sponsored by the Floyd County Farm Bureau

## WEATHER

Courtesy of Energas		
Date	High	Low
February 13	65	27
February 14	56	32
February 15	55	34
February 16	66	29
February 17	66	37
February 18	60	28
February 19	50	40

# THE FLOYD COUNTY HESPERIAN

## 25¢



Floydada, Texas 79235

USPS 2026-8000

Thursday, February 21, 1985

Volume 84, Number 8

a view from

The Lamplighter

By Ken Towery

The issue of adequate, or proper, control over the use of agricultural pesticides, herbicides and fungicides will be back in the news in a big way before this session of the Legislature is finished.

State Rep. Foster Whaley, who represents this District in the Legislature, has introduced a bill that would effectively strip State Agriculture Commissioner Jim Hightower of control over that operation, and place it in the hands of an appointed board of experts from across the state. Whaley's proposal, designated House Bill 329, would place the board within the Department of Agriculture, but it would have its own Director, responding to a 10-member Board appointed by the Governor from a list of 15 who would be proposed by the Deputy Chancellor of Texas A&M University. The Director of Texas Tech's Health Science Laboratory in San Benito would serve as a permanent member of the committee. The remaining nine appointees would include three entomologists, three plant pathologists and three weed control specialists. In making his recommendations the Deputy Chancellor would have to at least "consider" individuals from different parts of the state, as well as individuals employed by universities and colleges of Agriculture.

All in all it is a good proposal, in our view. It may well be changed somewhat before it completes the tortuous route into law, but the thrust of the proposal is good and we hope it will ultimately be enacted.

The simple truth of the matter is that there is very little agricultural expertise within our Department of Agriculture, beginning at the very top with Jim Hightower. Another simple truth is that there is no political imperative for our State Commissioner of Agriculture to be overly concerned about agricultural matters. His political power base lies elsewhere, in the leadership of organized labor, among the minorities, among the state's liberal community. Farmers and ranchers are just too few, statewide, to have any real impact on the policies or practices of our State Department of Agriculture. That is not a recent development. It has been that way for many years. The post of Commissioner of Agriculture is now basically a sounding board for politicians on their way somewhere else. It may be remembered that a few years ago Mr. Hightower ran for Railroad Commissioner. Then he professed to have the answers to energy problems. He lost that race, so he became an instant expert on agriculture and ran for his present post, winning with the help of groups mentioned above. When he has completed his task of political base-building, we can safely predict he will try for something else. He is cute with quips, which makes him a darling with a lot of people, but we doubt he knows the difference between a Shropshire and a Yorkshire.

The present incumbent aside, we have long thought the Department of Agriculture ought to be abolished and made into a cabinet position, with the governor appointing a Secretary from among the ranks of the agricultural community. We know this would be a controversial proposal, since many in the farm community still regard the department as "theirs" despite the fact they can no longer control who is elected to the post. If it were made into a cabinet position farmers and ranchers would be able to have far more influence, in our opinion, by having two shots at policy formulation. One, they would have someone present who understands the problems, and two, they would be an important factor in any gubernatorial candidate's coalition.

Since it is not likely that any moves will be made soon to make corrective action regarding the fundamental flaws in the State Department of Agriculture, Legislators can at least do the next best thing. They can force upon the Department a degree of expertise in the important area of agricultural chemicals. They can, in short, pass Whaley's bill into law.

## Successful auction grosses over \$98,000.00

The 1985 auction was the most successful ever held. A total of \$98,000.00 was paid for the animals that crossed the ring. This total was the highest ever achieved in the county sale. Approximately half the number of animals were sold this year as have been sold in previous years.

The Premium Sale delivered over \$70,000.00 to FFA and 4-H members selling their animals. The highest per pound bid was made for Hunter Smith's Grand Champion Hampshire Lamb, which sold for \$5.50 per pound. Troy Bigham sold his Grand Champion Hampshire Barrow for \$3.50 per pound and Shannon Edwards received \$1.85 per pound for her Grand Champion Cross Breed Steer. The lowest per pound bids in the premium sale were \$2.75 for lambs, \$2.00 for barrows, and \$1.30 for steers.

A floor bid of \$0.65 per pound was made by Floydada Livestock Auction for the remaining steers. Ron Davis of Canyon took the floor bid on barrows with \$0.48 per pound. Swift and Company bid \$0.64 per pound on the lambs. J.M. Livestock donated the

hauling for the animals.

The annual buyers' luncheon and sale was held Monday. The county's hard working 4-H and FFA members were rewarded for their hard work on the show animals when area buyers opened their money vaults and paid excellent prices for the hand raised animals. The cash premiums paid to these students will enable them to save money towards projects next year or their future education. A worthwhile contribution indeed for any of the buyers.

A complete list of the animals sold and the price paid for them is being published on another page in this edition. The buyers are also identified with their purchases.

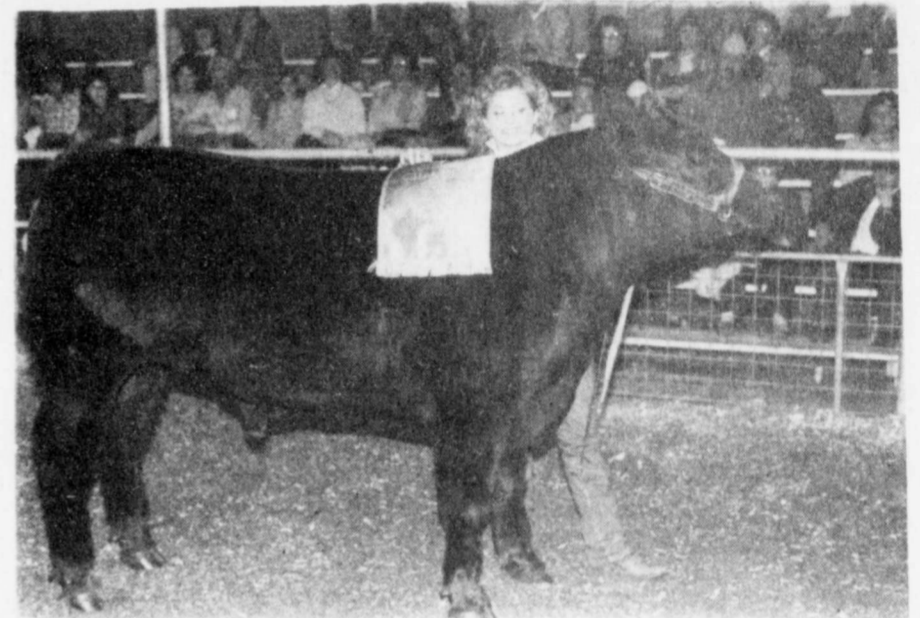
One hundred twelve Floyd County youngsters exhibiting a total of 224 animals participated in the 31st annual Floyd County 4-H and FFA Junior Livestock Show on February 16, 17, and 18. 93 sheep were paraded before show judge Jerry Hawkins from Clarendon. He also viewed 26 steers and 105 barrows during the course of the weekend.

Shannon Edwards took the Grand Champion award with a light-medium weight crossbred steer. She also won Breed Champion in Herefords with a light weight steer. Stacy Hinsley was awarded the Reserve Breed Championship in Herefords for her medium weight steer. Jeff Matsler won the Reserve Breed Championship in Cross-breed Steers with a medium-heavy weight steer.

Jim Thrasher was awarded Reserve Grand Champion with a heavy weight cross barrow. Breed championships were won by Keith Hancock in Durocs and Mindy Matsler in Yorkshire. Chad Williams won the Reserve Breed Championship in Berkshires and Shannon Barbee won the same for Hampshires. Also winning Reserve Breed awards were Ty Stovall for Poland China and Poland China Spots, Keith Hancock for Yorkshires, and Chad Williams in the Cross Breed category.

Hunter Smith's Grand Champion winner was a light weight Hampshire at the sheep show. Breed champion awards went to Todd Cage for Other Breeds, Grant Cage for Suffolks, Roxene Brown in Southdowns, Jennifer Crow for Crossbreeds, and Chad Pernel for Fine Wool. Hunter Smith won the Reserve Breed Championship in Fine Wool with Dean Smith claiming that prize in Suffolks and Grant Cage winning the same in Other Breeds.

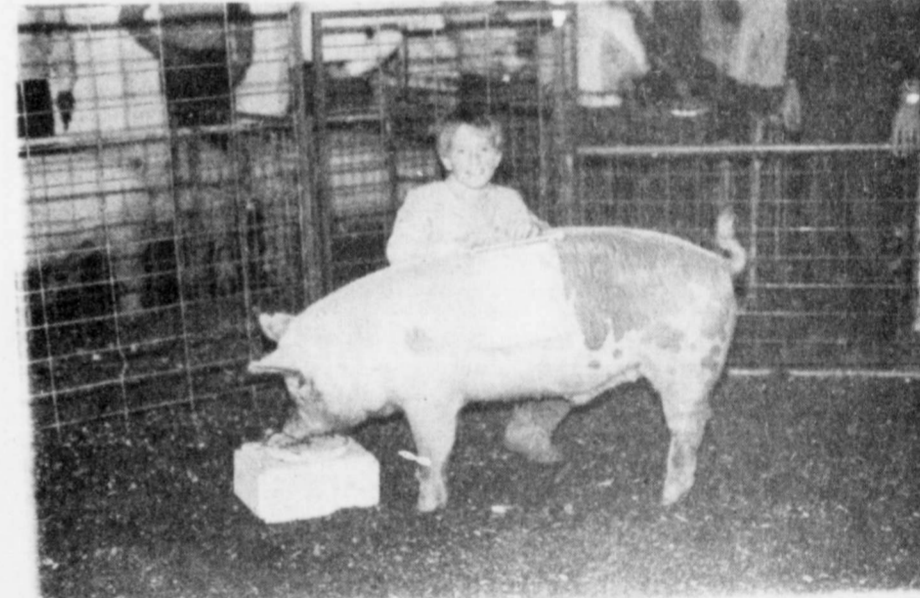
The final event for this year's stockshow was the banquet held in Lockney on Tuesday night. A complete report of that affair and the awards announced will be carried next week.



SHANNON EDWARDS — Grand Champion Steer.



HUNTER SMITH — Grand Champion Lamb.



JIM THRASHER — Reserve Grand Champion Barrow.

## White Elephant and Art Auction set for Saturday

Floyd County Art Association's fundraising event, a "White Elephant and Art Auction" will get underway this Saturday evening at 7:00 p.m. with a buffet dinner, entertainment, and auction events throughout the evening. A wide variety of items has been donated for auction, including art works of Ted Bell, Paul Wylie, and many Floyd County artists, merchandise from local and area merchants, baked goods, handmade dolls, jewelry, new furniture, small appliances, services, etc.

The "Americanized" Chinese dinner will be in keeping with a Chinese New Year theme. Peyton Fullingim, a professional magician from Lubbock, will entertain the audience with table-side

sleight-of-hand maneuvers. Freida Simpson will provide piano music, and there will be a rare appearance of the acclaimed Floyd Co. Cultural Ballet Troupe later in the evening. Auction events will be coordinated by Kenneth Gregg and Sam Fortenberry, auctioneers. Fashions for auction will be modeled, and door prizes will be presented every hour.

Although seating is limited, there are a few tickets still available at \$7.50 each. Tickets will NOT be available at the door. In order to reserve admission, contact Jackie Walls (983-2329) or Glynn Earle Cummings (652-3771) and they will see to it that tickets are delivered to you, while they last.

## City receives tax rebate

State Comptroller Bob Bullock sent our checks totaling \$111.8 million in local tax payments on February 7. The 991 cities receiving checks each levy a one-percent local sales tax. Checks received in February represent taxes collected on sales made in December and in the fourth quarter which were reported to the Comptroller by January 20.

"Disappointing Christmas retail sales during the 1984 Christmas season held February payments to a puny 6 percent increase over last February," said Bullock. "And even this little increase is due as much to new items being taxed for the first time as it is to any real sales growth."

Comparing payments to last February's checks and to the totals at this time last year, Houston's are not increasing rapidly. The \$19 million paid to that city in February, 1985, is down 1 percent from last February and the increase in the total so far this year is less than 1 percent. Dallas, receiving \$13.5 million, was up 7 percent for the month and 12 percent for the year. Fort Worth received \$3.9 million, an in-

crease of 5 percent for the month and 7 percent for the year.

Closer to home, Lubbock was on the receiving end of a check totaling \$1,852,291.33. This represents an increase of about 12 percent for the month and 11.49 percent for the year. Amarillo received a check for \$1,495,507.54, showing an increase of less than 1 percent for both the month and the year to date.

Floydada showed a hefty 15 percent increase over February, 1984 with \$15,208.14, making the year to date total over 31 percent ahead of 1984. Lockney received \$6,969.20, an 11 1/2 percent increase over the year to date total for 1984 and more than 7 percent up for the month.

Plainview received \$152,618.71. The total for the year was up by 1 1/2 percent while the total for the month was down by almost 1 percent. Crosbyton also posted a loss. The \$7,750.74 paid to that city this month is a decrease of nearly 4 percent for the month, making the year to date total down by more than 25 percent.

## Burglary foiled, suspect arrested

"Due to the alertness and quick action" of Sgt. Roy Muniz, a burglary of Brown Gin was prevented, according to acting police chief, James Hale.

Around the hour of 12:30 a.m. February 20, while patrolling the city, Sgt. Muniz observed vehicle headlights at the Brown Gin. The lights would turn off and on, and the vehicle continued to move around the building as if looking over the area.

The gin is located 2 miles south on

U.S. 62. Due to recent burglaries at Brown Gin, Sgt. Muniz proceeded to the area to investigate. Floyd County Deputy David Hart was called to back-up Muniz. While Muniz was checking the building for signs of entry, Hart approached the suspicious vehicle parked next to the Brown Gin.

The vehicle, driven by one male suspect, fled the scene. A pursuit ensued with Hart and Muniz attempting to stop the vehicle. During the on-going

## Local Citizens Cautioned

**BE AWARE:** A reminder from the Hesperian and the Floydada Police Department.

All women should be extra cautious about walking alone at night. There was an attempted assault on a young lady near the center of town on the night of February 17 by two men. The details are very sketchy at this time; more information will be provided later. If you have to walk alone, stay in well lit areas and near places you can run for help.

In addition, a warning is issued in regard to phone calls that have been received by several local residents from callers claiming to represent the United Marketing Service of Lubbock. The callers inquire as to how one voted in national elections and continue their inquiry further to include local elections. Specific questions are asked about city council election, naming council members by name and asking individual voting response about each one. The callers also refer to the local resident on a first name basis.

The Floydada Police Department stated that they checked with the Better Business Bureau of Lubbock. The BBB stated that the United Marketing Services is a subsidiary of the United Coupon Clearing House, a company that collects coupons and checks on warranty problems with products. The BBB stated that the United Marketing Services has nothing to do with phone surveys on voting.

chase, the suspect attempted to ram the city patrol car with his vehicle causing the patrol car to go into several spins.

The suspect was stopped approximately 5 miles outside the city limits. Due to the fact that there was evidence of a break-in at the Brown Gin, the suspect was arrested and placed in the county jail and will be charged accordingly.

Police cannot release the name of the suspect at press time, but more information will be provided later.

## This Week

### OLD PHOTOS, STORIES

The Hesperian is getting an early start on Old Settlers Day. If you have any old pictures or family stories pertaining to the early settlement of Floyd County, we would like to use them for our Old Settler's issue. Please call us at 983-3737 or come by the Hesperian office if you would like to share your knowledge of the early days with us.

### WORLD DAY OF PRAYER

A World Day of Prayer service will be held in Floydada at the First United Methodist Church at 10:30 a.m. March 1. A program will be presented by the women of the First Christian Church. All church women of the community are invited to attend. Nursery care will be provided.

### AUCTION

White Elephant and Art Auction. Art Association's fundraising event. Saturday, February 23, 7:00 p.m., Massie Activity Center. Dinner, entertainment, auction. For tickets, call Jackie Walls (983-2329). Advance reservations required.

### FORD RESIGNS

R.H. Ford, Justice of the Peace for Floyd County Precincts 2 and 3, has tendered his resignation effective March 31, 1985. The resignation will be accepted at the regular Commissioners' Court meeting on March 11.

Applications are now being accepted for the position in the county judge's office at the courthouse. A special session of the court will meet on March 18 to interview applicants and tentatively select a replacement for Ford. The official appointment will be made on April 1, 1985.

### FRIENDS OF THE LIBRARY

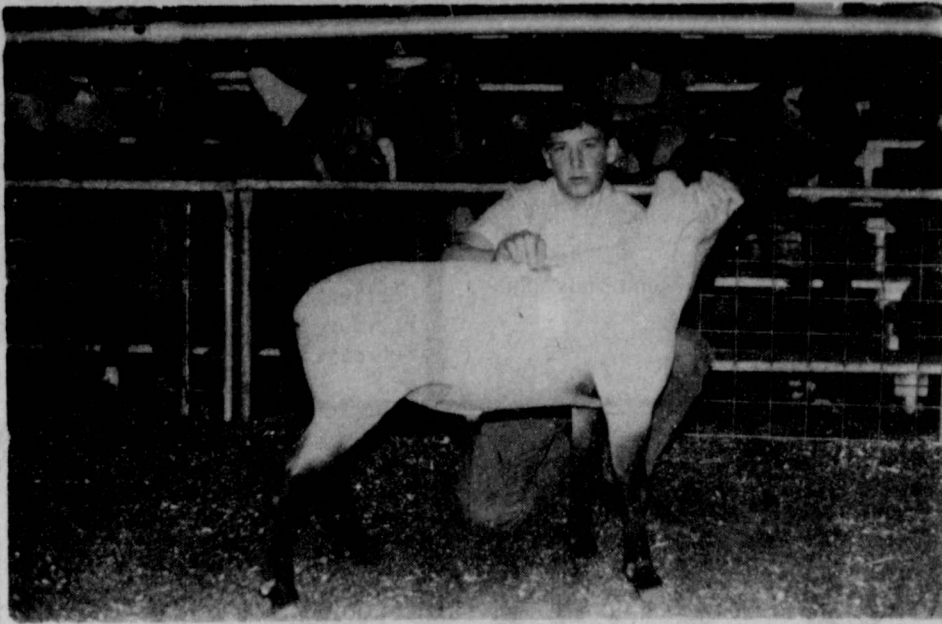
Floyd County Friends of the Library will meet Monday, February 25th at 5:00 p.m. in the Floyd County Courthouse.

### BANQUET

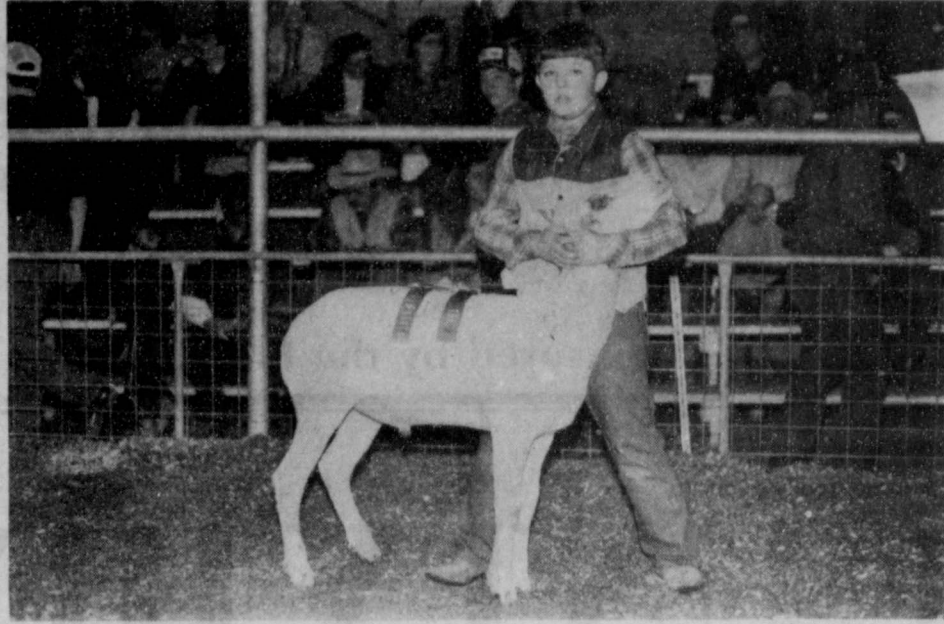
Chamber of Commerce Banquet will be held March 23, 1985 at Duncan Cafeteria. Azteca will cater the banquet and entertainment will be The Old Masters of Swing.

### ADULT ED. CLASSES

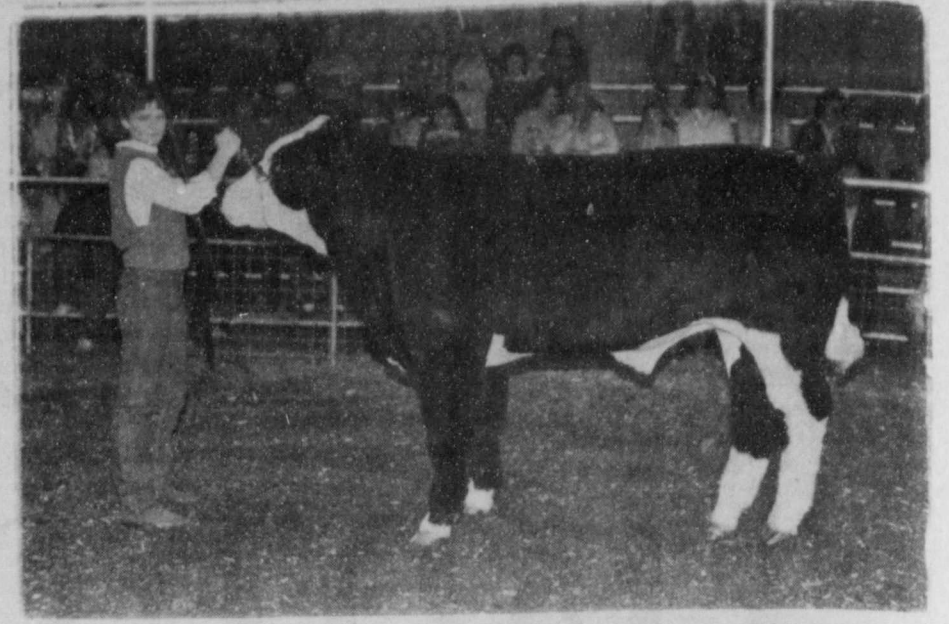
Adult Education Classes are being held Monday and Tuesday evenings from 6:30-9:00 p.m. at R.C. Andrews Elementary School.



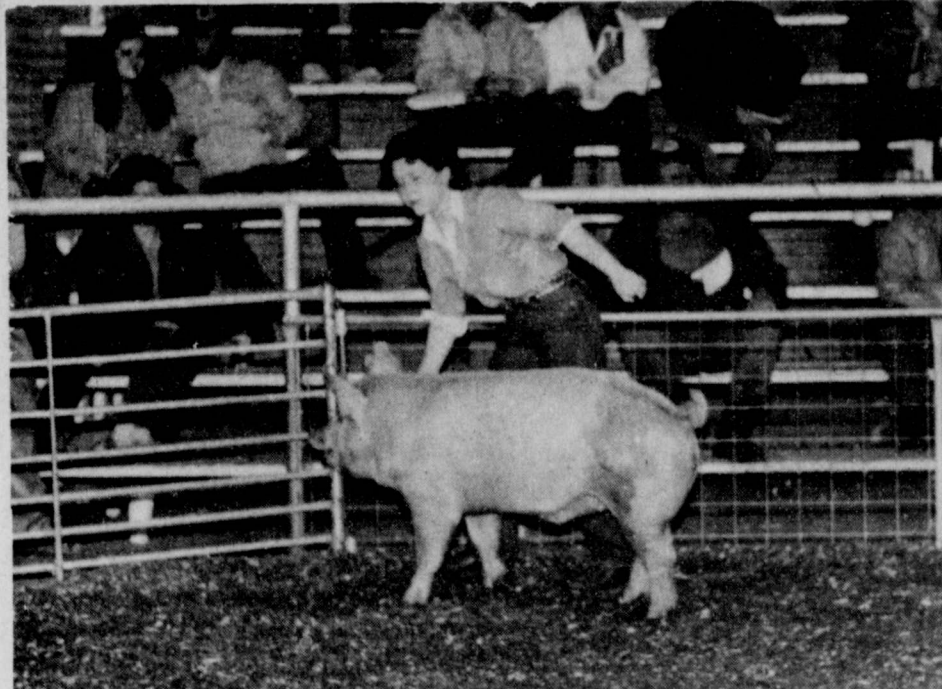
DEAN SMITH — Reserve Breed Champion lightweight Suffolk; 3rd mediumweight Suffolk.



TODD CAGE — Breed Champion Other Breeds; 2nd mediumweight Suffolk; 10th Finewool Lamb.



ANGIE HINSLEY — 2nd medium-heavyweight Cross Breeds; 2nd heavyweight Crossbreeds.



CAMMY HANCOCK—2nd mediumweight Cross; 4th heavyweight Yorkshire; 5th lightweight Duroc.



TY STOVALL — Reserve Breed Champion Poland China and Spotted Poland China.

## Voter registration drive underway in County

A drive to register voters in Floyd County is currently underway. Tino Morales says that the aim of the drive "is to pick up voters in the county and try to educate the people about their rights to vote and participate in local affairs." The drive will be an ongoing process beginning with the major populated areas of Floydada and Lockney and extending into the less populated and rural area according to Morales.

"We began the drive because, both in the state and nationally, the registration of voters with Hispanic surnames has declined in the past few years," explained Morales. "Something had to be done about that, and this is our answer. We will also be surveying the citizens we contact to obtain their views on the problems they face in their neighborhoods and their suggestions for solutions." Morales expressed "the hope of opening the lines of communication and everyone working together for the betterment of the county as a whole."

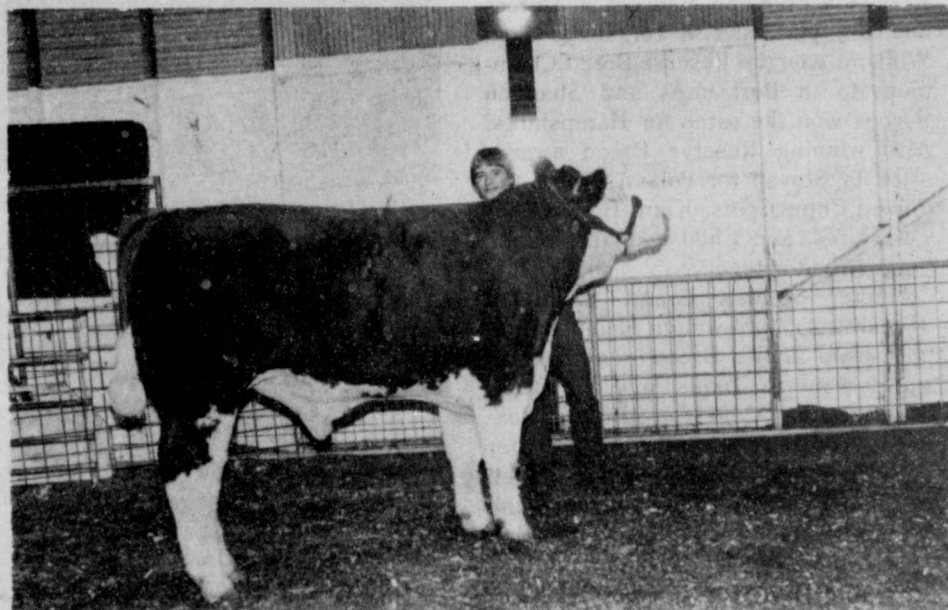
The voter registration push originally began as a part of the Southwest Voter Registration Project in early February, but Morales says the local project will continue after the end of that project in early March. At present, 63% of those having Hispanic surnames are registered to vote in the county. Morales said, "The immediate goal of the local drive will be to sign up 90% of the eligible citizens."

### Libraries and IRS

Most local libraries provide audio tapes to take you step-by-step through completion of your tax return, a reference set of the IRS free publication series, and reproducible tax forms.



A PUBLIC SERVICE MESSAGE FROM THE INTERNAL REVENUE SERVICE



CHAD EDWARDS—1st lightweight Cross Breed; 2nd light-mediumweight Cross Breed.

It takes the average person six-tenths of a second to walk one pace.

**Wanted:** Anyone interested in a Pentecostal Church of God of America church in Floydada. Call 983-5044.

Rev. Ronnie Blackerby  
628 W. Mississippi  
Floydada

### Wednesday Special

\$1.00 off each item on our menu.  
New items offered:  
Chicken sandwiches  
Ham sandwiches

Look for more to come!

Open: 10:00a.m. - 10:00p.m.

Call 983-5564

**B. J.'s**  
Barbeque

208 Houston

ON FEBRUARY THE 6TH, 1985 — HIGH QUALITY, LOW COST LONG DISTANCE TELEPHONE SERVICE BECAME AVAILABLE TO EVERY TOWN IN TEXAS!  
**BUT NOBODY KNOWS IT!** Representatives Wanted: -30%-50% Savings On L.D. Telephone Calls To All Cities In All 50 States. -Receive A Substantial Income For Telling Your Friends (Who Will Tell Their Friends!) Businessmen, Salesmen, Amway/Shaklee Distributors, Students, Retirees, Ministers, etc., Are Urged To Investigate This Opportunity!

\*Joining over 100 major cities nationwide

Please Send Complete Information On Your "Friendship Earning Program"

Name \_\_\_\_\_  
Address \_\_\_\_\_  
City \_\_\_\_\_ State \_\_\_\_\_ Zip \_\_\_\_\_  
Tel: (W)( ) (H)( )  
L.D. ASSOCIATES 10920 Indian Trail  
Suite 201 Dallas, TX 75229  
(214)620-9195, 9190

### THE FLOYD COUNTY HESPERIAN

[USPS 2026-8000]

Published weekly each Thursday at 111 East Missouri Street, Floydada, Texas 79235. Second class postage at Floydada, Texas 79235. SUBSCRIPTION RATES: Local \$12.50 per year, out-of-trade area, \$13.50 per year.

POSTMASTER: Send address changes to the Floyd County Hesperian, 111 East Missouri, Floydada, Texas 79235.  
Ken Towery Publisher  
Carolyn Redding Editor/Gen. Mgr.  
Juanita Stepp Reporter  
Rosemary Gonzales Photo/Comp.  
Carolyn Redding Foreman Advertising

## ALLSUP'S CONVENIENCE STORES

PRICES EFFECTIVE FEBRUARY 21-23, 1985  
GROCERIES-ICE- MILK- CHIPS & DIPS- SOFT DRINKS- SNACKS- HOT COOKED FOODS- SELF SERVE GAS- WHILE SUPPLIES LAST  
MONEY ORDERS  
WE ♥ YOUR BUSINESS



O'GRADY'S REGULAR OR AU 'GRATIN

**POTATO CHIPS** REG. \$1.49  
SIZE BAG

**\$1.19**

GRANDMA'S RICH N CHEWY CHOCOLATE CHIP COOKIES \$1.69  
10.5 oz bag

PEPSI FREE, PEPSI LIGHT, DIET, OR **PEPSI-COLA**  
2 liter 99¢

DECKER JUMBO **MEAT FRANKS** \$1.19  
1 LB. PKG.

BORDEN'S HOMOGENIZED **MILK** \$2.69  
GAL. CTN.

BORDEN'S ICE CREAM SANDWICHES & DRUMSTICKS NOVELTIES \$1.09  
6 PACK

WE HAVE MONEY ORDERS **ALLSUP'S MONEY ORDERS** 19¢  
UP TO \$299.99 FAST & CONVENIENT EACH

COOKED FOOD SPECIAL AS FEATURED ON TV FRESH **COOKED BURRITOS** 2.99¢  
FOR

**Floyd County Arts Association**

## White Elephant and Art Auction

mystery boxes

Ruth Walker china painting

pottery by Lisa Mosley

stained glass by Sara Probasco

C.L. Record handmade clock

new vacuum cleaner

TV movies

fashions modeled [some garments to be auctioned]

wood art by Jerry McGuire

Cabbage Patch clothes

door prizes

Dewayne Franklin rope sculpture

baked goods

like new new & "gently" used appliances

misc. goods donated by Floyd County merchants

leather art by Bill Gray

handmade dolls

**Works of Art**

Ted Bell  
Paul Wylie  
Jo Goen  
Dewayne Franklin  
Chip Polk  
Elfe Sherman  
Juanita Teeple  
Roseanne Bishop & many others

**American-Chinese buffet dinner** featuring **Froida Simpson on the piano**

professional magic with **Peyton Fullingim**

Massie Activity Center  
Saturday, February 23, 7:00 p.m.  
Admission: \$7.50  
Includes dinner and entertainment

Tickets sold in advance only  
Contact Jackie Walls  
Glynnne Earle Cummings

# Floyd County Stock Show Auction Results

Shannon Edwards, Grand Champion Steer, 4-H, 1101 lbs. at \$1.85 per lb., Floydada Coop Gin and First National Bank, Petersburg.

Troy Bigham, Grand Champion Barrow, FFA, 252 lbs. at \$3.50 per lb., Lockney Coop.

Hunter Smith, Grand Champion Lamb, FFA, 117 lbs. at \$5.50 per lb., Producers Coop and Floydada Businessmen and Farmers

Colt Golden, Reserve Grand Champion Steer, 4-H, 1028 lbs. at \$1.60 per lb., First National Bank, Lockney.

Jim Thrasher, Reserve Grand Champion Barrow, FFA, 244 lbs. at \$2.50 per lb., Floydada Businessmen and Farmers

Keri Dee Lusk, Reserve Grand Champion Lamb, 4-H, 134 lbs. at \$3.70 per lb., City Connection

**LAMBS**

Chad Pernell, Breed Champ Fine-wool, FFA, 105 lbs. at \$3.00 per lb., Floydada Businessmen and Farmers

Jennifer Crow, Breed Champ FWX, 4-H, 106 lbs. at \$3.00 per lb., Floydada Businessmen and Farmers

Roxene Brown, Breed Champ South-down, 4-H, 81 lbs. at \$3.00 per lb., Floydada Businessmen and Farmers and \$25.00 from Larry Barbee

Grant Cage, Breed Champ Suffolk, 4-H, 144 lbs. at \$3.00 per lb., Producers and Poole Chemical

Todd Cage, Breed Champ OB, 4-H, 119 lbs., \$3.25 lb., Consumers Fuel, Floydada

Hunter Smith, Res. Breed Champ FW, FFA, 113 lbs., \$3.00 lb., Lakeview Gin

Lisa Terrell, Res. Breed Champ FWX, 4-H, 136 lbs., \$3.10 lb., Brown Implement

Dean Smith, Res. Breed Champ SFK, 4-H, 108 lbs., \$3.00 lb., Floydada Businessmen and Farmers

Grant Cage, Res. Breed Champ OB, 4-H, 122 lbs., \$3.00 lb., Floydada Businessmen and Farmers

Casey Carthel, 1st Med. Suffolk, 4-H, 114 lbs., \$3.00 lb., City Connection

Jayson Lusk, 2nd Light FWX, 4-H, 100 lbs., \$3.35 lb., Floyd County Implement

Haney Robertson, 2nd Heavy FWX, FFA, 113 lbs., \$3.10 lb., Lighthouse Electric

Jon Garrett, 2nd Light HMP, FFA, 113, \$2.75 lb., Floydada Businessmen and Farmers

Erik Anderson, 2nd Heavy HMP, FFA, 138 lbs., \$3.50 lb., Oscar Golden and Jerry Williams

Casey Carthel, 2nd Light SFK, 4-H, 101 lbs., \$3.00 lb., Muncy Elevator

Todd Cage, 2nd Medium SFK, 4-H,

121 lbs., \$2.75 lb., Lockney Meat Co.

Jason Brown, 2nd Heavy SFK, 4-H, 145 lbs., \$2.75 lb., Floydada Businessmen and Farmers

Karen Ford, 3rd FW, FFA, 100 lbs., \$3.25 lb., D&J Gin, Inc.

Jennifer Fortenberry, 3rd Light FWX, 4-H, 103 lbs., \$3.25 lb., Consumers Fuel, Lockney

Zach Nutt, 3rd Heavy FWX, 4-H, 118 lbs., \$3.00 lb., Buddy Hendricks

Matthew Redding, 3rd Light HMP, FFA, 109 lbs., \$2.75 lb., Floydada Businessmen and Farmers

Renee Curry, 3rd Heavy HMP, FFA, 131 lbs., \$3.25 lb., Lockney Businessmen and Farmers

Dean Smith, 3rd Medium SFK, 4-H, 114 lbs., \$2.75 lb., Floydada Businessmen and Farmers

Romeo Araujo, 3rd Heavy SFK, FFA, 139 lb., \$3.00 lb., Lockney Businessmen and Farmers

Aric Hendricks, 3rd OB, 4-H, 125 lbs., \$3.10 lb., Ed Nutt

Matt Mitchell, 4th FW, 4-H, 102 lbs., \$3.70 lb., Lambert Spraying

Heath Robertson, 4th FWX, FFA, 118 lbs., \$2.75 lb., Producers and Supreme Mills

Heath Robertson, 4th HMP, FFA, 116 lbs., \$2.75 lb., Floydada Businessmen and Farmers

Jason Anderson, 4th Heavy HMP, FFA, 122 lbs., \$3.10 lb., First National Bank, Lockney.

Donna Campbell, 4th Light SFK, FFA, 108 lbs., \$3.50 lb., Lance Campbell

Karen Ford, 4th Medium SFK, FFA, 120 lbs., \$3.35 lb., Lambert Spraying and Sterley Gin

Keri Dee Lusk, 4th Heavy SFK, 4-H, 122 lbs., \$3.10 lb., Mr. and Mrs. Albert Scheele

Joel Mitchell, 4th OB, 4-H, 115 lbs., \$3.10 lb., Lockney Coop

Matt Mitchell, 5th FW, 4-H, 102 lbs., \$3.20 lb., First National Bank, Lockney

Donna Campbell, 5th FWX, FFA, 102 lbs., \$3.50 lb., Lance Campbell.

Jason Brown, 5th Light HMP, 4-H, 110 lbs., \$2.75 lb., Producers and Poole Chemical

Billy Bob Sherman, 5th Medium SFK, FFA, 121 lbs., \$4.00 lb., Sterley Gin and Plainview Seed and Delinting.

Joel Mitchell, 6th Light FWX, 4-H, 97 lbs., \$3.00 lb., Cruce and Long.

Jeremy Widener, 6th Heavy FWX, FFA, 112 lbs., \$3.25 lb., Eddie Teeter and Ronnie Thornton

Haney Robertson, 6th Heavy HMP, FFA, 139 lbs., \$2.85 lb., Floyd County Implement.

Gwen Lane, 6th Medium SFK, 4-H, 120 lbs., \$3.75 lb., Sterley Gin.

Wesley Teeter, 6th Heavy SFK, 4-H,

126 lbs., \$4.20 lb., Sun-Vue Fertilizer

Lori Smith, 7th Light Cross, 4-H, 106 lbs., \$3.20 lb., Providence Farm Supply and Ronnie Thornton

Wesley Teeter, 7th Heavy FWX, 4-H, 137 lbs., \$3.90 lb., Lambert Spraying.

Lori Smith, 7th Light Hamp, FFA, 120 lbs., \$3.50 lb., City National Bank, Plainview and Crume Gin.

Renee Curry, 7th Heavy HMP, FFA, 123 lbs., \$3.00 lb., Lockney Businessmen and Farmers

Manuel Suarez, 7th Light SFK, 4-H, 109 lbs., \$2.75 lb., Floyd County Implement.

Scotty Battey, 7th Medium SFK, FFA, 115 lbs., \$3.25 lbs., Floydada Coop Gin.

Aric Hendricks, 7th Heavy SFK, 4-H, 125 lbs., \$3.00 lb., G.L. Hight.

Travis Rowan, 8th Light FWX, 4-H, 103 lbs., \$2.75 lb., Floydada Businessmen and Farmers.

Erik Anderson, 8th Heavy FWX, FFA, 131 lbs., \$3.00 lb., Kellison Fertilizer.

Craig Forbes, 8th Heavy HMP, 4-H, 135 lbs., \$2.75 lb., Floydada Businessmen and Farmers.

Allen Stallings, 8th Light, SFK, FFA, 92 lbs., \$4.10 lb., Tri-C Inc.

Matthew Redding, 8th Medium SFK, FFA, 112 lbs., \$2.75 lb., Floydada Businessmen and Farmers.

Pam Woody, 8th Heavy SFK, 4-H, 141 lbs., \$2.75 lbs., Floydada Businessmen and Farmers.

Jeremy Widener, 9th FW, FFA, 108 lbs., \$3.00 lb., Lockney Coop.

Allen Stallings, 9th Light SFK, FFA, 110 lbs., \$4.25 lb., D&J Gin, Inc.

Chad Pernell, 9th Medium SFK, FFA, 115 lbs., \$3.20 lb., Jessie Pernell.

Don Chesshir, 9th Heavy SFK, FFA, 124 lbs., \$2.75 lb., Floydada Businessmen and Farmers.

Terri Bailey, 10th FWX, FFA, 88 lbs., \$3.00 lb., Lockney Businessmen and Farmers.

Jason Anderson, 10th HMP, FFA, 131 lbs., \$3.00 lb., Lockney Meat Co.

Scotty Battey, 10th Heavy SFK, FFA, 122 lbs., \$3.25 lb., Floydada Coop Gin.

Jayson Lusk, 11th FW, 4-H, 79 lbs., \$4.00 lb., Warren Mathis and Eddie Teeter.

Craig Forbes, 11th HMP, 4-H, 100 lbs., \$2.75 lb., Floydada Livestock Auction.

Roxene Brown, 11th HMP, 4-H, 125 lbs., \$3.00 lb., First National Bank, Lockney.

Christie Rowan, 11th SFK, 4-H, 111 lbs., \$2.75 lb., Floyd County Implement.

Don Chesshir, 11th Medium SFK, FFA, 115 lbs., \$3.00 lb., Brown



**SWEETHEARTS**—On hand for the 41st annual Floyd County Livestock Show were the four candidates for sweetheart. Pictured [l to r] are Sherre Klnard, Lisa Smith, Nicki Race and Kelli LaBaume. Martha Williams and Elaine LaBaume are on the right.

235 lbs., \$2.50 lb., Keith Jackson.

Chad Diepenhorst, 2nd Light Duroc, FFA, 218 lbs., \$2.60 lb., Providence Farm Supply and Bob Gardner Chevrolet.

Clay Adrian, 2nd Med. Duroc, FFA, 231 lbs., \$2.70 lb., Lambert Spraying.

Joe Widener, 2nd Light Hamp, FFA, 209 lbs., \$2.50 lb., Dulin-Reagan Auction.

Jerald Johnson, 2nd Med. Hamp, FFA, 229 lbs., \$2.60 lb., Lockney Meat Co.

Jarod Harrison, 2nd Light Spot, FFA, 210 lbs., \$2.75 lb., Sterley Gin and Lambert Spraying.

Ricky Key, 2nd Light York, FFA, 221 lbs., \$3.25 lb., Texas Energy and Lockney Coop Gin.

Brent Williams, 2nd Heavy York, FFA, 234 lbs., \$2.50 lb., Floydada Businessmen and Farmers.

Boyd Jackson, 1st Light Duroc, FFA, 202 lbs., \$3.20 lb., Lambert Spraying.

Darin Martinez, 1st Med. Duroc, FFA, 228 lbs., \$2.50 lb., Floydada Businessmen and Farmers.

Phillip Glasson, 1st Light Hamp, FFA, 210 lbs., \$2.50 lb., Floydada Livestock.

Robert Wofford, 1st Med. Hamp, FFA, 228 lbs., \$2.50 lb., Lighthouse Electric.

Monty Means, 1st Med. Cross, FFA,

226 lbs., \$2.60 lb., Floydada Coop Gin and Sun Belt Delinting

Charlie McMurrian, 3rd Light Hamp, FFA, 194 lbs., \$2.50 lb., Producers Coop Elev.

Coy LaBaume, 3rd Med. Hamp, FFA, 213 lbs., \$2.35 lb., Consumers Fuel, Floydada.

Michelle Delgado, 3rd Heavy Hamp, 4-H, 249 lbs., \$2.50 lb., Lockney Coop.

Phillip Glasson, 3rd Light Spot, FFA, 222 lbs., \$2.50 lb., Consumers Fuel, Lockney.

Greg Lawson, 3rd Heavy Spot, FFA, 232 lbs., \$2.25 lb., Lighthouse Electric.

Daralyn Williams, 3rd Light York, FFA, 225 lbs., \$2.00 lb., Floydada Businessmen and Farmers.

Jeff Matsler, 3rd Heavy York, FFA, 238 lbs., \$2.00 lb., Floydada Businessmen and Farmers

David Pyle, 3rd Light Cross, FFA, 218 lbs., \$2.10 lb., Floydada Livestock.


Shayla Barbee, 3rd Med. Cross, FFA, 234 lbs., \$2.00 lb., Floydada Businessmen and Farmers

Clint Bigham, 3rd Heavy Cross, FFA, 252 lbs., \$2.85 lb., Kellison Fertilizer and Spraying

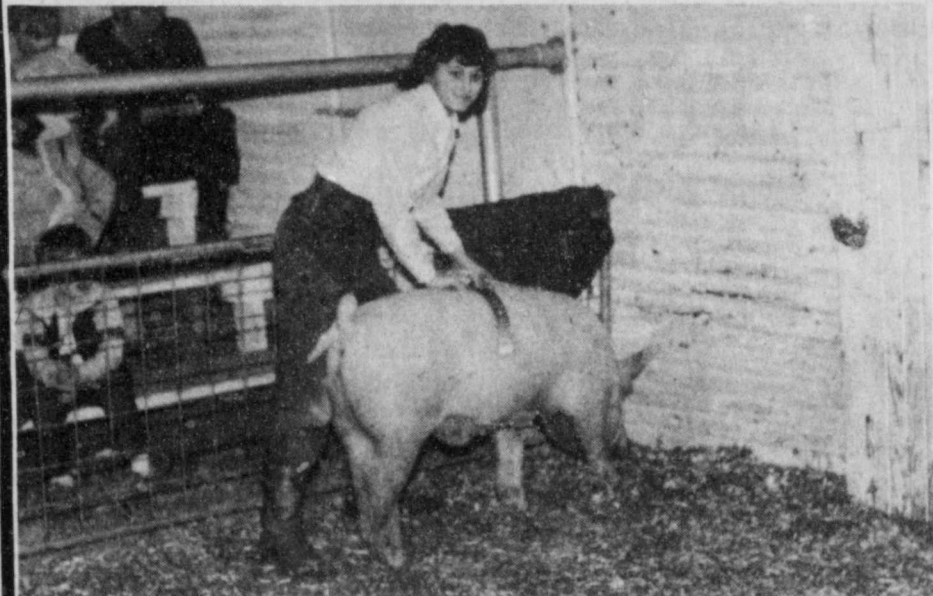
**FREE**  
FROM FEDERAL INCOME TAX  
**9.5%** \* TAX FREE BONDS  
TO MATURITY INTEREST MAY BE SUBJECT TO STATE & LOCAL TAXES

**Edward D. Jones & Co.**  
Member New York Stock Exchange Inc., Member Securities Investor Protection Corporation

111 E. 7th  
293-9551



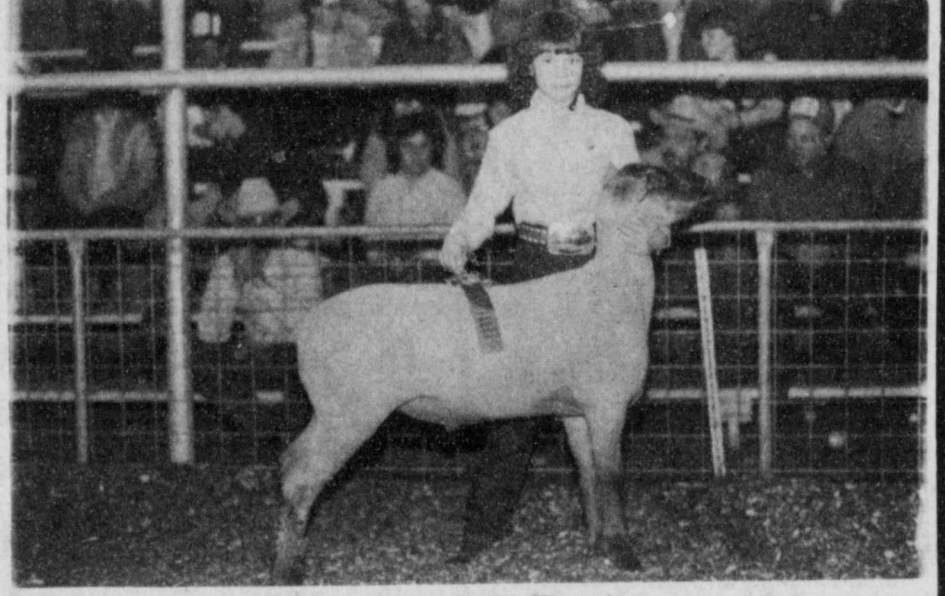
**Dougherty Community Club Mexican Food Supper**  
Saturday, February 23, 6:00 p.m. Dougherty School  
**Has been cancelled.**



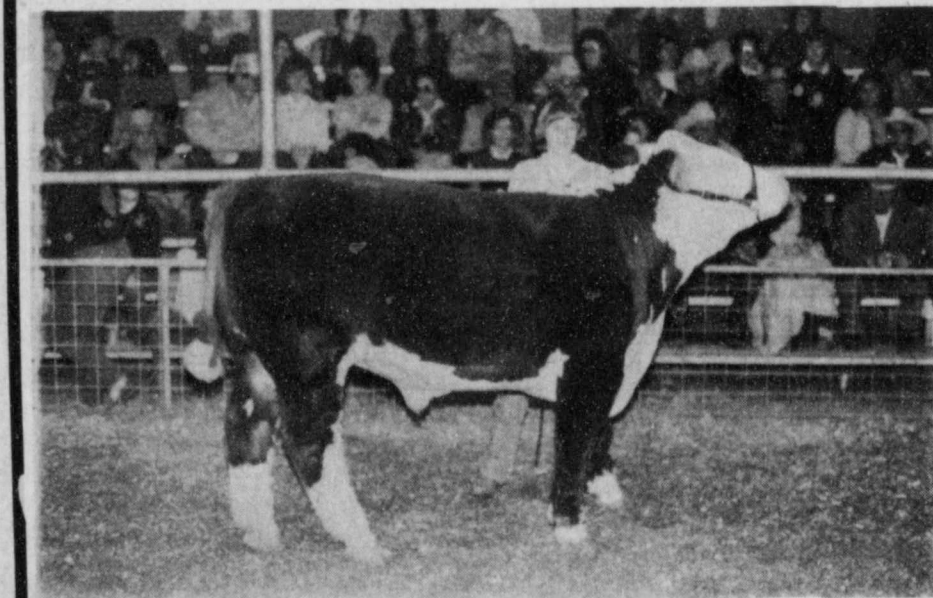
**MINDY MATSLER** — Yorkshire Breed Champion; 8th in lightweight Cross.



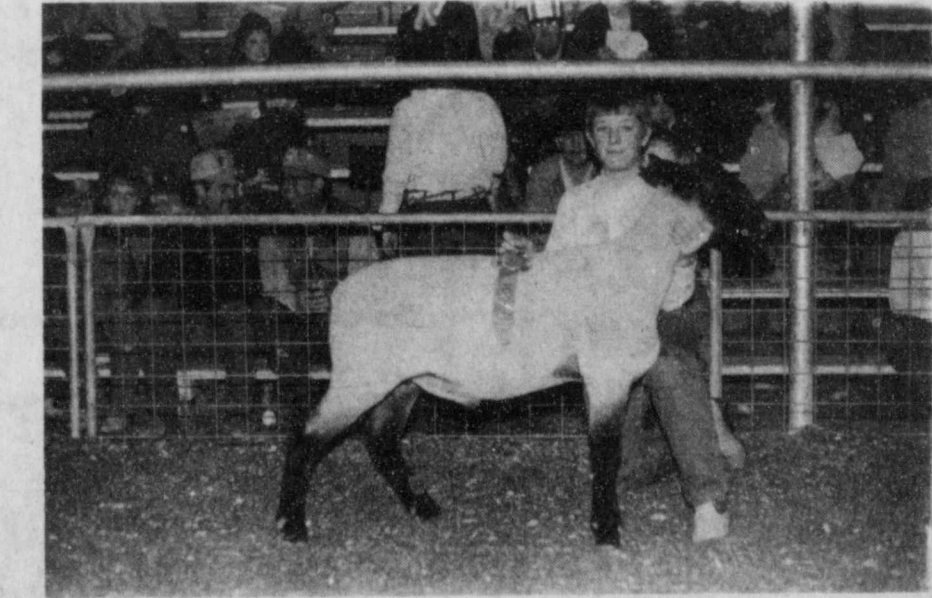
**ROXENE BROWN** — Southdown Breed Champion; 11th in heavyweight Hampshire.



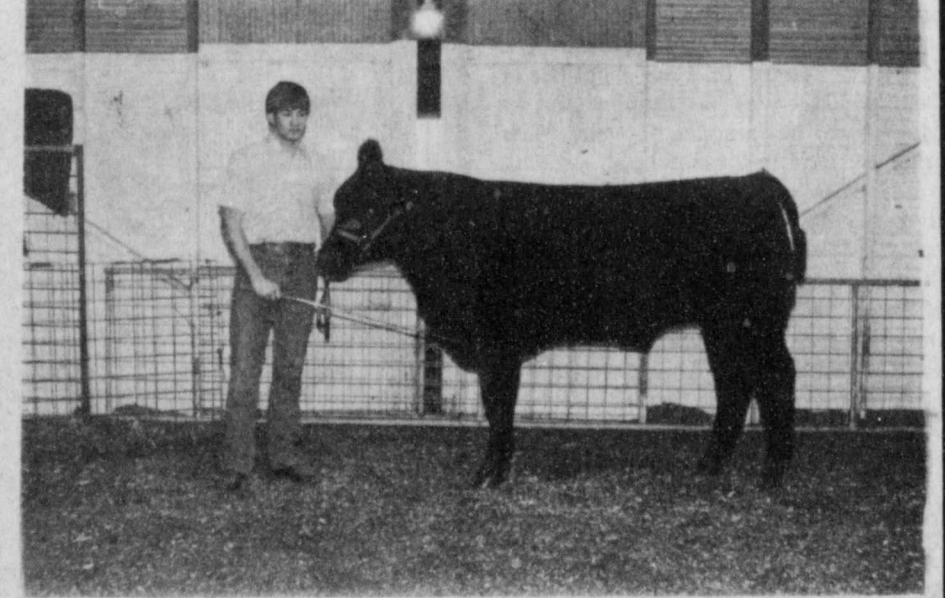
**JENNIFER CROW** — Finewool Cross Breed Champion.



**STACY HINSLEY** — Reserve Breed Champion Hereford.



**GRANT CAGE** — Breed Champion heavyweight Suffolk; Reserve Breed Champion Other Breeds; 6th lightweight Suffolk; 6th Finewool Lamb.



**JEFF MATSLER** — Reserve Breed Champion Cross breeds; 3rd in heavyweight Yorkshire.



**JON GARRETT** — 2nd lightweight Hampshire.



**DARIN MARTINEZ** — 1st mediumweight Duroc.

This page brought to you through the courtesy of:

**"Helping you change things for the better"**

**THE FIRST NATIONAL BANK OF FLOYDADA**

Member of F.D.I.C. Accounts insured up to \$100,000

## OBITUARIES

### CHARLES N. BROWN

Charles N. Brown, age 70, died at his residence in Tulia at 5:30 p.m. on Sunday, February 17. Memorial services were held at 11:00 a.m. in Moore-Rose Funeral Home Chapel in Floydada. The body was taken to Amarillo for cremation by Wallace Funeral Home of Tulia.

Brown was born April 16, 1914 in Floydada. He graduated from Floydada High School in 1931 and from the University of Texas. He received his PhD at the University of Chicago. Brown was a retired geologist. Survivors include his daughter, Lynda Nicholas of Richardson and his brother, Harold Brown of Chandler Oklahoma. He had six grandchildren and two great-grandchildren.

### CARROLL McCARTER

Services for Carroll Lee McCarter, 46, of Amarillo were at 3 p.m. Saturday, February 16, in Fairview Assembly of God Church in Amarillo with the Rev. Max Beggs, pastor, officiating. Burial was in Memory Gardens Cemetery, directed by Holley Funeral Home of Canyon.

He died February 14 in St. Anthony's Hospital in Amarillo after a lengthy illness.

Mr. McCarter was born August 27, 1938 in Canyon. He was a vault supervisor for Borden Milke Plant. He married Lois Jean Hileman September 4, 1959 in Wichita Falls.

Survivors include his wife; two daughters, Lana Christine Strain of Amarillo and Lesa Kay Chandler of Canyon; two sons, Ronnie Carroll McCarter and Richard Lee McCarter, both of Amarillo; three sisters, Willie Huskey, Estelle Atkerson and Waunita Marler, all of Amarillo; five brothers, Bill McCarter of Lockney, Eldon McCarter of Hobbs, New Mexico, Roy McCarter of Canyon, Ray McCarter of Whitesboro and Sherman McCarter of Amarillo; and five grandchildren.

### ALBERT PARRISH

Services for Albert Parrish, 72, were at 2 p.m. Thursday, February 14, in the First Baptist Church with the Rev. Al Stagg, pastor, and Dr. Herbert Bergstrom, retired Baptist minister, officiating.

Burial was in the Portales Cemetery under the direction of Wheeler Mortuary.

Parrish, a native of Haskell County, died Tuesday, February 12, at his home after a lengthy illness. He had been under a doctor's care.

As a child, Parrish came with his parents in a covered wagon to a homestead in the Red Lake community. He married Clarret Pardy Dec. 9, 1933, in Floydada and moved to Portales in 1958 from Floydada. He was a rancher and farmer, and was retired from the state highway department. He was a Baptist.

Survivors include his wife; a son, Abby of Clovis; a daughter, Sue Love of Portales; three sisters, Marie Terrell of Plainview and Mary Suman and Annie Sue Cook, both of El Paso; and four grandchildren.

### WILLIE D. ROSE

Services for Willie Dean Rose, 51, of Lockney were at 2 p.m. Tuesday, February 19 in First United Methodist Church. Officiating was the Rev. Oland Butler of Chillicothe and the Rev. Bill Beachy, pastor.

Burial followed in Lockney Cemetery directed by Moore-Rose Funeral Home of Lockney.

Mr. Rose died at 12:25 a.m. Sunday, February 17 in Lockney General Hospital.

Mr. Rose, born in Gladewater, moved to Floyd County in 1963 from Ector County. He was a farmer and a Methodist. He married Loveta Weir June 14, 1954 in Lockney.

Survivors are his wife; two sons, Ricky and Michael Rose, both of Lockney; a daughter, Lonita Sliton of Shamrock; two brothers, H.D. Rose Jr. of Borger and Cecil Rose of Gladewater; three sisters, Betty Taber of Carmichael, California, Mitty Ann McAllister of Childress and Tressie Laycock of New Smyrna Beach, Florida; and two grandchildren.

Pallbearers were Ken Hembra, Jim Roberts, Kelton Shaw, Bill Turner, Ronnie Thornton and Dub Dipprey.

Remember your loved ones with a living memorial to the Caprock Hospital Auxiliary Memorial Fund. Mrs. Jane Pruitt, Treasurer, 983-2040.

**Got Heating or Plumbing Problems?**  
CALL  
**Holmes Plumbing**  
Austin or Steve  
Call Day or Night  
983-2251



**VALENTINE KING AND QUEEN—Ruth Benson and Charlie Spence were elected Queen and King of Valentines Day at Floydada Nursing Home.**

## 38th Willson lectures given

The thirty-eight annual Willson Lectures came to the campus of West Texas State University on Monday and Tuesday, February 11 and 12. Students, faculty, and the general public once again had the opportunity to participate in a small way in the sort of education seminarians experience.

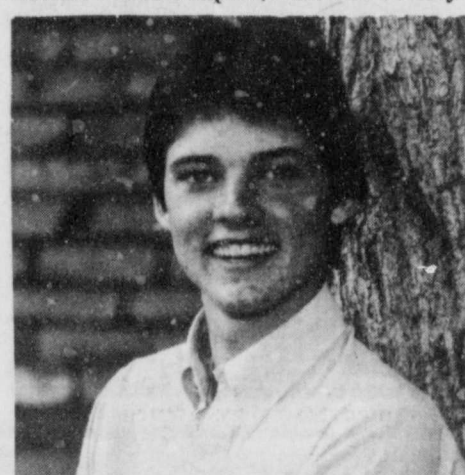
In 1947 a \$15,000 grant from J.M. Willson, a prosperous Floydada lumberman, established the lecture series on the WTSU campus. Willson had a compelling desire to see religious issues discussed on campus.

TEXAS NEWSPAPERS  
For Your Best Shopping Info

## Thompson named DAR Good Citizen

Greg Thompson, son of Mr. and Mrs. Jerry Thompson, was named the DAR Good Citizen of Floydada High School, 1984-1985.

The DAR Good Citizen contest is sponsored each year by the Floydada Buffalo Grass Chapter, National Society



GREG THOMPSON

## Floydada Nursing Home Happenings

Monday morning devotions were by Trinity Church. In the afternoon we had ceramics class. The residents who painted were Charlie Spence, Emmet Lawrence, Iva Simpson, Addie Lindley, Beno Wilson, Una Clark, and Myra Hall.

Tuesday morning devotions were by Brother Neeley Richardson. He spoke about the love of God. In the afternoon we had a good time of Bible study, sharing, and prayer. After Bible study, we had the resident's council meeting.

Wednesday morning devotions were by City Park Church of Christ. The singers were Mary Spears, Claudia Porter, Lorilla Bradley, Beulah Baker, Eunice Hardy, Ruth Walker, Eva Tackett, Ruby Hartsell, and Elva Blum. In the afternoon we went on the bus ride. We rode down to Matador and were treated to ice cream cones at Billie Dean's. The residents going on the ride were Iva Simpson, Della Halencak, Addie Lindley, Beno Wilson, Charlie Spence, Una Clark, and Dosa Webb. Jo Bryant also went with us. It was a really nice day for an outing. We appreciate Evelyn for driving us each week. We look forward to the bus ride and ice cream.

We thank Mrs. Matt Martin for the cookies she sent us for our "coffee time". We welcome our two new residents to the Nursing Home. They are Estelle Eubanks from Floydada and Faye McMahan from Alaska.

Thursday afternoon Sherry Hale and Leora Younger brought love sacks to all of the residents. We appreciate this act of love. We also had the Valentine's

party Thursday afternoon, complete with a King and Queen. Ruth Benson was voted queen and Charlie Spence was voted king. They were presented boxes of candy, we took a lot of pictures, sang love songs and refreshments were served by the Companions 'N' Caring. Those present for the party were Jo Bryant, Maxine Jarboe, Vickie Green, Tonya Hagood, Sabrina Varner, Shirley Varner, Leona Neff, Dolores Cannon, and Ola Smith.

We appreciate the quilt scraps donated to the activity department by Edna Cochran.

Friday morning devotions were by Mary Coreley, Flora Fawver, and Freida Simpson. Flora spoke about our Christian influence. Freida spoke about putting our trust in God using the verse "The Eternal God is our refuge and underneath are the Everlasting Arms." Mary spoke about the Good Shepherd. In the afternoon we played Bingo. Jo Bryant came and played with us. Una Clark was the big winner this week.

We want to thank Billie's Beauty Shop for sending out hair brushes, shampoo capes, and setting gel to the nursing home.

This week's visitors have included: Bobbie Rogers, Dora Kitchens, Marie Edwards, Alma Rape, Mr. and Mrs. Grady Freeman, Mary Wilson, Valree Turner, Anne Swepston, Hazel Bradley, Donna Bradley, Ora King, Leora Younger, Ola Smith, Tonya Hagood, Vickie Green, Dolores Cannon, Lucille Sisson, Winnie Neil, Bea and Will Martin, Lurene Gee, Myrtice Rainer, Ethel Warren and Myria Dade.



**LOVE SACKS—The 1956 Junior Study Club presented valentine love sacks to the residents at the Floydada Nursing Home on February 14. Members delivering the sacks included [l-r, standing] Sherry Hale, Leora Younger, and Darlynn Hambricht. Residents receiving sacks are [l-r] Ona Jones, Susie Thompson, Lura Brashear, Dosa Webb, Mamie Bradshaw, Florence Curry, and Ruth Benson.**



**AFGHAN WINNER—Peggy Medley proudly displays the Indian paintbrush afghan she won from the Floyd County Heart Association drawing on February 14. The drawing was held at the radio station by Sherry Hale, secretary of the local chapter of the American Heart Association.**

## Dixie Harris

is now located at

### Ginger's Beauty Salon

208 W. Missouri

and welcomes all customers old and new

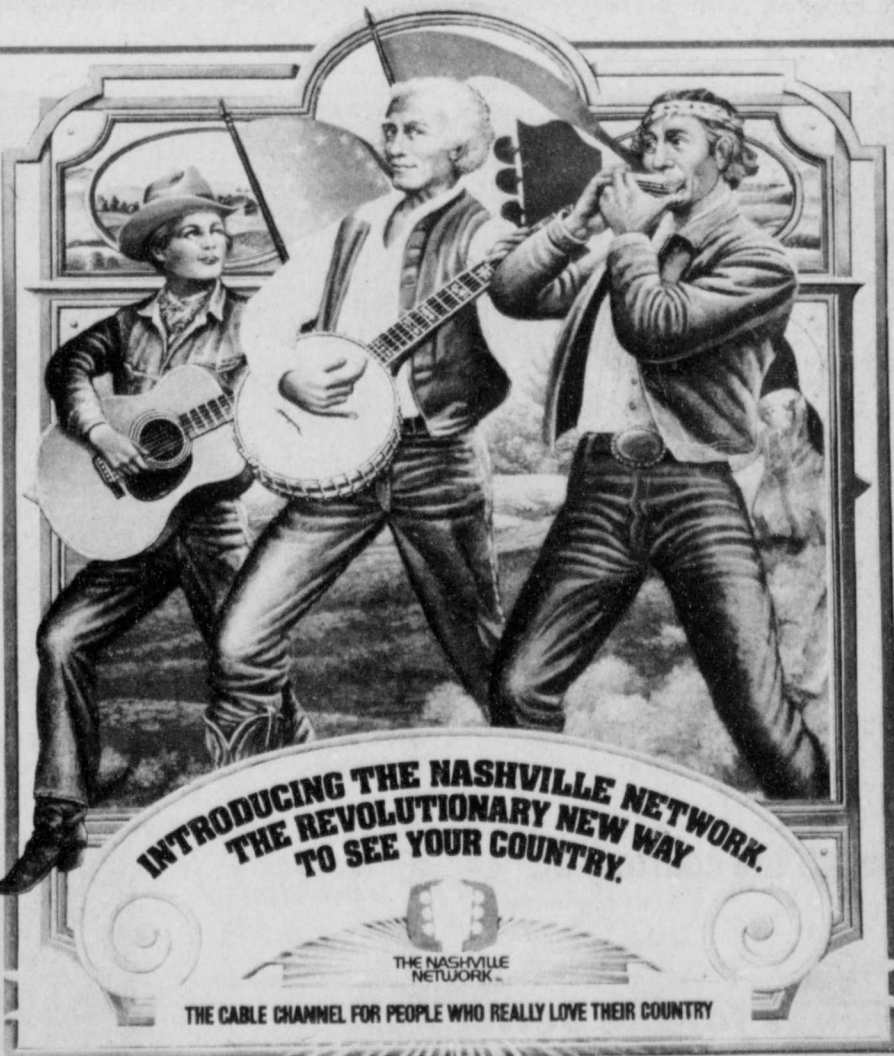
983-3126



On March 1 Floydada Cable TV will add two new exciting channels to our basic service.

The Spanish International Network (SIN) with a variety of programming, and the Nashville Network.

WATCH FOR MORE INFORMATION



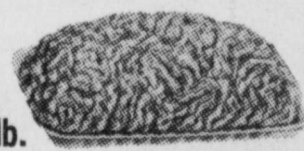
Now you can bring home the spirit of your country. For the first time there's a cable channel that's 100% country entertainment. It's The Nashville Network, with plenty of great country music, plus a whole lot more. You'll enjoy country-style sports, games, comedy and variety shows. Imagine, all the country entertainment you've ever wanted, 7 days a week, morning, noon and night.

Now cable's even better, because you can get it country style.

**FLOYDADA CABLE TV**  
983-2911



LEAN GROUND BEEF \$1.19 lb.



EXTRA LEAN GROUND BEEF PATTIES 20 to BOX \$7.95

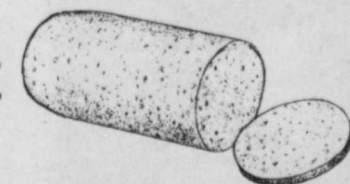
ECONOMY BEEF PATTIES BOX \$5.45 5lb. 20 to box

GRADE A FRYERS WHOLE 59¢ lb.



CUSTOM SLAUGHTERING & PROCESSING KILL DAYS - MON & WED

JOHNNY'S PORK SAUSAGE 2 lb. \$2.98



CHOICE BEEF HALVES & QUARTERS We feature only USDA Choice or Prime

VINE RIPE TOMATOES 49¢



AVOCADOS LARGE SIZE 4/1.00

POTATOES ALL PURPOSE \$1.99



BAMA APPLE BUTTER \$1.19 29 oz.



CRISCO 3 lb. CAN \$2.49

32 oz. COKE 6 BOTTLE CARTON \$1.99



SHURFINE SUGAR \$1.39 5lb. BAG

AFFILIATED MILK 1 GAL \$1.99

GRADE -A LARGE EGGS 59¢ DOZ



CHARMIN TOILET TISSUE \$1.19 4 ROLL PACK



CLOSE-UP TOOTH PASTE \$1.49 8.2 OZ

## KEETER'S

Located on the east side of Lockney on Highway 378

7:30 a.m. - 7:00 p.m.

## Cogdell and Courtney repeat nuptial vows

Jonnie Carol Cogdell and John Patrick Courtney were united in marriage Saturday, February 16 at 7:00 p.m. in the Chapel of St. Martin's Episcopal Church in Houston. The Reverend Claude Payne officiated at the double ring ceremony. Nuptial music was presented by Mr. Bruce Powell, organist.

The bride is the daughter of Mr. and Mrs. David Martin Cogdell, Jr. of Cedar Hill. She graduated from Mary Baldwin College, Staunton, Virginia, and from the University of Texas School of Law. She also attended England's University of Bath and Harvard University.

The bridegroom is the son of Mr. and Mrs. William Ray Courtney of Temple. He graduated from Tulane University, New Orleans, Louisiana, and the Baylor University School of Law.

Miss Cogdell, who was given in marriage by her father, wore an off-white, tea length dress of re-embroidered French lace. Complementing her dress was a shoulder length veil of silk illusion accented with seed pearls and attached to a jeweled lace cap.

Maid of honor was Miss Connie Delle Cogdell of Lubbock, sister of the bride. She wore an ivory tea length silk chiffon dress accented with ivory satin ribbon and wore flowers in her hair to complement her dress.

Best man was Mr. William Ray Courtney of Temple, father of the bridegroom. Serving as ushers were the groom's brothers, Mr. Joseph Sayles Courtney and Mr. David William Courtney, both of Austin.

Following the ceremony a reception was held at the Houston Country Club.

Music for the reception was provided by the Rob Landes Group. Miss Catherine Charlton Faust of La Jolla, California presided at the register.

The rehearsal dinner was hosted by the bridegroom's parents on Friday evening at the River Oaks Country

Club in Houston.

After a wedding trip to England, the couple will live in Houston where she is an attorney with the law firm of Vinson & Elkins and he is an attorney with the law firm of Andrews & Kurth.



MRS. JOHN PATRICK COURTNEY

## Robin Rankin representing Ralls in DAR essay contest

Robin Rankin, daughter of Mr. and Mrs. Joe Rankin, was selected to represent Ralls High School in an essay contest for the DAR Good Citizen Award. She will be in competition with a student from Floydada High School. The recipient of the award will receive a \$100 scholarship. The purpose of the contest is to recognize and reward the qualities of good citizenship among senior high students.

Robin has been outstanding in many activities in all four years of high school. She has served as Senior class president; Junior class president; Sophomore class president; band officer for 2

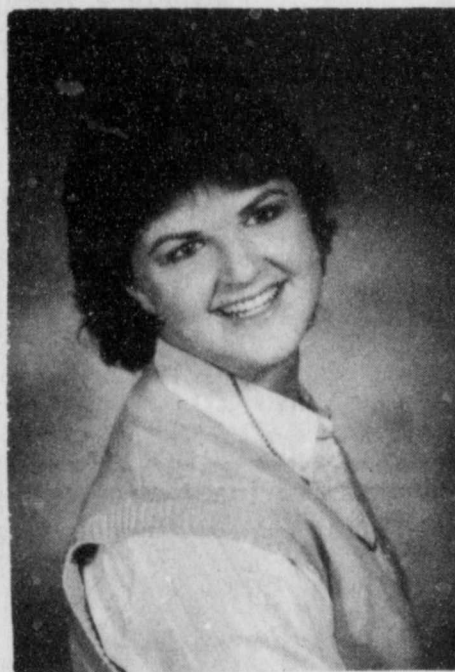
years, has been on the Student Council for 3 years serving as treasurer her senior year; has been in National Honor Society for 3 years, serving as president her senior year; member of the UIL Debate team which won 2nd in district; and has been a member of the Future Homemakers of America for four years.

Robin is an active member of the Ralls First Baptist Church. She was awarded the First Baptist Church Youth Queen in 1983.

In 1984 she was selected by the Ralls Study Club as representative to Girls State at Seguin.

Robin's plans after graduation are to attend West Texas State University in Canyon and major in business.

The winner of the contest will be announced February 26 at the meeting of the Buffalo Grass Chapter of the Daughters of the American Revolution at Lighthouse Electric Co-op in Floydada.



ROBIN RANKIN

## LIBRARY NEWS

New books in nonfiction include: **Overcoming Indecisiveness** by Theodore Isaac Rubin.

**Quilts and Afghans from McCall's Needlework and Crafts.**

New books in fiction include: **God Knows** by Joseph Heller.

**Bright River Trilogy** by Annie Greene.

**Maia** by Richard Adams.

**Life and Hard Times of Heidi Abramowitz** by Joan Rivers.

**Julie** by Catherine Marshall.



DEBRA GRAHAM was crowned 1985 Alpha Mu Delta Sweetheart Saturday, February 15.

## Floydada O.E.S. conducts memorial service for two

W.M. Regi Gross presided at the monthly meeting of Floydada Chapter No. 31, O.E.S., Thursday, February 14, 1985.

Special recognition was given Mrs. Flora McNeill, newly appointed Texas Grand Representative to Michigan, Order of Eastern Star.

Also introduced were Mmes. Lillian Lindsey and Noma Lou Rainer, and M.J. McNeill, Bobby Rainer, and Wayne Russell, all members of Grand Chapter of Texas committees.

Final plans were made for those planning to attend the O.E.S. School of Instruction to be held in Canyon, February 19, 1985.

The annual Friendship Night was scheduled for March 16, 1985, at 6:30 p.m., when Eastern Star members from twenty-four surrounding counties are invited to a salad supper and program.

Mmes. Noma Lou Rainer and Regi Gross recently attended the O.E.S.

School of Instruction in El Paso and reported a very informative and enjoyable session.

Mrs. Sherry Colston, Associate Matron, presented a valentine program in which a tribute was paid to wives and husbands.

A memorial service was conducted in memory of Hal Scott, a 50-year member of Floydada Chapter, No. 31, and Mrs. Robbie Dyer, Worthy Grand Matron 1940-1941 Grand Chapter of Texas, Order of the Eastern Star.

After chapter closed, a social hour was hosted by Noma Lou and Bobby Rainer and Lillian Lindsey.

Those present were Regi and Keith Gross, Sherry and Billy Don Colston, Roberta and Wayne Russell, Doris and Roger Vinson, Flora and M.J. McNeill, Charley Berry, Geneva Griffin, Ruth Daniel, Bess Carr, Ruth Trapp, Eula Parrack, Anne Swepton, and the hostesses.

## Alice Ogden crowned Sweetheart

Alpha Sigma Upsilon chapter of Beta Sigma Phi announced their Valentine Sweetheart Saturday, February 16, at their Valentine supper held at the Golden Corral in Plainview.

President Rhonda Guthrie announced Alice Ogden as Valentine Sweetheart. She was presented a plaque, yellow rose corsage, crown, a heart charm, and a kiss by her husband, Tommy Ogden.

Alice Ogden has been a member for one year during which time she has served as treasurer.

The Ogdens have two daughters,

Tonya, who is a freshman and Trina, a sixth grader.

She is a secretary for the State Department of Highways and Public Transportation and attends the First Baptist Church.

Those attending were: Tommy and Alice Ogden, Roy and Sheri Turnbow, Larry and Rhonda Guthrie, Jerry and Ginger Warren, Wayne and Janice Poteet, Neva West, Jackie and Karen Elliott, Sheryl Derryberry, Jimmy and June McLaughlin, Bud and Barbara Edwards, and Max and Vikki Yeary.

## Shermans honored with Saturday gift shower

Mrs. Mark (Lezee) Sherman and infant son, Ben, were honorees at a gift shower Saturday afternoon. The event was held in the home of Kim Lambert in the South Plains community.

Ben Sherman was born January 26. Special guests at the shower were his grandmother, Mary Jo Sherman, and two great-grandmothers, Elsie Sherman and Florene Wofford, all of Lockney.

The serving table was covered with a navy blue cloth. Centerpiece was an

arrangement of blue and white helium-filled balloons. Cutglass and silver appointments were used to serve punch and cake squares.

The hostesses gift was an intercom system. Sharing hostess duties were Mmes. Jamie Kemp, Nancy Henderson, Renee Hrbacek, Rise Ford, Vonda McLaughlin, Lisa Roberts, Cindy Smith, Robin Boedeker, Paula Edwards and Cindy Cotham.

## GA's hold skating party

The First Baptist Church GA's went on a roller skating party in Plainview. The girls enjoyed an afternoon filled with lots of laughter and good time.

Valentine refreshments were served to the following: Salina Shorter, Shea Sanders, Amber Pyle, Mindy Evans, Pepper Hinkle, Joni Smith, Rain McCandless, Misty Bertrand, Dana McCandless, Melissa Faulkenberry, Sarah

Purswell, Zacka Harris, Lee Anne Dunavant, and Laurie Rainbolt.

Also attending were: Rhealene Brown, Traca Lemons, Heather Fondy, Aimee Fondy, Carrie Emert, Stacy Ferguson, Katherine Davis, Deanna Watson, Amanda Watson, Candy Emert, Chad Hinkle, Duffy Hinkle, Rosemary Finley and Nova Evans.

## Debra Graham chosen 85 Valentine Sweetheart

Alpha Mu Delta held their annual sweetheart banquet Friday, February 15, at the Golden Corral in Plainview. Julianne Cornelius, 1984 sweetheart, crowned Debra Graham as the 1985 sweetheart.

Debra was presented with a rose and a gift. Julianne and Eric Cornelius then

presented the group with a box of candy, announcing that they are expecting a baby.

Couples attending were Mr. and Mrs. Mike Anderson, Jerry Battey, Eric Cornelius, Joel Hendrix, Danny Nixon, Stan Pierce, Rick Reddy, Scott Graham, and J.E. Eckert.

## What's new at Hale's

New spring styles of Nikes...

New spring knit shirts from Munsingwear...

Arrow..Jockey...

New pre-washed 501 Levis...

New spring sandals from SAS...

New Red Cross dress shoes in navy, red, white, and black patent...

New spring flats from Connie...

New spring mens slacks from Haggard...

New short sleeve shirts from Arrow...

New windbreakers from Arrow...

New spring separates from That's Me, Joyce, and Donovan Galvani...

New spring shirts by Sasson and Century...

New spring sweaters in lots of styles and colors...

New spring dresses by Brenner and J. Ellis...

New spring blouses by Shapely, Lady Manhattan ...

Linen selections for Patsy Turvey

It's spring at Hale's — Come by!

## World Day of Prayer service slated March 1st

World Day of Prayer is celebrated on Friday, March 1, in churches across the United States and in 170 countries and regions of the world. This 1985 service takes as its theme "Peace Through Prayer and Action." Written by Christian women of India, it calls people the world over to gather for the 98th consecutive year to circle the globe in prayer for peace and to actively become peacemakers. The service seeks to motivate a commitment on the part of participants to become personally involved in the peacemaking process—as individuals and as families within their communities, their nation and the world.

World Day of Prayer is sponsored in the United States by Church Women United (CWU), an ecumenical movement that brings Protestant, Roman Catholic and Orthodox women together into one Christian "community of caring." CWU represents a broad spectrum of religious tradition, race, age, economic status and ethnic background and works through a national unit, 51 state units, including one in greater Washington, D.C. and 1,800 local units. World Day of Prayer offerings make possible the mission of CWU including the Intercontinental Grants for Mission program that funds national and international projects in support of the empowerment of women, human rights, justice and peace.

World Day of Prayer service in Floydada will be held in the First United Methodist Church at 10:30 a.m. March 1. A program will be presented by the women of the First Christian Church. All church women of the community are invited to attend. Nursery care will be provided.

Is there a wedding in your future?

**WILLIAMS FLORIST and CARD SHOP**

is now booking dates for spring and summer weddings.

Call 983-5013 or come by 128 West California for a free estimate.

Floydada's only certified floral designer.

## Beauti Control

Free Color and Skin Analysis

Using our skin care products and color coded makeup in your season.

by Certified Consultants

All products have a 10 day money back guarantee.

For information call:

Peggy Turner - 983-3638

Donna McClendon - 983-5470

Glynn Earle Cummings - 652-3771

Nelda Howard (DIQ) - 652-3439

Barbara Cawley - 652-3778  
652-2224

Also watch for our ad in the April Glamour Magazine

## Manicures

By appointment on Tuesdays

European Facials

By appointment on Tuesdays

Perms  
\$30<sup>00</sup> and \$35<sup>00</sup>



**Evelyn's Beauty Salon**

424 W. Lee

983-2355

# Floyd County Stock Show Auction Results

Continued From Page 3

Darin Martinez, 4th Light CW, FFA, 219 lbs., \$2.00 lb., Floydada Businessmen and Farmers.  
 Mark Thompson, 4th Heavy CW, FFA, 245 lbs., \$2.00 lb., Floydada Businessmen and Farmers.  
 Troy Faulkenberry, 4th Light Duroc, FFA, 214 lbs., \$2.00 lb., Floydada Businessmen and Farmers.  
 Kelli LaBaume, 4th Med. Duroc, FFA, 223 lbs., \$2.00 lb., Floydada Businessmen and Farmers.  
 David Pyle, 4th Light Hamp, FFA, 194 lbs., \$2.10 lb., Lakeview Gin.  
 Monty Means, 4th Med. Hamp, FFA, 219 lbs., \$2.20 lb., First National Bank, Lockney.  
 Chad Williams, 4th Heavy Hamp, FFA, 249 lbs., \$2.10 lb., Floydada Coop Gin.  
 Ricky Patterson, 4th Light Spot, FFA, 194 lbs., \$2.50 lb., Webster, Joe Neil, and Lockney Vet Clinic.  
 Jerod Glasson, 4th Heavy Spot, FFA, 244 lbs., \$2.60 lb., Stanley Ferguson.  
 Daralyn Williams, 4th Light York, FFA, 218 lbs., \$2.00 lb., Floydada Businessmen and Farmers.  
 Cammy Hancock, 4th Heavy York, FFA, 228 lbs., \$2.00 lb., Floydada Businessmen and Farmers.  
 Ty Stovall, 4th Med. Cross, FFA, 230 lbs., \$2.00 lb., Consumers of Floydada.  
 Clay Harrison, 4th Heavy Cross, FFA, 248 lbs., \$2.10 lb., Lockney Businessmen and Farmers.  
 David Payne, 5th Light CW, FFA, 196 lbs., \$2.00 lb., Floydada Businessmen and Farmers.  
 Tiffany Bennett, 5th Med. Duroc 4-H, 219 lbs., \$2.25 lb., Floydada Coop and

\$25.00 from Ralls Delinting.  
 Shannon Barbee, 5th Heavy Duroc, FFA, 245 lbs., \$2.20 lb., Producers and Floydada Businessmen and Farmers.  
 Jason Bailey, 5th Light Hamp, FFA, 204 lbs., \$2.00 lb., Stanley Burleson and \$25.00 from Robert and Louis Pyle.  
 Chad Diepenhorst, 5th Heavy Hamp, FFA, 244 lbs., \$2.25 lb., Lockney Businessmen and Farmers.  
 Kip Holt, 5th Light Spot, FFA, 213 lbs., \$2.25 lb., Patterson Grain.  
 Tate Harris, 5th Light York, FFA, 223 lbs., \$2.25 lb., Floydada Coop Gin and \$25.00 from Hurst Seed, Lubbock.  
 Steve Emert, 5th Med. Cross, FFA, 240 lbs., \$2.00 lb., Floydada Businessmen and Farmers.  
 Wyman Rexrode, 5th Heavy Cross, FFA, 243 lbs., \$2.25 lb., Lockney Businessmen and Farmers.  
 Jerald Johnson, 6th Light Duroc, FFA, 211 lbs., \$2.30 lb., Farmers Ag Service.  
 Jerod Glasson, 6th Heavy Duroc, FFA, 246 lbs., \$2.25 lb., Lockney Businessmen and Farmers.  
 Joe Widener, 6th Light Hamp, FFA, 199 lbs., \$2.00 lb., Lockney Businessmen and Farmers.  
 Brent Williams, 6th Heavy Hamp, FFA, 238 lbs., \$2.00 lb., Floydada Businessmen and Farmers.  
 Pam Richardson, 6th Light York, FFA, 195 lbs., \$2.00 lb., Floydada Businessmen and Farmers.  
 Coy LaBaume, 6th Light Cross, FFA, 218 lbs., \$2.00 lb., Floydada Businessmen and Farmers.  
 Erin Adrian, 7th Med. Duroc, FFA, 219 lbs., \$2.35 lb., Ronnie Graham Spraying and Muncy Elevator.

Kip Holt, 7th Light Hamp, FFA, 208 lbs., \$2.20 lb., Mr. and Mrs. Eddie Teeter.  
 Robert Wofford, 7th Heavy Hamp, FFA, 239 lbs., \$2.00 lb., Lockney Businessmen and Farmers.  
 Kelli LaBaume, 7th Light Cross, FFA, 214 lbs., \$2.00 lb., Floydada Businessmen and Farmers.  
 Rusty Carthel, 8th Heavy Hamp, FFA, 243 lbs., \$2.25 lb., Lockney Businessmen and Farmers.  
 Mindy Matsler, 8th Light Cross, 4-H, 218 lbs., \$2.00 lb., Floydada Businessmen and Farmers.  
 Romeo Araujo, 8th Med. Cross, FFA, 230 lbs., \$2.30 lb., Kenneth Gregg and Fred Garrison Oil.  
 Rusty Carthel, 8th Heavy Cross, FFA, 252 lbs., \$2.30 lb., Warren Mathis.  
 Clay Adrian, 9th Heavy Cross, FFA, 244 lbs., \$2.35 lb., Floydada Coop Gin.  
 Michelle Delgado, 10th Heavy Cross, 4-H, 243 lbs., \$2.20 lb., First National Bank, Lockney.

**STEERS**  
 Troy Bigham, Res Brd Chp Angus, FFA, 1295 lbs., 1.30 lb., Plainview Coop Compress.  
 Stacy Hinsley, Res Brd Chp Hereford, 4-H, 985 lbs., \$1.30 lb., Floydada Coop Gin.  
 Jeff Matsler, Res Brd Chp Cross, FFA, 1149 lbs., \$1.30 lb., Gary, Thayer and Bowers.  
 Zane Colston, 1st Heavy Hereford, 4-H, 1086 lbs., \$1.30 lb., Floydada Coop Gin and Producers Elevator.  
 Chad Edwards, 1st Light Cross, 4-H, 1062 lbs., \$1.30 lb., Floydada Coop Gin.  
 Matt Williams, 1st Heavy Cross,

FFA, 1227 lbs., \$1.30 lb., Providence Farm Supply and East Bound Gin.  
 Chad Golden, 2nd Light Angus, 4-H, 1028 lbs., \$1.30 lb., Southwestern Grain Company and First National Bank, Plainview.  
 Kristy Hinsley, 2nd Med. Hereford, 4-H, 989 lbs., \$1.50 lb., Producers Elevator and Floydada Coop.  
 Amy Hinsley, 2nd Heavy Hereford, 4-H, 1052 lbs., \$1.30 lb., McCandless OK Tire Company.  
 Clay Golden, 2nd Light Cross, 4-H, 1028 lbs., \$1.35 lb., East Bound Gin and Ranchers and Farmers.  
 Angie Hinsley, 2nd Heavy Cross, 4-H, 1222 lbs., \$1.30 lb., Floydada Coop Gin.  
 Billy Sherman, 3rd Light Hereford, FFA, 873 lbs., \$1.40 lb., Patterson and Lockney Businessmen and Farmers.  
 Ross Colston, 3rd Med. Hereford, 4-H, 1023 lbs., \$1.30 lb., Floydada Coop Gin and Producers Coop.  
 Jason Bailey, 3rd Heavy Hereford,

4-H, 1033 lbs., \$1.30 lb., Gregg Auction and Floydada Livestock.  
 Zach Nutt, 3rd Light Cross, 4-H, 1014 lbs., \$1.45 lb., Barwise Gin.  
 Lisa Terrell, 3rd Lt-Md Cross, 4-H, 1101 lbs., \$1.40 lb., Lockney Coop.  
 Jennifer Crow, 3rd Md-Hvy Cross, 4-H, 1135 lbs., \$1.30 lb., Floydada

Businessmen and Farmers.  
 Clint Bigham, 3rd Heavy Cross, FFA, 1246 lbs., \$1.50 lb., First National Bank and Lockney Businessmen and Farmers.  
 Troy Faulkenberry, 4th Lt-Md Cross, FFA, 1082 lbs., \$1.30 lb., Floydada Businessmen and Farmers.

## At the Lubbock Hilton, kids are priceless.

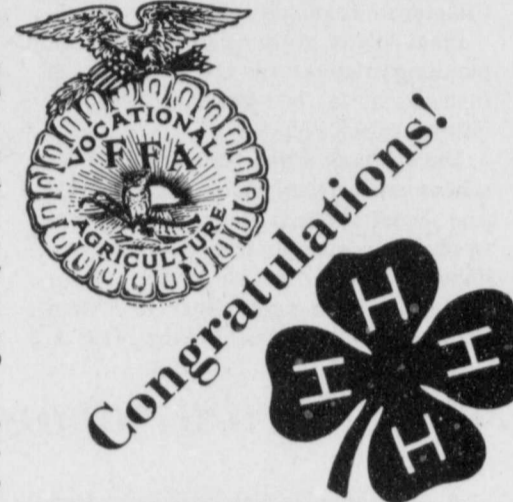
**Only \$39.95 per night, single or multiple occupancy.** Bring the kids for shopping and a fun-filled mini-vacation near all of Lubbock's attractions: South Plains Fairgrounds, Ranching Heritage Center and Museum, South Plains Mall and downtown shopping, Texas Tech University, Minutes from MacKenzie State Park, featuring two 18-hole golf courses, driving range, picnic area, Prairie Dog Town and Joyland Amusement Park.

**And look what else your family will enjoy:** FREE breakfast for kids 10 and under. Family-style restaurant. Indoor tropical swimming pool. And more!

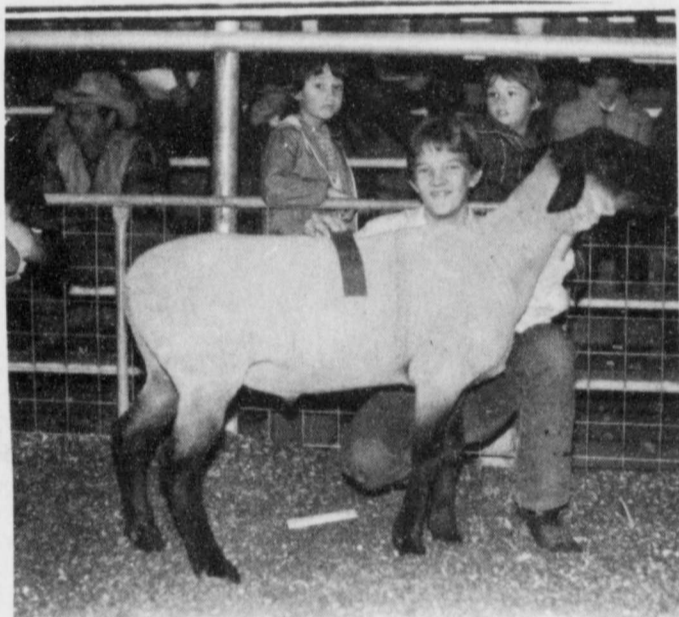
Children must accompany parents to qualify for this rate.

Call 806/747-0171 for reservations or information. Offer good on Friday, Saturday & Sunday only. Subject to space availability.

**LUBBOCK HILTON HOTEL**  
 505 Avenue Q  
 Lubbock, Texas 79401



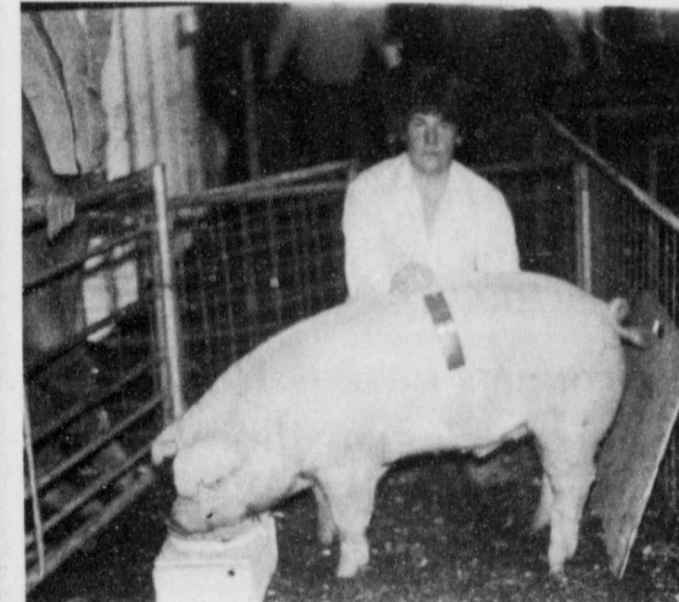
## Exhibitors, we appreciate all your hard work!



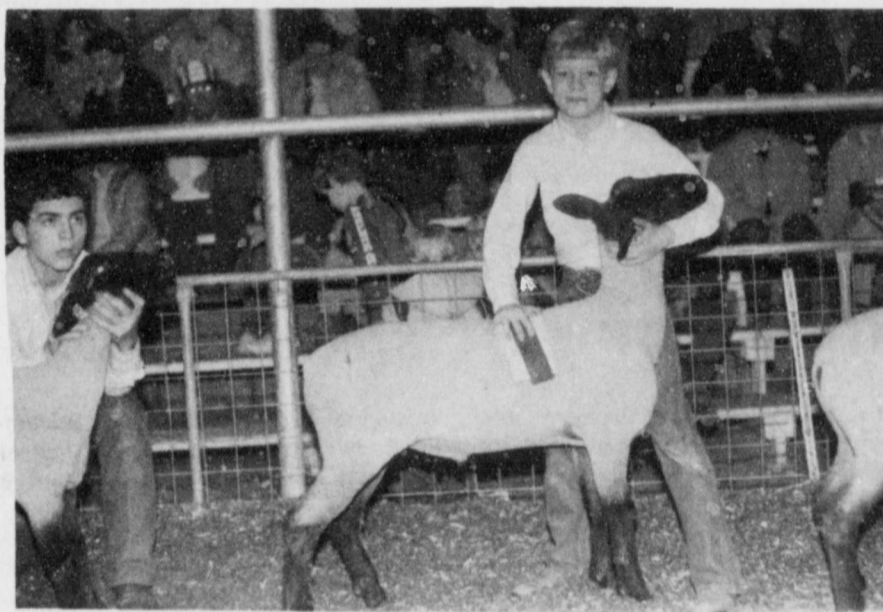
JASON BROWN — 2nd heavyweight Suffolk; 5th lightweight Hampshire.



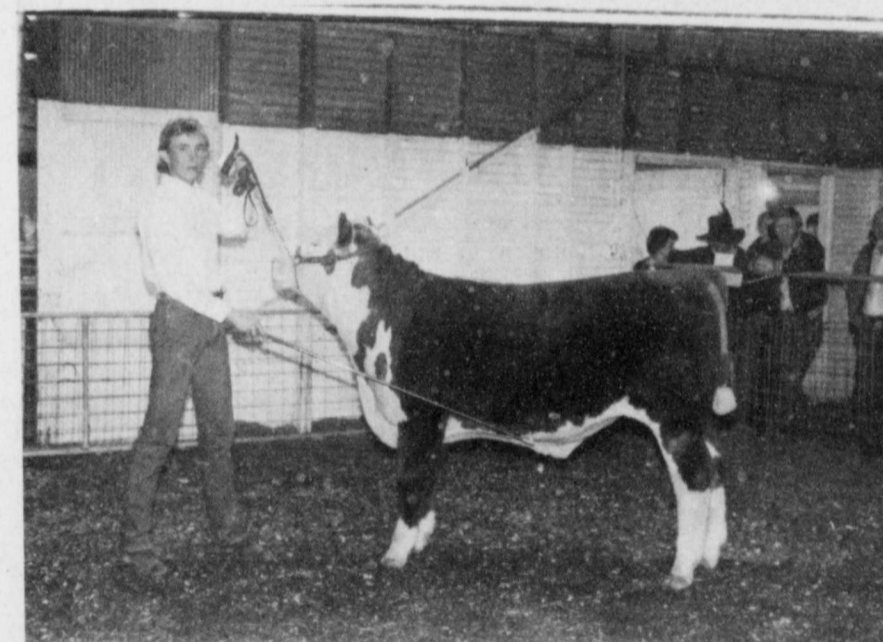
KEITH HANCOCK — Breed Champion Duroc; Reserve Breed Champion Yorkshire; 3rd heavyweight Chester White.



BRENT WILLIAMS — 2nd lightweight Chester White; 2nd heavyweight Yorkshire; 4th lightweight Cross; 6th heavyweight Hampshire.



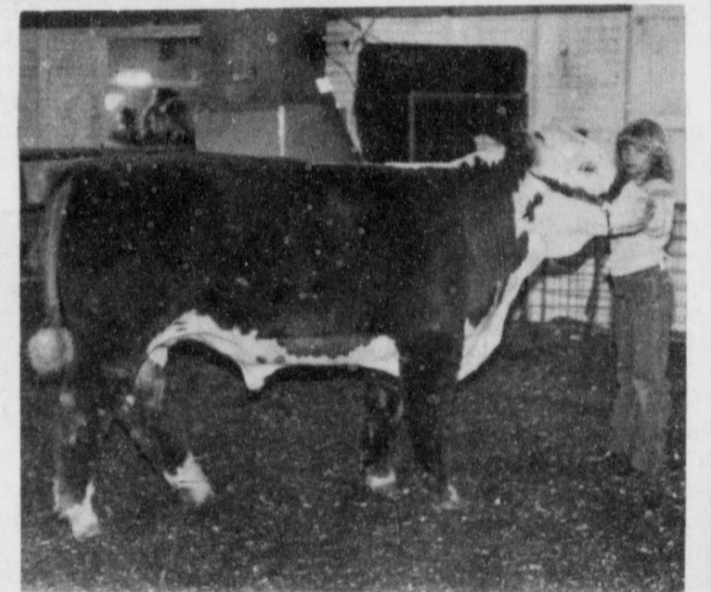
CASEY CARTHEL — 1st mediumweight Suffolk; 2nd lightweight Suffolk; 4th lightweight Cross.



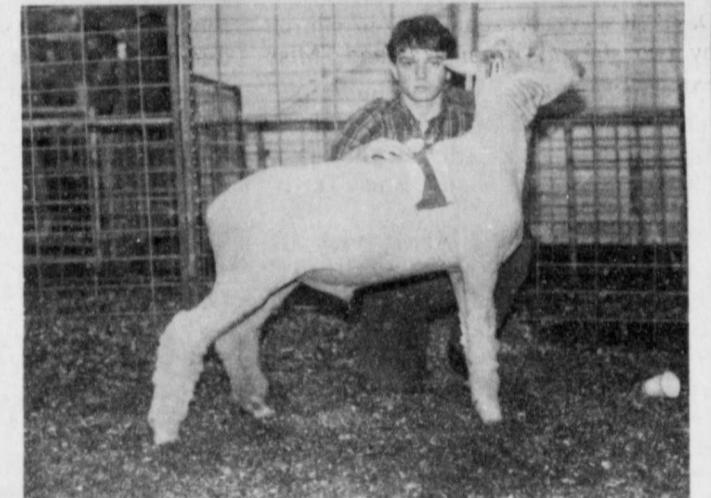
TROY FAULKENBERRY — 2nd Hereford lightweight; 4th light-mediumweight Cross Breeds.



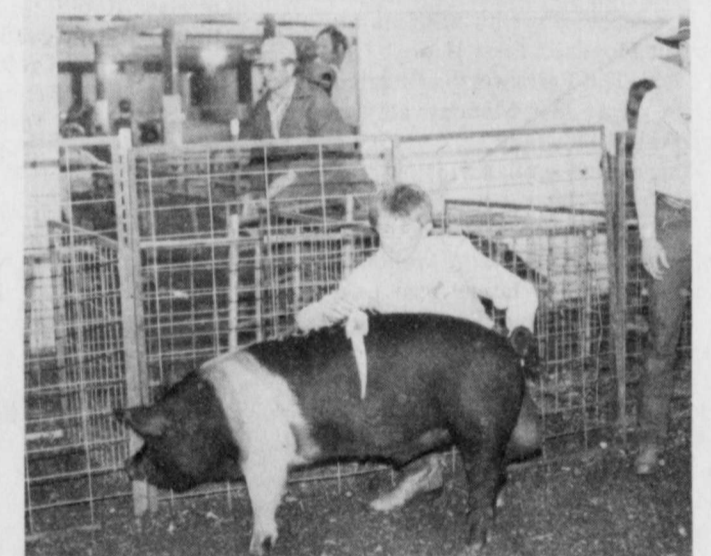
HANEY ROBERTSON — 2nd heavyweight Cross; 3rd lightweight Suffolk; 6th heavyweight Hampshire; 9th lightweight Cross.



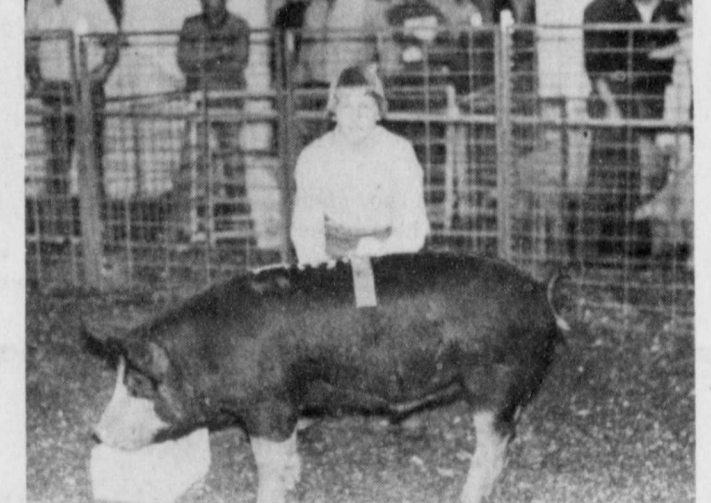
KRISTY HINSLEY — 2nd mediumweight Hereford.



CHAD PERNEL — Finewool Breed Champion; 9th mediumweight Suffolk.



SHANNON BARBEE — Reserve Breed Champion Hampshire; 5th heavyweight Duroc.



CHAD WILLIAMS — Reserve Breed Champion Berkshire; Reserve Breed Champion lightweight Cross; 4th heavyweight Hampshire; 5th heavyweight Chester Whites.

### Producer's Cooperative Elevator

Floydada, Dougherty, Boothe Spur, and Cedar Hill

### Production Credit Association

### Don Hardy Car Wash

Lockney and Floydada

### Floydada Livestock Sales Co.

### Thompson Pharmacy

# The Day's have a miracle baby

Mr. and Mrs. R.C. Day of Floydada, parents of seven children, have 20 grandchildren and five great-grandchildren and are proud of them all. However, their newest granddaughter, Jessica Rayann Day is very special to them because she is their "miracle baby." She was pictured in last week's Valentine section of the Hesperian.

Jessica was born to Karen and Ron Day on September 24, 1983, in Denton, Texas. There were several other babies born that day in Denton, but Jessica made history. At birth she was 2 1/2 months premature and weighed 1 lb. 14 oz., making her the smallest baby born in Denton County.

Better facilities were needed for Jessica, so she was immediately flown by helicopter to Fort Worth Children's Hospital. Her weight dropped to 1 lb. 10 oz. before she started to gain. Doctors warned the family against optimism because her chance of survival was so very slim. Tiny Jessica never heard the doctors and kept right on fighting.

The Days did not have the excitement

of bringing Jessica home within a couple of days after birth. Instead, they spent many, many hours with Jessica, day after day at the hospital, praying for her to live. Because of Jessica's courage and determination, the hospital staff's dedication, and God's intervention, the prayers were answered and Jessica grew stronger and gained weight.

On December 11, 1983, almost 2 1/2 months later, the then radiant parents brought Jessica triumphantly home.

She now weighed almost 5 lbs.

According to the last count from Mom was that at 16 1/2 months, Jessica weighs 18 1/2 lbs. and is 25 inches tall. She has 12 teeth and says "Mama" and "Dada," and still shows her determination by "climbing on everything."

Jessica has two brothers, Michael David, 20, and Geoffrey Shain (who Jessica calls "Nain") 16 years old. Her other proud grandparents are Mr. and Mrs. Paul Sparkman of Lubbock.



**MIRACLE BABY**—Jessica Day at six weeks old weighed 2 1/2 lbs.; [right] Jessica, now 16 1/2 months old, weighs 18 1/2 lbs. and is 25 inches tall. At 1 lb. 14 ozs., she was the smallest baby born in Denton.

## Lakeview News

by Joyce Williams  
Thursday, February 21, 1985

Charles Martin, grandson of Mr. and Mrs. Charley Wright, underwent major surgery in Methodist Hospital Monday. The fifteen year old son of Charlene and Don Martin fell in the restroom of the Muleshoe school two weeks ago, striking the back of his head, causing a concussion. He had suffered from migraine headaches for over a year. A teacher happened to see the youth stiffen and fall over backward and called an ambulance to take him to the hospital. Charley and Mary Wright and the boy's aunt, Mrs. Ova Ruth Neff, have been to Lubbock to be with his family several times since he was injured.

Mrs. Riley Teague was in Pampa over the week-end to attend a meeting of her health company, Avacare-Hilco. She also visited her son and family, Dr. and Mrs. Keith Teague, Shelli and Ryan.

Robert Pyle and his crew are starting work in the vineyard.

Austin Williams and other piano students of Mrs. Carolyn Cheek were presented in recital Sunday afternoon at the First Baptist Church in Floydada. Among his family present were his parents, Mr. and Mrs. James Williams, Ashleigh Williams; his aunt, Mrs.

Monte Williams; and grandparents, Mrs. Helen Akins of Clyde, Texas, and Mr. and Mrs. Q.D. Williams.

The oil crew struck the rig, loaded it up Thursday, and Friday moved on to Denver City, having achieved their goal of a good oil well here.

Mrs. Buell Neff visited in Lubbock overnight with her son, Donald, and family recently. Other visitors included Donald's son and family, Mr. and Mrs. Duane Neff and little Ami.

Mr. and Mrs. Howard Bishop attended the Country musical program Saturday evening at the high school auditorium. The two music groups provided a lively and loud program, played with verve and talent.

The T.S.T.A. banquet at Andrews Ward School last Monday evening was attended by Mrs. Q.D. Williams. The Jr. High Home Ec. girls helped decorate the tables in a red, pink and white Valentine theme.

The County Junior Livestock show was well attended by people from our community. Hunter Smith received the Grand Champion Award for his lamb. Dean Smith received a Reserve Breed Champion for his lamb. Matthew Redding's medium weight Hampshire lamb placed third. Congratulations to all our young showmen.

## County unemployment rate follows national and state lead

Floyd County's unemployment rate followed the national and state lead in December and rose higher than its November rate.

According to figures just released by the Texas Employment Commission, the final month of 1984 saw the national unemployment rate rise to 7.0 percent from a rate of 6.9 percent in November. At the same time the statewide figure went from 5.4 percent to 5.6 percent.

Floyd County equaled the Texas rate with an increase of 0.9 percent from 4.7 percent in November to 5.6 percent in December. This compares favorably, however, with a December rate last year of 6.6 percent. Out of a civilian labor force of 4,068 in December, TEC says that Floyd County had 3,840 individuals working in non-agricultural jobs, an increase over the November employ-

ment level. Although total employment went up in December, so did total unemployment.

Briscoe County, unlike its neighbors in the Plainview reporting area, enjoyed a decline in unemployment from 6.0 percent in November to a rate of 2.4 percent in December.

Motley County, with its 3.9 percent jump from 2.3 percent to 6.2 percent, had the highest percentage increase in the seven county region. Swisher County was next with a 2.1 percent increase to 5.8 percent from a November rate of 3.7 percent.

Other counties and their December unemployment rates are as follows: Castro, 4.5 percent, up from 3.6 percent; Hale, 6.2 percent, up from 5.8 percent; and Lamb, 4.7 percent, up from 4.6 percent.

## Representative visits local office

Walt McAdams, director of Satellite Franchise Operations for H & R Block, visited this week with Anna Lou Rodgers, franchise owner of the Floydada H & R Block office.

According to Anna Lou, the primary purpose of McAdams' visit was to provide the local franchise with all the

new and updated programs for improving client service. This included information on the same day service and senior citizens discount programs, in addition to the many changes made for 1985 filing requirements.

H & R Block currently has over 9000 offices worldwide. There are nearly 3000 franchise offices in the U.S. and Canada. The local Block office is located at 106 W. Missouri.

## Center News

By Mrs. J.E. Green  
Feb. 12, 1985:

Today the weather seems to have moderated. It is not so cold and the sun is shining. I guess we are all about ready for spring. It was good to be in church.

I had a good time Sunday at the birthday dinner for Anthony Latta's daughter, Carol. The whole family was present, including the parents; son, David of the Ralls highway and family; Sam and family of Mt. Blanco; Carol of Lubbock and Ma Green. It was such a good dinner and good company.

Mrs. Wiley Rogers had company over the weekend, her daughter Nora of Amarillo.

Mrs. Henry Brewer reports they had flue all last week. Mrs. Roe Jones is home; also Miss Francis Mitchell and the Mayfields.

Mrs. Ola Warren reports Mrs. Eula Battey is doing real good and is due for a checkup soon.

Mr. High Sr. of Hubbard, 97, a brother-in-law of my husband, James Green, passed on last week. Since retirement he had lived with his daughter, Annie Mary and husband.

February 19, 1985:

Sunday was "Christian Education Day." It was represented at our church by two students from Wayland, Miss Sandy Gray and Wesley Birch. We enjoy having young people visit or church, come again.

Mr. and Mrs. Bobby Plumlee of Amarillo spent the weekend with his mother, Mrs. W.C. Plumlee.

The Henry Brewers had a tri-birthday dinner Sunday at the Crosbyton daughter's home. Three of the group celebrated birthdays. There were 54 present, and a wonderful time. Relatives present were from Wichita Falls, Lubbock and Crosbyton and near Floydada. The Mayfields are rid of their colds and safe at home. Ma Green had a good dinner with the Lattas. Mrs. Eula Battey is doing fine.

I have had a nice chat with Mrs. Frizzell. Also with Mrs. Maudie Muncy of Lockney.

Mrs. Edna Patton in Caprock Hospital is reported as having a good day.

Vic and Sue Green of Plainview came Saturday afternoon. Clyde and Don Clark called me long distance.

Today, Tuesday afternoon is beautiful. Let us remember in our prayers those who are sick.

## Floydada School Menu

February 25 - March 11

- Monday:**  
Breakfast—Grape juice, toast, milk  
Lunch—Frito pie, spinach, black eyed peas, peanut butter cookie, cornbread, milk
- Tuesday:**  
Breakfast—Orange juice, rice, butter, toast, milk  
Lunch—Oven baked chicken, green beans, steamed rice, pears, hot roll, milk
- Wednesday:**  
Breakfast—Apple juice, toast, peanut

- butter, honey, milk  
Lunch—Pigs in blanket, corn, cole slaw, jello, milk
- Thursday:**  
Breakfast—Pineapple juice, dry cereal, toast, milk  
Lunch—Cheese and beef enchiladas, pinto beans, tossed salad, cornbread, mixed fruit, milk
- Friday:**  
Breakfast—Grape juice, cinnamon toast, milk  
Lunch—Char burgers, French fries, lettuce, tomatoes, pickles, peach cobbler, milk

## Whirlwinds compete in bi-district playoffs

The Floydada Whirlwind Basketball team defeated Tulia to win a berth in the bi-district playoffs. The Winds downed Tulia 80-73 on Tuesday, February 12 in Floydada. The hustling Winds met the challenge of remaining eligible for the playoffs with this victory.

Scoring for the Winds were: Derrick Jenkins, 24; David Morren, 15; Alvin Cooper, 10; Joey Kemp, 16; and Rabel Contreras, 15. Leading in the rebound department were Joey Kemp with 14, David Morren with 12, and Derrick Jenkins with 12.

The Winds lost a close game with Dimmitt the week before. A standing-room-only crowd saw Dimmitt outscore the Winds 73-63 in Graves Gym. Even with this defeat, the team ended regular season play with a 24-4 record. Their district record stood at 9-3.

Individual scoring achievements for the season include Derrick Jenkins with a total of 554 points this year, David Morren with a total of 396 points scored, and Joey Kemp with a total of 316. Rabel Contreras scored a total of 188 points this year, Alvin Cooper netted 170, and Brad Rainer made 124. Efforts in the rebound area include David Morren with 300, Joey Kemp with 271, and Brad Rainer with 112.

The team will be leaving the local Junior High at 3:25 on February 21 for

the journey to Amarillo where they face Perryton in a bi-district playoff at 7:30 p.m. in the Tascosa High School Gym. Tickets for the event are \$4.00.

A win on Thursday evening will advance the Winds to an area playoff match. The opponent and location of the area playoff games will be determined by the outcome of the bi-district playoffs now underway.

A charter bus will be transporting many local fans to the game in Amarillo to see the exciting game action and show the team their local support. A send off will be held at the Junior High at 3:25 p.m. for the team. Everyone is urged to make the trip and show their appreciation for the boy's effort.

Coach Cocanougher said "I wish to commend the local fans who have been so loyal all season. I know the support you have shown has helped the team a lot." He also added, "Our fans have always made us proud to play for them. We hope they are as proud to see us play."

Coach Joe Paty, athletic director for Floydada said, "The coaches definitely do appreciate the support and sportsmanship exhibited by the Floydada fans throughout our season. Their behavior has been an excellent example for our students in every situation we have faced, win or lose."



**BOUND FOR BI-DISTRICT PLAYOFFS**—The Floydada Whirlwind Varsity basketball team is on the road today to meet Perryton in Amarillo in a bi-district playoff match. Team members include [back row, l-r] Derrick Jenkins, Brad Rainer, Joey Kemp, David Morren, Larry Smith and Coach Mike Cocanougher; [front row, l-r] Rabel Contreras, Alvin Cooper, Tony Caballero, and Terry King.

## Area officers attend school

An Alcohol Beverage Commission (ABC) Liquor Laws School was held at the Texas A&M Extension Building in Floydada on February 19th. The 8-hour school was co-sponsored by the Floydada Police Department and the South

Plains Association of Governments (SPAG), Law Enforcement Academy.

Instruction at the school was provided by Johnny Fields of the Texas Alcohol Beverage Commission of Lubbock. Topics of instructions included: rules and regulations of private clubs, the search and seizure of transporters' vehicles, and the search and seizure of bootleggers' premises.

Twenty officers from surrounding counties attended the school, including Floydada city officers James Hale and Roy Muniz.

**BRETT R. GILL**

TAX SERVICE

Tax Returns and Bookkeeping Service

CALL: 847-2563

## LAST BIG BLOW OUT!!!

All fall and winter sale merchandise

75% off

Just arrived!

Spring and summer sweaters by Jeanne Pierre

at

Charlotte's  
In Petersburg

## Caprock Hospital Report

Feb. 11 - 18

- Opal Threadgill, Floydada, adm. 2-6, continues care, Hale
- Cecil Whitehead, Floydada, adm. 2-7, dis. 2-12, Hong
- Dorothy Main, Petersburg, adm. 2-7, dis. 2-13, Hale
- Bertha Anderson, Matador, adm. 2-8, continues care, Hong
- Lois Durham, Floydada, adm. 2-8, dis. 2-13, Hong
- Ruth Gilliland, Floydada, adm. 2-8, dis. 2-11, Hong
- Notie Colston, Floydada, adm. 2-10, dis. 2-14, Hong
- April Flores, Floydada, adm. 2-11, dis. 2-14, Hong
- James Cook, Matador, adm. 2-11, dis. 2-15, Hong
- Rodney Hill, Floydada, adm. 2-12, dis. 2-15, Hale
- Israel Irlas, Floydada, adm. 2-12, dis. 2-16, Hong
- Maxima Casillas, Floydada, adm. 2-12, continues care, Hong
- Alice Duncan, Floydada, adm. 2-14, continues care, Hale
- Lee Thomas, Roaring Springs, adm. 2-14, continues care, Hale
- Kenneth Thorpe, Petersburg, adm. 2-14, dis. 2-18, Hale
- Aleman Soria, Tulia, adm. 2-15, continues care, Hong
- Vollie McNeill, Floydada, adm. 2-15, continues care, Hong
- Edna Patton, Floydada, adm. 2-15, continues care, Hong
- Shelly Macha, Plainview, adm. 2-16, dis. 2-18, Hale
- Lynda Seymour, Floydada, adm. 2-16, adm. 2-17, Hale
- Shelly Macha, Plainview, adm. 2-16, baby girl born 2-16, dis. 2-18, Hale
- Santos Sanchez, Floydada, adm. 2-17, continues care, Hale
- Hal Thomas, Floydada, adm. 2-18, continues care, Hale
- Irenio Torres, Matador, adm. 2-18, continues care, Hong
- James Alonzo, Floydada, adm. 2-18, continues care, Hong

## Sr. Citizens Menu

February 25-28

- Monday — Chili and beans, cabbage, carrot slaw, cornbread and butter, applesauce, peanut butter cookie, milk
- Tuesday — Turkey and dressing, giblet gravy, cranberry sauce, buttered broccoli, roll and butter, chocolate pudding with whipped topping, milk
- Wednesday — Liver and onions, baked potatoes, squash casserole, cornbread, jello and topping, milk
- Thursday — Baked ham, large lima beans, carrot-raisin salad, roll and butter, pineapple upside down cake, tomato juice, milk

**19**  
WALLET SIZE  
COLOR PHOTOS  
**99¢**

WE USE  
KODAK PAPER

No limit on this offer

HAVE YOUR EASTER  
PICTURES TAKEN NOW

Ask about our FREE  
8 x 10 offer

AT  
**BUDDY'S FOOD**  
220 South 2nd.  
Floydada

DATE: Tuesday, Feb. 26  
PHOTO HOURS: 9 - 7

Group Charge  
99¢ per person  
per 19 wallets

**Shugart's**  
inc.

Kodak paper For a Good Look at the Times of Your Life

## Clean Sweep Sale

Final reductions in every department

**Jr. & Contemporary Missy**

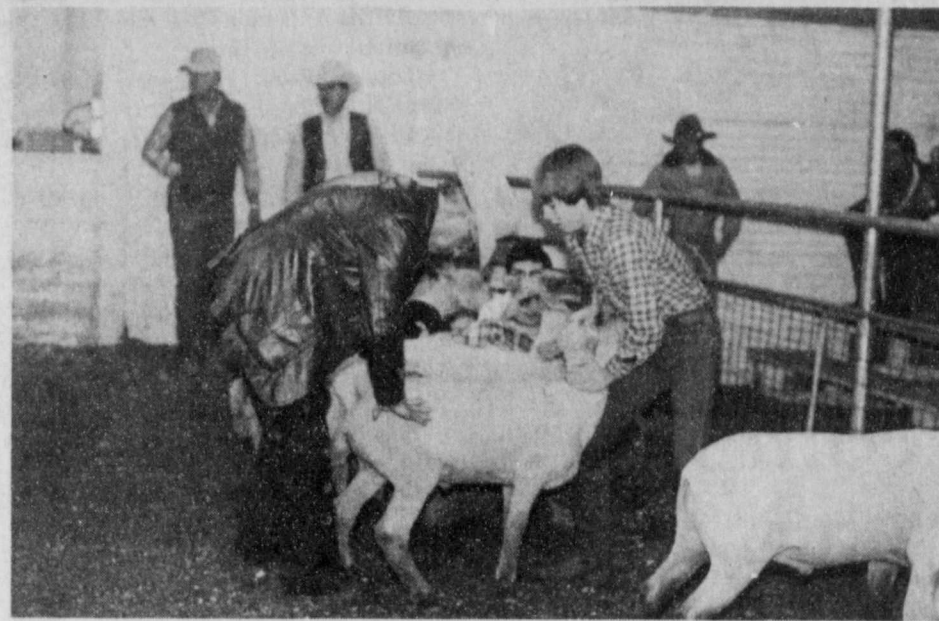
SUITS - Values to \$215<sup>00</sup>  
- Now \$49<sup>00</sup> - \$75<sup>00</sup>

DRESSES - Values to \$198<sup>00</sup>  
- Now \$25<sup>00</sup> to \$69<sup>00</sup>

**Kristi's**

614 Broadway Plainview, Texas

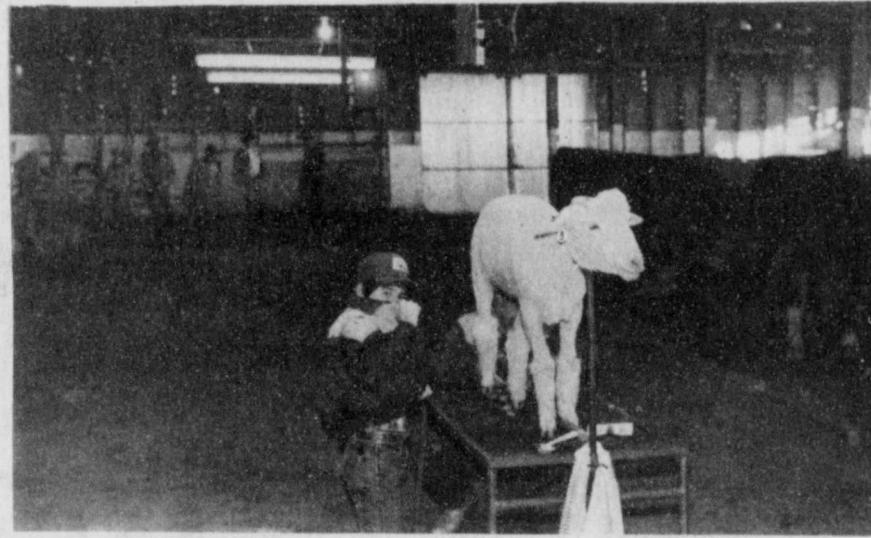
# FARM NEWS



JUDGE JERRY HAWKINS deliberates over Heath Robertson's lamb.



EDDIE TEETER [and son in background] and Erik Anderson work with their sheep at the local stock show.



ZACH NUTT attempts to hide his face while his lamb is being sheared.

## Imitation cheese: How to compare

It may look and even taste like cheese, but these days, only the label will tell you what you're eating.

Under Food and Drug Administration (FDA) regulations, a dairy product which does not meet the relevant standard of identity must be called "imitation," says Texas A&M University Agricultural Extension Service nutritionist Mary K. Sweeten.

But if the product substitutes for and resembles another food and is not "nutritionally inferior" it does not have to be called imitation, she adds.

Some cheeses are labeled as imitation simply because of a change in ingredients from real cheese. For example, some grated Italian style cheeses which contain added whey fall into this category.

Another class of "imitation" cheese is the non-dairy product, made from vegetable oils, sugars, a protein source such as sodium caseinate and other ingredients.

Some of these products, like imitation cream cheese, are not nutritionally equivalent to the products they imitate, says Sweeten. They must be labeled imitation, may be marked "non-dairy product," and may bear a nutrition label.

An "imitation label also appears on a popular and economical category of substitute cheeses which have been fortified to contain the same amounts of protein and the 19 other ingredients for which U.S. Recommended Daily Al-

lowances have been established, says the nutritionist.

The nutrition labels on these products indicate that they are equal to or better than natural cheese in providing protein, vitamin A, riboflavin and calcium. These products may be equivalent in fat content to natural cheese.

For consumers, the labels on packages of imitation cheese can be confusing, Sweeten maintains. The FDA requires full ingredient listing but nutrition labeling is not normally required.

Shoppers may have even more difficulty identifying imitation cheese in processed foods, she says, since the processor does not always have to state on the label that imitation cheese is being used.

For example, if a pizza is called "cheese" pizza and the processor uses imitation cheese, the word imitation must be stated on the label. When a pizza is called "mushroom pizza," that means mushrooms are the primary topping ingredient and any cheese used is secondary, so the imitation label does not have to appear.

When the cheese is genuine, the word cheese will appear in the ingredient listing, Sweeten says. But the only way a consumer can identify imitation cheese in many processed foods is to look for sodium caseinate and vegetable oil, its two primary ingredients, on the ingredients listing.

## Extension Service launch integrated beef program

The Texas Agricultural Extension Service, The Texas A&M University System, is intensifying its educational efforts in integrated livestock management.

"Our overall purpose is to develop an integrated approach to on-farm problem solving and advanced production planning as far as the livestock industry of Texas is concerned," points out Dr. John R. Beverly, animal reproduction specialist and supervisor of the Extension animal science project group.

"Basically, we'll be working with livestock producers over the state through our county Extension agents to help them optimize their production systems," he says. "Beef cattle producers have been caught in a severe cost-price squeeze for several years and are struggling for economic survival. This means cutting costs while maintaining their level of productivity or increasing productivity while keeping costs in check."

Optimum production efficiency is the direct result of timely decisions and management actions based upon herd management, health programs, forage production, range management, record systems, market information, feed acquisition and financial management, Beverly points out. All these things must mesh together, or be integrated, if production efficiency is to be increased.

Objectives of the integrated livestock management program are fourfold:

1. To effectively accelerate the transfer of technical data to producers to reduce present production inefficiencies.
2. To develop a statewide production and economic database for beef producers to better address and give evidence to the principles, practices and problems which impinge upon optimum production efficiency.
3. To strengthen and develop innovative integrated subject matter methods and management systems to enhance livestock production efficiency.
4. To develop computer software aids to assist producers in the decision-

making process as related to overall herd and ranch management.

"Profitability of Texas cattle producers has been greatly affected by continuing increases in production and capital costs," says Beverly. "This has dictated that producers seek greater levels of production efficiency."

"By looking at all production aspects and integrating these into an overall efficient operation, we should be able to help Texas cattle producers become more competitive," says Beverly.

While the Extension Service is taking the leadership in this integrated livestock management program, numerous other groups and organizations will have input.

To boost this programming effort, the Texas Agricultural Extension Service has received a \$22,500 grant from the Extension Service, U.S. Department of Agriculture. The grant was a direct result of the successful South Central Texas Beef Herd Improvement Program that was launched about a year ago. Funds will be used to support some of the activities of this 17-county area program as well as similar efforts in other parts of the state, Beverly notes.

Other states receiving similar grants to support efforts in integrated livestock management were Kansas, Kentucky and Idaho. Program emphasis will be on a concerted effort to accelerate the adoption of known and newly developed technology for producers.



WHO'S AFRAID OF THE BIG BAD WOLF? Certainly not these three little pigs who took time out for a break at one of the recent stock shows.

## TFB Labor Advisory Committee appoints seven

Seven agricultural employers from across Texas have been appointed to the newly-formed Texas Farm Bureau Labor Advisory Committee.

The committee is under the chairmanship of James Ray Adams of Odem, a cotton and grain producer and member of the TFB Board of Directors. It will meet for the first time during the annual TFB Leadership Conference, Jan. 27-29, in Austin.

Adams was recently appointed to serve on the American Farm Bureau Federation Farm Labor Advisory Committee by AFBF President Robert Delano.

The committee has been given the assignment of reviewing labor issues and problems facing agricultural producers in all areas of the state and making recommendations to the organization's board of directors on what should be done to assist farmers and ranchers in solving those problems.

The assignment of the committee includes the entire spectrum of general labor policy, legislation and regulations at the state and national level.

S.M. True of Plainview, a cotton and grain farmer and president of Texas Farm Bureau said that although agriculture is highly mechanized now, farm workers are still vital to the industry. The average number of farm workers in Texas is about 75,000, he said.

"We have a feeling, based on recent actions by unions, the courts and the Legislature, that important changes lie ahead in the availability and cost of labor of farms," True said.

"The Immigration Act reform legislation at the national level, as well as workers compensation and unemployment compensation at the state level have shown that we should be in a better position to respond to those issues and to assist Farm Bureau members in adjusting to any changes," True continued.

The other six members of the TFB committee represent six categories of agricultural employers and most regions of the state. They are:

Leland White of Tahoka, Lynn County, full-time farm workers; Homer McCasland of Goldwaite, Mills County, full-time ranch hands; R.A. Pinkerton of Decatur, Wise County,

dairy and poultry workers; Joe Van de Walle Jr. of San Antonio, Bexar County, fruit and vegetable workers; Malcom "Newt" Dyer of Pharr, Hidalgo County, seasonal workers, and Robert Young of Dalhart, Dallam County, custom labor.

### Caprock-Plains Federal Land Bank Association



Floydada 983-2480

### ADAM'S WELL SERVICE



Floydada 983-5003

### PRODUCTION CREDIT ASSOC.



Floydada 983-2454

### FLOYD COUNTY FARM BUREAU



Lockney Floydada 652-2242 983-3777

### FLOYDADA IMPLEMENT CO.



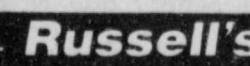
Floydada 983-3584

### FIRST NATIONAL BANK OF FLOYDADA



Floydada 983-3717

### RUSSELL'S EQUIPMENT & SUPPLY



Floydada 983-3751

### FLOYD COUNTY IMPLEMENT



Floydada 983-3732

### PATTERSON GRAIN CO.

Lockney Lone Star 652-3393

### FLOYDADA COOPERATIVE GINS INC.



Floydada 983-2884

### Special

### Heavy duty G M shock absorbers

Lifetime limited warranty

\$12<sup>00</sup> each

Expires February 28, 1985

CITY AUTO INC.



Tel. 983-3767  
201 E. Missouri  
Floydada, Texas 79235  
Lubbock 765-6143



## FISH

Now is the time for Spring stocking Hybrid Bluegill, Florida Hybrid Bass, Channel Catfish, Fathead Minnows, Hybrid Grass Carp, Black Crappie. The Hybrid Bluegill will Reach the weight of 2½ to 3 lbs.

We guarantee live delivery We furnish your hauling containers.

Delivery will be made Tuesday, March 5 at the times listed for the following towns and locations.

Plainview - Plainview Feed & Supply 8:00-9:00am 296-5431

Floydada - Producers Co-op Elevator 10:00-11:00am 983-2821

Roaring Springs - Stafford Farm Store 12:00-1:00pm 348-3271

Ralls - Crosby County Fuel Assoc. 2:00-3:00pm 253-2032

Post - J. T. Feed & Supply 4:00-5:00pm 495-3718

Call your local Feed Store to place your order or call collect:  
405/777-2202

Fishery consultant and pond rotenoning available. Special deliveries on large ponds and lake orders

DUNN'S FISH FARM

P. O. Box 85 Fittstown, Ok. 74842

## PUBLIC NOTICE

AT&T Communications of the Southwest, Inc. ("AT&T Communications"), in accordance with the Public Utility Regulatory Act and the rules of the Public Utility Commission of Texas ("PUC") hereby gives notice of its intent to implement a new schedule of rates for its services. The new rates will be effective February 22, 1985, unless otherwise determined by the PUC. All customers and classes of customers would be affected by the proposed rates.

AT&T Communications has filed restructured tariffs designed to more closely recover access and other costs for private line, DATAPHONE® Digital Service, OCC Facilities, WATS and 800 services.

Also proposed is the institution of a charge for directory assistance to begin to recover access costs incurred for such service, and increases in rates for operator assisted AT&T Long Distance calls.

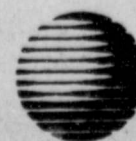
AT&T Communications is proposing to restructure its AT&T Long Distance Service and to reduce its overall revenues from basic long distance approximately \$25 million.

While long distance rates will, in most instances, be reduced, certain AT&T Long Distance rates are proposed to be increased to more nearly recover the access charges approved by the PUC for such service.

The proposed new rates for all services would result in an increase in adjusted test period revenues of \$123.4 million, or 11.3 percent.

A complete copy of the proposed tariffs are on file with the Texas Public Utility Commission.

Persons who wish to intervene or otherwise participate in these proceedings should notify the Commission as soon as possible. A request to intervene or participate or for further information should be mailed to the Public Utility Commission of Texas, 7800 Shoal Creek Blvd., Suite 400N, Austin, Texas 78757. Further information also may be obtained by calling the Public Utility Commission Consumer Affairs Division at (512) 458-0223 or (512) 458-0227 or (512) 458-0221 teletypewriter for the deaf.



AT&T Communications





**Future  
Farmers of  
America**  
FFA WEEK



## KEEP AGRICULTURE #1!

Agriculture is America's number one industry and feeds half the world.

To insure our future as a world leader, our strength and sustenance will have to come from the land and the young people who will protect and manage it.

Young people in high school today will be tomorrow's leaders. Agriculture is a career where young people can make a difference and work with the latest sophisticated technology.

Career opportunities are unlimited if they have the right skills, because today's agriculture is marketing, sales and research. It's biogenetics, chemistry, engineering and a whole lot more.

Young people can get a head start on developing those skills, half a million young leaders are already confident about their futures because of the experience they are getting now in vocational agriculture and the FFA.

The future is in their hands.

Keep agriculture #1—support vocational agriculture and the FFA!



Support  
Vocational  
Agriculture  
& FFA!



*We congratulate all who have participate in FFA — teachers and students alike!*

By "keeping America on the grow," FFA is preparing to meet agricultural challenges of the future. We support them!

- Adams Well Service
- Anderson's Dept. Store
- Arwine's Drug Store
- Azteca Cafe
- Baker Insurance
- Bishop-Ramsey Pharmacy
- Brooks Oil Co.
- Brown Gin Co.
- Brown Implement
- Buddy's Food
- Builders Mart
- Cable TV of Floydada
- Caprock Meat Co
- Caprock Motor Parts & Hdw.
- City Auto, Inc.



**1985 National FFA WEEK**  
FEBRUARY 16-23, 1985



- City Trim Shop
- City Power & Light
- Consumers Fuel Assn.
- Cornelius Conoco
- Covington Oil & Butane
- Darty Gin
- Dixie Dog Drive In
- Don Green Auto Parts
- Farm Bureau Ins. Co.
- First National Bank

- Floyd County Implement
- Floydada Coop Gins, Inc.
- Floydada Ready Mix
- Gary Fuller Trucking
- Hammond Sheet Metal
- Hendricks Barwise Gins
- Kirk & Sons
- King's Restaurant
- Lighthouse Electric
- Movies and More

- Oden Chevrolet-Olds
- Pizza Gold
- Poole Well Service & Radiator Shop
- Producer's Cooperative Elevator
- Quality Body Shop
- R. Photography
- Reed Ford Sales, Inc.
- Russell Equipment & Supply, Inc.
- Script Printing
- Shop Rite
- Summit Savings Asso
- Thompson Pharmacy
- Tipton Oil Co.
- Weems Texaco
- Wilson Electric

### PUBLIC NOTICES

I will be responsible only for charges, debts, or obligations made by me personally.  
F.M. Marquis  
2-28c

### NOTICE OF PUBLIC HEARING

A Public Hearing on the 1985-1986 City of Floydada Operating Budget and the Revenue Sharing Funds will be held at the regular Council meeting in the Council meeting room at 114 W. Virginia Street on Tuesday, March 12, 1985 at 7:30 P.M.  
2-21, 3-7c

### CONTRACTORS' NOTICE OF TEXAS HIGHWAY CONSTRUCTION

Sealed proposals for constructing 149.658 miles of Seal Coat on various limits in Lynn, Terry, Swisher, Floyd, Crosby, Parmer, Lamb, Yoakum, Hockley & Cochran Counties, on US 87, US 62, FM 146, SH 214, FM 54, SH 83, FM 41, FM 2698, FM 1585 & FM 2196, covered by CSR 68-3-23, CSR 228-1-36, CSR 357-4-17, CSR 453-1-13, CSR 453-2-12, CSR 461-6-14, CSR 563-3-5, CSR 583-1-9, CSR 645-5-8, CSR 645-6-4, CSR 755-5-2, CSR 3126-3-2, CSR 3126-4-3 & CSR 3473-1-2, will be received at the State Department of Highways and Public Transportation, Austin, until 9:00 A.M., March 6, 1985, and then publicly opened and read.

Plans and specifications including minimum wage rates as provided by Law are available for inspection at the office of J.W. Gooch, Resident Engineer, Lubbock, Texas, and at the State Department of Highways and Public Transportation, Austin, Texas. Bidding proposals are to be requested from the Construction Division, D.C. Greer State Highway Building, 11th and Brazos Streets, Austin, Texas 78701. Plans are available through commercial printers in Austin, Texas, at the expense of the bidder.  
Usual rights reserved.  
2-21/28



Millard Fillmore's wife, Abigail, found no books in the White House after he took office as the 13th president. She set aside a room for a library and got an appropriation of \$250 from Congress to buy books.

## Form 1040A

You can use the Form 1040A even if you have an IRA or claim the child and disabled dependent care credit. Check the instructions in your tax package for details.



A PUBLIC SERVICE MESSAGE FROM THE INTERNAL REVENUE SERVICE

## H & R BLOCK GUARANTEES TAX RETURN PREPARATION

"If we make any error in the preparation of your tax return that costs you any interest or penalty or additional taxes due, while we do not assume the liability for the additional taxes, WE WILL PAY THAT INTEREST AND PENALTY. Furthermore, if your return is audited, we will accompany you, at NO EXTRA COST, to the Internal Revenue Service and explain how your return was prepared, even though we will not act as your legal representative."

If everyone was perfect, you would not need to guarantee our tax return preparation. Block has consistently protected its clients from paying more than is rightly owed if a mistake is made by H & R Block on the tax return.

We'll even guarantee to find you the biggest refund — or your return is free.

See your telephone directory for the office nearest you or call 983-5233

106 W. Missouri

Mon. thru Fri. 9-6 Sat. 9-5

## PUBLIC AUCTION

Farm Machinery & Related Items  
March 15, 1985 - 10:00 a.m.

Location: Matador Gin  
- 2 miles north of Matador on Highway 70  
Kelly Keltz, owner

Quentin Jenkins and Associates:  
Brokers and auctioneers OKS-016-1882  
Serving the Southwest since 1947

Consignments welcome to this sale by calling  
Quentin Jenkins and Associates  
405-782-3069 or 405-782-2513, Home  
Computer print-out and settlement  
day of sale in most instances.  
Call us for your sale - we are the professionals.

## Supply of "D" stamps is available

An adequate supply of "D" stamps and other nondenominated items is available at the Floydada post office to help customers make a smooth transition after the February 17 postal rate change.

Postmaster Geary Reckling says that the nondenominated "D" stamps in sheet, coil, and booklet formats represent the new 22-cent first-class rate. There are also nondenominated postal cards and plenty of two-cent stamps that, when added to 20-cent stamps, make up the new first-class letter rate.

"Nobody likes to see higher postal rates, but this increase is moderate and justified," Postmaster Reckling said. "Since the last increase in November 1981, the cost of living in the United States, as measured by the Consumer Price Index, has gone up almost 13 percent. The 22-cent stamp is only a 10 percent rise."

"The nondenominated items are available because we estimate that stamp inventories in post offices at present will fall short of public demand

## Card of Thanks

Hunter and Dean Smith would like to thank Floydada Businessmen and Farmers, Lakeview Gin, and Producers Elevator for buying our lambs at the Floyd County Stock Show auction. You were very generous with your bids for our lambs and we appreciate it very much. Also a thank-you to the Stock Show Association and directors, and auctioneer, Kenneth Gregg.

To The Floydada Farmers & Businessmen Assn.

I would like to thank you for purchasing both my barrows at the Floyd County Livestock Show. It's people like you who make the show a success and give us young people who aren't well acquainted with farm life a chance to learn.

Sincerely,  
Darin Martinez  
2-21c

and, we want to avoid customer inconvenience," he said.

Commemorative stamps, beginning with the Jerome Kern stamp, and other 22-cent stamps, are expected to replace the "D" stamps by the end of March, the Postmaster said.

# FEBRUARY IS POTATO LOVER'S MONTH!

### CHICKEN-POTATO CASSEROLE

- 1 package Betty Crocker au Gratin potatoes
- 2 1/2 cups boiling water
- 2 tablespoons margarine or butter
- 1 can (5.33 ounces) evaporated milk
- 1 can (10 3/4 ounces) condensed cream of mushroom soup
- 2 cups cut-up cooked

- chicken or beef, or 2 cans (6 1/2 ounces each) tuna, drained
- 1 can (4 ounces) sliced mushrooms, drained
- 2 tablespoons chopped onion
- 1 cup shredded Cheddar cheese (4 ounces)
- 1/2 cup crushed corn flakes or cracker crumbs

Heat oven to 400°. Mix all ingredients except cheese and corn flakes in ungreased 2-quart casserole; sprinkle with cheese. Bake uncovered until potatoes are tender, about 35 minutes; sprinkle with corn flakes. Bake 5 minutes longer.

Let stand 5 minutes before serving. 6 servings.  
High Altitude Directions (3500 to 6500 feet): Increase bake time to about 50 minutes.

**Microwave Method:** Mix potatoes, water, margarine and onion in 2-quart microwavable casserole. Cover with waxed paper and microwave on high (100%) 10 minutes; stir in milk, soup, Sauce Mix, chicken and mushrooms. Cover and microwave until potatoes are tender, 10 to 13 minutes longer; stir. Sprinkle with cheese and corn flakes; let stand 5 minutes.

### CRUNCHY CHEESEBURGER CASSEROLE

- 2 cups Betty Crocker Potato Buds mashed potatoes (dry)
- 1/3 cup margarine or butter, melted
- 1 pound ground beef
- 1/2 cup chopped onion
- 1/2 teaspoon salt
- 1/4 teaspoon pepper
- 1 tablespoon Worcestershire sauce
- 2 eggs
- 1 cup creamed cottage cheese (small curd)
- 2 tomatoes, sliced
- 1 cup shredded Cheddar cheese (4 ounces)

Mix potatoes and margarine. Reserve 1/2 cup of the potato mixture; spread remaining potato mixture in ungreased square baking dish, 8x8x2 inches.

Heat oven to 350°. Cook and stir ground beef and onion until beef is brown; drain. Stir in salt, pepper and Worcestershire sauce. Spoon onto potato mixture in dish. Mix eggs and cottage cheese; pour over beef mixture. Top with tomato slices. Sprinkle with Cheddar cheese; spread with reserved potato mixture. Bake uncovered until set, about 20 minutes. 6 to 8 servings.  
High Altitude Directions (3500 to 6500 feet): No adjustments are necessary.

**Do-ahead Directions:** After sprinkling with Cheddar cheese, casserole can be covered and refrigerated up to 24 hours. Just before baking, spread with reserved potato mixture. Bake uncovered until top is light brown, 25 to 30 minutes.

Betty Crocker® and Potato Buds® are registered trademarks of General Mills, Inc.

I wish to give thanks first of all to our God Jehovah and his son Jesus Christ for helping me and Dr. Hong and Dr. Hale with my surgery.

Thank you my God Jehovah and your son Jesus Christ. And next I want to thank Dr. Hong for getting me ready for my surgery and to Dr. Hale for helping Dr. Hong with my surgery, and to all the nice nurses at the hospital.

And I want to give thanks to Mrs. Irene Wexler and Mr. and Mrs. Hollis Payne, for their prayers, and for being there until my surgery was over, and my family too.

I want to thank my mother for cooking for my children, and my sister-in-law, Bonnie Palacios, for cooking for my family too.

I want to thank my brother, Art Palacios, and Virginia Martin and my sister, Linda Ochoa, for taking my children to school. I want to thank my husband for staying with me at night at the hospital and everybody for their visits and prayers and flowers and cards while I was in the hospital, and to everyone that has come to see me at home or called me.

Thanks to everybody  
Maria Garza

I want to express my thanks to the Floydada Businessmen and Farmers for buying my sheep. The support of the community in efforts like the stock shows and the FFA organization means a lot to us young people. I am proud to be a part of a small community where this opportunity is given to me.  
Matthew Redding

## Land for sale

FOR SALE BY OWNER: 178 acres, 12 miles N.E. Crosbyton. All in cultivation, 675-2540. 2-28c

665 ACRES EAST PLAINS near Wake, 3 wells on pavement. Price reduced to settle estate. 697-2323. 2-21p

FOR SALE: 136 acres with 4 inch well. Large 3 bedroom brick home, with basement. Beautifully landscaped. Located three miles south of Lockney on Floydada highway. Paved highway on two sides. Contact: John Waddington, Lubbock, 806-745-9226; home, 806-797-4540. Priced to sell. 2-21c

136 acres with 4 inch well. Large 3 bedroom, brick home with basement. Beautifully landscaped. Located 3 miles south of Lockney on Floydada highway. Paved highway on 2 sides. Priced to sell. Contact: John Waddington, Lubbock, Work 806-745-9222 or home 806-797-4540. L2-21c

Americans spend more than \$125 billion dollars a year on sneakers.

## L. W. Kiker Estate Sale

Saturday, February 23rd, 1985 11:00 a.m.

at the E. K. Hufstедler Building  
(Across the street from Higginbotham Bartlett)  
220 E. 6th St. Plainview, Texas

Antiques, furniture, an accumulation of 61 years.

- 1956 Packard, Executive 4 door car
- All kinds of furniture
- Lamps Silver Brass Pewter Jewelry
- Depression Glass Antique Glassware Piano Whatnots
- Appliances Lawn Equipment Miscellaneous

### Gregg and Fortenbery Auction Service

Kenneth Gregg - TXS-026-0598 PHONE: 293-2830  
Sam Fortenbery - TXS-026-0937 652-2727  
652-3305

## Tuesday, February 26, 1985 - Sale Time: 10:00 a.m.

(Due To Bad Weather, This Sale Has Been Rescheduled For The Above Date.)

LOCATED: From Floydada, Texas, 8 1/2 miles East on Highway 70.

## MRS. OTIS ANDERSON & J.B. "Jake" COLSTON - Owners

Telephones: Doug Galloway (806) 983-2362

Due to the death of Mr. Anderson and Mr. Colston quitting farming, the following will be sold at Public Auction:

### TRACTORS, COMBINE -

- 1-1979 John Deere 4240 Diesel Tractor, Sound Guard Cab, A/C, Htr., AM-FM Radio, Quad-Range Trans. W.F. 3-pt. D.H. Weights, 18.4X38 Rubber (4625 Hours)
- 1-1972 Farmall 1065 Diesel Tractor, Cab, A/C, Htr., Radio, W.F. 3-pt. D.H. Weights, T.A. D.P.T.O., Camlifter Hitch, 18.4X38 Rubber
- 1-1972 Farmall 1065 Diesel Tractor, Cab, A/C, Htr., W.F. 3-pt. D.P.T.O., D.H., 18.4X38 Rubber
- 1-1972 Farmall 1466 Diesel Tractor, W.F. 3-pt. P.T.O., S.H. Weights, 18.4X38 Rubber
- 1-1971 Case 1070 Diesel Tractor, Cab, A/C, Htr., Radio, W.F. 3-pt. D.H., 18.4X38 Rubber
- 1-1965 Farmall 806 Diesel Tractor, Cab, A/C, Htr., Radio, W.F. 2-pt. With Adapter Quick Hitch, D.H., Weights, D.P.T.O., 18.4X38 Rubber
- 1-1965 John Deere 4020 LPG Tractor, Ansel Cab, W.F., 3-pt., S.H. Weights, 18.4X38 Rubber
- 1-1963 Farmall 706 Diesel Tractor, W.F., T.A. 2-pt. D.P.T.O., S.H., 18.9X34 Rubber
- 1-1958 John Deere 620 LPG Tractor, S.F., 3-pt., Nearly New 13.6X38 Rubber, Clean
- 1-1957 Farmall 450 LPG Tractor, W.F. 2-pt., Clean
- 1-1952 Massey Ferguson 30 Gas Tractor, W.F., 3-pt.
- 1-Massey Harris 82 Gas Combine, 14' Hdr., Engine Runnable

### COTTON STRIPPERS -

- 1-1981 International 1400, 4 Row Diesel S.P. Cotton Stripper, Cab, A/C, Htr., Hydro (127 Hours), Like New
- 1-Caldwell 3000 Brush Cotton Stripper & Basket

### PICKUP, GRAIN TRUCKS -

- 1-1975 Ford F150 1/2 Ton Pickup, 360 Engine, 4 Speed Trans., A/C, Htr., P/S, P/B, LWB., New Engine Overhaul
- 1-1949 International KB-6 S.A. Grain Truck, 6 Cylinder Engine, 4 Sp.-2 Sp. Trans., 16' Wooden Grain Bed
- 1-1946 Chevrolet S.A. Grain Truck, 4 Speed Transmission

### EQUIPMENT -

- 1-Krause 1499, 21' Folding Tandem Disc
- 1-Kewanee 630, 21' Folding Tandem Disc
- 1-Bush Hog 21', Folding Tandem Disc
- 1-Tye 8 Row, 3-pt. Grain Drill, 10" Space, D.D., P.W., Nice
- 1-John Deere 400, 6 Row, 3-pt. Rotary Hoe
- 8-J.D. 71 Flex Planter Units, F/G Boxes, K.O. For Big Bar
- 6-John Deere 71 Flex Planter Units, D.D., W.F.W.
- 1-International 642, 4-16' 3-pt. Spinner Mouldboard Plow
- 2-Caldwell 6164, 4 Row Shredders, D.C.W., Clean
- 1-8 Row, D.S.B. Roadweeder Rig, S & S Bar, Hamby D.C.D. Weeder, Complete
- 1-Hamby 21 Shank, T.S.B. Chisel/Sweep Plow, D.G.W., Nearly New Sweeps
- 1-Hamby 8 Row, D.S.B. Spring Shank Cultivar, G.W., L.T.M.
- 1-Hamby 13 Shank, T.S.B. Deep Ripper Plow, L.T.M., D.G.W.
- 1-Hamby 28' T.S.B. Chisel/Sweep Plow, L.T.M., D.G.W.
- 1-Byrd R.D.C. 21', T.S.B. Chisel/Sweep Plow On Hamby Bar, L.T.M., D.G.W.
- 1-9 Row, D.S.B. Lister Rig, S & S L.T.M. Bar, IHC Beams & Bottoms, Hydraulic Folding Markers, D.G.W.
- 1-Big Ox V-9, 3-pt. Ripper Plow, D.G.W.
- 1-John Deere DR 16-10' Grain Drill, L.W.R., C.C.
- 1-Hamby 3 Shank, D.S.B., 3-pt. Stubble Mulch Plow, G.W.
- 1-International 200, 6, 3-pt. Blade
- 2-John Deere Ind. 23-B Lister Planter Units
- 1-Krause 12', D.T. One-way 4-Krause 15', D.T. One-way
- 1-John Deere BWA 14' Tandem Disc

### TRACTORS, COMBINE -

- 1-Russell 9' T.S.B. 3-pt. Chisel/Sweep Plow
- 1-International No. 7, 4 Section Drag Harrow, Like New
- 1-Caldwell 6, 3-pt. Shredder
- 1-Noble 28' Lift Mulch Harrow
- 1-Noble 21' Lift Mulch Harrow
- 2-SM 21' Mulch Rakes 1-SM 30' Steel Land Float
- 1-Krause 11, 14' Tandem Disc
- 3-J.D. VanBrunt 16-10' Grain Drills (1-L.W.R. 2-S.W.)
- 1-SM Double Drill Hitch 1-J.D. 80, 6', 3-pt. Blade
- 1-6 Shank, 2-pt. Sweep Plow
- 1-Eversman 6', D.T., V-Ditcher, C.C.
- 1-Meyers D.T. V-Ditcher 1-4 Row, 3-pt. Rotary Hoe
- 2-John Deere 16-10' Grain Drill, S.W. (1-For Parts)
- 1-John Deere 4 Section Drag Harrow
- 2-Hoemes 12', D.T., Lever, L.C.
- 1-Hoeme, 9', D.T., L.C., C.C.
- 1-Hoeme, 16' Square Beam, 3-pt., H.C.
- 1-Hoeme, 15', Spring Loaded, Double Beam, D.T., H.C., C.C.
- 1-John Deere 10', D.T. Tandem Disc
- 1-Ford 6, 3-pt. Tandem Disc
- 1-Ferguson 2 Row, 3-pt. Lister Planter
- 1-Caldwell 4 Row, D.T. Seed Packer
- 1-Great Plains 12 Row, 3-pt. Sandlighter, S.B.
- 1-Phares-Wilkins 9 Row, 3-pt. Sandlighter, S.B.
- 1-SM 3-pt. Dirt Scoop 2-4 Row, 3-pt. Crustbusters
- 1-Eversman 14' Tandem Disc
- 1-2 Row, 3-pt. Sweep Plow, Gauge Wheels
- 1-SM 3-pt. Lift Boom, C.C.

### IRRIGATION -

- 1-Green 8' Portable Lake Pump, With Chrysler 26A Engine On 2 Wheel Trailer
- 2-Chevrolet 292 Irrigation Engines (For Parts)
- 30-Joints 7' X 20' Gated Pipe, 40" Rows, 1 1/2" Openings
- 10-Joints 6' X 20' Gated Pipe, 40" Rows
- 10-Joints 4' X 20' Gated Pipe, 40" Rows
- 8-Joints 2" PVC Pipe 2-SM 2 Wheel Pipe Trailers
- 2-Waterman 10' X 7' Hydrants
- 3-Waterman 10' X 7' Hydrants
- 1-Lot Irrigation Fittings, 1 1/2" Slip Joints
- 1-Lot 4" & 6" Fittings 1-Lot Irrigation Tubes, 2"

### TRACTOR & TOOL MAKEUPS -

- 1-S & S 28', D.S.B. Tool Carrier, L.T.M.
- 1-S & S 28', S.S.B. Tool Carrier, With 4' X 4" Bar Behind, L.T.M.
- 1-Hamby 21', D.S.B. Tool Carrier, L.T.M.
- 1-R.O.C. 21', D.S.B. Tool Carrier, L.T.M.
- 1-Hamby 21', S.S.B. Tool Carrier, L.T.M.
- 1-Set John Deere 18.4X38 Axle Duals For 4240
- 1-Set IHC 18.4X38 Axle Duals For 1066
- 1-Set 16.9X34 Snap-On Duals
- 1-Lot 2 1/4" Toolbars, V.L. 1-Set 13-26 Combine Duals
- 1-SM 6 Row, 16' Bed Roller
- 1-Hamby 8 Row, 12' Split Bed Roller
- 1-Hamby 6 Row, P.T.O., Roadweeder, D.C.D.
- 1-Set R.O.C. 6 Row Hydraulic Row Markers
- 8-John Deere Grain Drill Disc Units, New
- 1-14', 3-pt., 2 1/4" Toolbar 6-Hamby Rolling Fenders
- 8-John Deere Lister Beams & Bottoms (4-Cast)
- 1-Set John Deere Fenders 1-Lot J.D. Planter Plates
- 20-Hamby 1 1/2" Shanks & Clamps, 4' X 4'
- 7-Hamby 4' X 4", 2 1/4" Spacers
- 2-3-pt. Quick Hitches 7-Texas Row Dikers
- 5-S & H Row Dikers 2-SM Dam Buster Ext.
- 1-Lot Caldwell Stripper Brushes
- 12-Coulters (2-orenzo, 2-R.O.C., 4-Tye, 4-Hamby)
- 18-Hamby 1 1/2" X 3" Shanks & Clamps, 4' X 4'

### SPRAY RIGS, TRAILERS, TANKS -

- 26-24 Wood- & Wood-Wire Cotton Trailers: Big 12, Cobey, John Deere, Etc.
- 1-Wylie 500 Gallon Poly T.T. Spray Rig, Ace Pump, 12 Row Boom
- 1-Ken Ride 4 Seat, D.T. Folding Hand Spray Rig, With 110 Gallon Poly Tank
- 1-Wylie 200 Gal. T.M. Spray Rig, Boom & Pump, Poly Tank
- 1-Continental 200 Gallon T.T. Spray Rig
- 1-Wylie 12 Volt Portable Spot Sprayer
- 1-SM 3 Seat, D.T. Spot Spray Rig
- 4 Wheel Wooden Grain Bed Trailer
- 1-Lubbock Machine 4 Wheel Flatbed Trailer
- 1-Cobey 4 Wheel Chassis 1-Pair Steel Runners
- 2-2 Wheel Pickup Bed Trailer
- 1-1000 Gallon Water Wagon, With Mixing Tank, Gas Engine & Pump
- 1-1000 Gal. Water Wagon 2-4 Wheel Flatbed Trailers & Pump
- 1-2 Wheel Pickup Bed Trailer, With 110 Gallon Fuel Tank
- 1-500 Gallon Propane Tank
- 1-500 Gallon Fuel Tank On 4 Wheel Chassis
- 1-250 Gallon Propane Tank On 2 Wheel Trailer

### SEED, AUGER, LIVESTOCK EQUIPMENT -

- 20-Bags Wheel Seed 1-Metal 12' Feed Trough
- 1-Lot Acid Delinted Cottonseed
- 1-Mayath 6' X 20' Grass Trailer
- 1-2 Wheel Wood Stock Trailer
- 1-Lot 6", 2" Pipe Post, Approx. 40
- 2-Hay Buck Feeders 2-Hen Nests

### NON-CLASSIFIED -

- 1-Jensen Pump Jack With 1 H.P. Electric Motor
- 1-Forney 180 Amp. Electric Welder
- 1-Campbell Portable Electric Air Compressor
- 1-Lot 220' 2" Galvanized Pipe & Sucker Rods
- 1-Sears 2 H.P. Electric Portable Air Compressor
- 1-Buffalo Table Model Drill Press, 1/2 H.P.
- 1-Set Oxygen & Acetylene Bottles
- 1-Craftsman Acetylene Torch
- 1-10 Amp. Electric Battery Charger
- 1-Freon Charge Kit 1-McGraw 1/4" Rev. Drill
- 1-Set Variable Speed 1/4" Drill
- 1-2 Bottle Cart 3-1/4" Air Impact Wrenches
- 1-Set Kar Rite Car Ramps, New
- 1-Lot Tires & Wheels, Some New
- 1-L.P. Filter Hose 5-Trailer Side Nets
- 1-Lot Used Lumber 1-30 Gallon Butane Bottle
- 2-Fuel Transfer Pumps
- 1-Lot 8' Sheet Iron 1-Crossover Toolbox
- 4-Hi-Lift Jacks 1-Circular Saws
- 1-Land Measuring Wheel 1-20 Gallon Propane Bottle
- 1-Set Trailer Lights 1-20 Gallon Propane Bottle
- 4-5 Gallon Cans, Redne Implementation, Paint
- 1-Lot Log Chains 1-Weed Burner
- 1-Antique Corn Shelter 1-Lot Grasp Gun
- 1-Lot Scrap Iron 1-5 Gal. Propane Bottle
- 1-Lot Items Too Numerous To Mention

WE ARE AGENTS AND AGENTS ONLY

## Cruce and Long Auctioneers

BOX 1921 - PLAINVIEW, TEXAS 79072

WINCH TRUCK AVAILABLE ON SALE DAY

Terms of Sale: CASH • Lunch Will Be Available • All Accounts Settled Day of Sale  
NOTE: PLEASE BRING YOUR OWN CHECK BOOK

**Professional Services**

**"WE SELL SLEEP"**  
Direct Mattress Co. New or renovated. for appointment call City Trim Shop, 983-2332. Floydada. tfn

**CARPORT'S CUSTOM BUILT AND PAINTED RUSSELL'S EQUIPMENT & SUPPLY**  
983-3751

**Script Printing & Office Supply**  
\*Commercial Printing  
\*Office supplies & Furniture  
\*Business Machines  
108 S. Main Floydada 983-5131

Sprinkler & Drip Irrigation and Trees of all Kinds  
Scott Simpson, Owner  
**Simpson's Trees**  
Repairs - Installation  
all makes underground sprinklers  
Licensed & Bonded  
License #10001411  
513 W. Tennessee  
Floydada, Texas 79235 (806) 983-3455

**SAFE-LAWN RAIN-BIRD**  
513 W. Tennessee  
Floydada, Texas 79235 (806) 983-3455

**Poole Well Service**  
Simmon's Pumps  
Turbine & Submersible  
Muffler's & Radiators  
Stock Turbo's Cleaning  
Glass Pak's Recoring  
407 E. Houston  
Bus. 983-2285 Res. 983-5610

**ECONOMICAL STORAGE TRY BARKER'S**  
Jewel Box-Mini Storage  
and save your time and money.  
Phone 652-2642.  
Corner Main & Locust - Lockney, Texas.  
**Barker Building**

**Floydada Iron & Metal**  
We buy scrap iron, junk cars, aluminum cans, and batteries. We have new and used steel for sale.  
Location - East Ross  
Call 983-2305 Bus.  
983-5277 Home

**Mize Pharmacy & TV**  
Competitive prices on RCA color TV's & Litton microwave ovens.  
We do all types of TV antenna installation.  
Complete service on most makes and models of color TV's.  
We specialize in RCA service.  
102 S. Main 652-2435

Before exhaust system problems leave you fuming...  
Show your car you care.  
**DON'S MUFFLER**  
983-2273

**Diamond Industrial Supply Co., Inc.**  
Phone Days 296-7418  
Nights 296-1200 or 296-7828  
1014 Broadway Plainview, Texas  
Chain Sprockets V belts Sheave U joints Oil Seals O rings Wisconsin  
SKF BCA Timken Bower Cotton Stripper Brushes & Bats  
"We Appreciate Your Business More"

**BISHOP PEST CONTROL**  
Institutional and household pest control  
Termites: slab or pier and beam structures.  
**Mike Bishop, M.S.**  
(806) 983-2198  
TX. Bus. Lisc. 5021  
TPCL Lisc. 26855

**Automotive**

78 CAMARO-350 engine, 60,000 miles. Home-652-2768, office-983-3744, Bettye Jackson.

GOV'T SURPLUS cars and trucks under \$100. Now available in your area. Call 1-619-569-0242 for details. 24 hrs. 2-7p

FOR SALE: 77 Ford Maverick. Good condition. 1975 Ford van. Good condition. 983-5661. 2-21c

FOR SALE: 1978 Ford Fairmont station wagon. Call 983-3635 after 6 p.m. tfn

FOR SALE: 79 Chevrolet pickup. 48,000 miles. \$3500. J.M. Pierce, 118 W. Crockett. 2-21p

**HARD LUCK DRIVERS**  
Automobile Insurance  
Reasonable Rates. Small Down Payment. Monthly pay...  
SR22 Filings  
Call David Cates  
116 W. California  
983-3284

**Business Opportunities**

FEDERAL, State & Civil jobs now available in your area. Call 1-619-569-8304 for info. 24 hrs. 2-21p

NEED SOMEONE in the Floydada area to start their own business part time with the American Water Filter Corp., a Bon-Del Co. For more information call 806-296-2624 Monday and Wednesday evenings only, 7 p.m.-10 p.m. 2-21p

THINK WHAT YOU DRINK. American Water Filter Corporation. A Bon-Del filter has proven itself in U.S.A. and E.P.A. Europe, and other countries. Removes 99.8 percent chlorine, bad taste, odor, and renders the bacteria inactive. Inhibits growth and regrowth of bacteria. For 10 to 14 days free trial call C.M. English, 296-2624. 3-7p

OWN YOUR OWN jean-sportswear, ladies apparel, childrens, large size, combination, western store, accessories. Jordache, Chic, Lee, Levi, Easy Street, Izod, Esprit, Tomboy, Calvin Klein, Sergio Valente, Evan Picone, Liz Claiborne, Members Only, Organically Grown, Healthtex, over 900 others. fixtures, grand opening etc. Can open 15 days. Mr. Loughlin (612) 888-6555. 2-21p

WORK FROM HOME \$60 per 100 inserting envelopes information send stamp to K.S. Enterprises P.O. Box 1501-B Bloomfield NJ 07003. 2-21c

EXCELLENT INCOME for part time home assembly work. For info. call 504-641-8003 Ext. 8369. 2-28

**Professional Services**

SERVICE ON ALL KINDS of refrigerator and household appliances. Lowrance Appliance Service. Call 983-2333 (Don Green's Auto Parts) or 983-2763 (home.) tfc

**TREES**  
Large pecan, walnut, almond, fruit, and shade trees. All trees 100% guaranteed.  
Emert's Nursery and Tree Service  
Lockney 652-3116 after p.m.

**WILEY GRIGGS**  
Interior & Exterior Paint Contractor  
Phone 983-3912 520 West Virginia  
Floydada, Texas 79235  
Tape, bed, texture, acoustic spraying, paper hanging 3-14p

**STORAGE SPACE**  
West Texas Mini Storage  
c/o Assiter Insurance  
206 W. California  
983-2511

**Miscellaneous**

FOR SALE: Commodore 64 computer Atari 2600 video game. 983-2730. tfc

WILL DO IRONING in my home. Call 983-5529 after 5. 2-21c

I WILL CLEAN your home or office. Cindy, 983-2017. 2-21c

EXTRA CLEAN used beds for sale. One set of bunk beds at \$100 and 1 bookcase double bed for \$100. Call 983-3626. 2-21c

TREES: Red oak and live oak for sale. Put your orders in now. Call 983-2797 after 6 p.m. tfn

FIREWOOD FOR SALE: Jim Kelihor, 983-2891 or 983-5660. \$140 a cord. tfn

LOST: 1 Holstein heifer, 500 lbs., branded M left hip; 1 black Coriente roping steer, large horns, 500 lbs., no brand, 2 white sale tags on hip. 983-2937. 2-28c

MERLE NORMAN COSMETICS. 9:30 a.m.-6:00 p.m. Six days a week. Free makeovers, ear piercing, Eva Gabor wigs, jewelry, and accessories. Ann Turner, 3202 Olton Road, Plainview, 293-1783. tfc

76 ROCKWOOD pop up camper. Sleeps 6. Call 983-3273 after 5. tfc

FOUND: Pair of ladies bifocal glasses. Call 983-5013. tfc

2-MAN BASS BOAT. Trolling motor and battery. Call 983-3273 after 5. tfc

1-3 PIECE BEDROOM SUITE, 1-5 piece bedroom suite; 1-gas cook stove, good and clean; 5-radial heaters (Dearborn); 1-full size bed, good condition; 1-couch, like new; 2-bedroom chairs; 1-China cabinet; 1-kitchen aid portable dishwasher; 1/2 bed. Call after 3 o'clock for appointment. 983-3120 or 983-2792. 2-21p

SPORTING GOODS—6 man rubber raft and 2 man inflatable canoe. Call 983-3273 after 5. tfc

**Would you like to lose weight, Feel good and make money all at the same time?**  
Call your **HERBAL PRODUCTS** distributor at 983-3375.

**CAPROCK HOSPITAL DISTRICT COMMUNITY HEALTH PROGRAM**  
Basic life support CPR class  
Cardiopulmonary resuscitation  
8 hour course - Friday, Feb. 22  
7:00 p.m.-11:00 p.m.  
Saturday, Feb. 23  
1:00 p.m.-5:00 p.m.  
Tuition will be \$5.00  
Handbook is optional - \$2.00  
Upon completing, individuals will receive American Heart Association card of certification. Classes will accommodate 12-24 students.  
For more information or enrollment contact: Mary Lee Padgett - 983-2875.

**Farm Services**

WE CUSTOM MAKE AND FIT hose for all types of machines.  
Brown's Implement  
983-2281

**ADAMS WELL SERVICE**  
Complete irrigation service  
5 years warranty, domestic pump  
720 N. 2nd  
983-5003

**ALTERNATOR & STARTER REPAIRS**  
Norrell Tractor Parts  
215 S. Main 983-3417

Portable disc rolling  
**Lawson Farm Supply**  
Floydada Inc., 983-3940

**Miscellaneous**

FOR SALE: Monarch upright piano. Good condition. 296-5852. 2-28c

4240 1981 MODEL PS 1981 HRS Power assist lift. Quick hitch, factory duals, SC cab. John Deere; 30 ft. Case Spring-tooth cultivator. 652-2468, 652-3183 evenings. 2-28p

Trim off pounds with **GoBese Grapefruit Extra Strength Capsules.**  
**THOMPSON PHARMACY** 2-28p

1 HOUR COLOR FILM processing available. Pick up prints same day or next day. In-house professional processing. Thompson Pharmacy. 200 S. Main, 983-5111.

**For Rent**

FURNISHED ONE BEDROOM efficiency apartment. \$150 a month. Phone 983-3979. tfc

FOR RENT: 2 bedroom mobile home. Nice. Rent reasonable. 983-3504. tfc

UNDER NEW MANAGEMENT VOA National Housing. Low rent apartment for senior citizens and handicapped. Come see our apartments and make your home with us. Join this village of senior citizens for fun, games and fellowship. Mid-Tule Village, 321 S.E. 7th Tulia, Texas. Phone 806-995-2442 or 906-765-8134.

**Help Wanted**

TAKING APPLICATIONS for part-time help in aerial photography. Starting in early March - will train, no experience necessary. Call 983-2300. 2-28c

**NEED EXTRA MONEY**  
80 year-old company with progressive ideas is looking for a mature individual with the same outlook who is interested in part or full-time selling. No investment or experience required. If you have good mechanical skills and enjoy talking to people, you can earn top commission dollars. You'll be selling our Goodyear products for maintenance of roofs, walls and floors of industrial and commercial property. Free sales case and plenty of help along the way. We offer training, samples, technical help bonus plan, advancement opportunities and more. For details with no obligation, just send your name and address to Ed Mahon, Consolidated Protective Coatings Corporation, 1801 East 9th Street, Cleveland, Ohio 44114. 2-21

**Agriculture**

ALFALFA and prairie hay for sale. 652-3724. 2-28c

WHEAT PASTURE WANTED: Call 847-2276 or 847-2577.

WANTED: Wheat sowing call 847-2276 or 847-2577.

FOR SALE: 1982 A.C. combine. 700 hours, Hydro - 24' header. 675-2540. 2-28c

FOR SALE: Farm accounting software and budget overlays. CRH systems. 983-3151. 2-28c

FOR SALE: High germination PM18 cotton seed, also other varieties. (1980 seed). Call 652-3441. Larry or Wayne Bramlet. tfnc

**NOW FOR DELIVERY**  
Richardson stubble mulch plow with mulch tiller.  
\*\*\*  
Save moisture by leaving all straw on top and increase yields.  
\*\*\*  
Six sizes available — 55' - 45' - 35' - 30' - 25' - 20' - 15'.  
\*\*\*\*\*  
Contact Leighton & Dwight Teeple  
HCR3 Box 33 (806) 983-2946 HCR3 Box 32 983-3801 3-14p

**Mobile Homes**

REPO: 1982, 2 bedroom, 1 bath, balcony kitchen and dining area. Complete with fireplace, wet bar, and furniture. Call Delores collect 806-763-5319. 2-21c

HELP! I have 15 used 2 bedroom mobile homes, very affordably priced that must be sold by the end of February. Free set up and delivery included. Call Delores collect 806-763-5319. 2-21c

14x80 REPO: Spacious 1980, 3 bedroom, 2 bath. Good condition. Call Delores collect 806-763-5319. 2-21c

FOR SALE: 14x80 mobile home, extra clean! 3 bedroom, 2 bath. \$8500. Call 983-3736 after 6:30. tfc

**Garage Sales**

GARAGE SALE: 5 miles north of Lockney on Lone Star Hwy. Thursday and Friday til noon. Full size Long Boy bed, mattress, box spring and matching dresser; new, never been used, queen size mattress and box spring; new twin mattress, air conditioner, chair, kitchen items, appliances and all kinds of clothes. 2-21c

**Houses**

FOR SALE: House, 4 bedrooms, 3 baths, 2 car garage. Best location in town. Financing available, low interest rates. 350 acres irrigated land, East Plains; 130 acres dry land, East Plains. 915-267-2408 after 6; 806-794-5068, 915-676-3939 Broker. Co-brokers welcome. tfc

FOR SALE: 2 bedroom house near Jr. High. Call 272-5732 after 6:00 p.m. tfc

5000 SQUARE FT. retail location available for sale, lease, or trade in Floydada. Owner financed. Contact B. King, 1-214-373-6193. 3-14c

HOUSE FOR SALE. 4 years old. 3 bedroom, new paint, inside and out. 7 acres and water well. On pavement. After 5:30, 983-2092. 2-28p

FOR SALE: Nice 2 bedroom home. 1 bath, garage. Call Cindy Fuller, 983-2434. 2-28p

HOUSE FOR SALE: 3 bedroom, large living room, large kitchen, extra large utility, lots of storage, 2 car garage, and car port with an economy yard, located at 817 W. Missouri. Call 983-3717 and ask for Gary.

**HALE INSURANCE & REAL ESTATE**  
Sammy Hale - Broker 983-3261  
NEW ON THE MARKET 2/2/1 with finished basement. BEAUTIFUL CUSTOM BUILT, 4/3/2, sprinkler system. GOOD NEIGHBORHOOD, close to school, 3 bedroom, 1 bath. SPACIOUS OLDER HOME, SUPER PRICE, 3 bedrooms, 1 bath. REALLY NICE! GREAT LOCATION, 3/2/2, brick. CONVENIENT LOCATION, CLOSE TO TOWN, 2 bedroom, 1 bath. FOR RENT OR SALE - 3/1 1/2 unattached garage. "DON'T WORRY" KEEP MONEY ROLLING IN WITH SMALL MOTEL. COMMERCIAL PROPERTY, almost new building. BUILDING FOR RENT IN DOWNTOWN FLOYDADA, good location. WANT TO BUILD THAT NEW DREAM HOME! Texas Addition lot. 2-14

**"Floydada's Real Estate Leader"**  
**BOND LANDS, INC.**  
107 S. Fifth  
983-2151  
MOST BEAUTIFUL HOME on the market! It features three bedrooms, two fireplaces, spacious living, cozy den, quality built-ins, ceiling fans, extensive, low maintenance landscaping, all in mint condition with a super corner lot location. \$77,500  
COUNTRY HOME! Lovely 3/2/2 with open living concept featuring spacious rooms, solar heat, super storage, sunroom, and situated on 1 acre with garden area. \$65,000  
SUPER CORNER LOT location and owner financing. \$45,000  
LOTS OF HOUSE for the money! 3/2 with formal dining and gameroom 39,950  
TO SEE ME IS TO WANT ME! 3/1/1 with den and living room 35,000  
MUST SELL NOW! Three bedrooms, two baths and near high school 28,000  
HOUSE TO BE MOVED! These 3 bedrooms and 2 baths need a new home. \$28,000  
INVESTORS DREAM with his 3/1/1 and mother-in-law apartment SOLD  
NICE STARTER HOME! 3/1/1 that works like new. \$24,000  
AFFORDABLE AND ADORABLE 3 bedrooms, 1 bath and ceiling fans 24,000  
NEAT AS A PIN and loaded with charm for a terrific value of \$23,000  
IN DOUGHERTY this three bedroom family home can be yours for only 23,000  
TWO STORY DELIGHT - 3/2/1 with some remodeling at a price you won't believe 20,000  
SO MUCH FOR SO LITTLE in this remodeled two bedroom beauty 20,000  
GREAT LOCATION near downtown — can lease to purchase 13,500  
CHARMING OLDER HOME in good condition. Immediate possession! 12,500  
FIRST TIMERS DELIGHT begins in this neat and clean two bedroom 12,000  
COMMERCIAL PROPERTY — Good downtown location for business 20,000  
FLOYD COUNTY FARM north of Lockney with 313 acres of cultivation and grassland. Call us for more details.  
160 ACRES of good dry land located just east of Lockney. Call for more information.  
**SPECIALIZING IN FARM & RANCH MANAGEMENT**  
LARRY S. JONES Broker FRANCES ASHTON Office Manager

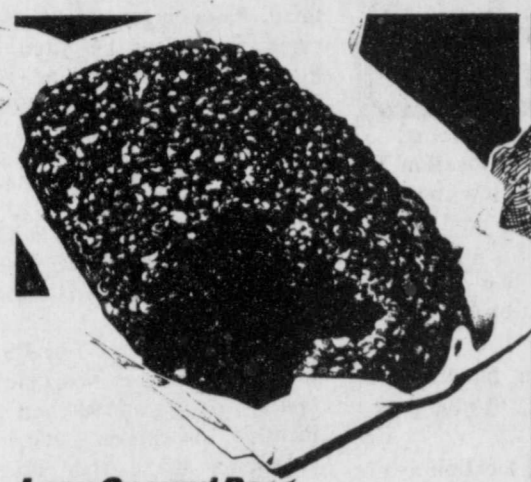
**ASSITER & ASSOCIATES AUCTIONEERS**  
Tom Assiter 983-2511

Prices are effective Wednesday, February 20th thru Tuesday, February 26th, 1985. We welcome USDA Food Stamps and dealer sales.



LUBBOCK STORE LOCATIONS:  
 \* 5025-50th (& Slide Road)  
 \* 302 University (& 4th Street)

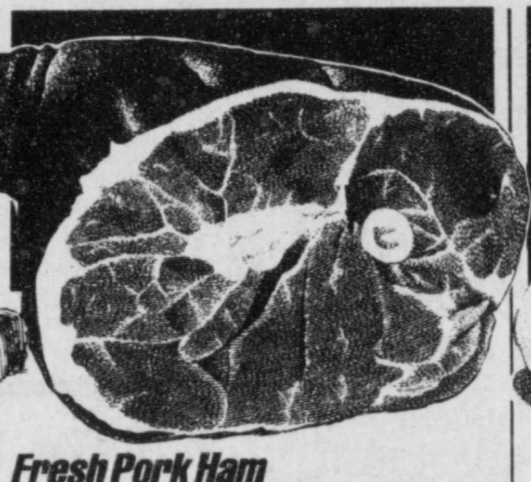
# THE FRESHNESS GIANT!



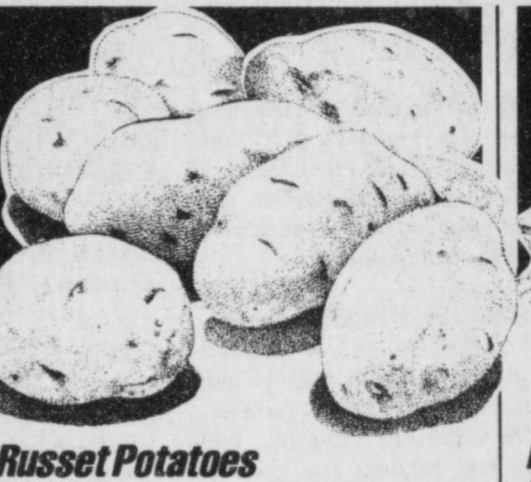
**Lean Ground Beef**  
 Fresh Daily  
**\$1.35**  
 Lb.



**Boston Butt Pork Roast**  
**\$1.15**  
 Lb.



**Fresh Pork Ham**  
 Shank or Butt Portion  
**\$1.15**  
 Lb.



**Russet Potatoes**  
 10 Lb. Bag  
**98¢**  
 Each



**Endive, Escrole, Romaine, Red Leaf, Salad Bowl or Butter Leaf**  
**69¢**  
 Bunch

**Boneless Chuck Roast**  
**\$1.67**  
 Lb.

**Stew Meat**  
 Lean Cubes  
**\$1.69**  
 Lb.

**Beef Cube Steak**  
**\$2.55**  
 Lb.



**Broccoli**  
 Fresh Tender  
**48¢**  
 Lb.

**Tomatillos**  
**79¢**  
 Lb.

**Boneless Pork Chops** \$2.98 Lb.  
**Boneless Pork Loin Roast** \$2.98 Lb.  
**Smoked Pork Chops** \$2.69 Lb.  
**Pork Cube Steak** \$2.69 Lb.

**Pork Spareribs** \$1.48 Lb.  
**Sliced Beef Liver** 78¢  
 Skinned & Deveined, Lb.  
**Rocky River Ducklings** 89¢ Lb.  
**Peyton Chorizo** \$1.08 12 oz.

**Peyton Sliced Bacon** \$1.38 12 oz.  
**Carl Buddig Wafer Meats** 49¢ All Varieties, 2.5 oz.  
**Kraft Velveeta Loaf** \$1.88 Plain or Mexican, Lb.  
**Pillsbury Biscuits** 4/89¢ Sweetmilk or Buttermilk, 8 oz.

**Navel Oranges**  
 8 Lb. Cello Bag  
**\$1.99**  
 Ea.



**Coke, Tab, Sprite, Diet Coke, S.F. Sprite, C.F. Coke**  
 6 Pk., 32 oz.  
**\$1.95** + Dep.



**Soft n' pretty**  
 4 Roll Pkg.  
**99¢**  
 Ea.



**Light Crust Flour**  
 5 Lb.  
**69¢**  
 Ea.



**Bake-Rite Shortening**  
 42 oz. Can  
**\$1.29**



**Campbell's Cream of Mushroom Soup**  
 10 3/4 oz. Can  
**3 For 99¢**



**Van Camp's Pork & Beans**  
 16 oz. Can  
**3 For 99¢**

## FROZEN FOOD



**Tony's Pizza**  
 Asst.  
 16 oz.  
**\$1.79**

**Ore Ida Hash Browns**  
 Southern Style  
 2 Lb. **99¢**

**Mrs. Smith's Cherry Pie**  
 8"  
**\$1.69**

**26 oz. Ore Ida Crispy Crowns** \$1.19  
 Reg. or w/Onions, 30 oz.  
**Mrs. Smith's Cherry Streusel Pie** \$3.29 42 oz., Ea.  
**Stilwell Strawberries** \$1.29 16 oz., Ea.

**Wesson Oil** 45¢ off Label, 64 oz. \$2.99  
**Scott Towels** Lg. Roll, Asst. 3/\$2.00  
**Hill's Brothers Decaf. Coffee** 13 oz. Can \$2.98  
**Bush's White or Golden Hominy** 15 1/2 oz. 25¢  
**Bush's Pinto Beans** 16 oz. Can 25¢

**Smucker's Strawberry Jam** Apoth. Jar, 2 Lb. \$1.99  
**Hershey's Chocolate Syrup** 24 oz. Bottle \$1.29  
**Alpo Liv-A-Snaps** 6 oz. box 39¢  
**Alpo Dog Food** 50 Lb. Bag \$12.99  
**Shasta Drinks** All Flavors, 2 Liter 79¢

## BAKERY

**Rainbo Honey Grain**  
 24 oz. Loaf **87¢**

**Hearth Farms 100% Whole Wheat**  
 24 oz. Loaf **87¢**

**Aunt Hannah Honey Buns**  
 Family Pack **99¢**  
 4 ct. Pkg.



**Farm Pac English Muffins**  
 Reg., 6 ct. **69¢**  
**Aunt Hannah Chocolate Cupcakes** 3/99¢ Twin Pack

## FRESH FISH

**Fresh Turbot Fillets**  
**\$1.99**  
 Lb.

**Whiting Fillets**  
**\$1.59**  
 Lb.

**Fresh Red Snapper Fillets** \$2.39 Lb.  
**Fresh Dover Sole Fillets** \$2.79 Lb.  
**Fresh Ocean Perch Fillets** \$2.88 Lb.  
**Fresh Butterfish Fillets** \$2.39 Lb.

**Medium Shrimp** \$2.99 Lb.  
**Whole Pink Salmon** \$1.79 2 to 4 Lb., Lb.  
**Orange Roughy** \$3.29 Lb.  
**Fresh Whole Catfish** \$2.99 Farm Raised, Lb.

## DAIRY

**Farm Pac Homogenized Milk**  
 1/2 Gal. **98¢**

**Farm Pac Whipping Cream**  
 1/2 Pint **49¢**

**Borden's Hi Pro Milk**  
 Gal. **\$1.98**

**Food Club Yogurt**  
 8 oz. ctn. **29¢**

**Borden's Butter Quarters**  
 1 Lb. **\$1.99**

**Borden's 5 Qt. Ice Cream**  
 Asst. Flavors **\$3.99**  
 Ea.

**Borden's Nutty Buddies**  
 Novelty Pack **99¢**  
 6 ct.