

Pavilion was the hit of the day
Pioneers enjoy shade

A number of 541 pioneers attending Saturday's Floyd County Pioneer Day celebration at the new Courthouse Square pavilion enjoyed comfortable shade, a cool breeze, and a beautiful day.

Presented to several pioneers were certificates of appreciation for their many years in the community. She was presented a certificate of appreciation for her many years in the community. She was presented a certificate of appreciation for her many years in the community.

recognized as the oldest pioneer woman attending the annual celebration. Mary Ida Casey came to Floyd County in March 1906. In August 1911 Carmillus Hayes Rose came to the county and were married June 7, 1914.

Their certificate read: "The Pioneer Association and the citizens of Floyd County wish to say to 'Rose and the girl' that we are happy that chose this place to live happily ever after."

Warnie Hilton of Floydada who was 100 years old in January was awarded the \$5 prize for being the oldest man at the reunion. Dicia Pittman Goltz of McKinleyville, California received a plaque for coming the farthest to the event. She was born in Floyd County and moved to California when she was 8 years old.

Charlie Boedeker of the Providence Community near Lockney was elected president of the Floyd County Pioneer Association; Sam Spence of Floydada, vice president; Ann Swepton of Floydada, re-elected secretary; and Hubert Frizzell of Lockney, treasurer.

Judy Allen conducted a memorial service for all Floyd County residents

who died since the reunion last year, closing her service with a tribute in song, accompanied by her husband, Harvey Allen, playing the French harp.

The morning program proceeded with Miss Swepton giving the dedication speech for the pavilion on the courthouse square where the pioneers and other visitors sat in the cool shade. She dedicated the site to the pioneers "who turned this vast wasteland into a garden spot."

Miss Swepton thanked the people who made the structure possible and dedicated it to the pioneers of Floyd County. "May this structure stand for the principles they observed in their lives — honesty, perseverance, and love for their fellowmen, God and country," she concluded. "May it ever perpetuate the memory of our Floyd County forefathers and bring honor to those who have gone before."

Speaker for the morning was the Rev. Murle Rogers, pastor of First Baptist Church in Lockney.

Rev. Rogers spoke on "Freedom". "Freedom has ever been man's greatest desire," he stated. "Free people of the earth have loved freedom and been willing to fight and die for it."



THE STAR OF OLD SETTLERS DAY was the new courthouse square pavilion. Pioneers enjoyed a meeting and entertainment comfortably. The Women's Chamber of Commerce presented excerpts from their 1890's Music Review on the new pavilion stage Saturday.

Prowler arrested by
Floydada police

BYNARD MACHA
Police Department
were kept busy over the weekend with arrests for DWI during the night. One DWI arrest resulted with no injuries to anyone.

On the 22 of May a young man was awakened by someone entering his residence. The man was on the door and attempted to open it. Fortunately both the man and the intruder were locked out.

On the 23 of May a second response by the police saved the woman who was frightened off by the man. The man was later arrested for the same crime. The man did not have a phone to call for help. The man did not enter the door being locked also. The man was later arrested for the same crime. The man did not have a phone to call for help.

by city police one day later. He was charged with two counts of disorderly conduct and violation of city ordinance 385 which pertains to window peeping.

Upon further investigation he was also charged for indecent exposure in an incident that took place some time back. The man was identified as the man who entered the Allsups store early one morning while a female employee was working alone and exposed himself to her.

City police are currently investigating a reported burglary that took place in July of 1981 where a city woman was awakened by a suspect that was standing by her bed exposing himself to her. When she ordered him to leave he would not. She quickly called police and the suspect fled as they arrived on the scene.

The man arrested Sunday is believed to be responsible also for the July incident and many other prowler calls that took place in April of this year.

One juvenile was also arrested for shoplifting in the Allsups store and released to his parents.

Parade
The parade on Old Settlers Day was one of the largest and prizes were given out in 15 categories.

Winners were:
Best Pioneer Float: 1st place, Pioneer Farming Equipment (A.C. Carthel); 2nd place, Thrasher and Cage.
Best Commercial Float: 1st place, Russells Equipment

Continued To Page 2

Bill Hale named new
party chairman

Bill Hale was elected as permanent chairman of the Floyd County Republican Party during the county convention on May 15. Mrs. Billy Don Colston was elected permanent secretary.

The convention, held at the First National Bank Meeting Room, was chaired by County Chairman Albert Scheele.

Delegates elected to the state convention in September were: Scheele, John N. Farris and Dwight Jackson. Alternates to the convention are: D.K. Jackson, Mrs. Colston and Ray Gant.

The following resolutions were approved to be sent to the state convention for consideration:

I. Whereas, federal spending rose from \$92 billion in fiscal year 1960 to more than \$650 billion in fiscal year 1981, an increase of more than 700 percent and in 1965 taxes on all levels took 19.5% of the gross income of the average working family and today they take 36%.

Whereas, the Federal Budget Control Act of 1974 mandated a balanced budget for fiscal year 1981, yet the government ran a \$57.9 billion deficit for that year. It appears from the above facts that the U.S. Congress cannot restrain itself in matters of deficit spending.

Therefore, Be it resolved that the Republican Party exert its strongest efforts to pass a constitutional amendment limiting taxes and requiring a balanced budget, except in time of war.

II. Whereas, it appears that the 1983 federal budget will have more than \$100 billion deficit and a deficit of this size will eat up all available capital and drive interest rates even higher than at present.

Whereas, we believe uncontrolled spending is the cause of this kind of deficit and that spending cannot be controlled without dealing with runaway entitlement programs which increase automatically each year. We further believe that these programs should not be "sacred cows" and that the deficit must be reduced by cutting or freezing them and not by raising taxes.

Therefore, be it resolved that the Republican Party exert its efforts to pass legislation to remove the automatic increase provisions of these programs and perhaps cutting even the present level of expenditures for the programs.

III. Whereas, the use of catalytic converters to control automotive emissions is costing this country billions of dollars annually in purchases of noble metals to be used as catalysts, and

Whereas, the catalytic converter is itself a proven safety hazard that has been responsible for many deaths and destruction of much property, and

Floyd County will share in the distribution of USDA cheese program which will be handled through the Community Action office in Floydada.

Cheese will be made available for low income and needy residents of the county. Storage fee on the cheese and transportation will be assumed by Commissioners Court.

Floyd County has asked for 300 cases to be divided between Lockney and

Floydada according to Kathy Green, center director of Community Action.

Cheese comes wrapped in five-pound blocks and will be given out at one block per household. For sanitary reasons, the center personnel will not be allowed to cut the blocks or change it in any way.

This is the first time that Floyd County has been part of the cheese distribution program, Green said.

Penalty soars on taxes

An additional collector's penalty will be added to all delinquent taxes by the Floydada Independent School System beginning July 1 of this year.

Delinquent taxes collected after that date will be assessed an additional 15% penalty.

The collector's penalty was provided for by Sect. 33.07 (D) of the State of Texas Property Tax Code enacted by recent legislation according to Tommy Cathey, school tax assessor.

"What this means is an additional 15% will be added to the normal 18% penalty for the July payment," Cathey said.

In terms of dollars and cents, if a person owes \$450 in taxes on January 1, and those taxes have not been paid by July 1, an additional \$150 will be added, making the total tax due of \$600.

This penalty pertains to all Real as well as Personal property, and includes the current year and any prior years.

Shoplifters caught
by aware merchants

BY SHELLY HARRIS
When the Plainview Herald picked up the story of the Chamber of Commerce "shoplifting" promotion, last week, to support the SBA workshop on prevention of retail loss, some merchants were afraid that Floydada might seem easy picking to those with sticky fingers.

Not so. An arrest was made this past weekend by Floydada Police of a shoplifter at the Allsups store.

Another shoplifter was caught in another business.

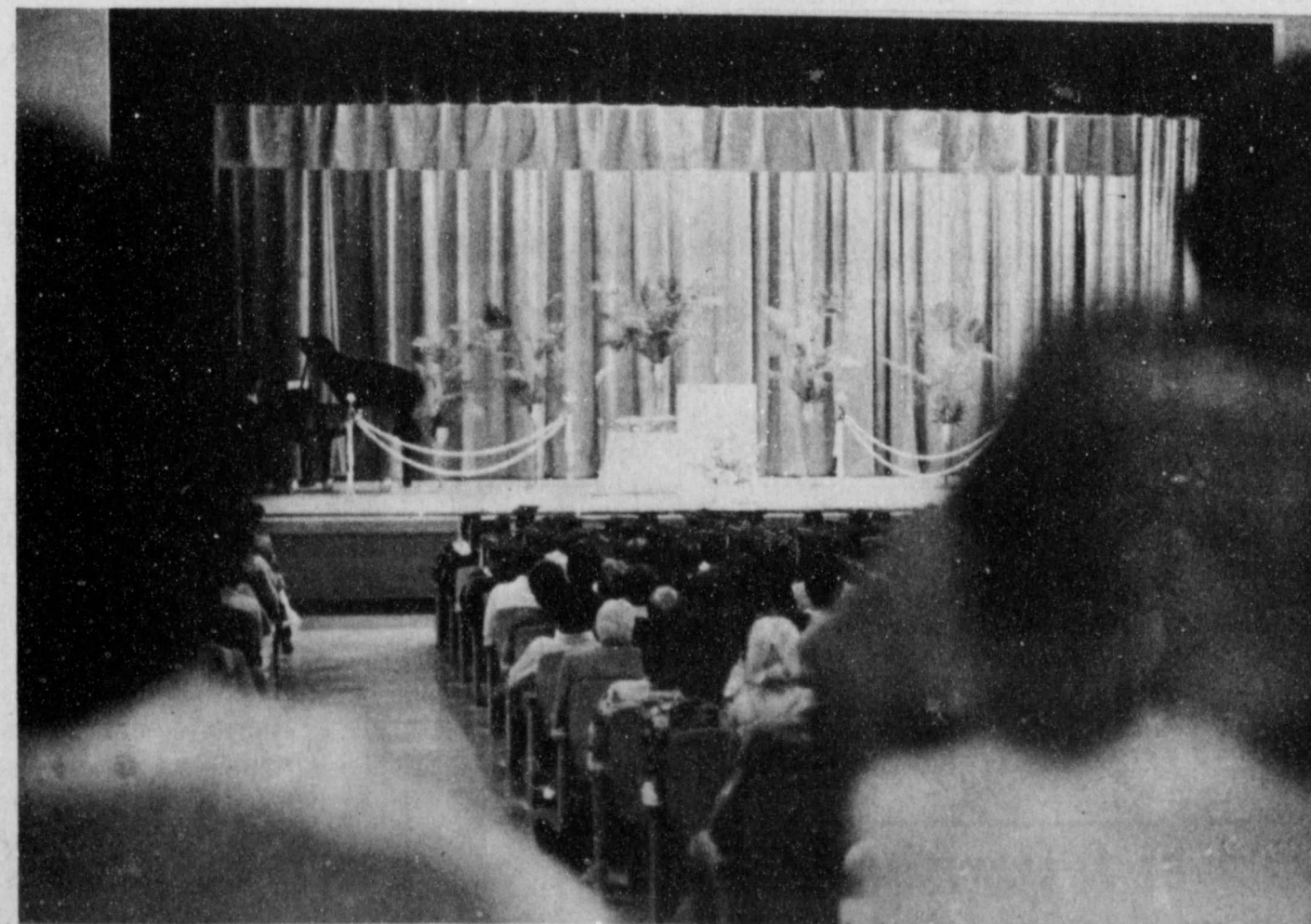
And one groceryman has a youngster

working at the store to pay back an item or items which were taken.

As an object lesson the promotion was "great" said SBA specialist, William Beauchamp.

But there is certainly a difference between the Chamber manager and the two police officers rummaging around a business and the people that store owners have been trained by experience to "keep a watch on."

Susan and her team were acting out the various ways that shoplifters work, so that clerks could be made better aware of what to look for.



STANDING ROOM ONLY at the Floydada High School auditorium with 80 graduates. Commencement exercises held Monday night in the F.H.S.

This Week

Closed Monday
The Floyd County Courthouse, State offices and the Hesperian will be closed Monday for Memorial Day.

Golf
The Floydada Women's Golf Association will have its monthly salad luncheon and meeting following the play day Tuesday, June 1. This will be the last meeting before the June 15 tournament, so everyone is urged to attend.

Center Closed
Sr. Citizens Center will be closed for the Senior Olympics to be held in Lubbock on Thursday, May 27. The bus will be going so all wanting to go need to get their name on the list.

CRIME CALL 983-5200

Weather
[Courtesy of Energas]

| DATE | HIGH | LOW |
|--------|------|-----|
| May 19 | 86 | 66 |
| May 20 | 94 | 66 |
| May 21 | 77 | 67 |
| May 22 | 83 | 63 |
| May 23 | 76 | 60 |
| May 24 | 85 | 57 |
| May 25 | 73 | 59 |

Rain:
May 25 — .6

8
mas
nee length. 50%
Permanent Press
prints in asst. col
C-Large, D-X-Large

to come
Day photo
information will
in next weeks

B&PW
are having their
monthly meeting
at noon at Pizza

members are nec-
essary is asked to
join them.

any now
called in to
Eg. Worms are
to show on the
press, and the
Pancan Elementary
is sprayed.

now, while the
small they are
Later on, when
nature it is very
get rid of them.
uses Malathon to
of the worms.

Special Fund
hand has been
the First National
the Floyd County
Mini Bus.
are needed and it
to pay for them
ations.

is owned by the
Inc. and is
Floydada Rest Homes.
for transportation
Senior Citizens.
pays \$1500 a
Floydada pays
insurance. Green
for one driver
for the other
Community

Reg. 19.97
Reg. 22.97
97 22.88
"Lugga"
zippered closures.
blue, brown, burg
EL PASO, TX.
9817 Dyer
1144 Yarbrough
Surland at Mesa



HONORED — Mr. and Mrs. C.H. Rose of Lockney, center front, were named the Outstanding Pioneer Couple, and Clara Day Murry, in wheel chair, the Outstanding Pioneer Woman of the Year, at the annual Floyd County Pioneer Reunion in Floydada Saturday. With the honorees were, left to right, Mrs. C.L. Record of Lockney and D.C. Rose of Plainview, daughter and son of Mr. and Mrs. Rose, and Floyd Murry of Canadian and Lloyd Murry of Floydada, twin sons of Mrs. Murry.



AWARDED — Warnie Hilton of Floydada, 100 years old (left) won the prize for being the oldest pioneer man at the Floyd County celebration in Floydada Saturday. O.C. Bailey of Lockney was named the Outstanding Pioneer Man of the Year. Dicia Pittman Goltz of McKinleyville, California, was presented a plaque for coming the greatest distance to attend the reunion.

Continued From Page 1

Old Settlers Day.....

Best Club Float: 1st place, Jr. Friends of the Library; 2nd place, Assembly of God Kids Crusade

Best Sheriff's Possee or Riding Club: 1st place, Post Riding Club

Oldest Man In Parade: Charlie Spence

Oldest Woman In Parade: Ada Pope

Bicycles: 1st place, Stacy Dawdy; 2nd place, Kara Cozby; 3rd place, Mychelle Harris

Best Modern Cowboy: 1st place, Clarence Pope

Best Modern Cowgirl: 1st place, Judy Rogers

Best Dressed Oldtime Cowboy: Paul Atteberry

Best Shetland Pony: 1st place, Jamie Rogers

Best Jr. Cowgirl Up To 12 Years: Jim Bob Hambright

Best Jr. Cowgirl Up To 12 Years: Crystal Rogers

Best Antique Auto: 1st place, W.R. Daniels; 2nd place, R.A. Maddox

Oldest Tractor: 1st place, 1935 J.D.D.; 2nd place, 1935 J.D.B.

Book Sale

The "Friends of the Library" book sale netted \$340 to be added to the Library Building Fund.

American Cancer Society

Victoria Cummings, three-year-old daughter of Mr. and Mrs. Kelvin Cummings, won the afghan given by the American Cancer Society.

It was a big day for the Cummings youngsters since brother Ken won a prize in the Youth Division at the Wildflower Show.

Reunion marked by many activities

BY SHELLY HARRIS

Hands-down star of the Old Settlers Day was the new pavilion which provided shade and comfortable seating for those attending the reunion. Those who donated their time and money had to have felt a great deal of satisfaction as they heard the favorable comments made all day long.

Armadillo

The new attraction this year of the Armadillo Races was fun and unveiled some fine armadillo-manship in the jockeys.

Winner of the trophy was Wide Track Jack, sponsored by City Auto and ridden by Mark Ashley. Ashley was awarded a belt buckle.

Sue-Sue, sponsored by Sue's Gifts and Quality Body Shop, was a finalist contender, nosed out by Jack. Ernest Torres Jr. was the jockey.

There were six races, the semi-finals and the finals. Twenty-two entrants competed in the Floydada Chamber of Commerce sponsored event.

Armadillo Queen

Linda Stone was the Armadillo Queen and signaled the start of the races, as well as presented the winners trophy. She received a trophy herself.

First runner-up in the queen contest was Treva Hambright. Second runner-up was Shele Morris. All three finalists were in the parade.

Playday

Another Chamber sponsored welcome touch was the playday for children which kept them happily entertained, and cut down drastically on the water balloon and shaving cream fights around the Courthouse lawn.

Fiddlers

Louis Ray Stapp and his Western String Band are all time favorites of those attending Old Settlers Day. Their music had toes tapping and heads bobbing as the audience listened to their favorite tunes.



ARMADILLO RACES were a new attraction at this year's Old Settlers Day. They were sponsored by the Floydada Chamber of Commerce.

WeatherAll
Flat Acrylic Latex House Paint
11.98 Gal.*

Our finest acrylic latex house paint is now available in three finishes. The original flat finish and our new satin finish are both exterior wood and aluminum siding, shingles, brick, stucco, etc. fade resistant. High hiding. 01/HPX/SHF
WeatherAll Gloss Finish (Not shown). Custom Colors, Black and 01/GHP.....13.98 Gal.

TRU-TEST
Supreme
Latex Flat Wall Finish
10.98 Gal.

Davis Lumber & True Value Hardware
9.98 Gal.

HEALTH INSURANCE
You Can Feel Secure With
**CONTACT: Helen Bertrand
Bill Dawson
David Cates**
FOR: Better Coverage
Best Price
**YOU SELECT: Daily Room Benefit
from \$50⁰⁰ to \$300⁰⁰**
Deductible from
\$100⁰⁰ to \$1,000⁰⁰

Cates & Dawson Ins.
231 W. California 983-5322 THE TRAVELERS

WATER WHEN THE WIND BLOWS. WATER ON DEMAND

Unlike electricity, water can be stored until it is needed. Pumped electrically during off-peak periods to pressure or gravity flow tanks, the water is ready on demand.

Higher electric costs have revived the romantic windmill but water systems which give you water when you need it, where you need it, and as much as you need, is one of the most agreeable rural amenities the electric cooperative has created.

Lighthouse Electric Coop Inc.

who I
Dispatch
enforcement h
multi faceted
ive in enforci
laws of society
law enforce
ordinated team
of the most
recognized pat
dispatcher.
ice dispatch
ing and disj
the police of
without a well
the officer
ntage.
s are sold
avor, but w
from the
mess.
dispatcher mus
communications
man, office
receptionist
to be able
in danger w
dispatcher mu
monitor ch
long a Floy
checked out d
p, and all the
stant on the pl
dition they
st required fo
now it always
t's quiet, and
ose at the sar
ge officers of
the dispatch
er a law enfor
ness is cut by
ay people the
important. But
been out on th
time and he
a good dispa
ness to telety
assistance or st
ome check the
of the night.

SIZE ISN'T IMP
IL DAM,
MPOR/
your growing
st loss from H
age.
easy to obtai
ance for your
at low net co
end has been
Hail Policyhol
past eleven ye
for 1982-21
ATION OFF C
P HAIL RATES
call your Texa
au Insurance C
James Ra
Floydada
Farm Bure
3177 or 6
TEXAS
F

Chamber Clips

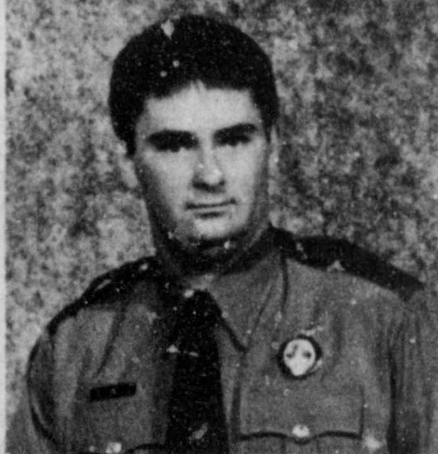
BY SUSAN GARMS

TGIF - There's Gold in Floydada! Of Course! If this is the end of the rainbow - what else? We believe there is gold here - the precious stuff from which a good life is made...good friends, easy pace, stability and integrity, wholesome atmosphere, caring and gentle people, and pride in the community itself. We care what happens here and what happens to our people. For this reason the Retail Trade Committee of the Chamber of Commerce chose the slogan and symbol of the rainbow spiraling down into Floydada that you have seen recently...a true picture of life in Floydada, at the end of the rainbow. There's gold in Floydada - we all mine it every day.

The students from South Plains College in Levelland will present "Raisin' a Ruckus" at the football stadium at 8:00 p.m. June 15. Excerpts will be seen at the Chamber's semi-annual membership breakfast on June 14. More details next week.

The Community Appearance Committee is sponsoring a tree sale with the theme "Put down roots in Floydada" and honor Father with a tree for Father's Day. Delivery will be in time for Father's Day. Can you imagine what Floydada would look like if everyone here honored their own father this year in this way? My dad loved trees and I'm going to plant one in his memory - how about you for your dad?

Plans are underway for the annual Cowboy trip. We'll be going to Dallas on November 6 this year for the St. Louis Cardinal's game on the 7th. We'll be staying at the Doubletree Inn right off of Greenville Avenue. Plans are bigger and better than ever and we'll start taking reservations at the Breakfast on June 14.



DOUGLAS JAY WHITWORTH

If the truth were known more police officers are alive today because of alert dispatchers than 357 magnums. Dispatchers would be paid more and held in much higher esteem by the public.

Who needs dispatchers? The police and you the citizen.

Jay Whitworth new trooper

AUSTIN — Douglas Jay Whitworth of Arlington has been commissioned as a Trooper with the Texas Department of Public Safety.

Whitworth received his commission as a State of Texas law enforcement officer from Colonel Jim Adams, DPS director, in a graduation ceremony at DPS Headquarters in Austin.

Whitworth completed a rigorous 18-week training course at the DPS Academy. The intensive course, recognized as one of the best programs of its kind in the U.S., included instruction in traffic law enforcement, accident investigation, criminal investigation techniques, crime prevention, first aid, riot control and other subjects related to law enforcement.

"These men and women have been trained to deal with extremely sensitive, stressful and sometimes dangerous matters on a daily basis," said Colonel Adams. "But their foremost duty is to faithfully serve the citizens of Texas."

Trooper Whitworth, 24, has been assigned to the Highway Patrol Service and will be stationed at Floydada.

Approximately 300 persons undergo the special training and graduation from the DPS Academy each year.

Trooper Whitworth is the son of Mr. and Mrs. Jake E. Whitworth of Arlington.



CITY COUNCILMAN Carl Jarrett was presented with a plaque for the five years he served on the council. Jarrett said, "I didn't think so much about it until I went down to vote and my name wasn't on the ballot."

NEEDS Police Dispatchers

Dispatchers have evolved into a respected field. To day, to law enforcing and maintaining order in society, everyone in the law enforcement must function as a team.

The most overlooked and undervalued parts of the team is the dispatcher.

The dispatcher is responsible for receiving and dispensing information to the police officer out on the street and a well trained and alert dispatcher is at even more of a premium.

It is seldom in the police officer's mind that without competent dispatchers the officer is less effective.

The dispatcher must be a combination of a secretary, public relations expert, public relations officer, secretary, jailer, receptionist, and have that special ability to tell when an officer is in danger without being told.

The dispatcher must somehow be able to enter a chase in Lockney, Texas. A Floydada officer has been out during a routine stop and all the while talking to a driver on the phone.

When the chase is over they must be doing stucco, etc. Stucco is required for modern police work.

It always seems that when an officer is out, then everything is done at the same time.

Dispatchers only link to help the officer. Without the dispatcher, law enforcement agencies are out by 50 percent.

The job looks easy. But ask any officer out on the streets for any stop and he will tell you he is a dispatcher.

The dispatcher he does not have to type to check for wanted people. He cannot check their business in the night.

Most important of all he has no way of patrolling the streets and receiving incoming calls from citizens without the dispatcher. Of course in larger departments dispatchers are not responsible for much of the office work and jail work our dispatcher have to do.

Our dispatcher must be more versatile since their work load and responsibilities are more and varied than the large departments.

While not placed in danger as much as police officers some dispatchers are hurt or killed every year by inmates of jails while attempting to escape or fighting police officers during the booking process.

Not everyone is capable of being a dispatcher because of the sacrifices they often must make and the difficult conditions they encounter on the job.

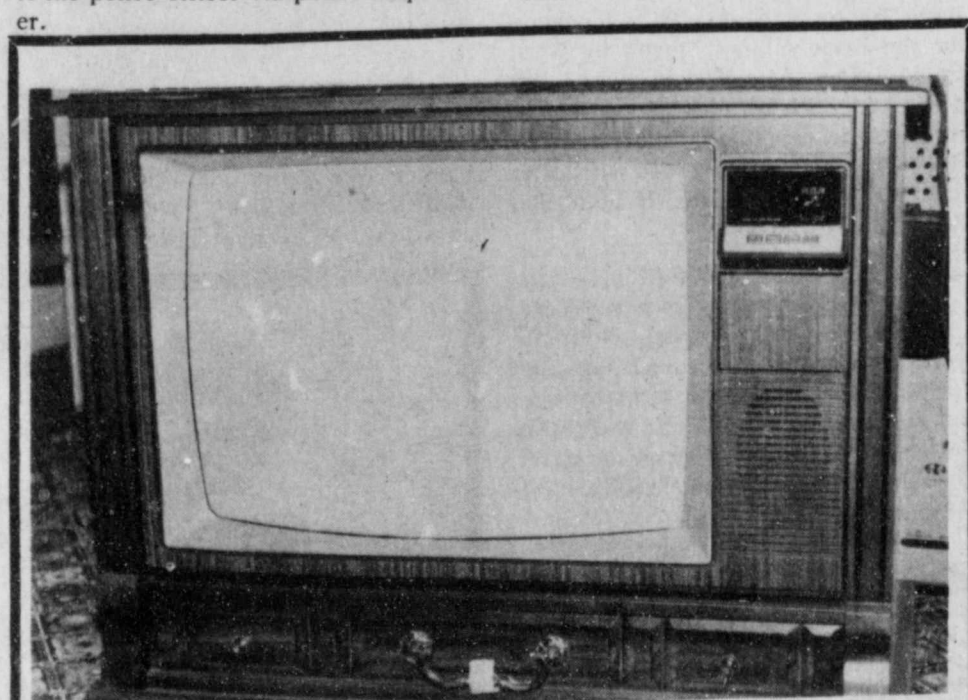
It takes years of experience and training to make a good dispatcher just as it takes experience to make a good officer.

I know from personal experience that many times I have been kept from harm or death because of a competent dispatcher. And I know the difficulties of the job because I have dispatched some too, and must admit that I wouldn't want their job.

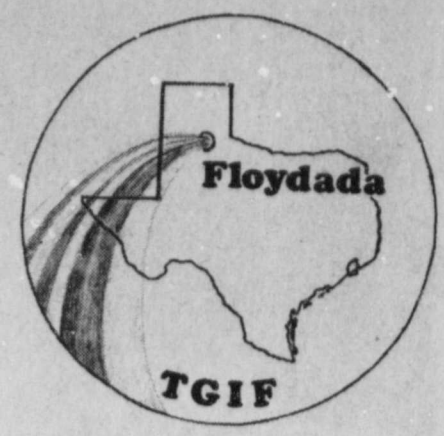
Of course there are still some people whose only understanding of law enforcement comes from watching reruns of Gunsmoke; that think modern communications in law enforcement are really not that important.

Of course they are the ones that have never been terrorized by someone trying to attack them or break into their house. They still don't realize that today we have the ability, in many cases, to stop the offense before it happens and someone gets hurt rather than try to solve the case after the damage is done.

That has been the whole thrust of modern police enforcement today. To try to stop a crime in progress before a party is injured or suffers a loss. The only way we can ever do that is by quick communications from the citizen to the police officer via police dispatcher.



RCA XL 100
25" Diagonal-Spanish Pecan Cabinet
 Remote Control
NOW \$675⁰⁰
 Reg. \$799⁹⁵
 Mod. No. GER689SR
Mize Pharmacy & TV
 652-2435 Lockney 102 S. Main



Elaine Giesecke Ruland is opening a monogram and artistic stitching business in White's Auto Store, approximately the 7th of June. ATTENTION CHERLEADERS! or how about an embroidered boot with initials on your jeans?

Donations for Muscular Dystrophy may be made through the Town and Country Food Store in Floydada. They will be collecting funds to turn in to national headquarters to help fight this disease.

The first thing a child learns when he gets a drum is that he's never going to get another one.

Our congratulations to Linda Stone for being chosen "Armadillo Derby Queen - 1982". She was chosen by a panel of three non-local judges on the basis of her photograph and reasons (in 50 words or less) why she wanted to be Derby Queen. First runner-up was Treva Hambright and second runner-up was Shele Morris.

Letter to the Editor

Dear Editor:
 Thank you to the donors and purchasers of the books for the book sale - proceeds netted \$340.00. The funds will complete the purchase of books which will make the Floyd County Library system a Historical Center in Texas.
 A special note of appreciation to the Floyd County Hesperian for the space and papers.
 Appreciation is also due to the hardworking co-chairmen; Olin Watson, Cheryl Kirk and Sally Galloway.
 Friends of the Library

Letter to the Editor:
 We would like to say a word of appreciation to Walter Davis Construction Co. of Floydada for furnishing the material for the pavilion at cost and erecting it, to Don Holt for contributing a part of the concrete, the County Judge and County Commissioners for their support in this project.
 Also, thanks to the Ladies Chamber of Commerce for the two programs they put on to assist the building fund. And to all the others who helped in any way, a thanks to you.
 We hope the pavilion will be used for other activities during the year.
 Thanks very much,
 Pioneer Old Settlers Directors

Dear Editor:
 I would like to commend the person who wrote the letter last week in regard to Mr. Easter. That person inspired me to do the same.

I feel it is a real shame that the Floydada School Board would refuse to hire a fine man such as Mr. Easter. I fail to see how they could find a more qualified and proven enthusiast for Ag programs. Most schools try to accommodate the spouse of a presently employed person when the spouse is seeking employment by that same school. Mr. Easter has a son who has only one year left of High School, who loves it in Floydada, and who has had to change High Schools once already. It seems the School Board could have at least given Mr. Easter one year's chance to prove himself. With the experience and qualifications of the present Ag Teacher combined with Mr. Easter our Ag programs could have nothing but the potential to achieve tremendous success. It seems that the Floydada Schools stand to possibly lose a fine educator in Mrs. Easter and a potentially fine educator in Mr. Easter on top of losing a fine family in our community. I for one am extremely disappointed in the decision made by the Floydada School Board and Mr. Cannon in regard to Mr. Easter.

FLOYD COUNTY HESPERIAN
 (USPS 302-488)
 Published weekly each Thursday at 111 East Missouri Street, Floydada, Texas 79235. Second class postage at Floydada, Texas 79235.
 SUBSCRIPTION RATES: Local \$1.50 per year, out-of-trade area \$12.50 per year.
 POSTMASTER: Send address changes to the Floyd County Hesperian, 111 East Missouri Street, Floydada, Texas 79235.
 Publisher, Editor: Shelby Harris
 Business Manager: Marjorie Holcomb
 Advertising Manager: David Cates
 Subscriptions, Circulation: Rosamaria Gonzalez
 Composition: Carolyn Redding

MEMORIAL DAY

☆ IN HONOR OF THOSE WHO DIED ☆



We remember the courageous men and women of our country's armed forces who have made the ultimate sacrifice for our sakes. Let's make this day a tribute to them all.

"Helping you change things for the better"
THE FIRST NATIONAL BANK OF FLOYDADA

Accounts Insured up to \$100,000 Member F.D.I.C.



MRS. LARRY D. WESTBROOK

Johnson, Westbrook united in marriage

Trinity Church of Lubbock was the site for a 3:00 p.m. candlelight ceremony Saturday, uniting D'Anna L. Johnson and Larry D. Westbrook. Pastor Paul Jantzen officiated.

Parents of the couple are Mrs. James B. Johnson of Lubbock and the late Mr. Johnson, and Mr. and Mrs. Paul L. Westbrook of Floydada. Grandparents attending were Mrs. Jo K. Johnson, grandmother of the bride; Mr. and Mrs. Edd Walters and Mrs. Adron Westbrook, grandparents of the groom.

A communion table was the focal point in the chapel for the double ring ceremony. Branched candelabras held white tapers accented with greenery and pink apple blossoms. Candles were lit by Tony Bailey and Danny Evans, who also served as ushers. Worship leaders were Nick Taylor and Scott Beard, with Tom McGuire accompanying at piano. Nick Taylor sang a special

selection, "Two Trusting Jesus," accompanying himself on guitar.

Guests were registered by Melanie Peak. Silk flowers of rose and pink, and a picture of the bride and groom accented the registration table.

The bride was escorted and presented by her brother-in-law, Van Sharpley of Ft. Worth. She wore a Victorian style gown of ecru lace over taffeta with a chapel length train attached at the waist. A two-tiered veil descended from a halo of silk flowers. She carried a bridal bouquet of spring flowers including purple iris, pink rosebuds, and daisies with baby's breath. Along with her bouquet, she carried a handkerchief her mother had carried at her wedding.

Attending the bride as Maid of Honor was Robin Dexter of Lubbock. Bridesmaids were Mrs. Van Sharpley of Ft. Worth and Jennifer Johnson of Lubbock, sisters of the bride, and Mrs.

Frizzell, Cotham recite wedding vows

Cindy Renee Frizzell and William Philip Cotham recited vows of matrimony Friday evening in First Baptist Church with the pastor, Rev. Murle Rogers, officiating.

The bride is the daughter of Mr. and Mrs. David Frizzell of Lockney. She is a graduate of Lockney High School. She has been attending West Texas State University and is now enrolled in Wayland Baptist University where she will complete her education degree.

Cotham's parents are Mr. and Mrs. Bud Cotham of Brownfield. He is a May graduate of WTSU and will be coaching in the Lockney School system this fall.

The nuptial area was centered with a candle arch flanked by cathedral candelabras holding ice blue tapers and accented with tropical foliage and blue satin ribbon. Formal baskets of white daisies and true blue carnations and the unity candle completed the setting.

Nuptial music was presented by Mrs. C.L. Record, organist; Mrs. Bill Race, pianist; and Keith Longbotham, guitarist. Providing vocal selections were Mr. and Mrs. Travis Thornton of Plainview. Wedding guests were registered by Janie Guest of Floydada.

Candles were lit by Mrs. Tim Parker of Canyon and Rise Taylor, Hilary and Jaime Webster of Wichita, Kansas,

cousins of the bride, were flower girls and Kip Holt, also a cousin, served as ringbearer.

The bride was given in marriage by her father. She chose a formal length gown of white silk organza fashioned with Venice lace and seed pearls. Falling from an empire waistline was a full skirt that featured scalloped lace extending to the back of the chapel length train. Appliqued motifs of Venice lace were sprinkled over the veil of illusion and framed the brides headpiece. She carried a fleur d'amour cascade arrangement of white daisies and pixie carnations showered with gypsophilia.

For something old and something borrowed, the bride wore a solid gold wedding band belonging to her maternal great, great grandmother. Something blue was her garter, handmade by her mother and presented at a lingerie shower. Her wedding attire was something new. For good luck, she wore pennies with the couples dates of birth in her shoe.

Julie Frizzell, sister of the bride, was her maid of honor. Bridal attendants were Karla McCarter of Canyon, Mrs. Curtis Bainum of Fritch, Beverly Barker of Lubbock and Kay Tannahill of Weatherford, Oklahoma. Junior attendant was Heather Holt, the bride's cousin.

They wore identical formal length gowns of blue accordian pleated knit, topped by a matching chiffon bolero jacket with Venice lace motifs at the shoulders. Each carried a white lace fan accented with white daisies and blue miniature asters on a background of leather fern.

The groom's father served as best man. Groomsmen were Scott Metcalf of Amarillo, Robin Spain and Kyle allcorn, both of Olton, and Johnny Dorman. Junior attendant was Chad Frizzell, brother of the bride. Guests were seated by Billy Keel and Bryan Woolldridge, both of Canyon.

RECEPTION

The reception was held in the garden room of the church. Assistants were Mrs. Don Neal of Robstown and Mrs. Bill McClure of Ft. Worth, both sisters of the bride, Connie Coffman, Christie Jack of Lubbock, Jerri Ann McCormick, Christy Coffman, Stephanie and Shandra Bybee and Amy Shaw also assisted.

A tiered wedding cake with nosegays of daisies and blue ribbon accents, crystal appointments, a five branched candelabra holding ice blue tapers and the bridal bouquet topped off a table covered with a white eyelet cloth.

The houseparty consisted of Mrs. R.V. Webster, Shelley Simpson, Rita Burleson, Delvin Bybee, Eddie Teeter, Audry McCormick, and Jerry Cawley. Tom Coffman, all of Lockney and Mrs. Bill Weir of Floydada.

The couple left on a wedding trip to Ruidoso, New Mexico and will make their home in Lockney.

A rehearsal dinner was hosted by the groom's parents in the garden room of First Baptist Church. Friends of the bride prepared the meal.

Special guests at the wedding were the bride's great, grandparents, Mr. and Mrs. T.E. Crisp of McLean.

Pre-nuptial parties included a bridal shower in the home of Mrs. Kelvin Shaw. Lingerie shower hosted by Mrs. Barry Barker and Beverly, a luncheon for the bride's family given by Mrs. Eddie Teeter, Mrs. Delvin Bybee and Mrs. Audry McCormick and a bridesmaid's luncheon in the home of Mrs. Bill McCarter hosted by Mrs. McCarter and Karla. Mrs. Lonny Hooten and Mrs. Robert Murdock.

LOCKNEY LOCAL

Weekend visitors of Johns and Vera Cox and Mel and Marjorie Holcomb were Nova Jean Ivy, Sheila Young and Jason and Ricky Ivy, all of Mansfield, Letha Davis of Irving, Keith and Wanda Brock and Marlin Marble of Hart, and Charlotte and Kimberly Blazier of Amarillo.

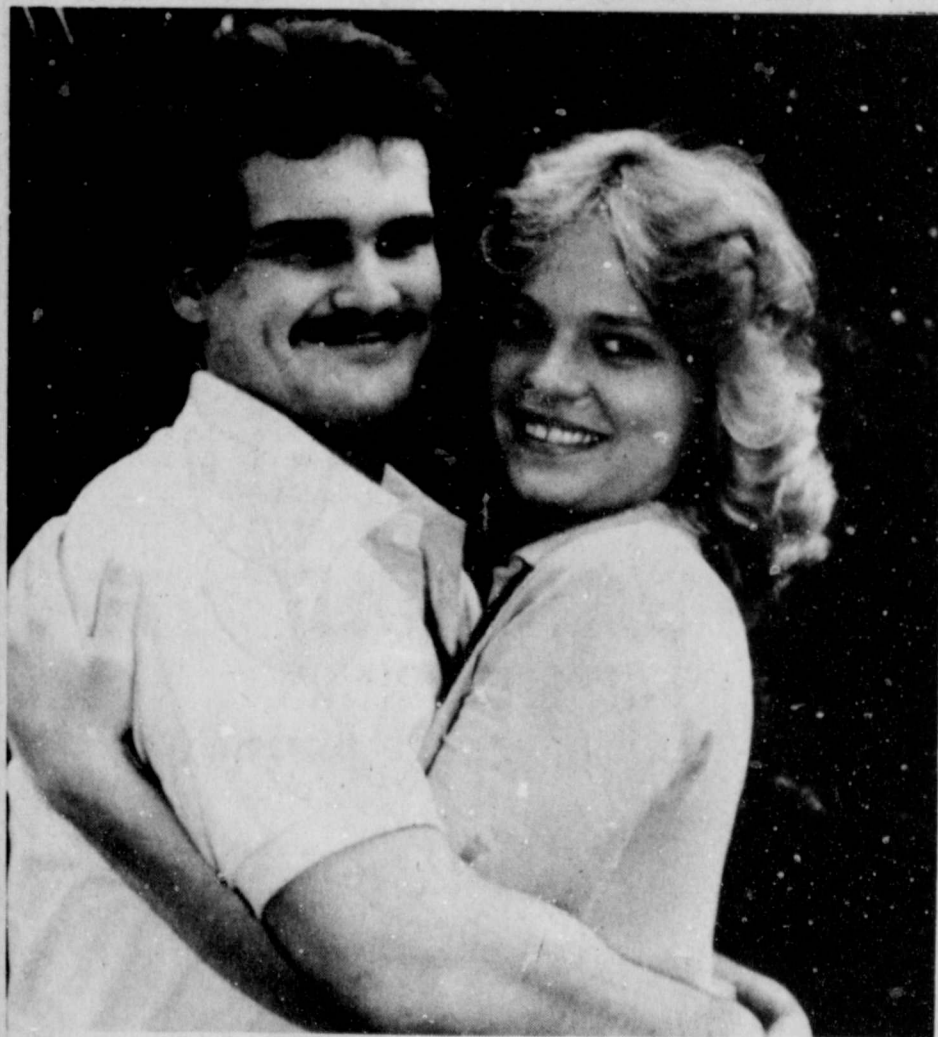
Casey, Hinkle reveal July wedding plans

Dena Sue Casey and Joe Wesley Hinkle would like to announce their engagement and approaching marriage on July 17, 1982 at the First Baptist Church in Lockney.

They are the children of Donice and Sue Casey of Lockney and Billy and

Doris Hinkle of Floydada.

Miss Casey is a 1982 graduate of Lockney High School and the prospective groom is a 1981 graduate of Floydada High School. He is presently farming northeast of Floydada.



JOE HINKLE, DENA CASEY

Llano Estacado JAC Club met Thursday

The Llano Estacado Junior American Citizens Club met on Thursday May 20, 1982 at 11 a.m. at the Dougherty school auditorium. Chad Pernel, president, called the meeting to order and the JAC prayer was led by Heath Robertson.

Bobby Martinez led the pledge to the flag and The Star Spangled Banner was led by Noelia Huerta. Dagna Jean Campbell read the minutes of the previous meeting and they were approved. The guest speaker for the day was Mr. Jim Word who spoke to us on respect for the flag and what the flag means to him. Mr. Word gave an informative speech and held a question and answer session.

Having no further business, the meeting was adjourned. The next meeting will be in September.

Register Your
Bridal Selection



Lovell - Collins Jewelry

806/983-3240 102 S. MAIN FLOYDADA, TEXAS 79235

We honor both our customers and brides by selling ONLY bridal selections.

Bridal selections are now available for

D'Lee Marble bride-elect of Dale Powell



Attention party givers!

Luncheon Plates, Cups and Bowl Loaned FREE!
Jewelry Cleaned FREE!



MRS. WILLIAM PHILIP COTHAM

Morris honoree of bridal shower

A bridal shower for Adeana Morris and Gale Campbell was held Thursday evening, May 13, in the home of Mrs. Charles Holmes, 907 W. Mississippi, Floydada.

Brides chosen colors of apricot, coral and beige were carried out on the serving table. Punch and an assortment of sweet breads were served by Dee Die Covington.

Guests were met at the door by Adeana, her mother, Linda Morris, mother of groom, Dorothy Campbell, and the hostess, Betty Holmes.

Renee Sanders was at the guest register.

Out of town guests included: Oleta Morris and Pauline Kooztz from Chillicothe, bride's grandmothers, Artie Wason of Matador, grandmother of the groom. Etoy Chapman from Iowa Park,

Nina Morris, Vanessa Morris, Terrell of Plainview and Wason of Matador.

Hostesses presented Adeana with a Kirby vacuum and several attachments and several pieces of pottery in the bride's chosen colors.

Other hostesses were Gene Bishop (Nancy, Hays), Glenn Jarnigan (Ft. Worth), Aun Criswell, Don Green, Buddy Hatley (Barbara, Ft. Worth), Sam Spence (Audrey, Ft. Worth), Ed Wester (Lola, Ft. Worth), Lynn Campbell (W.H. Bunch (Mamie), Ft. Worth), Johnny Bill Spence (Dorothy), Phillip Finley (June), Phillip Smithman (Carl Turner (Peggy), Doris Fry (Phyllis).

McCain receives layette shower, Saturday

A layette shower was given in the home of Mrs. Rusty Wilson in Lockney Saturday afternoon from 2:30 to 4:30 p.m. for Mrs. Tim (Rhonda) McCain.

Guests were served from a table laid with a white cutwork cloth and milk glass appointments. The centerpiece was designed of multi-colored baby building blocks.

Refreshments of banana punch, assorted cookies, pastel mints, and nuts were served to the guests.

Special guests at the shower were Mrs. Kent Taylor of Plainview, the honoree's mother, and her grandmother, Mrs. Leon Cartwright, also of Plainview. Mrs. Ricky Mason of Plainview and Mrs. Delvin Bybee of Lock-

ney, the honoree's sister and law respectively, also attended.

An automatic baby swing was a hostess gift.

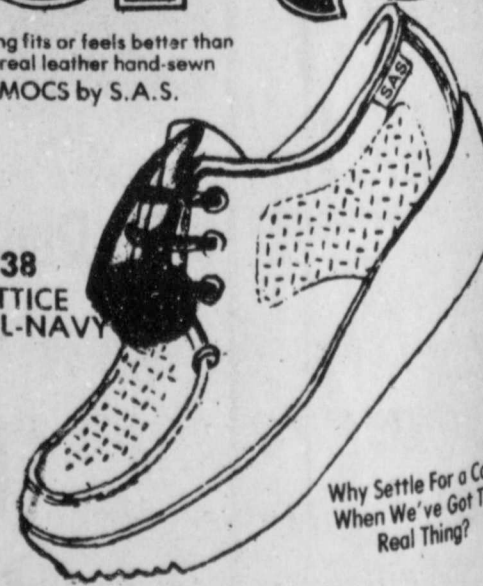
Lockney hostesses for the shower were Barbara McCormick, Zachary, Karen Hooten, Stapp, Erma Lee Dickey, Louise McCarter, Cleo Teague, Graves, Nora Bybee, Doreen Wether, Kim Lambert, and Loretta.

Out-of-town hostesses were Widener and Christy Mason of Lubbock, and Mrs. Earl W. Bradshaw, and Debra Bradshaw of Plainview.

SAS

Nothing fits or feels better than our real leather hand-sewn MOCS by S.A.S.

'38 LATTICE CAMEL-NAVY



Why Settle For a Copy When We've Got The Real Thing?

Brown's DEPARTMENT STORE

104-06 North Main Lockney, Texas



Congratulations
Pete and Pauline
Nash
On Your
40th Anniversary

Your Loving Children

Margaret
Camilla

Paul
Martha

Schlobohm, Simpson wed in Richardson

Lisa Yvette Schlobohm and Steve A. Simpson were married in a 3 p.m. wedding ceremony on April 18, 1982 at St. Luke's Lutheran Church, Richardson. The Rev. Leslie Conrad, Jr., pastor read the vows.

The couple are the daughter and son of Mr. and Mrs. Robert Schlobohm of Richardson and Mr. and Mrs. W.H. Simpson, Jr. of Floydada.

The church was decorated with white pew bows. The altar was highlighted with white gardenias, gladiolas and candelabras. Candlelighters were Mike Simpson, brother of the groom, and Paul Dittmer, cousin of the bride.

Presented in marriage by her father, the bride was dressed in a gown of floor length, white chiffon. It featured long sheer sleeves with an inner lace sleeve and points on the cuffs. A small bustle train and sweetheart neckline accented the lace on the bodice. She wore a picture hat with a tulle veil and carried a bouquet of baby peach roses with miniature white carnations. The bride also wore a penny in each of her shoes with the year of birth for herself and the groom. These were placed in her shoes by the groom's father.

Attending as maid of honor was Valerie Davis of Dallas. Tina Schlobohm of Richardson and Chris Dittmer of Denton, sister and cousin of the bride, respectively, served as bridesmaids.

They wore ballerina length dresses of antique beige. The chiffon over the darker beige taffeta was bordered in beige lace with a beige satin ribbon sash and bow in the back and was accented

with long, sheer sleeves. In their hair they wore pink miniature carnations and carried bouquets of pink baby roses and baby's breath.

Mike Simpson of Lubbock attended his brother as best man. Groomsmen were Larry Jones of Floydada and Steve Specter of Arlington. Doug Simpson, brother of the groom, and Paul Dittmer, cousin of the bride, were ushers. They wore light brown tuxes with white ruffled shirts.

Special guests at the ceremony were Mrs. Elizabeth Lange, grandmother of the bride from Leeds, New York, and the groom's grandparents, Mr. and Mrs. Tom Hall of Hereford.

RECEPTION

Following the ceremony a reception was hosted by the bride's parents in the Terrace Room of the Holiday Inn in Richardson. It was decorated with bud vases and large arrangements of palm leaves.

The serving table featured hors d'oeuvre buffets, the bride's cake featuring roses and the groom's chocolate cake.

Following a wedding trip to Honolulu, Hawaii the couple will be at home in Arlington.

The bride attended Pearce High School in Richardson and is presently sales manager for K-mart Corp. The groom, a 1968 Floydada High School graduate, attended Texas Tech University and graduated from Angelo State University in 1972 with a BA degree. He is store manager for Pacific Stereo.



MRS. ANTHONY RASTETTER

Waits, Rastetter repeat marriage vows

Karen Jeanne Waits and Anthony Alan Rastetter were united in marriage Saturday afternoon. The Rev. Jack Webb officiated at the recitation of vows.

The bride is the daughter of Mr. and Mrs. Stanley Waits. She is a graduate of Hale Center High School and is currently a junior at San Angelo State University where she is majoring in elementary education. She is the director of a day care center in San Angelo.

Parents of the groom are Mr. and Mrs. Roy Rastetter. He is a graduate of Hale Center High School and will graduate from the Texas State Technical Institute in Amarillo in August. He is employed as a diesel mechanic in San Angelo.

Parents of the groom are Mr. and Mrs. Roy Rastetter. He is a graduate of Hale Center High School and will graduate from the Texas State Technical Institute in Amarillo in August. He is employed as a diesel mechanic in San Angelo.

Music for the ceremony was provided by JoLyn Maddin as the organist and Mrs. Eddie Turner as pianist. Eddie Turner was the soloist.

Guests were seated by John Waits of Corpus Christi, brother of the bride; Jeff Waits, brother of the bride; Jeff Chapman, cousin of the groom; and Monty Chapman, cousin of the groom.

Vows were exchanged at an altar centered with a spiral candelabra holding white tapers trimmed with greenery. A unity candle centered the altar.

Given in marriage by her father, the bride wore a formal gown of white Chantilly lace and chiffon. A mandarin collar with a sheer off-the-shoulder yoke enhanced the gown. A Victorian flounce graced the fitted all-lace bodice. The chiffon skirt was fashioned with a chapel length train.

To complete her ensemble, the bride

chose a double-layered veil of illusion trimmed with Chantilly lace. She carried a cascade bouquet of yellow roses and rosebuds, accented with stephanotis and long white streamers.

Elaine Siewert of Hart, sister of the bride, was the matron of honor. Bridal attendants were Janet Watson of Canyon, Julie Tiner of Lubbock, and Sharon White. All wore identical dresses of yellow antique lace lined with yellow taffeta. They featured a V-neckline, a set-in waistband, and double ruffle lace sleeves. The full-length skirts featured a wide flounce which attached to the back waist. Each carried a single yellow silk rose with white streamers tied in love knots.

The groom's father was his best man. Groomsmen were Jerry Chapman of Plainview, Junior Ashmore, and Berry Borchardt.

RECEPTION

Following the ceremony, a reception was held in the fellowship hall. Reception assistants were Donna Howard, Dee Keener, and Jill Waits of Abernathy.

The bride's table featured a double-tiered wedding cake decorated with yellow rosebuds and silver wedding bells. An arrangement of white and yellow roses enhanced the table setting. Guests were served from crystal appointments.

The groom's table was decorated with an ecru tablecloth with a yellow underlay. A silver service was used to serve guests.

A rehearsal dinner was hosted by the parents of the groom at K-Bob's Restaurant in Plainview.

Others attending included Mr. and Mrs. Orville Poole, Springfield, Missouri; Mrs. Odessa Cage and Mrs. Jimmie Hallomon, Lubbock; Mr. and Mrs. Gary Hill and Jeremy Lockney, and Mrs. J.C. Odam of Floydada.

Jody Nance feted with bridal shower

Jody Nance, bride-elect of Scott Stansell was honored with a bridal shower in the home of Mrs. B.J. Terrell Saturday, May 22 from 10:00 to 11:30 a.m.

Mrs. Terrell and the bride-elect stood in the receiving line along with both mothers, Mrs. Joe Nance and Mrs. Pat Stansell.

They wore corsages of lavender tinted carnations tied with lavender ribbon.

Mrs. Elizabeth Sandefur, grandmother of the bride, Mrs. Tom Nance of Plainview, Mrs. Bud Nance and Mrs. Marie Henderson, all aunts of the bride-elect, were special guests at the shower.

The register table was graced with a floor length ecru cloth over pale yellow. Brass candleholders with lavender votive candles and bows centered the table. Amy Nance registered the guests.

Tonya Nance and Mrs. Mike Dietrich presided at the serving table. It was laid

with a white lace cloth over a white background. The overskirt was caught up with lavender bows at intervals around the table. The centerpiece was made up of a white candelabra with lavender votive candles, wedding bells and matching bows.

Mrs. Richard Wiley and Mrs. Thomas Marr assisted with the hospitalities in the gift room.

Hostesses sharing in the planning of the occasion and presenting the couple with a set of Farberware cookware were: Mses: B.J. Terrell, Roy Kinard, Neva Smith, Jerry Cawley, Bill Sherman, David Frizzell, Homer Ragland, Thomas Marr, Buck Ford, Bill Turner, Glen Cooper, Jack Frizzell, Richard Wiley, Pat Frizzell, Delvin Bybee, Kelton Shaw, Tom Moore, H.E. Frizzell, G.B. Johnston, G.E. Reeves, Mike Dietrich, and Claude Stallings.

The couple have planned a June 26 wedding in the First Baptist Church of Lockney.

Gift coffee honors Mrs. Layne Kirk

Mrs. Layne Kirk was honored with a gift coffee in the home of Mrs. Delmas McCormick, Saturday May 8. The couple was married April 10 in Canyon, Texas.

Guests were greeted by Mrs. McCormick and Mrs. David Kirk, and presented to Susan and her mother, Mrs. Melvyn.

Mrs. Johnny Bill Sue served spiced apple juice and coffee from a silver tea service. Other refreshments were miniature fruit and nut muffins, sausage spirals and a platter of fresh strawberries. A spring bouquet of flowers, hand-stitched cloth, and crystal appointments completed the table appointments.

Hostesses for the shower besides Mrs. McCormick and Mrs. Sue were Mmes: Jack Jordan, Robert Ward, Ozell Chappell, Buddy Lutrick, Newell Burke, Louis Lloyd, Edell Moore, Don Chesshir, Mack Hickerson, Adrain

Helms, Nile Bryant and Carolyn Cheek. Their gift to Susan and Layne was a mixmaster.

FLOYD DATA

Mrs. Ira Bobo and Mrs. Loyd Ownbey of Lubbock visited Mr. and Mrs. Clyde Bagwell last Thursday. Thurlam Thacker, also of Lubbock, visited the Bagwells on Saturday. They are all cousins of Mrs. Bagwell.

FLOYD DATA

Dr. and Mrs. K.C. Patzer and son, Bart, of Floydada, returned home this past weekend after a trip to the midwest.

Following a visit with relatives in Wisconsin, the Patzer's toured the Palmer College of Chiropractic in Davenport, Iowa. While there, Dr. Patzer lectured a 12th quarter class.



MRS. STEVE SIMPSON

Spenser Jr. Study hold meeting

The Study Club met in the home of Marylyn Biggs and Kathy Kellison, new officers. Julie Hickerson and the end of the year luncheon.

The end of the year luncheon revealed the names of the winners of the quilt — Ginger Matador.

Presented were Kirby vacuum cleaners and several other prizes. Treena Aston, hostesses were Nancy shop (Nancy), Helen Jarnigan (Helen) and Don Green (Don).

Presented were Kirby vacuum cleaners and several other prizes. Treena Aston, hostesses were Nancy shop (Nancy), Helen Jarnigan (Helen) and Don Green (Don).

Presented were Kirby vacuum cleaners and several other prizes. Treena Aston, hostesses were Nancy shop (Nancy), Helen Jarnigan (Helen) and Don Green (Don).

Presented were Kirby vacuum cleaners and several other prizes. Treena Aston, hostesses were Nancy shop (Nancy), Helen Jarnigan (Helen) and Don Green (Don).

Presented were Kirby vacuum cleaners and several other prizes. Treena Aston, hostesses were Nancy shop (Nancy), Helen Jarnigan (Helen) and Don Green (Don).

Presented were Kirby vacuum cleaners and several other prizes. Treena Aston, hostesses were Nancy shop (Nancy), Helen Jarnigan (Helen) and Don Green (Don).

Presented were Kirby vacuum cleaners and several other prizes. Treena Aston, hostesses were Nancy shop (Nancy), Helen Jarnigan (Helen) and Don Green (Don).

Presented were Kirby vacuum cleaners and several other prizes. Treena Aston, hostesses were Nancy shop (Nancy), Helen Jarnigan (Helen) and Don Green (Don).

Presented were Kirby vacuum cleaners and several other prizes. Treena Aston, hostesses were Nancy shop (Nancy), Helen Jarnigan (Helen) and Don Green (Don).

Presented were Kirby vacuum cleaners and several other prizes. Treena Aston, hostesses were Nancy shop (Nancy), Helen Jarnigan (Helen) and Don Green (Don).

Presented were Kirby vacuum cleaners and several other prizes. Treena Aston, hostesses were Nancy shop (Nancy), Helen Jarnigan (Helen) and Don Green (Don).

Presented were Kirby vacuum cleaners and several other prizes. Treena Aston, hostesses were Nancy shop (Nancy), Helen Jarnigan (Helen) and Don Green (Don).

Presented were Kirby vacuum cleaners and several other prizes. Treena Aston, hostesses were Nancy shop (Nancy), Helen Jarnigan (Helen) and Don Green (Don).

Presented were Kirby vacuum cleaners and several other prizes. Treena Aston, hostesses were Nancy shop (Nancy), Helen Jarnigan (Helen) and Don Green (Don).

Presented were Kirby vacuum cleaners and several other prizes. Treena Aston, hostesses were Nancy shop (Nancy), Helen Jarnigan (Helen) and Don Green (Don).

Presented were Kirby vacuum cleaners and several other prizes. Treena Aston, hostesses were Nancy shop (Nancy), Helen Jarnigan (Helen) and Don Green (Don).

Presented were Kirby vacuum cleaners and several other prizes. Treena Aston, hostesses were Nancy shop (Nancy), Helen Jarnigan (Helen) and Don Green (Don).

Presented were Kirby vacuum cleaners and several other prizes. Treena Aston, hostesses were Nancy shop (Nancy), Helen Jarnigan (Helen) and Don Green (Don).

Presented were Kirby vacuum cleaners and several other prizes. Treena Aston, hostesses were Nancy shop (Nancy), Helen Jarnigan (Helen) and Don Green (Don).

Presented were Kirby vacuum cleaners and several other prizes. Treena Aston, hostesses were Nancy shop (Nancy), Helen Jarnigan (Helen) and Don Green (Don).

Presented were Kirby vacuum cleaners and several other prizes. Treena Aston, hostesses were Nancy shop (Nancy), Helen Jarnigan (Helen) and Don Green (Don).

Presented were Kirby vacuum cleaners and several other prizes. Treena Aston, hostesses were Nancy shop (Nancy), Helen Jarnigan (Helen) and Don Green (Don).

Presented were Kirby vacuum cleaners and several other prizes. Treena Aston, hostesses were Nancy shop (Nancy), Helen Jarnigan (Helen) and Don Green (Don).

Presented were Kirby vacuum cleaners and several other prizes. Treena Aston, hostesses were Nancy shop (Nancy), Helen Jarnigan (Helen) and Don Green (Don).

Presented were Kirby vacuum cleaners and several other prizes. Treena Aston, hostesses were Nancy shop (Nancy), Helen Jarnigan (Helen) and Don Green (Don).

Presented were Kirby vacuum cleaners and several other prizes. Treena Aston, hostesses were Nancy shop (Nancy), Helen Jarnigan (Helen) and Don Green (Don).

Presented were Kirby vacuum cleaners and several other prizes. Treena Aston, hostesses were Nancy shop (Nancy), Helen Jarnigan (Helen) and Don Green (Don).

Presented were Kirby vacuum cleaners and several other prizes. Treena Aston, hostesses were Nancy shop (Nancy), Helen Jarnigan (Helen) and Don Green (Don).

Presented were Kirby vacuum cleaners and several other prizes. Treena Aston, hostesses were Nancy shop (Nancy), Helen Jarnigan (Helen) and Don Green (Don).

had been and drawing for new ones. Members present were Cindy Means, Judy Jackson, Jessie Johnson, Kay Martin, Charlanne Burson, Janette Workman, Linda Cunyas, Ginger Mathis, Robin Stoerner, Brenda Mangold, Recda Cay Smith, Karen Quebe, Gayle Jackson, Linda Marr, Cynthia Bybee.

Kelly Fortenberry, Rhonda McCain, Treena Aston, Kathy Kellison, Julie Hickerson, Marylyn Biggs, Sandra Cummings, Anita Bigham, Sandra Adrain and special guest, Christi Kellison and Lauren Mangold.

wedding at the United Methodist Church in Floydada.

Miss Joy Jordan is presently employed at Texas Instruments in Lubbock, and her fiancé is engaged in farming in the Lakeview community.



JOY JORDAN, REX BREED

BRIDAL SELECTIONS ARE NOW AVAILABLE FOR:

D'Lee Marble
bride elect of Dale Powell

Sue's
Wedding Accessories

983-5312

Memorial Day

May 30

Visit our shop or phone in your order for decoration for your graves in our local cemetery for this Memorial Day!

Place your order early! We will deliver & correctly install these decorations for you on your family plots.

Park Florist
983-2867 Floydada, Texas 983-2868
Helping you say it right.

GIFTS For the class of '82

SOLID GOLD
CHAINS, EARRINGS,
EARRING JACKETS, PENDANTS

BEADS, PEARLS,
ONYX, LAPIS

ADD A BEAD
Diamond Studs and
Matching Drop Set
\$50⁰⁰ 2½ point T.W.

Sue Hardy
Jewelry
202 W. Missouri

Nichols honoree of birthday reception

Louzilla Nichols was honored with a reception in her home Sunday, May 23 to celebrate her 80th birthday.

Hosting the event was her daughter and husband, Ruby Jewel and Glen Whitfill of Sweetwater, and granddaughters and husbands, Cindy and Terre Michaels of Garland and Judy and Lt. Commander David Allen and great-granddaughter, Davvyonna Alken of Virginia Beach, Virginia and Mrs. Bobbie Kinnibrugh of South Plains. Judy, David and Davvyonna were unable to be present.

Guests were greeted by Ruby Jewel and presented to her mother, Mrs. Nichols. Marjorie Holcomb, niece of the honoree, was at the guest register.

The table was laid with a lace tablecloth. Highlight of the table was the large sheet birthday cake decorated with red roses and the inscription "Happy 80th Birthday, Louzilla". Milk glass and gold appointments were used in serving.

Wanda Brock of Hart and Nova Jean Ivy of Mansfield, nieces, and Sheila Young of Mansfield, a great-niece served red punch, coffee, cake, nuts and mints. Bobbie Kinnibrugh was also in the houseparty.

Relatives registering were: Letha Davis of Irving; T.B. and Rosa Cox, Canyon; Doyle and Margie Cox and Nichole and Charlotte Blazier and Kimberly of Amarillo; Nova Jean Ivy, Ricky Iva and Sheila Young and Jason, Manfield; Keith and Wanda Brock and Marlin Marble of Hart; Howard and Mary Lou Springer of Hale Center; Johns and Vera Cox, Mel and Marjorie Holcomb, C.H. and Ida Rose and C.L. and Lucy Dean Record, all of Lockney; Delbur and Bennie Mavet Rose of Plainview; and Joe Richard and Sandra Noland, Mark Noland and Meda Ruth Watts of Floydada.

Others registering were: Grigsby and Lillie Mae Milton Jr., Patty Anderson, Bonnie Julian, Ernest and Ruth Smitherman, Jack and Aileen Smitherman, John Key and Madge West, and Sylvan and Bobbie Kinnibrugh, all of Floydada; and Mary Lou Hammonds and Frank Brown of Lockney.

Registration will be May 31 with classes beginning June 3. Interested persons may call 293-3605 for further information.

SPC offering home design and furnishing course

South Plains College at Plainview is offering a course in Home Design and Furnishings during the first summer session. This course is for anyone interested in home designs and will be taught by Rita Williams who has five years experience and is the area Decoration Consultant for Spears Furniture of Lubbock.

South Plains News

South Plains School presents play

BY MRS. MURRAY JULIAN
South Plains, May 24.

South Plains Elementary School children will have their school plays, recitations and songs this Monday, May 24, then on Tuesday they will have their room picnics and last of school work. Wednesday they will be going to school for the last day, of this term. Friends, relatives and teachers and pupils will gather at 2:00 p.m. this Monday, and everyone will enjoy the festivities, with refreshments served in various rooms.

Regardless of clouds, winds and storm signs, there has been no rain in our South Plains area this past week.

Rev. and Mrs. Cecil Osborne are to return this Monday from Mineral Wells, Texas where they have been enjoying a vacation for several days. Mrs. Osborne was in Dallas part of this time with another daughter, Mrs. Karen Mauney, and Rev. Osborne was also in Dallas for part of his vacation. Then both spent some time with Rev. Ron and Linda Somers, and granddaughters Jennifer and Jaime in Mineral Wells.

The pupils of the teachers of the South Plains School received many awards this Monday afternoon at the school program from 2-4 p.m., and 4 families had children with perfect attendance records for the year's school. Several children who did not speak English when school started have mastered the language, and were up with their classmates in the different grades. Mrs. Rance Young with 1, 2nd graders gave out awards, Miss Carol Arnold with her 3rd and 4th grades had several students with high grades.

Mrs. Charlene Starke had delightful kindergarten pupils—10 of them, and also she was school principal. Mrs. Jimmie Hunter with the 5-6th graders had the largest room of children she ever had. Now school will be out Wednesday for the coming summer.

We are very proud to announce that posters made here at our school to enter in the Fire Prevention Week Contest were judged in Floydada where they won the top 3, then were sent to Amarillo and won the top 3 there and now they are in Dallas where they are to be judged. No. 1 was Tim Julian, No. 2 was Keith Teeple and No. 3 was Rojel-

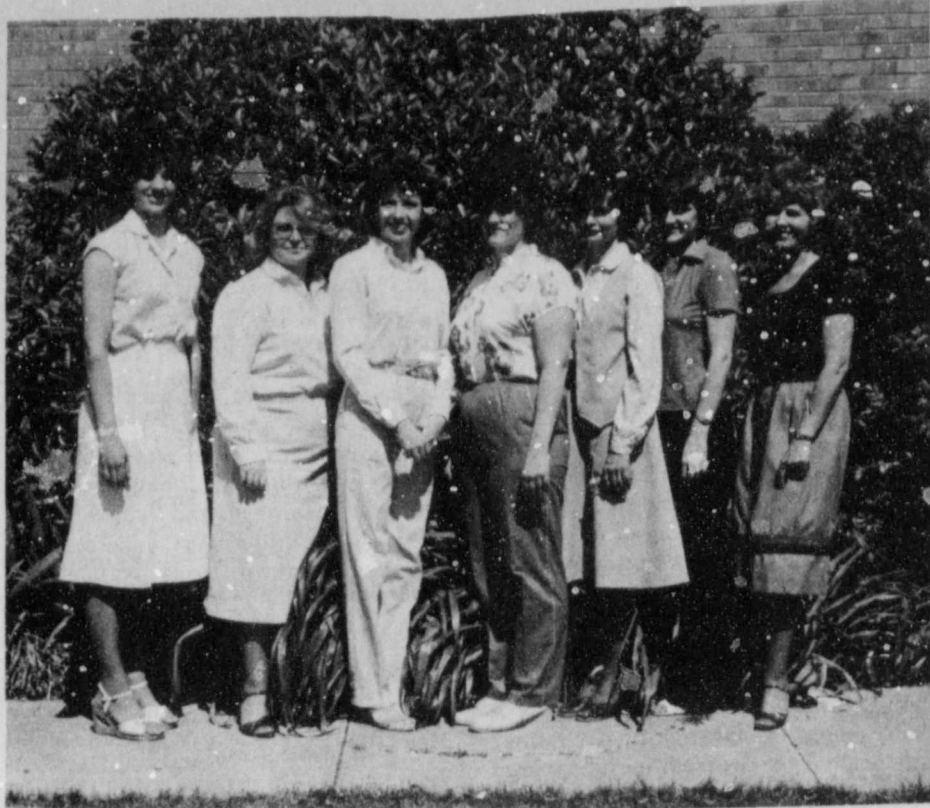
to Gonzales. We congratulate them all. The Annual Pioneer Reunion and Old Settler's Day for Floydada was held Saturday. There were Arts and Crafts Fair, and Friends of the Library held a book sale. The weather was perfect being cool and nice, especially in the new pavilion. A delicious barbecue lunch was served at noon, and there was the annual parade, and other festivities. Many from here were seen, including Mr. and Mrs. Grigsby and Lillie Mae Milton, Letha Mulder, Bonnie Julian, Mamie Wood, Ruby Higginbotham with her guests from Amarillo and Mrs. Fred Marble, who judged the Wildflower Show, and Mamie Wood who assisted.

Mr. and Mrs. Tillman and Doris Powell from Howe were in the South Plains vicinity Saturday morning and we were so pleased to have a visit from them. They report so much rain at their home near Dallas, they were here especially for their son Tom Powell's Masonic work, and planned to attend Old Settlers Day in Floydada. The Powells formerly lived here near us. Mr. and Mrs. Kerry Reeves of Idabel, Oklahoma, are parents of a baby girl, their second girl, born May 3rd, in Idabel. She was named Kacie Janelle, weighed 8 1/2 and 10 oz., and was 22 inches long! Bob and Janelle Reeves and son Mark were there when she was born, and Janelle stayed with them 2 weeks. Kacie has a sister, Kristy 2, and a brother Kellas 5 and a half. Congratulations to them and to grandparents. Kerry grew up in our community.

Jean Reeves is attending West Texas State University in Canyon where she is working toward her degree, and she is living with her brother and family, the Jack Reeves. Jean is working at Texas Tech Medical Center in Amarillo this summer.

Mrs. Mamie Wood went to Lubbock this Monday, and was accompanied by Mrs. Bonnie Moore. Mamie will be attending graduation exercises for her grandson Bodie Teague.

Kristi Julian, Mitzi Julian and Mrs. M.M. Julian plan to go to Roscoe, Tex. Tuesday morning where that evening they will attend graduation exercises for their cousin, and Mrs. Julian's grandson, Dickie Julian, who will be graduating from Roscoe High School the evening of May 25.



1956 JR. STUDY CLUB OFFICERS for 1982-84 — Left to right, Stacy Reeves, Secretary; Susan Garms, reporter/historian; Donna McClendon, 2nd vice president; Stacy Smith, president; Jan Thompson, 1st vice president; Sharon Vickers, federation counselor; and Sheree Cannon, custodian. Not pictured: Julie Cathey, parliamentarian; and Jan Thayer, treasurer.

Hardy presents piano recital

Students of Elaine Hardy will present their spring recital Thursday night, May 27, at the First Christian Church in Floydada.

The recital will be divided into two sections. From 6:00 to 7:00, an Honors Recital featuring Laron Cheek, Andrea Bonner, Shannon Edwards, Jamie Thayer, Tammy Leatherman, Mitzi Julian and Christi Norrell of Floydada plus Amy Shaw of Lockney.

They will be playing classical selections from their 10-piece National Program played for National Guild of Piano Teachers held in Lubbock last week.

From 7:00 to 7:30, a break with sandwiches, chips, dips and drinks will be served in fellowship hall.

All students will then perform at 7:30 with selections from popular, rock, and hymns being played on piano, electric piano, Yamaha Porta-sound and organ. Several ensemble groups will also present special selections with Keith Owens of Lockney on the drums.

Lockney students performing are: Betty Cates, Inez Gibson, Dee Carley, Jody Ansley, Tricia Steele, Amy Ansley, Amy Shaw, Stephanie Bybee, Shandra Bybee, Rachelle Ford, Karen Ford and Cherie Parrish.

Floydada students are Tammy Leatherman, Mike Leatherman, Tana Perry, Kim Perry, Cathy Langley, Jamie Thayer, Bryan Jarnigan, Christi Norrell, Cindy Burke, Amy McCormick, Anita McCormick, Chad Edwards,

Recital presented by students of Dell Gray

Piano students of Mrs. Dell Gray were presented in their annual Spring Recital in two performances on May 22, 1982, at the First United Methodist Church in Floydada.

Those participating in the 6:30 p.m. recital were: Alex Gregory, Brittany Gregory, Jayna Dunn, Jennifer Crow, Roxene Brown, Valency Zumwalt, Mindy Matsler, Shane Orman, Julie Smith, Amanda McDaniels, Paige Cannon, Jeannie Jackson, Virginia Mitchell, M'isti Orman, Rusty Simpson, Anna Leta Bradshaw, and Sandra Mitchell. During the awards ceremony, following this recital, the following students were honored: Jeannie Jackson, Honorable Mention; Virginia Mitchell, 3rd Place Award; Anna Leta Bradshaw, 2nd Place Award; and Sandra Mitchell, 1st Place Award.

Students performing in the 8:00 recital were: Amanda Watson, Esther Hong, Deanna Watson, Mychelle Harris, Shelby Ogden, Mark Thompson,

Shannon Edwards, Andrea Bonner, Amy Ogle, Mitzi Julian and Laron Cheek. Also, Josh Thayer, student of Christi Norrell will play. Awards to the students will follow.

A reception will follow with public invited to attend all the portions of the recital. A table will be set up to honor the 8th grade graduates — Jamie Thayer, Shannon Edwards, Cherie Parrish, Rachelle Ford, Karen Ford and Shandra Bybee.

Also, a honor table to recognize the high point students with Christi Norrell's method book she composed and wrote from her high school Gifted and Talented class.

Record students to hold Musical Recital Thursday

Mrs. Charles L. Record will present a group of piano, guitar, and organ students in a Musical Recital Thursday, May 27, 1982, 7:30 p.m. at the First

United Methodist Church in Floydada. They will be assisted by a student of Mrs. D.C. Rose, who is invited.

Those playing will be: Billy Villanueva, Morales, and Tana Turner of Amarillo. This group from Lockney will include: Jessica Lenos, Debbie Del Toro, Carrie Padon Widener, David Briley, Adams, John Klein, Jeni Adams, Lori Johnson, Jayson Price, Jerry Klein, Turberville, Phillip Green, Heath Rexrode, Donna Vernon, Daniel Stephan, Lisa Terrell, and Jovita Castro.

Great-grandparents are Mrs. Sarah Beard and Mr. and Mrs. Cleo Fulton of Floydada, Mrs. Sylvia Yeary of Lockney and Mr. and Mrs. Olin Bryant of Idalou.



MOSLEY
Rick and Lisa Mosley of Lockney are proud to announce the arrival of Lisa Nicole, born May 24, 1982 at Central Plains Hospital, Plainview, at 7:15 p.m. Grandparents are Boyce and Inez Mosley, Lockney, and Howard and Jackie Gregory of Floydada.

YEARY
Rex and Brenda Yeary are the proud

parents of a son, Jess Ryan, born May 15 at 2:03 a.m. in Lubbock General Hospital. He weighed in at 5 lbs. 6 oz. and was 18 1/2 inches long.

Grandparents are Jack and Dona Yeary, Bill and Darlene Fulton of Floydada, and Preston and Betty Coomer of Graham.

Great-grandparents are Mrs. Sarah Beard and Mr. and Mrs. Cleo Fulton of Floydada, Mrs. Sylvia Yeary of Lockney and Mr. and Mrs. Olin Bryant of Idalou.

WE'LL BE CLOSED
June 7th - 12th For A Vacation !!!
Your Consideration Is Appreciated
GENE'S CLEANERS
103 N. Main Floydada
Alterations - Drapery Cleaning - Laundry Service

Memorial Day
Wreaths, Sprays Or Vase
Fresh, Silk Or Permanent
Delivery To Cemetery
SCHACHTS
Flowers, Jewelry & Gifts
"Our Pleasure Is To Serve You"
Lockney 652-2385

never forgotten... those who gave their lives
Proudly, we pay tribute to those Americans of our armed forces who have given their lives in the line of duty. Their great sacrifice is our everlasting sadness... their memory our everlasting pride.
Let us all honor them on this special day.
Floyd County's Progressive Bank
First National Bank
in Lockney
MEMBER F.D.I.C.
Accounts insured up to \$100,000.
(806) 652-3355
Look for this symbol. We've got the answers.

ASK About Our FREE 8 x 10 OFFER
GET PICTURES MADE OF GRANDPA, GRANDMA, DAD AND ALL THE LITTLE ONES AT THESE SAME LOW PRICES. WE USE KODAK PAPER.
SHUGAR COLORED PHOTOS
Mize Pharmacy & TV
102 S. Main St.
2474

1982 Floyd County Pioneers

loway, Tammy... Sue Hong, Jill... Daralyn Williams... Ruth Elaine... and Shawnda... honored from this... lloway, Honorable... mbright, 3rd... ie Wilson, 2nd... da Sanders, 1st... recognition was... tory: Ruth... Anna Leta... awnda Sanders... tie), 1st Place... n seventeen years... Gray awarded a... student cater... as the recipient... Slaughter Most... a new recognition... emolled in this... mposer's study... y teaches, also... no curriculum... ong also received... n as being the... n the recital... rs. and is the young... rs. Gray has ever...

ns ranging from... olly Parton's... ist was Deon... sang "Moving... he second recital... awnda Sanders... stirring rendition... r." Mrs. Gray... er appreciation... he First United... the use of the... that her next... Christmas program... December.

to hold... Thursday

thodist Church... be assisted by... rs. D.C. Rose. The...

laying will be... v Johnson of the... r: Billy Villar... and Tana Turner... ront Lockney will... ssica Lemons, Br... Toro, Carrie Par... r. David Brittan... hn Klein, Jeri An... ales, Jayson Lov... y Klein, Loui... ille, Phillip Glas... ath Rexrode, Bl... non, Daniel Del... isa Terrell, Wyman... Castro.

Wed., June 9

KING SIZE... WALL... CREATIVE... COLOR... PORTFOLIO... FOR ONLY...

99

ASK... ut Our... x 10... FFER

odak paper, For a... ook at the Times... our Life.

PICTURES MADE... YPA, GRANDMA, DAD... ALL THE LITTLE ONES... ESE SAME LOW PRICES... SE KODAK PAPER

UGAR... be closed... Memorial Day... In Case Of... Emergency Call

12 S. Main St.

983-5577

Lockney, 1905; Ruby Whitfill, Sweetwater, 1929; Glenn Whitfill, Sweetwater, 1929; Marie Baxter, Floydada, 1919; Rubie Rajten, Floydada, 1929; Mary Lou Bollman, Lockney, 1909; Bessie Yeary Sauls, Quitaque, 1908; Wm. F. Sauts, Quitaque, 1935; Ruth Hammonds, Floydada, 1951; Weldon Hammonds, Floydada, 1951; Lois Newson Morrison, Lubbock, 1916; Mrs. Nancy E. Newson, Floydada, 1910; Katherine Ball, Lockney, 1924; Mrs. Harmon Roberts, Floydada, 1915; Mrs. Lois Waller, Floydada, 1917; Sed Waller, Floydada, 1928; Lillian Smith, Floydada, 1932;

Tom Weathers, Lockney, 1921; Valerie Turner, Floydada, 1923; Margie Young, Floydada, 1939; James Lovell, Floydada, 1926; Floyd W. Jackson, Lockney, 1917; Carolyn Jackson, Lockney, 1942; Leonard Matsler, Floydada, 1914; Lahoma Matsler, Floydada, 1936; E.T. Thacker, Lubbock, 1908; Faye Jackson, Floydada, 1919; Joanne Lloyd, Floydada, 1908; Alta Smith, Floydada, 1916; G.W. Smith, Floydada, 1915; Sue Casey, Lockney, 1946; Oletha Davis, Irving, 1909; Lois Gilly, Floydada, 1925; Carl Lee Gilly, Floydada, 1921; Grace Jarrett, Floydada, 1935;

Carl Jarrett, Floydada, 1916; A.L. Wylie, Floydada, 1948; Mildred Wylie, Floydada, 1948; Imogene Fortenberry, Lockney, 1925; Cephus Fortenberry, Lockney, 1916; Alma Dunn, Floydada, 1912; E.M. Jackson, Floydada, 1916; Fred Huggins, Lockney, 1927; Billie Huggins, Lockney, 1948; Mary Helen Day, Floydada, 1925;

Junior Day, Floydada, 1927; A.G. Tyler, Amarillo, 1928; Clarence Guffee, Floydada, 1926; Opal Guffee, Floydada, 1926; Gene Lawson, Floydada, 1929; Gladys Lawson, Floydada, 1930; Leon Thompson, Amarillo, 1928; Lois Marler, Floydada, 1920; Gus Hammonds, Floydada, 1922; Helen Hammonds, Floydada, 1950; Rudolph McCurdy, Floydada, 1937; Iva McCurdy, Floydada, 1934; Nola McCravey, Floydada;

Bill Beedy, Floydada, 1903; Mrs. Bill Beedy, Floydada, 1907; Carl Nelson, Floydada, 1917; Eddie King, Floydada, 1907; Mrs. Flora McNeill, Floydada, 1915; M.J. McNeill, Floydada, 1927; Elva Blum, Floydada, 1928; Ada Ellis, Floydada, 1908; Jack Lackey, Floydada, 1916; Fred Cardinal, Floydada, 1918; Polly Cardinal, Floydada, 1917; George L. Smith, Floydada, 1906; Wilma Black, Woodland, California, 1916; Dicie Goltz, McKinley, California, 1918; Mary Smith, Floydada, 1902; Mrs. Duncan Hollums, Floydada, 1917; Mr. Duncan Hollums, Floydada, 1910; R.A. Maddox, Floydada, 1915; Greer Christian, Floydada, 1916; Ruth (Troutman) Christian, Floydada, 1931; Michael Green, Floydada, 1950; H.E. Rizzell, Lockney, 1913; Thelma Fawver, Floydada, 1913; J.C. Anderson, Floydada, 1917; S.V. Adams, Floydada, 1906; Bearrice Adams, Floydada, 1917; C.H. Rose, Lockney, 1911; Mrs. C.H. Rose, Lockney, 1906; W.N. Staniforth, South Plains, 1928; Francis Staniforth, South Plains, 1929;

D.C. Rose, Lockney, 1917; C.L. Record, Lockney, 1941; Mrs. C.L. Record, Lockney, 1924; John Key West, Floydada, 1911; Mrs. R.M. Stovall, Plainview, 1927; Vaughan West Murff, Floydada, 1905; Fern Stovall Anderson, Floydada, 1931; Mrs. Edd Muncy, Floydada, 1921; Dola Maddox Lackey, Floydada, 1915; V.L. McNeil, Floydada, 1926; Leona McNeil, Floydada, 1949; Hester West Moore, Floydada, 1908; W.I. Moore, Floydada, 1973; Anne Swebston, Floydada, 1917; Gilbert Shirey, Torrance California, 1925; Nita Hollum, Lockney, 1951; Cecil Pope, Floydada, 1923; Louis Newell, Floydada, 1921; R.G. Dunlap, Floydada, 1912; Helen Dunlap, Floydada, 1915; Mrs. Bud Warren, Floydada, 1931; Bud Warren, Floydada, 1914; Clara Luttrell Redd, Floydada, 1924; Ruthy Bell Luttrell Clark, Plainview, 1924; Verlie Johnston, Plainview, 1938; Loyd Allen, Floydada, 1923; Joy Allen, Floydada, 1913; Jack Stansell, Floydada, 1918; Emogene Stansell, Floydada, 1921; Ethel Alexander Hambricht, Floydada, 1924;

W.M. Hambricht, Floydada, 1918; John McKenny, Floydada, 1913; Vernon McPeak, Floydada, 1906; Ethel Carmack, Floydada, 1929; Cager Carmack, Floydada, 1929; Ila Velle McPeak, Floydada, 1922; Thelma Crawford, Floydada, 1923; Earl Crawford, Floydada, 1933; W.B. Eakin, Floydada, 1925; Adrian West, Floydada, 1922; Sarah West, Floydada, 1939; Glenna Orman, Floydada, 1917; Janie Shurbet, Floydada, 1905; Mary Wilson, Floydada, 1934; Will Martin, Floydada, 1908; O.M. Watson Jr., Floydada, 1921; Betty Newell Shirey, Torrance, California, 1920; Mr. Earl Edwards, Floydada, 1916; Mrs. Earl Edwards, Floydada, 1918; Pauline Pierce, Floydada, 1937; J.D. Copeland, Lockney, 1908; Arla Copeland, Lockney, 1934; Louis Anderson, Floydada, 1928; Gladys Widener, Floydada, 1934; Ernie Widener, Floydada, 1916; Doyle Turner, Floydada, 1930; Dorothy Turner, Floydada, 1935; R.O. (Shorty) Turner, Floydada, 1932; Jessie Mae Wright, Floydada, 1925; Alma Edwards Rape, Floydada, 1911; Marvin Rape, Floydada, 1923; Mildred Rowse Owens, Floydada, 1931; R.E. Bob Owens, Floydada, 1928; Ruth Smitherman, Floydada, 1912; E.P. Smitherman, Floydada, 1917; Alton Higginbotham, Floydada, 1939; Harvey Allen, Floydada, 1939; Veda Dorsey (Ruth), Floydada, 1915; Viola Smith Brown, Crosbyton, 1913; W.B. Parrack, Crosbyton, 1925;

Mrs. W.B. Parrack, Floydada, 1925; Choise Smith, Floydada, 1938; Kenneth Bain, Floydada, 1919; Imelda Murry, Floydada, 1924; Laure Dade, Floydada, 1940; Myria Dade, Floydada, 1940; Pauline Sams, Lockney, 1905; A.C. Carthel, Floydada, 1917; Grace Colson, Lockney, 1911; Sylvia Yeary, Lockney, 1921; E.A. McLeod, Lockney, 1924; Helen Upton McLeod, Lockney, 1910; Burmah Probasco, Floydada, 1910; Mildred Fuqua, Floydada, 1917; P.L. Hart, Floydada, 1917; Amanda Hart, Floydada, 1921; Edith Hart, Amarillo, 1925; Lorene Batten Newberry, Floydada, 1918; Orbal Newberry, Floydada, 1916; Estefana Mercado, Floydada, 1925; Mrs. John Key West, Floydada, 1930; Frank Brown, Lockney, 1911; Esley Yeary, Floydada, 1902; Winfred Payne, Floydada, 1926; Wilma Payne, Floydada, 1934; Sue Ward, Floydada, 1938; Lurline Joiner Bagwell, Floydada, 1918; Clyde Bagwell, Floydada, 1917; Elton Goin, Floydada, 1916; Oleta Goin, Floydada, 1918; Mary Anna Ross Flowers, Amarillo, 1917; S.W. Ross, Floydada, 1907; Mrs. S.W. Ross, Floydada, 1965; Peggy McKinney, Plainview, 1912;

G.M. Armstrong, Floydada, 1912; Mrs. G.M. Armstrong, Floydada, 1912; Helen McKenny Solomon, Floydada, 1912; Edna Patton, Floydada, 1924; Evelyn Pierce, Floydada, 1924; Walton Wilson, Floydada, 1909; Mrs. Walton Wilson, Floydada, 1926; O.C. Bailey, Lockney, 1897; Alma Smith, Floydada, 1925; Letha Mulder, Floydada, 1931; Walter Hanna, Floydada, 1910; Billie Hanna, Floydada, 1922; Bonnie Julian, Floydada, 1943; Mollie Burleson, Floydada, 1916; Tom Emert, Dougherty, 1924; Ruth Perry, Floydada, 1918; Glenna Jack Miller, Floydada, 1923; Barbara Milton Edwards, Floydada, 1946; Mary Young Shurbet, Floydada, 1934; Elroy Emert, Floydada, 1928; Maxine Fry McCullough, Midland, 1917;

Rebecca Smith, Floydada, 1916; Lorraine D. Britton, Floydada, 1908; Darlynn Hambricht, Floydada, 1935; Flora Warren, Floydada, 1920; Gordon Hambricht, 1932; Doyle Moore, Floydada, 1926; Norma Martin, Floydada, 1941; Charles Beedy, Claude, Texas, 1929; Jan Watts, Floydada, 1948; Eugene Watts, Floydada, 1944; J.C. Wester, Floydada, 1919; Mattie Wester, Floydada, 1975; Marjorie Cox Holcomb, Lockney, 1929; Melvin Holcomb, Lockney, 1927; Vera Sweat Cox, Lockney, 1925; Johns Cox, Lockney, 1907; Ruby Higginbotham, South Plains, 1915; Nova Jean Cox Ivy, Mansfield, 1933; Sheila Ivy Young, Mansfield, 1954; Cleo Snodgrass Crawford, Lockney, 1904;

V.R. Crawford, Lockney, 1949; Warren Cypert, Amarillo, 1923; D. Alan Benson, Floydada, 1977; Fay Benson, Floydada, 1915; B.P. Sandefur, 1916; Crawford Sandefur, Floydada, 1930; Mae Muncy, Floydada, 1927; Maurice Campbell, 1915; Leona Campbell, Floydada, 1938; Roberta Garrett Hardin, Floydada, 1932; Floyd Bradford, Floydada, 1926; Euna Fawver Bradford, Floydada, 1925; Beth Cypert, Amarillo, 1923;

Vel Darden, Lockney, 1918; Bill Darden, Lockney, 1945; Icy Biggs, Lockney, 1892; Sue Thompson, Floydada, 1902; Ila Biggs Goodwin, Lubbock, 1923; Wanda DuBois, Floydada, 1927; Bill DuBois, Floydada, 1926; Charline Perry Smitherman, Floydada, 1932; Don Marble, South Plains, 1932; Nancy Marble, South Plains, 1951; Alma Baxter, Lockney, 1919; Clyde Baxter, Lockney, 1917; Everett Perry, Floydada, 1917; June Ware, Floydada, 1959; Maggie Jones Perry, Floydada, 1919; Mabel Foster, Floydada, 1926; Davis Bishop, Tahoka, 1925; Riley Teague, Floydada, 1915; Holt Bishop, Floydada, 1925; Ed Wester, Floydada, 1921; Mrs. Tom Emert, Floydada, 1924; Earl Bishop, Floydada, 1924; Jo Wester, Floydada, 1929; Dorothy Stapp, Lockney, 1946; Louis Stapp, Lockney, 1927; Floyd Montgomery, Plainview, 1917; Florence Montgomery, Plainview, 1919; Evalene Medley Boyd, Floydada, 1924; Ona Ruth Neff, Floydada, 1920; Sarah Beard (Lackey), Floydada, 1906; Nita Marble, South Plains, 1960; Keith Marble, South Plains, 1936; Ernestine Gilly, Floydada, 1921; Leona Neff, Floydada, 1931; Shorty Neff, Floydada, 1925; Cecil Baxter, Floydada, 1915;

Rena Baxter, Floydada, 1916; Guy Ginn, Floydada, 1923; Margaret Ginn, Floydada, 1917; Ben F. Cox, Jr., Plainview, 1903; Ruth Hale (Snell), Lubbock, 1920; Bill Shurbet, Floydada, 1930; Gladys Howard, Floydada, 1910; Jett Major, Floydada, 1980; Lynette Major, Floydada, 1980; J.H. Workman, Lockney, 1920; Edna Workman, Lockney, 1931; Lesley Workman, Lockney, 1982; Dan Shurbet, Floydada, 1932; Gary Matsler, Floydada, 1942; J.W. Womack, Dallas, 1921; Helen Ring Womack, Dallas, 1929; O.D. Williams, Floydada, 1953; Joyce Williams, Floydada, 1953; G.A. McAda, Lockney, 1921; Artitia Gordon McAda, Lockney, 1915; George Don Probasco, Floydada, 1933; Sara Probasco, Floydada, 1981; Flois Reed, Panhandle, 1930; Darlene Reed, Panhandle, 1951; Connie Reed, Panhandle, 1944; Carolyn Cunningham, Lockney, 1939; Melba Vickers, Dougherty, 1953; Bob Vickers, Dougherty, 1936.

did you know?

Southwestern Public Service Company uses woven fiberglass bags in its air-quality control system at Harrington Station near Amarillo. The fiberglass is more heat-resistant than standard cloth bags and is not affected by the high temperatures common in flue gas emissions. This keeps the air around the plant, and in your community, cleaner.

Wanda Hooks, Production Chemist, Harrington Station, Amarillo.

In many towns within the SPS service territory, you can pay your electric bill at drive-up locations. Many SPS offices have drive-up windows. You also may pay your bill at selected banks or savings and loan companies. Contact your local SPS office to find out if drive-up service is available in your area.

Ramona Knight, Cashier, Seagraves.

SPS offers free booklets on a variety of subjects. These booklets are designed to help customers understand the process of providing electric service and how to use electricity wisely. Booklets are available on electric ranges and water heating, microwave cooking, insulating your home, and many other topics.

Don Bigham, Local Manager, Portales.

Knowing what electricity is worth is worth knowing. For answers to your questions, call or write your SPS manager.



Sears Authorized CATALOG SALES MERCHANT

RED TAG Home Appliance SALE

Check these reduced prices on home appliances. Some are demonstrators, some are floor models, some are one-of-a-kind.

| | |
|--|----------|
| Portable Compact Vac | \$69.95 |
| Gas Grill | \$189.95 |
| Meal in One Microwave Oven | \$469.95 |
| Deluxe Gas Range | \$439.95 |
| Continuous Cleaning Electric Range | \$399.95 |
| 5 Cycle Washer - white | \$359.95 |
| 5 Cycle Washer - Almond | \$369.95 |
| Automatic Dryer - White | \$249.95 |
| Automatic Dryer - Almond | \$319.95 |
| 19" Ref. with ice maker - Almond | \$749.95 |
| 16" Upright Freezer, Hi-Efficiency - White | \$469.95 |
| 22" Upright Freezer - White | \$459.95 |
| 25" Color Console TV w/Remote | \$729.95 |

Quantities limited on some items

Delivery & Installation included

Sears has a credit plan to suit most every need

Each of these advertised items is readily available for sale as advertised

Satisfaction Guaranteed or Your Money Back

Sears 100 S. Main Floydada, Texas

Convenient! Shop Sears Catalog by Phone 983-2862 SEARS, ROEBUCK AND CO.

son & Sons -

lders Mart

MEMORIAL DAY

be closed

Memorial Day

In Case Of

Emergency Call

983-5577

STAMP PRICE SPECIALS

More savings!

Remember what a penny could buy in the good old days? Well, take a good look at our good old thirty Stamp-Price Specials! For just a few pennies... and a 1/4 Saver Book of Green Stamps (30 Big 10's)... it's happy days are here again... every day! Stamp-Price Specials are just one more way we help you save money through Green Stamps. Every time you shop. Hurry in for your Stamp-Price Specials Saver Books. The more you shop... the more you save. Promise. Price 6/2/82

STAMP PRICE SPECIAL

5 lb Imperial Pure Cane
SUGAR
89¢
With One Filled
S&H Special Saver Book
\$1.49
Without Book

STAMP PRICE SPECIAL

1/2 Gallon Buddy's
MILK
49¢
With One Filled
S&H Special Saver Book
\$1.09
Without Book

STAMP PRICE SPECIAL

Jumbo Roll Hi-Dri
PAPER TOWELS
9¢
With One Filled
S&H Special Saver Book
69¢
Without Book

STAMP PRICE SPECIAL

Sunny Fresh Farm Grade A Medium
Eggs
19¢ doz
With One Filled S&H
Special Saver Book
79¢ doz
Without Book

24 Count Fla-Vor
ICE BARS
\$1.19

Mrs. Bairds 8 Pack Hot Dog - 5 Pack Hamburger
BUNS
59¢
or 1 1/2 lb Extra Thin
BREAD

Always the best in produce!
TAKE HOME THESE MONEY-SAVING SPECIALS

| | |
|--|---|
| California Firm Green LETTUCE 59¢ head | 4 Count Red Ripe Cello TOMATOES 65¢ |
| Golden Ripe BANANAS 3 lb 99¢ | Golden Delicious APPLES 59¢ lb |
| Texas Straight Neck YELLOW SQUASH 49¢ lb | New Crop K-V-S GREEN BEANS 59¢ lb |

UP TO \$1,000.00 CASH MONEY BACK
WHERE
EVERYBODY WINS EVERYTIME
WITH MONEY BACK CARDS

HERE'S HOW!

GUARANTEED

YOU PICK UP YOUR FREE MONEY BACK CARD TODAY OR WHEN YOU DO YOUR NEXT SHOPPING.

YOU BRING IT WITH YOU EACH TIME YOU SHOP AT OUR STORE.

YOUR FRIENDLY AND HELPFUL CASHIER WILL RECORD YOUR PURCHASES AND YOUR VISIT.

YOUR CONCERNED MANAGER WILL OPEN THE SEAL IN THE AWARD SECTION WHEN YOU HAVE COMPLETED YOUR CARD.

CAUTION: PLEASE DO NOT TAMPER WITH SEAL ON YOUR MONEY BACK CARD. IT MUST BE OPENED BY AUTHORIZED PERSONNEL ONLY TO BE VALID.

COMPARE THESE ODDS TO ANY OTHER PROGRAM AND YOU WILL SEE THE DIFFERENCE!

ODDS CHART EFFECTIVE MAY 1, 1982

| Cash Awards | Total Number of Awards | Odds of Winning |
|-------------|------------------------|-----------------|
| \$1,000.00 | 1 | 1 in 11,500 |
| 100.00 | 15 | 1 in 2,066 |
| 50.00 | 15 | 1 in 2,066 |
| 10.00 | 150 | 1 in 206 |
| 5.00 | 300 | 1 in 103 |
| 1.00 | 45,514 | 1 in 1 |

EVERY CARD WORTH A MINIMUM OF \$1.00 IN CASH WHEN PROPERLY PUNCHED

Thank You
BY GIVING YOU BACK SOME OF THE MONEY YOU SPEND AS YOU SHOP OUR STORE

Double On Wednesday With A \$5 Purchase Or More

buddy's
SUPERMARKET

VALUES IN THIS AD EFFECTIVE THRU WEDNESDAY, JUNE 2, 1982

220 South 2nd - Floydada

buddy's SUPERMARKET

220 SOUTH 2nd • 983-3149
 STORE HOURS:
 MON. THRU SAT. 8 A.M. 'TIL 10 P.M.
 SUNDAY 9 A.M. 'TIL 9 P.M.
 WE RESERVE THE RIGHT TO LIMIT QUANTITIES

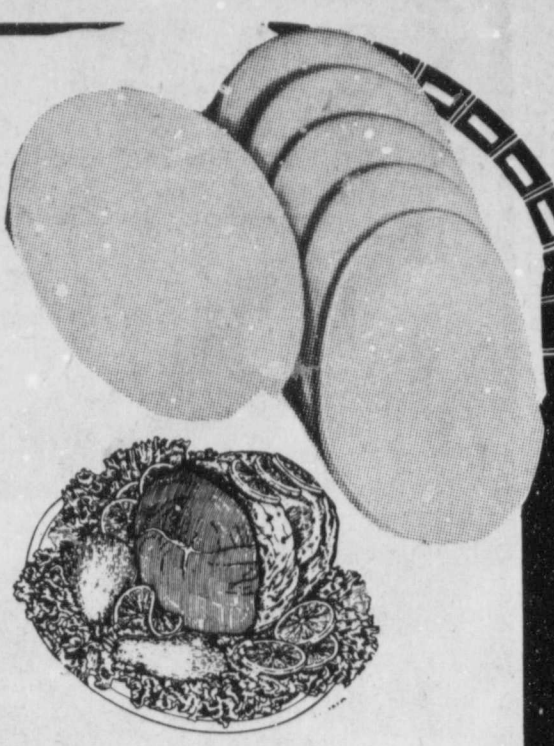


12 oz Smoky Canyon Chicken
BOLOGNA 79¢

Fresh Daily
GROUND BEEF \$1.29 lb

Halves Farmland
Boneless Ham \$2.19 lb

2 lb Kraft Velveta
CHEESE \$3.79



Wilson Smoked
SAUSAGE \$1.99 lb

12 oz Mr. Turkey Turkey
FRANKS 79¢

USDA Boneless
ROUND STEAK \$2.89 lb

Sunny Savings for your Cookout!



32 oz Vasic Hamburger
DILL CHIPS 99¢

10 lb Chef's Choice
CHARCOAL \$1.69

2 Quart Pre-Sweetened
KOOLAID 2/99¢

1/2 gal Borden's
ICE CREAM \$1.59

6-32 oz Plus Deposit
TAB OR COCA COLA \$1.99

- 4 Roll Delsey **BATHROOM TISSUE 89¢**
- 30 Count New Freedom **ANYDAY PADS \$1.69**
- 30 Count New Freedom **MINI PADS \$1.89**
- 30 Count New Freedom Super **MAXI PADS \$2.99**
- 125 Count Kleener Boutique **FACIAL TISSUE 69¢**
- 2 Liter-No Deposit-No Return **TAB OR COCA COLA \$1.09**
- 12 oz Nestles **CHOCOLATE CHIPS \$1.99**

- 16 oz French Squeeze **MUSTARD 69¢**
- 9 oz Frenchs Spicy Brown **MUSTARD 3/\$1.00**
- 10 oz Gebhardt's **HOT DOG SAUCE 3/\$1.00**

Zee Luau
NAPKINS 59¢
 100-Count

8 lb Bag Crystal Clear **ICE 89¢**
 30 oz Pre-Sweetened Cannister **KOOLAID \$2.99**

12 oz Dish Liquid
DAWN \$1.29

49 oz Giant Size
TIDE \$1.79

1 1/2" Size Ruffles
POTATO CHIPS 69¢

Frozen Foods
 6 Count Green Gaint Nibblents
CORN ON THE COB 99¢
 12 oz Minute Maid
LEMONADE 69¢
 6 oz White Swan
ORANGE JUICE 2/89¢

Health & Beauty Aids
 Twin Pack Summers
 Eve Disposable
DOUCHE 99¢
 7 oz Vaseline
PETROLEUM JELLY \$1.89
 8 Count Flip Flash 11
FLASH BULBS \$1.99

VALUES IN THIS AD EFFECTIVE THRU WEDNESDAY, JUNE 2, 1982



THIS LITTLE ONE IS NOT SURE WHETHER SHE WANTS HER PICTURE TAKEN OR NOT but we had to get a photo of her in her bonnet. Cobb Gilly, right, and daughter Kathy Steger, left, hold this darling, Heidi of Borger.

Heart Assn. announce new elected officers

The American Heart Association elected new officers at its regular monthly meeting, May 18.

The officers are: President, Ted Jordan; Vice-President, Marilyn Marler; Secretary, Joy Fulton; Treasurer, Tom Farris; Program co-chairmen, Anne Willson and Nancy Willson; Memorial Chairman, Olin Watson, Jr. and Reporter, Phyllis Harris.

The heart association would like to remind everyone that you may have your blood pressure taken, free of

charge, every Tuesday morning from 9:00 to 11:00 in the Floydada 1st National Bank Community Room.

If your group or organization would like a film or presentation concerning the heart, you may call Anne Willson or Nancy Willson.

The American Heart Association always welcomes volunteers to help with its different functions. If you would like to help with the heart association, please contact any of the above members.

Senior Citizen News

Esther Freeman, Reba Henry, Flora Fawver, and Mary Pearl Coward attended the meeting of the Rural Nutrition Project Council of the South Plains Advisory Council in Lubbock Thursday May 20.

The Senior Citizen Center was closed Friday, May 21 and Monday May 24 for repairs and installation of some new equipment.

L.D. Britton is in the Caprock Hospital recuperating from a broken hip. He

underwent surgery Thursday evening. He is in Room 127 and will appreciate cards and visitors.

Mrs. Annie Turner is visiting this week with her sister in Wichita Falls.

The Quilting ladies are keeping busy with their quilting. They have generously given \$100.00 to the fund for buying new tires for the mini-bus. This generous gift is appreciated by all those responsible for buying the tires as well as those who use the bus for transportation.

Senior Citizen Menu

May 31-June 4

Monday: Hamburger steak with mushroom gravy, hashed brown potatoes, cornbread, margarine, orange, banana, cantaloupe, fruit cup, milk

Tuesday: Meat pie, golden carrots, tossed salad with dressing, roll, margarine, plum cobbler, milk

Wednesday: Corned beef brisket,

boiled potatoes, steamed cabbage, cornbread, margarine, orange, banana, cantaloupe, fruit cup, milk

Thursday: Spaghetti with meat sauce, buttered green beans, tossed salad with dressing, French bread, margarine, bread pudding, milk

Friday: Fried chicken, cream gravy, buttered rice, oriental vegetables, roll, margarine, chocolate cake, milk

Creative Portraits

Portrait Package

Just \$12⁹⁵

With Deposit Of 99^c



2 8x10's, 2 5x7's, 10 walloets

Shop Rite

Friday, May 28th

10a.m.-6p.m.

Lakeview News

Oil wells scheduled to be drilled soon

BY JOYCE WILLIAMS

Rain over the community has ranged from three-tenths to one inch. We've had about three rains so far this week. No hail so far.

Guests at the Randy Bertrands included Mr. and Mrs. Connie Reed and Darlene of Panhandle. They were here for Old Settlers on Saturday afternoon, and Angie's piano recital Saturday night with other students of Dell Gray.

Connie Bertrand worked at the 1956 Study Club booth at the Arts and Crafts Show in the City Auto building Saturday during Old Settlers.

Mr. and Mrs. Lanny Glasscock attended a party Friday evening in the home of Mr. and Mrs. Brent Sanders. Mrs. Janie Hagood Assiter was guest of honor. Ann is practicing with her women's baseball team on week-ends. They will play with Lockney.

Mrs. Roy Fawver attended a Senior Citizens business meeting in Lubbock Thursday.

Greg Bishop visited the Odell Breeds Sunday evening.

Mrs. Viola Brown, Mr. and Mrs. Edmond Brown and Andy were in Albany and Cisco, Texas Friday through Sunday. Pat researched at the courthouse while the others visited old Ft. Griffin, where the late Mr. and Mrs. Hank Smith met and married before coming out on the Plains. They left in the Ft. Griffin Cemetery; their first baby and Aunt Hanks father and brother. The

Browns spent Friday night in Cisco with Viola's sister-in-law, Mrs. Mae Smith, whose husband, Henry Smith (Pete) was born at the Rock House in Blanco Canyon.

Mr. and Mrs. Carlton Fawver took Mrs. Roy Fawver for a Sunday afternoon drive down through Cedar Hill and Baker communities, looking at wheat, grass and the beautiful wildflowers. Rains and humidity have brought up an abundant display.

Miss Angie Glasscock was a hula girl in the program at Old Settlers.

Mrs. Odell Breed attended the High School graduation ceremony Monday night. Her niece, Treva Hambricht, was a graduate.

Mrs. Ronald Bertrand and daughter, Shelly, of Vernon, spent the weekend with Mr. and Mrs. William Bertrand. On Sunday night Faye and William attended a covered dish supper at the home of Mr. and Mrs. Thomas Warren.

Mrs. Nettie Adams visited Mrs. Roy Fawver on Friday afternoon.

Mrs. Mac Reep of Plainview visited her grandson, Lonnie Glasscock, and watched him rope calves at the arena Sunday evening.

Mrs. Rex Harrison is busy on the Little League and T-shirt leagues with her sons, Brandon and Jason. Brandon's team has their first game the first of June.

Mr. and Mrs. Joe Thurston are in East Texas to be with Aita's mother.

who had to be placed in the hospital.

Mr. and Mrs. Leslie Fawver visited Mrs. Roy Fawver Sunday evening. Flora played 84 at the home of Mrs. T.T. Hamilton on Wednesday.

The historic old Smith house in Crosbyton was recently purchased by two daughters of early Crosby County developer, Jullian Basset. The two ladies have done extensive renovation on the living quarters and have brought their hundred year old mother there to live with them.

Oil wells are being drilled directly to the east and to the west of our com-

munity, in a direct line with well that was producing at J.S. Hale's well in the Zimmerman well is being drilled in its early location, in paper: Floyd Co.; well: Corp. No. 1, J.S. Hale, et al. FEL, CP Huckabay OG, Abstract 2:389; 4 miles 7000 ft.

Floyd Co; NRM Field serve Inc., No. 1, A. L. 1940 FNL, 660 FEL, Survey; 12 miles SE Floyd



Byrd
PHARMACY
Phone 652-3353
LOCKNEY

We Your
From vitamins to all types of medications...

WHY BUY A GAS GRILL NOW?

Now is a great time to buy a new gas grill. Choose from 7 quality models... save a big 20%... and take the heat out of your kitchen, too.

You'll really enjoy the convenience of cooking out with a natural gas fired grill... love the flavor of outdoor cooking without the mess of charcoal or the hassle of LP tanks.

Order your gas grill from any Energas employee now and make the most of summer.



PATIO KITCHEN

PK grills provide the convenience of natural gas fired barbecuing... have heavy top and bottom aluminum castings and H-shaped stainless steel burners for years of long wear... and exclusive Range Rock briquettes with controlled porosity for even heat and less flare-up.

PK DELTA 1
Single-burner model with 270 sq. in. chromed steel cooking grid.

ONLY \$6.85 PER MONTH*

List price \$155.00
Less 20% -31.00
Plus installation 70.00
5% sales tax 9.70
1CASH PRICE \$203.70
1BUDGET PRICE* \$246.60

Budget terms: no down payment, \$6.85 per month for 36 months.

PK REGENT 1
Dual burner and controls let you use one-half or all of burner. 325 sq. in. cast iron cooking grid, plus 120 sq. in. chromed steel step-up grid for warming.

ONLY \$8.91 PER MONTH*

List price \$228.00
Less 20% -45.60
Plus installation 70.00
5% sales tax 12.62
1CASH PRICE \$265.02
1BUDGET PRICE* \$320.76

Budget terms: no down payment, \$8.91 per month for 36 months.

JACUZZI

Jacuzzi cast aluminum feature Char-Brown enamel rust-resistant porcelainized cast iron cooking grids, and cast iron and nickel alloy burner.

JET CHEF 4020
Two individually controlled burners in the top of the line grill with 275 sq. in. cooking grid plus 110 sq. in. raised warming rack, accurate sealed temperature gauge, and all-weather shell.

ONLY \$13.85 PER MONTH*

List price \$320.00
Less 20% -64.00
Plus installation 70.00
5% sales tax 15.40
1CASH PRICE \$421.00
1BUDGET PRICE* \$515.40

Budget terms: no down payment, \$13.85 per month for 36 months.

DUCANE

Ducane cast aluminum grills feature top-ported stainless steel burners, which last longer and save gas... porcelainized steel cooking grids... and a unique coal grate designed to prevent flare-ups and grease collection at the bottom of the firebox. Some models have Rotis-A-Grate, a separate vertical burner for rotissing from behind the meat.

CHAMPION 4000
Two burners — one main and one Rotis-A-Grate vertical burner, electronic ignition, 310 sq. in. cooking grid, rotissing motor and spit — all packaged in an elegant cart with large storage area, hardwood side shelf, heavy duty dual wheels, and connection hose.

ONLY \$21.67 PER MONTH*

List price \$711.00
Less 20% -142.20
Plus installation 45.00
5% sales tax 30.69
1CASH PRICE \$644.49
1BUDGET PRICE* \$780.12

Budget terms: no down payment, \$21.67 per month for 36 months.

CHALLENGER 800

Single-burner model with 310 sq. in. cooking surface.

ONLY \$8.57 PER MONTH*

List price \$216.00
Less 20% -43.20
Plus installation 70.00
5% sales tax 12.14
1CASH PRICE \$254.94
1BUDGET PRICE* \$308.52

Budget terms: no down payment, \$8.57 per month for 36 months.

CHALLENGER 1500

Dual burners, dual controls for each side, which save gas... you don't need to use the cooking surface of 485 sq. in.

ONLY \$12.27 PER MONTH*

List price \$300.00
Less 20% -60.00
Plus installation 70.00
5% sales tax 14.27
1CASH PRICE \$414.27
1BUDGET PRICE* \$500.54

Budget terms: no down payment, \$12.27 per month for 36 months.

TROPHY 2002

Three burners — two main and one Rotis-A-Grate vertical burner, electronic ignition, 310 sq. in. grid, rotissing motor and spit, and hardwood side shelf.

ONLY \$16.45 PER MONTH*

List price \$450.00
Less 20% -90.00
Plus installation 70.00
5% sales tax 21.45
1CASH PRICE \$551.45
1BUDGET PRICE* \$668.10

Budget terms: no down payment, \$16.45 per month for 36 months.

ASK ANY **ENERGAS** EMPLOYEE

* Budget terms available at 12.75% annual interest on declining balance. † Prices include sales tax and normal post-type installation, except for Ducane Champion 4000.

Sale ends July 31, 1982.

Softball Schedule

1982 FLOYDADA BASEBALL & SOFTBALL SCHEDULE

Girls Softball
7-10 yrs.
6:00 p.m. to 7:15 p.m.

June 1, Dyson's vs. Poole Well
June 3, Oden Chevrolet vs. Double LL & Script Printing
June 4, Dyson's vs. Oden Chevrolet
June 5, Poole Well vs. Double LL & Script Printing

June 7, Dyson's vs. Double LL & Script Printing
June 8, Poole Well vs. Oden Chevrolet
June 10, Poole Well vs. Dyson's

June 11, Double LL & Script Printing vs. Oden Chevrolet
June 14, Oden Chevrolet vs. Dyson's

June 15, Double LL-Script Printing vs. Poole Well
June 17, Double LL-Script Printing vs. Dyson's
June 18, Oden Chevrolet vs. Poole Well

T-BALL
[5-6 yrs.]
6:00 p.m. to 7:15 p.m.

June 1, City Auto vs. Fred Lipham Paving
June 3, Fuller Trucking vs. Hale's-Anderson's
June 4, City Auto vs. Fuller Trucking
June 5, Fred Lipham Paving vs. Hale's-Anderson's
June 7, City Auto vs. Hale's-Anderson's
June 8, Fred Lipham Paving vs. Fuller Trucking
June 10, Fred Lipham Paving vs. City Auto
June 11, Hale's-Anderson's vs. Fuller Trucking
June 14, Fuller Trucking vs. City Auto
June 15, Hale's-Anderson's vs. Fred Lipham Paving
June 17, Hale's-Anderson's vs. City Auto
June 18, Fuller Trucking vs. Fred Lipham Paving

T-SHIRT
[7-9 yrs.]
7:30 p.m. to 9:00 p.m.

June 1, Ponderosa vs. Davis Farm Supply
June 3, Thompson Pharmacy vs. First National Bank
June 4, Ponderosa vs. Thompson Pharmacy
June 5, Davis Farm Supply vs. First National Bank
June 7, Ponderosa vs. First National Bank
June 8, Thompson Pharmacy vs. Davis Farm Supply
June 10, Davis Farm Supply vs. Ponderosa
June 11, First National Bank vs. Thompson Pharmacy
June 14, Thompson Pharmacy vs. Ponderosa
June 15, First National Bank vs. Davis Farm Supply
June 17, First National Bank vs. Ponderosa
June 18, Davis Farm Supply vs. Thompson Pharmacy

1982-1983 School Calendar

| | |
|---------------------------------|-----------------------------|
| TEACHER IN-SERVICE REGISTRATION | AUGUST 19, 20, 23 |
| FIRST DAY OF SCHOOL | AUGUST 24 |
| LABOR DAY HOLIDAY | AUGUST 25 |
| THANKSGIVING HOLIDAYS | SEPTEMBER 6 |
| CHRISTMAS HOLIDAYS | NOVEMBER 25, 26 |
| | DECEMBER 20, 21, 22, 23, 24 |
| | 27, 28, 29, 30, 31 |
| TEACHER WORKDAY | JANUARY 14 |
| TEACHER IN-SERVICE | FEBRUARY 25 |
| SPRING BREAK | MARCH 14, 15, 16, 17, 18 |
| LAST DAY OF SCHOOL | MAY 24 |
| TEACHER IN-SERVICE | MAY 25 |
| TEACHER WORK-DAY | MAY 26 |

Floydadians enjoy California visitors

Dicie Pittman Goltz, McKinleyville, California, and Wilma Pittman Black, Woodland, California, formerly of Floyd County, and daughters of the late Jim Pittman, were in Floydada last week visiting with an aunt and uncle, Mr. and Mrs. George Smith.

All of them went to Blackwell, Texas on Tuesday to visit another aunt and uncle Georgia and Fletcher Stark. While here they also visited an aunt, Violet Senn of Petersburg, and a niece and her husband, Wynona and Paul

Willis of Petersburg. They attended the Reunion Saturday. Dicie from McKinleyville won the plaque for coming the greatest distance. They are granddaughters of the late Mr. and Mrs. T.L. Pittman.



Part of the antique car collection that was in the Old Settlers Day parade Saturday, May 22.

1983 Tri-County Schedule

2971
Roosevelt, Carl Craig, 842-3581, home: 762-0571, business
Lockney, Rodger Stapp, 652-3429 or 652-2354
Petersburg, Junebug Miller, 667-3407
Abernathy, Laurin Prather, 298-2790
Floydada, Tommy Cathey, 983-2144 or 983-3189

Team Contacts
Idalou, Dan Bell, 892-2995
Roosevelt, Denny Thomas, 842-3481
Lockney, Roy Turley, 652-2589 or 652-3326
Petersburg, Joel Bruington, 667-2240 or 667-2231
Abernathy, Lee Blanco, 298-2227
Floydada, Ritchie Crow, 983-2408 or 697-2631

The end-of-season tournament will be held at Idalou during the week of July 11-17. The pre-tournament meeting will be July 11, Sunday, at 2 p.m. at the ball park. Coaches for each town are expected to attend to discuss rules and to draw for bracket position. Any town not sending a team to the tournament is expected to pay a fine of \$100 to the host town. This is in accordance to Tri-County rules.

1983 Tri-County Schedule for 15-16 Year Olds

Monday May 31
Petersburg at New Deal
Lockney at Idalou

Thursday June 3
Idalou at Petersburg
New Deal at Lockney

Monday June 7
Idalou at New Deal
Petersburg at Lockney

Thursday June 10
New Deal at Petersburg
Idalou at Lockney

Monday June 14
Petersburg at Idalou
Lockney at New Deal

Thursday June 17
New Deal at Idalou
Lockney at Petersburg

Monday June 21
Petersburg at New Deal
Lockney at Idalou

Thursday June 24
Idalou at Petersburg
New Deal at Lockney

Monday June 28
Idalou at New Deal
Petersburg at Lockney

Thursday July 1
New Deal at Petersburg
Idalou at Lockney

Monday July 5
Petersburg at Idalou
Lockney at New Deal

Thursday July 8
New Deal at Idalou
Lockney at Petersburg

All games are scheduled to begin at 8:30 p.m. Any change in the schedule will be handled by the two towns involved. One and one-half hours of notification will be enough notification in case of rain-outs.

The end-of-season tournament will be at New Deal during the week of July 11-17. The pre-tournament meeting will be Saturday, July 10, at 6 p.m. at the New Deal ball park. Coaches for each town are expected to attend to discuss rules and to draw for bracket position. Any town not sending a team to the tournament is expected to pay a fine of \$100 to the host town. This is in accordance to Tri-County rules.

Town Contacts
Idalou, Dan Bell, 892-2995 or 892-2971
Petersburg, Junebug Miller, 667-3407
Lockney, Roy Turley, 652-2589 or 652-3326
New Deal, Kirby Huffman, 763-3321 or 746-6101

Team Contacts
Idalou, Roseno Mojica, 892-3298 or 892-2503
Petersburg, Alan Fullingim, 667-3480
Lockney, Arnold Perales, 652-2143 or 652-2293
New Deal, Sam Herron, 746-5314

South Plains observes graduation

Graduation exercises for graduates of the three campuses of South Plains College were held on Friday, June 25. Candidates for graduation were: Don Davis and Lorenzo G. Martinez. Graduates receiving an Associate of Applied Science degree in the field of Human Services were: Betty Jean Eubanks, Jackie Lynn Heckathorn, Linda Sue Lopez, Grace Le'Ette Turner, Joe M. Walker, and Melatework Bekele Wolde-Emmanuel. Licensed Vocational Nursing students receiving a Certificate of Proficiency included: Clara Burns, Norma C. Catano, Rebecca Ann Cognasi, Maria Collins, Tina Doran, Danny Estrada, Patricia D. Fairchild, Mary Gallaway, Jimmi Dale Hackler, Jo Ann Harrison, Elaine Ruth Holbert, Betty Ann Jordan, Sally Ann Martinez, Vickie Diane (Hines) McCarty, Margaret Florez Molinar, Virginia Vasquez Perales, Lynda (Lynn) Williams Rachel, and Becky Trevathan. Graduates earning

the Associate of Applied Science degree in Mid-Management included Nino Garcia and Alfredo C. Lozano. Graduating with an Associate of Applied Science degree in Radio and Television Servicing was Morris Dean Waters. Receiving an Associate of Applied Science in Real Estate was Robert Chavez. Graduates earning an Associate of Applied Science degree in Secretarial Science included: Sylvia (Mata) Barnes, Amelia Lynn Cline, Yolanda Contreras, Marcelina R. Pena, Esther Salas, and Olivia Vasquez.

Registration for classes for South Plains College at Plainview's first summer session will be held on Monday, May 31. Classes for the summer will begin on Wednesday, June 2. Anyone interested in beginning classes at the local community college and wishing further information should call 293-3605 or come by the campus at 708 Yonkers.



ALLSUP'S
CONVENIENCE STORES

"THERE'S ONE NEAR YOU"

PRICES EFFECTIVE MAY 27-29, 1982
SPECIALS GOOD WHILE SUPPLIES LAST
LIMITED SUPPLY

OPEN
MEMORIAL DAY

FLOYDADA



REFRESHING
COCA-COLA
2 LITER BTL. **\$1.09**

| | |
|--|---|
|  <p>KRAFT ASSORTED BARBECUE SAUCE 2 18 OZ. BTL. 89¢</p> |  <p>KRAFT VELVEETA 2 LB. BOX \$2.79</p> |
|  <p>BORDEN'S FRUIT DRINK 1 GAL. 99¢</p> |  <p>BORDEN'S ASSORTED YOGURT 3 8 OZ. CTNS. \$1</p> |
|  <p>BORDEN'S FUDGESICLES OR POPSICLES 6 CT. PKG. 99¢</p> | <p>COOKED FOODS SPECIAL</p> <p>BBQ Sandwich 99¢</p> |

SHOP ALLSUP'S FOR ALL YOUR HOLIDAY PICNIC NEEDS

Open

Open 7 am to 9 pm
Monday Thru Saturday

Mexican Food

Is Our Specialty

El Rancho Restaurant

Located 414 W. Houston On The Y
Parking In The Rear

Worms are eating NOW!

Two main and one vertical burner, electronic sq. in. grid, rotating motor, hardwood side shelf.

1st price...
Less 20%...
Plus installation...
5% sales tax...
CASH PRICE...
BUDGET PRICE...
\$16.45 per month for 36 months

Worms are eating NOW!

Two main and one vertical burner, electronic sq. in. grid, rotating motor, hardwood side shelf.

1st price...
Less 20%...
Plus installation...
5% sales tax...
CASH PRICE...
BUDGET PRICE...
\$16.45 per month for 36 months

in a direct line with...
Hale's well is to the...
erman well is being...
s early location, to...
oting from 5-20 of...
r: Floyd Co.; wild...
No. 1, J.S. Hale Jr.,...
CP Huckabay OG...
ract 2:389; 4 miles...
ft.

yd Co: NRM field...
Inc., No. 1 A. Lucie...
FNL, 660 FEL; Se...
y: 12 miles SE Flo...

We...
Your B...
From vitamins...
to all types of...
ications! See...

PAID BY RD

RS,
07

JACUZZI
Jacuzzi cast aluminum...
e Char-Brown enamel...
retained, c. at iron...
ron and nickel alloy...

CHEF 4020
Individually controlled burners...
op-of-the-line grill with 378...
ooking grid plus 110 sq. in...
arming rack, accurate...
temperature gauge, and...
shelf.

ONLY \$13.63 PER MONTH

List price...
Less 20%...
Plus installation...
5% sales tax...
CASH PRICE...
BUDGET PRICE...
Budget terms: no down payment, \$13.63 per month for 36 months.

CHALLENGER 1500
ual burners, dual controls...
each side, which saves gas...
you don't need to use the...
cooking surface of 405 sq. in.

ONLY \$12.27 PER MONTH

List price...
Less 20%...
Plus installation...
5% sales tax...
CASH PRICE...
BUDGET PRICE...
Budget terms: no down payment, \$12.27 per month for 36 months.

Two main and one vertical burner, electronic sq. in. grid, rotating motor, hardwood side shelf.

1st price...
Less 20%...
Plus installation...
5% sales tax...
CASH PRICE...
BUDGET PRICE...
\$16.45 per month for 36 months

rest on declining balance...
post-type installation.

1982.



PIONEER FARMING EQUIPMENT FLOAT took first place in the Best Pioneer Float division at the Old Settlers Day parade Saturday afternoon.

Floydada Nursing Home Happenings

BY LINDA EMERT
The weather has been pretty with hot days and cold nights most of the time. The cotton that is up is looking real good. All the wheat is great looking. Wheat harvest will be here before we know it. I will miss driving that truck this year, but I enjoy my job right here. I enjoy working with the residents and all the workers.

Monday, the residents enjoyed singing with Kim in music therapy.

Tuesday, we had a good group for Bible study. We are studying in Psalms. Wednesday, we played bingo. Each resident that played won one or more games. The winners are as follows: Sue Thompson with two games, W.C. Cates with one game, Una Clark with three games, Fay McMahan with two games, and Vera Duke with two games.

Thursday, we had arts and crafts. Each resident made a picture of their

choice. The Sunshine Sunday School Class brought out donuts for the residents. They really enjoyed them.

Friday, we showed two movies and served popcorn to the residents. We have a new resident, R.C. Rainer in 2 North.

Visitors this week were: Christine Robertson, Estelle Hinkle, Lois Guffee, Otis, Dana, Kim, and Jo Lee Ellis, Betty

Shirey, Charley L. Berry, Sr., Doris Snodgrass, Claude and Willene Lyles, Susie Mooney, Joyce and James Crowley, Allene Henry, Howard and Wanda Davenport, Ethel Barker, Gene Baird, Debra, Jason and Justin Bailey, Corene and Murry Stewart, Evelyn and Jack Crull and Joyce and James Crowley.

CAPROCK HOSPITAL NEWS

May 10-17

Juanita Bailey, Floydada, adm. 4-2, continues care, Hong.

Wiley Rogers, Floydada, adm. 4-6, continues care, Jordan.

Willie Pierce, Floydada, adm. 4-14, dis. 5-15, Hong.

Analee Brown, Floydada, adm. 4-25, dis. 5-12, Jordan.

Charles Epps, Floydada, adm. 4-26, continues care, Acar.

Jake Watson, Floydada, adm. 5-1, dis. 5-14, Jordan.

Donella Ann Thompson, Floydada, adm. 5-3, dis. 5-12, Hong.

Birdie Appling, Crosbyton, adm. 5-3, continues care, Jordan.

Robert Clem, Roaring Springs, adm. 5-6, expired 5-13, Jordan.

Geneva Bennett, Floydada, adm. 5-7, dis. 5-11, Jordan.

Reamer Rainer, Floydada, adm. 5-8, continues care, Hong.

Mitzi Nixon, Floydada, adm. 5-8, dis. 5-11, Jordan.

Helen Dunlap, Floydada, adm. 5-10, continues care, Hong.

Martha Griggs, Floydada, adm. 5-11, dis. 5-15, Hong.

Jolene Brown, Plainview, adm. 5-11, dis. 5-13, Hong.

Olga Pena, Floydada, adm. 5-11, dis. 5-13, Hong.

Mary Zacha Gregory, Floydada, adm. 5-12, dis. 5-14, Hong.

Earl Bishop, Floydada, adm. 5-13, continues care, Jordan.

Sandy Lutrick, Floydada, adm. 5-15, continues care, Jordan.

Beverly Barton, Floydada, adm. 5-16, continues care, Hong.

Charles Epps, Floydada, adm. 4-26, continues care, Acar.

Birdie Appling, Crosbyton, adm. 5-3, dis. 5-17, Jordan.

Reamer C. Rainer, Floydada, adm. 5-8, dis. 5-22, Hong.

Helen Dunlap, Floydada, adm. 5-10, dis. 5-21, Hong.

Earl Bishop, Floydada, adm. 5-13, continues care, Jordan.

Sandy Lutrick, Floydada, adm. 5-15, dis. 5-19, Jordan.

Beverly Barton, Floydada, adm. 5-16, dis. 5-18, Hong.

Adolfo Garcia, Floydada, adm. 5-17, dis. 5-19, Hong.

Dollie Cardinal, Lockney, adm. 5-19, continues care, Hong.

L.D. Britton, Floydada, adm. 5-20, continues care, Hong.

Cammy Lea Hancock, Floydada, adm. 5-20, dis. 5-22, Hong.

Teresa Valdez, Floydada, adm. 5-21, dis. 5-23, Hong.

Albert Juarez, Floydada, adm. 5-22, continues care, Jordan.

Claude Hughes, Floydada, adm. 5-22, continues care, Hong.

Birdie Appling, Crosbyton, adm. 5-22, continues care, Jordan.

Marvin Goolsby, Floydada, adm. 5-23, continues care, Jordan.

Ricardo Salazar, Crosbyton, adm. 5-23, continues care, Hong.

Otis Anderson, Floydada, adm. 5-24, continues care, Jordan.

Nadine Cooper, Roaring Springs, adm. 5-24, continues care, Hong.

Gary Hillyard, Matador, adm. 5-24, continues care, Hong.

George Weeks, Turkey, adm. 5-24, continues care, Hong.

Glenn Armstrong, Floydada, adm. 5-24, continues care, Hong.

May 17-24

Juanita Bailey, Floydada, adm. 4-2, dis. 5-17, Hong.

Wiley Rogers, Floydada, adm. 4-6, continues care, Jordan.

Lockney Care Center Capers

BY VICKIE HUTTON

This was a week filled with a lot of fun and excitement. Wednesday afternoon, the Early Living Class with their teacher, Cindy Ford, came to the Care Center and revealed their secret adopted grandparents. This was a special time for the residents. They have received many nice gifts during the year and the anticipation grew and grew. We send a special thanks to Mrs. Ford and these special young people for adding this special joy to our lives.

Our lucky bingo winners this week were Richard Lanham and Mary Jo Fielding. Our bingo cards really get a working over during our games. Bingo really generates a lot of excitement.

Thursday, Laverne Christian, Elizabeth Foster, Anna Zubia, Emma Araujo, Maria Segovia, and myself attended an exercise workshop at West Texas State University. This was a fun workshop and very informative. We are looking forward to incorporating what we learned into our exercise program for the residents.

Erma Walker, sister of Armine Torpely, was able to return home from the hospital last week. We were sure glad to have her back, she was truly missed.

Thomas Jones is still in Central Plains Regional Hospital in Plainview. We know he is feeling better because he still has his sense of humor.

Friday, Laverne Christian and myself presented our volunteer slide presentation to the Rotary Club. This gave us the opportunity to tell everyone about our special people. We send a special thanks to the Rotary Club for making us feel so welcome and the food was delicious.

Until next time; enjoy life.

Got Heating or Plumbing Problems?
CALL
Holmes Plumbing
Austin or Steve
Call Day or Night
983-2251

Just Arrived!
Staley Sweetlix Fly & Worm Blocks

- Fight Horn & Face Flies
- Kill Six Cattle Worms
- Stimulate Appetite and Improve Digestion
- Easy to Feed, Labor Saving Blocks
- Plus Supplemental Vitamins A & D

We offer these and other economical Sweetlix Blocks.

Lockney Co-op

T.J. BONDS

T.J. Bonds, 75, died Monday, May 17.

Services were at 2:30 p.m. Wednesday, May 19, in First Baptist Church with the Rev. Merle Weathers, retired pastor, and the Rev. Michael Hale, pastor, officiating. Burial was in Happy Cemetery by Schooler-Gordon Funeral Directors of Canyon.

Mr. Bonds was born in Valley Mills and came to Happy 52 years ago from Tulsa. He was a member of First Baptist Church and was a farmer. He married Eula Weathers in 1925 in Lockney.

Survivors include his wife; two sons, Lloyd Bonds and Kenneth Bonds, both of Dumas; two sisters, Lora Ponder of Los Angeles and Mattie Elrod of Wildorado; three brothers, Posy Bonds of Happy, Keller Bonds of Valley Mills, and Gesler Bonds of Bentonville, Arkansas; six grandchildren; and seven great-grandchildren.

WARREN DANIEL

Warren Daniel, former resident and pioneer of the Floyd County, Lone Star and South Plains communities died in Dallas on May 9, 1982.

The Daniel family migrated to Texas via Oklahoma from Missouri just after the turn of the century. Mr. Daniel spent his youth and most of his adult life farming in the Panhandle. In 1962 he moved to Dallas where he was engaged in the barber business until he retired. He was a member of the Pleasant Grove Church of Christ in Dallas.

He is survived by his wife Agnes Daniel; one daughter Jacky Baker Jewett of Irving, Texas; one son L. Brock Daniel of Galveston; seven grandchildren and nine great grandchildren.

FRANK MCCLURE

Services for Frank McClure, 72, of Floydada were at 2 p.m. Wednesday in South Plains Baptist Church with Rev. Cecil Osborne, pastor, officiating.

Burial was in Floyd County Memorial Park under direction of Moore-Rose Funeral Home.

He died at 6:15 a.m. Monday at Lubbock Methodist Hospital after a sudden illness.

The Erath County native married Fanny Bell Newman on May 22, 1927, in Crosbyton. He moved to Floyd County in 1953 from Crosbyton and was a retired farmer. He was a Baptist.

Survivors include his wife; a daughter, Jean Lee of Plainview; a son, Donald of Houston; three sisters, Lena Givens of Lubbock, Florence Hendrie of Fort Worth and Hazel Hendrie of Denton; eight grandchildren; and four great-grandchildren.

Grandsons served as pallbearers.

The Land Bank

Your long-term farm credit specialists



105 S. Wall
Tommy Ogden mgr.
983-2480

OBITUARIES

KATHERINE MEARS

Services for Mrs. Katherine Mears, 88, of Dallas were at 2 p.m. Tuesday in the Mansfield Church of Christ.

Burial was in the Mansfield Cemetery under direction of Blessing-McInnis Funeral Home of Mansfield.

Mary Katherine Mears born April 19, 1894 in Parker County, died May 23, 1982 at Dallas Osteopathic Hospital after a lengthy illness.

She was married to Andrew Jackson Mears. She lived in Lubbock from 1949-1969, in Mansfield 1969-1979 and in Grand Prairie from 1979-1982.

Surviving are two sons, Jack Mears of Wichita Falls and Clifton Mears of Grand Prairie; two daughters, Gladys Holland of Austin and Doris Rankin Gray of Arlington; eight grandchildren including Cindy Rankin Smith of Lockney, Tom Rankin of Midland, and Ted Rankin of Lubbock; and 14 great-grandchildren.

Doris Rankin Gray is also a former Lockney resident.

Services were at 2 p.m. Tuesday in First Baptist Church officiating. Burial was in Happy Cemetery by Schooler-Gordon Funeral Directors.

Mr. Nichols was born in Texas. He was a lifelong resident of the county. He was a veteran of World War I and was past commander of the Foreign War Post, Post No. 65. He was a member of the lodge. He was a member of the Calvary Baptist Church.

Survivors include his wife, Lillian Quintette in 1946 and Lillian Quintette in 1946 and Lillian Quintette in 1946 and Lillian Quintette in 1946.

Survivors include his wife, Lillian Quintette in 1946 and Lillian Quintette in 1946 and Lillian Quintette in 1946 and Lillian Quintette in 1946.

Survivors include his wife, Lillian Quintette in 1946 and Lillian Quintette in 1946 and Lillian Quintette in 1946 and Lillian Quintette in 1946.

Survivors include his wife, Lillian Quintette in 1946 and Lillian Quintette in 1946 and Lillian Quintette in 1946 and Lillian Quintette in 1946.

Survivors include his wife, Lillian Quintette in 1946 and Lillian Quintette in 1946 and Lillian Quintette in 1946 and Lillian Quintette in 1946.

Survivors include his wife, Lillian Quintette in 1946 and Lillian Quintette in 1946 and Lillian Quintette in 1946 and Lillian Quintette in 1946.

Survivors include his wife, Lillian Quintette in 1946 and Lillian Quintette in 1946 and Lillian Quintette in 1946 and Lillian Quintette in 1946.

Survivors include his wife, Lillian Quintette in 1946 and Lillian Quintette in 1946 and Lillian Quintette in 1946 and Lillian Quintette in 1946.

Survivors include his wife, Lillian Quintette in 1946 and Lillian Quintette in 1946 and Lillian Quintette in 1946 and Lillian Quintette in 1946.

Survivors include his wife, Lillian Quintette in 1946 and Lillian Quintette in 1946 and Lillian Quintette in 1946 and Lillian Quintette in 1946.

Survivors include his wife, Lillian Quintette in 1946 and Lillian Quintette in 1946 and Lillian Quintette in 1946 and Lillian Quintette in 1946.

Survivors include his wife, Lillian Quintette in 1946 and Lillian Quintette in 1946 and Lillian Quintette in 1946 and Lillian Quintette in 1946.

Survivors include his wife, Lillian Quintette in 1946 and Lillian Quintette in 1946 and Lillian Quintette in 1946 and Lillian Quintette in 1946.

Survivors include his wife, Lillian Quintette in 1946 and Lillian Quintette in 1946 and Lillian Quintette in 1946 and Lillian Quintette in 1946.

Survivors include his wife, Lillian Quintette in 1946 and Lillian Quintette in 1946 and Lillian Quintette in 1946 and Lillian Quintette in 1946.

Survivors include his wife, Lillian Quintette in 1946 and Lillian Quintette in 1946 and Lillian Quintette in 1946 and Lillian Quintette in 1946.

Survivors include his wife, Lillian Quintette in 1946 and Lillian Quintette in 1946 and Lillian Quintette in 1946 and Lillian Quintette in 1946.

Survivors include his wife, Lillian Quintette in 1946 and Lillian Quintette in 1946 and Lillian Quintette in 1946 and Lillian Quintette in 1946.

Survivors include his wife, Lillian Quintette in 1946 and Lillian Quintette in 1946 and Lillian Quintette in 1946 and Lillian Quintette in 1946.

Survivors include his wife, Lillian Quintette in 1946 and Lillian Quintette in 1946 and Lillian Quintette in 1946 and Lillian Quintette in 1946.

Survivors include his wife, Lillian Quintette in 1946 and Lillian Quintette in 1946 and Lillian Quintette in 1946 and Lillian Quintette in 1946.

Survivors include his wife, Lillian Quintette in 1946 and Lillian Quintette in 1946 and Lillian Quintette in 1946 and Lillian Quintette in 1946.

Survivors include his wife, Lillian Quintette in 1946 and Lillian Quintette in 1946 and Lillian Quintette in 1946 and Lillian Quintette in 1946.

Survivors include his wife, Lillian Quintette in 1946 and Lillian Quintette in 1946 and Lillian Quintette in 1946 and Lillian Quintette in 1946.

Survivors include his wife, Lillian Quintette in 1946 and Lillian Quintette in 1946 and Lillian Quintette in 1946 and Lillian Quintette in 1946.

Survivors include his wife, Lillian Quintette in 1946 and Lillian Quintette in 1946 and Lillian Quintette in 1946 and Lillian Quintette in 1946.

Survivors include his wife, Lillian Quintette in 1946 and Lillian Quintette in 1946 and Lillian Quintette in 1946 and Lillian Quintette in 1946.

Survivors include his wife, Lillian Quintette in 1946 and Lillian Quintette in 1946 and Lillian Quintette in 1946 and Lillian Quintette in 1946.

Survivors include his wife, Lillian Quintette in 1946 and Lillian Quintette in 1946 and Lillian Quintette in 1946 and Lillian Quintette in 1946.

Survivors include his wife, Lillian Quintette in 1946 and Lillian Quintette in 1946 and Lillian Quintette in 1946 and Lillian Quintette in 1946.

Survivors include his wife, Lillian Quintette in 1946 and Lillian Quintette in 1946 and Lillian Quintette in 1946 and Lillian Quintette in 1946.

Survivors include his wife, Lillian Quintette in 1946 and Lillian Quintette in 1946 and Lillian Quintette in 1946 and Lillian Quintette in 1946.

Survivors include his wife, Lillian Quintette in 1946 and Lillian Quintette in 1946 and Lillian Quintette in 1946 and Lillian Quintette in 1946.

Survivors include his wife, Lillian Quintette in 1946 and Lillian Quintette in 1946 and Lillian Quintette in 1946 and Lillian Quintette in 1946.

Survivors include his wife, Lillian Quintette in 1946 and Lillian Quintette in 1946 and Lillian Quintette in 1946 and Lillian Quintette in 1946.

Survivors include his wife, Lillian Quintette in 1946 and Lillian Quintette in 1946 and Lillian Quintette in 1946 and Lillian Quintette in 1946.

Survivors include his wife, Lillian Quintette in 1946 and Lillian Quintette in 1946 and Lillian Quintette in 1946 and Lillian Quintette in 1946.

Survivors include his wife, Lillian Quintette in 1946 and Lillian Quintette in 1946 and Lillian Quintette in 1946 and Lillian Quintette in 1946.

Survivors include his wife, Lillian Quintette in 1946 and Lillian Quintette in 1946 and Lillian Quintette in 1946 and Lillian Quintette in 1946.

J. HAROLD PERKINS

J. Harold Perkins, 67, died Thursday, May 20, at the Baptist Hospital in Amarillo after a lengthy illness of a year.

Services were at 2 p.m. Thursday in Lemons Memorial Church, minister of education officiating.

Burial was in Plainview Memorial Park under direction of Lemons Funeral Home.

The former Estella Harris, was born January 24, 1910, in Chico. She grew up in Wise County and moved to Floyd County in 1924, where she attended school in Lakeview.

She married Ray Nelson September 21, 1930, in Plainview. Following her marriage, she lived in Floyd County and moved to Petersburg in 1946. She moved to Plainview in 1950.

Mrs. Nelson was a member of the First Baptist Church and of the Hale County Senior Citizen's Association.

Survivors include her husband; one daughter, Mrs. Bob (Jane) Pillow of Hale Center; one son, Donald Nelson of Burnsville, Minnesota; two sisters, Ruby Wofford of Plainview and Mary Griffith of Lockney; and six grandchildren.

Nephews served as pallbearers.

Services were at 2 p.m. Monday in the chapel of the First Baptist Church with Rev. Shelby Baucum, minister of education officiating.

Burial was in Plainview Memorial Park under direction of Lemons Funeral Home.

The former Estella Harris, was born January 24, 1910, in Chico. She grew up in Wise County and moved to Floyd County in 1924, where she attended school in Lakeview.

She married Ray Nelson September 21, 1930, in Plainview. Following her marriage, she lived in Floyd County and moved to Petersburg in 1946. She moved to Plainview in 1950.

Mrs. Nelson was a member of the First Baptist Church and of the Hale County Senior Citizen's Association.

Survivors include her husband; one daughter, Mrs. Bob (Jane) Pillow of Hale Center; one son, Donald Nelson of Burnsville, Minnesota; two sisters, Ruby Wofford of Plainview and Mary Griffith of Lockney; and six grandchildren.

Nephews served as pallbearers.

Services were at 2 p.m. Monday in the chapel of the First Baptist Church with Rev. Shelby Baucum, minister of education officiating.

Burial was in Plainview Memorial Park under direction of Lemons Funeral Home.

The former Estella Harris, was born January 24, 1910, in Chico. She grew up in Wise County and moved to Floyd County in 1924, where she attended school in Lakeview.

She married Ray Nelson September 21, 1930, in Plainview. Following her marriage, she lived in Floyd County and moved to Petersburg in 1946. She moved to Plainview in 1950.

Mrs. Nelson was a member of the First Baptist Church and of the Hale County Senior Citizen's Association.

Survivors include her husband; one daughter, Mrs. Bob (Jane) Pillow of Hale Center; one son, Donald Nelson of Burnsville, Minnesota; two sisters, Ruby Wofford of Plainview and Mary Griffith of Lockney; and six grandchildren.

Nephews served as pallbearers.

Services were at 2 p.m. Monday in the chapel of the First Baptist Church with Rev. Shelby Baucum, minister of education officiating.

Burial was in Plainview Memorial Park under direction of Lemons Funeral Home.

The former Estella Harris, was born January 24, 1910, in Chico. She grew up in Wise County and moved to Floyd County in 1924, where she attended school in Lakeview.

She married Ray Nelson September 21, 1930, in Plainview. Following her marriage, she lived in Floyd County and moved to Petersburg in 1946. She moved to Plainview in 1950.

Mrs. Nelson was a member of the First Baptist Church and of the Hale County Senior Citizen's Association.

Survivors include her husband; one daughter, Mrs. Bob (Jane) Pillow of Hale Center; one son, Donald Nelson of Burnsville, Minnesota; two sisters, Ruby Wofford of Plainview and Mary Griffith of Lockney; and six grandchildren.

Nephews served as pallbearers.

Services were at 2 p.m. Monday in the chapel of the First Baptist Church with Rev. Shelby Baucum, minister of education officiating.

Burial was in Plainview Memorial Park under direction of Lemons Funeral Home.

The former Estella Harris, was born January 24, 1910, in Chico. She grew up in Wise County and moved to Floyd County in 1924, where she attended school in Lakeview.

She married Ray Nelson September 21, 1930, in Plainview. Following her marriage, she lived in Floyd County and moved to Petersburg in 1946. She moved to Plainview in 1950.

Mrs. Nelson was a member of the First Baptist Church and of the Hale County Senior Citizen's Association.

Survivors include her husband; one daughter, Mrs. Bob (Jane) Pillow of Hale Center; one son, Donald Nelson of Burnsville, Minnesota; two sisters, Ruby Wofford of Plainview and Mary Griffith of Lockney; and six grandchildren.

Nephews served as pallbearers.

TOUGH CASE FOR YOU

WE HAVE A TOUGH CASE FOR YOU...OVER \$1,500,000 IN FARM AND CONSTRUCTION EQUIPMENT THAT MUST BE SOLD BY JUNE 15th. NOW IS THE TIME TO CASH IN ON A GREAT DEAL. SO COME BY ONE OF OUR FOUR LOCATIONS AND LET US STATE OUR CASE.

LUBBOCK AG TRACTORS

| | WAS | NOW |
|-------------------------------------|---------------------|---------------------|
| 1968 880 David Brown only 1220 hrs. | 7000 ⁰⁰ | 5000 ⁰⁰ |
| 1979 2470 Cab Air PTO 4 Remotes | 32500 ⁰⁰ | 29500 ⁰⁰ |
| 1980 4490 Cab Air PTO 4 Remotes | 41500 ⁰⁰ | 37500 ⁰⁰ |
| 1976 1570 Cab Air PTO 4 Remotes | 19500 ⁰⁰ | 17500 ⁰⁰ |
| 1977 1175 Cab Air | 16500 ⁰⁰ | 15000 ⁰⁰ |
| 1978 1210 David Brown | 11500 ⁰⁰ | 10000 ⁰⁰ |
| 1975 2670 Cab Air | 21500 ⁰⁰ | 19000 ⁰⁰ |
| 1978 990 David Brown | 8500 ⁰⁰ | 7000 ⁰⁰ |
| 1980 2590 Cab Air | 36500 ⁰⁰ | 33000 ⁰⁰ |
| 1972 1070 Cab New Engine | 12500 ⁰⁰ | 11000 ⁰⁰ |
| 1972 1070 Cab Air | 10000 ⁰⁰ | 9000 ⁰⁰ |
| 1978 1570 Cab Air Radial Duals | 23600 ⁰⁰ | 21000 ⁰⁰ |
| 1972 1175 Cab Air | 8500 ⁰⁰ | 7000 ⁰⁰ |
| 1972 1070 Cab Air | 7000 ⁰⁰ | 6000 ⁰⁰ |
| 1970 1170 Cab Air Good Rubber | 7000 ⁰⁰ | 5000 ⁰⁰ |
| 1975 1370 Cab Air New Tires | 12000 ⁰⁰ | 11800 ⁰⁰ |
| 1981 1390 Case with 56 Loader | 18000 ⁰⁰ | 16200 ⁰⁰ |
| 1978 4440 JD Cab Air | 27500 ⁰⁰ | 25000 ⁰⁰ |
| 1981 4440 JD Cab Air 800 hrs. | 32500 ⁰⁰ | 28000 ⁰⁰ |
| 4010 JD LP & Stripper | 8500 ⁰⁰ | 7500 ⁰⁰ |
| Oliver 1800 LP & Stripper | 7500 ⁰⁰ | 6500 ⁰⁰ |
| Oliver 1550 D | 3500 ⁰⁰ | 2500 ⁰⁰ |
| 1978 1HC 1086 Cab Air | 17900 ⁰⁰ | 16000 ⁰⁰ |
| 1976 1HC 1466 Cab Air | 13500 ⁰⁰ | 11500 ⁰⁰ |

- Interest Free 6mo. Leasing on Farm Tractors.
- 10% APR Financing 1st Year
- 50/50 60 Day Powertrain Warranty on all AG Tractors
- F.O.B. Case Power & Equipment.



LAMESA AG TRACTORS

| | SOLD | 36800 ⁰⁰ |
|-------------------------------|---------------------|---------------------|
| 1980 Case 2590 Cab Air | 37800 ⁰⁰ | 35800 ⁰⁰ |
| 1980 Case 2590 Cab Air | 38500 ⁰⁰ | 36500 ⁰⁰ |
| 1980 Case 2590 Cab Air | 38500 ⁰⁰ | 36500 ⁰⁰ |
| Case 900 | 3000 ⁰⁰ | 2750 ⁰⁰ |
| JD 4630 Cab Air New Tires | 24500 ⁰⁰ | 22500 ⁰⁰ |
| JD 3010 | 6000 ⁰⁰ | 5200 ⁰⁰ |
| 1HC 1086 Cab Air | 18900 ⁰⁰ | 17900 ⁰⁰ |
| 1HC 1086 Cab Air | 17500 ⁰⁰ | 15700 ⁰⁰ |
| 1HC 1486 Cab Air Low Hours | 19900 ⁰⁰ | 18900 ⁰⁰ |
| 1HC 1486 Cab Air | 19000 ⁰⁰ | 17000 ⁰⁰ |
| 1HC 1086 Cab Air | 19000 ⁰⁰ | 17800 ⁰⁰ |
| 1HC 806 & Stripper New Engine | 10600 ⁰⁰ | 8600 ⁰⁰ |

IMPLEMENTS

| | | |
|------------------------------|---------------------|---------------------|
| Bush Hog Module Builder | 19500 ⁰⁰ | 17600 ⁰⁰ |
| Towner 4 Disc Plow | 15500 ⁰⁰ | 13500 ⁰⁰ |
| D15 Disc 16' Offset | 3500 ⁰⁰ | 3150 ⁰⁰ |
| Hesston 3000 Stripper | 9000 ⁰⁰ | 8000 ⁰⁰ |
| 1981 7ft. 3pt Blade Like New | 650 ⁰⁰ | 500 ⁰⁰ |

LITTLEFIELD TRACTORS

| | | |
|------------------------|---------------------|---------------------|
| 1980 Case 2590 Cab Air | 38500 ⁰⁰ | 36500 ⁰⁰ |
| 1980 Case 2590 Cab Air | 36500 ⁰⁰ | 32500 ⁰⁰ |
| 1980 Case 2090 Cab Air | 27500 ⁰⁰ | 25500 ⁰⁰ |
| Case 1175 Cab Air | 12500 ⁰⁰ | 10000 ⁰⁰ |
| Case 1175 Cab Air | 11500 ⁰⁰ | 9000 ⁰⁰ |
| 1HC 1466 Cab Air | 10000 ⁰⁰ | 9000 ⁰⁰ |

IMPLEMENTS

| | | |
|----------------------------------|--------------------|--------------------|
| Case RP 24 Offset Like New | 4000 ⁰⁰ | 3750 ⁰⁰ |
| Case 600 4 Bottom Plow Like New | 4800 ⁰⁰ | 4300 ⁰⁰ |
| 18 Row Sand Fighter | 1500 ⁰⁰ | 1200 ⁰⁰ |
| 14' Birch Tandem Disc | 1150 ⁰⁰ | 950 ⁰⁰ |
| 4 Row Packer | 1025 ⁰⁰ | 925 ⁰⁰ |
| Woods Shredders New | 4650 ⁰⁰ | 4000 ⁰⁰ |
| Case Model G Offset 14' Like New | 3950 ⁰⁰ | 3650 ⁰⁰ |
| M.F. 510 Diesel Combine | 7500 ⁰⁰ | 6500 ⁰⁰ |
| New Tye Planters Per Row | | 581 ⁰⁰ |

FLOYDADA

| | | |
|----------------------------|--------------------|--------------------|
| 9N Ford | 1750 ⁰⁰ | 1500 ⁰⁰ |
| New AMCO Disc Bedders | 3650 ⁰⁰ | 2100 ⁰⁰ |
| New 7 Bottom Case 400 Plow | 5600 ⁰⁰ | 3600 ⁰⁰ |

USED CONSTRUCTION EQUIP

LOADER BACKHOES

| | WAS | NOW |
|-------------------------------|---------------------|---------------------|
| Case 580D ROPS Canopy Std Hoe | 36000 ⁰⁰ | 33000 ⁰⁰ |
| Case 580C Cab Std Hoe | 25000 ⁰⁰ | 20000 ⁰⁰ |
| Case 580C Cab Std Hoe | 25000 ⁰⁰ | 20000 ⁰⁰ |
| Case 480C Cab Air Extendahoe | 22500 ⁰⁰ | 19500 ⁰⁰ |
| Case 580C ROPS Canopy Std Hoe | 20000 ⁰⁰ | 18500 ⁰⁰ |
| Case 580CK Std Hoe | 7500 ⁰⁰ | 6500 ⁰⁰ |
| JD 310 Loader Backhoe | 8500 ⁰⁰ | 7500 ⁰⁰ |

CRAWLER LOADERS

| | | |
|------------------------------|---------------------|---------------------|
| AC HG7G 1 1/2 YD with Ripper | 15000 ⁰⁰ | 12000 ⁰⁰ |
| AC HG7G 1 1/2 YD with Ripper | 15000 ⁰⁰ | 12000 ⁰⁰ |
| Cat 941 1 1/2 YD | 22500 ⁰⁰ | 20000 ⁰⁰ |

CRAWLER DOZERS

| | | |
|--|---------------------|---------------------|
| Cat D6 9Useries Hyd Blade | 7500 ⁰⁰ | 6500 ⁰⁰ |
| Case 1150C Low Hours 10' Power Angle Blade | 59000 ⁰⁰ | 53000 ⁰⁰ |

WHEEL LOADERS

| | | |
|--------------------------|---------------------|---------------------|
| Hough 90 3Yd with Cab | SOLD | 5500 ⁰⁰ |
| 1HC 260A with 1Yd Bucket | 10000 ⁰⁰ | 9000 ⁰⁰ |
| MF 40 with Box Blade | 8500 ⁰⁰ | 7500 ⁰⁰ |
| Case 480C with 3Pt Hitch | 22500 ⁰⁰ | 16500 ⁰⁰ |
| Case W18 2Yd 300hrs. | 60000 ⁰⁰ | 52000 ⁰⁰ |

EXCAVATORS

| | | |
|---------------------------|----------------------|----------------------|
| Drott 50 EC 1 1/4 Yd | 74000 ⁰⁰ | 67000 ⁰⁰ |
| Drott 50 EC 1 1/4 Yd | 115000 ⁰⁰ | 90000 ⁰⁰ |
| Drott 45 Rubber Tired 1Yd | 135000 ⁰⁰ | 122500 ⁰⁰ |
| Case 980 B 1Yd | 115000 ⁰⁰ | 90000 ⁰⁰ |

TRENCHERS

| | | |
|---------------------------------|---------------------|---------------------|
| Davis 30t4 Overhauled | 6000 ⁰⁰ | 4800 ⁰⁰ |
| Davis 1000 Crawler | 7500 ⁰⁰ | 5500 ⁰⁰ |
| Davis 7Hp Handle Bar New Engine | 2100 ⁰⁰ | 1700 ⁰⁰ |
| Case DH5 with Backhoe | 26500 ⁰⁰ | 22000 ⁰⁰ |
| Case DH4 Overhauled | 18000 ⁰⁰ | 15500 ⁰⁰ |

TRAILERS

| | | |
|-----------------------------|--------------------|--------------------|
| (2) MFI 800 LB New Trailers | 650 ⁰⁰ | 395 ⁰⁰ |
| 1 Belshe 2 Axle | 2500 ⁰⁰ | 2000 ⁰⁰ |
| 1 Belshe 2 Axle | 2200 ⁰⁰ | 1700 ⁰⁰ |
| 1 2 Axle Home Built | | 500 ⁰⁰ |

LUBBOCK
3202 SLATON HWY.
745-4451

LITTLEFIELD
E. HIGHWAY 84 BYPASS
385-4427

LAMESA
902 S. DALLAS
872-5861

FLOYDADA
101 SOUTH 12TH
983-2836

case

POWER & EQUIPMENT

SHOP
COMPARE

WANT ADS ARE YOUR BEST BUY!

For Sale

"WE SELL SLEEP"
Direct Mattress Co. New or renovated. For appointment call City Trim Shop. 983-2332. Floydada. tfn

EARLY AMERICAN love-seat and a cricket style rocker. Both good condition. 652-2379. call after 5 p.m. or weekends. Ltfnc

BROWN, PLAID, Herclon couch. Excellent condition. Two Early American end tables. Crossover toolbox and sun shade for pickup. Call after 5:00. 983-2931. TFN

TWIN BEDS, mattresses, box springs, frames, Pioneer AM-FM cassette deck stereo/ two speakers for car or pickup. RCA console TV. Call 983-3994 after 5 or weekends. TFN

FOR SALE: Camper shell for full bed pickup. Like new. Call after 5. 983-3918. TFN

2 USED PORTABLE B&W TV'S with maintenance agreements. \$50 each. 983-2862. tfn

FOR SALE: Hammond Piper Organ. Call 983-3143 or 983-3767. tfn

FOR SALE: Solid wood blonde bed. Interspring mattress and box springs. Slightly used. Reasonable. 983-2390. TFN

RELAX — Enjoy golf, swimming, camping. Will sell charter membership to Roaring Springs Ranch Club. Call Lawrence Royal, Plainview, 806-296-7367. 5-27c

WANT TO SELL ten piece living room suite. Call 983-3842 or 983-3858, or come by 106 E. Hallie. 5-27p

FOR SALE: Couch and chair, \$185.00. 983-5041. 5-27c

DINING ROOM SET, table with 4 chairs and china hutch with glass doors. All wood. 206 E. Jeffie. 5-27c

GREEN SHAG CARPET, 6 years old at \$2 square yard or \$150. Also a green 10x14 and a 12x14 at \$40 each. Call 983-2645. 5-27p

Farm Items

FOR SALE: Delinted cotton seed. High germination. Call 983-2028. TFN

YETTER REPLACEMENT ROTARY HOE WHEELS for ALL POPULAR MAKES. Only \$25.00 Each. Replace BEARINGS only \$3.71 each. Also HARD SURFACED 16 inch CHISEL PLOW SWEEPS only \$11.85 each. BROWN-MCMURTRY IMPLEMENT COMPANY, SILVERTON, TEXAS. PHONE 806-823-2441. 6-17c

SSAVES AGRICULTURAL BUILDINGS UNDELIVERED ALL STEEL BUILDING
Sizes start at 30x40x12 go to 100 wide. 30% thru 50% discounts. Must sell immediately. Easy erection. Call collect. Johnny Peters 512-349-4080. 6-3

Lost & Found

LOST IN ALLSUPS: Wallet — identification and important papers. \$10.00 reward. Call 983-5289. 5-27p

NOTICES

New Physician Hours
South Plains Health Provider
319 S. Main, Floydada
Clinic will be open
8 am to 5 pm
Monday thru Friday
Physician will only be in the clinic Monday thru Friday
afternoons from
1:30 to 4:00
Call 983-5371 for appointments

For Rent

FOR RENT: 1 bedroom apartment. Call Lockney Housing Development 652-2334 or go by 108 N. Main. tfn

FURNISHED TRAILER for summer rent. Available now. Call 983-2173. Off street parking. 6-3c

FOR RENT

The W.R. Daniel, Jr. house in the McCoy Community. Reasonable. Call W.R. Daniel, Sr. 983-3234. Box 148. Floydada, Texas.

ECONOMICAL STORAGE
TRY BARKER'S
Jewel Box-Mini Storage
and save your time and money.
Phone 652-2642.
Corner Main & Locust — Lockney, Texas.
Barker Building

STORAGE SPACE
BOATS, FURNITURE, ANYTHING, ETC. BY THE MONTH OR SIX MONTH 10% DISCOUNT.
West Texas Mini Storage
CALL WILSON BOND
983-3573 OR 983-2151

Want to Rent

WANT TO RENT 3 bedroom house in Lockney. Need to move on or before May 31, 1982. Call Joe Zorger between 8 a.m. and 5 p.m. Monday thru Friday at Moore-Rose Funeral Home, Floydada. 1-983-2525. 5-27p

WANT TO BUY OR RENT nice 3 bedroom home in Floydada. Willing to pay deposit. Needed by June 27. Call 983-3307. TFN

Wanted

WANT AN OIL & GAS LEASE ON YOUR ACREAGE?
CALL TODAY ON OUR NICKLE.
CALL TOLL FREE
1-800-592-1446
9 a.m. to 5 p.m. weekdays
OIL & GAS ASSOCIATES
P. O. DRAWER 952
MIDLAND, TEXAS 79702

Want To Buy

WANTED — Acreage with or without house. A anything from pasture land to a cotton field. 3 to 10 acres (or more). Located in the Floydada area. Couple will consider anything. Call 983-3736 after 5:00 p.m.

WANT TO BUY 3-point hitch post hole digger. 983-2300. 5-27p

WANTED TO BUY irrigated or dryland farm in Floyd or surrounding area. Write Box XRO, c/o Hesperian, 111 E. Missouri, Floydada. tfn

WANT TO BUY a Lazy-Boy recliner. City Trim Shop - 983-2332. 6-3c

Farm Services

LAND LEVELING, terraces, bench leveling, and pump pits, all types of dirt work for soil and water conservation. Dewie Parson 983-2646. tfn

CUSTOM APPLICATION of herbicides. Bill Wisdom, 652-3541. Ltfn

Portable disc rolling
Lawson Farm Supply Inc.,
Floydada 983-3940

Nash Irrigation Supply. Plastic pipelines, aluminum pipe, lake pumps and accessories. 983-5231.

LEAK REPAIR
No job too small or large!
Pit Digging.
Juarez Backhoe Service
983-3393

Grease Pit Pumping Cess Pool
RUBEN DELEON
318 W. Mississippi
Floydada, Texas 79235
983-2171 OR 983-2449
Day or Night
Mud Holes Septic Tank

FLOYDADA IRON & METAL
We buy Scrap Iron, Junk Cars, Aluminum Cans, Batteries, and sell new and used steel.
Location - East Ross
Call 983-2305

Services

SHARPENING: All garden tools, lawn mower blades, saws, scissors, etc. Sharpened by professional sharpeners. O.C. Allison, 652-2134. LTFN

15 YEAR OLD WANTS TO MOW your yard. Call 983-3273 TFN

WILL MOW LAWNS. Call Keith Hancock. 983-2459 after 4:00 p.m. 5-27

WILL DO housecleaning. Call 983-3003. Monday through Thursdays.

I WILL DO CUSTOM QUILTING in my home. 652-2130. Mrs. R.L. Lackey. L5-27c

WILL DO small jobs, lawnmower and engine repair, and small items. Call 652-2637. L6-10p

WANT TO BABY SIT for summer. Call 983-3338. 5-27c

Wall papering and painting
Call Nancy Mayo 983-2667
or Rena Turner 983-5130

Sharpen all cutting blades, hand saws, circle saws, garden and yard tools, scissors, knives, drill bits, plane blades. Pick-up service provided locally.
Bill Gibbs
983-3964
106 E. Jeffie

Business Services

ADAMS WELL SERVICE Complete Irrigation Service. All sizes submergible pumps in stock. One day service. 983-5003. tfn

LOCKSMITH: Locks opened. Locks repaired. Keys made for locks that have no keys. Duplicate keys made. Deadbolts installed. 24-hr. Mobile Service throughout area. Don Probasco. Pro-Lock shop. 983-3834.

POOLE WELL SERVICE AND RADIATOR SHOP
Irrigation and domestic.
407 E. Houston
983-5610 or 983-2285

"Carpet Need Cleaning?"
Let me do the work for you. Dry foam, 10 cents sq. foot. Also home and auto upholstery. Call Jack Moore 983-3033, after 5 p.m. tfn

Insulation
Installed & Guaranteed
Free Estimates
22 Years This Area
Marr Insulation
Lockney
652-3593

Script Printing & Office Supply
*Commercial Printing
*Office supplies & Furniture
*Business Machines
108 S. Main
Floydada
983-5131

BICYCLE REPAIR SERVICE
Western Auto Store
201 S. Wall Street
Floydada 983-2302

RICHARD WARD
Hochheim Prairie Farm Mutual
Insurance Association
Non Deductible Policy
at a lower cost
Box 15 Mobile 983-5733
Dougherty, TX 79231
Home 983-2973

Employment

HOUSECLEANING AND IRONING help needed one day a week. Must furnish own transportation. Good wages for reliable person. Call 983-5084. 5-27c

LICENSED VOCATIONAL NURSE South Plains Health Provider, a non profit medical organization in Floydada offers a unique opportunity for a licensed vocational nurse to work in a clinical setting atmosphere. Bilingual preferred. Supervisory skills needed. Salary commensurate with qualifications and experience. Working hours 8 to 5 Monday thru Friday. Excellent fringe benefits package. For more information call Walt at 293-8561 in Plainview. An equal opportunity employer.

J.P. WILLIAMS
Ph. 652-2326
WEED CONTROL
On Lawns
INSECT CONTROL
On Trees & Shrubs
Control Of
**BINDWEED, RAGWEED,
BLUEWEED & JOHNSON GRASS**
On Farms
C.A. Lic. No. 22453 Bus. Lic. No. 3106

TURNER REAL ESTATE
983-2635 Farms Ranches Floydada, Texas

Hollis R. Bond Real Estate
PHONE 983-2151
107 S. 5th FLOYDADA

Automotive

1980 GMC PICKUP, short wheel base, 6 cyl. - 4 speed, 12/24 battery, air compressor-tank and hose - 24,000 miles. \$5,250.00. 652-3742. LTFN

1981 CHEVY CHEVETTE. Excellent condition. Call after 6 p.m., 983-5577. 5-27p

1975 GRAN PRIX - Electric doors, windows and seats. AM-FM cassette, cruise, tilt steering wheel. Good condition. Call after 5 - (806) 347-2261. 5-27c

| | |
|--------------------|--------|
| 77 Chrysler 4-dr. | \$1500 |
| 77 Malibu 4-dr. | \$1950 |
| 71 LTD 2-dr. | \$ 850 |
| 75 LTD 2-dr. | \$1250 |
| 3-75 Malibus 2-dr. | \$1850 |
| 72 Vega 2-dr. | \$ 450 |
| 72 Olds 2-dr. | \$ 350 |

W.B. Eakin Car Lot
983-3616
Ralls Highway

Motorcycles

1981 KAWASAKI CSR650. 983-3273 after five. TFN

Auto Parts & Accessories

E-Z RIDER SHOCKS by Monroe. Buy 3 and the 4th is FREE. Free Installation. Don's Muffler Shop, 210 W. California Floydada, Texas. tfn

68 International Pickup engine, 1100 series, complete V-8 engine, ready to install. Can be seen and heard run at 625 E. Kentucky, Floydada. \$350.00. See Juan. 5-27p

ALTERNATOR & STARTER REPAIRS
Norrell Tractor Parts
114 W. Missouri
983-3417

CUSTOM EXHAUST WORK
Bruce Williams
Specializing in Glass Packs and Turbo Mufflers
At
DANS AUTO SERVICE
652-2462

DAN'S AUTO SERVICE
DAN TEUTON, Owner
Specializing in Automatic Transmission, Motor Tune-Ups, Auto Air Conditioning.
General Repair
We Have A BRAKE LATHE to handle all passenger car brake drums. See us for complete brake service.
Phone 652-2462

Shop Floyd County FIRST!

BOOTSTEPS

By

Mildred Crabtree Speer

To:
PARAMOUNT PUBLISHING COMPANY
1000 West Tenth, Amarillo, Texas 79101

Please send me the following book(s):

— copies BOOTSTEPS, hard cover, \$6.50 each

— copies BOOTSTEPS, paperback, \$4.95 each.

I enclose \$54 per book for tax and shipping.

TOTAL NUMBER BOOKS ORDERED: _____

TOTAL AMOUNT ENCLOSED: \$ _____

Please autograph my book(s) to: _____

I am attaching a separate sheet for further autograph instructions.

MAIL BOOK(S) TO:

Name _____

Address _____

City _____ State _____ Zip _____

Baptist Women hold meeting in Bunch' home

Baptist women of the First Baptist Church met in the home of Mrs. W.H. Bunch Wednesday for Bible Study, "Am I to Share My Home Too?"

Mrs. Thelma Crawford was leader of the program. Others assisting with the program were Mrs. T.L. Holland and Mrs. Lorene Newberry. Mrs. Bradley voiced the opening prayer.

Others present for refreshments and the program were Mesdames Eula Parrack, Queen Annie Lawson, Carrie Cline, Vada Meredith, Beulah Denison, Nettie Adams, Iva Benson, Evelyn Latta, Cleo Goins, Josephine Switzer, Lisa Howard, and May Garrett.

Area students named to Presidents and Deans Lists

Margaret Molinar and Tonya Nance of Lockney have been named to the President's List at South Plains College for the 1982 spring semester.

To qualify for placement on the President's List, SPC students must maintain a 4.0 or "straight A" grade point average for the semester. Students on the Dean's Honor List must maintain a minimum grade point average of 3.25. All honor students must enroll for a minimum of 12 semester hours.

"We wish to extend our congratulations to these fine students who have demonstrated the academic excellence which is found at South Plains College," said Dr. Bud Joyner, dean of arts and sciences. "We are always proud of the students who are named to the President's and Dean's Honor Lists at SPC."

A total of 153 students were named to the President's List for the spring, and 242 students were named to the Dean's Honor List.



POET RECOGNIZED — Mrs. Mildred Crabtree Speer, a nominee for Poet Laureate for the State of Texas, was honored recently by the Hi-Plains Chapter of the Poetry Society of Texas. Mrs. Speer, author of "Bootssteps — Poems of the West, Then and Now," is a renowned Panhandle poet, and has been widely published in the state and internationally. The book is illustrated by Eugene H. Brock and has 70 poems with 30 works of art in pen and ink. Mrs. Speer is the aunt of Mrs. John F. Speer of Floydada. Mrs. Speer is currently the alternate Poet Laureate of Texas and resides with her husband John at "September Acres," a retirement community northwest of Amarillo.

[Photo by Henry Bargas]

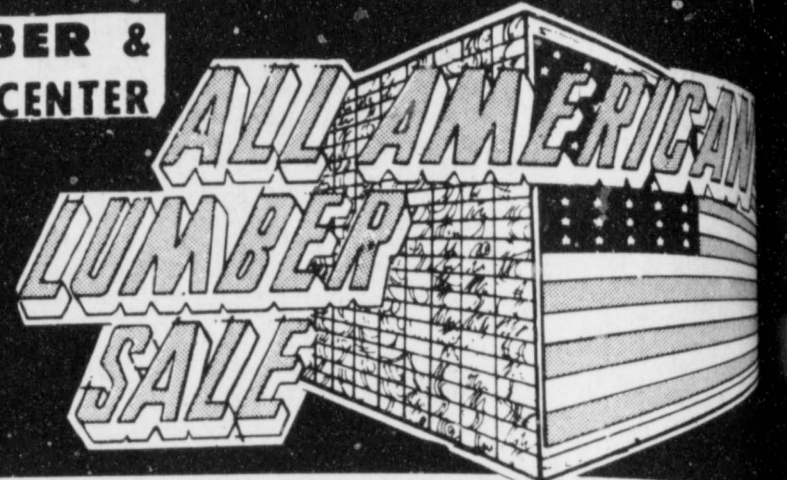


WHIRLERS SQUARE DANCE CLUB'S GRADUATION DANCE May 30th. Dudley Barber from Lubbock was the

caller. "Square dancing is friendly to all."

84 LUMBER & HOME CENTER

SALE DATES:
May 23
through
May 31



6' Patio Door
Mill Finish
With Screen
\$133.84

Fencing
Cedar
Picket 75¢
Landscape Ties \$3.54 used

Pre-Cut Lumber

| | | | | |
|---|---|--------|--------|--------|
| Sheathing Plywood 1/2" x 4' x 8' (CDX) \$6.49 ea. | Framing Lumber Construction Grade | | | |
| | 10 | 12 | 14 | 16 |
| Studs 2" x 4" x 92 5/8" \$1.31 ea. | 2x4 | 2x6 | 2x8 | 2x10 |
| | \$1.99 | \$2.29 | \$2.62 | \$2.90 |

Galvanized Steel Roofing
Build A Carport
Or
Deck Cover
Come To Your Nearest 84 Store For Details
\$150.00

Siding
3/4" x 4' x 8'
7/16" x 4' x 8' Hardboard \$10.29 ea.

Shingles
3 Tab
\$22.99
100 Sq. Ft. Self Sealing Cont. colors

Drywall
1/2" x 4' x 8' \$2.84

Metal Storage Sheds

| | | |
|----------|-----------|----------|
| 10' x 6' | Newburgh | \$142.84 |
| 10' x 9' | Newburgh | \$166.84 |
| 5' x 4' | Brentwood | \$77.84 |

Kitchen Cabinets
10% OFF
Regular Price
All Stock Items

Insulation
Roll In 3 1/2" R-11
6" R-19
Blow-In \$5.69

Power Attic Vent
\$46.84 ea.

Concrete Mix
\$2.69 per bag

Fiberglass Panels
Corrugated

| | |
|-------------|------------|
| Residential | Commercial |
| 8 \$2.45 | 8 \$7.39 |
| 10 \$2.35 | 10 \$9.24 |
| 12 \$5.29 | 12 \$10.99 |

Paint Many Other Paints On Sale
2 Gal. Int./Ext. \$12.29
Latex \$18.99
Hi-Bunch's
BPS Stain & Wood Pres. \$3.99
Latex Redwood Stain \$3.24

Stanley Tools
15-726 Hand Saws \$3.79
51-616 Wood Handle Hammer \$5.19
7088 Chain Door Guard \$1.79
4547 Locking Patio Door Bolt \$6.24

Barbed Wire
\$22.99 Per Roll

Carpeting
Per Sq. Yd. \$5.99
Carefree Shag \$6.50
Paydirt Tweed \$3.25
Artificial Grass \$2.24

We welcome Mastercard and Visa

84 LUMBER & HOME CENTER
In Plainview

CUSTOM SLAUGHTERING & PROCESSING

HALF LB \$1.29
HIND QUARTER LB \$1.49
FORE QUARTER LB \$1.19

Nice & Lean HAMBURGER \$1.29 LB
ARM ROAST \$1.89 LB
CHUCK ROAST \$1.59 LB
ROUND STEAK \$2.29 LB

Shurfresh 1/2 Gal Carton **ICE CREAM** \$1.39
Grade A Medium **EGGS** 59¢
Shurfresh 5 lb bag **SUGAR** \$1.28
Delsey 4 Roll Pkg **TOLIET TISSUE** 99¢
6-32 oz. **PEPSI COLA** \$1.59
Cans 6 Pak **PEPSI** \$1.49
Ruffles Frito Lay Reg \$1.29 **POTATO CHIPS** 89¢
Shurfresh 1 Gal **MILK** \$2.19
TOMATOES 49¢ LB
10 Lb Bag Utility **POTATOES** \$1.49
BANANAS 33¢ LB
Washington Golden Delicious **APPLES** 39¢ LB
Yellow **ONIONS** 19¢ LB

BLUE
We Give Circle W Blue Stamps Double on Wednesday

KEETERS GROCERY
7:30 a.m. - 7:30 p.m. 652-2191
We Redeem Food Stamps & WIC Cards
We Reserve The Right To Limit Quantities

Availability of water High Plains' key issue

Availability of water in the not-to-distant future is certainly a key issue on the High Plains. Not only is water a concern of politicians right now, but it has been and remains, vital to the West Texas and Panhandle farmer, whose prosperity affects the total economy.

Recent studies conducted at Washington State University and the University of Arkansas concerning petiole (leaf joint) nitrate monitoring of potato and cotton crops bears a certain relevancy and timeliness to the West Texas farmer in his growing dilemma. A&L Plains Agriculture Lab, a Lubbock based firm, has taken the germ of the Washington State and University of Arkansas research, adapted the theories, and conducted their own studies in petiole nitrate monitoring of High Plains cotton and potatoes. Art Carnrick, managing director of A&L Labs and chief force behind the Lubbock studies, has indicated that use of the petiole nitrate monitoring system can actually cut the farmer's water bill.

"Properly utilized, this program allows the cotton farmer to water his fields a maximum of three times over the year." Not only does this system help the farmer economize on water, but petiole nitrate monitoring and the ensuing foliar applications of certain chemicals can be used to manipulate the plant to do what the grower wants.

"By measuring levels of nitrates, plant growth and such things as adequate moisture, good fruiting, drought stress, potential insect damage, fruit loss, or square shed can be predicted with a good degree of accuracy," says Carnrick. "These techniques have been used for years in California, Arizona, Arkansas and Mississippi where long season cottons are grown. Plants have been forced to mature quickly and the risk of excessive stalk growth has been reduced. The wise use of this program has often significantly increased yields in those areas."

According to Carnrick, due to shorter growing seasons and a great deal of short season or determinant cottons being grown, petiole nitrate monitoring was ignored on the Texas High Plains. Using petiole nitrate monitoring, "yield increases of 10-20% are not uncommon on the High Plains."

If the weather is too dry or the plant needs more fertilizer, a chemical analysis of the petiole or leaf joint will determine what type of foliar spray will stimulate the plant to grow correctly. Likewise, analysis can determine if the cotton plant has received too much N fertilizer, moisture, or if insect build-up is eminent.

The petiole or leaf joint bridges the roots to the growing tip. If too much nitrogen is flowing across the leaf joint, cotton will begin succulent growth which attracts insects and it starts putting on too many leaves and no bolls. A foliar spray of growth regulators, boron, foliar fertilizer with micronutrients, or even sugar can stop it. If the nutrients are not getting to cotton for top yields, a foliar spray can also change this.

Carnrick advises that the High Plains cotton farmer make sure that his field representative is staying up with the weather as well as the watering

schedule and soil fertility. Often, withholding water can lower nitrogen without the use of boron or sugar.

"Make sure each treatment provides

the least cost, maximum benefit and greatest return," says Carnrick. "Many of the specific needs for the High Plains have been worked out. Already many

potatoes, tomatoes, cucumbers, and sugar beets are grown by this method. It is my personal feeling that this will be the farming method of the future."



CONGRESSMAN HIGHTOWER [front] is seen here taking part in the National Hearing on the Farm Economy, the massive farm call-in, May 11, 1982. Organized by the Agriculture Council of America, the call-in featured a toll-free telephone number and a 50-phone bank manned by Congressmen, Senators, agriculture committee staffers and farm lobbyists. Congressman Hightower received calls from farmers in Colorado, Iowa and several other farm-states. The

purpose of the call-in was to compile survey results on the growing farm depression that could be forwarded to the Congress and the White House in the hopes of speeding aid to farmers. Hightower helped organize the House Farm Crisis Group and has introduced emergency farm relief legislation which is being considered by the House Agriculture Committee.

Revolutionary new herbicide for weed control in wheat

A very promising new herbicide for controlling most broadleaf weeds and many grasses in wheat and barley will soon be on the market. Developed by DuPont, it will be sold under the trademark Glean TM.

Glean has a double-barrelled effect on weeds: it has both contact and pre-emergence activity. It will control existing broadleaf weeds, and after a rain has moved the chemical into the soil, it will prevent most broadleaf seedlings and many grass seedlings from emerging. Among the important broadleaf weeds Glean will control are: mustards, kochia, chickweed, pigweed, ragweed, Canada and Russian thistles, round-leaved mallow (dollarweed), and lanceleaf sage. Some grasses Glean will control include annual bluegrass, ryegrass, and green and yellow foxtail.

Glean can be applied anytime from before planting up until the boot stage. When applied at the correct time and at the correct rate, season-long weed control can be expected.

Another amazing thing about Glean

is how little of it it takes to do the job. Glean is effective at as low a rate as 1/4 ounce per acre. That is about the same as grinding up a quarter and spreading it over an acre.

Unlike 2,4-D, there is no vapor drift from Glean, so it could be used under a broader range of conditions than the hormone herbicides.

Another possible use for Glean will be in reduced-tillage operations. An example would be to apply Glean on old cotton ground that was going to be planted to wheat in the fall.

"I'm sure one question in everyone's mind is 'How much will it cost?' That's what it all boils down to, isn't it? Well, as I understand, the exact market price hasn't been established yet, but it should be comparable to 2,4-D on a cost per acre basis.

When will Glean be available? DuPont currently has an experimental use permit on Glean. They hope to have a full label for it sometime this year and have it on the market for the '82-'83 growing season.

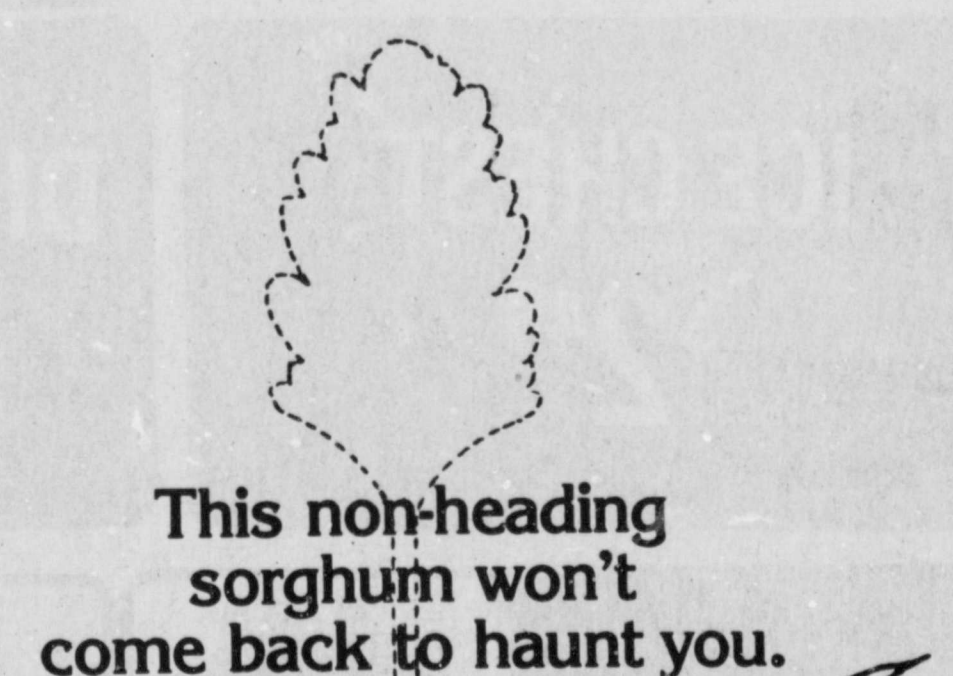
We currently have 2 demonstrations out with Glean on James Hinton's farm northwest of Dougherty. One is comparing Glean at 3 rates on wheat, the other is comparing it at 3 rates on fallow ground. The test on the wheat was applied 3 weeks ago at 1/4, 1/2, and 3/4 ounce per acre, and the results were stunning. Three-inch kochia was 100% controlled at all 3 rates, as were pigweed and several mustards. Alkali mallow was affected, and will probably eventually die.

The fallow test also looked good. Existing kochia and lanceleaf sage were controlled, and pigweed has so far been prevented from emerging.

If you would like to see either of these demonstrations plots, call us at the County Extension Office and we will try to arrange a tour.

Reference to commercial products or trade names is made with the understanding that no discrimination is intended and no endorsement by the Cooperative Extension Service is implied.

On Your Set-Aside Acreage

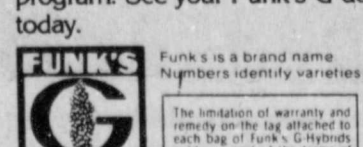


This non-heading sorghum won't come back to haunt you.

G-99F

Non-heading Forage Sorghum Minimize volunteer sorghum problems. Graze G-99F as long as you want. Harvest for green chop or silage whenever you want. Or let it grow until frost and use it for standing hay during the winter. G-99F won't produce a head under normal conditions. It stays in the same state of maturity with the same top nutritional quality throughout the growing season. And since there's no head, soil moisture is not so critical. In fact, G-99F

can be a lifesaver when drouthy conditions set in and other sorghums can't take it. Start profiting now from the reliable, big-yield potential of G-99F. Its versatility is sure to fit your program. See your Funk's G dealer today.



Setting a new pace in sorghum.

- | | | | |
|----------------------|----------|------------------------|------------|
| Producers Coop Elev. | Floydada | Heard Elev. | Petersburg |
| Lockney Coop Elev. | Lockney | Riverside Chemical | Petersburg |
| Craig Edwards | Floydada | Lone Star Chemical | Silverton |
| Riverside Chemical | Lockney | Providence Farm Supply | Providence |



WORTH HELPS IN RESERVE—Benton Easter, son of Mr. and Mrs. [Name], member of the South Plains College livestock judging team to reserve championship of the National Agriculture Livestock Judging meet, hosted recently by Texas Tech University. Easter also helped the team to second place in cattle, swine and oral sheep.

Wheat Field Day Scheduled for May 27

There will be a tour of the USDA Conservation Research Laboratory, May 27, 1982 at Amarillo. The tour is invited by Dr. [Name], Research Director of the laboratory. The tour will be a day-long tour of the TAM 105 and other wheat varieties and the latest wheat production methods for wheat will benefit from the tour. "Everyone is invited," he continued.



PARTS VALUE OF THE MONTH

Farm'n Ranch sale

SUPER SPRING SAVINGS!

SAVE UP TO 32%

ON IH MUFFLERS

- Get up to 32% off regular IH suggested list prices on high efficiency mufflers.
- For all IH tractors and most popular models of other makes.

Save now on Electric Fencing Products! IH fence controllers in every price range plus a full selection of insulators.

Save now on IH Farm Hardware! Tractor hitch pins, drawbar grab hooks, load binders, and clevises of all types.

Come in. See how much you can save!

Brown's Implement Inc.

INTERNATIONAL AGRICULTURAL EQUIPMENT
Ralls Highway 983-2281



Shurfresh Whole
BONELESS HAMS
\$1.99
lb.



Top Sirloin Boneless
BEEF STEAK
\$3.09
lb.



Fresh Pork Whole Avg. 3-5 lb
SPARE RIBS
\$1.69
lb.



USDA Grade A
SPLIT FRYERS
53¢

Shurfresh Halves
BONELESS HAMS lb **\$2.09**

Shurfresh All Meat
FRANKS 12 oz **89¢**

Shurfresh
SLICED BACON 16 oz **\$1.79**

Shurfresh
SLICED BOLOGNA 12 oz **\$1.09**

Shurfresh
PORK SAUSAGE 16 oz **\$1.19**

Shurfresh
CANNED HAMS 3 lb **\$6.39**

Shurfresh Jalapeno or Pimento
CHICKEN SALAD 8 oz **99¢**

Shurfresh
SMOKED MEATS 2 for 2 1/2 oz **99¢**



S

PRICES GOOD THRU SUNDAY, MAY 30

Cool Whip
DESERT TOPPING
8 oz **79¢**



*Health & Beauty
Aid Specials*

Listerine
MOUTH WASH 18 oz **\$1.99**

Jergens
HAND LOTION 10 oz **\$1.99**

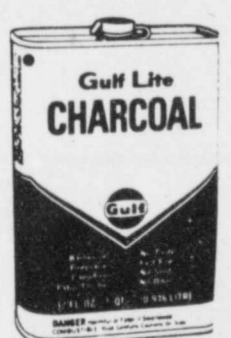
Revlon Flex
SHAMPOO 16 oz **\$1.99**

Revlon Flex
CONDITIONER 16 oz **\$1.99**



Kingsford
CHARCOAL
10 lb Bag **\$2.29**

Squeeze Btl.
FRENCH MUSTARD
16 oz **79¢**

Gulf Light
CHARCOAL LIGHTER
32 oz **\$1.49**

ICE CHEST
Styroform
\$2.49
12 Qt

DIXIE COLD CUPS
11 oz **88¢**

PEPSI COLA
\$1.39
6 pk Cans

COKE
\$1.99
32 oz 6 Pk. Plus Deposit




Kraft
BAR-B-QUE SAUCE
59¢
18 oz Asst



Tender Crust
HAMBURGER BUNS
2 for **99¢**
8 pk

\$ DOUBLE \$
Shop Rite
Present this coupon along with any one manufacturer's "cents-off" coupon and get double the savings from Shop Rite. Not to include "retailer", "free" or tobacco coupons or exceed the value of the item. Limit 1 coupon per manufacturer's coupon. Limit 8 Double Coupons per customer. Coupons good at Shop Rite May 27 to May 30, 1982.
COUPON

\$ DOUBLE \$
Shop Rite
Present this coupon along with any one manufacturer's "cents-off" coupon and get double the savings from Shop Rite. Not to include "retailer", "free" or tobacco coupons or exceed the value of the item. Limit 1 coupon per manufacturer's coupon. Limit 8 Double Coupons per customer. Coupons good at Shop Rite May 27 to May 30, 1982.
COUPON

\$ DOUBLE \$
Shop Rite
Present this coupon along with any one manufacturer's "cents-off" coupon and get double the savings from Shop Rite. Not to include "retailer", "free" or tobacco coupons or exceed the value of the item. Limit 1 coupon per manufacturer's coupon. Limit 8 Double Coupons per customer. Coupons good at Shop Rite May 27 to May 30, 1982.
COUPON

\$ DOUBLE \$
Shop Rite
Present this coupon along with any one manufacturer's "cents-off" coupon and get double the savings from Shop Rite. Not to include "retailer", "free" or tobacco coupons or exceed the value of the item. Limit 1 coupon per manufacturer's coupon. Limit 8 Double Coupons per customer. Coupons good at Shop Rite May 27 to May 30, 1982.
COUPON

A little bit of counter service.
Meet/Mayors
Straight Talk
Movie: "Slim"
Romper Room
Bewitched
Morning News
Jazzercise
Sesame Street
Villa Alegre
R. Simmons
Donahue
America
Diff'rent Strokes
9:00
8:00
8:30
9:00



Red Ripe Juicy Sweet
WATERMELONS
25¢
lb.



Farm Fresh
SWEET CORN
4 for \$1



Large Slicers
TOMATOES
69¢
lb.



PEACHES
99¢
lb.

OPTE

Selected items is required to be readily available for sale at or below the price in each store, except as specifically noted in this ad. The right to limit quantities. None sold to dealers.

Relish Tray Favorite
RED RADISHES 4 for \$1⁰⁰

Summer Time Treat
ORANGES lb 59¢

Bake'em, Boil'em, Fry'em
POTATOES lb 39¢

Brighten Up A Salad
GREEN ONIONS 4 for \$1⁰⁰

YELLOW ONIONS 4 lb for \$1⁰⁰

BROCCOLI lb 69¢

CUCUMBERS 5 for \$1⁰⁰

LEMONS 4 for \$1⁰⁰



Heinz
KETCHUP
\$1²⁹
32 oz



Vlasic Kosher
PICKLES
\$1²⁹
12 oz Jar

Delsey
BATH TISSUE
99¢
4 pk.

Frozen Food Specials

Morton
POT PIES 2 for 99¢
8 oz pkg.

Tree Top Concentrate
APPLE JUICE 12 oz 99¢

Pet Ritz Deep Dish
PIE SHELLS 2 ct. 99¢

Morton
CREAM PIES 14 oz pkg. \$1¹⁹



Eagle Brand
MILK
\$1¹⁹
14 oz



Wolf
HOT DOG CHILI
39¢
10 oz

COCA-COLA
\$1²⁹
2 lt. Bottle

Bordens
ICE CREAM
\$1⁶⁹
½ gal Round



Tender Crust
HOT DOG BUNS
for 99¢



Libby's
VIENNA SAUSAGE
2 for 88¢
5 oz Cans



Ruffles
POTATO CHIPS
89¢
8 oz Bag

DOUBLE \$ COUPON

Present this coupon along with any one manufacturer's "cents-off" coupon and get double the savings from Shop Rite. Not to include "retailer", "free" or tobacco coupons or exceed the value of the item. Limit 1 coupon per manufacturer's coupon. Limit 8 Double Coupons per customer. Coupons good at Shop Rite May 27 to May 30, 1982.

Shop Rite

Landscape & Gardening

BY BENNY J. BUTLER

TURFGRASS FOR TEXAS LAWNS

"I have replanted the grass in my front lawn several times. Still my grass does not develop as thick a carpet as my neighbor's. Is my soil bad? Do I have too much shade? Have I planted the wrong grass?" Many homeowners find themselves in the same situation. More often than not, the problem is with the selection of a properly adapted grass or grass variety. In the above situation, the homeowner had planted Floratam, a variety of St. Augustine grass, in a moderately shaded site and compared it to a neighbor's lawn of common St. Augustine grass. Had the homeowner known that, he could have avoided the inconvenience and expense of replanting the lawn. Similar mistakes are made with other grasses.

Selecting the proper grass for a particular site will enhance lawn appearance and reduce maintenance requirements. Poorly adapted turfgrasses do not perform satisfactorily even with good maintenance. Environmental conditions and management practice determine which turfgrass is best adapted to a specific site. Some grasses are suited to shade, others are not. And, some grasses tolerate traffic much better than others.

Texas has a wide range of environmental conditions—from semi-arid western regions to high rainfall regions of East Texas, and from temperate climates in the Texas Panhandle to subtropical regions in South Texas. Most turfgrasses can survive in arid areas with supplemental watering. But, temperature limits the adaption of many species, in the cooler, drier climates of the Texas Panhandle, cool season grasses such as bluegrass and fescue can be grown. In the sub-tropical areas of South Texas, the warm season grasses such as bermudagrass and St. Augustine are best adapted. Between these extremes, both cool and warm season grasses can be grown in some situations with good management.

Shade, or light intensity, is a major factor in the adaptation of a turfgrass to a specific site. St. Augustine grass, for example, would perform well in an area receiving 50% of full sunlight. Bermudagrass would not be satisfactory under the same conditions. However, even shade tolerant grasses require 30 to 40% sunlight.

Interactions between environmental conditions such as temperature and shade can also be important. Tall fescue, for example, would not perform well in Central Texas in full sun, but in 50% shade it might do very well. Likewise, temperature and moisture may interact to influence the adaptability of a turfgrass. Bluegrass would not be a good grass for East Texas lawns because of the combination of high temperatures and high humidity. But, bluegrass can be grown in Texas Panhandle where temperatures may be just as high, but humidity is much lower.

Soils also influence the adaptability of turfgrasses to a particular site. The

sandy, acid soils of East Texas are well suited to carpetgrass and centipedegrass. The heavy (clay or clay loam) alkaline soils of West Texas are best suited to buffalograss. Other grasses such as zoysia, bermuda, and St. Augustine can be successfully grown on all soils.

Management practices may have an overriding influence on turfgrass selection. If a homeowner does not plan to water a lawn, a drought tolerant grass such as bermudagrass or buffalograss is required. If you don't want to mow your lawn more than twice a month, then only the low maintenance grasses will meet your requirements. In Table 1 three levels of maintenance are included. A high level of maintenance requires frequent watering, at least weekly mowing, several applications of fertilizer each year, and pest control. A low level of maintenance requires no supplemental watering, monthly mowing perhaps annual fertilization, and no pest control.

To select a turfgrass, use Table 1 to identify grasses that meet all requirements. Finally, select the variety that is best adapted in terms of environment and management to that site. For example, to select a grass for a shaded site in Amarillo, review descriptions of grasses to arid, low winter temperature, and shade conditions. Only zoysia, tall fescue and bluegrass meet those conditions. You could then select one of those grasses, or a grass mixture in the case of bluegrass and perennial ryegrass.

GRASS DESCRIPTIONS

* Common bermudagrass (*Cynodon dactylon*). Bermudagrass was introduced into the U.S. in the 1700's from South Africa. It has since become naturalized throughout the southern U.S. Common bermudagrass is a medium-textured turfgrass with a creeping growth habit. It spreads by rhizomes and stolons and is the only bermudagrass that can be established from seed. It spreads rapidly during late spring and summer and goes dormant after the first hard frost. It is straw-colored during the dormant period and resumes growth when temperatures are above 70 degrees for several days.

* Common bermudagrass tolerates heavy traffic, moderate salinity, and dense mowing; but, it has very poor shade tolerance and is susceptible to winterkill where winter temperatures drop below 10 degrees. Common bermudagrass has a number of pest problems (leaf spot diseases, armyworms, and white grubs), but its rapid rate of recovery reduces the need for pesticides. It performs best under a moderate level of maintenance, but it can be used as a low maintenance grass in parks, lawns, and along roadsides.

* Hybrid bermudagrass (*Cynodon* spp.). Most of the hybrid bermudagrass have been developed in the last 25 years. In general, each hybrid bermuda was developed for a specific purpose. All must be established from sprigs or sod. They develop a fine to medium texture and require a higher level of maintenance than common bermudagrass. Fertilization, mowing, and watering requirements are all greater than for common bermudagrass. The fine textured varieties including Tifgreen (328), Tifdwarf, and Pee Dee are best suited for golf greens. Other varieties including Tifway (419), Santa Ana, Sunurf, Ormond, and Texturf-10 are best suited for lawns and athletic fields. Several hybrids bermudagrass including Midway, Midron, and U-3 have superior cold tolerance.

* St. Augustine grass (*Stenotaphrum secundatum*). St. Augustine grass, often incorrectly called carpetgrass, is native to the Gulf Coast area of Texas. It is a coarse textured, warm season perennial grass that spreads by large creeping stolons. It is largely propagated from sod or sod plugs although it may be established from seed. St. Augustine grass is limited to areas with mid winter temperatures. It is the most shade tolerant of the warm season grasses. St. Augustine has good fall color retention, but goes dormant after several hard frosts.

St. Augustine requires a moderate level of maintenance. It has a number of serious pest problems including brown patch, chinch bugs, white grubs, and St. Augustine Decline. Several varieties of St. Augustine grass are available including Texas common, Floratam, and Raleigh. Floratam and Raleigh are resistant to St. Augustine and Floratam is also resistant to chinch bugs. However, Floratam is not as cold tolerant or shade tolerant as Raleigh or common St. Augustine grass.

* Zoysiagrass (*Zoysia* spp.). Zoysia was introduced into the U.S. from Southeast Asia in 1911. It is a warm season perennial that spreads by creeping stolons and rhizomes. The texture of zoysia grass ranges from very fine (*Z. tenuifolia*) to fine (*Z. matrella*) to coarse (*Z. japonica*). The leaf blades of zoysia are much stiffer than those of

other warm season grasses. The improved zoysiagrasses must be established from sprigs or sod. Zoysia turns brown after the first hard frost, but is among the first grasses to green up in the spring. Zoysia has moderate shade tolerance, good drought tolerance, and excellent wear tolerance. But, zoysia is very slow to become established from sprigs or sod plugs.

The major varieties of zoysia for turf use are Meyer and Emerald. Meyer is a coarse textured variety used for lawns. Emerald is a medium textured grass used for lawns and golf courses. *Z. tenuifolia* is a very fine textured variety used primarily as a ground cover for difficult to mow areas on a landscape. *Z. tenuifolia* is not as cold tolerant as the other varieties of zoysia.

* Centipedegrass (*Eremochloa ophiuroides*). Centipedegrass is native to China and Southeast Asia. It was introduced into the U.S. in 1916 and has become widely grown in the Southeastern U.S. In Texas, it is best adapted to the sandy, acid soils in the eastern region of the state. On heavy textured, alkaline soils it develops severe iron chlorosis. Centipede is a low maintenance turfgrass ideally suited for lawns. It is a warm season perennial grass that spreads by stolons. The stolons produce rather short, upright stems resembling a centipede — thus the name centipedegrass. It produces seed and is readily propagated from seed. It is coarse textured and has a yellowish green color.

Centipedegrass forms a dense turf and has a rather slow rate of growth. It requires less mowing than St. Augustine or bermudagrass. Centipede turns a brown color after a hard frost, but recovers whenever temperatures are favorable. It is moderately shade tolerant, but grown best in full sun.

* Buffalograss (*Bushloe dactyloides*). Buffalograss is a native warm season perennial grass widely used for turf in the western region of Texas. It spreads by creeping stolons and can be propagated by seed. Buffalograss is one of the few grass species having separate male and female plants with the female plants producing a bur that contains the seed.

Buffalograss is not shade tolerant and has poor wear tolerance. It has excellent cold and drought tolerance. Although it develops a dry, straw-colored appearance during prolonged dry periods, it recovers after rainfall or irrigation. It requires little mowing and is well suited to low maintenance situations such as parks and roadsides.

* Carpetgrass (*Axonopus affinis*). Carpetgrass is a warm season perennial grass introduced into the U.S. from the West Indies in the early 1800's. Carpetgrass spreads by creeping, laterally compressed stolons. In contrast to St. Augustine, carpetgrass has blunt, rounded leaf tips. Also, the leaf blade makes about a 45 degree angle with the stem; whereas the blades of St. Augustine emerge at a 90 degree angle from the stem. In addition, the seedstalks of carpetgrass are 10 to 15 inches tall and forked; whereas the seedstalks of St. Augustine form a flattened, corky stem with the seed embedded on one side. Carpetgrass seed is commercially available; St. Augustine seed is not.

Carpetgrass is adapted to wet, poorly drained soils in East Texas. It grows well with little or no fertilization and has very few pest problems. It is more shade tolerant than bermuda, but less than St. Augustine. Carpet-

grass can be easily established from seed. Many homeowners think they are buying St. Augustine seed when in fact, it is carpetgrass seed. Carpetgrass does not produce a thick, dark green turf like St. Augustine. And, carpetgrass produces numerous tall seedstalks all summer that require weekly mowing to maintain a neat appearance.

* Tall fescue (*Festuca arundinacea*). Tall fescue is a cool season perennial bunch grass. In thin stands individual plants develop a rather broad crown through abundant tillering. Occasionally, plants develop a few short, thick rhizomes. Tall fescue is coarse textured, shade tolerant, and moderately drought resistant.

In Texas, tall fescue is best adapted to the far west and panhandle regions. Although it can be grown in north and central Texas in moderately shade sites, Kentucky-31, Kenwell, and Rebel are varieties suited for lawn use. All varieties are established from seed.

* Kentucky bluegrass (*Poa pratensis*). Kentucky bluegrass is the most popular lawn grass in the U.S. In Texas, its adaptation is limited to the far west and panhandle regions. Kentucky bluegrass is a cool season perennial bunch grass that spreads by tillers and rhizomes. It is a fine textured grass that forms a dense, dark green turf. Kentucky bluegrass is not shade or drought tolerant and has several serious pest problems.

Kentucky bluegrass can be established from seed or sod. Planting an adapted variety of bluegrass is very important. Delphi, Bristol, Baron, Victoria, Vantage, and Glade are among the best adapted varieties for Texas.

* Perennial ryegrass (*Lolium perenne*). Perennial ryegrass is a cool season bunch grass that behaves as an annual or short-lived perennial depending on environmental conditions. It is a fine textured grass characterized by rapid establishment and fast growth during the seedling stage. In Texas, it behaves as an annual in all regions except the panhandle where it survives in moderately shaded sites.

In lawns it can be used for a temporary winter cover or in a mixture with Kentucky bluegrass to provide a fast cover. Perennial ryegrass is established from seed. Varieties include Pennfien, Manhattan, Birdie, Derby, Yorktown, Citatin, and Caravelle.

Turf quality can be improved and problems reduced by selecting a grass adapted to a particular site. In low maintenance situations where water may be limited, only a few turfgrasses are adapted. In well maintained situations, environmental conditions influence the selection of a grass. Before selecting a grass, analyze a site to define conditions that might affect the adaptability of a turfgrass to the location. Temperature extremes, drought, shade, salinity, soils, and management influence the adaptations of a turfgrass.

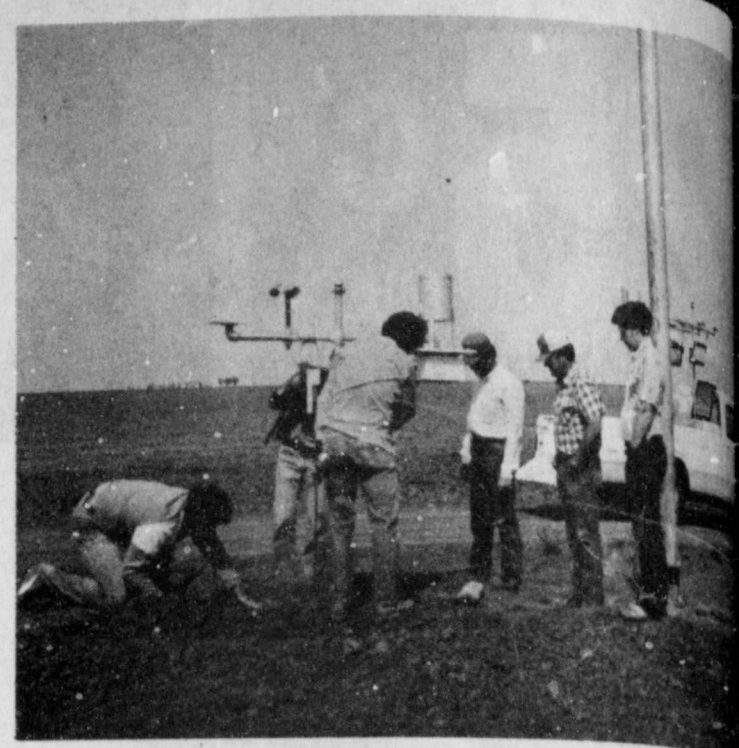
Selecting the best turfgrass for a site does not guarantee success. But, planting a grass not adapted to a site guarantees failure. An adapted turfgrass properly maintained will provide a beautiful lawn. Also, less money will be spent on lawn maintenance where adapted turfgrasses are used.

References to commercial products or trade names are made with the understanding that no discrimination is intended and no endorsement by the Cooperative Extension Service is implied.

Table 1. Selection Criteria for Turfgrasses

| ENVIRONMENTAL CONDITIONS | LEVEL OF MAINTENANCE REQUIRED | | |
|--|-------------------------------|---------------|------------|
| | HIGH | MODERATE | LOW |
| Arid Conditions | 1, 2, 3, 4, 8, 9, 11 | 1, 4, 6, 8 | 6 |
| Low Winter Temperatures (Below 10° min.) | 2, 4, 8, 9, 10 | 4, 6, 8 | 6, 8 |
| High Summer Temperatures - Low Humidity | 1, 2, 3, 4, 8, 9, 10 | 1, 3, 4, 6, 8 | 6 |
| High Summer Temperatures - High Humidity | 1, 2, 3, 4 | 1, 3, 4, 5 | 1, 3, 5, 7 |
| Shade (Less Than 80% Sun) | 3, 4, 8, 9, 10 | 3, 4, 5, 8 | 3, 5, 7, 8 |
| Saline Conditions | 1, 2, 3 | 1, 2 | 1 |

1 - Bermuda (Common)
2 - Bermuda (Hybrid)
3 - St. Augustine
4 - Zoysia
5 - Centipede
6 - Buffalo
7 - Carpet
8 - Tall Fescue
9 - Kentucky bluegrass
10 - Perennial ryegrass



LOOKING ON as the three Texas Agricultural Experiment station (left) assemble the new weather station on the Warren Mitchell Lockney are (right to left): Benny Butler, Floyd County Extension Agent, Mitchell, Lockney farmer, and Jett Major, Floyd County Extension Agent.

Producers invited to Insect Scouting Workshop

Cotton, corn and sorghum producers in Floyd County are receiving a special invitation this year to take part in the annual High Plains Scout Training Workshop to increase the effectiveness of their pest management programs. According to Jett Major, Floyd County Extension Agent, the workshop will be held Tuesday and Wednesday, June 1-2, at the Hale County Agricultural Center in Plainview. The center is on U.S. 87 Business Route south of the city.

The workshop, conducted by the Texas Agricultural Extension Service, was first held in 1973 to train scouts in the pest management programs conducted by Extension. In subsequent years, it has expanded to include scouts employed by consultants, aerial applicators, and others, as well as producers who want to learn how to scout their own fields of insects. The workshop focuses on perfecting skills in identifying crop pests and making timely pest management decisions which can protect investments and yield and hold down production costs.

The June 1 session opens at 8:30 a.m. with Dr. Pat Morrison outlining the scope of the workshop and explaining pest management concepts. Also on the morning program are Dr. Dale Pennington, Extension soil chemist; Dr. James Supak, Extension cotton agronomist; Dr. Robert Berry, Extension plant pathologist; and Dr. Jim Leser,

cotton Extension Entomologist. The afternoon program features Dr. Kirby W. Huffman, Extension agronomist; Dr. Pat Morrison, Extension entomologist; and Dr. Robert Berry, Extension entomologist, who will discuss sorghum pests. The June 2 session, beginning at 8:30 a.m., will focus on scouting and reports. Instructors will be Extension agents-entomologists from Hale County and Knutson. During the afternoon, participants will receive practical training in identification and scouting during a field session. Educational programs of the Texas Agricultural Extension Service serve people of all ages, backgrounds, and socioeconomic levels, and are available in English, Spanish, or other languages.

MUNCY ELEVATOR
Lockney 652-3100

CONSUMERS FUEL ASSOC.
COOP
Lockney 652-3336

PRODUCTION CREDIT ASSOC.
PC
Floydada 983-2454

BROWN'S IMPLEMENT INC.
mi
Floydada 983-2281

FLOYD COUNTY FARM BUREAU
FB
Lockney 652-2242
Floydada 983-3777

FLOYDADA IMPLEMENT CO.
MF
Floydada 983-3584

THE TYE COMPANY
tye
Lockney 652-3367

FLOYD COUNTY IMPLEMENT
JOHN DEERE
Floydada 983-3732

CASE POWER & EQUIPMENT
case
Floydada 983-2836

FIRST NATIONAL BANK OF FLOYDADA
1ST
Floydada 983-3717

SUN-VUE FERTILIZER
SUN-VUE
Lockney

FUN
POUCH GUARANTY
RANCH STYLE BEANS
9 Ranch Style Beans
MARTIN COMPANY
SUN-VUE FERTILIZER