



GLENN CARANO



BUTCH JOHNSON



TONY HILL



DREW PEARSON



LARRY BETHEA



STEVE WILSON



BENNY BARNES



JAY SALDI

Cowboys
The above eight Dallas Cowboys will be in Floydada Saturday night to challenge the Floydada All-Stars to a football game sponsored by the Chamber of Commerce. A few seats are still available, but you better hurry. A sell out of the Green Gym is expected. Tickets are \$7 for adults and \$3.50 under 12. Game time is 7:30 p.m.

This week activities are continued on page 3.

Weather

Chances of Energas		LOW
DATE	HIGH	
3/24	53	38
3/25	29	38
3/26	37	29
3/27	54	36
3/28	64	36
3/29	71	39
3/30	73	45

THE FLOYD COUNTY HESPERIAN

Volume 86 Number 9 32 Pages In Four Sections Thursday March 4, 1982

State and Federal Inspectors met with Commissioners Court

Canneries investigated

A suspected case of botulism reported by a Plainview doctor brought the Floyd County canneries to the attention of both state and federal health officials this past week.

The elderly patient, hospitalized in Plainview, was later proved not to be suffering from food poisoning but rather from a drug reaction.

However, Ralph Godfrey, investigator with the U.S. Food and Drug Administration, had already inspected the Lockney Cannery and placed an embargo on cans of hot sauce prepared at that cannery. Godfrey was brought into the matter because products from the cannery were taken across the state line into Oklahoma.

Ray Ashley is a Food and Drug Inspector with the Texas Department of Health. Both inspectors are based in Lubbock.

"We didn't know the canneries were here," Godfrey said. There has never been a health inspection.

The two inspectors met with Commissioners Court Monday morning and gave a list of "observations (that) would be deviations from current good manufacturing practice if the (Lockney) cannery had been operating in the manner reported during the visit."

Commissioners accompanied the inspectors to the Floydada cannery and were told that the same conditions exist in both canneries.

Ashley said that they cannot take action at this time because the canneries are not running and the evidence is "hearsay", but that when the canneries

begin operating; they will inspect both and if conditions are the same as had been reported; they will take action.

"We're not here to say you can't close," Godfrey said. "It is for your own protection from some very severe liability."

He was referring to the fact that a case of food poisoning from food processed at the cannery would make the county liable.

The canneries are not registered as a manufacturer of thermally processed Low-Acid foods packaged in hermetically sealed containers or as a manufacturer of acidified foods.

The pressure cookers used in the county canneries, which have been used for an estimated 50 years, and are thought to be the only county owned and operated manufacturers in the state, use a direct heat method for processing rather than the steam processing considered safe by the health department.

"Today we did not expect to find a flame heated processor (retort)" Ashley said. "I've never seen a fire retort before."

Godfrey said that he had never seen one before either.

Of all the retorts in Lockney and Floydada only one has a thermostat on it. Inspectors couldn't tell if it worked or not.

The list of deviations reported by the inspectors included: the operators of the processing systems have not attended and satisfactorily completed an approved school for thermal processing or container closure.

Faults of the equipments included: the retorts do not have the required mercury-in-glass thermometers, the retorts do not have the required temperature recording devices, the retorts do not have the required steam or heat controls, some do not have bleeders, and some do not have vents.

Commissioners estimated that 10,000 cans of food were processed at the two canneries the past season. The one in Lockney will process twice as much as the one in Floydada.

The plants are set up so that people can bring in their own vegetables and can them themselves for a fee. Cost of the cans is 17 cents apiece.

Then there is a plan where the managers of the cannery will process the food on behalf for people. Generally the half retained by the managers is sold and the money is kept by the managers as part of their compensation for the work.

The inspectors said that apparently the ladies who have managed the canneries have been doing a good job since there has been no problem.

Judge Choise Smith said, "The ladies have done a good job" in his estimation.

The inspectors said that since there is no coding or records kept on the cans in case of a problem, it would be very difficult to trace the contaminated cans.

Godfrey told the court that to "bring your canneries into the '80's" can be done but to bring them up to standards will cost.

The court took no action, but will put the issue on the agenda for the next court meeting.



COUNTY JUDGE CHOISE SMITH listens as Federal Health Inspector Ralph Godfrey points out "deviations" at the Floydada Cannery. Looking on is State Health Inspector Ray Ashley.

Jerry Thompson named 'Employer of the Year'

Jerry Thompson was honored as "Employer of the Year" at the Chamber of Commerce Banquet held Saturday night at Duncan Cafeteria. Jerry owns Thompson Pharmacy.

A special honorary plaque was presented for the first time, to Aldine Williams in recognition of the many years he has served on the Hospital Board.

The exchange of gavel ceremonies placed Stan McClendon in office as President of the Chamber.

In his address McClendon said that Floydada is still under consideration as possible site of an industry that would construct immediately a 60 to 80,000 square foot building and permanently employ several hundred people.

"We also will be making slide presentations about our city, businesses, industrial site, and what we have to offer in Floydada. These will be made available for any industry or business looking to locate in our city," he said.

The Chamber, working with civic organizations, will sponsor a week long community improvement campaign designed to improve the overall appearance of our city. Nancy Willson will be organizing this campaign.

To promote cotton products, the chamber will sponsor a week long cotton products sale with the downtown merchants.

The tables were decorated with checked cloths and strands of rope running their length and were dotted with miniature bales of cotton and bandanas.

Iron sculptures of windmills and covered wagons were used on the head table.

All of the decorations were on loan. The rope from Builders Mart was returned even after it had been cut.

Mark Wideman, past president, stressed the long way the Chamber has come in the past year. At the last year's banquet the chamber had no manager and no office. This year with Susan Garms as manager, the chamber has an attractive office and has been community leader throughout the year.

George Strake's coming Tuesday

George Strake, candidate for Lt. Governor, will be in Floydada Tuesday, March 9, to attend a coffee given in his honor at the First National Bank Community Room.

The coffee, held from 9 to 9:30 a.m., is hosted by Bill Hale.

"I feel that we are very fortunate to have a candidate for the number-two spot in the state visiting in Floydada," Hale said.

Strake is including rural towns in his campaign schedule and considers those residents a vital part of his campaign.

He will be looking for input from county residents on the issues of particular importance to them. He will be especially interested in meeting and hearing the views of area farmers.

The 46-year-old former Secretary of State sees President Reagan's "New Federalism" as an opportunity to regain "control of our own destiny."

Strake told reporters at a news conference in College Station that Texans have long been dissatisfied with the way the federal government has taken over functions traditionally done by this state.

"The state's political leader's have long said 'We can do it better.' Now, at long last, we stand a chance of getting what we want: a chance to run our own affairs, to have more control over our lives," he said.

"We know we can do a better, more compassionate, more caring, more efficient, more cost-effective job of running the programs President Reagan wants

to give back to us," Strake continued.

He stressed his record as Secretary of State, during which he cut the staff and saved the state three million dollars.

In another speech, Strake attacked the redistricting process and believes that the principle culprit in the current bitterness is the Legislative Redistricting Board presided over by the present Lt. Governor Bill Hobby.

Strake thinks there is a better way and has said, "I believe we ought to abolish the Legislative Redistricting Board and replace it with an entirely new commission, or board, selected on a non-partisan or bi-partisan basis, made up of Texans who do not owe their political future, or their business future, to anything but the continued respect of their fellow Texans."

Continued On Page 3

New precinct lines to be used

The County commissioners, during a called emergency meeting Monday afternoon, were faced with a decision of either abiding by federal law or state law concerning the coming precinct primary elections to be held May 1.

They heard the seemingly conflicting advice of three attorneys, but the final decision was left squarely in their own hands. They voted to follow federal law.

The problem stems from the federal Justice Department mandate that precinct lines must be drawn to comply with the non-discrimination code. This had been done and a balance of population was achieved in Floyd County, but the Justice Department must pass on the new precinct lines. So far, the county has not received that O.K. from the federal government.

State election laws say that voting lines must be in effect by March 1 or the election must be held using the old precinct lines.

Commissioners voted 3 to 1 to instruct County Tax Assessor Jonelle Inawver to send out voting cards according to the new precinct lines.

Precinct 2, Lockney, will be most effected by the decision. That is the only precinct with a race for commissioner. Incumbent, Bob Jarrett, is running against newcomer Charles Carthel.

The new precinct lines will exclude a part of east Lockney since they will now be part of precinct 3. Since there is no election in precinct 3 this year they will not vote.

Surrounding counties have been sued on the grounds of an imbalance in the minority population figures as set forth

by the Justice Department. These counties are Hale, Crosby, Lamb and Hockley. Court costs in those suits have cost the same counties as much as \$40,000.

Attorney, Bob Bass, was hired by Floyd County to draw up the new precinct lines and submit it to the Justice Department. Bass advised the court Monday, "any election held under the existing lines will be subject to discrimination."

If the county votes according to the old lines, Bass said, "I think you're running a real chance of losing a lawsuit."

The person bringing suit would be of a minority who felt that they had been

discriminate against. These suits have so far been filed by a group based in San Antonio called South West Voter Registration.

Bass said that he has inside information that the San Antonio group is now looking into 27 counties across the state with the intention of bringing suit if the voting lines are discriminatory.

If the Justice Department had passed on Floyd County's new precinct lines before the March 1 deadline there would have been no problem.

In this case Commissioners were advised that federal law supercedes state law so rather than subject the county to possible heavy court costs, they elected to go with the new boundaries.

one vacant office in the courthouse. The room, #112, is located at the north end of the building on the first floor.

The telephone will be paid for by TEC, and the court further stipulated that the office would be "subject to removal by the commissioners court."

Hambright will maintain the office alone, but said that there may be funds for part-time help later.

Since the closing of the sub-office, Hambright has been working at the Plainview TEC.

TEC office opens next week in Courthouse

Two more men have filed as candidates for the office of City Councilmen bringing the total number of five candidates for the three open seats on the council.

Don Green, assistant manager at Davis Farm Supply, filed this week as did Bob Phillips, owner of My-T Burger.

Bill Dawson, of Cates and Dawson, had already filed as had incumbents, Leroy Burns and Boone Adams.

The candidates run "at large" which means that the three men with the most votes will fill the available three seats.

Deadline for filing was Wednesday, yesterday, at 5 p.m. At press time only the five candidates were in the running.

Carl Jarrett's office is open and he has indicated that he would not seek re-election.

Election will be held April 3, at the City Hall.



JERRY THOMPSON shows his wife, Jan, the "Employer of the Year" plaque which had been presented to him earlier in the evening at the Chamber Banquet. Phyllis Harris is one of many congratulating Thompson.



BUD RAINEY SHOWS WEAPON used in the basic firearms portion of the recent academy for area reserve police officers sponsored by the Floydada Police Department.

Floydada police sponsor academy

During the month of February, the Floydada Police Department has been sponsoring an academy for area reserve police officers. The academy is a required basic seventy hour reserve school required of all reserve officers in the State of Texas.

When the officers complete the academy they will meet basic educational requirements of the state for reserve police officers. They will be licensed to function as a peace officer while working for any law enforcement agency with a reserve program.

Bud Rainey, former Sheriff of Floyd County and presently an instructor for Wayland Baptist University, is the coordinator and main instructor. Assisting as instructors are Sgt. Raynard Macha of the Floydada Police Department, Randy Hollums, 110th Judicial District Attorney and Sgt. Fant of the Texas Department of Public Safety.

Some of the topics taught are basic criminal law, firearms, traffic law, first aid, patrol procedures and many more subjects as required by the State Commission on Law Enforcement Officers Standards and Education.

Law enforcement agencies represented are Floydada Police Department, Floyd County Sheriffs office, Silverton

Police Department, Briscoe County Sheriffs office, Mackenzie Water Authority and the 110th Judicial District Attorneys office.

"We were fortunate that Wayland Baptist University allowed Bud Rainey to coordinate the school, lending his expertise in teaching practical police training" stated Sgt. Macha. "We hope that Wayland Baptist University and local law enforcement agencies will be able to work even closer in the future to improve area police training."

There has been a growing trend in the state for more reserve programs as law enforcement agencies are cut back in funding and manpower. In many areas of the state the reserve officers have become so valuable because Sheriffs and Chiefs of Police could not handle the work load with their present full time staffs. These people perform a community service often for no pay or benefits. They are strictly volunteers who work as police officers when called to service or when they can find time. They have been invaluable in times of natural disasters such as tornadoes and floods. They must all meet the state requirements of a police officer. The students have enjoyed the academy and

feel that they will be better equipped to serve their agencies. As one student put it, "I never realized how difficult it was to be a police officer working on the streets, it looks so easy on television. I have a greater respect for our area officers now. I wish everyone could go through a school like this, then they might realize that what you see on television and what really happens in real life situations are two different things. I'm glad we don't have to go through the full 340 hours of training that a licensed full time officer has to complete."

Persons attending the academy are Dan Holt and Jimmy Forbes of the Floydada Police Department, Nancy Willson of the 110th Judicial District Attorneys office, J. Eckert of the Floyd County Sheriffs office and David Malone, Eldon Oneal, Janice Hill, Emmet Tomlin, Ricky Minyard all from law enforcement agencies from Briscoe County.

On Friday, February 26th the class presented Bud Rainey with a new Smith and Wesson 357 magnum revolver and a plaque to show their appreciation for his hard work and sacrifice involved in making the academy possible.

Symphony Pops Night planned

When the Plainview Symphony gets together with the Floyd "Red" Rice Orchestra Pops Night, March 12, what follows will be a fun night for the family featuring everything from "Superman" to "Elvira."

Two Floydada residents will be playing with the Symphony at this concert: Sunny McDonald (violin) and Kerry Kirk (tuba).

"We chose Rice for our Pops Night artist because he has such an outstanding reputation from other symphony orchestras," said Dale Daniels, Plainview Symphony conductor. "Every symphony who has played with him

invites him back again and again because he is such a hit with the audiences."

Rice plays the trumpet and his wife Lou Ann sings and performs on the keyboards. His daughters, Joni and Donna, tap dance, sing, play guitar, sax, synthesizer drums, and bass.

The concert starts at 8:15 p.m. at Plainview High School Auditorium. Admission is by Plainview Symphony Orchestra season membership card or tickets can be purchased at the Floydada Chamber of Commerce office afternoons.

Tickets will also be available at

Gabriels Department Store in Plainview or at the door. The prices are \$5.00 for adults and \$2.50 for students.

One Oklahoma newspaper critic said "Seldom has there been so much good, clean, wholesome fun packed into a Saturday night as when Leigh Burns conducted the symphony in a short light classic concert and Floyd "Red" Rice's band wowed 'em as guest artists."

Red Rice's trumpet and comedy and Lou Ann Rice's piano and singing combined with the big sound of the Symphony make for the most enjoyable and entertaining Pops Concert ever, said Daniels.



THESE F.H.S. BAND STUDENTS received a Division I rating at the U.I.L. Solo-Ensemble contest held last Saturday and are qualified to the state contest at Austin in May. Left to right — Sandra Mitchell, Christine Wilson, Carrie Martin, Rusty Simpson and Tammy Boothe.

FHS Band students compete in contest

Nine Floydada High School band students competed in the Region XVI Solo-Ensemble Contest held last Saturday at Lubbock Coronado High School.

The contest allowed solos and/or ensembles in three categories: band instruments, orchestral instruments, and piano. Ratings were given from I to V with a I being superior and a V being poor. All students who made a Division I received an official U.I.L. medal.

The Floydada students and their ratings are: Tammy Boothe, flute solo, I; Sandra Mitchell, piano solo, I; Christine Wilson, piano solo, I; Carrie Martin, Rusty Simpson, and Christine Wilson, flute trio, I; Mitzi Julian, piano solo, II; Cindee Davis, piano solo, II; Greg Thompson, piano solo, II; Virginia Mitchell, piano solo, II; Rusty Simpson, piano solo, II; and Sandra Mitchell, trumpet solo, III.

Because the Division I ratings are on Class I solos and ensembles, Tammy Boothe, Sandra Mitchell, Christine Wilson, Carrie Martin, and Rusty Simpson qualify to go to the Texas State Solo-Ensemble Contest to be held in

Austin on May 29 and 31.

These students are under the direction of Bruce Kenner, F.H.S. band director. In addition, the piano students are from the studios of Dell Gray, Carolyn Cheek, and Elaine Hardy.

INSURANCE FOR YOUR HOME RANCH FARM AUTO CROPS LIFE	How can I provide for my retirement and reduce my current taxes? 983-3777 Floydada For help with insurance questions and needs call... TEXAS FARM BUREAU INSURANCE COMPANIES 652-2242 Lockney	 James Race TEXAS FB MEMBER OF INSURANCE CO.
--	---	---

Definition of oil terms

BY JOYCE WILLIAMS
Delay rentals may be generally defined as payments made by the lessee to the lessor, from year to year, during the primary term of a "unless" or "drill or pay" form lease, for the purpose of delaying the commencement of development operations on the leased land. The right to such payments may be of substantial value where large tracts of land are involved, as the amount of the delay rental is generally computed on a per acre basis. Where no production is obtained, the right to delay rentals may well be the most valuable right of the owner of the mineral estate.
Bonus is a sum paid to the owner of the mineral estate for the execution of an oil and gas lease. Such sum may be paid in cash or on a deferred basis out of future production. It represents market value for a "sale" of the minerals to the lessee.

which no market exists. Shut-in royalties which are being used to maintain a lease in effect must be paid prior to or on the date that actual production exists to maintain a lease in effect.

During the secondary term the **dry hole clause** allows the lessee a stated number of days after the completion of a well as a dry hole to commence well as additional drilling activities. If they result in a producing well the lease will be maintained in effect. The lessee may tack between the well completion clause and the dry hole clause.

Pooling is the formation of drilling units for oil and gas of sufficient size so that the lessee will comply with minimum spacing requirements for such

production. A pooling, class leasees acting pursuant to the lease vested in them by the lease pool.

An **overriding royalty** is a royalty payable to someone other than the lessor. Frequently, the overriding royalty" means a royalty out of the lessee's working interest. Occasionally, a royalty to the lessor in addition to the usual 1/8th of production to as an overriding royalty.

The **primary term** of the lease is the duration, which contains a lease by a secondary term, which is in duration and is dependent on production for continued existence.

A **"royalty" interest** may be broadly defined as the right to fractional share of production of petroleum products, free of cost or expense incident to exploration, development, or production. The royalty interest is that portion of production returned to the owner of the mineral estate as compensation for a oil and gas lease.
Shut-in royalties are a substitute for the payment of actual royalty. A shut-in clause provides for a substitute or contractual method of production, which will maintain the lease in force and effect when a well is drilled and for



AT THE CHAMBER OF COMMERCE BANQUET, Doyle Walls presents Williams with a plaque honoring him for his many years of service on the board.

Jamboree was a success

The Rock-n-Roll Jamboree held at the Floydada Nursing Home was a grand success.

From dawn to dusk one could hear the sound of a rocking chair creaking back and forth and the soft whisper of chairs rolling down the halls as the residents donated their time for a worthy cause.

The American Heart Association would like to thank all residents who participated to help raise \$212.78 for research projects.

There will be a Teen Heart Dance on March 5, 1982 from 8:00 p.m. to 12:00 p.m. at the Massie Activity Center. Cost will be \$2.50 per person and music will be provided by Sheldon Sue. Dress casual, bring a friend, and plan for an evening of fun.

Richard R. Stafford PHD Psychologist
Wishes to announce the relocation of his office
Haynes Building
812-B West 8th Suite 9-B Plainview, TX
Hours by appointment (806) 293-3333

AUTO PARTS STORES

ANNIVERSARY SALE

CARQUEST MOTOR OIL
10W40 All Season or HD30 wt.
A product of Ashland Oil Co.

YOUR CHOICE 99¢ qt.

AC OIL FILTERS
Help protect your engine.

2.89

COUPON 2.00 OFF

ANY **Gates** FAN BELT OR RADIATOR HOSE

LIMIT ONE PER CUSTOMER Expires March 7, 1982

I CAN HELP.
QUALIFIED COUNTERMAN

3.59 pr.

CARQUEST HEAVY DUTY SHOCK
Fits most Domestic cars, light trucks and some imports. Big 1-3/16" piston.

Sug. List \$14.88
8.95

ANCO WIPER REFILLS
replace worn wiper blades.

Good at participating CARQUEST Auto Parts stores thru Mar. 7, 1982

CAPROCK

Motor Parts & Hardware, Inc.

114 W. California Street
Floydada, 983-2865
CARQUEST: the Right Place to buy auto parts.

Chamber Clips

BY SUSAN GARMS

An open THANK YOU to the ladies who worked so hard on the decorations for the Chamber's 1982 Annual Banquet. The Women's Division of the Chamber supplied the "Man" power and the "props" and then several, so ably directed by Marilyn Tate, and co-chairman Regi Gross, gave up their Saturday morning to put it all together. The time and effort given by these ladies to make the Banquet a success is appreciated by all who attended. It looked great, gals, and we thank you.

SUPPORTERS OF "GREEN THUMB" ATTENTION: Federal cut-backs have eliminated from the 1983 budget Title V of the Older Americans Act, which funds TFU-Green Thumb and other senior citizens employment programs.

This means that Green Thumb with its 1000 workers and hundreds of rural community sponsors will have to cease operations on September 30, 1982 — UNLESS Congress votes to restore funding for Title V.

It is VITAL for you to contact your Congressman (Hon. Charles Stenholm, 1232 Longworth Office Building, Wash-

ington, D.C. 20515 or Hon. Jack Hightower, 2348 Rayburn Building, Washington, D.C. 20515.) and express your desires in this matter. Elimination of Title V in Texas would mean drastic reductions in services provided by schools, senior centers, libraries and museums where most Green Thumbs work. It would also mean that many older workers would be reduced to a non-productive, dependent status that would waste their valuable experience and increase demands on the system for so-called welfare benefits.

The Chamber, on behalf of the Board of Directors and those who have contacted us for help in this matter, ask you to come forward now to acknowledge what the program has done for your organization and your community.

A copy of an application to the Federal Communications Commission to construct a new FM radio station at Floydada is on public display at the Chamber office at 107 W. California.

Tickets to the Dallas Cowboy Hoopster Basketball Game on Saturday, March 6, are being sold at the Chamber office. Better HURRY!

Continued From Page 1

Letters to the Editor

Letter to the Editor.

We the officers of Floydada police department would like to publicly thank Vickie Edwards manager of Floydada Allsup's store for her assistance in apprehending two juvenile car burglars. Due to her alertness and cooperation she recognized two males in her store as matching a description given to her by officer Burnett. The two were arrested and the property stolen from a van in the Piggly Wiggly parking lot was recovered. It's cooperation of concerned citizens like her who can do more to fight crime than anything else we have. We just want to thank her and wish we had more citizens like her.

Sincerely,
Sgt. Raynard Macha

Strake.....

Strake is the grandson of a Houston cotton man, son of a pioneer oil operator. He was born in Houston. He attended the University of Notre Dame, where he majored in Economics, receiving a Bachelor of Arts degree in 1957.

He served two years as a Commissioned Naval Officer. After resigning from active duty, he entered Harvard University's Graduate School of Business and received a Masters degree in Business Administration in 1961.

Upon his return to Texas he joined his father in the independent oil business and after his father's death in 1969, carried on the business as an independent oil operator.

He was appointed Secretary of State by Governor Bill Clements on January 22, 1979 and served until his resignation on October 5, 1981, one day prior to announcing his intention to run for the office of Lt. Governor.

Married to Annette DeWalch in 1959, they have six children: three sons and three daughters.

This Week Banquet

The Floyd County Jr. Livestock Show Banquet has been re-scheduled for March 8, at 7 p.m. at the Lockney Elementary School.

Cancelled

The Floydada 4-H Club meeting scheduled for Monday, March 8, has been cancelled due to scheduling conflict with the County Stock Show Banquet.

The next meeting will be held in April as scheduled.

Blood Pressure

Blood pressures will not be taken March 9 at the First National Bank, but will be taken March 16 as usual.

Annie Taylor

An interview by Channel 13 with Annie Taylor will be televised tonight on the 10:00 news.

No lunches

Due to teacher in-service, Spring Break and other school activities, there will be no VEH lunches served at Della Plains School for the month of March. Serving of lunches will resume each Friday on April 2.

See you then!

Social Security

A representative of the Social Security Administration will be at the Floyd County courthouse annex on March 10 and March 24 from 9:30-11:30 a.m.

FLOYD COUNTY HESPERIAN

(USPS 202-680)
Published weekly each Thursday at 111 East Missouri Street, Floydada, Texas 79235. Second class postage at Floydada, Texas 79235.
SUBSCRIPTION RATES: Local \$11.50 per year, out-of-state area \$12.50 per year.
POSTMASTER: Send address changes to the Floyd County Hesperian, 111 East Missouri, Floydada, Texas 79235.
Shelly Harris Publisher, Editor
Marjorie Holcomb Business Manager
Tom Burns Advertising Manager
Rosemary Gonzalez Subscriptions Society
Carolyn Redding Composition
The Publisher is not responsible for copy omission, typographical errors, or any unintentional error that may occur other than to make corrections after being brought to attention. Advertising accepted on this basis only.



THE ABOVE PICTURE WAS TAKEN two weeks ago today at the City Park where two young mothers and their children had a picnic in the spring-like weather. They are: Candy Thrasher, and Jacob, 20 months; and on the slide is Kasey, 3 years old, and his mother Sharon Vickers. THE LOWER PHOTO was taken at the same park one week ago today. Children and Michael Saens staged a snowball fight.



PRICES EFFECTIVE
MARCH 4-6, 1982
WHILE SUPPLIES LAST

6-16 oz. COKES \$1.79	CRISPY, FRESH COOKED CORN DOGS 3 FOR \$1
MEAT BEEF OR CHICKEN PIES 2 FOR 89¢	SUNSHINE KRISPY CRACKERS 1 LB. BOX 89¢
White Grape 32 oz. JELLY \$1.65	48 oz. TIDE \$1.89
14.88 5 Ketchup \$1.19	12 Pak Kleenex DIAPERS \$2.39
Reg. \$1.88 HANDLES \$1.39	Sunbean Assorted COOKIES 3/\$1.00
Reg. \$2.13 HANDLES \$1.59	

If it's Borden, it's got to be good

1857 BORDEN 1982
BORDEN'S HI-PRO MILK 1/2 GAL. CTN. **\$1.09**
BORDEN'S PREMIUM ICE CREAM 1/2 GAL. RD. CTN. **\$1.69**
BORDEN'S COTTAGE CHEESE 12 OZ. CTN. **79¢**

ALLSUP'S
CONVENIENCE STORES
"THERE'S ONE NEAR YOU"

Don't Let The March Winds Blow Your Financial Plans Around...

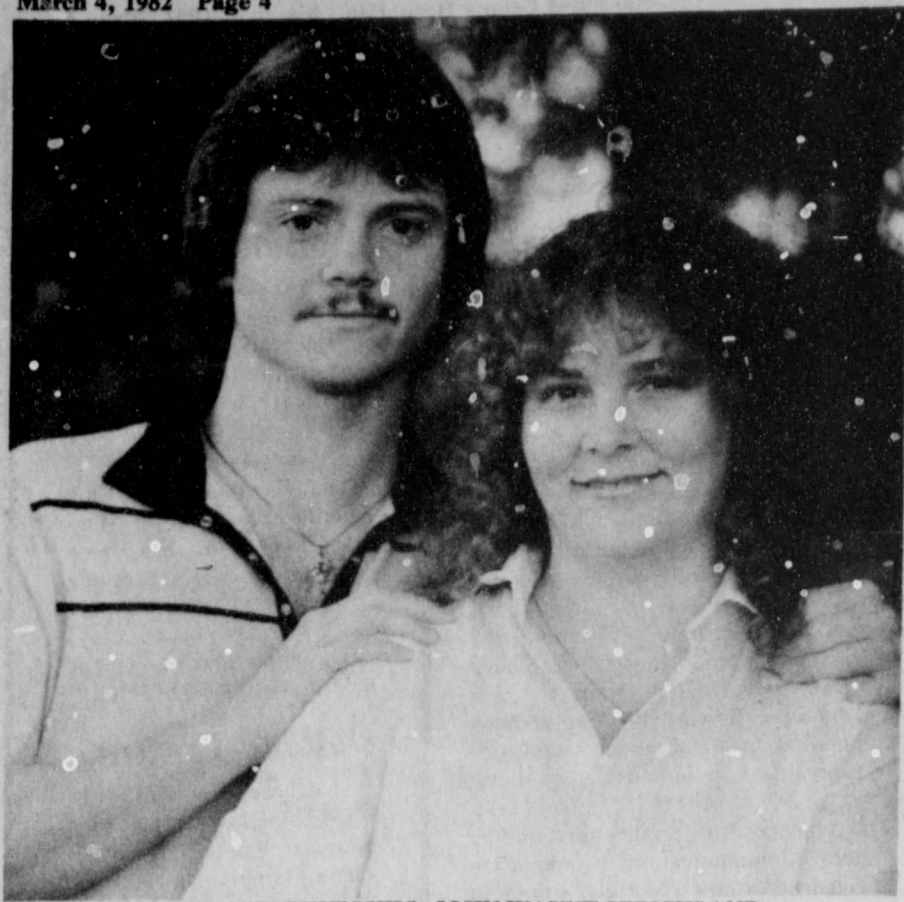
Come in and see one of our
friendly folks for any
financial advice.

"Helping you change things for the better"

1ST

THE FIRST NATIONAL BANK OF FLOYDADA

Member F.D.I.C. Accounts Insured up to \$100,000



SHERRI LEE THURLKILL, JOHN WAYNE STRICKLAND

Thurlkill, Strickland announce engagement

The parents of Sherri Lee Thurlkill and John LaWayne Strickland announce the engagement and approaching marriage of their children.

The bride-elect's parents are Ms. Frankie Thurlkill of Vernon and Tommy Thurlkill of Wichita Falls. The groom's parents are Mr. and Mrs. Bill Strickland of Lockney.

The wedding has been set for June 11, 1982 at the First United Methodist Church in Vernon with the Rev. Lee

Crouch, pastor of that church officiating at the double ring ceremony.

The bride has been attending Amarillo College. She graduated from Vernon High School.

The groom is currently employed by Halliburton in Amarillo. He graduated from Lockney High School and attended West Texas University.

The couple plan to make their home in Amarillo.

World Day of Prayer to be held Friday, March 5th

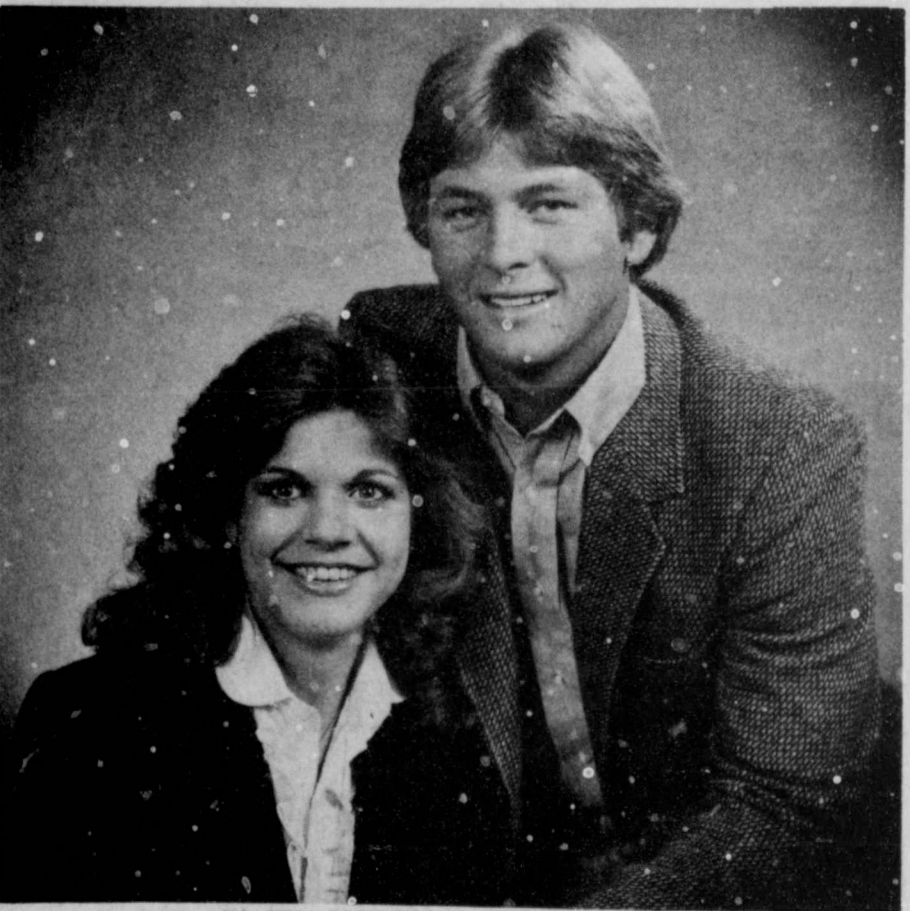
World Day of Prayer, an international celebration sponsored in the United States by Church Women United, will be held March 5, at 10:30 a.m. at the First Christian Church, 301 W. Missouri, Floydada. This annual service unites millions of people in prayer services occurring on six continents during a 24-hour period.

This year's theme is "The People of God: Gathered for Worship, Scattered for Service." The text was prepared by women of the Republic of Ireland and of Northern Ireland. They worked ecumenically at a Christian renewal center near the border of the two Irish states.

World Day of Prayer provides women in the United States with an occasion to participate in a nationwide offering which goes into International Grants, the process by which Church Women United carries out its stewardship through grants to a wide variety of programs.

Involved in World Day of Prayer events in Floydada are: the Women's Circles of the First United Methodist Church and the Christian Women's Fellowship of the First Christian Church.

All women of the community are cordially invited to attend. Lunch will be served at noon.



D'ANNA JOHNSON, LARRY WESTBROOK



Hank, son of Mr. and Mrs. Randy Henderson, Lockney

Remember your special times -

Call for your appointment



Chuck Wilson, M. Photog., CPP

Wilson Photography

652-3731



Clower, Kirby pledge vows in Cotton Center Feb. 27th

Naomia-Denice Clower and Jonathan Aaron Kirby pledged their wedding vows on Saturday, February 27, 1982 at six o'clock in the First United Methodist Church, Cotton Center. The Rev. Donny Crowson of Cotton Center and Craig Curry of Lubbock performed the marriage ceremony.

Parents of the bride are Mr. and Mrs. Ira Clower of Roaring Springs, and the groom is the son of Mr. and Mrs. W.H. Kirby, Jr. of Cotton Center.

The ceremony was performed before an altar area which was complimented with matching candelabra arches, spirals trimmed with boxwood and gyp centered with matching bows in mauve and plum. A kneeling bench centered the altar area, and a bouquet of white, mauve alstromeria lillies and plum pixie carnations centered the background area. Miniature hurricane lamps holding votive cups trimmed with boxwood, gyp, and trimmed with plum bows marked the honor pews.

Traditional wedding music was rendered by Mrs. Tommy Applewhite at the piano and Mrs. Ralph McFerrin at the organ. Vocalist was Mrs. Craig Curry, who sang "Wedding Song," "This Is the Day," and "That's the Way It Is."

Given in marriage by her father, the bride wore a formal length gown of satin accented with an overlay of organza with lace trim. She also wore a cathedral length veil.

Maid of honor was Miss Catherine Norfleet of Cotton Center. She carried a nosegay of pixie carnations, alstromeria lillies, sweetheart roses, and baby's breath. Bridesmaids were Iroma Applewhite of Cotton Center and Ramona Clower of Canyon. Both are sisters of the bride. Also, cousin of the bride, Lori Bice of Abilene and Stacy Parker of Levelland, were bridesmaids. The attendants wore identical plum soft faille gowns with a mauve suede jacket. The bridesmaids carried nosegays of pixie carnations, alstromeria lillies and baby's breath. They wore matching hairpieces of flowers used in their bouquets.

The candelabras were lighted by Karen Fisher and LaJean Taylor who wore identical dresses to the attendants.

Kimberly Clower, sister of the bride, was flower girl. She was attired in a long white dress and carried a lace basket filled with silk petals and accented with a matching bow of the brides chosen colors of plum and mauve.

The groom was dressed in a white tuxedo and wore a boutonniere of pixie carnations with a rose in the center. W.H. (Bill) Kirby, Jr., father of the groom was best man. Groomsmen were brother of the groom, W.H. (Chip) Kirby, III, of Cotton Center; brother of the bride, Keith Clower of Roaring Springs; Jimmy Sageser and Jeff Kirkland, both of Cotton Center.

Gary Koelder and Kip Thomas, both

of Cotton Center, were ushers. All of the men attendants wore grey tuxedos with white rose boutonnieres.

Timothy Schoenhals of Lubbock was the ringbearer and was attired in a white tuxedo with a white rose boutonniere.

Registering guests at the wedding was Dalene Livesay of Levelland.

RECEPTION

A reception was held in the fellowship hall and serving at the brides table was LaDon Horsford of Cotton Center and Tammi Webb of Levelland. Serving at the grooms table were Beverly Norfleet and Kendra Burnett both of Cotton Center.

Members of the house party were cousin of the bride, Amy Rowell, of Plainview, Karen Joines of Cotton Center, Mrs. Charles Norfleet, Mrs. James Sageser, Mrs. Ervin Koelder, all of Cotton Center, and Mrs. J.R. Nixon of Lubbock.

Sarah Mahagan, daughter of Mr. and Mrs. Allen Mahagan, passed out rice bags.

Following a honeymoon to New Mexico, the couple will reside in Cotton Center where the groom is engaged in farming.



MRS. JONATHON AARON KIRBY

Caprock Hospital Auxiliary met March 1st

The Caprock Women Hospital Auxiliary met for their monthly meeting Monday, March 1, at 2:30 p.m. in the hospital dining room.

The elected members are Edna Beth Tye, president; Ethel Carmack, vice president; Emma Lou Whitaker, treasurer, and Jo Bryant, secretary. The members present were Lillian Smith, Margaret Fowler, Hester Moore, Eunice Hong and guests, Mildred Cates, Mrs. John Wilson, Jean Appling, R.N. supervisor of nurses, and Joe Rice, administrator.

Mrs. Edna Beth Tye presided over the meeting calling it to order. Then reading of the last month's reading were read by Jo Bryant and approved by all members. A treasurer's report was given by Emma Lou Whitaker. She reported that the auxiliary had received some memorials and would continue to put an ad in the Hesperian so that the public is aware of giving in honor of someone who has deceased. The project of the auxiliary is a much, urgent need of a Heart monitoring machine. Thanks are also being given to the people who have contributed to memorials.

Joe Rice, administrator, spoke to the ladies of some of the needs of the hospital. The most urgent need is a heart monitoring machine, etc. It is used on emergency patients and patients in the hospital with heart prob-

lems. Two chairs are also needed at the nurses station, wall blood pressure cups are also needed, in fact 28 are needed. A Thyroid test machine, tests are being sent off, as of now and two typewriters for office work are also needed.

be aware of the needs of the hospital and that now they can have more confidence in getting the care they need while in the hospital, as alot of improvements have taken place and that all the community could benefit by coming to the local hospital.

The patient quota was 118 five months ago, it has increased to 555 now. Much more hope is expected for the future to grow and serve the needs of this community.

Mrs. Jean Appling shared the news of three R.N. nurses. They are supposed to come to Floydada in the next six to eight weeks. They are from the Philippines.

Further information will be announced later and plans for a reception as a welcome to our community will be announced later. Householdings and furniture will be needed these three nurses.

The meeting was adjourned.

LOCKNEY LOCAL

John L. and Elizabeth Taylor, born February 23, 1911, in Lubbock, Texas, died at 7:30 a.m. Tuesday, March 2, 1982, at the age of 70. He was 19% incl Brewster, 25. Brewster was a fatal one-car accident Tuesday, February 23.

Services were held in the Methodist Church at 2:00 p.m. Tuesday, March 2, at 2:00 p.m. in Dalhart. Brewster was survived by his wife and a 4 year old son, Mr. and Mrs. Bill Brewster, his sister and his grandparents, Mrs. Grady Brewster.

LOCKNEY GENERAL HOSPITAL IS PLEASED TO ANNOUNCE THE

Mary Kay Kratz, P.T.

has joined the hospital staff

Physical Therapist

treatment by medical referral

SAS

Nothing fits or feels better than our real leather hand-sewn MOCS by S.A.S.

'38 LATTICE CAMEL-NAVY

Why Settle For a Copy When We've Got The Real Thing?

Brown's

Lockney

12 and 14 Karet Gold filled Chains & Bracelets and 14 Karet Gold Chains & Bracelets

SCHACHTS

Flowers, Jewelry & Gifts

"Our Pleasure is To Serve You"

112 W Poplar Lockney

(BERTIE) I Standing, led Duncan, Du Tobl Ann Du and four days, great-grand

ve gel

Tobi Ann Dun... a fortunate y... she had 12... great-great-gra... (Ethel) Taylor... since 1911, having... Texas from K... red wagon. She



PERSON

and Mrs. Steve... the arrival of a... born February... in Lubbock, a... Todd weighe... was 19% incl... has an older... a fatal one-car... ruary 23.

Mr. and Mrs. Loui... Methodist Church at 2:00... Dalhart. Brewster was survived by his wife and a 4 year old son, Mr. and Mrs. Bill Brewster, his sister and his grandparents, Mrs. Grady Brewster.

and Mrs. Da... wish to ann... first child, a di... born February... Hospital, weig... parents of K... Ferguson of Fi... Mrs. Bob Barton... rary h... mem

Harmony E... Club met in... February 22 w... president, Ime... meeting to orde... Exodus 39:3... by a safety... program. Elect... was presented

40% OFF REGULAR PRICES

Heer Molded Counte

652-3731

Frizzell, Cotham reveal wedding plans May 21st

Mr. and Mrs. David Frizzell of Lockney and Mr. and Mrs. Bud Cotham of Brownfield announce the engagement and forthcoming marriage of their children, Cindy Renee and William Phillip.

The prospective groom will be graduating in May with a Bachelor of Science in Physical Education from West Texas State University, Canyon.

The couple plans to be married on May 21, 1982 at the First Baptist Church, Lockney.

Cindy is the granddaughter of Mr. and Mrs. Jack Frizzell of Lockney. The bride-elect is a graduate of Wayland Baptist College with a two

year Secretarial Science Certificate. She is presently attending West Texas State University in Canyon.

Bible Baptist Ladies meet in Fawver Home

The ladies of the Bible Baptist Church met on Tuesday, February 23, at 7:30 p.m. in the home of Debra Jo Fawver for their monthly Bible study.

The ladies enjoyed refreshments of brownies, soft drinks and coffee.

After all had arrived, the business was taken care of, and the next Bible study was set for Tuesday, March 23, at 7:30 p.m. in the home of Lila Taylor.

Those attending were: Nancy Welborn, Helen Lipham, Margie Sue, Lila Taylor, Lela Mae Burns, Renie Chapman, Debra Jo Fawver and Jaynette Harrison.

Helen Lipham then led the group in prayer. Lila Taylor then continued the lesson on The Tabernacle. The group

had a discussion on the lesson. Nancy Welborn closed the Bible study by leading the group in prayer.



CINDY FRIZZELL, PHILLIP COTHAM

Photo Mrs. J.A. [Eunice Taylor, 95, is seated. Standing, left to right, are Barbara Duncan, Dan Ray Duncan holding Tobi Ann Duncan, age three weeks and four days, and Dick Taylor, paternal great-grandfather.

(BERTIE) BRADLEY, 95, is standing, left to right, are Barbara Duncan, Dan Ray Duncan holding Tobi Ann Duncan, age three weeks and four days, and Dick Taylor, paternal great-grandfather. [Right

Generations times two

Tobi Ann Duncan of Panhandle is a fortunate young miss. When she had 12 living grandpar-

Lockney Care Center until her death February 12.

Another great-great-grandmother, Mrs. J.T. (Bertie) Bradley moved to this area from Grayson County in 1928. She currently resides in the Lockney Care Center.

Tobi Ann is the daughter of Mr. and Mrs. Dan Ray Duncan of Panhandle.

Today's Lifestyles

by Marilyn Tate
County Extension Agent



MACHINE EMBROIDERY CLASSES IN LOCKNEY

Machine embroidery techniques will be taught in three workshop sessions in Lockney March 23, 30, and April 6, from 2:00-6:00 p.m. Anyone interested in participating in the workshops should call me at 983-2806 to pre-register. Cost for the 12 hours of instruction will be \$30.00. Any sewing machine with a zig zag stitch will do machine embroidery.

desirable than the old-fashioned clay pots. But there's no reason why you can't grow just as healthy a plant in plastic as you can in clay.

Because water does not evaporate through the plastic pot, these plants will require less watering. It's easy to overwater if you're not used to plastic pots. But many are used in the production of greenhouse crops by professional growers.

WINTER TIME FOR POTTING

Plants love to get potted, and late winter is an excellent time to pot, or repot, whichever the case.

But what about the selection of the right pot for your plant? It may not be a simple task, as there are many from which to choose: some are good, but some should be avoided.

So what do you need? A clay pot, a glazed pot, plastic, styrofoam, brass or wood? Let's take a closer look at the various types available.

Plastic pots vary from the cheap flimsy ones to very decorative and attractive types designed for interior landscaping. One of the most interesting plastic pots is the clear plastic.

Clay pots — they don't actually "breathe" as is sometimes suggested.

When the pots have been watered all the pore spaces in the clay are filled with water so little or no air actually escapes through the pot container.

If the container is so dry that the pore spaces in the clay pot are not filled with water then the plant is in trouble. The main advantage of a clay pot is that

they're cooler because of the evaporation of water from the outside.

Also, because this water does evaporate you're less likely to over water plants in the clay pot. Of course, if the clay has been glazed you essentially have the same water requirements with this type of container that you would have with a plastic pot.

Wooden containers — all but especially the redwood, look very attractive in the garden shops. Once they're brought home and filled with soil, planted with plants and watered over a period of time they begin to streak and water stain. Like the clay pot, they will dry out faster than plastic and this may be an advantage.

Metal containers — most are designed to set less attractive clay or plastic pots in. They usually don't have holes provided for drainage and as a rule they're fairly expensive. They can last a long time, though, and they certainly add a special touch to the interior landscape.

Styrofoam pots — this is a relatively new type of pot and although people

associate styrofoam with inexpensive ice chests, styrofoam is a good material to make pots out of. It is a good insulator thus the soil should remain cooler, especially if the styrofoam is a light color. They don't dry out as rapidly as clay or wooden containers, but they just don't look as attractive as plastic or clay.

Being lightweight, styrofoam pots will occasionally tip over in a gusty wind if placed outdoors on the patio. This can wreck a beautiful plant you have grown carefully, so be forewarned.

Styrofoam hot cups used for coffee make good temporary planters for transplants if you punch about four holes in the side of the cup at the bottom.

Hanging basket containers — almost every material available for regular pots is also available in some form of hanging container. Wire baskets lined with sphagnum moss are still perhaps the favorite because they're very attractive and natural looking, but a number of plastic and ceramic hanging basket containers are also very attractive.

New programs to be offered

A film course on westerns and other action features is one of seven continuing education programs beginning in March at Texas Tech University.

Texas Tech's Division of Continuing Education also will offer courses on the finger calculation method of mathematics, aerobic dancing, test review, behavior modification and European art

as well as a conference on glass. Participants may enroll on a space available basis at the door, but early registration is encouraged.

Further information on March programs and other spring offerings is available by contacting the division at Box 4110, Texas Tech University, Lubbock, Texas 79409, (806) 742-2354.

Senior Citizen Menu

March 8-12

Monday — Macaroni, ham, cheese casserole, buttered green peas, tossed salad/dressing, roll, chocolate chip cookie, milk

Tuesday — Hamburger steak with mushroom sauce, potato tots, buttered cabbage, cornbread, canned plums, milk

Wednesday — Pork chop/gravy,

whole kernel corn, carrot/cabbage slaw, roll, peach cobbler, milk

Thursday — Meat loaf with creole sauce, candied yams, cauliflower with cheese sauce, cornbread, rainbow jello with whipped topping, milk

Friday — Oven fried fish, tartar sauce/catsup, potatoes au gratin, turnips and greens, roll, banana pudding, milk



HENDRIX

Joel and Holly Hendrix are proud to announce the arrival of their first daughter, Joni Marie, born Thursday, February 25 at 10:03 a.m.

Joni was 20" long and weighed 6 lbs. and 10 ozs.

Proud grandparents are Fern Hartsell, Floydada, Truitt Hartsell, Plainview, Bill and Eleanor Hendrix, Floydada.

Great grandparents are Felt Patterson, Plainview, and Mrs. L.L. Hendrix, Lubbock, and Margaret McCraney, Floydada.

HUCKABEE

Mr. and Mrs. Kenneth Huckabee of Moore, Oklahoma announce the arrival of a son named Ruston Lee, born February 11 at 6:30 a.m.

He weighed 8 pounds, 14 ounces and was 22 inches long.

He has two sisters, Shawna age 9 and Kessa, age 2, and a brother Todd, age 7.

Grandparents are Mr. and Mrs. Burl Huckabee of Floydada and Mr. and Mrs. W.H. Smith Jr. of Clovis, New Mexico.

Great grandmothers are Mrs. W.H. Smith, Sr., and Mrs. A.B. Keim of Floydada.

Murry hosts the Harmony Homemakers Club

Harmony Extension Home-Club met in the community room February 22 with Imelda Murry as hostess.

President, Imelda Murry, called the meeting to order. She read the minutes, Exodus 39:3. The roll call was taken by a safety measure in the

Hopper. Members were reminded of so many dangers in the misuse of electricity, not only in the home, but in every day life.

Recreation was led by Blanche Williams and she was assisted by Ruth Scott.

The hostess served refreshments to these members: Bess Carr, Anna Maude Hopper, Ruth Scott and Blanche Williams.

Plain or Safety Steel Toe--



Hardworking Feet Deserve THE HEEL FIT OF PECOS BOOTS

Large selection of sizes and widths

RED WING

Brown's DEPARTMENT STORE 104 NORTH MAIN LOCKNEY



Visit Our New Arts & Crafts Center


Lots of new lines have been added including Cake Decorating Accessories, String Art Kits, Cooper Art and Much More

PERRYS

114 East California
983-3570

did you know?

The average SPS customer spends the same percentage of his budget for electricity as he did in 1976. SPS keeps electric service costs lower by engineering and designing its own power plants, cooling towers and certain pollution-control devices. SPS is continuing its research into alternative energy sources to guarantee that our customers will have a reliable supply of electric power.



Jim Martin, district manager, Clovis.


SPS employees pay the same rate for electric service as do the Company's other customers. Although some utility companies in other areas offer special employee rates, SPS employees do not receive a discount on their electric service.

Jim Steinhilper, senior rate analyst, Amarillo.

SPS must build new power plants to take advantage of coal, a more reliable, less expensive fuel. Gas-fired plants cannot be economically converted to other fuel sources, so SPS must construct coal-fired plants to meet the energy needs of its customers. Coal-fired plants are more expensive to construct than gas-fired, but the SPS engineering and design staffs are able to build coal-fired plants at about one-half the national average.

Berry Smith, reports control supervisor, Amarillo.

Knowing what electricity is worth is worth knowing. For answers to your questions, call or write your SPS manager.



SOUTHWESTERN PUBLIC SERVICE COMPANY


930.1

OUR

MARCH

SALE

IS



TURKEYS
Shurfresh USDA Grade A

61¢
lb.



PORK ROAST
Boston Butt Bone In

\$1.29
lb.



BEEF ROAST
Sirloin Tip Whole Cry-O-Vac

\$1.89
lb.



SIRLOIN TIP
Beef Roast (Mkt Trim) 3 lb.

\$2.00
lb.

- Sirloin Tip** \$2.59
Boneless Waste Free Beef Steak lb.
- Boneless Ham** \$2.69
Wilson Certified lb.
- Owen's Sausage** \$3.35
1 lb. roll \$1.69 2 lb. roll
- Lunch Meat** \$1.89
Oscar Mayer Variety Pack 12 oz.
- Sliced Bologna** \$1.07
Oscar Mayer Meat or Beef 8 oz.
- Chorizo** \$1.09
Peyton Thrifty lb.

- Franks** 99¢
Peyton Ranch Brand 12 oz.
- Ground Beef** \$1.78
Lean Not less than 80% Lean lb.
- Pork Steaks** \$1.39
Family Pak Bone In lb.
- Shank Meat** \$1.79
Boneless Beef for Soup lb.
- Canned Ham** \$6.79
Shurfresh 3 lb. can



PIGGLY WIGGLY

Open Daily 8:00 a.m. to 8:00 p.m.
Sundays 9:00 a.m. to 7:00 p.m.

Prices effective Thurs. thru Wed.
March 4-March 10, 1982

Each of these advertised items is required to be readily available for sale at the advertised price in each store, except as specifically noted in the ad. We reserve the right to limit quantities. None sold to dealers.



FLOUR
Gladiola

79¢
5 lb. bag

Piggly Wiggly

Super Saver
LARGE EGGS
Large Grade A 1 doz.
with coupon

78¢

Dairy Specials

- Margarine** 88¢
Chiffon Whipped 1 lb. bowl
- Margarine** 63¢
Shurfresh Soft 2-8 oz. tubs
- Cinnamon Rolls** 99¢
Pillsbury 9½ oz. can
- Danish Roll** \$1.09
Pillsbury Orange 12 oz. can

Put \$2,500 in your pocket...play **CASH KING**

COIN CHART EFFECTIVE JANUARY 28, 1982

COIN VALUE	NUMBER OF COINS	DEPOSIT FOR TICKET	COIN VALUE
\$1.00	1	\$1.00	\$1.00
50¢	2	\$1.00	\$1.00
25¢	4	\$1.00	\$1.00
10¢	10	\$1.00	\$1.00
5¢	20	\$1.00	\$1.00
1¢	100	\$1.00	\$1.00
TOTAL	138	\$1.38	\$1.38

There are still plenty of tickets left to be won. Plus, winners qualify for a Prize Drawing. A few weeks left to win FREE Game Tickets. Don't miss your chance!



Fruit Cocktail
Del Monte

59¢
17 oz. can



LOWFAT MILK
Shurfresh 1 1/2%

\$1.88
1 gal. jug

Biscuits
Shurfresh

Buttermilk, Sweetmilk 5 8 oz. can for \$1

Coffee
Folgers Electric Perk, Regular

\$2.00
1 lb. can

Kleenex
200 ct. box Assorted, White

79¢

Nestle Quik
Chocolate Drink Mix

\$2.00
2 lb. can

Extra Value Coupons Piggly Wiggly 30¢ off regular price

Shurfine **Grape Drink** 46 oz. can

Extra Value Coupons Piggly Wiggly 15¢ off regular price

Kellogg **Product 19** 12 oz. box

Extra Value Coupons Piggly Wiggly 10¢ off regular price

Del Monte Seedless **Raisins** 15 oz. ctn.

Extra Value Coupons Piggly Wiggly 20¢ off regular price

Conditioner **Flex** 15 oz. can

Extra Value Coupons Piggly Wiggly 15¢ off regular price

Post 40% **Bran Flakes** 20 oz. box

Extra Value Coupons Piggly Wiggly 25¢ off regular price

Johnson & Johnson **Baby Oil** 10 oz. btl.


Extra Value Coupons Piggly Wiggly 15¢ off regular price

Premium Saltine **Crackers** 1 lb. box

Extra Value Coupons Piggly Wiggly 15¢ off regular price

Mint Toothpaste **Aim** 2.7 oz.

BLOWING BARGAINS YOUR WAY



POTATOES
Bake 'em, Boil 'em, Fry 'em
20-lb. bag

249



GRAPEFRUIT
Texas Ruby Red

4 for **\$1**



STRAW BERRIES
Red Ripe California

Pint **\$1.29**



CARROTS
Fresh Crisp

3 1 lb. bag for **99¢**

YOUR Home Town Store

of Values!

Oranges
Sunkist High in Vitamin C



\$1.49
5 lb. bag

Bean Sprouts

Green **Onions** each **49¢**
Salad Tray Favorite

Lettuce
Romaine Icy Fresh



79¢
bunch

4 for \$1

BE A WINNER!
PLAY **CASH**

There are still plenty of CASH prizes to be won. Plus, all Saver Disc purchases qualify to enter the Grand Prize Drawing. But Hurry! Only a few weeks left to enter. Pick up a FREE Game Ticket today. No Purchase Necessary.

Don't miss your chance to win!

Frozen Food Values

Onion Rings 9 oz. pkg. **88¢**
Mrs. Paul's

Waffles 11 oz. pkg. **88¢**
Eggo

Cool Whip 8 oz. tub **83¢**
Topping

Cherry Pie 24 oz. pkg. **\$1.59**
Morton

Piggly Wiggly

Super Saver Lipton Instant Tea
with coupon

\$1.79
3 oz. jar



Nice-N-Soft

\$1.49
6 roll pkg. White, Asst. Prints

Roasted Beef

12 oz. can **\$1.49**

Cake Mix
Betty Crocker
Pineapple Upside Down

21 oz. box **\$1.59**



CHUNK LITE TUNA
Chicken of the Sea

88¢
6 1/2 oz. can



COKE

\$1.99
6 pack 32 oz.

Pineapple
Monte

15 1/4 oz. can **59¢**

Grape Jelly
Weich

20 oz. jar **99¢**

Piggly Wiggly **10¢ off** regular price

Sandwich Bags 150 ct.

Extra Value Coupons Piggly Wiggly **10¢ off** regular price

Wolf Brand Beef Stew 24 oz. can

Extra Value Coupons Piggly Wiggly **25¢ off** regular price

Sure & Natural Maxi Pads 30 ct. pkg.

Extra Value Coupons Piggly Wiggly **10¢ off** regular price

Job Squad Paper Towels 1 roll

Piggly Wiggly **20¢ off** regular price

Monte Whole Pickles 22 oz. jar

Extra Value Coupons Piggly Wiggly **10¢ off** regular price

Texsun Unsweetened Orange Juice 46 oz. can

Extra Value Coupons Piggly Wiggly **10¢ off** regular price

Fiddle Faddle 7 oz. pkg.

Extra Value Coupons Piggly Wiggly **20¢ off** regular price

Liquid Dish Detergent Lux 22 oz. btl.

FARM NEWS



LAMB JUDGING was held Wednesday morning. These participants are trying to pick the ideal animal that would be sold for meat at the packers.

Floyd County judging contest held

The Floyd County judging contest took place Wednesday morning beginning at 8 a.m. This event is one in which the exhibitors of the day before become judges themselves.

The contest is a learning experience led by County Agents Jett Majors and Benny Butler. Its objective is to teach the youngsters what to look for as the ideal animal sold for meat at the packers.

It also helps them when picking out an animal for their project.

A 4-H judging team is being organized by the Floyd County 4-Hers. Any member interested in participating on the team is encouraged to contact the County Agent's office, 983-2806.

Winners of the County Show judging contest will be presented trophies at the Jr. Livestock Show Banquet, March 8. Individual trophies will be given in each division and one overall trophy.

Results of the contest are:

Lamb
1st Karvn Foster, score 147; 2nd Chris Fulton, 147; 3rd Melanie Foster, 146.

Barrows
1st Dean Seymour, 147; 2nd Karvn Foster, 146; 3rd James King, 145.

Steers
1st Kyle Brock, 149; 2nd Earl Brosech, 149; 3rd Randy Emert, 149.

ADAM'S WELL SERVICE

Floydada 983-5003

FEDERAL LAND BANK ASSOC. OF FLOYDADA

Floydada 983-2460

RUSSELL'S EQUIPMENT & SUPPLY

Floydada 983-3751

This space available call 983-3737

FLOYDADA COOPERATIVE GINS INC.

Floydada 983-2884

MARTIN & COMPANY

Floydada 983-3713

SUN-VUE FERTILIZER

Lockney 652-3362

Overall
[Possible score of 450]
1st Karvn Foster, 425; 2nd Jim Waller, 421; 3rd (tie) James King and Jeff Prisk, 418.

Men
1st James Cage, 413; 2nd Buster Terrell, 408.

Bentsen asks Agriculture Dept. to consider economic emergency

Washington, D.C. — Senator Lloyd Bentsen asked Secretary John R. Block if he intends to implement a \$600 million Economic Emergency Program to assist hard-pressed farmers in Texas and other states.

Some 35 percent of 16,000 Texas farmers borrowing from the Farmers Home Administration (FmHA) are delinquent on their loan payments, Bentsen said in a letter to Block. Of these farmers, some 1,250 are not able to receive refinancing or other assistance from FmHA, which traditionally is the lender of last resort for farmers. These statistics are for December, Bentsen said, noting that figures for January "will be even more depressing."

"If the American farmer ever faced an emergency situation, he does today. Many farmers in Texas are being literally driven to the wall by a combination of high interest rates and low farm prices," Bentsen said. Calling the situation the worst for

farmers since the Great Depression of the 1930s, Bentsen asked Block to consider using his discretionary powers to implement the Economic Emergency (EE) loan program. The EE is designed to assist farmers who, through circumstances beyond their control, have no other means of surviving until the economic situation improves. EE funds would make financing available to farmers who meet FmHA eligibility requirements.

"Many Texas farmers advise me that the FmHA, by turning its back, is forcing them and their neighbors to face the harsh prospect of either foreclosure or voluntary liquidation. These are not marginal operators either, but farms that would be prospering during normal economic times," Bentsen said.

"I would appreciate knowing whether you consider the current farm situation to be a serious emergency and if so what steps your department is taking to help farmers survive," Senator Bentsen said.

18 percent decline in cotton forecasted

A producer survey by the National Cotton Council in early January indicates farmers at that time intended to plant 11.8 million acres of cotton this spring, an 18 percent decline from last season's 14.3 million.

Results of the survey, taken before announcement of a government acreage reduction program for cotton, were revealed in Dallas on February 5 at a meeting of the Council's Producer Steering Committee.

Joseph T. Wyrick, staff agricultural economist, said more than 1,700 responses from producers all across the Cotton Belt were incorporated into the results.

Planting intentions by regions were:
Southeast — 635,000 acres, down 18 percent;
Mid-South — 2,583,000 acres, down 18 percent;
Southwest — 6,340,000 acres, down 22 percent;
West — 2,213,000 acres, down 3 percent.

Wyrick said producers in the Southeast and the Mid-South indicated much of their acreage shifted out of cotton would go into winter wheat and soybean. Southwest growers planned to step up their wheat and sorghum plantings to compensate for their downward shift in cotton acreage, while

The problem agriculture is facing today started "yesterday"

The problem agriculture is facing today actually began when President Ford decided to put an embargo on grain shipments to the Soviet Union in 1975. The reason he gave was that we had high food prices in the U.S. Later, President Carter decided to use the shipment of food and grains to the Soviet Union as a weapon against their invasion of Afghanistan. Reagan is now using the shipment of these items to Poland as a weapon. So it's small wonder that other countries have decided that if U.S. can use the shipments of those commodities as a club over the head of someone, why can't they do the same thing.

For example, Mainland China has told us if we continue to sell military plans to Taiwan, they will not honor the five year contract they have with us for the purchase of various grains. India has also decided they could use it as a weapon against us by threatening to cut off the purchase of various grains from the United States if we continue to sell weapons to Pakistan. Can we criticize them when we are doing the same thing? Also, can we fault the Russians when they indicate they would rather not have us as their main source of supply?

Another tragic example is Japan. It is the largest single importer of U.S. agricultural products. The volume of purchases from the U.S. exceeds 7 billion dollars, about 15% of the total U.S. agricultural exports. Two-thirds of the dollar volume is grain - primarily corn, soybeans and wheat.

At Chicago in July of last year, a panel discussion was held between the U.S. and Japanese concerning the future of U.S./Japan agricultural trade. Secretary of Agriculture Block as well as Ambassador Yoshio Okawara of Japan were in attendance.

The most interesting point made by the panel members - from Japan - and in particular Mr. Eishi Ueno, Agricultural Attache, was the point about U.S. grain embargo against Russia. The Japanese viewed this quite negatively and openly stated that as a result of this action they, the Japanese, would work to become less dependent on U.S. agricultural commodities. The point was made emphatically and repeatedly that the percent of Japanese purchase of grain from the U.S. will decline. They did not consider us a reliable source of supply because we use grain shipments as a weapon in cold war diplomacy.

Somehow or another the United States Department of State and the Department of Agriculture must get their act together. Surely, they realize

what a tragic blow to the farmers of this country their actions and in some cases inaction is causing. And the farmer's plight in this mess is only the tip of the iceberg. Obviously, nothing happens until the farmer grows or raises something, be it wheat, corn, soybeans, rice, cattle or hogs. But that is only the beginning.

I don't think most people realize that agriculture is this country's largest industry. It's assets today total nearly one trillion dollars, that amount is equal to almost 90% of the total assets of all manufacturing corporations in this country.

Also, agriculture is this country's largest employer (outside the government itself). Around 15 million people work in some phase of agriculture - the growing, the storing, transporting, processing, merchandising and marketing of all farm commodities.

Also, I think we're all aware that agriculture makes a tremendous contribution to the U.S. balance of payments. Farm exports last year totaled over 45 billion dollars, giving us a surplus of 26.7 billion in agriculture products. That went a long way toward helping us pay for the imported oil bill.

We are constantly hearing and reading the economists of our country proclaiming that the U.S. has fallen behind Japan, West Germany and other countries in productivity. They have completely overlooked the fact that the productivity gains of the farmers outstrip those of any other type of industry in this country or in any other country.

This current generation of U.S. farmer produces over 75% more crops than their fathers did on the same number of acres. An hour of farm labor in 1981 produced 14 times as much food as it did only 60 years ago.

As a result, food in this country is one heck of a good buy. That's something that most people overlook when they are grumbling about high prices. The United States families now spend approximately 14% of their incomes for food. This compares with 34% in the Soviet Union, 23% in Japan, 59% in India, 41% in Brazil, 60% in Mainland China, 41% in Mexico, 20% in France, 19% in England and on and on. The people of United States spend far and away the lowest percentage of their spendable income for food than any country in the world.

Due to better productivity on the farms, an hour of factory wages today buys four times as much chicken as it did 30 years ago, three times as many eggs, 70% more milk, and so on.

I don't think we should forget that

farmers are also large contributors to the economy. For example, the annual production of farm machinery, farm tractors, and other vehicles total 14 billion dollars. For fuel, lubricants, maintenance and equipment, the farmer spends over 13 billion dollars.

Agriculture uses about half million tons of steel each year. That is enough to make 100,000 cars. Farmers use a tremendous amount of electricity, 33 billion kilowatt hours each year. That's more than is used by New England, Maryland and Washington D.C. combined.

Incidentally, farmers are an enormous amount of tax payers. They paid over 8 billion dollars in taxes in the year 1980.

The farmers today are not the same as the farmers of the past. They are better educated, more organized, and more politically active. They are better organized than the labor unions. They are better organized than the business community. They are better organized than the government.

But in this country today, no political clout, you have no political voice. The farmer is dependent on what happens in the big cities and what happens in the Congressmen who come from the big cities and who have entered the lowest possible food prices.

What they have done is that as the farmer's income goes down, some of the people they are dependent on are able to take advantage of the farmer's situation.

I think it's time for all of us to get together and state representatives of the big cities and who have entered the lowest possible food prices.

What they have done is that as the farmer's income goes down, some of the people they are dependent on are able to take advantage of the farmer's situation.

Texas onions known for sweet and mild flavor to hit market soon

Texas onions are starting to move to market in the Rio Grande Valley. That's good news for onion lovers not only in this state but throughout the U.S.

"Texas onions are known for their sweet and mild flavor," says Tom Longbrake, horticulturist with the Texas Agricultural Extension Service, Texas A&M University System. "Supplies from South Texas should start to increase in the coming weeks and should continue through June."

Aside from supplying market demands in this state, Texas onions provide about 70 percent of the total of U.S. consumption from March through June.

Harvesting of the Texas crop won't mean lower prices, though. Onion prices will likely remain above normal this spring due to low storage stocks in northern states, notes Longbrake. Northern growers supply the nation with stored onions from October through

February except for a few fresh imports from Mexico.

"Onions are an everyday favorite for adding flavor to food at little cost and effort," says Longbrake. "Furthermore, they are low in calories and add vitamin C, the B vitamins and several minerals to the diet."

In addition to using onions for flavoring food, Longbrake suggests trying broiled battered whole onions or chopped onions added to cornbread or mashed potato cakes.

"And then there's the popular breaded french-fried onion ring," he adds. "Not only are onion rings a popular fast-food restaurant item, but they are also becoming a more popular fare in the home. Of course, sliced or diced onions and hamburgers go hand in hand."

What does all of this add up to? Each American consumes about 12 pounds of onions a year on the average.

Western growers listed wheat as their primary crop for acreage increases.

He said most of the acres intended to be taken out of cotton apparently are slated to be used for alternative crops since cotton farmers indicated they planned to reduce their plantings of all crops by less than 2 percent.

The economist emphasized that early season intentions are much more subject to revision than those nearer planting time.

"Certainly there will be ample reason for farmers to reconsider early intentions," he said.

Factors cited were: (1) the 7.67 cent target price deficiency payment which

the economist said will give producers a better understanding of this income protection feature of the farm bill; (2) the government acreage reduction program for cotton and alternative crops which requires that producers comply to be eligible for CCC loans and deficiency payments; and (3) net return prospects assuming both compliance and non-compliance with the acreage reduction program.

"It's possible that some producers could find it necessary to plant more cotton than originally planned in order to adhere to acreage requirements for other crops while minimizing idled crop lands," the Council economist stated.

Others, he added, may consider the costs of laying out land and complying with conservation requirements to be greater than expected benefits from program compliance.

Wyrick said USDA economists, using computer models to compare production costs and market target prices of cotton and alternative crops, have estimated cotton producer participation in the acreage reduction program at 75 percent in the Southeast, 65 percent in the Mid-South, 50 percent in the Southwest, and 55 percent in the West.

The USDA model assumes that non-participants would reduce acreage only about 5 percent and this - added to the 15 percent reduction by participants - leads to an estimate of 12.8 million acres planted to cotton in 1982.

The Council's survey, however, suggests this estimate may be somewhat high since non-participating producers appear likely to reduce their cotton plantings by a significantly greater amount than USDA's model assumes.

Noting that USDA's estimate of 12.8 million acres may be on the high side and the Council's survey findings on the low side, he said the "best guess" of planted acreage is about 12.5 million.

"This, we believe, reflects both the bullish and bearish impacts of the government's program while considering the stated intentions of producers who might choose not to participate."

FLOYD COUNTY IMPLEMENT

Floydada 983-3732

CASE POWER & EQUIPMENT

Floydada 983-2836

FIRST NATIONAL BANK OF FLOYDADA

Floydada 983-3717

CONSUMERS FERTILIZER ASSOC.

Lockney

PRODUCTION CREDIT ASSOC.

Floydada

South Plains Maulde

MRS. MURR

Plains, March 1

visitors present at

Church Sunday

other vehicles total 14

ended in a bo

and Church s

Leader, Mrs. Hel

spends over 13 billion

Agriculture uses abou

half million tons of steel

That is enough to make

100,000 cars. Farmers

use a tremendous amou

of electricity, 33 billion

year. That's more than

is used by New England,

and Washington D.C. c

Incidentally, farmers

are an enormous amou

of tax payers. They

paid over 8 billion dol

in taxes in the year

1980.

The farmers today are

not the same as the

farmers of the past. They

are better educated,

more organized, and

more politically active.

They are better organi

than the labor unions.

They are better organi

than the business comm

They are better organi

than the government.

But in this country

today, no political clou

t, you have no polit

ical voice. The farmer

is dependent on what

happens in the big ci

ties and what happens

in the Congressmen

who come from the big

cities and who have

entered the lowest pos

sible food prices.

What they have done

is that as the farmer's

income goes down, so

me of the people they

are dependent on are

able to take advantag

e of the farmer's situ

ation.

I think it's time for

all of us to get toget

her and state represen

tatives of the big ci

ties and who have

entered the lowest pos

sible food prices.

What they have done

is that as the farmer's

income goes down, so

me of the people they

are dependent on are

able to take advantag

e of the farmer's situ

ation.

Executive V

Krause P

Hutchin

BROWNS IMPLEMENT

Floydada

FLOYD COUNTY FARM BUREAU

Lockney

Floydada

FLOYDADA IMPLEMENT

Lockney

Floydada

THE TYE COMPANY

Lockney

Floydada

MUNCY ELEVATOR

Lockney

Floydada

CONSUMERS FERTILIZER ASSOC.

Lockney

Floydada

PRODUCTION CREDIT ASSOC.

Lockney

Floydada

106 W. 983.

Mulder enjoys Amarillo visitors

MRS. MURRAY JULIAN
 Mrs. Murray Julian, hostess of the Amarillo visitors, is seen with her daughter, Mrs. Helen Teeple, and other guests at the Pine Wood Derby. The guests included Mrs. Helen Teeple, Mrs. Gayle Henderson, Mrs. Connie Johnson, Mrs. Janis Julian, Mrs. Tracy Johnson, Mrs. David Perry, Mrs. Jerry Taylor, and Mrs. Letha Mulder.

money is to go for the Pine Wood Derby. Kathy Mulder made the Cub Scout and Webelos centerpiece, which was lovely, and Gayle Henderson made up the beautiful spoon awards for the cakes and these were presented each father and son who made a cake. Mrs. Janis Julian is Cub Scout Master, Mrs. Gayle Henderson is committee chairman, Mrs. Helen Teeple is Cub Scout Den mother, Mrs. Connie Johnson is committee chairman, and Jerry Chappell is Webelos Coordinator. Scouts present were Ruben and Victor Chavarria, Bryan Henderson, Larry and Jacob Galvan, Brian and Keith Teeple, Tim Julian, Cory Mulder, Tracy Johnson and David Perry. All were present with parents, sisters and brothers, and

honored guests. Jerry Massingill commended the troop for 100 percent participation.

Johns Co., brother of Mrs. Alvin Nichols was taken to the Plainview Central Plains Hospital, Saturday, where he was in intensive care until Monday, and we trust he is much better at this time.

Hobby Club will meet at the home of Mrs. Sterling Cummings on Wednesday, March 10, at 2:00 p.m. with a program on how to prepare exotic dishes by Mrs. Kendall Cummings. Bring a craft to show and tell about, and tell about an exotic dish you prepare at home. "Thought for the Day" will be given by Mrs. M.M. Julian.

Lockney Hospital Notes

Feb. 22-March 2

- Melinda Grimaldo, Lockney, adm. 2-23, dis. 2-27
- Angelita Gonzales, Plainview, adm. 2-23, baby boy Brandon, born 2-23, dis. 2-25
- Melba Martin, Lockney, adm. 2-23, dis. 2-27
- Robert James Shout, Floydada, adm. 2-24, dis. 2-26
- Margaret C. Duenas, Lockney, adm. 2-25, dis. 2-26
- Clay Muncy, Lockney, adm. 2-25, dis. 3-1
- Ester DeLas Santos Arellano, Floydada, adm. 2-25, continues care
- Emilia Chavez, Floydada, adm. 2-26, baby girl Norma, born 2-27, dis. 3-1
- Dana McCauley, Crosbyton, adm. 3-1, continues care
- Lowell Callaway, Silverton, adm. 3-1, continues care
- Beverly Minyard, Silverton, adm. 3-2, continues care
- Belva Gibson, Lockney, adm. 2-15, continues care
- Faye Sams, Lockney, adm. 2-18, dis. 2-24
- Fannie Belle McClure, Floydada, adm. 2-18, dis. 2-27
- Kristi Russell, Lockney, adm. 2-19, baby boy Joshua born 2-20, dis. 2-23
- Christian Leal, Quitaque, adm. 2-20, dis. 2-24
- Lydia Leal, Quitaque, adm. 2-22, dis. 2-24
- Nena Loudermilk, Silverton, adm. 2-22, dis. 3-1
- William C. Payne, Plainview, adm. 2-22, dis. 2-24
- James Jarrett, Silverton, adm. 2-22, dis. 2-24
- Elsie Pate, Lockney, adm. 2-22, dis. 3-1
- John L. West, Silverton, adm. 2-23, continues care

Caprock Hospital Report

February 22-March 1

- Lillie Pryor, Dougherty, 1-26, continues care, Hong
- Lucy Pettit, Floydada, adm. 1-26, continues care, Hong
- Harvey Lee, Matador, adm. 2-4, continues care, Jordan
- Cecil Griggs, Floydada, adm. 2-6, continues care, Hong
- Woodrow Wilson, Floydada, adm. 2-7, expired 2-22, Hong
- Ethel Burnham, Floydada, adm. 2-10, continues care, Hong
- Gladys Simpson, Floydada, adm. 2-15, continues care, Hong
- Duncan Hollams, Floydada, adm. 2-16, continues care, Acar
- Rebecca Pena, South Plains, adm. 2-17, dis. 2-22, Hong
- Clarence Leatherman, Floydada, adm. 2-17, continues care, Hong
- Henry White, Floydada, adm. 2-17, dis. 2-27, Acar
- Charles Epps, Floydada, adm. 2-17, continues care, Acar
- James Addison, Matador, adm. 2-18, expired 2-28, Acar
- Lloyd McCrav, Floydada, adm. 2-19, dis. 2-25, Hong
- Blanche Williams, Floydada, adm. 2-19, dis. 2-23, Hong
- Anita Rodriguez, Floydada, adm. 2-20, continues care, Jordan
- Patricia Vasquez, Floydada, adm. 2-20, dis. 2-24, Hong
- Ruby Bunch, Floydada, adm. 2-22, dis. 2-27, Hong
- Nora Arjona, Lockney, adm. 2-22, dis. 2-23, Acar/Hong
- Christopher Enriquez, Floydada, adm. 2-22, dis. 2-28, Hong
- Sudie Thomas, Floydada, adm. 2-23, dis. 2-27, Hong
- Lupe Mata, Petersburg, adm. 2-24, dis. 2-25, Jordan
- Ollie Miracle, Floydada, adm. 2-26, continues care, Jordan
- Garner Weems, Floydada, adm. 2-27, continues care, Hong
- Jerry Galloway, Floydada, adm. 2-27, continues care, Hong

Congratulations
4-H and FFA



RED RAIDERS—Little Dribblers on the Red Raiders team are back row [l-r] Buddy Hendricks, coach; Jimmy Craig Forbes, Rolando Cisneros and Gary Fuller, coach. Front row [l-r] Aric Hendricks, Tracy Bailey, Michael Hicks, Jessie Suarez and O. Bryan Barker.



GOLD DUSTERS—Little Dribblers on the Gold Dusters team are back row [l-r] Bryan Thomas, Randy Wideman, Gabriel Mendoza and Mike Self, coach. Front row [l-r] are Jessie Vela, Shane Orman, Lanny McMurrian, Anthony Asebedo and Ray Lopez.

MR. FARMER

Thru The Month of March

RECEIVE

10%

Discount

ON ALL PARTS

(Minimum Purchase of \$500⁰⁰ or More)

Brown's Implement

PARTS VALUE OF THE MONTH

Ralls Highway
 983-2281



OIL SALE

IRRIGATION OILS

SAVE \$2⁰⁰ TO \$20⁰⁰

BOOK YOUR OIL NOW. SALE ENDS MARCH 15th

	REGULAR PRICE	SALE PRICE	SAVE
GULF LUBE XHD 30-40 CRANKCASE OIL	\$189.75 DRUM PRICE \$22.56 CASE	\$169 ⁷⁵ \$20 ⁵⁶	\$20 ⁰⁰ \$ 2 ⁰⁰
GULF SUPER DUTY SERIES 3 OIL	\$196.90 DRUM PRICE \$23.34 CASE PRICE	\$176 ⁹⁰ \$21 ³⁴	\$20 ⁰⁰ \$ 2 ⁰⁰

DRIP OIL... \$1⁸¹ GAL. \$99⁵⁵ DRUM

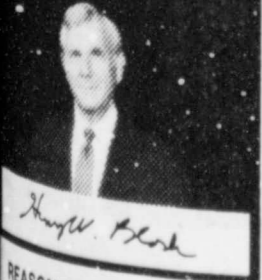
BRING YOUR OWN DRUM - WE WILL FILL

OIL FILTERS \$1⁹⁹ EA.



PHONE 293-1579
 1305 EL PASO ST.
 PLAINVIEW, TEXAS

"Here's #2 of my 17 reasons why H&R Block should prepare your taxes."



REASON #2: Free brochure about the new tax laws.

The recent tax law changes have you confused. We can help. H&R Block is offering a free brochure on the Economic Recovery Tax Act of 1981. We'll show you how you can benefit from these tax changes.

H&R BLOCK
 THE INCOME TAX PEOPLE
 Reasons. One smart decision.

106 W. Missouri
 983-5233

OBITUARIES

MILDRED CRUMP

Services for Mildred Lee Crump, 65, were at 10 a.m. Wednesday in the Downtown Church of Christ with Bill Morrison, minister, and the Rev. Bob Metzger, pastor of First United Methodist Church, officiating.

Burial was in Lamesa Memorial Park under the direction of Branon Funeral Home.

Mrs. Crump, a native of Roswell, New Mexico, died at 7:15 a.m. Monday in Highland Hospital in Lubbock. She married Verner W. Crump on November 25, 1939, in Clovis, New Mexico, and came to Dawson County from Crosby County in 1947.

She was a social worker for the State Department of Public Welfare from 1963 to 1966. She was the first welfare worker in the county and established the offices in both Dawson and Lynn Counties.

Mrs. Crump was a member of the Downtown Church of Christ, Lamesa Area Chamber of Commerce and the Dawson County Farm Bureau. She was listed in Who's Who in American Women for 1974 through 1976 and in Personalities of the South. She received the Florence Hall cash award in 1971 from the National Association of Extension Home Economics.

In 1970, she was appointed by the governor as delegate to the White House Conference on Aging. She was a life member of the Parent-Teachers Association.

Survivors include her husband; a son, Richard of Garland; three daughters, Nita Burney and Sandy Mayfield of Lamesa and Pam Farr of Hermleigh; her mother, Mrs. C.R. Smith Sr. of Lubbock; two sisters, Geneva Harris of Floydada and Eunice Nance of Denver, Colorado; four brothers, C.R. Smith Jr. of Ralls, Carl Smith of New Orleans, Dallas Smith of Lubbock and Aubrey Smith of Phoenix; and nine grandchildren.

SALLIE CARPENTER

Services for Sallie A. Carpenter, 91, of Floydada were at 3 p.m. Saturday at First Baptist Church of Floydada with the Rev. Floyd C. Bradley, pastor, officiating.

Burial was in Floyd County Memorial Park under direction of Moore-Rose Funeral Home of Floydada.

Mrs. Carpenter died at 12:55 p.m. Thursday in Lockney General Hospital after a brief illness.

She was born in Mason County and moved to Floydada in 1914. She married Claud Carpenter September 19, 1909, in Wolfe City. He died in 1979. She was a Baptist.

Survivors include two sons, Marion of Floydada and Dale of Irving; a daughter, Claudine Conway of Irving; two brothers, Darrell Smith of Tulsa and Russell Smith of Rogers, Arkansas; a sister, Mrs. Frank Hall of Plainview; 10 grandchildren; 14 great-grandchildren; and four great-great-grandchildren.

CHARLIE JARRETT

Services for Charlie L. Jarrett, 89, of Floydada were at 2 p.m. yesterday at New Salem Primitive Baptist Church with elder Joe Jackson officiating, assisted by elder Don Martin and elder Bill Heit, all of New Salem Primitive Baptist Church.

Burial was in Floyd County Memorial Park under direction of Moore-Rose Funeral Home of Floydada.

Jarrett died Monday in Lockney General Hospital after an illness.

He was a native of Sherivan, Indiana, and married Grace Pearson December 29, 1912, in Lockney. She died in 1962. He married Viola Fox August 7, 1965. He was a farmer and a retired minister.

Survivors include his wife; four sons, Lowell of Clarendon, Carl of Floydada, Bob of Lockney and Edward of Lubbock; three daughters, Joyce Hollums of Anderson, Missouri, Floyce Parkey of Littlefield and Lonnie of Alamogordo, New Mexico; two stepsons, Alvin Fox of Tulsa and Marvin Fox of Silver City; a stepdaughter, Sue Fortenberry of Silver City; 19 grandchildren; 79 great-grandchildren; and four great-great-grandchildren.

T.J. MILD SR.

Services for Timothy J. Mild Sr., 35, of Grand Junction and formerly of Slaton were at 10 a.m. Tuesday in Resthaven Funeral Home of Lubbock with the Rev. Bobby Zacharias, pastor of St. John's Lutheran Church, officiating.

Burial was in Resthaven Memorial Park under direction of Resthaven Funeral Home.

Mild was pronounced dead at the scene of a car-pedestrian accident which occurred at 9:45 p.m. MST Friday, about two miles west of Grand Junction. According to the Colorado State Police, Mild was running across the Interstate 70 bypass when he was struck by a westbound automobile.

Mild was born in Columbus, Ohio, and had lived in Slaton for 10 years. He was a diesel mechanic and had served in the U.S. Navy.

He was a Lutheran.

Survivors include two sons, Timothy Jr. and Johnathan, both of Grand Junction; his parents, the Rev. and Mrs. Andrew E. Mild of Lockney; his

grandmother, Marie of Plainview; three brothers, Andrew of Lubbock, Philip of Dodge City, Kansas, and Steven of San Angelo; a sister, Lois Hungerford of Energy; six nephews; and two nieces.

Pallbearers were Cecil Stolle, Jackie Ford, Larry Lilley, Sandy Bloxom, Bennie Moeller and Richard Becker.

The family suggests memorials to Lutheran Social Services of Texas or to the American Bible Society.

OLLIE B. MIRACLE

Services for Ollie B. (Blessingame) Miracle, 87, were at 11:00 a.m. yesterday at the First United Methodist Church with the Rev. James Smith, officiating. Burial will be today at Port Arthur, Texas, with Carter-Adams Funeral Home in Ralls in charge of arrangements.

Mrs. Miracle died at 3:30 a.m. Tuesday at Caprock Hospital, following a brief illness.

Born November 15, 1894 in Corin, Mississippi, she married Elmer Miracle November 16, 1912 in Eddy, Texas. They moved to Port Arthur shortly after. He died in October 1968.

She was a member of the Methodist Church in Floydada. She moved to Floydada in April 1975 and had been in the rest home in Floydada a little over a year.

Surviving are one sister, Mrs. Ethel Sawyer, Floydada; and numerous nieces and nephews.

MRS. MYRTLE ROBERTS

Funeral services for Mrs. Myrtle Roberts were at 10:30 a.m. Saturday, February 27, at the Tims Funeral Home at Altus, Oklahoma, with the Rev. Bill Moss officiating. Burial was in the Altus Cemetery.

Mrs. Roberts, 75, died at 3:45 p.m. Tuesday, February 23, at a nursing home in Erie, Kansas. She had been in failing health the past year, but death was unexpected.

Mrs. Roberts was born May 21, 1906, at Floydada, the daughter of Robert Lee Henry and Maud (Taffender) Henry. She spent her childhood years here and then graduated from high school at Monroe, Louisiana and from the Pamona, California junior college. She taught school for two years.

She was married to Isaac D. (Bob) Roberts on May 28, 1929 at Silvertown.

REMEMBER your loved ones with a living memorial to the Caprock Hospital Auxiliary Memorial Fund, Mrs. Ben Whitaker, Treasurer.

Local man named manager of 84 Lumber stores

Chris Sue, son of Huford and Carolyn of Lockney has been named Co-Manager of the 84 Lumber Company's store in San Angelo.

Chris is a 1978 graduate of Lockney High School and has completed one year at Texas Tech. He started with 84 in August of 1981 at the Plainview store, where he most recently has been a sales associate.

Chris and his wife Anne are now residing in the San Angelo area.

The 84 Lumber presently has 84 stores coast to coast and plans an additional 50 stores to be opened in 1982.



CHRIS SUE

See you at the game Saturday!

OLINE MONUMENT CO.
— 400 Joliet Street Phone (806) 296-2953 P.O. Box 1966
PLAINVIEW, TEXAS 79072

Companion Memorial Only \$595.00 Set Complete

MASTERTON
JOSEPH H. 1903-1974 LENORA I. 1902-

We Have The New Century Pre-need Memorial Plan Now You Can Purchase Your Memorial Before Need

Many families are surprised and burdened at time of need at the high cost of the things they have to do, on the most helpless day of their lives. Your memorial is one decision you must make alone. Also you must pay cash for some or all of these.

YOU MAY ASK; "WHY MAKE THIS DECISION NOW?"

- Stops Inflation
- Prevents Emotional Overspending
- You Can Make The Decision While You Are Still Together And Not Left For One To Do Alone.
- Advantage Of Small Monthly Payments.
- Make This Important Decision Together.

Call or stop by our office in Plainview. One of our Memorial Counselors will be glad to explain the new Century Pre-need Plan to you without obligation.

OLINE MONUMENT CO.

Got Heating Or Plumbing Problems?
Call
Holmes Plumbing.
Austin Or Steve
983-2251
Call Day Or Night

SUNFLOWER GROWERS MEETING
Holiday Inn - Plainview
Tuesday-March 9
at 7:30 p.m.

If you are interested in sunflowers - Don't miss this meeting!

TOPICS:

- Cultural Practices
- Delivery Points
- Marketing Opportunities
- Seed Varieties and Developments

All Interested Growers Welcome

Sponsored by: **Stauffer Seeds**

BAG THE BEST BUYS

HAMBURGER \$1.19	Gooch Bulk Pack BACON \$1.29
Delsey 4 roll pack TOILET TISSUE 89¢	Tenderized Nice & Tender STEAKS \$2.99
Atkins Hamburger Sliced 16 oz. PICKLES 59¢	Generic 25 lb bag DOG FOOD \$3.99
6-32 oz. Bottle COKES plus deposit \$1.98	Generic 1 lb CRACKERS 49¢
2 Liter COKES \$1.09	Ranch Style CHILI 303 can 99¢
Shurfresh 1 gal MILK \$2.19	Fresh TOAMTOES lb 59¢
Grade A Large EGGS dozen 79¢	Nice Firm heads LETTUCE lb 29¢
Gladiola 5 lb bag FLOUR 79¢	Texas ORANGES 3 lb \$1.99
Shurfine 5 lb bag SUGAR \$1.29	Baking 10 lb bag POTATOES \$1.99
Folgers 1 lb can COFFEE \$2.19	

KEETERS GROCERY
7:30 a.m. - 7:30 p.m. 652-2191

We Redeem Food Stamps & WIC Cards
We Reserve The Right To Limit Quantities

We Give Circle K Blue Stamps Double on Wednesday

ed co
umb
ber presently has
coast and plans to
stores to be open

IRIS SUE
er News
enter Comm. enjoys
unny weekend
MRS. J.E. GREEN
was beautiful, the sunny
was too. And not so cold.
Hartline has been visiting
of town.
Gordon Mayfield's guests are
Gene, wife Mary and daughter
of Henrietta. One errand
in this area was the trip to
where they enrolled their
for the fall semester of Texas
Ashton, a resident of
Rest Home spent the last
of the Lockney Hospital. We hope
she is feeling better.
Mrs. Millard Watson visited
Monday with her parents,
Mrs. Henry Brewer.
Thomas is home again after
several days in the local
Thomas children, Sue and
Heusch and son David of
spent over the weekend with
the Thomases.
Bethel Warren dined Sunday
Alona Warren.
The small daughters of Elaine
about of Muleshoe spent over
with their grandparents
Warrens while their par-
a week-end vacation with
Hudson.
Some part of the day all the
family were present except

Lockney Care Center Capers

BY VICKIE HUTTON
has been a full week! Monday,
Donald, Myrtle Payne, Rich-
donald, Myrtle Payne, Mable Griffin,
Sam Lide, Mable Griffin,
Bradshaw, Mary Jo Fielding,
Hester Myrtle Gibson, Estella
myself loaded ourselves in
picnic lunch and headed
State Park in Lubbock.
wonderful time. The weather
and we all enjoyed
ducks and geese. I don't
it is but the food always
picnics. We are looking
more picnics.
bingo winners this week
Payne and Myrtle Burke.
special thanks to Linda
bingo Tuesday and
congratulations to Phillip
Paul and DeLinda
having a champion in the
of the week was "Mons-
teries and Myths." This film
unexplained mysteries and

Center Comm. enjoys sunny weekend

BY MRS. J.E. GREEN
was beautiful, the sunny
was too. And not so cold.
Hartline has been visiting
of town.
Gordon Mayfield's guests are
Gene, wife Mary and daughter
of Henrietta. One errand
in this area was the trip to
where they enrolled their
for the fall semester of Texas
Ashton, a resident of
Rest Home spent the last
of the Lockney Hospital. We hope
she is feeling better.
Mrs. Millard Watson visited
Monday with her parents,
Mrs. Henry Brewer.
Thomas is home again after
several days in the local
Thomas children, Sue and
Heusch and son David of
spent over the weekend with
the Thomases.
Bethel Warren dined Sunday
Alona Warren.
The small daughters of Elaine
about of Muleshoe spent over
with their grandparents
Warrens while their par-
a week-end vacation with
Hudson.
Some part of the day all the
family were present except

Landscape & Gardening

BY JETT MAJOR
FLOYD COUNTY EXTENSION AGENT

YOUNG FRUIT TREES

one of the most difficult things for
to grasp when dealing
fruit trees is that half of the
should be removed before
Many nurseries provide this
information.
When a tree is topped? When a
of the nursery, about half of
system is lost. So, an equal
top growth must be removed
top and bottom into balance
root-to-top ratio) and to begin
branches in the right places. If
is not maintained, the tree
away.

Does not mean "hack off
" initial pruning removes
about half of the top
with weak and poorly
This should produce a tree
to be strong, well-distrib-
branches from which new
come soon. If you choose
branches now, you can avoid
branches and poorly shaped

Farmers... Let H&R Block prepare your income tax returns...we could save you money.

Our carefully trained tax preparers are up-to-date on all the tax credits and deductions that apply to farmers. At H&R Block, we'll take all the time necessary to do the job right because we want you to pay the lowest legitimate tax.

H&R BLOCK
THE INCOME TAX PEOPLE
106 W. Missouri
983-5233
Weekdays 9-6 Sat. 9-5



MONDAYS SUNNY WEATHER. was enjoyed by some of the residents from the Lockney Care Center who took a picnic lunch to Mackenzie State Park. Those attending were Alma McDonald, Myrtle Payne, Richard Lanham, Sam Lide, Mable



Griffin, Anna Bradshaw, Mary Jo Fielding, Donnie Hester, Myrtle Gibson, Estella Castro and Vickie Hutton.

Lakeview News

Browns attend museum meeting

BY JOYCE WILLIAMS
Congratulations to Jodie Smith for her lamb that won the grand championship at the County livestock show last month.
Mrs. O.K. Custer was in Lubbock Tuesday with Mrs. Hazel Bradley.
Mr. and Mrs. Edmund Brown attended the museum meeting at Amarillo in the convention center of the Villa Inn, from Wednesday to Saturday. The Texas Association of Museums conducted workshops for museum personnel and directors. Pat Brown, educational director of the Crosbyton Museum, attended those workshops specializing in how the local museum may be utilized through the public schools.
Boone Pickens, of Mesa Petroleum, spoke on how to approach foundations and individuals for large donations. The audience was given a report of Texas Sesaque-centennial plans. Governor Clements wants to build a sesaquecentennial museum, and several million dollars have already been spent studying the matter. However, museums over the state would prefer funds to have gone to existing museums, with perhaps a traveling display of material showing what Texas has been up to the last 150 years since the Battle of the Alamo.
Mrs. Roy Fawver was visited Thursday by Mr. and Mrs. O.H. Preston of Lamesa. Her granddaughter, Gail Ferguson, of Woodrow, came by for a visit Monday afternoon. Flora and other ladies of the Baptist church have prepared meals for families of thirty-one funerals conducted by Brother Bradley since January 1. Until your own family has gone through a funeral, you really can't truly appreciate the support and love shown by neighbors and church friends during such a time.
Mr. and Mrs. Joe Dunn have both had the flu the past few weeks. Their daughters, Norma and Snowdrop, called from Los Angeles and Springfield, Missouri to cheer their parents.
Norman Muncy returned home Tuesday, heart and blood pressure checked out fine, and is now on a low cholesterol diet. He's back working his usual rounds.
Mrs. Q.D. Williams went to Roaring Springs Sunday afternoon to look at her farm, and stopped by the Roaring Springs Ranch to explore the old houses recently moved there for remodeling. The house at the golf course is a large two-story, turn-of-the-century structure, with lots of interesting nooks and crannies. It has been re-wired, the stairway changed, and interior walls removed, and large supporting pillars added. Paneling resembling old fashioned beaded paneling has been used throughout. Sky lights bring the sunshine to the upstairs rooms.
Mrs. Choise Smith returned home from Dallas Saturday night, where she attended a workshop for teachers of the Gifted and Talented students. While Kay Dean was out of town, Choise and the children went to Lubbock to visit his

Cedar Hill News

Hutselles head for Philadelphia

BY GRACE LEMONS
The air is damp after a beautiful spring day Monday.
Sunday morning was a special day at the Assembly of God Church. Edna Gilly put on a program for Womens Ministry. The attendance was good.
Mr. and Mrs. Ed Hutselle and daughter Jan of Silverton left Sunday morning for Philadelphia, Pennsylvania where Ed will undergo surgery of the head. Our prayers are with them and the R.C. Guest family that everything will go as expected and Ed will have a speedy recovery.
Greer Lackey returned to his home in Burleson last week after spending some time with his parents, Mr. and Mrs. W.E. Lackey.
Virginia and Sandra Mitchell were among those who went to Lubbock Saturday and participated in the University Interscholastic League where Sandra received a I in piano and a III in trumpet. Virginia received a II in her piano solo.
Edna Gilly, Claude Gene and Darla Hammit of Holly, Colorado and Gertrude Hammit of Plainview enjoyed eating out in Plainview Thursday.
Craig and Trudy Gilly and Amy had dinner Sunday in the home of Edna Gilly. Jannette Lackey of Floydada visited with her in the afternoon.
Edna Gilly visited her mother Ruthie Clark in Plainview Friday and Monday Gertrude Hammit visited with Edna.
Lori Gilly's grandmother, Mrs. Vinson of Weslaco was laid to rest in the Floydada Cemetery Monday afternoon. Graveside services were at the cemetery. Mrs. Vinson had been in a rest home in Weslaco. Our sympathy is with the family.
Linda Lemons and Vance accompanied Grace Lemons to Amarillo Monday to see Grace's sister Mrs. S.A. Decker and husband Shields. Shields is recovering from recent gall bladder surgery. However x-rays show more stones in the liver and removal of them are scheduled at a later date. Mrs. Decker is improving after receiving treatment at the Rehab Hospital in Abilene. She fell and broke her leg and had complications recently.
Mr. and Mrs. A.S. Mize visited Sid Brown Sunday afternoon and report that he is much improved.
Several from Cedar Hill attended the funeral services for Woodrow Wilson, 67, at 2:00 p.m. Wednesday at the First United Methodist Church in Floydada Wednesday with the Rev. Jim Smith officiating. Woodrow died Monday at the Caprock Hospital from a lengthy illness.
Gladys Fortenberry and daughter Patsy Boone took Pam Hayhurst to her home in Henryetta, Oklahoma Friday. Pam had been visiting the Boones for several days.
Preparation, opportunity, and success are closely related.

Floydada School Menu

March 8-12

Monday:
Breakfast — Cinnamon toast, juice, milk
Lunch — Corn dogs with mustard, onion rings, baked beans, sugar cookie, milk

Tuesday:
Breakfast — Rice, butter, juice, toast, milk

Dallas Cowboys VS Floydada All-Stars
Saturday at Graves Gym

Chief Buildings

10 x 12 Utility Storage Building
\$595⁰⁰ in the crate
100⁰⁰ for setting up
100⁰⁰ for wood floor
(ready for delivery)
(approx. - \$200⁰⁰ for concrete floor)
Also dealer for Raynor Garage Doors
Automotive Garage Doors are \$175⁰⁰ includes 2 transmitters
We also carry in Industrial and Commercial Doors.
WALTER DAVIS CONSTRUCTION CO.
983-5337 or 983-5550 South 3rd in Floydada

See Tommy Assiter For Your All-Risk Crop Insurance

You Can Transfer Your Files From The Lubbock District Office Now.
983-2511
206 W. California
Floydada

Give Circle Blue Stamps Double on Wednesday

Wayland University to begin graduate study

Wayland Baptist University president Dr. David L. Jester announced that the university has received full approval to begin its own program of graduate study beginning next fall.

Approval came earlier this week from the Christian Education Coordinating Board of the Baptist General Convention of Texas. Jester explained. The Coordinating Board oversees the entire operations of the nine educational institutions in Texas supported by the B.G.C.T.

"This is one of the most important advancements in Wayland's history and falls in line with our new university structure," said Dr. Dan McLallen, academic vice president. "It is particularly significant in our efforts to become a total university."

As a result of the approval Wayland will phase out its cooperative graduate study program with Houston Baptist University, which has been in operation locally for the past year. However, all coursework completed in that program may be transferred into the Wayland program for students wishing to do so.

Through the graduate program Wayland will offer the master of arts in Christian ministries, master of education, and master of science in management degrees. Each is a 36-hour non-thesis program with emphasis on practical application and requires an internship.

A special graduate study committee consisting of Wayland administrators and faculty members from all three colleges began an intensive study in early November to address itself to some questions posed to the university earlier last fall.

We appeared before a committee of

the Coordinating Board, they outlined some questions for us to answer, and our committee went to work," said Dr. Bill Hardage, assistant academic vice president.

Dr. Sylvia Nadler, chairman of the

Division of Health, Physical Education and Recreation, headed the study committee of 11, which then appointed three curriculum sub-committees. "The sub-committees brought their recommendations back to the full

committee, which refined it and presented it for approval by the Coordinating Board," Nadler said.

The Board reviewed the committee results and accepted the recommendation that they be approved. Hardage added. A full self-study by the university, for use in receiving accreditation by the Southern Association of Colleges and Schools, is now forthcoming.

"The task before us now is to prepare

for instituting the program by next September," Hardage said. "That means hiring a director as well as an additional four to five faculty members, implementing the curriculum, and designing mechanisms for application and admission, record-keeping, and evaluation."

The program will be made available at Wayland's extension centers in

Lubbock, Amarillo and Midland. In addition, all financial aid available to undergraduates is available to graduate students.

Applications for admission schedule of classes will be posted in the near future, and students should contact the president, (806) 296-5521 for more information.

GI insurance payments may be withheld

The easiest way to make payments on GI life insurance is to have the premium deducted from the holder's Veterans Administration compensation or pension check.

But, such deductions can't be made for private insurance or insurance from other government agencies.

In order to have premiums deducted from a VA compensation or pension check, the veteran must fill in the proper request form available from any VA regional office. The form also may be requested by telephoning the Waco VA Regional Office toll free using the telephone number in your directory.

PUBLIC NOTICE EQUAL OPPORTUNITY IN HOUSING CITY OF LOCKNEY

The City of Lockney reminds all citizens that it has adopted and is currently enforcing a local fair housing ordinance which has the following provisions:

- (1) Prohibits discrimination in the sale or rental of housing.
- (2) Prohibits discrimination in the financing of housing.
- (3) Prohibits discrimination in the provision of brokerage services.
- (4) Provides for specific exemptions and exclusion to the ordinance.
- (5) Provides for designation of a City Fair Housing Administrator.
- (6) Sets out complaint handling and investigation procedures and defines financial penalties for non-compliance.
- (7) Provides for free administrative counsel by the City to persons who wish to file law suits.
- (8) Prohibits unlawful incitement of complainants under the ordinance.
- (9) Provides for cooperation with the Secretary of Housing and Urban Development.
- (10) Authorizes the City to conduct educational and public information programs concerning the ordinance.

The City is seeking feedback from citizens about housing opportunities in our community. Have you experienced or do you know anyone who has experienced discrimination with regard to housing? What special housing problems do members of minority groups, women, the handicapped, others, have in our City? What should our City's priorities be in regard to housing programs?

If you can provide information about our City's housing needs, please call, write or come by the Lockney City Hall, 215 E. Locust Street; Lockney, Texas 79241; (806) 652-2355. Copies of the City's fair housing ordinance and complaint handling procedures are available for examination, and copying, upon request, at the Lockney City Hall.

ESTATE SALE

To liquidate the estate of Lula M. Green, Deceased, the undersigned Executors offer for sale, and invite written bids on or before March 15, 1982 for purchase of, the following described two parcels of real estate in Floyd County, Texas, property of such estate, to be bid upon and sold separately:

First Parcel: 3-bedroom, 2-bath brick veneer residence with attached single garage, home of the Decedent, at 714 West Missouri, Floydada, Texas; possession on closing of sale.

Second Parcel: 149.75-acre farm 7-1/2 miles East and 1/2 mile South of Floydada, known as the Sam Green Farm; small irrigation well with pump; underground irrigation system; full possession on closing of sale, but purchaser will be required to pay for preparations made for 1982 crops.

Terms of sale cash, but reasonable time will be permitted, under contract of sale with suitable escrow, for responsible purchaser to procure loan in aid of purchase; insurance and 1982 taxes on First Parcel will prorated as of date of closing sale; purchaser of Second Parcel will assume payment of 1982 taxes.

Residence will be shown by appointment only.
Right is reserved to reject any and all bids.
March 1, 1982.

Howard Drysdale 983-3210
811 West California
Floydada, Texas 79235
Roy Baxter 983-3086
Route #4
Floydada, Texas 79235



NOTICE OF TRUSTEE ELECTION (AVISO DE ELECCION DE REGENTES)

The Floydada Independent School District Board of Trustees hereby gives notice of an election to be held on April 3, 1982, for the purpose of electing two (2) trustees for the full term of three (3) years.

(Por la presente la junta de regentes del distrito escolar independiente da aviso que se llevara a cabo una eleccion el dia 3 de Abril de 1982 con el proposito de elegir dos (2) regentes a un termino completo de tres (3) años.

ABSENTEE VOTING by personal appearance will begin on March 11, 1982, and continue through March 30, 1982.

19 82, from 8:30 a.m. to 5 p.m. on each day which is not a Saturday, Sunday, or an official state holiday. (VOTACION POR AUSENCIA en persona comencara el dia 11 de Marzo de 19 82, y continuara hasta el dia 30 de Marzo de 19 82 desde las 8:30 a.m. hasta las 5 p.m. en todos los días, que no sean sábado, domingo, o día oficial de vacaciones estatales.)

Absentee voting in person shall be conducted at: 226 West California Street, Floydada, Texas.

Applications for absentee ballots by mail should be mailed to: 226 West California Street, Floydada, Texas.

(Votando por ausencia personal se va conducido acerca de: 226 West California Street, Floydada, Texas.

Solicitudes para una boleta de ausencia por correo deben dar vuelta por correo al: 226 West California Street, Floydada, Texas.

The POLLING PLACE(S) designated below will be open from 7:00 a.m. to 7:00 p.m. on the day of the election. (Los sitios de votación indicados abajo se abrirán desde las 7:00 a.m. to 7:00 p.m. el día de la elección.)

Location (Colocación)
County Court Room, County Courthouse, Floydada, Texas.
Lugar del corte del condado, Foro del Condado, Floydada, Texas.

By order of the Board of Trustees, January 12, 1982:

(SEAL) Mrs. Findex Farris
SECRETARY, BOARD OF TRUSTEES

Saturday, March 6, 1:00 p.m. U.S. 70 & FM 378 South on the slab next to Lockney Meat Co. Lockney, Texas.

- 1-2 Horse side-by-side trailer, rubber padded mats & saddle compartments.
- 1-Crosby, fiberglass boat, 35-Horsepower Johnson motor with trailer
- 1-Honda 340 XL Dirt Bike
- 1-3 Rail Bural, motorcycle trailer with ball hitch
- 1-1963 Ford pick-up 6 cylinder, standard transmission
- 1-Manual crank hospital bed
- 1-8x9 Canvas tent

- 2-10 cent Coke machines
- 1-Open top Kelvinator soda box
- 5-Wall mount bathroom sinks & fixtures
- 1-Porcelain kitchen sink, metal cabinet, fixtures
- 7-Cafe bar stools with backs
- 1-Antique shoe shine chair with marble stands
- 1-White Westinghouse electric range, double oven
- 1-Gas cook stove
- 1-Sectional sofa
- 1-Rocker recliner
- 1-GE self-contained dishwasher
- 3-Cafe booths
- 1-Glass showcase
- 1-Iron bedstead
- 1-Lot of numerous wood grain doors, frames, hardwood
- 1-6 ft. gondola
- 1-3 burner grill
- 3-Gas wall heaters
- 4-Waiting room chairs
- 1-Kenmore vacuum cleaner with attachments
- 1-Motorola radio and record player
- 2-Air turbins
- 1-Lot numerous cafe dishes
- 1-Wall mount French fry cutter
- 1-Hot water heater
- 1-Lot of venetian blinds
- 1-1/2 ton electric cable hoist
- 1-1 ton chain hoist
- 2-Chain boomers
- 1-Pull Iron mechanics motor stands with casters
- 1-12 inch wheel puller
- 1-Piston ring compressor set
- 1-Stainless steel caliper
- 1-4 inch vise
- 1-Lot of crossbred pigs
- 1-Lot of goats
- 2-8 month old Hampshire lambs

Terms: All accounts will be settled day of sale. Cash or personal cash will be accepted. All merchandise will be sold as is where is. All announcements at sale will supercede any previous announcements.
Auctioneers note: We will continue to receive consignments until sale time.
For more information call Sam Fortenberry at Lockney Meat, 652-3305.

Sam Fortenberry Auction Service TXS-023-0937

Public Notice

NOTICE TO ALL PERSONS HAVING CLAIMS AGAINST THE ESTATE OF ADA HINTON, DECEASED
Notice is hereby given that original Letters Testamentary for the Estate of ADA HINTON were issued on February 24, 1982, in Cause No. 4588, pending in the County Court of Floyd County, Texas, to:

HENRY HINTON

The residence of such Executor is Floyd County, Texas. The post office address is:

c/o John R. Hollums
101 North Main
Floydada, Texas 79235

All persons having claims against this Estate which is currently being administered are required to present them within the time and in the manner prescribed by law.

DATED the 24th day of February, 1982.

John R. Hollums, Attorney for the
ADA HINTON ESTATE

LEGAL NOTICE

Plainview Schools will accept bids for the purchase of one (1) commercial freezer and three (3) school vehicles.

Sealed bids will be received until 3:00 p.m. on Tuesday, March 9, 1982. Bids should be sent or delivered to the Administration Office, 912 Portland, Plainview, Texas.

The bids will be opened and accepted or rejected at the regular Board meeting to be held in the Administration Building, 912 Portland, Plainview, Texas, at 7:30 p.m. on March 11, 1982.

Information concerning the bid forms and specifications may be obtained by contacting the Business Office, 912, Portland, Plainview, Texas 79072.

This is a solicitation for bids and is not an offer. The Board reserves the right to accept or reject any and all bids and to waive all informalities.

John O. Peck, Assistant Superintendent
Plainview Independent School District

CITY OF LOCKNEY PUBLIC NOTICE INVITATION TO BID

The City of Lockney, on behalf of applicants to the Community Development Block Grant program is soliciting bids for home repair and improvement contracts. Work may be picked up at the Lockney City Hall, 218 E. Locust Street, Lockney, Texas 79241. Copies of this material may be requested by potential bidders by calling the Lockney City Hall at (806) 652-2355.

Sealed bid procedures will be observed and the deadline for submitting bids on Application #'s 11238101, 12181801, 11188101, 10018105, and 10268101 is 5 o'clock P.M. on the 18th day of March, 1982. The bids will be opened at 7 o'clock P.M. in 1982. The City and applicant-owners reserve the right to reject any and all bids at their sole discretion.

Erma Lee Duckworth, City Secretary
P.O. Box 387
Lockney, Texas 79241

The Land Bank

Your long-term farm credit specialists



105 S. Wall
Tommy Ogden mgr.
983-2480

Political Calendar

Subject to the May Democratic Primary

U.S. Congress
Charles Stenholm

State Senator
Ray Farabee

District Clerk
Mary McPherson

County Judge
Choise Smith

County Treasurer
Glenna Orman

County Clerk
Margaret Collier

Commissioner Precinct 2

Bob Jarrett

Charles Carthel

Commissioner Precinct 4

Jack Lackey

Justice of the Peace
Precinct 1-4

Walter Hollur.s

E.P. "Ernest" Smitherman

Justice of the Peace

Precinct 3-4

Raz Ford

Words cannot adequately express appreciation for the love and concern during the death of our loved one. The Family of Johnson, Pat. John Johnson, 652-3367.

The family of Sallie... express gratitude for the love and concern during the illness and our bereavement. Your prayers, cards, phone calls, and never-ending supply of food are appreciated. Our thanks to our friends and neighbors. Lockney General Hospital, Lockney Care Center for the elderly, the clock caring and other special appreciation to Dr. Gary.

I would like to express my appreciation to each of you for your interest and concern while I was in Cape Verde. Home, Mr. & Mrs. Red...

Thank you so much for your prayers and prayers during my illness. Wichita Falls hospital, for the letters and flowers brightened my life for awhile. I am now at home and will be strong again before long. Mrs. T.

The family of T.C. Hollums... express our appreciation for the prayers, flowers, food, and other kindnesses to us and our family during our time of grief. Mrs. T.

The sons and daughters... Vinson wish to thank all the neighbors for their sympathy after our loss. Mrs. T.

I would like to thank Mrs. T. Hollums and the Floydada Business Office for buying my pigs, also for supporting the Floydada Business Office and helped with the show.

I would like to thank Cooperative Elevator and the men of Floydada for buying my pigs, also for supporting the Floydada Business Office and helped with the show.

I would like to thank Cooperatives Elevator and the men of Floydada for buying my pigs, also for supporting the Floydada Business Office and helped with the show.

To the Floyd County Business Farmers: Thank you very much for your support. I really appreciate your for our stock show.

To the Floydada Business Farmers: We would like to thank you for your support. County Livestock Sale.

We want to thank Floydada men and Lakeview Gin for the lamb. We appreciate the premiums and the support of the youth.

SHOP COMPARE

WANT ADS ARE YOUR BEST BUY!

marillo and Windsor
it arises in those
ill financial aid
undergraduates
graduate students
ons for admission
classes will be as
uture, and all p
ould contact H
21 for more info

Card of Thanks

not adequately ex
for all the exp
ern during the
loved one.
amily of Johnny R
at. Johnny Warne
Cindy
Mrs. Red Archer

of Sallie Carpent
itude for the lovin
bors and friends d
ur bereavement.
ers, cards, phone
supply of food

ts to our friend
neral Hospital
e Center for the
ring and conce
ciation to Dr. Mar

Marion
Claudine

e to express my
for your interes
I was in Caprock
v's, and since m
prayers, visit
one calls and
ciated.

Homer
so much for your
during my stay
ls hospital. The
wers brightened
home and will be
ut hope to be he
before too long
That
Rest

of T.C. Hollins
our appreciation
ers. Food, cards,
her kindness sho
our time of you
id everyone of y
Mrs. T.C.

nd daughters
o thank all the fr
or their expres
fter our loss,
us and our fam
ciated.

Jerrold & Be
Mark A.
Mr. & Mrs. Le
& Mrs. LaVerne
Mr. & Mrs. E.J.
Mrs. Evelyn F

w Cards of Thanks
to thank Marble
dada Business
igs, also ever
Floydada FFA
th the show and
The
T

e to thank Pr
evator and the b
la for buying my
to thank every
shows to make
Paige

Businessmen

o much for his
too for your in
S
Kris
ounty Business
ry much for his
ppreciate your
ow.
Mi
da Business

to thank you for
FA pigs at the
k Sale.
Shannon
Sharro

nk Floydada Bu
nk Gin for buy
preciate the se
he support of
Jud
Hurte
Dede

Real Estate

For Sale: Three bedroom, den, living room, fireplace, screened patio, storm cellar. Dougherty, Wilson Bond. 983-2151 or tfn 983-3787.

Several good two and three bedroom houses. Assumable mortgage. Wilson Bond. 983-2151 or tfn 983-3787.

REAR PORCH BRICK at 125 J.B. Fireplace, screened in patio. Financing loan can be transferred. Interest: 983-3184 or call Jack amily of Johnny R. 983-3787.

Several nice two and three bedroom houses. Loans can be arranged. Contact Sam Hale at Hale Ins. 983-3787.

Remodeled house at 129 J.B. Call 983-2633.

Two bedroom brick house, 2 baths, central heat and air, 2 car garage, storm cellar. Dougherty, Wilson Bond. Contact Plainview Savings and Loan. 983-3725.

BRICK HOUSE, 3 bedroom, fireplace, 2 baths. Lots of other extras. Call 983-2147 or tfn.

BRICK home, 1 1/2 baths, fireplace. Call 983-3288.

FOR SALE: 3 bedroom, playroom, den with fireplace, central heat, 522 W. Mississippi. For appointment, call Darrell 983-2444 or 983-2153.

BRICK 2 bath home, kitchen, large utility, recently remodeled. Redwood covered patio, domestic well, 1 mile east of town. For information, call Darrell 983-2444 or 983-2153.

3 bedroom, 2 bath house on Hwy. Good terms, 10% interest. Call 983-5000.

Home in the country, 3 bedrooms, 2 baths, large room, large lot. Call 652-2456.

2 bath, brick house in good condition. Call 983-2540, Briec Allen.

WEST part of Floydada. Insurance and Real Estate. Call 983-2134.

3 bedroom home, carport and driveway. Call 983-2818.

Home in the country, 3 bedrooms, 2 baths, large room, large lot. Call 652-2456.

2 bath, brick house in good condition. Call 983-2540, Briec Allen.

WEST part of Floydada. Insurance and Real Estate. Call 983-2134.

3 bedroom home, carport and driveway. Call 983-2818.

Home in the country, 3 bedrooms, 2 baths, large room, large lot. Call 652-2456.

2 bath, brick house in good condition. Call 983-2540, Briec Allen.

WEST part of Floydada. Insurance and Real Estate. Call 983-2134.

3 bedroom home, carport and driveway. Call 983-2818.

Home in the country, 3 bedrooms, 2 baths, large room, large lot. Call 652-2456.

2 bath, brick house in good condition. Call 983-2540, Briec Allen.

WEST part of Floydada. Insurance and Real Estate. Call 983-2134.

3 bedroom home, carport and driveway. Call 983-2818.

Farms & Acres

TOTAL ACRES, 226 acres in 40 acres in grass, with 2 wells. Bond Real Estate 983-3573.

Want To Buy

ACREAGE WANTED from pastureland to cotton field or surrounding area. \$10,000. c/o Hesperian, 111 E. Floydada.

TO BUY: Turbine irrigation system, electric motors and engine. A-1 Liquidators & More. 298-2880.

NOTICES

Party that borrowed the Elevator, please return. Produced by Elevator. tfn

FOR SALE: Baled hay grazer. In the barn. Call 983-2028.

FOR SALE: Big bone registered polled Hereford bulls. Ready for service. Ronald Gilbert 492-3093, Paducah.

CLASSIFIED ADS CALL 983-3737 or 652-3318

For Sale

1-19" Portable T.V. New picture tube. \$250.00. Call 652-2435.

"WE SELL SLEEP" Direct Mattress Co. New or renovated, for appointment call City Trim Shop. 983-2332. Floydada. tfn

1-19" RCA Portable T.V. \$200.00. Call 652-2435.

FOR PICTURE FRAMES call 983-2636. B and M Gregory. tfn

1-19" RCA Portable T.V. \$150.00. Call 652-2435.

ESSICK AIR CONDITIONER. Largest size. Call Karen 983-3394 or after 6:00. 983-5117. 4-3c

1-13" RCA Portable T.V. \$150.00. Call 652-2435.

1-25" RCA console with new picture tube. \$300.00. Call 652-2435.

FOR SALE: Baldwin Electronic Organ. Syntha-sound, auto-rhythm. Bell and Howell built-in cassette recorder, 2 keyboard with foot pedals. Matching bench with learning tapes. \$750.00. Call 806-983-5854 after 3 p.m. 3-4

1-25" RCA color console. \$200.00. Call 652-2435.

Do you need some Amway products? Call 652-2558. Dorothy Bailey. L3-11c

1-25" Motorola console. \$150.00. Call 652-2435.

FOR SALE: Celery velvet sleeper, sofa. Gold Early American rocker. Mesh fireplace screen. 983-5130. 3-11p

FOR SALE: J.C. Penney electric range, gold color. Call 983-3629. 3-4p

SOFA SLEEPER and chair and end tables. 652-3819. L3-4p

FOR SALE: Harvest gold gas range. Like new, and black and white TV in good condition. Call 652-3611. L3-18c

BOAT FOR SALE: Chrysler 14' fiberglass with 40 h.p. Johnson motor. Center console. Anchor, mat, Silvertronic remote control trolling motor. Drive on trailer. See at 116 S.W. 1st or phone 652-2635. Price \$1500.00. L3-11p

New buildings at factory. All parts accounted for. All structural steel carries full factory guarantee. Buildings 10,000 square feet to the smallest 1,200 square feet. Must sell immediately. Will sell cheap. Call toll free 1-800-248-0065 or 1-800-248-0321. Ext. 777. 3-4p

FIRE WOOD \$55.00 per Rick Producers Cooperative Elevator

TO BE MOVED 30x60 Machine Shed made of pipe & sheet iron. \$8,000. Small House 4 rooms and bath (needs repair). \$1,500.00. Double Garage of pipe and sheet iron. \$2,500.00. 983-2671.

Large Fruit Trees \$8.95
Pecan & Walnut \$14.95
Large Shade Trees \$17.95
Emerl's Nursery 652-3116 Lockney L3fn-c

FOR SALE OR TRADE: John Deere 6600 combine. Low hours in A-1 condition. Always kept in barn. 652-3524. tfn

Baled cane and heigari. Round or square bales. Tom Pierce. 983-2578. tfn

FOR SALE: Baled hay grazer. In the barn. Call 983-2028.

Livestock

For Rent

FOR RENT: 1 bedroom apartment. Call Lockney Housing Development. 652-2334 or go by 108 N. Main. tfn

FOR REASONABLE RENT — clean mobile home. Call early mornings or after 6. 983-3504. 3-4c

3 BEDROOM, 2 bath, living room, den, 1,900 sq. ft. 420 W. Missouri. \$325 a month plus deposit. Call 296-5764. tfn

ECONOMICAL STORAGE TRY BARKER'S Jewel Box-Mini Storage and save your time and money. Ph 652-2642. Barker Building

STORAGE SPACE BOATS, FURNITURE, ANYTHING, ETC. BY THE MONTH OR SIX MONTH 10% DISCOUNT. West Texas Mini Storage CALL WILSON BOND 983-3573 OR 983-2151

WANTED Someone who would like to share spacious, modern, office and expenses. Please contact Carolyn Redding at the Lockney Beacon. 652-3318.

Wanted TWO MEN WANT tractor driving job. Experienced. Can be seen at 110 S.W. 6th. Lockney, or call 652-2593. L3-4c

WANT AN OIL & GAS LEASE ON YOUR ACREAGE? CALL TODAY ON OUR NICKLE. CALL TOLL FREE 1-800-592-1446 9 a.m. to 5 p.m. weekdays OIL & GAS ASSOCIATES, P. O. DRAWER 952 MIDLAND, TEXAS 79702

Business Opportunities Own your own Jean-Sportswear or Infant-Preteen Store. Jean Program (ALSO SHOE, ATHLETIC SHOE STORE). Offering all Nationally Known Brands such as Jordache, Chic, Lee, Levi, Vanderbilt, Calvin Klein, Wrangler over 100 other brands. \$7,900.00 to \$19,500.00 includes beginning inventory, airfare for 1 to Fashion Center, training, fixtures, Grand Opening Promotions. Call Mr. Loughlin (612) 835-1304. 3-4p

NOW YOU CAN OWN YOUR OWN SPORTSWEAR & FASHION SHOP! Exciting and profitable opportunity now available in the Floydada area. PRES-TIGE FASHION offers you MORE for your investment. ACT NOW! Call Mr. Hartley, 1-214-937-9876. 3-4p

L.V.N.'S OR G.V.N.'S full-time or part-time. Top wages. Call Betty Sanders, 293-5201. tfn

L.V.N. NEEDED IMMEDIATELY. 11 to 7 shift. Floydada Nursing Home. Paid insurance and vacation. Apply in person or call 983-3704. tfn

ACTIVITY DIRECTOR NEEDED immediately. Floydada Nursing Home. 30 hour week. Need someone who enjoys the elderly and can plan their activities. Apply in person or call 983-3704. TFN

NURSES WANTED. Registered and Licensed Vocational Nurses for 3-11 and 11-7 shifts. Six day work week, then two days off and four days off every fifth weekend. Good salary, paid vacation, sick leave, and holidays. Hospital has tax annuity plan for employees that desire it and hospital and life insurance furnished each employee. Contact Flo Barnes, Director of Nurses or Gayle Fortenberry, Administrator at Lockney General Hospital, 320 N. Main, Lockney, Texas 79241, 806-652-3373, about working in this progressive small hospital with a family atmosphere.

Farm Services

LAND LEVELING, terraces, bench leveling, and pump pits, all types of dirt work for soil and water conservation. Dewie Parson 983-2646. Fred Parson, 983-2074. tfn

CUSTOM APPLICATION of herbicides. Ed Warren 983-3037 or Don Warren 983-2995. tfn

2-4-D OR FERTILIZER applied on wheat, Hagie ground rig. Ed Warren 983-3037 or Don Warren, 983-2995. tfn

CUSTOM APPLICATION of herbicides. Bill Wisdom. 652-3541. L3fn

Portable disc rolling Lawson Farm Supply Inc., Floydada 983-3940

Nash Irrigation Supply. Plastic pipelines, aluminum pipe, lake pumps and accessories. 983-5231.

Check with us for LIQUID FERTILIZER ANYDROUS HERBICIDES Rigs available for application LONE STAR CHEMICAL INC. Office: 652-2761 Deanie Henderson: 652-3434

LEAK REPAIR No job too small or large! Pit Digging. Juarez Backhoe Service 983-3393

Tree Trimming Yard Work & Hauling Cleaning Alleys and Painting 983-3917 Caballero & Sons 501 E. Ross Floydada

FLOYDADA IRON & METAL We buy Scrap Iron, Junk Cars, Aluminum Cans, Batteries, and sell new and used steel. Location - East Ross Call 983-2305

Script Printing & Office Supply *Commercial Printing *Office supplies & Furniture *Business Machines 108 S. Main Floydada 983-5131 tfc

JOHN'S SWAP SHOP 123 Wall Floydada, Texas 983-2758 2-12 gauge shotguns, 1 rifle, appliances, clothing, shoes. Come by John may have it. Buy, sell or trade 3-25p

PUBLISHER'S NOTICE: All real estate advertised herein is subject to the Federal Fair Housing Act of 1968 which makes it illegal to advertise "any preference, limitations or discrimination based on race, color, religion, sex, or national origin, or intention to make any such preferences, limitation, or discrimination." We will not knowingly accept any advertising for real estate which is in violation of the law. All persons are hereby informed that all dwellings advertised are available on an equal opportunity basis.

Business Services

ADAMS WELL SERVICE Complete Irrigation Service. All sizes submergible pumps in stock. One day service. 983-5003. tfn

POOL WELL SERVICE AND RADIATOR SHOP Irrigation and domestic. 407 E. Houston 983-5610 or 983-2285

"Carpet Need Cleaning?" Let me do the work for you. Dry foam, 10 cents sq. foot. Also home and auto upholstery. Call Jack Moore 983-3033, after 5 p.m. tfn

INSURANCE AUTO TRUCK MOTORCYCLE MOTOR HOME HOME RENTER'S LIFE HEALTH YOUR Independent AGENT SERVES YOU FIRST Cates & Dawson Insurance Agency 231 W. California Floydada 983-5322

Insulation Installed & Guaranteed Free Estimates 22 Years This Area Marr Insulation Lockney 652-3593

INCOME TAX PREPARATION PROFESSIONALLY DONE. REASONABLE RATES. MITCHELL'S TAX SERVICE 983-3692

Diamond Industrial Supply Co., Inc. Phone Days 296-7418 Nights 296-1200 or 296-7828 1014 Broadway Plainview, Texas SKF BCA Timken Bower Cotton Stripper Brushes & Bats "We Appreciate Your Business More" Chain Sprockets V belts Sheave U joints Oil Seals O rings Wisconsin

TURNER REAL ESTATE 983-2635 Farms Ranches Floydada, Texas

Hollis R. Bond Real Estate 107 S. 5th FLOYDADA PHONE 983-2151

BAKER INSURANCE AGENCY COMPETITIVE RATES LOW MONTHLY PAYMENTS *Auto *Fire *Homeowners *Business *Mobile Homes *Refrigerators *Boats *Workmen's Compensation *Life *Etc. 983-3270 NIGHTS SUNDAYS & HOLIDAYS CALL 983-2451 127 W. CALIFORNIA Sam Baker

We service most all makes and models televisions. We also make service calls to Lockney, Floydada and surrounding area. Specializing in RCA and Zenith service work. Mize Pharmacy & TV 652-2435 Lockney

Automotive

GOVERNMENT SURPLUS CARS AND TRUCKS many sold through local sales, under \$300.00. Call 1-714-569-0241 for your directory on how to purchase. Open 24 hours. 3-18p

1980 FORD F-100 custom pickup - 25,000 miles. 22 miles per gallon. Excellent condition. \$4,450. 983-5315. 3-4p

74 Gremlin 2 dr. \$1050
73 Nova 4 dr. \$1050
72 LTD 2 dr. \$1050
77 Chrysler 4 dr. \$1450
74 Pontiac 4 dr. \$1450
76 Ford LWB \$1950
72 Ford PLWB \$1650
72 LTD 2 dr. \$950
66 Ford 4 dr. \$750
W.B. Eakin Car Lot 983-3616 Ralls Highway

Auto Parts & Accessories E-Z RIDER SHOCKS by Monroe. Buy 3 and the 4th is FREE. Free Installation. Don's Muffler Shop, 123 W. California. TFN

CUSTOM EXHAUST WORK Bruce Williams Specializing in Glass Packs and Turbo Mufflers At DUNS AUTO SERVICE 652-2462

DAN'S AUTO SERVICE DAN TEUTON, Owner Specializing in Automatic Transmission, Motor Tune-Ups, Auto Air Conditioning. General Repair We Have A BRAKE LATHE to handle all passenger car brake drums. See us for complete brake service. Phone 652-2462

Shop Floyd County FIRST!

Dallas Cowboys to play in Floydada

NOW IS THE TIME TO SAVE \$500⁰⁰ ON THE NEW OLDS CUTLASS CIERA DO IT TODAY DON'T DELAY Save \$500⁰⁰



THERE'S A LOT OF NEWS IN OLDS TODAY



INTRODUCING CUTLASS CIERA!

Here's a car the likes of which you've never seen before. It's called Ciera and it's a Cutlass. A whole new kind of Cutlass up with the latest in automotive technology. Cutlass Ciera...the first Cutlass with front-wheel drive. A 2.5-liter

4-cylinder with electronic fuel injection is standard. A 3.0-liter V6 with an on-board computer that helps fine-tune your engine as you drive is available. Also available, the brand-new 4.3-liter diesel V6. And look what else comes

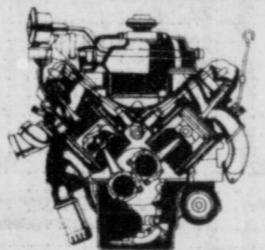
standard on Cutlass Ciera: power steering and brakes, automatic transmission, side window defoggers, full-wheel covers and...a lot of style. Cutlass Ciera. Even today, there's still room to do it with style.

ANNOUNCING FIRENZA!



This is what a small car can be...when it's an Oldsmobile! This newest, smallest Oldsmobile shows impressive quality throughout. Front-wheel drive, MacPherson strut front suspension. The fun-to-drive Firenza is ready for your test drive.

INTRODUCING NEW DIESEL V6!



A brand-new 4.3-liter diesel V6 joins America's best-selling diesel family. Available on all Cutlass Supreme and Cutlass Ciera coupes and sedans.

PRESENTING OMEGA ES!



That smart, sophisticated ES package that gave Omega sedans the grand-touring look inside and out is now available on Olds Omega coupes!

NO. 1 SELLER CUTLASS SUPREME!



Over the past seven years, more new car buyers chose Cutlass than any other car. Total value is why. The ride. The room. The comfort. The fine Olds quality. The traditionally high resale value. The 1982 Oldsmobile Cutlass Supremes offer all of this—plus the added value of popular standard features like power steering, power front disc brakes, automatic transmission and extensive anti-corrosion measures...and a lot of style. Engines? A 4.3-liter diesel V6, popular 5.7-liter diesel V8 and a new 5.0-liter gasoline V8 are now available. Isn't it time you traded for the solid value of a stylish Cutlass Supreme? Drive one today at your Olds dealers.

Keep That Great GM Feeling With Genuine GM Parts.



ODEN CHEVROLET OLDS INC.

221 South Main

Floydada

983-3787

Campaign head off in student

An intensive campaign launched in hopes of proposed massive cuts in support for higher education. Students—and their parents—are being asked by supporters of education to help meet the challenge of a federal budget that would clearly be a threat to American higher education.

President Reagan's message early in February cuts which will take a million out of student aid most other programs by the proposed FY 83 budget, a 40 percent reduction in a 30 percent cut in College Grants, National Direct Student Incentive Grants, fellowships, and further the Guaranteed Student as follows:

A proposal to drop professional students from the need loan program. Require all students to show financial need before the loan. Under existing law from families earning less than \$10,000 a year are automatically eligible while more affluent can borrow only if they pass a test.

Boost from 5 to 10 percent students pay to banks without guaranteed loans.

Require students to pay at market rates - rather than percent interest - two years leave college.

Require the state to administer the program and the loans to turn back to the half the money they pay students in the fees known as "Premiums." To be operating expenses, they are authorized to charge state percent of the amount borrowed.

The administration says goes to take effect by April affect loans made for next

These proposed reductions will have a severely impact on the students receiving aid and many students from returning because of financial problems.

The immediate effects of these cuts, say education leaders, are:

—Equal access to education is being threatened.

—Students may be forced to leave school.

—Prospective students at college is no longer an option.

—Institutions will be declining enrollments and problems. A February 15 issue of the Houston Post states that the assistant commissioner of services at the Coordinating Council on Higher Education found Texas' \$293 million in state aid to be reduced by \$122 million thereby eliminate almost 100,000 grants or loans. Adams' factors paint a dismal picture of the state's higher education. Many others who will starve for going to have to pull in their belt because there just isn't enough money.

It will mean a loss of quality at most campuses and, within a few years, some of the smaller schools that have primarily catered to students will probably close.

At both the national and state levels, students and their parents, members, administrators and university trustees are being urged to bring their collective voices to bear on their congressmen and senators. Communications efforts will include phone calls, position papers, personal visits to elected officials and urging no further cuts in financial aid programs.

Individual students are urged to write to their elected officials, stressing the importance of higher education to them in completing their education and asking for the support of senators and congressmen.

The Texas Guaranteed Student Loan Corporation, which administers guaranteed student loans in Texas, continues to support the program under the current law. Keep lenders, schools and parents advised of any legislative changes. Since January, 1981 TGSLOC has loaned \$141,000,000 in loans to students.

Junior livestock shows- are they worth it?



AREA 4-H and FFA youth during the Jr. Livestock judging.

4-H Meat Animal News Notes University of Wisconsin, January 1981

Before we discuss the merits of a junior livestock show, maybe we better define it. First of all, it's not a junior livestock show, it's a youngster show where livestock are used as props or visual aids. About 90% of the people who come to a livestock show come to see their youngster or someone else's youngster show themselves, and they have to have an animal in order to get into the ring.

Junior livestock projects should never be sold as a money-making project. It is a teaching project, and should be sold as such. What does it teach?

1. It teaches youngsters to get along with people. Showing animals, winning, getting beat, and so forth, helps youngsters to get along with others.

2. Livestock feeding teaches responsibility. It is the feeder's responsibility to hear the alarm clock and obey it. If they learn nothing more than that, feeding is worthwhile.

3. Junior projects teach youngsters to attend to details. In feeding, and especially through life, it is often the little things that count. The person who goes the extra mile gets the job done.

4. Decisionmaking is the most painful task that a teenager has. The good animals shown this year didn't just happen to be here. Somebody planned it that way.

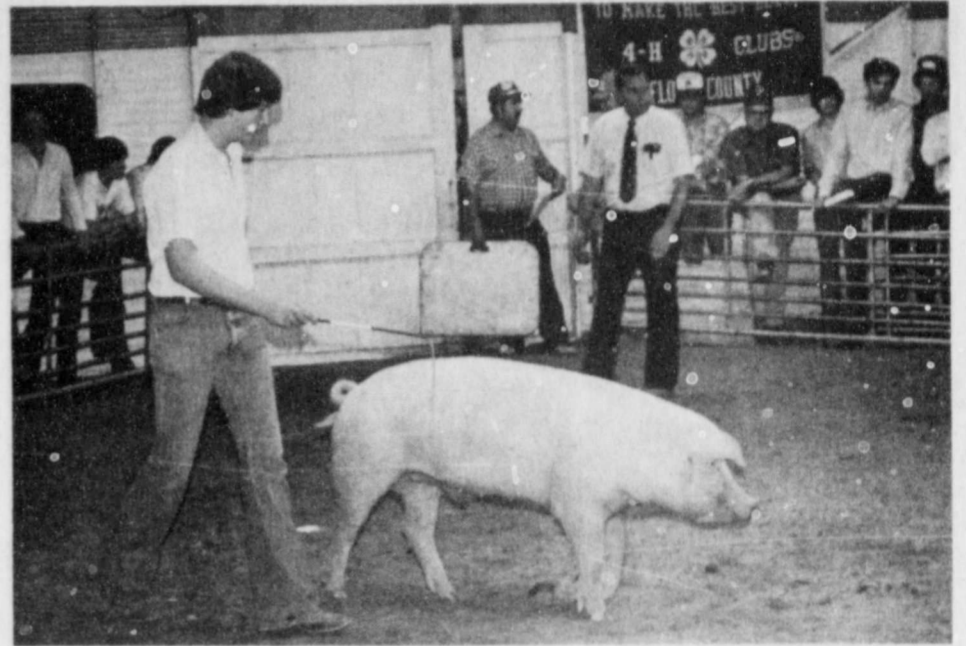
5. Feeding teaches youngsters to plan. Without a good planning job, we are sunk.

6. Somewhere along the line, we hope our young feeders will learn a little about livestock production.

We don't expect every youngster who feeds a calf, lamb, or hog to become a beef cattleman, sheepman or hogman; neither do we expect all little league baseball players to play for the major leagues.

Feeding is a family project. I don't mean the whole family does the work. I mean the whole family must enjoy it. Half the value of the project is lost if the parents don't attend the show.

I think sometimes we are prone to look at investments through the wrong end of a telescope. For example, we don't buy a car, we buy transportation; we don't buy a TV set, we buy entertainment; we don't miss a day at school, we lose a day of education. By the same token, we don't invest toward a premium list or buy some youngster's calf or pig in a premium sale. Rather than that, we invest in the future of some boy or girl who in turn will help to keep America the greatest country on earth.



PAUL GROSS, Amarillo District Extension Director, judging the Chester White class at the County Show.



JOE ED WISE, County Agent of Dawson, judging the Suffolk class at the County Show.



SPENCER TANKSLEY, County Agent of Bailey County, slapping the Reserve Champion Cross Steer.

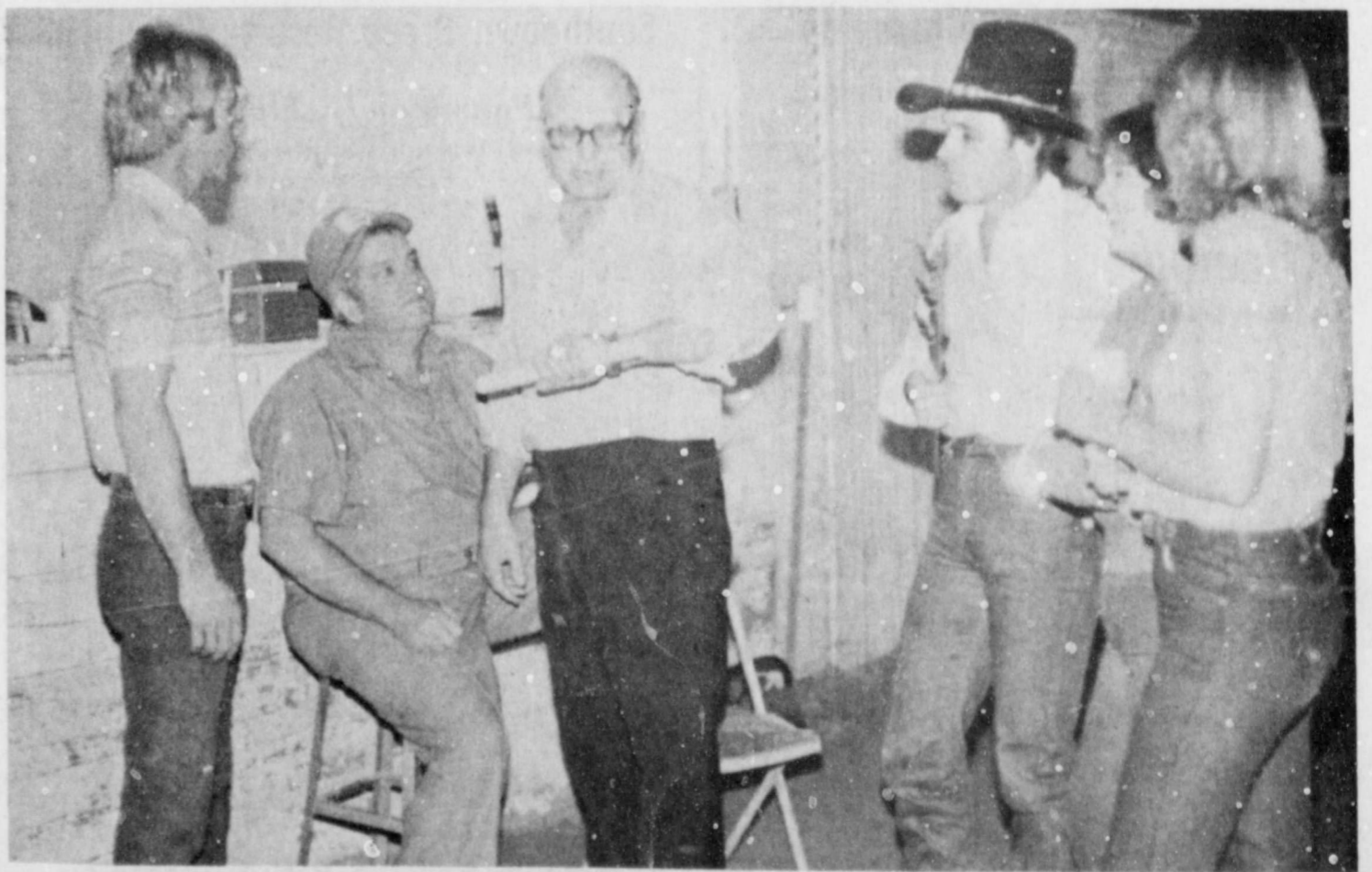


SWEETHEARTS—Deana Casey, FFA, [left] and Karyn Foster, 4-H.

Stock Show Banquet rescheduled for March 8 at Lockney Elementary Cafetorium

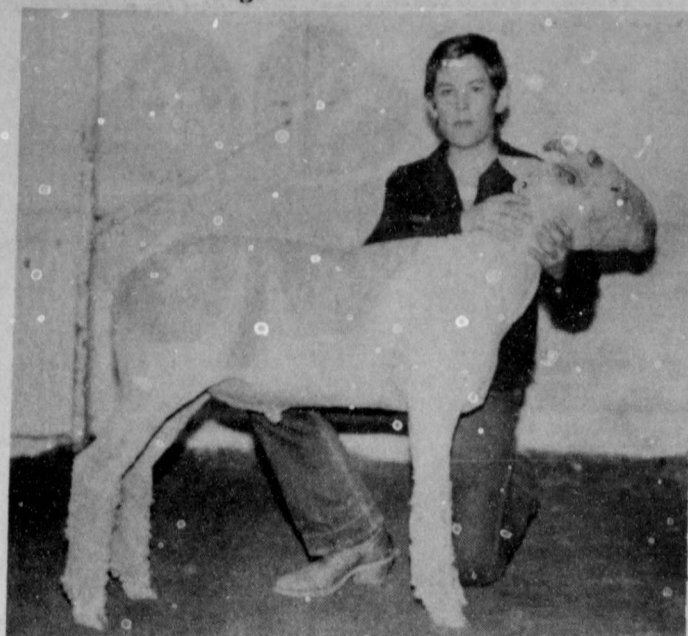


THE BATTEY, Floydada 4-H Sweetheart, [left], Susan Turner, Floydada FFA Sweetheart, [center] and Misty Younger, Floydada FFA Sweetheart.

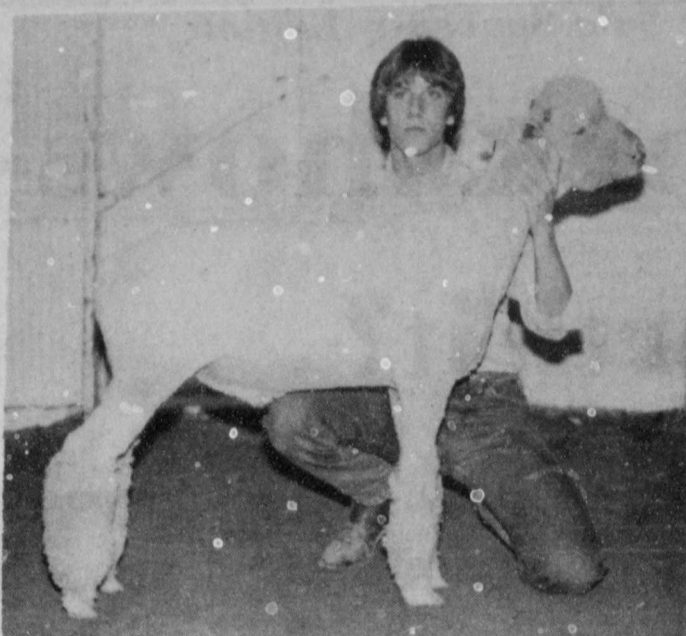


TIME TO GO HOME! Tommy Assiter checks his watch after the Stock Show ended and knew it was time to go home. Pictured are [l-r] Larry Barbee, Show Secretary; Weldon Pruitt, Assistant Swine Superintendent; Assiter, Show announcer; Stan McClendon, Assistant Show Secretary; Melanie Fosier and Deana Casey.

Grand Champion ribbon goes to Jodie Smith's Hampshire lamb



Fine Wool Breed Champion
David McCulloch, Lockney



Fine Wool Breed Reserve Champion
Bryant Higginbotham, Floydada



Fine Wool Cross Breed Champion
Tony Saucedo, Lockney



Fine Wool Cross Reserve Breed Champion
Garland Easter, Floydada



Shropshire Breed Champion
Trena Reeves, Floydada



Shropshire Reserve Breed Champion
Monty Teeter, Lockney



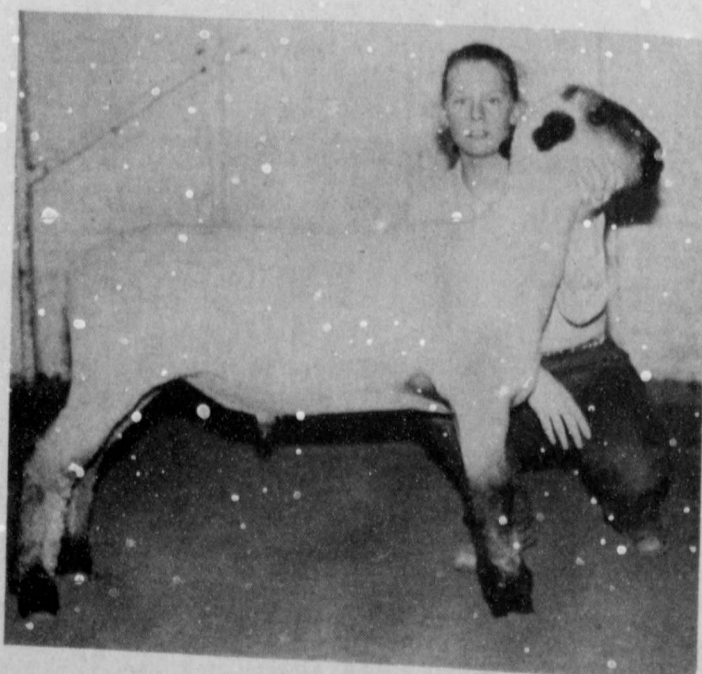
Southdown Breed Champion
Dean Seymour, Floydada



Southdown Breed Reserve Champion
Pam Woody, Floydada



Hampshire Breed Champion
Jodie Smith, Floydada



Hampshire Reserve Breed Champion
Gwen Lane, Lockney

The lamb judging was held Tuesday morning. Jodie Smith showed the Grand Champion lamb which was a medium weight Hampshire. The Reserve Grand Champion was a heavy weight Suffolk shown by Garland Easter. Joe Ed Wise, Dawson County Extension Agent, was lamb judge.

FINE WOOL

Lightweight: 1st Karyn Foster; 2nd Dean Smith; 3rd Kevin Helms; 4th Susan Hendrix; 5th Heather Holt; 6th Jodie Smith; 7th Susan Hendrix; 8th Melanie Foster; 9th Bryant Higginbotham; 10th Hunter Smith; 11th Erik Anderson.

Heavyweight: 1st David McCulloch; 2nd Bryant Higginbotham; 3rd Greg Sparkman; 4th Matt Mitchell; 5th Erik Anderson; 6th Kevin Bailey; 7th Joel Mitchell; 8th Tony Saucedo; 9th Kevin Bailey; 10th Heather Holt; 11th Ronnie Ford; 12th Lisa Terrell.

Breed Champion — David McCulloch
Reserve Breed Champion — Bryant Higginbotham

SOUTHDOWN

1st Dean Seymour; 2nd Pam Woody; 3rd Shannon Shurbet; 4th Cammy Hancock; 5th Gwen Lane; 6th Ritchie Thornton; 7th Wesley Teeter.

Breed Champion — Dean Seymour
Reserve Breed Champion — Pam Woody

SHROPSHIRE

1st Trena Reeves; 2nd Monty Teeter; 3rd Lori Bayley; 4th Lori Bayley; 5th Kip Holt; 6th Jim Ansley; 7th Wesley Teeter.

Breed Champion — Trena Reeves
Reserve Breed Champion — Monty Teeter

FINE WOOL CROSS

Lightweight: 1st Teddy Salinas; 2nd Sherre Kinard; 3rd Dean Smith; 4th Marty Covington; 5th Heather Holt; 6th Erik Anderson; 7th Margie Araujo; 8th Karyn Foster; 9th Sulema Salinas; 10th Kevin Bailey; 11th Kandy Wideman.

Heavyweight: 1st Tony Saucedo; 2nd Garland Easter; 3rd Cammy Hancock; 4th Ritchie Thornton; 5th Terri Sparkman; 6th Margie Araujo; 7th David McCulloch; 8th Eddie Kinard; 9th Lisa Terrell; 10th Cliff McLain; 11th Earl Broseh; 12th Greg Sparkman; 13th Ronny Whittington.

Breed Champion — Tony Saucedo
Reserve Breed Champion — Garland Easter

SUFFOLKS

Lightweight: 1st Pam Woody; 2nd Keith Hancock; 3rd Glenn Sutterfield; 4th Cliff McLain; 5th Hunter Smith; 6th Rusty Teeter; 7th Jim Waller; 8th Page Cannon; 9th Donny Ferguson; 10th Enrique Alvarez; 11th Dean Seymour; 12th Randy Wideman; 13th Kathie Battey; 14th Kathie Battey; 15th Trena Reeves; 16th Scotty Battey; 17th Jim Waller.

Mediumweight: 1st Grant Cage; 2nd Marty Covington; 3rd Jodie Smith; 4th Monty Williams; 5th Joe Faulkenberry; 6th Hugo Araujo; 7th Matt Mitchell; 8th Page Cannon; 9th Scott McCarty; 10th Kathie Battey; 11th Melanie Foster; 12th Earl Broseh; 13th Scotty Battey; 14th Greg Sparkman; 15th Terri Sparkman.

Heavyweight: 1st Garland Easter; 2nd Grant Cage; 3rd Grant Cage; 4th Kevin Helms; 5th Earl Broseh; 6th Earl Broseh; 7th Monty Williams; 8th Norman Allen; 9th Ritchie Thornton; 10th Terri Sparkman; 11th Glenn Sutterfield; 12th Rodney Smith; 13th Norman Allen; 14th Randy Wilson.

Breed Champion — Garland Easter
Reserve Breed Champion — Grant Cage

HAMPSHIRE

Lightweight: 1st Keith Hancock; 2nd Karyn Foster; 3rd Steve Shurbet; 4th Angie Shurbet; 5th Susan Hendrix; 6th Hugo Araujo; 7th Susan Hendrix; 8th Hunter Smith; 9th Joe Ed Wise; 10th Norman Allen; 11th Kandy Wideman; 12th Jim Ansley.

Mediumweight: 1st Jodie Smith; 2nd Scott McCarty; 3rd Shannon Shurbet; 4th Marty Covington; 5th Heather Holt; 6th Donny Ferguson; 7th Lori Bayley; 8th Lori Bayley; 9th Monty Teeter; 10th Monty Teeter; 11th Ralph Scheele; 12th Eddie Kinard.

Heavyweight: 1st Gwen Lane; 2nd Steven Turner; 3rd Ronnie Ford; 4th Ralph Scheele; 5th Jeff Pugh; 6th Bayley; 7th Rodney Smith; 8th Teeter; 9th Glenn Sutterfield; 10th Sparkman; 11th Glenn Sutterfield; 12th Eddie Kinard.

Breed Champion — Jodie Smith
Reserve Breed Champion — Gwen Lane

OTHER BREEDS

Lightweight: 1st Norman Allen; 2nd Kathie Battey; 3rd Joel Mitchell; 4th Teddy Salinas; 5th Tony Saucedo; 6th Matt Mitchell; 7th Rusty Teeter; 8th Ange Shurbet; 9th Scott McCarty; 10th Chad Williams; 11th Scotty Battey; 12th Michael Leatherman.

Heavyweight: 1st Grant Cage; 2nd Matt Mitchell; 3rd Susan Hendrix; 4th Ronny Whittington; 5th Joel Mitchell; 6th Joel Mitchell; 7th Tom Chad Williams; 8th Tom Chad Williams; 9th Dennis Grant; 10th Grant Cage.

Breed Champion — Gwen Lane
Reserve Breed Champion — Matt Mitchell

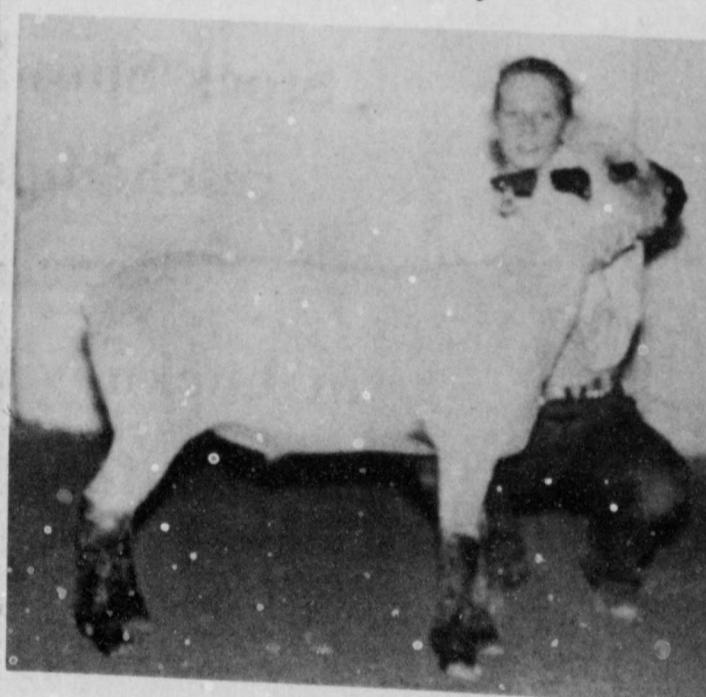
Grand Champion — Jodie Smith
Reserve Grand Champion — Garland Easter



Suffolk Breed Champion
Garland Easter, Floydada



Suffolk Reserve Breed Champion
Grant Cage, Floydada



Other Breed Champion
Gwen Lane, Lockney



Other Breed Reserve Champion
Matt Mitchell, Lockney

CONGRATULATIONS
To All FFA & 4-H Youth
on a great Stock Show
and successful Sale!

DAVIS LUMBER CO.

102 E. Shubert Lockney, Texas 652-3385

Williams wins Grand

Ty Williams had the Grand Champion steer which was a heavy-medium cross. The Reserve Grand Champion was a heavy cross belonging to Marty Covington. Steers, judged by Bailey County Agent, Spencer Tunksley, were shown Tuesday afternoon.

ANGUS

1st Ty Williams; 2nd Matt Williams; 3rd Libby Williams.

Breed Champion — Ty Williams
Reserve Breed Champion — Matt Williams

HEREFORDS

Lightweight: 1st Leslea Bivins; 2nd Kristy Dawdy; 3rd Shawnda Brock; 4th Robert Nixon

Heavyweight: 1st Kyle Brock; 2nd Dusty Burleson; 3rd Keith Hight; 4th Angie Hinsley.

Breed Champion — Kyle Brock
Reserve Breed Champion — Dusty Burleson

CROSSES

Lightweight: 1st Chad Golden; 2nd Mark Nutt; 3rd Tom Ross; 4th Chris Fulton; 5th Chad Edwards; 6th Keith Hight.

Mediumweight: 1st Ralph Scheele; 2nd Lisa Terrell; 3rd Angie Hinsley; 4th Shannon Edwards; 5th Coli Golden; 6th Robert Nixon; 7th Shannon Edwards.

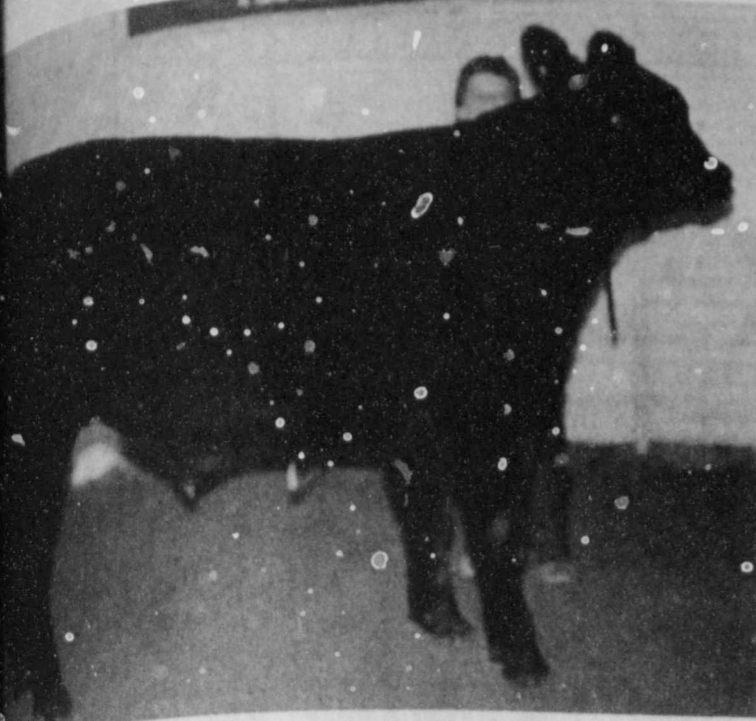
Heavy Mediumweight: 1st Ty Williams; 2nd Dusty Burleson; 3rd Kristy Dawdy; 4th Mitch Ross; 5th Chris Fulton; 6th Chad Edwards.

Heavyweight: 1st Marty Covington; 2nd Ralph Scheele; 3rd Tom Ross; 4th Zack Nutt; 5th Lisa Terrell; 6th Mark Nutt.

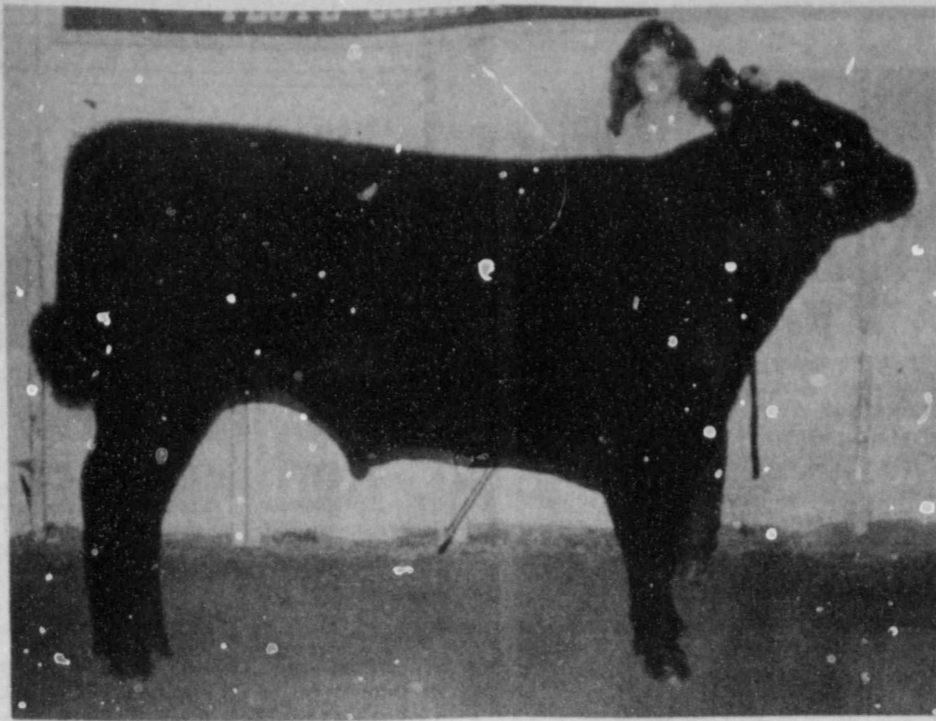
Breed Champion — Ty Williams
Reserve Breed Champion — Marty Covington

Grand Champion — Ty Williams

Reserve Grand Champion — Marty Covington



Angus Breed Champion
Ty Williams, Lockney



Angue Reserve Breed Champion
Libby Williams, Lockney
(Showing for Ty Williams)



Hereford Breed Champion
Kyle Brock, Lockney



Hereford Breed Reserve Champion
Dusty Burleson, Floydada



Grand Champion
Cross Breed Champion
Ty Williams, Lockney



Reserve Grand Champion
Cross Breed Reserve Champion
Marty Covington, Floydada

The 1982 Floyd County Junior Livestock Show Banquet which was cancelled last week due to hazardous driving conditions, has been rescheduled for Monday, March 8, 1982. The banquet will be held at the Lockney Elementary School Cafeteria and will begin at 7:00 p.m. The Floyd County Farm Bureau will again sponsor the meal at the stock show banquet.

A copy of the program for the banquet and a list of this year's trophy sponsors is outlined below.

LAMBS

Breed Champion, Fine Wool, David McCulloch, donated by Consumers Fuel Assn.

Reserve Breed Champion, Fine Wool, Bryant Higginbotham, donated by Eddie Foster

Breed Champion, Fine Wool Cross, Tony Saucedo, donated by Womack Brothers

Reserve Breed Champion, Fine Wool Cross, Garland Easter, donated by International Awards

Breed Champion, Shropshire, Trena Reeves, donated by Caprock Motor Parts and Hardware

Reserve Breed Champion, Shropshire, Monty Teeter, donated by Eddie Teeter

Breed Champion, Southdown, Dean Sevmour, donated by Jake and Danny Colston

Reserve Breed Champion, Southdown, Pamela Woody, donated by Albert Scheele

Breed Champion, Hampshire, Jodie Smith, donated by Choise Smith

Reserve Breed Champion, Hampshire, Gwen Lane, donated by Bill Hendrix

Breed Champion, Suffolk, Garland Easter, donated by Henry Hinton

Reserve Breed Champion, Suffolk, Grant Cage, donated by Elmer Dean Williams

Breed Champion, Other Breeds, Gwen Lane, donated by Cal Clay Farms

Reserve Breed Champion, Other Breeds, Matt Mitchell, donated by Buster Terrell

Reserve Grand Champion, Garland Easter, donated by Roger Dawdy

Grand Champion, Jodie Smith, donated by George Sparkman.

Showmanship, to be announced, donated by Floyd Easter

Herdsmanship, to be announced, donated by Mr. and Mrs. Kenneth Broseh

STEERS

Breed Champion, Angus, Ty Williams, donated by Charles Beedy Tub Springs Ranch

Reserve Breed Champion, Angus, Matt Williams, donated by Geneva and Jackie Elliott

Breed Champion, Hereford, Kyle Brock, donated by Charles Beedy Tub Springs Ranch

Reserve Breed Champion, Hereford, Dusty Burleson, donated by Geneva and Jackie Elliott

Breed Champion, Cross, Ty Williams, donated by Charles Beedy Tub Springs Ranch

Reserve Breed Champion, Cross, Marty Covington, donated by Geneva and Jackie Elliott

Reserve Grand Champion, Marty Covington, donated by Jim Simpson

Grand Champion, Ty Williams, donated by Mr. and Mrs. G.L. Fawver

Showmanship, to be announced, Herdsmanship, to be announced.

SWINE

Breed Champion, Chester White, Margie Araujo, donated by Morton Irrigation

Reserve Breed Champion, Chester White, Cammy Hancock, donated by Morton Irrigation

Breed Champion Duroc, Karen Pruitt, donated by Morton Irrigation

Reserve Breed Champion, Duroc, Garland Easter, donated by Morton Irrigation

Breed Champion, Hampshire, David Martinez, donated by Morton Irrigation

Reserve Breed Champion, Hampshire, Keith Hancock, donated by Morton Irrigation

Breed Champion, Spots and Polands, Phillip Glasson, donated by Morton Irrigation.

Reserve Breed Champion, Spots and Polands, Steven Turner, donated by Morton Irrigation

Breed Champion, Yorkshire, Mark Hatley, donated by Morton Irrigation.

Reserve Breed Champion, Yorkshire, Bobby Emert, donated by Morton Irrigation

Breed Champion Cross, Cammy Hancock, donated by Morton Irrigation

Reserve Breed Champion, Cross, Shayla Barbee, donated by Morton Irrigation

Reserve Grand Champion Barrow, David Martinez, donated by Larry Barbee and James McNeill

Grand Champion Barrow, Cammy Hancock, donated by Producers Cooperative Elevator

Showmanship, to be announced, donated in memory of K.E. Probasco

Herdsmanship, to be announced, donated by Buddy's Food.

This Community Appreciates The Faith Shown To Our Youth Through Your Donations ...

- First National Bank
- McCoy Gin
- Floyd County Implement
- D&P Grain
- Lon Davis Grain
- Davis Farm Supply
- Troye Massie
- Brown Gin
- Brown Implement
- Builders Mart
- Leslie Nixon
- William Bertrand
- Everett Perry
- Floydada Implement
- Oden Chevrolet-Olds
- Scott Gin
- Crazy C Ranch
- Adams Well Service
- Darty Gin
- Covington Oil & Butane
- Buddy's Food
- J.S. Hale
- Swift Distributors
- Barwise Elevator
- Brooks Oil
- City Auto
- L.O.R.M. #31
- Russell's Equipment & Supply
- Floydada Seed & Delinting
- Cornelius Oil Co.
- Beedy Spraying Service
- Martin & Company
- Reed Ford
- Babe Jones
- Bob Ross
- Laron Fulton
- Adrain Helms
- Roger Dawdy
- Hinsley Farms
- James Hinton
- Geneva Elliott
- Jackie Elliott
- Gene Bloys
- Sears, Sue Williams, Merchant
- Edwin Nutt
- Federal Land Bank
- Moore-Rose Funeral Home
- Plainview Savings & Loan (Floydada)
- Don Hardy Race Cars
- James Race Insurance
- Tipton Oil Company
- Quality Body Shop
- Fox Drilling Co. (Petersburg)
- Petersburg Butane
- Petersburg Co-op Gin
- Kenneth Bean
- Robert Heflin
- Jones-Heflin Farms
- Howard Gene Bishop
- Jack Lackey
- Scott Faulkenberry

- Harold W. Bennett
- Floyd Easter
- Craig Edwards
- Elmer Dean Williams
- Larry Barbee
- Anderson's Department Store
- Kirk & Sons
- King's Restaurant
- Jakey Younger
- John Dunlap
- Dale Smith
- Thompson Pharmacy
- Parker Studio
- Arwine Drug
- City Trim Shop
- Rucker O.K. Tire
- Floydada Insurance & Real Estate

- Petersburg Coop Grain
- J & R Auto (Petersburg)
- Matthews Oil (Petersburg)
- Porter Drug (Petersburg)
- Goen & Goen
- Norrell Tractor Parts
- Lawson Farm Supply
- James Cage
- Jerry Battey
- J.K. West
- Chloma Williams
- Bill Cagle
- Mickey D. Hammonds
- Jack Stansell
- Billy Hinkle
- Charles Christian
- Travis Jones
- Greer Christian
- Harvey Allen
- Don Shurbet
- Bill Tye
- Alton Higginbotham
- Weldon Pruitt
- L.C. Pruitt
- Billy Fulton
- Louis Pyle
- Don Bean
- J.O. Dawdy
- Franklin Harris
- Henry Hinton
- Choise Smith
- Leonard's Cafe
- Sam Spence Insurance
- Bill Beedy
- Randy Bertrand
- Don's Muffler Shop
- Joe Rainer
- Dr. Keith Patzer
- Kirtley's Market
- Edmiston Plumbing
- Parnell Powell
- Dr. Charles Craig
- Wayland Jones
- S.E. Sparks

Thank You For A Successful Stock Show

FLOYD COUNTY IMPLEMENT

Jerry Perry - owner



Buddy's SUPERMARKET



DOUBLE STAMPS ON WEDNESDAY WITH \$5.00 PURCHASE OR MORE

220 SOUTH 2nd • 983-3149
 STORE HOURS:
 MON. THRU SAT. 8 A.M. 'TIL 9 P.M.
 SUNDAY 9 A.M. 'TIL 8 P.M.

WE RESERVE THE RIGHT TO LIMIT QUANTITIES

These values in this adv are effective through Wednesday, March 11, 1982

USDA Boneless
SIRLOIN TIP STEAK **\$2.69** LB.

USDA Fresh Daily
GROUND BEEF
 \$1.29 lb

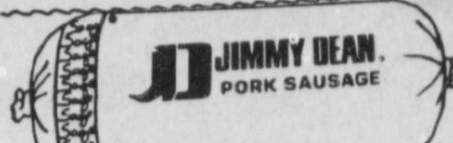
Family Pack
PORK CHOPS
 \$1.59 lb

From Our Deli
HOT LINKS
 3/\$1.00

CHICKEN OF THE SEA
TUNA
 WATER, OIL
99¢
 6 1/2 OZ. Chunk Light



Farm Fresh Whole
FRYERS
59¢ lb
 Limit 2

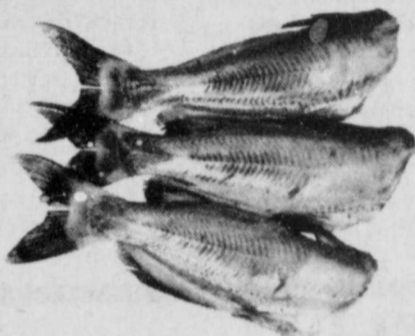


Pure Pork Jimmy Dean
SAUSAGE
\$2.69 2 lb pkg



Fresh Frozen
 Country Pride
BAKING HENS
69¢ lb

Americas Favorite
 No Deposit-No Return
 2 Liter Bottle
COCA COLA
99¢



16 oz. Kraft Regular or Jalapeno
CHEEZ WHIZ \$2.39
 Farm Fresh Whole
CAT FISH \$2.39 lb



Assorted Deckers 6 oz. pkg
LUNCH MEAT
59¢

JIF
PEANUT BUTTER

CREAMY CRUNCHY \$1.59
 18 OZ.



NESTLE CHOCOLATE
QUICK

32 OZ. **\$2.69**



22 oz. Giant
LIQUID DAWN
\$1.19

LIGHT CRUST
FLOUR
79¢
 5 LB.
\$4.99
 25 LB. Cloth Bag



FRESH START
DETERGENT 35 1/2 OZ. **\$3.29**
 6-32 oz. plus deposit
TAB OR COCA COLA \$2.39
 9 oz. Airwick
CARPET FRESH 99¢
 2 Count Air Wick Lemon
STICK UPS 79¢



46 oz. Texsun Pink
GRAPEFRUIT JUICE
77¢

WINDEX
GLASS CLEANER 22 OZ. **\$1.29**
VANISH TOILET BOWL CLEANER 12 OZ. **\$1.19**
 5 oz. Swanson Chunk Style
MIXIN CHICKEN 2/89¢



NICE 'N SOFT
BATH TISSUE
 ACCENT ASST'D 4 ROLL WHITE **99¢**

CHIFFON SOFTSTICK
OLEO
2/99¢
 1 LB.



1/2 Gal. Deluxe Round Carton Bell
ICE CREAM
\$1.79



30 lb Bonus Pack Purina
DOG CHOW
\$6.99



FOLGER'S
INSTANT COFFEE
 10 OZ. **\$4.59**

US No. 1
 Bake-Boil or Fry
 10 lb Bag
RUSSETT POTATOES
99¢



with this Coupon
 \$1.59 without coupon
 Limit One Per Coupon
 Expires 3-11-82 Good at Buddy's Food



12 oz. Package
 Wilson All Meat
FRANKS
49¢

with this coupon
 99¢ without coupon
 Good at Buddy's Food
 Limit One Per Coupon
 Expires 3-11-82



Grade "A" Low Fat or Homo
 Gallon
BUDDYS MILK
\$1.79

with this coupon
 \$2.39 without coupon
 Limit One Per Coupon
 Expires 3-11-82 Good at Buddy's Food

Health & Beauty Aids
AGREE SHAMPOO OR B/P REG. OILY CONDITIONER \$1.49
 X-BODY REG. OILY 8 OZ.

VASELINE
 INTENSIVE CARE
LOTION 15 OZ. **\$2.29**

Q-TIPS
SWABS 300 CT **\$1.59**

STAMP PRICE SPECIALS

More savings!

Remember what a penny could buy in the 'good old days'? Well, take a good look at our good old thrifty Stamp-Price Specials! For just a few pennies... and a 1/4 Saver Book of Green Stamps (30 Big-10's)... it's 'happy days' are here again... every day! Stamp-Price Specials are just one more way we help you save money through Green Stamp-A. Every time you shop. Hurry in for your Stamp-Price Specials Saver Books. The more you shop... the more you save. Promise. Prices on these four Stamp-Price Specials effective through 3/11/82



STAMP PRICE SPECIAL

100 Square Ft
GLAD WRAP
19¢
With One Filled S&H Special Saver Book
79¢
Without Book

5 oz. Swifts
VIENNA SAUSAGE
2/89¢



STAMP PRICE SPECIAL

Sunny Fresh Farm Grade A Medium
Eggs
29¢ doz
With One Filled S&H Special Saver Book
89¢ doz
Without Book

STAMP PRICE SPECIAL

1 lb Nabisco Premium
CRACKERS
19¢
With One Filled S&H Special Saver Book
79¢
Without Book

STAMP PRICE SPECIAL

12 oz. Nabisco
NILLA WAFERS
29¢
With One Filled S&H Special Saver Book
89¢
Without Book

7 oz. Martha White Apple Cinnamon, Orange, Strawberry or Blueberry
MUFFIN MIX
3/\$1.00

13 oz. Carnation
EVAPORATED MILK
2/89¢





200 Count Crusader
NOTEBOOK PAPER
99¢

Always the best in produce!
TAKE HOME THESE MONEY-SAVING SPECIALS


Pick of the Crop
Calif. Iceberg
Firm Green
LETTUCE **39¢** head



Taste Treat
South American
Golden Ripe
BANANAS **3/89¢** lbs




Boiled, Salads or Slaw
Delicious Any Way
New Crop Green
CABBAGE **23¢** lb



Bursting with Flavor
BROCCOLI **57¢** lb

Sliced or Salads
Always A Taste Tempter Red Ripe
TOMATOES **59¢** lb



Succulent
Zan Zabar Zucchini
SQUASH **49¢** lb

Tart and Tasty
LEMONS **39¢** lb

Spicy Spanish Yellow
ONIONS **3/99¢** lbs

20 lb Bag
KITTY LITTER **\$2.69**

30 Count Stay Free
MINI PADS **\$1.99**



5 oz. Lea & Perrins Chefs
MARINADE **3/\$1.00**

Dirts Out TIDE Is In
TIDE
49 oz. Giant Size
\$1.99
10. lb 11. oz. Family Size
\$5.89



1 lb can
All Grinds Hills Bros
COFFEE
\$2.19



8 oz. can White Swan
Sweet Milk or Buttermilk
BISCUITS
5/\$1.00

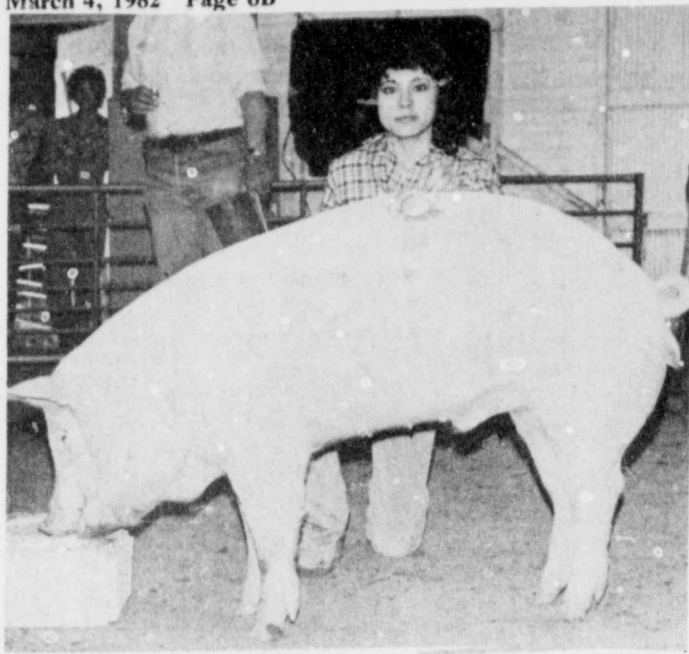


12 lb Bonus Pack
Purina
CAT CHOW
\$5.59

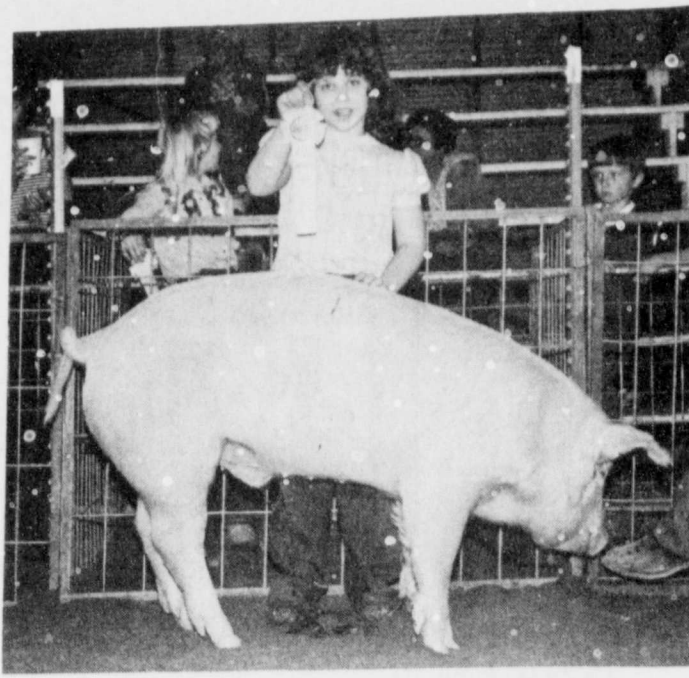
Double S&H Green Stamps on Wednesday with \$5.00 Purchase or More!

buddy's SUPERMARKET

Values In This Adv Effective thru Wednesday, March 11, 1982
220 South 2nd - Floydada



Chester Breed Champion
Margie Araujo, Lockney



Chester Breed Reserve Champion
Cammy Hancock, Floydada



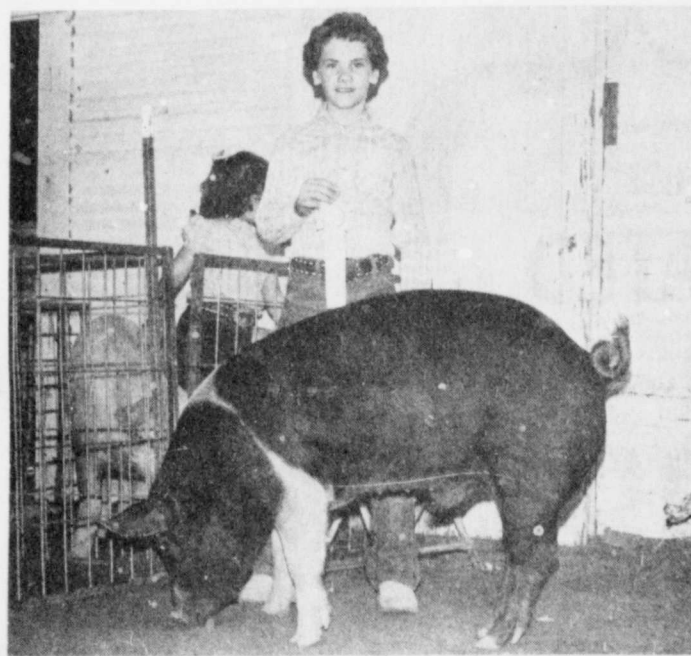
Yorkshire Breed Champion
Mark Hatley, Floydada



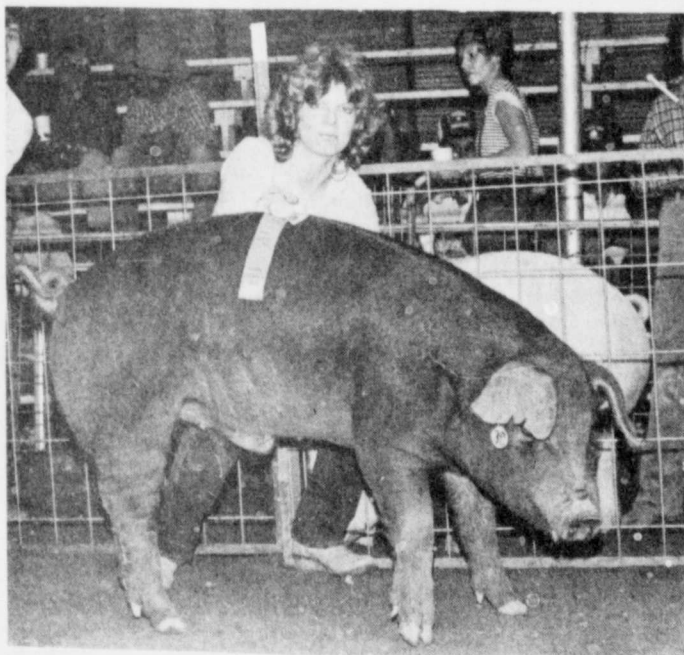
Yorkshire Reserve Breed Champion
Bobby Emert, Floydada



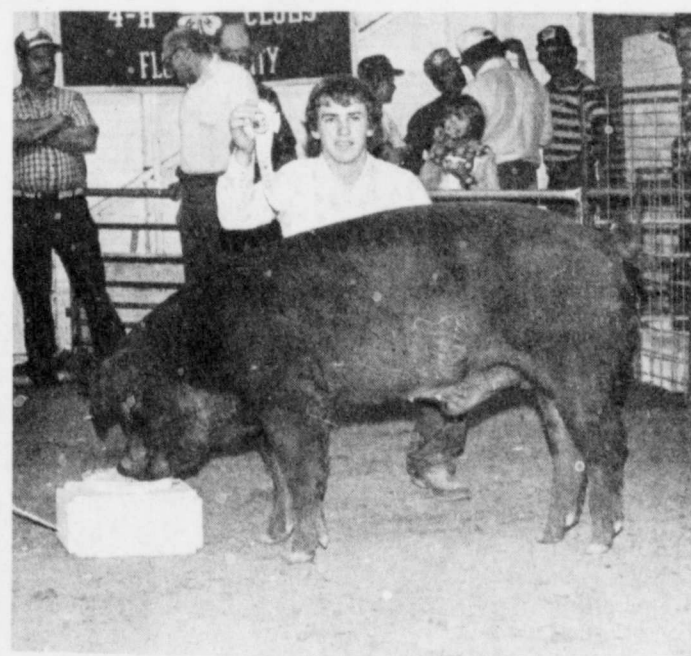
Hampshire Breed Champion
David Martinez, Lockney



Hampshire Reserve Breed Champion
Keith Hancock, Floydada



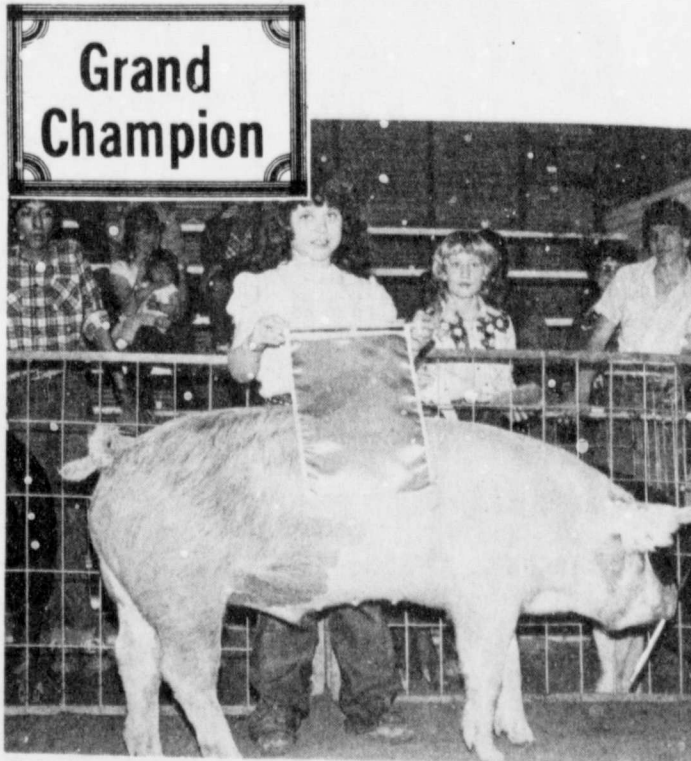
Duroc Breed Champion
Karen Pruitt, Floydada



Duroc Reserve Breed Champion
Garland Easter, Floydada



Cross Breed Champion
Shayla Barbee, Floydada



Cross Breed Reserve Champion
Cammy Hancock, Floydada

Cammy's cross swine takes Grand

Grand Champion winner in the swine division of the County Show was Cammy Hancock with a heavy weight cross. Reserve Grand Champion was David Martinez with a heavy weight Hampshire. The Swine Showmanship was Monday and the judge was Paul Gross, Amarillo District Extension Director.

CHESTER WHITES

Lightweight: 1st Max Bearden; 2nd Kevin Helms; 3rd Jerohme Widener; 4th Chad Williams; 5th Hugo Araujo; 6th Jerohme Widener; 7th Scott Poole. Mediumweight: 1st Heath Rexrode; 2nd Don Cheek; 3rd Gary Bigham; 4th Heath Rexrode; 5th Phillip Glasson; 6th Wyman Rexrode; 7th Terry Carlton; 8th Wyman Rexrode; 9th Daron Widener.

Heavyweight: 1st Margie Araujo; 2nd Cammy Hancock; 3rd Tim Burns; 4th J.B. Cates; 5th Joe Widener; 6th Mark Nutt; 7th Clay Harrison.

Breed Champion — Margie Araujo.
Reserve Breed Champion — Cammy Hancock

SPOTS AND POLANDS

All One Class: 1st Phillip Glasson; 2nd Steven Turner; 3rd Clay Harrison; 4th Chad Williams; 5th Randy Emert; 6th Wyman Rexrode.

Breed Champion — Phillip Glasson.
Reserve Breed Champion — Steven Turner

HAMPSHIRE

Lightweight: 1st Shannon Barbee; 2nd Kyle Brock; 3rd Terry Taylor; 4th Shayla Barbee; 5th Gary Bigham; 6th Joe Widener; 7th Christi Pruitt; 8th Troy Bigham; 9th Daron Widener; 10th Heath Rexrode.

Heavyweight: 1st David Martinez; 2nd Keith Hancock; 3rd Brian Sanders; 4th Robert Nixon; 5th Brian Sanders; 6th Karen Mathis; 7th Zach Nutt; 8th Joel Prock; 9th Becky Pitchford.

Reserve Breed Champion — Keith Hancock
Breed Champion — David Martinez

DUROCS

Lightweight: 1st Monty Williams; 2nd Shayla Barbee; 3rd Mack Sherman; 4th Scott Poole; 5th Kevin Helms; 6th Keith Owens; 7th Shannon Barbee; 8th Mack Sherman; 9th Marcus Schacht.

Mediumweight: 1st Karen Pruitt; 2nd Tim Burns; 3rd Gary Bigham; 4th Christi Pruitt; 5th Don Cheek; 6th David Martinez; 7th Kip Holt; 8th Heath Rexrode; 9th Steven Turner.

Heavyweight: 1st Garland Easter; 2nd Karen Mathis; 3rd Shawnda Brock; 4th Jerald Johnson; 5th Randy Emert; 6th Becky Pitchford; 7th Carlos Molinar; 8th Kelly Griggs; 9th Carlos Molinar; 10th Romeo Araujo; 11th Margie Araujo.

Breed Champion — Karen Pruitt.
Reserve Breed Champion — Garland Easter

YORKSHIRE

All One Class: 1st Margie Araujo; 2nd Bobby Emert; 3rd Cammy Hancock; 4th Carlos Baker; 5th Mychelle Harris; 6th Mychelle Harris; 7th Terry Carlton.

Breed Champion — Margie Araujo.
Reserve Breed Champion — Bobby Emert

CROSS BREED

Lightweight: 1st Phillip Glasson; 2nd Kristy Dawdy; 3rd Kristy Dawdy; 4th Sharon Smith; 5th Sharon Smith; 6th King; 7th Kip Holt; 8th Harris; 9th Mychelle Harris; 10th Mychelle Harris.

Mediumweight: 1st Karen Pruitt; 2nd Karen Pruitt; 3rd Karen Pruitt; 4th Karen Pruitt; 5th Karen Pruitt; 6th Karen Pruitt; 7th Karen Pruitt; 8th Karen Pruitt; 9th Karen Pruitt; 10th Karen Pruitt; 11th Karen Pruitt; 12th Karen Pruitt.

Heavyweight: 1st David Martinez; 2nd Keith Hancock; 3rd Brian Sanders; 4th Robert Nixon; 5th Brian Sanders; 6th Karen Mathis; 7th Zach Nutt; 8th Joel Prock; 9th Becky Pitchford.

Breed Champion — David Martinez.
Reserve Breed Champion — Keith Hancock

Grand Champion — David Martinez.
Reserve Grand Champion — Keith Hancock



Spots Breed Champion
Phillip Glasson, Lockney

Spots Reserve Breed Champion
Steven Turner, Lockney
(Photo not available)

Contributors to the Business Fund for the Floyd County Jr. Fat Stock Show - Sale

- | | | |
|---------------------------------|--------------------------------|-------------------|
| Omar Burleson | Behner & Co., Floydada | Larry Christian |
| Bobby Cox | Dan's Auto | J.T. Terrell Jr. |
| Jerry Ford | First State Bank, Silverton | Warren Mitchell |
| Bernie Ford | Longhorn Inn | Albert Scheele |
| Bill Evans Gin | Parker Furniture | G.L. Hight |
| Riverside | Pay-n-Save | Kenneth Holt |
| A.L. Newton Trucking | Beedy Spraying | R.C. Mitchell |
| Texas Farm Machinery, Plainview | Brooks Oil Co., Floydada | James Race |
| Floyd County Insurance | Marr Insulation | Charles Huffman |
| Ansley & Son | Plainview Savings & Loan | Roy Kidd |
| Whites Auto | Cruce & Long Auctioneers | Robert Daniels |
| Lockney Cable T.V. | Dulin, Reagan, Evans, | Lanny Voss |
| The Tye Co. | Auctioneers | Larry Cunyus |
| Strickland's Restaurant | Cantwell Irrigation, Plainview | Ricky Biggs |
| Johnson & Johnson | City Auto Inc., Floydada | N.M. Caldwell |
| H&W Durocs | Don Hardy Car Wash of Lockney | Joe D. Smith |
| Dicks Auto | Great Plains Chemical, Dimmitt | Dr. James Glasson |
| Gomez Cleaners | First National Bank, Quitaque | Joe Neil Rexrode |
| Mize Pharmacy | Don Sutterfield | R.D. Baccus |
| Byrd Pharmacy | Byran Smith | John Dorman |
| Plains Electric | W.H. Hallmark | Keith Phillips |
| Earl's Tractor Repair | Floyd Jackson | Rick Kellison |
| Keeter Grocery | Larry Adrian | V.H. Kellison |
| Brown's Dept. Store | Durward Jack | Ray Aston |
| Wofford Pipeline | Keith Stansell | Ronnie Aston |
| Lockney Oil & Butane | L.L. Rhodes | J.A. Bobbitt |
| Davis Lumber | Glen Cooper | Jerry Cawley |
| Southwestern Public Service | Charlie Henderson | Delton Jack |
| Energas | Phil Green | Verner Hodel |
| Jack Morris Ford, Plainview | Doug Mcriwether | Jack Frizzell |
| West Texas Industries | Carlton Johnson | Byron Brock |
| Green Machinery, Plainview | R.W. Johnson | Harmon Handley |
| Schacht's Flowers | Harold Griffith | Les Ferguson |
| Barker Insurance | Bigham Farms | Bickley & Bickley |
| Moore-Rose Funeral Home | Blake Hickerson | Linda Lemons |
| Day, Owen, Lyle, Voss & Owen | Audry McCormick | J.D. Copeland |
| Attorneys At Law, Plainview | Bill Glasscock | Buck Ford |
| | Kenneth Wofford | |

Thank You for helping to make the Show & Sale a great success!

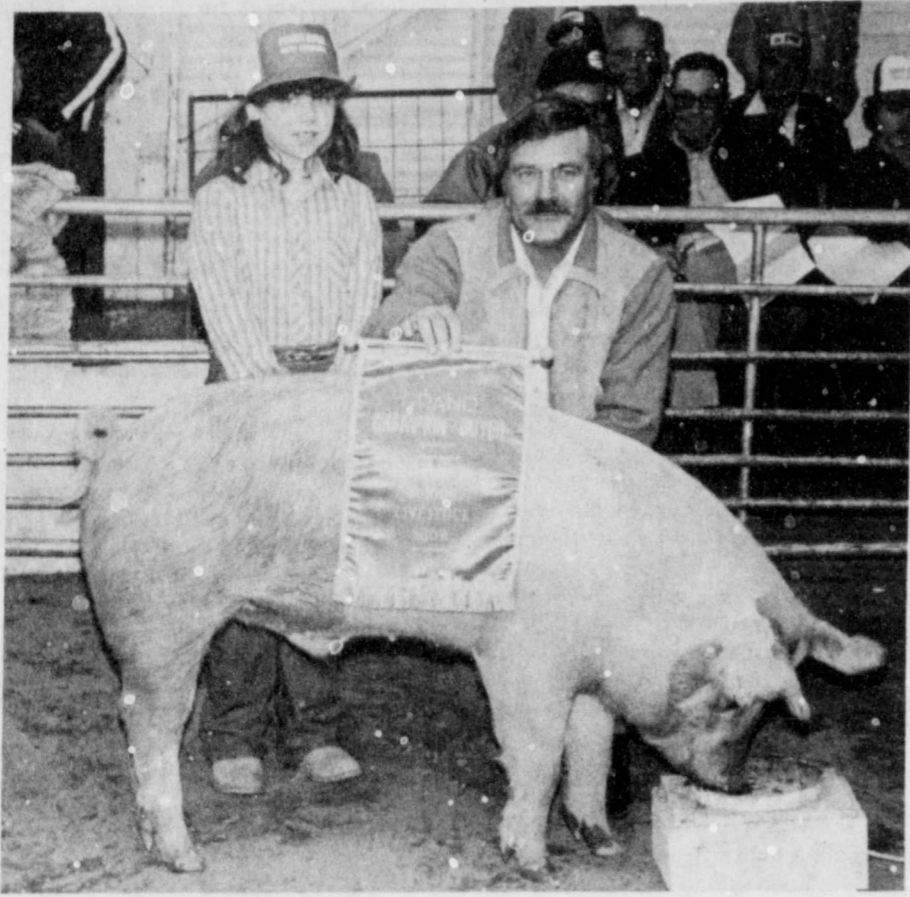
WESTERN LOCKNEY LTD.

652-3308

Hank Winter

Williams, Grand
1212 lbs. at
National Bank, Lockn
Hancock, I
FFA, 239
Businessme
Smith, Grand
1107 lbs. at \$5.
Martinez,
Barrow, F
Providence
Gin-Gale McPl
Covington,
Steer, 4-1
Farmers C
Elevator.
Easter,
Floydada B
McCulloch, I
FFA, 104 lb
Businessme
F
H, 123 lb
New A
Reeves, B
FA, 85 lb
Seed, Sea V
Leymour, I
FFA, 85 lb
elt, Gin and Del
Gin.
en Lane, Breed
120 lbs. at \$3.50
National Bank of
Higginbotha
Sheep, 4-
Floydada B
Teeter, Rese
Sheep, 4-H, 90
Foe Fertilizer, Lo
Woody, Reser
Sheep, 4-H, 88
ada Businessme
en Lane, Reser
Sheep, 4-H, 117
National Bank, I
at Cage, Reser
Sheep, 4-H, 117
Elevator, F
Mitchell, Rese
Sheep, 4-H, 112
ev Coop Gin.
rn Foster, 1st,
lb., Lockney Bee
perian
Salinas, 1st,
lb., First Nation
Hancock, 1st,
lb., Floydada B
m Woods, 1st, -
lb., Floydada B
man Allen, 1st,
lb., Floydada B
an Smith, 2nd,
lb., Floydada B
erre Kinard, 2nd,
lb., Kelton Sha
rn Foster, 2nd,
lb., Caprock Gi
ett McCarty, 2nd,
lb., Lockney Co
arty Covington, 2
110 lb., Floydada
ant Cage, 2nd,
lb., Consumers
athie, Battef, 2nd,
lb., Ruel Chen
4 Mill
reg Sparkman, 3rd
lb., Low-Pav&
ear Smith, 3rd,
lb., Floydada B
ri Bayley, 3rd,
lb., Lockney M
hannon Shurbet, 3
220 lb., Muncy F
even Turner, 3rd,
lb., Keith Jacks
hannon Shurbet, 3
110 lb., Producte
ronnie Ford, 3rd,
5 lb., Raz Ford
enn Sutterfield, 3
4 lb., Sterley C
die Smith, 3rd,
lb., Lakeview G
el Mitchell, 3rd,
Throu
Floyd
Coop
Inc
983-28
319 N.
Floyda

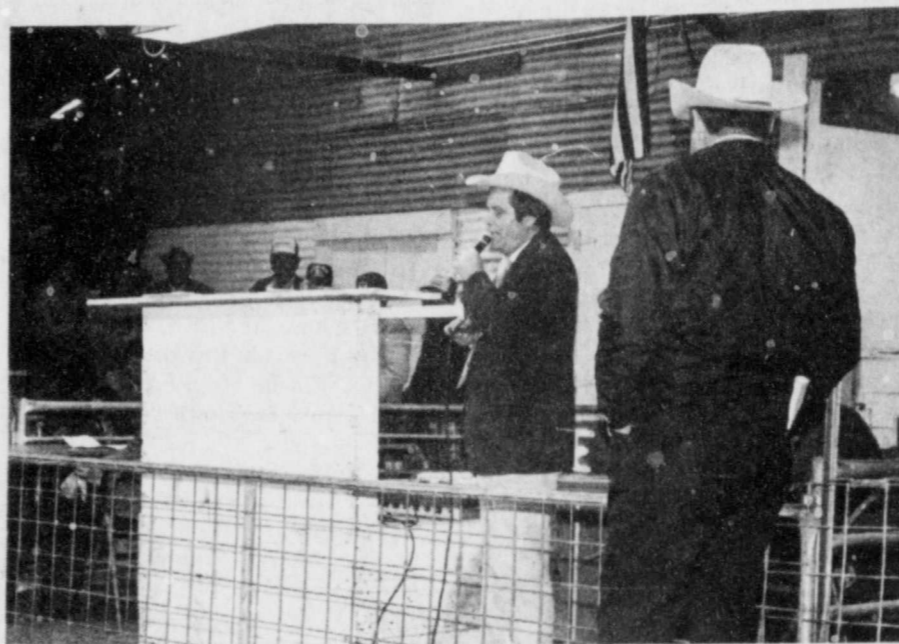
Today's FFA & 4-H Youth Are Tomorrow's Leaders In Our Community



CAMMY HANCOCK and buyer Johnny West of Floydada Businessmen and Grand Champion Cross.



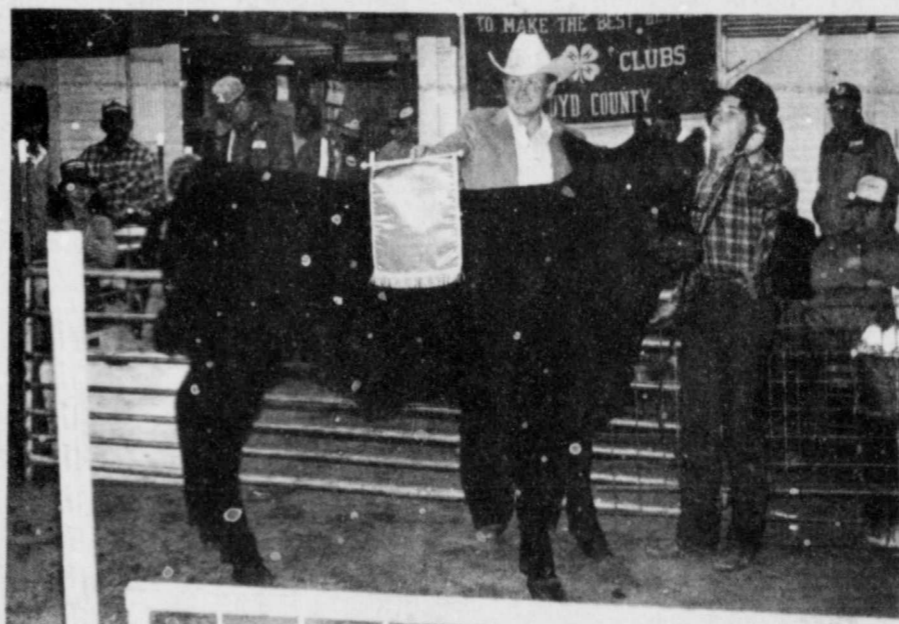
DAVID MARTINEZ and buyer Warren Mathis with Reserve Grand Hampshire.



AUCTIONEER Kenneth Gregg and Ringman Floyd Easter.



JODY SMITH and buyer Johnny West with Grand Champion Mediumweight Hampshire.



TY WILLIAMS with buyer George Sparkman of First National Bank in Lockney and Grand Champion Heavy Mediumweight Cross steer.



GARLAND EASTER and buyer Johnny West with Reserve Grand Heavyweight Suffolk Lamb.



MARTY COVINGTON and buyer Bill Cagle of Producers with Reserve Grand Champion Heavyweight Cross steer.

Supporting Today's Youth...

Is An Investment In Our Future

The cooperation and participation of both community's helped to make the 1982 Livestock Show & Sale a great success.

Floyd County's Progressive Bank

First National Bank in Lockney (806) 652-3355

MEMBER F.D.I.C.

Accounts insured
up to \$100,000.

Look for this
We've got the



Newsp