

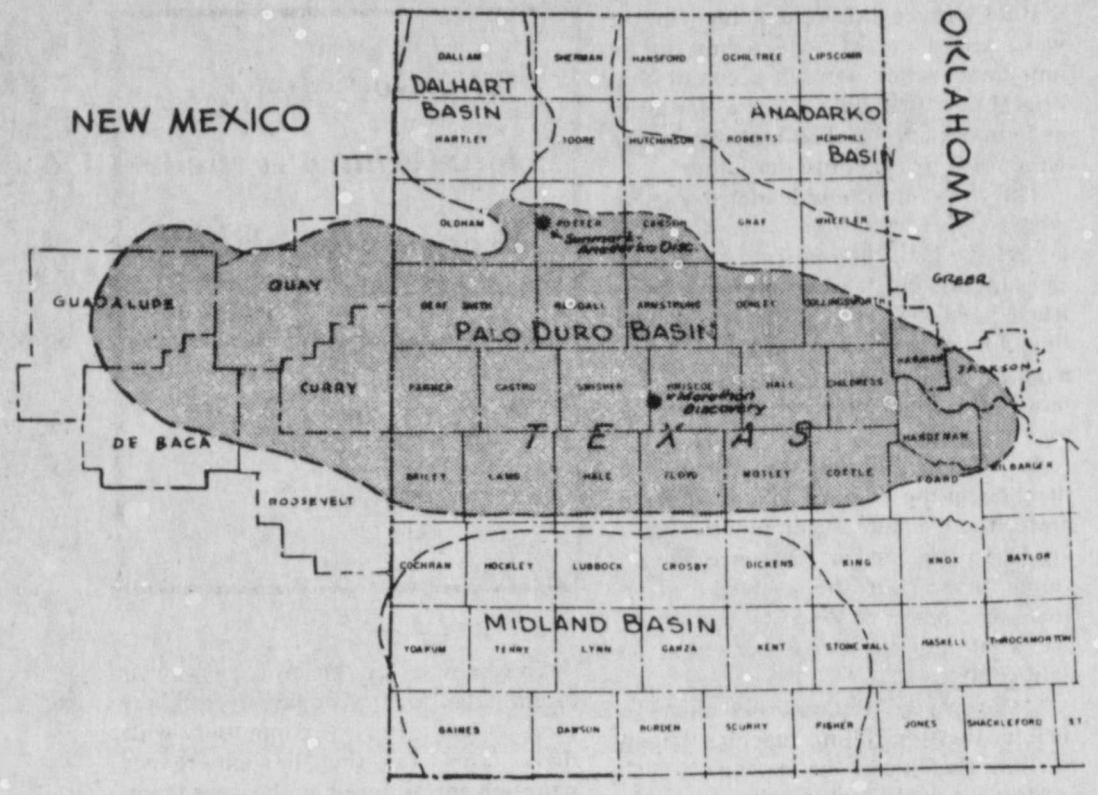
# Floyd is part of Palo Duro oil find

released this past week. The Mayfield discovery well in Briscoe County is producing 136 barrels of oil and are giving substance to rumors flying around Floyd County of the Palo Duro Basin. Floyd County is sitting, almost entirely, on an oil field with boom reminiscent of the 1920's. The Marathon Discovery is in the northern part of Floyd County close to the Mayfield. A well is being drilled inside the northern boundary of Floyd County. Another well is being drilled about 300 yards from the Mayfield well in Briscoe County. The Briscoe County well, the No. 1, also produced 73 barrels of oil in 24 hours from a well between 7880 and 7906 feet deep to 9500 feet. The No. 1 Pascal Garrison, in Briscoe County, was evaluated at total depth.

Reportedly, it has been drilled to 8,400 feet. The same rig used on the Mayfield and the Garrison has been moved to drill the No. 1 Cogdell. It is at the permitted 9000 feet and drillers are said to be submitting surface casing. Any results of the project should be known by mid-March. The immediate results of the discovery is an intensified interest in leasing. We have a confirmed report of \$100 an acre lease in the immediate vicinity of the Mayfield. Rumors have placed the figure as high as \$135 an acre. Reports of leasing along the eastern part of Floyd County and into Hale County have been a confirmed \$10 an acre. The leasing furor, however, is in southern Floyd County where many five-year leases are expiring and land owners are concerned about not only getting top price per acre, but also the concessions available.

The Amarillo Globe reports that spurred by the Marathon results, a small tract near the discovery well was reported leased for over \$100 per acre, with a \$650 per acre bonus, and one-quarter royalties instead of the usual one-eighth. Leases in west Hall County are going for \$35 an acre the Globe reported. With more than a million dollars in oil leases in the Palo Duro Basin already this year, operators are understandably nervous about such costs, but thus far the situation is limited to the immediate vicinity of the Marathon well. Another report stated that the "bonuses have jumped from the \$25 to \$30 per acre range to as high as \$135" in the Marathon area. The surest thing that can be expected from oil interest is that the reports will be conflicting and that no one is sure how much a lease will bring until it's written on a check or how good a well is until it's pumping.

PALO DURO BASIN is shaded on map drawn by John H. Nicholson, Amarillo consulting geologist. Mayfield No. 1 in Briscoe County is considered the discovery well for the strike. The SunMark-Anadarko well in Potter County is producing both oil and gas.



## Dallas Cowboys to appear at Floydada

Eight Dallas Cowboys will appear at Floydada on March 6 to challenge the local team in what may well be the event of the season. Tickets, however, will be basketball. The game will be played at the Floydada Chamber of Commerce in the Jr. High School. Time is 7:30 p.m. Tickets are now on sale, and Manager Susan Garms advises fans to purchase tickets early as seating will be limited. Cowboys participate in promotional games during off-season. The 45 member team, 41 travel across the state to appear in smaller communities. The team for the Floydada game will be made up of: Glenn Carano, quarterback for Danny White;

Tony Hill, wide receiver; Drew Pearson, wide receiver; Larry Bethea, defensive tackle; Steve Wilson, corner back; Butch Johnson, wide receiver; Jay Saldi, tight end; and Benny Barnes, corner back. The chamber has been working for over two months to secure a contract with the Cowboys for the game. The local team, Floydada All-Stars, is made up of: Richard Hale, Curtis Thompson, Donzell Minner, Kelvin Ratliff, Larry Barbee, Bob Marler, Bill Gilliland, Don Rainer, Ricky Biggs, Jerry Beary, Kerri Bearden and Matt Clark. Souvenir Dallas Cowboy T-shirts will be on sale at the game. Tickets may be purchased at the Chamber office at 107 California, or from any Chamber Director. Prices are \$7 for adults, and \$4.50 for children 12 and under.

## Chamber speaker will tell it like it is

Annual Banquet for the Floydada Chamber of Commerce will take place at the Cafeteria Saturday night at 7:00 p.m. Kings Restaurant will cater the barbeque dinner. Speaker, George McKinney, will tell "it is" to the many chamber members and friends in attendance. He has declared an official Ambassador Will by Governors Dolph and Bill Clements. In his remarks, McKinney will point out several points of a successful program, with much humor and stress, the need to present the picture and the growth picture

in their true lights rather than trying to sugar-coat them for a big impression. He will outline Dedication of members, Enthusiasm, Optimism, Misunderstanding, and Indecisiveness in a program of motivation and humor. He will be introduced by the President of the Chamber, Mark Wideman. The "Employer of the Year" will be awarded by the Women's Division. A special award will be given to an unsuspecting citizen and the exchange of gavel will be conducted symbolizing the change from the 1981 administration to the 1982 Officers and Directors. Banquet tickets are available at the chamber office and from any of the Board of Directors.

## This Week

### Rodeo Assn.

The Floydada Rodeo Association will have a meeting Monday night, March 1, at 7:00 p.m. at Kings Restaurant, to discuss the plans for the rodeo and roping. Everyone interested is invited to attend.

### Register

Thursday, March 4, will be the last day for Floyd County residents to register to vote in the city and school board elections on April 3.

### Cancelled

NOTICE!! The boys little dribblers games for tonight, February 25, have been cancelled and will be played on Friday night, March 5. The girls teams will be drafted on Friday, February 26 at 4 p.m. in the community room of the First National Bank.

### Dance

A Teen Heart Dance will held on March 5 from 8:00 p.m. until 12:00 p.m. at the Massie Activity Center. Cost will be \$2.50 per person and music will be provided by Sheldon Sue. Dress casual, bring a friend, and plan for an evening of fun. The dance is sponsored by The American Heart Association.

### Weather

DATE	HIGH	LOW
Feb. 17	64	44
Feb. 18	63	38
Feb. 19	68	37
Feb. 20	72	43
Feb. 21	82	40
Feb. 22	82	48
Feb. 23	84	55

Low yesterday: 38

## TEC office to reopen

Senator Ray Farabee telephoned the Hesperian Friday, noon, to report that the Texas Employment Commission office in Floydada would be opened within the next 30 to 60 days. Farabee had been loudly critical of the budget cut-backs which closed 71 job placement centers, including the one in Floyd County, last month. "The people who need the help most are the ones who can't afford to go to Lubbock or Plainview," he said, referring to the fact that with the sub-offices closed, those needing employment would have to travel to a main office in a near-by metropolitan area. The announcement that the TEC was to receive about \$12.5 million in

restored federal funds and that the Floyd County office would be opening, was made about 45 minutes before Farabee called. He said that he wasn't sure what level of staffing there would be, "as yet it hasn't been determined." The local TEC office boasts one of the highest placement records in the state of Texas and had been managed by Bob Hambricht for the past 14 years. Supporters of both Hambricht and the Floyd County TEC sent a barrage of letters and phone calls to government officials contesting the closing of the office. Farabee said "the efforts of community leaders and legislative efforts did

make a difference this time." The unemployment level in Texas is now at 6% and could go higher with farm workers being laid off as a result of the present agricultural slump. Farm laborers make up a large portion of the TEC job applicant lists. Farabee said that the Vernon and Sweetwater offices were to be opened immediately. There is an uncertainty of when the other offices will be put back in operation, or if they will be staffed as fully as before. Jerry Biscoe, TEC spokesman, said, "It's our intent to restore service in each of the local offices where we have cut service."

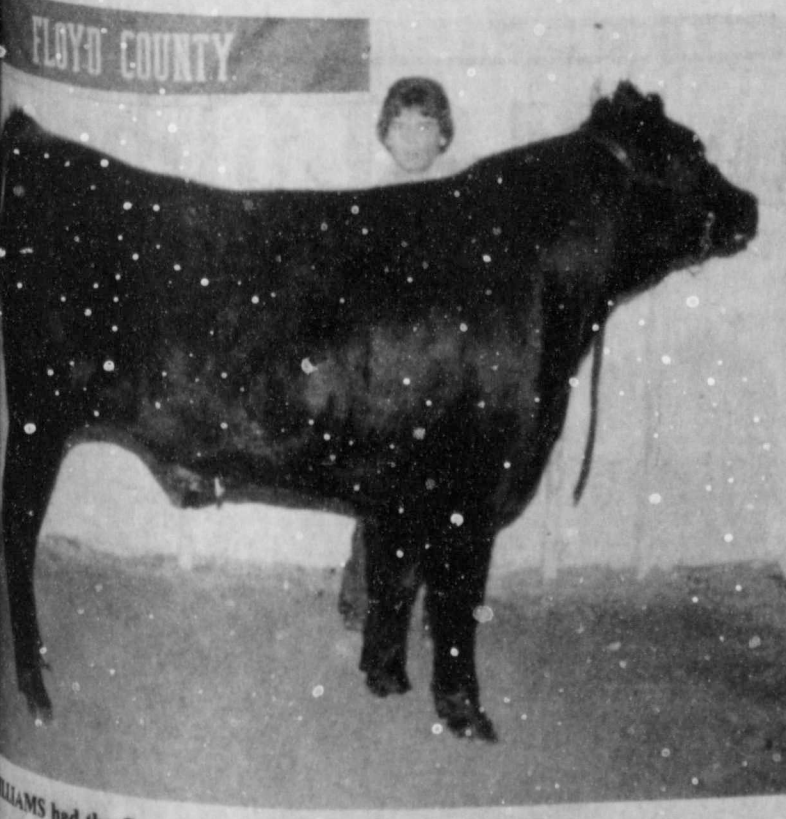
## Floyd County Jr. Livestock Show Banquet tonight

# 1982 Livestock Show winds down

The final event of the 1982 Floyd County Jr. Livestock Show is the 4-H and FFA banquet for exhibitors and their parents being held tonight at the Lockney Elementary School beginning at 7 p.m. Winning exhibitor trophies will be given out. The showmanship award winners will be announced as will the Herdsman award and Sweepstakes winner. Grand Champion winner in the swine division of the County Show was Cammy Hancock with a heavy weight cross. Reserve Grand Champion was David Martinez with a heavy weight Hampshire. The Swine Showmanship was Monday and the judge was Paul Gross, Amarillo District Extension Director. The lamb judging was held Tuesday morning. Jodie Smith showed the Grand Champion lamb which was a medium weight Hampshire. The Reserve Grand Champion was a heavy weight Suffolk shown by Garland Easter, Joe Ed Wise, Dawson County Extension Agent, was lamb judge.

Ty Williams had the Grand Champion steer which was a heavy-medium cross. The Reserve Grand Champion was a heavy cross belonging to Marty Covington. Steers, judged by Baile, County Agent, Spencer Tanksley, were shown Tuesday afternoon. The auction results were not in by press time for this edition. The sale began at 1 p.m. Wednesday. Full results of the five day county show will be published in next week's edition in a special souvenir section. This week's newspaper has a complete pictorial section with results of the Floydada Jr. Livestock Show and the Lockney Jr. Livestock Show, both were held last Saturday. Winners of the showmanship awards will not be known until announcement time at the banquet. Judge for this event is unknown except to the division ringman. Those youngsters who were chosen to compete in the swine showmanship division are: Kevin Helms, Margie Araujo, Kyle Brock, Karen Pruitt, Monty Williams, Karen Mathis, Kip

Holt, Kristy Dawdy, Garland Easter, Shannon Barbee, Mack Sherman and Max Bearden. The sheep division contenders for showmanship are: Karvin Foster, Bryant Higginbotham, Marty Covington, Margie Araujo, Garland Easter, Tony Saucedo, Lori Bayley, Scott McCarthy, Shannon Shuberl, Jeff Prisk, Stephen Turner and Cliff McLean. Those chosen in the steer division are: Ty Williams, Robert Nixon, Keith High, Kyle Brock, Dusty Burleson, Marty Covington and Tom Ross. The unidentified judge, who sits in the bleachers, picks out the exhibitors for the showmanship competition. After the division show is completed and the Grand Champions are named, the youngsters chosen to compete for showmanship re-enter the ring. The winner is then selected but not announced until the banquet. The Herdsman award is given to the youngster who keeps his animals and their pens in the best order during the entire show.



TY WILLIAMS had the Grand Champion steer which was a heavy-medium cross.



GRAND CHAMPION winner in the swine division of the County Show was Cammy Hancock with a heavy weight cross.



JODIE SMITH showed Grand Champion lamb with her medium weight Hampshire.

See Section B for results of the Floydada Jr Livestock Show and the Lockney Jr Livestock Show



# Man trapped in canyon wreck

On Saturday morning Clarence High, heavy equipment operator with the Jake Deil Company, was transporting one of the company's largest front-end loaders from Littlefield to the Thrasher Pits located about 20 miles east of Floydada. It was about 1 p.m.

The day was beautiful, almost spring like, and as he neared the rim of Blanco Canyon, six miles south of Floydada it seemed that the slow trip was almost over.

But Clarence didn't finish the trip. He was carried out of the canyon in an ambulance after a freak accident that brought in rescue units from as far away as Lubbock and blocked highway traffic on and off for six-and-a-half hours.

The 75 ton front-end loader moves on wheels 7 1/2 feet high and 3 1/2 feet across. To haul the machine it must be dismantled and loaded on five semi-trucks. It's weight is 30 times heavier than a truck, and 15 times heavier than a large field tractor. The system that moves this giant piece of equipment is totally hydraulic.

As Clarence started the decent into the canyon the engine stalled. Without power the machine began moving down grade out of control. Clarence fought vainly to re-start the motor. Twenty years of experience with heavy machinery went into his desperate battle to gain control.

At the curve, about half way down the incline, the free-rolling machine began to climb the side of the canyon.

Clarence could feel it going over. He stood and braced himself.

The noise was deafening as the loader rolled over on its side and then settled upside down.

Within minutes he could hear people banging and yelling, but he couldn't make out what they were saying.

"Oh, God," he prayed. "Don't let me have turned over on something. Don't let there be people under me."

Encased in a tomb of 150,000 pounds of metal he waited.

It would be two hours before a window was cut through the cab so that he could talk to people and find out what was happening.

A passing motorist saw the accident and began pounding on what he surmised to be the cab and called to see if anyone was inside. He heard a faint noise and was reassured that the man inside was alive.

A call from the nearby Country Club brought the Floydada Volunteer Fire Department rescue crew with their hydraulic jaws-of-life tool.

*"Oh, God, don't let me have turned over on something. Don't let there be people under me."*

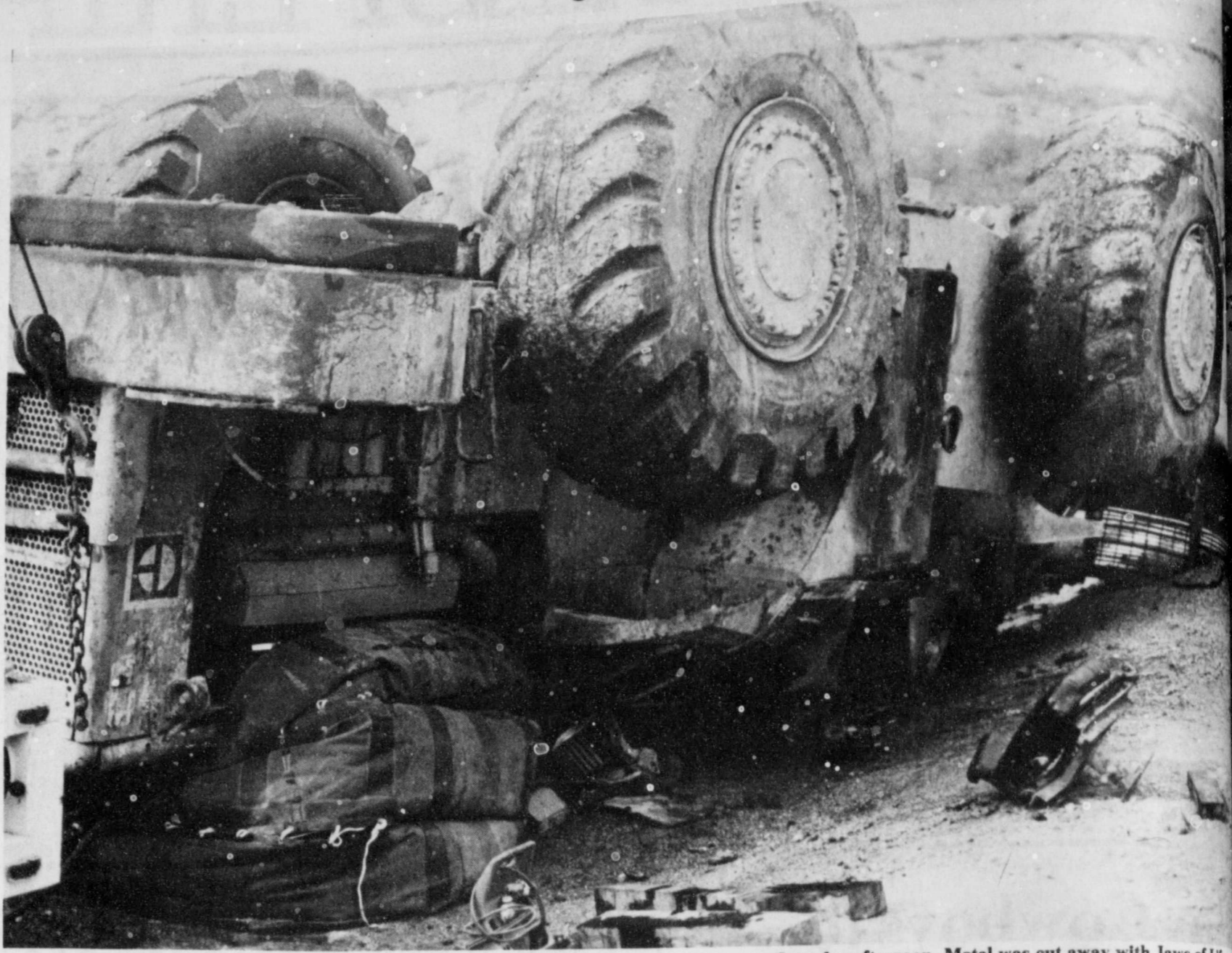
The newly purchased heavy-duty cutting tool was a donation from the Lions Club after a community-wide drive. This was the first emergency situation encountered by the jaws team.

But the unit is designed to cut into cars, trucks and tractors not a machine of the loader's immensity.

A second call went to the emergency medical crew dispatched from Caprock Hospital.

Jean Jarrett, EMS team member, has just sat down to lunch when the ambulance call came in at 1:15. She had taken about three bites of her lunch and it would be 6 hours before she returned to finish her cold meal.

She and her ambulance partner, Robert Luna, arrived on the scene just after the fire crew. They could hear the man inside and knew he was alive but



CENTER OF PHOTO shows cab where Clarence High was trapped for 3 hours and 37 minutes Saturday afternoon. Metal was cut away with Jaws of Life.

couldn't know how badly he was hurt. "You felt helpless," Jean said, "knowing the man's in there and you can't get to him."

She paced up and down the highway and wished there was something she could be doing.

The hospital had been alerted, and Dr. Hong was there waiting.

The Floydada Volunteer firemen were working desperately with the jaws of life, but it was impossible to cut through the thick steel.

A call had been put through to Lubbock Wrecker Service. They sent their two heavy-duty winch trucks, a supply truck and a pick-up.

One of the wrecker drivers, was baby-sitting when he got the message that a man was trapped near Floydada. His wife had just left to go to the grocery store. Faced with the dilemma of what to do with the baby, he was relieved to see his sister drive up. He ran out, handed her the baby and called back over his shoulder. "I'll see you later."

The wrecker made the trip from Lubbock in 45 minutes. They hooked on to the loader, but could only lift the 75

tons about a foot off the ground. It was enough, however, to place the huge air bags.

The fire volunteers had by this time cut a window on the left side of the cab. Not enough to pull the man out, but they could reach in, touch him, and could now talk to him.

Finally Jean and Robert could go to work. He reached in and put a pressure bandage on a cut in the back of Clarence's head that had re-opened. They found his pulse was normal and his condition stable. He complained of pain in his side and they took precautions against broken ribs and punctured lungs. Not knowing the extent of internal injuries, they were afraid to give him the water he was asking for, but handed in a damp rag so that he could moisten his lips.

Clarence's left leg was caught and doubled under him. The area he was enclosed in was so small that had he been a large man he could never have survived.

"Somebody was sure looking out for me," he told Robert.

The winch trucks worked vainly to raise the loader, so that rescue workers could get to the cab underneath.

A 40,000 pound crane had been dispatched from the Jake Deil plant at the Thrasher Pits and was on its slow moving way to the canyon.

Finally Allen Thrasher, who works for Jake Deil, was located and arrived on the scene. His knowledge of the loader and its construction was needed.

The volunteer firemen gave him a quick course in how to use the cutting tool. He was able to cut away enough metal pieces to get to the bolts on the cab seat. With those undone the seat was pulled out and Clarence finally released. He had been held prisoner for 3 hours and 37 minutes.

He was taken to Caprock Hospital where his condition was stabilized. Dr. Hong decided that an orthopedic surgeon would be needed to reset Clarence's ankle. The one that had been crushed under him. He was then taken by ambulance to Lubbock Methodist where his condition was listed as satisfactory. He is expected to fully recover.

Back at the scene of the accident the awesome task of righting the overturned loader and bringing it safely to the bottom of the canyon was in



THE CRANE has lifted the loader to its side after it turned over in the steep grade in Blanco Canyon.



EMS CREWS lift Clarence High into the ambulance after he was released from under a 150,000 pound front end loader.



A FRONT END LOADER half the size of the wrecked loader eases the equipment down the hill.

## Annie Taylor interviewed by Channel 13 Lubbock



KATHY WILLIAMS, Channel 13 reporter, interviewed Annie Taylor for a news spot which can be viewed tonight at 10.

A television news series, "Impact 13" will feature a local woman in tonights late report at 10 o'clock on Channel 13, Lubbock.

Annie Taylor, who has been spotlighted recently by publicity on a scholarship fund in her honor, was singled out for the interview because of her effect on the school system in Floydada.

Kathy Williams, Channel 13 reporter, said, "The theme of the program will show how she has affected so many people of all races."

Included in the program will be an interview with Floydada School Superintendent, Jerry Cannon, and Al Galloway, teacher at Della Plains School.

Side shots of the Della Plains school where Mrs. Taylor taught and of the park named after her will be included in the televised feature piece.

The Impact 13 series, aired nightly,

contained "hard news" stories the first three days of the week.

"I wanted to balance the heavy news with soft features the last two nights," Williams said. The Taylor story of changing education provided that balance.

Mrs. Taylor was the first black student admitted to Wayland Baptist College in Plainview. She was also a pioneer in the integration of schools in Floydada.

The scholarship fund is growing in momentum and the committee has as their goal the first scholarship to be awarded this fall to a senior who otherwise would not financially be able to go to college.

The First National Bank in Floydada is the depository for the fund and donations may be made directly to the bank.



JERRY CANNON AND AL GALLOWAY are part of the Annie Taylor news spot.



## Bridge to perform at Church

BRIDGE will perform live in concert next Saturday, February 27, at the First United Methodist Church in Floydada beginning at 7:00 p.m.

The message of BRIDGE is a very special one. Five highly stylized vocalists together with live horns, rhythm, and keyboards combine to present a dynamic concert. A BRIDGE concert is

not something you watch; it's something you experience! BRIDGE enters each concert with the purpose of ministry.

Through their music and sharing they build bridges that span hurts, doubts, frustrations, anger, and disappointments. They gently bring people in touch with God and the result is always

a wonderful experience.

In a small size town there is rarely a chance to participate in a ministry like the one of BRIDGE.

There will be no charge for this concert. A love offering will be taken for the group. There will be a nursery provided.



BRIDGE will perform in concert Saturday night at the First United Methodist Church in Floydada beginning at 7 p.m.



BAND performed at the "Little Bit Country" musical, sponsored by the Floydada Rotary, Saturday night at the local auditorium. Band members are (l-r) Rob Pratt, piano; Bryan Sanders, guitar; Roger Alldredge, guitar; Tim Burns, and Gilbert Schwertner, drums.

### Letters to the Editor

I was visiting my Dad, Olin Golden Age Nursing Home in the other day. I discovered a Floydadian, Mr. Tom Smith, who had been at Star Cash for 30 years, is living there too. I remember all his friends at the home and would love to hear from them. All send him a card and tell him I'm still here. The address is Golden Age Nursing Home, 2613 34th Street, TX 79413.

Thanks,  
Darlene Fulton

### Wait A Cotton Pickin' Minute

BY LOUISA HARTMAN

The Claude News

It really pays to be a subscriber. Consider the fate of this poor soul:

A man neglected to renew his subscription to his local, weekly newspaper, sent his little boy to borrow a copy from his neighbor.

In his haste, the boy ran over a stand of bees and in a few minutes looked like a warted squash....

His father ran to his assistance and failing to notice the barbed wire fence, he tore a pair of \$19 trousers and kicked a strand off the fence....

The old cow took advantage of the opening in the fence, got into the field

and killed herself eating green corn. Hearing the commotion the farmer's wife ran out, upsetting a four-gallon churn of cream into a basket of little chickens, drowning the entire lot....

The baby, being left alone crawled through the cream into the parlor, ruining a brand new \$50 carpet....

During the excitement the oldest daughter eloped with the hired man; and the dog broke up 11 settings of hens and the calves got out and chewed the tails off four shirts on the clothesline....

**MORAL:** Don't borrow the neighbor's paper, it's too risky. Be a Subscriber!

### Chamber Clips

BY SUSAN GARMS

The second annual Chamber sponsored Floydada Junior Livestock Show was rated a huge success by the Agriculture Committee of the Chamber. With much thanks going out to the many merchants and individuals who donated goods, time and cash to insure this successful program for our young people in Floydada. It takes all of us, no one can do it alone - it's been said many times; but the way this community pulls together to accomplish a common goal should be an example for all to see and emulate. Everyone benefitted by the efforts of all involved.

So now the Banquet is coming up this

Saturday. Tickets are still available from these Board Members: Tom Powell, Johnny Harris, Jr., Ricky Burns, Gordon Kirtley, Jerry Thompson, Sue Williams, Louis Anderson, Sue Moore, Jett Major, Anne Willson, Ted Jordan, Mark Wideman, Stan McClendon, Daphna Simpson, Joe Rice, Tommy Ogden, Jon LaBaume, Roger Dawdy, Darlynn Hambricht and Doris McLain; and of course from the chamber office.

And yes, the Dallas Cowboys ARE coming to Floydada to play basketball. March 6 is the date and 7:30 is game time at the Graves Gymnasium. Look for more details elsewhere in the Hesperian this week.

### Candidates to file expenses

Opposed Candidates for political office are required by Article 14.07 of the Texas Election Code to file with the County Clerk the following Campaign expense reports:

On April 1, 1982, report of all contributions received and expenses incurred through March 22, 1982.

On April 26, 1982, report of all contributions received and expenses incurred through April 21, 1982.

On May 31, 1982, report of all contributions received and expenses incurred through May 26, 1982.

These must be filed with Margaret Collier, County Clerk for Floyd County.

#### FLOYD COUNTY HESPERIAN

(USPS 202-680)

Published weekly each Thursday at 111 East Missouri Street, Floydada, Texas 79235. Second class postage at Floydada, Texas 79235.

SUBSCRIPTION RATES: Local \$11.50 per year, out-of-trade area \$12.50 per year.

POSTMASTER: Send address changes to the Floyd County Hesperian, 111 East Missouri, Floydada, Texas 79235.

Shelly Harris  
Marjorie Holcomb  
Tom Burns  
Rosemary Gonzales

Publisher, Editor  
Business Manager  
Advertising Manager  
Subscriptions, Society

The Publisher is not responsible for copy omission, typographical errors, or any unintentional error that may occur other than to make corrections after being brought to attention. Advertising accepted on this basis only.

# SHOP & SAVE.. TODAY!

Grade A FRYERS 59¢/lb  
1 lb Pkg Ends & Pieces BACON 79¢  
1 lb pkg HAMBRUGER \$1.19

- 1 lb Can Folgers Reg or Drip COFFEE \$2.09
- 4 lb. bag casserole pinto BEANS 99¢
- 1 Gallon Shurfresh MILK \$2.19
- Grade A Large EGGS Dozen 89¢

### PRODUCE

- Fresh TOMATOES lb 59¢
- Firm Heads LETTUCE each 39¢
- Golden Delicious APPLES lb 49¢
- 10 lb Bag POTATOES \$1.29

- 4 Roll Pak Charmin TOILET TISSUE \$1.09
- 303 Can Shurfine SWEET PEAS 2/89¢
- Shurfine Whip 12 oz. TOPPING 89¢
- Shurfine 32 oz. CATSUP 89¢
- Shurfine Peach or Strawberry 18 oz. PRESERVES 99¢
- Kraft qt jar MAYONNAISE \$1.39

## KEETERS GROCERY

7:30 a.m. - 7:30 p.m. 652-2191

We Redeem Food Stamps & WIC Cards  
We Reserve The Right To Limit Quantities

We Give Circle W Blue Stamps Double on Wednesday



# BRINGING YOU



**FRYER THIGHS  
DRUMSTICKS**  
USDA Grade A

**99¢**  
lb.



**FRYER BREAST**  
Fresh U.S.D.A. Grade A

**\$1.09**  
lb.



**ROUND STEAK**  
Beef Full Cut Bone In

**\$1.75**  
lb.



**PORK CHOP**  
Combination 1/4 Loin

**\$1.29**  
lb.

- Spare Ribs**  
Country Style
- Rump Roast**  
Boneless Lean & Tender Beef
- Round Steak**  
Beef Full Cut Boneless
- Sliced Bacon**  
Wilson's Certified
- Franks**  
Wilson Certified
- Sliced Bologna**  
Wilson's Certified

- \$1.27** lb. **Cheese**  
American Kraft Singles 12 oz.
- \$1.99** lb. **Fish Fillets**  
Boneless Turbot
- \$1.89** lb. **Stew Meat**  
Lean Beef Cubes
- \$1.89** 16 oz. **Cube Steaks**  
Extra Lean & Tender Beef
- 99¢** 12 oz. **Sharp Cheese**  
Kraft Cracker Barrel
- \$1.49** 16-oz. **Pork Chops**  
Waffle Thin Breakfast Chops
- \$1.89** 12 oz. **Cheese**  
American Kraft Singles
- \$1.99** lb. **Fish Fillets**  
Boneless Turbot
- \$1.89** lb. **Stew Meat**  
Lean Beef Cubes
- \$2.69** lb. **Cube Steaks**  
Extra Lean & Tender Beef
- \$1.99** 10 oz. **Sharp Cheese**  
Kraft Cracker Barrel
- \$1.99** lb. **Pork Chops**  
Waffle Thin Breakfast Chops



Open Daily 8:00 a.m. to 7:00 p.m.  
Sundays 9:00 a.m. to 6:00 p.m.

309 South Floyd

Prices effective Thurs. thru  
February 25-March 2, 1982

Each of these advertised items is required to be readily available for sale at the advertised price in each store, except as specifically noted by the manufacturer. We reserve the right to limit quantities. None sold to dealers.



**Crackers**  
Premium

**69¢**  
1 lb. box

Piggly Wiggly

**Super Saver**  
**LARGE EGGS**  
Large Grade A 1 doz.  
with coupon

**78¢**

**Dairy Specials**

- Orange Juice**  
Kraft 32 oz. btl. **99¢**
- Yogurt**  
Yoplait 26 oz. for **79¢**
- Velveeta**  
Kraft lb. **\$1.49**
- Cottage Cheese**  
Bell 24 oz. **\$1.49**

Put \$2,500 in your pocket...play **CASH KING**

There are still plenty of winners to be won. Plus, all winners qualify to enter the Grand Prize Drawing. But few weeks left to enter FREE Game Tic! No Purchase Necessary.

Don't miss your chance!



**TOMATO SOUP**  
Campbell's

**4 for 99¢**  
10 3/4 oz. can



**Potato Chips**  
Morton's 6 1/2 oz. bags

**BUY 1 GET 1 FREE**

**Kleenex**  
200 ct.

**79¢**

**CATSUP**  
Del Monte

**\$1.49**  
24 oz.

**Shurfine Sodas**  
Asst. Reg. cans

**5 for \$1**

**Glad Trash Bags**  
10 ct. 3 ply

**\$1.49**

**\$ DOUBLE \$**

Present this coupon along with any one manufacturer's "cents-off" coupon and get double the savings from Piggly Wiggly. Not to include "retailer", "free" or tobacco coupons or exceed the value of the item. Limit 1 coupon per manufacturer's coupon. Limit 8 Double Coupons per customer. Coupons good at Piggly Wiggly Feb. 25 to Feb. 27, 1982.

**COUPON**

**\$ DOUBLE \$**

Present this coupon along with any one manufacturer's "cents-off" coupon and get double the savings from Piggly Wiggly. Not to include "retailer", "free" or tobacco coupons or exceed the value of the item. Limit 1 coupon per manufacturer's coupon. Limit 8 Double Coupons per customer. Coupons good at Piggly Wiggly Feb. 25 to Feb. 27, 1982.

**COUPON**

**\$ DOUBLE \$**

Present this coupon along with any one manufacturer's "cents-off" coupon and get double the savings from Piggly Wiggly. Not to include "retailer", "free" or tobacco coupons or exceed the value of the item. Limit 1 coupon per manufacturer's coupon. Limit 8 Double Coupons per customer. Coupons good at Piggly Wiggly Feb. 25 to Feb. 27, 1982.

**COUPON**

**\$ DOUBLE \$**

Present this coupon along with any one manufacturer's "cents-off" coupon and get double the savings from Piggly Wiggly. Not to include "retailer", "free" or tobacco coupons or exceed the value of the item. Limit 1 coupon per manufacturer's coupon. Limit 8 Double Coupons per customer. Coupons good at Piggly Wiggly Feb. 25 to Feb. 27, 1982.

**COUPON**



# THE BEST FOR LESS



**POTATOES**  
Bake 'em, Boil 'em, Fry 'em  
10 lb. bag

**39¢**



**AVOCADOS**

**4 for \$1**



**ORANGES**  
Sunkist Sweet & Juicy

**39¢**  
lb.



**BELL PEPPERS**  
Excellent for Stuffing

**3 for 99¢**

**YOUR Home Town Store of Values!**

**APPLES**  
Red Rome Washington's Finest **47¢**

**Lemons**  
Flavorful Sunkist **8 for \$1**

**Broccoli**  
Firm Green Stalks **79¢**  
lb.

**Bird Seed**  
5 lb. bag **\$1.25**

**Vernell's Assorted Varieties Candy** **\$1.69**  
lb.

**Spinach** **\$1.49**  
High in Vitamin A ea.

**Onion Bulbs** **98¢**  
Red, White & Yellow pkg.

**Cole Slaw Mix** **59¢**  
1 1/2 oz. pkg.

**Frozen Food Values**

**Tater Tots** Ore Ida 16 oz. box **89¢**

**Five Alive** Reg & Snow Crop 12 oz. Fruit Punch **89¢**

**Waffles** Downy Flake 11 oz. **89¢**

**Pizzas** Gourmets Choice 21 3/4 oz. **\$2.99**

**Piggly Wiggly Super Saver**

**Fabric Softener** Downy 96 oz. with coupon **\$2.99**



**Margarine** **79¢**  
Velvet Spread 2 lb.

**Round Cake** Crocker 16 oz. box **79¢**

**COFFEE** Maxwell House 1 lb. can **\$2.19**



**Biscuits** Shurfine 5 oz. can **5 for \$1**



**Paper Towels** Brawny 1 roll **59¢**

**Maple Syrup** 32 oz. **\$1.79**

**Sunbeam Cookies** 5 oz. Assort. **3 for \$1**

**DOUBLE \$ COUPON**

Present this coupon along with any one manufacturer's "cents-off" coupon and get double the savings from Piggly Wiggly. Not to include "retailer", "free" or tobacco coupons or exceed the value of the item. Limit 1 coupon per manufacturer's coupon. Limit 8 Double Coupons per customer. Coupons good at Piggly Wiggly Feb. 25 to Feb. 27, 1982.

**DOUBLE \$ COUPON**

Present this coupon along with any one manufacturer's "cents-off" coupon and get double the savings from Piggly Wiggly. Not to include "retailer", "free" or tobacco coupons or exceed the value of the item. Limit 1 coupon per manufacturer's coupon. Limit 8 Double Coupons per customer. Coupons good at Piggly Wiggly Feb. 25 to Feb. 27, 1982.

**DOUBLE \$ COUPON**

Present this coupon along with any one manufacturer's "cents-off" coupon and get double the savings from Piggly Wiggly. Not to include "retailer", "free" or tobacco coupons or exceed the value of the item. Limit 1 coupon per manufacturer's coupon. Limit 8 Double Coupons per customer. Coupons good at Piggly Wiggly Feb. 25 to Feb. 27, 1982.

**DOUBLE \$ COUPON**

Present this coupon along with any one manufacturer's "cents-off" coupon and get double the savings from Piggly Wiggly. Not to include "retailer", "free" or tobacco coupons or exceed the value of the item. Limit 1 coupon per manufacturer's coupon. Limit 8 Double Coupons per customer. Coupons good at Piggly Wiggly Feb. 25 to Feb. 27, 1982.



# A 12 year record goes unchanged

BY SHELLY HARRIS

As a sports writer, I feel the faculty versus senior basketball game each year is the one sporting event that I am fully qualified to cover.

This year's line-up of faculty players featured the Floydada Coaching Staff, and others.

The rules of the game exempt senior basketball players, so the student team was made up mostly of the Whirlwind 1981 all-district football linemen.

The question posed by insiders was whether or not this crop of seniors could break the 12-year unbeaten record of the faculty with high school principal, Charles Tver, as official score keeper, and with Faculty coaches Jackie Chadwick and Brenda Radloff as referees?

Students packed the visitors side of the gymnasium. Though most of the faculty was on the floor as either players or cheerleaders, a fine showing of supporters sat on the home side.

Play began on time. (I assume it did, I didn't get there until almost the half.)

Halftime performance was put on by

the off-season athletes who went through a series of intricate drills. One of the most spectacular is called the explosion. The athletes leap forward and land with their bodies in a perfectly horizontal position. The coordinated skill drills were beautifully executed.

As play resumed in the second half, the seniors were behind by about 15 points. But the hard driving team of contenders beat their way up and down the court in a battle that looked as if stealing the ball was the prime game objective.

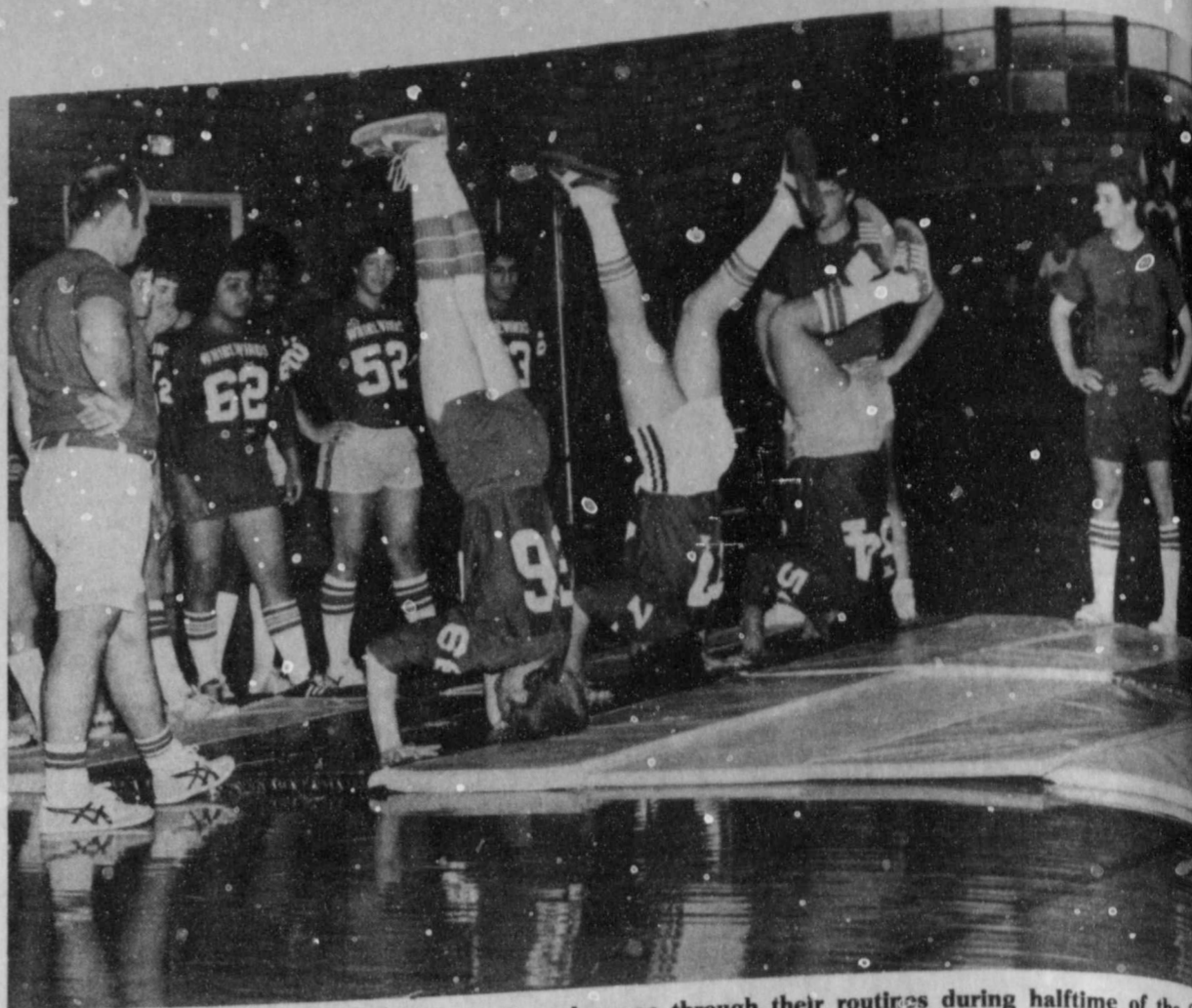
Families were pitted against each other as J.E. Waller, faculty team, attempted to steal the ball from his son, Jim, senior team. Even Mrs. Waller, a faculty cheerleader, was so caught up in the game that she ran onto the court and gave her husband a kiss for good luck as he stood poised to attempt a free throw in the first half. Then in the second half, when her son stood at the free throw line she was clearly torn between loyalties. At the last instant mothers instinct (and prodding by the other

cheerleaders) took over and she ran to give Jim a good luck kiss. His shot failed.

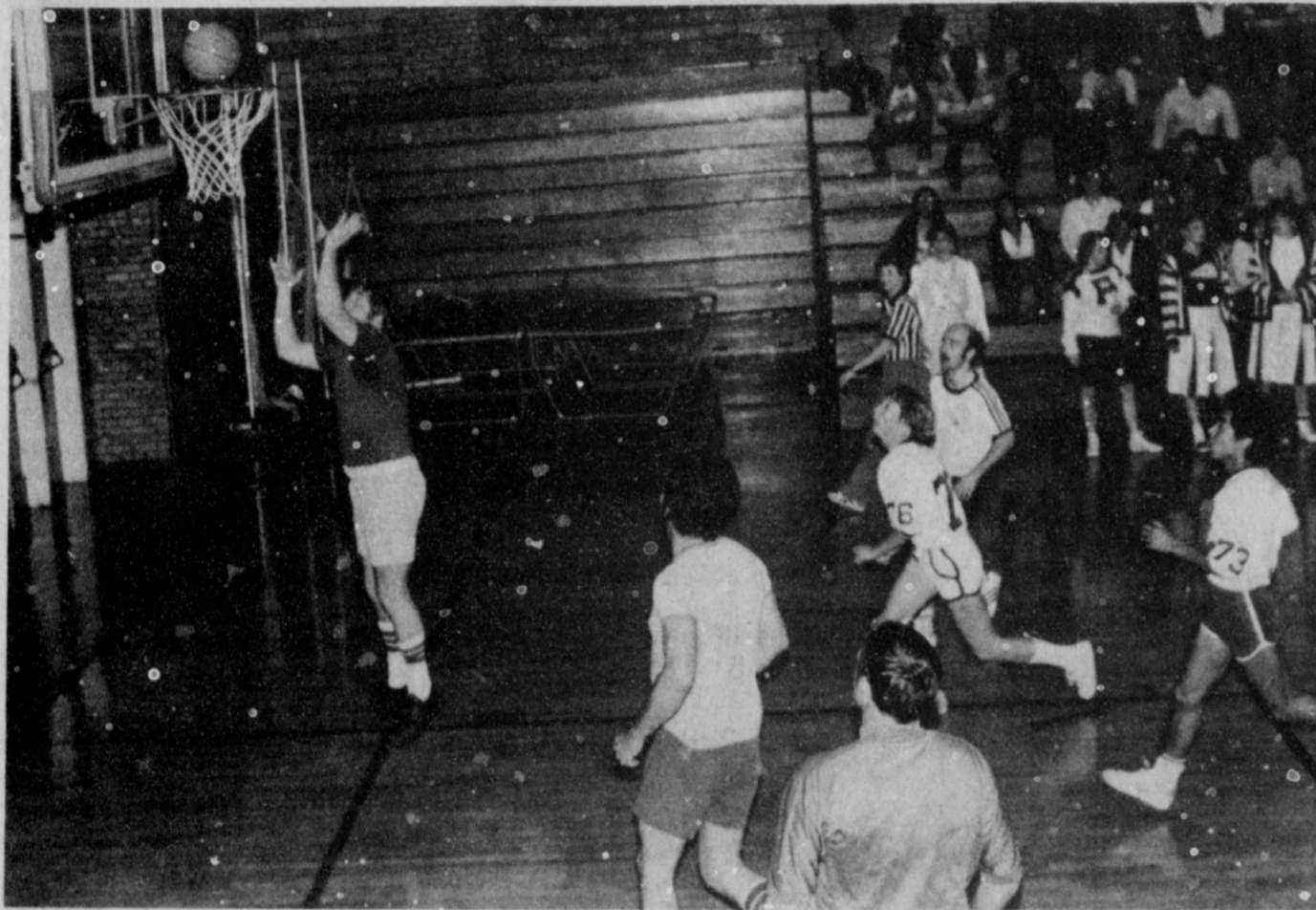
The senior cheerleaders did their part to aid the cause. In another free throw situation, as a senior was setting himself to throw, one of the girls snuck up behind Tommy Baxter and attempted to tie his shoe strings together.

As the drama of the tense game continued, tempers flared, unpaired seniors guarded their opponents with plays that looked suspiciously like body blocks. The backboard play was an everyman-for-himself situation, and the referees spent the evening dodging players and only blew their whistles when someone on the court got too close.

During the last minute of the game the seniors dropped one in to close the scoring gap and the student section went wild. With only seconds left Matt Clark, faculty team, stole the ball and attempted a shot from mid-court. It fell short and the game ended. Final score: Faculty 46, Senior 32 (I think).



HALFTIME PERFORMERS—Floydada off-season boys go through their routines during halftime of the Senior basketball game last week.



FACULTY SCORES AGAIN! Coach Coward goes for another two points during last week's Faculty-Senior basketball game. The seniors were once again defeated, 46-32.

## Winds fall to Abernathy 87-60

The Winds closed the season on a losing note as they were downed by Abernathy 87-60, February 15 here at Graves Gym. The Winds finished with a 15-12 record for the season.

The first quarter ended just about even as the Lopes lead the first quarter by three points. Abernathy stretched the lead to 47-30 by the end of the first half.

Abernathy controlled the second half as they went on to widen their lead well into the final quarter, to down the Winds.

Donell Weeks was high pointer with 16 points while Carlos Rainwater finished with 15. Calvin Coleman added 10 points followed by James King with nine and Bruce Williams with eight points.

## J. V. stomps Abernathy

The J.V. Whirlettes closed their season with a 59-56 win over Abernathy here at Graves Gym last Tuesday night. The win boosted the Whirlettes to 13-4 for the year.

Both teams exchanged the lead all through the game as the Lady Lopes lead at the half. The Whirlettes managed to take over the lead and crush Abernathy at the end.

Pam Cathey lead the scoring with 20 points followed by Rene Ledbetter who ended with 12. Also scoring were Cheryl Goen with nine and Margie Cisneros with eight.

Congratulations

stock show

winners!

**SAVE 10¢**

Per Gallon On  
Gasoline and Diesel

**USE OUR KEY LOCK**

For Information Contact:  
**Douglass Oil Co.**

Box 276      Plainview, Texas      293-1579

**CONGRATULATIONS**  
to all  
**FFA & 4-H Young People**  
for your efforts.

**ANDERSON'S**  
DEPARTMENT STORE  
120 West California      Floydada

## Abernathy defeats Whirlettes 60-45

Abernathy defeated the Whirlettes 60-45 in the Whirlette's final game of the season here in Graves Gym last Tuesday night. The Whirlettes ended the season with an 11-18 record for the year.

The Whirlettes started slow as they fell behind by five points with 2:30 left

in the first quarter but by the end of the half the Lady Lopes lead by ten points, (31-21).

Abernathy also controlled the second half as they lead 48-30 at the end of the third quarter and held this lead well into the final quarter to defeat the Whirl-

ettes.

Debra Alfaro lead the seniors with 10 points, as Sandra Robinson had 8 points.

Also helping out the Whirlettes were Terry Pleasant with 6 points and Kelli Ferguson who had 5.

### The Land Bank

Credit  
you can  
count on  
for the  
long pull



105 S. Wall

Tommy Ogden mgr.

983-2480

### Farmers...

Let H&R Block  
prepare your income  
tax returns...we could  
save you money.

Our carefully trained tax preparers are up-to-date on all the tax credits and deductions that apply to farmers. At H&R Block, we'll take all the time necessary to do the job right because we want you to pay the lowest legitimate tax.

### H&R BLOCK

THE INCOME TAX PEOPLE

106 W. Missouri

983-5233

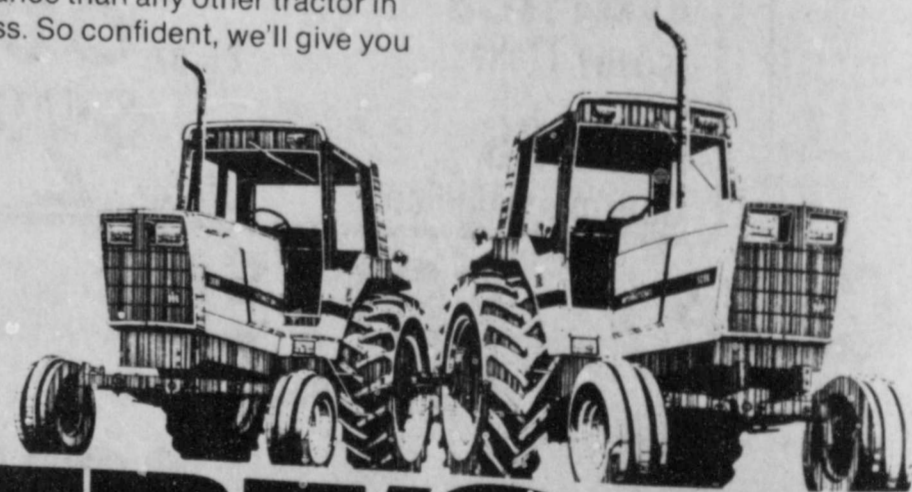
Weekdays 9-6 Sat. 9-5

There's a New Number One in high-horsepower tractors. And we're set to give you \$100 to prove it.

**\$100 says you'll pick International® 50 or 30 Series tractor performance over any competitor.** Just test drive any of our 185 to 90 PTO hp 50 or 30 Series tractors before you buy your next tractor. We're confident you'll find they deliver more performance than any other tractor in their class. So confident, we'll give you

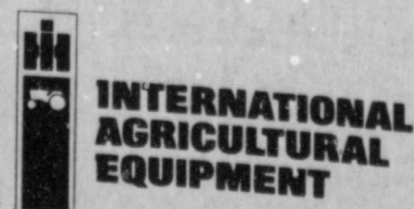
\$100 whether you buy our tractor or any other competitive tractor of similar horsepower.

**Come on. Put us to the test.** We'll prove that International has the productivity to get tougher in tough times. Stop by today! Get complete details and set up your 50 or 30 Series tractor test drive. Offer ends April 30, 1982.



# HERE'S \$100 TO PUT US TO THE TEST

WHEN TIMES GET TOUGH, GET TOUGHER  
GET THE RED EDGE



**Brown's Implement Inc.**

Rails Highway 983-2281

ARKHART  
for Johnny Burkha  
former resident of  
in Laurel Land  
Sart, who move  
Floydada in 1  
include her hu.b  
daughters. Sarah  
and Johnmare of F  
Mrs. W.J. Da

EDWARDS 81.  
Floydada, died  
February 16, in  
one after a length  
were at 2:30 p.m.  
in First United  
Floydada, with the  
for officiating, a  
Bradley, psstr  
much. Burial fo  
cemetery directed  
Home of Floyd  
April 3, 1900 in Pen  
Henry Edwards A  
Floydada. He died  
Mrs. Edwards was a  
member of First United

are one sister, N  
of Lubbock, and sev  
ephews.

HOLLUMS  
for T.C. Hollu  
were at 4 p.m. y  
Baptist Church.  
Floyd C. Bradl  
Burial followed i  
cemetery under the  
Rose Funeral Home.  
died at 12:30 p-1  
born April 29, 19  
moved to Floydada in 1  
member of the First Ba  
the Masonic Lodge a  
Lightfoot on Fe

was a farmer.  
include his wif  
son Keith Hollu  
a daughter. Su  
three brothers, I  
Walter Hollu  
John Hollums, c  
three sisters Fe  
Beth Newton  
ilsey of Farmingt  
grandsons.

MAYO  
for Joe B.  
Plainview b  
at 10 a.m. Wednes  
Methodist Church v  
actor, and the Rev.  
pastor, officiating  
graveside rites  
burg Cemetery with  
section of Wood-Dun

is a native of Peters  
Monday in C  
Hospital after a  
up in Petersburg  
with the Army /  
War II, returned  
Wilson on March  
1940.

was city secretary  
and operated the Me  
until 1974, two y  
to Plainview. H  
gent of the Plainview  
station, a member of  
the board of the Meth  
director of Central P  
Hospital.

was active in Mas  
member of the Petersl  
Floydada Chapter  
the Khiva Shrine.  
include his wi  
of Petersburg; a da  
one of Albuquerque  
of Maleshoe; and fi

MILTON  
Milton, 71, of  
February 18.  
were at 2 p.m.  
Shaw Memoria  
Harold Scarbro  
Baptist Church  
was in Llano Ceme

It's  
Pe  
Ti

1177  
Time for the com  
ing heel fit you  
Red Wings. Time  
pull-ons, easy walk  
workings. Choosi  
selection of the  
Red Wing Pecos (r  
or whatever!

SIZES 5-  
AA-EEE  
\*Not all sizes in st

Red W  
Hale's Dept  
108 E. C



# OBITUARIES

**BURKHART**  
 L. L. Burkhardt of Fort Worth, Texas, died at 1 p.m. Tuesday in Llanos Cemetery.

**EDWARDS**  
 Mrs. J. C. Edwards, 81, long-time resident of Floydada, died at 1 p.m. Tuesday in Llanos Cemetery.

**EDWARDS**  
 Mrs. J. C. Edwards, 81, long-time resident of Floydada, died at 1 p.m. Tuesday in Llanos Cemetery.

**HOLLUMS**  
 T. C. Hollums, 69, of Floydada, died at 4 p.m. yesterday in the First Baptist Church, Floydada.

**HOLLUMS**  
 T. C. Hollums, 69, of Floydada, died at 4 p.m. yesterday in the First Baptist Church, Floydada.

**HOLLUMS**  
 T. C. Hollums, 69, of Floydada, died at 4 p.m. yesterday in the First Baptist Church, Floydada.

**HOLLUMS**  
 T. C. Hollums, 69, of Floydada, died at 4 p.m. yesterday in the First Baptist Church, Floydada.

**HOLLUMS**  
 T. C. Hollums, 69, of Floydada, died at 4 p.m. yesterday in the First Baptist Church, Floydada.

**HOLLUMS**  
 T. C. Hollums, 69, of Floydada, died at 4 p.m. yesterday in the First Baptist Church, Floydada.

**HOLLUMS**  
 T. C. Hollums, 69, of Floydada, died at 4 p.m. yesterday in the First Baptist Church, Floydada.

**HOLLUMS**  
 T. C. Hollums, 69, of Floydada, died at 4 p.m. yesterday in the First Baptist Church, Floydada.

**MILTON**  
 Mr. Milton was born in Waxahachie and moved to Amarillo in 1949.

Mr. Milton was born in Waxahachie and moved to Amarillo in 1949. He was a retired postal clerk and a member of the Postal Union.

He was a retired postal clerk and a member of the Postal Union. He was deacon and member of Temple Baptist Church.

Survivors include his wife, Ora Mae; a son, Harvey Milton of Hereford; three daughters, Linda Walden and Peggy Winters, both of Amarillo, and Otisa Prater of Irving; two brothers, Otto Milton of Albuquerque and Grigsby Milton of Floydada; a sister, Mrs. H.E. Whiting of Lumberton, North Carolina; four grandchildren and four great-grandchildren.

The family requests memorials be made to a favorite charity.

**FELIX ORTIZ SR.**  
 Mass for Felix Ortiz Sr., 64, of Quitaque was celebrated at 3:30 p.m. Monday in Lady of Loretto Catholic Church in Silverton with the Rev. Harry Waldow of Tulia officiating.

Burial was in Resthaven Cemetery in Quitaque under direction of Quitaque Funeral Home.

Ortiz died Friday evening in Methodist Hospital in Lubbock after a brief illness.

He was born in Orange Grove and lived in Quitaque the past seven years. He was a farmer. He married Delores Leal in 1941 in Orange Grove.

He was a Catholic. Survivors include his wife; three daughters, Anie Moreno of Pampa, Rovelia Angell of St. Anthony, Idaho, and Rosa Cantu of Plainview; nine sons, Daniel, Leo, Severino, Armando, Felix Jr. and Sam, all of Quitaque, Tony and Joe, both of St. Anthony, Idaho, and Louis of Tulia; four sisters, Hortencia Colmenero of Orange Grove, Maria Flores of Lockney, Olivia Leal of New Mexico, and Lydia Leal of Quitaque; three brothers, Rene of Florida, Octavino and Cruz, both of Orange Grove; 38 grandchildren; and one great-grandchild.

**BOBBIE POOLE**  
 Bobbie E. Poole, 51, of Idalou, brother of several area residents died at 3:45 p.m. Thursday, February 18, in Methodist Hospital in Lubbock after a lengthy illness.

Services were at 2 p.m. Saturday at Idalou Church of Christ with Charles Billingsley, pastor, officiating.

Burial was in Resthaven Memorial Park under direction of Resthaven Funeral Home.

A native of Encino, New Mexico, Mr. Poole married Melva Smith January 9, 1954, in Clovis, New Mexico. He had

worked in the Villa Oldsmobile body shop for 25 years.

He was a veteran of the Korean War and attended Idalou Church of Christ. Survivors include his wife; a son, Leland Poole of Idalou; a daughter, Mrs. George Williford of Lubbock; his mother, Mrs. J.T. Poole of Floydada; four brothers, James Poole of Idalou, Lloyd Poole and Raymond Poole, both of Floydada, and Jimmie Poole of Houston; four sisters, Gladys Holliday of Jackson, Mississippi, Patsy Childs of Amarillo, Mrs. Bill Hart of Shallowater and Mrs. Fred Strange of Silverton; and three grandchildren.

The family suggests memorials to the American Cancer Society.

**MRS. NANNIE LOU ROGERS**  
 Mrs. Nannie Lou Rogers, 64, of Amarillo, died Saturday, February 20.

Services were at 2 p.m. Monday in Blackburn-Shaw Memorial Chapel with Dr. Winfred Moore, pastor of the First Baptist Church, and Dr. Charles Jones, of the Second Baptist Church, officiating. Burial was in Llano Cemetery.

Mrs. Rogers was born at Blue Ridge and was owner of the Putt-Putt Golf Course. She was a member of the Women's Golf Association and the First Baptist Church.

Survivors include a son, Wayne of Amarillo; a daughter, Mrs. Emerson Rickstrew of Amarillo; four sisters, Alberta Locke of Gordonville, Mabel Cox of Ralls, Gene Broom of Westport, Washington, and Joe Buchanan of Friona; a brother, Floyd Boren of Blue Ridge; and three grandchildren.

She was an aunt of Mrs. Melvin (Janet) Lloyd of Floydada.

**WOODROW WILSON**  
 Services for Woodrow Wilson, 67, of Floydada, were at 2 p.m. yesterday at the First United Methodist Church, Floydada, with the Rev. Jim Smith, pastor, officiating. Interment followed at the Floyd County Memorial Park under the direction of Moore-Rose Funeral Home, Floydada.

Wilson died Monday, February 22, at Caprock Hospital.

The Floydada native was born on June 17, 1914. He married Bessie Sherrill on July 31, 1934 in Floydada.

He was a farmer and rancher. He was a member of the First United Methodist Church.

Surviving are his wife; three daughters, Myrna Pyke, Omaha, Nebraska, Sonja Beth Glassmeyer, Grand Prairie, Texas, and DeAnn Robertson, Eureka, Missouri; one brother, Walton Wilson, Floydada; two sisters, Edna Beth Tye and Winnie Beedy, both of Floydada; six grandsons and one granddaughter.



**NEWLY ELECTED OFFICERS**—Companions 'n' Caring, a volunteer organization, recently elected officers for their group. These are (l-r) Mary Corley, president; Mary Adams, vice-president; Shirley Varner, secretary-treasurer; and Debra Bailey, parliamentarian. The group will meet the last Thursday of each month at the Floydada Nursing Home.

## Companions "n" Caring organize

Companions "N" Caring Volunteers had their organizational meeting Thursday the 18th at the new Lighthouse.

Members attending this meeting

were Gene Baird, Debra Bailey and son, Justin, Shirley Varner, Mary Adams, Mabel Meek, Dorothy Kerr, Dorothy Neff, Mary Corley, Dartha Westbrook, Stacey Westbrook, Juanita Hill, Hazel Bradley and Carol Williamson, volunteer director.

Officers were elected: Mary Corley, president; Mary Adams, vice-president; Shirley Varner, secretary-treasurer; and Debra Bailey, parliamentarian.

A monthly meeting will be held on the last Thursday of each month starting March 25 at 1:30 p.m. at the Floydada

Nursing Center. All interested people are invited to attend.

Carol Williamson, volunteer director, is at the Nursing Center every Thursday if anyone wishes to come out and find out about the worthwhile program.

Lynn Daniel and Carol Williamson held a program at the Senior Nutrition Center to tell about this wonderful program that is for the residents of Floydada Nursing Home. The food was great, so Lynn and Carol said they would be glad to hold a program there anytime if they would let them eat.

## Lockney Local

Israel Guerra, son of Mrs. Alice Luna of Lockney has recently enlisted in the United States Army. Israel will depart Lockney on March 2, 1982 and will be trained as a Medical Specialist. Upon completion of his training he will be assigned to the United States Army European Command.

Joe Covington, son of Mr. and Mrs. Jack Covington of Lockney has recently enlisted in the United States Army with a departure date of February 19, 1982. Joe will be trained as a Military Policeman and will also attend the Infantry Airborne school at Fort Benning, Georgia. Upon completion of his training Joe will be assigned with the 82nd Airborne Division at Fort Bragg, North Carolina.

## Lockney Hospital Notes

- February 15-22**
- Ethel Carroll, Lockney, adm. 1-20, continues care.
  - Ivan Thompson, Lockney, adm. 2-8, dis. 2-17.
  - Harrell Dollar, Lockney, adm. 2-11, dis. 2-19.
  - Lois Martin, Lockney, adm. 2-11, dis. 2-17.
  - Bernice Johnson, Roaring Springs, adm. 2-12, dis. 2-20.
  - Gwen Cogdell, Floydada, adm. 2-12, dis. 2-19.
  - Sallie Carpenter, Lockney, adm. 2-13, continues care.
  - Admelia Guerrero, Lockney, adm. 2-14, baby boy, Julian, born 2-14, dis. 2-22.
  - Belva Gibson, Lockney, adm. 2-15, continues care.
  - Delores Gonzales, Lockney, adm. 2-15, dis. 2-19.
  - Ollie Meeks, Floydada, adm. 2-15, dis. 2-22.
  - Beatrice Collis, Lockney, adm. 2-15, dis. 2-17.
  - Faye Sams, Lockney, adm. 2-18, continues care.
  - Fannie Belle McClure, Floydada, adm. 2-18, continues care.
  - Kristi Russell, Lockney, adm. 2-19, continues care.
  - Christina Leal, Quitaque, adm. 2-20, continues care.
  - Lydia Leal, Quitaque, adm. 2-22, continues care.
  - Nena Loudermilk, Silverton, adm. 2-22, continues care.
  - William C. Payne, Plainview, adm. 2-22, continues care.
  - James Jarrett, Silverton, adm. 2-22, continues care.
  - Elsie Pate, Lockney, adm. 2-22, continues care.

**REMEMBER your loved ones with a living memorial to the Caprock Hospital Auxiliary Memorial Fund.** Mrs. Ben Whitaker, Treasurer.

**OLNEY MONUMENT CO.**  
 —400 Jolley Street Phone (806) 298-2953 P.O. Box 1986—  
 PLAINVIEW, TEXAS 79072

Companion Memorial Only \$595.00 Set Complete

**SAVE Sales Agents Commission In Plainview**

**We Have The New Century Pre-need Memorial Plan Now You Can Purchase Your Memorial Before Need**

Many families are surprised and burdened at time of need at the high cost of the 47 things they have to do, on the most helpless day of their lives. Your memorial is one decision you must make alone. Also you must pay cash for some or all of these.

**YOU MAY ASK; "WHY MAKE THIS DECISION NOW?"**

- Stops Inflation
- Prevents Emotional Overspending.
- You Can Make The Decision While You Are Still Together And Not Left For One To Do Alone.
- Advantage Of Small Monthly Payments.
- Make This Important Decision Together.

Call or stop by our office in Plainview. One of our Memorial Counselors will be glad to explain the new Century Pre-need Plan to you without obligation.

**OLNEY MONUMENT CO.**

**If it's Borden, it's got to be good**

1857 1982

**BORDEN'S ICE CREAM SANDWICHES OR NUTTY BUDDY'S**  
 6 CT. PKG. **99¢**

**BORDEN'S BUTTERMILK** 1/2 GAL. CTN. **\$1.09**

**BORDEN'S 12 OZ. CTN. COTTAGE CHEESE** **69¢**

Shurfine 5 lb **Sugar 89¢**

Shurfine **TOMATO JUICE 89¢**

Crisco **SHORTENING \$1.89**

2 Liter **COKE 99¢**

**REAL TEXAS REAL TEXAS STYLE BARBEQUE \$2.99 PINT MAKES FOUR BIG SANDWICHES!**

**SCHILLING BLACK PEPPER** 4 OZ. CAN **\$1.39**

**ASSORTED FROZEN MORTON DINNERS** 11 OZ. PKG. **89¢**

Folgers All Grinds **Coffee \$1.89**

Kraft Macaroni & Cheese **DINNERS 5/\$1.00**

Brach's Ass'd **CANDY 79¢**

**BEEF OR CHICKEN MORTON POT PIES 3 \$1** 8 OZ. PKGS.

**ALLSUP'S CONVENIENCE STORES**

"THERE'S ONE NEAR YOU"  
 PRICES EFFECTIVE FEB. 25-27, 1982  
 WHILE SUPPLIES LAST

LOCKNEY

**It's Pecos Time!**

**Red Wings**  
 Dept. Store  
 108 E. Calif.



Lakeview News

# Watson family enjoys summer-like weather Sunday

**BY JOYCE WILLIAMS**  
Mr. and Mrs. Dean Watson and children, David, Deanna and Amanda went to Roaring Springs Ranch Sunday to enjoy the summer-like 80 degree. The children swam in the pool and played with the children of Byron and Eileen Kendricks. Later that evening the Watsons came home with the Kendricks for supper.

This has been a February of greatly contrasting weather. Summer and blizzards, dust storms and snow heat, all in one month; within three weeks to be exact.

Mr. Holt Bishop came home the early part of last week, with a good report from his hospital tests.

Friday night supper guests of Mr. and Mrs. Howard Bishop included Mr. and Mrs. Harold Page, of Cameron, Oklahoma, parents of Mrs. Mike Bishop. Other guests were Mike and Rozanne Bishop, Mrs. Shirley Peggam, Holt Bishop and Greg.

The Mike Bishops and their houseguests, Mr. and Mrs. Harold Page, stayed Saturday and Sunday at the Bishop's ranch at Roaring Springs.

Mr. and Mrs. Don Harrison visited in San Angelo last week with their granddaughter and her family, Mr. and

Mrs. Rex McPherson. They stayed with their great-grandson, Danny, as his regular babysitter was out of town.

Mr. and Mrs. Max Harrison, Debbie and Traci, visited in San Angelo Friday and Saturday with the Rex McPhersons and Don Harrisons. Greg Wilkes, student at San Angelo University, came over for a visit with the Harrison girls.

Bob Alldredge was attending a school meeting in Austin with the weekend, but the rest of the family was out in force to hear Roger Alldredge and other members of his band perform at the Rotary Club talent show in Floydada Saturday night. Other musicians included Bryan Sanders, Tim Burns, Robert Pratt, and Gilbert Schwertner.

Mr. and Mrs. Tommy Klein and sons, Jonathan and Jeremy, Mark and Steve Alldredge visited the Bob Alldredges over the weekend and attended the talent show.

Karen Klein was among the houseparty of friends who served at the wedding reception for Lou Ann Watson and Brent Barker Saturday afternoon.

A former Lakeview resident, now in Floydada, performed with a gospel singing group at the talent show, Del Russell Grey, looking so much like her pretty mother, provided piano accompaniment. They had the audience humming and singing along with them long before they invited all to join.

A third group at the talent show was a showcase of combining different musical groups in one harmonious beat. It brought back memories of fifteen years ago in the 60's, with Tommy Farris, on the guitar, Richard Burton on the piano, and Jimmy Sneed, all of whose music had the high school girls jumping and screaming, and their parents holding their hands over their ears in those days. Richard can still play the piano standing up or sitting down. Tom Farris, along with Kris Kristoferson, has undoubtedly changed the image of bankers, after that Saturday nights howling performance greeted with appreciative whistles, cheers and loud applause. The playing by Torrez and Turner was just as professional. I remember the first time I heard them perform, with the Check boys, at an Andrews Ward school Christmas program on the upper gallery of the T-Bar ranch house replica at the Floyd County Historical Museum. Jerry Cannon and Charley Tyer are to be commended for assembling so much high quality local talent.

The children of Mr. and Mrs. Danny Daniels, Chip, Hollie, and Ashley, are staying a few days with their aunt and uncle, Mr. and Mrs. Byron Kendrick, while their parents are out of town. Byron and Chip went fishing at Roaring Springs Ranch Sunday. The ranch has had several houses given to them, and these have been moved in and are being remodeled into a pro shop at the golf course, and a camp store near the lodge.

Mr. and Mrs. Q.D. Williams attended church at Crowell Sunday and had dinner with his brother and family, Mr. and Mrs. Odell Williams at the Shamburger Ranch. After lunch all went to the Johnson-Ekern ranch between Crowell and Paducah to watch a Pasture Roping. Cowboys from all over the

ranch country arrived with horses and trailers. Yearling calves were let out through a panel chute that ran twenty-five yards out into open pasture. Teams of two cowboys tried to rope the calf before it escaped into the mesquite and cedar brush, throw it, and grab the ribbon on its leg, to be returned to the judges. Spectators parked the cars, pick-ups and horse trailers into an arena shape, as much as the rough country allowed. Spectators frequently had to scramble when the cattle veered and headed toward them and open space. The 80 degree plus sunshine, dust and riding had the horses lathered and cowboys parched. It was a true test of a range cowboy's skill, where missing a rope can mean all day searching for the calf that got away. Nothing to compare with regular arena roping. The calves escaped to the canyons and pastures. A barbecue was catered for those who wished to eat on the site. Approximately a thousand spectators and contestants attended. It was much like the rodeos held in small towns in the 20's and 30's, where the only thing between spectators and performers, at most, was a stretched lariat to define the arena. Patrons sat on top their cars and pick-ups and leaned against trailers, Sunday afternoon. Neighbors visited; children ran everywhere; teen-age cowboys courted their high school sweethearts, while the girls eyed all the new cowboys they hadn't met yet. For many it was one good day before the farm sales start and they get out of farming into the know not what. One last day of visiting, of good fun together, of admiring skill and hard work. Wheat fields and pastures are dry and water tanks are almost empty all the way from Matador to Crowell. A good rain could still save the wheat. A good oil well could help the farmers and ranchers. Mrs. William's brother, Vernon Jones, enjoys the roping and barbecue. When he got home he discovered cattle rustlers had butchered one of his beeves, cutting off a hind quarter for a barbecue of their own, leaving the rest for the coyotes.

Floydada was full of seismograph crews and thumper trucks. Saturday reportedly headed for the oil patch of Silverton toward the north part of the county.

Lakeview residents report oil lease offers ranging from \$30 an acre and one eighth royalty, to \$50 and three-sixteenths. It's like a poker game with the lease holders holding the deck. It's a whole new crowd of oil people this time. None of the companies is being offered this time by companies that were in here February 1977 when oil fever was hot. Calls come in with offers from Amarillo, Midland and Lubbock with connections to the major oil companies as well as independents. Most of the leasing at

this time is along the rim of the canyon and in the southwest part of the community. One oil map shows we are part of the newly named Pals Duro Basin, deep drilling required. Another map shows we are part of the Permian Basin. Landowners don't really care what the Basin is called beneath their land, just so long as they are in it.

Mrs. W.R. Daniels entertained with a birthday party in her home, honoring her little granddaughter, Laura Kendricks, on her sixth birthday Friday after school. A group of Laura's classmates were guests. Her two sets of grandparents gifted her with an Easy Bake Oven and new Easter shoes.

All the children of Judge and Mrs. Choise Smith are showing sheep at the Floyd County Live-Stock Show this week. Jody, Hunter and Dean spent the week-end grooming their animals and getting ready for the show.

Mrs. Kay Dean Smith teaches the gifted and talented class for students K through 3 in Duncan Elementary School. She is attending a Gifted and Talented workshop in Dallas this week.

Joe and Julie Womack visited Sunday with his parents, Mr. and Mrs. Bill Womack, in Floydada, while Tracy Womack was home from Stephenville and college. Joe and Julie don't go far from home these days as their sheep are lambing. Joe helped judge the lamb division of the show at Lazbuddie where his brother, Ricky Copp, teaches agriculture in high school.

Mrs. Jimmy McGaugh and her mother, Mrs. C.M. Miller, visited her grandmother, Mrs. C.L. Alkire, in Happy Union on Sunday.

Marlis McGaugh is on the production crew of the play being readied at Junior High.

Mrs. Georgia Mae Erickson recently presented a copying machine to the Crosby County Historical Museum in memory of her late husband, Stanley, who was associated with A. T. and T. for many years when they lived in Connecticut and New York City. After his death, she returned to Mt. Blanco where she'd grown up and built Casa del Sol in Blanco Canyon.

Mrs. Joe Womack is commuting to classes at Texas Tech University this semester, and attending an evening college class in government at Crosbyton.

Greg Bishop and Jimmy McGaugh, like other farmers in our community, are putting Triflan on their fields when they catch a still day.

Norma Anderson entered St. Mary's Hospital in Lubbock Sunday for tests. He has suffered for several years from getting kicked in the stomach by a horse, and in a check-up for this, which was judged minor, a condition was discovered requiring the tests in the chest and neck area.

Mrs. Jimmy McGaugh and her mother, Mrs. C.M. Miller, visited her grandmother, Mrs. C.L. Alkire, in Happy Union on Sunday.

Marlis McGaugh is on the production crew of the play being readied at Junior High.

Mrs. Georgia Mae Erickson recently presented a copying machine to the Crosby County Historical Museum in memory of her late husband, Stanley, who was associated with A. T. and T. for many years when they lived in Connecticut and New York City. After his death, she returned to Mt. Blanco where she'd grown up and built Casa del Sol in Blanco Canyon.

Mrs. Joe Womack is commuting to classes at Texas Tech University this semester, and attending an evening college class in government at Crosbyton.

Greg Bishop and Jimmy McGaugh, like other farmers in our community, are putting Triflan on their fields when they catch a still day.

Norma Anderson entered St. Mary's Hospital in Lubbock Sunday for tests. He has suffered for several years from getting kicked in the stomach by a horse, and in a check-up for this, which was judged minor, a condition was discovered requiring the tests in the chest and neck area.

## Political Calendar

Subject to the May Democratic Primary

### U.S. Congress

Charles Stenholm

### State Senator

Ray Farabee

### District Clerk

Mary McPherson

### County Judge

Choise Smith

### County Treasurer

Glenna Orman

### County Clerk

Margaret Collier

### Commissioner Precinct 2

Bob Jarrett

Charles Carthel

### Commissioner Precinct 4

Jack Lackey

### Justice of the Peace Precinct 1-4

Walter Hollums

### Justice of the Peace Precinct 3-4

Raz Ford

### Justice of the Peace Precinct 3-4

Raz Ford

## Mike Fields competes in World of Wheels

Mike Fields of Lubbock, son of Mr. and Mrs. Buck Fields of Lockney, competed in the World of Wheels in

## Caprock Hospital Report

February 15-22

Guadalupe Martinez, Floydada, adm. 1-23, dis. 2-17, Hong.  
Lillie Pryor, Dougherty, adm. 1-26, continues care, Hong.  
Lucy Pettit, Floydada, adm. 1-26, continues care, Hong.  
Harvey Lee, Matador, adm. 2-4, continues care, Jordan.  
Cecil Griggs, Floydada, adm. 2-6, continues care, Hong.

Woodrow Wilson, Floydada, adm. 2-7, continues care, Hong.  
Juanita Salazar, Ralls, adm. 2-8, dis. 2-15, Hong.  
Frances McClure, Floydada, adm. 2-9, dis. 2-20, Hong.  
Ethel Burnham, Floydada, adm. 2-10, continues care, Hong.  
Essie Mullins, Floydada, adm. 2-10, dis. 2-20, Hong.  
Roy Jackson, Floydada, adm. 2-12, dis. 2-17, Hong.  
Fidela Nuncio, Lockney, adm. 2-13, dis. 2-21, Hong.  
Ralph Lemons, Floydada, adm. 2-14, dis. 2-20, Hong.  
Lea Cuellar, Floydada, adm. 2-15, dis. 2-19, Hong.  
Gladys Simpson, Floydada, adm. 2-15, continues care, Hong.  
Duncan Hollums, Floydada, adm. 2-16, continues care, Acar.  
Rebecca Pena, South Plains, adm. 2-17, continues care, Hong.  
Clarence Leatherman, Floydada, adm. 2-17, continues care, Hong.  
Henry White, Floydada, adm. 2-17, continues care, Acar.  
Charles Epps, Floydada, adm. 2-17, continues care, Acar.  
James Addison, Matador, adm. 2-18, continues care, Acar.  
Ernest Campbell, Matador, adm. 2-18, dis. 2-21, Hong.  
Debbie Vasquez, Spur, adm. 2-19, dis. 2-20, Hong.  
Baby boy Vasquez, Jonathan, Spur, born 2-19, dis. 2-20, Hong.  
Lloyd McCray, Floydada, adm. 2-19, continues care, Hong.  
Blanche Williams, Floydada, adm. 2-19, continues care, Hong.  
Anita Rodriguez, Floydada, adm. 2-20, continues care, Jordan.  
Patricia Vasquez, Floydada, adm. 2-20, continues care, Hong.



## See Tommy Assiter For Your All-Risk Crop Insurance

You Can Transfer Your Files From The Lubbock District Office Now.

983-2511  
206 W. California  
Floydada

company then puts the trust account, so you worry about them dropping second year or so and you paymenis from your trust income tax only in that for that year's sum. This tax savings over getting and paying 50% out in

## Lockney School Menu

March 1-5

**Monday:**  
Breakfast — Sausage, toast, milk, orange juice  
Lunch — Sloppy Joe on bun, cheese stick, French fried potatoes, salad, milk, pears, chocolate candy

**Tuesday:**  
Breakfast — Cereal, toast, milk, pears  
Lunch — Meat loaf, fruit in hot rolls, creamed peas, milk, cole slaw, hot rolls

**Wednesday:**  
Breakfast — Cheese on toast, milk, orange juice

**Thursday:**  
Breakfast — Peanut butter milk, applesauce  
Lunch — Pinto beans, corn, salad, buttered corn, cake

**Friday:**  
Breakfast — Sausage, orange juice  
Lunch — Chicken, peas, cracker, prune, cauliflower rolls

## More Classified

### USED CARS

Sell your used cars and trucks in the Classified Section



The oldest written national constitution still in use is the United States Constitution, written in Philadelphia during the summer of 1787.

**DEALERSHIP OPEN PRE-ASSEMBLED**  
Log walls assembled at erected at your job site. Experienced crew. New solves the four biggest dealers experience: 1) construction; 2) crews; 3) Unsuitable building; 4) Indecisive financing.

Mfg. of the famous Home. Home is retailing district establish retail sales with tected territory.

**UNLIMITED INCOME POTENTIAL FEATURES**  
\* Quality log kits that per sq. ft. (pre-asm. option)  
\* US\$1 "Maxi-Mini" fireplace total home heating cuts utilities up to 60%  
\* Exclusive "Weather Lock" Solid 8" uniform treated  
\* L.L.H. trains to insure  
\* Pre-Assembled or you

**INVESTMENT 100% SECURED BY MODEL HOME**  
Individual selected must ity to purchase or more \$17,000 model home. Sloan COLLECT at (704) 922-2800. Lincoln Log Homes, Inc. Main, Kannapolis, NC 28084

## Public Notice

**NOTICE**  
A budget hearing will be held March 4, 1982 at 9 a.m. in the Council Room of the City Hall. The total budget for 1982 is \$351,081.00. Of this amount, the city plans to use \$21,455.00 of Revenue Sharing money, \$6,738.00 of which is on hand and \$14,717.00 to be received during 1982. The City has set aside \$8,000.00 of this amount for Public Safety and \$13,455.00 for payments on the FMC Sweeper.

The public is encouraged to provide written and oral comments on the entire budget and ask questions concerning the relationship of revenue sharing to the rest of the budget.

**CITY OF LOCKNEY**  
J.D. Copeiland, Mayor  
1-2-25c

**CITY OF LOCKNEY PUBLIC NOTICE INVITATION TO BID**  
The City of Lockney, on behalf of applicants to the Community Development Block Grant program is soliciting bids for home repair and improvement contracts. Work write-ups, including specifications and the addresses of the homes to be repaired, may be picked up at the Lockney City Hall, 218 E. Locust Street, Lockney, Texas 79241. Copies of this material may be requested by potential bidders by calling the Lockney City Hall at (806) 652-2355.

Sealed bid procedures will be observed and the deadline for submitting bids on Application #s 11238101, 12181801, 1188101, 10018105, and 10268101 is 5 o'clock P.M. on the 18th day of March, 1982. The bids will be opened at 7 o'clock P.M. in the City Council meeting room of the Lockney City Hall on the 18th day of March, 1982. The City and their sole discretion.

Erma Lee Dackworth, City Secretary  
P.O. Box 387  
Lockney, Texas 79241

**LEGAL NOTICE**  
Plainview Schools will accept bids for the purchase of a commercial freezer and three (3) school vehicles.

Sealed bids will be received until 3:00 p.m. on March 9, 1982. Bids should be sent or delivered to Administration Office, 912 Portland, Plainview, Texas 79072.

The bids will be opened and accepted or rejected at a regular City meeting to be held in the Administration Building, 912 Portland, Plainview, Texas, at 7:30 p.m. March 11, 1982.

Information concerning the bid forms and specifications to be obtained by contacting the Business Office, 912 Portland, Plainview, Texas 79072.

This is a solicitation for bids and is not an offer. The reserves the right to accept or reject any and all bids and waive all informalities.

John O. Peck, Assistant Superintendent  
Plainview Independent School District

**NOTICE OF PUBLIC HEARING**  
**CITY OF LOCKNEY**  
A Public Hearing on the 1982-83 City of Plainview Operating Budget will be held at the regular meeting in the Council meeting room at 114 W. York St. on Tuesday, March 9, 1982 at 7:30 P.M.

A regular meeting of the Board of Directors for the County Central Appraisal District will be held on Monday, March 22, 1982 at 9:00 A.M. in the Appraisal Office board room, Room 205, County Courthouse.



SHOP COMPARE

WANT ADS ARE YOUR BEST BUY!

Real Estate

Three bedroom, ... 983-3757, tfc

Several good two bedroom houses, ... 983-2151 or tfc

BEDROOM houses, ... 983-3573, tfn

BEDROOM brick, ... 983-3725, tfn

Several nice two bedroom houses, ... 983-3261, tfc

BRICK HOUSE, 3 bedrooms, ... 983-3725, tfn

FOR SALE: 3 bedroom, ... 983-3725, tfn

BEDROOM: 2 bath, ... 983-3725, tfn

Home in the ... 983-3725, tfn

three bedroom ... 983-3725, tfn

ROOM: 2 bath, brick ... 983-3725, tfn

WIS PART of ... 983-3725, tfn

Garage Sale

Garage Sale

Garage Sale

Garage Sale

Garage Sale

Garage Sale

Garage Sale

Garage Sale

For Sale

1-19" Portable T.V. New picture tube, \$250.00. Call 652-2435.

"WE SELL SLEEP" Direct Mattress Co. New or renovated, for appointment call City Trim Shop, 983-2322, Floydada.

1-19" RCA Portable T.V. \$200.00. Call 652-2435.

FOR PICTURE FRAMES call 983-2636. B and M Gregory.

1-19" RCA Portable T.V. \$150.00. Call 652-2435.

ESSICK AIR CONDITIONER. Largest size. Call Karen 983-3394 or after 6:00, 983-5117.

1-13" RCA Portable T.V. \$150.00. Call 652-2435.

FIREWOOD FOR SALE. 100% mesquite. Farm deliveries made. 652-3810.

1-25" RCA console with new picture tube, \$300.00. Call 652-2435.

FOR SALE: Baldwin Electronic Organ. Syntha-sound, auto-rhythm, Bell and Howell built-in cassette recorder, 2 keyboard with foot pedals. Matching bench with learning tapes, \$750.00. Call 806-983-5854 after 3 p.m.

1-25" RCA color console, \$200.00. Call 652-2435.

FLOYDADA Country Club membership for sale. Call 347-2630, Frank Price.

1-25" Motorola console, \$150.00. Call 652-2435.

MAHOGANY dining room suite. Table, six chairs, china hutch, 2 extra leaves. Also a Stutz pickup camper cover. Call Doyle 983-3787 day or 983-2329 after 6:00.

FIREWOOD \$55.00 per Rick Producers Cooperative Elevator

TO BE MOVED: 30x60 MACHINE SHED made of pipe & sheet iron \$8,000

Small House 4 rooms and bath (needs repair) \$1,500.00

Double Garage of pipe and sheet iron, \$2,500.00

Large Fruit Trees \$8.95

Pecan & Walnut \$14.95

Large Shade Trees \$17.95

Emert's Nursery 652-3116 Lockney

Garage Sale

Garage Sale

Garage Sale

Garage Sale

Garage Sale

For Rent

Do you need some Amway products? Call 652-2558, Dorothy Bailey. L3-11c

Reduce safe & fast with GoBese Tablets or capsules & E-Vap "water pills". Thompson Pharmacy

FOR RENT: 1 bedroom apartment. Call Lockney Housing Development, 652-2334 or go by 108 N. Main. TFN

ECONOMICAL STORAGE TRY BARKER'S Jewel Box-Mini Storage

2-12 gauge shotguns, 1 rifle, appliances, clothing, shoes. Come by John may have it. Buy, sell or trade

John's Swap Shop 123 Wall Floydada, TX 983-2758

STORAGE SPACE BOATS, FURNITURE, ANYTHING, ETC. BY THE MONTH OR SIX MONTH 10% DISCOUNT.

West Texas Mini Storage CALL WILSON BOND 983-3573 OR 983-2151

FOR SALE OR TRADE: John Deere 6600 combine. Low hours in A-1 condition. Always kept in barn. 652-3524. Ltfn

HAY FOR SALE: Baled and stacked dry. J.B. Barton, Flomot. 469-5215. 2-25c

JERSEY BULLS for sale. Norman Mancy. 983-2259.

FOR SALE: Big bone registered polled Hereford bulls. Ready for service. Ronald Gilbert 492-3093, Paducah. 3-18p

ACREAGE WANTED Anything from pastureland to cotton field. 3 to 10 acres (or more). Couple will consider anything. Call 983-3736 after 5:00 p.m. tfp

WANTED TO BUY irrigated or dryland farm in Floyd or surrounding area. Write Box XRO, c/o Hesperian, 111 E. Missouri, Floydada. tfc

Want to buy: Turbine irrigation pumps, aluminum pipe, electric motors and diesel engines. A-1 Liquidators & Supply, Abernathy. 298-2880. L3-4c

WILL BUY used furniture. Call 652-2201. 2-25c

REWARD \$50 reward if person who found my Mother's beautiful gold wedding ring will return it to me, or the Floydada Nursing Home. Her 69th anniversary is February 23rd, and the ring has a special meaning to her that it could have for no other person. Hazel Bradley 402 S. Second 983-2275

Statement Of Intent To Change Rates General Telephone Company of the Southwest, in accordance with the Rules of the Public Utility Commission of Texas, hereby gives notice of the Company's intent to implement a new schedule of rates in Texas effective March 5, 1982.

The proposed changes in rates will affect all customer classes and are designed to increase the Company's intrastate revenue by 24 percent.

A complete set of revised rate schedules has been filed with the Public Utility Commission at Austin, Texas, and is available for public inspection in each of the Company's Business Offices in the State of Texas. A summary of the Company's rate filing has also been sent to the Mayor's Office of each affected Municipality.

General Telephone

Garage Sale

Garage Sale

Garage Sale

Garage Sale

Garage Sale

Garage Sale

Garage Sale

Farm Services

Land Leveling, terraces; bench leveling, and pump pits, all types of dirt work for soil and water conservation. Dewie Parson 983-2646, Fred Parson, 983-2074. tfc

CUSTOM APPLICATION OF herbicides. Bill Wisdom, 652-3541. Ltfn

CUSTOM APPLICATION OF Herbicides. Ed Warren 983-3037 or Don Warren 983-2995. tfn

2-4-D OR FERTILIZER applied on wheat. Hagie ground rig. Ed Warren 983-3037 or Don Warren, 983-2995. tfn

Portable dis-rolling Lawson Farm Supply Inc., Floydada 983-3940

Nash Irrigation Supply. Plastic pipelines, aluminum pipe, lake pumps and accessories. 983-5231.

Check with us for LIQUID FERTILIZER ANYDROUS HERBICIDES Rigs available for application

LONE STAR CHEMICAL INC. Office: 652-2761 Deanie Henderson: 652-3434

LEAK REPAIR No job too small or large! Pit Digging. Juarez Backhoe Service 983-3393

TREE TRIMMING YARD WORK & HAULING CLEAN ALLEYS AND PAINTING 983-3917

Caballero & Sons 501 E. Ross Floydada

BAKER INSURANCE AGENCY

983-3270 NIGHTS SUNDAYS & HOLIDAYS CALL 983-2451 127 W. CALIFORNIA Sam Baker

Employment

Pets

EARN \$4.87 HR. We need assistance in evaluating and responding to daily work reports submitted by our field agents throughout the state. No experience necessary. Paid training program: Work full or part-time at home. For information send self-addressed, stamped envelope 9 1/2 inches long to AWGA, Dept. E. Box 49204, Atlanta, GA 30359. L2-25p

CLASSIFIED ADS CALL 983-3737 BEFORE 3 P.M. ON TUESDAYS

If you have a home with a ventilated attic, you'd most likely have a slower rate of heat loss by carpeting the second floor. If you have an unheated basement, it might help to have carpeting on the first floor.

NURSES WANTED. Registered and Licensed Vocational Nurses for 3-11 and 11-7 shifts. Six day work week, then two days off and four days off every fifth weekend. Good salary, paid vacation, sick leave, and holidays. Hospital has tax annuity plan for employees that desire it and hospital and life insurance furnished each employee. Contact Flo Barnes, Director of Nurses or Gayle Fortenberry, Administrator at Lockney General Hospital, 320 N. Main, Lockney, Texas 79241, 806-652-3373, about working in this progressive small hospital with a family atmosphere.

The family of Bobby E. Poole wish to express our deepest respect and gratitude to each one who made the passing of our loved one easier. A very special thanks to each one who attended the funeral. God bless each and everyone of you in a very special way. Mrs. J.T. Poole Raymond & Mary Lloyd & Linda

Card of Thanks

Card of Thanks

Card of Thanks

Card of Thanks

Card of Thanks

Card of Thanks

Card of Thanks

Card of Thanks

Business Services

Adams Well Service Complete Irrigation Service. All sizes submergible pumps in stock. One day service. 983-5003. tfc

POOL SERVICE AND RADIATOR SHOP Irrigation and domestic. 407 E. Houston 983-5610 or 983-2285

"Carpet Need Cleaning?" Let me do the work for you. Dry foam, 10 cents sq. foot. Also home and auto upholstery. Call Jack Moore 983-3033, after 5 p.m. tfc

Insulation Installed & Guaranteed Free Estimates 22 Years This Area

Marr Insulation Lockney 652-3593

INCOME TAX PREPARATION PROFESSIONALLY DONE. REASONABLE RATES. MITCHELL'S TAX SERVICE 983-3692

Auto Parts & Accessories

F-Z RIDER SHOCKS by Monroe. Buy 3 and the 4th is FREE. Free Installation. Don's Muffler Shop, 123 W. California, TFC

Script Printing & Office Supply \*Commercial Printing \*Office supplies & Furniture \*Business Machines 108 S. Main Floydada 983-5131 tfc

DANS AUTO SERVICE Lockney 652-2462

CUSTOM EXHAUST WORK Bruce Williams Specializing in Glass Packs and Turbo Mufflers At DANS AUTO SERVICE Lockney 652-2462

Decreasing tire pressure doesn't increase traction; it just speeds up tire wear.

certified-bonded Locksmith 983-3834

PRO-LOCK SHOP 2 miles north of South Plains Don Probasco

Hollis R. Bond Real Estate PHONE 983-2151

107 S. 5th FLOYDADA

TURNER REAL ESTATE Farms Ranches 983-2635 Floydada, Texas

Diamond Industrial Supply Co., Inc. Phone Days 296-7418 Nights 296-1200 or 296-7828 1014 Broadway Plainview, Texas U joints Oil Seals O rings Wisconsin SKF BCA Timken Bower Cotton Stripper Brushes & Bats "We Appreciate Your Business More"

ESTATE SALE For Mrs. Ela May Bailey Saturday, February 27th at 416 W. Kentucky at 8:00 a.m.

Automotive

1980 CHEVETTE scooter, air conditioned, 18,800 actual miles, 4-speed, excellent condition. C.E. Tyer, 983-2269 (after 4:30 p.m.) 2-25p

1966 FORD FALCON, 4 door automatic and air, 29,000 miles. Almost like new. 652-3619.

1974 VEGA WAGON. New castiron sleeves and pistons. Real good. 652-3619.

74 Gremlin 2 dr. \$1050 73 Nova 4 dr. \$1050 72 LTD 2 dr. \$1050 77 Chrysler 4 dr. \$1450 74 Pontiac 4 dr. \$1450 76 Ford LWB \$1950 72 Ford PLWB \$1650 72 LTD 2 dr. \$950 66 Ford 4 dr. \$750

W.B. Eakin Car Lot 983-3616 Ralls Highway

DAN'S AUTO SERVICE DAN TEUTON, Owner Specializing in Automatic Transmission, Motor Tune-Ups, Auto Air Conditioning. General Repair We Have A BRAKE LATHE to handle all passenger car brake drums. See us for complete brake service. Phone 652-2462

CUSTOM EXHAUST WORK Bruce Williams Specializing in Glass Packs and Turbo Mufflers At DANS AUTO SERVICE Lockney 652-2462

Decreasing tire pressure doesn't increase traction; it just speeds up tire wear.

certified-bonded Locksmith 983-3834

PRO-LOCK SHOP 2 miles north of South Plains Don Probasco

Hollis R. Bond Real Estate PHONE 983-2151

107 S. 5th FLOYDADA

TURNER REAL ESTATE Farms Ranches 983-2635 Floydada, Texas

Diamond Industrial Supply Co., Inc. Phone Days 296-7418 Nights 296-1200 or 296-7828 1014 Broadway Plainview, Texas U joints Oil Seals O rings Wisconsin SKF BCA Timken Bower Cotton Stripper Brushes & Bats "We Appreciate Your Business More"

ESTATE SALE For Mrs. Ela May Bailey Saturday, February 27th at 416 W. Kentucky at 8:00 a.m.

INSURANCE

AUTO TRUCK MOTORCYCLE MOTOR HOME HOME RENTER'S LIFE HEALTH

YOUR Independent AGENT SERVES YOU FIRST

Cates & Dawson Insurance Agency 231 W. California Floydada Tx. 983-5322

FLOYDADA IRON & METAL

We buy Scrap Iron, Junk Cars, Aluminum Cans, Batteries, and sell new and used steel.

Location - East Ross Call 983-2305

Script Printing & Office Supply \*Commercial Printing \*Office supplies & Furniture \*Business Machines 108 S. Main Floydada 983-5131 tfc

DANS AUTO SERVICE Lockney 652-2462

CUSTOM EXHAUST WORK Bruce Williams Specializing in Glass Packs and Turbo Mufflers At DANS AUTO SERVICE Lockney 652-2462

Decreasing tire pressure doesn't increase traction; it just speeds up tire wear.

certified-bonded Locksmith 983-3834

PRO-LOCK SHOP 2 miles north of South Plains Don Probasco

Hollis R. Bond Real Estate PHONE 983-2151

107 S. 5th FLOYDADA

TURNER REAL ESTATE Farms Ranches 983-2635 Floydada, Texas

Diamond Industrial Supply Co., Inc. Phone Days 296-7418 Nights 296-1200 or 296-7828 1014 Broadway Plainview, Texas U joints Oil Seals O rings Wisconsin SKF BCA Timken Bower Cotton Stripper Brushes & Bats "We Appreciate Your Business More"

ESTATE SALE For Mrs. Ela May Bailey Saturday, February 27th at 416 W. Kentucky at 8:00 a.m.



# Musical evening offered at South Plains

BY MRS. MURRAY JULIAN  
South Plains, February 22:

The first Sunday in March, on the 7th, there will be an evening of music offered to everyone of the community at the South Plains Baptist Church when the Ladies Ensemble and the Men's Gospel quartet from the 1st Baptist Church of Plainview will come and present an evening of songs and music, and this is for everyone in the community. There will be refreshments offered at Fellowship Hall following the music session.

This has been a time of showers and weddings in our community, with the showers of Lori Young and Lonnie King and their wedding, Feb. 20, Saturday at 6:30 p.m. and the shower for Vickie Thompson and Ronnie Stewart at the home of Mrs. Mamie Wood, and their wedding to be held this Monday evening, February 22, at the South Plains Baptist Church at 7:30 p.m.

Mrs. Clarence McMillan from Hahira, Georgia, was here recently and Mrs. Mamie Wood brought her to her home from Lubbock. Mrs. McMillan spent the night with her. Mrs. McMillan was formerly Mrs. Bonnie Moore and lived in our area. Mrs. Ruby Higginbotham took her to Lubbock for her plane trip home last week.

Mrs. Carolyn Marble and Mrs. Nancy Marble from here attended a baby shower in Floydada for Mrs. Rick Reddy, formerly Kelli Lyons from South Plains, with the shower being held at the home of Mrs. Jay Lackey on Saturday between the hours of 10-11:30 a.m.

Mrs. Frank McClure is in the Lockney Hospital, having been taken there on Thursday. Visitors from here on Sunday included Mr. and Mrs. L.N. Johnson, Mrs. Ruby Higginbotham and Deneen Johnson. Mrs. Flossie Beedy was also in the Central Plains Hospital, but she was well enough to go home Sunday. The above group also called at the hospital to see about her.

Mrs. Raymond Upton was in the Central Plains Hospital a few days last week undergoing some tests, and she is back home now and doing well, we are glad to say. She was in the hospital in Plainview February 2.

Several from our area went to Floydada Saturday night to attend the Rotary group local talent contest. Included among those were Mr. and Mrs. Early Pritchett, Mrs. Mamie Wood and Mrs. Ruby Higginbotham. The Pritchett's grandchildren appeared in the contest. The contest was held at the Floydada High School.

Mrs. Louzilla Nichols went to Canyon Sunday morning to have dinner and spend the day with her brother and wife, Mr. and Mrs. T.B. Cox. They are getting along well and he is able to go to church, and get's around fine.

Rev. John Allen, who was pastor here at the South Plains Baptist Church in 1951-52, a graduate of Wayland Baptist College and Golden Gate Seminary has been recently elected executive director-treasurer of the Alaska Baptist Convention. With his wife Ann and two children, he has been director of missions and evangelism in Anchorage, Alaska since 1976. Rev. Allen and family love Alaska and enjoy their work there.

We offer our sympathy to Mr. and Mrs. Grigsby (Doodle) Milton on the death of his brother, Otis A. Milton of Amarillo, 71, who died last Thursday in Amarillo. His services were held Saturday, February 20, at the Blackburn-Shaw Memorial Chapel at 2:00 p.m. with Rev. Harold Scarborough of the Temple Baptist Church officiating at the services. Otis Milton had been suffering for several years with heart trouble.

Mrs. Mamie Wood and her daughter, Mrs. James Teague of Lubbock spent the past two weeks in Baton Rouge, Louisiana where they were working on a Positive Living set-up. They enjoyed Mardi Gras while there in Baton Rouge, and arrived back home Saturday, Feb. 20th. Mrs. Teague who is president of People Plus Inc. will schedule a seminar there in the future. This Tuesday, February 23, a Positive Living Seminar will present Dr. Denis Waitley in the "Winners Edge", Jerry Lucas in "Ready, Set, Remember" and Art Linkletter, in "Yes you can", at the Lubbock Municipal Auditorium from 6:30-10:30 p.m.

Deneen Johnson, who is taking Nurses Training at Methodist Hospital in Lubbock was home with her parents, Mr. and Mrs. L.N. Johnson over the weekend. She will have several more weeks of training and she will then be ready to take her nurses finals.

Rev. Cecil Osborne went to Jacksboro to speak at a Lay Witness meeting for the Jack Association on Monday and Tuesday nights of last week. With Mrs. Osborne they also visited their daughter and husband, Rev. and Mrs. Ron and Linda Somers, Jennifer and Jaime of Mineral Wells.

Mrs. M.M. Julian arrived home Saturday night from McAllen, where she had been spending the past two weeks visiting with her sister-in-law, Mrs. B.F. Harper. Friday night there was a

bad flood at Harlingen, which was 8 inches of water everywhere. All the airlines were jammed with people trying to get home from the area. The weather was very beautiful all the rest of the week's spent down there. All the parks were full of thousands of vehicles. It was night before Mrs. Julian and her family had waited all afternoon for her arrival. Her luggage had come on a 4:30 plane from Dallas. She had Southwest Airlines, and the American Airlines.

Mr. and Mrs. Sylvester Kinnibrugh spent last week with his father, J.A. Kinnibrugh. Mr. Kinnibrugh will be 80 next Sunday, February 22nd. He has 7 children, 7 of them, plan to be at the father's birthday celebration.

Mrs. Mamie Wood and Mrs. Cecil Osborne from here went to the Positive Living Tuesday evening, February 22nd, at the Municipal Auditorium, at 7:30 p.m. with speakers, Dr. Denis Waitley, Jerry Lucas and Art Linkletter.

The home of Mrs. Mamie Wood of South Plains, was the scene of a bridal shower for Vickie Thompson, bride-elect of Ronnie Stewart of South Plains. Guests called the hours of 3-5. Saturday, February 20. The brides chose a table of pink and burgundy were entertaining rooms, and the table was laid with a lace cloth, and was centered with a flower bouquet of pink and white which was later presented to the bride. Pink fruit punch and snowballs were served with the nuts from crystal apples. Honored guests included the bride's mother, Mrs. J.C. Austin of the groom's mother, Mrs. Deneen Johnson of South Plains, and his grandmother, Mrs. Ruth Babb of Logan, and Mrs. Lottie Stewart of Jacksboro.

Hostesses for the bridal shower were Mrs. Mamie Wood, Mrs. M.M. Marble, Ursel Taylor, Shelby Don Marble, Keith Marble, Upton, Sterling Cummings, Sanders, Early Pritchett, Mary Harry Hartman, Kendall G. Derald Young, Ruby Higginbotham, Mrs. Jim Roberts. Their bride-to-be was cookware. Mrs. Jim Roberts. Their bride-to-be was cookware. Mrs. Jim Roberts. Their bride-to-be was cookware. Mrs. Jim Roberts. Their bride-to-be was cookware.



FLOYDADA NURSING HOME BIRTHDAY HONOREES are (l-r) Travis Corley, Iva Simpson and Mamie Gray. Not pictured is Verna Troutman. The birthday party was held Thursday, February 18, at the Rest Home.



EMMIT LAWRENCE, 92, has made 174 owls in the last two years. If you are interested in getting an owl, he sells them for \$12.00 each and always has one or two on display in the lobby at Floydada Nursing Home.

## Residents celebrate February birthdays

February 18  
February is a month  
With days to celebrate...  
With birthdays or with Valentines  
We wouldn't dare be late!

Our Mrs. Mamie Gray we greet  
...She always wears a smile...  
She loves to have her special friends  
To come and "chat" awhile.

Our Mrs. Iva Simpson  
...Her years are 89...  
Is known among her neighbors  
As someone good and kind.

Mr. Corley has his day  
...He counts from 1903...  
And though he's slowed his gait a bit  
He still likes friends to see!

Our Mrs. Vera Troutman  
Came in with Cupids Bow...  
She was a special Valentine  
Her parents thought it so!

Lets serenade these lovely ones  
With the good old birthday song...  
So each one join the singing  
To cheer them right along!

Thursday, February 18 was birthday party time at the Rest Home. Ladies of the City Park Church of Christ hosted the occasion.

The table was laid with an ecru cloth and centered with a lovely arrangement of silk flowers in spring colors. Special cards marked places for the honorees at the "honor" table.

After the honorees, Residents and guests were seated in the dining room the poem was read and all joined in singing the "birthday" song. Mrs. Troutman was unable to sit at the table.

The Hesperian photographer arrived for the "picture taking" and the party was well underway.

A delicious birthday cake and tangy fruit punch was served.

Guests for the day included Mary Corley, Debra and Justin Bailey, Gene Baird, Dorothy Neff, Dorothy Kerr, Mary Adams and Shirley Varner.

The next party will be Thursday, March 18, 2:30 p.m. Everyone is invited to attend and celebrate with their loved ones or close friends.

INSURANCE FOR YOUR HOME RANCH FARM AUTO CROPS LIFE	I purchased a boat. Do I need insurance or an endorsement to my regular policy? <b>983-3777 Floydada</b> For help with insurance questions and needs call... TEXAS FARM BUREAU INSURANCE COMPANIES <b>652-2242 Lockney</b>	 <b>James Race</b> FARM BUREAU INSURANCE COMPANIES
---	--	--

**Ferguson TILLAGEVATOR**  
**IN ACTION!**

ONCE OVER PLANTING \* CHEMICAL INCORPORATION  
\* ROW CROP CULTIVATION \*

**Russell Equipment & Supply**

608 E. Houston 983-3751

If it's Borden, it's got to be good

1857 BORDEN 1982

**BORDEN'S ICE CREAM SANDWICHES OR NUTTY BUDDY'S**  
6 CT. PKG. **99¢**

**BORDEN'S BUTTERMILK** 1/2 GAL. CTN. **\$1 09**

**BORDEN'S 12 OZ. CTN. COTTAGE CHEESE** **69¢**

**REAL TEXAS REAL TEXAS STYLE BARBEQUE**  
**\$2 99**  
PINT  
MAKES FOUR BIG SANDWICHES!

**SCHILLING BLACK PEPPER** 4 OZ. CAN **\$1 39**

**ASSORTED FROZEN MORTON DINNERS** 11 OZ. PKG. **89¢**

**Del Monte PEAS** 4/\$1 00  
Del Monte Whole Kernel or cream style

**Del Monte CORN** 4/\$1 00

**Del Monte GREEN BEANS** 4/\$1 00  
Folgers 1 lb COFFEE \$1 00

Spillmate PAPER TOWELS 79¢

Clorox 1 gal BLEACH 88¢

Rath SAUSAGE 79¢

Heinz 32 oz. KETCHUP

Shurfine 12 oz. ORANGE JUICE

Shurfine LEMONADE BEEF OR CHICKEN MORTON PCT PIES 3 \$1 00

**2 Liter COKE \$1 09**

**ALLSUP'S CONVENIENCE STORES**

"THERE'S ONE NEAR YOU"  
PRICES EFFECTIVE FEB. 25-27, 1982  
WHILE SUPPLIES LAST

Floydada

ADAM WELL SE

FLOYD OPERATING INC

COO

ANSLEY

BUSH

MART COMP

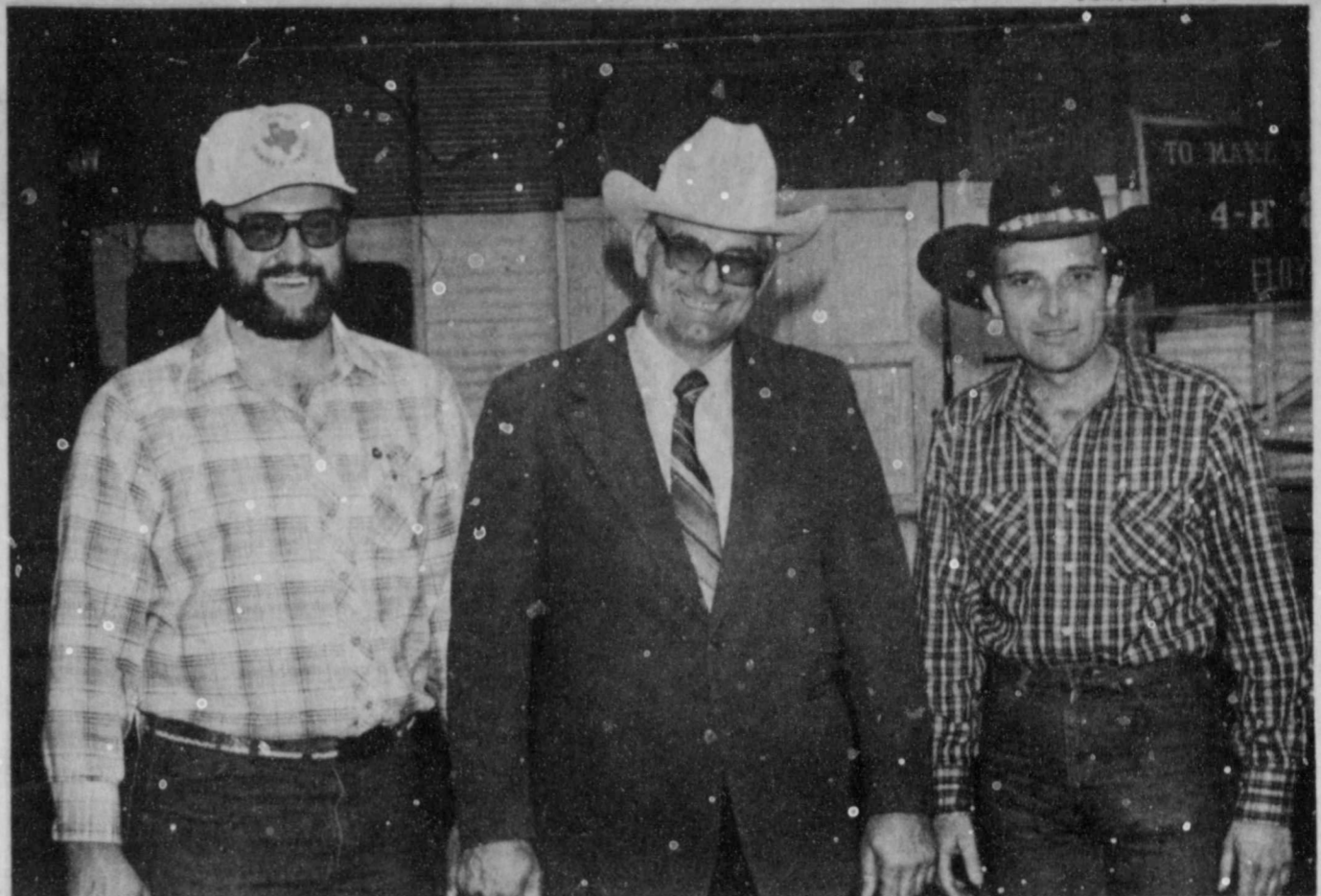
SUN-V FERTIL

SUN-V





JERRY HAWKINS, [center] judged the Lockney Jr. Livestock Show Saturday. Taking a break as they wait for the next division, are ringmen Keith Phillips [left] and Clar Schacht.



JERRY HAWKINS, [center] Clarendon Jr. College Livestock Chamber of Commerce. Pictured with Hawkins are past Judging Team coach, was judge at the Floydada Jr. Livestock Show Saturday. The show was sponsored by the Floydada Chamber of Commerce. Pictured with Hawkins are past president Mark Wideman [left] and president Stan McClelland.

## Landscape & Gardening

BY JETT MAJOR  
FLOYD COUNTY EXTENSION AGENT

Spring is generally the best time to plant fruit trees. For Floyd County, this includes the months of March and April.

Planting begins to break rapidly, and the results in obviously better centered with earlier-planted trees. Since the soil temperature when the soil temperature is above 45 degrees F., established trees can make some improvement in their growing before leaves appear and get vigorous start.

When planting fruit trees that one can buy that are two years old and 3 to 4 inches in diameter, they will survive better, but they become more expensive. The largest tree is usually the best. Smaller trees often are best because they are easier to handle.

they cost less, are inherently more vigorous, start growth sooner, are easier to plant and, most importantly, can be trained properly to look shapely and bear heavy crops. Tiny trees (less than 18 inches tall) were runts in the nursery and should be avoided.

To insure a successful transplanting after buying a tree, keep the roots moist by wrapping them in damp packing material or sawdust. The roots must not dry out or the tree will die. Trim off broken or injured roots.

To prepare to plant, dig the hole a little deeper and wider than necessary to accommodate the roots. Leave some loose soil in the bottom of the hole. Set the tree at the same depth that it grew in the nursery. Never set it so deep that the bud union of the scion and root section is below ground level when the hole is filled.

If a tree cannot be planted immediately, keep it in the original package and refrigerate it for a week or two. Otherwise, heel (temporarily plant) the trees in a well-drained area, making sure the roots never become dry. Soak the tree in a bucket of water several hours before planting to insure good moisture uptake.

Once the tree is in the hole, fill it with pulverized soil, shaking the tree gently to filter soil among the roots. Use the same soil that was removed from the

hole earlier. Tramp the soil firmly and thoroughly with the foot or a well-padded stick. Add water when the hole is about three-fourths full to help pack the soil around roots and increase chances for survival. After the water has soaked in completely, fill the hole with soil, leaving it loose on top.

Do not add fertilizer at planting time but consider a light application of nitrogen in June following planting. Keep all fertilizer at least 18 inches away from the trunk. It is essential that the tree be well watered and that all vegetation be controlled immediately under the tree. A heavy layer of mulch does an excellent job of weed control.

Some other crops which you may want to consider planting now are blackberries, figs and citrus.

With blackberries, plant root cuttings. Use 6- to 8-inch segments of 3/8-inch diameter roots. Plant two segments every 3 feet with plants 2 to 3 inches deep.

Figs are easy to start from cuttings. Place cuttings (6 to 8 inches long and 3/8 to 1-1/2 inches in diameter) 4 inches deep in rooting media and put them in a greenhouse or in pots indoors until the spring. Keep rooting media moist. Do not accept rooted cuttings dug from around a neighbor's plant since nematodes may be present and will prevent production or cause plant death.

harp. Executive Director of Grain Sorghum Producers Association; Dr. Bill Ott, Resident Director of Research, Texas Agricultural Experiment Station and Dr. Sam Curl, Dean of Agriculture, Texas Tech University.

"Secretary Block told us that he wants an opportunity to visit with farmers," stated GSPA Executive Director Elbert Harp. "This meeting is being planned to allow time for questions, answers and discussion. Farmers are encouraged to attend."

## "Town Hall Meeting" planned for February 25th in Lubbock

Secretary of Agriculture John Block has announced plans for a "Town Hall Meeting" with High Plains farmers in Lubbock, Texas on February 25. The meeting is scheduled for 8:00 p.m. at the University Center on the Texas Tech campus.

Arrangements for the meeting are being made by a host committee of High Plains agricultural leaders, including: Vern Highley, Vice-President of Plains Cotton Cooperative Association; Donald Johnson, Executive Vice President of Plains Cotton Growers, Inc.; Elbert

arrangements for the meeting are being made by a host committee of High Plains agricultural leaders, including: Vern Highley, Vice-President of Plains Cotton Cooperative Association; Donald Johnson, Executive Vice President of Plains Cotton Growers, Inc.; Elbert

## Lockney brings home winners from the Ft. Worth Stock Show

Young people from Lockney showed placing animals in the Junior Division of the 86th Southwestern Exposition and Fat Stock Show and came home winners.

Ty Williams came in 3rd, 1st, and Junior Champion Heifer in the Angus Heifers. Libby Williams brought home a 4th and 1st in Angus Heifers and Matt Williams, came in 4th in the Angus Heifers.

The 1982 Stock Show, which concluded its 12-day run Sunday, February 7, hosted a record number of Junior entries for Texas youth who are members of 4-H Clubs and Future Farmers of America chapters.

A record number of Junior Show exhibitors presented 5,780 head of livestock for judging in classes for steers, heifers, dairy, sheep and bar-

rows. The Junior Show posted a 25 percent gain from the 1981 Stock Show, and contributed greatly to the show record of 17,063 total livestock exhibited.

Chad Breeding, 11, of Miami shows the grand champion steer, a 1,216-pound registered Hereford bred by his father, Bill. The animal sold at the Stock Show's Sale of Champions for \$24,500 to Majestic Liquors/Fort Worth and Coors Distributing Company of Fort Worth.

The reserve grand champion steer, an 1,160-pound Limousin crossbred, was shown by Jeff Chisum, 11, of Frath. Breeder was Holcomb Cattle Company of Stanton. The sale brought \$8,000 from Tony Loma Boot Company.

Winner of the grand champion barrow of the show honor was Matt

Muehlstein of Avoca, a crossbred sold at auction for \$4,000 to Walsh Oil Company. Champions in the lamb show included Amy Hollifield of Iran, fine wool; Carl Gholson of Jayton, fine wool cross; Linda Sue Dockery of Colorado City, medium wool; and Susan Hill of Albany, medium wool cross. The lambs each brought \$2,500 from KXAS-TV, Fort Worth National Bank, Continental National Bank and Pancho's Mexican Buffet, respectively.

During the Stock Show, some 121,968 purchased tickets to one of the 22 performances of the World's Original Indoor Rodeo, and more than 618,900 visitors passed through the gates. Show dates for 1983 will be January 26 through February 6.

## Water District completes measuring of Floyd Co.

The High Plains Underground Water Conservation District has completed its annual program of measuring depth-to-water levels in the 97 wells in Floyd County. These wells are part of a larger network of more than 950 observation wells scattered throughout the District's 15-county service area.

Don McReynolds was able to complete 94 measurements of "static" water levels in observation wells and tag them with the District's red identification sticker for owner information.

"I visited with several irrigators in the field who wanted to know that their water's doing," said Don. "We have the initial results for each County, but tabulated data on the entire observation network readings is not expected to be complete until mid-year."

Floyd County's 1981-1982 depth-to-water table below surface minimum reading was at 62.21 feet, and the maximum level read was at 319.35 feet. This year's average change in depths-to-water in the county was +0.19 of a foot, which compares with a 1980-1981 county reading of -3.54 feet. Comparing the rate of change calculated this year for these wells shows a minimum decline change of +4.91 feet and a maximum decline change of -6.51 feet.

The Water District keeps a record of annual decline and rate of change going back to 1962. The data is used for making projections of decline rate, for determining the amount of water left in storage, and as a basis for the income-tax depletion allowance claims on landowner's tax returns.

## Stenholm Suggests Marketing Plans

By Con. Charles W. Stenholm

With a bumper cotton crop hitting the market and prices falling far below the cost of actually producing that crop, cotton growers must now make what I consider the only practical decision open to them at this time: Stop selling!

For several years, I have outlined a four-point agricultural program that remains as valid (and perhaps even more crucial in light of current conditions) and when it was first released in 1979. Highlights of the program include:

1) Farmers immediately curtail ALL sales of non-perishable commodities (not just cotton) at current prices.

2) Farmers agree to participate in an orderly marketing system designed to encourage market adjustments. This plan, that I call the 20-10-20 marketing plan, is outlined below.

3) A long-range production control program — which I

have long advocated — that includes set-asides of 15-25 percent, or some facsimile is initiated by Congress.

4) An expanded effort using all available resources to increase foreign and domestic sales of farm commodities at profitable prices.

**20-10-20 PLAN**  
Let's take a look at a workable, low-risk short-range solution, the 20-10-20 marketing plan:

20 percent goes immediately into reserve — cotton farmers make a voluntary commitment to place 20 percent of existing supplies (both carryover and new crop cotton) into a farmer-held reserve program. This could be through home or commercial storage and either through the federal Commodity Credit Corporation loan program or a private financed program.

10 percent sold during first marketing period — Farmers would then be free to sell no more than 10 percent of the

remaining 80 percent of existing supplies during any 30 day period in any of the first three months of the marketing year. An additional 10 percent of the remaining balance of the supply base if the market maintains an agreed upon price level.

20 percent sold during second marketing period — Farmers would then sell up to 20 percent of the remaining balance of the crop during any of the last nine months of the market year and additional 10 percent lots when the market allows as previously determined.

The risk to most farmers would be absolutely minimal and the benefits to all are easy to see. Such a program would be well within the realm of the free enterprise system that I support and would not require a federal spending program to achieve.

The same type of marketing program would work for all

non-perishable crops and is already gaining support in wheat-producing areas. I am currently working with a broad base of agricultural representatives to refine details and implement the program.

Farmers need only to look at the last session of Congress and read the writing on the wall to know that we have reached the point where solutions to growing problems in the industry must be found by farmers themselves. Government is not going to do it for them and as the number of congressman representing agricultural districts dwindles, passage of favorable farm legislation is going to become more and more difficult.

To those who might question such a program, I would only say, "What do you have to lose? If you accept today's market prices, you have already lost more than you can afford to lose and may not get another chance next year."

**ADAM'S WELL SERVICE**  
983-5003

**FLOYD COUNTY FARM BUREAU**  
Lockney 652-2242  
Floydada 983-3777

**RUSSELL'S IMPLEMENT & SUPPLY**  
Russell's  
983-3751

**FLOYDADA OPERATIVE GINS INC.**  
COOP  
983-2884

**WANSLEY & SON**  
652-3361

**MARTIN & COMPANY**  
983-3713

**SUN-VUE FERTILIZER**  
652-3362

**RUCKER'S O.K. TIRE STORE**  
Floydada 983-3379

**FLOYD COUNTY IMPLEMENT**  
Floydada 983-3732

**CASE POWER & EQUIPMENT**  
Floydada 983-2836

**FIRST NATIONAL BANK OF FLOYDADA**  
Floydada 983-3717

**BROWN'S IMPLEMENT INC.**  
Floydada 983-2281

**FLOYDADA IMPLEMENT CO.**  
Floydada 983-3584

**THE TYE COMPANY**  
Lockney 652-3367

**MUNCY ELEVATOR**  
Lockney 652-3100

**CONSUMERS FUEL ASSOC.**  
Lockney 652-3336

**PRODUCTION CREDIT ASSOC.**  
Floydada 983-2454



# CONGRATULATIONS!

## To All The Winners In The Lockney & Floyd County Stock Show



TONY SAUCEDA—Grand Champion Finewool



TONY SAUCEDA—Grand Champion Finewool Cross



MONTY TEETER—Grand Champion Hampshire



MATT MITCHELL—Grand Champion Suffolk



JOEL MITCHELL—Grand Champion Shropshire



GWEN LANE—Grand Champion Southdown



CHAD GOLDEN—Champion Lightweight Cross, Grand Champion Steer



TEDDY SALINAS—Grand Champion Other Breeds



STEPHEN TURNER—Champion Duroc, Grand Champion Barrow



MATT WILLIAMS—Champion Angus, Reserve Grand Champion Steer



DAVID MARTINEZ—Champion Hampshire, Reserve Grand Champion

Floyd Countys Progressive Bank

# The First National

# Bank In Lockney

Member F.D.I.C.  
Accounts Insured \$100,000

Look for this symbol.  
We've got the answers.





# Lockney Jr Livestock Show results

The annual Lockney Jr. Livestock Show was underway Saturday with near perfect weather and a high number of entrants.

Randy Upshaw, Lubbock County Agent, was commended on a fine job he did as judge. He took time with each class to discuss with the youngsters what he saw in their animals. Then he made the public judging announcement.

He said that the show was for the youngsters and that what they gained from the experience was his main concern.

The following are the show results:

## Swine

### CHESTERS

Lightweight: 1st Hugo Araujo; 2nd Heath Rexrode; 3rd Jeremy Widener; 4th Phillip Glasson; 5th Clint Bigham.

Heavyweight: 1st Margie Araujo; 2nd Clay Harrison; 3rd Wyman Rexrode; 4th Daron Widener; 5th Terry Carlton.

### HAMPSHIRE

Lightweight: 1st Gary Bigham; 2nd Kyle Brock; 3rd Becky Pitchford; 4th Joe Widener; 5th Daron Widener.

Heavyweight: 1st David Martinez; 2nd Karen Mathis; 3rd Troy Bigham; 4th Terry Taylor.

### DUROCS

Lightweight: 1st Keith Owens; 2nd Carlos Molinar; 3rd Heath Rexrode; 4th Scott Poole; 5th Gerald Johnson.

Heavyweight: 1st Stephen Turner; 2nd Gary Bigham; 3rd Karen Mathis; 4th Kyle Brock; 5th Kip Holt.

### SPOTS

1st Phillip Glasson; 2nd Wyman Rexrode; 3rd Stephen Turner; 4th Clay Harrison; 5th Bandy Emert.

### OTHER BREEDS

Lightweight: 1st Troy Bigham; 2nd Keith Owens; 3rd Ramiro Araujo; 4th Terry Carlton; 5th Kip Holt.

Heavyweight: 1st Karen Mathis; 2nd Phillip Glasson; 3rd Milhe Solis; 4th Karen Mathis; 5th Kyle Brock.

**Grand Champion — Stephen Turner.**  
**Reserve Champion — David Martinez**

## Lambs

### FINEWOOL

Lightweight: 1st Heather Holt; 2nd Ronnie Ford; 3rd David McCulloch; 4th Maria Saucedo; 5th Heather Holt.

Heavyweight: 1st Tony Saucedo; 2nd Matt Mitchell; 3rd Erick Anderson; 4th Gregg Sparkman; 5th Matt Mitchell.

**Reserve Champion — Heather Holt.**  
**Grand Champion — Tony Saucedo.**

### FINEWOOL CROSS

Lightweight: 1st David McCulloch; 2nd Erick Anderson; 3rd Teddy Salinas; 4th Sherre Kinard; 5th Heather Holt.

Heavyweight: 1st Tony Saucedo; 2nd Richie Thornton; 3rd Matt Mitchell; 4th Terri Sparkman; 5th Joel Mitchell.

**Grand Champion — Tony Saucedo**  
**Reserve Champion — Richie Thornton**

## HAMPSHIRE

Lightweight: 1st Ralph Scheele; 2nd Scott McCarty; 3rd Terri Sparkman; 4th Stephen Turner; 5th Ralph Scheele.

Heavyweight: 1st Monty Teeter; 2nd Ronnie Ford; 3rd Rodney Smith; 4th Lori Bayley; 5th Stephen Turner.

**Grand Champion — Monty Teeter**  
**Reserve Champion — Ralph Scheele**

## SUFFOLK

Lightweight: 1st Glenn Sutterfield; 2nd Ralph Scheele; 3rd Rusty Teeter; 4th Glenn Sutterfield; 5th Terri Sparkman.

Heavyweight: 1st Matt Mitchell; 2nd Carl Broseh; 3rd Gregg Sparkman; 4th Richie Thornton; 5th Terri Sparkman.

**Grand Champion — Matt Mitchell**  
**Reserve Champion — Glenn Sutterfield**

## SHROPSHIRE

1st Joel Mitchell; 2nd Kip Holt; 3rd Monty Teeter; 4th Lori Bayley; 5th Lori Bayley.

**Grand Champion — Joel Mitchell**  
**Reserve Champion — Kip Holt**

## SOUTHDOWN

1st Gwen Lane; 2nd Richie Thornton; 3rd Wesley Teeter

**Grand Champion — Gwen Lane**  
**Reserve Champion — Richie Thornton**

## OTHER BREEDS

1st Teddy Salinas; 2nd Gwen Lane; 3rd Scott McCarty

**Grand Champion — Teddy Salinas**  
**Reserve Champion — Gwen Lane**

## Steers

### ANGUS

1st Matt Williams; 2nd Ty Williams; 3rd Libby Williams

### HEREFORD

Lightweight: 1st Shawnda Brock; 2nd Leslea Bivins

Heavyweight: 1st Kyle Brock; 2nd Keith Hight

**Grand Champion Hereford — Kyle Brock**  
**Reserve Champion Hereford — Shawnda Brock**

### CROSS STEERS

Lightweight: 1st Chad Golden; 2nd Keith Hight.

Medium weight: 1st Ralph Scheele; 2nd Lisa Terrell; 3rd Colt Golden.

Heavyweight: 1st Ty Williams; 2nd Ralph Scheele; 3rd Lisa Terrell.

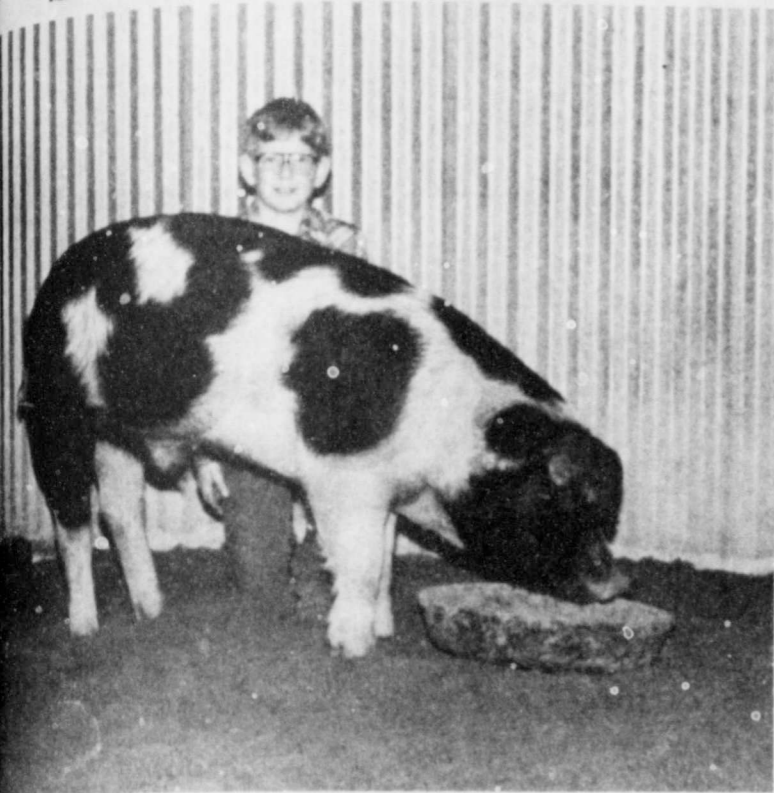
**Grand Champion Cross — Chad Golden**  
**Reserve Champion Cross — Ralph Scheele**

**Grand Champion Steer — Chad Golden**  
**Reserve Champion Steer — Matt Williams**

The GAB served hot coffee, cokes, and homemade chili to the record number of spectators.



MARGIE ARAUJO—Champion Chester White



PHILLIP GLASSON—Champion Spots



KAREN MATHIS—Champion Other Breeds



HEATHER HOLT—1st Lightweight Finewool, Reserve Champion Finewool



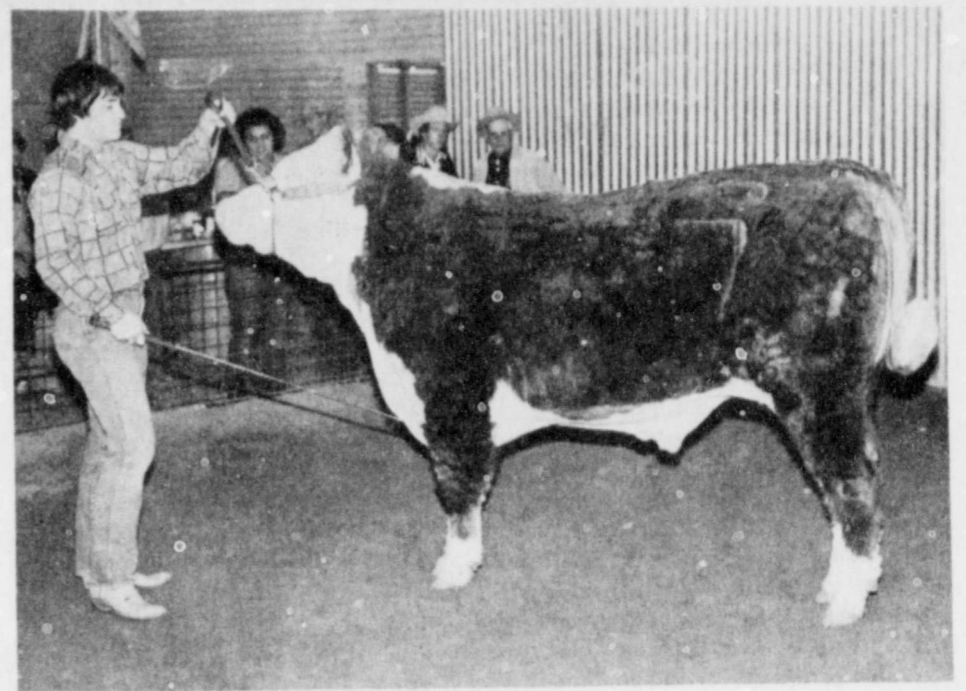
GLENN SUTTERFIELD—1st Lightweight Suffolk, Reserve Champion Suffolk



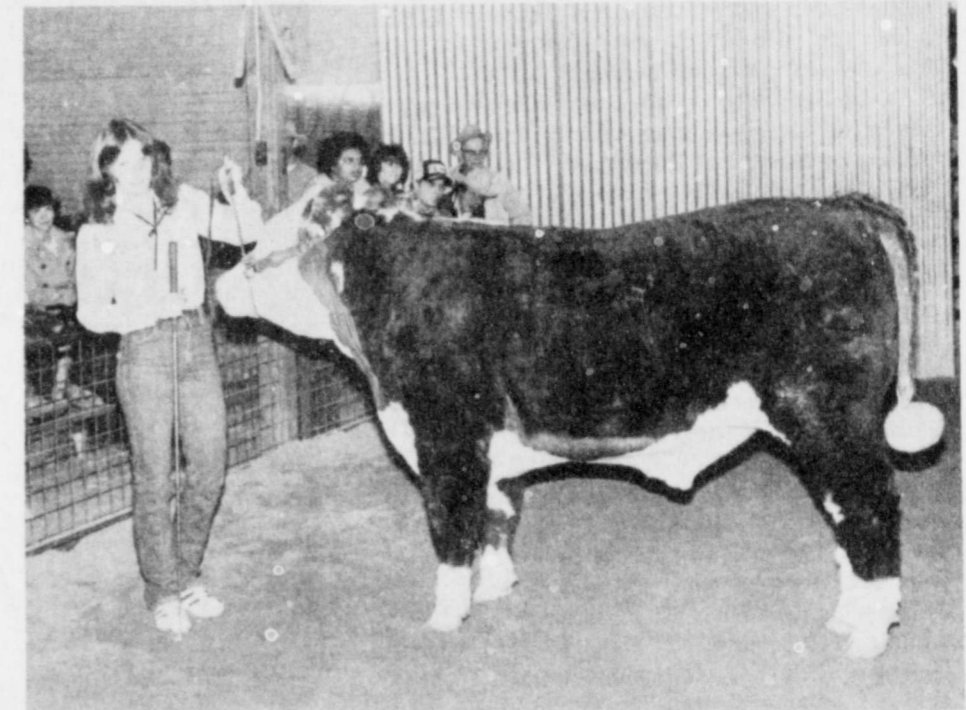
RICHARD THORNTON—2nd Lightweight Finewool Cross, Reserve Finewool Cross



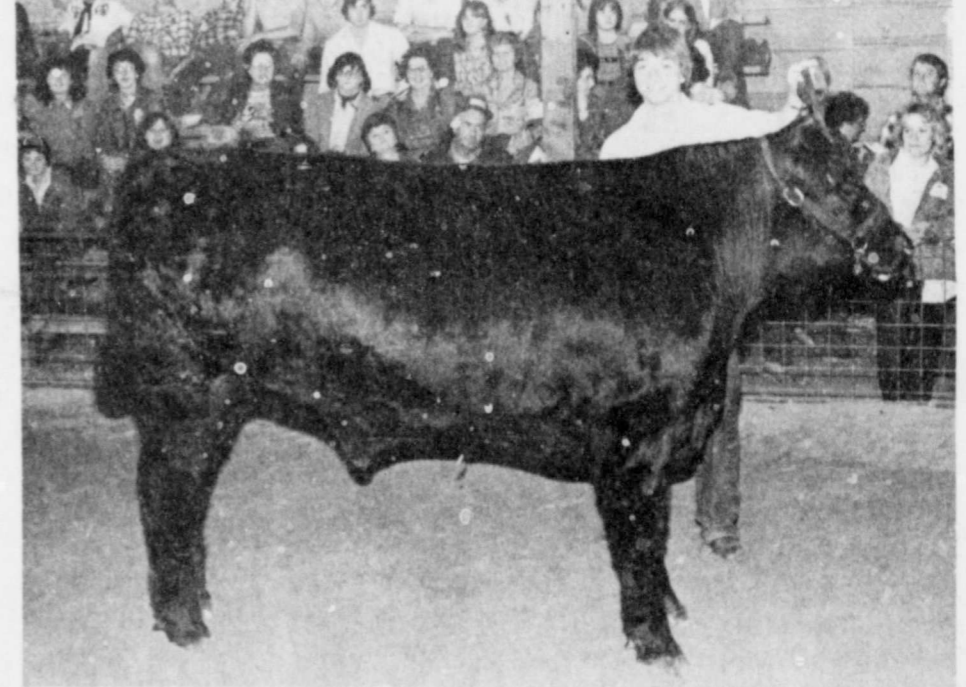
RICHE THORNTON—Reserve Champion Southdown



KYLE BROCK—1st Heavyweight Hereford, Grand Champion Hereford



SHAWNDA BROCK—1st Lightweight Hereford, Reserve Champion Hereford



RALPH SCHEELE—1st Mediumweight, Reserve Champion Cross



RALPH SCHEELE—1st Lightweight Hampshire, Reserve Champion Hampshire



KIP HOLT—Reserve Champion Shropshire



# Channel Five Highlights

**February 28-March 6**  
**BY MELISSA CREAMER**

The feather is perhaps nature's most extraordinary achievement. Man has not invented anything as strong, weight for weight, or duplicated its intricate construction. **Life On Earth**, episode eight "Lords of the Air" scrutinizes the feather and the birds, Tuesday at 7 p.m. Through the latest techniques in nature photography **Life On Earth** illustrates the varied uses and advantages of the light and flexible feather.

It is an excellent insulator, maintaining body temperature at a level high enough to support the high energy muscles used in flying. It also permits birds such as penguins to inhabit the coldest parts of the globe. And in other species, such as the pheasant and bird of paradise, the feather has been adorned with every color imaginable and is especially designed in certain birds for purposes of courtship and communicating territorial ownership to other birds. —and its used for flying. I thought this was all fascinating and I hope you can catch this program Tuesday at 7 p.m. on Channel 5.

"Carl Sandburg: Echoes and Silences", the award-winning docu-drama, will be on **American Playhouse**, Tuesday at 8 p.m. Actual film footage of Carl Sandburg is included.

From the stage of the Metropolitan Opera House, a joint recital of arias and duets will be sung by tenor Placido Domingo and baritone Sherrill Milnes, with James Levine conducting the Metropolitan Opera Orchestra Wednesday at 7 p.m. on "Live From the Met."

Tompall, Chuck and Jim Glaser are guests on **Austin City Limits** Thursday the 4th at 8 p.m. The Glasers perform their hits from the late '60s and early '70s, including "The Last Thing on My Mind", "The California Girl and the Tennessee Square". Also guest starring is Texas swinger George Strait.

Festival Nights begins Saturday March 6. This is Channel 5's big annual fund-raiser which is conducted for 16 nights using the best programming we can pool and it's all for you. The purpose? To raise one-quarter of our total operating budget to buy program-

ming for you, for next year. We must have your support—but it won't be painful in the least for you, in fact it will be delightful. To kick it off, Saturday at 7 p.m. is Rosalind Russell in "Auntie Mame". Based upon Patrick Dennis' best-selling novel of the same title, which was adapted for the Broadway smash hit, "Auntie Mame" received six Academy Award nominations, including Best Picture, Best Leading Actress (Rosalind Russell), and Best Supporting Actress (Peggy Cass). Auntie Mame also feature performances by Forrest Tucker, Coral Browne, Fred Clark, Roger Smith and Jan Handzlik.

America's Going Public March 6-21 with Festival Nights, on public television. Be there—Aloha.

# Researchers recognizing childhood depression

Childhood is a time of carefree happiness for most, yet some children suffer from depression just as adults do, says Diane Welch, a family life education specialist.

In fact, estimates show that one percent of all children suffer from depression, she adds.

Welch is on the home economics staff of the Texas Agricultural Extension Service, The Texas A&M University System.

Adult depression has been carefully studied, but researchers are just beginning to recognize childhood depression, she adds. Studies show that some children have the same depressive symptoms as adults about being loved — hopelessness, worthlessness, guilt

and anxiety.

A depressed child may show retarded physical movements, a sad face and stooped posture, she adds.

His appetite may drop off, and he may have trouble sleeping. Dreams and fantasies are likely to be full of danger and sadness, the specialist says.

Other symptoms in children may not be so obvious, she notes.

Depression may be masked by temper tantrums, disobedience, truancy, running away, delinquent behavior, school phobia, accident proneness, cruelty to others or self-destructive thoughts and behaviors, Welch says.

relationships with adults, the specialist explains.

Such children report feeling abandoned and unloved as a result of family events, such as death, divorce, desertion or any other major changes affecting the family unit, she continues.

**'Emotional Poverty'**

The family's economic level doesn't, however, seem to influence children's depression, but "emotional poverty" has a significant influence, Welch reports.

Some signs of "emotional poverty" in a family are family violence, lack of attention to each other and outright unconcern, Welch says.

When the family recognizes and tries to solve their own problems, the child's depressive state is more likely to disappear, the specialist says.

At the other extreme are families in which parents over-criticize or over-protect the children.

Children in these families are likely to become discouraged or depressed, the specialist says.

Parents can learn to help children at-risk situations.

Parents' "need" to be heard, when it vanishes when children can be heard, is a sign of depression. Parents can help by carefully listening to the child's depression support and encouragement.

On the other hand, children easily become depressed when, once outside of their environment, they are finding it hard to learn many new things.

Children need to learn to explore and experience the world. To mistakes they make, they are forgiven. Parents can help by encouraging children to become independent, the specialist says.

Temporary Depression

Of course, there are times when a child will suffer temporary depression, Welch says.

Children naturally feel their families suffer crises.

New situations, such as moving, are also sources of depression.

**Center News**

# Springtime weather hits Center

**BY MRS. J.E. GREEN**  
Monday, Feb. 22, 1982:

My! We have had some almost spring weather lately, especially Saturday and Sunday. And today is as promising as last ones. There is some wind, too.

There are still some colds among the inhabitants, but appear better. Except for Mrs. Sally Carpenter of the Lockney Hospital. We are sorry to report that Mrs. Carpenter is very low at this time, and besides local relatives her children Dale Carpenter and wife and Claudine Conway of the Dallas area are at her bedside. Our prayers are with them all. Mr. and Mrs. Mayfield were at the Pansy Baptist Church Sunday attending last rites for a cousin of Mr. Mayfield.

And our sympathy is with friends in Calvary Baptist Church, the Raymond Pooles, who Saturday attended last rites for a brother who resided in Idalou.

Mrs. Frank Dunn had the misfortune to break a wrist one day last week.

Mrs. Roe Jones spent over the weekend in Amarillo visiting a daughter and family.

Mr. and Mrs. Millard Watson visited her parents, the Henry Brewers, Thursday. Mrs. Ethel Warren dined Sunday with Mrs. Leis Durham. Mrs. Warren was in Lockney Friday seeing Mrs. Sally Carpenter in the hospital and also visited her sister Mrs. Workman at her home.

Mrs. Travis Lightfoot says they are all doing just fine.

Saturday afternoon wedding bells rang for Lou Ann Watson and Mr. Brent Barker. The beautiful ceremony at the First Methodist Church was attended by a host of relatives and friends from far and near. The reception was a reunion. Congratulations to the happy couple. May a long and happy life together be yours.

### Your Home Owned Store

64 oz. Downy <b>FABRIC SOFTENER</b>	\$1.89
32 oz. King Size Liquid <b>JOY</b>	\$1.59

### STAMP PRICE SPECIAL

Sunny Fresh Farm Grade A Medium <b>Eggs</b>	29¢ doz
With One Filled S&H Special Saver Book	89¢ doz Without Book

### STAMP PRICE SPECIAL

2 lb Casserole <b>PINTO BEANS</b>	9¢
With One Filled S&H Special Saver Book	69¢ without book

### Your Home Operated Store

6 oz. Gladiola Biscuit Pancake or <b>CORN BREAD MIX</b>	4/\$1.00
17 oz. Our Darling Cream Style <b>CORN</b>	2/89¢

6-32 oz. Diet or Regular <b>PEPSI COLA</b>	\$1.99 plus deposit
--	---------------------

### USDA Choice Beef

Mrs. P's <b>PIZZAS</b>	99¢
12 oz. White <b>SINGLE</b>	\$1.99
Lean & Tasty <b>PORK STEAK</b>	\$1.99
USDA Boneless <b>SIRLOIN STEAK</b>	\$2.99 lb
12 oz. Jimmy Dean <b>SAUSAGE PATTIES OR LINKS</b>	\$1.49
USDA <b>ARM ROAST</b>	\$1.99 lb

### Your Home Town Store

24 oz. Clorox Spray Bottle <b>PRE WASH</b>	\$1.79
10 lb 11 oz. Family Size <b>BOLD</b>	\$6.79

1 lb Arm & Hammer <b>SODA</b>	2/99¢
28 oz. Long Grain Dragon <b>RICE</b>	79¢

1 lb Sunshin <b>CRACKER</b>	3/99
15 oz. Chef Boyardee <b>SPAGHETTI &amp; MEAT BALLS</b>	79¢

Got Heating Or Plumbing Problems?

Call **Holmes Plumbing**

Austin Or Steve  
983-2251  
Call Day Or Night

We Give

# budd

GREEN STAMPS

We Take W.I.C. Cards

# SUPERMARKET





explains. As children learn to deal constructively with their problems and feelings, they are strengthened against future depression and its effects, she adds.

## Floydada School Menu

March 1-5

**Breakfast** — Juice, hash brown potatoes, toast, milk  
**Lunch** — Hot cheese and pepperroni sandwich, French fries, pickle spears, mixed fruit, milk  
**Thursday:**  
**Breakfast** — Juice, sweet rolls, milk  
**Lunch** — Meat balls and brown gravy, blackeye peas, tossed salad, pineapple crisp, hot rolls, milk  
**Friday:**  
**Breakfast** — Juice, hot rolls, sausage, milk  
**Lunch** — Hot dogs with chili, tossed salad, tater tots, jello, milk

## Spring registration is Tuesday March 2 at TSTI

Spring quarter registration at TSTI-Amarillo is Tuesday, March 2, 8:30 a.m. until 7:30 p.m. at the Resource Center. Twenty-one training programs are taught on the TSTI Campus, all will be accepting new students. Those programs are: Auto Body Repair, Aircraft Mechanics, Auto Mechanics, Boot and Shoe Operations, Commercial Art in Advertising, Construction Technology, Cosmetology, Computer Science Technology, Drafting and Design, Diesel Mechanics, Electronics, Interior Design Technology, Industrial Maintenance, Meat Processing and Marketing, Machine Shop Operations, Printing Technology, Professional Truck Operations, Saddle and Tack Making, Transport Refrigeration Mechanics, Technical Office Training, and Welding and Fabrication.

Registration for night credit classes will also be taking place, those courses are: Auto Body Repair, Auto Mechanics, Electronics, Industrial Maintenance, and Welding and Fabrication.

Registration for non-credit night classes will also be taking place, those are: Basic Auto Body Repair, Airframe Powerplant (18-30 months prior experience helpful), Auto Service Up-Date, Cabinet Making, FCC Licensing (some electronics experience necessary), and Basic Welding.

Registration for all classes will be one day only, Tuesday, March 2nd. For more information contact the Admissions Office, TSTI-Amarillo 806-335-2316, Ext. 217.



DOUG NIX

## Texan tops national yield contest

A Texas corn grower has won national honors for an outstanding yield in 1981. He's Doug Nix of Nigo Farms, Dalhart, Texas.

Nigo Farms entered a yield of 314.64 bushels (17,620 lbs.) per acre into the 1981 National Corn Growers Association yield contest. The entry was the second highest in the Nation making it a National winner and the top yield in Texas.

The corn hybrid used by Nigo Farms for their winning yield was NC+ 59. This hybrid also won the third highest yield in Texas, 235.22 bushels (13,172 lbs.) per acre. It was entered by William E. Warrick of Dalhart.

NC+ 59 is marketed extensively in this area by NC+ Hybrids at Lincoln, Nebraska. It has previously received two #1 titles in NCGA yield contests.

The planting population of the Nigo Farms entry was 29,000 plants per acre. Fertilizer application consisted of 181 pounds of 11-44-0, 22 pounds of K-Mg and 236 pounds of NH3 anhydrous ammonia. During the summer, 410 pounds of 28-0-0 nitrogen was also applied through a center pivot system. Furadan granular was used twice (July 31 and August 14) for corn borer control. Atrazine and oil were applied postemerge for weed control. Final stand count showed a harvest population of 28,000 plants per acre.

The National Corn Growers Association has conducted this nationwide contest for the past 17 years. It is the only known non-commercial nationwide competition. With a 25 acre entry requirement, it is the largest field size of any contest. In the 1981 competition, there were approximately 522 entries in the irrigated division.

## Cedar Hill News Field work progressing at Cedar Hill

BY GRACE LEMONS

We are having some beautiful weather with the temperatures in the 80's and field work is progressing.

Virginia Mitchell has the flu again and is not able to be in school.

Edna Gilly visited her mother Ruthie Hill in Plainview Saturday who is ill.

Edna Gilly was among those who attended the program sponsored by the Rotary Club at the High School building in Floydada Saturday evening.

Mr. and Mrs. Tom Fortenberry spent Tuesday in Lubbock visiting their granddaughter Pam Hayhurst who was visiting her parents Mr. and Mrs. Lafayette Boone.

Mr. and Mrs. John D. VanHoose attended a funeral at Bridgeport last week and spent the night with their daughter and husband Mr. and Mrs. William Hensley.

Mary Othela Hensley, daughter of Mr. and Mrs. William Hensley of Denton and Calvin Lee Black plan on a March 17th wedding in the Lindsey Street Assembly of God Church in Denton.

The missionettes of the Assembly of God Church enjoyed a skating party in Plainview Saturday afternoon. Those present were Virginia and Sandra Mitchell, Twyla and Traca Lemons, Tonya and Vicki Powell and Shelly Bethel. Martha Taylor and Laticia Fortenberry sponsored the group and later took them to the Pizza Hut for refreshments.

Guests in the home of Mr. and Mrs. Carl F. Lemons for dinner Sunday evening were Mr. and Mrs. Marvin Lemons and children of Lockney, Mr. and Mrs. Phil Lemons and Mrs. Belle Lemons.

Mr. and Mrs. Bryan Fortenberry recently moved from Cedar Hill Community to Plainview.

Mrs. Peat Kelley and Norma Welch visited Mr. and Mrs. Tom Fortenberry Thursday.

The past can teach you; the present can test you; and the future can reward you.

**STAMP PRICE SPECIALS**

1/2 gallon Clorox BLEACH 19¢

With One Filled S&H Special Saver Book 79¢ without book

**STAMP PRICE SPECIAL**

18 oz. Pillsbury Layer CAKE MIX 29¢

With One Filled S&H Special Saver Book 89¢ without book

**Your Home Owned Store**

3 lb can Maryland Club COFFEE \$5.49

12 Count Carnation Hot COCOA MIX \$1.29

13 oz. Carnation EVAPORATED MILK 2/99¢

8 oz. Contadina TOMATO SAUCE 4/\$1.00

1 oz. Snack CRACKER JACKS 4/99¢

16 oz. Bag Baby Ruth or Butter Finger CANDY BARS \$1.99

15 oz. Del Monte Chopped SPINACH 2/99¢

7 oz. Box Nabisco Potato & Sesame SNACK CRACKERS 99¢

**Your Home Operated Store**

16 oz. Carnation COFFEE MATE \$1.69

12 oz. Nestles CHOCOLATE MORSELS \$1.99

**Farm Fresh Produce**

6 oz. Cello Package RADISHES 3/\$1.00

Calif. Firm Green LETTUCE 59¢ head

Calif. Navel ORANGES 3 lbs \$1.00

Calif. Minneolos TANGERINES 3 lbs \$1.00

US No. 1 Top Quality 5 lb Bag POTATOES 89¢

6 1/2 oz. Chicken of the Sea Chunk light TUNA 99¢

**Your Home Town Store**

2 lb Welch Grape JELLY OR JAM \$1.19

30 oz. Bonus Pack American Beauty SPAGHETTI OR ELBO RONI \$1.09

220 South 2nd 983-3149

**STORE HOURS**

Mon. Thru Sat. 8 am - 9 pm Sunday 9 am - 8 pm

Values In This Ad Effective Thru Wednesday March 3, 1982

We Reserve The Right To Limit Quantities

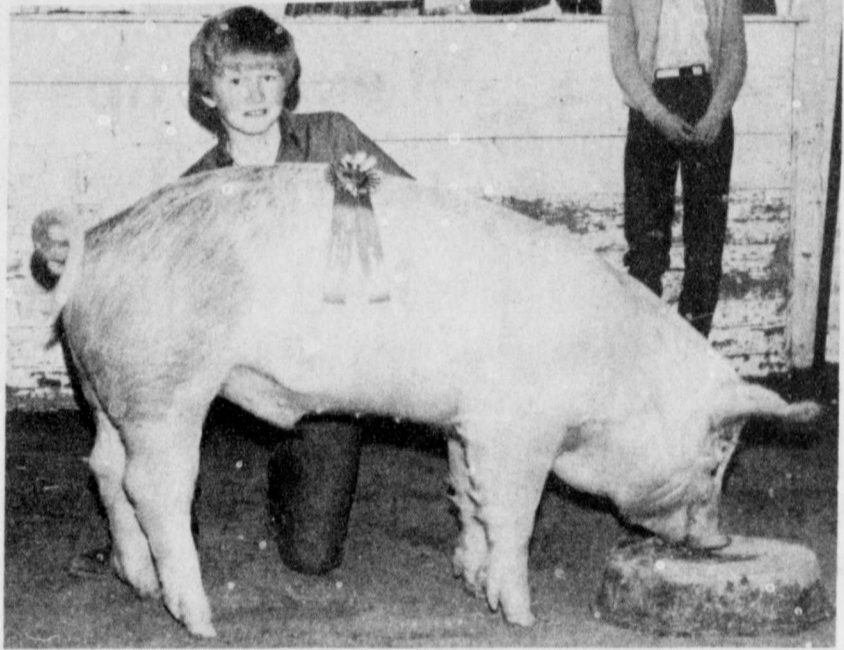
We Give S&H GREEN STAMPS We Redeem USDA Food Stamps

WE GIVE S&H GREEN STAMPS



# Congratulations

To FFA And 4-H Exhibitors



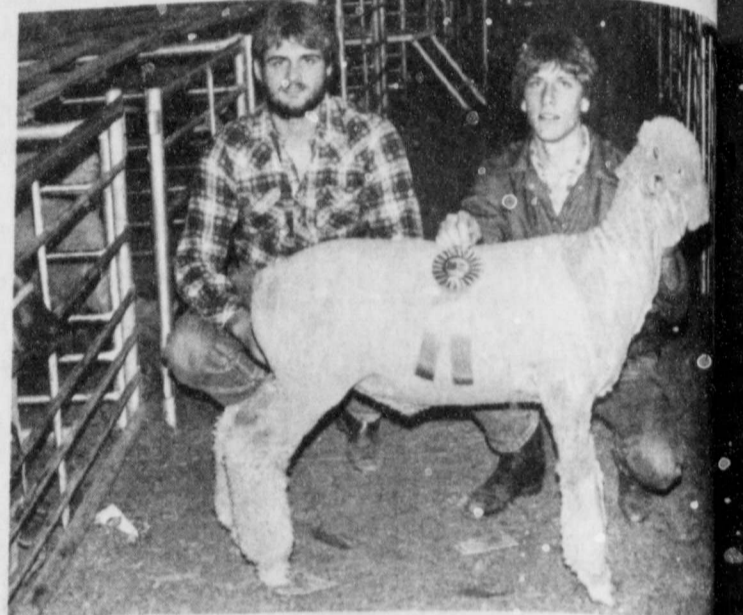
SHANNON BARBEE—Breed Champion Cross



MARTY COVINGTON—Breed Champion Hampshire



GARLAND EASTER—Breed Champion Duroc



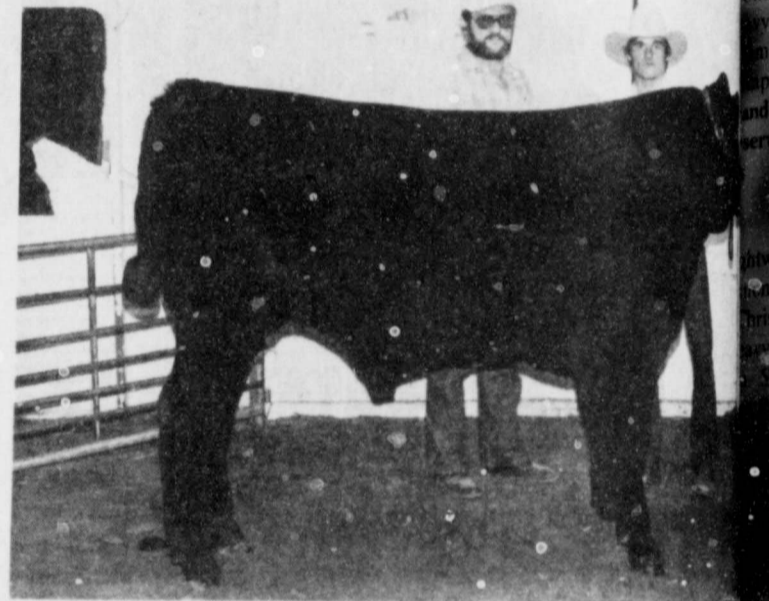
BRYANT HIGGINBOTHAM—Breed Champion Finewool



MARK HATLEY—Breed Champion Heavy Weight Yorkshire



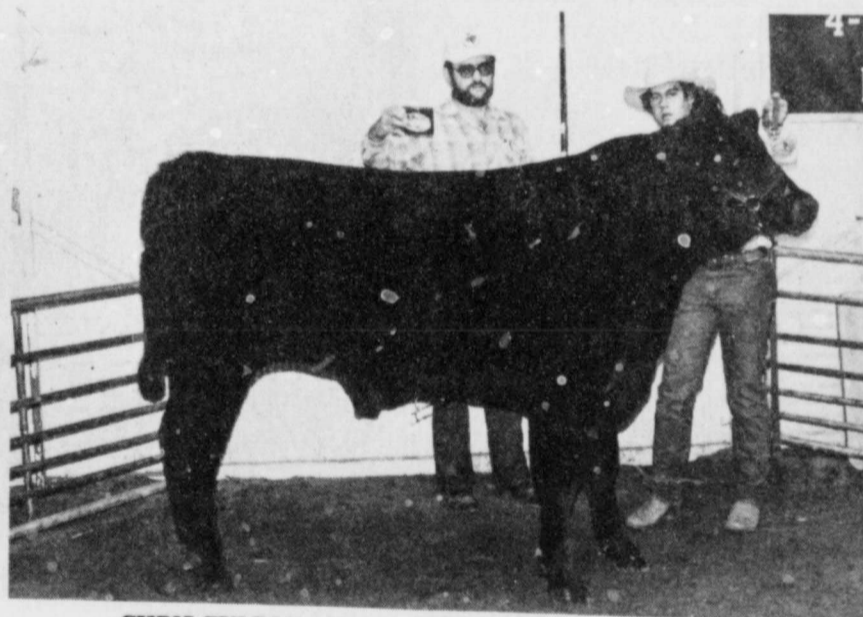
DUSTY BURESON—Reserve Breed Champion Hereford Steer



MARTY COVINGTON—Reserve Grand Champion Steer



JODY SMITH—Reserve Breed Champion Hampshire



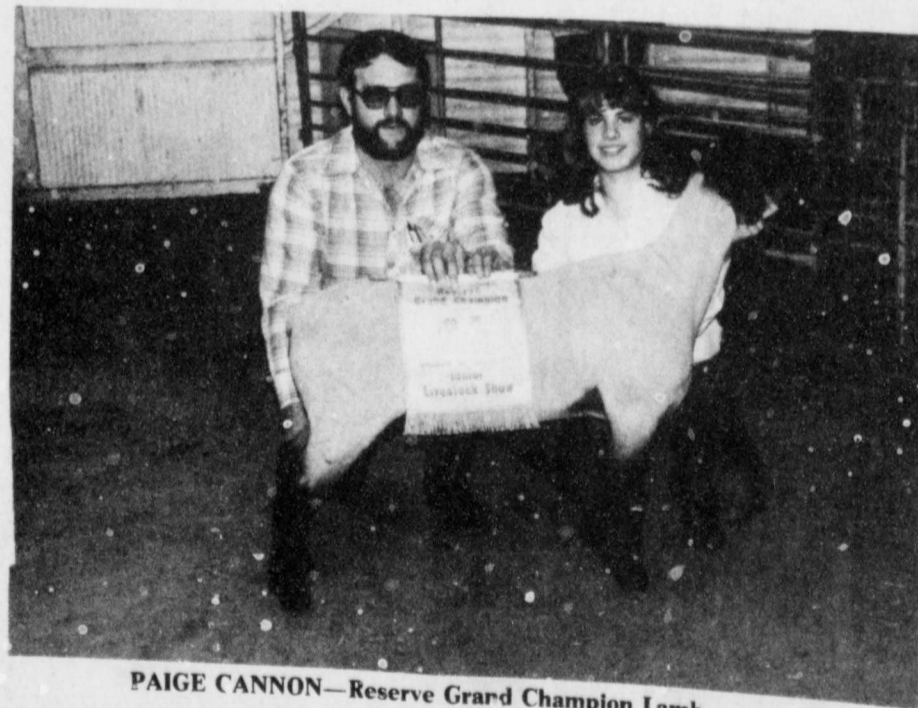
CHRIS FULTON—Grand Champion Cross Steer



KRISTI DAWDY—Breed Champion Hereford Steer



KEVIN HELMS—Reserve Breed Champion Finewool



PAIGE CANNON—Reserve Grand Champion Lamb



DEAN SEYMOUR—Reserve Breed Champion Southdown



KEITH HANCOCK—Reserve Breed Champion Finewool Cross

"Helping you change things for the better"  
**THE FIRST NATIONAL BANK OF FLOYDADA**



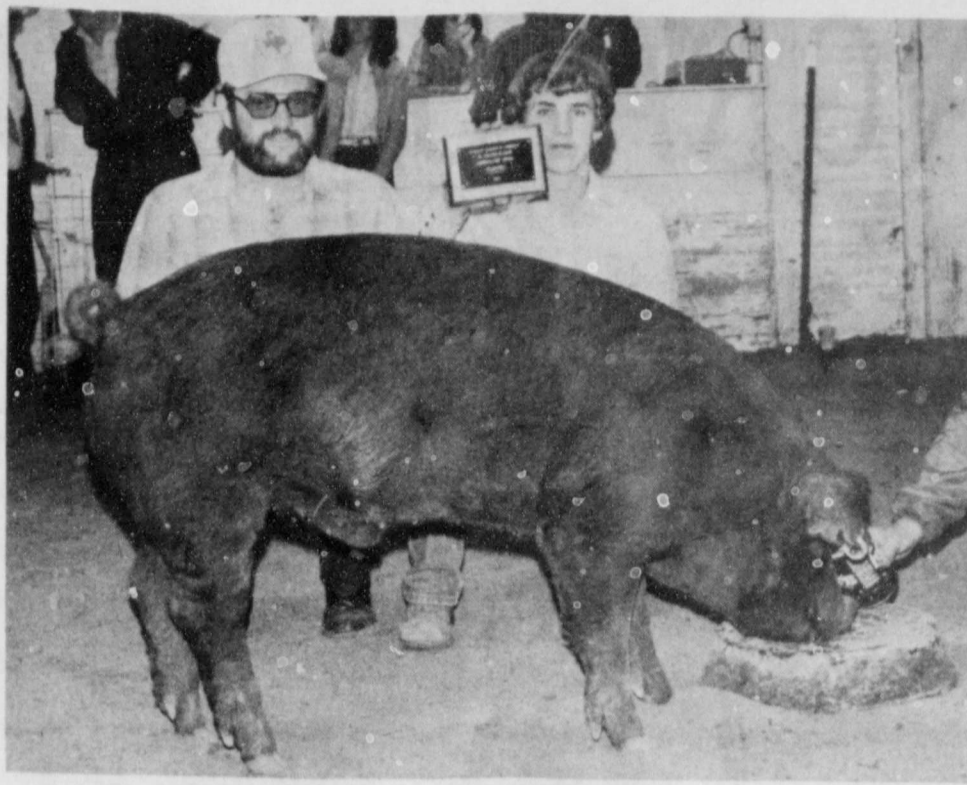
SHALA BARBEE—Heavy Weight Hampshire Breed Champion

oy  
HESTER W  
ght: 1st Ke  
3rd Chad  
ght: 1st T  
ancock: 3rd  
5th Max B  
n—Kevin H  
Champion—  
DUROC  
ght: 1st M  
Helms: 3rd  
mediumweight: 1st K  
Barbee: 3rd Ch  
Check.  
weight: 1st K  
Burns: 3rd K  
ples.  
and Champion—  
erve Champion—  
HAMPSH  
weight: 1st Gar  
Barbee: 3rd  
Prutt: 5th  
weight: 1st Sh  
enders: 3rd  
Joel  
Shala  
Champion—  
HER PURE  
ght: 1st Bri  
Smith: 3rd Ch  
weight: 1st M  
Ester: 3rd Mve  
ert.  
n—Mark H  
Champion—  
CROSSE  
ght: 1st M  
elle Harris: 3  
Dawdy: 5th  
Medium Weig  
d Cammy Ha  
4th Robert  
weight: 1st  
nd Easter: 3  
Dawdy: 5th  
Heavyweight  
d Christy Pa  
th Joey Pa  
weight: 1st S  
Hancock: 3r  
Fannon.  
erve Grand Cham  
Champion—  
CROSSBRED  
ght: 1st M  
Ross: 3rd Za  
Grand Cha  
Breed Cha  
CROSS ST  
ght: 1st Ma  
Angie Hir  
5th Chris Fu  
Here's #  
17 reasons  
&R Bloc  
epare you  
Reason #2: Fre  
about the new  
If the recent tax la  
have you confuse  
new H&R Block is of  
prochure on the Ec  
covery Tax Act of  
show how you can  
the new tax changes  
H&R BL  
THE INCOME TAX  
17 reasons. One sn  
106 W. Miss  
983-5233





TOM ROSS—Showmanship Award



GARLAND EASTER—Showmanship Duroc



KEVIN HELMS—Showmanship Award

# Floydada Livestock Show Results

**CHESTER WHITES**  
 Lightweight: 1st Kevin Helms; 2nd  
 3rd Chad Williams.  
 Heavyweight: 1st Tim Burns; 2nd  
 Hancock; 3rd Mark Nutt; 4th  
 5th Max Bearden.  
**Champion—Kevin Helms**  
**Reserve Champion—Tim Burns**

**DUROC**  
 Lightweight: 1st Monty Williams;  
 2nd Shannon Barbee; 3rd  
 4th Karen Pruitt; 5th  
 6th Christy Pruitt; 7th  
 8th Garland Easter; 9th  
 10th Kelly Griggs; 11th  
 12th Garland Easter.  
**Champion—Garland Easter**  
**Reserve Champion—Monty Wil-**

**HAMPSHIRE**  
 Lightweight: 1st Garland Easter; 2nd  
 3rd Keith Hancock; 4th  
 5th Robert Nixon.  
 Heavyweight: 1st Shala Barbee; 2nd  
 3rd Zack Nutt; 4th  
 5th Joel Prock.  
**Champion—Shala Barbee**  
**Reserve Champion—Garland Easter**

**OTHER PURE BREEDS**  
 Lightweight: 1st Brian Sanders; 2nd  
 3rd Chad Williams; 4th  
 5th Mark Hatley; 6th  
 7th Mychelle Harris; 8th  
 9th Mark Hatley.  
**Champion—Carlos Baker**

**CROSSES**  
 Lightweight: 1st Mychelle Harris;  
 2nd Kristy Dawdy; 3rd  
 4th James King; 5th  
 6th Sharon; 7th Cammy Hancock; 8th  
 9th Robert Nixon.  
 Heavyweight: 1st Shala Barbee;  
 2nd James King; 3rd  
 4th Brent Williams; 5th  
 6th Shannon; 7th  
 8th Kristy Dawdy; 9th  
 10th Shannon.  
**Champion—Shannon**  
**Reserve Champion—Shala Barbee**

**CROSSBRED STEERS**  
 Lightweight: 1st Marty Covington;  
 2nd Zack Nutt; 3rd  
 4th Marty.  
**Champion—Marty**  
**Reserve Champion—Marty**

**CROSS STEERS**  
 Lightweight: 1st Mark Nutt; 2nd Tom  
 3rd Angie Hinsley; 4th  
 5th Chris Fulton

Middleweight: 1st Chris Fulton; 2nd  
 Shannon Edwards; 3rd Kristy Dawdy;  
 4th Robert Nixon; 5th Shannon Ed-  
 wards.  
 Light Heavyweight: 1st Mitch Ross;  
 2nd Mark Nutt; 3rd Dusty Burleson; 4th  
 Chad Edwards.  
**Grand Champion—Chris Fulton**  
**Breed Champion—Chris Fulton**

**HEREFORD**  
 1st Kristy Dawdy; 2nd Dusty Burle-  
 son; 3rd Angie Hinsley; 4th Robert  
 Nixon.  
**Champion—Kristy Dawdy**  
**Reserve Champion—Dusty Burleson**

**FINEWOOL**  
 Lightweight: 1st Kevin Helms; 2nd  
 Hunter Smith; 3rd Dean Smith; 4th  
 Susan Hendrix; 5th Bryant Higginbo-  
 tham.  
 Heavyweight: 1st Bryant Higginbo-  
 tham; 2nd Kevin Bailey; 3rd Susan

Hendrix; 4th Kevin Bailey; 5th Jodie  
 Smith  
**Champion—Bryant Higginbotham**  
**Reserve Champion—Kevin Helms**

**FINEWOOL CROSS**  
 Lightweight: 1st Kevin Helms; 2nd  
 Kevin Bailey; 3rd Michael Leatherman;  
 4th Randy Wideman.  
 Mediumweight: 1st Garland Easter;  
 2nd Norman Allen; 3rd Dean Smith; 4th  
 Keith Hancock; 5th Grant Cage.  
 Heavyweight: 1st Keith Hancock; 2nd  
 Susan Hendrix; 3rd Marty Covington;  
 4th Chad Williams; 5th Cliff McClain.  
**Champion—Garland Easter**  
**Reserve Champion—Keith Hancock**

**SOUTHDOWN**  
 Lightweight: 1st Trena Reeves; 2nd  
 Ange Shurbet; 3rd Cammy Hancock;  
 4th Keith Hancock.  
 Heavyweight: 1st Dean Seymour; 2nd  
 Shannon Shurbet; 3rd Chad Williams;

4th Pam Woody  
**Champion—Trena Reeves**  
**Reserve Champion—Dean Seymour**

**HAMPSHIRE**  
 Lightweight: 1st Shannon Shurbet;  
 2nd Joe Faulkenberry; 3rd Joe Faul-  
 kenberry; 4th Ange Shurbet.  
 Mediumweight: 1st Cammy Hancock;  
 2nd Keith Hancock; 3rd Susan Hendrix;  
 4th Hunter Smith.  
 Heavyweight: 1st Marty Covington;  
 2nd Jodie Smith; 3rd Marty Covington;  
 4th Norman Allen; 5th Robert Huerta.  
**Champion—Marty Covington**  
**Reserve Champion—Jodie Smith**

**SUFFOLK**  
 Lightweight: 1st Cammy Hancock;  
 2nd Dean Seymour; 3rd Scotty Battey;  
 4th Trena Reeves; 5th Randy Wideman.  
 Light Mediumweight: 1st Kevin  
 Helms; 2nd Paige Cannon; 3rd Joe  
 Faulkenberry; 4th Enrique Alvarez; 5th  
 Kathie Battey.  
 Mediumweight: 1st Paige Cannon;  
 2nd Kathie Battey; 3rd Kevin Helms;  
 4th Pam Woody; 5th Cliff McClain.  
 Light Heavyweight: 1st Garland Eas-  
 ter; 2nd Marty Covington; 3rd Jodie  
 Smith; 4th Monty Williams

Medium Heavyweight: 1st Kevin  
 Helms; 2nd Norman Allen; 3rd Cammy  
 Hancock; 4th Randy Wilson.  
 Heavyweight: 1st Monty Williams;  
 2nd Grant Cage; 3rd Norman Allen; 4th  
 Grant Cage; 5th Grant Cage.  
**Grand Champion—Garland Easter**  
**Reserve Grand Champion—Paige**  
**Cannon**  
**Reserve Champion—Paige Cannon**

**Congratulations**  
**to FFA and 4-H members**

## Sorghum team works with Mexican livestock

A team of livestock research scientists and sorghum farmers is meeting with livestock producers in the rapidly expanding feedlot industry of Mexico. The seven-man team is under the direction of U.S. Feed Grains Council and Grain Sorghum Producers Association and is jointly sponsored by Funk Seeds, International; Ciba Geigy, Agricultural Division and Pioneer Hi-Bred Seeds, International. The purpose of the project is to examine ways to continue the expansion of sales of U.S. grain sorghum to Mexico.

Mexico was the second largest customer for U.S. grain sorghum in 1979 and 1980. Sales have dropped because the Mexican domestic crop of feed grains was large in 1981. Increased sales are expected later this year.

Beef Research Scientist from the Ft. Hays Experiment Station in Hays, Kansas, will conduct a nutrition seminar in Torreon and consult with livestock producers in Torreon, Guadalajara and Mexico City. The trip will conclude with conferences with Mexican Government and railroad officials in Mexico City.

GSPA President Mabry Foreman and Executive Director Elbert Harp are leading the team. Donald Epperson of Hutchinson, Kansas; Walter Cox of Abernathy, Texas and H.H. Deaver of Bishop, Texas are representing U.S. sorghum producers.

"We are grateful to our commercial sponsors: Funk Seeds, Ciba Geigy and Pioneer Seeds, for their support and encouragement," said Foreman. "Our market development program depends on this kind of cooperation between producers and agri-business."

Quality care is...  
**A Warm Atmosphere**

In our nursing home, one of the most important things we do for our residents is work to create a warm, friendly atmosphere. We do it with big smiles. With genuine friendship between our nurses and residents. And with activities designed to make our residents feel at home, among friends: trips, parties, classes in crafts, and more.

Some people may think that working to create a warm, happy atmosphere isn't a usual part of health care. But a nursing home isn't an intensive care unit. It's a home. And we try to make our home as warm and loving as we can, because when our residents are happier, they feel better.

And that's what nursing, and nursing home care, are all about.  
 Come and visit us soon, and feel at home.

**Lockney Care Center**  
 401 North Main Lockney - 652-2502

MEMBER  
 NURSING HOME ASSOCIATION  
 An affiliate of  
 AMERICAN HEALTH CARE ASSOCIATION

**CARQUEST AUTO PARTS STORES**

**ANNIVERSARY SALE**

**COUPON 2.00 OFF ANY Gates FAN BELT OR RADIATOR HOSE**  
 LIMIT ONE PER CUSTOMER Expires March 7, 1982

**CARQUEST MOTOR OIL 10W40 All Season or HD30 wt. A product of Ashland Oil Co.**  
**YOUR CHOICE 99¢ qt.**  
 LIMIT 1 CASE PER CUSTOMER

**AC OIL FILTERS**  
 Help protect your engine.  
**2.89 ea.**  
 #PF2, PF20, PF24, PF25, PF30, PF35, PF40, PF45.

**CARQUEST HEAVY DUTY SHOCK**  
 Fits most Domestic cars, light trucks and some imports. Big 1-3/16" piston.  
 Sug. List \$14.88  
**8.95**

**ANCO WIPER REFILLS**  
 Replace worn wiper blades.  
**3.59 pr.**

**I CAN HELP. QUALIFIED COUNTERMAN**

**GOT A PARTS PROBLEM?**  
 Ask a Qualified Counterman. Only CARQUEST has them.

Good at participating CARQUEST Auto Parts stores thru Mar. 7, 1982

**CAPROCK Motor Parts & Hardware, Inc.**  
 114 W. California Street  
 Floydada, 983-2005  
**CARQUEST: the Right Place to buy auto parts.**

Here's #2 of my 17 reasons why H&R Block should prepare your taxes.

Reason #2: Free brochure about the new tax laws.

With the recent tax law changes, are you confused? We can help. H&R Block is offering a free brochure on the Economic Recovery Tax Act of 1981. We'll show you how you can benefit from these tax changes.

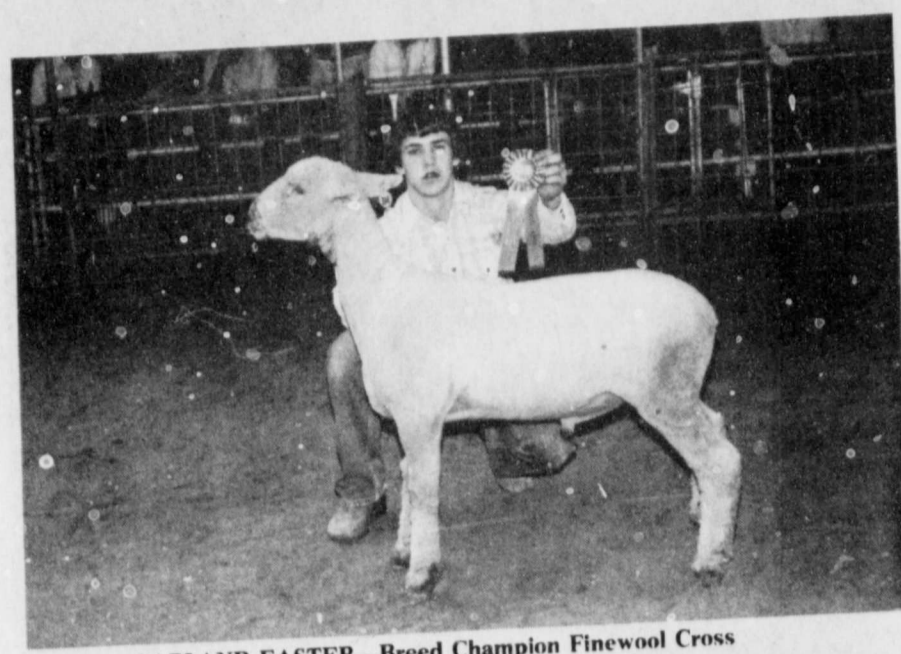
**H&R BLOCK**  
 THE INCOME TAX PEOPLE  
 Reasons. One smart decision.

106 W. Missouri  
 983-5233



# CONGRATULATIONS

## 4-H and FFA'ers You Have Our Support



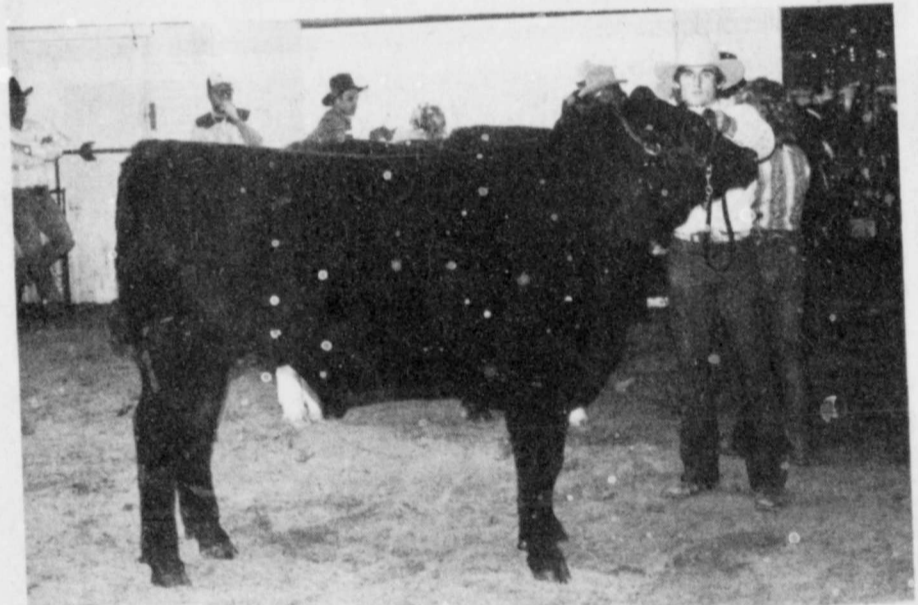
GARLAND EASTER—Breed Champion Finewool Cross



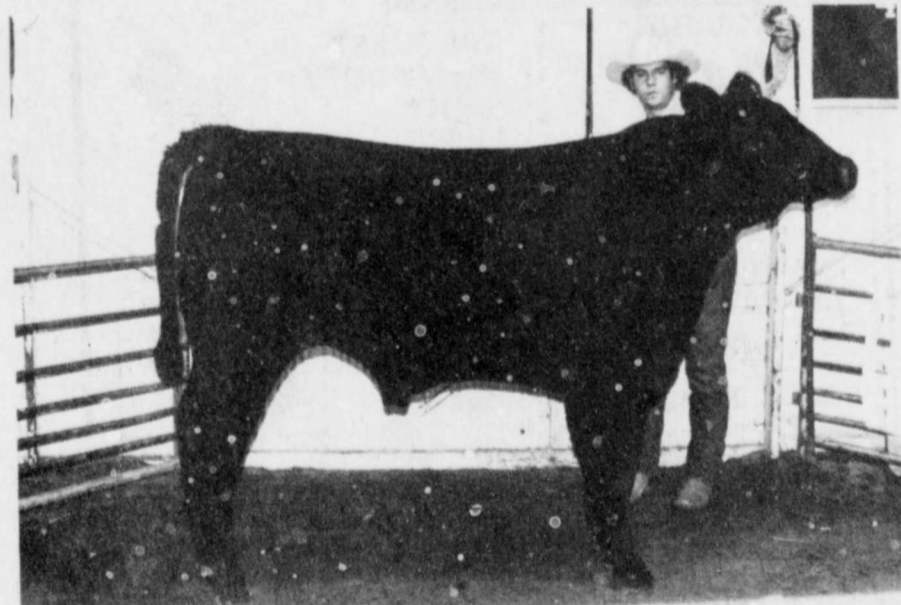
PAIGE CANNON—Reserve Breed Champion Suffolk



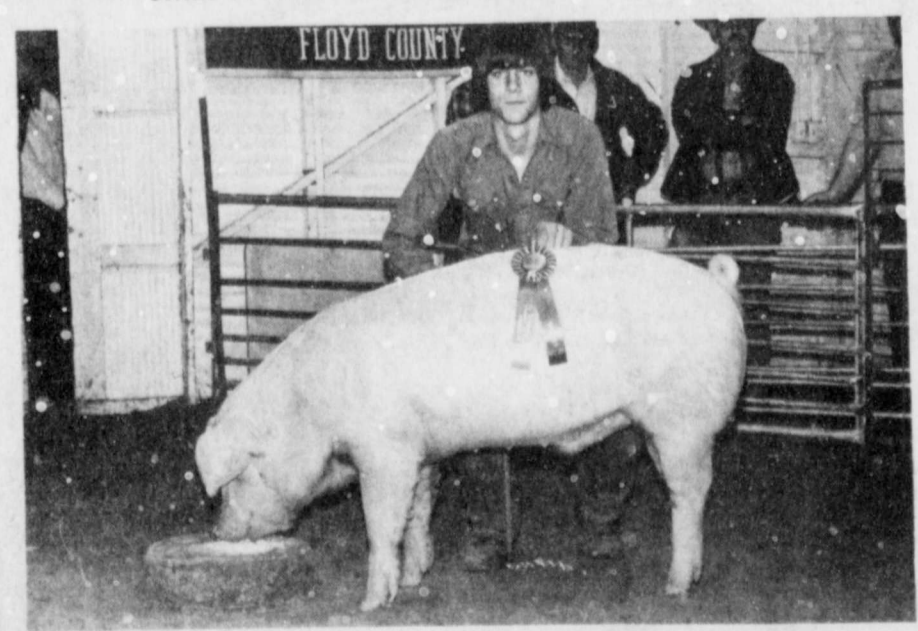
GARLAND EASTER—Grand Champion Lamb



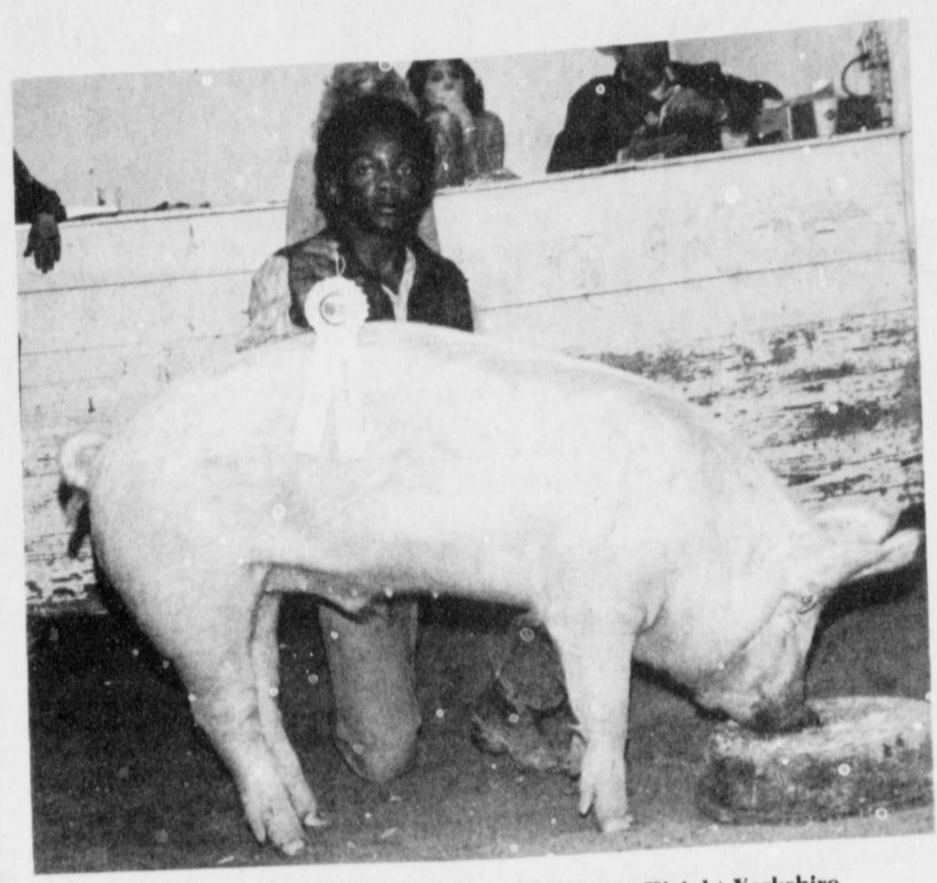
MARTY COVINGTON—Reserve Breed Champion Cross Steer



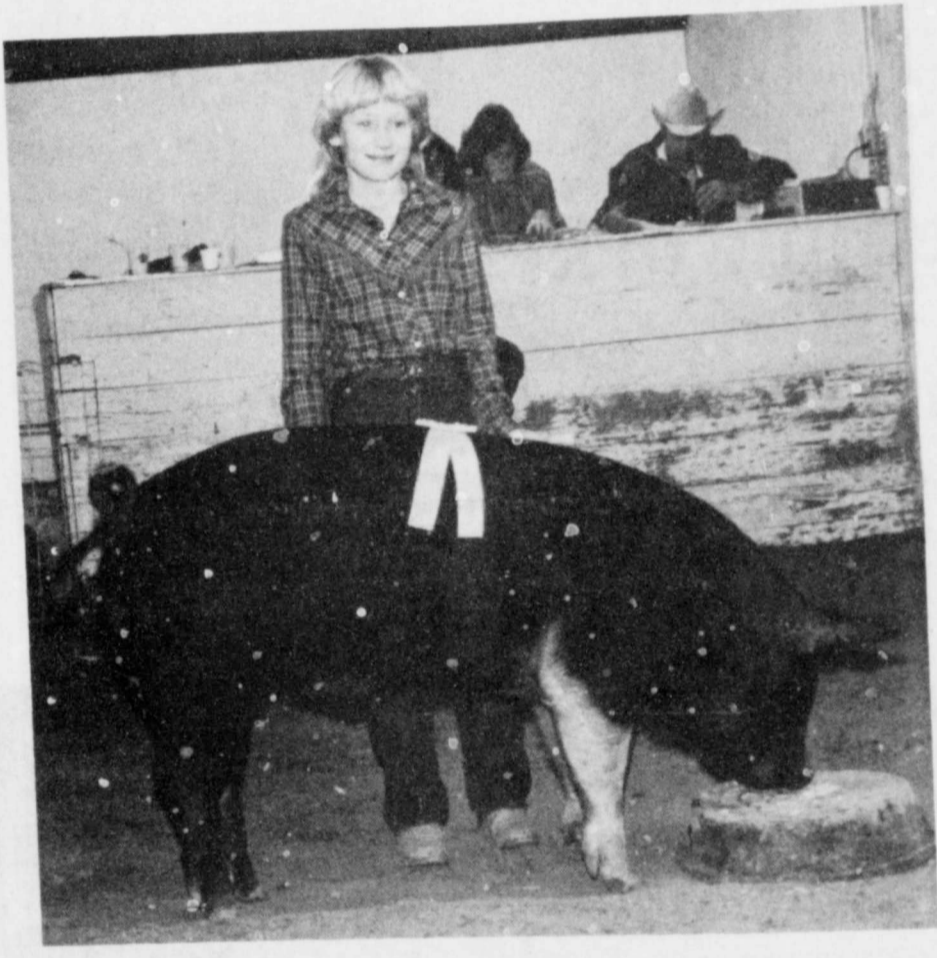
CHRIS FULTON—Breed Champion Cross Steer



KEVIN HELMS—Lightweight Chester White Champion



CARLOS BAKER—Reserve Breed Champion Heavy Weight Yorkshire



SHALA BARBEE—Medium Weight Cross Reserve Breed Champion



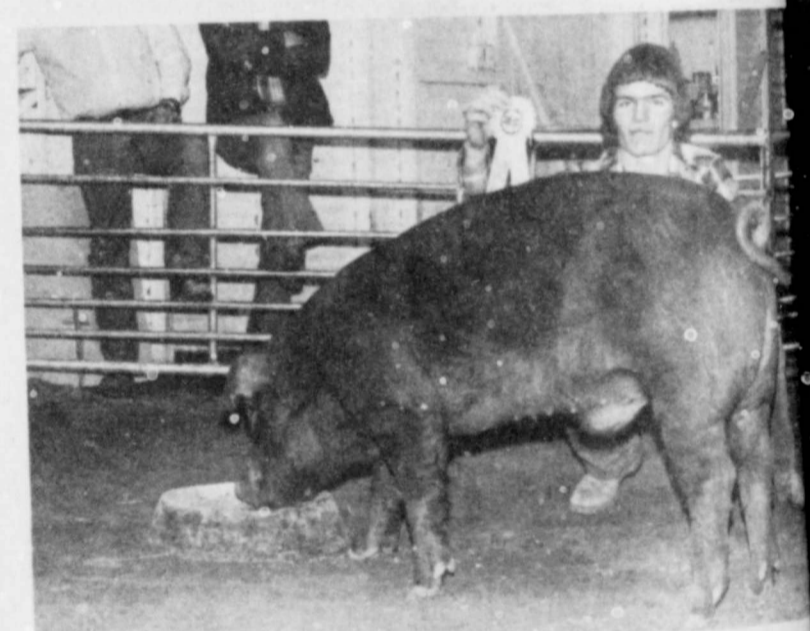
GARLAND EASTER—Breed Champion Suffolk



SHANNON BARBEE—Heavy Weight Cross Reserve Grand Champion



GARLAND EASTER—Grand Champion Heavy Weight Duroc



MONTY WILLIAMS—Reserve Breed Champion Eight Weight Duroc



TIM BURNS—Reserve Breed Champion Heavy Weight Chester White



GARLAND EASTER—Light Weight Hampshire Reserve Breed Champion

**CONSUMERS  
FUEL ASSN.**

210 East Missouri 983-3394

**PONDEROSA MEATS**

807 East Missouri 983-2261

**FLOYDADA COOP GINS  
INC.**

Ray Gene Ferguson Mgr.

319 N. 5 983-2884

This

GLENN C

BUTCH J

TONY I

DREW PE

LARRY BE

STEVE WI

3

BENNY

JAY SA

Cowb

The above  
Cowboys will b  
Saturday night  
Floydada  
basketball gar  
the Cham  
free. A few  
available, but  
try. A sell  
aves Gym  
kets are \$7  
50 under 12.  
10 p.m.

This week  
continued on 1

Wheat

Courtesy of	OF	HIGH
24	53	
25	29	
26	37	
27	54	
28	64	
March 1	71	
March 2	73	