

of Floydada not affected

## SPS requests rate raise

Southwestern Public Service Company will request a 12.7 percent increase in the retail price of electricity in Texas, ranging from 55 to 65 cents per kilowatt-hour for the typical residential customer.

Proposed increases include \$19.2 million in Texas city rates and \$22.3 million in rural areas which are set by the Texas Public Utility Commission outside city limits.

Company manager, Lewis McDaniel, said the city council in Floydada also has a municipal utility commission and SPS rates must be approved by that body.

McDaniel said the price increase will be approved by the city of Lockney and the city of Floydada.

He said the electric utility's revenue will be increased by 12.7 percent this year because of the change to coal as the fuel source and high money costs, and the cost of electric service represents

will spend about \$4 to \$5 per month less than he would have, if the company had not made the decision to move to coal and away from natural gas as boiler fuel in new power plants. For all of the Company's customers, this amounts to a savings of about \$106 million a year when the new Tolk Station is fully operating.

SPS managers in the 68 Texas cities and towns served by the utility and affected by the rate increase are now providing city officials with details of the Company's need for a rate increase.

Ballengue explained that extensive analysis of all revenue data and customer electrical demands indicates a need to file for the increase with the Texas city commissions and the Public Utility Commission. When the new rate is approved, a \$41.5 million annual revenue deficiency will be corrected.

The cost of electric service represents

about two percent of the average family residential budget—the same as it was five years ago, Ballengee said. He added that the unit cost of electricity is now the same as it was in 1927, when most families used 500 units of energy each year. Now, most families use about 7,000 units a year, Ballengee said.

"We don't expect our customers to like the prospects of higher electric bills—but we believe they will understand the importance of keeping the increases to a minimum while maintaining a reliable electric system," Ballengee said.

Southwestern Public Service primarily provides electric utility service to a population of more than 1 million in a 45,000-square-mile area of the Panhandle and south plains of Texas, eastern and southeastern New Mexico, the Oklahoma Panhandle and southwestern Kansas.

## Delinquent taxes at 7% penalty and going up

A congressional act, put into effect this year, will pile a mighty expensive penalty on those who allow their taxes to become delinquent.

Normally taxes, past due in February, would only cost 1% in penalty interest. At the present time all taxes are past due and the penalty and interest is at 7%. This will escalate at the rate of 1% per month until the taxes are paid.

The penalty will jump monthly from 6% in February to 12% in July and will stay at that figure the remainder of the year. By January 1983 a whopping 24% will be charged in penalty and interest.

By comparison, the penalty and interest did not reach 7% until June in 1980.

The 67th Legislature increased the penalty and interest and made the increase effective on September 1, 1981.

Dub Hallmark, superintendent of schools at Lockney, said that in the past it might have been feasible to let the taxes ride since borrowed money was at a cheaper rate, but that "with this new legislation the penalty and interest can be disastrous."

The Lockney ISD has placed on retainer the law firm of Perdue, Brandon, Blain & Fielder in Amarillo for the purpose of collecting delinquent taxes.

Hallmark said that his school district will mail delinquent notices again in order to give those affected an opportunity to clear their taxes before March 15.

The same penalty and interest schedule holds for all taxing units.

The city of Floydada also employs tax attorneys in Amarillo for collection of delinquent taxes. Second notices have been sent according to city manager Bill Feuerbacher.

The following chart gives the penalty and interest rates through the year:

Interest continues to accrue at the rate of 1% per month until taxes are paid.

The following chart gives the penalty and interest rates through the year:

DATE	PENALTY	INTEREST	TOTAL
February, 1982	6%	1%	7%
March, 1982	7%	2%	9%
April, 1982	8%	3%	11%
May, 1982	9%	4%	13%
June, 1982	10%	5%	15%
July, 1982	12%	6%	18%
August, 1982	12%	7%	19%
September, 1982	12%	8%	20%
October, 1982	12%	9%	21%
November, 1982	12%	10%	22%
December, 1982	12%	11%	23%
January, 1983	12%	12%	24%

Interest continues to accrue at the rate of 1% per month until taxes are paid.



BAND MEMBERS rehearse for the Rotary Club musical, A Little Bit Country, to be presented Saturday night at 7:30 p.m. at the high school auditorium. The show will feature all local talent. Proceeds will be used by the Boy Scouts.

## Rotary musical is all local talent

"A Little Bit Country" musical variety show will be staged Saturday night, February 20, at 7:30 p.m. at the Floydada High School Auditorium featuring all local talent.

Sponsored by the Floydada Rotary Club, proceeds from the entertainment will be used by the Boy Scouts to send two of their members to camp.

Featured performers are Harvey Allen's Playa Playboys. "The selections we'll be playing should fit every age group," Allen said, "some older coun-

try song, some new ones, and some surprises," he added.

The band is made up of: Tommy Farris, base guitar; Richard Burton, piano; Kelly Turner, lead guitar; Alex Torrez, drums; Art Ratzlaff, steel guitar; Jerry Ford, Rhythm guitar; and Allen on the harmonica.

Featured vocalists with the band are Susan Turner and Kamala Ford.

A selection of gospel music will be presented by Bobby Rainer, and Britt and Jack Gregory.

"The West Winds", a band of high school students led by Brian Sanders, is also on the program. Members are: Rob Pratt, Tim Burns, Roger Alldredge and Gilbert Schwertner.

Alton Higginbotham will act as Master of Ceremonies.

"We hope everyone will come out," Allen said, "they'll get their moneys worth."

Tickets are \$2 for adults and \$1 students.

## Show barns open noon Sunday

The 27th annual Floyd County Junior Livestock Show will begin Sunday, February 21 with the County Show Barns opening at 12 noon.

The show barns are located on the rodeo grounds in Floydada. Entry fees are \$5 per head for steers and \$3 per head for lambs and barrows.

Judges and classifier for the 1982 Show are: Steer Judge, Spencer Tank-sley, Bailey County Extension Agent; Swine Judge, Paul Gross, Amarillo District Extension Director; Lamb Judge, Joe Ed Wise, Dawson County Extension Agent; Classifier, Gary Stanford, Jones County Extension Agent.

The show, beginning on Sunday, will end on Thursday with the banquet for 4-H and FFA exhibitors and parents to be held at Lockney Elementary School Cafeteria in Lockney. The banquet, sponsored by the Floyd County Farm Bureau, is at 7 p.m.

Lockney and Floydada 4-H and FFA club and chapter sweethearts have begun membership card sales for the Show. Membership dues to the Stock Show Association are \$5 for individuals and \$10 for businesses.

Memberships to the Association gives an individual or business voting

rights in the Association and the dues are used to maintain and improve the existing showground facilities.

This year's 4-H and FFA Sweethearts are: Kathy Battey, Floydada 4-H; Misti Younger, Floydada FFA; Karyn Foster, Lockney 4-H, and Dena Casey, Lockney FFA.

The Sweetheart that collects the most membership dues will become the 1982 Floyd County Junior Livestock Show Queen.

This year's show is dedicated to the memory of Raymond Akin who donated his services as auctioneer of the show's annual auction sale of prize winning animals for 27 years.

Interest in this year's auction is mounting and a concerned effort is being expanded by supporters to make this the best sale year in the Show's history.

A schedule for the show is given in full on page three of this issue.

## Floydada local show

### Extended to full day

The Floydada Jr. Livestock Show, in its second year, will be expanded to a full day of judging on Saturday, February 20. The barn opens at 1 p.m. Friday and all animals must be in the barn at 5 p.m.

The show is sponsored by the Floydada Chamber of Commerce as a preliminary to the Floyd County Jr. Livestock Show which will begin on Sunday.

The two day local show will begin with the 5:30 weigh in on Friday afternoon.

Judging will begin Saturday morning at 10 a.m. with the lamb entries. The barrow and steer judging will follow.

Jerry Hawkins, Clarendon Jr. College Livestock Judging Team Coach, will be the judge.

Entries will be accepted from any regularly enrolled 4-H member, boy or girl who is nine years of age or older before the show, or any FFA or FHA member under the supervision of the

county Agent or Floydada Vocational Agriculture Instructor and attend public schools in Floydada, provided they are in show condition.

Each exhibitor will be limited to 12 entries. A maximum of four steers, four lambs, or four barrows.

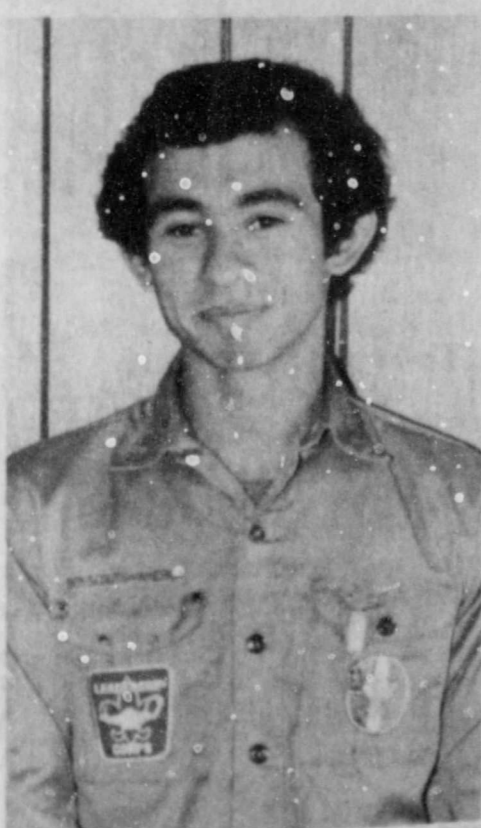
An entry fee of \$3 per animal will be charged.

Prize money will be furnished by the Chamber of Commerce. In all three divisions the breed classes with not more than eight will be in one class, breeds with 15 or less will be divided into two classes: lightweight and heavy-weight.

Premiums are as follows: light and heavy classes, 1st place \$5; 2nd place \$4; 3rd place \$3; 4th place \$2; 5th place \$1. 1st through 5th also will receive ribbons.

Breed Champion and Reserve Breed Champion will receive Rosettes. Grand Champions will receive belt buckles in each division.

## Galvan awarded Eagle Scout



DAVID GALVAN

David Galvan was awarded scouting's highest honor for boys, that of Eagle Scout, in a ceremony at the Rotary Club luncheon February 17. He is the son of Mr. and Mrs. Willie Galvan.

David is a senior at Floydada High School and as a member of the FHS tennis team competed in the state finals in 1981. He is also sportswriter for the Hesperian. He has been a member of Boy Scout Troop 355, sponsored by the Rotary Club, for five years.

Jose Alaniz was also recognized at the luncheon. Jose was awarded the Eagle Scout badge recently at a meeting of the Lions Club. He is also a member of the FHS tennis team.

Two other awards were presented one to Felix Soliz and the other Tony Soliz. Both boys received their Eagle Scout in 1980, and they were given the Eagle Silver and Gold Palms which are Merit Badge Awards above the Eagle.

Wilson Bond is Scoutmaster and Eli Enriquez and Adolfo Garcia are Assistant Scoutmasters.

This is the 75th Anniversary of Boy Scouting.



JOSE ALANIZ

## Dawson files for council

Bill Dawson has filed for one of three seats open on the Floydada City Council. Election will be held on April 3 at the City Hall.

Two of the incumbents have re-filed for positions. They are Leroy Burns and Boone Adams. Position held by Carl Jarrett is the third seat up for election and Jarrett has not filed.

Filing deadline is March 3. Councilmen are elected for a two-year term.

City Council will hold a public hearing on the 1982-83 operating budget at their

regular session on March 9 at 7:30 p.m.

The general Revenue Sharing 1982-83 budget was approved by council on February 9. Distribution of the \$34,418 funds are as follows: fire truck, \$10,000; remodel front of City Hall, \$9,418; electric distribution bucket truck, \$15,000.

Shipments of new dumpsters from the recently purchased sanitation replacement system have arrived and city personnel are preparing them for placement in the near future.

County of Emergas	LOW	HIGH
10	61	19
11	46	28
12	48	28
13	55	29
14	72	29
15	63	32
16	73	45
	78	38

# Support The Jr. Livestock Show



### Political Calendar

Subject to the May Democratic Primary

**U.S. Congress**  
Charles Stenholm

**State Senator**  
Ray Farabee

**District Clerk**  
Mary McPherson

**County Judge**  
Choise Smith

**County Treasurer**  
Glenna Orman

**County Clerk**  
Margaret Collier

**Commissioner Precinct 2**

Bob Jarrett

Charles Carthel

**Commissioner Precinct 4**

Jack Lackey

**Justice of the Peace  
Precinct 1-4**

Walter Hollums

E.P. "Ernest" Smitherman

**Justice of the Peace**

**Precinct 3-4**

Raz Ford



**ESSAY CONTEST WINNERS**—These students were announced to be the winners in an essay contest on Soil and Water Conservation. Pictured are [l-r] Jon LaBaume, Soil Conservation manager, Patti Campbell, second place winner, Lillian Polanco, 1st place, and Ricky Heflin, third place.

## Polanco places in essay contest

Lillian Polanco, Floydada High School student, was revealed, as the first place winner in the senior division of the essay contest Tuesday morning during a school assembly program. The essay was part of the Texas Conservation Program Awards.

R.G. Dunlap, director of the Floyd County Soil and Water Conservation District presented the cash awards to the top three winners.

Lillian won \$25 for her first place essay. Second place of \$15 was awarded to Patti Campbell. Third place award

went to Ricky Heflin and he received \$10.

Honorable mention went to Penny Kirtley and Jeanine Gray.

The Floyd County Soil and Water Conservation District donated the prize money. The contest was an open contest in which any high school age person was eligible to enter.

The title for this years contest was "Soil and Water Conservation". Polanco's essay has been forwarded to the regional and state contest for

judging. These winners will be announced later this month or early next month.

The junior division of the essay contest is still being judged and winners will be announced at a later date.

"The directors of the Floyd County SWCD wishes to thank all the students, teachers, and others for the fine assistance given during this years contest," said Jon LaBaume, Soil Conservation manager.

## Floydada Speech Team places 7th

The Floydada High School Speech team placed seventh in a field of 39 schools competing at the Tech Tournament this past weekend.

The debate team of Wally Davis and Don Cheek reached the quarter-finals. Jill Willson, informative extemporaneous, reached the semi-finals.

The team gathered 106 sweepstakes points in the tournament that attracted 4A and 5A schools from as far away as El Paso. The majority of schools entered were of large enrollment.

Floydada entered four debate teams. The UIL debate resolution this year is

"The federal government should establish minimum educational standards for secondary and elementary schools in the United States."

The debate teams were: Cindee Davis and Wendy Ruff; Stacy Smith and Robert Pratt; David Carr and Renda Thomason.

The extemp entries were: persuasive: Bill Harris and Lane Cheek.

Entered in the prose category were: Patti Campbell and Rande Poage. Those two also entered the duet acting competition.

The FHS team will go to Lubbock Cooper on February 27 with three

debate teams and a three member entry in each event.

Complete division entries will also participate in the Tulia High School Tournament on March 4.

On March 25 Floydada will host a one-act play festival with six schools participating.

The UIL district Tournament will be held in Lockney on April 1.

Joe Willis is FHS speech coach. Barbara Willis, his wife, is the Jr. High speech coach and takes members of the Jr. High team to most tournaments to gain experience.

## Letter to the Editor

Editor,  
I want to take this opportunity to thank all the people who judged at our recent speech tournament. They did an outstanding job. Each person was present on time and stayed to do extra work.

Also, several businesses and individuals helped to sponsor our tournament. They were: Mr. Randy Hollums, My-T Burger, Dairy Queen, Kirtleys, Script Printing, and Pizza Gold. Without their financial consideration, the second annual Whirlwind Invitational

would not have occurred.  
Mrs. Gloria Cavazos, Enlow, and Mrs. C... deserve a special vote of... help with concession... All the parents of... drama students helped... support of time and effort... I appreciate all the... patience of all these... individuals. Thanks again...

Director, F...

**INSURANCE  
FOR YOUR  
HOME  
RANCH  
FARM  
AUTO  
CROPS  
LIFE**

If a water pipe breaks and water ruins my carpet will my Homeowners policy cover the loss?

**983-3777 Floydada**

For help with insurance questions and needs call...

**TEXAS FARM BUREAU  
INSURANCE COMPANIES  
652-2242 Lockney**



James Ray



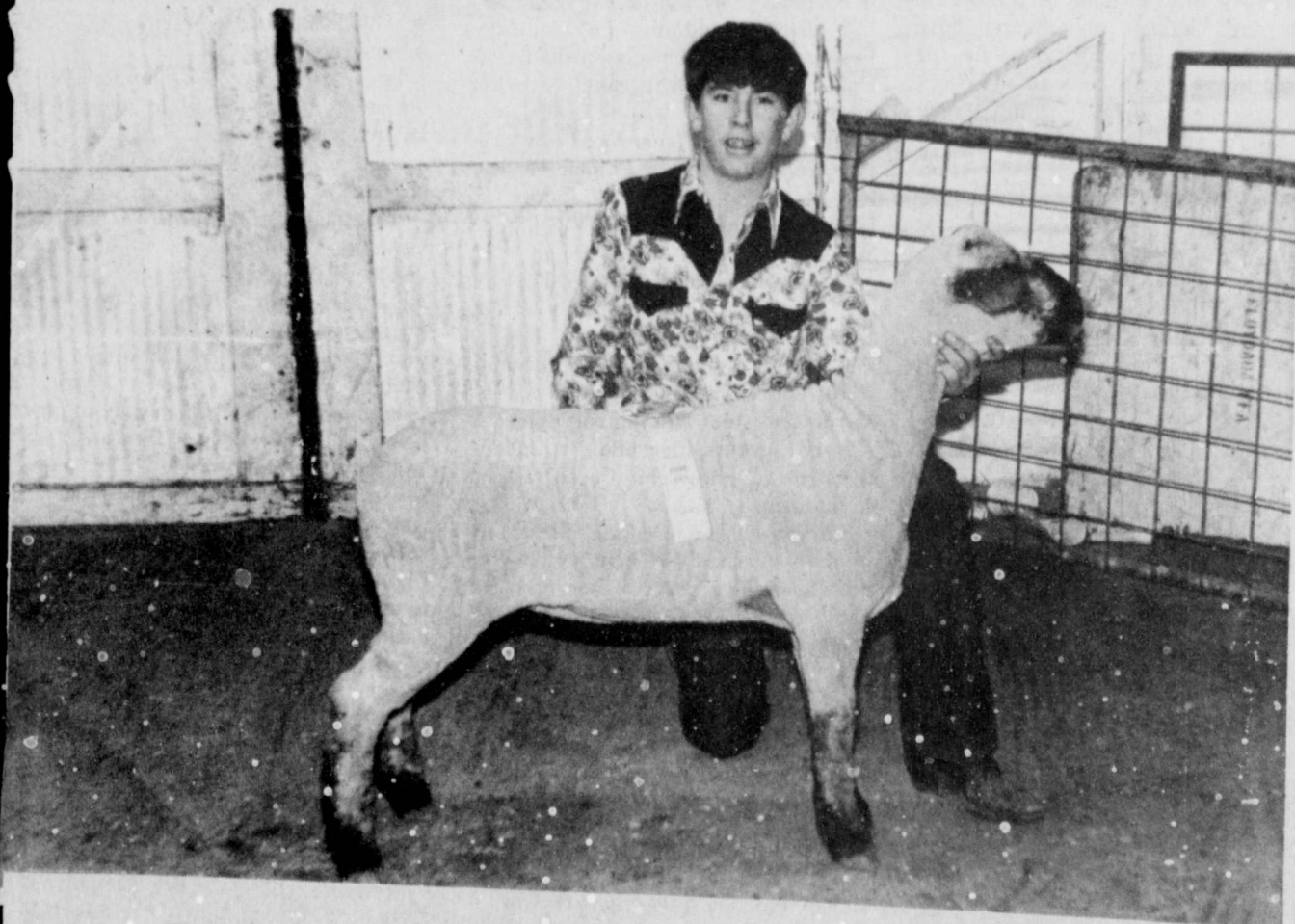
## See Tommy Assiter For Your All-Risk Crop Insurance

You Can Transfer Your Files From The Lubbock District Office Now.

983-2511  
206 W. California  
Floydada

## Support Our FFA & 4-H Youth in their activities!

...Our future tomorrows are in their hands.



Attend The Stock Shows And Sale  
Davis Lumber &  
True Value Hardware

102 E. Shubert Lockney, Texas 652-3385

## Our area youth need your support ...Our Future is in their hands



Show them you care, attend the Local & County Stock Show & Sale

Floyd County's Progressive Bank

**First National Bank**  
in Lockney

MEMBER F.D.I.C.

Accounts insured up to \$100,000.

(806) 652-3355

Look for this sign We've got the answer











**STUDENT COUNCIL OFFICERS**—Jr. High Student Council officers display a copy of the check to be presented to the Annie Taylor Scholarship Fund. The \$150.00 was raised from a dance, carnation sale and concession stand sales the students have participated in. Pictured are [l-r] Kellie Pitts, Treasurer; Mary Ann Quilantan, Secretary; J.D. Wilson, Vice President; and Johnny Barrera, President.

## Junior High Beau and Sweetheart elected

Clay Lowrance and Paige Cannon, seventh graders, and Hanev Robertson and Deborah Reeves, eighth graders at Floydada Jr. High School, were named Beau and Sweethearts at a Valentine Dance held Friday night at the FJHS gymnasium.

The dance was sponsored by the Student Council. Student Council officers are Johnny Barrera, President; J.D. Wilson, Vice President; Mary Ann Quilantan, Secretary; and Kellie Pitts, Treasurer.

Proceeds from a carnation sale, concession stand and a trivet raffle totaled approximately \$150.00 and will be donated to the Annie Taylor Scholarship Fund.

Other nominees for Sweetheart and

Beau were seventh graders L-if Younger, Tana Perry, Shannon Barbee, Darolyn Williams, Alfred Medrano and Jana Davis. Eighth grade nominees were Ramon Coronado, Rabel Contreras, Tomas Delgado, Janie Barrera, Jamie Thayer and Diana Wilson.

The winners were presented with gold heart pendants.

The trivet was won by Mrs. Tommy Lyles.

Those making donations to the fund through the trivet raffle were Mr. and Mrs. Al Galloway, Mrs. Ella Reue, Mr. and Mrs. Bill Feuerbacher, Mr. and Mrs. Jerrel Vinson, Mr. and Mrs. Tommy Lyles, Mr. and Mrs. Clar Schacht, Mr. and Mrs. Kyle Glover, Shawn Smith, Mr. and Mrs. Sam Spence, Mrs. Amy Hollums, DeLene Pearson, Mrs. Betsy Dempsey, Alissa Hambright, Tana Perry, Mary Ann Quilantan, Mrs. Berneice Walters, Mr. and Mrs. Gene Lowrance, Mr. and Mrs. Jamie Lewellyn, Mrs. LaVada Garrett, Mr. and Mrs. Randy Hollums, Mr. and Mrs. Mark Wideman and Jana Lawson.

The trivet was hand-crafted and donated by Al Galloway.



**BEAUS AND SWEETHEARTS**—These Jr. High students were named eighth grade Valentine Beaus and Sweethearts at a Valentine dance sponsored by the FJHS Student Council. Elected were [l-r] Paige Cannon, Lowrance, seventh graders, and Debora Reeves and Hanev Robertson, eighth graders. Each of the winners was presented with a gold heart pendant.

**Richard R. Stafford PHD Psychologist**

Wishes to announce the relocation of his office

Haynes Building

812-B West 8th

Suite 9-B

Plainview

Hours by appointment

(806) 293-2131

## Senior citizens applications accepted

U.S. Senator John Tower has announced he is accepting applications from Texas senior citizens who wish to

participate in an intern program in his Washington office May 17-21.

Two citizens will be selected from

among the applicants and will spend a week in Tower's Washington office in a program designed to provide increased communication between the retired community and their representatives in Congress.

Tower said the interns will observe the legislative process through meetings with representatives of various departments, agencies and committees.

"I once again look forward to learning firsthand more about our senior citizens' problems, needs and opinions," Tower said. "At the same time, I hope the interns will learn more about the legislative process and government programs designed for their needs and then share with their peers the experiences and information gained in Washington."

Applicants should be 65 years of age or older, active in their own communities and willing to communicate their knowledge to their fellow senior citizens in the state.

Interns will receive their airfare to and from Washington, as well as a stipend to cover expenses while in Washington.

Applications may be obtained from Tower's Dallas office at 1100 Commerce, Room 7c14, Dallas 75242. The deadline for returning the applications along with two letters of recommendation to the Dallas office is March 15.

Attend the Local & County Stock Shows and Sale.

...Our Future

is in their hands.

**MUNCY ELEVATOR**

Muncy

## Creative Portraits

Portrait Package

only \$12<sup>95</sup>

with deposit of 99¢

Thurs. Feb. 25

10 a.m. - 6 p.m.



309 South Wall

983-2184

Includes

2-8x10's

2-5x7's

10-wallet

**Our Future Depends on the present Attitudes of our FFA & 4-H Young People ...Show them YOU care.**



Attend the Local and County Stock Show & Sale.

**FLOYDADA COOPERATIVE GINS INC.**

Ray Gene Ferguson - Mgr.









MRS. ROBERT RANDAL REYNOLDS

## Westbrook, Reynolds united during double-ring ceremony in Crosbyton

Miss Jamie Kay Westbrook became the bride of Mr. Robert Randal Reynolds on February 6th in a 6:30 p.m. double ring ceremony at the First Baptist Church wedding chapel in Snyder. Brother Bobby Rine, pastor of First Baptist Church, Crosbyton, read the vows.

The couple are the children of Patsy Westbrook of Kermit and Mr. and Mrs. Jim Reynolds of Crosbyton.

A 15-branch brass rainbow candelabrum flanked on both sides by a 7-branch brass candelabrum and a brass kneeling bench adorned the altar.

Musical selections were presented by Ronce Thornton, cousin of the groom, who sang "Sunrise Sunset" and "Annie's Song." Beth Bowen, pianist, and Paula Howard, organist, accompanied.

Presented in marriage by her grandfather, Henry Fowler, the bride wore a gown of Chantilly lace to depict the Southern Belle appearance designed by Mike Benet. The fitted bodice featured a flounced V-shaped ruffle to the waist, forming a V-shaped neckline and soft cap sleeve effect at the shoulders. The full skirt fell gracefully from the natural waistline. Three tiers of ruffles encircled the skirt and formed the chapel length train.

The wide brim hat worn by the bride was trimmed in Chantilly lace and adorned with matching medallions. The two tiered fingertip veil attached to the

crown atop the brim completed the attire. She carried a cascade bouquet of white and peach roses centered with a white orchid.

Following tradition the bride had as something old a handkerchief belonging to her great-grandmother; something new was a diamond necklace, gift from the groom; something borrowed were her grandmother's diamond earrings; and she wore the traditional blue garter.

Rhonda Reynolds, sister of the groom of Crosbyton, served as maid of honor and Becky Beaver, sister of the bride of Fluvanna, served as matron of honor. Edrie Rathel, Waco, and Elena Garcia, Wink, attended as bridesmaids. Lezli Fowler was jr. bridesmaid.

All attendants wore dresses of peach Mirra-Mist with the sleeve being a long puff. A low cut sheer ruffle fell from shoulder to a matching bottom flounce. They all wore peach hats trimmed with ribbon and a small nosegay of flowers attached to the back. They carried blue nosegays with small peach and blue accents.

All wedding flowers were created and designed by the bridegroom's sister, Rhonda Reynolds.

Miss Stephanie Wenetschlaeger of Snyder was flower girl. She was dressed in a full length dress with an A-line skirt of a pastel combination peach floral design.

## Wexler hosts Calvary Baptist women meeting

The Baptist women of Calvary Baptist Church met on Monday at 4:15 p.m. in the home of Mrs. George Wexler for a Royal Service program and etc.

Each guest as they arrived was greeted with a cup of hot spiced tea and girl scout cookies. A short fellowship followed. A short business meeting was also held. Program theme was Southern Baptist Mosaic, led by chairman Mrs. Adam. Prayer calendar was by chair-

man Mrs. Hazle Powell.

Fifteen ladies and two youth were present: Jo Payne, Lucille Duncan, Cathy Hill from Lockney, Hazle Powell, Beady Owens, Merlene Breeding, Dee-ota Adam, June Van Cleve, Estelle Warren, Mildred Haile, Edna Patton, Delzie Bradford, Evelyn Pierce, Birdie Drummond, visitors, Charles Merrian and Jeremy Hill. Hostess was Irene Wexler.

## Society Features

### Collins honoree of baby shower Saturday Feb. 6th

A baby shower for Mrs. Mike (Lu Ann) Collins was held in the home of Mrs. Leslie Fawver, Saturday, February 6, from 2-4:30 p.m.

Mrs. Collins was presented with a corsage; a baby rattle tied with green and white checked ribbon, and attached with diaper pins. Guests, were greeted at the door by Mrs. Collins and the hostesses.

Punch, cookies, and mixed nuts were served to guests from a table dressed with a yellow and white checked tablecloth, containing a centerpiece of yellow balloons labeled with prospective

baby names, and tied with green and white gingham bows. Table appointments were of white milk glass.

Hostesses presented Mrs. Collins with a car seat, baby bath, and numerous pictures of the shower. Hostesses were Mrs. Robert (Gayle) Ferguson, Mrs. Dick (Joy) Guest, Mrs. Jack (Billie) Jordan, Mrs. Bobby (Noma Lou) Rainer, Sheila Clark, Laura Campbell, and Mrs. Leslie (Jonelle) Fawver. Honored guests were Mrs. James Lovell and Mrs. Johnnie Collins, the prospective grandmothers.

### Hendrix' bundle of joy welcomed January 30th

A shower to welcome Holly and Joel Hendrix' bundle of joy was given in the Don Shurbet home on Saturday, Janu-

ary 30th. Silk flower corsages were presented to the honoree and grandmothers-to-be, Mrs. Fern Hartsell and Mrs. Bill Hendrix. Many friends and relatives came, or sent gifts.

Yellow punch and pastel color thumb print cookies and yellow mints were served to the guests by Mrs. Scott Faulkenberry. The table arrangement, which was a straw basket accented by a Teddy Bear and filled with accessories for the baby, was presented to the mother-to-be, by the hostesses, along with a high chair.

Hostesses for the lovely occasion were: Mrs. Don Shurbet, Mrs. Don Hardy, Mrs. Valarie Green, Mrs. Buddy Hatley, Mrs. Scott Faulkenberry, Mrs. Tommy Pearson, Mrs. Louis Anderson, Mrs. Buck Marricle, Mrs. Burch Lobbin, Mrs. Lynn Campbell, Mrs. Deral Young and Mrs. Randy Beedy.

#### RECEPTION

Following the ceremony a reception was held in the Garden Room of the wedding chapel at the First Baptist Church.

The bride's table was centered with the attendant's bouquets surrounded by a dove centerpiece with candles scattered throughout. It held a three-heart shaped tier cake.

Presiding at the bride's table were Linda Cox, Zeena Cox, Donna Fowler and Paula Middleton.

The groom's table held a cake featuring an outdoor scene. It was centered with a gun and a peach and blue flower arrangement. A silver service also accented the table.

Jeanett Robinson and Patsy Faye Thornton presided.

At the register was Cindy Hogue.

The couple is now residing at Snyder. The bride is a 1979 graduate of Snyder and a 1981 graduate of WTC. She is now employed at the Snyder Chamber of Commerce.

The bridegroom, 1978 graduate of Crosbyton and 1981 graduate of WTC, is employed by I&R Industries.

#### REHEARSAL DINNER

Mr. and Mrs. Jim Reynolds hosted a rehearsal dinner at Snyder Country Club Friday evening February 5. Approximately 40 guests were present.



#### SHACKELFORD

Mr. and Mrs. Ronnie Shackelford are the new parents of a daughter, Melissa Kay, born February 13, 1982 at 10:40 a.m. The little girl weighed 8 lbs., 4 ozs. Melissa has a brother, Kevin, who is 4 years old.

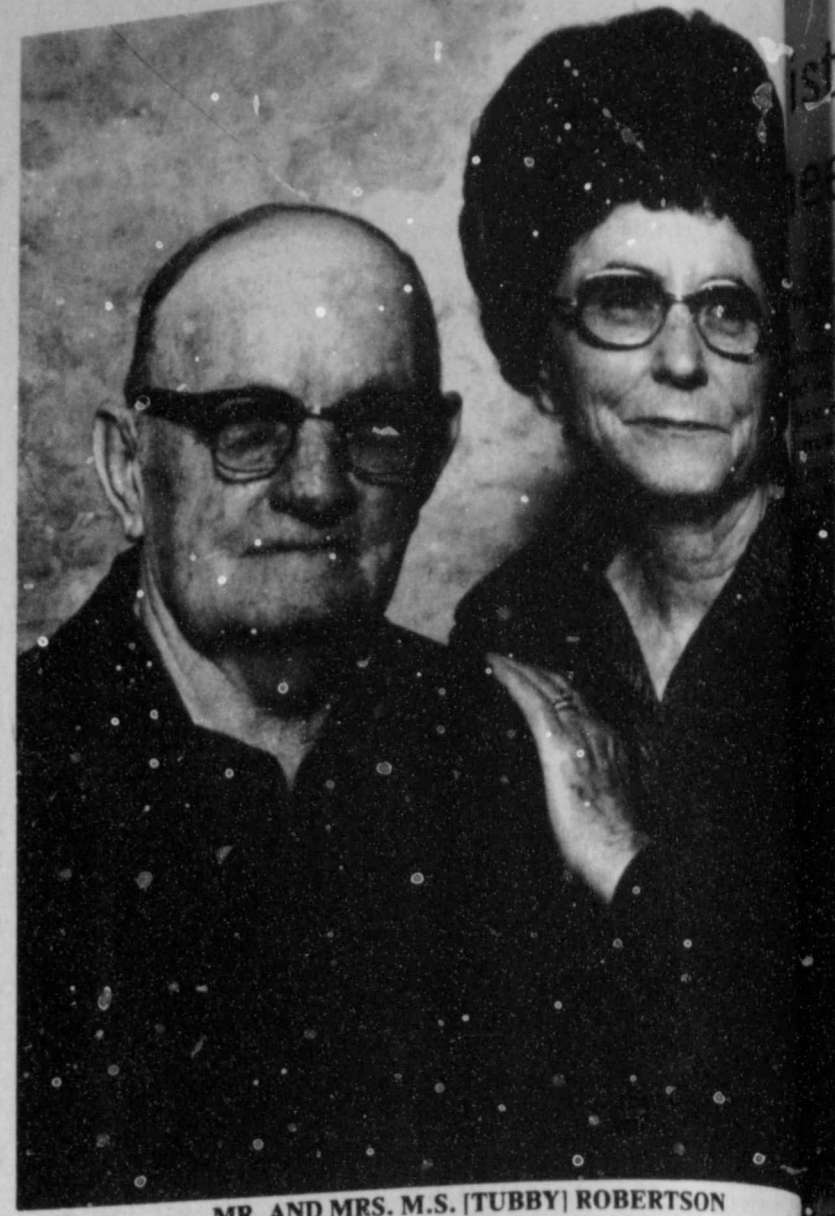
Grandparents are Mr. and Mrs. W.T. Cooper of Lockney and Violet Shackelford of Plainview.

#### LOCKNEY LOCAL

Mel and Marjorie Holcomb were in Lubbock Saturday to be with the Evelyn Nichols family at the Methodist Hospital.

Charlotte Blazier and Kimberly of Amarillo and Selicia Martin of Canyon were there to visit their aunt and family.

Kimberly came home with her grandparents to stay until Sunday night when Charlotte, Selicia and Millard Martin of Borger returned to take her home.



MR. AND MRS. M.S. (TUBBY) ROBERTSON

## Robertsons to celebrate 50th wedding anniversary

Mr. and Mrs. M.S. (Tubby) Robertson will celebrate their 50th wedding anniversary with a family gathering at their home in Floydada on Saturday, February 20.

It will be hosted by their children, Linda and Jimmy Crader of Floydada.

and Deanne and Jay Miller. Tubby and the former Patricia were married in Floydada most of their marriage is a former implement dealer. The couple has four grand-



### Lovell - Collins Jewelry

806/983-3240 102 S. MAIN FLOYDADA, TEXAS 79235

Make your bridal selections now.

Bridal Selections are now available for:  
Phyllis Johnson bride-elect of Randy Fry  
and  
Vickie Johnson bride-elect of Gerry Norrell

## Wrangler JUNIORS



Ladies, Misses & Juniors sizes reg. \$24-\$34 NOW \$5.00 Off regular price This Special good Thurs. & Fri. Only

THE LOFT 517 East Houston 983-2235



Mr. & Mrs. O.C. Allison, Lockney

Remember your special times -

Call for your appointment



Chuck Wilson, M. Photog., CPP

Wilson Photography

652-3731



Show that special person you really care with flowers, plants or a select gift from our store, full of gift items



SCHACHTS Flowers, Jewelry & Gifts "Our Pleasure Is To Serve You"

112 W Poplar

Lockney

652-2385



# Floydada Nursing Home Happenings

BY LYNN DANIEL

Love is just a word, and Valentines Day is just a day, until you experience a Valentines celebration with the resident at the nursing home. We didn't miss a thing, games, prizes, refreshments, entertainment, in short the works.

February 12 at 10:30 the residents kicked off the Rock and Roll Jamboree. Vera Duke was the starter on rocking and Nora McKnight was the first to kick off the roll.

Balloons were sold for a chance on a box of candy, money going to the Heart fund. Games that were played: musical balloon, Valentine toss, candy guess and lucky heart. The winners were Opal Rogers, W.C. Cates, Nora McKnight, Emmitt Lawrence, Juanita Bailey, Travis Corley and Claud Hughs. Then at 2:30 the Valentine King and Queen were crowned. We were pleased to present this honor, a crown and a box of candy to Queen Sue Thompson and King

W.C. Cates.

I can't recall having a better time at a party, it all went so well. I want to thank our own volunteers, "Companions 'n' Caring" for making this one to remember.

The residents and staff offer their sympathy to the family of Veda Griggs and Florence Simpson. We understand the great loss of these wonderful people. The love they brought to the nursing home will be with us always.

Visitors included: Evelyn and Jack Crull, Illa Belle McPeak, Charley L. Berry, Sr., St. Mary Magdalen Choir; Mary Ann Juarez, Sophie Garza, Esmeralda DeLeon, Irma Briones, Elsa Garza; Deecota Odam, W.H. Eubanks, Marvin and Vertie Powell, Lucille Sisson, Hubert Davis, Ruby Davis, Vallie and Leona McNeill, Beady Owens, Beulah Deaison, Elvis and Estell Warren, Worth Gwendolyn Howard, Burmah Probasco, Melissa Martin, Otis Anderson, Mr. and Mrs. Homer Hambright, Mr. and Mrs. Marvin Rape, R.C. Rainer, Angelita Cortinas, Dixie and Zacha Harris, Dana Ellis.

Also, Dorothy Neff, Otis, Dana, Kim and Joe Lee Ellis, Cynthia Covington, Robert Jackson, Maurice and Ella Goodwin, Marion Bailey, Ethel Sawyer, Eldie Bryant, Edd and Dorothy Neff, Hazel Bradley and Kim, Worth Gwen Howard, Debra Bailey and Justin, Zacha Harris, Nancy H. Willson, Velve Pricer, Lois Jones, Gene Baird, Melanie Ross, Kirk, Jackson and Daniel McIntosh, Mr. and Mrs. Jess Glover, Sherry Colston, Tex Smith, Clay Smith, Ruth Bishop, Corene and Murry Stewart, Clyde Bradshaw, Marie, Judy, Rusty and Jack.

## Historical Commission hold meeting at Courthouse

Floyd County Historical Commission met in the County Courtroom February 10 with Jim ... as chairman.

Members present included Della Plain ... marker is paid for and is the ... marker the state offered to ... to read the inscription

## Penseroso Jr. Study Club hosted by Barnettts

Penseroso Jr. Study Club met ... at the home of Lanny and ... Barnettts.

Members present were Sandy Adrian and ... Emergency Weather by ... cancelled by ... Twenty-one members ... "get reacquainted

## Local listed with America Outstanding Young Women

Board of Advisors for the ... Young Women of America ... announced that Melan ... of Nacogdoches, Judy ... of Floydada and Charlotte ... of Houston, Texas have been ... in the 1981 edition ... OUTSTANDING YOUNG WOMEN ...

This is the daughter of Mr. and Mrs. ... of Floydada, Judy is ... of Mr. and Mrs. E.B. ... and Charlotte is the ... of Mr. and Mrs. Edell Moore ...

The women listed, along with approximately 23,000 fellow Outstanding Young Women of America from across the United States, will be presented in the prestigious annual awards volume. In addition, they are now being considered for one of the fifty-one state awards to be presented to those women who have made the most noteworthy contributions in their individual states. From these fifty-one state winners, the Ten Outstanding Young Women of America will be chosen. The ten national winners will then be honored at the annual awards luncheon to be held this fall in Washington, D.C.

## This 'n' That Club serve husbands buffet supper

This 'n' That Club entertained ... with a supper and "84" ... night, February 3, at the ... of the Lighthouse Electric ...

After supper, games of "84" were enjoyed by members and their husbands.

Attending were Mr. and Mrs. W.H. Bunch, Bill Beedy, Maurice Campbell, Johnny Cates, Earl Crawford, F.M. Jackson, Floyd Lawson, T.L. Holland and Glenn White.

more easily. It is being prepared in Austin by the Texas Historical Commission. The local committee sent the history to them and their experts have condensed and re-written it to fit the marker. A chain link fence will be erected around the area.

Members present included Frank Brown, Joyce Williams, Nancy Marble, Reba Henry, Emily Johnston and Judge Choise Smith.

squares are due at the next meeting on February 25.

Members present were Lynda Gant, Judy Jackson, Kathy Kellison, Lesca Durham, Treena Aston, Cindy Means, Lisa Mosley, Kelly Fortenberry, Cynthia Bybee, Ginger Mathis, Lynda Cunyus, Reeda Cay Smith, Kay Martin, Charlanne Burson, Marilyn Biggs, Cathy Barnett, Sandy Adrian, Sandra Cummings, Kim Lambert, Jessie Johnson, and special guest Courtney Kaye Cummings.

This is the goal of the many leading women's organizations, college alumni associates and public officials who nominate deserving young women to participate in the program. Serving as chairman of the program's Advisory Board is Mrs. Dexter Otis Arnold, honorary president of the General Federation of Women's Clubs.

The women listed, along with approximately 23,000 fellow Outstanding Young Women of America from across the United States, will be presented in the prestigious annual awards volume. In addition, they are now being considered for one of the fifty-one state awards to be presented to those women who have made the most noteworthy contributions in their individual states. From these fifty-one state winners, the Ten Outstanding Young Women of America will be chosen. The ten national winners will then be honored at the annual awards luncheon to be held this fall in Washington, D.C.

hearts marked each place setting at tables centered with small flower arrangements and candy hearts.

After supper, games of "84" were enjoyed by members and their husbands.

Attending were Mr. and Mrs. W.H. Bunch, Bill Beedy, Maurice Campbell, Johnny Cates, Earl Crawford, F.M. Jackson, Floyd Lawson, T.L. Holland and Glenn White.

## Rebekah Lodge hold regular meeting

Floydada Rebekah Lodge met on Tuesday night February 9 for their regular meeting.

The death of Ruby Davis' aunt was

reported. Also the death of Lola Allen's mother. Several others were reported not feeling well.

The Charter was draped for two past

## Osborne guest speaker at Alpha Mu Delta meeting

The Alpha Mu Delta Chapter of Beta Sigma Phi held its regular business meeting Tuesday, February 2, at the First National Bank.

Vice President, Duffy Hinkle, brought the meeting to order. Mitzi Nixon then called the roll and read the minutes from the previous meeting.

At this time, Duffy Hinkle accepted the position of recording secretary.

Members were informed that hostesses for this meeting were Revis Pernel and Holly Hendrix. Program to be given by Tana Probasco on Enrichment.

Members were then told hostesses for the February 16 meeting would be Barbara Anderson and Mitzi Nixon. Program to be given by Donna Anderson on Diet.

Members were also reminded of the

Valentine Social February 12 at Kings Restaurant.

Following this, attention was given to guest speaker Cecil Osborne. Mr. Osborne is with People Plus. He presented a film on Winning by Dr. Denis Waitley. After the film he informed all members of the Psychology of Winning Seminar to be held February 23 at Lubbock Municipal Auditorium.

In conclusion, members held a Chinese Auction while refreshments were being served.

## Extension Homemakers hosted a salad luncheon

The Harmony Extension Homemakers Club hosted a salad luncheon for the Lone Star and Homebuilders clubs Monday, February 8 in the Lighthouse Electric building.

The Valentine theme was used for the decorations on the tables. Due to the icy streets and sidewalks there weren't as many members present as had been expected.

Bingo was played before the luncheon. After the luncheon Ann Willson reviewed the book "Walking West" by

Peter and Barbara Jennings. This was especially interesting since she had reviewed the book "Walking Across America" by Peter Jennings, last year. Before Peter completed his walk across America, he met and married Barbara. Thus the second book "Walking West."

Those enjoying the luncheon were Ruth Trapp, Gladys Widner, Anna Maude Hopper, Bess Carr, Lucille Miller and Imelda Murry and the agent, Marilyn Tate.

**Paula's back!**  
Make tracks to the Witches Hut  
311 W. Houston  
652-3800  
Wed.-Sat.  
Susan Patridge  
Paula Edwards

## SEMI-ANNUAL SALE

Sale Ends Saturday!

### Thacker Jewelry

200 Broadway • Roaring Springs

PHONE:

(800) 692-4249

(806) 348-3971

**GOOD IS GOLD  
14K!**



#### 14K Yellow Gold Beads

	RETAIL	SALE
3mm	\$1.00	.40
4mm	\$2.00	.80
5mm	\$3.38	\$1.35
6mm	\$6.00	\$2.40
7mm	\$6.88	\$2.75
8mm	\$10.50	\$4.20

#### 14K Yellow Gold Studs

3mm	\$15.00	\$6.00
4mm	\$17.50	\$7.00
5mm	\$20.00	\$8.00

#### 7mm Pearl Studs

Retail \$75.00 Sale \$26.25

#### 14K Yellow Gold Charm Holder

Retail \$67.00 Sale \$27.00

#### 14K Yellow Gold Charms

Retail \$42.00 Sale \$18.90

#### 14K Yellow Gold Earring Jackets

	RETAIL	SALE
Leaf design	\$55.00	\$24.75
Fashion design	\$71.00	\$31.95
Ribbed Style	\$30.00	\$13.50

#### 14K Yellow Gold Earrings

Shrimp Style	\$180.00	\$81.00
Triple Twist Hoop	\$108.00	\$48.60
Puffed Hoop	\$220.00	\$99.00

#### 14K Yellow Gold Rings

	RETAIL	SALE
3 Diamond .20 ct.	\$680.00	\$238.00
5 Diamond .42 ct.	\$1240.00	\$434.00
21 Diamond 1.00 ct.	\$3200.00	\$1120.00
14 Diamond & Ruby .45 ct.	\$1400.00	\$490.00
6 Diamond & Emerald .37ct.	\$1600.00	\$560.00
12 Diamond & Sapphire .25ct.	\$900.00	\$315.00
9 Diamond .66 ct.	\$1620.00	\$567.00
1 Diamond & Opal .04 ct.	\$300.00	\$105.00
21 Diamond 1.27 ct.	\$3600.00	\$1260.00
20 Diamond 3.81 ct.	\$11,600.00	\$4060.00

#### 14K Gold Diamond Studs

.10 ct Studs	\$240.00	\$84.00
.16 ct. Studs	\$360.00	\$126.00
.25 ct. Studs	\$440.00	\$154.00
.30 ct. Studs	\$580.00	\$203.00
.54 ct. Studs	\$1380.00	\$483.00
1.01 ct. Studs	\$2800.00	\$980.00

#### 14K Gold Diamond Drops

.03 ct. Drop	\$85.00	\$29.75
.10 ct. Drop	\$260.00	\$91.00
.17 ct. Drop	\$340.00	\$119.00
.25 ct. Drop	\$500.00	\$175.00
.33 ct. Drop	\$760.00	\$266.00
.43 ct. Drop	\$1280.00	\$448.00
.82 ct. Drop	\$2100.00	\$735.00
1.05 ct. Drop	\$5700.00	\$1995.00

Many Other Items Available To Numerous To List!

## Select Groups and Racks of Merchandise

# 75% OFF

## The Outlet Store

In Lockney



# Your Satisfaction is our Reward



**SPLIT FRYERS**  
USDA Grade A Whole

**49¢**  
lb.



**SIRLOIN STEAK**  
Beef Bone-In

**\$2.19**  
lb.



**PORK CHOPS**  
Rib or Loin End-Cuts

**1.49**  
lb.



**SLICED BACON**  
Oscar Mayer

**\$2.19**  
lb.

- T-Bone Steak**  
Lean and Tender
- Porterhouse Steak**  
Beef Loin 1st Cut
- Franks**  
Wilson's Certified
- Sliced Bologna**  
Oscar Mayer Meat or Beef
- Lunch Meats**  
Oscar Mayer
- Pickles or Sauerkraut**  
Claussen

- \$2.49** lb. **Franks**  
Oscar Mayer Meat or Beef 16 oz.
- \$2.59** lb. **Longhorn Cheese**  
Kraft 1/2 Moon Cheddar or Colby 10 oz.
- 88¢** 12 oz. **Fryer Breasts**  
Fresh U.S.D.A. Grade A
- \$1.45** 12 oz. **Pork Chops**  
Center Cut Rib
- \$1.39** 8 oz. **Pork Chops**  
Center Cut Loin
- \$1.49** 32 oz. **Sirloin Steak**  
Boneless Tender Beef
- \$1.79** 16 oz. **Franks**
- \$1.79** 10 oz. **Longhorn Cheese**
- \$1.09** lb. **Fryer Breasts**
- \$1.79** lb. **Pork Chops**
- \$1.79** lb. **Pork Chops**
- \$2.79** lb. **Sirloin Steak**



Open Daily 8:00 a.m. to 7:00 p.m.  
Sundays 9:00 a.m. to 7:00 p.m.

309 South Floydada

Prices effective Thurs. thru Wed. February 18-24, 1982

Each of these advertised items is required to be readily available for sale at the advertised price in each store, except as specifically noted by advertisement. We reserve the right to limit quantities. None sold to dealers.



**American Beauty**  
Elbo Roni, Long Spaghetti

**2 for 79¢**

Piggly Wiggly

**Super Saver**

**LOWFAT MILK**  
Shurfresh  
Limit 1 with coupon

**\$1.78**  
1 gal. jug

**Dairy Specials**

- Margarine** 1 lb. tub **68¢**  
Shurfresh Soft
- Biscuits** Sweetmilk, 12 oz. can **99¢**  
Buttermilk, 2 for
- Margarine** 1 lb. pkg. **49¢**  
Thrifty King Solid
- Orange Juice** **99¢**  
Kraft 32 oz. btl.

Put \$2.50 in your pocket...play **CASH KING**

There are still plenty of prizes to be won. Plus, all winners qualify to enter the Grand Prize Drawing. But only 100 winners will be selected. So hurry in now to get your FREE Game Ticket. No Purchase Necessary. Don't miss your chance!



**Fruit Cocktail**  
Del Monte

**59¢**  
17 oz. can



**Gladiola Flour**  
Shurfine  
10 1/2 oz. can

**78¢**  
5-lb. bag

**Glad Trash Bags**  
10 ct. 3 ply **\$1.39**

**Palmolive Liquid Dish Detergent**  
20° Off Label **\$1.69**  
32 oz. btl.

**Paper Towels**  
Shurfine

**2 rolls for 99¢** 21 oz.

**Jeno's Pizza**  
Sausage, Hamburger, Peppernoni **\$1.19**  
13 1/2 oz. pkg. 18 oz.

**DOUBLE COUPON**

Present this coupon along with any one manufacturer's "cents-off" coupon and get double the savings from Piggly Wiggly. Not to include "retailer", "free" or tobacco coupons or exceed the value of the item. Limit 1 coupon per manufacturer's coupon. Limit 4 Double Coupons per customer. Coupons good at Piggly Wiggly Feb. 18 to Feb. 24, 1982.

**DOUBLE COUPON**

Present this coupon along with any one manufacturer's "cents-off" coupon and get double the savings from Piggly Wiggly. Not to include "retailer", "free" or tobacco coupons or exceed the value of the item. Limit 1 coupon per manufacturer's coupon. Limit 4 Double Coupons per customer. Coupons good at Piggly Wiggly Feb. 18 to Feb. 24, 1982.

**DOUBLE COUPON**

Present this coupon along with any one manufacturer's "cents-off" coupon and get double the savings from Piggly Wiggly. Not to include "retailer", "free" or tobacco coupons or exceed the value of the item. Limit 1 coupon per manufacturer's coupon. Limit 4 Double Coupons per customer. Coupons good at Piggly Wiggly Feb. 18 to Feb. 24, 1982.

**DOUBLE COUPON**

Present this coupon along with any one manufacturer's "cents-off" coupon and get double the savings from Piggly Wiggly. Not to include "retailer", "free" or tobacco coupons or exceed the value of the item. Limit 1 coupon per manufacturer's coupon. Limit 4 Double Coupons per customer. Coupons good at Piggly Wiggly Feb. 18 to Feb. 24, 1982.

**DOUBLE COUPON**

Present this coupon along with any one manufacturer's "cents-off" coupon and get double the savings from Piggly Wiggly. Not to include "retailer", "free" or tobacco coupons or exceed the value of the item. Limit 1 coupon per manufacturer's coupon. Limit 4 Double Coupons per customer. Coupons good at Piggly Wiggly Feb. 18 to Feb. 24, 1982.



# Quality Produce at Affordable Prices



**BANANAS**  
Golden-Ripe

**399¢**



**APPLES**  
Golden Delicious

**49¢**



**TOMATOES**  
Red Ripe

**69¢**



**POTATOES**  
10 lb. bag Russet All Purpose

**\$1.39**

**YOUR**  
**Home Town**  
**Store**  
**of Values!**

**GRAPEFRUIT**  
Texas Ruby Red

**4 for \$1**

**CELERY**  
Fresh Crisp Stalks

**lb. 39¢**

**Carrots**  
Rich in Vitamin A

**1 lb. bag 39¢**

**Cauliflower**  
Snowwhite Heads

**lb. \$1.19**

**Jalapeno Peppers**

**\$1.19**

Spice Up Any Meal  
**Pineapples**  
Naturally Sweet

**lb. 98¢**

**Bell Peppers**  
Excellent for Stuffing

**3 for 99¢**

**Yellow Onions**  
Full of Flavor

**lb. 39¢**

## Frozen Food Values

- Honey Buns** Shurfine 9 oz. pkg. **69¢**
- Potatoes** Ore Ida Hash Brown 24 oz. pkg. **\$1.18**
- Burritos** Reg., Red, Patio Beef & Bean Green 5 oz. pkg. **2 for 89¢**
- Cherry Pie** Mrs. Smith's 26 oz. pkg. **\$2.68**

## Piggly Wiggly Super Saver

**Ice Cream**  
Borden's  
**\$1.59**  
1/2 gal.



**Nice-N-Soft**  
6 pack  
**\$1.39**  
Bath Tissue

**Dream Whip**  
Desert Topping 5 oz. pkg. **\$1.39**

**Chuck Wagon**  
Dog Food 10 lb. bag **\$3.99**

**Coffee Mate**  
Coffee Creamer 16 oz. jar **\$1.88**



**Campbell Soup**  
Chicken Noodle  
**4 for \$1**  
10 3/4 oz. can



**Cut Green Beans**  
Del Monte  
**3 for \$1**  
16 oz. can

**BE A WINNER!**



There are still plenty of CASH prizes to be won. Plus, all Saver Disc winners qualify to enter the Grand Prize Drawing. But Hurry! Only a few weeks left to enter. Pick up a FREE Game Ticket today. No Purchase Necessary.

Don't miss your chance to win!

**Net Cleanser**

21 oz. can **63¢**

**St Toasties**

18 oz. pkg. **\$1.19**

**DOUBLE COUPON**

**DOUBLE COUPON**

**DOUBLE COUPON**

**DOUBLE COUPON**



### Floydada School Menu

**February 22-26**  
**Monday:**  
 Breakfast — Juice, toast, bacon, jelly, milk  
 Lunch — Fish with catsup, potato salad, seven minute cabbage, chocolate pudding with vanilla wafers, hot rolls, milk  
**Tuesday:**  
 Breakfast — Juice, toast, oats, butter, milk  
 Lunch — Wieners stuffed with cheese, pinto beans, pickle spear, fruit, cornbread, milk  
**Wednesday:**  
 Breakfast — Juice, dried cereal, milk  
 Lunch — Italian spaghetti, tossed salad, buttered peas, sugar cookie, French bread, milk  
**Thursday:**  
 Breakfast — Juice, pancakes, syrup, milk  
 Lunch — Managers choice  
**Friday:**  
 Breakfast — Juice, sweet rolls, milk  
 Lunch — Char-burger on bun, lettuce, dill pickle, French fries, peach cobbler, milk



FLOYDADA HIGH SCHOOL band members [on stage] look on as the Stage Band [on floor] performs for the student body at high school during an assembly held Tuesday morning.

### Food Service Management companies must register

Food Service Management companies must be registered with the Texas Department of Human Resources to be eligible to bid for contracts for the Summer Food Services Program.

All applications for registration must be received by March 15, 1982.

Food Service Management companies

which were registered in the prior two years will be mailed applications. Other interested organizations can receive applications by contacting: E. Wayne Kuykendall, Administrator, Food Services Division, 520-A, Texas Department of Human Resources, P.O. box 2960, Austin, Texas 78769 or call: (512) 835-0440, ext. 2243.

### Silverton Young Farmers discuss rodeo plans

Silverton Young Farmers met on Thursday February 11 at the high school vocational agriculture department. Guest speaker was Charlie Thompson representing C Bar T rodeo stock of Lubbock.

Members voted to have C Bar T to be the rodeo stock producer for the Briscoe County Birthday Celebration to be held in August.

The Silverton Young Farmers Award banquet to be held on Saturday February 20 was discussed. Awards will be presented to Outstanding Young Far-

mer, Outstanding Associate Member, Outstanding Agribusinessman, Outstanding FFA member and the gold star 4-H members.

Those attending were Donnie Perkins, Fred Hill, Fred Minyard, Claude Jarrett, Hans Baird, Calvin Shelton, Zane Reagan, Dave Patrick, Deannie Henderson, Clinton Dickerson, Fred Brannon, Rick Hester, Abel Asebedo, Brad Ziegler, Jerry Baird, Tobe Riddell, George Martin, Bill Reid, Wayne Stephens and the guest speaker Charlie Thompson.

### Lockney School Menu

**February 22-26**  
**Monday:**  
 Breakfast — Sausage, toast, orange juice, milk  
 Lunch — BBQ on bun, June pea salad, French fried potatoes, prunes, milk  
**Tuesday:**  
 Breakfast — Peanut butter on bread, applesauce, milk  
 Lunch — Super dogs, mustard, milk, buttered corn, biscuit, sweet potatoes, plum cobbler  
**Wednesday:**  
 Breakfast — Cereal, toast, milk, peaches  
 Lunch — Enchiladas, pinto beans, tossed salad, sopapillas, milk, honey  
**Thursday:**  
 Breakfast — Cinnamon roll, orange juice, milk  
 Lunch — Roast and gravy, potato salad, spinach, milk, pineapple, brownie, hot rolls.  
**Friday:**  
 Breakfast — Scrambled eggs, biscuit, milk, pears  
 Lunch — Fried chicken, green beans, creamed potatoes, peach cobbler, hot rolls, milk.

### Sausage Festival to be held

Slaton's 12th Annual St. Joseph's German Sausage Festival will be held February 21, starting at 11:00 a.m. The dinner will consist of 200 year old recipe of homemade German sausage, sauerkraut, mashed potatoes, green beans, cranberry sauce, homemade bread and cake served with iced tea and coffee.

### Law firm announces new partner

Jones, Trout, Flygare, Moody & Brown, a Lubbock law firm, takes pleasure in announcing that David Anthony (Tony) Ellison has become a partner in the firm. Ellison is a December, 1978, graduate of the Texas Tech University School of Law. Tony's wife, Jane Whitehead Ellison, is the daughter of Mr. and Mrs. Whitehead of Ralls, Tony and one child, Lindsey.

Mr. and Mrs. Elton Ellison of Ralls, are the parents of partner.

Ellison is a graduate of the School and Texas Tech University.

**Our Future  
 Tomorrow  
 depends on our  
 Youth  
 Today!**

Attend the Livestock Show

**MIZE  
 PHARMACY & TV**

652-2435 LOCKNEY 102 S.

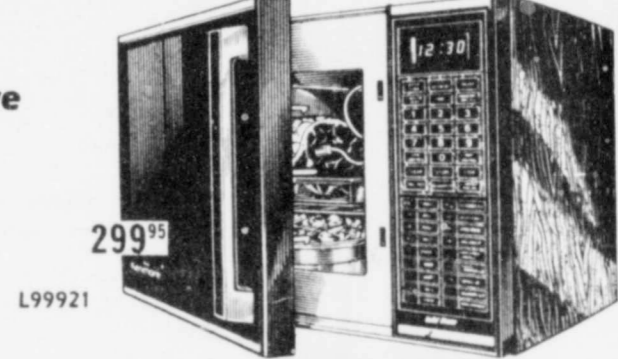
### Sears TOTAL COOKING SALE

No Matter What Cooking Appliance You Need . . . Buy Now And Save On Values Like These

**Cut \$110**  
 Sears best microwave

Was 609<sup>95</sup> **499<sup>95</sup>**

- ★ 80 preprogrammable recipes
- ★ 3-stage memory
- ★ Temperature sensing probe



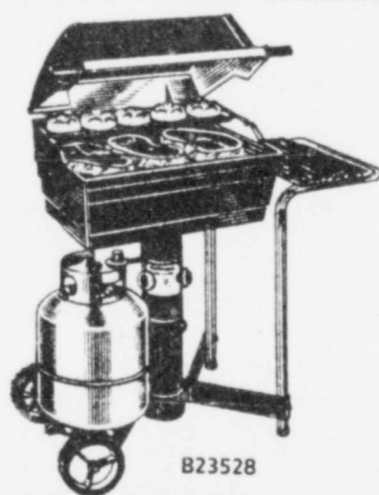
**Cut \$70**  
 Kenmore microwave oven

Was 369<sup>95</sup> **299<sup>95</sup>**

- ★ Temperature sensing probe
- ★ 3 power levels



Microwaves as low as \$199

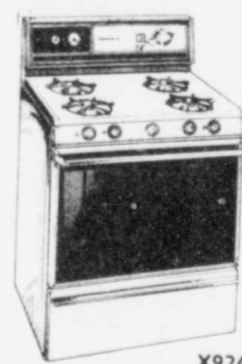


**Cut \$100**  
 Kenmore gas grill

Was 199<sup>95</sup> **Outfit**

- ★ Stainless steel "H" shaped burner
- ★ Twin controls
- ★ Matchless ignition

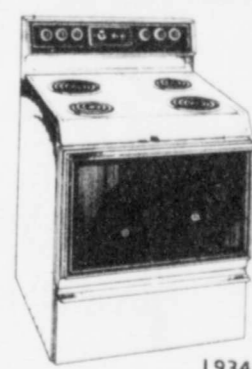
**GAS GRILLS AS LOW AS 99.95**



**Cut \$100**  
 Kenmore 30-in. electric range

Was 541<sup>95</sup> **441<sup>95</sup>**

- ★ Black-glass oven door
- ★ Pilot free ignition
- ★ Manual controls



**Cut \$100**  
 Kenmore 30-in. electric range

Was 511<sup>95</sup> **411<sup>95</sup>**

- ★ Black-glass oven door
- ★ Continuous cleaning oven
- ★ Fully automatic oven



**Cut \$100**  
 Kenmore drop-in electric range

Was 499<sup>95</sup> **399<sup>95</sup>**

- ★ Continuous cleaning oven
- ★ Chrome-plated cooktop
- ★ Converti-color oven door

These are just some of the values. Come in for a complete selection. Free gift with the purchase of any range, microwave or gas grill.

**FREE Microwave Demonstration**

February 25, 1982 at 4:00 p.m.

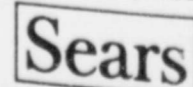
For more details or special appointments just call or come by.



Phone 983-2862

Most merchandise available for pick-up within a few days

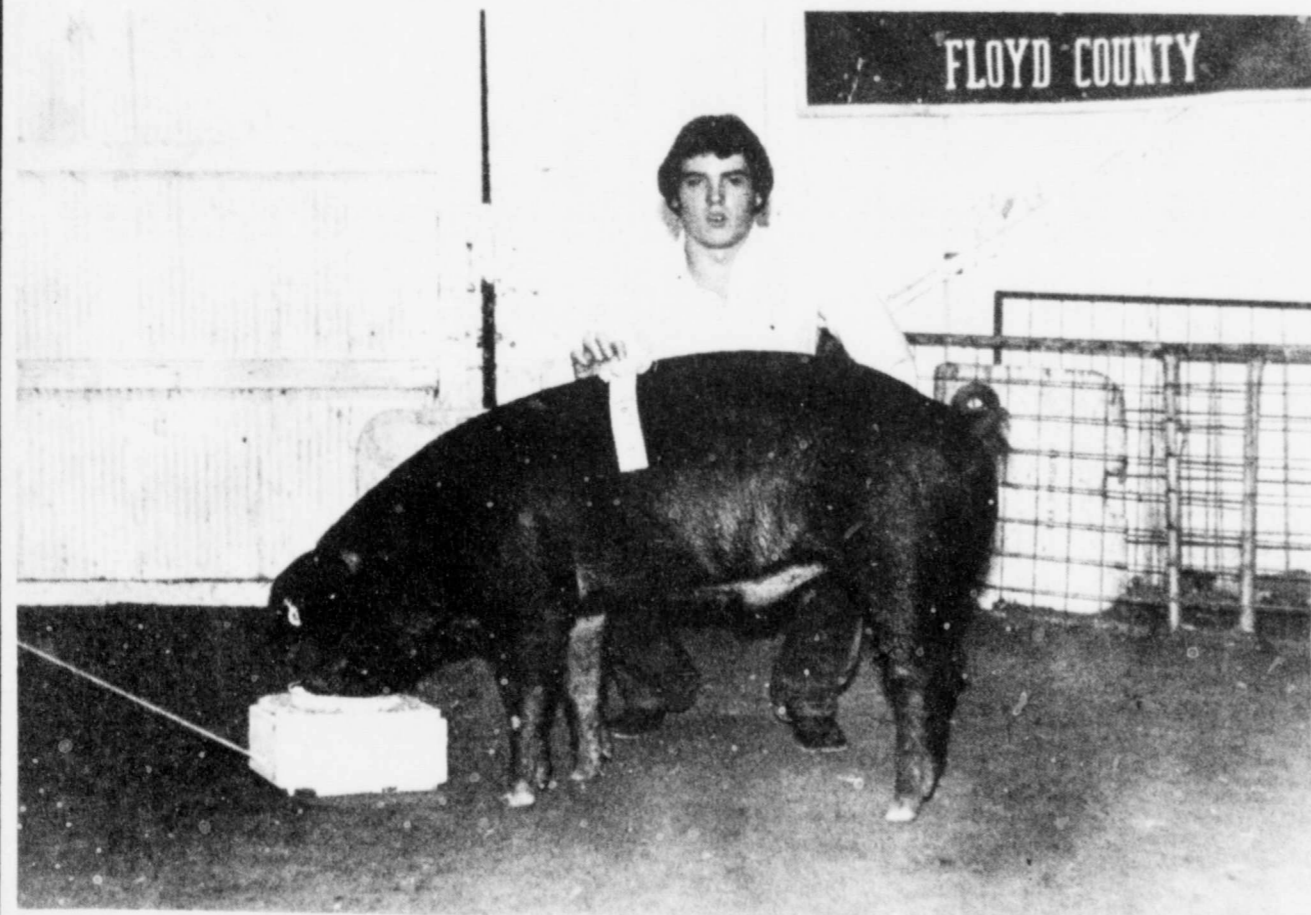
Satisfaction Guaranteed or Your Money Back



SEARS, ROEBUCK AND CO.

100 S. Main  
 Floydada, Tx

**We encourage everyone  
 To Attend the  
 Local & County  
 Stock Shows and Sale**



Our future depend on the encouragement of our FFA & 4-H Youth TODAY!

**PAY-N-SAVE**

210 N. Main

652-2293



## Lockney squeaks by Whirlettes 64-60

Lockney was victorious 64-60 over the Whirlettes last Tuesday at Graves Gymnasium. The Whirlettes started slowly and fell behind by 10 points behind midway through the first half. The Whirlettes tried to pull themselves from a point deficit to within three points at the half.

The Whirlettes had the lead as the buzzer sounded at the end of the third quarter but a foul was called on the Whirlettes which gave Lockney an opportunity to tie the game, and did at 50 to end the third quarter.

shot as the buzzer went off but it was not enough as the Lady Longhorns went on to win the game 64-60.

Debra Alfaro lead the scoring with 18 points while Terry Pleasant had 11 and Kellie Ferguson finished with 10 points. Also scoring were Sandra Robinson with 9 points followed by Rhonda Ratliff who added 5 points.

Robinson lead in the rebound department with 13 rebounds followed by Pleasant who ended the contest with 11 rebounds.

## Winds lose two close games

Winds lost two close games: Lockney 60-56 in overtime and Idalou. This runs their over record to 15-11.

Winds controlled the first quarter as Lockney tried it up to 18 points. Lockney through the second quarter through the second quarter. The Winds managed to regain the lead at the end of the first half.

hands a few times but Donell Weeks sunk two points as the buzzer sounded to give the lead 41-39 at the end of the third quarter.

The Winds still lead in the fourth quarter until the Longhorns tied it up with 49 points apiece with 1:34 left in the final quarter. Lockney then took the lead by two points then Bruce Williams sunk two to tie it up with :33 seconds

left on the clock. Lockney had an opportunity to win the game but fell to do so and sent the game into overtime. Lockney capitalized on Whirlwind mistakes and fouls which gave the Longhorns the victory over the Winds in overtime action.

Weeks lead the scoring with 26 points while Carlos Rainwater had 12 and Bruce Williams with 11 points.



FLLOYDADA WHIRLWIND JR. VARSITY basketball team members are back row [l-r] Coach Mike Cocanougher, Bobby Alaniz, Mark Hatley, Max Bearden, Joe Faulkenberry and Coach Matt Clark. Front row [l-r] are Cliff McLain, Mike Ruff and Richard Mitchell.

## Whirlettes fall to Idalou 45-40

Whirlettes never had control of the game as they fell behind by five points at the end of the first quarter and 26-17 at the half. The second half was much the same as the first. The Whirlettes got on a scoring run in the final quarter but they held Idalou to only 17 points in the last quarter. The Whirlettes closed the gap but it was not enough to take the lead and Idalou won 45-40.

Rhonda Ratliff was high pointer with 8 points while Louannie Williams had 7, followed by Terry Pleasant, Alfaro, and Ferguson who all scored 5 points

apiece. Also scoring were Sandra Robinson and Rhonda Rendon with 4 and Angie Anderson and Shere Cannon added 2 points each.

## Little dribblers begin season Feb. 22nd

The little dribblers season will begin on February 22. The first game will start at 6 p.m. There will be seven boys teams playing with a total of 54 boys and 12 girls involved in the program. You are invited to come and watch the games, who could become the future stars, as was experienced by our players last year.

- February 22 - Self vs. Gilliland; 7 p.m. - Sanders; and 8 p.m. - Thompson
- February 23 - Sanders vs. Stovall; 7 p.m. - Hendricks; 8 p.m. - Helms
- February 25 - Self vs. Helms; 7 p.m. - Sanders; 8 p.m. - Hendricks
- February 26 - Gilliland vs. Sanders; 7 p.m. - Helms vs. Stovall; 8 p.m. - Self
- March 1 - Gilliland vs. Stovall; 7 p.m. - Thompson; 8 p.m. - Helms
- March 2 - Sanders vs. Hendricks; 7 p.m. - Stovall vs. Self; 8 p.m. - Gilliland
- March 4 - Helms vs. Thompson; 7 p.m. - Hendricks vs. Gilliland; 8 p.m. - Self



### Whatever happened to 2¢ electricity?

It joined the 5¢ ice cream cone, 20¢ gasoline, and the 6% home mortgage, reluctant victims of inflation, fuel shortages and higher standard of living.

Still the price of electricity has increased at a far more moderate rate than most goods and services. In fact, if the enormous increase in generating fuel cost is discounted, the price of power is about what it was in the fifties.

The cooperative cannot control fuel costs nor wholesale power rates. But in the areas they do have control, prices have stayed under control.

Lighthouse Electric Coop Inc.



FLLOYDADA JV GIRLS basketball team members are back row [l-r] Renee Ledbetter, Patsy Williams, Christi Pruitt, Renee Weeks, Amelia Medrano, Anna Arellano. Front row [l-r] are Mysti Younger, Tony Lamb, Cheryl Goen, Pam Cathey, and Margie Cisneros.

## Whirlwinds edged out by Idalou 46-42

The Winds were edged by Idalou Friday night. The lead changed hands several times but Idalou was able to come up ahead at the end of the contest 46-42.

Leading in scoring was Carlos Rainwater with 19 points followed by Donell Weeks who had 10 points. Bruce Williams lead in rebounds with 16.

## Floydada golf team places 8th in Lubbock

The Floydada girls golf team traveled to Lubbock Friday, February 12, to play in the Lubbock Invitational tournament.

Finishing 8th out of 14 participating teams, individual scores were: Karen Lloyd, 106; Debbie Martinez, 109; Rusty Simpson, 110; and Patti Campbell, 126.

Try our Delicious

# BAR-B-Q

It's Real **HICKORY** Smoked!

TENDER AND JUICY  
BY Smokaroma

Every Friday, Saturday & Sunday

## My-T Burger

983-2558
207 South 2nd
Floydada

PRICES EFFECTIVE FEB. 18-20, 1982  
WHILE SUPPLIES LAST

<b>COOKED FOOD SPECIAL</b>	
Mild Links	69¢
Taco Rolls	2/99¢
SUNSHINE KRISPY CRACKERS 1 LB. BOX	89¢
2 Liter Coke	\$ 1.09
Shurfine 4 oz. Black Pepper	89¢
Shurfine 5 lb Sugar	99¢
Kraft Grape 2 lb Jelly	\$1.89
MORTON FAMILY PAK GLAZED DONUTS 14 OZ. PKG.	\$1.19

**ASSORTED FLAVORS ALLSUP'S ICE CREAM \$1.49**  
1/2 GAL. RD. CTN.

If it's Borden, it's got to be good

1857 BORDEN 1982

BORDEN'S HI-PRO MILK 1/2 GAL. CTN.	\$1.09
BORDEN'S 6 CT. PKG. POPSICLES	89¢
BORDEN'S 6 CT. PKG. FUDGESICLES	89¢

**ALLSUP'S CONVENIENCE STORES**

"THERE'S ONE NEAR YOU"

FRESH POPPED, BUTTERED  
**ALLSUP'S POPCORN 29¢**  
LARGE BAG



# OBITUARIES

## JOHNNY ADAMS

Services for Johnny Ray Adams, 41, were at 2 p.m. Tuesday in the First Baptist Church with the Rev. Murle Rogers, pastor, officiating.

Burial was in the Plainview Cemetery under the direction of Moore-Rose Funeral Home.

Adams, a native of Clarendon, died at 10:15 p.m. Sunday in Central Plains Regional Hospital in Plainview after a short illness. He came to Floyd County from Donley County in 1953 and married Patsy Mae Anderson on May 2, 1959, in Floydada. He was a farmer and service station attendant.

Survivors include his wife; three daughters, Tammy Marie, Cindy Lea and Tracy Auell, all of the home; a son, Johnny Wayne of the home; his father, William Virgil Adams of Plainview; two brothers, Gordon Allen of East Bernard and Virgil Lee of Amarillo; two sisters, Mrs. Red (Jane) Archer of Lockney and Ruby Adams of Plainview.

Pallbearers were Gary Waldie, Joe Bennett, Herbert Dudley, Kenneth Broeseh, Roy Kinard, R.V. Webster, M.D. Arterburn and E.M. Pyle Jr.

## EMORY CURRY

Services for Emory Curry, 74, of Quitman were held Friday, February 5, at 2 p.m. in Cain Chapel, Pastor of First Baptist Church of Arlington officiated.

Mr. Curry died at 5:30 p.m. February 3 in a Quitman hospital after having suffered a heart attack February 1.

He was born in Denton, August 30, 1907 and was married to Doyce Osborn December 9, 1930 in Floydada. She preceded him in death January 3, 1982.

Survivors include three daughters, Gene DuPee of Lakeport, California, June Rogers of Lockport, California, and Joyce Khulman of Arlington; two brothers, Clifford Curry of Tuleta and Homer Curry of Olton; two sisters, Alma Smith of Floydada and Billia Monte of Houston and seven grandchildren.

## BRANDON FRANKS

Brandon Dean Franks, 2-day-old son of Mr. and Mrs. Dean Franks of Floydada, died Tuesday at Lubbock.

Graveside services were at 2 p.m. Thursday, February 11 in Memory Gardens Cemetery with Terry Schrader, minister of Pampa Church of Christ, officiating. Arrangements were by Carmichael-Whattley Funeral Directors.

Survivors in addition to parents include a stepsister, Shannon Franks of Pampa; a stepbrother, D.J. Franks of Pampa; grandparents, Mr. and Mrs. J.P. Franks and Mr. and Mrs. Bobby Matlock, all of Pampa and Mrs. Maxa Price of Dumas; great-grandparents, Mrs. Mary McGahan of Elk City, Oklahoma, Mrs. Violet Mooneyham of Madison Park, Oklahoma, Mr. and Mrs. Leslie Matlock of Pampa and Mr. and Mrs. J.R. Stansell of Amarillo.

## DALMER GOWENS

Services for Dalmer Harild Gowens, 48, of Crosbyton were at 11 a.m. Thursday, February 11, at Crosbyton First Baptist Church with the Rev. Bobby Rine and the Rev. Randy Butler, both of the church, officiating.

Burial was in Crosbyton Cemetery under direction of Adams Funeral Home.

Gowens died at 7:30 Monday at Crosbyton Hospital after a lengthy illness.

He was a lifetime resident of Crosby County. He married Kathryn Brinlee September 29, 1951, in Crosbyton. He was a member of the Crosbyton Volunteer Fire Department and the Masonic Lodge. He was a veteran of the armed services. He coached Little League baseball, girl's softball and worked with the Cub Scouts.

He was a Baptist and a member of the Downtown Bible Class.

Survivors include his wife; his mother, Lora of Crosbyton; two sons, Mike and Garv, both of Crosbyton; a daughter, Kittie Hamersley of Crosbyton; two brothers, Donnell of Floydada and Robert of Crosbyton; two sisters, Margie Scoggins of Lubbock and Ella Rogers of Haskell; and five grandchildren.

## ROBERT GUFFEE

Services for Robert Thomas Guffee, 84, of Hale Center were at 2 p.m. Friday, February 12, at First United Methodist Church of Hale Center with the Rev. Jack Webb, pastor, officiating.

Burial was in Plainview Memorial Park under direction of Freeman Funeral Home of Hale Center.

Guffee died at 12:30 p.m. Wednesday in Central Plains Hospital in Plainview after a lengthy illness.

He was a native of Sweetwater, Tennessee, and moved to Bridgeport in 1901 with his family. He married Grace Kaker December 24, 1919, in Bridgeport. The couple moved to the Hale Center area in 1924. She died in 1977. He was a rancher and a Methodist.

**REMEMBER** your loved ones with a living memorial to the Caprock Hospital Auxiliary Memorial Fund. Mrs. Ben Whitaker, Treasurer.

Survivors include two brothers, Clarence of Floydada and E.H. "Joe" of Plainview; and several nieces and nephews.

## LLOYD HENDRIX

Services for Lloyd L. Hendrix, 80, of Lubbock were at 2 p.m. Tuesday in First Baptist Church with Dr. D.L. Lowrie, pastor, officiating, assisted by the Rev. John Ballard, assistant pastor of the church, and the Rev. J.T. Bolding, retired Baptist minister.

Burial was in Resthaven Memorial Park under the direction of Sanders Funeral Home.

Hendrix died at 12:15 a.m. Monday in Methodist Hospital after a short illness.

The Parker native was married to Ida May Jones December 25, 1923, in Monday. They moved to Lubbock in 1944.

Hendrix was owner and operator of Hendrix Lumber Co. and also was a building contractor. He was a member of First Baptist Church.

Survivors include his wife; two sons, Lloyd M. of Lubbock and Billy F. of Floydada; a daughter, Joline Taylor of Lubbock; a brother, Frank of Monday; eight grandchildren; and four great-grandchildren.

Grandsons served as pallbearers.

## LOUISA MCROBERTS

Louisa McRoberts, 102, of Amarillo died Sunday, February 14.

Services were at 2 p.m. Monday in the Post Oak Baptist Church at Post Oak with the Rev. Milton Capps, pastor, officiating. Burial was in Post Oak Cemetery by Blackburn-Shaw Memorial Chapel.

Mrs. McRoberts was born in Jackson, Tennessee, on April 25, 1879, the second of nine children. Her father, Abraham Lansden Williams, was a Cumberland Presbyterian minister-schoolteacher.

In 1889, the Williams family moved to Texas by train. The family lived near Weatherford, then moved to Post Oak, a small community in Jack County near Wichita Falls.

Mrs. McRoberts married Samuel Garrett McRoberts on December 23, 1903, and they remained in the Post Oak area for 24 years. The couple had seven children, six of whom survive. McRoberts died in 1927.

After her husband's death, Mrs. McRoberts made a living by quilting and making clothes for other people. She moved to Floydada to Amarillo in 1948.

Survivors include two sons, S.E. McRoberts of Cisco and G.E. McRoberts of Amarillo; four daughters, Zela King of De Soto, Amy Patton of Snyder, Adele Norman of Denton, and Mary Frances Penhall of Richardson; a sister, Downie Farr of Wichita Falls; 10 grandchildren, 30 great-grandchildren and four great-great-grandchildren.

## JIM E. ROBERTS

Services for Jim E. Roberts, 80, of Bovina were at 2 p.m. Monday in Bovina First Baptist Church with the Rev. J.L. Bass, pastor, officiating.

Burial was in Bovina Cemetery under direction of Parson-Ellis Funeral Home of Friona.

Roberts died at 12:20 a.m. Sunday in Parker County Community Hospital in Friona after an illness.

Roberts was born in the Indian Territory of Oklahoma. He had lived in Bovina since 1953 and was a retired farmer. He married Rosa Bell Dunn on April 18, 1922, in Frederick, Oklahoma.

Survivors include his wife; four daughters, Ima McCormick of Portales, New Mexico, Ophelia Latimer of Lockney, Alma Clayton of Bovina and Estela Lee Lide of Bovina; a son, C.R. of Amherst; two brothers, Hubert of Corcoran, California, and Fred of Mason; 14 grandchildren; and 27 great-grandchildren.

## EUNICE TAYLOR

Services for Mrs. Eunice Taylor were at 10 a.m. Monday at the First Baptist Church of Quitaque with the Rev. Andrew Curry, former pastor now of Wells and the Rev. Sid Parsley, formerly of Quitaque and now of Hamlin, officiating. Burial was in Resthaven Cemetery under the direction of Quitaque Funeral Home.

Mrs. Taylor, 95, died Friday in Lockney.

Mrs. Taylor was born in Taylor, Louisiana. She married J.A. Taylor in 1905 in Ringgold. He died in 1950. She had been a resident of Briscoe County for the past 71 years. She was a member of First Baptist Church.

Survivors include two daughters, Eula Merrell of Clarendon and Ruth Boswell of Littleton, Colorado; three sons, Dick of Quitaque, Preston of Mount Pleasant and Joe of Mesquite; nine grandchildren; 14 great-grandchildren; and three great-great-grandchildren.

## BESS BOBO WHITE

Services for Elizabeth (Bess) Bobo White, 85, of Floydada, formerly of

Houston, were held Thursday, February 11, at 10:00 a.m. at the First Christian Church, Floydada. Dr. Floyd C. Bradley of First Baptist Church officiated, assisted by the Rev. Karl Bunjes, pastor First Christian Church.

Mrs. White died at 6:30 p.m. Monday, February 8, at Caprock Hospital after a long illness. Burial was in Floyd County Memorial Park under direction of Moore-Rose Funeral Home.

She was a member of West University Baptist Church of Houston.

Born in Florence on November 13, 1896, Mrs. White graduated at Baylor College for Women (now the University of MHB), Belton, with a degree in piano, and was an assistant piano teacher there before going to New York City to study with Leslie Hodgson. She returned to Fort Worth as teacher and head of the music department of Southwestern Baptist Seminary, 1918-1922. There she married Russell Conwell White, a Baptist minister, April 24, 1920. He died in June, 1980, and is buried in Floydada.

Through their sixty years of marriage, Bess White served as pianist in the church her husband pastored. She played for numerous evangelistic meetings, and was pianist for the Baptist World Alliance in Atlanta, Georgia.

Survivors include two daughters, Mrs. Thomas Harris of Pasadena, and Mrs. Kinder Hale of Floydada; a brother, Halley F. Bobo of Winston-Salem, North Carolina; seven grandchildren; and eight great-grandchildren.

Pallbearers were John N. Farris, Ed Wester Lon Davis, Jr., Fred Zimmerman, III, and grandsons, Allen Hale, Thomas Hale, Jr., Thomas K. Farris, Jr., and John C. Farris.

## ERX WILLIAMS

Services for Erx K. Williams, 83, of Petersburg were at 2 p.m. Thursday, February 11, at First United Methodist Church of Petersburg with the Rev. Lee Couch, pastor of First United Church of Vernon, officiating, assisted by the Rev. Jerry Kunkel of First United Methodist Church of Petersburg.

Burial was in Carrs Chapel Cemetery in Petersburg under direction of Lemons Funeral Home of Plainview.

Williams died at 4:05 p.m. Tuesday in Hale Center's Hi-Plains Hospital of injuries he suffered in an automobile accident January 25 in Hale Center.

The Waco native moved to Floyd County in 1940. He married Anna Lee Heard March 14, 1920, in the Harmony

Community, and the couple farmed there after their marriage. They moved to Petersburg in 1945 from Colorado. He was a farmer and a livestock raiser and was a former Oddfellow.

Survivors include his wife; a son, Delbert of Dumas; a daughter, Mrs. Pockets (Billie) Heard of Petersburg; five brothers, Leo of Tow, Buck of Clyde, Paul of Wichita Falls, Elmer of Plainview and Woody of Buchanan Dam; two sisters, Robertha Bagwell of Dimmitt and Thalia Clubb of Austin; three grandchildren; and four great-grandchildren.

## HATTIE D. ZIEGLER

Services for Hattie D. Ziegler, 84, of Silverton were at 10 a.m. Tuesday in First Baptist Church, Silverton, with Don Martin and Kenneth Martin, both of Tulsa, officiating.

Burial was in Silverton Cemetery under direction of Silverton Funeral Home.

She died Sunday morning in Swisher

Memorial Hospital in Tulsa after an illness. She was born in Panola, lived in Silverton since she married J.A. Ziegler in 1936, in Tulsa.


Survivors include five children, Violet Thomas of Tulsa, Clara of Lockney, June Andrews of Oklahoma, Fay Pointer of Oklahoma, Vaughn of Tulsa; a son, Silverton; 18 grandchildren; and four great-grandchildren.

## KATE EDWARDS

Funeral services for Kate Edwards, 81, of Floydada will be at 8:00 a.m. at the First United Methodist Church, officiating will be the Rev. Smith, assisted by Dr. Floyd Levey, pastor of the First Baptist Church of Floydada. Burial will be in Floydada Cemetery. She died at 1:00 p.m. Tuesday in Floydada Nursing Home.

**OLINE MONUMENT CO.**

—400 Joliet Street Phone (806) 296-2953 P.O. Box 100  
PLAINVIEW, TEXAS 79072



Companion Memorial Only \$595.00 Set Complete

**We Have**  
**The New Century Pre-need Memorial Plan**  
**Now You Can Purchase Your Memorial Before**

Many families are surprised and burdened at the time of their loss. High cost of the things they have to do, on the most helpless day of their lives. Your memorial is a decision you must make alone. Also you must pay cash for some or all of these.

**YOU MAY ASK; "WHY MAKE THIS DECISION NOW?"**

- Stops Inflation
- You Can Make the Decision While You Are Still Together
- Not Left For One To Do Alone.
- Advantage Of Small Monthly Payments.
- Make This Important Decision Together.

Call or stop by our office in Plainview. One of our Memorial Counselors will be glad to explain the new Century Pre-need Plan to you without obligation.

**OLINE MONUMENT CO.**

# did you know?

Reporting a power outage helps SPS personnel restore a power more quickly. During major power interruptions, plant operators receive a signal telling them that a problem exists. Calls from customers help these operators pinpoint the exact location of the outage, allowing service crews to make repairs quickly, with less inconvenience to customers.



Billy Mason, Area Dispatcher, Roswell.

The most energy-efficient portable appliances are those that can be used for more than one thing. For instance, an electric fry pan may be used to fry eggs and meats, make a cake, cook roasts or prepare one-dish meals. When buying portable appliances, look for good warranty coverage and local availability of replacement parts and service. And always read the use and care book provided by the manufacturer BEFORE using the appliance. Baking a cake in an electric skillet is twice as economical as in the oven.

Christye Waters, Home Service Advisor, Lubbock.



It takes nearly one pound of coal to produce one kilowatt-hour of electricity. Southwestern Public Service has long-term coal contracts with mines in Wyoming to provide the large supply of coal needed to generate electricity for its customers. Even though it is transported about 1,000 miles, in 110-car trains, coal is still the least expensive fuel.

Jerry Hermesmeyer, Plant Manager, Harrington Station.

Knowing what electricity is worth is worth knowing. For answers to your questions, call or write your SPS manager.



**SOUTHWESTERN PUBLIC SERVICE COMPANY**

# Support Our Area Youth & Their Activities



Our future farming depends on it. Attend the Local & County Stock Shows and Sale.

# The Tye Co.

In Lockney



# Annual Financial Statement of Floyd County, Texas

Report of Glenna M. Orman  
Treasurer of Floyd County, Texas, of Receipts and Expenditures  
February 1, 1981 to February 1, 1982.

## Available School Fund

Balance, February 1, 1981	\$	100.41	
Receipts		5,651.59	
Amount spent during year			\$ 5,636.02
Balance, January 1, 1982			115.98
	\$	5,752.00	\$ 5,752.00

## Floyd County Revenue Sharing Fund

Balance, February 1, 1981	\$	37,566.50	
Receipts		129,581.09	
Amount spent during year			\$124,188.49
Balance, January 31, 1982			42,959.10
	\$167,147.59		\$167,147.59

## Victims of Crime Fund

Balance, February 1, 1981	\$	91.00	
Receipts		1,060.00	
Amount spent during year			\$ 978.50
Balance, January 31, 1982			172.50
	\$	1,151.00	\$ 1,151.00

## Library Construction Fund

Balance, February 1, 1981	\$	833.48	
Receipts		175.00	
Amount spent during year			\$ -0-
Balance, January 31, 1982			1,008.48
	\$	1,008.48	\$ 1,008.48

## 110th Judicial District Juvenile Probation

Balance, February 1, 1981	\$	2,255.74	
Receipts		34,287.42	
Amount spent during year			\$ 34,199.12
Balance, January 31, 1982			2,344.04
	\$	36,543.16	\$ 36,543.16

## Statement of Indebtedness of Floyd County, Texas as of January 31, 1982

Bonded Indebtedness: None  
Note Payable Precinct #3 : \$28,377.98

## Savings Accounts: FNB, Floydada, Texas

Permanent School: \$3,000.00  
Floyd County--  
Jury Fund 3,000.00  
Road and Bridge 40,000.00  
General 60,000.00  
Permanent Imp. 25,000.00  
Special Road 10,000.00  
Tenth Fund Pre #3 12,217.18

## FLOYD COUNTY, TEXAS

Certificates of Deposit, First National Bank, Floydada, Texas 79235

Fund	Amount	Date Purchased	Date Matured
Permanent School	\$ 1,383.00	Oct 15, 1979	Oct 15, 1983
Library Construction	2,600.00	Mar 01, 1980	Sept 1, 1982
Permanent School	2,000.00	Aug 04, 1981	Feb 04, 1984
Revenue Sharing	10,000.00	Aug 26, 1981	Feb 24, 1982
Special Road	10,000.00	Aug 26, 1981	Feb 24, 1982
Permanent Improvement	10,000.00	Oct 22, 1981	Apr 22, 1982
Special Road	10,000.00	Oct 22, 1981	Apr 22, 1982
General	10,000.00	Oct 22, 1091	Apr 22, 1982
Revenue Sharing	10,000.00	Oct 22, 1981	Apr 22, 1982
General	10,000.00	Oct 28, 1981	Apr 28, 1982
Special Road	10,000.00	Oct 28, 1981	Apr 28, 1982
Permanent School	5,000.00	Mar 04, 1981	Feb 02, 1093
Permanent School	5,000.00	Feb 26, 1981	Aug 26, 1982
Road and Bridge	20,000.00	Nov 02, 1981	May 03, 1982
General	20,000.00	Nov 02, 1981	May 03, 1982
Special Road	15,000.00	Nov 02, 1981	May 03, 1982
Precinct #1, Lat Road	28,139.00	Nov 10, 1981	May 11, 1982
Precinct #1 Class 7	50,000.00	Nov 10, 1981	May 11, 1982
Road and Bridge	10,000.00	Nov 17, 1981	May 18, 1982
Special Road	10,000.00	Nov 17, 1981	May 18, 1982
General Fund	10,000.00	Nov 18, 1981	May 19, 1982
Special Road	20,000.00	Nov 18, 1981	May 19, 1982
General	20,000.00	Nov 30, 1981	May 31, 1982
Special Road	20,000.00	Nov 30, 1981	May 31, 1982
Road and Bridge	25,000.00	Jan 19, 1982	Jul 20, 1982
General	20,000.00	Jan 25, 1982	Jul 26, 1982
TOTAL	\$364,122.00		

Respectfully Submitted,

*Glenna M. Orman*

Glenna M. Orman  
Floyd County Treasurer

I, Bobbie Hamilton County Auditor of Floyd County, Texas, do hereby certify that the above and foregoing is a true and correct statement of the financial condition of Floyd County, Texas as of January 31, 1982, to the best of my knowledge and belief, as shown by reports of the County Treasurer.

Witness my hand at office in Floydada, Texas this 16th day of February 1982.

Signed *Bobbie Hamilton*

County Auditor, Floyd County, Texas

### Jury Fund

Balance, February 1, 1981	\$	1,065.95	
Receipts		18,279.82	
Amount spent during year			\$ 15,261.07
Balance, January 31, 1982			4,084.70
	\$	19,345.77	\$ 19,345.77

### Road and Bridge

Balance, February 1, 1981	\$	57,023.67	
Receipts		260,093.66	
Amount spent during year			\$184,952.74
Balance, January 31, 1982			124,822.67
	\$	317,117.33	\$ 317,117.33

### General Fund

Balance, February 1, 1981	\$	5,507.56	
Receipts		507,600.77	
Amount spent during year			\$404,622.83
Balance, January 31, 1982			160,000.00
	\$	513,108.33	\$ 513,108.33

### Officers's Salary

Balance, February 1, 1981	\$(-6,096.77)		
Receipts	146,532.04		
Amount spent during year		\$316,563.14	
Balance, January 31, 1982	200,822.67		24,694.80
	\$341,257.94	\$341,257.94	

### Permanent Improvement

Balance, February 1, 1981	\$	16,215.62	
Receipts		136,997.15	
Amount spent during year			\$140,294.25
Balance, January 31, 1982			12,918.52
	\$	153,212.77	\$ 153,212.77

### Special Road

Balance, February 1, 1981	\$	15,124.25	
Receipts		533,275.92	
Amount spent during year			\$145,000.00
Balance, January 31, 1982			376,000.00
	\$	548,400.00	\$ 548,400.00

### Precinct #1

Balance, February 1, 1981	\$	23,662.69	
Receipts		41,659.41	
Amount spent during year		115,000.00	
Balance, January 31, 1982			\$153,447.73
	\$	180,322.10	\$ 180,322.10

### Precinct #4

Balance, February 1, 1981	\$	7,980.74	
Receipts		10,452.10	
Amount spent during year		115,000.00	
Balance, January 31, 1982			\$127,682.30
	\$	133,432.84	\$ 133,432.84

### Precinct #2

Balance, February 1, 1981	\$	11,330.52	
Receipts		9,797.50	
Amount spent during year		115,000.00	
Balance, January 31, 1982			\$124,613.24
	\$	136,128.02	\$ 136,128.02

### Precinct #3

Balance, February 1, 1981	\$	54,702.55	
Receipts		26,729.71	
Amount spent during year		115,000.00	
Balance, January 31, 1982			\$181,057.24
	\$	196,432.26	\$ 196,432.26

### Lateral Road

Balance, February 1, 1981	\$	-0-	
Receipts		112,556.03	
Amount spent during year			\$ 97,882.01
Balance, January 31, 1982			14,674.02
	\$	112,556.03	\$ 112,556.03

### County Library

Balance, February 1, 1981	\$	5,365.68	
Receipts		38,256.85	
Amount spent during year			\$ 30,371.17
Balance, January 31, 1982			13,251.36
	\$	43,622.53	\$ 43,622.53

### County Law Library

Balance, February 1, 1981	\$	45.07	
Receipts		1,152.00	
Amount spent during year			\$ 980.10
Balance, January 1, 1982			216.97
	\$	1,197.07	\$ 1,197.07

### Judicial District Adult Probation

Balance, February 1, 1981	\$	12,709.71	
Receipts		38,976.49	
Amount spent during year			\$ 42,123.95
Balance, January 31, 1982			9,562.25
	\$	51,686.20	\$ 51,686.20

### School Fund

Balance, February 1, 1981	\$	.33	
Receipts		7,000.00	
Amount spent during year			\$ 7,000.00
Balance, January 1, 1982			.33
	\$	7,000.33	\$ 7,000.33



## Caprock Hospital Report

**February 8-15**  
 Thomas Sid Brown, Floydada, adm. 12-10, dis. 2-8, Hong.  
 Bess White, Floydada, adm. 12-21, expired 2-8, Jordan.  
 Kate Edwards, Floydada, adm. 1-7, dis. 2-8, Hong.  
 Mamie Margarette Bond, Floydada, adm. 1-18, dis. 2-12, Jordan.  
 Guadalupe Martinez, Floydada, adm. 1-23, continues care, Hong.  
 Robert Quilimaco, Lockney, adm. 1-24, dis. 2-8, Hong.  
 Lillie Pryor, Dougherty, adm. 1-26, continues care, Hong.  
 Lucy Pettit, Floydada, adm. 1-26, continues care, Hong.  
 Charles R. Beedy, Claude, adm. 1-26, dis. 2-9, Acar.  
 Mamie Bradshaw, Floydada, adm. 1-26, dis. 2-8, Hong.  
 Joe Garza, Floydada, adm. 1-27, dis. 2-12, Hong.  
 Lloyd McCray, Floydada, adm. 1-30, dis. 2-10, Jordan.  
 B.A. Robertson, Floydada, adm. 2-1, trans. 2-10, Jordan.  
 Gonzalo Gonzales, Floydada, adm. 2-3, dis. 2-11, Hong.  
 Harvey Lee, Matador, adm. 2-4, continues care, Jordan.  
 Doris McLain, Floydada, adm. 2-5, dis. 2-12, Hong.

Homer Farmer, Floydada, adm. 2-6, trans. 2-8, Jordan.  
 Virginia Cox, Floydada, adm. 2-6, trans. 2-10, Jordan.  
 Cecil Griggs, Floydada, adm. 2-6, continues care, Hong.  
 Woodrow Wilson, Floydada, adm. 2-7, continues care, Hong.  
 Elda Martinez, Floydada, adm. 2-7, dis. 2-12, Hong.  
 Jean Miller, Floydada, adm. 2-8, dis. 2-11, Hong.  
 Juanita Salazar, Ralls, adm. 2-8, continues care, Hong.  
 Frances McClure, Floydada, adm. 2-9, continues care, Hong.  
 Maricela Tamayo, Floydada, adm. 2-9, dis. 2-10, Acar.  
 Leon Walker, Roaring Springs, adm. 2-9, dis. 2-11, Hong.  
 Ethel Burnham, Floydada, adm. 2-10, continues care, Hong.  
 Essie Mullins, Floydada, adm. 2-10, continues care, Hong.  
 David Latta, Floydada, adm. 2-11, dis. 2-12, Hong.  
 Roy Jackson, Floydada, adm. 2-12, continues care, Hong.  
 Fidela Nuncio, Lockney, adm. 2-13, continues care, Hong.  
 Ralph Lemons, Floydada, adm. 2-14, continues care, Hong.

## Lockney Hospital Notes

**February 8-15**  
 Ethel Carroll, Lockney, adm. 1-20, continues care  
 Grace Calson, Lockney, adm. 2-1, dis. 2-13  
 Christina Leal, Quitaque, adm. 2-2, dis. 2-10  
 Natalia Cruz, Lockney, adm. 2-6, baby boy Juan born 2-6, dis. 2-9  
 Charlotte Carthel, Lockney, adm. 2-6, dis. 2-10  
 Treena Aston, Lockney, adm. 2-6, dis. 2-9  
 Clay Muncy, Lockney, adm. 2-7, dis. 2-15  
 Mary Raines, Lockney, adm. 2-7, dis. 2-10  
 John L. West, Silverton, adm. 2-8, dis. 2-13  
 Ivan Thompson, Lockney, adm. 2-8, continues care  
 Harrell Dollar, Lockney, adm. 2-11, continues care  
 Lois Martin, Lockney, adm. 2-11, continues care  
 Bernice Johnson, Roaring Springs, adm. 2-12, continues care  
 Gwen Cogdell, Floydada, adm. 2-12, continues care  
 Sallie Carpenter, Lockney, adm. 2-13, continues care  
 Tammy Sheppard, Plainview, adm.

2-10, baby boy Phillip, born 2-11, dis. 2-13  
 Brenda Kay Shackerford, Lockney, adm. 2-13, baby girl Melissa Kay born 2-13, dis. 2-15  
 Amelia Guerrero, Lockney, adm. 2-14, continues care  
 Belva Gibson, Lockney, adm. 2-15, continues care  
 Dolores Gonzales, Lockney, adm. 2-15, continues care  
 Ollie C. Meek, Floydada, adm. 2-15, continues care  
 Beatrice Collis, Lockney, adm. 2-15, continues care

## Nichols listed in critical condition following wreck

Evelyn Nichols, of Lubbock, remained in critical condition Wednesday morning at Methodist Hospital in Lubbock.  
 She and her husband, Earl, were injured in a car wreck in Lubbock Thursday, February 11.

## Veterans urged to use educational benefits

A recently published study of GI Bill usage over a twelve-year period indicates that more Vietnam-era veterans in Texas and elsewhere used their education entitlements than has been previously reported, according to the VA Regional Office Director.

The study shows the percentage of veterans trained has increased over time from 60 percent among peacetime post-Korean conflict veterans to 72 percent among veterans who served during the Vietnam-era only.

The study also debunks the "Vietnam walkaway phenomenon" — that veterans who began training after release from active duty discontinued their training a short time later. The study indicates that more peacetime veterans left training than did Vietnam-era veterans.

Further, it reveals, three-quarters of the veterans who trained after discharge used some form of VA educational assistance, and an average of 60 percent completed training or reached an intermediate goal.

The Congressionally mandated study, "The Utilization of Education Entitlements by Veterans of the Post-Korean Conflict and Vietnam Era," was prepared by Research Applications, Inc., of Rockville, Maryland.

The independent study used records from more than eight million veterans from June 1966, through September 1978, to determine the extent to which eligible veterans used their GI Bill entitlements and how many veterans had successfully completed their programs of education or attained their educational or vocational objectives. Also, more than 11,000 personal interviews from VA's 1979 National Survey of Veterans were used.

Other highlights from the 399-page study:  
 —California had the highest number of veterans who trained, 916,000. That's 14 percent of the national total. Alaska had the lowest number, 0.2 percent or 9,927 veterans.

—More than 72 percent of all veterans interviewed stated they were satisfied with the information they had received about VA benefits before entering education programs. The main reason cited by veterans for using VA educational benefits was to get or qualify for a better job.

—Nearly 80 percent of the veterans interviewed stated they were satisfied with the amount of financial assistance received and 81 percent said they received their GI Bill checks in a timely fashion. Almost 90 percent said their

checks were accurate.  
 —More than 70 percent judged the government to be effective in covering their education expenses.

Since the inception of the original World War II GI Bill in 1944, nearly 18 million men and women have used one of the three GI Bills at an expense of about \$51 billion. The post-Korean GI

Bill permits a veteran to use benefits within 10 years of discharge from service, or by 31, 1989, whichever is earlier.  
 A new program, which financial participation by the veteran, is available for those who entered the military after 1976.

### NOTICES

#### Statement of Intent To Change Rates

General Telephone Company of the Southwest, in accordance with the Rules of the Public Utility Commission of Texas, hereby gives notice of the Company's intent to implement a new schedule of rates in Texas effective March 5, 1982.

The proposed changes in rates will affect all customer classes and are designed to increase the Company's intrastate revenue by 24 percent.

A complete set of revised rate schedules has been filed with the Public Utility Commission at Austin, Texas, and is available for public inspection in each of the Company's Business Offices in the State of Texas. A summary of the Company's rate filing has also been sent to the Mayor's Office of each affected Municipality.



## More Classifieds

**EARN \$365.00 PER WEEK, PART TIME**

We are a National Company specializing in Hot Food Vending equipment for National brand name foods such as MEL, Campbells and the like. Your machines will be located by professional caterers in factories, schools, hospitals, industrial complexes and similar high traffic locations. Your machines have a year factory warranty plus a 30-day guarantee and company expansion program.

With a three (3) machine minimum chase for only \$3,585.00 with 10% sales per day, your route will have \$6,419.52 gross per year, part time. You have \$3,585.00 CASH available NOW. You can start immediately, have a service auto and can operate from your home. **CALL NOW TOLL FREE** — This offer expires February 28, 1982.

**1-800-535-2115**

## Consignment Auction

We are now accepting consignments for our first sale to be held Saturday, March 6th on the slab next to Lockney Meat Company at U.S. 70 and F.M. 378 south. Let us turn your junk, trinkets and trash to cash. For more information call Sam Fortenberry at Lockney Meat Co. 652-3305  
**Sam Fortenberry, Auctioneer**  
 Bonded & Licensed  
 2xs-023-0937

## Angelo State Univ. is accepting applications

Applications from high school seniors are being accepted by Angelo State University for more than 300 Carr Academic Scholarships which may amount from \$2,400 to \$12,000 during a four-year course of undergraduate study for students with financial need who have outstanding academic ability and leadership qualities.

The applications for 1982-83 scholarships may be requested by writing to the Carr Academic Scholarship Program, Office of the President, Angelo State University, Box 11007-C, ASU Station, San Angelo, Texas 76909, or by telephoning (915) 942-2103.

Students are encouraged to submit their applications as soon as possible although applications from outstanding students may be considered up until July 1, 1982 to the extent funds are still available.

Supported by a multi-million dollar trust established in 1978 by Mr. Robert G. Carr of San Angelo, the scholarships will range in value from \$600-\$3,000 per year for a maximum of four years for undergraduates, two years for graduate students.  
 In selecting recipients for Carr Academic Scholarships, priority will be given to students of high academic ability with financial need who have demonstrated special qualities warranting honor, respect, and esteem. Carr Academic Scholarships are awarded without regard to race, color, religion, age, sex, or national origin.  
 Scholarships may be renewed annually. In order to be eligible for renewal, a Carr Academic Scholarship recipient must maintain a minimum of a "B" average (3.0 GPA) on all course work attempted while enrolled as a full-time student and must maintain an exemplary personal record which demonstrates that he/she is worthy and deserving of renewal of the scholarship.

Students are encouraged to submit their applications as soon as possible although applications from outstanding students may be considered up until July 1, 1982 to the extent funds are still available.

Supported by a multi-million dollar trust established in 1978 by Mr. Robert G. Carr of San Angelo, the scholarships will range in value from \$600-\$3,000 per year for a maximum of four years for undergraduates, two years for graduate students.

In selecting recipients for Carr Academic Scholarships, priority will be given to students of high academic ability with financial need who have demonstrated special qualities warranting honor, respect, and esteem. Carr Academic Scholarships are awarded without regard to race, color, religion, age, sex, or national origin.

Scholarships may be renewed annually. In order to be eligible for renewal, a Carr Academic Scholarship recipient must maintain a minimum of a "B" average (3.0 GPA) on all course work attempted while enrolled as a full-time student and must maintain an exemplary personal record which demonstrates that he/she is worthy and deserving of renewal of the scholarship.

**SAVE 10¢**  
 Per Gallon On  
 Gasoline and Diesel  
**USE OUR KEY LOCK**  
 For Information Contact:  
**Douglass Oil Co.**

Box 276 Plainview, Texas 293-1579

## Children SFSP to be available this summer

The Texas Department of Human Resources announces the availability of the Summer Food Services Program for children to eligible organizations during the upcoming summer.

The primary purpose of the Summer Food Services Program is to provide food service to children from needy areas during periods when area schools are closed for vacation.

Service institutions eligible to sponsor the Summer Food Service Program include: public or nonprofit private

school food authorities; public or nonprofit private residential camps; and units of local, municipal or county government.

Organizations interested in sponsoring a Summer Food Program are urged to contact: Gene Montag, Director, Child Nutrition Programs, Texas Department of Human Resources, Food Services Division, 520-A, P.O. Box 2960, Austin, Texas 78769 or call (512) 835-0440, extension, 2241 by March 12, 1982.

## GOOD LUCK!

To all the entries  
 in the Local  
 and  
 County  
 Stock Show!

**ANDERSON'S**  
 120 West California DEPARTMENT STORE  
 Floydada

Show Your Support  
 for our Future  
 Farmers, attend the  
 Local & County  
 Stock Shows  
 and Sale.

**MARTIN & CO.**  
 Floydada, Texas

We service most all makes and models of televisions. We also make service calls in Lockney, Floydada and surrounding areas. Specializing in RCA and Zenith service.

**Mize Pharmacy & TV**  
 652-2435 Lockney

**Our Youth of Today... Our Nations Leaders Tomorrow...**

Come to the Stock Show & Support Our Youth.

**PONDEROSA MEATS**

807 East Missouri - Floydada



# SHOP COMPARE WANT ADS ARE YOUR BEST BUY!

benefit  
 a veteran to use  
 within 10 years  
 from service, or by  
 whichever is earlier.  
 program, which  
 participation by serv  
 available for the  
 military after Dec

assified

\$365.00  
 WEEK,  
 TIME

Company specializ  
 equipment featu  
 e foods such as  
 ed by profession  
 schools, hospital  
 and similar high  
 machines have a  
 nty plus a local  
 pany expansion

chine minimum  
 \$85.00 with just  
 your route. If  
 year, part time, if  
 H available NOW  
 ly, have a service  
 site from your  
 FREE - This offer  
 982.

35-2115

ion

our fist  
 March  
 ckney  
 d F.M.  
 junk,  
 or more  
 berry  
 305  
 oneer  
 d

id models  
 vice calls  
 unding an  
 service wo

TV

of

ns

S

V...

Show  
 uth.

ATS

**Real Estate**

Three bedroom,  
 area. 983-3767. tfc

Several good two  
 bedroom houses.  
 Estate. Contact  
 983-2151 or tfc

BEDROOM houses.  
 Bond Real  
 983-2151 - 983-3573. tfn

BEDROOM brick,  
 B. Avenue. Fire-  
 covered in patio. The  
 can be trans-  
 5% interest. 983-  
 Jack Covington

Several nice two  
 bedroom houses.  
 be arranged. Con-  
 Hale Ins. and  
 983-3761. tfc

remodeled  
 129 W. Jeffe. Call  
 tfn

1 bedroom brick  
 2 baths. paneled.  
 and air. 2 car  
 storm cellar.  
 Texas. Contact  
 Savings and Loan.  
 Branch. 983-3725. tfn

BRICK HOUSE. 3  
 paneled den. fire-  
 2 baths. Lots of stor-  
 other extras. Call  
 for appointment. TFN

ROOM BRICK home.  
 105 J.B. Avenue.  
 983-3728.

FOR SALE: 3 bed-  
 room, sun room,  
 fireplace. 2800 sq.  
 ft. Mississippi.  
 appointment. 983-  
 tfn

BEDROOM: 2 bath  
 kitchen, large  
 recently remodeled.  
 covered patio.  
 Domestic well. 1  
 of city limits. For  
 call Darrell Mc-  
 983-2444 or 983-  
 tfn

3 bedroom, 2  
 Ralls highway.  
 10% interest.  
 983-3740. tfn

ROOM HOUSE. 2  
 5 acres of land.  
 limits. 983-2175.  
 2-25p

Home in the  
 3 bedroom, one  
 large room up-  
 bedroom or play-  
 almost 2 acres of  
 983-3766.

2 bedroom in  
 Lockney. Carport,  
 room, large fenced  
 with out building  
 carpet and dra-  
 really have to see  
 to appreciate it.  
 Marie Readhimer  
 Barker Rea-  
 Barker. broker.  
 L2-11c

three bedroom  
 central heat, refriger-  
 backward. 25%  
 \$6250.00. We fin-  
 at 12% - ten  
 out at \$269.00 per  
 Put your money in a  
 Barker Ins.  
 L2-25c

bedroom house, extra  
 one 3-bedroom  
 newly decorated,  
 Lockney. Call  
 983-3765. L2-25c

ROOM. 2 bath, brick  
 Lockney. 675-2540.  
 Lfc

WEST part of  
 Floydada Insur-  
 Real Estate. 983-  
 3-11c

**For Sale**

Reduce safe & fast  
 with GoBese Tablets or  
 capsules & E-Vap  
 "water pills".  
**Thompson Pharmacy**

**"WE SELL SLEEP"**  
 Direct Mattress Co. New or  
 renovated, for appointment  
 call City Trim Shop, 983-  
 2332. Floydada. tfc

1-19" RCA Portable T.V.  
 \$200.00. Call 652-2435.

FOR PICTURE FRAMES  
 call 983-2636. B and M Greg-  
 ory. tfn

1-19" RCA Portable T.V.  
 \$150.00. Call 652-2435.

FOR SALE: Wall hung sink,  
 medicine cabinet, wall stove,  
 golf clubs, guitar amplifier.  
 Victor Smith. 983-2048. 2-18c

1-13" RCA Portable T.V.  
 \$150.00. Call 652-2435.

FIREWOOD FOR SALE.  
 100% mesquite. Farm deliv-  
 eries made. 652-3810. L2-25p

1-25" RCA console with new  
 picture tube. \$300.00. Call  
 652-2435.

DREXEL MAHOGANY din-  
 ing room suite. Table, six  
 chairs, china hutch, 2 extra  
 leaves. Also a Stutz pickup  
 camper cover. Call Doyle  
 983-3787 day or 983-2329  
 after 6:00. 2-25p

1-25" RCA color console.  
 \$200.00. Call 652-2435.

FLOYDADA Country Club  
 membership for sale. Call  
 347-2630. Frank Price. 2-25p

1-25" Motorola console.  
 \$150.00. Call 652-2435.

**FIREWOOD**  
 \$55.00 per Rick  
**Producers Cooperative**  
 Elevator tfn

**TO BE MOVED:**  
 30x60  
**MACHINE SHED**  
 made of pipe & sheet iron  
**\$8,000**  
**Small House** 4 rooms and  
 bath (needs repair)  
**\$1,500.00**  
 \*\*\*\*\*  
**Double Garage** of pipe  
 and sheet iron. **\$2,500.00**  
 983-2671 tfn

**Large Fruit Trees**  
 Pecan & Walnut \$8.95  
 Large Shade Trees \$14.95  
 Large Shade Trees \$17.95  
**Emert's Nursery**  
 652-3116  
 Lockney Ltfnc

**Farms & Acres**

FARM 266 TOTAL ACRES.  
 226 acres in cultivation, 40  
 acres in grass, with 2 irriga-  
 tion wells. Bond Real Estate  
 983-2151 or 983-3573. tfn

**Garage Sale**

GARAGE SALE starts  
 Thursday til sold. At duplex  
 at Spruce and Main, Lock-  
 ney. Bedspreads, clothing,  
 pictures and misc. tfn

INDOOR SALE at 613 South  
 Main, Lockney. 2-25c

A paper bag can be taped  
 to your sewing machine  
 to collect small scraps.  
 They're great for stuffing  
 toys and occasional pillows.

**For Rent**

3 BEDROOM, 2 bath, living  
 room, den. 1,900 sq. ft. 420  
 W. Missouri. \$325 a month  
 plus deposit. Call 296-5764.  
 tfc

**ECONOMICAL  
 STORAGE**  
**TRY BARKER'S  
 Jewel Box-  
 Mini Storage**  
 and save your time and  
 money. Ph 652-2642.

**Barker Building**  
**Main and Locust  
 Lockney, Texas**

**STORAGE SPACE**  
 BOATS, FURNITURE,  
 ANYTHING, ETC.  
 BY THE MONTH OR  
 SIX MONTH 10%  
 DISCOUNT.  
**West Texas  
 Mini Storage**  
 CALL WILSON BOND  
 983-3573 OR 983-2151

**Card of Thanks**

Gilbert Fawver would like  
 to say thanks to all of you  
 that were so thoughtful to  
 send cards, the phone calls  
 and visits you made to cheer  
 him along. Especially to Bro-  
 ther Bradley for taking time  
 out of his busy schedule to  
 stop by during his recent stay  
 in the hospital.  
 He is now home but is  
 confined to the house so he  
 still enjoys the neighbors  
 visits.  
 Gilbert Fawver

We would like to gratefully  
 acknowledge the kind sym-  
 pathy shown us at the time  
 we lost our loved one. Our  
 sincere appreciation to Rev.  
 Jim Smith, Dr. Floyd C.  
 Bradley, the ladies of the  
 First Methodist Church, the  
 pallbearers, the ladies for the  
 beautiful music and the  
 many friends and neighbors  
 for their kindness and  
 thoughtfulness in our time of  
 need.  
 J.C. & Martha Griggs  
 Sue & Mel Baker  
 The Griggs family  
 2-18p

To our dear friends and  
 neighbors. We want to ex-  
 press our appreciation for all  
 the prayers, food, flowers,  
 cards, memorials and all the  
 other kindness shown us  
 during the brief illness and  
 death of our Granny. A  
 special thanks to Dr. Gary,  
 Dr. W.J. Mangold and the  
 Lockney hospital staff who  
 were so kind and gave so  
 much comfort to our family  
 during the final days.  
 The Family of Annie  
 Laura Graham  
 2-18p

We cannot express with  
 words our heartfelt gratitude  
 for your sweet expressions of  
 love. The prayers, food, flow-  
 ers and cards were such a  
 comfort to us in the loss of  
 our brother. We will never  
 forget your Christian love.  
 Donnell & Wilma Gowens  
 2-18c

We would like to express  
 our thanks to each of you for  
 your interest and concern  
 while Bill was in Lubbock  
 General Hospital and since  
 his return home. Your pray-  
 ers, visits, cards, flowers and  
 phone calls were greatly  
 appreciated. God Bless each  
 of you.  
 Bill, Wanda, Donna  
 & Paul Moats  
 2-18p

**CLASSIFIED ADS**  
 CALL 983-3737  
 BEFORE 3 P.M.  
 ON TUESDAYS

Water reaches its greatest  
 density at 39.2°F. (4°C).

**Farm Services**

Land Leveling, terrace;  
 bench leveling, and pump  
 pits, all types of dirt work for  
 soil and water conservation.  
 Dewie Parson 983-2646,  
 Fred Parson, 983-2074. tfc

CUSTOM APPLICATION of  
 herbicides. Bill Wisdom.  
 652-3541. Ltfn

CUSTOM APPLICATION of  
 Herbicides. Ed Warren 983-  
 3037 or Don Warren 983-  
 2995. tfn

2-4-D OR FERTILIZER ap-  
 plied on wheat, Hagie  
 ground rig. Ed Warren 983-  
 3037 or Don Warren, 983-  
 2995. tfn

Portable disc/rolling  
**Lawson  
 Farm Supply  
 Inc., Floydada**  
**983-3940**

Nash Irrigation Sup-  
 ply. Plastic pipelines,  
 aluminum pipe, lake  
 pumps and accesso-  
 ries. 983-5231.

Check with us for

**LIQUID FERTILIZER  
 ANYDROUS  
 HERBICIDES**  
 Rigs available  
 for application

**LONE STAR  
 CHEMICAL INC.**  
 Office: 652-2761  
 Deanie Henderson:  
 652-3434

**LEAK REPAIR**  
**No job too  
 small or large!**  
**Pit Digging.**  
**Juarez  
 Backhoe Service**  
**983-3393**

**Classified Rates**

CLASSIFIED ADVER-  
 TISING RATES: 20 CENTS  
 PER WORD FIRST INTER-  
 SION: 15 CENTS PER  
 WORD EACH SUBSE-  
 QUENT INSERTION. MIN-  
 IUM CHARGE \$2.50 FIRST  
 INSERTION. MINIMUM  
 CHARGE \$1.50 SECOND  
 INSERTION.  
 CLASSIFIED DISPLAY  
 RATE: \$1.82 PER COLUMN  
 INCH. CARD OF THANKS:  
 \$3.00. **983 3737**  
**652 3318**

One fourth of the body's  
 bones are in the feet.

**BAKER  
 INSURANCE  
 AGENCY**

• Auto • Fire • Homeowners  
 • Business • Mobile Homes  
 • Motorcycles • Boats  
 • Workmen's Compensation  
 • Life • Bonds

COMPETITIVE  
 RATES  
 EASY  
 MONTHLY  
 PAYMENTS

983-3270  
 NIGHTS, SUNDAYS & HOLIDAYS CALL 983-2451  
 127 W. CALIFORNIA  
 Sam Baker

**Public Notice**

Notice is hereby given by the Parks and Wildlife  
 Department that a public hearing will be held at 2 p.m. on  
 March 17, 1982 at the County Courthouse at Floydada for the  
 purpose of gathering information concerning proposed  
 hunting, fishing and trapping regulations for Floyd County.  
 As the result of action by the Texas Legislature, the Texas  
 Parks and Wildlife Commission is responsible for the setting  
 of seasons, bag limits, and means and methods of taking the  
 wildlife resources in Floyd County. All interested persons are  
 urged to attend and comment upon the proposed regulations.

**Business Services**

Adams Well Service Comple-  
 tely Irrigation Service. All  
 sizes submergible pumps in  
 stock. One day service. 983-  
 5003. tfc

**POOLE WELL SERVICE  
 AND RADIATOR SHOP**  
**Irrigation and  
 domestic.**  
**407 E. Houston**  
**983-5610 or 983-2285**

"Carpet Need  
 Cleaning?"  
 Let me do the work for  
 you. Dry foam. 10  
 cents sq. foot. Also  
 home and auto upholst-  
 ery. Call Jack Moore  
 983-3033, after 5 p.m.  
 tfc

**Insulation**  
 Installed & Guaranteed  
 Free Estimates  
 22 Years This Area

**Marr Insulation**  
**Lockney**  
**652-3593**

**INCOME TAX  
 PREPARATION  
 PROFESSIONALLY  
 DONE.**  
 REASONABLE  
 RATES.  
**MITCHELL'S TAX  
 SERVICE**  
 983-3692

**Business  
 Opportunities**

NOW YOU CAN OWN  
 YOUR OWN SPORTSWEAR  
 & FASHION SHOP! Exciting  
 and profitable opportunity  
 now available in the Floy-  
 dada area. PRESTIGE FASH-  
 ION offers you MORE for  
 your investment. Call Mr.  
 Hartley, 1-214-937-9876.  
 2-18p

OWN YOUR OWN Jean-  
 Sportswear Shop or Jean  
 Program. Offering all Nation-  
 ally Known Brands such as  
 Jordache, Chic, Lee, Levi,  
 Vanderbilt, Calvin Klein,  
 Wrangler, over 100 other  
 brands. \$8,900.00 to  
 \$16,500.00 includes begin-  
 ning inventory, airfare for 1  
 to Fashion Center, training,  
 fixtures, Grand Opening Pro-  
 motions (Also Infant/Pre-  
 Teen Shop). Call Mr. Lough-  
 lin (612) 835-1304. 2-18p

**INSURANCE**

**AUTO  
 TRUCK  
 MOTORCYCLE  
 MOTOR HOME  
 HOME  
 RENTER'S  
 LIFE  
 HEALTH**

**Cates & Dawson  
 Insurance Agency**  
 231 W. California  
 Floydada Tx.  
**983-5322**

**FLOYDADA  
 IRON & METAL**

We buy Scrap Iron,  
 Junk Cars, Aluminum  
 Cans, Batteries, and  
 sell new and used  
 steel.

Location - East Ross  
 Call 983-2305

**Script Printing &  
 Office Supply**  
 \*Commercial Printing  
 \*Office supplies &  
 Furniture  
 \*Business Machines  
 108 S. Main  
 Floydada  
 983-5131 tfc

**TREE TRIMMING  
 YARD WORK &  
 HAULING  
 CLEAN ALLEYS  
 AND PAINTING**  
 983-3917  
**Caballero & Sons**  
 501 E. Ross  
 Floydada

**Employment**

L.V.N. 3 to 11. 293-5301.  
 Care Inn, Plainview.

**NURSES WANTED.** Registered and Licensed Vocational  
 Nurses for 3-11 and 11-7 shifts. Six day work week, then  
 two days off and four days off every fifth weekend. Good  
 salary, paid vacation, sick leave, and holidays. Hospital  
 has tax annuity plan for employees that desire it and  
 hospital and life insurance furnished each employee.  
 Contact Flo Barnes, Director of Nurses or Gayle  
 Fortenberry, Administrator at Lockney General Hospital,  
 320 N. Main, Lockney, Texas 79241, 806-652-3373, about  
 working in this progressive small hospital with a family  
 atmosphere.

**Automotive**

1971 LTD FORD. Good con-  
 dition. June Bybee at First  
 National Bank in Lockney or  
 after 5 call 652-2323. tfn

1980 CHEVETTE scooter, air-  
 conditioned, 18,800 actual  
 miles, 4-speed, excellent  
 condition. C.E. Tyer. 983-  
 2269 (after 4:30 p.m.) 2-25p

3 Economy cars,  
 \$1250 each  
 1 77 Chrysler, 4 dr.  
 \$1850  
 1 75 Chev. Pickup.  
 \$2350  
 78 Bobcat, \$1400

W.B. Eakin Car Lot  
 983-3616  
 Ralls Highway

**Motorcycles**

FOR SALE: 1976 motorcycle.  
 KX400 - KAW. Call 983-2626  
 after 6:00 p.m. 2-18p

**Auto Parts &  
 Accessories**

F-Z RIDER SHOCKS by  
 Monroe. Buy 3 and the 4th is  
 FREE. Free Installation.  
 Don's Muffler Shop, 123 W.  
 California. TFC

**DAN'S AUTO  
 SERVICE**  
 DAN TEUTON, Owner  
 Specializing in Auto-  
 matic Transmissions,  
 Motor Tune-Ups, Auto  
 Air Conditioning.

General Repair  
 We Have A  
 BRAKE LATHE  
 to handle all passenger  
 car brake drums. See  
 us for complete brake  
 service.  
**Phone 652-2462**

**CUSTOM  
 EXHAUST WORK**  
**Bruce Williams**  
 Specializing in Glass  
 Packs and Turbo  
 Mufflers  
 At  
**DANS AUTO SERVICE**  
 Lockney 652-2462

**Hollis R. Bond  
 Real Estate**  
 PHONE 983-2151  
 107 S. 5th FLOYDADA

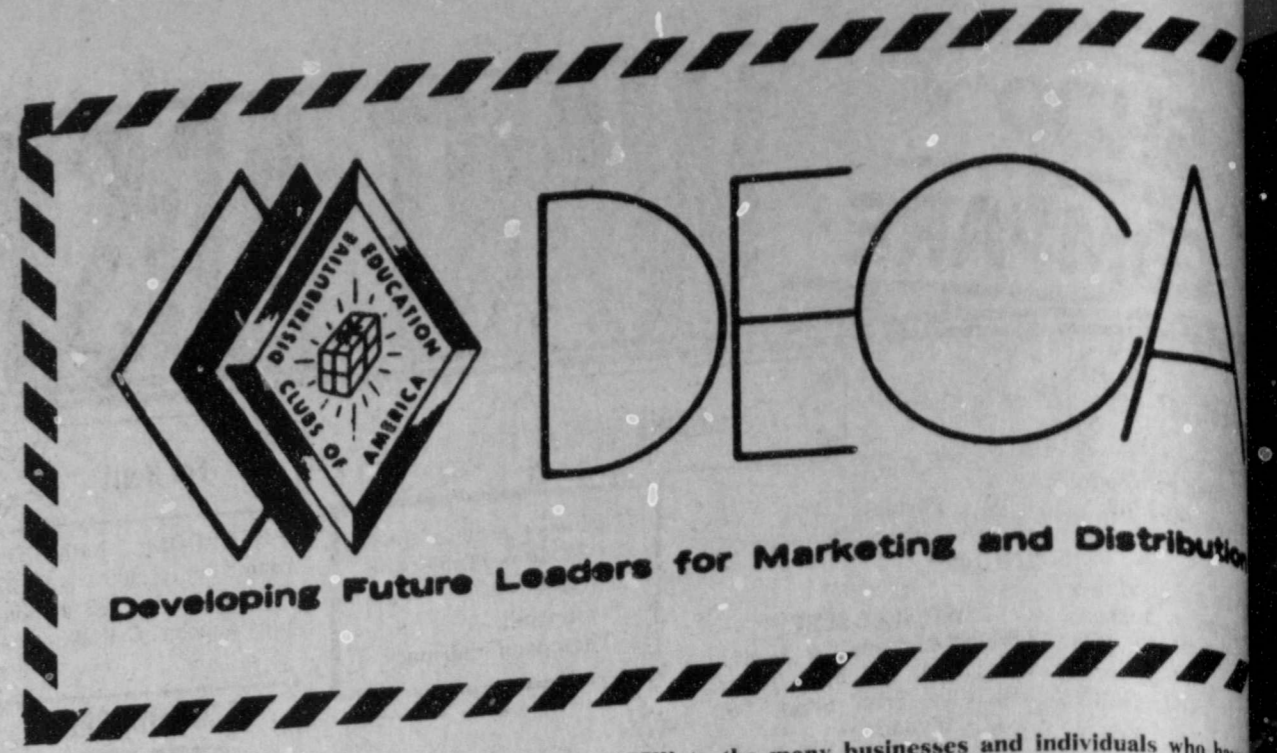
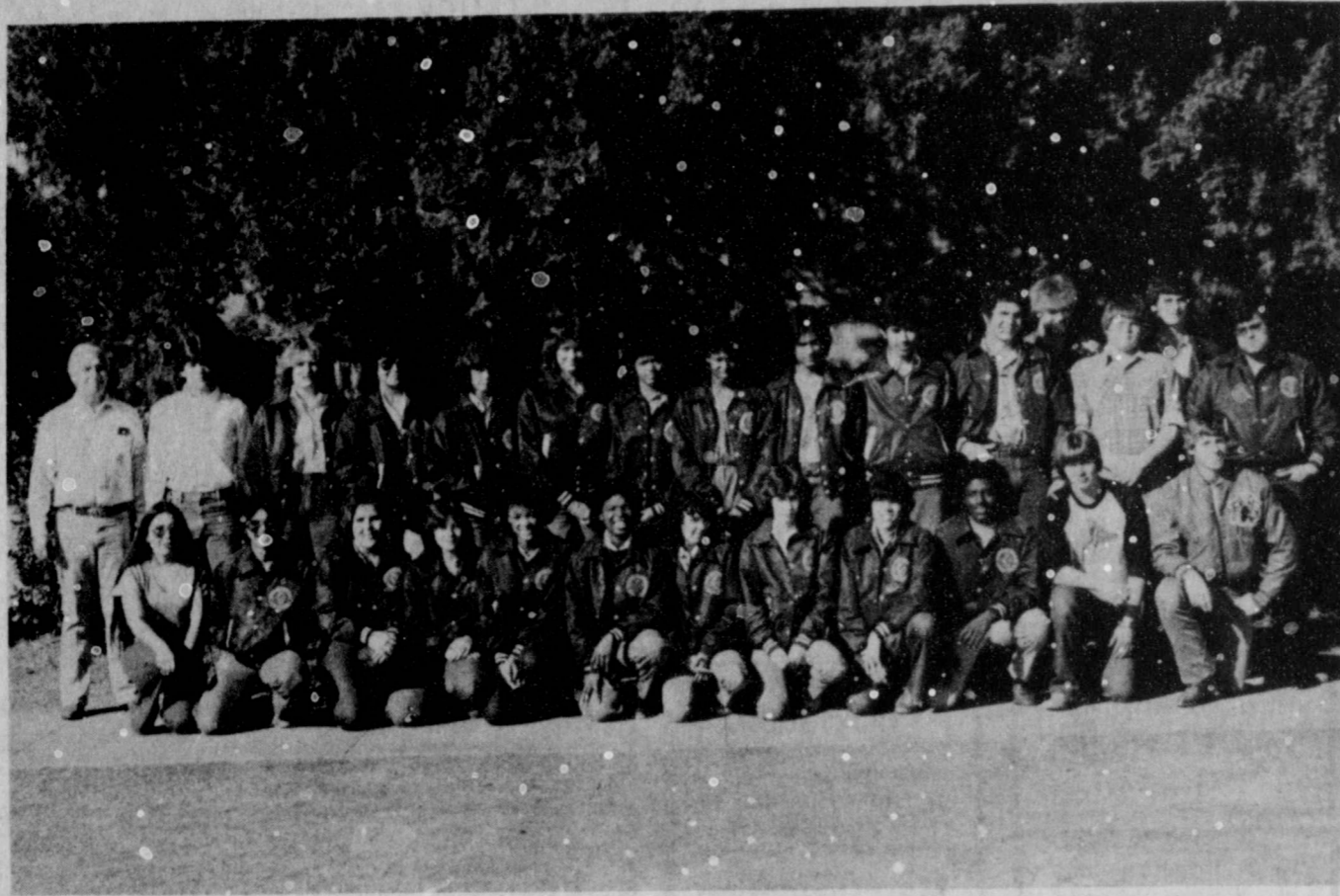
**TURNER REAL ESTATE**  
 Farms Ranches  
 983-2635 Floydada, Texas

**Diamond Industrial Supply Co., Inc.**  
 Phone Days 296-7418  
 Nights 296-1200 or 296-7828  
 1014 Broadway  
 Plainview, Texas U joints  
 Oil Seals  
 O rings  
 Wisconsin

Chain  
 Sprockets  
 V belts  
 Sheave  
 SKF BCA Timken Bower  
 Cotton Stripper Brushes & Bats  
**"We Appreciate Your Business More"**



# NATIONAL DECA WEEK



We would like to extend a sincere "THANK YOU" to the many businesses and individuals who have supported us over the years. A special thanks goes to the following merchants who are training our members this year.

Anderson's Dept. Store  
Arwine Drug  
Azteca Cafe  
Brooks Oil Co.  
Buddy's Food Store  
Caprock Motor Parts  
Collins Appliance  
Consumers Fuel Assn.  
Cornelius Conoco  
Dairy Queen  
Don Hardy Race Cars

Floydada Power & Light  
Floydada Nursing Home  
Floydada Water Dept.  
Kirtley's Market  
Lovell-Collins Jewelry  
Mr-T Burger  
Piggly Wiggly  
Pizza Gold  
Ruben's Drive-In Grocery  
Script Printing  
Westbrook Trade Center

Business is Great  
in FLOYDADA

PRESENTED AS A PUBLIC SERVICE BY THE FLOYDADA DECA SUPPORTERS:

FREE ENTERPRISE  
it's work

Floydada Nursing Home  
Hale Insurance & Real Estate  
Don Hardy Race Cars  
Anderson's Department Store  
Hi-Plains Farms  
Thompson Pharmacy  
Daniel Automotive  
Script Printing & Office Supply  
Nash Irrigation Supply  
Browns Implement Inc.  
Oden Chevrolet-Olds Inc.  
Consumers Fuel Assn.  
My-T Burger  
Kirtley's Market  
Travel Center Restuarant  
Plainview Production Credit Assn.  
Brooks Oil Co.  
Hales Dept. Store  
King's Restaurant  
City Auto Inc.  
Cornelius Oil Co.  
Dairy Queen  
Qualtiy Body Shop  
Martin & Company

Leonards Cafe  
Blanco Offset Printing In. Inc.  
Floyd County Hesperian  
Moore-Rose Funeral Home  
Ponderosa Meat Co.  
Bobs Shamrock  
Willson & Son-Builders Mart  
Bishop-Ramsey Pharmacy  
Baker Insurance Agency  
Producers Co-op Elevator  
Floydada Cooperative Gin  
Farm Bureau Insurance Co.  
Tipton Oil Company  
Floydada Insuarnc & Real Estate  
Arwine Drug  
Lighthouse Electric Coop Inc.  
Southwestern Public Service Co.  
Caprock Motor Parts  
Ince Oil Co. No. 15  
Collins Appliance  
Ruben's Drive-In Grocery  
Floydada Power & Light  
Floydada Seed & Delinting Co. Inc.  
Gooch Trucking Company

Westbrooks Trade Center  
Edmiston Plumbing and Heating  
Allens Dixie Dog  
Patzner Chiropractic  
Russell Equipment & Supply Inc.  
Piggly Wiggly No. 265  
Reed Ford & Mercury  
Town & Country  
First National Bank of Floydada  
Buddy's Food Store  
Pizza Gold  
Dons Muffler Shop  
Parker Furniture  
Gene's Cleaners  
City Trim Shop  
Kirk & Sons  
Floydada Livestock Sales  
Floydada Lions Club  
Wayne Fuller Trucking  
Adams Well Service  
Brown Gin Company  
Floydada County Implement

DECA means  
Business



## Cogdell donation made to Scott & White

Scott and White Memorial Hospital and Scott, Sherwood and Brindley Foundation announced this week that cash payments, including stocks and gifts-in-kind amounted to \$3,070 million in 1981. Of this total, \$2,793 million were new pledges.

Largest of the 1981 gifts was \$1.2 million from the Ella C. McFadden Charitable Trust of Fort Worth in the form of Southland Royalty Company stock. This money will be used for Scott and White's capital building program. The 1981 McFadden gift brings the total this trust has contributed to Scott and White to \$2.4 million, all of which is in Southland Royalty Company stock.

The second largest gift was \$500,000 from the Houston Endowment Inc. of Houston. This was the latest of a series of donations to the hospital, bringing the total gifts from this Foundation to \$4,250 million. The grant has been used to create and equip the Jesse H. and Mary Gibbs Jones Perinatal Center. The first part of this was dedicated last fall. Mr. and Mrs. Jones founded Houston Endowment in 1937. The Jones Perinatal Center provides care for problem pregnancy women and critically ill infants. The state of Texas has

designated it as the perinatal center for a 21 county region in Central Texas. Perhaps one of the most unusual large gifts received in 1981 was the gift of 160 acres of farmland near Hereford, Texas. The land, in Deaf Smith County, is from Mr. and Mrs. George B. Miller of Fort Worth. The land has been used for wheat and grain producing and this use will be continued for the present. Mr. and Mrs. Miller have both been patients at Scott and White.

In 1972 the Brown Foundation of Houston gave Scott and White a matching/challenge grant for \$2,275,000. The hospital was given 10 years to match it. At the present time Scott and White has received all but \$82,000 of this money. The hospital must raise \$827,000 before December 31 to receive the total matching grant. The Brown Foundation was set up by George and Herman Brown who founded the Brown and Root Company.

## Senior Citizens Menu

February 22-26

Monday — Swiss steak, blackeyed peas, fried okra, cornbread, canned apricots, milk

Tuesday — Spaghetti with meat sauce and parmesan cheese, buttered green beans, tossed salad with dressing, roll, cherry cobbler, milk

Wednesday — Corned beef brisket, parsley potato with cheese sauce,

buttered mustard greens, cornbread, applesauce, milk

Thursday — Pinto beans with ham, buttered carrots, sliced tomatoes-onions, cornbread, banana van wafer pudding, milk

Friday — Oven fried fish, catsup or tartar sauce, potato tots, oriental mix vegetables, spice prune cake, milk



**QUEEN**—The residents of Floydada Nursing Home named their Valentine King and Queen at a Valentine party last week. Elected Queen was Sue Thompson and named King was W.C. Cates. The two were voted for by penny vote. The proceeds from this are to benefit the American Heart Association.

## Student financial aid takes cuts

ashes in federal tuition outlays should prompt students to take a closer look at their career objectives, according to a study by the Texas Health Care Industry.

Sam may be tightening his purse strings on student financial aid dollars, said Anthony B. Owens, CAE, executive director of the Texas Hospital Association (THA) Vice President.

"But tuition assistance programs have never been more plentiful than now," Owens said.

Owens said that Texas hospitals and health care facilities put close to one-quarter of their budgets "up for grabs" in the form of scholarships, grants, and other financial aid.

related tuition assistance programs are proliferating as concern grows over shortages of health care workers, technical workers, and nurses to staff health care facilities.

"The greater accessibility of financial aid is another incentive for students to consider health careers," Owens said.

The Texas Health Careers publication will be sent to Texas high school juniors and seniors as well as career-changing adults who are considering employment in the health care industry.

Texas Health Careers is a statewide career education and recruitment program aimed at introducing young

people and adults to the broad spectrum of necessary but often neglected career opportunities in the health field. Components of the program include dissemination of career investigative literature, individual counseling, assembly presentations, and placement assistance for trained health care workers.

Texas Health Careers is an ongoing project of the non-profit Texas Hospital Education and Research Foundation.

affiliated with the Texas Hospital Association, the Austin-based trade organization for over 700 Texas hospitals and related institutions.

Inquiries about the Directory of Financial Aids and Educational Programs may be addressed to Texas Health Careers, P.O. Box 15587, Austin, Texas 78761; or phone toll-free, 1-800-252-9708.

On Saturday and Sunday, March 20 and 21, the first West Texas Championship Washer Pitching tournament will be held at the Garza County Livestock Barn in Post, Texas.

Sponsored by the OS Ranch Steer Roping & Art Exhibit, the proceeds will be donated to the West Texas Boys Ranch in San Angelo.

The tournament will be limited to the first 64 teams to enter. Entry fee is \$100/team and must be mailed by

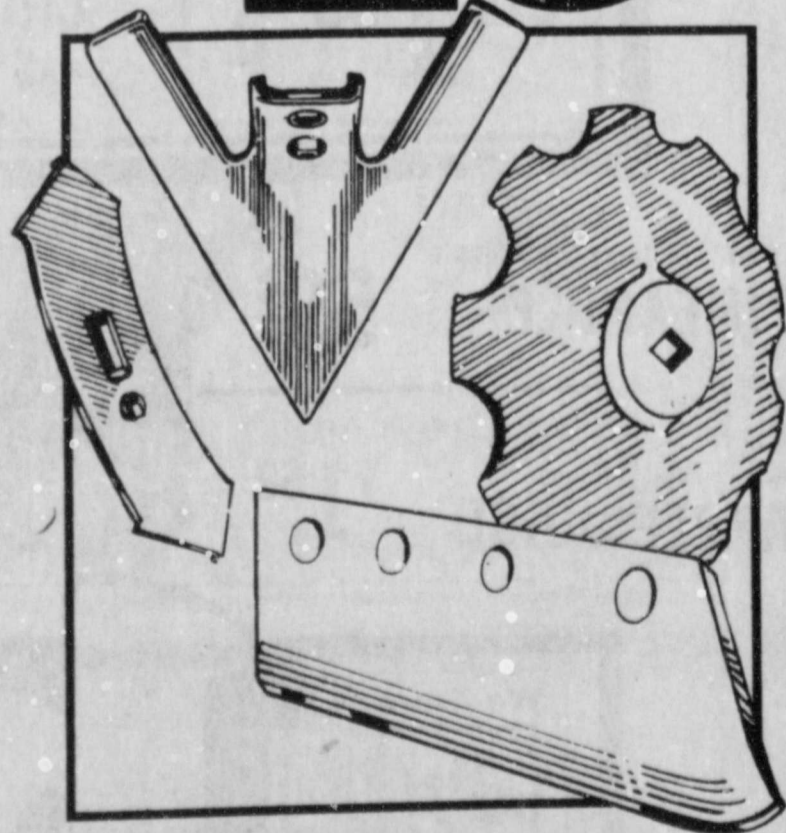
## Washer Pitching Tourney scheduled at Post

March 6th to the OS Ranch Steer Roping & Art Exhibit, P.O. Box 310, Post, Texas 79356, along with names and addresses of the team members.

This popular event will open each day at 11:00 a.m. for general public admission. For more information, call Bob Palmer at 495-2710 during office hours; or Mike Mitchell at 495-3104 evenings.

## Down to Earth Sale! IH TILLAGE PARTS

Now, save up to **25%**



are throwing out prices with red hot deals on tillage parts. Not just for IH equipment, but for other makes as well—all at up to 25% off regular IH suggested list prices.

**DISK BLADES**—Earth Metal™ blades with our cost-cutting IH exclusives: unequalled toughness that provides up to 20% longer life, crimped center design that gives extra strength and requires 33% less drawbar pull, saving fuel.

**PLOW PARTS**—Take your pick: flat, deep back, and upset shares; landsides, trash blades, and colter blades. Highest quality, lowest prices for a lot less.

**CULTIVATOR PARTS**—Get set to roll this spring with all the cultivator parts you need: sweeps, shovels, points, and spikes. Buy now and get low, low prices!

Come in. Start your harvest profits now with big pre-season savings!



**Brown's Implement Inc.**

Ralls Highway 983-2281

## Help Our Youth

Build a better tomorrow.

Support their activities today!

ATTEND

The Local & County Livestock Shows & Sales



## CONSUMERS FUEL ASSOCIATION

Farmers Supplies Irrigation Supplies

Gas Oil Greases Tires PROPANE

Veterinary Supplies

Phone 983-3394

Floydada, Texas







Center News

# Center blessed with a very beautiful Valentines Day

BY MRS. J.E. GREEN

Monday, February 15:  
Yesterday was St. Valentines Day, and it seems there was a lot of visiting done. Some of ours were absent from church and we had visitors at ours. And how grateful we were for the beautiful and warmer afternoon.

Our recuperating friends are about the same except Mrs. Sally Carpenter, who is back in the Lockney Hospital since Friday nite. Let us remember all in our prayers.

Bro. Muncy was brought home from the Lockney Hospital today.  
Mrs. Ava Jackson, the Mayfields and Ma Green are among those who have been fighting colds or flu.

Mrs. Hartline spent some of last week visiting friends in the hospital in Lubbock.

Mr. and Mrs. Bob Finkner of Lubbock visited Sunday with her mother, Mrs. Charles Fulkerson.

Mr. and Mrs. Hal Thomas spent over the weekend in Lubbock visiting the children. Sue and Milton Mensch and son David.

Mrs. J.D. Welborn and her local children and families had a get together dinner Sunday at the home of one of her daughters, Mr. and Mrs. Roger Gooch.  
Mr. and Mrs. Bobby Plumlee of Amarillo visited over the weekend with his parents, Mr. and Mrs. W.B. Plumlee.

Mrs. Ethel Warren visited over the weekend with her son John and family of near Lubbock.

Sunday visitors at the Thomas Warren's were daughter Joyce and Jim Owens and three small sons, Mrs. Ola

Warren and Mrs. Fred Battey and Mr. Burl Huckabee.

Mr. and Mrs. Millard Watson of Mt. Blanco were hosts Sunday to a birthday dinner honoring her parents, Mr. and

Mrs. Henry Brewer. All their children and most grandchildren were present except De Wayne Brewer of Dallas. Some other relatives were present also. Areas representing those present were Floydada, Crosbyton, Lubbock, Level-

land, and Wichita Falls. There were 39 present for dinner and some came later. They had a wonderful time.

(Observation: Don't people with large families have good times!)

## Challenging overseas experience for U.S. youth at international work camps

This summer, for the first time, the Council on International Educational Exchange (CIEE) is offering U.S. youth the unusual opportunity to participate in international work camps in Scandinavia, Germany, Belgium, Holland, Switzerland, Czechoslovakia, Poland and Mexico. The program offers young

people a meaningful overseas experience at little more than the cost of getting there.

The concept of international work camps, well-known throughout the rest of the world, is unfamiliar to most in the United States. A work camp enables young people to live and work together

with their counterparts from all over the world on a development project that benefits the local community. Usually two, three or four weeks in length, camps often combine manual and social tasks.

Projects include working with handicapped children in Denmark, restoring castles in Czechoslovakia and preserving the North Sea dunes in Germany. There is no salary but room and full board are provided for the volunteers.

It is not necessary to have any special qualifications and no language other than English is required. Volunteers must be at least 18 years of age; however, 16 year olds will be accepted for Germany.

For more information on the program, contact CIEE, International Work Camps, 205 East 42nd Street, New York, New York 10017, (212) 661-1414, or 312 Sutter Street, San Francisco, California 94108, (415) 421-3473.

### Pampa woman sentenced in fraud

A Pampa, Texas woman will serve six months of a three year sentence in prison for forging her grandmother's signature on social security checks negotiated after her grandmother's death.

The sentence was imposed by U.S. District Court Judge Mary Lou Robinson in Amarillo after Freddie Jean Lowrance of 1030 S. Faulkner in Pampa pled guilty to federal forgery charges.

According to Ray Purcell, Manager of the Plainview Social Security Office, the charges resulted from an investigation conducted by the U.S. Secret Service and the Department of Health and Human Services Office of Investigations.

Mr. Purcell said the case was detected in a record matching project between the Social Security Administration and the Health Care Financing Administration to identify individuals who had died according to hospital and medicare reports, but whose death had not been reported to the Social Security.

### Marrs joins PDA's office in Lubbock

James E. Marrs has joined Property Damage Appraisers, Inc. as an appraiser in the company's newly reopened office in Lubbock, announced David T. Clayton, PDA president.

PDA, one of the nation's leading independent appraisal firms, represents most major insurance companies. Their expertise in the field of automobile and heavy equipment damage appraisal for more than 19 years has earned them a national reputation for excellence. The Texas-based company has a network of nearly 100 offices nationwide.

Marrs is an experienced appraiser, having more than 14 years experience as an auto body shop manager and staff appraiser. Barbara Ann Marrs will be assisting him in office management.

"The office will continue to serve all insurance companies and self-insureds operating in the Lubbock area," Clayton said. The office will also serve all of Bailey, Cochran, Yoakum, Lamb, Hockley, Terry, Hale, Lubbock, Lynn, Floyd, Crosby, Garza, Motley, Dickens and Kent counties, he added.

PDA's Lubbock office has now resumed operations and may be reached by calling (806) 762-6465.

### The Land Bank

Dependable long-term credit through good times and bad...

See us:



Floydada  
105 South Wall

### STAMP PRICE SPECIALS

#### for Penny-pinching customers!

Even if pinching pennies isn't your style...we make it a fun thing to do. And shrewd too. Because it can save you a lot of money over the months...by offering you some of your favorite Brand Items for just 'pennies'...plus a 1/4 Saver Book of Green Stamps. And at the rate you can save stamps on all your other shopping...you'll have all you need for these unbelievable Stamp-Price Specials...and the S&H Gifts you want too!

We love our penny-pinching customers. They're so smart!

### STAMP PRICE SPECIAL

14 oz. Bag Kraft  
**Caramels**  
**39¢**

With One Filled  
S&H Special Saver Book  
**99¢**  
without book

### Your Home Owned Store

13 oz. Folgers Flaked  
**COFFEE**  
**\$2.19**

50 Count Mr Coffee  
**COFFEE FILTERS** **2/99¢**

### Your Home Operated Store

15 oz. Wolf Plain or with Beans  
**CHILI**  
**89¢**

5 oz. Swifts  
**VIENNA SAUSAGE**  
**2/89¢**

12 lb Purina  
**CAT CHOW** **\$5.89**

Unscented Sure  
**DESPERANT** **\$1.98**

Bath Size Camay  
**SOAP** **2/89¢**

7 oz Campbell's  
**SOUP FOR ONE** **3/\$1.00**

12 oz Smoke or Cheese Flavor  
**SPAM** **\$1.29**

20 Count Glad Medium  
**GARBAGE BAGS** **\$1.19**

8 oz Philadelphia  
**CREAM CHEESE** **89¢**

19 oz Nabisco Chips Ahoy  
**COOKIES** **\$1.49**

### Farm Fresh Produce

California Hass  
**AVOCADOES**  
**4/\$1.00**

Extra Fancy Red Delicious  
**APPLES**  
**49¢**  
lb

Texas Ruby Red  
**GRAPEFRUIT**  
**4 lbs \$1.00**

California 1 lb Cello Bag  
**CARROTS**  
**3/\$1.00**

Jumbo Roll Zee  
**PAPER TOWELS**  
**69¢**

### Your Home Town Store

32 oz King Size  
**IVORY LIQUID**  
**\$1.39**

50 oz. Automatic Dishwasher Detergent  
**CASCADE**  
**\$2.19**

220 South 2nd  
983-3149

STORE HOURS  
Mon. Thru Sat. 8 am - 9 pm Sunday 9 am - 8 pm

Values In This Ad  
Effective Thru Wednesday  
February 24, 1982

We Reserve The Right To Limit Quantities

We Give  
We Redeem USDA  
Food Stamps

that will give you...  
are as simple as...  
making a skirt, select...  
for rather than a...  
needs to be made...  
e money, buy...  
make items such as...  
nd make the vest...  
patterns that do...  
d buttonholes. Pe...  
elastic is much sim...  
glan sleeves are...  
suming than regu...  
rics that don't r...  
eam finishes. Ca...  
ments at the same...  
e need for getting...  
rd or clearing the...  
as often.  
your sewing area...  
work in and you...  
ed in a short amou...  
ch sewing by ma...  
le to use several...  
t to put in a hem r...

Family Pack  
**PORK CHOPS**  
**\$1.59**  
lb

2.89  
lb

8 oz Philadelphia  
**CREAM CHEESE**  
**89¢**

Instant

do  
ERM



