

The Shalom Connection perform

Faires and "The Shalom Connection" will be performing at the Christian Church next July 26 at 7:30 p.m. He will also be preaching at 10:30 a.m. morning services. Faires and "The Shalom Connection" are performing several songs and participating in worship on their way to and from the Assembly of the Christian Disciples (Christ) in Anaheim, California.

with Darrell, Sr. in "The Connection" are his daughters, Kathy and Kim, and his sons, Jr. and David. Also traveling with the tour are Darrell, Jr., Beth and Sanford and Joy Sr. is a Disciples of Christ who is now engaged in a free ministry in the areas of music, worship and youth ministry to operate economically. A "Media Day" is planned for assemblies, retreats and tours of the plant will be the near future.

Area public officials, including Governor Bill Clements, House Speaker Clayton, Senator E.L. Short and others have been invited to attend.



JERRY THOMPSON (left) and Stan McClendon (center), Ricky Burns and Louis Anderson (right) begin the "Flaunt Floydada" campaign started by "the guys in the white hats" at the Floydada Chamber of Commerce. The \$5.50 hats are limited editions with embroidered patches. The \$4.00 hats are puff-printed and will be available on a demand basis.

RR Commission meets opposition to closings

The Texas Railroad Commission will decide between economy and personal attention when it makes a decision to allow local Santa Fe agencies to remain open or close as requested by the parent company.

Kress, Lockney, Hale Center and Floydada would lose stations to a proposed regional office in Plainview.

Don Marble, of South Plains was the first to testify in the hearing last Thursday at the Unger Memorial Library in Plainview.

Marble is a farmer in Floyd, Hale and Castro counties. He said he is served by a railroad siding in Lockney for shipping cotton and grain and for shipping and receiving test equipment for John Deere and Co.

"I have had some serious problems from time to time in shipping cars of farm equipment to Des Moines. My local agent, whenever I had had these problems, has been as helpful as possible. What we have now works pretty well, so many changes should be for the good of the customer and not just for the railroad," said Marble.

Marble also suggested two improvements that are already part of Santa Fe's proposal, a toll-free line for customers to call the Plainview office and for an "agent on wheels" or Santa Fe representative to travel to the communities and assist shippers when needed.

Steve Brown, a farm equipment dealer, said that creating a regional freight office in Plainview and discontinuing the agency in Floydada would cause him costly delays when he needed service.

The proposal at the hearing was formally opposed by Lynn Cherry and Norman Shears of the Brotherhood of Railway and Airline Clerks because the changes would mean the loss of four working positions. Santa Fe officials said the agents at the affected stations, Leon Bell at Floydada; W.E. Stewardson at Lockney; N.E. Owens at Hale Center and H.W. Roden, Jr. of Kress probably will be given an opportunity to transfer to other positions in the Santa Fe system. Each of the four agencies have one employed.

Santa Fe officials estimate that the firm will realize an annual savings of \$115,000 by closing the four agencies.

In 1980, Floydada received 98 cars and shipped 284 cars, Lockney received 47 cars and shipped 268, Muncy received 15 cars and shipped 61; Hale Center received seven cars and shipped 288; Underwood received 392 cars and shipped 39, and Kress received 17 cars and shipped 220.

Plainview received 10,598 cars and shipped 3996.

The hearing examiners should announce their recommendation within 180 days, but the Railroad Commission still must rule on the decision.

FISD plans building purchase

The Floydada school board approved a motion Tuesday night to make a commitment to buy the old post office building owned by Clement McDonald. The school administration office will be moved to the newer building. The present building will be made available for sale in the near future school officials said.

The business managers report was presented with the result of tax collections which showed \$922,810.27 or 92 percent of taxes had been collected to date. The amount is down from 94 percent from last year. The report said \$20,000 in delinquent taxes is still needed to meet the budget.

The board approved the County Central Appraisal Budget at \$32,798.40 which is 26.42 per cent of the Appraisal district's total budget.

The board approved a recommendation from R.C. Andrews elementary principal Preston Watson that the fourth grade be departmentalized.

The future hiring of an assistant band director was approved. No one is hired at present.

Resignations were accepted from LuAnn Collins, Special Ed. and Resource teacher; Bama Coward, third grade teacher; Lee Finley, first grade teacher.

Recommendations for employment were given for Ann Helms, first grade; Glenda Livingston third grade; Karol Rainwater, elementary resource teacher at R.C. Andrews; and Jeanyne Hunter, Home Economics at high school.

Supt. Cannon said 14 new teachers had been hired.

The board approved the firm of McCreary and Huey to collect delinquent taxes.

Cannon presented a tentative budget to be approved in August. The budget calls for no tax increases and will not be completely tallied until the August meeting.

City public hearing gets positive results

A public hearing by Floydada City Council Tuesday night has resulted in determining ownership and responsibility of a piece of city property that has been the cause of numerous complaints.

Three houses on two lots on the corner of Fourth Street and Kentucky have been brought before council for their unkept condition. An official of an adjacent church as been outspoken before about the offense he and his parishioners have felt they have been subjected to.

The property owners are Teresa Gutierrez, a young woman who lives in Arlington, and her sister. Gutierrez told the council that she has already taken steps to pay up back taxes and intends to "fix up the property" and agreed to have the grey house torn down if it cannot be repaired.

Gutierrez, whose husband and small child waited outside, answered council question in a direct and competent manner.

She said that no one is to be living in the houses and that the city police have

her permission to evict anyone trespassing.

Council gave her 60 days so that she could see to the clean-up and fix-up of the property.

No one else appeared to testify at the public hearing concerning numerous parcels of property in violation of Ordinance No. 622.

Four pieces of property that have been found in violation were discussed. Council voted to give a 60 day notice for removal in each case. At that time, if nothing has been done, the city will demolish the buildings.

To keep the city fire rate, it is necessary to send some of the volunteer firemen to the A&M Firemans school at College Station July 19 through 24. Councilmen have been invited to the schools visitation day on July 22.

Three firemen will be sent and expenses of \$400 each will be paid by the city. It was reported that two other firemen will be attending the school at their own expense.

The school is considered the best training session available in fire fighting techniques.

Earth sheltered home is designed for comfort and total efficiency



THE EARTH-SHELTER home of Mr. and Mrs. D.L. Miller as seen from the front.

A Floydada couple have opted for the unconventional in a new earth shelter home in the Barwise Community.

Mr. and Mrs. D.L. Miller began considering a new home in 1979. After attending a seminar on earth shelter homes at Texas Tech University, the couple was convinced that they would try something unusual, but practical. Their next big task was to find a contractor who would consider building the home in the untraditional style. Fred and John Huggins of Lockney, were eventually commissioned for the construction.

A conventional cedar shingled roof is supported by nine and one-half inch concrete walls with 10 ft. irrigation pipes at four foot intervals. Sheets of 4x8 plywood were attached to the pieces of pipe and concrete was then poured in the spaces. After the concrete was poured, the boards were removed and used in other construction areas of the home.

The Millers said many people who have expressed interest in the home were incorrect in assuming that it was underground. Dirt is piled up to the roof-line on the exterior. Mr. Miller

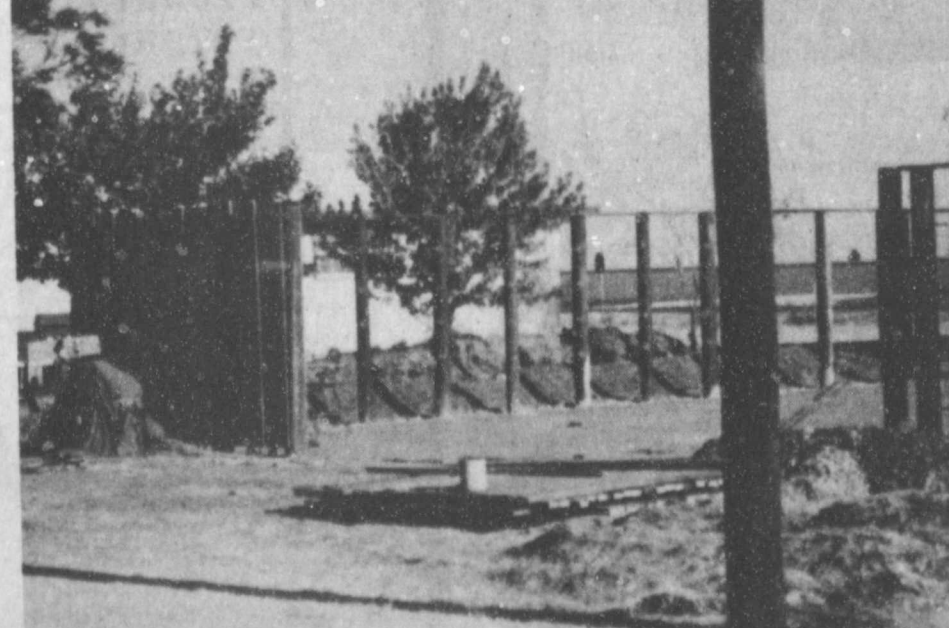
plans to cover the dirt with Astro turf to aid in water run-off. The eaves as well as the wall openings are a tan stucco that is virtually care-free.

The positioning of the home, southeast at a slight angle, is carefully calculated to avoid direct sun in the

eight windows on the front of the home. The upper three windows in the cathedral ceiling living area are not draped, but remain open for natural lighting.

The main living area is 24x48 with a

Continued On Page 3



EARLY CONSTRUCTION of the D.L. Miller home before concrete was poured between the irrigation posts.

Lockney Chamber seeks new rod plant

BY PATRICK CLARK

The Lockney Chamber of Commerce, led by president Gail Kring, is mounting an all-out effort to entice two Lockney natives to build a proposed \$6 million steel sucker rod plant just outside the city limits.

The plant would employ 45-60 employees with an annual payroll in excess of a half-million-dollars the first year and increasing to \$750,000 in the fifth year of operation.

The proposed developers are cousins Nelson and Jake Wofford of Lubbock who own a woden sucker rod plant in Lockney.

The critical factor in the negotiations has become developing a counter-proposal to an offer made the Woffords by the city of Crosbyton.

Crosbyton has offered the Woffords five acres of land on a 99-year lease for one-dollar a year plus installation of water, gas and sewer lines at no cost.

In addition, the Crosbyton site is on a railroad spur the Woffords said is suitable for their needs.

However, the Woffords, have been negotiating for the purchase of 3.6 acres of land just west of the Lockney city limits and south of Highway 70.

However, the Woffords said the pie-shaped site is the wrong shape and they need the additional 1.4 acres for the 40,000 square foot building they plan to build. As a result, Kring is talking to the owner of the adjacent property to see if a transaction could be arranged to provide the Woffords with the additional needed land.

A Fort Worth and Denver rail line is nearby and a spur could be constructed.

The Woffords said that if they decided to come into Lockney instead of Crosbyton, they would expect a similar arrangement on the water, sewer and gas lines.

It is estimated that it would cost 75-cents per foot for a two inch water line and the same amount for a two inch gas line.

A four inch sewer line would cost about \$4 per foot. "If they (the city) would spend a few thousand dollars, we could make the town a lot of money," Nelson Wofford said.

In addition, the Woffords want a guarantee that the city will not annex their land in the future so that it will not be subject to city taxes.

At the regular city council meeting earlier this month, council members indicated there would be no problem with the annexation guarantee.

The Woffords said they would like to have the plant in operation by the first of the year, regardless of where it is located.

Continued On Page 2

CORNELIUS COMPANY SERVICE STATION
Floydada

CONOCO
Floydada

THE TYE COMPANY
Lockney

MUNCY ELEVATOR
Lockney

PRODUCTION CREDIT ASSOCIATION
Floydada

CONSUMERS FURNITURE ASSOCIATION
Lockney

FIRST NATIONAL BANK OF FLOYD COUNTY
Floydada

CASE FOWER & EQUIPMENT
Floydada

FLOYD COUNTY IMPLEMENT
Floydada

Weather news
Courtesy of Energas

High	Low
87	72
91	72
94	74
98	74
90	74
90	74
96	76

Crime Call 883-5200

Judge Praises Entries In Crosbyton Art Festival

"The amazing thing about this show is the great cross section," remarked John Crump concerning the third annual Crosbyton Art Festival. Crump, a well-known artist from Anson, judged the show which was opened to the public Friday and Saturday.

Crump was highly complimentary of "the high quality show," which attracted 308 entries. "Good crowds" visited the event which was stated in the Crosby County Pioneer Memorial auditorium.

Judge Crump remarked "this is the best quality photography of any small town show I've seen." He also commented on the number and quality of wildlife.

He also praised the "excellent community involvement. The general attitude is overwhelming. I am very impressed with the art asso-

ciation and civic pride" evident in the Crosbyton Art Festival.

"BEST OF SHOW"
Chosen for "best of show" honors was a pastel of Louise Deering of Lubbock. It was entitled "Basket of Apples."

"People's choice" was a bronze of a young cowboy and his dad designed by Dwayne Cornelius.

Prizes were presented at 4:30 p.m. Saturday at the show's conclusion.

Thursday evening, a patrons' reception was held in the auditorium. Patrons made their selections before the festival was opened to the public the next morning.

Dwayne Cornelius, president of Crosbyton Art Association, said purchase prizes totaled \$3,610.

In addition to the \$15 cash prize for first place winners in each

division, ribbons were presented for first, second and third place and honorable mention.

Crump judged entries Thursday after they had been accepted the previous day.

Floydada Winners Announced

ANIMAL PORTRAITS: 1. Carol B. Fritz, Lubbock, "King of the Castle"; 2. Pam S. Davis, Lubbock, "Mom and the Boys"; 3. Jo Goens, Floydada, "Animal Portrait"; HM, Twig Greenhaw, Lorenzo, "Refuge"

STILL LIFE — COLOR: 1. Zee Kirkpatrick, Post, "All the comforts of Home"; 2. Tommy Burns, Floydada, (No title); 3. Ann McDonald, Ralls, "Chimayo Corner"; HM, Tommy Burns, Floydada, "West Texas Sunset"

BLACK & WHITE PHOTOGRAPHY
1. Lil Conner, Post, "Papa"; 2. Lil Conner, Post, "Almost Finished"; 3. Ann McDonald, Ralls, "Dinnertime"; HM, John Berry, Crosbyton, "Flames"; HM, Tommy Burns, Floydada (No title)

Commissioners approve \$124,000 appraisal budget monday

County Commissioners okayed their share of the over \$124,000 Appraisal District budget in regular court session Monday morning.

The county's part of the Floyd County Central Appraisal District's budget will be \$29,955.54. Commissioners voted to pay the sum quarterly.

County Judge Choise Smith said that the County Tax Office would be cut back in personnel to the Tax Assessor only next year.

In compliance with the new Texas tax law, the newly formed appraisal office will take on all duties of county tax appraisals, assessments, preparing the tax rolls, and collection of taxes for the 11 taxing entities in Floyd County in 1982.

There will be a four or five month change over while the County Tax Office completes the 1981 collections and turns the taxing duties over to the Appraisal Office.

The County Tax office will continue in all other phases of tax collecting as is done at the present time, car licensing, for example.

The county is obligated to 24.13 percent of the total \$124,142.30 Appraisal District budget, which the commissioners approved.

Sam Baker, Baker Insurance, met with the court to explain a Public Officials and Employees Liability Insurance.

Concern for such coverage has arisen from other cases in the state where lawsuits involving a court decision have

named county judges and commissioners individually as well as in a group.

County Attorney Kenneth Bain Jr. was asked to examine the policy and make recommendations. He reported that he was not an expert insurance lawyer and could not give an opinion on that basis.

Commissioner Sam Spence, who is an insurance agent, and Commissioner Bob Jarrett, who is an insurance adjuster, agreed that exact interpretations of insurance policies is difficult.

Need for the liability policy was discussed at a recent meeting of county judges and commissioners. This type of insurance would protect elected and appointed officials the costs of being named in a class action suit. It would be in addition to the personal injury and property liability insurance now carried by the county.

The policy would be written for not less than three years at a total cost of \$1400.

Baker reported that the City is considering a similar policy and that the Hesperian and Beacon have recently purchased a similar policy with specific adjustments for newspapers.

Bain recommended the need for the protection offered by the policy. "You need some coverage," he said.

After lengthy discussion motion was made by Bob Jarrett and seconded by Sam Spence that the county purchase from International Surplus Line Insurance Company a Public Officials and Employees Liability Insurance for county elected officials and appointed officials. All voted in favor.

Two budget requests were heard. Tentative budget requests were read for the County Extension office and will be considered with other budget requests later.

The cost per month for a county trapper will be raised \$200. At the present time the county pays \$500 a month for a trapper. That figure will be increased to \$700 per month next year.

Judge Smith read a letter asking for a resolution on Bill 621. The letters sent to the commissioners were different from the one sent to the County Judge and so the matter was tabled until the exact resolution request could be determined.

The question of redistricting was discussed. After each 10-year census all voting districts are expected to evaluate their population changes to see if they still comply with the percentage guideline of the state.

Judge Smith suggested that a thorough study of the block maps would give a good estimation of population in each precinct. They could then break it down and get a population number "to see if it is way out of proportion."

The guidelines are set by total population not by registered voters. All four county precincts are about equal in square miles. However, Precinct 2 (Lockney) has the largest voter registration with 1801. Precinct 1 (Floydada) is next with 1255 registered voters; Precinct 3 has 844 voters and Precinct 4 has 926 voters.

The census was not figured by voting precincts so the actual population figures in each precinct will have to be compiled and then studied for proportional imbalances.

Historic committee to erect marker

The Floyd County Historic Committee met Monday, July 6, in the county courtroom.

President Jim Word led the reports on the work on the Della Plains historical marker. Descendants of the Mickey-Smith families recently contributed to the fund for the marker, to be near the Duncan gravel pit on the South Plains highway, where the county's first town was located.

Mrs. Nancy Marble read a report on the committee's plans for a marker at the site of the G.L. Burns blacksmith in Lockney. The committee plans to erect a marker telling the historical and economical contribution this business made to the growth and development of farming in Floyd County and surrounding area.

J.D. Copeland was appointed to a committee to locate historic houses in Lockney. Selected houses will be photographed and history collected on each.

The committee discussed the necessity of incorporating the history of Della Plains with the history of Floydada. The story of Della Plains and names of those buried in the Della Plains cemetery will be on the same marker. Notes on history of the first town were given to the committee by Mrs. Alma Holmes of Duncanville, Texas.

This will be a county wide project, to memorialize the first town in the county. Donations may be given to the Floyd County Museum, Jim Word, or J.D. Copeland, for purchasing the marker of a size to be easily read.

Mrs. Emily Johnston reported on three historic homes in Floydada, in which the committee is interested. These include the George Linder house, the Marvin Massie house, and the Emmett Henry house, southwest of the swimming pool.


President Word presented a request for a marker for the Paymaster Farms Seed Company was owned by the

Moody Cotton Company of Galveston and was started in 1927. Committee members present included: Joyce Williams, J.D. Copeland, Olive Hinton, Reba Henry, Nancy Marble, Choise Smith and Jim Word.

SPORTS. ALL SPORTS. AND NOTHING BUT SPORTS.

Whatever sports you love to watch, whenever you love to watch on ESPN, the Total Sports Network — exclusively on your Cable TV — brings you pro, amateur and NCAA action from across the country and world, 24 hours every day. From football to fencing, basketball to everything in-between. SportsCenter — up to four hours every day of and sports news. Sports specials like the NFL Draft and a solid week of championship finals, live from Dallas. And much more.

So if you have Cable TV, watch it. If you don't, get it. And get your ticket to nonstop sports action.



August 1

ONLY ON CHANNEL 3 CABLE TV CHANNEL

When you decide to lose weight, call Diet Center!

NO SHOTS • NO DRUGS
NO CONTRACTS

983-2224

HOW TO WIN AT THE LOSING GAME

DIET CENTER®

Geneva Giesecke
983-5708
Ralls Highway

IRRIGATION DRIP OIL Drum Price \$102³⁰

Bring Your Own Drum - We Will Fill

DOUGLASS OIL CO.
1305 El Paso St.
PLAINVIEW, TEXAS 79072

Wed. July 22

9 99¢

KING SIZE WALLET CREATIVE COLOR PORTRAITS FOR ONLY

Kodak paper. For a Good Look at the Times of Your Life. TM



Extra Charge for GROUPS

NO LIMIT

WE USE KODAK PAPER

GET PICTURES MADE OF GRANDPA, GRANDMA, DAD, MOM AND ALL THE LITTLE ONES AT THESE SAME LOW PRICES!

Shugart's inc.

ASK About Our **FREE 8 x 10 OFFER**

COLOR PHOTOS

Mize Pharmacy & TV

102 South Main Lockney, Texas

JULY TIRE SPECIAL

ALL WEATHER STEEL BELTED RADIAL

\$44⁹⁵

P155R13 FET 1.51

While Supplies Last

SIZE	PRICE	FET
P165R13	\$44.95	\$1.68
P185R13	\$46.66	\$1.95
P185R14	\$51.84	\$2.06
P195R14	\$52.68	\$2.23
P205R14	\$54.55	\$2.34
P215R14	\$56.92	\$2.49
P225R14	\$59.57	\$2.62
P205R15	\$55.81	\$2.46
P215R15	\$58.21	\$2.62
P225R15	\$61.03	\$2.79
P235R15	\$64.93	\$2.95

Consumers Fuel Assn.
Floydada

**County Hesperian
plant....**

...the Woffords are trying to arrange the \$6 million in financing they...
...approached a Los Angeles financier about arranging the money. The...
...said, however, that even though the money is being sought through the...
...financier, it may come from a Ft. Worth bank.

...in the process of getting the financing," Nelson Wofford said. But the...
...rate, in excess of 20-percent now, "isn't going to help us any," we...
...may have to go to a lease-purchase agreement on our equipment. This is...
...sophisticated equipment."

...the wooden rods are used for windmills, the steel rods are used on oil...
...already have one major oil company customer lined up.

...have a ten year commitment for a million feet per month from this...
...Jake Wofford said. "And they have first right of refusal on anything in...
...of that."

...dollar-per-foot for the rods, that commitment is worth \$120 million over...
...years.

...plant would mean 45 to 60 new jobs for Lockney, Floydada and surrounding...
...immediately, with that half-million-dollar annual payroll.

...Woffords estimate that at least half of the jobs, if not more, could be filled...
...people from Lockney and Floyd County.

...are not going to be skilled jobs," Nelson Wofford said. "People are...
...have to be trained, such as machine operators, and we'll do the training."

...point, the next move is apparently up to the city. The Woffords said they...
...having their financing firmed up by the end of next week. A decision on a...
...will have to follow quickly in order to get into production by the end of the

...interested in talking to them," Mayor J.D. Copeland said. "It might be...
...business."

...next regularly scheduled city council meeting is not until Aug. 6.
...over, the mayor could call a special council meeting on his own to consider

...any councilman may ask the mayor to call a special meeting. At least...
...councilman has indicated he may ask Copeland to call the special session to...
...the Wofford plant.

With shelter home...Continued From Page 1

...in the center, the dining room...
...near of the main room and the...
...kitchen to the right.

...entire home is energy-efficient...
...planning in the double-insula-...
...windows, the metal doors that have...
...insulation (but actually look...
...to wooden doors) and the...
...that can even be opened for air...
...to the low energy costs.

...base of dirt piled high on the sides...
...home will equal about 3 ft. of...
...insulation. The R-factor is a...
...of insulation value, and the...
...home has the best R-factor for a...
...West Texas.

...interior of the home is tasteful...
...in shades of earth colors and

...Miller said the interior design...
...by Corkie Fullingim of...
...praised her painters for...
...work in texture-painted...
...staining to give the interior a...
...glow that stayed within her...
...scheme.

...custom-built cabinetry in the...
...was well-planned by Mrs. Miller...
...experimented with the lay-out of...
...to accommodate her needs...
...appliances coordinate with the...
...plan

**Mabry paintings
are on exhibit**

Twelve landscape oil paintings by Lubbock artist, Melba Mabry, are currently on exhibit in the lobby of the First National Bank, Floydada. The exhibit will remain through August.

The paintings present a panorama of the state of Texas, the woodlands of New Mexico, and a glimpse into Oklahoma where the buffalo can still be seen grazing. Coastal scenes, bluebonnets in the hill country, oil wells and windmills are subjects represented with which the artist is familiar.

Ms. Mabry grew up in Austin and surrounding area; then began her art career ten years ago in Corpus Christi with artists Dick Turner and Robert Garden.

"Working in all media and subject matter, I find myself specializing in oils and landscapes. The majority of my commission work, is portraits of people and pets in oil," said the artist. Monochromatic brown tones on contemporary divided canvases is a new venture for her.

Mabry's work has appeared in shows and galleries in Texas, New Mexico, and Oklahoma. She moved to Lubbock seven years ago, and has served in various positions including president in the Lubbock Art Ass'n. She was instrumental in organizing the first outdoor art show in Lubbock and the Sidewalk Art Association.

Ms. Mabry presently maintains a



MELBA MABRY

studio in her home at 2122 - 69th St. where she teaches oils and pastels, morning and evening classes. Workshops are offered, also, for all levels of accomplishment.

"I firmly believe that anyone with the desire and some patience has the ability to learn to paint," said the artist.

In addition to her art work, Melba Mabry is interested in people and psychology, and is pursuing studies at Texas Tech in that area. She is a member of Lubbock's First Christian Church. Parents without Partners; and enjoys cooking, reading, travelling, swimming, writing and people.

The First National Bank cordially invites you to view this fine exhibit during the hours of 9 a.m.-5 p.m. on Mondays and from 9 a.m.-3 p.m. on Tuesday through Friday.

**Aviation safety clinic
will be tonight at bank**

The Aviation Safety Clinic will be tonight, July 16 at 7:30 in the Community Room in the First National Bank in Floydada.

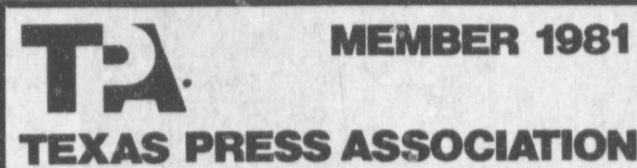
The clinic is co-sponsored by Grigsby Milton, Floydada Municipal Airport Manager, and the First National Bank in cooperation with the Lubbock General Aviation District Office Accident Prevention Program.

Thunderstorms will be discussed by

Billy Crunch of the National Weather Service in Lubbock.

"Time in Your Tanks" will be delivered by Bud Nollensmyer, Accident Prevention Specialist of the FAA.

Clinic participants can register for a chance to win a \$50,000 airplane to be given away during General Aviation Manufacturer's Association (GAMA) "Safe Pilot '81" Sweepstakes Awards Program.



MEMBER 1981

TEXAS PRESS ASSOCIATION

FLOYD COUNTY HESPERIAN

(USPS 202-680)

Published weekly each Thursday at 111 East Missouri Street, P.O. Box 700, Floydada, Texas 79235. Second class postage at Floydada, Texas 79235. SUBSCRIPTION RATES: Local \$11.50 per year, out-of-trade area \$12.50 per year

Shelly Harris
Marjorie Holcomb
Tom Burns
Kim McDonald
Rosemary Gonzales
Melissa Gleason
Terry Willson

Publisher, Editor
Business Manager
Advertising Manager
Advertising
Society
Composition
Reporter

Any erroneous reflections upon the character, standing or reputation of any person, firm or corporation will gladly be corrected when such occurs in the columns of this newspaper and are brought to the attention of the management.

The Publisher is not responsible for copy omission, typographical errors, or any unintentional error that may occur other than to make corrections after being brought to attention. Advertising accepted on this basis only.

**Rotary Governor says
Floydada club is best**

The District Governor of Rotary made Floydada his first stop on his tour of the clubs in the district.

John Seay, District governor of district 573 said he selected Floydada because it is the best club in the district.

"The objective of Rotary International this year is to promote world peace and understanding through Rotary," said Seay, "and that begins right here in Floydada."

Seay said, "Acquaintances are avenues of service."

Seay said he had made many new acquaintances in Floydada and he felt he could inspire the club to do more and achieve more through the many programs that Rotary International and the other local clubs sponsor.

Seay emphasized the Youth Ex-

change Program. He said the cost of the student's airline ticket is the only expense that the individual clubs must pay. He estimated that 5600 students will be involved in this program in 1982.

Seay quoted a French philosopher to illustrate his interpretation of the Youth Exchange Program. "Peace may be realized by teaching men how to cope with their differences."

Seay listed many other programs sponsored by Rotary that benefit countries all over the world. Innoculations in Italy and India, diabetic youth camps, scholarship funds, district projects and student guest programs were all commended by Seay.

Seay said Rotary International will spend a vast amount of money on projects, but individual clubs will spend \$250-3,000,000 next year.

**PROFESSIONAL CLEANING
at DO-IT-YOURSELF PRICES!**



With superior cleaning methods and chemicals from Rug Doctor you can clean your carpet and upholstery with results that will look Piggly Wiggly professional

Rent The Rug Doctor

**Tired of being given
the
RUN AROUND?**



Let The Friendly People
At The First
Treat You Right!

"Helping You Change Things For The Better"

THE FIRST NATIONAL BANK OF FLOYDADA

FLOYDADA, TEXAS 79235 MEMBER F.D.I.C.

Member FDIC

Accounts Insured to \$100,000



2 Liter **Coke or Tab** \$1.29

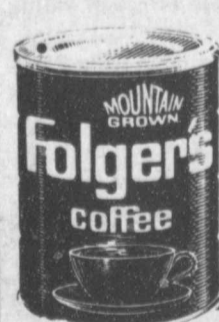


Giant Size Reg \$2.30
Cheer
\$2.05

RATH SPECIALS

- RATH BOLOGNA 6 OZ. PKG. **79¢**
- RATH PICKLE AND PEPPER LOAF 6 OZ. PKG. **79¢**
- RATH HICKORY SMOKED OR SMOKY MAPLE BACON 1 LB. PKG. **\$1.39**
- RATH SALAMI 6 OZ. PKG. **79¢**
- RATH LUNCHEON LOAF 6 OZ. PKG. **79¢**

Shurfine
Dill 32 oz.
PICKLES 79¢



FOLGER'S
FLAKED COFFEE
\$1.99



32 oz. Shurfine
Salad Dressing
69¢

PRICES EFFECTIVE JULY 16-18, 1981
WHILE SUPPLIES LAST



Reg \$1.99 Size Ruffles
Potato Chips
89¢

- BORDEN'S NUTTY BUDDYS 6 CT. PKG. **99¢**
- BORDEN'S CHOCOLATE MILK QT. **79¢**
- BORDEN'S ICE CREAM SANDWICHES 6 CT. PKG. **89¢**

ALLSUP'S
CONVENIENCE STORES

Floydada "THERE'S ONE NEAR YOU"

marker

Wil-Marble, Frank
Olive Choise Smith, Esq.
lancy ston and Jim Wor



G BUT

ve to watch 'em. Now they
your Cable TV system.
ss the country and around
basketball to boxing and
purs every day of sports
and a solid week of WC
re.

action.

IANNE

AL

4⁹⁵

5R13
\$1.51

FET

- *1.68
- *1.95
- *2.06
- *2.23
- *2.34
- *2.49
- *2.62
- *2.46
- *2.62
- *2.79
- *2.95

SSN.

County Hesperian
plant....
the Woffords are trying to arrange the \$6 million in financing they
approached a Los Angeles financier about arranging the money. The
said, however, that even though the money is being sought through the
financier, it may come from a Ft. Worth bank.
the process of getting the financing," Nelson Wofford said. But the
rate, in excess of 20-percent now, "isn't going to help us any," we
may have to go to a lease-purchase agreement on our equipment. This is
sophisticated equipment."
the wooden rods are used for windmills, the steel rods are used on oil
have one major oil company customer lined up.
have a ten year commitment for a million feet per month from this
Wofford said. "And they have first right of refusal on anything in
of that."
dollar per-foot for the rods, that commitment is worth \$120 million over
years.
would mean 45 to 60 new jobs for Lockney, Floydada and surrounding
with that half-million-dollar annual payroll.
estimate that at least half of the jobs, if not more, could be filled
from Lockney and Floyd County.
are not going to be skilled jobs," Nelson Wofford said. "People are
to be trained, such as machine operators, and we'll do the training."
point, the next move is apparently up to the city. The Woffords said they
their financing firm up by the end of next week. A decision on a
have to follow quickly in order to get into production by the end of the
interested in talking to them," Mayor J.D. Copeland said. "It might be
business."
regularly scheduled city council meeting is not until Aug. 6.
the mayor could call a special council meeting on his own to consider
any councilman may ask the mayor to call a special meeting. At least
has indicated he may ask Copeland to call the special session to
the Wofford plant.

shelter home...Continued From Page 1

is the center, the dining room
of the main room and the
kitchen to the right.
home is energy-efficient.
the double-insula-
the metal doors that have
insulation (but actually look
to wooden doors) and the
that can even be opened for air
to the low energy costs.
of dirt piled high on the sides
home will equal about 3 ft. of
insulation. The R-factor is a
of insulation value, and the
home has the best R-factor for a
West Texas.
interior of the home is tasteful
in shades of earth colors and
Miller said the interior design
by Corkie Fullingim of
She praised her painters for
work in texture-painted
staining to give the interior a
flow that stayed within her
scheme.
custom-built cabinetry in the
was well-planned by Mrs. Miller
agreed with the lay-out of
to accommodate her needs.
appliances coordinate with the
color plan.

**Mabry paintings
are on exhibit**



MELBA MABRY

Twelve landscape oil paintings by
Lubbock artist, Melba Mabry, are
currently on exhibit in the lobby of the
First National Bank, Floydada. The
exhibit will remain through August.
The paintings present a panorama of
the state of Texas, the woodlands of
New Mexico, and a glimpse into
Oklahoma where the buffalo can still be
seen grazing. Coastal scenes, bluebon-
nets in the hill country, oil wells and
windmills are subjects represented with
which the artist is familiar.
Ms. Mabry grew up in Austin and art
surrounding area; then began her art
career ten years ago in Corpus Christi
with artists Dick Turner and Robert
Garden.
"Working in all media and subject
matter, I find myself specializing in oils
and landscapes. The majority of my
commission work, is portraits of people
and pets in oil," said the artist.
Monochromatic browntones on contem-
porary divided canvases is a new
venture for her.
Mabry's work has appeared in shows
and galleries in Texas, New Mexico,
and Oklahoma. She moved to Lubbock
seven years ago, and has served in
various positions including president in
the Lubbock Art Ass'n. She was
instrumental in organizing the first
outdoor art show in Lubbock and the
Sidewalk Art Association.
Ms. Mabry presently maintains a

studio in her home at 2122 - 69th St.
where she teaches oils and pastels,
morning and evening classes. Work-
shops are offered, also, for all levels of
accomplishment.
"I firmly believe that anyone with the
desire and some patience has the ability
to learn to paint," said the artist.
In addition to her art work, Melba
Mabry is interested in people and
psychology, and is pursuing studies at
Texas Tech in that area. She is a
member of Lubbock's First Christian
Church, Parents without Partners; and
enjoys cooking, reading, travelling,
swimming, writing and people.
The First National Bank cordially
invites you to view this fine exhibit
during the hours of 9 a.m.-5 p.m. on
Mondays and from 9 a.m.-3 p.m. on
Tuesday through Friday.

**Rotary Governor says
Floydada club is best**

The District Governor of Rotary made
Floydada his first stop on his tour of the
clubs in the district.
John Seay, District governor of
district 573 said he selected Floydada
because it is the best club in the district.
"The objective of Rotary International
this year is to promote world peace
and understanding through Rotary,"
said Seay, "and that begins right here
in Floydada."
Seay said, "Acquaintances are ave-
nues of service."
Seay said he had made many new
acquaintances in Floydada and he felt
he could inspire the club to do more and
achieve more through the many pro-
grams that Rotary International and the
other local clubs sponsor.
Seay emphasized the Youth Ex-

change Program. He said the cost of the
student's airline ticket is the only
expense that the individual clubs must
pay. He estimated that 5600 students
will be involved in this program in 1982.
Seay quoted a French philosopher to
illustrate his interpretation of the Youth
Exchange Program. "Peace may be
realized by teaching men how to cope
with their differences."
Seay listed many other programs
sponsored by Rotary that benefit coun-
tries all over the world. Innoculations in
Italy and India, diabetic youth camps,
scholarship funds, district projects and
student guest programs were all com-
mended by Seay.
Seay said Rotary International will
spend a vast amount of money on
projects, but individual clubs will spend
\$250-3,000,000 next year.

**Aviation safety clinic
will be tonight at bank**

The Aviation Safety Clinic will be
tonight, July 16 at 7:30 in the Commu-
nity Room in the First National Bank in
Floydada.
The clinic is co-sponsored by Grigsby
Milton, Floydada Municipal Airport
Manager, and the First National Bank
in cooperation with the Lubbock Gen-
eral Aviation District Office Accident
Prevention Program.
Thunderstorms will be discussed by

Billy Crunch of the National Weather
Service in Lubbock.
"Time in Your Tanks" will be
delivered by Bud Nollensmyer, Acci-
dent Prevention Specialist of the FAA.
Clinic participants can register for a
chance to win a \$50,000 airplane to be
given away during General Aviation
Manufacturer's Association (GAMA)
"Safe Pilot '81" Sweepstakes Awards
Program.

MEMBER 1981
TEXAS PRESS ASSOCIATION
FLOYD COUNTY HESPERIAN
(USPS 202-680)
Published weekly each Thursday at 111 East Missouri Street, P.O. Box
700, Floydada, Texas 79235. Second class postage at Floydada, Texas 79235.
SUBSCRIPTION RATES: Local \$11.50 per year, out-of-trade area \$12.50
per year
Shelly Harris Publisher, Editor
Marjorie Holcomb Business Manager
Tom Burns Advertising Manager
Kim McDonald Advertising
Rosemary Gonzales Society
Melissa Gleason Composition
Terry Willson Reporter
Any erroneous reflections upon the character, standing or reputation of
any person, firm or corporation will gladly be corrected when such occurs in
the columns of this newspaper and are brought to the attention of the
management.
The Publisher is not responsible for copy omission, typographical errors,
or any unintentional error that may occur other than to make corrections after
being brought to attention. Advertising accepted on this basis only.

**PROFESSIONAL CLEANING
at DO-IT-YOURSELF PRICES!**
With superior cleaning methods and
chemicals from **Rug Doctor** you can
clean your carpet and upholstery
with results that will look
Piggly Wiggly professional
**Rent The
Rug Doctor.**
Steaming Mad At Dirt

**Tired of being given
the
RUN AROUND?**



Let The Friendly People
At The First
Treat You Right!

"Helping You Change Things For The Better"
**THE FIRST
NATIONAL BANK
OF FLOYDADA**
FLOYDADA, TEXAS 79235 MEMBER F.D.I.C.
Accounts Insured to \$100,000

2 Liter Coke or Tab \$1²⁹
**Giant Size Reg \$2³⁰
Cheer \$2⁰⁵**
Shurfine Dill 32 oz. PICKLES 79¢
FOLGER'S MOUNTAIN GROWN COFFEE 13 OZ. CAN \$1⁹⁹
PRICES EFFECTIVE JULY 16-18, 1981 WHILE SUPPLIES LAST
32 oz. Shurfine Salad Dressing 69¢
Reg 1" Size Ruffles Potato Chips 89¢
RATH SPECIALS
RATH BOLOGNA 6 OZ. PKG. 79¢
RATH PICKLE AND PEPPER LOAF 6 OZ. PKG. 79¢
RATH HICKORY SMOKED OR SMOKY MAPLE BACON 1 LB. PKG. \$1³⁹
RATH SALAMI 6 OZ. PKG. 79¢
RATH LUNCHEON LOAF 6 OZ. PKG. 79¢
BORDEN'S NUTTY BUDDYS 8 CT. PKG. 99¢
BORDEN'S CHOCOLATE MILK 79¢
BORDEN'S ICE CREAM SANDWICHES 8 CT. PKG. 89¢
ALLSUP'S CONVENIENCE STORES
Floydada "THERE'S ONE NEAR YOU"



MR. AND MRS. PAUL VINCENT DELMONICO

Redd, Delmonico recite wedding vows in Colorado

Miss D'Leese Ann Redd and Paul Vincent Delmonico recently recited vows of marriage in a double ring ceremony at the Ward Road Baptist Church in Arvada, Colorado. The ceremony was performed by the Rev. Stewart McChesney, pastor of the church.

The bride is the daughter of Mr. and Mrs. Dale Redd of Golden, Colorado and the groom is the son of Mr. and Mrs. John A. Delmonico of Arvada, Colorado.

Altar decorations consisted of arched candelabras and tall baskets of burgundy roses and white carnations on either side.

Belinda Noel of Petersburg was pianist and Tanya Covington of Floydada was vocalist for the ceremony.

Given in marriage by her father, the bride wore a formal length gown of ivory satin and organza fashioned with a scalloped peau d'ange lace at the Victorian neckline. The long lace sleeves were accented with seed pearls and a wide ruffle at the wrist. The bodice of the princess silhouette was enhanced by a lace overlay with seed pearls in a deep oval. A wide ruffle of lace encircled the hemline of the gown which swept into a full chapel train scattered with lace appliques.

The bride wore an antique brooch belonging to her great great grandmother and passed down to her great grandmother, Mrs. L.L. Clark of Floydada. For something blue she wore a blue garter belonging to her grandmother, Mrs. Tom Daniel of Floydada. She also wore a penny with her birth date in her shoe.

Miss Cherri' Redd, sister of the bride, was maid of honor. The bridesmaids were Patty Garrison, Carol Malony, Tracy Lytle and Kathy Howellen, all of Colorado. Their full length gowns were of burgundy crepe satin with matching chiffon capes and they carried burgundy silk roses on ivory lace fans.

Best man was Jack Garrison of Gunnison, Colorado. Groomsmen were Mark

Mennose, Robin of Gunnison, Rocky Delmonico, and John Delmonico of Colorado. Brad Redd, brother of the bride, was candlelighter.

Following the wedding, a dinner and reception was held in fellowship hall.

After a wedding trip to Vail and Aspen, Colorado, the couple will be residing in Golden until the fall, when they will return to Gunnison to resume their schooling.

Galloway honored with bridal shower July 11

A bridal shower honoring Cindy Galloway, bride-elect of Mark Tharp, was given in the home of Mrs. O.M. Watson Jr. on Saturday, July 11.

White daisy mum corsages were presented to the honoree, her mother, Mrs. Ben Galloway of Idalou, and the grooms mother, Mrs. Foy Tharp of Dalhart.

Refreshments were served from a table decorated with apricot and blue. Crystal appointments were used.

Methodist Women meet in church July 13

Methodist women met in the church parlor Monday night, July 13. Lorena McKinney, president, called the meeting to order. Evelyn Sparks, secretary, read the minutes of the last meeting.

Bennie Leibfried gave the devotional on "Staying in Tune." The youth director, Kevin Kirby, gave a talk on time. "Time is the stuff that life is made of." Kevin and LuAnn Smith gave a report on the recent visit to the camp at Canyon.

Society and Features

Floydada Rebekahs install officers

Floydada Rebekah Lodge installed officers for the new term on Tuesday night, July 7. Wava Barrick, District Deputy President of District #9 and her installing staff of Abernathy Rebekah Lodge No. 170 were the installing officers.

Barbara Gilliland, Past Noble Grand of Floydada Rebekah Lodge was escorted to the chair of the past noble grand and presented her certificate of P.N.G. The incoming noble grand, Pauline Pierce, was not able to be installed as she has recently had surgery. She will be installed at a later date.

Other officers installed were Valree Turner, Vice Grand; Grace Grundy, Recording Secretary; Artie Webb, Treasurer; Dorothy Reeves, Warden; Barbara Gilliland, Conductor; Eula Parrack, Chaplain; Amanda

Hart, Musician; Willie Hill, Inside Guardian; and Barbara Hatley, Outside Guardian. Also installed were Ruby Davis, Jewell Price, Lona Sparks, Alma Dunn and Ora King.

The new noble grand chose as her theme: Love.

slogan, Be Loyal; guide, The Holy Bible; symbol, The Praying Hands; watch word, Be Friendly; scripture, 1st Cor. Ch. 13 V. 13, and now abideth faith, hope, love, these three; but the greatest of these is love; her aim, To help love grow in the lodge.

A salad supper was enjoyed by the group before lodge opened. The District Deputy President, Wava Barrick, gave a short school before closing.

Ora King was named lodge mother and Jewell Price was chosen lodge queen.

Home ceremony unites Helms, Bairrington July 12

Kelly Elizabeth Helms and James Maxey Bairrington were married Sunday July 12 in the brides' parent's home in an afternoon ceremony among close friends and family.

The Rev. Jimmy McGuire, New Deal, officiated.

The bride, presented by her father, wore a blue street-length dress. She carried a Bible that belonged to her mother. The Bible was topped with cymbidium orchids and stephanotis.

Bobbie Miller, Floydada, sang "No Other Love."

"Wedding Song" and "Evergreen." He was accompanied by Jett Cheek, Lubbock, at the piano.

The double ring vows were repeated before the fireplace in the family room.

A reception followed the ceremony. Mrs. Carolyn Cheek of Floydada and Lanette Armstrong of Lubbock served at the bride's table.

An al fresco dinner was served after the reception.

Kelly is the daughter of Mr. and Mrs. Adrain Helms of Floydada. James is the son of Mr. and Mrs. Billy Jack Bairrington of O'Donnell.

Mr. and Mrs. Bairrington will reside in Lubbock where he is employed with the Lubbock public school system.



Eastern Star hold meeting

Floydada Chapter No. 31, Order of the Eastern Star, met for a regular meeting July 9 in the Masonic Hall with Jean and Bob Kendrick presiding in the East as Worthy Matron and Worthy Patron. Noma Lou and Bobby Rainer, associate matron and patron, presided in the west.

The Worthy Matron welcomed all members and gave a special thanks to her program officers.

Following the business session it was announced that the Founders Day celebration will be at the Eastern Star Home, Arlington, Texas, July 31 and August 1.

The highlight of the evening was the junior past matron report presented by Roberta Russell of her 1980-81 year of service as retiring Worthy Matron.

Refreshments were served by Bobby and Noma Lou Rainer. The next meeting will be August 13. There will be a special program, honoring the birthday of Dr. Robb Morris, the founder of the Eastern Star.

Roberta and Wayne Russell and Dell and Bill Gray will be hosting.

BRADFORD

Mr. and Mrs. Charles H. Bradford Jr. are proud to announce the birth of their first child, Desiree Dawn, born July 11 at 2:05 a.m. at Northwest Hospital, Amarillo.

Desiree Dawn weighed in at 5 lbs., 13 ozs. and was 20 inches long.

Grandparents are Mr. and Mrs. Houston Bradford of Floydada, the Rev. Leo Cole of Loop, Texas and Mrs. Ethel Shaddock of Richardson, Texas.

The child is the first grandchild of Mr. and Mrs. Bradford.

CAGE

A son, John Andrew, was born to Wayne and Pat Cage

of Dallas on July 10 at 3:21 p.m.

He weighed 7 lbs., 4 ozs. and was 19 inches long.

Grandparents are Mr. and Mrs. Frank Borsikie of Bryan and Mr. and Mrs. H.J. Cagle of Dougherty.

Great grandmother is Mrs. Opal Morrison of Dougherty.

BAKER

Mack and Patty Baker are the proud parents of a baby boy born on July 7 in Las Vegas, Nevada.

Kevin Estle weighed in at 9 lbs., 4 ozs. He has two sisters, Kasey, 7, and McKay, 4.

Grandmothers are Mrs. Dennis Dempsey and Mrs. A.F. Baker.

Sale

Plaques and Books
and more

up to **75% off**

Lovell-Collins Jewelry

Sue Lovell Lu Ann Collins

Adam Barker, age 15 months, son of Mr. & Mrs. Paul Barker of San Antonio

Chuck Wilson, M. Photog., CPP

Wilson Photography

652-3731



BEVERLY BURLESON, KIRK BROCK

Burleson, Brock announce August wedding plans

Mr. and Mrs. S.C. Burleson announce the upcoming marriage of their daughter, Beverly Sue, to Kirk Dane Brock, son of Mr. and Mrs. Jerry Brock, Levelland. Beverly is a 1980 graduate of Floydada High School and has attended South Plains College. She is employed by Keeling Buick-Oldsmobile Co. of Levelland.

Kirk is a 1977 Levelland High School graduate and a partner in the family owned Brock-Coleman Co. of Levelland. The couple was married on the August 22 at the Christian Church in Levelland. Rev. Don Morrison, Levelland First Baptist Church, officiating.

Bridal Selection for...

Beverly Burleson
bride elect of Kirk Brock

Custom Orders On
wedding invitations, notes,
thank you notes, books
and etc.

Sue's Gifts and Accessories

126 W. California - Floydada
983-5312

Tuesday is Tots' Day

6 Weeks thru 6 Years

Have your little one photographed on Tuesday and the \$20.00 Sitting Fee will pay for four (4) Color Previews of your choosing in a personalized mat. By appointment. 652-3731.

Reecer's Cleaner's
Closed For Vacation
18 Thru 25
Reopen July 27
"Ask About Our New
Laundry Services"

Brown's

Department Store of Lockney

July Clearance Continues

Double ring ceremony unites Jeanne Carolyn Jones, Stephen Roach

Wedding vows between Jeanne Carolyn Jones and Stephen Terry Roach, both of Canyon, were exchanged in a double ring ceremony May 15, at 7 p.m. in St. Ann's Catholic Church, with the Rev. Father Jack Gist, pastor, officiating.

The bride attended Clovis High School in California, was graduated from Escola

Americana de Campinas, attended West Texas State University and is now employed by the university. The groom, who is currently employed by Lewis Texaco in Canyon also attended West Texas State University.

The bride's parents are Dr. and Mrs. J. Randall Jones of Watertown, Con-

necticut and the groom is the son of Mrs. Daphne Roach of Amarillo and the late Robert D. Roach.

Celeste Simpson of Tulia, serving as Maid of Honor, was attired in a pale blue chiffon dress featuring a boat neckline and a floor-length gathered skirt. Her bouquet consisted of three white rose-

buds with blue and white ribbon streamers.

Gregory Roach of Amarillo served his brother as Best man.

The bride wore her mother's wedding dress of candlelight satin, featuring a scallop boat neckline, a satin front panel with lace overskirt and long sleeves ending in points. Her tulle veil was fastened to a Juliet Cap edged in candlelight lace. Her bouquet was of silk gardenias in a cascade with white ribbons and pearl beads.

Carrying out the time-honored tradition of wearing something old, something borrowed, something blue and something new, the bride carried her great grandmother's handkerchief, wore a new veil, borrowed shoes, a blue garter, and a coin in her shoe.

The bride's mother wore a pink floor-length chiffon dress styled with accordion pleats, featured by a shoulder cape and matching accessories. Her corsage was of carnations.

The bridegroom's mother wore a floor-length pale yellow suit with matching accessories and a carnation corsage.

Grandparents attending the ceremony were Mrs. Marjorie Jones of Floydada and Mr. and Mrs. Hunter Robertson of Dumas.

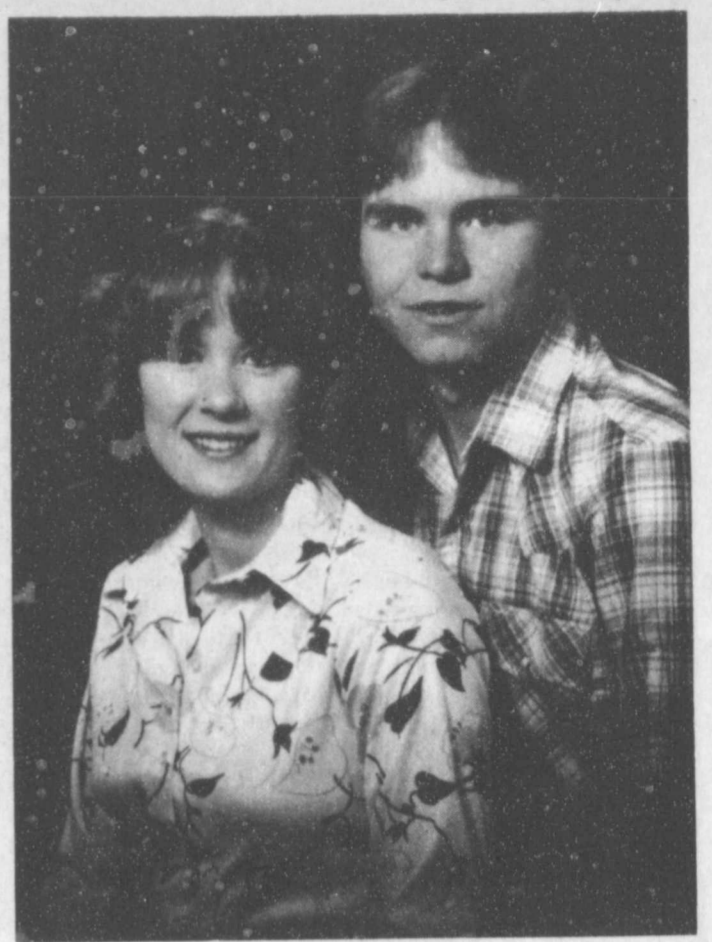
Guests were registered by Mrs. Gregory Roach.

Following the wedding, a reception was attended by approximately 30 guests in St. Ann's Parish Hall.

The table was laid with a blue cloth with white overlace. The bride's bouquet served as the centerpiece. Silver and crystal appointments completed the decor.

A two-tiered white wedding cake decorated with blue roses and topped with a miniature bride and groom was served by Mrs. Jeff Welty. Mr. Welty distributed rice bags.

For a wedding trip to Red River, New Mexico, the bride wore baby blue slacks with a pink top. The couple returned to their home in Canyon on May 17.



MR. AND MRS. STEPHEN ROACH



Lori White

Lori White crowned Miss Teenworld in Fort Worth

Lori White has brought home the crown of 1981 Miss Texas Teenworld after a weekend competition at the Hyatt Regency Hotel in Fort Worth.

The daughter of Mr. and Mrs. Larry White of Canyon,

Miss White was chosen tops over 84 other competitors at the second annual Miss Teenworld pageant. She received an all-expense paid trip to Atlanta, Georgia where she will compete for the national title in finals during late December.

Lori has a brother Blayne White, who is attending Kilgore Junior College on a football scholarship and a sister, Joni White. She is the granddaughter of Marie Baxter of Floydada and Mary Helen Lackey of Amarillo. Her aunt and uncle Mr. and Mrs. Richard H. Burns, and family attended the competition in Fort Worth.

As winner of the state title,

she received scholarships from the Fashion and Art Institute of Dallas, McMurry College in Abilene, Chiropractic School in Dallas, Barbizon Modeling School in Dallas, Centenary College in Shreveport, College of the Ozarks in Arkansas. The scholarships totaled \$20,000, and she plans to attend Barbizon School of Modeling next summer.

A senior at Canyon High School this fall, she plans to attend WTSU part-time during the upcoming semester. She is a member of the Canyon Student Council and plays varsity tennis. This fall she will be modeling for Calico Corner in Amarillo, both in the shop and for fashion shows.

She is the reigning "Miss Canyon 1981" and is also the Lions Queen, 1981-82, chosen by Canyon Noon Lions. Her next pageant competition will be at the "Top of Texas" event in Pampa during August and also Miss Wheatheart of the Nation.

Sponsoring Miss White for the Miss Teenworld competition was Richard H. Burns of Floydada. At the competition young women from across the state are judged on scholastic and civic achievement, grooming, poise, and personality.

Crowning Miss White at the state competition was Shelly Chapman of Austin. Runners-up for the title were Denise Sartain of Gainesville, Janet Reagan of Palestine, Kelly Hall of Marshall, and Laura Shaw of Burleson.

Lockney Hospital News

July 7-13
Letha Mae Jacob, Quitaque, adm. 7-3, dis. 7-13
Jeffrey Watson, Lockney, adm. 7-4, dis. 7-8
Wilbur Mize, Lockney, adm. 7-5, transferred 7-7
Mattie Readiemer, Lockney, adm. 7-6, continues care
Gordon Hambright, Floydada, adm. 7-7, dis. 7-10
Esperanza Barrientos, Floydada, adm. 7-7, dis. 7-11
Freddie Childs, Floydada, adm. 7-8, continues care

adm. 7-8, continues care
Ofelia Rodriguez, Victoria, adm. 7-8, continues care
Alma Mendoza, Silverton, adm. 7-8, continues care
Regina Kay Walthers, Norma, Oklahoma, adm. 7-11, dis. 7-13
Hilburn Casey, Lockney, adm. 6-12, continues care
Betha Cunyus, Lockney, adm. 6-12, continues care.

adm. 7-8, continues care
Ofelia Rodriguez, Victoria, adm. 7-8, continues care
Alma Mendoza, Silverton, adm. 7-8, continues care
Regina Kay Walthers, Norma, Oklahoma, adm. 7-11, dis. 7-13
Hilburn Casey, Lockney, adm. 6-12, continues care
Betha Cunyus, Lockney, adm. 6-12, continues care.

Singles to hold meeting

The Floydada Single Adults Club will hold their monthly meeting on Saturday night, July 18.

Everyone is to meet on the parking lot of the First Baptist Church and from there they will travel to Plainview. They will eat at Furr's Cafeteria and then play miniature golf at Family Fun Park.

They will leave Floydada at 6 p.m. The Lockney singles will meet them at 6:30 p.m. at the roadside park, west of Lockney on the Plainview highway.

All singles are invited to attend and enjoy an evening of fun.

Senior Citizens Menu

July 16-24
Family Day.
Salmon cakes, tartar sauce, scalloped potatoes and carrots, roll, milk, tea or coffee.
Swiss steak, baked eyed peas, cornbread, buttered apricots, milk, tea or coffee.

Tuesday—Turkey, dressing, giblet gravy, buttered spinach, cranberry sauce, roll, butter, pineapple, banana cup, milk, tea or coffee.
Wednesday—Barbecued franks, potato salad, cabbage, carrot slaw, roll, butter, ice cream, milk, tea, coffee.

Thursday—Chicken fried steak, cream gravy, hash brown potatoes, tossed salad with dressing, cornbread, butter, oatmeal cookie, milk, tea or coffee.
Friday—Hamburger steak, glazed sweet potatoes, steamed cabbage, roll, butter, strawberry shortcake, milk, tea or coffee.

Senior Citizens News

Mrs. Menard representing in Colorado.
Cross will leave home in Gadsden, after spending a day with her grandmother, Ethel Cross.
Mrs. Luther Hill with the Rev. and wife in Spur Sunday.

Mrs. Lorella Bradley brings us a book review "My Searching Heart" by an Indian girl, Crying Wind Stafford, on July 24 at 2 p.m.
Mary Pearl Coward has relatives from near Austin, visiting this week.
McCoy has their reunion here on July 19 from 9:30-5 p.m.

Zenith Hearing Aid representative will be here on the fourth Friday from 10-11:30 a.m.

Affairs of Life



Sincere love is to encourage, uplift, and give hope to one another!

Courtesy of



Adams Well Service, Inc.
COMPLETE IRRIGATION SERVICE
(806) 983-5003

BOONE ADAMS 720 NO 2nd ST.
Owner-Mgr. FLOYDADA, TEXAS 79235

Reunions to be held

McCoy
McCoy Community will be in the Senior Building at 301 E. on July 19. Registration begins at 9:30. A covered dish lunch will be served at 1:00. Drinks

Lakeview
The Lakeview, Pleasant Hill and Mount Blanco reunion will be July 26 at the Massie Activity Center starting at 10:00 a.m. Everyone is asked to bring a basket lunch.

Lyles
The annual Lyles family reunion will be at the Massie Activity Center this Saturday night and all day Saturday. Lunch will be served on Sunday.

Now Booking Appointments For '81 Seniors

Exciting New Poses
Greenery on Request Only

PARKER STUDIO

983-5063
121 W. California
Floydada



"MUSCLES" WERE A JOKE!

Beverly's new Spring wardrobe is all size 10. She has thrown her old 18s away... forever!

Pat Walker's has changed my life. I've learned so much about nutrition, my metabolism and combining foods properly for permanent weight loss. The Pat Walker's Symmetricon unit has gently shaped my body with results unlike those I used to achieve with strenuous exercise. I'll never forget my husband's jokes about those "muscles". This time I don't have muscles and firm fat. I have firm tissue with no excess fat because... Pat Walker's gets rid of fat. Thank you Pat Walker's!
BEVERLY WOODY GRAHAM, TEXAS



BEING A TEN does make a difference, even if it's only in dress sizes. The difference? Over and above a size 18... it's healthier, building of esteem and it makes a difference in availability of assortment when shopping for clothing, whether one piece or a wardrobe.

IF "THE PROBLEM" is yours we'll let you share it with us. "THOSE PROBLEMS" are ours at Pat Walker's; pure and simple, we know how to deal with them through confidential professional counseling and the use of our exclusive Symmetricon passive exercise unit.

CALL TODAY for a no-obligation appointment for analysis of your figure and free courtesy treatment. We'll design an individualized program just for you, tell you how long it will take and its cost on a per treatment basis of just \$4.⁹⁹

TODAY AFTER PAT WALKER'S
NO TENT, JUST LAST SUMMER'S SHORTS

Pat Walker's
Figure Perfection Salons International

983-2112
8:00-7:00 Weekdays
9:00-1:00 Saturday
\$35 Off On A New Program
Mr. and Mrs. John Hotchkiss, Owners

July is Ruby Month...

Mystic, Magical things happen when you look your best with a
• Ruby Pendant
• Ruby Earrings
• Ruby Rings
your choice of gold filled setting or 14 kt gold settings

Schacht
Flowers, Jewelry & Gifts
"Our Pleasure Is To Serve You"
112 W Poplar Lockney 652-2385

Anderson's Final Clearance!

On Spring & Summer Merchandise	
All Ladies Spring & Summer Dresses Now 1/2 Price	All Ladies Spring & Summer Mix & Match Sportswear Now 1/2 Price
Clearance On One Group Of Ladies Junior Sportswear Now 1/2 Price	Clearance On Men's Spring & Summer Suits Now 1/2 Price
Clearance On One Group Of Children's Sportswear Now 1/2 Price	Clearance On One Group Of Ladies Lingerie Reduced 25% Off Reg Price
ANDERSON'S DEPARTMENT STORE 120 West California Floydada	

South Plains News

Summer vacations started

BY MRS. MURRAY JULIAN
South Plains, July 13:

Summer vacations have started already, and many spent the weekend at the lakes or on camping excursions.

Mr. and Mrs. Darla and Jerry Chappell left here Friday and stayed until Sunday evening at Possum Kingdom Lake where they met several other married couples to enjoy the weekend with boating, fishing and camping out.

It was good to see Mrs. Epperson of Lockney here at church at the South Plains Baptist Church on Sunday. She came with her daughter, Mrs. Peggy Roberts.

Mrs. Terry Julian (Leona) is planning to come spend the week here with Mrs. M.M. Julian and with Mr. and Mrs. Kendis Julian. She is from Roscoe.

Mrs. Carlton Johnson (Diane) was in St. Mary's Hospital, Lubbock, last weekend where she underwent surgery the first of the week on a tumor which came behind her ear. She was found to be doing just fine, and is back at home at this time. We are all so glad to know she is doing well.

The Workers Conference for the Baptist churches has been scheduled for the conference here on August 11 with the meeting at the South Plains Baptist Church.

Aunts of Mrs. M.M. Julian and Mr. and Mrs. Kendis Julian, Mrs. B.F. Harper of McAllen and Mrs. Ruth Burnett of San Antonio, have been visiting the past few days in Lubbock, and they are coming here to spend this Monday night, have supper and visit the Julian families until Tuesday.

Mrs. Letha Mulder went to Littlefield on Friday to spend the weekend there with one of her sisters, Mrs. Inez Minyard, and they also visited another sister, Mrs. Fladger (Ruby) Fitzgerald.

Mrs. Louzilla Nichols spent Sunday afternoon visiting in Lockney with her brother and wife, Mr. and Mrs. Johns Cox, and she also spent part of the afternoon visiting with Mr. and Mrs. C.H. Rose.

Early Pritchett came home on Thursday from Ruidoso, New Mexico where he had been staying with his wife.

Mr. and Mrs. E.J. Kinslow had their grandchildren, Jennifer and Grant Kinslow from Koppell here with them for a visit from 19th of June until Friday, 3rd of July.

Mrs. Sally Reeves of Memphis got to come home from the Memphis Hospital last Thursday, and some of the family are staying with her while she recuperates from a fall. Mrs. Carol Bell, Sally's daughter, is in the hospital

from major surgery in Plainview, but we understand she is getting along fine.

Mrs. Mamie Wood went to Amarillo this Monday morning and will spend tonight and Tuesday attending a business meeting of the Lady Venus Beauty School. She will spend the night with her sister and family, Mr. and Mrs. Buster Dunham.

Mr. and Mrs. Fletcher Powell are spending a few days back in Howe, Texas, and they will be visiting relatives including Mr. and Mrs. Tillman Powell, who recently moved from here.

The Cub Scouts of South Plains with their parents enjoyed a wiener roast last Monday evening down in the canyon on the Taylor Ranch. Parents of the children held the picnic supper, and then the fathers and cub scouts made camp and spent the night in the canyon. Mr. and

Mrs. Dwight Teeple and Brian and Keith, Mr. and Mrs. Nathan Mulder and Cindy, Penny, Jimmy and Cory, Mr. and Mrs. Ira Henderson, Bryan and Amanda and Mr. and Mrs. Kendis Julian, Mitzi, and Tim attended the wiener roast, and the fathers, Nathan Mulder, Ira Henderson, Dwight Teeple and Kendis Julian with sons who are cub scouts, Brian Teeple, Bryan Henderson, Tim Julian and Cory Mulder spent the night camping out.

Frankie McClure of Houston arrived here Sunday to spend more time with his grandparents, Mr. and Mrs. Frank McClure.

Mr. and Mrs. Grigsby Milton went to Amarillo by car Sunday afternoon to visit Grigsby's brother, Otis Milton and his family, who was doing just fine this Sunday, and Otis being able to attend church.

Lakeview News

Leona Bishop buried in Lockney

BY JOYCE WILLIAMS

Mrs. Leona Bishop, wife of Holt Bishop, was buried at Lockney cemetery Friday afternoon. Services were held at the Main Street Church of Christ in Lockney. Her daughter, Mrs. Verda Mae Enloe of Allen, Mrs. Shirley Green of Lubbock and Mrs. Margaret Bartram of East Wenatohoe, Washington, have been helping Mr. Holt Bishop at his home this week.

Mrs. Don Winslow and infant son of Duncan, Oklahoma are visiting her parents, Mr. and Mrs. Carl Mooseberg, this week.

Mrs. Clara Jetton returned to her home in San Antonio last Thursday. She visited with her sister, Mrs. Dee Adams on Monday. Their father, Mr. Walter Craft of Roaring Springs, was removed from Methodist Hospital in Lubbock July 8, where he had been for a month, to the Lockney Care Center.

Jr. and Scott Battey went boat riding at White River last Tuesday.

Mr. and Mrs. William Bertrand have their grandson, Will Warren of Tahoka, as house guest this week while his parents, Mr. and Mrs. Martin Warren, are in Ruidoso.

Mrs. Q.D. Williams returned home Thursday after several weeks of visiting her children in Oklahoma. Her

granddaughter, Hillary Rutliff Goodwin of Idabel, Oklahoma, and grandson, Austin Williams, of Lawton, Oklahoma returned to Floydada with her for a visit.

Painting by Joe Taylor son of Mrs. Dennis Taylor, were exhibited at the Crosbytown Arts Festival, Saturday in the Pioneer Memorial Building. Mrs. Georgia Mae Erickson attended and purchased paintings.

Visitors at the open house in the D.L. Miller's new home in Barwise Sunday afternoon included: Mesdames Weldon Hammonds, Randy Bertrand, William Bertrand, Nancy Goodwin and Mrs. Q.D. Williams.

Mrs. Nancy Goodwin of Idabel, Oklahoma arrived Saturday to visit her parents, Mr. and Mrs. Q.D. Williams, for a week. Mrs. Goodwin and Mrs. Williams visited Mrs. Liz Rojas in Lubbock Monday, and Mr. and Mrs. Norman Muncy on Sunday.

Mrs. Edmund Brown is attending summer school at one of the colleges in Denton this summer for a class in museum work. The Brown farm at the north edge of Blanco Canyon has a wide variety of fresh vegetables for sale to the public now.

Mr. and Mrs. Bob Alldredge and cousins, Mr. and Mrs. William Bertrand took their camper to Tres Ritos, New Mexico and on to Creed and Antonita, Colorado, where they fished and hunted rocks. The Bertrands returned home Saturday.



BRYANT HIGGINBOTHAM (upper left) of Floydada and Stan and Donna McClendon, also of Floydada, who attended the Lighthouse Electric's Youth in Action Washington tour recently. They are pictured with Maribel Torrez [center] and Ralph Scheele of Lockney.

Local students travel to Washington

Bryant Higginbotham, Stan and Donna McClendon travelled to Washington, D.C. with the Lighthouse Electric Cooperative public speaking winners last month.

Ralph Scheele and Maribel Torrez won the contest that is sponsored for students in area schools. Winners received an all-expense bus trip to the state capital.

Forty-one winners and champions made the trip. McClendon is a Member Services Advisor for Lighthouse Electric.

Contest winners spoke on the "Rural Electric Cooperatives" project.

McClendon said Rep. Charles Stenholm made arrangements for the students to tour the White House in Washington, D.C.

Lockney Care Center news

BY VICKIE HUTTON

Bingo fever is growing and growing. We are playing bingo twice a week now. We have added three new players, L.A. Jones, Walter Craft, and Marie Leach.

A special thanks goes to Linda Holly for donating a new bingo game to the residents. We appreciate her kindness.

Our bingo winners this week are Lewis Roberts and Myrtle Payne.

We really had a watermelon feast Monday. The watermelon was delicious!! It was so juicy that we got more on ourself and on the floor than in our stomach. I think we could eat it everyday if possible.

The popcorn melted in our mouth while we watched the films "Hound" and "Zoo." It wouldn't be a movie without good popcorn. Mm! Mm!

Things were really "rocking and rolling" during music therapy. Kim

Sherman has a special touch to make the music extra special. Music is the one language that we can all enjoy.

We welcome new residents L.A. Jones, Walter Craft, and Marie Leach to our family. We are looking forward to having them join in on all the activities of the Care Center.

A special prayer is said for Sally Carpenter and Mattie Readhimer who are presently in the hospital. We miss their smiling faces and cheerful personalities.

A special recognition goes to all our churches who hold services and to all the great volunteers who give us their time and talent. Volunteers brighten our lives in more ways than can be mentioned.

Learn
Calligraphy
the
art of
Beautiful
Writing
with
Sheila Poore
Classes • beginning
call • 983-3334
652-2453

DRIP OIL

\$102.30

Bring Your Own Drum.

Drum Circle 30	55 gal	\$157.25
Double Circle 40	55 gal	\$157.25
Irrigation Engine Oil	55 gal	\$160.25

Prices with drum exchange while supplies last

CONSUMERS FUEL ASSN.

FLOYDADA

We're Qualified!

Trust us to fill your prescriptions exactly as your doctor ordered... swiftly and professionally. And in an emergency... we'll deliver 'round the clock!

Byrd PHARMACY
Phone 652-3353
LOCKNEY

Floydada 24th Annual RODEO

3 Big Days Thursday, Friday & Saturday
July 23-24-25

At Rodeo Grounds-East Floydada

Performance Every Night - 8:30

Sponsored By: Floydada Rodeo Association

Admission:
Children Under 12-Free
Children Over 12-\$1.50
Adults-\$3.00

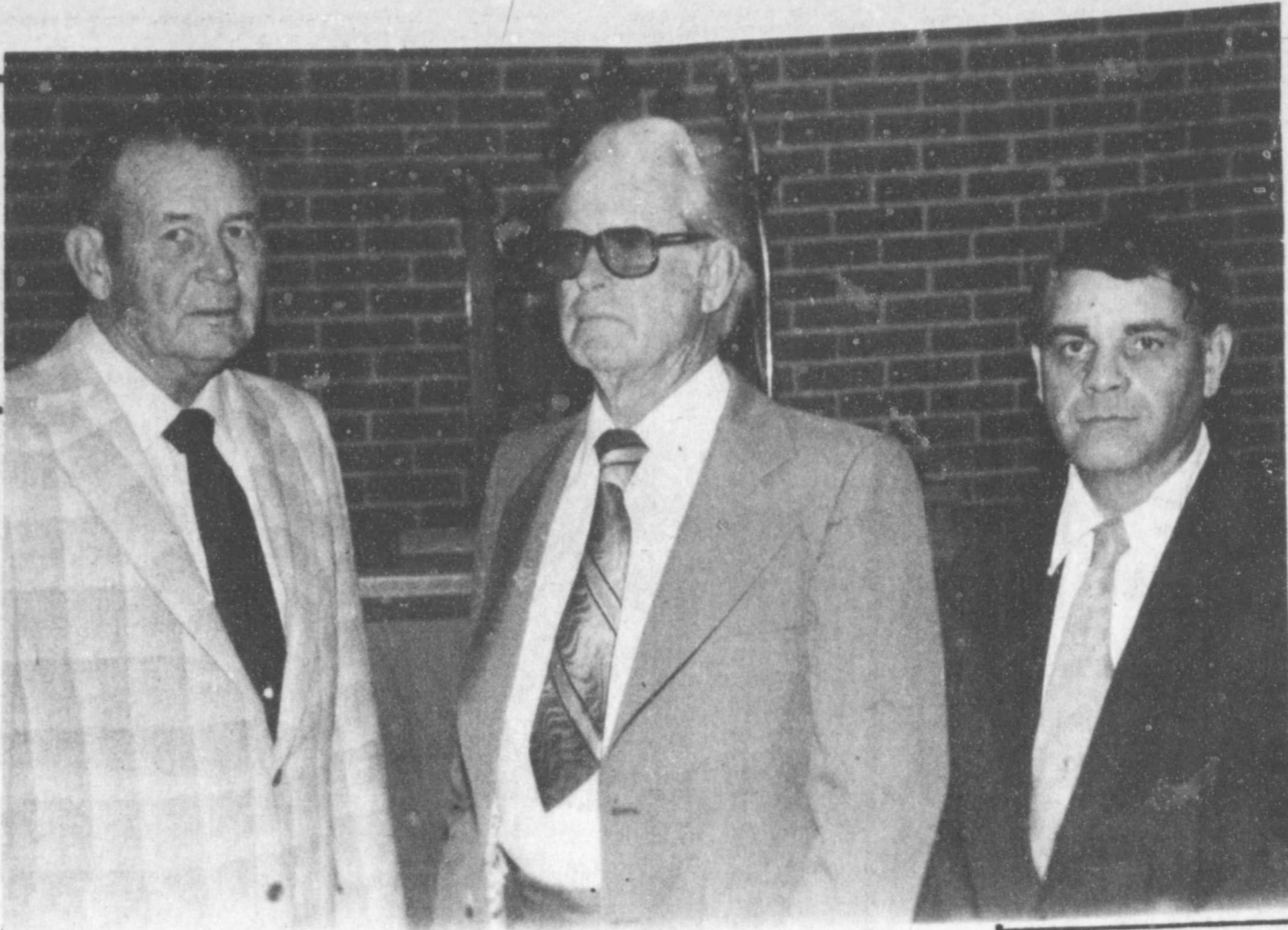
Stock Producers: C-T Rodeo Co.
Lubbock, Texas

RODEO DANCE

Friday & Saturday
Music By Roughrider Band

After Each Performance On Slab At Rodeo Grounds
Pride Of Texas Carnival Will Be On
Grounds During Rodeo

HARLEY WORKMAN, center, was installed as worshipful master, and Lawson Rowell, right, was installed as senior warden and Roy Porter, as junior warden, during ceremonies at the Lockney Masonic Lodge. Others installed included, Rudy Zachary, senior deacon, Zach Cummings, junior deacon, John Huggins, Tyler, and Roche Perry and Robert Webb, stewards.

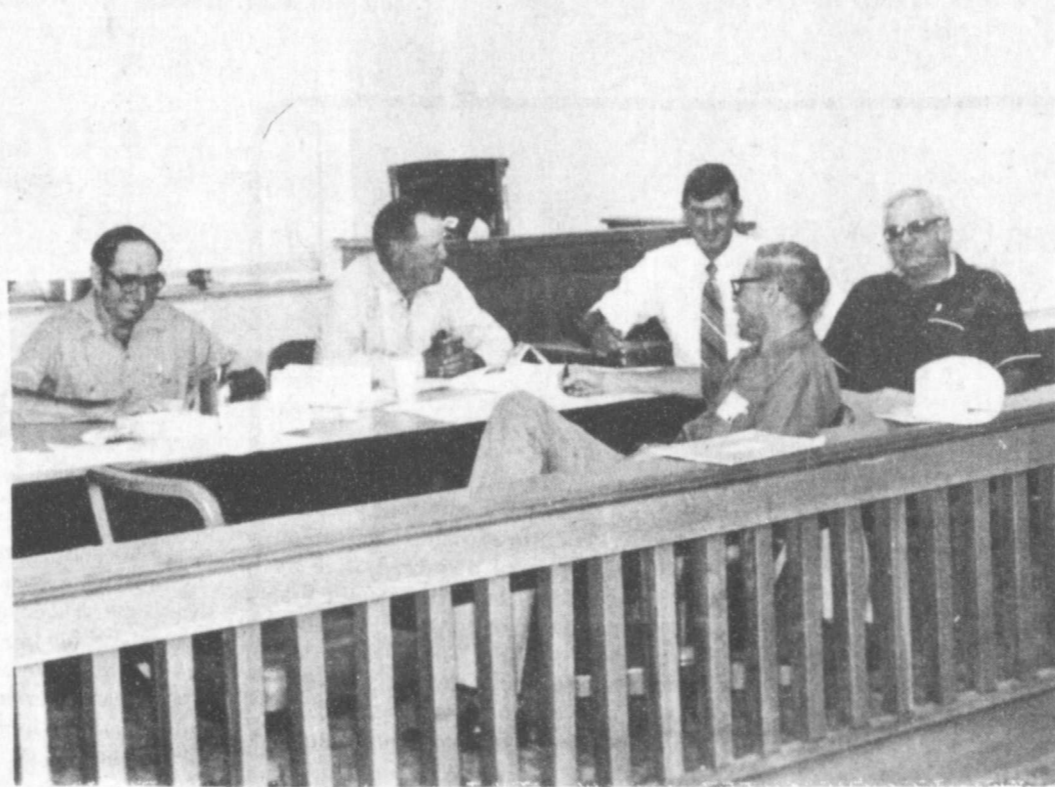


Lockney Swimming Pool
Swimming Lessons
Monday July 20, 6 pm
\$25 - 10 Lessons
Telephone 652-3835

HAPPY 31



From The Friends Of
Wanda Thomas



FLOYD COUNTY commissioners are pictured in the newly remodeled courtroom. The bench and several other pieces were refinished in Huntsville.

Enjoy
"A Fabulous Oasis"
In The Middle Of The Plains
Bring Your Family To
Roaring Springs Ranch
& Come Prepared To Have A Full Day Of
Fun For The Entire Family
For Your Private Tour Or Reservation
Contact: L. T. Cooper
Ask For Me At The Gate
Or Call **652-2739** For More Info.

Lockney birthdays and anniversaries

- Happy Birthday**
July 16 — Debbie Gallaway, Sonia Garcia, Paulina Vasquez, Buck Ford
July 17 — Weldon Cumbe, Isabel Cavazos
July 18—Thomas Banda, Yolanda Reyna, Judy Jackson
July 19—Henry Silva, Teresa Perez, Lisa Roberts, Coby Marr, Kimberly Martinez, Richard Guerrero Jr.
July 20—Melissa Guerrero Gaylyn Hooten
July 21—Evelia Elias, Joe M. Garcia, John A. Garcia, Ray Dillard, Rance Barnett, Mary Ruth Fewell, DeAnna McConnell, Tim Cooper
July 22—Mike Mooney, Carol Huggins, Terry Roberts, Micheal Gatica, Rudy Mendoza, Becky Amador, Michelle Cavazos, David Ramos
- Happy Anniversary**
July 17 — Carl and Bobbye Howard, Linda and Ricky Griffith
- July 18 — Hulon and Anne Carthel
July 20 — Jim and Peggy Roberts
July 22 — Mr. and Mrs. Refugio Vasquez, R.V. and Rita Webster, Jerry and Andy Ford



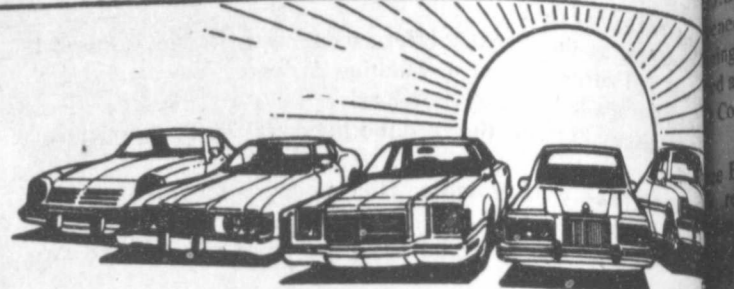
FIX-IT FACTS
Thurman Davis
Although patio doors were designed for summer use, they don't keep the inside very cool in the light of direct sun. To remedy the situation, consider building an attractive wind and sun shelter. First, construct a 2 x 4 frame outside the door consisting of two walls and a roof of four feet in width. Follow the slant of the roof of the house through to your door shelter. Once the frame is built and secured to the exterior wall by nailing additional 2 x 4s to the wall, cover the sides inside and out with five-eighths inch plywood paneling. The roof can be shingled to match the house over three-eighths exterior plywood. Add 1 x 6 trim strips cut to fit. Stain or paint to match your house trim. Add a hanging planter inside the shelter for effect and enjoy the shade.

DAVIS Lumber Company
Lockney

Floydada students graduate
More than 2,000 students at Texas Tech University received degrees in commencement exercises at the conclusion of the 1981 spring semester.

INSUR-MATION
Floyd County
Insurance Agency

With inflation as high as it is, isn't insurance a bad fixed dollar investment? Life insurance is not really intended to be an investment such as stocks and bonds, etc. Life insurance is a question: Without you, would your spouse and children suffer economically? If the answer is yes, you need life insurance. True, inflation does erode the future dollars but this erosion also points out the need for greater protection for your family. Whole life insurance protection along with the attractive additional cash value which you need it. Many experts suggest setting aside a percentage of your income for insurance protection will also increase according to your needs.



INTRODUCTORY DISCOUNT

"Deep Seal" Fabric Protector
Protects Seat Fabric From Most Stains For A Period Of Three Years!

(Written Warranty By "Deep Seal International")
Copy Of Warranty Available Upon Request

Reg Price \$85⁰⁰

Special \$50⁰⁰
(Cars & Pickups)

Undercoating \$35⁰⁰

CITY AUTO, INC.

983-3767 - Floydada

Keep That Great GM With Genuine GM Parts



Save On Gasoline

Use Our Key Lock Pumps
You Are The Only Key Holder

- Regular Gasoline \$1.22.8
- No-Lead Gasoline \$1.26.9
- Diesel Fuel \$1.08

Mr. Farmer

Pick Up Your Own Diesel And Save Money

For Information Contact;
Four "R" Irrigation
103 East Bryan Street
Lockney, Texas
Phone 652-2121

Continuing
FRIDAY Dairy Queen SPECIAL

Complete
CATFISH DINNER \$3.99
ALL YOU CAN EAT

- Including
Catfish with Tartar Sauce
Red Beans - french Fries
Cole Slaw
Onions - Jalapeno Peppers
Hush Puppies

Yes, it's TRUE
ALL YOU CAN EAT
OF EVERYTHING
ON THIS DINNER
for only **\$3.99**

SERVED FRIDAY NIGHT
STARTING AT 6PM & ENDING AT 9 PM

NO TO-GO ORDERS

at your
FLOYDADA Dairy Queen

**SHOP
COMPARE**

WANT ADS ARE YOUR BEST BUY!

idents gradu...
Degree recipients...
They are Timothy...
Penny Giesecke...
Nesa Jackson...
Marquis, Helen...
Lana Reed and Cand...

AGENCY
County...
Jerry...
as it is, isn't whole...
investment? ...
ly intended to be an "inv...
would your spouse, ch...
ally? If the answer is y...
inflation does erode the...
sion also points out the...
our family. Whole life of...
e attractive addition in b...
cash value which will be...
rts suggest setting aside...
me for insurance premi...
due partly to inflation),...
so increase accordingly.

SCOUT
rotector...
n Most...
e Years!

International")
n Request

INC.
hat Great GM Fe...
enuine GM Parts

GM QUALITY
SERVICE PARTS

MOTORS PARTS DIV

SPECIAL

3.99

IT'S TRUE
U CAN EAT
RYTHING
S DINNER
3.99

NIGHT
G AT 9 PM

Dairy Queen

Real Estate
Three bedroom...
area. 983-3767. tfc
Several good two...
bedroom houses...
983-2151 or tfc
BEDROOM brick...
fireplace. 1 1/4...
of storage area...
Call Wilson 983-...
Real Estate 983-...
3573. TFC
BEDROOM brick, at...
fireplace. The re...
can be trans...
interest. Call...
652-3367. tfc
bedroom, brick home...
unit on large...
Call The First...
Bank of Floydada. tfc

For Sale
"WE SELL SLEEP"
Direct Mattress Co. New or...
renovated, for appointment...
call City Trim Shop, 983-...
2332, Floydada. tfc
NEW CHEMAX washing...
unit for cleaning trucks, pick...
ups, or heavy equipment...
220V.-Single phase. Devel...
ops 750 psi at 4 gpm using...
cold water to clean. Priced...
BELOW dealers cost. 983-...
3834. TFC
FOR SALE MENUDO every...
Saturday. 2.25 plate. Azteca...
Cafe, Downtown Floydada. tfc
RECLINER chair, dark...
green. White vinyl head...
board, trimmed in gold. Box...
springs and interspring mat...
tress. All excellent condition...
Call 983-3737 or 652-3637. tfp
GF ELECTRIC RANGE. 2...
years old. Over and over...
double oven. Self cleaning...
Extra nice. 983-2079. 7-30c
2 CHAIRS, one love seat...
One round wicker table, one...
foot stool. Carpet 19x22...
983-2234. 7-16p
FOR SALE: 10 joints-21 feet...
of 1 inch galvanized pipe 75...
cents per foot. Call 652-3637...
TFN
FOR SALE 360 feet of good...
used 1 1/2" and 2" galvanized...
pipe. G.B. Johnston Jr...
652-3729 L-TFN-c
FOR SALE: Sears big three...
wheel bike. Almost new. Call...
983-5291. 7-16p

Pets
FOR SALE: AKC Great Dane...
puppies. Wormed and shots...
Very reasonable. Bill or Bob...
bie Weir 983-2614. 9-23p
PUPPIES to give away to...
good home! 127 W. Ken...
tucky. Call 983-2240. 7-16c
3 adult female and 1 adult...
male rabbits and 5 hutches...
\$50.00. Call 983-2049 or see...
at 817 W. Missouri. 7-16c

Fruits & Vegetables
CORN FOR SALE: 983-3002...
4 miles south of Lakeview on...
651.
PEACHES. Orchard open 3...
days only. Friday afternoon...
July 17. all day Saturday and...
Sunday. 14 miles north of...
Dickens, or 6 miles south of...
Roaring Springs, 2 miles east...
and 1/4 mile south. You pick...
\$10.00 a bushel. Boney Win...
kler 263-4359. 7-16c

Garage Sale
GARAGE SALE: Saturday...
only. July 18. Clothes, cam...
per shell, furniture, lots...
more. 1004 S. 3rd.
TWO FAMILY garage sale...
302 W. Crockett, Saturday...
only.
GARAGE SALE: Thursday...
706 SW 1st. Lockney 7-16c
Extra Large Garage Sale: 2...
old trunks, 2 new hutch tops...
Beauty shop equipment...
Chairs, tables, fans, lamps, 2...
tubs, desk, showcase, sofas...
Hollywood frame, store fix...
tures, baby beds, toilet bowl...
and tank, stainless top and...
table, bicycles, 4 motorcy...
cles, stoves, refrigerator, two...
gallon butane bottles. Al...
most Anything You Want!...
Thursday, Friday and Satur...
day. 8:00 til dark, 219 Main...
Street. 7-14c
GARAGE SALE: 429 W...
Jackson, Thursday, Friday...
and Saturday. Clothes, dish...
es, misc. 7-16p
GARAGE SALE: Saturday...
July 18 only. 120 J.B. Ave...
nue. Childrens clothes, small...
furniture and decorator items...
and toys. 7-16c
GARAGE SALE: 419 W...
Spruce, Lockney. 9 a.m.-6...
p.m. Friday and Saturday...
L7-16c
GARAGE SALE: Friday and...
Saturday. Beds, dresser...
misc. 103 W. Ollie. 7-16p
GARAGE SALE: Friday, 10...
a.m. - Saturday and Sunday...
Levis, Wranglers, linens and...
little of everything. 7-16c
YARD SALE: 205 E. Jeffe...
Thursday and Friday. 7-16c
FOR SALE: Vinyl couch and...
recliner, recently recovered...
excellent condition. 983-3180...
7-16c
LET ME have your garage...
sale for you this summer...
Elaine Hardy 652-2570.

Livestock
SHOW LAMBS for sale...
652-2468 after 7:00 p.m...
L7-23c

Automotive
FOR SALE '78 Chevrolet...
Silverado half ton, pickup...
automatic, air, power, low...
mileage 652-3469 L-7-23c
FOR SALE 1967 Buick...
Riviera, loaded, nearly new...
tires. EXTRA nice. 652-3569...
L-7-23-c
1977 4-dr. Chevrolet Caprice...
Extra clean, 54,000 miles...
983-3700 or 983-3772. TFC

Classified Rates
CLASSIFIED ADVERTISING...
RATES: 20 CENTS PER...
WORK FIRST INSERTION...
15 CENTS PER WORD EACH...
SUBSEQUENT INSERTION...
MINIMUM CHARGE \$2.50...
FIRST INSERTION, MINIMUM...
CHARGE \$1.50 SECOND...
INSERTION. CLASSIFIED...
DISPLAY RATE: \$1.68 PER...
COLUMN INCH. CARD OF...
THANKS: \$3.00.
983 3737
652 3318

Business Services
REPAIR AND SERVICE...
Lawn mowers, tillers, small...
pumps, air compressors...
overhead small engines. Bill...
Van Cleve, Bill's Small En...
gine Repair, 904 E. Price...
Floydada. 983-3410. 7-30p
Adams Well Service Complete...
Irrigation Service. All...
sizes submergible pumps in...
stock. One day service. 983-...
5003. tfc
INTERIOR PAINTING...
WALL PAPERING...
Call Rena Turner or Nancy...
Mayo, 983-5130 or 983-2667...
tfc
JACKSON ELECTRIC...
Residential & Commercial...
Serving Rural...
Communities...
At 652-2737 Lfc
'Carpet Need Cleaning?''...
Let me do the work for...
you. Dry foam, 10 cents...
sq. foot. Also home and...
auto upholstery. Call Jack...
Moore 983-3033, after 5...
p.m. tfc
POOLE WELL SERVICE...
AND RADIATOR SHOP...
Irrigation, domestic, and...
windmill service. 407 E...
Houston, 983-5610 or 983-...
2285. tfc

Auto Parts & Accessories
76 Datsun
75 Vega
76 Vega
75 Monte Carlo
73 Monte Carlo
W.B. Eakin Car Lot
Ralls Hwy. 983-3616 tfc
RADIATOR REPAIR: 1/2...
mile west of Muncy Elevator...
Darden Machine 652-3743. TFC
GEAR HEAD REPAIR. One...
day service. Pickup and del...
ivery. 1/2 mile west of Muncy...
Elevator. Darden Machine...
652-3743. TFC
4 shocks for the price of 3...
Free installation. 123 W...
California. tfc

Want To Buy
WANTED: Used swing set...
and slide. Call 983-2770...
7-16c

DAN'S AUTO SERVICE
DAN TEUTON, Owner...
Specializing in Automatic...
Transmission, Motor Tune...
Ups, Auto Air Conditioning...
General Repair...
We Have A...
BRAKE LATHE...
to handle all passenger car...
brake drums. See us...
for complete brake...
service.
Phone 652-2462

Script Printing & Office Supply
*Commercial Printing
*Office supplies & Furniture
*Business Machines
108 S. Main
Floydada
983-5131 tfc

Baker Insurance Agency
127 W. California
Ph. 983-3270

Dr. Stanley W. Cavett
Optometrist
Announces the opening of an additional office in...
LOCKNEY, TX. Effective June 1.
110 N. Main
Lockney, TX 79241
Ph. 652-2746
Office Hours: 8:30-5:00
Monday
2201 Edgemere Dr.
Plainview, TX
Ph. 296-7437
Office Hours: 8:30-5:00
Tuesday through Friday
Saturday 8:30-12:00

Diamond Industrial Supply Co., Inc.
Phone Days 296-7418
Nights 296-1200 or 296-7828
1014 Broadway
Plainview, Texas
Chain Sprockets U joints
V belts Oil Seals
Sheave O rings
SKF BCA Timken Bower Wisconsin
Cotton Stripper Brushes & Bats
"We Appreciate Your Business More"

Lost & Found
2 BOXER DOGS strayed...
from Kenneth Cox farm. \$20...
reward for both. Sentimental...
value. 983-2056. tfc
Employment
NEED PERMANENT part...
time school bus driver for...
South Plains ISD. Contact...
983-3801. TFC
Farm Services
Land Leveling, terraces...
bench leveling, and pump...
pits, all types of dirt work...
for soil and water conserva...
tion. Dewie Parson 983-2646...
Fred Parson, 983-2074. tfc
CUSTOM Application of...
Herbicides. Bill Wisdom 652-...
3541, John Wisdom 652-...
3544. Lfc
BUCKS 292 irrigation...
engine. One year old. Call...
983-3603. tfc

Business Opportunities
OWN YOUR OWN JEAN...
Shop. Offering all the nation...
ally known brands such as...
Jordache, Vanderbilt, Calvin...
Klein, Sedgefield, Levi and...
over 70 other brands...
\$13,500.00 includes begin...
ning inventory, airfare for 1...
to the apparel center, train...
ing, fixtures and Grand Op...
ening Promotions. Call Mr...
Loughlin at Mademoiselle...
Fashions 612-835-1304. 7-16c
FOUR WOMEN OR MEN to...
be selected to manage Nutri...
trim Clubs in the Floyd...
County area. Looking for...
business oriented individu...
als. Very lucrative commis...
sions and benefits. For in...
formation, send brief resume...
to Nutri-trim, 5235 15th St...
Lubbock, Texas 79416. 7-16p

Farm Machinery
PORTABLE disc rolling...
Lawson Farm Supply...
Inc., Floydada...
983-3940 tfc
Check with us for...
LIQUID FERTILIZER...
ANHYDROUS...
HERBICIDES...
Rigs available...
for application...
LONE-STAR CHEMICAL...
INC...
Office: 652-2761...
Deanie Henderson: 652-3434...
Lfc

Public Notices
NOTICE OF INTENTION OF THE CITY OF...
LOCKNEY, TEXAS...
TO ENTER INTO A COOPERATION AGREEMENT...
WITH THE HOUSING AUTHORITY OF THE CITY...
OF LOCKNEY, TEXAS...
Pursuant to a Resolution duly adopted on July 7, 1981...
by the City Council of Lockney, Texas, Notice is hereby...
given of the intention of the City of Lockney, Texas, to...
enter into a Cooperation Agreement with the Housing...
Authority of the City of Lockney, Texas, and further:
Notice is hereby given that at the expiration of sixty (60)...
days from the date of first publication, the City Council...
of the City of Lockney, Texas, will consider the question...
of whether or not it will enter into a Cooperation Agree...
ment with the Housing Authority of the City of Lockney, Texas...
A copy of the proposed Cooperation Agreement is...
available for the inspection of the public at the office...
of the City Secretary during business hours.
This Notice is given and published pursuant to the...
Housing Cooperation Law of the State of Texas. 7-23

The South Plains Community Action Association, Inc.,...
is currently accepting proposals for the operation of CETA...
Programs in the following counties: Crosby, Dickens...
Floyd, Motley and King Counties. Interested organiza...
tions must be state, county, or local units of government...
or public or private non-profit organizations.
Proposal packets are available in the South Plains...
Community Action Association, Inc., office. Packets are...
available Monday through Friday, 8 a.m. to 5 p.m...
Written inquiries should be directed to the Director of...
CETA Programs, P.O. Box 610, Levelland, Texas 79336...
Deadline for submission of proposal packets is August 3...
5 p.m. Proposals will not be considered if postmarked...
after August 3, 1981. South Plains Community Action...
Association, Inc., reserves the right to accept or reject any...
proposal and undertakes no financial responsibility for the...
preparation of the proposal (s).

House Levelling and Painting
Phone 293-7727
Roy Belk
1505 W. 11th
Plainview, Texas 79072

TURNER REAL ESTATE
983-2635 Farms Ranches Floydada, Texas

J. P. WILLIAMS
Ph. 652-2326

WEED CONTROL
ON LAWNS
INSECT CONTROL
ON TREES AND SHRUBS
CONTROL OF
BINDWEED, RAGWEED,
BLUEWEED & JOHNSON GRASS
ON FARMS
C. A. LIC. NO. 22253 BUS. LIC. NO. 3106 L-TFC

Hollis R. Bond
Real Estate
PHONE 983-2151
107 S. 5th FLOYDADA

Can You Use Some Extra Money Let Us Help!!!!
WE BUY SCRAP IRON, OLD JUNKERS, AND FREE PICKUP
Call 983-5277

Leak Repair
No job too small or large.
Pit Digging.
Juarez Backhoe Service
983-3393

LOCKSMITH
certified
now serving
Floyd, Briscoe, Motley
counties
PRO-LOCK SHOP
129 East Ollie Street
Floydada
• Locks Changed
• Keys Made
• Locks Repaired
• Deadbolts Installed
• Emergency Openings
DAY OR NIGHT
CALL 983-3834
Don Probasco

STORAGE SPACE
BOATS, FURNITURE...
ANYTHING, ETC...
BY THE MONTH OR...
SIX MONTH 10%...
DISCOUNT.
West Texas Mini Storage
CALL WILSON BOND...
983-3573 OR 983-2151

Obituaries

VERA MEREDITH

Services for Vera Meredith, 80, of Floydada, were at 10 a.m. yesterday in First Baptist Church in Floydada with Dr. Floyd C. Bradley, pastor, officiating, assisted by the Rev. John Jenkins of First Baptist Church of Lockney.

Burial was in Floydada Cemetery under direction of Moore-Rose Funeral Home of Floydada.

She died at 5:30 p.m. Monday in Lockney Nursing Home after a lengthy illness.

She was a native of Caldwell Parish, Louisiana, and moved to Floyd County in 1917 from Kent County. She was a retired teacher, having taught in Floyd County for 43 years. She retired in 1967. She was a member of Eastern Star and Texas Teachers' Association.

She was a member of the Calvary Baptist Church, and taught Sunday school at the First Baptist Church from 1917 until 1975.

Survivors include a sister, Mrs. Clay Muncy of Lockney, and several nieces and nephews.

lived in Lockney for the past 15 years. She was a homemaker and a Baptist.

Survivors include a brother, LaRoy Morrow of Nacogdoches, and a sister, Minnie Wright of Lockney.

Pallbearers were Don Vernon, Dale Ross, W.R. Smith Jr., Joe Smith, Lynn Smith and Kenneth Murdock.

LONNIE HOLLY

Lonnie L. Holly, 66, of Stamford, brother of Mariana Sproles of Floydada, died at 10:30 a.m. Monday, July 6, in the Stamford Hospital after a brief illness.

Services were at 2 p.m. Wednesday, July 8, in George Price Funeral Chapel. Officiating was the Rev. Riley Hamilton, pastor of Fairview Baptist Church. Masonic graveside rites were conducted by Sundown Lodge 1289 in Sundown Cemetery.

Born in New Mexico, Mr. Holly lived in Sundown from 1952 until moving to Stamford four years ago. He also had lived in Odessa three years.

He married Dolores Underwood January 25, 1974 in Big Spring. He was a member of Sundown Masonic Lodge 1289 and El Paso Scottish Rite bodies.

Also surviving are his wife, a daughter, his mother, four brothers, and five grandchildren.

LEONA BISHOP

Services for Leona Holt Bishop, 67, of Lakeview Community were at 3 p.m. Friday, July 10, at Main Street Church of Christ, Lockney, with Perry Zumwalt, a Church of Christ minister from Floydada, officiating. The Rev. Floyd Bradley, pastor of First Baptist Church, Floydada, assisted.

Burial was in Lockney Cemetery under direction of Moore-Rose Funeral Home of Lockney.

Mrs. Bishop died at 12:55

R.L. JONES

Services for R.L. Jones, 79, of Hale Center, were at 10 a.m. yesterday in Lemon Memorial Chapel with the Rev. Ron Mooney, pastor of First Baptist Church officiating, assisted by Dr. Charles Basset of Wayland Baptist University in Plainview.

Burial was in Plainview Memorial Park under direction of Lemon Funeral Home.

Jones died at 5:53 a.m. Monday in High Plains Hale Center Hospital after a brief illness.

He was a native of Troy, Oklahoma, where he grew up. He moved to Floydada in 1924 and to Lockney in 1925, where he farmed until 1939, when he moved to Hale County. He retired from farming in 1956 and moved to Hale Center. He served on the Hale Center City Council from 1972 to 1974. He married Eunice Rexrode on October 23, 1926, in Floydada.

Survivors include his wife; two daughters, Mrs. Raby (Lanell) Garrett of Plainview, Mrs. R.S. (Wanda) Johnson of Hale Center; two sons, Marvin of Fort Worth, Dr. Melvin Jones of Houston; a sister, Fay Gross of Lockney; 10 grandchildren; and 12 great-grandchildren.

MRS. SARAH CHILDS

Services for Sarah Elizabeth Childs, 67, of Lockney were at 10:30 a.m. Thursday, July 9, in First Baptist Church, Lockney, with the Rev. John Jenkins, pastor, officiating.

Burial was in Lockney Cemetery under direction of Moore-Rose Funeral Home.

Mrs. Childs died at 4:28 a.m. Tuesday at Lockney General Hospital after an illness.

The Arkansas native married John Edward Childs in Clovis, New Mexico, in 1953. He died in 1965. Mrs. Childs

a.m. Thursday, June 9, at Lockney General Hospital after a short illness.

The Floyd County native married Holt Bishop March 18, 1972, in Floydada. She lived in Floyd County all her life and was a homemaker and a member of the Floydada Church of Christ. She was a former member of the Lockney B&P.W. Club.

Survivors include her husband; a son, Gary Holt of San

Antonio; three daughters, Verda Mae Enloe of Allen, Shirley Green of Lubbock and Margaret Bartram of East Wrentham, Washington; a brother, Guy V. Cope of Amarillo; two sisters, June Bybee of Lockney and Ruth Fewell, both of Lockney; 10 grandchildren; and nine great-grandchildren.

Pallbearers were grandsons, Larry Green, Craig Green, Mike Williams, David Williams, Chris Bartram,

Tim Bartram, Greg Bishop and Mike Bishop.

GRACE DINNIN

Services for Mrs. Grace Dinnin, 91, of Wichita Falls were at 11 a.m. Saturday, June 11, in Owens and Brumley Funeral Home, Wichita Falls, with the Rev. Melvin Bradley, associate pastor of First Baptist Church, officiating.

Burial was in Crestview Memorial Park under direc-

tion of Owens and Brumley Funeral Home.

Mrs. Dinnin died at 4:30 p.m. Wednesday at Caprock Hospital in Floydada after a brief illness.

Survivors include four daughters, Margie Fowler of Floydada, Gladys Vaught of Wichita Falls, Bernice Blackhall of Denver, Colorado, and Doris Wheeler of Ankeny Iowa; and a son, Pat of Wichita Falls.

Radio Shack DEALER GRAND OPENING

Offer Good July 22-24 Wed-Fri
Collins Appliance
 111 W Calif. 983-5702



Save \$70

Receiver with the Features You Want and "Room To Grow"
\$209⁹⁵ Reg. \$279⁹⁵

Realistic STA-100. One of our best sellers—designed for beautiful sound and operating convenience. The wide dial, balanced flywheel control and lighted signal meter make it easy to tune for best AM and FM sound. FM muting silences tuning noise with the push of a button. You can listen with headphones only, main speakers only, remote speakers only, both pairs—or even reverse main speakers for perfect stereo imagery. There's also a loudness button, jacks for recording with two tape decks, a "hot" FM front end and phase-locked-loop multiplex for wide FM stereo channel separation. U.L. listed 31-2089

Big Savings on a High Efficiency Speaker System



Optimus-27 by Realistic

Save \$100
49⁹⁵ Each
 Reg. 149.95 Each

Buy now at a low price! Novel design features a 1" tweeter and 6 1/2" woofer coupled to an 8" passive radiator. Genuine walnut veneer. 27 1/2 x 15 1/2 x 6". #40-2033

Portable Cassette Recorder With Auto-Level Recording



CTR-52 by Realistic
 Save \$5
24⁹⁵
 Reg. 29.95

Batteries extra
 Perfect for recording meetings, lectures, "talking" letters. Built-in mike, Auto-Level make recording easy. Auto-Stop, jacks for remote mike, aux., earphone. #14-804

Bargain Priced Stereo 8-Track Player



Save \$15.00
\$29⁹⁵
 Reg. \$44⁹⁵

Highway stereo doesn't have to be high priced—Realistic proves it with this compact 8-track player. Convenient slide-action volume, balance and tone controls, pushbutton program change, and easy-to-use LED program indicators. 8-watt stereo amplifier. Just 2 1/2 x 4 3/4 x 6 7/8".

3-Speed Stereo Phono with Mini Changer



Clarinetto-20 by Realistic

Save \$30
49⁹⁵
 Reg. 79.95

Big sound and modern styling at a low price! Matching speakers separate up to 18". Removable dust cover, stereo headphone jack. 13" high speakers. #13-1166

FREE



5-CELL FLASHLIGHT \$1.98 Value

Just bring this coupon to the new Radio Shack for your free flashlight. Limit one per customer. Batteries not included. Offer expires July 24



12-Character Programmable LED Display Calculator EC-4000 by Radio Shack
 Cut 33%
39⁹⁵
 Reg. 59.95

Save \$20 on the calculator you can "teach" to help with your work. Up to 50 multi-key program steps, 9 branching instructions, 9 levels of parenthesis, subroutines and labels. 239-page guide. With batteries, charger/adaptor. #65-650

AM / FM / Weather radio



Save \$15.00
\$34⁹⁵
 Reg. 49⁹⁵

Entertainment plus instant weather updates, anytime, from National Weather Service VHF stations. Slide-action volume and tone controls. 4" speaker, telescoping antenna, switchable AFC, weather fine-tuning, ceramic filters to cut signal interference. Telescopic FM/weather antenna, built-in AM antenna. 5 1/2 x 10 x 3". With earphone. U.L. listed AC operation or 4 "C" batteries (not incl.)

Always Be On-Time with This Electronic Alarm Clock



Slashed 25%
14⁹⁵
 Reg. 19.95

Bright fluorescent display can easily be read from across the room. Wake to pleasant "beep" tone and then push down anywhere on the top of clock for "snooze." AM/PM indicators. #63-751

With This Coupon

Buy One Root Beer Float Get One Free
 (Soft Serve Ice Cream)

July 16-22

Pizza Gold

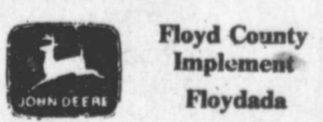
601 South 2nd Floydada

With This Coupon



Jerry Perry

There may be at least one glittering high point in this year's wheat harvest: The railroads are ready for it, and have been calling on grain shippers to drum up business, according to reports from Kansas City. The box car shortage, which seemed to be an on-going, annual nightmare, has apparently subsided. Market watchers and railroad people alike say that there is no box car shortage and, for the time being, at least, no threat of one. Actually, the old, forty foot wood boxcars are nearly a thing of the past. Today, jumbo hopper cars have pretty well taken over the task of moving wheat from farms to storage. Last year's record crop was handled with little or no difficulty by the transportation system, and trainmen see no problem again this year, no matter the size of the yield.



Family Heritage

A King descendant's gather

Arkansas and southern Missouri to serve his churches which stretched over a 100 mile territory. He was born in 1834 and moved to Lafayette County, Mississippi in 1844.

He was educated at Oxford University and was licensed to preach in 1858. He settled

in Izard County, Arkansas and later moved north to Wilderness, Missouri. He lived in Oklahoma for a few years before coming to Floyd County in 1909. He and his wife, Anne Bone King and their family were members of the Cumberland Presbyterian Church at Floydada.

Scott King and his wife, Rita from Houston. Traveling the greatest distance were Gerry, Liz, Elizabeth and Jeff Baker from Pacifica, California. Traveling from Colorado were Elizabeth Roberts from Colorado Springs and her daughter, Wilma Tanner of Littleton.

June, Jill and Kay Wells, Denton; Vernon, LaJuana, Paul and David Henning, Jan Billings, Seagraves; Raymond and Mary King, David, Mary Beth and Allison Cranford, Donette Marble, Lubbock; Dale Powell, Ralls; H.B. and Zelma King, Morton; Jim, Sandra, Julie and Britt Sadler, Dumas; Randell King, Ora King, Jakey, Leora, Moody, Mysti, Leif and Tian Younger, Brett Turner, Doris McLain, Floydada; Mike, Tonya Justin and Micah Marble, Lockney; Don, Nancy, Brett Marble, Fred, Carolyn, Kelly, Cindy Marble, Keith, Neta, Dwayne, D'Lee Marble, South Plains.



Top photo shows Robert A. and Anne B. King. The Pierce King Grocery Store (left) in Floydada began in 1933 on the South side of the square in the Beall-Perry building. R.I. Teeple was the first customer. The King's have two children Randall King and Leora King Younger who reside in Floydada with Mrs. King.

Wilson Cousins July Reunion

Now Wilbur Troy was a sight on earth
A sound healthy boy from the day of his birth
He climbed from the very first day that he walked
And charmed all of us from the first day he talked.

The next little cousin was a great source of joy
And no matter how old, I'll call him "Johnny Boy"
He came to all the Wilsons, a perfect little blonde
And of him all the Wilsons grew very very fond

For the work he did to bring on this oration
Let all the people stand to give him an ovation.
Thank you, and listen now, whatever else you do
For the very next arrival was sweet Lanita Sue.

She was quite a little singer, a musician from the start
Another Wilson cousin wrapping strings around our heart
Now if I put Lanita Sue where Jimmy ought to be
I don't believe I'll change it for you can plainly see

That it would wreck my perfect rhyme
And then besides, I don't have time
But I could never slight my Jim
For I am very proud of him Proud of him and his blonde brother

Because, of course, I am their mother
Jim came between our Bill and Brad
Another boy and we were glad
A brunette like his dad and me

Then came our Brad and there were three
Two brunettes and one blonde boy
Gave both of us a world of joy
I may have goofed again I think

But if I did, it's but a blink
Brad and Terry were close together
One chose fair — one winter weather
Terry, another Wilson charmer

Would be a lawyer — not a farmer
Whatever the weather — whatever the trends
These two became the best of friends.
Now all the cousins' natures vary

But there is one whose name is Gary
As quiet and calm as the ocean blue
But a Wilson cousin through and through
Now if you think my rhymes are corny

Just thank the Lord that ye were "borny"
Into a home with the Wilson label
For the Wilson label protects the table
And if you don't know what that means

It means fresh pork and turnip greens
Long printed on the Wilson Lard cans
That held the grease for Wilson fry pans
Now let us, dads and mothers all
Aunts and uncles, short and tall
Inlaws, outlaws, cousins dear
Enjoy each one who's gathered here

BY AUNT GLENNA
48 years a WILSON

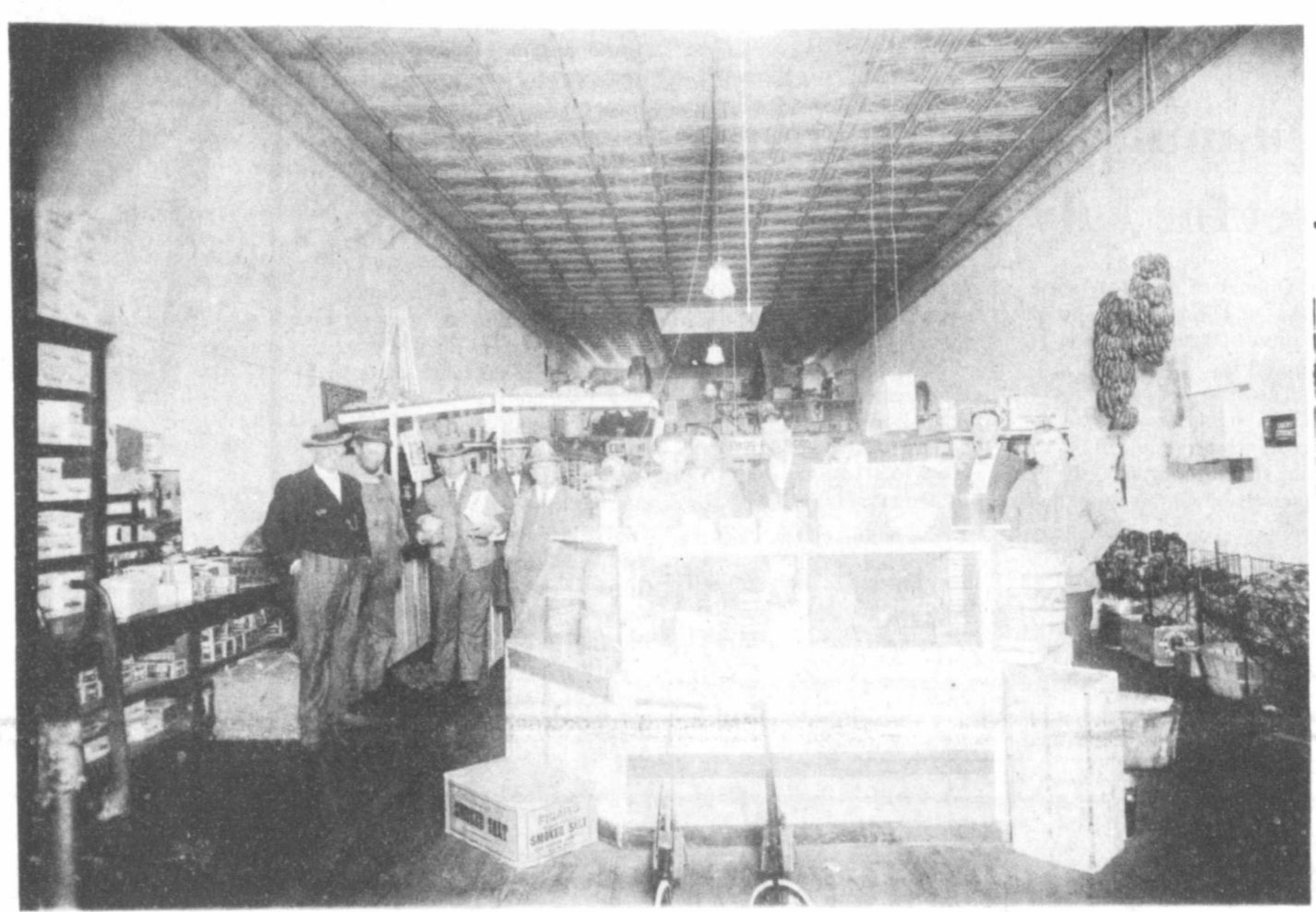
Rev. King died in 1914 and his wife in 1926, both are buried in the Floydada cemetery. Their children, Tom, Henry, John Leach, Rubie Taylor, James, Abner, William, Mollie Rose, E.C. (Ned) and Sid King, have many descendants living in this area today.

A picture of Pierce King's Grocery Store which opened in Floydada in April 1933 was featured on the reunion invitations. 1933 newspapers created topics of conversation including the Depression, the closing of the banks, NRA, popular movies, the Harley Sadler show, fashions, cost of food and clothing and school events. The King Family genealogy was displayed along with family photos.

75 registered during the day including relatives from California, Arkansas, Colorado, Oklahoma, New Mexico and Texas.

The Rev. and Neill Hudson of Mountain Home, Arkansas and his son, Dr. Robert Hudson of Russellville, Arkansas attended the reunion for the first time. They represented Rev. King's brother James Farr King's family. The Hudsons were house guests of Don and Nancy Marble.

Also attending for the first time were Joyce King Russell and her husband, Rusty of Fort Worth and Dale



American Red Cross involves entire community

THE AMERICAN RED CROSS

(The third in a series of four articles written by S.W. Ross for the 100th Anniversary of the American Red Cross)

In the post-war years from 1946-1980, there were marked changes in both the organization structure and the program of the Red Cross. Emphasis was given to the concept of involving the entire community in Red Cross programs. Young people of high school and college age are beginning to work as full-fledged volunteers, and opportunities for people of retirement age also expanded as well.

In the 1950's and 60's and 70's, the United States was stricken by many major national disasters in which the American Red Cross conducted

enormous and costly operations. In the 1970's the Red Cross was conducting, annually more than 600 large disaster relief operations and giving assistance in some 24,000 local emergencies.

In the early years of the decade of the 1970's the American Red Cross activities were supported annually by the work of approximately 1,700,000 students participating in Red Cross programs in school, and by between 35 and 40 million people, who contributed financial support.

As the government took a stronger hand in disaster relief, the Red Cross worked closely with government agencies.

The humanitarian purposes of the American Red Cross have remained constant; but the content and the scope of the Red Cross



THIS POSTER, painted by Altona Foringer in 1918, has proved to be most popular.



ILLUSTRATOR Jes Schlaikjer depicted the Red Cross role in disaster relief in 1949.



THE MAJORITY of World War II posters carried "at his side" themes.

programs have continued to change as the demands of the times have changed.

Thus, the American people are assured of an effective means, by which they might give help to one another in the many fields in which the American Red Cross is active.

Today's Red Cross aims to meet specialized needs of communities. It counsels Veterans in prison, instructs those who care for the homebound, offers courses in Spanish and sets up guidelines for young people. The American Red Cross is the only direct contact between Floyd County families and their men and women in the armed forces wherever they are throughout the world.

Today's Red Cross accepts International Red Cross humanitarian principles as living guidelines. It works to

reduce suffering around the world by reuniting families, offering technical advice, providing training in First Aid, CPR, swimming or sending relief for disaster victims. It puts into action what might be called global humanitarianism.

In the Red Cross, the heartline is people helping people! It is an organization built on dreams of individuals and millions of helping hands.

A few of the Floyd County residents who volunteered their services to the Red Cross in past years include Wynnie Angus, Mary Shaw, John Stapleton, Clarence Guffee, Troy Stansell, Bill Harden, O.M. Watson Jr., Hester Moore, Ian Moore, Jerry Finley, Sam Spence, Jimmy and Darlenda Marquis, Mrs. Q.D. Williams, Marilyn Tate and Jett Major.



RED CROSS membership in schools was soaring when this newspaper boy was featured in 1926.

Champion Building Contractors
852 Plainview
3014 806/293-45

Custom Wood Signs
Furniture Refinishing

Label Protects
The Table
or
Know About
The Cousins
Wilson Cousins I
need to write
you warning—
write is trite
I took the Wilson
Cousins never been the
watched the
grow things that you
bring you up to
prepared to stay till
married Buster there
Jo
even then if you
Aunt Glenna
first
ugh with pride I'd
herst
did not know still
sicken
and she taught me to
chicken
was the next little
line
very first glimpse I
her as mine
cute little
across her nose
pimp little cheeks
a rose
tummy was hard
me
and love her has
pleasure
I married there
and Gene
child I had never
the least bit of
a pool to make a
table
and shout or
will
during our first son.
mistaken please
right
birthdays has
big
I married there
on the way
quite sure she was
Ma
was special and
with her grow was
sight
went to appear was
sassy and very
I say sassy, I
was neat
her own Billy there
these, born
apart
wrapped them-
around our heart
up together, Billy
and bright as
can be
cousins, our first own
all death, our
and joy
Troy older than
my bawling mind
to remember the
birthdays,
for me to tell of

12-Character Programmable LED Display Calculator EC-4000 by Radio Shack
Cut 33% 39.95 Reg. 59.95

Weatheradio Save \$15.00 \$34.95 Reg. 49.95

Weather updates, Weather Service VHF and tone controls, Antenna, switchable ceramic filters to cut FM/Weather an-5 1/2 x 10 x 3". With operation or 4 "C"

n-Time with Alarm Clock 14.95 Reg. 19.95

an easily be read to pleasant down anywhere oze." AM/PM



LOCKNEY COOKING STUDENTS—Twelve Lockney students graduate from Lighthouse Electric Cooperative's "Food Fun for Juniors" cooking classes. Students graduating were back row, (l-r) Julia Segovia, Ruth Elaine Wilson, Jolie Diepenhorst, Teresa Leal, Julie Hernandez, Chad Diepenhorst. Front row (l-r) Lupe Gonzales, Margie Torres, Kathy Jo Davis, Gina Prisk, Leslie Martinez, and Carolyn Gonzales.

Students graduate from cooking classes at Lighthouse

Twelve students graduated from Lighthouse Electric Cooperative's "Food Fun for Juniors" classes this summer taught by Rosemary Paty.

The three-day cooking school is offered free of charge to boys and girls who have completed the fifth grade as part of Lighthouse Electric Cooperative's youth development program. The students studied the basics of cooking such as reading recipes, measuring, cooking terms, and kitchen safety. As daily meals were prepared, the class learned proper use of small appliances, meal planning for good nutrition, table setting techniques, and the importance of mealtime manners.

One of the favorite recipes of the school was Pigs in Blankets.

PIGS IN BLANKETS
2 cups of bisquit mix
1/2 cup water
12 weiners

Preheat oven to 450 degrees. Measure 2 cups bisquit into mixing bowl, add 1/2 cup water and blend. Knead

10 strokes. With lightly floured rolling pin, roll out dough into a square, 12 by 12

inches. Cut dough into 12 oblong shapes, each 4 inches long and 3 inches wide. Wrap each oblong around 1 weiner. The ends of the weiner will peek out of the bisquit "blanket." Place on an ungreased baking sheet and bake 10 to 15 minutes.

Quanah softball tourney set for July 24-26

Quanah Softball Association will host a women's Softball Tournament July 24, 25 and 26.

The first twenty-four (24) teams to enter will be accepted. The entry fee will be \$75 and should be in by July 19. Each team will hit their own ball.

ASA umpires will be used for the tournament. Two fields will be used during the tournament.

Individual trophies will be awarded first, second, and third place teams. Individual

medals will be awarded fourth, fifth, and sixth place teams.

The best dressed team will also receive a team award. A team sportsmanship trophy will be awarded. A MVP award will be given. All tournament team will be named and awarded medals.

Any team wanting to enter should write Quanah Softball Association, Box 62, Quanah, Texas 79252 or call James McDaniel at (817) 663-5885 or Neal Brooks (817) 663-2844 for further information.

Cedar Hill News

Revival to begin at Cedar Hill

BY GRACE LEMONS

A revival meeting begins Sunday at the Assembly of God Church with Rev. and Mrs. Dewey Newburn of Carlsbad doing the preaching. Services will begin at 7:45 p.m. and you have a cordial invitation.

Mrs. Myrt Guest entered the Methodist Hospital in Lubbock Sunday for preparation for major surgery Tuesday morning. She has been ill for several months and we trust that she will feel much better after she gains her strength.

Janette Lackey and Edna Gilly went to Lubbock on business last Thursday.

We trust that Edna Gilly will gain her strength and feel much better quick as she has been confined to bed in her home with pneumonia. We are glad to report that she is much improved. Clara Redd of Floydada visited her Saturday and her mother, Ruthie Clark of Plainview visited her Monday.

Cindi Darling of Lubbock spent the weekend with her brother and wife. Bruce and Missy Conner and the three of them had lunch with their grandparents, Mr. and Mrs. Jim Conner, Sunday.

Jenese Lemons returned to the home of Mr. and Mrs. Phil Lemons after spending a few days in Seagraves with her parents, Mr. and Mrs. James Lemons. Linda and the girls met her at the bus station in Plainview Monday.

Pauline VanHoose accompanied her sister, Eula Mae, to Lubbock to do some shopping Tuesday.

John D. and Pauline VanHoose had supper in the home of the Rev. and Mrs. Vance Mitchell and girls Thursday evening.

Elvie and Rosa Lackey, Greer Lackey and Troy had lunch Monday with Wanda and Bill DuBois and Quinn.

Barbra Salyer and Simone Payne of Alta Loma, California and Theopal Jay of Santa Anna, California arrived

Sunday to visit Mr. and Mrs. J.A. Welch and Peat Kelley. Jane Pigg of Silverton and Sue Wise of Plainview visited them Sunday. The women had visited several days in the Weatherford area and left Cedar Hill Monday afternoon to return home by plane.

Mrs. Peat Kelley and Norma Welch visited Mattie Davis and had lunch with Grace Keeter in Plainview

last Monday.

Clara Mize's niece, Joy Penrod and daughter, Janie of Lubbock, spent Friday night in the home of Clara and Albert Mize.

Flora Barnes visited Mr. and Mrs. Albert Mize Saturday.

Wesley and Rodney Smith of Dumas are visiting their grandparents, Mr. and Mrs. Cephus Fortenberry.

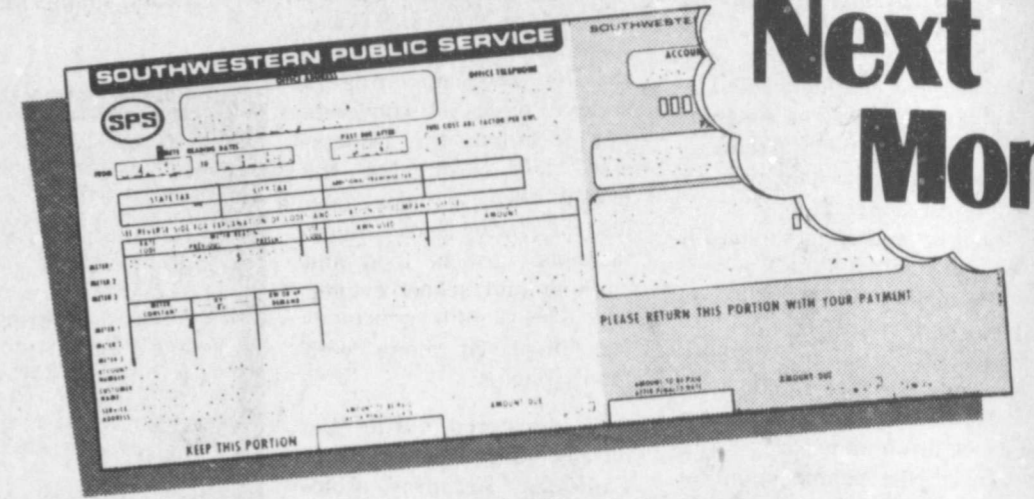
Grace Lemons visited Mrs.

Sally Carpenter who is a patient in the Lockney General Hospital, last Tuesday.

Our greatest glory is not in never failing, but in rising every time we fall.



Averaged Billing Could Reduce Your Electric Bill Next Month



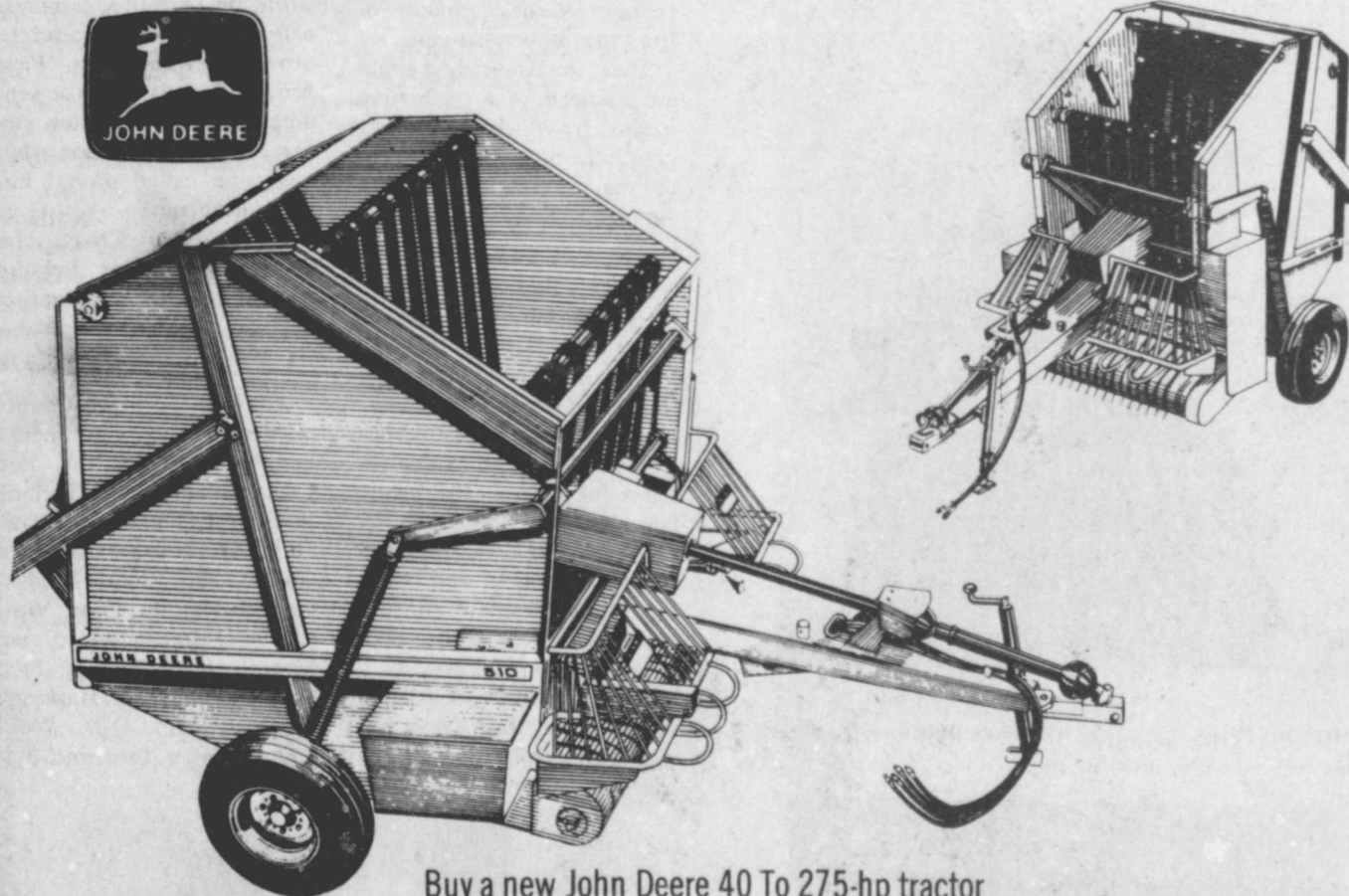
The Averaged Billing Plan with SPS can take a big bite out of your electric bill next month.

How? Because Averaged Billing evens out the highs and lows that occur in your electric bills throughout the year. So you pay about the same each month. The Averaged Billing Plan from SPS can help just about anybody. You can depend on it. Just call Southwestern Public Service.



SOUTHWESTERN PUBLIC SERVICE COMPANY

Buy Hay Equipment Now. Pay No Finance Charges Until January 1, 1982



Buy a new John Deere 40 To 275-hp tractor before July 31, 1981 and no finance charges will accrue until March 1, 1982. This same offer applies to all used tractors and new John Deere and used implements sold with the tractor.

Stop in and see us soon. We can help your equipment dollars do more.

All Cultivator & Hamey Sweeps 10% Off July 1-18 (Excluding Hard Facing)

Floyd County Implement

Floydada, Texas

Buy A John Deere Tractor Now And Save On Finance Charges.



Now's the time to buy the new or used haying equipment you need. Rectangular or round balers, mower/conditioners, windrowers and forage harvesters are all included in this money-saving program. Buy the equipment now and put it to work in your fields.

Stop in soon and make your deal. This special offer ends August 31, 1981.

983-37

Money-Saving Suggestions



for an army of eager appetites at meal time

Here are meat values as great as all out-doors, full of appetite appeal, and economy priced. Start your shopping list with these and please your family as well as your purse.

LIGHT CRUST Flour
 ALL PURPOSE FLOUR
 ENRICHED BLEACHED
 25 LB. BAG
\$4.99

KRAFT GRAPE Jelly
 32 OZ.
99¢

KRAFT PARKAY Margarine
 1 LB. QUARTERS
2/99¢

COUNTRY PRIDE GRADE A MIXED Fryer Parts
 LB.
69¢

12 oz Swift **Franks**
99¢

USDA Ranch **Steak**
 lb
\$1.79

Center Cut **Pork Chops**
 lb
\$1.99

USDA Boneless Sirloin **Steak**
 lb
\$2.89

3 lb Farmland Can **Ham**
\$6.99

From Our Deli Smoked **Sausage**
 lb
\$2.79

4 lb Box Morton Rock **Salt**
49¢

DISINFECTANT **LYSOL**
 REG. & SCENT #
 18 OZ. **\$2.39**

12 oz Keebler **Vanilla Wafers**
79¢

16 oz Keebler Honey **Grahams**
89¢

16 oz Keebler Club **Crackers**
89¢

WHITE SWAN PRE-CREEM Shortening
 42 OZ.
\$1.09

6-32 oz **Tab Or Coke**
\$1.79
 Plus Deposit

15 oz Liquid Cleaner **Pine Sol**
\$1.09

17 oz Pine Sol Foaming **Cleaner**
99¢

"THE FINEST OF THE FRESHEST"



Now's the time for thrifty Springtime Salads

Peaches
 CALIFORNIA'S FINEST
 LB.
49¢

CALIFORNIA SUN GRAND NECTARINES
 LB.
59¢

CALIFORNIA HASS AVOCADOS
 6/\$1.00

ALL PURPOSE POTATOES
 10 LB. BAG **\$1.99**

Golden Ripe **Bananas**
 3 lb/\$1.00

3 lb Bag Red Delicious **Apples**
99¢

Health & Beauty Aids

4 oz Jhirmack NCA Hair **Conditioner**
\$3.19

2 oz Jhiemack **NUTRI-PAK® Creme Conditioner**
\$3.39

FELICITY Glycerine Soap
49¢

16 Count Playtex **Deodorant Tampons**
\$1.29

all Detergent
 LOW SUDS
 60¢ OFF LABEL
 9 LB. 13 OZ.

Ivory Dish Detergent
 20¢ OFF LABEL
 32 OZ.

SWIFT Sausage
2/89

Love My Carpet
 REG., CITRUS, FLORAL
 20 OZ. **\$1.89**

FUTURE ACRYLIC FLOOR FINISH
 27 OZ. **\$2.89**

ALL LIQUID LAUNDRY DETERGENT
 60¢ OFF LABEL **\$2.99**
 64 OZ.

FABRIC SOFTENER DOWNEY
 15¢ OFF LABEL **\$1.09**
 33 OZ.



Values In This Ad Effective Thru July 22, 1981

buddy's
 SUPERMARKET

Farm News

Farm, marketing options for cotton growers

Faced with a record world cotton crop and a lackluster demand for their product, cotton growers need to map out a solid marketing strategy. A key part of this strategy is keeping a close eye on the market itself.

Dr. Carl Anderson, marketing economist with the Texas Agricultural Extension Service, Texas A&M University, System, suggests a number of marketing options for cotton producers:

--Establish a selling price by forward contracting or hedging in the futures market and arrange delivery at some future date.

--Sell at harvest.

--Hold and sell later.

--Place cotton under the Commodity Credit Corporation loan program and hope the price will go up.

"Growers can develop a 'feel' for the cotton market by watching daily and weekly reports on prices and worldwide production and use," says the economist. "Bumper 1980 crops in Russia and China have burdened the market, the U.S. prices have fallen about \$35 per bale since January."

According to Anderson, two developments will bear heavily on the cotton market for the season ahead--low carryover stocks and export demand.

"During the summer, the market will move up and down between low supplies and good and bad reports on crop conditions," says Anderson. "A decline in interest rates might also give the market a boost."

Periods of market strengths may offer an opportunity to forward-price some cotton between now and the time harvest gets into full swing, he adds.

"Export demand will be the main factor influencing cotton prices this fall

and winter," believes Anderson. "The growing importance of exports to disappearance of U.S. cotton suggests even more price uncertainty than in the past. Export demand is subject not only to the uncertainty of foreign production but also to political disruptions."

Any major change in the cotton market will likely stem from a change in exports from current projections of about 7 million bales, notes the economist. If the new U.S. crop turns out about 13.5 to 14 million bales, market prices will likely go up or down as exports go above or below the 7-million-bale figure.

"Historically, when cotton supplies improve--as it appears they will in 1981--the market usually remains tight. So watch for a time when the market is on the upswing to 'set' your price," Anderson advises growers. "With the high cost of holding cotton, timing your sale is more important than ever."

Gradual weaning of foals is best for both colt and it's mother

COLLEGE STATION — To make life easier on both a young foal and its mother, wean the foal gradually at three to six months of age, declines a horse specialist with the Texas Agricultural Extension Service, Texas A&M University System.

Traditionally, foals are weaned abruptly by separating them from their mothers. Oftentimes, mares are put in far-away pastures. This makes life miserable for both mares and foals for some time, says Dr. Doug Householder.

Since a foal is introduced to feed, deworming, vaccination and haltering during the weaning period, all this can put a severe strain on the young animal. Full recovery may take six to eight weeks.

Research has shown that the most suitable weaning program for both the foal and mare is a gradual weaning system, points out Householder. This minimizes stress on both and enhances their health and growth.

Depending on facilities and available labor, the specialist outlines several gradual weaning plans.

One plan calls for placing the foal and mare in adjacent stalls so they can see,

Wheat farmers threatened by low prices

PLANO, TEXAS—"This could be the last year many farmers in Texas and this nation will be growing crops because of the low prices they are receiving," Texas Farmers Union President Mike Moeller warned Thursday. Moeller spoke at the Wells Brothers Grain Elevators in Plano, an area which contains many wheat and grain farms.

"Many farmers plunged deep into debt last year because of the devastating drought. This year, they are faced with even higher prices for seed,

fertilizer and equipment, unparalleled high interest rates and a depressed market for their crops," Moeller stated. "And on top of all that, the prospects of having a Farm Bill in 1981 which will benefit the family farmer does not appear all too rosy," he added.

In Texas, wheat production is at an all time high, with the state agriculture department estimating 179 million bushels, 38 percent more than last year's production. Also, 29 percent more acreage was planted in wheat this year

in the hope that many farmers could offset last year's losses with a good wheat crop.

"The Department of Agriculture in Washington has already announced there will be no acreage limitations on wheat planting in 1982 for the third straight year," Moeller noted. "No limitations coupled with the low loan levels mean that wheat and other grain prices will remain depressed unless action is taken by Congress which will adopt a Farm Bill this year," Moeller

said.

The possibility of a Farm Bill, says Moeller, is a major concern for the Texas Farmers Union. The union's Chairman, John B. Farabee, has led the fight for a Farm Bill since 1977. Farabee said the union's first meeting was held on July 7, 1977. "It is a sad commentary on the economic condition of the United States that the Government is not taking any steps to raise the loan rates for grains and sell our surplus, which will guarantee a profit. Instead of getting a price for a bushel of wheat getting \$6 or \$7 a bushel, we are getting \$3 or \$4 a bushel," Farabee said. "The Texas Farmers Union reported that Secretary of Agriculture John Block also said that the 1981 Farm Bill is still in the future and we retained as proposed in the House and Senate versions of the bill. It also said other objectives include the sugar program, allotments and the dairy program. Farabee said that if the 1981 Farm Bill is passed, it would include a provision that would allow farmers to sue the government if they were unable to get a loan for their crops."

1980 Texas crop sales generally stable

While the 1980 drought devastated crop yields in Texas, cash receipts remained generally stable due to higher prices.

Although final figures are not yet in, Texas Agricultural Extension Service estimates show cash receipts from crops at about \$3.8 billion, down only slightly from 1979. Total receipts from all agricultural commodities for 1980 are pegged at just over \$10.1 billion, almost the same as the previous year.

"These cash receipts, however, don't show the severity of damage that production levels underwent or the

squeeze on net income," says Dr. Carl Anderson, Extension economist in marketing.

"Drought and higher production costs have placed serious financial hardships on many farmers. Young farmers and those depending heavily on credit for capital are under considerable financial strain. Record-high interest rates have added to the burden."

According to Anderson, hot dry conditions severely damaged crop production and caused subsequent price increases.

"Prices went up because of the small amount of crops that were available after the summer," explains Anderson.

Despite weather problems, last year's crop receipts should have an agribusiness impact of about \$16 billion on the Texas economy, he says.

As far as receipts from different commodities are concerned, cotton alone brought in \$1.4 billion.

The South Plains of Texas brought in the bulk of cotton receipts with an estimated \$665 million. South Texas (mainly the Rio Grande Valley) had the second highest cotton receipts at \$163 million.

Wheat and grain sorghum ran a close race for second place among crop sales

at about \$450 million each.

Wheat, a winter and spring crop, generally escaped the drought's wrath. The Panhandle area led the state in value of wheat produced with \$164 million while North Central Texas was second with a wheat crop of more than \$85 million.

The Panhandle also boasted the highest cash value from grain sorghum in 1980 at \$174 million. Second was the Coastal Bend with a sorghum crop valued at \$116 million.

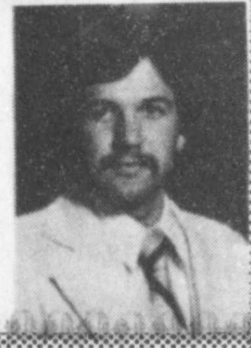
Corn ranked fourth on the list of estimated cash receipts from crops for 1980, totalling about \$349 million. Top producing areas were the South Plains at \$213 million and the Panhandle at \$76 million.

Rice ranked fifth in estimated cash receipts, totalling more than \$274 million. The Upper Coast is the state's major rice-producing area with receipts of \$260 million. The remainder of the crop is grown in the Coastal Bend.

Other crops that contributed much to 1980 agricultural receipts were vegetables, about \$250 million; nursery stock, \$225 million; soybeans, \$104 million; peanuts, \$83 million; and hay, \$45 million.

Landscape & Gardening

BY KEN LANGLEY



IRON DEFICIENCY IN PLANTS: SYMPTOMS AND CAUSES

Due to the number of calls through my office, my next two columns will relate to iron deficiency in lawn and garden plants.

Iron is an essential element for plant growth. Hence, all plants are susceptible to iron deficiency. Where the amount of iron available to plants does not meet their minimum needs, the plants fall into a diseased condition called iron chlorosis.

Soil areas that produce chlorotic plants range from a few square feet to many acres in size.

Symptoms

Iron chlorosis in plants is characterized by blanching or yellowing of the leaves. This change in the appearance of the leaves is due to failure of chlorophyll (green coloring matter) to develop normally.

Mildly affected plants become unsightly and grow poorly. Severely affected plants fail to grow, flower, or fruit. Very severely affected plants die from lack of iron.

In deciduous (leaf-shedding) plants, areas between leaf veins become light green, yellow, or white. The greater the iron deficiency, the paler the areas, the leaf veins ordinarily remain green. In very severe cases, the edges of leaves or entire leaves turn brown, and the plants often die.

In conifers, needles turn yellow; then, if the deficiency is severe, they turn brown and die.

Occasionally only a part of a plant is affected.

Causes

Iron chlorosis occurs in susceptible plants wherever and whenever iron is not available to them.

The condition is often due to high pH, which makes it possible for other elements to interfere with the absorption of iron, rather than to lack of iron in the soil. It occurs most often on soils that are high in lime. Thus it is more prevalent in the arid West than in the humid East, since high-lime soils occur naturally in arid areas.

But iron chlorosis is not limited to naturally occurring high-lime soils. It may be caused by actual deficiency of iron, or by application of excessive amounts of lime or phosphate to certain

soils. It may be caused by overirrigation, poor drainage, bicarbonate in the soil or in irrigation water, and high levels of certain heavy metals in the soil (for example, manganese, copper, and zinc.)

Control

If overirrigation or poor drainage is a possible cause of iron chlorosis, it should be corrected. Otherwise, the disease is controlled by furnishing soluble iron to plants, either through the soil or through the foliage of the plants.

Two principal types of iron-containing compounds used to furnish iron to plants are:

1. Iron chelates
2. Inorganic compounds containing iron in soluble form. Ferrous sulfate (also called copperas) is such a compound.

You can buy iron chelates and ferrous sulfate at stores that sell garden supplies and fertilizer.

Iron Chelates. Iron chelates are organic compounds containing iron. The iron remains available to plants when the chelates are placed in the soil.

The iron in chelates costs much more per pound than the iron in ferrous sulfate, but the amount of chelates required for control of chlorosis is much smaller than the required amount of ferrous sulfate, and the cost of treatment with chelates need not be greater.

Iron chelates are marketed under various trade names and in various formulations. Some are applied to soil, others to foliage. Some of those intended for application to soil are for high-lime soils, and some are for iron-deficient soils.

If you decide to use an iron chelate, get one that has been formulated for your particular conditions and purposes, and follow the directions on the package.

Ferrous Sulfate. Ferrous sulfate and similar compounds that contain inorganic iron furnish soluble iron to plants. However, when they are applied to the soil, much of the applied iron becomes unavailable to plants. Consequently, applications must be much in excess of amounts actually required by the plants. The iron is made unavailable by the same factors that cause iron chlorosis initially (high pH, interfering elements, etc.)

smell and hear each other but the foal is unable to nurse. Make sure the foal has access to creep feed, hay and water. Keep the pair separated four hours the first day, eight hours the second day and 12 hours the third day. Finally, separate them permanently after four days, says Householder.

Another plan is to place two or more foals in one stall and their mothers on either side, each in an adjacent stall. Use the same time span as with the first plan, and remove the mares permanently after three or four days.

If there are several foals to be weaned, place them all in one stall and all the mares in an adjacent stall or pen. Then remove the mares gradually, starting with the most aggressive ones with the biggest and most independent foals. Move these mares completely away after three or four days, and continue this practice until all mares are removed and weaning is complete.

After weaning, Householder advises keeping foals together and away from other classes of horses. They should stay on a suckling creep feed until age dictates changing them to a weaning ration.

Around The County

By Jett Major
FLOYD COUNTY EXTENSION AGENT



STILL TIME FOR MESQUITE CONTROL

Due to abundant rainfall in recent weeks, mesquite trees in many areas still have immature leaves and soil temperatures may still be below the optimum for good control of mesquite with liquid herbicide. This means that the spray season for mesquite may extend well into July.

Ranchers planning to use liquid herbicide to control mesquite should check foliage development of mesquite. Some immature leaves (light green in color) can be tolerated if most of the leaves are mature, but have not developed a thick layer of wax. If herbicide is applied when many leaves are immature, expect a lower kill of mesquite. Also, if most of the leaves are over mature (heavy wax build-up on leaves) expect less control.

Plants with fully developed, dark green foliage without heavy wax build-up that are past full bloom and have small pods developing are in the best condition for spraying.

Another sign to check for is soil temperatures. Best mesquite kill is usually obtained when the soil temperature 18 inches deep at spraying is 75 degrees F. or higher.

Three registered and effective herbicides for mesquite control on Texas rangeland using aerial broadcast spray are 2,4,5-T; a one-to-one mixture of picloram spray and 2,4,5-T (Tordon 225E); and a one-to-one mixture of

dicamba and 2,4,5-T. Dicamba and 2,4,5-T must be tank-mixed because a commercial formulation is no longer available.

Effective rates for these herbicides are one-half to one pound acid equivalent per acre. Tordon 225E and the dicamba-2,4,5-T mixture usually give a higher percentage of root kill than 2,4,5-T alone, but they are more expensive. Tordon 225E has given the best control in research and demonstration work.

If weeds are a problem along with mesquite, Tordon 225E and the dicamba-2,4,5-T mixture give excellent weed control in conjunction with mesquite control. Tordon 225E also provides good control of pricklypear.

Before applying any herbicide, read and follow directions on approval labels on the herbicide container.

To obtain the most benefit from mesquite control, defer grazing on the area sprayed for at least three months. This will allow desirable plants an opportunity to regain vigor and produce seed and for seedlings to become established. Where deferred grazing is not possible, consider reducing the stocking rate by culling and selling unproductive cows.

Educational programs conducted by the Texas Agricultural Extension Service serve people of all ages regardless of socioeconomic level, race, color, sex, religion or national origin.

FLOYD COUNTY FARM BUREAU

Floydada 983-3777

BROWN'S IMPLEMENT INC.

Floydada 983-2281

ADAM'S WELL SERVICE

Floydada 983-5003

FEDERAL LAND BANK ASSOC. OF FLOYDADA

Floydada 983-2480

RUSSELL'S EQUIPMENT & SUPPLY

Floydada 983-3751

FLOYDADA COOPERATIVE GINS INC.

Floydada 983-2884

PLAINVIEW SAVINGS & LOAN ASSOC. FLOYDADA BRANCH

Floydada 983-3725

ANSLEY & SON

Lockney 652-3361

MARTIN & COMPANY

Floydada 983-3713

SUN-VUE FERTILIZER

Lockney 652-3362

RUCKER'S O.K. TIRE STORE

Floydada 983-3370

FLOYD COUNTY IMPLEMENT

Floydada 983-3732

FLOYD IMPLEMENT

Floydada

CORNELIUS SERVICE ST

Floydada

THE TYE COMP

Lockney

MUNICIPAL ELEVATOR

Lockney

PRODUCT CREDIT ASS

Floydada

CONSUMERS ASSOC.

Lockney

FIRST NATIONAL BANK OF FLOYDADA

Floydada

CASE POWER & EQUIPMENT

Floydada

Farabee named Chairman

Senator Farabee has been named Chairman of the Commission on the State of Agriculture. The Commission will meet on July 7. Senator Farabee is one of two senators on the 30-member commission which was appointed by the Governor to study the state's agricultural situation. The Commission will operate both as a unit and in committees. In addition to

long-range perspective in Texas and the increasing need for the public and private sectors to work together in the development of policy actions that will ensure the continuation of Texas' leadership in the nation.

Free EKG Clinic to be held in Lubbock

How long has it been since you had an EKG run? Perhaps you have never had this important diagnostic test performed. An EKG records the electrical impulses that stimulate the heart. It is valuable in detecting many body weaknesses. Community Hospital of Lubbock, 5301 University, is offering a free EKG Clinic Thursday, July 23, between

the hours of 1:00-3:00 p.m. Technicians will be on hand to give this test. It is painless and takes about five minutes of your time. All EKG's will be read and analyzed by Dr. S. Patel. There is absolutely no charge for this service. For further information and to register, call Frankie Faver at the hospital - 795-9301.



Misty Bertrand places first

Joy The Great American Spirit was the theme of this year's Carson County 4th of July celebration in Panhandle, and "joy" was the word describing Misty LaShay Bertrand that day.

She was first runner-up in

the Little Princess Contest in the 4 and 5 year old division. Misty's parents are Mr. and Mrs. Randy Bertrand of Floydada. Her grandparents are Mr. and Mrs. W.F. Bertrand of Floydada and Sheriff and Mrs. Connie Reed of Panhandle.

Bogus to answer questions concerning state taxes

State Comptroller Bob Bullock has announced that Raymond Bogus from his Lubbock field office will be at the Floyd County courthouse in room 104 on Tuesday, July 21, from 9 a.m. to 11 a.m. A

comptroller's representative is available to assist local residents at the courthouse every third Tuesday of each month.

Bullock urged anyone with problems or questions con-

cerning state taxes to contact Mr. Bogus at the courthouse in person or call the Lubbock field office at (806) 795-0691. A toll free number (1-800-252-5555) is also available to Texas taxpayers.

C. Aguilar participates in training

Marine Sgt. Edward Aguilar, son of Carmen Aguilar of Lockney, recently participated in desert training at the Marine Corps Air/Ground Combat Center, Twenty-nine Palms, California.

He is a member of the 1st Battalion, 11th Marines, based at Camp Pendleton, California.

The training included live-firing the battalion's 105 and 155 mm howitzers in support

of combat training with the 1st Marines during day and night operations. They also practiced moving their artillery pieces while maintaining a combat ready posture enroute to new emplacements.



Department Store of Lockney

JULY CLEARANCE SALE BEGINS

FRIDAY, JULY 10

9:30 a. m.

Closing For Vacation

We will close the week of July 20th through July 25th for Vacation

Thank You for your Consideration

Rucker's
O.K. Tire Store



Floydada 983-3370



We knew it was coming!

The electric cooperative was planning ten years ago to meet today's higher demand for electricity. That kind of lead time is needed to forecast future requirements and provide adequate service.

Included in today's long range forecast is a certainty that more power at higher prices will be needed in the years ahead. Thus, it is critical that our member-owners practice every possible conservation measure to help lower demand, reduce the size and number of generating plants and save money.

While the cooperative plans to provide more power they are urging you to use less.

Lighthouse Electric Cooperative

PARTS FEVER

IT'S CATCHING!

We're giving a

10%

rebate on any IH agricultural equipment

Part or Accessory
for one week only

July 20 through July 25

What a time to buy! During IH Parts Fever, you can load up on any and every IH agricultural equipment part or accessory item you need, and get a rebate check back from IH for 10% of the total amount. (Your purchase must total \$500, and your check will come directly from International Harvester Company.) This offer good at participating dealers only.

So plan now. IH Parts Fever is one fever it pays to catch!

Make up your shopping list, and get set to save NOW!

Your I.H. Dealer

Brown's Implement Inc.

Ralls Highway 983-2281

RED POWER DOLLAR SHOWDOWN

SAVE UP TO \$10,000

NOW THROUGH JULY 31, SAVE UP TO \$10,000 IN RED POWER DOLLARS WHEN YOU BUY AND TAKE DELIVERY OF SELECTED NEW, INTERNATIONAL TRACTORS, AXIAL-FLOW COMBINES, HAY AND FORAGE OR MATERIALS HANDLING EQUIPMENT.

Red Power Dollar Showdown means we're willing to pay you up to \$10,000 in Red Power Dollars for buying and experiencing the performance of selected new International® Tractors, Axial-Flow Combines, Hay, Forage, and Materials Handling equipment.

Red Power Dollars put even more value behind the reliable quality of your International equipment investment. You may use them toward the purchase of any other new International equipment or parts at our dealership before December 31, 1981, but not toward the purchase price of qualifying equipment.

SAVE UP TO \$10,000



We will pay you \$10,000 in Red Power Dollars to buy and take delivery of any new International 230-300-350 engine hp 4-Wheel Drive Tractor. Or get up to \$7,500 in Red Power Dollars when you buy and take delivery of any new, 130-150-170 PTO hp 2+2 or over 100 PTO hp Series 86 Tractor. See the chart for a complete list of models and savings.



Axial-Flow. The combine that's leading the rotary revolution. And now it's leading in savings for you. We'll give you \$5,000 in Red Power Dollars when you buy and take delivery of any selected new Axial-Flow Combine. And ask about special savings on the new 1420.

Red Power Dollar Showdown offers the savings you need for

hay, forage, and materials handling jobs. Forage harvesters, round balers, mower conditioners, manure spreaders, grinder-mixers and more...we have Red Power Dollar Savings of up to \$1,320 to match their Red Edge productivity.

Choose a second way to save with Cash Rebates. Instead of receiving Red Power Dollars, you can get a Cash Rebate directly from IH on qualifying equipment. See chart for exact amounts. Waiver of Finance is also available on selected equipment. See us for details.

See us today. You must buy and take delivery between May 11 and July 31, 1981 to get your Red Power Dollar Showdown savings. So come in today!

MODEL	RED POWER DOLLARS	CASH REBATE FROM IH
TRACTORS		
4386, 4586, 4786	\$10,000	\$7,000
All 2+2's	\$ 7,500	\$5,000
1486, 1586	\$ 6,000	\$4,000
986, 1086	\$ 4,500	\$3,000
COMBINES		
1440, 1460, 1470, 1480	\$ 5,000*	\$3,500*
HAY, FORAGE, MATERIALS HANDLING EQUIPMENT		
Forage Harvesters	\$ 1,320*	\$ 925*
Mower Conditioners/Square Balers/Round Balers	\$ 725	\$ 500
Grinder-Mixers	\$ 650*	\$ 450*
Manure Spreaders	\$ 450*	\$ 300*
Mowers/Rakes	\$ 200	\$ 140

*Or instead you can choose Waiver of Finance, if applicable.

INTERNATIONAL AGRICULTURAL EQUIPMENT

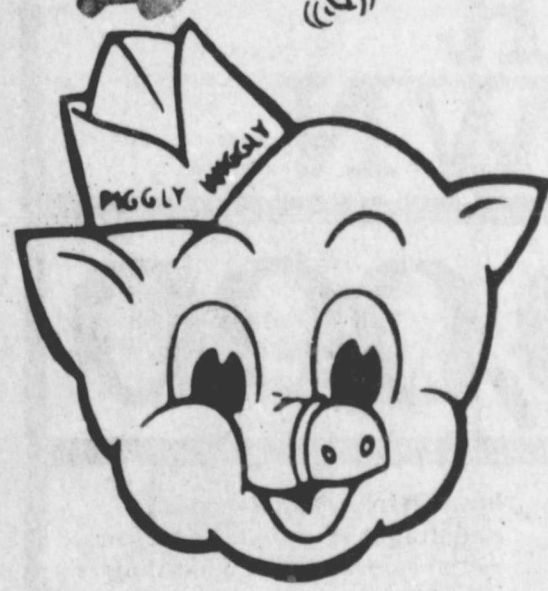
case

Ralls Highway 983-2281

Whirlwind Inflation Fighters...

- Summer Time Treat Peaches** 45¢ lb
- All Varieties Reg Fritos** \$1.19 (16 oz pkg)
- Shurfresh Buttermilk Or Sweetmilk Biscuits** 6/\$1.00 (8 oz Can, Coupon \$1.00 Minimum Purchase)
- Not Less Than 70% Lean 3 lbs Or Over Ground Beef** \$1.09
- Coke** \$1.79 (6-32 oz)
- Country Time Lemonade** 12 oz. can 73¢
- Hi Dri Towels** 1 Roll 59¢
- USDA Grade A 2 Per Bag Whole Fryers** 63¢
- Del Monte Halves Pears** 29 oz Can 89¢
- Del Monte Fruit Cocktail** 17 oz Can 59¢
- Thompson Seedless Grapes** 98¢ lb

20 cents Off Label Crisco Oil 38 oz. btl. \$1.89
 Ajax 14 oz. can 39¢
 Sure & Natural Maxi Sanitary Pads 12 ct. box \$1.29
 Glad Sandwich Bags 150 ct. pkg. 99¢
 Glad Garbage Medium Texize 20 ct. pkg. \$1.39
 Grease Relief Pinesol 22 oz. btl. \$1.19



Piggly Wiggly

309 S Wall
 Open Daily 8 To 9 Sunday 9 To 7

Hi C Fruit Drinks 46 oz. can 69¢	Swanson Fried Chicken 2 lb. \$2.59	Shurfresh Low Fat Milk
Shurfine Orange Concentrate Beverage 12 oz. can 2/79¢	Totinos Pizza 13 1/2 oz. pkg. \$1.19	Carnation Evaporated Milk
Del Monte in Syrup Chunk Pineapple 14 1/2 oz. can 59¢	Del Monte Sauerkraut 16 oz. can 49¢	Liquid Dish Detergent Crystal White
Gravy Train Dry Dog Food 5 lb. bag \$1.99	Lysol Disinfectant Regular, Scent II Spray	
Fresh Pork Whole 3-5 lb. avg. Spare Ribs \$1.49 lb.		

Long Green Cucumber 49¢ lb.	Red Full of Flavor Onions 38¢ lb.
Snowwhite Mushroom \$1.88 lb.	Tangy Fresh Limes 79¢ lb.

Beef Arm Boneless Center Cut Roast \$1.59 lb.	Beef Arm Boneless Center Cut Steak \$1.69 lb.	Pork Shurfresh Roll Sausage 16 oz. 88¢	Lean Boneless Beef Cubes Stew Meat \$1.89 lb.	Peyton's Ranch Franks
Sliced Wright's Bulk Bacon \$1.18 lb.	American Cheese Borden's Singles 12 oz. \$1.99	Shurfresh Bologna 12 oz. \$1.35	Longhorn Kraft Half Moon Cheese 10 oz. \$1.85	Brazilian Whole Catfish

100 FREE STAMPS 5 lb Bag Shurfine Sugar	100 FREE STAMPS 24 oz btl Del Monte Catsup	100 FREE STAMPS 4 oz Schilling Black Pepper	100 FREE STAMPS \$10 Minimum Purchase
1 doz Large Eggs 19¢ With One Filled Bonus Special Booklet	7 1/4 oz Kraft Macaroni & Cheese Dinner 2/29¢ With One Filled Bonus Special Booklet	12 oz Keebler Vanilla Wafers 29¢ With One Filled Bonus Special Booklet	18 1/2 oz Kitty Crocker Supermoist Mixes 19¢ With One Filled Bonus Special Booklet