

# Who gets to keep abstract books?

It began as a routine request for the abstract books from the county assessors by the newly formed Floyd County Appraisal District has caused more furor than the reevaluation.

The appraisal district, going on the verbal assumption that they were acting in the best interests of the seven taxing entities, have been working on the appraisals and preparing the tax rolls for 1981.

In order to do this they say that they need access to the county abstract books. County tax assessor Jonelle Fawver has been reluctant to let the abstract books leave her office they say.

The county tax office and the district appraisal office are across the hall from each other in the county courthouse.

In the last regular county court meeting, January 12, the commissioners asked the appraisal district employees take the books to their offices to work on them.

Fawver said that she didn't mind if they used the books in the day time, but that

they had to be back in her office at night.

She said that she used the books to look up information. She was asked if the books were currently posted. She replied that they were.

Commissioners consulted with County Attorney Kenneth Bain to find out whether or not the court had authority to order the abstract books taken out of the county tax assessors office. Also where their responsibility in the matter lay.

Evidently more came up on the subject because the county commissioners met in special session Friday, January 23. This reporter had no prior knowledge of the meeting and was not in attendance.

County Judge Choise Smith said in an interview Monday that the meeting was called for one purpose only and that was to discuss who would be making the county tax roll for the 1981 taxes. There was no action taken at the meeting.

"It is just a misunderstanding between the county and the appraisal district," he said. "It is my understanding that the abstract books will stay in the county tax office and that the county will be making their own tax roll."

He added that Jonelle Fawver would "bring the books up to date."

Judge Smith said that the appraisal district thought that they would be making the tax roll, but that to "be official they would have to come back to each of the entities."

At 9 a.m. Tuesday, January 27, the county appraisal district board met in special session at their office in the county courthouse.

Present at that meeting were board members: Travis Jones, Adrian Helms, Tom Duvall, and Jack Lackey. Chief Appraiser, Sheila Faulkenberry was in attendance.

Ben Ayres was invited to the meeting where his personal and sometimes professional opinion was sought on most of the questions discussed by the board.

This reporter was also present.

Travis Jones, president, began the meeting by appraising Ayers of the situation facing the board.

He said that the county had elected to come into the appraisal district a year before it would be mandatory by the state to do so.

He said that the county "by implication or verbally had indicated that the (district) tax appraiser would also do the tax assessment for 1981 and prepare the tax rolls."

Jones told Ayers that a meeting had been held in which each of the taxing entities were asked to bring a quorum of membership or alternates.

"The reason for the meeting was so that the entities could "tell us what direction they wanted us to head."

"The implication of the meeting was that we would go ahead with the appraisal and preparation of the assessment," Jones said. "There was no vote taken, no motion made."

"It was a voice opinion," Duvall said.

Lackey, who is a county commissioner and because of that position serves on the appraisal board, said that at that time the commissioners said that "We'll back you 100%."

Helms said that, "the board was not trying to push anyone or take any authority from anyone. We were just trying to do what was our job...to do what the entities asked us to do."

Someone then mentioned that there was the fear of losing local control. "I don't see any aliens on this board," Jones said, "I was raised here and most of you were too."

This referred to the fact that the re-evaluation of taxes and the setting up of a central taxing office in each county is mandatory by state law in 1982.

In time, ideally, the appraisal district office will do all of the taxing for each of the entities thus saving duplication of work and taxpayer money.

By law the district will do all of it in 1982. In 1981 the appraisal district does only what is agreed upon by each of the taxing entities.

The appraisal district has spent \$50,000 in setting up the tax office. They have been working on the abstract books bringing them up to date and "correcting errors" according to Faulkenberry.

At this time they are making copies of the abstract sheets and working from them rather than the books themselves.

According to appraisal board members they questioned Fawver at the last meeting about using the books to make the tax rolls. At that time she said that they could do the county tax rolls only if they would also do the collecting.

The appraisal district is not set up to do the collecting of taxes for 1981. They are not budgeted to do so they say.

They are budgeted to do the appraisal, prepare the assessments and the tax rolls. They had gone ahead with the work on the assumption that they had the go ahead from each of the entities.

When suddenly faced with the either/or proposition of collecting, which they can't do, in order to be able to prepare the tax rolls which they can they were forced to restudy their position.

Ayers opinion was, "You can't set off in one room and do the appraisal, and in another room (go through) the process of assessment."

He went on to say, "appraisal and assessments are so tied together how can you separate them?"

Ayers also said that once the assessment is done the tax roll is a simple matter. "The rudiments of common sense says go ahead with the tax roll."

Faulkenberry said that each entity is paying their part of assessing for 1981. Her office is ready and able to do it.

The county office has been plagued by a large turn-over of deputies the last few months. Untrained help has played it's part in keeping the county behind on getting out its 1980 tax statements.

The 1980 statements were to have been out in December, then in January, and now it will be February before the statements are ready to be mailed.

Judge Smith was invited to come into appraisal board meeting.

"We just want to know where to go from here," Jones said.

Smith answered, "I think we should all do the same. If the other entities want you to make the tax roll we are for it."

But he still contended that "for it to be official for you to do the (county) tax roll we need to take it to the court."

Jonelle Fawver was also invited in to the meeting and asked about her stand on the tax roll/collect question.

She said that she had to fill out reports to Austin and sign them if she was doing the collecting and that she would be responsible in that case for the tax roll.

"All you have to swear to is the collection," Ayers said.

"There have to be reports sent in, I have to swear to the corrections," Fawver said.

"To the collections?" Ayers asked.

"Yes," Fawver said.

"If you find errors you wouldn't be responsible for the mistake only for the correction?" Ayers pressed.

"Yes," Fawver answered.

Judge Smith asked Jonelle, "if a contract were presented to the court and was passed by all seven entities for the district to make the tax roll and they (each entity) do the collecting...would you go along with that?"

"Yes, for one year I would," Fawver answered.

The question of where the abstract books would be kept came up again.

Faulkenberry said that they can get by for a year with copies of abstract sheets as they are doing now.

Fawver said that the appraisal district could keep the books for as long as a week at a time. "I have taken a sworn statement that I am the keeper of that office," Fawver said.

After Judge Smith and Jonelle Fawver left, the board discussed the necessity of written agreements with the entities.

Tom Duvall made a motion that the president and the secretary of the board prepare and present to the boards of the taxing entities of Floyd County a letter of contract authorizing the district to perform for such entities the function of assessing taxes, and preparation of tax rolls for the year 1981.

The district is already doing the appraisal for the entities.

The motion carried and the meeting was adjourned.

## THE FLOYD COUNTY HESPERIAN

Number 5      16 Pages in One Section      Thursday      January 29, 1981      25¢



OLIO rehearsal members are (l to r) Harvey Allen, Lindsey Hudson, Pam Cathey, Carrie Martin, and Kay Beedy.

### Gala Olio plays this weekend

BY JANET LLOYD

What do Twinkle Tush, the Charles and Della Delago, the Queen of Chicago have in common? They are members of the cast in the roaring twenties style musical extravaganza, *Gala Olio*. Sponsored by the Women's Division of the Floydada Chamber of Commerce, the *Gala Olio* will start at 7:30 p.m. Saturday, January 31, at the Floydada High School Auditorium.

But one may ask, what is a *Gala Olio*. According to Webster's New Collegiate Dictionary *Gala* means festive; a gay celebration and *olio* is a miscellaneous mixture of music, comedy, dancing and singing.

Involving many members of the Floydada community the production promises to be an evening of totally entertaining. The proceeds from the event will go to benefit the Caprock Hospital Auxiliary and the Jaws of Life Fund.

Cracker jack prizes will be given by 46 local merchants "who faithfully support community activities again, and again, and again."

Many local farmers have given a donation to the Women's Division to offset the printing charges of the program.

The cast of the *Olio* have given many hours of preparation and a love for their community that can not be paid for separately.

In addition to the acts, skits and band the audience will have a chance to get in on the action by participating in a raffle. The programs have a plea for participation which reads, "Please participate along so the band won't hurt themselves."

Members of the cast include Harvey Allen, Kay Crabtree, Keith Thomas, Pam Cathey, Aldine Williams, and Paul Bell.

Lavada Garrett and Jerry Cannon are described as Cher and Cher alike, two persons.

Vicky Rainer, Roger Garms, Charley Overstreet, Sam Crabtree, Harry Radford, Tom Powell, Don Gowens and Lewis McLain are also cast members.

The musical maniac Danny Colston, Kay Crabtree, Penny Bearden, Tana Perry, Christy McNeil and Paige Cannon.

High school students who will add their talents to the event are Kelly Sue, Harvey Allen, Pam Cathey, Carrie

Martin, Lindsey Hudson, Moody Younger and Cliff McLain.

Putting all these people of diverse talents together are Nancy Willson and Susan Garms, who have worked many hours on this project beginning in October of last year.

The Floydada Farmers who donated to the *Olio* include Eugene (Button) Beedy, John Dunlap, Lanny Glasscock, Melvin Lloyd, Don Rainer, Lewis Reddy, Robert Stovall, and Johnny West.

Randy Bertrand, Carmel Eastham, Malvin Jarboe, Delmas McCormick, Mike Rainwater, Rick Reddy, Larry Schneider and Fred Zimmerman III also contributed.

Kent Covington, Laron Fulton, Travis Jones, Kenneth Pitts, Wayne Rainwater, Bob Ross and Dwight Teeple were others who donated.

The merchants who have so graciously given the Cracker jack prizes are Builders Mart, Arwine Drug, Travel Center, Anderson's Department Store,

City Auto, Inc., Leonard's Cafe, Brown Oil Co., Gilbreath Exxon Station, Hale's Department Store, Audrey's Beauty Shop, Ginger's Beauty Shop, Script Printing, Floyd County Hesperian and Norma Lou Rainer, Mary Kay Cosmetics.

Other merchants donating prizes include Bishop-Ramsey Pharmacy, Perry's, Caprock Hardware, Sue's Gifts, Davis Farm Supply, Park Florist, My-T-Burger, Char-Lee's, Thompson Pharmacy, Piggly Wiggly, Collins Appliance, Stitchin' Pretty, Sears, Ponderosa Meat Company and Kirtley's Market.

Solomon Jewelry, Whites Auto, Lighthouse Electric, The Loft Western Wear, Pizza Gold, Buddy's Food Store, Producers Cooperative, Parker's Studio, Oden's Chevy-Olds, Tastee Freez, Kirk and Sons and Classique Creations by Sue Williams were other contributing merchants.

### This Week

**Game Spirit**

Hey Everybody,

Tomorrow night the boys JV and both varsity teams will play Abernathy here starting at 5:00. Then on Tuesday we will start the second round of district play with games here against Childress beginning at the same time.

So let's all go out to Graves gym and show the Mean Green we're behind them 100%! **Go Green! We Know You Can Do It!!!**

Varsity Cheerleaders

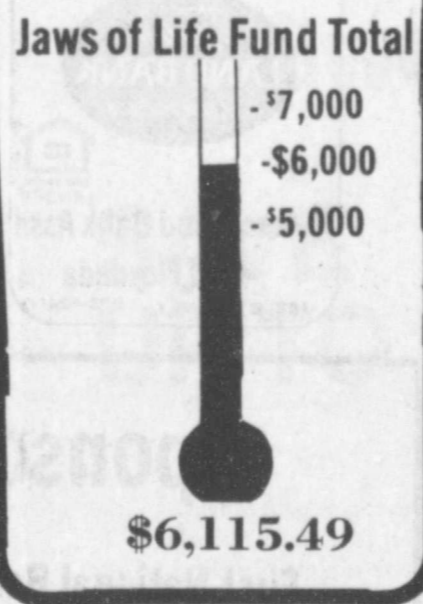
**Upcoming**

Students at R.C. Andrews school will be having a ceremony for the hostages this morning beginning at 8:55.

Today has been declared Thanksgiving day by President Reagan in honor of the former hostages.

If you would like to know more about income taxes come to Floydada High School Thursday, January 29, at 7:00 p.m. Mr. Fred Thayer C.P.A. will give a short program and have a question and answer period.

Everyone is invited to this timely and informative program.



CEMENT POURING of the over 1700 ft. of parking area in the new post office began Wednesday morning. Completion date on the building is set at April first. The cement is made on site in the portable plant.

### Green managing local Farm Bureau office

Career Agent Pat Green is handling the Floydada Farm Bureau office along with several members of the board directors this week after the resignation of the agency manager.

Green has been with Farm Bureau for two years and covers the three counties of Motley, Cottle and King. He has an office at Matador.

The board members will be interviewing applicants for the managers position.

To be eligible he must be a career agent with at least two years experience and a proven track record in recruiting agents.

Those coming for interviews will be

Farm Bureau men said Board member, Don Smith.

David Cates resigned as agency manager last Tuesday. Career agent, Bill Dawson, resigned at the same time as did office secretary, Helen Bertrand.

The week of February 9-14 will be observed across the state of Texas as Farm Bureau Week. Counties will be conducting membership drives during that period.

Farm Bureau began almost 70 years ago. It is now organized in 2,800 counties in all states except Alaska.

"Farm bureau is not just insurance," said Dan Smith, "it also maintains a full-time legislative office in Austin, has accomplished much in state legislation."

Farm Bureau men said Board member, Don Smith.

David Cates resigned as agency manager last Tuesday. Career agent, Bill Dawson, resigned at the same time as did office secretary, Helen Bertrand.

The week of February 9-14 will be observed across the state of Texas as Farm Bureau Week. Counties will be conducting membership drives during that period.

Farm Bureau began almost 70 years ago. It is now organized in 2,800 counties in all states except Alaska.

"Farm bureau is not just insurance," said Dan Smith, "it also maintains a full-time legislative office in Austin, has accomplished much in state legislation."

Farm Bureau men said Board member, Don Smith.

David Cates resigned as agency manager last Tuesday. Career agent, Bill Dawson, resigned at the same time as did office secretary, Helen Bertrand.

The week of February 9-14 will be observed across the state of Texas as Farm Bureau Week. Counties will be conducting membership drives during that period.

Farm Bureau began almost 70 years ago. It is now organized in 2,800 counties in all states except Alaska.

"Farm bureau is not just insurance," said Dan Smith, "it also maintains a full-time legislative office in Austin, has accomplished much in state legislation."

Farm Bureau men said Board member, Don Smith.

David Cates resigned as agency manager last Tuesday. Career agent, Bill Dawson, resigned at the same time as did office secretary, Helen Bertrand.

The week of February 9-14 will be observed across the state of Texas as Farm Bureau Week. Counties will be conducting membership drives during that period.

Farm Bureau began almost 70 years ago. It is now organized in 2,800 counties in all states except Alaska.

"Farm bureau is not just insurance," said Dan Smith, "it also maintains a full-time legislative office in Austin, has accomplished much in state legislation."



## Insurance valuable protection

With a new government subsidy that pays up to 30 percent of the cost of carrying crop insurance, the best buy in farming today may be the few dollars an acre (tax deductible) that it costs to insure all the other dollars invested in producing a crop.

This advice comes from Ben A. Jordan, Jr., regional director of the recently expanded Federal Crop Insurance Corporation.

Jordan suggests that there are no fewer than five sound reasons farmers should consider insurance this year, even if they have never protected their crop investments in the past.

First, the new policies offer more protection. Policyholders can insure up to 75 percent of average yields, which in most cases should fully cover the investment in the insured crop plus the cost of the insurance. They can also select, from several choices, the amount they want to be paid for each bushel or pound their crop falls short of the guaranteed production.

Second, the new federal subsidy can reduce the per acre cost of carrying all-risk insurance by as much as 30 percent. The combination of the subsidy and the tax deduction allowed for insurance premiums means the after-tax cost is only a small fraction of the protection provided.

Third, rising production costs mean the dollars and cents risks of crop production this Spring will be sharply higher than a year ago. In the event of crop losses, such as many farmers experienced in 1980, the financial consequences could be disastrous. Many farmers who have felt they could afford to farm without some amount of insurance in the past are now wisely reappraising the risks involved, Jordan said.

Fourth, the USDA disaster payments program, which some farmers have looked to as a solution for insurance, will end after this crop year. Farmers who elect to carry FCIC insurance in 1981 rather than participate in the disaster payment will be eligible for the 30 percent discount plus, if they do not incur a crop loss, an additional 5 percent premium discount in 1982.

Fifth, farmers who insure their crop investment will have an advantage, Jordan predicts, in competing for credit in this Spring's tight money market. The cash flow guaranteed by the policy assures a source of funds for timely loan repayment even in the event of a total crop loss. Moreover, at the option of the policyholder, FCIC policies can be pledged as loan collateral.

For information about the new, higher-coverage, lower-cost insurance protection, contact the nearest FCIC office or a private insurance agent that handles FCIC insurance.

## Livestock directors will meet in Floydada

There will be a meeting of all directors of the Floyd County Junior Livestock Association on Thursday, January 29, 1981, at 7:30 p.m. in the Floyd County Extension Office Meeting Room.

Listed below are the current Board of Directors. With the 1981 show only one month away, there are several items that need to be discussed at this meeting, so we ask that each director try to attend if at all possible.

**PRECINCT 1:** Ed Nutt — 83; Weldon Pruitt — 82; Bill Hendrix — 81.  
**PRECINCT 2:** Jerry Williams — 83;

## Colston appointed to Texas wheat committee

Billy Don Colston, of Floyd County, has been named as a member of the Texas Farm Bureau Wheat Advisory Committee, according to Delmas McCormick, County Farm Bureau president.

Colston was appointed to the state-wide advisory committee by TFB President Carrol Chaloupka.

31 counties have organized to form the Texas Farm Bureau Wheat Division. The state advisory committee has five members and it meets twice each year. In the summer, the committee meets before Farm Bureau's policy development process begins, to help surface wheat issues to be considered by county

Farm Bureaus. The committee also meets after the state convention in December to review and recommend ways to implement adopted policies.

The Commodity Department of Texas Farm Bureau was created in 1971. Its purpose is to provide a system within Farm Bureau in which members can participate in educational commodity programs and activities. There are nine established commodity divisions.

Billy Don attended the annual TFB Leadership Conference in Austin January 26-28 where commodity experts spoke, as well as Governor Bill Clements and American Farm Bureau President Robert B. Delano of Virginia.

Albert Scheele — 82; Warren Mathis — 81.

**PRECINCT 3:** Harold Bennett — 82; Stanley Burleson — 81; Roger Dawdy — 83.

**PRECINCT 4:** Leslie Nixon — 81; Kent Covington — 83; Rob Heffin — 82.  
**LOCKNEY:** Kenneth Broseh — 82; Eddie Joe Foster — 81; Paul Glasson — 83.

**FLOYDADA:** Larry Barbee — 82; Eugene Beedy — 81; Gary Brown — 83.  
**AT LARGE:** George Sparkman — 81; Johnny West — 82; James McNeill — 83.

J.P. Doodles by Barry McWilliams



### Dry weather to blame

## Poisonous plants are abundant

(COLLEGE STATION) 1981 looks like a bonus year for poisonous range plants.

"Due to last year's dry summer followed by a wet fall, all conditions point to generally a bonus year for poison plants in Texas," says Dr. Allan McGinty of Fort Stockton, area range specialist with the Texas Agricultural Extension Service, Texas A&M University System.

Bitterweed in the Edwards Plateau and loco, garbancillo, rayless goldenrod and threadleaf groundsel in the Trans-Pecos region of Texas has already been reported causing livestock losses this year, notes McGinty. So he cautions ranchers to become aware of the problem and to take steps to reduce further livestock losses.

"Ranchers should be familiar with and be able to identify common poisonous plants that occur in their pastures. They should also be familiar with symptoms of poisoning in livestock," points out McGinty.

As soon as animals begin to show signs of poisoning, they should be moved immediately to pastures free from poisonous plants and treated by a veterinarian.

If no pasture is available that is free from poison plants, ranchers may need to control weeds with chemical or mechanical methods. Caution should be used following chemical control methods since some poisonous plants become more palatable to grazing animals following herbicide use.

"Most problems with poisonous plants occur during winter and early spring when desirable warm-season forage plants are dormant and cool-season toxic plants are lush and green."

explains the specialist. "During these periods, livestock will easily switch to poisonous plants to attempt to obtain a higher nutritional plane for their diet and to obtain some green vegetative matter.

"Proper supplemental feeding that meets the nutritional requirements of grazing animals and provides green plant material in the form of pelleted alfalfa can significantly reduce poisonous plant problems during this time," contends McGinty.

In general, solid range management techniques offer the best prevention of livestock losses due to poisonous plants, he emphasizes. Use of a planned

grazing system that allows for periodic rest of pastures during the growing season can increase the quantity and vigor of desirable forages. This enables such plants to be more competitive with less desirable poisonous plants, reducing their availability to grazing animals.

Grazing systems that concentrate a large number of livestock in a single area may have extra benefits in that the amount of poisonous plant material available to a single animal is reduced.

McGinty advises ranchers to be extremely cautious when importing cattle from other areas of the state or country to a range containing poisonous plants unfamiliar to these animals. Such animals will more easily consume toxic plants compared to animals raised in that same area.

### The Land Bank

Need a better balance between short and long-term debts?

See us about the long-term.



Federal Land Bank Assn  
O'Floydada  
108 S. W. 4th 983-2471

20% OFF ON ALL CASE LUBRICANTS DURING JANUARY

Billy Jackson, parts manager for Case Power and Equipment, extends a special invitation to you to come by and see their computerized parts department.

While you are there, be sure and take advantage of the 20% off sale on all Case lubricants during the month of January.

Billy Jackson is a true professional with over 10 years experience in farm and construction parts. He and all the Case professionals have the expertise and parts available to fix your farm and construction equipment so that it runs like new.

Come in today and let the Case professionals help you.

### Case Power and Equipment

Lubbock 3302 Staton Hwy 745-4451  
Lamesa 902 S. Dallas 872-5861  
Floydada 101 South 12th 983-2836



# Farm News

## Conference set for Lubbock Feb. 17-19

(LUBBOCK) — Challenges facing cotton producers in the 1980s will be examined here February 17-19 during the five-state Western Cotton Production Conference.

The challenges will range from political policies and marketing opportunities to production techniques, financing and textile trends, Dr. James R. Supak, area cotton specialist with the Texas Agricultural Extension Service, said. Supak is program chairman for the annual conference.

The program will draw cotton producers and industry representatives from California, Arizona, New Mexico, Texas and Oklahoma. It is co-sponsored by the Southwest Five-State Cotton Growers Assn. and the Cooperative Extension Services of Texas, New Mexico, Arizona and California. General chairman is Joe D. Unfred of New Home, president of the Plains Cotton Growers.

The conference at the Hilton Inn will open at 8:25 a.m. February 17 with an analysis of the world outlook for cotton by Dr. Arlie Bowling, senior economist with the National Cotton Council, Memphis.

The Reagan Administration's viewpoint on agriculture, especially on cotton, will be presented by a yet-to-be-named spokesman.

Farm financing during the decade will be projected by Lloyd Cline of Lamesa, cotton producer and president of the First National Bank of Lamesa.

One of the industry's major concerns for the '80s, byssinosis or brown lung disease, will be discussed by Dr. I.W. Kirk, acting director of the U.S. Department of Agriculture-Science and Education Administration southern regional research center at New Orleans.

Carl Weiler of Laveen, chairman of the producer committee of the National Cotton Council, will report on farm programs '80s.

Trends in textile and production which will affect lint quality, hybrids and varietal improvements and insect management.

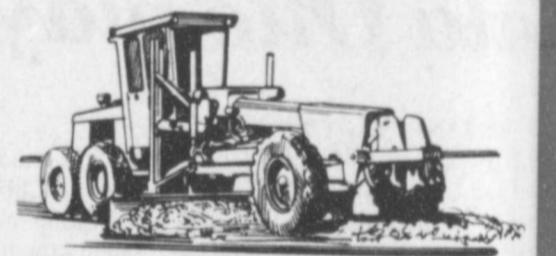
A panel of Texas growers will share their experiences in production and cost projection. Panelists include Larry Shaw, Big Spring; Hal Mann, Garden City; S.M. Plainview, and Marion Bowen, Lubbock. Moderator will be Gary Dimmitt, Extension area economist, Ft.

A panel of agricultural economists and producers will discuss insect problems on the farm. Panelists include Dr. James Dimmitt and Dr. Jerry Coakley.

Oklahoma, and growers Ronald C. Cotton Center and Morgan Roswell, New Mexico. Moderator will be Dr. James Leser, Extension area cotton entomologist, Lubbock.

The final morning of the conference will be a tour of the Textile Center at Texas Tech University. Dr. James Parker, director.

For experienced  
Tractor Repairs  
Call 652 3612



Earl's Tractor Repair

Box 701 Lockney, Texas

New Business

## Sponsored by the following interested firms:

First National Bank  
Floydada

Russell's Equipment & Supply  
Floydada

Consumers Fuel Association  
Lockney

Case Power & Equipment  
Floydada

The Floyd County Hesperian

The Lockney Beacon

Floydada Cooperative Gins

Martin and Company

Floyd County Farm Bureau

Federal Land Bank Association  
of Floydada

Ansley & Son  
Lockney

Floydada Implement Co.

Plainview Savings & Loan Association  
Floydada



## Letters TO THE EDITOR

Joseph A. Willis  
Box 336  
Floydada, Texas 79235

On behalf of the Floydada High School Speech Team, I would like to thank the people of Floydada for their support of our tournament on January 19, 1981. Forty three citizens gave up their Saturday to judge the event for us. They deserve a special thank you. I know that my students appreciate their time and effort.

Some of these folks were patient and understanding as we tried to get the event moved and the various conditions along. During the tournament, a single judge arrived on time to judge the assigned event. Having had a number of tournaments in my coaching career, I can tell you that the hundred percent judge turnout is not typical. It is this type of community support that makes teaching in Floydada so enjoyable.

Thank you, thanks to all and I look forward with enthusiasm to next year's tournament.

Sincerely Yours,  
Joseph A. Willis  
Director F.H.S. Speech and Drama

## Mollinary completes DEA course

Mollinary, Floydada police officer, just completed a two week Drug Enforcement Administration (DEA) course in Lubbock.

The Justice Department puts on the course which was taught by aologist from Colorado.

The classes, being held on the Texas campus, deal with the effects of drugs and drug related deaths.

The course also encompasses air traffic, dangerous drug classification, undercover operations, marijuana investigation and surveillance as to drugs and marijuana.

Each year there are a number of officers available for police officer training programs are available to have basic training of 320 hours to comply with Texas commission enforcement.

Mollinary moved to Floydada from El Paso and began work with the police department on November 1980.



**HAZEL BRADLEY** will be retiring as checker from Piggly Wiggly on the exact same day, February 2, that she started work 18 years ago. She had worked at the store almost four years before that making her total time about 23 years.



**JOE MOLLINARY**, Floydada Police officer, displays the award presented to him, after completing a two week Drug Enforcement Administration course in Lubbock.

## Chamber schedules banquet

Plans are nearing completion for the annual Chamber of Commerce Banquet to be held March 9 at the Duncan Elementary School Cafeterium.

Theme for this years banquet is "There's a Whole Lotta 'Country in Us."

Featured entertainment will be Travis Thorton and Friends from Plainview.

The banquet committee felt that this group represents the abundant musical talent of our area.

Thorton and Friends will present a program of popular country music and western humor.

They are well known in this area and have many musical credits. Thorton heads the Fall Music Festival in Plainview each year.

The group plays for county fairs. They also played for the farmers agricultural movement and recently completed recording their first album of popular country music.

Tickets are available at \$7.50 each from any Chamber member or at the chamber office.

## Garrett chosen for Who's Who

Fifty students from Texas Tech University have been chosen for the 1980-81 edition of "Who's Who Among Students in American Universities and Colleges."

Chosen on the basis of campus leadership, community service and scholarship, the students were selected by a committee of faculty, staff and students. The honor is open to junior, senior and graduate students.

Garrett has received the Annie M. Taylor Scholarship for outstanding freshman student and has been named to the Dean's List eight semesters as an undergraduate student.

Among those named to the latest edition of "Who's Who" is BraVada Garrett, daughter of LaVada Garrett of 1004 Leonard St., Floydada.

Garrett is a psychology



**BRAVADA GARRETT**

graduate student and a Texas Tech Supreme Court justice. She is a member of the Student Foundation, Eta Lambda Chapter of Delta Sigma Theta Sorority, and the Student Organization for Black Unity.

## Hotchkiss buy Pat Walker Salon

Dorothy and John Hotchkiss are the new owners and managers of the Pat Walker Figure Salon in Floydada.

The salon is located in the Lamplighter Hotel complex which they have owned for 17 years.

They purchased the salon in November. Two years ago, in April, they did the remodeling necessary to putting in the salon.

The Hotchkiss' attended a training school in Houston for the first two weeks in December.

The school was held in the Galleria Salon. An international supervisor was the instructor. The couple was taught methods and techniques of operating a salon at top efficiency.

"We were given the most professional training so that we can train our own counselors," Dorothy said.

"We spent many hours on learning figure analysis. Also on food and beverages," she said.

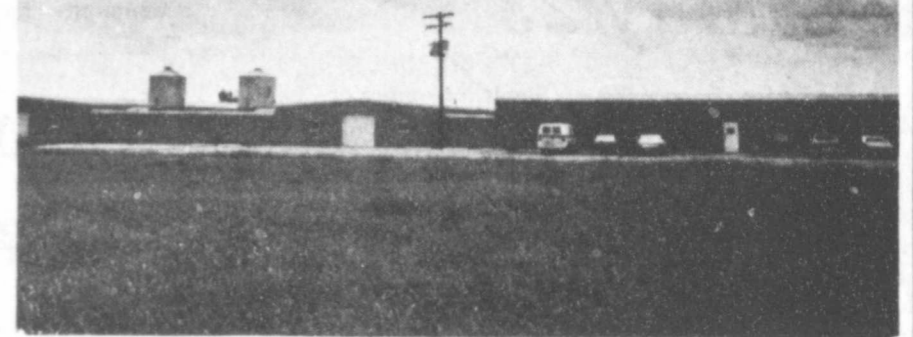
Both Dorothy and John have been in the Pat Walkers program.

They both became interested in the individualized and personalized figure correction program which concentrates more in inch loss than weight loss.

Dorothy also says that the passive exercise improved circulation, corrects posture and firms and tones.

Pat Walkers Salons are 30 years old.

**65,000 Kilowatt Hours  
3,000,000 Eggs**



Eggs are collected, cleaned, candled, graded and chilled electrically at this plant. The total electric bill is a whopper. Yet all of this electric coddling of your breakfast egg adds up to only one cent (1¢) per dozen eggs for the cost of electric power from the member-owned electric cooperative. It's yet another way your electric cooperative helps produce fresher food at lower prices. Your member-owned electric cooperative Wants to help you save.

**LIGHTHOUSE  
ELECTRIC COOPERATIVE**  
Floydada

**Get a Red Edge  
Rebate up to \$2000!\***

**On selected International®  
Series 86 tractors.**



Right now, get a big Red Edge Rebate on any International tractor in our inventory. As much as \$2000! Or, instead of the rebate, get waiver of finance on the same tractor until the next season of use.

Just make your purchase and take delivery before January 31, 1981. Either way, you save! And, you can finance through IHCC.

**See us today and save! Offer ends January 31, 1981.**

\*Get a \$2000 check when you purchase models 4386, 4586 or 4786.

Get a \$1000 check when you purchase models 1086, 1486 or 1586.

Get a \$800 check when you purchase models 786, 886 or 986.

**INTERNATIONAL®  
AGRICULTURAL  
EQUIPMENT**

**Brown's Implement Inc.**

Your I.H. Dealer Ralls Highway 983-2281

**PARTS VALUE  
OF THE MONTH**

**Price Plowdown Sale  
Sweeps and Shovels**

**SAVE  
UP TO 25%**

Just in time to get ready for spring, we've made truckload purchases of sweeps and shovels. All high quality...all priced at big pre-season savings: up to 25% off regular IH suggested list prices. Come in and stock up...prices will never be lower.

Remember, we can fit most competitive harrows and cultivators, too!







**BOBBY COPELIN, BETH MOORE**

## Moore-Copelin to wed May 23

Mr. and Mrs. George W. Moore, 1611 Jordan, Amarillo, formerly of Plainview, wish to announce the engagement and forthcoming marriage of their daughter, Adrienne Beth Moore to Robert Lloyd (Bobby) Copelin Jr. of Lubbock.

Parents of the prospective groom are Mr. and Mrs. Robert L. Copelin of Lubbock.

Miss Moore is a 1978 honor graduate of Plainview High School and is a junior at McMurry College in Abilene.

She is a member of Chanters and is treasurer of Theta Chi Lambda. She is employed in the business office at McMurry College.

Copelin is a 1978 graduate of Lubbock Cooper High School where he was active in band and 4-H. He is presently a service technician for Southwestern Bell Telephone Co.

The couple plan a May 23 wedding in the Family Life Chapel of the First Baptist Church in Plainview.

### Notices

#### SR. CITIZENS

Senior Citizens luncheon for the month of February will be on Wednesday, February 18, instead of a Thursday when the luncheons are normally held.

A representative from SPAG of Lubbock will be presenting the program.

#### WOMEN'S CHAMBER OF COMMERCE

All members of the Floydada Chamber of Commerce Women's Division who have unsold tickets to the Gala Olio are asked to return them to Doris McLain or Louise Turner by Friday evening.

# Society

## Hartman's to observe 50th Wedding Anniversary

Friends and relatives of Harry and Mamie Hartman are invited to a reception in observance of their 50th Wedding Anniversary Sunday, February 8th.

The event will be held at the Massie Activity Center in Floydada from 2:00 to 4:00 p.m.

Harry and Mamie (Jarnagin) were married in Clovis, New Mexico February 8, 1931. They have lived and farmed in the South Plains Community for over sixty years.

Hosting the reception for the couple are their children Mr. and Mrs. Bob Hartman of Lubbock, Mr. and Mrs. Charles Hartman of Amarillo, Mr. and Mrs. Vernon (Winnie) Youngquist of Abilene, Mr. and Mrs. James Hartman of Dallas, Roy Hartman, and Mr. and Mrs. Edward Hartman of South Plains.

The couple have eight grandchildren and one great-grandson. Granddaughters of the couple will serve.

## Marilyn Malouf feted with gift coffee

Marilyn Malouf, bride-elect of Ricky Biggs, was honored with a gift coffee Saturday, January 24, from 10-11 a.m. in the home of Mrs. Doyle Walls.

Mrs. Hugh Beyer, mother of the bride to be, and Mrs. Clyde Saul, mother of Mr. Biggs, were at the door with Miss Malouf and Mrs. Walls greeting guests as they arrived.

Mrs. Brent Sanders registered guests.

Mrs. Tommy Assiter, Ed Muncy and Orville Newberry presided in the gift room.

A handmade lace cloth

covered the serving table which held a silver service set and a centerpiece of earthenware silk flowers.

Mrs. Rance Young served refreshments to guests.

The hostesses presented Miss Malouf with a Revere cookware set and the centerpiece of silk flowers.

Hostesses for the coffee were Mmes. Ray Aston, Orville Newberry, Doyle Walls, W.H. Simpson Jr., J.R. Turner, Tommy Assiter, Don Hardy, Bill Hale, Louis Anderson, Travis Jones, Doyle Moore, Ed Muncy, Linton Pruitt and Ray Reed.

## Bridal brunch honors Fortenberry

Marcia Fortenberry, bride-elect of Keith Phillips, was honored with a bridal brunch Saturday morning, January 17, by Mrs. Sam Fortenberry in the home of Mrs. Roy Turley.

Buffet brunch was served with the guests sitting at

tables decorated in burgundy cloths, pink napkins, and burgundy roses. Pink baskets with heart shaped candles were the table favors.

Each guest presented the honoree with a burgundy silk rose and a wedding wish. Guests were the ladies of

the wedding party

Marcia Fortenberry, Eddie Fortenberry, Phillips, E.K. Sherman, Tommy Sherman,

Lacewell, Paul Steve McPherson, Bybee, and Miss Fortenberry.



**MR. AND MRS. HARRY HARTMAN**

## Chamber women to meet

The next meeting of the Chamber of Commerce Women's Division will be held Monday, February 2 at 7:30 p.m. at the Community Room of the First National Bank. The newly elected Board of Directors for 1981

will be announced at that time. Immediately following the regular meeting, the new

board will meet to elect officers for the coming year. All members are urged to attend.

Bridal Selection  
Kelly Hayden  
Bride Elect Of  
Danny Quisenberry

Mrs. Terry Roberts  
Formerly  
Lisa Bice

## Sues Gifts & Accessories

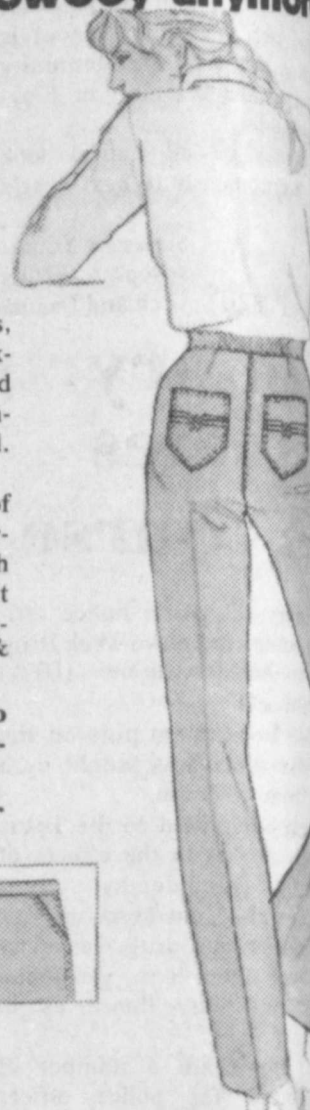
126 W. California Floydada 983-5312

## Wrangler doesn't just mean cowboy anymore

Ladies our New Spring Blouses, Skirts, Pants, Jackets, Wrap-Around Skirts, & Coordinates have arrived.

PLUS New shipment of Fancy Embroidered Pocket, Cinch Waist, No-Fault Wranglers for Ladies in good sizes & styles.

Don't forget to look over our clearance racks for special bargains.




## THE LOFT

517 East Houston

983-

# Welcome To The New Teachers

Please Get Acquainted With These Fine Merchants...

<p><b>Sue's Gifts &amp; Accessories</b> Phone 983-5312 126 W. California Floydada</p>	 <p><b>PAM VEAZY</b></p> <p>Pam Veazy is in her first year of teaching. She did her student teaching at Frenship and graduated from Tech last summer. Her home is Friona and she is single. This year she is teaching kindergarten at Duncan Elementary. Hardest thing about starting this year is not having the build up of items for bulletin boards and teaching aides," she said. "I thought with student teaching I'd have plenty of resources to draw from, but when I started looking through my file I realized how few I had." Pam works with the junior high choir at First Baptist Church. She helps out with the Friends of the Library. She said that plans are in the works to do a talent show musical. Pam is also a judge for speech tournaments on the weekends.</p>	<p><b>Stitchin Pretty</b> 983-3809 118 West California,</p>
<p><b>CITY AUTO INC.</b> Buick-Pontiac-GMC Floydada</p>	<p><b>Piggly Wiggly</b> 983-2184</p>	<p><b>Oden</b> CHEVROLET-OLDS., INC. 983-3787 221 S. Main Floydada</p>
<p><b>Cornelius Conoco</b> FLOYDADA, TEXAS</p>	<p><b>Martin And Co.</b> 216 S. Main - Floydada - 983-3713</p>	<p><b>Ponderosa Meat Company</b> 807 East Missouri Floydada, Texas</p>
<p><b>Char-Lee's Cakes Candles &amp; Flowers</b> 315 South 2nd 983-5141</p>	<p><b>Floyd County Hesperian</b></p>	<p><b>Gene's Cleaners</b> 103 North Main Floydada</p>
<p><b>Consumers Fuel Assn.</b></p>	<p><b>Hale Ins. &amp; Real Estate</b> 983-3261 106 S. MAIN FLOYDADA</p>	<p><b>Quality Body Shop</b> 121 East Missouri 983-5032 Floydada</p>
<p><b>THOMPSON</b> Rexall PHARMACY 200 SO. MAIN FLOYDADA, TEXAS Phone 983-5111</p>	<p><b>Evelyn's Beauty Salon</b> 424 West Lee 983-2355 Floydada</p>	<p><b>Brown's Implement Inc.</b> Ralls Highway Floydada 983-2281</p>
<p><b>Floyd County Impl</b> Ralls Highway - Floydada</p> <p><b>Reed Ford-Mercury Sales</b> 983-3761</p>		



## Today's Lifestyles

By Marilyn Tate  
County Extension Agent



### NEW HOTLINE NUMBERS

**TO HELP**  
Update your consumer "hotline" list since hotline numbers can help consumers solve problems, without spending a dime. Here are some of the "latest" hotline numbers to include in your collection:

Department of Energy (DOE) -- 1-800-424-9246. Consumers can report possible pricing violations by retail and wholesale petroleum firms.

International Fabricare Institute -- 1-800-638-2627. Call this number for information on dry cleaning problems which involve dry cleaners who are members of the International Fabricare Institute.

Mainstream, Inc. -- 1-800-424-8089. This non-profit organization provides confidential answers to questions about laws relating to the handicapped, particularly those questions concerning employment.

Renolds Aluminum Recycling Company -- 1-800-228-2525. Call this number for the location of the aluminum collection point nearest you.

Federal Deposit Insurance Corporation (FDIC) -- 1-800-345-4888. Call this number if you have a complaint concerning a bank insured by the FDIC.

Commodity Futures Trading Commission -- 1-800-424-9838. Call this number to find out whether a firm or sales representative is registered as required by law and whether any administrative or judicial action has been taken against the firm.

Consumer Product Safety Commission (CPSC) -- 1-800-368-3826. Report a potentially dangerous product or a product-related injury, and request free fact sheets on a wide range of products.

CPSC investigates anything from toothpicks to tricycles that does not regulate safety of cars, boats, airplanes, food, cosmetics or drugs.

Auto Safety Hot-Line -- 1-800-424-9393. Call this number to find out whether a car has ever been recalled because of safety defects. Use this number to report hazardous aspects of a car, and ask for free brochures and fact sheets. This hotline is staffed by the National Highway Traffic Safety Administration.

Solar Hot-Line -- 1-800-523-2929. Staffed by the National Solar Heating and Cooling Information Center, they provide information and brochures on solar heating and cooling.

Housing Discrimination Hot-Line -- 1-800-424-8590. This number is provided by the Department of Housing and Urban Development. They investigate charges of housing discrimination based on race, color, sex and national origin. However, they can't help if the discrimination is based on marital status.

Lawyer Referral Service -- 1-800-252-9690. Call this number, provided by the State Bar of Texas for the name of a local attorney who specializes in a particular problem.

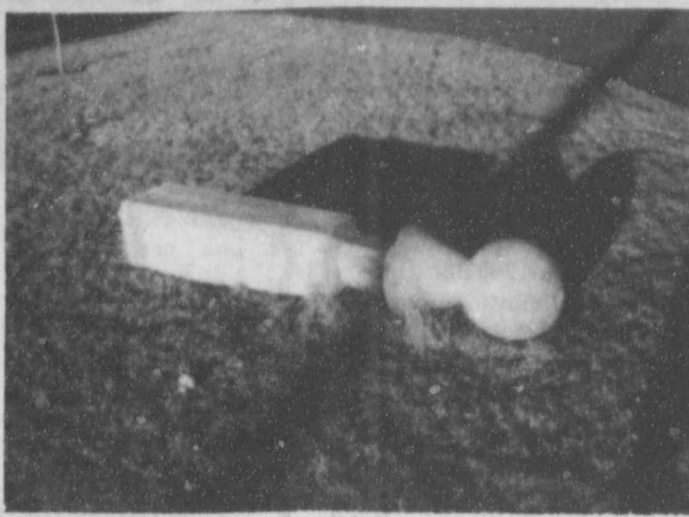
Education Hot-Line -- 1-800-638-6700. For information on federal grants for undergraduate college students, call this number. This hot-line is staffed by the Department of Education.

Operation Venus -- 1-800-227-8922. Call this number for information about venereal disease. They will give the name of a local free testing clinic.

Hearing-Aid Help-Line -- 1-800-424-8576. For information on hearing disabilities, call this number. It is staffed by the Better Hearing Institute. They will refer you to local doctors, clinics and hearing-aid dealers.

Moving Hot-Line -- 1-800-424-9312. Call this number for general information about transporting household goods and for assistance with loss-and-damage claims. It is staffed by the Interstate Commerce Commission.

## Coopers host reconstruction planning party



COOPERS' plan reconstruction of fountain.

Jerry Paul and Ophelia Cooper hosted a party at their house on Farm Road 378 north of Lockney to plan reconstruction of an historic fountain.

The fountain originally stood on the grounds of the old Lockney Christian College and was obtained by the Coopers, who call it an

"hysterical monument."

Those on hand for the construction planning at the Cooper home were: Jim and Peggy Roberts, Darrell and Joy Blessingame, Bobby and Ann McCormick, Jerry and Tammy Perry, C.L. and Marie Henderson and John and Rochell Dorman.

## Harmony studies "Families and the Law"

Harmony Extension Homemakers Club, Floydada, met in the community center January 26, with Bess Carr as hostess. She read the scripture Leviticus 25:10.

Roll call was answered with my pet peeve about other drivers. Ruth Scott gave the council report. Further plans were discussed for the luncheon when Harmony club will host the other clubs February 9 in the Lighthouse Electric dining room. We were reminded to take pies to the Floyd County Stock Show on February 22, 23, and 24.

The program, "Families and the Law," was presented by Ruth Scott. She conducted a pop quiz of multiple choice questions. Some of the answers were very enlightening.

The hostess served refreshments to members: Ruth Scott, Juanita Poole, Annie Maude Hopper and Blanche Williams.

## Homemakers elect delegates

The Extension Homemakers Council met in the council room January 22. Lillian Smith, council chairman, called the meeting to order. She read a poem, "Best Memory System."

Marilyn Tate, Extension Agent, announced Cynthia Chambers, secretary, had resigned. Phyllis Kelly is taking her place. She also announced Wanda Turner, council secretary, had resigned. Mattie Norrell was elected to replace her.

The chairman appointed Elvira Stewart, Mattie Norrell and Bess Carr to audit the secretary's books. This is done yearly. We were re-

minded that each club member is to furnish pies for the Floyd County Stock Show to be held February 22, 23 and 24.

The following members were elected delegates and alternates to attend district and state meetings: Harmony, Bess Carr and Annie Maude Hopper; Homebuilders, Mattie Norrell and Murl Mayfield; Lone Star, Syble Teeple and Trudy Taylor.

Marilyn was in charge of recreation. We played Tic-Tac-Do. Questions were asked from the book on Parliamentary Procedure.

Members attending were: Lillian Smith, Ruth Trapp,

## Club studies diet habits

The president called the meeting to order in the home of Mrs. Anthony Latta.

Evelyn opened the meeting by leading the club collect. Roll call was called by the secretary Wanda Turner.

The minutes were read and approved. A report was given about Mrs. Springer. Diane introduced the pro-

gram given by Flora and Opal. Points on good health and good eating habits were stressed. Each one is responsible for his own good health. Microwave cooking was also discussed. Some recipes were given for microwave cooking.

Those present were: Mildred Wylie, Queen Evelyne

Lawson, Jettie Moss, Josephine Newberry, Verna Lyn Stewart, Jo Davis, Frieda Simpson, Wanda Turner, Ruth Trapp, Helen Dunlap, Opal Ashton, Margarette

Bond, Jo V. Bingham, Lorene Newberry, Diane Glover, Betsy Dempsey and the hostesses, Flora McNeill and Evelyn Latta.

We Have Everything For

## The Perfect Wedding

Were here to help you plan it...

- ★ Wedding Invitations
- ★ Wedding Stationery
- ★ Toasting Cups
- ★ Brides Books
- ★ Brides Bibles
- ★ Garters
- ★ Wedding Sets
- ★ Engraved Napkins
- ★ Attendants Gifts
- ★ Complete Line Of Jewelry
- ★ Anniversary Plaques
- ★ Anniversary Invitations
- ★ Cake Knives And Servers
- ★ And Of Course All The Flowers For Any Occasion



**SCHACHT**  
Flowers, Jewelry & Gifts  
"Our Pleasure Is To Serve You"  
112 W. Ponlar - Lockney - 657-2385

## Alpha Sigma Upsilon served pizza

Alpha Sigma Upsilon Phi, chapter of Beta Sigma Phi, Floydada, met on Tuesday, January 20, in the home of Lynn Daniel.

Lynn served pizza with all the trimmings while the guest, Sharon O'Conner, was introduced to the members.

Members present at the meeting were June McKaugh, Irene Kendrick, Vikki Yeary, Mary Emert, Barbara Edwards, Donna Lipham, Pat Franklin, Rhonda Guthrie, and Lynn Daniel.

Roll call was answered with helpful hints while Rhonda Guthrie passed out copies of a diet to everyone.

Donna Lipham read a letter about the up-coming convention to be held in McAllen in June. Also a letter of appreciation was read from the West Texas Home Health.

Following our general business meeting a secret ballot was held to elect our Valentine Sweetheart. Last

year's Sweetheart, Donna Lipham, will be the one to reveal the selection on February 14 at the Valentine party.

Irene Kendrick gave an excellent program on Inaugurations and Washington D.C., supported with books and pictures. The meeting was adjourned.

## Wesley Anns discuss mission programs

Wesley Anns, Floydada, recently met at the Methodist Church to discuss the Missions program.

Mrs. Jewel Martin, program chairman, called the meeting to order and introduced those on the missions program. They were Opal Ashton, Lena Watson, Elizabeth Armstrong, Lorena McKinney and Hester Moore.

These ladies gave a report on missions in China, Alaska and Mexico.

Hostesses Elizabeth Armstrong and Lorena McKinney and Hester Moore served sandwiches, cookies, ice cream and drinks to Opal Ashton, Elizabeth Armstrong, Julia Baker, Diana

Glover, Lula Green, Ethyle Hinson, Bennie Leibfried, Jewell Martin, Norma Martin, Hester Moore, Mrs. Eunice Hong, Emma Lou Whitaker, Lorena McKinney, Helen Solomon, Ruth Trapp, Lena Mae Watson, and Mrs. Willson Sr.

Mrs. Mavis (J.M. Willson Sr.) was honored with a gift certificate for her 65 years of service in the First United Methodist Church of Floydada.

The World Day of Prayer will be held here in the Methodist Church on Friday, March 6.

Brides to be come in and see our



- INVITATIONS
- ANNOUNCEMENTS
- NAPKINS
- BRIDAL BOOK
- ACCESSORIES

WEDDING STATIONERY  
Parker Studio

983-5063 121 W Calif

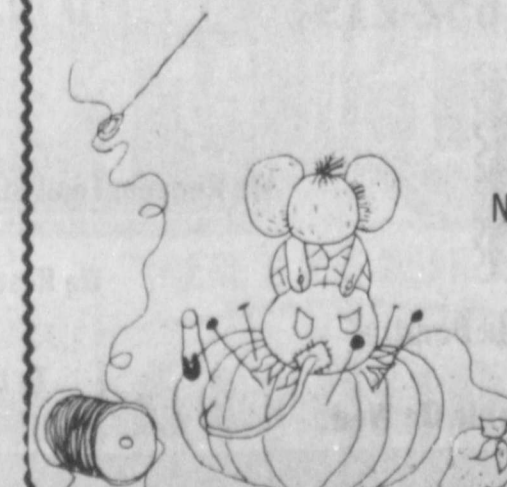


## Step Into Spring...

Update Your Wardrobe This Season With Soft Pastels Of Lilac, Apricot & Tropical Blue.

Classic Good Looks Are Softened This Spring By Feminine Fabrics Of Linen, Georgette Crepe, Crepe de' Chine.

Now Available At **Stitchin Pretty**  
983-3809  
118 West California, Floydada



## H&R BLOCK TAX TEST

Question No. 12

The only deduction or credit you can claim for your children is the personal exemption.

True  False

FALSE. For example, if yours is a two income household, and you incur child care expenses, you should know what Form 2441 means to you. If you don't, H&R Block does. We'll take the time necessary to understand your complete situation, because if you qualify you may be eligible for up to an \$800 tax credit for child care.

WE'LL MAKE THE TAX LAWS WORK FOR YOU

**H&R BLOCK**  
THE INCOME TAX PEOPLE  
106 W. Missouri  
983-5233  
Weekdays 9-6, Saturday 9-5

## Grandparents:

Here's a chance to make your children & grandchildren happy!

A Big VALENTINE from YOU

Send or bring us

a cute photo of

YOUR GRANDCHILD

Ages: 1 day to 6 years  
(We promise to return it unharmed)

We'll place it in a heart

(like the one on the left)

including name, and on

Thursday, February 11

(the last paper before)

Valentine's Day,

YOUR LITTLE VALENTINE WILL APPEAR IN OUR PAPER!

the cost is only

\$10<sup>00</sup> per heart

HURRY, NOW!  
DEADLINE IS  
February 6,

11 A.M.

FLOYD COUNTY HESPERIAN THE LOCKNEY BEACON







# OBITUARIES

**WESLEY JONES**  
Funeral services for Clarence Wesley Jones, 65, a Floyd County farmer, died at 2 p.m. yesterday at the United Methodist Church in Floydada with Rev. Smith, pastor, officiating. Burial followed in Floyd Memorial Park under the direction of Moore-Rose Funeral Home.

**MARJORIE PHILLIPS**  
Marjorie Phillips, 89, died at 5:15 p.m. yesterday at her home. Justice of the Peace Walter Hollums pronounced the death as of natural causes. She was married September 8, 1935, in Floydada, the year after he moved to Floyd County from Wright. He was a Methodist.

**TURNER**  
A. "Dub" Turner, 56, died Monday in Lockney. Services were at 2 p.m. yesterday in Riverview Baptist Church with the Rev. Gillmore, pastor, and Rev. Nolan Rucker, officiating. Burial in Memorial Park Cemetery at Amarillo by Minton-Rose Funeral Directors.

**TURNER**  
Survivors include his wife; two daughters, Nancy Hobbs and Brenda Nicols; two sons, Larry Turner and...

brothers, Billy Turner of Silverton, Carl Turner of Floydada, C.L. Turner of Lockney and Bill Turner of Dallas; two sisters, Mrs. Randall Cummings of Glenrose and Mrs. Maxine Griffith of Lockney; and four grandchildren.

**DORA HARRIS**  
Services for Dora Ellen Price Harris, 96, of Lockney were at 2 p.m. Tuesday at First Baptist Church with grandsons James Price of Yates Center, Kansas, and L.C. Price of Weatherford officiating.

Burial was in Flomot Memorial Park under the direction of Seigler Funeral Home in Matador.

Mrs. Harris died at 7:15 a.m. Monday at Lockney Care Center nursing home. A native of Duffield, Virginia, she moved with her family to Oklahoma Territory and later lived in Corsicana. Mrs. Harris lived in the Matador and Flomot area since 1941.

She married L.C. Harris in 1941 in Matador. He died in 1952. The couple operated a grocery store and service station in Matador for several years.

Mrs. Harris was a Baptist and an Eastern Star member. Survivors include a son, A.L. Price of Corsicana; 23 grandchildren; 44 great-grandchildren; and three great-great-grandchildren.

Grandsons served as pallbearers.

**WILL McDONALD**  
Will McDonald, 88, died Thursday in Lockney Care Center.

Services were at 3 p.m. Saturday in First United Methodist Church with the Rev. Michael O'Connor, pastor, officiating. Burial was in Lockney Cemetery by Moore-Rose Funeral Home of Lockney.

Pallbearers were Barry Barker, Duard Reeves, Danny Bowman, Mike Mooney, Eddie Teeter and G.A. McAda.

Mr. McDonald was born December 22, 1892 in Italy,

Texas and came to Floyd County in 1937 from Ellis County. He was a retired builder and was a member of First United Methodist Church of Lockney.

He married the former Alma Brown February 27, 1916.

Survivors are his wife; two sons, Charles L. McDonald of Hayward, California, and Robert G. McDonald of Lockney; two daughters, Mrs. Guy (Kathryn) Clayton of Dalhart and Mrs. Jim (Dora Lee) Cole of Odessa; two brothers, Ferril McDonald of Lancaster and the Rev. John McDonald of Mason; 12 grandchildren and nine great-grandchildren.

**JAMES H. ROSS**  
James Harmon Ross, 89, former Lockney resident, died at his home in Burkburnett Thursday, January 22.

Services were at 2 p.m. Saturday in First Baptist Church in Lockney. Officiating was Charles Coulston, minister of the Church of Christ in Redwood City, California, assisted by the Rev. John Jenkins, pastor of First Baptist Church in Lockney. Burial was in Lockney Cemetery directed by Moore-Rose Funeral Home of Lockney.

Born January 30, 1891 in Havana, Arkansas, Mr. Ross was a retired carpenter. He married the former Annie Lanora McClung in 1912 in Bailey. She preceded him in death. Mr. Ross moved from Lockney to Burkburnett eight years ago.

He is survived by five sons, Alvin L. and Harmon Ross, both of El Paso, Howard Ross of Plainview, Doyle Ross of Burkburnett and Dale Ross of Lockney; three daughters, Imogene Martin of Burkburnett, Mrs. J.D. Huffnagle of Maple Shade, N.J. and Mrs. Gale Brown.

REMEMBER your loved ones with a living memorial to the Caprock Hospital Auxiliary Memorial Fund. Mrs. Ben Whitaker, Treasurer

of Texarkana, Arkansas; 34 grandchildren and 43 great-grandchildren. Pallbearers were Hubert Davis, Carl Lee Jr., Cleatis Hayes and James Hill.

**OLIA FRANCES FURROW**  
Olivia Frances Furrow, 94, died at 9:10 p.m. Thursday in Floydada Nursing Home after a lengthy illness.

Services were conducted at 2 p.m. Sunday in Moore-Rose Funeral Home Chapel with the Rev. Jim Smith, pastor of First United Methodist Church in Floydada, officiating. Burial followed in Floydada Cemetery by Moore-Rose Funeral Home of Floydada.

A homemaker, Mrs. Furrow was born January 9, 1887 in Sherton County, Missouri. She married William B. Furrow in 1903 in Alvie, Oklahoma and they moved from there to Floyd County in 1912. Mr. Furrow died June 6, 1978.

Surviving are three sons, Dick Furrow of San Diego, California, S.J. Furrow of Independence, Kansas, and R.T. Furrow of Lubbock; three daughters, Edna Golden, Stella Whitehead and Elvina Short, all of Amarillo; one sister, Ethel Wise of Wichita, Kansas; 15 grandchildren and 31 great-grandchildren.

**LEONARD KING**  
Services for Leonard "Tuffy" King, 58, of Floydada were at 2 p.m. Monday in First Baptist Church in Floydada with Dr. Floyd C. Bradley, pastor, officiating.

Burial was in East Mound Cemetery in Matador under direction of Moore-Rose Funeral Home.

King died at 7:15 a.m. Saturday in Caprock Hospital

REMEMBER your loved ones with a living memorial to the Caprock Hospital Auxiliary Memorial Fund. These memorials go toward equipment to help serve our community in the best way possible.

in Floydada after a lengthy illness.

The Matador native married Irene Woody October 9, 1954, in Clovis, New Mexico. He came to Floydada in 1955 from Houston.

King was retired Air Force master sergeant. He and his wife operated King's Restaurant in Floydada since 1965.

Survivors include his wife; two daughters, Joy Fewell of Canyon and Jimmie West of Floydada; a sister, Mrs. Tom Spears of Matador; two brothers, Carl and Curtis, both of Matador; and six grandchildren.

**F.C. HACKNEY**  
F.C. Hackney, 76, of 1507 Nassau died at 2 a.m. Tuesday in Central Plains Regional Hospital. He had been in ill health for a year.

Services are set for 2:30 p.m. Wednesday in Lemons Memorial Chapel. Officiating was the Rev. George Cooper, pastor of Bethel Baptist Church in Round Rock. Burial was in Parklawn Memorial Gardens directed by Lemons Funeral Home.

Floyd Cameron Hackney was born July 31, 1904 in Springtown and came to Plainview in 1942 from Lockney. He was an independent trucker and a member of the Baptist Church. He married the former Zelma Deneson October 9, 1938 in Floydada.

Surviving are his wife; and four sisters, Mrs. Morris Nance and Mrs. J.W. Paschal, both of Plainview, Mrs. Fred Darden of Visalia, California and Lottie Carter of Clearwater, Florida.

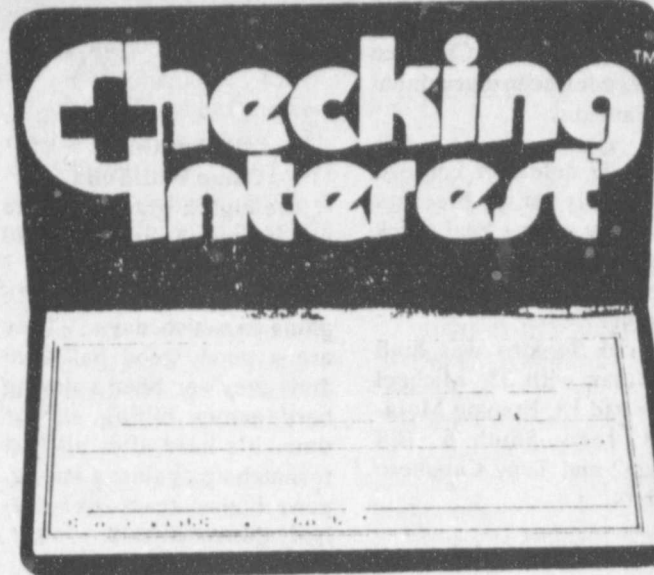
## Earn 5 1/4% Interest on All Your Money.

Now you can earn 5 1/4% interest on all your money and get free checking with our new Checking Plus Interest account. So you get a checking account just like you're used to and you earn interest besides.

If you save one place and bank at another, combine all your money into our new Checking Plus Interest account. Your money earns more. And you never need another account anywhere else.

To earn interest on all your money and get free checking, just keep a \$500 balance in your Checking Plus Interest account. If your balance falls below \$500 there is a monthly service charge.

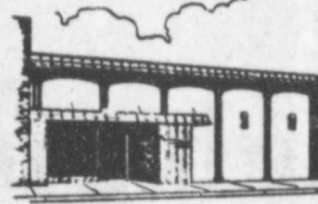
We're helping you build a better tomorrow. With Checking Plus Interest that's best for your money today.



Plainview SAVINGS & LOAN Association

HOME OFFICE - 716 BROADWAY - PLAINVIEW, TEXAS 79072

BRANCH OFFICES  
217 W. CALIFORNIA - FLOYDADA  
3000 OLTON ROAD - PLAINVIEW  
622 MAIN ST. - HALE CENTER  
710 BAILEY - MATADOR



© 1980 The Savings Marketing Corporation

We still pay 5 1/2% on regular savings!

### REPORT OF CONDITION

Consolidating domestic subsidiaries of the

First National Bank in Lockney of Lockney City

In the state of Texas, at the close of business on December 31, 1980 published in response to call made by Comptroller of the Currency, under title 12, United States Code, Section 161.

Charter number 14604

National Bank Region Number 11

#### Statement of Resources and Liabilities

Thousands of dollars

ASSETS		
Cash and due from depository institutions		3,613
U.S. Treasury securities		2,373
Obligations of other U.S. Government agencies and corporations		3,997
Obligations of States and political subdivisions in the United States		1,064
All other securities		9
Federal funds sold and securities purchased under agreements to resell		6,245
Loans, Total (excluding unearned income)	7,936	
Less: Allowance for possible loan losses	299	
Loans, Net		7,637
Lease financing receivables		None
Bank premises, furniture and fixtures, and other assets representing bank premises		144
Real estate owned other than bank premises		None
All other assets		590
<b>TOTAL ASSETS</b>		<b>25,672</b>
LIABILITIES		
Demand deposits of individuals, partnerships, and corporations		8,252
Time and savings deposits of individuals, partnerships, and corporations		13,674
Deposits of United States Government		26
Deposits of States and political subdivisions in the United States		1,347
All other deposits		40
Certified and officers' checks		287
Total Deposits		23,626
Total demand deposits	9,001	
Total time and savings deposits	14,625	
Federal funds purchased and securities sold under agreements to repurchase		None
Interest-bearing demand notes (note balances) issued to the U.S. Treasury and other liabilities for borrowed money		None
Mortgage indebtedness and liability for capitalized leases		None
All other liabilities		398
<b>TOTAL LIABILITIES (excluding subordinated notes and debentures)</b>		<b>24,024</b>
Subordinated notes and debentures		None
MEMORANDA EQUITY CAPITAL		
Preferred stock	No. shares outstanding	None (par value) None
Common stock	No. shares authorized	10,000
	No. shares outstanding	10,000 (par value) 100
Surplus		200
Undivided profits and reserve for contingencies and other capital reserves		1,348
<b>TOTAL EQUITY CAPITAL</b>		<b>1,648</b>
<b>TOTAL LIABILITIES AND EQUITY CAPITAL</b>		<b>25,672</b>
Amounts outstanding as of report date:		
Standby letters of credit, total		None
Time certificates of deposit in denominations of \$100,000 or more		3,350
Other time deposits in amounts of \$100,000 or more		295
Average for 30 calendar days (or calendar month) ending with report date:		
Total deposits		22,898

Preferred stock	No. shares outstanding	None	(par value)	None
Common stock	No. shares authorized	10,000		
	No. shares outstanding	10,000	(par value)	100
Surplus				200
Undivided profits and reserve for contingencies and other capital reserves				1,348
<b>TOTAL EQUITY CAPITAL</b>				<b>1,648</b>
<b>TOTAL LIABILITIES AND EQUITY CAPITAL</b>				<b>25,672</b>

We, the undersigned directors attest the correctness of this statement of resources and liabilities. We declare that it has been examined by us, and to the best of our knowledge and belief is true and correct.

J. June Bybee

Cashier

of the above-named bank do hereby declare that this Report of Condition is true and correct to the best of my knowledge and belief.

Directors

June Bybee  
January 22, 1981

**BORDEN'S COTTAGE CHEESE**  
12 OZ. CTN. **69¢**

**Kraft 32 oz. Grape JELLY** **\$1.49**

**MAIOLA FLOUR** 5 LB. BAG **\$1.29**

**DELICIOUS COOKED FOOD SPECIALS**  
Big One  
**HOT DOG..... 79¢**

**BURCHINE COOKIES** 12 OZ. PKG. **\$1.29**

**CHIP-A-ROO'S** 12 OZ. PKG. **\$1.29**

**RATH'S COOKED HAM** 5 OZ. PKG. **\$1.49**

**RATH'S PURE PORK SAUSAGE** 1 LB. PKG. **\$1.19**

**ALLSUP'S MILK**  
1 GAL. JUG **\$1.99**

**BORDEN'S ICE CREAM SANDWICHES OR NUTTY BUDDIES** 6 CT. PKG. **99¢**

**2 Liter COKES** **\$1.29**

**MORTON'S GLAZED DONUTS** FAMILY PKG. **\$1.49**

**MORTON'S HONEY BUNS** 9 OZ. PKG. **79¢**

Lockney "THERE'S ONE NEAR YOU" Floydada  
PRICES EFFECTIVE OPEN 24 HOURS A DAY  
JANUARY 29-31, 1981 OPEN 365 DAYS A YEAR  
SUPPLIES LIMITED WE ACCEPT FOOD STAMPS





## Breezers take second straight tournament

The eighth grade Breezers won their second consecutive tournament championship by defeating Lubbock Christian at the McAdoo tournament last Saturday.

A 68-37 defeat of Lorenzo on Thursday set the breezers up. "They were a real quick team," Coach Jeter said, "one of their players made 16 points."

Derrick Jenkins was high point man with 33, Michael Saens had 18, Frankie Morales 8, Larry Smith 6, Bill Harris 2 and Tony Caballero 2 points.

This was the eighth graders third tournament and their third time to be in the finals.

They faced Lubbock Christian again for the championship as they did in the Christ the King tournament. Breezers won that one 54 to 53. Lubbock Christian's only loss has been to Floydada.

"So at McAdoo it really turned out to be a shoot-out between Lubbock and Floydada," Jeter said.

Floydada jumped out to a quick 10-2 lead and never gave the lead up during the rest of the game.

In the third quarter Lubbock closed within 6 points of the Breezers three times, but couldn't close the gap any closer than that.

The teams traded baskets in the fourth quarter but the Breezers went on to win the championship game 61 to 50.

Jenkins was high point with 37, Saens had 20, Smith 10 and Morales and David Morren had 6 points each.

For the second straight tournament Derrick Jenkins was voted most valuable player. He scored 98 points in the three games.

Saens was picked for the all tournament team. He scored 48 points in all.

### Seventh Grade Game With Tulia

The seventh graders beat Tulia 51 to 11 in their game

Monday night. Most of the starters sat the game out letting the other team members play most of the game.

### Eighth Grade Game With Tulia

The eighth graders lost to undefeated Tulia 55 to 40 Monday night.

This was the Breezers fifth game in seven days. "They are a good, good ball club and they've been playing hard games hitting all the time. It's hard after all that to match up against a strong, powerhouse team like Tulia," the coach said.

Breezers have a 13-3 season. They have lost only to Tulia and to Abernathy twice.

They face Abernathy here next Monday night which should be a fine ball game.

The Breezers are "really going to be rested up and ready to play."

The last game of the season will be at Idalou the next Monday night.



MARY LLOYD on an intercept in the seventh grade game Monday night.

## Jr. High girls triumph

Floydada Junior High girls teams picked up two big victories Monday night as the 7th graders downed Tulia 31-26 and the 8th graders rolled to a 33-16 victory.

Cindy Polanco paced the 7th graders with 14 points while Kelly Pitts and Mary Lloyd added six apiece. Elsa Garza and Cookie Jones contributed two each and Becky Lopez rounded out the scoring with one point.

The 7th graders are 5-5 on the season and 3-2 in district play.

Ruby Ledbetter had the big night for the 8th graders as she poured in 20 points. Margie Cisneros was next

in scoring for the Breezers with nine points while Amy Arredondo added four and DeAnn Collins finished with two.

The victory moved the 8th grade to a 5-0 district slate and a 13-2 season mark after a second place finish in the McAdoo tournament last week.

After falling 38-36 to Motley County in the finals of the tournament, Cisneros and Ledbetter were named to the all-tournament team.

FJHS opened the tournament with a 30-15 win over Spur as Cisneros led the scoring with 17 points. Donna Pena added seven more while Arredondo, Ledbetter

and Marilyn Smith scored two each.

In the tournament's second round, the Breezers downed Lorenzo 40-17 behind Cisneros' 11 points.

Pena and Marilyn Smith pitched in eight and six points respectively in the game while Arredondo, Ledbetter and Amy Lipham added four apiece.

Kathy Martinez, Jill Willson and Meridith Kitchens rounded out the scoring with one point apiece.

Cisneros again led the scoring in the final contest with 14 points while Arredondo and Smith dumped in 10 each. Pena finished with two.



COUNTY JUDGE CHOISE SMITH and commissioner Thomas Warren were official inspectors as the gasohol test vehicle was torn apart and inspected. Buddy Hatley was driver of the car and Gary Pate is Oden Chevrolet mechanic who did the inspection.

## Gasohol car tested

By NEAL FARMER  
Avalanche-Journal Staff  
FLOYDADA — A Floydada-based gas and oil products company Thursday completed its year-long experiment on a gasohol powered car, and a company spokesman said the vehicle's slight engine wear could help alleviate America's reliance on foreign petroleum.

"We took this car and ran it on gasohol for 50,000 miles to prove gasohol is more efficient than gasoline," C.K. "Buddy" Hatley, area representative of Swifty Distributors Inc., said.

At the end of the experiment, Hatley said, a mechanic who inspected the car's engine said there was less wear on the parts than with normal unleaded gasoline. "We felt like the engine could have run 100,000 miles," he said.

Hatley said the idea to run the test car by the private company came from the company's president, A.C. Wylie Jr. "He wanted to help alleviate the OPEC problem," Hatley said.

Gary Pate, head mechanic at Oden Chevrolet in Floydada, said the car was in excellent shape for the 51,700 miles it had traveled. "The car was not modified at all," Pate said. "It is the same as you would buy on a showroom floor."

The car used for the experiment was a

V-6 Chevrolet Citation, Pate said. The only problems with the car, Pate said, were two water pumps which had to be replaced. But he said the maintenance had nothing to do with the efficiency of the car and was not the result of the gasohol.

"There is an ongoing question as to whether gasohol affects plastic and (synthetic) rubber parts," Pate said, "but...none of the plastic or rubber parts were affected."

Pate pointed out the neoprene carburetor float, the neoprene carburetor needle and the plastic accelerator pump all were "in fine condition" in the test car.

The combustion chambers of the engine were cleaner than if the car had used unleaded gasoline, Pate said. "Both leave a carbon build-up on (parts of the engine), but gasoline leaves a yellowish-white sulfur color. There was none on this engine," the mechanic said.

He added that the vehicle's original spark plugs still were in use.

Hatley said the car was rigged with a boat-sized gasoline tank for the 200-proof denatured alcohol.

When he would come to a gas station that did not have gasohol, Hatley said,

he would pump in one gallon of the alcohol for nine gallons of unleaded gas. Gasohol can be made only with unleaded gas, he noted.

"I got at the most 33.2 miles per gallon on the highway, with an average of 27 town and country driving in the car," Hatley said. The area manager also said he talked on a citizens band radio with people from California to Maine, and other Citation owners were getting 24 to 25 miles per gallon. "I'm beating them a little," he said.

Hatley said Swifty Distributors Inc. sells gasohol in stations owned by the company in Lubbock, Plainview, Floydada and Big Spring.

"We import the alcohol from Illinois and Louisiana in 30,000 gallon tanks," he said. The company also sells the alcohol to dealers who mix the gasohol themselves, he said.

Hatley said gasohol is selling well in this part of the state. In Lubbock, gasohol is selling almost twice as well as regular gasoline in their stations, he said, and selling as well as unleaded.

The manager noted for comparison that gasohol in Big Spring is selling the same as regular gasoline, but only 75 percent as well as unleaded gasoline.

## Floydada High students test

Floydada High School parents will be interested to know that their students were involved in a testing program on November 25, 1980. The tests given to the students were:

Freshman - SRA Achievement Battery.

Sophomores - Kuder Interest Survey and the Armed Services Vocational Battery.

Juniors - Differential Aptitude Test.

Seniors - Adult Performance Level and the Armed Services Vocational Battery.

The tests are of varying types and serve multiple purposes. The tests results, along with other cumulative information, area used by the student, counselor, and other school personnel to help students in vocational and

educational decision-making.

On February 2nd we will meet with students and distribute score results. We will interpret the reports in groups but will encourage individuals who wish to visit the counselor for further information.

We will ask students to take the score reports home along with a letter to parents. We encourage parents to visit with us concerning these test reports or any other student needs.

On February 18, 1981, we will administer the Texas Assessment of Basic Skills. In May 1979 the Texas legislature mandated that minimum basic skills competency testing be instituted in the state of Texas.

Last year the competency testing was for grades 5 and

9. This year grades 1 through 9 will be tested and any 9th graders who achieve competency test last year. Preparation for the testing are being conducted.

District results will be made public. Individual reports will be confidential but reported to parents and students. Test results will be made available to students directly involved in their students' instructional program.

According to TEA 16.176, "Each school shall utilize the student performance data resulting from the assessment...to design and implement appropriate competency testing for students in the schools..."

### Close Out Sale Prices Slashed On All Western Wear

Shirts

Boots

Jackets

Vests

Pants & Jeans

Belts



**Ladies And Men's  
Making Room For Expanded  
Irrigation Supplies And Parts  
Four-R-Western Wear**

102 1/2 Bryant 652-2121

**WE REPAIR  
ALL MAKES &  
MODELS OF  
SEWING MACHINES  
AND VAC'S.**

**RICHARDSON  
SEWING CENTER**

300 Broadway  
293-3958  
Plainview

Styrofoam Thermo-Tile

## Ceiling Tile

12"x12" 1201, 1202, 1205 Patterns

# 27¢ Per Tile

Washable, Paintable, Insulates

### Paneling

All Wood Pecan 4'x8' Panels <b>\$8<sup>95</sup></b>	Hardboard Back Vinyl Walnut 4'x8' Panel <b>\$8<sup>95</sup></b>
---	---

Several Patterns All Wood 4'x8'

## \$11<sup>49</sup> To \$12<sup>49</sup>

Also Matching Moldings

### Full Glass (Tempered Glass)

## Storm Doors

# \$99<sup>95</sup>

Installation Extra

## Carpet

Large Selection Installed On 1/2" Foam Rubber

# \$9<sup>99</sup> Square Yard And Up



## Davis Lumber Co.

102 E College Lockney 652-3385



# Winds take Horns in overtime thriller

If Friday night's game with Lockney was typical, it's no wonder the bleachers were full. Fans were treated to the kind of sit-on-the-edge-of-your-seat ball that results in over times.

"This is one game the team really gets emotional for," remarked Coach Mike Cocanougher. "The gym was full, the players and coach were a nervous wreck before the game."

The game ended in a 69-69 tie. The three minute overtime resulted in one basket for the Whirlwinds and a final score of Floydada 71 to Lockney's 69.

"The team did a great job the entire ball game," Cocanougher said. "I was very proud of them. These boys have hustled all season every ball game. We don't have alot of size so we try to make up for it in quickness."

The Lockney game was close to the very end. The first quarter ended with the Horns ahead by 1 point (12-13).

Five seconds before the end of the half sophomore, Donnell Weeks made a 25 ft. jump shot to put the Winds ahead by one point.

At the end of the third quarter the score was 54-51 with the green team out in front.

"We had a hard time all night keeping Lockney's 6'5" post man, John Cummings, from scoring," Coach said. He hit a total of 32 points under the bucket.

Late in the fourth quarter each team was matching buckets.

With less than a minute Carlos Rainwater made a shot that tied the game 67 all.

Lockney brought the ball downcourt and scored on two free throws. Score was then 69-67 in Lockney's favor.

With less than 15 seconds to go sophomore, Calvin Coleman, shot from the corner and missed. Mike Self, all 5'8" of him, took the rebound and put it back in the bucket for two points to tie the game 69-69.

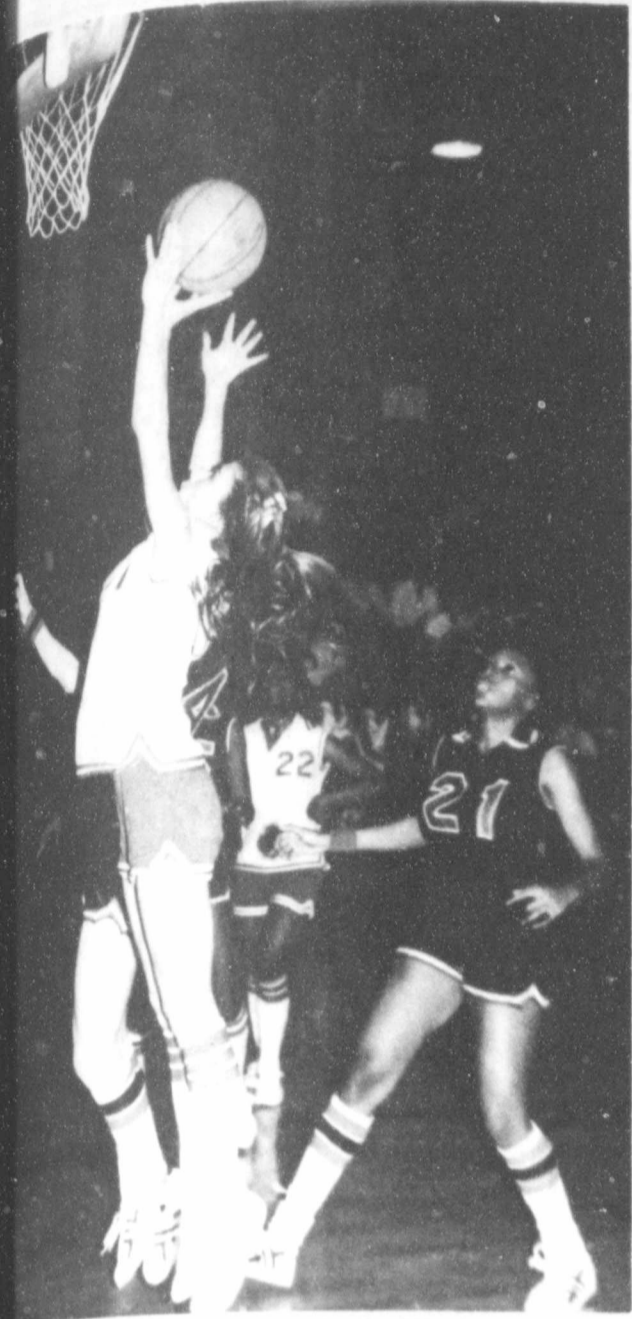
left, sophomore, Bruce Williams, got the rebound and held the ball till time ran out.

**SCORE BY QUARTERS**

	OT
Floydada	12 36 54 69 71
Lockney	13 35 51 69 69

**HIGH POINT PLAYERS**

Donell Weeks,	21 pts., 3 rebounds.
Carlos Rainwater,	20 pts., 8 rebounds.
Mike Self,	14 pts., 3 rebounds.
Andra Ledbetter,	8 pts., 4 rebounds.
Bruce Williams,	7 pts., 10 rebounds.



PELLIE FERGUSON drops one in for the Whirlettes in Friday night game against Lockney.

## Whirlettes seemed bent on upset

For the first eight minutes of Friday night, Floydada's Whirlettes seemed bent on an upset but a big second quarter spurt by Lockney put the game FHS crew at arm's length and the Lady Horns took a 64-41 victory.

Not only were the Whirlettes staying in the contest during the first quarter, but they even enjoyed a three point lead at one point.

points, 13 came in the first half surge, while Donnie Coffman pitched in 15. Hayes hit 11 for the night and Julie Frizzell scored 10.

The Whirlettes are at home Friday night with Abernathy to close out the first round action of 3-AAA play and they host Childress Tuesday evening to begin second round play.

**BOX SCORE**

FLOYDADA	fg	ft	pf	tp
Anderson	1	0	0	2
Black	4	1	4	9
Davis	6	0	5	12
Ferguson	1	0	0	2
Jones	1	0	2	2
Lipham	5	0	5	10
Pleasant	1	2	2	4
Turner	0	0	4	0
<b>Totals</b>	<b>19</b>	<b>3</b>	<b>22</b>	<b>41</b>

LOCKNEY	fg	ft	pf	tp
Evans	6	4	4	16
Sterling	3	0	0	6
Hayes	4	3	4	11
Frizzell	3	4	4	10
Coffman	7	1	3	15
Clark	0	3	2	3
Brock	0	2	1	2
Ferguson	0	0	0	0
Hill	0	0	1	0
Mathis	0	1	0	1
<b>Totals</b>	<b>23</b>	<b>18</b>	<b>19</b>	<b>64</b>

## Frosh girls win trophy

The Freshman girls basketball team brought home a second place trophy from the McAdoo Tournament.

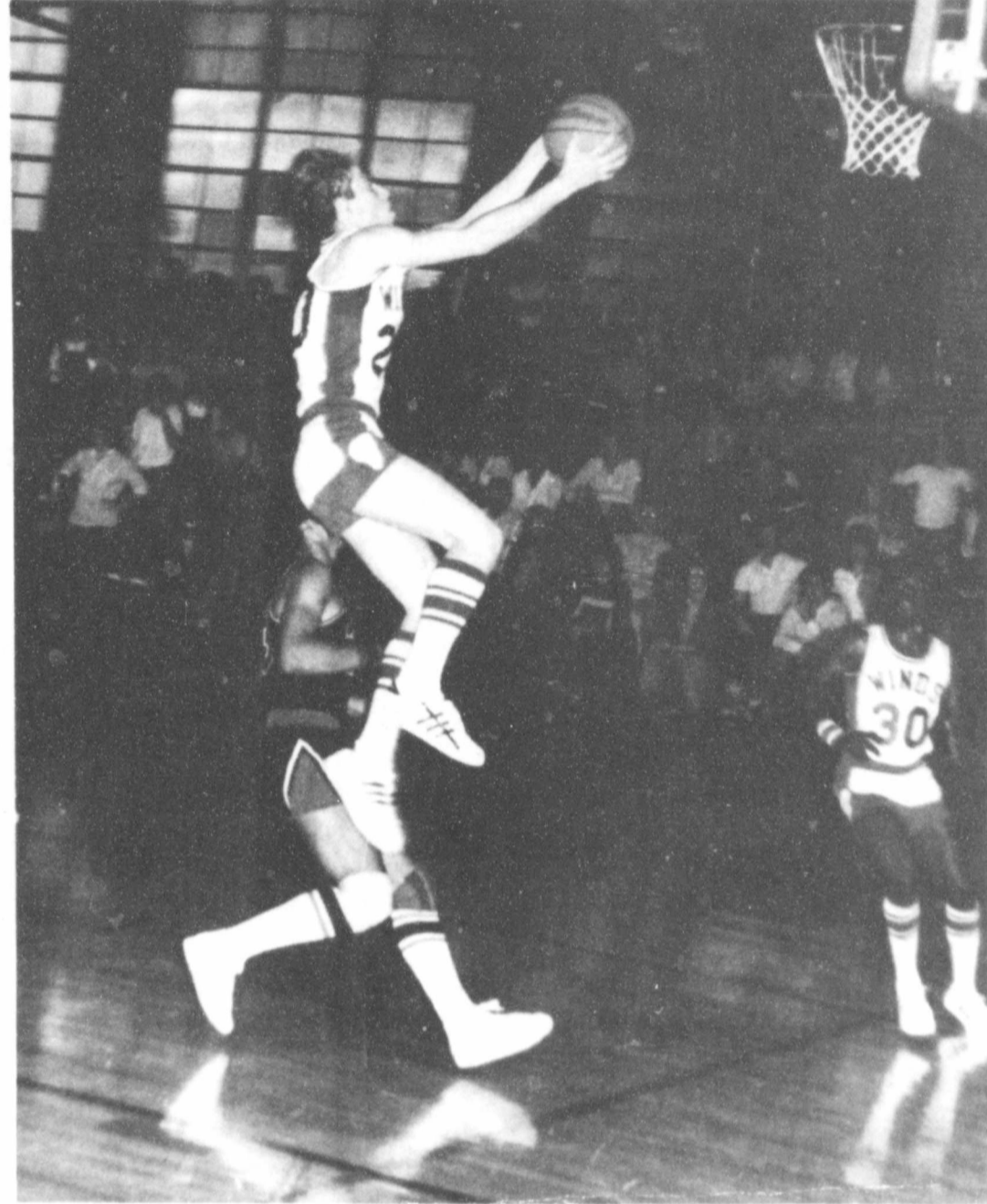
Three girls were named to the All-Tournament team. These girls are Sheresse Cannon, Wanda Rendon and Cheryl Goen.

In the first round of the tournament the Whirlettes were defeated by Idalou 25-35. Leading scorers in the game were Sheresse Cannon and Rhonda Rendon with 10 and eight points, respectively. Wanda Rendon added four points to the score. Cheryl Goen, Louannie Williams and Karen Lloyd each added a free throw.

In the second game of the tournament the Whirlettes took a victory over Spur 58-32. The girls led the entire contest and their lead was never challenged. Sheresse Cannon and Patsy Williams led the scoring with 12 apiece. Wanda Rendon sank 10 points. Cheryl Goen, Rhonda Rendon and Louannie Williams threw in six points apiece. Christy Pruitt and Vella Acy added four and two points, respectively.

In the final game of the tournament the Idalou Wildcats took a 45-25 victory over the Whirlettes. Idalou led throughout the contest. The Whirlettes pulled to within ten in the final period, but could not manage a comeback.

Wanda Rendon led all scorers with 10 points, followed closely behind by Sheresse Cannon with nine points. Cheryl Goen added three points. Rhonda Rendon added a basket and Karen Lloyd added a free throw.



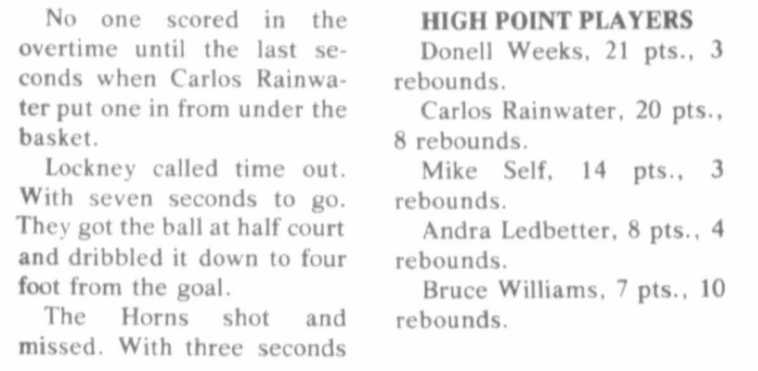
CARLOS RAINWATER is up in the air on this one as were the fans during the overtime game against the Longhorns Friday night.

## Go Team

Got Heating Or Plumbing Problems?

Call Holmes Plumbing

Austin Or Steve 983-2251 Call Day Or Night



**An Auto Accident** is a shattering experience. Without insurance, the shock can be worse. Don't take a chance on no insurance or being underinsured.

Auto insurance is just one of the Farm Bureau Members' insurance needs served at low net cost.

For this valuable protection or service call your agent.

**Floyd County Farm Bureau**  
101 S Wall St. 983-3777 Floydada  
652-2338 Lockney

TEXAS FARM BUREAU INSURANCE COS.

LeQuita Davis led the Whirlettes with 12 points for the evening while Lipham added 10 more. Nora Black added nine for the night. Terry Pleasant pitched in for more for FHS while LeQuita Anderson, Kelli Ferguson and Amy Jones contributed for two each.

Anderson led the rebounding department with seven while Lipham added six.

Evans led Lockney with 16

**agri-facts**

Jerry Perry

IF YOU WERE AROUND DURING WWII you'll remember posters asking the war effort question: "Is This Really Necessary?" Well, there's a war on to conserve fuel, and as one tactic in waging that war, the modern farmer has to ask himself the same question. Of course, trips to town are important to the question of every farm business, but there are some things you can do to cut down the costs. First, maintain a good supply of routine maintenance and operation items on the farm. Use the off season to thoroughly check, repair and maintain equipment to avoid emergency runs. Whenever possible, use the vehicle with the lowest fuel consumption to get to town. To keep total mileage to a minimum, plan to accomplish as much as possible with each trip.

Floyd County Implement  
Floydada

<p><b>Pepsi Cola</b> \$1.59 <b>Mountain Dew</b> <b>Hawaiian Punch</b> 6 Pack 12oz Cans</p>		
<p>Carton All Brands Cigarettes \$5.99</p>	<p>Dari Maid Gal Milk \$2.19</p>	<p>Large Loaf Mrs. Bairds Bread 59¢</p>
<p>JR Hats \$18.95 </p>		
<p>8 Track Tapes \$2.99</p>	<p>Herby's Sandwichs Hot Or Cold</p>	<p>Texaco Motor Oil 95¢</p>
<p><b>Hwy 70 Texaco</b></p> <p>Lockney Jean Strickland MGR. 652-8895</p>		

**No-Appreciable Wear Noted!**

Oden Chevrolet-Olds is proud to announce there was no appreciable engine wear in the 1980 Chevrolet V-6 Citation used in the Swifty Distributors Inc. Gasohol Mileage Test (51,700 Miles)

This 1980 Chevrolet Citation is the same model used in the Gasohol Test. No changes or modifications were used.

Come In & Test Drive A Chevrolet Citation Today!  
We have a good selection of Citations & other new cars now in stock!

**Oden Chevrolet-Olds, Inc.**

983-3787 FLOYDADA 221 S. Main

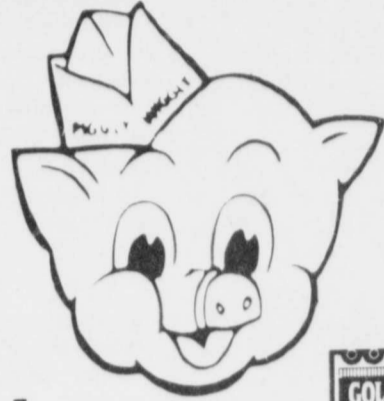
"Keep That Great GM Feeling With Genuine GM Parts!"

GM QUALITY SERVICE/PARTS GENERAL MOTORS PARTS DIVISION



# PIGGLY WIGGLY

Prices Good  
Thursday Thru Wednesday  
February 4, 1981



309 S. Wall  
Open Daily 8 To 8 Sunday 9 To 7



**PLAY WINNING DEAL...**

**NOW 50¢ OFF**  
Any Grocery Items With One  
Filled Gold Bond Bonus  
Special Booklet:  
A Grocery Bonus For You



Bone-In Full Cut  
**Beef Round Steak**  
**\$1.88**

3 lb. Box Peyton's Baconamy Bacon Ends \$1.99  
12 oz. Hormel Little Sizzlers \$1.39

12 oz. pkg. Certified, All Meat Sliced Bologna \$1.69  
12 oz. pkg. Oscar Mayer, Meat Or Beef Wilson Franks 99¢

12 oz. Pkg. Borden's Single Slices American Cheese \$1.69

Usda Grade A  
**Split Fryers**  
**69¢**

Fresh Blade Cut Boston Butt  
**Pork Roast**  
**\$1.29**

Turbot Fish Fillets \$1.99

Boneless Beef  
**Round Steak**  
**\$1.98**

Boneless Rump Or Beef Sirloin Tip  
**Roast**  
**\$2.49**

USDA Grade A  
**Box-O-Chicken**  
**59¢**

Boneless Beef Round Steak \$1.98

USDA Grade A Fryer Legs Or Thighs

USDA Grade A Fryer Breasts

Boneless Beef Round Sirloin Tip Steak

12 oz. pkg. Louis Rich Turkey Franks

Fresh Blade Cut  
**Pork Steak**  
**\$1.49**

## FIRST OF THE MONTH SAVINGS

200 ct Box Puffs Assorted Colors  
**Facial Tissue**

**69¢**

32 oz 6 Pak  
**Coke Cola**

**\$1.69**

12 oz Can Wholesun Frozen  
**Orange Juice**

**59¢**

14 oz Can Comet For Sparkle In Bath Or Kitchen  
**Cleaner**

**2/79¢**

11 1/4 oz pkg Italian Sausage, Pepperoni  
**Mr. P's Pizza**

**59¢**

2 lb Can Maryland Club Regular, Electric Perk, D  
**Coffee**

**\$4**



10 lb Bag Russet U.S. No. 1

**Potatoes**  
**\$1.99**

Sweet & Juicy  
**Anjou Pears**  
**39¢**

Low In Calories  
Broccoli **89¢**

Golden Ripe  
Bananas **3/87¢**

Large California  
**Avocados**  
**3/89¢**

Full Of Flavor 3 lbs.  
Red Onions **49¢**

New 6 roll Charmin bathroom  
Tissue **\$1.69**  
19 oz. can Wolf Without Beans  
Chili **\$1.29**  
12 oz. btl. Golden Griddle Pancake or Waffle  
Syrup **99¢**  
16 oz. btl. Realemon  
Lemon Juice **89¢**



1 gal Jug Clorox Liquid  
A Laundry Must

**Bleach**  
**79¢**



16 oz Can Green Giant Cut

**Green Beans**  
**2/75¢**



6 oz Kitchen Treat  
Chicken, Beef, Turkey

**Pot Pies**  
**4/88¢**



2 lb Bag Ore Ida Potatoes

**Hash Browns**  
**79¢**



1 lb Can Maryland Club  
Regular, Electric Perk, D

**Coffee**  
**\$2.09**



17 oz Can Green Giant Whole  
Kernal Or Cream Style

**Corn**  
**2/75¢**

17 oz Can Del Monte  
**Fruit Cocktail**

**77¢**

10 oz. btl. A-1 Steak  
Sauce **\$1.49**

16 oz. Jar Coffee Mate Coffee  
Creamer **\$1.59**

15 ct. box Hefty Tall Kitchen  
Bags **\$1.39**

46 oz. jar Vlasic Fresh Pack Kosher  
Polish Pickles  
32 oz. btl. Mop & Glo  
Floor Shine  
10 oz. pkg. Magic Garden Sliced  
Strawberries  
16 oz. pkg. Pound Betty Crocker  
Cake Mix



# South Plains News

by Mrs. Murray Julian

Plains, January 26:  
 Sunday, February 1,  
 Fred Howard and Mrs.  
 Howard will be with the  
 Plains Baptist Church  
 he will speak morning  
 night, during the ab-  
 sence of Rev. Cecil and Mrs.  
 who are leaving  
 Tuesday to be gone a few  
 at Shreveport, Louisi-  
 where they will visit  
 and Rev. Nathan  
 will speak Wednes-  
 night of this week, and  
 night of next  
 prayer meeting ser-  
 at seven o'clock.  
 Cecil and Mrs. Os-  
 will then go to Mineral  
 where he will be  
 ing a training class for  
 son-in-law, Rev. Ron  
 ers, at Mineral Wells  
 Thursday to Sunday.  
 Osborn will also be  
 at the Sunday  
 services there, and  
 will be back at the home  
 by February 8.  
 Mammie Wood went  
 day to Amarillo to visit  
 sister, Mrs. Buster Dun-  
 (Ruth) who is still in  
 care at West Texas  
 hospital. She will be another  
 weeks in a cast on her leg.  
 they are encouraged to  
 other signs of the wreck  
 appearing, and her vital  
 are better. Mrs. Wood

came home by Tulia and  
 spent the night with Mrs.  
 Bessie Myers who formerly  
 lived in this area.

Mr. and Mrs. Terry Julian  
 of Roscoe, Texas came Fri-  
 day evening to spend the  
 week-end here with Mr. and  
 Mrs. Kendis Julian and fam-  
 ily, and Mrs. M.M. Julian.  
 They report four heavy snow-  
 falls there already, and it is  
 still too wet to plow. Since  
 the flood of last September,  
 every rain or snow has kept  
 their fields wet.

Mr. and Mrs. Sylvan Kin-  
 nibrugh served birthday din-  
 ner on Sunday, January 25,  
 for their daughter, Mrs. Ted  
 Horne (Marilyn) of Plain-  
 view, and guests to share in  
 the dinner were Marilyn's  
 sister, Mrs. Beth Dickens  
 and Latham of Plainview,  
 Ted Horne and Melissa, and  
 Mr. and Mrs. Ray Dillard of  
 Lockney. Mrs. W.S. Sim-  
 mons and Mrs. John Kinn-  
 ibrugh are teaching school  
 this winter at Benjamin.

Mr. and Mrs. Frank Mc-  
 Clure attended the funeral  
 services last Tuesday, Janu-  
 ary 20th, in Lockney, for  
 Mrs. Hallie King, who had  
 passed away at the Lockney  
 Care Center on Monday.  
 Mrs. King was 88, and was  
 an old friend of the McClure  
 family.

Congratulations to Shawna-  
 da, 15, and Crystal, 4, sis-  
 ters, and daughters of Mr.  
 and Mrs. Curtis Sanders.  
 They won many honors Janu-  
 ary 17, in Canyon at West  
 Texas State University pa-  
 geant with costumes and  
 twirling performances.

We extend congratulations  
 to Mr. and Mrs. Terry Rob-  
 erts of Lockney on their  
 wedding which took place,  
 Friday, January 16, in Lock-  
 ney. The bride is the daugh-  
 ter of Mrs. Joy Reeves and  
 formerly lived in South

Plains, and Terry formerly  
 lived in South Plains with his  
 parents, Mr. and Mrs. Jim  
 Roberts. The couple left on a  
 wedding trip to Del Rio,  
 Texas and will be at home in  
 Lockney when they return.

Mr. and Mrs. Harold  
 Hamm went to Amarillo Fri-  
 day to spend the week-end  
 with their daughter and fam-  
 ily. Mr. and Mrs. Patrick  
 Huff and son, Duane.

"For the lonely one even  
 noise is a comfort."  
 Friedrich Nietzsche

**INSUR-MATION**  
 Floyd County  
 Insurance Agency Jerry Cooper  
 LOCKNEY



I do quite a lot of antique auto restoration as a hobby and have decided to build a garage-workshop entirely separate from my house but on my lot. What kind of insurance policy will cover this? You are automatically insured under your Homeowner's policy for on-the-premises structures which are used in connection with the occupancy of the dwelling, but are not attached. However, the coverage on such buildings is only 10 percent of the coverage you carry on your home. In most cases, this coverage would probably be adequate. However, since the antique cars are housed in the structure you may want to purchase an endorsement to your Homeowner's policy which will increase the coverage on the structures to their full value. Talk to your agent about additional coverage.



309 S Wall

# 1,200 Extra Gold Bond Stamps This Week!

100 EXTRA STAMPS

With This Coupon And Purchase Of  
**Minimum Of \$10**

**Purchase**

Excluding Tobacco

Coupon Good Thru Feb. 4, 1981

100 EXTRA STAMPS

With This Coupon And Purchase Of  
 3 lb

**Crisco**

Coupon Good Thru Feb. 4, 1981

100 EXTRA STAMPS

With This Coupon And Purchase Of  
 14 oz

**Hunts Catsup**

Coupon Good Thru Feb. 4, 1981

100 EXTRA STAMPS

With This Coupon And Purchase Of  
 46 oz

**Hi-C Fruit  
 Drink**

Coupon Good Thru Feb. 4, 1981

100 EXTRA STAMPS

With This Coupon And Purchase Of  
 6/12 oz Cans Regular Or Slim

**King Cola**

Coupon Good Thru Feb. 4, 1981

100 EXTRA STAMPS

With This Coupon And Purchase of  
 6½ oz Chicken Of The Sea Chunk Light

**Tuna**

Coupon Good Thru Feb. 4, 1981

100 EXTRA STAMPS

With This Coupon And Purchase of  
 5 lb Gold Medal

**Flour**

Coupon Good Thru Feb. 4, 1981

100 EXTRA STAMPS

With This Coupon And Purchase Of  
 16 oz Kraft Half Moon

**Longhorn  
 Cheese**

Coupon Good Thru Feb. 4, 1981

100 EXTRA STAMPS

With This Coupon And Purchase Of  
 4 oz Schillings

**Black Pepper**

Coupon Good Thru Feb. 4, 1981

100 EXTRA STAMPS

With This Coupon And Purchase Of  
 12 oz Picnic Pals

**Franks**

Coupon Good Thru Feb. 4, 1981

100 EXTRA STAMPS

With This Coupon And Purchase Of  
 1 gal Low Fat

**Milk**

Coupon Good Thru Feb. 4, 1981

100 EXTRA STAMPS

With This Coupon And Purchase Of  
 3 lb Or More

**Bananas**

Coupon Good Thru Feb. 4, 1981

REWARD  
 up to \$100 each  
 for Senior Rings

WANTED  
 Gold-Silver  
 Jewelry

# CASH PAID

This Weekend

# LUBBOCK BUYER IN LOCKNEY

at

**"Sechrist Radio & T.V."**

720 West Locust  
 652-2361

(7 blks west of Main Street Light)

**KP Gold & Silver**

**"Big J"**

Lubbock, Texas  
 Phone 765-8726

Green Bucks Paid  
 Gold-Silver  
 ANY FORM



Diamonds  
 Rings  
 Charms

Jewelry  
 Flatware  
 Coins

ken  
 Or Thighs  
 \$2.79  
 \$8.99  
 Round  
 Steak 99¢  
 is Rich  
 nks 88¢  
 ak  
 59¢  
 ctric Perk, Dr  
 \$4.18  
 Club  
 ASURE  
 land Club  
 c Perk, Dr  
 ee  
 9  
 ant Whole  
 Style  
 5¢  
 Kasher Din  
 \$1.45  
 \$2.25  
 iced  
 2/1  
 rocker Gold  
 99¢



## Caprock Hospital Report

January 19-26  
 Inez Roe, Floydada, adm. 1-8, dis. 1-19, Jordan.  
 Oscar Barrera, Floydada, adm. 1-11, dis. 1-21, Hong.  
 Billy Marquis, Floydada, adm. 1-12, dis. 1-23, Jordan.  
 Lillie M. Grimes, Floydada, adm. 1-15, dis. 1-22, Jordan.  
 Marie Vallejo, Floydada,

adm. 1-18, continues care, Jordan.  
 Sharon Derryberry, Floydada, adm. 1-19, dis. 1-21, Hong.  
 Baby girl Derryberry, "Shon", Floydada, adm. 1-19, dis. 1-21, Hong.  
 Leonard King, Floydada, adm. 1-19, expired, 1-24, Jordan.  
 Lydia Martinez, Crosbyton, adm. 1-22, dis. 1-24, Hong.  
 Baby boy Martinez, "Jose", Crosbyton, adm. 1-23, dis. 1-24, Hong.

Maria Falcon, Floydada, adm. 1-23, dis. 1-24, Hong.  
 Lucina Sanchez, Plainview, adm. 1-23, dis. 1-25, Hong.

Baby girl Sanchez, "Shaila", Plainview, adm. 1-24, dis. 1-25, Hong.

Jessie Reeves, Floydada, adm. 1-25, continues care, Jordan.  
 E.A. Noland, Floydada, adm. 1-24, continues care, Jordan.

### All-Risk Federal Crop Insurance is now available from

Before you spend a fortune planting your crops this year, think about protecting yourself with All-Risk Federal Crop Insurance. Just call Cates & Dawson Insurance at 983-5322. Find out how the benefits of all-risk insurance can be tailored to your farming operation. All-Risk Federal Crop Insurance. In good years and bad, it pays off.

**All-Risk Federal Crop Insurance**  
 David Cates  
 983-3273  
 Bill Dawson  
 983-2316  
 231 W. California

## Nursing course to be given

The Licensed Vocational Nursing (L.V.N.) Aptitude Exam will be given on Friday, January 30, beginning at 8:30 a.m. and finishing by 12 noon.

The test site will be in room 101 of the Wheeler Building at South Plains College, Plainview, 708 Yonkers.

This exam is required for

admission into the Fall 1981 class of L.V.N. students at South Plains College, Plainview.

The charge for the exam is \$5.00 and must be paid at the time of the test.

If you have any further questions concerning the exam or the L.V.N. program, call South Plains College, Plainview at 293-3605.



DARLENE TORREZ [r] is the manager for the new Town and Country food store which recently opened on Highway 70. Jimmy Dean [center] is the area manager for Town and Country and the cook at the new store is Olivia Zapata [l].

## Town and Country grand opening in progress

Town and Country food stores opened their 19th store in this district on December 7. Located on Highway 70 the quick-stop store is in the same building formerly occupied by Minit Mart.

The Town and Country chain of stores is based in San Angelo.

"The stores were started in central Texas," said area supervisor, Jimmy Dean, "then they moved them to San Angelo and it's been the headquarters ever since."

"We'd like everyone to know that this is a new store," said Darlene Torrez, store manager. "It is all new stock and we

offer hot food." The cook is Olivia Zapata. They feature food already prepared and in the warming case or will cook to order at a customers request.

The Town and Country stores have only offered hot food for the past year. Food items include: fried chicken, corn dogs, hot links, German sausage, burritos, fish and fries.

Both Darlene and Olivia are from this area. "One special thing we will have is fresh coffee all day long," they said. The store will be open from 6:30 a.m. until midnight.



# ATTEND THE RELIGIOUS SERVICE OF YOUR CHOICE THIS WEEK



### THE LIVING GOD

"My soul thirsteth for God, for the living God" (Psa. 42:2). The "God is dead" theory has little true comfort or satisfaction for men in trouble or sorrow.

For years we supposed that the term "the living God," in the above passage, had reference to God's power to help, in contrast to the impotence of dead heathen idols. A careful examination of the context, however, leads us to believe that it has rather to do with His ability to respond. The gods of the

age says nothing of this. Palestine is a dry land and entirely apart from being hunted down, a deer might well pant for streams of running water.

Be this as it may, the stag, in this passage, is not seeking for help; he is thirsting for refreshment and so does the psalmist long for the refreshment of fellowship with God, the living God.

How wonderful it is that we may know the living God through faith in Christ! Indeed, He bids men come into His presence and com-

munions with Him in view of that fact that Christ died to take away the barrier of sin. This is why the Apostle Paul declares in Hebrews 10:19: "Having therefore, brethren, boldness to enter into the holiest by the blood of Jesus, by a new and living way, which He hath consecrated for us, through the veil, that is to say, His flesh." In other words, by His death at Calvary our Lord tore away the veil that kept us from entering into God's presence, and now says: "Let us therefore come boldly unto the throne of grace . . . and find grace to help in time of need" (Heb. 4:16). Yes, God is A LIVING GOD.

heathen, by contrast, were like children's dolls; they could not even change their countenance or respond in any way.

"The idols of the heathen are silver and gold, the work of men's hands. They have mouths but they speak not; eyes have they, but they see not; they have ears, but they hear not, neither is there any breath in their mouths" (Psa. 135:15,17).

But the true God is a living God. He does see, hear and respond. The psalmist in Psalm 42 compares himself to a stag, panting with thirst. It is sometimes supposed that the scene is one of a stag pursued in the chase, but the pass-

- CALVARY BAPTIST**  
 Rev. Hollis Payne  
 Sunday School . . . . . 9:45 a.m.  
 Morning Worship . . . . . 11:00 a.m.  
 Bible Study . . . . . 6:00 p.m.  
 Evening Worship . . . . . 7:00 p.m.  
 Wednesday Evening . . . . . 7:00 p.m.
- ST. MARY MAGDALEN CATHOLIC CHURCH**  
 Joe Bixenman, Priest
- SUNDAY**  
 Mass . . . . . 11:30 a.m.
- MONDAY**  
 Mass and Ultreya . . . . . 9 p.m.
- THURSDAY**  
 Mass . . . . . 9 p.m.

- WEST SIDE CHURCH OF CHRIST**  
 Sunday Morning Worship . . . . . 10:30 a.m.  
 Sunday Evening . . . . . 6:00 p.m.  
 Wednesday Evening . . . . . 7:00 p.m.
- FIRST UNITED METHODIST CHURCH**  
 Jim Smith, Pastor  
 Sunday School . . . . . 9:45 a.m.  
 Morning Worship . . . . . 11:00 a.m.  
 Youth Fellowship . . . . . 5:00 p.m.  
 Sunday Evening Worship . . . . . 6:00 p.m.

- MT. ZION BAPTIST CHURCH**  
 Otis Cooks, Jr., Pastor  
 Sunday School . . . . . 10:00 a.m.  
 Morning Worship . . . . . 11:00 a.m.  
 Bible Study . . . . . 4:00 p.m.  
 Evening Worship . . . . . 5:00 p.m.  
 Wednesday Prayer Meeting . . . . . 8:00 p.m.

- FIRST ASSEMBLY OF GOD CHURCH**  
 Jim Guess  
 Sunday Morning . . . . . 9:45 a.m.  
 Sunday Youth Service . . . . . 5:00 p.m.  
 Sunday Evening Evangelistic . . . . . 6:00 p.m.  
 Wednesday Night Service . . . . . 7:00 p.m.  
 Thursday Womens Missionary . . . . . 9:00 a.m.

- SOUTH PLAINS BAPTIST CHURCH**  
 Rev. Fred Blake  
 Sunday School . . . . . 10:00 a.m.  
 Morning Worship . . . . . 11:00 a.m.  
 Training Union . . . . . 6:00 p.m.  
 Evening Worship . . . . . 7:00 p.m.

- CARR'S CHAPEL**  
 Rev. Robert Brown  
 Petersburg, Pastor  
 Services Every Sunday  
 Morning Worship . . . . . 9:30 a.m.  
 Sunday School . . . . . 10:30 a.m.  
 No Evening Services

- VICTORY BAPTIST CHURCH**  
 Gary Grant, Pastor  
 Sunday School . . . . . 10:00 a.m.  
 Morning Worship . . . . . 11:00 a.m.  
 Evening Worship . . . . . 7:00 p.m.  
 Wednesday Services . . . . . 7:00 p.m.

- CEDAR HILL ASSEMBLY OF GOD CHURCH**  
 Rev. Vance Mitchell  
 Sunday School . . . . . 10 a.m.  
 Morning Worship . . . . . 11 a.m.  
 Evangelistic Service . . . . . 6 p.m.  
 Wednesday Bible Study . . . . . 7 p.m.

- NEW SALEM PRIMITIVE BAPTIST CHURCH**  
 Joe M. Jackson  
 Sunday Congregational Singing . . . . . 10:00 a.m.  
 Morning Worship . . . . . 10:30 a.m.  
 Evening Worship . . . . . 6:30 p.m.
- SPANISH BAPTIST MISSION**  
 Sunday School . . . . . 9:45 a.m.  
 Morning Worship . . . . . 11:00 a.m.  
 Training Union . . . . . 6:00 p.m.  
 Evening Worship . . . . . 7:00 p.m.

- BIBLE BAPTIST CHURCH**  
 BOB CHAPMAN  
 Sunday School . . . . . 10:00 a.m.  
 Morning Worship . . . . . 10:45 a.m.  
 Sunday Evening Prayer Meeting . . . . . 6:00 p.m.  
 Sunday Evening Services . . . . . 6:30 p.m.  
 Wednesday Evening Services . . . . . 7:30 p.m.

- NEW HOPE PRIMITIVE CHURCH**  
 Beathel Jeffrey, Pastor  
 2nd Sunday Morning Worship . . . . . 11:00 a.m.

- CITY PARK CHURCH OF CHRIST**  
 Perry Zumwalt, Minister  
 Sunday Bible Study . . . . . 9:30 a.m.  
 Morning Worship . . . . . 10:30 a.m.  
 Evening Worship . . . . . 6:00 p.m.  
 Wednesday Bible Study . . . . . 7:30 p.m.  
 Ladies Bible Study, Wednesday . . . . . 9:30 a.m.

- FIRST CHRISTIAN CHURCH**  
 Sunday School . . . . . 10:00 a.m.  
 Morning Worship . . . . . 11:00 a.m.
- FIRST BAPTIST CHURCH**  
 F.C. Bradley, Pastor  
 Sunday School . . . . . 9:45 a.m.  
 Morning Worship . . . . . 11:00 a.m.  
 Church Training . . . . . 6:00 p.m.  
 Evening Worship . . . . . 7:00 p.m.
- CEDAR HILL BAPTIST CHURCH**  
 Sunday School . . . . . 10:00 a.m.  
 Morning Worship . . . . . 11:00 a.m.  
 Evening Worship . . . . . 7:00 p.m.

- THE CHURCH OF THE NAZARENE**  
 William E. Clark, Pastor  
 Sunday School . . . . . 9:45 a.m.  
 Morning Worship . . . . . 10:45 a.m.  
 Evening Worship . . . . . 6:00 p.m.  
 Wednesday Bible Study . . . . . 7:00 p.m.

- CUMBERLAND PRESBYTERIAN CHURCH**  
 Sunday School . . . . . 9:45 a.m.  
 Bible Study . . . . . 6:30 p.m.
- DOUGHERTY BAPTIST CHURCH**  
 Jim DeWese, Pastor  
 Sunday Services . . . . . 10:00 a.m.  
 Morning Worship . . . . . 11:00 a.m.  
 Evening Worship . . . . . 7:00 p.m.

- Adams Well Service
- Consumers Fuel Assoc.
- Thompson Pharmacy
- Floydada Nursing Home
- Gilbreath Exxon

- City Auto Inc.
- Parker Furniture
- Floydada Co-op Gins
- Floyd County Hesperian

### SPONSORED BY THE FOLLOWING FIRMS:

- Production Credit Assoc.
- Edmiston Plumbing
- Norrell Tractor Parts Co.

- Reed Ford Sales
- Bishop-Ramsey Pharmacy
- Martin & Company
- Floydada Real Estate & Insurance
- Russell's Equipment & Supply

## Math course offered

A mathematics course in viewing fractions, algebra and geometry is being offered this spring by the Continuing Education Center at Texas Tech University. The course, designed to help people returning to college to develop skills in math, will be held in Room 222, Homecoming Center, from February 5 through February 19, 1981. The cost is \$40. For more information contact Barbara Dietrich at 742-2354.

Drawing Nightly Wednesday-Saturday  
**Free Carnivals**  
 Admission  
 at the 1981 Floyd County Fair  
**PRIDE OF TEXAS CARNIVAL**







# Floydada High hosts all-day talk-a-thon

Students dressed in suits and ties wandering around the halls at Floydada High School muttering to themselves and gesticulating wildly are all indications that a speech tournament is at hand.

This past weekend Floydada hosted 17 area schools for an all-day talk-a-thon that ended with Muleshoe placing first. Shallowater came in second and Brownfield was third.

Forty-two local people served as

contest judges.

"They were really great," Joe Willis, head of the high school speech department said. "Not one of those volunteers missed a contest they were supposed to judge."

The invitational tournament included the classifications of; prose, informative speakers, duet, debate, poetry and persuasive speaking.



WANDERING AROUND THE HALLS, muttering and gesticulating indicated a speech tournament was being held this past weekend at Floydada High School. Forty-two local people served as contest judges.

## Available To Members Only!



When you join Farm Bureau, you become eligible to participate in a wide variety of economic services.

These include:

### INSURANCE—

- \*Auto--liability, collision, medical and uninsured motorist endorsement.
- \*Fire--homeowners, farm and ranch owners, and commercial.
- \*Liability--farmers comprehensive, personal and employers liability.
- \*Crop hail
- \*Life

GROUP PURCHASE PROGRAM--Safemark tires and batteries. Volume buying and high quality make for a real bargain.

GROUP MEDICAL--Blue Cross/Blue Shield hospital and surgical benefits.

Farm Bureau service programs were instituted to provide real services to members at the lowest possible cost.

JOIN FARM BUREAU TODAY!

Floyd County Farm Bureau  
101 South Wall St Floydada TX  
983-3777 Floydada 652-2338 Lockney

# Hey, Floydada! You ain't seen nothin' yet!

Outstanding movies, and one-of-a-kind spectaculars produced for America's most exciting pay TV.

It's Showtime, the biggest, brightest, brashiest, brassiest entertainment channel. And it's here.

Even if you already have pay TV, you don't have everything Showtime offers. Major movies from Hollywood and around the world—uncut, unedited and uninterrupted by commercials. After-hours movies. And more. All the things that put Showtime in a class by itself. Razzle-dazzle specials produced by Showtime for Showtime subscribers.

Specials like spellbinding Broadway shows, shimmering Las Vegas revues, concerts with the biggest names in Show Biz, and uncensored comedy. At least twelve hours daily of the brightest entertainment. All like you've never seen before.

Showtime will have you on the edge of your seat, laughing your head off, crying your heart out, biting your nails, sighing, cheering, and applauding seven days a week.



Introducing  
**SHOWTIME**

TELEVISION WORTH PAYING FOR™  
in Place Of H.B.O.

From Floydada Cable T.V.

# Winter Clothing On Sale At 1/2 Price

Accepts Visa And Master Charge  
No Lay-A-Ways, Refunds Or Exchanges.

**Kristi's**  
614 Broadway Plainview  
296-7254

## Public Notices

### NOTICE TO BIDDERS STATE OF TEXAS COUNTY OF FLOYD

Notice is hereby given that the Commissioners Court of Floyd County, Texas will receive bids for the purchase of the following described equipment until 10:00 A.M., Monday, February 9, 1981, being the regular February Term, 1981, of said Court; at which time all bids will be opened and read aloud; said bids for purchase of the equipment as follows:

New 1981 truck - Chevrolet, Ford, or GMC equipped with the following equipment: Advance price sheet, long-wide fleetside bed pickup, Rear axle 2.73 ratio, Heavy duty rear springs, Vacuum power brakes, 4.1 liter (250 CID 2 BBL) L6 Engine, 4-Speed manual transmission, Standard Emission system, Power Steering, Cigarette lighter, AM radio, Heavy duty radiator, P225/75R15 TBLS HWY S/B RAD B/W, Gages - Voltmeter, Oil, and Temp. Rear bumper Heavy duty Hitch Type.

Payment will be made in cash upon approval of truck.

All bids shall be sealed when presented and will be opened at the above time and date. The Court reserves the right to reject any and all bids and waive all formalities.

This the 5 day of January 1981.

Choise Smith  
Floyd County Judge  
2-5c

**10% OFF ON ALL PARTS AND LABOR DURING JANUARY**

Ross Luttrell, Service Manager for Case Power and Equipment, invites you to take advantage of a 10% off sale on all parts and labor during the month of January. Ron has over 30 years experience as the service manager for Case Power and Equipment in Lubbock. He and all the Case professionals will service your farm and construction equipment and save you money too.

If you have been needing to get your equipment fixed but haven't had time, now is the perfect opportunity. Come in today and let Ross and the Case professionals take care of your equipment.

Case Power and Equipment

Lubbock 3302 Slaton Hwy 745-4451  
Lamesa 902 S. Dallas 872-5861  
Floydada 101 South 12th 983-2836

## Public Notice

Plainview Schools will accept bids for the purchase of an Excel Hustler Tractor/Mower and Equipment, and Paving Repairs at Various Campuses and Parking Areas.

Sealed bids will be received until 4:00 p.m. on February 9, 1981. Bids should be sent or delivered to the Administration Building, 912 Portland, Plainview, Texas 79072.

The bids will be opened and accepted or rejected by the regular Board meeting to be held in the Administration Building, 912 Portland, Plainview, Texas at 7:30 p.m. on February 9, 1981.

Information concerning the bid forms and specifications may be obtained by contacting the Business Office, Administration Building, 912 Portland, Plainview, Texas 79072.

This is a solicitation for bids and is not an offer. The Board reserves the right to accept or reject any and all bids and waive all informalities.

John O. Peck, Assistant Superintendent  
Plainview Independent School District

NOTICE TO ANY BANKING CORPORATION, ASSOCIATION, OR INDIVIDUAL BANKER  
FLOYD COUNTY, TEXAS:

NOTICE is hereby given that the Commissioners Court of Floyd County, Texas will enter into a contract for the depositing of public funds of Floyd County in a bank of Floyd County for the years 1981-82, in accordance with Articles 2544 to 2550, Vernon's Civil Statutes of the State of Texas, as revised.

ANY Banking Corporation, Association, or Individual Banker in Floyd County desiring to be designated as the depository shall make and deliver to the County Auditor an application applying for such funds. Said application shall state the amount of paid up capital stock and surplus of said bank and shall show the financial condition of said bank at the date of said application which shall be delivered to the County Judge on or before February 9, 1981 at 10:00 o'clock a.m. Said application shall be accompanied by a certified check for not less than one per cent of the County's revenue of the preceding year, the amount of which may be obtained from the County Auditor prior to the date designated for the opening of applications.

DATED this 15 day of January, A.D. 1981.

Choise Smith, County Auditor  
Floyd County, Texas

January 22, 1981

### GENERAL REVENUE SHARING

Floyd County residents are invited to attend a public hearing on February 13, 1981 in the county auditor's office to give oral and written suggestions on how the County's General Revenue Sharing Funds of Floyd County will be allocated. The County will receive an estimated \$86,784.00 from the U.S. Treasury from October 1, 1981 through September 30, 1981.

### NOTICE TO BIDDERS

STATE OF TEXAS  
COUNTY OF FLOYD

Notice is hereby given that the Commissioners Court of Floyd County, Texas will receive sealed bids for the purchase of the following described equipment until 10:00 A.M., Monday, February 9, 1981, being the regular February Term, 1981, of said Court; at which time all bids will be opened and read aloud; said bids for purchase of the equipment as follows:

(1) Diesel Four-Wheel drive articulated steering production) not less than 95 H.P. net, electric brakes, equipped with enclosed POPS cab, Heater, defroster, and rear windshield wipers, 2 cubic yd. capacity bucket, Breakout Force 16,000 lbs or more. Transmission Torque converter with 3 speed minimum power shift drive planetary gear type, front axle "no spin" or equivalent Power steering, Brakes hydraulic wet disc or equivalent, Power steering, Tires 17.5 x 25-12 Ply Loader Tire Adjustable cushion seat, engine side shields, front and rear fenders, all gauges necessary for operator, Cold-weather start Air Precleaner, front and rear working lights, Flashing Turn signals. Manufacturer to provide one-year warranty.

The Commissioners Court offers as trade in one Honda gas loader, which can be seen at County Barn, Plainview, Texas.

Payment will be made in cash upon approval of vehicle.

All bids shall be sealed when presented and will be opened at the above time and date. The Court reserves the right to reject any and all bids, and waive all formalities.

This the 22nd day of January, 1981.

Choise Smith, Floyd County Judge

January 22, 1981

### NOTICE TO BIDDERS STATE OF TEXAS COUNTY OF FLOYD

Notice is hereby given that the Commissioners Court of Floyd County, Texas will receive sealed bids for the purchase of the following described equipment until 10:00 A.M., Monday, February 9, 1981, being the regular February Term, 1981, of said bids for the sale of the equipment as follows:

(1) 1961 Ford dump Truck motor No. F60CR182617, as seen at County Barn, Floydada, Texas

(1) D-G705 MM Wheatland (standard) Tractor serial number 23900137. Can be seen at Commissioners house 8 miles east and 2 miles east of Floydada.

Payment will be made in cash upon approval of tractor and truck.

All bids shall be sealed when presented and will be opened at the above time and date. The Court reserves the right to reject any and all bids, and waive all formalities.

This the 22nd day of January, 1981.

Choise Smith, Floyd County Judge



# If It's Results You Want-It's CLASSIFIED ADS You Need

## REAL ESTATE

**Bedroom.** 1 bath, single garage with central heat. Central heat. W.N. Anderson. TFC 2198, call at noon or night.

**Farms & Acre**  
Small acreage with hog facilities. James McNeill, 983-2198, call at noon or night. TFC

**SALE:** Three bedroom, living area. 983-3767. tfc

**SALE:** Several good two bedroom houses. Call Real Estate. Contact Bond, 983-2151 or tfc 2573.

**Bedroom, brick home** rental unit on large lot. Call The First National Bank of Floydada, tfc 3717.

**Store and 3 bedroom** on 1/2 acre land for sale. Make an offer. (806) 2-12c

**Bedroom, 2 bath home** to be moved, 1900 square feet. Needs repair, near Floydada. Make an offer. (806) 2-12c

**Bedroom, 2 bath home** to be moved, 1900 square feet. Needs repair, near Floydada. Make an offer. (806) 2-12c

**3 and 4 in the 900 block** West Houston. 983-3903. 1-29c

**Bedroom house, central air** heat. Good location. Elmer Swaffar, 983-2051, day. TFC

**IRRIGATED FARM.** 10 miles west Floydada. Call Doris McLain after 4:00 P.M. or weekends. 983-3994. TFC

**2 BEDROOM HOUSE,** approximately 1,400 sq. ft. corner lot. Good location. Furniture included. Storm cellar and garage. Only \$16,500. Randall King Real Estate 983-2707. 2-12c

**WANTED TO BUY**  
WANTED TO BUY irrigated or dryland farm in Floyd or surrounding area. Write Box XRO, c/o Hesperian, Box 700, Floydada. tfc

**320 ACRES Farm Land** 8 miles Northeast of Floydada. Call 806-293-4092 or 806-296-5556. 2-12p

**WANTED TO BUY**  
WANTED TO BUY irrigated or dryland farm in Floyd or surrounding area. Write Box XRO, c/o Hesperian, Box 700, Floydada. tfc

**320 ACRES Farm Land** 8 miles Northeast of Floydada. Call 806-293-4092 or 806-296-5556. 2-12p

**WANTED TO BUY**  
WANTED TO BUY irrigated or dryland farm in Floyd or surrounding area. Write Box XRO, c/o Hesperian, Box 700, Floydada. tfc

**WANTED TO BUY**  
WANTED TO BUY irrigated or dryland farm in Floyd or surrounding area. Write Box XRO, c/o Hesperian, Box 700, Floydada. tfc

**WANTED TO BUY**  
WANTED TO BUY irrigated or dryland farm in Floyd or surrounding area. Write Box XRO, c/o Hesperian, Box 700, Floydada. tfc

**WANTED TO BUY**  
WANTED TO BUY irrigated or dryland farm in Floyd or surrounding area. Write Box XRO, c/o Hesperian, Box 700, Floydada. tfc

**WANTED TO BUY**  
WANTED TO BUY irrigated or dryland farm in Floyd or surrounding area. Write Box XRO, c/o Hesperian, Box 700, Floydada. tfc

**WANTED TO BUY**  
WANTED TO BUY irrigated or dryland farm in Floyd or surrounding area. Write Box XRO, c/o Hesperian, Box 700, Floydada. tfc

**WANTED TO BUY**  
WANTED TO BUY irrigated or dryland farm in Floyd or surrounding area. Write Box XRO, c/o Hesperian, Box 700, Floydada. tfc

**WANTED TO BUY**  
WANTED TO BUY irrigated or dryland farm in Floyd or surrounding area. Write Box XRO, c/o Hesperian, Box 700, Floydada. tfc

**WANTED TO BUY**  
WANTED TO BUY irrigated or dryland farm in Floyd or surrounding area. Write Box XRO, c/o Hesperian, Box 700, Floydada. tfc

**WANTED TO BUY**  
WANTED TO BUY irrigated or dryland farm in Floyd or surrounding area. Write Box XRO, c/o Hesperian, Box 700, Floydada. tfc

**WANTED TO BUY**  
WANTED TO BUY irrigated or dryland farm in Floyd or surrounding area. Write Box XRO, c/o Hesperian, Box 700, Floydada. tfc

**WANTED TO BUY**  
WANTED TO BUY irrigated or dryland farm in Floyd or surrounding area. Write Box XRO, c/o Hesperian, Box 700, Floydada. tfc

**WANTED TO BUY**  
WANTED TO BUY irrigated or dryland farm in Floyd or surrounding area. Write Box XRO, c/o Hesperian, Box 700, Floydada. tfc

**WANTED TO BUY**  
WANTED TO BUY irrigated or dryland farm in Floyd or surrounding area. Write Box XRO, c/o Hesperian, Box 700, Floydada. tfc

**WANTED TO BUY**  
WANTED TO BUY irrigated or dryland farm in Floyd or surrounding area. Write Box XRO, c/o Hesperian, Box 700, Floydada. tfc

**WANTED TO BUY**  
WANTED TO BUY irrigated or dryland farm in Floyd or surrounding area. Write Box XRO, c/o Hesperian, Box 700, Floydada. tfc

**WANTED TO BUY**  
WANTED TO BUY irrigated or dryland farm in Floyd or surrounding area. Write Box XRO, c/o Hesperian, Box 700, Floydada. tfc

## BUSINESS SERVICES

**Adams Well Service** Complete Irrigation Service. All sizes submergible pumps in stock. One day service. 983-5003. tfc

**INTERIOR PAINTING WALL PAPERING**  
Call Rena Turner or Nancy Mayo, 983-5130 or 983-2667. tfc

**JACKSON ELECTRIC** Residential & Commercial Serving Rural Communities At 652-2737 tfc

**"Carpet Need Cleaning?"** Let me do the work for you. Dry foam, 10 cents sq. foot. Also home and auto upholstery. Call Jack Moore 983-3033, after 5 p.m. tfc

**For Interior Painting and Wallpapering** Call Sue Casey 652-3414

**Income Tax Service Mitchell Tax Service** 983-3692 tfc

**Land Leveling, terraces, bench leveling, and pump pits, all types of dirt work for soil and water conservation.** Dewie Parson 983-2646, Fred Parson, 983-2074. tfc

**POOLER WELL SERVICE AND RADIATOR SHOP** Irrigation, domestic, and windmill service. 407 E. Houston, 983-5610 or 983-2285. tfc

**Income Tax Service Mitchell Tax Service** 983-3692 tfc

**Land Leveling, terraces, bench leveling, and pump pits, all types of dirt work for soil and water conservation.** Dewie Parson 983-2646, Fred Parson, 983-2074. tfc

**Income Tax Service Mitchell Tax Service** 983-3692 tfc

**Land Leveling, terraces, bench leveling, and pump pits, all types of dirt work for soil and water conservation.** Dewie Parson 983-2646, Fred Parson, 983-2074. tfc

**Income Tax Service Mitchell Tax Service** 983-3692 tfc

**Land Leveling, terraces, bench leveling, and pump pits, all types of dirt work for soil and water conservation.** Dewie Parson 983-2646, Fred Parson, 983-2074. tfc

**Income Tax Service Mitchell Tax Service** 983-3692 tfc

**Land Leveling, terraces, bench leveling, and pump pits, all types of dirt work for soil and water conservation.** Dewie Parson 983-2646, Fred Parson, 983-2074. tfc

**Income Tax Service Mitchell Tax Service** 983-3692 tfc

**Land Leveling, terraces, bench leveling, and pump pits, all types of dirt work for soil and water conservation.** Dewie Parson 983-2646, Fred Parson, 983-2074. tfc

**Income Tax Service Mitchell Tax Service** 983-3692 tfc

**Land Leveling, terraces, bench leveling, and pump pits, all types of dirt work for soil and water conservation.** Dewie Parson 983-2646, Fred Parson, 983-2074. tfc

**Income Tax Service Mitchell Tax Service** 983-3692 tfc

**Land Leveling, terraces, bench leveling, and pump pits, all types of dirt work for soil and water conservation.** Dewie Parson 983-2646, Fred Parson, 983-2074. tfc

**Income Tax Service Mitchell Tax Service** 983-3692 tfc

**Land Leveling, terraces, bench leveling, and pump pits, all types of dirt work for soil and water conservation.** Dewie Parson 983-2646, Fred Parson, 983-2074. tfc

**Income Tax Service Mitchell Tax Service** 983-3692 tfc

## REAL ESTATE FOR SALE

**NEW LISTING....** Charming 2 bedroom, 1 bath, fireplace and living area. Brick. Excellent condition. Close to schools. **GATHER 'ROUND THE FIRE** for popping corn and watching T.V. Extra nice, 3 bedroom, 2 bath, beautiful yard. **CONVENIENT LOCATION TO DOWNTOWN...** Small 2 bedroom. **PRESTIGIOUS OLDER HOME...** 3 bedroom, 2 bath, guest house or rental property in back will help make payments. **GOOD STARTER HOME...** 2 bedroom, good location. **WANT TO GET AWAY FROM THE HUSTLE & BUSTLE OF CITY LIVING?** Let me show you how much home you money can buy just a hop and skip outside the city limits. 3 bedroom, 2 bath. **INVESTMENT PROPERTY...** 7 apartments plus house for manager. Good monthly income. Call Sam Hale at 983-3261 Hale Insurance & Real Estate, Floydada. tfc

**FOR SALE**  
22 ft. Coachman travel trailer for sale. 1979, like new. Call 983-2285, after 6 call 983-5610. tfc

**"WE SELL SLEEP"** Direct Mattress Co. New or renovated, for appointment call City Trim Shop, 983-2332, Floydada. tfc

**HAVE IN STOCK:** 18 oz. Window Cleaner, 12 oz. Buff up, 16 oz. Drain Mate, 32 fl. oz. Mop Mate, 4.5 oz. Never Stick, 32 oz. L.O.C., 18 oz. Silicane Glaze, 48 oz. Bleach, 18 oz. Oven Cleaner, 6 lb. Laundry Compound. Call Melissa Gleason at 983-5750 after 5 p.m. tfp

**Slightly used, good condition** wheel chair. Call 983-5000. TFC

**FOR SALE:** 450 ft. 16 in. used irrigation well casing. 652-3567. LTFC

**23 channel Sharp C.B.,** underdash mounting bracket and antenna. \$50.00. 983-5348. 2-5c

**AUTOMATIC GARAGE** door opener for single or double doors with mounting hardware and 3 operators \$100. Call Ray Reed, Res. 983-3998, office 983-3761. 2-5c

**24 FT. CAMPER** trailer, self contained. Excellent condition. Jim's Trailer Park, Floydada, 983-3848. 2-5c

**EXTRA GOOD BULLS.** Registered and pure bred Brangus. Registered Pooled Herefords. Registered and pure bred Angus. 1 registered Charolais, 22 months. R. B. McCravy, 806-253-2048, Ralls, Texas. 1-29c

**ETHAN ALLEN** maple furniture, nearly new and half price; Twin beds, mattress and box springs, dressing table mirror, and night stand. Also solid oak buffet with bookcase top and fruitwood finish. Call 652-3446. L1-29p

**Firewood**  
Oak \$120  
Mesquite \$75  
Call 652-3810  
Don McCready  
L2-12p

**Steam Carpet Cleaners** For Rent \$12.00 - \$15.00 per day 3 available 12-19c

**Can You Use Some Extra Money Let Us Help!!!!**  
WE BUY SCRAP IRON, OLD JUNKERS, AND FREE PICKUP  
Call 983-5277

**STOP PAINTING**  
Cover all outside walls and overhang with U.S. Steel Products  
FREE ESTIMATES  
Stan-By Steel Siding  
200 S. Broadway  
Plainview, Texas  
Phone: 293-9330  
Lfc

**STORAGE SPACE**  
BOATS, FURNITURE, ANYTHING, ETC. BY THE MONTH OR SIX MONTH 10% DISCOUNT.  
WEST TEXAS MINI STORAGE  
983-5573 OR 983-2151

**FREE:** Half black labrador puppies. Will deliver. 652-3580 after 3:00. L2-12c

**TO GIVE AWAY:** Part white Samoyed. Call 983-2957 after 6 p.m.

**Auto. Accidents DO Happen...**  
If one happens to you, be protected. Our car insurance offers coverage to meet your special needs — repairs to personal liability.  
**BAKER Insurance Agency**  
17 W. Calif.  
Ph. 983-3270

**FOR RENT:** 60'x24' building. Partial partition and counter optional. Next door to Hesperian. Call 983-3737.

**FOR RENT:** One bedroom apartment. 108 N. Main, call 652-3813. Lfc

**FOR RENT:** 60'x24' building. Partial partition and counter optional. Next door to Hesperian. Call 983-3737.

**FOR RENT:** One bedroom apartment. 108 N. Main, call 652-3813. Lfc

**FOR RENT:** 60'x24' building. Partial partition and counter optional. Next door to Hesperian. Call 983-3737.

**FOR RENT:** One bedroom apartment. 108 N. Main, call 652-3813. Lfc

## For Sale

**7 USED T.V.'s** 19" portables to 25" consoles priced from \$150.00 and up. Mize Pharmacy & T.V. 652-2435. L2-12c

**ELECTRIC RANGE**—clean, works well \$100.00. Saddle and stand \$300.00. Call 652-2404. L2-12p

**BLACK FAKE FUR COAT,** size 14. Only worn twice. Cost \$62.45. Will take \$40.00. Call 652-3637 or 983-3737.

**1976 Midas 21' Motor Home,** 127 W. Kentucky, 983-2240. 1-29c

**14'x80' Graham Mobile Home.** 3 bedroom, 2 bath. Central heating and cooling with refrigerated air. New refrigerator. 983-5300. tfc

**Oak Firewood Producers Cooperative Elevator**

**Script Printing & Office Supply**  
\*Commercial Printing  
\*Office supplies & Furniture  
\*Business Machines  
108 S. Main  
Floydada  
983-5131  
tfc

**LET FX BACTERIA** help clean your Septic Tank the Easy Way --\$6.98. Tree Roots Removed from Sewer Lines. Sinks opened. Kirk & Sons Hardware 119 W. Missouri Floydada, Texas

**AIRELOOM** Ceiling fans, 3 speed 5 yr. warranty, 10 to 15% discount. Grady Dunavant 983-3609

**Barker's Jewel Box** now renting MINI-WAREHOUSE STORAGE Your Lock-Your Key 652-2642 Lockney. Lfc

**Classified Rates**  
CLASSIFIED ADVERTISING RATES: 20 CENTS PER WORK FIRST INSERTION; 15 CENTS PER WORD EACH SUBSEQUENT INSERTION. MINIMUM CHARGE \$2.50 FIRST INSERTION. MINIMUM CHARGE \$1.50 SECOND INSERTION. CLASSIFIED DISPLAY RATE: \$1.68 PER COLUMN INCH. CARD OF THANKS: \$3.00.

**Garage Sale**  
MOVING SALE: Saturday and Sunday. Furniture, misc. 601 N. 1st or 983-2705. 1-29p

**FARM MACHINERY**

**Case Power & Equipment**

**FULLY RECONDITIONED USED CONSTRUCTION EQUIPMENT**

**INDUSTRIAL TRENCHERS**

**DOZERS**

**LOADERS**

**LOADER BACKHOES**

**EXCAVATORS**

**Case Power & Equipment**

**Case Power & Equipment**

**Case Power & Equipment**

**Case Power & Equipment**

**Case Power & Equipment**

## AUTOMOTIVE

**FOR SALE:** 1977 Silverado Suburban. Good condition. Loaded. Call 983-5610 or 983-2285. tfc

**1978 Impala, 4 dr.;** 1977 GMC Pickup. 1975 Ford Pickup, 1972 Chevrolet Pickup. All have radial tires except 1972. Steve's Used Cars and Pickups 414 E. Houston 983-8127 2-5p

**MOBILE HOMES**

**Jeeps, Cars & Trucks**  
available thru government agencies. Many sell for under \$200.00! Call (602) 941-8014 Ext. #505 for your directory on how to purchase.

**AUTO PARTS & ACCESSORIES**

**4 shocks** for the price of 3. Free installation. 123 W. California. tfc

**DAN'S AUTO SERVICE**  
DAN TEUTON, Owner  
Specializing in Automatic Transmission, Motor Tune-Ups, Auto Air Conditioning.  
General Repair  
We Have A BRAKE LATHE to handle all passenger car brake drums. See us for complete brake service.  
Phone 652-2462

**CUSTOM EXHAUST WORK**  
Bruce Williams  
Specializing in Glass Packs And Turbo Mufflers At  
DANS AUTO SERVICE  
Lockney 652-7452

**GARAGE SALE**

**Garage Sale**  
MOVING SALE: Saturday and Sunday. Furniture, misc. 601 N. 1st or 983-2705. 1-29p

**Garage Sale**  
MOVING SALE: Saturday and Sunday. Furniture, misc. 601 N. 1st or 983-2705. 1-29p

**Garage Sale**  
MOVING SALE: Saturday and Sunday. Furniture, misc. 601 N. 1st or 983-2705. 1-29p

**Garage Sale**  
MOVING SALE: Saturday and Sunday. Furniture, misc. 601 N. 1st or 983-2705. 1-29p

**Garage Sale**  
MOVING SALE: Saturday and Sunday. Furniture, misc. 601 N. 1st or 983-2705. 1-29p

**Garage Sale**  
MOVING SALE: Saturday and Sunday. Furniture, misc. 601 N. 1st or 983-2705. 1-29p

**Garage Sale**  
MOVING SALE: Saturday and Sunday. Furniture, misc. 601 N. 1st or 983-2705. 1-29p

**Garage Sale**  
MOVING SALE: Saturday and Sunday. Furniture, misc. 601 N. 1st or 983-2705. 1-29p

**Garage Sale**  
MOVING SALE: Saturday and Sunday. Furniture, misc. 601 N. 1st or 983-2705. 1-29p

**Garage Sale**  
MOVING SALE: Saturday and Sunday. Furniture, misc. 601 N. 1st or 983-2705. 1-29p

**Garage Sale**  
MOVING SALE: Saturday and Sunday. Furniture, misc. 601 N. 1st or 983-2705. 1-29p

**Garage Sale**  
MOVING SALE: Saturday and Sunday. Furniture, misc. 601 N. 1st or 983-2705. 1-29p

**Garage Sale**  
MOVING SALE: Saturday and Sunday. Furniture, misc. 601 N. 1st or 983-2705. 1-29p

**Garage Sale**  
MOVING SALE: Saturday and Sunday. Furniture, misc. 601 N. 1st or 983-2705. 1-29p

**Garage Sale**  
MOVING SALE: Saturday and Sunday. Furniture, misc. 601 N. 1st or 983-2705. 1-29p

**Garage Sale**  
MOVING SALE: Saturday and Sunday. Furniture, misc. 601 N. 1st or 983-2705. 1-29p

## WANTED

**WANTED TO BUY**  
WANTED TO BUY irrigated or dryland farm in Floyd or surrounding area. Write Box XRO, c/o Hesperian, Box 700, Floydada. tfc

**WANTED TO BUY**  
WANTED TO BUY irrigated or dryland farm in Floyd or surrounding area. Write Box XRO, c/o Hesperian, Box 700, Floydada. tfc

**WANTED TO BUY**  
WANTED TO BUY irrigated or dryland farm in Floyd or surrounding area. Write Box XRO, c/o Hesperian, Box 700, Floydada. tfc

**WANTED TO BUY**  
WANTED TO BUY irrigated or dryland farm in Floyd or surrounding area. Write Box XRO, c/o Hesperian, Box 700, Floydada. tfc

**WANTED TO BUY**  
WANTED TO BUY irrigated or dryland farm in Floyd or surrounding area. Write Box XRO, c/o Hesperian, Box 700, Floydada. tfc

**WANTED TO BUY**  
WANTED TO BUY irrigated or dryland farm in Floyd or surrounding area. Write Box XRO, c/o Hesperian, Box 700, Floydada. tfc

**WANTED TO BUY**  
WANTED TO BUY irrigated or dryland farm in Floyd or surrounding area. Write Box XRO, c/o Hesperian, Box 700, Floydada. tfc

**WANTED TO BUY**  
WANTED TO BUY irrigated or dryland farm in Floyd or surrounding area. Write Box XRO, c/o Hesperian, Box 700, Floydada. tfc

**WANTED TO BUY**  
WANTED TO BUY irrigated or dryland farm in Floyd or surrounding area. Write Box XRO, c/o Hesperian, Box 700, Floydada. tfc

**WANTED TO BUY**  
WANTED TO BUY irrigated or dryland farm in Floyd or surrounding area. Write Box XRO, c/o Hesperian, Box 700, Floydada. tfc

**WANTED TO BUY**  
WANTED TO BUY irrigated or dryland farm in Floyd or surrounding area. Write Box XRO, c/o Hesperian, Box 700, Floydada. tfc

**WANTED TO BUY**  
WANTED TO BUY irrigated or dryland farm in Floyd or surrounding area. Write Box XRO, c/o Hesperian, Box 700, Floydada. tfc

**WANTED TO BUY**  
WANTED TO BUY irrigated or dryland farm in Floyd or surrounding area. Write Box XRO, c/o Hesperian, Box 700, Floydada. tfc

**WANTED TO BUY**  
WANTED TO BUY irrigated or dryland farm in Floyd or surrounding area. Write Box XRO, c/o Hesperian, Box 700, Floydada. tfc

**WANTED TO BUY**  
WANTED TO BUY irrigated or dryland farm in Floyd or surrounding area. Write Box XRO, c/o Hesperian, Box 700, Floydada. tfc

**WANTED**



# STAMP PRICE SPECIALS



Remember what a penny could buy in the good old days? Well, take a good look at our good old thrifty Stamp-Price Specials! For just a few pennies... and a 1/4 Saver Book of Green Stamps (30 Big 10's)... it's happy days are here again... every day! Stamp-Price Specials are just one more way we help you save money through Green Stamps. Every time you shop. Hurry in for your Stamp-Price Specials Saver Books. The more you shop... the more you save. Promise. Prices on these four Stamp-Price Specials effective through 1/4/81

## More savings!

### STAMP PRICE SPECIAL

Cassarole 2 lb Bag

## Pinto Beans

**19¢**

With One Filled S&H Special Saver Book Without Book **79¢**

### STAMP PRICE SPECIAL

Gallon Jug Bleach

## Clorox

**29¢**

With One Filled S&H Special Saver Book Without Book **89¢**

### STAMP PRICE SPECIAL

Sunny Fresh Farm Grade A Large

## Eggs

**19¢**

With One Filled S&H Special Saver Book Without Book **79¢**

### STAMP PRICE SPECIAL

18 oz Layer Duncan Hines

## Cake Mix

**9¢**

With One Filled S&H Special Saver Book Without Book **69¢**

If You Do Not Receive Our Mail Out Add By Saturday Please Come By Our Store For A Free Copy

**Double**

S&H Green Stamps

Thursday, Friday Or Saturday

Garden Fresh Produce

Snow White **Cauliflower** **79¢** Head

Red Delicious **Apples** 3 lb Bag **99¢**

Texas Ruby Red **Gradefruit** 4 / \$1<sup>00</sup> lb

32 oz Quart Kraft **Miracle Whip** **\$1<sup>37</sup>**

16 oz White House **Applesauce** **2/79¢**

15 oz Rug Deodorizer **Rug Fresh** **99¢**

15 oz Liquid Cleaner **Pine-Sol** **89¢**

Gallon Grade A Buddy's

**Milk** **\$1<sup>99</sup>**

**Owens** Country Style Sausage Straight from the farm

2 lb Owens **Sausage** **\$3<sup>29</sup>**

2 lb Banquet **Fried Chicken** **\$2<sup>69</sup>**

USDA **Ground Chuck** **\$1<sup>89</sup> lb**

6-32 oz **Tab Or Coke** **\$1<sup>49</sup>** Plus Deposit

1 lb Deckers **Bacon** **\$1<sup>69</sup>**

3 lb Farmland Can **Ham** **\$6<sup>89</sup>**

County Style Spare **Ribs** **\$1<sup>69</sup> lb**

Gary's "From Our Deli" **Corn Dogs** **3/\$1<sup>00</sup>**

10 lb 11 oz Family Size **Oxydol** **\$5<sup>19</sup>**

1 lb All Grinds Folgers **Coffee** **\$2<sup>19</sup>**

220 South 2 nd 983-3149  
8 am - 9 pm Weekdays  
9 am - 9 pm Sundays

We Take W.I.C. Cards

**WE RESERVE THE RIGHT TO LIMIT QUANTITIES**

Prices Expire February 4, 1981

32 oz Liquid King Size **Ivory** **\$2<sup>29</sup>**

Schilling Brown Gravy, Spaghetti Sauce, Chili Or Taco Seasoning **Mix** **3/\$1<sup>00</sup>**

10 oz Folgers Instant **Coffee** **\$4<sup>49</sup>**

All Flavors 1<sup>99</sup> Size **Doritos** **\$1<sup>19</sup>**

**buddy's** SUPERMARKET

FOOD STAMPS