

# Fathers Day

MEMBER 1980  
**TA**  
TEXAS PRESS  
ASSOCIATION

## The Floyd County Hesperian

20 Cents

The Hostages

Page 84

Floydada, Floyd County, Texas 79235

NUMBER 47

June 15, 1980

10 Pages One Section

### Terminal Center Demonstrated for School Board

Lusk from the Terminal Center Re-Opening Committee met with the School Board to demonstrate the data processing services provided by the Center and to demonstrate the data processing terminal.

The results of the Texas Assessment of Basic Skills test were given to the newspaper for publication. "This test is not made for comparison," Cannon said. "It is to upgrade our overall academic program." It is a government stipulation that the test results be published.

### Interest Rates Down At Federal Land Bank

variable rate loan in 1969, which allows the billing rate to increase and decrease with variables in the money market. Earlier this year, faced with unprecedented high money cost, a fixed rate loan was offered on a temporary basis. Improvement in the money market in recent weeks makes it possible to return to the variable rate on new loans.

### Cloud Seeding Now Up To Water Board

Royce Carthel, president of Plains Weather Improvement, expressed disappointment that every precinct in Floyd County didn't carry. "I think it is a very valuable tool," he said.

Tuesday at 7:30 p.m. at the Business Office. Board members present were: Harvey Allen, Weldon Pruitt, Robert Stovall, Martha Farris, Travis Jones, Adrian Helms, June Ware, Cannon, and Tommy Cathey, business manager.

The Board accepted resignations from the following personnel: Karen Evans, special education; Carmen Quilantan, nurse's aide; Carla Schneider, math aide; Julia Douglass, special ed; James Cleveland, voc. ag.; Britt Gregory, math.

The report of taxes collected to date was \$786,976 or 94.2 percent.

The Federal Land Bank Association of Floydada makes long-term real estate loans on farm and rural residence property in the counties of Floyd, Motley, and Briscoe.



**PROUD FATHER, NOLAN ARNEY** shows off new daughter, Jennifer Brooke who was born May 26. She has three brothers and sisters; Jason, 2½; Jill, 4; and Jeff, 12. Her mother is Julie Arney.

### Field House Nears Completion

The School Board toured the nearly completed field house Tuesday evening. They were told that completion date has been set for July 15.

The field house is located adjacent to the track across from the high school. The 60' by 100' building will provide dressing area showers and meeting room for the high school athletes. It will be used exclusively by the boys during football season. The facility is designed so that it can accommodate dressing area for both boys and girls during track season.

The dressing rooms in the high school are being remodeled to accommodate the girls' basketball teams. The walls will be torn out between the old boys' dressing rooms giving more space for the girls. New lockers will be added and the dressing rooms will be carpeted. Work on this project will be completed before school starts in the fall.

The new field house contains 30 to 35 lockers, showers and dressing rooms on the north end of the building for the freshmen. The weight room is

in this area and the laundry opens off of it. The varsity dressing room contains 66 lockers, and is an ample 48' by 45' in size. Showers open off of this room.

Next to it is a large film room. It will be used for meetings and for review of games on film. Superintendent Jerry Cannon said that Coach L.G. Wil-

### School Board Releases Tabs Test Results

School Board members of Floydada Independent School District reviewed district scores on the Texas Assessment of Basic Skills which was administered this March to all 5th and 9th grade student. All students of Texas in these grades were given this criterion referenced test for the first time this year. Next year, 3rd graders will be tested, also.

School counselor, Joanne Cagle, explained to board members that test results will not be used in any way for retention or promotion. Mrs. Cagle, at

the regular board meeting on May 13, reviewed the legislative background leading to the Texas Assessment of Basic Skills. She then reported on campus summary reports, emphasizing strengths and weaknesses along with implications for revising and improving existing curriculum.

Board members participated in an informative discussion period concerning the test. They are now releasing the following information on local test results:

Continued on Page 3

### City Power Ties Into Coal Produced Power

City Power tie-in with Southwestern Public Service Company is in the last stages of adjustment and should be in full working order as this paper goes to press.

Ray Holmes, Division Manager for the Southern Division of SPS, was in Floydada Thursday. He said that SPS gets their coal supply from Gillet,

Wyoming. The company has leased 4 trains, each with a 110 car capacity. The trains are in use full time, and have about a 168 hour turn around time.

SPS has two coal burners under construction in Lamb County, and a new plant in Amarillo making a total of 3 coal burners in that city.

### Travel Center Burglarized

The Travel Center Restaurant and Station on East Houston was burglarized Tuesday night, June 10. Approximately \$200 was taken from a safe in the restaurant.

The cigarette machine and a cash register were damaged in an attempt to break them open.

According to Police Chief, Scott Newton, the businesses were not broken into, but were robbed by someone inside of the buildings.

Coaching staff offices are also in the building as are dressing rooms and showers for coaches and officials. The taping room is off of this area. It will house the ice machine, the whirlpool and the taping tables.

The matter is under investigation.

Report of the coal produced power project was given to City Council at their regular meeting Tuesday night. Council held an open hearing on the proposed electric power and light rates.

There were no citizens who exercised their right to attend that hearing.

Council passed a rate increase of 15% on money. This is different from the last increase in 1978 which was a 5% rate increase.

The 15% is expected to cover the \$129,000 additional budget money needed. \$120,000 will be used to pay bonds and \$9,304 will be used for facilities. This is mostly for expenses incurred for the power tie-in with SPS. The budget has been set at \$988,406.

How the rate increase will effect city power users will be reflected

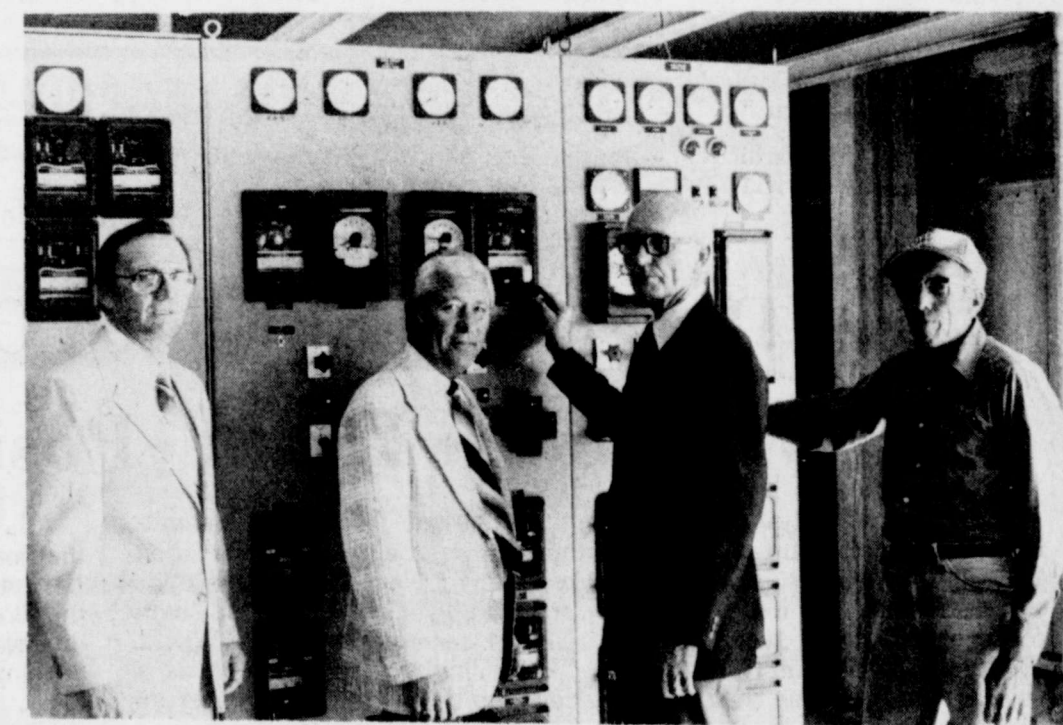
on their July 1 bills. A residence that has been using 1000 KWH at a cost of \$33.26 will then be paying \$44.00.

Electrical usage cost will go up, but after 60 to 90 days the savings from coal produced power will be reflected in a lower fuel cost on the billing. How much of a decrease that will be is not known, but Bill Feuerbacher, City Manager, thinks it will be about a 7% savings.

City Council passed on the first reading of the new Firearms Ordinance. This is an ordinance prohibiting the firing or discharge of any firearm or explosive weapons within the city limits of Floydada, or firing or discharging a projectile into the corporate limits of Floydada; providing for penalties for violation; providing for publication and providing a savings clause.

Ricky Burns and Louis Anderson were reappointed to the Planning and Zoning Committee. Sam Baker was appointed as new member taking the place of Ray McDonald.

Councilmen in attendance were: Wayne Russell, Leroy Burns, Jerry Thompson, Carl Jarrett.



**THIS PANEL** is the control unit for the Floydada Light and Power tie-in with Southern Public Service. Left to right: Lewis McDaniel, Floydada manager of SPS, Ray Holmes, Division Manager of SPS, Mayor Parnell, J.W. Cannon plant superintendent.

## Cloud Seeding Now Up To Water Board

Floyd County voters rejected the weather modification program in one of the heaviest voter turn-outs for a referendum in this county has been seen.

The only precinct that approved the program with a vote count of 28 for and 6 against. Only two precincts were involved in the polling, precincts 5 for and 11 against, West Lockney voted 265 against, Harmony voted 3 for and 12 against and Providence was 15 for and 37 against.

The total vote count for Floyd County was 128 for and 331 against, as almost half of the qualified voters turned out.

When asked what he thought would happen now, Carthel said, "It's up to the Water Rights Commission, they have absolute authority to issue permits. They will take out those precincts that they think need to be taken out."

"It's very confusing, I really don't know what the outcome will be," he said.

When asked to elaborate further, he said, "The thing that is confusing is that the overall project carried, but it's up to the Commission whether they will O.K. the permit as a unit or will exclude the voting precincts that lost."

The Plains Weather Improvement Association carried out a 7 year program of cloud seeding which even many of their opponents considered successful in hail suppression. Two years ago the Citizens For Natural Weather group formed and appealed to the Water Rights Commission to stop the program.

The Water Board in what may be the first instance of Initiative and Referendum put the issue to a vote of the people. An election was held and the program voted down. The Board then revoked the PWIA permit for weather modification. A two year waiting period was set before PWIA could again apply for a permit.

Wayne Bramlet, out-spoken opponent of the program and member of the Citizens for Natural Weather group was bitterly disappointed in the outcome. "The hail suppression people lost the election in Floyd and Hale Counties, or rather in the precincts that were allowed to vote," he said. "You can look at the precincts where it was in favor and tell where the big irrigation pumps are." Bramlet was referring to the fact that his group strongly believes that hail suppression stops rainfall and is disastrous for the dryland farmer and the rancher.

"I do have irrigated interests," he said, "but I still have compassion for those who don't." He added that he wished the "side-line supporters would make a genuine effort to understand the issues."

"I seriously think that this is causing contention and hard feelings among friends and neighbors, Church folks and even kin folks, and that's another reason that they (hail suppression supporters) should drop the program," he said.

He said that he did appreciate the support of friends in Hale and Floyd Counties and added, "we did win the counties right in the heart of the program."

When asked what they intended to do now Bramlet said, "It's in the hands of the Water Board for the time being at least." The Rights Commission in Austin will now decide whether or not to give a weather modification permit to the Plains Weather Improvement Association.

"If necessary, we will attempt to influence the Water Board," Bramlet said. "We still have our organization and we still don't want hail suppression. If they don't rule favorably for us we can figure out what our options are. We're not going to have it forced on us any way."





# FARM & RANCH NEWS



## Irrigation Infiltration Rates Differ With Soil Types

A poor field watering habit can be tough to break. But whether you are overwatering or underwatering, you're pouring money down a hole if you haven't considered the rate at which your soil type will absorb and hold water.

Once you decide how much water to put into your soil it is time to reckon with infiltration rates, that is, the time in inches per hour, it takes water to move into your soil type and fill it to field capacity to a given depth. Once you determine your field's water need, you cannot just dump on the water and expect it to stay in place until it has soaked in without losses to runoff, evaporation or deep drainage. You can, however, apply irrigation water based on knowledge of your soil's intake rate and current field conditions and have substantial control over your water resource.

Water enters the soil through pores, cracks, worm and decayed root holes, and cavities introduced by tillage. Water penetrates different soils at different rates depending on their porosity and texture. Changes in field conditions can also affect a soil's water intake rate, dramatically in some cases. And, as a general rule, soils in their native state have higher infiltration rates than they will after being cultivated for a number of years.

Surface sealing, soil compaction, cracking, tillage, crop rotation, chemicals, sediments, erosion, land leveling and even temperature will change water intake rates. For example, surface sealing or crusting will restrict water intake. It can be reduced with a mulch or other

permeable surface protective material or by a light cultivation before irrigation. Tillage can cause compaction and create a plowpan which impedes water movement. Subsoiling helps to improve water flow, particularly if the soil has an impermeable sublayer that can be broken up.

Sprinkler irrigation is similar to rainfall because its water moves vertically into the soil. A soil that surface seals under rainfall will likely also seal under a sprinkler on a bare or newly seeded field, reducing intake. In furrows, where water moved both vertically and laterally, the intake rate depends on the wetted perimeter of the furrow, the larger the better.

Since so many factors affect water intake it is no surprise that rates vary widely among soils. Because several soil types can occur in the same field, intake characteristics of a given field will vary from place to place, from irrigation to irrigation, from season to season, and from one irrigation method to another. That means that the water intake rate of a given soil will seldom be a constant number until the surface soil at least is gradually saturated.

There is however, a general intake rate guide prepared by the Lubbock area Soil Conservation Service which you can use to estimate intake rates for the time water will take to fill a certain depth in a particular soil type.

Soils with similar characteristics are grouped into "intake families" according to the intake rate that most nearly represents its usual condition and infiltration speed. Soils in the same intake family will

follow a similar water intake curve for a given water application method.

In the High Plains area, the most common soil types reside in three intake families as the chart illustrates.

The exceptions to this are the heavy clay soils such as the Pullmans and Lofton clay loam of this area which dry and crack. These cracks will initially take water at a pretty fast rate for several hours or until they begin to swell. Eventually the cracks swell completely closed and cut off virtually all water intake. Because the heavier clays are so erratic, you cannot over irrigate them, but you can over apply water.

The best way to apply water to these soils is to set an irrigation time, normally a 12 to 18 hour set, let the soil take in all the water it will in that time and stop.

By following the intake guide the irrigator can control the amount of water that goes on his soil by varying the length of time water flows over the field. The relationship between total intake and time helps to determine the speed with which the wetted front advances across the field and thus to a great degree controls the permissible length of run for the greatest efficiency.

If you need information to identify the soil types in your field, the SCS in cooperation with the Texas Agricultural Experiment Station, publishes a Soil Survey for each county in Texas. Your local county agent can help you find your soil type and match your irrigation design system to its intake characteristics.

## Floyd County Farm Report

BY NANCY CARTHEL

Friday's closing grain prices were: Corn/cwt. — 4.80; Wheat/bu. — 3.36-3.40; Soybeans/bu. — 5.05-5.08; and Milo/cwt. — 4.40.

\*\*\*\*\*

On the Lubbock spot market cotton prices were 1250-1450 points over for 3.0-3.2 mikes; 1275-1475 points over for 2.7-2.9 mikes and 1150-1350 points over for 2.6 and below mikes. These prices are over the 1979 loan rates.

\*\*\*\*\*

Jett Major, Floyd County extension agent, said that his office has received several calls concerning the grasshopper control program that has been federally funded in many counties. There has been some infestation reported in Floyd County but to date, no federal help is available.

Major stated that getting the federal aid is almost nil. The money is too scattered out and the cropland to quality. The much groundcover on land.

Briscoe, Motley and others are working on the obtaining the federal aid in neighboring counties to obtain the federal funds. It may be derived from the program in the future.

At this time, the service suggests that anyone who has a hopper problem should contact an entomologist will be look at your grasshopper and make recommendations of the type of pesticide that can be used.

GUIDE TO INTAKE FAMILIES FOR SURFACE IRRIGATION DESIGN

INTAKE RATE (inches p/hr)	SOIL TYPE	SOIL TEXTURE	NET DEPTH OF APPLICATION IN INCHES							
			1.0	1.5	2.0	2.5	3.0	4.0	5.0	6.0
0.3	Olton	loam	62	129	208	296	392	604	841	1100
0.5	Acuff	loam	38	75	119	166	217	328	450	580
	Berda	loam								
	Estacado	loam								
1.0	Portales	loam								
	Amarillo	fine sandy loam								
	Patricia	loamy fine sand loamy fine sand and fine sand	20	38	59	82	106	158	214	273

(time in minutes)

## Water Development Board Chairman A L Black Steps Down Position

A.L. Black recently stepped away from his chairmanship of the Texas Water Development Board as his six year term expired. He will continue to serve as Governor Clement's representative to the Six-State High Plains Study Council, however.

Black was appointed to the Water Board by Governor Dolph Briscoe in 1974 and named its chairman in 1976. He feels the most important Board action accomplished during his tenure as chairman was the merging in 1978 of Texas' three state water agencies, the Water Quality Board, the Water Rights Commission, and the Water Development Board, into the Department of Water Resources.

Black continues to be an expert representative to the Six-State High Plains Study Council which is a key project for Texans. It is charged with guiding a federal study to examine local, state and national impacts of continued depletion of the natural resources (including water and energy) in the Ogallala Aquifer region. Black has served on the Study Council since its organization in 1976 and served as its second chairman.

"The Six-State Study may not be the answer, but it is the best tool that the High Plains and the State of Texas have for analyzing and solving their water problems," says Black.

Water leaders will no doubt continue to confer on water problems with Black who is respected for

his long and formidable commitment to water and soil conservation programs. "He is also respected for practicing what he preaches," says HPWD manager, Wayne Wyatt. "He is highly commendable as a community leader who's respected because he not only promotes good soil and water conservation techniques, but practices those techniques in his own operations."

Black has been widely honored with and for his long leadership in water posts. The Panhandle agribusinessman began as a locally elected Soil and Water Conservation District supervisor in Parmer County, working his way through every office to two years as State President, and to service as a national Director of the Association of Soil and Water Conservation Districts.

Along the way, Black helped found and direct Water, Inc. He was serving as its chairman when appointed to the TWDB in 1974. He was named a Texas representative to the Western States Water Council in '78, and has chaired the National Association of Conservation District's Great Plains Committee.

NACD honored Black for outstanding contributions to conservation of natural resources in '77, and the Amarillo Chamber of Commerce named his "Panhandle Man of the Year" in '78. Black also accepted an "Outstanding Agriculturist Award" in '75 from the Texas Tech University College of Agriculture faculty and student agricultural council.

A.L. Black has been chairman of the Board of Friona State Bank since 1968, and is continuing chairman of the Board of Friona Industries, a diversified agribusiness industry, developed in 1962.



THIS CORNFIELD in western Floyd County was beginning to hurt for moisture before the...

## Williams' Children Elected To American Angus Association

Ty T. Libby and Matt Williams, children of Mr. and Mrs. Jerry Williams of Lockney have been elected to membership in the American Angus Association, reports Dr. C.K. Allen, executive vice-president of the national organization with headquarters in St. Joseph, Missouri.

The American Angus Association, with some 38,000 active life and junior members, is the largest beef cattle registry association in the world. Its computerized records

include detailed information on nearly 10 million registered Angus.

The Association records ancestral information and keeps records of production on individual animals for its members. These permanent records help members select and mate the best animals in their herds to produce high quality, efficient breeding cattle which are then recorded with the American Angus Association. Most of these registered Angus are used by the U.S. farmers and ranchers who raise high quality beef for U.S. consumption.

## 4-Hers At State

Nine Floyd County 4-Hers won the State 4-H Dairy Demonstration at the College Station June 10-12, 1980.

Three Method Dairy teams and one rifle team won in the contest.

Jill Whitfill earned 1st place in her dairy demonstration. Broseh and Terri Kinney placed in their sheep demonstration; the Mike Allen, Norman Heflin and Tom Ross placed; and Melanie Foster placed eighth in the pig demonstration.

## Sponsored by the Following Interested Firms

- First National Bank  
Floydada
- Case Power & Equipment  
Floydada
- Floydada Cooperative Gins
- Federal Land Bank  
Association Of Floydada
- Russell's Equipment & Supply  
Floydada
- Plainview Savings & Loan Association  
Floydada
- The Floyd County Hesperian
- Consumers Fuel Association  
Lockney
- Martin And Company  
Floydada
- Floyd County Farm Bureau
- Perry Implement  
Lockney
- Ansley & Sons  
Lockney
- Floydada Implement Co.



**Tab Result**

Continued from page 1

Board members expressed interest in the TABS reports and expressed hope that now that results are in, that they be used to help us take a look at curriculum design, instructional materials, and personnel competencies.

More detailed campus summary reports or individual student reports may be seen by parents of students who took the TABS in the counselor's office or in the principals' offices.

"I really wish many of the parents of students who took the test would come by to discuss the results. I think they would find it interesting, and we welcome parent interest and involvement," said Mrs. Cagle.

**New Star Show At Plantarium**

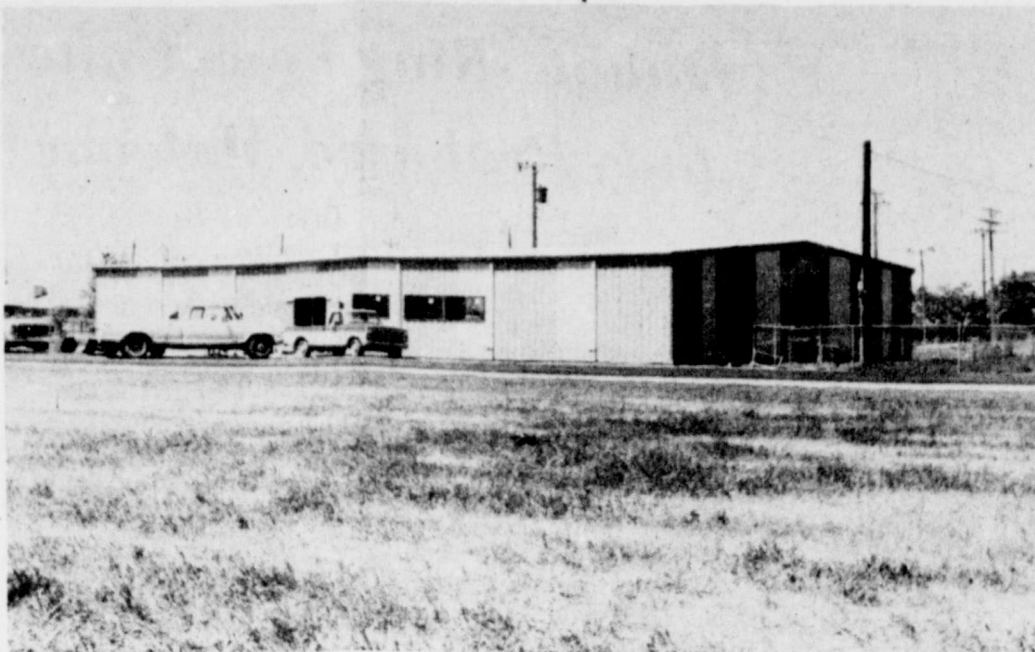
"We are living in the springtime of the universe," wrote world-famous writer Arthur C. Clarke. "Not until all the stars have flamed through their incandescent youth, in a few fleeting billions of years, will the real history of the universe begin."

On Saturday, June 7, the Don Harrington Discovery Center Planetarium in Amarillo will begin a summer run of "Springtime of the Universe," with performances scheduled at eight o'clock on Saturday evenings and three o'clock on Sunday afternoons.

The stars, awesome, brilliant and seemingly ageless, are really mortal. They had a beginning, will live out their life and eventually die. How were they born? What happens when all stars are gone? "Springtime of the Universe" answers these questions.

The program was made possible by a grant from the American Chemical Society with assistance from the American Association for the Advancement of Science. "Springtime" was produced by Hansen Planetarium of Salt Lake City, Utah.

More than 400 planetariums will receive the program and "Springtime" will be seen by more than ten million people.



COMPLETION DATE for the high school field house has been set for July 15. The field house is located adjacent to the track, across from the high school.

**Mackenzie Sponsors Marathon**

Lake Mackenzie will sponsor a Mini Marathon to be held July 4 at the lake, according to John McCammon of the Lake Mackenzie Public Relations Department.

The events of the day include three races: one mile run, three mile run, and 10,000 meter run (6.2 miles).

The one mile run, beginning at 8 a.m., will have categories of ages eight and under; 9-10; 11-12 and 13-15.

The three mile run will commence at 8:15 a.m. and is open to these age categories: 8-12; 13-15; 16-18; 19-29; 30-39; 40-49 and 50-59.

Women's categories for this event will be for ages 18 and under; 19-25; and 26 and up.

The 10,000 meter race, starting at 8:45, is open to all entrants in the following age groups: 18 and under, 19-29, 30-39, 40-49 50-59. Women's categories are as follows: 18 and under, 19-25, 26 and up.

A \$4 entry fee is required of all participants. This cost includes a T-shirt to be given to all entrants.

Entries should be mailed to: Lake Mackenzie Route 1 Silverton, TX 79257 (806) 633-4318

**Mother Daughter Team Wins**

Eleanor and Susan Hendrix, Floydada, won in local competition in the sixth annual Equitable Family Tennis Challenge at the Hillcrest Country Club in Lubbock, Monday.

The mother-daughter team defeated Carol and Annalee Allen of Lubbock, 6-4, 6-1. They will now advance to district competition which will be held in Amarillo on July 12.

District winners will play in 16 sectional events, with the sectional victors in each of the family combinations earning a trip to play at the U.S. Open at the United States Tennis Association Tennis Center in New York on September 4-6.

**CASE Previously Owned Equipment**

**6 Month Waiver Financing\***

\*Special waiver of finance charges on all used agricultural tractors. If you buy a used agricultural tractor of any make from a participating Case Dealer, and finance it through J. I. Case Credit Corporation, we'll waive finance charges for six (6) months from date of purchase. Offer valid on tractors purchased during the period of May 1, 1980 through June 30, 1980.

**Case Lubbock Construction Equipment**

Crawlers	
1 Caterpillar D5 Dozer	32,300.00
1 Case 1450 10 ft. TKT Dozer only 1261 HRS 90% under carriage	53,000.00
1 Case 1450 10 ft. Tilt Dozer only 1141 HRS 95% under carriage	56,000.00
1 John Deere 550 Power Angle Tilt Dozer	28,300.00
1 John Deere 2010 Power Angle Tilt Dozer	4,750.00
7 ft. Blade, 12" Street Pads	
1 Case 850 Crawler Dozer Side Boom	36,600.00
450 HRS Total Time New Engine	
Loaders and Backhoes	
1 Case 1737 Uniloader 37 HP Water Cooled Case Engine Reconditioned	4,280.00
1 Case 580 CR ROPS 14' Hoe Diesel Power Shuttle 17.5 x 24 Tires	8,500.00
1 Case 580C ROPS 14' HOE Excellent	16,500.00
1 Case 580B Loader Backhoe Cab 14'	11,000.00
1 Case 580B Loader Backhoe Cab 14'	16,600.00
1 Case 580B Loader Backhoe 14'	13,900.00
1 Case 580B Loader Backhoe 14' ROPS	12,800.00
1 Inley Truck Mounted Excavator International Tandem	3,750.00
1 M.F. 40 Loader Backhoe	6,750.00
Trencher	
1 Case 380 Road Runner 345 HRS	19,900.00
1 Davis 20' x 4' Trencher	4,230.00

**Case Lubbock Farm Tractors**

1 1964 Case 830 LP with Loader	2,100.00
1 1966 Case 930 Diesel with Cab	4,500.00
1 1972 Case 1070 with Cab & A/C	10,500.00
1 1972 Case 1175 with Cab & Motor Engine Overhaul	11,850.00
1 1974 Case 1370 with Cab & A/C & Major Engine Overhaul	17,200.00
1 1979 Case 2090 with Cab & A/C	24,300.00
1 JD 4020 Power Shift 1968 Model	7,500.00
1 1956 Ferguson T.O. 30 Gas	1,850.00
1 1979 2390 Cab A/C 20.8 x 38 Tires 730 HRS New 42,000 Special	29,900.00

**Case Floydada**

Case 1370 Cab Air Cond Factory Duals	17,900.00
1 Case 1175	8,500.00
1 JD 4020 Power Shift 1968 Model	7,500.00
1 1972 IHC 1066 Cab Air Conditioner	12,900.00
1 Case 1175 Cab	11,000.00
1 Case 1175 Cab Air Conditioner Good	12,900.00
1 AG Gator Sprayer New Engine	3,500.00

**Case Lamesa**

1 1466 IHC Cab Air 1850 HRS	18,600.00
1 1570 Case Cab Air Good	22,500.00
1 1370 Case Cab Air Good Rubber	17,600.00
1 1370 Case Cab Air Reconditioned	17,900.00
1 1070 Power Shift Cab & Air Cond	9,000.00

Lubbock	Lamesa	Floydada
3302 Slaton Hwy. 745-4451	902 S. Dallas 872-5861	101 South 12th 983-2836

**The Floyd County Hesperian**

Published each Sunday and Thursday at 111 East Missouri Street, P.O. Box 700, Floydada Texas 79235. Publication Number USPS 202-680. Subscription rates: Local \$10.50 per year, out-of-trade area \$11.50 per year. Second class postage paid at Floydada, Texas 79235.

**LITTLE LEAGUE**

Floydada Co-ops 10  
Adams Well Service 11  
Hale's & Script 13  
Adams Well Service 5  
Co-ops 24  
Floydada Co-ops 13  
Script & Hale's 8  
Adams Well Service 14

Moore-Rose 10  
Script & Hale's 1  
Co-ops 8  
Moore-Rose 2  
Hale's & Script 17  
Moore-Rose 3  
Adams Well Service 7  
Moore-Rose 4

**T-SHIRT**

Davis Farm Supply 10  
First National Bank 22  
Davis Farm Supply 19  
Thompson Pharmacy 9

Thompson Pharmacy 10  
Ponderosa 11  
FNB 11  
FNB 0

**WE GIVE S&H GREEN STAMPS**

9 Lives 6 oz Tuna or Liver  
**Cat Food**  
4/\$1.00  
37¢ value

**BUDDY'S**  
FLOYDADA  
220 S. 2ND  
Store Hours  
Mon. - Sat. 8 am - 10 pm Sun. 9 a m 9 pm  
VALUES IN THIS AD EFFECTIVE THRU WEDNESDAY, JUNE 18, 1980  
We Reserve The Right To Limit Quantities

**WE GIVE S&H GREEN STAMPS**

6-32 oz  
**Coke**  
\$1.79  
Plus Deposit \$2.99 value

**WE GIVE S&H GREEN STAMPS**

13 oz Nabisco Coconut Chocolate Chip or Peanut Butter Fudge  
**Cookies**  
99¢  
\$1.29 value

**VALUES IN THIS AD IN ADDITION TO OUR THURSDAY AD**

12 oz Sizzlean \$1.29	California Avocados 2/99¢
12 oz Wilson Franks 87¢ pkg	Sweet And Tasty Cantaloupes 4 lb \$1.00
3 to 4 lb Deckers Boneless Ham \$1.69 lb	Golden Ripe Bananas 4 lb \$1.00
16 oz Del Monte Whole New Potatoes 3/\$1.00 50¢ value	17 oz Del Monte Cream Style Corn 3/\$1.00 50¢ value
15 oz Del Monte "In Juice" Pineapple 59¢	17 oz Del Monte Sweet Peas 2/79¢ 53¢ value
5 lb Alpo Beef Dog Food \$1.49 \$1.99 value	15 oz Del Monte Spinach 3/\$1.00 50¢ value
11 oz Campbells Chunky Chili Beef Soup 2/89¢ 59¢ value	2 lb Keebler Crackers \$1.19 \$1.69 value
84 oz King Size Ajax \$2.59 \$3.99 value	12 oz Del Monte Hamburger Dill Chips 2/99¢ 77¢ value

**WE GIVE S&H GREEN STAMPS**

3 lb "Pure Vegetable"  
**Crisco**  
\$1.99  
\$2.59 value

**WE GIVE S&H GREEN STAMPS**

5 lb Gold Medal Flour 99¢  
\$1.39 value

**WE GIVE S&H GREEN STAMPS**

**200**  
Extra S&H Stamps  
With This Coupon And Purchase of \$20 or More  
Good At Buddy's Expires 6-18-1980

**WE GIVE S&H GREEN STAMPS**

3 oz Topping Mix  
**Dream Whip**  
2/99¢  
77¢ value

**WE GIVE S&H GREEN STAMPS**

10 oz Tropicanna  
**Orange Drink**  
5/\$1.00  
34¢ value

**WE GIVE S&H GREEN STAMPS**



## Double-Ring Vows Unite Judy Probasco, Malcom Washburn



MRS. MALCOM WAYNE WASHBURN

Judy Elaine Probasco became the bride of Malcom Wayne Washburn in a traditional double-ring ceremony held June 8 at 3 p.m. in the McKinney Memorial Bible Church in Fort Worth.

The bride is the daughter of Mr. and Mrs. James Albert (Bill) Colston of Floydada and the late Kenneth Eugene Probasco. The groom is the son of Mr. and Mrs. Charles William Washburn of Irving.

Paul Young, pastor of the McKinney Church, officiated the ceremony.

The church was decorated with three 12-branch candelabras across the front stage with fresh greenery at the base. On either side of the stage were two baskets of fresh white gladiolas and dusty rose carnations on brass stands.

Wedding gifts were displayed in the foyer on a large table covered with an ivory lace cloth underlined in dusty rose. Guests were registered at a marble-topped table decorated in ivory lace underlined in ivory. A domed arrangement of dusty rose silk flowers accented the bridal book and plumed pen. Rice bags were displayed in a silver bowl.

Guests were ushered by Mitchell Lane Probasco, Floydada, Mark Douglas Probasco, Plainview, and Max Allen Probasco, Pasadena, California, all brothers of the bride. The bride and groom were introduced by Richard Bridges of Irving.

Barbara Haun, organist, featured popular religious music as the prelude. Tommy Mojica played the guitar and sang "The Wedding Song," "Til There Was You," "Charity," and "The Lord's Prayer." He was accompanied by Ms. Haun. The traditional wedding march and recessional were also performed.

Given in marriage by her uncle, William N. Garrison of Fort Worth, the bride wore a formal Bianchi gown of ivory satapiu with a softly moulded empire bodice. The dress featured a sculptured Queen Anne neckline edged in Alencon lace fleurettes sprinkled with seed pearls. The gown was accented by full bishop sleeves with Alencon lace cuffs which were closed by covered buttons and loops. The A-line gored skirt swept back into a Watteau that drifted gently to form a chapel length train.

The bride chose a full chapel length veil of ivory bridal illusion to complete her attire. The veiling was garnished with imported lace appliques which cascaded from an Alencon lace Camelot caplet. The bride carried a cascading bouquet of rubrum lilies, stephanodas, Boston fern, and prayer plant leaves.

The bride's jewelry included a diamond lavalier which is a family heirloom. The bride also wore her grandmother's diamond stud earrings. Jill Probasco of Lubbock, sister of the bride, served as Maid of Honor. Bridesmaids were Maria Buckles of Fort Worth, Louise Grieshaber, New Orleans, Louisiana, and Anita Jordan, Dallas.

The bridesmaids wore dusty rose gowns of satapiu. Sculptured bodices fell into accordion pleats. The dresses featured capes of sheer illusion which were petaled in front and back. The attendants carried single rubrum lilies accented by prayer plant leaves and Boston fern.

Best man was Martin Dowdy of North Richland Hills. Serving as groomsmen were Joe Daniels, North Richland Hills; Mark Collins, Irving and Robert Jones, Irving.

The groom was dressed in an ivory cut-away tuxedo with tails, an ivory ruffled shirt, vest, and brown shoes. The groomsmen and ushers wore chocolate regency tuxedos

with ivory shirts and brown vests, ties and shoes.

### RECEPTION

Following the ceremony, a reception was given by Mr. and Mrs. Bill Colston at the Ridgela Country Club in Ft. Worth.

The bride's table featured a four-tier wedding cake with white-on-white icing. The cake was adorned with the traditional bridal couple.

The table was covered in ivory lace touched with dusty rose cloth and skirt and displayed two six-tier candelabras.

Centerpiece was a crystal pedestal bowl with dusty rose and earth tone silk flowers. Cool fruit punch, nuts and mints were served from sterling appointments.

A glass-topped table with brass legs served as the groom's table. Featured centerpiece was an arrangement of silk flowers in an antique brass bowl borrowed from the bride's family. The table served a German chocolate cake.

The bride's traveling attire consisted of a yellow linen sundress with matching jacket, panama straw hat, white heels and bag. The groom wore a light blue, three-piece suit and white-on-white shirt.

Following a wedding trip to Barbados Island, the couple will be at home in Irving.

## Lipham Competes In Beauty Contest

Miss Julianne Lipham, 16, was one of 107 contestants from all over Texas competing for the title of Miss Texas National Teen-Ager.

Julianne, the daughter of Mr. and Mrs. Julian Lipham of Floydada, was one of four contestants who received a \$100 savings bond, a wrist watch bearing the Teen-Ager Pageant emblem, and a trophy for being a runner-up in the Volunteer Community Service

## Socially Yours



ANNA DOREEN LINAWEAVER

## Linaweaver, Price Plan July Vows

Mr. and Mrs. Delbert Linaweaver of Plains, Kansas wish to announce the engagement and approaching marriage of their daughter, Anna Doreen, to Lester Price, Jr., son of Mrs. Rachel Vancia, Plains, and Mr. Lester C. Price, Meade, Kansas.

The bride-elect is a senior at Meade High

School. The groom attended Oakley, Kansas Goodland Tech. He is a member of the National Liberal, Kansas. The couple will be married on July 19 at the Baptist Church in Meade. Anna is the daughter of Mr. and Mrs. Giles of Plains.

Mrs. Lockyer, Meade, is the mother of Mr. and Mrs. Price.

ing is in the church in

MISS JULIANNE LIPHAM

Award and Program Participation Awards.

Miss Lipham was sponsored by Women's Division of Chamber of Commerce, and the Floydada Chamber of Commerce.

Contestants were accepted on basis of scholastic achievement, leadership, poise, personality, and appearance. Each contestant recited a 100 word essay on the topic "What's Right About America." The pageant was held at Ed Landreth Auditorium, Texas Christian University, Fort Worth, on June 14.

The new Miss Texas National Teen-Ager was Karen Hester of Austin. She will be crowned at the pageant in Dallas on July 19.

meadi... complete t... making me... three... straight... method... ing... the do... flour t... are co... nge r... set in... bubb... as pref... usua... dough... though me... batter i... nts ar... by stirr... batter... reading... usu... in 1... baked... the... the rou... ed dou... elastic... the gh... fine gr...

## Dorcas Class Shares Oral Selections

The Dorcas Sunday School Class of Floydada First Baptist Church met Tuesday evening with Mrs. H.O. Cline for their monthly business and social meeting.

The meeting was opened with prayer by Mrs. Mae Garrett. Mrs. Mabel Meek gave a devotional from Hebrews 11. Mary Wilson read a story entitled, "Reasons

Enough To Be Thankful." Cleo Goins read "Prayer," followed by a reading from Mrs. Stout called "Is Life Worth Living?"

Ethel Warren presented a selection entitled "How To Know You Are Growing Older," then "The Three Monkeys" was read by Myrtice Rainer.

Mrs. Valerie Turner

concluded the program with a comical story, "If You Got To Go," and then led the group in a Bible Bingo game.

Ladies present at the meeting were Mmes. Odell Stout, Ethel Warren, Mable Meek, Mae Garrett, Lula Stewart, Vada Meredith, Alva Sparks, Cleo Goins, Valerie Turner, Mary Wilson, Lois Durham, Ola Warren, J.B. Whitehead, A.C. Rainer, C.W. Denison, and H.O. Cline.

*The Very Nearest*

### ABBOTT

Barton and Carolyn Abbott are the parents of a son, Joshua Glyn, born June 6 in the USAF Hospital in Biloxi, Mississippi. He weighed 8 pounds and 14 ounces and was 22 inches long. Paternal grandparents are Linnie and Noble

Great-grandmother is Mrs. Mable Fletcher of Denton.

## Mrs. Garrett Honored With Birthday Coffee

Mrs. Robert Garrett was recently honored with a coffee on her birthday by her daughters, Mrs. Norman Muncy and Mrs. Bill Hardin in the Hardin home. Members of Mrs. Garrett's Sunday School Class were invited guests.

Mrs. Mike Giesecke, Pam Muncy, and Rosemary Hardin, granddaughters of the honoree, alternated at the serving table. Refreshments of angel food cake and coffee were served from a table laid with a white linen

cloth. The centerpiece was an arrangement of spring flowers in a crystal compote.

Members of the class who helped to share the occasion with their teacher were Mmes. H.O. Cline, C.W. Denison, E.L. Durham, Floyd Fuqua, Clarence Goins, C.M. Meredith, Elmer Warren, Ola Warren, Carl Wilson, and Alva Sparks. Also attending were Mmes. Ted Bell, Fred Battey, W.B. Parrack, and Robert Muncy.

## Senior Citizens Elect Officers

The Lockney Senior Citizens met in the Fellowship Hall of the First United Methodist Church at 10 a.m., June 6 for their regular monthly meeting. Games of dominoes and "42" were played until noon.

A covered dish luncheon was followed by a program given by Christine Huffman, daughter of Charles and Molly Huffman, and granddaughter of Mr. and Mrs. Herman Huffman. Christine sang two songs for the group. Following the program, G.A. McAda led an old-time singing session.

New Senior Citizens' officers were elected for the ensuing year. They are G.A. McAda, president; Bettie Counts, vice president; Carrie Apple, secretary.

Karen Turner will give swimming lessons at the Country Club, June 17-28 to children ages 5-8 and 9-12. Ten one-hour lessons, \$25.00 per child. Classes will be limited to 10 members in each age group. Call 983-5049 to register.

Amateur Photographers Only

## Photo Contest

Send Us Your Cute, Unique And Interesting Pictures

WINNER Will Receive

\$200

Plus Your Picture May Be Used In The Paper

JUDGING WILL BE DONE BY HESPERIAN STAFF MEMBERS

The Floyd County Hesperian

LOSE 17 to 25 POUNDS IN JUST 6 WEEKS

YOU'LL BE HEALTHIER AND HAPPIER!

HOW TO WIN AT THE LOSING GAME

DIET CENTER

Fara Burk 983-3772

We give & REDEEM

GOLD BOND STAMPS

Get 'em here... save and when you're ready

we'll redeem your stamps for \$2.50 credit per filled book to spend on anything in our store!

200

200 FREE GOLD BOND STAMPS WITH YOUR NEXT VISIT AT:

Sue's Gifts & Accessories

126 W. Calif. 983-5312

200 OFFERS EXPIRES 7-15-80



## Social Events

### Athena Club Elects Officers

Eleven Athenians met in the home of Mary Ann Kring Thursday, June 12. The Yearbook Committee served as co-hostesses for the meeting, which began with a Salad Supper. Each member brought a salad and its recipe to be shared.

Following the meal, Kathy Hunter proceeded to install the 1980-81 club officers. The installation theme was "What's in a Name?" and was composed by Jan Mize. Kathy reminded us that Athena means wisdom. As each officer was discussed, the new officer came forward and "signed in" on a posterboard. Her name's meaning was revealed and related to her office. Also, each was given a lifetime scripture appropriate to her name. The highlight of the installation ceremony was the presentation of beautifully framed, elegantly handwritten parchments to each new officer. On the parchment was the woman's name, its meaning, and the scripture reference applied to her.

Athena officers for 1980-81 are Martha Sue Lusk, president; Judy Schacht, vice-president; Donnie Meriwether, treasurer; Janet Houdeshell, parliamentarian; Mary Holley, reporter; and Jill Golden, historian. All of the officers were present except reporter, Mary Holly, and historian, Jill Golden.

Two special awards were given. These were voted on by secret ballot at the May meeting. The Outstanding Club Member award went to Charlotte Mitchell. Charlotte was presented a lovely wall mirror to represent a reflection of all the good work she has done for Athena in the past year. The Athena Rose award was given to Virginia Owens. This award was to honor the club member who has shown the finest spirit of enthusiasm and friendship to other members. Virginia was given a candle, representative of the bright light she has been to others this year.

As out-going president, Virginia was also given a gift from the club. This was a set of candlesticks and taper candles.

Members present for the June meeting were: Kathy Hunter, Janie Klein, Karen Koonsman, Martha Sue Lusk, Barbara Mathis, Donnie Meriwether, Charlotte Mitchell, Virginia Owens, Judy Schacht, Janet Houdeshell, and hostess, Mary Ann Kring.

**LITTLE KNOWN FACTS**  
A knitted shawl is a particularly convenient blanket for new babies because it wraps around them easily when they're up and stays tucked in over them when they're in bed.



NEW ATHENA OFFICERS: (l-r), Martha Sue Lusk, president; Judy Schacht, vice-president; Donnie Meriwether, treasurer; Janet Houdeshell, parliamentarian and Mary Ann Kring, secretary. Not pictured are Mary Holley, reporter and Jill Golden, historian.

### Tenderizer Stops Itching

Next time the family plans an outdoor activity, don't forget the meat tenderizer.

It's not for the meat—it's for the mosquito bites, according to the advice of a Texas College of Osteopathic Medicine physician.

"A paste made of meat tenderizer—unflavored—and water rubbed onto

bites of mosquitoes or chiggers will do wonders for taking the itch away," said Eugene Zachary, D.O. "Relief is immediate."

"A bee sting can be severe, even fatal, to those few people who are highly allergic. Allergic treatment kits are available on prescription for these people."



One secret of avoiding extra party work is to invite folks to a back yard bash where they can serve themselves.



Eskimos have more than 20 words to describe snow.

Got Heating Or Plumbing Problems? Call **HOLMES PLUMBING** Austin or Steve 983-2251 6:30 - 9:30 a.m. and 5:30 p.m. Until?



RAY MCMAHAN, PAM BRADLEY

### Ray and Pam Announce Engagement

Mrs. Melvin Lockney and her daughter, Pamela Len McMahan, and Mrs. Don of Route 3,

Miss Bradley is a graduate of Lockney High School and is presently a student at Texas Tech University in Lubbock where she will graduate in

December 1980, with a degree in Home Economics Education. She is employed as a secretary for the Texas Tech Uni-

versity Center Catering Service.

Mr. McMahan is also a Lockney High School graduate and attended Way-

land Baptist College in Plainview. He is presently employed at 84 Lumber and Home Center in Plainview.

### Today's Lifestyles

By Marilyn Tate

County Extension Agent



kneading and complete the pre-mixing yeast

are three basic straight dough sponge method

straight dough method. Yeast is usually placed in the pan

the part of the dough that most

of flour. Place the dough on the floured surface, and dust lightly with flour. Grease hands lightly with shortening. Fold the dough toward you with a rolling motion using the fingers of both hands. Then, with the heels of your hands, push the ball of dough away from you. Turn the dough a quarter turn and repeat the process until the dough looks full, rounded, smooth, satiny and tightly stretched. The dough will feel springy and elastic. You may need to work small amounts of flour into the dough while kneading, especially if the dough is very soft. However, avoid adding too much flour or the dough will rise slowly and produce a coarse texture.

Grease the dough lightly and allow it to rise on a smooth surface. Cover with wax paper or a damp towel while rising. The dough has risen sufficiently if doubled in bulk or when a finger impression remains in the dough. If dough is to rise twice, punch down and shape gently so you don't injure the gluten and produce a coarse texture.

There are many ways to shape a loaf, the simplest being to roll the dough into a rectangle slightly less than the length of the baking pan. Then simply

roll the dough, starting on the narrow side, as jelly roll fashion. Seal the edges and place the sealed side down in the pan. The bread is then allowed to rise or "proof" until double in bulk.

Baking is generally done at 375-400 degrees F. for 35-45 minutes for one pound loaf. When done, bread will produce a hollow sound when tapped. Cool on a wire rack to prevent softening of the loaf bottom. For a soft crust, brush the top of the loaf with butter while still warm.

Educational programs conducted by the Texas Agriculture Extension Service serve people of all ages regardless of socioeconomic level, race, color, sex, religion or origin.

**LITTLE KNOWN FACTS**  
A knitted shawl is a particularly convenient blanket for new babies because it wraps around them easily when they're up and stays tucked in over them when they're in bed.

### Get More!

More out of your Vitamin/Mineral Supplement

- More Vitamins
- More Minerals
- More Value for your dollar

Compare the MYADEC® potency to your present vitamin supplement.



\$7.45

## Arthritis Made Normal Activity Very Painful For Bonnie West . . . . . Then She Joined Pat Walker's.

Read Her

### Astounding Statement!

Bonnie West True Statement

When I started to Pat Walker's in Floydada I had arthritis in my hand so bad that I couldn't stir anything thick, and I couldn't carry anything. Within a week, I could do these things. Arthritis in my back was so bad that I couldn't make up a bed without my back killing me. Now I don't even notice it. The food plan Pat Walker's has you go on is just great! I eat more than I ever did. I haven't had indigestion or heartburn since I started to Pat Walker's not even a pain pill. I feel better than I have in years. Thanks to Pat Walker's. I have gone from size 18 to size 12.

Bonnie West  
Floydada, Texas



Mrs. West Lost 40 lbs and 50 inches at Pat Walker's



Before

Ladies: Do you find that you have the time for a Pat Walker Program in the summer, but fall and winter is too busy.

Call and let our counselors explain our summer program today!

**CALL TODAY.** FLOYDADA: 983-2112 LUBBOCK: 763-8056 For Your FREE Treatment AND Figure Analysis.

- No Strenuous Exercise
- Improves Posture
- Improves Circulation
- No Rigid Diet

Pat Walker's  
Figure Perfection Salons International

PLAINVIEW: 293-4435 LUBBOCK: 763-8056

### New Aerobic Dance Class

In Lockney American Legion Hall 8-10 Tues. Night More To Make A Beginners Class

Fee \$33.50 To Audit The Class Reeda K. Smith 652-3490

Your

Price

ows

School. The groom attended school in Oakley, Kansas, Goodland, Kansas, Tech. He is employed at the National Beef Plant in Liberal, Kansas. The couple will be married on July 19 at the Baptist Church of P. Anna is the granddaughter of Mr. and Mrs. Giles of Floydada.

Wedding is set for 8:00 p.m. in the First Church in Lock-



JULIANNE LIPHA

University, Worth, on June 6-8. The new 1980 Texas National Teen was Karen Helton, Austin. She will be competing for \$15,000 in scholarships in the N-

DEEN

... save 'em

you're read

camps

ed book

r store!

200

OPS

200



## Center News

By Mrs. J.E. Green

I know the whole country enjoyed the rain Saturday night. Friday and Saturday really held summer weather. Sunday was cooler, and Monday cloudy and nearly cool enough for a heater for some of us.

We had a about an inch of rain in town, but two inches out at Center. We hope there will be more here, but thankful for whatever we get.

Mrs. Henry Brewer and daughter, Mrs. Dorothy McDougle of Crosbyton, were in Lubbock Thursday, Saturday Mrs. Brewer was busy canning cherries.

Mr. and Mrs. Neal Wright of Raton, New Mexico spent the weekend with her mother, Mrs. Ava Jackson.

Mr. and Mrs. Marion Carpenter were in Lockney Rest Home Sunday visiting his mother, Mrs. Claud Carpenter, who is doing well.

Mrs. Ola Warren and Mrs. Fred Batten visited Saturday in the Thomas Warren home. Also present were Mr. and Mrs. Paul Stout and girls of Muleshoe and Mrs. Joyce Owen and boys.

Mr. and Mrs. Sam Spence are spending a vacation in "cool Colorado."

Visiting the Dale Millers is his mother, Mrs. Edna Davis from Oklahoma. Now she is visiting her children and on her way to Fienno, California where some of her children live.

Mr. and Mrs. Hal Thomas visited Thursday in Petersburg with an old friend, Mrs. T.J. Eller.

Miss Vera Meredith's company, Mrs. Bob Henderson and boys, former neigh-

bors but now of Amarillo, came Thursday. Bro. and Mrs. Clay Muncy dropped by Sunday afternoon.

Mr. and Mrs. Travis Plumlee of Pampa and Mrs. Ronnie Plumlee and small daughter of Amarillo visited the grandparents, Mr. and Mrs. W.C. Plumlee Saturday.

The Thomas Warrens reported two inches of rain Saturday night.

Mrs. Leo Frizzell and Mrs. Leona Warren visited Mrs. Elmer Warren Sunday afternoon.

John Sandifer of Lubbock, brother of Mrs. Vernon McPeak, entered a Lubbock Hospital Saturday for tests. Our sympathy is with Mrs. Morris Carroll in the loss of her brother Bob Towers of Paris, Texas. He was killed May 26 while on the job at Wilcox Boiler Works where he had worked for 17 years. Mrs. Carroll left for Paris immediately.

He is survived by his mother, three children, his sister and other relatives. Mrs. Carroll's family here was present at Paris for last rites on Monday.

Mrs. Darrel Smith of Tulia died Monday night about 12:30 in St. Anthony's Hospital, Amarillo. Mrs. Smith was a sister-in-law of Mrs. Claud Carpenter. Last rites are pending. She is survived by her husband and two daughters.

Darrell Smith is retired after being sheriff of Swisher County for 23 years. He made his home with the Claud Carpenters for a number of years before marriage.



LT. BRIAN L. VICKERS

## Vickers Graduates O.T.S.

Lieutenant Brian L. Vickers, USAF, of Dougherty, has recently been assigned to the 522nd Fighter Squadron of the 27th Tactical Fighter Wing at Cannon AFB, Clovis, New Mexico. Lt. Vickers was commissioned through Officer Training School at Lackland AFB, San Antonio, on September 19, 1979.

While at Officer Training School, Vickers served as a cadet flight captain. He has since graduated from the Air Intelligence Officer Training Center at Lowry AFB, Denver, Colorado and the Aircrew Survival School at Fairchild AFB, Spokane, Washington.

His service recognitions thus far include: Officer Training School Distinguished Graduate, Technical Training School Distinguished Graduate, revolver expert marksman, and automatic rifle expert marksman.

Lt. Vickers is a 1973 graduate of Floydada High School. He holds an A.A. degree from South Plains College and a B.A. from Texas Tech University. He is the son of Mr. and Mrs. Bob Vickers of

Dougherty, and is married to the former Debbie McMahon of Lubbock. They reside at 1711-A Juggler Loop, Cannon Air Force Base.

## Graham Attends Training Exercise

Pfc. Perry D. Graham, son of Mr. and Mrs. Wendell Graham, Route 1, Floydada, recently participated in a field training exercise at the Major Training Area in Grafenwohr, Germany.

The training provided soldiers an opportunity to train and test themselves in the field and requalify with various weapons.

Graham, a scout with the 11th Armored Cavalry Regiment in Fulda, entered the Army in January 1979.

He received his high school diploma through the General Educational Development program. His wife, Billie, is with him in Germany.

## OBITUARY

### H. CUNNINGHAM

Services for Herman Cunningham, 85, of Lockney were at 10 a.m. Saturday in the First Baptist Church in Lockney.

The Rev. Charles Broadhurst, pastor of the First Baptist Church in Littlefield, officiated and the Rev. John Jenkins, pastor of First Baptist Church, Lockney, assisted.

Burial was in Lockney Cemetery under direction of Moore-Rose Funeral Home.

Cunningham died at 5:15 a.m. Thursday at Lockney General Hospital after an illness.

The Lewisville native moved from Tulia to Floyd County in 1931. He was a retired cemetery sexton.

Cunningham was married to Annie Jennings June 20, 1920, in Tulia. He was a veteran of World War I and a member of the Baptist church.

Survivors include his wife; a son, Udell of Aurora, Colorado; three daughters, Flois Reed of

Panhandle, and Nelda Gene Morris and Carolyn Cunningham, both of Lockney; three sisters, Bessie Gray of Amarillo, Velma Elder of Clifton and Nina Moyer of Plainview; 11 grandchildren; and 14 great-grandchildren.

Pallbearers were Randy Bertrand, Kelley Reed, Gary Cunningham, Brian Curtis, Frankie Mills and Herman Gray.

### CLAUDE E. MYERS

Claude E. Myers of Claude, Texas died June 8 in a convalescent home in Claude. Services were held Tuesday, June 10, at 10:00 a.m. at the N.S. Griggs Pioneer Chapel in Amarillo under the direc-

Three Wheel Wee...  
HONDA AT...  
with spray...



Cycle City

6523 Ave. H (Tahoka Hwy.)...  
Lubbock, Texas

## (Dude) Barton To Appear

Mary Ellen Barton of Flomot, sister of Molly Burleson, Floydada, will be the featured guest on the television presentation, The American Trail, Tuesday, June 24 at 6:30

a.m. on the KCBD, Channel 11, Lubbock.

Miss Barton, well known for her registered quarter horses and rodeo performances, gave Don Jack of Lincoln, Nebraska,

a guided tour of her ranch. Her ranch and farm land are located five miles east of Flomot and 16 miles north of Matarador.

## CEDAR HILL NEWS

By Grace Lemons

Rain fell Sunday morning measuring from 1/2 to 1 1/2 inches. The farmers were glad to get some moisture and most of the crops are up.

Rev. Tom Lakey of Lubbock held a revival at the Assembly of God Church last week. It is reported that they had a very good revival with a good turnout.

Rev. and Mrs. Vance Mitchell took Virginia Mitchell, Vicki Powell, and Susan VanHoose to the youth camp at Roaring Springs Monday morning where the girls will stay until Friday.

Glady Fortenberry and Mrs. Asalee Beachamp took Danita Boone and Rhonda Fortenberry and Mrs. Beachamp's granddaughters to camp at Roaring Springs.

Bud Taylor was among the motorcyclists who rode their motorcycles to Lake Meredith Friday and enjoyed the world's largest Fish Fry. They also rode to the Mackenzie Lake before returning home.

Peggy Conner and Renetta Conner of Amarillo visited Mr. and Mrs. J.R. Conner Friday. They also visited Rhonda and Mike Pritchard in Plainview before returning home.

Mrs. Azalee Beachamp of Rankin arrived at the home of Mr. and Mrs. Tom Fortenberry Sunday afternoon. Tuesday morning they left for Oklahoma to visit Pam and Jackie Hayhurst and they also plan to visit with Mrs. Beachamp's brother.

Mary Ann and Garland Tucker visited Ricky and Lynn Breckenridge, Cindy and Ashley Renee near Lockney Sunday.

Grace Lemons visited Mildred Wells and also Temp Phillips in Lockney Friday. Mrs. Wells is improving after a fall April 17. She underwent surgery in Lubbock and now the cast is removed. She is getting around fairly well with the use of a walker.

Steve and Emily Mize, Chris and Karen Mize and their children, John and Rebecca, arrived from California in a motor home to spend two weeks with Mr. and Mrs. A.S. Mize. They went fishing Saturday and caught a big mess of fish and enjoyed a fish fry.

Chris and his father, Steve Mize accompanied Walton Wilson of Floydada on a fishing trip to Mackenzie Lake Monday.

Mr. and Mrs. Carl F. Lemons are the proud grandparents of a baby boy born to Mr. and Mrs. Marvin Lemons of Lockney May 28 in the Lockney General Hospi-

tal. He was named Cory Vance and weighed 7 lbs. and 9 ozs. He has a brother, David, and two sisters, Jessica and Diana. The other grandparents are Fred and Jo Carthel of Clovis. Great grandparents are Mrs. C.E. Steen of Clovis and Mrs. C.V. Lemons of Cedar Hill.

Rev. and Mrs. Vance Mitchell visited Pauline VanHoose in Floydada one day last week.

Several from here attended the funeral of Alvin Nichols, 86, held in the First United Methodist Church in Lockney Friday. Mr. Nichols died in the Central Plains Hospital in Plainview following a lengthy illness. He is survived by his wife, Luzilla, one daughter, Ruby Jewell Whitfill of Sweetwater, one brother, Mark Nichols of Sweetwater, two grandchildren and a foster grandchild. Alvin farmed in the Cedar Hill area for a number of years.

Mrs. Alton Warren of Lockney, her son, Alton Warren of Perrin, and Norma Welch visited Mrs. John Kelley Sunday.

Mrs. John Kelley and Norma Welch had supper in Plainview with Mrs. Olan Keeter Monday evening. Mattie Davis was also present.

Alton Love of Ft Worth died at 8:40 Saturday evening and memorial services were held there Monday evening before his body was transferred to Floydada. Funeral services were held in the First United Methodist Church Wednesday afternoon at 2 p.m. Many from Cedar Hill attended the services. Love was a brother to Billy Ruth Lackey. Supper was served in her home Tuesday evening for relatives and friends.

## INSUR-MATION

Floyd County Insurance Agency Jerry Cooper

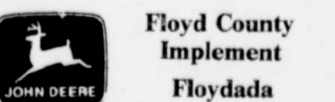
We just had our Homeowner's policy rewritten to cover 80% of current replacement costs. However, I don't understand how the policy will pay in the event of partial damage. Can you explain?

Yes. This is another important case for insuring your home for at least 80% of current replacement costs. With this coverage, in the event of a partial loss, you will receive the full cost of replacing or repairing the damage... up to the policy limits. However, if your coverage is less than the 80% level, the insurance company will compute your payments through 1) figuring the percentage of replacement costs based on the ratio of the coverage you have purchased compared to the 80% coverage you should have purchased and 2) the "actual" cash value (the amount it would take to replace the property less a deductible). The insurance will pay the larger of the two amounts but with less than 80% coverage you will certainly end up paying part of the repair costs yourself.

## agri-facts

Jerry Perry

Gasohol may be the tip of the iceberg. Blending ethanol with unleaded gasoline is only one of the ways ethanol can supplant petroleum usage. On that basis it replaces only ten percent of gasoline that would be used without ethanol. When used as the sole fuel in an engine, it replaces 100 percent of the gasoline that would have been used without it. When used as a dual-carburetor diesel fuel supplement it offsets diesel usage by 25 to 50 percent. For many farmers, another advantage of burning straight ethanol may be that it can be considerably less expensive to produce. Ethanol burned alone can be hydrated (containing 10% - 15% water) and therefore requires less expensive distillation than anhydrous (no water) ethanol which is required for mixing with gasoline.



# THOMASON

VENTURE GROCERY & MARKET  
PHONE 652-3346 220 South Main Lockney

We Reserve The Right To Limit Quantity  
Prices Effective June 16-21, 1980

We Accept Food Stamps and WIC Cards

USDA Choice Beef Blade	
<b>Chuck Steak</b> lb	<b>99¢</b>
83% Lean Fresh	
<b>Ground Chuck</b> lb	<b>\$1 29</b>
USDA Choice Center Cut	
<b>Chuck Steak</b> lb	<b>\$1 19</b>
USDA Boneless	
<b>Chuck Roast</b> lb	<b>\$1 19</b>
USDA Choice	
<b>Sirloin Tip Steak</b> lb	<b>\$1 99</b>
Shurfresh Reg. Meat	
<b>Franks</b> lb	<b>89¢</b>

Wrights Hickory Smoked

**Slab Bacon** lb **79¢**

Shurfresh Eggs Dozen

CALIFORNIA FREESTONE

## Peaches 49¢

Maryland Club Coffee 1 lb can

CALIFORNIA SUNKIST Lemons LB <b>39¢</b>	CALIFORNIA Celery Hearts LG PKG <b>59¢</b>
CALIFORNIA HASS Avocados 2 LARGE SIZE FOR \$1	CALIFORNIA LONG WHITE Potatoes 10 LB BAG <b>\$1 09</b>

Lipton Family Size 24 ct. Tea Bags	\$1 59
Gebharts 15 oz. can Tamales	59¢
Star Kist 3 1/2 oz. can Tuna	49¢
Gebharts Hot Dog Sauce	3/\$1 00
Swift Jewel 3 lb can Shortening	\$1 49
Fisher 12 oz. Mixed Nuts	\$1 89
Kal-Kan Cat Food 5 1/2 oz. can	3/89¢
Hot Shot House & Garden Spray 11 oz.	\$1 69
Hot Shot Flying Insect Spray 11 oz.	\$1 49

20¢ Off Label 50 oz. Cascade \$1 69

35¢ Off Label 64 oz. ERA Liquid \$2 69

## Coke .TAB. Two great refreshers

YOUR CHOICE

**\$1 99**

32 OZ RETURNABLES PLUS DEPOSIT

22 oz. botl Spray & Wash

Morton 9 oz. Honey Buns 2 - 8 oz. Cups Soft Parkay

10 oz. Kraft Hot Mustard Colby Cheese

Bath Size Safeguard

50 Ct. Band Aids Band Aid Spot Patch

30 Ct. Band Aid Deodorant

30¢ Off Label Scope 1/3 oz.



# TV Log

**6:00** PHILIPPO (MUSIC) \*\* "The Power of Pentecost" (SUSPENSE) \*\* "Terrot in the Sky" 1971 Leaf Erickson, Doug McClure. Pilot-co-pilots and several passengers on a commercial flight develop food poisoning and must turn to an ex-combat helicopter pilot for help. (90 mins.)

**6:30** JERRY FALWELL

**7:00** GEORGIA WRESTLING

**7:30** A DAY WITH CONRAD GREEN

**8:00** KENNEDY'S

**8:30** CROSSROADS HOUR

**9:00** MOVIE (DRAMA) \*\* "The Italian Job" 1969 Michael Caine, Noel Coward. A prison based masterpiece plots a \$4,000,000 gold robbery in Italy. (2 hrs.)

**9:30** WILD KINGDOM

**10:00** TO BE ANNOUNCED

**10:30** FOCUS ON THE FAMILY

**11:00** ABC NEWS

**11:30** NBC NEWS

**12:00** CBS NEWS

**EVENING**

**6:00** JIMMY SWAGART

**6:30** BEST OF DONNY AND MARIE

**7:00** UPSTAIRS DOWNSTAIRS

**7:30** SPECIAL MISCHIEF

**8:00** JOHN DENVER: THE HIGHER WE FLY

**8:30** EVER INCREASING FAITH

**9:00** ROSS BAGLEY SHOW

**9:30** MOVIE (COMEDY) \*\* "Life With Father" 1947 William Powell, Irene Dunne. The story of the irascible head of a household in 1800's New York City. (2 hrs., 30 mins.)

**10:00** REX HUMBARD

**10:30** MOVIE (COMEDY-FANTASY) \*\* "Everything's Ducky" 1961 Mickey Rooney, Buddy Hackett. Two zanies and a talking duck orbit the earth in a rocket ship. (2 hrs.)

**11:00** ODYSSEY

**11:30** OMNIBUS

**12:00** MORNING

**6:00** SUPER STATION FUN TIME

**6:30** PTL PROGRAM

**7:00** INTERNATIONAL BYLINE

**7:30** STARBLAZERS (EXC. TUE.)

**8:00** MOVIE (ROMANCE) \*\* "Adventurers" 1970 Candice Bergen, Ernest Borgnine. Based on Harold Robbins' novel of a poor boy who grows up to be a woman-chaser incapable of fulfilling a relationship but with a passionate love for life and his country. (3 hrs.)

**8:30** CHIP OFF

**9:00** ARCHIE BUNKER'S PLACE

**9:30** ONE DAY AT A TIME

**10:00** 700 CLUB

**10:30** MASTERSPIRE THEATRE

**11:00** ABC THEATRE

**11:30** THE BIG EVENT

**12:00** ALICE

**12:30** THE JEFFERSONS

**1:00** KENNETH COPELAND

**1:30** BEN WATTENBERG'S 1980

**2:00** LAWRENCE WELK SHOW

**2:30** TRAPPER JOHN, M.D.

**3:00** RUFF HOUSE

**3:30** NEWSIGHT '80

**4:00** MOVIE (WESTERN) \*\* "Will Penny" 1958

**4:30** MOVIE (COMEDY) \*\* "The King Is Coming"

**5:00** POP GOES THE COUNTRY

**5:30** MOVIE (DRAMA) \*\* "Con-flict" 1943 Humphrey Bogart, Alexis Smith. A man plots to murder his wife and her sister. (105 mins.)

**6:00** NBC LATE NIGHT MOVIE

**6:30** GUNSMOKE

**7:00** JACK VAN IMPE

**7:30** SPECTRUM

**8:00** PTL PROGRAM

**8:30** BILL DANCE OUTDOORS

**12:00** MOVIE (ADVENTURE) \*\* "Last Blitzkrieg" 1959 Van Johnson, Kevin Mathews. The fanatical son of a Nazi General leads a squad of German Commandos, dressed in American uniforms, behind the American lines during WWII. (90 mins.)

**12:15** NIGHTBEAT

**12:30** CHRISTOPHER CLOUSEP

**12:45** OPEN LINE

**1:00** CROMIE CIRCLE

**1:30** MOVIE (COMEDY) \*\* "Harem Girl" 1952 Joan Davis, Peggy Castle. Secretary to a beautiful princess takes her place, when princess is forced to flee from a wicked usurper. (90 mins.)

**2:00** PTL PROGRAM

**2:30** MOVIE (MYSTERY-DRAMA JOINED IN PROGRESS) \*\* "Bad Seed" 1956 Nancy Kelly, Patty McCormack.

**3:00** NEWS

**3:30** MOVIE (ADVENTURE) \*\* "From Hell to Boho" 1964 George Montgomery, Julie Gregg. A man tries to protect his island against crooks and smugglers. (110 mins.)

**4:00** ALL NIGHT AT THE MOVIES

**4:30** LOVE AMERICAN STYLE

**5:00** ALL NIGHT AT THE MOVIES

**5:30** PTL PROGRAM

**6:00** ROSS BAGLEY SHOW

**6:30** MON THRU FRI

**MORNING**

**5:55** TOP O' THE MORNING

**6:00** SUPER STATION FUN TIME

**6:30** PTL PROGRAM

**7:00** INTERNATIONAL BYLINE

**7:30** STARBLAZERS (EXC. TUE.)

**8:00** MOVIE (ROMANCE) \*\* "Adventurers" 1970 Candice Bergen, Ernest Borgnine. Based on Harold Robbins' novel of a poor boy who grows up to be a woman-chaser incapable of fulfilling a relationship but with a passionate love for life and his country. (3 hrs.)

**8:30** CHIP OFF

**9:00** ARCHIE BUNKER'S PLACE

**9:30** ONE DAY AT A TIME

**10:00** 700 CLUB

**10:30** MASTERSPIRE THEATRE

**11:00** ABC THEATRE

**11:30** THE BIG EVENT

**12:00** ALICE

**12:30** THE JEFFERSONS

**1:00** KENNETH COPELAND

**1:30** BEN WATTENBERG'S 1980

**2:00** LAWRENCE WELK SHOW

**2:30** TRAPPER JOHN, M.D.

**3:00** RUFF HOUSE

**3:30** NEWSIGHT '80

**4:00** MOVIE (WESTERN) \*\* "Will Penny" 1958

**4:30** MOVIE (COMEDY) \*\* "The King Is Coming"

**5:00** POP GOES THE COUNTRY

**5:30** MOVIE (DRAMA) \*\* "Con-flict" 1943 Humphrey Bogart, Alexis Smith. A man plots to murder his wife and her sister. (105 mins.)

**6:00** NBC LATE NIGHT MOVIE

**6:30** GUNSMOKE

**7:00** JACK VAN IMPE

**7:30** SPECTRUM

**8:00** PTL PROGRAM

**8:30** BILL DANCE OUTDOORS

**12:00** MOVIE (WESTERN) \*\* "Arizona Bushwhacker" 1968 Howard Keel, Yvonne De Carlo. Confederate spies in the old Southwest tangled in a crooked gunrunner who is aiding renegade Apache. (2 hrs.)

**12:30** GILLIGAN'S ISLAND

**1:00** THE MISADVENTURES OF SHERIFF LOBO

**1:30** THE WHITE SHADOW

**2:00** GOOD NEWS

**2:30** BASEBALL Atlanta Braves vs St. Louis Cardinals (2 hrs., 30 mins.)

**3:00** PATTERN FOR LIVING

**3:30** LAVERNE AND SHIRLEY

**4:00** GOOD NEWS

**4:30** BASEBALL Atlanta Braves vs St. Louis Cardinals (2 hrs., 30 mins.)

**5:00** PATTERN FOR LIVING

**5:30** LAVERNE AND SHIRLEY

**6:00** GOOD NEWS

**6:30** BASEBALL Atlanta Braves vs St. Louis Cardinals (2 hrs., 30 mins.)

**7:00** PATTERN FOR LIVING

**7:30** LAVERNE AND SHIRLEY

**8:00** GOOD NEWS

**8:30** BASEBALL Atlanta Braves vs St. Louis Cardinals (2 hrs., 30 mins.)

**9:00** PATTERN FOR LIVING

**9:30** LAVERNE AND SHIRLEY

**10:00** GOOD NEWS

**10:30** BASEBALL Atlanta Braves vs St. Louis Cardinals (2 hrs., 30 mins.)

**11:00** PATTERN FOR LIVING

**11:30** LAVERNE AND SHIRLEY

**12:00** GOOD NEWS

**12:30** BASEBALL Atlanta Braves vs St. Louis Cardinals (2 hrs., 30 mins.)

**1:00** PATTERN FOR LIVING

**1:30** LAVERNE AND SHIRLEY

**2:00** GOOD NEWS

**2:30** BASEBALL Atlanta Braves vs St. Louis Cardinals (2 hrs., 30 mins.)

**3:00** PATTERN FOR LIVING

**3:30** LAVERNE AND SHIRLEY

**4:00** GOOD NEWS

**4:30** BASEBALL Atlanta Braves vs St. Louis Cardinals (2 hrs., 30 mins.)

**5:00** PATTERN FOR LIVING

**5:30** LAVERNE AND SHIRLEY

**6:00** GOOD NEWS

**6:30** BASEBALL Atlanta Braves vs St. Louis Cardinals (2 hrs., 30 mins.)

**7:00** PATTERN FOR LIVING

**7:30** LAVERNE AND SHIRLEY

**8:00** GOOD NEWS

**8:30** BASEBALL Atlanta Braves vs St. Louis Cardinals (2 hrs., 30 mins.)

**9:00** PATTERN FOR LIVING

**9:30** LAVERNE AND SHIRLEY

**10:00** GOOD NEWS

**10:30** BASEBALL Atlanta Braves vs St. Louis Cardinals (2 hrs., 30 mins.)

**11:00** PATTERN FOR LIVING

**11:30** LAVERNE AND SHIRLEY

**12:00** GOOD NEWS

**12:30** BASEBALL Atlanta Braves vs St. Louis Cardinals (2 hrs., 30 mins.)

**1:00** PATTERN FOR LIVING

**1:30** LAVERNE AND SHIRLEY

**2:00** GOOD NEWS

**2:30** BASEBALL Atlanta Braves vs St. Louis Cardinals (2 hrs., 30 mins.)

**3:00** PATTERN FOR LIVING

**3:30** LAVERNE AND SHIRLEY

**4:00** GOOD NEWS

**4:30** BASEBALL Atlanta Braves vs St. Louis Cardinals (2 hrs., 30 mins.)

**5:00** PATTERN FOR LIVING

**5:30** LAVERNE AND SHIRLEY

**6:00** GOOD NEWS

**6:30** BASEBALL Atlanta Braves vs St. Louis Cardinals (2 hrs., 30 mins.)

**7:00** PATTERN FOR LIVING

**7:30** LAVERNE AND SHIRLEY

**8:00** GOOD NEWS

**8:30** BASEBALL Atlanta Braves vs St. Louis Cardinals (2 hrs., 30 mins.)

**9:00** PATTERN FOR LIVING

**9:30** LAVERNE AND SHIRLEY

**10:00** GOOD NEWS

**10:30** BASEBALL Atlanta Braves vs St. Louis Cardinals (2 hrs., 30 mins.)

**11:00** PATTERN FOR LIVING

**11:30** LAVERNE AND SHIRLEY

**12:00** GOOD NEWS

**12:30** BASEBALL Atlanta Braves vs St. Louis Cardinals (2 hrs., 30 mins.)

**1:00** PATTERN FOR LIVING

**1:30** LAVERNE AND SHIRLEY

**2:00** GOOD NEWS

**2:30** BASEBALL Atlanta Braves vs St. Louis Cardinals (2 hrs., 30 mins.)

**3:00** PATTERN FOR LIVING

**3:30** LAVERNE AND SHIRLEY

**4:00** GOOD NEWS

**4:30** BASEBALL Atlanta Braves vs St. Louis Cardinals (2 hrs., 30 mins.)

**5:00** PATTERN FOR LIVING

**5:30** LAVERNE AND SHIRLEY

**6:00** GOOD NEWS

**6:30** BASEBALL Atlanta Braves vs St. Louis Cardinals (2 hrs., 30 mins.)

**7:00** PATTERN FOR LIVING

**7:30** LAVERNE AND SHIRLEY

**8:00** GOOD NEWS

**8:30** BASEBALL Atlanta Braves vs St. Louis Cardinals (2 hrs., 30 mins.)

**9:00** PATTERN FOR LIVING

**9:30** LAVERNE AND SHIRLEY

**10:00** GOOD NEWS

**10:30** BASEBALL Atlanta Braves vs St. Louis Cardinals (2 hrs., 30 mins.)

**11:00** PATTERN FOR LIVING

**11:30** LAVERNE AND SHIRLEY

**12:00** GOOD NEWS

**12:30** BASEBALL Atlanta Braves vs St. Louis Cardinals (2 hrs., 30 mins.)

**1:00** PATTERN FOR LIVING

**1:30** LAVERNE AND SHIRLEY

**2:00** GOOD NEWS

**2:30** BASEBALL Atlanta Braves vs St. Louis Cardinals (2 hrs., 30 mins.)

**3:00** PATTERN FOR LIVING

**3:30** LAVERNE AND SHIRLEY

**4:00** GOOD NEWS

**4:30** BASEBALL Atlanta Braves vs St. Louis Cardinals (2 hrs., 30 mins.)

**5:00** PATTERN FOR LIVING

**5:30** LAVERNE AND SHIRLEY

**6:00** GOOD NEWS

**6:30** BASEBALL Atlanta Braves vs St. Louis Cardinals (2 hrs., 30 mins.)

**7:00** PATTERN FOR LIVING

**7:30** LAVERNE AND SHIRLEY

**8:00** GOOD NEWS

**8:30** BASEBALL Atlanta Braves vs St. Louis Cardinals (2 hrs., 30 mins.)

**9:00** PATTERN FOR LIVING

**9:30** LAVERNE AND SHIRLEY

**10:00** GOOD NEWS

**10:30** BASEBALL Atlanta Braves vs St. Louis Cardinals (2 hrs., 30 mins.)

**11:00** PATTERN FOR LIVING

**11:30** LAVERNE AND SHIRLEY

**12:00** GOOD NEWS

**12:30** BASEBALL Atlanta Braves vs St. Louis Cardinals (2 hrs., 30 mins.)

**1:00** PATTERN FOR LIVING

**1:30** LAVERNE AND SHIRLEY

**2:00** GOOD NEWS

**2:30** BASEBALL Atlanta Braves vs St. Louis Cardinals (2 hrs., 30 mins.)

**3:00** PATTERN FOR LIVING

**3:30** LAVERNE AND SHIRLEY

**4:00** GOOD NEWS

**4:30** BASEBALL Atlanta Braves vs St. Louis Cardinals (2 hrs., 30 mins.)

**5:00** PATTERN FOR LIVING

**5:30** LAVERNE AND SHIRLEY

**6:00** GOOD NEWS

**6:30** BASEBALL Atlanta Braves vs St. Louis Cardinals (2 hrs., 30 mins.)

**7:00** PATTERN FOR LIVING

**7:30** LAVERNE AND SHIRLEY

**8:00** GOOD NEWS

**8:30** BASEBALL Atlanta Braves vs St. Louis Cardinals (2 hrs., 30 mins.)

**9:00** PATTERN FOR LIVING

**9:30** LAVERNE AND SHIRLEY

**10:00** GOOD NEWS

**10:30** BASEBALL Atlanta Braves vs St. Louis Cardinals (2 hrs., 30 mins.)

**11:00** PATTERN FOR LIVING

**11:30** LAVERNE AND SHIRLEY

**12:00** GOOD NEWS

**12:30** BASEBALL Atlanta Braves vs St. Louis Cardinals (2 hrs., 30 mins.)

**1:00** PATTERN FOR LIVING

**1:30** LAVERNE AND SHIRLEY

**2:00** GOOD NEWS

**2:30** BASEBALL Atlanta Braves vs St. Louis Cardinals (2 hrs., 30 mins.)

**3:00** PATTERN FOR LIVING

**3:30** LAVERNE AND SHIRLEY

**4:00** GOOD NEWS

**4:30** BASEBALL Atlanta Braves vs St. Louis Cardinals (2 hrs., 30 mins.)

**5:00** PATTERN FOR LIVING

**5:30** LAVERNE AND SHIRLEY

**6:00** GOOD NEWS

**6:30** BASEBALL Atlanta Braves vs St. Louis Cardinals (2 hrs., 30 mins.)

**7:00** PATTERN FOR LIVING

**7:30** LAVERNE AND SHIRLEY

**8:00** GOOD NEWS

**8:30** BASEBALL Atlanta Braves vs St. Louis Cardinals (2 hrs., 30 mins.)

**9:00** PATTERN FOR LIVING

**9:30** LAVERNE AND SHIRLEY

**10:00** GOOD NEWS

**10:30** BASEBALL Atlanta Braves vs St. Louis Cardinals (2 hrs., 30 mins.)

**11:00** PATTERN FOR LIVING

**11:30** LAVERNE AND SHIRLEY

**12:00** GOOD NEWS

**12:30** BASEBALL Atlanta Braves vs St. Louis Cardinals (2 hrs., 30 mins.)

**1:00** PATTERN FOR LIVING

**1:30** LAVERNE AND SHIRLEY

**2:00** GOOD NEWS

**2:30** BASEBALL Atlanta Braves vs St. Louis Cardinals (2 hrs., 30 mins.)

**3:00** PATTERN FOR LIVING

**3:30** LAVERNE AND SHIRLEY

**4:00** GOOD NEWS

**4:30** BASEBALL Atlanta Braves vs St. Louis Cardinals (2 hrs., 30 mins.)

**5:00** PATTERN FOR LIVING

**5:30** LAVERNE AND SHIRLEY

**6:00** GOOD NEWS

**6:30** BASEBALL Atlanta Braves vs St. Louis Cardinals (2 hrs., 30 mins.)

**7:00** PATTERN FOR LIVING

**7:30** LAVERNE AND SHIRLEY

**8:00** GOOD NEWS

**8:30** BASEBALL Atlanta Braves vs St. Louis Cardinals (2 hrs., 30 mins.)

**9:00** PATTERN FOR LIVING

**9:30** LAVERNE AND SHIRLEY

**10:00** GOOD NEWS

**10:30** BASEBALL Atlanta Braves vs St. Louis Cardinals (2 hrs., 30 mins.)

**11:00** PATTERN FOR LIVING

**11:30** LAVERNE AND SHIRLEY

**12:00** GOOD NEWS

**12:30** BASEBALL Atlanta Braves vs St. Louis Cardinals (2 hrs., 30 mins.)

**1:00** PATTERN FOR LIVING

**1:30** LAVERNE AND SHIRLEY

**2:00** GOOD NEWS

**2:30** BASEBALL Atlanta Braves vs St. Louis Cardinals (2 hrs., 30 mins.)

**3:00** PATTERN FOR LIVING

**3:30** LAVERNE AND SHIRLEY

**4:00** GOOD NEWS

**4:30** BASEBALL Atlanta Braves vs St. Louis Cardinals (2 hrs., 30 mins.)

**5:00** PATTERN FOR LIVING

**5:30** LAVERNE AND SHIRLEY

**6:00** GOOD NEWS

**6:30** BASEBALL Atlanta Braves vs St. Louis Cardinals (2 hrs., 30 mins.)

**7:00** PATTERN FOR LIVING

**7:30** LAVERNE AND SHIRLEY

**8:00** GOOD NEWS

**8:30** BASEBALL Atlanta Braves vs St. Louis Cardinals (2 hrs., 30 mins.)

**9:00** PATTERN FOR LIVING

**9:30** LAVERNE AND SHIRLEY

**10:00** GOOD NEWS

**10:30** BASEBALL Atlanta Braves vs St. Louis Cardinals (2 hrs., 30 mins.)

**11:00** PATTERN FOR LIVING

**11:30** LAVERNE AND SHIRLEY

**12:00** GOOD NEWS

**12:30** BASEBALL Atlanta Braves vs St. Louis Cardinals (2 hrs., 30 mins.)

**1:00** PATTERN FOR LIVING

**1:30** LAVERNE AND SHIRLEY

**2:00** GOOD NEWS

**2:30** BASEBALL Atlanta Braves vs St. Louis Cardinals (2 hrs., 30 mins.)

**3:00** PATTERN FOR LIVING

**3:30** LAVERNE AND SHIRLEY

**4:00** GOOD NEWS

**4:30** BASEBALL Atlanta Braves vs St. Louis Cardinals (2 hrs., 30 mins.)

**5:00** PATTERN FOR LIVING

**5:30** LAVERNE AND SHIRLEY

**6:00** GOOD NEWS

**6:30** BASEBALL Atlanta Braves vs St. Louis Cardinals (2 hrs., 30 mins.)

**7:00** PATTERN FOR LIVING

**7:30** LAVERNE AND SHIRLEY

**8:00** GOOD NEWS

**8:30** BASEBALL Atlanta Braves vs St. Louis Cardinals (2 hrs., 30 mins.)

**9:00** PATTERN FOR LIVING

**9:30** LAVERNE AND SHIRLEY

**10:00** GOOD NEWS

**10:30** BASEBALL Atlanta Braves vs St. Louis Cardinals (2 hrs., 30 mins.)

**11:00** PATTERN FOR LIVING

**11:30** LAVERNE AND SHIRLEY

**12:00** GOOD NEWS

**12:30** BASEBALL Atlanta Braves vs St. Louis Cardinals (2 hrs., 30 mins.)

**1:00** PATTERN FOR LIVING

**1:30** LAVERNE AND SHIRLEY

**2:00** GOOD NEWS

**2:30** BASEBALL Atlanta Braves vs St. Louis Cardinals (2 hrs., 30 mins.)

**3:00** PATTERN FOR LIVING

**3:30** LAVERNE AND SHIRLEY

**4:00** GOOD NEWS

**4:30** BASEBALL Atlanta Braves vs St. Louis Cardinals (2 hrs., 30 mins.)

**5:00** PATTERN FOR LIVING

**5:30** LAVERNE AND SHIRLEY

**6:00** GOOD NEWS

**6:30** BASEBALL Atlanta Braves vs St. Louis Cardinals (2 hrs., 30 mins.)

**7:00** PATTERN FOR LIVING

**7:30** LAVERNE AND SHIRLEY

**8:00** GOOD NEWS

**8:30** BASEBALL Atlanta Braves vs St. Louis Cardinals (2 hrs., 30 mins.)

**9:00** PATTERN FOR LIVING

**9:30** LAVERNE AND SHIRLEY

**10:00** GOOD NEWS

**10:30** BASEBALL Atlanta Braves vs St. Louis Cardinals (2 hrs., 30 mins.)

**11:00** PATTERN FOR LIVING

**11:30** LAVERNE AND SHIRLEY

**12:00** GOOD NEWS

**12:30** BASEBALL Atlanta Braves vs St. Louis Cardinals (2 hrs., 30 mins.)

**1:00** PATTERN FOR LIVING

**1:30** LAVERNE AND SHIRLEY

**2:00** GOOD NEWS

**2:30** BASEBALL Atlanta Braves vs St. Louis Cardinals (2 hrs., 30 mins.)

**3:00** PATTERN FOR LIVING

**3:30** LAVERNE AND SHIRLEY

**4:00** GOOD NEWS

**4:30** BASEBALL Atlanta Braves vs St. Louis Cardinals (2 hrs., 30 mins.)

**5:00** PATTERN FOR LIVING

**5:30** LAVERNE AND SHIRLEY

**6:00** GOOD NEWS

**6:30** BASEBALL Atlanta Braves vs St. Louis Cardinals (2 hrs., 30 mins.)

**7:00** PATTERN FOR LIVING

**7:30** LAVERNE AND SHIRLEY

**8:00** GOOD NEWS

**8:30** BASEBALL Atlanta Braves vs St. Louis Cardinals (2 hrs., 30 mins.)

**9:00** PATTERN FOR LIVING

**9:30** LAVERNE AND SHIRLEY

**10:00** GOOD NEWS

**10:30** BASEBALL Atlanta Braves vs St. Louis Cardinals (2 hrs., 30 mins.)

**11:00** PATTERN FOR LIVING

**11:30** LAVERNE AND SHIRLEY

**12:00** GOOD NEWS

**12:30** BASEBALL Atlanta Braves vs St. Louis Cardinals (2 hrs., 30 mins.)

**1:00** PATTERN FOR LIVING

**1:30** LAVERNE AND SHIRLEY

**2:00** GOOD NEWS

**2:30** BASEBALL Atlanta Braves vs St. Louis Cardinals (2 hrs., 30 mins.)

**3:00** PATTERN FOR LIVING

**3:30** LAVERNE AND SHIRLEY

**4:00** GOOD NEWS

**4:30** BASEBALL Atlanta Braves vs St. Louis Cardinals (2 hrs., 30 mins.)

**5:00** PATTERN FOR LIVING

**5:30** LAVERNE AND SHIRLEY

**6:00** GOOD NEWS

**6:30** BASEBALL Atlanta Braves vs St. Louis Cardinals (2 hrs., 30 mins.)

**7:00** PATTERN FOR LIVING

**7:30** LAVERNE AND SHIRLEY

**8:00** GOOD NEWS

**8:30** BASEBALL Atlanta Braves vs St. Louis Cardinals (2 hrs., 30 mins.)

**9:00** PATTERN FOR LIVING

**9:30** LAVERNE AND SHIRLEY

**10:00** GOOD NEWS

**10:30** BASEBALL Atlanta Braves vs St. Louis Cardinals (2 hrs., 30 mins.)

**11:00** PATTERN FOR LIVING

**11:30** LAVERNE AND SHIRLEY

**12:00** GOOD NEWS

**12:30** BASEBALL Atlanta Braves vs St. Louis Cardinals (2 hrs., 30 mins.)

**1:00** PATTERN FOR LIVING

**1:30** LAVERNE AND SHIRLEY

**2:00** GOOD NEWS

**2:30** BASEBALL Atlanta Braves vs St. Louis Cardinals (2 hrs., 30 mins.)

**3:00** PATTERN FOR LIVING

**3:30** LAVERNE AND SHIRLEY

**4:00** GOOD NEWS

**4:30** BASEBALL Atlanta Braves vs St. Louis Cardinals (2 hrs., 30 mins.)

**5:00** PATTERN FOR LIVING

**5:30** LAVERNE AND SHIRLEY

**6:00** GOOD NEWS

**6:30** BASEBALL Atlanta Braves vs St. Louis Cardinals (2 hrs., 30 mins.)

**7:00** PATTERN FOR LIVING

**7:30** LAVERNE AND SHIRLEY

**8:00** GOOD NEWS

**8:30** BASEBALL Atlanta Braves vs St. Louis Cardinals (2 hrs., 30 mins.)

**9:00** PATTERN FOR LIVING

**9:30** LAVERNE AND SHIRLEY

**10:00** GOOD NEWS

**10:30** BASEBALL Atlanta Braves vs St. Louis Cardinals (2 hrs., 30 mins.)

**11:00** PATTERN FOR LIVING

**11:30** LAVERNE AND SHIRLEY

**12:00** GOOD NEWS

**12:30** BASEBALL Atlanta Braves vs St. Louis Cardinals (2 hrs., 30 mins.)

**1:00** PATTERN FOR LIVING

**1:30** LAVERNE AND SHIRLEY

**2:00** GOOD NEWS

**2:30** BASEBALL Atlanta Braves vs St. Louis Cardinals (2 hrs., 30 mins.)

**3:00** PATTERN FOR LIVING

**3:30** LAVERNE AND SHIRLEY

**4:00** GOOD NEWS

**4:30** BASEBALL Atlanta Braves vs St. Louis Cardinals (2 hrs., 30 mins.)

**5:00** PATTERN FOR LIVING

**5:30** LAVERNE AND SHIRLEY

**6:00** GOOD NEWS

**6:30** BASEBALL Atlanta Braves vs St. Louis Cardinals (2 hrs., 30 mins.)

**7:00** PATTERN FOR LIVING

**7:30** LAVERNE AND SHIRLEY

**8:00** GOOD NEWS

**8:30** BASEBALL Atlanta Braves vs St. Louis Cardinals (2 hrs., 30 mins.)

**9:00** PATTERN FOR LIVING

**9:30** LAVERNE AND SHIRLEY

**10:00** GOOD NEWS

**10:30** BASEBALL Atlanta Braves vs St. Louis Cardinals (2 hrs., 30 mins.)

**11:00** PATTERN FOR LIVING

**11:30** LAVERNE AND SHIRLEY

**12:00** GOOD NEWS

**12:30** BASEBALL Atlanta Braves vs St. Louis Cardinals (2 hrs., 30 mins.)

**1:00** PATTERN FOR LIVING

**1:30** LAVERNE AND SHIRLEY

**2:00** GOOD NEWS

**2:30** BASEBALL Atlanta Braves vs St. Louis Cardinals (2 hrs., 30 mins.)

**3:00** PATTERN FOR LIVING

**3:30** LAVERNE AND SHIRLEY

**4:00** GOOD NEWS

**4:30** BASEBALL Atlanta Braves vs St. Louis Cardinals (2 hrs., 30 mins.)

**5:00** PATTERN FOR LIVING

**5:30** LAVERNE AND SHIRLEY

**6:00** GOOD NEWS

**6:30** BASEBALL Atlanta Braves vs St. Louis Cardinals (2 hrs., 30 mins.)

**7:00** PATTERN FOR LIVING

**7:30** LAVERNE AND SHIRLEY

**8:00** GOOD NEWS

**8:30** BASEBALL Atlanta Braves vs St. Louis Cardinals (2 hrs., 30 mins.)

**9:00** PATTERN FOR LIVING

**9:30** LAVERNE AND SHIRLEY

**10:00** GOOD NEWS

**10:30** BASEBALL Atlanta Braves vs St. Louis Cardinals (2 hrs., 30 mins.)

**11:00** PATTERN FOR LIVING

**11:30** LAVERNE AND SHIRLEY

**12:00** GOOD NEWS

**12:30** BASEBALL Atlanta Braves vs St. Louis Cardinals (2 hrs., 30 mins.)

**1:00** PATTERN FOR LIVING

**1:30** LAVERNE AND SHIRLEY

**2:00** GOOD NEWS

**2:30** BASEBALL Atlanta Braves vs St. Louis Cardinals (2 hrs., 30 mins.)

**3:00** PATTERN FOR LIVING

**3:30** LAVERNE AND SHIRLEY

**4:00** GOOD NEWS

**4:30** BASEBALL Atlanta Braves vs St. Louis Cardinals (2 hrs., 30 mins.)

**5:00** PATTERN FOR LIVING

**5:30** LAVERNE AND SHIRLEY

**6:00** GOOD NEWS

**6:30** BASEBALL Atlanta Braves vs St. Louis Cardinals (2 hrs., 30 mins.)

**7:00** PATTERN FOR LIVING

**7:30** LAVERNE AND SHIRLEY

**8:00** GOOD NEWS

**8:30** BASEBALL Atlanta Braves vs St. Louis Cardinals (2 hrs., 30 mins.)

**9:00** PATTERN FOR LIVING

**9:30** LAVERNE AND SHIRLEY

**10:00** GOOD NEWS

**10:30** BASEBALL Atlanta Braves vs St. Louis Cardinals (2 hrs., 30 mins.)



# Steve Lewis Appears At Fair

A singer, composer, musician, actor, race driver and businessman will be one of the featured attractions at the 63rd annual Panhandle South Plains Fair, in Lubbock, September 20-27.

Fair general manager Steve L. Lewis said Marty Robbins—"The Performer"—would be on stage in Fair Park Coliseum at 5 p.m. and 8 p.m. on September 23, fourth day of the eight-day run.

Robbins will appear with Little David Wilkins. Lewis earlier announced that Merle Haggard and Susie Allanson would headline the exposition with two shows on September 21.

Robbins' range and variety seemingly are boundless. He sings Polynesian, Mexican, Western, country and pop with authority. A prolific songwriter, Robbins has authored more than 500 songs, including "White Sport Coat," "Devil Woman," "Big Iron," "You Gave Me a Mountain," "My Woman, My Woman, My Wife" and "El Paso City."

An acclaimed country music superstar, Robbins fills concert halls around the country, including Las Vegas and Lake Tahoe. He was the first "country" act to ever play in the main showrooms of Las Vegas and still holds the all-time attendance record at one of the city's larger hotels.

Two of his singles, "El Paso City" and "Among My Souvenirs," went to No. 1 in the Billboard, Cashbox and Record World charts as did his album, "El Paso City." Robbins also is an accomplished race car driver, entering four or five big races each year and consistently finishing among the top 10 drivers.

Robbins' backup for the show will be "Little David Wilkins."

"We feel very fortunate to have been able to sign stars the caliber of Merle Haggard and Marty Robbins," Lewis said.

"We're also trying to arrange a couple of other new shows," Lewis added.



## CASH REBATES UP TO \$5000

ON NEW CASE AGRICULTURAL TRACTORS

For a limited time only, we are offering cash rebates up to \$5,000.00 on the purchase of selected Case agricultural tractors. Tractor must be new, one of the eligible models shown in table. Offer available at participating Case dealers.

Eligible Models (new units)	Rebate
885, 990, 995, 1210, 1410	\$2000
2090, 2290	\$3000
2390, 2590	\$4000
4490, 4690, 4890	\$5000

NOTE: Government Agencies/Departments do not qualify for rebate.

LUBBOCK 3302 Slaton Highway 745-4451 FLOYDADA 101 South 12th 983-2836 LAMESA 902 S. Dallas 872-5861

- 9:00 SPOLETO '80
- 9:20-20 NEWS
- 10 M.A.S.H.
- 10:15 KNOTS LANDING J.R. Ewing comes to Knots Landing to protect Ewing family interests in off-shore oil drilling about to begin near the town. (Repeat: 60 mins.)
- 9:15 UPSTAIRS, DOWNSTAIRS
- 9:30 NORMAN VINCENT PEALE
- THE LAWMAKERS
- 10:00 ODD COUPLE
- 2 GOD'S NEWS BEHIND THE NEWS
- DICK CAVETT SHOW
- JOHN ANKERBERG SHOW
- 10:15 NEWS
- LOVE AMERICAN STYLE
- GOSSIP COLUMNIST The story of Dina Moran, a beautiful journalist-turned gossip columnist who finds herself caught in the compromising world of Hollywood. Stars: Kim Cattrall, Robert Vaughn.
- 10:15 LOVE AMERICAN STYLE
- ROSS BAGLEY SHOW
- MOVIE-(MYSTERY) "Angel Face" 1953 Robert Mitchum, Jean Simmons. A spoiled heiress lets nothing stand in her way; she becomes a murderer. (2 hrs.)
- ABC CAPTIONED NEWS
- PTL PROGRAM
- M.A.S.H.
- PRISONER: CELL BLOCK H
- THE TONIGHT SHOW Best of Carson. Guests: Gregory Peck, Martin Mull, Judith Blegen. (Repeat: 90 mins.)
- BOB NEWMAN SHOW
- MOVIE-(ADVENTURE) "Delphi Bureau" 1972 Laurence Luckinbill, Joanna Pettet. A secret agent with a photographic memory searching for an army filled with stock-piled weapons, gets into trouble. (2 hrs.)
- GUNSMOKE
- 11:30 ABC NEWS NIGHTLINE
- 11:50 ANGELS-BARETTA Charlie's Angels-"Haunted Angels" The Angels investigate a haunted parapsychology institute to pursue a murderous ghost. Barett-"Under the City" A gang of escaped juvenile convicts are held up in an abandoned plant surrounded by state police. (Repeat: 2 hrs., 15 mins.)
- 12:00 KOINONIA
- 10 NEWS
- TOMORROW Host: Tom Snyder. Guests: Charlie Daniels and Larry Gatlin. (60 mins.)
- 12:30 HOUR OF POWER
- LIGHT AND LIVELY
- 12:35 MOVIE-(WESTERN) "Last of the Fast Guns" 1958 Jack Mahoney, Gilbert Roland. A gunfighter is hired to find a man's missing brother in Mexico. (105 mins.)
- 1:00 PTL PROGRAM
- NIGHTBEAT
- PRISONER: CELL BLOCK H
- NEWS
- 1:30 ROSS BAGLEY SHOW
- MOVIE-(SCIENCE FICTION) "Ghidrah, the Three Headed Monster" 1965 Yosuke Natsuki, Uiriko Hoshi. Three suddenly benign monsters battles a flying, three-headed dragon, to save the world. (105 mins.)
- BENNY HILL
- F.B.I.
- 2:20 MOVIE-(DRAMA) "Secret Ways" 1961 Richard Widmark, Sonia Ziemann. American adventurer goes into Hungary, behind iron curtain, to bring out leader. (2 hrs., 20 mins.)
- 3:00 700 CLUB
- CBS LATE MOVIE-(DRAMA JOINED IN PROGRESS) "LUST FOR LIFE" 1978 Kirk Douglas, Anthony Quinn.
- 3:15 NEWS
- 4:30 SOUND OF THE SPIRIT
- MOVIE-(DRAMA) "Wind Across the Everglades" 1958 Burl Ives, Christopher Plummer. The story of South Florida and of the man who fought to save its beauty at the turn of the century. (65 mins.)
- 4:40 LOVE AMERICAN STYLE
- 5:00 THE LESSON
- PTL PROGRAM
- 5:10 WORLD AT LARGE
- ROSS BAGLEY SHOW
- NEWS
- 5:35 ALL NIGHT AT THE MOVIES (Joined In Progress) Titles to be announced.

- FRIDAY JUNE 20, 1980
- EVENING
- 6:00 STUFF
  - HOGAN'S HEROES
  - THE VICTORY GARDEN
  - NEWS
  - ANDY GRIFFITH SHOW
  - TV POWWOW WITH TOM AND JERRY AND SPIDERMAN
  - HBO RED SKELTON'S FUNNY FACES Red Skelton hosts mime artists Shields and Yarnell, Yavoc Noy, and others. (60 mins.)
  - 6:30 THE LESSON
  - ALL IN THE FAMILY
  - MACNEIL LEHRER REPORT
  - JIMMY SWAGGART
  - HAPPY DAYS AGAIN
  - BASEBALL Atlanta Braves vs Chicago Cubs (3 hrs.)
  - NEWS MAGAZINE
  - JOKER'S WILD
  - 7:00 IN TOUCH
  - MOVIE-(HORROR) "Frozen Dead" Lon Chaney, Jr., Talia Berali. No Other Information Available (2 hrs.)
  - WASHINGTON WEEK IN REVIEW
  - FRIDAY NIGHT MOVIE "Crash" 1978 Stars: William Shatner, Eddie Albert. The surviving passengers of an air disaster in the Florida Everglades wage a life and death battle against the elements. (2 hrs.)
  - BIONIC WOMAN
  - HERE "BOOMER" father regains his sense of family values after being caught up in the frenzied world of TV commercials.
  - THE INCREDIBLE HULK Reporter Jack McGee's obsession with finding the Hulk gets a severe setback when his new publisher forbids him to go on with the search. (Repeat: 60 mins.)
  - 7:30 WALL STREET WEEK "Over the Counter and Over the Hump" Host: Louis Rukeyser.
  - THE LESSON
  - ME AND MAXX Norman wants his partnership with Barbara to go beyond business, but she won't agree to rekindle their romance until he pledges fidelity.
  - 8:00 700 CLUB
  - MARKET TO MARKET
  - PTL PROGRAM

- STAR TREK "The Paradise Syndrome" (60 mins.)
- THE ROCKFORD FILES Jim Rockford isn't only out of his territory but out of luck when he flies to New Jersey, and discovers that his assignment there involves the underworld and two young hustlers trying to make a reputation for themselves. (Repeat: 60 mins.)
- THE DUKES OF HAZZARD Bo and Luke get coerced into repossessing a car for Boss Hogg and find they have fallen into a trap. (Repeat: 60 mins.)
- 9:30 WHAT'S YOUR LINE
- 9:00 PERSPECTIVE ON GREATNESS
- THIS IS EPIHEMERA
- TENSPEED AND BROWN SHOE A high-class client becomes a mirthless culprit who uses Lionel's romantic notions of detective life to entangle E in one of his own outrageous schemes. (60 mins.)
- M.A.S.H.
- AMANCALLED SLOANE Sloane sets out to thwart a tycoon's plot to use brainwashed military men to mobilize forces for a takeover of oil-rich countries. (Repeat: 60 mins.)
- DALLAS Sue Ellen's avoidance of her own baby becomes a source of conflict between her and J.R., and between Bobby and Pam, who has begun to think of the child as her own. (Repeat: 60 mins.)
- 9:30 RICHARD HOGUE
- PART OF THIS WORLD
- NEWS
- ODD COUPLE
- 10:00 DAN GRIFIN
- LAST OF THE WILD
- DICK CAVETT SHOW
- NEWS
- LOVE AMERICAN STYLE
- MOVIE-(WESTERN) "Johnny Concho" 1956 Frank Sinatra, Keenan Wynn. A cowardly soul must build courage for a showdown. (110 mins.)
- 10:30 ROSS BAGLEY SHOW
- MOVIE-(SCIENCE FICTION) "Space Monster" 1964 Francine York, Jimmy Brown. Four scientists aboard a spaceship are forced to land on the ocean floor of a strange planet. (110 mins.)
- ABC CAPTIONED NEWS
- M.A.S.H.
- PRISONER: CELL BLOCK H
- THE TONIGHT SHOW Best of Carson. Guests: Steve Lawrence, Elizabeth Ashley, Johnny Yune. (Repeat: 90 mins.)
- 11:00 BOB NEWMAN SHOW
- MOVIE-(HORROR) "My Blood Runs Cold" 1965 Troy Donahue, Joey Heatherton. A young man thinks a girl is a long-dead ancestor and recalls a love affair from generations before. (2 hrs., 10 mins.)
- GUNSMOKE
- 11:30 MOVIE-(DRAMA) "The Mountain Road" 1960 James Stewart, Glenn Corbett. A demolition team, led by an emotionless major, is charged with blowing up bridges, roads, and villages in the path of the advancing Japanese Army during W. II. (2 hrs.)
- 12:00 INSIGHT
- NEWS
- THE MIDNIGHT SPECIAL
- 12:20 NEWS
- 12:30 JIMMY SWAGGART
- 12:40 MOVIE-(MYSTERY) "Terror By Night" 1946 Basil Rathbone, Nigel Bruce. Murder strikes during a train ride on which Sherlock Holmes is engaged to protect a valuable. (70 mins.)
- PRISONER: CELL BLOCK H
- 1:00 NIGHTBEAT
- 1:30 ROSS BAGLEY SHOW
- BIG VALLEY
- MOVIE-(HORROR) "Face of Fu Manchu" 1965 Christopher Lee, Nigel Green. In 1925, an Oriental emperor tries to conquer the world. (2 hrs.)
- NEWS
- 1:40 MOVIE-(WESTERN) "Wells Fargo" 1937 Joel McCrea, Frances Dee. A man struggling to build a mail express service, loses the love of his wife in the process. (2 hrs.)
- MOVIE-(WESTERN) "Bullet For Sandoval" 1970 Ernest Borgnine, George Hilton. 1862: AWOL Confederate corporal arrives in Los Cedros to find his sweetheart dead of a cholera epidemic. Her unforgiving father gives him her new born son, and the corporal vows revenge when the baby dies. (2 hrs.)
- 700 CLUB
- 3:30 CBS LATE MOVIE-(JOINED IN PROGRESS) RETURN OF THE SAINT: The Nightmare Man. Starring: Ian Ogilvy.
- NEWS
- 3:40 NEWS
- 3:45 F.B.I.
- 3:50 MAVERICK
- MOVIE-(ADVENTURE-DRAMA) "Back from Eternity" 1956 Robert Ryan, Rod Taylor. Eleven plane crash survivors are marooned in a remote hunter region of South America's jungle; their reactions as each hope for escape fades. (2 hrs., 5 mins.)
- 4:30 JUST PASSING THRU
- 5:00 WAKE UP AMERICA
- IT'S YOUR BUSINESS
- PTL PROGRAM
- 5:30 ROSS BAGLEY SHOW
- REBOP

SATURDAY JUNE 21, 1980

MORNING

- 6:00 VEGETABLE SOUP
- VIDEO CONCERT HALL
- 6:30 ROMPER ROOM
- CARRASCOLENDAS
- 6:45 NEWS
- 7:00 EVER INCREASING FAITH
- ULTRAMAN
- THE LUNDSTROMS
- WORLD'S GREATEST SUPER-FRIENDS: SCHOOL ROCK
- 9) FARM REPORT
- GODZILLA: GLOBETROTTERS HOUR; ASK NBC NEWS
- MIGHTY MOUSE, HECKLE-JECKLE; IN THE NEWS
- 7:30 MOVIE-(WESTERN) "Saga Of Hemp Brown" 1958 Rory Calhoun, Robert Garland. An Army Lieutenant, framed for payroll robbery and dismissed from service, must find the real culprit. (90 mins.)
- PIRATE ADVENTURES
- DANIEL BOONE
- DAVID GRUEN SHOW
- 8:00 LIFE IN THE SPIRIT
- INSIDE TRACK
- PLASTICMAN SHOW; SCHOOL ROCK

- CELEBRITY
  - FRED AND BARNEY MEET SHMOO; ASK NBC NEWS
  - BUGSBUNNY AND ROAD RUNNER; IN THE NEWS
  - 8:30 THE ROCK
  - CHILDREN'S FILMS
  - MOVIE-(COMEDY) "Mr. Hex" 1946 Leo Gorcey, Huntz Hall. The boys hypnotize one of the gang into thinking he's a great fighter and enters him in a boxing tournament. (90 mins.)
  - 9:00 MANNA
  - MOVIE-(MUSICAL-BIOGRAPHICAL) "Song Without End" 1961 Dirk Bogarde, Capucine. The biography of composer Franz Liszt. (2 hrs., 45 mins.)
  - SATURDAY AM SPECIALS
  - MOSTLY MEDICINE
  - 9:30 THE LESSON
  - CIRCLE SQUARE
  - SCOOBY AND SCRAPPY DOO; SCHOOL ROCK
  - GOLF LESSONS
  - DAFFY DUCK; ASK NBC NEWS
  - POPEYE; IN THE NEWS
  - 10:00 STUFF
  - ZANE GREY
  - VOICE OF AGRICULTURE
  - JETSONS; TIME OUT
  - 10:30 BACKYARD
  - LITTLE RASCALS
  - STAR TREK "Journey Back To Babylon" (60 mins.)
  - BLACK FORUM
  - JONNY QUEST; TIME OUT
  - FAT ALBERT; IN THE NEWS
  - 11:00 PUPPET TREE GANG
  - WEEKEND SPECIAL
  - ASIANS NOW!
  - GODZILLA
  - SHAZAM; IN THE NEWS
  - 11:30 BIBLE BOWL
  - AMERICAN BANDSTAND
  - CHARLANDO
  - REVISTA DE LA SEMANA
  - FLASH GORDON
  - TARZAN AND THE SUPER SEVEN; IN THE NEWS
  - 11:45 MOVIE-(DRAMA) "Caught" 1949 James Mason, Robert Ryan. Young girl finds she has married a psychotic and has romance turns into terror. (2 hrs.)
- AFTERNOON
- 700 CLUB
  - OUR MEN IN THE CAPITOL
  - U.S. FARM REPORT
  - 12:30 FANFARRIA FALCON
  - THIS WEEK IN BASEBALL
  - THE WORLD TOMORROW
  - 11 QUESTIONS
  - 30 MINUTES
  - 1:00 SISE PUEDE
  - MOVIE-(COMEDY) "Flying Deuces" 1939 Laurel and Hardy, Jean Parker. Two zanies join the Foreign Legion and cause trouble. (90 mins.)
  - DISCOVERY
  - MAJOR LEAGUE BASEBALL GAME OF THE WEEK California Angels vs Boston Red Sox or St. Louis Cardinals vs Cincinnati Reds (Region will determine game to be televised in your area)
  - INQUIRY
  - 1:30 NEW HOPE
  - ZOLA LEVITT
  - SOUL TRAIN
  - LASSIE
  - 1:45 MOVIE-(MYSTERY-DRAMA) "Case Against Mrs. Ames" 1936 George Brent, Madeleine Carroll. The story of murder and a budding romance between an assistant district attorney and the woman accused of murdering her husband. (105 mins.)
  - 2:00 JUST PASSING THRU
  - SEND YOUR SPIRIT
  - CHAMPIONSHIP WRESTLING
  - TO BE ANNOUNCED
  - 2:30 FORD PHILIPOT
  - GOSPEL SING JUBILEE
  - MOVIE-(DOCUMENTARY) "Cougar Country" 1971 Chronicles the adventures of Whiskers, a cougar, from cubhood to adult life. (90 mins.)
  - MOVIE-(SCIENCE FICTION) "Doomsday Machine" Mala Powers, Henry Wilcoxon. Astro-adventurers meet "The Unknown" and match their courage against a threat to the universe. (90 mins.)
  - TO BE ANNOUNCED
  - 3:00 KENNETH COPELAND
  - PTL PROGRAM (SPANISH)
  - WESTERN OUTDOORSMAN
  - CANADIAN OPEN GOLF
  - 3:30 RAT PATROL
  - INDIANAPOLIS 500 SPECIAL
  - 4:00 BOB GASS
  - PUTT-PUTT GOLF
  - SEA HUNT
  - SOCCER MADE IN GERMANY
  - WIDE WORLD OF SPORTS
  - SOUL TRAIN
  - MOVIE-(WESTERN) "Uzuna's Raid" 1972 Burl Lancaster, Bruce Davison. Apache rebels leave the reservation and are off on a rampage of killings. The Cavalry is in pursuit, led by an idealistic young lieutenant and an experienced scout with an Indian wife. (2 hrs.)
  - UNITED STATES OLYMPIC TRIALS Coverage of boxing semi-finals and archery. (60 mins.)
  - SPORTS SPECTACULAR 1) Professional Underwater Sportsmen Competition. 2) Freestyle Roller Skating. (120 mins.)
  - 4:30 ROSS BAGLEY SHOW
  - THIS WEEK IN BASEBALL
  - 5:00 GEORGIA WRESTLING
  - LOOK AT ME "Exploring the World"
  - AMERICA'S TOP TEN
  - WILD KINGDOM
  - RUFF HOUSE
  - 5:30 HAPPENINGS
  - FAMILY AFFAIR
  - MARY TYLER MOORE
  - NBC NEWS
  - CBS NEWS

EVENING

- 6:00 THE BLACKWOOD BROTHERS
- ONCE UPON A CLASSIC Old Curiosity Shop. Neil discovers that grandfather's secret passion is gambling. (Closed Captioned)
- BLACKWOOD BROTHERS
- MARY TYLER MOORE
- LOVE AMERICAN STYLE
- HEE HAW
- LAWRENCE WELK SHOW
- 6:30 THE LUNDSTROMS
- HERE'S YOUR HEALTH "Pain Management"
- HAPPY DAYS AGAIN
- BASEBALL Atlanta Braves vs Chicago Cubs (3 hrs.)
- 7:00 700 CLUB

- MOVIE-(DRAMA) "W.U.S.A." 1970 Paul Newman, Joanne Woodward. The story of a super-patriotic radio station and the people it affects. (2 hrs., 30 mins.)
- NON-FICTION TELEVISION "Taylor Chain" The focus of this program is on the conflicts that develop between a local union and the national union representative during a strike in a chain factory in Indiana. (60 mins.)
- 240 ROBERT After the spectacular rescue of a panic-stricken woman stranded in a hot air balloon, Trap suits up for a pleasuredive with Morgan, unaware that a vengeful youth has spiked his air tanks with poison gas. (Repeat: 60 mins.)
- MOVIE-(COMEDY) "Road to Rio" 1947 Bing Crosby, Bob Hope. Two zanies try to wrest a woman from her sinister aunt. (2 hrs.)
- UNITED STATES OLYMPIC TRIALS: BOXING The nation's top amateur boxers—including Joe Frazier's trainer, Marvin—compete for 111 bouts to select the United States Olympic Boxing Team. (3 hrs.)
- THE BAD NEWS BEARS Buttermilk becomes a quadriplegic parent when young Amanda Wurilizer moves into his bachelor pad. (Repeat: 60 mins.)
- 7:30 THE STOCKARD CHANNING SHOW A 15-year-old youth who happens to be the boss' nephew falls in love with Susan.
- 8:00 THE LUNTS Lynn Fontanne, one of the theatre's finest first ladies, discusses her actor-husband Alfred Lunt, her career and many of her closest friends with noted director George Schaefer. Highlights will include a look at tapes of the Lunts' performances on the Hallmark Hall of Fame. (60 mins.)
- PTL PROGRAM
- THE LOVE BOAT "Never Say Goodbye" In a program episode, Captain Stubing is reunited with his love child, Vicki. (Repeat: 60 mins.)
- SATURDAY NIGHT MOVIE "The Last of the 72 Stars" Dennis Weaver, Sharon Gless. A retired mainland lawyer buys a small hotel in Honolulu, only to be caught up in a murderous situation involving a psychotic grant-wy witness, a ruthless mobster and a racket-busting U.S. Senator. (2 hrs.)
- 8:30 THE LESSON
- 9:00 ROCK CHURCH
- HOMEBOYS this documentary focuses on the realities that confront young people living in the barrios of Los Angeles. It examines the reasons the young Chicano choose to form gangs. (60 mins.)
- FANTASY ISLAND Excitement and romance await preparations for a spectacular wedding overhelm the island when Mr. Roarke realizes his ultimate fantasy—marrying the beautiful woman of his dreams. (Repeat: 60 mins.)
- DANCE FEVER
- 9:30 SOCCER Atlanta Chiefs vs Portland Timbers
- TO BE ANNOUNCED
- ODD COUPLE
- 10:00 ZOLA LEVITT
- RISE AND BE HEALED
- 10:15 NEWS
- MOVIE-(ADVENTURE-DRAMA) "Savage Innocents" 1961 Anthony Quinn, Peter O'Toole, An Eskimo hunter's life is disrupted by greedy white fur traders, a missionary whose motives are intentionally, and two Canadian policemen who attempt to bring him to justice. (2 hrs.)
- 10:30 RICHARD HOGUE
- DAK VAN IMPE
- M.A.S.H.
- MOVIE-(DRAMA-WESTERN) "One Eyed Jacks" 1961 Marlon Brando, Karl Malden. After prison term, outlaw, seeking friend who betrayed him, tracks him down and finds he is now a sheriff. (2 hrs., 50 mins.)
- SATURDAY NIGHT LIVE
- GUNSMOKE
- 11:00 HI DOUG
- MOVIE-(DRAMA) "Bonjour Tristesse" 1959 David Niven, Deborah Kerr. A young girl, living with widowed father and his female companion on the French Riviera, plots to get her other godmother who has disrupted their lives. (2 hrs.)
- 11:30 HOLIDAY AT MELODYLAND
- ROCK CONCERT
- KROEZE BROTHERS
- 700 CLUB
- PTL PROGRAM (SPANISH)
- NEWS
- SHA NA NA
- 12:30 GO TELL IT...BEN HOOKS REPORTS
- 1:00 MOVIE-(MYSTERY-DRAMA) "Fog for a Killer" 1960 David Summer, Susan Travers. Young policeman is used as bait by police in trap to catch homicidal maniac who has murdered three blondes. (90 mins.)
- ABC NEWS
- BENNY HILL
- 1:20 NIGHTBEAT
- 1:30 THE LESSON
- MOVIE-(HORROR-SCIENCE FICTION) "Beast of Morocco" 1967 Willis Sylvester, Diane Clare. A man becomes involved with archeologist and a beautiful vampire with whom he becomes obsessed. (2 hrs.)
- 1:50 MOVIE-(WESTERN) "Hostile Guns" 1967 George Montgomery, Yvonne De Carlo. A U.S. Marshall transports prisoners to a penitentiary discovers that female prisoner is a woman he once loved. (2 hrs.)
- 2:00 REX HUMBARD
- 2:30 MOVIE-(MYSTERY) "Mark of the Phoenix" 1957 Sheldon Lawrence, Julia Aronoff. Jewel thief works against a Communist gang to save an atomic secret. (75 mins.)
- 3:00 COURAGE FOR CRISIS LIVING
- 3:30 ORAL ROBERTS
- MOVIE-(WESTERN JOINED IN PROGRESS) "Wild Bunch" 1969 William Holden, Ernest Borgnine.
- 3:45 LOVE AMERICAN STYLE
- NEWS
- 3:55 ZANE GREY
- 4:00 JERRY FALWELL
- MOVIE-(MYSTERY) "Harry O" 1973 David Janssen, Margot Kidder. A cynical private eye accepts an assignment from a man who once shot him, to protect him from a potential killer. (75 mins.)
- 4:15 WORLD AT LARGE
- 4:25 F.B.I.
- 4:30 A.G.-U.S.A.
- 5:00 CHRISTOPHER CLOSEUP
- BETWEEN THE LINES
- 5:15 ALL NIGHT AT THE MOVIES (Joined In Progress) Titles to be announced.
- 5:25 DANIEL BOONE
- 5:30 KOINONIA

# There's A New Sound In The Air

## GOSPEL MUSIC

From The Rising Of The Sun To The Setting Same The Lord's Name Is To Be Praised Psalms 113:3

# All New Gospel Radio K.F.L.P.

On Your Radio Dial 9

- Programming:
- Christian Music
  - 4 Minutes of News Each Hour (local and regional)
  - Weather Information

Spreading the Good News of Jesus Christ to Floydada and Surrounding Community

Owned and operated by MBFA Communications Corp., Lubbock, Texas

Several good bedrooms, Real Estate, Bond, 3-3573.

SALE: Beautiful bedroom, tv, fireplace, large garage, with star fence, 4 months lease, warrant, 983-21.

BY OWNE, bedroom, brick, garage, on 10 acres of Floydad assumed. C

3 bedroom, kitchen, over bar, large shop in basement, 1 bedroom, large AGGS REA after 5 p.m.

Five room, moved, Al iron. C

Five room carpeted, closed garage, storage built.

Three bedrooms, bath and 104 J.B. Avenue, 293-813

FOR SAL, bedroom, one bathroom, one car garage, central air and heater.

RENT

RENT: In Lockn, bedroom and t apartment by 108 N. Main 3-3813.

RENT: Six room house, built 1900 - modern deposit. 1-214-5-6-2

For a Jewel Box, now renting, WAREHOUSE STORAGE, Lock Your Key, 442 Lockney. L

FOR RENT: T, near town a store. Couple, 983-5319.

FOR RENT, living, large, call 806-4-6-2

FOR RENT, bedroom house, 697-2433. 6-

when it is, want any kind crop, you coverage, your \$100 July the det GOEN.



BUY, SELL, TRADE OR RENT THROUGH THE

CLASSIFIED ADS

Real Estate

BUSINESS SERVICES

For Sale

FOR SALE

CLASSIFIED RATES

HOUSE FOR SALE: Three bedroom, completely remodeled interior. 322 W. California, 983-5044. 6-15p

HOUSE FOR SALE: 2 bedroom. 123 W. Jeffie, 983-5183 or 983-5044. 6-15p

HOUSE FOR SALE: 2 bedroom, needs work. 983-2767, call after 6. 6-22c

SEVERAL nice two and three bedroom homes for sale. Loans can be arranged. Call Hale Insurance and Real Estate at 983-3261. tfe

FOR SALE: Nice home, large living room with dining area, kitchen, den, 1 1/2 baths, new steel siding, insulated. Garage with large carport and storm cellar, two storage buildings, fruit trees and chain link fence, \$32,000. Hale Insurance and Real Estate, call 983-3261. tfe

FOR SALE by owner - 3 bedroom brick, 1 1/2 bath, 406 Poplar, Lockney. 652-2669 after 4 p.m. Ltf

HOUSE FOR SALE: Three bedroom, two bath, brick. Contact Brice Allen 675-2540. Ltf

FOR SALE: Three bedroom, two bath, two car garage, brick. 983-3703. tfe

FOR SALE: Two and three bedroom homes. Williams Insurance and Real Estate 983-3284. tfe

FOR SALE: The John R. Tinnin's home. Three bedroom, central heat and air. Call for appointment, 983-3551 or 634-5765. Sfc

FOR SALE: Cabin at White River. Paneled, carpeted, fully furnished. Call 983-3932 or 263-4480. Sfc

FOR SALE: Six room house, to be moved. C.E. Tyer, call 983-2269. S6-29p

Form Items

Land Leveling, terraces, bench leveling, and pump pits, all types of dirt work for soil and water conservation. Dewie Parsons 983-2646. Fred Parsons, 983-2074. tfe

FOR SALE: 250 Cummins International tractor and 42' deck cattle trailer, very good condition. Call 806-364-2135 after 6 p.m. tfe

25-1000 GALLON Anhydrous ammonia tanks, and trailers. Low buy \$1350.00 High rise \$1850.00. 5-560 gallon tanks \$625. SEE AT PRODUCERS IN FLOYDADA. tfe

Can You Use Some Extra Money Let Us Help!!!! WE BUY SCRAP IRON, OLD JUNKERS, AND FREE PICKUP Call 983-5277

CUSTOM Application of Herbicides. Bill Wisdom 652-3541, John Wisdom 652-3544. Ltf

Bob Taylor Co. Complete remodeling room edition, roofing. Call collect 667-3740 Petersburg. 6-22p

Minor repairs and tune up service on lawn mowers. Call Whites Home and Auto, 652-2145. Ltf

REPAIR WORK done on evaporative air conditioners. Collins Appliance, 983-5702. tfe

INSULATION Fire-Resistant. Installed and Guaranteed. MARR Insulation Co. Lockney 652-3593. Ltf

INTERIOR PAINTING WALLPAPERING Call Rena Turner or Nancy Mayo, 983-5130 or 983-2667. tfe

Adams Well Service Complete Irrigation Service. All sizes submersible pumps in stock. One day service. 983-5003. tfe

POOLE WELL SERVICE AND RADIATOR SHOP Irrigation, domestic, and windmill service. 407 E. Houston, 983-5610 or 983-2285. tfe

"Carpet Need Cleaning?" Let me do the work for you. Dry foam, 10 cents sq. foot. Call Jack Moore 983-3033, after 5 p.m. tfe

Call Carthel-Dudley Spraying Service for all your spraying needs. 983-5320 or 983-3200. 6-29c

Call 847-2264 for Campbell's GRO-GREEN, the complete fertilizer you simply spray on soil and foliage. 100% soluble fortified with iron and other essential trace elements for added growth and vigor. Use on cotton, milo, soybeans, wheat, corn, vegetables and fruit. T6-19

ROTARY HOE BEARINGS \$2.90. Fits J.D., Yetter, and M&W. Try our cultivator sweeps plain and dura faced. We also make hydraulic hoses. Brown's Implement, Inc. Your L.H. Dealer. 983-2281. 6-15c

CAKE DECORATING Custom baked and decorated for birthdays, holidays, parties, club meetings, etc. Laura Wilson 652-3770 Ltf

PLAINVIEW JANITORIAL SERVICE Carpet Cleaning Offices And Commercial Buildings, Free Estimates 293-7715 S6-22p

DAN'S AUTO SERVICE DAN TEUTON, Owner Specializing in Automatic Transmission, Meter Tune-Ups, Auto Air Conditioning.

General Repair We Have A BRAKE LATHE to handle all passenger car brake drums. See us for complete brake service. Phone 652-2462

Public Notices

PUBLIC NOTICE The City of Floydada has been notified by the Texas Department of Health that the water being supplied by our system exceeds the maximum constituent level for Fluoride established by the Department's "Drinking Water Standards" which were promulgated as required by the "Safe Drinking Water Act," Public Law 93-523 (U.S.). The limit for this area has been set at 1.6 milligrams of Fluoride per liter of water. The samples of water from our system contained 3.1 milligrams of Fluoride per liter. There is no immediate health hazard for drinking water containing Fluoride at this level. The Fluoride may cause mottling (brown staining) of the teeth in children under 14 years of age. All dentists in this area are aware of the Fluoride level. 6-15c

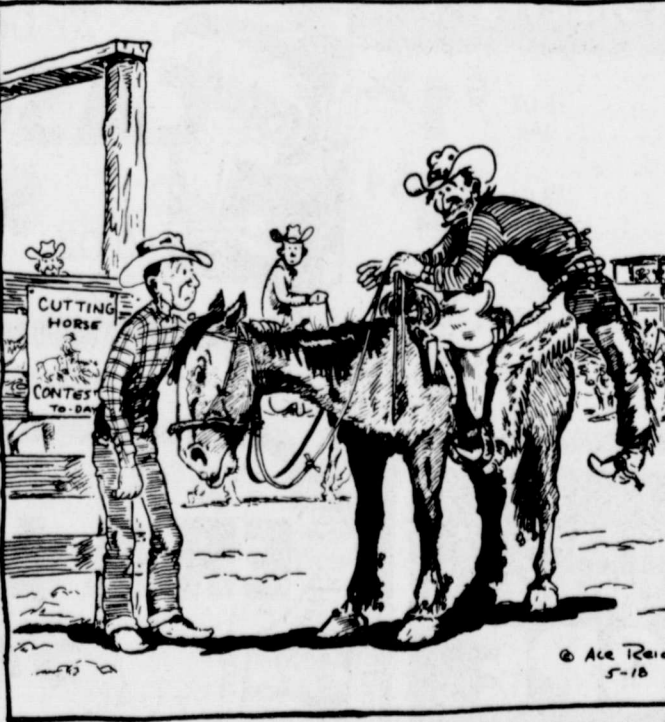
TURNER REAL ESTATE 983-2635 Farms Ranches Floydada, Texas

Diamond Industrial Supply Co., Inc. Phone Days 296-7418 Nights 296-1200 or 296-7728 1014 Broad way Plainview, Texas Chain Sprockets V belts Sheave: U-joints Oil Seals O-rings Wisconsin SKF RCA Timken Bower Cotton Stripper Brushes & Bats "We Appreciate Your Business More" Ltf

Insects for Biological Control of Corn Borer Armstrong Entomology Service Qualified Field checking Available For Information Call Debbie Ogden 983-5434

Crutchfield Bug Control Corn Bores Corn Ear Worms SPECIAL Corn & Cotton Trichogramma Wasps Lady Bugs 35' per acre put them our yourself Milo & Cotton & Corn 313 E. Houston 983-5004

COW POKES By Ace Reid



"It jst ain't fair, they eliminated me and ol' Blaze 'cause of our looks—said we wuz unnerving the other contestants!" COWPOKE SERIES. WE NEED A SPONSOR Call 983-3737

FOR YOUR Custom Exhaust Work SEE Bruce Williams SPECIALIZING IN GLASS PACKS TURBO MUFFLERS AT Dan's Auto Service LOCKNEY 652-2462 LS-TFC

FOR SALE: Kingsize bed mattress, very reasonable. 983-3504, Box 27, Floydada. tfe

IBM SELECTRIC TYPE-WRITERS, 2 years old, excellent condition, \$500.00. Call Floydada High School, C.E. Tyer, Principal, 983-3256. 6-19c

FOR SALE: Two on and off road 125 Honda motorcycles. Excellent gas mileage. 375 miles on one and 500 miles on other. Like new. 652-3524. L6-22c

Fireplaces BY MAJESTIC BUILT-IN OR FREE-STANDING CALL OR COME BY AUDREY MCCORMICK 107 WILLOW LOCKNEY 652-2572 L TFC

FOR SALE: 55 gallon trash barrels. Call 983-3739, 8 to 5 Monday thru Friday.

Swiftly DISTRIBUTORS INC. 200 proof fuel alcohol (Ethanol) for sale. Any quantities, contact Lyndell Roberts or Arthur Wylie, 806-983-3721.

CARD OF THANKS

I want to thank all my friends and neighbors who have been so kind and thoughtful during my illness. The bouquet of flowers was beautiful and brought me much happiness. I am presently at the Lockney Nursing Home and hope to see all of you soon. Thanks again Myrtle McDonald L6-15

LOST & FOUND

LOST: Set of Keys on a key ring. Reward! 983-5217. 6-15

LOST: Brown leather wallet at swimming pool or between pool and Consumer's. Reward offered. Leave at pool or call Randy Ford 983-2948. Ltf

Auto Accidents DO Happen... If one happens to you, be protected. Our car insurance offers coverage to meet your special needs - repairs to personal liability. BAKER Insurance Agency 127 W. Calif. Ph. 983-3270

STOP PAINTING Cover all outside walls and overhang with U.S. Steel Products FREE ESTIMATES Stan-By Steel Siding 1501 N. Columbia Plainview, Texas Phone: 293-9330 Ltf

FOR SALE: Lawn mower, never been used. Mrs. G.H. Phenis 419 W. Locust. 652-2274. L6-15p

FOR SALE: Two service station pumps. Good condition. Call 983-3144. 6-22c

FOR SALE: '75 Kawasaki 175. \$325. 983-5115 after 5 p.m. 6-15c

"WE SELL SLEEP" Direct Mattress Co. New or renovated, for appointment call City Trim Shop, 983-2332, Floydada. S-tfe

AMWAY PRODUCTS means quality and personal service. Contact Joann or Randy Rogers at 652-3825 or 652-2121. Lfe

\$25.00 rebate on 1/4 carat, diamonds. Rebate on other sizes also, 983-2087. tfe

AMWAY PRODUCTS means quality and personal service. Try us and see. Phone Melissa Gleason at 983-5750 after 5 p.m. tfp

AIRELOOM Ceiling fans, 3 speed 5 yr. warranty. 10 to 15% discount. Grady Dunavant 983-3609

Lots and Acreage

WANTED TO BUY irrigated or dryland farm in Floyd or surrounding area. Write Box XRO, c/o Hesperian, Box 700, Floydada. tfe

Help Wanted

Applications are being accepted at Floydada Nursing Home for an LVN. Good salary, paid vacation and hospitalization, plus the rewards of caring for the elderly. Call 983-3704 or apply in person. tfe

Cook Wanted: Daytime shift 10:30 a.m. to 6:30 p.m. Experience required, benefits include paid vacation and paid hospital. Contact Floydada Nursing Home or call 983-3704. tfe

BUS DRIVER needed for South Plains Independent School District. Contact 983-3314. If no answer call 983-2015. tfe

WANTED: A year round farm hand. Call 983-3828. tfe

Any male or female 15 yrs. and older that would like to work at the onion shed should contact Cruz or Chris Enriquez as soon as possible. Minimum wage. Call 983-5043 after 5 p.m. 6-15p

SALESMAN WANTED with agriculture background or active in agriculture. Sell nationally advertised cotton module builders on commission basis in your county. Protected territory. Send resume by June 20 to M & M SALES P.O. Box 223 Wellington, Texas 79095 806/447-2585 806/447-5817 405/726-2125 6-15p

Garage Sale BAKE SALE: Garage and bake sale by Betty Goen, Saturday June 14, 625 W. California. 6-15p

CLASSIFIED ADVERTISING RATE: 15 CENTS PER WORD FIRST INSERTION: 10 CENTS PER WORD EACH SUBSEQUENT INSERTION. MINIMUM CHARGE 2.00. CLASSIFIED DISPLAY RATE: \$1.54 PER COLUMN INCH CARD OF THANKS: 2.00.

Autos For Sale

4 shocks for the price of 3. Free installation. 123 W. California. tfe

FOR SALE: 1977, 2-door, Oldsmobile Cutlass Salon. Good condition. Loaded. Low mileage. Call 983-2674, early a.m. or evenings after 4 or 983-2631, during day. 6-21c

SITUATIONS WANTED

WANTED: Housecleaning. Call 652-3193. L6-15p

WANT TO BUY: Tandem bike. Call 983-3737 between 8&5. tfp

Two girls want to mow yards. 983-5115. 6-15p

WANTED: 1967 or '68 Camaro, Stock. Call 652-3414. L6-26c

Ronnie Hill wants to buy BASEBALL CARDS BEFORE 1960 983-2580 983-3419 6-15p

Check with us for LIQUID FERTILIZER ANHYDROUS HERBICIDES Rigs available for application LONE STAR CHEMICAL INC. Office: 652-2761 Deanie Henderson: 652-3434 Ltf

STORAGE SPACE BOATS, FURNITURE, ANYTHING, ETC. BY THE MONTH OR SIX MONTH 10% DISCOUNT. WEST TEXAS MINI STORAGE 983-3173 OR 983-2151

TROUBLED WITH BROWN SPOTS IN YOUR GRASS? WE HAVE FERTILOME WITH DIAZANON TO COMBAT CUTWORMS & FUNGICIDE TO SPRAY FOR FUNGUS. Patterson Grain



# BE A TOTAL SAVER CHECK THE TOTAL THAT'S WHAT COUNTS



**It's PORK COOKOUT Time**

WILSON'S HICKORY SMOKED **PICNICS** LB. **59¢**

SLICED HALF OR WHOLE LB. **69¢**

WATER ADDED WHOLE 6-8 LBS. AVG.

HORMEL'S SUPER SELECT LEAN TRIM QUARTER PORK LOIN OR FAMILY PAK **\$1.19**

**PORK CHOPS** LB.

YOUR THRIFTWAY STORES SELL & FEATURE ONLY FINE QUALITY AMERICAN GROWN GRAIN FED BEEF, FRESH PORK & QUALITY POULTRY.

CALIFORNIA LA GRANDES **NECTARINES** LB. **59¢**

MIX OR MATCH YELLOW STRAIGHT NECK OR ITALIAN **SQUASH** LB. **39¢**

CRISP CALIFORNIA **CARROTS** 1 LB. PKG. **23¢**

YELLOW SWEET **ONIONS** LB. **29¢**

SUPER SELECT **CUCUMBERS** LB. **29¢**

CENTRAL AMERICAN **BANANAS** 3 LBS. **\$1.00**

MIX OR MATCH CALIFORNIA SUNKIST **LEMONS** LB. **49¢**

OR PERISAN GREEN **LIMES** LB. **49¢**

OSCAR MAYER FINEST QUALITY SLICED <b>BACON</b> 1 LB. PKG. <b>\$1.39</b>	COUNTRY STYLE MEATY OR REG. <b>SPARE RIBS</b> LB. <b>\$1.39</b>	OSCAR MAYER SLICED CHOPPED OR HAM & CHEESE <b>HAM</b> 8 OZ. PKG. <b>\$1.29</b>
SUPER SELECT LEAN TRIM CENTER CUT <b>PORK CHOPS</b> LB. <b>\$1.59</b>	OSCAR MAYER SLICED MEAT REG. <b>BOLOGNA</b> THICK OR THIN 12 OZ. PKG. <b>\$1.29</b>	OSCAR MAYER SLICED COTTO MEAT <b>SALAMI</b> 8 OZ. PKG. <b>\$1.09</b>
SUPER SELECT LEAN TRIM CENTER <b>PORK CHOPS</b> LOIN THICK CUT LB. <b>\$1.69</b>	OSCAR MAYER SLICED BEEF <b>BOLOGNA</b> 12 OZ. PKG. <b>\$1.39</b>	OSCAR MAYER SMOKIE <b>LINKS</b> 12 OZ. PKG. <b>\$1.59</b>

ALL PURPOSE **GLADIOLA FLOUR**

25 LB. **\$3.99**

5 LB. BAG **89¢**

ALL GRINDS COFFEE **MAXWELL HOUSE**

1 LB. CAN **\$2.69**

32 OZ. **Coca Cola**

**\$1.79**

Plus Deposit

C.W. POST FAMILY STYLE **CEREAL**

WITH OR WITHOUT RAISINS 15 OZ. BOX **\$1.09**

DEL MONTE TOMATO **CATSUP**

32 OZ. BTL. **89¢**

**TOTAL GROCERY SAVERS**

TRAPPEY'S TORRIDO HOT **HOT PEPPERS** 12 OZ. JAR **69¢**

GREEN DRAGON SLICED **JALAPENO'S** 12 OZ. JAR **79¢**

SCHILLING **BLACK PEPPER** 4 OZ. CAN **\$1.09**

FRANCO AMERICAN **SPAGHETTIO'S** 3 1/4 OZ. CANS **\$1.00**

**DAIRY VALUES**

MARGARINE **VELVET SPREAD** 2 LB. BOWL **89¢**

KRAFT HALF-MOON HORNS CHEDDAR/COLBY **COLBY CHEESE** 10 OZ. PKG. **\$1.29**

BIG COUNTRY BUTTERMILK **BISCUITS** 10 CT. CAN **45¢**

**FROZEN FOODS**

MORTON **HONEY BUNS** 9 OZ. BOX **49¢**

MORTON BEEF/CHICKEN/TURKEY **POT PIES** 4 8 OZ. BOXES **\$1.00**

SHURFINE BROCCOLI **SPEARS** 10 OZ. BOX **59¢**

**SHELF SPECIALS**

DEL MONTE CUT OR FRENCH STYLE **GREEN BEANS** 2 1/2 OZ. CANS **79¢**

DEL MONTE CREAM STYLE/WHOLE KERNEL **GOLDEN CORN** 2 1/2 OZ. CANS **79¢**

DEL MONTE EARLY GARDEN BLENDED SWEET **SWEET PEAS** 2 1/2 OZ. CANS **79¢**

KRAFT REAL **MAYONNAISE** 32 OZ. JAR **\$1.09**

**HEALTH & BEAUTY AID SAVINGS**

SHAMPOO 25¢ OFF LABEL **HEAD & SHOULDERS** 11 OZ. BTL. **\$1.89**

DEODORANT 30¢ OFF LABEL **SURE ROLL-ON** 2.5 OZ. BTL. **\$1.69**

**FROM OUR SHELVES**

PETER PAN CRUNCHY OR SMOOTH **PEANUT BUTTER** 18 OZ. JAR **\$1.29**

KLEENEX SUPER DRY ELASTIC LEG **DIAPERS** 18 CT. BOX **\$2.69**

INSTANT MAXWELL HOUSE **COFFEE** 10 OZ. JAR **\$4.79**

TEKIZE AEROSOL **SPRAY 'N WASH** 16 OZ. BTL. **\$1.49**

20¢ OFF LABEL **CASCADE**

50 OZ. BOX **\$1.69**

COSMETIC JOHNSON & JOHNSON **SOFF PUFFS** 100 CT. PKG. **99¢**

FOR WOMEN **CORRECTOL LAXATIVE** 60 CT. BOX **\$2.89**

FOR WOMEN **CORRECTOL LAXATIVE** 30 CT. BOX **\$1.79**

ANTACID **MAALOX PLUS** 12 OZ. BTL. **\$1.79**

30¢ OFF LABEL MOUTHWASH **SCOPE**

18 OZ. BTL. **\$1.29**

DETERGENT 35¢ OFF LABEL **ERA LIQUID**

1/2 GAL. BTL. **\$2.59**

DUNCAN HINES BLUEBERRY **MUFFIN MIX** 13 OZ. BOX **99¢**

DUNCAN HINES FAMILY **BROWNIE MIX** 23 OZ. BOX **\$1.09**

UNDERWOOD ROAST BEEF OR DEVILED **CHICKEN SPREAD**

YOUR CHOICE 4 1/2 OZ. CAN **69¢**

START YOUR SET TODAY JOHANN HAVILLAND **FINE CHINA**

WITH EACH \$3.00 PURCHASE ONLY **99¢**

THIS WEEK'S FEATURED ITEM VALUABLE COUPON WITH YOUR PRICE WITH COUPON **\$19.99**

THIS WEEK'S FEATURED ITEM VALUABLE COUPON WITH YOUR PRICE WITH COUPON **\$20.99**

WE ACCEPT FOOD STAMPS **PAGE'S THRIFTWAY** PRICES EFFECTIVE JUNE 15-21, 1980