



The Floyd County Hesperian

20 Cents Each

Volume 84

Floydada, Floyd County Texas 79235

Sunday, February 17, 1980

24 Pages In Two Sections

Number 14

County Stock Show Judging Starts Monday

Stock shows open Sunday, February 17 at 8 a.m. at the 1980 Floyd County Junior Stock Show. Weighing in of barrows scheduled to begin at 2 p.m. and all other classes must be in place by 6 p.m.

Showing of barrows will be at 2 p.m. Tuesday, and of steers at 2 p.m. Tuesday. The show will be at 1 p.m. Wednesday.

Show judges this year are Bob Benson, steer judge; Scotty Windham, swine judge; Calvin Helm, lamb judge; and Buddy Logsdon, classifier.

Floyd County business firms and individuals will sponsor stock show trophies. Cash premiums will be given to exhibitors of the first-through fifth-place animals in each barrow, lamb and steer class.

James McNeill is general superintendent of this year's show. Roger Dawdy is swine superintendent, and Kenneth Brose is lamb superintendent. Steer superintendents are Vernie Moore, JH Lane, Warren Mitchell, Rick Hrbacek, Bob Ross and Kent Covington. Paul Koonsman will serve as grounds superintendent, Travis Jones as loading superintendent.

Paul Glasson and Charles Overstreet are show veterinarians.

Official weighers are Kelton Shaw, Clar Schacht, Travis Jones, Gary Brown, JH Lane, Tommy Assiter, Weldon Pruitt and Harold W. Bennett.

The final event of stock show week in Floyd County will be a banquet for exhibitors and their parents Thursday

night. Floyd County Farm Bureau will sponsor the banquet, scheduled to begin at 7 p.m. Thursday in the Lockney Elementary School cafeteria.

Sweetheart Contest
Floyd County 4-H and FFA Sweethearts — Paula Teuton, Lockney FFA; Jill Whitfill, Lockney 4-H; Kelly Higginbotham, Floydada FFA; and Jodie Smith, Floydada 4-H — are selling membership cards. The Sweetheart accumulating the most money will become the Floyd County Junior Livestock Show Queen for 1980.

MONDAY, FEBRUARY 18
7 a.m. - Weighing steers will begin
8 a.m. - Weighing, classifying and tooting lambs
9 a.m. - All steers must be in place
10 a.m. - Steer classifying
2 p.m. - Barrows judging

TUESDAY, FEBRUARY 19
9 a.m. - Lamb judging
2 p.m. - Steer judging
(Notification to sell non-placing floor bid animals must be made one hour after completion of judging schedule.)

WEDNESDAY, FEBRUARY 20
7:45 a.m. - Livestock judging
1 p.m. - Auction sale

THURSDAY, FEBRUARY 21
7 p.m. - Banquet for 4-H and FFA exhibitors and parents.

SCHEDULE OF EVENTS

SUNDAY, FEBRUARY 17
2 p.m. - Barn open
2 p.m. - Weighing barrows
6 p.m. All barrows must be in place

Lianne Lipham Finalist In Miss Texas National Teen-Ager Pageant

Miss Julianne Lipham, 16, of Floydada, has been selected to be a finalist in the 9th annual 1980 Miss National Teen-Ager Pageant to be held at Texas Christian University, Fort Worth, Texas, June 6-7-8, 1980. The pageant is the official state finals to the Miss National Teen-Ager Pageant to be held in Atlanta, Georgia, August of 1980.

Holly Roberts of Corpus Christi, the 1979 Miss Texas National Teen-Ager will crown the new queen. There will be contestants from all over the state competing for the title of Miss Texas National Teen-Ager.

The reigning Miss National Teen-Ager is Missi Bradley of Mansfield, Ohio.

Each contestant accepted will be

requested to participate in the Volunteer Community Service Program of the National Teen-Ager Pageant. This program teaches teenagers to share and to participate in school and civic affairs. A mini-modeling charm course will be given during the weekend of the pageant.

The winner of the Miss Texas National Teen-Ager Pageant will receive a \$500 cash scholarship, a



JULIANNE LIPHAM

modelling scholarship to Barbizon, other prizes and an all-expense paid trip to compete in the nationally televised Miss National Teen-Ager Pageant in Atlanta.

\$2,000 in cash scholarships will be awarded at the national pageant.

Contestants will be judged on scholastic achievement-leadership, poise-personality and appearance. There is no swim-suit or talent competition.

Each contestant will recite a 100 word essay on the subject, "What's Right About America."

Miss Lipham is sponsored by Women's Division of Chamber of Commerce, and the Floydada Chamber of Commerce. Her hobbies include piano music, reading and singing.

IN REGULAR SESSION

Floyd County Commissioners Court Meets

The Floyd County commissioners court met Monday, February 11 to conduct a routine slate of business.

Ed Hammonds met with the court to report that he has completed the insulation of heating and air conditioning for the Floyd County Courthouse.

The court was unanimous in accepting the job.

The commissioners voted unanimously to raise the travel budget for the Floyd County Extension Agents from 17 cents to 20 cents, and telephone allotment is to be set at \$1,200 per year.

Office supplies and printing budget is to be set at \$1,500 per year for 1980.

Motion was made and seconded that the county give \$500 to the soil conservation service. The \$500 donated by the county is matched by the state in the same amount. The vote was unanimous.

Three voted for and one against on the motion that the contract with KMK Enterprises, time share for the computer for the County Tax Assessors Collectors office be cancelled. But that the report for October, November,

December, and January cost for this work will be \$25.00 per receipt.

In another unanimous decision the court accepted the \$1.88 increase per employee for a semi-private room under the major medical and basic policy of Blue Cross and Blue Shield Insurance.

The commissioners agreed unanimously that Floyd County pay their advance of \$4,597.50 to the Central Appraisal Board of Floyd County for the re-appraisal of the personal property of Floyd County.

The court unanimously agreed once again that the county accept the contract between Floyd County and the City of Floydada concerning the Floydada landfill.

A unanimous vote okayed a resolution to be endorsed by Floyd County concerning the emergency medical services system.

In final business the commissioners voted unanimously again that Floyd County reinvest five Travis County water control and improvement district N-18 water works system tax and revenue bonds series 1965 total of 5,000 for the permanent school fund.

Girl Scout Cookies

Still On Sale

Girl Scout cookies are still on sale \$1.49 Value. They are available through February 17. Anyone interested may phone 983-3300. Cookies were left from the sale and we need to sell them. Profits go to the Floydada Girl Scout Council.

The Special FFA

"Preparing For Progress" is the theme of the 1980 National FFA week, February 16-23. Leading the local celebration in the national event will be the Floydada High School agriculture club, Orville Harris.

The second section of this edition of the Hesperian is devoted to the celebration of National FFA week and is sponsored by local merchants in support of the Floydada FFA chapter.

Floydada Chamber

Commerce

Selects New Officers

The Floydada Chamber of Commerce recently elected new officers for 1980. The board of directors chose the following officers: president Edwin W. Moore, vice president Mark Wideman, secretary Sue Moore.

They will take office March 3 which is the first night of the annual Chamber banquet.

Our Town

By the news staff

FEBRUARY 28 is the deadline for entering the Alpha Mu Delta sponsored volleyball tournament March 6, 7 and 8 in Floydada. Contact Revis Smith, Box 3, Dougherty, or call 983-3084. In Lockney, call Janet Woodshell at 652-2284.

PHI ZETA of Plainview will sponsor a bridge tournament March 6. For information or reservations, call Karen Fipps at 298-4538 or Debbie Schaefer, 296-6658.

REGISTER now for the adult education course in English as a second language scheduled to be taught Monday and Thursday from 7 to 9:30 p.m. Call Kathy Green at 983-3134, or at 983-2413 evenings, or contact at 601 E. Ross.

GUESTS with Mr. and Mrs. Lianne Lipham this past weekend were their daughter and her husband, Mr. and Mrs. Ben Fugitt of San Francisco, California, and grandson Randy.

TICKETS TO THE Chamber of Commerce banquet March 3 may be purchased at the Chamber office or from any Chamber director. Chamber manager Lance Barrow has "come through" with another great speaker for the year — Lex Ann Haughey, the reigning Miss Texas. Don't miss this special Floydada event.



CHARLES CRAIG, Jack Jordan, Louis Lloyd and Jack McIntosh prepare to leave from the Floydada airport for their annual medical and dental service trip to Central America. [See story page 2.]

Jana Lawson Wins Third In Essay Contest

Jana Lawson, sixth-grade student at R.C. Andrews Elementary, Floydada received a third place award for her

essay entitled, "Agriculture of the American Revolution."

Each year the Mary McCoy Baines

Chapter of the Daughters of the American Revolution, Plainview, sponsor the American History Month Essay Contest for students of the surrounding area, Plainview, Abernathy, Floydada, Hale Center, Tulia, Lockney and Idalou.

Sandy Carr, also a sixth-grade student in R.C. Andrews, received a certificate of appreciation for her entry entitled, "Rifles In the American Revolution."

The contest is a means of encouraging the students to have a greater appreciation of our history and our great heritage.

The Mary McCoy Baines Chapter also honored a senior student this year. Becky Crabtree, Floydada, was presented a citizenship award.

The winners of the American History Month Essay Contest were honored with a George Washington Tea February 13.



SANDY CARR AND JANA LAWSON

Mothers Day Out Urges Participation

A mothers day out program for the Floydada community is provided at the First United Methodist Church each Tuesday from 8:30 a.m. to 4:00 p.m.

Mothers day out registration is required and visitors are welcome to observe the program during the regular schedule each Tuesday.

located near the east entrance of the education building in the church. Everyone interested is urged to participate.

The program is open to all children between the ages of four months and five years, regardless of race or church affiliation.

The program is a non-profit service available to all interested persons. Under the direction of Mrs. Stan McClendon, the program offers excellent supervision for all children.

The daily schedule includes free play, art projects, games, music, and outside recreation when the weather permits.

Rates for full day care are: one child — \$4.75, two children in the same family — \$7.50. Half day and per-hour rates are available.

Separate classes are offered for infants, toddlers, and 3 to 4 year-olds. Each child must provide their own lunch and a towel or mat for rest time.

For additional information call Donna McClendon at 983-5470 of the First United Methodist Church office at 983-3706. Pre-registration is not re-



Children In Mothers Day Out Program

Trustees Approve

Construction, Renovation

Floydada school district trustees voted unanimously Friday morning for expansion and renovation of athletic facilities for both boys and girls at Floydada High School.

The school board awarded a contract for construction of a new athletic field house and appropriated \$6,000 for expansion and renovation of girls' athletic facilities at FHS.

A Floydada firm, Walter Davis Construction Co., submitted the low bid of \$79,963.48 for turnkey construction of the field house, a 6,000-square-foot (100 x 60) metal building to be erected on the southwest corner of the FHS track and field area, near the high-school building.

Superintendent Jerry Cannon cited the need to relieve crowded conditions in the FHS athletic department as a prime reason for the building and renovation program.

Davis's field house bid was the lowest

of six submitted to the school district. Three firms from Lubbock, one from Hereford and one from Amarillo submitted bids ranging from \$86,916 to \$103,844 for the building.

Field house construction is to start immediately. It is hoped that the building will be completed by June 1.

Under the planned renovation and expansion program, the downstairs area now used for boys' dressing rooms will be converted to a girls' athletic area. New lockers and carpet will be installed. Cannon said the girls' athletic area would be at least doubled.

The upstairs area will be the boys physical education dressing room.

The new field house will contain dressing rooms, showers, offices, weight room and film-viewing room.

All school board members were present at the special called meeting Friday morning.

Burnett New City Patrolman For Floydada

Glenn Burnett, new Floydada city patrolman began duties here February 1. He is working the night patrol.

Burnett and his wife Karla moved here from Copperas Cove, Texas where he was a full-time student at Central Texas College.

He has an associate degree in law enforcement.

The patrolman's wife Karla, is employed at the Lockney Nursing Home.

Burnett told a reporter, "this is a very friendly town and we already love it here," he also said, "I am looking forward to gaining lots of valuable experience in this new position."

The patrolman and his wife reside at 505 West Lee, Floydada.

The couple are Methodist.



GLENN BURNETT

Career Day Draws Near, Additional Speakers Accept Invitation

Two additional speakers have accepted invitations to speak at College-Career Day, March 3, at Floydada High School. They are Bob Whitaker, and Karin McCay.

Karin McCay, currently a producer-anchor-reporter at KCBT-TV in Lubbock will speak on the subject of careers in television. She is a Texas Tech graduate in telecommunications. Included in her presentation will be a "tour of the station long distance," via slide projector.

So far the list of participants in the upcoming event at FHS is quite impressive. Joann Cagle, school coun-

selor, is anticipating a successful and informative day for local students.

Bob Whitaker, a 1978 graduate of Floydada High School, is a student at Sam Houston State University. He is currently a correctional officer (III) with the Texas Department of Corrections.

He has seventeen months experience, nine months with Central State Farm and eight months with the diagnostic unit.

Whitaker's presentation will consist of:

- (1) Personnel recruitment by the Texas Department of Corrections.
- (2) T.D.C. Training Academy.
- (3) A correctional officer's responsibilities.
- (4) The Texas Department of Correction various departments and purposes.
- (5) Number of Texas inmates.
- (6) Information presented by various media.
- (7) An overview of the New Mexico prison riot.



KARIN McCAY



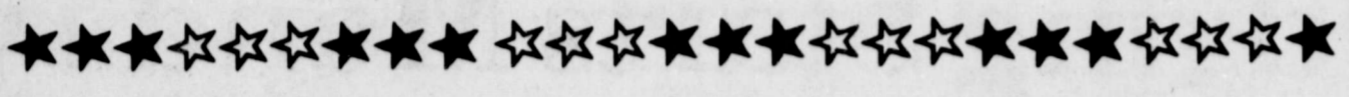
BOB WHITAKER

Leslie Soto Named Captain

Leslie Soto, an ex-Windstar, has been named as captain of the 1980 Pioneer field team at Wayland Baptist University. Leslie is the son of Mr. and Mrs. Soto of Floydada and is a former Nanette Burk of Floydada.

Soto is a 1976 graduate of the University of Texas at Dallas, transferred to Wayland Baptist in 1978 from South Plains College, Levelland, where he was a college All-American basketball player. He is a physical education and biology minor. Soto, 22, finished sixth in the shot put at the NALA Indoor Nationals.

Other captains named to the team were Randy Pool of Muleshoe and Rick Reimer of Canada.



Floydada Whozit



FLOYDADA WHOZIT — This baby was born in Floyd County in a dugout 71 years ago. He worked in the construction business in Floydada for 20 years and now has a small business in Floydada.

Whozits

Lockney Whozit



LOCKNEY WHOZIT — This photograph was taken in 1949 at the Lockney firemen's ice cream supper. Present-day Lockneyites should recognize the fireboys third from left and second from right in the front row, and extreme left and right in the back. Oldtimers may be able to identify the others.

Phone 983-3737
To Enter Your Guess

Phone 652-3318
To Enter Your Guess

Floydada Men On Annual Central America Trip

Four Floydada men left Wednesday on what has become an annual trip to provide medical and dental services to people in remote areas of Central America.

Dr. Charles Craig, D.D.S., Dr. Jack G. Jordan, M.D., Louis Lloyd and Jack McIntosh took off from Floydada Municipal Airport Wednesday morning bound for Guatemala, planning to spend a week with the Quiche' Indians in the mountains about 50 miles northwest of Guatemala City.

This is the 14th year that Drs. Craig and Jordan have flown to Central America. The trips are now partially sponsored by the "Flying Dentists' Association," but the Floydada doctors' trips predate the Flying Dentists by several years.

Lloyd and McIntosh, self-proclaimed

"handymen" for the doctors, are accompanying them for the first time. All four men are licensed dentists. This year they took two planes. Mooney and McIntosh's plane is on the Central American trip. The back seats and baggage compartments of both planes were loaded with dental supplies.

The trips usually take 10 days of flying time spread over two to three days because of weather conditions, McIntosh says. They try to get in four to five working days on the trip. (The four planes to Floydada by next Sunday.)

McIntosh explained why the Floydada men make the yearly trips. "We like to fly, we like Central America, we like the profession, we like the point of Christian service, and we like to get together and it just comes together."

Floydada Gets Larger Tax Rebate

Texas cities will receive more than \$36 million in February in rebates from the optional one-percent city sales tax, said State Comptroller Bob Bullock this week.

The February allocation is about \$11 million more than cities received during the same period last year said Bullock.

Bullock attributed the larger rebate checks to more efficient deposit procedures in his agency.

Floydada's net payment this period is \$7,495.17. It compares with \$5,352.90 received during the same period last year. The 1980 payments to date are \$10,137.92. This is a 27 percent increase over the \$7,933.49 payments received at this time in 1979.

Dallas will get a check for \$10 million, bringing that city's 1980 to about \$7.3 million.

Houston's rebate for this period will be \$7.3 million, compared with \$6.5 million during the same period last year. Houston's 1980 rebates total \$12.4 million.

San Antonio will receive a check for \$1.8 million, raising its 1980 payments to date to \$11.8 million.

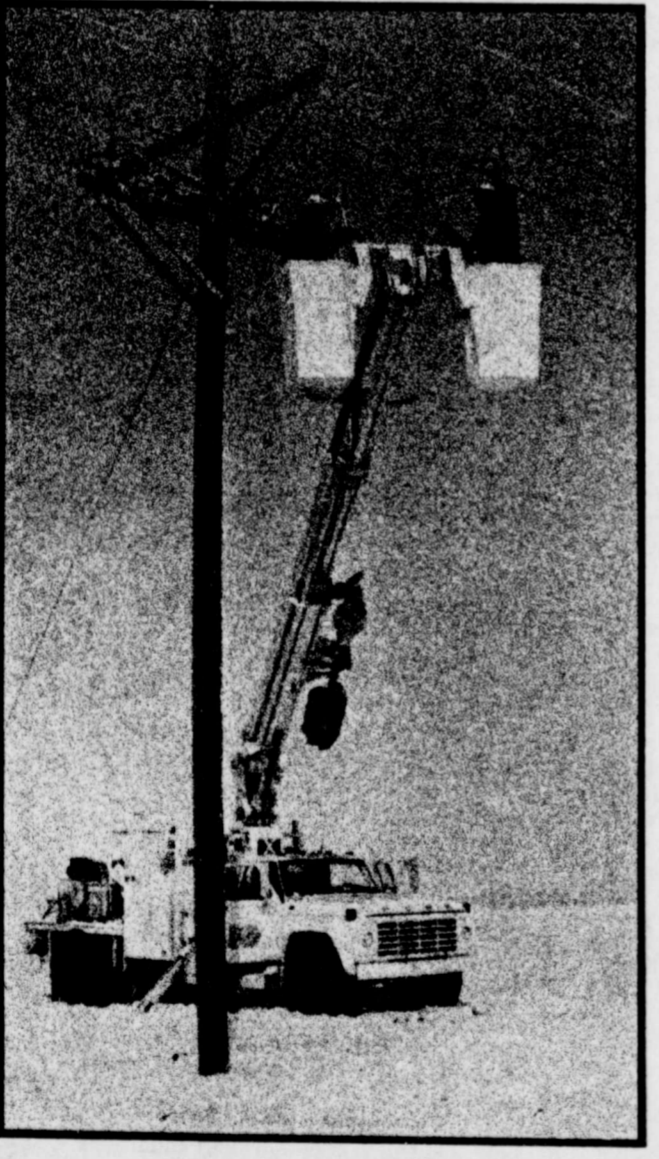
Fort Worth's check will be \$1.8 million, bringing the city's payments to date to \$2.4 million.

The city sales tax is a 1 percent tax on merchants and businesses. The state's four-percent sales tax is rebated monthly by the Comptroller's office to cities where it is collected.

Editor's Quote Book

Restlessness and discontent are the first necessities of progress.
Thomas A. Edison

YOU EXPECT US THERE



Yes you expect us there and You depend on Southwestern Public Service electricity to provide a lot of things to make your life better and more comfortable at home and work.

You depend on SPS to restore service quickly after a storm or accident.

When you need us we'll be there. It's good to know there's something you can depend on.



VERNA LYNN STEWART

Verna Lynn Stewart

Is Artist Of Week

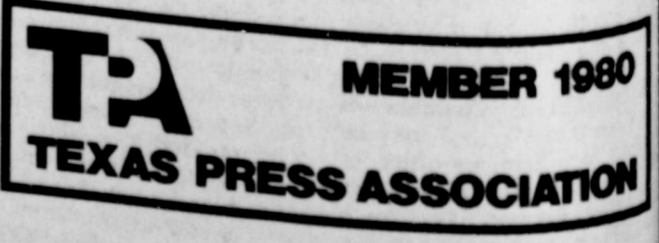
Verna Lynn Stewart is artist of the week at Art Southwest in Floydada. She has been a student of Winnie Carthel for about a year. A sample of her work is now on display.

Verna Lynn and her husband L.B. have two daughters, Juanita Williamson of Lubbock and Jo Anne Peek of Lafayette, Louisiana; and three grandchildren, Jeb and Cassye Williamson and Brandon Peek. Verna Lynn is owner and manager of Floyd County Abstract and L.B. is associated with Oden Chevrolet. They are members of the First Baptist Church in Floydada.

The Floyd County Hesperian

USPS 202-680

Published each Sunday and Thursday at 111 East Missouri Street, P.O. Box 700, Floydada Texas 79235. Publication Number 202-680. Jim Huggins, editor, publisher. Subscription rates: Local \$10.50 per year, out-of-trade area \$11.50 per year. Second class postage paid at Floydada, Texas 79235.



ie Soto
ned
tain

to, an ex-Whitman
een named as one
the 1980 Pioneer
it Wayland Baptist
:son of Mr. and Mrs.
dada and is married
ette Burk of Floydada,
1976 graduate of F
to Wayland in the
South Plains Coll
where he earned
American honors in
a physical education
minor. Soto, 22, wa
n again in 1979 wh
th in the shot put
r Nationals.
tains named to the
landy Pool of Mess
of Canada.

l Annu
Trip

"for the doctors, hav
ng them for some
ur men are licensed
y took two planes,
1 McIntosh's new Cal
nd baggage company
s were loaded with
supplies.
usually take 10 to 12
e spread over two
ays because of we
McIntosh says. The
four to five working
p. (The four plan to
by next Sunday.)
explained why the
ake the yearly trip:
like Central Ameri
their profession, and
ristian service. Par
l it just comes natur

Tax Reb

ill get a check fo
ng that city's
ut \$7.3 million.
s rebate for this mo
illion, compared
ing the same per
on's 1980 rebates
million.
nio will receive a Fe
.8 million, raising th
nts to date to \$3.2
rth's check will be
ng the city's 1980
to \$2.4 million.
sales tax is collect
and businesses alon
our-percent sales ta
nthly by the Comp
es where it is collect



perian

ny at 111
Floydada
-680. Jim
lon rates:
ea \$11.50
Floydada.

R 1980
IATION



HAROLD WILSON, Out-standing Hale Center Citizen

Father Of Floydada Woman Honored In Hale Center

Wilson of Hale Center was honored as "Out-standing Citizen Of the community awards" at the community awards ceremony held by the Hale Center Chamber of Commerce Saturday, February 16. Wilson is the father of LeAnn (Mrs. Jerry Neeley) of Floydada. Laney, incoming president of the Chamber, presented the award. "Because of Wilson's humility, his professional and Christian service. Part of it just comes natur

Wilson, 72, retired in May as director of public works, after being employed by the City of Hale Center 24 years, first as city water superintendent and later as director of public works in charge of city water, sewer department and street maintenance operations. He presently is plumbing inspector for the city and a member of the review board of South Plains Association of Governments.

He is a life member and past president of the Caprock Utilities Association, and was recognized as one of the most popular and knowledgeable city employees of the Association.

He farmed the Jeff Williams farm several years and then returned to Olton to live until coming to Hale Center in 1955. He and his wife, Ruby, have three children, Curtis Wilson of Saratoga, Calif.; LeAnn Neeley of Floydada; and Eualyne Needham of Hale Center; and nine grandchildren.

Gordon Russell, who has been Chamber president two terms, in 1977 and 1979, presided at the banquet until presenting the gavel to Laney, Hale Center city judge and an attorney in Plainview.

Wilson played a major role in Hale Center's comeback following the June 2, 1965 tornado that reduced downtown Hale Center to debris, badly damaging the city water system. He and his crew helped to restore order despite crippling difficulties. Wilson's everyday duties included extra long hours at night to restore services, especially in the winter when freezing temperatures ruptured water mains.

A member of First United Methodist Church, Wilson is Sunday School superintendent and a member of the official church board. He is Worshipful Master of the local Masonic Lodge and has filled every office in that organization.

Born in Timpson, Wilson moved to the Snyder Community, east of Hale Center, in January 1919 in a snowstorm. He played basketball and tennis in Snyder Community School and later attended Clarendon Junior College, Wayland Baptist College and Texas Tech.

Wilson previously operated a cafe in Amarillo and a grocery store in Olton.

Globe-Trotter

The first aerial circumnavigation of the globe was made in 1929 by the German dirigible, Graf Zeppelin under the command of Capt. Hugo Eckener.



KRISTI HOPPER, Hesperian receptionist, accompanied our photographer to the Floydada Nursing Home Valentine party, only to receive a gift herself. One of the residents made this macramé owl and Kristi's name was drawn from the "hopper."

Public Notice

CITY OF FLOYDADA HOUSING REHABILITATION PROGRAM

The City of Floydada will begin taking applications for the Community Development Block Grant housing rehabilitation program on Monday, February 11, 1980. Applications for this initial enrollment period will be accepted until the close of business on Monday, March 10, 1980. Applications may be obtained at the Floydada City Hall, 114 West Virginia, between 8 A.M. and 5 P.M. Monday through Friday.

Under the CDBG housing rehabilitation program, persons who meet specified income limits and own their homes may be eligible to receive grants to make needed repairs to their homes. Only persons living in the City's 1979 CDBG Target Area will be eligible for this assistance. A map of the Target Area in northeast Floydada is available for inspection by all interested persons at the Floydada City Hall.

A community meeting on the housing rehabilitation program will be held in the Target Area on Thursday, February 21, 1980, at 7:30 P.M. in the Auditorium of Della Plains School, 601 E. Ross. The purpose of this meeting will be to explain the details of the housing rehabilitation program and allow citizens the opportunity to ask questions about the grant assistance for which they may be eligible. All citizens owning homes in the Target Area are encouraged to attend this important meeting.

The City of Floydada will provide all necessary assistance to interested persons in completing applications for the housing rehabilitation program. Handicapped individuals who may have difficulty in coming to City Hall to obtain an application form or in attending the scheduled community meeting should contact City Hall to arrange for special assistance.

For further information on the CDBG housing rehabilitation program, contact Dorr Blassingame, Neighborhood Improvement Coordinator, City of Floydada, at 983-2834.

2-10, 2-17c

SCHOOL LUNCH MENU

FLOYDADA

Feb. 18-22

Monday Breakfast: 1/2 cup fruit juice, cinnamon roll, 1/2 pt. milk. Lunch: chicken fried steak/gravy, mashed potatoes, broccoli/richeese, coconut pudding, whole wheat rolls, 1/2 pt. milk.

Tuesday Breakfast: 1/2 cup fruit juice, sweet oatmeal, 1/2 pt. milk. Lunch: pinto beans, mashed potatoes, buttered spinach, peanutbutter cookie, cornbread, 1/2 pt. milk.

Wednesday Breakfast: 1/2 cup fruit juice, scrambled eggs, hot biscuit, butter milk. Lunch: fish/catsup, French fries/catsup, cole slaw/dressing, chocolate cake/chocolate icing, whole wheat roll, 1/2 pt. milk.

Thursday Breakfast: 1/2 cup fruit juice, waffles, kitchen made syrup, 1/2 pt. milk. Lunch: pigs in blanket/mustard, tomatoes/maccaroni, celery sticks, peach cobbler, 1/2 pt. milk.

Friday Breakfast: 1/2 cup fruit juice, sweet rice, 1/2 pt. milk. Lunch: hamburger/mustard, French fries/catsup, sliced tomato/sliced dill pickles, banana pudding, 1/2 pt. milk.

Cedar Hill News

by Grace Lemons

We received more ice accompanied with snow this week and the fields are very wet.

The Assembly of God Church had a good crowd for services Sunday in spite of the bad weather. Several visitors were present including Jean Smith and boys of Dumas and Wayne and Sherry VanHoose and Randy of Levelland.

Rev. and Mrs. Vance Mitchell and girls were among those present at the mission seminar of the area churches in this district held at the Assembly of God church in Floydada Tuesday evening.

Our sympathy goes out to the Jack Yeary family and the Grady Walker family and Jennifer and sons in the death of Jennifer's husband, Bill Walker, who drowned while on a fishing trip. Mr. Walker was a native of Vernon. He was a farmer and a member of the Methodist church. He is survived by his wife Jennifer; a daughter, Terry Walker of Dallas; two step sons, O'Bryan and Jason; his parents Mr. and Mrs. Grady Walker Sr. of Floydada; and one brother, Ray of Dallas.

Mrs. J.R. Kelley visited Tom Fortenberry Wednesday. Rev. and Mrs. Vance Mitchell were among those present at the band concert in Floydada last Thursday evening. Their daughters, Sandra and Virginia participated in the concert. Edna Gilly's mother Ruthie Bell Hill and W.M. Clark of Plainview were united in marriage at 2:30 Tuesday afternoon at the Assembly of God Church in Floydada with Rev. G.A. VanHoose reading the vows. A small reception was held at the church. Edna, Mr. and Mrs. Craig Gilly and Mr. and Mrs. Mark Gilly were present. Grace Lemons attended the band concert in Lockney at the grade school cafeteria Sunday afternoon where her grandson, David Lemons, participated. Mr. and Mrs. Troy Smith and sons of Dumas arrived at the home of Mr. and Mrs. Cephus Fortenberry Saturday and stayed until Sunday. Mr. and Mrs. Johnnie Harris and family of Floydada joined them Sunday for dinner. Mr. and Mrs. Marvin Lemons and family of Lockney had supper Tuesday evening with his parents, Mr. and Mrs. Carl F. Lemons.

Mr. and Mrs. Wayne VanHoose and Randy of Levelland spent Saturday night and Sunday in the home of Wayne's grandparents, Mr. and Mrs. John D. VanHoose.

Mr. and Mrs. John Kelley visited Mr. and Mrs. Garland Tucker Thursday. Mr. and Mrs. John D. VanHoose left Tuesday for Bridgeport to visit John D's sisters and on to Fort Worth to visit another sister and husband, Mr. and Mrs. J.D. Dunlap. They returned home Thursday.

Mr. and Mrs. John Kelley visited Mr. and Mrs. Garland Tucker Thursday.

Mr. and Mrs. John D. VanHoose left Tuesday for Bridgeport to visit John D's sisters and on to Fort Worth to visit another sister and husband, Mr. and Mrs. J.D. Dunlap. They returned home Thursday.

Ruthie and C.M. Clark had lunch with Edna Gilly Sunday.

Word was received of the death of Violet Walker, cousin of John Kelley. Violet died of a lengthy illness and her funeral was held February 4 at Rising Star.

Harvey Allan of Floydada visited Albert and Clara Mize Saturday. They returned home with him where they were guests for supper Saturday night. They spend the night Saturday with Winnie and Bill Beedy and had dinner with them Sunday.

Attend The Floyd County Livestock Show

Beginning Monday In Floydada At 2 p.m....See You There...

Important notice: The Case Company has allocated special *incentive dollars* to us for the month of February, 1980, so we can offer you big, big savings — hundreds (or thousands...maybe?) of dollars per tractor — on any new Case tractor. Exact price reduction depends on tractor model and your "bargaining" skill.

ANNOUNCING ONE OF THE BIGGEST PRICE INCENTIVES EVER OFFERED ON NEW CASE TRACTORS.



Low profile models — 5 models, 43 to 80 pto hp

90 series 2Wd's — 4 models, up to 180 pto hp

90 series 4Wd's — to 300 engine hp

See your Case Tractor Specialist listed below. Save on the new Case tractor of your choice.

Case Power & Equipment

Phone 806-983-2836

Certified Parts & Service Department

101 South 12th
Floydada

Case 2870	With Duals	\$1,500 ⁰⁰	Case 1175	Cab, Air, Heater	\$14,000 ⁰⁰
Case 1175	With Cab	\$12,000 ⁰⁰	I.H.C. 1066	With Cab	\$11,750 ⁰⁰

Used Implement Trailer

\$1,000⁰⁰

February Parts Special

All Batteries, Cables, and Filters 10% Discount

Case POWER & EQUIPMENT

101 South 12th

Floydada, Texas

983-2836



Eldon Eberhart
Saleman
983-2139

Alpha Mu Delta Meets With Sherry Smith

The Alpha Mu Delta Chapter of Beta Sigma Phi held their regular meeting February 5 at seven o'clock in the home of Sherry Smith. President Carrie Bertrand called the meeting to order with all members repeating the opening ritual.

Donna Anderson called the roll, followed with the reading of the minutes from the previous meeting.

Committee chairmen gave reports on forth coming projects and events.

The chapter's Ways and Means project, a volleyball tournament, to be held March 6, 7 and 8, was discussed by committee chairman, Revis Pernell.

JoAnn Patterson, social committee chairman, reported the chapter will celebrate Valentine's Day with a barn dance. The dance and supper is to be held Saturday, February 16 at Tonya Marble's. The coronation of the chapter's sweetheart will be the highlight of the evening.

The treasurer report was given by Daphna Simpson. Program committee chair-

man, Donna Henderson, reported the next meeting will be February 19. Hostesses for this meeting will be Carrie Bertrand and Duffy Hinkle. The program will be given by Donna Anderson on personal beauty.

President Carrie Bertrand called for pledge training February 12 at Farm Bureau.

The meeting was adjourned with all members repeating the closing ritual, then joining hands for the mizpah.

The program given by Sherry Smith was "People of Purpose". All members joined in a discussion of famous people and people in our community who have shown purpose in life.

Refreshments were served by hostesses Daphna Simpson and Sherry Smith to the following members. Donna Anderson, Debbie Beaty, Carrie Bertrand, Debbie Bertrand, Penny Bertrand, Kathy Green, Donna Henderson, Duffy Hinkle, Kay Jones, Judy Lloyd, Tonya Marble, JoAnn Patterson, Revis Pernell and Sharon Ward.

Social Events



MRS. ANDY COGNASI

The Very Newest

BATTEY

Rex and Teresa Battey of Ruidoso, New Mexico, are the parents of a son, Jon Maxwell Battey, born Wednesday, January 30 at 3:55 a.m. He weighed 7 pounds 13 ounces. Jon Maxwell has two brothers, Matt and Marc.

Grandparents are Lonnie and Wynell Hinsley of Floydada and Tom and Betty Battey of Ruidoso, New Mexico.

FLOYD DATA

Susan Turner, Floydada, is doing nicely in Lubbock Methodist Hospital after she underwent knee surgery Thursday.

FLOYD DATA

Dorothy Turner is reported to be doing nicely after undergoing surgery in Lubbock Methodist Hospital Wednesday.

Plainview Arts And Crafts Fair Calling For Artists

Applications are now being accepted for the 1980 Running Water Draw Arts and Crafts Festival. The show is set for October 17-19. Jointly sponsored by the Plainview Rotary Club and Llano Estacado Museum, the juried festival is in its sixth

year. All proceeds benefit these two organizations. Any artist or craftsman interested in applying for a booth may contact Rob Strong, Wayland College, Plainview, Texas 79072 for application forms and requirements.

put AMERICA back in the driver's seat
USC GASOHL
FLOYDADA TRAVEL CENTER 983-3028
SWIFTY DISTRIBUTORS, INC. 983-3721

Audrey's Hair Styles
Now Located At
210 West Houston
Full Service
Mens & Womens Styles
Student Rates
Senior Citizen Discount
Sensor Perm
Ear Piercing
LATE APPOINTMENTS
Call Now For Appointment
983-5220 Shop
983-3649 Home
Floydada

Valentine Day Wedding Vows Pledged

Four heart-shaped candelabras and a memory candle in the nuptial area of West College and Third Street Church of Christ in Lockney set the scene for the wedding vow exchange Thursday night of Miss Jacquelin Pat Carthel and Mr. Andrew Wayne Cognasi.

Frank Duckworth, Church of Christ minister, directed the 7:30 p.m. wedding service.

Parents of the couple are Bobby and Mervan Carthel of Lockney, Raymond and Lenora Cognasi of Plainview.

Ushers Jim Price of Plainview and Zach Zachary, bride's brothers-in-law, Linda Morris of Floydada, Kevin Turner and Robert Smith of Dallas assisted

guests in being seated. Aisles were marked with burgundy candles in glass chimneys. Guests were registered by a cousin of the bride, Shari Carthel.

Lisa Mosley sang "You Decorated My Life," "You Needed Me" and "The First Time Ever I Saw Your Face."

Recorded music was used as accompaniment and for the traditional wedding marches.

Honor attendants were the bride's sister, Tammie Zachary, and the groom's brother, Randy Cognasi of Clovis, NM. Bridesmaids were the bride's sister, Sherrey Price of Plainview; their sister-in-law Joann Carthel; and the groom's sisters, Cindy Cates and Sandy Keltz of Plainview. Another sister,

Kandy Cognasi, was a bridesmaid.

Groomsmen included the bride's brother, Dart Carthel, the groom's brothers-in-law, John Cates and Larry Keltz, both of Plainview; John Rueb of Boise, Idaho, and Tommy Billington.

Nieces of the bride and groom were flower girls. They are Lana Price and RaeAnne Cates, both of Plainview.

The bride's nephew, Lance Price of Plainview, and Ronnie Whittington were ring bearers.

The matron of honor wore a carpet-length dress that was the new color J-Blusher, a shade of pink. A molded bodice was accented with spaghetti straps. A matching chiffon capelet was fastened at each shoulder with bows. The accordion-pleated skirt fell from an Empire waistline. She carried three pink roses accented with baby's breath and leather leaf tied with pink streamers.

The bridesmaids' and the bridesmaid's dresses were styled identically but were burgundy-colored. Those attendants carried a single long-stemmed pink

rose tied with baby's breath, leather leaf and pink streamers.

When given in marriage by her father, Bobby Carthel, the bride was gowned in an ivory dress of sheer organza and re-embroidered lace jeweled with iridescents, oat and seed pearls. The Queen Anne neckline and long fitted sheer sleeves were adorned with handclipped lace medallions. More lace medallions were scattered over the A-line front skirt and Castilian train. The gown was triple bordered in self-fabric ruffles. She wore a wide-brimmed hat of re-embroidered lace. The bridal bouquet was of burgundy roses accented with baby's breath and eggshell ribbon streamers.

Reception

The reception was held in the church fellowship hall. Dominating the bride's table were the wedding cakes made by the bride's sister, Sherrey Price. The three-tiered cake was heart-shaped and iced in white. Burgundy cornelli lace and bouquets of roses were in the center of each tier. A fountain flowing with burgundy water was arranged with the cake and was surrounded by six smaller heart-shaped cakes iced identically to the larger cake.

Serving at the bride's table were Tina Graves, Karen Hooten and Dar Lee Pool of Amarillo.

Groom's table assistants were his sister-in-law, Becky Cognasi of Clovis, and Pat King. The heart-shaped chocolate cake was trimmed in J-Blusher cornelli lace and centered with a bouquet of J-Blusher roses.

The rehearsal dinner, hosted by the groom's parents, was at K-Bob's Restaurant in Plainview Wednesday night.

Mr. and Mrs. Cognasi will make their home in Lockney after the wedding trip. She is an employee of Baccus Motor Company and he is self-employed. She is a graduate of Lockney High School and he was graduated from Plainview High School.

Sale

Continues
Dinnerware
40% Off

Noritake Formal China
Noritake Stoneware
Makasih Stoneware
Franciscan Earthenware
Oneida Flatware

Noritake and Viking Crystal

50% Off

Wyler Watches 50% Off
SELECTED
Seiko Watches 20% Off

Schacht's
Flowers, Jewelry & Gifts

Lockney



"Block goes with me to the IRS? Free? I should have come here last year."

H&R BLOCK
THE INCOME TAX PEOPLE

106 West Missouri
983-5233
Floydada

Extension Homemakers Club Meets

The Extension Homemakers Club council members met Thursday, February 14. The meeting was called to order by the chairman, Lillian Smith; and the T.E.H.A prayer was voiced in unison. Marilyn Tate, Floyd County Extension agent, was introduced by Mrs. Smith.

The new club building is nearing completion, but the exact date of the planned open house has not been set. Murl Mayfield, appliance chairman, reported that some appliance dealers had indicated they would like to put in some of the larger appliances in the new kitchen.

Three club members, Lu-

cille Miller and Williams from Harmony Club, have been receiving state recognition in San Antonio.

The Lone Star Club, host the other two Lighthouse Electric room.

The state meeting in Denver City April Carr was elected as secretary.

Those attending today's meeting were Smith, chairman; Trapp, secretary; Gladys Williams, gate; Murl Mayfield, liaison; and Wanda

Shower Given For Miss McCarter

A miscellaneous wedding gift shower was a courtesy for Miss Kathy McCarter Saturday, Feb. 9. The event was held in the home of Mrs. John L. Hooten of Lockney.

Miss McCarter and Ronnie Hargis, both of Lubbock, will marry March 8.

Mrs. Hooten greeted guests and presented them to the honoree, her mother Mrs. Mary Louise McCarter and the prospective groom's mother, Mrs. Joyce Hargis of Lubbock.

The bride's book for guest registration was on a table covered with a white linen cloth with lace insertion and crocheted edging. A basket held blue blossoms. A blue china angel was on each side of the basket.

Assisting in the gift room were the sisters of the bride-elect and the prospective groom. They were Kay McCarter, Kim Murdock, Karen Hooten, Carrie and Janet Hargis of Lubbock.

The honoree's cousins,

Judy and Jody McCarter, served refreshments of cookies, coffee and hot spiced table was covered with white embroidered lace insertions on gray linen cloth. A silver bowl of lilies. A silver serving used for the hot beverage.

Hostess gift was cleaner and attached the serving table piece.

On the hostess table were Mmes. Hooten, Pat Lynn Ray Smith, Murdock, Bill Sherman, Hulcy, Omar, Joe Cunyus, Warren Marten Bradley, Pherson, Raymond, Bill Evans, Bobby Carthel, Tom Hamilton Gammage, Hrbacek, Tommy, Claude Brown, Jack Frizzell and Mize, and Miss Hooten.

Thornton Home Scene Of

A lingerie shower was given Wednesday night to fete Janie Bayley who is to marry Danny McAnally February 23.

The shower was held in the Lone Star community home of Pat Thornton. Sharing hostess duties with Mrs. Thornton were Andy Ford,

Cheryl Teeter, Barbara McCarty, Peggy Roberts.

Special guests were honoree's daughter and Jenny Bayley and their Inez Rhodes, prospective groom's mother, Karla Burnett dada.

El Progreso Has Valentine Program

El Progreso Study Club members enjoyed a Valentine program presented by Arla Copeland when the club met last week in the home of Cornelia Johnson in Lockney. The St. Valentine love story, "The Edge of Time," by Lula Grace Erdman, was about a couple who came to Texas from Missouri. Hazel Johnson presided at the club's business meeting.

Refreshments of cream cheese apple juice, nuts and were served to Helen, Marie Brock, Ball, Juanita Jenkins, Holmes, Bobbie Josie Taylor, Dimon Schacht, land, Jeanette Ferguson, Pauline Cornelia Johnson.

QUICK COUNTRY APPLE CRISP

One 20-oz. can apple pie filling
1/2 cup raisins, if desired
1/2 teaspoon lemon juice
12 Country Oats and Nut Crisps, crushed
3 tablespoons butter or margarine, melted

Combine pie filling, raisins and lemon juice in 1-qt. casserole; mix well. Combine crushed cookies and butter,

mixing well; spread over pie filling mixture at 350 degrees F. 30 minutes. Serve with whipped cream or ice cream, if desired. Makes 6 servings.

ATTEND THE
COUNTY
STOCK SHOW

CONNIE
A TOUCH OF CONNIE

Successful (and sexy) tailoring

The cut-price package is classic, the style is strictly today. Connie's unobtrusive heels and single open toe add that feminine touch to the basic shoe. So much the better!

Color-RED \$26.00

Cook of the week



BILL HARDIN, CHEF OF THE WEEK

Hardin, a local farmer and court reporter of the 10th Judicial District, is the first man to be featured as cook-of-the-week since the death of his wife Roberta in 1974. He is a sophomore at Tech University. They are members of the First Church in Floydada.

Bill Hardin decided a long time ago he was not going to go to work if he had the feeling he was cooking. He wanted to know how to cook a few simple things at home and bring them to work. He didn't object too much to helping out in the kitchen. Roberta probably had a dozen recipes for the fancy things he would whip up in just a few minutes. He has a biscuit recipe that he got from Mrs. John B. Brown and in my opinion is the best I have ever had.

add 1/4 cup cooking oil, 2 cups buttermilk, 5 cups self-rising flour. Mix well. Can be used immediately or stored in refrigerator up to one week.

Dip out as much as needed and knead on floured board a little, roll out and cut. Place in greased pan, let rise 45 minutes to 1 hour; or can go ahead and cook immediately at 425 to 450 degrees.

The second one is from the late Ruth Collins. It is one of the few that I follow to the letter except one might like to use a little more or less sugar depending on your taste.

Boiled Custard

Scald 4 cups milk in double boiler. Beat 5 eggs, slightly — use only 2 whites; add 6 tablespoons sugar, 2 heaping tps. flour (if whites are taken out), 1 tablespoon vanilla. Add small amount of milk to egg and sugar mixture. Slowly add to remainder of milk. Continue cooking in double boiler. Stir constantly until mixture coats spoon.

Remove from heat, strain and place in refrigerator. The third one came from Mrs. Ben Bob Cleveland of DeQuincy, Louisiana. This is an easy one and I think very good. It can be made a day or two ahead of time, as the

taste improves if it can set a day or two in a cool place.

Cherry Tarts

Slightly cream 2 sticks oleo, gradually add 1 cup sugar; 2 eggs, one at a time; 1 tsp. vanilla, 2 cups flour. Mix well. Add 1 cup chopped pecans.

Pour into greased 8 X 12 pan, saving small amount for topping. Spread 1 can cherry pie filling over top. Make small islands of batter that was saved. Cook in 325 degree oven until islands are a light brown.

Shannons Tour In Mexico

Forrest and Kay Shannon, of Floydada, recently accompanied Buddy, Myrna and Christy Widener on a tour of Mexico. They were in a group of over 200 grocers from all over Texas who attended the 1980 Texas Retail Grocers Convention.

The Floydadans were guests at the Camino Real

Hotel in Mexico City. While there they toured the Aztec Pyramids, Our Lady of Guadalupe Shrine and several other statues and monuments.

They were informed of some information about the country. Mexico City's population is between 13 to 15 million. There is a 40% unemployment problem. The

average wage in Mexico for an 8 hour work day is about \$9.00.

Mexico City hosts about 10 million tourists per year. The tour guides there speak fluent English, French, German, and Japanese.

Forrest Shannon is manager of Buddy's Food, Floydada. Kay also works at Buddy's.

OBITUARIES

Former Floydada Resident Dies In Oklahoma

Services for Mrs. Sibyl Johnson, 77, of Muleshoe are scheduled for 11 a.m. Monday morning in the Muleshoe Church of Christ with David Cox, minister, officiating. Graveside services will be at 3 p.m. in Floyd County Memorial Park.

Mrs. Johnson died Friday at 3:45 a.m. in the Baptist Medical Center in Oklahoma City, Oklahoma.

Mrs. Johnson was born January 12, 1903 in Hollis, Oklahoma. She completed her high school education in Hollis, and attended Southwestern State University in Weatherford, and taught math in Oklahoma for three years. She later moved to Floydada from Lawton, and from Floydada to Muleshoe, where she had lived for

fifteen years.

In Floydada, Mrs. Johnson worked for Miladies Shop, Kay Crouch Motor Company, Peoples Hospital and was bookkeeper at Oden Chevrolet and The Hesperian. After her retirement, she moved to Muleshoe.

She was preceded in death by her husband George G.

Johnson December 29, 1979.

Survivors are Doris McGill, Oklahoma City; Arch March, Eagle Pass; and Fred March, San Marcos; two brothers, Elsworth Gardner of Eugene, Oregon, and James Elmer Gardner of Houston, seven grandchildren and one great-grandchild.

Former Lockney Resident Dies In Irving

A former Lockney resident, Tom Davis, 80, of Irving, died January 29. Masonic graveside rites were conducted at the cemetery in Irving.

Davis, a brother-in-law of Johns Cox and Mrs. Alvin Nichols of Lockney, had been ill for several years and critically ill for three months. He was a foreman for the Santa Fe railroad at Tullia, Slaton, Big Lake and Hamlin before he retired about 10 years ago.

He is survived by his wife Letha; two sons, Jack of Lubbock and Perry Lee of Denver, Colorado; two daughters, Mrs. Gertrude Ruth Ogles of Irving and Nola Katherine Trewin of Richardson; 11 grandchildren and five great-grandchildren.

Remember your loved ones and friends with a memorial to Lockney General Hospital Memorial Fund. These memorials go toward equipment to help serve our community in the best way possible.

REMEMBER your loved ones with a living memorial to the Caprock Hospital Auxiliary Memorial Fund. Mrs. Ben Whitaker, Treasurer.

Today's Lifestyles

By Marilyn Tate



County Extension Agent

You are wasting money by giving it to the government free of interest when you allow your income tax money to be over-withheld. The money you give to the U.S. Government each payday in the form of payroll withholding tax goes into a sort of holding account pending settlement of your annual tax bill. If, over the course of the year, you've deposited too much into the "account" the deposits in excess of your tax bill are refunded to you. What a waste — while this surplus was languishing in a "dead" non-interest bearing account, it could have been earning at least 5 percent a year for you in a savings account. Over-withholding may be a method of forced savings, but it is an expensive one.

BORROWING INSURANCE

Before borrowing against a life insurance policy, consider both the advantages and the disadvantages.

THE ADVANTAGES

1. The most obvious reason to borrow from a life insurance policy is low interest. Current interest rates are around five or six to eight percent.
2. Look at the insurance contract to find the interest rate. Once cash value is built up, you can borrow roughly 92 to 95 percent of that amount. The cash value will continue to grow even though you have a loan.
3. Policy loans are lenient. Companies don't give you a timetable for paying back loans.

In fact, you don't have to pay it back at all. The loan plus interest will simply be deducted from your policy.

4. Since the company has cash value as collateral, loans are easy to obtain. You won't be quizzed about why you want the money, nor will there be a credit check.

To arrange a loan, just get in touch with your agent, the company or the VA office if you have GI insurance.

DISADVANTAGES

1. If the insurance was bought for protection, it's self-defeating to borrow against it. You are not borrowing against the company but against your beneficiaries.

2. If you die before paying back the loan, you'll leave less for the people you want to protect. A borrowed-against policy may be depleted and worth little.

3. Since companies aren't fussy about paying back the loan, people who borrow against policies often let them lapse.

4. Borrowing against a policy at six percent and reinvesting at a higher rate generally is not to the borrower's advantage.

If there is a profit it is likely too small to bother risking insurance protection. The taxes assessed on profit often discounts any earnings.

Got Heating Or Plumbing Problems? Call HOLMES PLUMBING

Austin or Steve

983-2251

6:30 - 9:30 a.m. and 5:30 p.m. Until?

We Have Bridal Selections

For

Alison Clark

Bride - Elect Of

Randy Hale

Solomon Jewelry

102 South Main Street

983-3240

FASHION DEADLINE

Fashions created from natural fibers will spotlight the Southwest Farm Show's 9th ANNUAL NATURAL FIBERS FASHION REVIEW on Saturday, March 8 in the Tarrant County Convention Center Theatre.

Entry forms may be obtained through the associations listed or by contacting J.L. Vandelune, Natural Fibers & Food Protein Commission, 17360 Coit Road, Dallas 75252 or telephone 214/231-0852.

Sears SAVE on these home appliances

Washers: COLORS WAS \$368.95 NOW \$338.95
 WHITE WAS \$358.95 NOW \$328.95
 Dryers: COLORS WAS \$263.95 NOW \$233.95
 WHITE WAS \$253.95 NOW \$223.95
 19" Colored Portable T.V. WAS \$416.95 NOW \$379.95
 AM - FM Stereo System WITH CASSETTE PLAYER AND 2 SPEAKERS WAS \$359.95 NOW \$309.95
 Microwave Oven WAS \$509.95 NOW \$439.95
 Gas Range WAS \$599.95 NOW \$529.95
 Dishwasher WAS \$414.95 NOW \$344.95
 Dishwasher WAS \$309.95 NOW \$239.95
 Vacuum Cleaner \$207.95

Shop Catalog by phone 983-2862

Authorized CATALOG SALES MERCHANT

Satisfaction Guaranteed or Your Money Back

SHOP AT SEARS AND SAVE Floydada

983-2862 100 S. Main Sue Williams

30 Weight Texaco Motor Oil 80¢/Quart
 Cigarettes 60¢
 Anti-Freeze \$3.99/1 Gallon

Sugary Golden 24 Ounce Yams 2/\$1.19	Del Monte 16 Ounce Tomatoes 3/\$1.00	Pet Milk 3/\$1.09	Hamburger & Hot Dog Relish 2/\$1.00
Spaghetti With Meatballs 2/\$1.00	Jack Sprat Golden Hominy 3/99¢	Jello 4/\$1.00	16 Ounce Hamburger Sliced Pickles 59¢
Chicken of the Sea Tuna 75¢	Ranch Style Navies 4/99¢	Ortega Taco Shells 49¢	Underwoods Chicken Spread & Roast Beef Spread 55¢
Kraft A-1 Steak Sauce 53¢	The Spreadables Chicken Salad AND Ham Salad 85¢	Kraft Macaroni & Cheese 3/\$1.00	Bama Preserves & Jams 59¢
Kraft 8 Ounce French Dressing 55¢			

Open Seven Days Highway 70 Texaco LOCKNEY

Hand Decorated

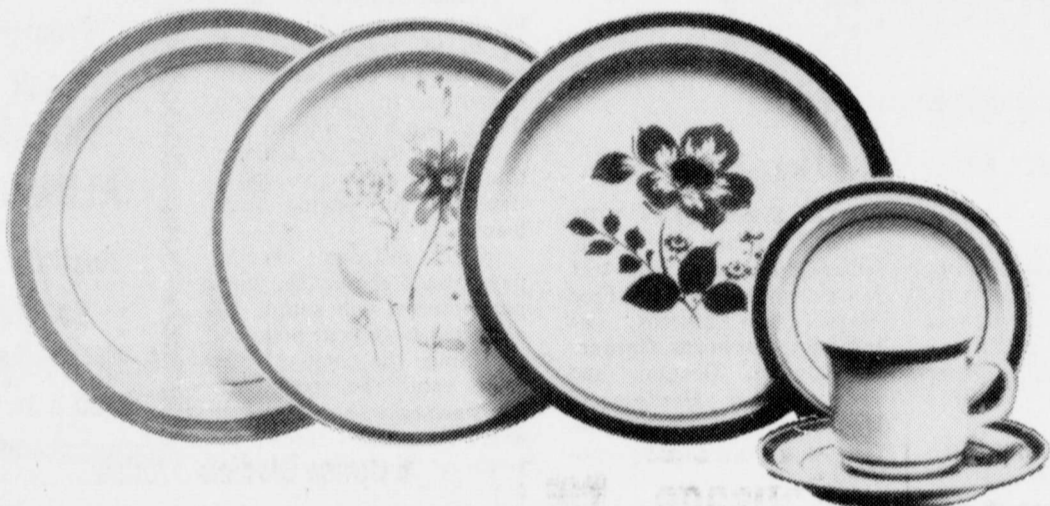
SIERRA STONEWARE

99¢

FOUR PIECE PLACE SETTING

WITH 2 FILLED SAVER CARDS
• DINNER PLATE • CUP
• DESSERT DISH • SAUCER

CHOOSE FROM 3
LOVELY PATTERNS

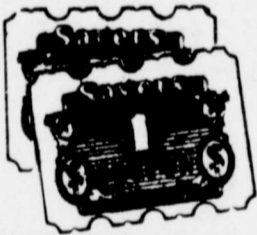


Begin your collection by choosing one of the 3 dinner plates in patterns shown above. Then complete your 4-piece place setting by adding the pre-packaged cup, saucer & bread and butter plate.

HERE'S ALL YOU DO



1. Get your free Sierra Stoneware "Sav-A-Coupon" saver card. It's yours for the asking at our checkout stands!



2. You'll get one Sierra Stoneware "Sav-A-Coupon" with each \$5.00 purchase. Two with \$10.00, three with \$15.00 and so on.



3. Collect your Sierra Stoneware "Sav-A-Coupons" in the saver card. Each card holds 15 coupons. Two filled cards can be redeemed for your 99¢ 4-piece place setting.



BUDDY'S

220 South 2nd
Floydada



WE TAKE U.S.D.A.
FOOD COUPONS

WE TAKE
W.I.C. CARDS

STORE HOURS

Monday-Saturday, 8 a.m. to 8 p.m. - Sunday, 9 a.m. to 7 p.m.

STONEWARE

Sierra Stoneware is today's stylish and practical solution to all your dining needs. Brighten your table each day with your selection of Sierra and share a lovely table with your friends.

The subtle blossoming of the Sierra patterns will make every meal a pleasure. Sierra is kiln-fired at the highest temperatures. Because of this firing each Sierra piece has its own distinctive character so that no two pieces are exactly alike.

To convince you of its value, we invite you to check our quality and compare it to stoneware sold in the finest department stores. You'll find that you are paying only a small fraction of its actual value on our program.



COMPLETER PIECES ON SALE AT ALL TIMES

EXCITING COORDINATED COMPLETER PIECES. Listed below are all the extras that make serving a pleasure and your Sierra collection complete. They will be on sale during the program.

- DESSERT DISHES
- SOUP/CEREAL BOWLS (2 in a box)
- SALAD/LUNCH PLATES (2 in a box)
- COVERED SUGAR BOWL
- CREAMER
- LARGE VEGETABLE BOWL
- SALT & PEPPER SHAKERS
- MUGS (2 in a box)
- MEDIUM SERVING BOWLS (2 in a box)
- LARGE PLATTER
- CASSEROLE
- COFFEE/TEA SERVER
- LARGE ALL PURPOSE BOWL

SIERRA STONEWARE CARRIES A COMPLETE OPEN-STOCK GUARANTEE

3 WAYS TO GET PLACE SETTINGS

99¢

with 2 filled Sierra Stoneware
"Sav-A-Coupon" saver cards

\$2.99

with 1 filled
Sierra
Stoneware
"Sav-A-
Coupon"
saver card

\$4.99

when
purchased
without
filled saver
cards.

Filled saver cards are redeemable for 4-piece place settings only. Partially filled saver cards have no redemption value.

WE GIVE S&H GREEN STAMPS

46 Ounce
Grape
Juice
69¢
99¢

WE GIVE S&H GREEN STAMPS

DOUB
ON
WEDNESD

6 1/2 Ounce Star K

"In W

Tu
79

Giant 4

Fab
\$1

22 Ounce

Pal
7

42

Fresh
Deter
\$4

Cash
Bou
7

Giant

Super
Deter

2 Bar P

ish spring

S

\$1

32 Ounce

Dish

\$1

50 O

Dishwa
Deter

WE GIVE S&H GREEN STAMPS

WE GIVE  WE GIVE  WE GIVE  WE GIVE  WE GIVE  WE GIVE  WE GIVE  WE GIVE  WE GIVE  WE GIVE  WE GIVE  WE GIVE  WE GIVE  WE GIVE  WE GIVE  WE GIVE  WE GIVE  WE GIVE  WE GIVE

<p>46 Ounce Texsun Grapefruit Juice 69¢ 99¢ Value</p>	<p>Gallon Rich N Ready Fruit Punch 79¢ \$1.19 Value</p>	<p>17 Ounce Our Darling Corn 4/\$1.00 41¢ Value</p>	<p>22 Ounce Liquid "For Dishes" Dove 69¢</p>	<p>1 Pound Nabisco Crackers 69¢ 95¢ Value</p>
---	---	---	--	---

BUDDY'S

DOUBLE ON WEDNESDAY

Store Hours
Mon.-Sat., 8 a.m. to 8 p.m. Sun., 9 a.m. to 7 p.m.
Values In This Adv Effective Through Wednesday February 20, 1980
We Reserve The Right To Limit Quantities

We Take U.S.D.A. Food Coupons
We Take W.I.C. Cards

<p>1 Pound Farmland Bacon \$1.39</p>	<p>Round Steak USDA Boneless \$2.69 Lb.</p>	<p>Pork Chops Center Cut \$1.99 Lb.</p>
<p>3 Pound Farmland Canned Ham \$5.99</p>	<p>2 Pound Mortons Fried Chicken \$2.59</p>	<p>USDA Ground Beef \$1.59 Lb.</p>
<p>USDA Boneless Chuck Roast \$1.99 Lb.</p>	<p>Longhorn Cheddar Cheese \$1.99 Lb.</p>	<p>12 Ounce Plainsman Franks 99¢ Pkg.</p>

<p>12 Count Carnation Hot Cocoa Mix 99¢ \$1.49 Value</p>	<p>9 Ounce Carpet Fresh \$1.09 \$1.49 Value</p>
<p>7 Ounce Kraft Marshmallow Creme 2/89¢ 59¢ Value</p>	
<p>6 Ounce Gladiola Yellow Corn Bread Mix 4/\$1.00 30¢ Value</p>	

<p>6½ Ounce Star Kist Chunk Light "In Water" Tuna 79¢ \$1.17 Value</p>	<p>Giant 49 Ounce Fab \$1.29 \$2.19 Value</p>
<p>22 Ounce Giant Liquid Palmolive 79¢ \$1.23 Value</p>	<p>42 Ounce Fresh Start Detergent \$2.29 \$3.59 Value</p>
<p>4 Bar Cashmere Bouquet 79¢ \$1.09 Value</p>	<p>Giant 40 Ounce Super Suds Detergent 79¢ \$1.19 Value</p>
<p>2 Bar Pack Irish Spring Soap 69¢ \$1.09 Value</p>	<p>32 Ounce King Size Dermassage Dish Lotion \$1.49 \$1.79 Value</p>
<p>50 Ounce Crystal Clear Dishwasher Detergent 99¢ \$2.29 Value</p>	

<p>½ Gallon Bell Buttermilk 99¢ \$1.39 Value</p>	<p>½ Gallon Bell Ice Cream \$1.49 \$2.09 Value</p>
<p>½ Gallon Buddy Milk 99¢ \$1.19 Value</p>	<p>6½ Ounce 9-Lives Cat Food 4/\$1.00 37¢ Value</p>
<p>Bath Size Dove Soap 2/99¢ 69¢ Value</p>	
<p>13½ Ounce "Generic" White or Fudge Frosting Mix 57¢</p>	<p>99¢ Size Doritos 2/\$1.39</p>
<p>Schilling "Envelope" Spaghetti Sauce Brown Gravy Or Chili Mix 4/\$1.00</p>	<p>4 Ounce Schilling Pepper Black 79¢ \$1.08 Value</p>
	<p>1 Pound Maxwell House Coffee \$2.79 \$3.69 Value</p>

<p>Ruby Red Grapefruit 6/\$1.00</p>	<p>Firm Green Cabbage 7¢ Lb.</p>
<p>Baking Size Potatoes 10/\$1.00</p>	
<p>Red Ripe Tomatoes 39¢ Lb.</p>	
<p>1 Ounce "For Dogs" Jerky Treats 5/\$1.00 39¢ Value</p>	
<p>48 Ounce Crystal White Dish Dish Detergent 79¢ With Coupon Without Coupon 99¢</p>	
<p>Good At Buddy's Expires 2-20-80 2 Liter "No Deposit" Coke Or Tab 79¢ With Coupon Without Coupon 99¢ Good At Buddy's Expires 2-20-80</p>	

WE GIVE  WE GIVE  WE GIVE  WE GIVE  WE GIVE  WE GIVE  WE GIVE  WE GIVE  WE GIVE  WE GIVE  WE GIVE  WE GIVE  WE GIVE  WE GIVE  WE GIVE  WE GIVE  WE GIVE  WE GIVE  WE GIVE



FARM & RANCH NEWS



Area City Pioneers Sewage For Irrigation

A pioneer in use of sewage water for irrigation, the city of Lubbock will provide national leadership during the '80s in effective use of city waste for agricultural purposes.

Urban sewage, produced at a daily rate of 80 to 100 gallons per person, can provide valuable nutrients and water for farming, especially in the Southwest. If used for land application, the sewage needs limited treatment, which reduces municipal expenses.

But techniques of applying partially treated sewage on agricultural land need to be perfected, according to Dr. Robert M. Sweazy, director of Texas Tech University Water Resources Center.

Sweazy heads a team of Texas Tech researchers who will provide information on applying waste water for agricultural purposes. The research effort, which will be completed by the mid '80s, is being supervised by a national advisory committee.

Once completed, the project will provide guidelines for cost-effective, productive and environmentally safe use of sewage water for land application.

The Texas Tech research effort is funded by the Environmental Protection Agency (EPA) through the Lubbock Christian College (LCC) Institute of Water Research.

The EPA-LCC contract calls for research and implementation of the sewage treatment project. Funded at 9.5 million, the project represents one of the largest EPA contracts for research and development of sewage reuse, Sweazy said.

"The use of municipal effluent for

agricultural purposes is becoming popular and with it has come the need for more information on the effects of sewage on crops, soils and groundwater reservoirs and the process," Sweazy said.

Lubbock can provide leadership in this endeavor because the city's waste water has been used for irrigating a 4,000 acre farm since 1939, Sweazy explained.

"Using that farm and a similar farm which has never been irrigated with sewage — but will be during the next five years — we will be able to monitor the long- and short-term effects of applying sewage on land."

Lubbock produces about 18 million gallons of waste water every day, "which represents about 55 acre-feet of water," he added.

Most of that water has been used for irrigating the 4,000-acre Frank Gray farm on the southeast edge of town since 1939. About 2.5 million gallons of that water percolates into the underground reservoir from which it is pumped into the Canyon Lakes Project for water-based recreation in Lubbock.

"Because the Gray farm received more than it needs, some of the water will now be used to irrigate 4,000 acres of farmland operated by 13 tenant farmers in the small community of Wilson, population 380, near Lubbock," Sweazy said.

Texas Tech research will generate baseline environmental data on the two irrigation sites, provide information on the effects of using effluent for irrigation on the quality and quantity of groundwater and study the number and type of any viruses associated with sewage.

The research team, headed by Sweazy, includes Drs. Billy J. Claborn and R. Heyward Ramsey, both of the Civil Engineering Department, and Dr. Clarence L. Baugh of the Biological Sciences Department. More than 50 undergraduate and graduate students will receive research assistantships through the project.

Most of the EPA money will be used for design and construction of pipelines to transfer the waste water from Lubbock to the Wilson farms and distribute it there.

Texas Tech will be responsible for a

major part of the research and will receive more than \$1 million for the work. Research also will be conducted by the Southwest Research Institute of San Antonio. Laboratory analysis of water, crop and soil samples will be conducted at LCC.

Besides providing research data on the use of waste water for irrigation, the project will evaluate existing EPA guidelines on using sewage for agricultural purposes.

"Once those guidelines are evaluated," Sweazy said, "other cities in the nation could benefit from them."

Texas Agriculture research report...

Convergent lady beetles have a lot to do with greenbug populations on wheat and sorghum. If there are a lot of lady beetles, greenbug populations never get out of hand. Norris Daniels, Texas Agricultural Experiment Station Entomologist, surveyed lady beetle and greenbug populations on irrigated wheat from 1953 to 1973. His study included Deaf Smith, Castro and Swisher counties in the Texas Panhandle. In 1961, 1967, 1969 and 1970 greenbug infestation was highest and averaged 2,304 per foot of row of wheat in March. The twenty year average population for March was 637 per foot or row. The lowest average population, 33 per foot of row, occurred in 1958, 1960, 1963 and 1972. On years when greenbug populations were low, there were a lot of lady beetles.

Daniels also kept temperature records and found the number of greenbugs to be lowest when temperatures were lowest from January to March. During some of these years, lady beetle populations were higher than usual. Surprisingly, Daniels found that lady beetles feed on greenbugs at temperatures lower than previously believed. Other researchers speculated that lady beetles did not eat when temperatures dropped below 65 degrees.

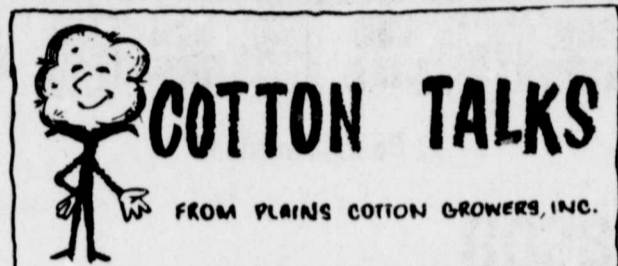
Louis Chedester, another Texas Agricultural Experiment Station researcher who worked with Daniels, studied the development of the lady beetle in the laboratory and a sorghum field. At 68 degrees in the laboratory, lady beetles developed from egg to adult in 33 days. According to the researcher, lady beetle eggs took four days to hatch. After hatching, larvae, went through four developmental stages or instars in the next 26 days. The first three stages took from three to five days and the fourth took 11 days. The pupa or resting stage took seven days. Adult lady beetles

emerging from the pupal stage immediately and lay eggs about later.

In the field where temperatures range from 68 to 95 degrees, lady beetles take 28 days to develop from egg to adult. In another laboratory study at 70 degrees, Chedester determined many greenbugs it takes 30 days to develop. First instar larvae develop in five days. In the second and third instars, appetites of lady beetles increased to 31 and 38 per day. In the fourth instar, lady beetle larvae eat 41 greenbugs per day. In the fifth instar, a well fed lady beetle will eat up to 490 greenbugs per day. Adults will eat anything in the pupal stage. Adults will eat about 50 greenbugs per day.

Because of lady beetle appetites for greenbugs a few per foot of row in wheat, or in a sorghum field, will keep them under control.

However, Daniels warns against using beetles to control greenbugs in wheat and sorghum fields. If conditions are wrong, lady beetles die or migrate to fence-line protection. "If conditions are right, nature will supply lady beetles to control greenbugs," Daniels said.



The Department of Agriculture appears to be making a sincere effort to improve the commodity statistics and economics programs conducted by the Department's Economics, Statistics and Cooperative Service (ESCS).

This was the comment of Donald Johnson, Executive Vice President of Plains Cotton Growers, Inc., Lubbock, on returning from an Agricultural Economics and Statistics Data Users Workshop in Dallas February 4. "Of course the results," Johnson added, "are yet to be seen."

ESCS staged the workshop to obtain input from users of ESCS information and statistics for use in the development of future ESCS budget and program needs. Johnson was invited to represent cotton producers.

Also attending from Lubbock was Elbert Harp, Executive Director of Grain Sorghum Producers Association. Wheat, rice, sheep and goats, cattle and citrus fruits were other commodities participating in discussions. The Texas Federation of Cooperatives, Texas Department of Agriculture and Texas Crop and Livestock Reporting Service were also represented.

The most visible of ESCS activities hinge around production and demand estimates, prices received by farmers and prices paid for production inputs.

One of the major points made by Johnson in the informal discussion was to the effect that ESCS should upgrade the accuracy of its in-season cotton acreage and production estimates. William Kibler, Deputy ESCS Administrator for Statistics, responded.

Noting that cotton is one of the most difficult commodities on which to make accurate estimates, Kibler admitted that ESCS hasn't done as well with cotton as with some of the other commodities, then pointedly remarked that much of the problem in cotton forecasting stems from the huge acreage and extreme variability and unpredictability of growing conditions on the High Plains.

Kibler did say however that attempts to make changes in ESCS sampling procedures, at least one of which will require legislation, if successful should prove beneficial to future results.

ESCS personnel also told those at the workshop that efforts are being made to expand the educational program on how producers can better use ESCS data and analysis in the development of production and marketing plans.

Under questioning, Kenneth Farrell, ESCS administrator, stressed that the confidentiality of individual producer replies to ESCS questionnaires has never been violated, and that every precaution is taken to preserve that record.

Bergland selects cotton board members and okays 1980 budget

Five members, six alternates, and two consumer advisors were named by Agriculture Secretary Bob Bergland this week to a board which administers a national cotton research and promotion program.

At the same time, Bergland said the 1980 budget for that program will be \$21.7 million.

The cotton research and promotion program, designed to strengthen the competitive position of cotton and expand its uses, is funded entirely by producer assessments of approximately \$2 per bale. Projects and budgets are developed and carried out by Cotton Incorporated under contract with the Cotton Board. The U.S. Department of Agriculture monitors the program and reviews budgets, plans, and projects to assure that the program operates according to law and in the public interest. The Cotton Board is composed of 19 members and their alternates who represent the cotton producing states. The following new appointees will serve 3-year terms ending Dec. 31, 1982:

- Texas — Billy Golden, Seymour; and Earl Jalufka, Robstown. Jack Young of Stamford was named an alternate to fill the 2-year term ending Dec. 31, 1981.
- Arizona — Charles Youngker (member), Buckeye; and Russell Schlittenhart (alternate), (alternate) Eloy.
- Arkansas — Lon Mann, Marianna; and William Currie, Osceola.
- Georgia — Dolan Brown, Twin City;

and John Harris, Cordele.

Mississippi — Robert Carson, Marks; and J. Tol Thomas, Cruger.

For the first time this year, consumer advisors also have been appointed to the board. The following appointees will serve in an advisory capacity for one-year terms ending Dec. 31, 1980: Dr. Naomi Albanese, dean, School of Home Economics, University of North Carolina at Greensboro; and Dr. Webster Pendergrass, recently retired vice president of the Institute of Agriculture, University of Tennessee, Knoxville.

Beef referendum registration figures released Monday

Registration figures for the Beef referendum were released Monday and, according to ASCS, 40,320 Texas cattlemen have registered. Voting is slated for Feb. 19-22.

Only cattlemen who registered Jan. 28 through Feb. 6 are qualified to vote.

Passage of the Beef referendum requires voting by at least 50 percent of the cattlemen who registered, than approved by a majority of those voting.

Large quantities of grain being moved to Mexico

American grain in large quantities will soon be moving to Mexico under an agreement reached between Santa Fe Railway, the National Railways of Mexico, and Conasupo, the Mexican grain company.

Larry Cena, president of Santa Fe, said the agreement calls for three 75-car trains of grain to move each week from points in West Texas, Oklahoma and Kansas. The trains will leave the United States at Presidio, Tex., and most will move to Torreón, Mexico, where the grain will be unloaded and re-shipped to consumption points by other means of transport. Some of the trains will go through to Mexico City.

Most domestic grain shipments, including those for export, move in large covered hopper cars. Because of the nature of Mexican facilities, these shipments will move primarily in 40, 50, and 60 foot box cars, and thus be handled without interfering with grain cars normally used in other service, Cena said.

Destroy bagworms on evergreens

The best time to prevent infestations of trees and shrubs by bagworms, is now, says Treptow, county entomologist.

Treptow says the simplest way to remove old cocoons hanging from tree limbs. He also advises depositing them with trash to keep away. If cocoons are dropped on ground, reinfestation may occur.

This method of control can be understood by looking at the life cycle of the bagworm. In winter the cocoon contains the larva. In the spring, each larva crawls from the old cocoon and spins its own. It never leaves its cocoon relatively safe from predators. As the larva matures, its cocoon declines. Upon reaching maturity, the larva seals the cocoon to form a stage and transforms into a moth. The female moth is wingless and does not leave her cocoon. The winged and does leave the cocoon.

The male moth dies soon after while the female deposits her eggs in the cocoon and then dies. The plug the lower end of the cocoon. The eggs remain in the cocoon until following spring when the eggs hatch.

Sponsored by the Following Interested Firms

First National Bank Floydada	Floyd County Farm Bureau
Case Power & Equipment Floydada	Russell's Equipment & Supply Floydada
Floydada Cooperative Gins	Perry Implement Lockney
McDonald Implement Co. Floydada	Plainview Savings & Loan Association Floydada
Federal Land Bank Association Of Floydada	Ansley & Son Lockney
Consumers Fuel Association Lockney	The Floyd County Hesperian
Producers Cooperative Elevators Floydada	Floydada Implement Co.

COTTON TODAY
A NATIONAL COTTON COUNCIL SERVICE

TARGET PRICE CONFERENCE SET: House-Senate conferees will meet February 19 to resolve their differences over legislation raising the 1980 target prices for wheat and feed grains. Senate bill extends the disaster program through 1980, but limits payments to \$50,000 per producer. Other provisions of the Senate version would give require producers to remain within their Normal Crop Acreage (NCA) for 1980 and 1981 to be eligible for loans, deficiency payments, and other program benefits. The National Cotton Council strongly opposes both the payment limitation and NCA provision.

EXPORTS REPORTED: New sales of upland cotton reached 171,600 running bales for the week ended January 27 to bring the season's total to 8,411,300. The major buyers were Japan, 124,400 bales; Korea, 15,700; and Taiwan, 13,800. The week's exports were reported at 168,400 running bales compared with 183,400 a week ago, bringing the total to 3,466,600 for the year.

TEMIK BANNED: Union Carbide has requested the Environmental Protection agency to ban Temik in Suffolk County,

RELIGIOUS
PROGRAMMING
GREEN ACRES
FAMILY AFFAIR SHOW
FRAN CARROLL SHOW
7:00 CLUB
MOVIE "Man On A Tightrope"

5:00 CHURCH IN THE HOME
6:00 FORD PHIL
6:30 JIMMY SWAGART
6:50 EVER INCREASING FAITH
7:00 MONSTER FLICKS
6:30

MOVIE (WESTERN) ***
Springfield Rifle, 1952. Gary Cooper. Phils. theater. Who's ailing
Government plans (2 hrs.)
TUESDAY NIGHT AT THE MOVIES The End, 1978. Stars: Burt Reynolds, Sally Field. A philandering doctor takes her to the series beach house he

(ADVENTURE-WESTERN) ***
Shiner Rife, 1952. Gary Cooper. Phils. theater. Who's ailing
The story of a gambler's rise to wealth and his fall (2 hrs., 12 mins.)
NBC LATE NIGHT MOVIE
Welcome to Arrow Beach. The Story of a woman who picks up a young woman and takes her to the series beach house he

AC-U.S.A. 4:31
F.B.I. 5:00
CHRISTOPHER CLOSEUP
BETWEEN THE LINES
CHRIST IN THE HOME
KONAKU 5:30

MOVIE (DARUMA) ***
Three and Pray. After the Civil War, former rope becomes a pastor, using much of his former knowledge in efforts to rebuild "ruined" church.
psychological and physical blocks. 12
GLEN CAMPBELL LOS AN

for anything... for everything... WANTED ADS

1 REAL ESTATE ADVERTISING
2 BUSINESS SERVICES
3 CLASSIFIED RATES
4 CASH IN WITH A CLASSIFIED AD...
5 CAN YOU USE SOME EXTRA MONEY? LET US HELP!!!
6 POLITICAL CALENDAR
7 AUTO ACCIDENTS DO HAPPEN...
8 DAN'S AUTO SERVICE
9 BAKER INSURANCE AGENCY
10 LIQUID FERTILIZER ANHYDRUS HERBICIDES
11 RIGS AVAILABLE FOR APPLICATION
12 LONE STAR CHEMICAL INC.
13 OFFICE: 652-2761
14 DEANIE HENDERSON: 652-3434
15 CAN YOU USE SOME EXTRA MONEY? LET US HELP!!!
16 WE BUY SCRAP IRON, OLD JUNKERS, AND FREE PICKUP
17 CALL 983-5277
18 POLITICAL CALENDAR
19 FOR SHERIFF: Fred Cardinal
20 FOR TAX ASSESSOR-COLLECTOR: Jonelle Fawver
21 FOR COMMISSIONER-PRECINCT I: 1. Sam Spence, 2. Rodger Dawdy, 3. J.W. Becker
22 FOR JUSTICE OF PEACE: Walter Hollums, Joyce Lipham, Linda Morris
23 FOR COMMISSIONER-PRECINCT 3: Thomas Warren, Larry Noland

Real Estate

FOR SALE: Brick three bedroom, one bath, modern kitchen, new carpet and new evaporative air conditioner, storage shed, fruit trees, new paint, and fenced back yard. All this plus a great location. 104 J.B. Ave. Floydada. Call 293-8137 in Plainview after 5 p.m. tfc

FOR SALE: Three bedroom two baths on large lot. 983-2306. tfc

FOR SALE: Five room house with one bath, and built-in back porch. Close to schools, call 983-5180. \$8000. 2-28p

FOR SALE: to be moved — 5 room house. 652-3183. Ltfc

FOR SALE: Two bedroom, one bath, large living and dining room, utility room, kitchen, single car garage, 1 1/2 lots. Call 983-2425 or 983-3024 after 6 p.m. tfc

Several 2 and 3 bedroom houses for sale. King Real Estate. 983-2881; 983-5028, 983-2707. tfc

FOR SALE: House 1 mile west of Lockney. 652-3840. L2-24p

FOR SALE: 528 W. Floydada, three bedroom, storm cellar. Call 652-3788. tfc

Moderate priced W. Lockney-Brick 2 1/2 garage, floor furnace will carry note. 170 acres of stacoo 2 bedroom hot water. 170 acres at 9420 acre, close to stock farm. Domestic and small 4-inch about 40 acres of row BAKER REALTY — Better Broker. L-21c

WANTED TO BUY irrigated or dryland farm in Floyd or surrounding area. Write Box XRO, c/o Hesperian, Box 700, Floydada. tfc

Mobile Home cheap for retiree in Floydada 806-983-tfc

BUSINESS SERVICES

INTERIOR PAINTING WALL PAPERING

Call Rena Turner or Nancy Mayo, 983-5130 or 983-2667 tfc

INSULATION

Fire-Resistant, Installed and Guaranteed. MARR Insulation Co. Lockney 652-3593. Ltfc

C-D-J INSULATION can help save your dollars. For information call 983-2601.

WILL DO ALL Types of carpenter work. Call 983-5201 after 5:30. tfc

WE DO Painting, floor leveling, house blocking, roofing and remodeling. We are now working Floydada Area. Contact Childress Bro. Collect 352-9563 tfc

CUSTOM Application of Herbicides. Bill Wisdom 652-3541, John Widom 652-3544. Ltfc

BEFORE YOU PAINT Get our free estimate on U.S. Steel Siding. 100% financing budget terms, D & B Construction 2806 34th, Lubbock 793-3173. tfc

"Carpet Need Cleaning?" Let me do the work for you. Dry foam, 10 cents sq. foot. Call Jack Moore 983-3033 after 5 p.m. tfc

MR. FARMER acres wanted for onions, peppers, or cucumbers under contract. If interested, call 983-3791. 2-21c

CAKE DECORATING Custom baked and decorated for birthdays, holidays, parties, club meetings, etc. Laura Wilson 652-3770 L-tfc

Fireplaces BY MAJESTIC BUILT-IN OR FREE-STANDING CALL OR COME BY AUDRY MCCORMICK 107 WILLOW LOCKNEY 652-2572 L TFC

Professional Sharpeners Hand Saws, circular saws — all types, chain saws, knives, clippers, scissors, pinning shears, electric scissors. Call 652-2134. Ltfc

HOUSE PAINTING, Interior, exterior, taping, bedding, acoustical ceiling. Free Estimate. Call 293-8069 or 293-7679. 3-13p

Kathy's Hair Design 303 N. 2nd Floydada Now has Shackley Products 3-13c

COW POKES

By Ace Reid

"Boys, if the saddle horn don't pull out, I think he's got em rode!"

THIS FEATURE SPONSORED BY Floydada Real Estate & Insurance Agency AUTO, FIRE & FARM INSURANCE Jim Word — — Phone 983-2360

TURNER REAL ESTATE Farms Ranches Floydada, Texas 983-2635

Diamond Industrial Supply Co., Inc. Phone Days 296-7418 Nights 296-1200 or 296-7-28 1014 Broad way Plainview, Texas

Chain Sprockets U-joints V belts Oil Seals Sheaves O-rings Wisconsin

SKF BCA Timken Bower Cotton Striper Brushes & Bats

"We Appreciate Your Business More" L-tfc

Public Notices

PUBLIC NOTICE Notice is hereby given by the Parks and Wildlife Department that a public hearing will be held at 2 P.M. on March 12, 1980 at the County Courthouse at Floydada for the purpose of gathering information concerning proposed hunting, fishing and trapping regulations for Floyd County. As the result of action by the Texas Legislature, the Texas Parks and Wildlife Commission is responsible for the setting of seasons, bag limits, and means and methods of taking the wildlife resources in Floyd County. All interested persons are urged to attend and comment upon the proposed regulations. 2-17c

STOP PAINTING Cover all outside walls and overhang with U.S. Steel Products FREE ESTIMATES Stan-By Steel Siding 1501 N. Columbia Plainview, Texas Phone: 293-9330 Ltfc

STORAGE SPACE BOATS, FURNITURE, ANYTHING, ETC. BY THE MONTH OR SIX MONTH 10% DISCOUNT. WEST TEXAS MINI STORAGE 983-3573 OR 983-2151 Ltfc

Avoid These Investment Blunders A golden rule for investors is "Know thyself." Before you invest — or take someone else's investment advice — be very clear about your goals. To increase capital? To realize income? To have some fun? To fund retirement? If, for instance, regular income is your goal, steer away from high-risk speculations. Some people overlook the low-risk, high-average annual yield of tax-deferred vehicles, like pension and profit-sharing plans, and deferred annuities. The interest and dividends on these are not taxed until a future time. Thanks to the compounding of the untaxed interest, long-term yields on your original investment may be 15 to 20 percent a year or more. A costly blunder for stock market investors may be failure to take advantage of dividend reinvestment plans (DRPs) where they exist. A DRP allows a stockholder to apply dividends from a particular stock to the automatic purchase of the number of shares of the dividend will buy. In addition to charging very modest or, in some cases, no fees, many companies

For Sale

FOR SALE: Two bedroom suits, good condition. Call 983-5001 after 6. tfc

FOR SALE: Good clean used refrigerator. 983-5702. tfc

FOR SALE: 4430 sound guard duals, power shift, a.c., radio, 20 ft. chisel plow, 13 shanks, 9.50 duals, 10 ft. all metal cattle feeder. Call 983-3305. tfc

"WE SELL SLEEP" Direct Mattress Co. New or renovated, for appointment call City Trim Shop, 983-2332, Floydada. S-tfc

FERGUSON four row Roto tiller with bud shaper. Phone before 8 a.m. or after 11 p.m. 983-2091. 2-24c

FOR SALE OR TRADE: Excellent 25" color T.V. Early American cabinet, 983-3529. 2-21c

FOR SALE: Matted cane 652-3619 Ltfc

FOR SALE: Mattress and box springs, contact Bobbie Miller. 983-2116. 2-17c

JEWEL BEAN needs someone to strip cotton. Call 983-3501 or 652-2582. Ltfc

Tickets Available for positive living rally with Peale, Ziglar and Robert. February 28, Civic Center, Lubbock. Call Sears 983-2862. 2-24c

FISHERMEN BE READY — Will do minor repair and cleaning of reels and rods — Install new lines — Have on hand size 6 lb. to 20 lb. test. E. Minter, 652-3338, 201 E. Willow, Lockney. L3-16p

WANT TO SAVE GAS? Then come to Charley's Sales, Service, Sharpening and Fix-it Shop in Plainview. We have the Heald trail bikes, tryskes and tryke haulers. Also the Pedal Power electric bicycle — or we can electrify your bike. We are also the distributor for Skil products. Charley's Sales, Service, Sharpening and Fix-it Shop, 2103 West Fifth, Plainview. Phone 293-8891. L-S-tfc

Home Addressers wanted. \$500.00 per week possible No experience required. A.S.D. P O Drawer 140069, Dallas, Texas 75214. 3-2c

WANTED: Experienced welder and two laborers. Call 983-2276 or come by 322 W. Houston, Floydada. tfc

Wanted: Nurses Aide Experienced, reliable aides to provide quality patient care. Salary plus vacation, sick and holiday pay. Call B. Durfee RN 652-2502, Lockney Care Center. L2-17c

Wanted: Nurses Aide Experienced, reliable aides to provide quality patient care. Salary plus vacation, sick and holiday pay. Call B. Durfee R.N. 652-2502, Lockney Care Center. L2-17c

LOOKING for the right man for local area, the man we select must be a self-starter and financially stable. Sales background a must. Knowledge of heavy equipment and farm machinery helpful. The man we select will service present accounts and establish new ones. Our men work on straight commission and monthly bonus, selling custom lubricants. Our top man last year made \$80,000 plus. Are you the man we are looking for. Call me collect: Vern Robinson, Primrose Oil Co. 214-241-1100 Monday, February 18, Tuesday, February 19, or Wednesday, February 20. 8:30 a.m. to 4 p.m. 2-17c

Auto Accidents DO Happen... If one happens to you, be protected. Our car insurance offers coverage to meet your special needs — repairs to personal liability.

BAKER Insurance Agency 127 W. Calif. Ph. 983-3270

DAN'S AUTO SERVICE DAN TEUTON, Owner Specializing in Automatic Transmission, Motor Tune-Ups, Auto Air Conditioning. General Repair We Have A BRAKE LATHE to handle all passenger car brake drums. See us for complete brake service. Phone 652-2462

CLASSIFIED RATES

CLASSIFIED ADVERTISING RATE: 15 CENTS PER WORD FIRST INSERTION; 10 CENTS PER WORD EACH SUBSEQUENT INSERTION. MINIMUM CHARGE \$2.00. CLASSIFIED DISPLAY RATE: \$1.40 PER COLUMN INCH CARD OF THANKS: \$2.00.

Autos For Sale

FOR SALE: 1971 Ford LTD, 983-3692. tfc

FOR SALE: 1974 Plymouth Fury III. Good condition. Call after 5 p.m. 652-3596. Ltfc

FOR SALE: 1974 Pontiac Grand Prix excellent condition. Call 652-3731. Ltfc

4 shocks for the price of 3. Free installation. 123 W. Calif. tfc

FOR SALE: 1974 Chevrolet four door sedan, 1974 Chevrolet Malibu four door, 1967 Chrysler Newport, four door sedan. Call Ted Allen 983-2597 or 983-2382. 2-24c

MUST SELL 1974 Yamaha 500 cc double overhead cam, eight valve, 2-cylinder, 15,600 mi. great mileage. Winter priced for quick sale. Phone 652-2277. 2-17p

FOR SALE: 1975 Chevrolet Camaro LT. Excellent condition. Loaded. 652-3619. L2-17c

FOR SALE: 1966 Ford pickup — good shape, Saddle tanks, 6 cylinder, 14 mpg. city, 16 mpg. highway. Make offer — Ben Reecer, 652-2277, Lockney. L2-21p

LOST & FOUND

LOST: gold watch Sunday either outside San Jose Catholic Church or at band concert at elementary building, possibly outside. 293-3041. L-2tc

LOST: Small deed, F. Harmon to Charley Berry. Lost between Post Office and variety store. Call 983-3237, Charlie Berry. Reward. 2-17c

NOTICE

Home Addressers wanted. \$500.00 per week possible No experience required. A.S.D. P O Drawer 140069, Dallas, Texas 75214. 3-2c

Help Wanted

WANTED: Experienced welder and two laborers. Call 983-2276 or come by 322 W. Houston, Floydada. tfc

cash in with a classified ad...

Check with us for

LIQUID FERTILIZER ANHYDRUS HERBICIDES

Rigs available for application

LONE STAR CHEMICAL INC.

Office: 652-2761
Deanie Henderson: 652-3434 Lfc

Can You Use Some Extra Money Let Us Help!!!!

WE BUY SCRAP IRON, OLD JUNKERS, AND FREE PICKUP

Call 983-5277

POLITICAL CALENDAR

FOR SHERIFF: Fred Cardinal

FOR TAX ASSESSOR-COLLECTOR: Jonelle Fawver

FOR COMMISSIONER-PRECINCT I: 1. Sam Spence, 2. Rodger Dawdy, 3. J.W. Becker

FOR JUSTICE OF PEACE: Walter Hollums, Joyce Lipham, Linda Morris

FOR COMMISSIONER-PRECINCT 3: Thomas Warren, Larry Noland

Pays To Advertise... Advertise Where It Pays...

★ Want Ads ★

Fast-Quick Results!

Phone: 983-3737

Shop Floyd County First!

S.H. GREEN STAMPS
DOUBLE ON WED.

WINTER WARMER SPECIALS!

RANCH STYLE CHILI	15 OZ. CAN	89¢
NABISCO'S RITZ CRACKERS	16 OZ. BOX	99¢
SCHILLING BLACK PEPPER	4 OZ. CAN	\$1.09

CRISCO VEGETABLE SHORTENING
PURE CRISCO

\$2.09

3 LB. CAN

CONTADINA QUALITY
ROUND TOMATOES

\$1.39

14 1/2 OZ. CANS

Tide 15% OFF LABEL
TIDE DETERGENT

\$1.49

49 OZ. BOX

6-12 Ounce Cans
Pepsi Cola **\$1.19**

FROZEN FOODS

SHURFINE FROZEN ORANGE JUICE	6 OZ. CAN	39¢
ORE-IDA CRISPERS	20 OZ. BAG	89¢
ORE-IDA CRINKLE CUT POTATOES	5 LB. BAG	\$1.89

Bell Quality Chekd
Buttermilk **89¢**
1/2 Gallon

Shurfine Large
Eggs **59¢**
Dozen

Wilson Certified 1 Pound Package
Bacon **\$1.09**

BONELESS CENTER CUT ROUND STEAK **\$2.19**
LB.



HEAVY GRAIN FED BEEF
ROUND STEAK **\$1.99**
LB.

YOUR THRIFTWAY STORES FEATURE ONLY FINE QUALITY AMERICAN GROWN GRAIN. FRESH PORK & QUALITY PORK.

GUARANTEED 73% LEAN FRESH
GROUND BEEF **\$1.29**
LB.

OSCAR MAYER REGULAR/JUMBO
MEAT WIENERS **\$1.59**
1 LB. PKG.

TOTAL GROCERY SAVERS

REFRESHING COCA-COLA 2 Liters **99¢**

HEAVY GRAIN FED BEEF
SIRLOIN STEAK **\$2.39**
LB.

HEAVY GRAIN FED BEEF
T-BONE STEAK **\$2.89**
LB.

OSCAR MAYER SLICED BEEF REG./THICK BOLOGNA 8 OZ. PKG. **\$1.09**

Hot Links Gooch **98¢** Lb.

Pork Roast **98¢** Lb.

Pork Steak **98¢** Lb.

REGULAR OR FOR DIP
Fritos 99¢ SIZE **79¢**

MAXWELL HOUSE
INSTANT COFFEE 10 OZ. JAR **\$4.79**

POST FRUITY OR
COCOA PEBBLES 11 OZ. BOX **\$1.09**

ALL GRINDS MAXWELL HOUSE SHARE THE OLYMPIC GAMES WITH MAXWELL HOUSE
COFFEE 1 LB. CAN **\$2.79**

NEW! SWIFT CHICKEN VIENNA
SAUSAGE 3 5 OZ. CANS **\$1.00**

FOR SPOTLESS DISHES
CASCADE 50 OZ. BOX **\$1.79**

BATHROOM TISSUE
SOFT 'N PRETTY 4 ROLL PKG. **89¢**

13% OFF LABEL
IVORY LIQUID

89¢

22 OZ. BTL.

RUSSET POTATOES

ALL PURPOSE
10 LB. BAG **89¢**



FLORIDA FULL OF JUICE 5 LB. BAG **\$1.19**

WASHINGTON RED DELICIOUS APPLES **49¢** LB.

PORTALES MARYLAND SWEET YAMS **29¢** LB.

CALIFORNIA CRISP CARROTS 1 LB. PKG. **25¢**

VINE RIPENED TOMATOES **39¢** LB.

CENTRAL AMERICAN
BANANAS **29¢**
LB.



DAIRY VALUES

VELVEETA CHEESE SPREAD 2 LB. BOX **\$2.59**

HUNGRY JACK ASSTD. BISCUITS 2 10 CT. CANS **89¢**

SQUEEZE MARGARINE 16 OZ. BTL. **89¢**

FROM OUR SHELVES

BETTY CROCKER SUPER MOIST LAYER CAKE MIX 18 OZ. BOX **69¢**

BETTY CROCKER READY-TO-SPREAD FROSTING 16 OZ. CAN **99¢**

ASSORTED BREAKFAST WAGNER DRINK 32 OZ. BTL. **49¢**

HEALTH AND BEAUTY AIDS
SAVINGS DAYS

Johnson & Johnson
QUALITY PRODUCTS

BAND-AID Brand Sheer Large or Plastic Large or 30 Ct. All Wide Plastic Strips **\$1.19**
50 CT. BOX

JOHNSON & JOHNSON CLEAR
DERMICEL TAPE 1/2" x 180" ROLL **79¢**

JOHNSON & JOHNSON RED CROSS
COTTON BALLS 65 CT. BOX **79¢**

JOHNSON & JOHNSON RED CROSS STERILE
GAUZE PADS 3 x 3 10 CT. BOX **79¢**

ob. o.b. TAMPONS
REGULAR OR SUPER
30 CT. BOX **\$2.29**

16 CT. BOX **\$1.29**

FLOYD CO
Willi
began Monday
the 1980 livesto
County. Ty Williams
Grand Champion
Byron Brock cam
grand champion ho
barrow entry.
Carthel of Floyd
Grand Champion h
and Kyle Brock of I
erve Grand barrow.
Bayley's Shropshi
on's "Other Bre
n's Suffolk, Tracy
Dwayne Marl
Jodie Smith's Fin
ed champions.

BARROWS

weight Chester: 1.
en Turner 3. Trac
Kidd 5. Terry Carl
Chester: 1. Sant
Nixon 3. Shart
Retrode 5. Mark I

Duroc: 1. Larry
McNeill 3. Kelly H.
Brent Duke.
Duroc: 1. Wad
Dutt. 3. Craig Elli
Robert Nutt.
Duroc: 1. Byro
McNeill** 3. Dar
Pruitt. 5. Margie

Hampshire: 1. Ke
Jackson 3. Marj
Wright 5. Mark W
um Hampshire: 1.
Ellison 3. Patricia
S. Dee McPherson
Hampshire: 1. K
Mariscal** 3. Dea
Mathis 5. Christy I

our To
by the news s

N. V. GOWENS, s
onald Gowens of y
ed the position of
of youth ministrie
Baptist Church
ormia. Dr. Glen P
church. Arvin is
Gata Seminary i

REPEAT, rumors
town that Sam
own from the
the rumors were to
ence is still "righ

ISTS with Mr. ar
recently were thei
band, Mr. and N
andson Randy of
nia.

MBER OF COMI
e March 3 bar
ed at the Chat
any Chamber dir
this year will
ey, Miss Texas.

FORMATION ON t
language course
da may be secu
Green at 983-
3. nights.

EARL PARKS
y evening in the l
ure Dade of Floy
of Mr. Dade, w
16 years.