

'Winds Drop 31 - 21 Heartstopper To Littlefield

# The Floyd County Hesperian



20¢ Per Copy

Volume 83

Floydada (Floyd County) Texas 79235

Sunday, October 7, 1979

Twelve Pages In One Section

Number 81

Subject Makes Getaway In Car

## Floydada Woman Abducted At Gunpoint

By Breck Stapleton and John Carroll Hesperian Staff

An unidentified assailant late Friday afternoon abducted a Floydada woman, her baby and a nine-year-old sister-in-law at gunpoint in a local grocery store parking lot.

Lupe Galvan was in the Buddy's parking lot at about 6:45 Friday when a man came up behind her, put a revolver in her back and told her to get into her car. The man got in the back seat while Mrs. Galvan drove.

The gunman forced the woman to drive just outside the city limits to a dirt road where he ordered the trio out of

the car.

He then took approximately \$50 from Mrs. Galvan and told her that if she tried to follow, he would shoot her. He said he didn't want to hurt the three, he just wanted the money and the car.

The man then reportedly headed back toward Floydada.

The thief was described as being a Mexican-American about 20 years old, slender built, 5 feet, six inches tall and weighing about 130 pounds. He has fair skin and shoulder length hair parted in the middle.

He is believed to be traveling in the

Galvan car, a 1973 Chevrolet Monte Carlo hardtop, with a white vinyl top and a rusty-orange body. The car bears Texas license number QXS 463.

Sheriff's department officials said the man should be considered armed and very dangerous. Anyone with information about the man or the vehicle should contact the Floyd County Sheriff's Department immediately.

The gunman would probably have stopped for gasoline nearby since the car only had half a tank, sheriff's department spokespersons said.

Commissioners Face

Agenda At

Meeting

Floyd County Commissioners will meet Monday when they will discuss the agenda for the county session in the county

city manager Bill Feuer- more with the court at 9 a.m. in the sanitary land fill and

county sheriff Fred Cardinal before the commissioners to pay for his office and to

representative from the Pioneer Co. will meet with the commissioners to discuss the under-

agent Steve Herber will be in charge of his office. In business, the court will

ing Singles' Organize

will be an organizational meeting of the Young Singles Club in the

Room of Floydada's First Baptist Church, Thursday, October 11 at

all young singles in the area are invited to attend this first meeting. The major topic of discussion

will be non-denominational in nature. The group will be starting together. Re-

will be served. Rev. Swearingin, pastor of Floydada Christian Church, will be in charge of the assist-

ing Soil And Water District Meeting

Floyd County Soil and Water District board of directors will meet for an open meeting for

at 8 p.m. at the Sterley

Out-O-Rama For Nov. 3

South Plains Council Boy Scouts will hold their annual Scout-O-Rama on

November 3, in the Lubbock Civic Center from 1 to 5 p.m.

Scout-O-Rama theme reflects the spirit of scouting with

Family Fun Fair. Features will include a contin-

guing show featuring regional Scout contests. Displays and

will round out the afternoon

the demonstrations are raffle and painting, totem pole

and juggling, marshal arts and

printing press. Scout-O-Rama is one of the

most popular events staged on the South Plains. Tickets are available from area

for \$1.00.

arian Offers Service

Jackie Walls offers a homebound service for homebound



STOPS TO CHAT — Rep. Foster Whaley, right, pauses outside the Massie Activity Center after addressing the Floydada Lions to talk with Jimmy Willson.



Julie Faulkenberry

Julianne Lipham

## Two Floydada Girls Reach Miss Mackenzie Finals

Two Floydada girls placed in the top five at the Miss Mackenzie Contest in Silvertown last Saturday.

Julie Faulkenberry and Julianne Lipham made it to the finals in the area-wide beauty and personality competition.

The five finalists, in order of their placings, were Miss Nelson, Miss Thornton, Julianne Lipham of Floydada and Julie Faulkenberry of Floydada.

Carol Stodghill, daughter of Mr. and Mrs. Clifton Stodghill of Silvertown, was judged Miss Congeniality.

Judges for the contest were Karen Laney of Hale Center, Doug Hodel of Lubbock and Lynette Thueit of Post. Master of ceremonies was Kipp Burnett of Tulia.

The pageant, held at Silvertown High School, was sponsored by LOA Junior Study Club of Silvertown to advertise Lake Mackenzie as well as promote unity among Floydada, Lockney, Silvertown and Tulia, communities served by Mackenzie Water Authority.

First runner-up was Melissa Greenhaw, a senior at Silvertown High School, and second runner-up was Ronee Thornton of Lockney.

The pageant, held at Silvertown High School, was sponsored by LOA Junior Study Club of Silvertown to advertise Lake Mackenzie as well as promote unity among Floydada, Lockney, Silvertown and Tulia, communities served by Mackenzie Water Authority.

At Lions Luncheon

## Whaley Raps Senate Bill 621

Texas state representative Foster Whaley Thursday took a few well-aimed swipes at the newly-passed Senate Bill 621, which set up a statewide system of tax appraisal.

"What this law does," Whaley told the Floydada Lions at their weekly luncheon, "is to create two new layers of government."

"The top layer tells you what to do with your taxes, and the lower layer interprets what the top layer wants," Whaley said.

Whaley said that he opposed SB 621 from the very first, adding that "three or four years from now, a 'no' vote on 621 will look good" on any legislator's record.

"It's enforcing a very unfair tax," he said. "A farmer with \$200,000 worth of equipment might not have 15 percent equity in that machinery but might have to harvest 700 acres of wheat just to pay the property tax."

The representative noted that his figures were purely arbitrary and could be lower or even higher.

Whaley said that the intent of the new bill was to tax everything on the price for which it would sell.

"I'm for non-taxation of intangibles," he said. He added that there was a provision in the law for penalties for not voluntarily reporting property.

Whaley also gave the Lions a rundown on legislation passed in the last session.

Farmers can now legally haul cotton modules that previously were prohibited from the highways because of weight and length regulations, he said.

Whaley called the new deceptive trade practices "way too strict," saying that the way to punish a deceptive dealer was to boycott the business. The law stated that a customer could recover three times the damages suffered if the dealer was found guilty of dishonesty.

"It puts the trial lawyer against the common man," Whaley said, adding that his position should not be interpreted as anti-consumerism.

Whaley also praised the legislation that prohibited insurance companies from exacting penalties from policyholders convicted of speeding on the state highways.

"The highways were designed for 70 mile per hour traffic," Whaley said. "The speed limit was changed to 55 because of the energy crisis, not because of safety reasons. There's no reason for insurance companies to charge penalties for speeding violations."

The representative urged his constituents to communicate with him on any subject of interest, no matter what

motivation the voter has for writing.

"If you have an interest in a bill, even if it's a selfish interest, tell me. Then I can go on the floor of the house with those letters and tell my colleagues that if these people are interested in this bill, there are probably people in their districts who feel the same way. It gives me a good argument on the floor of the House."

Whaley suggested that letters about proposed legislation should include the bill number, the author, a description and reasons for being for or against it.

In his closing remarks, Whaley voiced support for Proposition 3 on the Nov. 6 ballot, the Family Farm and Ranch Security Act.

"It would be hard for the state to lose money if this law was added to the state constitution," Whaley said. "There are strict criteria for approving loans for young farmers. Practically the same law has been in effect for two years in Minnesota," he said. "Out of 150 loans made so far there hasn't been a single case of default."

Whaley also hinted that, with the ever-increasing land prices, the state would be hard pressed to avoid actually making a profit if a farmer did default on his loan. Such profit-taking is illegal.

At Tuesday Meeting

## Council To Consider Block Grant

The Floydada city council will meet in regular session at 7:30 p.m. Tuesday at the Council Room in the city office building.

The councilmen will consider several items of business relating to the community development block grant program.

City personnel and Barber-Taylor Co. are expected to receive authorization to pursue a new block grant for 1980. Lester may meet with the council to discuss the grant dealing with standard housing.

The council will appoint a Neighborhood Improvement Committee to consist of five members to implement the

housing section of the block grant. Three will be city taxpayers and two will be councilmen. The council will also discuss sending Bill Feuerbacher to a housing workshop in Tyler Nov. 7 and 8.

Authorization will be given to consult an engineer to furnish needed information for the city's \$44,797 paving grant.

Discussion will be held on appointing three members to a combined board of adjustment for the electrical, plumbing and building code.

Also set for discussion at Tuesday evening's meeting were: authority for city personnel and Quinton, Colwell and Assoc. to advertise for bids, materials and labor to erect power lines and substation facilities

for Floydada Power and Light electrical improvements;

proposal to separate the water and sewer funds, now kept in a joint bank account, and sanitation funds which are currently kept in the general fund;

purchase of a new street sweeper;

purchase of a new billing machine;

setting up a council workshop to discuss and set city employee salaries for 1980;

discuss a letter received from the Texas Power Association and

discuss concrete prices on a new proposed sanitation building and a drainage trough on the west side of the fire department building.

## Cattlemen Oppose Quarantine Bill; Call Bergland Draft 'Dangerous'

The Independent Cattlemen's Association of Texas took a strong stand this week against a draft bill proposed by Agriculture secretary Bob Bergland which would expand the secretary's powers, allowing him to quarantine livestock in case of an "extraordinary emergency" due to existence of any communicable disease.

"We find this a very dangerous bill because we don't feel the agriculture secretary should be given the ultimate authority to control the intrastate movement of livestock and interfere in the day-to-day business of producers," said Mr. Wheeler.

"We are just as concerned as the secretary is in preventing the spread of disease in our cattle but we already labor under too many government restrictions."

ICA believes the bill may be an additional attempt by the government to

control eradication of brucellosis — a disease in the spotlight for the past year because of the controversial Uniform Methods & Rules on brucellosis.

Although the USDA has assured ICA that brucellosis is not an "extraordinary emergency" and does not fall under this proposed legislation, all it would take is for Secretary Bergland to declare brucellosis an "extraordinary emergency" and he would have the power to quarantine herds, if the bill is passed, said Wheeler.

In his Aug. 16 letter to Thomas P. O'Neill, Jr., speaker of the House of Representatives, Bergland says, "broader authority is needed to quarantine specific localities and control the intrastate movement of any animals, carcasses, products, or articles into, from, or through such localities even though the circumstances involved do

not warrant the above described finding with respect to them."

Bergland sent an identical letter to Vice President Walter Mondale, who is also president of the Senate.

"The Office of Management and Budget advises that there is no objection to the presentation of this proposed legislation from the standpoint of the Administration's program," Bergland said in his letter to O'Neill.

"We find it odd that this bill is just now being recommended at a time when the program to eradicate brucellosis is at such conflict between the producers and the government," said Wheeler. "If this lack of authority to quarantine is such a problem, why wasn't it brought up years ago? If a similar bill has been suggested before, we didn't hear about it."

Advertisement for Duracell batteries, showing various sizes and uses like photo recorders and radios.

Advertisement for Duracell batteries, highlighting 'LONG LASTING DURACELL BATTERIES' and 'VALUES!'.

Advertisement for 'SUPER SAVER' hair spray, featuring a woman's face and the text 'REXAL! NON-AEROSOL ULTRA CARE HAIR SPRAY'.

Advertisement for 'REXAL! FAST HOME PERMS', describing the product as easy to use and suitable for various hair styles.

Advertisement for 'REXAL! 49¢ each SAVE BIG ON THESE BRAND MEDICINE BUYS!', listing various medical products like rubbing alcohol and hydrogen peroxide.

Advertisement for 'REXAL! 99¢ FURNITURE POLISH WITH LEMON OIL', describing the product as a one-step cleaning solution.

### 'Expanding Horizons' 4-H Theme

National 4-H Week is the focal point of the annual 4-H calendar, a time when members and leaders can look at the past with pride as well as look to the future with anticipation.

National 4-H Week this year will be observed Oct. 7-13, with the theme being "Expanding Horizons." The Extension Service is the parent organization of 4-H.

4-H is expanding youths' horizons as they seek new knowledge, acquire life

skills and build on personal strengths 4-H inspires youth to stretch the limits of self, to reach out, share and learn with others. 4-H challenges youth to set high goals and to achieve them. And 4-H strengthens citizenship and leadership abilities and encourages youth and their leaders to assume positive roles in a free democratic society.

By broadening opportunities for greater understanding and service to community, nation and world, 4-H is expanding horizons.

### Bullock Rep To Be Here Oct. 11

State Comptroller Bob Bullock is sending a representative from his Lubbock office to Floydada on Thursday, October 11, 1979 to assist local taxpayers and answer questions about state taxes.

Bullock said enforcement officer Gene Cannon will meet with local taxpayers at the Floyd County Courthouse - Room 104 from 10:00 to 12:00.

"If Floydada-area merchants, or anyone else for that matter, have any questions about state taxes or need help in preparing tax forms, Mr. Cannon will be there to assist them,"

Bullock said.

"We're trying to cut the red tape in this office and we believe these face-to-face sessions with taxpayers help do just that," Bullock added.

Bullock reminded those taxpayers who are unable to meet with his representative on Thursday, October 11th that they can still get their questions answered quickly by calling his TOLL-FREE tax information number in Austin. That number is 1-800-252-5555.

The Lubbock office, headed by Vance A. Porfiro, serves Lubbock and surrounding counties.

### SPAG Board To Meet Tuesday

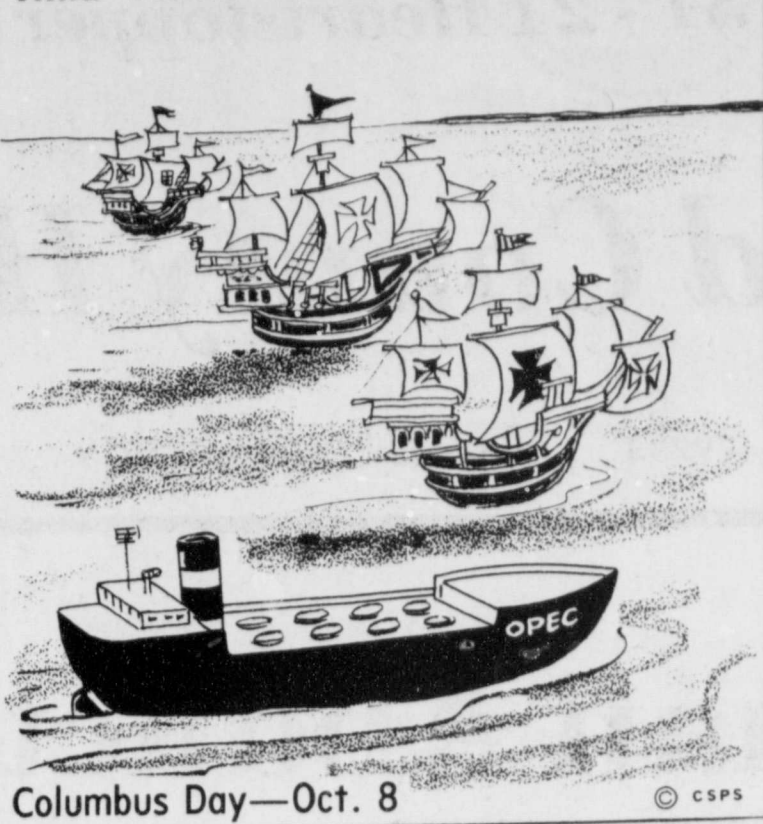
The South Plains Association of Governments (SPAG) board of directors will meet in regular session at 9:30 Tuesday in the SPAG conference room in Lubbock.

Discussion during the meeting are scheduled to include selection of one member for the fourth vice president slot and adding two executive committee members from among the designated minority-group board members.

In addition to those items, the Tuesday agenda will include: receiving the Comprehensive Employment Training Act consortium fiscal

- report;
- appointments to standing committees;
- authorization of SPAG membership dues for 1979-80;
- consider application to the office of the governor for an assistance grant of \$55,778;
- consideration of appointments to advisory committees;
- consideration of bylaws for the Natural Resources and Housing Committee and
- consideration of appointments to the health services agency board.

### Nina - Pinta - Santa Maria - OPEC



Columbus Day—Oct. 8

### USDA Proposes Strict Vaccine Use Rules

Washington, D.C. — Public comments will be accepted until Nov. 21 on a U.S. Department of Agriculture proposal to restrict the use of four veterinary biological products.

Under the proposal, tuberculin-PPD bovis — used to test cattle for tuberculosis — and rabies vaccines would be limited to use by or under the direction of a veterinarian. The distribution and sale of brucellosis vaccine and antigen — already limited to use by or under the direction of a veterinarian — would have even stricter controls on distribution.

Veterinarians of the department's Animal and Plant Health Inspection Service said the restrictions would reduce the misuse of these biologics. It would also help strengthen programs to eliminate tuberculosis, brucellosis and

rabies by giving state animal health officials flexibility in controlling the use of each product in accordance with local needs.

The proposed change is being made at the request of a number of professional groups, including the U.S. Animal Health Association, the American Veterinary Medical Association and the Conference of State and Territorial Epidemiologists.

Notice of the proposal is scheduled to be published in the Sept. 21 Federal Register. Comments should be sent to the deputy administrator, veterinary services, APHIS, USDA, rm. 828-A, Federal Building, Hyattsville, Md., 20782, where they will be available for public inspection during regular business hours.

### Floydada High FFA Show To Receive Farm Safety

Members of the Floydada Future Farmers of America will be able to learn how many farm and ranch workers are critically or even fatally injured by tractors and machinery at 9:45 Tuesday at the high school vocational agriculture department, according to O.L. Harris and James Cleveland, vocational ag teachers.

A Texas Farm Bureau representative

will be on hand... accident prevention... eliminate the...



The Consumer Alert

by Mark White Attorney General

Has this ever happened to you, your friends or neighbors? A homeowner fails to make his mortgage payments and is in default. Suddenly, a letter arrives or a phone call comes and apparently all his problems are solved. A "mortgage counselor" or "credit counselor" says, "Don't worry, we can take care of your problem, protect your credit, and even pay your moving expenses!"

The story just related involves a new perfectly legal scheme designed to take advantage of homeowners who are having financial difficulties. This new scheme has been referred to by some as the "home equity rip off" and it feeds on inflation.

"Equity" in a home is the difference between the home's market value and the amount of the debt outstanding on the mortgage. The home equity rip off relies upon the fact that most people do not know the market value of their homes. All most of us know is how much of the mortgage is left to be paid off.

With a typical thirty years mortgage, the bulk of the payments for the first ten years goes to interest. Very little of the "principal" debt is retired. Because of this, many of us assume that we have very little "equity" in our homes. The fact is, however, that because of inflation, our homes may be worth \$10,000 or \$20,000 more than we think. It is the equity created by inflation that is of interest to the unscrupulous home equity speculator.

The scheme works like this: When a notice of default comes to the attention of the speculator through business journals or public records, he gets in touch with the distressed homeowner. The speculator may claim to be a mortgage counselor, a credit counselor, a real estate expert or almost anything else.

## Profile: Don Hardy, Mechanic To Mogul

Many young people leave their small-town homes to seek fortunes in a big city, but one Floydadan found success and national recognition by staying away from the metropolitan areas.

Don Hardy, of Don Hardy Race Cars, Inc., chose Floydada for his manufacturing site "because it was handy" but stayed on because it was also profitable.

Hardy started out working in the Chevrolet garage in Olton in high school and after. He spent two years in Alaska with the army as a tank mechanic in an Armored unit.

"All the time at the garage, I was interested in the high performance aspect of the cars," he said.

Returning to the South Plains in 1965, he joined his parents in Floydada. He began working on cars in the rear of Daniel Automotive.

Teaming up with former coach Kelly Chadwick, Hardy went on the road for four years, building three different cars in that time.

"The people I met at the races wanted me to work with them, but the shop in Floydada got big enough that I could stay off the road," he said.

After two years in his original location, Hardy moved into his present building on Missouri Street.

"As long as people would come to us for the cars, Floydada was a good site," Hardy said. "Since we don't deal in street cars there was not a lot of walk-in business to disturb the mail order operation and the manufacturing."

And professional drivers have been coming to Hardy for their cars since the early 1970s.

"Wayne Galp and Jack Rausch from Detroit started buying our cars in 1974 and that put us on a national level," Hardy said. "They bought three cars from us before their partnership dissolved."

Since then, Hardy has built cars for such famous racers as the Sox and Martin team, "Dyno" Don Nicholson and Bob Glitten.

Driving four different Hardy-built cars, Glitten won ten national events in a single year, 1978, plus several more so far this year. He has already won enough points for the Winston Points Championship for 1979, to be awarded this weekend.

"The big thing in getting someone to try one of our cars was to sell at a very good price," Hardy said. "As we built more and more cars over the years our reputation and our innovations in design raised the price so that only the top professionals could afford our cars."

Those professional drivers continue to purchase Hardy cars. The manufacturing end of the business has grown from five cars a year made by three employees to more than 10 even more highly-advanced racers in recent years.

The cars are shipped to all corners of the U.S. and Canada. Some of the Hardy cars eventually made their ways to Europe.

Don Hardy has a crew of 16 employees to look after his now-diversified manufacturing and mail order business, but in the early days it was just him, his wife Sue and from one to

three employees working 18 hours a day.

"Back then, it was hard to break into the national market," he remembered.

"We had no reputation for winning but people came to know that we would deliver on time and for the quoted price." And that, in any business, is one of the criteria for success.

Quality is a hallmark of the Hardy line, and Don Hardy personally supervises every phase of his operation. He won the All Star Car Craft Award, given by Car Craft Magazine the last three years in a row. But building racing cars isn't the only thing Hardy does well.

In 1973 the Hardy company introduced its first mail order catalogue of high performance car parts. Since then, the catalogue has grown from eight pages to the 32 now printed in the seventh edition.

The mail order house became so popular that it now accounts for two thirds of the Hardy business. It became so popular, in fact, that Hardy had to begin manufacturing some of his parts himself at the Floydada plant just to be able to keep up with the demand.

"In '72 we started building a kit to put a V-8 engine in a Chevrolet Vega," Hardy illustrated. "We bought the headers at first but as we sold more and more kits we couldn't buy the headers fast enough to keep up. So we began to manufacture them ourselves."

And that operation, Hardy discovered, could be expanded further into the agricultural field. The headers would fit four makes of irrigation engines, so the company builds 5,000 sets, almost half of which never find their way to the race track or the street but do their work in irrigated fields.

But race cars are still the highlight of the Hardy business.

"You need the name that race cars give you to be able to sell the mail order parts," Hardy said.

And the race car business is getting harder and harder every year.

"It's a young man's game," Hardy said. "It's long hours of hard work to get started and get to the top. As you grow older there are more youngsters coming up after you who are more willing to devote the time to building cars."

"You can't ever stop improving or someone will take your place," he said. "If you ever reach a plateau, you'll be going backwards in a little bit. You've got to improve to stay ahead of the competitors."

"It's harder to stay on top that it is to get there."

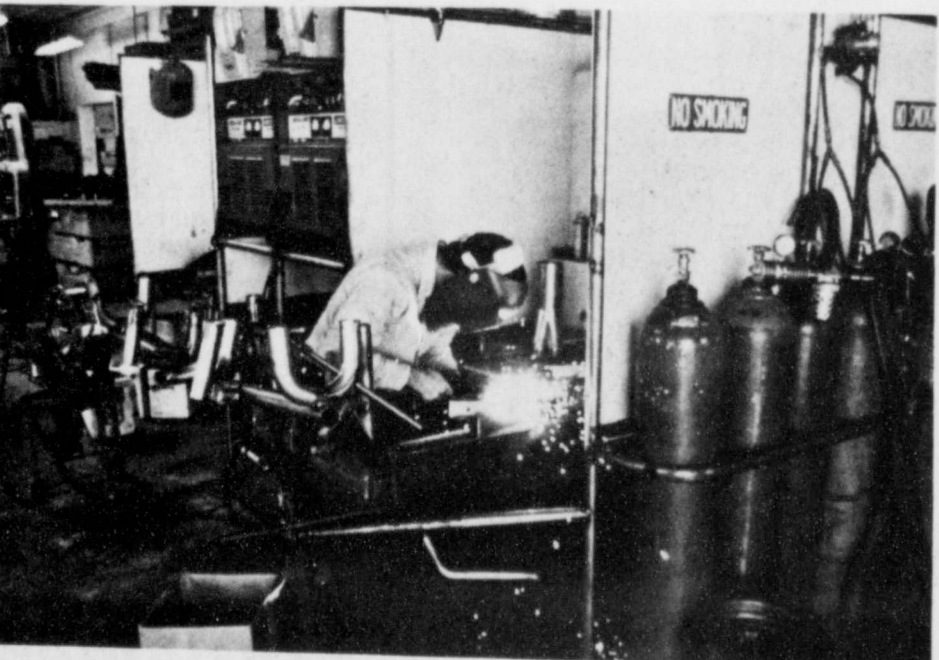
Hardy is a businessman, as well as a competitor. He plans to expand his mail order house and possibly to produce a street roadster kit that can be marketed popularly.

He has, he admits, even given some thought to retirement. "I hope when that time comes, some people will have been with us long enough to take over the business. Maybe I'll hand it down through the family."

But that event is still some years away. And until then Hardy cars will probably continue to win races.



PROJECT CAR — Don Hardy inspects the progress on a special project he is building for Hot Rod Magazine. The publication will feature the Hardy car in a series of articles after the first of the year.



FROM THE GROUND UP — Mac Fowler constructs one of the tools necessary to building the headers for the Vega conversion kits.



PARTS, PARTS EVERYWHERE — The Hardy operation expanded several years ago to include mail orders. The mail business now accounts for 2/3 rds of the income and has its own warehouse.

THE FLOYD COUNTY HESPERIAN

USPS 202-680

Published each Sunday and Thursday at 111 E. Missouri Street, P.O. Box 70, Floydada, Texas 79235. Publication No. 202680. John Carroll, editor, publisher. Subscription rates: Local \$10.50 a year. Second class postage paid at Floydada, Texas 79235.

TEXAS PRESS ASSOCIATION MEMBER 1979

### WEEKEND CROSSWORD

- |                  |             |
|------------------|-------------|
| ACROSS           | DOWN        |
| 1 "Blowout"      | 1 Lade      |
| 5 Impudent       | 2 "God's    |
| 10 Apex          | Little —"   |
| 11 Shine         | 3 Send-off  |
| 13 Age after     | for a       |
| Bronze           | sailor      |
| 14 Off the ship  | 4 Chicks'   |
| 15 MGM's lion    | mother      |
| 16 Somewhat      | 5 "Guys     |
| and              | and         |
| 17 Lyle          | Dolls"      |
| of boxing        | 12 Execute  |
| 18 Comparative   | star        |
| word             | 6 Spoil     |
| 20 In the center | by not      |
| 21 TV talk       | using       |
| show             | 19 Lift     |
| hostess          | 20 Decorate |
| 22 Force unit    | 7 Powdered  |
| 23 Dock          | lava        |
| 24 Arbor         | 8 Lena      |
| 25 Historic      | Horne's     |
| periods          | song        |
| 26 Body          | 23 Thrash   |
| ailments         | soundly: sl |
| 27 Mine          |             |
| entrance         |             |
| 28 Sicilian      |             |
| city             |             |
| 29 Sesame        |             |
| 30 Holiday       |             |
| time             |             |
| 31 Flap          |             |
| 34 Eastern       |             |
| Christian        |             |
| Neighbor         |             |
| of               |             |
| Kentucky         |             |
| 37 Greek poet    |             |
| 38 Mother        |             |
| of Castor        |             |
| 39 Marble        |             |
| 40 Mild oath     |             |

Vertical text on the right edge of the page, partially cut off.

# Sports

3 and 2

## Winds Lose to Littlefield, 31 to 21

Floydada Whirlwinds Friday night lost to Littlefield Wildcats in the first half. But the Wildcat attack fell apart, in the second half while the Wildcats were up another 11 points to win.

The Wildcats shocked the visitors in the second half of the game, the score was 21-14 in favor of the Wildcats.

Tracy Marquis alternated between the Littlefield goal with handoffs to Mac Collins and Tracy Womack, moving the Wildcat offense to the Littlefield line. Collins danced around the line for six points and Joey Womack made it 7 to zero in favor of the Wildcats.

Womack's kickoff sent the pigskin all the way into the wildcat end zone and the Wildcat end zone and took over on their own 20.

Gregory quickly, the Littlefield offense took a "March Through Georgia" march, ending with a handoff to Eddie Gregory pass across the line to Dale Demel.

The game after was good and the Wildcat offense tied 7 to 7.

Floydada had no intention of giving up a field goal.

Gregory ran the kickoff up to the 38. Marquis handed off to the Wildcat offense for another fast 10 yards. On the sideline for the score, the Wildcat offense ran another short pass and ran down the sideline for the score, the Wildcat offense ran another short pass and ran down the sideline for the score.

Gregory tried to take the Wildcat offense to the Littlefield line, but the Wildcat offense ran another short pass and ran down the sideline for the score.

Three plays later, after the Wildcat offense ran another short pass and ran down the sideline for the score, the Wildcat offense ran another short pass and ran down the sideline for the score.

Gregory tried to take the Wildcat offense to the Littlefield line, but the Wildcat offense ran another short pass and ran down the sideline for the score.

Three plays later, after the Wildcat offense ran another short pass and ran down the sideline for the score, the Wildcat offense ran another short pass and ran down the sideline for the score.

Gregory tried to take the Wildcat offense to the Littlefield line, but the Wildcat offense ran another short pass and ran down the sideline for the score.

Three plays later, after the Wildcat offense ran another short pass and ran down the sideline for the score, the Wildcat offense ran another short pass and ran down the sideline for the score.

Gregory tried to take the Wildcat offense to the Littlefield line, but the Wildcat offense ran another short pass and ran down the sideline for the score.

Three plays later, after the Wildcat offense ran another short pass and ran down the sideline for the score, the Wildcat offense ran another short pass and ran down the sideline for the score.

Gregory tried to take the Wildcat offense to the Littlefield line, but the Wildcat offense ran another short pass and ran down the sideline for the score.

Three plays later, after the Wildcat offense ran another short pass and ran down the sideline for the score, the Wildcat offense ran another short pass and ran down the sideline for the score.

Gregory tried to take the Wildcat offense to the Littlefield line, but the Wildcat offense ran another short pass and ran down the sideline for the score.

Three plays later, after the Wildcat offense ran another short pass and ran down the sideline for the score, the Wildcat offense ran another short pass and ran down the sideline for the score.

Gregory tried to take the Wildcat offense to the Littlefield line, but the Wildcat offense ran another short pass and ran down the sideline for the score.

Three plays later, after the Wildcat offense ran another short pass and ran down the sideline for the score, the Wildcat offense ran another short pass and ran down the sideline for the score.

Gregory tried to take the Wildcat offense to the Littlefield line, but the Wildcat offense ran another short pass and ran down the sideline for the score.

Three plays later, after the Wildcat offense ran another short pass and ran down the sideline for the score, the Wildcat offense ran another short pass and ran down the sideline for the score.

Gregory tried to take the Wildcat offense to the Littlefield line, but the Wildcat offense ran another short pass and ran down the sideline for the score.

Three plays later, after the Wildcat offense ran another short pass and ran down the sideline for the score, the Wildcat offense ran another short pass and ran down the sideline for the score.

Gregory tried to take the Wildcat offense to the Littlefield line, but the Wildcat offense ran another short pass and ran down the sideline for the score.

Three plays later, after the Wildcat offense ran another short pass and ran down the sideline for the score, the Wildcat offense ran another short pass and ran down the sideline for the score.

Gregory tried to take the Wildcat offense to the Littlefield line, but the Wildcat offense ran another short pass and ran down the sideline for the score.

Three plays later, after the Wildcat offense ran another short pass and ran down the sideline for the score, the Wildcat offense ran another short pass and ran down the sideline for the score.

Gregory tried to take the Wildcat offense to the Littlefield line, but the Wildcat offense ran another short pass and ran down the sideline for the score.

Three plays later, after the Wildcat offense ran another short pass and ran down the sideline for the score, the Wildcat offense ran another short pass and ran down the sideline for the score.

Gregory tried to take the Wildcat offense to the Littlefield line, but the Wildcat offense ran another short pass and ran down the sideline for the score.

Three plays later, after the Wildcat offense ran another short pass and ran down the sideline for the score, the Wildcat offense ran another short pass and ran down the sideline for the score.

Gregory tried to take the Wildcat offense to the Littlefield line, but the Wildcat offense ran another short pass and ran down the sideline for the score.

Three plays later, after the Wildcat offense ran another short pass and ran down the sideline for the score, the Wildcat offense ran another short pass and ran down the sideline for the score.

Gregory tried to take the Wildcat offense to the Littlefield line, but the Wildcat offense ran another short pass and ran down the sideline for the score.

Three plays later, after the Wildcat offense ran another short pass and ran down the sideline for the score, the Wildcat offense ran another short pass and ran down the sideline for the score.

Gregory tried to take the Wildcat offense to the Littlefield line, but the Wildcat offense ran another short pass and ran down the sideline for the score.

Three plays later, after the Wildcat offense ran another short pass and ran down the sideline for the score, the Wildcat offense ran another short pass and ran down the sideline for the score.

Gregory tried to take the Wildcat offense to the Littlefield line, but the Wildcat offense ran another short pass and ran down the sideline for the score.

Three plays later, after the Wildcat offense ran another short pass and ran down the sideline for the score, the Wildcat offense ran another short pass and ran down the sideline for the score.

Gregory tried to take the Wildcat offense to the Littlefield line, but the Wildcat offense ran another short pass and ran down the sideline for the score.

Three plays later, after the Wildcat offense ran another short pass and ran down the sideline for the score, the Wildcat offense ran another short pass and ran down the sideline for the score.

Gregory tried to take the Wildcat offense to the Littlefield line, but the Wildcat offense ran another short pass and ran down the sideline for the score.

Three plays later, after the Wildcat offense ran another short pass and ran down the sideline for the score, the Wildcat offense ran another short pass and ran down the sideline for the score.

Gregory tried to take the Wildcat offense to the Littlefield line, but the Wildcat offense ran another short pass and ran down the sideline for the score.

Three plays later, after the Wildcat offense ran another short pass and ran down the sideline for the score, the Wildcat offense ran another short pass and ran down the sideline for the score.

Gregory tried to take the Wildcat offense to the Littlefield line, but the Wildcat offense ran another short pass and ran down the sideline for the score.

Three plays later, after the Wildcat offense ran another short pass and ran down the sideline for the score, the Wildcat offense ran another short pass and ran down the sideline for the score.

Gregory tried to take the Wildcat offense to the Littlefield line, but the Wildcat offense ran another short pass and ran down the sideline for the score.

Three plays later, after the Wildcat offense ran another short pass and ran down the sideline for the score, the Wildcat offense ran another short pass and ran down the sideline for the score.

Gregory tried to take the Wildcat offense to the Littlefield line, but the Wildcat offense ran another short pass and ran down the sideline for the score.

Three plays later, after the Wildcat offense ran another short pass and ran down the sideline for the score, the Wildcat offense ran another short pass and ran down the sideline for the score.

Gregory tried to take the Wildcat offense to the Littlefield line, but the Wildcat offense ran another short pass and ran down the sideline for the score.

Luna kicked a perfect PAT and the Whirlwinds once again led the ball game, the score Floydada 21, Littlefield 20.

On the first play taking the Floydada kickoff, the 'Cat QB found himself in trouble behind his own line and hurried a long pass.

Todd Beedy stepped in to grab the first of two interceptions for the night. Marquis got off passes to Danny Nutt and Tracy Womack, as well as one run by Collins for 18 yards before the half ended.

It was the beginning of the end for Floydada. Throughout the second half, a resurging Littlefield defense kept smashing through the home line to drop ball carriers for losses.

Todd Beedy intercepted his second pass of the night, giving the ball to Floydada midfield. But two losses for nine yards and a 15 yard clipping penalty put the 'Winds in bad field position. Runs by Mac Collins and Jeff Rainey helped take up the slack but Floydada had to punt. Gray fumbled the snap and recovered but not before he was swallowed by a mass of Wildcats.

Another turnover occurred when Neal Becker recovered a Littlefield fumble on the Floydada 19. But in two plays Collins was thrown for two three-yard losses and Bill Gray again came in to punt.

The first play after the kick, Gregory threw a 33-yard pass to his end, Dale Demel, setting the 'Cats on the Floydada three. A short run across the end zone by Torres and a point after put the score at Floydada 21, Littlefield 28.

After returning the Littlefield kick to their own 32, the Floydada attack again bogged down. Marquis fumbled and Littlefield recovered on the Floydada 35.

After gaining a first down in two plays, Gregory handed off to Michael Williams and it looked like Williams would plow all the way through the 'Winds line for the goal. But Duncan Woody reached up from the ground and grabbed the Littlefield back's leg to stop the drive, on the home 20 as the third quarter ended.

Two plays later, the Littlefield coach called for a field goal attempt from the 12 yard line. The kick was good and the Wildcats increased their lead to 31-21. It was the last score of the game.

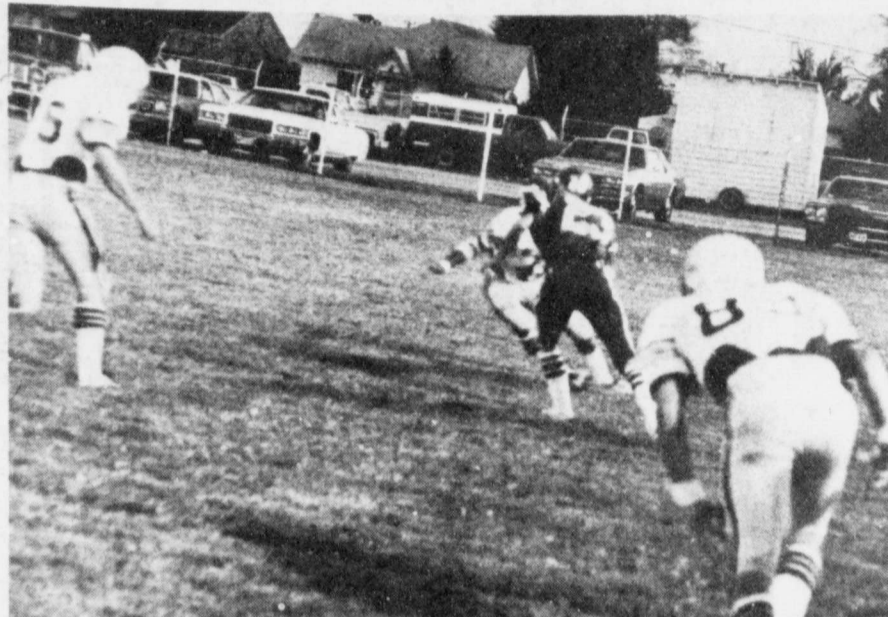
On the kick return, even worse luck hit the Whirlwinds.

Troy Marquis was trying his third pass attempt but the charging Littlefield rushers barely gave him time to raise his arm before crushing him to the ground. Marquis limped off the field and out of the game. Todd Beedy took over the quarterback duties for Floydada.

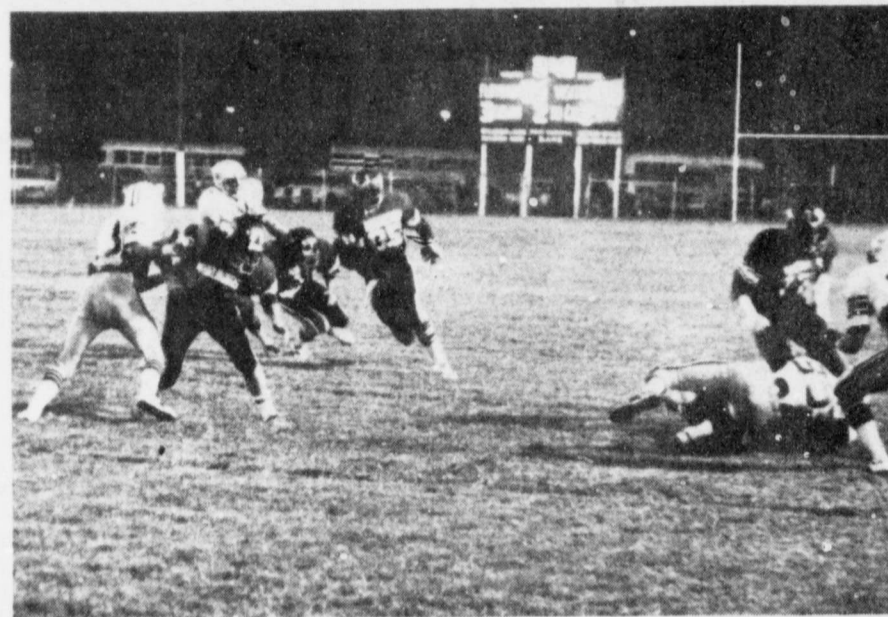
Littlefield took over the ball and tried to force runs through the Floydada line. But again and again Danny Nutt stepped in to plug what looked like a hole, stopping the 'Cats for little gain and forcing them to punt.

But Floydada could not advance and they had to punt.

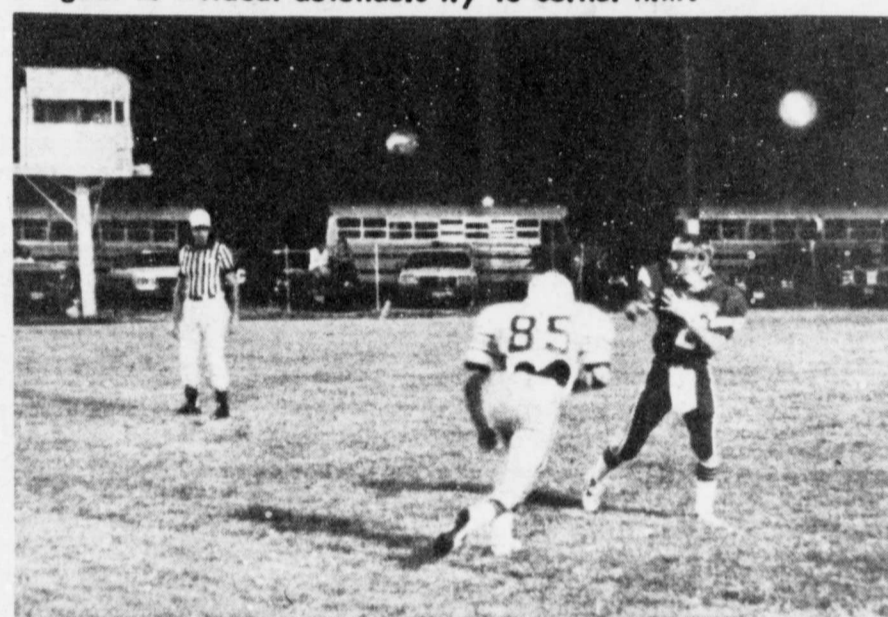
Tim Radloff snatched up a Littlefield fumble on the opposing 48, setting up a Floydada drive that almost made it to the goal. But Floydada fumbled and the 'Cats recovered possession on their own five-yard line. They never let the ball out of their hands in the remaining six plays of the game.



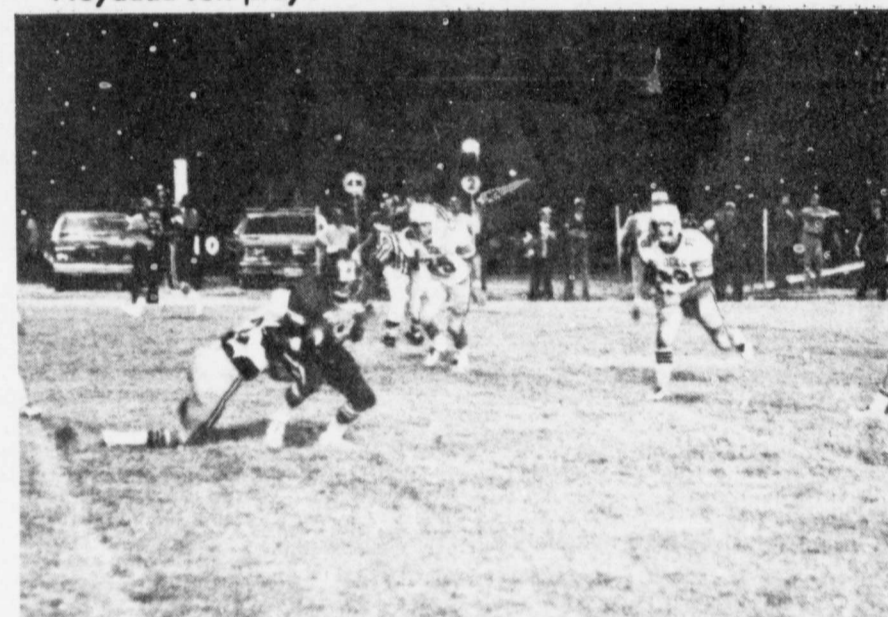
Split end Tracy Womack gallops toward the Littlefield goal as Wildcat defenders try to corner him.



Mac Collins gets an assist from Jeff Rainey during this Floydada run play.



Floydada quarterback Troy Marquis lets loose a pass downfield as Wildcat co-captain Brad Burgess closes in.



Danny Nutt is pulled down by Wildcat defenders after a five-yard gain.

### Freshmen, JV Down Wildcats

The Floydada freshmen gridders romped all over the visiting Littlefield team Thursday afternoon, for a 22 to 8 victory over the Wildcats.

Donelle Weeks made the initial Floydada score on a 15-yard run in the first quarter, followed by Todd Beady going over for the conversion, setting up an eight-point lead that the Wildcats never relinquished.

In the second quarter Mike Salazar went over for the second Floydada score, but the PAT try failed. The Whirlwinds led 14 to zero.

A little while later, Marty Covington threw a 15-yard touchdown pass to Grant Turner. Mike Salazar carried the extra points, giving the 'Winds a 22 to nothing lead.

Neither team could score in the third quarter, but in the early minutes of the last period Littlefield scored for the first time of the game on a 15-yard run. The two-point conversion was good.

Coach Mike Cocanougher said he was very pleased with his team's performance against Littlefield.

"They looked real good and played real good as a team," he said.

Cocanougher named Mike Salazar, Richard Vela, Marty Covington, Shannon Smith and Felix Soliz as outstanding players of the game.

Thursday's game was the first win for the freshmen in three games played. Floydada begins district play against the Lockney Longhorn freshmen next Thursday at Lockney.

The junior varsity also won their game against Littlefield 18 to 6. No details of that game were available at press time.

	GAME STATISTICS				
	Floydada	Littlefield			
Interceptions	8	17			
Yards rushing	135	263			
Yards passing	101	62			
Fumbles lost	3	2			
Penalties (yards)	40	5			
Score By Quarters	1st	2nd	3rd	4th	Total
Floydada	14	7	0	0	21
Littlefield	7	13	8	3	31

### Bow Hunters

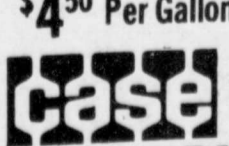
### Wear Visibility

### On Public Land

Persons planning to hunt deer on the public lands and Wildlife Department's management area public hunts should be aware that they are exempt from the requirement to wear daylight fluorescent orange vests while hunting.

Exceptions to the requirement for persons hunting migratory birds or turkey on the management area are:

Other hunters are required to wear 400 square inches of the material, of which 144 square inches must be on the chest and a like amount on the back.

**Winterize Now**  
**SPECIAL 10% Off**  
**Case Battery**  
 \$78<sup>93</sup>  
**Anit-Freez**  
 \$4<sup>50</sup> Per Gallon  
  
**POWER & EQUIPMENT**  
 101 South 12th Floydada 983-2836

**Case Power & Equipment**  
 Certified Parts & Service Department  
 Phone 806-983-2836 101 South 12th Floydada, Texas

(the Tractor Specialist) presents  
**The CASE 90 Series**

**New 2090:**  
108 hp\* (80 kW)



**New 2290:**  
128 hp\* (95 kW)



**New 2390:**  
160 hp\* (119 kW)



**New 2590:**  
180 hp\* (134 kW)



Four new models: 108 hp\* (80 kW); 128 hp (95 kW); 160 hp (119 kW); 180 hp (134 kW). Long life 504-cube Case-built diesel engines □ All new hydraulics □ The biggest, cleanest, quietest Case-built cab □ New super-easy "President's Chair" □ Standard Diff-Loc. New Swing-out batteries □ Dozens of other features for your comfort and field productivity □ \*All hp are Mfr. Est. pto

**Whether you're a "Case man" or not, you should see these great new tractors . . . from the company that builds nothing but tractors to serve the agricultural market.**

**A NEW SHOW OF POWER**

Stop in today. See the new Case 90's.  
 Interest Waiver On All New 2 Wheel-Drive Tractors  
 Until 3-1-80



**FFA Student Farm Safety Dept**

will be on hand to speak to the speaker will use a 16 millimeter film and a 16 millimeter film by the many ways people are using tractors and machinery. He will emphasize the accident prevention methods to eliminate the many causes. The program is sponsored by the Floyd County Farm Bureau.

**The Consumer Alert**  
 by Mark White Attorney General

Frequently, the special homeowners that he can get their credit rating by property from them and several thousand dollars for moving and a deposit on a new home. Another approach is to give up their house. To do this he will buy the property for then rent it back to the owners are led to believe is only temporary, that it is an immediate financial difficulty as times are better, their home again. Unfortunately, the family was unable to make mortgage, they are unable to pay the rent, which is greater than the original rental payments; their rent cancels the option to buy the family gets evicted. Whatever the method, the result is the same, the family ends up on the street, lost thousands of dollars from their home. Unless there is a mistake or unless the speculator has an unfair advantage of the scheme is legal. Consumer effective protection scheme is to know about forewarning. If you get a call or letter help for nothing, your money is worth more than the advice and help from the mortgage approved housing counselor. A licensed real estate tell you the value of your property, necessary, help you to it.

**COUNTY HESPERIAN**  
 PS 202-680

Sunday and Thursday  
 Street, P.O. Box 700,  
 79235. Publication No.  
 urroll, editor, publisher.  
 es: Local \$10.50 a year,  
 \$11.50 a year. Second  
 aid at Floydada, Texas

**AS PRESS ASSOCIATION**

**TODAY'S ANSWER**

1 Across	2 Down	3 Across	4 Down	5 Across	6 Down	7 Across	8 Down	9 Across	10 Down	11 Across	12 Down	13 Across	14 Down	15 Across	16 Down	17 Across	18 Down	19 Across	20 Down	21 Across	22 Down	23 Across	24 Down	25 Across	26 Down	27 Across	28 Down	29 Across	30 Down	31 Across	32 Down	33 Across	34 Down	35 Across	36 Down	37 Across	38 Down	39 Across	40 Down	41 Across	42 Down	43 Across	44 Down	45 Across	46 Down	47 Across	48 Down	49 Across	50 Down	51 Across	52 Down	53 Across	54 Down	55 Across	56 Down	57 Across	58 Down	59 Across	60 Down	61 Across	62 Down	63 Across	64 Down	65 Across	66 Down	67 Across	68 Down	69 Across	70 Down	71 Across	72 Down	73 Across	74 Down	75 Across	76 Down	77 Across	78 Down	79 Across	80 Down	81 Across	82 Down	83 Across	84 Down	85 Across	86 Down	87 Across	88 Down	89 Across	90 Down	91 Across	92 Down	93 Across	94 Down	95 Across	96 Down	97 Across	98 Down	99 Across	100 Down
----------	--------	----------	--------	----------	--------	----------	--------	----------	---------	-----------	---------	-----------	---------	-----------	---------	-----------	---------	-----------	---------	-----------	---------	-----------	---------	-----------	---------	-----------	---------	-----------	---------	-----------	---------	-----------	---------	-----------	---------	-----------	---------	-----------	---------	-----------	---------	-----------	---------	-----------	---------	-----------	---------	-----------	---------	-----------	---------	-----------	---------	-----------	---------	-----------	---------	-----------	---------	-----------	---------	-----------	---------	-----------	---------	-----------	---------	-----------	---------	-----------	---------	-----------	---------	-----------	---------	-----------	---------	-----------	---------	-----------	---------	-----------	---------	-----------	---------	-----------	---------	-----------	---------	-----------	---------	-----------	---------	-----------	---------	-----------	---------	-----------	----------



## NEWS & REVIEWS

Media Center  
Baptist Church Floydada

BY BETH PRATT

### In Memorium



RICK HOLMES

an, Rick Ho

dged In Mat

Church scene marriage id Rick lin of it the 7

Following the ceremony, a reception was hosted in the room at Plainview Loan in Matador. Rose and Suzanne, both of Matador, served as the bride's table and the groom's table.

Adding a special touch to the occasion was the fact that the bride and groom were accompanied by their parents, Mr. and Mrs. Matador.

Following a visit to Florida, the bride and groom are engaged in their new life together.

Roll call was made of 12 members of the Study Club at the meeting Tuesday county library. Ashton and Mrs. Foster were hostesses.

Mrs. Orval Neill introduced the guest Mrs. Doyle Wall. County Librarian, presented the program.

Mrs. Wall spoke on the life of a native New Yorker, but her love for Texas and New Mexico to paint Keefe's paintings in colors depicting saw. At the time she was being made she is still active.

Members present: Mmes. Denise Garland Foster, son, M.J. McNewberry, Vera L.d. Simpson, Springer, Mrs. W.W. and Mrs. W.W. guests were Doyle Wall and Marquis.

REMEMBER loved ones living memory the Caprock Auxiliary Fund. Mrs. Baker, Treasurer.

Got Health Or Plumb Problems Call HOLM PLUMB

Photographic Location Rebekah Lodge Hall 210 West Washington 983-2296

6:30 - 9:30 a.m. 5:30 p.m.

## Alpha Mu Delta Hold Model Meeting

The Alpha Mu Delta Chapter of Beta Sigma Phi held their October 1 "Model" meeting in the home of Jo Ann Patterson. As members and guests arrived, "Name Bingo" was played. Winners Debbie Ogden and Debbie Beatty received prizes.

President Pat Cates led the opening ritual. Details concerning the October 20, 21 Wichita Falls Area Convention and the October 26, 27, 28 Lubbock Area Convention were discussed by the members.

Members were reminded of the Day Care Center's Spaghetti Supper, October 19. Members will be donating cakes for the supper.

The next club meeting will be October 16 at the First National Bank. The hostesses will be Revis Pernell and Debbie Beatty, and Debbie

Bertrand will present the program. Pledge Ritual will be held for the new pledges of Alpha Mu Delta.

Program Chairman Donna Henderson introduced Carrie Bertrand, who informed the pledges of Beta Sigma Phi — its meaning, causes, type of organization and other general information of the sorority. She said that Beta Sigma Phi was founded by Walter W. Ross in 1931 in Kansas. The sorority started out as a small chapter with only a few members and has grown to a world-wide organization with over 12,000 chapters.

Members were served punch, mints, nuts and cake. The cake was decorated with colors of the sorority, a

balloon and the words, "Around the World With Beta Sigma Phi."

New pledges present were: Sharon Ward, Judy Lloyd, Duffy Hinkle, Sherry Smith, Penny Bertrand and Debbie Ogden. New transferee is Janet Houdeshell. Vicki Allen was a special guest.

Other members present were: Daphna Simpson, Tonya Marble, Debbie Beatty, Revis Pernell, Teresa Whittle, Carrie Bertrand, Pat Cates, Donna Henderson, Debbie Bertrand, Donna Anderson, Kay Jones and Jo Ann Patterson.

As members left, each drew a name of a fellow member who will be her Secret Sister for the 1979-80 sorority year.

## Duncan Open House Held

An open house was held Monday at Duncan Elementary School in Floydada in conjunction with public

school week. Principal of the school, Bob Copeland, presented the program on the subject of school policies.

Special guests were school board member Martha Farris, and Jerry Cannon, superintendent.



## ATTEND THE FIFTH ANNUAL Running Water Draw Arts and Crafts Festival

October 12-14, 1979

Hale County Agricultural Center Plainview, Texas

Friday and Saturday, 10:00 a.m. to 9 p.m. Sunday, 12:00 p.m. to 5:00 p.m.

"Buy Something Original This Year"

FEATURING THE WORKS OF 125 OF THE FINEST ARTISTS AND CRAFTSMEN FROM SEVEN STATES



Prices Effective October 8 - 13, 1979

WE RESERVE THE RIGHT TO LIMIT QUANTITIES



FRESH - SOFT - SMOOTH  
TENDERCRUST  
BREAD IS BETTER

We accept  
Food Stamps  
and  
WIC Cards

# THOMASON

VENTURE GROCERY & MARKET  
PHONE 652-3346 LOCKNEY, TEXAS



## DOUBLE STAMPS ON WEDNESDAY

Store Hours  
8 a.m. - 9 p.m.  
Monday - Saturday  
8 a.m. - 7 p.m. Sunday



Produce Specials

## Apples 89¢

RED DELICIOUS  
3 LB. BAG

CALIFORNIA Carrots 1 LB. PKG. 23¢  
SUPER SELECT Cucumbers LB. 29¢  
RUSSET ALL PURPOSE Potatoes 10 LB. BAG 89¢  
YELLOW SWEET Onions LB. 15¢

### Meat Specials

HEAVY GRAIN FED BEEF  
BLADE CUT

## Chuck Roast \$1.19 LB.



COVERED WAGON  
HICKORY SMOKED  
SLICED  
Slab Bacon  
LB. 49¢

HEAVY GRAIN FED BEEF <b>Chuck Roast</b> LB. \$1.39	HEAVY GRAIN FED BEEF <b>Cutlets</b> THICKER LB. \$2.39
HEAVY GRAIN FED BEEF <b>Chuck Roast</b> CENTER CUT 7 BONES LB. \$1.39	SHURFRESH TASTY <b>Franks</b> 12 OZ. PKG. 99¢
HEAVY GRAIN FED BEEF <b>Chuck Steak</b> LB. \$1.39	COUNTRY STYLE <b>Spare Ribs</b> \$1.19 LB.
HEAVY GRAIN FED BEEF <b>Stew Cubes</b> EXTRA LEAN LB. \$1.89	END CUT FAMILY PACK <b>Pork Chops</b> \$1.09 LB.
<b>Short Ribs</b> BEEF LB. 99¢	RAMIREZ FRESH CORN <b>Tortillas</b> 32 OZ. PKG. 49¢

### Dairy And Frozen Food

KRAFT AMERICAN  
**Singles** 1 LB. PKG. \$1.79

MAXI CUP  
**Soft Parkay** LB. BOWL. 79¢

### Grocery Specials

AMERICAN BEAUTY 2 - 4 OZ. PKG. \$1.79

KRAFT ITALIAN  
**Dressing** 16 OZ. BTL. 99¢

REFRESHING INSTANT  
**Nestlea Tea** 3 OZ. JAR \$1.89

LIBBY TASTY  
**Pumpkin** 303 CAN 39¢

FOR COOKING!  
**Puritan Oil** 32 OZ. BTL. \$1.29

FRITO-LAY RUFFLES  
**Potato Chips** REGULAR 99¢

### Shelf Specials

NON ASPIRIN  
**Tylenol** 100 CT. BTL. \$1.99

ANTISEPTIC  
**Lavoris** 12 OZ. BTL. 99¢

FASTEST  
**Denture Adhesive** 2 OZ. TUBE \$1.39

THANK YOU FOR SHOPPING WITH US AT VENTURE FOODS

We Have Dallas Cowboy "Helmet" Radios

KLEENEX  
**Facial Tissue** 200 CT. BOX 59¢

ABSORBENT PAPER  
**Zee Towels** 2 JUMBO ROLLS \$1

ALL GRINDS  
**Shurfine Coffee** LB. CAN \$2.69

We now have Hot Fresh Broasted Chicken-Burritos, Taco Rolls, Hot Fries, Cold Slaw, Potato Salad. Also Hot Fried Pies Try Some Today You'll love it. Ready in Nine Minutes or less.

32 Ounce 6 - Bottle Carton  
**Coke or Tab** 99¢ Plus Deposit

### FALL CLEANING SPECIALS!

25% OFF LABEL <b>Spic &amp; Span</b> GIANT BOX \$1.59	DISINFECTANT <b>Lysol Spray</b> 18 OZ. CAN \$2.19
13% OFF DETERGENT <b>Liquid Joy</b> 22 OZ. BTL. 89¢	TOILET BOWL <b>Lysol Cleaner</b> 24 OZ. CAN 89¢
HOUSEHOLD USE <b>Purex Bleach</b> GAL. BTL. 69¢	BASIN/TUB/TILE <b>Lysol Cleaner</b> 17 OZ. CAN 99¢
PUREX <b>Toss 'n Soft</b> 40 CT. PKG. \$1.49	DEODORIZING <b>Lysol Cleaner</b> 28 OZ. BTL. \$1.39
GIANT SIZE <b>Top Job</b> 28 OZ. BTL. \$1.49	

NEW!!!  
EXCITING!!!  
GAME FOR ALL AGES

## "THE DEVIL"



W T CARD COMPANY, INC.  
Lockney 652-2385

Schachts Flowers, Jewelry and Gifts

Lockney 652-2385

pleasure Is To Serve You"

## PORTRAIT

Special  
A BEAUTIFUL 8x10 NATURAL COLOR PORTRAIT  
only 99¢

GROUPS WELCOME EXTRA CHARGE  
ONLY ONE ADVERTISING OFFER PER FAMILY  
MINORS MUST BE ACCOMPANIED BY PARENT  
let the memory pass you by."  
PHOTOGRAPHIC LOCATION  
Rebekah Lodge Hall  
210 West Washington  
Wednesday October 10  
1 - 8 P.M. Lockney  
LE-MANN STUDIOS

**PRESTON MILK** **GALLON** **\$1.90**  
 USDA Inspected Plant Custom Processing,  
 Wholesale and Retail Meats, Cut, Wrapp-  
 ed, Frozen, and Fully Guaranteed. Fin-  
 ancing Available On Freezer Beef.  
**Lockney Meat Co.**  
 Hwy. 70 652-3305 Lockney, Texas

SHOP OUR BEAUTIFUL  
 ASSORTMENT  
 OF CLOTHING AND  
 GIFT ITEMS  
**ROYE'S**  
 Merle Norman Cosmetics

CALL CABLE TV  
 OF FLOYDADA 983-2323  
**TODAY**  
 FOR MORE AND BETTER

**SUNDAY 10/07/79**

CABLE AM	4 WTBS CH. 17 Atlanta	5 KTXT CH. 5 Lubbock	6 PTL CH. 6 Charlotte	7 KMCC CH. 28 Lubbock	9 WGN CH. 9 Chicago	10 KTV CH. 10 Oakland	11 KCB D CH. 11 Lubbock	13 KLBK CH. 13 Lubbock	2 CBN CH. 2 Virginia Bch
7:00	Three Stooges	No Programs	Kenneth Copeland	Praise the Lord Club	News Buyer's Forum What's Nu		Jimmy Swaggart Day of Discovery	Three Robonic Skatebirds	Lesson Chapel Hour
8:00	Maverick		Voice of Victory Oral Roberts and You	Jimmy Swaggart Prophecy Newsreel	Mass for Shut-Ins Mormon World		Oral Roberts Methodist Church	James Robison Presents Amazing Grace Bible Class	Hour of Power
9:00	Hazel		Ever Increasing Faith	I Love Lucy Mary Tyler Moore	Conference Groovy Ghoulies	Westbrook Hospital Robert Schuller	Rex Humbard	Jerry Falwell	Changed Lives Spiritual Awakening
10:00			PTL Club	Best of Donahue	Tarzan		Living Your Religion	Sunday School	Intouch
11:00				Baptist Church	Cisco Kid Lone Ranger	Oral Roberts Rex Humbard	Herald of Truth Sportscope	Hour of Power	Time of Deliverance Oral Roberts
12:00	Movie: 'A Farewell to Arms'	No Programs	Calvary Temple	Si Se Puedel	Movie: 'Charlie Chan in Egypt'	It Is Written	National League Playoffs/ or Local	Tom Landry Show NFL Today	Coral Ridge Presbyterian Church
1:00		Shakespeare Plays: Henry VIII	Rex Humbard	Wrestling	Movie: 'The Marx'	On the Square	Programs	NFL Football: St. Louis at Houston	Let the Redeemed of the Lord Say So
2:00			Larry Jones Ministry Celebration	A Papal Visit	Brothers Go West	Tarzan			
3:00	Movie: 'Wild'		Abundant Living James Robison		Movie: 'Ali Baba and the Forty Thieves'	Movie: 'You're Never Too Young'	NFL Football: Pittsburgh at Cleveland		
4:00	Heritage	Firing Line	Power of Pentecost		Nashville on the Road		NFL Football: Los Angeles at		
5:00	Championship Wrestling	Long Search	Amazing Grace Bible Class Kroeze Brothers	Pop! Goes the Country ABC News	Grizzly Adams	Movie: 'Niagara'		New Orleans	At Home with the Bible Focus on the Family

**SUNDAY 10/07/79**

CABLE PM	4 WTBS CH. 17 Atlanta	5 KTXT CH. 5 Lubbock	6 PTL CH. 6 Charlotte	7 KMCC CH. 28 Lubbock	9 WGN CH. 9 Chicago	10 KTV CH. 10 Oakland	11 KCB D CH. 11 Lubbock	13 KLBK CH. 13 Lubbock	2 CBN CH. 2 Virginia Bch
6:00	Nashville on the Road Porter Wagoner	Japan: Living Tradition Japan: Living Tradition	Ever Increasing Faith Celebration	Out of the Blue A New Kind of Family	Program Cont'd Wild Kingdom		Wonderful World of Disney	60 Minutes	Jimmy Swaggart
7:00	Movie: 'Gidget Goes Hawaiian'	Connections: Death in the Morning	Abundant Living James Robison	Mork & Mindy The Associates	In Search of Movie: 'Kildozzer'	Movie: 'Zulu'	American League Play-offs/ or MOVIE: Gray	Archie's Place One Day at a Time	Rex Humbard
8:00		Masterpiece Theatre: Love for Lydia	PTL Club	Movie: 'Vampire'			Lady Down and Prime Time Sunday	Alice Jeffersons	Best of 700 Club
9:00	Between the Wars Ruff House	Growing Years	Growing Years		Lawrence Welk			Trapper John M.D.	Crossroads
10:00	Open Up	Footsteps	Footsteps	Celebration PTL Club	News Texas Tech Football	Movie: 'Sunset'	Prime Time Sunday/ or	News Bill Dance Outdoors	Sand Forth Your Spirit Insight
11:00		Sign Off		Odd Couple	Boulevard	Movie: 'Forever Young, Forever'		Oklahoma Football	Sign Off
12:00							Free	Movie: 'Gidget Goes To Rome'	

**MONDAY - FRIDAY**

**10/07/79-10/13/79**

CABLE AM	4 WTBS CH. 17 Atlanta	5 KTXT CH. 5 Lubbock	6 PTL CH. 6 Charlotte	7 KMCC CH. 28 Lubbock	9 WGN CH. 9 Chicago	10 KTV CH. 10 Oakland	11 KCB D CH. 11 Lubbock	13 KLBK CH. 13 Lubbock	2 CBN CH. 2 Virginia Bch
7:00	Leave it to Beaver Romper Room	No Programs	Weather	Good Morning America	Ray Rayner and Friends		Today	Morning	Varied Programs
8:00	Lucy Show Green Acres	Varied Programs			Groovy Ghoulies I Dream of Jeannie			Captain Kangaroo	A Light to the Nation
9:00	Movie	Mister Rogers Neighborhood Varied Programs		Phil Donahue	Movie	Cartoon Town	People Place Hollywood Squares	Beat the Clock WHEW!	
10:00			PTL Club	Laverne & Shirley Family Feud		Hanna-Barbera Romper Room	High Rollers Wheel of Fortune	Price Is Right	Varied Programs
11:00	Love, American Style Movie	Sesame Street		Jr. Partner Pyramid Morning Magazine	Phil Donahue	Big Valley	Mindreaders Password Plus	The Young and the Restless Search for Tomorrow	Ross Bagley
12:00		Varied Programs	Varied Programs	All My Children	Bozo's Circus	Room 222	News Days of Our Lives	As the World Turns	Varied Programs
1:00	Gigglesnort Hotel	MacNeil-Lehrer Rept. Dick Cavett Show		Praise the Lord Club	Love, American Style	Phil Donahue	The Doctors	Guiding Light	Varied Programs
2:00	Lucy Show	Over Easy		General Hospital	Andy Griffith Flintstones	Medical Center	Another World		700 Club
3:00	Spectraman	Sesame Street		Edge of Night	Bugs Bunny & Coyote	Dialing for Dollars Movie	Card Sharks	Gunsmoke	Varied Programs
4:00	My Three Sons	Mister Rogers Neighborhood Electric Company			Groovy Ghoulies Star Blazer		Gilligan's Island Beverly Hillbillies	Gomer Pyle	Varied Programs
5:00	Carol Burnett and Friends Bob Newhart	Carrasco-Lendas Varied Programs	Herald of Truth Christopher Close-Up	ABC News	Good Times	Woody Woodpecker Hanna-Barbera	Get Smart NBC News	Hogan's Heroes CBS News	Program Cont'd

**MONDAY 10/08/79**

CABLE PM	4 WTBS CH. 17 Atlanta	5 KTXT CH. 5 Lubbock	6 PTL CH. 6 Charlotte	7 KMCC CH. 28 Lubbock	9 WGN CH. 9 Chicago	10 KTV CH. 10 Oakland	11 KCB D CH. 11 Lubbock	13 KLBK CH. 13 Lubbock	2 CBN CH. 2 Virginia Bch
6:00	Sanford and Son All in the Family	Program Cont'd MacNeil-Lehrer Rept.	Gospel Music Hour of Power	News Happy Days Again	Odd Couple Carol Burnett and Friends	T.V. Powww with Tom Star Blazer	News Sanford and Son		
7:00	Falcons Football	Paul Robeson	Westbrook Hospital	All-Star Family Feud	Maude Chico and the Man	Six Million Dollar Man On the Prairie	Little House on the Prairie		
8:00	Movie: 'Not As A Stranger'		PTL Club	Monday Night Football: Miami at	Movie: 'Little Boy Lost'	M*A*S*H Dating Game	NBC Theatre: 'When Hell Was In Session'		
9:00		Masterpiece Theatre: Toldark		Oakland		M*A*S*H	Odd Couple		
10:00		Dick Cavett Captioned ABC News	Richard Hogue PTL Club	News	Movie: 'Scorpio'	News	Movie: 'A Girl Named Tamiko'	Tonight Show	
11:00	Movie: 'My Foolish Heart'	Sign Off		Grant Taff Show Love, Ameri-					
12:00				can Style Sign Off	Nightbeat			Tomorrow	

**TUESDAY 10/09/79**

CABLE PM	4 WTBS CH. 17 Atlanta	5 KTXT CH. 5 Lubbock	6 PTL CH. 6 Charlotte	7 KMCC CH. 28 Lubbock	9 WGN CH. 9 Chicago	10 KTV CH. 10 Oakland	11 KCB D CH. 11 Lubbock	13 KLBK CH. 13 Lubbock	2 CBN CH. 2 Virginia Bch
6:00	Sanford and Son All in the Family	Victory Garden MacNeil-Lehrer Rept.	Happy Hour Good News	News Happy Days Again	Odd Couple Carol Burnett and Friends	T.V. Powww with Tom Star Blazer	News Sanford and Son		
7:00	Movie: 'Duel in the Sun'	Nova: Life on a Silken Thread	Patterns for Living	World Series	Maude Chico and the Man	Bionic Woman	Misadventures of Sheriff Lobo		
8:00		Governor's Report	PTL Club		Movie: 'Support Your Local Sheriff'	M*A*S*H Dating Game	Movie: 'American Graffiti'		
9:00		World: Who Killed Georgi Markov?				M*A*S*H	Movie: 'The'		
10:00	Last of the Wild Movie: 'Snows Of'	Dick Cavett Captioned ABC News	Richard Hogue PTL Club	News M*A*S*H	Movie: 'In Love And War'	Professionals	News Tonight Show		
11:00	Kilimanjaro	Sign Off		Bob Newhart	Barney Miller				
12:00				Movie: 'Wild and Woolly'	Nightbeat			Tomorrow	

**WEDNESDAY 10/10/79**

CABLE PM	4 WTBS CH. 17 Atlanta	5 KTXT CH. 5 Lubbock	6 PTL CH. 6 Charlotte	7 KMCC CH. 28 Lubbock	9 WGN CH. 9 Chicago	10 KTV CH. 10 Oakland	11 KCB D CH. 11 Lubbock	13 KLBK CH. 13 Lubbock	2 CBN CH. 2 Virginia Bch
6:00	Sanford and Son All in the Family	Growing Years MacNeil-Lehrer Rept.	Music Celebration Twentieth Century	News Happy Days Again	Odd Couple Carol Burnett and Friends	T.V. Powww with Tom Star Blazer	News Sanford and Son		
7:00	Movie: 'McHale's Navy Joins the Air'	Great Performances: The Dream	Guidelines Christopher Close-Up	World Series	Maude Chico and the Man	Six Million Dollar Man	Real People		
8:00	Force	Mikhail Baryshnikov at the White House	PTL Club		Movie: 'To Catch a Thief'	M*A*S*H Dating Game	Movie: 'Mirror, Mirror'		
9:00	Upstairs, Downstairs	Connections: Death in the Morning				M*A*S*H	Odd Couple		
10:00	Last of the Wild Movie: 'With a Song in My'	Dick Cavett Captioned ABC News	Richard Hogue PTL Club	News M*A*S*H	Movie: 'Shootout'	Undersea World of Jacques Cousteau	News Tonight Show		
11:00	Heart	Sign Off		Bob Newhart	The Love Boat				
12:00				Baretta	Nightbeat			Tomorrow	

**THURSDAY 10/11/79**

CABLE PM	4 WTBS CH. 17 Atlanta	5 KTXT CH. 5 Lubbock	6 PTL CH. 6 Charlotte	7 KMCC CH. 28 Lubbock	9 WGN CH. 9 Chicago	10 KTV CH. 10 Oakland	11 KCB D CH. 11 Lubbock	13 KLBK CH. 13 Lubbock	2 CBN CH. 2 Virginia Bch
6:00	Sanford and Son All in the Family	Japan: Living Tradition MacNeil-Lehrer Rept.	Revival Fires Jerry Falwell	News Happy Days Again	Odd Couple Carol Burnett and Friends	T.V. Powww with Tom Star Blazer	News Sanford and Son		
7:00	NHL Hockey: Atlanta vs. Montreal	Evening at Symphony	This is the Life	Laverne & Shirley Benson	Maude Chico and the Man	Bionic Woman	Buck Rogers in the 25th Century		
8:00		Sneak Previews Camera Three: Dreams	PTL Club	Barney Miller Soap	Movie: 'Donovan's Reef'	M*A*S*H Dating Game	Quincy		
9:00		Great Plains Experience Aztlan		ABC News Close-Up: Homosexuals		M*A*S*H	NBC News Special Report		
10:00		Dick Cavett Captioned ABC News	Richard Hogue PTL Club	News M*A*S*H	Movie: 'Return to'	News	Movie: 'The Mechanic'	Tonight Show	
11:00	Lady	Sign Off		Bob Newhart	Police Woman				
12:00				Baretta	Nightbeat			Tomorrow	

# These Floydada And Lockney Merchants

Sponsor The T.V. Schedule

For You Each Week . . . . .

10/12/79

4	5	6	7	9	10	11	13	2
WTBS CH. 17 Atlanta	KTXT CH. 5 Lubbock	PTL CH. 6 Charlotte	KMCC CH. 28 Lubbock	WGN CH. 9 Chicago	KTV CH. 10 Oakland	KCBD CH. 11 Lubbock	KLBK CH. 13 Lubbock	CBN CH. 2 Virginia Bch
News	Feelings	Down Home/ Happy Jimmy Swaggart	News	Odd Couple	T.V. Power with Tom Star Blazer	News	News	Bible Story
Sanford and Son	MacNeil-Lehrer Rept.		Happy Days Again	Carol Burnett and Friends		Sanford and Son	Joker's Wild	Lesson
Jittle House On the Prairie	Wash. Week in Review Wall Street Week	Lesson	World Series	Movie: 'The Next Victim'	Six Million Dollar Man	Diff'rent Strokes Hello, Larry	Yabba Dabba Doo 2	Intouch
IBC Theatre: 'When Hell Was In Session'	The Scarlet Letter	PTL Club		Movie: 'Strange and'	M*A*S*H	Rockford Files	Dukas of Hazzard	A Light to the Nation
Country Music Awards	Upstairs, Downstairs			Deadly Occurrences	M*A*S*H		Dallas	
News	Dick Cavett	Richard Hogue PTL Club	News	News	Movie: 'Jesus Christ Superstar'	News	News	Ross Bagley
Tonight Show	Captioned ABC News		M*A*S*H	Movie: 'One Million Years B.C.'		Tonight Show	NBA Basketball	
	Sign Off		Bob Newhart	Charlie's Angels			Los Angeles at San Diego	Relig Prgrms Cont'd
Tomorrow			Big Valley	Nightbeat		Midnight Special		

10/13/79

4	5	6	7	9	10	11	13	2
WTBS CH. 17 Atlanta	KTXT CH. 5 Lubbock	PTL CH. 6 Charlotte	KMCC CH. 28 Lubbock	WGN CH. 9 Chicago	KTV CH. 10 Oakland	KCBD CH. 11 Lubbock	KLBK CH. 13 Lubbock	CBN CH. 2 Virginia Bch
Pyromaniac	No Programs	God's News Behind News Big Blue Marble	The World's Greatest Superfriends	U. S. Farm Report Daniel Boone		Daffy Duck Show Casper and the Angels	Adventures of Mighty Mouse and Heckle & Jeckle	Ever Increasing Faith
Movie: 'American Graffiti'		Rebob	Plasticman Comedy/Adventure Show	Movie: 'Here Come the'		Fred and Barney Meet the Thing	Bugs Bunny/ Road Runner Show	Life in the Spirit Rock
News		Saturday Morning Pirate Adventures		Marines'	No Programs	Super Globetrotters New Shmoo	All-New Popeye Hour	Manna Lesson
Tonight Show		PTL Club	Little Rascals Scooby and Scrappy Doo	Movie: 'Francis In The Haunted House'	Voice of Agriculture Black Forum	Flash Gordon	Godzilla	Circle Square Backyard
			Football SWC Style World Series/ NCAA	Charlando	Asians Now	Jonny Quest	Jason of Star Command Tarzan and the Super	Puppet Tree Bible Bowl
Movie: 'Wolf Larsen'		Hilites		Movie: 'Eagle And The Hawk'	Our Men in the Capital World Tomorrow	U.S. Farm Report Eleven Questions	Seven Sunshine Sally	Best of 700 Club
		Larry Jones Ministry			Discovery	Movie: 'Pippi Goes on Board'	Movie: 'The Awful Truth'	Through Death to Life
		Jacobs Brothers Gospel Singing Jubilee		Movie: 'Abbott and'	Movie: 'Atom Age Vampire'			Rays of Hope Story
Movie: 'Brended'	Great Plains Experience	Club PTL		Costello Meet the Invisible Man		Marcus Welby, M. D.	To Be Announced CBS Sports Spectacular	Kenneth Copeland
	Soccer Made in Germany	Richard Hogue Evangel Football		Soul Train	Movie: 'Theatre of Blood'	Porter Wagoner Nashville Music		Celebration Ross Bagley
Championship Wrestling	Footsteps	Program Cont'd Larry Jones Ministry		Good Times	Movie Cont'd	Wild Kingdom	Ruff House	Program Cont'd
	Feelings			Dick Van Dyke		NBC News	CBS News	

10/13/79

4	5	6	7	9	10	11	13	2
WTBS CH. 17 Atlanta	KTXT CH. 5 Lubbock	PTL CH. 6 Charlotte	KMCC CH. 28 Lubbock	WGN CH. 9 Chicago	KTV CH. 10 Oakland	KCBD CH. 11 Lubbock	KLBK CH. 13 Lubbock	CBN CH. 2 Virginia Bch
	Once Upon a Classic Here's to Your Health	Maranatha Concerts	Family Affair	Odd Couple	Hee Haw	Lawrence Welk	Hee Haw	Insight
			Happy Days Again	Carol Burnett and Friends				Send Forth Your Spirit
Country Goes the Country Nashville Music	Happenings	Jacobs Brothers Gospel Singing Jubilee	The Rogers Detective School	Maude	Movie: 'How To Murder Your Wife'	ChiPs	Working Stiffs Bad News Bears	Best of 700 Club
NBA Basketball: Atlanta at Indiana	Sailing, Sailing L'Chain to Life	PTL Club	The Love Boat	Hee Haw		BJ and the Bear	Big Shamus, Little Shamus	Lesson
			Hart to Hart	Palace	Dance Fever	A Man Called Sloan	Paris	Rock Church
					Kicks			
	Sign Off	Maranatha Concerts	News	News	Movie: 'Godspell'	News	News	Zola Levitt
Rock Concert			M*A*S*H	Movie: 'Horse'		Saturday Night Live	Movie: 'First Men in the Moon'	Ross Bagley
		Club PTL	Movie: 'Gigot'	Soldiers'				Evangel Football Hilites
						She-Ne-Na		
				Nightbeat		Sign Off		

# WHOZITS . . .



LAST WEEK — Easton and Dewanda Blenden were the young couple in last week's Lockney Whozit picture. Vermer Hodel was the first to identify the Blendens from the 1942 photo. Others were Veda Mae Miller, W.L. Carthe., Junior Lee, and the Blenden' son Brad, who called The Beacon from Pampa to "guess" who they were.

**LOCKNEY WHOZIT** — This week's Whozit subjects are a father-son combination who struck similar poses in these early photos. One baby picture was taken in 1935, the other in 1957. Both father and son still live around

Lockney, both are farmers, both grew up to be tall and thin, with the same color hair. Any guesses as to their identity? 652-3318 is the number to call, Monday through Thursday, if you think you know who they are.

## Last Week's

Floydada

## Whozit

JUANITA CAMPBELL correctly identified last week's Floydada Whozit as the Andrews Ward Rhythm Band of 1937. Some members of the band were (according to Mrs. Chappell) Margaret Huckabee Teague, Bobbie Medlen Hamilton, Melba Smalley Tate, Tom Bob Jarboe and Ruth Harmon.



FLOYDADA SWEET-TOOTH should have no trouble identifying this week's Floydada Whozit. He married and moved here in 1924 to begin working for C.P. Looper Grocery.

# WATTS NEEDED?



ENERGY EFFICIENT HOME



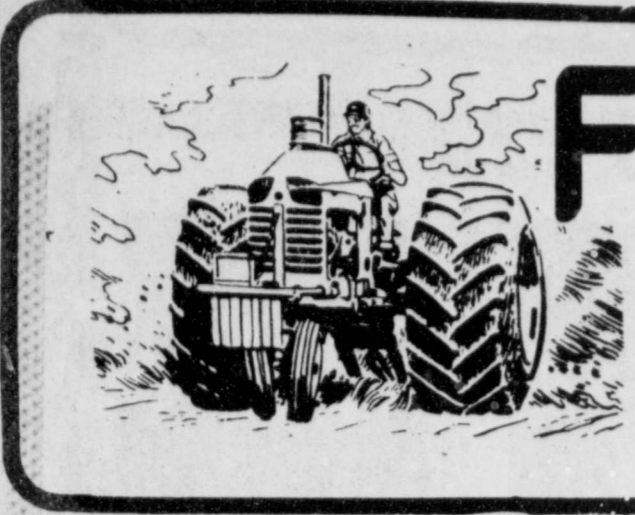
An Energy Efficient Home is ADEQUATELY insulated. Adequate insulation in walls and ceilings — caulking around window and door frames — storm doors and windows — plus other energy-saving construction features are included in all Energy Efficient Homes.

And with properly sized heating and cooling equipment, you won't pay for more watts than you need.

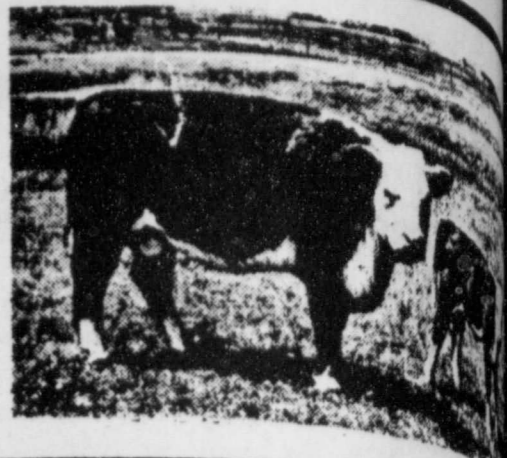
Get the most out of the electricity you use . . . look for an Energy Efficient Home. Call Southwestern Public Service Company for details.



SOUTHWESTERN PUBLIC SERVICE



# FARM & RANCH NEWS



## Around the County County Agent's Column

By Stephen R. Herber  
Floyd County Extension Agent

Windbreak seedling applications can now be picked up at the County Extension Office, currently located in the Courthouse. The seedlings are supplied by the Texas Forest Service and can be purchased for a nominal fee. Five species are now available and they are distributed on a first-come, first-served basis. Hardwood varieties include honeylocust and sawtooth oak. These varieties can be ordered in units of 100, at a cost of twenty dollars per unit. The hardwood seedlings will have 12 to 18 inch tops.

Conifer varieties include Austrian pine, Ponderosa pine and Arizona pine. These varieties will cost thirty dollars per unit. There are thirty seedlings in each

unit. Conifer varieties will have 6 to 12 inch tops. Orders must be sent in by February 11, 1980. Hardwood seedlings will be shipped beginning about mid-February and generally will continue through the first week of March. Because they come in fragile styrofoam containers, conifers cannot be shipped. Planters can pick up their trees at Lubbock on March 25, 1980.

A publication entitled "Windbreaking Planting Tips" can also be obtained at my office. This publication briefly describes each windbreak variety and points out the varieties best suited for our area. If any additional information is needed, please contact me at my office.

## Greenbugs Have Potential Of Destroying Wheat

Greenbugs have the potential of destroying either wheat or sorghum in the South Plains, under the right conditions. These light green aphids would do a lot more damage if it was not for biological control, by predaceous lady beetles and a small parasitic braconid wasp. According to N.E. Daniels, Texas Agricultural Experiment Station entomologist, greenbugs caused considerable damage during 1968 to sorghum in Texas and most states in the Great Plains.

In order to learn more about biological control, the life cycle of braconid wasps was studied in the laboratory at the USDA Southwestern Great Plains Research Center at Bushland, by Louis Chedester, a research associate who assists Daniels. Knowing the life cycle of the wasp would enable the researchers to develop a good pest management program for greenbug control.

Parasitized greenbugs were collected and reared in the laboratory at 68 degrees. Adult wasps emerged shortly and were allowed to mate at random. The researcher chose eight females, and put each one in a glass dish. At the same time a healthy adult greenbug 1/16-inch in length was placed in each dish. At the same time a healthy adult greenbug 1/16-inch in length was placed in each dish with a mated female wasp.

Shortly after the two insects were placed together the wasp thrust her ovipositor into the back region of the greenbug and laid an egg inside the body of the aphid. Two days later the egg hatched and the larva began to feed on the body contents of the greenbug. By the third day, the aphids coloration had changed from light green to yellow indicating death had occurred. By the fourth day the wasp larva had grown enough to completely fill the inside of the greenbug's body.

Microscopic examination of dead parasitized greenbugs, called mummies, showed that six days after eggs were laid, larvae transformed into pupae. By this time the mummies had changed from tan to dark brown. By the eighth day, the outline of the adult wasp could be seen through exoskeletons of mummies which had swollen to about twice the size of a nonparasitized greenbug. Adult wasps emerged on the ninth day after eggs were laid.

According to Chedester, this parasite is effective for controlling greenbugs on sorghum when it is 80 degrees during the day. Unfortunately they are not very effective against greenbugs on winter wheat, when it is cold or below 50 degrees.

Other studies have shown that a single female wasp can lay 100 eggs a day for 10 days.

## Cotton Today

WHAT'S HAPPENING

**UN TO DISCUSS COTTON:** The United Nations Conference on Trade and Development is holding its fourth preparatory meeting on cotton in Geneva. The main agenda items are an international cotton agreement and stockpiling, opposed by the U.S. delegation. Developing countries which are cotton exporters complain that volatile cotton prices adversely affect their foreign exchange earnings and economic development plans. The National Cotton Council is represented at the conference.

**COTTON DUST RESEARCH:** The National Academy of Sciences will study causes of byssinosis and the feasibility of OSHA-mandated medical testing procedures for identifying byssinosis in the field and in medical installations. The work will be done under a \$99,800 one-year grant from USDA. Funding for the project stems from an amendment by Sen. Morgan (D-N.C.) to the 1979 Agricultural Appropriations Act which was supported by the National Cotton Council.

**EXPORT SALES RISE:** Sales of 255,900 running bales of cotton during the week ended September 16 brought the current season's total commitments to 4,448,400. The principal buyers were China and Japan. The week's exports of 97,000 running bales brought total shipments to 670,000 thus far this season, compared with 728,100 a year ago. Spain purchased 6,000 bales for 1980-81 delivery.

**COTTON QUALITY TO BE STUDIED:** USDA has awarded a \$500,000 grant to the Texas Agriculture Department to study the effectiveness of mechanical instruments for measuring cotton quality.

**AND COTTON YESTERDAY:** Cotton threads in New Mexico's Tularosa Cave date back to 300 B.C.

**STEPS RECOMMENDED TO IMPROVE CCC EXPORT CREDIT:** The President's Export Council has approved recommendations that could lead to improved Commodity Credit

Corporation export credit for cotton. The group recommended that the CCC short-term export credit program (GSM-5) be set up as a revolving fund in order to stabilize annual funding levels. It called for an immediate increase from \$800 million to \$1.6 billion in the amount of GSM-5 credit in the budget for all agricultural commodities. The recommendations, now being transmitted to the President by letter, are in line with a resolution approved by National Cotton Council delegates.

**FOREIGN MILL EXECUTIVES TO TOUR:** Customers representing nine major Far East markets will arrive October 14 for a firsthand look at U.S. cotton. Sponsored by Cotton Council International, the National Cotton Council, and USDA, the annual orientation tour is designed to increase the U.S. industry's share of overseas cotton markets. Twenty-two foreign mill executives will participate. They are from Hong Kong, Indonesia, Japan, Korea, Malaysia, The Philippines, Sri Lanka, Taiwan, and Thailand. In 1978-79, these countries imported a combined total of 4,322,000 bales, or 69 percent of U.S. exports. The tour will begin in Fresno and conclude with a visit to the New York Cotton Exchange. The group will be in the Lubbock area October 18.

**EXPORT SALES RISE:** Sales of 146,000 running bales of cotton during the week ended September 9 brought the current season's total commitments to 4,222,500. Among the week's major buyers were China, Romania, Hong Kong, Bangladesh, and Japan. Meanwhile, the week's exports of 122,200 running bales brought total shipments to 573,700 thus far this season. Shipments of 621,500 bales were reported by the same date a year ago.

**AND COTTON YESTERDAY:** In 1884 cotton bales were used in the foundation of a Missouri post office.



The U.S. Department of Agriculture has invited interested parties to submit recommendations on decisions soon to be made with regard to the 1980 upland cotton program. Deadline for receipt of written comment is November 19.

**Plains Cotton Growers, Inc.,** Lubbock, will respond to the invitation following development of PCG positions at an October 10 meeting of its 50-man Board of Directors. Here are the issues as outlined by USDA in the September 18 Federal Register.

**TARGET PRICE** — Current law calls for this year's target (57.7 cents per pound) to be adjusted in 1980 to reflect any change in the average per-pound cost of production in 1977 and 1978 and the average cost for 1978 and 1979.

**NATIONAL PROGRAM ACREAGE (NPA) AND PROGRAM ALLOCATION FACTOR** — NPA is the number of harvested acres USDA determines will be needed in 1980 to meet domestic and export requirements during the 1980-81 marketing year beginning August 1, 1980. Minimum NPA required by law is 10 million acres. The allocation factor is determined by dividing the NPA for the 1980 crop by the estimated harvested acreage for 1980.

**VOLUNTARY REDUCTION PERCENTAGE** — Will be the percentage by which producers may voluntarily reduce 1980 plantings below 1979 plantings in order to guarantee themselves target price protection on total 1980 acreage.

**SET-ASIDE** — USDA, if it decides a

set-aside is necessary to prevent an excess cotton supply, may set a mandatory set-aside not exceeding 28 percent of 1980 planted acreage.

**PLANTED ACREAGE LIMITATION** — If a set-aside is in effect, the Secretary may also put a limit on each producer's planted acreage as a requirement for program benefit eligibility.

**VOLUNTARY SET-ASIDE** — The Secretary has authority to offer an additional diversion program, set the extent of such diversion and decide the payment therefor.

**Plains Cotton Growers, Inc.,** Lubbock, is offering its apology for an error in material published by PCG September 14.

In an example of the calculations necessary for producers to determine the economic advisability of harvesting low-yield cotton, PCG wrote that a farmer who has a projected yield of 500 pounds per acre and harvests 100 pounds would be eligible for a disaster payment on 300 pounds, 75 percent of the 400-pound shortfall below his project yield.

In fact, according to Charles Cunningham of the Washington ASCS office, the payment eligibility would be on only 275 pounds, 75 percent of the 500-pound projected yield (375 pounds), minus the 100 pounds harvested. Corrected figures for the complete example are available on request from PCG.

## Farm Bureau News Summary

**WHEAT PROMOTION PROGRAM**  
The United States Department of Agriculture has released a proposed nationally coordinated research and nutrition education program for wheat and wheat foods.

**REGIONALISM**  
Three federal regional economic development and public work programs are scheduled to expire on September 30, 1979. Currently, before Congress are two measures, S. 914 and H.R. 2063 to extend and revise these programs. If regionalism is to be defeated in the United States, it will be important to defeat these two measures mentioned.

**MILK PROMOTION PROGRAM**  
U.S. Department of Agriculture has announced termination of advertising and promotion programs in each of the following federal marketing order areas: Texas; Wichita, Kansas; Memphis, Tennessee; Fort Smith, Arkansas; Red River Valley; Oklahoma Metropolitan; Central Arkansas; Lubbock-Plainview, Texas; Texas Panhandle; Rio Grande Valley.

The program has ruled that the program no longer tends to effectuate the declared policy of the act authorizing it. The funding provisions for the advertising and promotion program in each of the orders is terminated on December 1, 1979. Other provisions dealing with the distribution and handling of funds, etc. are terminated on February 29, 1980.

**POLAND WHEAT INSURANCE**  
Commodity Credit Corporation announced on September 13 an additional \$15 million in protection against payment defaults for non-commercial reasons to exporters who sell U.S. wheat to Poland. The \$15 million announced on September 13, is in addition to the \$30 million designated for wheat on August 14, 1979.

There was a \$100 million coverage announced on January 5, 1979 on U.S. exports to Poland as follows: \$45 million for wheat; \$30 million for feedgrains; \$700,000 for tallow; and \$3.7 million for cottonseed meal. The remaining \$20.6 million commodity designation will be announced at a later date.

Before applying for protection, an exporter must have a calling for exports no later than August 31, 1980. Applications must be submitted before the export is completed and the assurance fee must accompany the application. The fee rate is 15.5 cents per \$100 for six months; 23.2 cents per \$100 for one year; 38.8 cents per \$100 for two years and 56 cents per \$100 for three years, based on semi-annual repayments of principle plus secured accrued interest. Based on equal annual repayments of principle plus secured interest the fee rate is 32.3 per \$100 for one year, 49.2 cents per \$100 for two years and 67.9 cents per \$100 for three years.

**CO-OPS AND EXPORTS**  
USDA reports that in 1976, 73 cooperatives directly exported agriculture commodities valued at more than \$2 billion. These co-ops were located in 23 states and serve farmers in all, or nearly all, of the 48 contiguous states. In terms of dollar volume, the U.S. cooperatives, direct export business was nearly all in the hands of 18 associations. However, hundreds of other farmer cooperatives were involved in moving commodities from farm to assembly plants.

The 1976 cooperative direct export figure as reported rounded to the nearest whole number amounted to \$2,031,000,000 divided as follows: grains \$932 million (45.59 percent), oilseeds and oil nuts \$427 million (21.03 percent), fruits \$293 million (14.43 percent), cotton \$232 million (11.43 percent), nuts \$79 million (3.89 percent), all others \$68 million (3.35 percent).

**MEXICAN OIL SPILL**  
The Water Development Board members were told \$2,800,000, including \$20,000 in state funds, has been spent cleaning up oil from the Mexican oil spill. The report indicated 21,000 gallons of oil has been skimmed off the surface of coastal waters and 18,000 cubic yards of sand containing heavy oil material has been removed from the beaches.

**FARM INCOME**  
Net income per farm after inventory adjustments for 1979, second quarter estimates expressed in 1967 dollars if \$5,970, compared to \$6,240 based on first quarter estimates. The figure on the same basis for 1978 was \$5,340.

**DROUGHT LOSSES AND IRS**  
Cattle farmers who incur costs for replacement feed after suffering a feed loss as a result of a drought or other disaster now have a ruling on the deductibility of those costs. IRS says farmers using the cash method can deduct only the portion of replacement-feed costs that will not be reimbursed by the government under the Emergency Livestock Feed Assistance Program. The reimbursement need not be included in the farmers' gross income.

**Sponsored by the Following Interested Firms**

<b>First National Bank</b> Floydada	<b>Collins Implement Co.</b> Floydada	<b>Floyd County Farm Bureau</b>
<b>Case Power &amp; Equipment</b> Floydada	<b>Russell's Equipment &amp; Supply</b> Floydada	<b>Perry Implement</b> Lockney
<b>Floydada Cooperative Gins</b>	<b>Plainview Savings &amp; Loan Association</b> Floydada	<b>Ansley &amp; Son</b> Lockney
<b>McDonald Implement Co.</b> Floydada	<b>The Floyd County Hesperian</b>	<b>Floydada Implement Co.</b>
<b>Federal Land Bank Association Of Floydada</b>	<b>Consumers Fuel Association</b> Lockney	<b>Brown Gin, Inc.</b>
<b>Martin &amp; Company</b>	<b>Wilson Electric</b> Floydada	<b>The Lockney Beacon</b>

NEW WASH...  
RESERVE THE RIGHT TO LIMIT...  
Whol...  
Bell Qu...  
1/2 Gallon Round Car...  
ROCCOLI...  
POTATOE...  
MAFFLES...  
MARGAR...  
PARKAY...  
BISCUITS...  
Chili...





# THRIFTWAY INVITES YOU TO WATCH MONDAY NIGHT FOOTBALL AND PLAY TOUCHDOWN DOLLARS

NO PURCHASE NECESSARY

THIS WEEK'S GAME

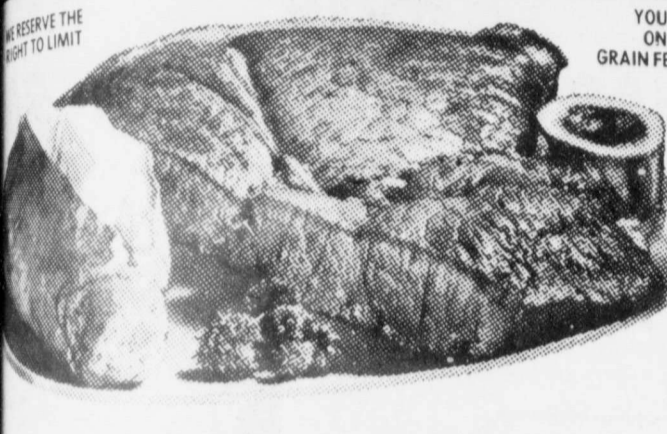
## MINNESOTA VS. NEW YORK JETS

OCTOBER 15, 1979

PRIZE VALUE	NO. OF PRIZES	ODDS FOR ONE TICKET	ODDS FOR TWO TICKETS
\$1000.00	2	75,000 to 1	37,500 to 1
\$100.00	15	10,000 to 1	5,000 to 1
\$10.00	40	3,750 to 1	1,875 to 1
\$5.00	70	2,143 to 1	1,072 to 1
\$1.00	1,373	109 to 1	55 to 1
TOTAL	1,500	100 to 1	50 to 1

# YOU COULD WIN UP TO \$1,000

PICK UP A TICKET EACH TIME YOU SHOP THRIFTWAY



YOUR THRIFTWAY STORES SELL & FEATURE ONLY FINE QUALITY AMERICAN GROWN GRAIN FED BEEF, FRESH PORK & QUALITY POULTRY.

HEAVY GRAIN FED BEEF

# ROUND STEAK LB.

# \$1.99

CENTER CUT BONELESS ROUND STEAK \$2.19 LB.

- HEAVY GRAIN FED BEEF SIRLOIN STEAK LB. \$2.19
- HEAVY GRAIN FED BEEF TENDERIZED CUTLETS LB. \$2.39
- HEAVY GRAIN FED BEEF BONELESS SIRLOIN TIP STEAK LB. \$2.39
- HEAVY GRAIN FED BEEF BONELESS SIRLOIN TIP ROAST LB. \$2.39
- OSCAR MAYER MEAT WIENERS 1 LB. PKG. \$1.59
- OSCAR MAYER BEEF FRANKS 1 LB. PKG. \$1.69
- RUDY'S FARM WHOLE HOG 2 LB. - \$2.97 SAUSAGE 1 LB. PKG. \$1.49

Whole Fryers

43¢ LB.



FRESH GUARANTEED 73% LEAN GROUND BEEF LB. \$1.29

Bell Quality Checkd

# Ice Cream

½ Gallon Round Carton \$1.29

Italian Festival

- CONTADINA ROUND TOMATOES 14 ½ OZ. CAN 39¢
- NIBLETS MEXICORN 2 12 OZ. CANS 79¢
- TRADITIONAL SPAGHETTI "RAGU ITALIAN FESTIVAL" 32 OZ. BTL. \$1.39
- SHURFINE BUTTON MUSHROOMS 4 OZ. CAN 69¢
- NEW! WISHBONE ITALIAN DRESSING WITH CHEESE 8 OZ. BTL. 69¢
- AMERICAN BEAUTY LONG SPAGHETTI 24 OZ. PKG. 79¢

ELECTRIC • REGULAR DRIP • FINE

# FOLGER'S COFFEE

SHURFINE VAC PAK COFFEE 1 LB. CAN \$2.69

# \$2.89

1 LB. CAN

SHELF SPECIALS

WELCH'S GRAPE JUICE 24 OZ. BTL. 89¢

7¢ OFF LABEL CLEANSER COMET LIQUID 14 OZ. BTL. 49¢

10¢ OFF LABEL 3 PAK BATH SIZE ZEST SOAP 3 CT. PKG. \$1.29

FROZEN FOODS

- CHOPPED BROCCOLI 3 10 OZ. BOXES \$1.00
- GOLDEN CRINKLE CUT POTATOES 5 LB. BAG \$1.79
- FROZEN WAFFLES 4 5 OZ. BOX \$1.00

DAIRY VALUES

- MARGARINE 1 LB. BOX 39¢
- MARKEY 1 LB. BTL. 79¢
- SCUITS 2 5 CT. CANS 49¢

BATHROOM

# HI DRI TISSUE

4 ROLL PKG. 69¢

GREEN PASCAL CELERY LB. 19¢

PORTALES MARYLAND SWEETS YAMS LB. 33¢

LONG GREEN CUCUMBERS LB. 29¢

CALIFORNIA RIPE POMEGRANATES EA. 19¢

WASHINGTON BARTLETT PEARS LB. 39¢

CALIFORNIA VINE RIPENED

# TOMATOES

LB. 39¢

FLAME TOKAY GRAPES LB. 59¢

CONTADINA RICH TOMATO SAUCE 5 8 OZ. CANS 89¢

PUSS-N-BOOTS CAT FOOD 4 15 ¼ OZ. CANS \$1.00

Winter Warmer Plain Chili 19 Ounce Can 99¢

25¢ OFF LABEL KING SIZE DOWNY SOFTENER 64 OZ. BTL. \$1.69

13¢ OFF LABEL DETERGENT JOY LIQUID 22 OZ. BTL. 89¢

HEALTH & BEAUTY AID SAVINGS

MILK PLUS 6 REVLON SHAMPOO 8 OZ. BTL. \$1.49

CREAM OF COCOA BUTTER POND'S LOTION "HARVEST OF VALUES" 8 OZ. BTL. \$1.19

POND'S TROPICAL BATH BEADS 15 OZ. BOX \$1.19

MEDIUM POINT BIC PENS EACH 19¢

PERMANENT KITS RAVE REFILLS EACH \$2.49

VASELINE INTENSIVE CARE POLISH REMOVER 3 OZ. BTL. 79¢

S. H GREEN STAMPS DOUBLE ON WED.

Enjoy Coca-Cola 32 Ounce 6 Pack COCA-COLA 99¢ Plus Deposit

REVLON SHAMPOO 8 OZ. BTL. \$1.49

CREAM OF COCOA BUTTER POND'S LOTION "HARVEST OF VALUES" 8 OZ. BTL. \$1.19

POND'S TROPICAL BATH BEADS 15 OZ. BOX \$1.19

MEDIUM POINT BIC PENS EACH 19¢

PERMANENT KITS RAVE REFILLS EACH \$2.49

VASELINE INTENSIVE CARE POLISH REMOVER 3 OZ. BTL. 79¢

"We don't want all the business-just yours!"  
**Willson & Son Builders Mart**  
 Tulia vs. Childress

**McDonald Implements**  
 Lockney vs. Dimmitt

**The Hesperian**  
 Idalou vs. Muleshoe

Fender bener mender  
**QUALITY BODY SHOP**  
 Morton vs. Springlake-Earth

**Arwine Drug**  
 Roosevelt vs. Tahoka

"For your health needs"  
**Thompson Pharmacy**  
 Cooper vs. Frenship

We appreciate your business  
**Hale Insurance**  
 Denver City vs. Seminole

"Dependable Service"  
**Floydada Co-op Gins Inc.**  
 Abernathy vs. LCHS

Buick-Pontiac-GMC  
**CITY AUTO INC.**  
 Bovina vs. Sunray

**HAVE FUN...**  
**\$20<sup>00</sup> In Cash Prizes**  
**Each Week**

**CONTEST RULES:**  
 Anyone can enter except the employees of the Hesperian. Three cash prizes are given each week - ties will split prize money. Members of the sports department are sole judges of the contest and their decision is final.  
 It is not necessary to indicate scores on all the games....But score must be indicated on the tie breaker game at right.  
 Simply circle the team you choose to win in each of the footballs. Deadline for submitting entries is 5 p.m. Friday - winners will be announced the following week. Enter as many times as you wish, print name and address plainly on blank below and mail or bring entire page to the Hesperian office.  
 Tie-breaker game will be considered only in case of ties.  
 Limit One Winner Per Family Per Week.



**Brown Implement, Inc.**  
 Lorenzo vs. Ralls

Massey-Ferguson equipment  
**Floydada Implement**  
 Hale Center vs. Petersburg

**Collins Implement Co.**  
 Motley County vs. Claude

"Is Everybodys Everything"  
**Dairy Queen**  
 Valley vs. Nazareth

**City Trim Shop**  
 Pampa vs. Coronado

**WIN PRIZES...**  
**Football CONTEST**  
**AND QUARTERBACK FORECAST**

**TIE BREAKER- Guess Total Points AND CIRCLE WINNER**

NAME	
ADDRESS	
CITY	

1ST PRIZE \$10<sup>00</sup>  
 2ND PRIZE \$6.00  
 3RD PRIZE \$4.00

**Production Credit Association**  
 Odessa Permian vs. Abilene

**Tastee Freez**  
 Texas Tech vs. Arkansas

Supplies For The Farmer  
**Russell's Equipment & Supply**  
 SMU vs. Baylor

**Kirtley's Market**  
 Houston vs. Texas A&M

**CONSUMERS FUEL ASSN.**  
 Rice vs. TCU

Good food and friendly service  
**Buddy's Food**  
 Texas vs. Oklahoma

The Fastest Service  
**Cornelius' CONCO**  
 Tennessee vs. Georgia Tech

Your L.H. Dealer  
**MARTIN & CO**  
 Washington vs. Arizona State

**Case Power & Equipment**  
 Dallas Cowboys vs. L.A. Rams



Several three bed...  
 King 983-...  
 3 bed...  
 King 983-...  
 All rice two and...  
 homes for...  
 can be arranged...  
 State Insurance...  
 at 983-3261  
 LE: Three bed...  
 ch 1 1/2 baths...  
 room, mobile h...  
 with storm cella...  
 houses...  
 W. Mar...  
 Wilkes Real Es...  
 bedroom brick...  
 priced to sell...  
 Barry...  
 nkers Ins. J...  
 L...  
 LS11...  
 TIE BRE...  
 Floydada...  
 Wellin...  
 SALE: Three be...  
 \$15,000. Go...  
 Joe Mack Bre...  
 983-3695 or 99...  
 SALE: All brie...  
 two bath wi...  
 and centr...  
 VA loans av...  
 Call William...  
 and Real Esta...  
 Rent...  
 ENT: In Lockne...  
 apartment...  
 N. Main c...  
 CARDS...  
 THANKS...  
 THE DUNCAN...  
 Duncan Facul...  
 wish to thi...  
 the many wa...  
 and their appr...  
 school person...  
 teachers appre...  
 The flowers, a...  
 delicious snack...  
 by all...  
 would like to...  
 appreciation to...  
 and neighb...  
 kindness duri...  
 and death of o...  
 and Mrs. Ger...  
 and Mrs. Dav...  
 and Mrs. Kenne...  
 Auction...  
 nday, Octobe...  
 2 p.m.  
 redeemed Pa...  
 Merchandis...  
 & Used Fur...  
 New Gift Ite...  
 Frontier...  
 Auction Cer...  
 621 ASH...  
 PLAINVIEW...  
 DRAGE SP...  
 ATS, FURNIT...  
 THINGS, ETC...  
 THE MONTH...  
 MONTH 10%...  
 COUNT...  
 WEST TEXAS...  
 MINI STORAGE...  
 983-...  
 Ready-Mid...  
 Concrete...  
 ming & Finis...  
 Rock...  
 Gravel...  
 San...  
 FIERRO...  
 & SONS...  
 652-2224...  
 Lockney

# CLASSIFIED ADS sure to get results

**CLASSIFIED RATES**

CLASSIFIED ADVERTISING RATE: 15 CENTS PER WORD FIRST INSERTION: 10 CENTS PER WORD EACH SUBSEQUENT INSERTION. MINIMUM CHARGE \$2.00. CLASSIFIED DISPLAY RATE: \$1.40 PER COLUMN INCH CARD OF THANKS: \$2.00.

**Autos For Sale**

4 shocks for the price of 3. Free installation. 123 W. Calif.

FOR SALE: 78 Ford LTD II, two door 27,000 miles. Call 983-3527 or 983-2717. 10-11p

FOR SALE — 1964 Chrysler four-door, power steering, radio, air conditioner. Also 1973 Buick station wagon, power steering and brakes, AM/FM radio. Call 652-2768. L10-11c

REAL SHARP low-mileage 1978 Pinto Ford 2-door. Air cond. radio, heater, 4-speed transmission. Extra good on gas mileage. Call 652-3641. L10-11c

FOR SALE OR Trade: White 1975 Chevrolet Belaire. Perfect condition, power steering and brakes, air-conditioning. \$1400. Call W.B. Eakin 667-2289. T10-11p

FOR SALE: 1973 Ford 1/2-ton custom pickup. Clean, never used on farm. 983-2678. tpf

**NOTICE**

FREE FIREWOOD: Dead tree needs to be cut. Anyone wanting firewood can cut and haul away. 983-5348. 10-7c

WANTED: Good used trampoline. 652-2111. L10-14c

**Happy Birthday**  
Beth. F.

**For Sale**

FOR SALE: Sweet Potatoes. Six miles north of Flomot. 469-5387. L10-21c

REDUCED FOR CLEARANCE: Refrigerated A/C 14,000 BTU. was \$479.95 - Now \$369.95. Sears, Floydada, 983-2862. tfc

FOR SALE: white Kenmore electric range, self-cleaning oven, fully automatic. Was \$449.95 now \$339.95. Sears, Floydada 983-2862. tfc

FOR SALE: Hoover portable clothes dryer, \$50, 983-2380. 10-14c

HAY FOR SALE: Nathan Mulder, 983-2738. 10-7c

HAY FOR SALE: Red Top Cane, Excellent condition, Call 983-3287 after 6 p.m. Ask for Jerry. 10-11p

HAY FOR SALE: Good fresh crop in stack. J.B. Barton. 459-5215. Flomot. 10-21p

**LOST & FOUND**

LOST: Ten lambs. Contact Kenneth Bloys or Gene Bloys at 983-3828 or 983-2969. 10-7c

LOST: Small dog. Male peeka-poo. Vicinity of Andrews Ward School. Wednesday afternoon. Black and brown, answers to "Sparky." REWARD \$10. Call 983-5392 after 5 p.m. tpf

**BUSINESS OPPORTUNITIES**

Have a highly profitable and beautiful Jean Shop of your own. Featuring the latest in Jeans, Denims and Sportswear. \$15,500.00 includes beginning inventory, fixtures, and training. You may have your store open in as little as 15 days. Call any time for Mr. Loughlin (612) 835-1304. 10-7c

cash in with a classified ad...

**Public Notices**

**LEGAL NOTICE**  
Lockney ISD is now accepting bids for new roof on Jr. High bldg., Band Hall and Jr. High cafeteria. Repair work on Administration Office, elementary bldg., NW corner. Bids should be in Superintendent's office by 5:00 p.m., October 15, 1979. Specifications may be obtained in Superintendent's office at 6th & Willow. The school reserves the right to reject any and all bids. W.H. Hallmar, Superintendent Lockney ISD. L10-7, 11, 13c

**Diamond Industrial Supply Co., Inc.**  
Phone Days 296-7418 Nights 296-1200 or 296-7228  
1014 Broad way  
Plainview, Texas

Chain Sprockets V belts Sheave U-joints Oil Seals O-rings Wisconsin  
SKF RCA Timken Bower Cotton Stripper Brushes & Bats  
"We Appreciate Your Business More" L10-11c

**Auction**  
New Auction Time -----  
First And Third Sunday  
Afternoon 1:30 P.M.  
Next Sale  
October 7, 1979  
**Plainview Auction**  
410 EAST 6TH  
PLAINVIEW, TEXAS  
293-9106 Or 296-5787  
Consignments Welcome

**For Sale**

FOR SALE: Baldwin Acrosonic piano, like new, call 983-3181. tfc

BALED CANE AND HEGARI MIXED, \$2.00. Thomas Pierce 983-2578. tfc

FOR SALE: 70 ft. chain link fence, 6 ft. high with gate. Call 983-2453. 10-7c

PORTABLE DISHWASHER: 2 1/2 year Kenmore - butcher-block top. Excellent condition \$150. 983-5348. 10-7c

FOR SALE: Fold down tent trailer \$200. 118 W. Crockett. T10-11p

FOR SALE: Canning tomatoes 10 cents lb. James Lovell 983-2633. 10-7c

FOR SALE: Sweet potatoes. Six miles north of Flomot. Joe Edd Helms. 806-469-5387. 10-21p

FOR SALE: Cane hay \$50 per ton, in field. 847-2675, Silvertown. 10-14c

FOR SALE — Hot Point washer and dryer; GE dryer; Wards gas cookstove; dinette set, table and six chairs; three-piece bedroom suite; dresser; refrigerator; 9x12 braided rug. Call 652-2768. L10-11c

**Fireplaces**  
BY MAJESTIC BUILT-IN OR FREE-STANDING CALL OR COME BY AUDRY MCCORMICK 107 WILLOW LOCKNEY 652-2572 L TFC

**Help Wanted**

WANTED: City Maintenance-water works man. Apply at City Hall, Roaring Springs, 348-3131. tfc

HELP WANTED: Dependable woman to do part-time light housekeeping and some cooking. Call 652-3451. L10-14c

\$205.80 minimum Guaranteed for 5 hour work week at home. Ladies Only Please. Free info: Charter P.O. Box 1783, Waco, Texas 76703. 10-14c

INSURANCE AGENTS UNION FIDELITY LIFE

Needs General Agents in the state of Texas. Add to your portfolio our money making Medicare All Star Plans and our A&H and Life Plans. We offer:

1. High commissions
2. Lifetime vested renewals
3. Fast issue, within 72 hours
4. Liberal underwriting
5. Prompt & efficient claim service
6. Immediate banking authority — every day is payday

For a confidential telephone interview call TOLL FREE 1-800-241-5026 between 9 a.m. — 12 noon EST.

**PETS**

PRETTY KITTENS. To give away. 652-3560. L10-14p



Auto Accidents DO Happen... If one happens to you, be protected. Our car insurance offers coverage to meet your special needs — repairs to personal liability.

**BAKER**  
Insurance Agency  
127 W. Calif.  
Ph. 983-3270

**COW POKES** By Ace Reid



"Now here is two of my big bucks, and the other two are in the glove compartment!"

THIS FEATURE SPONSORED BY  
**Floydada Real Estate & Insurance Agency**  
AUTO, FIRE & FARM INSURANCE  
Jim Word — — — Phone 983-2360

**CARPET 30 REMNANTS**  
All Sizes From 12 X 9 To 12 X 17  
★ KITCHEN  
★ SHAG  
Wholesale Less 20%  
**WHITES AUTO FLOYDADA**

**TURNER REAL ESTATE**  
983-2635 Farms Ranches Floydada, Texas

**Brown's Is Headquarters For Jeans**  
Sedgefield, Levi, & Wrangler  
In Sizes For—  
Men - Students - Boys

**FARMS-RANCHES-CITY PROPERTIES-BUSINESS LEASES-LOANS**  
**B. B. WILKES BROKER REAL ESTATE**  
100 S Main, Lockney Barry Barker, Solicitor  
Barker Insurance Agency-652-2642

IF IT IS INSURANCE -SEE-  
**BARKER INSURANCE AGENCY**  
LIFE-FIRE-CASUALTY-HOSPITAL

SAVE MONEY on your FALL HARVEST  
Two combines available now!  
15 years experience!  
Reasonable rates!

JOHN DEERE SOYBEANS TURBO 7700's MILO SUNFLOWERS  
**R & R HARVESTING**  
Call 983-2825 Room 12  
Your satisfaction is our business!

**Announcements**

**INTERIOR PAINTING WALL PAPERING**  
Call Rena Turner or Nancy Mayo, 983-5130. tfc

**INSULATION**  
Fire-Resistant. Installed and Guaranteed. MARR Insulation Co. Lockney 652-3593. L10-7c

WANTED TO RENT-300 to 700 acres of land P.O. Box 1361 Plainview 79072. L10-7p

WILL DO ALL Types of carpenter work. Call 983-5201 after 5:30. tfc

C-1-D INSULATION can help save your dollars. For information call 983-2601.

NEED SOME OLD NEWS-PAPERS? We got all you want at the Beacon office, 220 South Main, Lockney. Come and get 'em Please! L10-7c

WE DO Painting, floor leveling, house blocking, roofing and remodeling. We are now working Floydada Area. Contact Childress Bro. Collect 352-9563 tfc

WILL DO yard and garden spots. Hand tilled. Call 983-5606. 9-27c

This Month's Special: Carpets 9x16x7 feet \$350. Odum and Son Steel Builders Call 983-2276, 322 W. Houston, Floydada. 10-28c

"Carpet Need Cleaning?" Let me do the work for you. Dry foam, 10 cents sq. foot. Call Jack Moore 983-3033 after 5 p.m. tfc

**Farm Items**

FOR SALE: Two Allis Chalmers, self-propelled cotton strippers. Broadcast headers, bum extractions, good condition. John Deere 4020 cat - with 282, stripper, basket, mounted ready to go. Call 983-3791. 10-21c

FOR SALE: 1976 International 95 cotton stripper. Five cotton trailers 8x9x24, Big 12. Call 983-3273 after 6. 10-7c

FOR SALE: 915 combine, clean 983-2281. 10-7c

FOR SALE: Three 24 ft. expanded steel cotton trailers located at Floydada Co-op Gin, one IHC cotton stripper with basket, one IHC 1974 grain drill 16x10, Call 983-2884 or Greer Christian 983-3980. 10-7p

**DAN'S AUTO SERVICE**  
DAN TEUTON, Owner  
Specializing in Automatic Transmission, Motor Tune-Ups, Auto Air Conditioning.

General Repair We Have A BRAKE LATHE to handle all passenger car brake drums. See us for complete brake service.  
Phone 652-2462

**COTTON STRIPPER AND BASKETS MOUNTED**  
Johnny Smith 983-2604  
Victor Smith 983-2048

**REPAIR ALL MAJOR APPLIANCES**  
Collins Appliance 983-5702

**Real Estate**

FOR SALE: Three bedroom, den, livingroom, two baths; All carpeted; storage building and shed. 983-3994. tfc

FOR SALE: Three bedroom two baths, central heat. 12x24 storage house, 983-2756, Scott Faulkenberry tfc

FOR SALE: Brick three bedroom, one bath, modern kitchen, new carpet and new evaporative air conditioner, storage shed, fruit trees, new paint, and fenced back yard All this plus a great location. 104 J.B. Ave. Floydada. Call 293-8137 in Plainview after 5 p.m. tfc

PRICE REDUCED FOR QUICK SALE-Living dining room carpeted, 2 carports 2 bedrooms, possible 3rd bedroom or shop. Large lot. 702 W. Plainview Highway. Call 652-2737. L10-7c

HOUSE FOR SALE: 2 bedroom newly redecorated. Call 652-3179, Delvin Bybee. L10-7c

FOR SALE: A large brick home, 301 SW. 2nd, Lockney E.A. Sandusky 652-2714 L10-7c

HOUSE FOR SALE: Three bedroom on three lots, third and Houston in Lockney, 983-3838. 10-18c

FOR SALE: House, four rooms and bath, to be moved — \$1,200. R.C. Mitchell, Lockney, Texas. Telephone 652-3446. L10-7, 10-4p

FOR SALE — Brick duplex in Lockney. For information, call 652-3785. L12-30c

**Lots and Acreage**

FOR SALE: 3200 acres, all in cultivation, all level, no waste land. Randall King Real Estate. 983-5028 or 983-2707. S10-21c

WANTED TO BUY irrigated or dryland farm in Floyd or surrounding area. Write Box XRO, c/o Hesperian, Box 700, Floydada. tfc

Would like to lease grazing land for 150 to 400 cows — cash lease — if you have such grazing land for lease call collect 405-782-3974 or 214-785-6751. 10-11c

LET US DO YOUR HERBICIDE and Insecticide Spraying. We have two ground rigs and an airplane available. Lone Star Chemical.

Lone Star Chemical, Inc. Office: 652-2761 Deanie Henderson: 652-3434 L10-7c

Can You Use Some Extra Money Let Us Help!!!!  
WE BUY SCRAP IRON, OLD JUNKERS, AND FREE PICKUP  
Call 983-5277

**ERA**  
Ralph V. Graham  
504 Joliet - 293-4246  
305.9 acres ALL IN CULTIVATION. 2 wells, fairly Good Water. Near Lockney.

Nice 3-1-2, Corner Lot, Central Heat and Ref. Air - 420 So. Main, Lockney  
Near Schools 3-1-2, carpet, concrete cellar, fenced back yard. Nice Home for someone.  
CALL ME TODAY  
J.H. Workman  
652-3619

**Real Estate**

Several good three bedroom Real Estate. Bond, 983-5078. tfc

3 bedroom mobile home. King Real Estate. 983-5028. tfc

Two and three bedrooms for sale. arranged. Insurance and 983-3261. tfc

Three bedroom mobile home. storm cellar and houses. Only W. Marivena tfc

Real Estate room brick. West to sell quick. Barry Barker Agency Lockney LS1010-28c

Three bedroom, \$15,000. Good Breed 983-3885 or 983-2202. tfc

All brick three bath with eva- and central heat. loans available. Williams Insur- Real Estate 983- tfc

In Lockney one-artment. Come Main or call L10-7c

**CARDS THANKS**

EDUNCAN PTA Faculty and wish to thank the many ways they their appreciation personal during flowers, and the snacks were 10-7p

like to express to all our neighbors for during the death of our loved

Mrs. Gene Bloys Mrs. David Bloys Mrs. Kenneth Bloys 10-7c

vs. Georgia Tech

Fastest Service In T

elius' CONOCO

Your L.H. Dealer

MARTIN & CO.

vs. Arizona State

Frontier

AGE SPACE

FURNITURE, etc.

ST TEXAS STORAGE

Ready-Mix concrete

ing & Finishing

Gravel

Sand

ERROS & SONS 652-2224 Lockney

## Silverton Coed Wins Cotton Award

Cynthia Ann Edwards of Silverton sewed up a high fashion for this year's wardrobe — and, with it, several state awards at the 1979 State 4-H Fashion Revue in Waco last week.

Named first-place winner in the contest's cotton division, Cynthia also took the runner-up slot in the statewide division.

A Silverton High School sophomore, she is the daughter of Mr. and Mrs. Harold Edwards.

Her 4-H clothing project isn't her only interest, she admits.

"I enjoy playing the piano, cooking, water skiing, basketball and horseback riding."

However, as a six-year veteran of 4-H clothing projects, she says 4-H clothing work is an important interest — it may lead to a career in clothing and merchandising.

For this year's competi-

tion, an optional part of the clothing program, Cynthia created a "nautical-look" skirt and blouse of white cotton trimmed in red piping.

"This was my first time to work with piping — and I found it to be a rewarding but tedious experience," she confides.

A sailor collar topped the ensemble, which also featured a straight skirt — all made of crisp cotton/polyester poplin.

A metal anchor pin on the sleeve, red earrings and bangle bracelet, along with red-and-white sandal heels, completed the ensemble.

As cotton-division winner, Cynthia received a cash award from the Texas Cottonseed Crushers' Association, Dallas, Texas, and cotton fabric from Crompton Co., Inc., New York City, New York.

As statewide runner-up, she received a scholarship from Cloth World Inc., Ama-



Cynthia Ann Edwards

**SPORTRAIT**  
*Special*  
A BEAUTIFUL 8x10 NATURAL COLOR PORTRAIT  
**only 99¢**  
+ 50¢ POSTAGE & HANDLING

- FAMILY GROUPS WELCOME AT NO EXTRA CHARGE
- ALL AGES
- SEVERAL POSES FROM WHICH TO CHOOSE
- ONLY ONE ADVERTISING OFFER PER FAMILY
- MINORS MUST BE ACCOMPANIED BY PARENT

"Don't let the memory pass you by."  
PHOTOGRAPHIC LOCATION  
**Floydada Inn Motel**  
Thursday October 11  
1 - 8 P.M. Floydada

PORTRAITS BY **LE-MANN STUDIOS**

rillo, Texas.  
State 4-H Fashion Revue is sponsored by the Texas Agricultural Extension Service, The Texas A&M University System, as part of its State 4-H and Youth Program. It is the culminating event of the statewide 4-H clothing program.

Other winners include Betty Sue Vierus of Brenham, statewide winner and wool-division winner, along with Denise Thompson of Kress, Texas, first-place winner in the record-book division and wool-division runner-up.

**Going Out Of Business Savings To 75%**  
MISSY SIZES 6 - 20  
JUNIOR SIZES 3 - 13

**Kalico Fashions**  
626 AUSTIN  
PLAINVIEW

## Deaths

Brother Of

Floydada

Man Dies

E.B. Bloodworth, 82, brother of H.D. Bloodworth of Floydada died Monday night in a Santa Anna Hospital. Funeral services were Wednesday October 3 in Walker Funeral Home at Coleman. Interment was in Talpa Cemetery.

Survivors are his brother and one nephew, Wayne Bloodworth of Las Cruces, New Mexico.

Mr. and Mrs. H.D. Bloodworth and Mr. and Mrs. Wayne Bloodworth returned Wednesday night after attending the services.

**BUDDY'S**  
220 S. 2ND  
Store Hours  
Mon.-Sat., 8 a.m. to 9 p.m. Sun., 9 a.m. to 8 p.m.  
Values In This Adv Effective Through Wednesday October 10, 1979  
We Reserve The Right To Limit Quantities

**WE GIVE S&H GREEN STAMPS**  
½ Gallon Bell Deluxe  
**Ice Cream \$1.29**  
6-32 Ounce Coke Or Tab  
**COKE Or TAB 69¢**  
Plus 5¢  
With Coupon In This Ad

**WE GIVE S&H GREEN STAMPS**  
½ Gallon Buddy's  
**Milk 99¢**  
Grade A Extra Large  
**Eggs 9¢ Dozen**  
With Purchase Of 2 Lb. Owens Sausage

VALUES IN THIS AD IN ADDITION TO OUR THURSDAY

**WE GIVE S&H GREEN STAMPS**  
1½ Pound Soft N Lite  
**Bread 2/99¢**  
1 Pound Maryland Club  
**Coffee \$2.89**

**WE GIVE S&H GREEN STAMPS**  
Center Cut  
**Pork Chops \$1.99 LB.**  
Savory Boneless  
**Ham \$1.69 LB.**  
1 Pound Nabisco Premium  
**Crackers 2/99¢**

**WE GIVE S&H GREEN STAMPS**  
1 Pound Wilsons Certified  
**Bacon \$1.59**  
USDA  
**Ground Beef \$1.59 LB.**  
12 Ounce Tom Scott  
**Mixed Nuts 99¢**

**WE GIVE S&H GREEN STAMPS**  
10 Ounce Jenos Flat  
**Pizza 99¢**  
29 Ounce Glen Park Barbeque  
**Pears 69¢**  
32 Ounce White Swan  
**Salad Dressing 69¢**

**WE GIVE S&H GREEN STAMPS**  
14 Ounce Showboat  
**Pork & Beans 5/\$1.00**  
California  
**Oranges 3 \$1.00 Lbs.**  
16 Ounce Nabisco  
**Ritz Crackers 79¢**

**WE GIVE S&H GREEN STAMPS**  
1 Pound Cello  
**Carrots 5/\$1.00**  
Red Rome  
**Apples 3 \$1.00 Lbs.**  
6-32 Ounce  
**Coke Or Tab 69¢**  
Plus 5¢  
Without Coupon Plus 5¢

**1980 BUICKS  
PONTIACS & GMCs  
Are Here!**  
We're Already Selling 1980's  
**1980 Show-date Oct. 11**

- Come See Us -----
- ★ Door Prizes
  - ★ Refreshments
  - ★ Lots Of Give Away Items

"Keep That Great GM Feeling  
With Genuine GM Parts!"



**City Auto, Inc.**

201 East Missouri

Floydada

983-3767