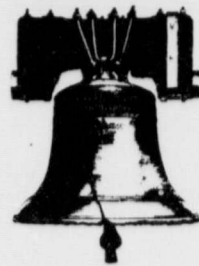


# The Floyd County Hesperian



Volume 83

Floydada (Floyd County) Texas 79235

Sunday, July 29, 1979

12 Pages in One Section

Number 60



## Bob Glenn Is New City Patrolman

Floydada has a new city policeman patrolling the neighborhoods at night. Robert Glenn, who will be 31 next month, recently accepted a position with the Floydada Police Department. He started his patrol duties Friday night and anticipates working nights mostly.

A native of Plainfield, N.J., Glenn moved to San Antonio three years ago. He moved here with his wife Gail and their 18-month-old son, Tommy. He first worked as a city patrolman in Devine and then took a job as deputy constable in Bexar County.

"We come from a small town back east, and was looking for another small town to settle in," Glenn said. "I saw an advertisement for a patrolman in the San Antonio paper and sent in my application. After a lengthy investigation, Chief Newton asked me to come on up to Floydada."

One of the attractions of the Texas South Plains that San Antonio doesn't have, Glenn noted, was a change of seasons. Constant Spring and Summer, apparently, can be boring.

Glenn graduated Plainfield High School. While in San Antonio he completed 280 hours of training at the Alamo Area Law Enforcement Academy and another 95 hours toward a criminology degree at San Antonio College.

He and his family now reside at 130 W. Marivena.

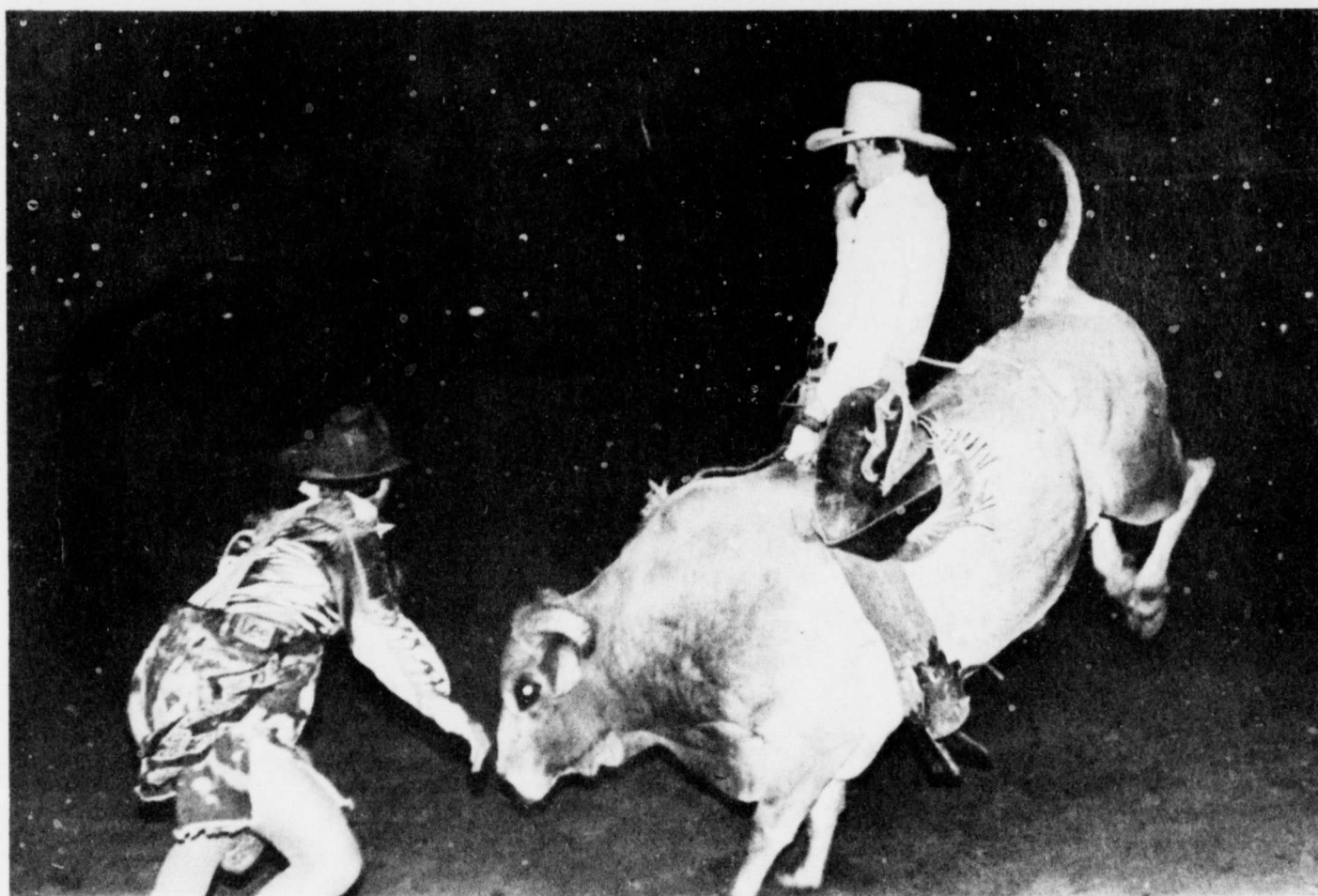
**ON THE BEAT** — Bob Glenn recently accepted a position on the Floydada Police Department as a patrolman. He will mostly patrol the city streets at night. Glenn is married and has one son. [Staff Photo]

## They Went Thataway

The Floydada Rodeo got off to an early start Thursday morning.

Someone apparently left the gate to the roping steers' pen open Wednesday night. By the time the oversight was noticed, about 20 of the cattle had decided to seek greener pastures.

It took rodeo organizer Joe Cluck and his cohorts some time before work to round up the little doggies. All the prodigal cows were believed returned to the pen, hopefully without including someone's Old Bossie. Yippie-ki-yi-yo, Joe.



**DANGEROUS ANTICS** — One of the pair of rodeo clowns at the Floydada Rodeo Thursday night prepares to move in and distract the bull if the rider should take a tumble. Both clowns are familiar with the bulls' habits and movements, and have scars to prove it. [Staff Photo]

## If You're Cheering For The Cows

# Floydada Rodeo Gets Off To A Good Start

The Floydada Rodeo got off to a good start Thursday night, but when the score was tallied, the animals appeared to have gotten the upper hand in the first night of events.

Disqualifications in the bull and saddle bronc riding events and faster-than-expected steers in the roping and bulldogging plagued many of the professional cowboys who entered. Appreciative applause from the crowd of several hundred and dusty blue jeans were all most contestants had to show for their entry fees.

A few good rides and a couple of fast times in bulldogging and calf roping highlighted the first night's action but, all in all, it was a lackluster performance by the cowboys.

For the cattle, it was a different story. One after another, the bulls threw their riders before the bell sounded and then turned their attentions to the arena hands and photographers inside the fences. Only fast action by the rodeo

clowns, who may look funny and tell jokes but are in a deadly serious business, kept the enraged animals from taking their displeasure out on everyone in reach.

Saddle bronc riders managed to stay atop their mounts, mostly, but the arena judges announced disqualifications left and right.

In the calf roping, several cowboys made good throws but lost points on technicalities. More calves managed to

outrun their pursuers to the end of the arena, at which point the cowboys decided to let them go and try again later.

One or two of the contestants made what at first seemed to be excellent rope tosses, but the calves darted through the loop before the cowboy could close the noose.

Some bulldoggers turned in good times. More ate a lot of dirt, others decided to let the steers go when the animals made an unexpected turn or pulled up short.

The women's barrel races was a highlight of the evening. Good, fast rides by all four women riders perked up everyone's spirits, even the some-

what dazed cowboys.

Kids under 12 years old lined up in the center of the arena to chase three calves around the grounds until all three were caught and their tail tags removed by the lucky youngsters. One calf was nabbed almost immediately, but the other two led the dozen kids a merry chase until the kids cornered the pair at the far end of the arena.

The disgruntled cowboys, after picking themselves up and dusting their pants, vowed that their general humiliation at the hands (or hoofs) of the beasts would not be repeated a second or third time.

The Hesperian will carry full final results and photographic highlights in Thursday's paper.

### Weather

High	Low	Molsture
72	64	
79	65	
82	67	
88	72	
91	72	
93	74	
84	68	.5
86	70	

Forecast for July — 3.1"



**NEW PASTOR** — The Rev. Leslie D. Hart recently took over his new duties as pastor of the Victory Baptist Church in Floydada. Born in Austin, Rev. Hart was raised in Burnett, Tex., where he attended high school. He graduated from Arlington Baptist College last May with a bachelor of arts degree. He resides, with his wife Sue and three boys, Chad, Les and Chris, at 625 W. California.

## Study Group Briefs Congressmen On Declining Ogallala Aquifer Water Reserves

The ground water and petroleum reserves of the Ogallala Aquifer region, for 50 years a significant source of food, fiber and energy for Texas and the nation are being rapidly exhausted, according to a briefing by the six-state High Plains Study Council to members of the Congress earlier this month.

The projected decline in the supply of the two basic resources, water and petroleum products, will result in a corresponding reduction in the supply of food, fiber and energy originating from the High Plains area, the report said. As a consequence, related land, capital, labor and management resources of the High Plains will be seriously affected.

The Texas High Plains has 34 percent of the total cropland and is the largest irrigation region with respect to acreage and water use in the state. Agricultural production of this area has contributed greatly toward Texas' current ranking third in the nation in agricultural production and third in value of agricultural exports. Since 1971, the High Plains has provided 41 percent of the state's crude oil production and another 41 percent of the natural gas.

An estimated 300 million acre-feet of water lies under the High Plains. In

1974, the annual withdrawal for irrigation and other uses was 8.4 million acre-feet, or 2.5 percent of the reserve annually. Based on projected pumpage, by the year 2,000 the Ogallala formation will be able to supply only about 53 percent of the six million irrigated acres in the area. By 2030, that figure will drop to 35 percent. Petroleum is expected to decline likewise.

The High Plains, the study group told the Congressmen, is in very serious trouble. The water and petroleum reserves are finite and being dangerously exhausted.

Several studies are underway to identify the benefits of the resources and impact of their decline on the area. These studies, when completed, will be given to policy-makers at the local, state and national levels to provide a basis for action to solve the problem.

A series of farm-level impacts, with projections for future years, will be computed using the best information on ground water reserves for each area. These impacts will be based on marketing and technological trends, but on the assumption that farmers' options will not be affected by changes in the institutional and legal systems. The effects of alternative water conservation and management strategies, including

incentives for farmers to invest in water-conserving technology, will be included in the study with an eye to offset dwindling local supplies.

In conjunction with the various state work elements, the Texas Department of Water Resources will conduct a series of public meetings and workshops within the Ogallala area to explain the project and to gather public reaction.

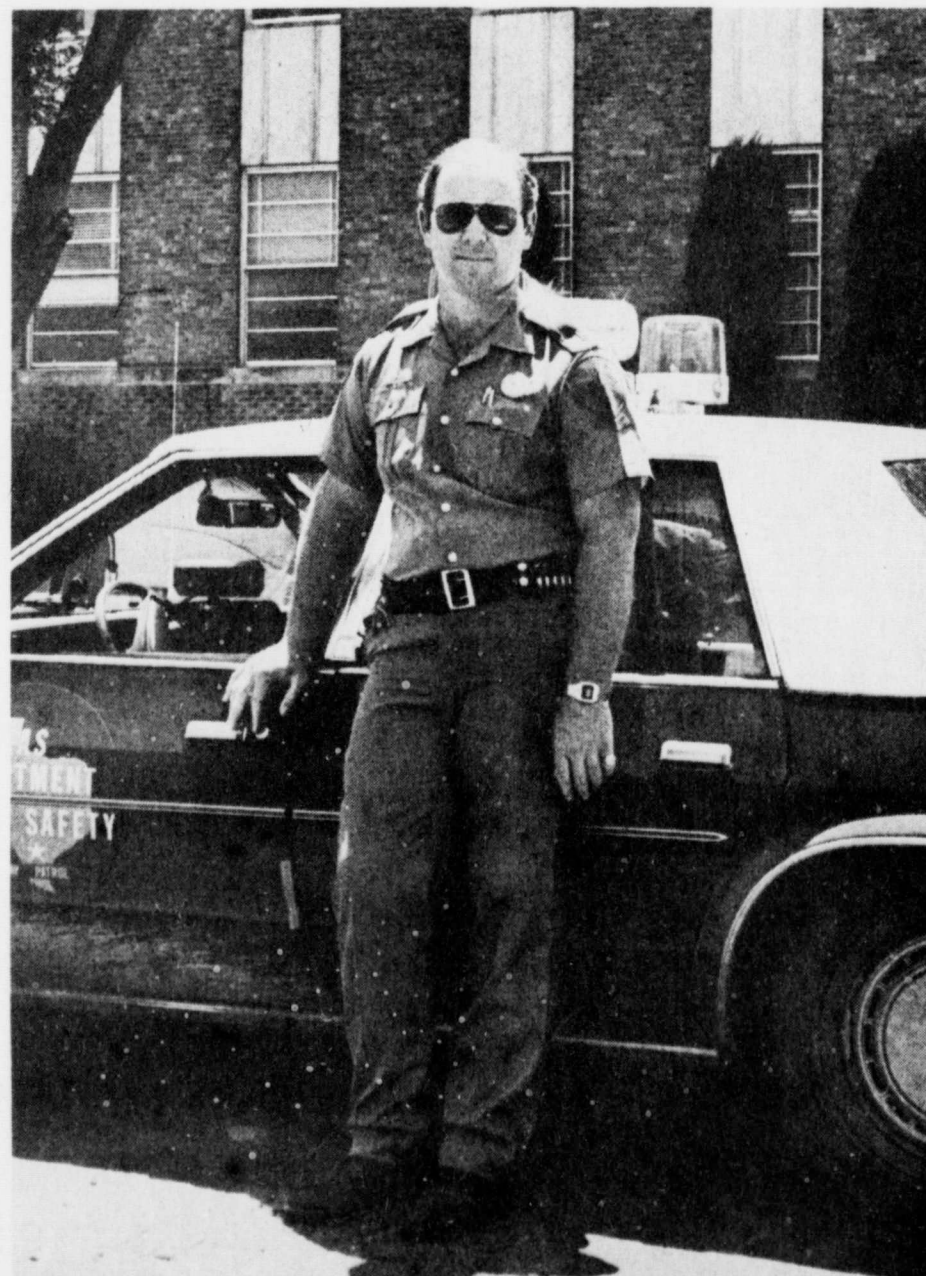
The final report on the Texas program will be submitted in September, 1981.

The Texas report to the Congress was made by A.L. Black, of Friona, one of four Texas members of the High Plains Council. The other members are Gov. Bill Clements, House Speaker Bill Clayton and Harvey Davis, executive director of the Texas Department of Water Resources.

Texas, New Mexico, Oklahoma, Kansas, Colorado and Nebraska comprise the Council.

Senator James Exon, of Nebraska, and Senator Henry Bellmon, of Oklahoma, welcomed the delegation and declared their full support for the program, but cautioned the group to carry out their study within the appropriated \$6 million because additional funds would be difficult to obtain from Congress.

## Bill Dawson Resigns From D.P.S. Highway Patrol



**GOODBYE, OLD PAINT** — DPS trooper Bill Dawson is hanging up his uniform and turning in his patrol car keys for a suit-and-tie desk job selling insurance at the end of this month. Dawson spent most of his DPS career in Floyd County. [Staff Photo]

Buddy's Milk 5¢  
1.1 Value  
9 Gallon

20¢ Per Copy

Take W.I.C. Cards  
U.S.D.A. Food Cou

ount "Light Days"

otex \$1  
\$1.39 Value  
Hi Dri  
aper  
wels 2/9  
65¢ Value  
4 Roll Hi Dri  
om 6  
99¢ Value  
10 Count Kleenex 2/9  
83¢ Value  
2 Ounce Nabisco  
la  
rs 2/\$1  
89¢ Value  
Santa Rosa  
ms 39  
Community  
ppenings  
ers 39  
New Crop  
es 3 \$1  
ound All Purpose  
des 99  
unce Ragu  
letti \$1  
e  
unce King Size  
With Coupon  
Without Coupon  
Expires 8-1-79  
Ounce Giant  
With Coupon  
Without Coupon  
Expires 8-1-79



**YARD OF THE WEEK** — Mr. and Mrs. W. H. Bunch returned home from a trip Thursday to discover a strange sign in their yard. At first, Mrs. Bunch said, they feared

someone had put the house up for sale. But on closer inspection, it was just the Women's Chamber weekly award for the best lawn and garden. [Staff Photo.]

**Finals Results --- Finally**

**Floydadans Score Well In Local Tennis Tourney**

Floydadan Donnette Marble trounced Levelland's Maggie Thompson 6-4, 6-2, last week in the Floydada Open Tennis Tournament women's singles division. Lon Davis, of Floydada, teamed up with George Smith, of Plainview, in the men's over 35 doubles to outplay Gayland Patterson and Bill Sylvester, both of Plainview, 6-2, 2-6, 6-3. In the consolation match for that category, Turner Hunter and Edell Moore, both of Floydada defeated Maurice Goodwin and a Dr. Stokes, of Lubbock, 6-3, 6-8, 6-3. In the women's doubles, Janelle Spears and Maggie Thompson, both of Levelland, won their match by default when the opponents failed to show.

Kathy McIntosh and Trudi Gilly took the consolation match over Eleanor and Susan Hendrix. No score was available in that contest. Elizabeth Farris, of Floydada, and Jed Menefee, of Fort Worth, lost their mixed doubles final match to Gena Faught and Carey White, of Brownfield, 6-4, 1-6, 6-3. In the consolation round, Floydadans Dwight Teeple and Trudi Gilly outlasted fellow locals Turner Hunter and Eleanor Hendrix 6-4, 6-0. Floydada's Blair Davis and Jed Menefee, Fort Worth, lost a hard-fought match in the men's doubles division to Mike Lofton and Tom Dennis, of Amarillo, 7-6, 6-4.

"Charm is a sort of bloom on women. If you have it, you don't need to have anything else; if you don't have it, it doesn't much matter what else you have." James M. Barrie



"NOW THAT YOU'RE ONE OF US, I'M SURE YOU'LL FIND THAT WE'RE JUST ONE BIG... MORNING, JERGENS... HAPPY FAMILY AROUND HERE."

**Gas Line Break Causes 'Geyser' Near Aiken**

One of Pioneer Natural Gas Company's main gas lines was ruptured Wednesday by telephone company equipment which was plowing in "a cable through a lake a mile east of Aiken. There were no injuries and no property damage—except to Pioneer's eight-inch steel line—as a result of the break, according to Judith Kerr, direc-

tor of corporate communications for Pioneer in Amarillo. However, residents in the area were somewhat uneasy about the escaping gas, which sent a "geyser" of water some 20 to 30 feet into the air for several hours before gas to that section of high pressure line was cut off. The break occurred about 7 p.m. Wednesday, approximately three miles west of Lockney, just north of U.S.

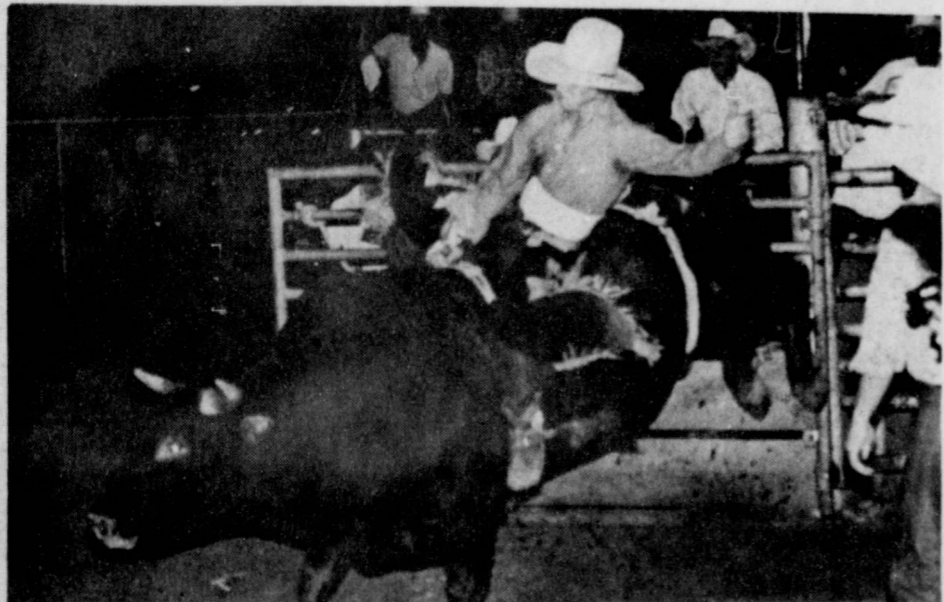
Highway 70. A section of the westbound lane of traffic on the highway was closed from about 8 p.m. to midnight Wednesday as a precautionary measure. Ms. Kerr said the line was punctured as Southwestern Bell Telephone employees were installing cable through a low area (a playa lake) covered with about two feet of water. The gas company temporarily lost

service to about 80 residential customers in the Aiken area, she said, but service had been restored to all but about 20 customers by 11:30 p.m. Wednesday, and she expected full service to be restored by mid-afternoon Thursday. There was no loss of service to Lockney or Plainview. The line was one of Pioneer's main natural gas lines from Plainview to Floydada.



**OUTRAGED BUT UNDAUNTED** — A young buckaroo makes the long walk back to the grandstand after failing to

catch one of the calves in the children's scramble. But the audience gave him a warm round of applause for his attempt.

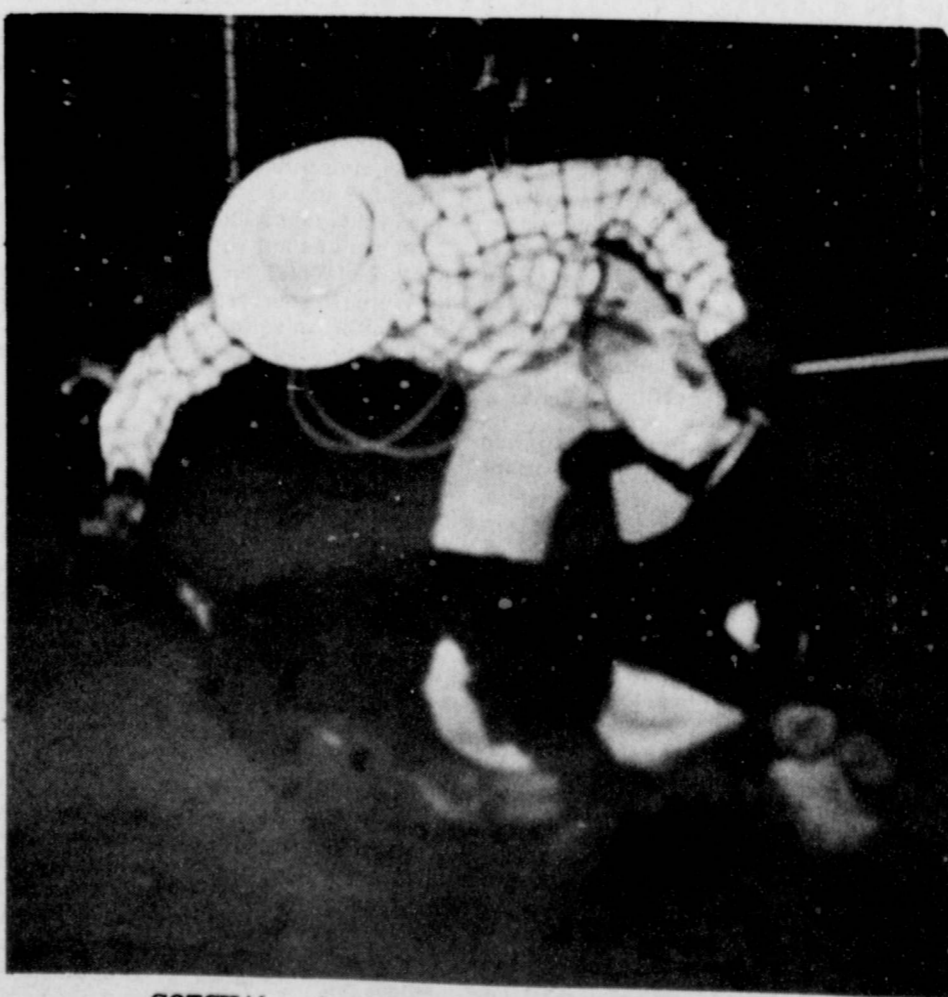


**A TON OF ORNERLINESS** — It takes a very brave, or very stubborn, cowboy to get atop one of these twisting, kicking beasts. But there was no shortage of willing riders at the rodeo grounds. This

bull, like most of them threw his rider and rampaged around the arena, scattering cowhands and spectators until he was driven into the holding pen. [Staff Photo.]



**OH, DARN!** — This cowboy probably used a lot stronger language than that after missing his steer in Thursday's bulldogging.



**GOTCHA!** — A good rope throw and a fast time helped this cowboy overcome the problems that plagued many of the ropers Thursday night. [Staff Photo]

**Lions Tour Girlstown Lubbock Campus**

A trio of Floydada Lions attended the District 2-T2 cabinet meeting at the New Deal High School Sunday and were given guided tours of the soon-to-be-completed Girlstown Lubbock Campus. Girlstown is one of several projects supported by the District 2-T2 Lions.

Paul Westbrook, zone chairman, Art Ratzlaff, Floydada Lion Boss and Lion Sam Spence joined 150 other Lions and their wives at the cabinet meeting. Located on property willed as a school for girls by the late Mildred Biglee, of Lubbock, the new campus was begun late last year and is expected to be completed this summer.

Graduates from the Whiteface, Berger and Austin campuses will receive vocational training, a college education or work experience, depending on their needs. Supervised independent living with skills being taught in budget management, insurance coverage, social skills, volunteer service and personal responsibility will be offered.

When licensing processes are completed with the Department of Human Resources, the campus will house 15 girls and the staff. Future plans include an administration building, three additional cottages, tennis courts, a swimming pool and storage buildings.

The total cost of the project was estimated at \$200,000. The Lubbock Campus is located west of Highway 87, between the Amarillo Highway and University Avenue.



Congressman  
**Charles W. Stenholm**  
Congressional Comment

Washington, D.C. — The Tokyo Round of Multilateral Trade Negotiations (MTN), which concluded in Geneva on April 12, 1979, was the seventh round of trade negotiations held under the General Agreement on Tariffs and Trade (GATT). GATT is a multilateral trade agreement of reciprocal rights and obligations which has been signed by eighty-three countries since its drafting in 1947.

The U.S. Trade Act of 1974 provided the negotiating authority for U.S. participation in the MTN. The Trade Act strictly prohibits Congress from amending the trade agreement after it has been submitted by the President.

Though the trade agreements cover many aspects of the trading sector, agriculture was a major topic of the MTN, having been somewhat ignored in past trade negotiations. The MTN agreements will result in new export opportunities for American agriculture through the reduction of foreign barriers to trade and improvement in the rules governing trade in agricultural products. Agriculture is our Nation's biggest industry, and its growth over the last ten years has been based largely on exports. As a result of these negotiations, foreign countries will reduce barriers which affected almost \$4 billion in 1976 trade, representing about one-fourth of U.S. farm exports subject to foreign barriers. Potentially even more important for the long term is negotiation of international codes of conduct in trade. This should help create a positive climate for further growth in U.S. farm exports, which topped \$30 billion in 1979. Texas exported \$1.8 billion of farm products in 1977, nearly four times the 1972 level, placing the state fourth in the nation as an exporter of agricultural products. Of Texas' farm sales, \$1 in every \$4 came from exports. Exports sales have a substantial effect on the price the farmer receives for his product. Recent increases in the price of grains, due to

exports, is an excellent example. Of major concern are trade agreements affecting the dairy sector. About half of all cheese imports go into effect. Once the new cheese imports will fall under the new quota system. Under the new quota system, 11,000 metric tons of cheese are allowed to be imported in 1980 and beyond are estimated at about 14,000 metric tons. Domestic production added protection against cheese imports under the agreement. Exporting countries are to refrain from using export subsidies to undercut U.S. prices. Procedures will be enforced which require that the U.S. be notified in advance of any program at 80 percent of the process of estimating the minimum.

The U.S. obtained concessions in other areas. Livestock and livestock products are expected to be U.S. agricultural exports worth \$592 million in 1975 exports. The U.S. received over \$592 million in 1976 exports. The MTN agreements cover a spectrum of matters affecting national trade. In the protectionism seriously affecting international trading agreements, though not certainly a step in the right direction and a step in which we are committed to moving toward an open free competitive environment.

THE WAY TO PUT IT OUT

THE FLOYD COUNTY HESPERIAN  
USPS 202-680

Published each Sunday and Thursday at 111 E. Mo. St., P.O. Box 700, Floydada, Texas 79235. Publication No. 202680. John Carroll, editor, publisher. Subscription rates: Local \$10.50 a year, out-of-trade area \$11.50 a year. Second class postage paid at Floydada, Texas 79235.

★ TEXAS PRESS ASSOCIATION MEMBER 1979

WHO'S FOR DINNER? — This bull waits in the chute to take his turn at trying to maul some hapless cowboy. Fortunately, despite the close calls, no one was hurt.

BEST QUALITY BEST PRICES BEST SAVINGS

HOUSE DETERGENT KIN FAIR ZES SOAP

21 OZ CAN

WHOLESALE STORES SELL & FLOYD COUNTY AMERICAN GROWN PORK AND PORK PRODUCTS

ACON

LEAN TRIM CENTER CUT PORK CHOPS

LEAN PORK PARE RIBS

LEAN PORK STEAK

PORK BREAKFAST STRIPS

PIZZLEAN

MEXICAN STYLE HOT LINKS

SMOOTH GERMAN BRAND SAUSAGE

OLD SOUTH BONE TURK

LB.

SUGAR

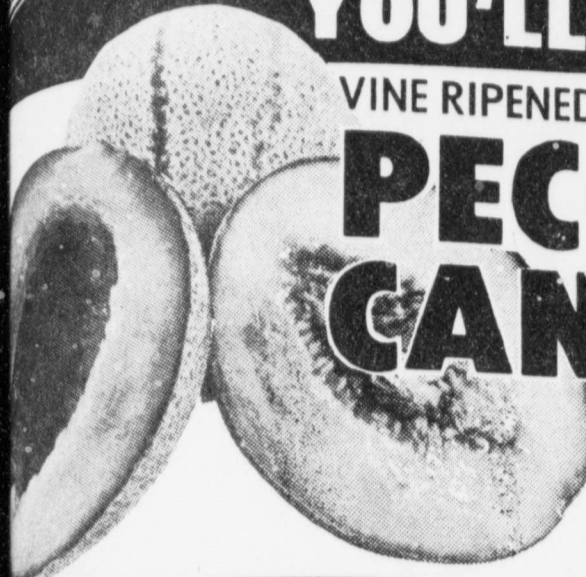
B. ag

P

# Don't Settle For Less!

YOU'LL ALWAYS GET THE BEST AT THRIFTWAY!

BEST MEAT  
BEST PRODUCE  
BEST SELECTIONS



VINE RIPENED

**PECOS  
CANTALOUPE** LB. **19¢**

CALIFORNIA LAGRANDE

**NECTARINES** LB. **39¢**

- WE RESERVE THE RIGHT TO LIMIT
- CALIFORNIA LARGE MELONS **HONEY DEW** EACH **79¢**
  - CALIFORNIA EXTRA FANCY **K. Y. BEANS** LB. **39¢**
  - CALIFORNIA FRESH **CELERY HEARTS** PKG. **79¢**
  - CALIFORNIA HASS **AVOCADOS** 3 FOR **\$1**
  - TEXAS GREEN **CABBAGE** LB. **19¢**

SHURFINE HALVES OR SLICES YELLOW  
**CLING PEACHES** 29 OZ. CAN **59¢**

HUNT'S WHOLE PEELED  
**TOMATOES** 3 14 1/2 OZ. CANS **\$1**

HOUSEHOLD SPECIALS  
**KING FAB** DETERGENT 40% OFF LABEL BOX **\$1.99**

SHURFINE VAC PAK REG. DRIP. ELEC.  
**COFFEE** 1 LB. CAN **\$2.29**

BATHROOM TISSUE  
**CHARMIN** 4 ROLL PKG **89¢**

PURE INSTANT  
**LIPTON TEA** 3 OZ. JAR **\$1.79**

15% OFF SUPER SIZE  
**ZEST SOAP** 3 BAR PKG. **\$1.59**

HOUSEHOLD CLEANSER  
**COMET** 21 OZ. CAN **49¢**

QUARTER PORK LOINS OR FAMILY PAK 9-11 CHOPS  
**PORK CHOPS** LB. **\$1.39**

EXTRA LEAN TRIM CENTER CUT **PORK CHOPS** LB. **\$1.79**

TOTAL GROCERY SAVERS

- JIF SMOOTH OR CRUNCHY **PEANUT BUTTER** 12 OZ. JAR **89¢**
- NABISCO'S CHOCOLATE SANDWICH **OREO COOKIES** 19 OZ. PKG. **\$1.29**
- FRANKLIN'S CRUNCH-N-MUNCH **SNACKS** 6 OZ. PKG. **59¢**
- OVERNITE DISP. DIAPERS **PAMPER'S** 12 CT. BOX **\$1.49**

FROZEN FOODS

- MORTON FROZEN FRIED **CHICKEN** 32 OZ. BOX **\$1.99**
- SHURFINE FROZEN **ORANGE JUICE** 12 OZ. CAN **69¢**
- MORTON'S FR. CHICK./TURKEY/SAL. STK./MEAT LOAF **DINNERS** 11 OZ. BOX **69¢**
- GREEN GIANT NIBLETS **CORN ON COB** 6 EAR PKG. **79¢**

8% OFF LABEL FABRIC  
**Downy Softener** 33 OZ. BTL. **99¢**

13% OFF LABEL COLGATE LIQUID DETERGENT  
**DERMASSAGE** 22 OZ. BTL. **79¢**

LIQUID DRAIN OPENER  
**DRANO** 32 OZ. BTL. **99¢**

DAIRY VALUES  
MARGARINE QUARTERS  
**BLUE BONNET** 1 LB. BOX **53¢**

SOUTH BONELESS SMOKED 2 1/2 LB. AVG.  
**TURKEY HAMS** LB. **\$1.79**

WRIGHT'S HICKORY SMOKED SLAB  
**SLICED BACON** LB. **99¢**

REGULAR OR SUPER  
**KOTEX** 30 CT. BOX **\$2.49**

KOTEX FEMININE  
**MAXI PADS** 30 CT. BOX **\$2.49**

SHURFRESH HALFMOON LONGHORN  
**COLBY CHEESE** 10 OZ. PKG. **\$1.19**

GRADE 'A' Medium  
**SHURFRESH EGGS** DOZ. CTN. **59¢**

Pure Granulated  
**Shurfine Sugar** 5 LB. Bag **\$1.19**

Assorted Flavors  
**Pepsi Drinks** 6 Pack Cans **99¢**

HEALTH & BEAUTY AID SAVINGS  
REGULAR OR MINT  
**CREST TOOTH PASTE** 9 OZ. TUBE **\$1.19**

REG./UNSCENTED SKIN  
**WONDRA LOTION** 10 OZ. BTL. **\$1.19**

CONCENTRATE  
**PRELL SHAMPOO** 7 OZ. TUBE **\$1.19**

**S.H. GREEN STAMPS** DOUBLE ON WED.

REG./UNSCENTED DEODORANT  
**SECRET ROLL-ON** 1.5 OZ. BTL. **\$1.19**

7 OZ. DEODORANT/6 OZ. ANTI-PERSP  
**SECRET SPRAY** CAN **\$1.99**



MRS. RONNIE LAWSON

## Teresa Duvall, Ronnie Lawson Married July 21 In Lockney

Miss Teresa Duvall became the bride of Mr. Ronnie Lawson in a double ring wedding ceremony, July 21 at 7:30 p.m. in the First Baptist Church of Lockney, Texas, with Rev. James C. Allison of Austin, Texas of-

ficiating.

The bride is the daughter of Mr. and Mrs. Tom Duvall of Lockney, Texas and the groom's parents are Mr. and Mrs. Bennett Lawson of Hamilton, Texas.

The nuptial area was de-

corated with a brass candle arch flanked by cathedral candlelabra holding ivory tapers, covered in tropical foliage, gypsophyllia and tied with apricot satin. Formal baskets of white gladioli, apricot carnations, daisies,

gypsophyllia, tropical foliage and the kneeling bench holding the unity candle completed the nuptial background.

The music was provided by Mrs. Robert McCrary of Andrews, sister of the bride, who sang "Walk Hand in Hand" and Carrie Vaughn and Larry Petty of Lubbock sang "Evergreen", "Sunrise, Sunset" and "Saviour Like a Shepherd Lead Us". Mrs. Ken Watson was the pianist and Mrs. James Ferguson, the organist.

Given in marriage by her father, the bride wore an ivory gown of chiffonet with a wedding band lace neckline, with halfmoon sheer yoke sprinkled with sheer lace and outlined with Venise lace, edged with sheer lace ruffle, long fitted bishop sleeves with sheer lace cuff, pleated shirt with matching lace trim and chapel train.

The bride's bouquet was a cascade arrangement of gardenias and white roses natural foliage and leather fern. Bridal satin streamers holding the bride's paternal grandmother's wedding hand enhanced the bouquet which was carried on a white bridal Bible which was a gift from her parents.

Mrs. Jimmy Glenn of Edmondson was the matron of honor, Mrs. David Camden of Garden City, Kansas, bride's matron and Miss Cindy Rucker of San Angelo served as bridesmaid. They were attired in floor length apricot dresses with matching chiffonet and lace trim and carried nosegays of gladioli, daisies, and gypsophyllia center with a crystal votive upholding apricot candles, accented with ivory satin streamers.

Aimee Lerman, of Rockwall, Texas, niece of the bridegroom, served as candlelighter.

Amy McCrary of Andrews, niece of the bride served as flower girl and Marcus Savage of Lubbock, nephew of the bride, was the ringbearer.

Serving the bride-groom as best man, was Gary Lawson of Hamilton, brother of the groom, Edward Nino of Dimmitt and Randy Wilson of Levelland, served as groomsmen.

The guests were seated by Keith Crum and Kelly Birdwell of Dimmitt.

A reception was hosted in Fellowship Hall of the First Baptist Church. The bride's table, covered with an ivory, lace cloth over floor length apricot underlay, was accen-

ted with the bridal bouquet and a three tiered wedding cake. Crystal appointments were used in serving the refreshments by Mr. Bill Golden and Patti Rucker of San Angelo.

The groom's table was covered with a floor length brown checked gingham cloth and accented by a wooden candleabra. Coffee and chocolate cake were served by Marci Mitchell of Plainview and Cathy McCarter. Those hosting the reception were Mmes: Claude Stallings, George Sparkman, Richard Wiley, Glenn Cooper, Kenneth Holt, Tom Marr, Jeff Terrell, and Dub Mercer.

After a wedding trip to Red River, New Mexico, the couple will reside at 3115, 35th in Lubbock, Texas.

Teresa is a graduate of Lockney High School and South Plains College in Levelland and is currently employed by St. Paul's Insurance Company. Ronnie is a graduate of Dimmitt High School and Metro Barber College in Lubbock. He is the manager of the Wolfarth Barber Shop.

### Births

#### ARNEY

Steve and Debbie Arney of Lufkin are the parents of a daughter Heather Nicole, who was born July 5 in Lufkin. She weighed seven pounds, five ounces.

Grandparents are Mr. and Mrs. J.R. Smith of Lufkin, Nolan Arney of Floydada and Eunice Lewis of Floydada. Great-grandmother is Mrs. J.D. Welborn, also of Floydada.

#### EMERT

Mr. and Mrs. Anthony Emert of Mator are the parents of a daughter, Shondra Lynn, born July 17 in Lockney General Hospital. Shondra Lynn, who weighed six pounds one ounce at birth, has a two year old brother, Anthony.

Grandparents are Mr. and Mrs. Elroy Emert of Dougherty. Foster grandparents are Mr. and Mrs. Owen Emert, also of Dougherty.

Great-grandparents are Mr. and Mrs. Guy Boston of Lincolnton, North Carolina, and great-great-grandmother is Mr. Elsie Hoyle of Newton, North Carolina.

## Gilberts Observe Golden Anniversary

Mr. and Mrs. Marvin Gilbert marked the occasion of their 50th wedding anniversary on July 22 from 2 to 4 p.m. at the fellowship hall of the First United Methodist Church in Lockney. Hosts were their children and grandchildren. They are Mr. and Mrs. Orland Gilbert and sons Greg, Garry, and Gavin Gilbert of Lubbock and Mr. and Mrs. Bob Miller and children Kristi, Blake, and Matt of Longview.

Presiding at the guest book were Kristi Miller, granddaughter of the Gilberts, and Mrs. Brad Tooley of Slaton. Alternating at the refreshment table were Mrs. Ronnie Adams and Mrs. John Simpson of Lubbock, Mrs. Charles Boughman of Amarillo, Mrs. Jane Bayley, Mrs. Eddie Teeter, Mrs. Kenneth Holt, and Mrs. Ike Johnson, all of Lockney.

Serving in the house party were Mrs. Ted Carthel, Mrs. Jim Warren, Mrs. Jerry Cannon of Floydada, Mrs. W.H. Hallmark, Mrs. Fred Byrd, Mrs. W.J. Mangold, Mrs. Faye Belt, Mrs. Estelle Powers, Mrs. Jack Frizzell, Mrs. Kenneth Holt, and Mrs. Robert Stovall, of Floydada, niece of the honored couple, Mrs. L.M. Gilbert of Fritch, sister-in-law, and Mrs. Jerry Ford.

Mrs. Omar Burleson assisted with the arrangements and served in the house-party.

Mary and Christine Huffman presented piano selections throughout the afternoon.

On Saturday evening at 7:00 o'clock Mr. and Mrs. Gilbert were honored with a dinner at K-Bob's Steak

House in Plainview. Sons and daughters and relatives were present to commemorate the 50th wedding anniversary.

OUT-OF-TOWN GUESTS These out-of-town guests attended the Gilberts' 50th wedding anniversary reception last day:

From Floydada — Mrs. and Darlean Stovall, George and Ty; Jerry and Sherry Cannon, Faige and Sherry Dr. Floyd Bradley, Mr. and Mrs. Cecil Hagood, Mr. and Mrs. J.S. Hale; Mr. and Mrs. Fred Cardinal.

Plainview — Mr. and Mrs. Earl Hicks and Louis E. Richard Stovall; Evans and myer; Doris Meriwether; and Mrs. George Meriwether; Mr. and Mrs. Hodel.

Lubbock — Mr. and Mrs. Roy Jarnigan; Mr. and Mrs. Barbee Ward; Mr. and Mrs. Terry McWhorter; Mr. and Mrs. Joyn McKinzie; Mr. and Mrs. Clyde Stovall; Mrs. Ronnie Adams; Mrs. John Simpson.

Abernathy — Mr. and Mrs. Jack Moss, Valerie and Kenneth; Dana Fauly.

Tulia — Dorothy Jennings Harris.

Also, Mr. and Mrs. E.L. Shoemaker, Abilene; Carolyn, Lauri and Dodd Donald, Dallas; Paulette Francis and Brady, Vidor; Mr. and Mrs. Charles Harris, El Paso; Virginia Teutsch, Fort Worth; Mr. and Mrs. Brad Tooley, Slaton; Mrs. Teak Stovall, Flomott; Bernice Wells, Stockton; Mr. and Mrs. L.M. Gilbert, Fritch; Dr. and Mrs. J.P. Williams, Roswell, N.M.

## NEWS 'N' NOTES

(by Sharon Hillis)

### Strengthening Marriage, Middle Years

A strong middle-years marriage can provide a shelter against loneliness, the ease of life-long friendship and many memories.

But many marriages hit a low point in the middle years.

Strengthening a marriage to prepare for the middle years is one answer—as opposed to divorce, separation or an unsatisfying relationship when the middle years

arrive.

WHY A LOW POINT? Researchers say middle-years marriages reach a low point because of several factors.

These factors include excessive domination by the husband, failure to communicate, poor self-esteem, decreasing companionship and failure to express affection and appreciation.

Other factors include heavy involvement with careers, extra-marital involvements and mid-life change.

#### HOW TO STRENGTHEN

To strengthen a marriage that will survive the child-rearing years, the "empty nest" and the mid-life role upheaval, here are some guidelines:

1) Establish your marriage relationship at the top of your priority list early in the marriage.

2) Do not allow the demands and activities of parenthood to crowd out husband-wife interaction. Plan special time with your spouse.

3) Strive toward equality in all aspects of your relationship.

4) Work at creating interesting friendships, especially with other couples who have satisfying marriages.

5) Evaluate your marriage from time to time.

Look for signs of deterioration, such as nagging sarcasm, possessiveness, criticism and self-discontentment. Seek help if needed.

6) Avoid being locked into boring or frustrating work situations.

# Food specials

Petty's Cat Claw 32 Ounce Jar	Keebler 13 Ounce Package
Honey \$2 <sup>25</sup>	Rich'n Chips 99¢
Carnation 1 Ounce Package	Milk Bone 24 Ounce Box
Hot Cocoa Mix 10/\$1 <sup>00</sup>	Dog Biscuits 2/\$1 <sup>00</sup>
Kraft 7 1/2 Ounce Package	Del Monte 5 Ounce
Macaroni & Cheese Dinner 3/\$1 <sup>00</sup>	Pudding Cup Assorted Flavors 5/\$1 <sup>00</sup>
Kellogg's 12 Ounce Package	Ortega 10 Shells 4 Ounce Package
Corn Flakes 2/\$1 <sup>00</sup>	Taco Shells 56¢
Kellogg's 40% Bran 16 Ounce Package	Van Camp's 16 Ounce Can
Bran Flakes 76¢	Pork & Beans 3/\$1 <sup>00</sup>
Kellogg's 6 Ounce Package	Hungry Jack Buttermilk 10 Ounce
Rice Krispies 2/\$1 <sup>00</sup>	Biscuits 2/\$1 <sup>00</sup>
Kellogg's 11 Ounce Package	Austex Beef 7 1/2 Ounce Can
Raisin Bran 72¢	Beef Stew 2/\$1 <sup>00</sup>
Gladiola Buttermilk 6 Ounce Package	Del Monte 16 Ounce Can
Biscuit Mix 5/\$1 <sup>00</sup>	Applesauce 2/\$1 <sup>00</sup>
Gladiola 6 Ounce Package	Del Monte 8 Ounce
Corn Bread Mix 5/\$1 <sup>00</sup>	Tomato Sauce 4/\$1 <sup>00</sup>
Gold Medal All Purpose 5 Pounds	Pringles Light 9 Ounce Twin Pak
Flour 96¢	Potato Chips 95¢

## Highway 70 Texaco



LOCKNEY

We Have Plenty Of Texaco Diesel & Gas

## Get Eye Voltage

with Merle Norman's Eye Glossary Offer  
Only \$6.50 with a \$6.50 Merle Norman cosmetic purchase.



MERLE NORMAN  
The Place for the Custom Face

July Clearance Continues

Our New Fall Fashions Are Here

- ★ Center Stage
- ★ Ivy Stevens
- ★ New Fall Faded Glory
- ★ II From Laguna
- ★ Vincenti
- ★ Rose Hips

Roye's

204 SOUTH MAIN Merle Norman Cosmetics

FLOYDADA

## FILOQUIER

- ★ New Line Of Cards
- ★ Bridge Tallies
- ★ Score Pads
- ★ New Stationery
- ★ Thank You Notes
- ★ Inspirational-Books

Schacht's

Flowers, Jewelry & Gifts

"Our Pleasure Is To Serve You"

652-2385

112 W. Poplar



MRS. RONNIE LAWSON

## Teresa Duvall, Ronnie Lawson Married July 21 In Lockney

Miss Teresa Duvall became the bride of Mr. Ronnie Lawson in a double ring wedding ceremony, July 21 at 7:30 p.m. in the First Baptist Church of Lockney, Texas, with Rev. James C. Allison of Austin, Texas of-

ficiating. The bride is the daughter of Mr. and Mrs. Tom Duvall of Lockney, Texas and the groom's parents are Mr. and Mrs. Bennett Lawson of Hamilton, Texas. The nuptial area was de-

corated with a brass candle arch flanked by cathedral candelabra holding ivory tapers, covered in tropical foliage, gypsophyllia and tied with apricot satin. Formal baskets of white gladioli, apricot carnations, daisies,

gypsophyllia, tropical foliage and the kneeling bench holding the unity candle completed the nuptial background.

The music was provided by Mrs. Robert McCrary of Andrews, sister of the bride, who sang "Walk Hand in Hand" and Carrie Vaughn and Larry Petty of Lubbock sang "Evergreen", "Sunrise, Sunset" and "Saviour Like a Shepherd Lead Us". Mrs. Ken Watson was the pianist and Mrs. James Ferguson, the organist.

Given in marriage by her father, the bride wore an ivory gown of chiffon with a wedding band lace neckline, with halfmoon sheer yoke sprinkled with sheer lace and outlined with Venice lace, edged with sheer lace ruffle, long fitted bishop sleeves with sheer lace cuff, pleated shirt with matching lace trim and chapel train.

The bride's bouquet was a cascade arrangement of gardenias and white roses natural foliage and leather fern. Bridal satin streamers holding the bride's paternal grandmother's wedding band enhanced the bouquet which was carried on a white bridal Bible which was a gift from her parents.

Mrs. Jimmy Glenn of Edmondson was the matron of honor, Mrs. David Camden of Garden City, Kansas, bride's matron and Miss Cindy Rucker of San Angelo served as bridesmaid. They were attired in floor length apricot dresses with matching chiffon and lace trim and carried nosegays of gladioli, daisies and gypsophyllia center with a crystal votive upholding apricot candles, accented with ivory satin streamers.

Aimee Lerman, of Rockwall, Texas, niece of the bridegroom, served as candlelighter.

Amy McCrary of Andrews, niece of the bride served as flower girl and Marcus Savage of Lubbock, nephew of the bride, was the ringbearer.

Serving the bride-groom as best man, was Gary Lawson of Hamilton, brother of the groom. Edward Nino of Dimmitt and Randy Wilson of Levelland, served as groomsmen.

The guests were seated by Keith Crum and Kelly Birdwell of Dimmitt.

A reception was hosted in Fellowship Hall of the First Baptist Church. The bride's table, covered with an ivory, lace cloth over floor length apricot underlay, was accen-

ted with the bridal bouquet and a three tiered wedding cake. Crystal appointments were used in serving the refreshments by Mr. Bill Golden and Patti Rucker of San Angelo.

The groom's table was covered with a floor length brown checked gingham cloth and accented by a wooden candelabra. Coffee and chocolate cake were served by Marci Mitchell of Plainview and Cathy McCarter. Those hosting the reception were Mmes: Claude Stallings, George Sparkman, Richard Wiley, Glenn Cooper, Kenneth Holt, Tom Marr, Jeff Terrell, and Dub Mercer.

After a wedding trip to Red River, New Mexico, the couple will reside at 3115, 35th in Lubbock, Texas.

Teresa is a graduate of Lockney High School and South Plains College in Levelland and is currently employed by St. Paul's Insurance Company. Ronnie is a graduate of Dimmitt High School and Metro Barber College in Lubbock. He is the manager of the Wolforth Barber Shop.

### BIRTHS

#### ARNEY

Steve and Debbie Arney of Lufkin are the parents of a daughter Heather Nicole, who was born July 5 in Lufkin. She weighed seven pounds, five ounces.

Grandparents are Mr. and Mrs. J.R. Smith of Lufkin, Nolan Arney of Floydada and Eunice Lewis of Floydada. Great-grandmother is Mrs. J.D. Welborn, also of Floydada.

#### EMERT

Mr. and Mrs. Anthony Emert of Matador are the parents of a daughter, Shondra Lynn, born July 17 in Lockney General Hospital. Shondra Lynn, who weighed six pounds one ounce at birth, has a two year old brother, Anthony.

Grandparents are Mr. and Mrs. Elroy Emert of Dougherty. Foster grandparents are Mr. and Mrs. Owen Emert, also of Dougherty.

Great-grandparents are Mr. and Mrs. Guy Boston of Lincoln, North Carolina, and great-great-grandmother is Mr. Elsie Hoyle of Newton, North Carolina.

## Gilberts Observe Golden Anniversary

Mr. and Mrs. Marvin Gilbert marked the occasion of their 50th wedding anniversary on July 22 from 2 to 4 p.m. at the fellowship hall of the First United Methodist Church in Lockney. Hosts were their children and grandchildren. They are Mr. and Mrs. Orland Gilbert and sons Greg, Garry, and Gavin Gilbert of Lubbock and Mr. and Mrs. Bob Miller and children Kristi, Blake, and Matt of Longview.

Presiding at the guest book were Kristi Miller, granddaughter of the Gilberts, and Mrs. Brad Tooley of Slaton. Alternating at the refreshment table were Mrs. Ronnie Adams and Mrs. John Simpson of Lubbock, Mrs. Charles Boughman of Amarillo, Mrs. Jane Bayley, Mrs. Eddie Teeter, Mrs. Kenneth Holt, and Mrs. Ike Johnson, all of Lockney.

Serving in the house party were Mrs. Ted Carthel, Mrs. Jim Warren, Mrs. Jerry Cannon of Floydada, Mrs. W.H. Hallmark, Mrs. Fred Byrd, Mrs. W.J. Mangold, Mrs. Faye Belt, Mrs. Estelle Powers, Mrs. Jack Frizzell, Mrs. Kenneth Holt, and Mrs. Robert Stovall, of Floydada, niece of the honored couple, Mrs. L.M. Gilbert of Fritch, sister-in-law, and Mrs. Jerry Ford.

Mrs. Omar Burleson assisted with the arrangements and served in the house-party.

Mary and Christine Huffman presented piano selections throughout the afternoon.

On Saturday evening at 7:00 o'clock Mr. and Mrs. Gilbert were honored with a dinner at K-Bob's Steak

House in Plainview. Some friends and relatives were present to commemorate the 50th wedding anniversary.

### OUT-OF-TOWN GUESTS

These out-of-town guests attended the Gilberts' 50th wedding anniversary reception last day:

From Floydada — Rose and Darlean Stovall, Gene and Ty; Jerry and Sherrill Cannon, Paige and Sherrill Dr. Floyd Bradley; Mrs. Mrs. Cecil Hagood; Mr. and Mrs. J.S. Hale; Mr. and Mrs. Fred Cardinal.

Plainview — Mr. and Mrs. Earl Hicks and Louis Earl Richard Stovall; Lynn and myer; Doris Merweber; and Mrs. George McWether; Mr. and Mrs. Hodal.

Lubbock — Mr. and Mrs. Roy Jarnigan; Mr. and Mrs. Barbee Ward; Mr. and Mrs. Terry McWhorter; Mr. and Mrs. Joyn McKinzie; Mr. and Mrs. Clyde Stovall; Mr. Ronnie Adams; Mrs. John Simpson.

Abernathy — Mr. and Mrs. Jack Moss, Valerie and Kenneth; Dana Fandy.

Tulia — Dorothy Jennings Harris.

Also, Mr. and Mrs. E.L. Shoemaker, Abilene; Carolyn, Lauri and Dodd Dool, Dallas; Paulette Francis and Brady, Vidor; Mr. and Mrs. Charles Harris, El Paso; Virginia Teutsch, Fort Worth; Mr. and Mrs. Brad Tooley; Slaton; Mrs. Teak Stovall; Flomot; Bernice Wells, Fort Stockton; Mr. and Mrs. L.M. Gilbert, Fritch; Dr. and Mrs. J.P. Williams, Roswell, N.M.

## NEWS 'N' NOTES

(by Sharon Hillis)

### Strengthening Marriage, Middle Years

A strong middle-years marriage can provide a shelter against loneliness, the ease of life-long friendship and many memories.

But many marriages hit a low point in the middle years.

Strengthening a marriage to prepare for the middle years is one answer—as opposed to divorce, separation or an unsatisfying relationship when the middle years

#### WHY A LOW POINT?

Researchers say middle-years marriages reach a low point because of several factors.

These factors include excessive domination by the husband, failure to communicate, poor self-esteem, decreasing companionship and failure to express affection and appreciation.

Other factors include heavy involvement with careers extra-marital involvements and mid-life change.

#### HOW TO STRENGTHEN

To strengthen a marriage that will survive the child-rearing years, the "empty nest" and the mid-life role upheaval, here are some guidelines:

1) Establish your marriage relationship at the top of your priority list early in the marriage.

2) Do not allow the demands and activities of parenthood to crowd out husband-wife interaction. Plan special time with your spouse.

3) Strive toward equality in all aspects of your relationship.

4) Work at creating interesting friendships, especially with other couples who have satisfying marriages.

5) Evaluate your marriage from time to time.

Look for signs of deterioration, such as nagging sarcasm, possessiveness, criticism and self-discontentment. Seek help if needed.

6) Avoid being locked into boring or frustrating work situations.

# Food specials

Petty's Cat Claw 32 Ounce Jar	Keebler 13 Ounce Package
Honey \$2.25	Rich'n Chips 99¢
Carnation 1 Ounce Package	Milk Bone 24 Ounce Box
Hot Cocoa Mix 10/\$1.00	Dog Biscuits 2/\$1.00
Kraft 7 1/2 Ounce Package	Del Monte 5 Ounce
Macaroni & Cheese Dinner 3/\$1.00	Pudding Cup Assorted Flavors 5/\$1.00
Kellogg's 12 Ounce Package	Ortega 10 Shells 4 Ounce Package
Corn Flakes 2/\$1.00	Taco Shells 56¢
Kellogg's 40% Bran 16 Ounce Package	Van Camp's 16 Ounce Can
Bran Flakes 76¢	Pork & Beans 3/\$1.00
Kellogg's 6 Ounce Package	Hungry Jack Buttermilk 10 Ounce
Rice Krispies 2/\$1.00	Biscuits 2/\$1.00
Kellogg's 11 Ounce Package	Austex Beef 7 1/2 Ounce Can
Raisin Bran 72¢	Beef Stew 2/\$1.00
Gladiola Buttermilk 6 Ounce Package	Del Monte 16 Ounce Can
Biscuit Mix 5/\$1.00	Applesauce 2/\$1.00
Gladiola 6 Ounce Package	Del Monte 8 Ounce
Corn Bread Mix 5/\$1.00	Tomato Sauce 4/\$1.00
Gold Medal All Purpose 5 Pounds	Pringles Light 9 Ounce Twin Pak
Flour 96¢	Potato Chips 95¢

**Highway 70 Texaco**

**LOCKNEY**

**We Have Plenty Of Texaco Diesel & Gas**

## Get Eye Voltage

with Merle Norman's Eye Glossary Offer  
Only \$6.50 with a \$6.50 Merle Norman cosmetic purchase.

Offer good through September 30, 1979, on active supplies last.

**MERLE NORMAN**  
The Place for the Custom Face

July Clearance Continues

Our New Fall Fashions Are Here

- ★ Center Stage
- ★ Ivy Stevens
- ★ New Fall Faded Glory
- ★ Il From Laguna
- ★ Vincenti
- ★ Rose Hips

**Roye's**

204 SOUTH MAIN Merle Norman Cosmetics FLOYDADA

## FILOUUIER

- ★ New Line Of Cards
- ★ Bridge Tallies
- ★ Score Pads
- ★ New Stationery
- ★ Thank You Notes
- ★ Inspirational-Books

**Schacht's**  
Flowers, Jewelry & Gifts

"Our Pleasure Is To Serve You"

652-2385 112 W. Poplar

## Room And Board Only \$1 A Day....



Harky Hotel

...that is, at the hotel. The Owens family business is located in the hotel building used to house the hotel. Mrs. J.S. Williams of the hotel building used to house the hotel. Mrs. J.S. Williams of the hotel building used to house the hotel.

number of guests. The cost for room and board was \$1.00 a day. Many who did not stay nights, "boarded" meals-daily. Meals were 25 cents a day for all you could eat.

In 1915 Mrs. Owen rented the hotel to Sam McClusky. It was then converted into a cafe. The west side of the Floydada square had burned in July 3, 1911 and in the spring of 1917, the building that had housed the hotel and later the cafe, burned. Mrs. Owen died in October, 1939.

The late Mr. and Mrs. Owen had one daughter, Eula of Floydada, and two sons, Horace and Charlie, both deceased. The Owen family moved from Jack County to Floyd County in a covered wagon driven by a six mule team in 1898. Then in 1899, they moved to Floyd County.

## Engagement

### Smith, Boedeker Engagement

Mr. and Mrs. Robert Lee Smith of Sterley announce the engagement of their daughter Robin Ann to Charles Terry Boedeker, son of Mr. and Mrs. Charlie Boedeker of Providence.

Miss Smith is a 1976 graduate of Abilene Christian University, where she received a bachelor's degree in music education. She has

taught elementary music at Arlington and Snyder public schools. Boedeker farms in the Providence community.

Both Boedeker and Miss Smith attended Lockney schools for 11 years and graduated from Plainview High School in 1972. They have named September 1 as their wedding date.

### Dorcas Class Meets In Lockney

The Dorcas Sunday School Class of the Lockney First Baptist Church met at the home of Mrs. Elvira Stewart Monday at 3 p.m.

Mrs. Pauline Sams, class president, presided. Mrs. Rebecca Truett gave the devotional, which was taken from Romans VIII, 14 thru 28. The theme was "God

never turns his back." The closing prayer was given by Mrs. Irene Fowler.

Refreshments were served to the following members: Mmes. Pauline Sams, Annie Cunningham, Rebecca Truett, Irene Fowler, Bessie Smith, Ethel Carroll, the teacher, Mrs. Emma Thomas, and the hostess, Mrs. Elvira Stewart.

## Hestand Bennetts Mark 50th

### Wedding Anniversary

Mr. and Mrs. Hestand Bennett celebrated their Golden Wedding Anniversary Sunday, July 22.

Fifty relatives and friends attended church services with them at Main Street Church of Christ Sunday morning. Lunch was served to those and about 20 others in the church fellowship hall after services. A host of friends called in the afternoon to congratulate the couple.

Hestand Bennett and the former Rubye Tinnin were married July 20, 1929 in Clovis, New Mexico. Mr. and Mrs. C. K. Bennett, brother and sister-in-law of the groom were their attendants. They made their home in Lockney, where he was engaged in farming and she was a beauty operator. They moved to Decatur in 1934 where they were en-

gaged in farming, dairying, and owned and operated a feed store. They returned to Lockney in 1958 and moved into their present home south of town on January 1, 1960.

They have no children of their own, but their home has always been open to nieces, nephews, and friends who needed help or attention for a while.

Attending were Laura Manning, sister of Mr. Bennett; Lula Mae Cates, Mrs. Bennett's sister; Bonnie Bennett and Bertie Bennett, sisters-in-law; and Mr. J. K. Waddington Sr., brother-in-law.

There were 21 nieces and nephews, 22 great nieces and nephews and three great-great nephews present for the occasion. Those attending came from Texas, New Mexico, Colorado and Virginia.

Prices Effective July 30-August 4, 1979

WE RESERVE THE RIGHT TO LIMIT QUANTITIES



FRESH - SOFT - SMOOTH  
TENDERCRUST  
BREAD IS BETTER

We accept  
Food Stamps  
and  
WIC Cards

# THOMASON

VENTURE GROCERY & MARKET  
PHONE 652-3346 LOCKNEY, TEXAS



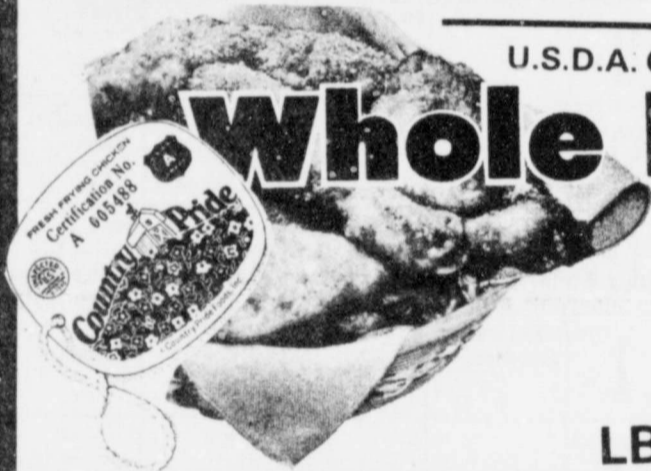
DOUBLE  
STAMPS  
ON  
WEDNESDAY

Store Hours

8 a.m. - 9 p.m.  
Monday - Saturday  
8 a.m. - 7 p.m. Sunday



### Meat Specials



U.S.D.A. GRADE A COUNTRY PRIDE

## Whole Fryers

55¢  
LB.

FRESH SPLIT <b>Half Fryers</b> LB. 65¢	CUT-UP PAN READY <b>Whole Fryers</b> LB. 65¢	FRESH FRYER <b>Drumsticks</b> LB. 99¢	FRESH <b>Fryer Thighs</b> LB. 99¢	FRESH SPLIT <b>Fryer Breast</b> LB. \$1.19
--	--	---	---	--

SHURFRESH <b>Sliced Bacon</b> 1 LB. PKG. \$1.19	HORMEL HAM <b>Ham Patties</b> 12 OZ. CAN \$1.39	WISCONSIN COLBY LONGHORN <b>Cheese</b> LB. \$1.89
--	--	--

SHURFRESH <b>Franks</b> 12 OZ. PKG. 99¢	SHURFRESH SLICED <b>Bologna</b> 12 OZ. PKG. \$1.09
--	---

### Produce Specials

PECOS VINE RIPENED

**Cantaloupe**  
4 \$1  
LBS.

TEXAS GREEN  
**Cabbage**  
LB. 15¢

CALIFORNIA SANTA ROSA <b>Plums</b> MIX OR MATCH LB. 39¢	CALIFORNIA <b>Nectarines</b> MIX OR MATCH LB. 39¢	CALIFORNIA <b>Peaches</b> MIX OR MATCH LB. 39¢
--	--	---

ALL PURPOSE RUSSET  
**Potatoes** 5 LB. BAG 49¢

### Grocery Specials

FOR HOME CANNING! <b>Sure-Jell</b> 2 1/4 OZ. PKGS. 79¢	BREAKFAST CEREAL <b>Cheerios</b> 10 OZ. BOX 79¢
FREEZER BAGS PINT <b>Bes-Pak</b> 2 50 CT. PKGS. 89¢	SHURFINE <b>Blackeyes</b> 3 15 OZ. CANS 89¢
FREEZER BAGS QUART <b>Bes-Pak</b> 2 40 CT. PKGS. 89¢	KEEBLER'S 13 OUNCE RICHIN CHIPS CC DROPS OR ICED OATMEAL WITH RAISIN <b>Cookies</b> 89¢
SHURFINE CIDER <b>Vinegar</b> GAL. BTL. \$1.59	

### Grocery Specials

SHURFINE ICED  
**Tea Mix**  
24 OZ. JAR \$1.09

JIF SM/CR.  
**Peanut Butter**  
12 OZ. JAR 79¢

13% OFF LABEL  
**Dermaassage**  
22 OZ. BTL. 79¢

SHURFINE 2-PLY  
**Bath Tissue**  
8 ROLL PKG. \$1.49

Dairy And Frozen Food  
SHURFRESH TASTY  
**Cottage Cheese** 24 OZ. CTN. \$1.09

MINUTE MAID  
**Orange Juice** 2 6 OZ. CANS 89¢

MORTON MEAT  
**Pot Pies** 3 8 OZ. PKGS. \$1

SHURFINE SPEARS  
**Broccoli** 2 10 OZ. PKGS. \$1

### Health And Beauty Aids

ANTI-PERSPIRANT/  
REG./UNSC.  
**Secret Spray** 2.5 OZ. CAN 99¢

REG./MINT  
**Crest Toothpaste** 3 OZ. TUBE \$1.19

REG./UNSC.  
ANTI-PERSPIRANT  
**Secret Spray** 6 OZ. CAN \$1.89

THICK RICH  
**Proll Concentrate** 3 OZ. TUBE \$1.19

SKIN CARE  
**Wondra Lotion** 15 OZ. BTL. \$1.59

Shell Specials  
8% OFF LABEL  
**Downy** 33 OZ. BTL. 99¢

10% MORE FREE  
**Comet Cleanser** 21 OZ. CAN 49¢

15% OFF LABEL  
**Zest Soap** 3 SUPER SIZE BARS \$1.59

GRANULATED  
**Shurfine Sugar** 5 LB. BAG \$1.19

SLICED OR HALVES 29 OZ. CAN  
**Shurfine Peaches** 59¢

SHURFINE LIGHT  
**Chunk Tuna** 6 1/2 OZ. CAN 69¢

Pillsbury  
**Flour** 5 LB. BAG 79¢

32 Ounce 6 Pack  
**Dr Pepper** 99¢ Plus Deposit  
With Minimum of \$5.00 Purchase  
Excluding Cigarettes And Gas  
Without Grocery Purchase \$1.49



Granddaughter Floydada Hotel

### Floydada Woman Receives Honors

Sherri Welborn, daughter of Mrs. J.D. Welborn of Floydada, received top honors in competition recently at the 28th Future Business Leaders of America National Leadership Conference in New Orleans. She is the daughter of Mr. and Mrs. J.D. Welborn and the granddaughter of Mrs. Georgia Smith.

### Make Own Snacks

Miss Welborn placed in the national competition. What better than to do give mom a surprise sometime, than her own afternoon.

Many children are really "starving" when they come in the door from school or play, say Dairy Council, Inc. dietitians. If your child has a big appetite, let him make his own half-sandwich out of chicken or tuna salad, cheese, or peanut butter and jelly.

Kids love most milk group snacks, and can make most of them without any help from mom or dad. Cheese and crackers are quick and easy. An ice cream cone is so good on a summer day! Yogurt is growing in popularity, especially frozen yogurt. Cereal and milk also makes a good and easy snack any time of day.

Teach your little one to make this instant pudding by himself, and try different flavors: In a container with a tight-fitting lid, pour one-half cup cold milk. (Mom may want to put a piece of tape on the outside to mark the half-cup level.) Add two teaspoons of instant pudding, put the lid on tightly, and shake until you have pudding! Serve with graham crackers.

A final favorite: Kids can mix their favorite flavor of powdered softdrink mix with milk instead of water, and presto! A magic cow!

...so he can help...

**RCA For The Best**  
**Price & Service On RCA T.V.'s**  
 See  
**MIZE PHARMACY & T.V.**  
 102 S. Main Lockney 652-2435

**PRESTON MILK** **GALLON \$1.90**  
 USDA Inspected Plant Custom Processing,  
 Wholesale and Retail Meats, Cut, Wrapp-  
 ed, Frozen, and Fully Guaranteed. Fin-  
 ancing Available Or Freezer Beef.  
**Lockney Meat Co.**  
 Hwy. 70 652-3305 Lockney, Texas

**CALL CABLE TV**  
**OF FLOYDADA 983-24**  
**TODAY**  
**FOR MORE AND BETTER**

**SUNDAY 07/29/79**

AM	WTCG CH. 17 Atlanta Cable 4	KTXH CH. 5 Lubbock Cable 5	PTL CH. 6 Charlotte Cable 6	KMCC CH. 28 Lubbock Cable 7	WGN CH. 9 Chicago Cable 9	KTV CH. 10 Oakland Cable 10	KCBD CH. 11 Lubbock Cable 11	KLBK CH. 13 Lubbock Cable 13	CBN CH. 2 Virginia Bch Cable 2
7:00	Three Scooges	No Programs	Kenneth Copeland	Praise the Lord Club	News Buyer's Forum What's Nu	"	Jimmy Swaggart Day of Discovery	This is the Life Hebob	Lesson Jimmy Swaggart
8:00	Maverick	"	Voice of Victory Oral Roberts and You	Jimmy Swaggart Prophecy Newsreel	Mass for Shut-ins Church	"	Oral Roberts Methodist Church	James Robison Presents Amazing Grace Bible Class	Hour of Power
9:00	Hazel	"	Jerry Falwell	Little Rascals I Love Lucy	Issues Unlimited Abbott and Costello	Westbrook Hospital Robert Schuller	"	Jerry Falwell	Changed Lives Spiritual Awakening
10:00	"	"	PTL Club	Best of Donahue	Voyage to the Bottom of the Sea	Day of Discovery	"	"	Sunday School Intouch
11:00	"	"	"	Baptist Church	Cisco Kid Lone Ranger	Oral Roberts Re: Humbard	Better Life Meet the Prez	Hour of Power	Time of Deliverance Oral Roberts
12:00	"	No Programs	Calvary Temple	Issues and Answers Animals, Animals	Major League Baseball Chicago at	It is Written	Marcus Welby, M. D.	Inquiry Women's Point of View	Coral Ridge Presbyterian Church
1:00	"	"	Amazing Grace Bible Class High Adventure	Putt-Putt Golf NASL Soccer Los Angeles	New York	On the Square	Adam-12 U.S.A. Mini-Olympics	Movie: 'Arizona'	World of Pentecost Deaf Hear
2:00	"	"	Harvest Temple Celebration	at Washington	"	Tarzan	"	"	At Home with the Bible World Concern
3:00	Movie: 'Don't Push, I'll Charge When I'm Ready'	"	Abundant Living James Robison	Wide World of Sports	"	Major League Baseball: San Francisco at	SportsWorld	"	CBS Sports Special: Think About Tomorrow
4:00	"	Firing Line	Club PTL	"	"	San Diego	"	"	Wide World of Truth Jerry Falwell
5:00	Championship Wrestling	Advocates	Amazing Grace Bible Class High Adventure	Lay Witness ABC News	"	Baseball Cont'd Movie: 'Godzilla'	Nashville Music NBC News	Last of the Wild CBS News	Program Cont'd Good News

**SUNDAY 07/29/79**

PM	WTCG CH. 17 Atlanta Cable 4	KTXH CH. 5 Lubbock Cable 5	PTL CH. 6 Charlotte Cable 6	KMCC CH. 28 Lubbock Cable 7	WGN CH. 9 Chicago Cable 9	KTV CH. 10 Oakland Cable 10	KCBD CH. 11 Lubbock Cable 11	KLBK CH. 13 Lubbock Cable 13	CBN CH. 2 Virginia Bch Cable 2
6:00	Major League Baseball: Cincinnati at	Consumer Survival Kit Victory Garden	Harvest Temple Celebration	Steve and Edie Gorme Our Love Is to Stay	Wild Kingdom In Search of...	Vs. the Sea Monster	Wonderful World of Disney	60 Minutes	Hour of Power
7:00	Atlanta	Evening at Pops: Angel Romero	Abundant Living James Robison	Salvage 1	Next Step Beyond People to People	Movie: 'Flower Drum Song'	Movie: 'A Fire in the Sky'	All in the Family One Day at a Time	Rex Humbard
8:00	"	Masterpiece Theatre: I, Claudius	PTL Club	Movie: 'Serpico'	Hee Haw	"	"	Alice Jeffersons	Best of 700 Club
9:00	Dragnet Ruff House	Upstairs, Downstairs	"	Mitch Miller Show	"	"	"	Kaz	Oral Roberts
10:00	Open Up	Sign Off	Jimmy Swaggart PTL Club	"	News	Movie: 'Cops and Robbers'	News	News	Jesus Festival Insight
11:00	"	"	"	Pop! Goes the Country Praise the Lord Club	"	"	Part 2	Movie: 'The Deadly Affair'	Sign Off
12:00	"	"	"	ABC News Sign Off	Nightbeat	"	News Sign Off	"	"

**MONDAY - FRIDAY**

AM	WTCG CH. 17 Atlanta Cable 4	KTXH CH. 5 Lubbock Cable 5	PTL CH. 6 Charlotte Cable 6	KMCC CH. 28 Lubbock Cable 7	WGN CH. 9 Chicago Cable 9	KTV CH. 10 Oakland Cable 10	KCBD CH. 11 Lubbock Cable 11	KLBK CH. 13 Lubbock Cable 13	CBN CH. 2 Virginia Bch Cable 2
7:00	Lassie	No Programs	Varied Programs	Good Morning America	Ray Rayner and Friends	"	Today	Morning	Varied Programs
8:00	Lucy Show	Sesame Street	"	"	"	"	Captain Kangaroo	Varied Programs	Varied Programs
9:00	Movie	Mister Rogers Neighborhood Electric Company	"	Phil Donahue	Movie	Cartoon Town	People Place All Star Secrets	All in the Family WHEW!	700 Club
10:00	"	Varied Programs	PTL Club	Laverne & Shirley Family Feud	"	Hanna-Barbera Romper Room	High Rollers Wheel of Fortune	Price Is Right	Varied Programs
11:00	Love, American Style	Over Easy	"	\$20,000 Pyramid Morning Magazine	Phil Donahue	Partridge Family Room 222	Password Plus Hollywood Squares	The Young and the Restless Search for Tomorrow	Ross Bagley
12:00	"	MacNeil-Lehrer Rept. Sign Off	Varied Programs	All My Children	Bozo's Circus	Rookies	News Days of Our Lives	As the World Turns	Varied Programs
1:00	Lucy Show	"	"	Praise the Lord Club	Bewitched	Phil Donahue	"	"	Varied Programs
2:00	Rebob (MWF)	Lilias, Yoga And You Villa Alegre	"	General Hospital	Love, American Style	Medical Center	Another World	"	700 Club
3:00	Flintstones	Sesame Street	"	Edge of Night	Mr. Magoo	Dialing for Dollars	Card Sharks	Love of Life	Varied Programs
4:00	Star Trek	Mister Rogers Neighborhood Electric Company	"	Family Affair	Superman/Batman Abbott and Costello	"	Beverly Hillsbillies Ironside	Gomer Pyle	Varied Programs Ross Bagley
5:00	Family Affair	Studio See	Harald of Truth Father Manning	ABC News	Sgt. Bilko	Woody Woodpecker Hanna-Barbera	"	Hogan's Heroes CBS News	Program Cont'd

**MONDAY 07/30/79**

PM	WTCG CH. 17 Atlanta Cable 4	KTXH CH. 5 Lubbock Cable 5	PTL CH. 6 Charlotte Cable 6	KMCC CH. 28 Lubbock Cable 7	WGN CH. 9 Chicago Cable 9	KTV CH. 10 Oakland Cable 10	KCBD CH. 11 Lubbock Cable 11	KLBK CH. 13 Lubbock Cable 13	CBN CH. 2 Virginia Bch Cable 2
6:00	Get Smart	Word on Words	Gospel Music	News	Dick Van Dyke	T.V. Power with Tom and Jerry	News	News	News
7:00	My Three Sons	MacNeil-Lehrer Rept.	Hour of Power	Bewitched	Star Trek	"	Sanford and Son	Joker's Wild	"
8:00	Movie: 'Fools'	Bill Moyers' Journal: Looking for India	Westbrook Hospital	Monday Night Baseball: TBA	Twilight Zone	Captain Cosmic Bewitched	Little House on the Prairie	White Shadow	"
9:00	"	James Michener's World: Hawaii	PTL Club	"	Movie: 'Chubasco'	Six Million Dollar Man	Movie: 'The Rain People'	M*A*S*H	"
10:00	Ascent of Man	Masterpiece Theatre: Poldark	"	"	"	Odd Couple	"	Lois Grimes	"
11:00	New Soupy Sales	Dick Cavett Captioned ABC News	Richard Hogue PTL Club	News	News	Movie: 'Hustling'	News	News	"
12:00	"	Sign Off	"	Police Story	"	"	"	"	"

**TUESDAY 07/31/79**

PM	WTCG CH. 17 Atlanta Cable 4	KTXH CH. 5 Lubbock Cable 5	PTL CH. 6 Charlotte Cable 6	KMCC CH. 28 Lubbock Cable 7	WGN CH. 9 Chicago Cable 9	KTV CH. 10 Oakland Cable 10	KCBD CH. 11 Lubbock Cable 11	KLBK CH. 13 Lubbock Cable 13	CBN CH. 2 Virginia Bch Cable 2
6:00	Get Smart	Prime Time	Happy Hour	News	Dick Van Dyke	T.V. Power with Tom and Jerry	News	News	News
7:00	Major League Baseball: San Diego at Atlanta	MacNeil-Lehrer Rept.	Good News	Bewitched	Major League Baseball: Philadelphia	Captain Cosmic Major League Baseball	The Runaways	The Doctors	"
8:00	"	Struggle for Israel	PTL Club	Three's Company Taxi	"	San Francisco at Houston	Movie: 'Final Crash'	"	"
9:00	America	"	"	The Barbara Walters Summer Special	"	Next Step Beyond	"	"	"
10:00	New Soupy Sales	Dick Cavett Captioned ABC News	Richard Hogue PTL Club	News	News	Movie: 'Grand Slam'	News	News	"
11:00	"	Sign Off	"	Movie: 'Cabaret'	"	"	"	"	"

**WEDNESDAY 08/01/79**

PM	WTCG CH. 17 Atlanta Cable 4	KTXH CH. 5 Lubbock Cable 5	PTL CH. 6 Charlotte Cable 6	KMCC CH. 28 Lubbock Cable 7	WGN CH. 9 Chicago Cable 9	KTV CH. 10 Oakland Cable 10	KCBD CH. 11 Lubbock Cable 11	KLBK CH. 13 Lubbock Cable 13	CBN CH. 2 Virginia Bch Cable 2
6:00	Get Smart	Spoletto Festival '79	Sound of the Spirit	News	Dick Van Dyke	T.V. Power with Tom and Jerry	News	News	News
7:00	Ret Patrol	The Long Search: Loose Ends	Patterns for Living	Eight is Enough	Chicago at Philadelphia	Captain Cosmic Major League Baseball	Real People	Stockard Channing Good Time	"
8:00	Atlanta vs. New England	Birth of the Bomb	PTL Club	Charlie's Angels	"	San Francisco at Houston	Butterflies	3rd Annual People's Choice Awards	"
9:00	"	To Be Announced	"	Vegas	"	"	Wives of David Wheeler Boss and Secretary	"	"
10:00	Movie: 'Forever, My Love'	Dick Cavett Captioned ABC News	Richard Hogue PTL Club	News	News	Movie: 'Five Branded'	News	News	"
11:00	"	Sign Off	"	Police Woman	"	Women	Upstairs, Downstairs	Kojak	"
12:00	"	"	"	Baretta	"	"	"	"	"

**THURSDAY 08/02/79**

PM	WTCG CH. 17 Atlanta Cable 4	KTXH CH. 5 Lubbock Cable 5	PTL CH. 6 Charlotte Cable 6	KMCC CH. 28 Lubbock Cable 7	WGN CH. 9 Chicago Cable 9	KTV CH. 10 Oakland Cable 10	KCBD CH. 11 Lubbock Cable 11	KLBK CH. 13 Lubbock Cable 13	CBN CH. 2 Virginia Bch Cable 2
6:00	Get Smart	Cinema Showcase	Kroeze Brothers Jerry Falwell	News	Dick Van Dyke	T.V. Power with Tom and Jerry	News	News	News
7:00	Movie: 'Dark Command'	National Geographic: The Tigris Expedition	Insight	Mork & Mindy	"	Captain Cosmic Bewitched	Project U.F.O.	Waltons	"
8:00	"	Superspy	PTL Club	Barney Miller	Movie: 'The Mountain'	Six Million Dollar Man	Quincy	Hawaii Five-O	"
9:00	Oned In Line	School Segregation To Be Announced	"	20/20	"	Odd Couple	David Cassidy: Man Undercover	"	"
10:00	New Soupy Sales	Dick Cavett Captioned ABC News	Richard Hogue PTL Club	News	News	Movie: 'Island in the Sun'	News	News	"
11:00	"	Sign Off	"	Stars & Hunch	"	"	"	"	"
12:00	"	"	"	Baretta	"	"	"	"	"

BIG SUMMER CLEARANCE ! MANY ITEMS 1/2 PRICE ROYE'S Merle Norman Cosmetics

Nominations Being Sought

Nominations for five top awards are being sought before the August 5, 1979 deadline by the Governor's Committee on Employment of the Handicapped...

WHOZITS...



FLOYDADA WHOZIT

This eight-year-old is all prepared to participate in the 'social whirl.' We wonder how many people will recognize this news-making young lady.

LAST WEEK'S FLOYDADA WHOZIT BETH FAULKENBERRY

Julie Cathy, Linda Crader, Allssa and Jim Bob Hambricht, Kay Lyn Ralner and Mrs. Eimer Williams all correctly guessed last week's Floydada Whozit as Beth Faulkenberry.



LOCKNEY WHOZIT - Everyone in the Lockney area should be able to identify the little girls on the left, in the middle, in this old photo.

Poultry, Pork Best Buys This Week

COLLEGE STATION -- Best buys at Texas grocery markets this week include poultry, pork and some fresh fruits and vegetables. Also, 'specials' in frozen food chests...

Taxpayer Booklet Reprint Scheduled

AUSTIN -- State Comptroller Bob Bullock Monday said widespread acceptance of a new system for handling tax appeals in the Comptroller's office has caused a need to reprint a booklet detailing the procedure for taxpayer use.

The essence of our efforts is to make sure when a taxpayer disagrees with us there is an unbiased person to listen to the taxpayer's side of the story and render a decision that's as fair as possible.

The booklet outlines the rights and options a taxpayer may follow in appealing a tax determination. It contains the complete text for all rules and includes a seven-page, 'plain-English' narrative explaining the rules used in the agency's appeals process.

Slaton Tennis Tournament Slated

The 1979 Slaton Tennis Tournament will be August 17-19. The tournament is open to anyone from junior high age upward, with a limit of three events per entry. Fee is \$5 per person per event, in all divisions, and should be sent to Fred Smith at Box 279, Slaton, 79364.

Men's and women's singles in the closed and open divisions will begin at 9 a.m. Saturday. Doubles open and closed will begin at noon Saturday and the mixed doubles will start at 3 p.m. Deadline for entries is August 14.

Table with columns for TV channels (WTCG, KTXH, PTL, KMCC, WGN, KTV, KCBD, KLBK, CBN) and program titles for the week of 08/03/79.

These Floydada And Lockney Merchants Sponsor The T.V. Schedule For You Each Week

Table with columns for TV channels and program titles for the week of 08/04/79.

Table with columns for TV channels and program titles for the week of 08/04/79.

CRUCE AND LONG AUCTION 8TH ANNUAL HARVEST EQUIPMENT AUCTION THURSDAY, FRIDAY, SATURDAY AUGUST 23, 24, 25, 1979

Floydada Men Participate In Babe Ruth League Duncan Woody, son of Mr. and Mrs. C.O. Woody, David Welborn son of Mr. and Mrs. Bobby Welborn, and Jimmy Jackson, son of Mr. and Mrs. Jim Jackson, will be playing in the all star state baseball tournament July 30-August 4 in Plainview.



RCA For The Best Price & Service On RCA T.V.'s See MIZE PHARMACY & T.V. 102 S. Main Lockney 652-2435

PRESTON MILK GALLON \$1.90 USDA Inspected Plant Custom Processing, Wholesale and Retail Meats, Cut, Wrapped, Frozen, and Fully Guaranteed. Financing Available On Freezer Beef. Lockney Meat Co. Hwy. 70 652-3305 Lockney, Texas

CALL CABLE TV OF FLOYDADA 983-2888 TODAY FOR MORE AND BETTER

SUNDAY 07/29/79

Table with columns for AM, WTCC (Atlanta Cable 4), KTXT (Lubbock Cable 5), PTL (Charlotte Cable 6), KMCC (Lubbock Cable 7), WGN (Chicago Cable 9), KTV (Oakland Cable 10), KCBD (Lubbock Cable 11), KLBK (Lubbock Cable 13), CBN (Virginia Bch Cable 2). Rows show program schedules from 7:00 to 5:30.

SUNDAY 07/29/79

Table with columns for PM, WTCC (Atlanta Cable 4), KTXT (Lubbock Cable 5), PTL (Charlotte Cable 6), KMCC (Lubbock Cable 7), WGN (Chicago Cable 9), KTV (Oakland Cable 10), KCBD (Lubbock Cable 11), KLBK (Lubbock Cable 13), CBN (Virginia Bch Cable 2). Rows show program schedules from 6:00 to 12:30.

MONDAY - FRIDAY

Table with columns for AM, WTCC (Atlanta Cable 4), KTXT (Lubbock Cable 5), PTL (Charlotte Cable 6), KMCC (Lubbock Cable 7), WGN (Chicago Cable 9), KTV (Oakland Cable 10), KCBD (Lubbock Cable 11), KLBK (Lubbock Cable 13), CBN (Virginia Bch Cable 2). Rows show program schedules from 7:00 to 5:30.

MONDAY 07/30/79

Table with columns for PM, WTCC (Atlanta Cable 4), KTXT (Lubbock Cable 5), PTL (Charlotte Cable 6), KMCC (Lubbock Cable 7), WGN (Chicago Cable 9), KTV (Oakland Cable 10), KCBD (Lubbock Cable 11), KLBK (Lubbock Cable 13), CBN (Virginia Bch Cable 2). Rows show program schedules from 6:00 to 12:30.

TUESDAY 07/31/79

Table with columns for PM, WTCC (Atlanta Cable 4), KTXT (Lubbock Cable 5), PTL (Charlotte Cable 6), KMCC (Lubbock Cable 7), WGN (Chicago Cable 9), KTV (Oakland Cable 10), KCBD (Lubbock Cable 11), KLBK (Lubbock Cable 13), CBN (Virginia Bch Cable 2). Rows show program schedules from 6:00 to 12:30.

WEDNESDAY 08/01/79

Table with columns for PM, WTCC (Atlanta Cable 4), KTXT (Lubbock Cable 5), PTL (Charlotte Cable 6), KMCC (Lubbock Cable 7), WGN (Chicago Cable 9), KTV (Oakland Cable 10), KCBD (Lubbock Cable 11), KLBK (Lubbock Cable 13), CBN (Virginia Bch Cable 2). Rows show program schedules from 6:00 to 12:30.

THURSDAY 08/02/79

Table with columns for PM, WTCC (Atlanta Cable 4), KTXT (Lubbock Cable 5), PTL (Charlotte Cable 6), KMCC (Lubbock Cable 7), WGN (Chicago Cable 9), KTV (Oakland Cable 10), KCBD (Lubbock Cable 11), KLBK (Lubbock Cable 13), CBN (Virginia Bch Cable 2). Rows show program schedules from 6:00 to 12:30.

## Research Projects To Be Featured August 28

Research projects and production practices to benefit Panhandle farmers and cattlemen will be featured August 28 at the annual field day at the Texas Agricultural Experiment Station research facility in Etter.

The program will begin at 1 p.m. with a brief presentation at the station's office building, said Dr. G.B. Thompson, TAES resident director of research at the Texas A&M University Agricultural Research and Extension Center in Amarillo. The test station at Etter operates as part of the Amarillo center. Following the briefing, tours of the research plots will be conducted. Tour

stops will include variety trials, limited irrigation tests in sorghum, skiprow planting and no-till planting.

At one stop, Dr. David P. Hutcheson, associate professor of animal nutrition with TAES at Amarillo, will discuss wheat pasturing of cattle. Soybean irrigation and production will be discussed at another stop by Dr. Frank Petr,

Extension area agronomist. At another point on the tour, Leon New, Extension area engineer and irrigation specialist, will discuss pump efficiency.

Scientists and Extension specialists from the Texas Agricultural Experiment Station, the Texas Agricultural Extension Service, and the USDA Science and Education Administration will be on hand to answer questions and discuss production problems with visitors, said Dr. Dan Undersander, TAES assistant professor of forage, field day chairman.

### Register Now For Pre-School Class At First United Methodist Church

Creative Play-Learning Experience For Children That Will Be 4 Years Old Before September 1, 1979

3 Mornings A Week Monday - Wednesday - Friday 9:00 A.M. - 11:30 A.M.

Teacher: Lu Ann Smith 127 W. Kentucky, Floydada

For More Information Call 983-2240

#### IT PAYS

To Make People Happy Sell The Products People Want To Buy..... Sell AVON.... Excellent Earnings, flexible hours. For More Information... CALL EDITH SELLARS 806-983-3139

REMEMBER your loved ones with a living memorial to the Caprock Hospital Auxiliary Memorial Fund. Mrs. Ben Whitaker, Treasurer. T-tfc

# Trying to Keep Your Cool?

The Governor's Office wants to help you save money and energy. We've got a free, easy-to-fill-out quiz. Just answer some basic questions about your house. We'll tell you how to keep cool air in when it's hot... out when it's not.

Call us toll-free at 1-800-252-9361.

And stay cool, OK?

Texas Conserve Home Energy Analysis

A public service of this publication and the Governor's Office of Energy Resources.

# ATTEND THE RELIGIOUS SERVICE OF YOUR CHOICE THIS WEEK

## The Moonshiner Who Heard Truett Pray...

By Gainer Bryan, Jr.

(Written In The Christian Index, 1955)

Five miles south of Hiawasse, in a mountain valley down a road that is almost impassable by automobile, there lives one of Georgia's oldest citizens, a veteran of 101 summers, who 70 years ago was led to Christ by a fervent young Hiawasse school teacher named George Truett in a remarkable experience unknown even to that great soul.

On August 15, 1887, Uncle Jimmie, at that time a North Georgia moonshiner on his way through the woods to deliver a gallon of mountain corn, stumbled upon the man who was in later years to be known as the world's greatest preacher, down on his knees praying. That prayer changed Uncle Jimmie's life.

In quest for an accurate firsthand story of how this distiller of spirits became acquainted with the Holy Spirit, my father and I made a pilgrimage to the humble mountain valley home in the later summer of 1946.

Reaching the unpainted clapboard house in the backside of a cornfield we spotted Uncle Jimmie in his cane-bottom chair on the front porch. There

he sat with the motionless and resignation of enfeebled old age.

My father introduced us to Uncle Jimmie and reminded him that he had been to see him earlier in the summer and had heard him tell of his experience that day in the woods with Dr. Truett. He said we were interested in hearing the story.

"Did you know Dr. Truett before that day, Uncle Jimmie?" I asked.

"Oh, yes, yes, I knew him well," the old man replied as he turned his head with difficulty toward me.

"Would you tell us about the time you saw him there in the woods praying?"

The stooped figure turned his brown and leathery face from me, and his watering eyes were focused out into space as the memory of that experience reshaped in his mind.

"Yes, I was a-making whiskey," he said with eyes that were tired and unlit by the fire that must have filled them I thought as he had told the story in more youthful days. "I'd promised to take a fellow a jugful.

"I measured it out and started to Hiawasse. George Truett was a school teacher then. Decided I'd cut through the woods below Hiawasse. It was about 12 o'clock.

"Thought I heard somebody coming through the branch. I didn't want anybody to see me with my jug, so I got down behind some bushes. Then I caught sight of him - George Truett - under a tree. I soon saw he wasn't a-spying on me."

Uncle Jimmie paused to remember a little more.

He finished. "You know, there's something to him, I said to myself. I decided then I'd quit my way of living and go to doing better. I'd break over now and then, but I'd keep trying."

"Went to work building the church. I decided I'd join the church if they'd let me help build it. I wanted my life then in the service of the Lord."

One of us wanted to know what it was that Uncle Jimmie heard Dr. Truett praying, so we asked him that.

"He prayed for the town of Hiawasse and the

people in it." "Did he pray for you by name, Uncle Jimmie?"

"No, he didn't pray for me by name but I was included."

Thus it was that virtue went out in the Truett in those early days to me. I remember he was unaware and in the days God called him to preach. Uncle Jimmie was about 32 or 33 then. The year would be 1887 or '88.

Uncle Jimmie Barrett was born in 1845. He is the father of 11 children all married but one. All are church members. Uncle Jimmie. And but for the experience in the woods near Hiawasse that day the present would have not been as good.

**CALVARY BAPTIST**  
Rev. Hollis Payne  
Sunday School ..... 9:45 a.m.  
Morning Worship ..... 11:00 a.m.  
Bible Study ..... 5:15 p.m.  
Evening Worship ..... 8:15 p.m.  
Wednesday Evening ..... 7:00 p.m.

**ST. MARY MAGDALEN CATHOLIC CHURCH**  
Joe Bixenman, Priest

**SUNDAY**  
Mass ..... 11:30 a.m.

**MONDAY**  
Mass and Ultraya ..... 9 p.m.

**THURSDAY**  
Mass ..... 9 p.m.

**WEST SIDE CHURCH OF CHRIST**  
Sunday Morning  
Worship ..... 10:30 a.m.  
Sunday Evening ..... 6:00 p.m.  
Wednesday Evening ..... 7:00 p.m.

**FIRST UNITED METHODIST CHURCH**  
Jim Smith, Pastor  
Sunday School ..... 9:45 a.m.  
Morning Worship ..... 11:00 a.m.  
Youth Fellowship ..... 5:00 p.m.  
Sunday Evening  
Worship ..... 6:00 p.m.

**MT. ZION BAPTIST CHURCH**  
Otis Cooks, Jr., Pastor  
Sunday School ..... 10:00 a.m.  
Morning Worship ..... 11:00 a.m.  
Bible Study ..... 4:00 p.m.  
Evening Worship ..... 5:00 p.m.  
Wednesday Prayer Meeting ..... 8:00 p.m.

**FIRST ASSEMBLY OF GOD CHURCH**  
G. A. Van Hoose  
Sunday Morning ..... 9:45 a.m.  
Sunday Youth Service ..... 5:00 p.m.  
Sunday Evening  
Evangelistic ..... 6:00 p.m.  
Wednesday Night Service ..... 7:00 p.m.  
Thursday Womens Missionary ..... 9:00 a.m.

**SOUTH PLAINS BAPTIST CHURCH**  
Rev. Fred Blake  
Sunday School ..... 10:00 a.m.  
Morning Worship ..... 11:00 a.m.  
Training Union ..... 6:00 p.m.  
Evening Worship ..... 7:00 p.m.

**CARR'S CHAPEL**  
Rev. Lee Crouch  
Petersburg, Pastor  
Services Every Sunday  
Morning Worship ..... 9:30 a.m.  
Sunday School ..... 10:30 a.m.  
No Evening Services

**VICTORY BAPTIST CHURCH**  
Emmett Clappitt, Pastor  
Sunday School ..... 10:00 a.m.  
Morning Worship ..... 11:00 a.m.  
Evening Worship ..... 7:00 p.m.  
Wednesday Services ..... 7:30 p.m.

**CEDAR HILL ASSEMBLY OF GOD CHURCH**  
Rev. Vance Mitchell  
Sunday School ..... 10 a.m.  
Morning Worship ..... 11 a.m.  
Evangelistic Service ..... 6 p.m.  
Wednesday Bible Study ..... 7 p.m.

**NEW SALEM PRIMITIVE BAPTIST CHURCH**  
Joe M. Jackson  
Sunday Congregational  
Singing ..... 10:00 a.m.  
Morning Worship ..... 10:30 a.m.  
Evening Worship ..... 6:30 p.m.

**SPANISH BAPTIST MISSION**  
Sunday School ..... 9:45 a.m.  
Morning Worship ..... 11:00 a.m.  
Training Union ..... 6:00 p.m.  
Evening Worship ..... 7:00 p.m.

**BIBLE BAPTIST CHURCH**  
Brother Dale Keener  
Sunday School 10:00 a.m.  
Morning Worship 10:45 a.m.  
Sunday Evening  
Prayer Meeting  
Sunday Evening Services 6:00 p.m.  
Wednesday Evening Services 6:30 p.m.  
Services 7:30 p.m.

**NEW HOPE PRIMITIVE**  
Beathel Jeffrey, Pastor  
2nd Sunday  
Morning Worship 11:00 a.m.

**CITY PARK CHURCH OF CHRIST**  
Thomas Pauley, Minister  
Sunday Bible Study 9:30 a.m.  
Morning Worship 10:30 a.m.  
Evening Worship 6:00 p.m.  
Wednesday Bible Study 7:30 p.m.  
Ladies Bible Study, Wednesday 9:30 a.m.

**FIRST CHRISTIAN CHURCH**  
Dennis Swearingin, Pastor  
Sunday School ..... 10:00 a.m.  
Morning Worship ..... 11:00 a.m.

**FIRST BAPTIST CHURCH**  
F.C. Bradley, Pastor  
Sunday School ..... 10:00 a.m.  
Morning Worship ..... 11:00 a.m.  
Church Training ..... 5:30 p.m.  
Evening Worship ..... 7:00 p.m.

**CEDAR HILL BAPTIST CHURCH**  
Sunday School ..... 10:00 a.m.  
Morning Worship ..... 11:00 a.m.  
Evening Worship ..... 7:00 p.m.

**THE CHURCH OF THE NAZARENE**  
William E. Clark, Pastor  
Sunday School ..... 10:00 a.m.  
Morning Worship ..... 11:00 a.m.  
Evening Worship ..... 7:00 p.m.

Wednesday Bible Study 7:00 p.m.

**CUMBERLAND PRESBYTERIAN CHURCH**  
Sunday School ..... 10:00 a.m.  
Bible Study ..... 11:00 a.m.

**DOUGHERTY BAPTIST CHURCH**  
Jim DeWese, Pastor  
Sunday Services ..... 10:00 a.m.  
Morning Worship ..... 11:00 a.m.  
Evening Worship ..... 7:00 p.m.

Adams Well Service

Consumers Fuel Assoc.

Babe's Service Center

Thompson Pharmacy

Floydada Nursing Home

### SPONSORED BY THE FOLLOWING FIRMS:

City Auto Inc.

Parker Furniture

Hale Insurance

Floydada Co-Op Gins

Hesperian Office

Collins Implement Co.

Milton Flying Service

Norrell Tractor Parts Co.

Bishop-Ramsey Pharmacy

Reed Ford Sales

Martin & Company

Nichols Oil Co.

Russell's Equipment & Supply

Floydada Real Estate & Insurance

McDonald Implements

Gilbreath Exxon

Production Credit Assoc.

Edmiston Plumbing

## Against Heat Exhaustion, Death, Heatstroke

**DEATH**  
**P. C. Hamilton**  
 Services for P. C. Hamilton, 77, of Prairie View, formerly of Houston, were held at the First United Methodist Church of Prairie View, Texas, at 11 a.m. Monday. Burial was in the cemetery.  
 Hamilton died at a Prairie View hospital after a period of illness. He was born in 1902 in the Indian Territory, a native of Oklahoma. He lived in Prairie View for 27 years. He moved to Houston in 1946.  
 Survivors include a daughter, Hazel; a daughter-in-law, Mrs. T. J. Hamilton; a son, Tim; a daughter, Mrs. B. K. Paul; a daughter, Mrs. Gene Setiff; a son, Gene; a daughter, Mrs. Keltz Garrison; and four grandchildren.

**HEATSTROKE**  
 Heatstroke, or sunstroke, is more serious than heat exhaustion. It's often a medical emergency.  
 A breakdown of the cooling system of the body which causes the body temperature to rise uncontrollably causes heatstroke, the specialist explains.  
 Because the sweating mechanism is not working, there is very little perspiration.  
 One symptom of heatstroke is dry, red, hot skin and a fast, strong pulse. The victim may also be nauseated and have a headache. There is also a possibility of the person collapsing.  
 As in the case of heat exhaustion, the important thing is to get the victim out of the sun and to lower the temperature.  
 Sponging the person with water, especially around the head. Avoid giving the victim stimulants such as tea or coffee because of the possibility of complications such as increased blood pressure.  
 If the person is unconscious, give no fluids at all. Ms. Shearer cautions.  
**PREVENT SUNSTROKE, HEATSTROKE**  
 To prevent sunstroke or heatstroke, avoid being in the sun and heat for a long period of time. Drink a sufficient amount of liquids and wear loose fitting clothing such as cotton T-shirts which help to retain perspiration and keep the body cool.

## Let's Talk About Meat

Every consumer in America is looking for ways to help cut down on costs at the grocery store without having to sacrifice quality or good nutrition. It's not easy. Many traditional foods that we have depended on to provide us with good nutrition have risen dramatically in price. Take beef, for example.  
 The rise in beef prices in 1979 can be attributed to a shortage of cattle caused by the largest cow herd reduction ever recorded. The slow process of herd rebuilding has begun, but it will be several years before we see any relief in the marketplace.  
 More and more meat packers and retailers are trying to respond to the problems of higher beef prices by using more boxed beef to help the consumer cut down on meat prices.  
 Boxed beef is beef that has been delivered to the retailer already cut into primal or subprimal cuts at the packing house. Primal cuts refer to sections of the carcass such as the chuck, rib, short loin and sirloin, and round. Subprimal cuts are divisions of primal cuts such as the loin strip from the loin primals or the top round from the round primal.  
 These primal or subprimal cuts are vacuum-packed in a cryo-vac film and then packed into boxes ready for the retailer to cut into the usual retail cuts or sell the entire subprimal in the meat case.  
 Shipping boxed beef to the retailer instead of beef carcasses eliminates additional labor costs at the retail level. This allows the retailer to offer these larger cuts at lower prices to the consumer. The savings of purchasing beef this way varies, but generally, the consumer can save from 10 to 20 percent by purchasing subprimals that range in weight from eight to 16 pounds or more.  
 The usage of boxed beef varies, depending on what part of the country you're in, but it currently represents about 60 percent of the total fresh beef received at the supermarket.  
 This doesn't necessarily mean that each store will be merchandising subprimal cuts in the meat case, but the concept of boxed beef is constantly changing and offering a wider variety of beef cuts—especially boneless cuts—plus the merchandising of subprimal cuts at retail.  
 Be sure to see if your supermarket is offering subprimal beef cuts in the retail meat counter will be glad to cut it to your specifications while you wait, usually at no additional charge.  
 The concept of boxed beef has helped the packing and retailing industries control costs, increase productivity, and offer the consumer more choices in the marketplace with the added bonus of reducing prices for those who purchase beef in quantity.

# BUDDY'S

220 S. 2ND  
 STORE HOURS  
 Mon.-Sat., 8 a.m. to 10 p.m. Sun., 9 a.m. to 8 p.m.  
 Values In This Adv. Effective Through Wednesday August 1, 1979  
 We Reserve The Right To Limit Quantities

<h2>Crisco</h2> <p>79¢</p> <p>With Purchase Of 2 Cut-up Fryers</p>	<h2>COKE Or TAB</h2> <p>\$1.49</p> <p>Plus Deposit</p> <p>2.29 Value</p>
<h2>Milk</h2> <p>95¢</p> <p>1.11 Value</p>	<h2>Bathroom Tissue</h2> <p>69¢</p> <p>99¢ Value</p>
<h3>VALUES IN THIS AD IN ADDITION TO OUR THURSDAY AD</h3>	
<h2>Doritos</h2> <p>2/\$1.29</p>	<h2>Bar-B-Q Sauce</h2> <p>59¢</p> <p>78¢ Value</p>
<h2>Potato Chips</h2> <p>89¢</p> <p>1.20 Value</p>	<h2>Plums</h2> <p>39¢ LB.</p>
<h2>Flour</h2> <p>99¢</p>	<h2>Bell Peppers</h2> <p>39¢ LB.</p>
<h2>Orange Juice</h2> <p>2/89¢</p>	<h2>Potatoes</h2> <p>99¢</p>
<h2>Corn</h2> <p>3/89¢</p>	<h2>Vanilla Wafers</h2> <p>2/\$1.29</p>
<h2>Bologna</h2> <p>99¢</p>	<h2>Donuts</h2> <p>59¢</p>
<h2>Sizzlean Bacon</h2> <p>\$1.49</p>	<h2>Hot Dog Sauce</h2> <p>3/89¢</p>
<h2>Pizzas</h2> <p>99¢</p>	<h2>Sherbet</h2> <p>\$1.29</p>
<h2>Ranch Steak</h2> <p>\$1.89 LB.</p>	<h2>Tide</h2> <p>\$1.39 With Coupon \$1.59 Without Coupon</p> <p>Expires 8-1-79</p>
<h2>Ham</h2> <p>\$1.89 LB.</p>	<h2>Coffee</h2> <p>\$2.99 With Coupon \$3.29 Without Coupon</p> <p>Expires 8-1-79</p>

**AMERICAN CANCER SOCIETY**  
 M. D. Anderson Hospital and Tumor Institute

Shop  
 Floyd  
 County  
**FIRST!**

### Safety First--In The Water, Too

The "danger season" for water and boating deaths is now well underway, warns an insurance safety expert.  
 "Four out of five water-related fatalities occur during the summer months," points out Milt Nachbar, Director of Loss Control for CNA Insurance.  
 "But most of these accidents could be avoided by following a few basic safety rules," he says. "One of the most obvious is to swim only in designated and guarded areas and never swim alone."  
 "However, many don't realize that most drownings—more than 60 per cent—result from non-swimming accidents," he reports. "These are usually cases of people falling into the water from docks, shores, bridges or boats."  
 Nachbar offers these suggestions for substantially lessening the risk of this type of accident:  
 • Obey all warning signs concerning the water and shore conditions.  
 • Watch for harmful debris on lake bottom, shoreline and beach.  
 • Caution your children about the hazards of the water in the area.  
 • If you own a boat make sure it is examined annually by the local Coast Guard Auxiliary for the proper safety equipment, such as life preservers, anchor, fire extinguisher, distress flag, horn and running lights.  
 • Observe water courtesy.  
 • Be sure your boat is equipped with one life jacket for every person on the boat.  
 • Insist that children, even those who can swim always wear life jackets while on board boat or near the dock area.  
 • Inner tubes and air-filled swimming toys are not life preservers and should not be considered as such.  
 • Have at least two people in the boat when pulling a skier.  
 • Warn all off-boat swimmers and skiers to stay clear of the motor area of the boat.  
 Nachbar says most drownings occur due to lack of ability to swim or overestimating their abilities. He suggests that one of the best ways to prevent drownings is to enroll children in swimming classes offered by the local Red Cross or a park or school district.  
 He also recommends learning the technique of mouth-to-mouth resuscitation as a preventive measure.  
 "It just takes a little forethought and caution," says Nachbar, "to make sure that this 'danger season' for water sports remains strictly a season of fun and enjoyment."



spreading disease. The treatment plan has to be carefully designed according to each patient's age, stage of disease at diagnosis and other information. In some instances, it is possible to remove cancerous bone and replace it with either an artificial device or with a donor's bone that has been freeze-dried. At Memorial-Sloan Kettering Cancer Center in New York City, cancer drugs are given to young patients before surgery to shrink the size of the tumor. This therapeutic approach has made more bone implants possible, and has bettered the chance of survival. Fortunately, bone cancer is rare. Also, there have been definite improvements in treatment and survival.

A woman writes: "Can you give me any reason why I shouldn't use laetrile?"  
**ANSWER line:** The number one reason is the fact that laetrile has never been scientifically proved effective in any way against cancer. If you take laetrile to treat cancer you are betting your life on an unproven remedy instead of a verified form of treatment. By delaying treatment known to be effective, you reduce your chance of survival. This is because cancer advances with the passage of time and must be stopped at the earliest possible moment. Stopping cancer is what laetrile has never been scientifically proved to do.

Do you have further questions? Call your local unit of the American Cancer Society or call M. D. Anderson Hospital & Tumor Institute's Cancer Information Service, 1-800-392-2040 toll-free in Texas, 792-3245 in the Houston area.

**FLOYD COUNTY FIRST!**

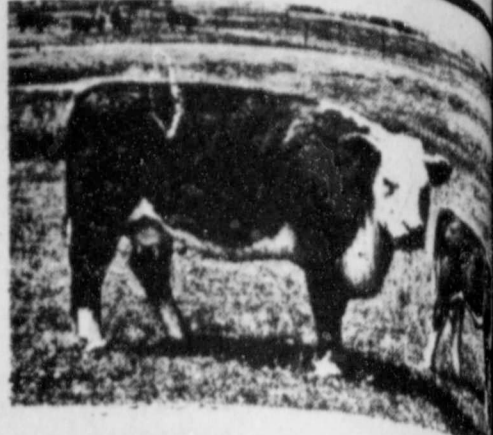
Got Heating Or Plumbing Problems? Call **HOLMES PLUMBING** Austin or Steve 983-2251 6:30 - 9:30 a.m. and 5:30 p.m. Until?

**MORTON BUILDINGS INC.**  
 For Information Call or Write...  
**MORTON BUILDINGS INC.**  
 Box 1928 Phone 806-293-4386  
 Plainview, Texas

Equipment & Supply...  
 Real Estate & Insurance...  
 Credit Assoc...  
 Plumbing



# FARM & RANCH NEWS



## Made-To-Order Hybrid Cotton May Soon Be Here

RALEIGH — Higher-yielding cotton plants that can be genetically engineered to provide the desired fiber length, strength, and micronaire, as well as disease and insect resistance,

### Wheat Fertilizer Considerations For 1980 Needed

Wheat yields throughout the Rolling and High Plains of Texas for 1979 were generally above average. The wheat market helped make some produce a little money.

Again, the wolf appears to be knocking on the door of the 1980 wheat crop. With next year's crop, the Texas farmer has a new set of problems. Now is the time to begin to plan next year's crop and side-step some of these problems. Every step must be taken to save energy. The recent diesel shortage will probably reduce the profit picture for 1980.

Producers should use the fertilizer rates that would eliminate soil deficiencies, in line with the producers yield goal. Their wheat yield goal should be consistent with the soil moisture situation, irrigation and management practices. While fertilizer costs may increase for next year, they remain a real bargain when applied at optimum rate. Soil testing is still the key to determining optimum application rates.

Nitrogen is the most important plant nutrient in the production of both forage and grains. Since nitrogen is required in larger amounts, this nutrient is commonly the most deficient nutrient in soil. Wheat yields over 40 bushels per acre have removed 80 lbs./acre of nitrogen. If one intends to produce a comparable yield level in 1980, then some nitrogen should be applied.

Nitrate nitrogen testing in the Extension Soil Testing Laboratory in Lubbock has proven very helpful over the past 10 years for determining nitrogen needs for wheat.

"It is important that samples be properly collected to represent your soil fertility situation. Information on soil sampling can be obtained from my office."

are just around the corner for cotton producers.

That is the word from several researchers who have been striving to develop hybrid cottons.

"In the next five years, commercialization of hybrid cotton will expand to where it is a common product in the marketplace," comments Dr. Wolfgang Wessling, director of genetics and breeding research for Cotton Incorporated.

Cotton Incorporated since the mid-1970s has been funding research on hybrid cotton with Dr. Dick Davis of New Mexico State University in Las Cruces and with Dr. J.B. Weaver at the University of Georgia. Cotton Incorporated is the fiber company of American cotton producers. Supported by producers' per bale assessments, it works for each producer through programs of research and marketing.

The biggest obstacle in developing hybrid seed that could be commercialized has now been overcome, says Wessling. That obstacle was developing fertility restorer lines that are necessary for seed breeders to assure complete fertilization in the hybridization process. The restorer lines provide the trait that assures adequate pollen production in the hybrid plants, Wessling explains.

New Mexico State University has turned over to five commercial seed breeders seed of one restorer plus the A and B seed lines necessary for the breeders to develop commercial hybrid cottons.

"With the hybrid seed, we will eventually be able to find the parent plants that can give us a wide range of properties for the marketplace," says Wessling.

"With the hybrid cottons, cotton will become more competitive with synthetic fibers because we will be able to provide mills with made-to-order fibers in a much shorter time span than is conceivable now with conventional seed breeding programs," he adds.

"While getting increased yields, we will be able to manipulate the plant to give us the desired fiber length, strength, micronaire and fiber uniformity. We will also be able to obtain a range of maturity groups and also incorporate disease or insect resistance into the hybrids," he explains.

Increased yields are one of the most attractive features of the hybrid cottons, say researchers.

Increases of up to 20 percent and greater have been reported, according to Wessling. But he cautions that when hybrid seeds become commercialized, producers could expect about a ten percent increase in yields.

Weaver reports that his research with hybrids has given him yields comparable to the best Coker seeds used in Georgia, but with a 20 percent increase in fiber length and strength.

### GREENBUGS INCREASING IN SORGHUM

## Fleahoppers Causing Problems In Late C

**WHAT'S HAPPENING**  
Fleahoppers are still causing problems in some of the later planted cotton. Greenbugs are increasing in sorghum. Sunflower moths have decreased but continue to infest blooming fields. Grasshoppers are still present in rangeland and adjacent cropland.

**GRAIN SORGHUM**  
Green bugs are increasing rapidly in many area sorghum fields. These pale green aphids with the characteristic dark strips on the back, damage sorghum by sucking the plant juices and injecting a toxin. The extent of greenbug damage in sorghum is dependent upon greenbug numbers, plant size, vigor and stage of growth, moisture conditions and effectiveness of parasites and predators. Greenbugs normally feed in colonies on the underside of leaves. Colonies normally are found first on the lower leaves of the sorghum plant and move up the plant as their numbers increase.

In our area greenbugs normally do not increase to high numbers until the boot stage. At that point yield reduction can take place depending on the length of time greenbugs have infested plants and plant condition. Plants weakened by greenbug damage may lodge at a later date.

The following table will serve as a guide in determining the need for treatment of greenbugs:

Plant Size: Emergence to about 6 inches.  
When to Treat: Visible damage (plants beginning to yellow) with colonies of greenbugs on plants.

"The fiber length and strength are excellent and essentially the same as the extra long staple types such as Pima and Egyptian cotton," he says.

His research involves crossing Pima cottons with upland cottons. The challenge for researchers, he explains, is to create a hybrid by crossing an upland cotton with an upland cotton while getting the same fertility that is currently available in the upland-Pima

cross. Weaver reports that a genetic factor that insures good fertility has been transferred from Pima to uplands for use in an upland-upland cross.

A cross of upland with upland should give an increase in yield and earliness as well as better disease resistance, more tolerance to certain insects and better seedling vigor, says Weaver.

Davis feels it is just a matter of time before researchers successfully create a

hybrid from an upland.

He explains that the value of the upland cottons will be in the ability to combine characteristics of both upland and Pima cottons.

"Achieving full fertility first," he comments.

Plant Size: Larger plant to pre-boot.  
When to Treat: Greenbug colonies causing red spotting or yellowing of leaves and before and entire leaves are killed.

Plant Size: Pre-boot to heading.  
When to Treat: Before the death of one functional leaf.

Plant Size: Heading to hard-dough.  
When to Treat: When greenbug numbers are sufficient to cause death of two normal-sized leaves.

The following insecticides are recommended for greenbug control in seed production fields:

Phorate (Thimet 15% G) -- 5-6.5 lb. concentrate per acre.

Malathion (5 lb.) -- 1/2-1 1/2 pints concentrate per acre

Carbofuran (Furadan 4F) -- 1/2-1 pint concentrate per acre

Pennacp-E\* -- 1-2 pints.

\* Pennacp-E is a formulation of micro-encapsulated ethyl parathion. Be sure and consult pesticide labels regarding restrictions in usage and re-entry intervals. Some of these materials may produce light spotting in some seed sorghum varieties.

In fields of commercial sorghum ethyl parathion, 1/4-2 pints per acre, can be used to effectively control greenbugs.

**Corn leaf aphid** populations are moderate to heavy in sorghum. After the head emerges from the boot in sorghum these insects will decline rapidly. These aphids support high populations of beneficial insects which help reduce greenbug numbers.

**Mummified greenbugs**, indicating

the presence of the parasitic wasp which destroys many greenbugs each year, has been found in several areas of the south plains. This is unusually early for this beneficial to show up. This means we may have some help with our greenbug control this season.

### COTTON

Blooms can be found in earlier planted fields at this time. Cotton at that stage is past the period for economic fleahopper damage to occur.

**Fleahoppers** however, found in most fields and cotton should be watched.

The publication, Cotton Insects in the Rolling Plains and Texas, which is complete for distribution at the extension office. You should be helpful in making decisions and for

## Area Pork Producers Association To Reorganize

Swine producers in 10 counties of the central Panhandle and northern South Plains will gather in Canyon Thursday, Aug. 2, to reorganize the Panhandle Pork Producers Association.

The meeting will be at 8 p.m. in the Randall County Extension Office in the County Courthouse. It is to develop a program of activities and schedule of meetings for the association for the next year.

At the meeting, Joe Nalley, manager of the Plainview plant of the Jimmy Dean Meat Co., will discuss the status of that company's swine slaughter facility. Ken Horton, executive vice

president of the Texas Swine Producers Association, will report on the state swine health program with PRV. Cohen will discuss Extension in support of producers.

The association represents producers in Bailey, Breckenridge, Smith, Floyd, Hale, Randall and Swisher counties. Dr. Robert S. Coker, specialist with the Texas Extension Service.

Producers attending are asked to enter the Courthouse through the

## Feasibility Study Launched For Texas Gasohol Plant

A group of Central Texas Farmers have worked out an agreement to enter into a feasibility study for the design, construction and operation of a plant to produce alcohol from milo for use in gasohol, it was announced this week.

Kenneth Johnson, a farmer near Hutto and chairman of the Board for Central Texas GPI Cooperative, Inc., made the announcement following signing of a contract with GPI, Inc., a marketing and management consulting firm.

The plant would process 4,200 carloads of grain sorghum into 20 million gallons of alcohol and sizeable amounts of high quality food protein. The cost of

the plant will be approximately \$30 million and would take 18 months to construct, following groundbreaking. The feasibility study will take approximately three months, and if favorable, an additional two or three months would be needed for site selection and engineering. Officials are hopeful the plant can be in the Hutto area.

The Central Texas plant is one of 25 planned facilities—all farmer-owned cooperatives—to be built in the grain producing states of the nation. Discussions are already proceeding in other areas of Texas and the upper midwest. The Central Texas agreement was the first signed to proceed with the feasibility

study. "If everything goes according to our plan," Johnson said, "we would be producing alcohol for gasohol fuel within two years."

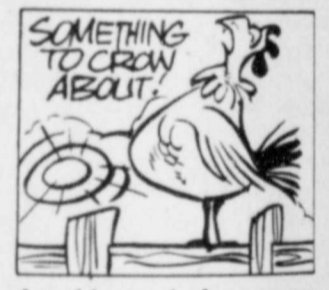
"When the 25 plants are completed, farmer owned cooperatives would be producing 500 million gallons of alcohol annually and would materially reduce our dependence on Arab oil imports and improve our balance of trade deficits," Ron Wood, Texas Coordinator for GPI, Inc., said.

The gasohol concept is not a new one, but has become more economically feasible with recent increases in the cost of oil imports and resulting increases in

cost of gasoline. In the past two years, refining systems for this alternative source of fuel have been developed, processing the grain into alcohol with a yield of fuel far in excess of the fuel consumed in the process.

The mixture of 10% alcohol and 90% gasoline will fuel any car which normally operates on regular gasoline, leaded or unleaded. It does not require any modification of the automobile and therefore can be readily marketed as soon as production can be attained.

"This is a real opportunity for farmers, through their cooperatives, to produce fuel, as well as food, with all the resulting benefits," Wood said. "If the farmers do not do it, some of the corporate giants will."



SOMETHING TO CHOP ABOUT!  
An old remedy for corn was to rub a kernel of corn on the toe corn, then feed the kernel to a rooster.



It now appears that some of the severe penalties were about to be inflicted on farmers under an impending "failure to certify" rule in farm program regulations to be avoided, according to officials of Lubbock-based Plains Cotton Growers, Inc.

PCG in early July began asking USDA's Agricultural Stabilization and Conservation Service (ASCS) for a change in the rule, citing instances in which a number of farmers would be declared ineligible for farm program benefits for reasons completely beyond their control.

The original instructions to county ASCS offices said that when a farmer failed to certify all acreage classified as cropland by ASCS, his mistake would make him and his landlord ineligible for program benefits on all farms in which they had an interest, and would also deny benefits to other tenants and/or landlords on any other farm in which they were connected.

The State ASCS office still has nothing in writing from Washington to change this situation. But State officials advised PCG July 20 that they have been promised a change to certify" rule will be brought into line with more reasonable "offsetting compliance rules."

Under these rules, a tenant and landlord will still be ineligible for program benefits on the farm with uncultivated cropland and on any other farm in which they have an interest if the other farm or farms have a crop planted that requires a set-aside. But they will retain eligibility on other farms, for those farms, for example, had planted only cotton, for which there is no set-aside requirement.

Also, any other tenant who is farming an ineligible landlord's farm would retain his program eligibility, as would any other landlord of an ineligible tenant.

"This is not all we had asked for," comments Executive Vice President Donald Johnson, "but if it comes through as expected at least it will prevent injury to hundreds of innocent parties on the Plains and we will be thankful for that."

**Sponsored by the Following Interested Firms**

<b>First National Bank</b> Floydada	<b>Collins Implement Co.</b> Floydada	<b>Floyd County Farm Bureau</b>
<b>Case Power &amp; Equipment</b> Floydada	<b>Russell's Equipment &amp; Supply</b> Floydada	<b>Perry Implement</b> Lockney
<b>Floydada Cooperative Gins</b>	<b>Plainview Savings &amp; Loan Association</b> Floydada	<b>Ansley &amp; Son</b> Lockney
<b>McDonald Implement Co.</b> Floydada	<b>Hi-Plains Gin</b> Lockney	<b>Floydada Implement Co.</b>
<b>Federal Land Bank</b>	<b>Consumers Fuel Association</b> Lockney	
<b>Association Of Floydada</b>	<b>Wilson Electric</b> Floydada	

state  
and three  
for sale.  
arranged.  
insurance and  
983-3143 or  
8-16c

House For  
double car  
location.  
983-3143 or  
8-16c

Several good  
bedroom  
Real Estate.  
Bond, 983-  
tfc

3 bedroom  
King Real  
983-5028;  
tfc

2 bedroom home  
with beauty shop  
W. Plainview  
652-2737. Ltfc

Three bedroom,  
Den,  
Equity  
of 6 percent  
appointments.  
3100 Ave. tfc

Three bedroom,  
basement,  
983-2324 or 995-  
18-2c

FOR QUICK SALE:  
with three lots,  
three bed-  
bathrooms,  
ceramic tile baths,  
copper counter top,  
with fireplace, for  
room, modern  
breakfast nook,  
carpet  
large base-  
ment and gar-  
age. All this for  
983-5185. tfc

SALE — 420  
Lockney. Con-  
Metrell at Ranch-  
West 4th, Lub-  
tfc

Three bedroom  
1 1/2 baths. Also  
mobile home,  
storm cellar and  
houses. Only  
117 W. Marivena  
tfc

LOCATION  
LOCKNEY

HOUSE  
Carpet,  
Furnace,  
Central Air

WILKES  
ESTATE  
Barker,  
Lockney  
652-2642  
L7/29, 8-5, 8-12c

MAIL  
INSURANCE  
ROPS

signed to protec-  
investment and in-  
against loss from

easy to obtain  
insurance for you  
crops at low  
cost—a dividend  
when paid to Crop  
Policyholder  
of the past eigh

call your Farm  
Insurance

DAVID CATES  
Floyd County  
Farm Bureau  
COOPER  
Koonsman  
GREEN  
Floydada 983-3777  
652-2242  
347-2880

FB  
INSURANCE CO.

# CLASSIFIED ADS sure to get results

## Real Estate

**FOR SALE:** Redwood cabin at White River Lake. Sleeps 12-call 983-3932 or 263-4480. tfc

**FOR SALE:** Brick three bedroom, one bath, modern kitchen, new carpet and new evaporative air conditioner, storage shed, fruit trees, new paint, and fenced back yard. All this plus a great location. 104 J.B. Ave. Floydada. Call 293-8137 in Plainview after 5 p.m. tfc

**HOUSE FOR SALE:** Three bedroom, two baths, 615 W. Miss. 983-3469. tfc

**FOR SALE:** Nice two bedroom, living-dining room, den, carpeted, house on large lot with carport and small storage house 105 E. Hallie. Call after 6 p.m. Jamie Lewallen 983-3904. tfc

**FOR SALE:** Three bedroom brick, two baths, living-dining room, two car garage, cellar, fenced, large storage room. Call for an appointment. 983-3587 or 256-2485. tfc

**FOR SALE OR TRADE FOR DRY LAND:** a beautiful 3 bedroom home and rental property. If interested call after 7 p.m. 983-3380. tfc

**FOR SALE - 3 bedroom, 2 car garage:** cellar. Fence yard. 652-2538 316 SW 5th St. L8/5p

**FOR SALE:** Three bedroom, carpeted, \$15,000. Good condition. Joe Mack Breed 983-3445. 8-5c

**FOR SALE:** House in country to be moved - five rooms and both approximately 1870 Sq. Ft. Call 983-2530 nights. 8-23c

**HOUSE FOR SALE:** 2 bedroom newly redecorated. Call 652-3179, Delvin Bybee. Ltfc

## NOTICE

**WILL DO ALL** Types of carpenter work. Call 983-5201 after 5:30. tfc

**SEWING** In my home. Two days on some items. Paula Pauley 983-3542. tfc

**KAY STEEN REALTOR** invites you to call her for your real estate needs in Lubbock County. French Chateau Realtors 744-2475 home or 792-4345 office. tfc

## BUSINESS SERVICES

**INTERIOR AND EXTERIOR PAINTING.** 983-3364 8-5c

**C-D-J INSULATION** can help save your dollars. For information call 983-2601.

**INSULATION** Fire-Resistant. Installed and Guaranteed. MARR Insulation Co. Lockney 652-3593. Ltfc

**NOW OPEN A-1 Pet and Grooming** professional grooming, all breeds-no tranquilizers 821 Broadway, Plainview, Texas 293-3557 tfc

**WE DO** Painting, floor leveling, house blocking, roofing and remodeling. We are now working Floydada Area. Contact Childress Bro. Collect 352-9563 tfc

**Minor repairs and tune up** service on lawn mowers. Call Whites Home and Auto, 652-2145. Ltfc

**Sheetrocking and remodeling** wanted: Experience guaranteed. Alton Thomas 983-5198 7-29p

**INTERIOR PAINTING WALL PAPERING** Call Rena Turner, 983-5130. Sfc

## COW POKES By Ace Reid



"No I can't help you git yore money from Jake you loaned him, but I can help you git committed!"

THIS FEATURE SPONSORED BY  
**Floydada Real Estate & Insurance Agency**  
**AUTO, FIRE & FARM INSURANCE**  
Jim Word — — Phone 983-2360

**Diamond Industrial Supply Co., inc.**  
Phone Days 296-7418 Nights 296-1200  
or 296-7828  
1014 Broadway  
Plainview, Texas

Chain Sprockets U-joints  
V belts Oil Seals  
Sheave O-rings  
Wisconsin

SKF RCA Timken Bower  
Cotton Stripper Brushes & Bats

"We Appreciate Your Business More" L-tfc

**WEED AND INSECT CONTROL**  
★ Lawns ★ Trees ★ Alley  
★ Fencerows ★ Irrigation Wells  
**CALL CECIL CARTEL**  
652-2136 or 652-3809 Lockney L-5TFC

**FARMS-RANCHES-CITY PROPERTIES- BUSINESS LEASES-LOANS**  
**B. B. WILKES BROKER REAL ESTATE**  
100 S Main, Lockney Barry Barker, Solicitor  
Barker Insurance Agency-652-2642

**IF IT IS INSURANCE -SEE- BARKER INSURANCE AGENCY LIFE-FIRE-CASUALTY-HOSPITAL**

**TURNER REAL ESTATE**  
983-2635 Farms-Ranches Floydada, Texas

**E.Z. LOAN CO.**  
About half the families in America owe money on some form of installment loan.

**Public Notices**  
**LEGAL NOTICE**  
Lockney ISD is now accepting bids for lighting classrooms in Jr. Hi. Building and cafeteria in secondary building. Jr. Hi. building must be completed by August 24, 1979 and cafeteria by September 4, 1979. Specifications may be picked up in Superintendent's office. Bids must be in Superintendent's office by 4:00 p.m. August 13, 1979. Bids will be opened at 8:00 p.m. August 13, 1979. L7-26, 7-29, 8-2c

Notice is hereby given that the Board of Equalization of the South Plains Independent School District will meet August 16, 1979 at 9:00 a.m. til 12:00 p.m. at the South Plains School, South Plains, Texas. All persons having business with the board are invited to make an appointment to appear. By order of the Board of Trustees, South Plains Independent School District.  
s/sKendas Julian  
President, Board of Trustees  
58-5c

## FOR SALE

**FOR SALE:** Two recreational lots, one at Runaway Bay near Bridgeport, waterfront location. The other is at Bella Vista, Arkansas. Call or write Luther Kirk, 3005, 59th, Lubbock, 806-799-6585. tfp

**FOR SALE:** Heavy metal building, 11 ft. x 11 ft., 9 ft. tall, 5 1/2 ft. sliding door, 2-inch square tubing frame. Strong and well built. David McCoy 652-2645. Ltfc

**FOR SALE:** Weedwackers, was \$54.99, now \$39.99. Sears, Floydada 983-2862. tfc

**REDUCED FOR CLEARANCE:** Lawn tractor, was \$1009.00, now \$849.00. Save \$169. Sears, Floydada 983-2862. tfc

**FOR SALE:** Refrigerated Air Conditioner. 25,000 BTUH. Cools five rooms. \$479.95. Sears, Floydada 983-2862. tfc

## For Sale

Almost new 42" electric range. Self cleaning. Fully automatic. Also new non-duct range hood with splash guard. 983-3163 or 983-2162. tfc

**FOR SALE:** Everett piano and pool table. 983-2667 or 983-2220. tfc

**FOR SALE - Tappan range,** baby bed and playpen. 652-2201. Ltfc

**FOR SALE:** Realistic 939 modulate stereo AM-FM cassette with phone inlet. Excellent condition. 983-2295 after 9:00 p.m. on weekdays. 8-2p

**FOR SALE:** Two antique ceiling fans. Call 983-2530 nights. 8-23c

**FOR SALE:** Rockwood Pop-up camper. 983-2223 or 983-5131. 8-2c

## CLASSIFIED RATES

CLASSIFIED ADVERTISING RATE: 15 CENTS PER WORD FIRST INSERTION; 10 CENTS PER WORD EACH SUBSEQUENT INSERTION. MINIMUM CHARGE \$2.00.  
CLASSIFIED DISPLAY RATE: \$1.40 PER COLUMN INCH CARD OF THANKS: \$2.00.

## AUTOMOTIVE

4 shocks for the price of 3. Free installation. 123 W. Calif. tfc

**FOR SALE:** 1962 Chev. pickup. 983-2061 before 5, 983-5381 after 5. tfc

**FOR SALE - 1978 Ford XLT** pickup. Runs regular gasoline. Power-air, 20,000 miles. 634-5717 Randy. 8-12p

**FOR SALE:** 1972 Oldsmobile 98; four door, all extras. 520 W. Missouri, 983-3430 after 5:30 p.m. 7-29c

**FOR SALE:** 1976 Catalina Pontiac 4-door, high mileage, company vehicle. Priced to turn quick. 983-2821. tfc

1977 Oldsmobile Cutlass Salon. Clean low mileage. 983-3787, ask for Brenda, or 983-5116 after 5 p.m. 7-29p

**FOR SALE - GMC Pickup,** Blue, 350 Engine. Good Michelin mud grip tires. 652-3697. 314 SW 6th. L8/2p

**FOR SALE:** 1977 GMC Jimmy four wheel drive. 415 W. Calif. 983-3466. 7-29p

## PETS

**FREE:** St Bernard Puppy. 983-3672. 7-29p

**FOR SALE:** Irish Setter Puppies. Call 983-3974. 8-5c

**PETS to give away - one** full grown female Keeshound, one male full grown part St. Bernard, puppies, male and female. Call 652-2492. Ltfc

## LOST & FOUND

**LOST!** Brittany Spaniel female, name on collar. Bud Higginbotham. 983-2464 8-2c

## Farms & Acre

**WANTED TO BUY** irrigated or dryland farm in Floyd or surrounding area. Write Box XRO, c/o Hesperian, Box 700, Floydada. tfc

## HELP WANTED

**STOCKROOM CLERK:** Receive and issue parts; input to computerized inventory records. Related prior experience preferred, but will train bright applicant. The Tye Co., East Highway 70, Lockney, Texas. L8-2c

**Addressers Wanted Immediately!** Work at home - no experience necessary - excellent pay. Write American Service, 8350 Park Lane, Suite 127, Dallas, TX 75231. 8-16p

**Floydada Nursing Home** is taking applications for nurses aides. Apply at Floydada Nursing Home. tfc

**HELP WANTED:** Male, experienced farm store merchandizing or retail store sales. Send resume to Box 6, Floydada. tfc

**HELP WANTED** Full Time Elevator Hand Muncy Elevator Contact Herman Graham L8-5c

## WANT TO RENT

**WANT TO RENT:** Three bedroom house in Floydada. Junior Bearden. 983-2281 day - night 667-3442, Petersburg. tfc

## MOBILE HOMES

**FOR SALE:** 1976 14x70 Lancer Mobile home. 983-2419. 8-12c



**Auto Accidents DO Happen...**  
If one happens to you, be protected. Our car insurance offers coverage to meet your special needs - repairs to personal liability.  
**BAKER Insurance Agency**  
127 W. Calif.  
Ph. 983-3270

**LET US DO YOUR HERBICIDE** and Insecticide Spraying. We have two ground rigs and an airplane available. Lone Star Chemical.  
**Lone Star Chemical, Inc.**  
Office: 652-2761  
Deanie Henderson:  
652-3434 L7FC

**WANTED:** Experienced diesel truck drivers. Pay by mileage, starting rate based on experience. Allowance for meals and down time. Guaranteed \$160 per week for slow periods. Will need to bring copy of driving record, be able to pass ICC physical. Prefer 25 years or older. Liberal benefits including vacation plan, paid holidays, health, accident and dental insurance, life insurance and disability plan. Apply at **EBELING MANUFACTURING CORP.** 1608 West 24th Street Plainview, Texas 79072 An equal opportunity employer L8-5c

**FLOYD COUNTY ABSTRACT CO.**  
Abstracts, Of Title  
Title Insurance  
Verna L. Stewart  
Owner, Manager  
217 W. California  
983-3728  
Floydada, Texas

**STORAGE SPACE**  
BOATS, FURNITURE, ANYTHING, ETC. BY THE MONTH OR SIX MONTH 10% DISCOUNT.  
**WEST TEXAS MINI STORAGE**  
983-3573 OR 983-2151

cash in with a classified ad...

**Can You Use Some Extra Money Let Us Help!!!!**  
**WE BUY SCRAP IRON, OLD JUNKERS, AND FREE PICKUP**  
Call 983-5277

**DAN'S AUTO SERVICE**  
DAN TEUTON, Owner  
Specializing in Automatic Transmission, Motor Tune-Ups, Auto Air Conditioning.  
General Repair  
We Have A BRAKE LATHE to handle all passenger car brake drums. See us for complete brake service.  
Phone 652-2462

**WE WANT YOU TO KNOW -**  
We sell all kinds of Good-year tires...tractor, auto, truck, a good tire, good service. Best deals in West Texas. Truck winch and hauling service. **BABE'S SERVICE CENTER.** Floydada. tfc

## Shop Floyd County

**CARDS OF THANKS**  
We would like to express our appreciation to the many friends who attended the reception on the occasion of our fiftieth wedding celebration, to all those who sent cards, for the telephone calls and the many thoughtful acts of kindness shown us at this time. We express our heartfelt love and thanks to our children and grandchildren who were responsible for making this joyous occasion possible.  
Mr. and Mrs. Marvin Gilbert L7-29p

## NO... WE AREN'T IN THE PHOTOGRAPHY BUSINESS BUT

**WE WILL REPRINT PICTURES THAT WE HAVE SHOT AND PUBLISHED IN THIS NEWSPAPER**  
**5 x 7 Gloss Finish \$2.00**  
**FLOYD COUNTY HESPERIAN & LOCKNEY BEACON**

**TALKS**  
FOR CORNS WAS MEL OF CORN RM, THEN FEED O A ROOSTER.

**LEGAL NOTICE**  
Lockney ISD is now accepting bids for lighting classrooms in Jr. Hi. Building and cafeteria in secondary building. Jr. Hi. building must be completed by August 24, 1979 and cafeteria by September 4, 1979. Specifications may be picked up in Superintendent's office. Bids must be in Superintendent's office by 4:00 p.m. August 13, 1979. Bids will be opened at 8:00 p.m. August 13, 1979. L7-26, 7-29, 8-2c

**Public Notices**  
Notice is hereby given that the Board of Equalization of the South Plains Independent School District will meet August 16, 1979 at 9:00 a.m. til 12:00 p.m. at the South Plains School, South Plains, Texas. All persons having business with the board are invited to make an appointment to appear. By order of the Board of Trustees, South Plains Independent School District.  
s/sKendas Julian  
President, Board of Trustees  
58-5c

**STORAGE SPACE**  
BOATS, FURNITURE, ANYTHING, ETC. BY THE MONTH OR SIX MONTH 10% DISCOUNT.  
**WEST TEXAS MINI STORAGE**  
983-3573 OR 983-2151

**WE WANT YOU TO KNOW -**  
We sell all kinds of Good-year tires...tractor, auto, truck, a good tire, good service. Best deals in West Texas. Truck winch and hauling service. **BABE'S SERVICE CENTER.** Floydada. tfc

# CONTINUING TO SET THE PACE IN LOW GROCERY PRICES FOR FLOYDADA

## Example of Savings

Total Savings of **\$10.03** is yours if you would have shopped Piggly Wiggly for the random 94 items listed below. See what you'll save on individual items . . . items that you purchase frequently.

Prices So Low — We Stand Behind With "Triple The Difference" in Cash!

**TRIPLE THE DIFFERENCE.** Come into Piggly Wiggly and buy 25 grocery items, any items you wish except for produce, since quality and trim varies from company to company. Then compare our prices to those items at any other supermarket in town. If you find a lower total, bring in your Piggly Wiggly receipt along with the other store's prices, and we'll triple the difference in cash! Now, a serious money saving offer!

ITEM	Competitor B's	Piggly Wiggly
Kraft Miniature Marshmallows 10 1/2-oz. pkg.	49¢	45¢
Del Monte Fruit Cocktail 30-oz. can	\$1.05	95¢
Del Monte Peaches 29-oz. can	89¢	85¢
Texsun, 6-oz. cans Grapefruit Juice 6-pack	\$1.07	99¢
Instant Orange Tang 27-oz. jar	\$2.21	\$1.99
Texsun, 6-oz. cans Orange Juice 6-pack	\$1.23	\$1.19
Tree Top Apple Juice 48-oz. btl.	\$1.43	\$1.39
Del Monte Pineapple Juice 46-oz. can	\$1.09	99¢
V-8, Cocktail Vegetable Juice 46-oz. can	99¢	83¢
Freeze Dried Taster's Choice Coffee 4-oz. jar	\$3.19	\$3.07
Lipton Ice Tea Bags 24-ct. pkg.	\$1.99	\$1.89
Instant Tea Nestea 3-oz. jar	\$2.79	\$2.29
Sugar Sweetened Koolaid Drink Mix 34-oz. can	\$2.29	\$2.19
Cool, Refreshing Gatorade 32-oz. btl.	63¢	59¢
Wagner Fruit Drinks 32-oz. btl.	61¢	57¢
Van Camp Pork 'N Beans 21-oz. can	57¢	53¢
Del Monte Green Beans 16-oz. can	53¢	49¢
Del Monte Spinach 15-oz. can	47¢	43¢
Cream of Mushroom Campbells Soup 10 1/2-oz. can	3/\$1	33¢
Gerber Strained Fruits 4.75-oz. jar	4/\$1	22¢
Del Monte Catsup 14-oz. btl.	57¢	53¢
Kraft Miracle Whip 16-oz. jar	93¢	83¢
Kraft Salad Dressings 16-oz. btl.	\$1.39	\$1.29
Honey Boy Chum Salmon 15 1/2-oz. can	\$1.89	\$1.79
Chicken of the Sea, Light Chunk Tuna 9 1/4-oz. can	\$1.47	\$1.45
Regular Spam 7-oz. can	99¢	93¢
Armour Vienna Sausage 5-oz. can	59¢	55¢
Without Bean Wolf Chili 24-oz. can	\$1.53	\$1.49
Ken-L-Ratton Dog Food 15-oz. can	37¢	33¢
Purina Dog Chow 50-lb. bag	\$12.99	\$12.69
Purina Dog Chow 25-lb. bag	\$7.99	\$7.19
Dog Food Gaines Burgers 72-oz. pkg.	\$2.97	\$2.97

ITEM	Competitor B's	Piggly Wiggly
Purina Cat Chow 4-lb. pkg.	\$2.23	\$2.23
Purina Tender Vittles 12-oz. pkg.	87¢	83¢
Bama, Strawberry Preserves 16-oz. jar	\$1.29	\$1.23
Red Label Karo Syrup 16-oz. btl.	81¢	73¢
Aunt Jemima Syrup 36-oz. btl.	\$2.29	\$2.11
Vermont Maid Syrup 24-oz. btl.	\$1.73	\$1.59
Nabisco Shredded Wheat 15-oz. pkg.	99¢	91¢
Post Grape Nut Flakes 12-oz. pkg.	99¢	91¢
Breakfast Total Cereal 12-oz. pkg.	\$1.27	\$1.20
Quick Quaker Oats 42-oz. pkg.	\$1.39	\$1.33
Hot Breakfast Cereal Malt-O-Meal 24-oz. pkg.	79¢	75¢
Instant Dry Carnation Milk 8-qts. makes 8-qts.	\$2.89	\$2.59
Coffee Creamer Coffee Mate 11-oz. jar	\$1.27	\$1.23
Aunt Jemima, complete Pancake Mix 2-lb. pkg.	\$1.29	\$1.15
American Beauty, Extra Wide Egg Noodles 8-oz. pkg.	49¢	47¢
American Beauty Elbo Roni 10-oz. pkg.	51¢	45¢
American Beauty Elbo Roni 24-oz. pkg.	95¢	89¢
Kraft Deluxe Dinners Macaroni & Cheese 14-oz. pkg.	99¢	93¢
Kraft Dinners Spaghetti 8-oz. pkg.	59¢	56¢
Kraft Dinners Chicken Noodle 7-oz. pkg.	83¢	75¢
Double Cheese Chef Pizza 28.88-oz. pkg.	\$1.79	\$1.69
Ragu, with meat Spaghetti Sauce 15 1/2-oz. jar	\$1.09	83¢
Imperial Powdered Sugar 1-lb. pkg.	51¢	42¢
Pure Vegetable Mazola Oil 48-oz. btl.	\$3.09	\$2.85
Pure Vegetable Crisco Oil 16-oz. btl.	\$1.19	95¢
For Cookware Pam Spray 4-oz. can	\$1.37	\$1.29
For Cookware Pam Spray 6-oz. can	\$1.73	\$1.59
Ass '1 Flavors Jello Puddings 3.75-oz. pkg.	2/73¢	35¢
For Dishes Ivory Liquid 22-oz. btl.	\$1.19	\$1.07
For Fine Washables Woolite Liquid 16-oz. btl.	\$1.67	\$1.59
Disinfectant Lysol Spray 12-oz. can	\$1.93	\$1.84
Dishwasher Cascade 35-oz. pkg.	\$1.69	\$1.49

ITEM	Competitor B's	Piggly Wiggly
Aerosol Windex 15-oz. can	97¢	87¢
Refill Windex 20-oz. btl.	89¢	83¢
Liquid Clorox Bleach 1/2-gal. btl.	67¢	61¢
All Fabric Bleach Clorox 2 61-oz. pkg.	\$2.19	\$2.11
Ass '1 scents, Room Deodorizer Wizard 2-oz. btl.	83¢	83¢
Air Freshener Renuzit Solid 7-oz. pkg.	83¢	83¢
Decorator Viva Paper Towels 85 sq. ft.	95¢	95¢
Family Pack Zee Napkins 360-ct. pkg.	\$1.19	\$1.19
Super or Regular Tampax 40-ct. pkg.	\$2.29	\$2.29
Pillsbury Buttermilk Biscuits 8-oz. pkg.	2/49¢	49¢
Chocolate Chip Pillsbury Cookies 16-oz. pkg.	\$1.29	\$1.29
Flieischmann Margarine 1-lb. pkg.	\$1.09	\$1.09
Chiffon, Family Soft Margarine 1-lb. tub	\$1.09	\$1.09
Mars, Fun Size Candy Bars 16-oz. pkg.	\$2.29	\$2.29
Kraft Cheese Spreads 5-oz. jar	89¢	89¢
Kraft Cheez Whiz 8-oz. jar	\$1.29	\$1.29
Green Giant, Frozen Corn-On-The-Cob 4-eaf. pkg.	\$1.19	\$1.19
Minute Maid, Frozen Orange Juice 6-oz. can	59¢	59¢
Wholesun, Frozen Orange Juice 6-oz. can	47¢	47¢
Wholesun, Frozen Orange Juice 12-oz. can	89¢	89¢
Minute Maid, Frozen Lemonade 6-oz. can	2/59¢	59¢
Swanson, Frozen Pot Pies 8-oz. pkg.	49¢	49¢
Totino, Frozen Sausage Pizza 13 1/2-oz. pkg.	\$1.29	\$1.29
Patio, Beef, Frozen Enchilada Dinner 13-oz. pkg.	93¢	93¢
Banquet, Frozen Fried Chicken 2-lb. pkg.	\$3.99	\$3.99
Sara Lee, Frozen Pound Cake 10.75-oz. pkg.	\$1.47	\$1.47
Mrs. Smith, Frozen Apple Pies 26-oz. pkg.	\$1.47	\$1.47
Del Monte, Sliced Pineapple 15 1/2-oz. can	58¢	58¢
Morton, Frozen Cream Pies 16-oz. pkg.	\$1.09	\$1.09
Grape Welch Jam 32-oz. jar	\$1.49	\$1.49
<b>TAPE TOTALS</b>		<b>\$137.49</b>

### Setting Prices So Low They're Hard To Follow! 309 S. Wall St., Floydada, Texas



## PIGGLY WIGGLY