

The Floyd County Hesperian

Volume 83 Floydada (Floyd County) Texas 79235

Sunday, July 15, 1979

12 Pages In One Section

Number 56



New Doctors Fill Caprock Staff

Two new doctors recently arrived in Floydada to set up general practices in the Cogdell Clinic, part of the Caprock Hospital complex.

Doctors J. Brian Wonnacott, who has already begun his practice, and Seung K. Hong, who anticipates opening his sometime later this week, will complete the staff requirements of the Caprock Hospital, according to Nell McClung, the hospital administrator.

Dr. Hong moved to Floydada with his wife, Kyung-Shin, and their two daughters, Soo Hwa, seven years old, and Esther, three years old. The family moved to the United States from Korea five years ago and lived in New York City while Dr. Hong studied at Jamaica Hospital there. His original degree is from Yonsei University in Korea.

Floydada will be his first independent practice outside the New York area. Dr. Hong expects to receive final approval to practice in Texas this week.

Dr. Wonnacott is a native of Canada, but practiced for a year and a half in the small community of Pilot Point and held hospital privileges in Denton, Texas.

Dr. Wonnacott is a graduate of Dal Housie Medical School in Halifax, Nova Scotia. He held a practice in Canada and served as a flight surgeon for the Canadian Air Force.

He decided to move to the United States, he said, because he didn't like the red tape and government interference under socialized medicine.

"It was a good practice," he recalled, "but the bureaucracy was just too much. Every time you saw a patient you had to fill out a separate form. I couldn't see getting roped into 25 years of that." He is also a certified Federal Aviation Administration medical examiner.

Dr. Hong said he moved to the United States because of the high standard of living here and the uncertain political situation in his home country.

"Korea is a divided nation, you know," he said. "I have no plans to return to stay. We'll probably go back to

visit family, but we live here now."

Hong spent more than three and a half years in the Republic of Korea armed forces, with almost a year of that time serving as a medical officer with the ROK forces in Vietnam.

Neither doctor felt any great culture shock in moving to the U.S., they said. "It was no problem changing from Korea to the U.S.," Hong said. "There are many differences in the countries, but there are many similarities also." Korea has become heavily Westernized because of the American presence there and it is a source of labor for Japanese industries.

"It's politically stable here and the economic situation is better also," he added. Hong said he visited the Floyd County area earlier.

"I liked the town and found the people kind and nice so I decided to accept the offer to settle here," he said.

Wonnacott agreed with Hong's assessment of Floydada wholeheartedly. "Everything you need is here in Texas," he said. The economic slowdown did not hit here nearly so bad as in the rest of the country and, besides, there's no state income tax.

Both men were impressed with the warm reception the local citizens have offered them.

"It was better than I expected, especially on the weekend," Wonnacott said. He was on emergency call last weekend and had a steady stream of patients. He hopes his private practice will soon match the flow through the emergency room.

"No doctor has a full office the first day he opens," he said. "Most want to hear from someone else if you're any good."

The additions of Drs. Hong and Wonnacott fill the Caprock Hospital's requirements, according to Mrs. McClung.

"We went out to get two good doctors," she said, "and I feel that's what we got."



DR. SEUNG K. HONG

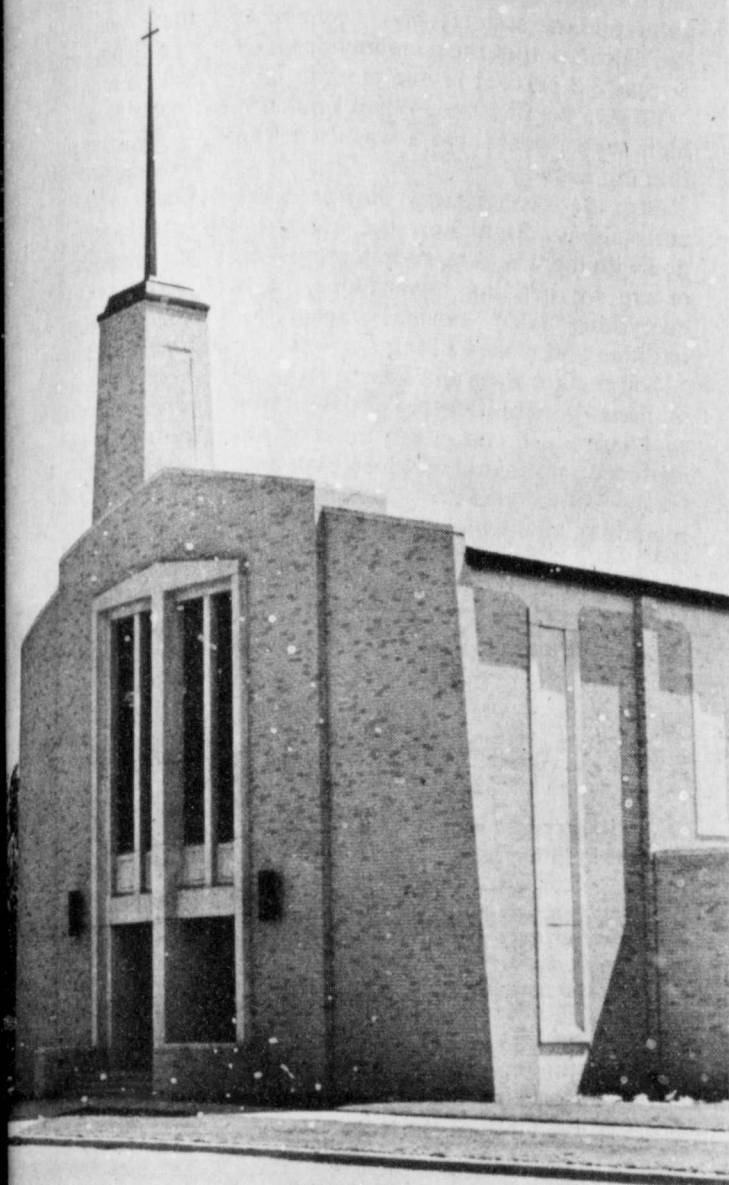


DR. J. BRIAN WONNACOTT

Oops!

Notice To Subscribers

Because of a machine malfunction in our mailing room, several address stencils for Hesperian or Beacon subscribers were destroyed. A free replacement will be given to anyone who didn't get their Thursday or Sunday papers. Call the Hesperian at 983-3737 or the Beacon at 652-3318.



It's Sunday, so attend the church of your choice.

Floydada Girl Scout To Place Wreath On Tomb of Unknown Soldier

Girl Scout was selected to place the wreath on the tomb of the Unknown Soldier in Washington D.C.

The Girl Scout will be accompanied by her 8 adult leaders and will attend as Miss Welborn during the changing of the guard ceremony.

The group will visit the capitol city as guests of the Senator John Tower and will present the Congressional Gold Medal to each of the 100th Congress members.

The group will arrive at Washington Monday, July 16, and will leave for home Tuesday, July 17.

The group will be accompanied by a local club and will be met at the airport by a local club.

The group will be accompanied by a local club and will be met at the airport by a local club.

The group will be accompanied by a local club and will be met at the airport by a local club.

The group will be accompanied by a local club and will be met at the airport by a local club.

The group will be accompanied by a local club and will be met at the airport by a local club.

The group will be accompanied by a local club and will be met at the airport by a local club.

The group will be accompanied by a local club and will be met at the airport by a local club.

The group will be accompanied by a local club and will be met at the airport by a local club.

The group will be accompanied by a local club and will be met at the airport by a local club.

The group will be accompanied by a local club and will be met at the airport by a local club.

Friday will find the girls in the Big Apple, New York City, where they will visit the Statue of Liberty and some of the other famous sights in the nation's largest metropolis.

Saturday is a travel day, with a late arrival in Washington anticipated. The girls will spend three days in the Capital visiting the Smithsonian Museum, the Library of Congress and taking a cruise down the Potomac River. Side trips are planned for July 25 to Mount Vernon, George Washington's home, and Colonial Williamsburg, in Virginia.

The group will swing southward Friday and Saturday through North Carolina and Tennessee, with a stop at the Grand Ole Opry in Nashville.

After that, it's homeward bound across the South, stopping Saturday night for a buffet supper and camping at Arkadelphia, Ark.

The scouts expect to arrive at Crosbyton by 8 p.m. Sunday, July 29 and be back in Floydada approximately an hour later.

"This trip has been being planned for three years," said Jaynette Harrison, one of the leaders of the expedition. "For the past two years, the girls baby-sat, held concessions at bazaars and everything else to raise the money to go."

Mrs. Ramsey and her husband, Joe

Max, have taken the scouts on trips to Taos, N.M., Big Bend, Santa Fe, N.M. and local backpacking but this trip is the most ambitious undertaking so far.

Dallas Ramsey, of Bishop Pharmacy, made up a special first aid pack for the girls to take along, Mrs. Harrison noted.

The scouts will gather at the Harrison home at 737 W. Price at 3 a.m. Monday, where they will depart for Crosbyton to join girls from Crosbyton and Lorenzo.

Senior and Cadette Scouts from Floydada to go on the trip were Debra Allen, Beverly Burleson, Jana Finley, Stacy Graham, Debbie Harrison, Tracy Harrison, Julie Morton, Mary Ann Rainer, Jodie Smith, Teresa Spurlock, Karen Turner, Lisa Ware, Lisa Welborn and Jonna West.

Adult supervisors for the trip will be Lou Burleson, Jaynette Harrison, and Helen Lipham of Floydada; Anne Butler and Beverly Hill of Crosbyton and Mary Landin, Pat Nickson and Rosalee Rainwater of Lorenzo.

Parents may check with the Hesperian for detailed itinerary information if necessary.

"The entire trip will cost \$16,000," Mrs. Harrison said. "That works out to \$400 a person." She added that the list of applicants was opened two years ago on a first-come, first-served basis.

Urged To Help Eradicate Leprosy Worldwide

Met Governor Snodgrass Reports Wednesday

District 2-72 governor Snodgrass, addressing the weekly meeting of the local club, urged the Floydada Lions to contribute support to a new fund to help the international effort to eliminate leprosy.

Snodgrass said that leprosy is a disease that can be beaten, and that it is not a stigma, as many people think.

Snodgrass said that leprosy is a disease that can be beaten, and that it is not a stigma, as many people think.

Snodgrass said that leprosy is a disease that can be beaten, and that it is not a stigma, as many people think.

Snodgrass said that leprosy is a disease that can be beaten, and that it is not a stigma, as many people think.

Snodgrass said that leprosy is a disease that can be beaten, and that it is not a stigma, as many people think.

Snodgrass said that leprosy is a disease that can be beaten, and that it is not a stigma, as many people think.

Snodgrass said that leprosy is a disease that can be beaten, and that it is not a stigma, as many people think.

Snodgrass said that leprosy is a disease that can be beaten, and that it is not a stigma, as many people think.

Snodgrass said that leprosy is a disease that can be beaten, and that it is not a stigma, as many people think.

contribute 40 cents each a year for ten years toward the program. With a million Lions worldwide, the club anticipates collecting approximately \$4 million.

When Morgan announced his proposal, Snodgrass said, the president's fellow New Zealand Lions immediately donated \$185,000 for LEAP.

Unlike most charitable groups, the Lions will give every cent collected for LEAP to the project. Nothing will be held back to cover expenses, Snodgrass said. He noted that Lion contributions often arrived in needy areas long before aid programs get started.

In the recent Kerrville Floods, he said, Federal relief did not arrive in the stricken area for almost two weeks. A \$10,000 emergency disbursement was available in less than 24 hours, courtesy of the Lions.

Snodgrass also urged the Floydada Lions to continue their support of the crippled children's camp at Kerrville.

The camp trains young people in the summer months and adults in the winter to live as normal a life as possible with their handicaps. The camp provides four two-week sessions for handicapped children at no cost to them or their families. Approximately 180 children attend each session.

"The camp trains them to revert their ways of thinking," Snodgrass said of the handicapped children and adults who attend the camp. "It gives them the ability and courage to succeed and the dignity that every person is entitled to."

"It's a horrible thing to live in darkness," Snodgrass said. "The purpose of Lionism is to give those people some light." But to do that, he said, the Lions must work together.

"Just like a jigsaw puzzle is not a complete picture until every piece is in its place, a Lions Club is just a crowd of people until every Lion fills his place," he said.

New Phone Book to Feature Artist

Telephone customers in Floydada can expect a special delivery from the telephone company soon — the 1979 Floydada Telephone Directory.

A record 3,304 copies of the new phone book are being mailed in the city, according to Jim West, Plainview manager for Southwestern Bell. Mailing began July 13. One copy will be mailed to each residential subscriber, with additional copies available at Southwestern Bell business offices," West said.

The cover of this year's directory is titled "Redstone Ranch," a watercolor landscape by nationally known San

Antonio artist Warren Hunter. A 1939 graduate of the Art Institute of Chicago, Hunter founded his own art school in San Antonio in 1946.

The painting chosen for the cover of this year's directory depicts the kind of scene for which Hunter is famous: a

Central Texas farm complete with windmill, water tank, clothesline, barbed-wire fence and plenty of bluebonnets.

"I've always loved this area," Hunter says, explaining that he wants his work to remind people of something in their own experience."

Two special entries have been added to the directory this year. A page on modular telephone equipment will be included in the call-guide section in the front of the directory. It illustrates how to connect and disconnect modular phones.

Also, a letter from Charley M. Davidson, staff supervisor-customer relations, will be included in the Yellow Pages. Titled, "How to Be a Better Buyer and Consumer," the letter offers shipping tips concerning prices, estimates, receipts, contracts, credit details, guarantees, licenses and permits.

'Service' Theme of Rotary District Governor

Stressing the Rotary International's goal to "Let Service Light the Way," Dr. J. Davis Armistead of Lubbock, governor of West Texas Rotary District 573, Wednesday urged members of the Floydada Rotary Club to make their influence felt as a part of the organization's 75th anniversary celebration.

Dr. Armistead's remarks were made at the Floydada club's weekly luncheon meeting at the Massie Activity Center.

Club president Gene Ehler presented the district governor to the club gathering. Armistead urged all members to participate in all local and district projects. When more than 850,000 Rotarians in 152 countries cooperate on a variety of projects, a great deal of good can be accomplished, he said.

Armistead cited Rotarian support of the Hunger, Health and Humanity Program for which Rotarians across the world were asked to pledge \$12 million.

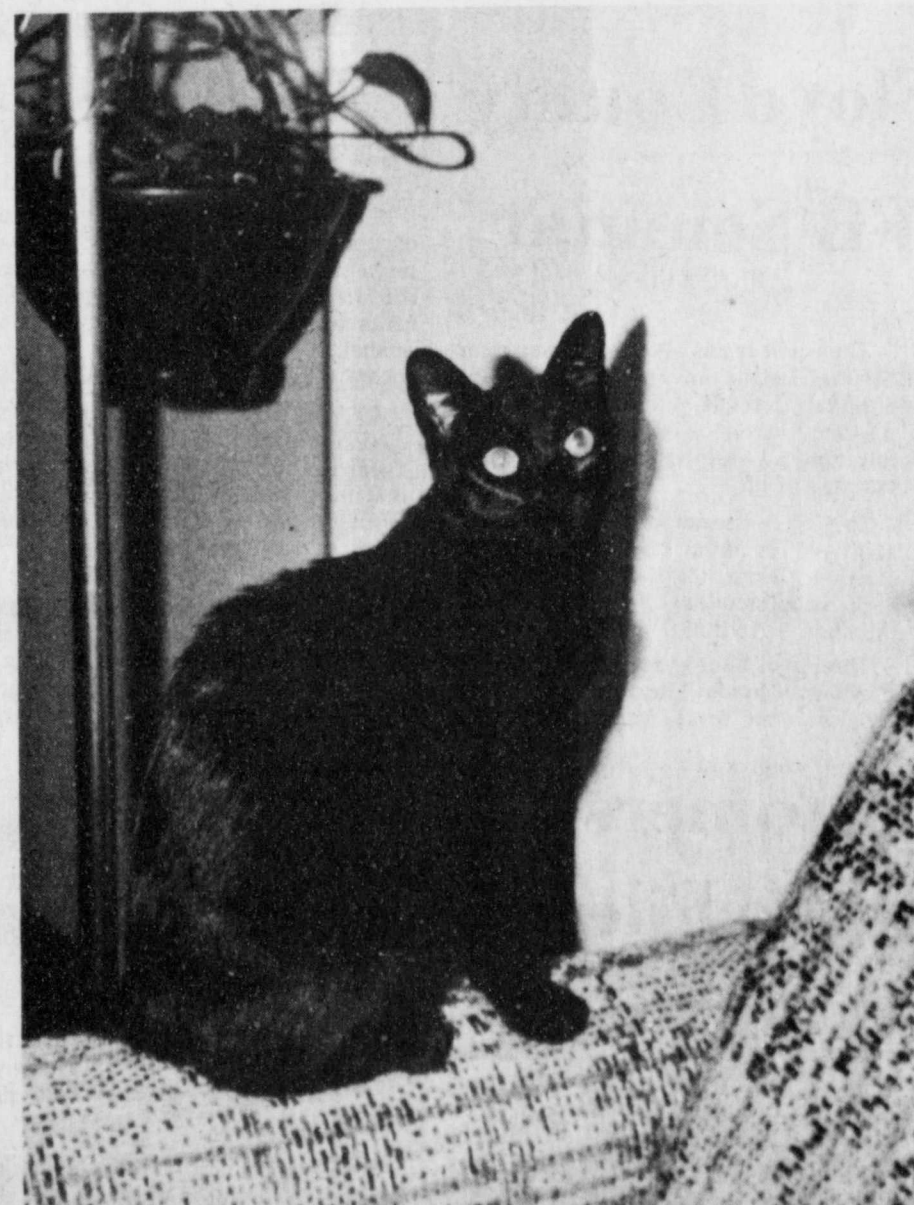
The Rotary motto of "Service Above Self," Armistead noted, was a fitting guide for Rotarians to use in all endeavors, including club, community and in business and professional relationships.

The district governor's wife, Cora, attended the meeting with Mrs. Ehler and Mrs. Jimmy Willson.

The previous evening, Armistead met with President Ehler and committee members from the Floydada club to discuss projects and programs for 1979-80.

Tom Farris, president of the First National Bank in Floydada, was inducted as a new member at Wednesday's meeting to fill the club's Banking classification.

Kristi Julian was presented as the new sweetheart for the coming year and was given a Rotary Sweetheart pin.



WHAT, ME WORRY? — Friday the Thirteenth held no omens of bad luck for Sabrina Ratzlaff, "grandest" of Art and Yvonne Ratzlaff. With a cushy job, plenty of soft places to cat-nap and three squares a day [not counting any luckless rodents that venture near Sabrina's home] things couldn't look brighter for this fortunate feline. [Photo Courtesy Art Ratzlaff]



WASHINGTON, D.C. — In ancient Greece the messenger of bad news was often beaten and sometimes even killed. In 5000 years of civilization human nature has changed very little and we still often accuse the messenger instead of the culprit.

For many years now energy experts have been telling us that if we continue the current regulatory policy of allowing cheap energy, we will eventually face a large shortage of hydrocarbon fuels. This is what is happening today. We are consuming fossil fuels at a rate that is one million times faster than it took nature to produce them and nothing will change the reality of the shortage — no matter who we blame or how much the issue becomes victim to demagoguery.

The decisions on how to deal with the current shortage now rest with our elected officials. President Carter recently proposed a plan to decontrol oil prices which I support. This proposal will save thousands of marginal wells which only produce 35 barrels a day or less. These wells have been abandoned in past years because they were losing money. Federal pricing policies only allow them to receive \$5.86 a barrel while we were paying many times that for foreign oil. This new policy will allow domestic producers to recover billions of barrels of oil that otherwise would not have been retrieved. There will be a small inflationary effect but this will be offset by a reduction in import costs and a strengthening of the dollar. When President Carter announced his decontrol decision it was hailed by most leaders of industrialized countries and confidence in the dollar was increased. Our energy goals should be conservation, increased production, less reliance on imported oil, and development of

alternative sources of energy — all of these aims would be enhanced by decontrol.

Most of the increased production will be done by the independents. These people are usually small businessmen who take great risks, often with borrowed money. Ninety percent of all exploratory wells have been drilled by the independents. Eight of nine holes they drill are dry and those that are successful pay over half of their profits in taxes. It is my belief we should encourage these people to find more hydrocarbon fuels. If we continue to restrain the rate of return it will force many companies out of the market and we will have a centralized industry with little competition, very high prices, and longer gas lines.

The Congress is currently considering a "windfall profits tax." This tax is not, in fact, based on profits but is a permanent federal severance tax on domestic oil. This proposal will increase the price to the consumer and also take away needed revenues for domestic production. According to the U.S. Census Bureau, independent producers have been investing on the average, more than 100 percent of their wellhead revenues in finding and producing domestic oil and natural gas. It is my opinion that our resources would be more efficiently allocated if we allowed these funds to be spent for production instead of higher government taxes.

If America is going to remain the dominant power in the world, we must become economically independent of foreign suppliers. Whether we can solve our energy needs will be one of our greatest tests as a Nation. If we do not, our defense, economy, way of life, and even our freedom will be in the hands of forces beyond our control.



"Yes, Jones, I'm always only too glad to discuss salaries with any members of our staff here."

Reunion

The 1969 Graduating Class of Floydada High School will hold a 19th Reunion July 29, 1979, at the Massie Activity Center in Floydada. The MAC has been reserved from 2 p.m. to 12 p.m. There will be a Pot Luck Supper about 6 p.m.

Classmates are asked to please bring a covered dish if you live in the area or can provide one, photos of children for display, and any old records, annuals, or other "artifacts" from the period.

To cover expenses of rent, dinnerware and postage, each participating class member needs to send \$5.00. (Local members are encouraged to send in their fee now.) Carrie Thayer Bertrand, Sharon Fuller Quisenberry, or Zacha Cummings Gregory may be contacted for any details.

This reunion is not limited to the '69 Class. The '69 Class encourages members from the other classes to attend as well as teachers, school officials, and parents of classmates.

"To be good is noble, but to teach others how to be good is nobler—and less trouble."

Mark Twain

Chamber Report

NEW CHAMBER OFFICE

The Chamber would like to announce the moving of their Chamber office to 116 W. California. The phone number will remain the same, 983-3434. The Chamber would like to invite everyone to come by and see the new facilities.

NEW DOCTORS

The Chamber would like to welcome Dr. James B. Wonnacott M.D. and Dr. S.K. Hong M.D. to Floydada. Dr. Wonnacott has already opened his office and Dr. Hong will begin his practice in the near future.

Wonnacott, 34, is a native of Charlotte, Prince Edward Island, Canada, where he attended high school and two years of university. He holds a bachelor of science degree from Dalhousie University in Halifax, Nova Scotia, and in June 1972 completed his medical training and internship at the Dalhousie medical school.

We are happy to have these two new doctors in Floydada.

UP CLOSE AND PERSONAL

Ray McDonald, 37, is the owner of McDonald Implements in Floydada, and is the third generation of McDonalds to own the business.

Ray and his wife Sunny, who will teach 5th grade science at R.C. Andrews school this fall, have two children; Bill, who is four, and Stephanie, 3. The McDonalds live at 113 J.B. and are members of the Episcopal Church. Ray is a 1960 graduate of Floydada High School, and attended Midwestern University. Ray is active in Lions Club, and his hobbies are photography, music and sports.

Ray feels that after living the first 18 years of his life in Floydada, then 12 years in Wichita Falls, that the future is definitely in the small towns of America, and of these, Floydada is tops, both in good living and fine people.

FLEA MARKET AND OPEN MARKET

The Retail Trade Committee along with the Agricultural Committee will sponsor a flea market and an open market for all who are interested. The flea market will be at the vacant building between Hale's and Beall's Department stores. Space for the sale will be \$5.00 per booth. The deadline to sign up for a booth will be July 25th. This market will be held on July 28th beginning at 10 a.m. till 5 p.m. The open market will be for anyone who would want to sell fresh produce and will be around the Court House Square. The booths will be \$2.00 per booth. The sign up deadline for this will be August 21st. The open market will be August 25th. You can reserve these booths by calling the Chamber Office at 983-3434. Money for the booths will be collected the day of the sale.

Farmers Group Takes Exception To Ag Decision

A Lubbock-based farmers group took exception last week to a U.S. Department of Agriculture decision to increase the 1979 sorghum target price four cents from \$2.30 a bushel to \$2.34 a bushel.

The Grain Sorghum Producers Association claimed that the government agency's ruling was much too low and that the action by U.S.D.A.'s handling of the matter violated the legislative intent of the Agriculture Act of 1977.

(The government action) "was taken to comply with the legislative intent that the same cost of production formula be used to adjust the sorghum target price as is used to adjust the corn target price," claimed Bob Bergland, the Secretary of Agriculture.

"A recent examination by the Economic Statistics and Cooperative Service of the cost estimates and calculations leading to the sorghum price adjustment shows that it should have been \$2.34," Bergland said.

After making their own calculations of the formula, the producers group believes that the 1979 target price should be \$2.40.

Legislative hearings into this matter, originally scheduled to take place July 10, would still be held later this month, according to Elbert Harp, executive director of the Association.

"We are not going to be satisfied until we get the increase that we deserve," Harp said.



YARD OF THE WEEK — The Women's Chamber chose Mrs. E.E. Hinson's lawn at 230 W. Marivena as the

best in town for the coming week. The finely manicured garden extends to the back of the house, where Mrs. Hinson

has grown a profusion of flowering plants and shrubs all carefully bordered with decorative rocks. [Staff Photo.]

Four From Floyd County To Attend FB Seminar

Four young people — two girls from Lockney and two boys from Floydada — will attend the Farm Bureau Citizenship Seminar Monday through Friday in Waco.

Going to the seminar, which is to be held on the Baylor University campus, are Penny Hight, daughter of Mr. and Mrs. G. L. Hight; Melody Wiley, daughter of Mr. and Mrs. Richard Wiley; Mike Allen, son of Mr. and Mrs. Harvey Allen; and Sammy Bradley, son of Mrs. Ned Bradley.

They will learn about our American heritage, government, economics and national defense, and they will be informed about some of the forces, internal and external, that are eroding our way of life.

They were chosen for their leadership ability, high moral character and personality. More than 400 outstanding high-school students from throughout the state will attend.

The Floyd County students will leave Floydada Monday morning on a chartered bus and return Friday afternoon.

PNG Ag Customers Don't Need To File Priority Two Forms

Agricultural customers and industries served by Pioneer Natural Gas Company do not need to file a Priority 2 Form with the U.S. Department of Agriculture by July 16 as to eligibility and classification as a "priority 2" essential agricultural user.

The Priority 2 Form, available at county ASCS offices, is requested of agricultural users served by interstate pipeline systems under federal regula-

tion. Pioneer Natural Gas Company, an intrastate utility division of Pioneer Corporation, is subject to regulatory provisions of the Texas Railroad Commission.

Pioneer will be taking actions to assure that supplemental supplies of gas purchased by Pioneer from interstate companies for irrigation use obtain the high priority available under recent federal proceedings.

Floyd Philosopher Confused By The Economists' Confusion On Whether We've Got A Recession

Editor's note: The Floyd Philosopher on his Johnson grass farm examines economists this week, a little bit.

Dear editor:

There are two things I've never been able to understand. (1) How teachers can grade students so accurately that, at the end of high school, their figures can show the valedictorian is one-tenth of one percent better educated than the salutatorian, and (2) how economists can calculate that the economy dropped or rose 3.3 percent in one month.

I'll skip the first one. When I finished high school years ago I wasn't in the running anyway.

But the economists, they're more entertaining. Right now the big question with them is, Are we in a recession, or are we heading toward one, or is everything fairly normal except for inflation and closed filling stations?

You can get a yes and a no to all three of these possibilities if you ask three economists. If you want to stay unconfused, never consult more than one. Going above that is like asking a roomful of kids which TV program they

want to see. Or a same thing.

But what I can't understand is whether he's in a recession or not. I tell when I'm in one. I bracket making \$75.00 a month. I may be exempted from a minor recession.

Now a Depression is a thing. Most young people don't know what a Depression is. I tell them how it comes along.

If you've got a good working, and you live in a house with all conveniences, and you have a mortgage, and you have a car, and you've got any work, you say yes, when asked says Right now, and you out asking how much your young friends, we're

Employers IRS Tax Needed For 2nd Quarter

Employers must report social security and withholding taxes for the second quarter of 1979, according to the Internal Revenue Service.

If the quarterly liability, reduced by any deposit during the quarter, is \$200 or more the unpaid balance must be deposited.

Employers who make timely deposits of the full amount of tax due in any Federal Reserve or approved commercial bank are allowed until Aug. 10 to

file Form 941, "Employer's Tax Return."

The IRS sends the forms, but anyone who mails the mail can obtain the IRS offices.

IRS publication 15, "Employer's Tax Guide," is available.

Floyd County phone, toll free, for more information.

THE FLOYD COUNTY HESPERIAN
USPS 202-680

Published each Sunday and Thursday at 111 E. Mo. St., P.O. Box 700, Floydada, Texas 79235. Publication No. 202680. John Carroll, editor, publisher. Subscription rates: Local \$10.50 a year, out-of-trade area \$11.50 a year. Second class postage paid at Floydada, Texas 79235.

★ TEXAS PRESS MEMBER 1979 ASSOCIATION

DRIVELINE

Marijuana or alcohol — which is more dangerous for drivers?

Both booze and pot are mind altering drugs. Both affect your perception and motor reflexes and neither should be consumed before or during driving. A myth grew up in the 60's that marijuana actually improved some persons' ability to drive, but that's not true. No less an expert than Keith Stroup, founder of the National Organization for Reform of Marijuana Laws (NORML), has publicly warned that it is not safe to drive while stoned. (Not to mention possession of the stuff is illegal.)

O.K. . . . so which drug is worse? The evidence seems to indicate that alcohol has more immediate and drastic effects. It's a central nervous system depressant that hits you like a ton of bricks, impairing judgment, blurring vision, and slowing reflexes. Experts believe that as many as half of highway fatalities may involve drinking.

"Driver", a magazine published by the Personnel for military personnel, recently surveyed available medical research on the subject. The magazine reported that although marijuana's effects are much subtler than alcohol's, it significantly impairs driving ability. Studies indicate that pot narrows peripheral vision, slows reaction time, and distorts perception of time and space. . . . And alcohol and marijuana in combination are especially dangerous for any driver.

History Lesson . . . Painted center lines on highways were first seen in 1911 in Detroit. The first drive-in gas station opened in Pittsburgh in 1913. . . .

Question: A buddy told me I shouldn't use those fancy synthetic oils in my brand new car. Why not?

Synthetic oils (which cost three to four times extra) do have many advantages over regular oils. They last longer between changes, reduce engine wear, and give you better gas mileage. They apparently they should not be poured into engines. Engines contain many rubber-like parts which need regular mineral oil to make them fit tightly. If you put in synthetic oil, the seal won't "cure" correctly, and could lead to some leaking.

There are over five million licensed CB operators on the road today. . . . Sometimes it seems like there are more. . . .

Thriftway Boxed Beef Home Freezer Sale!

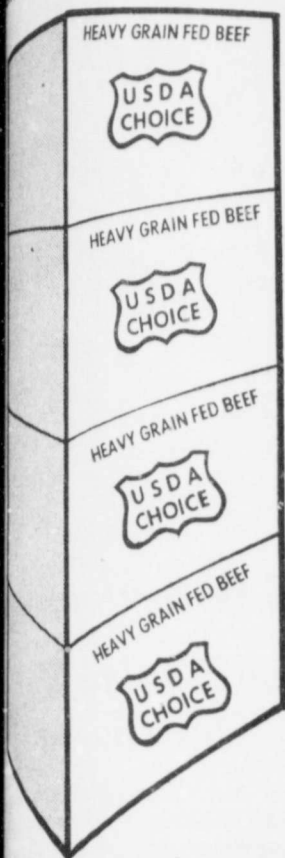


THE NEW WAY TO BUY BEEF

Boxed Beef is only the useable portions of the carcass skillfully trimmed and packaged through ultra-modern processing, then vacuum sealed and boxed for ease of handling. Cutting these portions to desired roasts and steaks does not require a trained butcher. In fact, many housewives across the country prepare the boneless cuts to their own requirements right in their kitchens. What a fine way to get just exactly the cuts you need and save dollars on quality beef at the same time. However, on any Boxed Beef purchase you make with us we gladly cut and wrap it to your own specifications.

ADVANTAGES:

1. Boxed Beef is naturally aged, thanks to its patented vacuum wrapping.
2. More sanitary-less bacteria.
3. You buy meat without the surplus waste fat and bone.
4. You save money in buying meat instead of bone, fat, and trimmings.
5. Quality controlled beef. Only the best beef is selected to go in the Boxed Beef program.
6. You can buy only the part of the beef that you want.



KRAFT DINNERS
MACARONI & CHEESE

389¢

7 1/4 OZ. BOXES

PURE TEA
REFRESHING
INSTANT NESTEA

\$189

3 OZ. JAR

ASSORTED PAPER
BOUNTY TOWELS JUMBO ROLL **69¢**

ALL PURPOSE 25 LB. BAG- \$3.79
GLADIOLA FLOUR 5 LB. BAG **79¢**

TODDLERS DISPOSABLE DIAPERS
PAMPER'S 12 CT. POX **\$179**

TOTAL GROCERY SAVERS

SHURFINE CREAM STYLE/WH. KERNEL
GOLDEN CORN 3 17 OZ. CANS **\$1**

6 PAK REG./SUGAR FREE A & W
ROOT BEER 6-16 OZ. BTL. **\$149**

ASSORTED FLAVORS 46 OZ.
HAWAIIAN PUNCH CAN **69¢**

HORMEL VIENNA
SAUSAGE 2 5 OZ. CANS **89¢**

SHELF SPECIALS

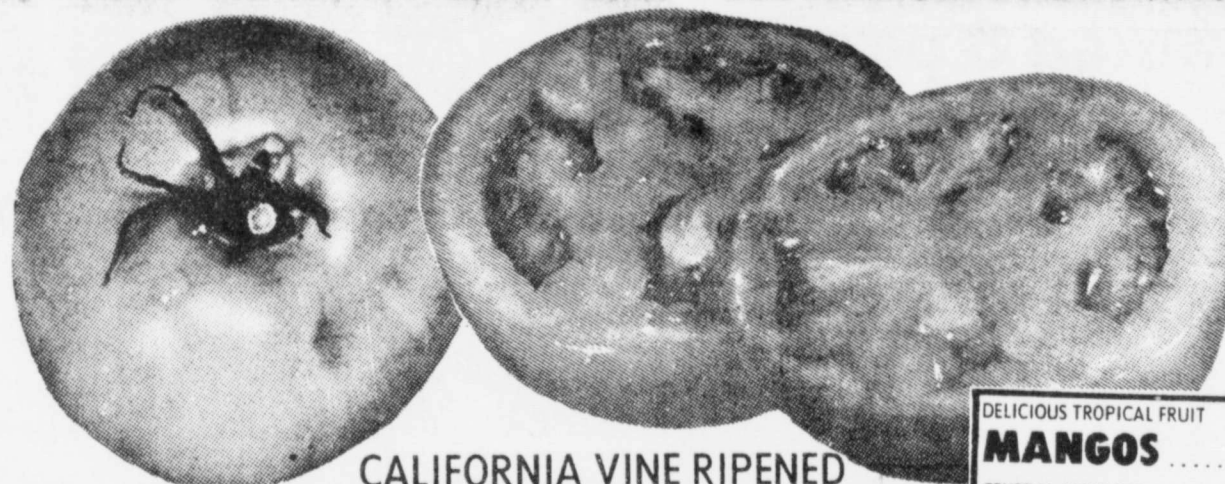
SCHILLING BLACK
PEPPER 4 OZ. CAN **99¢**

KRAFT PURE
GRAPE JELLY 2 LB. JAR **99¢**

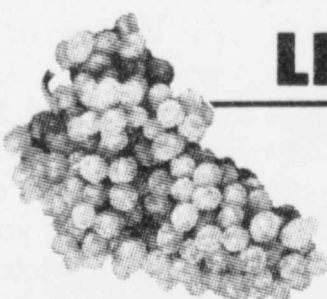
PURE STRAWBERRY
KRAFT JAM 2 LB. JAR **\$159**

SHURFINE MANDARIN
ORANGES 11 OZ. CAN **55¢**

DEL MONTE EARLY GARDEN
NEW POTATOES 16 OZ. CAN **3/\$100**



CALIFORNIA VINE RIPENED
TOMATOES
39¢
LB.



CALIFORNIA THOMPSON SEEDLESS
GRAPES
LB. **89¢**

DELICIOUS TROPICAL FRUIT

MANGOS EA. **59¢**

CENTRAL AMERICAN
BANANAS LB. **29¢**

CALIFORNIA HASS LARGE SIZE
AVOCADOS 3 FOR **\$1**

CALIFORNIA CELERY
HEARTS PKG. **69¢**

RED CALIF. LARGE SWEET
ONIONS LB. **29¢**

10-15 LBS. BEEF RIBS	20-25 LBS. BEEF PRIME RIB	50-65 LBS. BEEF ROUNDS	40-48 LBS. BEEF LOINS
\$239	\$219	\$189	\$229
LB.	LB.	LB.	LB.

BONELESS BRISKETS HEAVY GRAIN FED BEEF 7-10 LBS. \$139	LB.
BONELESS TOP SIRLOIN HEAVY GRAIN FED BEEF 10-12 LBS. \$289	LB.
BONELESS RIB EYES LIP ON HEAVY GRAIN FED BEEF 10-14 LBS. \$349	LB.
BONELESS LOIN STRIPS HEAVY GRAIN FED BEEF 10-14 LBS. \$349	LB.
FRESH GROUND BEEF 73% LEAN APPROXIMATELY 10 LBS. \$149	LB.

WRIGHT'S HICKORY SMOKED SLAB
SLICED BACON LB. **\$119**

ROAST BEEF BONELESS 1 LB. \$189	FRESH GUARANTEED 73% LEAN GROUND BEEF LB. \$159
ROAST BEEF BONELESS 2 LB. \$219	HEAVY GRAIN FED BEEF TENDERIZED CUTLETS LB. \$269
ROAST BEEF EXTRA LEAN 1 LB. \$189	OSCAR MAYER REG./JUMBO WIENERS 1 LB. PKG. \$169
ROAST BEEF 1 LB. \$179	OSCAR MAYER REG./JUMBO BEEF FRANKS 1 LB. PKG. \$179

SHURFINE FROZEN
LEMONADE
3 12 OZ. CANS **\$1**

USDA WHOLE
FRYERS **57¢** LB.

DAIRY & FROZEN FOODS

VEGETA 1 LB. BOX \$139	PEPSODENT 4.7 OZ. TUBE 49¢
PACK 16 OZ. PKG. \$169	ASSORTED HAIR SPRAY AQUA NET 10 OZ. CAN 99¢
FRUIT 4 7 1/2 OZ. CAN \$1	
PARKAY 1 LB. BOWL 79¢	
MILK 1/2 GAL. CTN. 99¢	
POTATOES 2 LB. BAG 59¢	
CHICKEN 2 LB. BOX \$259	

HEALTH & BEAUTY AID SAVINGS

NEW! ANACIN
ANACIN MAXIMUM STRENGTH 40 CT. BTL. **\$109**

20" OFF LABEL TOOTHPASTE
PEPSODENT 4.7 OZ. TUBE **49¢**

ASSORTED HAIR SPRAY
AQUA NET 10 OZ. CAN **99¢**

S.H. GREEN STAMPS
DOUBLE ON WED.

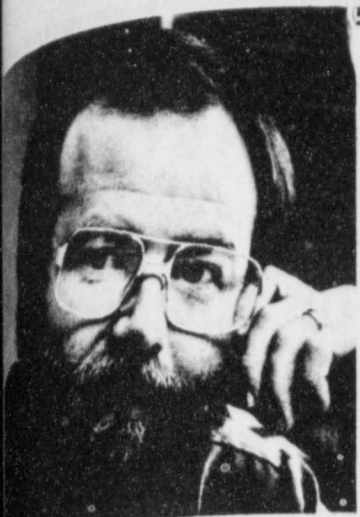
SHURFINE CHUNK STYLE
TUNA
69¢
6 1/2 OZ. CAN

FAMILY SIZE
WESSON OIL
\$189
48 OZ. BTL.

PAGE'S THRIFTWAY

PRICES EFFECTIVE JULY 15-21, 1979

LOCKNEY



LARRY SMITHERMAN

Smitherman, Art Director,

Smitherman, son of Ernest Smith, is rapidly becoming known in Texas as a cowboy.

After graduation Larry left Denver with three diplomas and his new bride, Marlene, whom he had met and married in Denver.

He went to work for the McCormick Advertising Agency in Amarillo where he

Schools' correspondence course. He had read that the school trained many great illustrators.

After high school, Larry enrolled in the Colorado Institute of Art in Denver. The school's president, John Jellico, exerted a positive influence on Larry while illustration continued to fascinate him as he studied under Charlie Dye. The latter, a well-known painter, had left New York to teach and pursue his own career as a western artist.

Worth recently, Irving is the only school in the state to receive the convention nutrition award.

Day attended the first national YAC workshop and the Texas YAC workshop in October. He has also made television appearances and worked in the promotion of TSFSA activities.

The theme of the convention, which lasted until Wednesday, was "Silver Reflections and Golden Projections." Fifty-nine Irving students entertained the conventioners with music fitting the theme.

Crockett Junior High Choir performed a selection of 50s music Monday. The Irving dettes spotlighted music from the 1960s and Wednesday the Cardettes and the Irving High School YACS presented a 70s theme.

stayed for about three years, working in production and illustration on accounts such as Shamrock Oil, Pioneer Natural Gas and several bank clients. From Amarillo Larry and Marlene moved to Austin where he worked as a medical illustrator for the Texas Health Department. Shortly after they moved their daughter, Kay Lynn, was born. A year later, he had an opportunity to make a move to the Texas Parks and Wildlife Department as the designer of their monthly magazine. "That position gave me an opportunity to get into something I really enjoyed," Larry was referring to magazine and book design.

Two people who helped Larry with his art career are Bob Helberg, publisher of Southwestern Art magazine, and John Jenkins, owner of Jenkins Publishing Company and the largest rare book dealer in the world. Through his business relationship and friendship with these men, Larry opened his own studio, Smitherman Graphic Design

& Illustration, Inc. in 1970. His new business concentrated almost exclusively on publication design and he soon became the Art Director of Southwestern Art magazine, a position he still holds.

"Magazine and book design is challenging and I'm glad I've had the opportunity to work in this field. I still love to do artwork in charcoal, mostly character studies, when I have the chance. I like to do a drawing that tells a story...never have been much on landscapes."

Today his studio consists of illustrators, designers and production artists. They do a lot of commercial art for ad agencies and businesses but about one-third of the work is of a non-advertising nature. Larry spends about 90% of his time on book and publication design. He and the studio have won local, regional and national awards for design and creativity in commercial and book design competitions. And his charcoal and paintings have been shown in galleries all over Texas.



Mr. and Mrs. Hestand Bennett

Mr. and Mrs. Hestand Bennett To Celebrate Golden Anniversary

Mr. and Mrs. Hestand Bennett are celebrating their golden wedding anniversary. A reception in their honor will be held in the home of Mr. and Mrs. Bill McCarter, 520 SW Sixth, Lockney, on

Friends are cordially invited to come and celebrate this occasion with them. Please omit gifts.

Sunday, July 22, from three to five p.m.

"The object of teaching a child is to enable him to get along without his teacher." Elbert Hubbard

Birdie Lee's Hair Styles

112 S. First Floydada

Cindy Ogden has returned as operator.

New Service:

Birdie Lee will be taking appointments Thursdays & Fridays for men's hair cuts and styling.

Call For Appointments 983-5169

PRICES EFFECTIVE July 16-21, 1979

WE RESERVE THE RIGHT TO LIMIT QUANTITIES



FRESH - SOFT - SMOOTH
TENDERCRUST
BREAD IS BETTER

We accept
Food Stamps
and
WIC Cards

THOMASON

VENTURE GROCERY & MARKET
PHONE 652-3346 LOCKNEY, TEXAS

Venture

FOODS

DOUBLE
STAMPS
ON
WEDNESDAY

Store Hours
8 a.m. - 9 p.m.
Monday - Saturday
8 a.m. - 7 p.m. Sunday



Meat Specials



WRIGHT'S HICKORY
SMOKED SLICED
Bacon
LB. 99¢

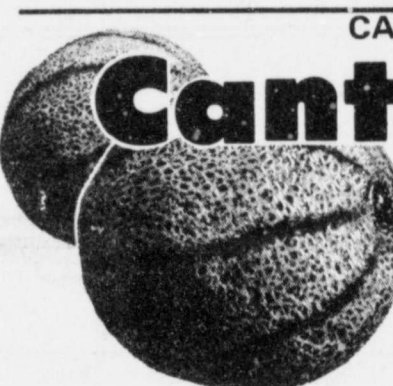
HICKORY SMOKED
**Wilson's
Picnics**
79¢
LB.

HEAVY GRAIN FED BEEF
Round Steak LB. \$2.39
HEAVY GRAIN FED BEEF
Cutlets LB. \$2.69
WRIGHT'S HICKORY SMOKED SLICED
Ends & Pieces 3 LB. BOX \$1.17
FRESH WATER FROZEN
Catfish Steaks LB. \$1.79

OSCAR MAYER SLICED
Bologna 8 OZ. PKG. 99¢
OSCAR MAYER SLICED
Meat Bologna 1 LB. PKG. \$1.79
OSCAR MAYER
Sliced Bacon 1 LB. PKG. \$1.69
OSCAR MAYER SLICED LUNCH
Meats 8 OZ. PKG. \$1.29

Produce Specials

CALIFORNIA VINE RIPENED



Cantaloupe
25¢
LB.

Nectarines 59¢ LB.
Avocados 3 for \$1
Cabbage 17¢ LB.



ALL PURPOSE
**Gladiola
Flour** 5 LB. BAG 79¢



FOR BAKING AND FRYING
**Wesson
Oil** 48 OZ. BTL. \$1.89



ABSORBENT PAPER
**Bounty
Towels** JUMBO ROLL 69¢



100% REFRESHING TEA
**Instant
Nestea** 3 OZ. JAR \$1.89

32 Ounce 6 Pack



DR PEPPER
\$1.69
Plus Deposit

Grainery Specials

20% OFF LABEL LIQUID
Palmolive 32 OZ. BTL. \$1.09

SHURFINE LIGHT
Chunk Tuna 6 1/2 OZ. CAN 69¢

BETTY CROCKER ASS'D. HAMBURGER
Helper WITH COUPON BELOW BOX 69¢

Hamburger Helper.

\$4.00 REFUND
ON HAMBURGER
HELPER

To receive \$4.00 refund, please send these items:

- Any brand Hamburger Helper box, bottle, and
- The proof label from the hamburger helper purchased, or the cash register tape indicating price paid, and
- This refund certificate.

Mail the above items to:
General Mills, Inc.
Box 5, Dept. 580
Minneapolis, MN 55402

NAME _____
ADDRESS _____
CITY _____
STATE _____ ZIP CODE _____

This Code must be included to ensure delivery of your refund. Refund will be processed within 30 days of receipt of this certificate. Offer expires November 30, 1979. (This is a mail-in certificate only. Cash cannot be redeemed in stores.) (This certificate is not valid for return.)

TRAPPEY'S JALA. W/BAC
Pinto Beans 2 300 CANS 79¢
JUMBO GERHARDT
Tamales 300 CAN 53¢
JUNT'S TOMATO JUICE/
V-8 Cocktail 6 PACK CANS 99¢
SHURFINE CUT GREEN SPEARS
Asparagus 15 OZ. CAN 89¢
LIPTON LEMON FLAVOR
Iced Tea Mix 24 OZ. JAR \$1.69
LITTLE FRISKIES DRY
Cat Food 4 LB. BAG \$1.79
TODDLER DISPOSABLE
Pampers 12 CT. BOX \$1.79
NEW! DEDORIZER 12 OZ. CAN
Love My Carpet 99¢

Shell Specials

COLGATE REG./MENTHOL
Instant Shave 11 OZ. CAN 69¢
SYLVANIA 90/75/100
Light Bulbs 2 CT. PKG. 79¢
FOR UPSET STOMACH
Pepto-Bismol 4 OZ. BTL. 79¢

Dairy And Frozen Food

PATIO ALL BEEF/Beef & Cheese
Enchiladas 4 CT. PKG. 89¢
KRAFT CHEESE FOOD
Velveta 1 LB. \$1.39
PILLSBURY PRIZE
Biscuits 10 CT. CANS \$1.79
HORMEL VIENNA
Sausage 5 OZ. CANS 79¢

30% OFF LABEL
Coffee Mate 22 OZ. JAR \$1.59

We Have Selection For

AREN BARNHARDT
Wide Elect Of Todd White

Gifts & Accessories
For All Occasions

Phone 983-5312 Floydada

Public Notice

Notice is hereby given that a public hearing will begin at 9 a.m. on July 24, 1979, in the offices of the Texas Public Utility Commission in Austin, Texas, on a petition by Southwestern Bell Telephone Company to make certain changes in the format of Texas telephone directories.

The principal proposed changes are: to separate business and residential listings in the white pages, with residential listings listed once in boldface type and business listings given names in regular type; to add, in addition to the "white pages" business and residential listings, a set of "blue pages" listing the names of selected governmental and service agencies.

Comments may be addressed to the Texas Public Utility Commission, 7800 South Congress Blvd., Austin, Texas 78757.

Southwestern Bell

Shop Roye's For The Latest
In Fashion
and Summer Colors
Of Merle Norman
ROYE'S
Merle Norman Cosmetics FLOYDADA

Hints To Lower Utility Bills

Just as consumers can count on a long hot summer, they can count on utility bills rising along with the temperature. So this is a good time to ask, "What can be done to hold down rising utility bills?"

First, use the air conditioner only when it is really needed. Second, use a whole-house ventilating fan (not an attic fan) instead of the air conditioner when it's 82 degrees Fahrenheit or below outside, or unless it's very humid. This can cut utility bills considerably. Third, use or buy cooling equipment that meets the need. Overcooling is expensive and wastes energy. Select a unit with the lowest suitable capacity and the highest energy efficiency rating available to cool your home.

If an 80 degree setting raises the home temperature 6 degrees (for example, from 74 degrees to 80 degrees), savings of between 12 and 47 percent in cooling costs can be realized, depending on location. If air conditioning temperatures nationally were raised 6 degrees, the Nation would save the equivalent of 190,000 barrels of oil every day.

Setting the thermostat at a colder setting to accelerate cooling when the air conditioner is turned on also wastes energy. Set the fan on high speed except in very humid weather. When it's humid, set the fan on low speed which will result in less cooling, but more moisture removed.

Here are some more tips on the efficient operation of an air conditioner:

Clean or replace filters at least once a month. When the filter is dirty, the motor has to run longer to move the same amount of air, requiring more electricity.

Turn off window units when leaving the room for several hours. Less energy will be used cooling the room later than if the unit was left running, even on low speed.

Consider using a fan in addition to the window air conditioner. It can spread the cooled air farther without greatly increasing use of electricity.

Don't place lamps or TV sets near the air conditioning thermostat. Incandescent lights or home appliances generate heat, which is sensed by the thermostat. This could cause the air conditioner to run longer than necessary.

For more energy-saving tips, including some on the efficient operation of the home without air conditioning, write ENERGY, Box 62, Oak Ridge, TN 37830.

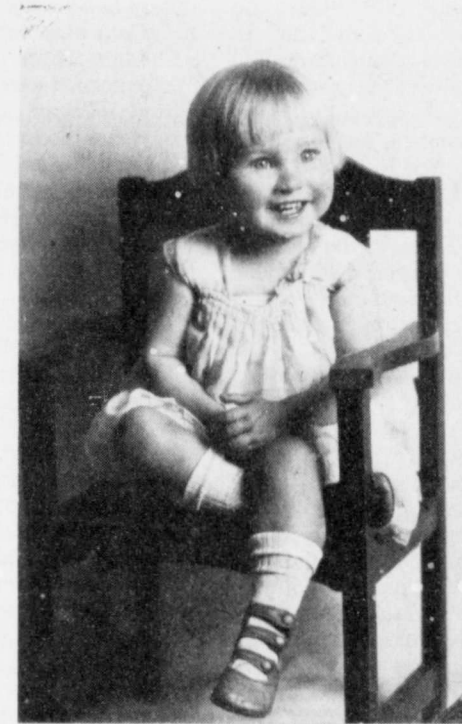
WHOZITS . . .

Knox, Frizzell

Lockney Whozits



These mystery ladies were on a trip to Port Arthur [probably not just to have their pictures made] in 1943. The ladies are sisters and the little girl belongs to the lady on the left. To make a guess about their identity, call the Beacon at 652-3318.



This little, blonde doll resides in Floydada and is married to a well-known farmer. If you would like to make a guess as to her identity, give us a call at the Hesperian....983-3737.

Molly Stringer

Is Last Week's

Floydada Whozit

Monte Covington, Mrs. Floyd Bradley, Bobby Rainer and Edith Ferguson all guessed last Sunday's Floydada Whozit as being Molly (Mrs. Bill) Stringer.

Emergency Medical Services Receive \$220,000 Federal Grant

Emergency Medical Services (EMS) in fifteen South Plains counties have been awarded a federal grant for \$220,000 to help improve emergency medical care throughout this region during the next 12 months, according to a South Plains

report.

Giles C. McCrary, Mayor of Post and Chairman of the South Plains EMS Committee, says the grant will help counties and towns develop a system of emergency care that can respond to medical emergencies anywhere in this 15-county area.

South Plains EMS, a private, non-profit association that will administer the grant, is composed of consumers, elected officials and providers of health services.

"Competition for this funding was intense," Mayor McCrary said, "because only about 20 such grants were to be awarded nationwide. Fortunately, we had regionwide support that was effectively demonstrated in Washington by South Plains EMS representatives and Congressman Kent Hance, (D) Lubbock.

"This grant will help us buy communications equipment and provide training for ambulance personnel," he said. "We'll be able to support the coordination and

planning that will help the accomplishments of individual communities combine into a regionwide EMS system. All this will assure the best in emergency medical care for every person in our 15-county area."

Mayor McCrary emphasized that these improvements won't take place overnight. He said this first year of funding will make such improvements possible in the near future, especially if federal funding continues.

Funds from the Department of Health, Education and Welfare are available for development of EMS systems because of EMS Systems Act of 1963. The Act provides grants for up to four years of system development. The grant is channeled through the Texas Department of Health, which helps coordinate several other EMS grants statewide.

Counties that will benefit from the grant are Bailey, Cochran, Crosby, Dickens, Floyd, Garza, Hale, Hockley, King, Lamb, Lubbock, Lynn, Motley, Terry and Yoakum.

FIRE SAFETY TIPS FROM SNUFFY®

GOOD VACATION PLANS INCLUDE HOME FIRE SAFETY CHECK

A care-free vacation takes thoughtful planning. And thoughtful planning includes measures for leaving your home fire safe.

"Train your children to help you detect and correct potentially hazardous conditions. Give your kids the responsibility of helping to make the house fire safe before you leave," says Snuffy® the Burger King Talking Fire Engine. Snuffy is the spokesperson for the Burger King Fire Safety Program which teaches youngsters the fundamentals of fire safety and prevention.

Before you leave, here are the things to check:

- Be sure the stove is turned off and that there are no flammable liquids or aerosols stored near the range. Even a pilot light can ignite vapors or fumes.
- Unplug all appliances, radios and televisions. Lightning storms or sudden electrical surges could cause a fire in this equipment while you're away.
- Don't leave pets in your home for long periods—even if you have someone coming in to feed them. If an animal becomes hungry, restless or lonely, it can actually cause a fire. For example, dogs have chewed through lamp cords, electrocuted themselves and started fires. Prowling cats have knocked over lighted table lamps and ignited the rug.
- Inspect the basement, attic and garage to be sure

that flammable liquids and combustible material are properly stored or disposed of. Varnish, paint thinner and cleaning fluid should be stored in sealed metal containers, away from the furnace, water, electric or gas heaters. If oily or greasy rags must be kept, store them in sealed metal containers. Here, again, a pilot light could set off fumes.



- If you have a fire hydrant in front of your home, make sure it is visible. Don't let shrubs, tall grass or trash cans obstruct access to the hydrant.
- Don't forget to tell your friends or neighbors and the police that you are going away. Ask them to keep an eye on your home. It's very important for safety and your own peace of mind.
- Finally, when you return from your vacation, check your smoke detector to make sure it's functioning properly. Batteries could run down, or other components fail while you're away.
- Don't allow your vacation to be spoiled by a fire tragedy that could have been avoided by practicing good fire safety habits in the home.



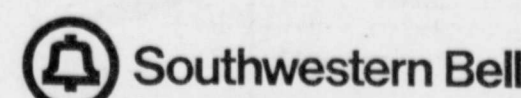
Line your vegetable bin with paper towels to keep vegetables fresher longer.

Public Notice

Southwestern Bell, in accordance with the rules of the Public Utility Commission of Texas, hereby gives notice of the company's intent to implement a new schedule of telephone rates in Texas effective August 3, 1979.

It is expected that the requested rate schedule will furnish a 6.09 percent increase in the company's intrastate revenues.

A complete copy of the new rate schedule is on file with the Public Utility Commission at Austin, Texas, and is available for inspection in each of the company's public business offices in Texas.



07/20/79

WTCH CH. 17 Lubbock Cable 4	KTXT CH. 5 Lubbock Cable 5	PTL CH. 6 Charlotte Cable 6	KMCC CH. 28 Lubbock Cable 7	WGN CH. 9 Chicago Cable 9	KTV CH. 10 Oakland Cable 10	KCBD CH. 11 Lubbock Cable 11	KLBK CH. 13 Lubbock Cable 13	CBN CH. 2 Virginia Bch Cable 2
News	Lilas, Yoga And You MacNeil- Lehrer Rept.	You'll Love It Jimmy Swaggart	News	Dick Van Dyke Andy Griffith	T.V. Powww with Tom and Jerry	News	News	Good News
Joker's Wild	Wash. Week in Review Wall Street	At Home With the Bible Westbrook Hospital	Bewitched	Soap Factory	Captain Cosmic Bewitched	Sanford and Son	Joker's Wild	Lesson
White Shadow	Evening at Pops Lionel Hampton	Movie: The Reincarna- tion of Peter Proud	Operation Petticoat Welcome Back, Kotter	Movie: 'Then Came Bronson'	Six Million Dollar Man	Diffrent Strokes Rockford Files	Incredible Hulk	Intouch
M*A*S*H	Masterpiece Theatre: I. Claudius	PTL Club	Movie: 'The Reincarna- tion of Peter Proud'	Movie: 'Then Came Bronson'	Odd Couple	Nbc News Special Report	Dukes of Hazzard	700 Club
WKRP in Cincinnati	Dick Cavett	Richard Hogue PTL Club	News	News	Dating Game	News	Dallas	Lay Witness
Lou Grant	Captioned ABC News	Sign Off	News	Movie: 'The President's Analyst'	Movie: 'Encounter with the Unknown'	Tonight Show	Hawaii Five-O	Bible 77
News	Sign Off	Sign Off	Sign Off	Sign Off	Sign Off	Sign Off	Sign Off	Ross Bagley
Rockford Files	Sign Off	Sign Off	Sign Off	Sign Off	Sign Off	Sign Off	Sign Off	Relig Prgrms Cont'd
Movie: 'Crisis'	Sign Off	Sign Off	Sign Off	Sign Off	Sign Off	Sign Off	Sign Off	Sign Off

07/21/79

WTCH CH. 17 Lubbock Cable 4	KTXT CH. 5 Lubbock Cable 5	PTL CH. 6 Charlotte Cable 6	KMCC CH. 28 Lubbock Cable 7	WGN CH. 9 Chicago Cable 9	KTV CH. 10 Oakland Cable 10	KCBD CH. 11 Lubbock Cable 11	KLBK CH. 13 Lubbock Cable 13	CBN CH. 2 Virginia Bch Cable 2
News	No Programs	Isaac	Fangface	U. S. Farm Report Daniel Boone	Alvin and the Chipmunks Fantastic Four	All-New Popeye Hour	Ever Increasing Faith	
Joker's Wild	Puppet Tree	Puppet Tree	Scobey's All-Stars	Movie: 'Smuggler's Cove'	Godzilla Super 90	Bugs Bunny/ Road Runner Show	Life in the Spirit Practical Christian	
Paper Chase	Kid's Jamboree	Bible Bowl	Challenge of the Superfriends	No Programs	At Home With the Bible	Daffy Duck	Tarzan and the Super	Rock '76
Movie: 'Don't Look Now'	Pirate Adventures	PTL Club	Bigfoot and Wildboy	Movie: 'Flight Of The Cougar'	Voice of Agriculture Black Forum	New Fred and Barney Show Jetsons	Seven	Lesson
Movie: 'Green Horns'	PTL Club	Bigfoot and Wildboy	Movie: 'Flight Of The Cougar'	Voice of Agriculture Black Forum	New Fred and Barney Show Jetsons	Seven	Faith That Lives	
News	All New Pink Panther Show American Bandstand	Charlando	See Hunt	Our Men in the Capital World Tomorrow	Discovery Soul Train	Pre-game Show Major League Baseball: Houston	Great Teams, Great Years	Life Abundant
Barnaby Jones	Good News	Si Se Puede!	Wrestling	at Chicago	Movie: 'Panic in Year	at Pittsburgh or Oakland at New York	Movie: 'Hellions'	Rays of Hope
Movie: The Spiral	Jacobs Brothers High Adventure	Isaac	Bass Fishin' America British Open	Soul Train	Movie: 'Harvey'	Porter Wagoner Nashville Music	Celebration	Ross Bagley
Staircase	Movie: 'Waltz Of The Toreadors'	Richard Hogue New Wine	Richard Hogue New Wine	Sgt. Bilko	Movie Cont'd	Wild Kingdom	Hee Haw Honeys	Program Cont'd
Movie: 'A Question of Guilt'	Another Voice	Larry Jones Ministry	Star Trek	My Three Sons	Lawrence Welk	Hee Haw	Insight	
News	Soccer Made in Germany	Club PTL	Program Cont'd Bewitched	Lawrence Welk	Hee Haw	Insight	Jesus Festival	
Joker's Wild	Meeting of Minds	Jacobs Brothers High Adventure	Battlestar Galactica	Nashville Music	Movie: 'Red Pony'	CHiPs	Movie: 'Animal Crackers'	Best of 700 Club
Waiters	Austin City Limits	PTL Club	The Love Boat	Kicks	Sword of Justice	CBS News Special	Lesson	
1979 Miss Universe Pageant	Session	Fantasy Island	Jackie Gleason Special	Dance Fever	Dancing Disco	Supertrain	Rock Church	
News	Sneak Preview	Isaac	News	Royal Ballet Salutes the USA	News	WCT Challenge	Zola Levitt	
Movie: 'Rebecca'	Sign Off	Club PTL	Movie: 'Seven Cities Of Gold'	Nightbeat	Sh-Na-Na News Sign Off	Innocence	Relig Prgrms Cont'd	

These Floydada And Lockney Merchants

Sponsor The T.V. Schedule

For You Each Week

07/21/79

WTCH CH. 17 Lubbock Cable 4	KTXT CH. 5 Lubbock Cable 5	PTL CH. 6 Charlotte Cable 6	KMCC CH. 28 Lubbock Cable 7	WGN CH. 9 Chicago Cable 9	KTV CH. 10 Oakland Cable 10	KCBD CH. 11 Lubbock Cable 11	KLBK CH. 13 Lubbock Cable 13	CBN CH. 2 Virginia Bch Cable 2
News	Soccer Made in Germany	Club PTL	Program Cont'd Bewitched	Lawrence Welk	Hee Haw	Insight	Jesus Festival	
Joker's Wild	Meeting of Minds	Jacobs Brothers High Adventure	Battlestar Galactica	Nashville Music	Movie: 'Red Pony'	CHiPs	Movie: 'Animal Crackers'	Best of 700 Club
Waiters	Austin City Limits	PTL Club	The Love Boat	Kicks	Sword of Justice	CBS News Special	Lesson	
1979 Miss Universe Pageant	Session	Fantasy Island	Jackie Gleason Special	Dance Fever	Dancing Disco	Supertrain	Rock Church	
News	Sneak Preview	Isaac	News	Royal Ballet Salutes the USA	News	WCT Challenge	Zola Levitt	
Movie: 'Rebecca'	Sign Off	Club PTL	Movie: 'Seven Cities Of Gold'	Nightbeat	Sh-Na-Na News Sign Off	Innocence	Relig Prgrms Cont'd	

The Depression And Drought Years

By Mark Martin

Early in September 1929, we began to hear of the New York stock market and the Chicago Board of Trade showing that there might be a depression starting. On September 30, 1929, the bottom fell out of the stock market. Thousands of millionaires were paupers in one day and many committed suicide by jumping out of windows along with other means of taking their lives.

In Texas, we paid very little attention to what was taking place. In 1928 and 1929, we were making a good crop. Then farm prices began to drop. In 1930, merchants in Floydada began to lay off employees because there were no customers.

On May 30, 1930, the merchants in Floydada, in order to try and stimulate more business, issued (to be used only in Floydada) many wooden nickels and one dollar paper script. These were payable in cash on or before May 28, 1931, by the First National Bank of Floydada. I kept a number of these wooden nickels but don't remember what happened with the dollar script.

Also in these days money in bills which the most came to the First National Bank of Floydada, Texas, were in blank and were signed by J.V. Daniel, President and Olin Watson, Cashier. There is one not owned by me in my silver collection on display in the Floyd County Museum.

The farm machinery business was very good in 1928, 1929 and 1930. Because it began to get very dry, the farmers were trading their livestock for tractors. On July 15, 1931, the great depression set in. The Floyd County National Bank closed their doors and on the same date the First State Bank at Lockney closed.

There were many good men and women like Mrs. Farris and Hugh Cannady both being directors in the First National Bank. It was rumored that Uncle Tom

Montgomery got his worn black satchel and headed with a driver in a Model A Ford for the Fort Worth National Bank and brought back \$200,000 to head off a run on the First National Bank. Hugh Cannady, knowing that the Floyd County National Bank was going to close, had some money there but he let it go with others.

Our employee, E.J. Barker, had given us notice that he was going to try farming in Arizona. My brother Lacy had gone to Russia for the Caterpillar Company to be a mechanic and instructor under Stalin's first five year plan. For the next several years, I was allowed to send him seven pounds of food every two weeks. Their main food was potatoes, bread and cabbage. There was no soap or tobacco. I would send him canned Prince Albert tobacco, Lava soap and canned goods. The only baths they took were at night in the Volga River. He was stationed on a collective farm at Kiev, Russia in the Ukraine wheat belt.

The drought here had set in and Arthur Kreis, an outstanding citizen and farmer, opened up a hamburger place across the street where the Palace Barber Shop is now. For several years, he opened up at 5 A.M. each morning and sold short orders for breakfast, 10 cent hamburgers, 5 cent coffee, and 5 cent donuts until 6 P.M. Many customers wondered why he did this because he was a well fixed man, financially. He seemed very happy doing this and as the years went by there were many good things that Arthur did to make Floydada and Floyd County a better place to live.

The farmer was better off financially than the merchant. Most farmers lived on the farm where they would have some chickens and milk cows with a couple of hogs for meat. Every Saturday was a busy day. The farmer

would bring a can of cream to sell. Emory Angus and Charley Berry would trade eggs for a few groceries. All farmers had a windmill and they could raise a few vegetables. The barber shops were full until late on Saturday. Lockney was known as the busiest small town in West Texas.

Martin and Zimmerman farmed and employees were plenty to be hired at \$1.50 a day for twelve hours. Recently, Dude Walding told me when I paid him \$1.50 a day, it was a lifesaver to him.

We had no irrigation but there was some at Littlefield. John and Dave Lewis had an old Ford truck and they would go to Littlefield and haul a load of bundled feed to Floydada for \$4.00 a load. They figured they were making 50 cents each day clear.

The land began to blow and clouds of dust from the powdered fields of Northwest Texas and New Mexico began to roll in. It would turn day into night in a minute. Banks were still closing. One day in March 1933, a young man named Franklin Roosevelt was elected President. About the third day he was President, he gave notice that all banks were closed until insurance was taken to save the depositor. When that man sat down to make a fireside chat, you would listen and hear him by a small radio and you knew that America would stand the test.

There were a few pieces of land that blomed in Floyd County. The unkept land from Hereford — north and west — would never stop blowing. Farms were abandoned where people had to move West to try and find work.

The chisel plow made by Graham-Houme of Amarillo, the Soil Conservation Agency and rain after 1935 began to produce proper farming techniques.

Before Mr. Roosevelt took office, I went to Valley View and took Matt's father to Wellington, Kansas, to see his brother. When we crossed the river south of Oklahoma City, there were 3,500 people on the river bank being fed on the soup line.

When we came back from Wellington, I noticed the lights were on the side of the street instead of in the middle where they used to be.

As tight as our house was, Matt would pin a bed sheet over the windows and at night we would hang a bed sheet over the bed to catch the dust.

In 1937, the wheat crop saved the farmer. Fred and I made 90 thousand bushels of wheat and sold it for \$90,000. We bought some land in Deaf Smith and Oldham County very cheap. There was one fence row seven miles long, fifty feet wide and five feet high that we called the Hindenburg Line from World War I. There were many high piles of dirt. Some as big as a barn and we knew there was something stored there to catch the dirt.

We would hook a long piece of railroad iron line to one tractor and hook another tractor with a long cable that would go around the edge and drag the tractor with the steel rail through. At one pile of dirt, we found two complete Hart-Parr tractors

covered up that had been abandoned some years before.

The Soil Conservation took over the Hindenburg Line. All of the fence was covered up and when they finished there was nothing left but the corner post to tell where our land began. Now that all the land has been leveled off, there are just a few reminders of the days of the Okies and the grapes of wrath.

Soccer Meeting Slated July 23

Due to the growing interest in the sport of soccer and the lack of a youth sports activity for the fall months, there will be a public meeting for those interested in starting a fall soccer program for the youth of Floydada.

This meeting will be held Monday, July 23, 8 p.m. in the community room of the First National Bank of Floydada. The purpose of the meeting is to discuss organizing and establishing the program.

'It is currently anticipated that the ages involved would be from kindergarten (79-80) through 5th grade (79-80). If you have a child or children who would be interested in playing, please drop a card or letter to First National Bank, SOCCER, P.O. Box 550, Floydada, Tx 79235. You need to include the name and ages of the person or persons who would like to play.

Please remember to mark your calendar for the 23rd. Attend the meeting and let's see if we can bring Americas' fastest growing sport to Floydada.

CANCER ANSWER LINE

American Cancer Society
M. D. Anderson Hospital
and Tumor Institute

A saleswoman writes: "I am in my early 40's, am healthy and have no history of breast cancer in my family or any other risk factors. I was told that I shouldn't have routine breast x-rays until I am 50. What kind of examinations should I be having?"

ANSWERline: First of all, you should be examining your breasts yourself each month for any possible changes. Breast self-examination is a lifesaving habit that women of all ages should acquire and complete and easy instructions are available from local units of the American Cancer Society free of charge. Also, each year you should have your breasts examined by a physician who will also go over your medical history. Naturally, if you notice any changes in your breasts between these annual checkups, you should see your physician as soon as possible.

A reader shares this experience: "Ten years ago in my third pregnancy I developed a very rare form of cancer called choriocarcinoma. I was successfully treated and I am very much alive. I think that your readers would be encouraged to learn about what's being accomplished.

ANSWERline: Choriocarcinoma is a rare form of cancer which develops after pregnancy, and used to kill women. But in 1955, two scientists, Drs. Min Chiu Li and Roy Hertz, treated a young woman with advanced choriocarcinoma with a drug that made the cancer disappear. Today, 27 years after their original discovery, some of the first patients that they treated are still alive and well. Now, using a combination

of drugs, physicians are able to cure between 95 and 100 percent of women in whom the disease is detected in an early stage and achieve remission (disappearance) of the disease in 75% of women with advanced choriocarcinoma. This achievement is important not only for the women with this particular form of cancer, it is another medical milestone in the use of drugs to treat cancer.

A lithographer asks: "Who is more likely to get cancer—a man or a woman?"

ANSWERline: In 1977, approximately 347,000 American men will develop cancer as will 343,000 American women. There is a far more startling difference, however, when you consider who is more likely to die of cancer. Cancer is most curable when detected in an early stage and treated promptly, and women are more likely than men to have regular physical checkups and pay attention to cancer's warning signals. Also, there is an enormous lung cancer death toll of American men because of cigarette smoking which is far beyond that for women although in the future greater numbers of women may die of lung cancer because of their increasing cigarette habit.

Do you have further questions? Call your local unit of the American Cancer Society or call M. D. Anderson Hospital & Tumor Institute's Cancer Information Service, 1-800-392-2040 toll-free in Texas, 792-3245 in the Houston area.

Texas Receives \$2,722,500 Grant

DALLAS, — The State of Texas has been awarded a grant of \$2,722,500 to continue implementation of a Home Weatherization Program for low-income citizens throughout the State. G. Dan Rambo, regional representative of the Secretary, U.S. Department of Energy (DOE), announced recently. The grant will allow the State to weatherize an estimated additional 4200 homes of low-income persons under

Illegal Trotlines Being Seized

More than 75 percent of all trotlines examined by Texas game wardens in the South Plains region have been confiscated because of one or more violations of the Texas trotline rules.

"Our officers pulled up over 60,000 feet of illegal trotlines last year and they have already confiscated over 49,000 feet this year," said Weldon Fromm, Lubbock Parks and Wildlife regional law enforcement director.

Most of the illegal trotlines were seized during the summer months when this type of fishing is in full swing in northwest Texas," Fromm said.

All trotlines must have the name, address of the owner,

Social Security

Rep. Visits

Floydada

A representative of the Social Security Administration will be on hand in the Floyd County Courthouse to help with Social Security problems during July, August and September.

The representative will be in Floydada July 18 and 25, August 1, 8, 15, 22, 29 and September 5, 12, 19 and 26. All dates are on Wednesdays. Hours will be from 9:30 a.m. to 11:30 a.m.

Surrounding towns serviced by the representative will be Abilene, Dimmitt, Matador, Silverton and Tulia.

Floydadan Makes

Trinity Honor Roll

A young Floydadan man was among 656 students named to the Dean's List or Honor Roll for academic work during the Spring semester at Trinity University in San Antonio.

Dwane Mark Martin, son of Mr. and Mrs. M.H. Martin, 517 W. Tennessee in Floydada, was named to the Honor Roll. Dwane is a senior at Trinity University.

To be placed on the Honor Roll, a student must maintain a minimum grade point average of 3.6.

The Hesperian congratulates young Martin and his parents.

"If you tell the truth, you don't have to remember anything." Mark Twain

Outdoors & Travel

by E. L. "Buck" Rogers

We live in a crazy, mixed-up age.

We give away wheat to the Russians and then pay the Saudis a premium price for a barrel of oil. We provide food stamps to people who don't want to work, and arms to little nations so they can kill each other more efficiently. We pump gasoline into big busses so they can haul kids clear across town to go to school. We even underwrite politicians' expenses when they run for office.

In an age like this, it's refreshing to see someone pay for what they get, and receive a fair return on their investment at the same time.

Such is the case with sportsmen who pay an additional 10 percent excise tax on much of their fishing and hunting equipment. That's right. A fishing reel is subject to greater tax than an electric toaster, or a garden tractor, and on the surface this seems a mite unfair.

Sportsmen don't mind, though. Under the Dingle-Johnson and Pittman-Robertson acts, these funds go back to the states to pay for wildlife restoration, fish propagation, research, and the conservation programs which assure quality outdoor experiences for all of us.

Receipts from the sale of fishing and hunting licenses help pay for these programs, too.

Last year, for example, some 28 million anglers provided \$25,000,000 through D-J, and 16 million hunters contributed \$4 each, or \$64,000,000 through P-R. During the period of years that these two Acts have been in existence, sportsmen have paid in more than a billion dollars in extra taxes which have been ploughed back into fisheries and wildlife conservation programs.

What sportsmen pay for the privilege of fishing and hunting effects others also. Their tax dollars have preserved wilderness areas and wildlife sanctuaries which nature lovers can enjoy as well. Collectively, they have saved the white-tail deer, our waterfowl, and many other species of wildlife from extinction. Sportsmen's excise taxes have built hundreds of new lakes, developed miles of hiking trails, cleaned up polluted streams, provided public access to wild places and generally funded the security measures needed to safeguard what natural resources we have left. Yes, sportsmen pay for their outdoor experiences, but at least they receive something in return.

It makes one think, doesn't it? If we applied this "you pay for what you get" principle to other pursuits, I wonder where we'd be.

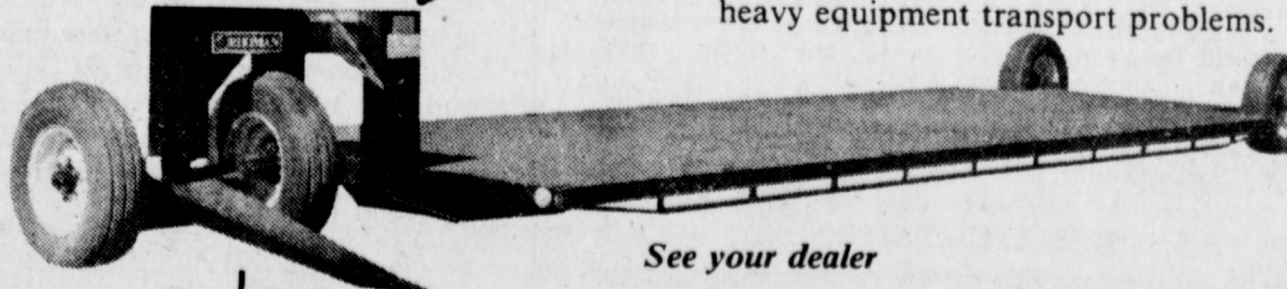
ABOVE AND BEYOND ANY ORDINARY TRAILER



The Lojo has the unique capability of maneuvering large loads in close turns of 90° or greater due to the "mini-neck" construction (patent pending). Built of tubular steel with steel cross members on 24 inch spacings, giving maximum support for heavy loads. The Lojo is available in 6 or 8 foot widths, 24 or 30 foot lengths. GVW is 10,000 lbs. on the 24 foot model and 8,000 lbs. on the 30 foot model. All models have 14 inch overall floor height and 6 inch ground clearance.

Rhoman Lojo

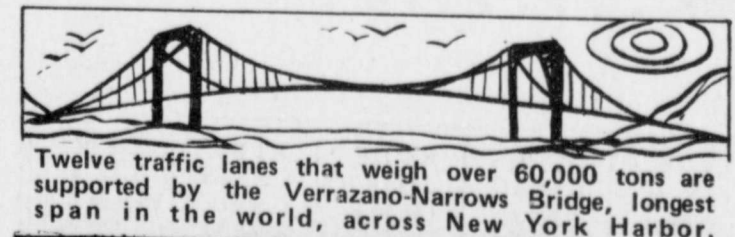
The Lojo could be your answer to large and heavy equipment transport problems.



See your dealer

PRODUCERS CO-OP

Larry Barbee, Floydada, Tx. 79235, 806-983-2821



Twelve traffic lanes that weigh over 60,000 tons are supported by the Verrazano-Narrows Bridge, longest span in the world, across New York Harbor.



MORTON BUILDINGS

For Information Call or Write. . . .

MORTON BUILDINGS INC.

Box 128

Plainview, Texas

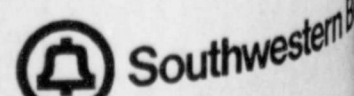
Phone 806-293-4386

Public Notice

Southwestern Bell, in accordance with the rules of the Public Utility Commission of Texas, hereby gives notice of the company's intent to implement a new schedule of telephone rates in Texas effective August 1, 1979.

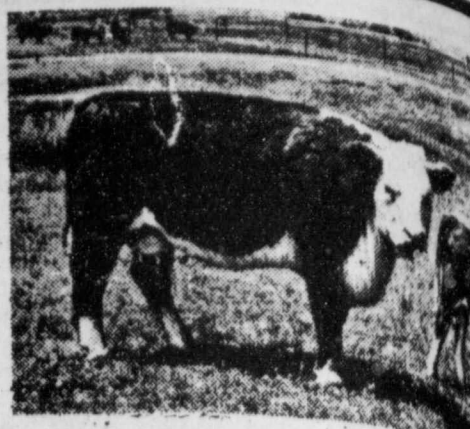
It is expected that the new rate schedule will furnish a 3.6 percent increase in the company's state revenues.

A complete copy of the new rate schedule is on file with the Public Utility Commission at Austin, Texas, and is available for inspection by the public at the company's public offices in Texas.





FARM & RANCH NEWS



Pest Management Report

BOLLWORM EGG LAY PREDICTION — JULY

Based on catches of adult cotton bollworm moths in a light trap placed in the Mount Blanco community of Crosby County we can not predict when peak bollworm egg lay for July will occur. This method of computer prediction has proved quite accurate in most instances over the last three years.

As shown in the attached graph the peak for July is expected to occur on the 25th. As we collect more data this prediction will be updated to include August and September. We cannot predict the number of eggs to be laid or the problem that will result, but it is intended to give you some idea of when a problem may arise.

SUNFLOWERS

Growers of sunflowers beware! Heavy numbers of the sunflower moth are being reported all across the South Plains. These moths are light gray and about 1/2 inch long. When not flying they rest with their wings folded so that they are narrow in appearance. When the sunflower heads are open enough so that the yellow petals can be seen they are vulnerable to the pest. The best time to check for the sunflower moth is in the early morning or late afternoon when they are most active.

An insecticide application should be made when percent bloom is approaching 20 percent and moths are present in the fields. Once fields start blooming they rapidly pass 20 percent bloom — so timing of the first application is critical. Methyl parathion, Thiodan* and Supracide* are registered for use against the sunflower moth. Fields should be checked with in 2-3 days after the first application. If moths or small larvae can be found another application is needed. A third application will be needed in some cases. Larvae which have tunneled into developing seeds are impossible to control.

I will be available to talk to anyone concerning insect problems at the following times:

Wednesday, July 11 — 9 a.m. Cone Gin, 10:30 a.m. Pleasant Hill Gin

Thursday, July 12 — 10 a.m. Lockney Gin, South Plains

Paul W. Treptow, III, Crosby-Floyd County Extension Entomologist, office telephone 675-2426, Mobile telephone 253-2901 - Contact through the Plainview mobile operator when in northern Floyd County. Home telephone 675-2416.

References to commercial products or trade names is made with the understanding that no discrimination is intended and no endorsement by the Texas Agricultural Extension Service is implied. Educational programs conducted by the Texas Agricultural Extension Service serve people of all ages regardless of socioeconomic level, race, color, sex, religion, or national origin.

*Registered Trademarks

COTTON FLEAHOPPERS

Description: Adult fleahopper is about 1/8 inch long and pale green. Nymphs resemble adults but lack wings, are very small and whitish in color.

Seasonal Biology: Overwinters in the egg stage in weeds, later moves into cotton when squares are present. Life cycle is approximately 4 weeks long.

Damage: Both adults and nymphs suck sap out of tender plant parts, especially small squares. Injury is characterized by excessive blasting and shedding of small squares and reduction in the number of fruiting branches. Most squares attacked, range in size between pinhead to match head size squares. Attacked plants can become whip-like or bushy from excessive vegetative branching.

Management Decisions: Whether or not control measures are necessary depends on three factors: (1) fleahopper numbers, (2) fruiting rate, and (3) where you are in the squaring sequence of the cotton plant. During the first 3 weeks of squaring, if the percent square set falls much below 80% and 25 to 50 fleahoppers are found per 100 terminals — treat. Dry weather will accelerate the drop in fruiting rate and past the 3rd week of squaring, more fleahoppers can be tolerated without yield reduction.

GENERAL SITUATION

Cotton ranges from seedling stage to 2-3 weeks into squaring. Insect infestations are generally light. Sorghum has light corn leaf aphid populations. Sunflowers are beginning to bloom and sunflower moth activity is at its peak.

COTTON

Cotton fleahoppers have been reported in economically damaging numbers in several Crosby County fields by a private consultant. All cotton growers should be on the lookout for this insect pest. The fleahopper is an insect which is a problem only occasionally in our area. However it can cause considerable yield loss when present during the first 3 weeks of squaring. No one can afford to lose squares this year that are normally set during those first few weeks. Since this is an inconspicuous insect producers need to scout their fields carefully. When fleahoppers are found in numbers ranging from 25-30 per 100 plant terminals and square set is 80% or less treatment should be considered. Remember that the first 3 weeks of squaring is the critical time to watch for the cotton fleahopper.

Insecticides recommended for control of fleahoppers include Bidrin,* Sevin,* dimethoate (Cygon,* De-Fend,* and Revelate*), methyl parathion and Dylor.* Only low rates of these materials are needed to manage fleahopper populations. Low rates will also preserve some beneficial insects. Attached is further information on identification and control of this pest.



Officials of Plains Cotton Growers, Inc., Lubbock, are asking for a change in what they call a "totally unfair" rule under which the 1979 farm program is now being administered.

"It's a procedure which, if followed, is going to cause more than a few of our people to be declared ineligible for any farm program benefits for reasons over which they have no control and in a number of instances won't even be aware of until they receive notices of ineligibility," says PCG Executive Vice President Donald Johnson.

The problem arises when a producer fails to certify all acreage classified as "cropland" by the Agricultural Stabilization and Conservation Service (ASCS). In such cases, his failure to certify, as would be expected, makes that farmer ineligible for any program benefits. "But that is only the beginning," Johnson complains.

"Not only is that farm ineligible, but all other farms in which either the operator or the landlord has an interest are also out of the program along with the different landlords and/or tenants on those other farms."

For clarification, Johnson uses the following example:

T.L. Landlord is the owner of Farms A, B and C in Bailey County, on each of which a different operator has program crops planted and is in full compliance with all program regulations. Mr. Landlord also owns Farm D in Midland County, operated by another tenant but with grass for a grazing operation planted on all his cropland.

Because the Midland County farmer is not participating in the farm program in any way, he does not think it necessary to certify what his cropland is being used for — a fact which is of no consequence to the operator or Mr. Landlord on the Midland County farm.

However, the failure of the Midland County operator to certify his cropland also causes Mr. Landlord and his tenants on Farms A, B and C in Bailey County to be denied use of the government loan and makes them ineligible for any low yield or price deficiency payments that may become due.

"This means the three Bailey County farmers will be penalized for the inaction of a farmer in Midland County over whom they have no control and may not even know exists," Johnson states.

And, he explains, the same would be true if Mr. Landlord has a fourth tenant in Lubbock who failed to certify wheat he had growing in borrow ditches, on terraces or on turnrows.

In contrast, Johnson notes further, if the fourth farmer overplants his normal crop acreage, fails to have adequate set-aside or is declared out of compliance for any other reason besides non-certification, eligibility of the Bailey County farmers would not be affected.

"This is just not a fair way to run the program," Johnson concludes, "and we are asking ASCS officials to recognize the fact and correct the situation before a lot of our people get hurt."

Wheat In Release Status, Storage Stops

Wheat in the farmer-owned reserve will continue in release status at least through July 31, according to John Goodwin, acting executive vice-president of the Commodity Credit Corp.

Storage stopped in all states June 30. Wheat was first released on May 16, when the national average market price reached \$3.31 a bushel. Wheat is released when the price level reaches 140 percent of the national loan rate, or

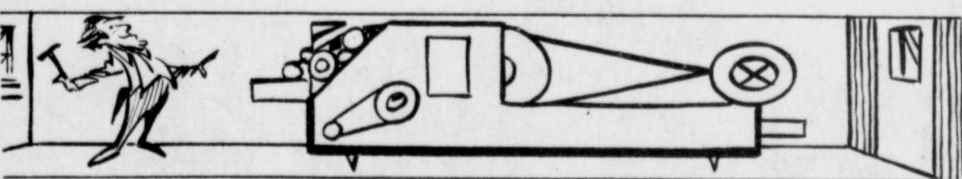
\$3.29 a bushel.

On July 31, the U.S. Department of Agriculture will again review the average market price to determine if the release will continue.

After a commodity is released, it may be sold by the farmer holding it after repaying the CCC price support loan. However, release of the reserve does not require farmers to redeem or sell their grain at this time, Goodwin noted.

"It is better to ask some of the questions than to know all of the answers."

James Thurber



Eli Whitney invented the cotton gin in 1793 before he had ever seen raw cotton

Sponsored by the Following Interested Firms

First National Bank
Floydada

Collins Implement
Co. Floydada

Floyd County
Farm Bureau

Case Power &
Equipment Floydada

Russell's Equipment
& Supply Floydada

Perry Implement
Lockney

Floydada Cooperative
Gins

Plainview Savings & Loan
Association Floydada

Ansley & Son
Lockney

McDonald Implement
Co. Floydada

Hi-Plains Gin
Lockney

Floydada Implement
Co.

Federal Land Bank

Consumers Fuel Association
Lockney

Association Of Floydada

Wilson Electric
Floydada

Local Ag Teachers To Attend Workshop

A pair of Floydada vocational agriculture teachers will join an estimated 1,600 other members of their profession in Houston July 30 for the annual inservice education workshop for vocational teachers.

O.L. Harris and James Cleveland will attend the five day workshop at the Shamrock Hilton. They will register at the hotel Monday, July 30 and be present for the first general session of the meeting on the 31st. In the Shamrock's Grand Ballroom.

Harris and Cleveland will hear lectures from Kenneth McFarland, of General Motors Corp., Dr. William Kemp, a member of the state board of education, and Dr. Harlan Ford, a deputy commissioner for programs and personnel development for the Texas Education Agency.

That evening, the Vocational Agriculture Teachers Association will present tenure pins to the membership, as well as other awards to legislators, school administrators, members of the news media, individual teachers and other persons who have contributed to the progress of agriculture education and the Future Farmers of America.

On Wednesday, the teachers will take part in ten separate workshops, including:

U.S. COTTON

Crop Estimate De

Difficulties in getting cotton crops started in Texas and the Mid-South have forced the cotton industry to lower its estimate of the current national yield, according to Lawrence Shaw, an associate director for Cotton, Incorporated.

Plainview Man

Honored By Texas

County Agents

COLLEGE STATION — S.M. True Jr. of Plainview, a Hale County farmer and agribusiness leader, has been named a "Man of the Year in Texas Agriculture" for 1979 by the Texas County Agricultural Agents Association.

One of seven Texans selected for the yearly honor, True was nominated by county agents in district two, the South Plains, of the Texas Agricultural Extension Service of Texas A&M University.

The awards are presented annually to outstanding leaders in agriculture and related industries. The honors also recognize contributions toward improving the level of living and economic growth in the nation as a whole, as well as the recipients' native communities and counties.

The Agents Association will present True's award during the state annual meeting in Amarillo, Aug. 5-8.

True has been active in such civic involvements as the Hale County Program Building Committee, 4-H, the Texas Farm Bureau and the Plainview Chamber of Commerce.

TAES Field Day

September 11

LUBBOCK — The 70th annual field day of the Texas Agricultural Experiment Station at Lubbock and Halfway will be held Tuesday, Sept. 11. The program will highlight a variety of crops, soils and water research programs on the Texas High Plains.

The Research Center at Lubbock is the host this year, said Dr. Bill Ott, resident director of the Lubbock-Halfway research complex. Doug Smallwood, research associate, is field day chairman. The annual program alternates between the experiment station locations at Lubbock and Halfway.

The Lubbock station is part of the Texas A&M University Agricultural Research and Extension Center complex three miles north of Lubbock International Airport, just east of U.S. 87 on FM 1294.

Stops along the tour include research plots for weed control, cotton breeding, soil fertility, grain sorghum breeding and water use efficiency.

For more information contact: Dr. Bill Ott and/or Doug Smallwood, Research Associate; Texas Agricultural Experiment Station; Route 3, Box 213AA; Lubbock, Texas 79401, (806) 746-6101.

ing Estate Planning... Ready to livi... cal Repair.

Speakers for the... sor of agriculture... Tech, and Mr. Mc... member of the ad... technical and voca... College Station.

The third general... ing of Aug. 2, will... Arfsten, president of... Farmers Association... Hayden McDaniels...

division of second... Texas Education... Jackson, chairman... Call 652-2737.

Shriver, philosopher... Ohio.

The Association... ship meeting Aug... Ballroom. Roy Can... president, will conda... Aug. 3, the teachers... groups and plan the... for the 1979-80 school...

Activities and... planned througho... inar for wives who...

U.S. COTTON

Crop Estimate De

The current estimat... stands at 14 million... 300,000 bales forecast...

"Prices have come... because of cotton... production in that... said. "These crops... to grow and a clear... size of the 1979 crop...

Elsewhere in the... tion prospects are... Shaw reported. He... crop of 50.5 million... bales from last month...

the estimates hold... is expected to be... 64.5 million bales in...

Rains have been... concern in the So... South, while conditi... and Far West have... favorable and the m... well.

Looking at the U... region, the Cotton... mists reported:

In the Southwest... tures and sandstons... in the High Plains... Texas. In the area... however, much of the... recover from the d... earlier in June.

LET US... YOUR HERBICI... pesticide Sprayli... ground rigs... available. Lo...

Lone Star... Chemical, Inc... 652-2761... Henderso... 652-3434

Cautio... In Irriga...

Cotton C... South Plains com... think twice before... ing cotton planted... June, a special... Agricultural Extens... tioned.

The advisability of... time is questionable... Supak, Extension... mist, said. Applicat... fertilizers could pre... to plant growth, but... be light, he added.

"Most farmers who... doing so in hopes of... plant growth and... Supak said. "In m... doing just the opposi... Irrigation at this...

the soil temperature... deep root development... Although irrigation... promote some grow... ly delay fruiting.

Irrigation is not... Supak noted. "The... rainfall was spars... approaching the grow... requires some wat... some farmers are... pivot irrigation sy...

But he urged cons... at their situation... the time and expen... against the possibl... on crop yield.

Because of the... some question abou... applying fertilizers... gen is the main... farmers should be... Extension specialis...

For best results... applied prior to or... stages, he said.

CLASSIFIED ADS sure to get results

Real Estate

NEW LISTING: House For Sale. 3 bedroom, double car garage, excellent location. \$27,500. Call 983-3143 or 983-3767. 8-16c

FOR SALE: Brick three bedroom, one bath, modern kitchen, new carpet and new evaporative air conditioner, storage shed, fruit trees, new paint, and fenced back yard. All this plus a great location. 104 J.B. Ave. Floydada. Call 293-8137 in Plainview after 5 p.m. ttc

HOUSE FOR SALE: Three bedroom, two baths, 615 W. Miss. 983-3469. ttc

FOR SALE: Nice two bedroom, living-dining room, den, carpeted, house on large lot with carport and small storage house 105 E. Hallie. Call after 6 p.m. Jamie Lewallen 983-3904. ttc

FOR SALE: Three bedroom brick, two baths, living-dining room, two car garage, cellar, fenced, large storage room. Call for an appointment. 983-3310. ttc

MOBILE HOMES

FOR SALE: 1976 14x70 Lancer Mobile home. 983-2419. 8-12c

FOR SALE — 14'x72' mobile home in Crosbyton, late model. Phone 983-3002 after 7 p.m. ttc

FARM MACHINERY

FOR SALE: 1175 Case, 1974, Cab, A.C., heater, new tires, clean. 652-2572. L-ttc

WE NOW HAVE IN STOCK THE Amazing "Lightning Rod" Wick Applicator, to control Johnson Grass and weeds in your crops. You can run in wind without worry of damage to your crop, saving you many hours of down time; also you will notice a considerable saving in chemical cost with this proven method of application. Drop in and ask about The "Lightning Rod." Lone Star Chemical, Lockney 652-2761, Residence 652-3434.

CARDS OF THANKS

A special thanks to all those friends who were so thoughtful and kind to us during the recent loss of my husband and our father. The Family of H.C. Gilly 7-15p

Can You Use Some Extra Money Let Us Help!!!!
WE BUY SCRAP IRON, OLD JUNKERS, AND FREE PICKUP
Call 983-5277



Auto Accidents DO Happen...
If one happens to you, be protected. Our car insurance offers coverage to meet your special needs — repairs to personal liability.

BAKER Insurance Agency
127 W. Calif.
Ph. 983-3270

NOTICE

WILL DO ALL Types of carpenter work. Call 983-5201 after 5:30. ttc

SEWING in my home. Two days on some items. Paula Pauley 983-3542. ttc

BUSINESS SERVICES

Minor repairs and tune up service on lawn mowers. Call Whites Home and Auto, 652-2145. L-ttc

INTERIOR PAINTING WALL PAPERING

Call Rena Turner, 983-5130. ttc

C-D-J INSULATION can help save your dollars. For information call 983-2601.

INSULATION Fire-Resistant, Installed and Guaranteed. MARR Insulation Co. Lockney 652-3593. L-ttc

NOW OPEN A-1 Pet and Grooming professional grooming, all breeds — no tranquilizers 821 Broadway, Plainview, Texas 293-3557 ttc

WE DO Painting, floor leveling, house blocking, roofing and remodeling. We are now working Floydada Area. Contact Childress Bro. Collect 352-9563 ttc

PETS

PETS to give away - one full grown female Keeshound, one male full grown part St. Bernard, puppies, male and female. Call 652-2492. L-ttc

HELP WANTED

HELP WANTED — LVN charge nurse needed immediately. Salary negotiable. 7-3 and 3-11. Apply at Ralls Nursing Home, 1111 Ave. P. 7-22c

WANTED: Experienced asphalt machine operator. Contact Bill Feuerbacher, city manager, City Hall, 8 a.m. - 5 p.m. Monday thru Friday. 983-2834. ttc

Mechanics, Diesel Engine and Construction Machinery. Experienced or Beginners, Good Company Paid Benefits, Company Paid Training Programs, Top Wages. Golden Opportunity to work with the industry leader. Apply in person or call for Service Manager. West Texas Equipment Company Amarillo (806) 335-1511 Lubbock (806) 745-4495. 7-15

IMMEDIATE openings for persons with drafting experience, wire welders, metal workers, truck assembly operators, parts person, experienced diesel truck drivers (copy of driving record, ICC physical), preferred 25 years or over. Wanted: mature person with maintenance, welding, cutting torch and hydraulic experience and be willing to go on the road to do service work, with commercial license. Liberal benefits including vacation plan, paid holidays, health and accident insurance, life insurance and disability plan. Apply at Ebeling Manufacturing Corporation, 1608 West 24th Street, Plainview, Texas 79072. An equal opportunity employer. L7-15c

Sleep While Your Want Ads Work!

DAN'S AUTO SERVICE

DAN TEUTON, Owner Specializing in Automatic Transmission, Motor Tune-Ups, Auto Air Conditioning. General Repair We Have A BRAKE LATHE to handle all passenger car brake drums. See us for complete brake service. Phone 652-2462.

COW POKES

By Ace Reid



Wul I guess our bank run outta money, they keep sendin' my checks back!

THIS FEATURE SPONSORED BY
Floydada Real Estate & Insurance Agency
AUTO, FIRE & FARM INSURANCE
Jim Word — — — Phone 983-2360

Diamond Industrial Supply Co., Inc.
Phone Days 296-7418 Nights 296-1200 or 296-7828
1014 Broadway
Plainview, Texas
Chain Sprockets V-belts Sheaves U-joints Oil Seals O-rings Wisconsin SKF RCA Timken Bower Cotton Stripper Brushes & Bats
"We Appreciate Your Business More" L-ttc

TURNER REAL ESTATE
983-2635 Farms-Ranches Floydada, Texas

FARMS-RANCHES-CITY PROPERTIES- BUSINESS LEASES-LOANS
B. B. WILKES BROKER REAL ESTATE
100 S Main, Lockney Barry Barker, Solicitor
Barker Insurance Agency-652-2642

IF IT IS INSURANCE -SEE- BARKER INSURANCE AGENCY LIFE-FIRE-CASUALTY-HOSPITAL



The peanut is not a nut but a member of the pea family.

NO... WE AREN'T IN THE PHOTOGRAPHY BUSINESS BUT

WE WILL REPRINT PICTURES THAT WE HAVE SHOT AND PUBLISHED IN THIS NEWSPAPER

5x7 Gloss Finish \$1.50
FLOYD COUNTY HESPERIAN & LOCKNEY BEACON

FOR SALE

FOR SALE: Two recreational lots, one at Runaway Bay near Bridgeport, waterfront location. The other is at Bella Vista, Arkansas. Call or write: Luther Kirk, 3005, 59th, Lubbock, 806-799-6585. ttc

FOR SALE: Heavy metal building, 11 ft. x 11 ft., 9 ft. tall, 5 1/2 ft. sliding door, 2-inch square tubing frame. Strong and well built. David McCoy 652-2645. L-ttc

FOR SALE: Bicycle, 10 speed, 27", never been used. 652-2379. L-ttc

FOR SALE: Nearly new electric guitar for sale. Call before noon. 652-2787 L6-28tfc

ANTIQUES

Try something old for something new. **The Wooden Windmill** — Antiques and lovable — is now open by chance or appointment. Ten miles East of Floydada on highway 70. 983-2771. 7-15p

WANTED

Want to buy a used refrigerator, 15 or 17 ft. Call 983-3166. 7-15c

FLOYD COUNTY ABSTRACT CO.
Abstracts Of Title
Title Insurance
Verna L. Stewart
Owner, Manager
217 W. California
983-3728
Floydada, Texas

STORAGE SPACE

BOATS, FURNITURE, ANYTHING, ETC. BY THE MONTH OR SIX MONTH 10% DISCOUNT.
WEST TEXAS MINI STORAGE
983-3573 OR 983-2151

For Sale

FOR SALE: RCA Color T.V. 652-2113. L-ttc

WATERLESS COOKWARE. Home demonstration kind. Still in Box. \$185. Normally, \$499, 1-303-591-1331. 7-15p

FOR SALE: Electric sewing machine in cabinet, practically new. 652-2379. L-ttc

Almost new 42" electric range. Selt cleaning. Fully automatic. Also new non-duct range hood with splash guard. 983-3163 or 983-2162. ttc

FOR SALE: Nice black Naugahyde couch; two lounge chairs and Ottoman; roll-away bed; two book cases and stereo; table; lamps; and other spanish accessories. 983-3808. Mrs. L. T. Dycus. 7-15c

FOR SALE: Boat and motor, 1969 Glastron 156, walk thru front and 1969 85 h.p. Johnson motor on dilly trailer. 730 West Lee St. 983-5054. 7-19p

FOR SALE: Frigidaire refrigerated air conditioner, almost new. 983-5356. 7-22

FOR SALE: two refrigerated air conditioners. 110 volt. Call 983-5367 after 5:00 p.m. 7-22c

Farms & Acre

WANTED TO BUY irrigated or dryland farm in Floyd or surrounding area. Write Box XRO, c/o Hesperian, Box 700, Floydada. ttc

WE WANT YOU TO KNOW — We sell all kinds of Good-year tires... tractor, auto, truck, a good tire, good service. Best deals in West Texas. Truck winch and hauling service. **BABE'S SERVICE CENTER,** Floydada. ttc

CLASSIFIED RATES

CLASSIFIED ADVERTISING RATE: 15 CENTS PER WORD FIRST INSERTION; 10 CENTS PER WORD EACH SUBSEQUENT INSERTION. MINIMUM CHARGE \$2.00.
CLASSIFIED DISPLAY RATE: \$1.40 PER COLUMN INCH CARD OF THANKS: \$2.00.

AUTOMOTIVE

4 shocks for the price of 3. Free installation. 123 W. Calif. ttc

FOR SALE 1972 Chevrolet, Kingswood wagon. Loaded and clean. 214 E. Jeffie 983-2516. 7-8c

FOR SALE: 1977 Ford 4-door LTD. Clean, low mileage, Auto., Air, and Radio. 652-2652. L7-26c

FOR SALE: 1971 GMC pickup. 1/2 ton Lwb. Also, a 1972 2 door Ford Galaxie 500. Call Paul Westbrook at 983-3979. ttc

GARAGE SALE

GARAGE SALE — Eddie Foster, 3 1/2 miles west of Lockney on Highway 70, and 1/4 mile north. L-ttc

GARAGE SALE: Saturday 620 W. Miss. 652-157

Phone 983-3737 for Hesperian Classifieds

Garage so full there's no room for the car?

Clean it out with a WANT AD!

There's a perfect way to clean out all that junk stored in your garage—simply turn it all into instant cash with a Want Ad! Somebody wants to buy those items you no longer want and you'll be surprised—and pleased—with how fast you'll reach that somebody through your ad in the classified pages! So give us a call today and we'll help you write a low-cost Want Ad to get the results you want!

Floyd County Hesperian & The Lockney Beacon



"The Little Dancer", bronze, edition of 10, by J.L. Searle is one of the several hundred art works to be exhibited in the Fourth Annual TEXAS ART CLASSIC at the Tarrant County Convention Center, Fort Worth, Texas July 13-15. Searle, from Evergreen, Colorado, is one of the leading sculptors in the nation. She specializes on American Indian subjects.

Molina Named Soldier Of The Quarter

BAUMHOLDER, Germany (AHTNC) July 11 — Spec. 4 Irene Molina, daughter of Mr. and Mrs. Ben S. Molina, Route 1, Lockney, Texas, recently was named Soldier of the Quarter for the 257th Personnel Service Company in Baumholder, Germany.

She was selected for her knowledge of military subjects and current events, outstanding military bearing, sound technical knowledge of her job, fidelity and performance of assigned duties.

Molina, a key punch operator with the company, entered the Army in October 1976.

The specialist attended Southwest Business College in Plainview, Texas.

International Exchange Students Seek American Host Families

Would your family be willing to welcome an international high school student into your home during the coming school year?

By sharing their daily life with a student from another country, the members of your family will have the unique opportunity to learn about a different culture through another person's eyes, while deepening their appreciation of their own country by introducing America to someone new.

The only requirement for becoming a host family is a willingness to accept a young person from another country into the everyday life of your family, so the student and family members can share an enriching experience. The host family provides only

meals and shelter, as well as companionship and love.

Youth For Understanding, a non-profit international student exchange organization, is now seeking U.S. host families for incoming students from 27 countries. Annually, host families throughout the United States open their homes and hearts to 7,000 international students, aged 14 through 18, who will be spending eleven months as "Ambassadors of friendship" between diverse nations and cultures.

Youth For Understanding received funds from the U.S. State Department in support of its efforts to promote world citizenship and understanding through teenage student exchange opportunities. Youth For Understanding

just received endorsement from the Senate of the State of Texas.

For further information on becoming a host family, contact: Mrs. Barbara Aker, 2302 Slide #22, Lubbock, Tx. 79407. Telephone 806-795-1825 or call collect 214-386-4517.



Tradition has it that daisies came to America with the hay brought to feed the horses of Gen. John Burgoyne's army during the Revolution.

Steve Herber Offers Tips On Plant Care

Indoor plants do not have the advantage of the cleansing effect of rainfall to keep their leaf surfaces free from dust. To keep them looking their best a careful cleaning once or twice a month is helpful.

For smooth-leaved plants, a wet sponge or soft cloth rinsed frequently in clean water is a dependable method. For specimens having many small leaves it may be best to take the plant outdoors and syringe with plenty of water.

Plants with hairy leaves require special attention. A camel hair brush used carefully to avoid bruising the leaves works well.

If commercial leaf polishes are used, be sure to water the plant thoroughly several hours before application.

Police Charge Andrews Man

Floydada police charged an Andrews, Texas, man with misdemeanor theft and unlawful possession of a weapon after a routine check in the early hours of Monday morning.

Patrolman Reynard Macha reported that he stopped Donald Ray Hill, 25, on suspicion of public intoxication at 3 a.m. Monday. Patrolman Macha said he spotted the man walking alone on the Ralls Highway near Reed Ford Co. When the officer discovered a pistol, a .32-cal. revolver complete with cartridges, in the man's possession he placed Hill under arrest.

The firearm apparently was taken from a local woman's home. Hill reportedly was a guest in the house.

GOLF Facts & Fancies

The first official national amateur golf championship was played October 1-3, 1895, at the Newport Golf Club in Newport, R.I. That was four years before the first golf tee was invented by George F. Grant of Boston.



The first winner of the United States Open golf championship was Horace Rawlins in 1895. The U.S. Open and the U.S. Amateur rank foremost among the 10 national championships conducted by the United States Golf Association, the national governing body of golf.

Deaths

Cecil E. Phillips

Services for Cecil E. Phillips, 74, were at 2 p.m. Saturday July 14 at Calvary Baptist Church. Hollis Payne, pastor, officiated. Burial was in Floydada Cemetery under direction of Moore-Rose Funeral Home.

Mrs. Phillips died at 1:30 p.m. Thursday in University Hospital in Lubbock after a brief illness.

She moved to Floyd County in 1955 from Motley County. She was a member of the Floydada Calvary Baptist Church.

Survivors include her husband, Josea; her parents, Mr. and Mrs. W. D. Strader of Hale Center; four sons, Buddy of Selma, Ala., Johnny and Grady, both of Mador, and Billy of Lubbock; a daughter, Ruby Brown of Lubbock; four sisters, Leila Stewart of Lubbock, Mrs. B. S. Earp and Mrs. Marvin Smith, both of Petersburg, and Mrs. J. B. Shannon of Idalco; two brothers, Jack Strader and Walter Strader, both of Petersburg; 14 grandchildren; and two great-grandchildren.

"The tiniest hair casts a shadow."

"Nothing is particularly hard if you divide it into small jobs." Henry Ford

Remember your loved ones and friends with a memorial to Lockney General Hospital Memorial Fund. These memorials go toward equipment to help serve our community in the best way possible.

REMEMBER your loved ones with a living memorial to the Caprock Hospital Auxiliary Memorial Fund. Mrs. Ben Whitaker, Treasurer.

Kenneth A. Reagan

Services for Kenneth Arlen Reagan, 47, of Lockney will be at 3 p.m. today (Sunday) in the West College and Third Street Church of Christ. Earl Cantwell, minister of the Rock Creek Church of Christ, will officiate. Burial will be in the Lockney Cemetery under direction of Moore-Rose Funeral Home of Lockney.

Reagan died Wednesday in Audie Murphy V.A. Hospital in San Antonio. He was born May 28, 1932 at Dalhart. He married Stacy Haggard January 1, 1979, in Lockney.

The Korean War veteran worked for a trucking firm. He was a member of the church of Christ.

Surviving are his wife; his mother, Mrs. Pauline Reagan of Lockney; two stepchildren, Shelly and Will Haggard of Lockney; a brother, Keith Reagan of Colorado Springs, Colorado; two sisters, Mrs. Joan Savage of Hayward, California and Mrs. Dolores Survant of Whittemore, Michigan; and several nieces and nephews.

Pallbearers will be Max Smith, Leonard Griffith, Billy Griffith, Jerry Griffith, Jack Miller, Condo Willis, Frank Landgraft and John Dorman.

THEN and NOW

Knitted socks and stockings were not commercially available at any price before the 16th century. Why? Nobody had a knitting machine.

THEN: Although hand knitting of hosiery had been known since the third century it was another 1300 years before a knitting machine was invented.

It's a romantic story; Rev. William Lee of Nottinghamshire, England, was in love with a woman who spent so much time knitting stockings by hand that she had little for him. Although not a mechanic, Lee figured out how to make a machine to knit the hosiery, thereby freeing his beloved so she had more time for his attentions.

Assorted Flavors
Hi-C Drinks
2 \$1
46-oz. cans

PIGGLY WIGGLY

Prices Good Thru Saturday, July 21, 1979

Pay Less For Groceries Or We'll Triple The Difference In CASH!

Each of the advertised items is required to be readily available for sale at or below the advertised price in each store, except as specifically noted in this ad. We reserve the right to limit quantities. None sold to dealers.

Barney's Butcher Block Better Buys!

<p>Old Fashion, Market Style, Thick</p> <p>Sliced Bacon</p> <p>98¢ lb.</p> <p>Farmer Jones</p> <p>FRANKS ALL MEAT</p>	<p>USDA Grade A, Fresh Frozen</p> <p>Baking Hens</p> <p>58¢ lb.</p> <p>12 oz. pkg.</p> <p>98¢</p>	<p>USDA Grade A</p> <p>Box-O-Chicken</p> <p>55¢ lb.</p> <p>Farmer Jones</p> <p>BOLOGNA ALL MEAT</p>	<p>Glover Dutton</p> <p>Boneless Ham</p> <p>\$1.78 lb.</p>
--	--	--	--

<p>Saltine Crackers</p> <p>White Swan</p> <p>44¢</p> <p>1-lb. box</p>	<p>Parkay Margarine</p> <p>8-oz. 2-ct. pkg.</p> <p>79¢</p>	<p>Kraft Velveeta</p> <p>1-lb. pkg.</p> <p>\$1.28</p>
---	--	---

Stan's Specials Feature Sunshine Sweetness

<p>California Sun Ripe Sweet 'N Juicy</p> <p>PEACHES</p> <p>2 lbs.</p> <p>88¢ lb.</p>	<p>Cooling Summer Melons</p> <p>HONEY DEWS</p> <p>lb.</p> <p>28¢</p>		
<p>Red Ripe, Carton</p> <p>Tomatoes 68¢</p>	<p>Firm Green Heads</p> <p>Broccoli 48¢</p>	<p>Kentucky Wonder</p> <p>Beans 48¢</p>	<p>Try 'em Baked or Candied</p> <p>Sweet Potatoes 2 88¢</p>

Milnot EVAPORATED MILK

Green Giant Nibblers, Frozen

CORN ON THE COB

20¢ Off label dish detergent

Palmolive LIQUID

Toddler

PAMPERS DIAPERS

12-ct. pkg.

DOUBLE STAR WEDNESDAY

We give Double Gold Bond Stamps with any purchase of \$2.50 or more (excluding cigarette purchases).

20¢ Per Copy

MEMBER - Melvin Li Tuesday sh... they won by fin... the first four gam... a new to complet... to a swimmit... members are

business!

group of Floyd... Tuesday after... to expand new... in the area.

Melvin Li... in the F... Bank commu... a member of... purchased... and John Ca... local newspa... thrust of the... indinate local... syndicate ha... and priv... meeting.

ays the loca... with busine... the area in a fav... corporations lo... site.

owed that the fin... ary could give... et some of the f... agriculture reven... a drop in the a... only.

ng people... ter high so... there was any

essmen agri... es would be... but would be m... agriculture-relate... over said, w... of the large l... in the area. "men primarily... sion to the a... businessmen li...

Beef Chicken Turkey

Beef Chicken Turkey

Beef Chicken Turkey

Beef Chicken Turkey

Beef Chicken Turkey

Beef Chicken Turkey

Beef Chicken Turkey

Beef Chicken Turkey

Beef Chicken Turkey

Beef Chicken Turkey

Beef Chicken Turkey

Beef Chicken Turkey