

The Floyd County Hesperian

Volume 83

Floydada, Floyd County, Texas 79235

Sunday, June 3, 1979

20 Pages in Two Sections

Number 44



TWO More Doctors Coming To Floydada

Hospital Administrator Reports One Signed Contract, One Verbal Agreement

Caprock Hospital administrator reports on the Caprock Hospital...

tor, reported Thursday morning that the hospital has received a signed contract from Dr. S.K. Hong, confirming an

earlier verbal agreement between the doctor and the hospital. Dr. Hong plans to open his office here July 2. The Korean native is a "board eligible surgeon."

make arrangements for housing.

"FULL STAFF"

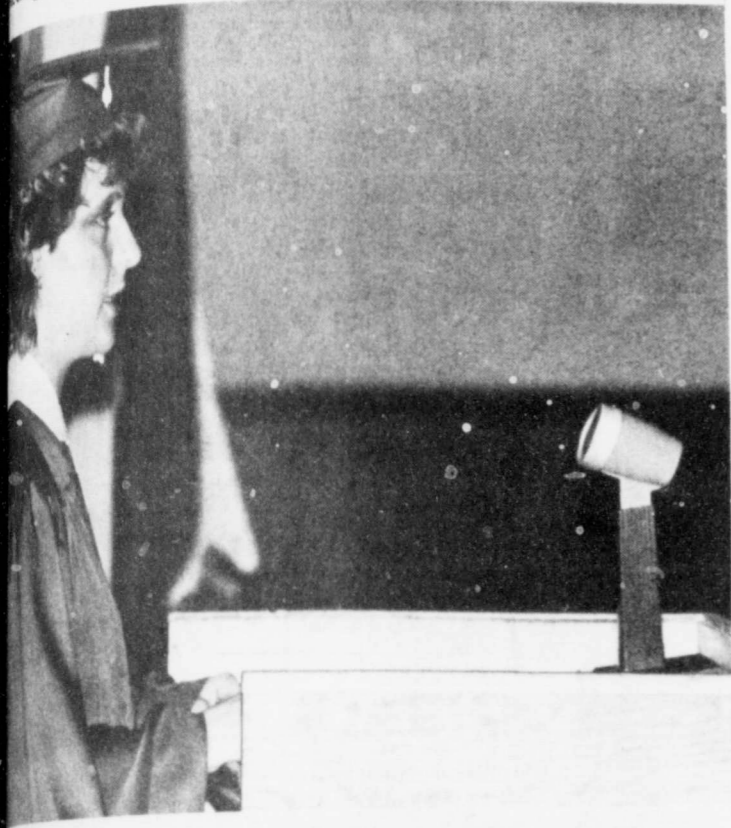
if both doctors honor their agreements, Caprock Hospital will have three doctors on the staff July 2. (Dr. Jack G. Jordan, Caprock Chief of Staff, is the other.) Mrs. McClung described the three-doctor situation as a "full staff", but said the hospital is already anticipating the return of a local medical student who has indicated he will practice in Floydada when he completes his schooling.

RNs NEEDED

The hospital still needs additional registered nurses, the Caprock adminis-

trator reports. She believes that more doctors may mean more patients, which in turn may lure more RNs to Caprock.

(There are three full-time and three part-time RNs on the Caprock staff now.)



GOODBYES — Floydada AFS student, Danielle...

graduation exercise Wednesday night. But she added at the close of her speech: "I shall return." [Staff Photo]

Saturday Is Deadline For History Book Memorials

The Floyd County History Book Committee is preparing the last shipment, the memorial section, for the printer.

The committee wants everyone who is interested in full-, half-, or quarter-page memorial for a loved one to have an opportunity to buy the space. For that reason they are reminding everyone that it is still possible, for a limited time, to buy memorials.

Members of the history book committee will be glad to assist in any way — answering inquiries, making suggestions, assisting with writing stories, etc. It is felt that there are many who have not bought a memorial but would really be happy to have a page or portion of a page to honor one dearly loved by family and community.

The committee feels that a Floyd County history will not be complete without these pages, which provide lasting remembrance and recognition to the deceased.

The cost of the pages is as follows:

one-fourth page \$45; one-half page \$80; full page \$150. Deadline for tribute and memorial pages is June 5. The committee must have the information by that date for it to be included in the book.

Anyone who has questions about the memorial pages is asked to call the museum, Ann Swepston, Virginia Taylor or Nancy Marble.



RETIRING school cafeteria workers Lorena McKinney and Lois Waller received plaques from Floydada ISD Superintendent Jerry Cannon and engraved lockets from R.C. Andrews School Principal Preston Watson Thurs-

day morning at a "retirement coffee" given in their honor in the Andrews School cafeteria. From left: Watson, Cannon, Mrs. McKinney, Mrs. Waller. [Staff Photo]

Long-Time Cafeteria Employees Are Honored At Retirement Coffee

Two long-time workers at the R.C. Andrews Elementary School cafeteria retired this year and were honored Thursday morning at a retirement coffee in the school cafeteria.

Lorena McKinney, director of all four Floydada school cafeterias for the past

five years, received a plaque from the school district inscribed "In appreciation for 26 years of service." For 23 of those 26 years, Mrs. McKinney had been cafeteria supervisor at the Andrews School.

Lois Waller, the pastry cook at Andrews, retired after working 15 years in the school cafeteria.

The plaques were presented by Floydada ISD Superintendent Jerry Cannon. Both retiring "lunchroom ladies" also received engraved lockets from Principal Preston Watson and the school staff, and "Money corsages"

made by Elaine Reid, a reading teacher at Andrews, using cash donated by teachers, aides, other cafeteria employees, and friends of the retiring pair.

Mrs. McKinney "...always had a smile on her face when we came through the line," one Andrews teacher said Thursday morning, "and no matter how busy she was, she always spoke to each of us."

Mrs. Waller was known affectionately as "our sweet cook" by the Andrews School teachers and students, only partly because she was head of cafeteria pastry department.

Band Members Qualify For State

Participants in the state UIL ensemble contest Saturday at the University of Texas in

Payne and Angie Turner — piano solo. Jett Cheek, Troy Marquis, Rodney Rodriguez, and Michael Self — brass quartet.

These Floydada High School band members made 1 ratings on Class 1 solos and ensembles in qualifying events.

Moore, Campbell, Bishop Get ASCS Awards

Members of the Floyd County Health Department and Conservation Department have been recognized for a total of 70 years service to the community received certificates and pins from the U.S. Department of Health and Human Services last week.

Tom Moore, County Executive Director, accepted his certificate and 30-year pin Wednesday at a regional ASCS meeting in Abilene.

Thursdays morning at the Floydada office, Moore presented a silver 25-year pin and certificate to Dorothy Campbell and a 15-year Bronze pin and certificate to Nancy Bishop.

Moore worked at the Motley County ASCS office in Matador for 13 years and has been at Floydada 17 years. He completed his 30 years of service January 12.

Mrs. Campbell also came to Floydada office from Matador. She worked five years in Motley County, 20 years here. Her 25 years of service were completed January 25. She is Chief Program Assistant at the Floyd County office.

All of Mrs. Bishop's time with the ASCS has been at Floydada. She completed her 15th year on August 1, 1978. Mrs. Bishop is an ASCS Program Assistant.



RECOGNIZED FOR SERVICE to the ASCS last week were (from left) Dorothy Campbell, 25 years; Nancy

Bishop, 15 years; Tom Moore, 30 years. [Staff Photo]

The Weather

(Courtesy of Pioneer Natural Gas Co.)

DATE	HIGH	LOW	MOISTURE
May 24	78	64	
May 25	64	58	
May 26	79	57	
May 27	84	62	.5
May 28	86	60	
May 29	88	64	
May 30	74	62	

Total Rainfall For Month — 5.5"

Raining At Presstime!

Children To Be Screened For Health Problems

Health Department team will screen for health problems on Wednesday at the University of Texas in

Children are needed to be screened for health problems on Wednesday at the University of Texas in

Children are needed to be screened for health problems on Wednesday at the University of Texas in

Children are needed to be screened for health problems on Wednesday at the University of Texas in

Children are needed to be screened for health problems on Wednesday at the University of Texas in

Children are needed to be screened for health problems on Wednesday at the University of Texas in

Children are needed to be screened for health problems on Wednesday at the University of Texas in

Children are needed to be screened for health problems on Wednesday at the University of Texas in

Baseball Starts Monday

Opening day in both Floydada youth baseball leagues is Monday (June 4).

TEE-SHIRT LEAGUE

The Tee-Shirt League, for youngsters age 7 through 9, continues through July 10, when the league champions are scheduled to take on a team of all-star players from the other four teams. The regular season will end July 6.

Tee-Shirt League team sponsors this

year are Fuller Trucking, First National Bank, Thompson Pharmacy, Ponderosa Meat Co., and David Farm Supply.

LITTLE LEAGUE

Little Leaguers, boys age 10 through 12, play their last regular-season on July 13.

Little League team sponsors are Adams Well Service, Floydada Co-Op Gins, Inc., and Collins Implement Co.

BASEBALL SCHEDULES ON PAGE 5

4-H Rifle Team Prepping For State Roundup

Floyd County 4-H Senior Rifle Team is preparing again this year in the State Roundup at Texas A&M

Lubbock. The district contest this year was April 28, when the Floyd County, riflemen scored 758 points. Hale County's team was second in the district contest.

High-point senior in the district contest this year (and the two previous years) was Kenny Willis, son of Kenneth and Barbara Willis. He scored 279 out of a possible 300 points (98 out of 100 from the prone position, 97 kneeling, 84 standing) at Lubbock.

Willis, a 1979 Floydada High School graduate, was high-point senior in

the district 4-H Rifle Contest in 1977 and 1978. He was second in '76 and third in '75, and he placed first in the junior division in '74.

The Floyd County 1979 senior team has plenty of experience in addition to Willis's.

Fulton, son of Laron and Joy Fulton, has been on 4-H rifle teams for five years. As a senior team member, he has placed third (this year) and second (1978) in the individual scoring at Lubbock. In 1977, when the Floyd County junior team placed first at

district, Fulton was the high-point junior. He was a member of the junior team in 1975, when it placed second at district, and in 1976.

Allen, son of Harvey and Judy Allen, also has five years of 4-H rifle team experience, three as a junior and two as a senior.

This is Heflin's first year as a senior team member. He competed on the junior level in 1975. He is the son of Rob and Linda Heflin.

Fulton, Allen and Heflin will be sophomore students at FHS next fall.



GOING TO COLLEGE STATION for the State 4-H Roundup are members of the Floyd County 4-H Rifle Team. They are (standing, from left) Chris Fulton,

Tommy Ross [alternate], Norman Allen, Ricky Heflin, and [prone] Kenny Willis. [Staff Photo]

BONUS SPECIAL KING SIZE COKE'S 10 OZ 6 BTL. CTN. With Filled Bonus Book... 9¢ Without Book... 59¢ YOU SAVE... 90¢	BONUS SPECIAL SHUREINE 5 LB. SUGAR With Filled Bonus Book... 69¢ YOU SAVE... 61¢
BONUS SPECIAL BACON With Filled Bonus Book... 69¢ YOU SAVE... 50¢	BONUS SPECIAL EXTRA LARGE EGGS DOZ. With Filled Bonus Book... 12¢ YOU SAVE... 57¢

SUMMER REUNION SALE

Get 'em all together: FAMILY... FRIENDS... FUN... GOOD FOOD!

ASSTD. FLAVORS
SHURFINE POP
7 \$1
12 OZ. CANS

ENERGY FAST LIGHTING
CHARCOAL BRIQUETS
ENERGY CHARCOAL LIGHTER
32 OZ. CAN **69¢**
10 LB. BAG **99¢**

YOUR THRIFTWAY STORES SELL & FEATURE ONLY FINE QUALITY AMERICAN GROWN GRAIN FED BEEF, FRESH PORK & QUALITY POULTRY.



SHURFRESH FULLY COOKED BONELESS HALF HAMS **\$1.99** LB.

QUARTER PORK LOINS OR FAMILY PACK
PORK CHOPS
8-11 CHOPS
\$1.39 LB.
EXTRA LEAN TRIM CENTER CUT PORK CHOPS **\$1.79** LB.

SHURFRESH VAC PAK
SLICED BACON
\$1.29 LB.
2 LB. PKG. **\$2.57**

ASSORTED FLAVORS GELATIN
JELL-O
5 \$1
3 OZ. BOXES

TOTAL GROCERY SAVERS

NEW HELLMAN'S BURGER 18 OZ. JAR **89¢**
NABISCO'S CHOCOLATE SANDWICH **19 OZ. PKG. \$1.19**
SHURFRESH REG. OR FOR DIPS **8 OZ. PKG. 59¢**
SHURFINE PURE VEGETABLE **48 OZ. CAN \$1.19**
SHORTENING
SHURFINE DINNERS **48 OZ. CAN \$1.19**
MACARONI & CHEESE 4 7 1/4 OZ. BOILER **49¢**
SHURFINE IN GLASS **25 OZ. JAR 59¢**
APPLESAUCE
SHURFINE CREAM STYLE OR WH. KERNEL **3 1/2 OZ. CAN 39¢**

SHELF SPECIALS

SUNSHINE BONUS PAK
CHI-HO CRACKERS 16 OZ. BOX **79¢**
SHURFINE GREEN **3 1/2 OZ. CAN 39¢**
SHURFINE LIGHT-WATER OR OIL PAK **6 1/2 OZ. CAN 69¢**
SHURFINE STRAWBERRY **18 OZ. JAR 89¢**
SHURFINE HAMBURGER SLICED **32 OZ. JAR 69¢**
DILL PICKLES

COUNTRY STYLE LOTS OF MEAT
SPARE RIBS LB. **\$1.39**
SHURFRESH FULLY COOKED **CANNED HAMS** 3 LB. CAN **\$5.79**
SHURFRESH PORK **SAUSAGE** 1 LB. ROLL **99¢**
SHURFRESH MEAT FRANKS OR SLICED **BOLOGNA** 12 OZ. PKG. **99¢**

SHURFRESH ALL BEEF FRANKS OR SLICED **BOLOGNA** 12 OZ. PKG. **\$1.09**
SHURFRESH CHICKEN OR **HAM SALAD** 8 OZ. CTN. **89¢**
SHURFRESH PIMIENTO/JALAPENO **CHEESE SPREAD** 8 OZ. CTN. **89¢**
SHURFRESH LUNCHEON BOLOGNA/PKIP/LOAF/SALAMI/SPICED LUNCHEON 6 OZ. LOAF PKG. **79¢**
SLICED MEATS

SHURFINE CUT **GREEN BEANS** 3 16 OZ. CANS **89¢**

SHURFINE ASSORTED 1 PLY **NAPKINS** 60 CT. PKG. **1.99**

50% OFF LABEL 49 OZ. BOX \$1.59 or **BOLD 3 DETERGENT** FAMILY SIZE BOX **\$4.99**

SHURFINE SUMMER REUNION SALE

SHURFRESH CHEESE SPREAD 2 LB. CTN. \$1.99	SHURFINE TOMATO JUICE FANCY 46 OZ. CAN \$.69
SHURFINE NON DAIRY CREAMER 16 OZ. CTN. 4/\$1.00	SHURFINE MIXED VEGETABLES 16 OZ. CANS 3/\$1.00
SHURFINE BROCCOLI SPEARS 10 OZ. BOX \$.39	SHURFINE TOMATOES WHOLE PEELLED 16 OZ. CANS 3/\$1.00
SHURFINE KRINKLE CUT POTATOES 32 OZ. BAG \$.69	SHURFINE MUSHROOMS PIECES & STEMS 4 OZ. CAN \$.49
SHURFINE GLAZED DONUTS 14 OZ. BOX \$.69	SHURFINE PEANUT BUTTER CRU. CREAMY 18 OZ. JAR \$.89
SHURFINE BATTER DIPPED FISH FILLETS 12 OZ. BOX \$.99	SHURFINE SWEET PICKLES WHOLE 22 OZ. JAR \$.89
SHURFINE EARLY HARVEST SWEET PEAS 17 OZ. CAN 3/\$1.00	SHURFINE CATSUP 32 OZ. BTL. \$.79
SHURFINE SALAD DRESSING 32 OZ. JAR \$.79	SHURFINE MUSTARD 16 OZ. JARS 2/\$.69
SHURFINE TALL KITCHEN BAGS 30 CT. BOX \$1.49	SHURFINE SALTINE CRACKERS 16 OZ. BOX 2/\$1.00
SHURFINE BATHROOM TISSUE 2 PLY ASSTD. 8 ROLL PKG. \$1.39	SHURFINE VANILLA WAFERS 10 OZ. BAGS 2/\$.79
SHURFINE DETERGENT POWD. BLUE/ALL PURPOSE 49 OZ. BOX \$.99	SHURFINE BLACK PEPPER 4 OZ. CAN \$.69
SHURFINE BLEACH 64 OZ. JUG \$.49	SHURFINE PEANUTS MARSHMALLOW 7 1/4 OZ. BAGS 2/\$.89
SHURFINE SALT FREE RUNNING/IODIZED 26 OZ. BOXES 2/\$.39	SHURFINE FRUIT COCKTAIL 16 OZ. CAN \$.49
SHURFINE DOG FOOD RATION HIGH PROTEIN 25 LB. BAG \$3.29	SHURFINE PEACHES YELLOW CLING/HALVES/SLICES 16 OZ. CAN \$.49
SHURFINE TEA BAGS 100 CT. BOX \$1.49	SHURFINE DRINK PUNCH/ORANGE/GRAPE 46 OZ. CAN 2/\$1.00
SHURFINE EVAPORATED MILK 13 OZ. CANS 2/\$.77	

GOLDEN RIPE **BANANAS** **29¢** LB.

FREE RIPE PEACHES **59¢** LB.
CALIF. HASS LARGE SIZE **AVOCADOS** 5 FOR **\$1.00**
TEXAS GREEN **CABBAGE** **19¢** LB.
CALIFORNIA SUNKIST **LEMONS** **49¢** LB.
CALIFORNIA SUNKIST **ORANGES** 3 **\$1.00** LB.
NEW CROP YELLOW SWEET **ONIONS** 2 **29¢** LB.
CALIFORNIA **CARROTS** 1 LB. PKG. **25¢**

HEALTH & BEAUTY AID SAVINGS

25% OFF LABEL TOOTH PASTE
Aim **AIM** FAMILY SIZE 6.4 OZ. TUBE **89¢**

MOISTURIZING LOTION
OIL OF OLAY 4 OZ. BTL. **\$2.99**

VITALIZING NIGHT CREAM
OIL OF OLAY 2 OZ. JAR **\$3.29**

SHURFINE WITH TOMATO SAUCE
PORK & BEANS
4 \$1
16 OZ. CANS

FROZEN FOODS

SHURFRESH SQUARE CARTON **ICE CREAM** 1/2 GAL. CTN. **89¢**
SHURFINE FROZEN **CORN ON COB** 4 EAR PKG. **69¢**
SHURFINE FROZEN **ORANGE JUICE** 12 OZ. CAN **69¢**

DAIRY VALUES

SHURFRESH BUTTERMILK OR SWEET MILK **BISCUITS** 8 OZ. CANS **89¢**
SHURFRESH HALF-MOON LONGHORN CHEDDAR OR **COLBY CHEESE** 10 OZ. PKG. **99¢**
SHURFRESH QUARTERS **MARGARINE** 2 16 OZ. BOX **89¢**

FREE SUPERMAN POSTERS

WHEN YOU BUY 2 SUPER SIZE SAFEGUARD OR 1-40 CT. BOUNCE OR 3-14 OZ. COMET OR 1-54 OZ. SPIC & SPAN

PINK OR WHITE SOAP **SAFEGUARD** 2 BATH SIZE BARS **89¢**

FABRIC SOFTENER SHEETS **BOUNCE** 40 CT. BOX **89¢**
TOUGH STAIN CLEANSER **COMET** 3 1/2 OZ. BOX **39¢**
THE BIG CLEANER **SPIC & SPAN** 24 OZ. BOX **89¢**

Social Passages

Nancy Anderson Honored At Bridal Shower

A bridal shower honoring Nancy Anderson, bride elect of Larry Kirk, was held Saturday morning May 19 from 9:30 to 11:00 a.m. in the home of Mrs. J.M. Williams. Guests were greeted at the door by Mrs. Williams and presented to the bride-to-be, her mother Mrs. Louis Anderson and Mrs. Betty Motley, Larry's mother of Olton. Corsages of white daisies trimmed in blue were worn by those in the receiving line. Lisa Anderson registered guests. Refreshments were served by Kathy Roberts and Gill Beam from a table covered

with a lace cut work cloth over blue. The centerpiece was a silk arrangement of white and blue flowers which was presented to the bride. The hostesses presented the honoree with a set of cook ware. Hostesses were Mrs. Carol Bell, Carmel Eastham, Greer Christian, John Moss, Howard Gene Bishop, Travis Jones, Irwin Seymour, Harold Bennett, Tommy Assiter, Bill Hendrix, Glenna Orman, Tom Moore, Willie Bradshaw, Edwin Leatherman, Norman Muncy, R.L. Giesecke, Corkey Guffee and J.M. Williams.

Cathy Archer Shower

A kitchen shower was a recent courtesy for Cathy Archer who will marry Gary Hill June 30. The fete was held in the home of Penny Hight, south of Lockney. Co-hostess was Patti Christy. Their gift to the honoree was a Presto-burger. Corsages of kitchen uten-

sils were used. Special guests were Mrs. Red Archer and Miss Janie Archer, mother and sister of Miss Archer. The serving table was laid with a white lace cloth over blue. Blue candles and a blue floral arrangement graced the table.



EXHIBITION SQUARE DANCING — Members of the Whirlers Square Dance Club [with help from one member of the Belles and Beaux Club of Plainview]

entertained Saturday afternoon at the Floyd County Pioneer Reunion in Floydada. [Staff Photo]

Fuqua On Dean's List

Fuqua of college credit work exclusive of physical education and who made a grade point average of 3.5 or more on a 4.0 grade scale. Carolyn, who is advertising manager of The Hesperian and Beacon, had a 4.0 grade point average.

Becomings By Duffy

While he shot them in the head. So, you know what we did? We Made him sit down and wait While we shot him in the "head" Today we hanged a Gilmore Hanged him on a tree I wonder who the joke is on Gilmore or me. Gilmore had a victim Shot him in the head Gilmore's now a victim Now, he, too is dead. Gilmore asked to die. Did we too quickly reply? Time has moved along and it is now A.D. 1979, an last week....well.....

Introducing



Glenn A boy was born Thursday night at 10:53 to Jimmy and Mitzi Glenn of Edmonson. The baby was named Christopher Acil. The first child of the couple arrived at Methodist Hospital in Lubbock weighing 7 lbs. 12 1/2 oz. Mr. and Mrs. B.J. Terrell of Lone Star are the maternal grandparents. Great-grandparents are Mrs. Tom Terrell of Plainview, and Mr. and Mrs. G.H. Edmonson of Sulphur Springs, Texas. Mr. and Mrs. A.C. Glenn of Plainview are the paternal grandparents.

LHS Seniors Feted With Parties

TAYLOR, FRIZZELL A "berry brunch" feted Misses Rise Taylor and Cindy Frizzell, graduating LHS seniors, Wednesday morning in the home of Jackie Lou Holt in Lockney. Jackie Lou and Charlotte Brock were hostesses for the brunch honoring their nieces. Special guests were Rise's mother, Virginia Taylor, her grandmothers Josie Taylor and Trudy Taylor, her aunt Katie Pierce, and her cousin, Shawnda Brock. Cindy's special guests were her mother Pat Frizzell, her grandmothers Sue Crisp of McLean and Lucille Frizzell, and her sister Julie Frizzell. Rise, Cindy and other LHS seniors Karla McCarter, Stephanie Turner, Jody Nance, Lezlee Woffard, Monte Griffin and Christie Jack sat at a large table covered with a yellow cloth. Red depression glass plates were used. The menu included cinnamon rolls, blueberry muffins, sausage rolls, fresh strawberries and a banana and strawberry fruit dish. Beverages were coffee and orange juice crush. The crush was served in crystal champagne glasses. Centerpiece on the table was of white daisies in a large strawberry-shaped jar. The other guests ate at quartet tables that had apple green polka dot cloths. Table settings were of white china. Rise and Cindy gave their aunts a gift in appreciation of the brunch.

TURNER, TAYLOR Mrs. Bill Turner and Mrs. Joe Taylor gave a come-asyou-are breakfast Monday morning honoring their daughters, Stephanie Turner and Rise Taylor, as a graduation party. The event was in the Turner home, and the girls were awakened beginning at 6:30 a.m. The serving table was centered with a clay pot holding daisies and baby's breath accented with butterflies and blue ribbon. Smaller clay pots holding a life plant, a daisy and a butterfly were at each girl's place setting. The menu included apple-sauce puffs, sausage, bacon and the grape juice. The guests, fellow graduates-to-be of Rise and Stephanie, joined the honorees in looking through old school pictures.

CARTHEL Mrs. Sally Miller of Gonzales honored her grandson Ches Carthel with a dinner Wednesday night at the Pizza Hut in Plainview. Ches was graduated from Lockney High School Thursday night. Guests were classmates Jim Burt, Hector Araujo, Dale Kidd, Breck Record, David Lee and Kevin Stennett. Also present were Ches' parents, Mr. and Mrs. Ted Carthel of Lockney, and his grandparents, Mr. and Mrs. Hershel Carthel of Plainview. Dessert was a cake decorated to resemble a pair of Levi jeans. A diploma was in the "hip pocket."

We Have Flowers For All Occasions

- ★ Wedding And Funeral Flowers
- ★ Blooming Plants
- ★ Potted Plants
- ★ Gift Items
- ★ Silverware
- ★ Green Plants
- ★ Complete Line Of Jewelry
- ★ Centerpieces
- ★ Corsages
- ★ Dinnerware

Schacht's
Flowers, Jewelry And Gifts
Phone 652-2385 Lockney, Texas

Customer averaged billing plan

AVERAGED BILLING AMOUNT

ACTUAL USE AMOUNT

JAN FEB MAR APR MAY JUN JUL AUG SEP OCT NOV DEC

Rebekah Lodge Meets

Rebekah Lodge had a regular session on Friday May 29. They were: Ora P. Shipley, Fred Reeves, Jess Patterson, Jane Marquis, Marion Wiles, Velma (Bell) Berry, Delma Burns, Alva Sparks, Gladys Peck, Inez Nichols, Mabel Johnson, Maud Day, Mabel Leonard, Marjaretta Davis, Gracie Riggles, J.B. Grundy, and Oleta Gaston. The program was closed with a prayer by Ruby Davis.

WTC Cheerleader Clinic Set

SNYDER — Western Texas College will host its sixth annual cheerleader clinic from June 25-29. Cheerleaders and prospective cheerleaders from high schools, junior high schools and colleges are invited to attend. Personnel from the All-Star Cheerleader Conference will provide professional instruction including new cheers and techniques, tumbling, partner stunts and gymnastics. Students will be housed in the college dormitories and will eat in the Student Center cafeteria. Recreation activities are also planned using the campus facilities. Information about the cheerleader clinic may be obtained by contacting Mrs. Mickey Baird, Student Activities Director at Western Texas College, Snyder, TX 79549.

Muncy Is Hostess

conducted the business meeting. Refreshments of sandwiches and cake were served by Mrs. Muncy and co-hostess Bessie Smith to Mrs. J.B. Allen, Pauline Sams, Sylvia Yeary, Elvira Stewart, Lillian Payne, Edna Lackey, Ethel Carroll, Rebecca Truett and Emma Thomas.

Choking Is No Joking Matter

Munch Bunch developed by Dr. Henry Heimlich, has been used to save thousands of lives from accidental death by choking, and is simple enough to be used by almost anyone. Why not come next Wednesday, who knows, the program might not only enrich, but actually save your life someday. Bring a sack lunch, join the fun, and be back to work (or wherever) by 1.

— Gabriel Wayland Shopping Center —
Plainview

Dorothy's Anniversary Sale

Starts Monday, June 4 at 9:30 a.m.

- Street Dresses SIZES 4-24 1/2
- Long Dresses SIZES 4-24 1/2
- Pantsuits, Robes
- Mix Mix & Match Sportswear
- Blouses
- Lingerie
- Jewelry
- Decorator Items

Dorothy's
— Save Up To 50% —

Southwestern's Averaged Billing Plan is designed to minimize the ups and downs in your electric bill.

If you've wished the amount of your electric bills could be more consistent every month instead of changing so much between seasons — here's a way...

The Averaged Billing Plan is provided to HELP SMOOTH OUT THE HIGHS AND LOWS that occur in your electric bills. As the name implies, this plan arranges for you to pay an "average" rather than the actual amount used each month.

Who's eligible for this plan?
Any residential customer with satisfactory credit, whose average bill is \$25.00 or more, can request the Averaged Billing Plan.

How to get started.
All you have to do is call

This is how the Averaged Billing Plan works.

The dollar amount of your electric bill each month will be determined by averaging the actual dollar amount of your bill for the past 12 months. When the amount you have paid does not cover the amount you have used, 15 percent of the difference will be added to your monthly average.

So, the Averaged Billing Plan does not change your rate, but allows you to pay less during high-use months and make up the difference by paying more during low-use months.



PRESTON MILK **GALLON** **\$1.90**
 USDA Inspected Plant Custom Processing,
 Wholesale and Retail Meats, Cut, Wrapp-
 ed, Frozen, and Fully Guaranteed. Fin-
 ancing Available Or Freezer Beef.
Lockney Meat Co.
 Hwy. 70 652-3305 Lockney, Texas

RCA  **For The Best**
Price & Service On RCA T.V.'s
 See **MIZE PHARMACY & T.V.**
 102 S. Main Lockney 652-2435

CALL CABLE TV
OF FLOYDADA 983-2911
TODAY
FOR MORE AND BETTER

SUNDAY 06/03/79

AM	WTCC CH. 17 Atlanta Cable 4	KTXT CH. 5 Lubbock Cable 5	PTL CH. 6 Charlotte Cable 6	KMCC CH. 28 Lubbock Cable 7	WGN CH. 9 Chicago Cable 8	KTV CH. 10 Oakland Cable 10	KCBD CH. 11 Lubbock Cable 11	KLBK CH. 13 Lubbock Cable 13
7:00	Three Stooges	No Programs	Hour of Power	Praise the Lord Club	News Buyer's Forum		Jimmy Swaggart Day of Discovery	This is the Life Rebob
8:00	Lost in Space		Voice of Victory	Jimmy Swaggart Prophecy Newsreel	Mass for Shut-Ins Church		Oral Roberts Methodist Church	James Robison Presents Amazing Grace
9:00	Hazel		Jerry Falwell	Morris Carollo I Love Lucy	Issues Unlimited Abbott and Costello	Westbrook Hospital Schooler	Rex Humbard	Jerry Falwell
10:00			PTL Club	Best of Donahue	Tarzan			Sunday School
11:00				Baptist Church	Cisco Kid Lone Ranger	Oral Roberts Rex Humbard	Better Life Meet the Press	Hour of Power
12:00		No Programs	Calvary Temple	American Lifestyle Animals, Animals	One Step Beyond Sea Hunt		Marcus Welby, M. D.	Kemper Open, Three on
1:00	Of St. Louis		Amazing Grace High Adventure	Issues and Answers Country Drs. Vanishing	Pre-Game Show	On the Square	Family Circle	
2:00			Living Faith	To Be Announced		Tarzan	Ironside	
3:00	Movie: 'Never Steal Anything Small'			Walker Cup Golf Match Wide World of Sports		Movie: 'Destination: Moon'	SportsWorld	
4:00		Firing Line	Club PTL		Movie: 'The Spirit of St. Louis'		Adam-12	
5:00	Championship Wrestling	Advocates	Amazing Grace High Adventure	Lay Witness ABC News		Movie: 'Children's Hour'	Wild Kingdom NBC News	Last of the Wild CBS News

SUNDAY 06/03/79

PM	WTCC CH. 17 Atlanta Cable 4	KTXT CH. 5 Lubbock Cable 5	PTL CH. 6 Charlotte Cable 6	KMCC CH. 28 Lubbock Cable 7	WGN CH. 9 Chicago Cable 8	KTV CH. 10 Oakland Cable 10	KCBD CH. 11 Lubbock Cable 11	KLBK CH. 13 Lubbock Cable 13
6:00	Major League Baseball: New York at	Consumer Survival Kit Victory Garden	Living Faith	Movie: 'Lassie: The New Beginning'	Movie Cont'd Next Step Beyond		Wonderful World of Disney	60 Minutes
7:00	Atlanta	A Place to Be	James Robison Presents		In Search of... People to People	Movie: 'The Best Years of Our Lives'	'Time Machine'	All in the Family One Day at a Time
8:00	Dragnet	Masterpiece Theatre: Lillie	PTL Club	Movie: 'The Spirit of St. Louis'	Hee Haw			Alice
9:00	Between the Wars Ruff House	Novas: The Long Walk of Fred Young			Lawrence Welk		NBC News Special	
10:00	Open Up	Sign Off	Jimmy Swaggart PTL Club		News	Movie: 'A Song Is Born'	News	News
11:00					Pop! Goes the Country Praise the Lord Club		with My Aunt'	WCT Tennis Finals
12:00					ABC News Sign Off		News Sign Off	News/Sign Off

MONDAY - FRIDAY

AM	WTCC CH. 17 Atlanta Cable 4	KTXT CH. 5 Lubbock Cable 5	PTL CH. 6 Charlotte Cable 6	KMCC CH. 28 Lubbock Cable 7	WGN CH. 9 Chicago Cable 8	KTV CH. 10 Oakland Cable 10	KCBD CH. 11 Lubbock Cable 11	KLBK CH. 13 Lubbock Cable 13
7:00	Lassie	No Programs	Varied Programs	Good Morning America	Ray Rayner and Friends		Today	Morning
8:00	Lucy Show	Sesame Street			Family Affair			Captain Kangaroo
9:00	Movie	Mister Rogers Neighborhood Electric Company		Phil Donahue	Movie	Cartoon Town	People Place	Sunshine Sally WHEWI
10:00		Varied Programs	PTL Club	Laverne & Shirley Family Feud		Romper Room	High Rollers	Price Is Right
11:00	Love, American Style Movie	Over Easy		\$20,000 Pyramid Morning Magazine	Phil Donahue	Partridge Family Room 222	Password Plus	The Young and the Restless Search for Tomorrow
12:00		MacNeil-Lehrer Rept. Sign Off	Varied Programs	All My Children	Bozo's Circus	Rookies	News	News
1:00	Lucy Show			Praise the Lord Club	Bewitched	Phil Donahue		Guiding Light
2:00	Infinity Factory (MWF) Banana Splits	Lilias, Yoga And You Villa Alegre		General Hospital	Love, American Style Love, American Style	Medical Center	Another World	M*A*S*H
3:00	Flintstones	Sesame Street		Edge of Night	Stringray	Dialing for Dollars Movie	Card Sharks	Love of Life
4:00	Star Trek	Mister Rogers Neighborhood Electric Company			Andy Griffith McHale's Navy		Gilligan's Island Beverly Hills	My Three Sons
5:00	Family Affair	Studio See	Herald of Truth Christopher Close-Up	ABC News	Conversation w/Irma My Three Sons	Woody Woodpecker Hanna-Barbera	Get Smart	

MONDAY 06/04/79

PM	WTCC CH. 17 Atlanta Cable 4	KTXT CH. 5 Lubbock Cable 5	PTL CH. 6 Charlotte Cable 6	KMCC CH. 28 Lubbock Cable 7	WGN CH. 9 Chicago Cable 8	KTV CH. 10 Oakland Cable 10	KCBD CH. 11 Lubbock Cable 11	KLBK CH. 13 Lubbock Cable 13
6:00	Get Smart	Word on Words	Gospel Music	News	Dick Van Dyke	T.V. Powww with Tom and Jerry	News	News
7:00	My Three Sons	MacNeil-Lehrer Rept.	Hour of Power	Bewitched	Star Trek		Sanford and Son	
8:00	Movie: 'A Lovely Way To Die'	Bill Moyers' Journal: How to Get a Job	Westbrook Hospital	Monday Night Baseball: Texas at Boston	Twilight Zone	Captain Cosmic Bewitched	Little House on the Prairie	
9:00	Ascend of Man	The Prime of Miss Jean Brodie	PTL Club		Annual Music City News Country Awards	Six Million Dollar Man	Movie: 'Jeremy'	
10:00	New Soupy Sales	Dick Cavett	Abundant Living PTL Club	News	News	Movie: 'Living Free'	News	News
11:00	Space	Sign Off		Police Story	Baskerville's			
12:00					Nightbeat			Tomorrow

TUESDAY 06/05/79

PM	WTCC CH. 17 Atlanta Cable 4	KTXT CH. 5 Lubbock Cable 5	PTL CH. 6 Charlotte Cable 6	KMCC CH. 28 Lubbock Cable 7	WGN CH. 9 Chicago Cable 8	KTV CH. 10 Oakland Cable 10	KCBD CH. 11 Lubbock Cable 11	KLBK CH. 13 Lubbock Cable 13
6:00	Get Smart	Basically Baseball: MacNeil-Lehrer Rept.	Happy Hour	News	Dick Van Dyke	T.V. Powww with Tom and Jerry	News	News
7:00	Montreal at Atlanta	Previn and the Pittsburgh	Oral Roberts	Happy Days		Captain Cosmic Bewitched	Billy Graham Tampa Crusade	
8:00		An Apple, an Orange	PTL Club	Three's Company Taxi	Movie: 'Saskatchewan'	Six Million Dollar Man	Movie: 'Nowhere to Run'	
9:00	America	Medicine Today		When the West Was Fun - A Western Re-Union		Odd Couple	Dating Game	
10:00	New Soupy Sales	Dick Cavett	Harvest Temple PTL Club	News	News	Movie: 'Abandon Ship'	Tonight Show	
11:00	Give	Sign Off		Movie: 'Sheila Levine Is Dead and Living in New York'				
12:00								Tomorrow

WEDNESDAY 06/06/79

PM	WTCC CH. 17 Atlanta Cable 4	KTXT CH. 5 Lubbock Cable 5	PTL CH. 6 Charlotte Cable 6	KMCC CH. 28 Lubbock Cable 7	WGN CH. 9 Chicago Cable 8	KTV CH. 10 Oakland Cable 10	KCBD CH. 11 Lubbock Cable 11	KLBK CH. 13 Lubbock Cable 13
6:00	Get Smart	Growing Together MacNeil-Lehrer Rept.	Sound of the Spirit Rex Humbard	News	Dick Van Dyke	T.V. Powww with Tom and Jerry	News	News
7:00	Fall of Eagles	The Long Search: The Chosen People	Pattern for Living	Eight Is Enough	Twilight Zone	Captain Cosmic Bewitched	Billy Graham Tampa Crusade	
8:00	NASL Soccer: Atlanta at	Great Performances: Dance in America	PTL Club	Charlie's Angels	Movie: 'War of the Wildcats'	Six Million Dollar Man	Movie: 'The Incredible Rocky Mountain'	
9:00	Dallas			Vegas		Odd Couple	Races	
10:00	New Soupy Sales	Dick Cavett	Changed Lives	News	News	Honeymooner's Trip to Europe	News	
11:00		Sign Off		Police Woman		Upstairs, Downstairs		
12:00				Mannix		Nightbeat		Tomorrow

THURSDAY 06/07/79

PM	WTCC CH. 17 Atlanta Cable 4	KTXT CH. 5 Lubbock Cable 5	PTL CH. 6 Charlotte Cable 6	KMCC CH. 28 Lubbock Cable 7	WGN CH. 9 Chicago Cable 8	KTV CH. 10 Oakland Cable 10	KCBD CH. 11 Lubbock Cable 11	KLBK CH. 13 Lubbock Cable 13
6:00	Get Smart	Cinema Showcase MacNeil-Lehrer Rept.	Kroeze Brothers Jerry Falwell	News	Dick Van Dyke	T.V. Powww with Tom and Jerry	News	News
7:00	Movie: 'Home of the Brave'	Novas: A World of Difference	Insight	Mork & Mindy	Twilight Zone	Captain Cosmic Bewitched	Billy Graham Tampa Crusade	
8:00		Views of Asia Malaysia	PTL Club	Barney Miller	Movie: 'Funeral in Berlin'	Six Million Dollar Man	Quincy	
9:00	Commanders	Sneak Preview		20/20		Movie: 'The Day of the Jackal'	'The Innocent and the Damned' Part 2	
10:00	New Soupy Sales	Dick Cavett	Richard Hogue PTL Club	News	News	Movie: 'Twilight'	Tonight Show	
11:00	Of Gregory	Sign Off		Starsky & Hutch	for the Gods			
12:00				Mannix		Nightbeat		Tomorrow

E TV
983-2911
ETTER TV

Shop Roye's For The Latest
In Fashion
and In Spring and Summer Colors
Of Merle Norman
ROYE'S
Merle Norman Cosmetics

Table with 8 columns: Channel, Program, Time. Includes channels KCB, KLB, WTC, KTX, PTL, KMCC, WGN, KTV, KCB, KLB.

Table with 8 columns: Channel, Program, Time. Includes channels KCB, KLB, WTC, KTX, PTL, KMCC, WGN, KTV, KCB, KLB.

Table with 8 columns: Channel, Program, Time. Includes channels KCB, KLB, WTC, KTX, PTL, KMCC, WGN, KTV, KCB, KLB.

Support Floydada And Lockney Merchants
Sponsor The T.V. Schedule
For You Each Week

Table with 8 columns: Channel, Program, Time. Includes channels KCB, KLB, WTC, KTX, PTL, KMCC, WGN, KTV, KCB, KLB.

**Vacation Church
School Slated**

Vacation Church School will be held the week of June 11-15 at First United Methodist Church. As in the past, First Christian Church and First Methodist Church are cooperating in providing this summer's Christian Education Program for children age three (as of September 1, 1978) through sixth grade.

Vacation Church School will be from 9:00 - 11:30 a.m. each day. All children of the appropriate age are welcome. For further information, call Lana Moore at 983-2006 or Sue Swearingin at 983-3931.

REMEMBER your loved ones with a living memorial to the Caprock Hospital Auxiliary Memorial Fund. Mrs. Ben Whitaker, Treasurer.

OBITUARY

Fred Warren

Services for Fred Warren, 74, were at 11 o'clock Saturday June 2 at the First Baptist Church chapel with Dr. Floyd C. Bradley officiating. Burial was in Floydada Cemetery under direction of Moore-Rose Funeral Home. Warren, who was a native of Hunt County and who moved to Floyd County in 1914, died Thursday at 11:20 a.m. in Lockney General Hospital after a lengthy illness. He was a retired mechanic, and army veteran and a member of First Baptist Church.

Survivors include four brothers, Dorsey and Bud of Floydada, and Carlos and Tom of Fort Worth; and a sister, Irene Brittain of Seymour.

NEWS & REVIEWS

Floydada Baptist Church Library

The Bubble Gum Bible Brigade is more than a reading club for boys and girls who have completed grades one through six. Instead of asking you to read a certain number of books, we will give you a score card and ask you to keep a record of the number of points you earn during the month of June.

Points may be earned by doing the following things:
10 — for each book you read on your reading level about a Bible subject.
5 — for other books you read from the Church Media Center.

10 — for listening to a Bible story cassette tape. Parents may check out a cassette player for you if you do not have one at home.
10 — for each adult that will agree to read a book or listen to a tape about a Bible subject from the Church Media Center.
20 — if your parents read

aloud one of the gospels from a modern translation of the Bible to you during the month of June.
20 — for perfect attendance at Vacation Bible School.
20 — for each Bubble Gum Bible Brigade program you attend at 6:00 p.m. each Sunday in June. We will meet in the 6th grade department across from the fellowship hall.
20 — memorize and say a Bible verse at the 6:00 p.m. meeting.
10 — each Sunday in June that you are in Sunday School.

AWARDS
Read 5 or more books to earn a Raspberry Book Mark. A piece of bubblegum for each 20 points that you earn. A Bubble Gum Bonus certificate for participating in the Bubblegum Bible Brigade.
High Point Girl and Boy from each grade will be recognized Sunday, July 8.
Get A Headstart Today By Picking Up Your Score Card In The Media Center.

Floydada Nursing Home Happenings

This was a week of leisure for most of the residents. They all enjoyed the activities during Nursing Home Week, however, they were somewhat tired. Our devotions for the week were really good. Wednesday morning the City Park Church of Christ had 25 guests with them for devotion. We would like to thank the First Baptist Church Sunshine S.S. Class for the fruit and cookies. Mr. and Mrs. Edd Muncy visited while passing the fruit sack out to each resident. Tuesday the residents enjoyed cake sent to us by Char-Lees. It was delicious and the residents really enjoyed it.

We didn't have many who were able to make the bus trip Wednesday. However, Juanita Bailey, Anis Fraaks and Green Bostick enjoyed a trip to Plainview. We stayed at several stores and did some shopping. Big bingo winner was Victoria Asher with three games. Clara Williamson and Anis Franks won two games each. Ray Reed, Mamie Gray, Emmitt Lawrence, Myrtle Roy and Henry Love won one game each. Docia Manning is in Methodist Hospital and Mrs. Fred Warren is in Lockney General. We wish them both a speedy recovery. Mrs. Verna McSwain came home from the hospital this week. We're proud she is back with us. Thanks to our many visitors for the week: Hubert and Ruby Davis, Leona Slater, Nellie Sessom, Ree Southward, Mary Hernandez, Maude Gray, Nancy Upton, Frankie Gilbreath, Ivey Gilbert, Berta Fay Cornelius, son, Mrs. Bob Bratton, Ethel Barker, Evelyn Crull, Dorris Tobin, Mr. and Mrs. R.T. Furrow, Dorothy Merrell, Mrs. Cecil Whitehead, Mr. and Mrs. Arthur Womack Jr., Ernestina Martinez, Barbara Martinez, Kay Guzman, Debi Holbert, Yrene Alvarez, Debra Alfaro, Terry Pleasant and Hazel Bradley and Kim.

**Baseball
Starts Monday**

**TEE SHIRT LEAGUE
1979 BASEBALL SCHEDULE**

- June 4 -- Fuller Trucking vs. Thompson Pharmacy
- June 5 -- First National Bank vs. Ponderosa Meat Co.
- June 7 -- Davis Farm Supply vs. Fuller
- June 8 -- Thompson vs. F.N. Bank
- June 11 -- Ponderosa vs. Davis
- June 12 -- F.N. Bank vs. Ponderosa
- June 14 -- Thompson vs. Davis
- June 15 -- Fuller vs. Ponderosa
- June 18 -- F.N. Bank vs. Davis
- June 19 -- Ponderosa vs. Thompson
- June 21 -- Davis vs. Ponderosa
- June 22 -- Thompson vs. Fuller
- June 25 -- Ponderosa vs. F.N. Bank
- June 26 -- Davis vs. Thompson
- June 29 -- Fuller vs. F.N. Bank
- June 29 -- Thompson vs. Ponderosa

- July 2 -- Fuller vs. Davis
- July 3 -- F.N. Bank vs. Thompson
- July 5 -- Ponderosa vs. Fuller
- July 6 -- Davis vs. F.N. Bank

**FLOYDADA LITTLE LEAGUE
1979 BASEBALL SCHEDULE**

- June 4 -- Collins Implement vs. Adams Well Service (6:30 p.m.)
- June 5 -- Moore Rose Funeral Home vs. Floydada Co-Op gins
- June 7 -- Adams vs. Collins
- June 8 -- Co-Op vs. Moore-Rose
- June 11 -- Collins vs. Co-Op (6:30)
- June 12 -- Moore-Rose vs. Adams
- June 14 -- Co-Op vs. Collins
- June 15 -- Adams vs. Moore-Rose
- June 18 -- Co-Op vs. Adams (6:30)
- June 19 -- Collins vs. Moore-Rose
- June 21 -- Adams vs. Co-Op
- June 22 -- Moore-Rose vs. Collins
- June 25 -- Moore-Rose vs. Co-Op (6:30)
- June 26 -- Adams vs. Collins
- June 28 -- Co-Op vs. Moore-Rose
- June 29 -- Collins vs. Adams

- July 2 -- Co-Op vs. Adams (6:30)
- July 3 -- Moore-Rose vs. Collins
- July 5 -- Adams vs. Moore-Rose
- July 6 -- Collins vs. Co-Op
- July 9 -- Moore-Rose vs. Adams (6:30)
- July 10 -- Co-Op vs. Collins
- July 12 -- Collins vs. Moore-Rose
- July 13 -- Adams vs. Co-Op

Home team listed first. Games start at 7 p.m. except where noted.

**Vacation Bible
School Slated**

The City Park Church of Christ on the corner of 5th & Tennessee, will conduct this year's Vacation Bible School, June 4-8. Classes begin at 9:00 a.m. and are dismissed at 11:00 a.m. Bible classes will be held for three year olds through the sixth grade. Tom Pauley, Minister of the City Park Church of Christ says "I want to personally invite the children of Floydada to come and join us in this years study." For free transportation call the Church office at 983-2570.

**Shop
Floyd
County**

THE FLOYD COUNTY HESPERIAN
[USPS 202-680]

Published each Sunday and Thursday at 111 E. Mo. St., P.O. Box 700, Floydada, Texas 79235. Publication No. 202680. Jim Reynolds, editor. Subscription rates: Local \$10.50 a year, out-of-trade area \$11.50 a year. Second class postage paid at Floydada, Texas 79235.

TEXAS PRESS
MEMBER 1979 ASSOCIATION

**Air Conditioner
Summer Special**

- Charge System
- Check For Leaks
- Tighten All Belts
- Check All Hoses

\$15⁹⁵

Includes Labor And Freon

M & N AUTO
507 E. Missouri Floydada
tfc

Got Heating
Or Plumbing
Problems?
Call
**HOLMES
PLUMBING**
Austin or Steve
983-2251
6:30-9:30 a.m. and
5:30 p.m. Until?

516 Register At Pioneer Reunion

Old Settlers Day May 26 was the usual big success with some 516 persons registering. The following are those who registered as having been among those to share in the day of fun and fellowship.

Beulah McNeely, Lubbock, 1903; Clara McNeely, Floydada, 1919; Loris Gilly, Floydada, 1925; C.L. "Cob" Gilly, Floydada, 1921; Ida Kind Phillips, Idalou, 1898; Verna Phillips Fuller, Idalou, 1920; C.O. Spence, Floydada, 1914; Orvil Spence, Sherman, 1919; Edna Phillips, Floydada, 1906; R.L. Morris, Plainview, 1907; Mary Pearl Coward, Floydada, 1917; Elva Perry, Lockney, 1901; Mrs. Olive Myers, Lockney, 1916; May Garrett, Floydada, 1900; George L. Smith, Floydada, 1906; Mary Pittman Smith, Floydada, 1908; Walter Hanna, Floydada, 1910; Billie Hanna, Floydada, 1922; Beulah Anderson Baker, Floydada, 1920; Earl Baker, Floydada, 1906; Louis Anderson, Floydada, 1928; Ferne Anderson, Floydada, 1931;

James Huggins, Lockney, 1943; Carol Huggins, Lockney, 1952; Grace Grundy, Floydada, 1913; Jessie Lee Odom, Fremont, California, 1921; Clem McDonald, Floydada, 1915; Mrs. Clem McDonald, Floydada, 1927; Vernon Gross, Lockney, 1910; Mrs. Vernon Gross, Lockney, 1923; Lillie D. Perry, Floydada, 1925; Charlie Perry, Floydada, 1917; C.A. Booth, Amarillo, 1910; Josephine Waller Switzer, Floydada, 1928; Joe Peck, Floydada, 1916; Henry Willis, Floydada, 1905; Mrs. Henry Willis, Floydada, 1905; J.C. Wester, Floydada, 1919; Guy Garrison, Floydada, 1913; Esley Yeary, Floydada, 1902; Hershel D. Hammonds, Floydada, 1913; Flossie Beedy, Plainview, 1917; Edna Burgett, Clovis, New Mexico, 1917; M.W. Martin, Clovis, New Mexico, 1917;

Mrs. Sidney Johnston, Plainview, 1938; Mrs. Kay Terrell, Plainview, 1920; Della Willman, Lockney, 1905; Bertha Cunyus, Lockney, 1905; Jettie Cooper Moss, Floydada, 1909; Earl Crawford, Floydada, 1933; Thelma Crawford, Floydada, 1923; John T. Carthel, Lockney, 1905; Mrs. Annie Taylor, Floydada, 1926; Iva Jewel Bonner, Floydada, 1928; Alma Montogmery Dunn, Floydada, 1912; Ruth McIntosh, Floydada, 1927; Sallie Kreis, Floydada, 1927; Mrs. L.H. Pesch, Floydada, 1912; M.S. Robertson, Floydada, 1925; Mrs. M.S. Robertson, Floydada, 1914; W.R. Daniel, Floydada, 1919; Margaret Daniel, Floydada, 1948; Heston Bennett, Lockney, 1904; Ruby Bennett, Lockney, 1908; Weldon McClure, Floydada, 1917; Frances McClure, Floydada, 1930; Helene Holt, Lockney, 1924;

Maurene Hammonds, Plainview, 1924; Opal Blount, Lockney, 1912; Peggy McKinney, Plainview, 1912; Helen Upton McLeod, Lockney, 1910; E.A. McLeod, Lockney, 1924; Earl Cooper, Lockney, 1918; Harry Reeves, Floydada, 1923; Dorothy Reeves, Floydada, 1918; Bob Bradford, Floydada, 1926; Margaret McKinney Rogers, Lubbock, 1922; Levis Gilliland, Floydada, 1926; Ruth Gilliland, Floydada, 1937; Leona Jameson Watson, Lockney, 1924;

Raymond Watson, Lockney, 1934; Sylvia Yearv, Lockney, 1921; Grace Colston, Lockney, 1910; Bettie Counts, Lockney, 1907; George McAllister, Floydada, 1928; M.M. (Jack) Smitherman, Floydada, 1917; Mrs. M.M. Smitherman, Floydada, 1905; Cora Lee Shipley, Floydada, 1919; W.A. Kirk, Canyon, 1919; Zelda McClure, Plainview, 1912; Beulah Faye McClure, Plainview, 1915; Faye Blaxom, Plainview, 1924; Wiley Rogers, Floydada, 1916; Bobby Rogers, Floydada, 1924; Aaron Carthel, Floydada, 1913; Estelle Byars Carthel, Floydada, 1920;

Ella Biggs Goodwin, Lubbock, 1923; Icy P. Biggs, Floydada, 1916; Vel Darden, Floydada, 1919; Bill Darden, Floydada, 1945; Grigsby Milton, Floydada, 1917; Artie Muncy, Floydada, 1921; Edd Muncy, Floydada, 1895; Esther Freeman, Floydada, 1928; Grady Freeman, Floydada, 1925; Foy Carpenter, Floydada, 1924; Marion Carpenter, 1914; Voncel Colston, Floydada, 1922; Buzz Muncy, Floydada, 1923; Clyde Stapp, Lockney, 1927; Mildred Martin, Lockney, 1916;

Edith Watts, Plainview, 1913; Lucille Brown, Lockney, 1907; Opal Ashton, Floydada, 1926; E.A. Noland, Lockney, 1920; Floyd Bradford, Floydada, 1926; Euna Fawver Bradford, Floydada, 1925; Milton Harrison, Floydada, 1918; Marie Jo Smith Harrison, Floydada, 1918; Alvin O. Foster, Lockney, 1924; Grace Foster, Lockney, 1924; Sudie Thomas, Floydada, 1898;

Hal Thomas, Floydada, 1937; Mary Corley, Floydada, 1907; Travis Corley, Floydada, 1903; Waylene Mankins, Floydada, 1945; Alyne Evans, Floydada, 1937; Bonnie Cage, Floydada, 1917; Penny Bertrand, Floydada, 1955; LaNell Tardy, Floydada, 1939; Eilene Francis, Carrollton, 1947; Mrs. Hattie Scheele, Lockney, 1911; Frances Collins, Borger, 1926; Vernon Collins, Borger, 1925; Jewel Martin, Floydada, 1930; Norma Martin, Floydada, 1942; J.C. Anderson, Amarillo, 1920; A.G. Tyler, Amarillo, 1926; Flo Davis, Floydada, 1926; Lon Davis, Jr., Floydada, 1920; Jack Stansell, Floydada, 1918;

Emogene Stansell, Floydada, 1921; Bill Beedy, Floydada, 1914; Charles Beedy, Claude, 1929; W.A. Massie, Floydada, 1909; Troye Massie, Floydada, 1910; R.B. Rosson, Floydada, 1924; Lula Teague, Floydada, 1925; Riley Teague, Floydada, 1915; Hazel White, Floydada, 1943;

Coedella Porter, Floydada, 1943; Mildred Cates, Floydada, 1921; Bessie Wilson, Floydada, 1919; A.C. Carthel, Floydada, 1917; Mrs. A.C. Carthel, Floydada, 1920; Winnie Wilson Beedy, Floydada, 1907; E.K. Williams, Petersburg, 1904; Hope Norman, Lubbock, 1931;

Kay Steen, Lubbock, 1935; Maurice Steen, Lubbock, 1924; Mrs. Leonard Matsler, Floydada, 1936; Leonard Matsler, Floydada, 1914; Frances Linch, Floydada, 1937; Talmadge Linch, Floydada, 1923; Chuck Holmes, Floydada, 1933; Betty Holmes, Floydada, 1953;

Ada Ellis, Floydada, 1908; Mrs. Bessie Hunt, Silverton, 1900; Sam W. Hunt, Silverton, 1903; O.R. McIntosh,

Floydada, 1925; Laverne McIntosh, Floydada, 1949; Bessie Glover, Dougherty, 1917; Jess Glover, Dougherty, 1916; Kermit Glover, Dougherty, 1916; Sarah Biard, Floydada, 1906; Zella Bolton, Plainview, 1902; J.B. Burton, Plainview, 1970; Horace Carr, Floydada, 1910; Bill Stevens, Floydada, 1920; Warnie Hilton, Floydada, 1915; L.D. Britton, Floydada, 1908; Eddie King, Floydada, 1907; Thurman Perry, Floydada, 1915; Ruth Perry, Floydada, 1917; Clyde Bagwell, Floydada, 1917; Lurline Joiner Bagwell, Floydada, 1918; Hester Moore, Floydada, 1908; Gayle Fawver, Floydada, 1949; Judy Payne, Floydada, 1950; David Kirk, Floydada, 1923; Jill Kirk, Floydada, 1947; Duncan Hollums, Floydada, 1910; Edvoina Hol-

lums, Floydada, 1912; Ila Hammonds, Floydada, 1926; Josephine Lyles, Floydada, 1924; Aldine Williams, Floydada, 1922; Pat Bullock, Floydada, 1923; Mary Lou Bullock, Floydada, 1923; Louis Newell, Floydada, 1921; Hazel Bailey, Lockney, 1907; Perl Bailey, Lockney, 1907; Mr. O.J. Lady, Lockney, 1907; Mrs. C.M. Meredith, Floydada, 1900; Mrs. Edell Dubois, Floydada, 1919; Edell Dubois, Floydada, 1919; Betty Chowning, Floydada, 1927; Leroy Chowning, Floydada, 1924; Mayble Meek, Floydada, 1904; Ollie Meek, Floydada, 1905;

Jack Lackey, Floydada, 1915; Dola Lackey, Floydada, 1915; Gladys Ebans Wimberly, Floydada 1918; Mable Laminack, Floydada, 1916;

Fay Hart, Floydada, 1917; Bonnie Bennett, Lockney, 1908; Amanda Stevens Hart, Floydada, 1921; Beth Bennett Kropp, Lockney, 1924; Martha Sandusky, Bronaide, Ok., 1932; Billy Sandusky, Bronaide, Floydada, 1916; Bloodworth, Floydada, 1916; Beatrice Bloodworth, Floydada, 1918; Walton Wilson, Floydada, 1909; Curtis E. Martin, Floydada, 1926; Cecil Pope, Floydada, 1923; E.L. Cornelius, Floydada, 1932; John K. West, Floydada, 1911; Greer Christian, Floydada, 1916; Ruth Christian, Floydada, 1931; Madge West, Floydada, 1928; Volney McNeil, Floydada, 1926; Macyl Orman, Burnet, 1927; Clara Redd, Floydada, 1924; Ruthie Bell Hill, Floydada, 1924; Edna Gilly, Floydada, 1926; Mary Lou Hammonds Bollman, Lockney, 1909;

Henry Bollman, Lockney, 1919; L.V. Phillips, Idalou, 1914; Juanita Phillips, Richman, Ky., 1919; Travis Lightfoot, Floydada, 1917; Letha Lightfoot, Floydada, 1936; Charlie Warren, Floydada, 1914; Roberta Garrett Hardin, Floydada, 1932; Carol Reeves Bell, Floydada, 1928; Glen Armstrong, Floydada, 1912; Elizabeth Armstrong, Floydada, 1912; Doris Johnson, Riverside, Ca., 1912; Mrs. R.L. Neil, Floydada, 1928; R.L. Neil, Floydada, 1924; Geneva Knight Elliot, Floydada, 1927; Mrs. Sam Lide, Floydada, 1923; Sam Lide, Floydada, 1923; Mrs. M.C. Smith, Floydada, 1946; M.C. Smith, Floydada, 1946; Jerry Cardinal, Houston, 1939; Verna Cardinal, Floydada, 1915; Wayne Finley, Floydada, 1919; Pansy Fin-

ley, Floydada, 1924; George Henry, Floydada, 1914; Juanita Shurbet Henry, Floydada, 1916; Janice Shurbet, Floydada, 1905; T.L. Callaway, Lubbock, 1927; Mrs. T.L. Callaway, Lubbock, 1918; T.S. Brown, Floydada, 1897; Marie Smith Tardy, Floydada, 1908; Harvey Tardy, Floydada, 1925; W.M. Hambright, Floydada, 1917; Ethel A. Hambright, Floydada, 1924; Leona McCray, Floydada, 1922; Lloyd McCray, Floydada, 1940; Eula Owen Williams, Floydada, 1898; N.W. Williams, Floydada, 1915; Mrs. H.W. Roberts, Floydada, 1918; Ethel Cross, Floydada, 1928; Mrs. E.W. Walls, Floydada, 1923; E.W. Walls, Floydada, 1923; Walton Hale, Floydada, 1929; Mary Hale, Floydada, 1929; Eddie Jarrett, Plainview, 1928; Will Mar-

tin, Floydada, 1910; Martin, Floydada, 1912; Grigsby Allen, 1912; Lloyd Allen, 1923; J.D. Cooper, Lockney, 1908; Young, Floydada, 1910; Blum, Floydada, 1908; Ross, Floydada, 1912; ecca Smith, 1912; Randy Hada, 1943; Floyd Anderson, 1916; Willie thel, Lockney, 1917; Bain Jr., 1908; Frank Smith, 1908; Ocie Mada, 1922; Mrs. Mada, 1916; Wootton, Dora, 1915; W.L. "Leta" Amarillo, 1908; Holmes, Amarillo, 1908;



Triple The savings

Each of these advertised items is required to be readily available for sale at or below the advertised price in each store, except as specifically noted in this ad. We reserve the right to limit quantities. None sold to dealers.

Prices Good May 27 thru June 2

<div style="border: 1px solid black; padding: 5px; margin-bottom: 5px;"> <h3 style="text-align: center;">Corn Oil</h3> <p style="text-align: center;">Mazola 2.59</p> <p style="text-align: center;">48 oz. Bottle</p> </div> <div style="border: 1px solid black; padding: 5px; margin-bottom: 5px;"> <h3 style="text-align: center;">Mayonnaise</h3> <p style="text-align: center;">Best Foods 1.59</p> <p style="text-align: center;">32 oz. Jar</p> </div> <div style="border: 1px solid black; padding: 5px; margin-bottom: 5px;"> <h3 style="text-align: center;">Soft Oleo</h3> <p style="text-align: center;">Parkay 79¢</p> <p style="text-align: center;">2 pack 8 oz. Tubs</p> </div> <div style="border: 1px solid black; padding: 5px; margin-bottom: 5px;"> <p style="text-align: center; font-size: 0.8em;">Coupon</p> <h3 style="text-align: center;">Joy Liquid Dish Detergent</h3> <p style="text-align: center;">1.29</p> <p style="text-align: center;">32 oz. Bottle</p> </div> <div style="border: 1px solid black; padding: 5px; margin-bottom: 5px;"> <h3 style="text-align: center;">Ritz Crackers</h3> <p style="text-align: center;">99¢</p> <p style="text-align: center;">32 oz. Box</p> </div> <div style="border: 1px solid black; padding: 5px; margin-bottom: 5px;"> <h3 style="text-align: center;">Big H Burger Sauce</h3> <p style="text-align: center;">Hellman's 99¢</p> <p style="text-align: center;">18 oz. Bottle</p> </div> <div style="border: 1px solid black; padding: 5px; margin-bottom: 5px;"> <h3 style="text-align: center;">Kool Aid Drink Mix</h3> <p style="text-align: center;">All Flavors 1.89</p> <p style="text-align: center;">Sweetened 34 oz. Can</p> </div>	<div style="border: 1px solid black; padding: 5px; margin-bottom: 5px;"> <h3 style="text-align: center;">Tomato Sauce</h3> <p style="text-align: center;">Contadina</p> <p style="text-align: center;">SAVE 68¢</p> <p style="text-align: center;">7 FOR \$1</p> <p style="text-align: center; font-size: 0.8em;">8 oz. Cans on 7 cans</p> </div> <div style="border: 1px solid black; padding: 5px; margin-bottom: 5px;"> <h3 style="text-align: center;">Orange Juice</h3> <p style="text-align: center;">Whole Sun</p> <p style="text-align: center;">SAVE 27¢</p> <p style="text-align: center;">3 FOR \$1</p> <p style="text-align: center; font-size: 0.8em;">6 oz. Cans on 3 cans</p> </div> <div style="border: 1px solid black; padding: 5px; margin-bottom: 5px;"> <h3 style="text-align: center;">Pinto Beans</h3> <p style="text-align: center;">Casserole</p> <p style="text-align: center;">SAVE 7¢</p> <p style="text-align: center;">2 FOR 58¢</p> <p style="text-align: center; font-size: 0.8em;">1 lb. Bag</p> </div> <div style="border: 1px solid black; padding: 5px; margin-bottom: 5px;"> <h3 style="text-align: center;">Del Monte Vegetables</h3> <p style="text-align: center; font-size: 0.8em;">Cut Green Beans Cream Style Corn Whole Kernel Corn</p> <p style="text-align: center;">Save 21¢</p> <p style="text-align: center;">3 FOR 95¢</p> <p style="text-align: center; font-size: 0.8em;">16-17 oz. Cans on 3 cans</p> </div>
---	---

Fanning Bread & Butter 65¢	Glade Air Freshener 6 oz. Box	Swiss Miss Frozen Waffles 3
Mazola No Stick 9 oz. Can 1.19	White Swan Bleach 128 oz. Jug	Birdseye Frozen Orange Awaka Drink 12 oz. Can
Oreo Chocolate Sandwich Holsum 1.35	Welch's Grape Jelly 20 oz. Jar 89¢	Airwick Carpet Fresh 14 oz. Pk.
Thru. Stuf. Manz. 89¢		

Double Stamps Every Wednesday

We give Double Gold Bond Stamps every Wednesday with any purchase of \$2.50 or more (excluding cigarette purchases).



The New Rotation Crop SUNFLOWERS

- a bright new idea for highest \$/acre yields.
- no acre allotment
- hybrid seed now in stock

RBA Rauenhorst, Bellows & Associates

'The SEED PEOPLE to GROW with'
Olivia, Minnesota 56277

Contact your RBA Man.

He's Fred Lloyd 806-983-2671

Pioneer Reunion Registrants

tin, Floydada, 1908; Martin, Floydada, 1912; Lloyd Allen, 1923; J.D. Copeland, Lockney, 1934; Arla Young, Floydada, 1935; Blum, Floydada, 1939; Cora Hartline, Floydada, 1943; Floyd Anderson, 1916; Willie Morrison, 1917; Ruth L. Lockney, 1905; Bain, Jr., 1908; Frank Smith, 1908; Ocie Morrison, 1922; Mrs. Stella Floydada, 1916; Wootton Dorsey, 1915; W.L. "Lefty" Amarillo, 1908; Mrs. Holmes, Amarillo,

Floydada, 1928; Gladys Widener, Floydada, 1916; Mrs. Earl Edwards, 1916; Earl Edwards, Floydada, 1917; Louis Blum, Floydada, 1928; Clinton Fyffe, Floydada, 1916; Mrs. Frank Brown, Floydada, 1924; Frank Brown, Floydada, 1911; Jonelle Fawver, Floydada, 1927; Alton Higginbotham, Floydada, 1939; Menard Fields, Floydada, 1923; Jettie Fields, Floydada, 1949; Helen Dunlap, Floydada, 1944; S.W. Ross, Floydada, 1907; Mrs. S.W. Ross, Floydada, 1965; Willie B. Eaken, Floydada, 1925; Mary Alice Eakin, Floydada, 1916; Mrs. E.I. Durham, Floydada, 1914; LeRoy Burns, Floydada, 1924; Loretta Burns, Floydada, 1926; Floyd Montgomery, Plainview, 1917; Florence McMurray, Montgomery,

Plainview, 1919; Milton Robbs, Lockney, 1901; Wynona Smith Willis, Petersburg, 1922; Mae Willis Moore, Petersburg, 1926; Don Marble, South Plains, 1932; Nancy Holland Marble, South Plains, 1950; Travis Dunn, Lockney, 1918; P.T. Gentry, Slaton, 1905; Ora Gilliland, Floydada, 1926; Lorene Battey Newberry, Floydada, 1918; Orville Newberry, Floydada, 1916; Floriene Dorrell Jarnagin, Floydada, 1917; Glenn Jarnagin, Floydada, 1917; Gayle Vickers Scott, Tulsa, 1940; Mattie Covington, Dougherty, 1913; Jim Conner, Lockney, 1907; Mrs. Jim Conner, Lockney, 1918; Jean Outcalt, Monta Vista, Colo., 1917; Mamie Schuster Bunch, Floydada, 1922; Willie H. Bunch, Floydada, 1916; Ruby Hall Shoemaker, Floydada, 1913; Bill Daniel, Floydada, 1921; Janice Jones Poteet, Floydada, 1946; Mrs. J.G. Wood, Floydada, 1917; Jesse Mae Wood Claiborne, Lamesa, 1917; C.W. Denison, Floydada, 1923; Rexie Gordon, Floydada, 1917; J.W. Adams, Floydada, 1925; Mrs. C.M. Leatherman, Floydada, 1915; C.M. Leatherman, Floydada, 1925; Ruby Cyfert Higginbotham, South Plains, 1915; Edith Cyfert Magnuson, Amarillo, 1924; Allene Hopkins Henry, Floydada, 1916; G.C. Applewhite, Lockney, 1903; Felicia Applewhite, Lockney, 1905; Doyle Moore, Floydada, 1926; Wanda Williams, Floydada, 1930; Doyle Turner, Floydada, 1930; Dorothy Turner, Floydada, 1937; Charlie Berry, Floydada, 1913; L.O. Adams, Floydada, 1910; Wayne Poteet, Floydada, 1943; Mrs. Dock J. Jones, Floydada, 1909; Dock J. Jones, Floydada, 1900; O.W. Denning, Floydada, 1908; Si D. Medley, Floydada, 1923; Peggy Medley, Floydada, 1947; Nellie Fulkerson, Floydada, 1902; C.P. Fulkerson, Floydada, 1914; Faye Jackson, Floydada, 1919; E.N. Jackson, Floydada, 1916; Mrs. Walton Wilson, Floydada, 1927; Mrs. J.T. Poole, Floydada, 1926; Louis R. Stapp, Lockney, 1927; Oleta Collier, Floydada, 1912; Coreen Mankins, Floydada, 1922; Dorothy Mae Anderson, Floydada, 1924; Odis Anderson, Floydada, 1922; Dolly Cardinal, Lockney, 1914; Mrs. A.B. Muncy, Lockney, 1920; Mona Dunn, Lockney, 1913; Lucille Miller, Petersburg, 1910; Everette Miller, Petersburg, 1910; Anne Swepston, Floydada, 1913; Imogene Fortenberry, Lock-

ney, 1925; Evelyn Jenkins, Lubbock, 1925; Virginia Taylor, Lockney, 1939; Foster Amburn, Canyon, 1905; Mrs. Foster Amburn, Canyon, 1914; Ester Brasher, Lockney, 1927; Virgil Brasher, Lockney, 1947; Fred Huggins, Lockney, 1927; Billie Huggins, Lockney, 1931; Bill Cagle, Floydada, 1964; Mrs. Bill Cagle, Floydada, 1964; Mrs. J.A. Arwine, Lubbock, 1963; J.A. Arwine, Lubbock, 1924; Cecil Baxter, Floydada, 1915; Mrs. Malvin Jarboe, Floydada, 1924; Malvin Jarboe, Floydada, 1921; Gladys Howard, Floydada, 1910; Willie Kay Bryant, Floydada, 1939; Mrs. U.A. Lovell, Floydada, 1925; James Lovell, Floydada, 1926; Mrs. W.B. Slaughter, Plainview, 1921; Jewell Guinn, Floydada, 1931; Betty Swepston Campbell, Floydada, 1926; Otero Scheele, Lockney, 1927; Mildred Fuqua, Floydada, 1917; Tom Wethers, Lockney, 1921; A.B. Womack, Floydada, 1911; Elton Goen, Floydada, 1916; Oleta Goen, Floydada, 1918; Mrs. W.S. Goen, Floydada, 1910; Guy Sams, Lockney, 1900; Pauline Sims Sams, Lockney, 1905; Tempest Phillip, Lockney, 1928; Raymond Martin, Lockney, 1916; Goldie Jacobs, Floydada, 1908; Sharron Huggins, Floydada, 1946;

Continued Thursday

WHOZITS . . .



LOCKNEY WHOZIT — This week is a fair-haired young miss. Her hair is now mostly gray, and she returned to live in Lockney several years ago.

Whozit Identity Eludes Guessers

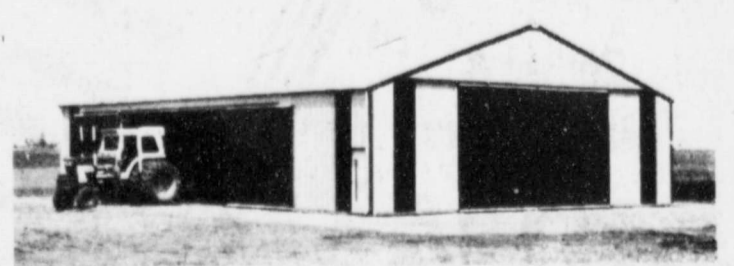
No one in Lockney successfully guessed the identity of last week's Lockney Whozit. Bruce Williams must be too young for all the old-timers who usually recognize the Whozits.



WHOZITS — Who is this longtime Floyd County family? The parents still are Floyd residents, but their offspring now live elsewhere. If you recognize them, please contact our office Monday through Wednesday.

Frank and Marisue Potts Whozits

Last week's Floydada Whozit kids were Frank and Marisue (Burlison) Potts. Sue Higginbotham correctly identified Frank and Marisue from the baby pictures in last week's paper.



MORTON BUILDINGS
For Information Call or Write . . .
MORTON BUILDINGS
INC.
Box 1928 Plainview, Texas
Phone 806-293-4386

Whozits make a difference for you!

Piggly Wiggly
Large
Grade A
Eggs
63¢
dozen

Jeno's
Frozen
Pizza
All Varieties
13/4-14 oz. Box
79¢

TRIPLE THE DIFFERENCE
Come into Piggly Wiggly and buy 25 different grocery items, any items you wish except for meats or produce, since quality and trim varies from company to company. Then compare our prices on those items at any other supermarket in town. If you find a lower total, bring in your Piggly Wiggly tape along with the other store's money saving offer! We'll pay you TRIPLE THE DIFFERENCE in CASH! Now, that's a serious money saving offer!

Barney's Butcher Shop Sale

Be Satisfied with Piggly Wiggly Meats or Double Your Money Back.

	Pork Chops Lean, Tender Combination Pac 6 Centers • 4 End Cuts	1 28 Lb.
	Box-O-Chicken USDA Grade A	55¢ Lb.
	USDA Heavy Western Beef Boneless Bottom	1 98 Lb.
	Farmer Jones Sliced Bacon	1 38 Lb.
	Farmer Jones All Meat Franks 12 oz. Pkg.	98¢
	USDA Heavy Western Beef Boneless Bottom Round Steak	2 08 Lb.
	Country Style Pork Spareribs	1 38 Lb.
	USDA Inspected Fresh Frozen Baking Hens	78¢ Lb.
	H & G Dressed Whiting Fish	68¢ Lb.
	Mrs. Paul's Fried Fish Fillets	1 08 8 oz. Pkg.
	Kraft American Deluxe Sliced Cheese	1 58 12 oz. Pkg.

Stan's Produce Sale!

Be satisfied with Piggly Wiggly Produce or Double your money back.

	California Avocadoes Creamy Smooth	8 FOR \$1
	Solid Firm Heads Cabbage	2 FOR 28¢ Lb.
	Medium to Large All Purpose Yellow Onions	2 FOR 28¢ Lb.
	Now Crop Watermelons	15¢ Lb.
	Washington State Crisp Winesap Apples	48¢ Lb.
	Fresh for Salads Bean Sprouts	58¢ Lb.

Mize Pharmacy & T.V. Is Having A


"WE WANT YOUR BUSINESS

SALE"

JUNE 4 THROUGH JUNE 30

All Clocks 
25% Off

All Jewelry
Except Whiting And Davis
1¢ Sale
Buy One At
Regular Price
Get Another For
1¢

All Drinking Glasses  **35% Off**

Stationary & Thank You Notes Very Good Selection **25% Off**

All Small Appliances 
30% Off
Blow Dryers, Curling Irons, Makeup Mirrors,
Electric Curlers, Hand Mixers, Blenders,
Can Openers, Slow Pot, Electric Skillet, Tea Pots

Many New Ones Have Just Arrived
Sun Glasses 25% Off

Key Rings
Zodiac & Many Others
40% Off

Story Book Dolls And Dolls
For Other Countries

25% Off

Novelty Mirrors

Good Selection

40% Off

Novelty Items

Soap Dishes, Planters, Coasters,
Brass Sculpter Pieces, Candles &
Candle Holders, Also Candle Rings

40% Off

10% Discount
On All New
Prescriptions

All Pangburns
Candy

25% Off

All Whirlpool Merchandise

Cost Plus 10%

No Trade Necessary

(Mens And Ladies)
Meeker Billfolds Cigarette Cases Etc.

Mize Pharmacy & T.V.


102 S. Main

Lockney

652-2435

1 Step
Poloroid
15% Off

Coke, Dr Pepper,
Diet Dr Pepper,
Sprite
14¢
Plus 1¢ Tax
(15¢)

All Whiting And Davis
Jewelry  **25% Off**

All Electric Razors **25% Off**

All
Smith Glass
50% Off

Speidel Watch Bands **50% Off**

Timex
Watches
Huge Selection

15% Off

All
Litton
Counter Top
Microwave Ovens
COST Plus 10%
No Trade Necessary
From \$262.90 to \$506.00
Nine Ovens To Choose From

10% Off
Already Discounted

Agricultural Aircraft Program Held Thursday At Floydada Airport

...from all over the area... agricultural aircraft... Floydada Municipi-... Texas A&M Extension Service... Floydada, Lockney, Idalou and... spray patterns... calibration is to... for uniform... clinic was one of... co-sponsored by... ICI American... and manufac-... of a new cotton... (R). Other clinics... Brownfield (Wednes-... City (Friday). Harry... representing Tri-... and Pat Kerr of Dallas... representative, Floydada airport for the... consultants and aerial... King's Restaurant in... the program at the... expressed thanks to Floyd-... Airport, for the use of



AT SPRAY PLANE CLINIC — Checking spray nozzles on a Howard Flying Service plane are (from left) Dr. Walter Walla of College Station; Al Howard of Floydada; Pat Kerr of Dallas. [Staff Photo]

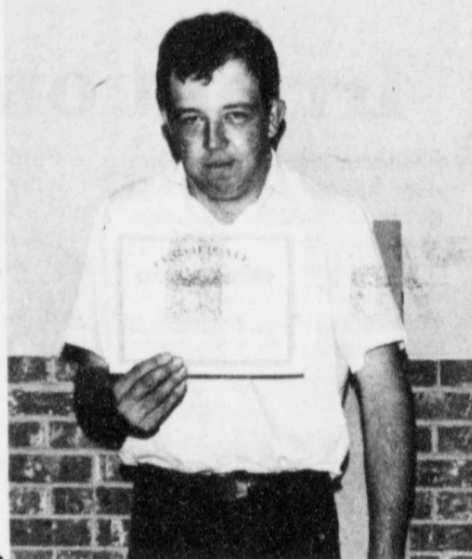
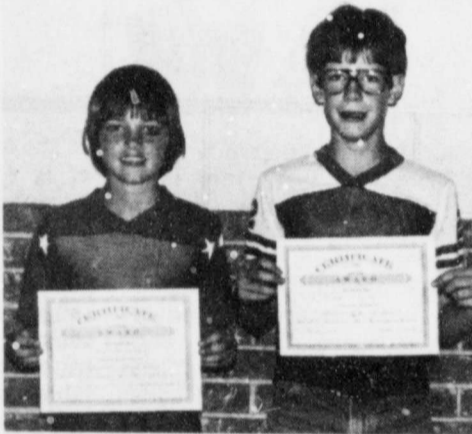
the facilities; and to Al Howard of Howard Flying Service, Floydada, who furnished mixing tanks and water for the clinic.
Area spraying services represented at

the clinic were Howard, Floydada; Austin Beedy, Lockney; Leo Suhr, Cone; Marble Brothers, South Plains; Arthur Newton, Idalou; Ben Holcomb, Dimmitt; Joe Vaughn, Kress.

Grade Award Winners Announced

... (all year) — Anna Leta... Roger Alldredge, Lisa... Lipham, Misti Orman... Jeff Galloway... Jeff Galloway, Lane... Greg Thompson...
... IN MARCH... Series E&H... Savings Bonds... County were repor-... by County Bond... Oscar Hernandez... \$21.00... the three month... \$2,872.00 for... 1979 sales goal of...
... during the... \$2,972,794, while... the first three...
... DATA... Myrick went to... Saturday, May... the wedding of... Glen Myrick, Mr. and Mrs. Gloy... Ridge, Texas at... Baptist Church... from Floydada and... attending the for-... were: Mr. and Mrs. Myrick, Mrs. Lipham, Mrs. Lipham, Mrs. Joyce Jack-... Mrs. Joyce Lip-... and Spring all... and Mr. and Mrs. Myrick, Joey, and Mrs. Plainview.

Roger Alldredge, Adolfo Garcia, David Morren, Ricky Poole, Toni Garza, Scott Neeley.
Perfect Attendance — Three years: Adolfo Garcia, Terry King. Two years: Greg Thompson. One year: Bryan Sanders, Ramona Ramazani.
Texas Readers Club — Jeff Galloway, Jill Willson (They read five fiction and four non-fiction books and turned in a written report on each).
BOYS' P.E. AWARDS
Football — David Morren, Ricky Poole, Darrell Martinez, Barney Maldonado.
Volleyball — Larry Smith.
Basketball — Matt Castle, Jeff Galloway, Richard Castaneda, Frankie Morales.
Track — Brad McNeill, Mike Saens, Junior Morales, Joey Kemp.
GIRLS' P.E. AWARDS
Basketball — Marilyn Smith, Connie Self, Margie Cisneros.
Volleyball — Rita Lara, Misti Orman, Amy Lipham.
Track — Ruby Ledbetter, Jill Willson, Elizabeth Garcia.



AWARD WINNERS... Top Photo: Greg Thompson (left) and Jeff Galloway received certificates for six years of straight-A grades during the R.C. Andrews Elementary School awards assembly Wednesday. Bottom: The Andrews School Citizenship Award went to John Carroll. [Staff Photo]

Vacation Bible School First Baptist Church Lockney

June 4-8 from 2 p.m. - 5 p.m.

Family Night

Friday, June 8 at 8 p.m.

Ages 3 through 6th grade

- ★ Bible Stories
- ★ Music
- ★ Games
- ★ Refreshments
- ★ Fun & Crafts

Everyone Invited to Attend

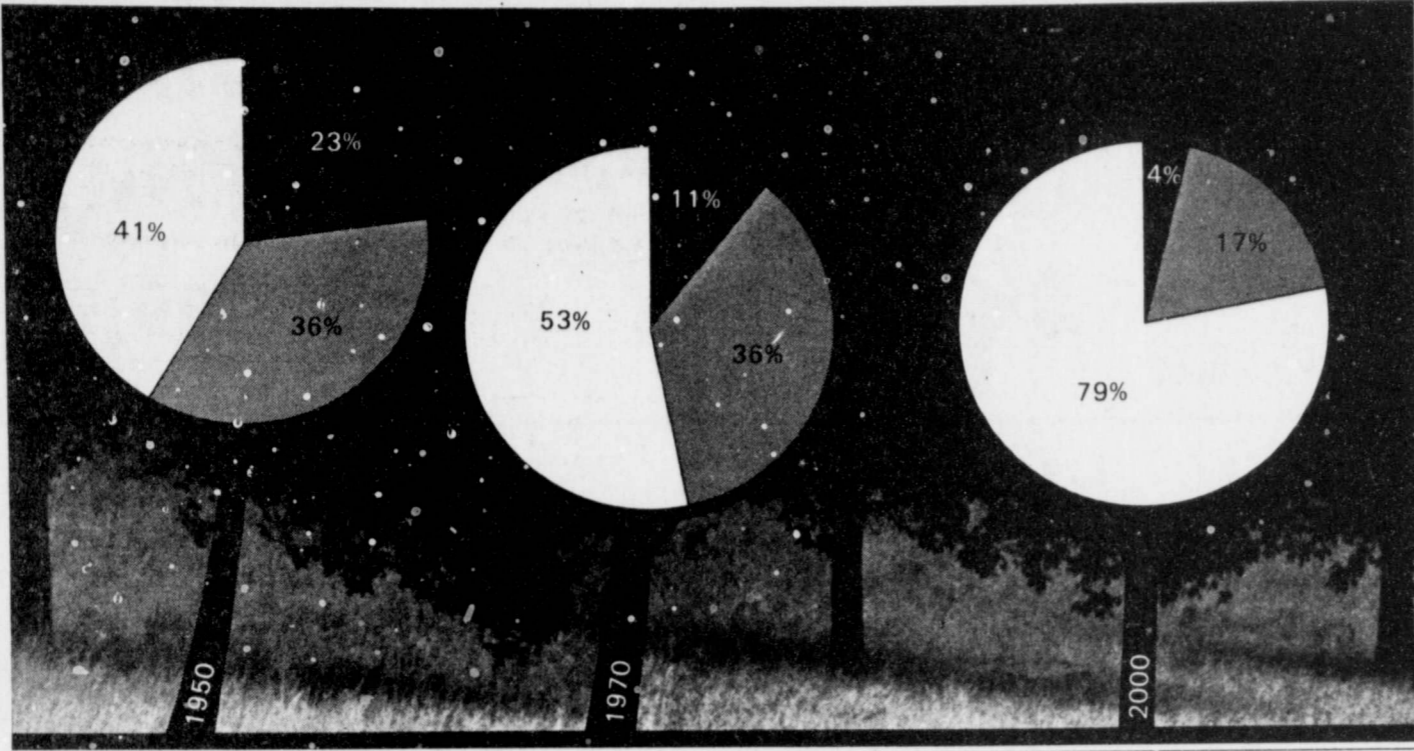
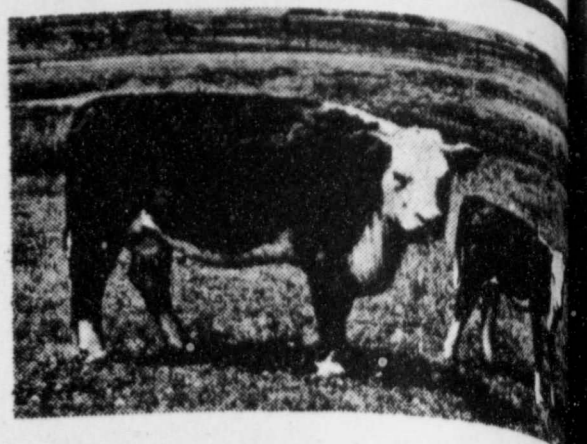
BUDDY'S

220 S. 2ND
STORE HOURS
Mon.-Sat., 8 a.m. to 9 p.m. Sun., 9 a.m. to 8 p.m.
VALUES EFFECTIVE THRU WEDNESDAY JUNE 6, 1979
We Reserve The Right To Limit Quantities

<p>8 LB. ALAMO DOG FOOD \$1.99 <small>*2.00 VALUE</small></p>	<p>10 OZ. CAMPBELLS TOMATO SOUP 34¢ VALUE 5/\$1.00</p>
<p>5 LB. GOLD MEDAL FLOUR LIMIT ONE PLEASE 49¢ WITH *10.00 OR MORE PURCHASE</p>	<p>5 OZ. PLANTERS CHEESE BALLS 79¢ VALUE 57¢</p>
<p>VALUES IN THIS AD IN ADDITION TO OUR THURSDAY AD</p>	
<p>32 OZ. WHITE SWAN MAYONNAISE \$1.00 VALUE \$1.09</p>	<p>5 LB. WHITE SWAN OR IMPERIAL SUGAR WITH PURCHASE OF 4 LIGHT BULBS 25¢ WITHOUT \$1.15</p>
<p>49 OZ. GIANT COLD POWER DETERGENT \$1.89 VALUE \$1.29</p>	<p>1/2 GAL. BELL BUTTERMILK \$1.69 VALUE 89¢</p>
<p>4 OZ. ADAMS VANILLA \$1.59 VALUE \$1.19</p>	<p>4 OZ. SCHILLING BLACK PEPPER \$1.13 VALUE 79¢</p>
<p>12 OZ. GREEN GIANT NIBLETS CORN 45¢ VALUE 4/\$1.00</p>	<p>EGGS DOZEN 57¢</p>
<p>6-32 OZ. REGULAR OR DIET DR PEPPER \$2.29 VALUE \$1.49 PLUS DEPOSIT</p>	<p>ORANGES 3 LBS. \$1.00</p>
<p>12 OZ. PLAINSMAN FRANKS \$1.09 PKG.</p>	<p>AVOCADOS 5/\$1.00</p>
<p>FAMILY PACK PORK CHOPS \$1.49 LB.</p>	<p>CABBAGE 15¢ LB.</p>
<p>SLICED SLAB BACON \$1.29 LB.</p>	<p>10 LB. 11 OZ. FAMILY SIZE TIDE \$4.89 WITH COUPON GOOD AT BUDDY'S EXPIRES 6-6-79 \$5.29 WITHOUT COUPON</p>
<p>4 TO 6 LB. WILSON'S BONELESS HAM \$1.99 LB.</p>	<p>32 OZ. KING SIZE JOY \$1.09 WITH COUPON GOOD AT BUDDY'S EXPIRES 6-6-79 \$1.29 WITHOUT COUPON</p>



FARM & RANCH NEWS



Farm workers ● under 25 years of age
 ● between 25 and 45 years of age
 ○ over 45 years of age

The case of the disappearing farmer...

Millions of farmers each year are leaving the fields of the industrialized world.

Between 1950 and 1970, over one-and-a-half million disappeared annually from the farmlands of the industrialized market economy countries (IMEC) and almost one-and-a-half million from those of the centrally planned economy countries, representing a total reduction of 60 million in the agricultural workforce in both East and West during this period.

ILO statisticians estimate that another 60 million will have left by the year 2000, representing a reduction of two million per year—that is one million each in the East and West groupings—bringing the total reduction for the latter half of the twentieth century to 120 million.

In addition, in the IMEC countries the agricultural labor force is not only rapidly diminishing but also inexorably ageing.

Statistics available from some East European countries indicate a similar trend.

No appeal for youth

One-fourth of all workers under 25 years of age in IMEC countries chose farming as a career in 1950—by 1970 about one-twentieth of the young labor force worked on farms.

If the number of farmers, both old and young, continues to dwindle at recent rates, by the turn of the century agricultural workers in IMEC countries will number only 10 million as compared to 38 million in 1970; at the same time the number of farmers younger than 25 will decline from over 4 million to only 400,000.

According to data compiled by the ILO's Bureau of Statistics and Special Studies, in all countries of West Europe, Australia, Canada, Japan and the United States, the farm workforce in 1950 numbered about 70 million. Almost one out of four farmers, 16 million, were young people under 25. By 1970 only one out of every nine farmers was under 25 years of age.

During the same 20 year period, the agricultural labor force in East Europe decreased from 24 million to 19 million and in the USSR from 52 million to 30 million. By the turn of the century it is expected to number about 7.5 million and 11 million respectively.

Changing proportions

In 1950 in the IMEC countries farmers aged 45 and older numbered 28 million, and represented 40 per cent of

the agricultural labor force. Two decades later, although the ranks of this older group had dropped to 20 million, they comprised over one-half (53 per cent) of all agricultural workers.

This ageing phenomenon was particularly marked in Japan where the percentage of the total agricultural labor force aged 45 and over went from 38 per cent in 1950 to 62 per cent in 1970. In Sweden the increase was from 49 to 60 per cent, and in Finland, Greece, Ireland and Norway, the proportion of older workers went from one-third to one-half during this period.

Less startling but still considerable increases in the proportion of older workers on farms were registered in the Federal Republic of Germany and the United States where it went from 40 per cent of the total agricultural workforce to one-half. In Belgium, Italy and France it edged up from 46 per cent to one-half.

Relative increases in the number of older workers were also noted in Denmark, 37 to 55 per cent; Australia, 34 to 43 per cent; Spain, 35 to 44 per cent; United Kingdom, 38 to 46 per cent; and Switzerland, 48 to 54 per cent. In Austria there was virtually no change, 29 to 30 per cent.

In three of the East European countries for which comparable data were available, the statistics imply similar tendencies. Young workers represented about one-seventh (14 per cent) of the agricultural labor force in Bulgaria, Poland and Hungary in 1970 as compared to about one-fourth (24 to 28 per cent) in 1950.

This ageing of the agricultural

workforce is especially striking because there is practically no comparable trend in other economic sectors, where not only has ageing been very slight but the projections of the workforce indicate that it will remain so.

Looking ahead

According to ILO projections, in the year 2000, the total active population in the IMEC countries will stand at about 400 million and in the USSR and East Europe it will number about 220 million. About 16 to 17 per cent will be under 25 years of age—68 million in the IMEC countries and 35 million in the USSR and East Europe.

Using calculations based on the trends observed over the past 20 years, ILO statisticians estimate that at the turn of the century only 2.5 per cent of the active population, or about 10 million, will be working in the agricultural sectors of the IMEC countries and about 8.5 per cent or 19 million in the agricultural sectors of the USSR and East Europe. Even more remarkable is the estimate that in the IMEC countries about 7.8 million or 80 per cent of the farm workforce will be over 45 years of age and less than half a million or about 4 per cent will be younger than 25 years of age.

FLBA Interest Rate Increases

Ted D. Jordan, Manager of The Federal Land Bank Association of Floydada, announced today that The Federal Land Bank of Houston's billing rate on farm and ranch loans will be increased from 8 1/4% to 9% effective

June 1, 1979.

In making this announcement, Jordan stated that the increase in the billing rate became necessary because of the continued high cost of funds to finance the Bank's lending operation and no substantial decline is anticipated in the near future.

He further stated that in today's economic climate the 9% rate is very competitive.

The Land Bank in Houston introduced a variable rate plan in 1969 which allows the billing rate to increase or decrease with variations in the money market. This increase in billing rate will

affect 676 loans amounting to \$11 million. The association's insurance a 983-3261.

Around the County

County Agent's Column

By Stephen R. Herber
Floyd County Extension Agent

The hose-on garden sprayer is one that every home vegetable gardener should consider purchasing if his garden site is located near a high pressure water faucet. Such a sprayer is relatively inexpensive (\$10 to \$12), easy to operate and can provide fast and efficient pesticide coverage to garden plants when properly used.

The hose-on garden sprayer is a device that screws onto the end of an ordinary water hose. However, it is designed to spray only those pesticide formulations that can be mixed with water, such as emulsifiable concentrates (EC), liquids and wettable powders (WP). Hose-on sprayers usually come with a pint-sized container which holds the pesticide. As water from the garden hose passes through the spraying device, it creates enough suction to draw out the pesticide and dilute it proportionately. Dilution rates can be controlled by turning a "dial" to the desired setting. This setting usually represents teaspoon or tablespoon of pesticide per

gallon of water through the hose dilution rates are reading the position. Differences in the ration of liquids that liquids can directly into without mixing as WPs must be and thoroughly with just enough give a flowable before pouring into. A disadvantage of sprayers is that ing tube can be broken with undamaged es of WP or fore. This will result spray mixture detected. When using WP in sprayers, agri- ture periodically uniform suspension ingredients.

Several g three bedro Real Estu 983-3273.

Irrigation Gas Rates Increase

Pioneer Natural Gas Company has announced an increase in rates for its irrigation customers. The new Pioneer irrigation rate, which becomes effective July 1, will reflect an average increase of 10.6 percent.

From a letter mailed Wednesday to Pioneer's Irrigation customers: "As you know, in February we were granted an increase of approximately 20% in our General Service Rate in the West Texas

System, which was the first increase in that base rate since 1970. Now, we find it necessary to increase the irrigation rate by an average of 10.6%.... The new irrigation gas service rate is, for the first 50

Mc of gas used the same price service rate effective in Texas System of this year. The steps of the rate are lower the last step of general use rate. The general previous irrigation rates which also a general washer room (washer room rent 983-3261. Priced to 412 S. M.

Spacing Effects On Dryland Cotton

The influence of plant spacing on contrasting cotton types, grown under dryland conditions in 40-inch rows, has been studied for five years at the Texas Agricultural Experiment Station at Lubbock.

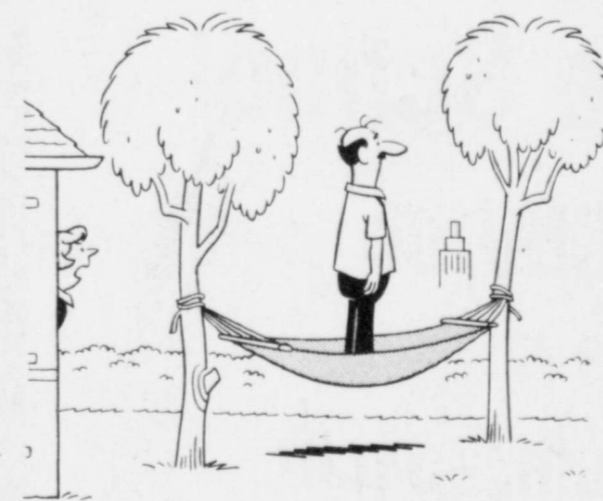
The effects of 10-, 8-, 4-, and 2-inch spacings on nine agronomic characters (ling yields, lint percentages, number of bolls per plant, boll size, 2.5% and 50% span lengths of fiber, and fiber strength, elongation, and coarseness) of "Paymaster III" and "Stripper 31" were studied by a research agronomist with SEA-USDA.

Plant spacings significantly affected every character, except fiber strength, in one or more of the five years of testing.

However, due primarily to the interactions of years and spacings, means averaged over all years were significantly different only for boll size and the number of bolls per plant. Boll number increased as the distance between plants increased. The 2-inch spacing produced the smallest bolls, and the other spacings had no significant effect on boll size.

In the two years when lint yields were much above average, the 10-inch spacing produced the lowest yields. The two years when yields were near average, the 2-inch spacing reduced yields. In the one year when yields were much below average, the range in yields among all spacings was only seven

pounds per acre. Therefore, in most years, spacings of 4 to 8 inches should be the most satisfactory for dryland cotton plantings on the Texas High Plains, specialists believe.



"FOR HEAVEN'S SAKE, FRED, LEARN TO RELAX."

COTTON TALKS

FROM PLAINS COTTON GROWERS ASSOCIATION

The National Council of Agricultural Employees May 22 in Washington expressed its views on labor problems in agriculture to some 70 Congressmen and and/or their representatives from 25 states. The group was an NCAE sponsored "Congressional Awareness" tour.

Speaking with the legislators from the High Plains Ed Dean, Field Service Director of Plains Cotton Co. Inc., Lubbock, an NCAE director and Executive Council member.

Dean and other NCAE board members concerning informing legislators of legislative and administrative needed in the Immigration and Naturalization Act (FLBA) the Farm Labor Contractor Registration Act (FLBA) the U. S. Employment Service (USES).

In addition the group was unanimous in expressing opposition to the proposed federalization of state unemployment compensation programs, which they contended bring on higher costs to employers, unwanted Federal controls and a new mass of red tape.

Agricultural workers cannot be brought into the under the INA until after employers have staged a wide recruiting effort to prove the absence of U. S. workers. The NCAE seeks an amendment to Act permitting the importation of labor when employers have proven the absence of able and willing workers within a radius of 200 miles of the need.

"With this change in the law and with its fair application by the Department of Labor," Dean says, "workers could become much more rapidly and widely available to agricultural employers when needed."

In a similar vein, Dean notes that agricultural workers find themselves in a "catch 22" situation with regard to employment of illegal aliens. Employers are required to face penalties when it is later discovered that some workers have no legal U. S. status.

The NCAE seeks to have USES require its local status before referrals are made. The major problems, Dean explains, stem from that willing and qualified U. S. workers are difficult to find, while at the same time the U. S. Department of Labor is making it increasingly difficult to obtain authorization for the use of temporary foreign workers.

Texas legislators represented at the breakfast and support for NCAE positions included Senators Lloyd and John Tower, Congressmen Kent Hance, Jack and Charles Stenholm.

Sponsored by the Following Interested Firms

First National Bank Floydada	Collins Implement Co. Floydada	Floyd County Farm Bureau
Case Power & Equipment Floydada	Russell's Equipment & Supply Floydada	Perry Implement Lockney
Floydada Cooperative Gins	Plainview Savings & Loan Association Floydada	Ansley & Son Lockney
McDonald Implement Co. Floydada	Hi-Plains Gin Lockney	Floydada Implement Co.
Federal Land Bank Association Of Floydada	Consumers Fuel Association Lockney	Production Credit Association Floydada
Martin & Co. Floydada	Wilson Electric Floydada	Producers Cooperative Elevators Floydada

CLASSIFIED ADS sure to get results

Real Estate

FOR SALE: Three bedroom home. Large basement, one car garage, corner lot near High School. 402 W. Willow, Lockney. Phone 652-3487 after 5. L6-13c

HOUSE FOR SALE: Three bedroom, two baths, 615 W. Miss. 983-3469. tfc

FOR SALE - Three bedroom brick house, prime location; standing brick fireplace; carpeted basement; large, carpeted patio, completely screened; two car garage with electric door opener; large utility room; excellent storage; see back yard to appreciate. Phone 983-5244 for appointment. tfc

FOR SALE: Nice two bedroom, living-dining room, den, carpeted, house on large lot with carport and small storage house 105 E. Hallie. Call after 6 p.m. Jamie Lewallen 983-3904. tfc

FOR SALE: Three bedroom house, 1 1/4 bath, lots of storage, carpeted, good location. Bond Real Estate, Wilson Bond. 983-2151 or 983-3573. tfc

PRICED FOR QUICK SALE: Brick home with three lots, good location, three bedroom, two ceramic tile baths, one with marble counter top, living room with fireplace formal dining room, modern kitchen with breakfast nook, den, storage galore, carpet throughout, storm windows and door, extra large basement with carport and garage with storage, all this for 39,500.00 Call 983-5185. tfc

WANTED

WANT TO BUY a 2 or 3 bedroom house in good location, in Lockney. Would consider house with 1 or 2 acres at the edge of town. Call 894-7094. L6-3c

WANTED: Two school bus drivers for South Plains Independent School District for the 1979-80 school year. Contact 983-2713 or 983-3801. tfc

CARDS OF THANKS

We want to express our appreciation to Preston Watson and the faculty of R.C. Andrews Elementary School for the lovely retirement party. Especially do we thank those who made the delicious refreshments, the beautiful decorations for the table, and the corsages, which were unusually decorated with miniature kitchen items reflecting the years we have worked in the cafeteria. A special "thank you" also goes to Jerry Cannon for the plaques of appreciation, to the faculty for the engraved necklaces, and to our many friends for the gifts of money and the beautiful hanging basket of flowers. We love each of you and think you are a wonderful group of people.

Lorena McKinney and Lois Waller 6-3c

We appreciate so much the food, cards, flowers, visits and prayers during our brother's illness and death. A special thank you to Bro. De Seago for visiting every day during the two weeks he was in the hospital, and to Bro. Jenkins for visiting several times. Our friends have meant so much to us during this time.

Opal Blount and Johnnie Newman, sisters and the nieces and nephews of A.B. Blount Jr.

DAN'S AUTO SERVICE

DAN TEUTON, Owner
Specializing in Automatic Transmission, Motor Tune-Ups, Auto Air Conditioning.
General Repair
We Have A BRAKE LATHE to handle all passenger car brake drums. See us for complete brake service.
Phone 652-2462

NOTICE

WILL DO ALL Types of carpenter work. Call 983-5201 after 5:30. tfc

SEWING in my home. Two days on some items. Paula Pauley 983-3542. tfc

BUSINESS SERVICES

INSULATION
Fire-Resistant. Installed and Guaranteed. MARR Insulation Co. Lockney 652-3593. tfc

NOW OPEN A-1 Pet and Grooming professional grooming, all breeds-no tranquilizers 821 Broadway, Plainview, Texas 293-3557 tfc

WE DO Painting, floor leveling, house blocking, roofing and remodeling. We are now working Floydada Area. Contact Childress Bro. Collect 352-9563 tfc

Minor repairs and tune up service on lawn mowers. Call Whites Home and Auto, 652-2145. Ltfc

C-D-J INSULATION can help save your dollars. For information call 983-2601.

INTERIOR PAINTING WALL PAPERING
Call Rena Turner, Jan Sherman, 983-5130. tfc

FOR RENT

FOR RENT: In Lockney, one bedroom apartment. Come by 108 N. Main or call 652-3813. Ltfc

FOR RENT: Two rooms, hall, bath, 983-3437. tfc

LOST & FOUND

LOST: 5 keys on leather key ring. Return to Beacon office for reward. L6-7c

LOST: Light blue bifocals with Christin Dior frames. \$20.00 Reward. Contact Louise Weathers, 293-4351 or 652-2483, or come by Beacon office. L6-3c



Vacuum cleaners, new and rebuilt. 1 yr. guarantee. Parts, sales and service. Prices begin at \$124.50.
Parker Home Furnishings in Lockney. 652-3315. Ltfc



WE WANT YOU TO KNOW -
We sell all kinds of Good-year tires...tractor, auto, truck, a good tire, good service. Best deals in West Texas. Truck winch and hauling service. **BABE'S SERVICE CENTER,** floydada. tfc

FLOYD COUNTY ABSTRACT CO.
Abstracts Of Title
Title Insurance
Verna L. Stewart
Owner, Manager
217 W. California
983-3728
Floydada, Texas

STORAGE SPACE

BOATS, FURNITURE, ANYTHING, ETC. BY THE MONTH OR SIX MONTH 10% DISCOUNT.
WEST TEXAS MINI STORAGE
983-3573 OR 983-2151

COW POKES

By Ace Reid



To think 6 hours ago we wuz in a heck of a drought!
THIS FEATURE SPONSORED BY
Floydada Real Estate & Insurance Agency
AUTO, FIRE & FARM INSURANCE
Jim Word -- -- Phone 983-2360

AMARILLO COIN & BULLION INVESTMENTS, INC.
Buy, sell or trade silver & gold coins. We have South African Krugerrands, Mexican 50 Pesos, American Gold. National Teletype Service. We guarantee to buy back anything we sell.
2300 W. 7th
Amarillo, Texas
Phone: 806/373-4102

cash in with a classified ad...

Diamond Industrial Supply Co., inc.
Phone Days 296-7418 Nights 296-1200 or 296-7828
1014 Broadway
Plainview, Texas
Chain Sprockets U-joints
V belts Oil Seals
Sheave: O rings
Wisconsin
SKF BCA Timken Bower
Cotton Stripper Brushes & Bats
"We Appreciate Your Business More" Ltfc

TURNER REAL ESTATE
983-2635 Farms' Ranches Floydada, Texas

WEED AND INSECT CONTROL
Lawns • Trees
Alley • Fencerows
Irrigation Wells
Call Cecil Carthel
652-2136 or 652-3809
Lockney L7-22C

Just in Case You May Forget
Don't Delay - - -
HAIL INSURANCE on Your Crops
Was Never More Necessary
The Best Policy to Buy is
"Weather Tested"
Sold Only by Your Local Agent
Sam A. Spence
112 W. Missouri Phone 983-2881

FARMS-RANCHES-CITY PROPERTIES- BUSINESS LEASES-LOANS
B. B. WILKES BROKER
REAL ESTATE
100 S Main, Lockney Barry Barker, Solicitor
Barker Insurance Agency-652-2642

IF IT IS INSURANCE -SEE- BARKER INSURANCE AGENCY LIFE-FIRE-CASUALTY-HOSPITAL

FOR SALE

FOR SALE: Rebuilt 292 Chevrolts, Rebuilt 413 Chrysler well motors. Used 292 Chevrolts. Phone 983-2168 M&N Auto. Floydada TFC

FOR SALE: Two recreational lots, one at Runaway Bay near Bridgeport, waterfront location. The other is at Bella Vista, Arkansas. Call or write Luther Kirk, 3005, 59th, Lubbock, 806-799-6585. tfp

CATFISH BAITS - Grandpa's favorite. Catches the big ones. Recipes \$1.00 plus stamp. CSCO, Box 1434, Navasota, Tex. 77868. L6-3p

FOR SALE: 8'x14' travel trailer, new carpet, kitchen bath facilities. 983-2255. 412, S. Main. 6-7p

Reduce safe and fast with GoBese Tablets & E-Vap "water pills" Thompson Pharmacy. 6-10p

FOR SALE: Lawn Mower, push type, Toro, 983-3162 after 5 p.m. 6-3p

FOR SALE: Wooden Window screens, used 1x12 lumber oak stays, 5'; divan with hide-a-bed. Call 983-2618 - 129 W. Crockett. 6-3p

FOR SALE: Four spaces in "The Lords Supper Garden" in Plainview Memorial Cemetery. 36" gas range - Tappan. Call 983-2065. Ltfc

FARM MACHINERY

FOR SALE: 1970 Model 5-10 Massey Ferguson Combine, 20 ft. header. 806-983-3911. M.J. McNeill 6-21p

FOR SALE: 1175 Case, 1974. Cab, A.C., heater, new tires, clean. 652-2572. Ltfc

FOR SALE: 1975 Combine Massey Ferguson 750, big motor, 24 ft. header, extension on grain bin, 750 hrs. 23.1 by 26 tires. Call 983-3211. tfc

Farms & Acre

WANTED TO BUY irrigated or dryland farm in Floyd or surrounding area. Write Box XRO, c/o Hesperian, Box 700, Floydada. tfc

Can You Use Some Extra Money Let Us Help!!!!
WE BUY SCRAP IRON, OLD JUNKERS, AND FREE PICKUP
Call 983-5277

For Sale

WATERLESS COOKWARE: Home demonstration kind. Never opened. \$175. Normally, \$400-\$500. 1-303-591-1331. 6-3p

FOR SALE: Cotton Seed, 1977 germination 90% \$12.00 a bag. 983-2028. 6-3p

FOR SALE: Country Club membership. 983-3451 tfc

One new occasional chair, call before 10 or after 8 p.m. 983-2573. tfp

FOR SALE - Lake pump. Call J.R. Beit. 652-3601. L6-10c

MOBILE HOMES

FOR SALE - 14'x72' mobile home in Crosbyton, late model. Phone 983-3002 after 7 p.m. tfc

HELP WANTED

HELP WANTED: City Maintenance man wanted for the City of Roaring Springs. Call 983-3131 mornings only. tfc

ATTENTION: Farm Workers and agricultural workers looking for a job. Contact Floydada multi-purpose Center. 983-3134. 6-7c

Help Wanted - 25 years or older. Full or part time. 652-2513. L6-3c

Addressers Wanted Immediately! Work at home - no experience necessary - excellent pay. Write American Service, 8350 Park Lane, Suite 127, Dallas, Tx. 75231. 6-17p



Auto Accidents DO Happen . . .
If one happens to you, be protected. Our car insurance offers coverage to meet your special needs - repairs to personal liability.
BAKER Insurance Agency
127 W. Calif. Ph. 983-3270

CLASSIFIED RATES

CLASSIFIED ADVERTISING RATE: 15 CENTS PER WORD FIRST INSERTION; 10 CENTS PER WORD EACH SUBSEQUENT INSERTION. MINIMUM CHARGE \$2.00.
CLASSIFIED DISPLAY RATE: \$1.40 PER COLUMN INCH CARD OF THANKS: \$2.00.

AUTOMOTIVE

FOR SALE: Nice 1974 Gran Torino Elite Ford, two doors; hard top; vinyl top; power steering and brakes; air; radio; and heater. \$2600. May be seen at Dairy Queen of Ralls. Pete Looney. 6-3p

4 shocks for the price of 3. Free installation. 123 W. Calif. tfc

FOR SALE, black 2 door 1973 Malibu Chevy. Electric sunroof, power windows, brakes, steering, automatic, air, good tires, good condition, mags, 57,000 miles, duals. \$1595. Keith Tooley, Lubbock 793-3571. tfp

FOR SALE: 1968 Chev. Chevelle; 1967 Delta 88 Olds. 983-2604. 6-7c

GARAGE SALE

GARAGE SALE - Eddie Foster, 3 1/2 miles west of Lockney on Highway 70, and 1/4 mile north. Ltfc

TREFLAN
Check on our Chemical prices, also we now have available Liquid fertilizer
Lone Star Chemical, Inc.
Office: 652-2761
Deanie Henderson: 652-3434 LTRC

FOR BETTER CONCRETE
CALL
CALLOWAY
READY-MIX
652-2224
LOCKNEY
PLAINVIEW HIWAY
ALSO
WHITE CALICHE
ROCK FOR SALE

J D SWEEPS

CULTIVATOR		HOEME	
PLAIN	H.F.	PLAIN	H.F.
6" - 2.20	4.70	6" - 3.45	5.95
8" - 2.50	5.15	8" - 3.70	6.35
10" - 2.90	5.70	10" - 5.15	7.95
12" - 4.40	7.85	12" - 5.35	8.80
14" - 5.20	8.85	14" - 5.70	9.35
16" - 6.85	10.95	16" - 6.00	10.10
18" - 10.40	14.70	18" - 7.20	11.50
20" - 12.95	17.70	20" - 9.50	14.25

Collins IMPLEMENT COMPANY
983-3732 FLOYDADA Tfc

PRICES EFFECTIVE
JUNE 4 - JUNE 9, 1979



We accept
Food Stamps
and
WIC Cards

WE RESERVE THE RIGHT TO LIMIT QUANTITIES

THOMASON

VENTURE GROCERY & MARKET
PHONE 652-3346 LOCKNEY, TEXAS



**DOUBLE
STAMPS
ALL WEEK!**

New Store Hours
8 a.m. - 9 p.m. Monday - Saturday
8 a.m. - 7 p.m. Sunday

Venture FOODS



SUMMER REUNION

SALE SECOND BIG WEEK!

ALL SHURFINE SALE ITEMS GOOD FOR ONE MORE BIG WEEK
DURING OUR ANNIVERSARY WEEK

FREE
Balloons
For The Kids!
All Day Saturday
While They Last

PLUS LOTS OF ADDITIONAL ADVERTISED AND IN STORE SALE ITEMS

FREE
Balloons
For The Kids!
All Day Saturday
While They Last

SHURFRESH BONELESS
Half Hams
Sectioned & Formed
LB. \$1.99

SHURFRESH
Sliced Bacon
LB. \$1.29



HEAVY GRAIN FED BEEF
BLADE CUT
Chuck Roast
\$1.39
LB.



GOLDEN RIPE
Bananas
29
LB.

SHURFRESH BEEF FRANKS OR
Bologna 12 OZ PKG. \$1.09

SHURFRESH MEAT FRANKS OR
Bologna 12 OZ PKG. 99¢

SHURFRESH 3 LB.
Canned Hams EACH \$5.79

SHURFRESH SLICED
Bacon 2 LB. PKG. \$2.57

SHURFRESH CHICKEN OR
Ham Salad 8 OZ CTN. 89¢

SHURFRESH PIM/JJALA
Cheese Spread 7 1/2 OZ PKG. 89¢

HEAVY GRAIN FED BEEF CENTER CUT
7-Bone Roast LB. \$1.59

HEAVY GRAIN FED BEEF LEAN
Stew Cubes LB. \$1.89

HEAVY GRAIN FED BEEF
Chuck Steak LB. \$1.79

Produce Specials
CALIFORNIA SUNKIST
Oranges 3 LBS. \$1

NEW CROP SWEET YELLOW
Onions 2 LBS. 29¢

CALIFORNIA GOLDEN
Carrots 1/2 BUSH. 29¢

Keekler
Fudge Cream or Vanilla Cream
Cookies
12 1/2 Oz. Pkg.
69¢

Ramariz
Corn Tortilla 2 Lb. Pkg. **49¢**

Frito Lay
Potato Chips
Reg. 89¢
69¢

6 Pack Cans
**COKES,
DR PEPPER,
7 UP, OR TAB**
\$1.29
Each

FREE — FREE — FREE

BORDEN'S
BUTTERMILK 1/2 GAL.
Buy one Reg. Price - Get Quart Of Chocolate Milk FREE

BORDEN'S
SOUR CREAM OR DIP
Buy One Get One FREE

BELL'S QUALITY CHECKD
YOGURT
Buy One - Get One FREE

BELL'S GALLON
FRUIT DRINK
Buy One - Get One FREE

BELL'S ROUND CARTON
ICE CREAM 1/2 GAL.
Buy One - Get Box Popsickle - 6 count FREE

AMERICAN BEAUTY
ELBO RONI 10 OZ. BAG
Buy One - Get One FREE

BEEF, SPANISH, OR CHICKEN FLAVOR
RICE ARONI
Buy One - Get One FREE

GIANT SIZE
SUPER SUDS
Buy One - Get One FREE

32 OZ. 6 BTL. CARTON
COKE \$2.29 REG. PRICE
Buy One - Get One FREE
PLUS DEPOSIT

LARGE SIZE CUP
COKE SATURDAY

10¢ EACH

CHILI DOGS

15¢ EACH

SATURDAY JUNE 9th ONLY

**Register For Prizes
Given Away
Saturday Night June 9th**

Registration Form

NAME _____

ADDRESS _____

PHONE NO. _____

You must be 17 years old to register

ADDITIONAL FORMS CAN BE PICKED UP
EACH TIME YOU VISIT OUR STORE

Prizes

1. Hindquarter Beef
2. Mr. Coffee Coffeemaker
3. Electric Toaster
4. Electric Portable Mixer
5. 10 Sacks Groceries. 1 Sack Per Person.

134-LOCATIONS
IF YOU WANT VARIETY WE HAVE IT...

PERRYS

IF YOU WANT VARIETY WE HAVE IT...
Specials on every counter!

PERRYS
SALE STARTS TODAY

Freddie, I