

# Save Gas Money...Christmas Shop Floydada!



15¢  
Per  
Copy

## The Floyd County Hesperian

Volume 82

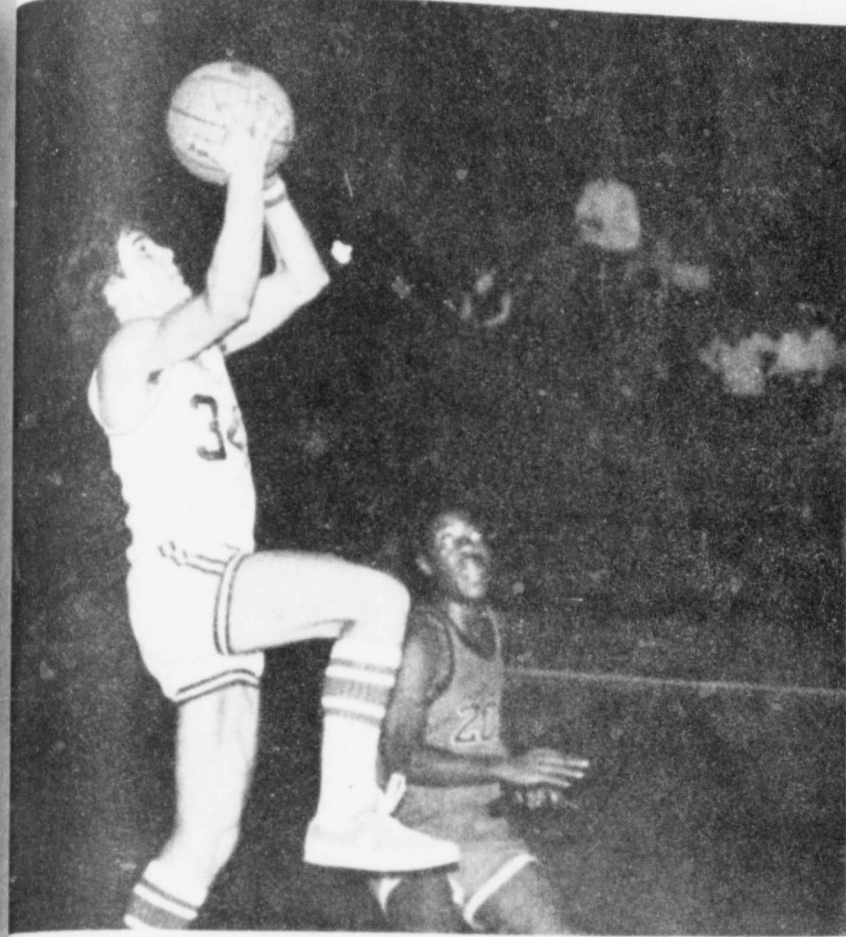
Floydada, Floyd County, Texas 79235

Sunday, December 17, 1978

16 Pages in Two Sections

Number 101

### Special Christmas Programs In Floydada Churches



HELMES makes a couple of points in the Motley County victory Tuesday night. (Staff Photo)

**By Wendell Tooley**  
Several Floydada churches will feature special Christmas programs beginning Sunday, December 17 and The Hesperian publishes information about them hoping that our people will attend church and receive Christmas blessings.

**FIRST UNITED METHODIST**  
The Sunday morning service at 11 will feature church choirs in the Christmas Cantata "Love Came Down" by Sonny Salisbury.

The children's choir under the direction of LuAnn Smith will join the church choir directed by Bobby Rainer. Accompaniment will be Penny Bertrand at the electric organ, Carol Jesse on the 12 string guitar and Tana Tyer on the flute.

Soloists include Rainer, Lee Battey, Doris Drysdale, Mary Tom Tooley, and Carol. Narration will be given by Britt Gregory.

Children choir soloists include Scott Smith and Scott Neeley.  
The 6 p.m. evening service features the traditional candle lighting ceremony with congregational singing and meditation.

**FIRST CHRISTIAN CHURCH**  
Sunday morning eleven o'clock services at the First Christian Church will involve the presentation of musical variations of Christmas carols and the reading of various scripture passages centering around the Christmas story as presented in the gospels. Dennis Swearingin will do the readings and the choir presentation will be directed by Bill Neeley.

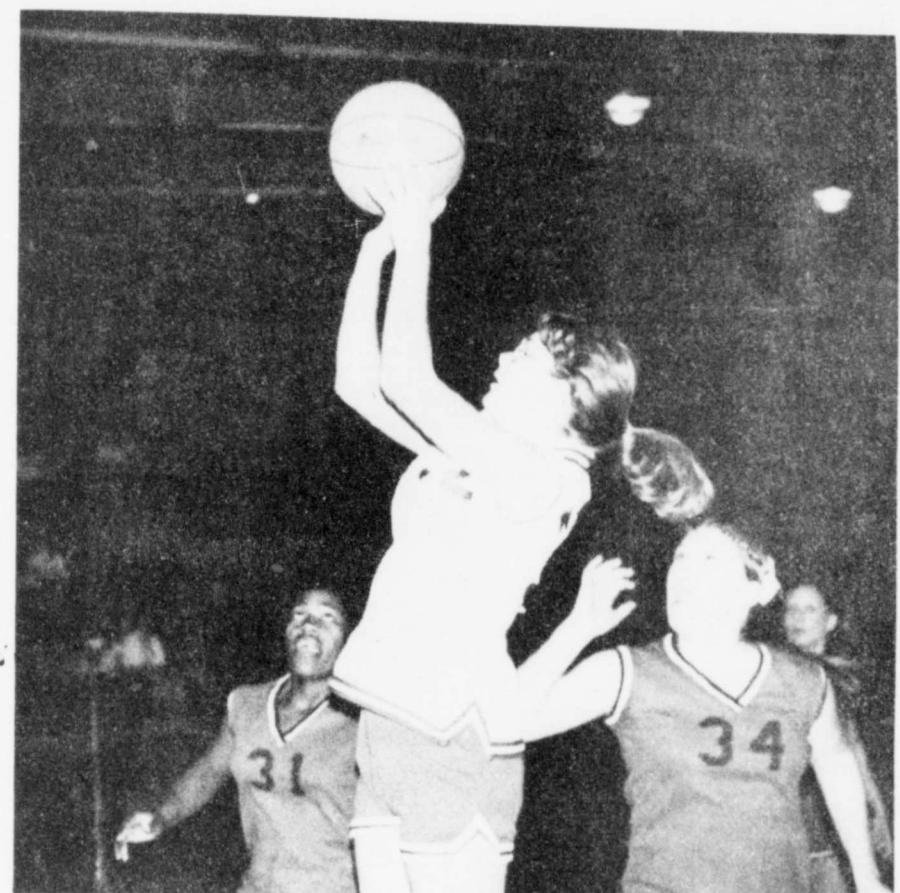
At seven o'clock that evening, a children's Christmas program will be presented in the sanctuary. At the close of this service, there will be a Christmas party in the fellowship hall with a tree, Santa and all the Christmas trimmings.

**FIRST BAPTIST CHURCH**  
The Sunday night Christmas music program at the First Baptist Church will include the children's choirs performing various selections.

John W. Peterson's "Joy to the World" will then be presented by the adult choir, directed by Bob Copeland. Mrs. Nina Copeland and Mrs. Mack Hickerson will accompany on the organ and the piano, respectively. Allen Bingham will narrate.

Soloists for the presentation will be Tom Powell, Thomas Warren, Mrs. David Seay, Miss Mona Dean, Mrs. Melvin Lloyd and George Finley.

**CALVARY BAPTIST**  
On Wednesday December 20 the youth of Calvary Baptist Church will have a special program featuring Christmas music and followed by a fun time. Refreshments will be served.



DARLA ASSITER shoots in the Whirllette victory over Motley County here Tuesday night. (Staff Photo)

#### Community Calendar

**SATURDAY, DEC. 16**  
Floydada Whirlers Square Dance Club Christmas Special. 8 p.m. Massie Activity Center. Jack Thompson of Tulia, caller.

**SUNDAY, DEC. 17**  
2:00-5:00 p.m. CANCER SOCIETY Christmas Show of Homes.  
6:00 p.m. Candle Light Service, First United Methodist Church.

**SUNDAY, DEC. 17**  
Band Parent Salad Luncheon & Concert 12 o'clock.

**SUNDAY, DEC. 17**  
BAND BOOSTER DINNER, 11:30-1:30. BAND IN CONCERT, 2 p.m. Public invited.

**THURSDAY, DEC. 21**  
Floydada Schools out at 2:30 p.m. for holidays. Classes resume January 2, 1979. The central office will also be closed during this time.

**THURSDAY, DEC. 21**  
Open House and refreshments at the First National Bank 9 a.m.-3 p.m.

**THURSDAY, DEC. 21**  
Christmas Party at the Della Plains gym at 3:30 p.m. for low income parents with young children under 12 years of age. There will be special program and stockings will be given to the children. Refreshments will be served.

**THURSDAY, DEC. 21**  
Christmas Tree Party at Floydada Nursing Home at 6 p.m. Families and friends of residents are invited.

**SUNDAY, DEC. 24**  
On December 24 from 5:30 to 7:30, the elders of the First Christian Church in Floydada will be in the sanctuary to serve communion. The dimly lit church should provide a time for personal meditation and prayer. Anyone who wishes to participate is welcome.

**NO CHRISTMAS SING SONG SATURDAY**  
Because so many choral and band students have the flu bug there will be no musical program at the courthouse square Christmas tree this Saturday.

The Women's Division of the Chamber of Commerce has had good response to this calendar service. When the January calendar is published, regular meetings will be listed if the Chamber has been made aware of those meetings. Please call Linda Matisler or Dot Word if you want the meeting dates, times, place, etc. included.

#### School Bus Drivers Warned "To Be Alert"

Since the four children were killed near Roby last week in a truck-bus collision, Floydada School business manager Tommy Cathey has sent out the following letter to all school bus drivers:

I would like to take this opportunity to thank you for the job you have been doing and at the same time remind you of the responsibility each of you have, that being the transporting of students to and from school each and every day. I realize you are aware of your role in the educational process, but it is necessary to be reminded once in awhile.

The type of weather you will surely encounter in the following months to come should draw additional attention to your driving habits. I cannot stress enough the safety and good judgement each of you must be constantly aware of, and I encourage you at all times to be careful and not let the familiarity of your bus route lull you into a false feeling of security. **Never take anything for granted!**

An added responsibility for you to consider is the care and maintenance of your buses. Due to the age, number of miles, and several recent mechanical breakdowns of the buses in our fleet, it

has become apparent that we are falling down in this area. Please be reminded that you should check these following items:

- A) Oil level every day - add oil when necessary.
- B) Water level and add antifreeze when necessary.
- C) Power steering fluid.
- D) Automatic trans fluid.
- E) All hoses, belts and lights.
- F) Above all else when a repair is necessary please call the bus mechanic's attention to the problem so it can be corrected as soon as possible.

One of our biggest complaints has always been speed, according to the public. Please be careful and exercise the good judgement that I know you have. I'm as guilty as anyone of trying to hurry and get through with a run, but each of us knows this is not the smart thing to do. **OBEY THE SPEED LAWS!** That old saying "Slow Down and Live!" should have a special meaning to each of you, with the awesome responsibility of some 10-70 lives in your hands each time you get behind the wheel.

Thanks again for the job you're doing, for caring and above all else the great responsibility that you have taken on.  
s/s Tommy Cathey

#### Floyd County Noxious Weed Control District Open Until January 31

The Floyd County Noxious Weed Control District office will remain open until January 31, 1979. Due to the fact that the district will be dissolved, each

land owner who has an account with the district is urged to have his account in the office not later than December 29, 1978 if possible.

#### Aprock Chat

RECEIVED Christmas note from pastor of Matador which I want to tell you:  
One of the spirit of Christmas did linger throughout the year, the season in human hearts would and love would become a blessing word.  
Trail Dust by Douglas Meador

EXPLAINED in this column two months ago that medical progress should be able to solve the problem....and I know progress is made.

Week I am very pleased with the progress medical science is making in saving lives of people with heart disease.  
This week medical technicians at Methodist Hospital discovered Pete had very little blood circulation through his heart. A few years ago he would have probably told me to go home and take it real easy until a heart took his life.  
With the relatively new by-pass heart surgery, a vein is taken from the leg and used in the heart to bypass the clogged pipes....and Pete is living nicely.

YOUNG MAN examined the high school menu, looked at his pocket, and asked, "How much will you give me for a little lollip?"

THERE IS CONSIDERABLE discussion about who, or what type of person would destroy \$1,000 worth of property in the high school building. It was done by high school students, some think it might be a past high school age, some think it might have been someone from town.

School board discussed at length last night what could be done to prevent this on the campus and the building. They have cars across the lawn, the practice field, they "spin out" the walk that goes into the front

School board could decide to put around the campus....or hire a policeman. Either of these would be a considerable amount of money. It seems to me that this town needs more of a citizen's police group. Students, many adults observe vandalism and do not want to get involved.

More people who want to be involved in the important institutions in our community and who are not afraid to speak up....if nothing more than their voice.  
Particularly a "light sleep" someone were busting out across the street, I think I would investigate the noise, and investigate

#### NOTICE

**NEW DUMP GROUND HOURS**  
Until the days get longer the new Floydada dump ground open hours will be from 8 a.m. until 5 p.m. six days a week. The dump ground is closed on Sundays.

#### Best Gate Money At Lockney Football Game

If you attended every Whirlwind football game this past season, you probably already know that the biggest crowd of fans was at the Lockney game, played in Lockney this year.

Total gate receipts were \$4,483.50. Expenses for officials and other incidentals amounted to \$241.02, so Lockney and Floydada each received \$2,121.24.

Floydada's share of all gate receipts this past year was \$13,727.14. From the Junior Varsity and Freshman games \$654.57 were received and a total of

\$660.88 was received from the Junior High games.

The poorest attended varsity game was at Post where Floydada received only \$803.00 for its share of that game. Second best playing game was the Idalou game here, Floydada received \$1,847.50.

What is it worth to advance to bi-district and regional games? Mule-shoe received a total of \$15,000 for the regular season play, then made another \$6,000 for two games played at Canyon against Idalou and Childress.

#### The Weather

(Courtesy of Pioneer Natural Gas Co.)

DATE	HIGH	LOW
Dec. 7	28	22
Dec. 8	18	12
Dec. 9	34	7
Dec. 10	45	5
Dec. 11	49	25
Dec. 12	62	25
Dec. 13	42	32
Dec. 14	56	28

Total for month: NONE  
Total for year: 17.7

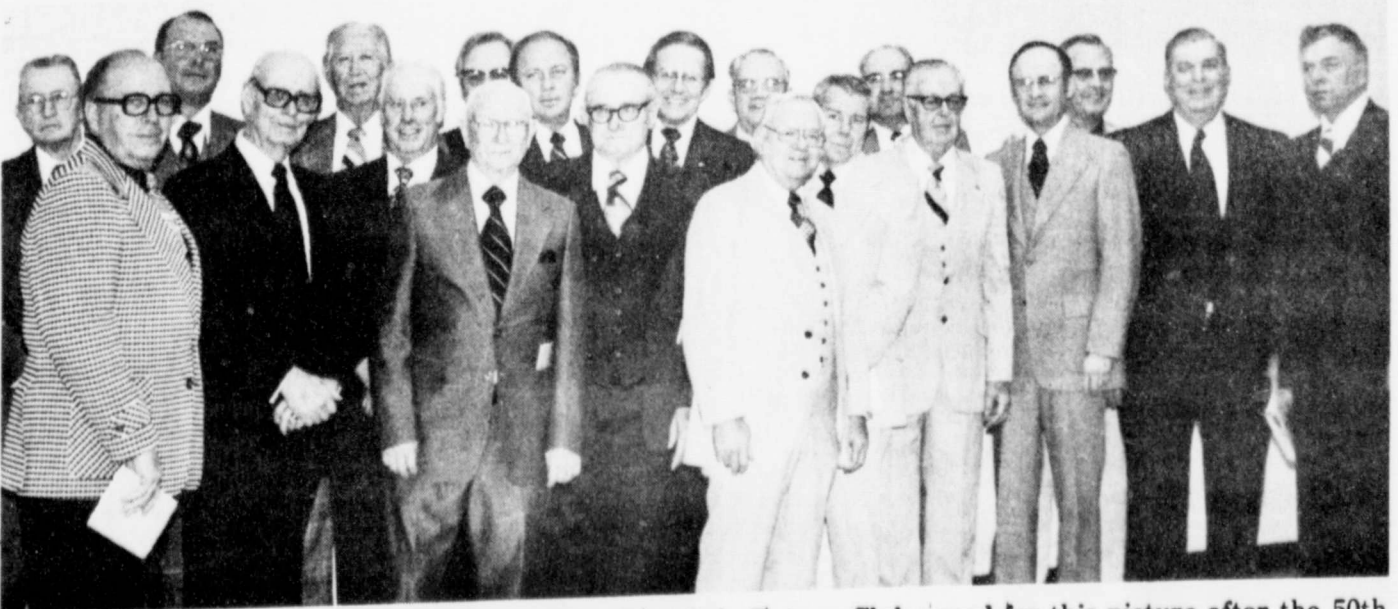
....only six more shopping days until Christmas.....

#### Band Boosters Sponsor Dinner, Band Concert

**By Treva Hambricht**  
On Sunday, December 17 the Whirlwind Band invites the public to the annual salad dinner at the high school cafeteria. The price of the salad dinner will be \$2.00 per person and \$1.00 for children 12 and under. The serving line will be open from 11:30 until 1:30. All will go to the Floydada Band Boosters.

The spirit of Christmas has been cast upon the Floydada bands. We invite you to hear the 5th and 6th grade beginner band as they perform **The Crusaders**, **Join The Parade**, and **Krazy Klock**. The junior high band will be performing **Winchester March**, **Rockin' The Blues**, and **Santa's Holiday**. Then the Swingin'

Sound from the high school stage band will perform for your enjoyment. The marching film of the number one rated Floydada High School Whirlwind Band will be shown. The film was taken at Jones Stadium in Lubbock on November 8. Topping off the afternoon will be the Floydada High School Band as they will perform **Selections From The Wiz**, **Trilogy of European Carols**, and **Christmas Caroling**.  
Admission to the concert is free and the public is invited to attend. The concert will be held in the high school auditorium and will start promptly at 2 o'clock. Hope to see you there for an afternoon of good food and enjoyable music presented by the Floydada Band Department.



PRESENT AND PAST PRESIDENTS of the Floydada Rotary Club posed for this picture after the 50th Anniversary banquet Tuesday night. (l to r) Hollis Bond, Doyle Walls, George Miller, Cecil Hagood, A.E. Guthrie, Aldine Williams, J.C. Wester, Clay Henry, Alton Higginbotham, Walton Hale, Floyd Bradley, Clem McDonald, Richard Stovall, Charles Tyer, Guy Ginn, Clinton Fyfee, Andrew McCulley, Newell Burk, Arthur Wylie, Jimmy Willson. (Staff photographer Wendell Tooley not pictured).

9  
79  
15  
99  
89  
99  
99  
49



### 1956 Study Club View Homes

The 1956 Study Club met in Elaine McNeil's home Tuesday December 12 for a "Christmas from Mexico" program presented by Leora Younger.

Co-hostesses were Jennisu Smith and Julie Cathey. Refreshments with a Mexican accent were served to Janet Lloyd, Brenda Brownlee, Debbie Bearden, Penny Bertrand, LeAnn Neeley, Jan Thayer, Linda Matsler, Pat Battey, Judy Dunlap, Darlyn

Hambright, Julie Cathey, Betty Edwards, Carla Schneider, Sarah Sanders, Connie Wideman, Phyllis Harris and Leora Younger.

The group went on a hayride to the homes of members to see indoor and outdoor Christmas decorations, and sang carols at the rest home. Then as a gift exchange, club members swapped Christmas ornaments.

### Senior Citizens Christmas

#### Meeting Held

Floydada Senior Citizens will meet December 21 at 11:00 a.m. at 301 East Georgia Street for their regular meeting which will be centered around Christmas.

Instead of bringing a gift to be exchanged valued at \$2, each person should bring cash to be placed on the money tree.

The Christmas program will be given by Mr. Jim Fullingim and Mrs. Lavada Garrett.

Everyone should bring a covered dish and enjoy the friendly fellowship.

The game night has been changed from Tuesday night to Thursday night of each week.

### Lockney Senior Citizens Meet

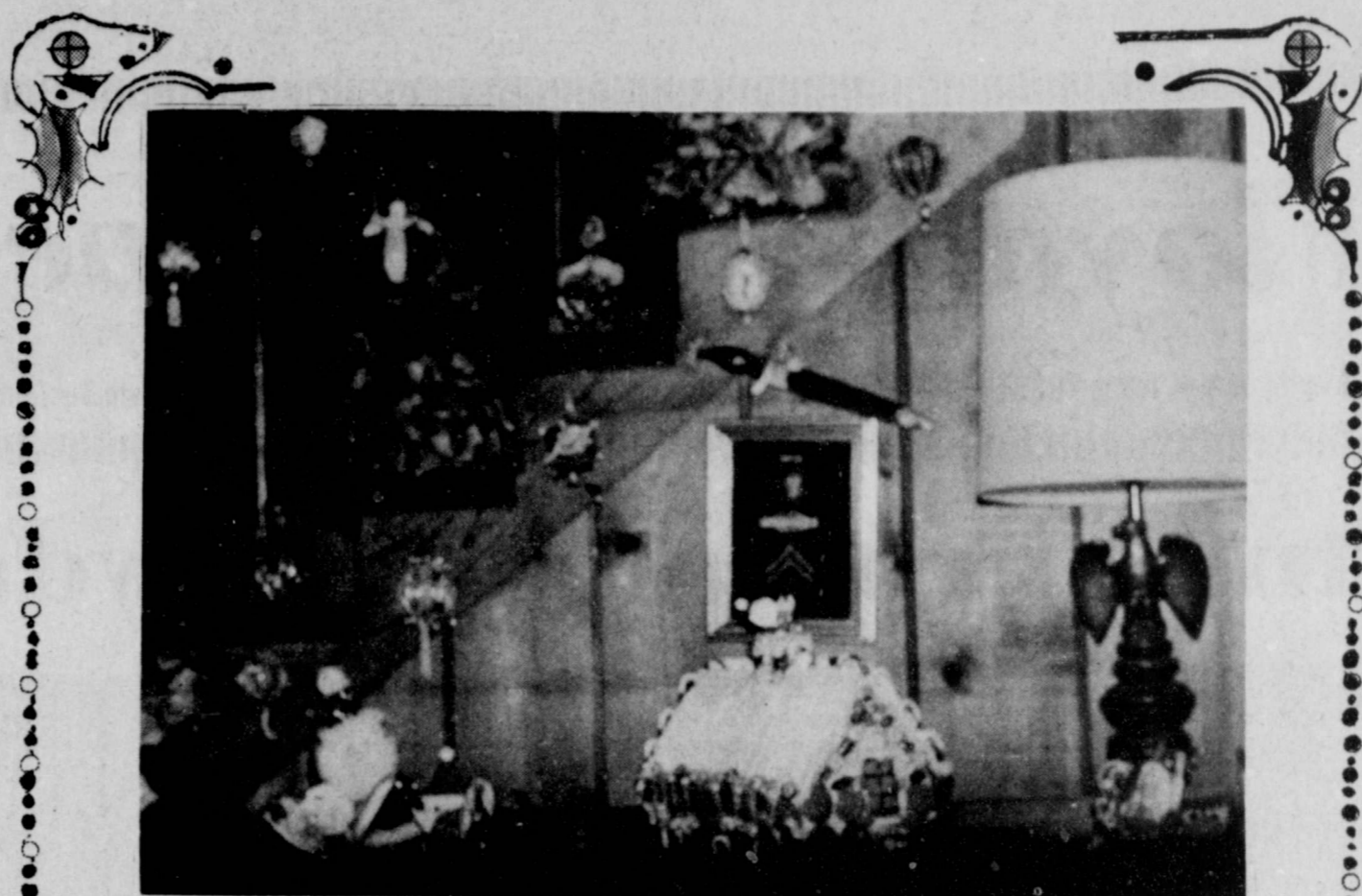
The Lockney Senior Citizens met at 1 o'clock Thursday of last week at the First United Methodist Church in Fellowship Hall for their regular monthly meeting. They played games of dominoes and forty-two till lunch, with Brother Dee asking the blessing.

After lunch Mrs. Ann Mc-

Cormick played the piano and the group sang Christmas carols. Mrs. Birda Foster read a Christmas poem. Mrs. Olive Myers dismissed the

meeting with a prayer. Eighteen members were present. Hostesses for the occasion were Mrs. Marie Henderson and Mrs. Mollie Huffman.

# Society and Features



SPECIAL CHRISTMAS displays in the home of Diana Glover include Santa and his "yummy" house made of various candies and other goodies. (Staff Photo)

### El Progreso Has Christmas Party In Jenkins Home

"Christmas is not a time of the year, it is a time of the heart."

Meeting in the beautifully decorated home of Juanita Jenkins, in Lockney, the El Progreso Study Club met December 13 for its annual Christmas party. Sharing hostess duties with Mrs. Jenkins were Fave Ferguson, Dorothy Smith and LaVerna Sams. As members arrived, they were served lovely Christmas goodies from the refreshment table.

Quoting a Christmas prayer by Robert Louis Stevenson, Anna Dell Quebe presided over the meeting. Roll call was answered by each member telling of a special doll that had meant the most to her as a child. Many lovely memories were recalled. Pauline Sams brought her first doll to display.

Katherine Ball introduced Juanita Jenkins, who gave a most interesting program

on dolls that she has collected from all over the world. Many of them have very special memories and meaning to her because of the people she associates with each doll. She has spent many years adding to her collection and has them displayed beautifully in her home.

She in turn, introduced Pauline Sams who gave the traditional Christmas story for the club. She chose

"Father Martin's Christmas" from Corrie Ten Boom's Christmas book. It was a very touching story and served to remind us of what Christmas is all about and the true meaning of this season.

After repeating the club collect, many lovely gifts were exchanged from the Christmas tree. As the members left, they were remind-

ed that the next meeting will be January 10, 1979 in the home of Marie Brock.

Attending this festive occasion were Dimon Schacht, Polly Gilbert, Ann Brock, Josie Taylor, Hazel Johnson, Katherine Ball, Marie Brock, Dorothy Smith, LaVerna Sams, Fave Ferguson, Cornelia Johnson, Bobbie Kellison, Pauline Sams, Fave Holmes, Arla Copeland, Anna Dell Quebe, and Juanita Jenkins.

## Alert Your Family For Crime Resistance

The best place to start practicing crime resistance is in the home and an easy way to make crime resistance a part of the family routine is through a Family Council.

A Family Council is simply an informal gathering of family members during which they discuss the family's individual and collective vulnerability to crime and

ways to reduce this vulnerability. Crime resistance literature, usually available from local police, can be used both to learn about crime problems of particular concern in your area and as a source of helpful preventive tips.

Although crimes such as burglary, robbery and assault are of concern to the family generally, individual family members should be aware of specific crime problems that might face them because of their age or sex. Children, for instance, must be warned of child molesters and bicycle thieves; women should recognize the dangers posed by purse snatchers and sex offenders; men should guard against pickpockets, and the elderly must be wary of swindlers.

To improve protection for the family as a whole consider assigning specific crime resistance responsibilities to family members. For example, one member of the family could insure that the home is always secured for the evening before the family retires. Another could

## OPEN HOUSE



The public is invited to our annual Christmas Open House!!!

Thursday, December 21....9 a. m. until 3 p. m.

Snacks & Refreshments

**THE FIRST NATIONAL BANK OF FLOYDADA**  
FLOYDADA, TEXAS 79235 MEMBER F.D.I.C.

### Rebekah Lodge Christmas Celebration

The Floydada Rebekah Lodge met in regular session Tuesday December 12 at the Lodge Hall with Noble Grand Valrie Turner and vice grand Artie Webb in chair.

During the business session Laules Parkey and Margaret Paschal were reported ill; also Dorothy Reeves' two granddaughters and Ruby

Davis' nephew are in hospital.

After the lodge dinner was served beautifully decorated featuring a Christmas tree. Afterward, the group Christmas carols and Webb read a poem, "The One Ordinary Man Changes World History."



### From

### Nancy's Kitchen

**SNAX**  
1/2 pound butter or margarine  
2 tablespoons Worcestershire sauce  
1 teaspoon celery salt  
1 teaspoon onion salt  
1/2 teaspoon garlic salt  
1/2 teaspoon Accent  
1 quart "popped" pop corn  
1/4 pound unsalted nuts  
1 quart doughnut-shaped oat cereal  
3 cups bite-size shredded rice cereal  
3 cups bite-size shredded wheat cereal  
1 (5 1/2 ounce) package bite-size cheese flavored pret-

zels, or  
1 (5 1/2 ounce) package pretzel sticks  
Melt margarine; add Worcestershire sauce, salt, onion salt, garlic and Accent; mix well. Remaining ingredients large roasting pan; margarine mixture them; mix gently, but roughly. Bake in slow (250 degrees) 2 hours, ing frequently. Cool roughly before serving. to be used at once, stored tightly covered jars. Make about 4 quarts of SNAX.

### T. E. L. Class Has Christmas Party

The T.E.L. Sunday School class, met at 2 o'clock Tuesday in the home of Mrs. Bobbie Kellison. Mrs. Dorothy Shipp, the class president, presided over the program. Mrs. Jewel Fortenberry opened the program with a prayer. A Christmas Story, "Two from Galilee," was given by Mrs. Doris Casey. Games were provided by Mrs. Neva Smith, and lovely refreshments were

furnished by Mrs. George Ford and Mrs. Tina Rex both unable to attend, due to illness.

Those present were guest, Mrs. Juanita Jenkins, teacher Mrs. Melba Adams, Mrs. Doris Casey, Mrs. Fortenberry, Ann Hays, Peggy Cherry, Dorothy Shipp, Neva Smith, Mrs. McCloud, Christine Byrd and the hostess, Bobbie Kellison.

### Selecting A Christmas Tree

Do you have a difficulty selecting the right Christmas tree for your den, living room or larger picture window in your home? Birch Lobban, county agent with the Texas Agricultural Extension Service, offers some guidelines to aid you in making that selection.

"Ruling is easy, governing difficult." Goethe

assume responsibility for insuring that all windows and doors are locked prior to the family's departure from the house.

After developing your family's anticrime strategy, suggest to your neighbors that they adopt the Family Council approach and then join your police and other families in your neighborhood to form a united front against crime.

First of all, select the sized tree. Christmas trees on the lot generally appear smaller than they actually are.

Look for a tree with uniform triangular top. Check to see that it is free of weak, broken or unduly thin branches. The tree should have a well-filled-out appearance. Shake or bump base firmly on something solid to determine if the needles are firmly attached. Only a few needles dropping is undoubtedly fresh; a tree is more likely to retain needles throughout the holiday season.

As soon as you get the home, saw an inch or so from the butt end to facilitate moisture uptake. This is essential to maintain fresh appearance of the tree. Then place the cut end in a container of water and saw the tree in a cool, shady place until you are ready to bring indoors. Add water to container daily to replace that taken up by the tree. A five or six foot tree may require as much as several pints of water a day. The low humidity found in most homes increases the difficulty of keeping the foliage fresh. Use a tree stand that allows the base of the tree to remain in water or wet sawdust when brought into the home.

Locate the tree so that it is not in the air stream of heating vents or near other sources of heat such as a stove, radiator, fireplace or television set. Also, refresh the water in the stand frequently.

As part of a safety program, always check the condition of electrical cords and lights before placing them on the tree. Christmas trees are extremely combustible and a short in the wiring can cause a serious fire. And always turn off tree lights when leaving the house or when retiring for the night.

Avoid getting caught up in the holiday gift-giving bind this year by filling Christmas stockings with fun, yet functional gifts. "Silence is a fence of wisdom."

**Gifts**  
that bring Christmas Cheer

Donovan Galvani



IT'S FIESTA TIME. D-G separates celebrate the holidays in radiant Fiesta Pink polyester/silk double knit. The new shorter jacket in solid color, teams with the plaid pants. The soft interlock knit shell is trapunto trimmed.

JACKET, SHELL, PANTS

**Brown's**  
DEPARTMENT STORE

104-08 North Main Lockney, Texas

SAY MERRY CHRISTMAS THE CORSAGE WAY

- ★ Christmas Corsages
- ★ Fresh Holly
- ★ Green Plants
- ★ Poinsettia Plants
- ★ Blooming Plants
- ★ Table Decorations
- ★ Table Arrangements

Schacht's  
Flowers Jewelry & Gifts  
112 W. Poplar Lockney 652-2385



### Miss Collins Honored With Bridal Shower

Sheri Collins, bride-to-be, was honored with a bridal shower at the home of Mrs. Ann Bean.

Vel Simpson, Jean Jones, and Jackie Gregory. The table was laid with a white cloth and was centered with a red and white Christmas centerpiece. The centerpiece was presented to Sheri as part of the hostess gift, along with a Mr. Coffee, a Fry Baby and the Bride's Book.

Guests were greeted by Ann Bean, then presented to Sheri, Norma Collins, mother of the bride-to-be, and Mrs. Royce Turnbow, Roy's mother. Out of town guests included Mrs. John Carpenter, Sheri's sister of Claremore, Oklahoma; the prospective

groom's sisters, Karen and Francis; the bride's grandmother Mrs. Floyd Massey; Mrs. J.C. Gooch and Mrs. Alton Brazell, aunts of the bride; and the bride's roommate, Mrs. Greg Parks, and Mrs. Tommy Cline (the former Karen Aldridge), all of the Lubbock area.

### FOOD FACTS & FANCIES



That famous dish baked with oysters, spinach and bacon called Oysters Rockefeller is said to have originated in 1899 at Antoine's, the famous New Orleans restaurant. Story has it that the dish got its name when a customer took a taste and exclaimed, "It's as rich as Rockefeller!"



A real innovation is the food processor. This multi-purpose appliance can chop, mix, shred, grate, grind and perform many other tedious tasks. If it's a top-quality machine, like the handsome Norelco Food Processor, it also comes with the exclusive six-setting Dial-A-Blade for slicing. No matter how you slice it, the food processor is one of the most time-saving and versatile of all kitchen appliances, and a great Christmas gift, too. Get one for yourself. It can make preparing holiday party food a snap.

# PRE-CHRISTMAS CLEARANCE SALE

CHRISTMAS STORE HOURS: Monday, Tuesday, Wednesday 7:00 p.m. Thursday, Friday, Saturday 8:00 p.m.



You Can't Say Shirt Without Thinking Of This Famous Maker

Reg. to 16.00

5<sup>88</sup>

Once you see the label, you'll see our point and congratulate yourself for taking our word for it.



Junior and Missy...

Sportswear Separates 1/3 Off

Jackets, Vest Blouses, Skirts-- Mix and Match



Our Best Men's Dress Slacks

12<sup>88</sup>

Reg. 20.00

The name in slacks you trust. Assorted fabrics and solid colors in 100% polyester. Size 30-42.

Winter Robes

Fleece, Flannel, Quilted

1/3 Off

Reg. 28.00

Warm Sleepwear

Reg. to 12.00

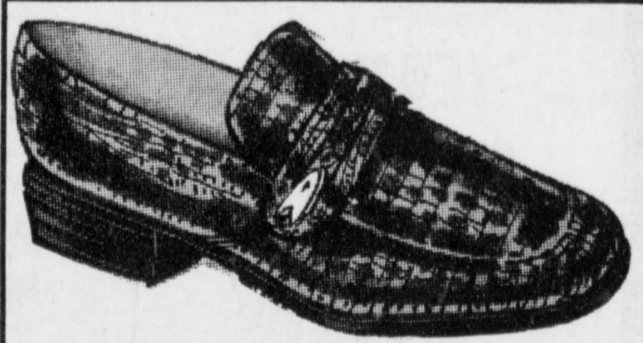
1/3 Off

Today's Girl

Panty Hose

77¢

Reg. .99



Men's Dress & Casual Shoe

Reg. 28.00

14<sup>25</sup> - 17<sup>88</sup>

Choose from a variety of style for the man of your choice.



Boy's Sport and Dress Shirts

Reg. 7.99

1<sup>88</sup>

Yes---A real American bargain.

Men's Corduroy Sport Coats

Reg. 28.00

24<sup>88</sup>

Mens Suits 1/2 price  
Mens Sweaters 25% Off  
Mens Jumpsuits 1/2 off  
Mens Knit Shirts 6<sup>88</sup>  
Mens Sport Coat 25<sup>00</sup>  
Boys Jeans 5<sup>88</sup>  
Boys Ties 1<sup>00</sup>  
Boys Sweater 5<sup>88</sup>  
Boys Suits 20<sup>00</sup>  
Boys Coats 7<sup>88</sup>  
Boys Knit Shirts 1<sup>88</sup>

Full Slips 4<sup>88</sup>  
Panties 1<sup>50</sup>  
Ladies Shoes 75% off  
Ladies Shoes 50% off  
Children Shoes 1/2 price  
Men's Shoes 1/2 price  
Houseshoes 1/2 price  
Ladies Ready to Wear Savings You Won't Believe  
Come See

Men's Western Boot

Reg. to 81.00

By Acme & Dan Post

NOW 25% OFF

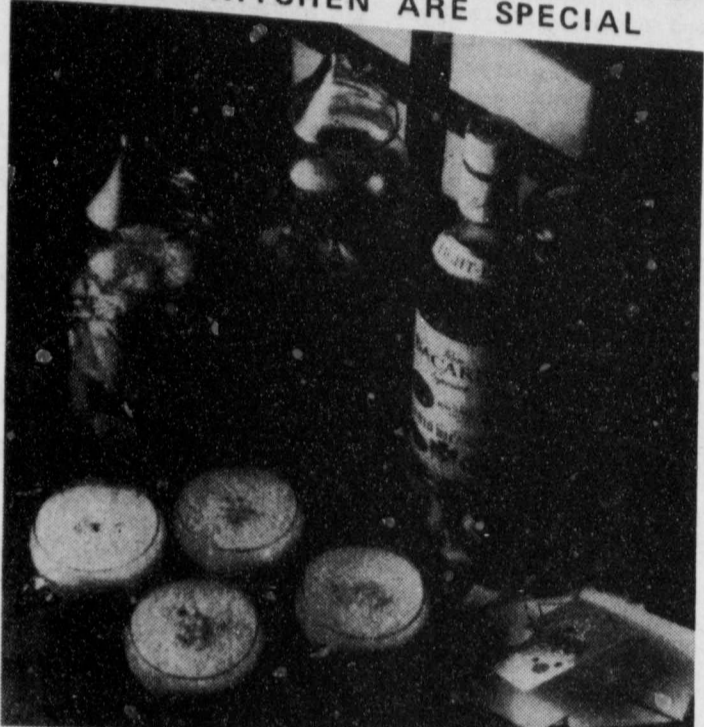
SAVINGS - SAVINGS - SAVINGS - SAVINGS -

# Bealls

## Holiday Hints

Gifts from your own kitchen are special

If you want to add a decorative touch to your holiday gift-giving this year, why not make some time out of the ordinary and stir up a batch of homemade dessert gifts. Cookies, cakes, and pastries prepared in advance are a holiday tradition there's no better way to share this custom than with the special people on your list. Attractive containers for your handiwork are appreciated, labeled neatly, and be sure to include a copy of the recipe for each gift. Bake in slow oven for 2 hours, then cool. Toppings always work well, and Rum Sauce and Topsy are a colorful festive holiday touch. Keep in mind that the tipsy fruit never end. Every remove some fruit, be sure to refrigerate. Any canned fruit for part of the gift will do nicely. You're making your plans, be sure to recipe for Bacardi Eggnog handy. You're having a down gathering or moment get-together, it's a tasteful and welcome way to welcome guests in the true spirit. Try, Ann Handley's CHOCOLATE SAUCE.



well. Stir in milk and salt. Cover and cook over boiling water until very hot. Beat until smooth. Blend in rum. Cool and store in covered jar in refrigerator. Spoon into 1/2 pint jars and suggest as serving sauce over ice cream, crepes, toasted pound cake and angel food cake. Serve cold or reheated to warm. Makes about 3 cups.

Gradually add rum and move fruit gently to dissolve sugar. Be sure that rum covers fruit. (If necessary, increase amount of rum.) Cover container and let stand at room temperature at least 1 week. Spoon into pint jars to give as gifts and suggest as serving for pound cake and ice cream or crepes. Makes about 2 quarts.

### TIPSY FRUIT

3 cups drained mixed canned fruits (mandarin oranges, pineapple chunks, sliced peaches, sliced pears)  
1 package (8 ounces) dried mixed fruits  
1/2 cup whole seedless green grapes  
1/4 cup blanched whole almonds  
2 cups superfine sugar  
1 1/2 cups Bacardi light rum

### BACARDI RUM EGGNOG

1 quart of eggnog mix (as supplied by your dairy)  
6 ounces Bacardi dark rum  
6 ounces Bacardi Anejo rum  
1 cup whipped heavy cream

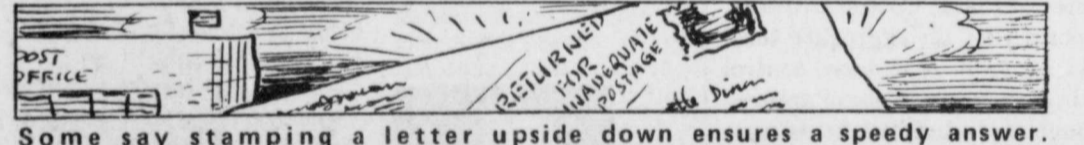
Layer fruits and nuts into 2-quart glass container. Sprinkle sugar over all.



Our President's Flag, with the President's Seal in bronze upon a blue background and a large white star in each corner, was adopted May 29, 1916 by President Woodrow Wilson.



Just Desserts  
A delicious dessert can be prepared in minutes if prepared with the ingredients. And pies are ever popular with today's homemade pie whipped up quickly. You not even have to



Some say stamping a letter upside down ensures a speedy answer.

**SHURFRESH MILK** WE ACCEPT FOOD STAMPS

**KIRTLEY'S MARKET** 316 N 2ND 983-3105

WE RESERVE THE RIGHT TO LIMIT

WE GIVE DOUBLE S AND H GREEN STAMPS ON WED THESE SPECIALS GOOD DEC. 18 THRU DEC. 23, 1978

6-32 OZ. BTL	GEORGIA PECANS \$1.69 IN SHELL .LB.	SHURFRESH CANNED HAMS 3 LB \$6.86
<b>Cokes \$1.59</b>	ORANGES .LB. 29¢	SHURFRESH 1/2 MOON COLBY CHEESE 12 OZ \$1.19
	RED DEL. APPLES .LB. 47¢	SHURFRESH FRANKS 12 OZ. 79¢
PLUS DEPOSIT	YELLOW ONIONS .LB. 12¢	COUNTRY PRIDE GRADE #11 FRYERS 55¢ .LB.

STOVETOP STUFFING MIX 6 OZ 69¢	REYNOLDS FOIL 12X25 45¢	BELLS Whipping Cream Sour Cream or Dip 8 OZ 2/79¢
--------------------------------	-------------------------	---

THRIFT KING MANDARIN ORANGES 11 OZ 39¢	TUFF+READY TOWELS 69¢	BELLS COTTAGE CHEESE 24 OZ \$1.19
--	-----------------------	-----------------------------------

LIBBY'S PUMPKIN REG 47C 39¢	SHURFINE SWEET POTATOES 16 OZ 59¢	BELLS BUTTERMILK 1/2 GAL 89¢
-----------------------------	-----------------------------------	------------------------------

ON SALE THIS WEEK

SPRING COLLECTION STONWARE SAUCER ONLY 69¢ PER PIECE WITH PURCHASE

Dr. Peppers OR 7-UP \$1.39

PLUS DEPOSIT



**LETTER TO THE EDITOR**

Dear Floyd County Friends,  
As we near the end of another year, we look back on our most successful year of taking care of the children of this county.  
Our average daily attendance last year was 40 and in the busy summer months we took care of 50 children many days. The financial needs of the Center have been met, mostly through the contributions of individuals, organizations, and businesses. Our budget this year was \$33,851.29. Of this amount only \$2,437.46 came through the Government Commodity program, and \$6,689.68 from the State of Texas. At this time our board of directors, our coordinator Betty Fuller and I sincerely appreciate your help in maintaining the Center another year.  
We thank you for your help and wish for you and yours a very Merry Christmas and Blessed New Year.

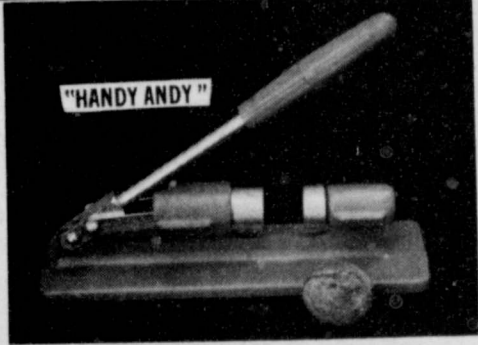
Sincerely Yours,  
Don Gowen  
President of the board

**Nutrition Task Force Calls For**

**Way To Resolve Conflicts**

**Got Heating Or Plumbing Problems? Call HOLMES PLUMBING**  
AUSTIN OR STEVE  
983-2251  
6:30 - 9:30 a.m. and 5:30 p.m. Until?

College Station, Texas -- A task force report on nutrition presented today at the National Farm Summit calls for "new decision-making mechanisms to resolve disputes in the food arena."  
The report, prepared by Dr. C. Peter Timmer of the Harvard School of Public Health and Dr. Malden Nesheim, Division of Nutritional Sciences, Cornell University, says the present approach is badly outmoded because "evidence offered by the producing sector is considered suspect because of the 'profit motive' and all evidence from the consumers is rejected because it 'politically motivated.'" This does



**NUT CRACKER**

★ Fool Proof ★ Strong & Durable  
★ A Good Christmas Gift - Only \$11<sup>95</sup>  
See H.B. Foster, Lockney 652-2233

**Last Minute Shopping Specials**



ALL JEANS 20% Off	CAMPUS SHIRTS \$6 <sup>00</sup>
MENS VELOUR SHIRTS \$12 <sup>00</sup> Reg. \$18.00 Now	MENS BRADFORD HATS 20% Off
ALL WOMENS AND CHILDRENS MERCHANDISE 1/3 Off	BOOTS 20% Off

10% Off EVERYTHING ELSE IN THE STORE

FREE GIFT WRAPPING

**THE LOFT**  
WESTERN WEAR

517 E. Houston Floydada

**A 'Crash Course' For Fender Benders**

In the minutes following a fender bender, there's a lot to be done -- determining whether anyone has been hurt, calling the police, moving the involved cars away from traffic, assessing damage, etc. And since it's also an emotion charged time, it can be difficult to remember everything you should do. Later, when it's time to file an insurance claim, or perhaps prepare for a court appearance, you might find yourself wishing you'd asked a few more questions or



recorded some additional details.  
To help avoid this problem, Jim Gelhard, assistant vice president of claims at CNA Insurance, has provided a handy checklist of things to be done in the event of an automobile accident. He suggests you cut the list out and keep it, along with pencil and paper, in the glove compartment of your car. Then if you have an accident, you can quickly review it and obtain all the information you need.

**What To Do After An Accident**

- Write Down**
- Date, time and place of the accident.
  - Names, addresses, and telephone numbers of:
    - All other drivers in the accident.
    - The insurance agents and companies of those drivers.
    - All passengers and where seated.
    - Make, model, year and license numbers of all other cars involved in the accident.
    - Prevailing weather conditions (clear, foggy).
    - Road conditions (dry, icy, wet).
    - Your speed -- and that (approximately) of the other car when the accident occurred.
    - Brief account of accident.
    - Evidence (if any) that the other driver might have been drinking.
    - Whether the other driver's license lists any restriction that would be re-

- levant. (For example, was he/she wearing glasses as required?)
- Evidence of injury to anyone involved in the accident.
- Location of the cars on the road (on the berm, across the lane, on the divider).
- Name badge number, and station number of the policeman who arrives at the scene.
- Don't indicate how much insurance coverage you have.
- Don't confess guilt even if you feel you were at fault.
- Don't sign anything which might indicate that you are not physically injured. (Some injuries are not immediately apparent.)
- Call your insurance agent and report the accident even if the damages are minor and you intend

- to pay for repairs yourself. Your insurance company may require that you report any accident in which you are involved within a certain period of time. If you don't report it, and the accident turns out to be more serious than you originally thought -- if the other driver develops a whiplash injury, for example, your insurance company may be able to disclaim coverage.
- After leaving the scene of the accident, refer any inquiries from others involved in the accident to your insurance agent. Don't try to answer them yourself.
- Keep track of any transportation costs you incur while your car is being fixed (car rentals, taxi cabs, etc.).
- Get estimates for repairing your car from two or three reputable auto body shops.

more to make matters worse than to resolve them, the report concludes.  
"The pressing question for the farm community is how to be part of the decision-making process without appearing to speak solely from a position of vested economic interest," Timmer concludes.  
The ideas were developed as part of an overall Summit process underway for much of the past year. A total of five task forces have been at work during this period. Draft reports from each are being presented at the Summit which is sponsored by the Agriculture, Council of America and Texas A&M University.  
The report warns that while it may be unpopular

and unwelcome news, "U.S. farmers and agribusiness interests need to face up to the fact that mounting medical evidence exists linking diet to health.  
Summarizing studies on the relationship between diet and health, the report notes that "regardless of what one

may think of the merits of the scientific evidence, it is having an affect on diets."  
The Task Force report cited a 1,400-household USDA study which indicated that 50 percent of the households were altering their diets due to health concerns.  
Task Force members -- including scientists, produ-



Aerial applicators sprayed ultra-low volume malathion on about 25,000 acres of weevil-infested cotton November 17, bringing the fifteenth year of the High Plains Boll Weevil Control Program to another successful close.

Ed Dean, Field Service Director of Plains Cotton Growers, Inc., program coordinator, reports that an aggregate total of 691,789 acres were treated in 1978. The base control zone at the peak of the spraying season contained approximately 210,000 acres in 10 counties. Individual fields were sprayed from two to six times as needed, using 64,835 gallons of insecticide.  
Last year the base acreage in the program came to 435,000, and the aggregate acres treated were 1,250,000 at a total cost of about \$1.8 million.  
The 1978 control zone covered all or parts of Motley, Dickens, Kent, Crosby, Briscoe, Floyd, Garza, Borden, Scurry and Dawson Counties.

Estimated cost this year is \$1.65 per acre per treatment, compared to the 1977 cost of about \$1.50. Total cost in 1978 is estimated at just over \$1.14 million.  
PCG initiated the program in 1964 when entomologists warned that unless controlled, boll weevils in a very few years would be adding huge costs to cotton production across the entire High Plains.

By "successful," Dean explained, he means the program prevented significant movement of boll weevils onto the High Plains above the Caprock, which is the program's overall objective.  
"Not only did we prevent the spread of weevils to the West, he continued, "we significantly reduced populations within the treated area and ended the season with much lower field populations than normal. This was possible because of the benefits from previous programs, dry weather and delayed cotton plantings last spring."

These factors, together, made it possible for the 1978 program to start at a later date and made it possible to apply insecticide on a tighter schedule than in 1977, Dean said.  
"Also," Dean adds, "because of lower weevil populations in the cotton area surrounding the control zone, we were only confronted with our own boll weevils this year and were not bothered with large numbers of weevils moving in from outside the zone."  
Spraying in the 1978 program did not begin until September 27, whereas operations in previous years had started near the beginning of September.

"Delayed plantings over a broad area of the treatment zone, some by design and some forced by drought conditions, were a big help in delaying a buildup of heavy population pressures," Dean says, "and we will be urging producers in 1978 to use later plantings as a management tool both to help themselves and to improve the odds favoring another effective, low-cost program."

The program is financed jointly by High Plains cotton producers, the U.S. and Texas Departments of Agriculture. USDA matches funds contributed by producers and the TDA.



Topiary is the ancient art of training plants to special forms. The Romans were known for their ornately shaped boxwoods. It's done by clipping and pruning a plant to grow in the shape you like.

**FLOYD DATA**  
Pete Hickerson, who underwent open heart surgery in Lubbock's Methodist Hospital Thursday, is reported to have come through the surgery fine and is doing well.

cers, consumers, processors and agribusiness representatives -- did not come to agreement on either the conclusiveness of the evidence linking diet to health or the remedies. Members did outline four alternative courses of action including:  
1. Less regulation of the food and fiber system. The care for less regulation is based upon the unworkable nature of the Delaney Amendment requiring zero tolerance for carcinogens in the food supply and the resulting fact that costs versus benefits are not considered in the present system.

2. Keep the present rules with no more regulation. Under this alternative, the food system would find its own path in the context of changing technology, consumer tastes, and present regulation and standards. The main effect of this alternative was seen as a continuation of the trend toward highly processed foods. Continued substitution of synthetics for animal and fish products was considered likely.

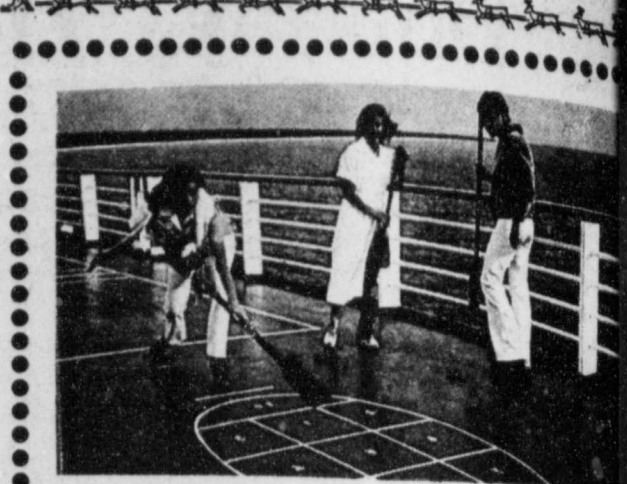
3. While the Task Force agreed on the need for expanded nutrition education, it did not agree on the substance of the education. The attractiveness of this alternative was that "it does not intervene directly, as regulations and price manipulations do."

4. More direct interventions in the marketplace aimed at restrictions on food advertising, changes in food grades to recognize consumer concerns, and government-mandated increases in the price of products which have high "public health costs" -- these actions were suggested by a few members of the task force.

If goals calling for reduced consumption of butterfat, eggs, fatty meats, other sources of saturated fats and sugar are implemented, it "will have direct and negative economic repercussions on the animal sector of the U.S. farm community."

The report goes on to say "just the opposite is true for those farm items that the dietary goals would have increase in consumption whole grains and fruits and vegetables."

**SAVE FOR CHRISTMAS 20% STOREWIDE CHRISTMAS SALE**  
Begins Fri., Dec. 8 - Christmas  
All Denim Bells & Big Bells, Student Bells & Big Bells Only \$12.98  
**Pants West**  
Free Gift Wrapping  
3310 Olton Road Village Shopping Center  
Plainview, Texas



**MAKE YOUR RESERVATIONS THIS WEEK!**  
**CARIBBEAN CRUISE**  
DELUXE 7 DAY AIR-SEA CRUISE  
● Montego Bay ● Santo Domingo  
● Antigua ● Guadeloupe  
● Ocho Rios  
SINGLES \$698  
DOUBLES \$798  
Leaving March 3 or March 10  
Call 983-3982 Or 983-3737  
FOR BROCHURE WITH ALL INFORMATION TOOLEY TOURS  
Floydada, Texas 79235

Insuring the good life for your children means guaranteeing their college education.  
The time to begin projecting their future is now.  
The way to begin is with a professional insurance planner. Your Southwestern Life Career Agent.

Tommy Assiter  
206 W. California  
Phone 806-983-2511

Southwestern Life  
Person-to-person service for 75 years.

**PROJECTION**

**Western Ag. Sales Co. Inc. Invites You - -**

TO TOUR OUR PLASTIC PIPE MANUFACTURING PLANT COME AND SEE THE PROCESS USED TO MAKE UNDERGROUND PLASTIC PIPE. OUR PIPE IS AS GOOD AND BETTER THAN MOST. GIVE US THE OPPORTUNITY TO LET YOU TRADE AT HOME AND HELP OUR LOCAL ECONOMY.

OUR OFFICE IS LOCATED AT 327 W. 24th St., IN PLAINVIEW, TEXAS.

COME BY AT YOUR CONVENIENCE. CALL OUR LOCAL SALES REPRESENTATIVE, **RONNIE ROGERS**, AT OUR FLOYDADA, OFFICE FOR ANY INFORMATION OR A QUOTATION ON PIPE BEFORE YOU TRADE WITH ANYONE ELSE. THE FLOYDADA OFFICE TELEPHONE NUMBER IS 983-5231  
THE MOBILE UNIT FOR RONNIE ROGERS IS 6215.  
OUR PLAINVIEW OFFICE NUMBER IS 296-6361.



# American Agriculture Views Accomplishments

The American Agriculture Movement has wholly or in part been responsible for these changes in agriculture; Raised the price of wheat from approximately \$1.90 to \$2.75 per bushel. Brought to the attention of the USDA the fact that imported meat was being used in the school lunch program; subsequently, it has been withdrawn. The change in the target price on wheat from \$2.90 to \$3.40 is a direct result of AAM action (\$50 x 117,500,000 bushels equals \$85,750,000) (Texas).

ment and other officials into foreign purchase of American farm land. Caused Secretary of Agriculture Bergland to reconsider and make milo deficiency payments; increase farm storage payments from twenty cents to twenty-five per bushel; and to extend haying and grazing to June 1. Emergency farm credit bill. Politicians taking stands on agriculture. Caused existing farm groups to be more responsive. Demonstrated that an individual still has a voice in government, increased awareness by everyone. Increased cotton loan from approximately 42 cents to 48 cents. (an additional \$163,950,000 to upland cotton growers.) Support the American Agriculture Movement--it's working to support you!!! Think what we could do if you'd help too!!!!!!!

THE FLOYD COUNTY HESPERIAN  
Published each Sunday and Thursday at 111 E. Mo. St., P.O. Box 700, Floydada, Texas 79235. Publication No. 202680. Wendell Tooley, editor, Subscription rates: Local \$10.50 a year, out-of-trade area \$11.50 a year. Second class postage paid at Floydada, Texas 79235.

**TEXAS PRESS**  
MEMBER 1978 ASSOCIATION



ESQUIVEL (left), Linda Irlas and Yolanda Arredondo display tractors being sold by the Vocational Education Homemaking class at Della School.

## Estate Planning and the New Inheritance Tax Law

Estate planning, in a broad sense, involves the making of present plans for the accumulation, conservation and future use of one's assets. Effective estate planning should provide for an orderly transfer of property during one's lifetime and after death, with a minimum of expenses, points out Birch Lobban, County Agent with the Texas Agricultural Extension Service. Important considerations in developing an estate plan are these: -Inventorying assets and taxable wealth. -Establishing financial security with minimum erosion. -Deciding on alternatives based on the individual and the family's desires and

goals. -Establishing plans for property transfer using wills and trusts. -Making plans for sufficient ready cash for payment of taxes, death and administrative costs. Estate plans should be reviewed periodically, emphasizes Lobban. During the 1970's inflation has resulted in substantial increases in the value of land, building, equipment, livestock, minerals and other assets. Consequently, a review of the estate situation may establish that a potential tax liability will exist upon the death of the owner. The review, in light of recent changes in the tax laws, may determine that the existing estate plan requires revision. Recent changes in federal estate tax laws and Texas inheritance tax laws represent an attempt to provide tax relief from the sharp increase in asset values during the 1970's. However, failure to become informed of the recent tax law changes and to do adequate estate planning may result in higher taxes and costs, cautions Lobban.

Is making the consumer realize the gravity of the situation in agriculture. AAM, by educating the consumer on the financial situation of the American rancher and drawing attention to beef imports at both national borders, has prevented a boycott on meat by the American consumers. Has exposed the fact that chemically contaminated produce is imported with misleading labeling, indicating it could have been grown domestically. Is involved in exposing President Carter and his Administration as promoting a Cheap Food Policy. Example-the grain reserve will be used to lower grain prices as he has used the meat imports to lower the livestock prices. Caused the investigation by government in the event there are more than one beneficiary. In no event shall any beneficiary have an exemption of less than \$25,000. More detailed information on the new Texas Inheritance Tax Law is available from the Inheritance Tax Division of the Texas Comptroller's Office in Austin. A series of Extension Service fact sheets on estate planning are available at the County Extension Office, notes Lobban.

## News & Reviews

Make this Christmas season a special time, select a book that can be listened to or read by the entire family, bringing a family devotional time for the twelve days of Christmas and see if your lives are not enriched. It might be a habit that you will want to continue through the new year. Christmas will have met its real purpose in part by continuing throughout the year. A delightful small book divided into five sections is THE CHRISTMAS MEMORIES by Corrie ten Boom. A wonderful Dutch lady of eighty-five years tells the Christmas story in several ways and shares with us her memories of long-ago Christmases when her beloved family gathered. It speaks of life and everlasting love, of a time when the world was young and life simpler. Begin this one before Christmas, ending with the Christmas story on the last day and see if your Christmas isn't more as you remember with Corrie. Christmas, Margaret Taliaferro has traditionally read a letter to her children's Bible classes, presenting the message of the Nativity in her own special way. THE REASON FOR CHRISTMAS contains twelve of these letters in the handprinted style of the originals. These are to be read aloud in the family circle, one letter for each of the twelve days of Christmas. Wouldn't it be ideal if the focus of our thoughts could be on the spirit of Christmas instead of the number of shopping days we have a cassette tape narrated by Dick van Dyke and featuring two Christmas plays for children. There is a story from the Treasure Chest series for children about Christmas, also a recording with the "The Story of the Birds" by Paul Harvey.

Don't forget our Christmas Tree Party Thursday, December 21 at 6 p.m. for our residents. Come out and help make this a special occasion for your loved one. It has been so cold this week until we had to cancel all outdoor activities. We played games Monday, did manicures, Tuesday. Thursday Mamie Gray was top winner in bingo with three games. Clara Williamson, Ray Reed and Emmett Lawrence tied with two games each. Anis Franks and Juanita Bailey won one game each. Friday morning Monda Dean and the second period homemaking class served cookies and sang Christmas Carols to the residents. Friday afternoon the fourth period homemaking class helped give the residents a spiced tea party, which all the residents enjoyed. They also sang Christmas Carols. Many Thanks to Mr. and Mrs. Jack McIntosh for the box of oranges, and to Earl Edwards for his two boxes of oranges. The residents have enjoyed them a lot. The residents have enjoyed door cards with each resident's name on them, and we are thankful to the Alpha Sigma Upsilon Club. Thanks to the Alpha Mu Delta Club for the beautiful Christmas Carols Sunday afternoon. Visitors this week were: Mr. and Mrs. B.A. Robertson; Mrs. Robert Bridges, Littlefield; Mrs. C.M. Bridwell, Littlefield; Mrs. Luther Lancaster, Matador; Mr. and Mrs. M.H. Hartness; Flo Ella Jarboe; Doris Snodgrass; Mollie Burleson; Pauline Pierce; Mrs. G.L. Bryant; Arthur Womack; Christine Robertson; Mrs. Bill Smallwood, Matador; Thanie Smallwood, Matador; Karla Williams; Ausie and Estelle Watson, Abilene; Mona Dean and 2nd pd. homemaking class, Sheryl Johnson; Kay Guzman; Elsa Rodriguez; Joe Galvan; Barbara Martinez; Janie Arredondo; Estella De La Fuente; Ernestina Martinez; Diana Landreth; Debbie Holbert; Terry Pleasant; Drew Ann Johnson; Debra Alfaro; Karen Pruitt; Suzie Ehler; Debra Allen; Jeff Campbell; Jacky Campbell; Judy Campbell; Mr. and Mrs. Bob Bratton, Odessa; Doug and Elaine Galloway and family; Lois Jones; J.C. and Decota Odum; Beady Owens; Ruby Davis and family; Jerry Jarr-

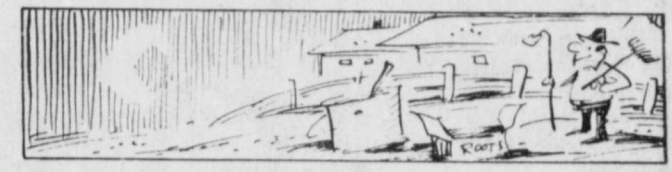
## Floydada Nursing Home Happenings



The word puppy comes from the French "poupee," meaning a dressed doll or a plaything.

## Cruz Tijerina Graduates From Fire Control School

December 4--Navy Fire Control technician Third Class Cruz G. Tijerina, whose wife, Dianna, is the daughter of Julian and Mickey Arredondo of P.O. Box 73, South Plains, Tex., was graduated from Fire Control Technician School. During the 23-week course at the Naval Training Center, Great Lakes, Ill., he received instruction on the electronic weapons systems installed aboard current U.S. waships. He studied the operating principles and procedures of radar, digital computers and related shipboard equipment used to control the firing of guns, missiles and torpedoes. He joined the Navy in January 1978.



The dark of the moon is considered the best time to plant roots.



Some used to say bathing in dew gathered from lilacs would make a person beautiful all year long.

## Tractorcade In Topeka

TOPEKA, KANSAS-- American Agriculture has scheduled a tractorcade Dec. 16 in Topeka to celebrate the first anniversary of the farm strike. The tractorcade is planned to precede the third Grain Marketing Hearing set for Monday, Dec. 18, at the state capitol. Representatives from all the major farm organizations, state legislators and grain company officials from 13 Midwestern states are expected to attend the conference. They will discuss how to possibly finance a multistate grain marketing compact. Initially, the compact would be involved in investigating the current marketing structure but would later try to come up with a marketing mechanism to ensure fair prices for agricultural products. American Agriculture representatives say the tractorcade will begin early Saturday morning. An American Ag rally will follow shortly after noon at the Municipal Auditorium, with Kansas Gov. Robert Bennett scheduled as one of the speakers. Following the rally, American Ag supporters will take their tractors to nearby farms, where they will be parked awaiting the start of the national tractorcade to Washington, D.C. in mid-January. Prior to the start of the grain marketing hearing, a rally will be held on the front steps of the capitol.

## FmHA Loans Up 45%

TEMPLE, TEXAS, December 7--The farmers Home Administration (FmHA), the rural credit agency of the U.S. Department of Agriculture, reported that its loans for rural development in Texas during the fiscal year (FY) 1978 reached a record high of \$525 million -- 43 percent above the FY 1977 level, according to W.H. (Bill) Pieratt, State Director. Of the \$525 million, 98 percent of which are loans repayable with interest, over \$345 million are farm loans. Housing loans accounted for almost \$96 million, over \$50 million went for community facilities improvements and more than \$33 million were used for business-industrial financing. State Director Peiratt said that 1979 will surpass this year's record amount of farm loans through the government

agency. FmHA will be the last resort for many producers who cannot obtain funds elsewhere, Pieratt said. Bankers expect the 1979 interest rate for farmers to average about 10 1/2 percent, the most that can be charged individually by national banks. State banks, due to a state usury clause, may charge no more than 10 percent. New farmers, depending on their particular situation, may have problems getting financed. The FmHA interest rate of 8 1/2 percent looks good to producers, even though they would rather stay with their local banker or Production Credit Association office. Pieratt said that although FmHA funds come from the federal budget, most FmHA customers repay loans. "So far our losses have been extremely light," he said. "Farmers have stayed in there. It's the characteristic of Texans to pay their bills." In speculating that 1979 FmHA loans would exceed those in 1978, Pieratt says he believes there will be adequate funding from the U.S. Department of Agriculture. Pieratt said 10,299 FmHA loans were made to farmers in fiscal 1978. "A lot of people have criticized the bureaucracy of Farmers Home Administration, but is has saved a lot of farmers," he said. Pieratt said, "a state reorganization will be completed this year. BUT IT DOES NOT INVOLVE THE CLOSING OF ANY FIELD OFFICES SERVING TEXAS FARMERS AND RANCHERS." Under the plan, new district offices will service all community, multiple-family housing and organization project loans. County FmHA offices will concentrate on improved service to families applying for farm and individual housing loans.

**"Hey, All You Whirlwind Fans, Come On And Cheer Your Bands."**

# CHRISTMAS CONCERT & SALAD LUNCHEON

December 17, 1978

Luncheon: 11:30 a.m. to 1:30 p.m.  
HIGH SCHOOL CAFETERIA  
Adults: \$2.00 per plate  
Children: 12 and Under \$1.00

FOLLOWED BY  
CHRISTMAS BAND CONCERT  
2:00 P.M. at  
HIGH SCHOOL AUDITORIUM  
Admission: FREE

THE PUBLIC IS INVITED TO COME AND JOIN IN THE FUN, SEE OUR STUDENTS PERFORM:

SPARKLING IDEA for CHRISTMAS

# Electrical GIFTS

MAKE IT AN APPLIANCE CHRISTMAS! GIVE ALL THOSE SPECIAL FOLKS GIFTS THEY WILL ENJOY FOR YEARS. LIKE PORTABLE TV SETS, DIGITAL CLOCK RADIOS, FAST PERK COFFEE MAKERS, STEREO COMPONENTS AND CONSOLES. SEE YOUR FAVORITE APPLIANCE DEALER.

**FLOYDADA POWER LIGHT**



VA NEWS

An increase in the maximum guaranty for Veterans Administration home loans and relaxation of the active duty requirement for Vietnam Era veterans applying for them, should significantly aid younger veterans seeking to enter the housing market, Jack Coker, Waco VA Regional Office Director, said today.

The new provisions affecting the popular VA home loan guaranty program were passed by congress and signed into law by President Carter last month.

The maximum VA loan guaranty was increased from \$17,500 to \$25,000 Coker said.

And he estimated that approximately 168,000 Vietnam Era veterans would now be eligible for a loan because the legislation reduced the length of active duty service required from 181 to 90 days.

Coker said at least one day of the 90 days of active duty required for loan eligibility must have been served between August 5, 1964, and May 7, 1975.

"This brings the loan eligibility requirements for Vietnam veterans in line with those for World War II and Korean conflict veterans," Coker said.

He also reminded veterans that, if the income is stable, their spouse's salary can be counted in computing the loan amount for which the veteran may qualify.

"We consider the combined incomes of the couple in cases where the veterans income alone would not qualify him or her for the loan in question," Coker said.

He urged veterans interested in qualifying for a VA guaranteed home loan to contact the nearest Veterans Administration office, county service officer, or a service representative of any national organization for full information.

An increase from \$17,500 to \$25,000 as the maximum guaranty for Veterans Administration home loans is one of several important features of the "Veterans Housing Benefits Act of 1978", according to Jack Coker, Director of the Waco VA Regional Office.

The legislation, which was signed on October 18, by President Carter, also permits certain severely disabled veterans to obtain a VA grant of up to \$30,000 to buy or adapt a residence to meet their special needs, Coker said.

VA grants for these so-called "wheelchair homes" were formerly limited to \$25,000.

Coker pointed out that the new bill should be of special benefit to an estimated 168,000 Vietnam Era veterans because it reduces the length of active duty service required for eligibility for VA home, condominium or mobile home loan guaranty benefits.

"The new law brings the eligibility requirements for Vietnam veterans in line with those for World War II and Korean Conflict veterans," Coker said.

In addition, the law authorized VA to guarantee loans for converted condominium loans in buildings constructed and sold as this type of dwelling.

Coker said another significant section of the legislation restructures VA's mobile home loan program—setting a \$17,500 loan maximum and extending the maximum loan term for single-wide mobile homes to 15 years an increase of 36 months.

Coker said veterans may obtain complete details of the expanded loan guaranty program at any VA regional office.

Waco Veterans Administration Regional Office Director Jack Coker today reminded veterans contemplating the purchase of a mobile home that VA's loan guaranty has recently been streamlined with their benefit in mind.

"Statutory maximum loan amounts have been eliminated for mobile homes and mobile home lots," Coker said. "Now, a loan of up to the cost or reasonable value of a mobile home and/or lot can be guaranteed. The maximum guaranty is \$17,500 or 50 percent of the loan, whichever is less."

Coker also pointed out that the recent Congressional action streamlining the guaranty program also increased the maximum term of some VA mobile home loans to 15 years, 32 days from 12 years, 32 days. Loans on double wides continue to have a maximum term of 20 years, 32 days.

"The Congress has also approved legislation redu-

cing the active duty time required for Vietnam Era veterans to be eligible for VA home loan benefits," Coker said.

Eligibility formerly required at least 181 days of active duty time. This has been cut to 90 days, with at least one day having been served between August 5, 1964, and May 7, 1975.

"This brings eligibility requirements for Vietnam Era veterans in line with those for World War II and Korean conflict veterans," Coker said. About 168,000 veterans are affected nationwide.

The loan guaranty eligibility requirement for peacetime veterans remains 181

days. Coker said any veteran interested in the loan guaranty program may obtain complete information at the nearest VA office, veterans county service officer, or one of the national veterans organizations.



Mark Twain was a redhead.



SANTA LETTERS

Dear Santa,

I have tried to be good this year so will you please bring me some toys - Baby Beth, Amanda Jane, baby and Holly Hobby tote, clothes for Mandy, and a bracelet.

Thank you Santa and Mrs. Clause and the elves.

Love, Stacy Dawdy

Dear Santa,

My name is Deidra (De-De). I'm a little girl nearly two. I've tried to be a good little girl this year, but sometimes the meanness just takes control of me. Mommy has really had her work cut out for her this year with all the meanness I've gotten into. I'm really trying to do better before Christmas. Boy, is it a long time!

For Christmas, I would like a new Baby doll, a cash register, Weebles Tree

House, set of dishes. Doll clothes, Dolly High chair, Jewelry Box and table & chairs. That is all, because my Birthday too is in January.

Don't forget my big sister, cousins and all the other children of the world. I love you.

DeDe McCarty

P.S. There will be cookies and hot chocolate on the kitchen table.

Dear Santa,

My name is Dana. I'm a little girl nearly four years old. I've really tried to be a good girl this year, but sometimes it's just impossible. You see I have a little

sister nearly two and she really bugs me sometime (You know how little sisters are?)

Anyway, I would like for Christmas a new Baby doll, stove and refrigerator, typewriter, view master viewer, bicycle, a new set of dishes and some doll clothes. I guess that's all, since I have a birthday in January.

Don't forget all my cousins, little sister and all the other children in the world. I love you.

Dana McCarty

P.S. I will leave cookies and coffee on the kitchen table for you.



The South American country of Brazil derives its name from the reddish tree the Spanish and Portuguese call Brazilwood, and which we call

Remember your loved ones and friends with a memorial to Lockney General Hospital Memorial Fund. These memorials toward equipment to help serve our community in the best way possible.

5 LB GOLD MEDAL FLOUR 39¢  
WITH \$10.00 PURCHASE OR MORE

15 OZ PILLSBURY QUICK BREAD MIX 89¢

16 OZ OCEANS SPRAY CRANBERRY SAUCE 2/89¢

32 OZ OCEAN SPRAY CRANBERRY COCKTAIL 99¢

8 OZ BORDEN OR BELL WHIPPING CREAM 2/79¢

QT. BORDEN OR BELL EGGNOG 79¢

6-32 OZ COKE OR 7-UP PLUS DEPOSIT \$1.39

28 OZ CANADA DRY GINGER ALE 2/99¢

16 OZ LIBBY'S CHUNKY PEARS 2/99¢

12 OZ BELL COTTAGE CHEESE 69¢

16 OZ DEL MONTE CUT GREEN BEANS 3/\$1.00

17 OZ DEL MONTE WHOLE KERNEL CORN 3/\$1.00

25 SQ. FT. REYNOLDS WRAP 2/79¢

50 COUNT KLEENEX DINNER NAPKINS 57¢

10 OZ CAMPFIRE MARSHMALLOWS 5/\$1.00

11 OZ GOOD DAY MANDARIN ORANGES 2/89¢

1/2 GAL BELL ICE CREAM \$1.29

26 OZ JOHNSONS MINCE OR PUMPKIN PIE 99¢

12 COUNT SOFT N LITE BROWN & SERVE ROLLS 2/89¢

1 LB WHITE SWAN SOFT MARGARINE 59¢

GRADE 'A' LARGE EGGS 9¢ DOZ.

4 OZ ADAMS VANILLA \$1.09

1 LB FOLGERS COFFEE \$2.29

WHITE SWAN TEA BAGS \$1.69

DOUBLE S&H GREEN STAMPS EVERYDAY UNTH

DOUBLE ON WEDNESDAY

1 LB TALL KORN BACON \$1.49

16 LB - UP HONEY SUCKLE TURKEYS WE HAVE BUTTERBALL TURKEYS AND GEES

WILSON'S BONELESS PIT HAM \$2.29 LB

8 OZ PHILADELPHIA CREAM CHEESE 79¢

USDA T-BONE STEAK \$2.39 LB

SUNKIST NAVEL ORANGES BOX \$10.75 3 LBS \$1.00

WASHINGTON RED DELICIOUS APPLES BOX \$12.85 3 LBS \$1.00

STALK CELERY 33¢

3 LB CRISCO \$1.87

8 OZ BELL OR BORDENS SOUR CREAM OR DIP 2/79¢

1/2 GAL BELL OR BORDENS BUTTERMILK 89¢



## The Scientists Tell Me... Exports Increasingly Important To Growing Economy of Texas

By Robert L. Haney  
TAES Science Writer

Export sales of Texas agricultural products are now at the \$1.76 billion level. That's about 30 percent of our agricultural output and a sizeable part of the State's total economy.

In specific crops, international sales represent an even larger share of the market: 60 percent of Texas soybeans, 68 percent of rice, 44 percent of cotton, and 35 percent of sorghum is exported.

Scientists with Texas A&M University and the

Texas Agricultural Experiment Station have cooperated with producer groups and USDA to expand our international markets.

For example, the Sorghum Producers Association, through the U.S. Feed Grains Council, recently sent a team to Southeast Asia to present information

on the quality of U.S. sorghum.

The team consisted of Mr. Elbert Harp, Executive Vice President, Sorghum Producers Association; Dr. L. W. Rooney, professor of cereal chemistry with the Experiment Station at Texas A&M; and Professor John Brethour, animal nutritionist with the Kansas Experiment Station.

In Korea, Taiwan, Philippines, Malaysia, and Hong Kong, many potential customers — animal nutritionists, feed manufacturers, agronomists, economists, grain buyers, and government of-

ficials heard clear, factual presentations on the properties of sorghum and its proper use in livestock feeds.

The disadvantages as well as the advantages of using sorghum were presented in detail. The team was able to present a favorable image of U.S. sorghum because it could draw upon the latest research accomplished in the U.S.

Considerable time was spent answering questions relating to high-tannin types of sorghum compared to yellow sorghums. Sorghum quality is widely misun-

derstood and considered to be poorer than it is because many buyers have had experiences with high-tannin sorghums sold by other countries, such as Argentina.

The combined information on the basic chemistry of the sorghum kernel along with the latest nutritional data made a good first impression. But additional follow-up work will be necessary.

A week after the seminar in Taiwan, the Feed Industry Association of that country placed a tender for bids for 500,000 to 1,200,000 bushels of sorghum per month. If these sales materialize, they could increase sorghum exports by 14.4 million bushels annually, which would increase total exports by as much as 6 percent.

Markets are available, Rooney says, but they must be developed by long-term educational programs.

In this regard, much has been done, and more remains to be done, in international market development by the Texas Agricultural Market Research and Development Center.

Scientists with the Center at Texas A&M University are doing research designed to explore opportunities for expanded producer-to-producer trade in different countries.

One comprehensive, recently published study, "International Cooperative Coordination in World Grain Trade," was done cooperatively by scientists at the Center and the Economics, Statistics, and Cooperatives Service, USDA. It's expected to result in increased sales of grain in international markets through improved cooperation among co-op organizations.

To collect information on trade policies, agricultural policies, and import and export activities of producer organizations, Station economists visited 20 countries in the past 2 years.

The importing countries included Japan, the countries of the European Economic Community (EEC), Brazil, Spain, Portugal, Taiwan, and South Korea.

Drs. Ron Knutson, Mike Cook, and Tom Sporer alerted buyers in each of these countries to the advantages of using Texas as a source of grain and cotton.

Already, as a result of the visit of economists to Japan, a trade delegation from that country visited Texas A&M University for more information.

Texas A&M has the potential for becoming a center for training people in international trade and marketing; the Department of Agricultural Economics is expanding instruction in these areas.

Research on consumer food product marketing in four countries, South Korea, Sri Lanka, Jamaica, and Guyana has been conducted by Dr. John Nichols, marketing economist with the Experiment Station and Texas A&M.

Evaluation of market development aspects of nutrition-improvement programs, using low-cost, nutritionally improved foods, has been the object of part of Nichols' research. Future research is expected to analyze factors influencing consumer demand for improved processed-food products in developing countries.

But another aspect of Station marketing knowledge and influence concerns educating policy makers in analyzing effects of foreign imports and the need for effective controls.

For example, under current laws, beef imports are not curtailed until they can damage glutted domestic markets. A part of the problem, according to Dr. Don Farris, economist with Texas A&M and the Experiment Station, is that many industrialized countries have very restrictive trade policies.

Floydada. He was a retired employee of Lighthouse Electric where he worked for 32 years. He was a member of the First United Methodist Church in Floydada.

Survivors include his wife; two daughters, Pat Self of Hereford and Gaynel Cline of Snyder; a son, Nick J. Henry of Winthrop, Maine; a sister, Myrtle Roberts of Parsons, Kan.; and a stepsister, Murette Dorsey of Floydada; a brother, George Henry of Floydada; and seven grandchildren.

Pallbearers are: Buck Marricce, Ed Pollan, Noland Arney, Odell Breed, Cecil Baxter, Herman King.

# STAMPS CHRISTMAS

# 5 DAYS

Mon.-Sat., 8 a.m. to 8 p.m.  
SUNDAY, DECEMBER 20, 1978  
We Reprint Quantities

- BUTT OR SH... \$1.39
- SM... \$1.39
- 9¢
- GEESE
- CUT... \$1.09
- 99¢ LB
- 69¢
- \$1.39 LB
- GOLD... \$1.00
- 17¢ LB
- US... \$1.00
- Y... \$1.00
- FLC... \$1.00
- TANG... \$1.00

## WIN WITH LUCKY STARS

- Gold - \$100 Gift Certificate
- Silver - Purchase Free
- Red - 10 Lb Turkey
- Green - 1200 S&H Green Stamps
- Blue - 600 S&H Green Stamps

No Purchase Required  
Must Be 18 Or Older



Julie Rodriguez

\$100 Gift Certificate Winner  
Recent Winners:

- Purchase Free (\$511.62)
- 1200 S&H Green Stamps
- 1200 S&H Green Stamps
- 1200 S&H Green Stamps
- 1200 S&H Green Stamps
- 1200 S&H Green Stamps
- 600 S&H Green Stamps
- 600 S&H Green Stamps
- 600 S&H Green Stamps
- 600 S&H Green Stamps
- 600 S&H Green Stamps
- 10 lb. Family Pride Turkey

- Teresa Hollums
- Clara Burns
- Teadaro Lopez
- Lucy Rodriguez
- Faye Walters
- Serafino Mencha
- Hilda Vasquez
- Janie Briones
- J.C. Griggs
- Mrs. R.E. Springin
- Mary Mendoza
- Mrs. Travis Gentry

20 OZ DELMONTE  
**PINEAPPLE**  
59¢

1 LB DROMEDARY  
**DATES** \$1.39

KEEBLER  
**SNACK CRACKERS**  
2/\$1.29

12 OZ FISHER  
**MIXED NUTS**  
"NO PEANUTS" \$1.99

22 OZ  
**LIQUID JOY**  
79¢

FAMILY SIZE  
**CHEER** \$3.99

25 LB OUR DARLING  
**FLOUR** 99¢

WITH PURCHASE OF \$10.00 OR MORE

16 OZ MRS ALISONS  
**CHRISTMAS COOKIES** \$1.09

6-32 OZ REGULAR OR DIET  
**DR PEPPER**  
\$1.19

PLUS DEPOSIT

GALLON TREE TOP  
**APPLE CIDER** \$2.99

SCHILLING  
**POULTRY SEASONING**  
49¢

SCHILLING  
**GROUND SAGE** 65¢

15 OZ CINCH  
**CORNBREAD MIX**  
3/\$1.00

8 OZ RED  
**MARASCHINO CHERRIES** 59¢

NABISCO SNACK  
**CRACKERS**  
65¢

12 OZ NABISCO  
**VANILLA WAFERS** 2/\$1.29

**30% OFF ON ALL CHRISTMAS PAPER BOWS—ORNAMENTS AND TAGS**

6 OZ CARNATION  
**TUNA** 69¢

MILKY WAY OR SNICKERS  
**CANDY BARS** 8/\$1.00

10 OZ HOLSUM  
**STUFFED OLIVES** \$1.29

16 OZ VLASIC  
**SWEET PICKLES** 89¢

19 OZ GEBHARDTS  
**CHILI** 79¢

15 OZ GEBHARDTS  
**REFRIED BEANS** 3/\$1.00

15 OZ GEBHARDTS  
**TAMALES** 2/79¢

30 OZ GEBHARDTS  
**TAMALES** 79¢

15 COUNT CHINET  
**COMPARTMENT PLATES** 69¢

75 SQ. FT.  
**REYNOLDS WRAP** 99¢

13 OZ SWANSONS  
**CHICKEN BROTH** 4/\$1.00

7 OZ STOVETOP  
**CORNBREAD STUFFING MIX** 59¢

1 LB IMPERIAL  
**POWDERED SUGAR** 3/\$1.00

30 OZ LIBBY'S  
**PUMPKIN PIE MIX** 69¢

12 OZ TOM SCOTT  
**MIXED NUTS** 99¢

2 LB BAG PRE-POPPED  
**POP CORN** \$2.69

12 OZ NESTLES  
**CHOCOLATE CHIPS** \$1.59

7 OZ SMUCKERS  
**MARSHMALLOW CREME** 2/99¢

32 OZ BLACKBURN'S  
CRYSTAL WHITE  
**SYRUP** 59¢

14 OZ  
**EAGLE BRAND MILK** 79¢



# IF It's Results You Want-It's CLASSIFIED ADS You Need

## HOME FOR SALE

FOR SALE: Several good two and three bedroom houses. Bond Real Estate. Contact Wilson Bond, 983-2151 or 983-3573. tfc

SEVERAL nice two and three bedroom homes for sale. Loans can be arranged. Call Hale Insurance and Real Estate at 983-3261. tfc

FOR SALE: Three bedroom, two bath brick home. Den, living room, built-ins. Call for appointments. Doyle Warren, 119 Mae Ave. 983-5256 tfc

FOR SALE: Two bedroom house. New carpet, doors, acoustical ceilings and light fixtures. Central heat, refrigerated air, two 40-gallon electric hot water heaters, walk-in closets, fenced back yard. 603 W. Locust, Lockney. 652-2689. Ltfc

TWO BEDROOM house for sale in Floydada. Needs repair. Call after 3 p.m. 652-2590. LTFc

FOR SALE: 2 bedroom house, partly carpeted, on corner lot. 1102 S. Main Floydada. James Lee Nichols. 983-2646 or 983-3144 tfc

FOR SALE: 2 bedroom house. Fully carpeted, wall heaters, ready to live in. Call Mrs. Porter Finley. 983-3871 or 983-2493. tfc

OUR HOME FOR SALE 211 West Ollie St. Appointment Only. Pike Hanna 1-14

Several 2 and 3 bedroom houses for sale. King Real Estate. 983-2881 tfc

TOTAL ELECTRIC Three bedroom brick home on J.B. Avenue. New carpet throughout, fenced back yard, fruit trees, storage shed. Call for appointment. 983-5203 tfc

COUNTRY HOME— 1975 sq. ft. brick, three bedroom, two bath plus basement, two car garage. Acreage available on paved road. Eight miles south of Lockney. Call 806-293-8785 12-17p

HOUSE FOR SALE: 3 bedroom, 2 bath, den with fireplace, living and dining room combination 983-3469 615 W. Miss. 12-30c

Two bedroom house moving and will sacrifice. Newly remodeled, carpet, paneled. Real Bargain. 514 W. Mississippi. 983-3366 or 983-3676 tfc

**GOLD BUYERS SELLERS**  
AFFILIATED SUPPLY, INC.  
#165 Mellie Esperson Bldg.  
Houston, Texas 77002  
713-225-4646  
Buyers/Sellers - Licensed

**TURNER REAL ESTATE**  
983-2635 Farms-Ranches Floydada, Texas

**BUDGET MINDED?  
BEST BUY IN FLOYDADA**  
Two bedroom, floor furnace, one year old carpet living & dining room. Large corner lot room for another building site, 401 N. 1st. \$8000.00 Cash call Cecil Hagood 983-2312 or Dorsey Warren 983-5122 for appointment. TFC

**MORTON BUILDINGS**  
Plainview Jerry Smith  
Lockney  
Floydada Gene Straw  
MINTADOR  
For information call or write...  
**MORTON BUILDINGS INC.**  
Box 1928 Plainview, Texas  
Phone 806-293-4386

## FARMS AND ACREAGE

WANTED TO BUY irrigated or dryland farm in Floyd or surrounding area Write Box XRO, c/o Hesperian, Box 700, Floydada. tfc

FOR LEASE: 387 acres, most in cultivation. Two irrigation wells. East Afton Com. Call 983-5370 12-17p

## GARAGE SALE

GARAGE SALE: Eddie Foster, 3 1/2 miles west of Lockney on Highway 70 and 1/4 mile north. L12-28p

## CARDS OF THANKS

Words cannot express our sincere thanks for friends who stand by in a time of grief.

We want you to know we appreciate each kind word, card, food and concern for the loss of our husband, father and brother.

The family of Bill Culpepper

## NOTICE

NOW OPEN A-1 Pet and Grooming professional grooming, all breeds-no tranquilizers 821 Broadway, Plainview, Texas 293-3557 tfc

**Can You Use Some Extra Money Let Us Help!!!!**  
WE BUY SCRAP IRON, OLD JUNKERS, AND FREE PICKUP  
Call 983-5277

**Big Savings -Up to 25% discount- Big Protection Farmers Texas Homeowners Policy**  
SAM A. SPENCE  
112 W. MISSOURI  
PHONE 983-2881

## HELP WANTED

Need for the Floydada area, distributor for the Amarillo Daily News. Excellent part-time job for teenager, housewife, or retired person. For more information contact Texas Employment Commission, Bob Hambright, 983-2361 tfc.

Floydada Nursing Home is now taking applications for nurses aides. Apply at the Nursing Home. tfc

HELP WANTED- Part-time bookkeeper, general knowledge of double-entry bookkeeping, payroll, filing. Experience required. Approximately four hours per day. Apply at superintendent's office, Lockney Independent School District. L12-21c

"Homeworkers needed in this area to lace leather goods at home. Earn \$150.00 per week. No experience necessary. Send \$1.00 (refundable) and long stamped envelope to: Davis Enterprises, 1100 1/2 Oak Street, Kingsport, Tennessee 37660". L12-21p

HELP WANTED. Spray application applicator, experience required, wages negotiable. By appointment only. 806-373-6801 L12-17p

Solid Sales Opportunity exists in the Floydada area. National company needs two District Sales Managers. Sound sales background preferred, but will consider self-starter whom we can train at our home office. Must be willing to work and learn all areas of our business. Personal interview only. Male or female may apply. This is not insurance. CALL COLLECT for Harold Lane (806) 293-4181, Sunday 5:30 to 8:00 and Monday 8:00 to 8:00. L12-17p

**FARM MACHINERY**  
24 Steel Cotton Trailers 24' long x 8' wide x 9' high Cobey and Big 12 Chassis. Call before: 7:00 a.m. after: 9:00 p.m. 745-1116 LTFc

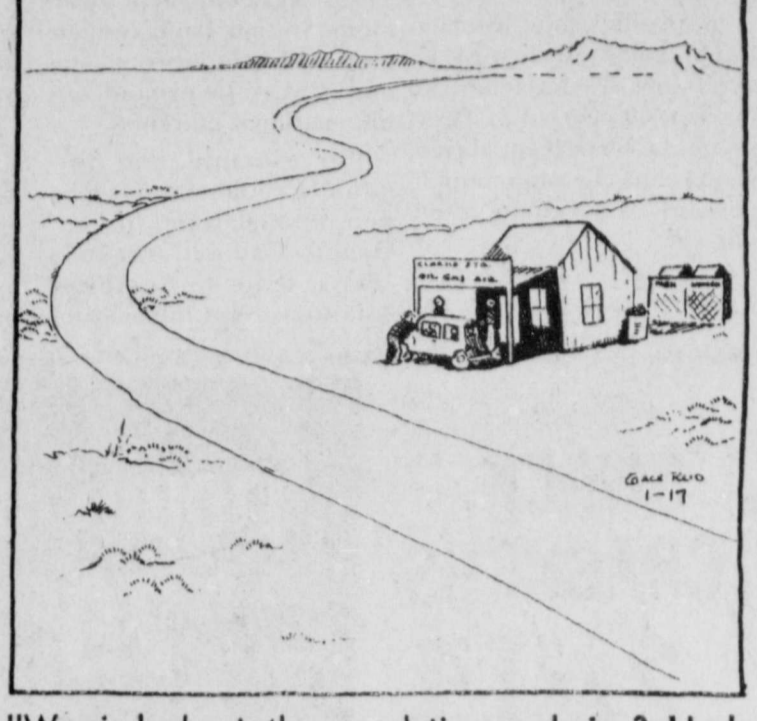
**NORRELL TRACTOR PARTS** for tractor and irrigation supplies and accessories. tfc

**Are You Interested In A Verse by Verse Study of the Bible?**  
If so, You are invited to attend a Non-denominational Bible Class  
Each Sunday at 10 a.m.  
In the main auditorium of the First Baptist Church  
Taught by Dr. Floyd Bradley, Pastor

**FLOYD COUNTY ABSTRACT CO.**  
Abstracts Of Title  
Title Insurance  
Verna L. Stewart  
Owner, Manager  
217 W. California 983-3728  
Floydada, Texas

**STORAGE SPACE**  
BOATS, FURNITURE, ANYTHING, ETC. BY THE MONTH OR SIX MONTH 10% DISCOUNT.  
**WEST TEXAS MINI STORAGE**  
983-3573 OR 983-2151

## COW POKES By Ace Reid



"Worried about the population explosion? Heck no, around here our echos don't even come back!"

THIS FEATURE SPONSORED BY  
**Floydada Real Estate & Insurance Agency**  
AUTO, FIRE & FARM INSURANCE  
Jim Word — — — Phone 983-2360

IN APPRECIATION FOR THE PAST YEAR'S BUSINESS—  
**Merry Christmas and Happy New Year**  
Ike Tickle  
TT Enterprises  
LTFc

**FARMS-RANCHES-CITY PROPERTIES- BUSINESS LEASES-LOANS**  
**B. B. WILKES BROKER REAL ESTATE**  
100 S Main, Lockney Barry Barker, Solicitor  
Barker Insurance Agency-652-2642  
IF IT IS INSURANCE -SEE-  
**BARKER INSURANCE AGENCY**  
LIFE-FIRE-CASUALTY-HOSPITAL

**TREFLAN — 5 gal. \$113.00 CASH PRICE**  
Other Chemicals Comparatively Priced  
**LONE STAR CHEMICAL, INC.**  
Office 652-2761  
Deanie Henderson 652-3434 L-tfc

**Diamond Industrial Supply Co., inc.**  
Phone Days 296-7418 Nights 296-1200 or 296-7828  
1014 Broadway Plainview, Texas  
Chain U-joints  
Sprockets Oil Seals  
V-belts O-rings  
Sheaves Wisconsin  
SKF BCA Timken Bower  
Cotton Stripper Brushes & Bats  
"We Appreciate Your Business More" L-tfc

**There's still time to order from Sears for Christmas delivery**  
Sears  
100 S. MAIN FLOYDADA, TX OWNED AND OPERATED BY SUE WILLIAMS  
WE WANT YOU TO KNOW—  
We sell all kinds of Good-year tires...tractor, auto, truck, a good tire, good service. Best deals in West Texas. Truck winch and hauling service. BABE'S SERVICE CENTER, Floydada. tfc

## FOR SALE

FOR SALE: Country Club membership. 983-5256 tfc

FOR SALE: 1964 Ford church bus. Good condition, reasonable price. Call 983-5041 or come by 202 Marivena, Floydada. 12-31p

FOR SALE: Bale Hay. 983-5026 12-21c

**JAPANESE FRUIT CAKE**  
large 4-layer \$10.00; Regular 2-layer \$5.00; Loaf unfrosted \$3.00 Contains spices, dates, maraschino cherries, and nuts; with filling of pineapple, coconut, orange and lemon juice. Call Betty Goen 652-3180 12-17p

FOR SALE: Gas heaters, 1-45,000 BTU, 1-150,000 BTU, 1 box spring with mattress, 1 large chair. 983-3305 tfc

FOR SALE: Thomas playmate organ with automatic rhythm and fancy voice. 983-2967 12-24p

## BUSINESS SERVICES

C-D-J 86 7-day service, car wash, oil change. Gas service, U-haul rentals. Located on Matador hwy. 983-2601.

C-D-J INSULATION can help save your dollars. For information call 983-2601.

**INSULATION**  
Fire-Resistant. Installed and Guaranteed. MARR Insulation Co. Lockney 652-3593. Ltfc

**SHGP FLOYD COUNTY FIRST!**

**FOR BETTER CONCRETE**  
CALL CALLWAY READY-MIX 652-2224 LOCKNEY  
PLAINVIEW HIWAY ALSO  
WHITE CALICHE ROCK FOR SALE



**Auto Accidents DO Happen...**  
If one happens to you, be protected. Our car insurance offers coverage to meet your special needs — repairs to personal liability.

**BAKER Insurance Agency**  
127 W. Calif. Ph. 983-3270

Tommy Assiter  
206 W. California  
Phone 806-983-2511  
**Southwestern Life**  
Person-to-person service for 75 years  
**PROTECT**

## For Sale

FOR SALE: New white gas stove, used three months \$220; small dinette set \$30; clothes dryer \$25.00. Call 983-5193 after 5:30. 12-17c

FOR SALE: 4 in. Green pump complete. 240 ft. setting. Same as new Dorsey Baker Ltfc.

**FEET TIRED?** Try Mason Shoes with "Velvet-eez" air-cushioned insoles. Keith Emert, 652-3116. LStfc

**CONTROL HUNGER** and lose weight with New Shape Diet Plan and Hydrax Water Pills. At Byrd Drug. L2-8p

FOR SALE: RCA VIDEO TAPE RECORDER. Will tape up to 4 hrs. of your favorite TV shows while you are away from home. Save \$200.00 off retail. Great gift for Christmas. Call 983-2825. 12-17p

## WANTED

Year around farm job wanted. Would like to live in my own home. Experienced in 6-8-12 row equipment. Phone 983-2797 12-24p

WANTED: Year round farm hand, must be experienced and dependable. House and utilities furnished on pavement. Must furnish references. Phone 983-2740 tfc

**SMALL JOBS WANTED**  
Carpenter, painting, odd jobs Call 983-2294 after 6 p.m. tfc

WANTED Wheat Pasture 983-3445 1-21p

**DAN'S AUTO SERVICE**  
DAN TEUTON, Owner  
Specializing in Automatic Transmission, Motor Tune-Ups, Auto Air Conditioning.  
General Repair  
We Have A BRAKE LATHE to handle all passenger car brake drums. See us for complete brake service.  
Phone 652-2462

**LEGAL NOTICE**  
NOTICE TO BIDDERS  
The City of Floydada, Texas will receive sealed bids, at the office of City Secretary at 114 W. Virginia until 5:00 p.m., January 9, 1979 and then opened and publicly read at the City Council meeting at 7:30 p.m. in the meeting room at City Hall for the following equipment to be delivered FOB, Floydada, Texas:  
One (1) 1979 Ford C900, GMC W7N042 or Chevrolet W7N042  
175 Inch wheel base  
Tilt Cab, Standard - One (1) bucket seat for driver  
Color - White  
61 Amp Alternator  
Heavy Duty battery  
50 Gallon Fuel Tank  
Extra Colling - Heavy duty radiator  
Engine - 427 Cu. in. V-8 - minimum  
Oil Bath cleaner  
Power Steering  
Transmission - Allison Automatic MT 653 with Hayden Pre-cooler  
Rear Axle - 22,000 lbs.  
Rear Springs - 10,400 lbs.  
Front axle - 12,000 lbs.  
Fresh air heater and defroster  
Dual West Coast Mirrors  
Full Air brakes  
10 x 20 12 ply regular front and rear tires  
Cast steel spoke wheels  
Frame - Reinforcement type  
Front tow hooks  
AM Radio  
INSTRUCTIONS:  
1. Please price all items listed above less all discounts.  
2. Exemption certificates will be issued upon request; by the City Secretary.  
3. The City Council of the City of Floydada, Texas reserves the right to accept or reject any or all bids submitted.  
Parnell Powell Mayor  
Jimmie Lou Stewart City Secretary 12-17c

## CLASSIFIED RATES

CLASSIFIED ADVERTISING RATE: 10 CENTS PER WORD FIRST INSERTION; 7 CENTS PER WORD EACH SUBSEQUENT INSERTION. MINIMUM CHARGE \$1.00. CLASSIFIED DISPLAY RATE: \$1.30 PER COLUMN INCH. CARD CO. THANKS: \$1.50.

## AUTOMOTIVE

FOR SALE: 1967 Ford pickup. Auto. Air. Extra good condition. \$995. 983-2113. 12-28c

FOR SALE: 1975 Blue Monte Carlo, loaded low mileage. 983-3049 after 6 weekdays. 12-14p

FOR SALE: Clean 1973 Oldsmobile Cutless supreme 2 door with cruise, radio, tape. Phone 983-3888 12-21p

FOR SALE: One 1969 Chrysler New Yorker and one 1966 Chrysler New Yorker. Call 652-3731 Ltfc

FOR SALE: 1972 98 Olds, 4 door, tilt, cruise, tape deck. Ed Wester, 983-3430 tfc

FOR SALE: 1975 808 Mazda 4 door White Station Wagon. Piston engine Good, low mileage. 296-5079 L12-24c

## LOST & FOUND

LOST - Wallet - In Floydada, Blue and Brown, Would like pictures and license back. 983-2986 Janie Cortinas 12-17p

LOST, Black billfold in Lockney. Keep money return billfold to Temp Phillips. 652-3851 L12-17p

**Kirby**  
Vacuum cleaners, new and rebuilt. 1 yr. guarantee. Parts, sales and service. Prices begin at \$124.50.  
Parker Home Furnishings in Lockney. 652-3315. Ltfc

Each available store...  
PRIC 1978 \$1  
D F  
Folge coffee  
CRE WHT CUT FRE GRE  
PAS CI GR BR SV PO BEA HOI COL LIVE





# Yuletide Savings



"Each of these advertised items is required to be readily available for sale at or below the advertised price in each store, except as specifically noted in this ad."  
 PRICES GOOD DECEMBER 17 THRU DECEMBER 23, 1978.

**\$1,000 WINNER**  
 CATHERINE MURRAY  
 EL PASO, TEXAS

Play Bingo Magic! Win Up to  
**\$5,000.00!**

**Odds Chart**  
 These odds are in effect for one month after start. After one month updated odds will be posted in all participating stores and in Newspaper ads. Use Series 8M30 Tickets only for all games on the Collector Card. Games must be played subject to Rules on the Collector Card.  
 Game program may be repeated by popular demand. The total number and worth of prizes to be awarded will depend upon the number of winning tickets actually redeemed.



FULLY COOKED SHANK PORTION  
**SMOKED HAM** **\$1.19** LB.

FULLY COOKED WHOLE OR HALF  
**SMOKED HAM** **\$1.49** LB.

WHOLE OR HALF RANCH BRAND BONELESS BUFFET  
**HAM** **\$2.29** LB.  
 COUNTRY PRIDE BONELESS TURKEY **HAM** **\$1.99** 1 1/2-3 LBS.

DAILY  
 8 a.m. - 8 p.m.

SUNDAY  
 9 a.m. - 8 p.m.



Barney's Butcher Shop Sale

BE SATISFIED WITH PIGGLY WIGGLY MEATS OR DOUBLE YOUR MONEY BACK!



USDA GRADE A  
**BOX-O-CHICKEN**  
 or SPLIT FRYERS  
 WITH BACKS & GIBLETS

**39c** LB.

USDA HEAVY WESTERN BEEF BONELESS RUMP OR BOTTOM ROUND  
**ROAST** **\$1.79** LB.

LEAN MARKET STYLE  
**SLICED BACON** **\$1.29** LB.

DRIP - ELEC. PERK - REGULAR  
**FOLGER'S COFFEE**

1-LB. CAN **\$2.48**

PIGGLY WIGGLY  
**WHIPPED TOPPING**

**38c** 9-OZ.

**DEL MONTE VEGETABLES**

CREAM STYLE OR WHOLE KERNEL CORN CUT GREEN BEANS FRENCH CUT GREEN BEANS  
**3 FOR \$1**

PLAINS DAIRY  
**EGG NOG**

SMOOTH-CREAMY GREAT FOR HOLIDAY ENTERTAINING  
**79c** QT.

PIGGLY WIGGLY LARGE  
**EGGS** **73c** DOZEN

AUTOMATIC DISHWASHING DETERGENT  
**CASCADE** **\$1.99** 65-OZ.

HEAVY DUTY DETERGENT A QUARTER CUP DOES IT!  
**FRESH START** **\$2.49** 42-OZ.

Stan's Produce Sale!

PASCAL  
**CELERY** **28c** EA  
**GREEN ONIONS** 2 BU **38c**  
**BROCCOLI** LB. **48c**  
**SWEET POTATOES** 3 LBS. **98c**  
 BEAUTIFUL HOLIDAY **POINSETTIAS** 6" POT **\$4.95**  
 COLORFUL-LIVE **POTTED MUMS** 6" POT **\$3.99**

SWEET NEW CROP CALIFORNIA NAVEL  
**ORANGES** 10 FOR **98c**  
 WASHINGTON STATE BULK RED DELICIOUS **APPLES** **38c** LB.  
 BULK WALNUTS or SHELL MIXED NUTS **\$1.19** LB.

JOHNSTON PUMPKIN PIE 26 OZ. **79c**

MERICO CRESCENT ROLLS 8-OZ. **49c**

BIRDSEYE LITTLE EARS CORN ON COB 8 PK **99c**

PET RITZ PIE SHELLS 2 PK 10 OZ. **49c**

CAMPFIRE MARSHMALLOWS 4 FOR **\$1**

DEL MONTE FRUIT COCKTAIL 17 OZ. **53c**

LIBBY'S TOMATO JUICE 46-OZ. **48c**

PIGGLY WIGGLY BROWN N SERVE ROLLS 12-CT. **2/79c**



**DOUBLE STAMPS EVERY WEDNESDAY**

We give Double Gold Bond Trading Stamp every Wednesday with any purchase of \$2.50 or more excluding cigarettes.





Santa Letters

Dear Santa,  
We tried hard to be nice this year. Will you please bring us the toys beside our names?

Jami — Barbie and Drowsie Doll.

Misti — Rub-A-Dub Dolly and bicycle

Kalli — Doll and Bicycle.

Lesha — Ball and bicycle.

April — Rub-A-Dub Dolly.

Jayna — This and That Baby.

Lacie — Baby Doll, Candies and gum.

Marcia — Baby This and That, Alfie and Whoopsie Baby.

Moraima — Books and Toys.

Jodee — Snuggle Doll and Candy.

Toby — Spiderman and motorcycle.

Frankie — Spiderman and Stretch Monster.

Quincy — Electric football set.

Terrance — "Hulk" and Spiderman.

Tanner — Toy Cotton Stripper and a truck.

Casey — Truck and a Van.

Alex — Trumpet and a play Santa Claus.

Paxton — A pair of boots and Spiderman.

Micheal — Spiderman, helicopter and flashlight.

James — Airplane and Truck.

Jason — Telephone and Truck.

Cody — Drum, Trumbone, and a Whirlwind Football set.

Leslie — Electric Train set and a Nerf Rocket.

Tad — Football suit, helmet and shoes.

Rance — Spiderman and King Kong.

We Love You Day Care Kids

P.S. Please remember all the workers, babies and the 2 and 3 year olds.

To: Santa Claus,

I want a Dancerralla doll for Christmas. And my brother Raymond wants a Nurf football and a basketball.

Thank you,  
Billie Ann Garza  
and Raymond Anthony Garza

Dear Santa Claus,  
My name is Shelly Bethel. I'm four years old and have a sister Jamie who is nearly two.

I would like to have a soft doll for Christmas. Jamie would like a teddy bear.

Also would you please leave my dogs, Bobbie & Doddie a bone.

I love you Santa Claus.

Love  
Shelly & Jamie Bethel  
Shelly

Dear Santa Claus & Rudolf,  
How are you and your reindeers and Mrs. Santa? I'm being great and nice.

I want skateboard, and a lego set, and snuggles (doll), and a stuffed Bugs Bunny, Raggedy Ann and Andy and Baby wet and care, and a teddy bear, and a tiger, that all.

Thank you  
Kathv

Dear Santa,  
I have tried to be a good boy. I would like an electric train, and loading construction set.

Love  
Jeffrey Sutterfield  
Age 5

Dear Santa,  
I have been a good girl this year. I am going to White River for Christmas look for the brightest light. I want Tuff-Stuff Shoppin' Basket, Tuff-Stuff Doll Stroller, Baby Beth, Calculator & Pierced Earrings.

Love,  
Jennifer Collins

P.S. And Don't forget my cousin Billy Paul who will be with me Christmas.

Dear Santa Claus,  
My name is Tiffany. I am 6 years old and am in the first grade. I would like you to bring me a doll, new magic markers, new clothes, a new paint book, I will leave you some cookies and milk.

Thank you,  
Love,  
Tiffany Reams

For The Finest In Men's Fashion,  
See Our New Lines From....  
**Curlee.**  
**Brown's**  
DEPARTMENT STORE

**RCA** For The Best  
Price & Service On RCA T.V.'s  
See  
**MIZE PHARMACY & T.V.**  
102 S. MAIN LOCKNEY 652-2435

JERRY UEMER'S  
**TEXAS INSULATION SYSTEMS**  
"Insulation Doesn't Cost. It Pays!"  
RESIDENTIAL, COMMERCIAL, INDUSTRIAL, AGRICULTURAL  
IN LOCKNEY TX 652-3344  
IN FLOYDADA 983-5377

SUNDAY 12/17/78

AM	WTCG CH. 17 Atlanta Cable 4	KTXT CH. 5 Lubbock Cable 5	PTL CH. 6 Charlotte Cable 6	KMCC CH. 28 Lubbock Cable 7	WGN CH. 9 Chicago Cable 8	KCBD CH. 11 Lubbock Cable 11	KLBK CH. 13 Lubbock Cable 13
7:00	Three Stooges	No Programs	Sunday Celebration	Praise the Lord Club	News Buyer's Forum What's Nu	Jimmy Swaggart Day of Discovery	This Is the Life Capitol Eye
8:00	Lost in Space	"	Rex Humbard	Jimmy Swaggart Prophecy Newsreel	Mass for Shut-Ins Heritage of Faith	Oral Roberts Methodist Church	James Robison Presents Amazing Grace
9:00	Hazel	"	Old Time Gospel Hour	Home Show	Issues Unlimited Abbott and Costello	"	Old Time Gospel Hour
10:00	Mine	"	Praise the Lord Club	"	Tarzan	"	Sunday School
11:00	"	"	"	Baptist Church	Cisco Kid	Better Life Children: TV & Change	Tom Landry NFL Today
12:00	Maverick	No Programs	Oral Roberts	Directions	Movie: 'Charlie Chan in the Chinese Quarter'	Homer Formby Show Marcus Welby, M. D.	NFL Football: Dallas at
1:00	NBA Basketball: Atlanta at	"	"	NCAA Bowl Preview Fanfarria Falcon	Ring	Porter Wagoner	NY Jets
2:00	New York	"	Amazing Grace	Si Se Puedel	Costello Meet the Mummy	Nashville Music NFL 78	"
3:00	Movie: 'The Harlem Globe'	"	Service Club PTL	Wrestling	Movie: 'Union Pacific'	NFL Football: San Diego at Houston	NFL Football: Minnesota at
4:00	trotters'	Firing Line	"	Pop! Goes the Country Issues and Answers	"	"	Oakland
5:00	Championship Wrestling	Christmastime with Mister Rogers	Larry Jones Ministry Human Dimension	Lay Witness	"	"	"

SUNDAY 12/17/78

PM	WTCG CH. 17 Atlanta Cable 4	KTXT CH. 5 Lubbock Cable 5	PTL CH. 6 Charlotte Cable 6	KMCC CH. 28 Lubbock Cable 7	WGN CH. 9 Chicago Cable 8	KCBD CH. 11 Lubbock Cable 11	KLBK CH. 13 Lubbock Cable 13
6:00	Star Trek	I Just Can't Hear Victory Garden	James Robison Presents Kroez Brothers	Who Are the DeBoits?	Program Cont'd Next Step Beyond	Stubby Pringle's Christmas	60 Minutes
7:00	Movie: 'Sorry, Wrong Number'	Simple Gifts: Six Episodes for Christmas	Ralph Wilkerson 10 Commandments	Battlestar Galactica	In Search of... NBA Basketball	'The Winds of Kitty Hawk'	All in the Family
8:00	"	Masterpiece Theatre: The Duchess of Duke St.	Praise the Lord Club	Movie: 'The Nativity'	Chicago at Milwaukee	"	Kaz
9:00	Dragnet	G. E. D.	"	"	"	Sword of Justice	Dallas
10:00	Ruff House	Bach Festival	"	"	"	"	"
11:00	Open Up	"	Calvary Temple	News	News	News	News
12:00	"	Sign Off	"	Lottie D.	Movie: 'Holiday'	Life Goes to War	Bill Dance Outdoors

MONDAY - FRIDAY

AM	WTCG CH. 17 Atlanta Cable 4	KTXT CH. 5 Lubbock Cable 5	PTL CH. 6 Charlotte Cable 6	KMCC CH. 28 Lubbock Cable 7	WGN CH. 9 Chicago Cable 8	KCBD CH. 11 Lubbock Cable 11	KLBK CH. 13 Lubbock Cable 13
7:00	Leave it to Beaver Hazel	No Programs Weather	Accent on Music	Good Morning America	Ray Rayner and Friends	Today in Texas Today	CBS Morning News
8:00	Lucy Show Green Acres	Over Easy Dick Cavett Show	Varied Programs	"	"	"	Captain Kangaroo
9:00	Movie	Mister Rogers Neighborhood Varied Programs	Tammy Faye Show	Phil Donahue	Movie	People Place Jeopardy	Sunshine Sally Price Is Right
10:00	"	"	Praise the Lord Club	Happy Days	"	High Rollers	"
11:00	Love, American Style Movie	Sesame Street	"	\$20,000 Pyramid Eleven-Thirty	Phil Donahue	America Alive	Young and the Restless Search for Tomorrow
12:00	"	Sign Off	Gerald Derstine Varied Programs	All My Children	Bozo's Circus	News	News
1:00	I Love Lucy	"	"	Praise the Lord Club	Bewitched	"	"
2:00	Speed Racer Flintstones	Lilies, Yoga And You Villa Alegre	Dr. Scott on Hebrews	General Hospital	Flintstones	"	"
3:00	Space Giants Gilligan's Island	Sesame Street	"	Edge of Night	"	Hollywood Squares Gilligan's Island	Match Game
4:00	I Dream of Jeannie Beverly Hillsbillies	Mister Rogers Neighborhood Electric Company	Good News	Little Rascals Brady Bunch	Gilligan's Island I Dream of Jeannie	Beverly Hillsbillies Mayberry, R.F.D.	My Three Sons
5:00	Andy Griffith My Three Sons	Varied Programs	Accent on Music	ABC News	Andy Griffith My Three Sons	Get Smart NBC News	"

MONDAY 12/18/78

PM	WTCG CH. 17 Atlanta Cable 4	KTXT CH. 5 Lubbock Cable 5	PTL CH. 6 Charlotte Cable 6	KMCC CH. 28 Lubbock Cable 7	WGN CH. 9 Chicago Cable 8	KCBD CH. 11 Lubbock Cable 11
6:00	Carol Burnett and Friends Sanford and Son	Bix Beiderbecke MacNeil-Lehrer Rept.	Tammy Faye Show Adventures in Life	News	Dick Van Dyke	News
7:00	Let's Go To The Races Falcon Show	Evening at Symphony	Hour of Power	20/20	Carol Burnett	Little House on the Prairie
8:00	Movie: 'Raw Wind in Eden'	"	Praise the Lord Club	NFL Football: New England at Miami	Hee Haw	"
9:00	"	"	"	"	Lawrence Walk	"
10:00	Hogan's Heroes Movie: 'Tokyo Joe'	Dick Cavett Captioned ABC News	Good News Abundant Living	"	News	News
11:00	"	Sign Off	Accent on Music	Untouchables	"	"
12:00	"	"	"	Sign Off	"	Tomorrow

TUESDAY 12/19/78

PM	WTCG CH. 17 Atlanta Cable 4	KTXT CH. 5 Lubbock Cable 5	PTL CH. 6 Charlotte Cable 6	KMCC CH. 28 Lubbock Cable 7	WGN CH. 9 Chicago Cable 8	KCBD CH. 11 Lubbock Cable 11
6:00	Carol Burnett and Friends World at War	Bix Beiderbecke MacNeil-Lehrer Rept.	Tammy Faye Show Celebration	News	Dick Van Dyke	News
7:00	"	Live From the Met: Tosca	You'll Love It Oral Roberts	Rudolph's Shiny New Year	Carol Burnett	Bear Who Slept Xmas Once Upon a Starry Night
8:00	Atlanta at Chicago	"	Praise the Lord Club	Carpenters... A Christmas Portrait	Movie: 'Desperadoes'	"
9:00	"	"	"	"	Starky and Hutch	Mac Davis Special: Christmas Odyssey 2010
10:00	Hogan's Heroes Movie: 'Ball Of Fire'	Dick Cavett Captioned ABC News	Good News Christ is the Answer	News Best of Donahue	News Movie: 'Constantine'	News Best of Carson
11:00	"	Sign Off	Accent on Music	"	And The Cross	"
12:00	"	"	"	"	Harrowhouse	Nightbeat Tomorrow

WEDNESDAY 12/20/78

PM	WTCG CH. 17 Atlanta Cable 4	KTXT CH. 5 Lubbock Cable 5	PTL CH. 6 Charlotte Cable 6	KMCC CH. 28 Lubbock Cable 7	WGN CH. 9 Chicago Cable 8	KCBD CH. 11 Lubbock Cable 11
6:00	Carol Burnett and Friends Sanford and Son	Bix Beiderbecke MacNeil-Lehrer Rept.	Tammy Faye Show Gospel Hour	News	Dick Van Dyke	News
7:00	Hall of Fame Game: Texas A & M vs.	Christmas Snows/Winds Christmas Celebration	Rex Humbard	Eight Is Enough	Carol Burnett	Dick Clark's Live Wednesday
8:00	Iowa State	Mourning Becomes Electra Part 3	Praise the Lord Club	Charlie's Angels	Chicago at San Antonio	Movie: 'Ishi'
9:00	"	Wonder Anew	"	Vegas	"	"
10:00	Hogan's Heroes Movie: 'Angela'	Dick Cavett Captioned ABC News	Good News Festival of Praise	News Bob Newhart	News Movie: 'Bells of St.'	News Tonight Show
11:00	"	Adams Chronicles	Accent on Music	Police Woman	Mary's	"
12:00	"	Sign Off	"	S.W.A.T.	"	Tomorrow

THURSDAY 12/21/78

PM	WTCG CH. 17 Atlanta Cable 4	KTXT CH. 5 Lubbock Cable 5	PTL CH. 6 Charlotte Cable 6	KMCC CH. 28 Lubbock Cable 7	WGN CH. 9 Chicago Cable 8	KCBD CH. 11 Lubbock Cable 11
6:00	Carol Burnett and Friends Sanford and Son	Bix Beiderbecke MacNeil-Lehrer Rept.	Tammy Faye Show Sharing	News	Dick Van Dyke	News
7:00	Gypsy Fever	Movie: 'Hester Street'	Old Time Gospel Hour	Mork & Mindy	Carol Burnett	Little Drummer Boy II Gift of the Magi
8:00	Movie: 'September Affair'	"	Praise the Lord Club	Barney Miller	Basketball	"
9:00	"	Sneak Preview	"	Family	"	David Cassidy Men Undercover
10:00	Hogan's Heroes Movie: 'Big Combo'	Dick Cavett Captioned ABC News	Good News Rise and Be Healed	News America 2Night	News Movie: 'Circus'	News Tonight Show
11:00	"	Sign Off	Accent on Music	Starky & Hutch	World	"
12:00	"	"	"	S.W.A.T.	"	Tomorrow

**Radio Shack**  
Makes Holiday Shopping Easier

IS NOW AT  
**RALLS AUTO PARTS**  
SHOP OUR  
**CHRISTMAS GIFT**

**S  
A  
L  
E**

808 Watts Street

253-2582

Ralls, Texas



**AFFILIATED**  
  
 W  
 THREE G. BLUE STAMP  
  
 RANCH STYLE  
 FRESH - SOFT - SMOOTH  
 TENDERCRUST  
 BREAD IS BETTER  
  
 CRAM & PASTEURIZED  
 BLENDED WITH  
 VITAMIN D  
 milk

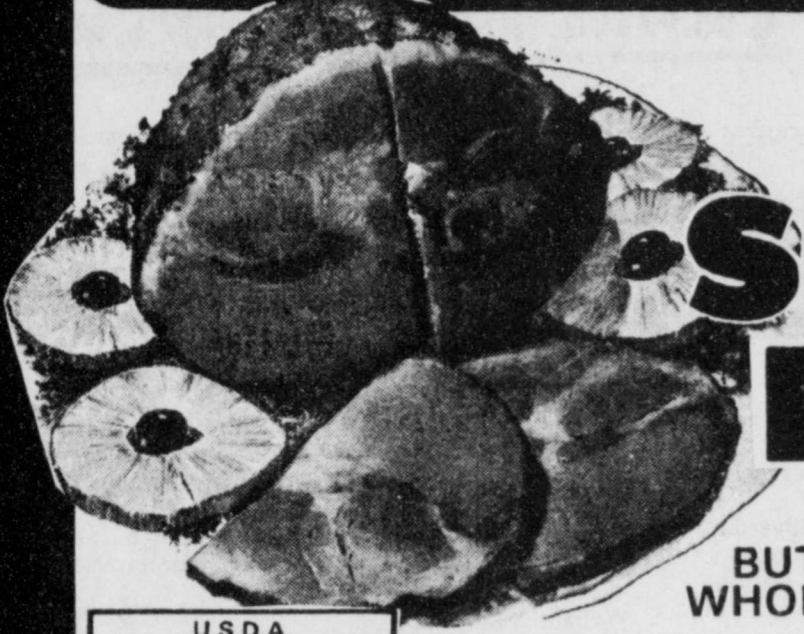
WE RESERVE THE RIGHT TO LIMIT QUANTITIES  
 PRICES EFFECTIVE DEC. 16 THRU DEC. 23, 1978  
**THOMASON**  
 VENTURE GROCERY & MARKET  
 PHONE 652-3346 LOCKNEY, TEXAS



**DOUBLE  
 STAMPS  
 MONDAY  
 THRU  
 SATURDAY**

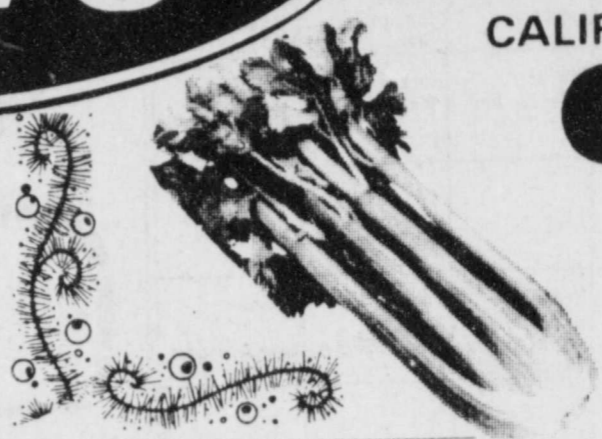


**Meat Specials**



WRIGHT'S DRY CURE  
 FULLY COOKED  
 SHANK PORTION HICKORY

**Smoked Hams \$1.39**  
 BUTT PORTION LB. \$1.49  
 WHOLE HAM 17-20 LB. AVG. LB. \$1.49 LB.



CALIFORNIA GREEN PASCAL

**Celery 29¢**

YELLOW SWEET Onions	LB.	10¢	STALK		
MARYLAND SWEET Yams	LB.	29¢	CALIFORNIA NAVEL Oranges	4 LBS.	\$1
CENTRAL AMERICAN Bananas	5 LBS.	\$1	RED DELICIOUS Apples	3 LBS.	\$1

U.S.D.A. GRADE 'A' SHURFRESH  
**Turkeys 79¢**  
 LB. 18-22 LB. AVG.  
 U.S.D.A. GRADE 'A' COUNTRY PRIDE BAKING OR STEWING  
**Hens 69¢**  
 LB.



SHURFRESH FULLY COOKED  
**Canned Hams 5 LB. CAN \$10.89**  
 SHURFRESH FULLY COOKED BONELESS  
**Half Hams LB. \$2.39**  
 ARMOUR STAR  
**Sliced Bacon 1 LB. PKG. \$1.49**  
 FRESH LEAN SEMI-BONELESS  
**Pork Butt Roast LB. \$1.39**

7-BONE  
**Chuck Roast LB. \$1.19**  
 HEAVY GRAIN FED Boneless  
**Beef Stew Cubes LB. \$1.49**  
 SHURFRESH REG./BEEF  
**Franks 12 OZ. PKG. 89¢**  
 SHURFRESH SLICED  
**Bologna REG./BEEF 12 OZ. PKG. 89¢**



32 OZ. 6-PACK  
**COKE OR 7-UP \$1.39**  
 PLUS DEPOSIT

PURE VEGETABLE  
  
**Crisco 3 LB. CAN \$1.79**  
 GLADIOLA ENRICHED  
  
**Flour 5 LB. BAG 69¢**

IMPERIAL STA-SOFT BROWN OR POWDERED  
  
**Sugar 2 LB. BAG 69¢**  
 HILLS BROTHERS  
  
**Coffee 1 LB. CAN \$2.39**

DR PEPPER  
**SKI CAP 95¢**  
 ONLY PLUS 6 BOTTLE CAPS FROM REGULAR OR SUGAR FREE DR PEPPER.  
 REDEEMABLE IN PERSON AT:  
**THOMASON GROCERY**  
 Lockney,  
 6-Pack 32 oz. Reg. or Sugar Free  
**DR PEPPER \$1.29**  
 PLUS DEPOSIT

**Grocery Specials**

BAKER'S ANGEL FLAKE Coconut	20' OFF LABEL	14 OZ. PKG.	\$1.09
ELLIS NEW CROP HALVES/PIECES Pecans		6 OZ. PKG.	\$1.19
SHURFINE FUDGE Brownie Mix		21 1/2 OZ. BOX	83¢
SHURFINE CHERRY Pie Filling		21 OZ. CAN	\$1.09
KARC LIGHT Corn Syrup		32 OZ. BTL.	\$1.19
FISHER PARTY Peanuts		12 OZ. CAN	99¢

**Dairy And Frozen Food**

SHURFRESH WHIPPING OR Sour Cream	3 1/2 PINT CTNS.	\$1
SHURFRESH Egg Nog Mix	QT.	79¢
SHURFRESH QUARTERS Margarine	2 1 LB. PKGS.	79¢
SHURFRESH Cream Cheese	8 OZ. PKG.	59¢
SHURFINE NON-DAIRY WHIPPED Topping	9 OZ. TUB	49¢
SHURFINE DEEP DISH Pie Shells	12 OZ. PKG.	53¢
MORTON Honey Buns	10 OZ. PKG.	49¢
DEL MONTE WHOLE Green Beans	3 16 OZ. CANS	\$1
SHURFINE PETIT POIS Peas	2 17 OZ. CANS	89¢
SHURFINE DARK RED KIDNEY Beans	3 15 OZ. CANS	\$1
HERSHEY'S PURE Chocolate Chips	12 OZ. PK.	\$1.29

**Health And Beauty Aids**

MENNON LOTION Baby Lotion	4 OZ. BTL.	89¢
Rolaids	12 CT. PKG. REGULAR	59¢
ANTI-PERSPIRANT DEODORANT Right Guard	3 PAK. PKG.	\$1.29
SWEETENED CONDENSED Eagle Brand Milk	14 OZ. CAN	69¢
CAMPFIRE Marshmallows	3 16 OZ. PKGS.	\$1
SHURFINE MANDARIN Oranges	11 OZ. CAN	49¢
SHURFINE WHOLE SWEET Potatoes	303 CAN	53¢
INSTANT PURE TEA Nestea	3 OZ. JAR	\$1.99
SHURFINE PAPER Napkins	2 60 CT. PKGS.	39¢
SHURFINE Vegetable Oil	38 OZ. BTL.	\$1.43
GLADIOLA MIX WHITE-YELLOW Cornbread	2 6 OZ. PKGS.	39¢
SHURFINE Bleach	1/2 GAL. BTL.	49¢
LIBBY Pumpkin	3 303 CANS	\$1



DEL MONTE WHOLE Green Beans 3 16 OZ. CANS \$1  
 REYNOLD'S HEAVY DUTY ALUMINUM FOIL 18" x 25" ROLL 89¢  
 SHURFINE STANDARD ALUMINUM Foil 3 12" x 25" ROLLS \$1