

Man Discovered In Blanco Canyon Probably Buried 700 Years Ago!

By Wendell Tooley

About a year ago the Bill Day family discovered a small cave just west of the Country Club in Blanco Canyon. As they dug into the cave they found an Apache Indian man in a sitting position, facing west.

It is estimated that the Indian was of the Apache tribe and had been buried some 700 years ago. He was possibly 40 to 60 years of age when he died, and probably had arthritis. The average life of an Indian then was around 30 to 40 years of age. His teeth were ground off as the Indians ate a lot of rocks and sand with their ground corn. With the Indian was a war paint palette, war paint, a piece of pottery, a knife, a shell necklace or bracelet. There was also a bone awl used to punch holes in skins. There was also a hair pin, a small arrow head, and a small rock used to make flint knives and spear points.

It is thought this is the oldest Indian discovered in this part of the state and skeleton may be placed in the Texas Tech museum at some later date.

The Indian is thought to be of taller stature than the average Indian of that time.

Bill Day said Friday morning that the skeleton would probably be offered to the Floyd County Museum after complete data has been compiled about it. Another amateur archeologist Jim

Word commented that the pre-historic classification of the skeleton was determined by the artifacts found in the burial site.

Anyone finding what might be a burial site, should contact some of the county's members of the Texas Archeological Society; Word, Bill, Wesley, Ricky Day, Dr. O.R. (Tommy) McIntosh to name a few, so that proper information may be recorded and digging carefully supervised.

All of the above men have attended field schools where they learned proper techniques.

Day and his family have been pursuing this hobby for some 14 years and have also found a lot of interesting artifacts in the Caprock area.

METAL DETECTOR

Bill has recently discovered an old settler's cabin in the Tule Creek area and his metal detector found some old square headed nails, a cap and ball bullet mould. He hunts old coins on court house squares where many people have gathered for years. The metal detector has discovered a 1925 silver dollar and an 1868 nickel. He has found over 2,000 coins through the years. He recently explored the courthouse square at Memphis, Texas.

He recently heard about an old gold mine near Silverton --- so he may be in the "gold business" someday.



INDIAN SKELETON is pictured before it is removed from the burial site.



DAY shows Indian skeleton to Duncan Elementary third (Staff Photo)

The Floyd County Hesperian

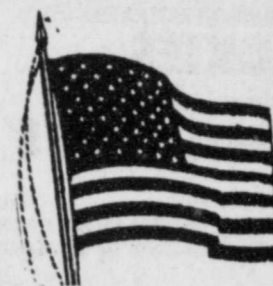
Volume 82

Floydada, Floyd County, Texas 79235

Sunday December 3, 1978

12 Pages in One Section

Numbers 97



15¢ Per Copy

Final Approval Made On Jailhouse Plans

Marvin Stiles of Lubbock meeting Thursday with Floyd

County Commissioners, county judge J.K. Holmes, county judge elect Choise Smith, and sheriff Fred Cardinal to give their final approval to the remodeling and addition plans for the county jailhouse.

The plans will now be returned to the Jail Standards Commission in Austin to

see if they meet all requirements before letting bids for the construction work.

Stiles estimated that it might be as long as 60 days before the plans would be approved in Austin.

The addition of an elevator for the jail is optional and to be determined when bids are opened.

Actually, the front outside appearance of the jailhouse will be changed very little because the addition will be added to the south side of the jailhouse. Commissioners hope to pay for the work with revenue money.

CITY, COURTHOUSE CHRISTMAS CLOSING CONFIRMED

The City offices and the Courthouse offices will be closed December 23, 24, 25, and 26 for Christmas holidays. Please arrange your business accordingly.

City Council Meeting Date Changed

Since the Floydada Rotary Club will be celebrating its 50th Anniversary on the night of December 12 the City Council's December 12 meeting will be changed to Monday night, December 11.

A public hearing has been called for this Council meeting in regard to repairing the airport runways at an estimated cost of \$28,972.00 and the public is invited to attend the meeting.

MOTORISTS NOT STOPPING FOR SCHOOL BUSES

According to a report from Justice of the Peace H.E. Porter there have been four complaints filed by school bus drivers of motorists who failed to stop when flashing red lights were flashing on school buses.

JP Porter said he had issued two \$53.50 fines.

Community Calendar

SATURDAY, DECEMBER 2
Senior Citizen Bake Sale and Bazaar. 308 E. Georgia. 9 a.m. - 12 noon.

SATURDAY, DEC. 2
9:15 a.m., Santa arrives in town to visit with children.

ART FOR HEART ticket sales at Piggly Wiggly and Buddys; sales to continue through Dec. 6.

THURSDAY thru SATURDAY DEC. 7-10
Rotary Jr. High Basketball Tournament.

THURSDAY, DEC. 7
9:30-11:30 a.m. and 2:00-4:00 p.m. SANTA LAND, Lighthouse Electric Bldg.

3:00 p.m. Drawing of winners of Art Work, First National Bank, Lockney.

3:30 p.m. Book Review by Wallene Dockery, County Library.

FRIDAY, DEC. 8
9:30-11:30 a.m. and 2:00-4:00 p.m. SANTA LAND, LEC Building.

SATURDAY, DEC. 9
9:30-11:30 a.m. and 2:00-4:00 p.m. SANTA LAND, LEC Building.

5:30 p.m., Christmas Tree Lighting, Band Concert, Sing-a-long with Band.

Xmas lighting of tree - Carolyn Cheek's 6th grade to sing; Nativity scene by Methodist Youth.

Court House Square.
MONDAY, DEC. 11
7:30 p.m., meeting of Girl Scout Cookie Chairmen, Residence of Paula Pauley.

TUESDAY, DEC. 12
50th Anniversary Banquet for Rotary Club.

FRIDAY, DEC. 15
6:00-8:00 p.m. Cancer Society Christmas Show of Homes.

SATURDAY, DEC. 16
Floydada Whirlers Square Dance Club Christmas Special. 8 p.m. Massie Activity Center, Jack Armstrong of Tulia, caller.

SUNDAY, DEC. 17
2:00-5:00 p.m. CANCER SOCIETY Christmas Show of Homes.

6:00 p.m. Candle Light Service, First United Methodist Church.

SUNDAY, DEC. 17
Band Parent Salad Luncheon & Concert 12 o'clock.

The Women's Division of the Chamber of Commerce has had good response to this calendar service. When the January calendar is published, regular meetings will be listed. If the Chamber has been made aware of those meetings. Please call Linda Matsler or Dot Word if you want the meeting dates, times, place, etc. included.

Congressman Releases Specifications

On New Lockney Post Office

Congressman Omar Burleson is pleased to announce that the U.S. Postal Service is seeking a suitable site upon which to build and lease a new Post Office building in Lockney.

The preferred area for site consideration is in or adjacent to the downtown business area. Minimum site needed is 30,000 square feet or a lot with dimensions of approximately 150' x 200'.

Property owners are asked to submit

site offerings not later than December 22, 1978 to Mr. Richard L. Heiligman, Realty Management and Acquisition specialists, Dallas Field Real Estate and Buildings Office, U.S. Postal Service, P.O. Drawer 239, Dallas, Texas 75221.

After a suitable site has been located the postal service will call for construction bids for a building that will be built with private funds and leased to the postal service over a period of 30 years.

The proposed Post Office will have approximately 4,440 square feet of interior floor space.

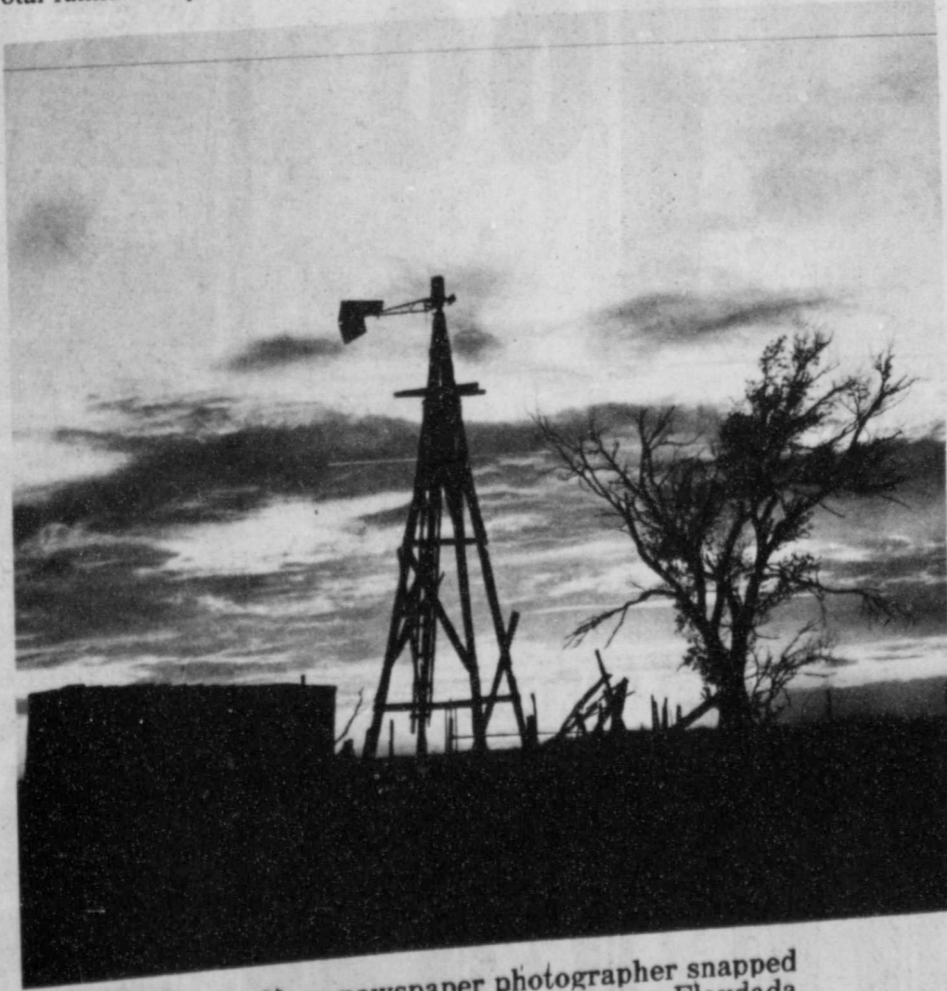
The Weather
(Courtesy of Pioneer Natural Gas Co.)

DATE	HIGH	LOW
Nov. 21	42	37
Nov. 22	59	40
Nov. 23	61	53
Nov. 24	67	47
Nov. 25	65	56
Nov. 26	55	42
Nov. 27	44	32
Nov. 28	53	27
Nov. 29	59	38
Nov. 30	61	37

Total rainfall for month: 1"
Total rainfall for year: 17.7

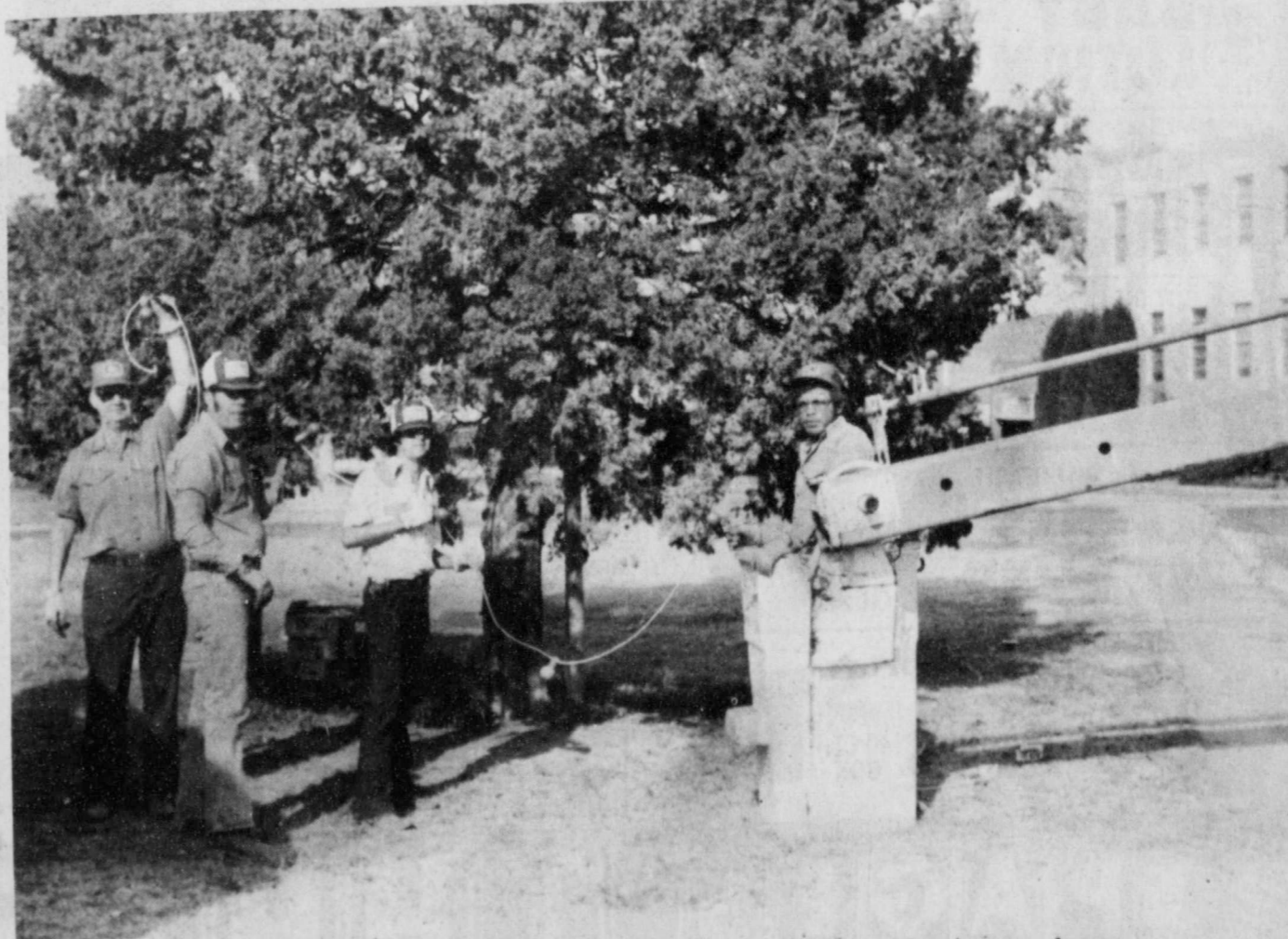
Cotton Situation

World stocks of cotton rose to an estimated 23.8 million bales as of August 1, 1978, or 2.8 million higher than the abnormally low level of a year earlier. The bulk of the increase was in the United States where, despite larger exports, a bumper crop boosted the carry-over to 5.5 million bales from only around 3 million bales on August 1, 1977. Inventories went up in other net export countries by approximately half a million bales. (Cotton - International Cotton Advisory Committee, Oct.-Nov. 1978)



SUNSET -- Your newspaper photographer snapped this autumn Wednesday evening between Floydada and Lockney.

(Photo by Jim Huggins)



DECORATING THE TREE....City Power and Light employees began decorating the tree on the southwest corner of the square with Christmas lights this week. (l to r) Clovis Myrick, Connie Galloway, Cruz Enriquez and Jesse Morales.

Whirlwinds Beat Kress 38-34

The Whirlwinds basketball team welcomed Kress here Tuesday night with a 38-34 win. They had lost to Littlefield the week before, and now have a 1-1 season record.

Tim Collins was high point man for the Whirlwinds with 12 points. He and Mac Collins each had 15 rebounds.

The Whirlwinds led throughout the game and according to coach Mike Cocanougher the entire team played

very well.

The game was tied 16-16 at halftime. **JV LOSES**

The Junior Varsity Whirlwinds lost to Kress Tuesday night 43-37 with Jeff Rainey scoring 17 points for high point honors for Floydada. It was their first game of the season and they led the first half.

The Varsity and JV. Whirlwinds and Whirlettes play in Petersburg Monday night.

KRAFT WINTER CARNIVAL

KRAFT VELVEETA
2 LB. BOX **\$2.49**

PHILADELPHIA CREAM CHEESE
8 OZ. CTN. **59¢**

SOFT PARKAY MARGARINE 2-8 OZ. BOWLS **69¢**

PILLSBURY CRESCENT DINNER ROLLS 8 CT. CAN **59¢**

KRAFT ASSTD. SQUEEZ-A-SNACK 6 OZ. PKG. **69¢**

PILLSBURY REFRIGERATED COOKIES ASSTD. ROLLS **99¢**

KRAFT MINIATURE M'MALLOWS 3 10 1/2 OZ. PKG. **\$1**

KRAFT POURABLE DRESSINGS FRENCH CHUNKY BLUE 8 OZ. BTL. CREAMY ITALIAN **59¢**

KRAFT MIRACLE WHIP 32 OZ. JAR **\$1.09**

KRAFT MARSHMALLOW CREME
7 OZ. JAR **39¢**

Bake-Rite SHORTENING 3 Lb. Can **\$1.29**

6 BTL. CTN. COKES
32 OZ. **\$1.29**
PLUS DEPOSIT

HEALTH & BEAUTY AID SAVINGS

VICKS REG.-CHERRY COUGH DROPS 2 BOXES **39¢**

MENNEN MAGIC BABY LOTION 9 OZ. BTL. **\$1.59**

MENNEN SPEED STICK 2.5 OZ. SIZE **\$1.39**

BUTANE DISPOSABLE BIC LIGHTERS EACH **49¢**

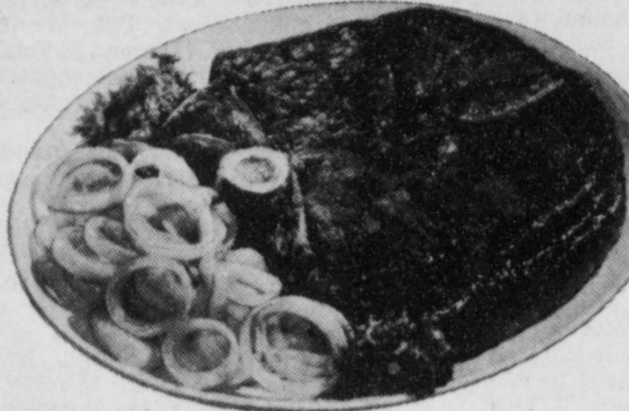
FLICKER DISPOSABLE LADIES SHAVER EACH **99¢**

SUPER-REG.-SUPER PLUS TAMPAX TAMPONS 40 CT. BOX **\$1.99**



ADD UP THE SAVINGS

SHOP THRIFTWAY FOR DAY-IN DAY-OUT VALUES!



HEAVY GRAIN FED BEEF

ROUND STEAK

\$1.69
LB.



WILSON CERTIFIED REG/BEEF FRANKS
12 OZ. PKG. **89¢**



WILSON CERTIFIED SLICED BACON
LB. **\$1.49**

HEAVY GRAIN FED BEEF SIRLOIN STEAK LB. **\$1.89**

HEAVY GRAIN FED TENDERIZED CUTLETS LB. **\$1.99**

HEAVY GRAIN FED BONELESS SIRLOIN TIP STEAK LB. **\$1.99**

HEAVY GRAIN FED BONELESS SIRLOIN TIP ROAST LB. **\$1.89**

FRESH 73% LEAN GROUND BEEF LB. **\$1.19**

RUDY'S FARM HOT-REG. WHOLE HOG SAUSAGE 2 LB. PKG. **\$3.39**

WRIGHT'S HICKORY ENDS & PIECES SMOKED BACON 3 LB. BOX **\$1.49**

GOOCH BLUE RIBBON GERMAN SMOKED SAUSAGE 12 OZ. PKG. **\$1.29**

FOLGER'S FLAKED COFFEE
13 OZ. CAN **\$1.99**

25¢ OFF LABEL TIDE DETERGENT KING SIZE BOX **\$2.19**

25¢ OFF LABEL FRESH START DETERGENT KING SIZE JUG **\$2.09**

PAPER HI DRI TOWELS JUMBO ROLL **39¢**

TRAPPEY'S JALEPENO WITH BACON PINTO BEANS 3 NO. 300 CAN **\$1**

SUNKIST NEW CROP NAVAL ORANGES
3 LBS. **\$1.00**

TEXAS STRAIGHT NECK YELLOW SQUASH LB. **43¢**

CALIFORNIA PURPLE TOP TURNIPS LB. **39¢**

GOLDEN YELLOW YAMS LB. **29¢**

TEXAS RUBY RED GRAPEFRUIT LB. **25¢**

CALIFORNIA SUNKIST LEMONS LB. **33¢**

FLORIDA FULL EARS CORN 3 EARS **39¢**

SPRING GARLAND-WATER CRESS-STRAWBERRY PATCH STONWARE DINNER PLATES
ONLY **69¢** PER PIECE WITH EVERY 3RD PURCHASE

NOW IS THE TIME TO GET EXTRA S & H GREEN STAMPS FOR CHRISTMAS

TOTAL GROCERY SAVERS

CORN-WHEAT-RICE CHEX CEREALS ASSTD. BOXES **79¢**

REG./DRIP/ELEC. SANKA COFFEE 1 LB. CAN **\$3.29**

SPICY HOT OR COCKTAIL REG. V-8 JUICE 6 PAK CANS **89¢**

STRAINED FRUITS AND VEGETABLES GERBER'S FOOD 4 1/2 OZ. JAR **19¢**

SHURFINE ALL PURPOSE FLOUR 5 LB. BAG **69¢**

NABISCO NILLA WAFERS 12 OZ. BOX **69¢**

6 BTL. CTN. DR PEPPER
32 OZ. **\$1.29**
PLUS DEPOSIT

BETTY CROCKER SUPER MOIST LAYER CAKES
18 OZ. BOX **63¢**

FROZEN FOODS

MORTON FROZEN BEEF-CHICKEN-TURKEY POT PIES 3 8 OZ. BOXES **\$1**

ORE IDA ONION-REG.-BACON TATER TOTS 2 LB. BAG **89¢**

Social Events

Friends Of Library Meet

The Library met in the Lockney room of the Floyd County Courthouse, chaired by the meeting reported Carolyn... prepared a his-... library for the... Historical... discussion was held... paying the cost of... the matter was... waiting further in-... It was announced... were many chil-... available at the... event was held... for December 7... to 5 p.m. in the... Floydada, an auto-... for Mrs. Rex... introduce her... Christmas... children are in-... range 5-11... refreshments will be... Mrs. Dockery

will review her book. Hazel Johnson of Lockney was elected reporter for Friends of the Library. The next meeting will be in Floydada, at 7 p.m. January 24. All people interested in the library are invited to attend. A film, "Pysanka, the Ukranian Easter Egg," was shown by Beth Pratt. The film shows the methods the people used to decorate the beautiful eggs that are typical of Europe. This film would make a very nice program just before Easter.

Those present were, from Floydada, Janice Lloyd, Judy Dunlap, Helen Dunlap, Diana Glover, Hester Moore, Beth Pratt and Thelma Crawford; and from Lockney, Lisa Mosley, Arla Copeland, Hazel Johnson, Helene Holt and Martha Sue Lusk.



MRS. JIM WORD AND MRS. W.M. STANIFORTH JR. are shown viewing donations to be given away in the Art for Heart drawing to be held Thursday December 7. Tickets on sale at Piggly Wiggly and Buddy's. (Staff Photo)

Births

Lori Christian is happy to announce the arrival of her sister, Laci Alyne, who was born in Cleburne Memorial Hospital in Cleburne at 8:14 a.m. weighing seven pounds four ounces. Lori and Laci

are the daughters of Mr. and Mrs. Joe Christian.

Grandparents are Mr. and Mrs. Greer Christian and Mr. and Mrs. Harry Reeves, all of Floydada.

SKIN CARE TIPS

Buy some plants and keep your skin beautiful this winter.

A riddle? Not at all. Dermatologists will tell you that dry heat in buildings draws moisture from the skin in cold weather. To replace the needed moisture and prevent skin from drying out, buy watered and keep them well watered and misted. (Unless you're allergic to plants, of course). They add humidity to the environment.

Keep thermostats set to comfortable but not excessive temperatures in winter. Use a vaporizer or humidifier in rooms where you spend much time.

Take quick, warm baths, not long hot ones. Hot water also removes moisture from the skin.

After bathing, moisturize your skin. One good product often recommended by dermatologists is Purpose Dry Skin Cream which contains lactic acid, an ingredient believed to help the skin hold water. In addition, its petroleum base helps hold in this moisture to prevent water loss. The product, available only at pharmacies, leaves the skin with a fine sheen after use.

Also use this moisture-holding skin cream to minimize skin dryness from winter wind and cold, which intensify dry skin conditions.



Eating sage is believed by some to prolong life.

thin.

DIVINITY CANDY
3 cups sugar
1/2 cup light corn syrup
1/2 cup cold water
2 eggs whites
1 teaspoon vanilla flavoring
1/2 teaspoon lemon flavoring
1/4 teaspoon salt

Cook sugar, water and syrup together. Beat egg whites until stiff. When syrup reaches soft ball stage pour about half of it over the beaten egg whites, (pour in a small stream). Continue cooking the remainder of the syrup until it reaches the crack stage then pour in a fine stream into the egg-syrup mixture. Add flavoring and fruit or nuts to suit taste. When cool enough to hold its shape drop by spoonfuls onto greased paper. NOTE: For variety a package of jello may be added to the beaten eggs for a fruit flavored divinity.

TEXAS MILLIONAIRES
1 cup brown sugar
1 cup white sugar
1 cup red karo
2 sticks oleo margarine or butter
2 cups canned milk
2 teaspoon vanilla
Mix all ingredients except 1 cup milk. Stir well. Let come to a good boil stirring constantly. Add the other cup of milk slowly (do not stop boil). Cook until it forms a soft ball (this takes a long time). Add 1 pound pecans halves. Pour into a large buttered pan and let stand in

ice box over night. Cut in squares, or drop by spoonfuls on greased surface, when cold dip in chocolate.

DIP
12 ounces sweet chocolate
1/2 pound paraffin
Melted together over hot water

CHOCOLATE MIX
(for dipping)
2 packages semi-sweet chocolate chips (6 ounce packages)
1 bar 1/4 pound paraffin - - Melted together over hot water
Stick toothpick in fondant and dip in chocolate mix
Set on waxed paper to cool

TAFFY
1 cup sugar
1/2 cup white corn syrup
1/2 cup water
1 tablespoon vinegar
1/4 teaspoon soda
Combine sugar, and corn syrup; stir over low heat until sugar dissolves. Cook to light crack stage (270 degrees) Remove from heat add soda and vinegar; mix well. Pour onto a greased shallow pan. When cool enough to handle, pull until taffy is snow-white and porous. Fat may be used on hands to prevent sticking. Twist in rope of desired thickness. Cut with scissors, or cool and break in pieces.

Use the basic four food groups as a yardstick for judging the nutritional adequacy of the diet of school children, advises Francis Reasonover, foods and nutrition specialist with the Texas Agricultural Extension Service, The Texas A&M University System.

Cream or light cream must have at least 18 percent and less than 30 percent milkfat, reports Mrs. Gwendolyn Clyatt, consumer marketing information specialist with the Texas Agricultural Extension Service, The Texas A&M University System. Heavy cream must have at least 36 percent milkfat, she says.

Health care costs are increasing more than 10 percent a year, reports Claudia Kerbel, consumer information specialist with the Texas Agricultural Extension Service, The Texas A&M University System. This puts a strain on family budgets without adequate health insurance, she points out.

Holiday Hints

The holiday season is the perfect time to tell the angel in your life how heavenly she is. A gift that will make her feel divine all through the year is an elegant, comfortable robe for lounging.



From Nancy's Kitchen

LATE NUT FUDGE
1/2 cups sugar and 1/2 cups evaporated milk - boiling (full rolling boil) over medium heat 5 minutes. Stir to prevent sticking to pan. Remove pan or mixing

Cook to soft ball stage
Add:
1 pound pitted dates
1 cup pecan halves
Cook until a little dropped into cold water makes a firm ball. Remove from fire stir in 1 teaspoon vanilla. Stir until it becomes stiff and loses its gloss. Turn onto a piece of waxed paper on which a cup of finely chopped pecans have been sprinkled. Make candy into a roll - cover with chopped pecans and roll in a damp cloth until set. When firm slice and sprinkle with powdered sugar.

of plain Hershey wafers into small pieces. Add packages semi-chocolate bits, 1 jar marshmallow

PEANUT BRITTLE
1 and 1/2 cups sugar
1/2 cup water
1/2 cup Karo Syrup
Cook to soft ball stage, then add:
1 and 1/2 cups raw peanuts
Cook until slightly brown. Quickly add:
1 teaspoon vanilla
1/2 teaspoon soda
Stir and pour out on well-buttered and salted surface. Pull as it cools to make it

LEAF CANDY
1/2 cup evaporated milk
1/2 cup flour
1/2 cup white Karo

1 teaspoon salt
1/2 cup vanilla
1/2 cup sugar-milk mix-
this, one half at a
time, stirring thoroughly
with addition. Mix well,
to suit taste. Pour
on, let cool, cut into
leaf shape by spoonfuls
on waxed paper.

CHRISTMAS
PERRYS
104 E. CALIFORNIA FLOYDADA 983-3510
SALES AND RECORDS
Sale NAME ARTIST
BUY NOW WHILE THEY LAST
2 FOR 5.00 RECORDS
ALSO CASSETTE TAPES FOR ONLY \$3.97 EACH
Hundreds To Choose From
Gene Autry's Christmas Classics
The Kendalls
Hit Explosion
Clear Hits of the 50s
Gene Autry's Christmas Classics
The Kendalls
Hit Explosion
Clear Hits of the 50s

ANDERSON'S
Pre-Christmas-Specials
Sale Starts December 4th Ends December 9th
Free Gift Wrapping

Special Mens and Boys JACKETS Asst Styles and Sizes Reduced 20% OFF Reg. Price	Special Infants-and-Girls COATS Sizes 1 Thru 14 Reduced 20% OFF Reg. Price
Special One Group of LADIES SPORTSWEAR Mix and Match Famous Brands Reduced 20% OFF Reg. Price	Special Ladies Pull-on and FASHION PANTS Sizes 6 Thru 20 Reg. 11.00 to 22.00 Values Reduced 20% OFF Reg. Price
Special Mens BLUE JEANS By Sedgefield and Wrangler Flare and Bell Bottoms Reg. 16.00 to 18.00 Values Now 12.88 Student Sizes 9.88 and 11.88	Special LADIES BLOUSES Asst-Styles Big Selection to Choose From Reduced 20% OFF Reg. Price

3 Ways To Buy: Cash - Layaway - Master Charge
ANDERSON'S
DEPARTMENT STORE
120 West California Floydada

Teacher
Of The Week



The Payne family: [L-R] Joey, Jo, Hollis and Tammie.

and girls, she enjoys church work, playing the piano and singing. "My desire is to always win my students through love instead of compelling them through fear.... Children are beautiful and with proper guidance, there is hope for the future."

Hollis has pastored many churches and has been pastor of the Calvary Baptist Church in Floydada since 1956. He is a graduate of Crowell High School in Crowell, attended Decatur Baptist College and graduated with honors in 1948. In 1950 he received a B.A. Degree from Baylor University, and attended Southwestern Baptist Theological Seminary in Fort Worth, where he received a Master of Theology in 1966.

In addition to his professional interests, Hollis is interested in just about all sports-- football, basketball etc. and reading and fishing. While in high school, he participated in football and basketball; and at Decatur Baptist College he played basketball and was in the track program. His love of athletics is reflected in his own words, "I seek (by being their friend) to build self confidence in our boys and girls, and to urge them always to do their very best. My hope and dream is to build good citizens and develop great athletes for tomorrow." His motto? "I can do all things through Christ...."

FLOYDADA SCHOOL LUNCH MENU

MONDAY BREAKFAST: 1/2 cup orange juice, Cowboy Bread, 1/2 pint milk
LUNCH: Bar-B-Que Hot Links, Seasoned Pinto Beans, Creamy Cole Slaw, Chilled Peach Halves, Hot Corn Bread Squares, 1/2 pint milk
TUESDAY BREAKFAST: 1/2 cup Mixed Fruit, Scrambled Eggs, Toast, 1/2 pint milk
LUNCH: Chicken Fried Steak with Gravy, Fluffy Whipped Potatoes, Glazed Carrots, Wild Cherry Cake, Hot Rolls, 1/2 pint milk
WEDNESDAY BREAKFAST: 1/2 cup grape juice, 3/4 cup Fruit Loops, 1/2 pint milk
LUNCH: Green Chili Casserole, Buttered Corn, Seasoned Broccoli, Banana Pudding with Wafer, Hot Rolls, 1/2 pint milk
THURSDAY BREAKFAST: 1/2 cup tomato juice, Cheese Toast, 1/2 pint milk
LUNCH: Roast Beef with Brown Gravy, Mashed Potatoes, Early June Peas, Strawberry Jello with Strawberries, Whole Wheat Rolls, 1/2 pint milk
FRIDAY BREAKFAST: 1/2 cup grape juice, Sausage, Hot Biscuits, Jelly, 1/2 pint milk
LUNCH: Hamburgers on Home Made Buns, Tomato, Lettuce, Dill Pickle Slices, Potato Chips, Peach Cobbler, 1/2 pint milk

THE FLOYD COUNTY HESPERIAN
Published each Sunday and Thursday at 111 E. Mo. St., P.O. Box 700, Floydada, Texas 79235. Publication No. 202680. Wendell Tooley, editor, Subscription rates: Local \$10.50 a year, out-of-trade area \$11.50 a year. Second class postage paid at Floydada, Texas 79235.

TEXAS PRESS MEMBER 1978 ASSOCIATION

Order Your Poinsettias Early For Christmas



- * Poinsettia Plants
- * Poinsettia Hanging Baskets
- * Decorations For the Home
- * Table Arrangements
- * Centerpieces

SCHACHT'S Flowers, Jewelry & Gifts
112 W. Poplar, Lockney 652-2385
"Our Pleasure Is To Serve You"

All Cable Subscribers in Floydada To See

"The Spy Who Loved Me" Plus "Old Yeller"

"The Spy Who Loved Me," the latest of the James Bond adventures, and a Walt Disney all-time classic "Old Yeller," plus sports and entertainment specials will be the highlights of two full nights of free pay-tv programming available to all cable television viewers in Floydada on December 12 and 13. The free preview was announced by Jerry Ford, general manager of Floydada Cable TV.

The two evenings of exceptional cable programming will be offered by special arrangement with Home Box Office, the pay TV network now serving cable subscribers in Floydada. "We think the two nights of December 12 and 13 will offer good examples of the movies and entertainment specials HBO offers all year round," said Ford, "and a free sample is the best way to let people know about it. It's two nights for the price of none."

"The Spy Who Loved Me," considered to be one of the best of the recent 007 films, is the main attraction on the 12th. The picture stars Roger Moore as the imperturbable Bond, along with the usual assortment of adventure, incredible special effects and gadgets, ruthless villains, and of course, beautiful women. HBO's monthly "Standing Room Only" series of specials will be represented on the 12th by "At the Fair," a 90-minute special from the Minnesota State Fair. The program stars Pat and Debby Boone, Seals and Crofts, Lynn Anderson, and the hottest new name in country music, Eddie Rabbitt. Fred Travalena, impressionist extraordinaire, is the tour guide and host in this HBO exclusive. Also on the 12th is the Richard Burton thriller "The

Medusa Touch." Walt Disney's "Old Yeller" is the lead-off attraction on December 13th. The heartwarming story of a dog and his two young masters in Texas frontier days, "Old Yeller" remains one of the most acclaimed Disney live-action dramas by critics and audiences alike.

Viewers will also get a preview of HBO sports coverage, when the national pay-tv network presents the much awaited basketball contest between DURHAM vs. Duke direct from Durham, N.C., on the 13th. After the game, the spectacular chill-filled "Rollercoaster" starring Timothy Bottoms, George Segal,

Henry Fonda and Richard Widmark will be presented. Winding up the preview will be "Thunder and Lightning," a high-speed zany comedy set in the Florida Everglades starring Kate Jackson and David Carradine.

The two evenings of programming will begin on both nights at 6:00 p.m. Eastern and Pacific, 5 p.m. Central, 7 p.m. Mountain--select correct time in your area.) Floydada residents not already signed up for cable service may call 983-2911 for immediate installation.

Ford also announced that WGN Chicago, Channel 8 is now on cable. CBN is temporarily on Channel 2.

First Christian All Church Christmas Celebration Dec. 17

The Christian Women's Fellowship of the First Christian Church in Floydada will meet in the parsonage Monday December 4 at 7 p.m. A Christmas program will be presented and will be followed by a Christmas party.

First Christian Women Christmas Party Slated

The tradition all-church Christmas program and party of the First Christian Church in Floydada will be December 17 at 7 p.m. Everyone is invited to attend.

Doctor: "What was the most you ever weighed?"
Patient: "154 pounds."
Doctor: "And what was the least you ever weighed?"
Patient: "8 1/2 pounds."

The worst thing about getting old is listening to the children's advice.



Tommy Assiter
206 W. California
Phone 806-983-2511

Our Joint Whole Life policy can protect husband and wife at less cost than two individual whole life policies. One for two. Another way a professional saves you money. Person to person.

Southwestern Life
Person-to-person service for 75 years.

PROTECT

Thrill Her With The Ideal Christmas Gift For Little Girls



FREE GIFT WRAPPING

LOVE IT jeans for... straight leggin' it!

Girls' pre-washed, indigo 100% cotton denims in the sensational straight leg style everybody's turning on to! Three fashion pockets featured: Yellow Rose of Texas, sizes 4-6x, \$15, sizes 7-14, \$18, sizes 6-14 pre-teen, \$20. Lollipop trim, sizes 4-6x only, \$15. Disco style, sizes 4-6x, \$16 and sizes 7-14, \$18. *Girls' Clothing

Brown's DEPARTMENT STORE
104-06 North Main
Lockney, Texas

Las Maracas Cafe

Now Open 7 Days A week
10 a.m. to 8 p.m.

- Serving
- ★ Mexican Food
 - ★ American Food
 - ★ Pizza

Mr. & Mrs. Silvestre Garcia, Owners
Lockney

Now Open 7 Days A week

10 a.m. to 8 p.m.

Serving

- ★ Mexican Food
- ★ American Food
- ★ Pizza

Mr. & Mrs. Silvestre Garcia, Owners

Lockney

KIRTLEY'S MARKET

316 N 2ND 933 3105

WE GIVE DOUBLE S AND H GREEN STAMPS ON WED. THESE SPECIALS GOOD DEC. 4 THRU DEC. 9, 1978

anges	29¢	Bacon	\$1.29
pefruit	19¢	Colby Cheese	\$1.09
atoes	99¢	Franks	79¢
onions	12¢	Fryers	55¢
una	69¢	Peaches	2/89¢
okes	\$1.59	Pine-Sol	79¢

ON SALE THIS WEEK SPRING COLLECTION STONWARE

THRIFT KING Toilet Tissue 64¢

PLUS DEPOSIT

FREE GIFT WRAPPING

ITMENT STORE Lockney, Texas



For The Finest In Men's Fashion,
See Our New Lines From....



RCA For The Best
Price & Service On RCA T.V.'s
See
MIZE PHARMACY & T.V.

Robes 1/4 off
Long Dresses 1/4 off
5 Racks At 1/2 Price
Roye's
Cosmetics & Apparel

Dear Santa Claus,
I enjoyed seeing you at the South Plains Mall. I look forward to seeing you every year. I hope you have been feeling well and your reindeers, too.

I hope you elves have made enough toys for all the little boys and girls around the world. I thought I would tell you again what I would like to have for Christmas, if you have these: a tool box, and some tools, a dot-to-dot book and some trucks.

Santa, take good care of yourself and don't get a cold.

Love
Alex
P.S. I have been very good & nice to my brother & my parents & my friends. My brother has a hurt leg and I help him.

Dear Santa,
My name is Cory Franklin Kemp and I am a little boy 5 years old. I am in Kindergarten and my teachers name is Mrs. Crader.

I have tried to be a pretty good boy this year. If you think I have been, would you please bring me a big dump truck and a loader? Also please bring my big brother something and leave some surprises in our stockings.

I will leave you some hot chocolate and cookies by our Christmas tree. Please remember boys and girls all over the world.

Thank you Santa,
I love you,
Cory Kemp

Dear Santa,
My name is Johnny Lamas and I am in fourth grade I think I have been a nice boy all these year.

I want a mini bike for Christmas and a spider man too.

Sign
Johnny Lamas

FLOYD DATA

Mrs. Irene Dorrell, who is the mother of Floriene Jarnagin, is a patient in Methodist Hospital in Lubbock. She is to undergo surgery for a broken hip. Mrs. Dorrell was a longtime resident of Floydada and is currently a resident in a retirement home in Lubbock.

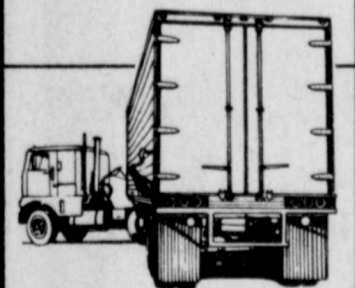
FLOYD DATA
Mrs. C.E. Bartlett is a patient in Nichols Hospital in Plainview. She is a resident of Heritage Homes.

FLOYD DATA
Baird Bishop continues to be a patient in Methodist Hospital in Lubbock.



The first recorded coffee houses, in 16th century Turkey, were known as "Mekteh-irfan," meaning "schools of the cultured."

Get Ready... to save
at Truckload Prices



Where else can you buy an American made 7 gauge, 22" disk for \$14.50? We can fit most popular makes. Just give us the disk and center hole size for price quote.



Brown-McMurtry Impl.
Silverton, Texas
806-823-2441

THE CABLE & REGULAR TELEVISION PROGRAMS SCHEDULE WILL APPEAR IN THIS NEWSPAPER EACH SUNDAY SPONSORED BY THE MERCHANTS ON THESE PAGES!!!

SUNDAY 12/03/78

AM	WTCG CH. 17 Atlanta Cable 4	KTXT CH. 5 Lubbock Cable 5	PTL CH. 6 Charlotte Cable 6	KMCC CH. 28 Lubbock Cable 7	WGN CH. 9 Chicago Cable 8	KCBD CH. 11 Lubbock Cable 11	KLBK CH. 13 Lubbock Cable 13
7:00	Three Stooges	No Programs	Sunday Celebration	Praise the Lord Club	News Buyer's Forum	Jimmy Swaggart	This is the Life
7:30	"	"	"	"	What's Nu	Jimmy Swaggart	As We See It
8:00	Lost in Space	"	Rex Humbard	Jimmy Swaggart	Mass for Shut-Ins	Oral Roberts	James Robison
8:30	"	"	"	Newsreel	Heritage of Faith	Religious Programs	Presents Amazing Grace
9:00	Hazel	"	Old Time Gospel Hour	Home Show	Issues Unlimited	"	Old Time Gospel Hour
9:30	Movie: Life At	"	"	Kids Are People Too	Abbott and Costello	Rex Humbard	"
10:00	The Top	"	Praise the Lord Club	"	Tarzan	"	Sunday School
10:30	"	"	"	Animals, Animals, Animals	"	Living Your Religion	Face the Nation
11:00	"	"	"	Baptist Church	Cisco Kid	Better Life	Tom Landry
11:30	"	"	"	"	Lone Ranger	Sportscope	NFL Today
12:00	"	No Programs	Oral Roberts	Directions	Movie: 'Charlie Chan: Dangerous'	NFL Football: Miami at Washington	NFL Football: Los Angeles at
12:30	"	"	Holy Spirit in the Now	Football Highlights	"	"	"
1:00	"	"	"	College Football '78 Fanfarria Falcon	Money'	"	NY Giants
1:30	"	"	"	"	Movie: Tammy and the	"	"
2:00	Maverick	"	Amazing Grace	Si Se Puedel	Bachelor'	"	"
2:30	"	"	Vicki Jamison Worship	"	"	"	"
3:00	Movie: 'The Buster Keaton Story'	"	Service	Wrestling	"	NFL Football: New England at	Mixed Team Championship
3:30	"	"	Club PTL	"	Movie: 'Sink The Bismarck'	"	"
4:00	"	Firing Line	"	Popl Goes the Country	"	Dallas	"
4:30	"	"	Hour of Power Singers	Issues and Answers	"	"	"
5:00	Championship Wrestling	The Long Search: West Meets East	Larry Jones Ministry Human Dimension	Lay Witness	Fred Akers Show	Star Trek	Last of the Wild CBS News

SUNDAY 12/03/78

PM	WTCG CH. 17 Atlanta Cable 4	KTXT CH. 5 Lubbock Cable 5	PTL CH. 6 Charlotte Cable 6	KMCC CH. 28 Lubbock Cable 7	WGN CH. 9 Chicago Cable 8	KCBD CH. 11 Lubbock Cable 11	KLBK CH. 13 Lubbock Cable 13
6:00	Star Trek	Love and Marriage Victory Garden	James Robison Presents Kroeze Brothers	Hardy Boys	Program Cont'd Next Step Beyond	Wonderful World of Disney	60 Minutes
6:30	"	"	"	"	"	"	"
7:00	Movie: 'Rope Of Sand'	Christmas Eve on Sesame Street	Ralph Wilkerson 10 Commandments	Battlestar Galactica	In Search of... Hee Haw	Bob Hope Special	All in the Family Alice
7:30	"	"	"	"	"	"	"
8:00	"	Masterpiece Theatre: Duchess of Duke Street	Praise the Lord Club	NFL Football: Denver at Oakland	Hee Haw Honeys	'Centennial' Part 6	Kaz
8:30	"	"	"	"	"	"	"
9:00	Dragnet	G. E. D.	"	"	Lawrence Walk	"	Dallas
9:30	Ruff House	Movie: 'Harlan County,	"	"	"	"	"
10:00	Open Up	U.S.A.	Calvary Temple	"	News	News	News
10:30	"	"	"	"	Movie: 'Beau Geste'	Movie: 'Trader'	Bill Dance Outdoors
11:00	"	"	Happy Hunters	"	"	Horn'	Movie: 'Psych '59'
11:30	"	Sign Off	Dan Griffin Show	Football Highlights Praise the	"	"	"
12:00	"	"	"	Lord Club	Nightbeat	News Sign Off	"
12:30	"	"	"	ABC News	"	"	Sign Off

WINTER SPECIALS

ANTI-FREEZE INSTALLED GAL \$4.00

OIL FILTERS ALL MAKES AND MODELS REG \$5.95 \$3.50

AIR FILTERS ALL MAKES AND MODELS REG \$8.90 \$4.85

983-2168 **M&N AUTO** 507 E. Missouri

JERRY ULMER'S
TEXAS INSULATION SYSTEMS

RESIDENTIAL
COMMERCIAL
INDUSTRIAL
AGRICULTURAL

"Insulation Doesn't Cost... It Pays"

IN LOCKNEY CALL 652-3348
IN FLOYDADA CALL 983-5377

NICHOLS OIL CO.

Featuring
Fina Products, DX Oils
Safemark & Goodyear Tires

Hours 7a.m. - 8p.m.
Hwy. 70, Floydada, East 983-3144

MONDAY - FRIDAY

AM	WTCG CH. 17 Atlanta Cable 4	KTXT CH. 5 Lubbock Cable 5	PTL CH. 6 Charlotte Cable 6	KMCC CH. 28 Lubbock Cable 7	WGN CH. 9 Chicago Cable 8	KCBD CH. 11 Lubbock Cable 11	KLBK CH. 13 Lubbock Cable 13
7:00	Leave it to Beaver Hazel	No Programs	Accent on Music	Good Morning America	Ray Rayner and Friends	Today in Texas Today	CBS Morning News
7:30	"	Weather	"	"	"	"	"
8:00	Lucy Show	Over Easy	Varied Programs	"	Family Affair	"	Captain Kangaroo
8:30	Green Acres	Dick Cavett Show	"	"	"	"	"
9:00	Movie	Mister Rogers Neighborhood	Tammy Faye Show	Phil Donahue	Movie	People Place	Sunshine Sally Price Is Right
9:30	"	Varied Programs	"	"	"	Jeopardy	"
10:00	"	"	Praise the Lord Club	Happy Days	"	High Rollers	"
10:30	"	"	"	Family Feud	"	Wheel of Fortune	Love of Life
11:00	Love, American Style	Sesame Street	"	\$20,000 Pyramid	Phil Donahue	America Alive	Young and the Restless Search for Tomorrow
11:30	Movie	"	"	Eleven-Thirty	"	"	"
12:00	"	Sign Off	Gerald Derstine	All My Children	Bozo's Circus	News	News
12:30	"	"	Varied Programs	"	"	Days of Our Lives	As the World Turns
1:00	"	"	"	Praise the Lord Club	Bewitched	"	"
1:30	I Love Lucy	"	"	"	Love, American Style	The Doctors	Guiding Light
2:00	Mickey Mouse Club	Lilias, Yoga And You	Dr. Scott on Hebrews	General Hospital	"	Another World	M*A*S*H
2:30	Flinstones	Villa Alegre	"	"	"	"	"
3:00	Space Giants	Sesame Street	"	Edge of Night	"	Hollywood Squares	Joey and Redhawk
3:30	Gilligan's Island	"	Varied Programs	Odd Couple	Superman	Gilligan's Island	All in the Family
4:00	I Dream of Jeannie	Mister Rogers Neighborhood	"	Little Rascals	Gilligan's Island	Beverly Hillsbillies	My Three Sons
4:30	Beverly Hillsbillies	Electric Company	Good News	Brady Bunch	I Dream of Jeannie	Mayberry, R.F.D.	Gunsmoke
5:00	Andy Griffith	My Three Sons	Accent on Music	ABC News	Andy Griffith	Get Smart	NBC News
5:30	"	"	"	Mary Tyler Moore	My Three Sons	"	CBS News

MONDAY 12/04/78

PM	WTCG CH. 17 Atlanta Cable 4	KTXT CH. 5 Lubbock Cable 5	PTL CH. 6 Charlotte Cable 6	KMCC CH. 28 Lubbock Cable 7	WGN CH. 9 Chicago Cable 8	KCBD CH. 11 Lubbock Cable 11	KLBK CH. 13 Lubbock Cable 13
6:00	Carol Burnett and Friends	Introduction / Psychology	Tammy Faye Show	News	Dick Van Dyke	News	News
6:30	Sanford and Son	MacNeil-Lehrer Rept.	Adventures in Life	Bewitched	Odd Couple	Adam-12	Joker's Wild
7:00	Let's Go To The Races	Evening at Symphony	Hour of Power	Barbie Doll for Xmas	Carol Burnett	Little House on the Prairie	The White Shadow
7:30	Falcon Show	"	"	Hogan's Heroes	"	"	"
8:00	Movie: 'Arrivederci Baby'	Max Ellison	Praise the Lord Club	NFL Football: Chicago at San Diego	Movie: 'Far Horizons'	Movie: 'Suddenly, Love'	M*A*S*H
8:30	"	Julia Child and Company	"	"	"	One Day at a Time	"
9:00	"	Aloha Experiment	"	"	"	Lou Grant	"
9:30	"	Economically Speaking	"	"	"	"	"
10:00	Love Experts	Dick Cavett	Good News	"	News	News	News
10:30	Movie: 'Saturday'	Captioned ABC News	Abundant Living	News	Movie: 'Dead Reckoning'	Tonight Show	Rockford Files
11:00	Her'	Sign Off	Accent on Music	Grant Taff Show	"	"	Movie: 'McMillan &'
11:30	"	"	"	Sign Off	"	"	"
12:00	"	"	"	"	"	Tomorrow	Wife: Blues for Sally M'
12:30	"	"	"	"	"	Nightbeat	"

TUESDAY 12/05/78

PM	WTCG CH. 17 Atlanta Cable 4	KTXT CH. 5 Lubbock Cable 5	PTL CH. 6 Charlotte Cable 6	KMCC CH. 28 Lubbock Cable 7	WGN CH. 9 Chicago Cable 8	KCBD CH. 11 Lubbock Cable 11	KLBK CH. 13 Lubbock Cable 13
6:00	Carol Burnett and Friends	Introduction / Psychology	Tammy Faye Show	News	Dick Van Dyke	News	News
6:30	Sanford and Son	MacNeil-Lehrer Rept.	Celebration	Bewitched	Odd Couple	Adam-12	Joker's Wild
7:00	World at War	Soundstage: Fifth Anniversary Special	You'll Love It	Happy Days	Carol Burnett	Secrets of Loving	Paper Chase
7:30	"	"	Oral Roberts	Laverne and Shirley	Hogan's Heroes	"	"
8:00	Movie: 'That Certain Feeling'	Session	Praise the Lord Club	Three's Company	Movie: 'Firecreek'	Movie: 'My Husband Is Missing'	The Kennedy Center Honors: A Celebration
8:30	"	Country Music	"	Taxi	"	"	"
9:00	"	Masterpiece Theatre: Duchess of Duke Street	"	ABC News Closeup	"	"	of the Performing Arts
9:30	"	"	"	"	"	"	"
10:00	Love Experts	Dick Cavett	Good News	News	News	News	News
10:30	Movie: 'Stopover'	Captioned ABC News	Christ Is the Answer	Best of Donahue	Movie: 'Wait Until'	Tonight Show	Barnaby Jones
11:00	Toyko'	Sign Off	Accent on Music	"	Dark'	"	"
11:30	"	"	"	Movie: 'Walking'	"	"	Movie: 'Cut Man'
12:00	"	"	"	Tall Part 2'	Nightbeat	Tomorrow	Caper'
12:30	"	"	"	"	"	"	"

WEDNESDAY

PM	WTCG CH. 17 Atlanta Cable 4	PTL CH. 6 Charlotte Cable 6	KMCC CH. 28 Lubbock Cable 7
6:00	Carol Burnett and Friends	Faye	News
6:30	Sanford and Son	Bewitched	"
7:00	Let's Go To The Races	Eight Is Enough	"
7:30	Falcon Show	Charlie's Angels	"
8:00	Movie: 'Arrivederci Baby'	Vegas	"
8:30	"	"	"
9:00	"	"	"
10:00	"	"	"
10:30	"	"	"
11:00	"	"	"
11:30	"	"	"
12:00	"	"	"
12:30	"	"	"

THURSDAY

PM	WTCG CH. 17 Atlanta Cable 4	PTL CH. 6 Charlotte Cable 6	KMCC CH. 28 Lubbock Cable 7
6:00	Carol Burnett and Friends	Faye	News
6:30	Sanford and Son	Bewitched	"
7:00	Let's Go To The Races	Teletown: United Net	"
7:30	Falcon Show	Pink Panther Christmas	"
8:00	Movie: 'Arrivederci Baby'	Barney Mill	"
8:30	"	Soap	"
9:00	"	Family	"
9:30	"	"	"
10:00	"	"	"
10:30	"	"	"
11:00	"	"	"
11:30	"	"	"
12:00	"	"	"
12:30	"	"	"

FRIDAY

PM	WTCG CH. 17 Atlanta Cable 4	PTL CH. 6 Charlotte Cable 6	KMCC CH. 28 Lubbock Cable 7
6:00	Carol Burnett and Friends	Faye	News
6:30	Sanford and Son	Bewitched	"
7:00	Let's Go To The Races	Donny & M	"
7:30	Falcon Show	"	"
8:00	Movie: 'Arrivederci Baby'	Movie: 'Gift of Love'	"
8:30	"	"	"
9:00	"	"	"
9:30	"	"	"
10:00	"	"	"
10:30	"	"	"
11:00	"	"	"
11:30	"	"	"
12:00	"	"	"
12:30	"	"	"

SATURDAY

AM	WTCG CH. 17 Atlanta Cable 4	PTL CH. 6 Charlotte Cable 6	KMCC CH. 28 Lubbock Cable 7
7:00	Ultra	Scoby's All-Stars	"
7:30	Partners	"	"
8:00	Star Trek	Challenge of the	"

1/4 off
1/4 off
Price

DUDDY'S
STORE HOURS
MON.-SAT. 8a.m. - 9p.m.
SUN. 9p.m. - 8p.m.
WE RESERVE THE RIGHT
TO LIMIT QUANTITIES
DOUBLE
WEDNESDAY

WEDNESDAY

PM	KMCC CH. 28 Lubbock Cable 7	WGN CH. 9 Chicago Cable 8	KCBD CH. 11 Lubbock Cable 11	KLBK CH. 13 Lubbock Cable 13
6:00	News	Dick Van Dyke	News	News
6:30	Bewitched	Odd Couple	Adam-12	Joker's Wild
7:00	Eight Is Enough	Carol Burnett	Dick Clark's Live Wednesday	Rudolph the Red-Nosed Reindeer
8:00	Charlie's Angels	Movie: 'Fathom'	Movie: 'Steel Cowboy'	Bing Crosby: The Christmas Years
8:30	Vegas			Johnny Cash Christmas Show
9:00	News	News	News	News
10:00	Bob Newhart	Movie: 'Chuka'	Tonight Show	Movie: 'The Love Boat'
11:00	Police Woman			
12:00	S.W.A.T.		Tomorrow	Kojak

THURSDAY

PM	KMCC CH. 28 Lubbock Cable 7	WGN CH. 9 Chicago Cable 8	KCBD CH. 11 Lubbock Cable 11	KLBK CH. 13 Lubbock Cable 13
6:00	News	Dick Van Dyke	News	News
6:30	Bewitched	Odd Couple	Adam-12	Joker's Wild
7:00	Taleahon: United Negro College Fund Christmas	Movie: 'Toral Toral'	Project U.F.O.	Waltons
8:00	Movie: 'Ulysses'	Barney Miller	Quincy	A Country Christmas
9:00	Family		David Cassidy Man Undercover	An All-Star Tribute to Jimmy Stewart
10:00	Love Express	News	News	News
10:30	Movie: 'Island of Dr. Moreau'	Movie: 'Streets Of'	Tonight Show	M*A*S*H
11:00	Love	Starsky & Hutch	San Francisco	Movie: 'Columbo: A Stitch in Crime'
12:00	S.W.A.T.		Tomorrow	
12:30		Nightbeat		News/Sign Off

FRIDAY

PM	KMCC CH. 28 Lubbock Cable 7	WGN CH. 9 Chicago Cable 8	KCBD CH. 11 Lubbock Cable 11	KLBK CH. 13 Lubbock Cable 13
6:00	News	Dick Van Dyke	News	News
6:30	Bewitched	Odd Couple	Night Before Christmas	Joker's Wild
7:00	Donny & Marie	Carol Burnett	Diff'rent Strokes	A Special Sesame Street Christmas
8:00	Movie: 'The Godfather'	Movie: 'The Bastard' Part 1	Rockford Files	Young and Foolish
9:00	NBA Basketball		Eddie Capra Mysteries	Flying High
10:00	Atlanta Seattle	News	News	News
10:30	America 2/Night	Movie: 'One Eyed Jacks'	Tonight Show	New Avengers
11:00	Baretta			
12:00	Sign Off		Midnight Special	Movie: 'Nightmare'
12:30		Nightbeat		

SATURDAY

PM	KMCC CH. 28 Lubbock Cable 7	WGN CH. 9 Chicago Cable 8	KCBD CH. 11 Lubbock Cable 11	KLBK CH. 13 Lubbock Cable 13
7:00	Star Trek	U.S. Farm Report	Galaxy Goof-Ups Fantastic Four	All-New Popeye Hour
8:00	Challenge of the Googly's	Movie: 'Bower to Baghdad'	Godzilla Super 90	Bugs Bunny/Road Runner Show

9:00	Movie: 'Son of Captain Blood'	Introduction / Psychology	Jot/Storyline Focus on Listen The Athletes	Superfriends					
10:00			Praise the Lord Club	Fangface	Movie: 'Wilderness Journey'	Yogi's Space Race	Seven		
11:00	Movie: 'Young Fury'			New Pink Panther Show					
12:00		Adams Chronicles	Joy in My Time To Live Holy Spirit in the Now	Weekend Special American Bandstand	Charlando	Fabulous Funnies U.S. Farm Report	Fat Albert & Cosby Kids		
1:00	Movie: 'Aaron Slick from Punkin Crick'	G. E. D.				NFL Football: Baltimore at Pittsburgh	Ark II	30 Minutes	
2:00		Movie: 'L' Adventura'	Cinematic Eye						Capitol Eye
3:00	Movie: 'The Breaking Point'		Larry Lea Presents			Costello in Buck Privates Come	Grand Prix of Bowling	NFL Football: Minnesota at Detroit	
4:00			Happenings	Power Praise	ABC's Wide World of Sports	Soul Train			
5:00	Championship Wrestling	Aztlan	Dan Griffin Show Happy Hunters			Andy Griffith My Three Sons	Wild Kingdom		NBC News

SATURDAY 12/09/78

PM	WTCH CH. 17 Atlanta Cable 4	KTXT CH. 5 Lubbock Cable 5	PTL CH. 6 Charlotte Cable 6	KMCC CH. 28 Lubbock Cable 7	WGN CH. 9 Chicago Cable 8	KCBD CH. 11 Lubbock Cable 11	KLBK CH. 13 Lubbock Cable 13
6:00		Soccer Made in Germany	Something Special Let's Get Acquainted	Star Trek	Dick Van Dyke	Lawrence Welk	Hee Haw
7:00	Hee Haw Honey's Marty Robbins	Once Upon a Classic Julia Child and Company	Vicki Jamison Special	Rudolph's Shiny New Year	Wild Kingdom	CHiPs	Rhoda
8:00	Toys For Tots Concert	The Long Search: Loose Ends	Praise the Lord Club	Love Boat	Movie: 'The Bastard' Part 2	Dan Martin's California Christmas	Movie: 'A Real American Hero'
9:00		The Cousteau Odyssey: Prophets of Easter Isle		Fantasy Island		Weekend	
10:00	NBA Basketball: Atlanta at Golden State	American Short Story	Larry Lea Presents	News	News	News	News
11:00		Sign Off	Sharing with Steve Grand Old Gospel Music			Saturday Night Live	Sports Special
12:00						Sha-Na-Na	Movie: 'The Best of Enemies'

TWO NIGHTS ON THE HOUSE

Nothing could cost less than the preview of Home Box Office on cable TV. This Tuesday and Wednesday, December 12 & 13, see the kind of movies, sports, entertainment and specials that Home Box Office is all about.

TUESDAY, DECEMBER 12
5 PM "The Medusa Touch." Horror fills the screen when Richard Burton and Lee Remick star in this movie about the highly unnatural demise of a man with awesome supernatural powers.

7 PM "The Spy Who Loved Me." Nobody does it better than Roger Moore as Ian Fleming's James Bond 007. Watch this one—it's the biggest, the best, it's Bond and beyond.

9:30 PM SRO: "At the Fair." HBO's Standing Room Only brings you the unmatched and spectacular Minnesota State Fair. Taken from 50 hours of taping, "At the Fair" stars Pat and Debby Boone and Seals & Crofts.

11 PM "Thunder and Lightning." Powerful action as David Carradine and Kate Jackson bust up one of the biggest moonshine rackets in the country. Hilarious, sure shootin' all the way!
This December 12 & 13, look twice at what you're missing.

WEDNESDAY, DECEMBER 13
5 PM "Old Yeller!" Puppy love takes over in the unequalled Walt Disney adventure for the whole family. Dorothy McGuire and Fess Parker star in the story of a frontier family who owe their lives to their dog "Old Yeller."

7 PM USC vs Duke. The Trojans of Southern California and the Blue Devils of North Carolina battle it out once again. The action's a sure thing, so get your seats now!

9 PM "Rollercoaster." Hang onto your seats for this suspense melodrama. A killer is on the loose, and no one knows when he will strike next. Full of fun and suspense, and starring Richard Widmark and George Segal.



HEO HBO IS SOMETHING ELSE

WGN Chicago Now On Channel 8

CBN Is Temporarily On Channel 2

Cable T.V. Of Floydada

Floydada

119 E. Kentucky

Phone 983-2911

Courthouse NEWS

WARRANTY DEEDS
Floyd Co. Memorial Park to Lee Trice Lot 6 & 8, S-3, B-5, Garden No. 2.

I.W.A. Massie to John Key West, All L-7, 8, B-4, Texas Add., Floydada.
George R. Finley et al to Alpha Hill, L-1, B-46, Floydada.

E.A. Noland et al to Joe Richard Noland, NW 1/4, S-83, B-D-3, Floyd.
Theodore Hershel Carthel and Olga E. Tannahill to co-trustees: Amarillo Nat.; Chester F. Carthel, L-1, 2, B-4, Floyd.

Obe E. Durham et al to Juan Morales et al N.70 L-14, 15, 16, B-29 Lockney.
Earl Bishop et al to Willie Windom et al, L-4, B-56, Floydada.

L.J. Welborn et al to J.M. Willson Jr., L-3, B-138, Floydada.

James H. Robertson to Harold B. Robertson, 160 acres, Floyd.
Geraldine Massie Murray to A.C. Carthel, L-5 - 7 - B-21, Floydada.

Hollis Bond and J.P. Moss, executors Massie Will, to A.C. Carthel, L-4, B-21, Floydada.
Mrs. Roddy Sims of Nash-

ville and Mrs. J.S. Tanner to A.C. Carthel, L-6, B-21, Floydada.
Opal D. Ashton and Clarence L. Ashton et al to Mable Laminack, L-6, B-"k", Andrews add., Floydada.
Belinda Coats and Andy Coats to Ruben de Leon et al, L-14, 15, B-122, Floydada.
Higinio Garcia et al to Alejos De Hoyos et al, L-16, B-126, Floydada.
Faye Harston to H.B. Foster et al, L-1, 2, 3, B-7, Lockney.

J.M. Willson Jr. et al to Elmer Wayne Lipham et al, L-3, B-138, Floydada.

MARRIAGE LICENSE
Raymond Anthony Spoth Jr. and Sheryl Denise Cates.
Ronald Dee Casey and Kimmie Jeanine Harden.
Jaime Cuellar and Maria Flores DeLa Fuente.
Roland Gerald Bennett and Jan Marie Samuels.

PROBATE
Ruby D. White, will and app. to probate.
Raymond H. Grubbs, will and app. to probate.
Peggy Yvonne Young app. for guardianship.
CASES FILED
Mrs. E.E. Boothe vs. Bo Johnson. Suit for rent.

Savings and loan businesses feel lending crunch

AUSTIN — Savings and loan associations, caught between rising interest rates for money they must borrow and buy to make home loans and a 10 percent usury ceiling, may not be in the lending business much longer.

Durward Curlee, executive vice president of the Texas Savings and Loan League, says Texas associations are being squeezed out of the home loan market by rising prime interest rates, and the fact that home loans currently fall under the 10 percent interest rate ceiling in the Texas Constitution.

The problem, Curlee notes, is that it's costing the associations more to get funds — including the cost of paying higher interest rates to savers on their funds, particularly for certificates of deposit.

Lending now is at 9.78 percent, which amortizes at 10 percent over the life of the loan, Curlee says.

MONEY OBTAINED by association earlier in the year is still "in the pipeline," he reports, but those funds aren't likely to last much longer — and probably will be gone by mid-December or early January.

In the meantime, he notes, there appears to be no slackening of demand for housing.

Some associations may continue making loans with money costing them more than 10 percent for a while, and might keep the practice up if they believed the tight money period is going to last only a short while, Curlee says.

However, he adds, lenders feel the high interest rates will have a "longer duration than in the past."

THE SECONDARY market — where associations sell loans to another buyer — is "dead in Texas" for "all practical purposes," he says, adding, "a Texas loan cannot be sold outside the state."

Part of the reason for that is that other states, such as California, are permitting higher interest rates — and Curlee says associations may ask lawmakers in January to permit them to make home loans at over 10 percent.

Apart from such secondary market sales and new savings (and borrowed funds), the only funds for savings and loan associations are from loan repayments — and those funds accounted for only 10-15 percent of the lending activity by associations last year, Curlee says.

"It could get really tough," he reports.

IF THINGS STAY "exactly as they are," there could be a 30-60 percent drop in home lending in Texas — with resulting problems for the home industry.

The result could be, he says, loss of billions of dollars to the Texas economy, and increased unemployment.

There may be some legislative and consumer resistance to the idea of allowing home loans by savings and loan associations to exceed 10 percent — but Curlee notes credit unions are allowed to make such loans at up to 12 percent, and national banks at up to 10.5 percent.

In California, demand dropped initially when rates paused 10 percent, Curlee says, but the demand has — and rates there are running 10.25 percent.

Do You Know How Much Water You Are Really Using?

(UPI)—People are not aware of how much water they are really using, says Richard Weickart of the Water Quality Association.

Besides the eight ounces they drink in each glass of water, there's another 16 ounces that goes for washing and rinsing—a total of 24.

"But that's only the beginning," says Weickart. Pointing out that most household faucets deliver 400 to 600 ounces of water a minute—50 to 75 glassfuls, he adds, "If you let the water

run for 15 seconds before filling your glass, it means you may actually be wasting 15 or 20 glassfuls for every glass you drink. Is it any wonder the average person uses 160 gallons of water a day? They're unaware of how much they're using—and how much they could save by exercising just a little care."

Preston
lb. 99¢ Milk Gal. \$1.75
Special Plant Custom Processing,
and Retail Meats, Cut, Wrapped,
and Fully Guaranteed.
Available On Freezer Beef
Lockney Meat Co.
Lockney, Tx. 652-3305

LOCKNEY GENERAL Hospital Report

Robert Peel, Ralls, adm. 11-11 - dis. 11-22.
 Myrtle Allen, Lockney, adm. 11-12 - dis. 11-22.
 Virgie Samford, Lockney, adm. 11-12 - dis. 11-16.
 Iva Simpson, Floydada, adm. 11-13 - dis. 11-20.
 Dudley Graham, Floydada, adm. 11-13 - dis. 11-24.
 Thomas L. Graham, Floydada, adm. 11-13 - dis. 11-17.
 Donna Hernandez, Lockney, adm. 11-14 - dis. 11-17.
 Lucille Willis, Floydada, adm. 11-14 - dis. 11-21.
 Flora Warren, Floydada, adm. 11-16 - dis. 11-22.
 Margie Womack, Floydada, adm. 11-16 - dis. 11-24.
 Ida Wilson, Lockney, adm. 11-16 - dis. 11-22.
 Frederick W. Ayers, Lockney, adm. 11-17 continues care.
 Faye Guerrero, Olton, adm. 11-16, baby boy Santos, born 11-16 - dis. 11-18.
 Theresa Hallman, Lubbock, adm. 11-19, baby boy Jerrod, born 11-19 - dis. 11-21.
 Ivan Thompson, Lockney, adm. 11-19 - dis. 11-22.
 George Thompson, Lockney, adm. 11-20 - dis. 11-23.
 Maria Guadalupe Ruiz, Ralls, adm. 11-24, baby boy Francisco, born 11-24 - dis. 11-25.
 Genoveva Rodriguez, Lockney adm. 11-25, baby boy Eugene, born 11-25 - dis. 11-25.
 Ruby Muncy, Lockney, adm. 11-25 continues care.
 D.D. Tate, Lockney, adm. 11-26, continues care.
 Corina Gonzales, Lockney, adm. 11-27, baby boy Johnny Jr., born 11-27 - dis. 11-29.
 Mabel Andrea, Aiken, adm. 11-27, continues care.
 Lonnie Hernandez, Floydada, adm. 11-28, continues care.
 Sarah Diaz, Plainview, adm. 11-28, continues care.
 James Robert Scott, Tulia adm. 11-29, continues care.
 Anna Shugart, Lockney, adm. 11-29, continues care.
 Clara Harris, Floydada, adm. 11-30, continues care.
 Mary Torrez, Plainview, adm. 11-29, continues care.

Quitaque News

The weatherman tried his best during November to make us forget the beautiful Indian Summer days that we had enjoyed earlier in the fall. During the month there was rain, fog, drizzles, frost and occasionally a few hours of sunshine. It all added up to EXCEEDINGLY POOR harvest conditions, and as a result very few crops have been harvested as we enter December. Under the Caprock the cotton is still much better than anyone thought it could be, and most of it is open and ready for harvest. The winter and pastures are also in excellent shape, so we all really need now to get things back on the right track is a good stretch of PRETTY WEATHER.

Ordinarily at this time of year the peanut harvest across the Valley has been completed, but this year the rainy weather stopped things right in the midst of harvest. A few growers managed to get their peanuts to the grading station before the bad weather hit, but most of them were caught with hundreds of sacks in the field, and this necessitated turning the sacks daily to keep the peanuts from molding. It is ALREADY EVIDENT that the grades won't be as good as they have been in years past, and everybody is just hoping they can finish the harvest before further damage is done.

The weather jinx continued for Aoudad sheep hunters again this year, for much of the bad weather occurred during the two week Aoudad hunting season in November. It seems that bad weather has a way of harrasing the Aoudad hunter, regardless of the time of year that the hunt is held. When the open hunting season was in January, hunters braved some bone-chilling zero temperatures, along with snow and bitter cold winds. Then after the season was moved to November, there was intermittent cold, mixed with fogs, drizzles and conditions

that provided extremely POOR VISIBILITY. Despite the weather barriers, the Aoudad sheep continue to be the most talked about big game in Texas. This year hunters paid \$300.00 up just for a chance to stalk the elusive target, and even with guides some of the best still came away empty handed. Some GOOD KILLS were registered this year, however, for on the D.M. COGDILL ranch southwest of Quitaque MARVIN MARSHALL of Plainview landed a trophy sheep whose horns measured 32 5/8 inches. In all, an estimated 55 sheep were bagged in Briscoe County along the rugged Caprock terrain.

NEWS AND VIEWS—
 (1) FIRST TRAIN—SMITH REES called us from Mount Pleasant a few days ago and told he had just read an article in a 1929 Turkey annual that he'd like to share with us. The article stated that FIFTY YEARS AGO, on November 20, 1928, the first trains came through Quitaque and Turkey. Five trains came through on that historic day, and the train to Lubbock began taking passengers at Estelline and by the first time it reached Quitaque no more seats were available. Smith said he was a passenger on that first

train, and that bans and crowds gathered at every stop.
 NEW HOUSING UNITS—the new housing units in the north part of Quitaque have been completed and are now ready for occupancy. These apartments were built primarily to relieve the critical labor housing shortage in this area, and government officials who have seen the apartments for the Texas Department of Health, said the labor units were the nicest he's seen in this part of the state, and he felt they were quite possibly "the nicest in Texas."



TIPS FOR THE MOTORIST
How To Deal With Highway Surprises
 Highway emergencies can happen to anyone, anywhere, anytime.
 Think about the unexpected, from other drivers or your car.
 And be prepared to act. The "Driving Emergency" and "Emergency Repair" books can help you handle many highway surprises.
Think, React, Live!
 Panic is your enemy. It can kill you.
 Example: brake failure. Pump the brake pedal. Use the parking brake (but don't jam it on hard if you're in a curve—that can cause a spin.) Shift into a lower gear (or lower range on your automatic.) The drag of the engine will slow you down.
Simple Fix-Ups For Breakdowns
 You can handle some common car problems yourself. You just have to know where to look for, and what to look for, and what to do when you find it.
 Be prepared with an emergency kit. Pack it with jumper cables, working flashlight, phon pump, distress flag, duct tape, wire, paper clip, inflator, plastic water bottle, screwdrivers, and adjusters.




PIGGLY WIGGLY HOLIDAY HARVEST OF SAVINGS

Tis The Saving Season At Piggly Wiggly

"Each of these advertised items is required to be readily available for sale at or below the advertised price in each store, except as specifically noted in this ad."

PRICES EFFECTIVE DEC. 3 THRU DEC. 9, 1978

JOY LIQUID

 22-OZ. BTL.
89¢

BOUNCE FABRIC SOFTENER

 60-CT. SHEETS
\$2.59

OLEO 1-LB. PKG. **59¢**

LIBBY'S SAUSAGE VIENNAS 5-OZ. CANS **2.89¢**

PIGGLY WIGGLY CINNAMON ROLLS 9 1/2 OZ. SIZE **49¢**

GREEN GIANT NIBLETS CORN 12-OZ. CANS **3 \$1.00**

ORE-IDA SHOESTRING POTATOES 20-OZ. SIZE **59¢**

PIGGLY WIGGLY ASST. OR DECORATOR PAPER TOWELS EA. **49¢**

REG. OR UNSCENTED DEODORANT SECRET 1.5-OZ. SIZE **99¢**

LIQUID SHAMPOO PRELL 16-OZ. SIZE **\$1.99**

PURE VEGETABLE WESSON OIL 24-OZ. BTL. **\$1.19**

U.S.D.A. GRADE 'A' BOX-O-CHICKEN

 LB.
49¢
 "A PIGGLY WIGGLY MONEY SAVER"

TIDE DETERGENT

 84-OZ. BOX
\$2.29

COCA COLA

 6 32-OZ. OR ONE 1 LITER BTL. **\$1.49** PLUS DEPOSIT

PEANUT BUTTER PETER PAN CRUNCHY OR SMOOTH 18-OZ. JAR **\$1.19**
NILLA WAFERS NABISCO 12-OZ. **69¢**
RITZ CRACKERS 16-OZ. **89¢**
COCOA MIX SWISS MISS 1-OZ. 12-CT. **\$1.25**
PLANTERS SNACKS CHEESE BALLS 5-4.5 OZ. **69¢**
CAKE MIX PILLSBURY PLUS ASST. FLAVORS 18%-19% OZ. **79¢**
KORDITE TRASH CAN LINERS 40-CT. SIZE **\$2.59**
HEFTY SUPER WEIGHT TRASH BAGS 15-CT. SIZE **\$1.99**

FROSTING PILLSBURY READY TO SPREAD 16 1/2-OZ. **\$1.09**
WAFFLES AUNT JEMIMA, COUNTRY BLUEBERRY, BUTTERMILK 10-OZ. **69¢**
CAT FOOD CHEFS BLEND 3 1/2-OZ. SIZE **\$1.79**
CORNBREAD MIX CINCH 15-OZ. **45¢**
COCKTAIL PEANUTS PLANTER'S 12-OZ. **\$1.29**
PEANUT BRITTLE KRAFT 12-OZ. **69¢**
HEFTY TRASH CAN LINERS 20-CT. SIZE **\$1.99**

PIGGLY WIGGLY BATHROOM TISSUE

 4 ROLL PKG. **69¢**



Facts from a pro on driving to survive.

Q. This past summer I saw a long line of army vehicles dominating one lane of the highway. Do they have a right to do this? E.B., El Paso

A. Texas law calls for vehicles traveling in convoy to leave sufficient space between one another so that an overtaking car "may enter and occupy that space without danger."

Q. Is the 55 m.p.h. speed limit really safer, or is it just a way to get us to use less gasoline? R.M., Buda

A. The death rate on highways in Texas and across the U.S. has fallen dramatically with the national adoption of a 55 m.p.h. limit. Impact in an accident at 55 is considerably less severe than it is at higher speeds. For most drivers, it is also easier to keep a vehicle under control in an emergency at 55 m.p.h. than at 65 or 70. But recently, with more Texas drivers ignoring the 55 maximum, the death rate has started to climb again.

Q. Can a car drive on the improved shoulder of a two-lane highway to pass another vehicle on the right? J.M., Vidor

A. This is a "gray area" under Texas law, especially as the statutes contain no definition of improved shoulder. The shoulder is not added to the road to increase its driving surface. It provides emergency parking and helps keep the edge of the road from washing away due to the effects of wet weather. Passing on the shoulder should best be considered an emergency maneuver. An example might be when a car ahead stops or turns left suddenly.

If you have a question on driving, send it to:
 Texas Office of Traffic Safety
 P.O. Box 1165
 Austin, Texas 78767



aim for fearful

You have sense of humor, you're poor cult candidate

Canyon, Texas--

If you've got a good sense of humor you're a poor candidate for a cult, one of those cults consisting of people who seem to be mindless crime and terror, according to a psychologist.

The person who can see two sides, who tends to be reasonable, who sees things in shades of gray, is not a cult candidate," said Dr. Tom Cannon. "Also, the person who wants to figure out for himself what he is to be when he grows up."

The cultist, the cult leader, often looks for "someone who is overwhelmed, who sees the world as a buzzing, frightening place" to become part of his organization, Cannon said.

The West Texas State University psychology professor, who said his observations on cults could be nothing more than speculation, said cults of the kind which stunned Americans this week by their mass suicide and murder activities in Guyana are not just aberrations of the modern

mind.

"To us this kind of thing is unbelievable," he said, "but what we saw in World War II is not any different."

The acts of genocide of Nazi Germany, the suicide pacts of the Japanese were cult acts, perpetrated on a massive and national scale.

10 ways to become leader of a cult

Like to start your own cult? Psychologist Tom Cannon says there are at least 10 techniques which lead to a successful cult organization.

"The methods are neither good or bad," he said, "but it's the purposes for which they are used. In

fact, they can be helpful. If they build school spirit, for example, or build discipline or dedication."

Here's how you can have your own cult:

- Say what you want to be believed loudly and often.
- Have a mystical ritual. Test the members frequently and have a pay-off of some sort.
- Give the members something or somebody to believe in.
- Require some sacrifice, some humiliation from the members.
- Require public confession, perhaps, or some public statement of commitment.
- Assure perpetual stress on the members, disruptive routines, unexpected demands.
- Alternate stress with love.
- Have group experiences, group highs, perhaps induced by drugs or alcohol or simply mystical exaltation.
- Provide group identification, maybe uniforms, pens, symbols of some common kind.
- Instill in your members the belief they are right, in some way superior, and that others are inferior or wrong.

HOLIDAY BINGO MAGIC - WIN UP TO \$5,000.00

Chart

DECEMBER 3, 1978

1	10	20	30	40	50	60	70	80	90	100
11	21	31	41	51	61	71	81	91	101	110
12	22	32	42	52	62	72	82	92	102	111
13	23	33	43	53	63	73	83	93	103	112
14	24	34	44	54	64	74	84	94	104	113
15	25	35	45	55	65	75	85	95	105	114
16	26	36	46	56	66	76	86	96	106	115
17	27	37	47	57	67	77	87	97	107	116
18	28	38	48	58	68	78	88	98	108	117
19	29	39	49	59	69	79	89	99	109	118
20	30	40	50	60	70	80	90	100	110	119

PLEASE READ!

These odds are in effect for one month after start. After one month updated odds will be posted in all participating stores and in Newspaper ads. Use Series BM30 Tickets only for all games on the Collector Card. Games must be played subject to Rules on the Collector Card.

Game program may be repeated by popular demand. The total number and worth of prizes to be awarded will depend upon the number of winning tickets actually redeemed.



DAILY
8 a.m. - 8 p.m.

SUNDAY
9 a.m. - 8 p.m.



Barney's Butcher Shop Sale

BE SATISFIED WITH PIGGLY WIGGLY MEAT OR DOUBLE YOUR MONEY BACK!

CENTER CUT RIB OR LOIN PORK CHOPS	\$1.89
U.S.D.A. HEAVY WESTERN BEEF, BONELESS CHUCK ROAST	\$1.59
FRESH PICNIC PORK ROAST	99¢
FARMER JONES FRANKS	89¢
LEAN COARSE GROUND CHILI MEAT	\$1.29
FARMER JONES BACON	\$1.59
COUNTRY STYLE PORK RIBLETS	\$1.39
HILLSHIRE FARMS SMOKED SAUSAGE	\$1.69
TENDA MADE CHIC. FRIED BEEF FINGERS	\$1.29

DOUBLE STAMPS EVERY WEDNESDAY

Every Wednesday with \$2.50 or more purchase excluding cigarettes.

KRAFT MIRACLE WHIP

99¢

8-OZ. JAR

LIBBY'S TOMATO JUICE

49¢

46-OZ. CANS

LIBBY'S TOMATO SAUCE

69¢

8-OZ. CANS

Stan's Produce Sale!

WASHINGTON STATE RED OR GOLDEN DELICIOUS APPLES

3 LB. BAG 98¢

FRESH CELLO CARROTS

2 1-LB. BAGS 39¢

WESTERN RUSSET BULK BAKING POTATOES

7 LBS. \$1.00

Texas Food and Fiber

Texas Department of Agriculture
Reagan V. Brown, Commissioner

TEXAS' RICH AND DIVERSE agricultural heritage is responsible for much of the state's present prosperity, although this heritage is in danger of being forgotten, Agriculture Commissioner Reagan V. Brown said recently.

Brown addressed descendants of many of Texas' pioneer farmers and ranchers at the Texas Department of Agriculture's 1978 Family Land Heritage Program in Austin.

"Today there are fewer than one-half million persons living on farms and ranches in the state, even though 50 per cent of our entire population lived in rural areas as recently as 40 years ago," Brown said.

"Agricultural producers now represent only about three per cent of the population, which makes them one of the smallest, but most important, minority groups.

"Even though we are a minority, and a misunderstood one at that, we must never let this country's vital food and fiber lifeline be taken for granted," he added. "We must make the consuming public aware that farmers and ranchers do not always share in the prosperity, even during the best of times."

of South Texas and Northeastern Mexico, which are used extensively for wintering over cattle, notes Agriculture Commissioner Reagan V. Brown.

"Experts reveal that screwworms have been indicated throughout the Hill Country and Edwards Plateau," Brown said. "They also appear to be moving from the heavily infested area west of the Pecos River."

Confirmed cases of the costly parasite have increased dramatically in 1978, after a relatively light year in 1977, Brown stated.

REAGAN V. BROWN, Texas Commissioner of Agriculture, has been honored with a second major agricultural award this year.

Brown recently received the 1978 Distinguished Government Service Award from the Professional Agricultural Workers of Texas, for his work to make Texas agriculture No. 1 in production and profits. He was previously notified that he has been named the 1978 recipient of the D. Howard Doane award from the American Society of Farm Managers and Rural Appraisers.

Brown has received some 17 major awards and citations during his nearly three decades of involvement in Texas agriculture.



MAKE YOUR RESERVATIONS THIS WEEK!

CARIBBEAN CRUISE

DELUXE 7 DAY AIR-SEA CRUISE

- Montego Bay
- Santo Domingo
- Antigua
- Guadeloupe
- Ocho Rios

SINGLES \$698
DOUBLES \$798

Leaving March 3 or March 10

Call 983-3982 Or 983-3737

FOR BROCHURE WITH ALL INFORMATION

TOOLEY TOURS

Floydada, Texas

FARM & RANCH NEWS

Wheat, Barley Farmers To Receive \$650 - \$735 Million In Payments

Wheat producers will receive between \$585 and \$655 million and barley producers between \$65 and \$80 million in deficiency payments under the 1978 wheat and feed grain program, Ray Fitzgerald, administrator of the Agricultural Stabilization and Conservation Service (ASCS) said.

Payment checks will be mailed to eligible wheat and barley producers by

the ASCS county offices beginning in December. Corn and grain sorghum payments will be made in April.

The deficiency payment rate is the difference between the established (target) price of the commodity and the higher of either the national average loan rate or the national weighted average market price received by farmers during the first five months of

the marketing year for each commodity (for wheat and barley June through October).

TARGET PRICES

The per bushel 1978 target prices are \$3.40 for wheat and \$2.25 for barley and the national average loan rates are \$2.35 for wheat and \$1.63 for barley.

The national average market prices

Arsenic Acid Use May Be Disallowed

The cotton industry will suffer a severe blow if the Environmental Protection Agency (EPA) disallows the use of arsenic acid as a harvest-aid chemical.

That's the concern voiced by Dr. Robert B. Metzger, cotton specialist with the Texas Agricultural Extension Service.

To prevent this from happening, cotton farmers are urged to respond immediately to a survey being conducted by the manufacturer of arsenic acid. Purpose of the survey is to obtain opinions from farmers regarding the benefits of the chemical for continued profitable cotton production.

According to Metzger, the survey stems from an Oct. 18 EPA decision to place all uses of inorganic arsenicals including arsenic acid on the Rebuttable Presumption Against Registration (RPAR) list. This does not mean automatic removal of arsenic acid from the market, but EPA will now demand more evidence that benefits of this compound outweigh risks before further registration is permitted. An assessment team has until Dec. 4 to respond with benefit comments concerning the value of arsenic acid to the cotton industry.

"The EPA decision to require further evaluation of the benefits vs. risks of arsenic acid as a cotton desiccant could have far-reaching effects on cotton producers," contends Metzger. "More than two million acres of cotton in the Southwest are treated annually with arsenic acid to prepare the crop for stripper harvesting. The chemical desiccates or dries the plant for stripper harvesting so that lint and seed quality can be preserved.

"Loss of the chemical could be devastating to a large segment of the cotton industry. First of all, it would cost producers millions of dollars in terms of lower lint and seed grade due to delayed harvest," explains the Texas

A&M University System specialist. "It would also prevent stalk destruction for insect and disease control and would mean higher ginning costs due to the reduced capacity and increased energy required for additional drying of cotton."

A change in cotton varieties and harvesting methods to circumvent the need for arsenic acid would cost additional millions and would disrupt the industry to the point that many producers would no longer grow cotton, believes the specialist.

'79 Feed Grain Program Provisions Announced

Acting Secretary of Agriculture Carol Tucker Foreman has announced the 1979 feed grain program that is essentially the same as in 1978. Feed grain producers will be encouraged to remove from production an acreage equal to 20 percent of the acres they plant for harvest in 1979, a percentage identical to 1978, according to Foreman.

Corn and sorghum producers will again be offered a 10 percent set-aside and a 10 percent diversion program. There will be a 20 percent set aside program for barley in 1979, instead of a combination set-aside/diversion program.

The incentive to participate in the 1979 program totals \$2.30 a bushel for corn and \$2.40 a bushel for sorghum and barley. However, the corn target prices will be \$2.20, instead of \$2.10 a bushel, and the diversion payment will be 10 cents a bushel, instead of 20 cents. The sorghum target price will be \$2.30 a bushel, and the

barley target price will be \$2.40 a bushel, Foreman said.

SET-ASIDE ESSENTIAL

Without a set-aside program, feed grain producers would have faced sharply lower prices. At the same time taxpayers would have been forced to assume excessive federal payments to farmers.

The 1979 feed grain program will protect producer returns. It is expected to result in a modest increase in feed grain prices, but also to ensure that livestock producers and foreign buyers have adequate feed grain supplies at reasonable prices.

It will result in higher export earnings from feed grains, and at the same time, federal spending in fiscal year 1980 should be lower than in 1979. Because our program balances producer consumer and taxpayer interests fairly by ensuring adequate, but not excessive grain supplies, it will not be inflationary, Foreman said.

for wheat were: June, 2.82; July, \$2.80; August \$2.88; September, \$2.92; October Mid-month, \$3.04. For barley, the national average market prices were: June; \$2.04; July \$1.84; August, \$1.87; September, \$1.84; October mid-month \$1.81.

Based on these prices the estimated per bushel payment rate is from 50 to 60 cents for wheat and from 33 to 39 cents for barley. The final deficiency payment rates will be determined following the Nov. 30 agricultural prices report.

The allocation factor is determined by dividing the national program acreage by the number of acres the secretary of agriculture estimates were harvested.

Pheasant Population Good

LUBBOCK -- Texas hunters should find about the same number of ring-necked pheasants during the Dec. 9-24 season as last year according to surveys and comments from Texas Parks and Wildlife Department personnel in the Panhandle.

A slight decrease in the number of birds counted on survey lines could be the results of heavy rains, hail storms, or failure of some hens to nest twice.

The daily bag limit of two cock (male) birds will be strictly enforced as will the restriction on pheasant hens. Hunters are reminded to leave the head and feet attached to the pheasant carcass until the bird is delivered to its final destination.

The three areas of high pheasant populations including the Hereford-Dimmitt-Friona region; Stratford-Dumas region; and the Plainview-Kress region, are again expecting large numbers of hunters. Many sportsmen are finding good bird hunting in the less publicized areas where grain, wheat and cover are available.

Most successful pheasant hunters bagged one bird during the 1977 season on the first day. Hunters that were successful on the second day or later in the two-week season hunted the heavy cover, fence rows and playa lakes.

Texas game wardens working the pheasant season are finding a larger number of pheasant hen violations

These values will be determined from the November crop report.

Deficiency payments for the 1978 wheat and barley crops are computed by multiplying the projected yield for the farm by the acreage planted for harvest times the payment rate. However, the payment may be adjusted downward by the allocation factor.

The allocation factor will be applied to deficiency payments on farms where producers have not reduced the 1978 acreage of wheat from the 1977 by 20 percent or the 1978 acreage of barley from 1977 by 20 percent. It is estimated the allocation factor will be 95 to 100 percent for wheat and 83 to 89 percent for barley.

each successive year. Also, more complaints are being received from irate landowners as hunters continually hunt on posted land or private property without getting permission.

Panhandle counties open to the Dec. 9-24 season include: Armstrong, Bailey, Briscoe, Carson, Castro,

Childress, Collinsworth, Cottle, Dallam, Deaf Smith, Donley, Floyd, Gray, Hale, Hall, Hansford, Hardeman, Hartley, Hemphill, Hutchinson, Lamb, Lipscomb, Moore, Motley, Ochiltree, Oldham, Parmer, Potter, Randall, Roberts, Sherman, Swisher, and Wheeler. Hunters are reminded to

have their 1978-79 Texas hunting license when required by Texas law. More information on hunting regulations is available from your local Texas game warden or P&WD representative in your area.

Got Heating Or Plumbing Problems?
Call **HOLMES PLUMBING**
AUSTIN OR STEVE
983-2251
6:30 - 9:30 a.m. and 5:30 p.m. Until?

Western Ag. Sales Co. Inc. Invites You - - -

TO TOUR OUR PLASTIC PIPE MANUFACTURING PLANT. COME AND SEE THE PROCESS USED TO MAKE UNDERGROUND PLASTIC PIPE. OUR PIPE IS AS GOOD AND BETTER THAN MOST. GIVE US THE OPPORTUNITY TO LET YOU TRADE AT HOME AND HELP OUR LOCAL ECONOMY.

OUR OFFICE IS LOCATED AT 327 W. 24th St., IN PLAINVIEW, TEXAS.

COME BY AT YOUR CONVENIENCE. CALL OUR LOCAL SALES REPRESENTATIVE, **RONNIE ROGERS**, AT OUR FLOYDADA, OFFICE FOR ANY INFORMATION OR A QUOTATION ON PIPE BEFORE YOU TRADE WITH ANYONE ELSE. THE FLOYDADA OFFICE TELEPHONE NUMBER IS 983-5231 THE MOBILE UNIT FOR RONNIE ROGERS IS 6215. OUR PLAINVIEW OFFICE NUMBER IS 296-6361.



WINTER FORECAST



JOIN THE MOVE TO MICHELIN

XM+S

FOR TIRES YOU CAN DEPEND ON



CLOSE OUT SALE

	Reg. Price	Sale Price
Monroe Matic	\$15.95	\$7.47
Super 500	\$26.95	\$12.95
Load Leveler	\$39.95	\$19.90



RUCKER'S OK TIRE STORE

308 So. Main

Floydada, Tex

983-3370

If It's Results You Want-It's CLASSIFIED ADS You Need

PROPERTIES FOR SALE

Several good three bedroom homes for sale. Call Real Estate, Wilson Bond, 983-3873. tfc

Two and a half bedroom homes for sale. Call Insurance and Real Estate, 983-3261. tfc

Three bedroom, brick home. Den, built-ins. Call Investments, Doyle 119 Mae Ave. tfc

Two bedroom carpet, doors, built-ins, central heat, refrigerator, two 40-gallon water heaters, fenced back yard. Call W. Locust, Lockney 983-3589. tfc

Bedroom house for sale. Call after 3 p.m. LTFC

Five bedroom bath, good condition. 525 W. Miss. Lockney. 983-2573. tfc

2 bedroom carpeted, on lot 1102 S. Main. Call James Lee Nichols, 983-3144 tfc

2 bedroom fully carpeted, wall to wall, ready to live in. Call Finley, 983-3871 tfc

Home for sale 211 St. Appointment. Call Hanna 1-14

2 bedroom carpet, paneled. Call night 983-2667 12-3p

Three bedroom brick home on J.B. New carpet about, fenced back yard, fruit trees, storage. Call for appointment. tfc

1978-79 Texas license when re-examined. More information from your game warden or representative in Lockney. Call 983-3875 12-17p

3 bedroom bath, den with living and dining room. Call 983-3469 Miss. 12-30c

14 x 65 mobile on good lot. Fenced carpet, concrete. Small two-room and back with good shelving, trees. Shown by appointment only. Call 983-228c

Elementary school in Lockney, paved. 12-14c

Use Some Extra Money Let Us Help!!!! BUY SCRAP IRON, OLD WRENCHES, AND FREE PICKUP Call 983-5277

WANT YOU, TO sell all kinds of Good tires... tractor, auto, a good tire, good price. Best deals in West Texas. Truck winch and service. BAHE'S SERVICE CENTER, tfc

FARMS AND ACREAGE

WANTED TO BUY irrigated or dryland farm in Floyd or surrounding area. Write Box XRO, c/o Hesperian, Box 700, Floydada, tfc

FOR SALE by owner-189 acres 2 1/2 mi. northeast of Littlefield, two 6-inch wells. 12-7p

PETS

PUPPIES TO GIVE AWAY... half border collie. Call 983-2603 12-3c

GARAGE SALE

GARAGE SALE: Eddie Foster, 3 1/2 miles west of Lockney on Highway 70 and 1/4 mile north. L12-28p

DAN'S AUTO SERVICE

DAN TEUTON, Owner
Specializing in Automatic Transmission, Motor Tune-Ups, Auto Air Conditioning.

General Repair
We Have A BRAKE LATHE to handle all passenger car brake drums. See us for complete brake service.

Phone 652-2462

FOR BETTER CONCRETE

CALL CALLOWAY READY-MIX 652-2224 LOCKNEY PLAINVIEW HWY. ALSO WHITE CALICHE ROCK FOR SALE

CARD OF THANKS

With grateful hearts we say Thanks to everyone for their concern when Henry had his recent surgery. For all the prayers, calls, cards and visits. May God bless all of you.

The Henry Bloodworths

We wish to thank all our friends and relatives for each kindness shown us during my stay in the hospital. Each prayer, card, visit, phone call and flowers were deeply appreciated.

May God bless each of you, is our prayer.

Carl and Grace Jarrett

HELP WANTED

Addressers Wanted Immediately! Work at home-no experience necessary-excellent pay. Write American Service, 8350 Park Lane, Suite 127, Dallas, TX 75231 12-3p

Need Responsible lady to babysit newborn from 8 to 5 weekdays. References required. Call 983-2037 tfc

LOST & FOUND

Lost, Hearing Aid. Reward. Call C.L. Calloway 652-2224 L12-7c

FARM MACHINERY

NORRELL TRACTOR PARTS for tractor and irrigation supplies and accessories. tfc

24 Steel Cotton Trailers 24' long x 8' wide x 9' high Cobey and Big 12 Chassis. Call before: 7:00 a.m. after: 9:00 p.m. 745-1116 LTFC

COW POKES



THIS FEATURE SPONSORED BY
Floydada Real Estate & Insurance Agency
AUTO, FIRE & FARM INSURANCE
Jim Word --- Phone 983-2360

TT ENTERPRISES

Custom Cabinet Work
All kinds of shelves Remodeling
Room Additions
No job too small or too large
Licensed and Bonded
Call Ike Tickle, 652-3549 Lockney

RANGE CUBES

\$143.20 Ton-Plus Freight In The Barn.
Will Contract Nov. Dec. Jan. 20% Nat. Protein 7% Fiber; 25,000 Vit. A.
Call 806/348-3271 After 6: P.M. 348/3573 tfc

TURNER REAL ESTATE

Farms-Ranches Floydada, Texas
983-2635

GROUND RIG AND AERIAL APPLICATION FOR COTTON DEFOLIATION

★ LONE STAR CHEMICAL INC. ★
652-2761

RICK KELLISON 652-3504
DEANIE HENDERSON 652-3434
EVANS GIN 652-3765 L-tfc

FARMS-RANCHES-CITY PROPERTIES-BUSINESS LEASES-LOANS

B. B. WILKES BROKER
REAL ESTATE
100 S Main, Lockney Barry Barker, Solicitor
Barker Insurance Agency-652-2642

IF IT IS INSURANCE -SEE-
BARKER INSURANCE AGENCY
LIFE-FIRE-CASUALTY-HOSPITAL

Diamond Industrial Supply Co., inc.

Phone Days 296-7418 Nights 296-1200 or 296-7828
1014 Broadway Plainview, Texas

Chain Sprockets V-belts Sheaves U-joints Oil Seals O-rings Wisconsin
SKF RCA Timken Bower Cotton Stripper Brushes & Bats
"We Appreciate Your Business More" L-tfc

Kirby

Vacuum cleaners, new and rebuilt. 1 yr. guarantee. Parts, sales and service. Prices begin at \$124.50.
Parker Home Furnishings in Lockney. 652-3315. L-tfc

FOR SALE

FOR SALE: Stove and refrigerator, bed frame, box springs and mattress, dining room table and chairs. 983-2168 tfc

FOR SALE: Country Club membership. 983-5256 tfc

FEET TIRED? Try Mason Shoes with "Velvet-ez" air-cushioned insoles. Keith Emert, 652-3116. LStfc

FOR SALE: Decorative baby bed, avocado and white. Good condition. 983-2316. 11-30p

Washer & Dryer Maytag. Avocado. Like new Call 983-2607 tfc

CAMPER SHELL FOR SALE Excellent Condition \$390.00. Phone 298-4251, Abernathy after 6 p.m. 12-3p

SONY Reel to Reel SANSUI amplifier and two speakers PE 2040 turntable. 983-5289. 12-3p

FOR SALE: Green Artificial Christmas Tree. 7 ft. good shape. 983-5111 or 983-5392 after 5. tfp

C-D-J 66 7-day service, car wash, oil change. Gas service, U-haul rentals. Located on Matador hwy. 983-2601.

C-D-J INSULATION can help save your dollars. For information call 983-2601.

INSULATION Fire-Resistant. Installed and Guaranteed. MARR Insulation Co. Lockney 652-3593. L-tfc

Year around farm job wanted. Would like to live in my own home. Experienced in 6-8-12 row equipment. Phone 983-2797 12-24p

WANTED: Year round farm hand, must be experienced and dependable. House and utilities furnished on pavement. Must furnish references. Phone 983-2740 tfc

SMALL JOBS WANTED Carpenter, painting, odd jobs Call 983-2294 after 6 p.m. tfc

WANTED Wheat Pasture 983-3445 1-21p

18 SHOPPING DAYS LEFT

CHRISTMAS 1978
FIGHT LUNG DISEASE WITH CHRISTMAS SEALS

For Sale

SALE-Shelled pecans 3 lbs. For \$11.50 or 5 lbs. for \$19.00. Contact any 4-H member or Floyd County Extension Office. (983-2806) tfc

FOR SALE: 4 in. Green pump complete. 240 ft. setting. Same as new Dorsey Baker L-tfc.

FOR SALE: Three Peerless pumps 3", 4" \$1200 each. 7 1/2 h.p. engine 250. Call 652-2136 or 652-2492. L12-28c

FOR SALE: 1 Country Club Share. Call 983-3975 after school. tfc

FOR SALE: Country Club Share and two chain saws. Joe R. Jones 983-3695 12-3c

FOR SALE: Swivel rocker, occasional chairs, glass coffee table. All in good condition. 983-2604 tfc

NOTICE

FOR SALE OR TRADE FOR FARM LAND: Size 50 x 100 ft. Brick Building Fire Walls, Double Ceiling-Refrigerated Air-7 years Remaining excellent lease. Cecil Hagood 983-2312 tfc

Do You Want To BUY, SELL OR TRADE Let me help you. Cecil Hagood, Real Estate Salesman, Warner Dale Goen, Broker. Phone 983-2312-708 N. 2nd tfc

NOTICE Fur Buyer will be in Floydada on Saturdays beginning Nov. 25 through January. North Side Court House, 12 to 12:45. Red Veale Fur Co. Ken Hayden, Buyer 817-559-3624 Breckenridge, TX. 12-3p

DO YOU NEED HELP TO PAY YOUR RENT? Call 983-3171 or come by 302 E. Tennessee 12-3c

NOW OPEN A-1 Pet and Grooming professional grooming, all breeds-no tranquilizers 821 Broadway, Plainview, Texas 293-3557 tfc

Give your house a fresh new look, for interior painting call Rena Turner, Jan Sherman 983-5130 12-10c

CLASSIFIED ADVS. MUST BE PAID IN ADVANCE

SHOP FLOYD COUNTY FIRST!

AUCTION REAL ESTATE

REAL PROPERTY OF FLOYD COUNTY TIRE COMPANY FLOYDADA, TEXAS

WILL BE SOLD ON THE STEPS OF FLOYD COUNTY COURT HOUSE 3:00 P.M. TUESDAY DECEMBER 5, 1978

PROPERTY DESCRIPTION
1 CONCRETE BLOCK BUILDING ON 2-LOTS AT 315 SOUTH HOUSTON ST. FLOYDADA, TEXAS.

LEGAL DESCRIPTION
All of Lots 15 and 16, Block 125, Original Town of Floydada, Floyd County, Texas, together with all permanent improvements situated thereon.

TERMS
Cash: 10% in escrow, balance on delivery of trustee's deed.
Property sold in accordance with the terms of the Small Business Administration.

Butler & Faulks Auctioneers

TRAVIS BUTLER T&GS-019-0398 (806) 763-4919
JACK FAULKES T&GS-019-0053 P.O. BOX 5701 LUBBOCK, TX 79417

Trying It On For Size



Sheer delight is shown by 9-year-old Chigusa Kawahara of Palisades Park, N.J., as she tries on the crown of Miss USA, Judi Lois Andersen of Hawaii. The petite and pretty Chigusa painted the 1978 Christmas Seal that represents New Jersey in the child-drawn Christmas Seals selected from all over the country. The blonde and beautiful Miss USA is a Christmas Seal Ambassador for the American Lung Association. They both say, "Give to Christmas Seals and support the work of your lung association."

WANT A GOOD BUILDING? CALL US MORTON BUILDINGS Plainview 806-293-4386 Box 928



FREEDOM TO READ STATEMENT

The freedom to read is essential to our democracy. It is continuously under attack. Private groups and public authorities in various parts of the country are working to remove books from sale, to censor textbooks, to label "controversial" books, or authors, and to purge libraries. These actions apparently rise from a view that our national tradition of free expression is no longer valid; that censorship and suppression are needed to avoid the subversion of politics and the corruption of morals. We, as citizens devoted to the use of books and as librarians and publishers responsible for disseminating them, wish to assert the public interest in the preservation of the freedom to read.

We are deeply concerned about these attempts at suppression. Most such attempts rest on a denial of the fundamental premise of democracy; that the ordinary citizen, by exercising his critical judgement, will accept the good and reject the bad. The censors, public and private, assume that they should determine what is good and what is bad for their fellow citizens.

We trust Americans to recognize propaganda, and to reject it. We do not believe they need the help of censors to assist them in this task. We do not believe they are prepared to sacrifice their heritage of a free press in order to be "protected" against what others think may be bad for them. We believe they still favor free enterprise in ideas and expression.

We are aware, of course, that books are not alone in being subjected to efforts at suppression. We are aware that these efforts are related to a larger pattern of pressures being brought against education, the press, films, radio and television. The problem is not only one of actual censorship. The shadow of fear cast by these pressures leads, we suspect to an even larger voluntary curtailment of expression by those who seek to avoid controversy.

Such pressure toward conformity is perhaps natural to a time of uneasy change and pervading fear. Especially when so many of our apprehensions are directed against and ideology, the expression of a dissident idea becomes a thing feared in itself, and we tend to move against it as against a hostile deed, with suppression.

And yet suppression is never more dangerous than in such a time of social tension. Freedom has given the United States the elasticity to endure strain. Freedom keeps open the path of novel and creative solutions, and enables change to come by choice. Every silencing of a heresy, every enforcement of an orthodoxy, diminishes the toughness and resilience of our society and leaves it the less able to deal with stress.

Now as always in our history, books are among our greatest instruments of freedom. They are almost the only means for making generally available ideas or manners of expression that can initially command only a small audience. They are the natural medium for the new idea and the untried voice from which come the original contributions to social growth. They are essential to the extended discussion which serious thought requires, and to the accumulation of knowledge and ideas into organized collections.

We believe that free communication is essential to the preservation of a free society and a creative culture. We believe that these pressures towards conformity present the danger of limiting the range and variety of inquiry and expression on which our democracy and our culture depend. We believe that every American community must jealously guard the freedom to publish and to circulate, in order to preserve its own freedom to read. We believe that publishers and librarians have a profound responsibility to give validity to that freedom for the readers to choose freely from a variety of offer-

ings. The freedom to read is guaranteed by the Constitution. Those with faith in free men will stand firm on these constitutional guarantees of essential rights and will exercise the responsibilities that accompany these rights. We therefore affirm these propositions:

1. It is in the public interest for publishers and librarians to make available the widest diversity of views and expression, including those which are unorthodox or unpopular with the majority. Creative thought is by definition new, and what is new is different. The bearer of every new thought is a

rebel until his idea is refined and tested. Totalitarian systems attempt to maintain themselves in power by the ruthless suppression of any concept which challenges the established orthodoxy. The power of a democratic system to adapt to change is vastly strengthened by the freedom of its citizens to choose widely from among conflicting opinions offered freely to them. To stifle would mark the end of the democratic process. Furthermore, only through the constant activity of weighing and selecting can the democratic mind attain the strength demanded by times like these. We need to know not

only what we believe but why we believe it. 2. Publishers, librarians, and booksellers do not need to endorse every idea or presentation contained in the books they make available. It would conflict with the public interest for them to establish their own political, moral, or aesthetic views as a standard for determining what books should be published or circulated. Publishers and librarians serve the educational purpose by helping to make available knowledge and ideas required for the growth of the mind and the increase of learning. They do not foster education by imposing as mentors the pat-

terns of their own thought. The people should have the freedom to read and consider a broader range of ideas than those that may be held by any single librarian or publisher or government or church. It is wrong that what one man can read should be confined to what another thinks proper. 3. It is contrary to the public interest for publishers or librarians to determine the acceptability of a book on the basis of the personal history or political affiliations of the author. A book should be judged as a book. No art or literature can flourish if it is to be measured by the political views or private lives of

OBITUARY

Grace Byars

Remember your loved ones and friends with a memorial to Lockney General Hospital Memorial Fund. These memorials go toward equipment to help serve our community in the best way possible.

Services for Mrs. Grace Byars, 88, of Lockney were Friday afternoon in the First Baptist Church in Lockney with the Rev. John Jenkins, pastor, officiating. Burial was in the Lockney cemetery with Moore-Rose Funeral

say. 4. There is no place in our society for efforts to coerce the taste of others, to confine adults to the reading matter

deemed suitable for adolescent, or to inhibit the efforts of writers to achieve artistic expression (to be continued)

Home, Lockney, in charge. Mrs. Byars died about 3 p.m. Wednesday at the Lockney Nursing Home. She was born September 10, 1891 in Lee County, Virginia and was married to Walter Byars on December 25, 1911 in Lockney. She came to Lockney in 1901. She was a member of the First Baptist Church. Survivors include a daughter, Estelle Powers of Lockney; a brother, Norman Livesey of Hershford; and a sister, Mrs. Percy Hart of Hart.

WIN WITH LUCKY STARS

Must Be 18 Or Older No Purchase Required

25 Winners Weekly

Recent Winners

- Florence Simpson Purchase Free (\$24.40)
- Rosa De La Fuente Purchase Free (\$3.41)
- Ola Mae Sullivan 1200 S&H Green Stamps
- Margarita Romero 1200 S&H Green Stamps
- Marilyn Marler 1200 S&H Green Stamps
- Daniel Fonseca 1200 S&H Green Stamps
- Vel Darden 1200 S&H Green Stamps
- Ike Tikel 600 S&H Green Stamps
- Yolanda Martinez 600 S&H Green Stamps
- Joe Peck 600 S&H Green Stamps
- San Juan Ibarra 600 S&H Green Stamps
- Ray Nichols 600 S&H Green Stamps

Mrs. Ed Muncy
\$100.00 Gift Certificate Winner

WE GIVE S&H GREEN STAMPS

DOUBLE ON WEDNESDAY

BUDDY'S

STORE HOURS
Mon-Sat., 8 a.m. to 8 p.m. Sun., 9 a.m. to 8 p.m.
VALUES EFFECTIVE THRU SATURDAY, DECEMBER 9, 1978
We Reserve The Right To Limit Quantities

<p>PURPLE TOP TURNIPS 4-LB \$1.00</p> <p>1 LB BAG CARROTS 5 FOR \$1.00</p> <p>RED DELICIOUS APPLES 39¢ LB</p> <p>5 LB BAG TEXAS ORANGES 89¢</p> <p>15 COUNT SHINNY BRITE ORNAMENTS \$2.19 \$2.99 VALUE</p> <p>TWIN PACK RAY-O-VAC C OR D SIZE BATTERIES 59¢ \$1.00 VALUE</p> <p>100 COUNT WHITE SWAN TEA BAGS \$1.49 \$2.09 VALUE</p> <p>TRAIL SIZE APPLE EASY 5/\$1.00 1 OZ. CHILI MAN</p> <p>CHILI MIX 3/\$1.00 39¢ VALUE</p> <p>6-32 OZ. TAB \$1.49 \$2.09 VALUE PLUS DEPOSIT</p> <p>12 OZ. FISHER RAW SPANISH PEANUTS 59¢ 79¢ VALUE</p> <p>29 OZ. LIBBY'S PEACHES 59¢ 77¢ VALUE</p> <p>16 OZ. LIBBY'S CHUNKY PEARS 59¢ 75¢ VALUE</p>	<p>FAMILY PACK GROUND BEEF 99¢ LB</p> <p>USDA BONELESS SIRLOIN STEAK \$2.19 LB</p> <p>USDA T-BONE STEAK \$2.39 LB</p> <p>LEAN CHILI MEAT \$1.19 LB</p> <p>COUNTRY STYLE PORK BACKBONE \$1.39 LB</p> <p>BELL SOUR CREAM OR DIP 2/79 65¢ VALUE</p> <p>BELL WHIPPING CREAM 2/79 65¢ VALUE</p> <p>12 OZ. TOM SCOTT MIXED NUTS 99¢ \$1.49 VALUE</p> <p>12 OZ. NESTLES CHOCOLATE CHIPS \$1.59 \$2.69 VALUE</p> <p>40 OZ. WELCH GRAPE JUICE \$1.29 \$1.59 VALUE</p> <p>20 OZ. DEL MONTE PINEAPPLE 59¢ 73¢ VALUE</p> <p>16 OZ. GREEN GIANT CUT GREEN BEANS 3/\$1.00 45¢ VALUE</p> <p>32 OZ. BLACKBURNS CRYSTAL WHITE SYRUP 59¢ 81¢ VALUE</p> <p>3 OZ. ADOLPHS TENDERIZER 59¢ 79¢ VALUE 75 SQ. FT.</p> <p>REYNOLDS FOIL 89¢ \$1.33 VALUE</p>	<p>12 OZ. SIZZLE LEAN BACON \$1.39</p> <p>LEAN HAM SLICES \$1.99 LB</p> <p>CENTER CUT PORK CHOPS \$1.89 LB</p> <p>SHOP MADE PORK SAUSAGE \$1.19 LB</p> <p>16 OZ. PILLSBURY QUICK BREAD MIX 87¢ \$1.09 VALUE</p> <p>EGGS 9¢ DOZ WITH PURCHASE OF 2 LB OWENS OR JIMMY DEAN SAUSAGE</p> <p>13 OZ. PILLSBURY HOT ROLL MIX 59¢ 73¢ VALUE</p> <p>10 LB 11 OZ. FAMILY SIZE CHEER \$3.89 \$5.99 VALUE</p> <p>2 LB KEEBLER CRACKERS 99¢ \$1.43 VALUE</p> <p>14 OZ. KEEBLER CINNAMON CRISP OR HONEY GRAHAMS 79¢ 99¢ VALUE</p> <p>1 LB ARM AND HAMMER BAKING SODA 3/\$1.00 53¢ VALUE</p> <p>KEEHLER-OR-NABISCO SNACK CRACKERS 2/\$1.29 89¢ VALUE</p>	<p>HOLIDAY CORSAGE 99¢ \$1.39 VALUE 25 SQ. FT.</p> <p>GIFT WRAP \$1.39 \$1.99 VALUE 1 1/2 LB MRS BAIRDS</p> <p>SPLIT TOP BREAD 69¢ 83¢ VALUE 8 OZ. SNACK</p> <p>FIDDLE FADDLE 2/89¢ 67¢ VALUE 15 OZ. OLD ELPASO</p> <p>REFRIED BEANS 3/89¢ 39¢ VALUE 40 OZ. CHEF BOY-AR-DEE</p> <p>RAVIOLI \$1.29 \$1.79 VALUE 40 OZ. CHEF BOY-AR-DEE</p> <p>SPAGHETTI AND MEAT BALLS \$1.29 \$1.79 VALUE</p> <p>12 OZ. RALSTON CHEX CEREAL 77¢ \$1.09 VALUE</p> <p>19 OZ. GEBHARDTS CHILI 77¢ \$1.15 VALUE</p> <p>15 OZ. GEBHARDTS TAMALES 2/79¢ 59¢ VALUE</p> <p>6 1/2 OZ. CARNATION TUNA 59¢ 99¢ VALUE</p>
---	--	---	--