

15¢
Per
Copy

The Floyd County Hesperian



Volume 82

FLOYDADA, FLOYD COUNTY, TEXAS 79235

Thursday, November 9, 1978

10 Pages In One Section

Number 90

Floyd Voters Favor Hill, Krueger; Clements, Tower Lead Statewide

Floyd voters in the general election favored John Hill and Bob Krueger for Governor and U.S. House, but Republicans John Tower and John Burleson were the winners statewide.

It from the Panhandle or western Texas. "That's a shame. It will be real important (to be on the committee) in writing the productive value (of agricultural land legislation)." He noted the Tax Relief Amendment, which was favored hands down by state voters, included the provision to tax farm and ranch land on its productive, rather than market value, is a major issue in the upcoming legislative session.

Hale, 48, owner of a department store and a Floydada civic leader, said, "I think the people should have really been ready for a little more of a change than what has occurred."

"But if they're not, they're not," Hale said he "certainly hoped" Whaley could help the legislature keep the state budget at a surplus, or balanced, and benefit the Panhandle.

"I give him my best," he said. "I hope he can do the very best job possible. The people have spoken, and I don't feel the least bit bad about it."

Hale noted that he doubted "very seriously" that he would try his luck at politics again.

"I'll relax," he said.

Whaley said, "I didn't take one dime of downstate lobby money. I ran on that as a ticket. I believe people like it that way. I sent back enough checks that would have cured my indebtedness I've incurred."

He added that he wants to "write a spending limit on each legislative seat in Texas. We really need to look into these laws that govern the financing of these elections."

"I say put a spending limit on each position," he said.

The final count was Whaley 10,678, Hale 6,412.

STENHOLM WINS

Stamford farmer Charles Stenholm easily defeated his Republican opponent Bill Fisher. Floyd voters very

readily approved Stenholm 1618 to 590. Stenholm will succeed veteran U.S. Congressman Omar Burleson in the 17th District, and has pledged his best efforts to get on the Agriculture committee.

STATE OFFICES

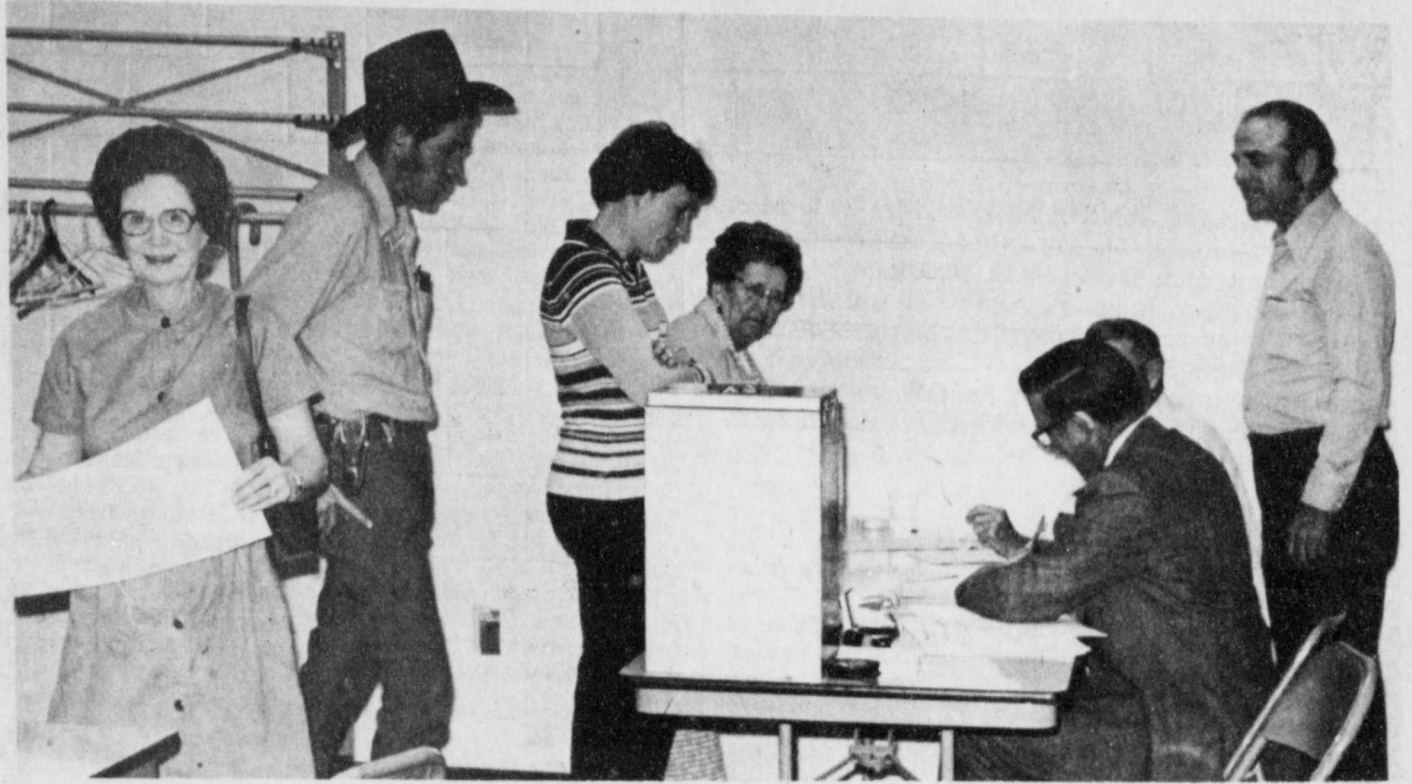
Floyd voters favored John Hill over Bill Clements for Governor 1255-997. They favored Bob Krueger over John Tower for U.S. Senate 1244-984. They approved Hobby over Marshal 1502-612 for Lt. Governor, White over Baker 1352-830 for Attorney General. They approved Poerner over Lacy 1547-543 for Railroad Commissioner.

AMENDMENTS

Floyd voters approved all the amendments to the State Constitution except two and three.

They favored tax relief by an impressive 1697-262. They favored No. 1, 1251-540, turned down No. 2, 812-983, turned down No. 3, 797-971, favored No. 4, 1222-629, favored No. 5, 1007-793, favored No. 6 1008-383, favored No. 7, 934-784, favored No. 8 1111-657.

Amendment Number 2 was the "permit employment opportunity revenue bonds" and Number 3 was "Legislature to authorize redevelopment bonds".



VOTING BRISK in Floyd's biggest box, Number 1, Southwest Floydada. (Staff Photo).

Whirlwinds Get A Good Rest Ready To Play Abernathy

By Wendell Tooley
After a week's rest from hitting the football field, the Whirlwinds are ready to wind up district play, playing Abernathy there Friday night and the

Tulia Hornets here November 17. Abernathy looked unbeatable for awhile. They went 5-0, then lost a close one to Muleshoe. That one was sorta expected...but then, they lost to Tulia.

Two weeks ago they beat the Lockney Longhorns with a field goal the last minute of the game, 15-14.

In the Lockney game Antelope quarterback Tony Heath threw 145 yards of pass completions...kicker Gilbert Cuevas booted the winning three points, and also punted a 63 yarder in the game.

Abernathy's led offensively by running backs Lee McCune and Roger Lindsey and quarterback Tony Heath. Two of the top Abernathy defensemen are linebackers David Kennedy and Ken Sanders.

Kickoff is at 7:30 p.m. in the Abernathy stadium.

The consistency of Heath's passing attack is revealed in the win over Idalou last week when he passed for 151 yards. The Whirlwinds will be keying on pass receivers Joe Barrera and Dean McGuire.

In fact the Antelopes made more yardage passing than rushing against Idalou 151-134 yards. Their defensive line is about 190 pound average.

FLOYDADA

Whirlwind coach L.G. Wilson said the team is in good physical condition and spirits are high after Abernathy's win over Idalou which "creates a new ball game" in the district race.

"We have five of the strongest teams in this district I have ever seen," he commented Tuesday. "Lockney, who hasn't won a district game, could very

easily have won all three and be on top of the district now...the games they have lost have been by very few points," he added.

Coach Wilson said the starting lineup would be as usual except Tim Radloff would be starting right guard.

Veteran's Day Holiday

Armistice Day, November 11 is now classified as "All Veteran's Day" and the holiday will be observed on Saturday by the Post Office.

The bank and other government offices will take the holiday on Friday.

The courthouse, city hall, utility offices will not close Friday, and will observe the holiday closed as usual on Saturday.

The Floydada Branch of Plainview Savings & Loan Assn. will also be closed Friday.

Get A Lope!

Hey all you Mean Green Fans this week the Mighty Whirlwinds journey to Abernathy. The winds are fired up for their third District game. They are still very much in the race for the District title and have a great chance to go all the way. We would like to invite you to the pep rally at 3:25 in the high school gym and then to the game at 7:30. Let's show the Winds that we're behind em all the way. We are going to make this year THE YEAR OF THE WHIRLWINDS yet!!

Let's go BIG GREEN
GET A LOPE!

Varsity Cheerleaders

Scrap Iron Drive!

The Distributive Education Classes of Floydada High School are holding a scrap iron drive. If anyone has any scrap iron they would like to donate or know of anyone who would like to donate, please contact Mr. Neely at the high school.

The phone number there is 983-2340...or you may call president of DECA Alex Torrez at 983-5101 after 6 p.m. Alex says, "your contributions will be greatly appreciated."

Hospital Joins Attack On Rising Prices

Caprock Hospital District of Floydada has announced adoption of a resolution joining the state and national attack on rising health care costs.

Neil McClung, Administrator of Caprock Hospital District in making the announcement said, "we have been working diligently for a long time to hold down the cost of hospital care. This resolution indicates our strong desire to reassess our current operating and capital budgets to determine which expenditures can be reduced without sacrificing the quality of care."

The hospital industry's program to control costs is known as the Texas Voluntary Effort. This is a part of a national effort which commits hospitals to reduce the national rate of cost increase by two percent a year for two years.

"HOSPITAL RECEIVES RECOGNITION"

Caprock Hospital District of Floyd-

dada has been awarded a certificate indicating its participation in the State and National attack on rising health care costs.

Upon issuing the Certificate, O. Ray Hurst, President, Texas Hospital Association, (THA) Austin, said, "we are pleased to recognize another THA member hospital for its dedication to help hold down the rising cost of health care. Although hospital costs in Texas are thirty (30) percent below the national average, hospitals across the State are joining in the Voluntary Effort to help reach a national industry goal of two percent year reduction in the state of increase for two years."

Participating in the Texas Voluntary Effort together with hospitals are physicians, nurses, pharmacists and other health care groups. Over 20 health, business and state government groups, including the Governor's Office have organized to effectively deal with the problem of rising health care costs.

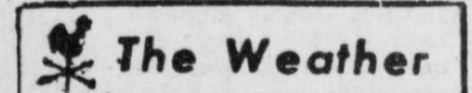


JUDGE J.K. HOLMES visits with Nancy Marble while Ben makes election returns by phone in County Clerk's office (Staff Photo)

Weed Control District "Weeded Out"

For years Floyd farmers have argued back and forth about the worth of having a weed control district.

The future of the district was settled Tuesday as farm owners voted 585 to 311 for dissolution of the district.



(Courtesy of Pioneer Natural Gas Co.)

DATE	HIGH	LOW	MOISTURE
Nov. 1	70	55	
Nov. 2	72	52	
Nov. 3	66	56	
Nov. 4	63	57	.6
Nov. 5	62	53	
Nov. 6	45	39	
Nov. 7	62	33	
Rainfall for Nov.	.6		
Yearly Total	18.8		

Greg Pruitt Wins Football Contest

Greg Pruitt, Rt. 3 missed only four contests and will receive the \$10 first place award. He missed the Lubbock-Herford tie game, Borger-Dumas, Abernathy-Idalou and Kress-Farwell games.

Winner of the second place \$6 prize is Jim Cursinger, 5418-14th, Lubbock, with five contests missed.

Third place winner of \$4 is Marlon

McDonald, Box 577, Lockney, who also missed five contests.

The tie breaker Tulia-Lockney game was used in determining second and third place. Tulia won with a total score of 19 points. Cursinger guessed 21, McDonald 15.

Others who missed only five contests but were farther away on the tie breaker score were: Lorene Newberry,

Mrs. Sam Hale, and Bill Kincaid.

Honorable mention goes to: Carrie Davis, Claude Estes and Lisa Mosley who missed only six contests.

Only two more big contests this season. Cut it out of last Sunday's Hesperian, fill it out, and get it to the Hesperian or post marked by 5 p.m. Friday.



TALLYING THE ELECTION RETURNS were Kenneth Bain, C.J. Payne and Bill Hardin. (Staff Photo)

Rock Chat

A FEW YEARS ago Slaton hardly ever won a football game. Now, with the families of Lubbock into these towns, the schools...and the teams are becoming stronger. Slaton is also a growing Lubbock town...and their football team has the best record in years.

For the Whirlwinds to have a chance to win next year, they would be able to take Abernathy...something like that...rest will have given them some extra get-up-and-go...they will be played out after the game.

Old Johnny was visiting a number in San Francisco when a earthquake struck. Johnny went back yard playing, and his grandmother ran to the back...do it, Grandma! the...prevented.

For a gift for the man who...? Get him a calendar to...when the payments are

CLAFF is a card carrying something. Perhaps you can...represents. Here's...card says he handed me

everyone together, some...heads, some with square...with flat heads, some with...heads. When He had...looked them over, and...ashamed of He covered



ENGAGEMENT ANNOUNCED... Mr. and Mrs. Preston Samuels of Petersburg announce the engagement and approaching marriage of their daughter Jan to Rolland Bennett, son of Mr. and Mrs. Joe Bennett of Lockney. Miss Samuels attends Lockney High School. Bennett, a Lockney High graduate, attended South Plains College in Levelland. The couple will be married November 25 in Grant Chapel, Floydada.

Golden Spread Doll Show

The Golden Spread Doll Club of Amarillo announces their annual doll show and sale November 11 from 10 a.m. to 8 p.m. at the Amarillo Federation of Womens Clubs Building at 2001 Civic Circle.

Local Women Tour Seven States

Lucille Carroll and Mrs. Doyle Sandefur accompanied Mrs. Sandefur's sister, Mrs. Frank Loftin of Tulsa, on a tour of Oklahoma, Arkansas, Mississippi, Tennessee, Alabama, Louisiana and Texas.

trip. They reported that Arkansas was quite beautiful, but that Tennessee provided the most beautiful scenery. The trio went to Memphis, Tennessee, for one night and on to Grace-land, where they viewed the gravesite of Elvis Presley as well as his home. Then it was on to Nashville and the Grand Ol' Opry and a three hour show at Opera Land. From Nashville the

Reception

Honors Uptons

Raymond and Nina Upton were honored with a reception Sunday, November 5, at the South Plains Baptist Church, in appreciation of their many years of service in the Post Office and grocery store in the South Plains Community.

Special out of town guests were their children, Ronnie and Betty Upton, Rocky and Rick of Los Alamos, New Mexico; Richard and Christi Abel, Amarillo; Karl and Bonnie Craig, Karla, Rhonda, and Rance, of Roosevelt; Jimmy and Vickie Upton, Shanna, Scotty, and Stephanie of Bartlesville, Oklahoma.

Other out of town guests were Velma Solomon, Henry and Jo Solomon, Garland Solomon, Juanita Coker, and Lillie Upton, Hereford; Geraldine Wilhite, Bill and Betty Stanford, and Carol Arnold of Plainview; Bessie Bradford, Tulsa; Ira and LaHoma Clower and Kim, Cotton Center; Walter and Bobbie Bean and Myrtle Shaw of Silverton; Ernestine Craig, Hale Center; Johnny and Sue Wilson, Crosbyton; Lynn Allen, Los Alamos, New Mexico; and Craig Lovelady, R.A.F.B., Lubbock.

Flowers were furnished by Karl and Bonnie Craig from the wedding of their daughter Shelly to James E. Camp, Jr.

women went on to Alabama to visit a privately owned cemetery of the Loftin family. The cemetery was on a hill and the antique markers and various colors of the trees and shrubs also provided a beautiful sight. Mrs. Loftin's husband's great grandparents and other relatives are buried there.

The next stops included Alabama, Mississippi and the beautiful city of New Orleans. From Louisiana, they went to Paris, Texas to visit Lucille's mother, Mrs. Pearl Powers, who will be 85 on December 25, and her sister Gladys Franks, and Mrs. Power's brother, Mack "Buck" Steward, who is 86. The three area women then returned to Tulsa, where they spent the night at Mrs. Loftin's and the two Floydada women returned to Floydada on Wednesday November 1.

Social Events

Ann Smith Hostess To

Wesley Ann Circle

Mrs. Ann Smith was hostess to the Wesley Ann Circle of the First United Methodist Church on Monday night November 6.

Ruth McIntosh conducted the study on Revelations. She suggested that everyone read the book "There's A New World Coming" by Hal Lindsey.

After the study refreshments were served to Opal Ashton, Elizabeth Armstrong, Julia Baker, Margie Fowler, Ethyle Hinson, Billie Jordan, Bennie Leibfried, Jewel Martin, Lorina McKinney, Ella Reue, Jack and Ruth McIntosh and hostess Ann Smith.

Choise Smith Speaks

To 1929 Study Club

Members of the 1929 Study Club met Thursday November 2 at the home of Mrs. Clay Henry. Juvenile Probation officer Choise Smith gave the most interesting and educational talk on problems he faces in his work with adolescents.

The business meeting included the reading of the minutes by Mrs. S.W. Ross. The meeting closed

with prayer by Mrs. Noman Hamilton.

Following the program refreshments were served by the hostess Mrs. Henry. Those present were Mmes. S.W. Ross, Lee Rushing, Ben Whitaker, Clarence Goins, C.W. Denison, Noman Hamilton, C.M. Meredith, Willard Davis, Q.D. Williams, H.O. Cline, and Miss Ann Sweptson.

Birthday Party Honors

Miss Vera Meredith

The TEL Sunday School Class of Calvary Baptist Church sponsored a birthday party for Miss Meredith on Thursday November 9 from 2 to 4:30 p.m. at her home.

The table was beautifully decorated with an orange and gold mum centerpiece sitting on a gold tablecloth. The cake was inscribed "Happy Birthday to Vera".

Delicious refreshments were served to the following persons: Mmes. Margie Williams, Vada Meredith, Noma Lou Rainer, Ethel Frizzell, Ava Jackson, Ethel Warren, Clyde Frizzell, Eula Battey, Edna Patton, Jewell Walters;

Roxie Covey, Deota Odom, Josie Ross, Opal Guffee, Lou Williams, Miss Frances Mitchell; also Louise Hamilton, Noman Hamilton, Rev. and Mrs. Clay Muncy of Lockney, Mrs. Juanita Burke and Mrs. Myrtle Meredith of Amarillo.

Miss Meredith received many lovely and useful gifts. Rev. and Mrs. Hollis Payne, Mrs. Ola Warren and Miss Mary Pearl Cowan were unable to attend.

Another delightful thing happened to Vera on Sunday morning to help cheer her. Mrs. Hollis Payne brought her class to Vera's home to teach the Bible lesson.

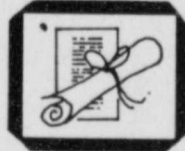
Wesley Circle Meets

In R.B. Holt Home

The Wesley Circle Sunday School Class, of the Lockney

First United Methodist Church, met Monday evening at 6:30, in the home of Mrs. Helene Holt, to continue study of Romans, which was led by Mrs. Faye Holmes. Those present were Hazel Johnson, Mary Ansey, Edna Cox, Helen Me-

Donald, Jewel Roberts, Lena Hawkins, Faye Holmes, Mildred Thomas and Mrs. Holt.



"What nobody seeks is rarely found." Pestalozzi

Friendship Social

Club Has Banquet

The Friendship Social Club sponsored a banquet supper on Saturday night, November 4, honoring the Rebekah and Odd Fellow Lodges of Floydada and Lockney. Ruby Davis, president of the Friendship Social Club, welcomed the guests and introduced Mr. and Mrs. Jim Fullingim from Petersburg, who brought the program.

A very inspiring program of singing and testimonials was enjoyed by the group. Mr. and Mrs. Fay Hart sang two special songs.

After the meal and program, the group formed a circle holding hands and singing "God Be With You Until We Meet Again."

Those present were: Messrs. and Mmes. Floy Webb, Hubert Davis, Harry Reeves, Fay Hart, Henry Price, Fay Gooch, Weldon Graves, Elmo Savage, and granddaughter Susie Savage, Carl Howard, Elvis Warren;

Laules Parkey, Jewell Price, Valrie Turner, Jewell Reeves, Wanda O'Neal, Mr. and Mrs. Carl Howard, and Charley Berry.

Miss Donna

Davis Is

Shower Honoree

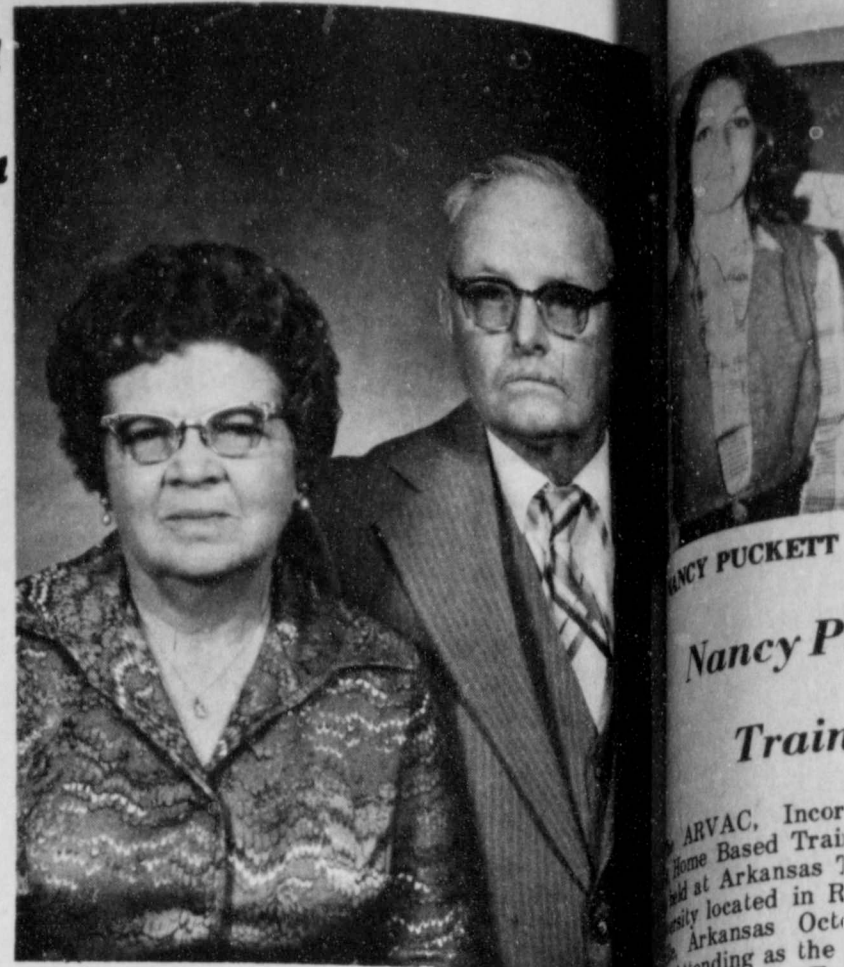
A shower Saturday in the home of Mrs. Dee Copeland in Lockney honored Miss Donna Davis, bride-elect of Craig Gladman.

Guests were registered by Delle Norman, the bride-elect's aunt, at a small covered table decorated with a single rose in the bride-elect's colors of mauve and grey. They were greeted by Mrs. Copeland and presented to Donna Davis, Lynn Davis, Ola Gladman, Fanny Davis and Lela Wofford. The corsages were pink roses surrounded by baby's breath.

Assisting in displaying the gifts were Jennie Davis, sister-in-law of the honoree, and Faye Alford and Delle Norman, aunts.

Faye Alford and Jennie Davis served refreshments. Guests were served white frosted cake squares, mints, nuts, coffee and hot tea. The serving table centerpiece was a formal arrangement of silk roses, snapdragons and anemones in the bride's chosen colors of mauve and grey.

Hostesses were Mmes. Bill Fewell, Richard Ellison, Denny Quisenberry, Kenneth Wofford, Kenneth Moody, Boyce Mosley, Chuck Wilson, Durward Jack, Hershel Carthel, Oscar Golden, John Lee Carthel, John T. Carthel, Louise Ray Stapp, John L. Hooten, Otto Schacht, Harold Griffith, Claude Brown, Joe Cunyus, Warren Mathis, Leonard Griffith and Frank Duckworth, and Mrs. Copeland. The hostesses' gift to Miss Davis was a cookware set.



MR. AND MRS. J.B. WHITEHEAD

Reception To Honor

Whiteheads

Mr. and Mrs. J.B. Whitehead of Floydada will celebrate their 50th wedding anniversary Sunday November 12 at their home at 815 West Grover in Floydada from 3 to 5 p.m. Friends and relatives are invited to attend. Children of the couple will host the occasion.

The couple were married November 10, 1928 in Jarr-

ell, Texas. Their children are Mrs. Winston Brown, Brock, James Whitehead, Floydada, Mrs. Wayne Clure of Nashville, Whitehead of Lubbock and Mrs. Gerlie Trent Radcliff, Kentucky; and late Melvin Whitehead.

Request no gifts.

Floydada Girls In Piano Recital

The Plainview Music Teachers Association presented elementary students in recital Sunday November 5 at the Hale County State Bank in Plainview. Four Floydada students were included.

Those in recital were Aleisa Hambricht, who presented "Raisins and Al-

monds" by Lethco; Sherry Edwards who played "Juggler" by Kern; Reeves who played "Little Flower Girl" by and Jamie Thayer played "The Russian Song" by Beethoven. Many friends and relatives from Floydada attended.

1934 Study Club Meets

1934 Study Club meeting was called to order by the president Effie Foster. Roll call was answered with each one naming a favorite Texas Artist.

Minutes of the last meeting were read and approved. Mrs. Winnie Carthel presented the program by doing a painting of red zinnias. She answered questions from the group as she painted.

The business of the meeting was completed as Winnie worked on the painting. Names were drawn for the Christmas Party. Comments of the district meeting were given by Effie Foster, Wanda Turner, and Joe V. Bingham about the district meet-

ing they attended Hilton Inn in Lubbock for meat and for the Spaghetti held by the Day Care on November 17 were for.

Refreshments were served by Mrs. Mamie. Those present were Ashton, Allen Bingham, son Bond, Floyd B. W.H. Bunch, Dennis sey, R.G. Dunlap, Foster, Kyle Glover, Hale, Floyd Lawson, McNeill, J.P. Moss, Parker, L.D. Simpson, George Springer, L.B. art, J.R. Turner, O.M. son, J.M. Willson, and Wylie and Earl Crav-

WMU Associational Meeting

Held Monday

The W.M.U. of the First Baptist Church of Lockney attended a W.M.U. Associational meeting at the First

Baptist Church of Monday morning for the Baptist Womanance Woman Department of prayer. The program was directed by Joan Dur-

At 2:30, the women turned to the First Church parlor, where held a W.M.U. meeting. "Argentina Reachout" the title of the program presented by Elvira Muir. A book review "kari Pass" written by Frizzell.

Those attending were Elvira Stewart, Hel Leod, Ann Handley, Fortenberry, Bobbie son, Pauline Sams, Mitchell, Melba Atkins, Faye Ferguson, and Jenkins.

Honest

Communications

Parents help child's self-image-positive and negative. For many adults, unfortunate, because must spend a lifetime doing a poor self-image was largely formed in childhood. To build self-image, individuals learn to like and themselves.

The Loft
Fashions For The Entire Family
517 E. HOUSTON 983-2235

WESTERN JACKET COMBINES WARMTH WITH 'NO-FAULT'

This handsome, rugged Wrangle coat has a 100% cotton 'No-Fault' denim shell that actually resists puckering, wrinkling and never shrinks out of size. The added bonus is the warm, lightweight shearling type lining made of polyester/acrylic. Sizes S-M-L-XL.

\$38.00

Wrangler
menswear

Show Of Homes

Coming Soon

The Floydada unit of the American Cancer Society will sponsor a Christmas Show of Homes on December 15 and 17. Details of the show will be announced later.

Brown's
DEPARTMENT STORE
104-06 North Main Lockney, Texas

\$24.00
In Wine or Gray....

From our **DAY DREAMER** Collection.
Fresh, sleek fashion on the newest dressy heel height. A touch of metal accents the vamp and toe for day dreamy prettiness.

EASY STREET
Suave

AMERICA'S MOST COMFORTABLE SHOES (LAST SHIP)

S-7-10 N-6-10 M-5-10

OPEN HOUSE
NOV. 18, 19, 20 & 21st
9-5 EXCEPT SUN. 1-5

AUDREY'S FIGURETTE
LINGERIE & HOSTESS WEAR

For Christmas
Ideas By Ilene Kendrick on Home Decorating, Holiday Center Pieces, & Gifts on Display at AUDREY'S HAIR STYLES

Audrey's HAIR STYLES

Audrey Thomas 983-3649 Lynn Daniels 983-3838 Ilene Kendrick 983-2009

ALL ON 4 MI. SO., 4 MI. W. AND 1/2 MI. SO. PAVEMENT

Band Booster To Have Mexican Supper

The Floydada Band Boosters will meet Monday November 13 at 7 p.m. at Lighthouse Electric. All families of band students are urged to attend and to bring a family size dish of Mexican food.



RUBY BARKER

Ruby Barker Named Business Teacher Of The Year

STEPHENVILLE—Ruby Barker, assistant professor of Business Administration at Tarleton State University, was selected Business Teacher of the Year of District 15 of the Texas Business Education Association meeting in San Angelo on October 10. The Tarleton professor was also named district representative.

Mrs. Barker taught at Johnston High School in Austin following graduation from West Texas State and is a former secretary to the business manager at Tarleton for one year.

In addition to membership in the Texas Business Education Association, Mrs. Barker is also a member of National Business Education Association, Phi Gamma Nu, honorary business sorority, and Pi Omega Pi, honorary business fraternity.

She and her husband, Tommy, assistant professor of Industrial Education and Technology at Tarleton, have three children, Brian, Craig, and Tametha.

Youth Workers Conference Planned

Vince Smith, youth consultant for the Texas Baptist Convention.

A youth workshop clinic will be held at the First Baptist Church in Floydada Saturday, November 11 from 1:30 to 7:15 p.m. Supper will be served (\$1.50). The theme of the program is "The Winning Game Plan", under the direction of

Anyone wishing to attend this conference should contact Janet Lloyd, at the First Baptist Church in Floydada, by Thursday, November 9.

Business included the decision to donate \$50 to the Baker Memorial at the school in memory of A.E. Baker and a \$50 donation toward the royalty of the play "Annie Get Your Gun." On December 1 cards will be sent out to the members of the division with the names of the six new board nominations from which three will be selected. Those names are: Nancy Willson, Louise Turner, Judy Warren, Polly Pauley, Emily Johnston and Wanda Hickerson.



In 1870 the U.S. population was 38,558,371. Today it is over 215 million!

To Ted

The angels are buzzing
And flying around;
A new arrival
Has just come to town!

There's singing and dancing
On every gold street—
They're all so excited
That Ted Bell they shall meet.

I see them embracing
Then they lift up their wings—
They're off the palace
To worship the King.

Oh, sweet Rock of Ages
Surely, great Thou art!
To heal all the wounded—
To mend broken hearts!

And we give you, dear Lord,
Our sincere thanks to-day
For enriching our lives
Sending Ted our way.

Written By Marjorie Hyden



CHRISTY NEWBERRY

Christy Stringer Newberry To Tour Europe

Christy Stringer Newberry is one of 40 members of Wayland Baptist College's elite International Choir which will tour Europe including London, Vienna, Zurich, and Salsburg, May 20-29, 1979. The choir will perform daily throughout its tour. Each student is having to raise the necessary funds to pay individual expenses. Christy is the daughter of Mr. and Mrs. Bill Stringer of Route 3, Floydada.

Understanding Your Child

NEED FOR FULFILLMENT

Your child will grow, but he may not mature if you don't allow him to have a sense of fulfillment.

Many psychologists point out that when a parent is too overprotective the child will never become self-sufficient.



YOUNGSTERS are happy when they have a sense of fulfillment.

Nancy Puckett Attends Training Seminar

Inc. Incorporating Arkansas Tech in Russellville, October 10-12, as the Serenity Project Family Lubbock was the daughter of Sam Puckett, Floydada.

is the prime enabler and Home Based helps to reinforce the parent in this job. The training program consists of experiences and activities which support the parental role as the principal influence in their child's education and development. The main focus of the training was upon working with families who have children.

Womens C of C Have Meeting

The Floydada Women's Division of the Chamber of Commerce met for their regular meeting Monday November 6 in the Commu-

You're invited to attend...



OUR 5th ANNIVERSARY CELEBRATION

NOVEMBER 9th
HOURS 9 a.m.--4 p.m.

It has been a pleasure to have served this community for the past five years. To show our appreciation we invite everyone out to help us celebrate with refreshments and door prizes.

REGISTER FOR FREE
SX-70 POLAROID CAMERA

MR. MEAT SMOKER Your Own Homestyle Smokehouse

Floydada Branch

Plainview SAVINGS & LOAN
Association

217 W. CALIFORNIA

FLOYDADA, TEXAS



Over 42 Years In Business, Organized January 1, 1936.
"Where You Save Does Make A Difference"

DELAYED BILLING CHARGE SALE

WITH YOUR BEALLS
CHARGE CARD—NO
PAYMENT UNTIL
FEBRUARY 1979



Fall Fashion All Weather Coats

Reg. 34.88
25⁸⁸

Make this your year for a smart all weather coat and save money at these prices. 100% texturized polyester for rain/stained repellent-lined. Sizes 8-18

Our Best Men's Dress Slacks

15⁸⁸
Reg. 20.00

The name in slacks you trust. Assorted fabrics and solid colors in 100% polyester. Size 30-42.

Save On "Shalimar" Towels From Dundee

Bath...Reg. 4.29.....	3.27
Hand...Reg. 2.69.....	1.97
Wash...Reg. 1.39.....	.97

Plush, sheared 100% cotton terry towels with fringe trim and schiffle embroidery detail. Luscious beige, lemon, cinnamon, and green colors. Bath towel is 24 x 44, hand towel is 16 x 26, wash cloth is 12 x 12.

Brushed Long Gown

Reg. 6.00
2/8⁰⁰

Extra sizes
Reg. 7.00
2/9⁰⁰

Warm in the winter in these brushed long gowns in Pink, Green, Blue, Yellow, and Peach. Size S, M, L, XL.

Bealls

NEWS 'N' NOTES

(By Sharon Hillis)

CARE FOR LEATHER, SUEDE

Keep all care instructions to insure best care and longest life for leather and suede garments, whether real or fake. In addition, follow these special care techniques:

SUEDE

Brush suede regularly with a terry towel or soft brush to keep dirt from settling in the nap and to ruff up the nap. Remove most spots, small light stains or shiny areas by rubbing with a soft gum eraser, board or very fine sandpaper. Most dark suede dyes easily bleed when wet or rub off when new.

SMOOTH LEATHER

Clean smooth leathers by wiping with a damp cloth and mild soap, not detergent. Never use cleaning fluid, shoe cleaning products, polish or saddle soap. Test any specially designed aerosol cleaners on an inconspicuous area first, particularly for color changes or circling.

DRYING LEATHER

If a leather garment become wet, dry as soon as possible away from heat on a shaped wooden hanger. Before drying, shake or sponge

extra moisture from garment. After suede has dried, buff the nap in one direction.

REPAIRS

For holes, piece with a matching piece taken from seam or facing and glue with fabric or leather glue. Tears may also be glued down. Carefully dye lighter edges around tears or holes with shoe polish or ink.

STORAGE

Never store leather garments in plastic bags since plastic can cause discoloration. Also, don't use adhesive name tags because they also discolor.

PROFESSIONAL CLEANING

When major cleaning is needed and the garment is not washable, take it to a leather specialist.

4h

Citizenship means many things to many people and is hard to pin down. It is something like trying to define happiness. For some people citizenship means participating in government, holding an office, campaigning and voting. For others, it is patriotism, defending the country, displaying the flag, and singing the National Anthem. It may also be

holding a job, making money, paying taxes, owning property and obeying the law. Still others see citizenship as simply being

born or naturalized as a "citizen" of the country and that's it—a very passive approach.



LETTER TO THE EDITOR

Mr. Wendell Tooley, Editor
Floyd County Hesperian
P.O. Box 700
Floydada, Texas 79235

"My Life In Floydada"

Some sixty years ago when I arrived in Floydada, I began to look for a job since I was a fair mechanic with some knowledge of the early farm tractors. I went to the I.H.C. Dealer Mr. O.P. Rutledge who was taking over the McCormick-Deering Agency.

I.H.C. was operating in Texas under the Texas Harvester Company because for a number of years they were put out of Texas for a monopoly. The company was coming back to Texas under McCormick-Deering and P & O.

The first tractor I worked on was a 10 x 20 Titan owned by a very close friend L.C. McDonald. My next tractor was a big 20x40 Case owned by John Lloyd who also has been a very good friend for the past 60 years.

Being single, I looked for a place to board. I lived for the next two years staying with Mrs. G.V. Slaughter. There were three boys already boarding. They were Bob McGuire, Calvin Steen and Phil Scott. The four of us slept in the same room. Calvin & Phil in one bed and Bob and me in the other bed. Mrs. Slaughter lived just west of the Q.A. & P. station on the north side of the street. Mrs. Slaughter was a very good cook and we were well fed.

There was no sewer or water system in that part of town. The water was used from a windmill pumping water in two wood barrels. We would have to break the ice in the winter to wash outside on the back porch in the winter.

My favorite men on coming to Floydada were L.C. McDonald, Emmitt Henry, O.P. Rutledge and Dr. George Smith. Sam McLesky was working for Mr. Rutledge. Our first job was to put up ground driven Corn Binders and we made a team that put up three Binders a day even if it took after night. This 40 hour week had never been heard of.

In the early twenties, I purchased a \$300.00 interest in the store and in 1923 Fred Zimmerman came in as a Partner. We sold our first combine in 1920 which I have a picture of leaving Floydada pulled by a Waterloo Boy that began the popular Deere & Company of Waterloo, Iowa.

There was nothing but one row farm machinery and this

farm territory was being plowed up with a 12 inch sod plow which would plow three rounds and then hang a can of goose neck maize and make a row where the seed would be taken off. This plowing would start about the middle of March and last until the middle of June. When the spring rains started the maize would come up and make a good crop which was all cut by hand and hauled to either the Edwards or Marshall grain company. The maize heads brought about \$3.50 a ton and were unloaded in rows where the old thrasher would pull between the rows and heads fed from both sides of the separator.

Our first two regular Farmall was sold on 2-1-75 to T.R. Atkinson who lived across the canyon where Grady Walker now farms. It was used 20 years before it was traded back to me.

In July 1921, I went back to Cooke County and married the girl of my dreams, Mattie B. Slinker. I might say in 1921, we were not very rich as we paid \$45.00 for used furniture and \$40.00 for groceries and cooking utensils. Dr. V. Andrews had come from Cooke County and he rented us the east side of the old house which still stands just west of the old ice plant. We lived mostly on canned pork and beans and bought vienna sausage by the case. We had a used oil cook stove that the oven would lift off. Matt has always been a good cook.

Fred was born six years after we were married and it was a pleasure to go home in the evening and lay down and have him crawl all over me.

By this time I owned more of the business and I began to farm in 1929. The steel wheel tractor had begun to take the place of the horse and mule farming in a big way.

Farmers had good crops from 1926 till 1929 when the depression began to hurt. In September 1929 the depression hit hard. A few banks had begun to fail due to the depression. On July 15, 1931 at 10 a.m. The Floyd County National Bank that we did business with closed the doors. We lost \$5,700.00 in that bank. The same day at 10:20 The First State Bank at Lockney closed the doors and we lost 5,470.00 in this bank. Since we owed nothing, we started to recover. Years later I only received 9% from Floydada and 7% from Lockney for the loss of our money.

To me it looked like in the depression years the farmer had a little money to pay his bills where in 1978 the banks have the money and the farmer is broke as far as present capital is concerned.

Martin and Zimmerman began to farm in a big way in 1937. We had bought cheap land northwest of Hereford and had begun to fly and used a plane in our distant operation.

Then the War came and I became your gasoline board chairman. I spent the entire period seeing after gasoline. I then became leader in the Civil Air Patrol. I held this position from 2-1-42 till 1946 when the army took over the Civil Air Patrol job. During the war, we furnished our own plane and fuel. I held the position of Lieutenant.

By 1935, I owned 50% of Martin & Co. and business was very good. At a very early age David Lewis became an important young man in the future of my life. I still held the mechanic position and Dave and I worked many years together. I don't recall any time that we went out on a job that we failed to get the job done. To me, Dave will always be in my thoughts and ways.

In 1969, we closed our store at Lockney and moved Lowell and Joyce Bilbrey to help us at Floydada. My partner of 35 years, Mr. Fred Zimmerman died on September 12, 1954 and the Zimmerman Estate owned 50% of Martin & Co. I purchased their 50% and became sole owner of Martin & Co. On January 1, 1955, I took my son Fred in as a partner and his wife Babe became our bookkeeper and Joyce went to work for Southwestern Public Service Co. but is a stand-by bookkeeper for Martin & Co.

In 1969, Fred met a young man from South Africa who was a farm manager for a large farmer in South Africa. He was a smart little boy whose grandfather had migrated from England in 1905 and settled at Val, Transvaal, Republic of South Africa.

My granddaughter Kit met this boy and we all liked him. Rodney as we call him had been sent to America by John Evans of South Africa to study American farming and was

spending some time at Paymaster farms at Aiken. His Floyd County home was with the Francis Montandons at Aiken. Rodney told Fred with his knowledge of farming in South Africa. So in 1969 Fred and Babe went to South Africa. He met Evans who took him to meet people and he also was helped in getting Fred started in what the farmer of South Africa needed.

Kit married this smart "little devil" who is a partner with Freds. They have two children a boy and a girl. I sure Fred has made his million. We have been to South Africa three times. I believe Kit is the happiest person that lives in South Africa. I might say that Kit's in-laws are the most wonderful people that I ever met. While I was at Val, Ken would come by at 4 p.m. to pick up me and Lane and we would go fishing on a number of lakes that he has on his large ranch.

Since Fred moved to South Africa in 1970, Martin & Co. Company has doubled its business many times. Fred says should have left Texas five years sooner. Inflation has been a big factor in the amount of gain and it is getting no better.

Now comes the time of decision in a business way. I have been here for 60 years representing the Harvester Company and I will soon be 81 years old. A partnership is bad and something happens to any one partner, then any contract with big companies are at once cancelled. I have obligations in Africa but I do have in America. After several years of planning, the International Harvester and I have come to a mutual agreement not to be made public.

So with regrets to our many friends and customers of which are starting on their fifth generation and our period of 60 years and on my own decision, I have cancelled the contract that has existed for over a half century effective 1-1-79. But with 30 days grace period to get all parts in care of.

This doesn't mean that we will close our doors or shop. It will continue to be open. We are making arrangements with other small companies to furnish us any kind of parts.

For several years International told me that 1600 companies were making parts for them. As long as I have the money to pay cash I don't think we will have any trouble and I might say our successor might be glad to see us. I might say I hope that some of the machinery and parts are made better than some we are now getting.

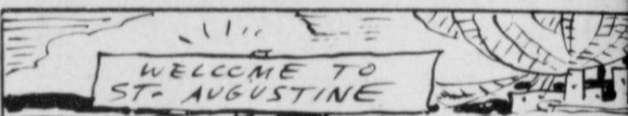
In a few days, each of my customers will receive a personal letter from the Harvester Company stating that was Martin & Co. who had cancelled the contract. I would like to have suggestions from you, our customers help find someone to take my place.

So until a replacement is found, please feel free to use our store your store to have a place to loaf in down Floydada where you have come for many years. I might say that no property, no shop equipment, no office or no bins are considered. I still handle Krause Plow, Ad-Cisco and Yetter Rotary Hoe. We still have to stay business where we will operate with some employees on a small corporation. I will have a place to have my office meet friends as I have no intention of retiring and say I am going to spend my time fishing. For hem me in and dead.

Yours Very Truly
s/s Mark H. Martin
Mark H. Martin



In ancient Rome, sprigs of parsley were passed around during funeral orations and nibbled on by the audience.



St. Augustine, Florida, which was founded in 1565 is the oldest city in the United States.

NOW OPEN
TUESDAY THRU SATURDAY
Minnie's Beauty Salon
Minnie Wright Looks Forward To Serving Her
Regular Customers And Welcomes New Ones.
Minnie's Beauty Salon
314 SE 2nd Lockney 652-2713

Shop Floyd

County First

Floydada

Nursing Home

Happenings

Things have slowed down a bit since Halloween. However, we still have plenty to do for the holidays ahead.

We had a nice Halloween party, with lots of spooks Tuesday night. All employees came dressed for the occasion. Our own Janie Martinez won the prize for being best dressed.

Molly Jones, Albert Martin and Anis Franks enjoyed lunch out Tuesday. The treat was furnished by Rose Witcher of Matador and Lennie Gilbert and Beatrice Bilberry of Flomot, friends of the three residents.

Green Bostick enjoyed a visit with a long time friend "Charlie Moore" this week. The two hadn't seen each other since World War I days.

We would like to thank Rebecca Smith for the nice scraps of cloth.

The resident enjoyed the cake Mrs. Jewel Price brought out Friday. "Thank you" Jewel for your thoughtfulness.

Thanks to Mr. and Mrs. Woodrow Badget for the candy. The residents enjoyed it very much.

Mr. Freeman is in Arkansas on vacation so we didn't get to take our bus trip this week. We all wish him a nice and safe trip.

Mr. Roy Reed was top winner in bingo with three games. Clara Williamson and Emmett Lawrence tied with two games each; and Victoria Asher, Mamie Gray and Anis Franks tied with one game each.

It was nice to have Mr. Lawrence with us for the first time. Hope he continues to play. We enjoy having a full table.

We have a new resident, Mr. Paul Murff. Hope he will enjoy his stay here. He will need your love and visits.

Mr. and Mrs. Elmer Norrd gave a \$10.00 donation to our projector fund in memory of Calvin Steen. We thank you both very much.

Mr. Baird Bishop was taken to Lubbock Methodist Hospital Sunday afternoon. We all wish him a speedy return.

Thanks to all our visitors which include: Flo Ella Jarboe; Eunice and James Johnson, Plainview; Gene and Bettye Johnson, Lubbock; Ewell Johnson, Lubbock; Mary Emma Matthews, Corpus Christi; Doris Snodgrass; and Mr. and Mrs. Winston Watkins, Petersburg;

Mrs. George Wexler; Alma Ruth Nelson, Mrs. Bill Smallwood, Matador; Thanie Smallwood, Matador; Tania Carthel and Wanda Hickerson; Corene and Murry Stewart, Levelland; Mr. and Mrs. Vallie McNeill; and Mr. and Mrs. Hubert Davis.



SATURDAY IS ALL VETERAN'S DAY

AND WE WILL BE CLOSED FRIDAY IN HONOR OF ALL MEN AND WOMEN WHO HAVE SERVED IN ALL WARS OUR COUNTRY HAS EVER EXPERIENCED

Please arrange your banking business accordingly.

"Helping You Change Things For The Better"

THE FIRST NATIONAL BANK OF FLOYDADA
FLOYDADA, TEXAS 79235 MEMBER F.D.I.C.

THE FOLKS AT LOCKNEY OIL & BUTANE WHOLESALE & SERVICE STATION

Invite their friends to come by and see them for:

- ★ ARCO GASOLINE & OIL
- ★ MICHELIN TIRES
- ★ REYNOLDS TIRES
- ★ CONTINENTAL BATTERIES
- ★ A-C FILTERS

- HAM and MILDRED GAMMAGE, owners
- TOMMY MONTANDON, wholesale
- GARY SMITH, station

LOCKNEY OIL & BUTANE

OPEN 7 a.m. - 6 p.m., MONDAY THRU SATURDAY

300 South Main Street

Lockney 652-2555

FLOYDADA SCHOOL LUNCH MENU

MONDAY
BREAKFAST:
 1/2 cup apple juice
 Sweet Roll
 1/2 pint milk
LUNCH:
 Lasagna Casserole
 Buttered Corn
 Glazed Carrots
 Gingerbread with Apple Sauce
 Hot Rolls
 1/2 pint milk
TUESDAY
BREAKFAST:
 1/2 cup mixed fruit
 Hot Oatmeal
 Buttered Toast
 1/2 pint milk
LUNCH:
 Chicken Pot Pie
 Early June Peas
 Apple, Raisin, Cabbage Salad

WEDNESDAY
BREAKFAST:
 Peanut Butter Cake with Icing
 Hot Rolls
 1/2 pint milk
WEDNESDAY
BREAKFAST:
 1/2 cup orange juice
 Cowboy Bread
 1/2 pint milk
LUNCH:
 Beef Tacos
 Seasoned Pinto Beans
 Tomato, Lettuce Salad
 Pineapple Delight
 Corn Bread
 1/2 pint milk
THURSDAY
BREAKFAST:
 1/2 cup orange juice
 Scrambled Eggs with Cheese
 Toast
 1/2 pint milk
LUNCH:

Hamburgers on Home Made Buns
 Tomato & Lettuce, Dill Pickle Slices
 Potato Chips
 Apricot Cobbler
 1/2 pint milk
FRIDAY
BREAKFAST:
 1/2 cup tomato juice
 2 slices bacon
 Toast & Jelly
 1/2 pint milk
LUNCH:
 Baked Ham
 Candied Sweet Potatoes
 Seasoned Green Beans
 Hot Rolls
 1/2 pint milk

THE FLOYD COUNTY HESPERIAN
 Published each Sunday and Thursday at 111 E. Mo. St., P.O. Box 700, Floydada, Texas 79235. Publication No. 202680. Wendell Tooley, editor, Subscription rates: Local \$10.50 a year, out-of-trade area \$11.50 a year. Second class postage paid at Floydada, Texas 79235.

TEXAS PRESS
 MEMBER 1978 ASSOCIATION

1950 Study Club Christmas Greeting Page

Do You Want On The 1950 Study Club Christmas Greeting Page?
 Members of the 1950 Study Club are preparing their annual Christmas

greeting page to be printed in the Hesperian in December.

Anyone who has not been included in the greeting before and who desires to

use this means of extending best wishes to their friends, should contact Ann Helms at 983-5084 or Sue Moore at Cozy Corner Gift Boutique. 983-5312.

Outstanding Senior



BRAD FEUERBACHER

Brad Feuerbacher has been proudly selected as the Outstanding Senior for the month of October by the 1956 Jr. Study Club.

Brad is the son of Mr. and Mrs. Bill Feuerbacher, and is a member of the First United Methodist Church. His activities include vice president of Floydada DECA Chapter, treasurer of Floydada United Methodist Youth, reporter for the Senior class, member of the Floydada Whirlwind Annual Staff, and participation in football, basketball, and track while attending FHS. He is currently a DECA employee at Buddy's Supermarket and plans to attend college after graduation.

Congratulations, Brad, on your outstanding achievements and we wish you continued success in the future.

Breezers Take Out Both Abernathy Teams

The seventh and eighth grade Breezers joined the JV and Freshmen teams in making it a clean sweep of Floydada victories over Abernathy last Thursday afternoon.

The Breezer games were played at Abernathy.

SEVENTH WINS 28-6
 Sam Crabtree led the Breezer offense with three touchdowns and one two point conversion...all running plays.

Joe Faulkenberry made one touchdown on a pass play from Mark Hatley, and a two point conversion on a pass from Mark.

Michael Mendoza made one pass interception.

The seventh graders season record is now 3-4-1 and a perfect 3-0 in district play. Tonight they play Tulia here. Tulia is also 3-0 in district...AND THE WINNER OF THIS GAME WINS DISTRICT!

You all come and see the game...cheer the Breezers on to the championship.

EIGHTH WINS 28-0
 Bruce Williams led the offense in this game with three touchdowns and one two point conversion. Mike Salazer made one TD. Marty Covington a two point con-

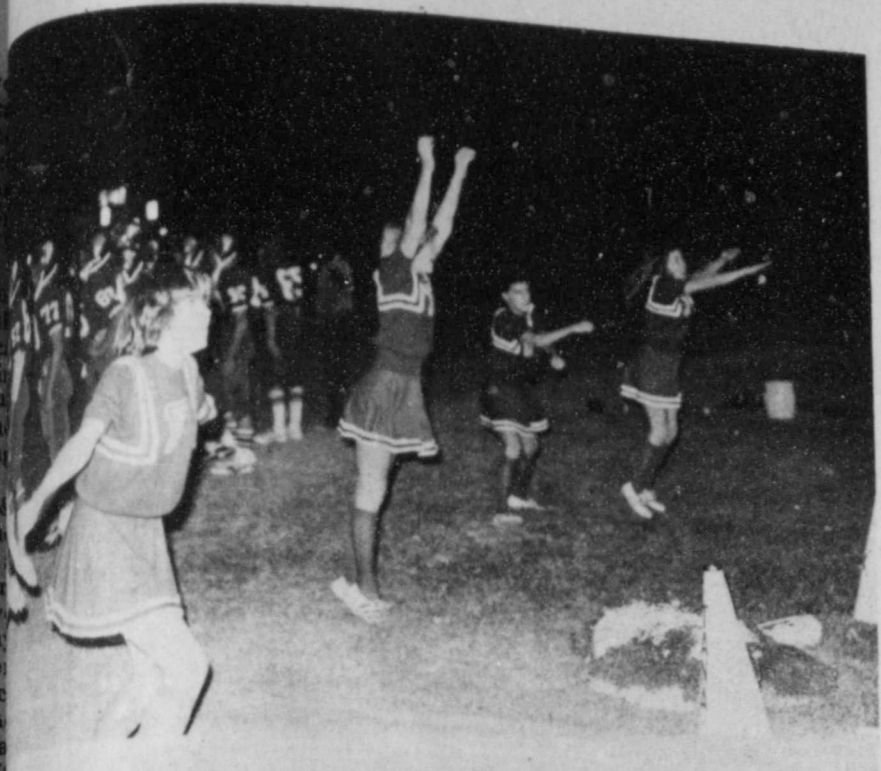
version. Salazer and Covington each intercepted one pass.

Their record is 4-4 and 2-1 in district play, making them still in contention for the district championship.

The eighth graders also play Tulia here tonight.

There were no Floydada fumbles in either game and both Breezer teams pretty well controlled the ball all the way.

The eighth graders hope you'll come see them play tonight.



READERS Tana Tyer, Susan Turner, Julie Faulkenberry, Kelly Deanne Fry cheer their team on to victory over Abernathy. In Number 25, Michael Self, climbs out of pileup after making a lower photo quarterback Moody Younger blasts over the middle (Staff Photo)

Annie 'Dee-lightful'

By Bill Kineaid

What happens when a rifle toting sharpshooter named Annie Oakley crosses paths with a handsome but egotistical marksman called Frank Butler? Why, podner, the end result is a most dee-lightful experience—as the folds attending the local production of "Annie Get Your Gun" Friday and Saturday nights can verify.

Tammy Payne did an excellent job in the title role of the shap-shooting Annie, while Kalvin Dick turned in a good performance as the man Annie had in her sights.

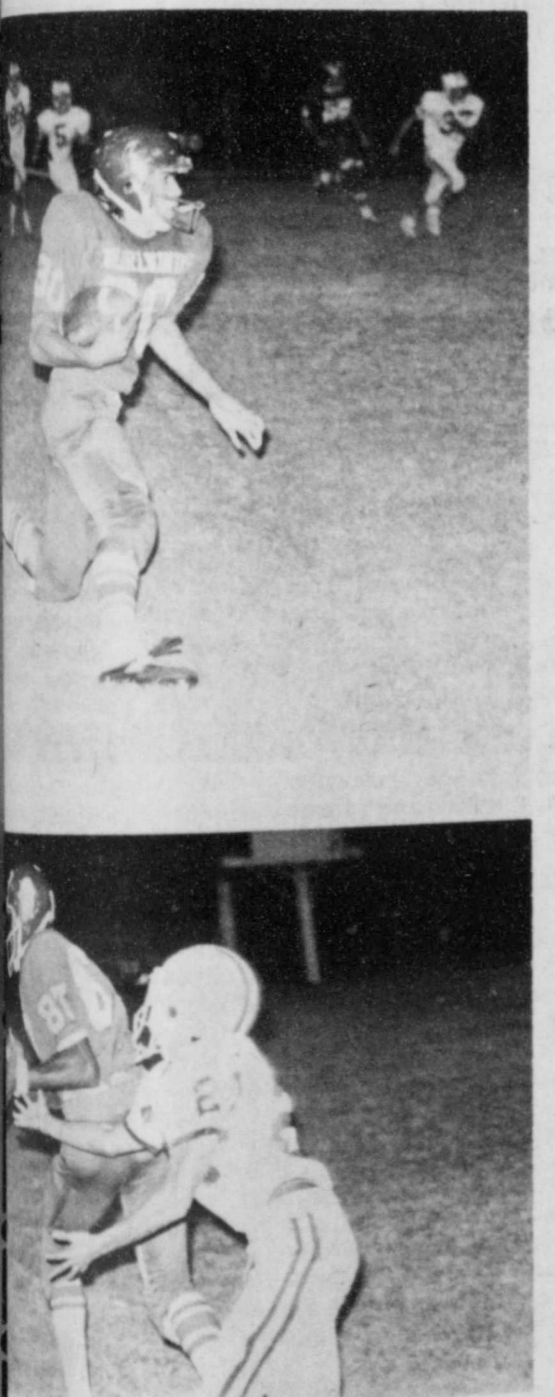
It was rather hard to tell where the lead roles ended and the supporting cast started, as all had commendable performances. For example, Bernice Walters, Theresa Whitely and Jett Cheek were especially noteworthy in their roles of Charlie, Davenport, Dolly Tate and Col. William F. Cody (Buffalo Bill), respectively.

The entire cast—including pianist Penny Bertrand and director Dianne Lewallen—should be commended for helping show the audience why "There's No Business Like Show Business."

Of course, What especially helped to put the show across was the delightful music by Irving Berlin. Although it has been over three decades since this musical opened on Broadway, the tunes were still as bright and refreshing as ever—and the story line as cute.

Although Annie first attempts to catch dreamboat marksman Frank Butler by impressing him, she succeeds in doing so to deflate his male super-ego. It is not until she fully realizes that "You Can't Get a Man With a Gun" and that what Frank really wants is a lady who can be a help-mate instead of being his superior that she succeeds in winning Frank and trying the marital knot.

The real winners, however, was Floydada, since this play helped to showcase quite a bit of local talent. Although this may be the first musical to be presented here in many a moon, it is to be hoped that this is not the last one.



MERCADO makes good gain as he clears in the win over Abernathy. In the lower photo, Andra Ledbetter catches a long pass from quarterback Moody Younger. (Staff Photo)

HARRIS RATINGS	
Cameron Yoe	151.9
Chely	147.9
Newton	145.9
West	145.8
Childress	144.9
Bowie	144.7
Breckenridge	144.3
East Bernard	141.9
London	141.9
Bridgeport	141.8
Malone	134.8
Colorado City	134.7
Malleshoe	132.8
Floydada	131.7
Shalton	131.6
Seminole	130.5
Tiboka	129.5
Abernathy	128.7
Perryton	128.2
Littlefield	125.5
Friendship	123.5
Tulia	123.5
Lockney	123.4
Denver City	122.2
Spearman	121.8
Boys Ranch	121.7
Dummitt	121.4
Priona	120.4
Oilton	119.3
Roosevelt	118.4
Dahart	115.1
Post	114.3

ALLSUP'S

CONVENIENCE STORES

COME BACK TO VALUE

Come back to GOODNESS

PRICES GOOD NOV. 6-12, 1978

<p>SHURFRESH QUALITY SLICED BACON 1 LB. PKG. \$1.39</p> <p>SHURFRESH PORK SAUSAGE 1 LB. ROLL 99¢</p>	<p>REGULAR/BEEF SHURFRESH FRANKS 12 OZ. PKG. 89¢</p> <p>REGULAR/BEEF SLICED SHURFRESH BOLOGNA 12 OZ. PKG. 89¢</p>	<p>NEW SHIPMENT OF BACK ORDER MERCHANDISE ARRIVING THURSDAY</p> <p>SHURFINE GRANULATED SUGAR 5 LB. BAG 89¢</p> <p>SHURFINE PINK ONLY BATHROOM TISSUE 6 ROLL PAK \$1.19</p> <p>WHITERS SHURFINE BLEACH GAL. BTL. 69¢</p>
<p>SHURFINE EARLY HARVEST SWEET PEAS 17 OZ. CANS 3 FOR \$1</p> <p>SHURFINE WHOLE PEELED TOMATOES 16 OZ. CANS 2 FOR 69¢</p> <p>SHURFINE TOMATO SAUCE 8 OZ. CANS 6 FOR \$1</p> <p>SHURFINE PINK SALMON 15 OZ. CAN \$1.49</p> <p>SHURFINE ENRICHED FLOUR 5 LB. BAG 69¢</p> <p>SHURFINE FRUIT COCKTAIL 16 OZ. CANS 2 FOR 89¢</p> <p>SHURFINE YC PEACHES 16 OZ. CANS 2 FOR 89¢</p>	<p>SHURFRESH HALFMOON CHEESE 10 OZ. PKG. \$1.05</p> <p>SHURFRESH SLICED AMER. CHEESE 12 OZ. PKG. \$1.09</p> <p>SHURFINE FROZEN ORANGE JUICE 3 6 OZ. CANS \$1</p> <p>EGGS Shurfresh Large Grade A 59¢ Doz.</p> <p>LIPTON TEA 4 OZ \$1.49</p>	<p>SHURFINE VAC PAK COFFEE 1 LB. CAN \$2.19 ALL GRINDS</p> <p>FOUNTAIN COCA COLA 24 OZ REG. 40¢ 29¢</p> <p>SHURFINE WAFFLE SYRUP 32 OZ. BTL. 79¢</p> <p>SHURFINE CATSUP 32 OZ. BTL. 79¢</p> <p>SHURFINE SALAD DRESSING 32 OZ. JAR 79¢</p> <p>SHURFINE SALTINE CRACKERS 16 OZ. BOX 2 FOR \$1</p> <p>ROXEY BATHON DOG FOOD 15 OZ. CAN 7 FOR \$1</p>
<p>ALLSUP'S MILK GAL. \$1.89</p> <p>BORDEN'S COTTAGE CHEESE CTN. 59¢</p> <p>FRESH COOKED ALLSUP'S BURRITOS 3 FOR \$1</p> <p>BORDEN'S CHOCOLATE MILK QT. SIZE 59¢</p>	<p>SHURFRESH SELF-BASTING TURKEY 10/14 LBS. 79¢ WITH TIMER</p> <p>BORDEN'S PREMIUM ASST'D ICE CREAM RD. CTN. \$1.39</p> <p>FOLGER'S COFFEE 12 OZ. CAN \$2.39</p>	<p>SHURFINE BARTLETT PEARS 16 OZ. CANS 2 FOR 89¢</p> <p>SHURFINE SPINACH 15 OZ. CANS 3 FOR \$1</p> <p>SHURFINE SHELLED BLACKEYES 15 OZ. CANS 4 FOR \$1</p> <p>SHURFINE GOLDEN CORN CM / WK 17 OZ. CANS 4 FOR \$1</p> <p>SHURFINE BM / SK BISCUITS 8 OZ. CANS 8 FOR \$1</p> <p>SHURFINE CUT GREEN BEANS 16 OZ. CANS 4 FOR \$1</p> <p>SHURFINE PAPER ASST'D TOWELS 2 FOR \$1</p> <p>SHURFINE VANILLA WAFERS 10 OZ. PKGS. 2 FOR 69¢</p>

102 E. Houston Floydada, Texas

Deer And Turkey Forecast

LUBBOCK—Forecasting the deer and turkey populations for the upcoming November 18 season is like trying to forecast the weather—it keeps changing each week.

Comments from Texas Parks and Wildlife Department personnel stationed across Texas indicate deer and turkey populations are ranging from poor to good. The deer situation has improved in the Panhandle and South Plains regions over what it was earlier in the year, but the rains came too late in the year to help

antler development. These late rains have helped to mature the browse conditions for deer and the herds should go into the winter with ample food supplies.

In the Texas Panhandle, the 16-day whitetail season is Nov. 18-Dec. 3 with a bag limit of one deer, buck or antlerless (antlerless by permit only).

The mule deer season in the Panhandle is open for the same period from Nov. 18-Dec. 3 with a two mule deer, limit one buck or antlerless (antlerless by permit).

mit) bag restriction.

In most of the remainder of the regulatory counties including the South Plains (Lubbock), the rolling plains (Wichita Falls) and the edge of the Edwards Plateau, the white-tailed deer season is Nov. 18-Jan. 1. The bag limit in most of these areas is three deer, no more than two bucks, antlerless by permit.

The white-tailed deer season will be CLOSED in these north-west Texas counties: Andrews, Bailey, Cochran, Collingsworth, Dawson, Castro, Lamb, Hale, Lubbock, Hockley, Terry, Lynn, Gaines, Martin, Sherman, Hansford, Lipscomb, Wheeler, Farmer, Yoakum.

The mule deer season will be CLOSED in these north-west Texas counties: Andrews, Bailey, Cochran, Collingsworth, Dawson, Castro, Lamb, Hale, Lubbock, Hockley, Terry, Lynn, Gaines, Martin, Sherman, Hansford, Lipscomb, Wheeler, Farmer, Yoakum.

Shooting hours for both deer and turkey are 30 minutes before sunrise to 30 minutes after sunset.

The regulations governing white-tailed and mule deer were created to enable the P&WD to manage both species more closely by being

able to modify seasons and bag limits. Studies have shown that the mule deer season should not be as long as white-tailed deer season. Mule deer attain sexual maturity at a later date than do white-tailed deer. The shorter season and bag limit on mule deer reflect the more vulnerable nature of this species.

The same conclusions about the upcoming turkey season have been made by P&WD personnel as were made for the deer forecast. Too much dry weather during the nesting period reduced the hatch to a point well below what it was last year.

Hunters will see quite a few turkeys due to the carry-over from last year's population which was good statewide. However, fewer young turkeys will be found.

The turkey season in the Panhandle will be from Nov. 18-Dec. 3 with a bag limit on one gobbler or bearded hen.

The remainder of the counties east and south of the Panhandle will have a Nov. 18-Jan. 1 turkey season with a limit to two gobblers or bearded hens.

Shooting turkeys from the roost is prohibited and the shooting hours for turkey hunters are the same as the

deer hunters, 30 minutes before sunrise to 30 minutes after sunset.

For specific seasons in the county you wish to hunt, consult the department's 1978-79 Texas Hunting and Sport Fishing Guide available where hunting licenses are sold.

Further questions regarding hunting laws may be answered by local Texas game wardens or biologists, or by calling the department's statewide toll-free telephone number, 1-800-252-9327.

Cedar Hill News

By Grace Lemons

We received about an inch of rain in most parts of Cedar Hill stopping the harvest of cotton and it is very cold.

Mr. and Mrs. Royce Hess of New Deal spent Sunday with their daughter and husband Rev. and Mrs. Jackie Thompson.

FLOYD COUNTY NOXIOUS WEED CONTROL ELECTION	BOX NUMBER	FOR DISSOLUTION	AGAINST DISSOLUTION
11-7-78			
SOUTHWEST FLOYDADA	1	128	83
ALLMON	3	19	3
SANDHILL	4	14	8
EAST LOCKNEY	5	39	12
PROVIDENCE	7	22	9
LONE STAR	8	29	7
SOUTH PLAINS	9	34	16
CEDAR HILL	11	24	9
BAKER	13	15	12
HARMONY	16	7	12
GOODNIGHT	17	22	4
WEST LOCKNEY	18	106	68
NORTHWEST FLOYDADA	19	37	16
DOUGHERTY	20	23	19
MCCOY	22	5	8
SOUTHEAST FLOYDADA	23	37	15
NORTHEAST FLOYDADA	24	12	8
ABSENTEE		12	2
TOTALS		585	311

Mattie Davis accompanied Ruthie Belle of Floydada to Oklahoma City where they departed, and Ruthie Belle went to Springfield, Missouri, to visit her son Lucious Hill and family, and Mattie spent a week with Louise Dunn in Hugo, Oklahoma. They returned home Saturday.

Jean and Troy Smith of Dumas spent Saturday night with Mr. and Mrs. Cephus Fortenberry. Phillis and Johnnie Harris and family of Floydada joined them for lunch Sunday. Wesley and Rodney returned to Dumas with their parents Sunday after spending several days with their grandparents.

five o'clock in their Floydada. Norma Welch, Grace Lemons and morning. The General Election held in the Fellowship Cedar Hill Baptist with Johnnie Dell Welch, Judge and Billy Welch, Imogene Fort June Ware, and Welch clerks. The Control was also at this time.

Casey Lackey was honored with a birthday party in the home of her parents, Mr. and Mrs. Jerry Lackey Saturday. Others present were Duffy Hinkle, Chad and Pepper, Linda Lemons, Twyla and Traca, Leah Lackey and Brandi.

Wednesday Grace Lemons visited Temp Phillips in Lockney. Temp had surgery on her hand Wednesday morning. Dona Yearly visited her Thursday. Other visitors during the week were Myrtle McCready, Almeta Phillips, Mrs. Oscar Phillips, Rochelle Dorman, Jewell Rigdon, Pearl and Linton Lantham, and Dorothy McClendon.

member your friends who to Lockney Hospital Men. These memorials to community possible.

Martha Taylor accompanied Edna Gilly to Dallas Sunday where she will visit with her daughter and husband Mr. and Mrs. Charley Joiner; and Edna went to Shreveport, Louisiana to visit with her daughter and family Mr. and Mrs. Johnnie Harrison.

Rev. and Mrs. Jackie Thompson attended the Fall Convention in Floydada at the Assembly of God Church Monday night.

berton Young a regular m Guest spe of the Lubbock Admini on disaster type loan

Gladys and Tom Fortenberry spent Thursday in Lubbock visiting their daughter and family, Mr. and Mrs. Lafayette Boone.

Mr. and Mrs. J.B. Whitehead, former residents of our community will celebrate their fiftieth wedding anniversary on Sunday November 12 from three until

business me Farmers vo pipe for m the elem: ans were fin Halloween car ang Farmers hay for th

WESTERN AG SALES CO. INC.

NOTICE NOTICE NOTICE

BILL PIGG HAS RESIGNED TO GO INTO FARMING

WE WANT TO WISH BILL GOOD LUCK

RONNIE ROGERS

Our NEW Salesman for Floyd County has several years of experience. See Him Soon. Floydada office 983-5231 or Home at Present Time 293-7490 Mobile Phone 983-5330 Unit 6215

SHUGART COUPON

WEDNESDAY NOVEMBER 15

Thompson Pharmacy

200 SOUTH MAIN

9

WALLET SIZE COLOR PORTRAITS

99¢

ASK About Our FREE 8 x 10 OFFER Extra charge for GROUPS

Get the FORD REWARD

Free Atlas with a test-drive.

LTD. New American Road Car

With more passenger room, handling ease and window area, LTD for 1979 offers road car comfort and luxury for the long trips Texans love. Road test LTD.

Pinto. The Great Little Workhorse

The complete small car, Pinto for 1979 has more standard features than ever, plus a striking new look inside and out. Great price, great economy, plus a new redesigned fuel system. Fun test a Pinto!

Mustang Rides Again

A whole new breed of Mustang excitement. Dramatic new sportscar styling and performance tells you it's a new breed of Mustang. Take a Mustang test drive... you'll see.

Bob Lilly, for your Texas Ford Dealer

*Rand McNally Road Atlas and Travel Guide, Free with a test drive at your Texas Ford Dealer. Map out the best way to go, the best things to see in the USA, Canada and Mexico.

Texans are BIG on

BACCUS MOTOR CO.

321 SO. MAIN LOCKNEY TX.

OB
no Wri
Scott
for G
Scott, 42, who
October 31 at
Denver, Col
Monday Novembe
United Meil
Floydada.
Scott was born
Lubbock and
to Mary Do
had been a
Trinidad, Col
August 1978. He
of Floydada
and Texas A&M
He had worke
government i
and was i
the Vietnam
as captain in
army. He was
in death by
May 26, 1936.
Others include his
son, Zant Se
Colorado;
Becky Sco
W. Fult
W. Fulton, 8
Arkansas
in the (Memorial Hos)
long resider
County, he w
farmer and a
Mt. Bethel B
Others include
Fulton of
Willard Full
Little Rock, A
daughters,
Belms of Arl
Arkansas, Mrs. P
of Sulphur, L
Jean Deat
and Mrs. Jane l
Little Rock, A
sister, Mrs.
of North
grandchildre
grandchildren
were at 11
in the Murry
General Home C
Calvin H
Jack Dickey
burial was in
cemetery. Mem
made to the Ric
Fuld.
member your
friends who
to Lockney
Hospital Men
These memor
equipment to
community
possible.
berton Yo
farmers M.
berton Young
a regular m
Guest spe
of the Lubbo
Admini
on disaster
type loan
business me
Farmers vo
pipe for m
the elem:
ans were fin
Halloween car
ang Farmers
hay for th
present wer
Brannon, M
and C
Kiker,
present wer
Donnie Pe
ell, Calvin
Turner, M
Fred Minyard,
erson, Fred
John Th
Scott Gi
met, and W
KEY SHOOT
berton Young
had their a
turkey
Nov. 18. It w
run club rai
of Silverton,
dark.

AGAINST DISSOLUTION

OBITUARY

4-Hers Learn Good Citizenship

Arvedar; one stepdaughter, Suzanne Dever of Trinidad; one step-son John Dever of Trinidad; his father, Lonnie Hale Scott of Floydada; an aunt and uncle R.L. and Blanche Rutherford of Plainview; aunt and uncle Zant and Ruth Scott of Floydada; and numerous other aunts, uncles and cousins. He was the grandson of Mr. and Mrs. S.W. Wright of Crosby, County.

Citizenship is not something for passive minds, points out Birch Lobban, County Agent with the Texas Agricultural Extension Service. The lonely person who stands on the sidelines watching the parade, speculating and criticizing, and thinking how much better the show might be, is not practicing good citizenship, for citizenship demands participation, involvement, and contribution.

determination to help her become great, emphasizes Lobban. Unlimited opportunity awaits the young American with enough love, courage and sense of direction to rise to the challenge of good citizenship. The 4-H program has as one of its objectives to help young Americans do just that. A community is built by close relations between citizens. The individual good of every citizen depends upon the harmonious working of all the community. The 4-H Club is a functioning group that promotes community activity. The 4-Hers see

themselves as highly individual, but at the same time, as responsible citizens using organized action to improve this living environment. Citizenship education through 4-H provides for three-fold learning—knowing, feeling, acting—says Lobban. This three-fold learning is as follows: Understanding—using our heads for clearer thinking, getting information and understanding issues. Attitudes—using our hearts to appreciate our rights and feel our responsibilities. Skills—using our hands and health bodies and minds to put into practice what we understand and feel we should do.

Through 4-H, youth can learn to become more active citizens working toward a better America. For details on the 4-H citizenship program, contact the County Extension Office, adds Lobban, at 983-2806.

Education programs conducted by the Texas Agricultural Extension Service serve people of all ages regardless of socioeconomic level, color, sex, religion, or origin.

Travelers Advice: Treat Credit Card As If It Were A \$1,000 Bill. Security is one thing you never want to worry about, especially when traveling.

To Our Friends and Customers
We are grateful to you for your loyal support while we were in the Conoco Station and Garage at 609 So. Main Lockney. Websters Service and Supply is in the station and happy to serve you.
Melvin and Edith Cooper

83
3
8
12
9
7
16
9
12
12
4
68
16
19
8
15
8
2
31
lock in their h
da.
na Welch v
Lemons Thu
g.
General Electio
the Fellowship
Hill Baptist
Johnny Dell Cog
and Billy Rut
mogene Forten
Ware, and
clerks. The
I was also vote
ne.
t Heating
Plumbing
blems?
Call
on Young
OLMES
UMBING
TIN OR STEV
983-2251
-9:30 a.m. a
0 p.m. Until
INC.
ARMING
several
ada office
-7490

WE COMPARE OUR PRICES WITH OTHERS TO MAKE SURE WE SAVE YOU MONEY!



PIGGLY WIGGLY

FARMER JONES SAUSAGE

1 LB. 1 10⁹ 2 LBS. 2 20⁹

KRAFT REAL MAYONNAISE

99¢ 32 OZ.

BOUNTY DESIGNER, DECORATOR OR ASSORTED TOWELS

1 ROLL 59¢

BANQUET FRIED CHICKEN

1 89 2 LBS.

PIGGLY WIGGLY LARGE EGGS

65¢ DOZ.

CAMPBELL SOUP CHICKEN NOODLE

5 10 1/2 OZ. CANS \$1

Play Bingo Magic! Win Up to \$5,000.00!

USDA HEAVY WESTERN BEEF BONELESS RUMP OR BOTTOM ROUND ROAST

1 79 LB.

HUNT'S TOMATO SAUCE PASTE KETCHUP

15 OZ. 39¢ 12 OZ. 59¢ 14 OZ. 43¢

MINUTE MAID ORANGE JUICE

6 OZ. 48¢

USDA HEAVY WESTERN BEEF BONELESS BOTTOM ROUND STEAK

1 89 LB.

LIBBY'S POTTED MEAT

5 1/2 OZ. 39¢

PETER PAN, CREAMY OR CRUNCHY PEANUT BUTTER

28 OZ. 1 79

FARMER JONES FRANKS

12 OZ. PKG. 79¢

SWANSON BEEF, CHICKEN OR TURKEY POT PIE

8 OZ. 39¢

PIGGLY WIGGLY SALTINE CRACKERS

16 OZ. 55¢

Medalion TURKEYS

10 lbs & Up LB. 89¢

PIGGLY WIGGLY GRAPEFRUIT JUICE

46 OZ. 59¢

BLUE BONNET SPREAD OLEO

2 POUNDS 1 19

SMALL LEAN PORK SPARE RIBS

LB. 1 49

ADORN HARD TO HOLD or UNSCENTED HAIR SPRAY

9 OZ. 1 49

PILLSBURY HUNGRY JACK INSTANT POTATOES

16 OZ. 1 05

EXTRA LEAN GROUND ROUND

LB. 1 49

MENNEN SPEED STICK

2.5 OZ. 98¢

RED or GOLDEN WASHINGTON STATE DELICIOUS APPLES

3 LB. BAG 89¢

GLOVER HOT LINKS or BRAND CHORIZOS

LB. 99¢

CALIFORNIA BROCCOLI

LB. 39¢

RUSSET BAKING POTATOES

10 LB. BAG 88¢

FARMER JONES LUNCHEON MEATS

8 OZ. 89¢

USDA HEAVY WESTERN BEEF BONELESS RUMP OR BOTTOM ROUND STEAK

1 79 LB.

USDA HEAVY WESTERN BEEF BONELESS BOTTOM ROUND STEAK

1 89 LB.

KRAFT AMERICAN SLICED CHEESE

12 OZ. PKG. 1 19

Stan's Produce Sale!

"Be Satisfied With Piggly Wiggly Produce or Double Your Money Back!"

RED or GOLDEN WASHINGTON STATE DELICIOUS APPLES 3 LB. BAG 89¢

CALIFORNIA BROCCOLI LB. 39¢

RUSSET BAKING POTATOES 10 LB. BAG 88¢

Barney's Butcher Shop Sale!

THE PRICE WATCHER'S PLEDGE

"We go from store to store, checking prices... to be sure Piggly Wiggly is competitive. We stand behind Piggly Wiggly's commitment to give you low prices you can believe in."

NEW! cheer

REDUCES WRINKLING while it cleans!

1 29 49 OZ.

Election Results...

	COUNTY OFFICERS												CONSTITUTIONAL AMENDMENTS																																	
	U.S. SENATOR	U.S. SENATOR	U.S. SENATOR	U.S. SENATOR	U.S. SENATOR	U.S. SENATOR	U.S. SENATOR	U.S. SENATOR	U.S. SENATOR	U.S. SENATOR	U.S. SENATOR	U.S. SENATOR	No. 1	No. 2	No. 3	No. 4	No. 5	No. 6	No. 7																											
SOUTHWEST FLOYDADA	1	338	149	0	0	419	117	307	289	122	0	365	170	1	411	419	2	407	409	412	2	399	114	222	320	0	0	399	0	431	62	340	119	235	223	227	227	314	165	273	189	261	189	284		
ALLMAN	3	17	16	0	0	82	9	17	16	14	0	19	13	0	21	21	0	21	21	21	0	23	9	18	13	0	0	21	0	27	7	15	11	10	18	10	19	18	9	16	12	17	12	12	15	21
SANDHILL	4	24	21	0	0	27	16	26	21	14	1	26	18	0	29	24	0	30	24	20	0	21	0	22	20	0	0	27	0	39	5	30	7	23	14	20	15	24	12	21	14	22	11	24	9	23
EAST LOCKNEY	5	77	90	0	0	105	49	77	77	52	0	84	63	1	92	99	1	94	97	96	1	95	67	89	61	114	0	0	106	113	15	92	34	47	64	42	59	66	36	60	45	44	58	53	43	
PROVIDENCE	7	16	31	0	0	27	17	17	29	20	0	25	22	0	29	29	0	30	32	21	0	22	21	19	24	32	0	0	26	36	4	30	9	16	20	17	20	31	8	26	11	21	13	18	15	23
LONE STAR	8	29	25	0	0	37	15	29	29	19	0	33	20	0	35	39	0	36	37	39	0	38	15	32	21	37	0	0	39	41	1	23	18	6	30	9	28	21	21	18	21	14	22	20	17	14
SOUTH PLAINS	9	42	35	0	0	64	16	40	36	19	0	49	31	0	57	59	0	57	57	59	0	58	18	42	34	0	0	57	68	7	52	15	37	31	41	26	57	14	47	21	42	22	44	21	49	
CEDAR HILL	11	16	21	0	0	24	10	16	19	13	0	16	17	0	17	18	0	17	17	17	0	19	14	12	23	0	0	12	29	9	23	5	10	20	8	22	26	7	14	14	15	12	19	14	14	
BAKER	13	23	15	0	0	32	6	32	5	4	0	25	13	0	34	34	0	32	32	33	0	31	7	21	17	0	0	35	35	0	32	2	20	2	7	23	12	17	21	10	14	17	15	15	17	13
HARMONY	16	9	16	0	0	20	5	16	9	6	0	13	12	0	18	21	0	20	21	21	0	21	3	11	14	0	0	21	0	20	4	15	8	7	15	10	11	15	9	9	14	13	9	10	12	14
GOODNIGHT	17	15	18	0	0	21	7	28	6	9	0	16	17	0	17	19	0	17	19	18	0	25	7	17	11	0	0	14	25	5	9	15	4	17	4	15	11	11	3	19	6	15	2	18	8	
WEST LOCKNEY	18	177	244	0	0	249	150	194	235	154	0	197	214	1	280	282	0	282	213	279	0	289	142	226	238	302	0	0	301	290	69	209	135	129	217	124	219	244	130	179	167	184	165	159	173	191
NORTHWEST FLOYDADA	19	117	46	0	0	133	27	116	54	29	0	119	43	0	130	127	0	131	132	131	0	132	26	42	83	105	104	124	103	132	24	93	40	69	65	69	71	84	50	77	53	75	55	68	53	92
DOUGHERTY	20	33	40	0	0	48	20	35	40	25	0	34	35	0	44	42	0	45	44	46	0	49	17	19	55	0	55	45	0	51	12	57	19	20	35	21	34	43	16	29	29	33	22	33	31	
MCCOY	22	18	5	0	0	20	3	15	6	8	0	19	4	2	20	20	1	18	19	11	2	19	2	4	17	0	0	15	0	17	1	13	3	7	8	6	9	7	7	8	8	10	5	9	7	12
SOUTHEAST FLOYDADA	23	201	109	4	0	238	72	200	112	64	0	219	89	1	243	231	0	240	244	243	1	236	62	138	172	0	242	236	0	233	37	179	69	143	104	138	110	163	84	144	103	160	82	144	93	175
NORTHEAST FLOYDADA	24	34	20	0	0	41	13	37	23	16	0	37	18	0	36	40	0	35	34	36	0	34	14	25	25	0	0	25	0	44	31	10	20	23	17	22	25	16	24	16	22	17	21	19	20	
ABSENTEE	25	43	0	0	70	18	51	42	29	0	58	32	0	67	66	0	61	67	64	0	61	25	63	42	59	60	73	59	77	9	60	23	22	56	32	49	60	25	45	41	56	27	42	36	47	
TOTALS	124	784	4	0	1619	590	1255	997	612	1	1352	830	6	1590	1610	4	1597	1587	1573	6	1547	543	1063	1240	569	496	1001	771	1699	262	1251	540	812	913	797	971	1222	129	1007	783	1008	373	924	784	1111	

THANK GOD IT'S FRIDAY.

COLUMBIA PICTURES PRESENTS A MOTOWN-CASABLANCA PRODUCTION OF
THANK GOD IT'S FRIDAY
 Special Guest Stars DONNA SUMMER and THE COMMODORES
 Executive Producer NEIL BOGART Written by BARRY ARMYAN BERNSTEIN
 Produced by ROB COHEN Directed by ROBERT KLANE
 ORIGINAL SOUNDTRACK ALBUM AVAILABLE ON CASABLANCA RECORDS AND TAPES
CAPADA DRIVE-IN
 Show Starts 7:00 p.m.
 Box Office Opens 6:15 p.m.
FRIDAY, SATURDAY, SUNDAY



ANOTHER UNUSUAL VEGETABLE....Hubert E. Davis displays a four legged carrot grown in his garden in Floydada. (Staff Photo)

Brown to Receive National Doane Award for Ag Service

AUSTIN—A career of dedication and service to Texas agriculture has earned Agriculture Commissioner Reagan V. Brown the D. Howard Doane Award for 1978, it has been announced. The award is presented each year by the American Society of Farm Managers and Rural Appraisers to an individual who is judged to have made exceptional contributions in the field of agriculture. Brown will officially receive the honor during ceremonies Dec. 4 in New Orleans, La.

Past recipients of the Doane Award include many of the nation's leading agricultural educators, writers and government officials.

Among the many factors considered in selecting Brown for this year's award was his sustained interest not only in Texas agriculture, but in upgrading the quality of life in rural communities.

As the leader of the Texas Community Improvement Program, Brown helped over 750 rural Texas communities install water systems, worked to upgrade 1,000 small towns and was a major factor in revitalizing more than 800 rural churches. The Chamber of Commerce Managers of Texas recently adopted a resolution noting the fact that Commissioner Brown has addressed over 5,000 community building meetings during his career.

In his position as Texas Commissioner of Agriculture, Brown has worked to increase exports of Texas cattle, wheat, grain sorghum, cotton, soybeans and other agricultural products. He has emphasized programs to step up testing of fruits and vegetables for pesticide residues, and recently instituted a reorganization of Texas Department of Agriculture

field operations which will result in improved cost efficiency and public accessibility.

Brown has been presented more than 17 major awards and citations from Texas organizations, institutions and agencies for outstanding service to agriculture and community development.

Among these are: Man of the Year in Texas Agriculture, 1968; "Progressive Farmer" magazine; Agriculture Hall of Fame, Southwest Texas University; Superior Service Award, Texas Agricultural Extension Service; and the George Washington Honor Medal, Freedom Foundation of Valley Forge, Pa.

The Floyd Philosopher

Comes Up With A Great Idea For All Foreign Nations In Debt To Us

Dear editor:
 I don't know about the rest of you, although I have an idea, but when the experts start reporting on how the dollar has fallen on the world markets, I don't know what they're talking about.

Around here, I don't know whether a dollar buys less because it's worth less or because a tractor bolt is just priced higher.

Anyway, it seems to be a fact that the dollar is considered now at its cheapest in world history, far below the Japanese yen, German mark, British pound, Russian ruble and, for all I know, South Sea conch shells and Navaho beads.

Based on that I have hit on a brilliant idea foreign leaders have somehow completely overlooked.

Now is the perfect time for them to pay off those staggering war debts they owe us. Why don't they out-smart us, buy up a wad of those cheap dollars, and pay us off in one fell

swoop?

I don't know how much they owe World War I and II loans but it's billions and billions of dollars, and their chance to wipe the slate clean of debt at half price.

I'm sure the foreign leaders just thought of this slick financial move a minute it occurs to them they'll swoon action.

Because I have no idea how circulation this newspaper has in the capitals of the world, I suggest you some sample copies of your paper with idea in it to all the foreign countries that us money. You could get a list Washington.

One second thought, that won't be a very. Just send copies everywhere. They owe us money.

Yours faithfully,

Now playing "AH, CHOO" The first motion picture copyrighted in the U.S. was a man sneezing. It was 1894.

SALE: 2 b New carpet, ceilings at 1102 S. James Le 8546 or 983-3...

SALE: 2 b Fully carpeted ready to live in. Finley. 9 883.

SALE: Two b bedroom, bath, good carpet, ceilings at 1102 S. James Le 8546 or 983-3...

SALE: Two b Fully carpeted ready to live in. Finley. 9 883.

SALE: 14 x 65 in good lot, carpet, ceiling. Small two-room back with shelter, trees. Investment only.

You Use So... Extra Money... Us Help!!! BUY SCR... OLD FREE PICKU... 983-5277

WANT YO... all kinds of... tractor... good tire... Best deals i... Truck win... service. B... GE CEN... Hesperian

PROGRESS

is replacing two moving parts with one

That's what a Checking Account does

FIRST National Bank
 MEMBER F.D.I.C.
 201 N. Main In Lockney Ph. 652-3355 IN LOCKNEY

All air-cooled engines are NOT created equal

If you can find an engine that uses less fuel than a Deutz Buy it!

ADAMS WELL SERVICE
 FACTORY AUTHORIZED DEALER FOR
 DEUTZ AIR COOLED DIESEL IRRIGATION ENGINES
 720 N. 2ND ST. FLOYDADA, TX. 983-5003

Fall Weather No Blessing For Farmers

AUSTIN—After a summer of scorching heat and drought, September's moisture and lower temperatures were not the blessing they should have

SCRAP IRON DRIVE

The Distributive Education Classes of Floydada High School are holding a scrap iron drive. If anyone has any scrap iron they would like to donate or know of anyone who would like to donate please contact Mr. Neeley at high school 983-2340 or Alex Torrez at 983-5101 after 6 p.m.

YOUR CONTRIBUTIONS WILL BE GREATLY APPRECIATED

ENGLISH DICTIONARY

The richest language world is English with 490,000 words!

It's Results You Want-It's CLASSIFIED ADS You Need

GARAGE SALE


GARAGE SALE: Queen size brass bed, gold carpet with padding, two T.V.'s like new, sleeper, couch set, three new sets of mattresses and box springs, two rockers. Much more. 629 W. Missouri-983-2204. Starts today last two weeks. 11-9c

CHILD CARE

Responsible housewife will babysit in my home week days. 983-2860. 11-9c

COW POKES

By Ace Reid



GARAGE SALE: Eddie Foster, 3 1/2 miles west of Lockney on Highway 70 and 1/4 mile north. L12-28p

HELP WANTED

An OHIO OIL CO. offers PLENTY OF MONEY plus cash bonuses, fringe benefits to mature individual in Lockney area. Regardless of experience, write C.C. Reed, Pres. American Lubricants Co., Box 696, Dayton Ohio 45401. L11-9c

FOR SALE

SALE-Shelled pecans 3 lbs. For \$10.50 or 5 lbs. for \$17.00. Contact any 4-H member or Floyd County Extension Office. (983-2806) tfc

For Sale

BATTERIES IN STOCK Die-Hard-42.99, 48 month \$33.99 Sears Floydada tfe

CLASSIFIED RATES

CLASSIFIED ADVERTISING RATE: 10 CENTS PER WORD FIRST INSERTION. 7 CENTS PER WORD EACH SUBSEQUENT INSERTION. MINIMUM CHARGE \$1.50. CLASSIFIED DISPLAY RATE: \$1.30 PER COLUMN INCH CARD OF THANKS: \$1.50.

GARAGE SALE: Five families, many items, excellent Christmas presents. 628 W. Missouri, Saturday Nov. 11, 9 a.m. to 6 p.m. 11-9c

FARMS AND ACREAGE

WANTED TO BUY irrigated or dryland farm in Floyd or surrounding area. Write Box XRO, c/o Hesperian, Box 700, Floydada. tfe

"Now that oughta git the point across!"

THIS FEATURE SPONSORED BY
Floydada Real Estate & Insurance Agency
AUTO, FIRE & FARM INSURANCE
Jim Word — — — Phone 983-2360

TURNER REAL ESTATE

Farms - Ranches Floydada, Texas
983-2635

GROUND RIG AND AERIAL APPLICATION

FOR COTTON DEFOLIATION
★ LONE STAR CHEMICAL INC. ★
652-2761

RICK KELLISON 652-3504
DEANIE HENDERSON 652-3434
EVANS GIN 652-3765 L-tfc

THE SMITH AGENCY

OFFERS YOU IN LOCKNEY

An older two-story home, 5 bedrooms, 1 1/2 bath, living room, dining room; also two 2-bedroom houses & two apartments, storm shelter, good income property, all for only \$30,000.

CONTACT BILL OR DELTA SMITH
293-2710 Plainview L11-2c

CARD OF THANKS

We would like to express our appreciation for each and every kind act and deed shown us during the loss of our dad. It's so good to have friends like you at a time like this.

Dub & Betty Trowbridge
Steve & Gayle Trowbridge & family

LOST & FOUND

LOST White-gold ladies wrist watch. Elgin, has name on back, reward. 983-2977 11-12c

STORAGE SPACE

BOATS, FURNITURE ANYTHING, ETC. BY THE MONTH OR SIX MONTH 10% DISCOUNT

WEST TEXAS MINI STORAGE
983-3573 OR 983-2151

FOR SALE: Piano-2 years old, like new. 983-2614 11-12c

FOR SALE: 3,000 bales bright cane hay. J.B. Burton, Flomot 469-5215 11-23p

TOMATOES-Picked or you pick-Busby's Vegetable stand on Silvertown Hwy. Call 983-3642. 11-12c

FOR SALE: Garage door \$65. 983-5351 11-19c

FOR SALE: Three Peerless pumps-one 3", two 4" submersible pumps with panel boxes, 7 1/2-h.p. engines, 250 ft. setting. One Peerless turbine pump and panel box, 15-h.p. hollow shaft engine. Call 652-2136 or 652-2492. L12-28c

FOR SALE: 4 in. Green pump complete. 240 ft. setting. Same as new Dorsey Baker L1fc

MATTRESSES. New or renovated. For appointment call City Trim Shop. 983-2332, Floydada. T-tfc

REMEMBER your loved ones with a living memorial to the Caprock Hospital Auxiliary Memorial Fund. Mrs. Ben Whitaker, Treasurer. T-tfc

FOR SALE: Solid maple drop leaf dining table and four matching chairs. Excellent condition. Mrs. Mac Smitherman 983-2084 11-12c

TIRE CLEARANCE-Firestone, Steel Radial White-wall Blemis. ER 78-14 \$49.75, FR 78-14 \$49.75, GR 78-15 \$49.75, HR 78-15 \$49.75. Plus tax 1420 Ave. J., Lubbock 765-5588 11-9p

AUTOMOTIVE

Reduced to Sell. 1976 Chevrolet Town Coupe. Auto. Air. Landeau. Call 983-2783 on weekends or after 5; or 983-3737 Tuesday thru Friday

1966 Chevrolet Impala 4 dr. 1971 Chevrolet Impala 4 dr. good condition. Call 652-3141 11-9p

FOR SALE: 1974 Buick Riviera, fully equipped, excellent condition. Call Gene Collins. 652-3355 L1fc

PICKUP TIRES-Firestone 700-15 \$35.25, 750-16 \$40.75, 6 ply. Plus tax 1420 Ave. J., Lubbock 765-5588 11-9p

FOR SALE: 1973 Chevrolet, 4 wheel drive, automatic, power steering. 983-3816 11-12p

BUSINESS SERVICES

C-D-J INSULATION can help save your dollars. For information call 983-2601.

C-D-J 66 7-day service, car wash, oil change. Gas service, U-haul rentals. Located on Matador hwy. 983-2601.

FARM MACHINERY

NORRELL TRACTOR PARTS for tractor and irrigation supplies and accessories. tfe

INSULATION
Fire-Resistant. Installed and Guaranteed. MARR Insulation Co. Lockney 652-3593. L1fc

24 Steel Cotton Trailers 24' long x 8' wide x 9' high
Cobey and Big 12 Chassis. Call before: 7:00 a.m. after: 9:00 p.m. 745-1116 L1fc

NOTICE

LOSE WEIGHT SAFELY! Take NEW B-SLIM diet plan and Aquavap "water pills." Byrd Pharmacy L11-12p

CHILDRESS BROTHERS

For leveling and blocking, painting, roofing and repairs 352-9563, Amarillo, Texas 11-26p

FOR SALE OR TRADE FOR FARM LAND. Size 50 x 100 ft. Brick Building Fire Walls, Double Ceiling-Refrigerated Air-7 years Remaining excellent lease. Cecil Hagood 983-2312 tfe

Do You Want To BUY, SELL OR TRADE Let me help you. Cecil Hagood, Real Estate Salesman, Warner Dale Goen, Broker. Phone 983-2312-708 N. 2nd tfe

WANT A GOOD BUILDING?

CALL US
MORTON BUILDINGS
Box 928 Plainview
806-293-4386

PETS

NOW OPEN A-1 Pet and Grooming professional grooming, all breeds-no tranquilizers 821 Broadway, Plainview, Texas 293-3557 tfe

WANTED

BABYSITTING
In my home, all hours. By the hour, day or week. Reasonable rates.
Deanna McConnell Lockney 652-2771 L-28p

DEALER WANTED
Aggressive Farm Operator Considered. Men or Women to handle major lines of thousands of products used daily by Farmers, Ranchers and Homemakers. Lucrative opportunity part-time. Tremendous full time earnings. No inventory required as we drop ship. Minimal Returnable Investment. Call 1-800-325-6400-Ask for Operator 33 or write Rural America Supply, P.O. Box 8304, Topeka, Kansas. 66608 11-9c

FOR SALE: AKC registered Keeshond puppy. \$50. Must Sell Call 983-3280 tfe

FOR SALE: Two Timber-wolf-Malmute puppies. Faithful and good guard dogs, six weeks old. 983-2860 11-9c

FOR RENT

FOR RENT: in Lockney one- and two-bedroom apartments. Come by 108 N. Main or call 652-3813. L1fc

LEGAL NOTICE

NOTICE TO ALL PERSONS HAVING CLAIM AGAINST THE ESTATE OF MURRAY M. JULIAN, DECEASED

Notice is hereby given that original Letters Testamentary for the Estate of Murray M. Julian were issued on November 6, 1978, in Cause No. 4373, pending in the County Court of Floyd County, Texas, to Kendis D. Julian.

The residence of such Executor is Floyd County, Texas. The post office address is:

Route Q,
Lockney, Texas 79241.

All persons having claims against this Estate which is currently being administered are required to present them within the time and in the manner prescribed by law.

Dated this 6th day of November, 1978.

s/s Kendis Julian
Kendis D. Julian
11-12c

PUBLIC NOTICE

The City of Floydada has been notified by the Texas Department of Health that the water being supplied by our system exceeds the maximum constituent level for Fluoride established by the Department's "Drinking Water Standards" which were promulgated as required by the "Safe Drinking Water Act", Public Law 93-523 (U.S.).

The limit for this area has been set at 1.6 milligrams of Fluoride per liter of water. The samples of water from our system contained 3.1 milligrams of Fluoride per liter. There is no immediate health hazard for drinking water containing Fluoride at this level.

The Fluoride may cause mottling (brown staining) of the teeth in children under 14 years of age.

All dentists in this area are aware of the Fluoride level.

Bobby Welborn, Water Superintendent
City of Floydada
11-5, 11-2, & 11-19c

RANGE CUBES

\$143.20 Ton-Plus Freight In The Barn.
Will Contract Nov. Dec. Jan. 20% Nat. Protein 7% Fiber; 25,000 Vit. A.
Call 806/348-3271 After 6: P.M. 348/3573 tfe

DR. O. R. McINTOSH

OPTOMETRIST
316 S. Main Telephone 983-3460
FLOYDADA, TEXAS

Hollis R. Bond

Real Estate
PHONE 983-2151
107 S. 5th FLOYDADA

Ints For Homeowners

Home Improvement, Safety And Economy
NEW LIGHTING SAVES ENERGY

With the hours of daylight getting shorter, electricity bills will rise as we turn on lights earlier both morning and evening. There are several ways to hold costs down while providing adequate, even improved lighting.

Fluorescent lights use less energy than incandescent bulbs, and new fluorescent fixtures fit into a standard socket. They cost about 40% less to operate and last up to ten times longer with greater light output than the 60-watt incandescent they replace.

You can also insert low-wattage vapor lamps into standard sockets. The vapor lamp has an average life of about 750 for an ordinary household bulb.

A dimmer switch not only saves energy but can change the mood of a room with the turn of a dial. Full-range dimmers allow you to dial-a-light anywhere from completely off to fully on; hi-lo controls have two settings, bright or dim. Both fit into the space occupied by a conventional wall switch, and generally the conversion can easily be done with just a sturdy screwdriver, like a Crescent with the cushion grip handle that makes turning light work.

A plug-in dimmer plugs into a wall outlet and a lamp can be plugged into the dimmer. There are also dimmers you can install in a lamp cord.

Another bright idea: skylights. They are particularly effective in interior areas where artificial light is essential most of the day, and ready-mades are available at home-supply centers.

See SANTA in person

6-8 P.M. NOV. 15, 16
WED. AND THURS.
100 S. 983-
Main 2862

SEWING MACHINE SERVICE CENTER

New & Used Sewing Machines
Sales & Service
111 S. Main Lockney 652-2721

LOCKNEY PRINTING

ALL TYPES COMMERCIAL PRINTING
Phone 652-2184
We Appreciate Your Business.

EVERY PRESCRIPTION IS A MIRACLE DRUG

Because, after a personal examination and study of your problem, your physician has selected the one specific medicine he believes will help you most. The odds are it will.

That is why it is wiser to depend on your physician's prescriptions when sick instead of home remedies prepared for the average person. Also, when you treat yourself you can only treat the symptoms which distress. But a physician has the knowledge to find the cause of your sickness and cure it.

YOUR DOCTOR CAN PHONE US when you need a medicine. Pick up your prescription if shopping nearby, or we will deliver promptly without extra charge. A great many people entrust us with their prescriptions. May we compound yours?

MIZE PHARMACY
LOCKNEY 652-2435
DAY OR NITE

Several good bedrooms, Real Estate Bond, 983- tfe

two and homes for arranged. Insurance and 983-3261. tfe

FOR RENT for room. 3/4 appointment for Gene tfe

2 lots. 602 S. 5th. take travel motor, car, down pay. Joe Reid tfe

3 bedrooms, double garages, 75 x 40 ft. 983-2532 or call tfe

be moved, house five paneled & bath, paneled in room and large carpeted. back porch \$2,000. tfe

house for sale. Needs after 3 p.m. LTFC

SALE: Five good 305 S. 35th, 983-2573, tfe

Valley Forge, Pa.

NOW PLAYING "AH, CHOO."

Must sell! low down make a man sneezing. The 1894. tfe

2 bedroom carpeted, on 1102 S. Main Lee Nichols 983-3144 tfe

2 bedroom carpeted, wall to wall tile, call to live in. Call Finley. 983-3871 tfe

Two bedroom carpet, doors, things and light central heat, refrigerator, two 40-gallon water heaters, fenced back. Lockney, Lockney. Life

ign leaders just financial move and them they'll swing

no idea how paper has in the world, I suggest you of your paper with reign countries that could get a list

that won't be necessary everywhere. They

Yours faithfully

nd the rains accompanying cool weather and in some aging. Agricultural missioner Reagan said.

Most cotton farmers would hold off bolls had matured. "The rains cause some decline in quality and during harvest be- be is loose in the he 1978 cotton uction estimate need to drop, accor- as Crop and Livest- rting Service sur- 37 per cent below crop. The estimat- 10 bales below member forecast.

her rain-relat- ems have shown up with delayed har- extensive lodg- ed in some of or corn-produc- ies. The crop is do- cent from a year- production expected 35 million bushels.

ENGLISH DICTIONARY

the language in is English with 0 words!

Fairview News

By Mrs. Clyde Bagwell

By Mrs. Clyde Bagwell
November 6—After a weekend of damp cloudy weather and a rain on Saturday, this Monday morning we awoke to the fact that winter had arrived with a strong cold wind blowing in from the north. This cloudy rainy weather is bad for the cotton harvests that was in full swing.

Mr. and Mrs. Ronnie Upton and son Rocky of Los Alamos, New Mexico, and Ricky Upton of Canyon and Mr. and Mrs. Richard Abel of Amarillo spent the weekend with their parents and grandparents, Mr. and Mrs. L.H. Blum. On Sunday afternoon all of the above named went to South Plains where they attended the reception at South Plains Baptist Church for Ronnies parents, Mr. and Mrs. Raymond Upton. Mr. and Mrs. Upton are retiring from the South Plains Post office and grocery business which they have operated for many years.

Mr. and Mrs. Harvey Allen, Mike and Norman, attended the Tech ball game Saturday at Lubbock.

Mrs. Ray Cook went to Arlington last Monday and visited until Thursday in the home of her son Lt. Col. and Mrs. Keith Whitfill and children Debra and Brian. Mrs. Cook reports the weather was real nice at Arlington while she was there.

Mr. and Mrs. Ira Bobo of Seminole and Mrs. Leon Rasco of Lubbock visited Saturday with their cousins, Mr. and Mrs. Clyde Bagwell.

Mrs. Nellie Turner visited Mrs. C.H. Wise Friday morning.

Mr. and Mrs. E.W. Walls spent Thursday in Plainview where they attended the funeral of Mrs. R.C. Mangum. Mrs. Mangum is the mother of Bobbie Ann Walls, former resident of our community. While in Plainview Mr. and Mrs. E.W. Walls visited a number of friends and also Mr. and Mrs. E.R. Walls.

Those visiting Mr. and Mrs. Lindsey Graham last week were Mr. and Mrs. Walter Hollums, and Joe Dunn.

Saturday afternoon and that night for supper guests in the home of Mr. and Mrs. C.H. Wise and Denton were Mr. and Mrs. C.D. Wise of Paris, Mrs. Joe Cox and daughter Doris and a girlfriend of Amarillo, Mr. and Mrs. F.A. Faulkenberry, Mrs. Doris Kitchens of Floydada and Mona Dell Wise and a girlfriend of Amarillo. C.D. Wise, C.H. Wise, Mrs. Kitchen and Mrs. Faulkenberry are brothers and sisters; Mrs. Joe Cox is a niece. After the evening meal all of this group enjoyed looking at old pictures of the family. Sunday they were guests for dinner in the home of Mrs. Doris Kitchens. Then on Monday, several of them went to Amarillo and visited relatives there.

Friday afternoon visitors in the home of Mr. and Mrs. Bill Beedy were their son Charles Beedy from the ranch near Claude, Mr. and Mrs. Bill Tye, and Mr. and Mrs. Walton Wilson.

Sunday after church Mr. and Mrs. Walton Wilson drove out to the home of Mr. and Mrs. A.S. Mize and had dinner with them and spent the afternoon.

Mr. and Mrs. Robert Warren of Lubbock came Sunday and had dinner with their parents Mr. and Mrs. Bud Warren. In the afternoon Mr. and Mrs. Randell Warren and Mr. and Mrs.

FAMILY FINANCES

COLLEGE STATION—Make Household business a family affair, suggests Lillian Chenoweth, family resource management specialist with the Texas Agricultural Extension Service, The Texas A&M University System.

Know who the family's financial advisors are: lawyer, banker, accountant and insurance agent, for example.

Review the insurance policies held and determine the kind of policy and amount of coverage needed, the specialist advises.

Understand the maturity dates and the payment of premiums.

Know where the policies are kept and what the policy numbers are, as well as the benefits provided.

BUYING FIREWOOD

COLLEGE STATION—

With winter weather just around the corner, homeowners will soon be making preparations for sitting by a glowing fireplace. But these dreams of a warm fire and a cozy fireplace may go up in smoke if the wrong type of wood is purchased, cautions a forestry specialist for the Texas Agricultural Extension Service.

"Since firewood purchases

are not covered by consumer protection laws, it is the responsibility of the buyer to shop and choose the right type of wood," points out Dr. Mike Walterscheid.

"Price comparisons may be difficult since firewood may be sold by the standard cord, the face cord or the truck load," he adds.

A standard cord is 8 feet long, 4 feet wide and 4 feet high, or 128 cubic feet. On the other hand, a face cord measures 8 by 4 feet on the face of the stack, with the wood cut into smaller pieces.

The face cord measures about 1/3 to 1/2 of a standard cord.

"The best way to compare prices is to calculate the cubic feet of wood. Measure the stack and multiply the length by the width and by the height," suggests the forestry specialist.

Following this advice will also keep the unwary buyer from making a mistake out of what appears to be a bargain. Cubic feet measurements should also be used on truck loads of firewood.

After the truck is unloaded

The Floyd County Hesperian

ed and the wood stacked, multiply the length, width and height of the stack in feet and divide by 128 to obtain the portion of a cord you have. For example: 6 feet x 2 feet x 4 feet = 48 cubic feet; 48 divided by 128 = .38 or about 1/3 of a standard cord. A good rule of thumb is that a standard 1/2-ton pickup without heavy-duty springs can carry about 1/3 cord.

"Certain types of firewood also burn better than others," says Walterscheid.

"Live oak, hickory, white

oak, post oak, red oak and pecan are excellent, long-burning woods with a high heat output. However, pine and cedar are softwoods that make excellent kindling, hardwood for heat, and fruit or nut wood for aroma will make shopping around worthwhile, contends the forestry specialist.

"Always choose dry, lightweight wood over green wood," says Walterscheid. "Drier wood can give up to 20 percent more heat and is much easier to kindle than moist green wood."

Additional information about various types of wood is provided in a publication, "Buying and Using Firewood," available at any county Extension office.



Afraid of strange particular phobia "Xenophobia."

<p>RAINBO DINNER TIME</p> <p>ROLLS</p> <p>2/89¢</p> <p>63¢ VALUE</p>	<p>1/2 GAL BORDENS</p> <p>ICE CREAM</p> <p>\$1.29</p> <p>\$1.89 VALUE</p>	<p>33 OZ.</p> <p>"FABRIC SOFTNER"</p> <p>DOWNEY</p> <p>89¢</p> <p>\$1.29 VALUE</p>	<p>2 LITER NO DEPOSIT</p> <p>DR PEPPER</p> <p>69¢</p> <p>99¢ VALUE</p>	<p>4 ROLL DELSEY</p> <p>BATHROOM TISSUE</p> <p>79¢</p> <p>\$1.29 VALUE</p>
---	--	---	---	---

WE GIVE WE GIVE

BUDDY'S

DOUBLE ON WEDNESDAY

STORE HOURS: Mon.-Sat., 8 a.m. to 8 p.m. Sun., 9 a.m. to 8 p.m.

VALUES EFFECTIVE THRU SATURDAY, NOVEMBER 11TH, 1978

We Reserve The Right To Limit Quantities

DOUBLE ON WEDNESDAY

<p>1 LB BAG CELLO</p> <p>CARROTS 5 LBS \$1.00</p> <p>FIRM GREEN TEXAS</p>	<p>1 LB OWENS</p> <p>CHILI \$1.39</p> <p>LB</p>	<p>FAMILY PACK</p> <p>PORK CHOPS \$1.19</p> <p>LB</p>	<p>19¢ CHINA ENDS</p> <p>NOVEMBER 10TH 1978</p>
<p>1 LB</p> <p>CABBAGE 10¢</p> <p>FANCY RED DELICIOUS</p>	<p>2 LB OWEN</p> <p>SAUSAGE \$2.89</p>	<p>20 COUNT BOUNCE</p> <p>"FABRIC SOFTNER"</p> <p>BOUNCE 89¢</p> <p>\$1.19 VALUE</p>	<p>14 OZ LIQUID</p> <p>COMET 3/\$1.00</p> <p>61¢ VALUE</p>
<p>3 LBS</p> <p>APPLES 3/\$1.00</p> <p>GOLDEN RIPE</p>	<p>FAMILY PACK</p> <p>GROUND BEEF 99¢</p> <p>LB</p>	<p>U.S.D.A.</p> <p>ARM ROAST \$1.19</p> <p>LB</p>	<p>U.S.D.A.</p> <p>RANCH STEAK \$1.09</p> <p>LB</p>
<p>5 LBS</p> <p>BANANAS 5/\$1.00</p>	<p>USDA BONELESS</p> <p>SIRLOIN STEAK \$1.99</p> <p>LB</p>	<p>DECKERS RANCH BRAND</p> <p>BONELESS HAM \$2.59</p> <p>LB</p>	<p>JUMBO ROLL HI-DRI</p> <p>PAPER TOWELS 2/89¢</p> <p>59¢ VALUE</p>
<p>15 OZ OREO</p> <p>COOKIES 79¢</p> <p>\$1.15 VALUE</p>	<p>LOIN END</p> <p>PORK ROAST \$1.29</p> <p>LB</p>	<p>FAMILY PRIDE</p> <p>TURKEYS 79¢</p> <p>LB</p>	<p>24 COUNT KLEENEX</p> <p>DIAPERS \$2.00</p> <p>\$2.89 VALUE</p>
<p>6 OZ. NABISCO</p> <p>CHEESE NABS 2/99¢</p> <p>59¢ VALUE</p>	<p>25 LB OUR DARLING</p> <p>FLOUR \$1.99</p>	<p>8 OZ DEL MONTE</p> <p>FRUIT COCKTAIL 3/89¢</p> <p>41¢ VALUE</p>	<p>12 OZ. "SOIL AND STAIN REMOVER"</p> <p>SHOUT 89¢</p> <p>\$1.23 VALUE</p>
<p>7 OZ. JOLLY TIME</p> <p>BUTTERY SEASONING SALT 2/99¢</p> <p>69¢ VALUE</p>	<p>1 LB ZESTA</p> <p>CRACKERS 2/\$1.29</p> <p>79¢ VALUE</p>	<p>4 LB COUNTRY BLEND</p> <p>CAT CHOW \$1.39</p> <p>\$2.09 VALUE</p>	<p>12 OZ. RAGU</p> <p>SPAGHETTI SAUCE \$1.29</p> <p>\$1.69 VALUE</p>
<p>4 OZ ADAMS</p> <p>VANILLA 99¢</p> <p>\$1.29 VALUE</p>	<p>10 OZ. FRITOS</p> <p>TACO DIP 59¢</p> <p>75¢ VALUE</p>	<p>38 OZ NESTLES</p> <p>CHOCOLATE QUIK \$2.39</p> <p>\$3.19 VALUE</p>	<p>1 LB MAXWELL HOUSE</p> <p>COFFEE \$2.29</p> <p>\$2.89 VALUE</p>
<p>3 OZ. SCHILLINGS</p> <p>SALAD TOPPINGS 69¢</p> <p>95¢ VALUE</p>	<p>42 OZ. FRESH START</p> <p>DETERGENT \$1.99</p> <p>\$2.79 VALUE</p>	<p>12 OZ FISHER "NO PEANUTS"</p> <p>MIXED NUTS \$2.19</p> <p>\$2.79 VALUE</p>	<p>KRAFT</p> <p>CHEESE & CRACKERS 8/\$1.00</p> <p>20¢ VALUE</p>
<p>5 LB "PURE CANE"</p> <p>SUGAR 39¢</p> <p>WITH PURCHASE OF 4 LIGHT BULBS</p>	<p>10 COUNT GLAD</p> <p>TRASH BAGS 99¢</p> <p>\$1.49 VALUE</p>	<p>8 OZ KEEBLER</p> <p>SNACK CRACKERS 2/\$1.29</p> <p>89¢ VALUE</p>	<p>6-12 OZ TEXSUN</p> <p>GRAPEFRUIT JUICE \$1.29</p> <p>\$1.89 VALUE</p>
<p>"1" WITHOUT PURCHASE</p> <p>16 OZ KEEBLER</p> <p>TOWNHOUSE CRACKERS 79¢</p> <p>\$1.09 VALUE</p>	<p>3 OZ LIPTON</p> <p>INSTANT TEA \$1.79</p> <p>\$2.79 VALUE</p>	<p>18 OZ WELCH</p> <p>STRAWBERRY PRESERVES 2/\$1.19</p> <p>\$1.19 VALUE</p>	<p>11 OZ. HOT SHOT</p> <p>ROACH & ANT SPRAY 99¢</p> <p>\$1.49 VALUE</p>
<p>3 LB "PURE VEGETABLE"</p> <p>CRISCO 79¢</p> <p>WITH PURCHASE OF 2 CUT-UP FRYERS</p>	<p>12 OZ BELL</p> <p>COTTAGE CHEESE 59¢</p> <p>79¢ VALUE</p>	<p>15 BAR PANTRY PACK</p> <p>CANDY BARS \$2.29</p> <p>\$3.00 VALUE</p>	<p>27 OZ FUTURE</p> <p>FLOOR WAX \$1.79</p> <p>\$2.29 VALUE</p>
	<p>8 OZ BELL</p> <p>YOGURT 3/89¢</p> <p>45¢ VALUE</p>	<p>24 OZ. GLORY</p> <p>RUG CLEANER \$1.89</p> <p>\$2.39 VALUE</p>	
	<p>1/2 GAL BELL</p> <p>SLIM MILK 87¢</p> <p>\$1.17 VALUE</p>		

15 Per Copy

Volume

Wh

Simpson

apparent

Floydada

Capro

DAY NIGHT

THERE A

AS IN DA

any wind