

TOTAL GROCERY SAVERS

FOOD KING TOMATOES	3	16 OZ. CANS	\$1 ⁰⁰
LIBBY PUMPKIN	303	CAN	37 ^c
SCHILLING VANILLA	2	OZ. BTL.	79 ^c
KRAFT GRAPE JELLY OR JAM	2	LB. JAR	89 ^c
KRAFT ITALIAN DRESSING	8	OZ. BTL.	59 ^c
SUNSHINE CHIP-A-ROOS	12	OZ. PKG.	69 ^c
KOTEX LIGHT DAYS OVAL PADS	16	OZ. PKG.	79 ^c
KOTEX LIGHT DAYS OVAL PADS	30	CT. BOX	\$1 ³⁹

WE RESERVE THE RIGHT TO LIMIT



Harvest of Good Food Ideas

CALIFORNIA HONEYDEW MELONS	29 ^c
WASHINGTON D'ANJOU PEARS	39 ^c

WASHINGTON RED DELICIOUS

CRISP APPLES LB. **39^c**

TEXAS GREEN CABBAGE	19 ^c
COLORADO YELLOW SWEET ONIONS	19 ^c

CALIFORNIA GREEN BROCCOLI	
CALIFORNIA LARGE AVOCADOS	



FIREPLACE
STERNO LOGS EA. **79^c**



KRAFT REAL
MAYONNAISE 32 OZ. JAR **\$1³⁹**

DAIRY VALUES

MAXI CUP SOFT PARKAY	1	LB. CUP	69 ^c
HUNGRY JACK Butter Tasting Flaky/Fluffy BISCUITS	2	5 CT. CANS	49 ^c
HALFMOON LONGHORN COLBY GOLDEN IMAGE	10	OZ. PKG.	99 ^c
KRAFT CHEESE FOOD VELVEETA	1	LB. BOX	\$1 ¹⁹
STACK PAK AMERICAN KRAFT SINGLES	1	LB. PKG.	\$1 ⁵⁹
PHILADELPHIA Plain w Chives CREAM CHEESE	3	OZ. PKG.	29 ^c
KRAFT REFRIGERATED ORANGE JUICE	QUART	BTL.	69 ^c

REGULAR-AUTO DRIP ELECTRIC PERK
HILLS BROS. COFFEE
\$2²⁵
1 LB. CAN

CREAMY EVAPORATED
CARNATION MILK
WITHOUT COUPON 3 FOR \$1.09
399^c
TALL CANS WITH 10 COUPON

REGULAR-CHICKEN KIDNEY/BACON
FRISKIES DOG FOOD
WITHOUT COUPON 3 FOR 99^c
589^c
15 1/2 OZ. CANS

COUNTRY PRIDE USDA GRADE A
FRYERS 49^c lb.
HEAVY GRAIN FED BEEF BLADE CUT
CHUCK ROAST

REGULAR OR BEEF
SHURFRESH FRANKS 12 OZ. PKG. **89^c**

SHURFRESH REGULAR OR BEEF
SLICED BOLOGNA 12 OZ. PKG. **89^c**

89^c
LB. BONELESS LB. \$1.39

ENRICHED FLOUR
GOLD MEDAL 5 LB. BAG **79^c**

ORE-IDA CRINKLE CUT
POTATOES 5 LB. BAG **\$1⁷⁹**

NEW! CLASSIC COMBINATION
TOTINO PIZZA 20 OZ. PKG. **\$1⁹⁹**

SHURFINE FROZEN
GREEN PEAS 10 OZ. PKG. **39^c**

PLAIN
WOLF CHILI 19 OZ. CAN **99^c**

AUTO. DISHWASHER 13" OFF LABEL
CASCADE 35 OZ. BOX **99^c**

HEAVY GRAIN FED EXTRA LEAN BEEF STEW CUBES	1	LB.	\$1 ⁴⁹
HEAVY GRAIN FED BEEF CENTER CUT 7 BONE CHUCK ROAST	1	LB.	99 ^c
HEAVY GRAIN FED BEEF BONELESS CHUCK STEAK	1	LB.	\$1 ⁴⁹
HEAVY GRAIN FED BEEF BONELESS ARM SWISS STEAK	1	LB.	\$1 ⁶⁹
HEAVY GRAIN FED BEEF BONELESS SHOULDER ROAST	1	LB.	\$1 ⁵⁹

GLOVER'S MEXICAN STYLE HOT LINKS	1	LB. PKG.	89 ^c
SENR BLUE BEEF & BEAN BURRITOS	1	LB. PKG.	99 ^c
HORMEL PORK LINK SAUSAGE LITTLE SIZZLERS	12	OZ. PKG.	\$1 ⁰⁹
HORMEL SMOKED FRANKS WRANGLERS	1	LB. PKG.	\$1 ⁶⁹

10 VALUABLE COUPON 10
EVAPORATED MILK
CARNATION 3 TALL CANS **99^c**
WITHOUT COUPON 3/\$1.09 WITH THIS COUPON COUPON GOOD OCTOBER 15-21, 1978 LIMIT 1 COUPON PER CUSTOMER
10 **THRIFTWAY** 10

10 VALUABLE COUPON 10
FRISKIES Reg. Ckn. Kidney/Bacon Liver
DOG FOOD 5 15 1/2 OZ. CANS **89^c**
WITHOUT COUPON 3/\$1.99 WITH THIS COUPON COUPON GOOD OCTOBER 15-21, 1978 LIMIT 1 COUPON PER CUSTOMER
10 **THRIFTWAY** 10

JUMBO PAPER
HI-DRI TOWELS
39^c
ROLL

HEALTH & BEAUTY AID SAVINGS

GLEEM
TOOTH-PASTE 7 OZ. TUBE **99^c**

DEODORANT REG./UNSCENTED
SURE ROLL-ON 2.5 OZ. SIZE **\$1⁵⁹**

7 OZ. LOTION/4 OZ. TUBE/JAR
HEAD & SHOULDERS **\$1³⁹**

VASELINE LOTION
INTENSIVE CARE 15 OZ. BTL. **\$1⁵⁹**

MOUTHWASH
MINTY SCOPE 12 OZ. BTL. **99^c**

AGREE REG./OILY/EXTRA BODY
CREME RINSE 8 OZ. BTL. **99^c**

REGULAR/GENTLE/OILY
AGREE SHAMPOO **\$1³⁹**

RELIEVES DISTRESS OF COLDS
VICK'S VAPORUB 1.5 OZ. JAR **89^c**

S AND H
GREEN STAMPS EVERYDAY DOUBLE ON WED.

VICKS FORMULA 44-D
FORMULA 44-D 3 OZ. BTL. **\$1³⁹**

REGULAR
ORACIN 3 OZ. BTL. **\$1³⁹**

PAGE'S THRIFTWAY

PRICES GOOD OCTOBER 15-21, 1978

OBITUARY

Mulder

Arby Mulder, 62, of the South Plains Baptist Church, died at 2 p.m. Saturday in the South Plains Baptist Church, pastor, officiating.

Mulder was in Floydada under direction of the Funeral Home. He was dead about 12 hours.

Hoffman

Hoffman, 62, of Arizona, died October 7 in a Chandler after an illness. Services were held at the First Methodist Church, officiating. Burial Garden of Peace.

Hoffman was born in Floyd County, he farmed until he moved to New Mexico, and he remained in Roswell, N.M., until 1974 when he moved to Chandler, where he was involved in real estate.

Hoffman's survivors include his wife, two step sons, Bobby Hoffman and one sister, Mrs. Clanton of Plainview, nephew, Don of Plainview and Mrs. Dorma Hazel of Roswell.

J. Roach

Roach, 94, died in Plains Hospital in Roswell at 5:45 a.m. Friday.

Hospital Report

Byars, Lockney, continues care. Bigham, Lockney, dis. 10-9. McPherson, Plainview, 10-5, Baby girl born 10-5 dis 10-6. Davis, Lockney, dis 10-10. Lopez, Crosby, 10-5 baby boy born 10-6 dis. 10-8. Phillips, Lockney, dis. 10-9. Johnson, Silvertown, continues care. Thurman, Silvertown, 10-6 continues care. Richardson, Floydada, 10-7 dis. 10-10. Trevino, Kress,

day. She had been ill since July.

Services have been scheduled at 2 p.m. Saturday in the First United Methodist Church in Lockney with the Rev. DeWitt Seago, pastor, officiating, assisted by Tommy Ewing, pastor of Trinity United Methodist Church in Plainview. Burial will be in Lockney Cemetery with Lemons Funeral Home, Plainview, in charge of arrangements.

Born Alpha Ellen Jackson on February 14, 1884 in Itasca, Texas, she grew up in Lipan and was married to C.J. Roach April 16, 1903 in Lipan. They moved to Floyd County in 1929 and to the present farm home in the Aiken community in 1945. She was a member of the Lockney First United Methodist Church.

Mr. Roach died April 24, 1956 at his home. Among survivors are one son, J.C. (Tubb) Roach of Lockney; one brother, C.W. Jackson of Lipan; one sister, Mrs. Jewel Chaney of Hawthorne, California; 10 grandchildren and a number of great-grandchildren and great-great-grandchildren.

Mabel Martin

MARTIN--Mabel Porter Martin, 80, a resident of Albuquerque for 20 years and a former resident of Austin and Floydada, Texas, passed away Wednesday after a long illness. She was the wife of the late Claude M. Martin, the mother of Jack Porter Martin and the grandmother of Jack Porter Martin, Jr., of Albuquerque. She is also survived by: five sisters, Mrs. Clara Bryan, Plainview, Texas, Mrs. Lydia Pollard, Lubbock, Texas, Mrs. Francis Gillespie, Boca Raton, Fla., Mrs. Lena Watson, San Antonio, Texas and Mrs. May Ann Sharp, Albuquerque; two brothers, Grady Porter, Lubbock, Texas, and Robert Porter, San Diego, Calif. She was a member of the University Methodist Church of Austin, Texas.

Funeral services were held at 2 p.m. on Friday in Palm Chapel of Strong-Thorne, 1100 Coal SE, with the Rev. Harry Vanderpool officiating. Pallbearers were William Sharp, Grady Porter, Bob Riddle, Manny Garga, Ernie Slade and Robert Goehring. Honorary pallbearers were Wayne Suggs, Derwood Knight, Richard Neff and Bill Sullivan. Interment was in Sandia Memory Gardens.

Concerned Over

ing Traffic Death Toll

The director of the Texas Department of Transportation today expressed "serious concern" over the rising traffic fatality toll and increasing violent crime.

Wilson E. Speir, Texas Department of Transportation director, said the trends are "symptoms of the rapid population growth experienced in the last few years of the 70 mile speed limit, but had been lower in the 1974-76 period. Regarding crime, the DPS director noted that while the

overall crime rate per 100,000 population was down by one percent for the first six months of 1978, actual numbers of major crimes rose.

There were an estimated 336,302 major offenses in Texas during the first half of 1978, compared to 330,169 such crimes in the same months of 1977.

Looking specifically at violent crimes, Speir said reports submitted to DPS indicate these offenses soared during the first six months. The murder rate rose 14.7 percent, rapes up 15.2 percent, and the rate for aggravated assaults climbed 6.2 percent.

"Part of the problem," Speir, "is that growth in law enforcement just has not kept pace with the state's growing and increasingly mobile population. That certainly is true in the Department of Public Safety."

Speir observed that while the crime rate per 100,000 population has risen 32 percent since 1973, the department's authorized criminal law enforcement strength

has risen by only 10 percent. Regarding traffic enforcement, he said that California, Florida, Illinois, Michigan and Pennsylvania—states with populations, vehicle registrations and licensed drivers comparable to Texas—have an average of 2,043 Highway Patrol troopers per state while Texas has but 1,350.

"If we compare our strength to population, these states have one trooper per 6,083 people while we have one for each 9,504," Speir added.

The DPS director noted that the problem is further compounded by inadequate pay levels for law enforcement officers and essential support personnel.

"We have a department-wide annual turnover of 15 percent, and our turnover in enforcement personnel is nearly 50 percent more than just two years ago," he said.

"The DPS urgently needs additional personnel, and we need salary adjustments which are sufficient to permit retention of trained and productive employees,"

Speir added. "This is essential if we are to provide the proper response to these growing problems."

FLOYD DATA
Mrs. Willis McCormick underwent surgery this week in Central Plains Hospital in Plainview.



Now hear this: The loudspeaker public address system was first used in 1913 by the governor of Oklahoma.



The song "Greensleeves" is believed to have been composed by King Henry VIII.

The Floyd Philosopher Campaigning To Cut Taxes And Cutting Them Is Not The Same



Editor's Note: The Floyd Philosopher on his Johnson grass farm looks at the prospects for a tax cut.

Dear editor:
"Finally," a man said to me the other day, "we're going to get some tax relief."

"You think so?" I asked.
"Of course. Look, everybody is running on a platform of cutting taxes. Republicans, Democrats, Independents, you name them and they're all committed to reducing taxes. Regardless of who gets elected, we're bound to get a tax cut."

Maybe so. There's a saying, "those who are ignorant of history are doomed to repeat it," but that's only half the story. Those who are familiar with history keep on repeating it too. Frequently on purpose.

Never in the history of man has anybody ever run for office on a platform of increasing

everybody's taxes, and never since the invention of elections have taxes come down to where you could tell it.

A tax-cut platform has been used so often by candidates it's as worn down as the hollowed-out marble steps at an ancient cathedral trod upon by millions of visitors over the centuries.

Not only are all the candidates in favor of cutting taxes, the people already in office with the power to do it are in favor too. Why, some Congressmen who've been in office 25 years or longer and have continued to raise taxes are still running on the same platform they first got elected on—cutting taxes.

But a lot of people say this time it's going to be different, taxes are going to be cut. Come back a year from now and let's see what happened.

Yours faithfully,
J.A.

DOUBLE BLUE STAMPS ALL DAY WEDNESDAY

WE RESERVE THE RIGHT TO LIMIT QUANTITIES
PRICES EFFECTIVE OCTOBER 16-21, 1978

THOMASON
114 NORTH EAST 8TH
PHONE 652-3346 LOCKNEY, TEXAS
WE RESERVE THE RIGHT TO LIMIT

**Double Stamps
Wednesday**

FRESH - SOFT - SMOOTH
TENDERCRUST
BREAD IS BETTER

Shurfresh Milk

All Our Meats Are Fully Guaranteed Our Meats With Your Approval

Blade Cut
Chuck Roast
89¢ Lb

FRESH
Ground Beef
\$1.09 Lb

Beef Liver	LB	49¢
CUBE STEAK	LB	\$1.79
Cutlets	LB	\$1.79
Sirloin Tips	LB	\$1.79
Pikes Peak Roast	LB	\$1.19
Rump Roast	LB	98¢
T Bone Steak	LB	\$2.29
Sirloin Steak	LB	\$1.69
Club Steak	LB	\$1.79
BEEF Short Ribs	LB	89¢
MARKET MADE FRESH Pork Sausage	LB	\$1.19

WRIGHT'S HICKORY SMOKED
Bacon Ends & Pieces 3 LB BOX \$1.59
SAN ANTONIO BRAND
Mexican Chorizo LB 99¢

FEATURING LOCAL PEN FED BEEF. RETAIL MEATS AT WHOLESALE PRICES:

Arm Roast
\$1.09 Lb

Rib Steak
\$1.39 Lb

WE ALSO HAVE READY TO GO 30 LB BEEF PACKS \$39.50
Consists of 10 lb Steak 10 lb Roast 10 lb Ground Beef

Washington Red Del. Apples 3 LBS. \$1.00
Washington D'Anjou Pears 3 LBS. \$1.00

SHORTENING Bake-Rite 3 LB. CAN \$1.39

HONEY BOY Pink Salmon 15 OZ. CAN \$1.39

Quick Oats 18 OZ. BOX 59¢
Mixed Nuts 12 OZ. PKG. \$1.49
Maxwell House 5 OZ. JAR \$2.99

Crackers 1 LB. BOX 2/\$1.00
Kool Aid 10 QT. \$1.59
Tide box \$4.39

Sure Roll-On 1.5 OZ. SIZE \$1.19
Toothbrushes EA 39¢
Gleem Toothpaste 5 OZ. TUBE 89¢
Denture Cream 5 3/4 OZ. \$1.29
Scope Mouthwash 12 OZ. BTL. \$1.09

CALIFORNIA LARGE Avocados 3 FOR \$1

Yams 3 LBS. \$1.00
GREEN SQUASH Zucchini 3 LBS. \$1.00

Fall Housecleaning Aids
TOP QUALITY BUYS DOWN EVERY AISLE!

Lysol 17 OZ. BTL. 99¢
Lysol 24 OZ. BTL. 89¢
Mop & Glo 32 OZ. BTL. \$1.59
Pinesol 15 OZ. BTL. 89¢

Cascade 35 OZ. BOX \$1.09

Dairy And Frozen Food
JENO'S HAMBURG-CHEESE PIZZA 13 1/2 OZ. PKG. 89¢
MORTON MEAT POT PIES 8 OZ. PKG. 29¢
BORDEN SINGLES Lite Line 8 OZ. BOX 89¢
MINUTE MAID FROZEN Orange Juice 6 OZ. CAN 43¢

Life '78



MR. AND MRS. DON R. CHESSHIR announce the engagement of their daughter, Donna Rhea to Charles Keaton, son of Mr. and Mrs. Claude Keaton of Lubbock.

The couple plan to be married December 29 in the First United Methodist Church in Floydada.

The bride-elect is a 1977 graduate of Floydada High School and attends Texas Tech University. The future bridegroom is a graduate of Roosevelt High School and is a candidate for May graduation from Texas Tech University.

WATER COLORS
by
RUTH MITCHELL
Now Showing
Heritage Gallery
2120 Avenue Q. Lubbock, Texas

KIRTLEY'S MARKET
316 N 2ND 983-3105

WE ACCEPT FOOD STAMPS

WE RESERVE THE RIGHT TO LIMIT

WE GIVE DOUBLE S AND H GREEN STAMPS ON WED. THESE SPECIALS GOOD OCT. 16 THRU OCT. 21, 1978

<p>BACON LB \$1.19</p> <p>SPAM 12 OZ. \$1.28</p> <p>POT PIES ALL VARIETIES 31¢</p> <p>SUGAR 5 LB 99¢</p>	<p>FRYERS LB. 54¢</p> <p>ROAST LB \$1.59</p> <p>BOLOGNA OR FRANKS 89¢</p> <p>DR PEPPER 6-32 OZ. BTL. SUGAR FREE OR REGULAR</p> <p>SUGAR PLUS DEPOSIT \$1.59</p>
--	--

PRODUCE: BANANAS LB. 4/\$1.00, YAMS LB 35¢, 10 LB POTATOES 99¢

ZESTA 16 OZ. CRACKERS 59¢

SHURFINE SHURFINE 99¢

NOTEBOOK PAPER 300 CT. 99¢

1956 Study Club Hear League of Women Voters President

The 1956 Study Club met in the home of Valdonna Barbee Tuesday October 10. Co-hostesses were Betty Edwards and Phyllis Harris.

Nancy Willson introduced the program which was led by Betty Anderson, president of the League of Women Voters. She discussed the organization, operation,

purpose and involvement of the League. The program was interesting and provided helpful information which stressed the importance of being aware and becoming more knowledgeable and involved in elections. Roll call responses were suggestions from members given as a "Voters Voice".

Soil conservation chairman, Sarah Sanders, urged everyone to recycle things at home in order to save money. She demonstrated several examples of recycled items. Included in the business meeting were reports from each department head. Several good auction items were presented.

New members voted into the club were Debbie Bear- den and Pat Battley.

Present for the meeting were Pat Ochoa, Vicki Rainer, Glenna Ross, Nancy Willson, Jenniesue Smith, Jan Thayer, Pat Barrow, Janet Lloyd, Sarah Sanders, Penny Bertrand, Jan Thompson, Julie Cathey, Elaine McNeill, Carla Snider, Linda Matsler, Beth Pratt, Judy Dunlap, Leora Younger, Brenda Brownlee and Sandra Rainey.

Alpha Sigma Upsilon Holds Hobo Dinner

Members of Alpha Sigma Upsilon Chapter of Beta Sigma Phi met on the side track of Hobo Lyn Daniel for a Hobo Feast, October 10, to meet possible ruses for this year.

Hobo hostess had set a table with tin plates, various sizes of jars and spoons, bandana napkins and miniature hobo packs. The cornbread was served from felt hats and the beans from a dutch oven. For dessert Hobos were served cake slices stolen from a local home and served on butter

lids. After eating, the Hobos got their door prize numbers from their Hobo packs and three prizes were given.

Everyone then played relay games and then adjourned to catch a train home.

Hobos attending were Lynn Daniel, June McLaugh, Iantha Smith, Linda Jackson, Rhonda Guthrie, Ilene Kendrick, and Vikki Yeary. Special Hobos in attendance were Donna Lipham, Audrey Thomas and Gaya Hale.

Human Resources Offer Housing Alternative

The Department of Human Resources is offering elderly and handicapped persons in Lubbock and 14 surrounding counties an opportunity to live independently in shared housing arrangements.

The project, called the Alternate Living Plan, is aimed at aiding the elderly and handicapped in avoiding premature entry into nursing homes.

A family-like setting will be established and house-keeping chores, cooking and limited personal care will be performed by a live-in or part-time homemaker.

Shared household costs will make community living more affordable for those on fixed incomes.

Housing may vary from several persons sharing a home to individual residing in separate units within an apartment complex or boarding house.

Interested elderly and handicapped persons will be considered for participation

on the basis of their physical disabilities and ability to get along with others. Persons with severe disorientation or confusion cannot be accommodated in this project.

In order to be financially eligible, the monthly income for an individual must be \$573.69 or less.

All persons interested in the project should contact the nearest Department of Human Resources office. In Floydada call Norma Whiteley at 983-2280. Priscilla Byrd, Alternate Living Plan Coordinator, may also be contacted in Lubbock at 762-8922, Ext. 253.

Women's C of C To Meet

The Floydada Women's Division of the Chamber of Commerce will meet Monday October 16 in the Community room at the bank at 7:45 p.m.

Everyone is urged to attend.



You can be surer your asparagus is fresh if it snaps when broken.

Becomings By Duffy

Several of us old math minds are trying to make it in a new math course this semester. One of our group set her frustration to paper... thought you might enjoy her essay. It is written by Carolyn Fuqua, former Hesperian advertising manager, and submitted to her English class in response to the assigned subject: "Change One Thing in the World, How and Why".

Delete Numbers From The World

"Since numbers and their workings properties are difficult, boring, and to my mind, have no basis behind them, I shall endeavor in this work to rid the world of its plague.

In comparison, words and their properties are understandable, interesting, and have reason and rhyme.

Imagine adapting words for all numerals. For example, suppose if you will, the fraction 1/2 being changed to a word-fraction: fun/games. If we were to change the number 3/2 to read happiness/games, consequently 3/2 = 1 would read happiness/games = fun/games = happiness, fun and games.

The figures four and five might be moderated to abstractions of hate and love. By subtracting 5-4, or love from love, we would then have only love.

The theory I am recommending will delete all numbers from the world and will replace them with words. Hence, mankind will be free to think purely in terms of beauty, faith, hope, laughter and ambition."



MRS. PAUL CURTIS NEWBERRY

Miss Christy Stringer, Mr. Newberry

Pledge Vows

Various musical arrangements set the mood in the sanctuary of the First Baptist Church in Floydada on September 29 as wedding vows were exchanged by Christy Jan Stringer and Paul Curtis Newberry. Dr. Floyd C. Bradley, pastor, officiated at the 6 p.m. ceremony.

Organist, Mr. David Crane of Earth, cousin of the bride, and pianist, Mrs. David Crane, played selections before the ceremony began, including piano-organ duet arrangements. "Psalm 129" was played for the processional. Before the entrance of the mothers, the bride, accompanied by guitar by Mr. Danny White of Amarillo, sang "You Needed Me."

Messrs. Joe Dekker, brother-in-law of the groom from Dallas, Scott Snod-

grass of Abernathy and Steve Stringer, brother of the bride, ushered in guests and special family members. After the mothers were seated, the groom, accompanied by Mr. Martin Duckett at the piano, sang "David's Song."

The bride was escorted to the altar by her father Mr. Bill Stringer, where the bride and groom knelt while a trio-Miss Penny Wellborn of Sulphur Springs, Miss Trudy Williams of Roswell, New Mexico, and Mr. Danny White-sang "The New 23rd Psalm." After lighting the unity candle, the bride and groom sang a duet arrangement of "Eternal Life," accompanied by Mrs. David Crane on the piano.

Maid of honor for the occasion was sister of the bride, Miss Melody Stringer. Bridesmaids were Miss Mary Vance of Port Arthur and Mrs. Joe Dekker, sister of the groom, of Dallas.

Mr. Larry Newberry, brother of the groom of Stephenville, was best man. Groomsmen were Mr. Randy Butler and Mr. Keith Longbotham, both of Plainview.

Frances Staniforth

Current Artist At

The artist whose works are currently on display at the First National Bank of Floydada is Frances Staniforth of South Plains. Mrs. Staniforth paints primarily subjects are landscape and still life. She is beginning her third year of study under Ruth Barnett of Hale Center and has participated in workshops conducted by Robert Garden of Corpus Christi, and M.M. Hicks of La Veta, Colorado. This summer she was enrolled in the Ramon Froman School of Art in Clouderoft, N.M. and enjoyed the course of oil landscape painting by Harold Roney of San Antonio.

Frances has shown and sold works the past two years at the Cuchara Hermosa Art Festival in Cuchara, Colorado where some

The Tree House Sale

(810 Main-Ralls)

WED.-SAT. (OCT. 18, 19, 20 & 21)

<p>JUNIOR Action Sportswear by Label Four 1/3 OFF</p>	<p>COATS All Coats 20% OFF Shorts, Longs & Also Leathers</p>
<p>One Rack JUNIOR TOPS & SWEATERS 1/3 OFF</p>	<p>FALL DRESSES Misses Dresses 1/3 OFF</p>
<p>ONE "surprise" RACK 1/2 PRICE (While They Last) Pants Blouses Vests Dresses</p>	<p>FALL SPORTSWEAR Misses-Jane Colbey 1/3 OFF No Layaway on Sale Merchandise</p>

Victory Baptist

Hold Monthly Meeting

The Ladies Fellowship of Victory Baptist Church held their monthly meeting, Monday, October 9, at 7:30 p.m. in the Fellowship Hall of the Church. Betty Fuller opened the meeting in prayer.

After a short business meeting discussion, a devotion was presented by Gaya



FLOYD DATA
The Rev. Jim Smith, pastor of the First United Methodist Church of Floydada, is the featured speaker and honoree today in the First United Methodist Church of Tulia. He is a graduate of Tulia High School, McMurray College and Asbury Theological Seminary in Wilmore, Kentucky.
Currently he is a candidate for the Doctor of Ministry degree from Fuller Theological Seminary in Pasadena, California. He and his wife, Lu Ann, have three children.

WHEN A DIVORCED FATHER with a grown daughter worries about the fleeting years short-changing him in the happy-life department and decides on a merry last fling, the stage is set for the comedy "Not With My Daughter" now playing at Amarillo's Country Squire Dinner Theatre. And when this grown daughter knocks at his swinging-singles apartment door, the father's worries take on some hilarious twists. Jay Christopher wrote the comedy, directed the Country Squire production and plays the part of the father. Playing Karen, daughter of the "swinging" father, is Mary Criner. Dennis Sullivan has the role of Rip Tracy, young partner of Karen's father. Bruce Romig as Sylvester, taxi driver, adds a load of laughter to the performance. "Not With My Daughter" will run Tuesday through Saturday through Oct. 21 at Country Squire, located at I-40 and Grand. Buffet dinner service begins at 6:30 p.m. Country Rogue pre-show entertainment is scheduled for 8 p.m. with show time at 8:30 p.m. Oct. 15 and 16 special Sunday and Monday concerts by "The Four Lads" are on Country Squire's entertainment calendar. The famous group has a long list of "Gold Records" including "Standing on the Corner," "Moments To Remember" and "No, Not Much." Pre-concert dinner service will begin at 6:30 p.m. both evenings.

FLOYD DATA
Leonard (Tuffy) King suffered a broken hip in a fall on Saturday. He underwent surgery Monday in Methodist Hospital in Lubbock. He is in room 388 if anyone wishes to write to visit.

FLOYD DATA
Mrs. Troy Leonard, mother of Olin Watson, underwent major surgery in Caprock Hospital Friday.



Gustave Eiffel, who built the Eiffel Tower, also designed the right arm of the Statue of Liberty.



FREE TURKEY...

for anyone signing up for

CABLE T.V.

from

OCT. 15th TO NOV. 15th

YOU MUST COME BY

OFFICE & PICK-UP

A PROOF OF PURCHASE SLIP

& TAKE IT TO

BUDDY'S FOOD

OR

PIGGLY WIGGLY.

YOU CAN PICK-UP TURKEY

BETWEEN

OCT. 15th THRU THANKSGIVING.

CABLE T.V.

OF FLOYDADA

OFFICE HOURS
MONDAY-FRIDAY
8:30a.m. to 5:30p.m.
983-2911

THE CABLE & REGULAR TELEVISION PROGRAMS SCHEDULE WILL APPEAR IN THIS NEWSPAPER EACH SUNDAY AND SPONSORED BY THE MERCHANTS ON THESE PAGES!!!

SUNDAY 10/15/78		10/15/78-10/21/78					
AM	WTCG CH. 17 Atlanta Cable 4	KTXI CH. 5 Lubbock Cable 5	PTL CH. 6 Charlotte Cable 6	KMCC CH. 28 Lubbock Cable 7	CBN CH. 8 Portsmouth Cable 8	KCDB CH. 11 Lubbock Cable 11	KLBK CH. 13 Lubbock Cable 13
7:00	Three Stooges	No Programs	Ralph Wilkerson	Praise the Lord Club	Lesson	Carrascollas Jimmy Swaggart	This Is the Life As We See It
7:30	"	"	"	"	Jimmy Swaggart	"	"
8:00	Lost in Space	"	Rex Humbard	Jimmy Swaggart Prophecy Newsreel	Hour of Power	Day of Discovery James Robison	What's New, Mr. Magoo? Amazing Grace
8:30	"	"	"	"	"	"	"
9:00	Hazel	"	Old Time Gospel Hour	Home Show	Changed Lives	Rex Humbard	Old Time Gospel Hour
9:30	Movie: 'Five Fingers'	"	"	Kids Are People Too	The Athlete Listen	"	"
10:00	"	"	"	"	First Baptist Church Of Atlanta	Oral Roberts	Sunday School
10:30	"	"	"	Animals, Animals	"	Living Your Religion	Face the Nation
11:00	"	"	"	"	Baptist Church	Acts 29	Inquiry
11:30	Movie: 'Destination: ...'	"	"	"	"	Oral Roberts	Women's Point of View
12:00	"	"	"	"	"	"	"
12:30	"	"	"	"	"	"	"
1:00	"	Thunderbird's Phoenix Classic	"	College Football '78 Fanfarria Falcon	World of Pentecost Deaf Hear	"	NFL Football: Dallas at St. Louis
1:30	Movie: 'The Forty-Ninth'	"	"	"	"	"	"
2:00	"	"	"	"	Si Se Puedel	Happy Hunters	"
2:30	"	"	"	"	Vicki Jamison Worship	World Concern	"
3:00	Movie: 'For Love or Money'	"	"	"	Service	Wrestling	World Series (Game 5) or Local Programs
3:30	"	"	"	"	Club PTL	Hi Doug	NFL Football: Los Angeles at ...
4:00	"	Firing Line	"	"	"	"	Minnesota
4:30	"	"	"	"	Hour of Power Singers	Pop! Goes the Country Issues and Answers	"
5:00	Championship Wrestling	The Long Search: The Chosen People	Larry Jones Ministry Human Dimension	Lay Witness	Program Cont'd Good News	"	"
5:30	"	"	"	Fred Akers Show	"	"	"

BUDDY'S
STORE HOURS
MON.-SAT. 8a.m. - 9p.m.
SUN. 9p.m. - 8p.m.
WE RESERVE THE RIGHT TO LIMIT QUANTITIES

RCA For The Best
Price & Service On RCA T.V.'s
See
MIZE PHARMACY & T.V.

WELCOME
FEATURING

SUNDAY 10/15/78

PM	WTCG CH. 17 Atlanta Cable 4	KTXI CH. 5 Lubbock Cable 5
6:00	Star Trek	Love Me Tender
6:30	"	"
7:00	Movie: 'White Witch Doctor'	The Changeling
7:30	"	"
8:00	"	"
8:30	"	"
9:00	Dragnet	U.S.A.
9:30	Ruff House	"
10:00	Open Up	"
10:30	"	"
11:00	"	"
11:30	"	"
12:00	"	"
12:30	"	"

MONDAY-FRIDAY 10/15/78-10/21/78

AM	WTCG CH. 17 Atlanta Cable 4	KTXI CH. 5 Lubbock Cable 5
7:00	Leave it to Beaver Hazel	No Programs
7:30	"	"
8:00	Lucy Show	Security One
8:30	Green Acres	"
9:00	Movie	Watergate News Program
9:30	"	"
10:00	"	"
10:30	"	"
11:00	Love, American Style Movie	U.S. Top Ten
11:30	"	"
12:00	"	"
12:30	"	"
1:00	"	"
1:30	I Love Lucy	"
2:00	Mickey Mouse Club Finestones	Viva Agt
2:30	"	"
3:00	Space Giants	Security One
3:30	Gilligan's Island	"
4:00	I Dream of Jeannie	Movie: 'The Beverly Hills Cop'
4:30	"	"
5:00	Andy Griffith My Three Sons	"
5:30	"	"

MONDAY 10/15/78

PM	WTCG CH. 17 Atlanta Cable 4	KTXI CH. 5 Lubbock Cable 5
6:00	Carol Burnett and Friends Sanford and Son	Interracial Prejudice
6:30	"	"
7:00	Let's Go To The Races Falcon Show	Security One
7:30	"	"
8:00	Movie: 'In Love With A Woman'	"
8:30	"	"
9:00	"	"
9:30	"	"
10:00	"	"
10:30	Movie: 'Commando'	"
11:00	Strike At Dawn	"
11:30	"	"
12:00	"	"
12:30	"	"

FOOTBALL CONTEST

PICK THE WINNING TEAMS!

WIN FIRST PRIZE..... \$10⁰⁰
 SECOND PRIZE..... \$6⁰⁰
 THIRD PRIZE..... \$4⁰⁰

GO,
 FIGHT, WIN!!!



MEET THE LONGHORNS



#74 Jeff Terrell
 6'0" 210 lb.
 Senior Tackle

GO
 LONGHORNS
 GO

RAGIN' RED

MARR INSULATION
 Tom Marr, Owner
 Lockney, Texas
 1. Littlefield at 2. Dimmitt

Baccus Motor Co.
 321 SO. MAIN ST.
 LOCKNEY
 3. Olton at 4. Morton

Page's Thriftway No. 3
 "A Better Way To Save"
 5. Arkansas at 6. Texas

Wilson Photography
 LOCKNEY, TEXAS
 7. Abernathy at 8. Tulia

Providence Farm Supply and Grain Co.
 9. Valley at 10. Silverton

Byrd Pharmacy
 "Accurate Prescription Service"
 9. Te11. Houston at 12. SMU

Davis Lumber Co.
 "Where Customers Send Their Friends"
 mit at 12. Denver

Moore-Rose Funeral Home
 Lockney Tx.
 15. Crosbyton at 16. Lorenzo

Dan's Automotive
 LOCKNEY, TEXAS
 17. Nebraska at 18. Colorado

Mize Pharmacy & TV
 Your Complete Family Drug Store
 Gift Headquarters ★ RCA Television
 LOCKNEY, TEXAS
 19. Happy at 20. Motley Co.

Dairy Queen
 LOCKNEY, TEXAS
 21. Muleshoe at 22. Friona

Webster Service & Supply
 "Where You're Always Welcome"
 27. Tascosa at 28. Palo Duro

White's Auto Store
 Lockney, Texas
 25. Spur at 26. Ralls

Schacht Flowers, Jewelry & Gifts
 "Our Pleasure Is To Serve You"
 23. Coronado at 24. Lubbock High

First National Bank
 In Lockney
 Member of F.D.I.C.
 35. New Deal at 36. Hale

Thomason Grocery
 LOCKNEY, TEXAS
 37. Kress at 38. Vega

Roger's Pastry and Fried Chicken
 LOCKNEY, TEXAS
 29. Alabama at 30. Tennessee

The Tye Company
 On The Plainview Highway
 39. Monterey at 40. Plainview

Brown's Department
 LOCKNEY, TEXAS
 43. Philadelphia Eagles at 44. Dallas Cowboys

Stricklands Restaurant
 HWY. 70
 LOCKNEY, TEXAS
 31. Texas Tech at 32. Rice

Perry Implement Co.
 John Deere Implements
 33. Dalhart at 34. Perryton

Longhorn Inn
 "Where School Friends Meet"
 41. Auburn at 42. Georgia Tech

CONTEST RULES
 Circle on the official entry blank the number of the team you think will win each game. Circle the winner and indicate the total score in the tie-breaker game. Each entry must be validated by one of the merchants on the contest page. Take the entry form to the merchant of your choice for validation. (Validation by only ONE merchant is necessary.) Contestants may mail their entries or bring them to the Beacon Office, 120 South Main. Mail entries must be postmarked no later than 5 p.m. Friday, and in-person entries must be at the office by the same time. Mail entry address is Box 187, Lockney 79241. One Winner Per Family Per Week.

OFFICIAL ENTRY FORM
 NAME _____ ADDRESS _____
 CITY _____ MERCHANTS STAMP _____
 1-2 3-4 5-6 7-8 9-10 11-12 13-14 15-16 17-18 19-20 21-22 23-24
 25-26 27-28 29-30 31-32 33-34 35-36 37-38 39-40 41-42 43-44

TIE BREAKER FLOYDADA at LOCKNEY
 TOTAL SCORE.....

Stricklands Restaurant
 HWY. 70
 LOCKNEY, TEXAS
 31. Texas Tech at 32. Rice

FLOYD
 AAAA
 Floy
 #76
 6'7"
 Senior
 PHIS tennis coach
 entered sev
 in the AAA tot
 Plainview last v
 yada was the
 AA players...so
 tion was rough
 Coach Baxter re
 Bobby Green
 did the bes
 by finishit
 Cables.
 Freshmen and
 were used a
 Girls played r
 than scores ind
 Stacy Graham, fi
 best finish by c
 Freshmen
 of D'Lee Ma
 Hendrix
 other finishers
 Facts from a
 When my
 seems to "flo
 hard to conti
 doesn't do it i
 faces on high
 W.L., Collie
 Since it see
 chances are yo
 tenger cars wer
 such as you mi
 full complemen
 quently, you-m
 check absorbers
 a few extra pou
 ready your car.
 Q. My youn
 first motorcyc
 learn to ride i
 the streets. W
 J.H., Arling
 Fortunately
 Department co
 courses severa
 the course is pr
 eless Traffic
 son. In other
 dealers. They us
 offered by the
 clubs.
 Q. I hit a cu
 developed on
 the tire and it
 yet. Is it okay
 J.R., Round
 A. The "bubb
 weakening of th
 on by hitting the
 weak and you c
 Change the tire i
 pare. It isn't sa
 nce.
 Q. I am plai
 U.S. and thro
 Leaf Highwa
 fuel. Will I h
 E.M., LaGr
 A. There are
 fuel. Obviously
 as service stati
 more careful i
 your problem t
 sell it to you. S
 diesel fuel use
 diesel in their s
 obtain but eac
 have a different
 contact the AA.
 they will give y
 your trip. Tha
 P.O. Box 1986,
 713. 524-1851.
 If you have
 Texas Off
 P.O. Box
 Austin, T



ATTEND STATE-WIDE SEMINAR--Seventy-one justices of the Training Center Seminar Sept. 19-22 in Amarillo. The training center is at Southwest Texas State University. Among the judges attending were (left) Judge Jeanne Marr, Hale Co., Precinct 3; Judge Henry E. Porter, H.H. Ford, Floyd Co., Precinct 2&3.

Floydada Netters AAAA Tournament

Tennis coach Tommy entered several players in the AAAA tournament last week and was the only non-player...so the competition was rough. Baxter reported: Green-Monte finished the best among by finishing 6th in boys and sophomores were used for the girls team and fared played much better scores in...Graham, freshman, finish by coming in Freshmen doubles D'Lee Marble and Hendrix finished finishers included

Greg Pruitt, 14th in boys singles, Gerry Norrell, 16th; Robin Chambless, 13th in girls singles and Tana Tyr and Julie Faulkenberry 16th in girls doubles.... Next tournament, Oct. 27-28, Lubbock Fall Invitational. Tournament Results! (See Page 2) Team Standings Boys: Abilene 62, Plainview 41, Lubbock Coronado 37, Hereford 29, Amarillo Palo Duro 29, Borger 24, Lubbock Monterey 16, Floydada 13. BOYS SINGLES First round: Nirmal Jayaseelan, Coronado def. Greg Pruitt, F, 6-7, 6-2, 6-2; David Vargas, Plainview def. Gerry Norrell, F, 6-0, 6-0. Second round: Keith Brawley, Borger def. Pruitt, 6-4, 6-4;

Scott Fromby, Hereford def. Norrell, 6-1, 6-3. Third round: Pruitt def. Fuqua Winn, Monterey, 6-3, 6-2; Bill Pirtle, Borger def. Norrell, 4-6, 6-2, 6-3. Fourth round: Pirtle def. Pruitt, 6-3, 6-1; Winn def. Norrell, 6-4, 7-6.

BOYS DOUBLES First round: Bobby Green-Monte Lyons, F, def. Gay-Kaelin, Monterey, 6-1, 6-4; Decker-Hunnicut, Abilene, def. David Galvan-Tommy Myrick, F, 6-1, 6-0; Second round: Able-Willard, Borger def. Green-Lyons, 6-3, 6-0; Posada-Irwin, Palo Duro def. Myrick-Galvin, 6-2, 6-2. Third round: Green-Lyons

def. Billy Harris-Richie Havenhill, Plainview, 6-3, 6-4; Solley-Murley, Borger def. Galvin-Myrick, 6-3, 6-2. Fourth round: Chad Northington-Bill Johnson, Coronado def. Green-Lyons, 3-6, 6-1, 6-3; Castanada-Lawson, Hereford def. Myrick-Galvin, 4-6, 6-0, 7-6.

Team standings girls: Lubbock Coronado 57, Lubbock Monterey 44, Plainview 30, Hereford 29, Amarillo Palo Duro 28, Borger 28, Abilene 24, Floydada 12.

GIRLS SINGLES First round: Stacy Graham, F def. Martha Dye, Plainview, 6-0, 7-5; Susan Crow, Coronado def. Robin

Chambles, F 6-0, 7-6. Second round: Linda Nash, Coronado def. Graham, 6-1, 6-2; Helen Wiegand, Palo Duro def. Chambles, 6-0, 6-0. Third round: Michelle Jackson, Monterey def. Graham, 6-4, 6-2; Chambless def. Dye, 6-1, 2-6, 6-3. Fourth round: Stomi Janeway, Abilene def. Graham, 6-1, 6-2.

GIRLS DOUBLES First round: Thomas Baugh, Monterey def. Susan Hendrix-D'Lee Marble, F, 6-2, 6-1; McCorkle-Price, Monterey def. Tana Tyr-Julie Faulkenberry, F, 6-0, 6-0. Second round: Cindy Clayborn-Mary Ellen Serghit, Plainview def. Tyr-

Faulkenberry, 6-1, 6-1; Ray-Hunt, Borger def. Hendrix-Marble, 6-3, 6-4. Third round: Marble-Hendrix def. Judy Rice-Allison Bennett, Plainview, 6-7, 6-0, 6-1; Davidson-Howl, Abilene def. Tyr-Faulkenberry, 0-6, 7-5, 7-6. Fourth round: Rice-Bennet def. Tyr-Faulkenberry, 3-6, 6-4, 6-3; Davidson-Howl def. Hendrix-Marble, 4-6, 6-2, 6-2.



The word "cheerful" is said to come from the Latin *cara*, meaning "face."



The name Idaho comes from an Indian word meaning "gem of the mountains."

PIGGLY WIGGLY

DOUBLE Gold Bond Stamps every Wednesday with \$2.50 or more purchase excluding cigarettes.

Prices good October 15 thru October 21, 1978. We reserve the right to limit quantities. None sold to dealers.

Cream Style Com, Whole Kernel Com, Spinach or Cut Green Beans.

Del Monte Canned Vegetables 89¢

Cream Style Com 17 ozs. 3 Cans
Whole Kernel Com 17 ozs.
Spinach 15 ozs.
Cut Green Beans 16 ozs.

Hunt's Tomato Sauce 58¢

When it comes to sauces, Hunts wrote the book!

Harvest of Values!!!

Play **NEW** Bingo Magic!
Win Up to \$5,000.00!

Odds Chart

PRIZE	NO. OF TICKETS	ODDS FOR PRIZE	ODDS FOR PRIZE	ODDS FOR PRIZE	ODDS FOR PRIZE
\$1,000	35	1:280	1:280	1:280	1:280
\$500	35	1:280	1:280	1:280	1:280
\$100	35	1:280	1:280	1:280	1:280
\$50	35	1:280	1:280	1:280	1:280
\$25	35	1:280	1:280	1:280	1:280
\$10	35	1:280	1:280	1:280	1:280
\$5	35	1:280	1:280	1:280	1:280
\$2	35	1:280	1:280	1:280	1:280
\$1	35	1:280	1:280	1:280	1:280

PLEASE READ!

You can win \$1, \$2, \$5, \$10, \$100 or even \$1,000 playing Bingo Magic. You might even be an INSTANT WINNER! And if there's a Magic Disc in your game ticket, save it! When you collect 10 Magic Discs you qualify for the next exciting \$5,000 Grand Prize drawing. No purchase necessary. Get complete details at your local PIGGLY WIGGLY.

Drive Line

Learn from a pro on driving to survive. When my family and I travel, the car is to "float" and, at times, it is a bit to control, especially on curves. It doesn't do it in town. Is it the type of surfer on highways?

Since it seems to occur only when you travel, it's your problem is over-loading. Passenger cars were not built to handle heavy loads as you might have with a family and their complement of luggage. If you travel frequently, you might consider having adjustable absorbers mounted on your car. Otherwise, extra pounds of air in your tires will help your car.

My youngest son is about to get his motorcycle and I would like for him to ride it well before he goes out onto the streets. Where can he get lessons?

Fortunately, in your area, the Euless Police Department conducts beginning motorcycle courses several times a year. The cost is small and the course is pretty comprehensive. Contact the Traffic Safety Officer for more information. In other areas, check with local cycle clubs. They usually know about existing courses and by the local authorities and motorcycle

I hit a curb last week and a "bubble" popped on the tire. I'm still driving on it and it hasn't given me any trouble. Is it okay or should I change the tire?

The "bubble" or "blister" is caused by a loosening of the strands within the tire brought about by hitting the curb. That means the structure is weakened and you could have a blowout at any time. Change the tire immediately and don't keep it as a spare. It isn't safe to drive on even for a short distance.

I am planning to travel throughout the U.S. and through Canada along the Maple Leaf Highway in a car that requires diesel fuel. Will I have trouble finding fuel?

There are plenty of truck stops with diesel fuel. Obviously, there aren't as many truck stops as service stations so you will have to be a bit more careful in planning your stops. However, the problem may be in finding places that will sell fuel to you. Some states require you to have a diesel fuel users permit before you can purchase diesel in their state. The permits are fairly easy to obtain but each state requiring them seems to have a different agency handling them. If you will contact the AAA, Texas Division with your route, they will give you all the information you need for your trip. That address and phone number is: P.O. Box 1986, Houston, Texas 77001; area code 713-524-1851.

If you have a question on driving, send it to: Texas Office of Traffic Safety, P.O. Box 1165, Austin, Texas 78767

Barney's Butcher Shop Sale!

USDA Heavy Western Beef

Chuck Blade Roast 99¢ Lb.

This great cut of beef doesn't cut into your food budget!

USDA Grade A

Split Fryers 49¢ Lb.

With Back and Giblets

Plump and juicy, these split fryers are a tasty and economical food bargain!

USDA Heavy Western Beef

Chuck Blade Steak 109¢ Lb.

Broiled--Plain and simple--and simply a great steak!

4 End and 6 Center Cuts

Combo Pork Chop Pak 138¢ Lb.

Every cut of this pork is tender, tasty and delicious!

Wolf Chili 89¢

Try Wolf Chili--for chili with a lot of zing!

19 oz. Cans

Regular or Smoked

Spam Luncheon Meat 99¢

Try Spam today--tasty and great in either Smoked or Regular.

12 oz. Cans

Piggly Wiggly Ice Cream 109¢

This is a smooth, creamy and delicious ice cream!

1/2 Gallon

Our New Triple the Difference Policy is Your Guarantee of Low Prices!

WALLY WILLIAMS
President of Piggly Wiggly

Everybody's talking about low prices, but we're doing something about it! We're so confident you'll save at Piggly Wiggly we guarantee you low prices with our new TRIPLE THE DIFFERENCE POLICY.

Here's how it works: First shop at Piggly Wiggly and buy 25 different grocery items. Then check the prices on the same 25 items in any other store. If their total is lower, bring in your Piggly Wiggly tape and the other store's prices and Piggly Wiggly will pay you TRIPLE THE DIFFERENCE IN CASH.

At Piggly Wiggly we're committed to offering you quality products at competitive prices. Meat and produce not included as quality and trim may vary from company to company.

Stan's Produce Sale!

Washington State **Red Delicious Apples 38¢**

One pound

Bulk **Yellow Onions 28¢**

2 pounds

Carrots 48¢

2 one lb. bags

"We don't want all the business-just yours"

Willson & Son Builders Mart

Spur at Ralls

A. C. and New Holland Equipment

McDonald Implements

Coronado at Lubbock High

MOORE-ROSE FUNERAL HOME

Memphis at White Deer

Fender bener mender

QUALITY BODY SHOP

Muleshoe at Friona

Your Fina Wholesale And Retail Dealer...

NICHOLS OIL COMPANY

Tascosa at Palo Duro

"For your health needs"

Thompson Pharmacy

Stanton at Shallowater

We appreciate your business

Hale Insurance

Estacado at Dumas

"Dependable Service"

Floydada Co-op Gins Inc.

New Deal at Hale Center

Buick-Pontiac-GMC

CITY AUTO INC.

Crosbyton at Lorenzo

HAVE FUN...

\$20⁰⁰ In Cash Prizes Each Week

CONTEST RULES:

Anyone can enter except the employees of the Hesperian. Three cash prizes are given each week - ties will split prize money. Members of the sports department are sole judges of the contest and their decision is final.

It is not necessary to indicate scores on all the games....But score must be indicated on the tie breaker game at right.

Simply circle the team you choose to win in each of the footballs. Deadline for submitting entries is 5 p.m. Friday - winners will be announced the following week. Enter as many times as you wish, print name and address plainly on blank below and mail or bring entire page to the Hesperian office.

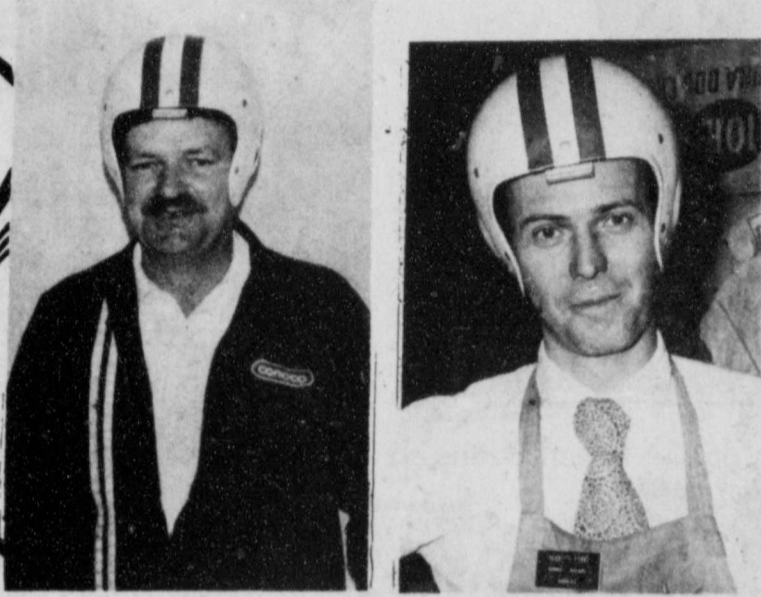
Tie-breaker game will be considered only in case of ties.
Limit One Winner Per Family Per Week.

WIN PRIZES...

Hesperian Football Contest

AND QUARTERBACK FORECAST

DEADLINE FOR ENTRIES-5 P.M. FRIDAY IN HESPERIAN OFFICE OR POSTMARKED



Jim Cornelius Floydada 21, Lockney 7
Forest Shannon Floydada 12, Lockney 7

TIE BREAKER- Guess Total Points AND CIRCLE WINNER

NAME _____

ADDRESS _____

CITY _____

1ST PRIZE \$10⁰⁰

2ND PRIZE \$6.00

3RD PRIZE \$4.00

Crop and Livestock Loans

PRODUCTION CREDIT ASSN.

Abernathy at Tulia

Cosmetics and Apparel

Roye's Merle Norman

Happy at Motley County

Good food and friendly service

Buddy's Food

Florida St. At Pittsburg

Massey-Ferguson equipment

Floydada Implement

Olton at Morton

Your Full Service Station

Gilbreath Exxon Service

Canyon at Borger

The Fastest Service

Cornelius' CONCO

Houston at SMU

Sears

Wellington at Panhandle

Supplies For The Farmer

Russell's Equipment & Supply

Dalhart at Perryton

Your I.H. Dealer

MARTIN & CO

Texas Tech at Rice

"Is Everybodys Everything"

Dairy Queen

Valley at Silverton

Kirtley's Market

Littlefield at Dimmitt

Case Power & Equipment

Arkansas at Texas

City Trim Shop

Monterey at Plainview

CONSUMERS FUEL ASSN.

Nebraska at Colorado

Caprock Motors & Hardware Inc.

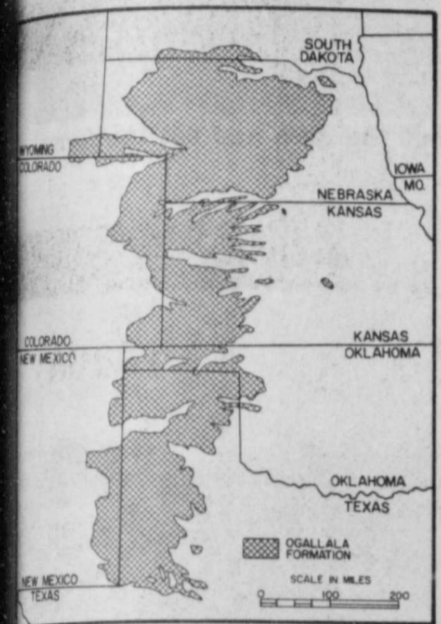
Alabama at Tennessee

Federal Studies To Have Impact On High Plains

Three Federal studies are currently underway that will have as the center of their focus the High Plains and/or the Ogallala Aquifer. These studies are being funded principally by the Federal Government, with some financial support by State and local agencies. When the studies are finished any actions or recommendations resulting from these studies will be felt directly by all residents in the geographical area of the High Plains Underground Water Conservation District No. 1.

USGS Ogallala Study

The U. S. Geological Survey has planned an extensive study centering on the High Plains and the Ogallala Aquifer. The total project is expected to be completed in five years and will include the development of a computer model of the entire Ogallala Aquifer which underlies varying portions of the States of Texas, Oklahoma, New Mexico, Kansas, Nebraska, Colorado, Wyoming and South Dakota (see accompanying map). The area of the study encompasses some of the best food and fiber producing areas of the United States.



The purposes of the study, as outlined in the official work plan for the study, are to: 1) describe the water resource and the operation of the hydrologic system; 2) develop a regional water-resources (and related) data storage and retrieval system; 3) design and develop a digital computer model (or models) of the High Plains aquifer system; and 4) evaluate selected groundwater management alternatives to demonstrate the applicability of the model (or models) and provide a hydrologic basis for the economic evaluation of management alternatives.

EDA Study

In October, 1976, the United States Congress passed the Water Resources Development Act and authorized a \$6 billion study generally referred to as the High Plains-Ogallala Study. This authorization designated the Economic Development Administration of the U. S. Department of Commerce to work with other governmental agencies and departments of all levels, and with private interests, to study the natural resources of the areas of the States of Colorado, Kansas, New Mexico, Okla-

homa, Nebraska and Texas that are using the water of the Ogallala Aquifer and to develop a means of increasing the water supplies of or to those areas.

The main thrust of this EDA study will be the determination of the effect of declining groundwater supplies on the economic growth or stabilization of the areas overlying the Ogallala Aquifer. The study will cover the states directly affected by mining groundwater, and its impact on other areas of the country that depend on the High Plains states to supply raw materials and food supplies and on the ability of the High Plains states to continue as ready markets for products and services from the other states of the Nation. The study will also assess the impact to the area of going from an irrigated agricultural base to a dry-land farming base, with a resultant decline in the yields of crops.

The EDA, with an initial Congressional appropriation of \$3 million for the first year of the study, is preparing to contract out most of the work to a general contractor who will be responsible for the major portions of the study. The general contractor will contract with the individual states for certain portions of the study pertaining to their particular areas of state farm-level research, energy production impacts and overall state impacts. Approximately one million dollars will be allocated to the six states for state-level research.

Of particular interest to residents of the High Plains area will be the work of the Corps of Army Engineers as it takes a new look at water importation to the study area. The Corps' work will include a reconnaissance level study looking at alternate water sources and conveyance routes which have been previously identified, attempt to identify new sources and conveyance routes as well as updating studies previously completed. The Corps has been awarded \$750,000 of the \$6 million appropriation for its study effort.

Bureau of Reclamation Study

The third Federal study currently being conducted is the Bureau of Reclamation's "Llano Estacado Total Water Management Study". The area covered by this study encompasses the High Plains of eastern New Mexico and northwest Texas and those portions of Colorado, Kansas, and Oklahoma lying south of the Arkansas River (shown in accompanying illustration).

The principal water supply for the study area is ground water pumped from the Ogallala Aquifer. Because this supply is rapidly being depleted, the Bureau of Reclamation will evaluate conserving and augmenting the present water supplies. The study will place special emphasis on quantifying water supplies that may be available from the playa lakes of the area.

The main objectives of the study are to: 1) identify water supply problems and needs; 2) determine the quantity and quality of surface water resources (emphasizing playa lake water availability); 3) evaluate the possible uses of playa lake water; 4) study related water supply concepts; 5) and the

economic impacts due to the declining groundwater.

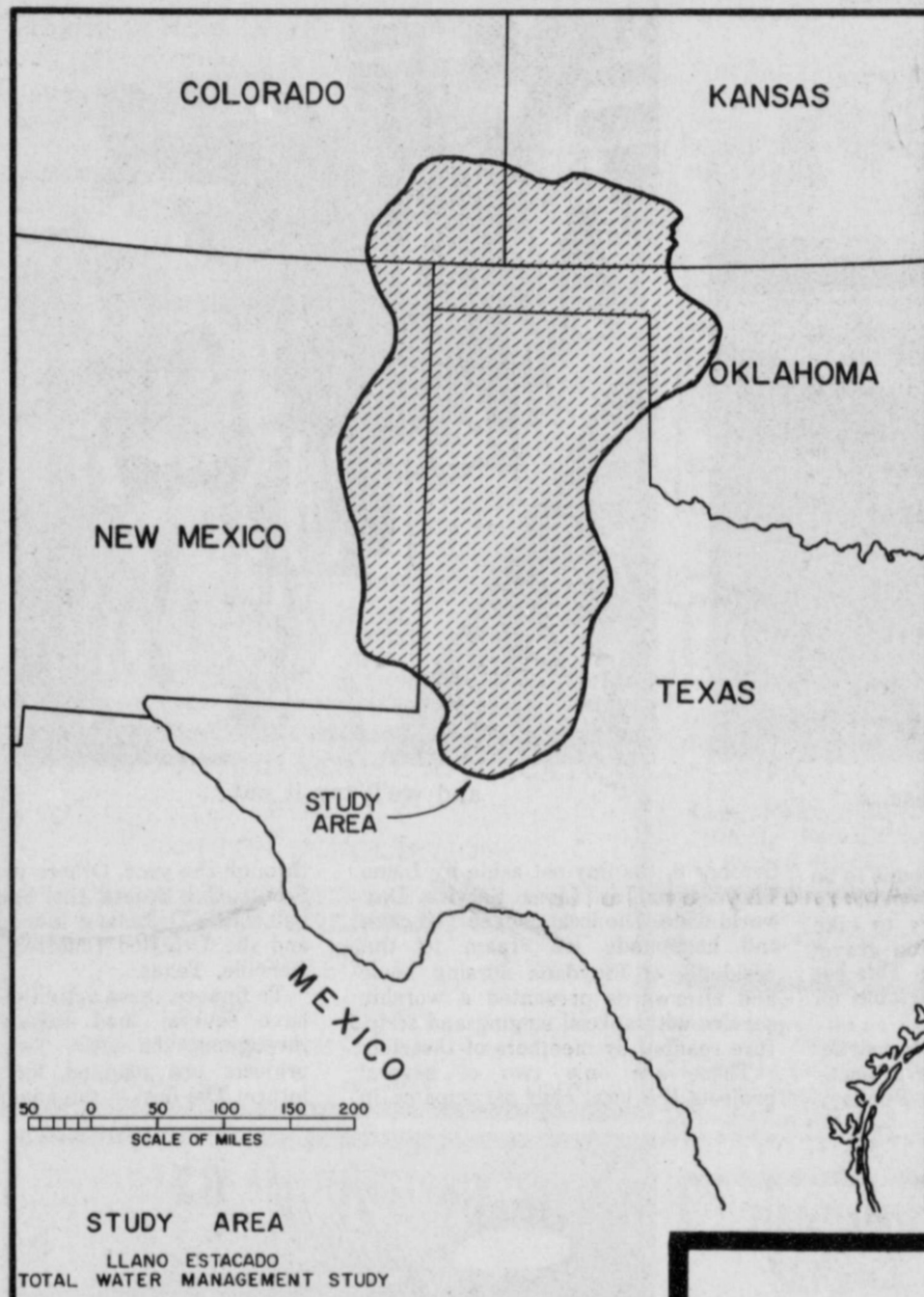
This is an ongoing study with the first status report being published in November, 1977.

EDITOR'S NOTE

(These three Federal studies will in all probability strengthen the High Plains' chances for water importation to the area. For example, the "Llano Estacado Total Water Management Study" will quantify the amount of water collected in playa lakes and will in all probability document that there is in fact not a substantial amount of water collected in these playa lakes. Also, that the water which is collected in the playa lakes is being utilized almost completely by the High Plains irrigator. This documentation should, prove very important to correct a misconception of the many visitors to the area. This misconception has resulted at times when visitors to the area have flown over the area following a rain. They have observed hundreds of lakes which contained what appeared to be huge amounts of water. Aerial observations of playas can be very deceiving, even though the playa has a large water surface area, the depth of the water in the lakes is generally only a

few inches. Consequently, what appears to be a large quantity of water is in fact very little. Congress needs to be assured that we do not in fact have a large source of surface water which is not being fully utilized before they can in good conscience pass legislation necessary for the importation of water to the High Plains. This study should document this fact.

The U. S. Geological Survey Study to quantify the groundwater reserves and project the likely depletion of these reserves will to some extent duplicate studies already conducted by state and local agencies in Texas; however, the same types of studies have not been made for the remainder of the Ogallala aquifer in the other Great Plains States. This study is extremely necessary to illustrate to Congress that our water supplies are being mined and that if the High Plains area is to remain a highly productive food and fiber production area, that water will have to be brought to the area from some other source. Even though local and state studies in Texas have documented this fact, Congress is more prone to rely on studies made by their own agencies when making large, long term commitments.



Disaster Deadline Date Extended

Congressman Omar Burleson advises that the Small Business Administration has extended its previously announced deadline for applying for disaster assistance due to drought and hail. The previously announced deadline of October 11, 1978, has been extended to November 13, 1978 for physical damage and to January 11, 1979 for economic injury. The counties affected due to disaster by drought are Baylor, Callahan, Coleman, Comanche, Eastland, Earth, Jack, Knox, Montague, Palo Pinto, Parker, Shackelford, Stephens, Stonewall, Throckmorton, and Wise; while Crosby and Floyd were affected due to hail.



Facts from a pro on driving to survive.

Q. Is it possible for someone from out-of-state to obtain a Texas drivers license? I have a valid Oklahoma commercial license and would like to get the same thing from Texas.

—W.W., Waurika, Oklahoma

A. Yes it is. However, you will have to visit one of Texas' Drivers License Sub-stations to obtain it. Since you have a valid Oklahoma license, you will probably only have to take a written exam.

Q. If I enter an intersection under a yellow light but don't clear it before it turns red, have I violated the law?

—D.J., Tyler

A. No. The Texas law states that if you enter an intersection legally, you have the right to clear the intersection legally. However, keep in mind that the yellow light is warning you that the light is about to turn red and, legalities aside, being in an intersection when the light turns red leaves you in an extremely vulnerable position.

If you have a question on driving, send it to:
Texas Office of Traffic Safety
P.O. Box 1165
Austin, Texas 78767



Seeking to build on what is now no more than a smattering of High Plains cotton exports to Western and Eastern Europe, Plains Cotton Growers, Inc., Lubbock, will host cotton spinner representatives from 13 European countries in Lubbock October 26 and 27.

Bangladesh, already well-known to High Plains cotton exporters, also will have a representative present.

The visit to Lubbock is a part of the annual U. S. Cotton Orientation Tour sponsored by Cotton Council International, National Cotton Council, the U. S. Department of Agriculture's Foreign Agriculture Service and local hosts. Joining PCG as host in Lubbock will be the Lubbock Cotton Exchange, an organization of cotton merchants.

The group will be shown High Plains cotton production, processing, merchandising and research facilities. Emphasis will be placed on how each of these works to make the High Plains better able to meet raw fiber requirements all over the world.

The countries involved are substantial importers of cotton but not one fills more than a small part of its needs from the U. S. Germany, for example, in 1975-76, the latest year for which figures are readily available, consumed about a million bales of cotton, imported almost 900,000 bales of that total, but bought only about 7,000 bales from the U. S.

As a whole, Western and Eastern Europe in 1975-76 consumed about nine million bales and imported over eight million, of which less than 500,000 came from the U. S.

"These countries represent a tremendous potential market for our cotton," comments PCG Executive Vice President Donald Johnson, "and having them here is an opportunity to begin convincing them we want their business and have both the determination and the ability to meet their requirements as well or better than other cotton exporters."

While here, the textile spinners will have an opportunity to visit with members of the Lubbock Cotton Exchange, individually and in groups, to initiate if not consummate purchase arrangements.

Countries represented on the tour will be Belgium, Bangladesh, Denmark, Finland, Germany, Italy, Netherlands, Norway, Romania, Spain, Sweden, Switzerland and the United Kingdom. They will arrive in Lubbock on the afternoon of October 26 and depart on the morning of October 28.

Bill Fisher-John Connally

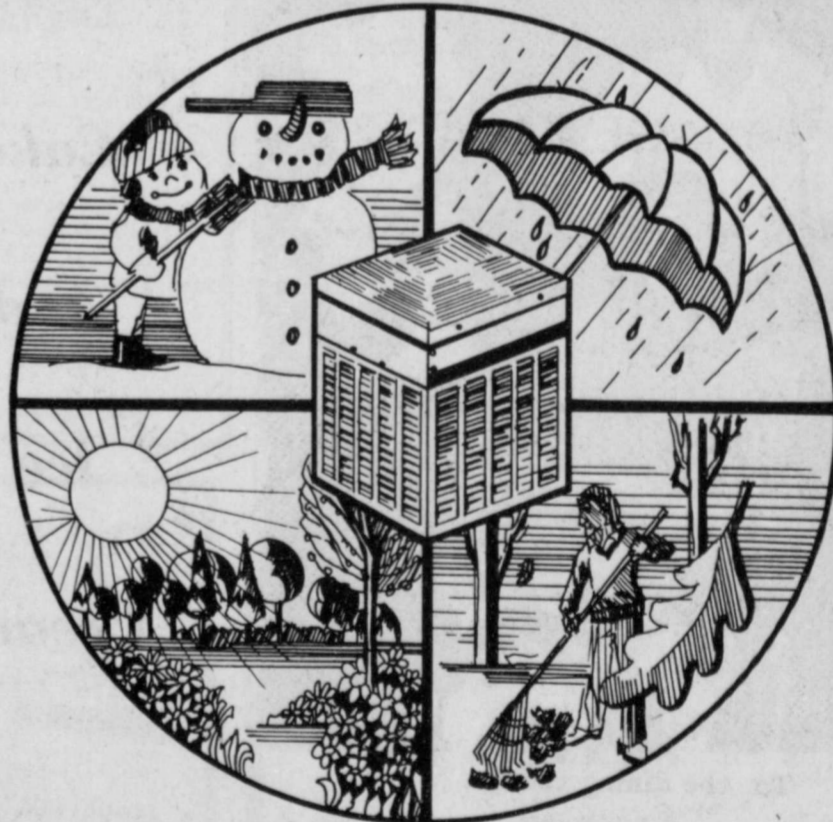
Dinner Tuesday Night

Final arrangements are complete for the dinner honoring Bill Fisher and John Connally on October 17. The event will be held in the Abilene Civic Center in Abilene at 7:30 p.m.

Former Texas governor John Connally will support and endorse Fisher in his efforts to replace retiring Rep. Omar Burleson.

Tickets, which are \$25 each, are being sold all over the 17th District by Bill Fisher for Congress county chairmen. For tickets and more information, contact the Fisher campaign headquarters at 241 Cypress, or call (915) 673-2569.

Got Heating Or Plumbing Problems?
Call
HOLMES PLUMBING
AUSTIN OR STEVE
983-2251
6:30 - 9:30 a.m. and 5:30 p.m. Until?



A MACHINE FOR ALL SEASONS

HEAT PUMP

YOUR CONSTANT COMPANION FOR HEATING & COOLING EFFICIENCY

No matter what the weather outside, the heat pump works quietly... efficiently... automatically to keep your family comfortable. Since it pulls much of its heat right out of thin air, the heat pump actually saves energy as it works. In fact, it delivers as much as two units of heat for every one heat unit of electricity it uses. Costs are the lowest of any electric heating/cooling system available.

For year 'round heating and cooling efficiency, the heat pump is your constant climate control companion. Call us today for more information.



SOUTHWESTERN PUBLIC SERVICE

now another
TSO
in Lubbock

3822
50th Street
793-1334

TEXAS STATE OPTICAL

also located at 1106 Broadway Downtown

Forecasts... Floydada At Lockney... Got Heating Or Plumbing Problems? Call HOLMES PLUMBING... now another TSO in Lubbock... TEXAS STATE OPTICAL... also located at 1106 Broadway Downtown

Lions Club Completes Projects For Hospital And Nursing Home



OLE BILL SAYS: Lions Club build a sidewalk?...sure!



...all you need is a smart, efficient, well organized crew ...



...fill it with good mix and sweep off the excess...



and we'll try it out...



for a few years and let you know...

The Floydada Lions club built a badly-needed sidewalk on the property of the Caprock hospital, connecting the hospital emergency drive with the sidewalk of the Floydada nursing home last week. The walk will provide easier access to Caprock hospital and Cogdell Clinic for residents of the home, as well as for employees and doctors going back and forth.

Previously, if a resident needed to be taken to the clinic or hospital by wheelchair, it was necessary to take them by way of the street on gravel and otherwise rough terrain. This has proved to be very uncomfortable for the patient.

Lions Bob Copeland was "construction Superintendent" for the project. Another project began on Sunday,

October 8, the day set aside by Lions International as Lions Service Day world-wide. The local club served cake and homemade ice cream to the residents of Floydada nursing home and afterwards presented a worship service with special singing and scripture reading by members of the club.

These are only two of several projects the local club participates in

through the year. Others include: Boy Scouts, Cub Scouts, Girl Scouts, Baseball, Little Dribblers, Lions Eye Bank, and the Crippled Children's camp at Kerville, Texas.

To finance these activities the Lions have several fund raising projects throughout the year. Two of these projects are planned for the near future: The first is the annual pancake

supper, held at the Floydada Junior High cafeteria. This year's supper will be Friday, October 27, preceding the Idalou-Floydada game. Serving will begin at 5:30 p.m. and will continue until 7:30 p.m. On the menu, as always, are pancakes, and sausage, coffee and milk.

The second project to raise funds will be the Arts and Crafts show and sale to

be held at the Main

Saturday, December 2

5 p.m. Booths will be

rent for \$15 each. Let

should be sent to Floyd

107 S. 5th, Floydada, Mo.

call Wilson Bond, 983-

3529 after 5 p.m.

3493



To the dining room...

Then
Cake
And
Ice
Cream



maybe a big slice of cake...



dip it, slice it...and eat it!



a little scripture...



some special music...



and a sermonette...



and resident bass singer...and friends join in...

IF
HOME F
R SALE: Sev
and three
Bond Rea
tlet Wilson B
983-3573.
SEVERAL nice
bedroom h
means can be
Hale Insur
state at 983-
HOME FO
room, 2 bal
garage, bu
quire First
Lockney.
FOR SALI
den, 3 be
walk-in clos
gas grill, ot
Call Doris
994.
R SALE: 2
se. Fully carpe
ters, ready to liv
Porter Finl
or 983-2493.
ARGE 3 bedroon
ble garage, 60'
yada. Would ta
ier, boat and m
pickup, for do
st. 983-3695, J
es.
R SALE: 2
se, partly carpe
er lot, 1102
yada, James I
983-2626 or 983-
USE FOR SA
rooms re
about, 2 bedro
om, large ut
Filtered w
Storm doors
Yard light,
aps building an
property on
me, 983-3126.
R SALE: Sma
two acres, 98
O BEDROOM h
in Floydada.
Call after
3590.
USE FOR SAL
n and bath, goo
\$11,000.00 525
Floydada, 9
7 p.m.
RIFICE MUST
bedroom home, N
ment, come and
e. Phone Georg
3529 after 5 p.m.
3493
R SALE: Two-
e in Lockney.
new carpet, cen
Call 652-3
3347.
HELP WAN
4 Used Bookke
small Scales Ope
male or fem
Barwis
377.
WANTED M
interested in
business
at Joe's 7-1
DEED: Main
Call 675-2626.
Sales-Diesel
struction
Wages an
to Servic
Texas Eq
Your Ca
Amarillo
Lubbock 806-

ALL TIME
VATOR H
NEEDED---
SEE
BERMAN GRAH
AT
UNCY ELEVAT
Big Savings
Up to
discoun
Protection
Farmers Texa
owners Po
SPEN
MISSO
PHONE 983-28

If It's Results You Want-It's CLASSIFIED ADS You Need

HOME FOR SALE

Several good three bedroom homes for sale in the Wood Real Estate, Wilson Bond, 983-3573. tfc

REAL nice two and three bedroom homes for sale in the Wood Real Estate and Insurance and Home at 983-3261. tfc

HOME FOR SALE: 2 bath, large garage, built-in kitchen, first National Lockney. Ltfc

FOR SALE: Living room, 3 bedrooms, built-in closets, outdoor grill, other features. Call Doris McLain tfc

2 bedroom home, fully carpeted, wall to wall, call for more information. Call Finley, 983-2493. tfc

3 bedroom, 2 lots, large, 602 S. 5th, would take travel trailer and motor, car, for down payment. Call Joe Reid tfc

2 bedroom home, fully carpeted, on 1102 S. Main, James Lee Nicholas or 983-3144. tfc

FOR SALE: All rooms remodeled, 2 bedroom, den, large utility and filtered water system doors and windows, fenced, building and cellar. Property on lots for 983-3126. tfc

Small house on 2 acres, 983-2881 10-19c

BROOM house for Floydada. Needs call after 3 p.m. LTFc

FOR SALE: Five bath, good condition, 4000 525 W. Miss. Floydada. 983-2573. tfc

ICE MUST SELL!! home. Must see, come, low down, come and make an appointment. Call George Finley after 5 p.m. tfc

Two-bedroom home, Lockney. Corner carpet, central air, call 652-3432 or L-tfc

WANTED Bookkeeper for Sales Operator for male or female. Call Barwise Gins 10-19c

WANTED Male or female interested in learning business. Apply at Joe's 7-11. tfc

Maintenance 983-2626. tfc

Diesel Engine Construction Machinery Wages and Benefits to Service Managers Texas Equipment Amarillo 806-335-4495 806-745-4495 S11-2p

ALL TIME MOTOR HELP REDED-SEE MAN GRAHAM AT ELEVATOR TFC

Savings Up to discount- Protection Owners Texas Owners Policy

SPENCE MISSOURI 983-2881

Friends join in...

FARMS AND ACREAGE

WANTED TO BUY irrigated or dryland farm in Floyd or surrounding area. Write Box XRO, c/o Hesperian, Box 700, Floydada. tfe

FARM MACHINERY

NORRELL TRACTOR PARTS for tractor and irrigation supplies and accessories. tfe



WE WANT YOU TO KNOW- We sell all kinds of Good year tires...tractor, auto, truck, a good tire, good service. Best deals in West Texas. Truck winch and hauling service. BABE'S SERVICE CENTER, Floydada. tfe

BUSINESS SERVICES

C-D-J INSULATION can help save your dollars. For information call 983-2601.

C-D-J 66 7-day service, car wash, oil change. Gas service, U-haul rentals. Located on Matador hwy. 983-2601.

INSULATION Fire-Resistant. Installed and Guaranteed. MARR Insulation Co. Lockney 652-3593. Ltfc

FOR BETTER CONCRETE CALL CALLOWAY READY-MIX 652-2224 LOCKNEY PLAINVIEW HWY. ALSO WHITE CALICHE ROCK FOR SALE

LEGAL NOTICE

The board of trustees of Lockney Independent School District is accepting bids on the sale of the following items: Item #1: The teacherage located at 806 E. Shubert, being in approximately one and one-fourth (1 1/4) acres with a house and a detached one-car garage. Item #2: East part of Block E, Abst 590, N.B. Davis Survey, commonly called the old school grounds, presently vacant lots only. Item #3: Lots 13-14 Block 4 Walling Addition to Lockney, being two vacant lots. Bids may be for all items or any one item as stated in the bid. Envelope must have "Property Bids" written across the face. Bids may be mailed to Supt. Hallmark, Lockney Independent School District, Box 428, Lockney, Texas 79241 and in Superintendent Hallmark's office by noon Friday, November 13, 1978. Bids will be opened during the regular board meeting which convenes at 7:30 p.m. November 13, 1978. The Board reserves the right to reject any or all bids. For further information or to be shown the property contact Jack Samford, Tax A/C, at the School Tax Office, 120 S. Main. L10-15, 10-18c

NOTICE TO BIDDERS

Sealed proposals will be received by the business manager at the school business office until 4:00 P.M. C.S.T. Nov. 14, 1978 for the repair and roofing of several buildings for the Floydada I.S.D. Information Concerning this proposal may be obtained by contacting the central office located at 208 S. Main, Floydada, or calling Area Code 806-983-3498. The Board of Trustees reserves the right to accept or reject any and all bids. Tommy Cathey, Business Manager 10-19c

NOTICE OF ELECTION ORDER

WHEREAS, pursuant to Acts 1955, 54th Leg., p. 943, ch. 369, of the Legislature of the State of Texas, hereinafter referred to as the Act, there was created on or about July 24, 1957, and now exists the FLOYD COUNTY NOXIOUS WEED CONTROL DISTRICT, hereinafter referred to as the District, having boundaries coterminous with the boundaries of Floyd County, Texas except for the exclusion from such District of all lands then or hereafter within the respective corporate limits of the City of Floydada, Texas and the City of Lockney, Texas in such County; AND WHEREAS, there was presented to the Board of Directors of the District at a lawful regular meeting of such Board held on the 10th day of October, 1978, at which meeting were present a lawful quorum of such Board, a petition signed by more than fifty (50) of the landowners residing in the District, asking that an election be held within the District to dissolve the District, as authorized by the Act;

NOW, THEREFORE, be it ordered by the Board of Directors of the District, pursuant to the Act and the above mentioned petition, that an election be held throughout the District, in each of the existing seventeen (17) voting precincts of Floyd County, Texas, on the 7th day of November, 1978, between the hours of 7 A.M. and 7 P.M., for the purpose of voting upon the proposal to abolish the District; that the voting place for such election in each District; that the voting place for such election in each precinct in order of the Commissioners' Court of Floyd County, Texas (hereinafter called the Court) made and entered on the 14th day of August, 1978 and recorded Vol. 11, Page 122, of the Minutes of the Court, and the presiding judges of such election, and their alternates, in the various precincts shall be the presiding judges and their alternates appointed by the order of the Court above referred to; that the County Clerk of Floyd County, Texas shall be the clerk to conduct absentee voting in such election; that none but resident property taxpayers of the District shall be permitted to vote at such election; that all voters favoring dissolution of the District shall have printed on their ballots: FOR DISSOLUTION OF THE DISTRICT

-and all voters opposing dissolution of the District shall have printed on their ballots: AGAINST DISSOLUTION OF THE DISTRICT.

That such election shall be held in accordance with the election laws of the State of Texas except as otherwise hereinabove provided.

That the Chairman of the Board of Directors shall give notice of such election by causing publication of a true and correct copy of this Order under his hand in the FLOYD COUNTY HESPERIAN and in the LOCKNEY BEACON, within both newspapers of general circulation published within Floyd County, at least twice, with an interval of at least seven (7) days between the two publications, prior to such election.

This 10th day of October, 1978. The foregoing true and correct copy of Order of the Board of Directors of FLOYD COUNTY NOXIOUS WEED CONTROL DISTRICT is published in accordance with the terms of such Order as notice of the election therein provided for.

WITNESS MY HAND, this 12th day of October, 1978. /s/ Kenneth Wofford (KENNETH WOFFORD) CHAIRMAN OF THE BOARD OF DIRECTORS, FLOYD COUNTY NOXIOUS WEED CONTROL DIST. 10-15, 10-18c, 1978c

COW POKES



"Pin, would you git back and hold this calf... besides you're standin on my piggin string!"

TURNER REAL ESTATE

983-2635 Farms Ranches Floydada, Texas

Diamond Industrial Supply Co., Inc.

Phone Days 296-7418 Nights 296-1200 or 296-7828 1014 Broadway Plainview, Texas Chain Sprockets V-belts Sheaves U-joints Oil Seals O-rings Wisconsin SKF BCA Timken Bower Cotton Striper Brushes & Bats "We Appreciate Your Business More" L-tfc

GROUND RIG AND AERIAL APPLICATION

FOR COTTON DEFOLIATION

LONE STAR CHEMICAL INC.

652-2761 RICK KELLISON 652-3504 DEANIE HENDERSON 652-3434 EVANS GIN 652-3765 L-tfc

THE SMITH AGENCY

OFFERS YOU IN LOCKNEY An older two-story home, 5 bedrooms, 1 1/2 bath, living room, dining room; also two 2-bedroom houses & two apartments, storm shelter, good income property, all for only \$30,000. CONTACT BILL OR DELTA SMITH 293-2710 Plainview L11-2c

FARMS-RANCHES-CITY PROPERTIES-

BUSINESS LEASES-LOANS

B. B. WILKES BROKER

REAL ESTATE 100 S Main, Lockney Barry Barker, Solicitor Barker Insurance Agency-652-2642

IF IT IS INSURANCE

-SEE- BARKER INSURANCE AGENCY LIFE-FIRE-CASUALTY-HOSPITAL

Can You Use Some

Extra Money Let Us Help!!!! WE BUY SCRAP IRON, OLD JUNKERS, AND FREE PICKUP Call 983-5277

STORAGE SPACE

BOATS, FURNITURE ANYTHING, ETC., BY THE MONTH OR SIX MONTH 10% DISCOUNT WEST TEXAS MINI STORAGE 983-3573 OR 983-2151

FLOYD COUNTY ABSTRACT CO.

Abstracts Of Title Title Insurance Verna L. Stewart Owner, Manager 217 W. California 983-3728 Floydada, Texas

By Ace Reid

FOR SALE

FOR SALE: Top-Hogs Lean-Corn Fed. Bacon type. Excellent quality. Call Lynn Campbell 983-2717 10-15c

FOR SALE: Two twin beds, complete with headboards, frames, box springs and innerspring mattresses. Price reasonable. Call 652-2114. L10-19

FOR SALE: Singer Sewing Machine, touch and sew, excellent condition. Attachments included. 983-3927 tfe

FOR SALE: Vincent Bach Stradivarius Silver trumpet almost new 983-5003 tfe

FEET TIRED? Try Mason Shoes with "Velvet-eez" air-cushioned innersoles. Keith Emert, 652-3116. LStfc

FOR SALE: Two bunk beds, good condition. Call 652-3144. L10-26c

FOR SALE: Rabbits, 983-5165 before 5 p.m. 983-3396 after 5 p.m. tfe

FOR SALE: New all steel 26 gauge buildings. Runs 30x50x12, 3-40x50x16, 1-50x100x16. Call 806-795-4139 or 806-647-3245. 10-15c

WANTED

BABYSITTING In my home, all hours. By the hour, day or week. Reasonable rates. Deanna McConnell Lockney L10-8p

Baby Sitting Wanted. Call 652-3116 L10-15c

LOST & FOUND

GLASSES found near city dump. Contact Hesperian or call 983-3737 10-15p

Lost, Black Poodle, Name "Brandy" Reward. Call Barry Barker. 652-3379 L10-19c

NOTICE

Notice LOST in Lakeview Area 1 Suffolk Ram, 2 lambs. Call 983-3049 or 983-2783. 10-15p

DAN'S AUTO SERVICE

DAN TEUTON, Owner Specializing in Automatic Transmission, Motor Tune-Ups, Auto Air Conditioning. General Repair We Have A BRAKE LATHE to handle all passenger car brake drums. See us for complete brake service. Phone 652-2462

BAKER Insurance Agency

127 W. Calif. Ph. 983-3270

SEWING MACHINE SERVICE CENTER

New & Used Sewing Machines Sales & Service 111 S. Main Lockney 652-2721

NO...

WE AREN'T IN THE PHOTOGRAPHY BUSINESS BUT WE WILL REPRINT PICTURES THAT WE HAVE SHOT AND PUBLISHED IN THIS NEWSPAPER

5 x 7 Gloss Finish

\$1.50 FLOYD COUNTY HESPERIAN & LOCKNEY BEACON

FOR SALE

FOR SALE: Young laying hens, \$3.00 each. 652-3414. Ltfc

FOR SALE: Piano \$60.00 983-6251 after 5 p.m. 10-15c

FOR SALE: Floor furnace without vent pipe. Will sell cheap. Also, 4 bar stools. Call Terry 983-2294 tfp

FOR SALE: Good overhead water tank and steel tower, also Ford Camper top for 1973 to 1978 models. Clyde Baxter 203 S. W. 5th Lockney Ltfc

FOR SALE: Good G.E. electric Dryer and Whirlpool Washer. See at 419 So. Main Lockney Ltfc

FOR SALE: Four electric classroom Olivetti typewriters, \$150 each; and four manual classroom Royal typewriters \$75.00 each. May be seen at high school. 983-2340

FOR SALE: Stove and refrigerator, bed frame, box springs and mattress, dining room table and chairs. 983-2168 tfc

FOR SALE: 20 feet fishing barge with 35 horse Johnson motor, and trailer. \$1250 Phone 983-2240, 127 W. Kentucky. tfp

SAVE

SAVE-Direct from the factory. Check our low prices and quality. Over 40 living-room suits and sleepers for you to choose from. Open Wed., Thurs., Fri., and Sat. Dixon Furniture Factory Outlet, 804 N. University, Lubbock across the street from Red Raider Drive Inn Theater. 10-15p

WANTED TO BUY

WANT TO BUY 1962 Rambler Car or Station Wagon. Leave word for C. M. Day at Caprock Hospital, Floydada. 10-15p.

Kirby

Vacuum cleaners, new and rebuilt, 1 yr. guarantee. Parts, sales and service. Prices begin at \$124.50. Parker Home Furnishings in Lockney. 652-3315. Ltfc

Watermelons grown along the Tigris River have been known to reach as much as 275 pounds.



Soak oven racks in detergent overnight to make them easier to clean.

NO...

WE AREN'T IN THE PHOTOGRAPHY BUSINESS BUT WE WILL REPRINT PICTURES THAT WE HAVE SHOT AND PUBLISHED IN THIS NEWSPAPER

5 x 7 Gloss Finish

\$1.50 FLOYD COUNTY HESPERIAN & LOCKNEY BEACON

For Sale

FOR SALE: Young laying hens, \$3.00 each. 652-3414. Ltfc

FOR SALE: Piano \$60.00 983-6251 after 5 p.m. 10-15c

FOR SALE: Floor furnace without vent pipe. Will sell cheap. Also, 4 bar stools. Call Terry 983-2294 tfp

FOR SALE: Good overhead water tank and steel tower, also Ford Camper top for 1973 to 1978 models. Clyde Baxter 203 S. W. 5th Lockney Ltfc

FOR SALE: Good G.E. electric Dryer and Whirlpool Washer. See at 419 So. Main Lockney Ltfc

FOR SALE: Four electric classroom Olivetti typewriters, \$150 each; and four manual classroom Royal typewriters \$75.00 each. May be seen at high school. 983-2340

FOR SALE: Stove and refrigerator, bed frame, box springs and mattress, dining room table and chairs. 983-2168 tfc

FOR SALE: 20 feet fishing barge with 35 horse Johnson motor, and trailer. \$1250 Phone 983-2240, 127 W. Kentucky. tfp

SAVE

SAVE-Direct from the factory. Check our low prices and quality. Over 40 living-room suits and sleepers for you to choose from. Open Wed., Thurs., Fri., and Sat. Dixon Furniture Factory Outlet, 804 N. University, Lubbock across the street from Red Raider Drive Inn Theater. 10-15p

WANTED TO BUY

WANT TO BUY 1962 Rambler Car or Station Wagon. Leave word for C. M. Day at Caprock Hospital, Floydada. 10-15p.

Kirby

Vacuum cleaners, new and rebuilt, 1 yr. guarantee. Parts, sales and service. Prices begin at \$124.50. Parker Home Furnishings in Lockney. 652-3315. Ltfc

Watermelons grown along the Tigris River have been known to reach as much as 275 pounds.



Soak oven racks in detergent overnight to make them easier to clean.

NO...

WE AREN'T IN THE PHOTOGRAPHY BUSINESS BUT WE WILL REPRINT PICTURES THAT WE HAVE SHOT AND PUBLISHED IN THIS NEWSPAPER

5 x 7 Gloss Finish

\$1.50 FLOYD COUNTY HESPERIAN & LOCKNEY BEACON

AUTOMOTIVE

FOR SALE: 1974 Maverick 4 door, air power, low mileage. Joyce Kimble. 983-3983 After 4. 10-15c

FOR SALE: 1972 Chevy super Cheyenne pick-up V8, S 400, power brakes and steering, A/C, AM radio, tape deck and speakers, cruise control, tilt wheel, dual saddle tanks, low mileage. 983-5063 10-15c

FOR SALE: 1976 Ford XLT Ranger fully loaded, 37,000 miles 657-4409 after 6:00 p.m. 10-19p

For Rent

FOR RENT: in Lockney one and two-bedroom apartments. Come by 108 N. Main or call 652-3813. Ltfc

FOR RENT: Apartment. Call 983-3437. tfc

WANT A GOOD BUILDING?

CALL US MORTON BUILDINGS Plainview 806-293-4386 Box 928

CARD OF THANKS

It is with deep appreciation the family of Murray Julian want to express their thanks to friends and neighbors for all their wonderful acts of love they showed through the long hospital stay and loss of their beloved Murray. Thank you for the beautiful cards, for food, telephone calls, gifts, for visits, and everything you have done to help us through these sad days. May God Bless and Keep you all is our prayers. With Love, Bonnie Julian Terry, Kendis, Bruce and families Vera Harper Ruth Burnett 1015p

Watermelons grown along the Tigris River have been known to reach as much as 275 pounds.



Soak oven racks in detergent overnight to make them easier to clean.

NO...

WE AREN'T IN THE PHOTOGRAPHY BUSINESS BUT WE WILL REPRINT PICTURES THAT WE HAVE SHOT AND PUBLISHED IN THIS NEWSPAPER

5 x 7 Gloss Finish

\$1.50 FLOYD COUNTY HESPERIAN & LOCKNEY BEACON

Beauty in Beasts

In World of Wildlife, It's Courting Males Who 'Dress' to Please, Says Nature Magazine

Among humans, it is the female who is noted for preening and preening to attract a mate.

But in the world of wildlife, the situation is often reversed, according to National Wildlife magazine. There, the current (October-November) issue of the magazine reports, it is usually the male who puts on a spectacular show during courtship.

The show may consist of anything from a display of feathers — which the peacock spreads to impress an admiring hen — to a loud noise or a change of body color. And it sometimes includes the use of weapons, such as spurs or antlers, to fight off other suitors, says the bimonthly publication of the National Wildlife Federation.

Along with the peacock, the male grouse and turkey use their feathers to catch the attention of prospective mates. The grouse raises a ruff of glossy feathers around his neck. The wild turkey, in addition to showing his feathers, sports a "beard" — a tuft of hair-like feathers that sprout from his chest.

The turkey gobbler and the male pheasant wear sharp spurs on their legs to fight off

rivals during their breeding seasons. Similarly, the bull moose, the bull elk, and buck deer grow antlers to fend off competition. When the mating season is over the antlers drop off.

Lizards and fish are among the creatures who change

colors or even the configuration of their bodies to lure mates, says National Wildlife. Some male lizards inflate brightly colored "fans" at

their throats. Some species of salmon acquire hooked jaws and humped backs as the spawning season approaches.

The "hot" in peppers is a volatile alkaloid called capsaicin, explains a foods and nutrition specialist with the Texas Agricultural Extension Service, The Texas A&M University System.

In general, smaller peppers are the hottest, Mary K. Sweeten reports.

David Kirk Chairman Bill Clements For Governor

Gubernatorial candidate Bill Clements today announced that David L. Kirk is serving as the Floyd County chairman for the Bill Clements for Governor Campaign.

"Clements campaign organizations have now been established in all of the

state's 254 counties. This is an unprecedented accomplishment in a Republican gubernatorial campaign in this state," Clements said. "And, it points up the fact that my campaign is not a one-party effort. My candidacy is attracting Democrats, Independents and Republicans alike this year because Texans are realizing that the governor's race is not a case of Democrats versus Republicans, but a case of conservatives versus liberals," he

added. "This statewide organization clearly shows the strong momentum of my campaign and the widespread support for my candidacy," he stated. "MANY Texans realize that my opponent is a liberal, as shown by the 300 percent increase in the size of his staff and the 600 percent increase in his budget during his term as attorney general. His record speaks for itself and it

8 OZ. DEL MONTE **FRUIT COCKTAIL** 3/89¢ 37¢ VALUE

15 OZ. **RANCH STYLE BEANS** 3/89¢ 39¢ VALUE

7 OZ. WHITE SWAN **MACARONI & CHEESE** 4/89¢ 30¢ VALUE

ONLY 19¢ CUP or DINNER PLATE SAUCER, BREAD and BUTTER or FRUIT DISH

IT'S EASY! Here's All You Do - Simply Save The Cash Register Tapes You Receive Every Time You Make A Purchase At Our Store. Keep The Tapes In The Convenient Envelope. When You Have Sufficient Tapes, Just Return Them For Any Of The Price Saving Plans At 22¢ Each.

ACCEPTED ONLY FROM APRIL 15TH 1978 TO NOVEMBER 15TH 1978

WE GIVE GREEN STAMPS

DOUBLE ON WEDNESDAY

BUDDY'S

STORE HOURS: Mon.-Sat., 8 a.m. to 9 p.m. Sun., 9 a.m. to 8 p.m. VALUES EFFECTIVE THRU SATURDAY OCTOBER 21, 1978 We Reserve the Right To Limit Quantities



MALE ADORNMENTS: Wild turkey displays spurs on shanks and "beard," or tuft of hairlike feathers, on chest; caribou bull grows new pair of antlers which drop off after mating season. Illustrations by Ned Smith.



Many species resort to mating calls or other sounds, but among the strangest amorous noisemakers is the cricket, who produces his summer evening's "song" by rubbing parts of his wings together. Male woodcocks use special wing feathers to make twittering sounds, while prairie chickens and some grouse hoot loudly by suddenly releasing air from inflatable sacs on the sides of their necks.

A man might think that kind of noise is for the birds, but for those fowl it works better than man's so-called wolf whistle.

With many species, the magazine reports, mating occurs only after the male suitor instinctively performs a series of courtship rituals. Painted turtles stroke the female's cheeks with the elongated claws of their forefeet. The male fiddler crab waves an enlarged claw in the face of his chosen mate — not a subtle gesture among those crustaceans whose "fiddle" claw comprises nearly half of their body weight.

Some males must work faster than others. Since adult moths live only a few days, the male is equipped with a broad, feathery antenna that helps him zero-in on the "perfume" of a female, sometimes miles away.

Modern science has slowed the march of one destructive species, the gypsy moth, according to National Wildlife, by synthesizing the female's scent and releasing it where there are no females. This confuses the males and thwarts their efforts to mate — a mean trick on the moths but a boon to mankind.

FIRM GREEN **CABBAGE** 12¢ LB

YELLOW **ONIONS** 15¢ LB

SUNKIST **LEMONS** 37¢ LB

FIRM GREEN **LETTUCE** 29¢ HEAD

8 OZ. AIR WICK TWIN **AIR FRESHENER** 59¢ 99¢ VALUE

13 OZ. BRUT **DEODORANT SPRAY** \$1.99 \$2.99 VALUE

10 COUNT GLAD **TRASH BAGS** 99¢ \$1.49 VALUE

15 OZ. **PINE SOL** 77¢ \$1.09 VALUE

13 OZ. MARYLAND CLUB EXTRA MEASURE **COFFEE** \$2.19 \$2.69 VALUE

7 OZ. BUTTERY SEASONED **SALT** 2/99¢ 69¢ VALUE

6-32 OZ. REGULAR OR DIET **DR PEPPER** \$1.39 \$2.09 VALUE PLUS DEPOSIT

2 LB. HUNGRY JACK EXTRA LIGHT **PANCAKE MIX** 69¢ \$1.09 VALUE

4 OZ. ADAMS **VANILLA** 99¢ \$1.29 VALUE

1/2 GAL. PUREX **BLEACH** 57¢ 73¢ VALUE

DECKERS SLICED **SLICED PICNIC** 89¢ LB

DECKERS **BACON** 1 LB \$1.49

12 OZ. DECKERS **SALAMI, BOLOGNA OR SPICED LUNCHEON** 99¢ PKG.

WILLSON'S **BONELESS HAM** \$1.99 LB.

U.S.D.A. BEEF **POT ROAST** 99¢ LB.

U.S.D.A. BONELESS **ROUND STEAK** \$2.39 LB.

COUNTRY STYLE **SPARE RIBS** \$1.29 LB.

FRESH **BEEF LIVER** 69¢ LB.

U.S.D.A. BONELESS **SIRLOIN STEAK** \$2.39 LB.

FAMILY PACK **GROUND BEEF** 99¢ LB.

100 COUNT WHITE SWAN **TEA BAGS** \$1.49 \$2.09 VALUE

12 OZ. BELL **COTTAGE CHEESE** 59¢ 75¢ VALUE

1/2 GAL. BELL **BUTTERMILK** 79¢ \$1.09 VALUE

5 LB. LIGHT CRUST **FLOUR** 59¢ 89¢ VALUE

140 COUNT KLEENEX **NAPKINS** 59¢ 79¢ VALUE

3 OZ. ADOLPH'S **TENDERIZER** 59¢ 79¢ VALUE

83c LAYS **POTATO CHIPS** 2/99¢

14 OZ. KRAFT **CARMELS** 69¢ 99¢ VALUE

24 OZ. KRAFT MIXED BAG **CANDY** \$1.49 \$1.99 VALUE

12 OZ. NESTLES **CHOCOLATE FLAVORED CHIPS** 89¢ \$1.29 VALUE

1/2 GAL. BELL **ICE CREAM** \$1.29 \$1.89 VALUE

75 SQ. FT. 12" **REYNOLDS FOIL** 89¢ \$1.33 VALUE

6 1/2 OZ. CARNATION **TUNA** 67¢ \$1.05 VALUE

72 OZ. 6 PACK TEXSUN **GRAPEFRUIT JUICE** \$1.29 \$1.79 VALUE

22 OZ. PURINA COUNTRY BLEND **CAT CHOW** 2/99¢ 79¢ VALUE

49c OZ. GIANT **CHEER** \$1.27 \$1.89 VALUE

35 OZ. "FOR DISHWASHERS" **CASCADE** 99¢ \$1.47 VALUE

ASSORTED **CANDY BARS** 8/\$1.00 20¢ VALUE

HORMEL 6 OZ. TENDER **CHICKEN OR TURKEY** 79¢ \$1.07 VALUE

JUMBO ROLL **TERI TOWELS** 59¢ 89¢ VALUE

12 COUNT KOTEX **MAXI PADS** 79¢ \$1.13 VALUE

200 COUNT KLEENEX **FACIAL TISSUE** 59¢

1 LB. WHITE SWAN **MARGARINE** 2/99¢ 69¢ VALUE

7 OZ. ASSORTED SUNBLENDED **COOKIES** 4/99¢ 35¢ VALUE

10 OZ. WHITE SWAN **TOMATO SOUP** 5/99¢ 34¢ VALUE

15 OZ. NABISCO **COOKIES** 5/99¢ \$1.15 VALUE

16 OZ. NABISCO **CRACKERS** 7/99¢ 99¢ VALUE

3 OZ. WHITE SWAN **INSTANT TEA** 5/99¢ \$1.50 VALUE