

15c
Per
Copy

The Floyd County Hesperian



Volume 82

FLOYDADA, FLOYD COUNTY, TEXAS 79235

Sunday, September 3, 1978

12 Pages In One Section

Number 71

Schools Begin Serving Breakfast Thursday

Floydada schools will offer breakfast as well as lunches beginning this morning.

Students not eligible for the free program may eat breakfast for 25 cents from 8:15 - 8:35 a.m. The cost is 40 cents. Student lunch is 80 cents at Duncan and 70 cents at Jr. High and \$1.00 for adults.

Menus will be published in Sunday editions of the Hesperian.

LUNCH PROGRAM

Floydada Independent School District today announced its policy for free and reduced-price meals and free milk for children unable to pay the full price of meals and milk served under the National School Lunch and Special Milk Programs.

Local school officials have adopted the following family size income criteria for determining eligibility:

Children from families whose income is at or below the levels shown are eligible for free or reduced-price meals and free milk during the period of unemployment, provided that the loss of income causes the family income during the period of unemployment to be at or below the levels shown on the scale.

Application forms are being sent to all homes in a letter to parents. Additional copies are available at the principal's office in each school. The information provided on the application is confidential and will be used only for the purpose of determining eligibility. Applications may be submitted at any time during the year.

In certain cases foster children are also eligible for these benefits. If a family has foster children living with them and wishes to apply for such meals and milk for them, it should contact the school.

All children are treated the same regardless of ability to pay. In the operation of child feeding programs, no child will be discriminated against because of race, sex, color, or national origin.

Under the provisions of the policy, school principals will review applications and determine eligibility. If a parent is dissatisfied with the ruling of the official, he may make a request either orally or in writing to the Superintendent of Schools, 208 South Main, Floydada, Texas 79235 for a hearing to appeal the decision. The policy contains an outline of the hearing procedure.

Each school and the Business Office has a copy of the complete policy which may be reviewed by any interested party.

Team Tennis

The Floydada Tennis Club's next meeting is Thursday evening, September 7.

A big night of recreation and food is planned as "team tennis" play is scheduled from 6 to 8 p.m. Following the play the losing team cooks the hot dogs for the winning team.

There will be singles, doubles and mixed doubles matches and anyone who wants to play should call Vickie Rainer, 983-2513. It is important that Vickie and her committee know how many will play, because they need to know how much hot dog stuff to buy.

All members of the family are invited to the hot dog supper and meeting.

Quarterback Club Meeting

The Quarterback Club will have its first meeting of the football season Tuesday night at 7 p.m. Ordinarily, the meeting will be on Monday nights, but due to the Labor Day holiday, it will be on Tuesday night.

The Dallas football game film highlights will be shown and plans will be made for the coming football season. Coach L. G. Wilson will also make a report on the team.

Everyone is invited to attend..... there may be refreshments!

The meeting will be held in the high school cafeteria.

Ladder Tennis Tournament

All members of the Floydada Tennis Club are reminded that the deadline for entering the ladder tournament is Saturday, September 2.

The tournament is for both men and women doubles and a trophy will be given for the first and second place winners in each division.

The tournament will be over on September 30 and the winners will be announced at that time.

All you gotta do is call 983-2029 now and enter.



NEW FIRST CHRISTIAN PASTOR Dennis Swearngin is pictured with wife Susan and son Bryan. (Staff Photo)

New Pastor At First Christian

Reverend Dennis Swearngin began serving as pastor of First Christian Church, Floydada Friday. He, his wife Susan and their four-year-old son Bryan have recently moved here from Fort Worth, where Dennis attended seminary.

On August 11, 1978, Dennis was graduated from Brite Divinity School, Texas Christian University, with a Master of Divinity degree. He was ordained to Christian ministry at South Hills Christian Church, Fort Worth, on August 13. Dennis was serving the South Hills congregation as minister to youth.

Dennis did his undergraduate work at Drake University in Des Moines, Iowa, where he was graduated with a

Bachelor of Arts degree in 1969. He is a navy veteran and a former employee of Armo Steel Corporation, Kansas City, Missouri.

Dennis and Susan are both natives of Kansas City, Missouri, and both graduated from Ruskin High School on that city's south side. They were married in Kansas City in 1968. Susan has been employed in secretarial work in a variety of settings in Kansas City, Des Moines, San Diego, California and Fort Worth. She was most recently employed as secretary to Chancellor James Moudy of Texas Christian University.

Bryan was born in Vancouver, Washington while Dennis was on active duty with the navy.

PRPC Approves Water Line Grant

Board of Directors of the Panhandle Regional Planning Commission met Thursday in Amarillo and approved an \$8.2 million grant application from Lake Mackenzie Water Authority to build water transmission lines from the lake to Tulia, Silverton, Lockney, and Floydada.

The application now goes to Temple, Texas for state approval. The PRPC approval is the first step in securing the water line grant and it is possible that some time will be required on the

state approval.

Other items on the agenda included: a \$200,000 application by Canyon to extend water and sewer lines to the low and moderate income sections of the city, a \$320,000 grant for Deaf Smith County to develop a new water system for the San Jose labor camp south of Hereford, a \$51,000 grant for City of Wellington to rehabilitate ten houses and demolish ten city blocks in a section of the town that houses minority, elderly or low income persons.

Farm Bureau Meet Thursday

The annual meeting of the members of Floyd County Farm Bureau will be September 7, 1978 at Duncan Elementary School, Floydada. This is where policy is made, and resolutions have been sent to each member.

Resolutions that concern County, State and National policies will be presented for vote to those attending.

Any member desiring to introduce a resolution should bring it to the

meeting in writing.

The banquet will be served at 7:30 p.m. There will be a film for the children.

"Make your plans now to attend. Thursday, September 7, 1978 at 7:30 p.m. Remember this is your organization, so attend this meeting. All Farm Bureau policy begins on the local level, help us to have the organization you want," president Omar Burleson said in a letter to the members.

Annual Field Day At Acco Seed

ACCO SEED, PAYMASTER will celebrate its 50th year in business with their Annual Field Day on Wednesday, September 6th. The Field Day will be held on the Paymaster farm 3 1/2 miles north of Aiken, Texas (10 miles east of Plainview). It will begin at 9:00 a.m. and will conclude at 2:00 p.m. the same day. A free Bar-B-Que lunch will be served and a free Paymaster hat will be given to each registered guest.

Field Tours will begin at 9:30 a.m. showing the latest in Paymaster grain and forage sorghums, corn and the latest varieties of Paymaster cotton. Paymaster regional managers, Gary

Duncan and Frank Dickson, say that Paymaster has some new and exciting hybrids and cotton varieties for High Plains farmers to see in various growth stages, and they encourage all interested farmers, wives, dealers and other interested individuals in the agribusiness industry to come out and see what's new at Paymaster for 1978 and 1979.

Crop management information will also be available at the event, and both Duncan and Dickson say they hope farmers will attend and learn more about choosing hybrids and varieties and managing those crops to maximize profits.

\$20 Per Week Football Contest Prizes

The annual Hesperian football contest begins in this edition and will again pay \$20.00 in cash prizes each week. The first place winner will

receive \$10, second place \$6.00 and third place \$4.00.

Entries must be in the Hesperian office or postmarked not later than 5 p.m. each Friday.

Armchair quarterbacks will again be featured in each contest as local sponsors guess how the Floydada game will come out each week.

This year's sponsors are: Gilbreath Exxon Service, McDonald Implements, Moore Rose Funeral Home, Quality Body Shop, Nichols Oil Company, Thompson Pharmacy, Hale Insurance, Floydada Co-op Gins, City Auto Inc.,

Production Credit Assn., Floydada Implement, Sears, Dairy Queen, City Trim Shop, Roy's Merle Norman, Willson & Son Builders Mart, Russell's Equipment & Supply, Kirtley's Market, Consumers Fuel Assn., Buddy's

Food, Cornelius' Conoco, Martin & Co., Case Power & Equipment, Caprock Motor Parts & Hardware Inc., Script Printing and Producers Co-op Elevators.

Rules of the contest are included on the contest page in this edition of the Hesperian.

The Weather			
Date	High	Low	Moisture
August 25	92	68	
August 26	84	70	
August 27	97	69	
August 28	86	73	
August 29	82	66	.3
August 30	79	63	
August 31	85	59	
Total for August..... 1.7			
Total for year..... 11.9			

Floydada Man To Be Roasted

The fourth annual Floydada Chamber of Commerce breakfast has been scheduled for Friday, September 15. The breakfast is for all Floydada merchants and their employees and is free to all. It will be held at the Massie Activity Center. Serving will begin at 6:30 a.m.

The program will be a short version of the "Dean Martin Roast". One of Floydada's merchants has been chosen as the "roastee". The meal will be served with the program to start at 7:25 and be over by 7:45 so that everyone can make it to work by 8 if they wish.

Sponsors for the breakfast are 12 Floydada merchants:

Goen & Goen Insurance, Adams Well Service, Blanco Offset Printing Co., Baker Insurance Agency, First National Bank, Floydada Real Estate, Floyd Co. Farm Bureau, Hale Insurance Agency, Don Hardy Car Wash, Plainview Savings & Loan, Williams Ins. & Real Estate, and Willson & Son Builders Mart.

"Participation in this annual affair has increased each year and we hope to again have a good turnout and promise everyone a good time," Art Raizlaff, chairman of the C of C breakfast and banquet, said.

Most Stores Open

Labor Day

Floydada department stores, super markets and many other businesses will not observe the Labor Day holiday Monday, according to a report from the Chamber of Commerce office.

Of course the bank, Post Office, city offices, courthouse; and government offices will observe the holiday.

There is no school Monday. School officially begins at 8:45 Tuesday morning.

Band Booster Shopping Spree Tickets Go On Sale

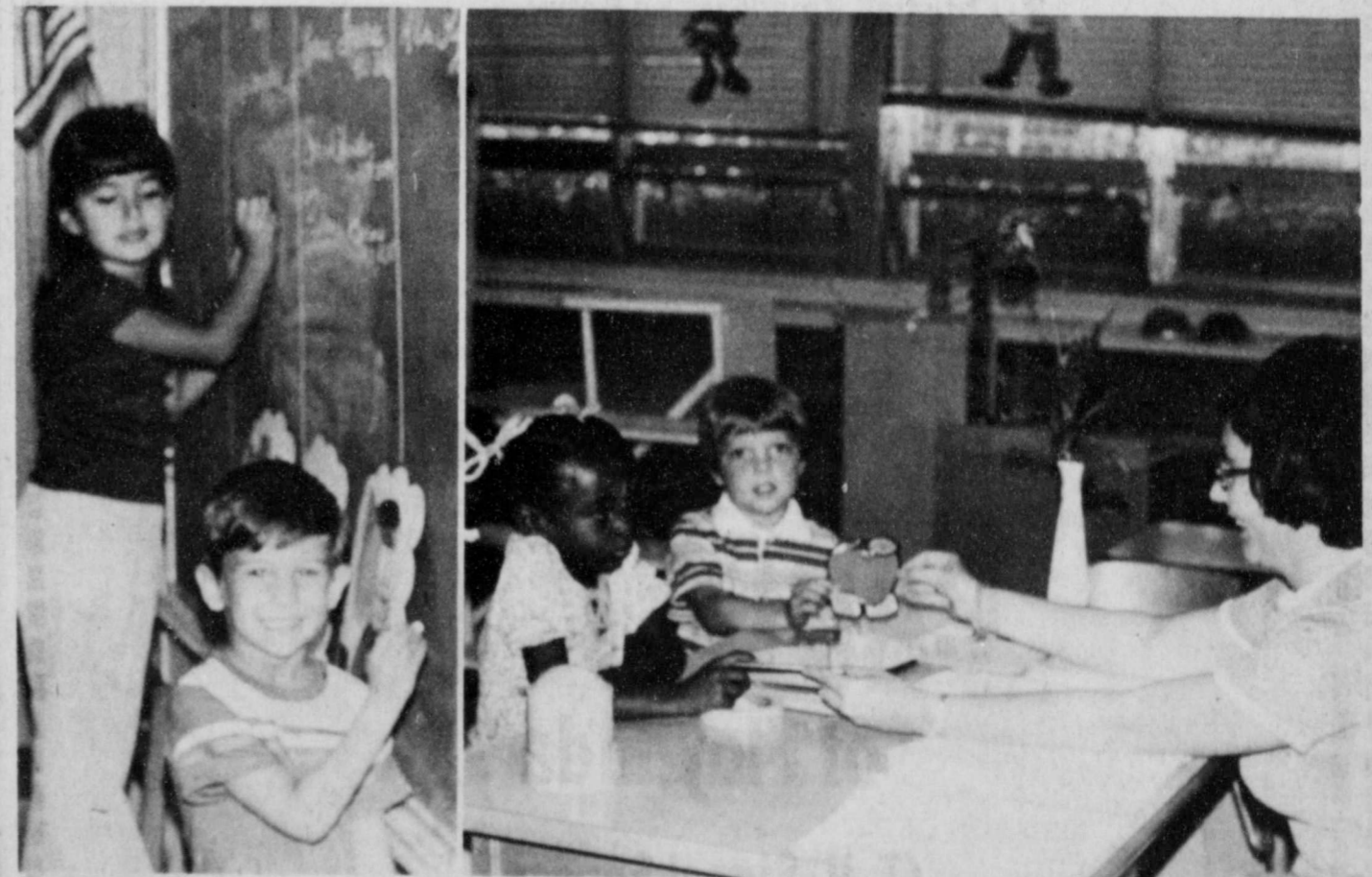
Tickets for the Floydada Band Booster's annual shopping spree go on sale Tuesday, September 5. The drawing will be held during halftime at the Olton football game September 29. Tickets are \$1.00.

The winner will be entitled to a 5 minute shopping spree values up to \$250, at Kirtley's Supermarket. The

shopping spree will be subject to advertised limits. The winner may fill as many grocery carts as possible in the five minutes allotted, as long as the full cart is returned to the front of the store. Items must be edibles--no drugs, notions, cigarettes, paper goods, soap, etc... There is a 6 pound limit on coffee and a \$50 limit on fresh, frozen or

canned meats. If something is spilled or broken by the shopper, all debris must be cleaned up in the store.

Tickets may be purchased from any high school band member. The student who sells the winning ticket will receive a \$50 gift certificate to the store of his choice.



FIVE YEAR OLDS eager to get on with back-to-school. These Kindergarten students are pictured during registration Thursday. School begins Tuesday and they're ready to go. In left picture Lupe Gonzales and Ryan Burns try out chalk board. In right picture Tammy Pleasant and Cody Nichols visit with teacher Linda Crader. Parents of the students are: Mr. and Mrs. Jimmy Nichols, Johnny Pleasant, Mario Gonzales and Rick Burns. (Staff Photo)

Beth... visited a long time... Alma Chapman... Wednesday... Mr. and Mrs. ... and Bud had... Plainview Sunday... Janice Lackey... ren of Burleson... weekend in the home... and Mrs. W.E. ... Linda Lemons... ren of Lockney... in the home of Mr. Carl F. Lemons... evening.

IVE DOUBLE GO... BOND STAMPS

IGGY

rence Po... w Prices

about it! We're so confident you'll...

POLICY... mt grocery items. Then check... ur Piggy Wiggly tape and the... CE IN CASH... ts at competitive prices... m company to company.

to

ces we... in your... wide at... nbol of... behind... believe

Western Beef... d Steak... 1.49... boneless lb. 1.79

Franks... 79c

of vitamins... 18c



MRS. BRUCE WILLIAMS

Wines-Williams Vows Pledged In Henrietta

Susan Renee Wines, daughter of Mr. and Mrs. Leon Wines of Henrietta, and David Bruce Williams, son of Mr. and Mrs. Dan Teuton, were united in marriage in the First United Methodist Church in Henrietta on August 26 at 8 p.m. The double ring ceremony was officiated by Reverend Bill Murray, minister of the church.

The bride, given in marriage by her father was escorted to the bridal altar which was accented with a basket of white gladioli and white spider mums, flanked by two brass spiral candelabra accented with greenery and white tapers. Spider mums and greenery decorated the pews. The bride's attendants

were Mrs. Rick Offutt, sister of the groom, and maid of honor was Miss Diane Wines, a cousin of the bride. Both are from Lubbock. Greg Baker, friend of the groom, of Petersburg was best man. Groomsman was Mike Wines, brother of the bride, of Henrietta. Ushers were Rick Offutt, brother-in-law of the groom,

of Lubbock and Gary Cawley, cousin of the groom, of Lockney.

Candlelighters were Michael Cawley, cousin of the groom, of Lockney and Brian McAlpine, nephew of the groom, of Amarillo. They wore matching choir robes.

The bride wore a formal length gown of ivory satin organza fashioned with a scalloped peau-d'ange lace ruffle at the high Victorian neckline. The long slender lace sleeves were etched with beads and ended with a flared ruffle at the wrists. An overlay of lace in a deep oval, edged with ruffles of lace, formed a yoke on the bodice of the princess-line dress. A deep ruffle of lace formed the hemline of the skirt and full chapel train. Seed pearls accented the yoke and sleeves. The headpiece was a matching Juliet cap holding 3 tiers of illusion. She carried a colonial style bouquet of gardenias.

Following tradition, the bride borrowed a gold wedding band which belonged to her great grandmother Benson, who married in 1894. She wore a blue garter and in her shoe were pennies with the year of birth of the bride and groom. She also carried an embroidered linen handkerchief for something new, given by her aunt Mrs. R. I. Snook. She carried a white Bible belonging to her sister-in-law, Mrs. Rick Offutt.

Bridal attendants were attired in identical gowns of light blue, featuring a yoke of sheer fanastasia with a deeply flounced capelet bodice, edged in candlelight Venice lace. The lace edged the Victorian neckline and bottom of the floor length full skirt. They carried a colonial style bouquet of white daisies, blue miniature carnations and baby's breath. In their hair they wore a matching headpiece of the chosen flowers.

Miss Elaine Bunting and Mrs. Mike Wines sang "Evergreen" and "Wedding Song," accompanied by Mrs. W. W. Shultz, pianist and organist.

A wedding reception followed the wedding cere-

Alpha Mu Delta Paper Drive

Alpha Mu Delta Sorority is having a paper drive on Sunday, September 10 at 3 p.m. Newspapers should be left on the porch or steps of your home and will be picked up by club members. The drive is one of the sorority's service projects.

mony in the Fellowship Hall of the church. The bride's table was set with a cloth of candlelight and bridal illusion edged with lace and appliqued with lace flowers over candlelight satin.

Punch was served from a silver service. Silver candelabra with candlelight tapers, the bridal bouquet and a 3 tiered wedding cake with cascades of blue roses with small kissing angels between the layers and surrounded by devils ivy and gardenias centered the table.

A blue quiana cloth and blue and white napkins with the names Bruce and Susan engraved in silver decorated the groom's table. A silver coffee service was used. Small kissing angels surrounded by devils ivy complemented the decor. German chocolate cake was served, along with coffee. The bride is a graduate of Henrietta High School, and attended Midwestern University and Texas Tech.

Williams graduated from Lockney High and will be employed by Dan's Auto Service.

Following a trip to Carlsbad, New Mexico, the couple will be at home at 300 S. Popular in Lockney.

The rehearsal dinner was given in Wichita Falls, at Underwood's in the Crystal Room, on the night before the wedding. The event was hosted by the groom's parents, Mr. and Mrs. Dan Teuton.

Grandparents attending were Mr. and Mrs. A. O. Foster of Lockney, grandparents of the groom; and Mrs. G. H. Borgman of Henrietta, grandmother of the bride.

Society News



MRS. ROGER QUANNAH
SETTLER

Miss Lansford, Roger Settler Wed

Deborah Lynn Lansford and Roger Quannah Settler were united in marriage at 5 p.m. Saturday, July 1 in the Sanctuary of First United Methodist Church in Lubbock with the Reverend Richard E. Brunk, Jr., Lutheran minister, officiating.

The bride is the daughter of Mrs. Patricia Kirk Lansford O'Shea of Lubbock, and the late Dr. William N. Lansford of Lubbock. The bridegroom is the son of Mr. and Mrs. William S. Settler of Lubbock and Seattle, Washington.

The bride, given in marriage by her uncle, James Trueman Kirk of Houston wore a formal length gown of white satin, with long sheer sleeves and an Italian Renaissance veil. Chantilly

lace accented the bodice, sleeves and hem. The gown featured a portrait neckline and a flowing train.

Her attendants wore satin gowns of blue, aqua and green with floral over-skirts. The groomsmen's shirts coordinated with the attendants' dresses.

Bridal attendants were Miss Shayron O'Shea, sister of the bride, maid of honor; Mrs. Judy Alexander of Austin, matron of honor; and Diana D. Bullock, bridesmaid.

Rickey Alexander of Austin was best man, and groomsmen were Steve Lackey of Littlefield and William S. Settler of Lubbock.

Guests were seated by Steve Mangum of Littlefield, Charles Hutchinson of Lub-

Alpha Mu Delta Beginning

The Alpha Mu Delta Chapter of the Sorority met in the home of Blake Heston on Sunday, August 27, in advance of their "Beginning Day."

Purpose of the meeting was to inform the new members of the meaning of the Sigma Phi and the coming services. Kaye Franklin, president, welcomed the new members, and the following committee members were read: Kaye Franklin, president; Pat Gooch, secretary; Vickie Allen, treasurer; and Donna Johnson, service chairman.

Miss M Married

Miss LaJuana M. Bennett and Mr. Carleton were married Saturday afternoon in First United Methodist Church of Hereford. The couple's wedding Sept. 2 was the

second of the wedding party's parents, Mr. Bennett and Mrs. Jack G. Bennett.

The double ring ceremony was officiated by Minister Rev. Bennett. The church setting was decorated with a brass archway and greenery. The bride wore a yellow gown and the groom wore a white tuxedo. The bride's side was a champagne holder.

Open

Ladies Pull-out Junior and Mini Junior Pants Bras and Girders Infant and Girls Infant Booties

After a visit to Mexico and the couple will be attending the Law School.

The bride will be an elementary school teacher in the Lubbock Public Schools. She was a member of the Kappa Psi, and a Student Senator for two years. She was the American Girl and achieved the List.

The Women's Club of the First United Methodist Church will meet on September 5 at 9:30 a.m. The monthly business meeting is 9:30 a.m. and is urged to attend. Covered dish is requested.

The business meeting which will have the purpose of electing officers and coming year's tentative plans will be held September 5.

Recent winners of the partnership award are Donna Perry, Windy Perry, and Brigit Boush.

THE CABLE IS COMING

The cable is coming to Floydada September 15th. Don't miss one day of viewing. Call today so that we can install your cable now. The channels that we will be carrying are the following:

- 2 - Proposed local First Baptist Church
- 3 - Weather Channel
- 4 - P. T. L.
- 5 - Lubbock KTXT
- 6 - WTCG Atlanta, Georgia
- 7 - Lubbock KMCC
- 8 - Christian Broadcasting Network
- 9 - Vistar
- 10 - KTVU San Francisco
- 11 - KCBD Lubbock
- 12 - To be announced
- 13 - KLVK Lubbock.

All for only \$8.25 monthly.

CABLE T. V.

of Floydada
(T. V. Signal Service)

119 E. Kentucky

983-2911

SHURFRESH MILK

KIRTLEY'S MARKET

316 N 2ND 983-3105

WE GIVE DOUBLE S AND H GREEN STAMPS ON WED. THESE SPECIALS GOOD SEPT. 4 THRU SEPT. 9, 1978

PRODUCE		MEAT	
THOMPSON SEEDLESS GRAPES	LB. 69¢	COUNTRY PRIDE GRADE A FRYERS	LB. 59¢
PLUMS	LB. 3/\$1.00	SHURFRESH CANNED HAM	3 LB. \$5.45
PEARS	69¢	FLAVOR WRIGHT BACON	LB. \$1.19
POTATOES ALL PURPOSE 10 LB.	99¢	HORMELL SUPER SELECT SPARE RIBS	LB. \$1.19
TOMATOES	LB. 35¢	SHURFRESH MARGARINE	LB. QTS. 2/89¢
SHURFINE PAPER TOWELS REG 68	59¢	INSTANT NESTEA	3 OZ. \$1.99
MARINA TOILET TISSUE 4 ROLL PAK REG 1.18	99¢	SHURFRESH STRAWBERRIES	10 OZ. 45¢
SHURFINE FLOUR	5 LB. REG. 90¢ 73¢	JENNO PIZZA	ALL VARIETIES REG. 1.32 99¢
5 WEEKLY DISCOUNT EACH ONLY 29¢	GLACIER 12-oz. Beverage Glass	6-32 OZ. COKE OR DR PEPPER	\$1.49 PLUS DEPOSIT

Special Group Ladies Summe Junior Ladies

ALL MERCHA Be Here At 9: Labor Day S for Monday ONLY

NEWS 'N' NOTES

(by Sharon Hillis)

Alpha Mu Delta Beginning Day

The Alpha Mu Delta Chapter of Beta Sigma Phi met in the home of Blake Hickerson on Tuesday, August 29 in observance of their annual "Beginning Day."

Purpose of this meeting was to inform new pledges of the meaning of Beta Sigma Phi and to learn of coming activities.

Kaye Powell, president, led the opening ritual and welcome, after which a flowered committee report was read. Other officers were Julie Hickerson, treasurer; Pat Cates, v. p.; Vickie Allen, corresponding sec.; and Donna Henderson, service chairman.

Refreshments were served to members and guests including: Vickie Allen, Pat Cates, Lu Ann Collins, Donna Gross, Donna Henderson, Julie Hickerson, Jo Patterson, Kaye Powell, Daphna Simpson, Donna Anderson, Debbie Beatty, Campbell, Dorita Carr, Bama Coward, Sharon Fenton, Kay Jones, Tompa Mable, Revis Pernel and Pyle.



MRS. CARL GIBSON
Miss Matchett, Gibson Married In Hereford

book and Lochland Lamm of Lubbock.

Ben Karnes of Dallas, professional pianist, performed the organ selection and accompanied Kaye Wook Shin, soloist, of Lubbock.

The bride and groom repeated vows which they had written as the sun streamed through the sanctuary window, one of the largest in the world. Pledges were read by Kahlil and Black Elk highlighting the ceremony.

A reception followed at the church parlor, with no selections provided by Ben Karnes.

The bride is a graduate of Texas Tech University where she was listed Who's Who. She is a member of Zeta Tau Alpha, Alpha Lambda Delta honorary. She was active in student government and on University Center Advisory Board, and achieved Dean's List eight semesters.

The groom is a graduate of Texas Tech University where he received the George Washington Honor. He is a member of Kappa Psi, and served as Student Senator for two years. He was president of the American Indian Council and achieved the Dean's List.

After a wedding trip to Mexico and Colorado, the couple will reside in Lubbock, where the groom is attending the Texas Law School.

The bride will be teaching elementary music for Lubbock Public Schools. She was the elementary teacher in Big Lake, Texas, 1975-78, and is the immediate past president of Reagan County P.T.A. She is the granddaughter of late Mr. and Mrs. O. Willis Kirk of Floydada.

Women Golfers To Meet Tuesday

The Women's Golf Association of the Floydada Country Club will meet Tuesday, September 5 for a monthly luncheon and business meeting. Tea will be served at 9:30 a.m. Everyone is urged to attend and bring a covered dish to the luncheon.

The business meeting which will follow is for the purpose of considering the election of officers for the coming year and to discuss tentative plans for the annual Jill tournament to be held September 9.

Recent women golfers include: Rue Nix, Peterson and Donna Peterson, partnership, low ball; Elaine Green, most bogey; Donna Pernel, low par; Windy Pierce, low ball; Brigit Boxler, low par.

The bride's attendants were gowned in dresses of orange taffeta that were designed with a high neckline with sheer orange insert on the bodice yoke, bishop sleeves, and long skirt with an overlay of sheer orange material. Each attendant wore in her hair a comb covered with orange silk flowers. They carried brown wicker baskets filled with orange tiger lilies, daisies and touches of yellow and brown ribbon accents.

The former Miss Matchett was given in marriage by her brother, Ricky Matchett of Hereford. Her dress was a white, formal-length gown of sophisticated satin with an overlay of chiffon and embroidered Alencon lace. The high lace neckline topped a sheer chiffon yoke. Alencon lace sprinkled with pearls were applied on the bodice. The sleeves were of bishop style. The unadorned skirt fell from a princess waistline into a chapel wateau train that was accented with Alencon-lace appliques.

Lace and pearls covered her Juliet cap that held a blusher veil. The bridal bouquet was a circular design of yellow daisies with touches of orange, baby's breath and brown ribbon.

The attendants' baskets of flowers were arranged to form the centerpiece on the reception table. The white satin table cloth was trimmed with orange bows. The three tiered cake was decorated with orange and yellow chrysanthemums and was topped with a kissing couple figurine enclosed in a blush of blossoms.

Reception attendants were Mrs. Jerry Neuman of Stamford, Mrs. Sonny Pittcock of Rule and Mrs. S.M. Hayes of Carlsbad, New Mexico.

For the wedding trip to the Dallas area, the new Mrs. Gibson chose a belted dress of brown and dusty rose with matching accessories.

Mr. and Mrs. Gibson will be at home in Pampa. He is employed by Far-Tex Custom Feeders.

Both were spring graduates of West Texas State College in Canyon. She was graduated from Hereford High School and he is a graduate of Lockney High School.

FLOWERING POT PLANTS

Living plants are increasing in popularity for gifts and decorations. A few tips on their care can help prolong the pleasure received from these plants.

Kalanchoes, chrysanthemum, tulips, azaleas and most other flowering pot plants will last much longer if kept in a cool location away from drafts. Never place them where heating vents or other heat sources can blow or reflect directly on them. If the room where the plant is used is kept rather warm, try moving your plant to a cooler room each night.

Water is extremely important, since your flowering plant has probably been growing in a greenhouse where it has had all the water it could use, it will wilt quickly when deprived.

The soil should always be fairly moist to the touch. This usually means water about every other day. Over watering is a possibility also and very confusing since the symptoms for it are the same as for lack of water. Planting media must be well drained and containers should have a hole in the bottom. This usually will prevent problems from over watering.

Light is also important. Artificial lighting is helpful but most plants will remain attractive longer if placed near a window or other source of natural light. Direct sunlight or placement too near glass should be avoided.

Consumers frequently ask about how to transplant their flowering plants into their landscape. Many species are not well adapted for garden use having been developed just for forcing purposes in the greenhouse. Most florist type azaleas are very difficult to grow and best enjoyed for their flowering period then discarded. Gloxinias and cyclamen are not good landscape plants for most of Texas. Although the chrysanthemums used for pot plants are usually not the best ones for landscape use, many will perform satisfactorily. If they can be kept alive until early spring, cut back to 3 or 4 inches tall, and planted in well-drained

Flowering pot plants are great to receive or give for Holidays and special occasions. By giving them a little extra care this joy may be extended considerably.

GOOD EATING LABOR DAY SPECIALS

SERVING FROM 9 AM TO 2 PM

AZTECA CAFE

109 W. CALIFORNIA

Former Floyd County Residents Meet In California

The ninth annual picnic for former Floyd County residents who are now living in California was held in Balboa Park in San Diego, California on Saturday, August 19.

A delightful day was spent visiting, playing of "42" and taking pictures. A delicious lunch was served at noon.

Those enjoying the affair were: Edgar and Jean Wilkins Willis, Moorpark; Ron Hill, Golden Gate Seminary-San Francisco; Opal Nelson Higgins, La Mesa; Don and Lorraine McLain Wallace, Woodland Hills; E.T. and Faye Williams, Bakersfield; Jeremy Smith, Bakersfield; J.T. and Rita Stovall, National City; Dottie Stovall Turner, Chula Vista; Gilbert and Laura Kitson, La Mesa; Ralph and Jewell Hennessee Taylor, Tulare; Mr. and Mrs. Everett Price, El Cajon; and Melvin Hollums, Oceanside.

Attending from San Diego were: Buck and Clara Belle Goughly Bishop, Sappa -

Ward Henderson, Mrs. Kate Ward, Claude and Irene Higgins Cash, Larry Mayes, Virgil and Virginia Womack Breit, Bill and Virginia Taylor Jeter; Arlis (Pee Wee) and Mona Blackmon Rainer, Dr. John Robuck and Mrs. Linda Breit Robuck, Gordon and Imogene Roy Gray, Duke and Frances Lovell Wallace, Dick and Inez Harrison Furrow.

Traveling the greatest distance was Ron Hill, Golden Gate Seminary, San Francisco.

The oldest person in attendance was Mrs. Kate Ward 83. The youngest was Jeremy Smith, grandson of the E.T. Williams, Bakersfield.

The picnic will be held next year in Long Beach on the third Saturday in August. Host and hostess will be Gilbert and Betty Shirey, 3716 Long Beach Blvd. Long Beach, Ca. 90807. Please contact them for additions to the mailing list for next years invitations.

Kiss A Baby For Cystic Fibrosis

The 1978 Kiss A Baby Week Campaign of the Cystic Fibrosis Foundation begins September 18 in the Floydada area, and Chairman Judy Dunlap is asking volunteers to donate their time to fund raising activities.

"I'm looking for people who can give a little of their time so that millions of lung-damaged children across the United States can live longer, more normal lives," said Judy Dunlap of the Lone Star Chapter of the Cystic Fibrosis Foundation.

"Just breathing is a struggle for these kids. They must have constant care and treatment. Some must take as many as 50 pills a day to fight infection and aid digestion, and breathe a medicated mist from a face mask each day."

The much needed funds raised from the campaign will go to support research, care and education programs aimed at lengthening lives and finding a cure for Cystic Fibrosis. These programs include support for more than 100 Cystic Fibrosis Centers across the nation which provide diagnosis, treatment and referral to children suffering from asthma, chronic bronchitis, "childhood emphysema," and recurrent pneumonia, as well as cystic fibrosis.

"In addition to finding a cure for C/F," said Dunlap, "researchers are hoping to find a test to detect carriers of the C/F gene, and also a method of diagnosing the disease at birth. Early diagnosis and treatment helps extend and improve lives."

"In 1955, when the C/F Foundation was established, most children with C/F died before reaching 3 years of age. Now more than 50% can be expected to live past age 18. But, we want to make it possible for all children with cystic fibrosis to live normal, full lives." Volunteers can help," she added, by giving of their time to support the giving of the most precious gift of all—the Breath of Life."

To volunteer for the Kiss A Baby Campaign, Contact: Judy Dunlap, 983-3561.

ATTENTION ALL FARMERS, CREW CHIEFS AND PARENTS:

EVERY CHILD BETWEEN THE AGES OF 7 AND 17 INCLUSIVE RESIDING IN FLOYD COUNTY MUST ATTEND REGULARLY EITHER PUBLIC OR PAROCHIAL SCHOOL. THE PARENTS OF SUCH CHILDREN NOT REQUIRING THEM TO ATTEND SCHOOL MAY BE SUBJECT TO HEAVY FINES. CREW CHIEFS MAY NOT WORK SCHOOL AGE CHILDREN DURING SCHOOL HOURS. FARMERS MAY BE SUBJECT TO HEAVY FINES IF THEY PERMIT SCHOOL AGE CHILDREN TO WORK ON THEIR LAND DURING SCHOOL HOURS WITHOUT A PERMIT.

FLOYDADA SCHOOLS	CLASSES BEGIN SEPT. 5
LOCKNEY SCHOOLS	CLASSES BEGIN SEPT. 5
DOUGHERTY SCHOOLS	CLASSES BEGIN SEPT. 5
SOUTH PLAINS SCHOOLS	CLASSES BEGIN SEPT. 5

J. K. HOLMES
COUNTY JUDGE
FLOYD COUNTY
FLOYDADA, TEXAS

ATENCION RANCHEROS, CONTRATISTAS, Y PADRES DE FAMILIA:

CADA CRIATURA DE EDAD 7 HASTA 17 QUE RESIDA EN EL CONDADO DE FLOYD TENDRA QUE ASISTIR A LA ESCUELA DIARIA, YA SEA PUBLICA O PARROQUIAL. LOS PADRES QUE NO MANDEN A SUS HIJOS A LA ESCUELA, TENDRAN QUE PAGAR UNA MULTA. LOS CONTRATISTAS NO PUEDEN HACER QUE TRABAJEN CRIATURAS DURANTE HORAS DE ESCUELA. LOS RANCHEROS TENDRAN QUE PAGAR MULTA SI PERMITEN QUE CRIATURAS TRABAJEN EN SUS LABORES DURANTE ESAS HORAS SIN PERMISO.

LAS CLASES EN FLOYDADA, LOCKNEY, SOUTH PLAINS, Y DOUGHERTY COMIENZAN EL DIA DE SEPTIEMBRE 5.

J. K. HOLMES
JUEZ DEL CONDADO

Labor Day Specials!

Open at 9:30 with Bargains Galore!

- Men's Pull-on Pants values to 8.00.....Now 3.88
- Men's and Misses Dresses values to 28.00.....Now 75% off
- Men's and Misses Sportswear values to 20.00.....Now 75% off
- Men's Pants by Cocauts values to 14.00.....Now 6.88
- Men's and Girdles values to 10.95.....Now 1.00-2.00-3.00
- Men's and Girls Sportswear values to 10.00.....Now 1/2 price
- Men's Booties and Soft Shoes values to 6.50.....Now 1/2 price

- Men's Short Sleeve Shirts values to 8.00.....Now 1.88
- Men's Knit Shirts values to 7.00.....Now 2.88
- Men's Suit and Sport Coats values to 130.00...Now 1 2 price
- Men's Fashion Ties values to 7.00.....Now 1 2 price
- Men's Short Sleeve Shirts values to 7.99.....Now 1.88
- Men's Colored and Denim Jean values to 10.50..Now 1/2 price

- Berry Bath Tub Mats value 5.00.....Now 1.99
- Men's and Ends Sheets and Pillow Cases values to 13.99.....Now 1/2 price
- Special Group Bedspreads values 40.00.....Now 1/2 price
- Men's Towels values to 4.00.....Now 2-3.00
- Men's Clocks values to 1.60.....Now 3-1.00
- Men's Straps values to 8.99.....Now 2.88
- Men's Large size Suitcases value 70.00.....Now 29.88
- Men's Summer Lingerie values to 16.00.....Now 75% off
- Men's Summer Handbags values to 16.00.....Now 75% off

- Special Group Girls School Shoes values to 13.00.....Now 1/2 price
- Men's Summer Shoes values to 16.00.....Now 1/2 price
- Men's Ladies values to 15.00.....Now 1/2 price

ALL MERCHANDISE IN LIMITED QUANTITIES!
Here At 9:30 for the Best Selection!

Labor Day Specials,
for Monday, Sept. 4

ONLY

Bealls

"We don't want all the business—just yours"

Willson & Son Builders Mart

IOWA STATE VS. RICE

A. C. and New Holland Equipment

McDonald Implements

HALE CENTER VS. BOVINA

MOORE-ROSE FUNERAL HOME

OKLAHOMA VS. STANFORD

Fender, bumper, mender

QUALITY BODY SHOP

KANSAS ST. VS. ARIZONA

Your Fina Wholesale And Retail Dealer...

NICHOLS OIL COMPANY

CANYON VS. MONTEREY

"For your health needs"

Thompson Pharmacy

TÉXAS TECH VS. S. CALIF.

We appreciate your business

Hale Insurance

PALO DURO VS. DUMAS

"Dependable Service"

Floydada Co-op Gins Inc.

BROWNFIELD VS. LEVELLANC

Buick-Pontiac-GMC

CITY AUTO INC.

CROSBYTON VS. VALLEY

HAVE FUN...

\$20⁰⁰ In Cash Prizes Each Week

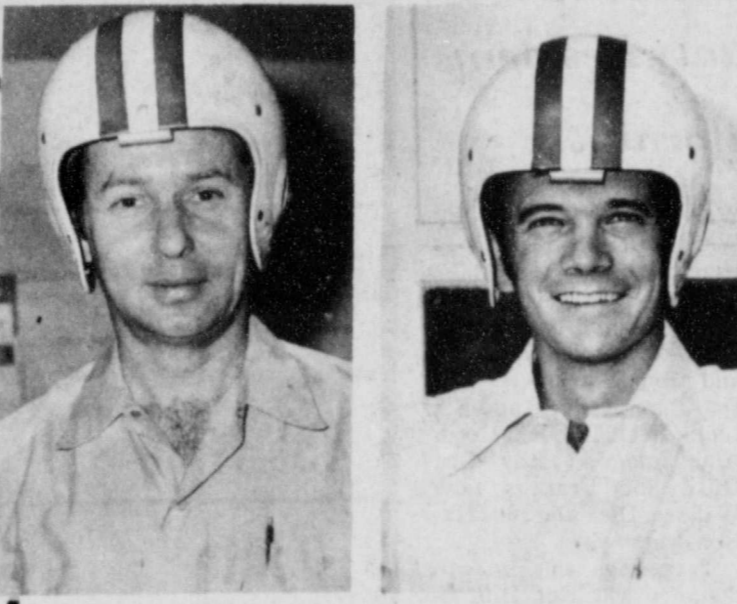
CONTEST RULES:

Anyone can enter except the employees of the Hesperian. Three cash prizes are given each week - ties will split prize money. Members of the sports department are sole judges of the contest and their decision is final.

It is not necessary to indicate scores on all the games.... But score must be indicated on the tie breaker game at right.

Simply circle the team you choose to win in each of the footballs. Deadline for submitting entries is 5 p.m. Friday - winners will be announced the following week. Enter as many times as you wish, print name and address plainly on blank below and mail or bring entire page to the Hesperian office.

Tie-breaker game will be considered only in case of ties. Limit One Winner Per Family Per Week.



Johnny Bill Sue
Floydada 24
Dimmitt 14

Ricky Burns
Floydada 21
Dimmitt 14

Crop and Livestock Loans

PRODUCTION CREDIT ASSN.

LITTLEFIELD VS. FRENSHIP

Massey-Ferguson equipment

Floydada Implement

ODESSA ECTOR VS. CAPROCK

Sears

CANADIAN VS. PHILLIPS

"Is Everybodys Everything"

Dairy Queen

PETERSBURG VS. ABERNATHY

City Trim Shop

PORTALES VS. MULESHOE

WIN PRIZES... Football CONTEST

AND QUARTERBACK FORECAST

DEADLINE FOR ENTRIES - 5 P.M. FRIDAY IN HESPERIAN OFFICE OR POSTMARKED

TIE BREAKER- Guess Total Points AND CIRCLE WINNER

NAME	
ADDRESS	
CITY	

1ST PRIZE \$10⁰⁰
2ND PRIZE \$4.00
3RD PRIZE \$6.00

Floydada At Dimmitt

Cosmetics and Apparel

Roye's Merle Norman

LUBBOCK VS. BORGER

Your Full Service Station

Gilbreath Exxon Service

PLAINS VS. MORTON

Supplies For The Farmer

Russell's Equipment & Supply

TCU VS. SMU

Kirtley's Market

HOLLIS VS. WELLINGTON

CONSUMERS FUEL ASSN.

FRIONA VS. TULIA

Good food and friendly service

Buddy's Food

ESTACADO VS. PLAINVIEW

The Fastest Service In Town

Cornelius' CONOCO

POST VS. LOCKNEY

Your I.H. Dealer

MARTIN & CO.

KANSAS VS. TEXAS A AND M

Case Power & Equipment

PAMPA VS. HEREFORD

Caprock Motor Parts & Hardware Inc.

NEW DEAL VS. IDALOU

HOSP...

Anderson, ... continues to ...
Johnny Marti ...
Jose Martinez ...
Wandell Vance ...
Leonard H. ...
Carrigino P. ...

Got Heating Or Plumbi Problems? Call HOLME PLUMBI ...
83-2251 ...
9:30 a.m. ...
3:30 p.m. Un...

Things t ...
where your F ...
your favorite ...
Opinions on A ...
Family news. ...
Local events t ...

N ...
of l ...
FLOY ...
and reduced-p ...
full price of ...
Lunch, School ...
Local school c ...
come criteria ...
FREE A ...
(Minimum ...
Family ! ...
1 ...
2 ...
3 ...
4 ...
5 ...
6 ...
7 ...
8 ...
9 ...
10 ...
11 ...
12 ...
Each Additi ...
Family Mer ...
Children from ...
shown are eligi ...
In addition, fam ...
usual expenses ...
costs in excess ...
due to the ment ...
casualty losses ...
Application for ...
only. Additional ...
and the principa ...
on the applicati ...
purpose of dete ...
at any time du ...
In certain cases ...
if a family has ...
apply for such ...
school. ...
In the operation ...
criminated again ...
Under the prov ...
pective school ...
If a parent is di ...
make a request ...
Floydada ...
for a hearing to ...
of the hearing p ...
Each school and ...
concrete policy ...
The policy also ...
discrimination at ...
a lunch.

FLOYDADA'S CAPROCK
HOSPITAL REPORT

Wanda Anderson, admitted 8-24, expired 8-28.
Isabel Martinez, admitted 8-24, dismissed 8-25.
James Jenkins, admitted 8-26, dismissed 8-31.
C.D. Garrison, admitted 8-26, dismissed 8-29.
Pawline P. Monroe, admitted 8-26, dismissed 8-28.
Margaret F. Molinar, admitted 8-26, dismissed 8-31.
Jvona Holiday, admitted 8-28, dismissed 8-31.
Mattie Burmah Probasco, admitted 8-28, dismissed 8-31.
Callie S. Plemons, admitted 8-29, continues treatment.
Doyce Smalley, admitted 8-30, expired 9-1.

Got Heating Or Plumbing Problems?
Call **HOLMES PLUMBING**
983-2251
9:30 a.m. and 5:30 p.m. Until?

Things to Send or Call in to 983-3737
Where your FHS graduate is attending college.
Your favorite recipe.
Opinions on Aging.
Family news.
Local events to Community Calendar — 983-2360.

Floyd's 206 Businesses Report Quarterly Sales

AUSTIN — State Comptroller Bob Bullock said Tuesday night that gross sales in Texas for the first quarter of 1978 totaled \$42.4 billion, up 15 percent over the same three-month period last year.

"All the signs point to another record economic year," said Bullock. Bullock's office Monday released computer analyses showing reported sales for each of the state's 254 counties. Sales also are broken down by Standard Metropolitan Statistical Area (SMSA).

Harris County, the state's most populous, recorded sales totaling \$10.7 billion, up 13.8 percent over the first quarter of last year.

Sales in the state's other major urban centers included:

Dallas County, \$6.9 billion, up 21 percent.
Bexar County (San Antonio), \$1.9 billion, up 18.7 percent.
Tarrant County (Fort Worth), \$2.6 billion, up 30 percent.
Swisher County's 235 reporting outlets reported \$12,176,230 in gross sales; \$5,114,124 in gross taxable sales; \$17,316 in use tax purchases; and \$3,421,153 subject to tax.
Castro County's 180 reporting outlets reported \$16,916,637 in gross sales; \$12,746,026 in gross taxable sales; \$199,034 in use tax purchases; and \$3,807,907 subject to tax.
Floyd County's 206 reporting outlets reported \$14,398,959 in gross sales; \$4,718,267 in gross taxable sales; \$1,805,201 in use tax purchases, and \$2,949,424 subject to tax.

Back To School Style Show Deemed Success

The Back to School Style Show sponsored by the 1956 Junior Study Club was held Tuesday at Duncan Elementary Cafitorium. Over 150 people joined club members and local merchants in viewing the new fall fashions for teachers as well as students.

A welcome was given by club president Elaine McNeill, who later introduced the mistress of ceremonies, ValDonna Barbee.

The audience was then presented over fifty new fashions modeled by children, students and adults.

Local merchants participating were as follows: Andersons Department Store, Hale's Department Store, Sears Catalog Sales, and Roye's Merle Norman.

Those presenting fashions for Anderson's were Shayla Barbee, Tiffany Bennett, Judi Bean, Kristi Willis and Margie Fowler.

Representing Hale's were Chad Williams, Mitchell Harris, Zack Nutt, Stacy Day, Melissa Hale, Elaine McNeill, and JoAnn Cagle.

Those modeling for the Loft were Sherry Smith and Debbie Bertrand.

Fashions from Beall's were modeled by Shannon Paty, Randy Wideman, Lisa Welborn, Beverly Vickers, and Connie Wideman.

Sears chose Tana Turner, Shayla Moore, Kelly Higginbotham, Lana Moore and Leora Younger to show their new styles.

Modeling for Roye's-Merle

Norman were Shelly Bear-den, Lisa Powell, Lori Gilly, Julie Faulkenberry, Melody Powell and Kathy Green.

A special performance was given by the 1978 F.H.S. varsity cheerleaders. The group consisting of Tracy Tyr, Head cheerleader, Judi Bean, Carla Burleson, Jonna West, Kelly Higginbotham, and Julie Morton were dressed in cheerleading uniforms of days gone by.

They were a reminder that the fall season always means football season in our community.

Before refreshments of lemonade and home-made cookies were served, two lovely door prizes were given away. An attractive tote painting by club member Kay Dean Smith was won by Mrs. T.L. Holland. The other prize, a framed oil painting by club member Beth Pratt, was won by Carrie Bertrand.

A special "thank-you" was given to all representatives of Andersons, The Loft, Sears, and Roye's, for their participation in the Back to School Style Show by members of the 1956 Jr. Study Club.

Fair

Members of the Floyd and Surrounding Counties Fair Association have started getting the fairgrounds in shape for the annual fair, scheduled this year on September 14, 15 and 16.

Paul Koonsman, president of the fair association board of directors, reports that the fair buildings will be open beginning next Saturday (September 10) so that exhibitors can start readying booths, for the fair.

Returning to the fair this year after several years' absence is the gospel singing, on Friday night.

As in the past, a parade through downtown Lockney will mark the first day of the fair. It's scheduled at 4:15 p.m. Thursday. Also Thursday is a Shorthorn Breeders Association exhibit and show, another new feature of the 1978 fair. Most judging of individual fair entries will be conducted Thursday.

The big event Thursday night in the entertainment building is the Floyd and Surrounding Counties Fair Queen Contest. Young ladies from Floyd, Briscoe, Motley, Crosby, Hale and Swisher counties are eligible to enter.

Friday is Women's Day at the fair, numerous demonstrations planned.

On top Saturday at the fair are an arts and crafts show, old fiddlers contest, children's pet show, livestock show and judging contest, tractor-driving contest, and other events.

The fair horse show will be Sunday, September 17.

Other fair association officers besides Koonsman are Warren Mitchell, vice president; Clar Schacht, treasurer; Johnnie Jameson of Matador, secretary.

NOTICE of Free Lunch Policy

FLOYDADA INDEPENDENT SCHOOL DISTRICT today announced its policy for free reduced-price meals, free milk, for children unable to pay the full price of meals and milk served under the National School Lunch, School Breakfast, and Special Milk Programs.

Local school officials have adopted the following family size income criteria for determining eligibility:

FREE AND REDUCED PRICE ELIGIBILITY INCOME SCALE

(Minimum Guidelines Increased by 25% for Free and 95% for Reduced-Price Meals)

Family Size	Family Annual Income	
	Free Meals	Reduced-Price Meals
1	\$0 - 4,190	\$ 4,190 - 6,530
2	0 - 5,500	5,500 - 8,580
3	0 - 6,810	6,810 - 10,630
4	0 - 8,110	8,110 - 12,660
5	0 - 9,310	9,310 - 14,530
6	0 - 10,510	10,510 - 16,400
7	0 - 11,600	11,600 - 18,100
8	0 - 12,690	12,690 - 19,790
9	0 - 13,680	13,680 - 21,330
10	0 - 14,660	14,660 - 22,870
11	0 - 15,640	15,640 - 24,390
12	0 - 16,610	16,610 - 25,910

Each Additional Family Member \$970 \$1,520

Children from families whose income is at or below the levels shown are eligible for free or reduced-price meals or free milk. In addition, families not meeting these criteria but with other unusual expenses due to unusually high medical expenses, shelter costs in excess of 30 percent of income, special education expenses due to the mental or physical condition of a child, and disaster or casualty losses are urged to apply.

Application forms are being sent to all homes in a letter to parents. Additional copies are available at the superintendent's office and the principal's office in each school. The information provided on the application is confidential and will be used only for the purpose of determining eligibility. Applications may be submitted any time during the year.

In certain cases foster children are also eligible for these benefits. If a family has foster children living with them and wishes to apply for such meals and milk for them, it should contact the school.

In the operation of child feeding programs, no child will be discriminated against because of race, sex, color or national origin.

Under the provisions of the policy the superintendent of each respective school will review applications and determine eligibility. If a parent is dissatisfied with the ruling of the official, he may request a hearing either orally or in writing to

Floydada Independent School District

has a hearing to appeal the decision. The policy contains an outline of the hearing procedure.

Each school and the office of the superintendent has a copy of the complete policy which may be reviewed by any interested party.

The policy also provides that there will be no identification of or discrimination against any student unable to pay the full cost of lunch.

FLOYDADA SCHOOL LUNCH MENU

September 5 - 8, 1978

TUESDAY

LUNCH: Baked ham
Old fashioned potato salad
Seasoned green beans
Pineapple crisp
Hot rolls
1/2 pint milk

WEDNESDAY

LUNCH: Battered fried fish
FHS - Salmon croquettes
Seasoned pinto beans
Creamy cole slaw
Lemon pudding with vanilla wafer
Corn bread squares
1/2 pint milk

THURSDAY

BREAKFAST: 1/2 cup orange juice
Scrambled eggs with toast & jelly
1/2 pint milk
LUNCH: Hamburgers on home made buns

Tomato, lettuce & ill pickles
Potato chips, apricot cobbler
1/2 pint chocolate or plain milk

FRIDAY

BREAKFAST: 1/2 cup orange juice
2 slices bacon, toast, jelly
1/2 pint milk

LUNCH:

Chicken pot pie
Cheese sauce potatoes
Early June peas
Carrot sticks
Wild cherry cake
Hot rolls
1/2 pint milk

THE FLOYD COUNTY HESPERIAN

Published each Sunday and Thursday at 111 E. Mo. St., P.O. Box 700, Floydada, Texas 79235. Second class postage paid at Floydada, Texas 79235. Publication No. 202660. Wendell Tooley, editor. Subscription rates: Local \$9.50 a year, out of trade area: \$10.50

We're dealing to make room for new 1979 merchandise. It's your chance to **SAVE** on the RCA ColorTrak TV you've been wanting!

BIG RCA ColorTrak CLEARANCE

RCA ColorTrak
RCA's most Automatic Color TV ever

RCA ColorTrak 25" Diagonal

RCA XL-100 25" Diagonal

SAVE BIG MONEY

Don't Forget... Purchase Of A New 1978 or 1979 Color T.V. Entitles You To Register For 13" Color R.C.A. Portable To Be Given Away August 31st.

REMEMBER... CABLE T.V. IS COMING SOON.

JERRY'S T.V. & Appliance
WE SERVICE WHAT WE SELL

215 So. Main 983-3481 Floydada

Attention:

The Annual Meeting Of The Floyd County FARM BUREAU

will be at **7:30 p.m.**

DUNCAN ELEMENTRY CAFETERIA

Thurs. Sept. 7th 1978

Paymaster

50th Anniversary FIELD DAY CELEBRATION

Wednesday, September 6th
9:00 A.M. - 2:00 P.M.
on the Paymaster Farm

* FREE Bar-B-Que lunch, a Paymaster cap, and Tours for all registered guests.
* Paymaster Farm is located 3 1/2 miles north of Aiken, Texas off Hwy. 70 east (10 miles east of Plainview).

ACCO SEED
DIVISION OF ANDERSON CLAYTON & CO.

RECAST FRIDAY MARKED
Floydada At Jimmitt
Friendly folks Food
INVIEW
Service In Town CONOCO
KNEY
H. Dealer
N & CO.
A AND M
Equipment
FORD
Motor Parts
are Inc.
ALOU

Lake Mackenzie Is Now Clear

Fishing has been good for channel catfish, crappie and bass at Lake Mackenzie. Nice stringers of crappie have been caught although most of the fish have been small up to one pound.

A few smallmouth bass have been caught. The lake has dropped ten inches during the summer and is now clear.

ACCIDENT CONTROL
—Animals may be responsible for about 10 percent of farm and ranch injuries, according to the Texas Agricultural Extension Service. Some of these can be prevented by just "care and kindness"—that is, not teasing or mistreating animals. Let animals know you are around; don't startle them. And keep walking surfaces dry and clear of clutter.

Order Form

GROSSMONT PRESS
7071 Convoy Court/Suite 310 • San Diego, CA 92111

Please send copies of "The Answers to Par Golf" by Kris Wise

Quantity	Price
_____ copies at \$3.95 per copy	_____
California residents add 6% tax	_____
Shipping & handling 75¢ TOTAL	_____

Cash/check/money order enclosed
 Bill me (On orders of 5 or more books only)

Name _____
Company or school _____
Address _____
City _____
State _____ Zip _____
(Bookstores: 40% discount on order of 5 or more books.)

The Answers to PAR GOLF



THE AUTHOR:

Kris Morgan Wise took up the game of golf in 1960. Like most beginners, he found the golf swing to be the most difficult part of the game. Frustrated by years of failure to improve by using traditional methods, Wise was determined to find the real answers to the classic golf swing. An engineer by training, Wise was familiar with the laws of physics and their relationship to golf, and by applying this knowledge to his golf game, Wise devised a series of unique exercises which helped him to master the game.

Wise currently resides in San Diego and is employed at San Diego State University. Outside the University, his main interest is golf; his spare time is spent developing his golf theories and giving golf lessons. Wise also gives tennis lessons, and is working on a book about the tennis stroke.

THE BOOK

You can play scratch golf by using a few easy techniques. *The Answers to Par Golf* shows you how. Kris Wise covers all aspects of your golf swing, from its relation to the laws of physics to the actual movement of the swing itself, with each movement fully illustrated.

Step by step, the author shows you how to develop a free-flowing natural golf swing. He has also developed innovative exercises to aid in perfecting your swing.

Whether you are a beginner or an expert, *The Answers to Par Golf* will shave strokes from your game.

\$3.95
Grossmont Press
San Diego, CA.

Highway Patrol Around The Clock Day Holiday

Regional Commander, Major C.W. Bell of the Lubbock Department of Public Safety Region 5, comprising of 60 counties, is optimistic for a safer Labor Day Weekend 1978. Last year, Texas lost only 27 in fatal crashes on the highways. This is the lowest number killed in traffic accidents on a Labor Day Weekend since 1966, when the death toll was only 23. Major Bell said, "Holiday traffic will be heavy near recreational areas such as lakes and camp grounds. The Texas motorist should be extra careful for children playing and for motorcycles. Both are difficult to recognize by the motorist in these crowded places." Bell said that the drinking driver still poses a problem in traffic. He urges the motorists to cooperate with all law enforcement agencies in helping to reduce loss of life by being especially alert for the drunken driver.

The Texas Department of Public Safety will have all its uniform personnel available around the clock during Labor Day Operation Motorcade 1978. These troopers will be on the lookout for the DWI and speeding driver,

since there are many causes of... The... type of... have... source... highways... are... head... meet... is... not... The... people... ing... job... also... as... more... in... available... to... ages... to... troopers... ways... ing... road... Day... saying... killed... han... dea... as... those... not... zed."

Do You Like The Report?

CANYON -- A weekly fishing report for most of the public lakes in the Texas Panhandle has furnished local anglers with up-to-date fishing conditions and the report was done voluntarily by fishery personnel stationed at the P&WD Canyon laboratory during the past two fishing seasons.

This report is considered as a method of increasing the fishing opportunities for all anglers and Joe Kraai, fishery project biologist, would like comments from the public indicating whether he should schedule a similar fishing report next summer or eliminate it from his agenda.

Letters or phone calls should be directed to Joe Kraai, fishery biologist, Texas Parks and Wildlife Department, P.O. Box 835,

Canyon, TX 79065-0835. Even though reports for 1978 are being month... fishing... handle... As... tures... into... they... available... species... walleye... smallmouth... northern... become... winter... Fishing... at... less... ers... ing... to... barometer...

DOUBLE BLUE STAMPS ALL DAY WEDNESDAY

WE RESERVE THE RIGHT TO LIMIT PRICES EFFECTIVE September 4-9, 1978

Double Stamps Wednesday

THOMASON
114 NORTH EAST 8TH
PHONE 652-3346 LOCKNEY, TEXAS
WE RESERVE THE RIGHT TO LIMIT

Shurfresh Milk

VENTURE FOODS

Meat Specials

ARMOUR STAR
Sliced Bologna
12 OZ. PKG.
\$1.09

ARMOUR STAR
Sliced Bacon
1 LB. PKG.
\$1.49

EXTRA LEAN
Ground Beef
1 LB.
\$1.05

BROIL OR BAR-B-QUE
Rib Steak
1 LB.
\$1.49

U.S.D.A. GRADE #1
COUNTRY PRIDE
Whole Fryers
1 LB.
55¢

PAN-READY CUT-UP
Cut-Up Fryers
1 LB.
65¢

Produce Specials

CALIFORNIA **Lemons** 6 EACH

CALIFORNIA **Avocados** 3 FOR

CALIFORNIA ICEBERG **Lettuce** 3 HEADS

CALIFORNIA VINE RIPPENED **Tomatoes** 3 LBS.

99¢

Health And Beauty Aids

MINT OR REGULAR FLAVOR
Crest Toothpaste 5 OZ. **99¢**

NIGHTTIME MEDICINE
Vick's Nyquil 6 OZ. BTL. **\$1.69**

SINUS SPRAY
Vick's Inhaler EACH **79¢**

Dairy And Frozen Food

SHURFRESH 24 OZ. CTN. **99¢**

COTTAGE CHEESE **99¢**

KRAFT AM/PIM/SWISS 12 OZ. PKG. **\$1.19**

CHEESE SINGLES **99¢**

SQUEEZE MARGARINE 1 LB. BTL. **79¢**

Parkay **79¢**

SHURFINE 8 OZ. CANS **5/\$1.00**

Lemonade **5/\$1.00**

LEMON YOGURT 16 OZ. EACH **\$1.69**

Mrs. Smith's Pies **\$1.69**

Shelf Special

NO BEANS 19 OZ. CAN **99¢**

Wolf Chili 19 OZ. CAN **99¢**

DELMONTE Net. Juice Cans
Pineapple 8 OZ. CANS **3/99¢**

SUNSHINE VANILLA 11 OZ. PKGS. **2/99¢**

ASSORTED FLAVORS
Drinks SHURFINE **3/99¢**

HILLS BROS ALL GRINDS
Coffee LB. **\$2.39**

Grainery Specials

TRAPPY'S JALAPENO & BACON
Pinto Beans 3 300 CANS **99¢**

GLACIER REG. 12-oz. Beverage Glass **29¢** EACH

NO PURCHASE NECESSARY
5th WEEK SEPT. 4th THRU SEPT. 9th

Grainery Specials

GRANULATED **Sugar** 5 LB. BAG **99¢**

OUR DARLING WK/CS **Golden Corn** 303 CANS **99¢**

DISHWASHING DETERGENT **Dawn** 32 OZ. BTL. **99¢**

CARNATION LIGHT **Tuna** 6 1/2 OZ. CAN **69¢**

TEXSUN UNSWEETENED GRAPEFRUIT **Juice** 46 OZ. CANS **99¢**

PURE VEGETABLE **Crisco Oil** 48 OZ. BTL. **\$1.99**

CONTADINA ROUND **Tomatoes** 14 OZ. CANS **3 99¢**

FRANCO-AMERICAN **Spaghettios** 15 OZ. CANS **4 99¢**

Grainery Specials

Corn Dogs 12 OZ. PKG. **99¢**

TENDAMADE CHICKEN FRIED **Beef Fritters** 1 LB. PKG. **\$1.19**

HORMEL **Ham Patties** 12 OZ. CAN **\$1.39**

32 OZ. 6 BTL. CTN.

Pepsi Cola
\$1.19
PLUS DEPOSIT

Dash Laundry Detergent
\$4.99
13 LB. 2 OZ. BOX

Check Credentials Of... Claiming To Be IRS Employee

Taxpayers should ask to see the credentials of all persons identifying themselves as Internal Revenue Service employees, the IRS said.

From time to time, individuals have posed as employees of the Internal Revenue Service to collect money for what these imposters refer to as unpaid taxes.

Taxpayers should bear in mind that every public contact IRS employee carries distinctive identification and is required to produce identification.

Fike Godfrey Accepts Position With Western

H. E. Chiles, Chairman of the Board of The Western Company of North America today announced the appointment of J. Fike Godfrey to the Corporate position of Director of Public Affairs. Mr. Godfrey will report directly to the Chairman of the Board.

The Western Company of North America has served the petroleum industry since 1939 with technical services required in the discovery and production of oil and gas. These services include fracturing, acidizing and cementing.

Western also performs offshore contract drilling operations. Four semi-submersible drilling vessels and four jack-up rigs are now operated by the Company in the Gulf of Alaska, the Mediterranean Sea, the Arabian Gulf and off Western Africa.

Godfrey comes to The Western Company after having served about seven years as Executive Vice President of the West Texas

12 OZ. MARYL EXTRA-MEA
COFFEE
\$1.99
\$2.69 VA

WE GIVE
GREEN STAMPS
DOUBLE ON WEDNESDAY

CUCUMBERS
TOMATOES
FLORIDA
U.S. N
P

ICE CREAM
140 COUN K
NAPK
100 COUNT

ICE CREAM
140 COUN K
NAPK
100 COUNT
4 RO
TI
BET
H
12 C
COOL
\$1.
18 OZ. BE
C
48 OZ.
LIQUID I
\$2.49 VA
T
ROZ. ATKINS H
PICKLE

12 OZ. MARYLAND CLUB
EXTRA-MEASURE
COFFEE
\$1.99
\$2.69 VALUE

12 OZ. MINUTE MAID FROZEN
ORANGE JUICE
79¢
\$1.19 VALUE

9 OZ. WHITESWAN FROZEN
WHIP TOPPING
39¢
59¢ VALUE

ONLY **19¢** CUP or DINNER PLATE
SAUCER, BREAD and BUTTER or FRUIT-DISH

EXCLUDING CIGARETTES AND GAS
YOU CAN BUILD A 40 PIECE SERVICE LIKE THIS... FOR ONLY \$7.60 A \$49.20 VALUE!

CASH REGISTER TAPES
ACCEPTED ONLY FROM BUDDY'S
APRIL 10TH 1978 THRU NOVEMBER 10TH 1978

IT'S EASY!
HERE'S ALL YOU DO -
Simply Save The Cash Register Tapes
You'll Receive Every Time You Make
A Purchase At Our Store. Keep The Tapes In The
Convenient Envelopes. When You Have Sufficient Tapes,
Just Redeem Them For Any Of The Place Setting Pieces
At 19¢ Each

WE GIVE

DOUBLE ON WEDNESDAY

BUDDY'S

220 SOUTH 2ND

STORE HOURS
Mon.-Sat., 8 a.m. to 9 p.m. Sun., 9 a.m. to 8 p.m.
VALUES EFFECTIVE THRU SATURDAY, SEPTEMBER 9, 1978
We Reserve The Right To Limit Quantities

983-3149

WE GIVE

DOUBLE ON WEDNESDAY

CUCUMBERS 5 LBS. \$1.00

RED RIPE **TOMATOES** 3 LBS. \$1.00

FLORIDA SWEET **CORN** 10/\$1.00

U.S. NO. 1 10 LB. BAG **POTATOES** 99¢

1/2 GAL. SLIM AND TRIM **ICE CREAM** \$1.09
\$1.59 VALUE

140 COUNT KLEENEX **NAPKINS** 59¢
79¢ VALUE

100 COUNT KLEENEX FACIAL **TISSUE** 3/\$1.00
45¢ VALUE

4 ROLL HI-DRI BATHROOM **TISSUE** 69¢
89¢ VALUE

BETTY CROCKER **HAMBURGER HELPER** 59¢
79¢ VALUE

BETTY CROCKER READY TO SPREAD **FROSTING** 99¢
\$1.23 VALUE

12 OZ. NESTLES **COOKIE MIX** 69¢
\$1.19 VALUE

18 OZ. BETTY CROCKER LAYER **CAKE MIX** 69¢
89¢ VALUE

48 OZ. FAMILY SIZE **LIQUID DAWN** \$1.69
\$2.49 VALUE

6 1/2 OZ. CARNATION CHUNK LIGHT **TUNA** 69¢
\$1.19 VALUE

ATKINS HAMBURGER **PICKLES** 77¢
\$1.03 VALUE

TONY'S HAMBURGER SAUSAGE OR PEPPERONI U.S.D.A.
PIZZA \$1.29

ARM ROAST \$1.19 LB.

PURCHASE 2 LB. ROLL OF OWENS SAUSAGE AND GET ONE DOZEN GRADE A LARGE EGGS FOR ONLY 9¢

FAMILY PACK **GROUND BEEF** 99¢ LB.

U.S.D.A. CLUB **CLUB STEAK** \$2.19 LB.

COUNTRY STYLE **SPARE RIBS** \$1.29 LB.

PORK CHOPS \$1.29 LB.

U.S.D.A. BONELESS **ROUND STEAK** \$2.29 LB.

1 LB. OWENS **CHILI** \$1.39

U.S.D.A. BONELESS **LOIN TIP ROAST** \$1.79 LB.

2 LB. ORE-IDA **POTATO TOTS** 69¢
89¢ VALUE

BANQUE I **T.V. DINNERS** 59¢
79¢ VALUE

5 OZ. FREEZER QUEEN BEEF-SALSBUURY TURKEY **COOKING BAGS** 3/\$1.00
39¢ VALUE

12 OZ. AGREE **SHAMPOO** \$1.89
\$2.53 VALUE

3 OZ. SCHILLING **SALAD TOPPINGS** 79¢
95¢ VALUE

12 OZ. KEEBLER **VANILLA WAFERS** 59¢
79¢ VALUE

16 OZ. KEEBLER CLUB **CRACKERS** 69¢
93¢ VALUE

25 LB. OUR DARLING **FLOUR** \$1.99
\$2.99 VALUE

10 OZ. FRITOS **TACO DIP** 59¢
79¢ VALUE

12 COUNT BALL REGULAR **JAR LIDS** 3/\$1.00
47¢ VALUE

15 OZ. BUSH **CHILI BEANS** 4/\$1.00
34¢ VALUE

16 OZ. BUSH **SAUERKRAUT** 4/\$1.00
34¢ VALUE

15 OZ. BUSH **PINTO BEANS** 4/\$1.00
34¢ VALUE

14 OZ. SHOWBOAT **SPAGHETTI** 5/\$1.00
42¢ VALUE

15 OZ. BUSH CHOPPED MIXED **GREENS** 5/\$1.00
34¢ VALUE

14 OZ. SHOWBOAT **BLACK-EYE PEAS** 5/\$1.00
34¢ VALUE

14 OZ. SHOWBOAT **PORK AND BEANS** 5/\$1.00
34¢ VALUE

GRADE A LARGE **EGGS** 9¢ DOZEN
WITH PURCHASE OF 2 LB. OWENS SAUSAGE

Dash Laundry Detergent \$4.19

1 LB. FLEISHMAN'S **MARGARINE** 79¢
\$1.13 VALUE

128 OZ. RICH AND READY **ORANGE DRINK** 79¢
\$1.09 VALUE

3 OZ. LIPTON **INSTANT TEA** \$1.79
\$2.61 VALUE

12 OZ. CAN REGULAR - OR - DIET **PEPSI COLA** 6/99¢
29¢ VALUE

16 COUNT WHITESWAN **TEA BAGS** 29¢
49¢ VALUE

12 OZ. CAN COUNTRY TIME **LEMONADE** 6/99¢
29¢ VALUE

GIANT 42 OZ. PUREX **DETERGENT** 89¢
\$1.19 VALUE

2 BAR PACK BATH SIZE COAST **SOAP** 69¢
93¢ VALUE

12 OZ. LYSOL **DISINFECTANT** 99¢
\$1.79 VALUE

control To W
Clock Lab
Holiday
since these are the
causes of fatal acci
The past few
have indicated that
type of vehicle as
highways. This ve
motorcycle. This ve
are not wearing pr
head gear, and th
met is not used.
The DPS is mak
ing human lives. Th
job. Also, the Texa
ist will find that th
is more than w
in directing the lo
to the proper and
available. The DPS
ages the stranded
to obtain help fr
troopers on the r
ways in order to
proper security wh
ing these long str
roadway during th
Day Weekend.
Major Bell con
saying, "More peo
killed in Texas ea
traffic than are kil
handgun. These
deaths are just a
as needless, and a
those by the hand
not nearly as w
ed."

e The Fish
port?

Canyon, Tx. 79013
806/655-4341.
Even though the
reports for the m
1978 are being w
month, some of
fishing in the Tex
handle occurs in
As the water
tures drop, game
into shallow wat
they actively fee
available to the
species of fish incl
walleye, largemou
smallmouth bass,
northern pike and
become more acti
winter.
Fishing is more
at this time of t
less competition
ers and swimme
weather can be go
ing cool fronts and
to bite better v
barometer is risi

tials Of Perso

e IRS Emplo

tification when co
official business.
If, after seeing a
ee's identification,
er still doubts his
authenticity, the
should immediately
his or her nearest

Chamber of Comm
nation's largest
chamber of co
Godfrey also ser
ident of the We
organization in the
term.
Besides being ca
ating offices of
Godfrey had pr
sponsibility for
ber's work in nat
state affairs and
resource develop
der Godfrey's dire
WTCC won five
awards for progr
included three
Foundation Award
nomic education
and in 1978, the
the nation for be
tion program fr
American Society
ation Executives.
Godfrey has be
as a businessman,
civic leader, educ
church affairs and
ceived numerous
each. Texas and
Spr. Texas and
until moving to
1971. He is mar
former Naomi Sw
Phillips, Texas and
le have two child
a lawyer in Milwa
Pierpont, and adv
media specialist in
Godfrey and his
reside in Fort W

When using hand
tools in the home
shop, heed instr
uals, properly gro
tools, keep safe
guards in place, w
protective equipm
keep the shop cle
ter and tripping
cautions the Tex
tural Extension

Speak Out About TV Advertising Aimed At Children

It's time for concerned parents to speak out about television advertisements aimed at children, a consumer information specialists urges.

The Federal Trade Commission has recently proposed a regulation which would:

- (1) Ban TV advertising directed at children too young to understand its selling purpose,
- (2) ban TV advertising of

Back-To-School SALE
Save Up To 60%
KALICO FASHIONS
626 Austin
Plainview

sugared food products most likely to cause tooth decay that is directed to, or seen by, audiences that include a significant proportion of older children, and

(3) require nutrition or health disclosures that will balance TV advertising of other sugared foods directed to, or seen by, a significant proportion of older children.

FTC will receive comments until October 24, 1978. Send these comments to: The Federal Trade Commission, Washington, D.C. 20580.

These proposed regulations are the result of a report compiled by the FTC staff after they investigated television advertising directed at children, Claudia

Kerbel with the Texas Agricultural Extension Service, The Texas A&M University System, explains.

The report points out that the average 2- to 11-year old watches over 1,300 hours of TV annually and sees about 20,000 commercials each year.

Based on its investigation, the FTC staff finds the following:

--Many young children don't understand the selling purpose of TV advertising and regard it as just another form of programming.

--TV advertising aimed at children too young to understand the intent of commercials is both unfair and deceptive.

--TV advertising for sugared products is deceptive under the FTC Act because its fails to reveal material facts regarding the health hazards of sugar consumption.

Also, it violates well-established legal policies that protect children against serious and lasting consequences of their own mistakes and against adult exploitation.

CORN, SORGHUM PRICES UNDER PRESSURE

Good corn and sorghum prospects, both in the U.S. and abroad, will keep crop prices low in the coming months, contends a grain marketing specialist with the Texas Agricultural Extension Service. However, yields will be down in Texas due to drought conditions. Corn and sorghum prices should be near the loan rate in the coming weeks although severe weather in the Midwest, such as an early frost, could boost prices.

GOING OUT OF BUSINESS SALE IN PROGRESS

Everything Must Go At 10% BELOW COST GOOD SELECTION LEFT

OPEN 9:00 Till... Dealers Welcome

BOOT HILL WESTERN STORE

No. Main in Lockney, Texas

When you visit Lubbock, visit

Furri's PIE KITCHEN

**A VARIETY OF MELT-IN-YOUR-MOUTH PIES

**CONVENIENT CARRY-OUT SERVICE

2708 50th Street 792-5154



Why not take one home!

HEAT PUMP

"THE ELECTRIC SAVINGS MACHINE"



SAVING FOR THE FUTURE

Coin banks help teach children how to save for the future. You can save for the future, too, with the electric heat pump. That's why we call it the electric savings machine. This efficient heating/cooling system can deliver as much as two units of heat for every one unit of electricity it uses. But the savings don't stop there. With fuel costs expected to rise during the next two decades, the electric heat pump is a smart investment that will save energy today and in the future.

It's never too soon to start saving... with the electric heat pump. Start today before your future gets here. You'll be glad you did.

CALL US ABOUT THE HEAT PUMP



SOUTHWESTERN PUBLIC SERVICE

OBITUARY

Elmer C. Mosley Doyce Smalley

Services for Elmer C. Mosley, 82, of Plainview were Friday at 2 p.m. in the 11th and Amarillo Streets Church of Christ in Plainview with Frank Duckworth, minister of College Street Church of Christ in Lockney, officiating, and W. A. Marshall, minister, assisting.

Burial was in Plainview Memorial Park under direction of Lemons Funeral Home.

Mosley died at 10:15 p.m. Wednesday in Methodist Hospital at Lubbock after a two-week illness.

The McLennan County native and World War I veteran had lived in Tahoka and Brownfield before moving to Lockney when he married Vera Cox Sept. 21, 1921 in Roseland Community north Lockney.

He retired from farming in 1948 and moved to Plainview where he was a member of 11th and Amarillo Streets Church of Christ.

He had formerly served on the Sterley Community school board.

Survivors include two sons, Doyce of Lockney and Howard of Dumas; two daughters, Norma Hague of San Antonio and Marlene of the home; two sisters, Mrs. Jake Sanders of Plainview and Ola LaBlue of Trinedille, Ore.; a brother, Curtis of Dover, Ark.; seven grandchildren and nine great-grandchildren.

CATTLE NUMBERS CONTINUE DECLINE

Cattlemen are continuing to reduce their herds, but some signs point toward a buildup by next year, contends a livestock marketing specialist with the Texas Agricultural Extension Service. Total cattle and calf inventories on July 1 were 7 percent below a year ago while beef cows were down 9 percent.

23, 1920 in O'donnell. He moved to Floyd County in 1959 from Petersburg, and was a retired businessman and farmer and member of the First Methodist Church of Floydada.

He is survived by his wife, Abbie; seven sons, R.H. Jr. of Odessa; Neil L. Carlsbad, Texas; John W. and Jim R. both of the home; Bill W., Vernon; Charles A. of Plainview; R.L. (Tony) of Sidney, Montana; five daughters, Mrs. Joe Pimlett of Hurst; Mrs. Don Thorne of San Jose, California; Mrs. J.W. Gardner of Beaumont; Mrs. Q.B. Spencer of Plainview; and Mrs. H.M. Moses of Orange, California; 19 grandchildren and 13 great-grandchildren.

Grandsons will serve as pall bearers.

Robert B. Marr

Robert B. Marr, 57, former resident of Plainview and Lockney, died Monday in a Kernville, California hospital after a brief illness.

Services were Thursday morning in Valley Mortuary at Lake Isabella, California. Burial was in Oakwood Cemetery at Chatsworth, California.

Mr. Marr, who was born in Clarksville, has been a resident of Kernville the past 10 years. He was a World War II veteran of the Air Force. In 1943 he married the former Betty J. Graves. Mr. Marr was operator of a resort at Lake Isabella, California at the time of his death.

Surviving are his wife; three daughters, Cathy Burgie of Reseda, Calif., Joyce Peterson and Mary McIlwain, both of Atascadero, Calif.; his mother Mrs. R.E. Marr of Lockney; three sisters, Dorothy Turner of Floydada, Frances Willis of Paducah and Louise Cooper of Ruidoso, N.M.; two brothers, Thomas Marr of Lockney and W.E. Marr of Clarksville; and six grandchildren.

Mrs. Eva Beard

Services for Eva C. Clinton Beard, 88, of Lockney



Around the County County Agent's Column

By Doyle Warren County Extension Agent

The annual assault of the Diapause Boll Weevil Control Program to stem the westward movement of the weevil will be launched about three weeks later than usual this year, leaders of the program have decided.

The major effort of the program is the concentrated and carefully coordinated aerial spraying of infested acreage just before diapausing weevils leave the field and enter the ground trash in the early fall. This is when spraying has the least chance of aggravating the bollworm situation, explained Dr. James F. Leser, area Extension entomologist. Once weevils enter the ground trash, they are inaccessible to spraying, he noted.

In recent years, this assault has begun about the first week of September, said Ed Dean, director of field services for Plains Cotton Growers and secretary of the control program's technical advisory committee.

But this year, the programs aerial attack will begin about September 25, officials decided at a recent meeting. Intensive scouting of fields this season has revealed a somewhat different pattern of weevil activity, the group noted.

Weather, crop conditions and the successful adoption by producers of cultural practices recommended by the diapause control program have been factors in the changing activity, the officials said. Among the cultural practices urged by the program and supported by growers in the control zone was use of a uniform planting date to deny emerging weevils adequate plant food for reproduction early in the season.

The movement of weevils to winter habitat will be heaviest during late September and early October, said Dr. Ron Rummell, research entomologist with the Texas Agricultural Experiment Station here. The percentage of diapausing weevils in the total population in the

control zone will remain relatively small until late September, it was noted. Consequently, program officials selected September 25 as a target date for opening the aerial attack, Dean said. "This means that producers will need to keep a close check on their individual fields and provide their own treatment if it is needed before the proposed starting date of the control program spraying," Dean said.

The uniform planting date was a major factor in making it practical to delay the spraying program to insure that adequate funds are available to give adequate treatment when the maximum percentage of weevils have attained the state of diapause, Dean added.

The diapause control program was initiated by growers in 1964. It is jointly funded by the growers and the U.S. Department of Agriculture. It covers all or part of 16 counties, with 13,500 square miles and is administered by the USDA Plant Protection and Quarantine Office. Collection and administration of funds from growers is handled by Plains Cotton Growers.

Since the program began, the cotton acreage in the control zone has increased from some 250,000 acres to 437,118 acres last year. However, government funding has remained at the 1964 level, and inflation has more than outdistanced the increased funding provided by producers, based on bales produced. Spray material, such as Malathion, which a few years ago cost \$5 a gallon now cost almost \$10 a gallon.

The increased acreage and limited funding makes it imperative that maximum effectiveness be obtained in the diapause program this fall. Roy J. Moritz, officer in charge of the USDA-PPQ office in Lubbock, stressed.

Educational programs conducted by the Texas Agricultural Extension Service serve people of all ages regardless of socio-economic level, race, color, sex, religion, or origin.

Pre-Harvest Special



\$200 Factory Rebate on Caldwell's Boll Buggy

Caldwell will mail you a \$200.00 cash rebate if you purchase a Caldwell Boll Buggy prior to September 30 from one of their authorized dealers. In addition to the \$200.00 factory rebate you can take advantage of the 10% investment credit and accelerated depreciation. Add these figures together and the Caldwell Boll Buggy is a super bargain.

SAVES MONEY ON HARVEST Consider the high cost and wasted time of your expensive cotton harvester deadheading back to the module builder. The wear and tear... cost of fuel, time and labor.

INCREASES HARVEST BY 30% Get your cotton out of the field in less working days. Lets you take advantage of good weather. Holds 2 to 3 bales of picked cotton or 2 1/2 bales of stripped cotton.

Walking beam axle loads hold stable over rough ground and reduces stress on upper frame. Wheels for high flotation tires. Empty weight is 5200 pounds.

SALE \$4600 PLUS FACTORY REBATE FACTORY AUTHORIZED DEALER

ANSLEY & SON

PLEASE GIVE US A CALL Clarence Ansley 806-652-2481 Bill Fewell 806-652-3629



This Mini Van Will Be Given Away October at the

ST. MARY MAGDALENE CATHOLIC CHURCH

Tickets are \$1.00 each at the

Valle Record Show OR MEMBERS OF THE

COMPLETE ENGINE TUNE-

Includes: Points, Plugs, PVC Valve, Carburetor Adjustment

Timing Set, Belts Adjusted Hoses Checked.

Parts & Labor \$20

All Work Guaranteed

M & N AUTO

507 E. MISSOURI

Regulations Can Be Confusing

The three most common reasons about the dove hunting seasons are:

1. I take a limit of 10 doves and on the same day?

2. It always rains on open days?

3. There is a plus for who can expect action around water sources and evening tends to be better.

4. Doves prefer dry ground for feeding and food is much more available on dry ground.

5. Food is available by past muddy ground according to Jim Texas Parks and Department's dove hunter.

6. The first two Dunks said a dove usually shoot 20 days—10 white—10 mourning the four-day season September 10, in the 16th have a white-

7. The hunter fully feathered to each bird during days—whether in the North or South Zone, hunt- ing a fully fea- tured every bird entire season— four-day white-

8. Zone counties whitewing sea- son, Hudspeth, Davis, Pre- mer, Terrell, Val Kinney. The counties are Webb, Zapata, Willacy and

9. Reasons in both effort by the to satisfy the of hunters. One mourning dates are Sep- tember 21 and "We have to September 1 hunters in the of the state is when most of available and gone soon said, "but in the North Zone hunting is in the period."

10. Season in the this year repre- sentative— it al- ready long (51- segment, but al- ready late segment passes two in past years was authorized Zone, the late 18 days, Dunks

11. Zone mourn- ing, also split, is November 5 (51- hours for are 30 min- utes to sunset. are noon to sunset for in the counties whitewing sea- son four days. change this year ment of white- wings along a nar- row details of boundaries published by papers, but hunt- ing this infor- mation of department of hunting license

12. It's too early populations, are that hunt- ing a reasonably both species, is a guessing

game as to where the birds will be," Dunks said, adding that the dove's capricious

unpredictability may be one reason for its popularity as a game species.

SLEEP WHILE YOUR WANT AD WORKS.

Law Discovered Which Requires Import Label

Texas American Agriculture, in trying to get a state law passed requiring labeling of imported meat, has discovered that such a law has existed since 1965 but has never been enforced.

Apparently, funds were never appropriated to enforce the labeling law.

The law, 4476-6, requires that any individually wrapped portion of fresh or frozen beef, pork, or mutton, including quarters, halves, or whole carcasses, be labeled with the country of origin at both wholesale and retail levels.

First offense carries a \$200 fine. Second offense carries a \$500 fine and 60 days in jail.

Texas American Agriculture had been working for several months to get such a law passed so that the consumer would at least have a choice when buying meat.

"Educating the consumer to inferior sanitation practices in foreign countries does no good if the consumer doesn't know when he or she is buying imported meat," said Mike McCathern, Texas spokesman from Hereford.

Celebrate Labor Day with Big Savings at..

WE GLADLY REDEEM USDA FOOD STAMPS

WE GIVE DOUBLE GOLD BOND STAMPS



PIGGLY WIGGLY

Items & prices good thru September 6, 1978. We reserve the right to limit quantities. None sold to dealers.

Each of these advertised items is required to be readily available for sale at or below the advertised price in each store, except as specifically noted in this ad.

Jumbo Size Bottles
32 oz. bottles
Coca Cola
6 for 1.29
At these bargain prices, you can get several six-packs of this refreshing soft drink. Coke adds life to snacks, parties, meal-times, and all-around GOOD times!

Fast Starting, Slow Burning
Kingsford Charcoal
10 lbs. Only 99¢
The charcoal used by people who take outdoor cooking seriously. It starts fast and burns slowly, the low essentials for making outdoor meals that are both fine and festive. Limit one with additional \$10.00 purchase.

Big 32 oz. size
Heinz Ketchup
Only 69¢

Kraft Barbecue Sauce
18 oz. Only 49¢

Showboat Pork & Beans
14 1/2 oz. Cans 5 for \$1

Piggly Wiggly
Bathroom Tissue 400, fluffy, 2-ply sheets.
Pkg. of 4 69¢

A tasty fruit drink is not enough for Piggly Wiggly. We add Vitamin C to make it healthful, too!
Piggly Wiggly Drink Mix
Cherry, Lemonade, Orange or Grape
Pkg. of Four Only 99¢

Old-fashioned, spicy dill pickles straight from the Vlasic stork to you!
Vlasic Sliced Pickles
16 oz. Jar 49¢

The Totinos insist on the right cheeses, meats, and spices for their pizza—the right everything for you!
Totino's Pizza
Pepperoni, Sausage, Cheese, Hamburger
13 oz. size Only 89¢

Made from 100% Durum Semolina, the finest pasta ingredient used by those who know the best.
American Beauty Long Spaghetti
1002. pkg. Only 36¢

Instant Tea
Nestle Lemonade
Delicious iced or hot, 302. jar Only 1.97
Nestle's special blend of 100% tea plungers you into total refreshment!

If you haven't tasted Piggly Wiggly's Lemonade, you haven't tasted the real lemonade flavor.
Piggly Wiggly Lemonade
62. cans 6 for \$1

Piggly Wiggly Assorted Paper Napkins
With 180 napkins per package, you can wipe dozens of big faces and lots of greasy hands!
Only 49¢

Why wash dishes and mix all the fun, when you can get these disposable paper plates?
9-Inch White Paper Plates
100 count package Only 79¢

Arrow helps make your cookout a success with its fast-lighting and safe lighter fluid.
Arrow Charcoal Lighter Fluid
32 oz. can 59¢

Johnson & Johnson
Adhesive Bandages
30 Wide Plastic, 30 Wide Sheer, 50 Large Sheer, 50 Large Plastic
Only 99¢

Our New Triple the Difference Policy is Your Guarantee of Low Prices!



Everybody's talking about low prices, but we're doing something about it! We're so confident you'll save at Piggly Wiggly we guarantee you low prices with our new

TRIPLE THE DIFFERENCE POLICY

Here's how it works: First shop at Piggly Wiggly and buy 25 different grocery items. Then check the prices on the same 25 items in any other store. If their total is lower, bring in your Piggly Wiggly tape and the other store's prices and Piggly Wiggly will pay you TRIPLE THE DIFFERENCE IN CASH.

At Piggly Wiggly we're committed to offering you quality products at competitive prices.

Meat and produce not included as quality and trim may vary from company to company.

Piggly Wiggly is Determined to Fight Rising Costs!

To make sure that we are offering you the most competitive grocery prices we have a new team of Price Watchers. Their job is to go from store to store in your town checking our competition's prices to make sure you save storewide at PIGGLY WIGGLY. And meet Penny the Price Watcher. She is the symbol of this new PIGGLY WIGGLY effort. She and her "real life" team stand behind PIGGLY WIGGLY'S continuing drive to give you low prices you can believe in.



Barney's Meat Sale!



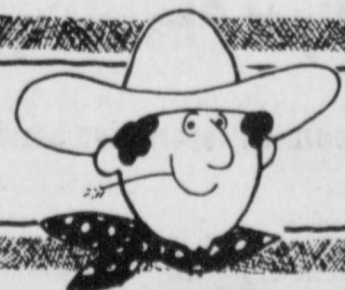
USDA GRADE Whole, Split
Fryers
Plump and flavorful. Now at this low, low price. Lb. 45¢

Heavy, Western Beef
Round Steak
A savory steak treat with bone 1.49
lb. Boneless lb. \$1.99

One Pound
Market Style Bacon
Sliced for you in the store by Barney the Butcher. 1.19 one lb.

Farmer Jones
Jasty Franks
Juicy franks spiced just right! 79¢ 12 oz.

Stan's Produce Sale!



Fresh, Golden, Yellow
Sweet Corn
No picnic is complete without the golden, country taste of fresh, sweet corn. Succulent corn at a bargain price. 10 for \$1 Ears

Sweet, Large Size
Honeydew Melons
Nothing beats an icy-cold slice of Honeydew Melon for cool, cool refreshment. 88¢ Each

Firm, #1, Baker's
Russet Potatoes
Full of vitamins...wonderful flavor! 18¢ lb.

FOOTBALL CONTEST

MEET THE LONGHORNS

PICK THE WINNING TEAMS!

WIN FIRST PRIZE..... \$10⁰⁰
SECOND PRIZE..... \$6⁰⁰
THIRD PRIZE..... \$4⁰⁰

GO,
FIGHT,
WIN!!!



23 Jim Burt
6' 3" 160 lb.
Senior Split End



40 Earlee Mathis
5' 10" 190 lb.
Sem Senior Back



RAGIN' RED

GO
LONGHORNS
GO

<p>Baccus Motor Co. 321 SO. MAIN ST. LOCKNEY</p> <p>1. Friona at 2. Tulia</p>	<p>Moore-Rose Funeral Home Lockney Tx.</p> <p>13. Canyon at 14. Lubbock Monterey</p>	<p>Schacht Flowers, Jewelry & Gifts "Our Pleasure Is to Serve You"</p> <p>21. Silverton at 22. Kress</p>	<p>Stricklands Resto HWY. 70 LOCKNEY, TEXAS</p> <p>29. Midland at 30. Ta</p>
<p>Page's Thriftway No. 3 "A Better Way To Save"</p> <p>3. Texas A&M at 4. Kansas</p>	<p>Dan's Automotive LOCKNEY, TEXAS</p> <p>15. New Deal at 16. Idalou</p>	<p>White's Auto Store Lockney, Texas</p> <p>23. WTSU at 24. Texas Arlington</p>	<p>Perry Implement Co John Deere Implement</p> <p>31. Littlefield at 32. B</p>
<p>Wilson Photography LOCKNEY, TEXAS</p> <p>5. Texas Tech at 6. Southern California</p>	<p>Mize Pharmacy & TV Your Complete Family Drug Store Gift Headquarters ★ RCA Television LOCKNEY, TEXAS</p> <p>17. Big Spring at 18. Andrews</p>	<p>Webster Service & Supply "Where You're Always Welcome"</p> <p>25. Slaton at 26. Colorado City</p>	<p>First National Ba In Lockney Member of F.D.I.C.</p> <p>33. Floydada At 34. B</p>
<p>Providence Farm Supply and Grain Co.</p> <p>7. Plains at 8. Morton</p>	<p>Dairy Queen LOCKNEY, TEXAS</p> <p>19. Estacado at 20. Plainview</p>	<p>Roger's Pastry and Fried Chicken LOCKNEY, TEXAS</p> <p>27. Motley Co. at 28. Paducah</p>	<p>Thomason Groc LOCKNEY, TEXAS</p> <p>35. Crosbyton at 36. B</p>
<p>Byrd Pharmacy "Accurate Prescription Service"</p> <p>9. Petersburg at 10. Abernathy</p>	<p align="center">CONTEST RULES</p> <p>Circle on the official entry blank the number of the team you think will win each game. Circle the winner and indicate the total score in the tie-breaker game. Each entry must be validated by one of the merchants on the contest page. Take the entry form to the merchant of your choice for validation. (Validation by only ONE merchant is necessary.) Contestants may mail their entries or bring them to the Beacon Office, 120 South Main. Mail entries must be postmarked no later than 5 p.m. Friday, and in-person entries must be at the office by the same time. Mail entry address is Box 187, Lockney 79241. One Winner Per Family Per Week.</p>		<p>The Tye Comp On The Plainview High</p> <p>37. Mississippi St. at 38. B</p>
<p>Davis Lumber Co. "Where Customers Send Their Friends"</p> <p>11. Oklahoma at 12. Stanford</p>	<p align="center">OFFICIAL ENTRY FORM</p> <p>NAME _____ ADDRESS _____</p> <p>CITY _____ MERCHANTS STAMP _____</p> <p>1-2 3-4 5-6 7-8 9-10 11-12 13-14 15-16 17-18 19-20 21-22 23-24 25-26 27-28 29-30 31-32 33-34 35-36 37-38 39-40 41-42</p> <p>TIE BREAKER POST AT LOCKNEY TOTAL SCORE.....</p>		<p>Longhorn Inn "Where School Friends Meet"</p> <p>39. Tahoka at 40. B</p> <p>Brown's Department LOCKNEY, TEXAS</p> <p>41. TCU at 42. B</p>

If It's Results You Want-It's CLASSIFIED ADS You Need

FARMS AND ACREAGE

WANTED TO BUY irrigated or dryland farm in Floyd or surrounding area. Write Box XRO, c/o Hesperian, Box 700, Floydada, tlc

FOR SALE: Level 80 acres northeast of Lockney, two metal buildings, large three-bedroom, two-bath home. NICE CITY LOT with cement block building, 16 x 26. Allison Realty, 652-2134. Ltfc

NEED IMMEDIATELY: House to rent in Lockney; also babysitter for two preschoolers. Call Pat Queen at Lockney Dairy Queen, 652-3761, any time before 6 p.m. L9-3p

Want to buy good 150 to 200 gallon butane-propane tank. Phone 983-3982 or 983-3737. tf

FOR RENT: in Lockney one- and two-bedroom apartments. Come by 108 N. Main or call 652-3813. Ltfc

SHOP FLOYD CO. FIRST

HELPFUL HINTS ABOUT INFANTS

Q. How is formula different from ordinary cow's milk?

A. In a way that could be very important to your baby until he's at least a year old.

Formula is designed to contain the same essential nutrients in the proportions that human milk has. Cow's milk is designed for calves and does not have the proper amounts of all the nutrients babies need.

Many minerals and vitamins are found in cow's milk in only very small amounts. Fats found in cow's milk are not easy for babies to digest. In addition, formulas such as Enfamil are heat-treated so that the protein they contain is more easily digested.

Knowing the difference between formula and plain milk may help make a difference between a child who's a little peaked and one who's at the peak of health.

BUSINESS SERVICES

C-D-J INSULATION can help save your dollars. For information call 983-2601.

C-D-J 66 7-day service, car wash, oil change. Gas service, U-haul rentals. Located on Matador hwy. 983-2601.

INSULATION Fire-Resistant. Installed and Guaranteed. MARR Insulation Co. Lockney 652-3593. Ltfc

Enroll now in piano lessons. Call Ginger Mathis at 296-7096. L9-7p

CARD OF THANKS

We wish to express our sincere thanks for your kindness shown to us during the illness and death of our dear loved one, Eula Clark. A heart-felt thank you for the food and beautiful flowers. To Drs. W.G. and Gary Mangold and all the nurses at the Lockney General Hospital and Lockney Care Center who were so kind and attentive to her. May God's richest blessings be with you always.

Leeman & Jane Norman Truman & Jo Dunavant & family Dr. & Mrs. G.A. Pittman & family Mr. & Mrs. Elton Goen & family 9-3p

PETS

AKC Doberman puppies international champion bloodlines, \$75.00 each. Lawrence Stovall. 983-2847.

SEWING MACHINE SERVICE CENTER New & Used Sewing Machines Sales & Service 111 S. Main Lockney 652-2721

FLOYD COUNTY ABSTRACT CO. Abstracts Of Title Title Insurance Verna L. Stewart Owner, Manager 217 W. California 983-3728 Floydada, Texas

BIG REMUDA
By Carter White
92 True Stories About Horses
On Sale At Office And Art Supply Center
111 E. Missouri In Floydada S8-6C

Diamond Industrial Supply Co., Inc.
Phone Days 296-7418 Nights 296-1200 or 296-7828
1014 Broadway Plainview, Texas
Chain Sprockets U-joints Oil Seals V-belts O-rings Sheaves Wisconsin
SKF BCA Timken Bower Cotton Stripper Brushes & Bats
"We Appreciate Your Business More" L-tfc

FARMS-RANCHES-CITY PROPERTIES-BUSINESS LEASES-LOANS
B. B. WILKES BROKER REAL ESTATE
100 S Main, Lockney Barry Barker, Solicitor Barker Insurance Agency-652-2642
IF IT IS INSURANCE -SEE-
BARKER INSURANCE AGENCY
LIFE-FIRE-CASUALTY-HOSPITAL

COW POKES



"Jake, our post office gives General Delivery, Special Delivery and now with you we're havin' to give range delivery!"

THIS FEATURE SPONSORED BY
Floydada Real Estate & Insurance Agency
AUTO, FIRE & FARM INSURANCE
Jim Word --- Phone 983-2360

TURNER REAL ESTATE
983-2635 Farms Ranches Floydada, Texas

Can You Use Some Extra Money Let Us Help!!!!
WE BUY SCRAP IRON, OLD JUNKERS, AND FREE PICKUP
Call 983-5277

STORAGE SPACE
BOATS, FURNITURE ANYTHING, ETC. BY THE MONTH OR SIX MONTH 10% DISCOUNT
WEST TEXAS MINI STORAGE
983-3573 OR 983-2151

CAN CUSTOM BEND TAILPIPIES TO FIT VEHICLE, MUFFLER, BRAKE WORK, AND BEAR WHEEL ALIGNMENT, YOUR MUFFLER SHOP...
COOPER CONOCO
652-3633 LOCKNEY, TEXAS LTFc

CLASSIFIED ADVS. MUST BE PAID IN ADVANCE.
ATTENTION CHINA PAINTERS
Opening Sept. 5, 78
FLO's China Shop
3822 IDALOU RD., REGISTER THRU SEPT. 9TH FOR FREE LAMP

Thomason Meat Co.
1 Mile North Fair Barn on FM Road Number 378 on Lone Star Highway 114-118 N.E. 8th, Lockney, Texas
WE FEATURE LOCAL PEN FED BEEF
CUSTOM SLAUGHTERING AND PROCESSING
KILL CHARGE \$5.00 BEEF EACH
PROCESSING CHARGE 12¢ LB.
SLAUGHTER DAYS MONDAY AND THURSDAYS
WE ALSO HAVE 30 Lb. Beef Paks
CONSISTS OF STEAKS, ROASTS AND FRESH GROUND BEEF
FORMERLY LOCKNEY MEAT CO. 114 N.E. 8TH LOCKNEY, TEXAS 806-652-3346

FOR SALE

USED FURNITURE AND APPLIANCES for sale. Service man on duty 24 hours. Caprock Appliance Center, 115 North Main, Lockney, 652-3721. Ltfc

FOR SALE: Rabbits, 983-5165 before 5 p.m. 983-3396 after 5 p.m. tlc

1964 Chevy, 6 cylinder, L.T.D. transmission, 1/2 ton pickup, good condition. 652-2435. Ltfc

FREEZERS IN STOCK: Chests and uprights. Good buys, Sears, Floydada. tlc

FOR SALE: Nearly new GE washing machine. Call 983-3171 before 5:00 or 983-5381 after 5:00. tlc

GET YOUR 25,000 mile oil for cars, trucks, tractors and irrigation motors at Davis Farm Supply or Carmack Feed and Seed. 9-3p

FOR SALE: Four good steel radial tires, 13x wide 70. \$5.00 each, 983-3982 or 983-3737. tlf

FEET TIRED? Try Mason Shoes with "Velvet-ez" air-cushioned insoles. Keith Emert, 652-3116. LStfc

FOR SALE - 15 ft. refrigerator-freezer combination. Call 983-2576 after 12 noon. tlc

FOR SALE: Sears space saving compact dishwasher was \$274.95 now \$169.95. Sears, Floydada. tlc

FOR SALE: Sears trash compactor was \$374.95 now \$199.95. Sears, Floydada. tlc

FOR SALE: Sears 23.1 chest freezer, was \$353.95 now \$299.95. Sears, Floydada. tlc

FOR SALE: 19.1 Upright freezer was \$523.95 now \$419.95. Sears, Floydada. tlc

FOR SALE: Sears 15" color television, now \$319.95, was \$376.95. Sears, Floydada. tlc

FOR SALE: Sears 19" color television, now \$389.95, was \$466.95. Sears, Floydada. tlc

FOR SALE: Bundy Clarinet and case \$125. Selma wooden Clarinet and case 1 1/2 years old \$275. Both in excellent Condition. 983-3422 after 5 p.m. 8-30, 9-14, 9-16

FOR SALE: Tomatoes \$6.00 bushel. Cecil Pinner, Pinner Drive In, Lockney. 652-2231 or 652-2301. 9-3p

Big Savings -Up to 25% discount-
Big Protection Farmers Texas Homeowners Policy
SAM A. SPENCE
112 W. MISSOURI
PHONE 983-2881

DAN'S AUTO SERVICE
DAN TEUTON, Owner
Specializing in Automatic Transmission, Motor Tune-Ups, Auto Air Conditioning.
General Repair We Have A BRAKE LATHE to handle all passenger car brake drums. See us for complete brake service.
Phone 652-2462

FOR BETTER CONCRETE CALL CALLOWAY READY-MIX 652-2224 LOCKNEY PLAINVIEW HWY. ALSO WHITE CALICHE ROCK FOR SALE

For Sale

FOR SALE: Two-door Kelvinator refrigerator-freezer. Dorsey Baker, Lockney. Ltfc

FOR SALE: Camper topper, fits long-wheelbase pickup; lined, insulated. See at Reece's Cleaners, Lockney. L9-10

FOR SALE: Floydada Country Club membership. Larry Noland, 983-2083. L9-7

FOR SALE: 1-1976 Model 915-400 hours, 24-ft. header, 1-six-row corn head with corn saver, 1-three-axle De mco Gooseneck trailer. Call 983-2083, Larry Noland; 652-3144, E.A. Noland. L9-7p

FOR SALE: Early American maple double bed mattress and box springs. 652-2450. L9-3p

Chico tomatoes \$6 bushel; okra \$8 bushel. We pick. Phone 652-2301. L8-27, 8-31, 9-7, 9-14p

Reduce safe and fast with Go Bese Tablets and E-vap "Water pills" Thompson Pharmacy. S9-10p

FOR SALE: Tomatoes. Call 296-5051 after 5 p.m. L9-21p

FOR SALE: A Bundy Cor-net by Selmar. Used two years in school band. \$125.00 Matador, 806-347-2731. S9-10p

FOR SALE: Young laying hens, \$3.00 each. 652-3414. Ltfc

FOR SALE: Dry land cane. Tom Pierce, 983-2578. 9-10p

POLES FOR SALE: 15 cents per foot or \$5.00 per pole. Call Lighthouse Electric Cooperative, Floydada, 983-2813 or 983-2814. 9-10c

CLASSIFIED ADVERTISING RATE: 10 CENTS PER WORD FIRST INSERTION; 7 CENTS PER WORD EACH SUBSEQUENT INSERTION. MINIMUM CHARGE \$1.50. CLASSIFIED DISPLAY RATE: \$1.20 PER COLUMN INCH-CARD OF THANKS: \$1.50.

CUSTOM SPRAYING
HERBICIDES
INSECTICIDES
AIRPLANE AND GROUND RIGS AVAILABLE
★ LONE STAR CHEMICAL INC. ★
RICK KELLISON 652-3504
JIM MARTIN 652-3594
DEANIE HENDERSON 652-3434
EVANS GIN 652-3765 L-TFC

Case
NEW & RENTAL TRACTORS
Case 1270 with Weights & Radio \$26,500
CASE 1370 with Weights & Radio 30 Hours \$28,000
2-25 Ft. Tandem \$8,000 ea.
USED EQUIPMENT
1972-5020 J.D. Cab & Factory Duals \$10,500
1974-1370 Cab & Air 2500 Hrs. \$17,500.00
1974-1370 Cab & Air 2800 Hrs. \$17,500.00
1975-1370 Cab & Air 2000 Hrs. \$19,000.00
1972-1175 Cab & Air 3700 Hrs. \$9,500.00
18 Ft. Offset Disk \$3,250.00
Case Power & Equipment
Phone 983-2836
Floydada, Texas

AUTOMOTIVE

FOR SALE: 1969 Buick, clean, looks good, runs good. \$695.00. Day phone 983-2233, night 652-3111. L9-10c

FOR SALE: 1973 Ford L.T.D. station wagon. Call after 4:30. 652-3613. L9-7p

FOR SALE - Red '74 Vega Kamback. Call 983-2912. Good condition. tlc

GARAGE SALE

GARAGE SALE: Thursday and Saturday. 9-5. 906 W. Houston, West of Floydada High School. 9-3p

GARAGE SALE: Friday, Sept. 1 and Saturday, Sept. 2. 4 miles east of Floydada on Matador Highway. Pool table, heavy oak dresser and mirror, drum, luggage, clothes, christmas arrangements. 9-3p

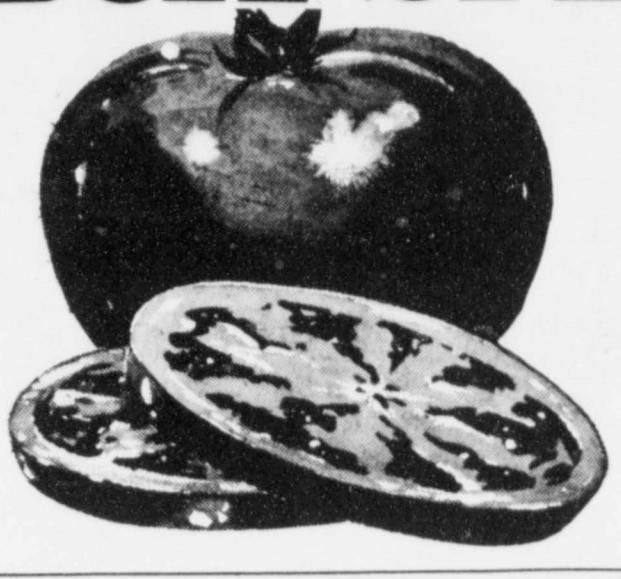
GARAGE SALE: Two refrigerators, two bedroom suites, two dinette sets, large assortment heaters, box springs, antique shift-robe, antique library table, two antique trunks, large assortment chairs. Evelyn Merrell, 420 South Main, Lockney, 652-3687. L9-3c

WANT A GOOD BUILDING?
CALL US
MORTON BUILDINGS
Box 928 Plainview
806-293-4386

LUNCH BOX SPECIALS



WE RESERVE THE RIGHT TO LIMIT



CALIFORNIA FRESH
VINE RIPE TOMATOES
3 LBS. \$1

CALIFORNIA DELICIOUS
RED APPLES LB. **49¢**
COLORADO FULL EARS
FRESH CORN 3
CALIFORNIA HASS LARGE
AVOCADOS 3
CALIFORNIA KENTUCKY WONDER EXTRA FANCY
GREEN BEANS
CELLO PACKAGE
CRISP RADISHES
VINE RIPENED
CANTALOUPE

HUSBAND PLEASIN' BEANS
RANCH STYLE 3 15 OZ. CANS **89¢**

THRIFT KING
PAPER TOWELS JUMBO ROLL **39¢**

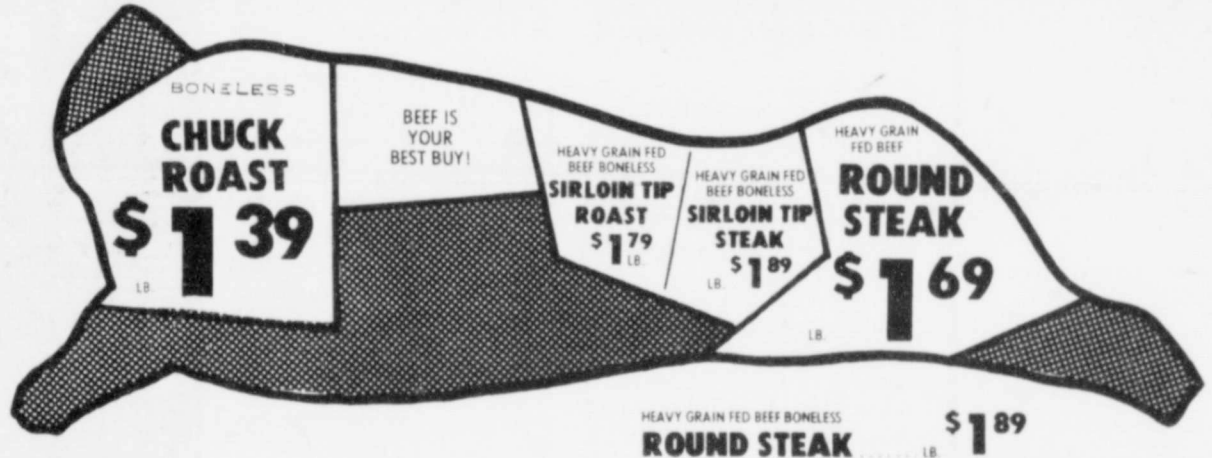
TOTAL GROCERY SAVERS

GLADIOLA WHITE CORN MEAL	5 LB. BAG	89¢
JIF CRUNCHY OR SMOOTH PEANUT BUTTER	12 OZ. JAR	79¢
NABISCO HONEY MAID CRACKERS	16 OZ. BOX	89¢
QUICK BREAKFAST CHEERIOS	20 OZ. BOX	\$1.19
DINTY MOORE BEEF STEW	24 OZ. CAN	99¢
UNSWEETENED GRAPEFRUIT TEXSUN JUICE	46 OZ. CAN	55¢
NEW! BEEF/VEGETABLE SOUP STARTER	7.12 OZ. PKG.	89¢

PURE GRANULATED
SHURFINE SUGAR
89¢
5 LB. BAG

ELECTRIC • REGULAR DRIP • FINE
FOLGER'S COFFEE
\$2.49
1 LB. CAN

REGULAR & WATER
CHUNK LIGHT
STARKIST TUNA
69¢
6 1/2 OZ. CAN



HEAVY GRAIN FED BEEF
ROUND STEAK
\$1.69
LB.

HEAVY GRAIN FED BEEF BONELESS SIRLOIN TIPS	LB.	\$1.59	SELECT SLICED YOUNG BEEF LIVER	LB.	79¢
HEAVY GRAIN FED BEEF LEAN BONELESS STEW CUBES	LB.	\$1.39	FRESHWATER CATFISH FILLETS	LB.	\$1.49
HEAVY GRAIN FED BEEF-CENTER CUT 7-BONE CHUCK ROAST	LB.	\$1.09	HILLSHIRE FARM SMOKED REGULAR OR POLISH SAUSAGE	LB.	\$1.79
HEAVY GRAIN FED BEEF - BONELESS TENDERIZED BEEF CUTLETS	LB.	\$1.99			
HEAVY GRAIN FED BEEF BONELESS CHUCK STEAK	LB.	\$1.49			

HEALTH & BEAUTY AID SAVINGS
CREST REG. OR MINT
TOOTH-PASTE 9 OZ. TUBE **\$1.19**
ALLERGY RELIEF MEDICATION
A.R.M. TABLETS 20 CT. PKG. **\$1.39**

TABLETS FOR SINUS
SINE-OFF 24 CT. PKG. **\$1.19**
GENTLE & REGULAR PERMANENT
HOME TONI EA. **\$1.19**

50% OFF LABEL
DASH
FAMILY SIZE BOX **\$4.59**

PURE VEGETABLE
CRISCO
48 OZ. BTL. **\$1.99**

DETERGENT
DAWN LIQUID 32 OZ. BTL. **\$1.19**
FOR JAMS & JELLIES
PEN-JEL 1 1/4 OZ. PKG. **33¢**

PROFESSIONAL ANT-ROACH KILLER
HOT SHOT HIT
PROFESSIONAL FLY/MOSQUITO KILLER
HOT SHOT HIT

COFFEE & TEA SPECIALS

REGULAR/DRIP/ELECTRIC FOLGERS	2 LB. CAN	\$4.98
REGULAR/DRIP/ELECTRIC FOLGERS	3 LB. CAN	\$7.47
FLAKED COFFEE FOLGERS	39 OZ. CAN	\$6.57
LIPTON TEA BAGS	48 CT. PKG.	\$1.19

FROZEN FOODS

BRIGHT & EARLY - IMITATION ORANGE JUICE	4	1.29
ORE-IDA - UNION PLAIN BACON TATER TOTS	3	1.29
PET RITZ COBBLERS	3	1.29
VAN DE KAMP DINNERS FISH FILLETS	3	1.29

REFRESHING AND DELICIOUS
COCA-COLA
6-32 OZ. BTL. CTN.
\$1.29
PLUS DEPOSIT

GLACIER 12 OZ.
BEVERAGE GLASS
REG. 49¢
29¢
EACH ONLY NO ADDITIONAL PURCHASE NECESSARY

S AND H
GREEN STAMPS
EVERYDAY
DOUBLE ON WED.

PAGE'S THRIFTWAY

PRICES EFFECTIVE SEPT. 2-4, 1978

LOW LEFT TO
Lins, Jim
Danny Ce
ay, TRAC
15¢
Per
Copy
Volume 8
Wh
prock
LAST TIME we
at Bobcats, we were
district champions
of course how our
come out. It's t
season, so we woul
scoring game. M
be Floydada 13, D
at the game.
REMINDEERS: b
and white Friday
number two
for the
as Cowboy
will be dri
WINDS: i
former team
Naylor play
a year or
has moved to
AT SOUTH PL
has baled some 60
for winter cattle f
Reeves out the
last year and it
ing out. Of course th
ous as alfalf
the bale and
as to be a
ring the type we
ing it is a weed tha
or careless weeds
farm. Back in dep
ized the leaf of th
and called it lam
County Agent's of
would be similar to w
hoeher weed. Th
doubt about
ing of hoeher.
A MAN gets too
he starts
AUTO CR.