

ian

avings
WIGGL

Golden Best

ure
rtening

98

Washington Extra
Golden of

Delicious
Apples

3 Lbs.

6-32 oz. bottle

COCA
COLA

\$1.29

TexaSweet

Juice
Orange

5-Lb.
Bag

79

All Varieties, From

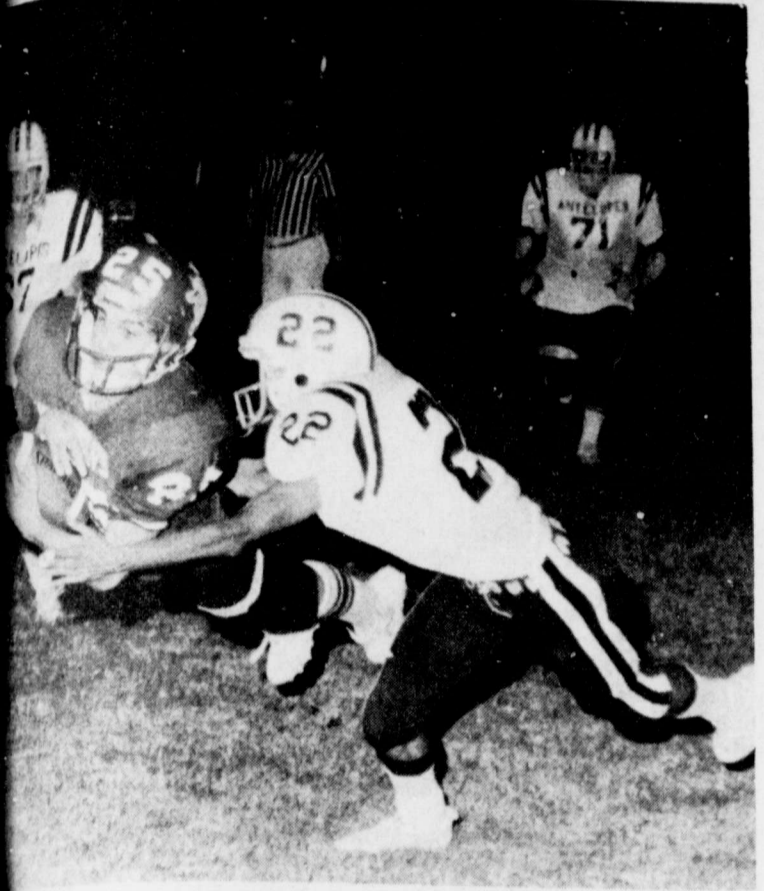
Morton
Pot Pie

29

8-oz.
Pkg.

Financed Attack Keys Winds' Romp, 33-0

Doug Simpson full minutes at Floyd Field Friday night, the needed someone to wake them up and tell them that a football game was being played. But the remaining three periods of a laughter with winless Abernathy, the



MACS MAKES SPECTACULAR CATCH...in second half at Wester Field, one of five receptions he made in the (Photo by Bill Kincaid)

hosted exploded and went on to score 33 unanswered points, in achieving the sixth victory of their season, and in doing so, playing some of the best and most "entertaining" football of their lives.

The contest has to rank as one of the more "flawless" performances in Whirlwind football history. The attack on both offense and defense startled everyone on both sides of the fence. The kind of defense Floydada exhibited was at its best, but still only typical of the superb performance it has played with all season long.

And the offense? It was the highest output by a Floydada team since September of '76 when the Olton Mustangs were given a 40-0 thumping at this same stadium.

For a single period here, however, it looked like the same old song again. Whirlwind receivers dropped at least three Todd Vickers' aeriels, while the victors picked up only two first downs and 10 net yards rushing.

It appeared as if the Antelopes had adjusted to the 'Winds offense and pulled it to a halt from the very beginning. Floydada needed some kind of emotional lift to get things going late in the initial stanza. And they got it!

The stampede arrived with 32 seconds left in the quarter. Defensive tackle Bill Starkey pounced on an Antelope fumble by Roger Lindsey at the opponents' 47-yard line, where the Floydada offense began first and ten.

A clipping penalty advanced it to the Abernathy 31, and from there Vickers began what seemed to keep the Lopes defense honest for the majority of the evening.

A 14-yard pass to halfback Ricky Day put the Winds in business at the 15, and the tempo had been established.

Just when the Antelopes would appear to have the running game in check, Vickers would put in his air game and strike successfully on almost every occasion.

Two plays later, the 'Winds' junior quarterback carried it himself around left end, 13 yards to paydirt and the icebreaker for the rest of the night for the previously punchless offense.

Junior Cuevas' PAT attempt hit the crossbar and bounced back, so with 10:32 remaining in the first half, Floydada was on top 6-0.

The defense provided several scoring opportunities for the Whirlwinds to feast upon Friday night.

On the ensuing series, corner-linebacker Rick Covington picked off a Tony Heath pass in between two receivers at the Lopes 40, to help set up the second TD.

Vickers immediately went to work, spotting his primary receiver and one of the finest pass-catchers in all of the South Plains, Kary Helms.

The junior, 140-pounder caught Vickers attempt on the 35, and wiggled and squirmed seven more yards before finally being wrestled down.

Day carried for 10, Cagle for 4, and Vickers threw to Cagle for 14 more, and Floydada had themselves a first down on the enemy 17.

Larry Jones, who wound up rushing for 117 yards in the contest, carried for the next three plays, and exemplified the kind of back he has been all year long and why he is almost a shoo-in candidate for All-South Plains honors.

Jones barreled 9 yards on the first play, five more from the eight, and eventually the three yards needed for the score with 6:59 to play in the half.

It was 12-0 at this point. But the hosts were far from finished. The defense kept the Antelopes in check on their next series, and soon, Floydada regained possession.

This time, Vickers and his setbacks engineered a 41-yard, 10 play march. 31 of those yards via the airways.

Helms, who eventually caught four in the game for 60 yards, caught one on this drive for 21, and Brad Feuerbacher pulled in another for 10 more yards.

Ricky Day got the final three yards on an end run right with only 58 seconds to play in the half. Vickers tossed the distance to Helms for the conversion that gave the Whirlwinds a commanding 20-0 halftime advantage.

SECOND HALF

The hosts took the ensuing kickoff and marched 80 yards in 15 plays. But to do it, they had to overcome an offensive holding call that set them back 15 yards on the fourth play from scrimmage.

So many sailed through the air that Floydada citizens could have easily started their own United Nations chapter.

The drive was keyed by the runs of Cagle, Day, and Jones who together accounted for 63 of the 80 yards needed. Vickers got 16 by passing and 14 by rushing on the drive's final play, a quarterback bootleg around right end, with 6:37 to play in the third period. Cuevas added the conversion boot to make it 27-0.

When Floydada next got an offensive series they managed one more TD, then Coach Wilson began substituting with reserves to give them playing experience and help give the regulars a rest for the showdown with Idalou this week.

Larry Jones got much of the needed 67 yards on an incredible run that excited everyone on the Floydada side of the stadium, a 48-yard right sweep gallop that advanced the ball to the Abernathy 20.

But several plays later, the Whirlwinds coughed it up on fourth down by not acquiring the first down, thus resulting in possession for the visitors. Ricky Luna pounced on the 'Lopes opening play, a fumble, to give it right back to Floydada at the 10-yard line.

Two plays later, Joe Covington dived over from two yards away with 9:51

SEE FOOTBALL PAGE 3



MAC WILLSON FAMILY... (l to r) Nancy, June, and Jane, Jill, and Mac, holding Penny. (Staff Photo)

Floydada's A Good Place To Make A Home

By Jan Sherman

There is a trend of young adults moving back to rural America...and Floydada is no different. Young couples have decided the Floydada community is a good place to rear their families.

Young people are always anxious to graduate from high school, go to college, then into a business or home life in the big city. However, some have made this move and have found the better place to be is the smaller community. The Hesperian would like to feature these young adults and their reasons for returning.

Our feature couple this week is Mac and Nancy Willson. Mac and Nancy began dating while they were in high school, although, according to Nancy, they have known each other since 1952. Mac's parents are owners of Willson and Son Builder's Mart, a family business since 1916. Nancy's parents were in agriculture and owned KFLD radio station. Her mother is now retired and living in Dallas.

After Mac and Nancy graduated from Floydada High School, they attended college. Mac earned his B.S. degree in Biology from West Texas State University, and his Masters from New Mexico State University. Nancy attended Abilene Christian College. They were married July 15, 1966 and now have four little girls; Jill age 10, twins, June and Jane, 7, and Penny, 10

months. When asked why they decided to return to Floydada, Mac replied that he felt Floydada would be a safe place to raise his children and could more easily avoid the drug traffic you face in larger cities. "You can take it a little easier and stay out of the ratrace," he continued. Nancy commented that she enjoyed being close to her family and their activities. Since they returned in January of this year, Mac and Nancy become involved in numerous activities and clubs which benefit the community. Nancy stated that most of her time is spent in the children's clubs and activities as well as 1956 study club and Women's Chamber of Commerce.

Mac has joined the Rotary Club. Mac and Nancy are very optimistic about the economic growth of the community; however, Mac explained he is concerned about the water situation not only for the town but for agriculture as well. They enjoy the people of Floydada and "especially their straight-forwardness," stated Mac. "It's nice that people are truthful about their opinions regarding economic and political situations. They're very frank about how they feel and don't mind telling you, which is rare in most communities."

We welcome the Willson's back to Floydada and appreciate the active role they are taking in community projects.

Book Chat

HAPPY to announce that this is beginning a new series in this edition about young people who have returned to this community to their homes.

YOU'VE BEEN wondering why Racing Cars has been big news. Don is featured in a two part write up in the "Hot Rod" magazine. We'll publish the November edition

TO NOMINATE school Lovell as one of our citizens. He has the job of the visitor's side of the stadium to sit in a certain room for Floydada fans on the visitor's stadium.

where the bravery James very dutifully telling Lockney fans to sit to the middle and south Floydada fans could sit Friday before last.

back talk, and rightly has enough fans to fill the stadium and would not be annoyed by to "scout down, so Floydada sit over here with you."

much competition in this time, I just think it is foolish administrators to put old here and risk his health in

complain about this year and I believe they in complaining.

AND I visited with his parents the Corky and Si Medley in Thursday. The situation's wife, Debbie is critical. been unconscious for a following the brain surgery.

Larry's baby girl, Candis is doing okay, and is in the hospital about She weighs a little over

ennie and Sherry Robin works with Larry at Oklahoma for Haliburton Oil. Debbie's brother, Danny, of Doyle and Shorty Turner there Wednesday and

never seen such faith as Debbie's parents continue to that Debbie can recover. Oklahoma City and Floydada for her.

MAC Enjoyed By All

Editor's Note: This feature is the sixth of a series about the most important boards of directors in this community and county. The series is intended to be highly informative about the responsibilities of each board its goals, achievements, and the individual opinions of each board or council member.

There will be one feature a month for 13 months and the civic minded firms who sponsor this series are: Perry Brothers Inc., Oden Chevrolet-Olds, Inc., Dyson's Boot Shop, Solomon's Jewelry, Piggy Wiggly, City Auto, Inc., Quality Body Shop, Buddy's Food, Beall's Department Store, The Country Morning, Thompson Pharmacy, Mize TV, Collins Implement, Bishop-Ramsey Pharmacy, Betty's Place, Adams Well Service, Baker Insurance Agency, Farm Bureau, Floydada Cooperative Gins, Floydada Real Estate & Insurance, Plainview Savings & Loans-Floydada Branch, Ponderosa Meat Co., Gibreath Exxon, Wayne Russell Implement, Norrell Tractor Parts, and Martin & Company.

By Wendell Tooley
In 1972 Mrs. William Lynch Murray of Camp Hill, Pennsylvania gave the Floydada community the Massie Activity Center. The gift was in honor of Mrs. Murray's father, the late W.M. Massie.

A non profit corporation complete with board of directors was set up for management of the Center, and since that time many people of the Floydada community have rotated on and off the board.

At present C.J. Payne is president of the board, Sammy Hale treasurer and Edith Muncy secretary. Newell Parker is vice president.

Basically, the board is selected from many organizations throughout the community of both adults and youth.

Mrs. W.T. Lightfoot is employed by the board to take care of reservations for use of the Center.

The building is rented for family reunions, private parties, and money making projects for various organizations. The building is free of charge for school functions, scouts, other youth organizations.

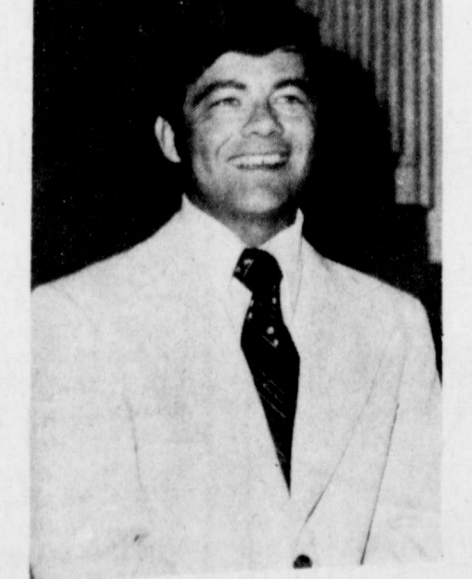
Since its construction, paving has been added to the west side, concrete front area replaced gravel landscaping.

The Lions Club meets in the MAC on Thursday noon, the Rotary Club on Wednesday noon. Many people of the community donated the chairs, tables, the Lions Club gave the speaker system, and the American Legion has contributed to the Center's needs.

MRS. MURRAY
Mrs. Murray, who was known here as Geraldine Massie, was born here in 1906 and graduated from the Floydada High School with the Class of 1924. She graduated from the University of Texas and was married here in 1935 to William Lynch Murray of Harrisburg, Pennsylvania where she has lived ever since. The Murrys have two sons, William M. who is a doctor and served his internship at the Baylor Medical Center in Dallas, and Martin L. who is an architect and associated with his father in their architectural firm.

Local Minister Cited For Area Activity

Ron Pingelton, pastor of Floydada's First Christian Church, has been named on numerous occasions as one of



Ron Pingelton

the most active leaders in local, area, and regional work of the Disciples of Christ Christian Church. Pingelton, and his wife, Becky, have just returned from the General Assembly of the Disciples of Christ Brotherhood in Kansas City, October 21 - 26.

As chairman for the Chi Rho Council for the Hi Plains Area Christian Churches, Rev. Pingelton serves as director for two week-end retreats for youth and one summer camp each year. The Hi Plains Council plans all youth events for the 38 churches in the area.

More than 120 Junior Hi youth gathered at Cota Glen Christian Camp for the fall Chi Rho Retreat in October, directed by the local minister, Rev. Pingelton is chairman of the Christian Education Committee for the Hi Plains Area, making him a member of the Area Executive Committee and a member of the regional Christian Educational Committee of the Southwest. The region includes Texas and New Mexico.

He also serves on the Hi Plains Area Board and the Hi Plains Area Assembly Planning Committee.



CHAMBER OF COMMERCE WELCOMES new business. Pictured at the ribbon cutting "ceremony" were Mr. and Mrs. Gordon Kirtley of Kirtley's Market (left) Chamber of Commerce president Gene Ehler and president of the Women's Division of the C of C Ann Willson. (Staff Photo)

Society News



Engagement Announced

Dr. and Mrs. Andrew G. McCulley of Floydada announce the engagement of their daughter, Miss Nan Ellen McCulley, to Mr. Jack William Shirley of Lubbock, son of Mrs. Jack M. Shirley of McKinney, Texas and the late Lieut. Commander Jack M. Shirley.

Miss McCulley is a graduate of Floydada High School, attended Texas Tech University, and is a graduate of Methodist School of Nursing of Lubbock. She received her certification as Registered Nurse in August and is now employed by Methodist Hospital in Lubbock.

Mr. Shirley is a graduate of McKinney High School and of Texas Tech University with a degree in Architecture. He is an associate in the firm of Atcheson and Cartwright, Architects in

Lubbock and is a member of the American Institute of Architects.

The wedding is planned for January 28 at the First Christian Church in Lubbock.

Christmas Ideas and Party Snacks was the program for the Homebuilders Home Demonstration Club when it met October 25 in the home of Mrs. Raymond Evans.

Each club members answered roll call with "a holiday food that is tradition in my home."

Mrs. Raymond Williams gave a very interesting program on Apple Head dolls. Each member started a doll

Cancer Society To Give Afghan

A one dollar donation to the American Cancer Society will give you a chance to win a beautiful off-white handknitted afghan. Mrs. Wanda Hickerson spent some 80 hours knitting the afghan which, when displayed, will cover a full size bed.

The drawing will be held on November 19 at 4:30 p.m. as part of the concluding activities of the Lions Club

El Progreso Meets

The El Progreso Study Club met in the home of Arla Copeland on Wednesday, October 26, 1977. This marked fifty years as an active club. Lovely refreshments were served to eleven members, two visitors, and one new member.

In a short business meeting presided over by President Juanita Jenkins, Polly Gilbert was unanimously elected as a renewed member after an absence of many years. She had served as president in 1943 and had resigned in 1947 to pursue her teaching career.

Hazel Johnson traced some of the interesting events that had concerned the membership through the 50

SCP Students On Spring Market Trip

LEVELLAND-A fortnight in France at Neiman Marcus and stops at Dallas firms are on the agenda this weekend for South Plains College fashion merchandising students during their annual spring market trip to Dallas.

In addition to the stop at Neiman Marcus, Saturday's (Oct. 29) tour will include visits to sample shops and retail outlets, according to Tickets for the drawing signals purchased from Janie Synatzke (983-3471). Kathy Burk or Wanda Hickerson at Lighthouse Electric, Mrs. Louis Lloyd, or any other members of the American Cancer society's Board of Directors.

Cindy Brown, SPC fashion merchandising instructor and trip sponsor.

On Sunday (Oct. 30), the group will hear a market report by Kim Dawson, fashion show producer at the Dallas Apparel Mart, meet area buyers for a tour through the market and attend the annual BAMBI awards given to fashion manufacturers, said Mrs. Brown.

Monday's (Oct. 31) plans will include visits to Mary Kay Cosmetics, Mr. Fine's Manufacturing (which produces ladies sportswear), JC Penny Distribution Center and Olla Podrida, a shopping center of specialty and craft shops, all in Dallas.

Fashion merchandising students from SPC going on the trip include Teresa Cox and Sonia Wood, both of Levelland; Billie Boland of Ralls, Barbie Butcher and Rhonda Drachenberg, both of Lubbock, Kim Clayton of Earth, Teresa Duvall of Lockney, Kasha Gary of O'Donnell, Kelly Haydon of Hart, Tammy Hutto of Clovis, N.M., Sandy Melcher of Meadow, Judy Neutzler of Maple, and Tammy Wesley of Plainview.



MRS. WANDA HICKERSON, president of the Floydada Unit of the American Cancer Society presents Ms. Janie Synatzke, Special Events Chairman, with an afghan that she knitted and donated to the Cancer Society.

years of its existence. Since the death of Mrs. Meda

Honea, there are no active charter members in the club. Several area women listed as charter members include Mrs. Willie Merle Haithecock

who organized the club, October 28, 1927. A. P. Barker, Carl McAdams, Ray Patterson, Burton Thornton, Arch Crager, and Watt Griffith. Mrs. Jo Taylor is the member who has been in the club for the longest period since 1934 followed closely by Arla Copeland and Polly Gilbert, 1940. Many memories were recalled, and many worthy projects had been sponsored through the years. The program was concluded with two quotations taken from yearbooks of the past.

November 19 in the M.A.C. Members present were Ruth Trapp, Doris Huckabay, Mrs. Elmer Norrell, Mrs. John Walker, Mrs. Weldon McClure, Mrs. Gordon Mayfield, Mrs. Ernie Widener, Mrs. Raymond Williams, Mrs. Dovie Rushing Mrs. Bill Smith, and the hostess.

The club adjourned to meet November 8 in the home of Mrs. Doris Huckabay.

Caprock E.M.T.

Sponsor Sale

The Caprock Emergency Medical Technicians' Association is planning a rummage and bake sale for Thursday, November 3 from 8:5 p.m. in the building next door to Stewart's Cleaning.

"Let me grow lovely, growing old"

So many fine things to do Laces Ivory and gold

And silks need not be new Why may not I, as well as these Grow lovely, growing old," and finally,

"The club year is closed, the

record made The last deed done, the last word said:

The memory alone remains of all its joys and splendid gains;

And now with purpose full and clear We turn to meet other years."

After reciting the Women's Club collect the meeting adjourned to meet with Hazel Johnson, November 9, 1977 for My Junk, Your Treasure program. Those present were Bobby Kellison, Arla Copeland, Alice Mitchell and her mother Mrs. Miller, Laverna Sams and her sister, Mrs. Ruth Wood, Juanita Jenkins, Dimon Schacht, Faye Ferguson, Faye Holmes, Pauline Sams, Josie Taylor, Hazel Johnson and Polly Gilbert.

Home Demo

Club Meets

The Lone Star Home Demonstration Club met October 18 in the home of Mrs. Raymond Teeple.

The program theme was demonstration of table treats and novelties traditionally seen around the home during the holiday season.

A report was given by the Club Council delegate Mrs. Stewart who attended the State THDA meeting held in Galveston, the vacation spot of Texas.

Refreshments were served to the following: Mmes.

Engagement Announced

Mr. and Mrs. Weldon Kiker of Tulia announce the engagement and approaching marriage of their daughter Charla Beth, to Davis William Edwards, son of Mr. and Mrs. Bill Edwards of Abilene.

A December 30th wedding is planned at the First United Methodist Church of Tulia with Rev. Jim Smith and Rev. Bruce Parks officiating.

Miss Kiker is a 1972 graduate of Tulia High School and a graduate of Christ for the Nations Insti-

Reed Lawson, H.E. Frizzell, C.L. King, J.P. Taylor, Allen Kellum, Joe Reeves, Jewell Rexrode, W.A. Stewart and the hostess Mrs. Raymond Teeple.

The next meeting will be



KIRTLEY'S MARKET

316 North Second Phone 983-3105

GRAND OPENING

Monday, October 31 through Saturday, November 5



BUY ONE
6-32 Oz. Bottle Carton
Coke
PLUS DEPOSIT



7-UP

GET 1-6 Pack 32 Oz. 7-UP FREE . . .

<p>BUY 1/2 GALLON CLOVERLAKE BUTTERMILK</p> <p>GET 1 Quart Lowfat Chocolate MILK FREE</p>	<p>BUY 1-8 Oz. CLOVERLAKE SOUR CREAM</p> <p>GET 1-8 Oz. DIP FREE</p>
<p>DORITOS Reg. 83¢ bag 49¢</p>	<p>Friday & Saturday JUMBO COKES 10¢ CUP</p>

SEE THE INSERT FOR OUR SHURFINE SALE OCT. 31 THROUGH NOV. 12




WE ACCEPT FOOD STAMPS HOME OWNED & OPERATED
We Give Double Green Stamps On Wednesday

Bealls

Open Daily 8:30 - 5:30





Ladies Coordinated To Put You In The Spotlight

20% off

Choose from Byn Mar, Center Stage, Jefferson Street and other brands you know and trust. The latest in fall colors, teal blue, rust, cordovan, beige, camel, black. Sizes 8-20.

CHURCH REPRESENTATIVES of Sioux City, Iowa: Becky J. Prange, Texas, and Suzanne Wolfe of El Paso among more than 11,000 persons at the General Assembly of the Christian Church (Disciples of Christ) at Kansas City, Mo.

ORDER

Start At Tradition

Give Personalized Christmas Ornaments

\$1.75 & up
(Names Engraved)

29 Styles To Choose From

SCHACH

Flowers, Jewelry

"Our Pleasure Is To Please"

112 W. Pauline

Society News

DOUGHERTY HONOR ROLL

Grades 3-6
 A-Silvia Huerta, Reagan Everett and Karla Ward.
 B-Richard Rendon, Van McNece, Judy Cervantes,

Fobby Emert, Rhonda Vick, Wanda Rendon, and Rhonda Rendon.
 2nd Grade: Chad Pernel, Heath Robertson, and Jay Cantrell.



CHARLES AND CINDY STENHOLM and family ended a day of touring 23 communities by bus in the 17th Congressional District recently and are shown here with Stamford residents who accompanied the Stenholms on the tour. Charles, a Stamford native and farmer, announced his intention to run for Congress in each community visited.

Couple Living In Lockney After October 8 Wedding

Following a wedding trip in the Black Hills of South Dakota and northern Minnesota, Terry Mac Howard and his bride, the former Miss Carrie Jo Eckman, are making their home in Lockney. The couple were married October 8 in Canyon Lake Methodist Church in Rapid City, South Dakota.

The afternoon wedding ceremony was directed by the Rev. M. Kent Millard, pastor of Canyon Lake Methodist Church, which was decorated with baskets of fall flowers. Matching tapers and bows marked the pews and the altar.

Joan Goschke of Rapid City was organist and accompanied soloists Tami Huse of Onida, South Dakota and Barbara Johnson of Blunt, South Dakota.

Honor attendants were Janice Brown of Rapid City and "Mac" Howard, father of the groom.

Bridesmaids were Barbara Johnson of Blunt, LeAnn Sevensing of Pierre, South Dakota, and Glenda Eckman, the bride's sister, of Rapid City. The feminine attendants all wore long yellow dresses with shades of rust and green in the material design. Each carried a long-stemmed rust-colored rose tied with baby's breath and a green bow.

Flower girl was Keely Eckman of Ft. Pierre, South Dakota, and the candlelighters were Shelbi Eckman of Ft. Pierre and Bridget McCann of Scotland, South Dakota. All are cousins of the bride. Ring bearer was Scott Howard of Lockney, brother of the groom.

Serving as ushers and groomsmen were Danny Cunyus of Lubbock Terry Huggins of Lockney, and Patrick Eckman, the bride's brother of Rapid City.

When given in marriage by her father "Morry" Eckman, the bride was gownned in a wedding dress of white polyknit and satin Venice lace. The bodice was designed with sheer inserts at the neckline yoke and over the shoulders, and was covered with lace. Lace edged the long, fitted sleeves, the long, flowing skirt and attached chapel train. A bead and lace covered capulet held the ankle-length veil of bridal illusion. All four, full tiers were trimmed in lace. The bridal bouquet was of colonial style with rust-colored roses, stephanotis and baby's breath.

The bride's parents hosted a wedding reception at the church and a buffet dinner afterwards at their home. Reception assistants were Mr. and Mrs. Steve Lyon of Rapid City, and Mr. and Mrs. Clyde Colson of Blunt.

An heirloom silver service and matching candelabra were used on the serving table. Also on the table was a bride doll which was made by the bride's paternal grandmother. The doll was also used by the bride's mother at her wedding. Fall flowers and matching tapers completed the table decor.

The rehearsal dinner was given by the groom's parents at Taylor's Restaurant in Rapid City.



MR. AND MRS. TERRY MAC HOWARD

Community Action

General Meeting Held

Community Action Governing Board of Directors. Other Board members from Floydada are Judge J.K. Holmes and Doug Frazier manager of the Floydada Chamber of Commerce.

The parks and the work being done on them were discussed by Mr. Frazier. The Forest Lawn Cemetery was discussed. It was decided to form an association for the upkeep of the cemetery. Mrs. Dorothy Kerr was elected president of the association. John Campbell vice-president, Debra Chatman secretary, and Kathy Green treasurer. Several ways to raise money were suggested. Mrs. Taylor suggested asking for donations. Debra Chatman thought a Halloween Carnival for the children with the proceeds going to the cemetery fund would be good. Mr. Sam Henry gave legal advice and completed the charter to make the Forest Lawn Cemetery Association tax exempt.

Ways and means of getting more people involved were discussed. The primary purpose is to get people involved in their community and to have input in all phases of the Community Action Programs.

Surviving are his wife; two daughters, Mrs. Nancy Marble of South Plains and Mrs. Patsy Musser of Marengo, Ill.; a son, Robert Lee Holland Jr. of Hallettsville; a brother, Walter Holland of Whitewright; a sister, Mrs. Vera Biggerstaff of Whitewright; and nine grandchildren.

The family suggest memorials may be in the form of donations to the American Cancer Society.

Services were Thursday in First Baptist Church here with Rev. John Jenkins, pastor, officiating. Burial was in Floydada Memorial Park at Floydada directed by Moore-Rose Funeral home of Lockney.

Born Aug. 14, 1900 in Fannin County, Mr. Holland moved to the Bethel Community of Grayson County in 1905 and attended school at Bethel from the first through seventh grades. He graduated from Pilot Grove High School in 1917 and in 1922 went to Commerce College one year. Mr. Holland taught at Jameson two years.

Mr. Holland played baseball one year at Cannon, at Van Alstyne in 1926 and then at Seminole, Okla. After taking a business course at Tyler in 1927, he began work at Whitewright Gin, and then took a cotton course at Texas A&M University in 1928. Mr. Holland had managed and worked in gin offices in Whitewright in 1927-41, Whitesboro in 1941-51, and Lockney in 1951-74.

He and the former Juanita Powell were married June 17, 1932 in Durant, Okla.

LOCKNEY GENERAL Hospital Report

Alice Ormond, Lockney admitted 10-13 continues care.

Mae Jackson, Lockney admitted 10-14 dismissed 10-21, readmitted 10-26 continues care.

W.L. Bradley, Lockney admitted 10-16 dismissed 10-20.

Verdie Smith, Lockney admitted 10-17 dismissed 10-22.

Lela Wofford, Lockney admitted 10-17 continues care.

A.D. Perryman, Floydada admitted 10-18 continues care.

Bertid Bradley, Quitaque admitted 10-20 dismissed 10-26.

Irma Silva, Amarillo admitted 10-18. Baby girl Laura Lee born 10-20 dismissed 10-22.

Ted Salinas, Lockney admitted 10-20 dismissed 10-21.

Melanie Frizzell, Lockney admitted 10-20 dismissed 10-24.

Edna Holmes, Floydada admitted 10-21 transferred.

Iva Ruth Duncan, Floydada admitted 10-21 continues care.

Lottie McGee, Lockney admitted 10-22 continues care.

Margie Vasquez, Ralls admitted 10-23. Baby girl

Carissa born 10-23 dismissed 10-25.

Miguel Rodriguez, Plainview admitted 10-24 continues care.

Hattye Thomas, Floydada admitted 10-25 continues care.

Vivian Dunlap, Lockney admitted 10-25 continues care.

Lillie Lopez, Crosbyton admitted 10-26 continues care.

Lois Honea, Quitaque admitted 10-26 continues care.

Travis Huley, Lockney admitted 10-26 continues care.

Everyone Invited To Health Provider Meeting

South Plains Health Provider Organization, Inc. is a non profit health care corporation which provides health care to many residents here in our community. The programs philosophy is to provide a quality medical service at a cost that anyone can afford. In this way a sliding fee schedule is used instead of a fixed fee. The sliding fee is based upon a family's income and the number of dependents in the family. In this way all patients pay for medical services in accordance with their ability to pay. None of the services are free except family planning and immunizations even though services cannot be refused for inability to pay.

Services include: Obstetrics/Gynecology, Internal Medicine, Pediatrics, Nutrition, Denistry (referral), Urology, Optometry (referral), Orthopedics (referral), X-ray, Cardiology, Laboratory, Pharmacy.

In an effort to continue to provide needed quality medical services to you and members of your community a public meeting will be held on Tuesday, November 1, 1977 at 7:30 p.m. in the Community Room of the First National Bank of Floydada. The meeting will be to assess the services provided currently by South Plains Health Provider Organization and obtain community input as to additional services needed, if any.

We would encourage each of you to attend and have a voice in regards to a program operating in your community.

NEWS OF SAFETY

Don't Let Snow Throw You

Don't let the snow take you for a ride this winter. If you learn how to use your riding snow thrower properly you'll be on your way to a cleaner, safer yard and driveway. Here are some hints from Outdoor Power Equipment Institute experts on how to use a riding snow thrower.



SOLO JOB - Allow no passengers.

1. Every season, reread the owner's manual and make sure you know all the controls and can maneuver skillfully.

2. Allow no passengers to ride with you. Clearing snow is a solo job.

3. Before leaving your seat, disengage power to attachments, giving moving parts ample time to stop.

4. Be extra careful when backing up. Make sure no one has come into the area.

5. Reduce speed on slopes and avoid sharp turns to prevent tipping or losing control.

6. Never direct discharge at bystanders or allow anyone in front of the machine—debris may be hidden in the snow. Follow these tips and your snow thrower won't throw you.

We proudly present the world's finest **STAINLESS STEEL** home water distillers

What's REMOVED Makes the Difference!
Makes Drinking Water 100% PURE
 In Your Own Home

Much less expensive than buying bottled water - Available through

MOODY ELECTRIC
 807 1/2 W. Spruce - Lockney
 652-2417

New Treats Decrease Halloween Hazards

Because many parents are spooked by the idea of poisoned Halloween candy, the occasion may be dying out. But the Texas Medical Association suggests a safer alternative to candy. Giving inedible treats may reassure parents and still let children participate in the excitement of trick-or-treat.

Giving balloons, pencils, coins or other small, relatively inexpensive items probably will please children just as much or more than candy. Then parents will not have to inspect and maybe throw out suspicious candy. People who give inedible treats also may save children from stomach aches caused by too much candy in one night.

Of course it is still fairly safe for children to have trick or treat candy that has never been unwrapped. But children should wait until parents have had a chance to

inspect candy before the kids devour their loot. Parents also should be careful toddlers do not swallow or otherwise injure themselves with inedible treats.

Adults also have some responsibility for avoiding vehicle-pedestrian accidents. Many children get excited and dash across streets or they simply cannot see well in their costumes so motorists need to be especially careful at Halloween.

Parents can prepare children for safe trick-or-treating by helping them choose safe costumes. Loose-fitting masks or ones with small eyeholes should be avoided. Cosmetics, burnt cork or grease paint can be used as a safe alternative to masks. Costumes should have bright colors, reflective tape or other materials that make children highly visible. Outfits should not include haz-

ards such as sharp instruments, candles or loose cloth that could snag on obstacles.

Trick-or-treating as early as possible in the evening and hitting only a small area also will decrease the chance for problems. Some parents prefer to take their children only to a few friends' houses.

But some children go out on their own without adult supervision. Homeowners can help themselves and these trick-or-treaters by lighting their property well, keeping pets inside, closing garage doors and putting away objects such as garbage cans and lawn furniture to prevent damage to youngsters and property.

Just like Christmas or any other festive occasion, Halloween needs preparation to be enjoyed. The only thing different about Halloween is that more stress should be on safety.

The first woman to fly solo from England to Australia was Amy Johnson in 1930.

ent Announced

eldon Kik...
 approach...
 their daugh...
 to Davis...
 son of Mr...
 wards of

10th wed...
 the First...
 Church of...
 Jim Smith...
 'arks offi...

a 1972...
 lia High...
 aduate of...
 ions Insti...

Frizzell...
 or, Allen...
 es, Jewell...
 wart and...
 Raymond

will be

SSSED R REFERRED
 S SUBSTITUTE

57 61 65 69 73 77

62 66 70 74 78

63 67 71 75 79

64

PRESENTATIVES-Cathy...

ORDER EARLY

Start A Family

Tradition...

Give

Personalized

Christmas

ornaments

\$1.75 & up

Names Engraved Free)

Styles To Choose From

CHACHT

rs, Jewelry & Gift

asure Is To Serve You

Popular - Lockney 652-2395

Salind

inker

er missionary

ted author,

er, lecturer



She's

Coming

To

Floydada

November

6-7-8

st United

Methodist

Church

FOOTBALL CONTEST

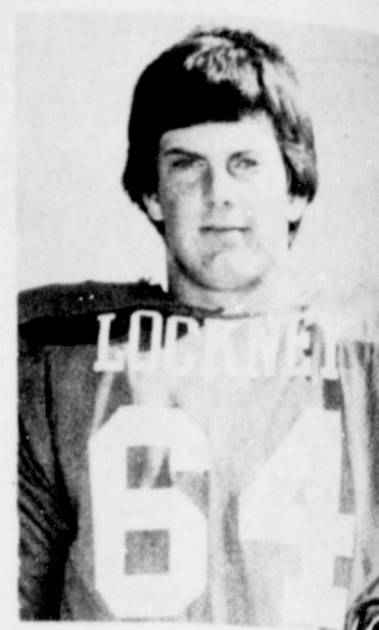
MEET THE LONGHORNS

PICK THE WINNING TEAMS!

WIN FIRST PRIZE..... \$10⁰⁰
 SECOND PRIZE..... \$6⁰⁰
 THIRD PRIZE..... \$4⁰⁰

GO,
 FIGHT,
 WIN!!!

RAGIN'
 RED



NO. 64
 DAVID FOSTER
 151 LBS.
 SENIOR GUARD

GO
 LONGHORNS
 GO

CONTEST RULES

Circle on the official entry blank the number of the team you think will win each game. Circle the winner and indicate the total score in the tie-breaker game. Each entry must be validated by one of the merchants on the contest page. Take the entry form to the merchant of your choice for validation. (Validation by only ONE merchant is necessary.) Contestants may mail their entries or bring them to the Beacon Office, 120 South Main. Mail entries must be postmarked no later than 5 p.m. Friday, and in-person entries must be at the office by the same time. Mail entry address is Box 187, Lockney 79241. One Winner Per Family Per Week.

<p>Baccus Motor Co. 321 SO. MAIN ST. LOCKNEY</p> <p>1. Baylor at 2. Arkansas</p>	<p>Moore-Rose Funeral Home Lockney Tx.</p> <p>13. Denver City at 14. Roosevelt</p>	<p>CONSUMER'S FUEL ASSN. Lockney, Texas</p> <p>23. Estacado at 24. Lamesa</p>	<p>Perry Implement</p> <p>John Deere Implements are \$399 for \$1.00 for student and meatball bread, coffee, emerald pie and served. Every</p> <p>35. Spur at 36. ...</p>
<p>Page's Thriftway No. 3 "A Better Way To Save"</p> <p>3. Texas at 4. Houston</p>	<p>Boot Hill WESTERN WEAR Lockney, Texas</p> <p>15. Olton at 16. Muleshoe</p>	<p>White's Auto Store Lockney, Texas</p> <p>25. Dunbar at 26. Snyder</p>	<p>First National in Lockney Member of F.D.I.C.</p> <p>37. Lorenzo at 38. ...</p>
<p>Caprock Appliances LOCKNEY, TEXAS HOME OF MAYTAG APPLIANCES, SERVICE YOU CAN DEPEND ON.</p> <p>5. Rice at 6. SMU</p>	<p>Mize Pharmacy & TV Your Complete Family Drug Store Gift Headquarters ★ RCA Television</p> <p>17. Littlefield at 18. Morton</p>	<p>Webster Service & Supply "Where You're Always Welcome"</p> <p>27. Fort Stockton at 28. Andrews</p>	<p>Thomason Grocery LOCKNEY, TEXAS</p> <p>39. New Deal at 40. ...</p>
<p>Roger's Fried Chicken & Pastry 102 1/2 E. Bryant LOCKNEY, TEXAS</p> <p>7. TCU at 8. Texas Tech</p>	<p>Dairy Queen LOCKNEY, TEXAS RAY & DAVIE STEGALL</p> <p>19. Dimmitt at 20. Friona</p>	<p>Floyd County Insurance Agency "Around The Clock Protection"</p> <p>29. Perryton at 30. Borger</p>	<p>The Tye Company On The Plainview Highway</p> <p>41. Oklahoma at 42. ...</p>
<p>Byrd Pharmacy "Accurate Prescription Service"</p> <p>9. Floydada at 10. Idalou</p>	<p>Reecer's Cleaners "The Finest In Dry Cleaning"</p> <p>21. Lake View at 22. Sweetwater</p>	<p>Ansley & Son LOCKNEY, TEXAS</p> <p>31. Plainview at 32. Coronado</p>	<p>Longhorn "Where School Friends Meet"</p> <p>43. Georgia Tech at 44. ...</p>

OFFICIAL ENTRY FORM

NAME _____ ADDRESS _____

CITY _____ MERCHANTS STAMP _____

1-2 3-4 5-6 7-8 9-10 11-12 13-14 15-16 17-18 19-20 21-22 23-24
 25-26 27-28 29-30 31-32 33-34 35-36 37-38 39-40 41-42 43-44 45-46

TIE BREAKER: LOCKNEY at ABERNATHY TOTAL SCORE.....

 TEXAS INSURANCE SYSTEM
 Lockney, Texas
 652-

 PATTI SUPP
 Lou Booste
 ering a spa
 before the
 football game
 7 P.M.
 High School Co
 of the football
 are \$399 for
 \$1.00 for stu
 and meatball
 bread, coffee
 emerald pie an
 served. Every

 man W
 ou, 24-
 down runs
 ards by Ray
 Mike Self trig
 offensive a
 quarterback I
 a 14-6
 Jerry
 in the free
 to an impr
 over a tur
 dialou team,
 ester Field.
 win, accomp
 by the ext
 y the offensi
 and a punishi
 arge that re
 ibles, recor
 safety, and
 ammy passe
 Floydada's
 E.S.
 do first pu
 into the l
 romp on the
 the first pe
 self scored lat
 scamper and
 carried the
 three yard
 point convers
 ore midway
 second quarter

 field manage
 ward in th
 visitors to
 kickoff and p
 long scoring
 coming on a 2
 in the perio
 ade it 14-6, a
 eaded for the
 intermissio
 uring a se
 ans, defensiv
 by Sue got
 yacking the
 starback in t
 two-point
 16-6 with
 remaining to
 y, with less th
 hile, Floydada
 and thi
 s on a 1
 Younger
 Rainey
 the two poin
 the contest,
 Doanougher
 erts of Joe
 covered two fu
 and with on
 ay, and Yo
 Brawley. Mi
 t enemy pass

Join The Whirlwind Victory Train

This next weekend the mighty green machine takes on the Idalou Wildcats at Idalou. This being a very important district game, Floydada High School would like to do something a little extra special to raise some spirit and help fire up the guys, and we'd like the townspeople to participate as much as possible.

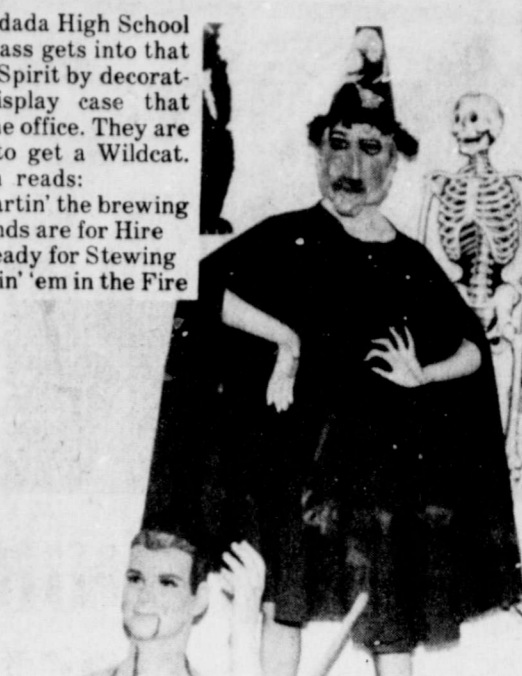
representing each class and one for the townspeople. Students and sponsors will be selling the cars to attach to the train for 10 cents a piece. We would like to ask everyone that buys one of the cars to write encouraging phrases on them. Let's see how long we can make each of these trains. Come to the pep rally and see them!! Go Winds! Get A Cat!! -The Green Peppers

Carnival And Disco At Della Plains

The Community Action Multi-Purpose Service Center will be sponsoring a Halloween Carnival and Disco Monday night October 31, Halloween night at Della Plains School. All children are invited to come. There will be games

and food. Quinn Coleman will spin the records for the teenagers to dance. Come out and have a good time. All proceeds will go to the Forest Lawn Cemetery Association for the upkeep of the cemetery.

The Floydada High School DECA II class gets into that Halloween Spirit by decorating the display case that goes into the office. They are preparing to get a Wildcat. The slogan reads: DECA's startin' the brewing Whirlwinds are for Hire Idalou's ready for Stewing We're puttin' 'em in the Fire



DECA CLUB HALLOWEEN DISPLAY...adds decoration to Floydada High School office.

Coach's Comments

Overlooking an incident suitably described as "very low behavior" by Coach L.G. Wilson, the attitude Saturday morning was generally very favorable.

Friday night, during the shootout with Abernathy at Wester Field, the coach said that someone had broken into the locker rooms and stole some money of the players.

Saturday morning, he was able to say that his troops had played well. "We played a pretty good ball game, but we are still making too many mistakes, such as penalties," Coach Wilson remarked.

"Any time you make too many errors you cannot contend with a very good ball club and we will have to improve in order to defeat Idalou next week."

Wilson was asked what the chances of pulling off a miracle in district 4-AA were.

"First, we have to beat Idalou!" "If we can do that and the chips fall where they may, then we can still represent the district."



ACTION IN ABERNATHY GAME... (Top Photo) Todd Vickers returns interception on last play of first half; (Middle Photo) Joe Covington just got into the end zone before the ball got away from him. He scored, anyway; (Lower Photo) Ricky Day scampers around left end for good gain in first half. (Photos by Bill Kincaid)

Andra Ledbetter also did a fine job defensively.

The fish will close their '77 season next Thursday with Crosbyton here, beginning at 5 P.M.

8th Breezers

Fall To Idalou,

The Idalou Wildcats took advantage of single scoring opportunities, each in the first and third stanzas of play, along with a punishing defensive unit that allowed only a touchdown, to hand the 8th grade Breezers a 14-6 defeat Tuesday afternoon at Wester Field.

The loss left Floydada with a present season ledger of three wins, four losses. The Breezers will close out their season next Thursday at Crosbyton, beginning at 6:30 P.M.

Todd Beedy got the only Floydada score in the contest, in the second period on a three-yard quarterback keeper play.

The TD tied things up at 6-6 at intermission, but the 'Cats were able to open up in the second half and snap the deadlock.

JV Winds Lose

To Wildcats,

The Idalou Wildcats scored twice, a single TD in each of the first and third quarters, and withstood a late Whirlwind comeback, to hand the JV troops their first loss since September, by the score of 13-6.

The Wester Field battle, marked by defensive prowess and hazardous weather conditions, threw the district 4-AA chase into a three-way scramble between Floydada, Idalou, and Tulia.

The 'Winds now stand at 6-2 on the year, and 3-1 in district. Floydada has two games remaining to play, with Lubbock schools Dunbar and Coronado.

The first Idalou score came early in the first period, as the hosts bobbled the opening kickoff and the Wildcats recovered near the Floydada 30-yard line.

From there, they went in and scored and hit the ensuing PAT to make it 7-0, the way it stood all through

the first half.

In the third quarter, the 'Cats scored again, this time on an 18-yard draw play run. The kick failed, and it was 13-0.

The Whirlwinds did manage to get onto the scoreboard, late in the fourth period on a 58-yard romp by Junior Arredondo.

Following the contest, Coach Daniel Coward said that on defense, Duncan Woody recovered an enemy fumble and Tracy Womack intercepted a pass.

OBITUARIES

Noble Murphy

Services were pending at press time Saturday for Noble (Dock) Murphy, 63, who died about 3 a.m. Saturday. He was pronounced DOA at Caprock Hospital. He resided at 1012 South Fourth.

He was born April 23, 1914, married Linda K. Carver September 12, 1969 in Floydada, moved to Floyd County in 1964 from Hale County.

He is survived by his wife, Linda, of the home, two daughters: Cynthia Leann of the home and Mrs. Lois Lyn Stone of Taylor, Texas; four sons, Michael Shane of the home, William of Taylor, Kenneth of Georgetown and Clint of San Diego, California; two sisters: Mrs. Una Mae Drake of Waco and Mrs. Annie Belle Cooper of Lubbock; one brother D.W. Murphy of Waco; ten grandchildren and one great grandchild.

Brandon Smith

Graveside services for Brandon Doyle Smith, 27 day old son of Mr. and Mrs. Jerry Smith of Lockney, will be at 2 p.m. Sunday in Lockney Cemetery with the Rev. Bill Sessom, pastor of Aiken Baptist Church at Aiken, officiating.

Burial will be under direction of Moore-Rose Funeral Home here.

The Smith infant died late Thursday in Lubbock's Methodist Hospital. The infant had been ill since birth. Survivors include the parents; grandparents, Mr. and Mrs. Joe D. Smith of Providence, Mrs. Rachel James of Lockney and Mrs. Robert Donegan of San Francisco, Calif.; and great-grandparents Mr. and Mrs. W.R. Smith of Rogers, Ark.

FOOTBALL FROM 1

left. The kick failed.

Marty Daniel operated the 'Winds offense at quarterback for the remainder of the contest, while reserves Kenny Willis, Junior Cuevas, and Rodney Rathel also got in some playing time.

The victory Friday night is hopefully not for naught. Lockney blew a 17-8 fourth quarter advantage, and Tulia remained in a tie with Floydada for second by rallying to win, 18-17. Next week's showdown with the Wildcats is for every hope the 'Winds have in representing district 4-AA in post-season action.

HALFTIME

It was the last home game for the Whirlwinds, and for that reason, a good halftime show is always expected-and received.

The Floydada High School marching band delighted home town fans with old favorites, "Temptation," "Star Wars," "Country Medley," and the traditional presentation of band sweetheart and runner-up honorees.

Rosemary Hardin received the roses

and traditional kiss for being chosen as 1977-78 sweetheart, flanked by runners-ups Shannon Bell, Tammy Gentry, and Caren Campbell.

STATISTICS

Floydada	Abernathy
20	3
265	41
101	24
366	65
8-14-0	1-6-2
0	3
8-90	3-30
4-34.4	5-40.7
L. Jones	Individual Rushing
21 carries/117 yards	

SCORE BY QUARTERS

Floydada	0	20	7	6	33
Abernathy	0	0	0	0	0

4-Hers Selling Pecans

Floyd County 4-H'ers are now taking orders for pecans. This is our major fund raising activity this year. We hope you will support your local 4-H club by purchasing your holiday pecans from them. The proceeds from this activity will be used to help secure projects, activities, camps, trips and community service projects for Floyd County's youth.

The shelled pecans will sell for 3 lbs., \$11.00 and 5 lbs., \$18.00. Please place your pecan orders as soon as possible with any 4-H member so that your pecans can be delivered prior to the holiday baking season. You may place your order by calling the Floyd County Extension Office (983-2806).

THE FLOYD COUNTY HESPERIAN

Published each Sunday and Thursday at 111 E. Mo. St., P.O. Box 700, Floydada, Texas 79235. Second class postage paid at Floydada, Texas 79235. Publication No. 202080. Wendell Tooley, editor. Subscription rates: Local \$9.50 a year, out of trade area: \$10.50.

PRO STOCK CHASSIS BUILDER DON HARDY GIVES THE CHEVROLET LUV TRUCK A WHOLE NEW PERSONALITY WITH THE INSTALLATION OF A 350 LT-1 V8 AND IMSA-STYLE MONZA BODY PANELS PART 1

Don Hardy of Floydada, Texas, is one of a handful of men who have brought new technology in chassis design to Pro Stock, Competition and Modified Eliminator through years of constant product improvement. Don is also one of the leaders in the movement to put V8 engines where they belong, in some of the lightweight Detroit iron like Vegas and Pintos, making for dozens and dozens of mean street machines that are currently cruising in cities and towns all over the country.

And when Don Hardy sets out to build a new-concept vehicle, such as the 350 V8-powered, IMSA-style Chevrolet LUV truck shown here, he naturally tends to try all the hard lessons he and his staff have learned over the years of race car development and development of

street V8 conversion kits. This way, the finished product is practically guaranteed to look good from all angles, and to perform its intended functions without problems like mechanical noise, chattering, vibration, poor fit, difficult maintenance, poor cooling or bad ventilation.

The truck shown here was the prototype vehicle in Don Hardy's V8 LUV development program, and we'll be showing you exactly how the vehicle was designed and put together, starting this month with the installation of the mildly modified 350-cubic-inch LT-1 Corvette into the restrictive engine compartment of Chevrolet's popular Japanese import utility truck. Inquiries about the complete V8 LUV kit should be sent directly to Don Hardy Race Cars, 202 West Missouri Street, Floydada, Texas 79235.



TEXAS STYLE

(From the November Hot Rod Magazine)

Rosalind Rinker

Former missionary noted author, speaker, lecturer



She's Coming To Floydada November 6-7-8

First United Methodist Church

PHOTOGRAPHY: FRED POTTER

FARM & RANCH NEWS

Sorghum Producers Appeal For 20% Set Aside

LUBBOCK, TEX.—Grain Sorghum Producers Association has been appealing to Secretary of Agriculture Eergland for at least a 20 percent set-aside for feed grains. In a recent letter to Eergland, Elbert Harp, executive director of GSPA,

states: "With the October crop report showing a record corn crop and a large increase in grain sorghum production over 1976, we want to plead again for a set aside program of not less than 20 percent for feed grains. A ten percent reduction will not decrease supply enough to restore prices to profitable levels. Only with a nationwide program, which will cut acreage sharply

enough to reduce production, can we bring supplies in balance with demand."

Over a three year period the average production per year for corn and sorghum together was 6.6 billion bushels. In the same period the average per year combined consumption of the two grains was only 6.1 billion bushels. The yearly carryovers have produced the 1 billion bushel surplus of grain we now have. Grain Sorghum Producers Association figures show that even if there were an actual 10 percent reduction in production, the yield would be a combined total of 5.9 billion bushels. This amount added to the 1 billion bushel surplus would still bring the

total 78-79 supply of corn and sorghum well over the present consumption level of 6.1 billion bushels per year.

Therefore, in order to achieve the 10 percent reduction that is necessary, Grain Sorghum Producers

Association urges at least a 20 percent set-aside for feed grains because better management of land, fertilizer, irrigation, labor, etc., on the planted land will raise the average yield per acre.

The national policy of

planting "fence to fence" in recent years has produced the glut of surplus grain now choking the market. This policy must stop. GSPA strongly contends that (1) if all farmers would cooperate in a nationwide program

(the set-aside) to restrict production and (2) if all farmers would support organizations which promote their grain with established sales promotion programs, then and only then, will full parity be achieved.

\$20 Million Cotton Promotion

MEMPHIS (Special)—America's cotton producers plan a substantially expanded research and marketing program for their fiber in 1978.

The Cotton Board recently accepted a \$20.5 million budget for the program and submitted it to the Secretary of Agriculture for consideration.

The proposed budget was adopted by the board of directors of Cotton Incorporated which conducts the program at a meeting in Dallas in mid-September.

Under the Cotton Research and Promotion Act, the Cotton Board is the body responsible for administering the program.

G.L. Seitz, Bakersfield, Calif., Cotton Board chairman, said the new budget establishes priorities based on solving the most pressing problems facing the cotton industry and strengthening cotton's competitive position in the fiber market.

A high priority will be given, Seitz said, to expansion of a multi-pronged pest management program aimed at solving the worm problems that caused extensive damage to cotton crops in many sections of the Cotton Belt this year. Cotton Incorporated's 1978 program calls for a special task force to carry out this effort.

Other programs areas earmarked for major attention include byssinosis, the respiratory ailment that affects some workers in textile

mills that use cotton; cottonseed research and development; energy; and farm-to-mill systems.

Seitz said the new budget also covers activities designed to strengthen cotton's position in blended fabrics and to protect 100 per cent cotton markets from attacks made by synthetic fibers.

High priority will be given to: (1) protecting and expanding cotton usage in heavyweight apparel fabrics, (2) building on the success of the high cotton

"Natural Blend" program in lightweight and medium-weight fabrics with durable press properties, and (3) increasing use of cotton in knits of all types and in fire retardant apparel.

The home furnishings market also will come in for special attention, with research, development and marketing programs designed to increase the consumption of cotton in such products as sheets and towels.

Seitz said the entire product development and mar-

keting effort will be backed up by a major advertising program aimed at keeping cotton's message before the American public.

"If we cotton producers don't advertise the benefits of our cotton fiber, no one else will do it for us," Seitz said.

Commenting on acceptance of the budget by the Cotton Board, Chairman Seitz said the 1978 research and marketing program embodies the "long term business approach that is essential to cotton's continued progress."

Vacuum refrigerator condensers coils at 3-4 month intervals—they're in the back or at bottom of cabinet. Dr. Carolyn McKinney, family resource management specialist with the Texas Agricultural Extension Service, The Texas A&M University System, reports that dust-covered impair the efficiency of the compressor operation and increase ener-

gy usage. **Look closely at contests and gifts,** says Claudia Kerbel, consumer information specialist with the Texas Agricultural Extension Service, The Texas A&M University System. If you must listen to a sales pitch or make a purchase first, then it's not free. In any "give-away," look for strings attached, the specialist says.

When you think of irrigation needs—(underground pipelines, Lockwood center pivot, sprinkler-gated aluminum pipe)



Think of **MIKE CAMPBELL** Now Representing **R & R Irrigation, Inc.** in Floyd County

Don't forget, Floyd County ASCS Office is taking sign ups for cost share on underground pipe the 1st week of Nov. 1977. For further information contact Mike Campbell: 253-2297 Ralls or 763-5193 Lubbock.

Texas Food and Fiber

by Reagan V. Brown, Commissioner Texas Department of Agriculture



My daddy used to tell me "you can't sell from an empty wagon." As the years passed, I became more and more appreciative of his philosophy and have tried to practice what he preached.

While you can't sell from an empty wagon, neither can you sell from a full wagon if you don't tell the customers what you have. And the Texas Department of Agriculture, working with the state's food and fiber interest groups, is bursting its suspenders telling the Texas agriculture products story.

And the story is an exciting one. Our Texas Ruby Red grapefruit has become internationally known; our choice breeding cattle have also attained international acclaim; our oranges are competitive with the famous Sunkist brand from California; our orange juice competes successfully with Anita Bryant's sunshine products from Florida. Idaho and Maine potatoes find the competition keen when matched with Texas potatoes.

Be it turkeys or tomatoes; onions or okra; pecans or peaches; cotton or corn; carrots or chickens; wheat or watermelons; peanuts or pork, Texas' products are finding great favor with the housewives throughout the nation.

Agriculture is presently in an atmosphere of uncertainty. However, I am optimistic about its future, and I shall do everything I can to promote our Texas agricultural products.

The Department's marketing Division has planned an outstanding program for next year, and I feel that Texas agriculture will benefit greatly from the division's efforts. The division's projects include general Texas Agricultural Products promotion and promotion of meat, eggs, fruit and vegetables, nursery products, institutional programs, and promotions at trade shows, conventions, and a number of the popular Taste of Texas productions. All of this is designed to market the products of Texas agriculture, which will

be of great benefit to all Texans.

The Texas Department of Agriculture is going to do all the law will allow in providing services to Texas agriculture, and every employee of the Department is going to be a salesman for Texas agricultural products.

I urge the people of Texas to become aware of the TAP (Texas Agricultural Products) signs in their favorite supermarket and grocery store. These products are the freshest and finest you'll find.

4-H CLUB

News

Reporter: Melanie Foster
The Lockney 4-H club held a meeting October 24, 1977 at 7:00 in the ag building.

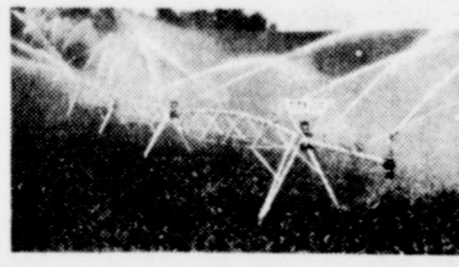
Stephanie Turner read a letter and explained what she and Jody Foster did when they were District II Council Delegates. Then later on Linda Terrel talked about Method Demonstrations. Sharon Jones and Darlene Broseh, two of the senior members won first and went to state. They also gave their demonstration at Kansas, and they showed slides and gave a program on what you do when you win state. Jerry Williams discussed the pecan selling project. David Foster and a few other members gave a program on Leadership LAB.

New members that have joined are: Daron Widner, Jay Widner, John Koonsman, Karen Ford, Lisa Terrel, and Hugo Araujo. Those present were: Byron Brock, Kyle Brock, Shawnda Brock, Darlene Broseh, Earl Broseh, Shandra Bybee, Stephanie Bybee, Shereshe Cannon, Gary Cawley, Michael Cawley, David Foster, Jody Foster, Melanie Foster, Kar-

Got Heating Or Plumbing Problems? Call **HOLMES PLUMBING** 983-2251 6:30 - 9:30 a.m. and 5:30 p.m. Until?

Now! What you pay to lease a Zimmatic depends on the price of corn.

Here's another first from Lindsay... the Zimmatic Corn Crop Lease. Instead of a fixed lease payment, you pay for your Zimmatic based on the price of corn. If corn prices plunge, so does your lease payment.



By offering this new lease, Lindsay is sharing some of the same risks that you face every year. Corn prices fluctuate, which affects your profit picture. That's why Lindsay developed the exclusive Zimmatic Corn Crop Lease... a revolutionary program that tailors your lease payments to the changing price of corn, from one year to the next.

The number of Zimmatics available under this program and the time period of this offer are limited so come in soon and get all the details on the Corn Crop Lease and other exclusive leasing programs available only through Lindsay Credit Corp.

The Zimmatic Corn Crop Lease is designed so you can lease a Zimmatic without using your normal operating credit sources... your Zimmatic pays its own way by turning on your production.

Take advantage of a program that has never been offered in the industry before... it's the lease we can do for you.

LINDSAY christian irrigation, inc. THE CENTER PIVOT SPECIALIST GIVE US A CALL - CENTER PIVOTS ARE OUR ONLY BUSINESS. REPRESENTATIVE-DELVIN BYBEE, LOCKNEY 652-3179 PLAINVIEW OFFICE-800 E. 6TH.-293-4337



The first car theft reportedly occurred in Paris in 1896. The Baron was stolen by his mechanic while it was undergoing repairs.

The heat pump

"THE ELECTRIC SAVINGS MACHINE"

HOW MUCH HEAT DO YOU GET FOR THE HEAT PUMP PUMPS?

Neither glacial January winds nor those in-between days, nor the August sun can affect the heat circulation of air, at just the right temperature.

Now you can stop fussing with those in-between days, too. An automatic climate control switches from heating to cooling the precise temperature you desire. On cold days, the heat pump automatically switches from heating to cooling. On hot days, it automatically switches from cooling to heating. The HEAT PUMP SAVES YOU MONEY!

A stream of * Springtime air . . .

SPS SOUTHWESTERN PUBLIC SERVICE

OUR GENERATION IS FOR YOU!



IT'S NO TRICK - Treat Yourself To Savings At PIGGLY WIGGLY!



*Each of these advertised items is required to be readily available for sale at or below the advertised price in each store, except as specifically noted in this ad.

Kounty Kist
Whole Kernel Corn
 5 **\$1**
 12-oz. Cans

6-32 OZ BOTTLE CARTON
COCA COLA
\$1.29
 PLUS DEPOSIT

Golden Best
Pure Shortening
98¢
 1-Lb. Can

Piggly Wiggly
Oleo Shorteners
\$1
 1-Lb. Ctns.

Assorted Varieties Mars
Candy Bars
 Plains
Chocolate Drink
 Plains
Protein Plus

6 ^{20¢} **\$1**
 Bars
 plastic jug gallon **\$1.29**
 gallon carton **\$1.77**

Washington Extra Fancy Red
Delicious Apples
3 \$1
 Lbs.

Husband Pleasin'
Ranch Style Beans
\$1
 15-oz. Cans

Round Steak
\$1.18
 Lb.

Heavy Aged
Sirloin Steak
\$1.18
 Lb.

U.S. No. 1 East Texas
Sweet Yams
4 \$1
 Lbs.

Assorted Varieties
Bean Cookies
\$1
 8-oz. Pkgs.

COUNTRY STYLE
Pork Ribs Lb. **\$1.19**
 BONELESS
Round Steak Lb. **\$1.58**

Cube Steak **\$1.98**
 Farmer Jones Jumbo
Franks 1-Lb. Pkg. **99¢**

TexaSweat
Juice Oranges
89¢
 5-Lb. Bag

Fight The Frizzies
Protein 21 Shampoo
99¢

FAMILY PACK
Pork Chops Lb. **\$1.29**
 Bulk Style
Sliced Bacon
\$1.29
 Lb.

T-Bone Steak Lb. **\$1.88**
 Round, Top or Bottom
Roast
\$1.58
 Lb.

Slim Jim Frozen
 French Fried
Shoestring Potatoes
\$1
 20-oz. Pkgs.

What One Person Can Do

BARBARA SHIRLEY, GRATEFUL CRUSADER

A Georgia mountain girl had a dream shattered by blindness. Then a corneal transplant restored her sight. She got her world back. Now she has a new dream on top of the old one - to help others have the miracle of sight.

Barbara Shirley had wanted an education. "I had wanted to serve humanity and someday leave the world a better place than I found it..." She had just been getting started at Tennessee Temple College. Then one day the mountains and the sun became "strangely distant." She tried to study and saw no print on the page. Mysteriously, she was almost blind. She had to leave college.

Twenty-six months and many doctors later, a young ophthalmologist identified an unsuspected disease which had caused a malformation

of the cornea. A heavy contact lens on her least affected eye enabled her, with difficulty, to finish college. She graduated summa cum laude. She started a teaching career. But her deteriorating sight made graduate school impossible and a corneal transplant essential. She had first one, then another. "My soul flooded with gratitude..." she said. "I looked untiringly into the smiling face of a 7-year-old daughter and thanked God for those who will their eyes that others may see."

Out of her gratitude grew the second dream - the growth of eye research laboratories and eye banks in Georgia to serve those who are, or would become, blind. Barbara Shirley teaches, counsels and is a crusader against drugs. She also movingly relates her personal miracle before group after group and pleads for eye donors. The Atlanta Eye Bank has put her on its advisory board. Helping others is a great way to say, "Thanks."

Do," send a stamped, self-addressed envelope to The Christophers, 12 E. 48th St., New York, NY 10017.

Jimmy Howard Promoted

At U. Of Illinois

URBANA, ILL. - Jimmy L. Howard has been appointed an assistant professor of veterinary clinical medicine at the University of Illinois at Urbana-Champaign. Howard, a native of Floydada, Texas, received his bachelor's degree from Texas Tech University at Waco and his doctorate in veteri-

ary medicine from Texas A & M University.



In a year's time 30 tons of barnacles can attach themselves to the bottom of an ocean-going ship.

42 OZ. WHITE SWAN
SHORTENING 19¢
With Purchase Of 2 Cut up Fryers
99¢ WITHOUT PURCHASE

6-32 OZ. BOTTLE CARTON
DR PEPPER \$1.49
PLUS DEPOSIT

JUN BO ROLL HI-DRI
PAPER TOWELS 2/89¢
79¢ VALUE

15 OZ. GEBHARDTS 49¢ VALUE
TAMALES 3/\$1.00

THESE VALUES GOOD SUNDAY, OCTOBER 30 THROUGH WEDNESDAY, NOVEMBER 2



WE RESERVE THE RIGHT TO LIMIT QUANTITIES

BUDDY'S
220 South 2nd Street 983-3149
HOURS MON-SAT 8 A.M. - 8 P.M. SUNDAY 9 A.M. - 7 P.M.



DOUBLE ON WEDNESDAY

15 COUNT CHINET 99¢ VALUE
PAPER PLATES 79¢

15 OZ. WHITE SWAN 34¢ VALUE
BLACK EYE PEAS 4/\$1.00

14 OZ. WHITE SWAN 39¢ VALUE
TOMATOES 3/\$1.00

12 OZ. TOM SCOTT
MIXED NUTS 99¢
\$1.49 VALUE

3 OZ. GEBHARDTS
CHILI POWDER 59¢
73¢ VALUE

16 OZ. WHITE SWAN 34¢ VALUE
SPINACH 4/\$1.00

14 OZ. NABISCO CHIPS AHOY 99¢ VALUE
COOKIES 79¢

16 OZ. KLEEN GUARD
FURNITURE POLISH 89¢

48 COUNT KOTEX \$2.69 VALUE
TAMPONS \$1.89

12 OZ. ALL AMERICAN
CHEESE SINGLES \$1.09

15 OZ. 99¢ VALUE
PINE SOL 69¢

USDA BONELESS
ROUND STEAK LB \$1.59

USDA BONELESS
SIRLOIN STEAK LB \$1.49

13 OZ. MILNOT 39¢ VALUE
CAN MILK 4/\$1.00

LEAN
GROUND CHUCK LB 99¢

FAMILY PAK
PORK CHOPS \$1.09 LB

17 OZ. WHITE SWAN GOLDEN
CORN 4/\$1.00
34¢ VALUE

16 OZ. WHITE SWAN WHOLEN NEW
POTATOES 4/\$1.00
34¢ VALUE

17 OZ. WHITE SWAN 34¢ VALUE
LUNCHEON PEAS 4/\$1.00

10 PACK TRIDENT 99¢ VALUE
GUM 79¢

5 OZ. WHITE SWAN
CATSUP 79¢
99¢ VALUE

32 OZ. BLACK BURN
WAFFLE SYRUP 69¢

10 LB BAG
POTATOES 79¢
RUBY RED

16 OZ. WHITE SWAN \$1.09 VALUE
COFFEE CREAMER 77¢

3 OZ. WHITE SWAN
INSTANT TEA 99¢
\$1.39 VALUE

1 LB
GRAPEFRUIT 4/\$1.00

5 OZ. LEA AND PERRINS 61¢ VALUE
WORCESTERSHIRE SAUCE 2/99¢

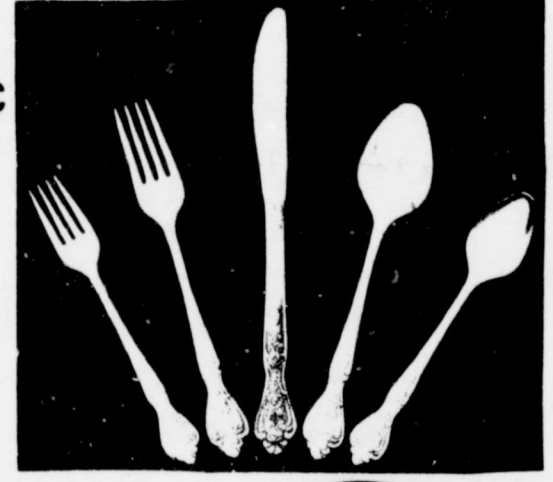
5 QUART BUCKET \$3.89 VALUE
ICE CREAM \$2.89

1 LB TEXAS
CRANBERRIES 39¢

1 LB
CARROTS 5/\$1.00

GALLON
CHOCOLATE DRINK \$1.27
\$1.59 VALUE

Stainless Flatware



only **25¢**

for a 5 Piece Place Setting

Imagine a 40 piece service for only \$2.00

HERE'S HOW IT WORKS!
Simply save the coupon each time you shop at Buddy's. Add up your coupons. When you've collected \$2.00 in coupons, you can use them for a 5 piece place setting in your choice of pattern. This is a special savings and is not available with other coupons. Start saving today. For the details of our coupon plan, see the coupon book at Buddy's.

2 LB BAMA
STRAWBERRY JAM 99¢
WITH COUPON
\$1.19 WITHOUT COUPON
GOOD AT BUDDY'S EXPIRES 11-2-77

GIANT 49 OZ.
TIDE \$1.19
WITH COUPON
\$1.39 WITHOUT COUPON
GOOD AT BUDDY'S EXPIRES 11-2-77

10 COUNT HEFTY
TRASH BAGS 79¢
WITH COUPON
\$1.09 WITHOUT COUPON
GOOD AT BUDDY'S EXPIRES 11-2-77

OUR FRIENDS & NEIGHBORS



THIS MONTH WE SALUTE THE MASSIE ACTIVITY CENTER BOARD OF DIRECTORS (L TO R STANDING) GILBERT FAWVER, PRESIDENT C.J. PAYNE, NEWELL PARKER, W. I. MOORE, TREASURER SAMMY HALE, CHARLES TYER, LOUIS ANDERSON. (L TO R SEATED) LOVENE MOORE, SECRETARY EDITH MUNCY, JOY FULTON AND GALE RAMSEY.

BISHOP-RAMSEY
Pharmacy 983-3174
208 WEST HOUSTON FLOYDADA, TEXAS

Collins Implement
S. of City
983-3732

Piggly Wiggly
No. 265 303 S. Wall

221 So Main
FLOYDADA, TEXAS 79235

Chevrolet
ODEN CHEVROLET
Olds Inc.

MIZE TV
Joe Hart-983-3481
RCA TV Litton Microwave Ovens Sound Designs Stereo Products.

QUALITY BODY SHOP
Johnny Sue, owner
121 E. MISSOURI Phone 983-5032
FLOYDADA, TEXAS

DYSON'S
SHOE SHOP
104 South Main Phone 983-3414
Floydada, Texas

RUSSELLS EQUIPMENT & SUPPLY INC.
608 E. Houston
983-3751

Beall's
DEPARTMENT STORES
118 E. California St.
983-2596

Norrell Tractor Parts
114 W. Mo. 983-3417
Floydada, TX

Betty's Place
Fashion & Fabrics
604 S. 2nd 983-5091

perry's
104 E. California

Martin & Co.
216 S. MAIN FLOYDADA

Baker Ins. Agency
127 W. California
Floydada, TX

GILBREATH EXXON
101 N. 2nd, 983-3323
Floydada, TX
PRODUCTS AND SERVICE STATION

Plainview SAVINGS & LOAN Association
217 W. California
FLOYDADA BRANCH

Floydada Farmers Co-op Gin
319 N. 5th 983-2884
Floydada, TX

FLOYDADA REAL ESTATE AND INSURANCE
108 W. Mo.
983-2360

Solomon Jewelry
102 South Main St.,
Floydada, Texas

Buddy Food
200 S. 2nd

Adams Services
COMPLETE IRRIGATION SERVICE
BOONE ADAMS
Owner/Mgr.

TEXAS FB
INSURANCE AGENCY
FLOYD COUNTY BRANCH
101 S. WALL FLOYDADA

The Country Market
126 West California
FLOYDADA, TEXAS

Ponderosa Meat Co.
807 E. Mo. 983-2116

BULLOCK CITY AUTO
201 E. MISSOURI
FLOYDADA, TEXAS 79235

THOMPSON
200 SO. MAIN

WE ACKNOWLEDGE THE CO-OPERATION OF THESE FIRMS IN SPONSORING THIS PAGE. THE CIVIC PRIDE THEY EXEMPLIFY IS A TRIBUTE TO OUR COMMUNITY.

FOR SALE

Large 3 bed-
3 1/2 baths,
6 ft. cedar
throughout,
Call 983-
Shown by tfe

Small two
Good loca-
tfe

New 3 bed-
two bath
West Mis-
James tfe

1 1/2 story
west on
4 bed-
kitchen,
and double
after 5 o'clock tfe

FOR SALE:
bath, large
built-in kit-
First National
Ltf

home fully
storage, ex-
Must see
983-3813 after
tfe

OM house,
fully carpeted,
kitchen, stor-
10 W. Lee,
5:00 p.m. or
day. tfe

LIVING for
bedroom or 4
TV room,
by appoint-
2856 ask for
983-2933. tfe

Five room
garage and
lot, good
property. 414
Floydada. For
Marvin Gil-
983-2337. Box
Ltf

M. 1 bath,
house, 529
Day-983-3929
983-5227. tfe

New three
and a half
able car gar-
age. 3,751
983-2828. tfe

3 bedroom
1 1/2 baths,
air-central
er lot with
x 30' insulat-
ing in back
and electri-
9840 after 5:00
tfe

bedroom, 2 lots,
983-3695, 602
Reid J ones,
tfe

33 Bedroom
bath, cent-
large base-
garage, on
216. Ltf

22 bedroom
carpeted, storm
all heaters,
washer and
storage house.
Finley 983-
Ferguson 983-
tfe

Large house,
and well. Good
exchange for
and lots. Bal-
one 983-2359.
11-10e

store building,
Floydada, good
Real Estate.
Bond 983-2151,
tfe

3 bedroom
bath, utility
vener, single
by appoint-
982748. 11-20e

Three bed-
Lockney. Lar-
ment cella-
Call 652-
Healthy. Ltf

nice two and
homes for
can be arranged.
Date at 983-
tfe

Two year old
spacious 2 bed-
ins in kit-
clothes clos-
bedrooms, cent-
eat, split level
beams, panel-
throughout,
made drapes
car garage
door opening
rt. Located on
ay outside the
call after 5 p.m.
tfe

WANTED

NEED AMWAY? Call 983-
2709 10/27e

WANT TO BUY camper
for eight foot pickup. Call
983-2453. 11-3p

NEED TO LEASE OR
RENT, feed stalks, corn
stalks or grass for cattle
grazing - call collect 697-2770
10/30e

NOTICE
Drama Club needs old
clothing including: men's
hats, old suits, women's
padded-shoulder suits (and
various period-clothing of
the 1930's look). Mens over-
coats and women's coats. If
you would like to donate any
items call High School or
983-5216. Your support will
be greatly appreciated.

EMPLOYMENT

ADDRESSERS WANTED
IMMEDIATELY! Work at
home-no experience neces-
sary - excellent pay. Write
American Service, 8350
Park Lane, Suite 269, Dallas
Tx 75231 11/13p

HELP WANTED: Couple to
live in and care for semi-in-
valid. Lovely home in coun-
try, excellent wages, healthy
retired couple preferred.
Call 652-3782 after 9 p.m.
L10-30 P

NEEDED: John Deere strip
per driver, call 983-2671. tfe

EXPERIENCED LP-Gas
man to operate business in
small West Texas town.
Good salary-partial owner-
ship possible. Call collect-
Virgil Elliott, 918-583-0440.
LF 10-30e

MANAGER TRAINEE
WANTED
Expanding Company needs
people to train to fill jobs
as manager.

Couple preferred but not
essential - after placed as
manager, salary plus bonus
to exceed \$1000.00 per month.

Incentive plan, including
yearly vacation, insurance
plan.

On-The-Job training will
include learning to cook fast,
scheduling employees, and
supervision of A Dairy Queen
restaurant.

Opportunity for person
who desires to build a future
in food service.
Must be able to relocate.
Interested? Call Pete Looney
806-253-2057, or write
Hollis Jones, Dairy Queen
District Office, Box 892,
Ralls, Texas 79357. 11-6e

Full time bookkeeper with
agricultural knowledge
needed in Lockney. Must have
experience. For interview
call Glynell Durant, 293-4506.
Ltf

WANTED: year's round
farm hand, with house, paid
vacation, electric and gas
paid. 983-3828. tfe

FOR SALE
100 Yamaha Cycle
RCA Stereo Component
Set with tape deck and
speaker.
Terry Brewer 652-2125

REMODELING,
All types Building,
Built-Ins,
Cabinet Work
CALL
CHRIS RINK
983-5117
222 W. Miss
Floydada

DISCOUNT PRICES ON PET FOODS
PURNIA- CO-OP - BOW WOW - FIELD RATION
Producers Cooperative Elevators

FOR SALE
Nice Brick Duplex Located at 308-A &
308-B S.W. 2nd St. In Lockney Call
Phyllis Reay 652-3480
Ralph V. Graham Realtors
504 Joliet, Plainview Phone 293-4246

Custom Upholstery
Guaranteed
Quality Work
652-2207
Jesse Savage LTF

PLUMBING REPAIR
WORK Day or night, call
983-5103. tfe

MR. FARMER
Let us clean your harvest
equipment and well engines
on your farm. Call Lone Star
Chemical, Inc. 652-3594, 652-
3504, or 652-3434. Ltf

NORRELL TRACTOR
PARTS for tractor and irri-
gation supplies and accesso-
ries. tfe

PAINTING-residential
and commercial, spray and
brush. Acoustic ceilings and
paneling. Economical prices-
Free Estimates-Call 983-
3306-Floydada. tfe

PIANO TUNING, Eo-
ward C. Lain, 25 years
experience. Write Box 425
Silverton or call 823-2151.

FEET TIRED? Try Mason
Shoes with "Velvet-eez" air
cushioned innersoles.
Keith Emert, 652-3116 LStfe

BUSINESS SERVICES

PLUMBING REPAIR
WORK Day or night, call
983-5103. tfe

MR. FARMER
Let us clean your harvest
equipment and well engines
on your farm. Call Lone Star
Chemical, Inc. 652-3594, 652-
3504, or 652-3434. Ltf

NORRELL TRACTOR
PARTS for tractor and irri-
gation supplies and accesso-
ries. tfe

PAINTING-residential
and commercial, spray and
brush. Acoustic ceilings and
paneling. Economical prices-
Free Estimates-Call 983-
3306-Floydada. tfe

PIANO TUNING, Eo-
ward C. Lain, 25 years
experience. Write Box 425
Silverton or call 823-2151.

FEET TIRED? Try Mason
Shoes with "Velvet-eez" air
cushioned innersoles.
Keith Emert, 652-3116 LStfe

AUTOMOTIVE

FOR SALE-1972 Chevro-
let Kingswood wagon, load-
ed, good condition,
\$1,795.00. 983-3121 or 983-
2489. tfe

1968 BUICK ELECTRA
225-all electric and power-
good transportation. 983-
2994. tfe

For Rent

FOR RENT: Two bedroom
house in country. call
652-3149 Ltf

MOBILE HOMES

FOR SALE-1974 ultimate
14 x 80, garage and lot.
\$19,500. Call 652-2524. Ltf

FARMS AND ACREAGE

WANTED TO BUY irri-
gated or dryland farm in
Floyd or surrounding area.
Write Box XRO, c/o Hesp-
erian, Box 700, Floydada. tfe

Kirby

Vacuum cleaners, new and
rebuild. 1 yr. guarantee. Parts
sales and service. Prices begin
at \$124.50.
Parker Home Furnishings
In Lockney. 652-3315 Ltf

Case

You, Mr. Farmer, can
Lease-Purchase your next
tractor. Can get fast de-
pendable service.

FOR summer Sale Prices
on new or used equipment,
43 to 300 H.P.

CASE POWER
AND
EQUIPMENT
983-2836.
Robert Crawford, Mana-
ger. Residence 983-5315.
SILVERTON HWY.

FOR SALE
Nice Brick Duplex Located at 308-A &
308-B S.W. 2nd St. In Lockney Call
Phyllis Reay 652-3480
Ralph V. Graham Realtors
504 Joliet, Plainview Phone 293-4246

DISCOUNT PRICES ON PET FOODS
PURNIA- CO-OP - BOW WOW - FIELD RATION
Producers Cooperative Elevators

FOR SALE
Nice Brick Duplex Located at 308-A &
308-B S.W. 2nd St. In Lockney Call
Phyllis Reay 652-3480
Ralph V. Graham Realtors
504 Joliet, Plainview Phone 293-4246

Custom Upholstery
Guaranteed
Quality Work
652-2207
Jesse Savage LTF

PLUMBING REPAIR
WORK Day or night, call
983-5103. tfe

MR. FARMER
Let us clean your harvest
equipment and well engines
on your farm. Call Lone Star
Chemical, Inc. 652-3594, 652-
3504, or 652-3434. Ltf

NORRELL TRACTOR
PARTS for tractor and irri-
gation supplies and accesso-
ries. tfe

PAINTING-residential
and commercial, spray and
brush. Acoustic ceilings and
paneling. Economical prices-
Free Estimates-Call 983-
3306-Floydada. tfe

PIANO TUNING, Eo-
ward C. Lain, 25 years
experience. Write Box 425
Silverton or call 823-2151.

COW POKES



"If I live through this, I'm gonna apply for one them civil service jobs."

THIS FEATURE SPONSORED BY
Floydada Real Estate & Insurance Agency
AUTO, FIRE & FARM INSURANCE
Jim Word - - - Phone 983-2360

INSULATION
Fire-Resistant, Installed and Guaranteed
MARR INSULATION CO.
Tom Marr Owner 652-3593

FARM MACHINERY

FOR SALE, 4 large mixer
drums good for septic tanks,
liquid storage or grain stor-
age. Wayne Bennett, 983-
3209. tfe

FOR SALE: 25 cotton trail-
ers, call 675-2289, Crosbyton
10/27e



WE WANT YOU TO KNOW
We sell all kinds of Goodyear
tires, tractor, auto
truck, a good tire, good ser-
vice. Best deals in West Tex-
as. Truck winch and hauling
service. BARE'S SERVICE
CENTER, FLOYDADA. tfe

QUALITY SHAMROCK PRODUCTS

Always Make A Good Deal On
SONIC TIRES and SOUTHLAND BATTERIES
Dial 652-3366
JACKSON TIRE COMPANY
Richard Wiley

Diamond Industrial Supply Co., Inc.
Phone Days 296-7118, Nights 296-1200
or 296-7828
1014 Broadway
Plainview, Texas

Chain U-joints
Sprockets Oil Seals
V-belts O-rings
Sheaves Wisconsin
SKF BCA Timken Bower
Cotton Striper Brushes & Bats
"We Appreciate Your Business More"
L-TFC

DON'S MUFFLER SHOP
"OUR BUSINESS IS EXHAUSTING"
MUFFLER & CUSTOM SHOP
SPECIALIST IN
DUAL EXHAUST
123 W. California 983-2273 tfe

FARMS-RANCHES-CITY PROPERTIES-
BUSINESS LEASES-LOANS
B. B. WILKES BROKER
REAL ESTATE
100 S. Main, Lockney
Barry Barker, Solicitor
Barker Insurance Agency - 652-2642
IF IT IS INSURANCE
-SEE-
BARKER INSURANCE AGENCY
LIFE-FIRE-CASUALTY-HOSPITAL

FOR SALE
Nice Brick Duplex Located at 308-A &
308-B S.W. 2nd St. In Lockney Call
Phyllis Reay 652-3480
Ralph V. Graham Realtors
504 Joliet, Plainview Phone 293-4246

DISCOUNT PRICES ON PET FOODS
PURNIA- CO-OP - BOW WOW - FIELD RATION
Producers Cooperative Elevators

FOR SALE
Nice Brick Duplex Located at 308-A &
308-B S.W. 2nd St. In Lockney Call
Phyllis Reay 652-3480
Ralph V. Graham Realtors
504 Joliet, Plainview Phone 293-4246

Custom Upholstery
Guaranteed
Quality Work
652-2207
Jesse Savage LTF

PLUMBING REPAIR
WORK Day or night, call
983-5103. tfe

MR. FARMER
Let us clean your harvest
equipment and well engines
on your farm. Call Lone Star
Chemical, Inc. 652-3594, 652-
3504, or 652-3434. Ltf

NORRELL TRACTOR
PARTS for tractor and irri-
gation supplies and accesso-
ries. tfe

PAINTING-residential
and commercial, spray and
brush. Acoustic ceilings and
paneling. Economical prices-
Free Estimates-Call 983-
3306-Floydada. tfe

PIANO TUNING, Eo-
ward C. Lain, 25 years
experience. Write Box 425
Silverton or call 823-2151.

For Sale

FOR SALE: GE self clean-
ing oven-stove, 2 Deereborn
heaters, good condition, 983-
2001 10/30e

FOR SALE: Hegari bundles
with grain. W.H. Finley
983-3443 tfe

FOR SALE: Sixty yards of
good avocado green carpet
for sale, call 652-2385. Ltf

TOMATOES
15 cents a pound, you
pick. 983-2671. tpf

FOR SALE: 1-Hydrone
16 foot 60 horse power Evin-
routde motor, 1-big trailer
chasis and 1-Wittmore
grinder/mixer. Call 983-
3881. 11-6e

FOR SALE: Fresh country
eggs, 983-2953 after sun-
down. 11/3e

FOR SALE: Good Electric
Range with built-in Deep
Fryer. Call 983-3218 or 983-
2604. \$30.00. 10-30e

FOR SALE: White gold
diamond wedding ring set.
Practically brand new. Call
983-3584 and ask for Debra.
\$150.00. 10-30e

FOR SALE: White leg-
horn pullets ready to lay.
Phone 983-3404, 983-3585
nights. C.B. Carmack. 10/30

FOR SALE: Shelled pecans 3 lbs.
for \$11.00 or 5 lbs. for
\$18.00. Contact any 4-H
member or Floyd County
Extension Office (983-2806)
12-1e

FOR SALE: 14.2 cubic
foot GE refrigerator, elect-
ric Hot Point range-both
white and in good shape.
Also a Frigidaire washing
machine. Call James Lee
Nichols. 983-2626 or 983-
3144. tfe

FOR SALE: French Proven-
cial 3-piece bedroom suite,
\$250.00. 983-3927. tfe

FOR SALE: Whirlpool
portable dishwasher, like
new. Call 983-2361 days,
983-3467 after 5 p.m. 11-3e

NEW 1977
Heavy Duty Sewing
Machine
All medal zig-zag button
hole and decorative work.
Regular Price \$229.00
Now \$99.95
SEWING MACHINE
SERVICE CTR.
1801.34th.
Lubbock, Texas
794-4618 LTF

Can You Use Some
Extra Money?
Let Us Help!!!
WE BUY SCRAP IRON,
OLD JUNKERS, COPPER
BRASS.
Call 983-5277
Help Us Keep Our
Country Clean

THRASHER & CO.
Redi-mix Concrete
Sand & Gravel
Excavation
call us:
983-2170
229 E. California TFC

DAN'S AUTO
SERVICE
DAN TEUTON, Owner
Specializing in Auto-
matic Transmission,
Motor Tune-Ups, Auto
Air Conditioning.
General Repair
We Have A
BRAKE LATHE
to handle all passenger
car brake drums. See us
for complete brake
service.
Phone 652-2462

INSULATION?
do it now!

TEXAS
INSULATION
SYSTEMS Box 591
Lockney, Texas 79241
(906) 652-3348
ThermoCon Spray-on
for Metal Buildings & Shops
ThermoCon Loose-fill
for Residential Application
"Insulation doesn't cost
it pays!"
Please call for a free
estimate without obligation.

INSULATION?
do it now!

TEXAS
INSULATION
SYSTEMS Box 591
Lockney, Texas 79241
(906) 652-3348
ThermoCon Spray-on
for Metal Buildings & Shops
ThermoCon Loose-fill
for Residential Application
"Insulation doesn't cost
it pays!"
Please call for a free
estimate without obligation.

INSULATION?
do it now!

TEXAS
INSULATION
SYSTEMS Box 591
Lockney, Texas 79241
(906) 652-3348
ThermoCon Spray-on
for Metal Buildings & Shops
ThermoCon Loose-fill
for Residential Application
"Insulation doesn't cost
it pays!"
Please call for a free
estimate without obligation.

INSULATION?
do it now!

TEXAS
INSULATION
SYSTEMS Box 591
Lockney, Texas 79241
(906) 652-3348
ThermoCon Spray-on
for Metal Buildings & Shops
ThermoCon Loose-fill
for Residential Application
"Insulation doesn't cost
it pays!"
Please call for a free
estimate without obligation.

INSULATION?
do it now!

TEXAS
INSULATION
SYSTEMS Box 591
Lockney, Texas 79241
(906) 652-3348
ThermoCon Spray-on
for Metal Buildings & Shops
ThermoCon Loose-fill
for Residential Application
"Insulation doesn't cost
it pays!"
Please call for a free
estimate without obligation.

SALES

FLEA MARKET
24th & Ave. K
LUBBOCK
Open every weekend, free
parking, free admission.
Over 75 dealers. 11/3e

CAPROCK EMER-
GENCY MEDICAL TECH-
NICIANS ASSOCIATION'S
Rummage and Bake Sale,
Thursday, November 3, 8-5
p.m. North Main, next to
Stewarts Cleaners. 11-3e

Everthing PLUS The
Kitchen Sink Furniture,
clothes, and misc. items.
Thursday, Friday and Sat-
urday 716 W. California. 11-3e

MUST SACRIFICE two
registered Saint Barnards,
one male and one female,
Dennis White, 983-3357. tfe

PETS

TO GIVE AWAY: 1/2 Lab-
ador Retriever puppies, call
983-3644 tfe

FLOYD COUNTY
ABSTRACT CO.
Abstracts
Of Title
Title Insurance
Verna L. Stewart
Owner, Manager
217 W. California
983-3728
Floydada, Texas

Auto Accidents
DO Happen . . .
If one happens to
you, be protected.
Our car insurance
offers coverage to
meet your special
needs - repairs to
personal liability.

BAKER
Insurance Agency
127 W. Calif.
Ph. 983-3270

TURNER REAL ESTATE
• Farms • Ranches
• Commercial Property
983-2635 Floydada, Texas

Farmers Insurance Group
Fast • Fair • Friendly
Farmers Insurance Group offers a complete line of protection
Auto • Fire • Life • Truck • Boat • Commercial • Liability
Sam A. Spence
112 W. Missouri 983-2881

never
a sour
note
(WELL, ALMOST
NEVER)

Venture FOODS

SHURFINE Shoppers' Special

Your Passport to SAVINGS

SHURFRESH

18-22 LB. AVG. **Turkeys** 59¢ LB.


6-32 OZ BOTTLE CARTON **COKE** \$1.69 PLUS DEPOSIT



FULLY COOKED BONELESS HALF/WHOLE **Shurfresh Ham** \$1.89 LB.

2 LB. THICK \$2.37 SHURFRESH VAC PAC **Sliced Bacon** \$1.19 1 LB. PKG.


SHURFINE CUT **Green Beans** 4 \$1 16 OZ. CANS



SHURFRESH SALTINE **Crackers** 39¢ 16 OZ. BOX



SHURFINE ASSORTED **Towels** 39¢ JUMBO ROLL



SHURFINE GOLDEN **Corn** 4 \$1 17 OZ. CANS



Grcery Specials

SHURFINE **Grape Jelly** 18 OZ. JAR 59¢

SHURFINE CRUNCHY/CREAMY **Peanut Butter** 18 OZ. JAR 79¢

SHURFINE **Waffle Syrup** 32 OZ. BTL. 69¢

SHURFINE FRESH PAK **Cucumber Chips** 2 \$1 16 OZ. JARS

SHURFINE **Tomato Catsup** 32 OZ. BTL. 79¢

SHURFINE **Mustard** 2 \$1 16 OZ. JARS

SHURFINE VANILLA **Wafers** 2 \$1 10 OZ. BAGS

SHURFINE **Sugar** 79¢ 5 LB. BAG



SHURFINE **Flour** 49¢ 5 LB. BAG



Grcery Specials

SHURFINE COFFEE **Creamer**

SHURFINE SUGAR **Frosted Flakes**

MEDIUM GRAIN **Shurfine Rice**


SHURFINE **Grape Juice**

SHURFINE INSTANT ORANGE **Breakfast Drink**

SHURFINE **Apple Butter**

SHURFINE STRAWBERRY **Preserves**

ALL GRINDS VAC PAC **Shurfine Coffee** \$2.69 1 LB. CAN



SHURFINE HOUSEHOLD **Bleach** 59¢ GAL. JUG



SHURFINE MACARONI & CHEESE **Dinners** 5 \$1 7 1/2 OZ. BOXES



SHURFRESH QUARTERS **Margarine** 3 \$1 1 LB. PKGS.



SHURFRESH BAKED **Biscuits** 9 \$1 8 OZ. CANS



SHURFINE **Spinach** 4 \$1 15 OZ. CANS

SHURFINE MIXED **Vegetables** 3 89¢ 16 OZ. CAN

SHURFINE FRESH SHELLED **Blackeyes** 3 89¢ 15 OZ. CANS

SHURFINE EARLY HARVEST **Sweet Peas** 3 89¢ 17 OZ. CANS

SHURFINE WHOLE IRISH **Potatoes** 4 \$1 16 OZ. CANS

SHURFINE WHOLE SWEET **Potatoes** 2 79¢ 16 OZ. CANS

SHURFINE **Sauerkraut** 4 \$1 16 OZ. CANS

SHURFINE **Tomato Sauce** 6 \$1 8 OZ. CANS

SHURFINE **Pink Salmon** 15 OZ. CAN \$1.49

SHURFINE PURE VEGETABLE **Shortening** 48 OZ. CAN \$1.39

SHURFINE EVAPORATED **Canned Milk** 3 \$1 14 1/2 OZ. CANS

SHURFINE **Applesauce** 3 \$1 16 OZ. CANS

SHURFINE STRAINED/WHOLE **Cranberry Sauce** 3 \$1 16 OZ. CANS

SHURFINE FRUIT **Cocktail** 2 79¢ 16 OZ. CANS

SHURFINE YC Halves/Slices **Peaches** 2 79¢ 16 OZ. CANS

SHURFINE **Tomato Juice** 2 \$1 46 OZ. CANS

SHURFINE **Pork & Beans** 4 \$1 16 OZ. CANS

SHURFINE **Sliced Beets** 2 59¢ 16 OZ. CANS



RUSSET ALL PURPOSE **Potatoes** 10 LB. POLY BAG

AFFILIATED WE RESERVE THE RIGHT TO LIMIT PRICES GOOD OCT. 31, - NOV. 12, 1977

THOMASON GROCERY 114 N. E. 8th LOCKNEY, TN

Venture FOODS

Shelf Specials

SHURFINE ASSTD. BATHROOM **Tissue** 8 ROLL PKG. \$1.29

SHURFINE HEAVY DUTY **Aluminum Foil** 18' x 25' ROLL 69¢

SHURFINE BLUE ALL PURPOSE **Detergent** 49 OZ. BOX 99¢

SHURFINE LIQUID Pink/Lemon **Detergent** 22 OZ. BTL. 59¢

Dairy And Frozen Food

SHURFRESH HALFMOON LONGHORN **Colby Cheese** 10 OZ. PKG. 89¢

SHURFINE NON-DAIRY WHIPPED **Topping** 2 \$1 9 OZ. CTNS.

SHURFINE FROZEN SPEARS **Broccoli** 2 79¢ 10 OZ. PKGS.

SHURFINE Mixed/Cut Corn/Peas & Carrots **Vegetables** 3 89¢ 10 OZ. PKGS.

