

Penny
On Ho
May 25-
Floydada, A
gelo State
listed on the
the spring
university,
the 3.5 to
A fresh
declared m
graduate of
School.

from Tahob
lia, Ft. Wo
Hobbs N.M.
from Floyd
Mrs. A.D.
Curtis Jett

as
in
5,
d-
or
d

aine, Red, or
LEAF
ETTUC
29
W
Lb.
nkist
CIA
ES Lb.

Varieties, Froze
Patio
nner
49
Best
ato
sup
9c
ABLE COUP
IVE 20c
u buy one (1) 24
l. Mouthwash
Scope
with this coupon.
Expires June 11, 1977



LEAGUE opening game
Cubs beat the Pirates 11-3
was called in the top of the fifth
inning due to wind, dust, small amount of rain. In left photo first Cub batter up J.D. Wilson gets a hit. However in picture at right J.D. is out at home.
Pirate catcher is Scott Mankins, pitcher is Freeman Jones. Umpire is Mack Willson. Cubs coaches are Jr. Martinez and Jakey Younger. (Staff Photo).
Ricky Vasquez and Pete Castillo. Pirate coaches are

The Floyd County Hesperian



FLOYDADA, FLOYD COUNTY, TEXAS 79235 Sunday, June 12, 1977 14 Pages In Two Sections Number 47

3000 FHA Money Labor Housing

McDowell, Floyd County Administrator a \$3,000,000 will mean the construction of 3000 new labor housing units to be completed by 1980. She said there is a continual demand for more rent property in Floydada for people of all income levels.

Union Checks Up

3,000 In Floyd

are getting Supplementary Security Income payments, which go to aged, blind and disabled persons in states that participate in the supplemental program, are included. Some 33.4 million Social Security recipients and 4.3 million SSI beneficiaries are affected.

Under the new rate scale, the monthly payments to retired workers rises from an average of \$221 to \$234. For a couple, both of whom are receiving benefits, the average goes from \$377 to \$400 a month. For an elderly widow it will be \$223 instead of \$210.

The new maximum, for men who are retiring this year at age 65, will be \$437, compared with \$413 previously. The net result, for Floyd County, is that payments to local beneficiaries in the fiscal year beginning July 1st will total approximately \$3,715,000, as against \$3,508,000 in the past fiscal year.

Rock Chat

By Wendell Tooley

THE TOWN OF TULIA is larger than Floydada...and evidently, large enough to get a Pizza Hut...and now K'Bob's

I NOTICE in the Chamber of Commerce Newsletter that Floydada will undergo a clean-up, paint-up, fix-up campaign from June to September.

IT'S THE CALM before the storm for Tom Moore's ASCS office as it is anticipated that most of the wheat crop will go in the Government Loan. This is about the only way our wheat farmers can get a little money to pay debts...and hopefully have any spending money.



THE PRESIDENT WORKS...president of the baseball association Richie Crow didn't get to pitch out the first ball Thursday night because he was busy marking off the base lines. Assisting him was Donnell Williams. (Staff Photo).

Attorney General Pleased With Q Decision

There will be uninterrupted railroad service for shipments of wheat, cotton, and milo between Acme and Floydada, Attorney General John Hill said Tuesday, if the Interstate Commerce Commission approves a recent decision reached by an administrative law judge.

Hill was commenting on last week's initial ruling by Administrative Law Judge Geraldine R. Keyes in Washington, D.C. denying an application for rail abandonment by Quanah, Acme and Pacific Railway Company, a subsidiary of St. Louis-San Francisco Railway Company (Frisco Line).

The line had sought authority from the I.C.C. to abandon the stretch of railroad from Acme to Floydada, a distance of approximately 104.8 miles through Hardeman, Cottle, Motley, and Floyd Counties. That stretch is used by area wheat shippers for almost 95-99% of their shipments, and by cotton and milo shippers to a lesser extent.

Crippled Children's Clinic Here Monday

The Texas Department of Health Resources will hold a Crippled Children's Services Nursing Clinic in Floydada on June 13, 1977. The clinic will be held at the First United Methodist Church, 203 West Kentucky, from 10:00 a.m. to 3:00 p.m.

Billie Moore, R.N., Public Health Nurse from the Region 2 office in Lubbock will be in Floydada to conduct the clinic. She notes that services available at this clinic will include counseling for persons now taking part in the Crippled Children's Services Program, as well as counseling for those individuals who are not now on

Band Director Resigns

FHS band director Dennis Teasdale this week submitted his resignation to the Floydada Independent School district and will soon be moving his family to Lubbock where he will enter the subcontractor business in heating, air conditioning, home insulation.

He will be resuming a business his father operated some five years in Lubbock. (Teasdale Service and Repair). A native of Iowa, Teasdale graduated from Lubbock high school, graduated from Texas Tech. He became band director at Plainview High School for three years, then four years as director at Hale Center High School, and was a Floydada three years.

Barbershop Singers Auditions June 20

The Town and Country Chorus of Plainview and surrounding area is holding an audition for admission night June 20 at 8 p.m. in the City National Bank building in Plainview. The Lubbock "Singing Plainmen" chorus will be there to assist and to sing. The Town and Country Chorus meets regularly each Monday evening at 8 p.m. at the Hale County Airport

Commissioners To Meet With Jail Architect

The Floyd County Commissioners Court will meet with a jail architect when they begin their regular monthly meeting at 10 a.m. Monday.

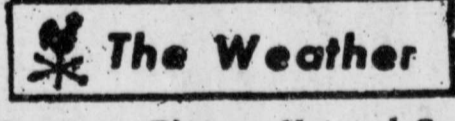
All Cattle Producers Urged To Register

All eligible livestock producers in Floyd County are reminded that they will need to register by June 17, 1977 if they are to vote in the forthcoming producer referendum on the Beef Research and Information program July 5-15, 1977.

Commissioners To Meet With Jail Architect

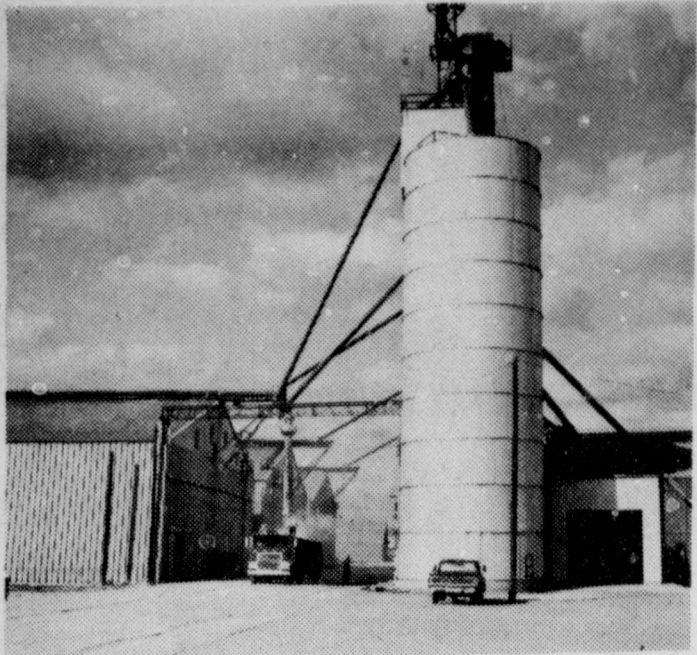
The state jail inspector from Sweetwater was in Floydada this week and stated "the jail certainly does not meet the state's requirements" but the official condemnation of the jail building would come from the state later.

The Commissioners in last month's meeting voted to give the jail priority over the revenue money that was left after taking half to grade the roads. Other items on the Monday agenda include safety insurance and meeting with probation officer Choice Smith.



Courtesy Pioneer Natural Gas

Total rainfall for year is 9.24.....this time last year it was only 6.05.....



MOVING GRAIN—Despite drops in grain production this year, the Texas Department of Agriculture is expecting around 286 million bushels of grain sorghum and over 100 million bushels of wheat to be moving through storage facilities in the state this year.

Grain Warehouse Bill Restores Public Confidence in Industry

AUSTIN—“The new Grain Warehouse Act is good for operators, good for the Texas Department of Agriculture (TDA) as the regulatory agency, and good for Texas producers,” Agriculture Commissioner Reagan V. Brown told members of the grain elevator industry recently. Brown said he felt the new legislation would “restore the public’s faith in the warehouse industry” after widespread adverse publicity over grain fraud cases this year. “That one rotten apple has always had the ability to make the whole barrel stink,” he said, telling the group it was to their credit that they were involved in the initial planning of the legislation. Members of the agricultural banking community, TDA, and the Texas Grain and Feed Association worked on provisions included in the bill. “The increased bonding provisions will work to your favor,” he pointed out, “by



It is hard to believe President Carter would carry out his threat to veto the Senate-passed farm bill because of “executive cost,” states Donald Johnson of Plains Cotton Growers, Inc.

“And if he does,” Johnson says, “it will be a direct contradiction of his pre-election campaign promises and will destroy the Carter image that bought the farm vote last November.”

Carter has indicated he may veto any farm bill with an annual estimated commodity support program cost substantially exceeding the arbitrary figure of \$2 billion. The Administration, operating on the illogical assumption of favorable crop production weather for each of the five years of the bill’s duration, sets cost of the Senate farm law at an average \$3.9 billion per year.

The Senate Ag Committee, acknowledging the high probability of variable weather during the five-year period, says the average cost is more likely to be in the neighborhood of \$2 billion.

Moreover, as Committee Chairman Herman Talmadge of Georgia pointed out in his presentation of the bill, nearly a third of the commodity cost figure consists of crop loans, most of which will be repaid by producers or recovered by the government when the commodities are sold.

Talmadge also pointed out the inconsistency of the President “quibbling” over a \$2 billion or even \$4 billion government program to assure the economic health of the nation’s biggest industry while signing “with such pride and fanfare” the recently enacted economic stimulus program.

That program allocates \$2.6 billion for employment and training assistance, \$6.8 billion for temporary employment assistance and \$4 billion for local public works.

“The most enthusiastic supporters of the economic stimulus program claim the total outlay of \$12.4 billion would result in the employment of only a few hundred thousand people,” Johnson notes, “whereas the comparatively small cost of the farm bill would protect the much more productive employment of over four million people directly employed in agriculture and another 12 to 15 million people working in closely related enterprises.”

The House is slated to consider in July a farm bill with less costly commodity support provisions than the Senate measure, and it is assumed the bill which winds up on Carter’s desk will contain provisions that indicate a cost somewhere between the House and Senate versions.

Other federal expenditures cited by Talmadge included \$20 billion for natural resources, environment and energy; \$44.3 billion for health; \$43 billion for interest on the national debt, and an estimated \$98.9 billion for defense. When one places the farm program in the context of these outlays, he said “what we are requesting appears paltry by comparison.”

Johnson adds “What Talmadge didn’t say but might have said is that without adequate food and fiber, all these huge expenditures will go for naught.”

State FU President Urges Farmers To View Beef Plan With Caution

WACO—On the eve of producer registration for a vote on the proposed Beef Market Development Plan, Texas Farmers Union President Jay Naman warns cattle producers to “be sure you know who it is that wants to control your \$40 million, why they want it, and what they intend to do with it.”

Speaking in behalf of the state-wide general farm organization, Naman claims the Beef Research and Information Act “is vague and unspecific in assuring that it will be controlled by those who pay the tab. The only sure thing is that producers themselves will in no way be able to speak out or vote on anything. Special interest groups deemed ‘qualified’ by the Secretary of Agriculture will control all the decisions, and one of them in each state stands to get a 10 percent kickback. In Texas, that means some group is in line for around \$600,000.”

Naman noted there has not been enough talk about opposition to the plan, mostly due to general

apathy among beef producers. “The plan doesn’t take the time to register the voters,” Naman says, “everyone who owns a cow is a candidate for a Beef board which could be elected without considering the producers’ interest. Registration is set up June 15-17, 1977, at the local ASCS office. Certified producers only. July 5-15.”

“The Texas Farmers Union has a long history of self-help programs so that producers can research their commodities and be sure that the program doesn’t become a boondoggle that only helps the travel-tour industry. Democratic legislators totally absent from this legislation.” Naman concluded by urging producers to register and vote on government-enforced check-off programs that the cattle industry does not

Financing Plans For Beef Program

Financing plans for the proposed Beef Research and Information Program have been tentatively outlined, announces Doyle Warren, County Extension Agent. The Act is Public Law 94-294, and is enabling legislation similar to that for wheat, potatoes, cotton and eggs.

Funds would come from assessments on producers’ receipts from sales of cattle,” he explained.

The law sets a maximum check-off assessment rate of one-half of one percent (0.5 percent) of the live animal value, but for the first three years, the rate has been set at 3/10 of one percent. The funds would be collected according to a “value-added concept,” which would assess all sellers in the marketing chain. The concept is similar to that of “pencil shrink.”

However, emphasized the Extension agent, sales of breeding cattle may be exempt until the animals are

sold for slaughter.

The initial purchaser in the marketing chain would deduct the amount of assessment plus an added assessment resulting from the animal’s increased value during the seller’s period of ownership.

“The purchaser at the point of slaughter would remit the assessment to the Beef Board, as proposed in the Act. Consequently, packers would be responsible for maintaining records of the transactions, deducting the assessment from the sale of the animal and forwarding the money to the Beef Board.”

“Provisions of the Act also allow for producers not wishing to participate in the program to request and receive a refund upon application to the Beef Board. To qualify for this refund, however, the request must be made in writing and sent along with a copy of the sales slip—within a 60-day period after the end of the

month in which the assessment was paid.

Based on an expected beginning assessment rate of 0.3 percent of the value of each animal slaughtered, nearly \$40 million would be generated in the program’s first year of operation.

Billion Dollar Cotton Crop Is Reported

AUSTIN—Cotton production during 1976 totaled over \$1 billion, just under the record set in 1973, Agriculture Commissioner Reagan V. Brown has announced.

Total value of last year’s crop was 84 percent over the 1975 crop, according to the Texas Crop and Livestock Reporting Service. A total of 3,307,000 bales

per cent of the reported accidents involved machinery, with tractors leading the list. Other accidents involved the mishandling of animals, inadequate lifting

County Agent’s Corner

By Doyle Warren
Floyd County Agent

CORN IRRIGATION GUIDELINES

Early Vegetative Development—until 25 to 35 days after planting—water needs are normally supplied by pre-plant irrigation and rainfall.

Rapid Growth—25 to 40 days—Rainfall potential is good, but if inadequate, irrigate at 8-10 leaf stage, irrigate at pre-tassel (3 weeks later).

Tassel, Silking, and Pollination—15 days—Irrigate at silking and pollination.

Grain Filling—20 to 30 days—Irrigate at milk or dough.

Grain Maturity

WEED CONTROL

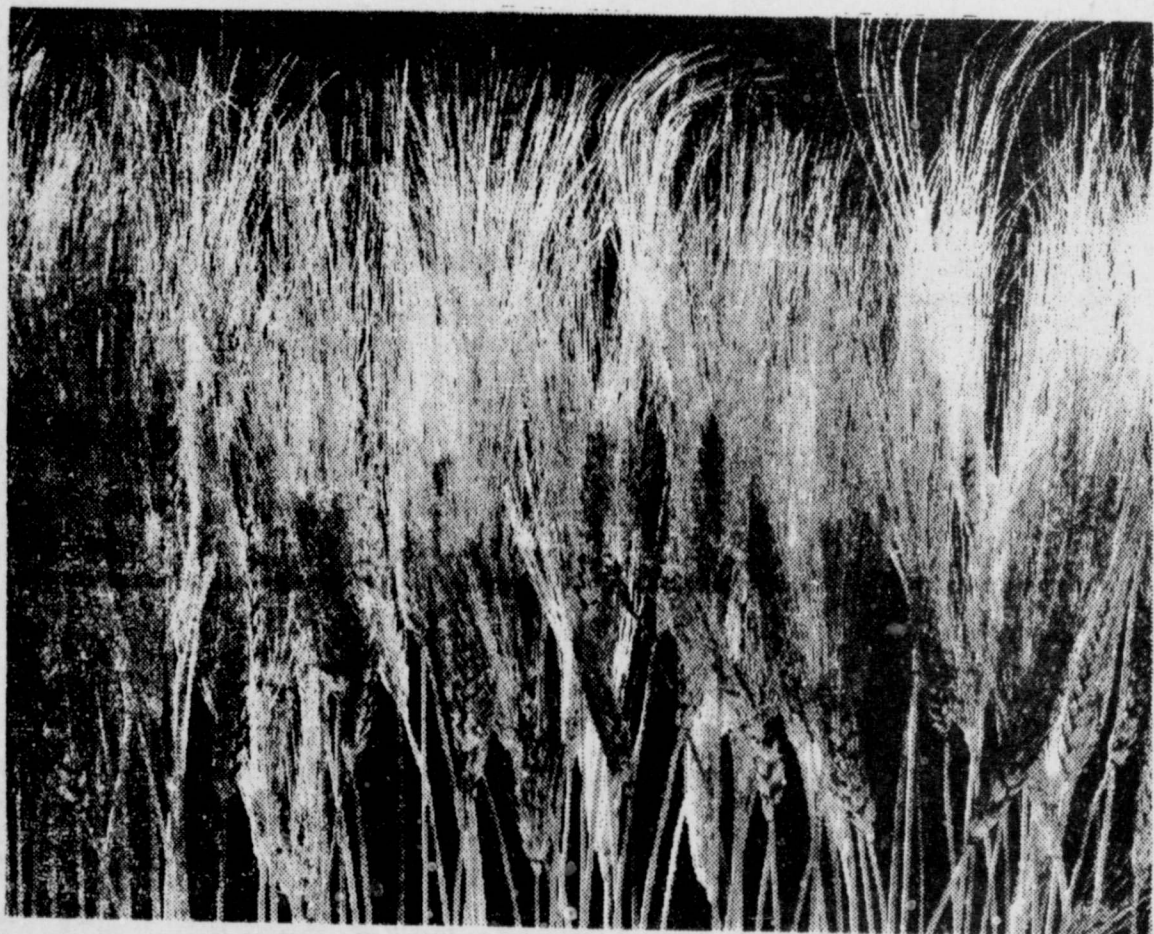
Floyd County producers have noticed severe weed infestations this year due to good moisture conditions and warm temperatures. Severe nutgrass (yellow and purple Nutsedge) infestations have been noted in some cotton fields. Nutsedge forms reproductive nuts 6 to 12 inches deep that can be spread by plowing. If not controlled, nutsedge can spread rapidly in our good weather conditions.

Labeled control measures from the 1975 Weed Control Guide are: DSMA at 3 1/2 Qt. or MSMA at 1 1/2 qt. per acre as directed spray after cotton is three inches high and before first bloom, for additional control of some broad-leaf weeds use Caparol 80W at .62 lbs. + MSMA at 1 1/2 qt. per acre applied as a mixture. Ansar 9100 (DSMA) EPA registration for overtop application when the cotton has one or two true leaves. A second application may be necessary on nutgrass. Apply during warm, sunny weather for more effective weed control.

FARM ACCIDENT SURVEY UNDER WAY—A statewide farm accident survey in progress shows that farm machinery and recent winter weather have taken their toll. The survey involves some 300 volunteers who are collecting facts about accidents on a sample of 3,000 Texas farms and ranches. Early returns of accident descriptions indi-

cate that 30 per cent have involved slips and falls, with the majority involving falls on ice. Other falls included those from ladders and slips and falls on mud. Another 30

For Amber Waves Of Grain...

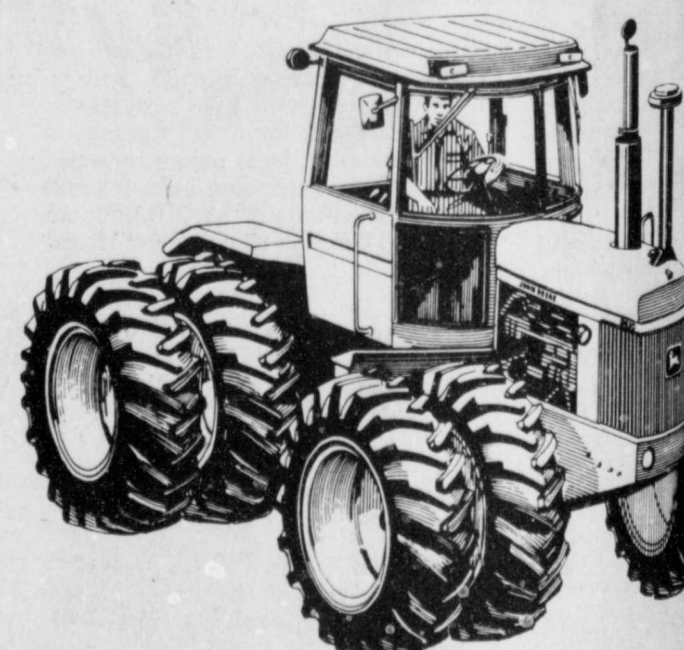


Let Us Pause And Give Thanks For A Bountiful Harvest

Producers Cooperative Elevators

FLOYDADA—DOUGHERTY—CEDAR HILL—BOOTHE SPUR

Perry Implement OFFERS REAL SAVINGS ON JOHN DEERE 4-W-D TRACTORS AND WAIVES FINANCE CHARGES TOO



It’s our “After-Spring-Work Special”. We have some real gains on John Deere 8430 and 8630 Tractors. In addition, during this special offer, no finance charges will be imposed on tractor you choose for six months after date of purchase. That’s less than you thought—you can have the increased power and traction of a 4-wheeler. You’ll like the power ratings: 275 hp, 225 PTO hp in the 8630; and 215 engine hp, 175 PTO hp in the 8430. You’ll like the air-conditioned Sound-Gard® body that’s regular equipment. And you’ll certainly like these big savings. See us soon for details. Offer for a limited time only.

Perry Implement Lockney, Texas

gister must vote in order for the referendum to be valid, and two-thirds of those voting must vote affirmatively for the program to carry. The Texas Agricultural Extension Service, in each of the other states, has been assisting with educational meetings on the upcoming referendum as it is charged with the educational responsibility to present facts about the proposed program.

REGIONAL WINNERS IN COMMUNITY JUDGING—Regional winners have been selected in the Texas Community Improvement Program, announced a community improvement specialist with the Texas Agricultural Extension Service. They are Wildorado, Oldham County; Little River Academy, Bell County; Sulphur Bluff, Hop-

kins County; and Austwell, Refugio County. Each will receive \$300 and will compete for the top prize of \$450 and a silver tray in state judging the week of May 23. The TCIP is conducted by the Extension Service and the investor-owned utility companies in Texas for communities with populations below 1,000. Some 185 communities were enrolled for 1976-77.

POST PLANTING CARE OF YOUNG TREES—Summer is a critical period for recently planted shade and ornamental trees, says a landscape horticulturist for the Texas Agricultural Extension Service. Water is the prime need since trees lose a great deal of moisture from the leaves and stems. Also, young, transplanted trees have a limited root system so they can only use

water that is close by. Trees should be watered regularly, once a week on sandy soil and 10 days to two weeks on clay or loam soil. The soil should be moist to 12 to 18 inches after watering.

Mac's Backhoe Service
Call Harvey McJimsen
Silverton, Texas

Storage Special

At Wall & Mississippi Street
RENT STORAGE SPACE FOR 6 MONTHS
WE WILL GIVE 10% DISCOUNT.
Wilson Bond
983-2151-983-3573
West Texas Mini Storage

BUDDY'S FOOD

Buddy Widener, Owner-Forrest Shannon Mgr.
in Floydada, 220 South Second



NEW STORE HOURS
SUNDAY 9 A.M. - 8 P.M.

MONDAY - SATURDAY 8 a.m. thru 9 p.m.

THESE SPECIALS GOOD SUNDAY 6-12-77
THROUGH WEDNESDAY, 6-15-77

We Reserve The Right To Limit Quantities



1 2 GAL. SQUARE CARTON
ICE CREAM
\$1.09
\$1.49 VALUE

10 OZ. KEEBLER TUC
CRACKERS
79¢ VALUE **59¢**

10 OZ. GEBHARDTS HOT DOG
SAUCE
39¢ VALUE **4/\$1.00**

12 COUNT BALL REGULAR
JAR LIDS
40¢ VALUE **3/\$1.00**

18 COUNT
FLAVOR ICE BARS
99¢ VALUE **79¢**

18 OZ. KRAFT BAR B-Q
SAUCE
79¢ VALUE **2/99¢**

8 OZ. CONTIDINA TOMATO
SAUCE
20¢ VALUE **6/\$1.00**

5 OZ. LIBBY'S VIENNA
SAUSAGE
49¢ VALUE **3/\$1.00**

5 LB. GOLD MEDAL
FLOUR
\$1.09 VALUE **59¢**

16 OZ. KRAFT THOUSAND ISLAND
DRESSING
99¢ VALUE **69¢**

12 OZ. LAND OF DIXIE DRY
ROASTED
PEANUTS
\$1.15 VALUE **79¢**

16 OZ. KRAFT FRENCH
DRESSING
\$1.19 VALUE **77¢**

ECHRICH SMOKED
SAUSAGE
LB. **\$1.49**

CHUCK
ROAST
LB. **69¢**

FAMILY PACK
PORK CHOPS
LB. **99¢**

TOP HAND PORK
SAUSAGE
2 LB. PACKAGE **\$1.59**

PEYTON 1 LB. SLICED
BOLOGNA
\$1.09

GROUND FAMILY PACK
BEEF
LB. **59¢**

LONGHORN
CHEESE
LB. **\$1.49**

DRY CURED BUT OR
SHANK END
HAM
LB. **89¢**

1 LB. CRISP RITE
BACON
\$1.09

BONELESS SIRLOIN
STEAK
LB. **\$1.49**

6-32 OZ.
COKE OR 7-UP
\$1.95 VALUE **\$1.39**
PLUS DEPOSIT

36 COUNT CHINET
COMPARTMENT
PLATES
\$1.79 VALUE **\$1.19**

SUNKIST
LEMONS
3 LBS. **\$1.00**

CALIFORNIA RED
PLUMS
LB. **49¢**

STRAIGHT NECK
YELLOW
SQUASH
4 LBS. **\$1.00**

8 OZ. KRAFT THOUSAND ISLAND
DRESSING
69¢ VALUE **2/99¢**

8 OZ. KRAFT CATALINA
DRESSING
69¢ VALUE **2/99¢**

16 OZ. KRAFT
SQUEEZE
PARKAY
87¢ VALUE **63¢**

New Store Hours:
Monday-Saturday
8: A.M. - 9 P.M.

Sunday
9 A.M. - 8 P.M.

15 OZ. PATIO FROZEN
TAMALES
\$1.29 VALUE **2/99¢**

12 OZ. KIT
CAR WAX
\$1.89 VALUE **\$1.49**

3 1/2 OZ. ADOLPH'S MEAT
TENDERIZER
75¢ VALUE **2/99¢**

3 LB.
CRISCO
99¢
99¢ WITH PURCHASE OF
2 CUT-UP FRYERS
\$1.79 WITHOUT PURCHASE

1 1 1/2 LB. RAINBO MILK
BREAD
59¢ VALUE **2/89¢**

11 1/4 OZ. NESTLES FUN SIZE
CANDY
\$1.49 VALUE **\$1.09**

1 LB. NABISCO
CRACKERS
73¢ VALUE **59¢**

32 OZ. LIQUID
LUX
\$1.29 WITHOUT COUPON
WITH COUPON **99¢**
GOOD AT BUDDY'S
EXPIRES 6-15-77

3 OZ. WHITE SWAN INSTANT
TEA
\$1.29 WITH OUT COUPON
WITH COUPON **\$1.09**
GOOD AT BUDDY'S
EXPIRES 6-15-77

32 OZ. RAGU SPAGHETTI
SAUCE
\$1.29 WITHOUT COUPON
WITH COUPON **\$1.09**
GOOD AT BUDDY'S
EXPIRES 6-15-77

Society



Mrs. Joe Phillip Jones

Wedding Vows Unite Anne Tillman And Joe Phillip Jones

Miss Anne Tillman, daughter of Mr. and Mrs. Frank Tillman, of Ozona, became the bride of Mr. Joe Phillip Jones, son of Mr. and Mrs. Travis P. Jones of Floydada, in a formal ceremony June 4, at 5 p.m. in the Ozona United Methodist Church. Rev. Rodney Gibson, retired Presbyterian minister, performed the ceremony.

The bride, given in marriage by her father, wore a gown fashioned of white

satapeau and re-embroidered Alencon lace. The classic gown featured an Italian neckline with motifs of the lace tracing the split opening. Lace also accented the empire waistline. Full shepheress sleeves were accented with touches of the lace at cuffline and elbow. The skirt fell to slipper length in front flowing to a chapel length train with a soft border of the lace tracing the hemline. Her veil of two tiers of imported illusion

was caught with a camelot cap of re-embroidered lace and scattered with lace motifs. She carried a bouquet of apricot carnations centered with a white orchid. Miss Lida Tillman served her sister as maid of honor. Bridesmaids were Olivia Jones, Margo Powell and Nancy Hudson. Flower girl was Jennifer Davidson, niece of the bride. Her attendants wore gowns of apricot knit with open V necklines. The

Cummings-Gaydos Engagement Announced

Mr. and Mrs. M.J. Gaydos of Laguna Park and Mr. and Mrs. S.K. Cummings of Lock

ney are announcing the engagement of their children, Monica Ann and Kim. A June

25 wedding is planned at the First Baptist Church in Glen Rose.

Senior Citizen's Meeting Date Changed

Floydada senior citizen's club will meet on Thursday which is June 16th at 11:00 a.m. in Lighthouse Electric. Due to a program on aging in Lubbock on Wednesday June 15th the meeting date has been changed to Thursday, June 16, for this month only. You are invited to attend.

The program will be given

by Reverend J.W. Smith of the First United Methodist church.

The luncheon will be a covered dish for the noon meal.

Since June is time for

election of officers for another year come prepared to cast your vote.

The business meeting will be followed by a time of socializing and game playing.

Two Graduates Of North Texas

DENTON.—Gregory Bond of Floydada and James

Thomas of Lockney are among 1,150 graduates awarded degrees May 14 at the 87th annual spring commencement at North Texas State University.

In addition to 851 bachelor's degrees, the university granted 259 master's and 40 doctorate degrees, during ceremonies in the NTSU Coliseum.

Bond, the son of Mr. and Mrs. Wilson G. Bond, 905 W. Virginia, Floydada, received the bachelor of science in industrial arts degree in industrial arts; and Thomas, the son of Mr. and Mrs. W.L. Thomas, Route 2, Lockney, received the bachelor of business administration degree in banking and finance.

ELECTRIC FRY-PANS—an energy-saving idea—are celebrating their 65th birthday this year, says Linda McCormack, family resource management specialist, with the Texas Agricultural Extension Service, The Texas A&M University System.

CLOTHING THAT FITS—tightly emphasizes the figure—making a large person look larger and a thin person thinner. The most becoming fit is loose enough to let the

Piano Recital Tuesday

The public is invited to a piano recital by Grant Hambricht Tuesday at 8 p.m. in the First Baptist Church of

Floydada. Grant is a student of Sam B. Brown. There is a reception following the recital.

sleeveless gowns fell in princess style to floor length. A soft capelet apricot chiffon softened the gowns and fell to elbow length. They wore sheer, imported Swiss braid hats complimenting the gowns, and carried colonial bouquets of apricot carnations.

Best man was Jay Jones, brother of the bridegroom, of Floydada. Groomsmen were Jon Jones, another brother, of Floydada; Mark Tillman, brother of the bride, and Mike Simpson of Floydada. Ushers were Ricky Biggs of Floydada, Johnny Powell of Eldorado, Richey Jones of Canyon and Douglas Bean, of Ozona.

Candelighters were Louis Bunker and Will M. Black. Ringbearer was Tracy Johnson of Floydada.

The church was decorated with four branched candelabra holding white tapers and entwined with greenery. The altar was centered with a large arrangement of white ball mums flanked by two large palm trees and candelabras.

Mrs. Steve Baker of San Angelo was the soloist, accompanied by Mrs. Bud Cox at the organ.

A reception followed the wedding at the ranch home of the bride's parents. The bride's table was centered with a large arrangement of white roses flanked by silver candelabra. The bridegroom's table held an arrangement of red roses.

Members of the houseparty were Martha Alice Shanklin, Patty Cowden, Debbie

Montya, Sally Bailey, Kay McMullan, Julie Jones, Sherri Altizer, Mrs. Jim Bob Bailey, Mrs. Cuatro Davidson, Rita Tillman, Christy Davidson, Sheryl Scheemann, Cindy Scott, Suzanne Williams, Joni Hunt, Virginia Henderson and Luann Perner.

Following a wedding trip to Bozeman, Mont. the couple will be at home in Floydada where the bridegroom is engaged in farming. Mrs. Jones is a graduate of Ozona High School and attended Texas Tech. Her husband is a graduate of Texas A&M.

Mr. and Mrs. Travis Jones hosted the rehearsal dinner Friday night at the Civic Center in Ozona.

The bridesmaid's luncheon was held at noon Saturday at the Civic Center and hostesses were Mrs. Bob Hudson, Mrs. Cuatro Davidson, Mrs. Tom Davidson, and Mrs. Gary Mitchell.

Other parties honoring the bride and the couple were a coffee May 21, at the home of Mrs. Joe Bean.

A rice bag party at the Civic Center May 25, was hosted by Mrs. Jim Bob Bailey.

A brunch honored the bride May 27, in the home of Mrs. Steve Baker in San Angelo. Assisting hostess was Mrs. L.W. Puckett.

A Mexican supper and dance was held May 28 in the Charles E. Davidson, Jr. home, hosted by Mr. and Mrs. Chas. E. Davidson, III, and Mr. and Mrs. Bob Bailey.



MRS. KEITH WEBB

Gearhart-Webb Exchanged In

Miss Melissa Kay Gearhart, daughter of Mr. and Mrs. George Gearhart, Fritch, became the bride of Keith Webb, son of Mr. and Mrs. Don Webb, Fritch, in a double ring ceremony at 5 p.m. June 4 in the Church of Christ of Fritch.

Mr. Doyle Chapin, minister, officiated.

Vocalists were Misses Becky Mansfield, Patty Scott, Cristie Jones; and Marty Brittain.

The bride wore a formal gown of white satin overlaid with white chiffon edged with a square neckline styled in lace, short puffed sleeves and princess style skirt.

Her veil of illusion was trimmed with rose lace. She carried a bouquet of white daisies and yellow roses.

Miss Maureen Hearn of

garment hang smoothly with no bulges or wrinkles, says Margaret Ann Vanderpoorten, clothing specialist, with the Texas Agricultural Extension Service, The Texas A&M University System.

TEST A RECREATION-AL vehicle on a windy day—before buying—to in-

Give Dad Our Best on His Day

SUITS

With a suit - HALE'S has a great selection of summer - weight and year - round suits in shorts, regulars, and talls with styles and colors to please any Father.

SHIRTS

For the active father, HALE's has the Munsing-wear Grand-Slam golf shirt in a rainbow of colors. Also available in Tall man sizes for a cool, casual feeling, a sportshirt from Arrow made of polyester or cotton blend makes an excellent gift.

SLACKS

HAGGAR SLACKS - Hale's has their largest selection ever! In patterns or solids, these are a sure fire winner for Dad! Hale's also has HUBBARD SLACKS for men - especially good for long rise fitting.

COVERALLS

We have new styles to choose from in short sleeves of double-knit or dacron-cotton blends. This is a great gift for Father to enjoy during his leisure time.

HALE'S DEPARTMENT STORE

DOWNTOWN IN FLOYDADA, TEXAS

RENT RINSE-VAC CARPET CLEANING SYSTEM

\$12.00 A DAY
Davis Lumber Co.

652-3385 102 E. Shubert Lockney

Charmglow Electric Grill



CART MODEL
\$176⁰⁰
PLUS TAX

BUY THIS CHARMGLOW ELECTRIC GRILL AND GET ANY OF THESE ACCESSORIES AT \$17.77 ea. PLUS TAX

- Rotisserie Basket Regular price \$13.50 \$17.77
- Rotisserie Kit Regular price \$33.90 \$17.77
- Aluminum Shelf Regular price \$8.50 \$17.77
- Vinyl Protective Cover Regular price \$10.50 \$17.77

PUT IT ON YOUR ELECTRIC BILL
OFFER EXPIRES JULY 31, 1977

ELECTRICITY-IT DOES SO MUCH GOOD

The ELECTRIC Company

FOR SO MANY PEOPLE

Linda Mc Eachern, James Giles Married In Home Ceremony

Linda McEachern and James Giles pledged wedding vows Sunday afternoon at the home of the bride's parents, Mr. and Mrs. T.R. Weathers of Lockney. Rev. O.C. Haile of Floydada performed the double ring ceremony. The groom's parents are Mr. and Mrs. Joe Giles of Floydada.

The bride wore a formal length gown of Ivory polyester and cotton. It was designed with a lace yoke and long sleeves also of lace. She carried a leather bible, borrowed from her father topped with a cascade bouquet of yellow and cream flowers.

Miss Melissa McEachern was her mother's only attendant. She wore a formal length beige cotton dress, with lace trim and short butterfly sleeves. She carried a natural basket of rose petals and daisies.

A reception was held in the home following the wedding. Mrs. Pat Reese of

Plainview and Mrs. Donna Weathers of Dalhart, sister-in-law of the bride presided at the bride's table and Barbara Bloys, of Lubbock, sister of the bride, presided at the groom's table.

The bride's table was laid with a red cloth, centered with a spring bouquet in a large crystal bowl. The table also featured a wedding cake decorated with tiny spring colored flowers and topped with an antique bride and groom, used by the bride's grandparents. The groom's table was covered with a white cloth and was centered with a chocolate cake. A silver service was used.

The bride attended school in Lockney and graduated from Texas Tech University.

She is a fifth-grade teacher and a member of Delta Cappa Gamma Sorority. Mr. Giles attended Floydada school and Amarillo Junior College. The couple will be at home in Lubbock for the summer, where they are continuing their education.



Mr. and Mrs. James Giles

**... The Public
Is Invited
William Grant
Hambricht**

**Pianist In
Recital
Student Of
Sam B. Brown**

**First Baptist Church
Floydada**

**June 14, 1977 8 p.m.
(Reception Following Recital)**

WHAT ONE PERSON CAN DO

BENJY STELLMACHER BUS DRIVER

What can a city bus driver do to make the world a better place? Any of Benjy Stellmacher's passengers can tell you.

Commuters on Mr. Stellmacher's express bus from Hartford, Connecticut, to suburban Manchester compete for seats near the driver. That's where the fun is. Singalongs, laughter and camaraderie are Mr. Stellmacher's specialties.

"You can't go home depressed," says one regular passenger. The driver's magic has touched nearly every rider on his route, generating friendships among persons who used to ride silently even though they sat next to each other day after day.

On Christmas, Mr. Stellmacher decks his bus with garlands and ornaments, hands out carol booklets with transfers, and accompanied by the music of a tape deck, leads a carol sing, shrugging his shoulders to keep time.

"It's wonderful to find someone like him to talk to and make you feel better," says another regular.

Mr. Stellmacher said that his work

with his church led to a drastic change in his life. His pastor, Dr. John Wilson, "converted me and gave me something to be happy about," he explained. "I used to cuss, drink, smoke, gamble and everything."

After encountering each other under the happy bus driver's spell, several of the riders now meet socially. Others chat together throughout the trip. Said one passenger, "It was just a routine run until Benjy came along."

Will those you meet in your daily work be able to say that it was just a routine day until you came along?

For a free copy of the Christopher News Notes, "Happy Are They," send a stamped, self-addressed envelope to The Christophers, 12 E. 48th St, New York, NY 10017.

THE FLOYD COUNTY HESPERIAN

Published each Sunday and Thursday at 111 E. Mo. St., P.O. Box 700, Floydada, Texas 79235. Second class postage paid at Floydada, Texas 79235. Publication No. 202680. Wendell Tooley, editor. Subscription rates: Local \$8.50 a year, out of trade area: \$9.50.

TRIMMING OUTSIDE
fat from meats before-grilling will eliminate some of the flaming of coals that burns the outside of meat, says Marilyn Haggard, foods and nutrition specialist, with the Texas Agricultural Extension Service, The Texas A&M University System.

OBITUARY

William Patterson

Private graveside services for William Kenneth Patterson, 24, of San Antonio and formerly of Lockney and Lubbock, were Friday afternoon in Plainview Memorial Park with the Rev. Richard M. McDuffie of Maryland officiating.

Arrangements were under the direction of Moore-Rose Funeral Home in Lockney.

Patterson died Wednesday in a San Antonio hospital after a lengthy illness.

A native of Lockney, Patterson attended schools there before moving to Lubbock in 1964. He was a Monterey High School graduate.

Patterson is survived by his mother, Mrs. Richard Patterson of San Antonio; two brothers, David of Dallas and Mark of San Antonio; and his grandparents, Mrs. W.R. McDuffie of Lubbock and Mrs. R.E. Patterson of Lockney.

LOCKNEY GENERAL Hospital Report

Martha Burk, Lockney admitted 4-30 continous care.

Edgar Livesay, Lockney admitted 5-12 dismissed 6-6.

Mae Crayer, Lockney admitted 5-20 continous care.

Ariela Esquivel, Plainview admitted 5-25 dismissed 5-27.

Minnie Canon, Lockney admitted 5-25 dismissed 6-3.

Pam Bennett, Floydada admitted 5-25. Baby girl Kristi born 5-25 dismissed 5-27.

Estella Juarez, Silvertown admitted 5-27. Baby boy Michael born 5-27 dismissed 5-29.

Eula Clark, Floydada admitted 5-27 continous care.

Kenneth Moody, Lockney admitted 5-28 dismissed 6-2.

Roy Hunter, Quitaque admitted 5-22 dismissed 5-28.

Vickie Flores, Plainview admitted 5-30. Baby girl Monica born 5-31 dismissed 6-3.

Hattie Tate, Lockney admitted 5-31 continous care.

L.D. Bilberry, Flomot admitted 5-31 continous care.

Kathy Kingery, Silvertown admitted 6-1. Baby girl Kara born 6-2 dismissed 6-5.

Connie McWilliams, Plainview admitted 6-3. Baby boy Jerry, born 6-3 dismissed 6-5.

John H. Williams, Lockney admitted 6-4 dismissed 6-7.

Beatrice De La Fuente, Floydada admitted 6-5. Baby girl, Angelica born 6-5 dismissed 6-7.

Ofelia Quintanilla, Plainview admitted 6-5. Baby girl Belinda born 6-5 dismissed 6-7.

Teresa Cedillo, Floydada admitted 6-6. Baby girl Lisa born 6-6 dismissed 6-8.

Aurora Johnston Floydada admitted 6-6. Baby boy Aaron born 6-6 dismissed 6-8.

Roy Ragle, Lockney admitted 6-8 continous care.

Mae Bryant, Plainview admitted 6-8 continous care.

Lottie McGee, Lockney admitted 6-8 continous care.

Lavona Pitchford, Lockney admitted 6-8 continous care.

Easton Blendon, Lockney admitted 6-9 continous care.

Hattie Tate, Lockney admitted 5-31 continous care.

L.D. Bilberry, Flomot admitted 5-31 continous care.

Kathy Kingery, Silvertown admitted 6-1. Baby girl Kara born 6-2 dismissed 6-5.

Connie McWilliams, Plainview admitted 6-3. Baby boy Jerry, born 6-3 dismissed 6-5.

Hattie Tate, Lockney admitted 5-31 continous care.

L.D. Bilberry, Flomot admitted 5-31 continous care.

Kathy Kingery, Silvertown admitted 6-1. Baby girl Kara born 6-2 dismissed 6-5.

Connie McWilliams, Plainview admitted 6-3. Baby boy Jerry, born 6-3 dismissed 6-5.

Hattie Tate, Lockney admitted 5-31 continous care.

L.D. Bilberry, Flomot admitted 5-31 continous care.

Kathy Kingery, Silvertown admitted 6-1. Baby girl Kara born 6-2 dismissed 6-5.

Connie McWilliams, Plainview admitted 6-3. Baby boy Jerry, born 6-3 dismissed 6-5.

Hattie Tate, Lockney admitted 5-31 continous care.

L.D. Bilberry, Flomot admitted 5-31 continous care.

Kathy Kingery, Silvertown admitted 6-1. Baby girl Kara born 6-2 dismissed 6-5.

Connie McWilliams, Plainview admitted 6-3. Baby boy Jerry, born 6-3 dismissed 6-5.

Hattie Tate, Lockney admitted 5-31 continous care.

L.D. Bilberry, Flomot admitted 5-31 continous care.

Kathy Kingery, Silvertown admitted 6-1. Baby girl Kara born 6-2 dismissed 6-5.

Connie McWilliams, Plainview admitted 6-3. Baby boy Jerry, born 6-3 dismissed 6-5.

Have A Lot Of
Fine Gift
Options For
Fathers Day
Flowers Like
Flowers Too!

Spring Paint Up SALE

Get \$3.00 on famous Kem® Paints



Reg. \$11.89
\$10.89 Reg. \$13.89

- Both go on easy, dry fast, too.
- Clean up with soap and water.
- Washable, durable.
- Full line of decorator colors.
- Kem-Namel® color mated to Super Kem-Tone®

**Highland
INTERIORS**
WAREHOUSE • SHOWROOMS
"Your Complete Home Decorating Center"
792-2144
Open 9-6, Mon-Sat—9-9, Thursday

ZENITH
WORN ALL IN EAR
30 Day Trial

For Personal Consultation Come by or Call --
Arwine Drug
100 E. Calif. Floydada
Monday, June 13
9:30 - 11:30 CALL 983-2856 RICHARD R. DAVILA

"Try Before You Buy"
LIVINGSTON HEARING AID CENTER
1913 A 19th St. - Lubbock, Tx. 7901
762-2951

| | |
|--|----------------------------|
| FRYERS U.S.D.A. GRADE A | LB. 49¢ |
| PURE GROUND BEEF | LB. 79¢ |
| CELLO BAG CARROT'S | 2/49¢ |
| SHURFINE 8 OZ. CAN TOMATO SAUCE | 2/39¢ |
| LARGE HEADS LETTUCE | EACH 29¢ |
| SHURFINE 303 CAN MIXED VEGETABLES | 33¢ |
| SHURFINE WHOLE IRISH POTATOES | 303 CAN 29¢ |
| MORTONS FROZEN CHICKEN, BEEF, TURKEY POT PIES | EACH 29¢ |
| CLOVERLAKE 1/2 GAL. BUTTERMILK | 69¢ |
| CLOVERLAKE MELLORINE | 1/2 GAL. 79¢ |
| 32 OZ. 6 BOTTLE CARTON COKES | PLUS DEPOSIT \$1.39 |
| VAN CAMPS 300 CAN PORK & BEANS | 2/69¢ |
| TEXAS ORANGES | 5 LB. BAG 89¢ |
| SCOPE 12 OZ. BTL. MOUTHWASH | \$1.39 |

THESE VALUES GOOD THRU JUNE 15

shurfresh MILK **AFFILIATED**

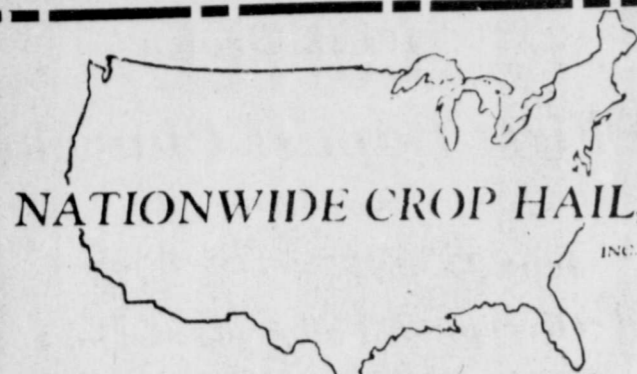
YOUR HOME OWNED AND HOME OPERATED GROCERY

L & J FOOD STORE
316 N. 2ND PHONE 983-3105
WE GIVE DOUBLE S & H GREEN STAMPS ON WEDNESDAY

ANTIQUES COLLECTABLE SALE

50 Year Accumulation

Miniatures In China & Bronze
Old Silver-Copper-Brass-Tapestries
Pressed & Carnival Glass-China
Pottery-Indian & Western Items
Bottles, 110 Pc. Pipe Collection
16' Circle Handmade Braided Rug
& Many Other Collectables,
Approximately 1500 Items,
Dealers Welcome
Old Hotel, Lockney, Texas
June 20 Thru July 6, 1977
9 A.M. to 5 P.M. Mon. Thru Sat.
1 P.M. To 5 P.M. Sunday
Garage Sale In Other Part Of Building



NATIONWIDE CROP HAIL

COTTON

1. Adjusted on individual stalk count.
2. Substitution of crops will be allowed.
3. July 1st. additional coverage car. be added at 1/2 price.
4. Harvest expense applies after. Cotton is 100% in effect.

CORN

When corn reaches the fifteenth (15th) leaf stage, it is very vulnerable to hail damage. The fifteenth leaf stage is usually when the corn is about 42 days old, or around June 10th for most fields. This is an extremely bad hail period for most of Zones 1 and 2.

FOR YOUR CROP HAIL INSURANCE CALL
Edmond A. Williams 983-3284
Or Sam A. Spence 983-2881

Wilkins Family Reunion

The fourth family reunion of the J.E. and Mamie Wilkins family children was held at the home of Mrs. Woodrow Hill of Floydada on May 29.

All of the children attended the Pioneer Reunion. All saw and loved the parade. This is the first time all the children have registered or attended the Old Settlers together since childhood. The noon meal was served picnic style at the Hill home. Enjoying picture taking, talking and games the first of the two day reunion were: Mrs. Inez (Wilkins) Barton (Shorty Wilkins) Hill, Mr. and Mrs. Neil (Mary Lee Wilkins) Wayman of Moorpark, California, Mr. and Mrs. J.E. Wilkins II of Killeen, Texas, Mr. and Mrs. Edgar (Bertha Jean Wilkins) Willis of Moorpark, California, Mr. and Mrs. George Wilkins of Waco, Mrs. Leroy (Effie M. Wilkins) Kennimer of Lubbock, Mr. and Mrs. R.G. Wilkins Voight of Lubbock.

Their offspring and guests attending Sat. were Mr. and Mrs. James E. Wilkins III, James IV, Susan of Nolanville, Texas, Mrs. Eddie Barton and Shane of Plano, Texas, Anita Wilkins of Fort Worth, Susan Wilkins of Dallas, Mona, Jackie and Jimmie Kennimer of Lubbock, Yany Hogge of Lubbock. Guests were Harry R. Sherwood of Lubbock, Tommie and LaVerne McIntosh, Mrs. Doris Harris of Floydada.

The second day of the reunion was held at the new home of Mr. and Mrs. Chuck Kennimer of Lubbock, another great day of visiting and eating was enjoyed by all. Other than the above named attending at Lubbock were Mr. and Mrs. Randy Voight, Mr. Chuck Kennimer, Mr. Ken Hogge, Mr. and Mrs. Curtis Barkly and Clint, all of Lubbock, and Mr. and Mrs. Everett Hill of Slaton.

The oldest member was Mrs. Onez Barton, the youngest was James Wil-

Uranium Search Said Two Years From Production

A French-based mining company has some "shows" in two-county search for uranium in the Texas Panhandle, but it is at least two years from production of ore.

This assessment was made by the company's president in Denver in response to speculation among geologists that an ore leaching plant is in the mill for Swisher and/or Briscoe County.

"We have some shows but we are a long way from knowing if these are exploitable," Frank Skelding of Denver, president of French-American Metals Corporation (FRAMCO), said. "At best, we assume something is there and that we are good enough to find it, and at best we are two to three years away from production."

But the ore bodies which have been investigated by FRAMCO geologists on leasings of more than 28,000 acres in Briscoe and Swisher Counties are "too deep and too small" for open-pit mining, Skelding said.

Land records on file in the Briscoe County Courthouse in Silver-

ton indicate FRAMCO, headquartered in Denver, has leased 22,397 acres of land for mining uranium, thorium and other fissionable elements.

Some 6,500 acres of land have also been leased in Swisher County, apparently for the same purpose, Clerk's records show.

"Open pit mining looks improbable," Skelding said. "At the moment, we are not considering a particular method (of mining). We are not thinking about it."

A uranium leaching facility reportedly has been in the planning stages for the Panhandle, according to a geologist not retained by FRAMCO.

"Geologically, it is out of the question to consider open-pit mining in the area," Skelding said. "However, another method, and one being used successfully in Texas, is leaching. Wells are drilled—some for input of leach solution and others for recovery, and the problem there is roughly analogous to water flood secondary recovery in an oil pool."

A geologist at FRAMCO's Am-

arillo field office has said this firm has been investigating the two-county area for the past three years.

"We are working in Swisher, Floyd and Briscoe counties, and going south," the FRAMCO geologist, Daniel Carre, was quoted as saying.

A drilling rig has been utilized for explorational work in the area, he said.

"It takes quite a few years, a lot of luck and a hell of a lot of money to find uranium," Skelding said. "We have some mineralization, but we are a long way from finding commercial quantities. We very well may not have a producer."

FRAMCO's mining leases, some of which were made for "\$10 and other valuable consideration," provide for exploring, prospecting and core drilling for and development and mining by the methods being desirable by the lessee of ore, minerals, metals and materials of all kinds, including but not limited to uranium, thorium, vanadium, molybdenum, copper and other fissionable or associated

kins IV, the largest family was the Chuck Kennimer family and the ones coming the greatest distance were the Wilkins and the Waymans of California.

Most of the family returned home on Monday, Mrs. May Wayman and Mrs. Jean Wilkins stayed for an extended visit with their sister, Mrs. Willis was to return by plane the 9th of June but was called home the 5th of June because her husband Edgar Willis was hospitalized for kidney trouble.

The next family reunion will be held at the lake home of J.E. Wilkins II at Mineral Wells, Texas.

Confirmation Mass Celebrated

On Sun. June 5, Bishop Lawrence De Falco of Amarillo was the celebrant of a Confirmation Mass for 60. Fr. Richard Casey assisted him, along with Deacon Robert Cortinas.

Miss Carmen Morales read the 1st reading, Anita Garza the second reading and Mrs. Helen Martin sang the Responsorial Psalms. Mrs. Jo Bryant welcomed the Bishop and presented the 60 candidates to receive the "Baptism of the Holy Spirit" as adult Christians. They had been prepared by the teachers, Mrs. Jo Bryant, Mrs. Helen Martin and with assistance of Mrs. Angelita Cortinas.

The six students to bring the gifts for the offertory were: Yolanda Morales, wine, Mike Briones, bread, Isabell Martinez, water, Armando Enriquez, money and Dianna Enriquez and Sylvia Guzman, posters. Darrel De LaCruz, and Martin Morales served as altar boys.

The class consisted of ages 14 to 30.

San Jose in Lockney had 34 students to receive the sacrament of Confirmation of the Holy Spirit also. They were prepared by Mario Torres. The students wore stoles (red) decorated with their choice, saying "Peace" "Love" "Jesus is Lord" "Christ our Savior" "Come Holy Spirit" etc.

A dinner was served to Bishop De Falco and Fr. Casey, the teachers in the hall, along with other members of the church. The sponsors gave gifts and had the noon meal in their homes honoring the newly confirmed.

Those receiving the sacrament were:

Adelfino Martin Aleman, Beatrice Lucy Barraza, Juan Paul Barraza, Oscar John

Barrera, Dalia Teresa Briones, Elida Mary Magdalen Briones, Silvester Christopher Briones, Beatrice Elena Bueno, Mary Lou Guadalupe Bueno, Mike John Bueno, Sylvia Mary Bueno, Daniel John Cedillo, Juanita Josephine Cortez, Robert Patrick Cortinas, Bonifacio Matthew Cuevas, Margie Mary Cuevas, Eloisa Dominique DeLaCruz, Salia Ann DeLaCruz, Salia Guadalupe Deigado, Armando Paul Enriquez, Carlos Joseph Enriquez, Cruz Jesus Enriquez, Diana Jesuita Enriquez, Eliazar Paul Enriquez, Virginia Anne Teresa Garcia, Ruby Barnabos Garby, Anita Elizabeth Garza, Josephine Monica Garza, Delia Inez Gomez, Henry John Gonzalez, Isabel Agatha Gonzalez, Rose Mary Guadalupe Gonzalez, Guadalupe Martin Guzman, Patricia Ann Anastasia Guzman, Rosa Christina Guzman, Sylvia Josephine Guzman, Manuel Jose Peter Hernandez, Alejandra Mary Ibarra.

Francisco Martin Ibarra, Irma Mary Ibarra, SanJuana Frances Ibarra, Elizabeth Guadalupe Juarez, LeRoy Joseph Juarez, Isabel Teresa Martinez, Maybell Mon-

ica Martinez, Diana Amanda Medrano, Yolanda Teresa Medrano, Victor Manuel Marcos Mendoza, Anna Maria Mary Magdalen Morales, Carmen Catherine Morales, Yolanda Mary Morales, Dora Guadalupe Moreno, Gloria Juanita Moreno, Rosa Mary Moreno, Eddie Mark Muniz, Roy Augustine Muniz, Rafael Martin Murillo, Carmen Mary Rios, Oscar John Salazar, Sammy Joshua Salazar.

To be Blessed by Bishop: Martha Rendon, and Jane Cortinas.

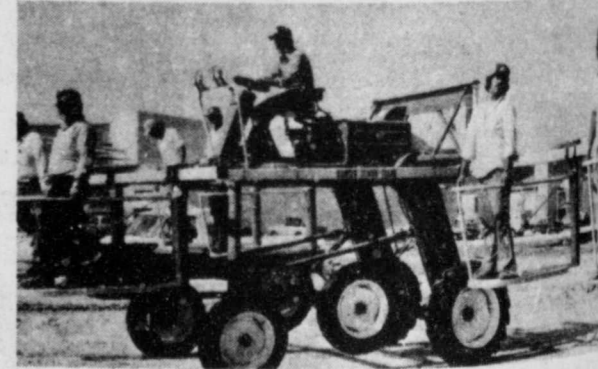
Each one received a certificate of Confirmation, given to them by Fr. Casey and the Bishop.

Sanders Construction Maintenance Co.

313 S. Wall Floydada, Texas
Oilfield construction, Roustabout Shop & Portable Welding (structural & pipe), Pipeline vibrator and Gin Work.

-Fully Insured-
Shop No. 983-5331 Home No. 983-5332

BOYS & GIRLS SUMMER EMPLOYMENT



Wanted boys and girls 14 years of age or older to work detasseling corn. Most of the work consist of riding a machine like pictured above, pulling tassels from corn plants. Each machine and operating and supervised by an adult. Previous experience necessary as each person will receive on the job training. Transportation furnished daily to and from a central pickup location.

If you are interested in summer employment please fill out the application and mail it in or bring it by to:

Mr. Wayne Lee
Pioneer Hi-Bred International, Inc.
Southwestern Division
Box 788 Plainview, Texas 79072

We are located 3 miles North 1/2 mile East of Plainview, Texas 79072. 293-5231.

I am interested in summer work with Pioneer
 Contracting to detassel _____ Acres. Crew Detasseling Roustabout
 10 _____ Social Security Number _____
 Full Name _____
 First Middle Last
 Street or Route _____
 Town _____ State _____ Zip Code _____
 Birth _____
 Date _____ Height _____ Phone _____
 Name of School _____
 Male Female Enrolled in Summer School Yes No
 Others interested are: NAME ADDRESS _____
 DO NOT RETURN THIS CARD UNLESS YOU WILL BE 14 OR OVER AT THE TIME WORK BEGINS.



CAN I HELP YOU HEAR BETTER?
KEN WADE

I will be at Lamplighter Inn WED., JUNE 15, 1977 from 10:00 - 1:00

Free Cleaning & Check-Up Of Any Hearing Aid Free Electronic Hearing Test Batteries for all models.



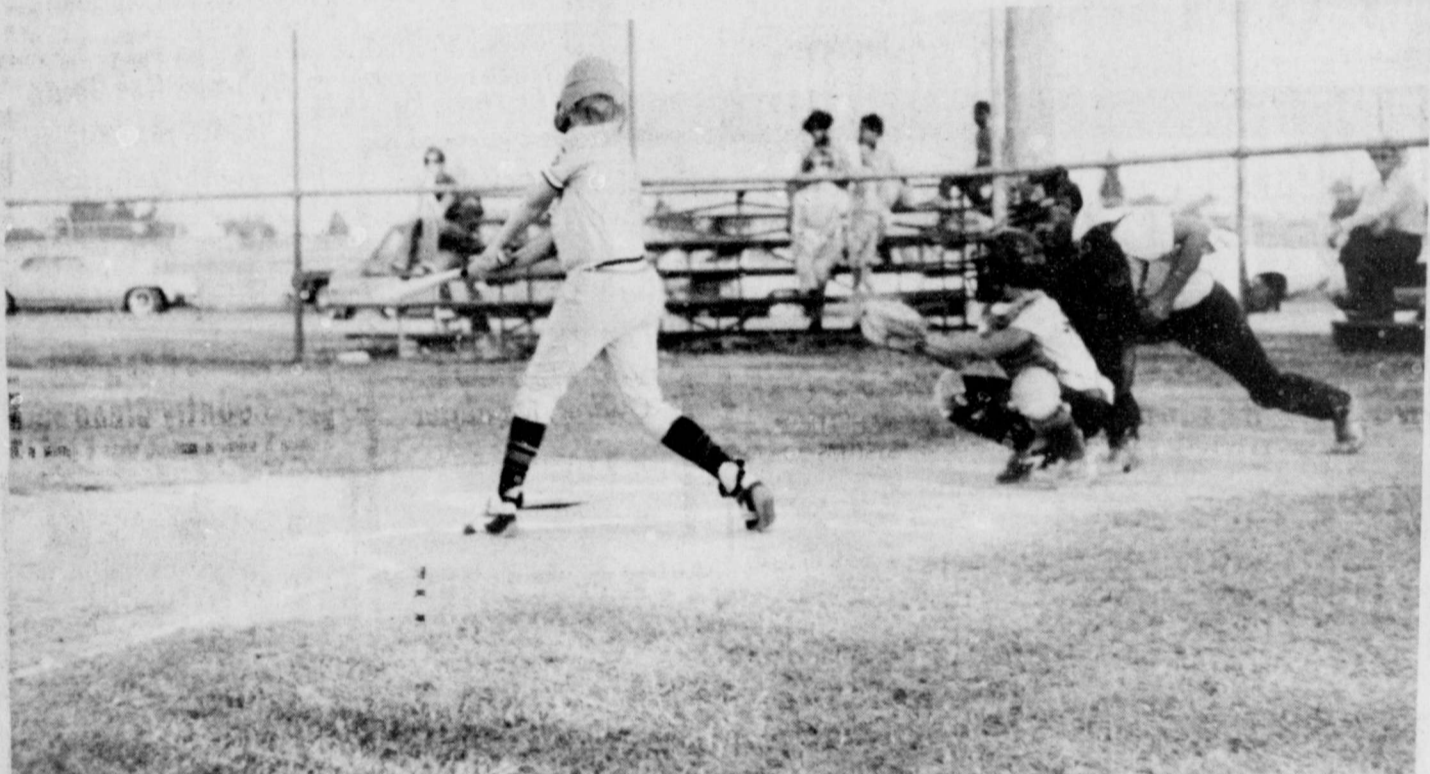
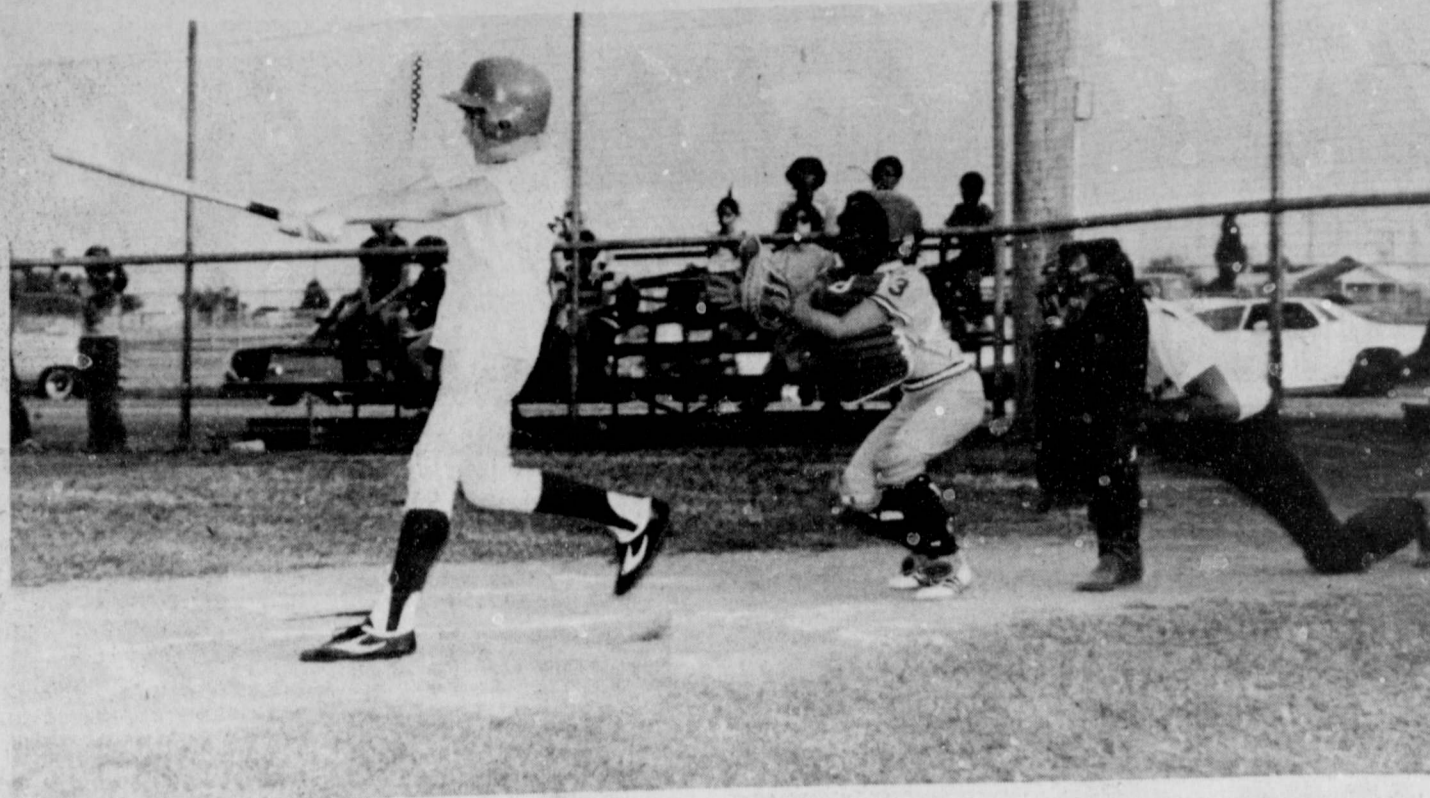
KEN WADE
2815 Avenue Q
Lubbock, Texas
7471675

Reed Ford & Mercury Sales

RALLS HIGHWAY—FLOYDADA, TEXAS

| | LIST | SALE |
|---|-----------|---------|
| 1977 F100 PICKUP 302 V-8, AUTOMATIC TRANSMISSION, POWER STEERING, TINTED GLASS, BODY MOLDINGS, WHITE SIDE WALL TIRES. | \$4531.00 | |
| 1977 F150 PICKUP 460 V-8, ALL POWER, AIR CONDITION, 2 FUEL TANKS AND EXPLORER PACKAGE. | \$5550.00 | |
| 11 OTHER PICKUPS AT SIMILAR SAVINGS | | |
| 1976 PINTO, BRAND NEW, FULL WARRANTY. MAKE OFFER! | | |
| 1977 LTD Landau 4 door, silver | 7127.00 | 6100.00 |
| 1977 LTD Landau 4 door, L. Blue | 7689.00 | 6550.00 |
| 1977 LTD Landau 4 door, champagne | 7936.00 | 6750.00 |
| 1977 LTD Landau 2 door, champagne | 7708.00 | 6565.00 |
| 77 Granada 2 door, creme | 6327.00 | 5596.00 |
| 77 Granada 2 door, jade | 6418.00 | 5748.00 |
| 77 Mercury Bobcat Runabout | 3958.00 | 3655.00 |
| 77 LTD II 4 door, L. Jade | 6441.00 | 5691.00 |
| 77 LTD II 2 door, white | 6449.00 | 5709.00 |
| 77 Maverick 4 door, bright saddle | 5196.00 | 4726.00 |
| 77 Mercury Comet 2 door, red | 5204.00 | 4731.00 |

Do yourself a favor and save on these and many other Models during our 15th Anniversary Sell-A-Bration.



IN METS-DODGERS season opener Thursday night the Mets were ahead 7-2 when the game was rained out. In top picture Mets Gary Nelson blasts a good hit. Dodger catcher is Shannon Shurbet. Umpire is Allen Cochran. In second photo Dodger

Brent gets a hit. Mets catcher is Steve Weaver. Dodger Dusty Burlison gets a hit in lower photo. Mets pitcher was Gilbert Schwertner. Mets coach is Freddie Morren, Dodger coaches include Mike and Terry Reeves, Carmen Schliz.

Mike Bean Receives Scholarship

Michael Don Bean, 1977 graduate of Floydada High School, has been awarded a \$750 Clark Foundation Scholarship by Texas Interscholastic League Foundation.

The Clark Foundation provided funds for 62 of the \$750 scholarships to be awarded by TILF on the

basis of participation in League academic and literary contests, scholastic records, achievement test scores and work in school and community activities.

Michael earned eligibility for the scholarship by participating in the League Number Sense, Persuasive

Speaking, Journalism and Science Contests. This year he won first in district, qualified at regional and competed in state in Headline Writing. In 1975 he won fifth place at state in Headline Writing.

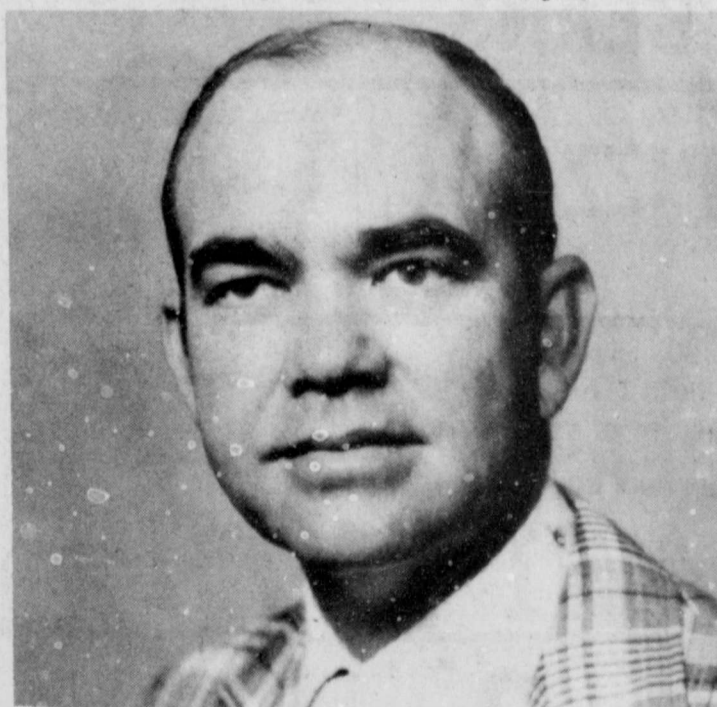
Ranking fifth scholastically in his class, he graduated with a 93.91 average in grades. He scored 1320 on the College Entrance Examination Board test.

He is a member of National Honor Society, student council and Who's Who. He

was a four-year member of the school newspaper staff.

"Michael has proved that he is a fine student," said Dr. Rhea H. Williams, TILF secretary. "His good grades, excellent score on the achievement test and wide variety of extracurricular activities are proof that he has the talent, energy and dedication needed to succeed. We are proud to have him as a Clark Foundation Scholar."

He plans to major in communications at Texas Tech University.



LOCAL DAIRY QUEEN EXECUTIVE ELECTED—James L. Utley, who, as executive vice-president of Dairy Queen of Taylor County and Dairy Queens of West Texas, personally directs local Dairy Queen operations, is one of the three new directors elected for 1977-80 terms at the just-concluded 1977 convention of the Texas Dairy Queen Trade Association, the nation's largest group of its kind, in San Antonio.

He is shown being congratulated on his election by Dan McNeil of Waco, the newly elected president of TDQTA for 1977-78.

The Land Bank
The Bank of Generations



FEDERAL LAND BANK ASSOCIATION OF FLOYDADA
105 South Wall Floydada, TX
Telephone 983-2480



FLOYDADA Freshman League Schedule

| | | |
|---------|---------|-------------|
| June 9 | Mets | Vs. Dodgers |
| June 10 | Red Sox | Vs. Giants |
| June 13 | Red Sox | Vs. Mets |
| June 14 | Dodgers | Vs. Giants |
| June 16 | Dodgers | Vs. Red Sox |
| June 17 | Giants | Vs. Mets |
| June 20 | Dodgers | Vs. Mets |
| June 21 | Giants | Vs. Red Sox |
| June 23 | Mets | Vs. Red Sox |
| June 24 | Giants | Vs. Dodgers |
| June 27 | Red Sox | Vs. Dodgers |
| June 28 | Mets | Vs. Giants |
| June 30 | Dodgers | Vs. Mets |
| July 1 | Red Sox | Vs. Giants |
| July 4 | Dodgers | Vs. Giants |
| July 5 | Red Sox | Vs. Mets |
| July 7 | Dodgers | Vs. Red Sox |
| July 8 | Giants | Vs. Mets |
| July 11 | Mets | Vs. Dodgers |
| July 12 | Red Sox | Vs. Giants |
| July 14 | Mets | Vs. Red Sox |
| July 15 | Dodgers | Vs. Giants |

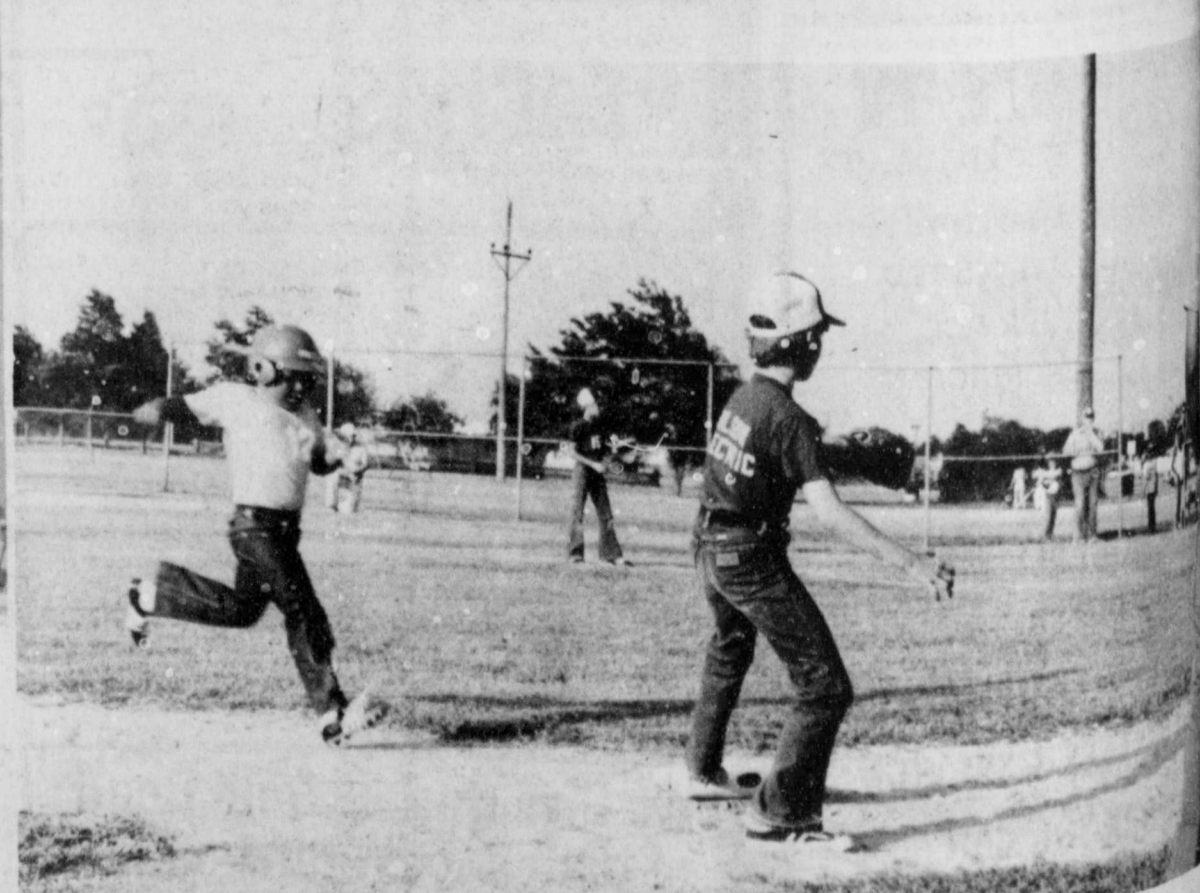
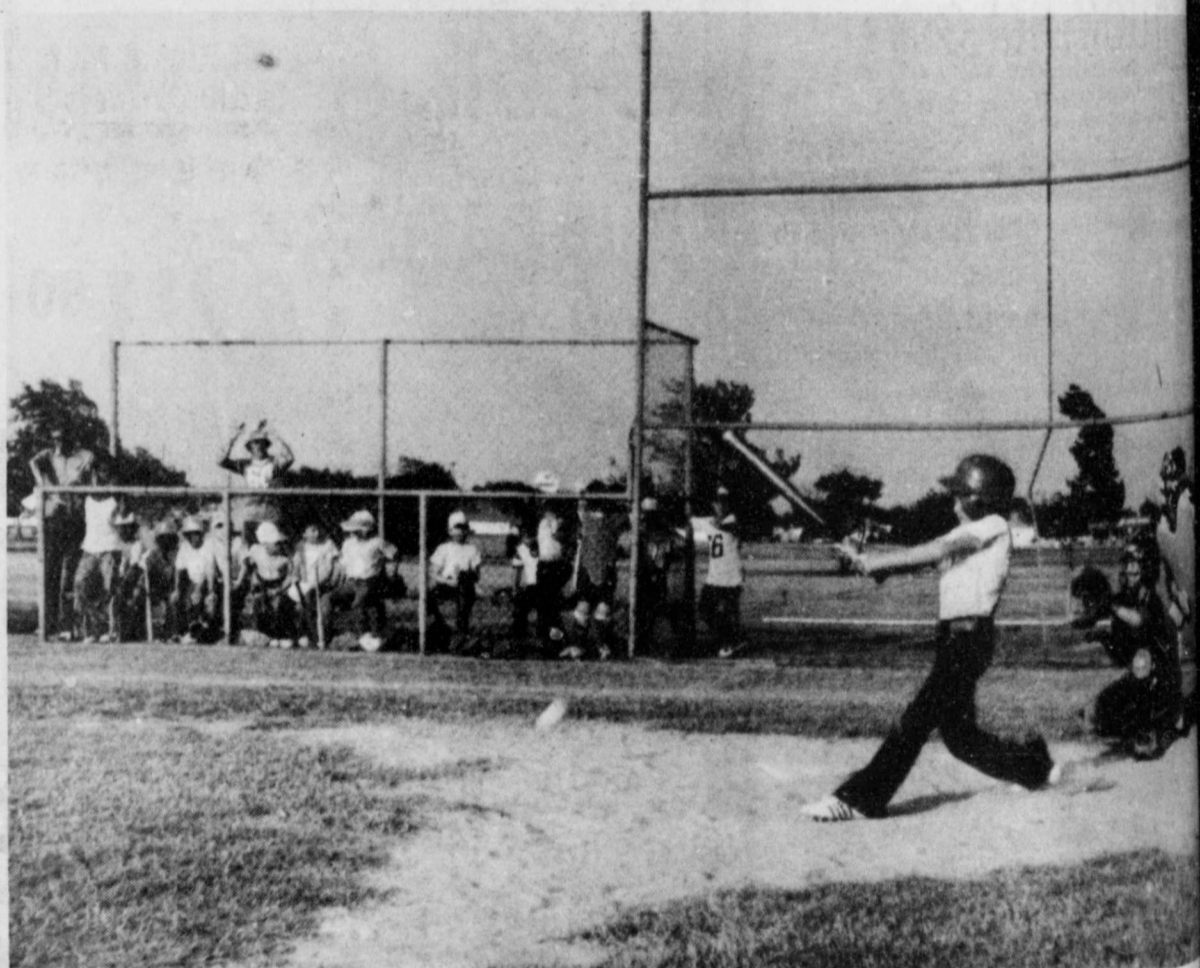
T-Shirt League Schedule

| | | |
|---------|-----------|---------------|
| June 9 | Cubs | Vs. Pirates |
| June 10 | White Sox | Vs. Yankees |
| June 13 | Cubs | Vs. Yankees |
| June 14 | White Sox | Vs. Pirates |
| June 16 | Pirates | Vs. Cubs |
| June 17 | Yankees | Vs. White Sox |
| June 20 | White Sox | Vs. Cubs |
| June 21 | Yankees | Vs. Pirates |
| June 23 | Yankees | Vs. Cubs |
| June 24 | Pirates | Vs. White Sox |
| June 27 | Cubs | Vs. Pirates |
| June 28 | White Sox | Vs. Yankees |
| June 30 | Cubs | Vs. White Sox |
| July 1 | Pirates | Vs. Yankees |
| July 4 | Cubs | Vs. Yankees |
| July 5 | White Sox | Vs. Pirates |
| July 7 | Pirates | Vs. Cubs |
| July 8 | Yankees | Vs. White Sox |
| July 11 | White Sox | Vs. Cubs |
| July 12 | Yankees | Vs. Pirates |

Erby Hernandez Promoted

June 8—Marine Private W. Marivena, Floydada, First Class Erby M. Hernandez, Tex., has been meritoriously promoted to his present rank while serving with first

Marine Division, Marine Corps Base, Pendleton, Calif. He received the accelerated promotion in recognition of outstanding performance.



IN PIRATE-CUB GAME Pirate Shannon Barbee was first batter up. Cub catcher Brad Rainer. In lower photo Pirate runner advances to third base. Base umpire Rod Enriquez, plate umpire Mack Willson. (Staff Photo).

Tri-County Baseball
All games begin at 7:00 p.m.

June 6
Floydada at Abernathy
New Deal at Lockney
Roosevelt at Idalou

June 9
Lockney at Floydada
Idalou at New Deal
Roosevelt at Abernathy

June 13
Floydada at Idalou
New Deal at Roomer
Abernathy at Lockney

June 16
Floydada at Roomer
Lockney at Idalou
New Deal at Abernathy

June 20
New Deal at Floydada
Idalou at Abernathy
Roosevelt at Lockney

June 23
Abernathy at Floydada
Lockney at New Deal
Idalou at Roosevelt

June 27
Floydada at Lockney
New Deal at Idalou
Abernathy at Roomer

June 30
Idalou at Floydada
Roosevelt at New Deal
Lockney at Abernathy

July 4
Roosevelt at Floydada
Idalou at Lockney
Abernathy at New Deal

July 7
Floydada at New Deal
Idalou at Abernathy
Lockney at Roosevelt

July 11
Floydada at Abernathy
New Deal at Lockney
Roosevelt at Idalou

ESTATE
SOLD

REAL ESTATE
Call Sam
Estate Brok

MOBILE
HOMES

FOR SALE: 1100 sq. ft. 2 bed. 1 bath. Call Guy

FOR SALE: 2 bed. 1 bath. Call Guy

FOR SALE: 3 bed. 2 bath. Call Guy

FOR SALE: 4 bed. 2 bath. Call Guy

FOR SALE: 5 bed. 3 bath. Call Guy

FOR SALE: 6 bed. 4 bath. Call Guy

FOR SALE: 7 bed. 5 bath. Call Guy

FOR SALE: 8 bed. 6 bath. Call Guy

FOR SALE: 9 bed. 7 bath. Call Guy

FOR SALE: 10 bed. 8 bath. Call Guy

FOR SALE: 11 bed. 9 bath. Call Guy

FOR SALE: 12 bed. 10 bath. Call Guy

FOR SALE: 13 bed. 11 bath. Call Guy

FOR SALE: 14 bed. 12 bath. Call Guy

FOR SALE: 15 bed. 13 bath. Call Guy

FOR SALE: 16 bed. 14 bath. Call Guy

FOR SALE: 17 bed. 15 bath. Call Guy

FOR SALE: 18 bed. 16 bath. Call Guy

FOR SALE: 19 bed. 17 bath. Call Guy

FOR SALE: 20 bed. 18 bath. Call Guy

FOR SALE: 21 bed. 19 bath. Call Guy

FOR SALE: 22 bed. 20 bath. Call Guy

FOR SALE: 23 bed. 21 bath. Call Guy

FOR SALE: 24 bed. 22 bath. Call Guy

FOR SALE: 25 bed. 23 bath. Call Guy

FOR SALE: 26 bed. 24 bath. Call Guy

FOR SALE: 27 bed. 25 bath. Call Guy

FOR SALE: 28 bed. 26 bath. Call Guy

FOR SALE: 29 bed. 27 bath. Call Guy

FOR SALE: 30 bed. 28 bath. Call Guy

FOR SALE: 31 bed. 29 bath. Call Guy

FOR SALE: 32 bed. 30 bath. Call Guy

FOR SALE: 33 bed. 31 bath. Call Guy

FOR SALE: 34 bed. 32 bath. Call Guy

FOR SALE: 35 bed. 33 bath. Call Guy

FOR SALE: 36 bed. 34 bath. Call Guy

FOR SALE: 37 bed. 35 bath. Call Guy

FOR SALE: 38 bed. 36 bath. Call Guy

FOR SALE: 39 bed. 37 bath. Call Guy

FOR SALE: 40 bed. 38 bath. Call Guy

FOR SALE: 41 bed. 39 bath. Call Guy

FOR SALE: 42 bed. 40 bath. Call Guy

FOR SALE: 43 bed. 41 bath. Call Guy

FOR SALE: 44 bed. 42 bath. Call Guy

FOR SALE: 45 bed. 43 bath. Call Guy

FOR SALE: 46 bed. 44 bath. Call Guy

FOR SALE: 47 bed. 45 bath. Call Guy

FOR SALE: 48 bed. 46 bath. Call Guy

FOR SALE: 49 bed. 47 bath. Call Guy

FOR SALE: 50 bed. 48 bath. Call Guy

FOR SALE: 51 bed. 49 bath. Call Guy

FOR SALE: 52 bed. 50 bath. Call Guy

FOR SALE: 53 bed. 51 bath. Call Guy

FOR SALE: 54 bed. 52 bath. Call Guy

FOR SALE: 55 bed. 53 bath. Call Guy

FOR SALE: 56 bed. 54 bath. Call Guy

FOR SALE: 57 bed. 55 bath. Call Guy

FOR SALE: 58 bed. 56 bath. Call Guy

FOR SALE: 59 bed. 57 bath. Call Guy

FOR SALE: 60 bed. 58 bath. Call Guy

FOR SALE: 61 bed. 59 bath. Call Guy

FOR SALE: 62 bed. 60 bath. Call Guy

FOR SALE: 63 bed. 61 bath. Call Guy

FOR SALE: 64 bed. 62 bath. Call Guy

FOR SALE: 65 bed. 63 bath. Call Guy

FOR SALE: 66 bed. 64 bath. Call Guy

FOR SALE: 67 bed. 65 bath. Call Guy

FOR SALE: 68 bed. 66 bath. Call Guy

FOR SALE: 69 bed. 67 bath. Call Guy

FOR SALE: 70 bed. 68 bath. Call Guy

FOR SALE: 71 bed. 69 bath. Call Guy

FOR SALE: 72 bed. 70 bath. Call Guy

FOR SALE: 73 bed. 71 bath. Call Guy

FOR SALE: 74 bed. 72 bath. Call Guy

FOR SALE: 75 bed. 73 bath. Call Guy

FOR SALE: 76 bed. 74 bath. Call Guy

FOR SALE: 77 bed. 75 bath. Call Guy

FOR SALE: 78 bed. 76 bath. Call Guy

FOR SALE: 79 bed. 77 bath. Call Guy

FOR SALE: 80 bed. 78 bath. Call Guy

FOR SALE: 81 bed. 79 bath. Call Guy

FOR SALE: 82 bed. 80 bath. Call Guy

FOR SALE: 83 bed. 81 bath. Call Guy

FOR SALE: 84 bed. 82 bath. Call Guy

FOR SALE: 85 bed. 83 bath. Call Guy

FOR SALE: 86 bed. 84 bath. Call Guy

FOR SALE: 87 bed. 85 bath. Call Guy

FOR SALE: 88 bed. 86 bath. Call Guy

FOR SALE: 89 bed. 87 bath. Call Guy

FOR SALE: 90 bed. 88 bath. Call Guy

FOR SALE: 91 bed. 89 bath. Call Guy

FOR SALE: 92 bed. 90 bath. Call Guy

FOR SALE: 93 bed. 91 bath. Call Guy

FOR SALE: 94 bed. 92 bath. Call Guy

FOR SALE: 95 bed. 93 bath. Call Guy

FOR SALE: 96 bed. 94 bath. Call Guy

FOR SALE: 97 bed. 95 bath. Call Guy

FOR SALE: 98 bed. 96 bath. Call Guy

FOR SALE: 99 bed. 97 bath. Call Guy

FOR SALE: 100 bed. 98 bath. Call Guy

Registrants At Pioneer Reunion

PLAINVIEW
Mrs. Willa Ruth Simmons, 1922; J.T. Bibbrey, 1923; Mary Lee Bilbrey, 1923; Janet Halfmark, 1932; Peggy McKinney, 1912; R.M. Stovall, 1927; Mrs. Sidney Johnson, 1938.

SILVERTON

Sam W. Hunt, 1903; Bessie Baker Hunt, 1900; Raymond Teeple, 1917; Sylvia Covington Teeple, 1906.

LUBBOCK

Bulah McDermott McNeely, 1903; Eura Horn Robertson, 1917; A.H. "Hop" Robertson, 1925; Eddyth Walker Hopkins, 1927; A.G. Hopkins, 1916; Margaret McPeak Kinsey, 1919; B.W. Snell, 1920; Virginia McKinny Snell, 1919; Margaret McKinny Rodgers, 1921; T.L. Calloway, 1927; Mattie McPeak, 1891; Geraldine Calloway, 1918; Bonita Newsome Mook, 1918; Lois Newsom Morrison, 1916; Floyd Willis, 1913; Roy G. Voight, 1932; Effie Kennima Wilkins, 1928.

AMARILLO

W.L. "Lefty" Holmes,

1923; Billye Holmes, 1923; C.A. Boothe, 1910; Alice Bell Spencer, 1932; Mrs. Jennie Burgett Irwin, 1912; George Burgett, 1933; Millie Carmack Burgett, 1935; Ruby Owens Carmick, 1928.

CALIFORNIA

Wayland Bagwell, Montebello, 1917; Bertha Jean Willis, 1924; Edgar Willis, 1917, Morpark; Faye Jeter Williams, 1920; E.T. Williams, 1920, Bakersfield.

NEW MEXICO

Edith Bagwell Mulvaney, 1917; L.V. "Pete" Shurbet, 1913; Woodrow Martin, 1917; Mrs. W.M. Knight, 1908.

ROARING SPRINGS

W.L. Craft, 1921; Kermit Glover, 1916.

IDALOU

Daisy Eudy Colvery,

1917; Paul Rodgers, 1916.

DOUGHERTY

Colesta Bean Caffee, 1923; Oliver Emert, 1922.

RICHMOND, KY

Juanita Phillips, 1919.

HEREFORD

Virginia McClung Thomas, 1923; E. A. Thomas, 1924.

TULIA

Mrs. D.H. Shubert, 1908; D.H. Shubert, 1907.

RICHARDSON

Kerwin Baxter, 1935.

CANYON

A.G. Tyler, 1926; Lucie Kirk, 1935; W.A. Kirk, 1935; Foster Amburn, 1907; Mrs. Foster Amburn, 1914.

GROOM

Flois Reed, 1930.

CROSBYTON
Viola Smith Brown, 1906; Gladys Davis Howard, 1910.

LAMESA

Jessie Mae Clairborne, 1917.

PETERSBURG

Mrs. Everett Miller, 1910; Everett Miller, 1910; Mary Alice Eakin, 1916; W.B. Eakin, 1925.

SOUTH PLAINS

Ruby Higginbotham, 1915; Mamie Wood, 1948.

WACO

J.C. Williams, 1925; George Wilkins, 1926.

FORT WORTH

Charles Holland, 1952.

DUMAS

Evylena Myrick Hucka-

bee, 1928; Earl Huckabee, 1917.

BEAUMONT

Jennie Eubanks, 1917.

OKLAHOMA

Luther and Juanita Hill, 1948.

HALE CENTER

Edd Mason, 1934.

Captain Westfall

On Japan

Training Mission

FUSSA, Japan-Captain Monte J. Westfall, son of Mrs. E. L. Widener of Rt. 3, Floydada, Texas, is participating in "Team Spirit," a

PAY CASH!
And Buy Your Farm Chemicals Wholesale

Aatrez-\$2.00 lb. Milogard-\$2.35 lb.
4L \$12.50 gal. 4L \$15.00 gal.
Caparol \$3.25 lb. Banvel 1 gal.-\$28.00
Formula 40-\$8.50 5 gal.-\$27.55
Roundup-1 gal. \$53.00

Prices Subject To Change Without Notice
PRODUCER CO-OP ELEV.
FLOYDADA, TX



We Welcome Federal Food Stamp Customers

FINE STAINLESS TABLEWARE

THIS WEEK'S FEATURED ITEM

DINNER FORK ONLY 49¢ EACH

WITH EACH \$3.00 PURCHASE DURING SALE PERIOD

CHOOSE EITHER RHINELAND OR VALHALLA PATTERN

ONLY 4 MORE WEEKS TO COMPLETE YOUR SET

June is Dairy Month
Enjoy All Texas Dairy Products

SAVE MORE MONEY WITH THESE SUPER SPECIALS

Prices good thru June 18, 1977. We reserve the right to limit quantities. None sold to dealers.

Each of these advertised items is required to be readily available for sale at or below the advertised price in each store, except as specifically noted in this ad.

Packer Trim, Whole Only, Cry-O-Vac
BEEF BRISKET 89¢
Lb.

Grade A Mixed
FRYER PARTS 45¢
Lb.

California
Valencia Oranges 29¢
Lb.

Summer Farm
Fresh PEACHES 49¢
Lb.

3-Lbs. or More, Fresh
Ground Beef 68¢
Lb.
Rath's Meat or Beef
Sliced Bologna 89¢
Full Lb.

Farmer Jones
Jumbo Franks 79¢
Full Lb.
Heavy Aged Beef, Chuck
Boneless Roast 98¢
Lb.

Fresh
Fancy Artichokes 29¢
each
Tender
California Cauliflower 79¢
Lb.

Crisp
Bell Peppers
Halves or
Sliced Watermelons

Powdered, Heavy Duty
Purex Detergent 69¢
42-oz. Box

Cream Style or Whole Kernel
Del Monte Corn 4 \$1
17-oz. Cans

Bath
Charmin Tissue 69¢
4-Roll Pkg.

Van Camp's
Pork Beans 4
15-oz. Cans

Pure Vegetable
Crisco Oil 1.39
38-oz. Btl.

Piggly Halves or Slices Choice
Peaches 49¢
29-oz. Can

Bremner Saltine
Crackers 39¢
16-oz. Box

Regular Beef Flavor
Ken-L-Ration

Frozen Tree Sweet
ORANGE JUICE 4 FOR \$1

Piggly Wiggly
Texas Style Biscuits 6 \$1
12-oz. Cans

POT PIES 4/\$1.00

VALUABLE COUPON
SAVE 50¢
When you buy one (1) 20-Lb. Bag Kingsford
Charcoal Briquets
With This Coupon.
Coupon Expires June 18, 1977.

VALUABLE COUPON
SAVE 50¢
When you buy one (1) 20-Ct. Box Hefty
Trash Bags
With This Coupon.
Coupon Expires June 18, 1977.

VALUABLE COUPON
SAVE 50¢
When you buy one (1) 12-Ct. Pkg. Polishing Cloths
Gloss 'N Toss
With This Coupon.
Coupon Expires June 18, 1977.

VALUABLE COUPON
SAVE 50¢
When you buy one (1) 33-oz. Can Borden Prize
Pink Lemonade
With This Coupon.
Coupon Expires June 18, 1977.

VALUABLE COUPON
SAVE 50¢
When you buy one (1) 16-oz. Can
Gravy Train
With This Coupon.
Coupon Expires June 18, 1977.