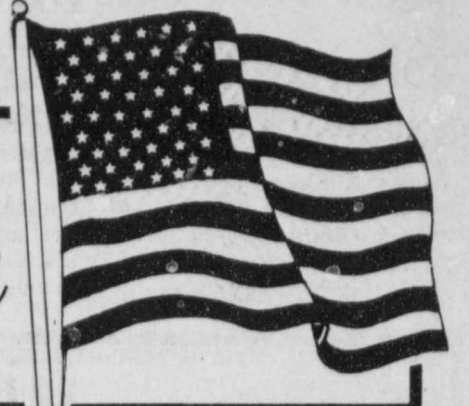


The Floyd County Hesperian



FLOYDADA, FLOYD COUNTY, TEXAS 79235

Sunday, May 29, 1977

16 Pages In Two Sections

Number 43

Committee Sets Goals For New Industry

Meeting at King's...
Development Co. had fifty acres which could be purchased by Floyd County or area industry or negotiations could be worked out which would furnish the industry planning an expansion program and hiring additional employees with a new location at little or no cost. Chamber of Commerce Manager Doug Frazier reported that it had been the policy for several years that the Industrial Development Co. would work on industrial locations and the Chamber of Commerce would do the prospecting for new and expanding industry.

Development Co. had fifty acres which could be purchased by Floyd County or area industry or negotiations could be worked out which would furnish the industry planning an expansion program and hiring additional employees with a new location at little or no cost. Chamber of Commerce Manager Doug Frazier reported that it had been the policy for several years that the Industrial Development Co. would work on industrial locations and the Chamber of Commerce would do the prospecting for new and expanding industry.



ACTIVITY AT THE A&M West Texas Regional Center...as a class of 35 learned pesticide application, and a smaller class on underground electric power lines. Some came from as far away as Louisiana. (Staff Photo).

MEMORIAL DAY

Let Us Pause and Pay Tribute

VFW Memorial Day Program Planned

There will be a joint Memorial Day Program conducted by James W. Harrison Post No. 5616, Veterans of Foreign Wars, and McDermott Post No. 118, American Legion, both of Floydada, Texas, beginning at 8 a.m. on Sunday, May 29, 1977, at Floydada Cemetery, Floydada, Texas. During this program, the Gold Star

Mothers will be presented with a corsage. The Memorial Day Message will be delivered by Rev. Jim Smith, pastor of the First United Methodist Church, Floydada. In case of inclement weather, this program will be conducted in the First United Methodist Church, Floydada.

No Talent Hootenanny

Because there were not enough entries in this year's Talent Hootenanny it has been cancelled at 8 p.m.

Saturday night. This will make the slab available to some other group at that time.

Caprock Hospital Board Guides Life Saving Institution, Major Floydada Industry

Editor's Note: This feature is the beginning of a series about the most important boards of directors in this community and county. The series is intended to be highly informative about the responsibilities of each board, its goals, achievements, and the individual opinions of each board or council member.

build the hospital today would be twice the original cost...or at least two million dollars.

center was well equipped there are facilities that need more use. He also agreed that the cause of being unable to break even was the fact that the hospital is bothered by delinquent accounts. He considered a 21-patient per day basis an adequate break even point. Walls is president of the board and associated with Oden Chevrolet-Olds.

owed on the bonded indebtedness to pay for the construction of the hospital. He said it should be paid out by 1985 and said that the hospital budget of 1976-77 is \$796,495.50. In a closing remark, Patton said, 'I feel that our staff is well trained, highly competent, and a real asset for the district and this community.'

There will be one feature a month for 13 months and the civic minded firms who sponsor this series are: Perry Brothers Inc., Oden Chevrolet-Olds, Inc., Dyson's Boot Shop, Solomon's Jewelry, Piggly Wiggly, City Auto, Inc., Quality Body Shop, Buddy's Food, Beall's Department Store, The Country Morning, Thompson Pharmacy, Mize TV, Collins Implement, Bishop-Ramsey Pharmacy, Betty's Place, Adams Well Service, Baker Insurance Agency, Farm Bureau, Floydada Cooperative Gins, Floydada Real Estate & Insurance, Plainview Savings & Loans-Floydada Branch, Ponderosa Meat Co., Gilbreath Exxon, Wayne Russell Implement, and Norrell Tractor Parts.

EMPLOYS 36 Today 36 full time persons are employed at Caprock and 16 part time people. So, it is not only a vital service institution, but the payroll for these employees goes back into the community as a leading industry.

LADIES AUXILIARY The heart monitoring machine and the respirator and blood gas analyzer, Burdick EKG machine, an \$11,500 portable x-ray machine were given the hospital by the Ladies Auxiliary.

OUTSTANDING EQUIPMENT The 40 bed hospital features some of the latest technical equipment: This includes the Ohio 55 O Respirator, two hypothermia units, respiratory therapy department equipment, or various instruments, and several defibrillators.

EMERGENCY AMBULANCE One of the most important services that the hospital has undertaken the past year is emergency ambulance service. Certified ambulance drivers and nurses aides are ready for any emergency around-the-clock.

HOSPITAL BOARD MEMBERS In a recent interview with the members of the Caprock Hospital board, these pertinent facts were revealed:

WILLIAM BERTRAND: The newest member on the board, Bertrand agrees that more doctors are needed if the hospital is to reach needed improvement in certain areas and in service as well as to be able to operate and still not lose money. Bertrand is a farmer and a native of the community.

LARON FULTON: Fulton a member of the hospital board for two years and a seven-year resident of Floydada commented that the hospital possessed good facilities but simply needed to serve more persons that need the services. Fulton also stated that the hospital was unable to operate and not lose money since there were too many people who received medical attention that could not pay their bills. He is a farmer.

DOYLE WALLS: Walls, a six-year member of the board also agreed that more doctors were needed at the hospital, and said that although the

ALDINE WILLIAMS: Williams, also a six-year member, praised the hospital's facilities and equipment, but agreed that it could make money in operation if a higher percentage of bills charged could be collected. In his opinion, the hospital could even make money at a 21-patient per day rate. Williams is an agri-business man.

SAMMY HALE: A member more than a year and a 19-year Floydada businessman, also spoke of the excellent facilities and personnel at the hospital. He also considered the 21-patient rate an excellent break even point for operation.

It is evident that a big personnel ratio is necessary to meet Medicare requirements whether there are six patients or forty. This fact combined with patients who can't or won't pay their bills make it hard to keep from losing money.

Hospital administrator Troy Patton said that the average monthly payroll is \$30,750.00 and some \$185,000 is still

Cheerleaders Selling Pens

Floydada Varsity cheerleaders are selling ink pens. There are five writing pens to the box at a cost of \$1. Proceeds from the sales will go for cheerleaders' equipment.

BULLETIN

Sylvia Arrellano and children John Mark, Tonie, were only slightly injured Friday afternoon in a truck-car accident near the swimming pool on highway 70. Uninjured was driver of the truck Gerald Coots, his passenger Don L. Hand of Plainview. The truck overturned on top of the back part of the auto. The Arrellanos live near Dougherty.



SIXTEEN NEW APARTMENTS are beginning to take shape just south of Duncan Elementary in Floydada. (Staff Photo).

Floydada Firms To Close Memorial Day

is an official holiday in...
open for business Monday.

Many Floydada folk will be traveling to White River and Mackenzie lakes for picnic and boating outings.

Friends Of The Library Seeking Memberships Saturday

of the courthouse. The organization needs funds to further its efforts to see that Floyd County has better libraries.

of the courthouse. The organization needs funds to further its efforts to see that Floyd County has better libraries.

Rock Chat By Wendell Tooley

ALLY a critical time for...
winter, it probably didn't cause any increase in the number of common colds in your home. Cold weather doesn't cause colds. Viruses do, and the brutal weather may drive people inside where they are more likely to breathe air carrying them. But if no viruses are around, you could stand in cold water or in a draft for hours without catching a cold. Research on the subject comes from a team of doctors at the Baylor University School of Medicine. It showed that keeping warm and dry doesn't prevent colds and getting chilled and damp doesn't do any harm. Home seems to be the chief place for spreading colds, says the study. One reason why people get colds in the fall is that central heating is turned on at the time. The heat dries up the moisture in the air. The membranes that line the nose and respiratory system are affected, and their susceptibility to infection increases.

ALLY a critical time for...
winter, it probably didn't cause any increase in the number of common colds in your home. Cold weather doesn't cause colds. Viruses do, and the brutal weather may drive people inside where they are more likely to breathe air carrying them. But if no viruses are around, you could stand in cold water or in a draft for hours without catching a cold. Research on the subject comes from a team of doctors at the Baylor University School of Medicine. It showed that keeping warm and dry doesn't prevent colds and getting chilled and damp doesn't do any harm. Home seems to be the chief place for spreading colds, says the study. One reason why people get colds in the fall is that central heating is turned on at the time. The heat dries up the moisture in the air. The membranes that line the nose and respiratory system are affected, and their susceptibility to infection increases.

NOW LET'S SEE...there are no hail suppression planes flying...is it possible that Floyd County is getting more rain and hail since the planes are not breaking up the clouds?

WE'VE RECEIVED some inquiries about what happened on the QA&P railroad hearing. The woman judge from Washington D.S. has probably made her recommendation to the Interstate Commerce.

So...Chamber of Commerce manager Doug Frazier says official word on whether or not the train continues to run from Quanah to Floydada will come from the Interstate Commerce...not time limit.

FLOYDADA LOSES a nice couple as the A.W. Coltharps move to Tyler this week. A.W. will be right in the middle of a bunch of good fishing lakes and his new boat should see plenty of action.

A.W. leaves a legacy to this community of leadership in education...and I personally thank him again for the two tennis courts at Junior High.

ANYONE WANT TO HELP the Day Care Center children this hot weather? They are in desperate need of a new or good used evaporative air conditioner. Let me know if you can help...please and thank you!

YOU PROBABLY wonder why Aldine Williams is pictured as an inset in the Caprock Hospital Board picture. Aldine is a real dedicated member of the board...so dedicated, he was using the hospital for his own relief and was in a hospital bed instead of at the board meeting. We hope Aldine soon recovers.

Floydada Junior High Honor Students

THESE HONOR STUDENTS were recognized at the Floydada Junior High graduation ceremonies last Tuesday. These five students maintained an average of 90 or above in each of the five basic subjects:

English, History, Mathematics, Reading and Science. They are Moody Younger, Tana Tyer, Deann Fry, Lori Lyles, and Jeff Rainey.



Moody Younger



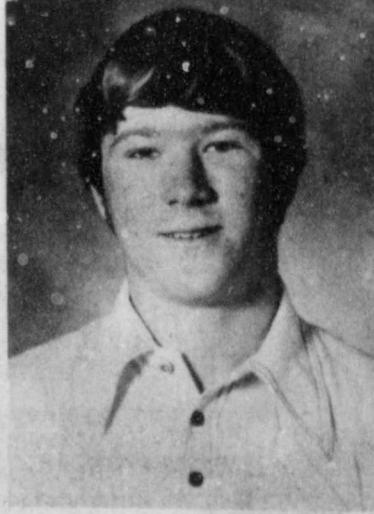
Tana Tyer



Deann Fry



Lori Lyles



Jeff Rainey

Tennis Tournaments At Slaton And Plainview

All tennis players are invited to play in tournaments at Slaton and Plainview June 3-4-5.

Entry Blanks may be picked up at The Hesperian or the First National Bank in

Floydada. Entry fees are required for both tournaments and trophies will be awarded for first and second places. Divisions include Jr. High through over 35.



JOE HART

WE SERVICE MOST ALL MAKES AND MODELS

INCLUDING A-1 ANTENNA SERVICE

FOR NEW SALES & SERVICE

& QUALITY WORK YOU CAN

DEPEND ON

MIZE TV

215 So. Main
Pho. 983-3481

MIZE TV
OF FLOYDADA, TX.

FACTORY
AUTHORIZED
SERVICE
TECHNICIAN



RETIREMENT TEA...attended by a host of Floyd County friends, honored Nita Merle Hull Thursday afternoon. Mrs. Hull is pictured greeting Dr. and Mrs. Floyd Bradley. In background is Mrs. George Springer, a member of the 1934 Study Club, who hosted the event. Guests were served fruit punch from a milk glass punch bowl and an assortment of cookies. The table was covered with a green linen cloth and held a mass arrangement of roses. Club members alternated in serving. (Staff Photo)

Of Heismanns And Scholarships ...

by Doug Simpson
Just how big a prize is Tony Dorsett? The Dallas Cowboys apparently think they have the answer. The

University of Pittsburgh's explosive Heisman Trophy winner, whom Coach Tom Landry was recently quoted as saying, "we will pay him what he produces," can turn the Cowboy offensive attack around-if they find a front wall to protect him.

Could any Whirlwind tracksters find future homes in college ranks for next season? Why not? There are certain to be plenty of

smaller schools as well as large powerhouse campuses that would enjoy owning talent like the Winds' awesome sprint relay runners and even in the mile relay-of course, a pair of the mile relay personnel have yet to graduate, Junior-to-be Ricky Day and Senior-to-be Charles Bradford. Randy Rathel could easily perform for a smorgasbord of colleges of his preference in the 440, as could Jay Womack and Mickey Minnitt in the 100-yard dash.

There is both talent and determination in Floydada's summer baseball program. In the opening game of the season, the pony league diamonders knocked off Lockney in a high-scoring tilt by a single run, 13-12. Though unable to attend the contest, I sense a winning foundation in this ball club through observance of a couple of their practice sessions.

Know what the world's toughest assignment really is, as far as staying alive concerned? That of professional basketball official!

Friday night's tussle at the Spectrum in Philadel-

Everybody's Doin' It... HOME IMPROVEMENT

SUMMER IS HERE...

AND NOW IS THE TIME TO MAKE THOSE LONG NEEDED IMPROVEMENTS,

COME IN AND LET US HELP YOU WITH YOUR IMPROVEMENT LOAN TODAY



Floydada Branch
Plainview

SAVINGS & LOAN Association

217 W. CALIFORNIA FLOYDADA, TEXAS

ESLIC
Equal Housing Lender

FEDERAL HOME LOAN BANK

MEMBER

Equal Housing Lender

Over 40 Years In Business Organized January 1, 1936
"Where You Save Does Make A Difference"

OBITUARIES

Dick Nichols

Funeral rites were pending at Moore-Rose Funeral Home Friday at Press time for Clyde Nichols, brother of James Lee Nichols of Floydada, who died in Plainview at Central Plains Hospital Friday morning about 11:30 of an apparent heart attack. Nichols was the son-in-law of Mr. D.M. Moore who lives at the Floydada Nursing Home.

Nichols moved to Plainview several months ago from Waldren, Ark.

Born in Trinton, Texas, he moved to Floyd County with his parents, the late Rufus Lee and Inez Nichols. He and Velma Mae (Toots) Moore were married June 1, 1929 in Lockney.

Nichols was a member of the Lakeview Baptist church in Floyd (now disbanded) and was a retired farmer and rancher.

Survivors include his wife, a son, Billy Clyde of Plainview; two brothers, James Lee of Floydada and Claude of Tucson, Ariz; and three grandchildren.

He was preceded in death by his parents and a daughter.

Mrs. Robinson

Services were scheduled for Saturday morning, May 28th at 10:30 in Moore-Rose Funeral Home Chapel for Mrs. Mary E. Robinson, 91, an early day longtime resident of Floydada. Mrs. Robinson died about 12:30 a.m. Friday at the home of a daughter in Lubbock.

Rev. Wayne Williams and Rev. Charles Broadhurst both Baptist ministers officiated for the rites. Interment was by Moore-Rose in Floydada Cemetery where her husband Robert L. Robinson was buried in 1933.

A native of Timpson, Tex., she was born October 16,

1885 and moved to Ft. Worth from Floydada some 25 years ago and to Lubbock in 1974. Mrs. Robinson was a member of Grace Methodist Church of Fort Worth and Woodsmen Circle.

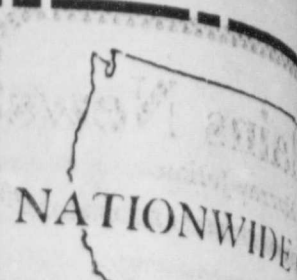
Survivors include two daughters, Mrs. Lucille Dempsey and Edra Robinson both of Lubbock; a son, Rex Robinson of Lubbock; a sister, Mrs. Wilma Johnson of Orange, Calif.; two grandchildren and four great grandchildren.

Mrs. Robinson was the aunt of Mrs. Alvie Jackson, Mrs. Newell Parker and Bud Sparks all of Floydada.

FLOYD DATA

Mr. and Mrs. Edgar Willis of Moore Park, California, are here this week visiting through Old Settlers and to visit his brothers, Emmett and Henry Willis and their families.

phia before a nationwide TV audience was by far the most physical sporting event witnessed thus far this year. Everybody's beginning to get into the heat of the action. That fourth quarter brawl which left two players, ejected included fans, coaches, and officials alike.



NATIONWIDE

1. Adjusted on...

2. Substitution...

3. July 1st, addi...

4. Harvest expen...

ter. Cotton is 100%...

When corn reaches...

(15th) leaf stage, it...

stage is usually when...

42 days old, or around...

most fields. This is an...

hail period for most of...

FOR YOUR GROUP HAIL...

Edmond A. Williams...

Or Sam A. Spence...



- SPECIALS GOOD MAY 30-JUNE 1**
- Shurfresh Aluminum Foil Heavy Duty 18"x25" Roll
 - Shurfresh Apple Sauce 16 oz. Can
 - Shurfresh Bathroom Tissue 2 Ply White/Blue/Pink/Yellow 8 Roll Pkg.
 - Shurfresh Biscuits Butter/Maple/Sweet 8 oz. Can
 - Shurfresh Blackeyes Fresh Shelled 15 oz. Can
 - Shurfresh Bleach 64 oz. Jug
 - Shurfresh Cake Mix Devils Food/White/Yellow 18 1/2 oz. Box
 - Shurfresh Catsup 32 oz. Bottle
 - Shurfresh Energy Charcoal Briquets 10 Lb. Bag
 - Shurfresh Energy Charcoal Lighter Fluid 32 oz. Can
 - Shurfresh Cheese Halfmoon Longhorn Colby 10 oz. Package
 - Shurfresh Coffee Regular/Drip/Elec. Perk 16 oz. Vac Pac Can
 - Shurfresh Coffee Creamer 16 oz. Jar
 - Shurfresh Corn Golden Cream Style/Whole Kernel 17 oz. Can
 - Shurfresh Crackers Saltine 16 oz. Box
 - Shurfresh Detergent All Purpose/Blue 49 oz. Box
 - Shurfresh Detergent Automatic Dishwasher 50 oz. Box
 - Shurfresh Detergent Liquid Lemon/Pink 22 oz. Bottle
 - Shurfresh Diapers Disposable Daytime 30 Count Box
 - Shurfresh Dinner Macaroni & Cheese 7 1/4 oz. Box
 - Shurfresh Roxy Rotion Dog Food 15 oz. Can
 - Shurfresh Evaporated Milk 14 1/2 oz. Can
 - Shurfresh Facial Tissue White/Yellow/Pink 200 Count Box
 - Shurfresh Fish Fillets Frozen Batter Dip 12 oz. Package
 - Shurfresh Flour 5 Lb. Paper Bag
 - Shurfresh Grapefruit Juice Texas Natural Pink 46 oz. Can
 - Shurfresh Green Beans Cut 16 oz. Jar
 - Shurfresh Ice Cream Assorted Flavors 1/2 Gal. Square Carton
 - Shurfresh Lemonade Frozen 6 oz. Can
 - Shurfresh Mandarin Oranges 11 oz. Can
 - Shurfresh Margarine Quarters 1 Lb. Package
 - Shurfresh Mustard Salad 16 oz. Jar
 - Shurfresh Napkins Assorted Colors 160 Count Package
 - Shurfresh Food King Paper Plates 9" White 100 Count Package
 - Shurfresh Peaches Yellow Cling Halves/Sliced 29 oz. Can
 - Shurfresh Peanut Butter Creamy/Crunchy 18 oz. Jar
 - Shurfresh Pickles Hamburger Sliced Dills 32 oz. Jar
 - Shurfresh Pie Shells Frozen 2 Count With 2 Pans 10 oz. Pkg.
 - Shurfresh Pop Assorted Flavors 12 oz. Can
 - Shurfresh Pork & Beans 16 oz. Can
 - Shurfresh Potato Chips Regular Twin Pak/For Dips 8 oz. Pkg.
 - Shurfresh Rice Medium Grain 2 Lb. Bag
 - Shurfresh Salad Dressing 32 oz. Jar
 - Shurfresh Shortening Pure Vegetable 48 oz. Can
 - Shurfresh Spaghetti Sauce Plain/Meat/Mushrooms 15 1/2 oz. Jar
 - Shurfresh Spinach 15 oz. Can
 - Shurfresh Strawberry Preserves 18 oz. Jar
 - Shurfresh Sugar Granulated 5 Lb. Bag
 - Shurfresh Sweet Peas Early Harvest 17 oz. Can
 - Shurfresh Topping Frozen Whipped 10 oz. Carton
 - Shurfresh Vanilla Wafers 10 oz. Package
 - Shurfresh Vegetable Oil 24 oz. Bottle
 - Shurfresh Vegetables Frozen Cut Corn/Green Peas/Mixed 10 oz. Pkg.

COOKIES 32 OZ., 6 BOTTLE CARTON PLUS DEPOSIT

LETTUCE LARGE HEADS

GROUND BEEF PURE

FRYERS GRADE A

HAMS SHURFRESH 3 LB. CANNED

BACON SHURFRESH SLICED 1 LB. PKG.

BACON SHURFRESH SLICED 2 LB. PKG.

FRANKS SHURFRESH REGULAR OR BEEF 12 OZ. PKG.

BOLOGNA REGULAR OR BEEF SHURFRESH 12 OZ. PKG.

shurfresh MILK



YOUR HOME OWNED AND HOME OPERATED BUSINESS

L & J FOOD STORE

316 N. 2ND

PHONE 983-3105

WE GIVE DOUBLE S & H GREEN STAMPS ON EVERY PURCHASE

Plains News

Mrs. Murray Julian

week with them. Thursday of last week, dark, angry clouds came boiling over our community and left one inch of rain, with a little hail. There has

been rain somewhere in our area, nearly every day or night since then. Congratulations to Deneen Johnson who was named Band Queen and crowned at the band banquet at the Lockney High School cafeteria last Saturday night. Deneen is one of the twin daughters of Mr. and Mrs. L.N. Johnson of South Plains.

Mr. and Mrs. Harold

Hamm and their daughter are home for the summer from Texas Tech. They plan to leave Thursday for Austin, and on Friday night they will attend graduating exercises for their son-in-law, Tom Aufdermorte, who is graduating with high seniors from the University of Texas at Medical School. Tom plans to be a doctor, and will teach in medical school next year while he prepares for this work.

A "staggering" variety of tropical plants could provide many food items for the world—which now depends on only about 20 crops for food, says Mrs. Gwendolyn Clyatt, consumer marketing information specialist, with the Texas Agricultural Extension Service, The Texas A&M University System. She cited a recent report of a National Academy of Sciences panel on under-exploited

tropical plants with promising economic value.

Use awnings, blinds or drapes to shade windows and help save air-conditioning energy, says Glenda Moore, housing and home furnishings specialist with the Texas Agricultural Extension Service, The Texas A&M University System.

Storage Special

At Wall & Mississippi Street
RENT STORAGE SPACE FOR 6 MONTHS
WE WILL GIVE 10% DISCOUNT.
Wilson Bond
983-2151-983-3573
West Texas Mini Storage

BUDDY'S FOOD

Buddy Widener, Owner-Forrest Shannon Mgr.
in Floydada, 220 South Second



NEW STORE HOURS
SUNDAY-9 A.M.-7 P.M.

MONDAY SATURDAY 8 A.M.-8 P.M.

THESE SPECIALS GOOD SUNDAY, 5-29-77
THROUGH WEDNESDAY, 6-1-77

We Reserve The Right To Limit Quantities

24 OZ. EVER FRESH

DRINK MIX **99¢**
\$1.49 VALUE

1/2 GAL. ROUND CARTON
ICE CREAM **\$1.19**
\$1.59 VALUE



16 OZ. NABISCO RITZ
CRACKERS **77¢**
99¢ VALUE

24 OZ. CLOVELAKE
COTTAGE CHEESE **87¢**
\$1.33 VALUE



10 OZ. GEBHARDT'S HOT DOG
SAUCE **4/\$1.00**
39¢ VALUE

32 OZ. RAGU SPAGHETTI
SAUCE **\$1.09**
\$1.49 VALUE

1 LB. NABISCO
CRACKERS **2/99¢**
73¢ VALUE

11 1/4 OZ. NESTLES
FUN SIZE CANDY BARS **\$1.09**
\$1.49 VALUE

12 COUNT BALL REGULAR

JAR LIDS **3/\$1.00**
40¢ VALUE

18 COUNT FLAVOR ICE BARS **79¢**
99¢ VALUE

18 COUNT 16 OZ DIXIE BIG ONES
PAPER CUPS **2/\$1.19**
79¢ VALUE

17 OZ. OUR DARLING
CORN **4/\$1.00**
41¢ VALUE

U.S.D.A. CHUCK ROAST **79¢**
LB.

FAMILY PAK PORK CHOPS **98¢**
LB.

3 LB. FARM LAND CAN
HAM **\$5.29**

SLICED SLAB BACON **\$1.19**
LB.

12 OZ. DECKERS FRANKS **79¢**

6-32 OZ. COKE OR 7 UP **\$1.39**
\$1.95 VALUE PLUS DEPOSIT

RED DELICIOUS APPLES **3 LBS/\$1.00**

FIRM SLICERS CUCUMBERS **4 LBS/\$1.00**

YELLOW SQUASH **4 LBS/\$1.00**

15 OZ. PATIO FROZEN TAMALES **2/99¢**
\$1.29 VALUE

18 OZ. DUNCAN HINES LAYER CAKE MIX **59¢**
79¢ VALUE

18 OZ. KRAFT BAR-B-Q SAUCE **2/99¢**
79¢ VALUE

12 OZ. HORMEL SPAM **99¢**
\$1.33 VALUE

3 1/2 OZ. ADOLPH'S MEAT TENDERIZER **2/89¢**
75¢ VALUE

20 OZ. POLSKI WYROB POLISH DILL PICKLES **79¢**
\$1.09 VALUE

NABISCO SNACK CRACKERS **2/\$1.39**
79¢ VALUE

U.S.D.A. ROUND STEAK **\$1.29**
LB.

FAMILY PAK GROUND BEEF **59¢**
LB.

3 OZ. PENROSE SLICED HAM **79¢**
PKG.

COUNTRY STYLE PORK BACK-BONE **\$1.29**
LB.

2 PIECES CHICKEN, POTATOES, CORN, PASTRY PUFFS CHICKEN LUNCH **\$1.79**

35 COUNT CHINET COMPARTMENT PLATES **\$1.19**
\$1.79 VALUE

42 OZ. WHITE SWAN SHORTENING **49¢**
WITH PURCHASE OF 2 CUT-UP FRYERS
\$1.29 WITHOUT PURCHASE

1 LB. ROMAN MEAL BREAD **2/89¢**
69¢ VALUE

10 OZ. STEAK SAUCE **89¢**
\$1.19 VALUE

11 OZ. GOOD DAY MANDARIN ORANGES **3/\$1.00**
39¢ VALUE

32 OZ. LIQUID LUX **99¢**
\$1.29 WITHOUT COUPON WITH COUPON
GOOD AT BUDDY'S EXPIRES 6-1-77

GIANT 49 OZ. TIDE **\$1.19**
\$1.39 WITHOUT COUPON WITH COUPON
GOOD AT BUDDY'S EXPIRES 6-1-77

3 OZ. WHITE SWAN INSTANT TEA **\$1.09**
\$1.29 WITHOUT COUPON WITH COUPON
GOOD AT BUDDY'S EXPIRES 6-1-77

New Of The Water Safety Rules

ing your boat is still the best prevention. A thorough check of safety equipment to be completed before leaving home and will insure a safe start.

When you are checked by a Texas game warden, some of the items he will want to see includes the boat registration and certificates of number issued by the P&WD; life preservers accessible for each person on board and all 12 year old and under persons wearing their life preservers at all times; visible numbers painted, decal, or otherwise affixed to both sides of the bow of the boat; lights if the boat is to be operated after dark; ventilation ducts and flame arresters in working condi-

tion on inboards; mirrors if the boat is towing a person or persons on water skies and located so the boat operator has a full and complete view beyond the rear of his boat.

The law concerning boat titles became effective Jan. 1, 1976 and all new unregistered motorboats in excess of 14 feet in length, and new outboard motors in excess of 12 horsepower must be titled with the P&WD prior to use.

Fire extinguishers approved for motorboats are hand-portable, of either B-I or B-II classification. Either fire extinguisher must be full when on board and the number of approved extinguishers required depends upon the class of the motor-

boat. Class A motorboats are less than 16 feet in length and require one B-I fire extinguisher or a fixed extinguisher system in the machinery space of the engine compartment. Class I motorboats are 16 feet to 26 feet in length and require one B-I extinguisher or a fixed system in the machinery space.

All of these regulations are listed in the Digest of the Texas Water Safety Act available at all P&WD offices across the Panhandle and South Plains.

Another handy booklet to study is the little Blue Boating Book available by writing the P&WD, 4200 Smith School Road, Austin, TX 78744.

Remember, whatever you're doing on the water, take along common sense.

After the sun goes down, open doors and windows to let in cool evening breezes for cooling, advises Glenda Moore, housing and home furnishings specialist, with the Texas Agricultural Extension Service, The Texas A&M University System.

Sleep while your want ad works.

Published each Sunday and Thursday at 111 E. Mo. St., P.O. Box 700, Floydada, Texas 79235. Second class postage paid at Floydada, Texas 79235. Publication No. 202680. Wendell Tooley, editor. Subscription rates: Local \$8.50 a year, out of trade area \$9.50.

Only 2.3 per cent of the nation's women earn more than \$25,000 per year—yet women comprise over 40 per cent of the labor force.

reports, Debby Johnson, family life education specialist with the Texas Agricultural Extension Service, The Texas A&M University System.

SHUGART COUPON

Wednesday, June 1
Mize Pharmacy
102 S. Main Street

9
WALLET SIZE
COLOR PORTRAITS
99¢



Extra charge for GROUPS

Sanders Construction & Maintenance Co.
313 S. Wall
Floydada, Texas
Oilfield construction, Roustabout Crews, Shop & Portable Welding (structural & pipe), Pipeline Work, Elevator and Gin Work.
—Fully Insured— 24 Hour Call

SAVE MORE MONEY WITH THESE SUPER SPECIALS

Prices good thru June 1, 1977. We reserve the right to limit quantities. None sold to dealers.

Each of these advertised items is required to be readily available for sale at or below the advertised price in each store, except as specifically noted in this ad.

NEW STORE HOURS

DAILY 8 A.M.—9 P.M.
SUNDAY 9 A.M.—7 P.M.

 Quarter Pork Loin 8 to 11 PORK CHOPS \$1.28 Lb.	 GROUND BEEF 68¢ Lb.	 Breakfast Treat LARGE CANTALOUPE 29¢ Lb.	 Golden RIPE BANANAS 4 \$1 Lb.
---	--	---	--

Country Style Spare Ribs Lb. \$1.18	Grade A Turkey Hindquarters Lb. 39¢	Fresh Corn On The Cob 8 Ears \$1	New Crop Juicy Cherries Lb. 99¢
Farmer Jones Jumbo Franks Full Lb. 79¢	FARMER JONES Sliced Bologna 12 OZ. PKG. 89¢	Halves or Slices Red Ripe Watermelon Lb. 19¢	Red Ripe Tomatoes Lb. 69¢

Del Monte Golden Corn 17-oz. Cans 4 \$1	Piggly Wiggly Tomato Sauce 15-oz. Cans 4 \$1	Piggly Wiggly Canned Biscuits 8-oz. Cans 8 \$1	Fox Deluxe Frozen Pizza 13-oz. Pkg. 79¢
---	--	--	---

Canned Del Monte Spinach 16-oz. Cans 4 \$1	Piggly Wiggly Choice Cling Peaches 16-oz. Cans 3 \$1	French Style Cut Del Monte Beans 16-oz. Cans 4 \$1
--	--	--



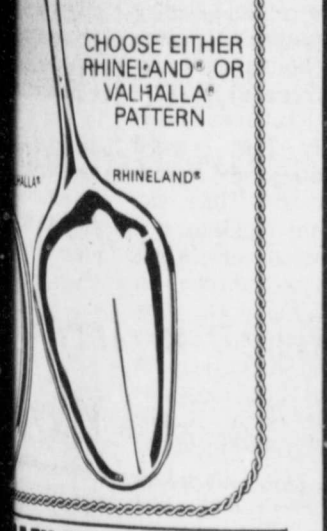
We Welcome Federal Food Stamp Customers

FINE CHINALESS DINNERWARE

TEASPOON ONLY **49¢** EACH

WITH EACH \$3.00 PURCHASE DURING SALE PERIOD

CHOOSE EITHER RHINELAND® OR VALHALLA® PATTERN



STEAM MACHINE

With this coupon, Save \$1.00

When you buy one (1) 50-Lb. Bag Dog Food

SAVE \$1.00

Coupon expires June 4, 1977.

VALUABLE COUPON

SAVE 15¢

When you buy one (1) 15-oz. Pkg. Nabisco Regular or Double Stuff

Oreo Cookies

With this coupon, Save 15¢

Coupon expires June 4, 1977.

VALUABLE COUPON

SAVE 50¢

When you buy one (1) 16-oz. Pkg. Fun Size Milky Way, Snickers, or 3 Musketeers

Mars Candies

With this coupon, Save 50¢

Coupon expires June 4, 1977.

VALUABLE COUPON

SAVE 50¢

When you buy one (1) 28-oz. Can Assorted Flavors Drink Mix

Hawaiian Punch

With this coupon, Save 50¢

Coupon expires June 4, 1977.

VALUABLE COUPON

SAVE 25¢

When you buy one (1) 26-oz. Box Powdered

Snowy Bleach

With this coupon, Save 25¢

Coupon expires June 4, 1977.



Plainview Lanes Inc.

Gary Hight-Manager

Bowling, the great American fitness program, is ALWAYS more fun at the Plainview Lanes! This well-known bowling center features the very latest in equipment and your score will improve whenever you stop in and bowl a game!

Conveniently located at 2002 Quincy in Plainview, phone 293-3177, this fine facility has more to offer for the beginner or experienced bowler. They utilize the very best in automatic pin setters and electronic scoring. Leagues for all ages and abilities are forming right now and there's no better way to improve your skill than to join a team and bowl regularly.

of Plainview Lanes, urges EVERYONE to keep in shape the fun way with bowling! They feature free instruction, a bowler's "pro shop", a fine snack bar and many other convenient and enjoyable services to help you enjoy your game a little more.

The writers of this 1977 Review suggest that YOU become a better bowler by bowling regularly at Plainview Lanes!

Plainview Rendering

A Division of Tri-State Industries
Ray Cognasi-Manager

Plainview Rendering, located East of Plainview, phone 293-4431, is providing an excellent service to farmers and stockmen. They have the plant, the truck, the experience and the equipment necessary to render

kept in the most sanitary condition and are not disease carriers. Feel free to call them whenever a loss occurs.

They specialize in prompt service, regardless of your location, and make removal of dead stock without disturbance or inconvenience to you. It is a great deal safer

to call them for removal services than to do it yourself.

They have served the farmers and stockmen very satisfactorily in this community for some time and we, the editors of this 1977 Review, feel you will receive the best and prompt service by phoning Plainview Rendering.

Gantt's One Hour Martinizing of Plainview

Mildred Gantt-Owner

Gantt's One Hour Martinizing of Plainview, phone 293-4784, at 1810 West 5th in Plainview is famous for the quality of their work.

People are often judged by their appearance. Our clothes mean a great deal in making that first impression a good one. It is wise to keep them neat and clean. It is an established fact that fabrics

that have been cleaned often wear a great deal longer. Be thrifty and have your clothes cleaned often by Bant's One Hour Martinizing of Plainview where all the help is experienced and their equipment is the best that is possible to secure. Your clothes will be returned to you "Fresh as a Flower in Just One Hour"

from this fine One Hour Martinizing. For added convenience you can use their convenient drive-in window.

We, the writers of this 1977 Review, feel that we can highly recommend Gantt's One Hour Martinizing of Plainview and refer them to all our readers for the finest cleaning service available.

Village Pastries

Where Baking & Decorating Is An Art
Mike & Nancy Finch-Owners

For the very best in baked goods, try Village Pastries located at 3322 Olton Road in Plainview, phone 296-5610. They will be closed on Mondays throughout the summer months.

At this fine bakery, you can order beautifully decorated cakes for any occasion. Their tasty pastries are made with a secret spice added to give them that "Old World" flavor, and have become the talk of the town. Once you have tried their pastries, you will want to

tell all your friends about Village Pastries and the many delicious products they bake.

They use only the highest quality of ingredients for their baked goods and keep their modern bake shop exceptionally clean.

Here you will find the nicest and most polite people to serve, and they are always happy to assist you in your needs.

Village Pastries specialize in orders for parties, club meetings, weddings and

other occasions, and can handle any size order.

In Lockney you can enjoy these fine pastries from Allsup's Store #59 located on Main Street. The fine pastries from Village Pastries are delivered here daily.

The composers of this 1977 Review are proud to salute this fine bakery and the people who run it and suggest to our readers that they remember to stop at Village Pastries for the best in baked goods.

Framing On The Square

Fred and Daphne Jamison-Owners

A treasure house of beautiful interior decoration accents, Framing On The Square where they specialize in the very finest custom picture frames available! Here's just the thing to add beauty and charm to every wall in your home or office. There's nothing that makes a bare wall look better than a beautifully framed picture! Located at 118 East 5th in

Plainview, phone 293-8141, this will know shop features expert custom framing for all types of paintings, graphics and photographs.

Choose from the hundreds of styles and colors available in high quality frame stock. They can also mount your pictures on distinctive matt board if you desire. Photographs look especially nice when treated this way!

Here you can have your needle point framed and they also offer dry mounting and framing of oval mat and oval glass cutting services.

The writers of this 1977 Review suggest this well liked shop for ALL of your picture framing needs! If it hasn't been framed by Framing on the square...well, it's not looking its very best!

Plainview Plate Glass & Mirror Co.

Wayne Arnold & Wayne Arnold Jr.-Owners

The Plainview Plate Glass & Mirror Co. located at 215 East 5th in Plainview, phone 293-1926, offers the people of this community glass for commercial and

"Serving You Since 52"

home use. They feature a full line of glass for windows, store fronts, desk tops, coffee tables, pictures, mirrors, and auto glass. Regardless of what item you have that

needs glass all you have to do is take the measurements and give them to them and they will cut it to your exact specifications.

Take an inventory in your home today and see what furniture you have that needs a glass top, or what broken windows need replacing. Take the measurements and on your next trip to town, let them cut it to size while you wait.

The Plainview Plate Glass & Mirror Co. carries a

Culligan Soft Water

Now Under New Ownership
And Management
Terry & Jimmy Holmes

"Hey Culligan Man"! This is a familiar sound when there's trouble with YOUR water softening system.

Your Culligan man can be expected to respond to your problem and take care of it in an absolute minimum of time because "Culligan Men" are the leaders in the soft water field, and they know

they must do a better job! In Plainview, your Culligan men are Terry and Jimmy Holmes, at 3408 Olton Road. Just phone 296-2104 for fast service on all Culligan soft water units.

With a famous Culligan water softening unit installed in your home, you can experience a new sensation in cleaner washing, softer

skin every time you bathe, and longer lasting pipes and drains due to the lack of minerals in the water. There are many other benefits, too, and to find out about all of

them...call Terry or Jimmy Holmes TODAY! The writers of this 1977 Review suggest that you just holler, "Hey Culligan Man"!

Sherwin-Williams Company

When you want the finest paint at realistic prices, see the Sherwin-Williams Company first! Located at 1601 West 5th Plainview, phone 293-4281. This community-minded concern has been serving the local area reliably for years. Their reputation rides on every can of paint that goes out the door. They also feature a wide selection of wallpaper in vinyls, textured fabrics and exciting prints. There are

decorator's books with thousands of ideas, mirrors, fixtures, and many other items which you will want to incorporate into your own decorating scheme.

Featuring the full line of Sherwin-Williams paints, this outstanding merchant offers free custom color mixing...free professional advice...free contractor referrals...and much, much more! They hold to their philosophy that their customers

deserve more than just a product.

So, if you need anything in the way of painting equipment and, of course, famous Sherwin-Williams paints... Stop in at the Sherwin-Williams Company and do

business with this community's paint professionals! As the authors of this 1977 Review, we know you'll be glad you did!

J.D. Spann Bail Bond

J.D. Spann, Sr. & J.D. Spann, Rs.-Owners

Call 293-1492 for 24 hour bail bond service.

If you've ever been in jail regardless of the circumstances and have had the

experience of not knowing if you would be able to afford to post bail...then you probably know how invaluable a good bondsman is.

J.D. Spann Bail Bond is

conveniently located at 207 East 6th in Plainview and they offer the fastest possible service for all types of bail bonds. When you're in need of their services, you can always count on a speedy posting of the bond and a quick release.

Being in jail is certainly no fun but it still happens to the best of us. EVERYONE

should be aware of their rights in these matters and keep the phone number of a competent bondsman such as J.D. Spann Bail Bond close by.

The writers of this 1977 Review urge ALL area residents to remember the name and phone number of this reputable bondsman.

Plainview Roller Rink

W.M. & Wanda Tyler Owners

What's more fun than roller skating? Why, roller skating at the Plainview Roller Rink, of course! This outstanding skating facility is located at 921 Ash in Plainview, phone 296-9066 or if no answer call 293-3441, and features everything for a fun-filled time!

There's soft music and a friendly atmosphere for your enjoyment. Skate rent

als and sales are another facet of the complete services offered by this rink, and they will make reservations and offer special rates for birthday, church and school parties. Just call for group reservations. Open skating sessions are featured most every afternoon, on the weekends and in the evenings.

Whether you skate for

fun, relaxation, exercise, or all three...you'll skate better at the Plainview Roller Rink! Their fine snack bar features cold drinks and snacks for your enjoyment.

The writers of this 1977 Review suggest that you make roller skating at the Plainview Roller Rink a regular habit. Try it today and see if it isn't great fun and good exercise!

Gary's Citizen Band Shop, Inc.

Gary Valentine, Owner

The West Texas Headquarters for Communication equipment is Gary's Citizen Band Shop, Inc., located at 1111 Columbia, phone 293-5358. They feature the famous SBE and Tram CB's and have a wide variety of the new 40 channel CB units in many different models and price ranges.

Gary's Citizen Band Shop also has a great selection of Sony TV's and all the accessories imaginable for

the two-way radio enthusiast. Antennas, scanners, monitors, mikes, telescoping poles are but a few of the items Gary's has to offer.

You'll be surprised how inexpensive it is to equip your car or home with a CB radio from Gary's! With a CB unit 8, your sleepy-time driving times are over. Even an emergency is no longer a big problem.

Gary's Citizen Band Shop is FCC licensed to repair and

install your unit whether it's for commercial or amateur use. They offer quality work at reasonable prices. Ask about the Conditional parts and service warranty on all their units.

Now, there's a Big 10-4, Good Buddies! Remember, even the Smokies get their units serviced at GARY'S CITIZEN BAND SHOP* INC.

Skibell's

Kathy Wittner-Manager

Skibell's is located at 633 Broadway in Plainview, phone 293-3624. Here they feature a complete line of ladies' ready-to-wear suitable for ANY woman...from college girl to business lady to housewife. This fine shop caters to ALL women...who desire to look their absolute best at all times.

You can find just the right ensemble for your every mood or occasion at this full line store. They carry famous brands, of course, and offer all of the popular services such as layaways,

and bank cards. Stop in today...select a new blouse and a pair of smashing slacks or maybe that new dress you've been wanting. You'll like the service and LOVE the selection!

If you haven't visited Skibell's yet, the manager cordially invites you to do so. They value your patronage and will do everything they can to make you a regular customer. The editors of this 1977 Review urge all fashion-conscious women in this area to give Skibell's a try!

complete selection of auto and truck glass for most makes and models and will install it while you wait. Your complete satisfaction is guaranteed on all work and they specialize in insurance claims.

If you are considering some remodeling or build-

ing, let them give you an estimate on the job.

They also feature storm doors & windows, patio doors, carports, patio covers and window awnings.

The writers of this 1977 Review highly endorse the Plainview Plate Glass & Mirror Co. and recommend them to all of our readers.

Industrial Machine Service

Robert Edwards & Tommy Bennett Owners

For tool and dye work of the highest order, many manufacturers in the Plainview area have come to depend on the Industrial Machine Service to do the job in the most professional manner possible.

Located at 1503 W. 24th in Plainview, phone 293-7331, this reliable concern features only fully equipped machinery such as milling machines, lathes, drill presses and high speed grinders and are capable of turning out products that have become recognized as the standard of the industry. Experimental work and special fabrications including special production machinery are a specialty with this unique shop.

They are also known as leading subcontractors of production machine work. Industrial Machine Service will be a major factor in the industrial growth of the

Western Ag Sales

W.W. (Shorty) ...
Manager ...
Bill ...
Floydada ...
By ...
Tulia ...
Representative

Let the experts at The Western Ag Sales, 327 W. 24th in Plainview, phone 296-6361, help you plan a modern, efficient irrigation system on your farm.

It is well known that without irrigation there could be no farming in dry regions. Without irrigation, millions of acres of rich land which are now covered with productive farms would still be a wasteland and desert.

When you call Western Ag Sales a friendly representative of this firm will tell you the advantages and low

Bradshaw Jewelry

R.C. Bradshaw

The wedding season is "on" all year. Express your love and commitment to your new bride with an enchanting diamond from Bradshaw Jewelry, your wedding jeweler! Located at 115 1/2 East 6th on north side of square in Plainview, phone 296-5860, this fine community leader specializes in wedding sets of lasting value and beauty.

In addition to diamonds, Bradshaw Jewelry carries a full line of jewelry for men and women. They have Bulova, Elgin and Caravel

Henry & H

Owners
Dewey Henry, Sr.
Dewey Henry, Jr.
Jackie Henry

In the estimate of many people in this section of the state who have had Henry & Henry located at 1500 Joliet in Plainview, phone 296-5483, handle any of their general building construction, there is not a better qualified contractor anywhere.

This company offers our community an outstanding service in house and building moving, safely, economically and quickly. They have the equipment necessary for the successful completion of moving houses and buildings. Great preparation and

Hawkins Supply

One of the region's leading wholesale plumbing fixture and supply houses specializing in Universal Rundle Plumbing Fixtures, Hawkins Supply Inc. is well known as being a great place to do business! Their modern, efficient facilities, and their courteous service has been acclaimed throughout the area as being the very best! Contractors, builders and retail outlets in this area ordering anything along the lines of Universal Rundle Plumbing Fixtures including fiberglass, vitreous china, enameled cast iron, enameled steel and chrome brass fittings call this fine company first for wholesale

Fillerso

ultimate in farm and a host of ...
Harvester ...
Plainview, ...
dealer has ...
anywhere ...
service to ...
and ran ...
it's sales ...
you won't ...
ANYWHERE! ...
today and ...
what's new

Wayne I Own

rapid develop ...
this section, ...
building service ...
necessary. By ...
dependable weld- ...
much delay is ...
operation costs ...
reduced for

Weld Custom

no difference ...
or small the job ...
Custom Weld ...
fabricating at 508 ...
293-5516 in ...
will do it in such a ...
that you will be ...
with their ...
are fully equip- ...
classes of work, ...
in: aluminum,

Plainview Com

community, the ...
is one of the ...
instituting ...
Plainview Hard- ...
The agency, located at ...
Plainview, phone ...
just such a place. ...
realizing the ...
farmers and home- ...
throughout the area, ...
provide a supply of ...
and other commo- ...
will their needs. ...
community-minded ...
known as the place ...
latches, hinges ...
as well as appli- ...
power tools to ...
complete that pro- ...
one with speed and

Ki's Kand

Ballard Win

store with ...
handmade candles ...
gift. That's ...
you will find at ...
Kitchen at ...
10th Street in ...
phone 296-6522.

Plainview I

"Serving You ...
Wayne Arno ...
Arnold Jr

Plainview I & Mirror

Plainview Plate Glass ...
Co. located at 215 ...
in Plainview phone ...
to the people of ...
and home use. ...
full line of ...
store fronts, coffee ...
mirrors. ...
Regardless ...
you have that ...
measurements ...
to them and ...
to your exact

PFC Enterprises

PFC Marine PFC Pawn Loans Randy Warrick-Owner

People of this section are fortunate to have this concern in their midst with whom they can deal with confidence and, as their reputation will prove, they are a real friend to many in this area. PFC Enterprises is the operator of PFC Marine and PFC Pawn Loans, located at 627 Ash in Plainview, phone 296-5850.

When you're in the market for a new boat and you

W.W. (Shorty) Castwell
 Manager, 296-6361
Bill Pigg
 Floydada, 983-5367
 By Freeman
 Tulsa, 965-9187
 Representatives

Tillerson-Fish, Inc.
 Andy Fish
 And
 Carl Tillerson
 Owners

For 1977 at your International Harvester dealer! The service department is managed by Gavin Hayes, who has specialized in farm machinery maintenance for more than 19 years. Also with Derald Gray as parts manager, you'll be able to find the part you need from their complete parts department.

The compilers of this Consumer Message suggest that ALL area agriculturists check with Tillerson-Fish Inc. and find out more about the complete International Harvester line-up of quality machines for 1977!

Riverside Chemical Co., Inc.

The Riverside Chemical Company, Inc. is located on Riverside and Pioneer Road north of Plainview, phone 293-5341 with a plant located on Hwy. 70 between Lockney and Floydada, and, also in Petersburg. Their retail office in Plainview is at 1016 Beach Street, phone 296-7622. They feature fertilizer, herbicides and pesticides.

Through all periods of economic fluctuation this chemical company has always been ready to serve the best interests of the farmers and general public of this section. They have derived more than the mere profit as measured by dollars and cents because there has been a real and genuine satisfaction to this firm to be able to render this service.

A business of this kind is essential to the entire section. By fair and honest methods they have gained the confidence and patronage of the people of this community.

A fine spirit of cooperation has always been in every transaction with Riverside Chemical Company and we, the writers of this 1977 Consumer Review, wish to compliment them.

Plainview Mattress and Upholstery Company

E.L. (Top) & June Foreman Owners
 "If We Don't Have It, We'll Make It"

PLAINVIEW MATTRESS & UPHOLSTERY COMPANY, located at 607 Yonkers in Plainview, phone 293-5673, offers a complete service in mattress renovating and custom made mattresses. Both inner spring and box springs are featured.

This company is well equipped to do an expert job on your mattress in the shortest time possible. You can save the price of a new mattress and yet your old one will be as good as new. Their prices are fair and their reputation for turning out satisfactory work is well known.

They have been serving the community for some time and it will pay you to have a consultation with them before you have any mattress renovating done.

This modern firm has all the latest machinery with which to turn out quality work at the most reasonable prices, and they know that a satisfied customer means more customers for them.

The developers of this 1977 Review are pleased to recommend this mattress company to the people of this section.

They also have a car trim and carpet cleaning service featuring the newest methods in Deep Steam carpet and furniture cleaning.

Browning Seed, Inc.
 "Programmed for Profit"

A major factor in the growth and development of the Briscoe and Hale counties area, the Browning Seed Inc. has proven to be a valuable asset to the overall well-being of the community and, in particular, those farmers who depend on their fine line of seeds. This well-known firm is located at 1309 N. Columbia in Plainview, phone 293-5271, in Tulsa phone 995-3809 (Harold Dow) and in Silverton, phone 823-2200 (Joe Kitchens), and YOU'RE invited to drop in anytime!

This quality-conscious concern has been providing local people with the very best in all kinds of planting seeds, hybrid sorghums and sorghum sudangrass, wheat, rye, oats and native grasses. Their reputation for maintaining the "old fashioned" business policies of trust, courtesy and honesty has won them many new friends and solidified the faith of their old friends. They're one of the best-liked firms in the area! Whenever you need Browning Hybrid seeds...see Browning Seed Inc. and get the very best!

The writers of this Consumers Message suggest that all area farmers get to know this outstanding company.

Plant Now For Fall Chrysanthemums

COLLEGE STATION—Chrysanthemums are a fine source of fall flowers all over Texas, and now is the time to start new plants for bloom this fall.

"If you have plants from last year, cuttings taken now can provide transplants in a few short weeks," points out Dr. William C. Welch, landscape horticulturist with the Texas Agricultural Extension Service. "Four-to-five-inch tip cuttings stripped of their lower leaves and placed in sand or a mix of half sand and half peat moss will root quickly."

"A rooting hormone is often helpful but not essential. Keep the cuttings moist during the rooting period and place them in a bright area but not in direct sun. By starting these new plants and destroying the old clumps, disease problems can often be avoided," says Welch.

Mums prefer a sunny site with well-drained soil and plenty of water during the summer. Pinching the terminal buds promotes branching, more flowers and sturdier plants. However, buds should not be pinched after August 1 as this will delay flowering.

"Place the rooted cuttings 18 to 24 inches apart and apply small amounts of a complete fertilizer such as 13-13-13 several times during the summer before August 15. Watch for insects, especially aphids which can severely weaken or retard the plants," cautions Welch.

If you have recently received a pot of florist mums, you may be successful in transplanting them to the landscape. After the blossoms begin to fade, cut the plants back to 4 or 5 inches in height. Since there are usually three or more plants per pot, Welch advises separating them by cutting the soil ball with a sharp knife, leaving a sizable ball on each plant. If the plants have not been weakened too severely by long periods of exposure to dark areas or too much or too little water, they will usually begin growing quickly and form sizable plants in time for fall blooming, notes the horticulturist.

"Chrysanthemums are light sensitive plants and flower when the day length shortens in the fall," says Welch. "Since varieties vary as to when flowering begins, it is possible to have mums bloom from late September to heavy frost by selecting early, mid-season and late flowering types."

"Chrysanthemums can provide a lavish display of color this fall by planting fairly large masses of the same color," adds the horticulturist.

Shaw Jewelry
 R.C. Bradshaw-Owner

Season is pressing your attention to with an iron from Fry, your Located at north side Plainview, this fine specialist sets of beauty, diamonds, carries a y for men have Bu-Caravell

watches, many other beauty and are part of this reliable feature some one on your appreciate courteous service. Each delay in making your As the 1977 Review that YOU Jewelry for jewelry gifts.

Custom Welding & Fabricating
 Wayne Baker Owner

stainless steel, trailer repair and fabrication and they do each job according to the latest approved methods. They are specialists in rebuilding, customizing and repairing.

Wayne Baker is a specialist who understands in detail the intricate processes of welding various types of metals. You are assured of receiving a precise job which will give you satisfactory service.

In this 1977 Review, we the writers, wish to compliment Torch Custom Welding & Fabricating upon giving such excellent welding service to people in this section.

M.O. Stapleton Construction Co.
 M.O. Stapleton Owner

For your next structure... build with steel for lasting beauty! The M.O. Stapleton Construction Co. is located at 1001 East 5th in Plainview, phone 296-7893, and they're ready to show you the very latest advancements in distinctive, everlasting metal structures.

Plans are available to suit nearly every application from a modern retail store to a roomy, weather-proof barn to a giant warehouse. Regardless of what you need in buildings, this is one contractor who can do JUST WHAT YOU WANT!

The M.O. Stapleton Construction Co. handles the TOTAL job from site preparation to building design to complete construction and finishing. This is your COMPLETE SERVICE steel building contractor!

The editors of this 1977 Review suggest that anyone contemplating a new building get in touch with the M.O. Stapleton Construction Co. Their reputation in this area is unparalleled!

Warren Drilling Company
 The WARREN DRILLING COMPANY, located at 1310 North Date in Plainview, phone 296-9212, specializes in expert cleaning, installing and repairing of septic tanks and cesspools. Don't take chances by having someone work on your septic tank who doesn't have this experience. So many times that type of work must be dug up and done all over, all because of lack of knowledge and experience. You can have it done properly the first time by calling WARREN DRILLING COMPANY.

Don't wait until bad weather has set in before you have that septic tank or cesspool cleaned or repaired. Give them a call and have this reliable firm do it for you. They can be depended upon to satisfy you and they fully guarantee their work.

Let them clean your clogged sewers, sinks, toilets, showers, laundry facilities, pipes and drains in all commercial, residential and industrial buildings.

In this 1977 Review we, the authors recommend the WARREN DRILLING COMPANY to all our readers and suggest that you call them for all your septic tank or cesspool work.

Warren Drilling Company

The WARREN DRILLING COMPANY, located at 1310 North Date in Plainview, phone 296-9212, specializes in expert cleaning, installing and repairing of septic tanks and cesspools. Don't take chances by having someone work on your septic tank who doesn't have this experience. So many times that type of work must be dug up and done all over, all because of lack of knowledge and experience. You can have it done properly the first time by calling WARREN DRILLING COMPANY.

VACATION PLANS

COLLEGE STATION--Effective vacation plans can increase enjoyment--and cut spending, says Claudia Kerbel, consumer information specialist.

Ms. Kerbel is with the Texas Agricultural Extension Service, The Texas A&M University system.

She recommends "six easy steps" for vacations that succeed:

Decide on vacation goals--such as adventure, travel, cultural enrichment, exercise or relaxation.

For vacations with friends or the entire family, consider each person's favorite activity, also.

Know spending limits--and save ahead or plan the budget carefully for a "vacation on credit." A plan will help combat the overspending temptations.

Consider off-season vacations to save money. Many summer resorts have low rates in May and September--or winter resort areas, such as Florida, have good summer rates. Also, off-season resorts will be less crowded.

Several weeks before the trip, write the Chamber of Commerce or tourist bureau at your destination. Ask for free information about things to see and do.

Henry & Henry
 Owners
 Dewey Henry, Sr.
 Dewey Henry, Jr.
 Jackie Henry

of many care is taken liminary work accomplished careful manner the building destination proper position ally ready Phone for out obligations ten their find their The edition Review wish this reputable their efforts, service and contribution of id building and

Plainview Hardware Company
 E.M. "Andy" Anderson & Bill McBride-Owners

At the Plainview Hardware Company, you'll find people who take a genuine interest in serving your needs and, if they don't have just what you want, they'll order it for you.

They also feature CEN TURA and SANGO China, silverware by ONEIDA and glassware by FOSTORIA. They specialize in China selection service for all your wedding needs.

We, as the editors of this 1977 Review, wish to take this opportunity to recommend the Plainview Hardware Company to all of our readers.

Quality Auto Sales
 John, Ozzie, Jack-Owners

Tired of the rising prices and "hidden" costs found at most new car dealers? Maybe it's time for you to get some straight facts about automobile values and just what's important in today's confusing transportation market. The people to see for straight talk and honest values is Quality Auto Sales at 615 Cummins (7th & Columbia) in Plainview, phone 293-1688. They're THE used car specialists!

Kandle Kitchen
 Ballard Winkels-Owner

At Kaki's Kandle Kitchen, you'll see the candle for every occasion. Christmas, Easter, New Years, Halloween, birthdays, religious holidays and every holiday you can imagine. No matter what the reason...there's a candle that will make the perfect gift! Stop by today and look over the outstanding selection of candles offered by this fine shop!

As the authors of this 1977 Review, we urge all of our readers to shop at Kaki's Kandle Kitchen for gifts of beauty!

Plainview Plate Glass & Mirror Co.
 "Serving You Since 52"
 Wayne Arnold & Wayne Arnold Jr.-Owners

With every manufacturer cutting corners, trying to get production up and costs down...quality must suffer. This is one lot where you can still get a car "built like they used to build it!" Every vehicle that comes in is completely inspected and reconditioned before it goes on the lot, and the result is a better, more reliable car than even many new car dealers can offer.

Industrial Sites
 50 acres
 U.S. #70

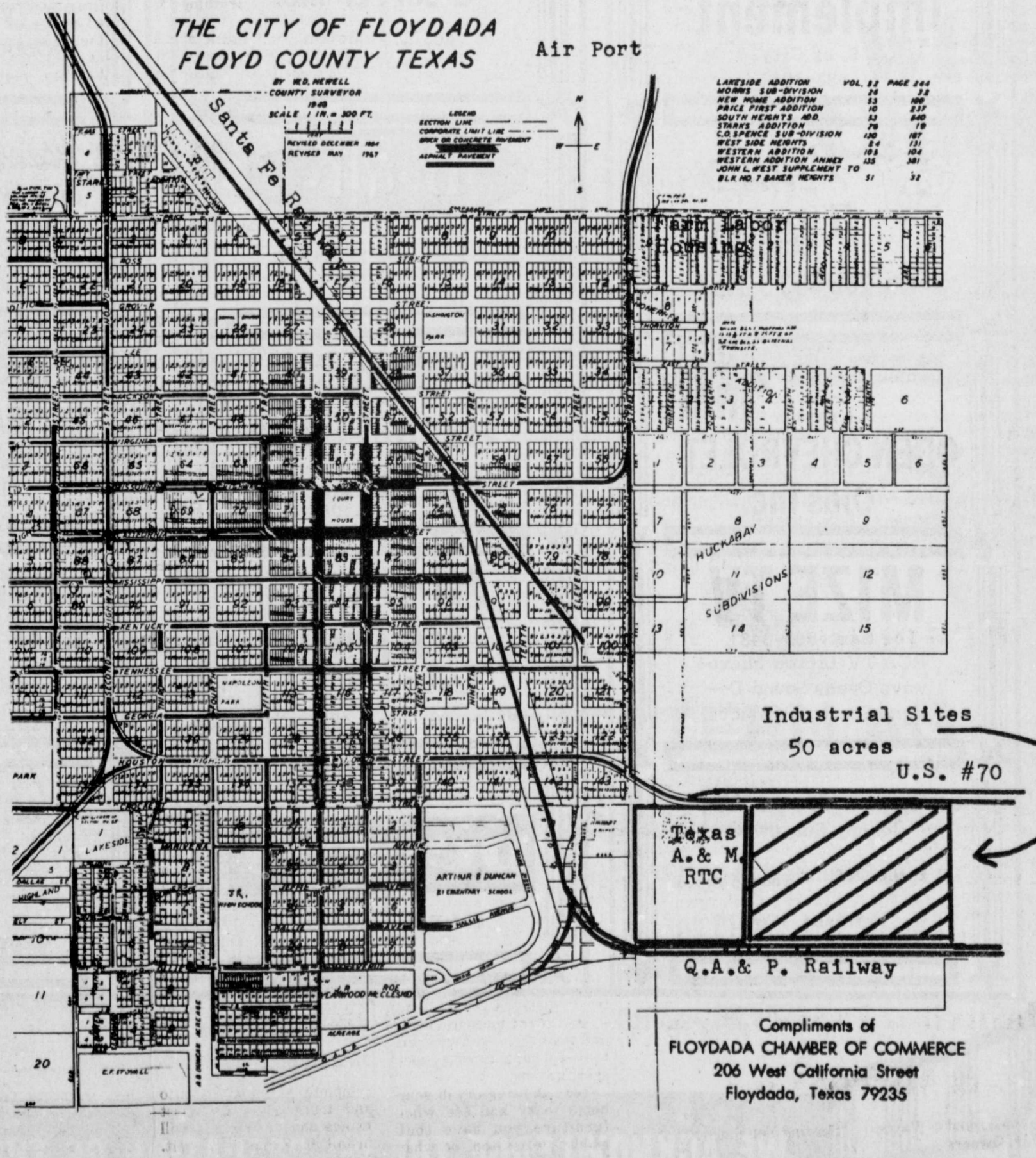
Texas A. & M. RTC

Q.A. & P. Railway

Compliments of FLOYDADA CHAMBER OF COMMERCE
 206 West California Street
 Floydada, Texas 79235

Industrial Prospects For Floydada?

THIS FIFTY ACRE INDUSTRIAL SITE IN FLOYDADA, TEXAS could be yours at little or no cost. It is worth investigating. Contact the Floydada Development Company, Box 135, Floydada, Texas 79235, or call AC 806 983 3434. (Your neighbor will be the Texas A&M University Regional Training Center). Please file this so that you will have our name and address for future reference.



IF YOU KNOW OF AN INDUSTRY that might want to locate in Floydada, please clip this map and mail to the person in charge of industrial development... or, if you are a local business wanting to create a new industry... or expand your present business, this site is available to you and you should contact Gene Ehler here in Floydada.

ins Supply
 orders, and get some service!
 Hawkins located in they're ready contractors, tail outlets in call 293-2638 order or for where your area. They're ideas! That's Review will congratulate Kitchen at 10th Street in phone 296-6522.

Quality Auto Sales
 John, Ozzie, Jack-Owners

Tired of the rising prices and "hidden" costs found at most new car dealers? Maybe it's time for you to get some straight facts about automobile values and just what's important in today's confusing transportation market. The people to see for straight talk and honest values is Quality Auto Sales at 615 Cummins (7th & Columbia) in Plainview, phone 293-1688. They're THE used car specialists!

Kandle Kitchen
 Ballard Winkels-Owner

At Kaki's Kandle Kitchen, you'll see the candle for every occasion. Christmas, Easter, New Years, Halloween, birthdays, religious holidays and every holiday you can imagine. No matter what the reason...there's a candle that will make the perfect gift! Stop by today and look over the outstanding selection of candles offered by this fine shop!

As the authors of this 1977 Review, we urge all of our readers to shop at Kaki's Kandle Kitchen for gifts of beauty!

Plainview Plate Glass & Mirror Co.
 "Serving You Since 52"
 Wayne Arnold & Wayne Arnold Jr.-Owners

With every manufacturer cutting corners, trying to get production up and costs down...quality must suffer. This is one lot where you can still get a car "built like they used to build it!" Every vehicle that comes in is completely inspected and reconditioned before it goes on the lot, and the result is a better, more reliable car than even many new car dealers can offer.

Quality Auto Sales
 John, Ozzie, Jack-Owners

Tired of the rising prices and "hidden" costs found at most new car dealers? Maybe it's time for you to get some straight facts about automobile values and just what's important in today's confusing transportation market. The people to see for straight talk and honest values is Quality Auto Sales at 615 Cummins (7th & Columbia) in Plainview, phone 293-1688. They're THE used car specialists!

Industrial Sites
 50 acres
 U.S. #70

Texas A. & M. RTC

Q.A. & P. Railway

Compliments of FLOYDADA CHAMBER OF COMMERCE
 206 West California Street
 Floydada, Texas 79235

OUR FRIENDS & NEIGHBORS

Serving You For A Better Floyd County



This Week We Salute The Caprock Hospital Board (l to r) Administrator Troy Patton, board president Doyle Walls, Laron Fulton, William Bertrand, Sammy Hale, and Aldine Williams

BISHOP-RAMSEY
Pharmacy 983-3174
208 WEST HOUSTON FLOYDADA, TEXAS

Collins Implement
S. of City
983-3732

Piggly Wiggly
No. 265 303 S. Wall

221 So. Main
FLOYDADA, TEXAS 79235

CHEVROLET
Chevrolet
ODEN CHEVROLET
Olds Inc.

MIZE TV
Joe Hart-983-3481
RCA TV Litton Micro-wave Ovens Sound Designs Stereo Products.

QUALITY BODY SHOP
Johnny Sue, owner
121 E. MISSOURI Phone 983-5032
FLOYDADA, TEXAS

DYSON'S
SHOE SHOP
104 South Main Phone 983-3414
Floydada, Texas

RUSSELLS EQUIPMENT & SUPPLY INC.
608 E. Houston
983-3751

Beall's
DEPARTMENT STORES
118 E. California St.
983-2596

Norrell Tractor Parts
114 W. Mo. 983-3417
Floydada, TX

Betty's Place
Fashion & Fabrics
604 S. 2nd 983-5091

perry's
104 E. California

Baker Ins. Agency
127 W. California
Floydada, TX

GILBREATH EXXON
101 N. 2nd, 983-3323
Floydada, TX
PRODUCTS AND SERVICE STATION

Plainview SAVINGS & LOAN Association
217 W. California
FLOYDADA BRANCH

Floydada Farmers Co-op Gin
319 N. 5th 983-2884
Floydada, TX

FLOYDADA REAL ESTATE AND INSURANCE
108 W. Mo.
983-2360

Solomon Jewelry
102 South Main St.,
Floydada, Texas

Buddy's Food
200 S. 2nd

Adams Well Service
COMPLETE IRRIGATION SERVICE
BOONE ADAMS
Owner-Mgr. FLOYDADA, TEXAS

FB OFFICE 983-2777 HOME 983-5222
DAVID CATES
INSURANCE AGENCY MANAGER
FLOYD COUNTY FARM BUREAU
101 S. WALL FLOYDADA, TEXAS

The Country Morning
126 West California Street
FLOYDADA, TEXAS 79235

Ponderosa Meat Co.
807 E. Mo. 983-2261

BULLICK **BUICK** **PONTIAC** **GMC**
CITY AUTO. INC.
201 E. MISSOURI
FLOYDADA, TEXAS 79235
BUS: 983-3767

THOMPSON **PHARMACY**
200 SO. MAIN FLOYDADA, TEXAS

WE ACKNOWLEDGE THE CO-OPERATION OF THESE FIRMS IN SPONSORING THIS PAGE. THE CIVIC PRIDE THEY EXEMPLIFY IS A TRIBUTE TO OUR COMMUNITY.

Naman Condemns House Farm Bill

Texas Farmers Union President Jay Naman of Waco released the following statement on the federal farm bill which has recently been reported out of the agricultural committees of both houses of Congress:

"Despite reports from Washington that members of the House Agriculture Committee congratulated themselves with applause on the voting out of the four-year farm bill, Texas farmers do not share this enthusiasm. They view the committee approved bills as a dismal display of irresponsible agriculture that will condemn agriculture to four more years of tottering on the brink of economic ruin.

"A recent Department of Agriculture survey shows that Texas is one of the nine states surveyed by the Federal Reserve Bank indicating that 'the financial condition of the farmers has deteriorated.' The report pointed out that one-third of the farmers in these states are having difficulty getting re-financed and one-fourth of the bank borrowers in these states will be forced to re-finance their loans or dispose of their farm assets, if price improvements are not imminent. It showed that 11,300 Texas family farmers are in extreme economic difficulty.

"With the exception of the dairy section of the farm program, in itself not good enough, both the Senate and the House versions of the farm bill are totally inadequate to meet the needs of a financially strong agriculture. Prices on all the basic commodities are set at or below the cost of production. Among the worst sections of the farm bill are those which pertain to cotton, peanuts, and rice, but when a farmer asks himself what commodity he might produce and be better off, it becomes a question of whether he is 'shot or hung.'

"The peanut provisions of the bill are a radical departure from what peanut farmers have voted for and supported traditionally. The language which substitutes poundage quotas for acreage allotments will be extremely discriminating and detrimental to producers in Texas and Oklahoma. In fact, the proposed peanut program will wreck the economies of those areas which have traditionally produced peanuts in the southwest.

"The cotton section of the bill sets loans and target prices at or below the cost of production and assures the U. S. cotton producer that it is unlikely that he will ever again receive a parity or fair price for his crop. The bill contains provisions which permit the importation of an unprecedented amount of raw cotton. In other words it puts a lid on the price of cotton at a low level.

"The rice section of the bill perpetuates the grave mistake which was made two years ago in repealing a good rice program which farmers had supported and voted for through the years.

"The farm bill, as approved by the Senate and House Agriculture Committees, provides a gigantic windfall to the processors and handlers of farm commodities. By setting loan prices at depressed levels and permitting the importation of raw cotton, the international grain traders and cotton shippers are assured of the continuation of a high volume of low priced farm commodities. The peanut bill is a special interest peanut program designed to benefit the peanut shellers and

crushers at the expense of family farmers.

"The implications of cheap grain which will be guaranteed under the proposed farm legislation will extend beyond the producers of that grain and will affect an already depressed cattle industry by intensifying the problem by encouraging more production of cheap red meat. Sadly enough, the low prices and economic chaos which will result from the new farm bill will not result in lower retail prices to the consumer. In fact, the consumer can anticipate even higher prices when more family farmers are put into bankruptcy.

"Farmers Union commends the handful of members of the Senate and House Agriculture Committees who had the courage to vote against the majority because of the inadequacy of the legislation. We shall work with them in an effort to get floor amendments to the farm bill that will improve it. We cannot support the legislation as it is presently constituted."

Younger and lower-income households are making more changes in cooking practices to save energy than are other households, according to Frances Reasonover, foods and nutrition specialist, with the Texas Agricultural Extension Service. The Texas A&M University System. A U.S. Department of Agricultural survey reports one-tenth of its respondents cook more food in the oven at one time, use slow cookers and other specialty items, or buy more food that requires little or no cooking at home.

observed and treatment appears to be needed, foliar application of zinc can be very effective and relatively inexpensive. A complete coverage of the leaf surface with a solution containing three pounds of 36 percent zinc sulfate per 100 gallons of water will do the job. Include a wetting agent at the concentration recommended by the manufacturer for insecticidal use. Be concerned only about just wetting the foliage. One such application is all that will likely be needed. Before the next crop, get a good composite soil sample for analysis by the Extension Service Soil Testing Laboratory in Lubbock. They will suggest rates of zinc for soil application for the next crop. Soil applications of three to ten pounds of actual zinc per acre are highly effective when worked into the root zone preplant. Indiscriminate use of such rates is definitely not recommended. Iron deficiency is more

likely to be visible in sorghum than in corn. It is readily recognized in all crops by the characteristic yellowing between green leaf veins which, in sorghum and corn, begin at the base of the leaf and extend to the extreme tip. Long recognized as a severe production problem in sorghums on the high lime soils, corn is quite resistant to the disorder. Although symptoms frequently occur in very young corn, the crop tends to quickly grow out of the condition.

Foliar application of iron is the only measure that has given satisfactory control, and yield increases from such applications have frequently been disappointing. Spraying until foliage is wet with a solution containing 15 to 20 pounds of iron sulfate per 100 gallons of water plus a wetting agent or spreader sticker is a long standing recommendation. Several applications may be required for sorghum.

Individual plants within a row are more uniformly affected by iron deficiency than by zinc. With both elements, the most severe visual symptoms are likely to occur on shallow high lime soil. The pattern of occurrence can be highly irregular.

Concentrations given for foliar applications are for use in ground rigs and should not be exceeded. Other additives such as copper, manganese, sulfur, nitrogen, phosphorus, potassium, etc. will not increase the effectiveness of the zinc or iron and could easily cause foliage damage. If both iron and zinc are included in a single application, the concentrations of each material should be reduced by one-half.

Don't let inflation drain your profits away. Store your grain in a Chief Bin and sell when the price is right. Order now, and get immediate delivery on all capacities of Chief Grain Drying and Storage Bins... insure you'll have the needed capacity at harvest time. **More standard features:** Heavy gauge vertical stiffeners • 30" weathertight top cone • Bolt-free, non-drip roof panels • Double-row hill and valley bolting. Compare...you'll buy Chief!

WESTERN AG SALES CO., INC. formerly Gifford-Hill retail outlets

Bill Pigg
Home--- 983-5367
Office--- 983-5231

COMPLETE DESIGN * COMPLETE SERVICE

FREE ESTIMATES
In Plainview 293-1764
In Floydada 983-2068
After 5 p.m.

FREE ESTIMATES
In Plainview 293-1764
In Floydada 983-2068
After 5 p.m.

FREE ESTIMATES
In Plainview 293-1764
In Floydada 983-2068
After 5 p.m.

FREE ESTIMATES
In Plainview 293-1764
In Floydada 983-2068
After 5 p.m.

FREE ESTIMATES
In Plainview 293-1764
In Floydada 983-2068
After 5 p.m.

FREE ESTIMATES
In Plainview 293-1764
In Floydada 983-2068
After 5 p.m.

FREE ESTIMATES
In Plainview 293-1764
In Floydada 983-2068
After 5 p.m.

Future Farmers Electric

Workshop June 13-15

More than 100 Future Farmers of America members and leaders will attend Southwestern Public Service Company's 15th annual Farm Electrification Workshop to be held June 13, 14, 15 at the Episcopal Conference Center in Amarillo.

The FFA members, who come from Texas and New Mexico, will be competing for five trips to the National FFA Convention at Kansas City. Thirteen hours of instruction are offered in each of three subjects, Farm Motors, Farm Wiring and Electric Controls. Two students from the wiring and motor courses and one from the controls course are selected as outstanding and receive the trips to Kansas City for their accomplishment. Each student who finishes the course he is enrolled in is awarded a certificate. Alternates are selected in each course in the event the winner is unable to attend the Convention.

Heading the staff of instructors at the workshop are Ken Pollard, Texas A&M Agricultural Engineering Department, Electric Con-

trols, Bobby Browning, Texline, Farm Wiring; Truman Kidwell, Childress, Farm Wiring; Frank Kennedy, Vega, Farm Motors; and Jay Eudy, Turkey, Farm Motors.

FLOYD COUNTY WEED CONTROL DISTRICT REPORT

David Duvak, Supervisor of the Floyd County Weed District, states that the weather has been a hindrance the past few months to the District in keeping up with bindweed applications as fast as they would like to. Since the District is behind with their spray program this year and bindweed is first preference of treating of weeds, all applications for fence row treating will have to be postponed for awhile until the District can get caught up. Each year the District urges landowners to have fence row treated by March 15, but will work fence row applications in as soon as possible.

The District office will be closed Monday May 30, 1977 for Memorial Day.

Plant the Big One in 1977
Cargill Hybrid 204
Hybrid Sunflower Seed

It's a dependable, high-yielding hybrid that ripens uniformly for a big harvest with high oil content.

Available from
EDWIN NUTT, 983-3864

SORRY...
ELEVATOR FULL

Protect your profits with Chief!

Don't let inflation drain your profits away. Store your grain in a Chief Bin and sell when the price is right. Order now, and get immediate delivery on all capacities of Chief Grain Drying and Storage Bins... insure you'll have the needed capacity at harvest time. **More standard features:** Heavy gauge vertical stiffeners • 30" weathertight top cone • Bolt-free, non-drip roof panels • Double-row hill and valley bolting. Compare...you'll buy Chief!

WESTERN AG SALES CO., INC. formerly Gifford-Hill retail outlets

Bill Pigg
Home--- 983-5367
Office--- 983-5231

COMPLETE DESIGN * COMPLETE SERVICE

FREE ESTIMATES
In Plainview 293-1764
In Floydada 983-2068
After 5 p.m.

FREE ESTIMATES
In Plainview 293-1764
In Floydada 983-2068
After 5 p.m.

FREE ESTIMATES
In Plainview 293-1764
In Floydada 983-2068
After 5 p.m.

FREE ESTIMATES
In Plainview 293-1764
In Floydada 983-2068
After 5 p.m.

FREE ESTIMATES
In Plainview 293-1764
In Floydada 983-2068
After 5 p.m.

FREE ESTIMATES
In Plainview 293-1764
In Floydada 983-2068
After 5 p.m.

FREE ESTIMATES
In Plainview 293-1764
In Floydada 983-2068
After 5 p.m.

FARM REVIEW

Water Flunks

Test With Cotton

with a commercial wettable finish. Hal E. Brockmann, vice president of textile research and development at Cotton Incorporated's Raleigh research center, noted that cotton has long been recognized as the world's standard for textile comfort, largely because of the cotton fiber's high affinity for moisture. Cotton Incorporated is the fiber research and marketing company of U.S. cotton producers.

"Moisture is taken inside the cotton fiber," Brockmann pointed out. "That is one reason why the synthetic fiber producers have never been able to come up with a fiber that could match the comfort of cotton.

"The 'wetable' polyester finish has been represented as a real breakthrough in making a polyester fabric more comfortable," said Brockmann. "That's why we were especially interested in seeing the results of these independent studies."

According to Dr. Norman R. S. Hollies, who directed the comfort tests at the Gillette Research Institute, Rockville, Md., the "wetable" polyester flunked the test.

The commercial "wetable" finish, he reported, failed to increase the comfort level of the polyester fabric to that of all-cotton "or even to that present in 'Natural Blend' shirts of comparable structure."

Dr. Hollies said the comfort tests, based on actual wearing of the shirts by 26 men, showed that the four shirts fell into two groups.

"The shirts containing cotton gave the higher comfort ratings, distinguishable from one another at the 90 per cent confidence level in only one case. The all-polyester shirts gave lower ratings not distinguishable from one another at the 90 per cent confidence level. The cotton containing shirts were more comfortable than the polyester shirts at the 99 per cent confidence levels in all but two instances, but still significant at the 90 per cent confidence level."

"In every instance, he added, "the cotton-containing fabrics were rated significantly higher than the polyester fabrics..."

Each of the 26 men participating in the tests was given one of each of the four shirts to wear under controlled conditions of varying combinations of tempera-

ture and relatively humidity. Labels were removed from the shirts so that brand and fiber content were not known to the participants.

Discussing the significance of the studies, Brockmann pointed out comfort is a subjective value that does not lend itself to conventional laboratory tests.

"Only through actual wearing trials and from the individual reactions of people can you really get a measurement of a fabric's comfort," he added. "When we say all-cotton or mostly cotton knit dress shirts are more comfortable, we are supported by the documented data provided by people who actually wore the shirts and made their own comfort evaluations."

Brockmann said the recent comfort tests were similar to a series of investigations conducted by the Gillette Institute in the past that compared different blend levels in men's woven shirts and knit sport shirts.

"Those tests established that the 'Natural Blend' shirts were more comfortable than the high synthetics and were just as good in durable press performance," he said.

When sewing collars, facings, and cuffs—press seams open on a point presser or seam roll before turning them right-side-out. Seams will be easy to turn and will form a smooth edge, says Margret Ann Vanderpoorten, clothing specialist, with the Texas Agricultural Extension Service, The Texas A&M University System.

When sewing collars, facings, and cuffs—press seams open on a point presser or seam roll before turning them right-side-out. Seams will be easy to turn and will form a smooth edge, says Margret Ann Vanderpoorten, clothing specialist, with the Texas Agricultural Extension Service, The Texas A&M University System.

When sewing collars, facings, and cuffs—press seams open on a point presser or seam roll before turning them right-side-out. Seams will be easy to turn and will form a smooth edge, says Margret Ann Vanderpoorten, clothing specialist, with the Texas Agricultural Extension Service, The Texas A&M University System.

When sewing collars, facings, and cuffs—press seams open on a point presser or seam roll before turning them right-side-out. Seams will be easy to turn and will form a smooth edge, says Margret Ann Vanderpoorten, clothing specialist, with the Texas Agricultural Extension Service, The Texas A&M University System.

The Land Bank

Agriculture's long-term lender

For 60 years, through good times and bad times, America's farmers and ranchers have depended on the Federal Land Bank for long-term financing. The kind of financing needed to set and reach long-term goals.

FEDERAL LAND BANK
ASSOCIATION OF FLOYDADA
105 South Wall Floydada, TX
Telephone 983-2480



HIGDON ENTERPRISES

Automatic Lawn Sprinkler Systems - Residential And Commercial-

SYSTEMS DESIGN
INSTALLATION
SERVICE

Licensed Landscape Irrigators
Texas License No. 393
Completely Automatic Or Manual Controls

Free Estimates
In Plainview 293-1764
In Floydada 983-2068
After 5 p.m.

ANDREWS WARD HONOR ROLL

GRADE 6
 A-David Myrick, Sandra Robinson, Belinda Vallejo, Sheila Ehler, Eloisa Ocanaz, Tammy Beams, Debra Patterson, Teresa Spurlock, Christi Norrell, David Carr, Wally Davis.
 B-Carol Cochran, Sophia Garza, Tracy Harrison, Lillian Polanco, Mitch Ross, Calvin Coleman, Gilbert Schwertner, Eli Menchaca, Terri Marquis, Mary Lou Quintanilla, Rhonda Ratliff, Shanda Sanders, Jodie Smith, Tonya West, Neva West, John Leatherman, Don Cheek, Ramon Martinez, Olivia Bueno, Cindy Burk, Esmeralda DeLeon, Myra Ledbetter, Trina Reeves, Mysti Younger, Kevin Heims, Dwayne Green, Bobby Smith, Irma Briones, Michelle Byrd, Pam Cathey, Tammy Cochran, Helen Guzman, Sandy Morales.

6th SIX WEEKS GRADE 5

A-Sam Crabtree, Jana Finley, Tammi Galloway, Lori Jarrett, Patrick Lloyd, Cliff McLain, C.L. Robison, Rusty Simpson, Anita Nichols, Becky Fuller, Richard

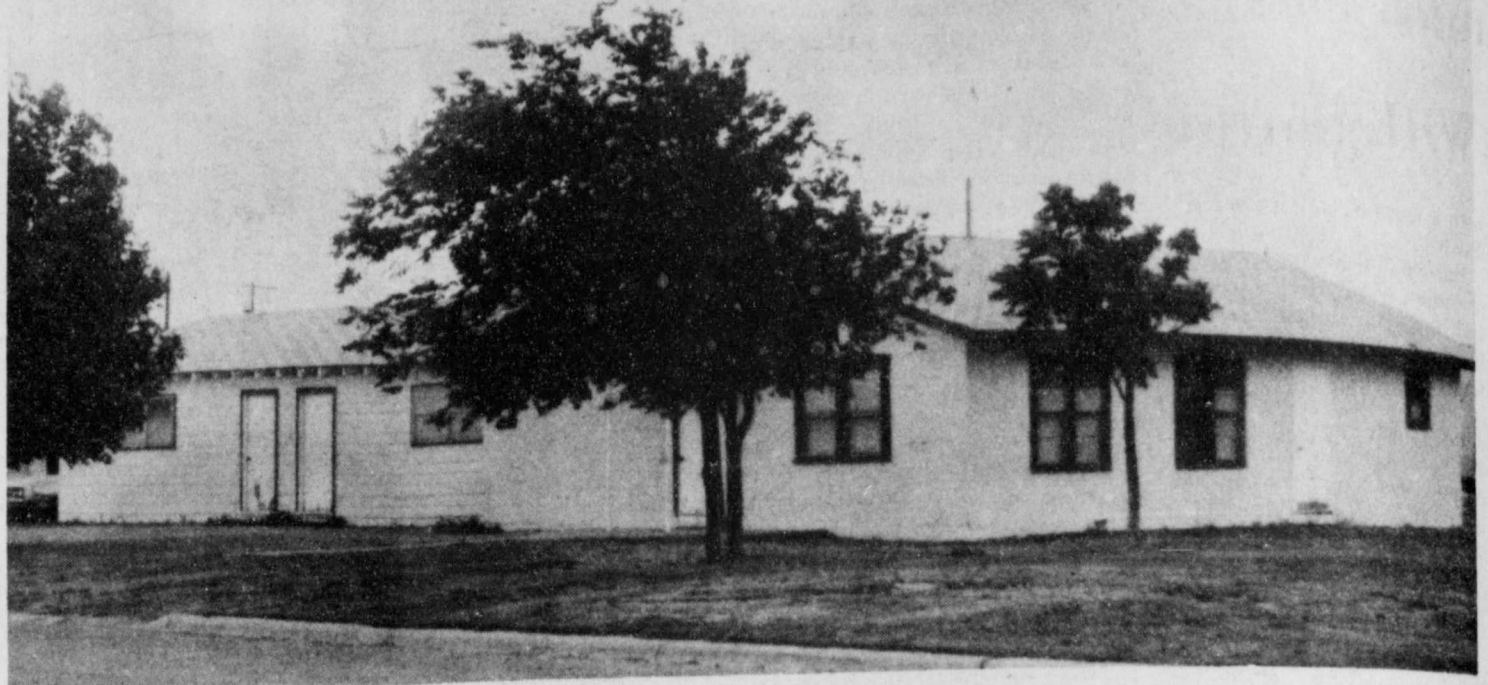
Mitchell, Stanley Sanders, Christy Pruitt, Timothy Lipham, Kent Mankins, Cindee

Davis, Susan Kimble.
 B-Quint Anderson, Robert Galvan, Mark Hatley, Wayne Morren, Cheryl Goen, Melet Nolan, Christy Kicks, Kyle Adams, Skipper Kicks, Sandra Jolly, Roger Nichols, Mary Ann Rainer, Kristi Rainey, Thresa Brooks, Irma Garcia, Angela Ellis, Martin Morales, Joey Payne, Joe Faulkenberry, Matt Griffin, Jonny Jones, Shannon Shurbet, Betty Jo Mendoza, Gloria Medrano.

HONOR ROLL 6th SIX WEEKS GRADE 4

A-Scott Smith, Jeff Galaway, Greg Thompson, Cathy Nolan, Lisa Smith.
 B-Mike Parham, Larry Smith, Jill Willson, Nora Dominquez, Karrie Franklin, Cindy Gonzalez, Misti Orman, Ricky Freeman, David Beaty, Scott Neeley, Brian Sanders, Connie Self, Roger Alldredge, Tim Burns, Maricella Cisneros, Jan Cagle, Alejandro Garcia, Debbie Hale, Frankie Morales, David Morren, Donna Pena, Lane Cheek, Adolfo Garcia, Anna Leta Bradshaw, Tammy Leatherman, Stacey Smith.

ATTEND THE RELIGIOUS SERVICE OF YOUR CHOICE THIS WEEK



THE CHURCH OF GOD IN CHRIST, 10TH AND JACKSON STREETS

clean electric energy will power progress in **1977**

Electric utilities have been one of America's fastest-growing industries, normally doubling capacity every 10 years. The rapid growth of this industry has made possible the tremendous industrial capacity of our Nation... It has lightened the burdens of homemakers... It has made our offices and commercial establishments more comfortable and more attractive.

There is every indication that your electric energy requirements will continue to grow. And, it is the responsibility of your electric utility and others throughout the country to meet the needs of their consumers.

In the future years, tremendous quantities of electrical energy will be required to reduce pollution and protect our natural resources. Electric automobiles and electrified rapid transit systems may remove much of the pollution now created by internal combustion engines. Electric energy will be increasingly used to dispose of waste, re-cycle waste, remove salt from sea water, and treat sewage. Electric heat and climate control devices may

be the means to stimulate the abundant, year-round crop growth needed to feed a growing world population.

To meet your long-range future needs for electric energy without detriment to the environment will be a difficult, expensive and time-consuming job. But we believe that with careful planning, intensified research and determined efforts, clean electric energy will be a positive force in protecting and enhancing our environment today and for generations to come.

..and for years to come!



CALVARY BAPTIST
 Rev. Randy Nixon
 Sunday School 9:45 a.m.
 Morning Worship 11:00 a.m.
 Bible Study 5:15 p.m.
 Evening Worship 6:15 p.m.
 Wednesday Evening 7:00 p.m.

ST. MARY MAGDALEN CATHOLIC CHURCH
 Richard Casey, Priest

SUNDAY
 Mass 11:15 a.m.
MONDAY
 Religion Classes
 Grades 1-6 4:00 p.m.
 Mass and Prayer
 Service 8:30 p.m.

FIRST CHRISTIAN CHURCH
 Ron Pingelton, Pastor
 Sunday School 10:00 a.m.
 Morning Worship 11:00 a.m.

WEST SIDE CHURCH OF CHRIST
 Sunday Morning
 Worship 10:30 a.m.
 Sunday Evening 5:00 p.m.
 Wednesday Evening 7:00 p.m.

FIRST UNITED METHODIST CHURCH
 Jim Smith, Pastor
 Sunday School 9:45 a.m.
 Morning Worship 11:00 a.m.
 Youth Fellowship 6:00 p.m.
 Sunday Evening
 Worship 7:00 p.m.

FIRST ASSEMBLY OF GOD CHURCH
 Sunday Morning 9:45 a.m.
 Sunday Youth Service .. 5:00 p.m.
 Sunday Evening
 Evangelistic 6:00 p.m.
 Wednesday Night
 Service 7:00 p.m.
 Thursday Womens
 Missionary 9:00 a.m.

SOUTH PLAINS BAPTIST CHURCH
 Rev. Fred Blake
 Sunday School 10:00 a.m.
 Morning Worship 11:00 a.m.
 Training Union 6:00 p.m.
 Evening Worship 7:00 p.m.

CARR'S CHAPEL
 Rev. Lee Crouch
 Petersburg, Pastor
 Services Every Sunday
 Morning Worship 9:30 a.m.
 Sunday School 10:30 a.m.
 No Evening Services

VICTORY BAPTIST CHURCH
 Emmett Clampitt, Pastor
 Sunday School 10:00 a.m.
 Morning Worship 11:00 a.m.
 Evening Worship 7:00 p.m.
 Wednesday Services 7:30 p.m.

NEW SALEM PRIMITIVE BAPTIST CHURCH
 Joe M. Jackson
 Sunday Congregational
 Singing 10:00 a.m.
 Morning Worship 10:30 a.m.
 Evening Worship 6:30 p.m.

SPANISH BAPTIST MISSION
 Sunday School 9:45 a.m.
 Morning Worship 11:00 a.m.
 Training Union 6:00 p.m.
 Evening Worship 7:00 p.m.

BIBLE BAPTIST CHURCH
 Lloyd Hamilton, Pastor
 Sunday School 10:00 a.m.
 Morning Worship 10:45 a.m.
 Sunday Evening
 Prayer Meeting 6:00 p.m.
 Sunday Evening
 Services 6:30 p.m.
 Wednesday Evening
 Services 7:30 p.m.

NEW HOPE PRIMITIVE
 Beathel Jeffrey, Pastor
 2nd Sunday
 Morning Worship 11:00 a.m.
CEDAR HILL ASSEMBLY OF GOD CHURCH
 Rev. Jackie Thompson
 Sunday School 10:00 a.m.
 Morning Worship 11:00 a.m.
 Evangelistic Service 6:30 p.m.

FIRST BAPTIST CHURCH
 F.C. Bradley, Pastor

Sunday School
 Morning Worship
 Church Training
 Evening Worship
CEDAR HILL BAPTIST CHURCH
 Sunday School
 Morning Worship
 Evening Worship p.m.

THE CHURCH OF THE NAZARENE
 Rev. Robert Rhodabarger
 Sunday School
 Morning Worship
 Evening Worship
 Sunday Night Youth 6:00 p.m.

CUMBERLAND PRESBYTERIAN CHURCH
 Sunday School
 Bible Study

DOUGHERTY BAPTIST CHURCH
 Jim DeWese, Pastor
 Sunday Services
 Morning Worship
 Evening Worship

CITY PARK CHURCH OF CHRIST
 Melvin Byrd, Minister
 Sunday Bible Study
 Morning Worship
 Evening Worship
 Wednesday Bible Study
 Wednesday

This Inspirational Message Is Sponsored By The Following Firms.....

- | | | | |
|----------------------------------|-----------------------|---------------------------|----------------|
| Nichols Oil Co. | City Auto Inc. | Ponderosa Meat Co. | Adams Well S |
| Russell's Equipment & Supply | Parker Furniture | Milton Flying Service | Consumers F |
| Floydada Real Estate & Insurance | Hale Insurance | Bishop-Ramsey Pharmacy | Babe's Service |
| McDonald Implements | Floydada Co-Op Gins | Reed Ford Sales | Thompson P |
| Gilbreath Exxon | Collins Implement Co. | Martin & Company | Solomon Jew |
| Production Credit Assoc. | Hesperian Office | Norrell Tractor Parts Co. | Floydada Nur |
| Edmiston Plumbing | | | |

STATE
 SOLD
 office built
 James I
 983-2151 or 1
 HOUSE ut
 potential inc
 Real Est
 983-2151 or 1
 Bath, Cor
 Location: 602
 King R
 two and th
 for sale. Lo
 Call Sam Hi
 Estate Broker
 MOBILE
 FOR SAL
 bath, re
 14 x 65 Falc
 on two lots, fei
 landscap
 storage bui
 possib
 also has tri
 and wou
 you
 H
 82% to
 Locknr
 2101
 233-4339 or Ph
 Lt
 ultimate
 \$19,500. C
 L-1
 FOR JULI
 story br
 west on Sand
 bedrooms, ;
 den, living roo
 garage. Phone af
 2276
 SALE: 110 M
 5382 or 983-5111.
 SALE: 2 bedroc
 and dining ro
 Large Sun Por
 decorated. Call 9
 nice 2 and
 for sale, a
 Realty. 6
 appreciate yr
 L
 3 bedroom, 2 ba
 room, large den, li
 paneling, Cr
 Air Conditioni
 Call Guy Gi
 FOR SALE: 3 br
 bath, large doul
 kitchen. Inqu
 Bank in Lockn
 L
 New 3 bedro
 two bath fro
 Missouri, Ft
 Local. 983-2633.
 7.926 miles
 Indust
 Days 296
 or
 1014
 Plain
 Chain
 sprockets
 V-belts
 Sheaves
 SKF BC
 Cotton Strip
 Appreciate
 QUALITY
 PRO
 Always Make
 TIRES and S
 Dial
 JACKSON
 Ric
 3315
 Dryers-
 scrubber D
 years of Sales
 and mechanic
 prepare Our Pr
 Parker Home F

CLASSIFIED ADS



EMPLOYMENT

DONNIE JACKSON ELECTRIC
Wiring and repair. Residential and commercial. 652-3572. L-tfc

POSITION available for light bookkeeping and general office work. Send **HANDWRITTEN** resume giving background, references, and phone number to: Box B to Floyd County Hesperian, Box 700, Floydada, Texas 97235 tfc

HEAD WAITRESS to work in the cafe on Wednesday's at Floydada Livestock Auction. Call 983-2153. 6-5c

WANTED
WANTED TO BUY irrigated or dryland farm in Floyd or surrounding area. Write Box XRO, c/o Hesperian, Box 700, Floydada. tfc

WANTED. General farm hand. Experienced in irrigation and six row equipment. Top Salary. Call 652-3604. L5-29p

WANT to lease grass land. Call 983-2851. 6-5c

WANT TO MOW lawns in Lockney. Call 652-2301. L6-2p

HELP WANTED

HELP WANTED Full or part time. Start at \$2.40 per hour. Must be willing to work week-ends. No phone call. Apply in person. Dairy Queen, S. Main, Lockney. L5-29c

Homeworkers—Men, women, students needed for assembling work at home. Earn \$150.00 per week. No experience necessary. Send \$2.00 (refundable) and stamped envelope to Allen Industries, Box 12616, El Paso, Texas 79912. 6-2p

GARAGE SALE

4 FAMILY garage sale—505 S. 5th, Wednesday, Thursday, Friday, and Saturday. Baby clothes, 8 items, kitchen items, furniture 1 half bed, knick-knacks, curtains, rugs, clothing. 6-2p

GIANT garage sale: Thursday, Friday, and Saturday, June 24-1 mile west on Sandhill Hwy. Dishes, clothes, furniture, etc. tfc

CLASSIFIED RATES

CLASSIFIED ADVERTISING RATE: 7 CENTS PER WORD FIRST INSERTION; 5 CENTS PER WORD EACH SUBSEQUENT INSERTION. MINIMUM CHARGE: \$1.00.

CLASSIFIED DISPLAY RATE: \$1.20 PER COLUMN INCH. CARDS OF THANKS: \$1.00.

COPY DEADLINES: 5 P. M. TUESDAYS FOR THURSDAY EDITION; 10:00 A. M. FRIDAYS FOR SUNDAY EDITION. Call 983-3737 in Floydada or 652-3318 in Lockney

BUSINESS OPPORTUNITIES

WORK AT HOME in spare time. Earn \$250.00 per 1000 stuffing envelopes. Send 25 cents plus stamped, self-addressed envelope to: Terry Lane Enterprises, P. O. Box 289, Hobart, Indiana 46342. 5-29p

\$250.00 per geek stuffing envelopes, possible. Immediate income. No Experience needed. Details guaranteed. Send \$1.00 and a self-addressed, stamped envelope. Sent to: Business Enterprise, P. O. Box 455, Ruston, La. 71270. 6-2p

BUSINESS SERVICES

PIANO TUNING. Edward C. Lain 25 years experience. Write Box 425 Silverton or call 823-2151. L-tfc

WATCH REPAIR. C.H. Bradford. 216 W. Crockett St. 983-3325. tfc

INSULATION INSTALLED. Marr Insulation Co. Tom Marr Owner. 652-3593. L-tfc

COMPLETE CB REPAIR. New system eliminates C. B. receiver noise. Two miles north of Abernathy on Highway 87 one mile east on Western Warehouse pavement. Garland Brantley 6-2p

COW POKES By Ace Reid



"Now this part of the ranch will make a fine government subsidized recreation area!"

THIS FEATURE SPONSORED BY
AUTO, FIRE & FARM INSURANCE
Floydada Real Estate & Insurance Agency
Jim Word — — Phone 983-2360

INSULATION
Fire-Resistant, Installed and Guaranteed
MARR INSULATION CO.
Tom Marr Owner 652-3593

LEGAL NOTICE

Being certified by the Commissioner of Agriculture of the State of Texas for this purpose, the Texas Corn Growers Association, 105 E. Bedford, Dimmitt, Texas 79027, a referendum election on July 29, 1977, under provisions of Article 55C, Vernon's Civil Statutes on the proposition of whether or not corn producers in the following counties shall assess themselves an amount not to exceed 1/2 cent per bushel on all corn sold to be collected at the first point of sale, and to elect members for a 6-person commodity producers board to administer proceeds of such assessment to be used for research, disease and insect control, promotion, and education designed to encourage production, marketing, and use of Texas corn.

Counties included in the referendum are: Area I—Deaf Smith, Palmer, Castro, Bailey, and Lamb. Area II—Randall, Swisher, Briscoe, Hale, and Floyd. Area III—Dallas, Sherman, Hansford, Ochiltree, Hartley, Moore, Hutchinson, and Carson.

The referendum and election will be held by physical ballot with voting place to be at each county courthouse in the referendum area. Polls will be open at 7 a.m. and close at 7 p.m. Producers who will be away from their particular voting box location on election day may obtain an absentee ballot from county agent offices, or the Texas Corn Growers Association. Absentee ballots must be mailed in the self-addressed envelope to the central balloting place at 105 E. Bedford, Dimmitt, Texas 79027, before midnight three days prior to the election date.

Any person within this referendum area engaged in the business of producing or causing to be produced corn for commercial purposes is eligible to vote, including owners of farms and their tenants and sharecroppers, if such person would be required to pay the assessment proposed. 5-29, 6-5-12c

THRASHER & CO.
Redi-mix Concrete
Sand & Gravel
Excavation
call us:
983-2170
229 E. California TFC



Auto Accidents DO Happen...
If one happens to you, be protected. Our car insurance offers coverage to meet your special needs — repairs to personal liability.

BAKER
Insurance Agency
127 W. Calif.
Ph. 983-3270

Caprock Appliance Center
115 N. Main
is your factory authorized
MAYTAG
dealer in Lockney, Texas.

CUSTOM APPLICATION
Propazine, Caparol
Thrip
Billy Wisdom
652-3541
Terry Howard
652-3439

BEEF CHOICE
CUT & WRAPPED FOR YOUR FREEZER
79¢ LB.
YOU CANNOT BUY BETTER BEEF AT ANY PRICE!
GOOD — 75¢ LB.
Lockney Meat Co.
Sam Fortenberry, Mgr.
652-3305 L-tfc

FOR SALE

SEARS BEST compactor, floor model in gold only. For \$169.95. Save \$100.00 at Sears, Floydada. Call 652-2492. L-tfc

For sale. Two good used bicycles. one girls and one boys. Call 652-2492. L-65-c

FOR SALE: Kenmore Sewing machine. 12 dial-to-sew stitches complete with cabinet. Save \$90.00 on floor model. Only \$199.95 at SEARS, Floydada. tfc

DEARBORN EVAPORATIVE Coolers, G. E. Refrigerated window units. Evaporative pads and parts. Parker Home Furnishings, Lockney. L6-30c

FOR SALE: Nice 4 piece French Provincial bedroom suit. Call 983-2001. L5-29c

FOR SALE: Green lake pump. Call 652-3601. L6-5C

For sale. Two chairs, draw draperies and sheers. 60 piece set porcelain china, set of ironstone and Hoover vacuum cleaner. 420 Spruce ST. Lockney. 652-2337 L5-29p

ROYALTY For Sale in southeast Floyd County and northwest Dickens County. Call 983-2620. 6-2p

FOR SALE OR TRADE: Foster Motel, nine units, living quarters. Age and health reasons. C. Foster. 6-9p

FARM MACHINERY

NORRELL TRACTOR PARTS for tractor and irrigation supplies and accessories. tfc

AMONG TODAY'S ARMY SCOUTS ARE ARMORED RECONNAISSANCE SPECIALISTS WHO MAP THE ROUTE FOR TANKS!

NOW OPEN
Chris & Jack's
Wood Shop
We repair and re-finish most wood furniture. We also build any size picture frame. Call us for your wood working needs.
983-5117 or 983-3676.
Chris Rink & Jack Carthel Owners



WE WANT YOU TO KNOW
We sell all kinds of Goodyear tires... tractor, auto, truck, a good tire, good service. Best deals in West Texas. Truck winch and hauling service. **BABE'S SERVICE CENTER, FLOYDADA.** tfc

INSULATION
helps beat the heat!
TEXAS INSULATION SYSTEMS Box 591 Lockney, Texas 79241 (806) 652-3348
ThermoCon Spray-on for Metal Buildings & Shops ThermoCon Loose-fill for Residential Application "Insulation doesn't cost, it pays!"
Please call for a free estimate without obligation.

DAN'S AUTO SERVICE
DAN TEUTON, Owner
Specializing in Automatic Transmission, Motor Tune-Ups, Auto Air Conditioning.
General Repair
We Have A BRAKE LATHE to handle all passenger car brake drums. See us for complete brake service.
Phone 652-2462

DAN'S AUTO SERVICE
DAN TEUTON, Owner
Specializing in Automatic Transmission, Motor Tune-Ups, Auto Air Conditioning.
General Repair
We Have A BRAKE LATHE to handle all passenger car brake drums. See us for complete brake service.
Phone 652-2462

AUTOMOTIVE

FOR SALE: 1972 Oldsmobile two door hardtop. All electric, fully loaded, new tires, extra clean. 652-3866. L-tfc

1973 Datsun pickup. 43,000 miles. Excellent condition. \$2,000. Call 983-3273. tfc

FOR SALE: 1973 Ford Courier pickup. 40,000 miles. Excellent condition. Call Jim Jackson, 983-5363 after 7 p.m. tfc

FOR SALE: 1976 Coachman Deluxe Travel Trailer. 26 feet long. Self contained, many accessories, excellent condition. 903 W. Georgia. 983-3945. tfc

1963 2-door Plymouth Belvedere. Golden Commando power. 1957 Pontiac. 983-3241. T-tfc

1972 TRAIL 90 Honda. 1000 miles. VARSITY schwinn bike. 1968 Ford Pick-up, short wheel. 983-3695. 6-26c

1969 V. W. Dunebuggy. Fiberglass body, chrome wheels. \$895.00. 983-5115. tfc

FOR SALE: 72 GMC Pickup. Clean, new motor. Contact Monte Covington, 125 JB Avenue. 983-3184. tfc

CARD OF THANKS

WE WOULD like to express our appreciation for your visits, cards telephone calls, and flowers during our hour of sorrow at the death of our loved one. And to our neighbors for the food and kindness shown. May God bless each and everyone. R. M. Olsen, Mr. & Mrs. Dale Gilbert Mr. & Mrs. W. M. Alford. L5-29c

MISCELLANEOUS

MATADOR NURSERY, north side of Matador on FM 94. All kinds bedding plants, pot plants, swinging baskets, and all kinds beautiful yard flowers. Friendliest nursery in West Texas. 6-5p

WE SELL new and rebuilt Kire Y vacuum cleaners and parts Parker Furniture, Floydada. tfc

I HAVE AN OPEN TERRITORY in nearby Dougherty. It can be yours. Call 983-3139 or 296-6904. 6-23c

LIVEN UP YOUR LIFE AND EARN MONEY, TOO. Sell quality products made by the world's largest cosmetics company. Interested? Call 983-3139 or 296-6904. 6-9c

IT'S THE MOST!

The most calorie-free sugar substitute you can get in the United States today is saccharin. Of all the artificial sweeteners ever devised including those on which tests are still being made—none is more free of calories than saccharin. That's why many people are writing to congress to protest its ban.

WANTED

HOUSES FOR LABORERS JUNE TO OCT.
Call 983-3791

Kirby
Vacuum cleaners, new and rebuilt. 1 yr. guarantee. Parts, sales and service. Prices begin at \$124.50.
Parker Home Furnishings In Lockney. 652-3315 L-tfc

FARMS-RANCHES-CITY PROPERTIES-BUSINESS LEASES-LOANS
B. B. WILKES BROKER
REAL ESTATE
100 S. Main, Lockney
Barry Barker, Solicitor
Barker Insurance Agency - 652-2642
IF IT IS INSURANCE -SEE-
BARKER INSURANCE AGENCY
LIFE-FIRE-CASUALTY-HOSPITAL

MOTORCYCLES

FOR SALE: 1973 Honda 450 CB; Windshield, Fairing, Excellent condition. Price negotiable. Call 983-3353 or 983-2040. tfc

1968 HONDA motorcycle. Also 1955 Chevy pickup. Call A. L. Pereira, 983-2795. tfc

LIVESTOCK

FOR SALE: Cow calf pairs. Call 983-3077. tfc

PETS

FOR SALE: 6 month old silver male A. K. C. registered poodle. Has shots. 983-2170. Ask for Linda or Vickie. tfc

FARRETT: "Mongoose" for sale. Household pet. He's albino. Call 983-2494. 5-29c

ANNOUNCEMENTS

KITTENS to give away. 983-3664. tfc

BARGAIN ROOM: Betty's Place, open 10:00 close 6:00. Great saving on many items. tfc

Feet Tired? Try Mason Shoes with "Velvet-ez" air cushioned innersoles. Keith Emert, 652-3116. L-tfc

FLOYD COUNTY ABSTRACT CO.

Abstracts Of Title
Title Insurance
Verna L. Stewart
Owner, Manager
217 W. California
983-3728
Floydada, Texas

GOLD IN THAT THAR BAY

The Lord High Admiral of the Isles in Scotland is a gold digger.

That's because he has the right to any treasure which lies under the sea in his domain, including Tobermory Bay, under which is supposed to lie the wreck of the Spanish treasure ship, Florencia. She was sunk in a storm after the famous sea battle in which Drake defeated the Spanish Armada.

The Duke of Argyll holds the Lord High Admiral title, and more dukes have tried to retrieve the treasure. Divers have reported that a ship undoubtedly lies at the bottom of Tobermory Bay. But all they have been able to bring up are odds and ends, including some helmets and a small cannon.

Teacher's Scotch Information Centre hopes that eventually a Duke of Argyll will strike gold.

Good Selection Of Bedding Plants Available Now At SCHACHT'S Flowers & Gifts IN LOCKNEY

Industrial Supply Co., Inc.
Days 296-7418 Nights 296-1200
or 296-7828
1014 Broadway
Plainview, Texas
U-joints
Oil Seals
O-rings
Belts
Sprockets
 SKF BCA Timken Bower
Cotton Striper Brushes & Bats
We appreciate Your Business More!
L-TFC

QUALITY SHAMROCK PRODUCTS
Make A Good Deal On BATTERIES and SOUTHLAND BATTERIES
Dial 652-3366

JACKSON TIRE COMPANY
Richard Wiley

652-3315

GE
652-3315
Dryers-Refrigerators, Ranges
Dishwashers.
Sales & Service by factory
mechanics.
Our Prices Before You Buy.
Home Furnishings In Lockney

652-3315

652-3315

Courthouse NEWS

(Probate Docket)
 Application to probate the will of Claus H. Schacht, deceased.
 Application to probate the will of Vivian Hinkle, deceased.
 Application to probate the will of Ethel Gilbert, deceased.
 (Marriage Licenses)
 Samuel Horace Dowdell and Dorothy Faye Thomason, May 17.
 Carl Scott O'Banion and Glee Ann Bradley, May 23.

(Warranty Deeds)
 Edna Mae Taylor and Laura Belle Bowman to Clayton Pigg et ux, 0.835 acre tract out of the east part of Section 99, Block 4.
 E.L. Elliot et ux to Roy Morrison, Lots 5, 6 and 7, in Block 4, Brewster Addition No. 2 in Lockney.
 Betty Yeary to Ruthie Belle Hill, the east 15 feet of Lot 2 all of Lot 3, Block 88 in Floydada.
 Foy Pennington and Vera Freeman to Aubria Kent et ux, Lots 6 and 7 and the north one-half of Lot 8, Block 1, Guest and Ramsey Annex in Lockney.
 Edgar L. Judy Jr. to Wilma Jean Judy, one-third interest in and to a tract of land containing 320 acres being all of the west one-half of Survey 10, Block 1, AB&M.
 Sarah Naomi Marr to Calvin W. Poteet et ux, the west 122.5 feet of Block A, Stewart Subdivision of Block 4, Price First Addition in Floydada.
 H.N. Powell et ux to C.H. Overstreet et ux, Lot 11 and the west 12.5 feet of Lot 12, Block 2 in Dougherty.
 J.L. Chandler et ux to Billy Miles Pigg et ux, all of the west 40 acres of the north one-half of the south one-half of Section 59, Block 3.
 BFW Grain Co., Inc., to NBS Grain, Inc., three acres of land out of Section 108, Block D-2.
 Gladys Davis Howard and Cleo Davis Starkey to Floydada Pepper and Vegetable Co., Lots 7 and 8, Block 96, Floydada.
 Ernest Fowler et ux to Luther D. Bain, a tract of

land, 75 feet east and west by 150 feet north and south out of the N.B. Davis Survey.
 Denzil L. Probasco and George D. Probasco, Independent co-Executors and co-Trustees of the Frank and Lizzie Probasco Estate Trust to Judy Elaine Probasco et al, one-fifth interest in and to 160 acres of land being the southwest one-fourth of Section 54, Block 1.
 A.W. Coltharp et ux to Harold Woodson et ux, Lot 12 and the west 15 feet of Lot 13, Block 2, Caprock Addition, Floydada.
 Harold Woodson et ux to Robbie Hatley, the west 38 feet of Lot 4, and the east 43 feet of Lot 5, Block 1, New Home Addition, Floydada.
 Dr. Charles Cecil Craig to Mary Alice Craig, Lots 9 and 10 and the east one-half of Lot 8, all in Block 9, Texas Addition, Floydada.
 Jerry Thompson et ux to Warren D. Walls et ux, Lots 4 and 5 and the east one-half of Lot 3, all in Block 11, Texas Addition, Floydada.
 Warren D. Walls et ux to Jerry Edward Allen et ux, Lots 4 and 5 and the east one-half of Lot 3, Block 11, Texas Addition.
 Vergie McCandless to Joe E. Torres et ux, Lot 6, Block 1, Vinyard Addition in Lockney.

Carol Sue Binkley and Robert Edwin Reeves to Elva A. Reeves, Lots 6, 7 and 8 all in Block 1, South Heights Addition, Floydada.
DISTRICT COURT
 (Cases Filed)
 Ben Guerra Molina Jr., vs Lydia Gamon Molina, suit for divorce.
 (Cases Disposed)
 Mary Alice Craig vs Dr. Charles Cecil Craig, divorce granted.
 Evelyn Merrell vs Bankers Commercial Life Insurance Co., suit on insurance policy. Judgement for Plaintiff.
 Mary Rosales vs Emilio Rosales, divorce granted.
 Nancy Susan Fowler Kimble vs John Wilson Kimble II, divorce granted.
 Jerry Cypert vs R. Fred Brown et al, suit for real estate commission, dismissed.

Homeowners Urged To Control Bagworms

FLOYDADA-Floyd County homeowners whose trees and shrubs have bagworms decorating their limbs need to get out their insecticides unless they want some unusually adorned trees next winter.
 Insecticide control is most effective in May and early June when bagworms are small and before young worms begin to construct bags around themselves.
 "Homeowners should closely examine their woody, ornamental plants for newly-hatched bagworms. If bagworms go unnoticed in the spring, heavy populations may develop which can strip almost all of the leaves off the plant."
 In the spring, bagworm larvae emerge from hatching eggs inside of last feeding on leaves. Soon they

begin to construct their own protective bag of silk, twigs, and leaves, making them hard to see. As the larvae and their bags continue to grow, control becomes more difficult. In these later stages, two chemical applications may be required to obtain effective control.
 Bagworms feed throughout the summer months, building their bags larger until the bags are about 1 1/2 inches long. In the fall, the bagworms become adults, mate, and the females lay eggs inside their bags.
 Interested persons can get complete information on bagworm control at the County Extension Office.
 More than half the cranberries grown in the U.S. come from Massachusetts, around Cape Cod.



GIVE THAT GRADUATE THE NEWS OF HOME!

We will send gift certificate for you.

HESPERIAN or BEACON 9 MONTHS \$6.00

"GOLD BOND SUPER DISCOUNTS"

PRICES ON THESE 5 ITEMS EFFECTIVE May 30th Thru June 4th
 YOU MUST HAVE ONE FILLED GOLD BOND SUPER DISCOUNT BOOK FOR EACH ITEM.
 EACH SUPER DISCOUNT BOOK MUST BE FILLED WITH 30 "GOLDEN TEN" GOLD BOND STAMPS.

<p>GIANT SIZE TIDE DETERGENT 1 03 \$1.53 VALUE PLUS ONE FILLED GOLD BOND SUPER DISCOUNT BOOKLET GOOD MAY 30 THRU JUNE 4</p>	<p>WESTINGHOUSE SOFT WHITE BULBS 69¢ VALUE 19¢ PLUS ONE FILLED GOLD BOND SUPER DISCOUNT BOOKLET GOOD MAY 30 THRU JUNE 4</p>	<p>DEMURE PAPER TOWELS 53¢ VALUE 3¢ PLUS ONE FILLED GOLD BOND SUPER DISCOUNT BOOKLET GOOD MAY 30 THRU JUNE 4</p>	<p>12 OZ. DECKER FRANK 3¢ PLUS ONE FILLED GOLD BOND SUPER DISCOUNT BOOKLET GOOD MAY 30 THRU JUNE 4</p>
---	---	--	---

<p>CABBAGE LB. 10¢</p>	<p>BELL PEPPERS 2/25¢</p>	<p>YELLOW ONIONS LB. 17¢</p>	<p>CUCUMBER </p>
--	---------------------------------------	---	------------------------------

<p>BANANAS LB. 19¢</p>	<p>WE HAVE FRESH WATERMELONS IN STOCK AND MORE ARRIVING DAILY AVACODOES 4/\$1.00</p>	<p>LETTUCE 3 HEADS FOR CANTALOUPE </p>
--	---	---

<p>GREEN BEANS LB. 49¢</p>	<p>YELLOW SQUASH LB. 29¢</p>	<p>303 SIZE DEL MONTE SAUER KRAUT 3/89¢</p>	<p>GIANT SIZE OXYDOL \$1.39</p>
--	--	---	--

<p>GRADE A MEDIUM EGGS 59¢</p>	<p>303 SIZE DEL MONTE CREME STYLE CORN 3/89¢</p>	<p>DEL MONTE 303 SIZE SWEET PEAS 3/89¢</p>	<p>5 LB. GLADIOLA HI-DRI PAPER FLOUR 59¢</p>	<p>303 SIZE DEL MONTE CUT GREEN BEANS 3/89¢</p>
--	--	--	--	---

<p>303 SIZE OUR DARLING CORN 4/\$1.00</p>	<p>12 OZ. THRIFTY MAID CATSUP 3/\$1.00</p>	<p>4 ROLL SOFT-N-PRETTY TISSUE 79¢</p>	<p>300 CAN IDEAL DOG FOOD 6/\$1.00</p>	<p>303 SIZE DEL MONTE WHOLE NEW POTATOES 3/89¢</p>
---	--	--	--	--

<p>GROUND BEEF LB. 65¢</p>	<p>ARM ROAST LB. 89¢</p>	<p>FAMILY STEAK LB.</p>
---	---	--

<p>MARKET MADE BAR-B-Q PT. \$1.49</p>	<p>CLUB STEAK LB. \$1.19</p>	<p>BEEF RIB LB. 49¢</p>	<p>SENORA CHRISTINAS BURRITOS 16 OZ. PKG.</p>
---	--	---	--

<p>T-BONE STEAK LB. \$1.48</p>	<p>SIRLOIN TIP LB. \$1.49</p>	<p>BONELESS STEW MEAT LB. 98¢</p>	<p>PRICES PIMENTO SPREAD 7 1/2 OZ. 79¢</p>
---	--	---	--

Carter's Market
 121 W. College Lockney, Texas
 Monday-Saturday 8 a.m. to 8 p.m.
 652-3380
 We Reserve The Right To Limit Quantities

Carter's Market is going back to old fashioned service style meat marketing with specialized custom cuts as well as a good selection of sandwich meats.
We Give Double Gold Bond Stamps On Wednesday.
 We Accept Food Stamps