

Up \$11 Million

Would You Believe 85,000 Bales ???

By Wendell Tooley

When the last cotton stripper eases to a halt and the last row of the 1976 crop is stripped, in the trailer, it is estimated that the total amount of cotton for Floyd county will be around 85,000 bales.

According to Bob Hambricht, manager of the Texas Employment Commission office in Floydada 83,835 bales have been accounted for by the 18 ginners in Floyd county and they estimate another thousand or two bales yet to be harvested. The crop is much better than

expected, the price has been good and it could have been much better had not an almost record setting early freeze injured the crop. When the freeze arrived, some agriculture professionals in the county estimated the crop would only make around 50,000 bales. The south end of the county suffered

less from the early freeze and produced more than expected.

How much money will be circulated in Floyd county due to the cotton harvest? Most reports are that the cotton has been sold just as fast as possible. Some early cotton brought over 70 cents a pound, some was

contracted in the 60's. Some now is bringing in the 50's due to a price slope off and poor grade.

SURE BEATS LAST YEAR

No doubt about it, this year's cotton crop beats last year's....total gross money this year will be around \$25 million as compared to last year's \$11

million

The price is better, the grade is better, and the overall production of 85,000 beats last year's 58,000 bales.

How much cotton next year? No one knows about weather conditions on another crop, but ginners report that the acreage planted will be up as much as 40% over this year.

15¢ Per Copy

The Floyd County Hesperian



VOLUME 81

FLOYDADA, FLOYD COUNTY, TEXAS 79235

Sunday, December 19, 1976

12 Pages in one section

Number 102

Band Concert Sunday

The public is invited to the annual Christmas Concert of all Floydada school bands Sunday afternoon at 3 o'clock in the high school auditorium.

Band director Dennis Teasdale reports the following planned program: Sixth Grade Band-"Jingle Bells, The Harold Angels Sing, Silent Night, and We Wish You A Merry

Christmas."

Junior High Band-"March of the Toys, The House of the Rising Sun, Carol of the Drum, The Morning After, and Jingle Bells Rhapsody."

High School Band-"Sleigh Ride, Christmas Music for Winds, Mancini, Jingo Jango, Nutcracker Suite, MacArthur Park, and A Christmas Festival."



REGIONAL ALL-STATE band winners are pictured....tryouts will be Thursday evening at Lubbock high school. Winners will tryout again January 22 at Texas Tech for Area All State. If they make that tryout they will go to San Antonio February 9-10-11-12 for the TMEA Convention, and perform in the All State Band in concert. FHS band winners are: Tim Dyess French horn, Kelly Turner tenor sax, Billy Marquis cornet and first alternate baritone Grant Hambricht.

Ten Nominated To Chamber Board

Ten men have been nominated for five vacancies on the Floydada Chamber of Commerce board.

Every member of the chamber has received a ballot and they should be marked and returned before January 1, 1977.

The five directors elected will serve two year terms beginning March 1, 1977.

Nominated are: Charles Abbe, Con-

sumers Fuel Assn. manager; Bob Alldredge, principal Jr. High School; Frank Barrow, officer First National Bank; Donnie Galloway, manager Piggy Wiggly; Jim Green, superintendent of Public Works City of Floydada; Carl Jarrett, salesman Reed Ford Sales; Art Ratzlaff, manager Blanco Offset Printing Inc.; Greg Roberts, Mize TV manager; Carol Sims, Dyson Shoe Shop and George Sweatt, manager Perry Bros.

Young Farmers Elect Officers

Floydada Young Farmers elected officers at their Thursday night meeting held in the high school regional agriculture room. They also elected the program of work for the year. Named as president was Smith. Serving with Smith are Bertrand, vice president; James Hill, secretary-treasurer; and John Camp, reporter. The next meeting will be Thursday

January 6th, for a program on herbicides, their usage and adaptability for various crops.

Farmers are reminded of the Area 1 and II Young Farmers field day on Tuesday, January 11, from 10:15 a.m. through 3:30 p.m. at the agriculture auditorium at Texas Tech in Lubbock. Topics to be discussed will include commodity futures, ag. credit, equipment investment and depreciation.

Cotton Referendum Vote Small

At noon Friday only 700 cotton referendum ballots had been returned to the county ASCS office of a total 2300 mailed out.

Ballots must be returned to county

ASCS offices across the Cotton Belt by the close of business Friday or be postmarked not later than midnight Friday. Voting began Monday.

The additional assessment, to begin with the 1977 crop, would amount to four-tenths of one per cent of the value of cotton as determined by the Cotton Board and the secretary of agriculture.

This would be in addition to the \$1 per bale growers now pay. The funds, according to officials of the Plains Cotton Growers, Inc., would be used in programs designed to help strengthen in cotton's competitive position and to maintain and expand domestic and foreign markets and uses for U.S. cotton.

Growers are voting on a proposed amendment to the U.S. Cotton Research and Promotion Order.

Approval by two-thirds of the producers voting nationally, or by a majority of growers voting if that majority accounts for two-thirds of the cotton represented in the referendum, is necessary for the amendment to become effective.

If the amendment is approved, the \$1 per bale plus the four-tenths of one per cent assessment will be deducted automatically from grower marketings but refunds would be available to farmers who did not wish to participate.

SCHOOL TAX, BUSINESS OFFICE TO BE CLOSED DURING HOLIDAYS

The business and tax office of Floydada Independent School District, will close at 3 p.m. December 22 through January 2nd for the Christmas and New Year Holidays.

Persons wishing to transact business with the office are urged to remember these closing dates. All tax payers will continue to receive their December one percent discount until January 5, 1977, an office clerk said.

City's Gotta Buy One Of Those Big Garbage Trucks

City of Floydada faces the cost of replacing one of the big garbage trucks that was purchased back in 1971. It went to the new method of

picking up garbage containers. In its meeting Tuesday night the city council voted to accept bids on a new garbage truck and go to a side loading

type instead of front loading truck. The other garbage truck is still in fairly good shape and will not be replaced at this time.

City manager Bill Feuerbacher said some changes would have to be made on the orange garbage containers in order to go to the side loading type truck. The trucks used now lift the container up over the front bumper and cab to dump.

The council also decided to accept bids on a new half ton pickup for the electric department.

In other business the council met with Ina McDowell about the new Plan 8 Housing Assistance plan and with three citizens about some paving under

the next paving grant.

For new water meter connections in the future a deposit of \$75 will be required for a 3/4 inch line and \$100 for an inch line, and the council also approved the hiring of Bill McMorris to do the engineering for future paving grants....possibly another \$100,000 worth.

Mayor pro-tem Wayne Russell presided over the meeting as the mayor arrived late from the Rotary Christmas party. All councilmen were present except Jerry Thompson.

NOTICE

Donations of Christmas stockings and fruit is still being needed at the Della Plains School for the children's Christmas party on December 22 at 3 p.m. If you would care to donate, please call Kathy Green at 983-3134, or bring the donations to the Multi-Purpose Service Center office at the Della Plains School. They will be greatly appreciated.

Community Action

Meeting Slated

Community Action will hold a community meeting December 21, at 7:30 p.m. at Della Plains School. The public is urged to attend.

The meeting is being held to gather information and ideas from the public toward programs for the coming year.

Christmas Cantata At Methodist Church

The choir of the First United Methodist church will present a Christmas Cantata, "Joy To The World" by John W. Peterson, at the 11 a.m. service Sunday.

Dennis Teasdale is director, Penny

Bertrand pianist and pastor Jim Smith is narrator for the cantata.

Solists include Olin Watson Jr., Doris Drysdale and Wendell Tooley.

The traditional candle light service begins Sunday evening at 6 o'clock in the church sanctuary.

Caprock Chat

By Wendell Tooley

THINK I MISSED some progress.... some time ago two big hangers were at the Floydada Municipal Airport. It's beginning to look like "Floyd International"....

HEART ATTACK hasn't affected Leibfried's ability to make good about brittle. "Thanks again...Lorin!"

ECONOMISTS advise us not to all the money we make. But I a problem that's even more.

can't make all the money I spend." Joe Jordan

OPEN ON A CHURCH: "We, Too, Open On Sunday!"

OWNS ARE JUDGED BY THEIR LEADING CITIZENS"

When a manufacturer looks at a prospective site, many factors besides labor, raw material supply, and location are considered. Industry is more than ever aware that good town is one where there is good management and alert and considerate salespeople and service personnel.

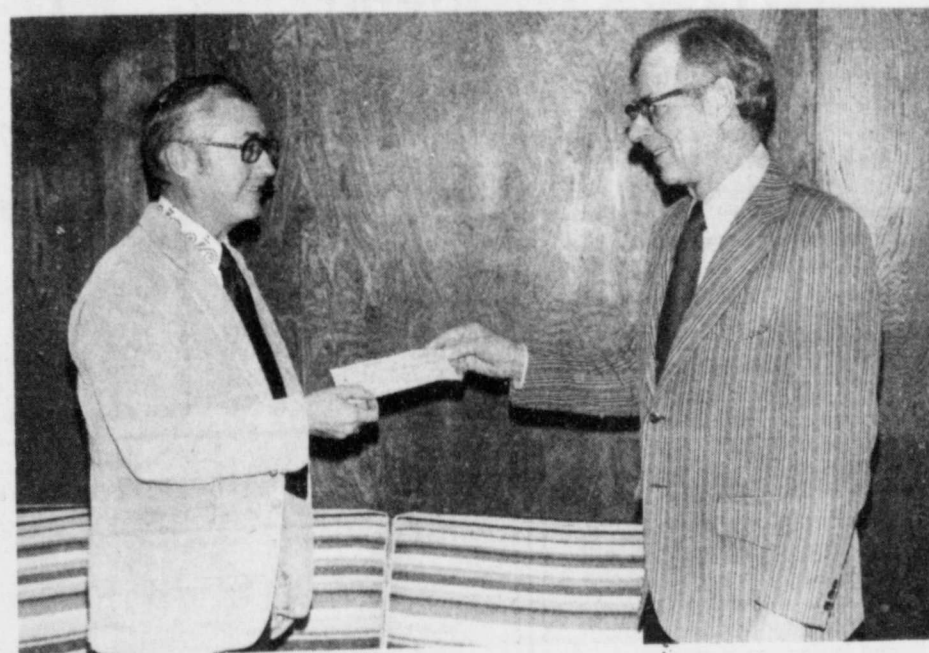
They judge a town not only by its leaders, but also by its "leading citizens." Leading citizens are not the men in city hall, the bank, or the number of commerce. The real leading citizens are those who meet industrial representatives first: service station attendants, waitresses in diners, clerks in hotels and salepeople in stores. If they are courteous, attentive and available, they will attract not only consumers, but manufacturers as well. (Chamber News Letter)

BAND DIRECTOR Dennis Teasdale will really have to "hoe the field" this Sunday. At the 11 a.m. Methodist church worship service he is directing the choir in its annual Christmas cantata.

At 3 p.m. Sunday afternoon he will be directing all the school's band members in their annual Christmas concert at the high school auditorium. Everyone send a few positive words to Dennis' way all day Sunday.

CITY DWELLER picking flowers in farmer's field: "Hey, Mr. Farmer, is your well safe?"

Farmer: "Well he's a whole lot safer than you are."



\$500 FOR THE FLOYDADA DAY CARE CENTER is received by Wendell Tooley, president of the board. Clay Henry presents the check on behalf of the First National Bank. The Center also received a \$125.00 donation from Lighthouse Electric Cooperative this week. (Staff Photo)

Tax Load In Floyd \$410 Per Capita

NEW YORK--Are residents of Floyd County paying a high or a low price for the operation of their local government?

Per capita, how much is it costing them, in state and local taxes, compared with the cost in other communities?

In Floyd County, as in almost every other area of the country, taxes have been rising sharply in recent years, in line with the mounting cost of government.

To provide the services that people want, such as better educational facilities, more police protection and improved health care, and to meet their welfare, transportation and other needs, has put most communities in a bind.

The net result, according to statewide figures compiled by the Commerce Clearing House, an authority on government finances, Americans paid an average of \$664 in state and local taxes in fiscal 1975, an increase of \$46 over the previous year. As recently as 1970, the average was \$427. Thus, in five years, there was a jump of 55 percent.

In Floyd County, based upon the report and upon data from other sources, such taxes amounted to approximately \$410 per capita in the past year.

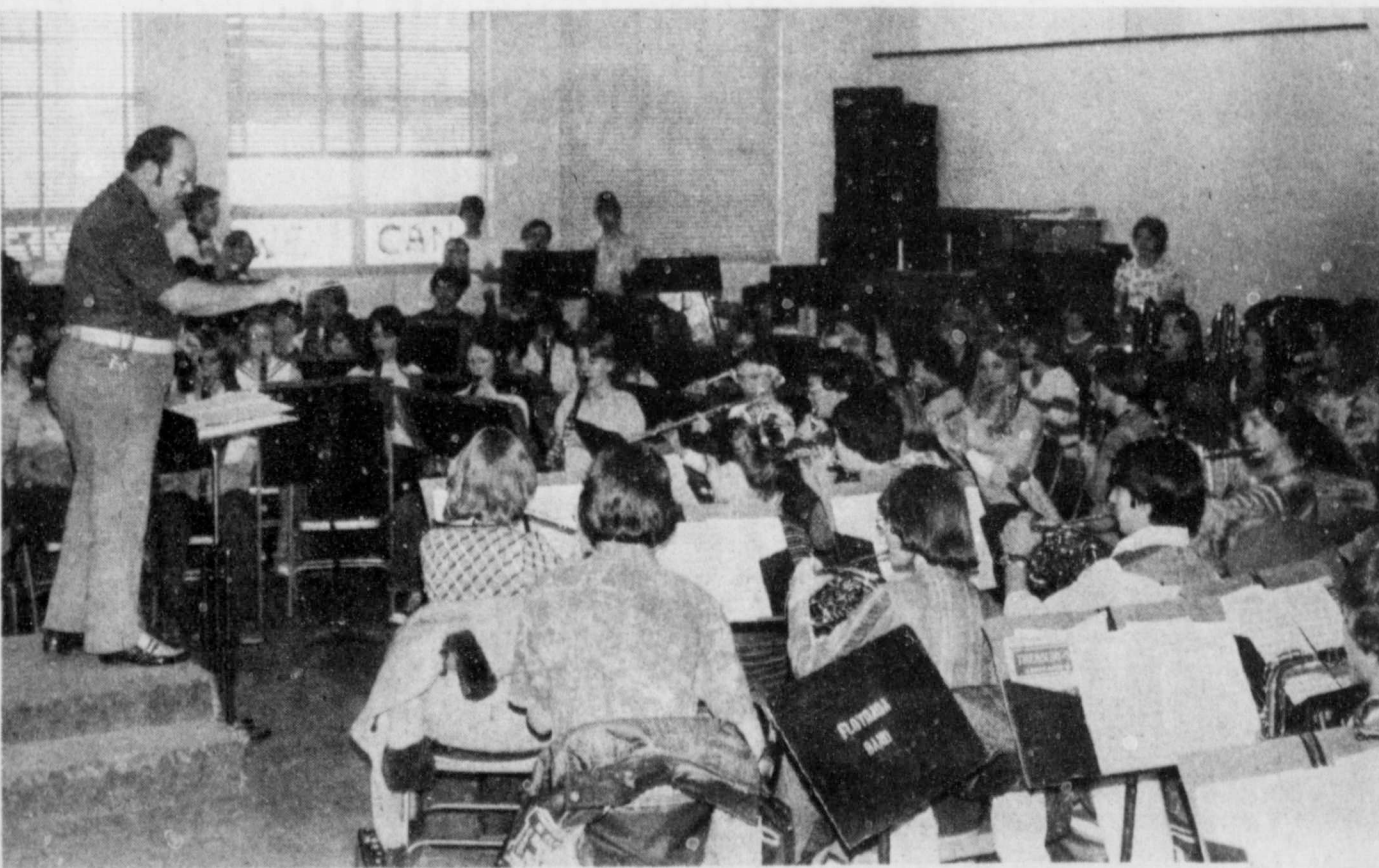
By way of comparison, the average throughout the State of Texas was \$515 per capita, which was \$48 more than in the prior year. In the West South Central States as a whole, it was \$490.

In some states, faced with special local conditions, such as unusually heavy welfare costs, the tax load was much heavier than in others. The range was from a high of \$1,025, in New York, which was the only state above \$1,000, to a low of \$405 in Arkansas.

On an overall basis, state and local taxes in the past year reached a record total of \$141.5 billion. This was twice as much as was collected in 1968.

In Floyd County, the tax burden came to approximately \$4,305,000.

In many areas of the country there has been growing resistance recently to higher taxes. It has forced a reduction in spending for capital improvements and, in some cases, a cutback in existing services.



FHS BAND practices for Sunday concert.

(Staff Photo)

Caution Urged For Corn Producers Switching To Cotton

LUBBOCK—Corn producers who are thinking about taking advantage of possible high cotton prices next season by switching from corn to cotton may have to reconsider if they used a herbicide this season called atrazine.

An agronomy specialist and a weed control scientist both warn that atrazine-treated soils may harbor enough residue next spring to damage young plants such as cotton, soybeans or sunflowers.

Dr. James Supak, area specialist for the Texas Agricultural Extension Service, and Dr. John Abernathy, research scientist with the Texas Agricultural Experiment Station, both at Lubbock, say that only corn or sorghum can be planted

on atrazine-treated land the following season, according to the atrazine label.

"If more than one pound per acre of atrazine was used on this year's corn crop, the possibilities of making a crop of cotton, soybeans, or sunflowers on the same land next year are very slim," they caution.

Conditions favoring breakdown of that herbicide in the soil, they add, involve wet, warm weather. The wetter and warmer this winter is, the more chance there is for chemical breakdown.

"A farmer may wish to take soil residue samples to ease his mind one way or the other," Supak and Abernathy suggest. "If so, the samples should be obtained in the spring to allow as

much herbicide to break down as possible. A sample taken in the fall may not give a true picture, because

the herbicide residue level in the soil will decrease during the following six-month period.

Abernathy and Supak say a farmer can test the soil himself simply by taking atrazine-treated soil and soil which has not had a herbicide applied this year, and place the samples in cups inside the house by a window. Cotton seed or whatever seed is being considered for planting next season can be planted in the cups, and observed for three or four weeks. Crop seedlings will usually emerge healthy looking, but begin to turn yellow and die after two to three weeks if too much atrazine is present in the soil.

"Some producers may be concerned about propazine, a herbicide commonly used in sorghum," Abernathy says. "Atrazine and propazine, both members of the triazine family of herbicides, persist for about the same length of time in the soil; however, cotton can tolerate only about one-fourth to one-half as much atrazine as

propazine. "If the amount of these two herbicides left in the soil is borderline," he adds, "consideration might be given to resistant varieties." Abernathy says that in research conducted at the Texas A&M University Agricultural Research and Extension Center at Lubbock over the past three years, some 19 herbicides were tested in 48 cotton varieties. Certain of these varieties were much more resistant to triazine soil residues than others, he reports.

"Various cotton varieties ranged from no injury to 95 percent injury caused by the triazine herbicides," he adds. Cotton varieties which were most tolerant of the triazine herbicides were Paymaster 303, GSA 71, and Auburn M. Most sensitive cotton varieties were Lankart 611, Lockett 4789, and Paymaster 111A.

Farm-facts

A Weekly Report Of Agri-Business News

The Lowest In 43 Years... Farm Labor Steady... Red Meat Production Increases.

Not since the depression-ridden year of 1933 has parity been as low as the most recent report from the Texas Crop and Livestock Reporting Service. Parity as of mid-November was 66. This is two points under a month earlier and eight points below the same time a year ago.

For the seventh month in a row, livestock and livestock product prices showed a decline. During the month, they dropped two per cent. Crop prices showed an even deeper decline; they went down on the average five per cent compared to a month earlier. Lower prices for wheat, corn, sorghum, and oats more than offset higher prices received for cotton as well as peanuts. In the spring of 1933 the parity ratio also stood at 66.

Wheat and sorghum prices are more than \$2 below parity levels. Wheat averaged \$2.38 a bushel in the state in mid-November; parity for that commodity is \$4.86 per bushel. Grain sorghum parity is \$5.45 per hundredweight; the average price in the state was \$3.31 per hundred. Corn averaged \$2.27 while parity is \$3.26.

In the crop category, cotton continues to be the big bright exception. Cotton price average was 68.3 cents per pound; this is about six cents a pound higher than a month ago, and is within ten cents a pound of equaling the parity ratio.

All livestock prices continue their downward plunge. Hogs, which a few months ago were at record levels, stayed about steady this past month compared to the previous month. But a year ago, hogs were \$16 per hundredweight higher than they are now. The average for the state is \$31; that compares with a \$52.20 parity ratio.

Calf prices are more than 50 per cent under the parity ratio; beef cattle are more than \$25 per hundredweight under parity.

Egg prices showed about a nickel a dozen increase in price to producers compared to a month ago; eggs are only three cents per dozen from equaling parity.

FARM LABOR FORCE IN TEXAS

numbered 239,000 during the survey period, the same as a year ago. Farm and ranch operators and unpaid family workers totaled 164,000; this is down one per cent from a year ago. The number of hired workers, at 75,000, increased three per cent from a month ago.

A SLIGHT INCREASE IN RED MEAT

production in Texas was noted this past month compared to a month ago. Red meat production in the state for the ten months of this year totaled 2,909,000,000 pounds compared with 2,520,000,000 pounds a year ago.

Nationwide, commercial production of red meat totaled almost five per cent more than a year ago.

In Texas, declines in cattle and calf slaughter were noted, while hog slaughter showed an increase.

STORAGE SPECIAL

At Wall & Mississippi Street
RENT STORAGE SPACE FOR 6 MONTHS
WE WILL GIVE 10% DISCOUNT.

Wilson Bond

983-2151-983-3573

West Texas Mini Storage

We have a complete line of Reloaders &

Reloading Supplies plus New & Used

Shotguns & Rifles also Hunting Knives,

Hunting Vests and Pocket Knives, and

many other items & supplies

for the Hunters needs!



Roberts Gun Shop

Rt. 4 - Floydada - 983-2751

State's Red Meat Production Boosted by Cattle Slaughter

AUSTIN—Continued high cattle slaughter coupled with increases in pork production again boosted Texas' total red meat output during September, despite slight declines in calf, sheep and lamb kills from a year earlier.

Commercial slaughtering plants produced 303 million pounds of red meat during September, six percent higher than September 1975, and three percent more than a month earlier, Agriculture Commissioner John C. White noted.

Cattle slaughtered during September totaled 518,000 head, 8,000 more than last year and 7,000 head above August 1976.

The hog industry has rebounded, with the 95,500 head killed in September some 17,500 head above September 1975, and 10,000

head more than a month earlier. Total hog slaughter for 1976 is still running some 12 percent below the same period in 1975.

Calf kill for September was 50,500 head, 12,000 less than a year ago but 8,500 head above the previous month. The January-September total calf kill totaled 357,000 head, 19 percent below last year.

Sheep and lambs killed totaled 82,000 head in September, a drop of 45,000 head from last year and 12,000 below August 1976.

So far this year, 818,500 sheep and lambs have been slaughtered, down 28 percent from 1975.

Nationwide commercial production of red meat totaled nearly 3.5 billion pounds in September, 12 percent more than a year ago.

SPLITS STOCKS

Anderson Clayton

Increases Dividend

HOUSTON—The Board of Directors of Anderson, Clayton & Co. at its regular meeting today declared a quarterly dividend of 50 cents per share on common stock payable on January 14, 1977 to shareholders of record on December 22, 1976. The new rate represents a 25% increase.

The Directors also authorized a two-for-one split of common stock, effected in the form of a dividend to be distributed on January 17, 1977 to holders of record on December 22, 1976. The January cash dividend will be payable only on the old, pre-split shares.

"The new quarterly dividend at an annual rate equivalent to \$1.00 per share after the split," commented T. J. Barlow, Chairman, "increases the dividend payout rate to 35% of net income available to common shareholders for the twelve months ended September 30, 1976, and represents a yield of over 4% at current prices. We are very pleased that the Company's strong financial position and the earnings prospects for the future permit us to move with confidence to this higher level of payout to the stockholders in the Company's 32nd year of continuous quarterly dividends.

Mr. Barlow pointed out that the stock has recently been selling at between \$44 and \$48 per share which is only about eight to nine times the net income as reported for the recent twelve months. It has not sold below \$40 for almost six months. "At such price levels," said Barlow, "the reduction in market price from a two-for-one split should be beneficial to investors, especially the smaller ones, including many present Anderson Clayton stockholders, by possibly reducing the commission costs on small exchanges and by broadening public interest in the stock. The split should increase the number of shareholders and the daily trading activity as did a similar two-for-one split in 1973."

A division of Anderson Clayton, ACCO SEED, operates the Paymaster seed farm at Aiken. An extensive sorghum and cotton research station, seed processing plant and general business office are located on the farm. ACCO is a major supplier of sorghum, cotton, corn and alfalfa seed in the United States and foreign countries. Headquarters for the company is Belmond, IA.

FARMERS

LET US DO YOUR DIRT WORK.

TAIL WATER PITS,

LAND LEVELING,

GENERAL EXCAVATION.

WE ALSO BUILD BASEMENTS

AND CELLARS

\$15⁰⁰ PER SQUARE FOOT

TURN KEY JOB

Thrasher & Co.

229 E. California

983-2170



Other High Plains crops are in the weather almost all 1976 cotton will be of December. "Which means we will soon be looking for 1977," notes Donald Johnson, Plains Cotton Growers, Inc., Lubbock. "We have a lot to do with the color of the balance sheets."

How much of productive capacity devote to cotton, corn, soybeans, and alternative crops?

"That's a question each individual farmer must answer," Johnson asserts, "based on his own factors of water and equipment, climatic factors."

Among the most potent of factors prospective price for alternative crops. "And here it is important that producers get the best and most complete economic information available."

In this regard Johnson believes that groups can render a valuable service to help maintain complete, up-to-date information on foreign production and commodity prices, he states, "and we can help on request."

PCG also keeps on file various information from Cotton Incorporated, the National U.S. Department of Agriculture and other sources. Johnson specifically recommends that producers obtain monthly from the Economic Research Division of Cotton Incorporated, 30067, Raleigh N.C. 27612. He also says the "Cotton Summary" can be especially helpful in 1977 cropping patterns.

"The chances for accurate projections of prices will improve as current year production figures become more readily available," and USDA will publish planting estimates in January and again about April 15.

"All of which means it may be well to have his planting options open as long as the production efficiency."

HOLIDAY TIME SAVER

When cooking, double your favorite recipe and serve one half. Freeze the second for a pressured day. You'll have your dinner in just the time it takes to heat it up!

OUR 20TH YEAR AS YOUR HOME SERVING DEALER

Parker Home Furnishings IN LOCKNEY

Form 1040 US Department of the Treasury - Internal Revenue Service Individual Income Tax Return 1975. Includes sections for Filing Status, Adjustments to Income, and Total Adjustments.

DAVID CATES INSURANCE AGENCY MANAGER FLOYD COUNTY FARM BUREAU OFFICE 983-3777 HOME 983-3273 101 S. WALL FLOYDADA, TEXAS 79235 LOCKNEY, TEXAS

Texas Last In State Aid To Cities And Counties

AUSTIN—State Comptroller Bob Bullock said Tuesday an analysis by his office shows that Texas ranks last among the 50 states in per capita state aid to cities and counties.

Bullock said that Texas' 254 counties received \$3.30 per capita from the state during the 1976 fiscal year, while the cities received \$3.27 per person.

"Take this money away," Bullock said, "and then watch local property taxes." Only \$31 million of the \$72 million allotted to cities and counties by the state in fiscal 1976 came from state revenues, according to Bullock. The remaining \$41 million came from the federal government.

The counties received a total of \$40 million in fiscal

1976, while the cities received \$32 million.

The analysis is contained in the December financial statement published by Vernon McGee's Planning and research Division.

The statement also reports that energy related taxes continued to play a vital role in the state's economy during fiscal 1976.

Taxes on the production of oil and gas, consumption of motor fuel and utility receipts brought in more than \$1.2 billion, accounting for one-third of the total revenue raised by the state, according to the report.



LETTERS TO SANTA

Dear Santa,
Please bring me a B-B gun Six Million Dollar Man, football, Motorcycle, watch, Walki-talki, minibike.
Love, Eddie

Sgt. Wayland Carthel At Nellis AFB

LAS VEGAS, NEV.—J.S. Air Force Staff Sergeant Wayland L. Carthel, whose parents are Mr. and Mrs. W. L. Carthel of Lockney, Tex., has arrived for duty at Nellis AFB, Nev.

Sergeant Carthel, a weapons mechanic with a unit of the Tactical Air Command, previously served at Kadena

AB, Japan.

The Sergeant is a 1966

graduate of Lockney High School, R5

FREE ESTIMATES

LOWEST PRICES



Aladdin CARPET

SAM JACKSON PHONE 293-4358

726 BROADWAY PLAINVIEW, TEXAS 79072

FLOYD DATA

Frank Jordan of Oklahoma City, Okla., visited briefly Thursday with Mr. and Mrs. Leroy Burns, Jordan is brother-in-law of Burns.



Santa's Food Values

WE GIVE GOLD BOND STAMPS

Fruit Cocktail CAN 39¢



303 CAN DEL MONTE

Corn CAN 3/\$1.00

303 CAN DEL MONTE

Peas CAN 3/\$1.00

303 CAN DEL MONTE CUT

Green Beans CAN 3/\$1.00

303 CAN DEL MONTE MIXED

Vegetables CAN 3/\$1.00

303 CAN DEL MONTE

Spinach CAN 3/\$1.00

303 CAN DEL MONTE

Sauerkraut CAN 3/\$1.00

8 OZ CAN DEL MONTE

Tomato Sauce CAN 5/\$1.00

303 CAN DEL MONTE

Beets CAN 3/\$1.00

14 OZ DEL MONTE

Catsup BTL 39¢

300 CAN OCEAN

Cranberry Sauce CAN 39¢

GOLD MEDAL Flour 5 LB 79¢

JEWELL Shortening 42 OZ CAN \$1.29

GIANT Tide BOX \$1.19

1/2 GALLON Clorox 59¢

5 LB IMPERIAL Sugar BAG \$1.09

4 PACK ZEE NICE & SOFT Tissue 69¢

Gal Preston Milk \$1.65

6 PACK 32 OZ Enjo

Coca-Cola

\$1.39

Carter's Market
121 W. College
LOCKNEY, TEXAS
Monday-Saturday 8 a.m. to 8 p.m.
Sunday 8 a.m. to 6 p.m.

Gold Medal UNBLEACHED ENRICHED FLOUR
Tide AMERICA'S FAVORITE
Hi-C Drink

Jewel Creamed Shortening
Clorox
Zee Nicer Soft toilet tissue
Coca-Cola

OBITUARY
Dunlap
for Willie Rich-
Dunlap, 75, of
longtime school
charter member
Tech University
Friday at
2 p.m. Friday at
United Methodist
Crosbyton with
Johnnie William,
assisting, assisted
all Johnson, Executive Vice
rs, Inc., Lubbock, "Doctor"
h the color of the bottom
ductive capacity should a farmer
y each individual most aware
"based on his own soil type,
ment, climatic probabilities
potent of those "other factors"
alternative crops, the PCG offers
r that that price projections be
complete supply-demand
available."
son believes PCG and other
aluable service. "It is a part
nplete, up-to-date figures on
and consumption, export,
at that bear on current and
tes, "and we can supply this
file various analyses of such
rated, the National Cotton
griculture and other sources.
y recommends the "Cotton
y Incorporated. The public
r by writing Cotton Incorpor
27612. He thinks the Decem
y" can be especially helpful
is.
accurate projections of 1977
current year production and
more nearly complete," John
ish planting intentions report
ut April 15.
ans it may be well for a farmer
pen as long as he can without
SAVER SHOP FLO
double
pe and
eze the
ed day.
rner in
akes to
Built-in POTSCRU
DISHWASHER
3 level
action
Built-in
Dishwa
No S
clog Sa
/stand
/size
Dishwa
Decorat
Pock
SUGGESTED \$389.00
RETAIL \$299.00
INSTALLED
NORMAL CHARGE
H YEAR AS YOUR G.E.
RVICING DEALER
Home Furnishings
IN LOCKNEY
Internal Revenue Service
Tax Return
1973 ending
COUNTY OF RESIDENCE
Occupation
Years in
Spouse's
Regular / 65 or over
if...
Have you taken
advantage of
tax deductions?
Form 2440 (or statement)
4848
14
retirement Act" in 1962, marked
or simply "Keogh", permits self-
ny of the same tax advantages that
plans even more attractive. The
ed individual can contribute up to
it income tax deduction for the
additional method for self-emp
arning
ible re-
ppy to
FB
JAMES RACE
Office
Lockney, Texas

County Home Demonstration Council Holds Yule Tide Party

Floyd County Home Demonstrations Council met for their annual Christmas party December 10th in the J.R. Turner home. Lone Star Club was in charge of Christmas games and the program. Mrs. J. P. Taylor led games and Mrs. Clois King gave the Christmas

Story from the Book of Luke.

During business council officers were installed. Mrs. Taylor is chairman; Mrs. O. G. Mayfield, vice chairman; Mrs. Zant Scott, secretary; and Mrs. Herman Huffman, treasurer. Mrs. Ruth Trapp of Homebuilders Club installed the officers, choosing the Santa Claus theme and using symbols of Christmas to represent each office.

Refreshments were served by Mrs. Turner from a beautifully decorated table. Gifts were exchanged by Mmes. Zant Scott, Bob Ratjen, Raymond Williams, Raymond Evans, O. G. Mayfield, Elmer Norrell, W. H. Smith, John Walker, Ernie Widener, Ruth Trapp, C. H. Huffman, Allen Kellum, W. H. Stewart, Raymond Teeple, J. P. Taylor, C. L. King, and the agent, Sharon Hillis. Next council meeting is slated for January 26th.



THE STRINGER SISTERS... (no, that's the mother) entertained Floydada Rotarians, their Rotary Anna and annual Christmas banquet in the MAC Tuesday night. Religious and Christmas songs. (l to r) Christi, Mrs. Ruby...

Society



Kristi Love, Dennis Meyers

Kristi Love, Dennis Meyers

Plan January Wedding Vows

Mr. and Mrs. Russell D. Warren of Floydada announce the engagement and approaching marriage of their daughter, Kristi Love to Dennis Meyers, son of Mr. and Mrs. Cloyd Meyers of the Lakeview Community.

The couple will exchange vows January 7th, in the chapel of the First United Methodist Church in Floydada. Both are seniors in Floydada High School.

Dorcas Class

Holds Annual Christmas Fete

Mrs. V. D. Turner hosted the Dorcas Sunday School Class of the First Baptist Church Wednesday in her home for their annual Christmas social. Mrs. Robert Garrett opened the program with prayer, followed with Mrs. A. R. Epperson reading the second chapter of Luke.

Mrs. Turner read the story "Cradle," then presented a humorous story, "Home and Family." Mrs. Garrett told the story "Then I Met the Messiah."

Members exchanged gifts from around a decorated Christmas tree and refreshments were served and Christmas carols were sung. Present were Mmes. Carl Wilson, Ola Warren, Carrie Cline, A. R. Epperson, C. M. Meredith, R. E. Young, Gracie Riggie, Elmer Warren, C. W. Denison, Nina Willis, Leonard Smith, Robert Garrett, Alva Sparks, Mable Price, V. D. Turner, Lois

FLOYD DATA

Mr. and Mrs. Bud Goen plan to spend the Christmas holidays in Colorado Springs, Colo., with their daughter and husband, Mr. and Mrs. Kent Hardage and family.

FLOYD DATA

William Bertrand is home from Lockney General Hospital and is said to be recuperating from paratyphoid. Bertrand was hospitalized some two weeks.

FLOYD DATA

Carl Minor was still undergoing tests and receiving medical attention in Lubbock Methodist Hospital Friday.

FLOYD DATA

Mr. and Mrs. Kenneth Pitts and children, Kellie and Kerrie spent last Sunday at Matador with his grandmother, Mrs. D. E. Pitts.

FLOYD DATA

Durham, Cleo Goins, A. C. Rainer and Miss Peggy Young.

SALE
Christmas Tree
Ornaments
Birthstone Rings
Watches
Men and Ladies

"Our Pleasure Is To Serve You"

The Scene Is 3-Piece Vested



Claude Brown Is Showing A 3-Piece Vested Suit By Eldorado & Modeling A 3-Piece Vested Suit Of 100% polyester By Curlee, These Are Just A Few Of The Many Suit Styles Available For The Man At Brown's, As You Can See In The Picture

Brown's Also Has A Good Selection Of Fashion
Jean's & Boots For The Men &
Young Men.

Stop In Today
Let Us Help You Select That Special
Gift For That Special Man



DEPARTMENT STORE
104-06 North Main
Lockney, Texas

WE WILL BE OPEN NIGHTS TIL CHRISTMAS

FLOYD DATA

N. W. Williams was brought home Monday from Valley View Hospital in Harlingen where he had been hospitalized since becoming ill there November 28th. He and Mrs. Williams had gone to Harlingen to be with relatives due to a death in the family when Mr. Williams became ill. He is reported to be recuperating fairly well.

Homebuilders

Hold Annual Yule Party

Mrs. W. H. Smith was hostess December 14th for the annual Christmas party for the Homebuilders Home Demonstration Club.

Mrs. Elmer Norrell led the group in games after which Mrs. Raymond Williams read a Christmas Story, giving members thought for the celebration of the holidays that it isn't big gifts that give the most happiness-but the little things we can do for our neighbors who need love and help.

Gifts were exchanged by Mmes. Elmer Norrell, Raymond Williams, Raymond Evans, O. G. Mayfield, Doris Huckabay, John Walker, Ernie Widener, Ruth Trapp and agent, Sharon Hillis.

Mrs. Smith served holiday festive foods from a lovely Christmas decorated table. Next club meeting will be January 11th with Mrs. Elmer Norrell.

Athenians Enjoy Cosmopolitan Christmas

Saturday evening, December 11, was a night to remember for nineteen Athenians Junior Study Club members and their husbands or dates. The club's annual Christmas Party was held in the home of Mr. and Mrs. Joe Taylor. Members of the yearbook committee served as co-hostesses for the evening. They were: Mrs. Wilbur Mize, Mrs. Roy Turley, Mrs. Jerry Klein, Mrs. John Peck, Mrs. James Poole, Mrs. Bill Hunter, and Mrs. Raymond Lusk. These ladies were dressed to represent different countries and served at each of the foreign food tables. Lovely decorations of blue and white decked each serving table.

Guests served themselves buffet style to an international smorgasbord featuring English Wassil, a delicious, spiky hot drink; Swiss fondue; which included not only a Swiss cheese sauce, but also a delicious chocolate sauce; Chinese Sweet and Sour Pork (and a new one-Sweet and Sour Shrimp!); tea, and European coffees. Served with the main course of Chinese food were individual loaves of homemade bread. Also on the menu, from Mexico, was a delicious Mexican Salad served with homemade flour tortillas. Dessert, for those who desired it after the rich feast, was choices of German Chocolate Cake, Italian Cream Cake, and French

Following the games, the annual affair of exchanging gifts was undertaken. This year, in keeping with the international motif, all gifts were to be either homemade or foreign made. Some lovely and unusual gifts were opened and exchanged, and exchanged again, for other delicious and versatile gifts. You can understand that last sentence only if you were there!

To conclude the evening, several thought it appropriate to sing "For She's a Jolly Goodfellow" to Mrs. Wilbur Mize for all her efforts toward this unique, imaginative, Cosmopolitan Christmas.

Those attending this year's party were: Mr. and Mrs. Jerry Cannon, Mr. and Mrs. Ted Carbel, Mr. and Mrs. Lewis Diepenhorst, Mr. and Mrs. W. H. Hallmark, Mr. and Mrs. Bill Hunter, Mr. and Mrs. Jerry Klein, Mr. and Mrs. Raymond Lusk, Mr. and Mrs. Warren Mathis, Mr. and Mr.

FLOYD DATA

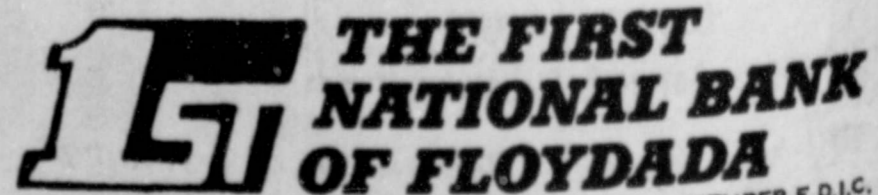
Jim Lewallen returned home recently from Lubbock Methodist Hospital and is doing well following open heart surgery.



The public is invited to our annual
Christmas Open House!!!

Wednesday, December 22, 9-3...

Snacks & Refreshments



THE FIRST NATIONAL BANK OF FLOYDADA
FLOYDADA, TEXAS 79235 MEMBER F.D.I.C.

ation To Honor Mr. And Chloma Williams Sunday

and relatives are celebrating the 40th wedding anniversary reception December 19th, 5 p.m. honoring Mrs. Chloma Williams. The open house

will be in the home of a daughter and her husband, Mr. and Mrs. Leon Williams at 714 West Georgia in Floydada.

The honoree has requested no gifts please.

To Observe Anniversary

and Fannie Davis will observe their 50th anniversary December 30. Mr. and

Mrs. Davis are parents of Thurman and Jerry Davis of Lockney, Edward Davis of Perryton, Kenton Davis of Albuquerque, Kathryn Foraker of Hale Center, and Loy Davis of Clayton, N.M.

FLOYDDATA

Edward Malstrom will arrive by plane from Perry, Ga., to spend the holidays with other relatives. The family will be in El Paso where

the family is moving this month. Dr. Malstrom will be with A&M at El Paso. Joining them in Floydada on December 26th, will be Mrs. Goen's other daughter and family, Mr. and Mrs. Dan Smith of San Angelo.

New Years Eve Ball For Cancer Slated In Floydada

American Cancer Society Floyd County Unit, is sponsoring a New Year's Eve Ball with tickets to the Cancer Society. Tickets to the ball may be purchased from Mr. and Mrs. Williams, Mr. and Mrs. Jerry Williams, or from Julie Williams.

Lubbock will be playing for the ball at Massie Activity center which begins at 9 p.m. New Years Eve and will continue until 1 a.m. Free refreshments will be served.

FLOYDDATA

Mr. and Mrs. Lee Trautman, Josh and Jesse of Plano and Ann Brown of Dallas will be in Floydada through the holidays with Dr. and Mrs. A. E. Guthrie. Mrs. Trautman is the daughter of Mrs. Brown.

How to be Like Santa: Have a Seiko watch.

Seiko has the right watches for men and women, for dress, casual and sporting wear. Chronographs for the most active sports like car racing or sailing. Seiko Quartz for men and women, for a whole new standard of accuracy to within seconds per month. Seiko watches with those distinctive colored dials. Seiko watches with special features like HARDLEX mar-resist crystals and instant set day/date bilingual calendars. If you want to be sure your gift is the right one, be the Santa who says Seiko.

Initiated into Honor Society

WTSU-A Lutheran student at West Texas University from Dallas has been initiated into the Texas Zeta chapter of Chi, national honor society. Initiated in the home of Mrs. Dora Fry, daughter of Mr. and Mrs. Fry.

"Induction into Chi is reserved to those and seniors of good character who rank in the upper tenth of their class."

Dr. Martha Head, professor of physics, chapter sponsor, and Kathleen Collins, professor of English, David Lasher, associate professor of mathematics, were present.

Organized in 1922, Texas Zeta chapter of Chi is one of 182 chapters in 39 states.



No. ZP208—\$95.00.
17J, self-winding, instant date setting calendar, Hi-Beat. Yellow top/stainless steel back, indistinct brown dial, strap.

No. CM2016M—\$225.00.
17J, top/stainless steel, Hi-Beat, gill dial, faceted crystal, mar-resist crystal, Hi-Beat hands and markers, adjustable bracelet.

"Our Pleasure Is To Serve You"
Schacht Flowers, Jewelry & Gifts
112 West Poplar
Lockney, Texas 79241

FLOYD DATA

Mr. and Mrs. Elton Turner and daughters of Flagstaff, Ariz., will arrive Saturday to spend through the holidays in Floydada with their parents, Mrs. V. D. Turner and Mr. and Mrs. S. D. Roe and other relatives.

FLOYD DATA

Mr. and Mrs. Don Pundt and family and Mrs. T. H. Orman all of Borger visited Saturday in Floydada with Mrs. Orman's sister, Mrs. Garnet Goen.

Pollyanna Club Holds Christmas Luncheon

The Pollyanna Club observed their annual Christmas luncheon in the home of Mrs. R. H. Parker at 12:00 noon Tuesday, December 14. All members were present:

Mmes. Olie Allison, Dale Widener, Richard Phillips, Lester Carter, Joe Farish, Lloyd Wofford, Leon Wofford, Hershel Carthel, Melvin Thacker, Clara Jeffcoat, Barney Manning, and the hostess Mrs. Parker. Following the salad luncheon, gifts were exchanged and snapshots were taken.

Mrs. Richard Phillips entertained with a coffee Thursday morning, December 16 for the club members.

Stitchers Have Christmas Party

The Jolly Stitchers Club held their annual Christmas dinner and party at Strickland's Restaurant Tuesday evening, December 14. A delicious dinner followed by games of "42" was enjoyed by members and their husbands. Present were: Mrs. Andrews, Raz Ford, Royce Latimer, Char. Adkins, Hilburn Casey, Harmon Handley, W. T. Cooper, E. O. McLeod, Jack Dollar, L. M. Readhimer, and Mmes. Sylvia Yeary, Jewel Roberts, Grace Colson and Dollie Cardinal.

Study Club Meets For Luncheon

The El Progreso Study Club met Saturday in the home of LaVerna Sams, lovely Christmas luncheon. The beautifully decorated home was a fitting setting for a festive affair. Delicious salads were served by hostesses: Faye Holmes, Ethel Mitchell, LaVerna Sams, Dimon Schacht and Josie Taylor.

After the meal, the members gathered around the Christmas tree for an exchange of gifts. During a short business meeting it was voted to give a donation to the Nellie Brown fund for needy children.

Guests present were Arla Copeland, Faye Ferguson, Jaunita Jenkins, Hazel Johnson, Bobbie Kellison, Anna Dell Quebe, Pauline Sams, and Jeanette Marr.

Miss McGuire, Ex-depart Wed Recently In Lubbock

Bett McGuire of 5403-41st Street, Lubbock, Texas, became the bride of Noel Deavenport, of the South Plains Community, November 20, at 7:30 p.m. The wedding was performed at the home of Mr. and Mrs. Charles R. Walker in Lubbock. The wedding vows were performed in front of a beautifully decorated fireplace. Horace Coffman, associate minister of Broadway Church of Christ, performed the impressive double ring ceremony.

The bride was a secretary and bookkeeper to the principal of Coronado High School until her wedding. The groom farms in the South Plains Community.

Matron of honor, Mrs. Harrell Anderson, wore a peach colored floor length dress for the wedding. Herman B. Thornton served as best man.

The bride was gowned in a mint green colored floor length dress fashioned with a pleated skirt and shirtd waist bodice. Her bridal bouquet was composed of pale green spider mums.

Following the wedding, a reception was held in the home of Mr. and Mrs. Charles R. Walter. The bride's

table was laid with a white Belgian tablecloth with silver and crystal appointments. The bride's bouquet formed the centerpiece. Apricot colored punch, coffee, green colored mints and a three tiers cake in the bride's chosen colors completed the setting.

Reception attendants were Donna Ewerz, Gina Brooks, daughters of Lloyd Deavenport, Mrs. Lloyd Deavenport, Mrs. Derrell Garner, brother of bride, Amarillo; Mr. and Mrs. E. L. Criswell, Plainview; Mr. and Mrs. Hilburn Thompson, Shell Rock, Iowa; Mrs. Barbara Gale, sister of the bride, Grand Junction, Colorado; Mrs. Mora Garner, mother of the bride, Farwell; Mrs. Jean Bowman, Levelland; and Mr. and Mrs. Herman B. Thornton and Rusty, Lockney.

Following the wedding trip to Denver, Colorado, the couple will be at home in the South Plains Community.

Out of town guests attending the wedding were Mr. and Mrs. Jim McClendon, Tulia; Mr. and Mrs. Lloyd Deavenport, Denver, Colorado; Mr. and Mrs. Derrell Garner, brother of bride, Amarillo; Mr. and Mrs. E. L. Criswell, Plainview; Mr. and Mrs. Hilburn Thompson, Shell Rock, Iowa; Mrs. Barbara Gale, sister of the bride, Grand Junction, Colorado; Mrs. Mora Garner, mother of the bride, Farwell; Mrs. Jean Bowman, Levelland; and Mr. and Mrs. Herman B. Thornton and Rusty, Lockney.

Old Fashioned Christmas Enjoyed By Club Members

Members of the 1950 Jr. Study Club of Floydada met for their December meeting in the James McNeill home. Mrs. McNeill served an old fashioned Texas Christmas dinner consisting of barbecue beef, red beans, scalloped potatoes, sour dough bread, a relish tray and blackberry cobbler. Assisting Mrs. McNeill with hostess duties were Mrs. Mark Wideman and Mrs. Jake Younger.

Roll call was answered with a poem concerning a Texas Christmas.

The program was presented by Mrs. Joe Paty on the Cowboy's Old Fashioned Christmas Ball, after which members sang carols and exchanged gifts with secret pals.

Present for the dinner meeting were Pat Barrow, Nona Cantrell, Julie Cathy, Barbara Christian, Judy Dunlap, Betty Edwards, Lorrie Farris, Darlyn Hambricht, Phyllis Harris, Joy Lawson, Elaine McNeill, Lana Moore, Lee Ann Nealey, Pat Ochoa, Norma Patton, Rosemary Paty, Beth Pratt, Vickie Rainer, Sandra Rainey, Rue Nita Robertson.

FLOYD DATA

Mrs. Earl Rowan, and her mother, Mrs. W. F. Jacobs of Matador, along with other relative were in Clayton, New Mex., December 13 for the funeral of Mrs. Jacobs' sister-in-law, Mrs. Ray Jacobs, who died December 10.

Ruby Lee Jones and Ernestine Pleasant were in Plainview Tuesday to attend the funeral of their brother, Norman Davis.

THE FLOYD COUNTY HESPERIAN

Published each Sunday and Thursday at 111 E. Mo. St., Floydada, Texas 79235. Second class postage paid at Floydada, Texas 79235. Wendell Cooley, editor. Subscription rates: Local \$8.50 a year, out of trade area: \$9.50.



She weighed seven pounds, 12 ounces. Grandparents are Mr. and Mrs. A. E. Frizzell of Floydada and Mr. and Mrs. J. C. Fletcher, Petersburg.

A daughter was born to Mr. and Mrs. Ronnie McCandless of Seagraves, formerly of Lockney. She weighed 6 pounds, 12 ounces and was named Andra Lynn. Grandparents are Mr. and Mrs. C. D. McCandless and Mr. and Mrs. Tom Nance of Lockney.

Send a Living, Loving Gift this Christmas.

With the FTD Season's Greeter™ Bouquet

This year say Merry Christmas with our uniquely elegant arrangement of Christmas greens, flowers and candles in a solid brass bowl. We also have traditional poinsettias and many other holiday selections from which to choose.

ORDER EARLY

"Our Pleasure Is To Serve You"

Schacht Flowers, Jewelry & Gifts
112 West Poplar
Lockney, Texas 79241

on earth... peace



The most blessed blessing of them all...
Peace In Our Time! Our hearts soar with fervent thanks for this blessing and the joys of a serene Christmas. As we celebrate this special time, we extend deep gratitude to all our devoted friends.

Floydada Branch

Plainview SAVINGS & LOAN Association

217 W. CALIFORNIA FLOYDADA, TEXAS

Joy Assiter - Manager Waylene Mankins - Secretary

MEMBER FSLIC
Federal Savings & Loan Insurance Corp.
Your Savings Insured to \$40,000

The Methodist Churches Of Floyd County Welcome You!

Your Sundays belong to God! He will have about four thousand Sundays. All of these belong to God. An elderly person was talking to one of our former ministers and made this remark: "We have lived so uselessly. We haven't had time for the church." They never realized God had given them four thousand Sundays to do something about it. What we do with our four thousand Sundays largely determines the extent of our spiritual life. With few exceptions there should be only one legitimate reason for attending church... "physically unable." Some day we can look back and be proud that we did attend church every Sunday when we were physically able.

HUGH DANIEL, LOCKNEY

SUNDAY:
9:34 a.m. Sunday School
11:00 a.m. Worship
6:00 p.m. Evening Worship
WEDNESDAY:
7:00 p.m. Bible Study

BRITTS GRADUATE
112 W. MO. ST.
CALL COLLECT
983-3125

See me about State
disability income insurance

Like a good
neighbor,
State Farm
is there.

Lockney Care Center Capers

By Brenda Steen
Merry Christmas! It really won't be long until the jolly fellow will be here.

Monday we had a fine devotional. I finished the last chapter of God's Psychiatry. We all enjoyed these lessons.

Monday afternoon we worked on decorations for our tree.

Tuesday the West Side Church of Christ came and led our devotional. This was very enjoyable. Thanks a lot.

Tuesday afternoon was bus day. Martha Burke, Lewis Roberts and myself went to Floydada. Did some Christmas shopping for some of the residents. Had a treat of ice cream before returning home.

Wednesday morning the fine people of the Methodist Church came and led singing. We enjoyed you all so very much.

Hugh Daniels brought a special lesson about Christmas. We all received a special blessing Wednesday afternoon we worked glittering jars for gifts.

Thursday Bro. Clay Muncy brought our devotion. Fred Fortenberry sang a special song. Mrs. Muncy was with us again. Her hand seems to be doing better. Glad to hear this. Mayme McGhee and Maggie Payne played the piano for all of us.

Thanks to each and every one of you.

Thursday afternoon was Bingo day. Our prizes were all wrapped this week with Christmas wrapping. All the players enjoyed this special treat. The big winner was winning homemade cookies and candy.

Friday morning Bro. and Mrs. Crowder from Flomot came. Had the story of the birth of Christ. Was very much enjoyed.

Friday afternoon worked on crafts.

We would like to thank the ladies of the Rebekah Lodge for bringing bananas and oranges to all the residents. They really have enjoyed the fresh fruit, also thanks to everyone who has brought egg cartons and cards for our crafts.

Don't forget the residents Christmas party the twenty-first.

They will be looking for you.

Well until next time God Bless and Keep Smiling.

FLOYD DATA

Mrs. Minnie Smartt of Abilene, joined by Paul Lloyd of Floydada, emplaned from Fort Worth-Dallas airport Saturday enroute to the Republic of South Africa. Mrs. Smartt will be on an extended visit with her daughter and family, Mr. and Mrs. Fred Martin in Hilton Natal, and a granddaughter and her husband, Mr. and Mrs. R. K. Reynolds in Val Transval. Paul, son of Mr. and Mrs. Louis Lloyd of Floydada, plans to remain and will be working with his uncle, Johnny Lloyd in a manufacturing firm which designs and makes farm equipment. Paul will be making his home with Mr. and Mrs. Johnny Lloyd and their son, Mitchell, in Hilton Natal.

FLOYD DATA

Clarence Guffee continues to improve in Lubbock Methodist Hospital. He had recent surgery on his knee, then developed complications unrelated to the operation. He was moved from IC Monday and hopes to be able to return home before too long.

FLOYD DATA

Ralph and Emily Johnston are expecting all their children home during the holidays. Mrs. Grace Ann Badgett and children of Port Lavaca, Mrs. Becky Hamilton and children of Burlington, Colo., Mr. and Mrs. Bill McIntosh and Kara of Seattle, Wash., and Ralph Johnston Jr., of San Antonio will spend the holidays in Floydada and the Lubbock children, Lon Johnston and wife and George Johnston will be joining the group for Christmas. The Seattle family will also spend part of the holidays with his parents, Mr. and Mrs. Jack McIntosh and other relatives.

FLOYD DATA
Mike and Elaine Giesecke, students at Angelo State, and children of Mr. and Mrs. R. L. Giesecke, arrived in Floydada Friday from their studies to spend the holidays with their parents.

San Antonio, plans to spend the Christmas holidays in Floydada with his grandparents, Mr. and Mrs. Mark Martin.

FLOYD DATA

Ruth Stewart of Dallas is visiting in Floydada through the holidays with her mother, Mrs. L. B. Stewart Sr., and other relatives.

FLOYD DATA
Dwane Martin, who attends Trinity University at

FLOYD DATA
Ernie Crisp of Mid-West City, Okla., was overnight guest Wednesday of Mr. and Mrs. Robert O. Turner and family.

FLOYD DATA

Phyllis Guffee, student at Texas Tech, is home for the holidays with her parents, Mr. and Mrs. Corky Guffee.

FLOYD DATA
Jimmy Parker, student at West Texas State University, is home with his parents, Mr. and Mrs. Vernon Parker, for the holidays.

"Few are those who err on the side of self-restraint."
Confucius



Dear Santa,
This is from Jerry and John Richard Klein. I am six years old, and John is one,

but next year he will be two. John wants a little riding horse. I want a Nerf football and Evil Knievel set and a



Prices good thru December 24, 1976. We reserve the right to limit quantities. None sold to dealers.

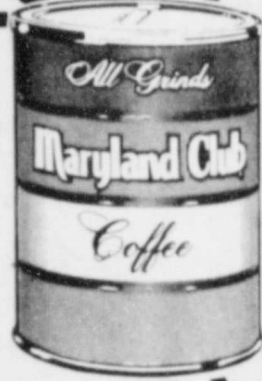
Each of these advertised items is required to be readily available for sale at or below the advertised price in each store, except as specifically noted in this ad.

SEASON'S

Plus Deposit,
COCA COLA
\$1 39
6-Pack
32-oz. Btls.

Azar (Regularly 79c)
Shelled Pecans Pkg. **59c**

Pillsbury, Assorted Flavors
CAKE MIX
39c
18-oz. Box



All Grinds, Coffee
MARYLAND CLUB
\$1 69
1-Lb. Can

Piggly Wiggly
Fresh Butter
1-Lb. Pkg. **99c**

Piggly Wiggly
Fruit Cocktail **3 \$1**
16-oz. Cans

Piggly Wiggly, Bartlett

Pear Halves **3 \$1**
16-oz. Cans

Pet
Evaporated Milk **4 \$1**
13-oz. Cans

Del Monte Peas or
WHOLE BEANS
3 \$1
16-oz. Cans

Powdered, Light Brown or Dark Brown
C&H SUGAR
25c
1-Lb. Pkg.

Texsun
Orange Juice **49c**
46-oz. Can

Piggly Wiggly, 8-oz. Pkg.
Potato Chips **59c**
Twin Pak

Sliced or Crushed
Del Monte Pineapple **3 \$1**
8-oz. Cans

Kraft's
Marshmallow Creme **45c**
7-oz. Jar

Miniature or Jet Puff
Marshmallows **39c**
10-oz. Pkg.

Gandy
Egg Nog **59c**
Qt. Ctn.

BELL
Sour Cream **3 \$1**
8-oz. Ctns.

BELL
Whipping Cream **3 \$1**
8-oz. Ctns.

Reynolds Standard
Aluminum Foil **29c**
25-Ft. Roll

Zee Luau, Assorted Colors
Paper Napkins **2 79c**
100-Ct. Pkgs.

Rainbo Sweet Pickles	22-oz. Jar	89c
Baker's Chips	12-oz. Pkg.	59c
Del Monte Spiced Peaches	29-oz. Can	99c
Piggly Wiggly, Cut. With Tops Asparagus	14 1/2-oz. Can	59c
Medium Pitted, Early California Ripe Olives	2 6-oz. Cans	99c
Fancy Le Sueur Peas	17-oz. Can	53c
Piggly Wiggly Cottage Cheese	12-oz. Ctn.	69c
Green Giant Peas with Onions	17-oz. Can	53c
Kraft's Peanut Brittle	12-oz. Box	69c
Daytime 30-Ct. Box or Extra Absorbent Kimbles Diapers	24-Ct. Box	\$2 19
Stove Top Stuffing Mix	6-oz. Pkg.	69c
Makes Two Quarts, Pre-Sweetened Kool-Aid	6-oz. Pkg.	39c

All Flavors 46-oz. Can
Hi-C Drinks **45c**

Piggly Wiggly, Cut
Yams **39c**
24-oz. Pkg.

Pillsbury, Crescent
Rolls **59c**
8-oz. Pkg.

Early California, Stuffed
Olives **79c**
5-oz. Jar

Frozen Food
Mrs. Smith's, Natural Juice, Frozen
Pumpkin Pie
Piggly Wiggly, 2 Pack

Pie Shells

"Poly Bag Sale"
Mrs. Smith's, Natural Juice
Apple Pie
Piggly Wiggly

Whipped Topping
Borden's

Corn On The Cob

New Year Resolution

...time of year...
...toting around...
...grit their...
...determinedly...
...make the New...
...year...
...said...
...Area Direc...
...t Watchers in...
...the tune has

For 1977, though, the overweight can make that "thin year" resolution stick, provided they follow these "resolutions" recommended by the Weight Watchers Organization:
1. During the upcoming holiday celebrations, never arrive at a party hungry. Surrounded by all sorts of "goodies," you're bound to be trapped by temptation.
2. When the host or hos-

...tess tells you that "you must eat..." be polite, but be firm in saying "No" to a morsel you know can snowball into a banquet.
3. If you're invited to a holiday celebration that features an elaborate smorgasbord, wear white gloves. It's a sure-fire way to avoid an hors d'oeuvre binge, and soiled gloves.
4. Pay no attention to the rest of the family at the

Christmas or New Year's dinner table. Eat only what you really want or should.
5. Going to the movies during the long holiday weekends? Walk briskly to your seat. Do not stop at the popcorn and candy counters. Chew on the plot rather than on a candy bar.
6. Keep a "slim outfit" hanging on the closet door. That will surely bolster your determination to get rid of

excess pounds.
7. When you weigh yourself, put both feet on the scale. Don't kid yourself if you are really determined to lose weight.
8. Join a weight-control group that will enable you to fulfill your New Year's resolution.
Mrs. McGinty admitted that "while some of these resolutions may be tongue-in-cheek, they are better

than gobs-of-food-in-cheek... food you really don't need and which can only shatter your dream of a thin New Year."

Hints for HOMEMAKERS

Tips On Caring For Crystal
Home economists recom-

...mend the following method to keep crystal sparkling: soak your fine crystal in a very mild solution of vinegar and warm water to which a few grains of rice have been added. Make sure the water is lukewarm. Rinse crystal in clear warm water. Shake dry.
When it comes to buying crystal, select a classic pattern you'll be proud to own and set on your holiday table, or give as a gift for almost any occasion. Many people prefer the look of elegant cut crystal such as the flowing, graceful shape of these wine glasses, decanter and serving bowl in this lead crystal barware collection by Fostoria Glass Company.
Another hint: be sure to store your crystal side-by-side.

CAPRICORN
December 22-January 20
A pleasing nature and ready smile cover the withdrawn nature of Capricorn people. Generally quiet, they are often all-knowing in many ways. A rugby shirt for the Capricorn male or argyle knit socks

I. PAINT SANTA'S FACE ON AN UPSIDE-DOWN BUCKET!
II. USE A LARGE PIECE OF RED CONSTRUCTION PAPER FOR SANTA'S HAT! KNEEL IT INTO A CONE, TRIM THE BOTTOM EDGES AND PASTE OR TAPE TO SECURE IT TO BUCKET!
III. PASTE COTTON BALLS ALL AROUND SANTA'S FACE AND OVER THE ENTIRE BUCKET TO MAKE HIS HAIR AND BEARD!
IV. ADD MORE COTTON BALLS FOR SANTA'S MUSTACHE AND THE POMPOMS ON HIS HAT! U

GREETINGS



Swifts Empire
TURKEY
49¢
Lb.

Rodeo's, 4 to 7 Lb. Average
Buckboard Hams
\$1.99
Lb.

Swifts 10-14 Lb. Avg.
BUTTERBALL TURKEYS
79¢
Lb.

Water Added, Shank Portion
RATH'S SMOKED HAM
98¢
Lb.

California Fresh
Pascal Celery
29¢
STALK

Washington State Small Extra Fancy
RED DELICIOUS APPLES
3 \$1
Lbs.

- TOP or Bottom Beef
Boneless Roast Lb. \$1.58
Grade A Country Pride, 5 to 7 Lb. Avg.
Baking Hens Lb. 69¢
Swift's All Dark, 2-Lb. Box, Turkey
Roast Ea. \$2.59
PIGGY WIGGLY LONGHORN 8 OZ.
Cheese Ea. 89¢
KRAFT CREAM 8 OZ.
Cheese Lb. 69¢
Sirloin Tip, Boneless, Beef
Roast Lb. \$1.54
Boneless Beef, Chuck
Roast Lb. \$1.19
T BONE
Steak Lb. \$1.69
Fresh Pork, 3 to 5 Lb. Average, Loin
Roast Lb. \$1.19
Farmer Jones, (2-Lb. Pkg. \$2.09)
Roll
Sausage 1-Lb. Pkg. \$1.29
Fresh
Oysters 10-oz. Jar \$1.29
Fryers
Livers 1-Lb. Cup 89¢
Chicken
Gizzards 14-oz. 1 Lb. 89¢
Whole Only, Smoked, 6 to 8 Lb. Avg.
Picnics Lb. 79¢

- Sugary
Sweet Yams 19¢
- Premium Baker
Russet Potatoes Lb. 27¢
Crisp
Radishes 2 Bu. 39¢
Yellow
Golden Bananas Lb. 25¢
Field Ripe
Pineapple Ea. 79¢
- Mild
Yellow Onions Lb. 19¢
Fresh Crisp
Romain Lettuce Head 39¢
Juicy Zipper Skin
Tangerines Lb. 39¢
Fresh Ocean Spray
Cranberries Pkg. 59¢

New Crop Sunkist California
NAVEL ORANGES
5 \$1
Lbs.

- Cracker Crackers 8-oz. Pkg. 69¢
9-oz. Cansisters
Apples Twin Pack 79¢
Victory Maraschino 10-oz. Jar 49¢
Ocean Spray Cranberry 48-oz. Btl. \$1.19
Soda, Collins, Ginger Ale,
White Rock Mixers 3 28-oz. Btls. \$1

- Health & Beauty Aids**
- Upset Stomach
Peppermint 25-Ct. Btl. 55¢
Body Cologne
Deodorant 3 33 2.59
4-oz. Btl. 99¢
Skin Bracer
Consort Hair Spray 13-oz. Can 89¢
Hair Spray 11-oz. Can 89¢
Mint
toothpaste 8.75-oz. Tube 99¢

Now at Piggy Wiggly
BRITANNICA JUNIOR ENCYCLOPAEDIA
This Week's Feature
Volume Eighteen Ea. \$2.99
"ROCKS"
(One of Hundreds of Topics)

Piggy Wiggly invites you to play
BANK VAULT BINGO
You may WIN \$1000.00
Up to

Hospitality Ovenware
By Anchor Hocking
COMPLETE YOUR SET TODAY!

Utility Dish	\$1.49	Custard	29¢
Round Casserole	\$1.99	Round Casserole	\$1.99
Deep Loaf Pan	\$1.49	Ranger Mug	49¢
Round Casserole	\$1.99	Mixing Bowl	69¢
Square Cake Dish	\$1.49	Mixing Bowl	89¢
Pie Plate	\$1.39	Mixing Bowl	99¢

VA News

A 7 percent increase in monthly benefit rates for Veterans Administration pensioners, plus increases in the annual income limits on which the pensions are based, becomes effective January 1, 1977. The pension changes were approved by the President on September 30.
Affected are about a million veterans and 1.6 million veterans' survivors receiving VA pensions, Jack Coker, VA Regional Director, pointed out.
The increases are estimated to cost \$432 million in fiscal year 1977.
Income limitations were raised as follows: To \$3,540 for veterans or surviving spouses without dependents and to \$4,760 for those with dependents under the current program; to \$3,100 and \$4,460 for those under the prior pension law; and for parents under the dependency and indemnity compensation program, the limits were raised to \$3,540 for a single parent, and \$4,760 for parents living together or with a spouse.
The maximum unearned income limitation for children entitled under the current pension program was increased \$190 to \$2,690.
A significant addition in the new law provides for a 25 percent added differential to all pension rates for eligible veterans who are 78 years of age or older. Primary beneficiaries of this provision are some 318,000 World War I veterans whose average age is 80.
Aid and attendance rates for veterans on the pension rolls was increased by \$22 to \$155 and the household rate by \$4 to \$57. For surviving spouses on the pension rolls, parents receiving DIC payments and surviving spouses and parents receiving death compensation, the aid and attendance rate was increased to \$74.
Another new provision permits payments of a reduced aid and attendance monthly allowance to eligible veterans whose pension payments are denied or terminated because annual income exceeded the statutory limitation by less than \$500.
Pensions are paid to wartime veterans who are totally disabled from non-service-connected causes if they are disabled before age 65 and come within income limits. After age 65, only income is taken into account. Pension payments to widows of wartime veterans are determined by income limitations.
The pension bill also makes permanent an 8 percent increase in monthly pension payments enacted last year with an October 1, 1976, expiration date.

Looking For A Convenient Holiday Gift Idea?
Give Piggy Wiggly Gift Certificates to friends, employees, and business acquaintances.
See Your Local Piggy Wiggly Store Manager

ODDS CHART

1	2	3	4	5	6	7	8	9	10	11	12	13	14	15	16	17	18	19	20	21	22	23	24	25	26	27	28	29	30	31	32	33	34	35	36	37	38	39	40	41	42	43	44	45	46	47	48	49	50	51	52	53	54	55	56	57	58	59	60	61	62	63	64	65	66	67	68	69	70	71	72	73	74	75	76	77	78	79	80	81	82	83	84	85	86	87	88	89	90	91	92	93	94	95	96	97	98	99	100
---	---	---	---	---	---	---	---	---	----	----	----	----	----	----	----	----	----	----	----	----	----	----	----	----	----	----	----	----	----	----	----	----	----	----	----	----	----	----	----	----	----	----	----	----	----	----	----	----	----	----	----	----	----	----	----	----	----	----	----	----	----	----	----	----	----	----	----	----	----	----	----	----	----	----	----	----	----	----	----	----	----	----	----	----	----	----	----	----	----	----	----	----	----	----	----	----	----	----	-----



STEERING COMMITTEE NAMED — chart a variety of strategies for Staked Plains churches involved in Good News Texas. They include (standing from left) Jim Goins, Hubert Frizzell, J. C. Farrand, and Al A. Morgan. Also Ms. Julie

Masten (seated) and Dr. Carlos McLeod (seated right). Also shown are Caprock-Plains Baptist Area Center Director Dr. Strauss Atkinson (right) and Dr. Floyd Bradley of Floydada (seated center).

LOCKNEY GENERAL Hospital Report

Dec. 9-16, 1976
 Dee Witt Burk, Lockney, admitted 11-20, continues care.
 William F. Bertrand, Floydada, admitted 12-3, dismissed 12-10.
 J. D. Blankenship, Quitaque, admitted 12-5, continues care.
 Inez Grantham, Lockney, admitted 12-6, dismissed 12-10.
 Claud Keeter, Lockney, admitted 12-6, dismissed 12-14.
 Janice Price, Quitaque, admitted 12-7, dismissed 12-9.
 Lottie McGee, Lockney, admitted 12-8, dismissed 12-16.
 Teresa Luna, Lockney, admitted 12-9, dismissed 12-16.
 Gloria Martinez, Floydada, admitted 12-9, baby girl Letisia born 12-9, dis-

missed 12-11.
 Geneva Taylor, Plainview, admitted 12-10, continues care.
 Frances Thurman, Silverton, admitted 12-10, dismissed 12-15.
 Mayme McGhee, Lockney, admitted 12-12, dismissed 12-16.
 Tomesita Alaniz, Lockney, admitted 12-12, dismissed 12-15.
 Patricia Stegael, Plainview, admitted 12-14, dismissed 12-16.
 Maria Cruz, Silverton, admitted 12-14, continues care.
 Tommy Beck, Flomot, admitted 12-16, continues care.
 Rebecca Riojas, Floydada, admitted 12-16, continues care.

THREE RURAL ACCIDENTS IN NOVEMBER

The Texas Highway Patrol investigated three accidents on rural highways in Floyd County during the month of November, 1976 according to Sergeant Ken Ewans, Highway Patrol supervisor of this area.

These crashes resulted in one persons killed and eight persons injured.
 The rural traffic summary for this county during the first eleven months of 1976 shows a total of 48 accidents resulting in two persons killed and 42 persons injured.

The rural traffic accident summary for the 60 counties of the Lubbock Department of Public Safety Region for November, 1976, shows a total of 567 accidents resulting in 14 persons killed and

26 injured, as compared to November, 1975, with 530 accidents resulting in 14 persons killed and 258 persons injured. This was 37 more accidents, the same killed, and three more injured in 1976 at the same period of time.

The 14 traffic deaths for the month of November, 1976, occurred in the following counties: Two each in Carson, Gray; One each in Castro, Oldham, Potter, Floyd, Lamb, Palo Pinto, Parker, Wichita, Wise, and Yoakum.

Letters To SANTA!

Dear Santa,
 I would like a Baby-That-Away, and a snow-cone machine for Christmas.
 Please bring my sister Eden a new dolly.
 We also have a brand new baby sister so don't forget her please. She needs a tiny doll.
 Please send my mother a new gown and my daddy some new house shoes.
 I hope all my friends have a Merry Christmas.
 Love, Shayla Moore

Dear Santa,
 I have been a good girl. I would like Hush Little Baby and a set of dishes and a stove. Have a safe trip.
 Love, Martha Garcia
 Pat Garcia
 Cristi Garcia

Dear Santa Claus
 I Love you so. So would you come to our house for Christmas because we are going to Wash. The 23.
 Love The Teeters, Rusty

Dear Santa Claus,
 I want a baby alive also a strip shower and a green machine. And a candel for my mother. And candy for my Daddy.
 Your Friend,
 Kelli

Dear Santa Clause,
 I want a Happy Birthday Tender Love Baby, and a barbie, and a good luck present wrapped with a pretty pink bow, and Slay with eight tiny reindeer, and a new basket for my bicycle and this for you m-w-o a kiss. I love you very much signed Julie Diann Davis.

Dear Santa Clause,
 I want a stretch armstrong. I want a real football. I do not want strips. I want a green bike it has one on it. It looks like a modersicle. I want a eletric fooball michen.
 Your friend
 Coy LaBaume

Dear Santa,
 I liked the toys you gave me last year. I would like Soft Tears Soft Tina this year. I will leave cookies and some milk for you.
 I love you,
 Love Penny Mulder
 Age 8

Dear Santa,
 I have been a good girl. I would like a Hush Little Baby and a set of dishes. Have a safe trip.
 Love,
 Pat Garcia

Dear Santa Claus,
 Please bring me a Tonka Tanker for Christmas. I am 7 years old.
 Thank You,
 Jimmy Mulder

FARMERS INSURANCE GROUP
 Symbol of Superior Service
 AUTO • LIFE • FIRE
 TRUCK • COMMERCIAL
 Sam A. Spence
 983-2881

CLOSING NOTICE

Due to poor health our shop has been closed, but we plan to reopen in January.

In the meantime, we appreciate your loyal patronage this year and express...

A Christmas Wish

May the radiant star of that Holy Night shine forever in the heart of all mankind.

M & N Auto Repair
 507 East Missouri



Slow Me Down Lord

Wilfred A. Peterson

Slow me down, Lord! Ease the pounding of my heart by the quieting of my mind. Steady my hurried pace with a vision of the eternal reach of time. Give me, amidst the confusion of my day, the calmness of the everlasting hills. Break the tensions of my nerves and muscles with the music of the singing streams that live in my memory.

Help me to know the magic restoring power of sleep. Teach me the art of taking minute vacations . . . of slowing down to look at a flower, to chat with a friend, to pat a dog, to read a few lines from a good book. Remind me each day of the fable of the hare and the tortise that I may know that the race is not always to the swift; that there is more to life than increasing its speed.

Let me look upward into the branches of the towering oak and know that it grew great and strong because it grew slowly and well. Slow me down, Lord, and inspire me to send my roots deep into the soil of life's enduring values that I may grow toward the stars of my greater destiny.
 Amen.

During this week, may each of us slow down and re-evaluate our lives and appreciate our blessings. We thank each of you for your patronage this past year!

Willson & Son - Builders Mart

S. W. ROSS JOHN WALKER
 JIMMY WILLSON ROD ENRIQUEZ ANNE WILLSON

"We Don't Want All The Business - JUST YOURS"

25% Storewide
 Savings Just In Time
 Free Gift Wrapping
 Through Christmas
Pants Village Shopping
 Plainview, Tex.

BUDDY'S FOOD

Buddy Widener, Owner - Forrest Shannon, Mgr.
in Floydada, 220 South Second

STORE HOURS

Monday - Saturday 8 a.m. - 8 p.m.
Sunday 9 a.m. - 7 p.m.

THESE VALUES GOOD SUNDAY, DECEMBER 19
THROUGH FRIDAY, DECEMBER 24

We Reserve The Right To Limit Quantities

CLOERLAKE DELUX ROUND 1/2 GAL. \$1.59 VALUE



FRUIT COCKTAIL

3/\$1.00

MEADOWLAKE LB BOWL 57¢ VALUE



WHITE SWAN 303 CAN CUT

GREEN BEANS

5/\$1.00



SOFT OLEO

2/89¢

18 OZ. LAYER
79¢ VALUE

JOHNSTON 9 INCH
61¢ VALUE READY
FORMED GRAHAM

20% OFF
ALL
CANDIED
FRUIT

Double S&H Green
Stamps All Week -
Closed
Christmas Day

IMPERIAL LB BOX 43¢ VALUE
POWERED OR BROWN

SUGAR 3/\$1.00

ICE CREAM

\$1.19

CAKE
MIX
67¢

PIE CRUST
2/99¢

MINI LITE 12 CT 54¢ VALUE
DOWN AND SERVE

ROLLS 3/\$1.00

WHITE SWAN 303 CAN
37¢ VALUE WHOLE OR CREAM

CORN
4/\$1.00

TURKEYS

ROAST RITE TOMS SELF
BASTING 18
LB AVG

49¢

BUTTERBALL 14
TO 20 LB AVG

69¢

HAMS

4 LB WILSON
CAN HAM
\$6.69

DECKERS DRY CURED AND
SMOKED 18 LB HALF

99¢

HALF OR WHOLE
BONELESS

FULLY
COOKED LB \$1.00

BUTTERMILK

67¢

CLOVERLAKE QT 99¢ VALUE

EGG NOG 69¢

6-32 OZ. BTL. CNT.
\$1.99 VALUE

COKE or
7-UP \$1.39

PLUS DEPOSIT

LIBBY 16 OZ. 45¢ VALUE

PUMPKIN
3/93¢

GAISHA WHOLE 8 OZ. \$1.19 VALUE

OYSTERS 79¢

SWANSON 300 CAN 29¢ VALUE

PEACHES 2/99¢

CHICKEN BROTH
5/\$1.00

PORK
ROAST
69¢ LB

GROUND
BEEF
69¢ LB

CHUCK
ROAST
69¢ LB

USDA
GOLD BAND
TURKEY
59¢ LB
WE HAVE
HOG HEADS

DEL MONTE 11 OZ. 52¢ VALUE

MANDARIN
ORANGES 2/89¢

SOUTHERN BELL 5 OZ. \$1.19 VALUE

PECANS OR
WALNUTS 89¢

7 OZ. HOLSUM
STUFFED
\$1.19 VALUE

OLIVES 89¢

WHITFIELD SALAD 8 OZ. 67¢ VALUE

MARCHINO
CHERRIES 2/99¢

VLASIC PINT 97¢ VALUE

SWEET
PICKLES 69¢

ADAMS EXTRACT 4 OZ.
\$1.19 VALUE

VANILLA
89¢

TONY'S PIZZA
HAMBURGER-
SAUSAGE-
PEPPERONI \$1.19

SUPREME
CANADIAN
BACON \$1.39

9 INCH OLD SOUTH
PIE SHELLS 2/79¢

9 OZ. RICH'S WHIPPED
TOPPING 2/99¢

16 OZ. TEXSUN
89¢ VALUE
ORANGE JUICE
67¢

NEW MEXICO NO. 1
SWEET POTATOES 5 LBS/\$1.00

CALIF PASCAL STALK EACH

CELERY 27¢

TEXAS YELLOW
ONIONS 9¢ LB

WASH STATE FANCY

RED DELICIOUS
APPLES 4 LBS \$1.00

WIN YOU 21 OZ. \$1.03 VALUE

CHERRY PIE
FILLING 79¢

14 OZ. 83¢ VALUE

EAGLE
BRAND 69¢

NON SUCH 5 OZ.
74¢ VALUE

MINCE
MEAT 59¢

KRAFT 10 OZ. 53¢ VALUE

MARSHMALLOWS
3/\$1.00

3 LB
CRISCO \$1.49

WITH COUPON
\$1.69 WITHOUT COUPON

GOOD AT BUDDY'S EXPIRES 12-24-76

LEMON SPRAY WHOLE OR JELLIED 300 CAN

RASPBERRY
SAUCE 2/79¢

GRADE A LARGE DOZEN

EGGS 87¢

PRINCELLA CUT 73¢ VALUE

YAMS 2/99¢

14 OZ. BAKERS ANGEL FLAKE
\$1.33 VALUE

COCONUT 89¢

WALNUT OIL 3/\$1.00

TEXAS NO. 1
SWEET POTATOES 5 LBS/\$1.00

CALIF PASCAL STALK EACH
CELERY 27¢

TEXAS NO. 1
GRAPEFRUIT 7/\$1.00

CALIF SUNKIST
ORANGES \$1.00

FRESH LB BAG
CRANBERRIES 2/79¢

Whirlwind Freshmen Win Fifth Straight

By Doug Simpson
Paced by an ever-present
defense coupled with a bal-
anced team effort and
strong reserves support, the
Floydada freshmen squad
captured its fifth consecu-
tive victory of the season by
dumping Idalou 41-23 on the
road on December 13th. The
victory improved the Winds'
season record to 5-0 and
gave the visitors the cham-
pionship of the first half
district title.

Although the Whirlwinds
did register a low shooting
percentage, they displayed a
tenacious defense which for
three periods allowed under
10 points. The contest marks
the third consecutive occa-
sion on which Floydada op-
ponents have been contained
to under 30 points.
The Whirlwinds grabbed
the lead early and never let
up. They posted a 13-4
advantage in the first pe-
riod, and extended the lead

to 25-11 at the midway point.
The Winds were victimized
by a very low scoring output
in the third stanza, but once
again played well on the
opposite end of the floor to
shut down the Wildcat at-
tack.

Idalou matched its highest
total with a seven point
performance in the closing
stage of the contest, but on
this occasion, Floydada be-
gan hitting a few of its shots

en route to a 12-point effort.
Following the contest,
Freshman head coach Daniel
Coward commented that his
troops had been able to
utilize a balanced scoring
attack along with an excel-
lent defense and very good
bench support. He also re-
marked that he was pleased
with the team's success in its
5-0 record and 1st half
district crown.

BOX SCORE

Player	FG	FT	TP
N. Becker	5	1	11
T. Womack	2	0	4
G. Naylor	3	0	6
N. Becker	1	0	2
T. Marquis	3	1	7
H. Gonzales	4	1	9
J. Arredondo	1	0	2
	19	3	41

Whirlwinds Drop Fourth

By Doug Simpson
The Floydada Whirlwinds
evened their season record
to 4-4 by losing to the
powerful Post Antelopes a
team they had ironically
beaten for the championship
of the Floydada tournament,
in a game played Tuesday,
December 14, at Antelope
Gymnasium, by the score of
62-40. The Winds, who face
annual powers such as Lit-
tlefield and Dimmitt before
taking a few days rest for
the holidays, had rallied to
defeat the Antelopes by
49-44 count only last week-
end. This time it was a much
more potent and alert Post
team, which played aggres-
sively and with a great deal
of poise.

which played a key role in
Post's 21-18 lead at inter-
mission.

In the third stanza, Post
utilized the size and quick-
ness of 6-6 center, Mike
Waldrip, a certain selection
for the All-South Plains
squad and all-state team
hopeful, who combined a
rarity of scoring, rebounding
and passing, to boot, to hold
a 41-29 advantage at the
buzzer.

Waldrip continued his
domination in the final sta-
ges of the contest, and
teamed with forward Jimmy
Dorland to record 21 4th
quarter points, which was
adequate enough for the win
over Floydada, which only
came up with 11 points in
the final frame.

BOX SCORE

Player	FG	FT	TP	Reb
Minnitt	7	0	14	5
Johnson	4	0	8	6
Carthel	2	3	7	5
Keele	1	0	2	9
Coleman	1	0	2	5
Westbrook	1	0	2	2
Emert	0	1	1	4
Ratheal	1	1	3	3
	17	4	40	39

What's Cooking

At
**FLOYDADA
SCHOOLS**

- DECEMBER 20-22, 1976**
- MONDAY 5-C**
- Vegetable Beef Soup with Crackers
- Peanut Butter & Cheese Sandwiches
- Carrot Sticks
- Wild Cherry Cake
- 1/2 pint milk
- TUESDAY**
- Pizza with Cheese
- Seasoned Pinto Beans
- Buttered Broccoli
- Peach Half with Cookies
- 1/2 pint milk
- WEDNESDAY**
- Char Burgers on Home Made Buns
- Tomato, Lettuce, & Dill Pickle
- Potato Chips
- Gingerbread with Apple-sauce
- 1/2 pint milk

SCHOOL DISMISSED FOR CHRISTMAS HOLIDAYS!!!

Floydada fell behind by six in the first period but used a pair of baskets by Ed Johnson and Mickey Minnitt to close the gap to 12-8 when the buzzer sounded.
The Whirlwinds enjoyed much more balanced scoring in the second period but still failed to contain the Antelopes' massive front line,

NEWS & REVIEWS First Baptist Church Media Center/Library

A special treat for the holidays for your children would be Dick Van Dyke's narration of THE MEANING OF CHRISTMAS: A STORYBOOK IN SOUND. This is a book with the cassette tape so that as you listen you may follow along in the book which has pictures and the words of the story. The name of the first play is "The Broken Lamp." It is an imaginary story but it's connected with true facts about those days before Jesus was born. It is about two young boys playing around the market stalls in Jerusalem who didn't realize that their actions would trigger Roman fears of a riot. These fears were connected with a certain Jewish hopes before the first Christmas.

The second play "Joy to the World" continues with the might have been boys of Bethlehem, David and Ahaz. What would it have been like to be in the town where Jesus was born on the first Christmas night? The story in Luke's Gospel pictures the excitement of some shepherds. Suppose you were in the family of one of the shepherds? The third and last of the stories about David and Ahaz is entitled "King of the World." Ahaz is filled with wonder about a particular sandal brought to his father's shop to be mended. The last story "Peter's Walk to Christmas" is true. The young man Peter, tells about an unforgettable event that happened in his childhood at Christmas time. Then, one thing was all-important in his mind. But he changed his thinking about what was really important that Christmas. As you listen, you may recall Christmases you have spent.

Amid the happy preparations for Christmas, many families are struggling with grief over the death of loved ones. Sometimes it helps to read of others who have walked this same path. C. S. Lewis wrote A GRIEF OBSERVED as "a defense against total collapse, a safety-valve," as he came to recognize the "bereavement is a universal and integral part of our experience of love." Other titles that are especially good are Eugenia Price's NO PAT ANSWERS and THE MOURNING SONG by Joyce Landorf. John Claypool's TRACKS OF A FELLOW STRUGGLER is one we have reviewed before and would remind you about.

Whirlettes Lose Second To Post

By Doug Simpson
The Floydada high school varsity Whirlettes remained in a difficult struggle for three quarters and were trailing by just three points with 7 minutes remaining but could not hold together and dropped their 8th decision of the frustrating season, this time to an impressive Post squad, by 68-44. It was the second loss to the Antelopes this year, as Floydada dropped a 58-55 decision for the championship of the Floydada tournament. The Whirlettes are 2-8 on the year.

The hosts grabbed the lead early by a taking advantage of turnovers and cold shooting to boast a 13-4 first quarter advantage. Tracey Puckett scored Floydada's only points with a bucket and pair of free throws.

Led by Jill Poague's explosive second quarter performance the Whirlettes erupted for 22 points but did little defensively to contain



The elephant shrew of Africa weighs just six ounces!



SPORTING EVENTS

School Holidays

Floydada and Floyd County Schools will dismiss Wednesday afternoon, December 22, at 2:30 for the Christmas, New Year's holidays. Schools will resume at the usual hour Monday, January 3rd.

Firewood

If you chopped your own supply of winter firewood, that stack of logs in the backyard may be worth a lot more than you realize. Like almost everything else today, the cost of firewood is going up, sometimes astronomically. Across the country, a standard cord of wood which cost an average of \$49.50 in 1972 is today about \$86. In some parts of the country that figure is much higher. A cord that sold for \$45 four years ago in New Orleans, for example, now costs \$150. Prices in New York City, Chicago and Los Angeles also have broken the \$100 mark. Prices have risen primarily because demand has escalated. Eighty percent of all newly-constructed homes costing over \$23,000, say building contractors, contain at least one fireplace. The U.S. consumption of firewood for fireplaces was estimated at 14 million cords in 1960, 16 million cords in 1970 and is forecast at 18 million cords by 1980. Although a price of \$50-\$90 per cord delivered is not exorbitant to pay, it is often difficult, if not impossible, for the consumer to know if he is, indeed, getting a cord for his money. A standard cord of wood equals 128 cubic feet in volume, or a stack 8' x 4' x 4'. Many dealers sell face cords, short cords, ricks, racks or pick-up loads—sometimes advertised simply as "cords" and priced accordingly. Another pitfall lies in buy-

COST OF FIREWOOD 1972 - 76	
Albuquerque, NM	72 76
Atlanta, GA	50 83
Boston, MA	- 79
Chicago, IL	- 160
Cincinnati, OH	- 70
Denver, CO	45 75
Detroit, MI	- 64
Houston, TX	45 90
Indianapolis, IN	- 77
Los Angeles, CA	45 125
Milwaukee, WI	- 65
New Haven, CT	- 73
New Orleans, LA	45 150
New York, NY	- 100
Philadelphia, PA	65 50-68
Richmond, VA	- 72
San Francisco, CA	- 83
Seattle, WA	50 60
St. Louis, MO	45 80

Shur-fine Holiday Special

- Shur-fine Beets Sliced Pickled 16 oz. Glass39
- Shur-fine Blackeyes Fresh Shelled 15 oz. Can.4/1.00
- Shur-fine Cake Mix Devil, Whl., Ylw. 18 1/2 oz. Box2/89
- Shur-fine Cheese Hifmn. Lh. Galby 10 oz. Pkg.89
- Shur-fine Coffee Drip Elec. Reg., VP. 16 oz. Can.1/79
- Shur-fine Coffee Creamer 16 oz. Jar.79
- Shur-fine Cream Cheese 8 oz. Pkg.2/89
- Shur-fine Crescent Rolls 8 oz. Can.2/69
- Shur-fine Flour Enriched 5 lb. Bag59
- Shur-fine Frosting Mix Choc., White 13 1/2 oz. Box2/1.00
- Shur-fine Fruit Cocktail 16 oz. Can.2/79
- Shur-fine Green Beans Whole 15 1/2 oz. Can.4/1.00
- Shur-fine Margarina Qtrs. 1 lb. Pkg.3/1.00
- Kraft Marshmallows Miniature 10 1/2 oz. Pkg.2/69
- Shur-fine Orange Juice Froz. Concentrate 12 oz. Can.2/79
- Shur-fine Pears Bartlett Halves 16 oz. Can.3/1.00
- Shur-fine Peas Early June Sweet 17 oz. Can.2/89
- Shur-fine Pickles Whole Sweet 16 oz. Can.2/89
- Johnston Pies Pumpkin or Mince 9" Dia.2/89
- Shur-fine Pineapple In Juice Cdn. Cn.2/89
- Shur-fine Salad Dressing 32 oz. Jar.2/89
- Shur-fine Salt Free Running lard 2 lb. Can.2/89
- Shur-fine Shortening All Vegetable 2 lb. Can.2/89
- Shur-fine Soup Cream Of Chicken 10 1/2 oz. Can.2/89
- Shur-fine Spinach 15 oz. Can.2/89
- Shur-fine Strawberries Froz. Halves 16 oz. Can.2/89
- Shur-fine Sugar Granulated 5 lb. Bag2/89
- Shur-fine Sweet Potatoes Whole 22 oz. Can.2/89
- Shur-fine Syrup Light Corn 22 oz. Can.2/89
- Shur-fine Tea Inst. 3 oz. Jar.2/89
- Shur-fine Topping Frozen Whipped 10 1/2 oz. Can.2/89
- Shur-fine Vegetable Oil 24 oz. Btl.2/89

From Our Family To Your Family Happy Holidays

THE ELECTRIC COMPANY

ELECTRICITY-IT DOES SO MUCH GOOD

FOR SO MANY PEOPLE

SHURFINE HAPPY HOLIDAY SALE PRICES GOOD DECEMBER 13, THRU 24, 1976

ITEM	PRICE
BUTTERMILK (CLOVERLAKE)	67¢
EGG NOG (CLOVERLAKE)	69¢
FRYER (COUNTRY PRIDE GRADE A)	49¢
COOKIES & DR PEPPER (6-32 OZ. BTL. CNT. PLUS DEPOSIT)	\$1.39
WHIPPING CREAM (CLOVERLAKE 1/2 PINT)	8 OZ.
MILK (shurfresh 8 OZ.)	3/59
SOUR CREAM (shurfresh 8 OZ.)	3/59
BEEF (SHURFRESH SLICED 3 OZ. PKG)	3/59
TURKEY (MIX OR MATCH)	3/59
HAM	3/59
CORNED BEEF	3/59
SAUSAGE (SHURFRESH PORK 2 LB)	\$1.58
CHICKEN BROTH (SHURFRESH PORK)	3/59
FRANKS (SHURFRESH MEAT OR BEEF 12 OZ. PKG)	59¢
SAUSAGE (SHURFRESH 1 LB)	3/59
BACON (SHURFRESH LB)	98¢
HAMS (SHURFRESH CANNED 5 LB)	\$7.59
BOLOGNA (SHURFRESH 1 LB)	3/59

L&J FOOD STORE
We Give Double S&H Green Stamps On Wed.
116 NORTH 2nd PHONE 983-1111

REAL ESTATE
MOBILE HOME
FOR TRADE: 14
BRICK HOUSE
LIVING ROOM, TV
ROOMS EXTRA LAR
211.
E. three bar
kney, 101 Gue
for paint, carpe
condition. Pri
\$2,000.00. ALC
on paved r
Lockney will s
taker insuranc
FOR THE PA
Lockney, 3 Bl
Rm., Dini
kitchen, cen
abundant built
full baths, stor
wide and db
corner lot, e
and choice l
Call Phyl
RALPH V. GI
RS. 504 Joliet
Phone 293
POM house, l
utility room
Bond Real Est
d. 983-2151 or 5
NICE two an
homes for sal
arranged. Call
at 983-3261.
LE house on
South of Aik
FARMS /
ACREAC
CRES Ranch r
rough countr
Randell King
at Lee St. 983-
12-191
E. good 1/2 se
County, 1-8' v
derground pip
ents. \$300 ac
hone 983-3982.
ALE. 906 ac
remainder
frontage on
y. Howe Hine
between Floy
If interested
4259 Parklan
5206. Pho. 214
nd 214-522-6930
TION, 8' wate
Also 1/2 sect
\$650.00 acre.
gency, N. 2nd
yada, 983-5028.
res near Loc
underground pip
to Holder.
SITUATIO
WANTED
DM FARMING
me. \$3.50 per
283-7968.
ED: Farm job
JOB WANTED
Floydada area
Christ

YOUR KEY to Buy, Sell or Trade Anything ARE THE CLASSIFIEDS

REAL ESTATE

50 office floor, paneled, day 983-3144 tfc

Lockney, partly fenced \$1,600.00 Call 12-19p

PROPERTY: Large two house with two bedrooms which approximately \$160.00 property needs some repair, but excellent opportunity to invest. Call Morgan in Plainview to L12-77c

MOBILE HOMES: TRADE: 14 x 65 improved lot, Lockney, St. Lockney, L12c

HOME and Lot: 1/2 acre, fully furnished, carpet, awning, only 1 block from school. Call 652-2188 after 5 p.m. L12c

bedrooms, 2 full bath, Houston, Lockney L12c

Mobile Home, 14x14 room, brick, 697-2742 Tfc

FOR SALE: utility room, 2nd floor, 983-2151 or tfc

HOUSE, utility room, 2nd floor, 983-2151 or tfc

Beautiful new brick home, 2 baths, large front porch, fireplace, garage, ready to live in. Call Don L12c

Brick house, two full baths, dining room, two fireplaces, extra large, 301 sq. ft. Call Don L12c

three bedroom house, single garage in front, carpeted, in excellent condition. Priced to sell. ALSO - Good investment. Call Don L12c

partially furnished, utility room, good condition. Call Don L12c

two and three bedrooms for sale, loans available. Call Hale L12c

house on 1/2 acre, south of Aiken. Call L12c

ARMY AND NAVY: Ranch north of Lockney in the beautiful King Agency, 1/2 mile St. 983-5028. 12-19 & 26 & 2c

1/2 section in country, 1.8" well, 1.6" ground pipe, no irrigation. \$300 acre, 29% interest. Call tfc

906 acres, 419 remainder pasture, Matador Hines place between Floydada and Fritch. Contact Sam Fortenberry, Mgr. 652-3305 tfc

8" water, \$900.00 1 1/2 sections, 10" 1.00 acre, Randall Park, N. 2nd and Lee St. 983-5028. T12-30c

near Lockney, 2" ground pipe, terms, Holder, Lubbock, 12-26p

SITUATIONS WANTED: FARMING: tandem 1350 per acre. 293-986. 12-19p

Farm job 983-2295, tfc

WANTED: Lockney area. Call 983-2122c

Christmas

BUSINESS SERVICES

PIANO TUNING, Edward C. Lain 25 years experience. Write Box 425 Silverton or call 823-2151. L12c

APPLIANCE and air conditioning service. John Van Hoose, Snack Shack building, Lockney, 8-5: 30, phone 652-3721. Early or late, phone 983-2758, Floydada, L12c

IF IT'S METAL, we can sharpen it. Scissors, saws, chain saws, knives. Carmack Feed & Seed, 983-3404. tfc

FARM MACHINERY: NORRELL TRACTOR PARTS for tractor and irrigation supplies and accessories. tfc

TREFLAN: Less than \$113.00 Producers Co-operative Elevator, Floydada. tfc

FOR SALE: Two 16-10 John Deere Wheat drills 2 years old, One Rosebud Cotton Ricker one year old, 8 1/2 x 20 wood cotton trailers, Coby chassis. Call Vernie Moore, 983-2006, tfc

FOR SALE: '73 John Deere, sei, propelled stripper, Lockney 652-3414. L12c

POST OAK Fireplace wood, \$85.00 cord. Pick up at Producers Co-op Elevator, Floydada, L12c

FOR YOUR portable disc rolling needs, call Lawson Bros., Welding and Equipment 983-3940, Floydada. tfc

WINTER SPECIAL 15% Discount on all aluminum pipe and accessories. Sale Ends December 31. Western Ag Sales 607 N. 2nd Floydada. 12-16, 12-26c

1974 CHEVROLET pick-up. Low mileage all power, automatic, also 16 ft. Hale gooseneck trailer. Days 983-2654 or 986-2814 from 5 til 10 p.m. 12-19p

WANT to sell push button Ford radio. Excellent condition, \$15. Phone 983-3982. tfc

ADAMS WELL SERVICE: Complete Irrigation Service, All Size Domestic Submersible Pumps In Stock, 1 Day Service On Submersibles. CALL 983-5003 DAY OR NIGHT FLOYDADA

BEEF CHOICE CUT & WRAPPED FOR YOUR FREEZER 79¢ LB. YOU CANNOT BUY BETTER BEEF AT ANY PRICE! GOOD - 75¢ LB. Lockney Meat Co. Sam Fortenberry, Mgr. 652-3305 L12c

Hollis R. Bond Real Estate: PHONE 983-2151 FLOYDADA 107 S. 5th

MUFFLERS: We specialize in Duals-Tailpipes-All Exhaust Systems Low overhead keeps our prices below the cities DON'S SMALL ENGINE SERVICE 983-2273 123 W California tfc

WANTED

WANTED TO BUY irrigated or dryland farm in Floyd or surrounding area. Write Box XRO, c/o Hesperian, Box 700, Floydada. tfc

WOULD LIKE TO RENT irrigated or dry land, Sandhill, Pleasant, Valley or Barwise area. Francis Montandon, 652-3112. L12c

SALES: GARAGE SALE: Saturday, December 18, 114 W. Tennessee 10 to 5 Furniture, Plant stands, lots of goodies. 12-16c

DONNIE JACKSON ELECTRIC: Wiring and repair. Residential and commercial. 652-3572. L12c

EMPLOYMENT: BABYSITTER wanted in my home from 2 to 6. Will pay \$2.00 hr. Transportation not necessary. Call 983-8108 after 5 p.m. tfc

INSURANCE SALES TRAINEE, no prior experience, will train with guarantee \$10,000 and up with excellent benefits. Lockney and Floydada area. Call 293-5485. 12-30c

ONE OF A KIND OR 13-year history has proven a KWIK KAR WASH to be one of the highest investment return businesses known. We provide financing, analysis, construction and site analysis. Call Mike Slevin collect (214) 243-3521. 12-23p

WANTED: Truck driver 983-2170 after 5:00 p.m. tfc

A NICE way to remember your friends and loved ones is with a Memorial Gift to the American Heart Association. A card will be sent to the family acknowledging your gift. Contact June Bybee, Memorial Chairman at Lockney 652-3355. L12c

WANTED TO RENT: Corn Stalks, Milo, and Wheat Pasture Call Betty Hise or Archie Flynn 293-1094 Bedford Bros., Cattle Co L12-19p

Just arrived complete new lines of American Indian Turquoise Jewelry on display at SEARS 100 So. Main Floydada

WE WANT YOU TO KNOW: We sell all kinds of Goodyear tires, tractor, auto, truck, a good tire, good service. Best deals in West Texas. Truck, winch and hauling service. BABE'S SERVICE CENTER, FLOYDADA. tfc

COW POKES By Ace Reid



"Now this part of the ranch will make a fine government subsidized recreation area!" THIS FEATURE SPONSORED BY AUTO, FIRE & FARM INSURANCE

Floydada Real Estate & Insurance Agency Jim Word --- Phone 983-2360

ANNOUNCEMENTS: BARGAIN ROOM: Betty's Place, open 10:00 close 6:00. Great saving on many items. tfc

WANTED: LITTLE AD FOR BIG RESULTS

A Special Gift Idea For Christmas Electro-Warmth Automatic Bed Warmer Double Bed Size \$26.95 See At Baker Store or Call Dimple McGavock 652-2552 - Lockney

FLOYD COUNTY ABSTRACT CO. Abstracts Of Title Title Insurance Verna L. Stewart Owner, Manager 217 W. California 983-3728 Floydada, Texas

THRASHER & CO. Redi-mix Concrete Sand & Gravel Excavation call us: 983-2170 229 E. California TFC

ALLIANCE STEEL BUILDINGS & MONARCH GRAIN SYSTEMS Contact Jerry Hill 806-874-3675 Collect Box 417, Clarendon, Tx. Turn-Key Installation Commercial & Farm Storage LT12-30C

Auto Accidents DO Happen... If one happens to you, be protected. Our car insurance offers coverage to meet your special needs - repairs to personal liability. BAKER Insurance Agency 127 W. Calif. Ph. 983-3270

ARTHUR B. DUNCAN ABSTRACT COMPANY Abstracts - Title Insurance Agents for Stewart Title Guaranty Company. TELEPHONE 983-3167 Office on South East Corner public square, Corner California and Wall, Floydada, Texas. "The Oldest Abstract Plant in Floyd County"

Diamond Industrial Supply Co., Inc. Phone Days 296-7118 Nights 296-1200 or 296-7828 1014 Broadway Plainview, Texas Chain Sprockets V-belts Sheaves SKF BCA Timken Bower Cotton Stripper Brushes & Bats U-joints Oil Seals O-rings Wisconsin

Ditching and Backhoe Service Storm Cellars, Basements, Slush Pits, Pit Cleaning, Sewer systems, Custom Trenching, Irrigation and Gas Line Repair, Water, Sewer and Gas Line Installation. Lockney Lumber & Supply JERRY WOFFORD South Main - Lockney Phone 652-3357 Night 652-2185 or 652-2418

FOR SALE

FOR SALE: Mec 650 Reloader and all equipment and accessories. 983-2908. tfc

FOR SALE: set of three Keystone drums and cymbals. Call 983-2772. 12-19c

USED appliances for sale. Sears, Floydada, 983-2862. tfc

REMEMBER your loved ones with a living memorial to the Caprock Hospital Auxiliary Memorial Fund, Mrs. Ben Whitaker, Treasurer. tfc

FOR SALE

FOR SALE: one voting membership in Floydada Country Club. Phone 983-3982. tfc

WE SELL new and rebuilt Kirby vacuum cleaners and parts Parker Furniture, Floydada. tfc

MATTRESSES. New or renovated. For appointment call City Trim Shop. 983-2332, Floydada. tfc

FOR SALE: 14 ft. Hale covered stock trailer. Like new. Staggs call table. 983-2851. 12-23p

Treflan Less Than \$112 Can Leather Gloves \$2.99 Insulated Gloves \$3.99 LEE'S FEED & SEED Roaring Springs

SLEEP WHILE YOUR WANT AD WORKS.....

FOR SALE: Several hundred feet of good used aluminum pipe, four and five inch for 30 cents a foot. Phone 983-3982. tfc

FOR SALE: New 4" green pump 250 ft. setting, all complete gearhead etc. Several joints irrigation pipe. Two porting scales, different sizes. Dorsey Baker 652-2363. L12c

FIREWOOD FOR SALE: Call Mary McCready, 652-3810. L12-19p

USED STUDENT'S DESK: wooden, seven drawers, \$25. Brand new blue escort luggage, 2 piece set \$40. Call 652-2309 after 5. L12-19p

LIVESTOCK: FOR SALE: gentle 7 year old Palomino mare. Saddle and bridle. Lockney 652-2468. 12-19p

PETS: TO GIVE AWAY in time for Christmas, half Australian heeler and half Australian shepherd pups. 12 miles east on Matador highway then 2 1/10 mile south. C. O. Woody. 12-19p

PETS FOR SALE: AFC tiny toy poodle puppies. Mother weighs only five pounds. 983-2170. tfc

FOR SALE: Three pure bred German Shepherd pups. Just in time for Christmas. Call 983-2144 or 983-5295 nights. tfc

LOST & FOUND: LOST: 6 month old male white American Eskimo dog. Louis Pyle 983-5358. tfc

REWARD: \$25 for lost male silver toy poodle. Answers to the name Tigger. Call 983-2170. tfc

BRING NEW LIFE TO YOUR CARPETING: Revive the original beauty of your rugs. Cleaned in your own home by Von Schrader dry-foam method. No muss. No fuss. No odor. Use the same day. All work guaranteed. Phone for estimate today. CALL 652-2500 LOCKNEY, TEXAS

LOCKNEY PRINTING: ALL TYPES COMMERCIAL PRINTING Phone 652-2184 WE APPRECIATE YOUR BUSINESS

lightweight ALUMINUM CANES & CRUTCHES: Sturdy Dependable Attractive Wide selection for every prescribed need Forearm and underarm crutches Adjustable telescopic canes Four legged canes Seat Canes BISHOP-RAMSEY PHARMACY 208 West Houston 983-3174 FLOYDADA

LEGAL NOTICES

LEGAL NOTICE: LOCKNEY ISD The Board of Trustees of the Lockney Independent School District is taking bids for a stack oven for the Elementary cafeteria. Sealed bids addressed to the Superintendent of Schools, Box 428, Lockney, Texas, 79241, will be received until 5:00 p.m. January 10, 1977. Bids sheets and specifications may be picked up at the superintendent's office at 6th and Willow in Lockney or by requesting them from the Superintendent of Schools, Lockney, Texas. This is a solicitation for bids and is not an offer. The school reserves the right to reject any and all bids and to waive formalities. Board of Trustees Lockney Independent School District L12-19, 12-16, 1-2 c

LEGAL NOTICE: NOTICE OF PUBLIC HEARINGS Under the Housing and Community Development Act of 1974, Federal Funds are available to the City of Lockney through the Department of Housing and Urban Development, for particular community development needs. Public hearings will be held at Lockney City Hall on December 28, and December 30, 1976, at 7 p.m. The hearings will be for the purpose of obtaining citizens views of particular community needs. Some eligible activities under this program include (1) sanitary sewers, (2) water lines, (3) park improvements, (4) street paving (5) drainage, (6) clearance of dilapidated structures and (7) rehabilitation of structures. The City of Lockney will be eligible for a grant minimum of \$50,000.00 to a maximum of \$250,000.00; however, all Preapplications for funding may not be approved by the Department of Housing and Urban Development. Citizens are encouraged to attend to express needs, preferences and priorities of eligible projects. The hearing is being held prior to submission of the Preapplication for Community Development Funds. Citizens participation is encouraged. Published this 19th day of December, 1976. Claude Brown Mayor L12-19c

Erma Lee Duckworth City Secretary

PRODUCTION WELDERS: Experienced Workers Only BENEFITS INCLUDE PAID VACATION, HOLIDAYS, GROUP LIFE INSURANCE, GROUP MEDICAL INSURANCE. THE TYE CO. Hwy. 70 East Lockney, Texas

MAGNETIC SIGNS. MADE TO ORDER LLOYD HARDY FLOYDADA, TEXAS 983-3774 After 5 983-5030

Heating Air Conditioning Installation TINO GOMEZ 501 S. Main Floydada Phone 983-5279

DR. O. R. MCINTOSH OPTOMETRIST 316 S. Main Telephone 983-3460 FLOYDADA, TEXAS

QUALITY SHAMROCK PRODUCTS Always Make A Good Deal On SONIC TIRES and SOUTHLAND BATTERIES Dial 652-3366 JACKSON TIRE COMPANY Richard Wiley

IF IT IS INSURANCE -- SEE -- Barker Insurance Agency LOCKNEY Life - Fire - Casualty - Hospital B. B. Wilkes, Real Estate LOCKNEY Farms - Ranches - City Properties Business Leases - Loans

MERRY CHRISTMAS



Double S&H Green Stamps
Mon. Thru

SHURFINE GRANULATED
SUGAR
589¢
LB. BAG



SHURFRESH GRADE A SELF-BASTING

Turkey 49¢
PREMIUM BRED, POP-UP TIMER, AND BROAD BREASTED 18-22 LB. AVG. LB.

- KAHN'S BONELESS FULLY COOKED
Ham Center Slices 1 LB. \$1.99
- EXTRA LEAN BONELESS
Beef Stew Cubes 1 LB. \$1.19
- TRAY GRANULATED BEEF BONELESS
Ribeye Steaks 1 LB. \$2.99
- SHURFRESH
Boneless Ham 5 LB. CAN. \$7.59
- SHURFRESH
Canned Ham 5 LB. CAN. \$1.49
- OSCAR MAYER
Sliced Bacon 1 LB. PKG. \$1.49
- OSCAR MAYER FRESH PORK
Link Sausage 1 LB. \$1.39
- OSCAR MAYER
Smokie Links 12 OZ. PKG. \$1.79
- OSCAR MAYER
Little Smokies 5 OZ. PKG. 79¢

- KAHN'S HICKORY GROVE BONELESS-WATER ADDED-HALF OR WHOLE
Fully Cooked Hams 1 LB. \$1.79
- SHURFRESH GRADE A 12-16 LB. AVG.
Young Hen Turkeys 1 LB. 59¢
- U.S.D.A. INSPECTED-4 TO 7 LB. AVG.
Plump Baking Hens 1 LB. 59¢
- U.S.D.A. CHOICE BEEF
Boneless Chuck Roast 1 LB. \$1.09

6 OZ. PKG.
PECAN
\$1.19

- THRIFTY HOLIDAY NEEDS**
- SHURFINE HALVES
Bartlett Pears 3 16 OZ. CANS \$1.00
 - SHURFINE FRUIT
Cocktail 2 16 OZ. CANS 79¢
 - SHURFINE CRUSHED CHUNKS/SLICES IN JUICE
Pineapple 2 15 1/4 OZ. CANS 89¢

- SWANSON
Chicken Broth 14 OZ. CAN 19¢
- SHURFINE LIGHT
Corn Syrup 32 OZ. BTL. 79¢
- SHURFINE WHOLE
Sweet Pickles 16 OZ. JAR 69¢
- KRAFT MINIATURE
Marshmallows 2 10 1/4 OZ. PKGS. 69¢

KLEENEX DINNER
Napkins
50 CT. BOX **39¢**

- FROZEN FOOD CASE BUYS**
- SHURFINE FROZEN
Orange Juice 2 12 OZ. CANS 79¢
 - SHURFINE FROZEN HALVES
Strawberries 10 OZ. CTN. 39¢
 - SHURFINE FROZEN WHIPPED
Topping 2 10 OZ. TUBS \$1.00
 - PET RITZ DEEP DISH
Pie Shells 2 CT. CTN. 49¢

KRAFT MARSHMALLOW
CREME
7 OZ. JAR **39¢**

- BOND
Stuffing Mix 8 OZ. PKG. 43¢
- KLEENEX
Facial Tissue 280 CT. BOX 69¢
- LIBBY
Pumpkin 3 303 CANS \$1.00
- GOLD MEDAL
Enriched Flour 5 LB. BAG 69¢
- HI-VI BEEF CHUNK
Dog Food 2 14 OZ. CANS 49¢
- CARNATION INDIVIDUAL ENV. SERVINGS
Hot Coco Mix 3 PKG. 25¢
- SNOW FLAKE
Coral Bay Coconut 14 OZ. PKG. 79¢
- KRAFT
Mayonnaise 32 OZ. JAR 99¢

BAKER'S CHOCOLATE FLAVOR BAKING
CHIPS
12 OZ. PKG. **59¢**

PURE VEGETABLE SHORTENING
CRISCO
3 LB. CAN **\$1.49**

- HOLIDAY DAIRY DELIGHTS**
- Cool Whip 9 oz. 59¢
 - SHURFRESH
Sour Cream 8 OZ. CTN. 39¢
 - SHURFRESH
Egg Nog Mix QUART CTN. 69¢
 - PHILADELPHIA
Cream Cheese 8 OZ. PKG. 49¢
 - SHURFRESH QUARTERS
Margarine 3 1 LB. CTNS. \$1.00
 - SHURFRESH
Crescent Rolls 2 8 OZ. CANS 69¢
 - SHURFRESH HALFMOON LONGHORN
Colby Cheese 10 OZ. PKG. 89¢
 - SHURFRESH SWEET -IN QUARTERS
Cream Butter 1 LB. PKG. 99¢
 - KRAFT-ASSTD.
Squeeze-A-Snack 6 OZ. TUBE 69¢

THRIFTWAY GIFT CERTIFICATES
GIVE FOOD THIS CHRISTMAS-Let your Thriftway grocer assist you in making those 'Last Minute' gift suggestions. Why not purchase a Gift Certificate, in any denomination, from your Thriftway Grocer? This is a welcomed gift for the entire family!!!

IMPERIAL POWDERED OR STA-SOFT BROWN
SUGAR
2 LB. POLY BAGS **69¢**

EAGLE BRAND
MILK
15 OZ. CAN **59¢**

LINDSAY MEDIUM PITTED RIPE
Olives
300 CAN **49¢**

- SHURFINE WHOLE
Sweet Potatoes 2 23 OZ. CANS \$1.00
- TENDER CRUST ROLLS
BROWN'N SERVE 3 12 CT. PKGS. \$1.00

32 oz. 6 Btl. Ctn
7-UP COKE OR DR PEPPER
Plus Deposit **\$1.39**

COMPLETE SELECTION OF FRUITS AND NUTS FOR YOUR HOLIDAY NEEDS

- CALIFORNIA SUNRIST
Navel Oranges 1 LB. 29¢
- OCEAN SPRAY
Cranberries 1 LB. CELLO BAG 39¢
- CALIFORNIA
Large Avocados EACH 19¢
- CALIFORNIA
Colory Hearts 49¢
- SWEET
Golden Yams 25¢
- CALIFORNIA EXTRA
Large Walnuts 69¢

SYLVANIA TYPE X
Magicube
30 CT. BTL.

Vitalis LIQUID WITH V7
6 OZ. FOR 4 OZ. PRICE

FOR UPSET STOMACH
ALKA SELTZER 8 CT. BTL.

HAIR SPRAY
MISS BRECK 11 OZ. CAN

10 CUP COFFEE BREWER
MR. COFFEE EACH \$2.00
CARDED C110-12 OR C126-12 FOR PRINTS
Kodacolor Film

KEEBLER
Vanilla Waters
SCHILLING PURE
Vanilla Extract
HOLSUM THROWN STUFFED
Manz. Olives
SHURFINE HEAVY DUTY
Aluminum Foil

MARYLAND CLUB
Coffee 1 LB. CAN \$1.00

APPLES
WASHINGTON WINESAP
LB. 29¢

CALIFORNIA ZIPPER SKIN
Tangerines LB. 29¢

PAGES THRIFTWAY

OPEN 8 AM --- 5 PM