

Farm Chemical Program Tuesday At Lone Star

All interested persons are invited to a program on agricultural chemicals and oils at 8 p.m. Tuesday night in the Lone Star School building, Lovvern Oil Com-

pany of Claytonville and Graves Welding Shop of Lone Star will sponsor a slide show about new chemical products. Refreshments will be served.

FLOYD DATA

Visiting during the weekend with Mrs. W. F. Daniel were daughters and their husbands, Mr. and Mrs. Jack Cruell of Lubbock and Mr. and Mrs. Murry Stewart of Levelland.

FLOYD DATA

Johnnie Collins, Floydada Implement dealer, is reported about the same in Lubbock Methodist Hospital where he is receiving medical care.

Burleson Announces Summer Job Examination

WASHINGTON, D.C.—Congressman Omar Burleson (D-Tex.) said today that the Civil Service Commission is now receiving application for the 1977 competitive examination for summer employment with the United States Government. The examination, which includes a written test, applies to most Federal summer jobs in clerical and administrative positions, as well as in engineering and the physical and biological sciences, GS-1 through GS-4. The Congressman urges

applicants to file early to receive maximum consideration for employment because opportunities for summer employment are extremely limited.

Tests are scheduled locally by CSC area offices. Applicants who file with an area office by December 9 will be tested in January. Those who file by January 13 will be tested in February. Any applications postmarked after January 13 will not be accepted.

Notification of when and where to report for the

written test will be given about two weeks in advance.

Those candidates who took the test and qualified for summer employment in 1976 may renew their eligibility without taking the written test again by submitting an updating form by January.

Complete instructions for filing for the written test and for renewing eligibility, along with all necessary forms, are included in the CSC announcement No. 414, Summer Jobs in Federal Agencies, which may be

obtained upon request through Congressman Burleson's Washington office, 2369 Rayburn House Office Building, Washington, D. C. 20515, or from Federal Job Information Centers, most college placement offices, or from the Civil Service Commission, Washington, D. C. 20415. The nearest Job Information Center is listed in most local telephone directories under "U.S. Government," or the toll-free distance telephone number in Texas can be obtained by calling 800-555-1212.

The U.S. Postal Service is not participating in the 1977 summer employment program. Inquiries regarding

summer employment in the Postal Service should be directed to the post office where employment is desired.

FLOYD DATA

Mrs. Fred Gross continues to improve in Lubbock Methodist Hospital where she underwent foot surgery recently. She is expected to return home next week.

**FREE TURKEYS!
SEE PAGE 2**

BUDDY'S FOOD

Buddy Widener, Owner-Forrest Shannon, Mgr.
in Floydada, 220 South Second



NEW STORE HOURS
Monday - Friday 8 a.m. - 7 p.m.
Saturday 8 a.m. - 8 p.m.
Sunday 9 a.m. - 7 p.m.



THESE VALUES GOOD SUNDAY, NOVEMBER 14 THROUGH SATURDAY, NOVEMBER 20

We Reserve The Right To Limit Quantities



SWIFTS 24 OZ. \$1.09 VALUE

BEEF STEW
2/99¢



QUALITY CHECK
1/2 GALLON SQUARE
CTN \$1.39 VALUE

ICE CREAM
99¢

10 COUNT OVALTINE \$1.29 VALUE

HOT COCOA MIX
69¢



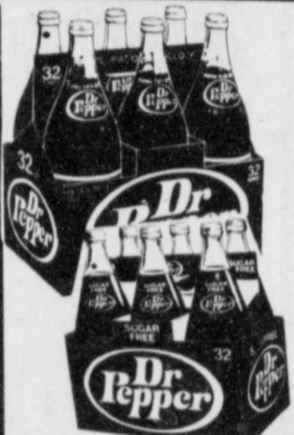
1 LB NABISCO 69¢ VALUE

CRACKERS
57¢



DIET OR REG 32 OZ. 6 PAK

DR PEPPER
\$1.39



PLUS DEPOSIT

SWIFTS NO BEANS
15 OZ.

CHILI
3/\$1.00



3 1/2 OZ. ADOLPH'S 75¢ VALUE

MEAT TENDERIZER
2/89¢

5 OZ. GILLIANS SUGAR STICK 59¢ VALUE

CANDY 2/79¢

KRAFT 7 OZ. 57¢ VALUE
MARSHALLOW

CREME 2/79¢

3 OZ. WHITE SWAN \$1.49 VALUE

INSTANT TEA 1.09



ASSORTED
TONY'S PIZZA
\$1.19

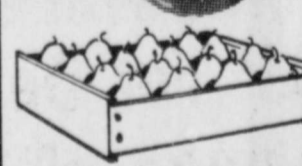
COLO FANCY RED ROME

APPLES 4 LBS/\$1.00



WASH ST D'ANJOU

PEARS 4 LBS/\$1.00



CALIF SNO WHITE HEADS EACH

CAULIFLOWER 59¢



1 LB BAG CALIF

CARROTS 5/\$1.00



12 OZ DECKERS

BACON 99¢



LEAN PORK
STEAK

LB 89¢

USDA RANCH

STEAK LB 89¢

12 OZ. WILSON BEEF

FRANKS 59¢



USDA SIRLOIN

STEAK

LB \$1.19

SLICED PICNIC

LB 69¢

USDA CHUCK



ROAST

LB 79¢

CENTER CUT

HAM SLICES

LB \$1.39

SMOKED

TURKEY HAM

LB \$1.89

COUNTRY STYLE

SPARE RIBS

LB 99¢

BATH SIZE 45¢ VALUE

DOVE SOAP



3/\$1.00

32 OZ. LIQUID \$1.49 VALUE



WISK \$1.09

11 LB PARKAY SOFT 79¢ VALUE

MARGARINE 67¢



5 OZ. SWIFTS 44¢ VALUE

VIENNA SAUSAGE 4/\$1.00



9 OZ. TWIN PAK \$1.09 VALUE

POTATO CHIPS
79¢



3 OZ. SWIFTS 25¢ VALUE

POTTED MEAT



6/\$1.00

CARNATION \$1.09 VALUE

INSTANT BREAKFAST
79¢



GIANT BOX

FAB

WITH COUPON 99¢

\$1.29 WITHOUT COUPON

GOOD AT BUDDYS EXPIRES 11-20-76

FRISKIES SAUCE OR CUBES

DOG FOOD



25 LB BAG \$3.99

WITH COUPON

\$4.99 WITHOUT COUPON

GOOD AT BUDDYS EXPIRES 11-20-76

GOLD MEDAL 5 LB BAG

FLOUR



WITH COUPON 59¢

79¢ WITHOUT COUPON

GOOD AT BUDDYS EXPIRES 11-20-76

Society

Mrs. Sherman Gives Program

El Progreso Study Club met in the home of Juanita Jenkins Wednesday afternoon. Bobbie Kellison presided over the session. Members drew name for gift exchange at the Christmas Luncheon in the home of Laverna Sams in December. Elsie Sherman presented a paper on "Art, a hidden talent" and displayed a number of her paintings. Mrs. Sherman is an outstanding local artist. Dainty refreshments were served by the hostess Mrs. Jenkins to the following members:

Hazel Johnson, Arla Copeland, Fay Ferguson, Alice Mitchell, Bobbie Kellison, Ethel Mitchell, Laverna Sams, Dimon Schacht, Pauline Sams, Fay Holmes, Jeanette Marr and the guest speaker Elsie Sherman. The meeting adjourned after reciting the "Club Womans Creed."

FLOYD DATA

Mrs. Gene M. Collins, who entered Lubbock Methodist Hospital last Monday, seemed somewhat improved Friday, according to Floydada friends who visited Mrs. Collins and also her son, Johnnie. Mrs. Collins is suffering a heart condition and circulatory problem, and her son Johnnie recently underwent surgery. Johnnie was able to walk the short distance to his mother's room Friday for a brief visit, friends said. Mrs. Collins is in Room 704.

FLOYD DATA

Cager Carmack continues to receive medical attention and tests in Lubbock Methodist Hospital. A son, Billy Carmack of Dalhart, visited his father and his mother at the hospital last weekend.

FREE TURKEYS!
SEE PAGE 2

Sears
Authorized CATALOG SALES MERCHANT

..where America Shops

See SANTA in person

6 P.M. to 9 P.M.
Wednesday • Thursday
NOVEMBER 17, 18th



SANTA NIGHTS
GIFT CERTIFICATE
FREE Sears GIFT

Good only Nov. 17-18, 1976
with purchase of \$25 or more at
your participating Catalog Sales
Merchant or Agency

Satisfaction Guaranteed or Your Money Back

Now Open
All Day Saturday

Sears
Authorized CATALOG SALES MERCHANT

100 S. Main
983-2862

Senior Citizens' Luncheon Thursday

FLOYD DATA
Mr. and Mrs. Jack Cruell of Lubbock, accompanied by her mother, Mrs. W. F. Daniel visited in Eules recently with the Cruell's daughter and husband, Mr. and Mrs. Gayland Arrant. From Eules the three went to Temple to visit the Homer Daniels, the Raymond Daniels and the Wayne Beasleys as well as other relatives. They were joined in Temple by Mr. and Mrs. W. R. Daniel also of Floydada.

The regular Quarterly Senior Citizens luncheon will be at the First Baptist Church, Lockney Thursday November 18. Please bring a covered dish. All senior citizens are invited.



HEIDI (played by Susan Blumert) with her grandfather (played by Edwin Child) depicts a scene from the touring company of the National Children's Theatre Association production of HEIDI. The legend, written by Johanna Spyri and dramatized by Marian DePew Ostrander, will be presented under the sponsorship of Il Penseroso Jr. Study Club and can be seen at 9:30 a.m. and 1:30 p.m. on Friday November 19 in the Lockney Elementary School cafeteria.

The chemical that gives the skunk its odor is called ethanethiol, so pungent that less than one ten-trillionth of an ounce can be detected by the human nose.



Of the almost four billion people in the world today, approximately a third eat with a knife and fork, a third with chopsticks and a third with their fingers.

FLOYD DATA

E. L. Cornelius returned home Sunday from three weeks visit in Bartlesville, Okla., with his son and wife, Mr. and Mrs. Don Cornelius.

Hobby Club Has Covered Dish Luncheon

Members of the Sandhill Hobby Club held a covered dish luncheon meeting Wednesday in Fellowship Hall of the First United Methodist Church. This was the club's regular monthly session.

Kathy Burk, home economist at Lighthouse Electric, gave an informative program on Christmas decorations for packages and also gave other Christmas ideas.

Attending the meeting were Mmes. Turner Hunter, Walter Hollums, R. B. Hatley, Weldon Smith, R. L. Bullock, W. W. Trapp, J. W. Becker, B. A. Robertson, W. G. Kinard, Arlon Miller, J. T. Huckabay, Gene Bloys and guests. Kathy Burk, Mrs. George L. Smith and Mrs. Alma Dunn.

AMERICA The Bountiful

In the U.S. today, according to the Department of Agriculture, the average American can rely on getting about 114 milligrams of vitamin C a day from food—13 more than in 1965.

'Heidi' To Be Presented In Lockney Friday

The Il Penseroso Jr. Study Club will present the famous story of HEIDI at 9:30 a.m. and 1:30 p.m. on November 19 in the Lockney Elementary School Cafeteria. Dramatized by Marian DePew Ostrander from the unabridged edition of the Johanna Spyri book written in 1881, all the characters of HEIDI will be portrayed by a cast of five professional adult actors of the original company of the National Children's Theatre Association of Dallas and New York. The play will be performed before beautifully painted backdrops of the Alp Mountains with authentic Swiss costumes and music.

As the play begins, Heidi is seen rushing ahead of her aunt who slowly climbs the mountain on the way to Grandfather's hut. She is astonished to see a young shepherd boy, who attends Grandfather's sheep, in an angry mood talking furiously as he pretends to fight an invisible person. Speaking to him, Heidi finds out his name is Peter and before Aunt Dada catches up, they immediately become friends. Arriving at the Grandfather's hut, Aunt Dada tells him that Heidi is to live with him from now on because she has

NEWS 'N' NOTES

(by Sharon Hillis)

The "merry berry" has arrived for the holidays—the bright and bouncy cranberry. This fruit can be found all year around in various forms, but the major part of the fresh crop come to market during November and December.

"Now is definitely the time for consumers to buy fresh cranberries. Some consumer buying tips will help in getting the best berries for the money.

Select berries that are firm, plump and fresh, with a high luster. The cranberries will differ in size, shape and color, according to variety, but each has a delicious flavor.

Remember that fresh berries are bouncing berries—high quality cranberries will bounce several times when dropped. Avoid berries that are dull in appearance, shriveled and/or soft.

Refrigerate cranberries in their original package until needed. Cranberries usually keep well in the refrigerator for a couple of weeks. If you plan to keep them long, pop them into the freezer.

Cranberries are one of the easiest foods to freeze. If the original bag is unbroken, simply put the berries, sealed in the bag, into the freezer. When you are ready to use them, there's no need

for thawing. The berries will separate easily and they are ready to be made into a delightful side dish, relish, salad or dessert.

The cranberry adds its special taste to meals in dozens of ways. Use it fresh as a garnish on the meat platter, or add a few berries to a fruit salad to give a colorful flavor twist to it all. Grind cranberries for many more uses. Try adding half a cup of them to cake batter, bread or muffin mix.

Cranberry sauce is delicious hot or cold. For breakfast, try it warm over pancakes or waffles. For lunch of dinner, use it as a side garnish, sauce or even as a basting sauce for turkey. Add it to ice cream, pudding or creamy cheese cake for dessert.

Club Observes 20th Birthday

Members of the 1956 Junior Study Club observed their 20th anniversary Tuesday night with a birthday social meeting held in the community room of the First National Bank. Special recognition was given to past club presidents and ex-members which included charter president, Mrs. Travis Jones.

Mrs. Gordon Hambricht, 1976-77 club president, gave the welcome followed with the invocation given by Mrs.

FLOYD DATA
Dorris and Watson Jones, accompanied by their brother, Dalton of Lubbock were in Hamilton Saturday for the funeral of an aunt, Mrs. O.R. Williams.

SAFE PRACTICES

1. Make a home escape plan, decide on primary and secondary exits from each room in the house.
2. Practice your home escape plan often, especially if you have children.
3. Install a smoke detector. It can give you vital extra minutes in case of fire.

4. If clothing catches fire, stop, drop to the floor or ground and DON'T RUN.
5. If a room is filled with smoke, crawl along the floor with a wet cloth over nose and mouth if possible.

THE TIME to fight a fire in your home is before it starts—with smart fire safety practices.

solve the great mystery of a ghost in the house. On a dark and scary night the mystery is solved with much excitement. Grandmother finds Heidi so ill and homesick, she at once sends her back to live with her Grandfather in the mountains.

Heidi is happy to be back in the mountains with her Grandfather, Peter, and the goats, but she misses Klara very much. One day a letter arrives from Klara saying that she is coming for a visit. When Klara arrives, she is still unable to walk, but with the help of Grandfather, she is wheeled about in her chair. The children have great fun during the long beautiful summer days on the mountain. The fresh mountain air and the sunshine help Klara regain her health and to the amazement and delight of all her friends, she learns to walk again.

Tickets are 25 cents and will be on sale at the door.

GO INSURANCE

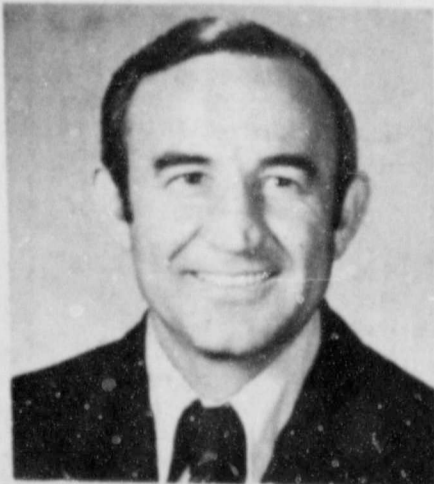
Temporary protection against travel hazards wherever you or your family go. Coverage against accidental death or bodily injury and loss of personal possessions. Come in and see me about State Farm "GO" Insurance before you go. Anywhere.

Britt Gregory
112 W. Mo.
Call Collect
983-3125

Like a good neighbor, State Farm is there.
STATE FARM FIRE AND CASUALTY COMPANY
HOME OFFICE: BLOOMINGTON, ILLINOIS

For A Spiritual REVIVAL You Are Encouraged To Hear

MONDAY Through
WEDNESDAY
Services At
7:30 a.m. and 7:30 p.m.



SUNDAY SERVICES
Bible Study - 9:30 a.m.
Worship - 10:30 a.m.
6:00 p.m.

Brother Ian A. Fair

In A Series Of Gospel Meetings
Theme: "REVIVING THE CHURCH"

November 14-17

CITY PARK
Church Of Christ
FLOYDADA, TEXAS

Bud Rainey, Members had the club collect and named ed roll call with "If I were 20 again, I would..."
Departmental reports were given and special presentation on giving club reports was presented by Mrs. Edward Smith.

Thank you notes were read from Mrs. Jack Allen, Robin Roberts and L.L.A. Study Club in Silverton. A letter of resignation was received from Mrs. Brenda Jones who has moved to Amarillo.

During other business club voted to sponsor two girls from Gristown, USA appointed Mrs. Tommy Faris chairman for Santa Land a booth at the Lions Club Bazaar in December. Each member is to donate an item for the booth with a value of at least \$5.

Mrs. James McNeil introduced guest speaker, Mrs. Jimmy Willson, who reviewed the book, "Upstairs At The White House." Auction items were brought by Mrs. Choise Smith, Mrs. Billy Don Colston, Mrs. Jerry Neeley and Mrs. Frank Barrow.



Would you Vote to Church then don't cast an "Absentee Attendance" is perhaps the most four vows a Methodist takes when person doesn't keep the attendance likely keep any of them. A member won't likely pray for the services, nor make a pledge to the church. We make exceptions to this.

Church attendance can be at Regular - Irregular - Seldom - Never

SUNDAY: 9:45 a.m. Sunday School
11:00 a.m. Worship
Broadcast
7:00 p.m. Worship
* Nursery Care
TUESDAY: 9:00 - 4:00 Music
Out Nursery Care
school children
Call 983-3707 for more information.

Pre-kindergarten for 3 and 4 on Monday-Wednesday-Friday
Call 983-3707 for more information.
First United Methodist
Floydada, Texas

We'll Send you're in
Thanks to the
Back

With the FTD
Thanksgiving Bouquet

Say "Happy Thanksgiving" to your loved ones with this beautiful bouquet of harvest flowers in a woven basket. Or if you like, choose one of our many other arrangements.

SCHACHT
Flowers, Jewelry

"Our Pleasure Is To Serve"
112 W. Poplar LOCKNEY, TEXAS



DESKS 159.00 UP

THE BEACH
IN LOCKNEY

THE HESPERIAN
IN FLOYDADA

We invite celebrate o

chosen by the Cooperative Extension Service.

Texas Teens Win 4-H Honors, 4-H Alumni Honored



Berry
Three Texas young people have been named state and sectional 4-H award winners in their 1976 club projects by the Cooperative Extension Service.

Miss Groce
Kenneth Berry, 17, of Lubbock, took top state honors for his safety project and will be among some 30 Texas youths at the 55th National 4-H Congress in Chicago Nov. 28-Dec. 2.

Miss Fortenberry
Joy Groce, 18, of Petersburg, won girls' honors in the public speaking program and received a \$50 U.S. Savings Bond from Union Oil Company of California.

Broseh
Marcia Fortenberry, 19, of Lockney, received a \$50 U.S. Savings Bond as state winner in the veterinary science program. She will attend Congress as one of 24 sectional winners in the program. Both awards are donated by The Upjohn Company.

Miss Fortenberry, daughter of Mr. and Mrs. Eddie Fortenberry of Floyd County, is a sophomore at West Texas State University

and a 10-year 4-H'er. An award winner in veterinary science, she plans a career in veterinary medicine.

In 1975 Miss Fortenberry received a blue ribbon rating and placed first with her veterinary science record book in the county and was a county medal winner in veterinary science.



By Jack House, The Director Teacher's Scotch Information Centre

The Canny Man
One of the world's great writers on economics was, naturally, a Scotsman. If you belong to a canny race like the Scots, you know all about economy.

He was Adam Smith, born in the town of Kirkcaldy in the county of Fife 200 years ago. He wrote a book called "The Wealth of Nations," which has been translated into almost every language in the world.

BASEBALL QUIZ

CONTINUED FROM PAGE 2

7. In the Bible there are many famous pairs. Score a single by linking the correct name to the following: a. Adam; b. Esau; c. Samson; d. Cain; e. Naomi.

8. Match the following Apostles with the trait of character generally associated with each (worth a triple): **Names:** Thomas, Peter, Matthew, Judas and John. **Traits:** a. philosopher; b. scientist; c. renegade; d. accountant; e. impulsive.

9. Try to match the characters below with the books of the Bible where they are described - score a home run for each correct answer. **People:** Samson, Noah, Solomon, Mary and Paul. **Books:** a. Genesis; b. Acts; c. Judges; d. Kings; e. Luke.

Game's over. Total the number of bases you earned against a possible 100 and figure your Bible batting average.

Commissioner Kuhn, in releasing the Bible quiz, urged clubs and organizations and youth groups to utilize the game during the Bible Week by choosing up sides, dividing the questions between opposing teams and letting a pitcher deliver one question per batter. Players advance around the bases as hits are made. Three outs (incorrect answers) and the next team comes to bat.

National Bible Week is sponsored by the Laymen's National Bible Committee, an organization of lay men and women of all faiths with headquarters in New York. Its executive director, John F. Fisler, said that "Bowie Kuhn's Bible Baseball Quiz" was patterned after the Bible Baseball which was once played extensively by youth groups, notably Christian Endeavor clubs. Questions for the this special newspaper feature were provided by Dr. George W. Crane, author of the booklet, "How to Stimulate Bible Reading" and syndicated columnist of "The Worry Clinic."

Copies of the quiz may be ordered from the Laymen's National Bible Committee, 815 Second Avenue, New York, N.Y. 10017.

BIBLE BASEBALL ANSWERS: 1. (c) and (e). 2. (c) (e) (b) (a) and (d). 3. (e) (d) (b) (c) and (a). 4. (c) (a) (d) (b) and (e). 5. Matthew, Mark, Luke, John and Acts. 6. (e) (d) (c) (a) and (b). 7. Adam and Eve, Esau and Jacob, Samson and Delilah, Cain and Abel, Naomi and Ruth. 8. (b) (e) (d) (c) and (a). 9. (c) (a) (d) (e) and (b).

EDITOR'S: Please print answers upside down.)

THE FLOYD COUNTY HESPERIAN

Published each Sunday and Thursday at 111 E. Mo. St., Floydada, Texas 79235. Second class postage paid at Floydada, Texas 79235. Wendell Tooley, editor. Subscription rates: Local \$8.50 a year, out of trade area: \$9.50.

Mrs. Burris

Services for Mrs. E. L. (Bessie) Burris, 74, were held Tuesday in Emmanuel Baptist Church in Brownfield. Burial was in Terry County Memorial Cemetery. Mrs. Burris died early last Sunday in Brownfield Nursing Home, following a lengthy illness.

GREEN AND GOLD RELISH

- 1 1/2 cups cooked rice
 - 1 cup drained crushed pineapple
 - 1 cup shredded raw carrots
 - 1/2 cup chopped green pepper
 - 1/4 cup sugar
 - 2 teaspoons grated lemon peel
 - 2 tablespoons lemon juice
- Combine all ingredients and mix well. Cover and chill about 2 hours. Use as an accompaniment or salad. Makes 8 servings.
- Think rice this holiday season and you'll be taking a delicious road to economy and nutrition.



THE FASHION in faces is the fresh, clean look.

SHOP SCHACHT

Watches, Jewelry & Gifts

LOCKNEY 652-2385

YOU ARE INVITED

Christmas Open House November 28

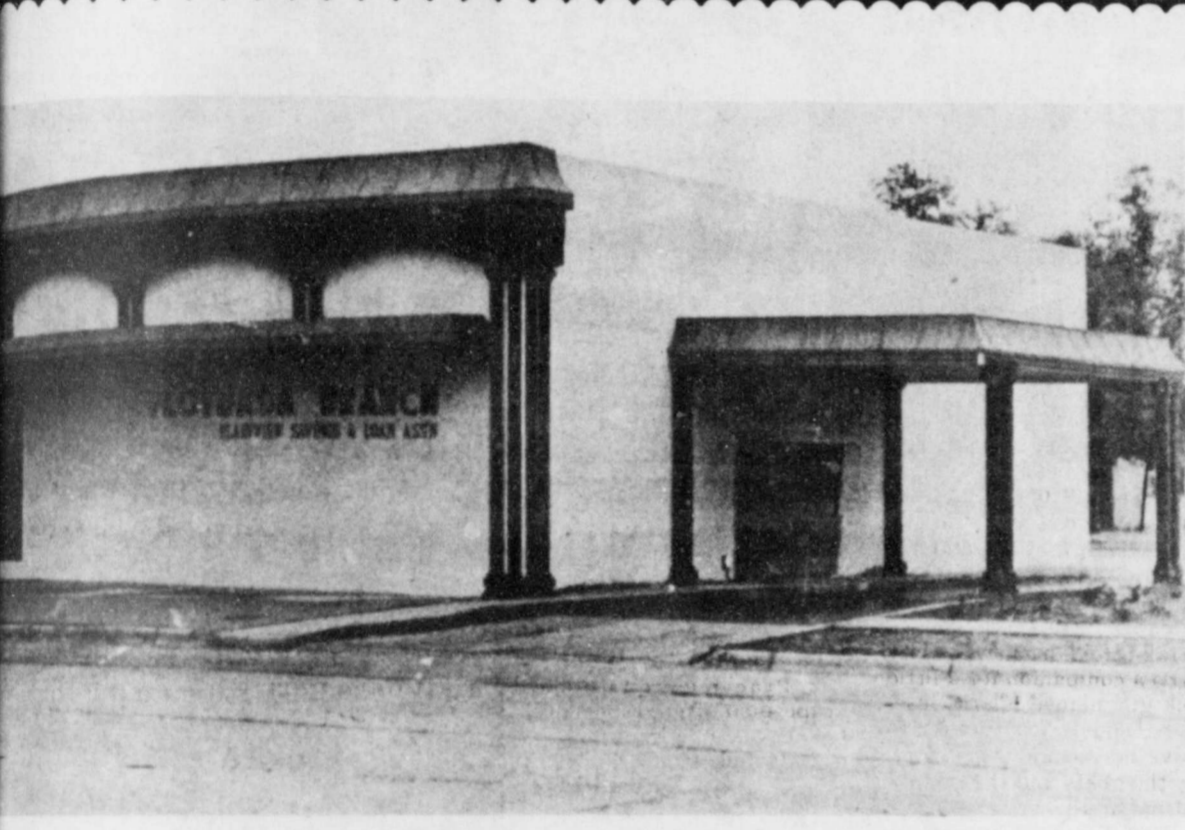
Business, and Decorations Gifts Home and Every- Of The Family.

Complete Flower Service.

Make Us To Serve You"



YOUR EXTRA TOUCH FLORES!



You're invited to attend...

OUR 3rd ANNIVERSARY CELEBRATION

Friday, November 19th
Hours 9 a.m. - 5 p.m.

We invite you to come in during our business hours Friday and help us celebrate our 3rd Anniversary in Floydada, Refreshments will be served and we look forward to visiting with everyone.

PLEASE REGISTER FOR FREE Pace C. B. Radio & AM/FM Digital Radio

Floydada Branch

Plainview SAVINGS & LOAN Association

217 W. CALIFORNIA FLOYDADA, TEXAS



Over 39 Years In Business Organized January 1, 1936
"Where You Save Does Make A Difference"



Waylene Mankins



Assiter

PRE-Thanksgiving SALE

Terrific Buys

30% Reduction On

COATS—

Sport & Dress Models
Jr & Misses Sizes 4-20

Excellent Selection

DRESSES —

Long & Street, Jr & Misses
Sizes 4-24 1/2

SPORTSWEAR —

Sizes 6-20 & Custom Sizes To 44

Christian Dior
Panty Hose
1/2 Price

See Our Beautiful
FUR COATS
Direct From Factory—
Best Quality—
Best Prices
Shop Early For Xmas!

Dorothy's Ladies Apparel

Gabriel-Wayland Shopping Center
Plainview, Texas



In 1925 it was possible to buy an automobile for as little as \$260!

FREE TURKEYS! SEE PAGE 2

SPECIAL EAR PIERCING

\$8.95

Barbara's Beauty Shop
652-3778
LONE STAR



The Preacher Lived The Bible

When a single bolt of lightning killed the four daughters of the Sunday School superintendent in the small Carolina town where I was growing up, it was more than a tragedy. It was a challenge to my father, as the town preacher, to hold steady the faith of people who saw that deadly flash as a sign from heaven.

I had grown accustomed to hearing my father read the Bible aloud each morning in the Greek and Hebrew as well as English because he loved language almost as much as he loved the Bible itself, and he searched diligently for every nuance in God's Word.

So now he went to his knees for hours to pray his

way out, and from his study through the night came his tormented voice, reading the Bible aloud - for solace, for guidance, for faith.

It was hard to fall back this time on God's will as an explanation for the terrors of fate.

But when he rose to preach the funeral over the bodies of those four girls he read from the Bible of a tender God of mercy. Now he was serene, and the faith he had drawn from the Bible brought hope to a town staggered by a bolt of lightning.

He abhorred those who preached of hellfire and damnation, and he wrote a book that interpreted God as the forgiving God of the

New Testament and rejected the angry Jehovah of Old Testament lore.

In those years in the rural South it was not always wise to set aside any passage of the Bible as less than the final word. But my father lived actively to within a month of 101 years and his Bible was always beside him as an ally and as the source of his strength.

What else sustained him for decades in these small towns? What gave him the drive, in the near oblivion of backwater Carolina, to hold fast? Here was a scholar who walked or rode his bicycle through the rain to visit the sick and dying, who struggled against poverty through out his life and yet main-

tained a dignity that was as unyielding as his concern for his fellow man. How did he do it?

It was his knowledge, we heard at his funeral, that relations with other persons are the stuff of life and that in small communities, with their common interests and shared responsibilities, social tissue and vitality are being restored.

He believed that no matter how small the scope of his influence, even when it seemed hopeless to affect the forces that determine the fate of mankind, he must live true to the Bible's teaching and leave the rest to God.

It is a faith rarely found, and yet it seems to me that it must be the substance of all society. Its source is as strong today as ever, and as

near at hand to us as my father's Bibles were to him. (National Bible Week begins November 21, a time to renew our dependence on this source of faith).

FLOYD COUNTY MERCHANTS APPRECIATE YOUR BUSINESS.....

VA News

The third decrease in the GI home loan interest rate ceiling this year was announced today by Administrator of Veterans Affairs Richard L. Roudebush.

The new maximum rate, effective October 18, is 8 percent, a reduction from 8.5 percent, set on March 30. The rate had been decreased from 9 percent to 8.75 on January 5.

For a veteran buying a home with a 30-year, \$30,000

GI loan, the .5 percent decrease lowers the monthly payment by about \$10.50. It could result in a savings of almost \$3,800 over the life of a 30-year loan, Roudebush said.

The rate change does not affect existing loans. Once a loan is made, the interest rate remains the same for the life of the loan.

The 8 percent rate was agreed upon jointly with the

Department of Housing and Urban Development. As the money is the principal reason for the lower interest rate, Roudebush said.

The VA guarantees loans made by private lenders to eligible veterans, unmarried surviving spouses and active duty military people. During fiscal year 1976 the VA guaranteed almost \$10 billion in home loans, a record dollar volume.

More than 9.5 million veterans have obtained over \$129 billion in loans to purchase homes under the VA loan guaranty program since its inception in 1944.

FLOYD DATA
Mr. and Mrs. Shorty Turner, Mr. and Mrs. Doyle Turner, and Mr. and Mrs. S.

win your turkey

LOCKNEY MERCHANTS WILL GIVE AWAY 14 CHOICE TURKEYS!

Just fill out and clip any or all of these coupons and deposit them at the firms listed on the coupons. Each firm will hold an individual drawing. Drawing will be Monday, November 22 before Thanksgiving. YOU NEED NOT BE PRESENT TO WIN! DRAWINGS WILL BE AT CLOSING TIME MONDAY.

YOU MUST BE 16 YEARS OR OLDER TO ENTER.



Thanksgiving Turkey

NAME

ADDRESS

PHONE

Parker Furniture & Appliance
110 S. MAIN

Thanksgiving Turkey

NAME

ADDRESS

PHONE

Schachts Flowers, Jewelry & Gift Shop
112 W. POPLAR

Thanksgiving Turkey

NAME

ADDRESS

PHONE

Davis Lumber Co.
102 E SHURBET

Thanksgiving Turkey

NAME

ADDRESS

PHONE

Webster Service & Supply
302 S. MAIN

Thanksgiving Turkey

NAME

ADDRESS

PHONE

Keeter's Grocery
114 NE 8TH

Thanksgiving Turkey

NAME

ADDRESS

PHONE

Boot hill Western Store
200 S. MAIN

Thanksgiving Turkey

NAME

ADDRESS

PHONE

Brown's Dept. Store
106 N MAIN

Thanksgiving Turkey

NAME

ADDRESS

PHONE

Strickland's Auto Sales
HWY 70 NEXT TO STRICKLAND REST.

Thanksgiving Turkey

NAME

ADDRESS

PHONE

Mize Pharmacy & TV
102 S. MAIN

Thanksgiving Turkey

NAME

ADDRESS

PHONE

Page's Thriftway
211 N MAIN

Thanksgiving Turkey

NAME

ADDRESS

PHONE

Barker Insurance
100 S. MAIN

Thanksgiving Turkey

NAME

ADDRESS

PHONE

Rowell Variety
100 N MAIN

Thanksgiving Turkey

NAME

ADDRESS

PHONE

White Auto Store
119 S. MAIN

Thanksgiving Turkey

NAME

ADDRESS

PHONE

Floyd County Insurance
116 S. MAIN

COTTON TALKS

FROM PLAINS COTTON GROWERS, INC.

What is the amended Cotton Research and Promotion Order?

It is an order issued, pursuant to an act of Congress, that allows cotton producers to vote in a referendum to authorize a supplemental assessment for cotton research and promotion in addition to the current \$1 per bale.

How much is the supplemental assessment?

The Cotton Board recommends it be 4/10ths of 1% of the gross sales price per bale of cotton beginning with the 1977 crop. (For example, if cotton prices were 60¢ per lb., the supplement on each 500-lb. bale would be \$1.20.) The order also provides that, beginning with the 1978 crop, the rate can be increased in increments on recommendation of the Cotton Board and approval of the Secretary of Agriculture. However, the final rate cannot exceed 1% of a bale's gross sales price.

If I vote "yes", does that mean I'm approving an automatic increase in the assessment beginning with the 1978 crop?

No. The producer-run Cotton Board has publicly testified it would not recommend an increase to the Secretary unless an in-depth study showed that (1) the program was being conducted with maximum effectiveness, (2) its effectiveness could be increased only with additional financing, (3) producers indicated an overwhelming sentiment for an increase, and (4) the Board determined the exact level of the increase desired by producers.

Why do we need a supplemental increase of any kind?

The \$1 per bale you're now contributing equals only about 60¢ today, due to inflation. Smaller crops have also reduced income for cotton research and promotion programs. Federal budget cuts have eliminated supplemental government funds under Section 610 of the 1970 Agricultural Act which helped get your programs on a firm footing. Utilization cotton research by USDA and state agricultural experiment stations has decreased by 10%. From here on out, it's strictly up to producers to protect and expand their markets.

What are the advantages of a supplemental assessment based on per cent of value as opposed to a flat rate?

There are advantages to both systems and the current proposal gives a combination of the two. The present assessment will continue at \$1 per bale on all bales produced. The supplement will be based on value, and a high quality bale will contribute a greater assessment than will a low quality bale. Most growers feel that together these two types of assessments make for a fairer and more equitable arrangement.

What has Cotton Incorporated accomplished with my \$1 per bale contributions?

It is now firmly established with marketing headquarters in New York, research facilities in Raleigh, N.C., and fabric libraries in New York, Los Angeles, and Dallas. It operates with professionally-trained, experienced staffs which are carrying out aggressive, hard-hitting programs aimed at your synthetic fiber competition. They're making your voice heard in the marketplace where it counts. Almost weekly, cotton's competitors are running full-page ads in the nation's leading textile trade paper attacking your new products -- that's good evidence your programs are hitting the opposition hard! Thirteen of the top U.S. brands of men's dress shirts have adopted CI's "Natural Blend" durable press fabric. And as "Natural Blend" moves into women's and children's wear markets, it's going to help you sell more cotton.

AG WORKERS NAME OFFICERS

New officers of the Professional Agricultural Workers of Texas include President J. A. Marshall, Austin, director of agricultural education with the Texas Education Agency; First Vice President A. H. Walker, College Station, retired state agricultural leader with the Texas Agricultural Extension Service; Second Vice President Bruce Miller, Corpus Christi, with Central Power and Light Co.; and Secretary-Treasurer Foy Page, Bryan, coordinator of teaching materials for Texas A&M University's Department of Agricultural Education. The organization held its 50th meeting at College Station Oct. 26-27.

Farm-facts

A Weekly Report Of Agri-Business News

Compiled From Sources Of The TEXAS DEPARTMENT OF AGRICULTURE
John C. White, Commissioner

Adding It Up... Number Two And Three... Down From Last Year.

While the figures are still being compiled on 1976 agriculture income, Texas during 1975 continued its number two and three rankings nationwide in value of crops and livestock.

Texas ranked number three in crop and livestock total value in 1975 with a total of \$5.8 billion. If you add the \$281,000,000 in timber income, that would put Texas above \$6 billion. Only Iowa and California are above the \$6 billion figure.

In crop value, Texas was third with \$2.8 billion; in livestock and livestock products, Texas is second with \$3 billion.

A half dozen Texas counties during 1975 had more than \$100,000,000 in value in crops and livestock. The number one county in the state is Deaf Smith with a crop and livestock value of \$180,860,000. Other counties in the top ten in crop and livestock total values are Hidalgo, Parmer, Castro, Hale, Lamb, Wharton, Lubbock, Swisher, and Hansford.

The top ten counties in crop value were Hidalgo, Parmer, Deaf Smith, Hale, Castro, Wharton, Lamb, Cameron, Lubbock, and Floyd. The top ten counties in livestock and livestock product values are Deaf Smith, Gonzales, Hopkins, Castro, Nacogdoches, Shelby, Parmer, Sherman, Swisher, and Hansford.

The \$5.8 billion figure for Texas' 1975 farm income of crops and livestock represents a slight increase from 1974, but is considerably below the \$6.5 billion figure for 1973.

Take a look at the gross and net income figures for the state and you get a better idea of how Texas farmers are faring financially. Net farm income is down \$132,800,000 from 1974; and the 1974 net is down \$33,200,000 from 1973. The year of 1973 was the big one in net farm income for Texas with \$2 billion plus.

On a per-farm basis in Texas, the average farm produced a net income of \$4,610 in 1975.

Total gross income from agriculture nationwide as well as Texas is expected to be near the 1975 levels, but net income is expected to be lower due to increased production costs.

HARVEST OF THIS YEAR'S CROPS is fairly close to the three-year average overall. Corn harvest is more than 85 per cent complete; cotton harvest is about a fourth finished; sorghum harvest is nearing completion. Peanut and soybean harvests are close to the three-year average levels.

Wheat planting is more than 80 per cent finished and oat planting is more than two-thirds complete.

Elsewhere throughout the state, pecan harvest continues to progress and production is about 50 per cent under a year ago.

In the Rio Grande Valley, citrus harvest continues. Planting of spring onions is active with some replanting required.

On the Coastal Bend, cucumber harvest is in progress; in the San Antonio Winter Garden area, bell pepper harvest continues.

Anderson Clayton Reports

Record First Quarter Income

HOUSTON.—Anderson Clayton's net income for the first quarter ended September 30, 1976 increased 23.6% to a record \$12,299,000 from \$9,952,000 a year ago. Earnings per share were \$1.85, an increase of 19% compared to \$1.56 the previous year. T.J. Barlow, Chairman, announced today. "Key contributors to the improvement in this quarter were the significantly better results from the insurance companies and an increased dividend from the Mexican subsidiary." Mr. Barlow stated. "Quarterly sales were \$166,219,000, an increase of 8% over last year's \$153,685,000."

"Consumer and institutional food products profit contribution declined substantially in the quarter," Mr. Barlow said, "due to depressed margins on regular CHIFFON margarine and private label products and to substantial volume reductions and increased costs associated with an eleven-week strike at the Company's largest processing plant at Jacksonville, Illinois. The company and the union agreed upon a new contract on October 22." "Processing in the oilseed products division in the first

quarter was low because of reduced inventories of raw materials available from the prior year's crop."

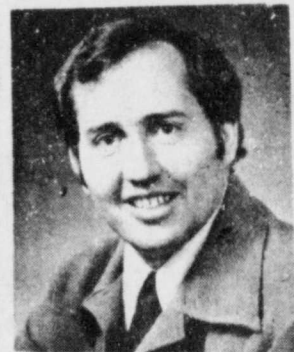
A division of Anderson Clayton, ACCO SEED, operated the Paymaster seed farm at Aiken. An extensive sorghum and cotton research station, seed processing plant and general business offices are located on the farm. ACCO is a major supplier of sorghum, cotton, corn and alfalfa seed in the United States and foreign countries. Headquarters for the company is Belmond, IA.

FLOYD DATA

Mrs. Travis Lightfoot, Mr. and Mrs. T. C. Hollums and Mrs. Lillian Marble were in Amarillo Wednesday at High Plains Hospital for the open heart surgery of a brother-in-law, Rev. Merle Weathers of Canyon. Rev. Weathers is reported to be recovering nicely.

FREE TURKEYS!
SEE PAGE 2

WE SELL LIFE INSURANCE...



DAVID CATES
RES 983-3273



JAMES RACE
RES 652-3869

FARM BUREAU INSURANCE

FLOYDADA
BUS. PHONE
983-3777

LOCKNEY
BUS. PHONE
652-3711



ATTENTION Typing Students!

We have 20 lb typing paper.

500 Sheets For ONLY
\$3.15

Hesperian Office Supply
Beacon Office Supply

STORAGE for House

Items, Boats or Anything You Need

Store At Wall & Mississippi Call....

Wilson Bond

983-2151-983-3573

West Texas Mini Storage

HEAD START

THAT'S WHAT WE GIVE YOUR COTTONSEED NOW,
SO NEXT HARVEST HAS A BETTER CHANCE

We can do a couple of things: 1) fungicidal and insecticidal treatment of saved cottonseed. 2) Germination testing of saved seed... a scientific report for future production. We want your business. Details won't cost you a cent.

WHOLESALE & RETAIL SEEDS PLAINS

SEED & DELINTING CO.
403 E. Erskine Road Lubbock, Texas 806-765-8844

OLD ENOUGH TO KNOW WHAT WE'RE DOING.
YOUNG ENOUGH TO KNOW WHAT YOU WANT.

NATIONAL DECA WEEK

NOVEMBER 14-20



THE 1976 DECA STUDENTS OF FLOYDADA HIGH SCHOOL



Congratulations To Floydada Public Schools, Community, & Progressive Businesses For Their Continuing Support Of The F.H.S. DECA Chapter

Floydada High School DECA will be shooting for another big year when it competes in the area and state meets in February and March respectively. The area meet will be held in Lubbock and the state meet in March at the Baker Hotel in Dallas. DECA appreciates all the many people who make it possible for us to compete in many aspects of a business make-up. Categories include: Public Speaking, Advertising, Display, Job Interview, Sales Demonstration, Student of the Year, and Manual Writing.

PRESENTED AS A PUBLIC SERVICE BY THE FOLLOWING DECA SUPPORTERS:

- | | | |
|--------------------------|--|----------------------------------|
| Buddy's Food | Parker Studio | Hale Insurance Agency |
| Leonard's Cafe | Morton Irrigation | Floydada Lions Club |
| Weems Texaco | Rucker's O. K. Tire | McDonald Implements |
| Baker Insurance Agency | Martin & Company | Stewart Printing |
| Thomas Aero Maintenance | Goen & Goen Ins. | Blanco Offset |
| Dixie Dog Drive In | Dyson's Boot Shop | Britt Gregory-State Farm |
| Floydada Power & Light | Floydada Coop Gin Inc. | Azteca Drive-In #1 & #2 |
| Moore-Rose Funeral Home | Ponderosa Meat Co.-Ponderosa Retail | Reed Ford Mercury |
| Piggly Wiggly | Plainview Production Credit Association | Quality Body Shop |
| KFLP 900 | City Auto, Inc. Buick-Pontiac-GMC | Babes Service Center, Inc. |
| Bishop-Ramsey | First National Bank of Floydada | Arwine Drug |
| Thompson Pharmacy | Day Heating & Air Conditioning | Collins Implement Co. |
| Floydada Nursing Home | Staff of Caprock Hospital | Fuller Trucking Co. |
| Cone Farm Supply | Brown Gin & Company | Chez Pat |
| Don Hardy Race Cars | Fred Lipham Dirt & Paving Contractor | Dairy Queen |
| Rudy's Barber Shop | Allsup's Convenience Store #50 | Gilbreath Exxon |
| Redman's Club | DeBruyn High Plains Farms | Beall's Dept. Store |
| Adams Well Service | McCoy Grain Storage | Swiftly Distributors |
| W&O Butane | Consumers Fuel Assn. | Tastee Freeze |
| Perry Brothers | Nichol's Oil Co. | Floyd County Hesperian & Office |
| Hale's Dept. Store | Bairds Bakeries-Pete Switzer | Russell Equip. & Supply |
| Cornelius Conoco | Floydada Real Estate-Ins. | Peggy's Beauty Shop & Boutique |
| King's Restaurant | Davis Farm Supply, Inc. | Case Power & Equipment |
| Travel Center Restaurant | Plainview Savings & Loan Floydada Branch | Willson & Son-Builders Mart |
| | Crutchfield Tire Co. & Radiator Repair | Odens Chevrolet-Olds Inc. |
| | Federal Land Bank Assn. of Floydada | Kirk & Sons Hardware & Furniture |

Life Habitat Disappearing

Travelers go to the Panhandle plains of Texas that the amount of the plains is only one thing—closer, they are burning grain in lake beds, and even weed

into believing that even with the 1976 harvest of birds, an adequate number will survive through the winter into the nesting season.

Mild winter temperatures and minimum amounts of snow and rain over the past few years have allowed a sufficient number of game birds to make it to the nesting season, but one of these years (maybe 1976-77; the plains will again experience deep snow, cold winds and a die-off of local game birds.

Leaving a 50-yard strip of grain stocks near some winter wheat is one way to insure against this unnecessary waste. Controlled burning of fields is beneficial but the elimination of cover in playa lakes and fence-rows

as the fire jumps a turn-over or road exposes all wildlife to the elements and their enemies.

Destruction of habitat also crowds the game birds into small areas where disease and an over-harvest of cock birds could occur from hunters and predators.

To help landowners improve the wildlife habitat and carrying capacity of both domestic stock and game birds, the Texas Parks and Wildlife Department has stationed extension biologists across Texas.

Individuals wanting assistance from the department should contact Richard DeArment, Extension biologist, P&WD, P.O. Box 122, Wheeler, Texas 79096 or call 806/826-3233.

The biologist will setup a

survey of the land needing improvement with the landowner. A complete management plan will be worked up for that particular property with suggestions for planting specific trees, shrubs, and cover. The plan will then be presented to the landowner explaining the reasons for each job. It will be up to the landowner to initiate the program on his property.

With proper habitat management, the plains of Texas could furnish some fine hunting opportunities rivaling Kansas and South Dakota in the number of pheasant per square mile.

Mr. And Mrs. James Norrell

Hospitalized After Wreck In Kansas

James and Karla Norrell of Liberal, Kan., son and daughter-in-law of Mr. and Mrs. Elmer Norrell were reported to be in a fair condition Friday suffering from injuries sustained Sunday evening in a two car collision in Mead, Kan. Two occupants in the other vehicle also sustained injuries, relatives said.

Karla was transferred to Newman Memorial Hospital in Shattuck, Okla., for special treatment. She is suffering from a crushed pelvis and other serious injuries. James is in Mead County District Hospital in Mead, Kan., being treated for broken ribs, concussion, neck injuries and numerous lacerations and bruises.

Rex Miller Graduates Navy Course

Marine Second Lieutenant Rex B. Miller, 26, son of Mr. and Mrs. D. L. Miller of Route 3, Floydada, Tex., was graduated from the Navy's Aviation Indoctrina-

tion Course (AIC). During the four-week course at the Naval Air Station, Pensacola, Fla., trainees studied basic aerodynamics, aviation physiology and eng-

ineering. They also studied land and sea survival techniques and participated in an extensive physical fitness curriculum. AIC is the first step in the

Naval flight training program leading to designation as a naval aviator.

A 1974 graduate of Texas Technical University, Lubbock, with a bachelor of arts degree, he joined the Marine Corps in April 1975.

FLOYD DATA

Mr. and Mrs. T. L. Holland, Jr., were in Anson Monday for the funeral of his brother, Hub Holland, 71, who died Saturday, Nov. 6th. Mr. Holland was a retired groceryman.

FLOYD DATA

Tommy Weathersbee of Lufkin and Mrs. Leigh Ann Evans of Lupe are in Floydada with their parents, Mr. and Mrs. Claude Weathersbee. Mrs. Weathersbee remains in a critical condition in Caprock Hospital where she is a medical patient.

RENT RINSEVAC

No other "do-it-yourself" method cleans carpets as...

EASILY—38 pound portable power-house does all the work

EFFECTIVELY—cleans, rinses and vacuums out deep down dirt and grime in a single sweep

ECONOMICALLY—cleans the way professionals do—at a fraction of the cost YOU SAVE UP TO \$25.00 PER ROOM!



Rent for only \$12.00 a day

Davis Farm Supply

511 E. HOUSTON 983-2233

Let's talk Turkey!

FOR A HAPPY THANKSGIVING
FLOYDADA MERCHANTS
WILL GIVE AWAY
15 TENDER TURKEYS!

Just fill out and clip any or all of these coupons and deposit them at the firms listed on the coupons. Each firm will hold an individual drawing. Drawing will be Monday, November 22 before Thanksgiving. YOU NEED NOT BE PRESENT TO WIN! DRAWING WILL BE AT CLOSING TIME.

YOU MUST BE 16 YEARS OR OLDER TO ENTER.



Thanksgiving Turkey

NAME.....
ADDRESS.....
PHONE.....

C & J FLORAL

319 S 2ND 983-3964

Thanksgiving Turkey

NAME.....
ADDRESS.....
PHONE.....

THOMPSON PHARMACY

200 S. MAIN ST. 983-5111

Thanksgiving Turkey

NAME.....
ADDRESS.....
PHONE.....

WILLSON & SON—
BUILDERS MART

111 W. WALL ST. 983-3113

Thanksgiving Turkey

NAME.....
ADDRESS.....
PHONE.....

BUDDY'S FOOD

220 S. 2ND 983-3149

Thanksgiving Turkey

NAME.....
ADDRESS.....
PHONE.....

ARWINE DRUG

100 W. CALIF. ST. 983-2856

Thanksgiving Turkey

NAME.....
ADDRESS.....
PHONE.....

HALES DEPT. STORE

112 W. CALIF. 983-2388

Thanksgiving Turkey

NAME.....
ADDRESS.....
PHONE.....

REED FORD SALES INC.

RALLS HIWAY 983-3761

Thanksgiving Turkey

NAME.....
ADDRESS.....
PHONE.....

L&J FOOD MART

316 N 2ND 983-3105

Thanksgiving Turkey

NAME.....
ADDRESS.....
PHONE.....

PIGGLY WIGGLY

309 S WALL ST 983-2184

Thanksgiving Turkey

NAME.....
ADDRESS.....
PHONE.....

Davis Farm Supply, Inc.



Box 606 PHONE 806 983.2233
FLOYDADA, TEXAS 79235

LOUIS BLARDEN
RES PH 983.2420

DON GREEN
RES PH 983.5343

Thanksgiving Turkey

NAME.....
ADDRESS.....
PHONE.....

PONDEROSA RETAIL
MEAT CO.

601 S. 2ND ON THE WYE 983-3239

Thanksgiving Turkey

NAME.....
ADDRESS.....
PHONE.....

CITY AUTO INC.

201 E. MISSOURI 983-3767

Thanksgiving Turkey

NAME.....
ADDRESS.....
PHONE.....

ODEN CHEVROLET—
OLDS.

221 S. MAIN
983-3787

Thanksgiving Turkey

NAME.....
ADDRESS.....
PHONE.....

MISTER BURGER

207 S. 2ND 983-2558

Thanksgiving Turkey

NAME.....
ADDRESS.....
PHONE.....

PRODUCERS CO-OP
ELEVATOR

112 N. 8TH
983-2821



What's Cooking

At

FLOYDADA SCHOOLS

- November 15-19, 1976
MONDAY
Chicken Pot Pie
Seasoned Mixed Vegetables
Dill Pickle Spears
Pear Halves & Sugar Cookie
Hot Rolls
1/2 Pint Milk
TUESDAY
Chili Beans
Potato Salad
Buttered Spinach
Sweet Rolls
Hot Corn Bread
1/2 Pint Milk
WEDNESDAY
Vegetable Beef Soup with Crackers
Pimento Cheese Sandwiches
Celery Stuffed with Peanut Butter
Chocolate Cake with Icing
1/2 Pint Milk
THURSDAY
Chicken Fried Steak with Gravy
Fluffy Whipped Potatoes
Garlic Green Beans
Pineapple Crisp
Hot Rolls
1/2 Pint Milk
FRIDAY
Hamburgers on Homemade Buns
Tomato, Lettuce, & Dill Pickles
Potato Chips
Plum Cobbler
1/2 Pint Milk

KINCAID HEADS SWAHRF FOUNDATION-T. A. Kincaid of San Antonio, long-time trustee of the Southwest Animal Health Research Foundation (SWAHRF), has been named president of the livestock industry support group, and Ed Ketchum of Duncan, Okla., vice presi-

BULLETIN.....Floyd farmer brought the Don Barton family of Irving to the Caprock Hospital Friday night after their plane crashed west of Allmon.

News & Reviews

First Baptist Church Library/Media Center

In Baptist churches across the land November is the month of budget planning and emphasis on Christian stewardship of possessions. There are several good books which deal with this matter of personal stewardship. These are IT IS REQUIRED OF A STEWARD by John McBain, RESOURCES UNLIMITED by William Hendricks and MY MONEY AND GOD. Most of the time when stewardship is mentioned, it is limited in scope to the sharing of possessions. In reality, stewardship of time, talent and resources is the natural response when the awareness of God's unlimited grace dawns upon the human heart. For some this awareness is slow in coming, but one realized another truth arrives...one cannot "outgive" God. These spiritual lessons are difficult to explain since there is a real danger of taking a materialistic attitude of "give in order to get" which is the opposite of Christian stewardship. Any of the books mentioned will help the Christian put into perspective his thoughts about sharing his possessions.

NO LONGER ALONE is Joan Winmill Brown's story...Joan was born and grew up in England. Her mother died in childbirth when she was still small, and Joan was shunted from one home to another until she was old enough to be out on her own. Many times she felt rejected and "different" from other children. After finishing school, Joan became an actress and secured the leading role in several outstanding theatrical productions. Her health became bad, however, and she lost jobs and became depressed to the extent that she almost took her own life. When she was still trying to fake her way through life, she was invited by some friends to go to a meeting of the Billy Graham Crusade in London. She made a public profession of her faith that night, and though she had been reared in a nominally Christian home, she learned for the first time what a personal commitment to Jesus meant. Later Joan was invited to star in a Billy Graham film, and she came to the United States for its production. She soon met and married Bill Brown, a member of the Billy Graham team. Though their meeting was good, Joan found moving so often to be difficult, especially after the birth of her first and second son.

The Browns now live in California where Bill is president of World Wide Pictures, and Joan works with him. She was co-star of the film entitled "Time to Run." Mrs. Brown in this book shares her deepest feelings as she experienced rejection, depression, and then a change of life because of her relationship to Christ. She realistically shows that though she became a Christian, all her problems were not immediately solved.

dent. Jerry Puckett of Fort Stockton is the new secretary-treasurer. Foundation trustees, as a recent meeting in Austin, voted to continue the efforts of the

Foundation "as long as the screwworm problem poses Mexico Screwworm Commission in current efforts to eradicate the costly livestock pest from both countries.

WHIRLWINDS STATISTICS

Table with 5 columns: Name, Att., Cmp., Yds, % Int. TD. Rows include Womack, Cagle, Vickers, Westbrook, and TOTALS.

Table with 4 columns: Name, Punts, YDS, AVG. Rows include Womack and Lackey.

Table with 5 columns: Name, TD, Ex Pt, FG, Tot Pt. Rows include Minnett, Womack, Keeleq, Westbrook, Ratheal, Reese, and TOTALS.

Table with 3 columns: Scoring, Floydada, Opponents. Rows include First Downs, Rushing Yards, Total Offense, Interceptions by, and Fumbles Lost.

Table with 5 columns: Name, Att, Tot, Aver, TD. Rows include Minnett, Womack, L. Jones, Cagle, Reese, Luna, J. Covington, Day, Ratheal, R. Covington, and TOTAL.

Table with 5 columns: Name, No. Yds, Avg, T.D., Ct. Rows include Ratheal, Keele, Minnett, Cagle, Westbrook, L. Jones, and TOTALS.

PASSING N.

MORE WHIRLWIND STATISTICS IN THURSDAY'S PAPER

JV Whirlwinds Close Out Season On High Note

By Doug Simpson
Defenders Greg Jones and Bill Starkey led a punishing defensive charge that allowed just four first downs and kept its opponents in check by preventing a single penetration inside the 31-yard line, to lead the Floydada Whirlwinds Junior varsity squad to a 32-0 rout of Lubbock Coronado in the season finale at Wester Field on Thursday, November 11. The victory, which was highlighted by spine-tingling clutch plays that continuously led to touchdowns, gave the Whirlwinds a final season ledger of 4 wins, 3 losses, and two ties. After the Mustangs won the toss and elected to receive, Joe Covington booted the opening kickoff out of the end zone, and Coronado was quickly stunned by the way in which the Winds' defensive line contained them on its opening series. Ricky Day took the punt on fourth down to the Mustang 46-yard line, where Floydada began first and ten. On third and 14, from midfield, Todd Vickers dropped straight back and found Brad Feuerbacher open for a first down on the Coronado 29. Vickers rolled right on the next play, and found an opening, and sprinted 28 yards to the 4, before being wrestled down by opponents to save a touchdown. Two plays later, however, the Whirlwinds coughed it up, as Vickers bobbled the snap just three yards away from a TD. The Mustangs managed to ground out a few yards of breathing room before being forced to punt. Greg Jones burst through to block the kick and set up the Winds' opening score. Jones carried the ball on into the end zone but officials ruled that possession only was granted on the block. Joe Covington went the necessary three yards on the next play to give Floydada 6-0 advantage with 1:49 remaining in the first quarter. The two-point conversion try was unsuccessful. With 3:14 left to play in the first half, Coronado committed its second error of the evening when Bill Starkey pounced on a fumble at the Mustang 14-yard line. A clipping penalty nullified a touchdown on the next play and moved the ball back to the 27. The Whirlwinds were able to go the distance for another score in only six plays, with the key play being an interference call against Coronado. That resulted in a first down at the 7-yard line. Covington punched across from three yards out three plays later, and day converted on an end sweep to give Floydada a 14-0 lead with 1:14 remaining in the second period. Once again, the Winds had made the big play count by turning the fumble recovery into 8 points. The teams went into the locker room at halftime on a chilly but spirited evening, with the class 4-A Mustangs trailing by two touchdowns. Floydada wasted no time in opening up a commanding lead in the second half, as Ricky Luna galloped 88 yards on the opening kickoff for an easy score. The PAT was unsuccessful, and Floydada led comfortably, 20-0. A

review of the play reveals that Luna appeared to be on his way down when he reached the 25-yard line, but he was able to spin off tacklers, follow excellent blocking, and coast the rest of the way into the end zone. On Coronado's opening offensive series, mistakes continued to plague the Mustang attack, as a punt attempt resulted in a mishandled snap at the 25-yard line. Floydada took over from there and traveled that distance in six plays. Junior Arredondo completed the drive on a 1-yard plunge, with 5:55 to play in the third stanza. Covington's point after attempt was wide to the left, and the score remained 26-0. All Coronado seemed to be doing throughout the contest was punting. Bill Starkey came up with his second big play on the next Mustang offensive series, as he charged through and blocked the fourth down kick. The total amount of lost yardage was 17 yards, and the Whirlwinds were in business at the 13-yard line. Junior Arredondo scored the final Floydada touchdown of the night on an 8-yard burst with 3:02 showing on the clock. Arredondo also carried on the conversion try but was stopped for a one yard loss. The Whirlwinds made 12 first downs, while Coronado could only manage only 4. Floydada chewed up 165 rushing yards, and Coronado made only 57 yards on the ground. The Winds went to the air four times and connected twice for 53 yards and no interceptions, with the longest pass play being a 32-yard strike from Vickers to Mark Beedy. Coronado went upstairs on 12 occasions and completed two aerials for 26 yards and no thefts. Floydada punted just one time for 29 yards, while the Mustangs kicked five times for a net average of 14 yards. The Whirlwinds piled up 307 total yards, while Coronado made a mere 83 total yards. Following the contest, JV Coach Rollie Rinker had this comment to close the season with: "I think that this is a great way to end a season, and it was just a great effort, offensively and defensively."



RICKY DAY was going good until a couple of Coronado players tackled him. Todd Vickers is pictured in background.



FLOYD COUNTY SHERIFF BUD RAINEY helps move gunshot victim John D. Rogers, into the Crosby courthouse, so he could identify murder suspects of Motley County Sheriff....

1976-1977 FLOYDADA BASKETBALL SCHEDULE

Basketball schedule table with columns: DATE, OPPONENT, SITE-TIME, VARSITY BOYS-J.V., VARSITY GIRLS. Rows list games from Nov 16 to Feb 15 against teams like Roosevelt, Littlefield, Post, Crosbyton, Plainview, Hale Center, Floydada, Nazareth, Dimmitt, Muleshoe, Canyon, Lockney, Tulia, and Abernathy.

Vertical text on the right margin containing various advertisements for real estate, homes for sale, and other services.

OBITUARY

Jack Deakins

Services for Jack G. Deakins, who died during the night Tuesday, November 9th., were conducted at 11 a.m. Friday in the First United Methodist Church. The pastor, Rev. James Smith, officiated.

Burial was in Floydada Cemetery under the direction of Moore-Rose Funeral Home.

Pallbearers included Richard Hale, Dan Fry, Gene Lowrance, Robert Stovall, Dale Goen and Laron Fulton.

Honorary pallbearers were Dr. A. E. Guthrie, Charlie Lewis, Tate Jones, Grady Walker, Bill Baker,

Bill Dailey, Walton Hale, Dick Stovall, Clinton Fyffe, and Lorin Leibfried.

SHOPPERS planning ahead for holiday gifts will find fall specials on dinnerware lines. A number of dinnerware manufacturers are planning price cuts up to

25 per cent. Special promotions are planned to move a sluggish market. Discounts will generally be for selected sets rather than across the

board. Now is the time to find out the pattern name of the special friends on your gift list, suggests Lynn Bourland, family resource management specialist with the Texas Agricultural Extension Service, The Texas A&M University System.

Lockney Hospital Report

Nov. 4-11, 1976
Adela Reyes, Floydada, admitted 10-19.
L. D. Bilbrey, Flomot, admitted 10-20, dismissed 11-7.
Lowell Callaway, Silverton, admitted 10-31, dismissed 11-6.
Fred Arnold, Silverton, admitted 11-1, dismissed 11-5.
Mary Lillard, Lockney, admitted 11-1, dismissed 11-6.
Floyd Graham, Floydada,

admitted 11-2, dismissed 11-3.
Juanita Luna, Lockney, admitted 11-5, transferred.
Teresa Cedillo, Floydada, admitted 11-5, dismissed 11-10.
Oma Cummings, Lockney, admitted 11-5, continues care.
Martha Mojica, Plainview, admitted 11-5, baby boy David born 11-5, dismissed 11-8.
Diana Berner, Plainview, admitted 11-6 baby boy Johnny, born 11-6, dismissed 11-8.
Bernice Titus, Lockney, admitted 11-6, dismissed 11-8.
Mary Torres, Plainview, admitted 11-6, baby girl Sally born 11-6, dismissed 11-8.

A. L. Bigham, Lockney, admitted 11-8, continues

care.
Raymond Lusk, Lockney, admitted 11-8, dismissed 11-9.
Dorothy Thomas, Lockney, admitted 11-8, continues care.
Marilyn Asebedo, Silverton, admitted 11-8, continues care.
A. V. Womack, Floydada, admitted 11-8, continues care.
Maria Flores, Lockney, admitted 11-9 continues care.
Willie Luna, Lockney, admitted 11-9, continues care.
Thelma Smith, Alvord, admitted 11-9, dismissed 11-10.
Lottie McGee, Lockney, admitted 11-11, continues care.
Eddie Joe Fortenberry, Lockney, admitted 11-11, continues care.

FLOYD DATA
Mr. and Mrs. Sam Johnson and Casey of Smyer were in Floydada last weekend to visit their parents, Mr. and Mrs. Carlton Fawver. Mr. Fawver was brought home Thursday from Caprock Hospital where he recently underwent surgery. He is reported to be progressing satisfactorily.

FLOYD DATA
Mrs. Walton Wilson is receiving medical attention in Central Plains Hospital in Plainview.

FLOYD DATA
Mrs. H. E. Woodson returned home Sunday from Central Plains Hospital in Plainview where she had surgery. She is reported to be doing fine.

FLOYD DATA
Wilson "Little Mack" Fowler was able to return to the home of his parents in Floydada during the week after a lengthy stay in Lubbock Methodist Hospital. Little Mack is reported to be progressing well from injuries sustained when struck by a car in Dallas recently.

"IN APPRECIATION"
THE FAMILY OF CHARLIE BEDFORD EXPRESS THEIR THANKS AND GRATITUDE TO HIS MANY FRIENDS AND RELATIVES FOR THEIR LOVE AND FRIENDSHIP AND THEIR CONTINUED CONCERN AND LOVE DURING HIS LONG ILLNESS. TOKENS OF SYMPATHY HAVE BEEN RECEIVED FROM MR AND MRS LEE BEDFORD, LLOYD BEDFORD, E. M. SIA, LOU BEDFORD, LAMBORN, THE PHIL LANDRUM FAMILY.



Prices Good Thru Nov. 17, 1976. We reserve the rights to limit quantities. None sold to Dealers.

Invites You To Play

BANK VAULT BINGO

BANK VAULT BINGO WINNERS

MANUEL MENDOZA — \$10.00
TRINIDAD SOLIZ — \$10.00
FRANCES DELACRUZ — \$5.00



Each of these advertised items is required to be ready for pickup by 10:00 a.m. on the advertised date. In each case, order at participating store in this ad.

New Store Hours
Daily 8 a.m.-8 p.m.
Sunday 9 a.m.-7 p.m.

ODDS CHART

GAME	NUMBER OF PRIZES	ODDS
\$1.00	100	100:1
50¢	100	100:1
25¢	100	100:1
10¢	100	100:1
5¢	100	100:1
2¢	100	100:1
1¢	100	100:1
TOTAL	1000	1000:1

Empire 16 to 20-Lb.
Swift's Turkeys
49¢
Lb.

Picnic Cut, Fresh
Pork Roast
68¢
Lb.

Kraft's
Mayonnaise
99¢
Qt. Jar

32 oz. 6 Btl. Case
Coca Cola
\$1.13
Pies 3¢

HOLIDAY TREATS

BUTTER BALL
Turkeys 16 TO 20 Lb. **69¢**

Rib Roast Lb. **\$1.18**

QUARTER 8 TO 10 CHOPS
Pork Loins Lb. **\$1.29**

CENTER CUT
Pork Chops Lb. **\$1.59**

Water Added Whole Only
Smoked Hams Lb. **79¢**

BREAKFAST ITEMS

Armour Star Pan Sized
Sliced Bacon 12-oz. Pkg. **\$1.19**

Hormel
Sliced Bacon 1-Lb. Pkg. **\$1.49**

Farmer Jones
Roll Sausage 2-Lb. Roll **\$2.35**

Swift's Nine Patties
Ham Patties 21-oz. Can **\$1.99**

"Country Style" Fresh Pork
Spare Ribs Lb. **\$1.19**

EVERYDAY LOW PRICE

Van Camp's
Pork N Beans 5 8-oz. Cans **\$1**

Libby's
Vienna Sausage 3 5-oz. Can **\$1**

Tomato Cocktail
Snap-E-Tom 3 10-oz. Cans **\$1**

Piggly Wiggly Cheese & Macaroni
Dinners 4 7-oz. Pkgs. **\$1**

Nice & Soft Zee
Toilet Tissue 4-Roll Pkg. **69¢**

EVERYDAY LOW PRICE

Party Mate
Mixed Nuts All Flavors Nuts 4 Pack

Snack Pack

Brenner Saltine
Crackers

Campbell's
Tomato Soup

Family Pak Pringles
Potato Chips 1 1/2-oz. Pkg. **\$1.13**

PIGGLY WIGGLY PEOPLE PLEASIN' SPECIALS

TexasSweet
Juice Oranges
79¢
5-Lb. Bag

"Holiday Nuts"
A Must For Baking Candy

Walnuts Lb. **69¢**

Pecans Lb. **\$1.39**

Brazil Nuts & **Almonds** Lb. **79¢**

Roasted **Peanuts** 12 OZ. BAG **79¢**

Health & Beauty Aids

All Varieties
Earth Born Shampoo 8-oz. Btl. **\$1.29**

And Conditioner 8-oz. Btl.
Earth Born Cream Rinse **99¢**

Premium Baker
Russet Potatoes Lb. **19¢**

Solid Heads
Green Cabbage Lb. **15¢**

Fresh Yellow Or
Italian Squash Lb. **39¢**

California
Pears Lb. **39¢**

Now at Piggly Wiggly
The World Famous
Britannica Junior Encyclopaedia

This Weeks Feature
Volume Thirteen Machines **\$2.99**

Just One Of Many Topics Each Only

Special Buys

Hospitality Ovenware
by Anchor Hocking

No. WM. 1430 (Flat)
Round Casserole 1-Quart **\$1.99**

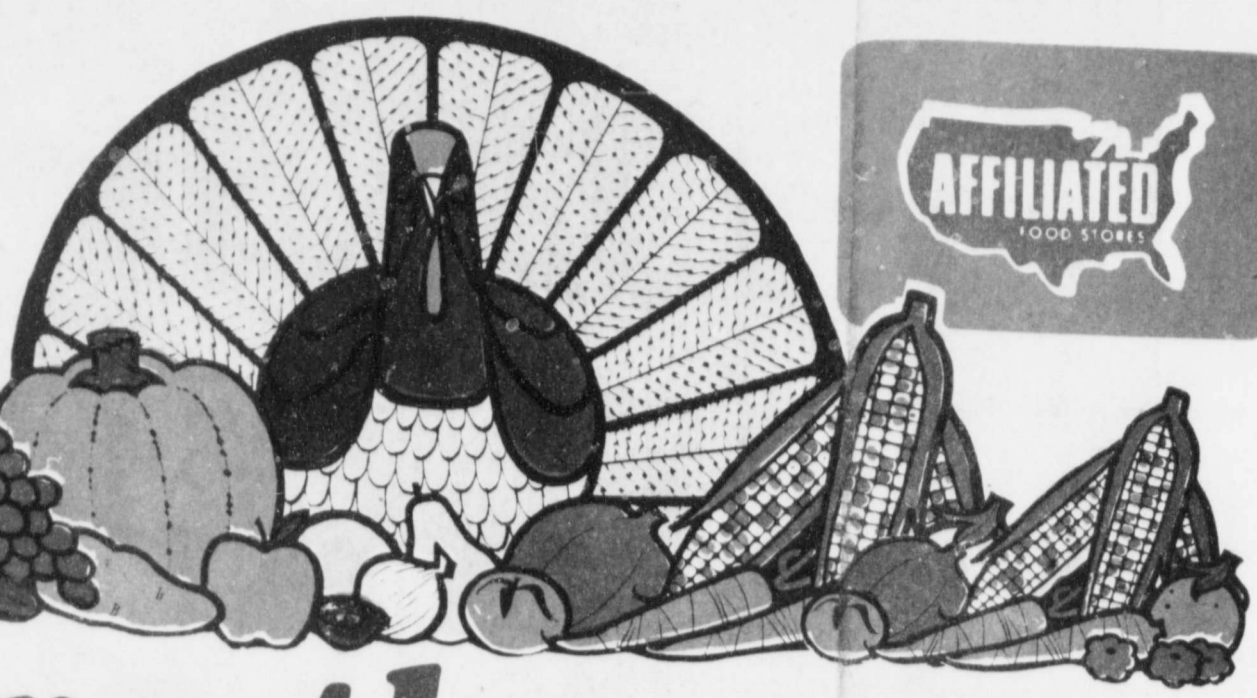
Pie Plate **\$1.39**
Custard Dish **29¢**
Oval Roaster **\$4.99**
Ranger Mug **49¢**
Mixing Bowl **69¢**
Mixing Bowl **89¢**
Mixing Bowl **99¢**

All Purpose Flour
Gold Medal **59¢**
5-Lb. Bag

Betty Crocker Biscuit Mix
Bisquick
Bama
Apple Butter
Piggly Wiggly 100% Pure Vegetable
Cooking Oil

Betty Crocker
Hamburger Helper

TOTAL SAVER



SUPPLEMENT TO THE FOLLOWING PAPERS WEEK OF NOVEMBER 14, 1976

- ANDREW COUNTY NEWS ANDREWS, TEXAS
- CANYON NEWS CANYON, TEXAS
- MOORE COUNTY NEWS-PRESS DUMAS, TEXAS
- FLOYD COUNTY HESPIRIAN FLOYDADA, TEXAS
- HEREFORD BRAND HEREFORD, TEXAS
- WINKLER COUNTY NEWS KERMIT, TEXAS
- LOCKNEY BEACON LOCKNEY, TEXAS
- LOVINGTON DAILY LEADER LOVINGTON, NEW MEXICO
- MEMPHIS DEMOCRAT MEMPHIS, TEXAS
- PECOS ENTERPRISE PECOS, TEXAS
- PLAINVIEW DAILY HERALD PLAINVIEW, TEXAS
- PORTALES NEWS TRIBUNE PORTALES, NEW MEXICO
- ROTAN ADVANCE ROTAN, TEXAS
- SHAMROCK TEXAN SHAMROCK, TEXAS
- QUAY COUNTY SUN TUCUMCARI, NEW MEXICO

Serve the very best this Thanksgiving



A PREMIUM TURKEY, SPECIALLY BRED TO HAVE ALL THE FEATURES OF NATIONALLY ADVERTISED BRANDS

- ★ **GRADE A** ★ **SELF-BASTING**
- ★ **BROAD BREASTED**
- ★ **Plus a POP-UP TIMER** to make cooking preparation easier

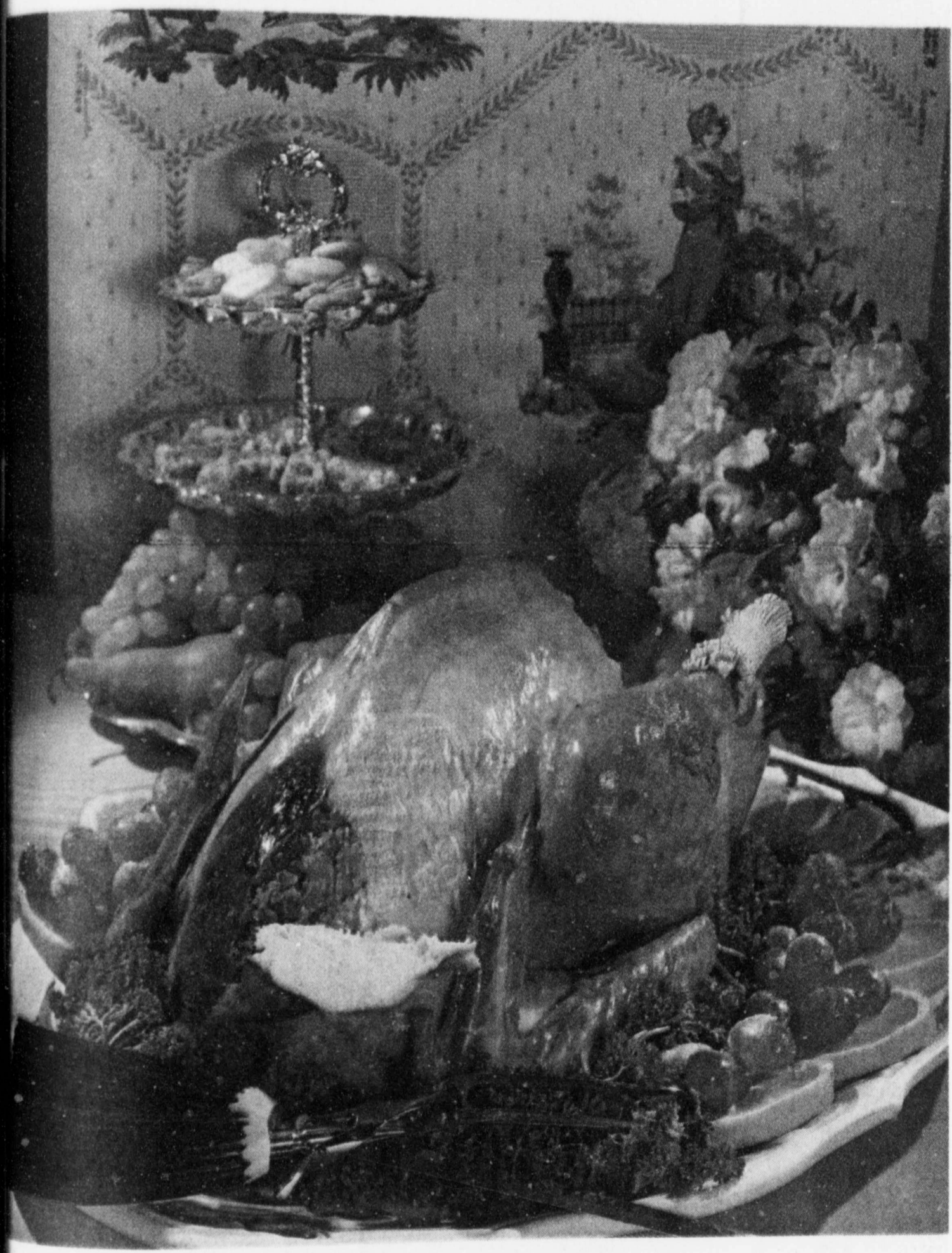
Young Turkey



18-22 LB. AVG. WEIGHT

49¢

LB.



SPECIALS GOOD NOVEMBER 15-20, 1976

THRIFTWAY

Exceptional Savings at Your Participating Thriftway Food Stores....

- | | | | | | | | |
|--|--|--|--|--|---|---|--|
| ARNATHY, TEXAS
MORTON'S THRIFTWAY
S & H GREEN STAMPS | BORGER, TEXAS
HOLT'S THRIFTWAY
BLUE STAMPS | DALHART, TEXAS
PORTER'S THRIFTWAY
BLUE STAMPS | LOCKNEY, TEXAS
PAGE'S THRIFTWAY NO. 3
S & H GREEN STAMPS | MORTON, TEXAS
DOSS THRIFTWAY
BLUE STAMPS | PECOS, TEXAS
BOB'S THRIFTWAY
HILL'S THRIFTWAY
POPULAR THRIFTWAY
BLUE STAMPS | RALLS, TEXAS
LEFTWICH THRIFTWAY
GOLD BOND STAMPS | SPEARMAN, TEXAS
THRIFTWAY
BLUE STAMPS |
| ANDREWS, TEXAS
MORTON'S THRIFTWAY
S & H GREEN STAMPS | CANADIAN, TEXAS
MILLER THRIFTWAY
BLUE STAMPS | DUMAS, TEXAS
THRIFTWAY SUPERMKT.
BLUE STAMPS | LOVINGTON, NEW MEXICO
THRIFTWAY
NO. 1-721 NORTH MAIN ST.
NO. 2-17 WEST AVENUE H
BLUE STAMPS | PADUCAH, TEXAS
MOORE'S THRIFTWAY
S & H GREEN STAMPS | PLAINVIEW, TEXAS
PAGE'S THRIFTWAY
NO. 1-809 WEST 24TH ST.
NO. 2-1200 SOUTH DATE ST.
S & H GREEN STAMPS | ROTAN, TEXAS
GLEN'S THRIFTWAY
GOLD BOND STAMPS | TUCUMCARI, NEW MEXICO
COOPER'S THRIFTWAY
BLUE STAMPS |
| ARLINGTON, NEW MEXICO
MORTON'S THRIFTWAY
S & H GREEN STAMPS | CANYON, TEXAS
COOPER'S THRIFTWAY
GOLD BOND OR BUYER'S BONUS | HEREFORD, TEXAS
THRIFTWAY
GUNN BROS. STAMPS | MEMPHIS, TEXAS
DAVIS THRIFTWAY
BUCCANEER STAMPS | PANHANDLE, TEXAS
PANHANDLE THRIFTWAY
BUCCANEER STAMPS | PORTALES, NEW MEXICO
FOOD TOWN THRIFTWAY
GOLD BUCK COUPONS | SHAMROCK, TEXAS
PRITCHARD'S THRIFTWAY
S & H GREEN STAMPS | WELLINGTON, TEXAS
OWENS & SCOTT THRIFTWAY
BLUE STAMPS |
| ATLANTA, OKLAHOMA
MORTON'S THRIFTWAY
BLUE STAMPS | CLOYIS, NEW MEXICO
STANSELL'S THRIFTWAY
BLUE STAMPS | KERMIT, TEXAS
SERV-ALL THRIFTWAY
BLUE STAMPS | | | | SNYDER, TEXAS
EVERYBODY'S THRIFTWAY
S & H GREEN STAMPS | WHEELER, TEXAS
PRITCHARD'S THRIFTWAY
S & H GREEN STAMPS |

Let us give thanks



LIBBY'S

PUMPKIN
 3 303 CANS **\$1.00**

TENDER CRUST BROWN AND SERVE
ROLLS
 3 12 CT. PKG. **\$1.00**

Baking & Cooking Needs

- BAKER'S ANGEL **Flake Coconut** 14 OZ. PKG. **89¢**
- NONE SUCH **Mince Meat** 9 OZ. PKG. **69¢**
- RED LABEL **Karo Syrup** PINT BTL. **49¢**
- SWANSON **Chicken Broth** 14 OZ. CAN **19¢**
- KRAFT MINIATURE **Marshmallows** 10 1/2 OZ. PKG. **39¢**
- SCHILLING POULTRY **Seasoning** 1/4 OZ. CAN **39¢**

- SHURFINE HEAVY DUTY **Aluminum Foil** 18" X 25' ROLL **69¢**
- SOFT'N PRETTY **Bathroom Tissue** 4 ROLL PKG. **69¢**
- BETTY CROCKER LAYER **Cake Mixes** 18 OZ. BOX **59¢**
- FISHER'S-VAC PAK **Mixed Nuts** 12 OZ. CAN **\$1.29**
- STOVE TOP CHICKEN-PORK OR CORNBREAD **Stuffing Mix** 6 OZ. BOX **59¢**
- SHURFINE CUT ALL GREEN SPEARS OF **Asparagus** 14 1/2 OZ. CAN **59¢**
- SHURFINE WHOLE **Green Beans** 15 1/2 OZ. CAN **33¢**



GLADIOLA ALL PURPOSE
FLOUR
 5 59¢
 LB. BAG



FINEST VEGETABLE SHORTENING
CRISCO
 3 \$1.49
 LB. CAN

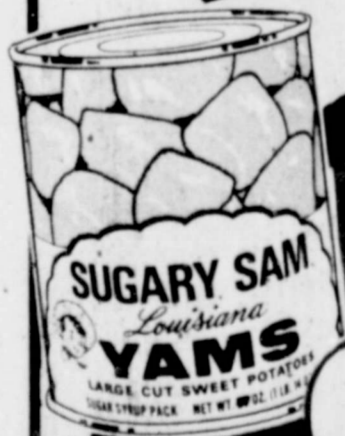


FIRESIDE FAMILY
BIBLES

PROTESTANT
 OR CATHOLIC

YOUR
 CHOICE

\$1.95



SUGARY SAM LOUISIANA
CUT YAMS
 3 39¢
 NO. 3 SQUAT CAN

Holiday Priced

Specials From Your Frozen or Dairy Food Case!

- JOHNSTON FROZEN PIES **Mince Meat** 32 OZ. CTN. **\$1.29**
- JOHNSTON FROZEN **Pumpkin Pies** 32 OZ. CTN. **\$1.29**
- JOHNSTON FROZEN 9 INCH **Pie Shells** 2 CT. PKG. **39¢**
- BIRDSEYE TOPPING **Cool Whip** 9 OZ. CTN. **59¢**
- SHURFINE FROZEN SPEARS OF **Broccoli** 10 OZ. CTN. **39¢**
- SHURFINE FROZEN HALVES **Strawberries** 16 OZ. CTN. **69¢**

- PHILADELPHIA **Cream Cheese**
- SHURFRESH **Sour Cream**
- OLD ENGLISH BACON OR PIMENTO PINEAPPLE OR OLIVE PIMENTO **Kraft Cheese**



SHURFRESH SWEET CREAM IN QTRS. **BUTTER** 1 LB. PKG.

THRU

Pri rig De
 S
 BU T
 RI QU
 PE CE
 Wa
 SH
 Premi Ru Solid I Gr Fresh Ita Cali P

...ks is festive Holiday!



BAKER'S CHOCOLATE
FLAVOR CRANBERRY SAUCE
5933¢

Holiday Grocery Needs

- KLEENEX Dinner Napkins 50 CT. PKG. **39¢**
- HOLSUM THROWN MANZ. Stuffed Olives 7 OZ. BTL. **79¢**
- SUNSHINE SALTINE Krispy Crackers 16 OZ. BOX **49¢**
- IMPERIAL POWDERED OR STA-SOFT LIGHT Brown Sugar 2 LB. BAG **69¢**
- STERNO LONG BURNING Fireplace Logs EACH **79¢**
- LINDSAY MEDIUM Ripe Olives 300 CAN **49¢**

GIFT WRAP SALE

- 26" X84" PRINT AND SOLID Foil Paper JUMBO ROLL **79¢**
- 26" X84" SOLID Foil Paper JUMBO ROLL **79¢**
- ASSORTED Color Bows 25 CT. BAG **49¢**
- 4 DONUT WIND ASSORTED Colored Ribbon CARD **49¢**

PUMPKIN PIE

1 teaspoon cinnamon
 1/4 teaspoon ginger
 1/4 teaspoon cloves
 1/4 teaspoon nutmeg
 1 1/2 cups undiluted Carnation Evaporated Milk
 9-inch single-crust unbaked pie shell

2 slightly beaten eggs
 1 1/2 cups canned pumpkin
 1 cup sugar
 1/2 teaspoon salt

Combine egg & pumpkin, sugar, salt and spices. Gradually add Carnation. Mix well. Pour into unbaked pie shell. Bake in hot oven (425° F.) 15 minutes; reduce to moderate; heat (350° F.) and continue baking about 40 minutes, or until knife inserted near the center of pie comes out clean. Cool. Makes one 9-inch pie.

THE SECRET IS
VELVETIZED CARNATION EVAPORATED MILK
3 14 1/2 OZ. CANS \$1.00

BLUE BONNET IN QUARTERS

Margarine

39¢



SALAD DRESSING

Miracle Whip

99¢

32 OZ. JAR

Holiday Priced

Holiday Health and Beauty Aid Specials

REGULAR AND UNSCENTED
FINAL NET \$1.39

8 OZ. BTL.

FOR UPSET STOMACH
SCOPE
99¢

12¢ OFF LABEL
SCOPE
 12 OZ. BTL. **89¢**

TABLETS
SINAREST 20 CT. BTL. **99¢**

All Grinds
Maryland Club Coffee

MARYLAND CLUB **COFFEE**
 1 LB. CAN **\$1.89**

SHURFINE GRANULATED
SUGAR
599¢

1 LB. BAG

Holiday Priced

OUTWAY

Top Quality
Traditional
Thanksgiving

MEATS



A PREMIUM TURKEY, SPECIALLY BRED TO HAVE ALL THE FEATURES OF NATIONALLY ADVERTISED BRANDS

- ☆ BROAD BREASTED
- ☆ SELF-BASTING
- ☆ GRADE A



☆ Plus a POP-UP TIMER to make cooking preparation easy

YOUNG TURKEYS

KAHN'S FULLY COOKED BONELESS HAMS



SHURFRESH VAC PACK SLICED BACON



SHURFRESH GRADE A SELF-BASTING HEN TURKEYS
12-16 LB. AVG. WEIGHT
LB. 59¢

18-22 LB. AVG. WEIGHT

49

WATER ADDED HALF OR WHOLE

\$1.59

LB. PKG.

99¢

LB.

Shop Your Thriftway Food Stores For Other Holiday Needs



- ☆ SWIFT SELF-BASTING BUTTERBALL TURKEYS
- ☆ SMOKED TURKEYS
- ☆ TURKEY BREAST AND OTHER TRADITIONAL HOLIDAY MEATS

GRADE A-4/7 LB. AVG. Baking Hens	LB.	59¢
KAHNS-CENTER SLICES Boneless Ham	LB.	\$1.89
U.S.D.A. CHOICE BEEF STANDING Rib Roast	LB.	\$1.19
FRESH-LEAN SEMI BONELESS BOSTON BUTT Pork Roast	LB.	89¢
WILSONS CORN KING BONELESS COOKED Canned Hams	5 LB. CAN	\$7.99
RUDY'S FARM WHOLE HOG Sausage HOT OR MILD	1 LB. ROLL	\$1.29
RUDY'S FARM WHOLE HOG Sausage HOT OR MILD	2 LB. ROLL	\$2.57

TOTAL SAVER

Holiday Produce



CALIFORNIA GREEN PASCAL CELERY
LB. 19¢

WASHINGTON RED Delicious Apples
CALIFORNIA-LARGE SIZE Sunkist Lemons
MARYLAND SWEETS Portales Yams
SWEET Yellow Onions
HOLIDAY FAVORITES Large Walnuts

CRANBERRIES
OCEAN SPRAY
LB. 39¢

THRIFTWAY