






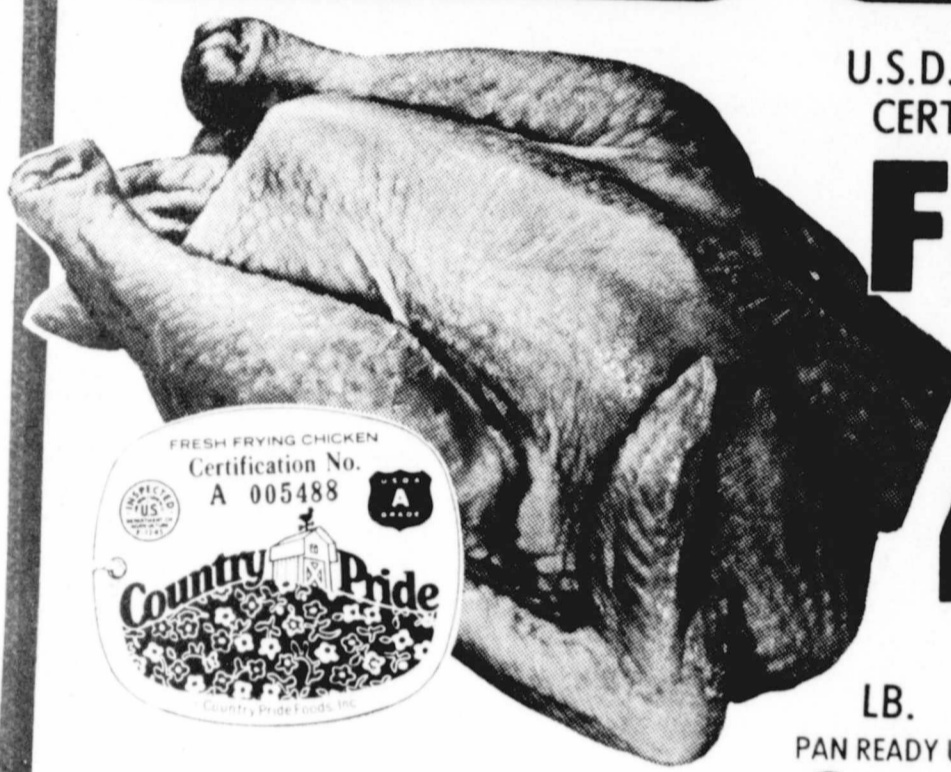
# TOTAL SAVINGS FOR YOU... THAT'S OUR AIM

32 oz. 6 bottle carton  
  
**COKE**  
 or  
**DR PEPPER**  
 plus deposit **\$1 39**

FOR BETTER BAKING  
  
**BAKE-RITE SHORTENING**  
**99¢**  
 3 LB. CAN

GLADIOLA ALL PURPOSE  
  
**FLOUR**  
**\$2 89**  
 25 pounds

LOW SUDS DETERGENT  
  
**DASH**  
**\$4 89**  
 FAMILY SIZE BOX



U.S.D.A. GRADE A COUNTRY PRIDE CERTIFIED FINE QUALITY WHOLE  
**FRYERS**  
**45¢**  
 LB.

HI DRI  
  
**PAPER TOWELS**  
**39¢**  
 JUMBO ROLL

COUNTRY PRIDE Split Fryer Breast	LB.	99¢
COUNTRY PRIDE Fryer Drumsticks	LB.	89¢
COUNTRY PRIDE Fryer Thighs	LB.	89¢
SHURFRESH Pure Pork Sausage	2 LB. PKG. / 1 LB. PKG.	\$2 37 / \$1 19
SHURFRESH Sliced Bologna	12 OZ. PKG.	89¢
BETTAWAY CHICKEN Fried Beef Patty	12 OZ. PKG.	89¢
BETTAWAY CHICKEN Fried Beef Fingers	12 OZ. PKG.	89¢

PAN READY U.S.D.A. GRADE A COUNTRY PRIDE  
**Cut-Up Fryers** LB. **59¢**  
 GRADE A CHECKERBOARD FARMS-4 TO 6 LB. AVG.  
**Baking Hens** LB. **59¢**

GELATIN  
  
**JELL-O**  
**59¢**  
 3 OZ. BOXES

RANCH STYLE  
  
**CHILI**  
**79¢**  
 19 OZ. CAN

INSTANT TEA  
  
**NESTLE**  
**\$1 00**  
 3 OZ. JAR

WILSON CERTIFIED REGULAR OR  
**Beef Franks** 12 OZ. PKG. **59¢**

**\$1 50 CASH REFUND**  
 BY MAIL FROM CHESEBROUGH-POND'S INC.  
  
**WHEN YOU BUY ALL 3 OF THESE QUALITY VASELINE BRAND PRODUCTS**  
 VASELINE INTENSIVE CARE LOTION REGULAR OR HERBAL, 10 OZ. **99¢**  
 VASELINE INTENSIVE CARE BATH BEADS, 15 OZ. **\$1 19**  
 VASELINE PETROLEUM JELLY 7 1/2 OZ. **89¢**

MAXWELL HOUSE  
  
**INSTANT COFFEE** 10 OZ. JAR

GLADIOLA ALL PURPOSE  
  
**FLOUR**  
**59¢**  
 5 LB. BAG

**DAIRY & FROZEN FOODS**

MINUTE MAID FROZEN Orange Juice	16 OZ. CAN	89¢
ORE-IDA FROZEN Tater Tots	2 LB. PKG.	69¢
KRAFT SLICED HALFMOON Longhorn Cheese	10 OZ. PKG.	\$1 09
KRAFT ASSORTED Cheese Spreads	5 OZ. JAR	49¢

FACIAL TISSUE  
  
**KLEENEX**  
**49¢**  
 200 CT. BOX

**Health & Beauty Aid Discounts**  
  
 12¢ OFF LABEL  
**LISTERINE**  
**89¢**  
 14 OZ. BTL.

20¢ VALUABLE COUPON  
 COFFEE FILTER RINGS  
**Max-Pax** 10 OZ. CAN  
 WITH THIS COUPON VOID OCTOBER 2, 1976  
 LIMIT ONE COUPON PER CUSTOMER

20¢ VALUABLE COUPON  
 BREAKFAST CEREAL  
**Wheaties** 12 OZ. BOX  
 WITH THIS COUPON VOID OCTOBER 2, 1976  
 LIMIT ONE COUPON PER CUSTOMER

7¢ VALUABLE COUPON  
 BETTY CROCKER PIE  
**Crust Sticks** 20 OZ. PKG.  
 WITH THIS COUPON VOID OCTOBER 2, 1976  
 LIMIT ONE COUPON PER CUSTOMER

**TOTAL SAVER**  
  

CALIFORNIA Large Nectarines	LB.	49¢
WASHINGTON Bartlett Pears	LB.	25¢
FANCY Acorn Squash	LB.	25¢
LARGE SIZE Bell Peppers	LB.	39¢
GREEN Table Cabbage	LB.	10¢

WASHINGTON GOLDEN  
**DELICIOUS APPLES**  
**3 \$1**  
 3 LBS.

**BAND-AID BRAND**  
  
 LARGE SHEER STRIPS 50 CT. BOX **89¢**  
 ALL WIDE PLASTIC STRIPS 30 CT. BOX **89¢**  
 VALUE PACK PLASTIC STRIPS 70 CT. BOX **\$1 29**

**We Give \$1 Green Stamp**  
**Double On Wednesday**

# PAGES THRIFTWAY

SPECIALS GOOD SEPT. 27-OCT. 2, 1976



# Society

## Final Plans Made For FH School Homecoming. Program Outlined

Final plans for Floydada High School homecoming have been made and the program outlined for festivities on Saturday, October 9th. Homecoming events will begin Friday afternoon, October 8th., with the crowning of a homecoming queen about 3 o'clock at high school, followed with a spaghetti supper, sponsored by the Day Care Center, the football game between Levelland and Floydada, and a teen-age, college dance at the Mac after the game.

The spaghetti supper will be served at the Junior High School cafeteria between the hours of 5:30 thru 8 p.m. Tickets may be purchased from Day Care board members or at the door.

Main activities for homecoming will commence Saturday morning, October 9th with registration and coffee at high school starting at 9 o'clock. Mrs. Ann Deakins Reddy will be in charge of registration.

There will be a business meeting by Ex-Student Association at 11 a.m. with Travis Jones, president, presiding. A memorial service will also be held in the school auditorium at this time with Francis Field Stanforth in charge.

Possibly one of the earliest graduating students of Floydada High School plans to attend the luncheon. They are Mr. and Mrs. J. Ray Dickey of Lubbock, who were in the 1918 class. Mrs. J. V. Nelson of Amarillo, with the 1922 class, also plans to attend the luncheon, as well as numerous other ex-students from early day classes. You will find these listed below.

Following the luncheon "The Floydada Story" will unfold in the high school auditorium from 1 until 2 p.m. From 2:30 until 3:30 there will be a coffee and

A good number of ex-students have made reservations for the barbecue luncheon to be held in the high school gymnasium from noon until 2 p.m. The luncheon is not only for ex-students, but for the general public as well as long as tickets to the luncheon are purchased before October 1. If you wish to attend the luncheon clip the form from this newspaper, fill it in, and with remittance of \$3.50 per plate, send to Ex-Student's Association, Box 430, Floydada, 79235. Tickets may also be purchased at the First National Bank or the Floydada Branch of the Plainview Savings and Loan. The Association must know before October 1 the number of plates, and only those with tickets will be served. Ex-students planning to attend from out of town and who have ordered their meal tickets, are informed that these will be waiting for you at the registration table Saturday morning.

Class and organizational reunions will commence after the days programs. To wind up festivities a homecoming dance for all exes will be held at the MAC beginning at 9 p.m.

Many local ex-students are planning special reunions. These will be announced at class meetings during the day Saturday.

One class planning a get-together is the class of 1949 in the home of Mr. and Mrs. Bill Hardin. Another is the 1966 class from 4:30 until 6:30 in Fellowship Hall of the First Methodist Church. Ex-students who have

already made luncheon reservations and their classes are as follows: Mr. and Mrs. J. Ray Dickey, Lubbock, 1918; Mrs. J. V. Nelson, Amarillo, 1922; Hazel Jones Mitchell, Waco, 1924; Norman L. Ross, Grunfield, Calif., Martin E. Brown, Stockton, Calif., and H. G. (Bill) Dailey, Dallas, 1925.

Velma Heard, Lubbock, Mrs. R. Glenn Jones, Stockton, Calif., Tom Bishop, Seguin, Gertrude Davis, Clovis, N. Mex., and Ethna Green Vincent, Topeka, Kan., 1926.

Richard Stovall, Plainview, 1927; Mr. and Mrs. Wayne A. Gound, Dallas, 1929; Pattye Looper Simpson, Stockton, Calif., 1931; Elizabeth Daniel Spears, Austin, 1932; Wanda Teeple, Plainview, 1933; Mrs. Raymond J. Rodgers, Harlingen and James G. Badgett, Conroe, 1934; Bonita Newsum, Lubbock, 1935; Mrs. G. N. Shirey, Long Beach, Calif., 1936.

Estelle Gary Turner, Buffalo, Mo., 1937; Earl Beck, Dumas, Harold Cochran, Abilene, Verda Frances and L. G. Pierce, Lubbock 1939; Evelyn Daniel Cruil, Lubbock, 1940; James B. Turner, Albany, Calif., Dillon Patterson, Slaton, Maurice Steen, Lubbock and Beryle Bishop, Sherman, 1941.

Ernest Huckabee, Stephenville, 1942; Kay Steen 1945; Eddie Landers, Amherst, Martha Cudd McCormick, Muleshoe and Charles Beedy, Claude, 1947; Juaneal Black, Plainview, and Hazel Patton Davis, Amherst 1947; Ken and Rose Hart, Amarillo and Mrs. Ernest Huckabee, Stephenville, 1948.

Gene D. Jackson, Richardson and John Perry, Petersburg, 1950; Bill Jones, Pampa, Chris Perry, Petersburg and Reese Grubbs, Lubbock, 1950; Lavon Shearer, Wall, South Dakota, 1951; JoAnne Grubbs, Lubbock, and Frank Stovall, Houston, 1953; Dorothy Holmes McGinnis, Shawnee Mission, Kan., and James D. Welborn, Hurst, 1954.

Jack Henry, San Antonio, Beuna Holmes Dallas of Dallas, and Christene Britts Bell, Morton, 1955; Bonnie Upton Craig, Slaton, 1956; Glea Adams, Fort Worth, 1959; Geoge Farris, Houston and Charles and Judy Holland, Fort Worth, 1960; Janice Harder, Plainview, 1961; Rodney and Sara Teague, Duncanville, 1962.

Darryl and LaJuana Lindsey, Lubbock, Richard Watson, Farmers Branch, 1963; Monroe A. Schulz Jr., Andrews, 1964; Shelia and Neal Schirato, Dallas, Keith Teague, Pampa and Mr. and Mrs. Jim Tye, Lubbock, 1965; Charles Overstreet, Joy Willis Scott, Canyon, Jan Slegle, Dallas, Dan Hale, Lubbock and Beverly Teague, Pampa, 1966; Tim and Janie Assiter of Spearman, 1971.

## Fall Fashion 76- Highlights

Wouldn't you like to own some unique new clothes for fall? Something you couldn't find in even your favorite store! Something you could make yourself! Then join us for Fall Fashion '76 - Highlights, Monday, September 27, at the Lockney Grade School Cafeteria, at 8 p.m.

Fall Fashion '76 - Highlights is sponsored by the

Floyd County Family Living Committee and is presented by the Baker Store in Lockney.

It will be a trunk showing from a New York Yarn manufacturing company, featuring all types of knitted, crocheted, latch-hook, crewel, and needle-point fashions for everyone in the family. These unique fashions will be displayed by

the "Knit-Wits", models gathered from all around Floyd County.

Do plan to join us for fresh ideas in fashions, some refreshments, and register prizes. It's the best time you'll have for a long time, and it's all for free! We'll be looking for you!

## Alpha Mu Delta Chapter Meets

The Alpha Mu Delta Chapter of Beta Sigma Phi held its regular meeting September 21, at Plainview Savings and Loan.

President Becky Pingleton led the Opening Ritual and called the meeting to order.

Roll was called by Teresa Whittle, and the minutes from the last meeting were read.

Members were informed of the First Lady of the Year program and the Scholarship Fund.

Standing Committee reports were given by Ilene Kendrick, Brenda Watson, Kay Powell, Barbara Kock, and Lynn Daniel.

The following service

projects were voted upon by the members: Swine Flu program, Floyd County Museum, Scholarship for a senior high school girl, and the Cystic Fibrosis Drive.

Donna Henderson presented the program on Physical Science. Members took part in the discussion.

Kay Powell and Teresa Whittle served refreshments to the following members: Debbie Bertrand, Donna Henderson, Barbara Koch, JoAnn Patterson, Becky Pingleton, Brenda Watson, Vikki Allen, Lynn Daniel, Dixie Harris, and Ilene Kendrick.

A Brunch was held September 11, at the Plainview Savings and Loan for members and the new rushees. Those present visited, and the rushees were able to learn more about the sorority and its members.

## WMU To Hold Salad Supper

WMU of the Caprock Association will hold a salad supper at Plains Baptist Floydada, October 7th. Pastors and their wives of the Caprock Assoc. will be special guests at the supper to be served at 7:30 p.m.

The new Missionaries, Mr. and Mrs. Smith of Plainview, will be speakers.

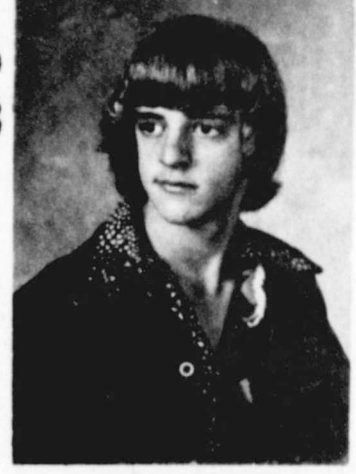
All WMU women are asked to bring a salad.

## Debbie Martinez On Youth Board

Debbie Martinez, 12 year old daughter of Mr. and Mrs. Junior Martinez of Floydada, has been selected to serve on the Junior Youth Board of Dunlap Department Store in Lubbock.

Debbie received word of the appointment this week, after being judged recently at a modeling show.

The 7th grader at Floydada Junior High School will be modeling and attending other functions pertaining to the store. Their main event for the year will be their Christmas Style Show scheduled in December.



Bill Mayfield

## Mayfields At Scout Honor

Mr. and Mrs. Gordon Mayfield plan to be in Little Rock, Ark., to attend Scout Court of Honor on Tuesday, Sept. 28, at Levy Baptist Church.

Their grandson, William (Bill) Gordon Mayfield, son of Mr. and Mrs. Gene Mayfield of North Little Rock, will be bestowed Scoutings Highest Honor.

Bill is also the grandson of Mrs. Lula Morman of Canyon, former Floydada resident.

## What's Cooking At FLOYDADA SCHOOLS

Sept. 27-Oct. 1, 1976

MONDAY  
Pigs in Blanket with Mustard  
Seasoned Black Eyed Peas  
Tossed Vegetable Salad with Dressing  
Fudge Cookie  
1/2 pint milk

TUESDAY  
Battered Fried Fish with Ketchup (FHS-Chicken Fried Steak)  
Whole Kernal Corn  
Oven Baked Broccoli  
Apricot Crisp  
Hot Rolls  
1/2 Pint Milk

WEDNESDAY  
Pizza with Cheese  
Buttered Mixed Vegetables  
Dill Pickle Spears  
Peach Half  
Peanut Butter Raisin Cookie  
1/2 Pint Milk

THURSDAY  
Roast Beef with Brown Gravy  
Mashed Potatoes  
Mixed Greens  
Cherry Jello with Topping  
Hot Rolls  
1/2 Pint Milk

FRIDAY  
Hamburgers with Mustard  
Tomatoe, Lettuce & Dill Pickle  
Potato Chips  
Apple Cobbler  
1/2 Pint Milk

**FARMERS INSURANCE GROUP**  
Symbol of Superior Service  
AUTO • LIFE • FIRE  
TRUCK • COMMERCIAL  
Sam A. Spence  
983-2881

**HAPPY 40th BIRTHDAY DORIS H.**

**Now pay less for beauty in rugs that last and last.**  
The richer looking, longer wearing rug yarn for more than 100 famous Bernat patterns.

**TABRIZ by BERNAT**  
SPUN OF 100% KODEL\* POLYESTER

"Tabriz" Kodel Polyester gives your rugs twice the wear of acrylics underfoot... in fact, polyester resists abrasion ever better than wool alone. In Tabriz, colors are rich, and the texture of your finished rug or hanging is luscious and deep. Tabriz is a joy to work with... fingers never tire - and every packet contains a full 360 pieces. Because of Tabriz, you can now make those Bernat patterns you've always admired - and pay less than you ever, ever expected.

\*Kodak Reg T.M.

**SALE 49¢ PACKET ONE WEEK ONLY**

**BAKER STORE**  
SINCE '94  
210 SOUTH MAIN Lockney, Texas  
Phone 652-3461 or 652-2552

**REWARD**

**FOR CAPTURED LOST HEAT SAVINGS ON ELECTRIC HEATING BILLS**

When you buy or build a new home, you'll get the reward of an Efficient Home. Such a home saves energy by the use of insulation methods and with efficient electric heating equipment. Heat is captured and retained where you need it... inside your home. The Electric Company this week for details on how to capture the Energy Efficient Home.

Building or buying? Ask about E.E.H.

**ENERGY EFFICIENT HOME**



## Caprock -Plains Baptist Center Facility Opens

The Caprock-Plains Baptist Area Center in Plainview formally opened Thursday for a three-day grand opening celebration, bringing into reality a long awaited dream to have its own offices and working space.

The \$250,000 facility, originally given to the area missionary headquarters which had been in Wayland Baptist College's Flores Bible Building, has been renovated and completely refurbished. It was donated to house the area offices by remaining members of the Second Baptist Church who signed over the buildings to local Southern Baptist leadership, and placed their memberships into nearby sister churches.

"It was a most gracious, and welcomed act of Christian benevolence," said Director of Missions Dr. Strauss Atkinson. "It will enable our area to do things we never dreamed possible before."

The Caprock-Plains Area Center was presented to the Staked Plains Baptist Association for the use of an area center for four Baptist associations of which Atkinson serves as director of missions. These include Caprock, Llanos Altos, South Plains and Staked Plains associations. The Second Baptist Church disbanded on May 2 and presented its property, located at 10th and Utica Streets, debt free, to the association.

The offices for the area will be here, and assist in administering programs for 124 churches and missions on the South Plains," Atkinson explained. "The building will be used as a conference center for church related services." These will include the Women's Missionary Union, Baptist Men, Sunday school, Church Training, and music and youth organizations.

More than 49,604 members make up the churches and missions represented through the new area center, and are scattered throughout 15 different counties. Counties included are Parmer, Castro, Swisher, Briscoe, Bailey, Lamb, Hale, Floyd, Motley, Cochran, Hoekley, Crosby, Dickens, Terry, and part of Garza, and range from 150 miles east and west to 150 miles north and south.

Churchmen across the Panhandle converged on the center Saturday, Sept. 18, for a formal dedication from 10:30 until 11:30 a.m. Open house on Saturday was held from 9:30 to 10:30 a.m. and from 11:30 to 12:30 p.m. On

Thursday and Friday, open house was from 9 a.m. until noon and from 1 p.m. to 4:30 p.m.

Special speaker for Saturday's opening was Dr. Charles P. McLaughlin, secretary for the State Missions Commission of the Baptist General Convention of Texas. His offices are in Dallas.

The purpose of the Commission is to facilitate and support the work of the churches across the state. Included in its broad function are programs of evangelism, missions, special services through training and music, Sunday School, vacation Bible schools, stewardship, disaster relief services, and coordinates cooperative efforts with the Woman's Missionary Union of Texas and the Texas Baptist Men, both of which are missionary outreaches among the laity.

An area committee of representatives from various churches serve as a coordinating board. Chairman for the group is the Rev. Floyd Bradley, pastor of Floydada's First Baptist Church.

The committee includes Leonard Sims, First Baptist Church, Matador; Bobby Rine, First Baptist Church, Crosbyton; Cliff Ennen, First Baptist Church, Farwell; Glen Smith, First Baptist Church, Springlake; A. J. Kennemer, Jr., First Baptist Church, Littlefield; Printis McGee, First Baptist Church, Levelland; Homer Stephens, Fellowship Baptist Church, Levelland; Ron Mooney, First Baptist Church, Kress; Dr. Carlos McLeod, First Baptist Church, Plainview; John Lewis, First Baptist Church, Olton; and Pat Cummins, First Baptist Church, Brownfield. Several new area leaders will be elected in October.

The area center already has a media center provided for a library and visual aids. A seminary extension program was initiated Sept. 9 with several ministers and lay people throughout the area enrolled.

On Monday, missions division director Charles Lee Williamson of the Baptist General Convention of Texas met with pastors in

the Staked Plains Association for a strategy planning meeting.

"We feel that this meeting helped pastors and their churches to visualize the needs of the churches and the work that the association needs to do," said Atkinson. He added that the meeting will enable church leadership to "determine their goals and make some long range goals on the bases of one, three, five, and 10 years."

Christian social ministries will be undertaken at the corner as the programs can be worked out, explained Atkinson. "As the planning is done, ministries will be added as needed."

Already in operation is a literacy program. To be provided in the future are home, domestic, counseling programs, ministries to minorities, and family life services.

## Lockney Care Center Capers

by Brenda Steen

Can you believe it's only 358 days until the fair! Hope everyone enjoyed the big event as much as the residents in the center. They were all excited about our 3rd place ribbon. We would like to thank Jeff Terrell for the use of his low-boy trailer and the Kenneth Broseh's for pulling us down main street. We all had lots of fun, and believe it or not are looking forward to next year.

Friday Bro. and Mrs. Crowder from Flomot came and brought another fine devotional. Thanks so much. We look forward to you'll coming.

Friday afternoon the ladies played bingo since the fair was on Thursday and messed up their bingo day. The big winner was Mrs. Ola Rogers. She won a candy bar.

Laverne and myself worked on crafts. We made calico flower pots. Saturday, brought us a most enjoyable afternoon with Dowell Brewer playing his guitar and Louis Ray Stapp playing his fiddle. We all were saddened Saturday evening, when Mrs. Lena

## The Floyd County Hesperian

Colvin passed from this earth. We will miss her very much. Our prayers are with her family.

Monday and Tuesday Wayne Campbell led our devotional. We are still reading the book on the ten commandments. All the residents enjoy these lessons very much. Thanks Wayne.

Tuesday afternoon Myrtle Burke, D. W. and Martha Burke, Mary Lillard and Juan Garcia went on the green thumb bus to the Dairy Queen for ice cream. Thanks Edna and Mable.

Wednesday morning the folks from the Methodist Church came and led singing. We love for you'll to come and enjoy the singing a lot. Thanks.

Thursday morning if you were driving down by the home, hope you didn't get excited, we were not having a garage sell. Mr. Morris of Lubbock was painting the lobby. It sure does look nice after the new paint job.

Even though the lobby was having a new coat put on we were all having a great time at our outside devotional. Wayne Campbell filled in for Bro. Muncy due to Mrs. Muncy having a virus. Hope you will be feeling better soon.

Mayme McGhee played the piano. This was very nice and the sunshine did all a lot of good.

Thursday afternoon the ladies had their bingo day. Had to move the game to the kitchen. The ladies didn't mind the inconvenience as long as bingo was played. Mr. Lewis Roberts called the numbers for the ladies. The lucky lady this week was Mrs. Alpha Kitchens, a first time player. She won a candy Hershey bar.

Nothing seems to stop two things at our home, that's daily devotionals and bingo day. "I know where there is a will there is a way!" Right! Mr. Charlie Cottrell is still in the Lockney General. Our prayers for him for a speedy recovery.

Mr. James Dear returned Wednesday from the Caprock Hospital. Glad you home James.

I want to welcome Mr. and Mrs. Lindsey Graham to the Center. Hope you feel right at home.

Until next week God Bless and Keep Smiling.  
Brenda

## Troop Changes Meeting Date

Pack meeting for Floydada Boy Scout Troop 357 has been changed to Tuesday night, September 28th at 7:30 in the Mac.

All members are urged to attend.

## Brownie Uniforms Are Needed

Brownie uniforms are being needed by Floydada girls. If you have a Brownie uniform and would like to sell it at a reasonable price please call 983-2603.

ATTEND THE CHURCH OF YOUR CHOICE


Mr. and Mrs. W. B. Parrack of Anson visited in Floydada Sunday and Monday with Mr. and Mrs. C. W. Denison. Wednesday's guests were the Denison's son, Wilmer and son, Perry of Lubbock.

## Person to person health insurance

It can make you feel better. Call me.

Britt Gregory  
112 W. Mo.  
Call Collect  
983-3125

STATE FARM MUTUAL  
Automobile Insurance Co.  
Home Office  
Bloomington, Illinois



**You're Invited To Hear**  
**DUDLEY STRAIN**  
First Christian Church  
7:30 Each Evening  
TUESDAY, WEDNESDAY, THURSDAY



PLAINS CENTER-Director of Missions Strauss Atkinson (center) discusses plans for Caprock-Plains Baptist Area Center in Plainview which opened Thursday (Sept. 16) for a 15-county area. With him is Charles Strauss Atkinson (left), missions division director of the Baptist General Convention of Texas in Dallas, and Edna Gilly (right), a member of the Center's committee.

**CEGAR HILL NEWS**  
Glenda Kaye Thompson)  
Last Tuesday, Mrs. Edna Gilly, 62, of Cedar Hill, Texas, was born Monday, September 13, weighing 7 lbs. 6 ozs. The mother is the former Roxanne Conner, daughter of Mr. and Mrs. Fred Conner of Amarillo. The maternal great grandparents are Mrs. Oleta Collier of Floydada and Mr. and Mrs. Jim Conner of Cedar Hill.

Thursday, Friday and Saturday was the big county fair in Lockney. Several of the Cedar Hill people were there.

Friday night Edna Gilly joined friends at the house of Georgia Finley of Floydada to play 42.

Cephus and Imogene Fortenberry and their daughter Jean and her two boys, Wesley and Rodney went to Mr. and Mrs. Fortenberry's other daughter's home, Phyllis and Johnny Harris for lunch Sunday.

Mr. and Mrs. Tom Fortenberry ate lunch Sunday with Mr. and Mrs. George Taylor at Lockney. They celebrated the birthday of Mr. and Mrs. Taylor's granddaughter Tracy Wesley.

Rev. and Mrs. Jackie Thompson and family and Mr. and Mrs. Tom Fortenberry went to Mr. and Mrs. J. G. Tuckers for pie and cake, Sunday night.

Mrs. Eutimio are parents of Lance, who was born September 17, at Central Plains Plainview. The baby weighs 7 lbs. 2 1/2 ozs. and has an older brother, age 12, and an older sister, age 7.

Mr. and Mrs. G. DeLeon and Mrs. Eutimio are residents of Lockney.

Mr. and Mrs. Tom Fortenberry went to Mr. and Mrs. J. G. Tuckers for pie and cake, Sunday night.

Mr. and Mrs. Tom Fortenberry went to Mr. and Mrs. J. G. Tuckers for pie and cake, Sunday night.

Mr. and Mrs. Tom Fortenberry went to Mr. and Mrs. J. G. Tuckers for pie and cake, Sunday night.

Mr. and Mrs. Tom Fortenberry went to Mr. and Mrs. J. G. Tuckers for pie and cake, Sunday night.

Mr. and Mrs. Tom Fortenberry went to Mr. and Mrs. J. G. Tuckers for pie and cake, Sunday night.

# SALE

## BERNAT BERELLA 4

Reg \$2<sup>00</sup> **\$1 69**

Knitting worsted weight-4 oz. ball Machine washable/dryable - 100% orlon acrylic yarn. Perfect for afghans and fashion knitting or crocheting. Choose from over 50 colors. Complete selection of books and accessories.

REGISTER FOR KNITTING AND CROCHET CLASSES STARTING OCTOBER 4  
Sponsored by WILMA ADAMS

START YOUR ENTRY FOR THE FLOYD COUNTY FAIR 1977

# BAKER STORE

SINCE '94

210 South Main- Lockney, Texas Phone 652-3461 or 652-2552

6-32 OZ. BOTTLE CARTON

**COKE \$1<sup>39</sup>**  
PLUS DEPOSIT

**ARM ROAST LB 89¢**  
**CHUCK ROAST LB 79¢**  
**HAMBURGER LB 69¢**  
**BACON MARKET SLICED LB \$1<sup>39</sup>**

HI-C 46 OZ. CAN  
**FRUIT DRINK 53¢**  
MRS. ALLISON'S SHOE BOX  
**COOKIES \$1 15**  
AFFILIATED 300 COUNT PACKAGE  
**THEME PAPER 98¢**  
FAMILY SIZE MOUTHWASH  
**SCOPE \$1 19**  
**PALMOLIVE LIQUID 32 OZ. \$1 09**  
**CHEER KING SIZE \$1 98**  
22 OZ. FAULTLESS  
**SPRAY STARCH 79¢**  
JUMBO BOUNTY ROLL  
**PAPER TOWELS 59¢**  
**CRISCO 3LB \$1 39**

# PRODUCE

RED DELICIOUS APPLES LB 29¢  
THOMPSON SEEDLESS GRAPES LB 39¢  
WHITE 2 LBS ONIONS 23¢  
ORANGES LB 29¢

**Bill's Cash & Carry**  
114 NE 8 652-3346 LOCKNEY

DOUBLE STAMPS TUES AFTERNOON AND ALL DAY WED.

Wanda Petersburg

1610 Main

Electricity 17 PDS SO

THE ELECTRIC COMPANY

FOR 10 MARK



# City Auto Showing New Pontiacs

The public is invited to come into City Auto Inc., of Floydada and see the all new 1977 Pontiacs and Buicks. There will be refreshments and plenty of friendly personnel to welcome you and show you the many new features of

of GMC trucks. The event will be held Thursday, September 30.

The dealership has 77 models with new exterior color combinations, new interior trim on all light-duty models and a bolder appearing new grille on Pickups, Suburbans, Jimmys and Crew Cab models. There are new four-wheel-drive, one-ton pickups, Cab & Chassis and four-door model pickups. Three-quarter and half-ton models already are offered with four-wheel-drive.

Among other new optional features are power-assisted windows and door locks for two-door pickups. GMC also has made available a small-block 305 V8 engine for many models. Two In-Line six engines are offered as standard depending on the model.

GMC has a complete line of pickup trucks, vans, Suburbans, four-wheel-drive models. Cab & Chassis models and many others to suit the needs of a wide variety of applications.

City Auto has invited everybody to come in for complete details and first-hand look at the new models.



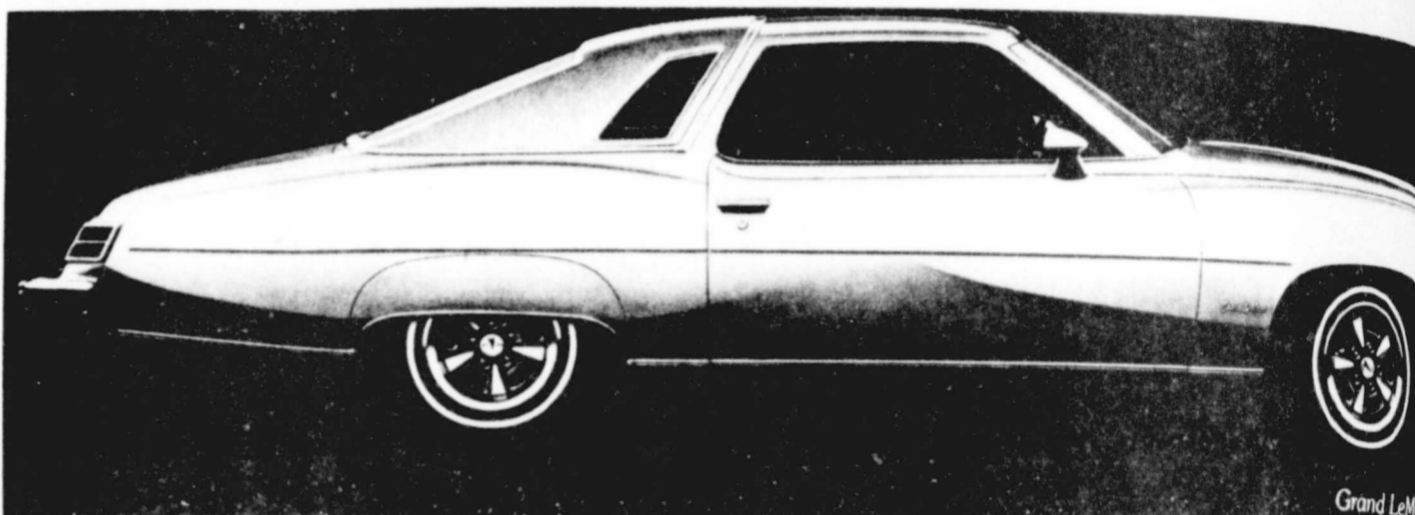
NEW '77 MODEL GMC PICKUPS like the one pictured here now are on display at City Auto Inc. In the upcoming model year GMC will offer one-ton pickups in two-door, four-door and Cab & Chassis models with four-wheel-drive. Among other new optional features are power-assisted windows and door locks for two-door pickups. GMC also has made available a small-block 305 V8 engine for many models. City Auto Inc., offers a complete line of GMC pickups, vans, Suburbans, four-wheel-drive models, Cab & Chassis models and many other for broad use and application. GMC '77 models are on display at City Auto Inc.

## City Auto Showing 1977 GMC Pickups

City Auto Inc., Floydada has scheduled a '77 announcement "Open House" to announce new '77 models



THE 1977 GRAND PRIX PONTIAC



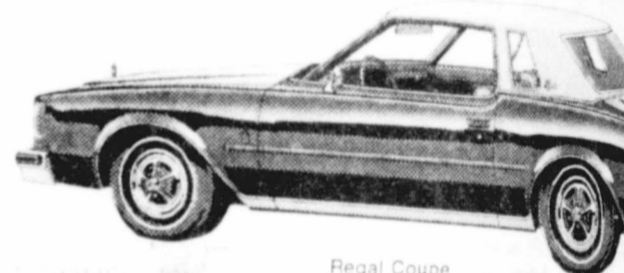
Grand LeMans



LeSabre Sedan



CATALINA 4-DR. SEDAN



Regal Coupe

# - INTRODUCING - The 1977 "SUPERSTARS"

SEE OUR ALL STAR SHOW FEATURING THE TOP PERFORMERS OF THE ROAD.

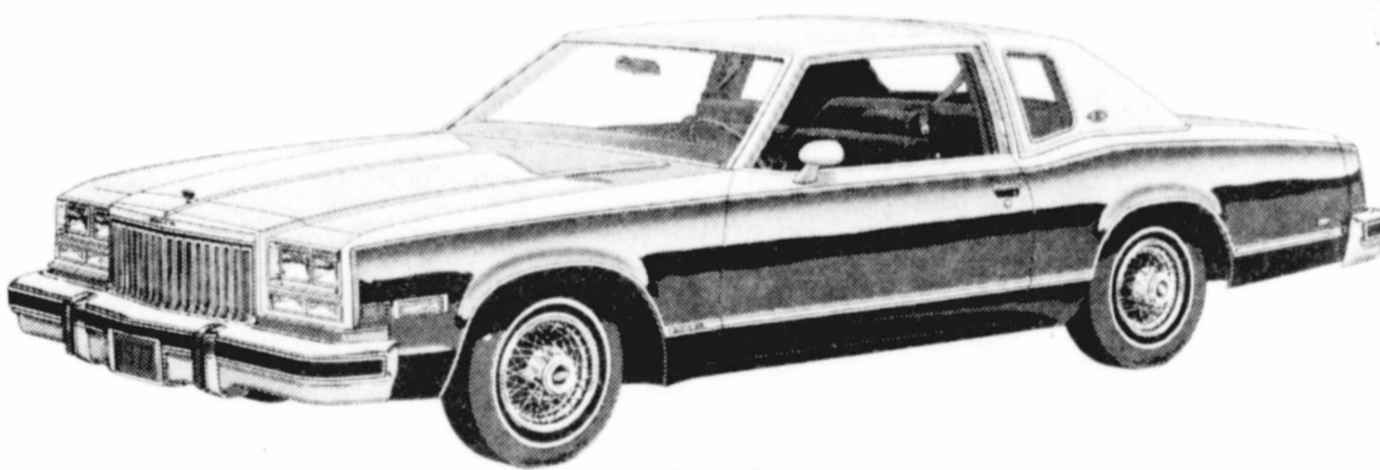
OUR "SUPERSTARS" ARE TRIMMER NOT SMALLER WITH FULL SIZE LUXURY, ECONOMY & MANEUVERABILITY YOU WON'T BELIEVE, BUT WILL LOVE TO DRIVE ! ! ! ! !

Get Behind The Wheel Of A Pontiac, Buick or GMC Today !



GET TRUCKIN' WITH A NEW '77 GMC

FREE GIFTS FOR THE KIDDIES AND REFRESHMENTS FOR EVERYONE



Riviera Coupe



Electra Limited Sedan



BONNEVILLE BROUGHAM 4-DR. SEDAN

# CITY AUTO INC.

201 E. Missouri

983-3767

North Side Of Square



CSS Virginia's duel with the USS Monitor was the first battle between seagoing ironclads in history. Jarnagin's ship is 585 feet long, displaces 11,000 tons and can reach speeds in excess of 30 knots.

A 1969 graduate of Floydada High School, he joined the Navy in April 1971. His ship will be homeported in Norfolk, Va.

**FLOYD DATA**

Miss June Moosberg of Lockney joined Mr. and Mrs. Carl A. Moosberg in Lubbock one evening last week and all went to "Noahs' Ark" program at coliseum. Mr. and Mrs. Moosberg flew to Des Moines, Iowa to

**Husband Of Floydada Girl On Nuclear Powered Cruiser**

Navy Machinist's Mate Second Class David L. Sutton, 21, whose wife Charlotte is the daughter of Mrs. Edell Moore of Floydada, is a crew member aboard the Navy's newest nuclear-powered guided missile cruiser.

visit his brother and wife several days last week. Carla Moosberg celebrated her birthday Tuesday evening with the family at home here.

The USS Virginia was commissioned Sept. 11th at the Norfolk, Va., Naval Station.

Sutton's ship is 585 feet long, displaces 11,000 tons and can reach speeds in excess of 30 knots.

A 1973 graduate of Bellevue Senior High School, Bellevue, Neb., he joined the Navy in June 1973. His ship will be homeported in Norfolk, Va.

**Lockney, Floydada Receive Sales Tax Checks**

AUSTIN—Comptroller Bob Bullock said Wednesday that an analysis shows that his procedure of rebating city sales taxes monthly rather than quarterly has turned out to be a real help to Texas city governments. Since the monthly rebates began in April, 1975, the Comptroller's Office has turned back to the cities 19 percent of their allocation 60 days sooner and 41 percent 30 days sooner than they would have gotten it under a quarterly system, Bullock

said. "This means these cities can put their money to work faster, earning interest or providing services," the Comptroller said. "The city sales tax money belongs to the cities in the first place and never should have been held in Austin until the end of a quarter."

Bullock mailed checks totaling \$56.6 million Wednesday to the 855 cities and towns collecting the one-cent tax as their September rebate.

He noted that city sales tax rebates have totaled \$230 million so far this year, nearly 18 percent ahead of the \$195 million rebated during the same period in 1975.

Lockney received \$5,050.95, Floydada \$12,629.26, Tulia \$17,531.69, Crosbyton \$6,069.18, Ralls \$5,149.59, Spur \$3,940.85, and Matador \$2,166.53.

**LOCKNEY LOCAL**

Out-of-town relatives in Lockney for Mrs. Meda Honea's funeral included Mrs. Nell Deavenport of Boulder, Colorado and her daughter Meta Coleman;

Mr. and Mrs. Ed Gross and Mrs. Mary Phillips, all of Port Lavaca.

**SAVE GAS, SHOP IN FLOYD COUNTY.**

**BUDDY'S FOOD**  
 Buddy Widener, Owner-Forrest Shannon, Mgr.  
 in Floydada, 220 South Second

**DOUBLE STORE HOURS**  
 Monday-Saturday 8 a.m.-8 p.m. Sunday 9 a.m.-7 p.m.

WEDNESDAY 8 a.m.-8 p.m. FEDERAL FOOD COUPONS

THESE VALUES GOOD SUNDAY, SEPTEMBER 26 THROUGH SATURDAY, OCTOBER 2  
 We Reserve The Right To Limit Quantities

**USDA CHUCK ROAST** LB 69¢

**SLICED PICNIC** LB 69¢

**USDA T-BONE STEAK** LB \$1.39

**USDA RANCH STEAK** LB 79¢

**USDA BONELESS ROUND STEAK** LB \$1.39

**USDA CAN HAM** \$6.19

**TALL KORN BRAND 1 LB Sliced Bacon** 1 LB TAIL KORN BACON \$1.39

**USDA FIRST CUTS ROUND STEAK** LB 99¢

**USDA TENDERIZED STEAK** LB \$1.59

**LEAN GROUND BEEF** LB 69¢

**ARMOUR STAR BUTTER BASTED HEN TURKEY** LB 79¢

**SPARE RIBS** LB \$1.49

HOT AND TASTY "READY TO EAT"

32 OZ. 6 PAK \$1.99 VALUE PLUS DEPOSIT

**COKE or TAB**

\$1.39

FOLGERS LB CAN \$2.19 VALUE

**COFFEE**

\$1.79

IT'S DIGESTIBLE PURE VEGETABLE 3 LB CAN

**CRISCO**

WITH PURCHASE OF TWO CUT UP FRYERS

69¢

WHITE SWAN 303 CAN

**FRUIT COCKTAIL**

49¢ VALUE

3/\$1.00

1/2 GAL CLOVERLAKE 99¢ VALUE

**BUTTER-MILK**

67¢

14 COUNT NESTLES HOT

**COCOA MIX**

89¢

16 1/2 OZ. BETTY CROCKER

**POTATO BUDS**

79¢ 99¢ VALUE

WHITE SWAN 3 OZ.

**INSTANT TEA**

\$1.49 VALUE

99¢

15 BAR PANTRY PAK \$2.25 VALUE

Pantry pak boxed candy bars

\$1.69

3 Musketeers, Snickers, M & M Plain chocolate, Mars Almond bars.

20% OFF ON ALL LADYSTAR PANTY HOSE

1 LB SQUEEZE PARKAY 89¢ VALUE

**MARGARINE**

59¢

SWIFTS PREMIUM 3 OZ. 29¢ VALUE

**POTTED MEAT**

6/\$1.00

CONTIDINA 15 OZ. 39¢ VALUE

**TOMATO SAUCE**

4/\$1.00

GULF OUTDOOR FOGGER

**INSECT SPRAY**

\$1.59

WHITE SWAN 303 CAN 35¢ VALUE

**SPINACH**

4/\$1.00

ZESTA LB BOX

**CRACKERS**

WITH COUPON 49¢

59¢ WITHOUT COUPON

EXPIRES 10-2-76 GOOD AT BUDDYS

CALIFORNIA SUNKIST

**ORANGES** 5 LBS \$1.00

COLORADO NO. 1 LB

**CABBAGE** 9¢

TART AND TASTY

**LEMONS** 3 LBS \$1.00

20 LBS US

**POTATOES** \$1.39

9 OZ. KRAFT FOR CANDY APPLES

**WRAPPLES** 79¢

93¢ VALUE

6 OZ. BAG DEL MONTE DRIED

**APRICOTS** \$1.29

\$1.67 VALUE

65 OZ. FAMILY SIZE \$2.29 VALUE

**CASCADE** \$1.69

8 COUNT CHINET 99¢ VALUE

**PLATTERS** 77¢

84 OZ. KING SIZE

**AJAX**

WITH COUPON \$1.69

\$2.09 WITHOUT COUPON

EXPIRES 10-2-76 GOOD AT BUDDYS

30 COUNT DAYTIME

**KIMBIES**

WITH COUPON \$1.89

\$2.19 WITHOUT COUPON

EXPIRES 10-2-76 GOOD AT BUDDYS



# HAVE FUN ... WIN PRIZES

## \$15 IN CASH PRIZES EACH WEEK

# FOOTBALL

# HESPERIAN CONTEST

# AND QUARTERBACK FORECAST

DEADLINE FOR ENTRIES - 5 P.M. IN HESPERIAN OFFICE OR POST OFFICE

### CONTEST RULES:

Anyone can enter except the employees of the Hesperian. Three cash prizes are given each week - ties will split prize money. Members of the sports department are sole judges of the contest and their decision is final.

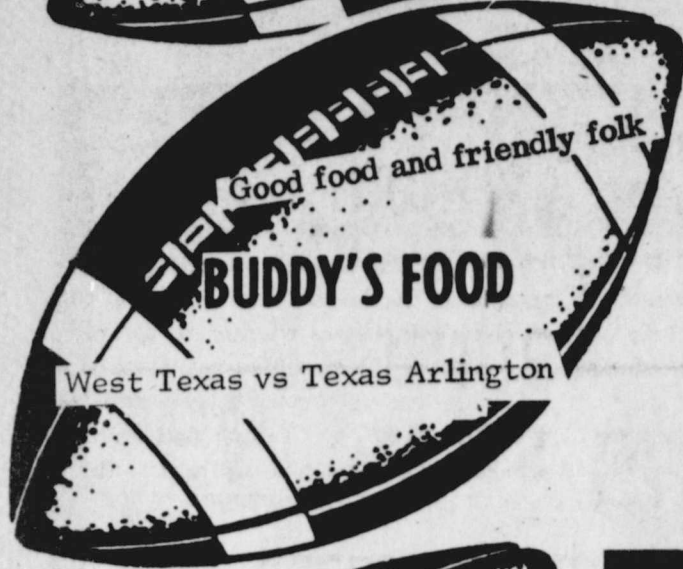
It is not necessary to indicate scores on all the games....But score must be indicated on the tie breaker game at right.

Simply circle the team you choose to win in each of the footballs. Deadline for submitting entries is 5 p.m. Friday - winners will be announced the following week. Enter as many times as you wish, print name and address plainly on blank below and mail or bring entire page to The Hesperian office

Tie-breaker game will be considered only in case of ties.

## QUARTERBACK QUOTES

### TIE BREAKER-Guess Total Points AND CIRCLE WINNER



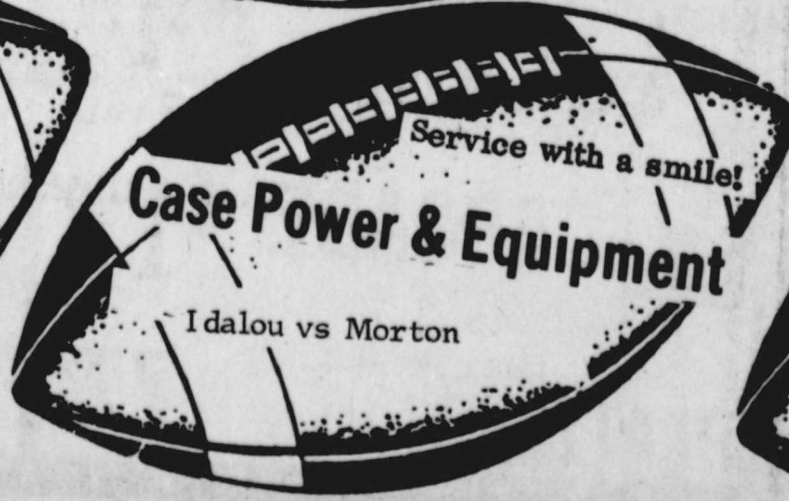
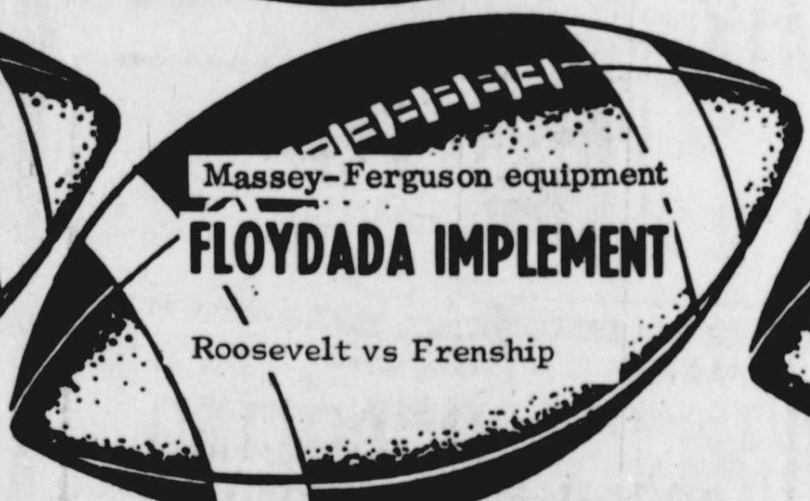
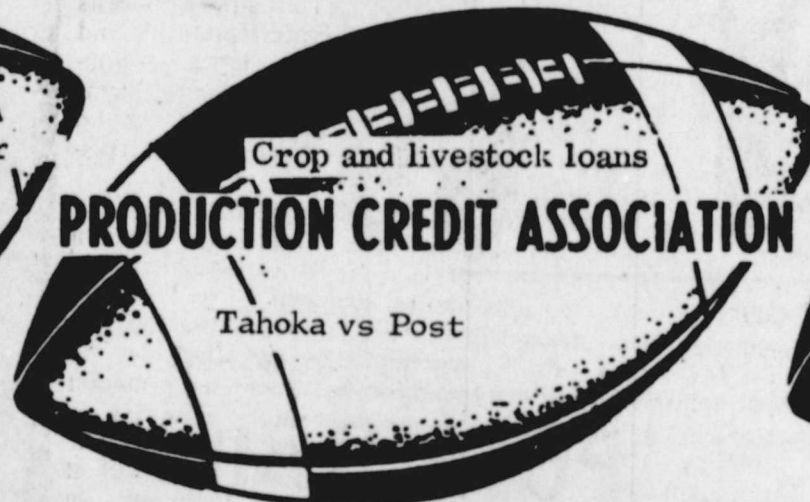
BUDDY LUTRICK  
FLOYDADA.....12  
LITTLEFIELD.....0



FORREST SHANNON  
FLOYDADA.....20  
LITTLEFIELD.....17

NAME
ADDRESS
CITY

1ST PRIZE	\$7.50
2ND PRIZE	\$5.00
3RD PRIZE	\$2.50





# as Ideal For Textile Industry

Special Pro... the Texas... the growth of... the state's... 69 percent of... as well... to point... to form... the textile

One of the keys to the success of the denim mill, Heath said, has been the support of the area cotton producers and ginners who own the plant and the surrounding communities which are anxious to bring in new industry to utilize cotton crops and provide more jobs.

"This mill utilizes the newest technology available in a modern building-designed to accommodate this new technology-which is a cheaper way to go than trying to remodel existing antiquated structures," Heath said. "Our acres and acres of industrial sites in Texas, as well as financial support for developing the sites, are a magnet to the out-of-state and foreign textile leaders."

Top level technology to design and operate the various phases of textile milling is at a premium. Training the rest of the labor force is being facilitated through the Industrial Start-Up Training programs offered by the Industrial Commission and Texas Education Agency. These two state agencies are working with industry to design training programs for specific application to the textile industry.

Ongoing research into better quality fibers and fiber combinations is aiding the quality of Texas fabrics. Such organizations as the Textile Research Center at Texas Tech University, the Natural Fibers Economic Research at The University of Texas at Austin, Texas Woman's University and Texas A&M University are continually striving to improve Texas products. "The Committee includes representation from these organizations, as well as marketing experts and

industrial development specialist. The Committee membership will promote the sharing of research finds and dissemination of technology to producers, and lure more industry to the state," Heath said.

Lay members of the Committee in addition to Heath are Carl Cox, executive director of the Natural Fibers and Food Protein Commission; Bill Harris, director of the Natural Fibers Economic Research Department of the University of Texas at Austin; Dr. Herb Grubb of the Governor's Division of Planning Coordination; and Marvin Segal, director of the Southwest Apparel Manufacturers Association based in Dallas.

Legislative members are Rep. E. L. Short of Tahoka, Sen. Grant Jones of Abilene, Sen. Kent Hance of Lubbock, Sen. Tom Creighton of Mineral Wells, Rep. Forrest Green of Corsicana and Rep. Don Rains of San Marcos. Senior advisors are Armer Earwood, president of Texas Sheep and Goat Raisers Association; Dan Davis of the Plains Cotton Coopera-

tive in Lubbock; and Fred Walker of the Walker Estate Ranch in Comstock.

"Through the Committee's combined efforts of technology and industrial development, a tremendous surge will be experienced by the Texas economy," according to Short, chairman of the Committee.

The current cotton production of 2.4 million bales for the 1975-76 season could easily be expanded to a total of 3.6 million bales, according to Harris. This increase of 1.2 million bales could support 17 textile mills with a direct employment of more than 7,000 employees with \$51 million payroll and a generated employment of more than 4,700 jobs. The annual state and local taxes generated would exceed \$7 million, revenue to producers would exceed \$390 million and revenue to agribusinesses would be almost \$1.5 billion.

Texas wool and mohair production could easily be increased to support nine mills using both the fibers individually or in blends. They would employ nearly 900 new workers with a

payroll of \$6 million annually, and would stimulate nine new businesses with 60 new jobs in firms providing services to mills and employees. The mills alone would increase the annual state and local tax revenue by more than \$178 thousand. Sheep and goat raisers would increase their income by \$10.2 million, and agribusinesses throughout the state would experience a \$36 million annual expansion.

Currently, there are no textile mills in Texas producing man-made fiber or yarn.

"As the natural fiber mills expand in the state, more and more of them will begin to use man-made fiber in combination with the natural fibers to produce durable blends," Heath said. "The fact that Texas leads the nation in production of feedstock for synthetic fabrics is one more important reason to expand the state's textile mill operations."

Polyester fabrics are made from ethylene and glycolethylene, acetate fabrics from butane and ethylene, acrylic fabrics from propane gas and propylene, vinyl fabrics from ethylene and nylon fabrics from benzene or cyclohexane. Of the total national production of these chemicals, Texas supplies 60 percent of the ethylene, 54 percent of the propylene, 51 percent of the benzene and 87 percent of the butadiene.

"The market for Texas finished garments is virtually unlimited," Heath said. "The 1976 fall women's and children's clothing display attracted 13,390 buyers representing 44 states and 14 foreign countries to the Dallas Apparel Mart. On top of that, Texas has the nation's third largest population, giving the state a ready-made customer pool of 12.05 million people.

"With Texas' vast supply of natural resources, garment manufacturers and market outlets, the missing link is in the textile mills," Heath said.

# Look for Beef Specials Freeze Now for Later

AUSTIN--Consumers can expect to find many bargains at the meat counter this fall, and some of the best buys should be in the beef section.

The Texas Department of Agriculture home economist advises consumers to look for beef specials and take advantage of them to fill the freezer.

She reminds consumers that special care is required when freezing prepackaged fresh meats from the supermarket display case.

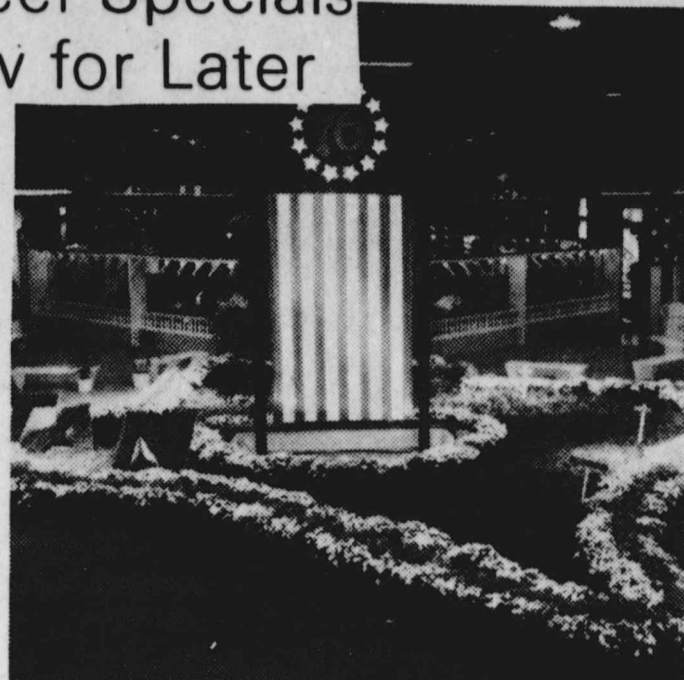
Before freezing, the store wrapping must be removed for two reasons. First, the great amount of air contained in store packages contributes to freezer burn. Second, the clear wrap used to wrap the meat is not strong enough for freezer storage.

With beef supplies so good, many homemakers may want to freeze beef casseroles for those "emergency" meals or when there's no time to cook.

To successfully freeze casseroles, follow these easy tips.

Remember that creamed foods, stews, meat pies, spaghetti sauce and most casseroles freeze well. If stored at zero degrees Fahrenheit, they have a storage life of four to eight months. Undercook any vegetables or pastas since they finish cooking when the main dish is reheated.

**ASK DAVIS FARM SUPPLY ABOUT REMOTE SENSING 1 Less Worry About Winter Wheat**



IT'S TIME AGAIN FOR THE STATE FAIR--The Texas Department of Agriculture Food and Fiber Pavilion at the State Fair October 8-24 will feature educational exhibits, free brochures and recipe booklets, and a chance to win several prizes. The Pavilion has been completely remodeled to represent a "Wonderland of Texas Agriculture," according to Agriculture Commissioner John C. White. Shown above is a scene from the 1975 Pavilion.

16' IHC OFFSET DISC	\$2,100
w/new 22" disc on front	
14' MILLER OFFSET DISC	\$1,600
14' KRAUSE OFFSET DISC	\$2,200
w/23" disc & cylinder	
14' CASE TANDEM DISC	\$375

**USED TRACTORS**

1150 Massey Ferguson w/cab	\$8,600
1030 Case w/cab	\$6,000
1466 IHC w/cab & air	\$11,995
1175 Case w/cab	\$12,500
1370 Case w/cab, air, & duals	\$21,500

CALL  
Frank Milby 652-2334  
Robert Crawford 983-5315  
Boyd Reay 652-3480

**CASE POWER & EQUIPMENT**  
Lockney Hwy. Floydada, Texas  
**The Big Tractor Specialists**  
983-2836 - Floydada - 983-2836



The 1976 annual meeting of Plains Ginners Association will be held on Saturday, September 25, at the Lubbock Country Club in Lubbock from 9:30 a.m. to 2:00 p.m. according to the organization's secretary, Dixon White of Lubbock. Over 300 High Plains ginners and allied industry people are expected to attend.

The meeting will feature addresses by Texas' 19th District Congressman George Mahon; Donald A. Johnson, Executive Vice President of Plains Cotton Growers, Inc., Lubbock; Tony Price, Executive Vice President of the Texas Cotton Ginners' Association, Dallas, and Pete Brown, Southwest Area Supervisor of the National Cotton Council, headquartered in Memphis, Tennessee.

Bill McCasland of Lubbock, President, will give the annual report to the membership. Congressman Mahon, Chairman of the powerful House Appropriations Committee in Washington, has served the people of the High Plains area in Congress since January, 1935. "Mr. Mahon for 42 years has been a moving force behind agricultural progress on the High Plains," said McCasland, "and we are both pleased and honored to have him for our program."

The ginners association will honor the Congressman with its first "Exceptional Service Award." No other individual has been so honored since the organization's inception in 1923, McCasland notes.

Johnson will review what PCG is doing and plans to do toward ensuring the future of the cotton industry on the High Plains, stressing the need for "total involvement and a united effort if the industry is to control its own destiny."

Price, whose statewide organization has kept ginner interests in the forefront as government regulations on air pollution and safety have been promulgated, will outline the latest developments and suggest practical answers to some of the problems that arise from air pollution control, Occupational Safety and Health Administration rulings, and other government regulatory activities affecting ginners.

The National Cotton Council is planning an intensive educational campaign in connection with a producer referendum scheduled in December of this year, and Brown's remarks are expected to center on information that will be used in that campaign. Cotton producers will vote in the referendum on whether to increase the \$1 per bale they now contribute to Cotton Incorporated for that organization's research and market development activities.

Preceding the business meeting on Saturday will be the association's annual golf tournament, with players teeing off at the Lubbock Country Club from 9:30 a.m. to 11:00 a.m. on Friday, September 24.

**WHEAT SEED**

It pays to plant a good 1st year seed for improved yeilds and cleaner fields.

Here's what they are saying about WEATHER MASTER 125:

**YIELD:**  
WM 125 yeilds competitively with all popular varieties in this area. Field test show at least 8 to 10% Advantage over the comman varieties.

**PROTEIN:**  
A pleasant surprise. WM125 consistently test at least 2-3% higher in protein content.

**GRAZING:**  
An outstanding feature of WM125.

**ADAPTATION:**  
Responds equally well in competitive tests to both dry land and irrigation.

**DISEASE:**  
WM125 resists loose smut and stem rust and shows only slight infection to leaf rust.

**See or Call SAM PUCKETT**  
Floydada, Texas  
Ph. 806-983-2276

SAVE GAS, SHOP IN FLOYD COUNTY.....



**FOR FAST SERVICE, UP-TO-DATE MARKETS ON CORN & MILO IT'S Lockney Cooperatives Inc..**

Federally Licensed and Bonded

Rainey Davis	Tommy Scaff	Dwight Cox
LOCKNEY	STERLEY	SOUTH PLAINS
652-3377	652-3103	983-3501

**1000 CASH PRIZE**

**Boot Hill Western Store**  
547 - Phone (806) 652-2607  
Lockney, Texas

**WEEKLY FOOTBALL CONTEST**

Entries Must Be In To  
**Boot Hill Store**  
12:00 Noon Saturday!

(around dotted line) Reasonable  
(circle acceptable)

- |              |                  |
|--------------|------------------|
| Alabama      | 21. Georgia      |
| Arkansas     | 22. Arkansas     |
| Duke         | 23. Duke         |
| Kentucky     | 24. Kentucky     |
| Ohio St.     | 25. Ohio St.     |
| Michigan St. | 26. Michigan St. |
| Syracuse     | 27. Syracuse     |
| Florida      | 28. Florida      |
| Mississippi  | 29. Mississippi  |
| Illinois     | 30. Illinois     |
| Kansas       | 31. Kansas       |
| Nebraska     | 32. Nebraska     |
| Missouri     | 33. Missouri     |
| Rice         | 34. Rice         |
| Memphis St.  | 35. Memphis St.  |
| Baylor       | 36. Baylor       |
| Iowa St.     | 37. Iowa St.     |
| Clemson      | 38. Clemson      |
| Princeton    | 39. Princeton    |
| Stanford     | 40. Stanford     |

**RULES FOR ENTRIES:**

the number of the team you like.  
the score of the tie breaker game.

PRIZE \$25.00 Gift Cert.  
PRIZE \$10.00 Gift Cert.  
PRIZE \$5.00 Gift Cert.

guess all the games and also the score of the tie breaker game, you win \$1,000.00 CASH!!!!!!!!!!!!!!  
purchase necessary to enter. only one per person per week.

**PRIZES**

**QUARTERBACK FORECAST**

OR ENTRIES - 5 P.M. FROM IN OFFICE OR POSTMARK

Points

\$7.50

\$5.00

\$2.50

Floyd

Little

AC & New Holland equipment

McDONALD IMPLEMENT

ansas City vs Buffalo

Your IH Dealer

MARTIN & COMPANY

s Angeles vs Miami

Custom Processing

ANDERSON MEAT CO.

QUALITY MEATS

it vs Green Bay

Mr. Burger

FAMILY PLACE TO EAT

ants vs St. Louis

nelius Conoc

vs New England





THIS YEARS BREEZER CHEERLEADERS are pictured here in one of their pep formations. They are: (top to bottom) Tana Tyer, Shelly Bearden, Julie Faulkenberry, Susan Turner, and Esmeralda Gonzales. (Staff Photo)

## Eagles Upend Whirlwinds 23-6

By Doug Simpson  
The Roosevelt Eagles, by chewing up 215 net rushing yards and coasting to touchdown runs of 23 and 38 yards, defeated the Floydada Whirlwind Junior Varsity squad in a game played Thursday, September 23, by a 23-6 score. The Eagles were able to take advantage of costly Whirlwind errors which they turned into touchdowns, as they handed Floydada its initial defeat of the season. The Eagles prevented the first half from ending in a scoreless tie with 54 seconds remaining as they went in from five yards out for a TD. The conversion attempt was faked and proved to be successful, as the Roosevelt quarterback scooped up the ball and scampered around his own right end into the end zone. This gave the Eagles an 8-0 advantage. Both clubs also went into the locker room at intermission with that score. Floydada fumbled away its chance to regain momentum on its first possession of the second half. The Eagles took over on the Whirlwind 36-yard line, and from there, they marched 36 yards in six plays with the final play being a 23-yard quick opener run. The two-point conversion attempt was again successful, and Roosevelt led comfortably 16-0. The Whirlwinds, however, were not to be denied.

they took the ensuing kickoff and went 66 yards in only plays. Jay Waller opened the drive with a six yard run from scrimmage, followed by Ray Toney's 4-yard end sweep, which put Floydada in scoring position at the Roosevelt 10 yard line. Toney raced around his own left end for the TD, which proved to be Floydada's lone score of the evening. The PAT failed, and the score remained 16-6 with 5:48 remaining in the third stanza. Roosevelt's final score of the contest came with 5:08 remaining in the final quarter on a 38-yard quick opener. The conversion boot split the uprights, and the Eagles were in firm control of the game from that point. On the stat-sheet, the Whirlwinds managed 11 first downs, and held the Eagles to just 7. Roosevelt out-gained Floydada on the ground, however as they made 215 net yards, compared to the Whirlwinds 124. The "Winds gained 62 yards aerial-wise while Roosevelt made 28 yards upstairs. Floydada was penalized twice for 20 yards and the Eagles committed one mistake for five steps. The Whirlwinds committed four turnovers compared to Roosevelt's 1, which proved to be a major factor in the outcome. The Eagles gained 296 yards, and Floydada trailed with 236.

## Fish Rally Falls Short; 19-15

By Doug Simpson  
The Plainview Bulldogs took advantage of 19 first half points combined with excellent defensive play, in taking a 19-15 decision from the Floydada freshmen, in a game played Thursday, September 23, at Wester Field. The Whirlwinds, now 2-1 for the season, staged an exciting come back attempt in the final stages of the contest but were halted in the closing moments. Midway through the first period, the Bulldogs used a Whirlwind turnover to set up their first score. Tracy Womack took the snap from center at this own 21-yard line but mishandled the exchange. A Plainview lineman intercepted the ball in midair, and returned it five yards to the Floydada 16. Moments later, a 4 yard end run put the Bulldogs on the scoreboard. The conversion boot split the uprights, and Plainview led 7-0 with 4:24 remaining in the quarter. The Bulldogs extended their lead when they intercepted a pass on the "Winds first series moments later. This was returned to the Whirlwind 20, and a few plays later, Plainview scored on a six yard pass play. The PAT failed, and the Bulldogs led now by 13-0. Floydada began to get moving on their next drive as Junior Arredondo retur-

ned the ensuing kickoff 65 yards where he was finally brought down at Plainview's 30-yard line. From there, Ricky Luna carried for 10, Arredondo 15 more following an offside penalty, and then, Tracy Womack found Arredondo open in the end zone for a touchdown. The play covered 13 yards, and occurred with 8:54 remaining in the first half. Womack also kicked the point after, and the Whirlwinds had narrowed the gap to 13-7. But with 1:44 left, the Bulldogs scored again, this time on a 75-yard sweep. The PAT try was blocked, but Plainview held a comfortable 19-7 advantage. The whirlwinds were a very different ball club when they took the field in the second half. They gained momentum quickly by blocking a Plainview punt and recovering it on the Bulldog 35-yard line. From there, Womack hit Luna at the 10 for a first down, but more important, it put the "Winds in scoring position. Two plays later, Arredondo went in from the 4 to put Floydada back in the game with 6:02 left in the third quarter. At that point, Plainview's defense stiffened, and the Whirlwinds were unable to score until deep in the fourth quarter. At its own four-yard line, the Bulldogs made

a costly mistake that almost cost them the game. While attempting to gain breathing room, a Plainview back mishandled the pitch on an end sweep, lost the ball back into the end zone, and finally pounced on it for a safety.

That made the score 19-15 with 2:05 remaining in the contest, and Floydada was to receive the ball on a free kick. The Whirlwinds fought for every yard they could manage but ran out of time and downs on the Plainview

43-yard line. Statistic-wise, Floydada made 9 first downs and held the Bulldogs to 7. Plainview chewed up 187 yards on the ground, while the Whirlwinds could only manage a mere 39. Floydada comple-

ted 2 of 5 passes for 28 yards and 1 interception, and the Bulldogs connected on 1 of 2 attempts and 1 theft. Plainview out gained the "Winds in total yards as they made 271 yards, compared to Floydada's 199.

Following the contest, head coach Daniel Conrad commented that he was not disappointed in anything except the score. He praised the overall effort of his team and said that the players had given everything they had.

# Come to Church

## Floydada Community Houses Of Worship



WALL STREET CHURCH OF CHRIST



**BIBLE BAPTIST CHURCH**  
Lloyd Hamilton, Pastor  
Sunday School ..... 9:50 a.m.  
Morning Worship ..... 10:45 a.m.  
Sunday Evening  
Prayer Meeting ..... 6:00 p.m.  
Sunday Evening  
Services ..... 6:30 p.m.  
Wednesday Evening  
Services ..... 8:00 p.m.

**NEW HOPE PRIMITIVE BAPTIST CHURCH**  
Beatbel Jeffrey, Pastor  
2nd Sunday  
Morning Worship ..... 11:00 a.m.  
2nd Saturday afternoon ..... 2:00 p.m.  
2nd Saturday  
Evening Worship ..... 7:00 p.m.

**CEDAR HILL ASSEMBLY OF GOD CHURCH**  
Sunday School ..... 10:00 a.m.  
Morning Worship ..... 11:00 a.m.  
Evangelistic Service ..... 6:30 p.m.

**FIRST BAPTIST CHURCH**  
F. C. Bradley, Pastor  
Sunday School ..... 9:45 a.m.  
Morning Worship ..... 11:00 a.m.  
Church Training ..... 6:00 p.m.  
Evening Worship ..... 7:00 p.m.

**WALL STREET CHURCH OF CHRIST**  
Newell Burk, Elder  
Sunday ..... Communion  
and Morning Worship ..... 10:30 a.m.  
Evening Worship ..... 6:00 p.m.

**SOUTH PLAINS BAPTIST CHURCH**  
Rev. Fred Blake  
Sunday School ..... 10:00 a.m.  
Morning Worship ..... 11:00 a.m.  
Training Union ..... 6:00 p.m.  
Evening Worship ..... 7:00 p.m.

**CARR'S CHAPEL**  
Rev. Lee Crouch,  
Potterburg, Pastor  
Services Every Sunday  
Morning School ..... 9:30 a.m.  
Sunday School ..... 10:30 a.m.  
No Evening Services.

**VICTORY BAPTIST CHURCH**  
Emmett Clappitt, Pastor  
Sunday School ..... 10:00 a.m.  
Morning Worship ..... 11:00 a.m.  
Evening Worship ..... 7:00 p.m.  
Wednesday Services ..... 7:30 p.m.

**NEW SALEM PRIMITIVE BAPTIST CHURCH**  
Joe M. Jackson  
Sunday Congregational  
Singing ..... 10:00 a.m.  
Morning Worship ..... 10:30 a.m.  
Evening Worship ..... 6:30 p.m.

**SPANISH BAPTIST MISSION**  
Sunday School ..... 9:45 a.m.  
Morning Worship ..... 11:00 a.m.  
Training Union ..... 6:00 p.m.  
Evening Worship ..... 7:00 p.m.

**CALVARY BAPTIST**  
Hollis Payne, Pastor  
Sunday School ..... 9:45 a.m.  
Morning Worship ..... 11:00 a.m.  
Bible Study ..... 6:00 p.m.  
Evening Worship ..... 7:00 p.m.  
Wednesday Evening ..... 7:00 p.m.

**ST. MARY MAGDALEN CATHOLIC CHURCH**  
Richard Cassey, Priest  
SUNDAY:  
Mass ..... 11:15 a.m.

**MONDAY:**  
Religion Classes ..... 4:00 p.m.  
Mass and Prayer ..... 8:00 p.m.

**WEST SIDE CHURCH OF CHRIST**  
Sunday Morning  
Worship ..... 10:30 a.m.  
Sunday Evening ..... 5:00 p.m.  
Wednesday Evening ..... 7:45 p.m.

**FIRST UNITED METHODIST CHURCH**  
Jim Smith, Pastor  
Sunday School ..... 9:45 a.m.  
Morning Worship ..... 11:00 a.m.  
Youth Fellowship ..... 6:00 p.m.  
Sunday Evening ..... 6:00 p.m.  
Worship ..... 6:00 p.m.

**FIRST CHRISTIAN CHURCH**  
Roy Pingolton, Pastor  
Sunday School ..... 9:45 a.m.  
Morning Worship ..... 11:00 a.m.  
Youth Meeting ..... 6:00 p.m.  
Evening Worship ..... 6:00 p.m.

**FIRST ASSEMBLY OF GOD CHURCH**  
Pastor: Gary L. Cook  
Sunday Morning ..... 9:45 a.m.  
Sunday Youth Services ..... 7:00 p.m.  
Sunday Evening  
Evangelistic ..... 6:00 p.m.  
Wednesday Night  
Services ..... 7:00 p.m.  
Thursday Women's  
Missionary ..... 9:00 a.m.

This Inspirational Message Is Sponsored By The Following Firms.....

Nichols Oil Co.	City Auto Inc.	Ponderosa Meat Co.
Russell's Equipment & Supply	Parker Furniture	Producer's Cooperative Elevators
Floydada Real Estate & Insurance	Hale Insurance	Bishop-Ramsey Pharmacy
McDonald Implements	Floydada Co-Op Gins	Reed Ford Sales
Gilbreath Exxon	Collins Implement Co.	Martin & Company
Production Credit Assoc.	Hesperian Office	Norrell Tractor Parts Co.
Edmiston Plumbing		

By Vernon Parker  
Three Eagle Squadrons, none of the same but we each made up with other RAF Squadrons and Free French and American. Some 350 American through these three squadrons during 1941 and accidents or less than 50 were only 16 made the 16 weeks ago.

of the sixteen were friends we had flown together. I knew five others in meetings in London during the war. I had never met them. We of course had to revisit our old haunts and re-visit a place where we had our Eagle club. The beginning was as the commander, a British officer. Later the command was passed on to Americans with experience in combat. The first British command was represented by his son in Rome but flew for 2 weeks with us. Both were able to meet with our British Intelligence Squadron with whom we had pilots with and flown with in to re-live the old days.

and great fun with our recalling the days we had enough Texan Squadron. We petitioned for a charter. The received back was we have 3 bloody "bloody" the word going a bit in the history of headaches given to us, in such a short time must have been for the royal reception treatment. Our reunion was ministry, by the that had been up of Defense with as co-host. We were Squadron Leaders. Lis. from the RA Staff to guide us station, and escort. At times depending on the Ministries Force. The Minister personally escorted the Hendon RAF Museum address in the and a luncheon in the of the Director of m. They also provided invitations to the Services of West for the public it is by the Royalty and high and military leadership by the Bishop and ennobled side by side while our country.

CONCORDE FLIGHT Airway sponsored members on an special flight to Bayrolle Commercial flight service Jan to Bayrain in the G service. We spent a in the cockpit, observed on the various and our first international flight. The and flies in traditional by the pilot and flight plan is local and take off, c and automatic l human hand touching automatic landing was on landing back and day. The cockpit very crowded instruments, rather but similar to those instantly recognized 11:30 we are re-visor heat shield exposed cockpit section has been giving very good take off. We line a short wait for tension mount sweat. re-heat (afterburning extra area to increase weight this gives of acceleration. A to an angle of 1 200 kts. we leave away. Shortly reduced and the settles to a speed of 250 kts. we go due west the left and follow route over the minutes after take cruise at a Mach 0.88 (880 m.p.h.) in the sub-sonic hour and 20 Venice is below good view of Paris the way and then I was allowed to begin our acceleration to feel this slight the extra thrust of passing of at about 28,000 on the Mach 1 after passing



# Vernon Parker Shares His Trip To England And Ride On The British Concorde Airplane

Vernon Parker  
Three Eagle Squadrons  
England, none of the three  
regiment to the same base at  
We each made up wings  
with other RAF Squadrons  
French and Free Polish  
Some 350 squadrons  
with these three squadrons  
during 1941 and 1942,  
accidents or combat.  
less than 50 surviving  
only 16 made the London  
two weeks ago.

sixteen were friends of  
had flown together in #121  
five others through  
in London during the  
I had never met, tho I had  
We of course have a lot  
it was great meeting  
to revisit our old bases,  
pubs, and re-visit areas of  
we had our own  
club.  
beginning we had British  
the commander, and two  
Later the command  
to Americans as we  
in combat.  
British commander, later  
represented by his son who  
Rome but flew up and  
with us. Both Flight  
able to meet with us, as  
British Intelligence officer  
London Doctor. Many other  
with whom we had been  
and flown with kept  
to re-live the old days or  
be.  
great fun with our British  
the days when we  
and enough Texans to form  
We petitioned the  
for a charter. The only  
received back was "Heaven  
we don't know how to  
The word going around in  
of Winston Churchill  
the history of time was  
atches given to so many,  
such a short time!"  
have been forgiven as  
the royal reception and  
Our first offer  
reunion was made by  
by the time we  
had been upped to the  
Defense with the air  
host. We were assigned  
from Leaders, and two  
from the RAF Public  
to guide us to all  
times depending on the  
were escorted by Cabinet  
the Ministries of Defense  
personally escorted us, to our  
London RAF Museum, gave  
address in the Museum  
a luncheon in the Board  
Director of the RAF  
They also provided the  
to the Sept. 19th  
services of Westminister  
the Battle of Britain. Not  
the public it is by invitation  
and high ranking  
military leaders. We were  
by the Bishop as honorary  
and enlized for the  
side by side with the  
our country was still

ALDERSGATE  
UNITED METHODIST  
Now meeting at  
Methodist Church  
Thursday Even  
Bible Study  
CEDAR HILL  
BAPTIST CHURCH  
Sunday School  
Morning Worship  
Evening Worship  
FOUR SQUARE  
CHURCH  
Rev. Gerald Holder  
Sunday afternoon  
Bible Study Thursday  
THE CHURCH  
OF THE NAZARENE  
Rev. Robert Rhoads  
Sunday School  
Morning Worship  
Evening Service  
Sunday Night Youth  
CUMBERLAND  
PRESBYTERIAN  
Sunday School  
Bible Study  
DOUGHERTY  
CHURCH  
Jim DeWese, Pastor  
Sunday Services  
Morning Worship  
Evening Worship  
CITY PARK  
CHURCH OF CHRIST  
Melvin Byrd  
Sunday Bible Study  
Morning Worship  
Evening Worship  
Wednesday Bible Study  
Wednesday Bible Study  
Young Ladies Bible  
Friday

CONCORDE FLIGHT  
Airway sponsored a flight  
members on an established  
flight to Bayrain. The first  
Commercial flight began  
service Jan. 21, 1976,  
Bayrain in the Gulf on a once  
trip. We spent a good part of  
the cockpit, observing and  
our first introduction to  
the Concorde.  
The pilot and crew or the  
plan is locked into a  
take off, climb, cruise,  
automatic landing with  
hand touching a control.  
The landing back at Heathrow  
day. The cockpit area is  
very crowded. The wrap  
around, rather more than  
similar to those on any civil  
aircraft.  
We are ready for take  
heat shield is lowered  
cockpit windows and  
action has been lowered 5  
ing very good visibility for  
off. We line up on runway  
wait for clearance to  
mission mounts, my palms  
heat (afterburner) which  
ing extra thrust by  
to increase thrust by  
used for take off even at  
this gives a noticeable  
acceleration. At 175 kts. we  
angle of 13 degrees. At  
190 kts. we leave the ground  
away. Shortly after this the  
and the re-heat cut as  
settles to a steady climb at  
350 kts.  
go due west, then a slight  
and follow the Midway  
over the south coast.  
After take off we are at  
altitude at a Mach number of  
1.6 (1,000 m.p.h.) which crossing  
the sub-sonic range.  
and 20 minutes after  
is below the aircraft we  
view of Paris through the  
way and the Adriatic Sea  
we allowed to select re-heat  
for acceleration. It is just  
at this slight "Kick-in-the-  
extra thrust comes in, but  
of Mach 1, which  
at Mach meter. Twenty  
passing Venice we are

Adams Well Ser  
Consumers Fuel  
Babe's Service C  
Thompson Pharm  
Solomon Jewelry  
Loydada Nursing

above Brindisi, on the southern tip of Italy's heel, at 53,000 feet.

We are now at Mach 2 flight-twice the speed of sound (1395 m.p.h.)-quiet, smooth, almost eerie. The bright narrow band at the horizon is quite evident, curvature of the earth is quite pronounced, and the sky from the horizon band is dark blue to black overhead. All of Southern Europe is laid out below us as if looking at a map. Now the Greek islands are stepping by on the left. Two hours and 10 minutes after take off we are south of Crete. As we pass Cyprus we turn a little north and then begin a long right handed turn to pass over northern Lebanon and Syria. From here its a straight line into Bayrain.

We have been climbing slowly, enormous amounts of fuel have been used, to maintain our center of gravity. A fuel transfer system keeps tank levels evenly distributed. We are back down to 58,000 feet, still at 1385 m.p.h., not a cloud in sight, the sky is darkening ahead and the sun sets behind us, we have passed time changes and 3 hours ahead of London time (10 hours ahead of Floydada time).

At 3 p.m., 6 p.m. Bahrain time power is reduced and descent is started. Oil well flares show on the ground and we can see the beginning of the Gulf on the radar screen. The weather is good, a few clouds, some dust visible in the air and a ground level temperature of 120 degrees-at our level it is a 57 degrees. Speed is reduced and back to sub-sonic speed. From here on the Concorde behaves like any other airliner, descending at 325 kts. The lights of Dhahron show on the left and the Bayrain dead ahead. Visor comes up, nose again dropped 5 degrees, giving a perfect view of the Ancient City and the airfield. Wheels down, speed reduced to 155 kts. The pitch angle on approach is about 10 degrees up-considerably higher than a 747 which is about 3 degrees-but the approach is very smooth and steady. The high angle is explained by all lift of flaps and slats (speed brakes)-all lift is obtained by changing the angle of attack. The slower the speed the greater the angle.

At 3:45 p.m. London time, 6:45 p.m. Bayrain time we grease the runway. The airborne time 3 hours, 45 minutes and we have covered nearly 4000 miles. Compared to other airliners the sub-sonic schedule for this sector is 6 hrs. 20 min. Eastbound and 7 hours 30 minutes Westbound.

We have all been Earth-shrinkers-well the Concorde really does Shrink the world. Inside cabin pressure for the entire flight was maintained at 5,500 ft. compared 7500 to 8000 ft. on our airliners. Cabin temperature held at a comfortable 71 degrees throughout. Stepping on the aircraft into a still 110 degrees was like walking into a steam bath.

Now we were surrounded by dirty little men in white turban and white sheets reminding me that a spook reunion must be in progress here in the desert. We stayed at the Tyros Hotel, a new, very modern and clean, fully air conditioned with a very beautiful black and brass furnishing and Persian rugs. Our only surprise was the price for our single room Arab Price \$25. American pay \$96-but after a free \$1500 flight we felt it was a bargain.

The return flight was essentially the same except we went supersonic on the take off reaching 59,000 feet and Mach 2, just 9 minutes after take off.

To better understand the speed of Mach 2, it is 23 miles per minute, roughly 1395 m.p.h. When we turned Eastward from Italy with a tail wind our ground speed was just over 1560 miles per hour.

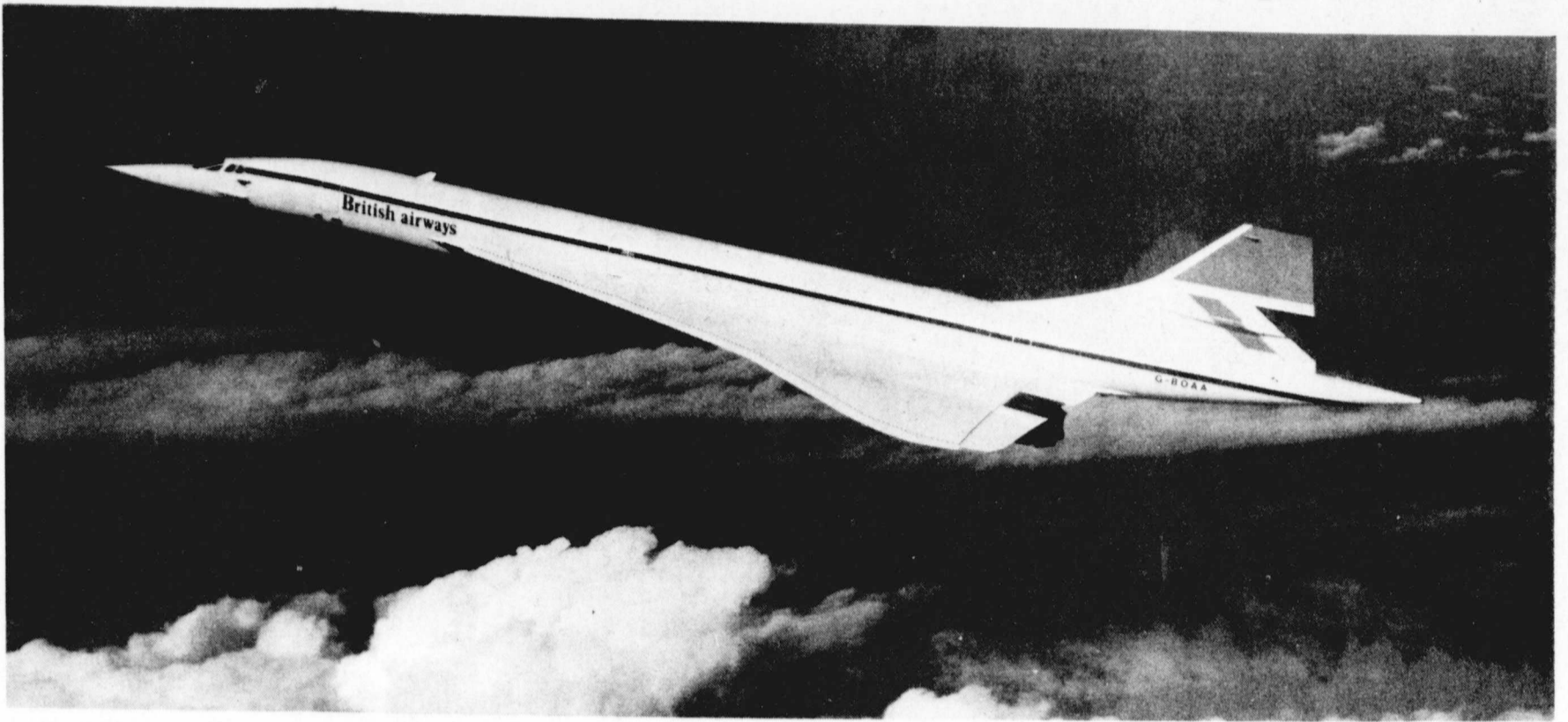
### THE EAGLES

When they went to war they were regarded by many of their fellow countrymen as crazy young men. Others admired their courage and fighting spirit and wished them well. In threatened Britain they were welcomed with open arms, as the country stood with its back to the wall facing a seemingly invincible German war machine. They were few in number, but their presence provided a boost to morale at the eleventh hour. Who were these daring flyers who had volunteered to leave the peace and prosperity of home life to fight in a foreign force? They were American Eagles...and thirty six years later they are coming back for a nostalgic reunion in London.

### RETURN OF THE ROYAL EAGLES

Throughout its history the Royal Air Force has been a rather cosmopolitan Service, with many personnel from the Commonwealth and Continental Europe. Today's RAF contains air and ground crew from as far apart as New Zealand and Poland, Canada and Singapore. In American Bicentennial Year it is appropriate to recall the wartime role played by the Americans in RAF blue. The Eagle Squadrons, comprised volunteer American flyers who were fully integrated within the RAF, two years before the United States entered the world conflict.

Thirty six years after the Battle of Britain - the Eagles are returning to England for their reunion in September. They are members of the



The British Concorde



Vernon....back then....



The Eagle Squadron And Their Spitfires



First American Flag to fly over an RAF base.

## Eight Rural Accidents In August

The Texas Highway Patrol investigated eight accidents on rural highways in Floyd County during the month of August, 1976 according to Sergeant Kenneth G. Evans, Highway Patrol supervisor of this area. These crashes resulted in no persons killed and three persons injured. The rural traffic accident summary for this county during the first eight months of 1976 shows a total of 34 accidents resulting

in one person killed and 31 persons injured. The rural traffic accident summary for the 60 counties of the Lubbock Department of Public Safety Region for August 1976, shows a total of 566 accidents resulting in 16 persons killed and 319 injured, as compared to August 1976, with 596 accidents resulting in 16 persons killed and 292 persons injured. This was 30 less accidents, the same number killed, and 27 more injured in 1976 at the same

period of time. The 16 traffic deaths for

the month of August, 1976, occurred in the following counties: three each in Parker, Hansford; two each in Donley, Motley; one each in Deaf Smith, Foard, Lubbock, Lynn, Montague, Palo Pinto.



**MIZE TV**

Authorized Service Technician

**Greg Roberts**

We Service Most Makes & Models -INCLUDING- A-1 Antenna Service.

Let Us Serve You With 'QUALITY WORK YOU CAN DEPEND ON !'

**MIZE TV**

215 So. Main Bus. Ph. 983-3481 Home Ph. 983-3481

**A HOME FOR THE PARTICULAR** in Lockney. 3 BR BRK Veneer, Lg Rm, Dining area, full kitchen, central heat, rv, air, abundant built-ins & storage, 2 full baths, dbl garage over 32' wide and storm cellar beneath, corner lot, excellent condition, and choice location. Call Phyllis Reay, 652-3480.

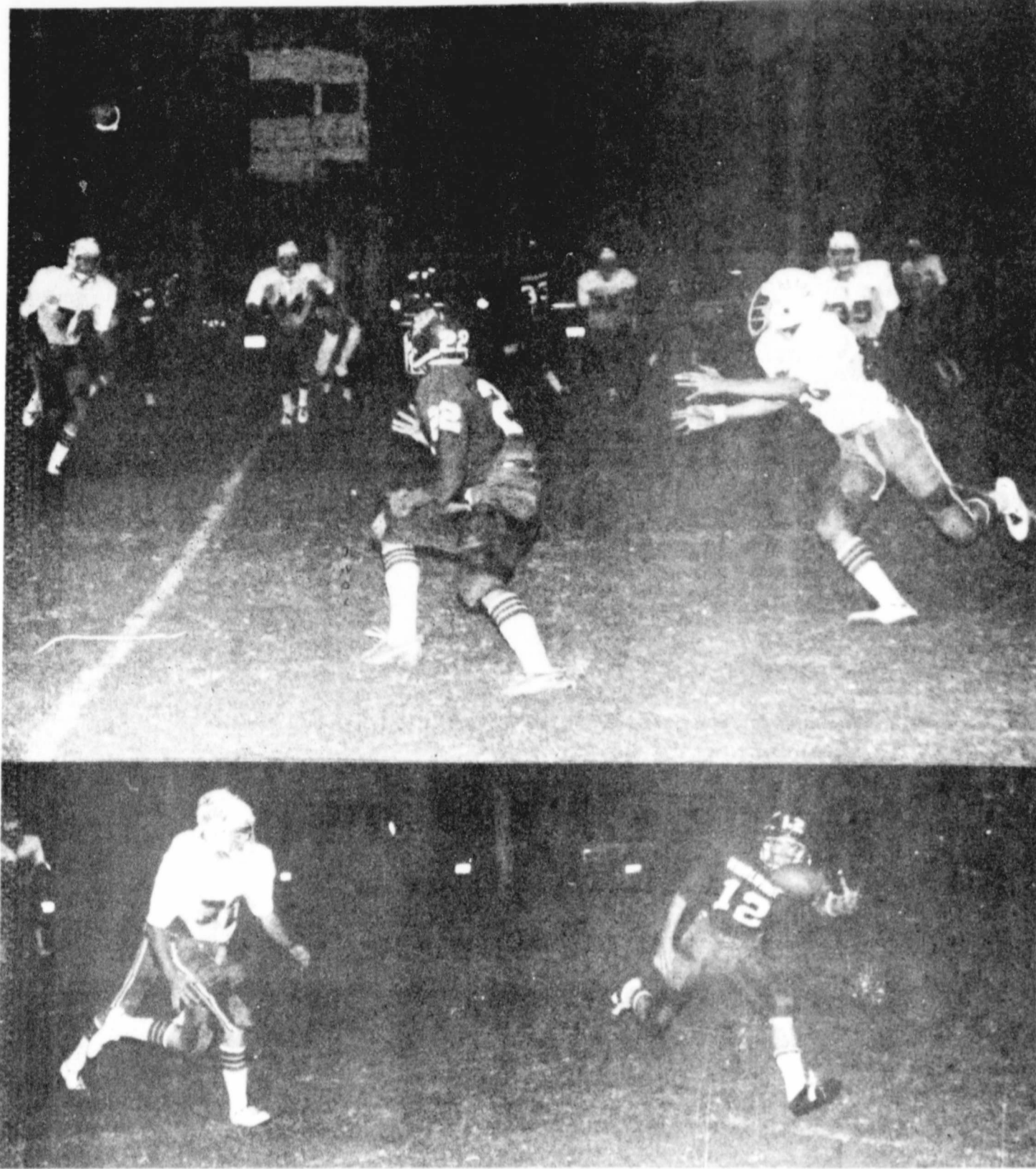
**NEAT, CLEAN, & ECONOMICAL:** in Lockney. 2 BR, L/V Rm, kitchen-dining combination, custom storm cellar.

\$11,500 Call Phyllis Reay, 652-3480.

**RALPH V. GRAHAM, REALTORS**

504 Joliet Plainview, Texas Phone 293-4246





PASSES GALORE!...Randy Ratheal prepares to pull one in and in lower photo Rusty Cagle takes another pass. (Staff Photo)

## The Floyd Philosopher

### Takes Sidelong Glance At The Effect TV Violence Has On Children



Editor's note: The Floyd Philosopher on his Johnson grass farm looks at violence on television this week. It's hard to tell what he sees.

Dear Editor: According to child psychologists, whose kids don't seem to turn out any better than other folks' kids, there's too much violence on television.

And if it isn't stopped, they say, there's no telling what's going to happen when the kids get out into life. One expert has calculated that the average child, sitting in front of a TV set several hours a day, will, by the time he's 14, have seen 18,000 murders on the various crime shows, detective shows, westerns, cartoons, etc., not counting what happened to Little Red Riding Hood's grandmother or, if somebody forgot to change channels, what happened in some of Shakespeare's plays.

Personally, I don't know what effect TV has on children, outside of increasing their consumption of potato chips, and I have a hard time explaining Watergate when you remember the people guilty of it didn't have television when they were growing up, but a

man I read about the other day has figured out a way to cut down on the amount of TV violence they watch, he thinks.

Noticing his kids sitting around glued to the TV set one Saturday morning when they should have been, had they been normal like cops and robbers or cowboys and Indians, he decided he's make them earn the right to watch those cartoons, and save electricity at the same time.

What he did was mount a bicycle on a stand in the TV room, with the rear wheel off the floor, and rig up a belt from that going to a car generator, wired to a battery. Wires from the battery were then connected to the TV watch TV? Get on that bike and pedal fast.

I have not heard how that guy's children are reacting to his scheme, newspapers have a bit of failing to follow through on a good story, but I have a notion they're over at a neighbor's house sitting on the floor with their friends eating potato chips and watching television.

Yours faithfully,  
J. A.

## Food and Fiber Pavilion

DALLAS—Visitors to the Texas Department of Agriculture Food and Fiber Pavilion at the State Fair October 8-24 will see a "Wonderland of Texas Agriculture."

According to Agriculture Commissioner John C. White, the Pavilion will be decorated with a profusion of green plants and decked out in fall colors, in keeping with the Fair's

theme, "October Magic."

The exhibits will illustrate some aspects of Texas agriculture, such as a replica of an old-fashioned butcher shop, an incubator hatching live chicks, and the latest fashions featuring

fabrics made from natural fibers.

In addition, there will be free informational booklets and recipes for everyone, and the chance to win many prizes, including an ice cream freezer and a smoker-cooker.



MICKEY MINNITT goes high to take Womack pass in the Olton game. (Staff Photo)

## The Weather

Date	High	Low	Moisture
Sept. 8	81	66	1.60
Sept. 9	66	57	
Sept. 10	72	58	
Sept. 11	83	60	
Sept. 12	88	66	
Sept. 13	80	66	
Sept. 14	82	67	
Sept. 15	83	65	
Sept. 16	84	65	
Sept. 17	78	67	
Sept. 18	80	66	
Sept. 19	82	66	.2
Sept. 20	68	59	
Sept. 21	78	56	

Total Precipitation for year 13.45  
Total Precipitation for Week .2  
Total Precipitation for September 1.84

Raining Saturday morning.

## News & Reviews

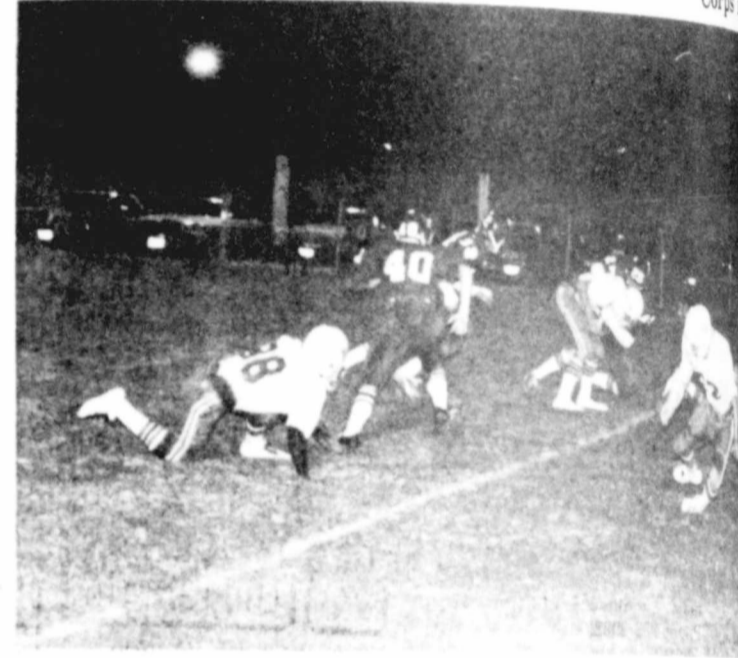
There is a new movie out about the discovery of what is believed to be Noah's Ark. If you are planning to view this movie, perhaps you would enjoy reading the biblical account of the flood and the building of the ark in Genesis and then John Warwick Montgomery's THE QUEST FOR NOAH'S ARK. This book is considered by some to be a valid historical record of the 2000 year old search for the ark.

If you saw or plan to see in the future, the movie, The Hiding Place, and have read the book by the same name, perhaps you would enjoy Corrie ten Boom's PRISON LETTERS.

The recent Roy Rogers movie that was filmed in this area, T. J. and McIntosh, might be more interesting to you if you have read something about Roy Rogers' and Dale Evans' lives. Dale Evans Rogers' book WHERE HE LEADS relates her own philosophy of life and experiences while visiting in the Holy Land.

Another well known name to movie goers is Dick Van Dyke. Here is a sample of humor from THOSE FUNNY KIDS!...and "about the little boy who was sure God created the Earth for the Addams Family..." or the first grader who recited the names of Columbus' ships... "The Nina, the Pinta and the Toyota."

The library of First Baptist Church has many books by famous persons in all walks of life. Why not come by and look around.



LARRY IONES, Danny Colston, and Jay Lackey with Mustang back in Olton game. (Staff Photo)

**Thrasher & Co.**  
Redi-mix Concrete  
Sand & Gravel  
Excavation  
call us:  
**983-2170**  
229 E. California

**Only Olivetti gives you an electric portable with a changeable typing ball!**

**The Lexikon 82.**  
(See it at your Olivetti Dealer today!)

It's the only electric portable in the world with interchangeable type styles. You can use a business style for business and switch to an informal style for your personal letters in seconds. It's easy and practical. It also has a quick-as-a-flash ribbon cartridge. A fresh ribbon (or a different color) clicks into place about as fast as you just read this sentence. Beautifully designed and engineered, the Lexikon 82 sells for less than \$300, carrying case included. Try one today at your Olivetti Dealer. (You'll find him in the Yellow Pages.)

**olivetti**  
OLIVETTI CORPORATION OF AMERICA  
500 PARK AVE., NEW YORK CITY 10022

**299.95**

**Hesperian Office Supply**

your **&** lect investment

Chances are, you never thought about the value of the electric distribution system that serves you. How much do you suppose is invested in the electric meter, service connection, poles and wires just to serve you? And how about the miles of line that bring electricity to your property—what's your share of that? And the transformers? And the trucks and the line equipment, and the electric utility property and building? What's your guess?

■ **Nationally, America's public power systems have an average investment of more than \$1,000 for each customer served—\$1,034 to be exact. And this figure is growing rapidly. Ten years ago the investment for each customer was \$596—about half that of today. In 1971 we estimate**

that an average of nearly \$1,000 is spent in electric system improvements for each customer served.

■ **Your electric utility investment is sizeable and growing rapidly. It's our responsibility to help you maintain this investment. As a citizen-owner, you should know we value your electric utility.**

**FLOYDADA LIGHT & POWER**

ESTATE  
25 x 50 office floor, paneled walls day 983-314  
2 acres on Lockne south of Carthage, Jack Deak 930  
Fuqua Feed Store, grinder and 2251.  
MOBILE HOMES  
465 Mobile home and two room and a bath, on the back of lot and carport. 30 x 10 ft. Lockney, Lt  
FOR SALE  
Two and three bedrooms for sale, large lot. Call Hale 1-8-3281.  
Viole Mullins home, Bryant, Lockney Webster 652-2171, or 652-3646. Lt  
Two story, three bedrooms, Lockney, 294-227  
1.41  
Lockney, replace close to structure, conditioning and fence. Lt  
In good carpet, Ockney, O. 1-8-3281.  
on 1/2 acre, Aiken, Ca. Lt  
houses for sale, Randle Lee S  
ROOM with carpet, West 8th S. own owner insurance. 1-8-3281.  
house, 1 1/2 bath, room. Call 983-397  
FARM AND ACREAGE  
FOR CO. LAND for sale, 400 Acres, small well Agency, N. 2nd 1-8-3281.  
FOR RENT  
SPACE FOR RENT, 111 Gregory St. nce.  
LOT & FOUND  
owner of Wall at Hesperian. 9-2  
PETS  
SHEPARD puppy, 8 months old. N. Call 983-3660. 19-3  
YOU TO KNOW  
kinds of Goodyear tractor, but good tire, good deals in West T. winch and haul. BABE'S SERVICE FLOYDADA  
FOR TH  
GF  
W  
50 LB. AVG. I  
PAGE'S  
IN







# Letter To The Editor

Dear Editor:  
Enclosed is a follow up on the article you printed in Sunday's paper.  
I hope you will reprint it in the Hesperian.  
As a Southern Baptist and, more important in this election year, a citizen of our

United States, my family and I still regard Connally very highly, and could not vote for Carter regardless of Connally's views on him.  
Mrs. Shelby Calahan  
Box 103  
South Plains, Texas

## Four Baptists Offer 'Other View' On Connally, Politics

Editor, Avalanche-Journal:  
The following thoughts were written to Dr. James M. Dunn, Director of the Texas Baptist Christian Life Commission, concerning an article that appeared in the Sept. 15, 1976, Lubbock Ava-

lanche-Journal. Since it sets out a different opinion of Gov. John Connally by some Baptists, we would appreciate readers of your paper knowing of our thoughts.

"Dr. James M. Dunn, Director Texas Baptist Christian Life Commission:

"Enclosed is a copy of an article that appeared in the Sept. 15, 1976, Lubbock Avalanche-Journal wherein you are quoted as saying Gov. John Connally 'is out of favor with Texas Baptists'."

"Texas Baptists will be more inclined to support Carter because of Connally's endorsement of Ford."

"To simply set the record straight, we would like to point out to you that you do not speak for all Baptists and you should not try to make the public think you do.

"We are four Texas Baptists, all members of different congregations, that hold Gov. Connally in very high esteem. We would say to you that when one examines what Gov. Jimmy Carter stands for he had to be "out of favor with Texans". Some examples are: Repeal of the Right to Work Law, Socialized Medicine, Forced Busing, Common Situs Picketing, Breaking-up of the Oil Companies, and he will not take a stand against abortion.

"We do not feel that this election has anything to do with Baptists. The question is, do we want a liberal (Carter) of unknown quality or a conserva-

# Ruby Bunch Heads Cystic Fibrosis Fund Raising Campaign

Ruby Bunch is leading the fight against crippling lung diseases in children. The job

can't be left to dedicated parents of C/F and lung-damaged children alone. Mrs. Bunch is organizing the Cystic Fibrosis "Kiss A Baby Campaign" now. Everyone can help. She will give you information on turning concern for these youngsters into active help to change the odds against them.

A little more than 20 years ago, parents whose children were diagnosed with cystic fibrosis (C/F) were sadly advised to go home and enjoy their children while they were still alive. Then, few children with C/F survived even to the first grade. Even today no cure for

this baffling and complex genetic disease has been found. Yet parents now have a great deal more hope than their children with C/F are expected to live to be adults.

The outlook for this first generation of C/F adults is brighter than ever before.

"Another point on Gov. Connally which it appears you have failed to recognize is that he was tried and found innocent by a 12 member jury in Washington, D.C. of all charges. At that trial the wife of a former Democrat President, Mrs. Lyndon B. Johnson, a liberal Democrat Congresswoman, Miss Barbara Jordan, and the leading Southern Baptist Evangelist, Rev. Dr. Billy Graham, all testified as to the integrity of Gov. Connally. Certainly you would not say Billy Graham is out of step with Texas Baptists, would you?"

Steve Bryant, 3208 40th St., Lee McNair, 5303 24th St., William L. Deal, 3608 78th Dr., Fred Woodley, 4710 61st St.

Shredding Weeds, Cotton, Topping, etc. PEST CONTROL Trees - Lawns - Call A.C. Carthel 983-3000



# Piggly Wiggly FALL-STOCK UP SALE

Each of these advertised items is required to be readily available for sale at or below the advertised price in each store, except as specifically noted in this ad.

Prices good thru September 29, 1976. We reserve the right to limit quantities. None sold to dealers.



All Purpose

## GOLD MEDAL FLOUR

# 79¢

5 Lb. Bag

Delta Paper Towels 145 Ct. Roll **2/89¢**

Powdered Cheer Detergent 84-oz. Box **\$1.99**

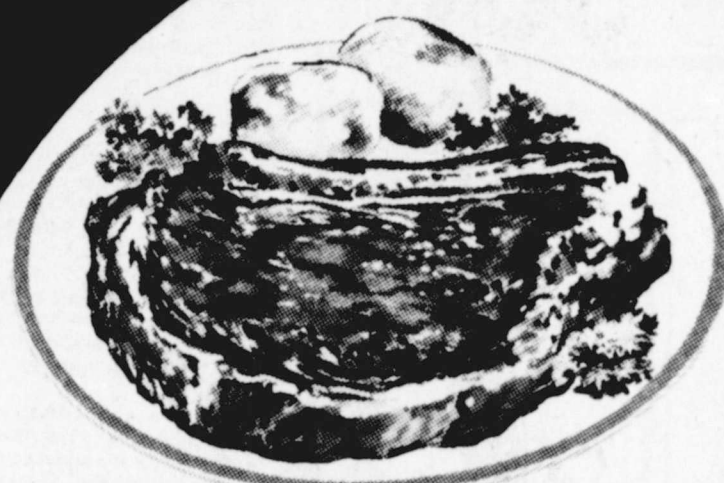
Hunt's Tomato Sauce 8-oz. Cans **6 \$1**

Benco

## PINTO BEANS

# 33¢

2 Lb. Bag



Heavy Aged Beef

## RIB STEAK

# 98¢

Lb.

Packer Trim, Cry O Vac

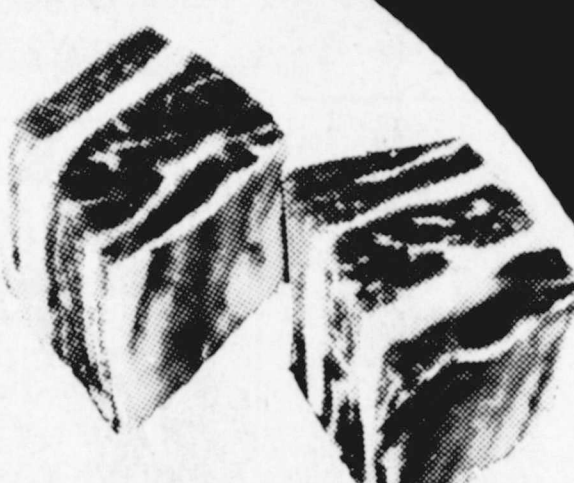
Beef Briskets Lb. **89¢**

Heavy Aged Beef Boneless

Rib Steak Lb. **\$1.29**

Heavy Aged Beef

Rib Eyes Lb. **\$2.39**  
Extra Lean For Chili Course, Ground Beef Lb. **98¢**



Lean Meaty Beef

## SHORT RIBS

# 49¢

Lb.

Farmer Jones, Salami & Spiced Luncheon Meat

Sliced Bologna 12-oz. Pkg. **89¢**

Vacuum Pack for Flavor, Rath's

Sliced Bacon 12-oz. Pkg. **\$1.29**

Heavy Aged Beef Boneless

Strip Steak Lb. **\$2.69**  
Tasty Perch Fillets Lb. **89¢**



Piggly Wiggly

Baby Oil 16-oz. Btl. **\$1.39**

Piggly Wiggly

Baby Powder 14-oz. Size **\$1.09**



Morton's, Frozen

Pot Pies 4 8-oz. Pkgs. **\$1**

Piggly Wiggly, Frozen

Waffles 5 5-oz. Pkgs. **\$1**

COMP VOLUME 6 BRITANNIC ENCYCLOPEDIA \$2.99 Volume One Still Available at Only 49¢

Thanks to you for all of us. United

EAST TEXAS

## SWEET POTAT

# 2

Lb.

Firm Solid Heads

Green Cabbage Lb.

Medium Size Sweet

Yellow Onions Lb.

Del Monte

Dried Prunes Kraft Orange or Pineapple Juice

Lunchbox Favorites California

## BARTLE PEAR

# 2

Lb.