

15c  
Per  
Copy

# The Floyd County Hesperian



VOLUME 81

FLOYDADA, FLOYD COUNTY, TEXAS 79235

Sunday, September 5, 1976

10 pages in one section

Number 72

## Whirlwinds Stomp Out Friona In Season Opener, 31-0

Jay Womack galloped for the first score of the evening, Mickey Minnett tacked on the point after, and the Winds were in the lead, 7-0.

The drive was highlighted by Womack, who mixed his plays well, using backs Minnett, Larry Jones, and Rusty Cagle.

**SECOND QUARTER**

Midway through the second period, Womack helped put together a picture-perfect drive that extended the Whirlwinds to a safer margin. Minnett carried the ball twice for 10 yards, caught one pass for 9 more, and capped off the drive by booting a 28-yard fieldgoal with 3:17 remaining in the first half. Womack also used Wide Receiver Randy Ratheal, who caught a 9-yard aerial to help set up the score.

With only 34 seconds to play, Floydada capitalized on Friona's biggest mistake of the evening. Edward Castillo dropped back in punt formation at his own goal line, but mishandled the high snap. The ball bounced crazily into the end zone where he retrieved it, tried to find running room, and was finally trapped on the one-yard line by Ronny Wall and Rick Covington. This set up Womack's 1-yard touchdown run with 30 seconds showing on the clock. Minnett, as usual, dependably added to the PAT, and the Winds found themselves in the lead by 17-0. They were very content to go into the locker room at intermission with

that score.

**HALFTIME**

At halftime, a total of 100 proud musicians proudly marched onto the field and entertained the crowd, along with this year's twirlers. This year's band is again under the direction of Mr. Dennis Teasdale, who has done an excellent job with the band for the past two years.

**THIRD QUARTER**

In the second half, Floydada's defense stiffened even more. Their efforts are supported by the fact that Friona was unable to make a single first down in the third quarter and only one in the entire second half. The Whirlwinds were not creating too much offense of their own until they broke the ice with 1:37 remaining, as Womack fired a 22-yard scoring pass to Ratheal for their third TD of the night. Minnett's extra punt was true and Floydada held a commanding 24-0 lead.

**FOURTH QUARTER**

Friona had difficulty in handling Minnett's ensuing kickoff, and were trapped back at their own five-yard line. They were forced to punt, and, annoyed by a heavy rush, could only manage a 26-yard kick, giving the Winds excellent field position. Minnett gained 14 yards on the first play of the drive, and two plays later, Womack found Rusty Cagle open at the six yard line. From there Calvin Reese carried twice, the first time for five, and the second, plunging in for the final tally of

the night. This occurred with 8:34 remaining in the contest. Mickey's point after again split the uprights, to put the icing on the cake.

From this point, Coach Wilson was able to put in his reserves, who did a fine job, and gained valuable experience.

STATISTICS		Friona	
Floydada	16	First Downs	8
Net	174	Yards Rushing	189
85	85	Yards Passing	39
8-14-0	Passes Att./Com./Int.	1-3-0	
2	Turnovers	3	
5-35	Penalties	3-25	
3-92 yds.	Punts	3-130 yds.	

JAY WOMACK runs for more yards with Larry Jones assisting on a block. Others pictured in the background are Paul Radlopp 55, Jesse Morales 66, and Len Wood 77. (Staff Photo)

### Coach's Comments

**COACH'S COMMENTS**

"I was just pleased with the total, overall results and this game compares with the best first games we've had in recent years." was the opening comment Head coach L. G. Wilson made on Saturday morning. Wilson

made the remark following the Whirlwinds' 31-0 trouncing of the Friona Chieftains.

"This week we'll need to work on several areas that need strengthening and also make some personnel changes," Coach Wilson added. "We will also need to work on our depth. Of course we'll know more when we see the films."

Overall effort of the entire team, both offensively and defensively. He praised the efforts by the offensive backfield

and said the offensive line did a good job blocking. Individually, he spoke of the fine job done by quarterback Jay Womack and by halfback Mickey Minnett.

When asked about the two-platoon system he had mentioned earlier, Wilson said he was pleased with the way it had worked, and added "With the group of boys we have this year, we will use the system to experiment with our players a little."

## Upswing In Floyd County Business

WORK, Aug. 28-Floyd County moved into higher ground last year, according to a study of business activity.

Momentum was powered, by heavier spending on the part of consumers, most of whom were at their command before and less hesitancy

about using it.

The facts and figures on income and spending in the area, with comparable data for communities in other parts of the country, are contained in a copyrighted study made by Sales and Marketing Management. It is called "Survey of Buying Power."

It shows that the overall income of Floyd County residents was at a high level. Net earnings, after payment of personal taxes, amounted to \$49,071,000, topping the previous year's total of

\$41,194,000.

Just what this was equivalent to, in terms of the individual family, is indicated by the median income per household, which marks the midpoint on the local income scale. It came to \$9,814 per household. The year before it was \$8,454 per household.

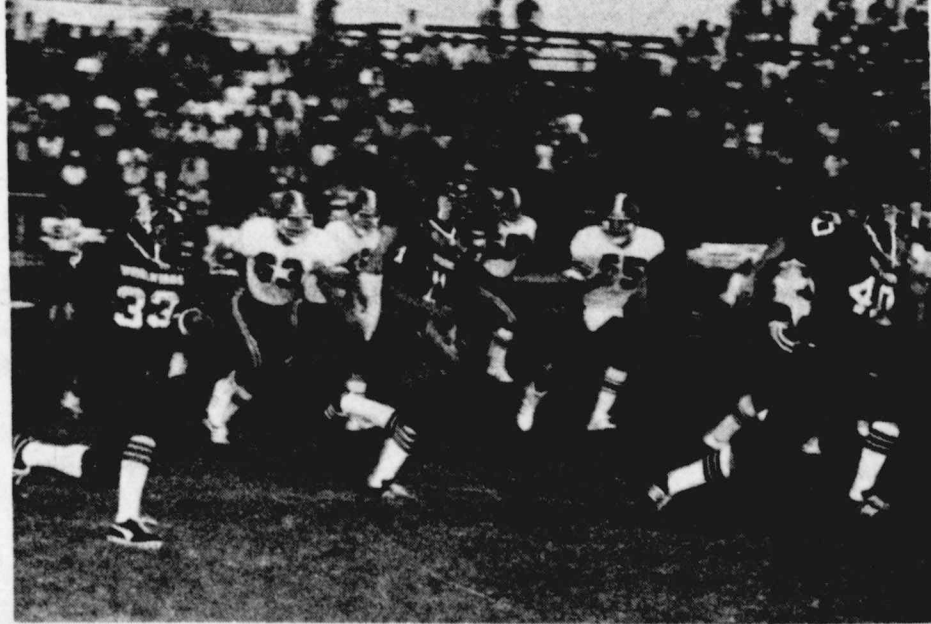
The various surveys and economic studies that have been made recently seem to agree, almost without exception, that the business outlook is bright for the near future.

They expect that, with incomes rising faster than the cost of living, which has been the case lately, with unemployment declining somewhat and with inflation staying within bounds, the confidence of consumers will improve and they will return to their freer spending habits.

Their ability to do so is enhanced by the fact that most of them have more savings than usual salted away, due to their cutback in spending during the recession.

And, the reasoning goes, since consumer spending is the backbone of our economy, once it gets into full swing again, industrial production will increase to meet the demand, opening up job opportunities for more people.

In Floyd County, the improvement is already under way, the figures show. In the past year local retail stores recorded gross sales of \$19,989,000, as against the prior year's total of \$19,448,000.



MICKEY MINNETT gets around the side for good yardage. Assisting him are Jay Womack 11 and Larry Jones 40. (Staff Photo)

### Rock Chat

**WENDELL TOOLEY**

...MAN by the name of Rick Perryton, Texas may have a new golfing record...he shot a 72. This sort of score is not in anyone's record book, and it is about this feat is what was playing the course in

more details, come by the Perryton newspaper.

...1970...year of the last census there were 4,109 people here. Of course there is an official census until 1980, but newspapermen and business managers like to know the population...hopefully, it

PETER PRISCHL...of Vienna 1969-70 American Field Student in Floydada, is pictured with Mrs. Clay Henry as the two reminisce in his school days in Floydada. Peter made his home with Mr. and Mrs. Henry while attending school here. He is in the states to attend the World Congress of AFS International Scholarship in New York where he will be secretary. He left Floydada Friday for New York, after visiting friends here several days. Peter will receive his Masters Degree in November from the Economic University in Vienna and will become a management consultant for a firm in Vienna. (Staff Photo)

### Quarterback Club Meeting Monday

All Whirlwind football fans are reminded about the first meeting of the year Monday night at 7 o'clock in the high school cafeteria.

President of the club Bob Marler says there will be a showing of the Friona game film, refreshments, interviews with the coaches and urges everyone to back the Whirlwinds through the Quarterback Club.

**MASSIE BOARD TO MEET**

Massie Activity Center board members will meet Monday night, September 6 at the Massie Center at 7:30.

All board members are urged to attend.

### Canyon Football Tickets On Sale

Tickets for Friday night's game at Canyon will be on sale Tuesday at the high school offices. There will be 50 reserve seats, but the tickets will be 50 cents cheaper if bought before the game.

The game will be played in the big Buffalo Bowl, north of Canyon and both Canyon and Floydada fans will sit on the west side of the stadium.

Whirlwind fans are reminded to park and enter on the north end of the stadium. Tickets sold at Floydada will be \$1.00 for students, \$2.00 for adults. At the gate, both tickets will be 50 cents higher.

### Cooperative Gins Annual Meeting

The fourth annual stockholders meeting of the Floydada Cooperative Gins Inc. will be held Tuesday, September 7 at 8 p.m. in the Massie Activity Center.

There will be a business meeting and the election of two directors. There will also be door prizes and refreshments.

All members and their families are invited and urged to attend.

### Area Farm Bureau Cotton Meeting

THE AREA FARM BUREAU cotton meeting was held at the Massie Activity Center Thursday evening to discuss farm program and legislation to be adopted in 1977. Over 30 area farmers turned out to hear and discuss the new Farm Bureau policies and recommendations. The presentations were made by (left to right) Don Neuman-state field service director of Texas, Don Petty-chairman of cotton commodities, Joe Lusk-district field services supervisor, and Omar Burleson-county cotton commodities chairman. (Staff Photo)

### Floyd Deputy No-Billed By Grand Jury

A Floyd County grand jury Thursday no-billed suspended Floyd County deputy sheriff Eddie Anzaldua on charges he raped a 19-year-old Yernon woman June 7.

The grand jury action followed a referral of the charges to the Floyd County investigative body by a Hale County grand jury which also refused to indict the deputy on the rape charge Aug. 16. The Hale County jurors recommended the charge be investigated by Floyd County officials after apparently being unable to determine if the alleged offense occurred in its jurisdiction.

The charges arose from an alleged incident June 7 in Hale County in which Anzaldua was accused of stopping the Yernon woman's car on Texas 70 East about 1:30 a.m. The charge stated Anzaldua allegedly forced the woman at gunpoint into his patrol car and drove to another location, where she said he raped her.

Anzaldua was indicted by the Hale County grand jury on a charge of official misconduct and will face trial on that charge at a later date. He is currently free on bond.

If convicted of the official misconduct charge, a Class A misdemeanor, Anzaldua could face a maximum sentence of a \$2,000 fine or one year in jail or both.

Others indicted included J. C. Jarrett, Jimmy Edward Jarrett and Wick Thomas Robertson, retaliation; Fernando Deltran, forgery; Ricky Dean Allen, theft; Roger Dale Shipman, two cases of forgery and Jessie Johnson, burglary. Two other subjects were also indicted for forgery but were not in custody at this time.

Serving on Grand Jury were Guy Ginn, Mrs. Ewald Quebe, Mrs. Lewis Renny, Willis Reynolds, Jim Crawford, Weldon Hammonds, Mrs. R. G. Dunlap, Wayne Bennett, Weldon Pruitt, Paul Cooper, Mrs. L. B. Brandes and Chester Carthel.

### Most Floydada Businesses Open Labor Day

Most Floydada businesses will be open Monday, Labor Day, September 6th, with the exception of Federal State and County offices, the First National Bank, Post Office and Hesperian. Floydada schools will also be dismissed for the holiday with classes resuming at the usual hour Tuesday morning.

A spot check over the town Friday with managers, the Hesperian learned grocery stores, department and variety stores, drug stores and auto firms will remain open for business Labor Day.

### Bandsmen Boost Bargain Burgers

This week, the Whirlwind Band is selling Dairy Queen discount coupon booklets for a fund-raising project. The booklets contain 28 coupons for different food items that add up to a whopping \$5.50 discount, with coupon booklets costing only \$1.00 each.

All band members have these booklets to sell now, but only for a limited time. There will be a number of bandsmen working the town Saturday to sell them, or you may call phone number 3-5222 for special sales contact.

This is an excellent opportunity to save money, enjoy DQ food, and is a great way to back your Floydada Whirlwind Band.



THE AREA FARM BUREAU cotton meeting was held at the Massie Activity Center Thursday evening to discuss farm program and legislation to be adopted in 1977. Over 30 area farmers turned out to hear and discuss the new Farm Bureau policies and recommendations. The presentations were made by (left to right) Don Neuman-state field service director of Texas, Don Petty-chairman of cotton commodities, Joe Lusk-district field services supervisor, and Omar Burleson-county cotton commodities chairman. (Staff Photo)



# MORE BUY POWER... MORE SOLID SAVINGS

We Give S&H Green Stamps

Double On Wednesday

32 oz. 6 bottle carton  
**COKE or DR PEPPER**  
plus deposit **\$1.39**

HUNT'S TOMATO  
**Ketchup**  
**79¢**  
QUART BTL.

PURE VEGETABLE SHORTENING  
**CRISCO**  
**3 \$1.39**  
LB. CAN

We Give S & H Green Stamps Double On Wednesday

U.S.D.A. CHOICE BEEF  
**ROUND STEAK** LB.  
**\$1.19**

U.S.D.A. CHOICE BEEF  
**SIRLOIN STEAK** LB.  
**\$1.29**

U.S.D.A. CHOICE BEEF  
**RIB STEAK** LB.  
**\$1.19**

U.S.D.A. CHOICE BEEF BONELESS  
**CHUCK ROAST** LB.  
**99¢**

GLADIOLA ALL PURPOSE  
**FLOUR**  
**59¢**  
5 LB. BAG

25 LB. BAG **\$3.39**

- U.S.D.A. CHOICE BEEF **Boneless Round Steak** LB. **\$1.39**
- U.S.D.A. CHOICE BEEF **Tenderized Beef Cutlets** LB. **\$1.59**
- U.S.D.A. CHOICE BEEF **Extra Lean Cubed Beef Stew** LB. **99¢**
- U.S.D.A. CHOICE BEEF **Boneless Chuck Steak** LB. **\$1.19**

- GUARANTEED 81% LEAN **Extra Lean Ground Beef** LB. **99¢**
- U.S.D.A. CHOICE **Beef T-Bone Steak** LB. **\$1.69**
- HEAVY GRAIN FED **Boneless Beef Briskets** LB. **89¢**
- GOOCH'S HICKORY SMOKED **Slab Sliced Bacon** LB. **\$1.49**

KRAFT MACARONI & CHEESE  
**DINNER**  
**3 79¢**  
7 1/2 OZ. BOXES

25¢ OFF LABEL DETERGENT  
**Oxydol**  
**\$1.99**  
KING SIZE BOX

20¢ OFF LABEL DISHWASHER  
**Cascade**  
**\$1.19**  
50 OZ. BOX

BATHROOM TISSUE  
**Charmin**  
**69¢**  
4 ROLL PKG.

- 
- SWEET AND JUICY  
**CALIFORNIA PEACHES**  
**3 \$1**  
LBS.
- CALIFORNIA NEW CROP RED **Delicious Apples** 3 LBS. **\$1.00**
  - CALIFORNIA THOMPSON **Seedless Grapes** LB. **49¢**
  - CALIFORNIA VINE **Ripened Tomatoes** LB. **39¢**
  - KENTUCKY WONDER-CALIFORNIA EXTRA FANCY **Green Beans** LB. **39¢**
  - CALIFORNIA LARGE SIZE **Bell Peppers** LB. **39¢**

- PURE VEGETABLE **WESSON OIL** 48 OZ. BTL. **\$1.49**
- FOOD KING HALVES **BARTLETT PEARS** 29 OZ. CAN **49¢**
- ORANGE, LIME OR PINEAPPLE **SHURFRESH SHERBET** 1/2 GAL. CTN. **88¢**
- MAXI PADS **New Freedom** 30 CT. BOX **\$1.79**
- MINI PADS **New Freedom** 30 CT. BOX **\$1.29**

**TOTAL GROCERY SAVINGS**

PAPER TOWELS	
ScotTowels	
KLEENEX	
Facial Tissue	
PRINGLES-10" OFF LABEL TWIN PACK	
Potato Chips	
RAID FLYING	
Insect Killer	
MAXWELL HOUSE	
Instant Coffee	
SKINNER SHORT CUT	
Elbo Macaroni	

We Give S&H Green Stamps Double On Wednesday

**THRIFTY GROCERY SAVINGS**

SHURFINE	
Tomato Sauce	3
BEEF OR CHICKEN	
LaChoy Bi-Pack	
GERBER STRAINED FRUITS & VEGETABLES	
Baby Food	3
30 CT. DAYTIME OR 24 CT. EXTRA ABSORBENT TODDLERS	
Kimbies Diapers	
SCHILLING	
Pure Vanilla	
SUNSHINE	
Hydrox Cookies	
KEEBLER	
Vanilla Wafers	

MORTON FROZEN  
**Honey Butter**  
9 OZ. CTN. **49¢**

**DAIRY & FROZEN FOODS**

SHURFINE FROZEN	
Cut Corn	3
LYNDEN FARMS FROZEN SHOESTRING	
Potatoes	4
PILLSBURY	
Crescent Rolls	
SHURFRESH	
Soft Margarine	

**HEALTH & BEAUTY AIDS**

COTTON SWABS	
Q-TIPS SWABS	170 CT. PKG. <b>79¢</b>
AEROSOL DESENEX	
FOOT POWDER	6 OZ. CAN <b>\$1.19</b>
FOR SINUS SUFFERERS	
Sine-Off TABLETS	24 CT. BTL. <b>99¢</b>
FOR PAIN RELIEF WITHOUT ASPIRIN	
TYLENOL	
Tylenol Tablets	100 CT. BTL. <b>\$1.19</b>
WITH 2 FREE ROLLS ALKA-2	
Alka Seltzer	36 CT. BOX <b>\$1.19</b>

## PAGES THRIFTWAY

LOCKNEY and PLAINVIEW  
SPECIALS GOOD SEPTEMBER 6-11, 1976



# Area water levels listed

HERALD AUSTIN BUREAU

**AUSTIN**—Several water systems in five Plainview-area counties exceed maximum contaminant levels for nitrates or fluoride, or both, as set out under Safe Drinking Water Act of 1975, according to the State Department of Health Resources.

That federal law, effective June 24 of next year, sets a maximum level for fluoride in most of the Panhandle at 1.6 milligrams per liter.

At the present time, Plainview's municipal water does not exceed the maximum contaminant levels for both nitrates and fluoride, according to the department.

A ceiling of 10 mg-liter of nitrates in drinking water is specified for both community and non-community water systems.

Non-community water systems include such public water supplies as those found in isolated restaurants, motels and clubs. These usually are well-water supplies.

**COMMUNITY** water systems in the Plainview area range from Silvertown to the small Halfway Water Supply Corp.

The only known health hazard associated with fluoride found in the levels listed below is mottling of the teeth of children under age 14.

Nitrates in drinking water have been determined by the Environmental Protection Agency to present a danger of illness or death to infants under the age of six months.

THE FOLLOWING list was compiled by the Department of Health Resources and represents, for the most part, analyses of samples taken during the past four years:

Water System	Nitrates (mg-liter)	Fluoride (mg-liter)
<b>HALE COUNTY</b>		
City of Abernathy	2.3	
Cotton Center Water Supply Corp.	2.0	
City of Hale Center	3.2	

Halfway Water Supply Corp.	2.3
City of Petersburg	3.3

<b>BRISCOE COUNTY</b>	
City of Quitaque	33.0
Caprock Canyons S.P.	14.9
City of Silvertown	4.4

<b>CASTRO COUNTY</b>	
City of Dimmitt	2.6
City of Hart	1.7

<b>FLOYD COUNTY</b>	
City of Dougherty	3.9
City of Floydada	3.6
City of Lockney	2.6

<b>LAMB COUNTY</b>	
City of Earth	2.0
City of Littlefield	1.8
City of Olton	2.5
Spade Water Supply Corp.	2.2
City of Springlake	2.1

<b>SWISHER COUNTY</b>	
City of Happy	2.7
City of Kress	2.0
City of Tulla	1.7

to important officeholders both before and after the election."

However, Johnson concludes, "you can't overestimate the importance of having people in office who are knowledgeable about agriculture and sympathetic to its problems. And the individual farmer, with his contributions, his influence and his vote is the only one who can put such people in office."

The cotton producers from across the Cotton Belt who make up the Cotton Board have made their recommendation to the Secretary of Agriculture concerning the producer referendum which will determine future funding of Cotton Incorporated (CI).

The Board, which since 1966 has handled collection of the producer's \$1 per bale contribution and contracted with CI for approved cotton research and market development projects, opted for a producer vote on an additional assessment based on a percentage of value.

After much discussion of the pros and cons at a meeting in Dallas August 20, the Board unanimously recommended that the vote be on four-tenths of one percent of bale value in 1977. The Board's recommendation also provides for the possibility of incremental increases up to a maximum of one percent after the 1977 crop year.

A tentative timetable prepared by the Board calls for the Secretary by September 3 to prepare a final draft of the proposed amendment to the Research and Promotion Order, under which the referendum will be held, and issue notice of field hearings. It suggests field hearings in Memphis, Atlanta, Dallas and Phoenix between September 20 and October 1, followed by the required publication of the recommended Order in the Federal Register.

The Board projects that the final Order could be issued about November 12 and the referendum held the second or third week of December.

# West Texas water may pose 'headache'

By LARRY SPRINGER  
Herald Austin Bureau

**AUSTIN**—Folks in the Panhandle city of Hereford used to brag about the virtues of their fluoride-rich water, dubbing their High Plains community "The Town Without a Toothache."

That was back before fluoride-mottled teeth began to concern the Environmental Protection Agency.

Now Hereford and dozens of other Texas communities with high levels of the cavity-fighting element in their drinking water may become "The Towns With a Headache"—the Safe Drinking Water Act of 1975.

That legislation, which goes into effect on June 24 next year, mandates maximum contaminant levels for fluorides, nitrates, certain heavy metals, pesticides, bacteria and turbidity in the nation's drinking water.

THE NEW federal law also has expanded the definition of a "community water system" to mean a public water system with at least 15 service connections used by year-round residents or serving at least 25 persons on a year-round basis.

Of all these new standards, those set

by the Environmental Protection Agency for fluorides and nitrates may pose as insurmountable financial obstacles for many of the state's smaller communities, while for others, it may mean expensive renovations to water

systems and higher water bills for consumers.

The presence of nitrates in drinking water may present a significant health problem due to the potential danger it presents to infants and the unborn.

But, according to the State Department of Health Resources officials who administer the Texas drinking water program, the only known harmful effect of fluoride found in the highest levels reported in Texas is mottling—or staining—of the teeth of children under age 14.

**DRINKING** Water Program Director Floyd Williams said that fluoride actually can be beneficial to the human

body—aiding in the formation of strong bones—until levels in drinking water reach very high proportions.

More than 500 Texas "communities" have fluoride levels in excess of those required by the Safe Drinking Water Act. They range from Hereford with a population of about 16,000 to Texas Boys

Ranch in Lubbock County with 13 residents.

Maximum allowable fluoride levels in the state range from 1.8 milligrams per liter to 1.4 mg-liter, varying according to the average temperature.

Many communities, such as Muleshoe and Refugio, are only one-tenth of a milligram over the maximum allowable level. Others, including the Trimmer Mobile Home Park in Bell County with 8.7 mg-liter and the community of Blooming Grove in Navarro County with 6.2 mg-liter, are far in excess of that limit.

THE MAXIMUM allowable levels prescribed for nitrates in both community and non-community water systems is 10 mg-liter.

According to Williams, the EPA has determined that nitrate concentrations exceeding the 10 mg-liter standard may bring about the onset of a form of anemia which can make infants under six months of age seriously ill or even cause death.

Non-community water systems—those which serve transient groups frequenting roadside restaurants and motels—also must meet the nitrate limit since a single exposure can present a health hazard, Williams said.

Although the health agency has listed more than 50 Texas water systems which exceed the nitrate limit, Williams said he could not recall any cases of nitrate-related anemia having been reported in those areas in recent times.

THE HIGH nitrate area, concentrated primarily in those counties west of Wichita Falls, includes water systems just over the 10 mg-liter limit such as that operated by the City of Vernon with 10.78 mg-liter nitrates in the water supply and those systems which the State rates as being significantly over the allowable level including the City of Quitaque at 33 mg-liter and the City of Haskell at 30.8 mg-liter.

The costs to correct fluoride and nitrate contamination may stagger the operators of smaller systems.

To remove nitrates by a mechanical process known as reverse osmosis, the health agency estimates a water system serving 25 to 99 persons daily would have to pay \$30,000 on the

average. Using the electronic process of ion exchange would push that single system cost to \$41,000.

A system serving 100 to 499 persons daily would pay \$52,500 for the reverse osmosis process and \$68,000 using ion exchange.

FLUORIDE removal, required only of community systems exceeding standards could cost the 145 water systems, each serving 25 to 99 persons, an average of \$2,600 per system using the activated alumina process.

The 153 systems, each serving 100 to 499 persons, could pay an average \$6,100 per system using this process.

Fluoride removal costs to larger communities such as Hereford and the City of Taylor could run as high as \$130,000.

A nitrate treatment process for Vernon and the City of Brownfield in Terry County soar as high as \$2 million dollars.

THE HEALTH Resources Department also is facing a financial crunch with its added responsibilities in testing and enforcement.

Bacteriological samples required by the law will increase from 244,000 taken in 1975 to about 400,000 next summer at a cost of approximately \$3 million.

Chemical monitoring requirements for the health agency will exceed \$700,000.

Easing this burden somewhat for the state are EPA grant monies. The health department will receive \$416,500 for this fiscal year. In FY-77, a grant of \$915,700 is expected.

There are, however, no federal grant monies provided for local communities which must bring their water systems in line with the standards within 18 months of the effective date of the act.

THE SAFE Drinking Water Act does provide for exemptions and variances for those water systems without immediate resources to meet the law's criteria.

But, as Williams points out, each

variance or exemption must be accompanied by a compliance timetable setting a deadline for bringing the affected water system under the act's standards.

What will happen to those water

systems which are so small as to never make compliance with the law a financial reality?

"We hope they will be able to join regionalized water supply systems," said Williams.

Proponents of the \$400 million November water development bond issue are urging passage of that measure so that loans can be made available for cities and other governmental entities for the upgrading of water systems.

OF THE approximate 500 systems not meeting fluoride standards, however, only an estimated 160 will be eligible for Texas Water Development Fund loans. Trailer parks, water corporations and so on cannot receive loans from this fund.

More than half of 50 water systems needing expensive nitrate removal equipment will not be able to apply for state loans.

Those which cannot meet the standards by one means or another eventually will have to cease service, Williams predicted.

Another aspect of the act which concerns Williams and others is the law's requirements for public notification of a water system which does not meet standards on June 24.

Community water systems will be required to place a notice in customers' water outlining the problem, its potential health hazards and preventive measures which should be taken. The billing notice must be repeated every three months as long as the system remains noncompliant.

ADDITIONALLY, the water system owner must place a notice of the violation in a newspaper of general

circulation and furnish copies of the notice to local television and radio stations.

Non-community water systems, said Williams, likely will be required to post printed notices in a conspicuous location on the premises warning of the violation and giving preventive measures. The law states that, where appropriate, the notice must be bilingual.

"Any way you handle it," Williams said, "it's going to scare people and create a lot of problems."

## COTTON TALKS

FROM PLAINS COTTON GROWERS, INC.

... in 1976 could cause greater damage to the production of High Plains farmers than all other ... of Donald Johnson, Executive Vice President of Cotton Growers, Inc., Lubbock.

... can decimate production and income only if farmers fail to take maximum influence on the interest and yield maximum influence on the agricultural can suffer losses at the hands of ... no amount of favorable weather can over-

... is a no-no for organizations such as ... official notes, "which leaves it up to individual ... on his own judgment, to carry the ball at ... position in politics, aside from being a ... tax exempt status, is necessary to maintain ... effectiveness in the legislative arena year in ... Johnson explains. "We work constantly for ... administrative rulings needed by our members, ... of one candidate or one party over ... election would limit the access we have

## Wex

**NUTRIENT RELEASE** Agent do not forget to apply 12 to 15 lbs WEX per acre when sowing your wheat for increase in yield and making a better root system so the live wheat will not pull up the wheat where applied.

... talk to you about our other fine products that are made by the CONKLIN CO.

... make you a good saving on your gasoline. Can increase your gasoline mileage 10 to 20 per-

... for your (Mox, Wex, Fuel Mate, K-Glide, Safe and other products.)

... and let's talk about these PRO-

**Wheat Feed & Seed**  
111 N. Main Floydada  
OR  
Dougherty Farm Supply  
Dougherty, Texas

# ATTENTION AREA FARMERS!

## WITH CORN AND MILO HARVEST COMING THINK OF SOUTH PLAINS ELEVATOR FOR YOUR CORN DRYING NEEDS

WE ARE EQUIPPED TO HANDLE  
ALL YOUR WET CORN PROBLEMS

For Further Information Call  
**983-2887**

Or When In South Plains Stop  
By South Plains Elevator To  
Discuss Your Situation.

### Windbreak And Pine Seedlings Available

The Soil Conservation Service in Floydada has received the new price list for windbreak seedling application and for pine seedling application from the Texas Forest Service. Some of the species of evergreen seedling available are Arizona Cypress, Austin Pine, Oriental Arborvitae, Ponderosa Pine, and the Redcedar. Some of the species of deciduous seedling available are the Chinese Elm and the Honey Locust. Orders must be in quantities of 100 or more and in multiples of 50 of any one species. All orders must be received by February 11, 1977 by the Texas Forest Service. Shipments will begin about mid-December and continue through the first week in March.

Other kinds of pine seedlings must be ordered in bales of 500 or more. Planting recommendations will be sent to the applicant. No trees are furnished for landscaping or ornamental purposes.

For more information and for application forms contact the SCS office in the Agriculture Building on the Court House Square or phone 983-2352.

All programs and services of the USDA and the SCS are available to everyone without regard to race, creed, color, sex or national origin.

**Mac's Backhoe Service**  
Call Harvey McJimsy  
Silvertown, Texas

## Thrasher & Co.

### Redi-mix Concrete Sand & Gravel Excavation

call us:  
**983-2170**  
229 E. California

**WINGS**

**GROCERY SAVERS**

**GROCERY BUYS**

**PACK**

**VEGETABLES**

**EXTRA ABSORBENT TODDLERS**

**WIPERS**

**COOKIES**

**SAVERS**

**FRONZED**

**FRONZED FOODS**

**DESTRING**

**ROLLS**

**BEAUTY AIDS**

**DEF WITHOUT ASPIRIN**

**ROLLS ALKA-2**

**PLAINVIEW**



# Society



Mrs. James David Dempsey

## Gail Urbanovsky, James David Dempsey Wed

Gail Ann Urbanovsky and James David Dempsey were united in marriage on Saturday, August 28 at 1 o'clock p.m. in the Catholic Church of the Assumption in West.

Mike Archer, organist, accompanied the bride's cousin Sister Rosemary Liehnovsky, who was soloist.

Presented in marriage by her father, the bride wore a formal gown of white polyarganza with pearly Chantilly and Venise lace. The high rise bodice featured a sheer circular yoke with a high neckline and Venise lace flowers scattered over the Bishop sleeves. Matching lace motifs formed a scalloped effect on the full skirt and also edged the hemline which swept into a chapel length train. A contoured caplet of lace, pearls and crystals held a silk illusion fingertip veil. She carried a cascade of somia coral roses, stephano-

## Alphu Mu Delta Chapter Has "Beginning Day"

Members of the Alpha Mu Delta Chapter of Beta Sigma Phi and their guests, met at Lighthouse Electric, August 30, at 7:30 p.m. for their "Beginning Day."

Guests present were Lou Ann Smith, Linda Roberts, Vicki Thrasher, Vicki Yearly, Judy Cornelius, Leonida Cleveland, and Sally Wylie.

## Floydada Chamber Of Commerce Women To Meet Monday Night

All members of the Women's Division of the Floydada Chamber of Commerce are urged to attend an important meeting Monday night, September 6th, at 8 o'clock in the conference room at Farm Bureau.

## Spice And Rice

A Spice and Rice shower honoring Val Johnson, bride elect of Craig Turner, was given in the home of Mrs. Travis Young Saturday, August 28th.

## Shower Honors Val Johnson

A Spice and Rice shower honoring Val Johnson, bride elect of Craig Turner, was given in the home of Mrs. Travis Young Saturday, August 28th. Those present were aunts and cousins of the prospective groom.

## Senior Citizens Meet Wednesday

All Senior Citizens are reminded of their monthly meeting Wednesday, September 8th at 11 a.m. in Lighthouse Electric.

## Girls Invited To Join Scouts

The Girl Scout program has attracted millions of girls since its founding in 1912. The organization's continued growth for more than 60 years is a tribute to its ability to provide program which captures the interests of girls.

## FLOYD DATA

Attending the wedding of Steve Pitts and Kathy Williams of Lubbock were Mr. and Mrs. Travis Young and family, Valynda Chandler, Mr. and Mrs. Don Shurbet and family, Mr. and Mrs. Deral Young, Mrs. R. E. Young, and Peggy from Floydada.

## Couple Wed In Floydada

Mr. and Mrs. Dannie Parsons will be making their home at 408 W. 10th in Plainview after a wedding trip to California. The couple was married Saturday afternoon in First Christian Church of Floydada.

## FLOYD DATA

Sam Green, son of Mr. and Mrs. Starks Green, is recuperating nicely in Central Plains Hospital where he underwent surgery Thursday morning.

## FLOYD DATA

Mr. and Mrs. Jerry Chappell of Duncan, Okla., are here for the weekend with his parents Mr. and Mrs. Ozell Chappell and her parents, Mr. and Mrs. Doodle Milton at South Plains.

## FLOYD DATA

Mr. and Mrs. Ernest Smitherman have returned home from a visit in Denver, Colorado with friends.



Kelvin Cummings, Jolene Robertson

## Miss Jolene Robertson Cummings Plan Nore...

Mr. and Mrs. Ross McWilliams of Canton, Tex., announce the engagement of their daughter, Jolene Robertson to Kelvin Cummings, son of Mr. and Mrs. Kendall Cummings of South Plains.

## De Lyn Ramsey In Plain...

De Lyn Ramsey, daughter of Mr. and Mrs. Dallas Ramsey of Floydada, and Leah Kay Lyle, daughter of Mr. and Mrs. Paul Lyle of Plainview were presented in a piano recital Sunday afternoon in the Fine Arts Center in Plainview.

## FANCY TIME

Some scientists predict that by studying how a plant absorbs energy from the sun we will be able to more efficiently use the sun's energy for our own heating and cooling needs!

## REDUCE ENERGY CONSUMPTION

According to the U.S. Bureau of Standards, 20% of all energy consumed in this country is used in the home.

## DATING CLOCK

The country with the greatest length of navigable waterways in the world is Finland with a total length of navigable waterways about 31,000 miles!

**perry's** We will be open Labor Day Prices good All Week!

☆☆☆☆☆☆☆☆☆☆☆☆☆☆☆☆☆☆☆☆☆☆☆☆☆☆☆☆☆☆☆☆

# Labor Day SALE

**PAMPERS**

NEW BORN	Reg. \$2.79	now \$2.29
DAYTIME	Reg \$3.19	now \$2.57
DAY and NIGHT TODDLER	Reg \$1.89	now \$1.49
OVERNIGHT	Reg \$1.89	now \$1.09

Reg \$1.79 yd

**DOUBLE KNIT now 99¢** yd

Reg \$2.29 yd.

**TRANSFER PRINT now \$1.79** yd

Reg \$1.99

**BATH TOWELS now \$1.57** ea

16"X25" Popcorn Terry Reg 77¢

**STITCH TOWELS now 47¢**

**THE ORGANIZER** By Mead

Reg \$2.79 **now \$1.88**

## HAVE YOU MET THIS MAN?



Sam A. Spence Ralls Hwy. 983-2881

You should meet him, get to know him. He's the expert who has the answers to all your insurance problems—Auto, Life, Business, Home. He can save you money, too. A good man to know. Call him soon.

**FARMERS INSURANCE GROUP**

Symbol of Superior Service

AUTO • LIFE • FIRE TRUCK • COMMERCIAL

Fast • Fair • Friendly

Please join the Folks at

## FLOYDADA COOPERATIVE GINNS

Fourth Annual Stockholders Meeting

TUESDAY, SEPTEMBER 7, 1976 - 8:00

### MASSIE ACTIVITY CENTER

BUSINESS MEETING - Elect Two Directors

DOOR PRIZES & REFRESHMENTS



## Final Plans Made For FHS Homecoming

Box 430, Floydada, Tx. 79235. Tickets may also be purchased at the First National Bank or the Floydada Branch of the Plainview Savings and Loan. We must know the number of plates to be provided for

the barbecue before October 1, and only those having tickets will be served. If you choose to mail in your check, your tickets will be waiting for you at the registration table Saturday morning. The price for the barbecue is

\$3.50 a plate. There has been much enthusiasm expressed for homecoming this year, but we know the real success will come when many old friends actually get together on October 9.

I want \_\_\_\_\_ tickets for the noon barbeque, \$3.50 ea

NAME: \_\_\_\_\_

ADDRESS: \_\_\_\_\_

CLASS OF: \_\_\_\_\_

## Volunteers Cited For Scouting Success

Pointing out that Scouting and Cub Scouting provide a type of training for boys from 8 through 17 that is difficult to duplicate in other

kinds of youth activities, President, Max Tidmore of the South Plains Council, Boy Scouts of America, cited the volunteer leaders who

make Scouting succeed. "The men and women who volunteer as leaders in the Boy Scouts of America are responsible for a special type of educational impact on youth," Tidmore said. Adults who volunteer to serve in Scouting work through organizations that use the program as a part of their own youth program or serve in the South Plains Council or its seven Districts.

Tidmore explained that adults serve as leaders of boys in a Cub Scout Pack or Scout Troop, serve as instructors in one of the more than 100 hobby and vocational fields included in the merit badge program help Scout units as assistant leaders or on committees, or take part in activities, organizing Scout units, administering Scout camps, or serving as training instructors.

In the South Plains Council, December 31, 1975, there were 2,834 adults registered in positions that are related to the council's 7,569 young members.

"As part of our council plan to expand the Scouting program, more adults are being invited to give leadership in a variety of ways," Tidmore said. "There is a tremendous feeling of accomplishment by adults when they work in a youth program like the Boy Scouts of America."

## What's Cooking At

FLOYDADA SCHOOLS  
September 6-10, 1976  
MONDAY  
School dismissed-Labor Day Holiday  
TUESDAY  
Chicken Fried Steak with Gravy  
Fluffy Whipped Potatoes  
Tossed Vegetable Salad with Dressing  
Cocoanut Oatmeal Cookie Hot Rolls  
1/2 pint milk  
WEDNESDAY  
Bar-B-Que Wieners  
Seasoned Pinto Beans  
Cheese Sauce Broccoli  
Chocolate Pudding with Vanilla Wafers  
Hot Corn Bread Squares  
1/2 pint milk  
THURSDAY  
Hamburgers on Homemade Buns  
Tomato, Lettuce, & Dill Pickles  
Potato Chips  
Plum Cobbler  
1/2 pint milk  
FRIDAY  
Oven Fried Chicken  
Steamed Rice  
Garlic Green Beans  
Carrot Sticks  
Strawberry Jello with Fresh Strawberries  
Hot Rolls  
1/2 pint milk

By Ray Purcell  
Social Security Representative

Q. I am a senior in college receiving student benefits. In my final semester, I will be student teaching. Is this considered to be full-time attendance in school even though I won't be attending any classes?

A. Yes, where a student is engaged in study or related activity, he can be considered as being in full-time attendance.

THE FLOYD COUNTY HESPERIAN

Published each Sunday and Thursday at 111 E. Mo. St., Floydada, Texas 79235. Second class postage paid at Floydada, Texas 79235. Wendell Tooley, editor. Subscription rates: Local \$8.50 a year, out of trade area: \$9.50.

## Center-Fairview Reunion Today

The Center and Fairview Communities will hold their annual reunion today September 5, at the Massie Activity Center at 511 West Georgia in Floydada. Come

live too far away, bring enough food for your family. Drinks will be furnished, as will silverware, plates and cups.

### HEARTY HAM AND MACARONI SALAD

- 4 cups cold cooked macaroni
- 1/2 pound sliced cooked ham, sliced
- 1-1/2 cups diced red apples
- 1 medium-sized green pepper, diced
- 2 tablespoons chopped scallions
- 1/2 cup mayonnaise
- 1 tablespoon original Worcestershire sauce
- 1 teaspoon salt
- 1 teaspoon lemon juice

In a large bowl combine macaroni, ham, apples, green pepper and scallions. Blend mayonnaise with Worcestershire sauce, salt and lemon juice; pour over macaroni mixture; mix well. Serve garnished with small ham cornucopias and sliced hard-cooked eggs, if desired. Yield: 4 portions.

### LIVE DRAMA

### LIVING SOUND (In New Quadraphonic)

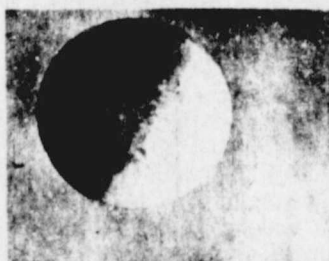
### MULTI-MEDIA Film Projection

## The Life Story of Jesus



- ★ The Greatest Story Ever Told
- ★ The Greatest Life Ever Lived
- ★ From the Creation to the Cross

SINGING HARRIS FAMILY PRODUCERS



IN THE BEGINNING 1st Night

\*Scenes of the moon, and the world from outer space, direct from the U.S. Gemini and Apollo space missions.  
\*The birth and boyhood of Jesus.  
\*The raising of Lazarus from the dead, and the many miracles of Christ.



"LIVE" Crucifixion 2nd Night

\*The betrayal and complete details of the trial.  
\*The LIVE CRUCIFIXION, before an 11x20 ft. artists painting, showing Jerusalem and the surrounding hills, with simulated lightning and a recording of a Texas storm.



"THE RAPTURE" 3rd Night

\*The resurrection of Jesus.  
\*Singing narration of Heaven, with light show.  
\*The Rapture.

An Event You'll Never Forget — Don't Miss It!

ADMISSION: No Charge EVERYONE IS INVITED!

PLACE: First Assembly of God Church, Lockney

TIME: 7:30 p.m. Tuesday, Wednesday, Thursday-Sept 7,8,9

### NOTICE:

Parents, please sit with children, the realism of the crucifixion may tend to frighten

## News & Reviews

### News & Reviews

#### Floydada First Baptist Church Library

Fall brings new excitement each year as the routine of school is re-established and lives are busier but more orderly. This would be an excellent time to begin that orderly plan of Bible study that you promised yourself and God that you are going to do. An anthology of R.A. Torrey's writings YOU AND YOUR BIBLE includes some valuable information about how to approach the Bible for systematic study. Two of the most helpful chapters are "How to study the Bible: by individual books," and "How to study the Bible: other effective methods." He also has a chapter entitled "Bible difficulties: its 'contradictions'." In the foreword the publishers describe R. A. Torrey as an evangelist of international renown and influence, more than a well-educated man, a scholar who studied in Germany at a time when Biblical criticism was rampant, much of it destructive. His personal faith in the integrity of the Bible as the inerrant Word of God was unshaken and he is compared to Luther, Wesley, Finney and Moody.

**FUNNY-BONE DRAMATICS** by Bernice Carlson is a collection of humorous speak-up riddles, dramatic puppet jokes, skits with endings you create yourself, and plays with both serious and humorous twists. Directions on how to recite and act each part are included as well as helpful hints about pantomime, when to use slow or fast speech, and other acting skills. Designed for ages 4-8, it is a delightful book for any time you want to make people laugh. Brownie and Cub Scout people would find many useful ideas in this little book.

Have you and your best friend ever had a fight? In I'M NOT OSCAR'S FRIEND ANYMORE, Marjorie Sharnat tells about how Oscar lost his best friend. Anyone who has ever had a pal suddenly turn into a former pal will enjoy reading about how Oscar's friend handles the situation. This is a book that children about 7-10 will really identify with. Remember we are developing a cassette tape library and have a number of new tapes you would enjoy.

# SEPTEMBER Food Sale

- 6-32 OZ. BOTTLE CARTON COKE PLUS DEPOSIT \$1.39
- CLOVERLAKE DELUXE 1/2 GAL ICE CREAM \$1.29
- PRETTY 4 ROLL PAK TISSUE 89¢
- WIPES FRENCH 303 CAN 3/89¢
- BORN 8 OZ. BOTTLE SHAMPOO \$1.39
- 2 OZ. BOTTLE BATH WASH 59¢
- DEL MONTE CUT OR SLICED 303 CAN BEETS 3/89¢
- CLOVERLAKE 12 OZ. COTTAGE CHEESE 59¢
- CLOVERLAKE SOUR CREAM OR CHIP N DIP 3/\$1.00
- PURINA CAT CHOW ALL FLAVORS CAT FOOD \$1.49
- SWEET STAKES 303 CAN MACKEREL 59¢
- DEL MONTE CHUNK LIGHT TUNA 6 1/2 OZ. CAN 59¢

## PRODUCE AT 'THE CROPS-IN' PRICES

- NO 1 10 LB BAG POTATOES EACH 67¢
- CENTRAL AMERICAN BANANAS LB 19¢
- NO. 1 YELLOW ONIONS LB 5¢
- NO 1 HEADS CABBAGE LB 12¢

- 100% PURE BEEF GROUND BEEF LB 69¢
- 100% PURE BEEF PATTIES LB 79¢
- FIRST CUTS ROUND STEAK LB \$1.09
- BONELESS USDA CHOICE SIRLOIN LB \$1.49
- MAN PLEASERS T-BONE STEAK LB \$1.49
- SEVEN BONE ROAST LB \$1.09
- ARM CUTS ROAST LB \$1.09
- ARM CUTS SWISS STEAK LB \$1.09
- BEEF TENDER LIVER LB 49¢
- MARKET MADE BAR-B-QUE LB \$1.29
- MARKET MADE CHILI LB 98¢
- NORBEST HEN TURKEYS LB 59¢
- GRADE A FRYERS WHOLE LB 48¢ CUT UP LB 55¢
- YOUNG TENDER HENS LB 49¢

# RITE-PRICE FOODS

HOME OWNED, HOME OPERATED PHONE 652-2301 LOCKNEY, TEXAS

WE GIVE GUNN BROS STAMPS

DOUBLE ON TUESDAY AFTER 2 P.M. ALL DAY WEDNESDAY

THIS COUPON IS GOOD FOR EXTRA GUNN BROS. STAMPS AT RITE PRICE With the Purchase of ANY 3 PKGS BEEF FROM OUR SELF SERVICE COUNTER Please fill in your name and city Coupon Per Customer—Coupon Expires SEPT. 11

THIS COUPON IS GOOD FOR FREE GUNN BROS. STAMPS AT RITE PRICE No Purchase Required Please fill in your name and city Coupon Per Customer—Coupon Expires SEPT. 11



### Phillip Smitherman Arrives In Saudia Arabia

Phillip Smitherman of Floydada has arrived in Dhahran, Saudia Arabia according to word received by his family last week. Smitherman is with CRC-Automatic Welding Limited, which is a division of Crutcher Resources Corp., out of Houston.

Employees of the corporation who lay pipes global will be laying water pipe lines in the desert area. At

present Smitherman and other employees are staying in guests homes, but camps near their working area will be their quarters as soon as they can be erected.

In a letter to his family Smitherman said the temperature at Damma where he is now stationed is ranging from 110 to 115 degrees each day, 2 percent humidity and slight winds. Smitherman said they are

paying 13 cents per gallon for gasoline; \$2 a quart for drinking water and \$2 for a bottle of Dr. Pepper.

Prior to his recent assignment Smitherman was in Scotland and then on the North Sea working on a barge. He will be in Saudia Arabia from three to six months, his wife said.

### Panhandle South Plains Fair Sept. 25

LUBBOCK—The deadline for entering the Panhandle South Plains Fair's rabbit show has been set for September 16, according to Steve L. Lewis, general manager of the exposition.

More than \$1,000 in premiums are being offered in the show. Total fair premiums will exceed \$50,000.

Entries must be post-marked by midnight September 16. Entry blanks and fees (75 cents for a single rabbit, meat pen, doe and litter and fur classes) should be forwarded to Mrs. Rosalie Berry, Show Secretary, at 513 E. Kent Street,

Lubbock, Texas 79403.

Robert Berry is president of the sponsoring South Plains Rabbit Breeders Association and also will serve as general superintendent of the show. Earl Hord will judge the entries beginning at 8:30 a.m. September 30.

The 59th annual exposition will be paid in the following classifications:

—For breeds maturing at less than eight pounds: juniors, under 6 months; seniors, more than 6 months; meat pen, three rabbits, under 69 days old and not weighing more than five pounds; doe and litter of four to eight young, 5 to 8 weeks old, litters to be judged in three classes of light, medium and heavy; fur classes will be provided for normal white, normal colored, white satin, white rex, colored satin, colored rex and breed fur.

Special prizes will be awarded for best display, second and third best display, largest entry, second largest entry, best normal white fur, best normal colored fur, best white satin fur, best white rex, best colored rex and best in show.

Other special awards also will be given by several

rabbit clubs. Competition is open to the world. A junior show, headed by Shane Peiser, also is on tap.

All-star lineup has been slated for Fair Park Coliseum during the eight-day run, billed as the "Festival 76" edition of the fair. It includes:

—Charley Pride, Sept. 26, along with the popular trio, Dave and Sugar;

—Freddy Fender and Barbara Mandrell, Sept. 27-28.

—Charlie Rich, Sept. 29-30;

—Neil Sedaka, Oct. 1-2.

Shows will be presented at 5:30 p.m. and 8:30 p.m. daily. Tickets are priced at \$4, \$5, and \$6 and may be obtained at the fair offices or by mail by writing to the fair association at P. O. Box 208, Lubbock 79408. Mail order requests for tickets should be accompanied by a stamped, self-addressed envelope.

Tickets also are available at Luskey's Western Wear, Sear's downtown store, Dunlap's in Caprock Center or at Lubbock Western World.

One new wrinkle has been added this year. The popular fiddler's contest has been moved onto the stage of Fair Park Coliseum and eight to nine hours of competitive fiddling will launch the fair run. No admission will be charged.

## The Floyd Philosopher

### Warns Ford And Carter To Keep An Eye Carefully On Their Economists



Editor's note: The Floyd Philosopher on his Johnson grass farm has some unsolicited advice for the Presidential candidates this week.

Dear Editor: Right off the bat, I've noticed that both candidates, Ford and Carter, have made the same mistake. They've each hired economists to help them with their speeches.

As best I can tell, economists seem to be several notches below weathermen in accuracy. A weatherman, while not very dependable on what's going to happen tomorrow, is almost always right on what happened yesterday. An economist is vague in both directions.

What got me started on this was an article I read in a national magazine, written by one of the foremost economists in the country. He has figured out how inflation is a good thing for a home owner.

According to him, "almost every homeowner has seen the market value of his house go up, and his mortgage—even neglecting payments on the principal—decline as a fraction of the value of the house. Inflation has been paying off his debt and increasing his equity."

I have a notion that everybody who owes

on his home would like to do business with this economist, if he has money to lend. Letting inflation pay off your mortgage is the best idea since a colony of drop-outs tried to make a living by taking in each other's laundry.

You have to take this idea and turn it around in your hands and hold it up to the light to see why Ford and Carter ought to check up on their economists. Sure, if your house cost say \$30,000 and inflation has pushed the price of it up to \$40,000, you're \$10,000 ahead, only you still owe most of the \$30,000 mortgage and your loan company officer will look at you over the top of his glasses if you tell him you've decided to let inflation pay off the balance.

The only way you can profit by inflation is to sell your \$30,000 home for \$40,000, hold the money a few days while you stay in a motel, they buy another \$30,000 home which will now cost you \$45,000.

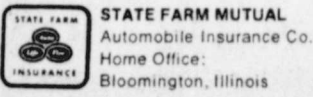
Inflation is wonderful, and all you have to do to make it work is to get everybody to sell his home every six months. The last one to sell is a rotten egg.

Yours faithfully,  
J. A.

### Person to person health insurance

It can make you feel better. Call me.

Britt Gregory  
112 W. Mo.  
Call Collect  
983-3125



## OBITUARIES

### L. D. Simpson

Services for Loyce Dean "Buster" Simpson, 58 year old Floydada resident, are tentatively scheduled for this afternoon, Sunday, September 5th in the First Baptist Church in Floydada. Simpson died in Lubbock Methodist Hospital about 4 a.m. Friday following an illness from a heart condition and complications. Dr. Floyd C. Bradley, will officiate for the rites, and Moore-Rose Funeral Home will be in charge of arrangements and burial in Floyd County Memorial Park.

A native of Sparta, Tenn., Simpson was born June 14, 1918, and moved to Floyd County in 1921 with his parents. He graduated from Floydada High School and Texas Tech, and worked for the Soil Conservation Service in Alabama following his college graduation.

Simpson and the former Frieda Dunn were married in Tuscaloosa, Alabama in 1942. After moving back to Floydada, Simpson was employed by the SCS in Plainview and was engaged in farming. He was president and chairman of the board of Brown Gin at the time of his death, a member of the First Baptist Church, and a former member of the Floydada School board.

Survivors include his wife; a daughter, Mrs. Susan David of Houston; a son, Bob Simpson of Floydada; three grandchildren; his mother, Mrs. W. H. Simpson,

Floydada; two brothers, W. H. Jr., and Jim Simpson both of Floydada; and two sisters, Mrs. D. T. Holland of Dallas and Mrs. Don Shaw of Chicago, Ill.

### Miss Scheele

Services for Marie Louise Scheele, 41, of Houston and formerly of Lockney were held Saturday at Trinity Lutheran Church, Providence, with the pastor, Andrew Mild, officiating. Burial was in Plainview Memorial Park under direction of Wood-Dunning Funeral Home.

Miss Scheele died at 3:30 a.m. Thursday in a Houston hospital following an illness lasting several months.

Born in Lockney, she grew up in the Providence community near there and was valedictorian of Lockney High School in 1952. She was graduated from Lipperts Business College as a legal secretary.

For 10 years, Miss Scheele worked as a legal secretary for Marshal Formby. In 1965 she moved to Midland and worked for law firms there for seven years and then moved to Houston where she had been employed two years as legal secretary for Shell Oil Company. Miss Scheele was a Lutheran.

Survivors include her parents, Mr. and Mrs. Marvin Scheele of Providence community; a brother, Albert of Providence community; and two sisters, Mrs. Vernon Collins of Borger and Mrs. Claude Pickell of Plainview.

### Huley Promoted

Jerry D. Huley of Borger, son of Mr. and Mrs. T. L. Huley of Lockney, formerly manager of the Dairy Queen restaurant in Sweetwater, has been promoted to Panhandle area supervisor by Dairy Queen of West Texas, Inc.

In his new position, he will supervise DQ restaurants in Borger, Canadian, Dalhart, Perryton and Shamrock. Announcement of the two appointments was made by James Utley of Midland, executive vice-president of DQ of West Texas, Inc. The firm is one of four DQ corporations headed by I. B. (Barney) Chapman of Fort Worth, the nation's largest private operator of Dairy Queens. His four companies include more than 50 of the DQ fast-food restaurants in three states.

Among all Chapman restaurant managers, Huley holds the all-time records for total sales in a month, a week, and a day. All three records were set by the Sweetwater restaurant during Huley's 18 months as its manager, the monthly and weekly records being set in June of this year.

Huley has been in the restaurant business since 1972. He was previously manager of the XIT Steakhouse in Muleshoe during 1974; manager of the Amarillo College Cafeteria, for Greyhound Foods, in 1973; and assistant manager of the Big Texan Steak Ranch in Amarillo in 1972 and 1973.

He is a graduate of Amarillo College, where he majored in restaurant management, and of Lockney, Texas, High School.

Huley and his wife, Sara Beth, daughter of Mr. and Mrs. N. W. Kramer of Aiken; live at 206 Gardner in Borger. They have two children, Thanet Renee, age 3; and Jerry Craig, born last January.

## Kids 8-13

### Kick off some fun at the Punt, Pass & Kick CONTEST

First, come to our dealership with your parent or guardian, between August 6 and September 10, and register for PP&K. Be sure to ask for your free PP&K Tips Book. It has valuable tips from the pros on how to prepare for Punt, Pass and Kick. You'll have fun and maybe even develop the skills that will make you the PP&K national champion!

TIME: 9:30 A.M. DATE: Sept. 18th

PLACE: Mitchel Zimmerman Field

REGISTRATION BEGINS AUGUST 6

© Walt Disney Productions  
SEE WALT DISNEY STUDIO'S NEW MOVIE THE MULE WHO KICKS 100-YARD FIELD GOALS, AT YOUR FAVORITE THEATRE.

**Baccus Motor Co.**  
321 S. Main - Lockney

## THIS SIGN STOPS LOST HEAT

### at the edge of town

When it comes to heating bills, Lost Heat is the villain. You can stop him... with the Energy Efficient Home... If you're thinking of buying or building a new home, look for the sign that says "Energy Efficient Home". Because the Energy Efficient Home is designed for greater heat-saving, energy-saving efficiency, you can stop Lost Heat and save money. So, be sure to look for the sign, or call The Electric Company and get all the information on the Energy Efficient Home.

ELECTRICITY IT DOES SO MUCH GOOD

CORRECTION ON OUR ADV. IN THURSDAYS  
Our Adv. Should have read:

## BAKERITE 3 LB CAN SHORTENING

# 99¢

THESE VALUES GOOD THROUGH SEPTEMBER 8

WE ACCEPT FOOD STAMPS

YOUR HOME OWNED AND HOME OPERATED

## L&J FOOD STORE

We Give Double S&H Green Stamps On Wed.

# VA

Education benefits are available to many dependents of veterans whose death or total and permanent disability was the result of their service. Jack Coker, Veterans Administration Regional Director, said today.

Dependents of service personnel missing in action, captured, interned or forcibly detained in line of duty by a foreign power for more than 90 days may also qualify for the VA education benefits.

In general, those eligible are children between 15 and 26 years of age and the spouses of veterans whose death or total and permanent disability resulted from military service after the beginning of the Spanish-American War on April 28, 1898.

Unless extended under certain conditions a child's VA educational eligibility ends on his 26th birthday, plus any time period after his 18th birthday required to process the application.

The eligibility of a spouse ends on November 30, 1978, or 10 years from the date the veteran was found to have a total and permanent service-connected disability, or 10 years from the date of his death, whichever is later.

Spouses of service personnel declared missing in action, captured or detained in line of duty, are eligible for education benefits until December 24, 1980, or for 10 years from the date of their death.

## ANNOUNCING THE OPENING OF THE MACRAMA HUT WITH COMPLETE LINE OF MACRAME SUPPLIES

FREE Classes Now Starting

- NEEDLE POINT
- CREWEL
- MACRAME
- FABRIC PAINTING

Call 652-3461 or 652-1553  
For Additional Information

FRIDAY & SATURDAY  
**15% DISCOUNT**  
ON ALL LATCH-HOOK KITS

SUPPORT YOUR SCHOOL WITH AN EMBLEM ON LATCH-HOOK KIT

## BAKER STORE

210 South Main - Lockney, Tex.



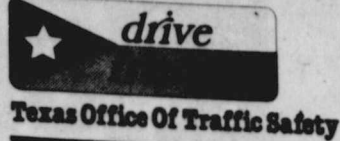
# LOW SO SURE AFTER ALL?

## Underscores Role of Differential in Safety

ing. His chances of making it to his destination in one piece are not as good as the fellow who travels at the speed limit and moves with the flow of traffic.

According to Nevil, the study may be a landmark in the philosophy of traffic control and could lead to many innovations.

The traffic safety slogan of tomorrow might read: "A difference in speed kills," or, "go with the flow."



### Fiesta '76 Benefit Bazaar In Lubbock

Fiesta '76, a benefit bazaar featuring original arts, crafts and other handwork, will be held 9 a.m. to 6 p.m., Saturday, September 11 on the park grounds of the Municipal Garden & Arts Center, 4215 University Avenue, Lubbock.

The Fiesta is sponsored each year by the Garden & Arts Center's board of directors as a means of raising operational funds for the facility and as an opportunity for artists to show, and viewers to buy, original works of art.

Artists and craftsmen from West Texas, New Mexico and Oklahoma will be present, exhibiting thousands of items including paintings and drawings in all media, metal and wood sculpture, pottery, stained glass, weaving and many

other types of creative art. In addition, garden clubs and heritage groups will offer for sale plants and gardening items, home canned pickles and preserves, quilts, needlework, small antiques, barbed wire and other collectors items.

In the Center auditorium, the Lubbock Art Association will present continuous art demonstrations and the Texas Fine Arts Association Region 20 will display an art exhibition. Musical groups and square dance clubs will perform during the day.

The public is cordially invited to attend.

# BUDDY'S FOOD

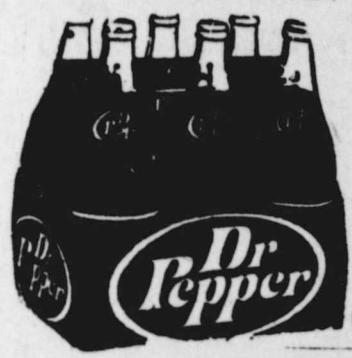
Buddy Widener, Owner-Forrest Shannon, Mgr. in Floydada, 220 South Second

**DOUBLE STORE HOURS**  
 Monday-Saturday 8 a.m.-8 p.m. Sunday 9 a.m.-7 p.m.

THESE VALUES GOOD SUNDAY SEPTEMBER 5 THROUGH SATURDAY, SEPTEMBER 11

We Reserve The Right To Limit Quantities

DIET OR REGULAR 32 OZ., 6 PAK \$1.99 VALUE



**DR PEPPER**  
 \$1.39

PLUS DEPOSIT

1/2 GALLON QUALITY CHECK CT. RED, WHITE AND BLUE



**ICE CREAM**  
 76¢

FUN SIZE MARS ALL VARIETIES \$1.49 VALUE, 16 OZ.

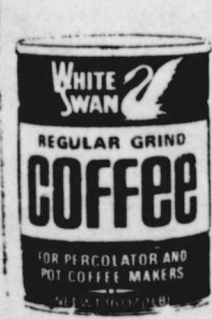


**CANDY BARS**  
 99¢

9 OZ. PRINGLES \$1.09 VALUE



**POTATO CHIPS**  
 79¢



1 LB WHITE SWAN \$2.19 VALUE

**COFFEE**  
 \$1.59

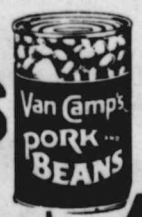
HUSKEY 15 OZ.

**DOG FOOD**

8/\$1.00

8 COUNT CHINET DINNER 99¢ VALUE

**PLATTERS**  
 69¢



**PORK & BEANS**  
 4/\$1.00



**COOKIES**  
 69¢

128 OZ. LIQUID \$5.89 VALUE

**ERA**  
 \$4.79

TULE CREEK ORGANIC 24 OZ. \$1.39 VALUE

**HONEY**  
 \$1.19

2 LB NESTLES CHOCOLATE \$2.83 VALUE

**QUIK**  
 \$1.99

12 OZ. WHITE SWAN 88¢ VALUE



**SALAD DRESSING**  
 69¢

ADOLPHS 75¢ VALUE  
**MEAT TENDERIZER** 2/99¢

# WEST TEXAS MINI-STORAGE

Located 209 S. Wall Street

Call

**WILSON G. BOND**

983-2151

983-3573

## STORE HOURS

Monday thru Saturday 8 a.m. to 8 p.m.

Sunday 9 a.m. to 7 p.m.



**TALL KORN BRAND SLICED BACON**  
 \$1.39



12 OZ. DECKERS **FRANKS**  
 69¢

12 OZ. DECKERS **BOLOGNA**  
 79¢

CENTER CUT **PORK CHOPS** LB \$1.39



2 LB OWENS **SAUSAGE**  
 \$2.89

USDA BLADE CUT **CHUCK ROAST** LB 69¢



SLICED **PICNIC HAM** LB 69¢

TASTY **HOT LINKS** LB 79¢

BONELESS **HAM**

LONGHORN **CHEDDAR CHEESE** LB \$1.49

LB \$1.99



**TIDE**  
 \$3.99



GRADE 'A' LARGE **EGGS**  
 19¢

WITH PURCHASE OF 4 LB CANNED HAM



WHITE SWAN 3 OZ. \$1.49 VALUE  
**INSTANT TEA**

99¢

WHITE SWAN LB BOX 59¢ VALUE

## CRACKERS

39¢

**WEEKS** Last week to collect your set of classically elegant Interlude glassware.

**FREE GLASSES!** One with each purchase of King Size Tide or Family Size Ivory Liquid.

10.5 OZ. COGNAC SET GLASS 13 OZ. TUMBLER

**PLUS!** A 2-qt. Interlude pitcher by mail for \$1.00 plus \$50.00 worth of cash register tapes from your store.

10.5 OZ. COGNAC SET GLASS 13 OZ. TUMBLER

King Size (5 lb. 4 oz.) Family Size (48 fl. oz.)

**Tide** \$2.49 **Ivory** \$1.59

HUSKEY 15 OZ.

**DOG FOOD**

8/\$1.00

8 COUNT CHINET DINNER 99¢ VALUE

**PLATTERS**  
 69¢



**PORK & BEANS**  
 4/\$1.00



**COOKIES**  
 69¢

128 OZ. LIQUID \$5.89 VALUE

**ERA**  
 \$4.79

TULE CREEK ORGANIC 24 OZ. \$1.39 VALUE

**HONEY**  
 \$1.19

2 LB NESTLES CHOCOLATE \$2.83 VALUE

**QUIK**  
 \$1.99

12 OZ. WHITE SWAN 88¢ VALUE



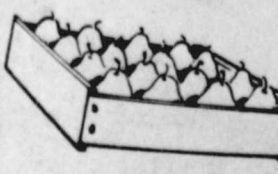
**SALAD DRESSING**  
 69¢

ADOLPHS 75¢ VALUE  
**MEAT TENDERIZER** 2/99¢



US NO RUSSET 10 LB BAG **POTATOES**  
 79¢

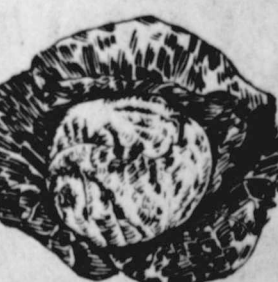
WASHINGTON STATE BARLETTES



**PEARS** 4 LBS \$1.00

TEXAS NO FIRM HEADS **CABBAGE** LB 9¢

CALIFORNIA LB CELLO BAGS



**CARROTS** 2/29¢



12 OZ. **WHEATIES CEREAL**  
 49¢

WITH COUPON 59¢ WITHOUT COUPON  
 GOOD AT BUDDY'S EXPIRES 9-11-76



GOLD MEDAL 5 LB **FLOUR**  
 WITH COUPON 69¢

WITHOUT COUPON 89¢  
 GOOD AT BUDDY'S EXPIRES 9-11-76



# HAVE FUN ... WIN PRIZES

## \$15 IN CASH PRIZES EACH WEEK

# FOOTBALL CONTEST

# HESPERIAN AND QUARTERBACK FORECAST

DEADLINE FOR ENTRIES - 5 P.M. IN HESPERIAN OFFICE OR POSTOFFICE

"We don't want all the business - just yours!"  
**BUILDERS MART**  
 Abernathy VS Olton

Good food and friendly folk  
**BUDDY'S FOOD**  
 Littlefield VS Levelland

**CONTEST RULES:**  
 Anyone can enter except the employees of the Hesperian. Three cash prizes are given each week - ties will split prize money. Members of the sports department are sole judges of the contest and their decision is final.

It is not necessary to indicate scores on all the games....But score must be indicated on the tie breaker game at right. Simply circle the team you choose to win in each of the footballs. Deadline for submitting entries is 5 p.m. Friday - winners will be announced the following week. Enter as many times as you wish, print name and address plainly on blank below and mail or bring entire page to The Hesperian office

Tie-breaker game will be considered only in case of ties.

## QUARTERBACK QUOTES

## TIE BREAKER-Guess Total Points AND CIRCLE WINNER



**BABE JONES**  
 FLOYDADA 21  
 CANYON 7



**TOM DANIELS**  
 FLOYDADA 14  
 CANYON 7



NAME \_\_\_\_\_  
 ADDRESS \_\_\_\_\_  
 CITY \_\_\_\_\_

1ST PRIZE \$7.50  
 2ND PRIZE \$5.00  
 3RD PRIZE \$2.50

Fender bender mender  
**QUALITY BODY SHOP**  
 Dimmitt VS Slaton

We have what you need in auto parts, housewares & hardware  
**CAPROCK AUTO PARTS & HARDWARE**  
 Crowell VS Seymour

Good cars, good deals!  
**ODEN CHEVROLET OLDS**  
 Childress VS Memphis

AC & New Holland equipment  
**MCDONALD IMPLEMENT**  
 Dumas VS Pampa

Tires For Everything!  
**Babe's Service Center**  
 Caprock VS Address

Supplies For The Farmer  
**Consumer's Fuel Assoc.**  
 Lockney VS Friona

Crop and livestock loans  
**PRODUCTION CREDIT ASSOCIATION**  
 Tascosa VS Plainview

Your IH Dealer  
**MARTIN & COMPANY**  
 Monterey VS Wichita Falls

Buick-Pontiac-GMC  
**CITY AUTO INC.**  
 Texas VS Boston College

**Dairy Queen**  
 IS EVERYBODY'S EVERYTHING....  
 Virginia Tech VS A&M

Massey-Ferguson equipment  
**FLOYDADA IMPLEMENT**  
 Colorado VS Tech

Custom Processing  
**PONDEROSA MEAT CO.**  
 QUALITY MEATS  
 Dunbar VS Coronado

"For your health needs"  
**THOMPSON PHARMACY**  
 Northern Illinois VS Wichita St.

See us for your auto parts needs  
**DANIEL AUTOMOTIVE**  
 Houston VS Baylor

YOUR FINE WHOLESALE AND RETAIL DEALER....  
**NICHOLS OIL Co.**  
 Utah St. VS Arkansas

**Mr. Burger**  
 THE FAMILY PLACE TO EAT  
 Southern Illinois VS McNeese St.

Everything in Insurance  
**HALE INSURANCE**  
 Tulsa University VS Oklahoma St.

Service with a smile!  
**Case Power & Equipment**  
 Drake University VS Iowa St.

Good Food, Good Service  
**Travel Center Restaurant**  
 El Paso VS New Mexico St.

The Fastest Service In Town  
**Cornelius Conoco**  
 TCU VS SMU



# FAST ACTION use the

## COW POKES By Ace Reid



Yeah Paw your a good provider — providin' you git past the next bar  
THIS FEATURE SPONSORED BY  
AUTO, FIRE & FARM INSURANCE  
Floydada Real Estate & Insurance Agency  
Jim Word — — — Phone 983-2360

**DEMPSEY'S FRAME SHOP**  
Picture Frames Made To Order  
Shadow Boxes Decorative Mirrors  
602 W. Mississippi Tel. 983-3552 Floydada

Heating Air Conditioning Installation  
**TINO GOMEZ**  
501 S. Main  
Floydada  
Phone 983-5279

CUSTOM  
**WHEAT CLEANING**  
SACKED - BULK  
ALL TYPES TREAT AVAILABLE  
Producers Cooperative Elevators  
FLOYDADA TFC

**QUALITY SHAMROCK PRODUCTS**  
Always Make A Good Deal On  
SONIC TIRES and SOUTHLAND BATTERIES  
Dial 652-3366  
**JACKSON TIRE COMPANY**  
Richard Wiley

**Diamond Industrial Supply Co., Inc.**  
Phone Days 296-7418 - Nights 296-1200  
or 296-7828  
1014 Broadway  
Plainview, Texas  
Chain Sprockets V-belts Sheaves SKF BCA Timken Bower Cotton Stripper Brushes & Bats U-joints Oil Seals O-rings Wisconsin  
"We Appreciate Your Business More" L-TFC

IF IT IS INSURANCE — SEE —  
**Barker Insurance Agency**  
LOCKNEY  
Life - Fire - Casualty - Hospital  
**B. B. Wilkes, Real Estate**  
LOCKNEY  
Farms - Ranches - City Properties  
Business Leases - Loans

**BEEF FOR THE FREEZER**  
GRAIN FED  
CUT WRAPPED FROZEN  
225-250 LB. AVG. HALF.....75' LB.  
**PAGE'S THRIFTWAY**  
IN LOCKNEY LTFC

### BUSINESS SERVICES

**PIANO TUNING**, Edward C. Lain 25 years experience. Write Box 425 Silverton or call 823-2151. L-tfc

**APPLIANCE** and air conditioning services. John Van Hoose, Sr. Shack building, Lockney, 8-5-30, phone 652-3721. Early or late, phone 983-2758, Floydada. L-tfc

**IF IT'S METAL**, we can sharpen it. Scissors, saws, chain saws, knives. Carmack Feed & Seed, 983-3404. tfc

### FARM SERVICES

**DUBOIS CUSTOM WORKS:** Sweating-Bailing-Plowing. Wheat Sowing-Cattle Hauling. We have combines to get your milo out of the field and to the elevator. Call Craig DuBois at 983-2991 or Quinn DuBois at 983-2629. Early or late. 9-26p

### FARM MACHINERY

**BALED haygrazer**, Tom Pierce, 983-2578. tfc

**NORRELL TRACTOR PARTS** for tractor and irrigation supplies and accessories. tfc

**FOR SALE:** Two 16-10 John Deere wheat drills 2 years old, \$1750.00. Two 16-10 I. H. No. 10 wheat drills, \$980.00. One Rosebud Cotton Ricker one year old, \$2250.00. Call 983-2006 after 8 p.m. tfc

**FOR SALE:** International 16-10 wheat drill, 983-2954. Harvey Tardy. 9-12p

**FOR SALE:** New 4" green pump 250 ft. setting, all complete gearhead etc. Several joints irrigation pipe. Two platform scales, different sizes. Dorsey Baker 652-2363. L-tfc

### AUTOMOTIVE

**1974 KAWASAKI H-1-500**, new overhaul, also 1974, 125 Yamaha Enduro. Both in good condition. Phone 983-8135. 9-9c

**CAMPER:** 10 1/2 ft. Royal Coach, self contained, \$1450.00, 804 W. Lee. 9-5c

**FOR SALE:** 1973 Green Malibu, very good condition, Call 983-5054. 9-5p

**1973 FORD TORINO, V-8**, 4 door station wagon, power, air, automatic drive, radio, \$1395. Phone 983-3982. tfp

### C. B. RADIOS & ACCESSORIES NOW IN STOCK SEVERAL MODELS ON SALE!

**Sears**  
Authorized CATALOG SALES MERCHANT

Ordering is quick 'n easy when you phone just call Sears

100 So. Main  
Owned & operated by Sue Williams

### CARD OF THANKS

WE WANT to thank our friends and neighbors for their help and kindness during our sorrow. We love all of you and appreciate you so much. We can't thank you enough. God Bless You. Mrs. J. R. McDonald and family Mrs. Marie Dillard and Dimmitt friends LB-5c



WE WANT YOU TO KNOW — We sell all kinds of Goodyear tires, tractor, auto, truck, a good tire, good service. Best deals in West Texas. Truck winch and hauling service. BABE'S SERVICE CENTER, FLOYDADA. tfc

### WANTED

**WANTED:** sewing and button-holes, 983-5328. tfc

**REMODELING** and carpenter work, T. J. Juarez, 983-2436. 9-5p

**WANTED:** Someone to pick lima beans for half. C. L. Henderson, 652-2111. L-5c

**WANTED TO BUY** irrigated or dryland farm in Floyd or surrounding area. Write Box XRO, c/o Hesperian, Box 700, Floydada. tfc

### NOTICE

**AS OF 25th of August**, Debbie McMillan is a Certified Notary Public. Call 983-3008. 9-5c

**OPEN FOR BUSINESS:** vegetable shed on Highway 70. All kinds vegetables. tfc

**BARGAIN ROOM** open on Friday and Saturday at Betty's Place - open 10:00 close 6:00. Great saving on many items. tfc

**YOU ARE INVITED** to go to Japan, Taipei, Hong Kong, Bangkok and Singapore November 3 for 21 days. Deluxe hotels, two meals a day. Dr. and Mrs. Luther Kirk, 3005 59th Street, Lubbock, Texas 79413. tfp

### HELP WANTED

**CLEANING PERSON** WANTED to clean offices from 12 noon to 1 p.m. Monday thru Friday. Apply in person. The Tye Co., Highway 70 East, Lockney. L-30c

**HELP WANTED:** applications are being accepted for a part time night dispatcher by Lighthouse Electric Cooperative, 201 W. California, Floydada, Texas. Excellent fringe benefits. Contact Claude Weathersbee for applications and information before September 24. An equal opportunity employer. 9-23c

**RESTAURANT WAITRESS** wanted, contact Jerry Allen, 983-5113 or 983-2869. 9-9c

**HELP WANTED:** Someone to work Wednesdays all day in camera and darkroom. Must read well and speak good English. See Art Ratzliff, Blanco Offset, 983-3739, 111 E. Missouri, Floydada. tfc

### LATHE OPERATOR PRODUCTION WELDER

Experienced Workers Only  
BENEFITS INCLUDE PAID VACATION HOLIDAYS GROUP LIFE INSURANCE GROUP MEDICAL INSURANCE.

**THE TYE CO.**  
Hwy. 70 East  
Lockney, Texas LTFC

### case TRACTORS

for RENT or LEASE  
Call 983-2836  
**CASE POWER & EQUIPMENT**  
Floydada, Texas

### lightweight ALUMINUM CANES & CRUTCHES

Sturdy Dependable Attractive  
Wide selection for every prescribed need  
Forearm and underarm crutches  
Adjustable telescopic canes  
Four legged canes  
Seat Canes

**BISHOP-RAMSEY PHARMACY**  
208 West Houston  
983-3174  
FLOYDADA

### FOR SALE

**4 GOOD POULTRY COOPS**, one large link tow chain. Charles Berry, 304 E. Georgia. 9-5c

**WE SELL** new and rebuilt Kirby vacuum cleaners and parts Parker Furniture, Floydada. tfc

**ANTIQUE UPRIGHT PIANO**, good condition, see at 314 W. Jeffie, 983-2337. 9-5c

**FOR SALE:** Several hundred feet of good used aluminum pipe, four and five inch for 30 cents a foot. Phone 983-3982. tfp

**CONCORD GRAPES**, 25 cents pound or \$6.00 a bushel. You pick! Bring your own containers and snippers. Lakeview community, 983-2671. tfc

**FRESH HONEY** for sale. Call Jimmy Dietrich, 296-2074. L-5c

**FOR SALE:** new hand calculators, Litrox and Remington. now on sale at Hesperian. Prices range from \$25 to \$49.95. tfp

### FOR SALE

**USED appliances** for sale. Sears, Floydada, 983-2862. tfc

**FOR SALE:** used stove and refrigerator, 983-5328. tfc

**BLACKKEYED PEAS**, okra, and tomatoes, 983-2068. 9-26c

**FOR SALE:** School bus camp, self contained good condition. 618 So. Main, Lockney, 806-652-2201 L-tfc

**FOR SALE:** Selmer-Signet Alto Saxophone. Excellent condition 983-2600. tfc

**WANT** to sell push button Ford radio. Excellent condition. \$25. Phone 983-3982. tfp

**MINNOWS-11 miles** east of Floydada on highway 70 and 1 mile south. 40 cents a dozen. 983-3029. tfc

**USED TV SETS FOR SALE:** one 1973 Motorola Quasar 25" color TV, new picture tube-\$450. One 1971 Sylvania 25" color set, new picture tube-\$400. Several used sets, your choice-\$100. Mize Pharmacy & TV, Lockney. Phone 652-2435. L-5c

**FOR SALE:** 4 piece solid wood bedroom suit-good condition, black and white TV that needs work or may be remodeled as piece of furniture \$10.00, end table \$10.00. Call 983-3536 after 5 p.m. tfp

**JACKSON ELECTRIC**  
Electrical Wiring & Repair  
New Construction  
Contract Electrical Work  
Residential & Commercial  
Phone 652-3572  
Lockney L10-24C

**DAN'S AUTO SERVICE**  
DAN TEUTON, Owner  
Specializing in Automatic Transmission, Motor Tune-Ups, Auto Air Conditioning.  
General Repair  
We Have A BRAKE LATHE to handle all passenger car brake drums. See us for complete brake service.  
Phone 652-2462

**OUR BACKYARD GREENHOUSES ARE FACTORY-BUILT AND DELIVERED AS ONE UNIT**  
Our unique **MOORE HYDROPONIC GREENHOUSES** are equipped with heating, cooling, and automatic feeding systems to assure year round gardening.  
Come see our display - 13 1/2 miles North of Lockney on Hwy. 378 - or write us for more information and color brochure.  
**PANHANDLE HYDROPONICS, INC.**  
LOCKNEY, TEXAS 79241  
ROUTE 1 (806) 652-3741... MONDAY THRU SATURDAY TFC

**SLEEP WHILE YOUR WANT AD WORKS.....**

### CARPET SALE!

34% off Andrea... our thickest, most popular sculptured carpet.  
Was \$13.79  
**\$8.79** sq. yd.  
Sears has a credit plan to suit most every need  
-Prices are Catalog prices  
-Installation Available  
-Now on sale  
Authorized CATALOG SALES MERCHANT  
**Sears**  
100 So. Main  
Owned & operated by Sue Williams

**LEGAL NOTICES**  
NOTICE AFFORDING OPPORTUNITY FOR PUBLIC HEARING  
The State Department of Highways and Public Transportation is planning the construction of F. M. 786 from F. M. 378, 3.5 miles south of U. S. 70 in Lockney, east to S. H. 207 in Floyd County. The proposed project will pass through the community of Muncy.  
This proposed improvement will consist of the construction of a farm to market type pavement consistent with other farm to market highways in the area. Proposed right of way width will be 100 feet.  
Maps and other drawings showing the proposed location and design, environmental studies and any other information about the proposed project are on file and available for inspection and copying at the Resident Engineer's Office on Loop 445 in South Plainview, Texas.  
Information about the State's Relocation Assistance Program, the benefits and services for displacees and information concerning the relocation assistance office as well as information about the tentative schedules for acquisition of right of way and construction can be obtained at the Resident Engineer's Office.  
Any interested citizen may request that a public hearing be held covering the social, economic and environmental effects of the proposed location and design for this highway project by delivering a written request to the Resident Engineer's Office on or before October 7, 1976. The address of the Resident Engineer's Office is Loop 445 in South Plainview, Texas.  
In the event such a request is received, a public hearing will be scheduled and adequate notice will be publicized about the date and location of the hearing.  
9-5-76c

### CLASSIFIED AD SALE

**CLASSIFIED ADVERTISING RATE:** 7 CENTS PER WORD FIRST INSERTION; 5 CENTS PER WORD EACH SUBSEQUENT INSERTION. MINIMUM CHARGE: \$1.00.  
**CLASSIFIED DISPLAY RATE:** \$1.15 PER COLUMN INCH. CARDS OF THANKS: \$1.00.  
**COPY DEADLINES:** 5 P.M. TUESDAYS FOR THURSDAY EDITION; 10:00 A.M. FRIDAYS FOR SUNDAY EDITION. Call 983-3737 in Floydada or 652-3318 in Lockney

### GARAGE SALES

**MOVING SALE:** divan, recliner, Boston rocker, 7-pc. dinette set, 4-pc. bedroom suit, RCA stereo, stove, refrigerator, washer & dryer, and tables, lamps, braided rug, pictures, TV stand, TV antenna, curtains, shoes, purses, etc. See at 735 W. Price Saturday, Sunday, and Monday. 9-5p

**GARAGE SALE:** 819 W. Cedar St., Wednesday, Thursday, and Friday. 9-5c

### BUSINESS OPPORTUNITIES

**CAREER SALES OPPORTUNITY:** Farm Bureau, seeks outstanding person to sell and service established farm and ranch accounts. Our good first year people earn \$15,000 plus, and can expect steady increase during 3 year training program leading to management. No travel, over 200 hours of professional training. For confidential interview call 983-3777. 9-16c



**Auto Accidents DO Happen...**  
If one happens to you, be protected. Our car insurance offers coverage to meet your special needs — repairs to personal liability.

**BAKER Insurance Agency**  
127 W. Calif.  
Ph. 983-3270

### FLOYD COUNTY ABSTRACT CO.

Abstracts Of Title  
Title Insurance  
Verna L. Stewart  
Owner, Manager  
217 W. California  
983-3728  
Floydada, Texas



## LOCKNEY LOCALS

Mrs. Dorothy Merrell has had several visitors in her home recently. Her daughter and granddaughter from Amarillo, Mrs. Carolyn Jones and Jami spent a weekend; also visiting were Mr. and Mrs. Sonny Jones, Jennifer and Melissa from Snyder; and Stacy Hillis of Floydada.

Mrs. Harley Workman returned recently from Santa Barbara, Calif., where she spent 10 days with her daughter, Mrs. Bill McAda, who was recovering from surgery.

Spending Friday in the Johns Cox's home visiting with Mr. and Mrs. Caleb Cox were Mmes. Winnie Hooser and Effie Berry of Lubbock.

Arriving Friday afternoon for a visit with the Johns Coxes and Marjorie Martin was Wanda Hankins (a niece of Mrs. Johns Cox) from Sand Springs, Okla. Saturday evening guests for an enchilada supper were Mr. and Mrs. C. H. Rose, Mel Holcomb, Marjorie Martin and Wanda Hankins.

Mrs. Hall Ferguson and her sister, Mrs. Louie Rawdon, Plainview, spent the past week visiting with their sisters at Temple, Texas; Mr. and Mrs. Van Hook, and Mr. and Mrs. W. J. Champ, Mrs. Bernice Rawdon, Plainview, accompanied them on their visit.

Mrs. D. F. Byerly, accompanied by her daughter Mrs. Lloyd Payne of

Lubbock flew to Dallas Aug. 21st for the funeral of her mother, Mrs. J. H. Palmer, at Jacksonville, Tex. Aug. 22nd. They returned to Lubbock the same day.

## Lockney Care Center Capers

by Brenda Steen

Well here it is another month. The beginning of the fall months. Just think we will start getting some rain?!

Sure have had a busy week at the Center, these past few days.

Monday and Tuesday mornings we finished up our book on the twenty-third psalm. We all enjoyed this very much.

Monday afternoon we worked on our pillow-tops. Tuesday afternoon, Dimple McGavock welcomed several of our ladies to her

home for tea and we viewed her beautiful home. The ladies who enjoyed the visit were Myrtle Burke, Mary Lillard, Martha Burke, Maggie Payne, Edna Phillips, and Mable Foster from the Green Thumb bus, and myself. We all had such a nice time. Thanks so very much Dimple for your hospitality.

Wednesday morning the folks from the Methodist Church came and led our devotional we all had such a good time.

Wednesday afternoon the ladies from the Main Street Church of Christ came and

gave all the residents born in this month a birthday party. The honored guest were Mr. Jack Harris, Martha Burke, Dora Harris, Mae Brown, and Edna Gill.

The ladies sending cakes were Ruby Bennett, Nora

Sunday, September 5, 1976, Page 10 The Floyd County Hesperian

Thanks so very much for your time and interest in us.

I would like to send a "Thank You" to all the people who come for our devotionals. I know this takes your time and some of you drive a far piece just for a few minutes of prayer with all of us, but a few minutes of prayer does so very much for all of us and we do appreciate you all, more than you know.

I would like to thank Mr. and Mrs. Phenis for bringing us jars and glasses for our crafts. Thanks to the Muncy's and Mrs. LaVerne Carthel for the magazines. We do appreciate them. If anyone has any fruit jars they don't need anymore, I sure could use them for our crafts. We are trying to get ready for our Christmas Bazar.

Better close for now. Until next time-God Bless and Keep Smiling.

## Letter To The Editor

Dear Sir:  
I must say that I am rather squabbling that has been going on do not drink and realize that the difference as to the operation of battle-flak reminds me of a permit to sell wine, beer, or liquor who has solicited membership in the establishment of state police from automobiles to state police and emotional problems and terminate long term relationships.

WE BUILD BETTER COTTON TRAIL STEEL OR GRAVES WELDING 652-3639 LUBBOCK

Britannica Junior Encyclopedia

BUY VOL. THREE at 2.99 GET VOL. 25 FREE



Kraft's

# MIRACLE WHIP

# 99¢

Qt. Jar

Piggly Wiggly  
**Chicken Soups** 5 \$1  
10 1/2-oz. Cans

Welch's Jam Or  
**Grape Jelly** 89¢  
20-oz. Jar

Piggly Wiggly, Non Returnable  
**Soft Drinks** 59¢  
64-oz. Btl.

Luncheon Meat

# HORMEL'S SPAM

# 99¢

12-oz. Can

# Piggly Wiggly LOW PRICES

Prices Good Thru September 8, 1976. We Reserve The Right To Limit Quantities. None Sold To Dealers.



STORE HOURS  
Daily 8 am-9 pm  
Sunday 9 am-8pm

OPEN LABOR DAY 9 am - 6 pm

Heavy Aged Beef, Chuck

# BONELESS ROAST

# \$1.09

Lb.

Regular or All Beef

**Rath Franks**

12-oz. Pkg.

# 69¢

Fresh,  
**Ground Beef**

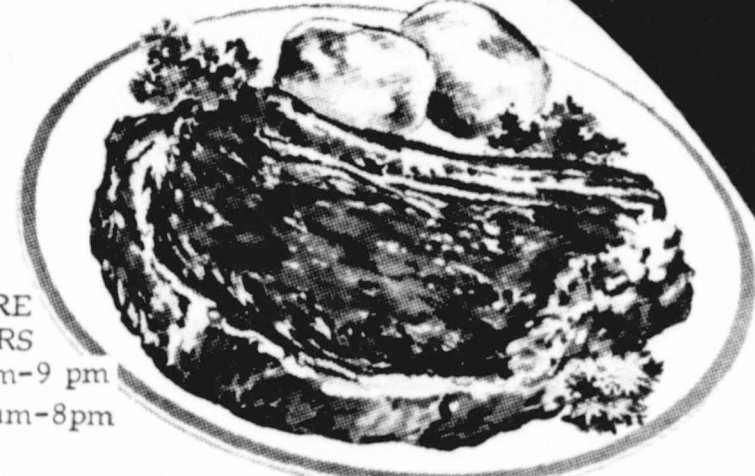
Lb.

# 79¢

Columbia River, Whole, 1-2 Lb. Each

**Baby Salmon**  
Delicious  
**Perch Fillets**

Lb. 99¢  
Lb. 89¢



Heavy Aged Beef

# RIB STEAK

# \$1.09

Lb.

Heavy Aged Beef, 4th thru 7th Rib

**Rib Roast**

# \$1.09

Farmer Jones, Whole Only, Water Added

**Smoked Picnic**

# 79¢

For Frying

**Flounder Fillets**  
Fillets  
**Red Snapper**

Lb. \$1.19  
Lb. \$1.19



Piggly Wiggly

**Aspirin Tablets**

100-Ct. Btl.

# 59¢

Vitamin C Tablets, 250 mg.  
**Neo Vadrin**

100-Ct. Btl. \$1.29



Deluxe, Frozen

**Fox Pizza**

13 1/2-oz. PKG.

# 89¢

Morton's Frozen In A Basket  
**Chicken**

32-oz. PKG. \$1.99

# SEEDLE GRAPE

# 39¢

Garden Fresh  
**Crisp Cucumber**

Salad Ready  
**Bell Peppers**

Crunchy  
**Carrots**  
Medium Size, White  
**Onions**

California  
**BARTLE PEAR**

# 39¢