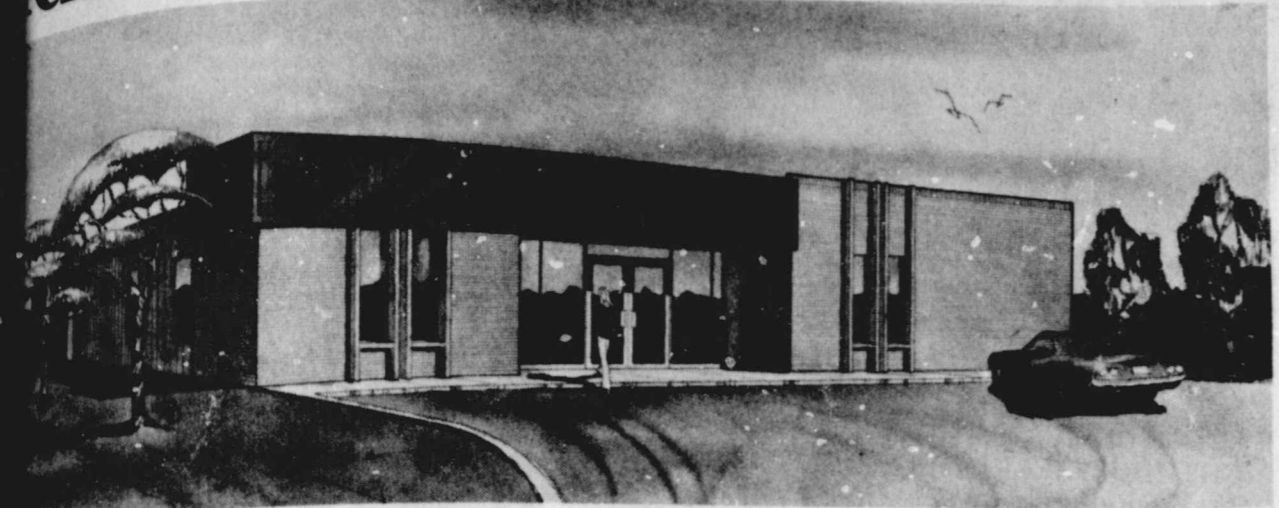


Bids On First A&M Building To Be Opened May 3

Bids will be opened by the Floydada Development Company on the first A & M classroom building Monday, May 3. The 60 x 100 foot steel building will be located where the present temporary office is located on the A & M 20 acre site in east Floydada.

The front will be brick and the overall floor plan shows four classrooms, three offices, a conference room, a lab and restrooms. Bill Hale, chairman of the building committee for the Floydada Development Company called a meeting at Lighthouse Electric Cooperative community room Thursday night when final specifications were approved. The building will face north.



ARCHITECT'S DRAWING OF CLASSROOM BUILDING

15¢
Per Copy

Floyd County Hesperian

8 PAGES IN ONE SECTION

AMERICAN REVOLUTION BICENTENNIAL
1776-1976

FLOYDADA, FLOYD COUNTY, TEXAS 79235 SUNDAY, APRIL 25, 1976 NUMBER 34

Floydada Gets Tornado Scare

A tornado "hook" cloud was reported others rushed to private cellars after storm warning sirens began a blast that lasted about half an hour.

A tornado "hook" cloud was reported others rushed to private cellars after storm warning sirens began a blast that lasted about half an hour.

two miles east of Barwise, heading for the city, and the local radio station came back on the air after signoff to advise Floydada people to head for shelter.

Second Interval Siren

Thursday night about 8:15 a hook was spotted some eight miles west, southwest of town, indicating the possibility of a tornado. City sirens were sounded for residents to take shelter and KFLP came back on the air to warn people of the possible danger of the approaching storm.

Nearly golf ball size hail pelted the city for a short time, with winds and hard rain. Some residents measured as much as .75.

Floydada firemen moved Caprock Hospital patients to shelter in the hospital basement. Traffic was heavy as citizens drove to places of shelter or left town to escape the path of the reported tornado. Floydada Police Department received no accident reports, however.

Storms Mean Take Shelter

Thursday night about 8:15 a hook was spotted some eight miles west, southwest of town, indicating the possibility of a tornado. City sirens were sounded for residents to take shelter and KFLP came back on the air to warn people of the possible danger of the approaching storm.

Nearly golf ball size hail pelted the city for a short time, with winds and hard rain. Some residents measured as much as .75.

Floydada firemen moved Caprock Hospital patients to shelter in the hospital basement. Traffic was heavy as citizens drove to places of shelter or left town to escape the path of the reported tornado. Floydada Police Department received no accident reports, however.

THE WEATHER

(Courtesy of Pioneer Natural Gas Co.)

	H	I	moisture
April 14	85	54	1.1
April 15	67	50	1.3
April 16	68	46	.1
April 17	63	46	
April 18	68	42	
April 19	75	50	
April 20	79	45	
April 22			.75
Precep. for April			4.55
Precep. for year			4.85

Another warning from officials is that when an alert is sounded please stay out of your cars and off the streets unless you are going to shelter.

Floydada Fire Department units spotted a low, fast-moving cloud "possibly containing a tornado" which passed over the west part of the city, moving northeast.

Caprock Chat

By Wendell Tooley

A RUDE AWAKENING... IF YOU WANT TO SELL cold drinks and hamburgers... Saturday May 1 would be a good day in Floydada.

Not only will there be thousands of people in Floydada for the Texas A & M field day...and voting day, but there will be some 1500 Junior high school band students here.

The second phase in the accreditation process of the Floydada Independent School District will be underway Sunday when a visiting evaluation committee arrives for a 6 p.m. dinner meeting at R. C. Andrews Elementary School cafeteria.

SEEMS TO BE some... THING IT SHOULD be mentioned that all the city's vehicles, manpower, fire department vehicles, firemen were out looking for tornadoes and helping the people of the community without pay Thursday night. Thanks Fellow!

AN INTERESTING FELLOW, Otis D. Carter, came by our office for a visit a few days ago. He was on his way to Hardin Simmons University for the 50th anniversary of his graduating class.

Members of the visiting committee are Gid Adkisson, Jr., elementary principal at Abernathy; Betty Bickel, elementary counselor at Plainview; Dell Brown, elementary principal at Plainview; Hatcher Brown, of the Department of Health and Physical Education at West Texas State University; Sheree Cannon, high-school counselor at Lockney; Curtis Davenport, high-school principal at Abernathy.

THE people who crowd the... He was a former printer at the Lockney Beacon and later ran the linotype machine for Homer Steen at the Floyd County Hesperian.

He is now a retired optometrist living in Glendale, California. He worked for the Beacon back in 1920 and 1921. His father, D. P. Carter, worked at Baker's store and once served on the Lockney city council.

Also Jack Edmonston from the Education Service Center in Amarillo; Margaurite Edwards, retired high-school teacher from Matador; Sibyl Gholson, from the special education division of Texas Education Agency; Ike Moore, director of Plan "A" at Dimmitt; Larry Prather, band director at Tulia; John Quinby, vocational director at Tulia;

REGION from people too far... The Freshmen Whirlwinds won everything at Idalou except first in singles. Donnie Kincer and Bobby Green

Before he became an optometrist he worked for or owned newspapers at Abilene, Seagraves, Lubbock, and Littlefield.

Whirlwind Keith Tooley easily defeated Abernathy's single entry 7-5, 6-2 in the quarterfinals, then defeated the district's number one seed Howard Moore of Lockney in the semi-finals. In the finals he easily defeated Tulia's Danny Cowan 6-2, 6-3.

SCHEDULED MAY 1 IN FLOYDADA

'Something For Everybody' Promised At A&M Field Day

Exhibits and demonstrations to capture the interest of young and old alike are planned for Saturday, May 1 at the 20-acre site of the West Texas Regional Training Center, at the southeast Floydada city limits on Highway 70. Activities begin at 10 a.m. and continue through 3:30 p.m. Everyone is invited -there will be something for everyone.

fires; extinguishing small pit fire with portable extinguishers; and extinguishing large pit fire with hose lines from truck. Local volunteer firemen will assist.

area. The light bulb will depict the many residences enjoying electricity. There will also be displayed a core of a transformer and tank.

The day-long "Floydada Field Day" has been planned to introduce the Texas Engineering Extension Service (a part of the Texas A&M University System) to the people of West Texas. A giant tent set up at the site will house exhibits ranging from firearms to safety equipment, as well as a variety of slide presentations, movies, and other displays. Outside the tent visitors will be able to see heavy construction equipment, rescue operations from utility poles, and emergency helicopter, self defense demonstrations, lie-detector equipment, fires being extinguished, and many other demonstrations. Refreshments will also be available.

Law Enforcement and Security Training Division
 There will be a display of equipment used in law enforcement as well as hand-out material and other displays. Their live demonstration will involve defensive tactics, polygraph examination and taking fingerprints. Also on display will be a police car, highway patrol car, sheriff's car, motorcycle and the DPS rescue helicopter, weather providing. Local officers will assist.

Aerial Device Performance -There will be a 5-man crew performing work on an energized line from an insulated aerial device. They will also be utilizing personal protective equipment and insulated cover-up. A placard describing the performance and pieces of equipment used will be displayed.

Floydada Field Day is a joint effort by the citizens of Floydada and the Texas Engineering Extension Service. The Engineering Extension Service has been providing job training for Texans for over a quarter of a century. Its programs include vocational training in the areas of fire protection, electronics, law enforcement and security, supervisory techniques, building codes inspection, construction equipment electric power utilities, loss control, telecommunications, water and wastewater, oil and hazardous material control, public works, and vocational industrial teacher education. The extension Service's new West Texas Regional Training Center at Floydada will make these training services more easily accessible to the people of West Texas.

Heavy Equipment
 There will be a number of pieces of heavy equipment on display, which will be brought from Lubbock from several firms, as well as an information center. This equipment will begin arriving on Friday, April 30.

Life Saving Rescue Methods - A demonstration of the "One Man - Pole Top Rescue" and Aerial Device Rescue will be performed. A poster board will list the different methods.

Floydada Mayor Parnell Powell has sent personal invitations to mayors of 67 area cities to be present at the big event, and the Floydada Fire Department has mailed invitations to a like number of area fire departments. Area city managers have also been invited to attend.

Electric Power Utilities Training Division
 Transformer Bank - A three phase bank will be connected to operate a three phase motor. A light bulb will be used also. The three phase motor will represent the irrigation load in the

Basic Electricity - A display of a simplified electric circuit and the importance of understanding classroom theory in application of the performance of the job. A poster relating this and other work to the total electric power industry will be designed.

Some of the Field Day exhibits and demonstrations:

Fire Protection Training Division
 There will be a continuous sound-slide presentation, display boards and hand-out material.

At the latest count, at least 60 people will come from College Station or from their homes in other parts of Texas to be a part of Field Day.

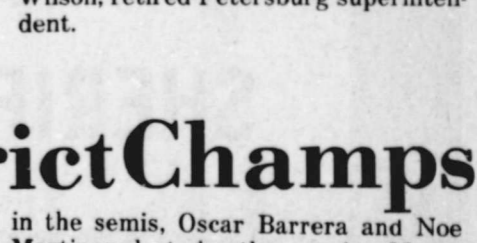
The live demonstration will involve extrication from wrecked auto; auto

A plan for alternate location and for demonstrations has been made, if weather prohibits having Field Day on the WTRC site.

Bracken To Conduct Meeting At City Park Church Of Christ

Steve Bracken will be conducting a series of Gospel meetings beginning April 26 and continuing through May 2 at City Park Church of Christ, 5th and Tennessee in Floydada.

The public is cordially invited to all services at the Church of Christ at 5th and Tennessee.



Steve Bracken

Committee To Evaluate Floydada Schools

And Helen Richardson, retired elementary principal from Dimmitt; Robert Splawn and Fred Stoker, both with the Department of School Services at WTSU; Ronnie Waide from the WTSU

Department of Education; and Pete Wilson, retired Petersburg superintendent.

FHSTennis TeamDistrictChamps

defeated teammates Clay Suggs and Brett Marble in the finals. Whirlwind Rodney Ratheal lost in the finals to Burt of Lockney. Whirlwind Greg Pruitt lost to Burt in the semi-finals.

Whirlwinds Theis Brown and Pat Miller lost to an Abernathy doubles team in the quarter finals.

AT IDALOU
 Whirlwind Keith Tooley easily defeated Abernathy's single entry 7-5, 6-2 in the quarterfinals, then defeated the district's number one seed Howard Moore of Lockney in the semi-finals.

WHIRLETES
 Whirlwinds Elizabeth Farris, Debby Johnson, Donette Marble, Donna Reid and Kellie McDowell entered regional play Friday in Odessa.



WHIRLWIND TENNIS PLAYERS who advance to the regional tournament at Odessa (left to right): Keith Tooley, Tracy Brown, Alonzo Gonzales. (Staff Photo)

FRESHMEN
 The Freshmen Whirlwinds won everything at Idalou except first in singles. Donnie Kincer and Bobby Green

Eddie Teeter Attends State Farm Bureau Conference



LIGHTHOUSE ELECTRIC DIRECTORS—Left to right: Tom Porter; Alton Higginbotham; Harry Jung, attorney; Gerald Lackey, president; Henry Scarborough, secretary; Cecil Baxter, vice president; L. B. Brandon; R. C. Ratheal; Louis Lloyd.

Floyd County Farm Bureau President Eddie Teeter of Lockney attended a state-wide conference of county Farm Bureau presidents April 14-16 in Waco. Conference highlights were an address by Allan Grant of Visalia, California, the new president of the American Farm Bureau Federation, a measure-the-candidate session involving candidates for U.S. Senator in the May 1 primaries, and a speech by Carrol Chaloupka of Dalhart, TFB president.

Grant opened the three-day conference with a speech on "Issues Confronting Agricultural Leaders." Candidates who agreed to appear on the Farm Bureau program were Senator Lloyd Bentsen, Democrat of Houston; Phillip Gramm, Democrat of College Station; Louis Leman, Republican of Crosby; and Congressman Alan Steelman, Republican of Dallas. All U.S. Senate candidates in the May 1 primaries were invited to appear.

County Farm Bureau presidents took part in discussion on state issues, councils of government, and proposed expanded programs in the Texas Farm Bureau. Leading the discussions were Texas Farm Bureau staff and Board members, Warren Newberry of Waco, TFB executive director, closed the conference with a speech on "Prepare 1976 for the History Books."



ATTENDS CONFERENCE—Floyd County Farm Bureau President Eddie Teeter of Lockney attended a statewide conference of county Farm Bureau presidents April 14-16 in Waco. The conference featured a speech by American Farm Bureau Federation President Allan Grant and a measure-the-candidate session involving four candidates for U.S. Senator in the May 1 primaries.

FAMILY SIZED FOOD SAVINGS

CLOVERLAKE ICE MILK
SLIM & TRIM 1/2 GAL. **89¢**

DR PEPPER 6-32 OZ. BOTTLE CARTON **\$1.39**

Cloverlake 1/2 Gal.
BUTTERMILK **67¢**

GROUND BEEF 100% PURE LB. **69¢**

FRYERS GRADE A LB. **47¢**

BAR-B-Q HOT LB. **\$1.49**

FRESH FARM RAISED CATFISH

CARROTS 1 LB BAG **10¢**

ONIONS YELLOW LB. **9¢**

POTATOES RUSSETT 10 LB BAG **79¢**

Don's Thrifty Supermarket

STORE HOURS: MON-SAT 8AM-7PM, CLOSED SUNDAY

WE ACCEPT FOOD STAMPS OR WIC CARDS

CALL REX McFADDIN CO. 792-4446 Lubbock, Texas

ELECT C.L. "Mack" McKAY

SHERIFF OF FLOYD COUNTY

A VOTE FOR MACK McKAY WILL BE FOR THE PEOPLE OF FLOYD COUNTY FOR BETTER PROTECTION. MACK IS WELL QUALIFIED TO BE SHERIFF OF FLOYD COUNTY AND WILL DO HIS BEST TO UPHOLD THE LAW TO THE UTMOST OF HIS ABILITY AND WILL NOT SHOW ANY FAVORITISM TO ANYONE.

MACK WILL WORK WITH ALL LAW ENFORCEMENT AGENTS IN FLOYD COUNTY AND SURROUNDING COUNTIES ALIKE. MACK HAS THE EXPERIENCE AND KNOWLEDGE OF THE QUALIFICATIONS TO MAKE A GOOD SHERIFF FOR THE PEOPLE OF FLOYD COUNTY. YOUR VOTE WILL BE "APPRECIATED" VERY MUCH.

C.L. "Mack" McKAY

PD., POL., ADV. BY C.L. McKAY, FLOYDADA

Fishing Rodeo At Mackenzie Opening May 1

Lake Mackenzie, located 10 miles northeast of Silverton, will open Saturday, May 1, for bank fishing only. No boats will be allowed on the lake because the water is not up to the boat ramp level. Water is approximately 40 feet deep at the deepest places.

In conjunction with the opening of the lake, the Silverton Volunteer Fire Department and the Silverton Merchants Association will sponsor a Fishing Rodeo. Individuals entering the rodeo will be required to register at the City Hall in Silverton prior to weighing in their fish. Registration time will be from 5:00 p.m. until 9:00 p.m. Friday, and the deadline Saturday for registration will be 10:00 a.m. Prizes will be awarded in

three categories: catfish (all varieties), bass and trout. These prizes will be awarded for the largest in each class, by weight: \$75.00, first place; \$50.00, second place; \$25.00, third place.

There will also be three prizes awarded for children twelve and under. These will be for any type fish caught by the children, by weight, and will be \$25.00 for first place; \$15.00 for second place, and \$10.00 for third place.

Weight-in for each contestant will be at the same location as the registration. The contest will be for one day only, Saturday, May 1, and will end at 9:00 o'clock that evening. All fishermen are invited to take part.

CALLIE BERMUDA-GRASS HIGHLIGHTED—Callie bermudagrass has been an outstanding performer in trials in Mississippi, according to a Mississippi agricultural scientist who spoke at the recent Texas Animal Agriculture Conference at Texas A&M University. The grass was selected at Mississippi State University in 1966 and is now being planted in 35 states and territories and 11 foreign countries. It has larger stolons, wider leaves and taller growth than the famed Coastal and other bermuda varieties and hybrids commonly used for forage. Growth rates of 2.5 to 6 inches per day have been reported.

The word person was derived from the Latin word for a mask worn by actors.

Most Farm CHEMICALS at discount prices

Milogard \$2.00
Atrex \$2.00
Simezine \$3.00
Caparol \$2.00

WEX

The superior surfactant solid nutrient release agent

Darrell Dunn
Star Route Box 16
5 mi. S. 5 mi. W.
Ralls, Texas 79355
806-649-2578

INSUR-MAN

DAVID CATES
983-3273

At what age am I able to start receiving the individual Retirement Act? Am I taxable? Will I be able to borrow? Under IRA you may begin to receive benefits become disabled, these funds are available to beneficiaries at one of the savings instruments, there are penalties prior to these three circumstances. The money you are earning interest which is taxable... you are earning interest which is money in regular savings accounts. You account or use the money as security. The purpose is to assure your retirement security protected and available only in the appropriate manner.

FARM BUREAU INSURANCE

OFFICE PHONE 983-3777

THINK

Of The Advantages Of A Goose

PRODUCERS COOPERATIVE ELEVATORS

...nny, reath

WAGGLY

The Only SELF S...

Chal...

min, 50

BA TISS

6

Wiggy, Mix or I

each, Cut Green Be

or Whole Kernel

Golden

Wiggy

Wiggy

ato

hips

8-d

Tw

Pal

olid Spread

Wiggy

16-0.

Luncher

MORN

SPA

8

Tommy, I can't breathe."



ASKING FOR YOU

When you're very young...castles are for the asking. All you need is the sand and the spot. And a little encouragement.

When you're very young and you have cystic fibrosis, like Allison does, help is for the asking. Equipment to help you breathe. Medication to help you digest food and fight infection. Education to aid your family and doctor to help you live. And help to hope, from people dedicated to conquering this yet incurable disease.

And so we of the Alpha Mu Delta Chapter of Beta Sigma Phi are asking. For Allison and all the children with cystic fibrosis, and other lung-damaging diseases. Asking for you - for your help.

Please don't wait - help today. Time is short for sand castles, and the children with cystic fibrosis who build them. Should you not be contacted, please call Teresa Whittle - 983-3626 or Jo Ann Patterson - 983-2149.

RICE PICTURE BLEAK- Rice producers in the U.S. are faced with an uncertain market due to record domestic and world rice production last year. U.S. rice stocks on August 1 could be five times the level of last summer due to a 14 per cent increase in production last year coupled with an almost 16 per cent

decrease in exports due to strong foreign competition. About 45 per cent of last year's U.S. rice crop still has not moved into market channels, and in about three months the 1976 crop will start coming in, points out an economist for the Texas Agricultural Extension Service and the Texas Agricultural Experiment Station.

Approximately 15,000 infants are born with cerebral palsy each year and today 750,000 Americans have one or more of its effects. Cotton flannel is the best interlining for draperies in terms of insulation.

WORLD'S LARGEST

BRITT GREGORY
112 W. MO.
983-3125



State Farm Mutual

WHITE AUTO STORE

Hot weather is here!
See us for your AIR CONDITIONING NEEDS.
Pumps, Pads, Motors, etc.

Call us for SERVICE
White Auto Store
652-2145
LOCKNEY



Piggly Wiggly

LOW PRICES

Prices good thru April 28, 1976. We reserve the right to limit quantities. None sold to dealers.



Piggly Wiggly Welcomes Food Stamp Customers

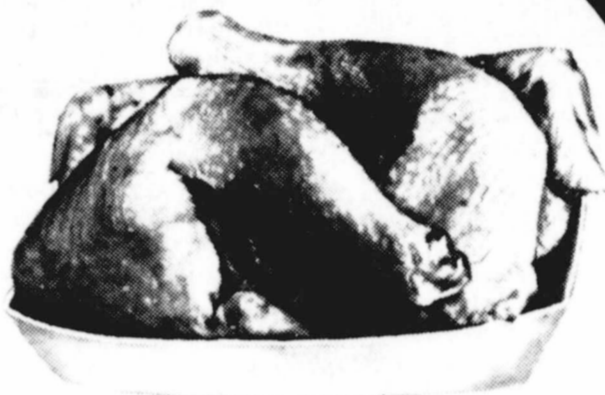


Quarter Pork Loin, Cut Into 8-11

PORK CHOPS

\$1 29

Lb.



Fresh Cut, 3-Breast, 3-Leg Quarters, 3 Wings, 3 Giblets

TUB-O-CHICKEN

49¢

Lb



All Grinds, Coffee

MARYLAND CLUB

\$1 19

1-Lb. Can



Charmin

Charmin, 500-Ct., 1 Ply

BATH TISSUE

69¢

Wiggly Mix or Match, Leaf Cut Green Beans, Cream or Whole Kernel

4 \$1

16-oz. Cans

59¢

8-oz. Twin Pak

25¢

16-oz.

FORMEL'S SPAM

89¢

3-Lbs. or More, Fresh **Ground Beef**

79¢

Lb.

Farmer Jones, No. 1 Quality **Sliced Bacon**

\$1 09

12-oz. Pkg.

Farmer Jones Regular or **Beef Franks**

79¢

12-oz Pkg.

Swift's Can (9 Patties) **Ham Patties**

\$2 29

21-oz. Can

DOUBLE YOUR MONEY BACK MEAT GUARANTEE

At Piggly Wiggly, we are so confident of the superior quality of our fresh meats that we proudly offer an unconditional guarantee that gives you double your money back on any fresh meat purchase which does not completely please you.

So, if the meat you buy does not completely satisfy you, see our store manager and the purchase price will be refunded, DOUBLE!



California Fresh **Strawberries**

49¢

Pt. Bkt.

Red Ripe, Halves & Slices **Watermelon**

19¢

Lb.



Crisp Crunchy **Green Cabbage**

10¢

Lb.

Add the Gourmet Touch **Artichokes**

39¢

Lb.

Skin Care Cream **Rose Milk**

\$1 19

8-oz. Btl.

Del Monte **Tomato Juice**

49¢

46-oz. Can

Tater Tots with Onion, Tater Tots, Crinkle Cuts, Hash Browns, Cottage Fries, Frozen **Ore-Ida Potatoes**

69¢

2-Lb. Bag

Tomato **DEL MONTE CATSUP**

69¢

Qt. Jug

Honored On 60th Anniversary

Society

Mr. and Mrs. Bryan Ceil Hardin of McAdoo were honored with a surprise anniversary gathering last Sunday by family members. The couple were married 60 years ago while seated in a buggy at a church in Covington. Mrs. Hardin is the former Nellie Pearl Hodges.

they moved in 1922. The couple's first two children were born near Blum in Hill County and the last four were born in the McAdoo residence which the Hardins still occupy. Both Mrs. and Mrs. Hardin are natives of Hill County. The Hardin children include William Dwight (Bill) Hardin of Floydada; Bryan Ceil Hardin Jr., of Portales, New Mexico; Geneva Doris Merrell of McAdoo; Garland Eugene Hardin of McAdoo; Thomas Wayne Hardin of Cuero and Bobby Glen Hardin of Crosbyton. The couple also has 13 grandchildren and eight great grandchildren.

The celebration was held in the Hardin home where some extent but kept quiet. Mrs. Wilson Bond spoke on Canada and read excerpts from Gordon Sinclair's speech on America. The Canadian radio and TV commentator also has a recording of the speech in which is stated that all countries should be thankful for the help from America.

Dougherty 4-H Bowling Party

All Dougherty 4-H Club members and their families are invited to a meeting, then a bowling party Tuesday night, April 27th. You are to meet at the Dougherty School at 5:45. During a short business meeting the election of officers will be held, then all will journey to Plainview for the bowling party.

FLOYD DATA Mr. and Mrs. Paul Vaughn Ross Jr., and daughters, more recently of the state of Georgia, are in Floydada visiting his mother, Mrs. Mary Henderson and brothers, Larry of Floydada and Dennis of Plainview. The Paul Vaughn Ross family is enroute to Africa where he has been assigned to Missionary work.

Ann Battey Honored With Bridal Shower

Miss Ann Battey, bride elect of Staff Sgt. Allen Henneman, presently stationed in Thailand, was honored in the Mack Fowler home in Floydada April 10th with a gift tea. Mrs. Fowler presented guests to the honoree, her mother, Mrs. David Battey, Jr., and her grandmother, Mrs. David Battey, Sr. Mrs. Lawrence Davis was at the guest register, and Mrs. Vernie Moore presided at the serving table. Crystal appointments were used from a table laid with an off-white Quaker cloth over yellow, and centered with an arrangement of white and yellow daisies in a crystal bowl. Hostesses presented Miss Battey with several pieces of her chosen china. Assisting Mrs. Fowler with hostess duties were

Mmes. Kenneth Bean, Jack Jordan, Fred Rink, Scott Faulkenberry, Herman Graham, Wendell Tooley, Pete Hickerson, Lawrence Davis, Vernie Moore, George Miller and Jimmy Willson, Jr.

'34 Club Meets In Lawson Home

FLOYD DATA Mr. and Mrs. Joe Hennig and children, Shaye and Brandon of Richardson were in Floydada a week visiting her parents, Mr. and Mrs. Jack Stansell. Hennig came for his family Easter weekend. The Hennigs are making preparation to move to Tyler where he has been transferred as assistant district supervisor for Texas Power & Light.

Members of the 1934 Study Club met Tuesday night in the Floyd Lawson home for a program on "As Others See Us." Mrs. John Reue was program director. During business the announcement was made of the State TFWC convention at South Park Inn at Lubbock, which is April 28-30. Mrs. Allen Bingham will represent the '34 Club as house chairman.

Achieve an easy, inexpensive decorative trim by sewing over several strands of colored yarn with a multiple zigzag stitch. For a stretchable smocked effect, use elastic thread in the bobbin, advises Mrs. Becky Culp, area clothing specialist with the Texas Agricultural Extension Service, The Texas A&M University System.

Members voted to contribute \$50 to the Floydada Day Care Center and \$15 to the Cystic Fibrosis campaign. A committee comprised of Mrs. J.S. Hale Jr., Mrs. R. G. Dunlap and Mrs. M. J. McNeill were named to study the situation of club contributions to various organizations. Some named as possible recipients were the hospital, Senior Citizens, the Museum and entertainment at the Library and Museum in connection with the Bicentennial celebration.

South America, which is almost two times the size of the U.S. but slow in developing industries, could develop into one of the greatest countries in the world, said Mrs. George Springer. Aeroplane and ox carts, very different in contrast, is their mode of transportation. Most farmers cannot raise enough food to feed their families, Mrs. Springer said, but manufacturing is growing steadily, however, bananas, beef, coffee, cotton and sugar are still being imported. Some one-fourth of all kinds of wild life in the world exist in South America. Mrs. Springer said there is one television to 100 persons in South America.

Following the program Mrs. Lawson served refreshments to Mmes. Wm. Bertrand, Allen Bingham, Wilson Bond, Floyd Bradley, R. G. Dunlap, Garland Foster, Kyle Glover, J. S. Hale Jr., Doris Huckabay, M. J. McNeill, J. P. Moss, W. O. Newberry, Vernon Parker, John Reue, George Springer, J. M. Willson Jr., and a guest of Mrs. Moss, Mrs. Avanelle Wilkinson of Austell, Ga.

NEWS AND REVIEWS

First Baptist Church Library

"In those days I took my churchgoing habit with me when I traveled abroad...How very proud I was of my churchosity. But I was only a pagan with a little fringe on top for Sunday morning. As a 'frozen Christian' I prayed, or I thought I prayed. I made petitions to God in my head, mostly 'shopping lists' of what I wanted to receive or to happen. Time and again I decided to read the Bible...I read through the first few episodes of Genesis, then came to the 'begats' and got 'besunk'."

In these words Eleanor Searle Whitney describes the state of her soul in INVITATION TO JOY. As she later describes her surrender to the Spirit of God in a Billy Graham Crusade she says, "They were warm tears, because the cold place I had locked away in my heart was warmed by the Holy Spirit. The timid chill which I had never been able

to describe was gone. That chill, that emptiness, had been my unawareness of God." Eleanor Whitney has lived the fairy tale life of the wealthy and found that "having too much is somehow not enough." She shares with us many of her extraordinary experiences, moments of pleasure and happiness together with those of personal suffering and serious decision. As she matured as a Christian she had to decide whether or not she was going to continue to live and work in the social scene in which she married years were spent. She says, "I used to think religion was fine for the 'down-and-outers'...I now know the 'up-and-inners' have just as many painful, agonizing fears and heartbreaks and they too are looking for solution to their problems."

Unless you have been closeted away in a remote area you are probably very aware that the Cosmopolitan philosophy of the swinging single girl has flooded the market with silly and damaging literature about a fulfilled life for singles. We have many young teenagers swallowing this nonsense without realizing that the arguments for the libertine life are as old as the world. Unfortunately, it isn't only the teenager taken in by this philosophy. In YOUR HALF OF THE APPLE, GOD AND THE SINGLE GIRL, Gini Andrews presents a Christian answer, perceptive and positive. She meets the singles' problems where they are, not where some Christians assume them to be. For instance, one of the questions she raises is "Does God understand twentieth century sex ethics? In other words, has He kept up?" Sometimes the world of couples in the church make it difficult for the singles to feel a part of the Christian body because of the emphasis on family. We believe this book will be helpful in building the self-image of the single girl or woman.

J. B. Phillips presents a skilled attack on immature and inadequate ideas about Jesus Christ so prevalent today. "The True Greatness of God" is a challenge and call to honest biblical Christianity. On the other side of this cassette tape is "A message to youth," a serious challenge to youth everywhere to take the trouble to seriously read the New Testament, and study the evidence about Jesus Christ and Christianity. The speaker is also the author of the translation of the New Testament referred to as Phillips New Testament.

Pain Strikes Where Rheumatism

Rheumatic and Arthritic Pain can strike the joints in any of the indicated areas (see arrows on chart)



Puts Pain to SLEEP

Now for the first time, overnight blessed temporary relief from the pain of arthritis, bursitis, rheumatism, soreness, affected joints or muscles, and you can actually feel again. If you don't have relief in 24 hours we'll refund your money. \$3.00 for 3/4 oz. jar or \$5.00 for 7 oz. jar.



Icy-Hot

SOUTHWESTERN PUBLIC SERVICE COMPANY

DEAL 680-5885 NIGHT 680-5974

Bicentennial



COTTON'S BICENTENNIAL MAID... cotton's heritage and progress in the... be the mission of 1976 Maid of Cotton... resident of Newport Beach, Calif. she is... University of Southern California. Los... speech communications and radio broadcast

DECA Chapter To Sponsor

The DECA Chapter of Floydada High School is sponsoring their annual movie Tuesday night, April 27th. The showing will be "Wind and the Lion" at the Capada Drive-In. Featuring Sean Connery, Brian Keith, Candice Bergen



Cash Crop




Rising costs, market fluctuations, weather... three good reasons to protect your farm with savings. Unfortunately, these are also the same three reasons why it's difficult to save. Come in and let's talk about it. We'll help you find a plan that suits your needs... to get your dollars-doing-things. Farming is a tricky business—interest on savings isn't. Think about it.

Dollars doing things

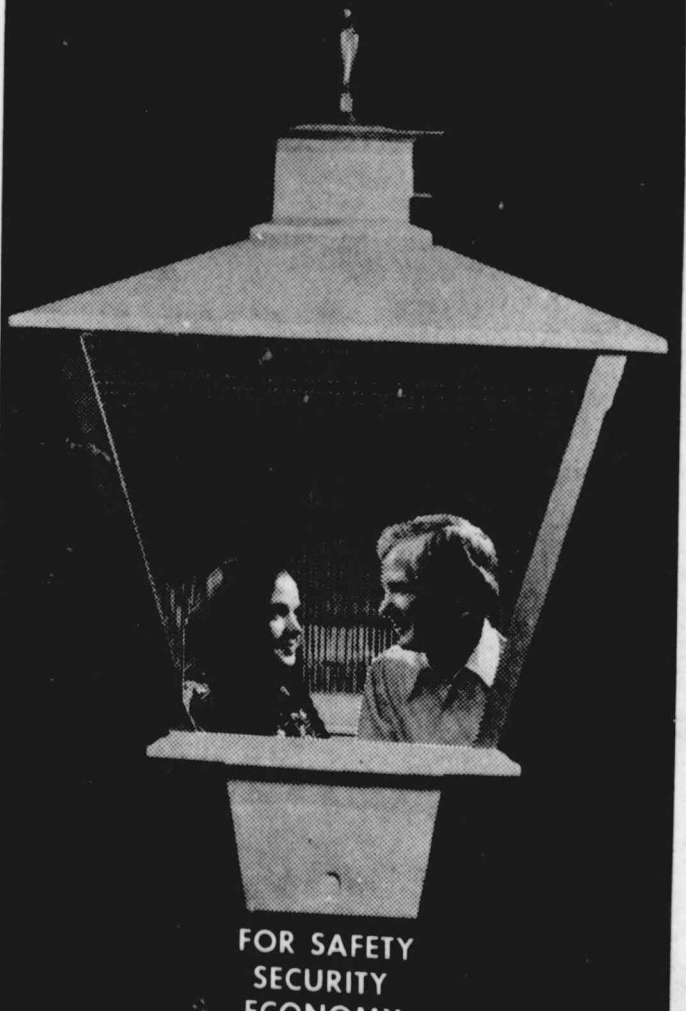
Where You Save DOES MAKE A DIFFERENCE

Floydada Branch
Plainview SAVINGS & LOAN Association



217 W. California Floydada, Texas

PUT A LITTLE LIGHT IN YOUR NIGHT



AUTOMATIC ELECTRIC READY-LITE

FOR SAFETY SECURITY ECONOMY
SOUTHWESTERN PUBLIC SERVICE COMPANY

Sears AND GARDEN SALES AUTHORIZED CATALOG SALES MERCHANT



CRAFTSMAN® Mower with 3.5-HP engine
Was \$124 **9699**



20-in. wide cut with 5 quick-adjust brights. Dual-power engine has automatic choke gear assist starter. An outstanding mower!



PHONE 983-2862
100 S. MAIN
FLOYDADA, TEXAS

Scholarship Fund Established In Memory Of Joe Thurston

The Aggie Club of Lubbock Christian College has established a memorial scholarship fund in memory.

of Joe Robert Thurston. The scholarship will be given annually to a student

majoring in agriculture. Anyone wishing to donate to the scholarship fund may send their donations to Rodney Blackwood, Lubbock Christian College, 5601 19th Street, Lubbock, Texas.

Bus Service Through Floydada, Lockney

WITHOUT fanfare or publicity, a new bus service was instigated through Floydada and Lockney Friday, replacing T.N.M. & O. Coaches which had been in operation out of Lubbock the past 35 years. Plainview Bus & Transfer Company, owned by Mr. and Mrs. Norman Peoples assumed the Plainview to Vernon route which was threatened with abandonment last year by

T.N.M. & O. and proposed to leave towns between those two towns, without bus passenger and express service. Floydada is one of the towns on the route.

The stop in Floydada is at Mize TV on Main Street. The bus stops here enroute to Vernon at 8:10 each morning and stops at 3:55 p.m. each day enroute back to Plainview. At Lockney the bus arrives from

Delphia Defoor

Mrs. Delphia Mae Defoor of Paducah, sister of Mrs. Troy Cranford of Floydada, died Thursday at her home of an apparent heart attack. The 56 year old native of Atoka County, Oklahoma, had resided at Paducah some 53 years. Rites for Mrs. Defoor were conducted Saturday in Paducah.

Survivors include her husband, H. L. of the home; a son, Randall of Fresno, California; two sisters, Mrs. Cranford of Floydada and Mrs. Velma Davidson of Bowie; and three grandchildren.

Plainview at Mize Pharmacy at 7:55 a.m. and returns through there at 4:10.

According to a news feature in Sunday's Plainview Reporter-News; This plan on the part of

T.N.M. & O to abandon the route presented Norman Peoples the chance to fill a long time ambition, to get into the bus business.

A business man, Norman could see the possibility of not only making money, but the satisfaction of keeping in operation a service so much needed.

When asked why he thought he could make a go of something which was losing money to a large company as T.N.M. & O., his reply was simple and to the point: "I do not require a piece of equipment which costs \$75,000. such as was being used. My fuel ration is about three times that per mile as is the requirement for the larger busses. I have no mileage rental on the tires I use. I am not bothered with having to pay union scale. There are no stations which require an investment, no maintenance people on the payroll, no staff of clerical help, reclaim agents or other employees which require a lot of money. My wife does it all and she works pretty

cheap." Norman's first run was Friday. The nice new "stretch job," capable of holding a lot of baggage and express and 12 people, light brown in color just off the assembly line, seemed anxious to start that new era.

His express load was typical, and expressed within itself the need for the service. It contained among other things, flowers for Lockney, medicine and blood for use in the hospital and pharmacy in Floydada, a birthday gift from a grandmother to a grandson in Matador, mechanic's tools for Crowell and planting seed going to Vernon.

Small in operation, Plainview Bus & Transfer Company is going out in a big way for personal service, efficiency in operation and always anxious to create good will.

• Easy dessert — toast slices of pound cake. Spoon chilled applesauce over the top. Garnish with sour cream and slivers of candied ginger.



AT HAYLOFT -Dana Scott Galloway and his wife Rebecca are shown here on the set of THE MOUSETRAP, which is making its West Texas Premier at the Hayloft Dinner Theatre in Lubbock. This Agatha Christie mystery classic features the former Floydada man and his wife, and is playing now through May 1st. Dana, son of Mr. and Mrs. Al Galloway of Floydada, plays Sgt. Trotter in the play, and his wife portrays the owner of an English guest house. The Galloways immediate future plans include additional dinner theatre appearances, summer stock, and a possible USO tour in the Fall.

Buddy's Food

Buddy Widener, Owner — Forrest Shannon, Mgr. in Floydada, 220 South Second

NEW STORE HOURS MONDAY — SATURDAY 8 AM — 8 PM SUNDAY 9 AM — 7 PM

THESE VALUES GOOD SUNDAY, APRIL 25 THROUGH SATURDAY, MAY 1

THESE VALUES GOOD IN PLAINVIEW ALSO We Reserve The Right To Limit Quantities

6-32 oz. Bottle carton COKE OR TAB \$1.39 plus deposit

POTATO CHIPS 79¢ 9OZ. TWIN PAK PRINGLES \$1.09 VALUE

ROMAN MEAL BREAD 2/89¢ 59¢ VALUE

COFFEE \$1.39 6 OZ. MARYLAND CLUB INSTANT LIGHT BLEND \$2.29 VALUE

TOMATO PASTE 4/89¢ 6 OZ. CONTADINA 30¢ VALUE

LEMONADE \$1.49 33 OZ. COUNTRY PRIZE \$2.09 VALUE

STRAW BERRIES 2/99¢ CALIF FRESH PINT BASKETS

SQUASH 3 LBS/\$1.00 STRAIGHT NECK YELLOW

DECKERS BACON 12 OZ. \$1.19	LONGHORN CHEDDAR CHEESE \$1.49 LB
SAUSAGE \$1.79 2 LB TASTE WRITE	GROUND BEEF 69¢ LB 100% PURE
CHUCK ROAST 79¢ LB USDA	ARM ROAST 99¢ LB USDA
HAM SLICES \$1.59 LB BONELESS	TONY'S PIZZA \$1.29 ASSORTED

SAUCE 4/\$1.00 10 OZ. GEBHARDTS HOT DOG 39¢ VALUE

DOG FOOD \$4.99 30 LB PURINA \$6.99 VALUE

FLOUR \$3.39 25 LB PILLSBURY \$4.99 VALUE

VINEGAR 3/\$1.00 32 OZ. WHITE SWAN WHITE 43¢ VALUE

EGGS 67¢ DOZEN. GRADE A LARGE

TIDE \$1.19 GIANT 49 OZ. \$1.55 VALUE

VANILLA WAFFERS 2/\$1.19 12 OZ. NABISCO 75¢ VALUE

BAR-B-QUE SAUCE 19¢ KRAFT ALL FLAVORS 18 OZ. WITH PURCHASE OF 2 STEAKS OR ONE ROAST ANY CUT

SLIM & TRIM 89¢ 1/2 GALLON \$1.29 VALUE

NESTEA \$1.29 INSTANT TEA 3 OZ. \$1.49 WITHOUT COUPON

6-pack CANDY BARS 69¢ 90¢ VALUE ONLY

50¢ OFF ON A PURCHASE OF CARTONS OF REG SIZE KING OR 100 MM \$4.19 WITH THIS COUPON

FACIAL TISSUE 4/\$1.00 100 KLEENEX 3-\$1.00 WITHOUT COUPON

WARNING: The Surgeon General Has Determined That Cigarette Smoking Is Dangerous to Your Health.

FAST ACTION use the

WANTED ADS

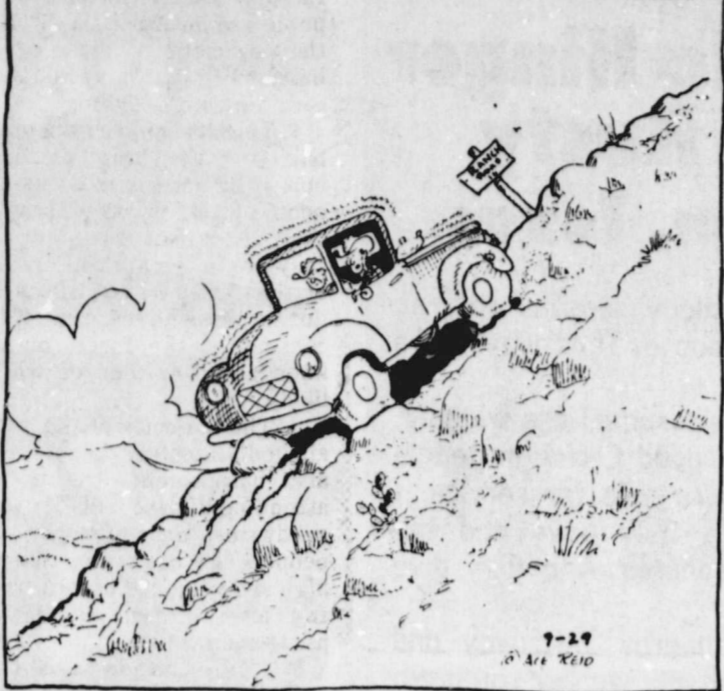
BUSINESS SERVICES

PIANG TUNING, Edward C. Lain 25 years experience. Write Box 425 Silverton or call 823-2151 or 823-205 L-tfc

FARM SERVICES

CUSTOM FARMING Breaking listing, planting, crosscut, spraying, tandem and chisel. 293-2578 L-tfc

COW POKES By Ace Reid



"One thing about this road, nobody's ever got a ticket for speedin' on it."

FOR SALE

FOR SALE: Brand new Grandfather clocks. See at 804 W. Grover, Phone 983-2417. tfc

FOR SALE

FOR SALE: 413 Chrysler Irrigation motor, new valve job. 983-3610, nights. tfc

CLASSIFIED AD SALE

CLASSIFIED ADVERTISING RATE: 7 CENTS PER WORD FIRST INSERTION; 5 CENTS PER WORD EACH SUBSEQUENT INSERTION. MINIMUM CHARGE: \$1.00.

WANTED

WANTED TO BUY irrigated or dryland farm in Floyd or surrounding area. Write Box XRO, c/o Hesperian, Box 700, Floydada. tfc

FARM MACHINERY

FOR SALE: New 4" green pump 250 ft. setting, all complete gearhead etc. Several joints irrigation pipe. Two platform scales, different sizes. Dorsey Baker. 652-2363. tfc

THIS FEATURE SPONSORED BY AUTO, FIRE & FARM INSURANCE Floydada Real Estate & Insurance Agency Jim Word - - - Phone 983-2360

AUTOMOBILES

FOR SALE: 1974 Mustang II, \$3,350. Lisa Nichols. 983-3564 tfc

HELP WANTED

EVENING COOK and dishwasher needed. Roger's Cafe 652-8893. L-tfc

NOTICE

Inventory Reduction 25% Discount Shop & Save Dougherty Grocery tfc

STROUD Crop Insurance is the biggest writer of crop insurance in Texas. Represented locally by Goen & Goen. 5-2c

WE WANT 12 persons to make reservations for a Scandinavian Tour out of Dallas June 4-18. Tour includes Brussels, Amsterdam, Hamburg, Copenhagen, Stockholm, Karstad, Oslo, Bergen, and London. \$1299 covers everything out of Dallas. Contact Mrs. Luther Kirk, 3005 59th Street in Lubbock. Phone 799-6585. tfp

FOR OUT OF THIS WORLD RESULTS WANT ADS

CASE TRACTORS for RENT or LEASE Call 983-2836 CASE POWER & EQUIPMENT Floydada, Texas

ALCOHOL & DRUG ABUSERS Want Help...Need a Home... Want a New Start in Life? Call collect Plainview (806) 293-8651.

FOR SALE: mark down on 1976 Kenmore dryer, automatic cycle plus air and timed cycles. Was \$239.70 now \$179.70. Sears, Floydada, 983-2862. tfc

HOUSE FOR SALE 3 BEDROOM GOOD LOCATION CALL 983-3992

T & F USED AUTO PARTS USED PARTS Auto Pick-up Truck Any type engine or transmissions Across the street from Scott Gin Office Floydada

E-59 Big Bronze Leader Greenbon Resistance Bonus PRODUCERS COOPERATIVE ELEVATOR

Bedding Plants flowers & vegetables available now SCHACHTS FLOWERS, JEWELRY & GIFT SHOP 112 W. POPLAR

WE WANT YOU TO KNOW We sell all kinds of Goodyear tires... tractor, auto, truck, a good tire, good service. Best deals in West Texas. Truck winch and hauling service BABE'S SERVICE CENTER, FLOYDADA. tfc

Heating Air Conditioning Installation TINO GOMEZ 501 S. Main Floydada Phone 983-5279

Diamond Industrial Supply Co., Inc. Phone Days 296-7418 - Nights 296-1200 or 296-7828 1014 Broadway Plainview, Texas

lightweight ALUMINUM CANES & CRUTCHES Sturdy Dependable Attractive Wide selection for every prescribed need Forearm and underarm crutches Adjustable telescopic canes Four legged canes Seat Canes

BISHOP-RAMSEY PHARMACY 208 West Houston 983-3174 FLOYDADA

DAN'S AUTO SERVICE DAN TEUTON, Owner Specializing in Automatic Transmission, Motor Tune-Ups, Auto Air Conditioning. General Repair We Have A BRAKE LATHE to handle all passenger car brake drums. See us for complete brake service. Phone 652-2462

Free Estimates Satisfaction Guaranteed PAINTER Interior Exterior Residential Commercial 983-2503 983-3512 Floydada, Texas

QUALITY SHAMROCK PRODUCTS Always Make A Good Deal On SONIC TIRES and SOUTHLAND BATTERIES Dial 652-3366 JACKSON TIRE COMPANY Richard Wiley

2 OR 3 BEDROOM HOUSE, 812 WEST LEE ST. SEVERAL OTHER 2 AND 3 BEDROOM HOMES IN GOOD LOCATION. 160 ACRES IRRIGATED FARM 2 MILE NORTH OF LOCKNEY. PRICED WORTH THE MONEY. LOW DOWN PAYMENT. CAPROCK INSURANCE AND REAL ESTATE Phone 983-3284 Aldine Williams-983-2366 Randell King-983-5028 Scott Faulkenberry-983-2756

Mr. Cotton Producer The girl has nothing to do with what we sell, but now that we have your attention may we suggest... MACHA 1100 High Yielding High Yielding *Strong Seed *Quick Maturing MACHA WR-2 *Wide Resistant *Quick Maturing *Large Boll *Good Mids MACHA N-57 *Good Mids *High Yielding *Quick Maturing *Large Boll *Strong Seed CHECK OUR RECORD IN 1972, '73, '74 & '75 MACHA HAS A COTTONSEED FOR YOU REGARDLESS OF YOUR WATER OR SOIL CONDITIONS. MACHA SEED FARMS BOX 248 LITTLEFIELD, TEXAS 79337 PHONE 383-6094

Auto Accidents DO Happen... If one happens to you, be protected. Our car insurance offers coverage to meet your special needs - repairs to personal liability. BAKER Insurance Agency 127 W. Calif. Ph. 983-3270

IF IT IS INSURANCE - SEE - Barker Insurance Agency LOCKNEY Life - Fire - Casualty - Hospital B. B. Wilkes, Real Estate LOCKNEY Farms - Ranches - City Properties Business Leases - Loans

\$129.95 LLOYD'S 12-digit electronic calculator It has many features including 12-digit silent print head, four functions, percent key, floating decimal, exchange key reverses position of multiplier or divider & many more. Hesperian Office Supply FLOYDADA Beacon Office Supply LOCKNEY

Round Trip From Lubbock INCLUDING HOTEL HAWAII 2 ISLANDS \$483 \$379 W.M. Tooley Box 700 Floydada, Texas 79235 Phone 983-3737

Problem whose parents... ermed with the... ren who are inv... alism that does... st of the pres... uted allegations... rity, are not res... nts and do our... kke our roles... istributing citi... ed complaints... ity and resentm... y people and the... possible for us... lp and underst... CE two and thre... homes for sal... sible, mature c... of only do we... examples of th... turity to show... e the best citi... ur community and... Sales, Nancy... ger, Brenda Vi... al, Kristie Kirk... Jackson, Russ... t, Max Probsan... Kirk, Paul Loyd... Herrera, Mike... Michael Curry,...

MEET A "TOTAL SAVER"



Eugenia Hinger and Rusty Canyon, Texas

There are many reasons why so many people shop at Thriftway. Here are Mrs. Hinger's:
 "The store personnel are friendly, personable and good Christian people that go the extra mile for service. I like the brands they have and the prices are reasonable. And they give stamps."
 Shop your nearby Thriftway and see for yourself why we say you are a "Total Saver" at Thriftway.



U.S.D.A. GRADE A COUNTRY PRIDE CERTIFIED FINE QUALITY WHOLE

FRYERS 49¢ LB.

MARGARINE-IN QUARTERS
PARKAY
 1 LB. PKG. **39¢**

FAMILY PACK
Delsey
 BATHROOM TISSUE
 4 ROLL PKG. **69¢**

MORTON FROZEN MEAT
Pot Pies
 4 8 OZ. CTNS. **89¢**

SECRET-30' OFF LABEL
DEODORANT
 7 OZ. CAN **99¢**

A & W REG. OR SUGAR FREE
ROOT BEER
 12 OZ. CANS **7 \$1**

CREST-15' OFF LABEL
TOOTH PASTE
 7 OZ. TUBE **89¢**

Q-tips **COTTON SWABS**
 170 CT. PKG. **79¢**

COUNTRY PRIDE CERTIFIED FINE QUALITY
CUT-UP FRYERS LB. **59¢**

FRESH-NOT LESS THAN 70% LEAN
GROUND BEEF LB. **79¢**

- SPLIT **Fryer Breast** LB. **99¢**
- FRYER THIGHS OR **Drumsticks** LB. **89¢**
- SELECT SLICED **Beef Liver** LB. **69¢**
- FARMFRESH **Catfish** LB. **\$1.69**
- WILSON SMOKED **Pork Chops** LB. **\$1.79**

- HICKORY SMOKED SLICED **SLAB BACON** LB. **\$1.29**
- SHURFRESH **Sliced Bologna** 12 OZ. PKG. **79¢**
- SHURFRESH **Quality Franks** 12 OZ. PKG. **69¢**
- BONELESS TENDERIZED **Beef Cutlets** LB. **\$1.69**

MACARONI AND CHEESE
KRAFT DINNERS 4 7 1/2 OZ. BOUL. **49¢**

SHURFRESH SQUARE CARTON
ICE CREAM HALF GAL. **99¢**

WHITE AND DECORATOR-3¢ OFF LABEL
SCOTTOWELS JUMBO ROLL **49¢**

DAIRY AND FROZEN FOODS

- MINUTE MAID FROZEN **ORANGE JUICE** 3 6 OZ. CANS **79¢**
- KRAFT CRACKER BARREL SHARP & EXTRA SHARP **Stick Cheese** 10 OZ. PKG. **\$1.19**
- OLE SOUTH **Fruit Cobblers** 2 LB. CTN. **99¢**
- MORTON FROZEN **Mini Donuts** 10 CT. CTN. **69¢**
- PILLSBURY COUNTRY STYLE-BUTTERMILK **BISCUITS** 8 8 OZ. CANS **\$1.00**

TOTAL GROCERY SAVINGS

- HEINZ **Barbecue Sauce** 26 OZ. BTL. **89¢**
- SANITARY OVAL PADS **Kotex Life Days** 30 CT. BOX **\$1.09**
- SANITARY OVAL PADS **Kotex Life Days** 12 CT. BOX **45¢**
- BOW WOW **Dog Food** 5 LB. BAG **89¢**
- RAID AEROSOL ANT AND **Roach Killer** 11 OZ. CAN **99¢**
- SHURFINE **Spinach** 4 15 OZ. CANS **\$1.00**
- SHURFINE **Tomato Sauce** 6 8 OZ. CANS **\$1.00**

15¢ OFF LABEL DETERGENT
COLD POWER
 GIANT BOX **99¢**



FLORIDA FULL EARS
CORN
3 39¢
 FOR

- FLORIDA RUBY RED **GRAPEFRUIT** 2 LB. **37¢**
- CALIFORNIA MINEOLAS **TANGERINES** LB. **29¢**
- WASHINGTON GOLDEN DELICIOUS **APPLES** LB. **29¢**
- TEXAS STRAIGHT NECK YELLOW **SQUASH** LB. **35¢**
- NEW CROP YELLOW **ONIONS** 2 LB. **29¢**

MORE GROCERY SAVINGS

- FRUIT PUNCH-GRAPE-ORANGE **Boden Drink** HALF GAL. **59¢**
- Folgers **Ground Coffee** 1 LB. CAN **\$1.49**
- FOLGER'S INSTANT **Coffee Crystals** 10 OZ. JAR **\$2.69**

6-32 OZ. BOTTLE CARTON
 DIET OR REGULAR PLUS DEPOSIT
Dr Pepper **\$1.39**

20¢ VALUABLE COUPON
 GOLD MEDAL KITCHEN TESTED
Flour
 WITH THIS COUPON VOID MAY 1, 1976
 LIMIT ONE COUPON PER CUSTOMER

25¢ VALUABLE COUPON
 FISHER'S CROCK STYLE
Cheese
 WITH THIS COUPON VOID MAY 1, 1976
 LIMIT ONE COUPON PER CUSTOMER

PAGES THRIFTWAY

SPECIALS GOOD APRIL 24-30