

for new  
Massachusetts  
Pennsylvania

PPY  
Dth  
izzie  
ie!!!

NEW STORE  
DAILY  
8 AM - 9 PM  
SUNDAY  
9 AM - 8 PM

CHEF PRIDE  
Pinto  
Beans  
39

Unsweetened  
pefruit  
e 2  
en  
s 4  
ato  
ce 8  
ly Wiggly Heavy  
ndry  
ergent  
& Beaut  
hbrush  
ne  
Milk  
Candy  
eter Pa  
Candies  
15c  
d Joys  
39

## Planters Sponsor Liberty Tree

The planting ceremony was held at the west side of the square, Arbor Day, 1976.

It was sponsored by the H Clubs, Commission-loyd County Museum.

Texas Forestry Service and Texas Forestry Association, as an official of the American Revolution Bicentennial project.

Highlight of the ceremony was the dedication and planting of the "Liberty Tree."

The Liberty Tree is a "Tejas" variety

pecan. Pecan is the state tree of Texas and "Tejas" (the Spanish word for Texas) is a variety which grows well throughout the state and produces abundant shade and tasty fruit.

This Bicentennial pecan is called a Liberty Tree after the famous elm in colonial Boston under which the first act of public resistance occurred in 1765—the hanging in effigy of a newly-appointed stamp officer.

This tree is dedicated to the people of Floyd County and will remain on the courthouse lawn along with a plaque furnished by Cline Monument in Plainview.



PLANTING LIBERTY TREE (l to r) Nancy Marble, Glenna Orman, Kenneth Brosech, Ricky Hrbacek, Steve Herber, Curtis Smalley, Steve Jones, Clay Hamilton, Doyle Warren, Sharon Hillis, Olin Watson and county judge J. K. Holmes. (Photo by Keith)

## Much Hospital Taxes Do County Residents Pay?

It is possibly the only area of the state that has two hospital districts and two courthouses there are more hospitals in Lubbock and

patients to the two hospitals. The two hospitals are in Floyd County.

Patients are kept in operation Precincts 1, 3, and 4 are in Lockney Hospital district.

Precinct 2 residents are in the Lockney Hospital district.

In 1974 the people of Caprock Hospital District paid \$161,939.64 in taxes. The people in the Lockney district paid \$89,347.33. The taxes are collected for the districts by the county tax assessor-collector.

In 1974 all the people of the county paid \$321,832.72 for county and \$50,882.35 for state taxes.

Because people are still paying on 1975 taxes, these records are not yet complete and ready for publication.

## Beat Idalou!

## Cardinal Seeks Sheriff's Office

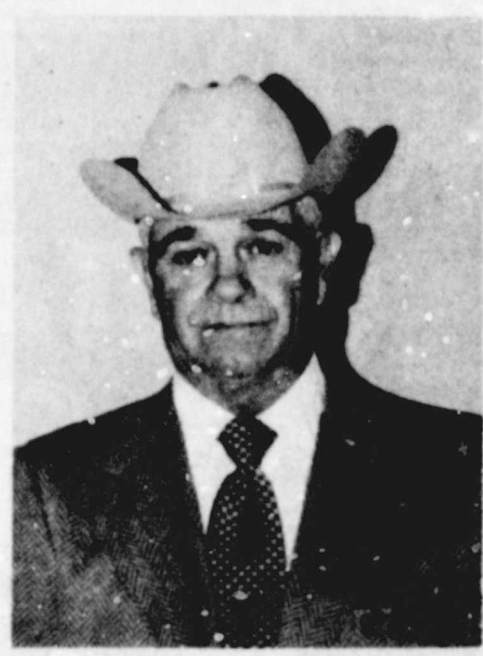


This week Fred Cardinal authorized this newspaper to announce his candidacy for Sheriff of Floyd County subject to the May Democratic Primary.

Cardinal is a certified law officer and has been in law enforcement for 11 years. He is a Dougherty farmer and most of his law experience has been with the Floyd County sheriff's office.

He is a native of Floyd County and is a veteran of the United States Marines.

In his announcement statement Cardinal said, "I will try to see everyone personally between now and election time....I want you to know that I appreciate your vote and influence. If elected I will serve the people of this county fairly and honestly and make you a good sheriff."



Fred Cardinal

# Floyd County

15¢ Per Copy

# Hesperian

12 PAGES IN ONE SECTION

VOLUME 81 FLOYDADA, FLOYD COUNTY, TEXAS 79235 SUNDAY, JANUARY 18, 1976 NUMBER 6

## Accreditation Study Begins

The Floydada Independent School District is presently undergoing an accreditation procedure which is the normal requirement of the Texas Education Agency every ten years.

The self-study is being done system-wide with all school personnel involved. A major portion of the entire school year will be used to conduct the study.

The steering committee, whose function is to organize, coordinate, and oversee the entire study, was selected in late summer with Tommy Cathey as its chairman and Dr. Robert Splawn (WTSU educator) as consultant. Other members of the staff are:

A. E. Baker, superintendent; C. E. Tyer, high school principal; Bob Alldredge, junior high principal; Preston Watson, elementary principal; Bob Copeland, elementary principal; Beth Faulkenberry, elementary speech therapist; Margaret Jones, 6th grade language arts teacher; Harvey Allen, school board; Jimmy Tidwell, lay member; Judy Beedy, lay member; Ann Helms, lay member.

The steering committee met last Saturday, January 7, 1976, to hear progress reports from each school. Results of each school revealed that the self-evaluation is almost 75 percent completed and a March 1 due date will be easily attained.

The method used for evaluation is the self-evaluation instrument. Its basic purpose is to identify and assess the educational needs of the school district. Such a process enables the district to develop, implement, and

upgrade many instructional materials, teaching techniques, and course offerings.

The basic objective of school accreditation is to see that every school in the state operates so as to meet minimum standards and at the same time establishes a goal of performance that exceeds the minimum requirements. The State Board of Education plans, "A program of continuing planning and evaluation should be established for measuring the performance of the public school system in terms of the competence of its staff... and the efficiency of its structure and processes."

Because Texas schools serve the needs of society, the goals, objectives,

and purposes of the schools must be reexamined as society and its needs change. A chief purpose then, of accreditation, is to provide the stimulation for school improvement necessary to bring about desirable change.

Accreditation by the Texas Education Agency has been voluntary since the early 1950's, with local school districts assuming the responsibility for meeting accreditation standards. When a district decides to become accredited, it automatically accepts the responsibility of meeting the minimum standards prescribed for accreditation. The local commitment because it does involve the professional staff and students, as well as various people from the community.

## Caprock Chat

By Wendell Tooley

THE COMPUTERS... and the football experts pick the stealers to beat the Cowboys Sunday in the Super Bowl. This doesn't bug me... I'm still gonna watch the game. The Cowboys were picked to lose several times this year but they are the forecasters... and now here they are in the Super Bowl.

It is estimated that some 76 million Americans will either see the game in person or by TV.

WE BEGAN SIGNING people up for the trip to Hawaii Thursday night. We have about 15 days now to get everyone signed up. It only takes

\$25.00 now to make your reservation. Let me know.

HOPE YOU ALL WILL notice the water director election story on page one and go vote, today, Saturday, January 17. We carried the story earlier in the month and should have published it again Thursday, but lost it in the shuffle.

It's pretty important to have good people on this board representing our county... and the laws that concern drilling irrigation wells and water conservation.



BAND...Sixteen members of the Floydada Whirlwind Band made All Region recently. They are (l to r, back row) Lane Kirk, Tim Dyess, Grant Hambricht, Kristi Kirk, Derek Cheek, Shannon Bell, Laura McCulley, Ricky Strange, Joe Covington, Donna Chesshir, Sylvia Bueno, and Cheryl Bearden. Not pictured are Malinda Morton and Roijon Adams. (Staff Photo)

## Underground Water Director To Be Elected

The High Plains Underground Water Conservation District No. 1 will conduct an election January 17, 1976, to name a Director to represent Director's Precinct 5 - that part of the District situated in Floyd and Hale Counties - and three Floyd County Commissioners.

(Floyd County Commissioner's Precinct 1), and M. M. Smitherman, Floydada (Floyd County Commissioner's Precinct 3).

Chester Mitchell of Lockney, who has served the District as a Member and Officer of its Board of Directors for 12 years, longer than any other person, will vacate his post as Director from Precinct 5. Seeking to replace him is Malvin A. Jarboe of Floydada.

Seeking election to the Floyd County Committee as Committeeman-at-large is C. D. Lyles, Floydada. Also seeking election to the Floyd County Committee are Connie Bearden, Floydada

Polling places for Floyd County are the County Courthouse, Floydada, and Barker Insurance Agency, Lockney. Absentee balloting began at noon on December 30, 1975, and will continue through January 14, 1976, at the Floyd County Clerk's office.

Any voter possessing a valid voter registration certificate and residing within the delineation of the District and within the county where a vote will be taken is qualified to vote in the District's 1976 election.

The Water District urges every eligible voter to do his part in selecting the District's governing board. The foundation for equitable groundwater conservation is public participation.

## How Many People Use Floyd County Libraries?

There is no way of knowing how many people enter the two county libraries in Lockney and Floydada each year. Some read books in the library and do not check them out...some look through the files.

The only accurate record of interest in books in this county is revealed in the actual amount of books checked out.

Nita Merkle Hull reports a total of 17,243 books checked out of the library in the county courthouse in 1975. She also reports that 6,374 books were checked out of the Lockney branch.

She also reports that the total of 24,643 books in the two libraries. The operating income for the libraries last year was \$19,374.

More books are checked out during the summer when school children use the libraries more.

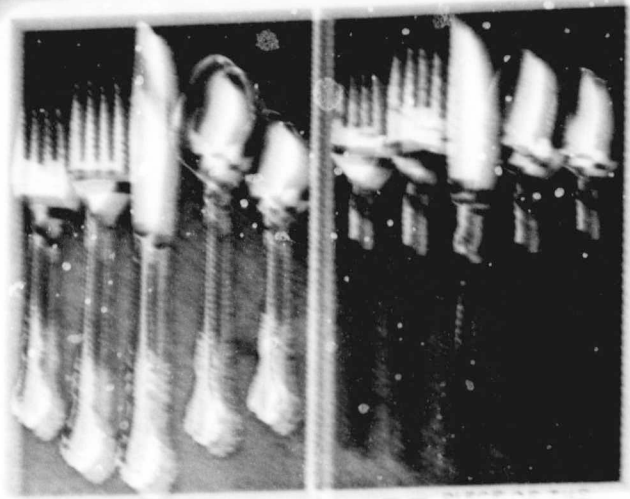
Floyd commissioners have set aside money for a new library building on the east side of the square, pending purchase of lots.



STEERING COMMITTEE FOR SCHOOL EVALUATION STUDY (l to r clockwise) Beth Faulkenberry, Tommy Cathey, Dr. Robert Splawn, Carol Bell, Ann Helms, Rev. Jimmy Tidwell, Margaret Jones, Preston Watson, Bob Copeland, A. E. Baker and Charles Tyer. (Photo by Keith)

DOUBLE S & H GREEN STAMPS ON WEDNESDAYS WITH \$2.50 PURCHASE OR MORE

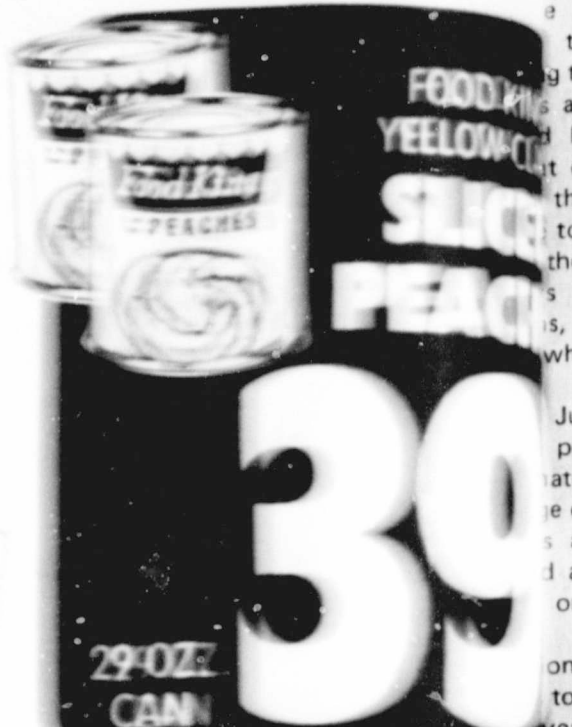
# HAPPY BIRTHDAY U.S.A. SALE



STAINLESS FLATWARE  
ON SALE AT THRIFTWAY



**BACON**  
SHURFRESH VACUUM PACKED  
LBI PKG. **\$1.29**



**39**



ON SALE AT THRIFTWAY



SHURFRESH CANNED  
**HAMS**  
3 LBI CAN **\$5.69**

SHURFRESH  
Franks: 7 OZ PER. **63c**  
SHURFRESH  
Bologna: 7 OZ PER. **63c**  
SHURFRESH  
Meats: 7 OZ PER. **43c**



**SHORTENING**  
3 LBI CAN **99c**



**SALAD DRESSING**  
32 OZ JAR **59c**



**CONTACT**  
10 CT PKGS **99c**

**HEALTH AND BEAUTY AIDS**  
Listerine: 79c  
Shave Cream: 76c



SHURFRESH V-PRESS, DRIP, OR ELEC. PERK  
**COFFEE**  
1 LBI CAN **\$1.09**



**FROZEN FOODS & DAIRY**  
Cauliflower: 2 1/2 LBS \$9.00  
Colby Cheese: 39c  
Biscuits: 9 1/2 LBS \$9.00



SHURFRESH  
**SALTINES**  
2 1/2 OZ BOXES **76c**

**Page's Thriftway No.**  
Lubricants, Tires, etc.  
Phone: 425-2393



**Orange Juice**  
5 1/2 GAL **\$1**



**BLEACH**  
1 GAL **59c**



**PAPER**  
300 CT PER. **76c**



**OLEO**  
3 1/2 GAL **76c**



**RUSSET POTATOES**  
10 LBI BAG **79c**



**GRAPEFRUIT**  
4 LBS **49c**



**FLOUR**  
25 LBI BAG **\$2.79**

**THRIFTWAY'S**  
PAPA JOHN'S: 99c  
SHURFRESH SLAW: 49c  
SHURFRESH PASTA: 59c  
SHURFRESH BREAD: 59c  
MAG. C. S. S. BINDER: 2.99  
SHURFRESH DRESSING: 49c

# THRIFTWAY

SPECIALS HIGH IN MARKET

A Week  
a  
Compil  
Of The  
John C.  
Year Lov  
the nu  
to drop  
to the T  
and pic  
by the  
only 78  
the low  
total wa  
the comi  
s are goi  
s, farrow  
which is a  
June-Nov  
per cent  
ated 77.0  
e of 7.1 p  
s and pig  
l at four  
on Texas  
onwide, t  
totald 49  
year ago  
producers  
now thro  
e intentio  
of 38,000  
but 16 p  
to 1974.  
ese inter  
increase  
r-May per  
TUALLY  
d through  
the San A  
harvest re  
greens, w  
s, while  
Texas.  
nwhile, R  
otton; pl  
to March  
ome comm  
OTAL OF  
received  
k Reportin  
questionn  
s of Texas  
may h  
n to fill it  
report is  
ie and ac  
ure.  
yours is a  
y as possi  
e R  
Deco  
Texas Hig  
estigated  
E-59  
g Bronze Le  
ug Resistan  
COOPERATI  
COOPERATI  
ELEVATOR  
INS  
DAVID CA  
93-3273  
s there  
n one st  
e 50 states  
these agen  
regarding  
it must be  
is possible  
... each de  
and benef  
discrepan  
or form o  
FAR  
IN  
ICE PHO

### Weekly Report Of Agri-Business News

## Farm-facts

Compiled From Sources Of The Texas Department of Agriculture  
John C. White, Commissioner

#### Low... Ready to Roll... Yours May Be

The number of Texas cattle and calves is down slightly this year, consider what is the Texas swine industry. Pigs on Texas farms as of Dec. 1, 1975, are 780,000. This is 17 per cent below a year ago. The lowest Dec. 1 inventory number since 1965 was 702,000. In the coming five months, it appears that Texas hog production is going to increase. Based on farrowings now through May are estimated at an increase of two per cent from a year ago. The November pig crop totaled 550,000 head, a 10 per cent increase from the number of pigs saved in 1974. 77,000 sows farrowed during this period with 7.1 pigs per litter. The number of pigs kept as of Dec. 1 for breeding are 400,000, a four per cent increase over a year ago; market hogs on Texas farms were down 19 per cent from last year.

The same trend is evident. Hog and pig production totaled 49,600,000 as of Dec. 1; this is 10 per cent above a year ago and 19 per cent below two years ago. Producers intend to increase farrowings eight per cent through May. Projections and a projected litter size indicate a 38,000,000. This is seven per cent more than a year ago but 16 per cent under the December-May period of 1974.

When intentions and litter rate are realized, the increase would be the first since 1971 for the Texas swine industry.

**ALLY ALL MAJOR FIELD CROPS** are now throughout the state. Cotton harvest is finished as of San Antonio-Winter Garden area, cabbage and most remains active. In north Texas, harvest of beans, peas, collards, parsley and mustard while pecan harvest is virtually complete in Texas.

While, Rio Grande Valley farmers will soon be planting; planting dates in that part of the state are March 31. Muddy fields in South Texas have commercial vegetable harvest.

**AL OF 42,000 TEXAS FARMERS** have or soon received a questionnaire from the Texas Crop and Reporting Service. Questionnaires will be used as the basis for making Texas agricultural production.

Some may have received your questionnaire and to fill it out and return it. If so, you are reminded that a picture is needed and plays a vital role in getting an accurate and complete picture as possible of Texas farms.

Among the missing, please return it as possible.

**Rural Accidents**  
December

Accidents on rural highways in Floyd County during the month of December, 1975, according to Sergeant Thurman Keffer, Highway Patrol supervisor of this area. These crashes resulted in no persons killed and four persons injured.

The rural traffic accident summary for this county during the first 12 months of 1975 shows a total of 74 accidents resulting in four persons killed and 38 persons injured.

The rural traffic accident summary for the 60 counties of the Lubbock Department of Public Safety Region for December, 1975, shows a total of 534 accidents resulting in 22 persons killed and 325 persons injured, as compared to December, 1974, with 598 accidents resulting in 11 persons killed and 340 persons injured. This was 64 less accidents, 11 more killed, and 15 less injured in 1975 at the same period of time.

The traffic deaths for the month of December, 1975, occurred in the following counties: Four in Parker, three in Hardeman, two in Lubbock; and one each in Bailey, Dickens, Hookley, Jack, Montague, Palo Pinto, Wise, Young, Gray, Ochiltree, Parmer, Potter and Wheeler.

## Farmers Lauded In Protest Efforts

Escorted by city and county police, some 160 slow-moving farm vehicles converged on Plainview Saturday from the surrounding communities of Kress, Lockney, and Hale Center to demonstrate against low commodity prices and increased operating costs.

They were met at the Hale County Agriculture Center by U.S. Congressman Jack Hightower and State Representative Pete Laney, who spoke to approximately 660 farmers, bankers, implement dealers, and media representatives from Plainview, Lubbock, and Amarillo.

Included in the audience was Plainview City Councilman Tom Almon. Hightower lauded the farmers' efforts at drawing attention to their problem and said, "People outside of farming just don't understand the farmer's plight."

"HE'S NOT looking for a guaranteed income," continued Hightower. "All he wants is a strong economy and a reasonable return on his investment and effort. The price of groceries and other goods is going up, while the price the farmer gets is down 20 per cent in many areas."

In response to a question from the audience, Hightower said action from

Washington would be slow in coming because "It's hard to get 435 people representing different interests from all over the country to agree on anything."

He was interrupted by cheers and applause when he said: "Action will be generated as more and more farmers get involved. Congress is concerned about consumer prices but it had better start getting concerned about consumers having something to consume."

**REPRESENTATIVE Laney** agreed, saying: "People have got to realize that Post Toasties don't really come out of boxes."

In response to other questions, Hightower said he doubted that a 25 to 50 per cent layout of farm acreage this spring would gain enough nationwide support to be effective. And he noted that the government's reluctance to grant 100 per cent parity results from fears of "huge surpluses, depressed prices, and tremendous storage costs."

He concluded his remarks urging farmers to work together and bring their "problem to Congress and the people."

**IN THAT regard,** Maxine Jones, spokeswoman for the farmers, said they planned a trip to Washington sometime in February. Plans are to be finalized and issued shortly, she added.

Jones spearheaded a letter-writing campaign to state and federal officials last November. On December 20th, a group of about 100 farmers staged a parade of farm vehicles from Kress to Plainview, similar to Saturday's demonstration.

In addition, they set up informational rest stops on I-27 and dispensed brochures and coffee to people from 14 states, according to Jones.

**IN COMMENTING** on the large turnout Saturday, Jones said: "Even more farmers would be here if pride didn't keep them from admitting they're in the same boat."

Saturday's protest reportedly will draw nationwide attention on NBC television. The protest almost ended in tragedy when a light plane returning from taking aerial photographs of the parade clipped some electrical lines as it was attempting to land at Hale County airport.

No one was injured and damage to the plane was described as minor. However, power to several parts of Plainview was interrupted for a time.



Cotton production on the Texas High Plains holds great promise and "seed breeders will have much to do with bringing that promise to fruition."

That's what Donald Johnson, Executive Vice President of Lubbock-based Plains Cotton Growers, Inc. told the cotton section of the Texas Certified Seed Breeders Association in Lubbock, January 13. The 250-member TCSBA held its annual meeting at Lubbock's Hilton Inn on January 13 and 14. Johnson was one of some 30 speakers to address the convention.

Citing prospects for a resurgence of U.S. and world market demand for cotton, the comparatively low cost of production on the High Plains, and the fact that High Plains-type cottons perform well on open-end spinning machinery, Johnson told the breeders that the outlook for cotton production in the West Texas area is "highly promising," both in terms of volume and profitability.

He pointed out that U.S. consumption of cotton in the 1975-76 marketing year would probably approach 7.2 million bales, up from 5.9 million the previous year, and said "The consumer trend is definitely back to the natural fibers." Outside the U.S., Johnson said the economies of foreign countries, while lagging behind the U.S., are poised for recovery and that demand for textile products in those countries can be expected to pick up accordingly.

The PCG executive foresees a draw-down of U.S. carryover stocks of cotton from 5.7 million bales on August 1, 1975, to around 3.9 million or less at the beginning of the 1976-77 marketing year and said "that is a healthy sign for cotton prices."

On prospects for U.S. cotton plantings in 1976, the PCG officer said "... producers will have a good opportunity to show an acceptable profit on cotton production in 1976 and will most likely plant additional acreage to take advantage of that opportunity."

Johnson commended the seed breeders for an impressive record of developing improved varieties and strains of cotton for the High Plains area, especially cottons with higher yield, longer staple, and greater strength potential.

He called attention to projections that open-end spinning in the early 1980's will produce as much as 30 per cent of the world's textile yarns, and to research showing that open-end equipment handles the shorter staple, low micronaire cottons with much less trouble than does conventional ring machinery.

"And, other things being equal, this revolutionary system makes stronger, more uniform yarns from these cottons than does the ring system." After cautioning that there are still problems associated with High Plains cotton on open-end equipment, Johnson expressed confidence that research and breeding will solve or at least bring these problems under control to the extent that "High Plains cotton will become a dominant force in the raw fiber requirements of open-end mills around the world."

## Roy Rogers Is Back!

Lubbock-Roy Rogers is back. After a 20-year absence from movie making, the legendary star returns in "Mackintosh and T.J." which will have its world premiere at the Winchester Theatre in Lubbock February 5.

A gala evening is planned for West Texas' first world premiere of any major movie. Roy Rogers will be on hand for the event which will benefit the Ranching Heritage Center at the Museum of Texas Tech University.

The center now is planning its formal opening for July 25, 1976. It is an authentic outdoor exhibit depicting the history of ranching in America's West.

Those attending the premiere will have a reception at 7 p.m. in the lobby of the Winchester. The film will start at 8 p.m. Those who purchase Golden Row tickets will attend an after-theatre supper party with Roy Rogers. Tickets are \$10, \$25, and \$50. All seats are reserved and may be purchased at The Museum of Texas Tech or by writing P. O. Box 4612, Texas Tech University. All proceeds are for the development of the Ranching Heritage Center.

"Mackintosh and T.J." is a contemporary western, filmed at the 208,000 acre 6666 Ranch, 92 miles east of Lubbock near Guthrie. None of the sets were constructed.

All are set against the backdrop of the famous 6666. Instead of a 10-gallon hat and buckskin, Rogers' costuming is usually a straw hat and cotton shirt. Instead of Trigger, Roy's transportation is a broken-down pickup truck.

Rogers' co-star is Clay O'Brien who was born six years after Roy's last picture, "Son of Paleface," was released.

O'Brien is no newcomer, however. Now 14 years old, he began his career when he was 9 in "The Cowboys." He followed that with another John Wayne vehicle, "Cahill, U. S. Marshall." Most recently, he added a Huck Finn appeal to Disney's "Apple Dumpling Gang," and he has played opposite Fess Parker and with James Garner in "One Little Indian."

Rogers, the star of 87 feature films before the long dry spell, chose "Mackintosh and T.J." because of the story. There's action - bronc busting, brawls, a rabies epidemic, and even murder. "But it's the relationship between the tough old cowboy and the fatherless boy that gives the picture its heart," said Roy. Rogers adds understanding to the part as he himself is the father of nine - four of his children adopted and one a foster child.

Director Marvin Chom- BRIGHTER OUTLOOK FOR COTTON - Cotton production and marketing leaders recently told Central Texas farmers that the cotton outlook looks brighter for 1976. Cotton prices have jumped and should continue strong due partially to a decline in domestic production during the last

crop year as well as a decline in world production. At the same time, demand for cotton fiber from the textile industry has increased 47 percent during the past year. Continued emphasis on pest management and new efforts to eradicate the boll weevil should help farmers cope with this serious pest in the coming season.

**Grandparents:**  
This Year Let's Have A Big Valentine from YOU  
Here's A Chance To Make Your Loved Ones Happy!  
Send Or Bring Us A Cute Photo Of Your Grandchild  
(We Promise To Return It Unharmd)  
We'll Place It In A Heart (Like The One On The Right) Including Name, And On  
**Thursday, February 12**  
(The Last Paper Before)  
**Valentine's Day,**  
Your Little Valentine Will Appear In Our Paper!  
Ages 1 Day To 6 Years  
**HURRY, NOW! THE DEADLINE IS February 5th**  
The Cost Is Only \$5.00 Per Heart  
Floyd County Hesperian The Lockney Beacon

## State Hearing Set On Student Fees

AUSTIN (AP) - A state-wide hearing on the controversial student fees issue will be held Jan. 26 in Austin, Joe Kelly Butler, chairman of the State Board of Education, has announced.

Butler set the hearing date Wednesday and invited all school superintendents and local board presidents to speak out on Atty. Gen. John Hill's controversial legal opinion outlawing collection of certain student fees.

The state board upheld Commissioner M.L. Brockette's directive to cease collecting the fees immediately at its regular meeting last Saturday by a 12-8 vote. However, Butler said he was appointing a special committee to study the issue and several board members asked that the fee problem be placed on the Feb. 14 agenda. The Texas Education Agency says a survey shows that Texas schools will have to spend about \$22 million more this school year without the fees for workbooks, driver education, band uniforms and other extracurricular activities.

## INSUR-MATION



SID CATES 3273 JAMES RACE 652-3869

There is so much difference in insurance one state and another? 50 states and therefore 50 different regulatory agencies. Each agency makes up that particular state's rules and regulations. For a policy to be marketed and sold in another state, it must be approved by that state's insurance regulatory agency. Therefore, to have 50 policies... each slightly different, designed to do the same thing and give the same benefits. However, you will find in most cases the discrepancy between policies in different states is in the form of the policy, not in the substance.

**FARM BUREAU INSURANCE**  
PHONE 983-3777 FLOYDADA, TEXAS

OR MORE  
SALE!  
FOOD KING  
YELLOW CL...  
SLICED PEACHES  
39  
CANNED GOOD BUYS  
COCKTAIL  
PEARS  
MATOMO JUICE  
PINTO BEANS  
BEANS  
SLICED BEETS  
SPINACH  
TUNA  
POTATOES  
MATOMO SAUCE  
MATOMO PASTE  
VEGETABLES  
DODDLE SOUP  
MUP  
MINY  
6 BTL. 32 OZ.  
COKE \$1.59  
EPOSIT  
Page's  
tway No.  
ckney, Texas  
hone: 652-2293  
LD OR SCHOOL SUPPLIES  
URGENT  
TISSUE  
TYPING PAPER  
ECT BOOKS  
Y SUBJECT BOOKS  
ing.  
FOOD KING  
FLOUR  
276  
D JANUARY 19-24, 1976

### El Progreso Study Club Meets

The El Progreso Study Club met in the home of Hazel Johnson January 14, 1976. Roll call was answered with many useful hints and stories. A nominating committee, Dimon Schacht, Anna Dell Quebe and Jeanette Marr, to select new officers for the next club year was appointed.

Anna Dell Quebe introduced Virginia Taylor who gave a very interesting and informative program concerning the Bicentennial year for the United States and in particular as it is being observed in Floyd County. The Floyd County Museum has set up a bicentennial committee which has set up a series of projects to be carried out by the people of Floyd County. Some of these such as the archeological dig near the Country Club have been completed already. Others to be done include: enrolling data and marking of historical, compiling Floyd County and family records with the idea of setting up a Genealogical Library of the families in this county, give information for bicentennial minutes on radio and in the newspapers, issuing a quarterly newspaper for the museum, sponsoring an artist a county wide map of all the historical sites in Floyd County, compile a list of Civil War veterans and their records, an oral history of the citizens of Floyd County, an issuance of commemorative coins for our bicentennial celebration. The committee also plans to have a dedication of the museum during this year. They are working to have Floydada and Lockney designated as bicentennial cities. She concluded by asking that each one get involved, because it will take the cooperation of all the citizens of the county to make these projects successful.

### Floydada Firms To Have Exhibits At Fashion Preview

Several Floydada business firms will have exhibits at the Fashion Preview Friday, February 6, in the Masonic Activity Center, 313 W. Georgia. The Floyd County Historical Museum will also have an early day fashion exhibit at the event which is being conducted by the Texas Agriculture Extension Service and the Floyd County's Family Living Committee. Sharon Hulse, Floyd County extension agent will be in charge. Three specialists will be at the preview to present fashion and sewing trends and techniques for all family members. All interested persons are encouraged to attend. The programs are free of charge.

Businesses to have exhibits thus far include Beals, Lakes, Hagoods, The L&J Sears, Montgomery Ward, Betty's Place and Perry's. Others are to be contacted.

Registration and the viewing of exhibits begins at 9 a.m. and will continue until 5:30. Programs scheduled include "Spring Fashion & Fabric Trends", 9:30 until 10:10; "Clothing Dollars and Sense", 10:15 until 10:55; "Care To Sew", 11 until 11:45; lunch break with registration and viewing of the afternoon beginning at 12:30 until 1. Afternoon programs consists of "Quick and Easy Sewing Techniques" from 1 until 1:45; "ABC's of Children's Cloths" from 1:45 until 2:25; and "Closet Ecology" from 2:30 until 3:15.

Specialists on the program include Becky Culp, 10:10; Clothing Dollars and Sense", 10:15 until 10:55; "Care To Sew", 11 until 11:45; lunch break with registration and viewing of the afternoon beginning at 12:30 until 1. Afternoon programs consists of "Quick and Easy Sewing Techniques" from 1 until 1:45; "ABC's of Children's Cloths" from 1:45 until 2:25; and "Closet Ecology" from 2:30 until 3:15.

### Sandhill Hobby Club Meets In Helms Home

Members of the Sandhill Hobby Club met Thursday for a business meeting in the home of Mrs. P. D. Helms. Yearbooks were distributed and discussed, along with other business pertaining to the club.

Mrs. Helms and Mrs. C. B. Carmack served refreshments of salads, chips, dips,

### Floydada Women's Division Of Chamber Of Commerce To Meet

Floydada Women's Division of the Chamber of Commerce will meet Monday night, January 19th at 7 o'clock in the community room of the First National Bank.

All members are urged to be present.

### Senior Citizens Meet January 21

Senior Citizens of Floydada are reminded of the change in their meeting place. Due to conflicting dates, Senior Citizens will meet at 2:30 p.m., Wednesday, January 21, at the community room of the First National Bank.

Members of the 1974 Study Club will present the program and provide refreshments.

Transportation will be provided by the mini-bus.

### Sharon Warren On Dean's List

Snyder - Sharon Warren of Floydada has been named to the Dean's List at Western Texas College for the 1975 fall semester.

The Dean's List is composed of students who made a grade point average of 3.3 or more while enrolled for at least 12 hours of college credit work exclusive of physical education.

Western Texas College is a two-year community college now in its fifth year of operation. Located just south of Snyder on land donated especially for the college, it offers both academic and vocational-technical programs.

Miss Warren, the daughter of Mrs. Doris Hinkle, is a freshman. Maj-Management major at WTC. She is a graduate of Floydada High School.

### Lonnie Robinson On Dean's List

LEWISLAND - A total of nine students from the Plainview and Berger areas have been named to the dean's honor list for the fall 1975 semester at South Plains College, Plainview, Amarillo, Floydada, Idaho, Loveland, Pecosburg, Ralls, Berger, and Miami are represented on the honor list.



Mrs. Ted Eugene Bruce II

### Miss Passmore Is Bride Of Ted Eugene

Miss Cheryl Louise Passmore became the bride of Ted Eugene Bruce II at 7:00 p.m. Sunday, December 28 in the First Presbyterian Church at Brady.

Parents of the bride are Mr. and Mrs. Lindsey Passmore of Brady, Mrs. Ken Bright of Amarillo, and Ted Bruce of Estelino.

Rev. Edward Halffner read the double ring marriage vows before an altar of white spider mums and arch candelabras. Spruce candelabras were on each side of the arch. Side candles were used along with flowers.

Music was presented by Mrs. R. L. Miller, organist, Violinist, Karl E. Steffens, sang "Welcome to My World".

Given in marriage by her father, the bride wore a formal length candelight gown, which she and her mother designed and made. Off-white flower girl dress, the gown featured a high, wide collar, inset waistband, and large cuffs, all of which were covered with extra hand crocheted lace in a flower pattern. Large puffed sleeves added to the gown, which had a fully gathered skirt trimmed with the extra crocheted lace and extended into a chapel length train. The circular candelight tulle veil was trimmed with matching lace. She carried an arched cascade bouquet with baby's breath.

Mrs. Jerry Miller of Floydada was matron of honor. Miss Janet Schmidt of Mason was maid of honor and Mrs. Dorey Edmiston of Brady was bridesmaid. They wore formal gowns with mint green bodices, featuring v-necklines and short puffed sleeves, with the gathered skirts of dark green sculptured velvet. Attendants wore flowers in their hair. Miss Julie Bruce of Estelino was flower girl and was dressed identically to bridesmaids.

Mrs. Kelle of Canadian attended the bridegroom as best man. Steve Purdie of Hartman and Mike Helm of Wichita Falls served as groomsmen. Chad Holland of Lubbock was ring bearer.

Markus McEneaney of Sterling City, Lynn Dismore of McGames, Byron Thomas of Wolfburn, seated guests.

Following the ceremony a reception was held at the home of the bride's parents.

Assisting at the reception were Mrs. Betty Harrel and Mrs. Jimmy Lockhart of Brady, Mrs. Jim Thompson of Wolfburn, Mrs. Danette of Harbino, and Mrs. Elyse Taylor of Livingston. At the bride's home were Mrs. Marie Taylor of Richard Springs and Mrs. Tom Stamell of Lubbock.

Following a wedding trip to New Mexico the bride will be at home in Estelino.

Among courtesies extended to the bride were a gift shower in Floydada, the home of Mrs. Keith Gross was the setting for the wedding style gift shower in Floydada before her marriage.

Guests for the shower included Mrs. J. E. Walker, Peter Clark, Keith Gross, Jimmy Chacker, Keith Gross, James Bruce, Charles, Carl, West, Paul.

**FOOD VALUES ARE plentiful HERE!**

BORDENS 1/2 GALLON **\$1.09**

**ICE CREAM**

FRITOS 4 OZ. TWIN PACK **69¢**

**SUN CHIPS**

3 BOTTLE 32 OZ. PLUS DEPOSIT **\$1.59**

**COKE or DR PEPPER**

JOAN OF ARK 16 OZ. CAN **5/\$1.00**

22 OZ. DAWN LIQUID **69¢**

**DETERGENT**

MORTON MEAT **4/\$1.00**

**POT PIES**

10 LB UTILITY RUSSET **79¢**

**POTATOES**

GOLDEN RIPE **15¢** LB

**BANANAS**

100% PURE **79¢** LB

**GROUND BEEF**

GRADE 'A' WHOLE **49¢** LB

**FRYERS**

**HOT BAR - B-Q DAILY**

WE HANDLE ONLY USDA CHOICE BEEF

On The Wye Floydada

**BE ELECTRIFIED TO ELECTRIC HEAT**

**BE SWEAT-PROOFED**

ASK ABOUT THE HEAT PUMP

**IT'S NOT MAGIC... IT JUST ACTS THAT WAY**

THE ELECTRIC COMPANY

CALL US FOR A FREE PERSONALIZED HOME HEATING COST SURVEY

**SHUGART CO.**

Thurs. Jan. 22

**Thompson Pharmacy**

200 SO. MAIN FLOYDADA

WALCO

# Social Events



James Steven Paschall  
Unite Miss Brooks,  
James Steven Paschall

white, the table had a candelabra arrangement of silk flowers and baby's breath as centerpiece. Rice paper napkins were embossed with "Suzanne and Steve."

Coffee and a tiered chocolate cake with white grapes were on the bridegroom's table covered with pink and appointments of silver.

Misses Kay and Julie Faulkenberry of Floydada, the bride's cousins, distributed rice bags which resembled pink satin roses when they formed the two topiary trees.

Miss Delisa Brooks of Paducah, bride's cousin, played the piano during the reception.

Mrs. Paschall co-hosted the rehearsal dinner with Mrs. Suttle Majors, Mrs. J. C. Wilcox, Mrs. Gerald Piper and Miss Inez Crump. It was held in the Community Center Building where hurricane lights, wedding bells and big pink bows lined the walk. Tables were highlighted with candles and pink and white ribbon rosettes.

Among those attending the dinner were Mr. and Mrs. F. A. Faulkenberry, Mr. and Mrs. Don Faulkenberry and Troy of Floydada. For travel Mrs. Paschall wore a brown pantsuit with white blouse, brown accessories and her orchid corsage.

After a wedding trip, the newlyweds will be at home at 3002 4th Street, Lubbock, where he is majoring in agriculture at Texas Tech. Mrs. Paschall who complet-

## Mrs. Norrell Hostess For Homebuilders

Mrs. Elmer Norrell was hostess for members of the Homebuilders Home Demonstration Club January 13. Members answered roll call with current events.

The announcement was made of the District 2 Training meeting for THDA chairmen, council chairmen, and extension agents to be held Feb. 2, at Municipal Garden and Arts Center in Lubbock. Mrs. J.P. Taylor of South Plains, Mrs. Bill Smith and Mrs. Sharon Hillis of Floydada will attend the meeting representing Floyd County.

Mrs. Gordon Mayfield in December requirements for her bachelor of science degree in home economics from Tech, is now enrolled for further studies in education. Both are Paducah High School graduates.

The bridegroom served three years in the Army with a tour of duty in Germany.

Attending the wedding from Floydada were: Mr. and Mrs. F. A. Faulkenberry, Mr. and Mrs. Scott Faulkenberry, Kay, Julie and Joe, Mr. and Mrs. Don Faulkenberry and Troy, Mr. and Mrs. Charlie Perry and Mr. and Mrs. Mac Smitherman.

announced the Family Life and Planning program to be held Feb. 6 in Lighthouse Electric with registration starting at 9 a.m. Various programs will be presented including wardrobe planning and spring fashions. The meeting is open to anyone interested.

New Yearbooks were distributed during the meeting, then Mrs. Raymond Williams gave an informative program on Social Security benefits. Seven wise ways to whip inflations was presented by seven club members.

Refreshments were then served by Mrs. Norrell, to Mmes Doris Huckabay, Gordon Mayfield, Bill Smith, Ruth Trapp, John Walker, Ernie Widener and Raymond Williams.

Club will meet again January 21 in the Gordon Mayfield home.

### FLOYD DATA

Mrs. Edell Moore underwent surgery Monday in St. Mary's Hospital in Lubbock. Mrs. Moore is reported doing fine and expected to be home by Monday.

### FLOYD DATA

Mrs. Jean Jarrett flew to Galveston Thursday to be with her critically ill father, Lee Carver, who is a patient in John Sealy Hospital. Carver, who resides in Floydada, has been a patient there for the past three weeks.



You can perk up a green salad by adding freshly minced parsley, minced scallions, minced chives, any fresh or dried herb (tarragon, basil, chervil) minced.

## JANUARY CLEARANCE

### NOCONA BOOTS

GROUP \$35.00 - \$35.00  
SOME - \$20.00

### TONY LAMA

REDUCED TO AS LOW AS \$39.00

### COWTOWN BOOTS

\$26.00 ON SALE

### TEXAS BOOT

REDUCED TO \$30.00

### KIDS BOOTS

GROUP REDUCED

### ALL SHIRTS

CUT TO \$7.00

### DOWN COATS

A FEW LEFT AT GREAT SAVINGS

### FELT HATS

40% OFF

### COATS

\$25.00 VALUE TO \$14.95

### SPORT COATS

WESTERN \$49.50 VALUE TO \$25.00

### SUITS

REDUCED FROM \$75.00 TO \$50.00



SALE STARTS JANUARY 15TH

SALE ENDS JANUARY 24TH

104 S. MAIN

# Dyson's

983-3414

# WOW ... THIS IS THE ONE!

## DeeDee's JANUARY Fashion CLEARANCE

### January Clearance Sale Continues

### January SAVINGS UP TO

# 50%

### FINE LINES - GREAT SELECTIONS

- ✓ SPORTSWEAR
- ✓ DRESSES
- ✓ PANT SUITS
- ✓ PANTS & TOPS
- ✓ COATS
- ✓ SWEATERS



We'll Have Extra Sales Help For Your Convenience In Shopping these Values

## KEN'S "The Man's Shop" JANUARY SALE CONTINUES

THIS IS THE BIG SALE YOU DON'T WANT TO MISS!

**DeeDee's the lady's shoppe**  
3209 OLTON ROAD  
ADJOINING KEN'S "THE MAN'S SHOP"  
IN PLAINVIEW

PLEASE NO EXCHANGES NO LAY-AWAYS ON SALE MERCHANDISE

rows were ex-  
Miss Connie  
ks and James  
all at 6 p.m.  
January 10, 1976,  
ist Church of

Herman Lan-  
or, performed  
ring ceremony  
candle arches  
a chapel arch  
Mrs. Mark W.  
Norman Ferris  
Jo Ann Stelter

is the daughter  
Mrs. Delwin  
the bridegroom  
of Mrs. C. M.  
of the late Mr.  
of Paducah. The  
granddaughter  
Mrs. F. A.  
of Floydada,  
by a student  
Lockney High

aisle cloth was  
bride's entrance  
es of garland  
twined with a  
three hurricane  
with white pew

riage by her  
wore a formal  
ite knit chiffon  
with a high  
ckline of Brus-  
ented with seed  
Camelot sleeves  
a ruffle at the  
Empire bodice  
r v-yoke edged  
p hand of lace.  
red A-line skirt  
into a chapel  
A deep flare  
d the hemline of  
rain. The head-  
Camelot crown  
lace holding a  
h veil of illusion.

ed a cascade  
at of white orchid  
white roses and  
th with stream-  
satin ribbon,  
and roses.

ething old, the  
necklace set  
y, given her by  
room, brought  
a during his  
my duty there.  
er dress; an opal  
arrowed from her  
blue was her  
and she wore a  
er shoe.

ven Pearson of  
as maid of honor,  
e waist gown of  
atin was enhanc-  
otted Swiss and  
Bridesmaids were  
ie Smith, Mrs.  
hall, the bride-  
ster-in-law; and  
Cheyne, all of  
nd Mrs. Terry  
luff Date. Each  
ses identical to  
maid of honor and  
ite satin umbrel-  
with silk flowers.  
risti Brooks of  
ousin of the bride,  
t girl. She wore a  
in dress with  
eeves and pink  
flowers filled the  
er carried.

YOYD COUNTY  
HESPERIAN

each Sunday and  
at 111 E. Mo. St.  
Texas 79235. Sec-  
postage paid at  
Texas 79235. Wen-  
y, editor Subscrip-  
Local \$8.50 a year.  
Area: \$9.50.

Of Ted Eugene B

usband, and  
of which were  
a eru hand  
in a flower  
puffed slee-  
s the gown,  
ully gathered  
with the eru  
and extended  
length train,  
ndlelight tulle  
immed with  
She carried  
cade bouquet  
eath.

Dorcias

Meets W

Mrs. Tur

Dorcias S.  
class of the  
Church met at  
home of Mrs.  
Tuesday.

The meeting  
Mrs. A.R. Em-  
ing. "Some E-  
by Sybil Leon-  
"Mother Taught  
Pray".

Mrs. R.A. G-  
er of the class,  
contests, then  
Meredith led in  
ring bearer.

Birthdays  
each member,  
sented to Mrs.  
and Mrs. Car-  
birthdays were  
Mrs. Garrell  
before refresh-  
served by Mrs.

Following re-  
members had  
singing seven  
favorite hymns,  
ed at the piano  
Goins and Mrs.  
Present for  
wore Mmes.  
head, R.E. T-  
Meredith, A.C.

wedding trip  
to the couple  
in Estelline.  
esies extend  
prior to the  
ded a gift  
yodada. The  
Keith Gross  
ing for the  
gift shower.  
ght school in  
e her marri-

the shower  
es. J. E.  
Clark, Keith  
Crader, Rich-  
mes Poole,  
Scott Faul-

WALLEN  
COLOR P  
ASK  
8 x 10  
OFFER

# A & M Training School Course Begins January 26

A&M Extension Training School instructor Perry Thompson will be in Floydada January 26, 27, 28 and 29 to teach a course entitled "Development In Supervision And Management."

The courses will be taught in the Massie Activity Center from 6:30 to 9:30 each evening.

This is the second course in the Supervisory Development Program and all managers, supervisors, superintendents in all types of business are invited to attend the course. The enrollment fee is \$40.

The objective of the course is to give the supervisor a standard and a picture of himself so that he can analyze and begin to improve his techniques in supervision.

The topics are: supervision in management, principles of supervision applied to specific problems, cooperation and productivity, control of waste and self-assessment. More information and enrollment may be made at the A&M office in Floydada.

## LOCKNEY GENERAL Hospital Report

January 8-15, 1976

Ella Casey, Lockney, admitted 12-13, continues care.

Hattie Tate, Lockney, admitted 1-3, dismissed 1-13.

Clyde Farish, Lockney, admitted 1-7, continues care.

Harold Griffith, Lockney, admitted 1-7, transferred 1-12.

Catalina Q. Delgado, Floydada, admitted 1-9, continues care.

Belle Olive, Silvertown, admitted 1-9, continues care.

Linda Vick, Floydada, admitted 1-10, baby boy James Lee, born 1-10, dismissed 1-11.

Ruth Cox, Lockney, admitted 1-10, dismissed 1-13.

Luevinnie Johnson, Quitaque, admitted 1-10, continues care.

Pauline Watson, Lockney, admitted 1-11, dismissed 1-15.

Lionor Armandaris, Plainview, admitted 1-12, baby girl Nidia Elvia, born 1-12, dismissed 1-14.

Virgil Thomas, Lockney, admitted 1-12, continues care.

W. D. Calson, Lockney, admitted 1-6, continues care.

Alice Mitchell, Lockney, admitted 1-12, dismissed 1-14.

Myrtle Lloyd, Lockney, admitted 1-13, continues care.

Elida Perez, Floydada, admitted 1-14, continues care.

Thur. Jan. 22

KING SIZE WALLET CREATIVE COLOR PORTRAITS FOR ONLY

# 9 99¢

NO LIMIT

Extra Charge for GROUPS

GET PICTURES MADE OF GRANDMA, GRANDPA, DAD, MOM AND ALL THE LITTLE ONES AT THESE SAME LOW PRICES!

ASK About Our FREE 8 x 10 OFFER

SHUGART COLOR PHOTOS

THOMPSON PH. 983-5111

PHARMACY

200 SO. MAIN FLOYDADA, TEXAS

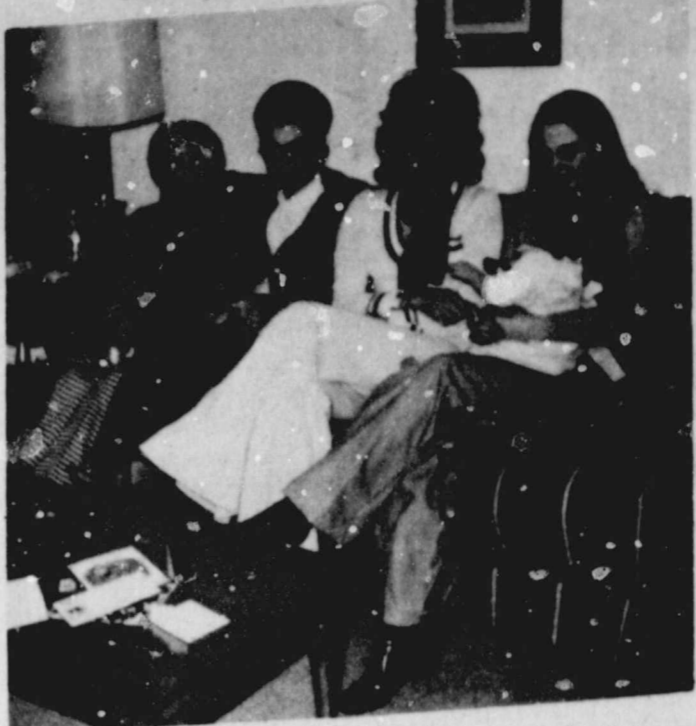
**"We built the world's largest car insurance company on low rates and good service..."**

It seems when you consistently offer better service and protection, at low rates, the word gets around. Drop by or give me a call. You'll find there's a world of difference with State Farm.

BRITT GREGORY  
112 W. MO.  
983-3125

Like a good neighbor, State Farm is there.

STATE FARM MUTUAL AUTOMOBILE INSURANCE COMPANY  
Home Office: Bloomington, Illinois



FIVE GENERATIONS...were present Christmas Eve at the Earl Cooper home in Lockney. Pictured are Mrs. Eva Wood Finley, Plainview; Mrs. Kathleen Finley Cooper, Lockney; Mrs. Shirley Cooper Beedy, Los Angeles, California; Mrs. Cindy Beedy Monden, Stinnett; and 10 month old Chere Monden. At the time of her birth, Chere made the fifth generation three ways.

### What's Cooking

At LOCKNEY SCHOOLS

January 19-23, 1976

MONDAY  
Tuna shortcake  
Buttered peas  
Diced carrots, biscuits  
Milk - apple crisp

TUESDAY  
Swiss steak  
Harvard beets  
Mashed potatoes  
Brussels sprouts  
Hot rolls, milk  
Prune cake

WEDNESDAY  
Fried chicken  
Scalloped potatoes  
Buttered asparagus  
Hot rolls, milk  
Banana cobbler

THURSDAY  
Ham and sauerkraut  
Pinto beans  
Carrot stick  
Buttered corn  
Biscuit, milk  
Vanilla pudding

FRIDAY  
Hamburger  
French fried potatoes  
Hamburger salad  
Mustard, milk  
Applesauce, gingerbread

## Lockney Care Center Capers

By Linda Cumble

Hil! Another week has flown by. We have been busy here at the center. We have had lovely devotions this week. Estevonals played the piano for us Tuesday morning and Ann McCormick played for us on Thursday morning. Thanks to everyone who had a part in the devotions this week.

We worked on crafts Friday, Monday and Wednesday p.m. We are still making pexy dolls, clothes hangers and owls made out of art-foam. We had several residents working with us.

Tuesday, Mable Foster and Edna Phillips came and took several of our residents on a bus trip to Floydada. Rode around and viewed the scenery. We stopped for ice cream on the way home. Those making the trip were Juan Garcia, Lewis Roberts, Simplicio Leal, Mr. and Mrs. D. W. Burke, Anna Deitrich and aide, Virginia.

Thursday we played Bingo. Our grand prize winner was Elsie Woodall. She won a box of bath powder. Everyone had a great time. Monday, Lena Brotherton came and fixed the ladies' hair. We sure do appreciate Lena for doing this for us.

We were saddened this week by the death of one of our fine ladies, Annie Patton. We will miss her very much. We wish to extend our sympathy to the family. May God give them the strength and courage to bear onward.

Mr. Virgil Thomas is in the hospital this week. We wish him a speedy recovery and hope he will be home with us before long.

We want to welcome a new resident to the center. She is Mayme McGhee. We hope she will make herself right at home with us.

The beautiful flowers were shared with us this week by the family of Annie Patton.

Those bringing us egg cartons, clothes, hangers, magazines this week were: Eva Whitfill, C. C. Bailey, Mable Foster, Mrs. Walter Reeves, and Beth Newton. Thanks to each of you and also thanks to those who brought items whose name I didn't get. We appreciate these items so much.

We want to welcome Mrs. Park back home with us after a recent stay in the hospital.

Several of the ladies from the First Baptist Church are doing some mending for us. Thanks ladies for doing this for us.

We have had many local visitors this week. We have enjoyed your visiting with us.

We have also had many out of town visitors. These include: Mr. Frizzell had Clyde Frizzell from Floydada; Mr. Marble had Faye Jackson from Floydada; Mr. Turner had Matt Norrell from Floydada; Mr. Leal had visitors from Quitaque; Jack Harris had visitors from Silvertown; Mr. Word had Marian Word from Canadian; Wallis Word from Dallas; and W. O. Word from Plainview. Mrs. Gridler had Mr. and Mrs. Art

## Shortage Of Physicians Tops Health Needs

A shortage of physicians, the need for financial health care for the medically indigent and underutilization of existing health care facilities are among the chief problems cited in a recent study on Lubbock's health care delivery system.

Prepared by West Texas Health Services, Inc. (WTHS), the study on local health care was conducted during a three-year period. A report on the study soon will be released.

During a Thursday night meeting the WTHS board of directors adopted the upcoming report, which identifies problems in the health care delivery system and proposes plans to correct the trouble areas.

WTHS is an Experimental Health Services Delivery Systems Project funded by the U.S. Department of Health, Education and Welfare (HEW). The local agency has been one of 18 similar experimental projects in the nation operating under contract to HEW to conduct studies and experiments in the planning and delivery of health care.

As a result of a new national health planning program implemented by Public Law 93-641, the experimental health projects must be ended by June 30, WTHS director Larry DePriest told board members. The agency's successor in the health planning field will be an area health systems agency.

According to DePriest, all the data collected by WTHS and a summary of the agency's analyses and recommendations on health matters will be passed on to the health systems agency.

DePriest advised board members that South Plains Health Systems, Inc. (SPHS) has completed its application

Ratzliff from Floydada; Mr. and Mrs. W. H. Hartley had Leona Jameson from Plainview; Mrs. Hill had James Hill from Lamesa and other out of town visitors. Mr. and Mrs. D. W. Burke had Jonelle Fawver and Mildred Cates from Floydada; Mrs. Dyer had Floreine Cobb and other visitors from Quitaque; Mrs. Edwards had Alma Rape and Penny Edwards from Floydada.

Myrtle Burke had Mrs. Ted Cooper from Breckenridge and Louise Harker from Ingleside, Texas; Mrs. Christian had Mrs. Houston Green and baby and Mrs. Jean Miller and baby from Sterley, Mr. and Mrs. Ronnie Christian and family from Matador. Also Mrs. Carl Wilson from Floydada; Mrs. Bryant had Glenda Jean Baker from Amarillo, Mae Chandler from Abilene, Mr. and Mrs. Slim Everson from Vernon and Mr. and Mrs. Jimmy Bryant from Plainview; Mrs. Hamilton had Mr. and Mrs. Art Ratzliff from Floydada. Mrs. Rogers had Howard and B. Rogers from Flomot, Donna Sue Deagan from Flomot, Mrs. Stella Davis from Flomot and Mrs. Nat Davis from Matador; Mrs. Carwile had J. R. Carwile from Amarillo; Mrs. Ormond had Dale Brown from Garland and Mrs. Ted Cooper from Breckenridge. Mrs. Woodall had Mr. and

FLOYDADA LIGHT POWER.

clean electric energy will power progress in 1976

Electric utilities have been one of America's fastest growing industries, normally doubling capacity every 10 years. The rapid growth of this industry has made possible the tremendous industrial capacity of our Nation... It has lightened the burdens of homemakers... It has made our offices and commercial establishments more comfortable and more attractive.

There is every indication that your electric energy requirements will continue to grow. And it is the responsibility of your electric utility and others throughout the country to meet the needs of their consumers.

In the future years, tremendous quantities of electrical energy will be required to reduce pollution and protect our natural resources. Electric automobiles and electrified rapid transit systems may remove much of the pollution now created by internal combustion engines. Electric energy will be increasingly used to dispose of waste, re-cycle waste, remove salt from sea water, and treat sewage. Electric heat and climate control devices may be the means to stimulate the abundant, year-round crop growth needed to feed a growing world population.

To meet your long-range future needs for electric energy without detriment to the environment will be a difficult, expensive and time-consuming job. But we believe that with careful planning, intensified research and determined efforts, clean electric energy will be a positive force in protecting and enhancing our environment today and for generations to come.

SMITH CORONA

# CORONAMATIC 220

ELECTRIC PORTABLE TYPEWRITER

This typewriter has a totally new ribbon system - the Coronamatic Cartridge. It can be changed in three seconds from utility fabric to premium quality carbon film. Cartridges also contain different colors, correction ribbon and metallic ribbons. The Coronamatic user can choose and change ribbons to match the needs of the job.

CORONAMATIC 1200

HESPERIAN OFFICE SUPPLY

FLOYDADA

BEACON OFFICE SUPPLY

LOCKNEY

**Practices Important In Corn Borer Control**

expected surviving the winter," Warren says. "However, cultural practices which expose the top roots to freezing weather will greatly reduce the number of corn borers surviving the winter. In the High Plains, sufficiently cold weather to kill exposed larvae can be expected up through February."

Warren says if a producer is planning to graze his stalks, some type of cultivation is still necessary and the earlier this is done in the winter, the more effect it will have on hibernating borer larvae.

"If no cultivation is applied until after the severe part of the winter is over, deep breaking may reduce populations some,"

Warren adds. "Deep breaking often buries the borers too deep for the adult moth to emerge in the spring."

Warren encourages area-wide or community-wide

stalk destruction programs to help control the pest. With the prediction that corn production will increase next year, practices which decrease borer populations should be undertaken now.

**Encouraging News About Our Energy Supply**

By W. Donham Crawford  
President, Edison Electric Institute & Chairman of the Federal Energy Administration's Electric Utilities Advisory Committee

Q. Is nuclear power economical?

A. Favorable economics is one of nuclear power's most important advantages. It costs considerably less to produce electricity from a nuclear

power plant than it does from one fueled by oil, coal or natural gas. The initial capital costs for nuclear power plants are higher than for comparable fossil power plants, but the gap between them is constantly narrowing.

The lower cost of fuel gives nuclear power its big advantage. This factor greatly outweighs the higher capital costs of nuclear plants and generally results in savings to consumers of millions of dollars annually.



ARTIST OF THE MONTH...Mrs. Travis Jones is pictured with her art work which will be displayed through the month of January at the Floyd County Historical Museum.

AIC PATRICK L. RENDON of the 308th Security Police Squadron, USAF, graduated from the Security Police Academy December 22. He will now be stationed at Little Rock, Ark. He is the son of Mr. and Mrs. Pat Rendon of Floydada.



thru Jan. 21, 1976. We reserve limit quantities. None sold

**The People Pleasin' Store**

Collect Duet China Every Week For The Next 15 Weeks And Save Every Time This Weeks Feature Bread & Butter Plate 49¢ with each \$3.00 purchase

Discover The People And Events That Made Our Nation Great With "Our Great Heritage" This Weeks Special Vol. 2 Revolutionary \$1.99 (Revolutionary 1763-1783)

**Dairy**

**Frozen Specials**

Piggly Wiggly Buttermilk Local Brand Cottage Cheese Piggly Wiggly All Varieties Refrigerated Cookies	1/2-Gal. 89¢ 6-oz. 59¢ 16-oz. 89¢	Interstate French Fry Potatoes 6 Varieties Frozen: Queen Cooking Pouches Morton's Apple, Cherry or Peach Fruit Pies Chef Boy-Ar-Dee 4 Varieties Pizza	2 2-Lb. Bag 89¢ 4 5-oz. Pkg. \$1.00 24-oz. Pkg. 69¢ 12-oz. Pkg. 89¢
--	---	---	--

We Gladly Redeem Federal Food Stamps

**Rain Check**

Piggly Wiggly now marks the price of all its advertised items on the package itself... so that you can be assured that you are being charged the advertised price at the checkout.

**Advertised Items**

If we are sold out of the sale item you particularly wanted, we will gladly give you a "Rain Check" guaranteeing you of the sale price if presented within 30 days.



Piggly Wiggly Vegetable Oil 69¢

1-Lb. 49¢

Meat or Mushroom Ragù

Spaghetti

Sauce 59¢

24-oz. 79¢



Superb Valu-Trim Chuck Steak \$1.19

\$1.19 Lb.

NEW STORE HOURS DAILY 8 AM - 9 PM SUNDAY 9 AM - 8 PM

Superb Valu-Trim Rib Steak \$1.39

Superb Valu-Trim Round Steak \$1.39	Superb Valu-Trim Round Steak \$1.89	Farmer Jones Franks 12-oz. 89¢	FARMER JONES Bologna Pack 1-Lb. \$1.39
Superb Valu-Trim Sirloin Steak \$1.29	Superb Valu-Trim, Bone In Round Steak \$1.99	Farmer Jones Franks 1-Lb. \$1.19	PIGGLY WIGGLY SLICED CHEESE EGGS PIGGLY WIGGLY SINGLE SLICE CHEESE 12-oz. 89¢
Fresh Ground Beef 1-Lb. 89¢	Superb Valu-Trim, Bone In Rump Roast \$1.39	Farmer Jones Bologna 12-oz. 89¢	Swiff's, 10 to 14 Lb. Arg. Turkeys BUTTERBALL 1-Lb. 79¢
Lean & Meaty Short Ribs 1-Lb. 69¢	ARM ROAST \$1.39	Farmer Jones Sausage 1-Lb. \$1.39	Piggly Wiggly Fish Sticks 6-oz. \$1.19
BONELESS Chuck Roast \$1.39	SHOULDER ROAST \$1.19	Normal Link Sausage, Little Sizzlers 12-oz. \$1.09	Mr. Paul's, Fried Fish Fillets 1-oz. 85¢
TOP ROUND STEAK \$1.89	SWISS CHEESE 6-oz. 93¢	Smoked Hot Links 1-Lb. \$1.09	

Superb Valu-Trim Chuck Roast Lb. 89¢

California Sunkist Navel Oranges 5/\$1.00

Texasweet Ruby Red Grapefruit Lb. 19¢

Florida Zipper Skin Tangerines Lb. 29¢

Florida Sweet Corn 6-EARS \$1.00

Delicious New Red Potatoes Lb. 19¢

Golden Ripe Bananas 12 1/2-oz. 22¢	Texasweet Juice Oranges 5-Lb. 99¢	Crisp Crunchy Radishes 1-Lb. 29¢	Colts 29¢
Medium White Mushrooms 1-Lb. 98¢	Clip-Top White Turnips 1-Lb. 29¢	Sliced Size Tomatoes 1-Lb. 59¢	

Piggly Wiggly Applesauce 2 25-oz. Jars \$1.00	Piggly Wiggly Whole Tomatoes 3 16-oz. Cans \$1.00
Piggly Wiggly Yellow Cling Peaches 3 16-oz. Cans \$1.00	Piggly Wiggly Mixed Vegetables 3 16-oz. Cans \$1.00
Piggly Wiggly Bartlett Pears 3 16-oz. Cans \$1.00	Piggly Wiggly Tomato Sauce 3 15-oz. Cans \$1.00
Piggly Wiggly Fruit Cocktail 3 16-oz. Cans \$1.00	Piggly Wiggly Green Peas 3 16-oz. Cans \$1.00

Bayer Aspirin 50-Ct. 69¢	Gillette Deodorant, Bronze Can 7-oz. 99¢
Cough Mixture Vicks Formula 44 6-oz. 1.49	Regular or Extra Dry Jergens Hand Lotion 10-oz. 99¢



Grape Welch's Jelly 99¢

2-Lb. Jar

Piggly Wiggly Sweetmilk or Buttermilk Biscuits 10¢

8-oz. Can

Laundry Detergent 79¢

Piggly Wiggly Facial Tissue 3 \$1

Piggly Wiggly, Instant Chocolate Drink 2-Lb. Can \$1.49

Piggly Wiggly Pancake Mix 2-Lb. Box 59¢

Pace's Picante Sauce 16-oz. Jar 79¢

Piggly Wiggly Dry Dog Food 5-Lb. Bag 99¢

Piggly Wiggly Regular Quarters Margarine 3 \$1

Cal. 69¢

Piggly Wiggly 375 Sheet 2 Ply Bath Tissue 4-Ball Pkg 69¢

Chocolate Drink, Nestle's Quik 2-Lb. 1.89

Piggly Wiggly Pancake Syrup 32-oz. 99¢

# LET'S GO!!!! MEAN GREEN!!!!

## AT LONE STAR

# Neighbors Help Sick Friend

Jerry Cawley, Floyd Lyles and Kenneth Holt found themselves unofficially "in charge" of the proceedings, but everybody pitched in. There was one "lady tractor-driver".

It started out as "gin talk"—a couple of Harold Griffith's neighbors were saying they might do some plowing for Griffith because he had suffered a stroke and was in a Lubbock hospital, and his wife, Mary was in the same hospital for surgery—and before it was finished, friends and neighbors of the Griffiths had turned out in full force. At noon Wednesday, some 30 tractors and drivers were at work on Griffith's land in the Lone Star community northeast of Lockney. Others had arranged to serve the crew a fried chicken lunch at the old Lone Star school building; arrangements had been made to deliver fuel (at a discount) to the work site; a chemical company had agreed to put down fertilizer without charging an application fee; and the spirit of the moment was in evidence all over the north Floyd County community.

Joan King, a Lone Star neighbor, joined the crew. The volunteers weren't limited to residents of the Lone Star area—they came from all over the north end of the county.

One conservative estimate put the value of equipment on Griffith's approximately 500 acres Wednesday at three-quarters of a million dollars.

Cawley figured they'd be able to plow the land twice before sundown Wednesday and probably "tandem" some, to have the land ready for listing in three or four weeks. Later some of the crew may come back to put down herbicide and list.

Griffith is well known in the Lone Star area. According to Cawley, Griffith was born in a dugout near his present home and has lived there all his life.

A partial list of those who helped Wednesday (we tried to make the list as complete as possible, but undoubtedly someone has been inadvertently left out. So many were involved that even Cawley was not sure exactly how many "good neighbors" turned out for the event):

Don Curry, Bill Sherman, Tom Johnson, Robert Carthel, Johnnie Belt, Joe Rexrode, Larry Christian, Hubert Frizzell, Joan King, Earl Kellison, Garland Francis, Keith Phillips, Larry Jarrett, Kenneth Wofford;

Keith Jackson, Gale McPherson, Jeff Terrell, Shorty Hartman, Reed Lawson, Bob Merrell, Benny Cox, Jack Frizzell, Clois King, A. O. Foster, Floyd Jackson, Ray Sissney, Joe Bennett, Tommy Sherman;

Foy Westfall, Bill McCullen, Archie Jones, Johnny Tilley, Williams Prater, Harold Sheppard, Maya Robles, Ramiro Garcia, Gariand Francis, Ronnie Thornton, Charlie Henderson, Danny Lambert;

Huford Sue, Don Sutterfield, Ken Nevins, Red Lytle, Sal Barclay, Jerry Barclay, Felipe Rodriguez, Adelaido Vargas, Ronald Carthel, Pat Frizzell, Don Smith, Jerry Cawley, Barbara Cawley, Floyd Lyles, Kenneth Holt; Lone Star Gin and Evans Gin (furnished lunch), Texas Energy Company (delivered fuel), Riverside Chemical Company (fertilizer).



Helping out...

JERRY CAWLEY AND JOAN KING—two of many who helped plow Harold Griffith's land Wednesday.



JV WHIRLETTES are pictured in the four overtime with Lockney last week. Whirlettes left to right are: Kathy Davis, Rhonda Bennett, and Jill Poage.

REMAINING WHIRLETTES	
January 20	Idalou
January 23	Dimmitt
January 27	Lockney
January 30	Tulia
February 3	Abernathy
February 6	Idalou

REMAINING WHIRLWINDS	
January 20	Idalou
January 24	Dimmitt
January 27	Lockney
January 30	Tulia
February 3	Abernathy
February 6	Idalou
February 10	Crosbyton
February 13	Lockney
February 17	Tulia

# GREEN!

WE'RE BACKING THE MEAN GREEN ALL THE WAY TO STATE. OUR BEST WISHES GO WITH THE COACHES AND THE PLAYERS WHO ARE DEDICATED TO REPRESENTING OUR SCHOOL DURING THE BASKETBALL SEASON.

WE URGE EVERYONE TO ATTEND THE GAMES.... CHEER THE WHIRLWINDS AND WHIRLETTES ON TO VICTORY.

This Page Is Sponsored And Made Possible By The Following Merchants

- Producers Co-Op
- Elevators
- Caprock Motor Parts & Hardware Inc.
- Cornelius Conoco Service
- Dougherty Grocery & Hardware
- Floydada Cooperative Gins Inc.
- Babe's Service Center
- Oden Chevrolet-Olds.
- Floydada Implement Co.
- McCoy Gin Inc.
- Baker Insurance Co.
- King's Restaurant
- Fieldan Motel
- Quality Body Shop
- Betty's Place
- Roberts Gun Shop
- City Auto Inc.
- Dairy Queen
- Martin & Co.
- Floydada Nurs Home
- Higginbotham Bartlett Co.
- Beall's Department Store
- Consumer's Fuel Association
- Federal Land Bank Assoc.
- Adams Well Service
- Case Power & Equipment



IN THE WHIRLETTES victory over Lockney game Nanette Burk and Christy Stringer look up at the hope Lockney shot doesn't roll in.





POSTER WINNERS (l to r front row) Kelly Ferguson, Treva Hambright, Bobby West, Jim Brad Fulton. (back row l to r) Andrews Ward teacher Mrs. Eula Peters, Gary Rinker and Eyles. (Staff Photo)

### Lada Sixth Graders Make Safety Posters

Grade class at R. C. Andrews Elementary assigned safety posters to be made as the subject for the poster. The students could either work along or in pairs. Any phase of safety could be used as a subject for the poster. Students were told a prize would be given for the best poster in each grade section, and the best over all poster. Judges were Miss Joyce, Miss Moosberg and Miss Worcester. Bicentennial coins were awarded as prizes.

The winners in each grade section were: 6B - Moises Reyes; 6C - Gary Rinker; 6D - Jim Waller and Brad Fulton; 6E - Bobby West. Over all best poster - Treva Hambright and Kelly Ferguson. The posters have been displayed the past week in the hall of R. C. Andrews School.

### R. C. ANDREWS ELEMENTARY SCHOOL HONOR ROLL-3rd Six Weeks - GRADE 4

"A" - Rusty Simpson, Sam Crabtree, Timothy Lipham, Cindee Davis, DeLyn Ramsey, Patrick Lloyd.  
 "B" - Kenny Crawford, Mark Hatley, C. L. Robinson, Stanley Sanders, Cliff McLain, Richard Mitchell, Wayne Morren, Cheryl Goen, Christy Pate, Skipper Hicks, Shannon Shurbet, Christy Pruitt, Melet Nolan, Quint Anderson, Pete Bramblett, Joe Faulkenberry, Martin Morales, Tammi Galloway, Anita Nichols, Vicki Powell, Diana Vallejo.

GRADE 5  
 "A" - David Carr, Tammy Reams, David Myrick, Christi Norrell, Lillian Polanco, Wally Davis, Teresa Spurlock.  
 "B" - Luis Barrera, Kevin Helms, Grant Turner, Njia Campbell, Shela Ehler, Eloisa Ocaez, Rhonda Ratliff, Shawnda Sanders, Don Cheek, Carol Cochran, Debra Patterson, Gilbert Schwertner, Mysti Younger, Danny Crawford, Michael Lipham, Bobby Smith, Terry Marquis, Calvin Coleman, John Leatherman, Ramon Martinez, Pam Cathey, Sophia Garza, Tracy Harrison, Sandra Robinson, Belinda Vallejo.

GRADE 6  
 "A" - Stacy Graham, Mark McCormick, Todd Beedy, Brent Duke, Steve Griffin, Bryant Higginbotham, Gary Rinker, Susan Turner, Deanne Howard, Jim Waller, Gail Phillips, Suzie Ehler, Debra Alfaro, Todd Denton, Brad Fulton, Norman Allen, Kelli Ferguson.  
 "B" - Francisca Bueno, Chris Fulton, Tonya Tunnell, Darrell Gooch, Susan Hendrix, Treva Hambright, Monte Williams, Leslie Strickland, Hope Hartsell, Triss Coleman, Troy Neely, Dorcas Baker, Brenda Hicks, Ricky Heflin, Van Lowrance, Ricky Peralaz, Melanie Cox, Patty Gonzales.

Recently, Mr. and Mrs. Donny Jackson, Clint, Chad, Shea and Cody of Hurst and Rev. David Ray and Mrs. Jackson, Nancy and David of Winstonsboro were here. Joining them in Mr. and Mrs. David Jackson's home were Mr. and Mrs. Charlie Cottrell and Mr. and Mrs. Joe Jackson, grandparents of David and Donny. Mrs. Donny Jackson is the former Judy Johnson and while here they also visited with her parents and family, Mr. and Mrs. Lavon Johnson.

Joan King flew to Fort Worth last week for a visit with a friend, Laura Wilson and on to Houston for a weekend visit with her brother and his wife, Ben and Vicki King.



MRS. CARL LEE, owners of the White's Auto Store in Lockney, recently attended the semi-annual merchandise showing held January 16 at the Statler Hilton Hotel in Dallas, Texas. The Lees were part of a group of three hundred dealers from an eight state area who attended the show and viewed the new lines of merchandise to be offered for the 1976 summer selling season. White's is joining in the nation's Bicentennial celebration and several lines of merchandise slanted toward this event were featured. During the show, the Lees also received counseling concerning financing and advertising. White's is a chain of over 700 company owned stores located in eighteen states ranging from the southwest to the northeast.

### of interest to women

#### Heart Set For February 3rd

American Heart Association is sponsoring a bridge tournament luncheon Tuesday, January 20, 1976 at 10 a.m. at Lighthouse. Out of town guests invited to attend. Tickets are \$3 which covers the luncheon consisting of spaghetti, salad and all the trimmings, as well as the bridge tournament. Prizes will also be awarded. For additional information contact Mrs. Sam Fowler.

#### Star HD Club Meets

Star Home Improvement Club met in the home of Mel Rexrode with Mrs. Herman presiding. The six month Year Book material was discussed. The next meeting is to be held with Mrs. C. L. King January 20, 1976 at 2 p.m. The program to be given by the agent on Creating & Furnishing An Outdoor Living Area.

### Lockney Locals

Mr. and Mrs. Don Haskins and Ethel Smith of Denver and Mr. and Mrs. Guy Watson of Amarillo visited Mrs. Schacht and Anna Schacht last Friday.  
 Sarah Jane Schacht returned to Canyon Tuesday afternoon after spending her Christmas vacation here. Sarah will complete her work for a Bachelor's Degree in nursing from Northwest Texas University in May.  
 Ethel Mitchell's sister, Willie Keel of Fort Worth, visited after taking her daughter Dee Dee Keel to enroll in school at Tech at



BY COURT ORDER Floyd County sheriff's deputies moved all of the Troy Brooks' family furniture out of the house and into the barrow ditch at 522 East Jackson Wednesday afternoon. Brooks, a disabled veteran, said he hadn't made a house payment since last March and the finance company got the court order to move his household belongings out of the house. However, by nightfall Brooks had reached a payment agreement with the finance company and had moved his furniture back into the house. Brooks said he was unhappy because his furniture was damaged in the process. (Staff Photo)

### bicentennial briefs

Farming was so much a part of the Early American life style that Congress was slow in setting up a standing committee on agriculture. Commerce and manufacturing were already being served

by Congressional committees before the need for one on agriculture was recognized. One senator from Maine, in fact, questioned whether any issues would arise in agriculture which would call for study by a Congressional committee. In 1820, the U.S. House of Representatives established a standing committee on agriculture and the Senate followed

suit five years later. A bill establishing a Department of Agriculture was signed by President Abraham Lincoln in 1862 and Isaac Newton was named commissioner of agriculture. Twenty-seven years later, Congress elevated the Department to Cabinet status in recognition of agriculture's importance to the nation's economy.

## SHURFINE'S

# HAPPY BIRTHDAY U.S.A. SALE!

THESE BARGAINS GOOD THROUGH JANUARY 24

<p><b>SHORTENING</b> 99¢</p> <p><b>BEEF UP BUDGETS WITH SALE PRICED</b></p> <p><b>MEATS</b></p> <p><b>BACON</b> 1 LB \$1.18 SHURFRESH VAC PAC LB</p> <p><b>FRYERS</b> GRADE 'A' LB 49¢</p> <p><b>SAUSAGE</b> OWENS 2 LB HOT OR MILD \$2.49</p> <p><b>GROUND BEEF</b> PURE LB 79¢</p> <p>3 LB SHURFRESH CANNED</p> <p><b>HAM</b> 12 OZ. SHURFRESH EACH \$5.20</p> <p><b>FRANKS or BOLOGNA</b> 6 OZ. SHURFRESH \$5.4¢</p> <p><b>MIX &amp; MATCH LUNCH MEAT</b> 6 OZ. SHURFINE FROZEN 35¢</p> <p><b>ORANGE JUICE</b> FOOD KING SALID 1 LB 5/\$1.00</p> <p><b>OLEO</b> SHURFINE 10 OZ. FROZEN BROCOLI SPEARS, CORN, CAULIFLOWER 3/\$1.00</p> <p><b>VEGETABLE</b> SHURFRESH COLBY 10 OZ. 3/\$1.00</p> <p><b>CHEESE</b> FOOD KING NO. 2 1/2 89¢</p> <p><b>PEACHES</b> FOOD KING GRATED 6 OZ. 39¢</p> <p><b>TUNA</b> 3/\$1.00</p>	<p><b>CATSUP</b> 69¢</p> <p>HUNT'S 15 OZ.</p> <p><b>FRUIT COCKTAIL</b> 2/76¢</p> <p>FOOD KING 16 OZ.</p> <p><b>PEAR HALVES</b> 3/\$1.00</p> <p>HUNTS 46 OZ.</p> <p><b>TOMATO JUICE</b> 55¢</p> <p>HUNTS 8 OZ.</p> <p><b>TOMATO SAUCE</b> 4/76¢</p> <p>SHURFINE CHICKEN 10 1/2 OZ.</p> <p><b>NOODLE SOUP</b> 4/76¢</p> <p>FOOD KING 3 LB</p> <p><b>SHORTENING</b> 99¢</p> <p>HUNT'S TOMATO 32 OZ.</p> <p><b>CATSUP</b> 69¢</p> <p>FOOD KING 32 OZ.</p> <p><b>SALAD DRESSING</b> 59¢</p> <p>SHURFRESH 1 LB BOX</p> <p><b>CRACKERS</b> 2/76¢</p> <p>SHURFINE FREE RUNNING SALT AND IODIZED 10¢</p> <p>SHURFINE REG., DRIP AND COFFEE ELEC. PERK 1 LB \$1.09</p> <p>SHURFINE WAFFLE 32 OZ. 89¢</p> <p><b>SYRUP</b> SHURFINE 2 LB. 59¢</p> <p><b>PANCAKE MIX</b> SHURFINE MACARONI AND CHEESE 7 1/4 OZ. 59¢</p> <p><b>DINNERS</b> SHURFINE DRIED PINTO 2 LB. 3/76¢</p> <p><b>BEANS</b> SHURFINE LIQUID GAL 49¢</p> <p>SHURFINE LIQUID GAL BLEACH 59¢</p> <p>SHURFINE PINK AND DETERGENT LEMON LIQUID 2/\$1.00</p> <p>8 ROLL ORCHID 2 PKG. BATHROOM TISSUE WHITE PINK YELLOW 99¢</p> <p>300 COUNT AFFILIATED NOTEBOOK PAPER 76¢</p> <p>100 CT. AFFILIATED TYPING PAPER 44¢</p>
--	--

YOUR HOME OWNED AND HOME OPERATED GROCERY

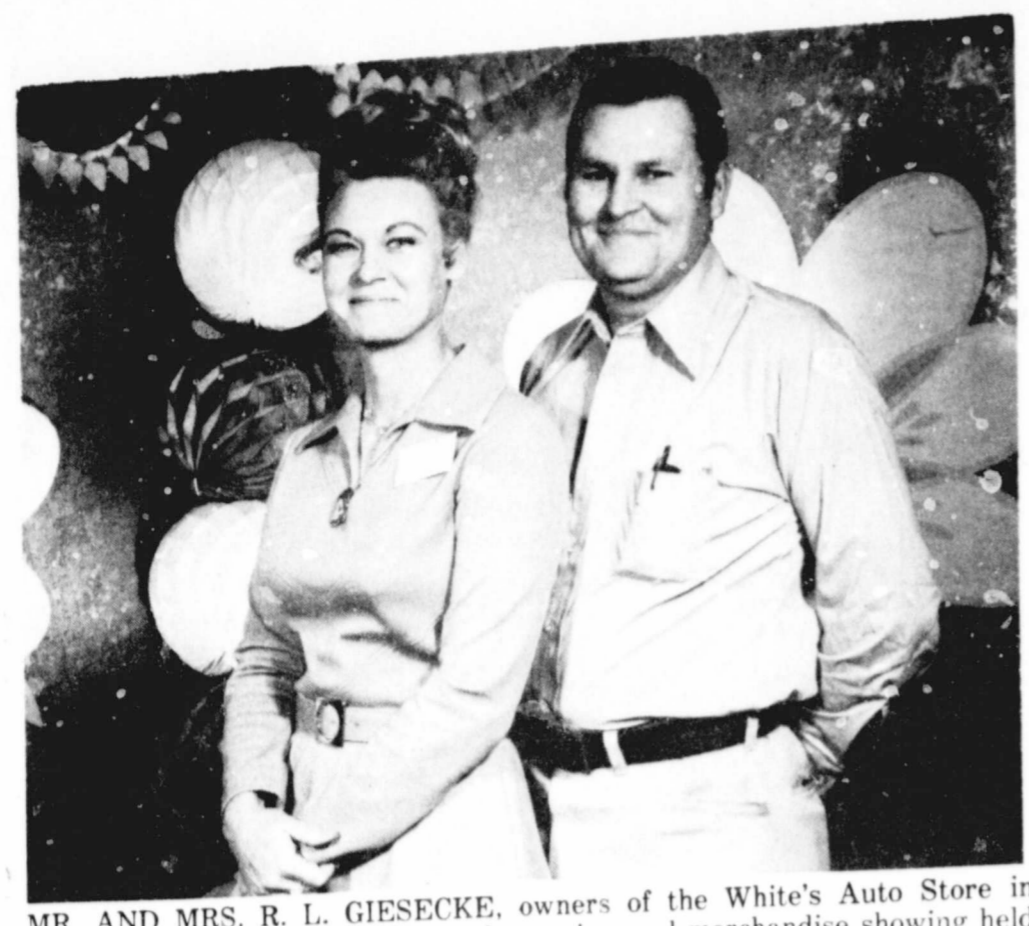
## L&J FOOD STORE

We Give Double S&H Green Stamps On Wed.

116 NORTH 2nd PHONE 953-3105

**WE DELIVER**

NIFTY 4-IN. 1 SUBJECT BOOKS LISTERINE ANTISEPTIC 14 OZ MOUTHWASH 79¢ GILLETTE FOAMY MENTHOL SHAVING CREAM 11 OZ 76¢



MR. AND MRS. R. L. GIESECKE, owners of the White's Auto Store in Floydada, Texas recently attended the semi-annual merchandise showing held January 11-13, 1976 at the Statler Hilton Hotel in Dallas, Texas.

Voter Registration Certificates Will Be Mailed In February

Voter registration certificates will be mailed out in February by the Floyd County Tax Assessor Collector's office, which are to be signed and kept by the voter. These certificates are mailed out every two years. If you do not receive a certificate then you are not eligible to vote, therefore, you need to come in and register said Janelle Fawver, tax assessor collector.

Applications Being Taken For Lions Crippled Children's Camp

Applications for a summer vacation full of fun for handicapped children in the Floydada area are now being accepted by members of the Floydada Lions Club. The Camp is free to eligible blind, deaf, mute or crippled children. All requests for summer camp are handled locally by Lions.

OBITUARIES

J. C. Bramlet

Funeral services for Jacob Clyde Bramlet, 70, of Lockney were held Friday in Rock Creek Church of Christ with Earl Cantwell, minister, officiating.

Bramlet died at 10 a.m. Thursday in Central Plains Hospital in Plainview after a lengthy illness.

Mrs. Birchfield

Services for Mrs. Lizzie Birchfield, 83 year old Matador woman and mother of William K. (Rusty) Birchfield of Coahoma, former Floydada resident,

were held Friday afternoon in the Church of Christ in Matador. Mrs. Birchfield died Wednesday night at High Plains Hospital in Hale Center following a lengthy illness.

Mrs. Birchfield was a native of Motley her life time. Survivors include one other son, Robert of Midland; a daughter, Mrs. Tokio Doty of Morton; a brother, J. W. Meador of Phoenix, Arizona; four grandchildren; and five great grandchildren.

H. K. Permenter

Services for a former Floydada resident, Henry King Permenter, 84 of Pasadena, Texas, will be conducted in Floydada Sunday afternoon, January 18th at 2 o'clock in the West Side Church of Christ.

Survivors other than her parents include a sister, Carla Ann of the home; two half sisters, Shonda and Tonia of Lubbock; her paternal grandmother, Mrs. Dave Summers of Floydada; and her maternal grandparents, Mr. and Mrs. M. D. McDuff of Amarillo.

the grave of his wife, Bessie, Moore-Rose Funeral Home will be in charge of arrangements.

Permenter lived in Floydada until some ten years ago when he moved to Pasadena. He was a retired farmer.

Survivors include a daughter, Mrs. Roy Atkinson of Pasadena, Texas; two grandchildren; and five brothers and sisters. V. C. Permenter of Floydada Nursing Home, Les Bee Murry and Wes Permenter both of Waterford, Calif., and Miss Alta Permenter of Grants, New Mexico.

Summers Infant

Rites for Teresa Michelle Summers, six month old daughter of Mr. and Mrs. Johnny Summers of 8500 Triangle Drive, Amarillo, were held Friday afternoon in the First Assembly of God Church in Floydada.

Survivors other than her parents include a sister, Carla Ann of the home; two half sisters, Shonda and Tonia of Lubbock; her paternal grandmother, Mrs. Dave Summers of Floydada; and her maternal grandparents, Mr. and Mrs. M. D. McDuff of Amarillo.



SIX SETS OF TWINS....(front row l to r) Barrera and Jose Medrano, (second row l to r) Eubanks and Medrana, (third row l to r) Cisneros and Riojas.

Six Sets Of Twins In Duncan Elementary

School teachers in Duncan Elementary School may often think they are seeing double, as there are six sets of twins in the school. The twins, their ages, their parents and addresses are as follows: Cisneros, Roel and Rolando, born 11-23-69, sons of Mr. and Mrs. Jose Cisneros, 309 W. Jackson, Roel is in Mrs. Diana Gross's kindergarten class; Rolando is in Mrs. Gayle Waller's kindergarten class.

West Texas Savings ... Your Headquarters for Farm and Ranch Savings. Agriculture income from most areas of the South Plains has been good this year. Much of this income will be placed into savings to make it grow even more. West Texas Savings wants to be your savings headquarters. The officers and directors are just plain folks and talk your language. Give us a chance to be of service to you.

POLITICAL CALENDER Subject to the May Democratic Primary in Floyd County. U. S. Congress OMAR BURLESON Sheriff C. L. MCKAY Sheriff BUD RAINEY Sheriff FRED CARDINAL Commissioner Precinct 1 AARON CARTEL Commissioner Precinct 3 GRIGSBY MILTON Tax Assessor and Collector JONELLE FAWVER

Carl Jarrett Attains Ford Society Membership since 1971. Jarrett received a combination desk organizer and plaque featuring the Society insignia, a certificate of membership for 1975. Society membership can only be attained by those Ford salesmen who display outstanding sales achievement during the calendar year. Carl Jarrett is employed with Reed Ford Sales and has been a member of their sales staff.

LOSE UGLY FAT OR PAY NOTHING Start losing weight today OR MONEY BACK. MONADEX is a tiny tablet that will help curb your desire for excess food. Eat less, weigh less. Contains no dangerous drugs and will not make you nervous. No strenuous exercise. Change your life start today. MONADEX costs \$3.00 for a 20 day supply and \$5.00 for twice the amount. Lose ugly fat or your money will be refunded with no questions asked by Mize Pharmacy LOCKNEY-MAIL ORDERS FILLED

Letter To The Editor I am presently engaged in some historical deals with your area. Specifically, I am writing the history of the Quanah, Acme & Pacific Railway. My work will appear in book form.

Bar Life - B. F. arms - Bus

PETS puppies call

Bar Life - B. F. arms - Bus

QUICK AND EASY Henry 17 reas you sho to us for tax

Reason 1 concrete you back for a free

ENN H&R B THE INCOME

concrete want it.

concrete you back for a free

Reason 1 concrete want it.

ENN H&R B THE INCOME

REAL EST bedroom hou d at 319 W V 91. bedroom hou ewly remod Estate. Wil 51 or 983-35. LE: Fuqua ng. 3 lots, g Call 983-226. AL NICE tw on homes fr e arranged. ( at 983-3261. ICE HAS BE terably on 1 house. via, shown l only. 983-339. EW Town 3 bedroom, A/C, fully er-dryer, d iced. Paymen quity. See l Call 983-2154 ys and nig. FOR SALE a garage, 3 e. C. J. Pay. BEDROOM 17 W. Ross ll King Ag Lee St. Pho. bedroom h e, ten acre one mile, 83-6117 or 98. SALE: 3 bedr oved. Lockn. LE: J. B. Avr newly paint and barbequ Realtors. 17. SALE: Rural 1 to be moved 132. FARM & RANCHI. ABOUT a h 10" water? wells tied to ground pipe on, good d 15 miles v No improve 82. PETS puppies call. Bar Life - B. F. arms - Bus. QUICK AND EASY Henry 17 reas you sho to us for tax. Reason 1 concrete you back for a free. ENN H&R B THE INCOME

# Small Ads... Big Results! CLASSIFIED ADS!

## REAL ESTATE

3 bedroom house for sale near 318 W. Virginia. Call t/c

3 bedroom house, carpeted, newly remodeled. Bonded. Wilson Bond. Call 983-3973 t/c

2 1/2 Fugate Feed Store. 3 lots, grinder and call 983-2281 t/c

ALL NICE two and three bedroom homes for sale-locks arranged. Call Hale in 983-3281 t/c

PRICE HAS BEEN reduced on this 3 bed house. 804 West shown by appointment. 983-3390 t/c

New Town & Country 3 bedroom, 1 1/2 baths. A/C fully furnished. Dryer, dishwasher. Paid. Payments \$166.00. See by appointment. Call 983-2151 or 983-2388 t/c

FOR SALE 3 bedroom house. Two 1/2 W. Ross. A bargain. Call King Agency North Star St. Phone 983-5029 t/c

3 bedroom house, double lot, ten acres, well, one mile east of town. Call 983-3673 t/c

3 bedroom house to build. Lockney 652-3358. L25c

3 J. B. Ave. 3 bedroom newly pointed trim, gas and barbecue. Ralph V. Reators. 293-4246 or 983-3117 t/c

Rural two bedroom home to be moved. 983-2608 or 983-3117 t/c

FARM & RANCHES

ABOUT a half section 10' water? Two irrigation wells tied together with ground pipe. All in cultivation. good deep soil. 15 miles west Denver. No improvements. Call 983-3117 t/c

PETS

puppies call 652-3819. L1-18c

IF IT IS INSURANCE - SEE -

**Barker Insurance Agency**  
LOCKNEY  
Life - Fire - Casualty - Hospital

**B. B. Wilkes, Real Estate**  
LOCKNEY  
Farms - Ranches - City Properties  
Business Leases - Loans

**READY MIX CONCRETE**  
QUICK AND EASY

You can't beat our price per yard for quality concrete—and quick, easy delivery to save you back-breaking labor. Give us a call today for a free estimate, and have your mixed concrete delivered where and when you want it.  
CALL 983-2170  
**KENNETT BUILDING MATERIAL**  
209 E. CALIFORNIA FLOYDADA

## BUSINESS SERVICES

PIANO TUNING. Edward C. Lain. 25 years experience. Write Box 425 Silverton or call 823-2151 or 823-205 L-t/c

CARPET shampoo and shampooer. Rent the shampooer for \$1 day with purchase of shampoo. Davis Lumber Company, Lockney. L-t/c

**BUSINESS FOR SALE**  
GROCERY Inventory and Fixtures \$15,000. Rent brick building and 3 bedroom house. Phone 1-806-983-2943. t/c

**FOR RENT**  
FOR RENT Property Apartments, 2 and 3 bedroom houses, business buildings, clean. BARKER INSURANCE AGENCY. Lockney, 652-2642. L-t/c

**WANTED**  
WANTED TO BUY irrigated or dryland farm in Floyd or surrounding area. Write Box XRO, c/o Hesperian, Box 700, Floydada. t/c

**BUSINESS OPPORTUNITIES**  
TEENAGERS: The Amarillo Daily News is accepting applications for a local distributor in Lockney. Excellent opportunity to earn your own money while learning. Good sound business practices. contact Sherman Pursler 652-3341 Monday, Tuesday, Wednesday. L1-18c

**ONE OF A KIND**  
OUR 13 year history has proven a KWIK KAW WASH to be one of the highest investment return businesses known. We provide financing, site analysis, construction and service. Call Ray Ellis collect (214) 243-3521. 1-25p

## FARM SERVICES

CUSTOM FARMING - Breaking, listing, planting, crosscut, spraying, tandem and chisel. 293-2578. L-t/c

NORRELL TRACTOR PARTS For Tractor and Irrigation Supplies and Accessories. t/c

MR. FARMER we have baling wire now - Babe's Service Center. t/c

PORTABLE DISC ROLLING - Sammy Kemp. Work guaranteed. 983-2347. t/c

**FARM MACHINERY**  
FOR SALE: 413 Chrysler, 318 Chrysler, 292 Chevy, 455 Oldsmobile, irrigation engines with natural gas carburetion. 36 points of gated pipe or 40' rows four 10 inch water hydrants. Call after 7, 652-2492 or 652-2136. Lockney. L1-29c

**AUTOMOBILES**  
FOR SALE: Economy 1975 Vega HR, AT, Air, 1600 miles, call after 5 p.m. 983-3358. Jimmie Lou Stewart. t/c

FOR SALE: 1970 Ford 1/2 Ton Pickup, good shape, clean, call 983-3200. t/c

1970 Mustang V8 Power steering and brakes, radio, low mileage, clean, will trade for pickup of equal value. 611 S.W. 7th, Lockney, 652-3832. L-t/c

FOR SALE: 1973 Monte Carlo, power steering, power brakes, air conditioned, automatic, swivel seats, tape deck, 2 new tires. t/c

**BISHOP-RAMSEY PHARMACY**  
206 West Houston  
983-3174  
FLOYDADA

**Custom Application in Lockney Cotton Spraying Treflan**  
Call Bill Wisdom 652-3541  
Or Darryl Dennis 652-2616

**Professional Service**  
DR. JOHN W. KIMBLE, O.D.  
Contact Lenses - Visual Analysis  
Closed Tuesday Afternoon Saturday 9-3  
Floydada, Texas Phone 983-2495

**DAN'S AUTO SERVICE**  
DAN TEUTON, Owner  
Specializing in Automatic Transmission, Motor Tune-Ups, Auto Air Conditioning.  
General Repair  
We Have A BRAKE LATHE to handle all passenger car brake drums. See us for complete brake service.  
Phone 652-2462

**QUALITY SHAMROCK PRODUCTS**  
Always Make A Good Deal On SONIC TIRES and SOUTHLAND BATTERIES  
Dial 652-3366  
**JACKSON TIRE COMPANY**  
Richard Wiley

## COW POKES



"Whatta you mean, the hard times are nearly over, I never knew we'd ever had good times!"

THIS FEATURE SPONSORED BY  
**AUTO, FIRE & FARM INSURANCE**  
Floydada Real Estate & Insurance Agency  
Jim Word - - - Phone 983-2360

**HELP WANTED**  
WANTED: Dog Catcher. Contact Lockney Chief of Police 652-3548. L1-25c

**NOTICE**  
I WILL NOT be responsible for debts incurred by anyone other than myself.  
Rosezell Sams L1-18c

**SALES**  
ANYONE interested in participating in dog obedience school call 983-3840 after 5. L22c

**INSIDE GARAGE SALE:** commode chair, electric 40" stove heaters, ladies clothes size 12 misc. 2 miles north of Sandhill between 9, 30 and 5, 00. 983-3080. 1-18c

**A WANT AD WILL FIND YOU A BUYER**

**CIVIL RIGHTS STATEMENT**  
It is the policy of the Lockney Care Center in Lockney, Texas to admit and to treat all patients without regard to race, color, creed, or national origin. The same requirements for admission are applied to all, and patients are assigned within the nursing home without regard to race, color, creed, or national origin. There is no distinction in eligibility for, or in the manner of providing, any patient service provided by or through the nursing home. All facilities of the nursing home are available without distinction to all patients and visitors, regardless of race, color, creed, or national origin. All persons and organizations that have occasion either to refer patients for admission or recommend the Lockney Care Center are advised to do so without regard to the patient's race, color, creed, or national origin.

**Diamond Industrial Supply Co., Inc.**  
Phone Days 296-7418 - Nights 296-1200 or 296-7828  
1014 Broadway  
Plainview, Texas  
Chain Sprockets V-belts Sheaves SKF BCA Timken Bower Cotton Stripper Brushes & Bats  
U-joints Oil Seals O-rings Wisconsin  
"We Appreciate Your Business More"  
L-TFC

## FOR SALE

FOR SALE: I have several hundred feet of good four and five inch aluminum pipe. 40 cents per foot. Phone 983-3982 t/c

FOR SALE: Coke machine, choice of three. Dougherty Grocery. Phone 983-2943. t/c

WANT to sell push button Ford radio. Excellent condition. \$35.00 Phone 983-3982. t/c

FOR SALE: Yearling hereford bulls 652-3705, Lockney. L-t/c

FOR SALE: Relieves rheumatism, arthritis - icy Hot. Call 983-2204 after 4 p.m. t/c

WE HAVE in stock some Paymaster check writing machines. \$79.95 Hesperian Office Supply and Beacon Office Supply. t/c

FOR SALE: The 1976 Texas Almanacs are here! Beacon Office Supply - Hesperian Office Supply. t/c

GOOD used Remington calculator. \$75.00 Hesperian Office Supply, Floydada. 983-3737 t/c

WE have the Spanish Farm & Ranch book. Hesperian Office Supply. t/c

**LOST AND FOUND**  
REWARD: Lost set of 5 keys on a Montgomery Ward Auto Club key chain. Bring to the Hesperian if found. t/c

REWARD: Information leading to the return of a 5 month old St. Bernard puppy. Full black mask. Responds to the name of Czer. Phone 983-3838. t/c

## FOR SALE

WOOD FOR SALE: \$35.00 a cord. Also, Tappen gas range. Call 652-3579. L1-18c

HAY FOR SALE: Charles Hamilton 983-3151. t/c

WE carry Marvick Sportswear - Betty's Place, 604 South 2nd Street. t/c

WE SELL new and rebuilt Kirby Vacuum Cleaners and parts Parker Furniture, Floydada. t/c

FOR SALE: Kirby Vacuum Cleaners new or rebuilt. Beginning at \$119.95. Also Kirsh heavy duty cafe drapery and curtain rods. All lengths. Parker Furniture, Lockney. L-t/c

"Venus Cosmetics"  
The best money can buy. With Stabilized Aloe Vera. Please call after 5 or weekends. Demanda Blenden, 652-2563. L-t/c

**CARD OF THANKS**  
YOUR expressions of sympathy and acts of love are deeply appreciated by the relatives of Maurice Tannahill following his sudden death of January 10. True friends are a great blessing in times of sorrow. Olga and Gary Tannahill Francis and Chester Carthel Mr. and Mrs. Joe Reeves Eugene Tannahill family and Hershel Carthel family

WE express our sincere appreciation to everyone for the food, flowers, cards and the many acts of kindness shown to us at the loss of our loved one. Our deepest appreciation and thanks also goes to Dr. Mangold and the hospital staff and to the staff of the nursing home for their care and understanding. The family of Annie Patton, W. T. Cooper family and Jim Harris family.

THANK YOU for cards and flowers during the passing of my father.  
Helen Bertrand and Family

A NICE way to remember your friends and loved ones is with a Memorial Gift to the American Heart Association. A card will be sent to the family acknowledging your gift. Contact Olin Watson, Memorial Chairman at 983-2191.

**PICTURE FRAMES**  
made to order  
**DENNIS DEMPSEY**  
602 W. Miss. 983-3552

**OIL SALE**  
THRU JANUARY 20  
**TEXAS ENERGY COMPANY**  
652-3334 LOCKNEY

**BEEF FOR THE FREEZER**  
GRAIN FED  
CUT WRAPPED FROZEN  
225-250 LB. AVG. HALF-----83¢ LB.  
SEE YOUR MEAT MAN, MAX SMITH AT  
**PAGE'S THRIFTWAY**  
IN LOCKNEY L-t/c

**Buster Brown Drilling Co.**  
Drilled & Cased \$7.75  
If We Do Pump Work  
Fast Bailing & Gravel Pack.  
HPC Pumps  
Buster Brown  
& Raymond Poole  
892-2752-Idalou &  
983-2285

## FOR SALE

FOR SALE: 1976 Texas Almanacs are here! Beacon Office Supply - Hesperian Office Supply. t/c

GOOD used Remington calculator. \$75.00 Hesperian Office Supply, Floydada. 983-3737 t/c

WE have the Spanish Farm & Ranch book. Hesperian Office Supply. t/c

**LOST AND FOUND**  
REWARD: Lost set of 5 keys on a Montgomery Ward Auto Club key chain. Bring to the Hesperian if found. t/c

REWARD: Information leading to the return of a 5 month old St. Bernard puppy. Full black mask. Responds to the name of Czer. Phone 983-3838. t/c

**Auto Accidents DO Happen . . .**  
If one happens to you, be protected. Our car insurance offers coverage to meet your special needs - repairs to personal liability.

**BAKER Insurance Agency**  
127 W. Calif.  
Ph. 983-3270

**FLOYD COUNTY ABSTRACT CO.**  
Abstracts Of Title  
Title Insurance  
Verna L. Stewart  
Owner, Manager  
217 W. California  
983-3728  
Floydada, Texas

**BEEF**  
HEAVY GRAIN PER FED . . . . . 83¢  
LIGHT GRAIN PER FED . . . . . 79¢  
CUT, WRAPPED AND FROZEN  
\$30-\$50 BEEF PAKS  
LOCKNEY MEAT CO. Deer Processing 652-3305. Sam Fortenberry, Mgr. L-t/c

**WE WANT YOU TO KNOW**  
We sell all kinds of Goodyear tires, tractor, auto, truck, a good tire, good service. Best deals in West Texas. Truck winch and hauling service. BARE'S SERVICE CENTER, FLOYDADA. t/c

# Buddy's Food

Buddy Widener, Owner - Forrest Shannon, Mgr.  
in Floydada, 220 South Second

NEW STORE HOURS  
Monday - Friday 8:00 am - 7:00 pm  
Saturday 8:00 am - 8:00 pm  
Sunday 9:00 am - 7:00 pm



Double Stamps Wednesday

THESE VALUES GOOD SUNDAY, JANUARY 18 THROUGH SATURDAY, JANUARY 24  
We Reserve The Right To Limit Quantities  
THESE VALUES GOOD IN PLAINVIEW ALSO

# PLAY LUCKY STARS

WATCH FOR YOUR LUCKY STARS - 25 WINNERS EACH WEEK, IF THERE ARE STARS ON YOUR CHECK-OUT SLIP TAPE YOU HAVE WON THE FOLLOWING:  
Blue Stars . . . . . 600 S & H Green Stamps  
Green Stars . . . . . 1200 S & H Green Stamps  
Red Stars . . . . . Freezer Beef Pak  
Silver Stars . . . . . Your Purchase Free  
Gold Stars . . . . . \$100.00 Gift Certificate  
NO PURCHASE NECESSARY - MUST BE 18 YEARS OLD



IMPERIAL PURE CAN 5 LB BAG  
WITHOUT LIGHT BULBS  
**SUGAR**  
\$1.49  
WITH PURCHASE OF 4 LIGHT BULBS  
**49¢**

**PAPER TOWELS**  
2/89¢



CUT GREEN BEANS  
4/\$1.00

ASSORTED TONY'S  
**PIZZA**  
1.79 VALUE  
**\$1.29**  
CHEESE-\$1.09

**OWENS SAUSAGE**  
2 LB OWENS  
\$2.69

**SMOKED SAUSAGE**  
1 LB WILSONS  
\$1.39

**MARGARINE**  
3/\$1.00



DEL MONTE 303 CAN  
CREAM OR WHOLE KERNEL  
**CORN**  
3/89¢

**SIRLOIN STEAK**  
\$1.09 LB

**BACON**  
\$1.39 LB

**DR PEPPER**  
\$1.00

**DURAFLAME LOGS**  
\$1.29 VALUE  
89¢

**T-BONE STEAK**  
\$1.39 LB

**GROUND BEEF**  
79¢ LB

**CAKE MIX**  
3/\$1.00

**CRACKERS**  
2/99¢

**FRANKS**  
69¢

**HAM PATTIES**  
\$2.29

**HOT COCOA**  
79¢

**SAUERKRAUT**  
4/\$1.00

**SWEET ROLLS**  
59¢

**ICE CREAM**  
\$1.09

**COFFEE**  
\$1.19

**CARROTS**  
2/29¢

**EGGS**  
77¢

**PIE SHELLS**  
2/99¢

**CRISCO**  
\$1.00

**GRAPEFRUIT**  
2/25¢

**EGG BEATERS**  
89¢

**TOMATOES**  
5/\$1.00

**PALMOLIVE**  
99¢

**ORANGES**  
5 LBS \$1.00

**TAMALES**  
2/99¢

**SOAP**  
3/\$1.00

**DETERGENT**  
49¢

**APPLES**  
5 LBS \$1.00

**NOTEBOOK PAPER**  
99¢

**DILLS**  
2/\$1.19

**DETERGENT**  
49¢

## Whirlwind

Whirlwinds defeated the Whirlettes lost to in games played at Idalou. Whirlwind win put them in a 2-0 district play. The loss put Whirlettes in a 2-2 for the first time with Tulsa or Abernathy as winner. Curry was high pointer with 13 and Elton Ratliff made 13 for Donette Marble hit 24 for Whirlettes.

Whirlettes beat Abernathy here last night 56-54 in an exciting game. The fans screaming from start to finish. The Whirlettes were ahead at half; however, entering the 3rd quarter they were behind five points.

Forward Debby Johnson, Whirlettes ahead at the last of the game. She had a perfect free throw line. She made 10 of 11 shots in the game. Donette Marble was high scorer with 20. Tracey was second with 19 and Debby had 17.

## The Weather

H	L	Moisture
48	20	
66	30	
58	32	
68	33	
68	53	
52	30	
51	16	

## Prock Cho

WOMAN CALLED Building Department that her new calendar for 1976 might be in error...the calendar shows February 1st as a Sunday in February!...there are for sure only 28 days in February, which could only happen in a Leap Year...anyone know for sure?

CONGRATULATIONS to the state band selected by the state board of education. The band includes Kelvin Ratliff, Donny and Gary Nixon who were on the all state AA football team. The state's sportswriters like these help put Floyd County on a banner we like.

DOUBT ABOUT IT...this year has had some moisture. I look at the rain record and January 1976 is being a good moisture year. There were only four days in 1925 that we didn't get a moisture or rainfall...not since 1925.

Mr. Tooley - Some things in the paper you are talking about. I remember the first man I knew him when he was 11 or 12 years old. He worked at the Hotel about where the hotel and I visited the hotel. I'm sure he is in Floydada and was the first mayor, and my father W. L. Tooley was the second mayor served so maybe this will help as I lived in Floyd County before moving to this area. - Mrs. E. P. Nelson, Amarillo, Texas 79109.