

Save your -- Time -- Money -- Temper -- Gasoline -- By Christmas shopping Morton stores

# Morton Tribune

ME 34 NUMBER 6

MORTON, TEXAS THURSDAY, DECEMBER 13, 1973

PRICE FIFTEEN CENTS

## Cotton harvest on down-hill run



Over 50 percent out of fields

The South Plains cotton harvest passed the half way mark during the first week in December, according to Paul R. Dickson in charge of the U.S.D.A. Cotton Classing Office in Lubbock.

Samples from 1,218,000 bales had been classed at the Lubbock, Brownfield, Lamesa and Levelland offices through Friday, December 7th and the four offices had 97,000 unclassified samples on hand at that time.

Personnel at the four offices tested and classed samples from 353,000 bales during the week ending the 7th.

Quality of cotton continued excellent and is considerably higher than last year.

Grades 31 and 41 continued to be the predominant grades at Lubbock, making up 78 percent of all classed. Grade 31 made up 30 percent, Grade 41, 48 percent and Grade 32, 12 percent.

Staples were predominantly 30 to 32. Forty-two percent had staple lengths of 30 and shorter and the remaining 58 percent stapled 31 and longer. Average staple length was 31.

Micronaire readings continued excellent. Eighty-three percent of all cotton tested at Lubbock had micronaire readings in the premium range of 3.5 to 4.9, 5

See COTTON Page 4



A GOING CONCERN is the way Dale Kirk, industrial arts instructor at Morton High School describes his training program. Showing off one of their many accomplishments above are four seniors who recently completed a new gate house for Indian Stadium. A large number of boys are currently engaged in building toys to be sold, with the proceeds going into expansion of their program. Kirk, bottom, is shown here with, from left, Jerry Silhan, Mark Fluitt, Terry Gillespie and Darrell Smith.

BOARD GROUP of outgoing and incoming members attended the regular meeting of the Area Chamber of Commerce board of directors Friday. The four incoming members, in November, received a briefing on the duties of the chamber and the duties of the members. Newcomers include Tom Hester, president; Jean Sayers, second vice president; Ronnie Wallace, seated fifth from left; Dwain Hester, partially visible fifth from left. The new members will take office January 1, 1974. Other board members clockwise from left include: Tennie Wall, chamber secretary; Christ Bell; Mike Liner, Donald Hodge, Carol Shelton, Treasurer, standing, Tobe Hendon, president and Wayne Wilcox, past president; Bill Smith, Gerald Ramsey and Jerry Schaeffer. Not pictured are Randy Thomas, vice-president, Ray Luper and Bill Sayers, board secretary.

## Medical student plan bared

Plans of Morton and county are reaching a ready state to stabilize the field of medicine in the area.

Recognizing the need for a long range, workable plan reaching far into the future, a large group of leading citizens recently met for the purpose of combining their various talents and abilities in the

formulation of such a plan.

The result is a medical education scholarship fund which has been established by the Cochran Memorial Hospital Auxiliary under the Cochran County Hospital District for the purpose of securing doctors for Cochran County.

Plans for the fund and a decision to establish it were accomplished at the meeting held in the First State Bank and two subsequent meetings where additional plans were formulated. All meetings are open to the public.

See MEDICAL Page 4

## Yule Concert

Make plans to attend the MHS Choir Christmas concert Sunday, December 16, at 3 p.m. in the auditorium of the County Activity Building.

John Harris, director, promises a special treat in Christmas music for all who attend.

## Tribe, Lobos cliffhang

Three full overtime periods were expended before a decision could be reached in one of the most hard-fought and thrill-producing cage encounters witnessed in

recent years as the Levelland Lobos finally leaked out a 4 point win over the Morton Indians Tuesday night.

The cliff hanger, played at Levelland and, which ended regulation play in a 62-62 deadlock, was marked throughout by big plays on the part of both teams, kept a packed house in a state of delirium and held them on their feet throughout the three extra periods.

The score was knotted at 75-75 with some three minutes to go in the third overtime, when the Lobos managed to pull ahead to the final score of 79-75 mainly via the free throw line.

The loss, which brings the Tribe season record to 5-3, followed on the heels of a scintillating performance by the Indians at Brownfield Friday night where they put the Cubs in the bag by a margin of 67-56.

The Tribesmen started well and ended the first quarter with a 12-10 margin, but slowed somewhat in the second period and ended the first half with a one point deficit at 25-26. The third period saw them accelerate to a 44-42 advantage and slowly pull out ahead in the final stanza to the 67-56 victory margin.

Larry Thompson's 20 points made him high for the evening, where he was closely followed by Jerry Silhan with 18. Thompson turned in an all-around super game, hitting 9 of 16 shots from the field, 2 of 2 free throws, grabbed 6 rebounds, made 3 steals, had 5 assists and 4 personal fouls.

See TRIBE Page 4

## Annual ministerial program scheduled

Annual Christmas Ministerial Alliance will be held Wednesday, December 19, at 7:30 p.m. in the Cochran County Courthouse.

Feature this year will be the Morton High School Choir who will be the choirs of six local churches. Roger Posey, director of music for the First Baptist Church, will direct the choir.

Rev. Nicholas Sanders, St. Ann's Catholic Church, will read the opening prayer. Other ministers participating are Rev. James Price, First Methodist Church, the

Rev. Paul McClung, First Baptist Church, the Rev. Rois Sandifer, First Missionary Baptist Church, the Rev. Wilbur Stanley, Assembly of God Church and the Rev. Ignacio Ruiz of the Spanish Assembly of God Church.

Everyone is cordially invited to attend this special Christmas program.

## Damage suit filed against law officers

A suit for damages in the amount of \$20,000 was filed in 121st district court in Morton November 30, naming the Cochran county sheriff, one of his deputies and a Morton city patrolman as defendants.

The complainant in the action, Charles Palmer, Jr., charges false arrest, false imprisonment, assault and assault and battery against Sheriff C.G. Richards, deputy sheriff Derrell Denny and city patrolman Robert Turner. It also names as a defendant the Western Surety Company of Dallas as surety on bonds of Richards and Denny.

The suit asks actual damages of \$5,000 and punitive damages of \$15,000. It alleges

See DAMAGE Page 4

## Christmas Party

The Senior Citizens will hold their Christmas party at 2:30 p.m. today in the County Activity Building.

The Town and Country Club will be presenting the program. The Rev. A.R. Hester will bring the invocation and Harold Hester will conduct a "Song".

All area Senior Citizens are invited to attend.



BOY SCOUT TROOP 645 from Morton was among seven Scout troops, three from Littlefield and three from Levelland that began the First Annual Ice Burg Camp-O-See in the Levelland City Park Friday night. The troop includes Larry King, Mike Gunter, Daniel Hall,

Mike Rivera, Mike Honesto, Henry Marina, David Tobar, Scout Master Eddie Lewis, Daniel Ruiz, Billy Cox, Rickey Lewis chief bottle washer and Ralph Tarango. (Photo by Joyce Wrinkle)

## Students slate piano recital

Senior piano students of Morton in grades 7-12, will be presented in a Recital December 15 at 7 p.m. in the auditorium of the First Baptist Church.

The theme is the "Many Moods of Music," each selection being programmed according to its emotional appeal. Included in the recital will be several two piano-double duos, and organ and piano duos.

The public is invited to attend the hour long program.

## Thompson, Soliz All-3AA picks

Two Morton Indians were on the first string roster naming the District 3AA all-star football team and one of them was later named to the first team All-South Plains squad.

Larry Thompson, 5-10, 160, was named to the all-district team on defense as a safety and to the All-South Plains team also in the defensive secondary.

Pete Soliz, 5-10, 160, senior, was named on the district all-star team as an offensive lineman. Both Soliz and Thompson were unanimous choices on the district team.

See SOLIZ Page 4

Morton Tribune

Published Every Thursday Morning at 106 N. Main St., Morton, Texas 79344
OFFICIAL NEWSPAPER OF COCHRAN COUNTY
"TEXAS' LAST FRONTIER"
BILL SAYERS, Editor and Publisher

Subscription rates—In Cochran County and adjoining counties: Per year, \$4.50, six months, \$3.00. Outside Cochran County: Per year \$6.00, six months, \$3.50.

Classifieds

CLASSIFIED RATES
5c per word first insertion
4c per word thereafter
75c Minimum

1-FOR SALE

FOR SALE: Salad tomatoes — 4 lbs. for \$1. Bell's Greenhouse.

FOR SALE: Fresh cut Christmas Trees. 4 1/2 blocks west of stop light.

FOR SALE: Small office Bldg. to be moved. Contact N.H. Steed, 266-8643.

FOR SALE OR TRADE: 1967 GMC 1/2 ton pickup-V-6. Call 266-5137.

FOR SALE in Morton. Nearly new spinet piano. Concert approved. Tremendous Bargain.

FOR SALE: Set Childcraft books, oak chest and bookshelves, pole lamp.

FOR SALE: 3 bedroom, 1 1/2 bath, large den, carpet, garage, 504 SE 9th, call 266-5936.

FOR SALE: 3 bedroom, carpet, air cond., 1 bath, 606 SE 1st. Call 266-5672.

FOR RENT

HOUSE FOR RENT—702 Washington. Call 247-2286.

HELP WANTED

HELP WANTED: Full time employee to operate seed cleaning machinery.

TEXAS OIL COMPANY

Has opening in Morton area. No experience necessary. Age not important. Good character a must.

NOTICE

RESPONSIBLE POSITIONS FOR SERVICE TRAINED MEN: The United States Navy is offering positions of responsibility and security to men honorably discharged from any branch of the armed forces within the past four years.

AUCTIONS—If you are planning on having an auction of any kind please contact Ken Bozeman in Lubbock. Phone 765-7530.

MOVED: We have moved our office from 109 S. Main to 410 E. Lincoln. Barker Accounting Service. Call 266-8681.

WANTED: Farm and Ranch listing. Have buyers. Call Bob Cross 266-5730.

MUST PICK UP small piano and Hammon organ by December 20. Will allow person with good credit to assume payments on either piano or organ or both.

WE BUY used pickups and trucks. Call Morton Auto Supply, 266-8877.

"HOMEWORERS WANTED IN THIS AREA": men, women, students. No experience necessary; stuffing and addressing envelopes.

3-BUSINESS SERVICES

COCKROACHES, rats, mice, termites, golphers, and other household pest exterminated. Guaranteed. 15 years experience. 894-3824, Levelland, Texas.

MATRESSES RENOVATED also new King and Queen Size. Pick up Mondays. Call Morton Tribune 266-5576.

SORRY SALLY is now a merry gal. She used Blue Lustre rug and upholstery cleaner.

Inflation

One economic face many are unaware of, as inflation continues to cause concern, and increases criticism of the Nixon Administration, is that, as of July, real per capita disposable income of the average American was up 5 per cent over July, 1972—taking into account inflation.

Some of today's concern over the economy centers on inflation in August and September, and on fears the economic boom of the past year is slowing down.

Thus, the expectation is for some slowing down. But unless the slowdown is quite severe, Americans can still enjoy a healthy economy for some time to come, even if not a constantly-booming one.

A New Network?

Presidential advisor Clay Whitehead has called for a new television network, to bring more diversity into American homes.

Whitehead's idea is, of course, sound. It is in the best interests of the American people, though implementation of his proposal is certain to encounter entrenched opposition.

The dangerous situation exists today wherein a few executives in New York (of the three major commercial networks) can determine what news, and what emphasis, the American people see and hear on television.

This is unquestionably a disproportionate influence, especially since these executives' first interest is financial success, not the national interest.



BUSINESS and PROFESSIONAL DIRECTORY grid with categories: AUTOMOBILE DEALERS, REAL ESTATE, ELECTRONICS, SEED, APPLIANCE, INSURANCE, JEWELRY, DITCHING SERVICE, ANIMAL REMOVAL, PAINTING AND GENERAL REPAIRS.

On British trains, the cow-catcher is called the plough.

ABORTION—IS NOT THE BEST SOLUTION TO ANY UNWANTED PREGNANCY! Give your baby a chance at life!

State Farm is now paying big 15% car insurance dividends. CALL 894-7614 JERRY SANDERS AGENT

Is now the time to buy land? Acquiring that farm might seem more practical with financing through the Federal Land Bank.

CARD OF THANKS: To Morton's wonderful citizens for their excellent support of our Multiple Sclerosis Fund Raising Campaign which raised over \$600.

CARD OF THANKS: Many thanks to our friends for everything you did for us when we lost our home in the fire. God bless each one of you.

DISTRIBUTOR WANTED FOR LIGHT MANUFACTURING: National known corporation is now expanding its operations into this area.

Liner's PHARMACY advertisement with illustration of a woman and child.

INTRODUCING THE "AUTOMATIC PERM" JUST IN TIME FOR CHRISTMAS INTRODUCTORY SALE. REG. \$25.00 NOW \$15.00

## Morton teachers gives Kappa Gamma program

Theta Epsilon Chapter of Delta Kappa Gamma met Saturday, December 8, for their regular monthly meeting. Thirty-two members enjoyed a Christmas brunch hosted by Hazel Sylvester, Polly Parmer, Jane Cole, Felba Amis, and Flora Bryant in the SPC Student Union.

The DKG colors of red and gold were carried out in the table decorations. A floor-length, deep red velvet cloth covered the table and was decorated with a gold tiered centerpiece holding deep red and green grape clusters.

Following the brunch, the club held a short business meeting presided over by the president, Frances Watkins.

Janette Young, Morton, was in charge of the program, "Christmas in Changing Times." Other members on the program were Jane Cole, Jerri Nowlin, Hazel Sylvester, and Laura Cole, all of Levelland. The program presented home decorations made and used by the program members.

These covered a wide range of ideas. Jerri Nowlin displayed her continuously growing collection of framed Christmas cards which she has grouped into various categories from "blue madonnas" to "the children." She uses various groupings in every room of her home at Christmas time and certain ones are kept

up all year. Jane Cole displayed a "Children's Calendar" made of felt and holding 24 candy canes. Each day of December a cane is taken off, so that when the last one comes off, the child knows that is the night Santa comes.

Hazel Sylvester showed slides of numerous Christmas activities engaged in by the Levelland children in the elementary schools.

Janette Young presented each member with a red organdy rose and then demonstrated how to make them. She displayed a Christmas centerpiece which she had made using the red roses and baby's-breath highlighted with red and gold glitter.

Laura Cole displayed a six foot tall tree structure depicting the song, "The 12 Days of Christmas." The structure was made by using cardboard cylinders of graduated size. Each cylinder was hollow so that gifts could be hidden under each. She also displayed three Christmas panels painted on old weathered boards. One pictured the three kings, one three shepherds, and the largest was of the Holy family flanked by angels.

The group joined Wanda Balch and Ann Bulls in the singing of Christmas songs. Then the meeting was adjourned with the singing of the DKG song.

## Increased consumer demand intensifies water search

The world's skyrocketing demand for food and fiber is giving impetus to a quest for supplemental water for West Texas and Eastern New Mexico. That's the consensus of Water, Inc., officials as they intensify efforts toward importation of a supplemental water supply to the area.

"On every hand we hear of the approaching food and fiber shortage," said Duncan Ellison, Water, Inc., executive director. "National leaders are taking the initiative to alert their fellow countrymen of the coming crisis," he said.

Water, Inc., a non-profit corporation dedicated to a goal of exploring proposals for supplemental water and pursuing implementation of most likely proposals in the midst of its annual membership campaign. The organization was financed entirely through voluntary membership dues.

An example of the national concern about food and fiber shortages was voiced by U.S. Rep. John J. Rhodes, (R-Arizona) in an address at Phoenix. "There are people who question the need for more irrigated farm land developed by investment of federal funds," he said.

"Until quite recently they could point to costly farm crop surpluses to justify their position. Now, however, the surpluses have all but disappeared and we are looking at shortages of some key crops. Are they temporary, or will they

be with us for a long time to come? That probably depends upon the world market, and how we in this country decide to use our productive capacity in world trade. Trade in food and fiber can be the cause of wars or a tool for peace in the world. Personally I would rather worry about farm surpluses and how to use them to promote peace in the world than to face shortages at home and abroad," he concluded.

A.L. Black, Friona, president of Water, Inc., noted that the day is coming when the nation will demand an increase in the production from the area. "We can speed that day by giving all-out support to Water, Inc.," he said, "support by literally putting our money where our mouths are."

## December wedding plans announced

Mr. and Mrs. J.A. O'Neal, Sr. of Bronco announce the engagement of their daughter, Miss Gail O'Neal, to Alvin Gladden, son of Mrs. L.P. Gladden and the late Mr. Gladden.

Miss O'Neal is employed by the Texas Agricultural Extension Service and Gladden is employed by Farm Equipment Company. The couple plans a December 28 wedding.

## College announces ACT testing date

The next testing date for the American College Test (ACT) has been scheduled for Feb. 23 at South Plains College.

Students wishing to take the test may register now through Jan. 28 in the counselor's office at the college. They will receive a registration card and registration instructions upon signing up.

Test fee is \$6.50. This permits the student to have copies of their ACT assessment scores sent to as many as three colleges or scholarship agencies. There is a fee of \$1 for each additional selection.

Time and place of the test will be announced later.

Additional testing dates for the ACT exam are April 27 and June 15.

Registration for the April test opens on Jan. 21 and closes on April 1. Opening registration for the June test is March 25 and closing date is May 20.

Persons needing further information concerning the ACT test may contact Don Melton, director of guidance at SPC, or Mrs. Shirley Foster, academic counselor.

## BERIA EXECUTED

In a purge of top-level Communist officials, the Soviet Union executed Lavrenti P. Beria, head of the secret police, on Dec. 23, 1953.



Janette Young of Morton demonstrated how to make baby's-breath roses at a Delta Kappa Gamma meeting in Levelland Saturday. She displayed a Christmas centerpiece which she had made using the roses and baby's-breath highlighted with red and gold glitter. She presented each lady at the meeting with one of the roses.

**LIKE IN CHARGE**  
On Dec. 24, 1943, President Franklin D. Roosevelt announced the appointment of Gen. Dwight D. Eisenhower as chief of Allied forces in the projected invasion of Europe.

**Local couple's book on Judo**  
Shelton of Dallas, a former instructor of Oldham County, has signed a contract with a West Coast firm for the publication of his first non-fiction book, "Judo for Dummies," a 1957 graduate of Adrian High School, is the son of Mr. and Mrs. Shelton of Morton.

**Contract with O'hara Publications**  
Shelton, a Tamura student for two and a half years, holds a brown belt. A contract was signed in early November in Dallas.

**Shelton and Dallas judo instructor Tamura**  
are co-authors of the work. Shelton is a three-time national judo champion and holds a sixth degree black belt. Shelton, a Tamura student for two and a half years, holds a brown belt.

**Shelton, his wife Barbara, and 10-year-old daughter Theresa**  
have been residents of Dallas since 1968. Mrs. Shelton is a major at Richland College in Dallas.

**Shelton, his wife Barbara, and 10-year-old daughter Theresa**  
have been residents of Dallas since 1968. Mrs. Shelton is a major at Richland College in Dallas.

**Texas cattle feeders book now available**  
The Texas Cattle Feeders Handbook has been published by the Texas Agricultural Extension Service.

**Comprehensive reference book**  
prepared in cooperation with Extension Services of nine Great Plains states, and provides information on all aspects of commercial cattle feeding.

**New publication is composed of 50 fact sheets, 25 of which are**  
publications and 25 from other sources. L.A. Maddox, Extension cattle specialist and project coordinator.

**The endeavor is a part of the Great Plains Cattle Feeders Committee**  
plan to make available a wide range of technical material of higher quality than ever before. New and revised information will be mailed to subscribers now through September 1, 1975.

**Authoring the handbook with Maddox**  
are Dr. John Sweeten, agricultural engineer in animal waste management; Dr. Dennis B. Herd, beef cattle nutritionist.

**The handbook, B-1133, includes broad**  
range of information on nutrition, preparation and storage, animal health, feedlot management, feedlot equipment, figures for feedlot operations, waste management, and a glossary for miscellaneous publications. For additional information, contact local county Extension agent.

# Christmas Gifting...

Is More Fun At

## St. Clair's

Lingerie

Pant Suit

Jackets

Pants  
Blouses

Skirts

3 Piece Ensembles

Jewelry

Gift Certificate - Free Gift Wrapping Wrap

Mens & Boys

Shirts,  
Dress & Sports

Pajamas  
Underwear

Shoes

Ties

Sox

Belts

Jackets  
Sweaters

**SOLIZ**

FROM PAGE ONE

Other Indians named on the honorable mention list were, offense, Randy Kuehler, 6-3, 180 lb. senior end and wingback Mark Fluit, 5-11, 165 lb. senior.

Honorable mentions on defense included Soliz, at linebacker; Billy Joyce, senior, 6 ft, 160 lb. senior safety, and end Jerry Silhan, 6-3, 190 lb. senior.

Soliz was also on the honorable mention list as a defensive lineman on the all South Plains squad.

**TRIBE**

FROM PAGE ONE

Silhan had an excellent game from the field, canning 9 of 14 attempts. He also hauled in 7 rebounds.

Mike Williams did himself proud with 5 of 9 shots from the field and 2 of 2 foul shots for a total of 12 points. He also grabbed 7 carombs, made three steals and contributed 2 assists.

Kenneth Standmire was next in line with 4 of 7 from the floor and 1 of 2 free throws for a total of 9. Billy Joyce followed with 5 tallies and Mark Fluit with 4.

Coach Whillock's comment in general on the Brownfield game was "good shooting percentage from the floor, but too many mistakes over-all."

The Lobo game began as it ended—with very little visible margin between the output of the two teams. Morton pulled to a 14-13 advantage at the end of the first period, but fell to a four point deficit at 32-36 at intermission. They made one point back in the third period at

48-51 then mounted a late surge to knot it up 62-62 at the end of regulation play.

The three overtime periods were significant in more than thrilling the fans, it set up a meeting between these two teams Friday which should produce a real old fashioned donnybrook. They will clash in the next game for both of them in the Denver City tournament at 2:30 p.m. Friday. It should straighten out some points obscured by the Tuesday game and could be the game of the tourney.

Larry Thompson again took the honors against the Lobos, bucketing 9 of 15 field shots and 8 of 11 charity shots for a total of 26 points. He also contributed three rebounds and three steals. Silhan was next in line with 7 of 15 field goals for 14 and chipped in 6 rebounds and 6 steals to the pot. Joyce hit 6 of 15 field shots and one free throw for 13 plus 6 rebounds and two steals.

Fluit dunked 5 of 8 field shots and 2 of 2 charity shots to turn in a respectable shooting average for the night. He further contributed 5 rebounds, 3 steals and 2 assists.

Standmire made four points on the strength of 2 of 6 field shots, and hooked 3 rebounds and made two steals. Williams added four points and three rebounds to the cause.

Game totals included: 32 of 64 field goals; 11 of 18 free throws; 26 rebounds, 16 steals, 2 assists, 24 personal fouls and a total of 17 mistakes.

Next action for the Tribemen is the Denver City Tournament, Friday, Saturday and Sunday.

**COTTON**

FROM PAGE ONE

percent was in the high micronaire range of 5.0 to 5.2 and 1 percent was in the very high range of 5.3 and above.

The Agricultural Marketing Service of the U.S.D.A. reported cotton prices \$5.00 to \$12.50 higher per bale on the Lubbock market during the week. Demand was strongest for cotton with staple lengths of 31 and longer but was strong for cotton with staple lengths of 29 and 30. Prices ranged from 3100 points over the Government Loan for short staple cotton up to 4500 points over the loan for long staple cotton. Typical lots were bringing an average of 37 cents per pound over the loan and were selling in the price range of 50 to 60 cents per pound.

Average prices paid for the most predominant qualities in the 3.5 to 4.9 premium micronaire range were: Grade 31, Staple 30 - 52.15 cents per pound, Grade 31, Staple 31 - 58.40, Grade 31, Staple 32 - 62.40, Grade 41, Staple 30 - 51.20, Grade 41, Staple 31 - 57.25, and Grade 41, Staple 32 - 60.95.

Cottonseed prices were lower and farmers received \$95 to \$110 per ton. Average price was \$100.40 per ton.

**MEDICAL**

FROM PAGE ONE

Mrs. Orville Tilger was elected president of the organization, Roy Hickman was elected vice-president and Mrs. James Bell will serve as secretary.

Under the scholarship plan, clubs, organizations and individuals are asked to pledge monies which will be used as a scholarship in educating a doctor while he is in medical school. Following graduation, the doctor will agree to practice in Morton for a five year period. It is hoped that after five years, he will remain here and make Morton his home, however, his obligation is for five years only.

Three medical students have applied for the scholarship and a screening committee consisting of Gene Benham, Judge Glenn Thompson, Truman Swinney, Dr. N.L. Dubberly, Mrs. Ray O'Brien, Mrs. Deryl Bennett, Jimmy St. Clair and James Walker will spend a day with each student in an effort to determine which applicant will be accepted. The three applicants have requested from \$100 to \$300 a month. To date over \$1,000 is in the fund.

**School energy saving drive set for Jan. 1**

Texas public schools were requested to cooperate in Governor Dolph Briscoe's energy saving program in a letter from Dr. J.W. Edgar, commissioner of education, Thursday, December 6.

Governor Briscoe has declared an emergency period for the State's school districts beginning January 1 and ending

March 31, 1974, and has asked schools to set a goal of a 15 percent energy curtailment.

In response to the Governor's request, the Texas Education Agency will coordinate an energy saving program in the public schools designed not only to save energy this year but to produce the data necessary to plan an effective program for next winter.

Specific action measures requested by the Governor and by the Texas Education Agency include:

-Set all thermostats at 68 degrees for cold weather and 78 degrees for warm weather.

-Reduce thermostat settings to 65 degrees just before the end of the class day and reset them to 68 degrees an hour before the opening of school in the morning.

-Schedule classes to end at 2:30 p.m. (3:30 p.m. Daylight Savings Time) for the months of January, February, and March.

-Schedule all student activities to the extent possible, including athletic events, in the afternoons during January, February, and March.

-Turn off all unnecessary lighting.

-Close off and reduce heat to the minimum in all portions of buildings not necessary to the instructional program.

-Where possible, plan maintenance and custodial work during the day rather than at night.

In compliance with Governor Briscoe's requests, Edgar authorized an abbreviated school day and

**DAMAGE**

FROM PAGE ONE

that the three defendants arrived at his residence on or about November 24, 1973 without a warrant for his arrest and without an explanation as to why they were there.

The action further states that Palmer was assaulted and taken to the county jail, where it alleges he was again assaulted by Denny and Turner and falsely imprisoned.

The suit lists several alleged injuries to Palmer's person which rendered him incapable of pursuing his line of work and depriving him of substantial income, and from which he suffered considerable physical and mental pain.

James K. Walker is attorney for the plaintiff.

**Hospital notes**

Patients admitted to Chchran Memorial Hospital from Dec. 4 through Dec. 11, were: Lena Mills, Eddie Miller, Louise Giles, Socorro Diaz, Librado Alaniz, Lavita Brownlow, Lesseye Silvers, Juan Muro, Manuel Lopez, Oris Ellington, Wade Sanders, Randy Konstankof, Thomas Gonzales, H.G. Pollard, Katherine Harvey, Sabrina Herloscher, Mike Turner, Mary Lou Morales, Lucy Young, Glenda Stroud, Dennis Young, W.A. Harris, Mollie Parnell, Homer Waldrop, Marie Lewis, Gene Bridges, and Lucille Wynn.

**FOR PEOPLE WHO THINK**

From the Christians who assemble at Taylor and S. 2nd. Sts., Greetings:—

After Satan had failed in the first attempt at tempting Christ to disobey God the Father he (Satan) tried again as recorded in Matthew 4:5, 6, & 7—as follows—"Then the Devil taketh him up into the holy city and setteth him on a pinnacle of the temple, and saith unto him, If thou be the Son of God, cast thyself down; for it is written, He shall give his angels charge concerning thee; and in their hands they shall bear thee up, lest at any time thou dash thy foot against a stone. Jesus said unto him, It is written again, Thou shalt not tempt the Lord thy God." Satan accurately quoted Psalms 91:10, 11. Truly, then, such a promise had been made in this prophecy concerning Christ.

WHY didn't Christ prove himself by jumping down off that high place? God HAD promised no harm could come to him. Christ, then, could have put God "to the test" by jumping. Christ did not put the Father to test (Tempt God). WHY? Simply because God had said in Deuteronomy 6:16 "Ye shall not tempt the Lord your God, as ye tempted him in Massah." Read also Exodus 17:2 and 7. Hence Jesus set the example for us to follow when we are tempted to do something that seems the thing to do as far as we can see, but that which is not authorized of God, or would in any way put God to the test to make good on his promise in any matter. If the Son of God would not so act because such an act is a violation of God's word, then, certainly we would be condemned in so acting. Simply because a certain thing is a "good" work so far as we can see, but which is NOT either set forth by direct statement, approved example, or clear and necessary inference in God's word, what we "think" about it does not license us to do it for we would be going "beyond" what is written and not "abiding in" the "doctrine" of Christ which DOES condemn us. (1 Cor. 4:6 and 2 John 9). When we will not limit ourselves to God's ways, desiring to do according to the wisdom (?) of our own ways—we do not have the trust in God that is necessary to true faith in God and our works are NOT works of righteousness—(Read Romans 10:1-3 and Isaiah 55:8, 9.) More about tempting God next time. Please remember that you are sincerely welcome to the assemblies at Taylor and S. 2nd.

C.R. MANSFIELD, Evangelist  
CHURCH OF CHRIST.

**100 GOLD BOND EXTRA** Stamps  
When you present this Valuable Coupon at  
**LINER'S PHARMACY**  
118 SOUTHWEST 1st MORTON, TEXAS  
WITH PURCHASE OF \$3.00 OR MORE  
GOOD NOW THROUGH NEXT WEEK

WRAP UP... CHRISTMAS... HERE!

WRAP IT UP HERE! You can wrap up all your gift-giving problems in Neal Ellis' gift department. Men, women and children will all be delighted with your selection. You'll love our distinctive gift wrap, too. We take BankAmericard and Mastercharge cards.



FRENCH COLOGNE FOR MEN "MON TRIOMPHE" AFTER SHAVE, \$3.50; COLOGNE \$4; SETS \$8

**Neal Ellis**  
PHARMACY AND GIFT SHOP  
ONE THOUSAND COLLEGE

**FRALIN'S PHARMACY**  
WE OFFER THESE SERVICES FOR OUR CUSTOMERS' CONVENIENCE:  
DRIVE IN WINDOW  
24 HR. DELIVERY SERVICE  
WELFARE PRESCRIPTIONS  
FAMILY RECORDS FOR INCOME TAX & INSURANCE PURPOSES  
PHOTO PROCESSING  
24 HR. PRESCRIPTION SERVICE

Hardening of the arteries is the result of higher living, says Dr. John Houston, Dir. of Cardiology, Milwaukee Cty Hospital. Other civilizations are less susceptible to the disease because they burn up more energy thru exercise and physical work. Dr. Houston blamed animal fats, smoking and alcohol along with lack of proper exercise. The natural effect of cigarette nicotine is to contract the arteries. Alcohol increases the appetite, encouraging overeating, a direct cause of cardio-vascular diseases, he said.

**TO ZERO IN ON OUR GREAT FALL SPECIALS SET YOUR SITES ON OUR WINDOW BULL'S EYES**

**BUTTON-A-DAY**  
VIGILANTES HAD HANGUPS

# W communications net can be boon to hunters

9 p.m. and bright and early tomorrow morning you and your buddies are going duck hunting. You've got a question about the point you can't wait until tomorrow and might want to ask your local Parks and Wildlife Department office is closed for the day when it reopens at 8 a.m. it will be late and the local warden is out of town.

to turn to? Call 512-475-5909 and get the Parks and Wildlife Department's communication center in Austin.

The center is manned 24 hours a day at a two-fold purpose.

First, it can answer the majority of questions from the public after hours on most matters of fishing and water safety.

Second, it is a center for the collection and dissemination of information to and from department field personnel and other personnel from agencies such as the Department of Public Safety and local sheriff's departments.

Under the direction of James Schmidt, communication center is part of the district law enforcement office.

By dialing our number at any time of

the day," said Schmidt, "we can assist the public in matters of inquiries and also take information of game and fish violations or criminal activity."

Reports of any unlawful activity can be transmitted to game wardens in the field via the communications center's telephone, radio or teletype.

"We have a 24-hour outward wide area telephone system (WATS) which is remoted from the department's headquarters in the Reagan Building after business hours," said Schmidt.

"Our Austin-based radio system can cover a 39-county area around Austin and is in contact with some 119 enforcement radio units.

"The teletype is tied in with the Texas Crime Information Center at the DPS in Austin and the National Crime Information Center in Washington D.C."

The teletype system has been worth the money of late during flash flood alerts.

Word of fast-rising water comes over the teletype from the National Weather Bureau through the DPS and Schmidt notifies park superintendents of parks in the affected area along with game wardens.

"Also, most serial-numbered items—cars or boats—can be traced to their owners through various contacts over the

teletype," said Schmidt.

"We can trace boat registration numbers through the Parks and Wildlife Department's registration retrieval system and in a matter of minutes come up with ownership, residence of owner and other information which might help return a stolen craft to a Texas boater."

A second radio station will open in Houston Nov. 1. With its radio antenna perched atop the San Jacinto Monument, it will cover the populous Southeast Texas region.

"Eventually," said Schmidt, "we hope to open additional stations across the state to maintain continuous, round-the-clock contact with game wardens."

## Students compete in national test

Thirty-two MHS seniors competed in the Betty Crocker Search for Leadership in Family Living contest, sponsored by General Mills, Inc., Dec. 4.

At stake for the winners are a \$1,500 state scholarship and a \$500 state scholarship for second place. The

National first place winner will receive in addition to the State scholarship, a \$5,000 scholarship. Second place is a \$4,000 scholarship and the third place winner receives a \$3,000 scholarship.

Scholarships may be used for any degree and are not restricted to Home Economics. All high school seniors are eligible and this is the second year boys have been eligible to participate.

Mrs. Helen Crone was in charge of the tests. Local winners will be announced in approximately six weeks.

## Clayton briefing

Interested Cochran county citizens are reminded that Rep. Bill Clayton will give a briefing in Morton, Thursday, December 20, on revision of the Texas state constitution.

He will be at the county auditorium from 2:45 to 4:45 p.m. He will brief local citizens on the effect of the revision on them and will answer any questions they may have on the subject.

# BEN FRANKLIN TOYTOWN

 <p><b>Tony Roche TENNIS SET</b> Reg size racket, nylon grip &amp; nylon strings, includes 3 tennis balls, waterproof racket cover.</p> <p><b>788</b></p>	 <p><b>THE GAME OF LIFE</b> Make them get decisions and be a success in LIFE! For ages 10 to adult. 2 to 8 players.</p> <p><b>497</b></p>	 <p><b>MIDLAND AM/FM STEREO with 8-TRACK PLAYER &amp; SPEAKERS</b></p> <p>OUR LOW PRICE <b>8488</b></p>
<p><b>Gifts for Him! ELECTRIC SHAVERS</b></p>  <ul style="list-style-type: none"> <li>Norelco Triple-Header</li> <li>Remington Mark I</li> </ul> <p>Remember him with a gift he'll cherish! Famous make shavers with deluxe features. Each in travel case.</p> <p><b>YOUR CHOICE 2397</b> Each</p>	 <p><b>Sturdy RIDE-EM TOYS</b> Go as fast or as slow as you want, your own foot power moves you along. Develops coordination. Sturdy molded poly bodies. Bright colors. 20 to 25-in. long.</p> <p><b>CHOICE 333</b> EACH</p>	 <p><b>45-PC. DINNERWARE SET</b> Service for 8 • Choice of Patterns</p> <p>Orange Blossom, Reg. \$16.88 Georgia, Reg. \$16.88 Coral, Reg. \$16.88 Crest, Reg. \$16.88 Crest, Reg. \$16.88 Crest, Reg. \$16.88</p> <p><b>1288</b> Set</p>
 <p><b>6-ROLLS GIFT WRAP</b> Bright package makers. Choice of 30-40 sq. ft. roll or 60-80 sq. ft. paper. Many different designs.</p> <p><b>99¢</b> Each</p>	 <p><b>KODACOLOR-X FILM CARTRIDGE</b> For color prints. 12 exposures.</p> <p>Christmas Special <b>83¢</b></p>	 <p><b>Magnetic PHOTO ALBUMS</b> Holds pictures without paste under protective sheets. 10 pages. 11" x 9" in size. Choice of padded covers.</p> <p>SAVE! Reg. \$2.57 <b>197</b> Each</p>
<p><b>40 BOWS or 10 REELS RIBBON</b></p>  <p>The finishing touch. Package of 40 bows in lots of sizes and colors, or package of 10 reels of 3/4-in. ribbon, totaling 200-ft.</p> <p>Choice <b>77¢</b> Each</p>	 <p><b>Electric STEAMER</b> Steamers are easy. Lightweight, safe to use. Compact. UL 100P.</p> <p>Our Gift Price <b>399</b></p>	 <p><b>Automatic ELECTRIC BLANKET</b> For Twin or Full Size Lightweight soft polyester blend with wide nylon binding. Two-year manufacturer's guarantee. Choice of colors.</p> <p><b>SINGLE CONTROL 1399</b> Dual Control Style... Only 16.99</p>
 <p><b>Noma 15-LIGHT INDOOR SET</b> Bright and colorful light set. Add-on plug connector. UL approved.</p> <p><b>277</b> Set</p>	 <p><b>For Her ELECTRIC SHAVERS</b> Choose Lady Sunbeam or Lady Norelco. Easy to use shavers with twin shaving heads. Compact designs. Each in gift case.</p> <p>Choice <b>777</b> Each</p>	 <p><b>Iridescent Line CARNIVAL GLASS GIFTS</b> Bright new gift ideas for the discriminating hostess! Choose one or all five matching table top pieces in new iridescent line.</p> <p>AS LOW AS <b>150</b></p>
 <p><b>POLAROID® COLORPACK FILM</b> Polaroid Type 108 Eight 3 1/4" x 4 1/4" Prints</p> <p>Christmas Special <b>399</b></p>	 <p><b>supermax STYLER/DRYER</b> Comb, dress styles. With attachments.</p> <p>SAVE! Reg. \$18.44 <b>1397</b></p>	 <p><b>Package of 3 FLASH CUBES</b> Norelco brand. 4 flashes per cube. Christmas Special</p> <p>REG. 87¢ <b>77¢</b> PKG. OF 3 Norelco MAGIC CUBES... \$1.27</p>
 <p><b>MAGIMATIC CAMERA OUTFIT</b> Consists of: Magicube Camera, 1 Magicube, one 126 Kodacolor film cartridge.</p> <p><b>995</b></p>	 <p><b>KODAK INSTANT LOAD CAMERA KIT</b> No dials to turn. Focus 4 1/2 to infinity. Consists of: Camera, one 126 film, 11 flashcube and 2 batteries.</p> <p>Special Price! <b>695</b></p>	 <p><b>BIG JIM SPORTS CAMPER</b> 997 COMPLETE Pack your gear and take a trip! Big Jim Sports Camper with 15-in. fishing boat. Sturdy plastic. Has mountain climbing and rescue gear, cycle rack, camping equipment. Camper in colorful tan and brown.</p> <p><b>BIG JIM with Talking Field Radio</b> 497 Magical Big Jim, 9 1/2-in. tall, all joints bend and turn. Voice unit in back pack. Pull string and hear 6 messages.</p>

LARGE SELECTION OF GIFTS UNDER \$200

<b>RECLINERS</b>	REG. \$79.95	NOW \$5995
<b>PC. BED ROOM SUIT</b>	\$249.00	\$21995
<b>VELVET SOFA &amp; CHAIR</b>	\$239.95	\$19995
<b>PC. LIVING ROOM SUIT</b>	\$499.95	\$38900
<b>NG SIZE MATTRESS &amp; BOX SPRING</b>	\$239.95	\$18995
<b>UREKA UPRIGHT VACUUM CLEANER</b>	\$54.95	\$4495

WE ALSO HAVE SEVERAL NEW G. E. FROST FREE REFRIGERATORS WITH A FEW SCRATCHES AT A GOOD SAVING.


## TAYLOR & SON

FURNITURE & APPLIANCE

8 W. JEFFERSON MORTON

## WRAP UP... CHRISTMAS... HERE!

WRAP IT UP HERE! You can wrap up all your gift-giving problems in Neal Ellis' gift department. Men, women and children will all be delighted with your selection. You'll love our distinctive gift wrap, too. We take BankAmericard and Mastercharge cards.



CHOOSE FROM A LARGE COLLECTION OF FIGURINES FROM \$3 TO \$22

# Neal Ellis

PHARMACY AND GIFT SHOP  
ONE THOUSAND COLLEGE



# The Merriest Meals start here

OPEN  
7 TIL 11  
7 DAYS  
A WEEK

## AT ALLSUP 7-11

608 S. MAIN MORTON



SPECIAL

SPECIAL

SPECIAL

SPECIAL

### GET YOUR CHRISTMAS TREE HERE

JUST RECEIVED -- A GIANT SHIPMENT OF FRESH, FULL BOBIED CHRISTMAS TREES--TO MAKE THE YULETIDE SEASON EXTRA MERRY IN YOUR HOME **SCOTCH PINE-FIR-PINON** SEE THESE WHILE THE SELECTION IS AT ITS GREATEST ALL SIZES OF TREES FOR THE HOME AT LOW, LOW PRICES BEGINNING AT \$2.00.

PLUMP... DELICIOUS  
**TURKEYS**

YOUNG HENS

LB. **59c**



### TUNA

CHICKEN OF THE SEA  
6 1/2 OZ.

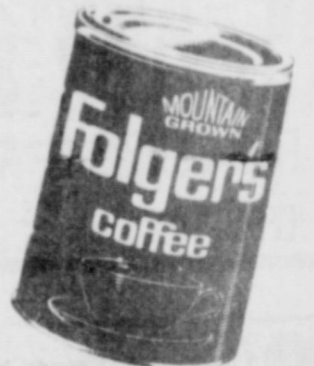
**49c**



### COFFEE

FOLGERS  
REGULAR AND ELECTRIC  
LB.

**99c**



WILSON

### HAM

LB. **59c**

POP RITE

### POPCORN

2 LB. BAG

**29c**

### BACON

RACON

LB. **69c**

### CASE OF COKES

24 CANS

**\$2.99**

for CHRISTMAS

### STEREO TAPES

**\$1.99**

SHURFINE

### SALAD DRESSING

QUART

**49c**

### TOYS 50% OFF

BAR-B-Q BEEF

ICEES

FRIED CHICKEN



## Allsup's 7<sup>TO</sup>11

DOUGHNUTS

BAR-B-Q RIBS



OPEN 7 A.M. TO 11 P.M. FOR YOUR EARLY AND LATE SHOPPING

# MORTON BRANCH

# Opening

MONDAY, TUESDAY,  
WEDNESDAY,  
DECEMBER 17, 18, 19  
DURING NORMAL BUSINESS  
HOURS  
8:30 a.m. - 4:30 p.m.

## LEVELLAND SAVINGS

### WILL HAVE A

### FORMAL

### SHOWING OF IT'S

### NEW FACILITIES

### SOUTH MAIN - PIERCE - MORTON

REGISTER for door prizes to be drawn for daily. You do not have to be present to win!

- Refreshments & Free Gifts
- Entertainment by Morton Choral Groups
- Prizes
  - Set of 4 "Norman Rockwell" Plates
  - 10 - \$25.00 Savings Accounts

OUR STAFF  
IS LOOKING  
FORWARD TO  
VISITING WITH  
YOU



"DESIGNED FOR  
YOUR PLEASURE  
AND CONVENIENCE"



# Levelland

SAVINGS & LOAN ASSOCIATION

Main Office - Levelland      Branch Office - Morton

PLAN TO  
ATTEND  
THIS OPENING

# Nationwide effort begins to find jobs for veterans

A nationwide effort to find suitable and rewarding jobs for Vietnam Era disabled veterans has been launched by the Veterans Administration, the National Alliance of Businessmen and the Department of Labor.

Acting on a letter from President Nixon in which he expressed great concern for suitable careers for disabled veterans, VA Administrator Donald E. Johnson recently mailed employment questionnaires to 41,000 of the 368,000

Vietnam Era veterans who have service-connected disabilities. Designed to identify veterans who want further training to qualify for jobs or who want help in finding a suitable job, the questionnaire will be sent to all Vietnam disabled during the coming months.

"Special help—over and above GI Bill education—is available to veterans with service-connected disabilities," Johnson explained. "This is a follow up to insure that the full spectrum of VA benefits has been used to the maximum toward helping the individual veteran overcome disabilities."

The Veterans Administration is permitted by current legislation to pay disabled veterans who are drawing compensation an additional \$170 per month while they are in school. The monthly stipend, which is increased when there are dependents, is in addition to VA payments for tuition, books and other expenses, and it does not affect compensation payments that range from \$28 (for a 10 percent disability) to as high as \$1,232 (for 100 percent when loss of limbs is involved.)

The 66,000 member National Alliance of Businessmen is developing job openings for disabled veterans to be identified by the VA survey. The

# 'Adversity resistance' helps improved cotton varieties

A scientist's effort to improve plant vigor by building "adversity resistance" into three new cotton varieties has resulted in earlier harvests and higher yields for many Texas producers this season.

His Tamcot SP cottons—SP37, SP21 and SP23—are storm and multi-disease resistant as well as early maturing characteristics that enabled growers to harvest their cotton early despite a delayed harvest in many areas.

Department of Labor is cooperating through its state employment offices.

Veterans who respond in the survey that they want a job or job training will be contacted immediately by VA counselors. Those who want jobs will be referred to a NAB job opening. Suitable job training programs will be found for others. VA counselors will carefully assess each veteran's physical capacities, job skills and qualifications before making referrals.

Unemployment among disabled veterans is estimated at 14 percent. Administrator Johnson expressed confidence that the rate could be lowered considerably and kept down through the cooperation being extended by the nation's business enterprises.

In fact, the nation's first 1973 cotton bale was the SP37 variety.

The adversity resistant SP cottons were developed by Dr. Luther Bird, Texas Agricultural Experiment Station scientist at Texas A&M University. As plant pathology professor for the past 23 years, Bird has conducted research aimed at the economic control of disease by applying genetic improvements to plant strains. Besides the SP cottons and several successful earlier varieties, Bird has exciting new strains under development that "look quite promising."

Growers along the Texas Gulf Coast feel that the SP cottons received a thorough test from adverse weather and growing conditions this year. Generally, the early maturing characteristic permitted the varieties to be harvested ahead of rains which hampered harvests in many regions.

"We must have these Tamcot SP cottons or be forced out of business by unfavorable weather," declared Henry Smith, veteran county extension agent at Wharton. Dan Pawlik, county agent for San Patricio and Aransas Counties, and other agents and producers echoed Smith's enthusiasm.

Introduced commercially last year for the first time, the Tamcot SP cottons have been a bonanza to producers who have

been plagued by unfavorable growing conditions.

Foundation planting seed are still being increased this season, and certified seed growers are pleased with response of the SP cottons.

Tamcot SP37 accounted for approximately 2 percent of the total 1973 Texas cotton acreage and about 1 percent of the U.S. planted acreage, according to estimated percentages of planted cotton acreages.

Bird and other TAES researchers expect the 1974 SP cotton acreage to climb quickly as more seed becomes available.

Rio Grande Valley growers used the SP37 variety for the first time this season. Its earliness and fast-maturing characteristics were well documented, and the first 1973 bale was produced by Oscar Mayfield and Son of Rio Hondo.

The season's first bale graded 42 on

one side and 31 on the other, had a length of 33, and a micronaire of 4.4, considered to be quite good.

Yields vary according to area and local situations, but the SP cottons harvested by machine picked stripping. Yields have ranged from 2.5 bales to the acre.

In variety tests conducted by the County Extension Agent, Lita Wilson, cooperation with Lucas K. Keen, agronomist with the Experiment Station, Tamcot SP37 ranked at the top.

"Most farmers have already planted SP37 for next year, as a result of performance in this area," Wilson said.

Another large grower of SP37 cotton was the Stiles Farm Foundation, Williamson County where early yields averaged about 1.5 bales to the acre.

## LOSE UGLY FAT OR PAY NOTHING

Start losing weight today OR MONEY BACK. MONADEX is a tiny tablet that will help curb your desire for excess food. Eat less—weigh less. Contains no dangerous drugs and will not make you nervous. No strenuous exercise. Change your life—start today. MONADEX costs \$3.00 for a 20 day supply and \$5.00 for twice the amount. Lose ugly fat or your money will be refunded with no questions asked by:

**LINER'S PHARMACY**  
118 S.W. 1st Morton

TO THE MANY FRIENDS OF MRS. J.C. (MAUDE) MILLER: OUR SINCEREST THANKS TO EACH OF YOU FOR THE KINDNESS SHOWN MRS. MILLER DURING HER RECENT ILLNESS. SHE HAS IMPROVED SLIGHTLY AND IS NOW RESIDING AT THE QUAKER MANOR, 4401 74th STREET, LUBBOCK, TEXAS. I AM SURE SHE WOULD BE VERY HAPPY TO SEE OR HEAR FROM HER MANY FRIENDS IN MORTON SO, FROM BOTH MRS. MILLER AND HER FAMILY, MERRY CHRISTMAS AND HAPPY NEW YEAR TO YOU ALL.

- ASSEMBLY OF GOD CHURCH, Whiteface, Pastor, Rev. Billy Pierson. Sunday Services—Sunday School, 9:45 a.m.; Morning Worship, 11 a.m.; Evening Worship, 6 p.m.; Midweek Bible Study, 6:30 p.m.
- ST. ANN'S CATHOLIC CHURCH, Pastor Nicholas Schneiders C.P. Mass Schedule: Sunday, 9:00-11:15 A.M.; Weekdays, 7:30 a.m.; Wednesday Evenings, 8:30 p.m.; First Fridays each Month, 8 a.m.-8:30 p.m.; Sunday School, 10-11 a.m.
- NEW TRINITY BAPTIST CHURCH, Rev. W.D. Anderson, 3rd and Jackson. Sundays—Sunday School, 9:45 a.m.; Morning Worship Second and Fourth Sundays, 11:00 a.m.; H.M.S., 4:00 p.m. Wednesdays—Prayer Service, 7:00 p.m.
- FIRST BAPTIST MEXICAN MISSION. Sundays—Sunday School, 10:00 a.m.; Training Union, 6:30 p.m.; Evening Worship, 7:30 p.m. Wednesdays—Prayer Service, 7:30 p.m.
- FIRST BAPTIST CHURCH, ENOCHS, Rev. Charley Shaw. Sunday School, 10 a.m.; Morning Services, 11 a.m.; Training Union, 7 p.m.; Evening Services, 8 p.m.

- BLED SOE BAPTIST CHURCH, Rev. Frank Taylor. Sunday Service, 9:45 a.m.; Worship Service, 11 a.m.; Training Union, 6 p.m.; Evening Worship, 7 p.m.; Wednesday Night Service, 8 p.m.
- CHURCH OF CHRIST, S.W. 2nd and Taylor, C.R. Mansfield, Preacher. Sundays—Bible Class, 10:00 a.m.; Worship, 10:45 a.m.; Evening Worship, 6:00 p.m. Wednesdays—Midweek Bible Class, 8:00 p.m.
- FIRST METHODIST CHURCH, James E. Price, Pastor, 411 West Taylor. Sundays—Church School Session, 9:45 a.m.; Morning Worship Service, 10:55 a.m.; Evening Fellowship Program, 5:00 p.m.; Evening Worship, 6:00 p.m.
- WHITEFACE, CHURCH OF CHRIST, Dick Biggs, Minister, 300 Tyler Street. Sunday—Bible Classes for all ages, 10:00 a.m.; Worship and Communion, 10:55 a.m.; Evening Bible Classes, 6:30 p.m.; Evening Worship, 7:00 p.m. Wednesdays—Bible Study & Prayer, 8:00 p.m. Sister Pearl's Gospel Singing House, Purity Sunday School, Class, 8:45 a.m. Teacher—Pearl Swindle Williams, 511 E. Jackson.
- UNITED METHODIST CHURCH, ENOCHS, Rev. Grady Adock, Pastor. Services held 1st and 2nd Sundays. Sunday School, 10 a.m.; Morning Services, 11 a.m.; Evening Services, 7 p.m.; 4th Wednesday—Fellowship, 7 p.m.

Thou wilt show me the path of life, in thy presence is fulness of joy... PSALM 16:11. HERE IS THE PATH

Thou shalt love the Lord thy God with all thy heart, and with all thy soul, and with all thy mind, and thy neighbor as thyself. Luke 10:27. The basis of God's first and greatest commandment is love. God gave man the freedom to choose... and therefore will not force his love on anyone. God took the first step and is always ready to receive any who would come to Him. EVERYONE IN THE CHURCH THE CHURCH IN EVERYONE

- HICK'S CHAPEL BAPTIST CHURCH, Rev. Hugh Montgomery. Sunday School, 9:45 a.m.; Morning Services, 11 a.m.; Training Union, 6 p.m.; Evening Services, 7 p.m.
- FIRST BAPTIST CHURCH, Harold Harrison, Pastor. Sunday School, 9:45 a.m.; Morning Worship, 11 a.m.; Church Training, 6 p.m.; Evening Worship, 7:30 p.m.; Wednesday Prayer Meeting, 7:30 p.m.
- FIRST BAPTIST CHURCH, Paul McClung, Pastor, 202 S.E. First. Sunday School, 9:45 a.m.; Morning Worship, 10:55 a.m.; Morning Service K.R.A.N., 11:00 a.m.; Training Union, 6:00 p.m.; Evening Worship, 7:00 p.m.
- Tuesdays—Helen Nixon W.M.U., 9:30 a.m. Wednesdays—Graded Choirs, 7:30 p.m.; Prayer Service, 7:30 p.m.; Church Choir Rehearsal, 8:30 p.m.
- SPANISH ASSEMBLY OF GOD CHURCH, Rev. Ignacio Ruiz, N.E. Fifth and Wilson. Sundays—Sunday School, 10:00 a.m.; Morning Worship, 11:00 a.m.; Evening Evangelistic Service, 7:00 p.m. Wednesdays—Young people service, 7:30 p.m.
- EAST SIDE CHURCH OF CHRIST, Jammie Paden, Minister, 704 East Taylor. Sundays—Bible Study, 10:00 a.m.; Worship, 10:45 a.m.; Worship, 6:00 p.m. Wednesdays—Midweek Service, 8:00 p.m.
- CHURCH OF CHRIST, MAUDE, Dannie Mize, Preacher. Bible Study, 10 a.m.; Morning Worship, 11 a.m.; Night Worship, 8 p.m.; Wednesday Night Services, 8:30 p.m.
- UNITED METHODIST CHURCH, BULA. Services 2nd and 4th Sundays. Sunday School, 10 a.m.; Morning Service, 11 a.m.; Evening Service, 7 p.m.
- THREE WAY BAPTIST CHURCH, Rev. Jack Dewitt. Sunday School, 10 a.m.; Morning Worship, 11 a.m.; Training Union, 6 p.m.; Evening Services, 7 p.m.
- ASSEMBLY OF GOD CHURCH, Rev. Wilbur L. Stanley. Sundays—Sunday School, 9:45 a.m.; Morning Worship, 11:00 a.m.; C.A. Service, 6:00 p.m.; Evangelistic Service, 7:00 p.m. Wednesdays Services, 7:30 p.m.
- FIRST MISSIONARY BAPTIST CHURCH, Rois Standifer, Pastor, Main and Taylor. Sunday School, 9:45 a.m.; Morning Worship, 10:45 a.m.; Training Service, 6:00 p.m.; Evening Worship, 6:45 p.m.
- WMA Circles. Monday—Night Circle, 7:30 p.m. Tuesday—W.M.A., 2:00 p.m.; G.M.A., 4:00 p.m. Wednesday—Midweek Service, 7:30 p.m.; Edna Bullard, 9:30 a.m.

This Feature Is Published With The Hope of Getting More People To Church By The Undersigned City Business And Professional People.

Beseda Grain Co.	Ramby Pharmacy 104 W. Wilson Phone 266-5093	First State Bank 107 W. Taylor- 266-5511	Star Route Co-op Gin St. Rt. 1-Phone 927-3416
Claunch Gin Bula	Compliments of Carl Griffith Gin and G & C Gin	Griffith Equipment Company 120 N.W. 3rd-Phone 266-5330	Higginbotham-Bartlett
Bailey County Electric Co-op Association Phone 266-8600-Whiteface Hwy.	Judge Glenn Thompson	Luper Tire and Supply 602 Main -Phone 266-8001	Maple Co-op Gin
Bedwell Implement 219 E. Jefferson-266-5306	L & B Supply N. Main-Phone 266-5110	Allsup's 7 til 11 113 E. Washington-Phone 266-5532	Tic Toc Restaurant Loma and Rob Richards Levelland Highway-Phone 266-5223
Rose Auto and Appliance 107 E. Wilson-266-5959	Cochran Electric Service & Supply 317 W. Washington Phone 266-5545	Ramsey's Food Store Gerald Ramsey, Owner 210 South Main	St. Clair Department Store Morton 266-5223
Bill's Furniture & Appliance Bill Smith 108 SW 1st 266-5201	Gwatney-Wells Chev.-Olds.	State Line Butane	Smith Seed and Implement Maple, Texas Phone 927-3302
	Farmer's Co-op Gin of Enochs Enochs 927-3444	West Texas Seed Co. Roy Oxford, Mgr. Dora Hwy. 266-5557	Liner's Pharmacy Mike and Donna Liner 118 SW 1st. 266-8965 266-5007



## ABOUT LOCAL FOLKS

by Dutch Gipson

was received this week of the late Louis Shields of Gary. He and his wife moved from here approximately 10 years ago. He was employed by Service at Lehman and they lived in the Lehman community.

He died Thursday night, December 6, at the Veterans Hospital in Shreveport, Louisiana. He is survived by a wife, a son, Dave, and a daughter, Betty Arnold.

Arnold has been promoted to the Marine Corp. He recently returned for five years and plans to make a career.

Jackie Pinson and Brandon from Littlefield are visiting with her mother, S.A. Ramsey, this week.

Mr. and Mrs. W.B. Swim of Plainview, Texas, citizens of Morton, with Rev. J. Wayne of First United Methodist Church, visited in Morton Wednesday. Swim was a guest of the 1936 Study Group meeting old friends and meeting new ones, while Rev. Swim was enjoying his time with citizens of Morton.

Members of First Missionary Baptist Church entertained the Women's Auxiliary Association Monday night with a skit entitled "Twas The Night Before Christmas." A miscellaneous program was enjoyed, afterwards a gift exchange was held by both groups. About 40 people attended.

Mrs. Hal Pugh of El Paso, have

been guests of her parents, Mr. and Mrs. Rob Richards. While here they have assisted in redecorating the Tic Toc Restaurant.

Officers and members of Morton Chapter No. 841, Order of Eastern Star, met in early session Tuesday night for the purpose of packing baskets of cheer for shut-ins for members and well wishers of O.E.S. Regular meeting was held and afterwards a Christmas Tree was enjoyed. Worthy Matron and Patron, Mr. and Mrs. Bob Newton, and Assist. Matron, Winnie Mae Byars and Asst. Patron, Joe Gipson hosted the chapter with Christmas goodies.

Charles McDermott spent the weekend with his son and wife, Mr. and Mrs. J. Wayne McDermott in Abilene. J. Wayne who has recently undergone another operation, is much improved and is able to walk unassisted and plans were for his dismissal Monday morning.

Glady Anderson of Grand Junction, Colorado has been visiting her cousin, Mr. and Mrs. Ray Griffith and family, for several days the past week.

### Look who's new

Christopher Wayne, son of Mr. and Mrs. Ray Bridges, Chris arrived at Cochran Memorial Hospital December 11 at 11:40 a.m. and weighed 7 pounds and 12 ounces.

Mrs. Pauline Bridges of Groom is his grandmother.



### Rights Of Grandparents

Do grandparents have a legal right to the companionship of their grandchildren? Consider the tale of woe brought into

court by an elderly couple. "Since our daughter died, relations with our son-in-law have gone from bad to worse. Lately he won't let our little boy come to visit us, or even let us go to visit him. Surely we have a right to see our own grandchild."

But the court refused to come to their aid. The court said that since the father had legal custody, he alone could decide whom the child should see.



### Sewing club meets in Cooper home

The Busy Fingers Sewing Club met in the home of Mrs. F.G. Cooper, Mrs. Ethel Stracener presided over the meeting in the absence of the president.

Mrs. A.R. Lindsey led the opening prayer and the club song was sang. The minutes were read and business discussed. Mrs. Walter Taylor closed the meeting with prayer.

Refreshments were served to: Mmes. Boyd Willis, Walter Taylor, Rolly Hill, Clayton Stokes, Nath Crockett, J.B. Carter, Ethel Stracener, Lola Mae Houghton, F.G. Cooper, and A.R. Lindsey.

The Christmas Party will be in the home of Mrs. Nath Crockett on Dec. 20. All members are to bring an apple, orange, banana or grapes for fruit baskets.

This is the usual rule—that grandparents have no independent right against parental wishes, to spend time with their grandchildren. However, courts have held the other way if the child's own welfare is clearly at stake.

For example: Custody of two little girls in a divorce case was awarded to their mother. At the time, she did not object to giving visitation privileges to the father's parents, since the children had a long and loving relationship with them.

Later, she changed her mind and tried to end these visits with the grandparents. But this time, a court ruled—for the sake of the children—that the contact should not be broken off.

"To have suddenly severed this close blood tie of love and affection," said the court, "might well have caused emotional disturbance."

Furthermore, there is always the possibility that grandparents can take over full-time custody by proving that the parent is no longer a fit person to be in charge.

Thus, in another case, the grandparents of a three-year-old boy were able to show that his mother was guilty of frequent intoxication and immorality.

The court switched custody to them outright. The boy would be better off not merely to visit, said the court, but to move right in.

A public service feature of the American Bar Association and the State Bar of Texas. Written by Will Bernard.

© 1973 American Bar Association

Sheets and pillowcases consume more than 600,000 bales of cotton annually.

**MEN; GIVE A GIFT THAT WILL LAST A LIFE TIME**  
**VOLLRATH STRATO-LINE COOKWARE**  
**WITH 304 SURGICAL STEEL \$249.95**

REGULARLY \$349.95 SET NOW UNTIL CHRISTMAS

50 YEAR WRITTEN GUARANTEE—THE "ULTIMATE" IN FINE COOKWARE CALL OR WRITE

**HAGGARD DISTRIBUTORS**

P.O. BOX 6426 LUBBOCK, TEXAS 79410 PHONE 799-2613 COLLECT

IMMEDIATE DELIVERY

PAYMENTS IF DESIRED

This Page Sponsored

By The Following  
 Indian Supporters

- LINER'S PHARMACY
- SILVERS BUTANE
- STAR ROUTE CO-OP GIN
- MORTON BI PRODUCTS
- WEST TEXAS SEED COMPANY
- TAYLOR AND SON FURNITURE
- COCHRAN POWER & LIGHT
- MORTON INSURANCE AGENCY
- JOHN'S WELDING & REPAIR
- BAILEY COUNTY ELECTRIC CO-OP ASSOCIATION
- GRIFFITH EQUIPMENT COMPANY
- COCHRAN ELECTRIC SERVICE & SUPPLY
- NOWELL GIN COMPANY
- MORTON DELINTING, INC.
- G & C GIN
- MORTON AUTO SUPPLY
- FORREST LUMBER COMPANY
- MINNIE'S SHOP
- TIC TOC RESTAURANT
- OWEN BROTHERS CUSTOM FEEDING
- ALLSUP'S 7 TILL 11
- L & B SUPPLY
- LUPER TIRE & SUPPLY
- GRIFFITH GIN
- GWATNEY-WELLS CHEV.-OLDS
- ST. CLAIR'S DEPARTMENT STORE
- ROBERTS MEMORIAL NURSING HOME—LEE AND DORTHY DOTTS, OWNERS
- RAY'S FURNITURE & APPLIANCE
- FIRST STATE BANK
- COX AUTO SUPPLY
- GREAT PLAINS NATURAL GAS CO.
- FRALIN'S PHARMACY
- HIGGINBOTHAM BARTLETT COMPANY
- MCMASTER'S TRACTOR COMPANY
- NEW YORK STORE
- REYNOLD'S TEXACO STATION & WHOLESALE TEXACO PRODUCTS
- LEVELLAND SAVINGS & LOAN
- ROSE AUTO SUPPLY
- JUDGE GLENN THOMPSON
- WILLINGHAM GINS
- WINDOM OIL & BUTANE
- RED HORSE SERVICE & MOBIL WHOLESALE PRODUCTS (WILEY HODGE)
- MORTON TRIBUNE

# BASKETBALL

## MORTON INDIANS

### 1973-74 MORTON HIGH SCHOOL BASKETBALL SCHEDULE (VARSITY)

#### NOVEMBER

- 26 Dora . . . . . There
- 27 Floyd, N.M. . . . . Here
- 29 Friona Tournament Nov. 29, 30, Dec. 1

#### DECEMBER

- 4 Seminole . . . . . Here
- 7 Brownfield . . . . . There
- 11 Levelland . . . . . There
- 13, 14, 15 Denver City Tournament
- 17 Muleshoe . . . . . There
- 18 Seminole . . . . . There
- 21 Idalou . . . . . Here
- 27, 28, 29 Caprock Tournament

#### JANUARY

- 4 Smyer . . . . . There
- 8 Levelland . . . . . Here
- 11 Snyder . . . . . Here
- 15 Olton . . . . . Here
- 18 Dimmitt . . . . . Here
- 22 Friona . . . . . There
- 29 Clovis . . . . . Here

#### FEBRUARY

- 1 Olton . . . . . There
- 5 Dimmitt . . . . . There
- 8 Friona . . . . . Here
- 12 Littlefield . . . . . Here

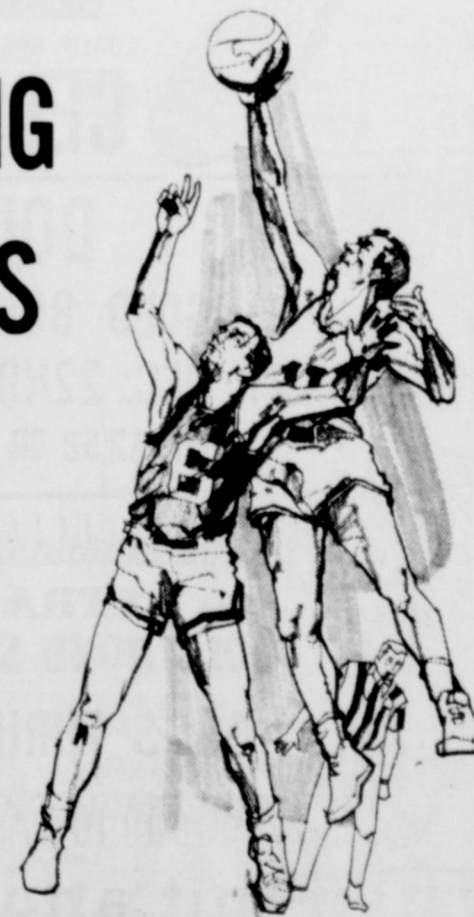
### Results This Week

MORTON 67 BROWNFIELD 56

MORTON 75 LEVELLAND 79

THREE OVERTIMES

**GO,  
 FIGHTING  
 INDIANS  
 YOU  
 CAN  
 DO IT!**



**ON TO STATE!**

# THRIFTWAY



WISHES  
YOU  
A.....

# Merry Christmas

PRICES EFFECTIVE DEC. 14TH THRU DEC. 24TH, 73  
RIGHT TO LIMIT, PLEASE

## SEMI - BONELESS

JOHNSTON FROZEN MINCE OR  
**PUMPKIN PIES** 32-oz. EACH **89c**

MOISTURE ADDED  
CUDAHY FULLY COOKED  
**HAMS**  
15 to 18-LB. AVERAGE WHOLE OR HALF **99c**

**Turkey** ARMOUR STAR  
U.S.D.A. GRADE 'A' SELF BASTING  
ALL SIZES 10-LBS. AND UP **69c**

SHURFINE PURE CANE **SUGAR** FIRST 5-LB. BAG **69c** THERE AFTER REG. PRICE

CRISCO ALL VEGETABLE **SHORTENING** FIRST 48-oz. CAN **\$1.19** THERE AFTER REG. PRICE

ELLIS HALVES OR PIECES **PECANS** 6-oz. PKG. **79c**

GOLD MEDAL (WITH COUPON) **FLOUR** 10-LB. BAG **\$1.65**

ASSORTED FLAVORS **JELLO** 3-oz. BOX **10c**

MAXWELL HOUSE (WITH COUPON) **COFFEE** 1-LB. CAN **79c**

KLEENEX **DINNER NAPKINS** BOX OF 50 **29c**

REYNOLDS HEAVY DUTY **FOIL** 18"x25" ROLL **49c**

SUNSHINE HI HD **CRACKERS** 16-oz. BOX **49c**



BAR-S FULLY COOKED SMALL WHOLE **BONELESS HAMS** 5 to 7-LB. AVG. **\$1.99**

SHURFRESH **CANNED HAM** 5-LB. CAN **\$7.49**

WE WILL BE  
CLOSED TUES.  
DEC. 25TH.



CENTER CUT **HAM SLICES or ROASTS** 16-oz. PKG. **\$1.29**

SHURFRESH **FRANKS** 16-oz. PKG. **99c**

ARMOURS GOLDEN STAR GRADE A **STUFFED TURKEYS** 12 to 14-LB. AVG. **89c**  
**SMOKED TURKEYS** **\$1.19**

SHURFRESH **BOLOGNA** 16-oz. PKG. **99c**

WILSON'S SMOKED **SAUSAGE** 16-oz. PKG. **\$1.59**

SWIFT **BAKING HENS** 16-oz. PKG. **79c**  
OSCAR MAYER **BACON** 16-oz. PKG. **\$1.39**

We Will Have a Full Variety of Swift's Butterball And Honeysuckle Turkeys and Other Holiday Poultry. Selected for Quality.

SHURFINE POWDERED OR **BROWN SUGAR** 32-oz. POLYBAG **45c**  
EAGLE BRAND **MILK** 15-oz. CAN **43c**  
BORDEN'S **EGG NOG** QT. CAN **79c**  
SHURFINE ASST. FLAVORS **LAYER CAKE MIXES** 18 1/2-oz. BOX **29c**  
SKINNERS SHORT CUT ELBO **MACARON** 12-oz. PKG. **31c**  
LIBBY PUMPKIN **PIE MIX** 29-oz. CAN **49c**

SHURFINE **FRUIT COCKTAIL** 16-oz. CAN **33c**  
SHURFINE HALVES **BARTLETT PEARS** 16-oz. CAN **35c**  
DEL MONTE WHOLE **GREEN BEANS** 17-oz. CAN **33c**  
SHURFINE FANCY **EARLY JUNE PEAS** 17-oz. CAN **33c**  
BLUE PLATE COVE **OYSTERS** 8-oz. CAN **69c**  
SHURFINE PIECES & STEMS **MUSHROOMS** 4-oz. CAN **39c**

**VALUABLE COUPON** NO. 27952 28  
**GOLD MEDAL FLOUR** 10-LB. BAG **\$1.65**  
WITH THIS COUPON  
THRIFTWAY FOOD STORES  
VOID AFTER DEC. 24, 1973

## Farm Fresh Produce

OCEAN SPRAY **CRANBERRIES** 16 oz. **39c**

WASHINGTON RED DELICIOUS **APPLES** EXTRA FANCY **25c**

CALIF. SUNKIST NAVAL **ORANGES** **19c**

YELLOW SWEET **ONIONS** **17c**

PORTALES MARYLAND SWEET **YAMS** **25c**

MIX OR MATCH-LARGE PAPER SHELL PECANS AND **LARGE WALNUTS** **69c**

LARGE HONDURAS **COCONUTS** EA. **29c**

CALIF. GREEN PASCAL **CELERY** **14c**

**LEMON JUICE** REAL LEMON 24-oz. BOTTLE **59c**

HOLSUM THROWN STUFFED **MANZ OLIVES** 5-oz. JAR **59c**

SHURFINE WHOLE SWEET **PICKLES** 22-oz. JAR **59c**

DRY DRESSING MIX ASST. FLAVORS **GREAT BEGINNING** FOIL ENV. **23c**

KRAFT MINIATURE **MARSHMALLOWS** 10 1/2-oz. PKG. **25c**

### Thriftway DAIRY Specials

**WHIPPING CREAM** 1/2-PT. CTN. **33c**

**SOUR CREAM** 1/2-PT. CTN. **33c**

**PARKAY MARGARINE** SOFT MAXI CUP. 16-oz. PKG. **59c**

**PHILADELPHIA CREAM CHEESE** 12-oz. PKG. **69c**

**SHURFRESH MARGARINE** PURE CORN OIL. POUND CARTON **49c**

**LARGE EGGS** DOZEN **00c**

**Checked & Rated** HIP-O-LITE **MARSHMALLOW CREME** 9-oz. CTN. **29c**

SHURFINE **LIGHT CORN SYRUP** PT. **49c**

SHURFINE FROZEN NON-DAIRY **WHIP TOPPING** 10-oz. CTN. **39c**

SOFLIN WHITE OR ASSORTED **TOWELS** JUMBO ROLL 3/\$1

BAKERS ANGEL FLAKE **COCONUT** 14-oz. BAG **59c**

DROMEDARY LOOSE PAK **DATES** 8-oz. CTN. **33c**

TOM SCOTT (VAC PAC) **MIXED NUTS** 13-oz. CAN **79c**

LIBBY PUMPKIN **PIE MIX** 16-oz. CAN **23c**

RED LABEL **KARO** 9-oz. BTL. **69c**

TENDER CRUST BROWN & SERVE **ROLLS** 3 PKGS. **\$1.00**

**DOUBLE GOLD BOND STAMPS**  
SAT. DEC. 22ND. & MON. DEC. 24TH  
WITH \$2.50 OR MORE PURCHASE

**DETERGENT OXYDOL OR GAIN** YOUR CHOICE  
**GIANT BOX 79c**

**100 EXTRA FREE GOLD BOND STAMPS**  
With the purchase of \$5.00 or more at DOSS THRIFTWAY  
Coupon expires (date) Limit one per family

**VALUABLE COUPON** MOUNTAIN GROWN 13  
FOLGER'S **COFFEE** 2-LB. CAN **\$1.89**  
WITH THIS COUPON  
THRIFTWAY FOOD STORES  
VOID AFTER DEC. 24, 1973

**VALUABLE COUPON** MOUNTAIN GROWN 18  
FOLGER'S **COFFEE** 3-LB. CAN **\$2.97**  
WITH THIS COUPON  
THRIFTWAY FOOD STORES  
VOID AFTER DEC. 24, 1973

**VALUABLE COUPON** 10  
MAXWELL HOUSE **COFFEE** 1-LB. CAN **79c**  
WITH THIS COUPON  
THRIFTWAY FOOD STORES  
VOID AFTER DEC. 24, 1973

THE LIVING BIBLES  
**ADULT HARDBACK** EA. **\$6.99**  
**TEENAGE PAPER-BACK** EA. **\$4.88**  
**CHILDRENS** EA. **\$3.88**

## Fruit and Gift BASKETS

**NOW ON SALE!**

NORTHERN 3 CONTROL **HEATING PADS** EACH **\$3.77**

MUNSEY **OVEN BAKER** EACH **\$16.88**

MIRRO ELECTRIC **CORN POPPER** EACH **\$7.99**

WE GLADLY WELCOME FOOD STAMP CUSTOMERS  
**DOSS THRIFTWAY SUPER MARKET**  
DOUBLE GOLD BOND STAMPS EVERY WEDNESDAY  
WITH \$2.50 PURCHASE OR MORE.

### Progressive dinner held

The Whiteface Study Club met December 6 at 6:30 p.m. for a Progressive dinner party. Members met at the home of Mrs. Kenneth Sams for appetizers, then progressed to the homes of Mmes. Royce Elam, Larry Baldwin and Marshall Cooper for other courses. The evening activities ended with a birthday party and gifts for the Club's Girlstown girls.

Becky Owens and Angela Eakright. Members attending were: Mmes. Baldwin, Cooper, Elam, Sams, Richard Souter, Sam Rankin, Joe Bob Allen, Marvin Lasater, John Fietz, Jack Franch, R.D. Hensley, J.W. Smith, Freddy Butler, Larry Seales, Cliff May, Roy Akin and Lanier. The next meeting will be held January 3 in the home of Mrs. Vern Beebe.



The arrival of two open-end spinning frames at the Texas Tech Textile Research Center during the week of November 25 gives added hope that the recent announcement of three commercial open-end plants on the Plains is "just a beginning," says Ray Joe Riley of Hart, President of Lubbock-based Plains Cotton Growers, Inc.

"The open-end system is being hailed as a major innovation in the textile industry," Riley states, "and it could be the means for turning an already promising future into a brilliant future for the production of High Plains cotton."

Open-end spinning of cotton yarns, in addition to being three or four times as fast as conventional ring spinning, does

not require or even favor raw cotton with micronaire readings in the premium priced 3.5 to 4.9 range. On the contrary, testing to date has shown that low micronaire cottons, normally in abundant supply from the High Plains crop, may well produce yarns on the open-end system superior to those made from higher micronaire cottons.

"These tests are conclusive enough to serve as one of the reasons that an existing mill on the Plains is switching much of its production from ring to open-end spinning, and two other such mills are on the way," Riley notes, adding that "PCG will be doing additional, more extensive research on the two machines at Tech, with the results used to encourage both the establishment of other spinning mills on the Plains and the use of High Plains cotton in open-end operations around the world."

Careful plans are being laid by PCG, the Textile Research Center and others toward these ends. A meeting at the PCG offices November 30, for example, drew research recommendations from PCG, the Textile Research Center, the South Plains Research and Extension Center, the Federal Ginning Laboratory at Lubbock and from principals in the existing and planned commercial operations.

"PCG is also looking ahead to possibilities for other new and perhaps even more revolutionary yarn forming methods yet to be proven commercially," Riley states, "as well as considering research of new weaving and finishing techniques."

"The objective," he continued, "is to make sure our cotton's ability to perform on these new systems is recognized far and wide."

The existing mill to which Riley referred is Southwest Textiles, Inc., of Abertown. The plant is replacing some of its ring spinning with seven open-end frames (1400 spinning units). Three of the frames should be in operation before the end of this year and the other four in place by the Spring of 1974.

One of the two mills mentioned as "on the way" is Feather Fabrics, Inc., a joint venture between Lubbock area investors and Nijverdal-Ten Cate, the Netherlands' oldest and largest integrated textile firm. This plant will be located in Lubbock, will begin with 2400 spinning units, and should be in production by the Fall of 1974.

The other mill slated for the Plains will be known as Daiwabo Texas, Inc. and will be jointly owned by two Japanese firms, Daiwa Spinning Company and the Marubini Corporation. A specific site for the plant has not been announced but it has been confirmed for the High Plains area. It is expected to be in operation by late 1975 with about 4000 spinning units.

### Jr. Club holds 'Mini Auction'

The Emlea Smith Junior Study Club met December 6 in the home of Mrs. Ray Luper for their annual "Mini Auction." Members brought items that they had made and Mrs. Glynn Lowe, acting as auctioneer, auctioned them to the highest bidder. Proceeds from the project were donated to the Medical Student Fund.

Christmas parade. Plans were discussed for the annual Christmas party to be held December 20 in Fellowship Hall of the First United Methodist Church.

The meeting closed with the song "Jingle Bells".

Mrs. Dewayne Hester gave the story of Christmas 1984 and Mrs. Sandy Asbill and Mrs. Hester made a book of recipes for each one present.

In the business meeting, Mrs. Sue Lofton was welcomed as a new member to the club. It was announced that the club's Christmas float won first place in the

Members attending were: Mmes. Bill Foust, Kim Hanlin, Bob Lawdermik, Ray O'Brien, Keith Price, Jimmy Roddy, Bill Welch, Ken Williams, J.W. Tyson, Mike Liner, Tom Rush, Ronnie Wallace, Donnie Dewbre, Glynn Price, Asbill, Hester, Lowe, Koy Kern and guests, Dorothy Tucker, Jane Hoyl, Lofton, Gayle O'Neal, Johnnie Harris and Darlene Terrell.

A Weekly Report Of Agri-Business News

## Farmcast

Compiled From Sources  
Of The Texas Department of Agriculture  
John C. White, Commissioner

The Best and The Worst... Cotton Deadline Extended... Now Down To Two.

Texas agricultural producers are finding that 1973 has and is turning out to be a year of some of the best prices they have seen, but are also finding that this year has presented them with some of their worst times, too.

Farm prices were at record highs this past summer; now, farm prices have dropped as much as a third for beef cattle and broiler prices have been cut in half.

Making plans for 1974 is now uppermost in minds of Texas agricultural producers. And they look ahead and see complete confusion and uncertainty over availability of inputs for 1974.

No one knows yet how severe the energy crunch will be to farm production. But farmers also face severe shortages of fertilizer, some top quality planting seed, implement repair parts, labor and new equipment.

Farmers are also finding that next year's crop production costs are going to continue to increase, and some

economists are already talking about the price-cost squeeze hitting again at the farmer's pocketbook.

Farm income next year is already being forecast at levels below this year's record pace. Uncertainties over exports of U.S. farm production is also causing some farmers to wonder about 1974 production plans.

Agricultural producers are beginning now to put together plans that will determine the extent of food and fiber production next year.

COTTON stalk destruction deadlines have been extended in most areas of the state due to the weather conditions. Texas Department of Agriculture personnel will be checking those areas to make certain that all harvested fields have been cleared of stalks and debris which could provide hibernation headquarters for cotton insects.

Early cotton stalk destruction is perhaps the best weapon farmers have to control insects for the next year's crop.

Even though you may be in an area which has an extended cotton stalk destruction deadline, it is wise to destroy



MRS. W. R. ADAMS of Enochs will celebrate their 50th wedding anniversary December 16, with a reception at the First United Methodist Church in Enochs until 5 p.m. Hosting the event will be their children, Mr. and Mrs. Bobby G. Jr. and granddaughters, Debbie and Linda. Adams and the former Mamie Bell were married December 29, 1923 in Bonham. They moved to their home in 1933. Adams is a retired farmer. Friends are invited to attend.

### Mrs. Price hosts club

The Study Club met Wednesday, December 12, in the home of Mrs. James Price for their annual Christmas Handmade decorations were made throughout the home.

"Christmas Memories" in song, verse and story was presented by Mrs. M.C. Gerhome Holloway presided at business meeting and members joined with the Morton

Industrial Foundation to encourage the location of future doctors in the area.

Members present were: Mmes. Gage Knox, Iva Williams, W.W. Smith, Joe Nicewarmer, Hume Russell, James St. Clair, Sr., Bill Sayers, D.E. Benham, Lessye Silvers, John Crowder, Neal Rose, W.C. Benham, John L. McGee, Joe Gipson, Maurice Lewallen, Lloyd Miller, and one guest, Mrs. W.W. Swim from Plainview.

17th century New Englanders believed that at Indian dances the devil appeared away one little Indian.

# CHRISTMAS

COME TO  
**LINER'S PHARMACY**  
FOR CHRISTMAS SHOPPING BARGAINS FOR EVERY MEMBER OF THE FAMILY  
**FOR THE MEN**

- WE HAVE A COMPLETE LINE OF TOILETRIES FOR MEN--IDEAL FOR CHRISTMAS
- BRAGGI
  - SPIDEL WATCH BANDS
  - BILLFOLDS--AMITY
  - RUSSIAN LEATHER
  - CHESS SETS FOR MEN
  - MALE CHAUVINIST
  - IMPERIAL SABER
  - AMERICAN LEATHER
  - POCKET KNIVES--SHRADE--WALDEN
  - PIPES & SMOKING EQUIPMENT
  - LIGHTERS & HUMIDORS
  - PEN & PENCIL SETS
  - CROSS, CENTURY & SHEAFFER
  - DESK SETS--HE WILL BE PROUD TO DISPLAY THESE IN HIS OFFICE.
  - ROMAN BRIO
  - BRITISH STERLING
  - ROYAL COPENHAGEN
  - ENGLISH LEATHER
  - ROYAL COPENHAGEN
  - CHANEL FOR MEN
  - BRUVARA
  - JADE EAST
  - HAI KARATE
  - RAZORS & HOT COMBS
  - NORELCO, SUNBEAM, SCHICK, REMINGTON
  - HOT LATHER MACHINES
  - TRUBLE

### FOR THE LADIES

- BROWSE THROUGH OUR LARGE STOCK OF THE LATEST AND MOST GLAMEROUS COSMETICS AND BEAUTY AIDS FOR THE LADY IN YOUR LIFE
- MY SIN BY LANVIN
  - XANDU - MILK BATH
  - INTIMATE
  - MUOK
  - COURANT
  - CHARLIE
  - MAXFACTOR HYPNOTIQUE
  - NORELL
  - MOON DROPS
  - HEAVEN SENT
  - COSTUME JEWELRY--EAR RINGS, BRACELETS, SPIDEL ID BRACELETS FOR MEN OR WOMEN
  - DECORATIVE & PRACTICAL CANDLES LARGE VARIETY
  - HOT COMBS FOR WOMEN--SUPER MAX & MIGHTY MAX BY GILLETTE
  - LADIES ELECTRIC RAZOR
  - MUSICAL JEWEL BOXES
  - STATIONARY--HALLMARK & OTHERS
  - GIFT BOOKS--TREASURE BOOKS
  - WOMENS BILLFOLDS
  - GIFTS FOR HOUSE--LARGE VARIETY

### CHRISTMAS CAMERA SPECIALS

THE WORLD'S MOST ADVANCED CAMERA



KODAK Pocket INSTAMATIC # 10 Camera Outfit  
**KODAK POCKET 10**  
REG. \$24.95 **\$1888**



**POLAROID XS-70**  
REG. \$180.00 SPECIAL **\$15995**



**POLAROID SQUARE SHOOTER II**  
REG. \$24.95 SPECIAL **\$1895**



KODAK INSTAMATIC X-15 Color Outfit  
**KODAK INSTAMATIC X-15 COLOR CAMERA OUTFIT**  
**\$1795**

CONVELESCENT SUPPLIES - CAMERAS - FILM - PHOTO SUPPLIES  
VETERINARY SUPPLIES - BOOKS - MAGAZINES - CARDS - GIFT BOOKS  
24 HOUR PRESCRIPTION SERVICE

# Rx LINER'S PHARMACY

ARMOUR STAR  
 L BE  
 TUES.  
 5TH.  
 99c  
 \$1.59  
 20c  
 165  
 973  
 20c  
 LOW  
 9c  
 49c  
 39c  
 3/5  
 59c  
 33c  
 79c  
 23c  
 69c  
 \$1.00  
 79c  
 1973  
 30c  
 79c  
 1973  
 30c  
 79c  
 1973  
 30c

**PUBLIC NOTICES**

BE IT REMEMBERED that the Commissioner's Court of Cochran County, Texas, meeting in regular session on this the 13th day of August, A. D. 1973, with all members present and coming on to be considered the change in boundaries of Commissioner's Precincts, and after considered study and taking into consideration the number of people living in the precincts and the miles of roads and further taking into consideration the opinion of the United States Supreme Court in the case of Hank Avery vs. Midland County, Texas, et al, holding among other things that a voter has the right to a vote for the Commissioner's Court of substantially equal weight to the vote of every other resident and to redistrict the Cochran County Precinct accordingly would be to the best interest and welfare of Cochran County, Texas, as a whole should a more equitable division of the precincts be made and determined.

Upon the motion of Commissioner Mike Walden and seconded by Commissioner E. J. McKissack, the following described area in Cochran County, Texas, shall constitute and be the four Commissioner's precincts and the following is adopted and is the order of the Commissioner's Court.

Commissioner's Precinct Number One is described by metes and bounds as follows:

BEGINNING at a concrete marker set for the NE corner of Cochran County and for the NE corner of Precinct 1;  
 THENCE Westerly, along the North line of Cochran County, to a point at the intersection of the West line of League 106, Fisher CSL and the East line of League 121, Childress CSL;  
 THENCE South, to a point at the intersection of the East line of League 119, Knox CSL, being the SW corner of League 104, Jeff Davis CSL;  
 THENCE East, along the North line of League 103, Jeff Davis CSL, to the NE corner of Labor 8;  
 THENCE South to the North city limits line of Morton, thence continuing South along Main St. to a point of intersection at Jackson Ave;  
 THENCE West, along Jackson Ave. to a point at the intersection of First St. ;  
 THENCE South, along First St. to a point at the intersection of Buchanan Av;  
 THENCE West, along Buchanan Ave. to a point at the intersection of 8th st. ;  
 THENCE North, along Eighth St. to a point of intersection of State Hwy. 116;  
 THENCE N. 72° 50' W. along State Hwy. 116, to a point in the East line of League 126, Coke CSL;  
 THENCE South, along the East line of Leagues 126 and 127, to a point in the East line of League 128, Coke CSL;  
 THENCE East, along the North line of Tracts 99, 100, 101, 102, 103, 104 and 105, League 117, Slaughter Subdivision of Knox and Brewster CSL's; to a point at the intersection of the West ROW line of State Hwy. 214;  
 THENCE North, along the West ROW line of said State Hwy. 214, to a point at the intersection of Harding Ave. ;  
 THENCE East, along Harding Ave. to a point at the intersection of SE 3rd St. ;  
 THENCE North, along third st. to a point at the intersection of Grant Ave;  
 THENCE West, along Grant Ave. to a point at the intersection of E. 2nd St. ;  
 THENCE North, along E. 2nd St. to a point at the intersection of Washington Street;  
 THENCE West, along Washington St. to a point at the intersection of East First St. ;  
 THENCE North, along E. First St. to a point at the intersection of Madison Avenue;  
 THENCE East, along Madison Ave. to a point at the intersection of E. 8th St. ;  
 THENCE South, along E. 8th St. to a point in the North ROW line of State Highway 116;  
 THENCE S. 44° 04' E. along the North ROW line of said State Hwy. 116 to a point in the North line of Tract 4, Section 20, Block V;  
 THENCE East to the West line of League 85, Greer CSL, continuing East along North line of Tracts 5, 6, 7 & 8, League 85, continuing East along South line of Labors 21, 22, 23 & 24, League 84, Shackleford CSL to a point in the East line of Cochran County;  
 THENCE Northerly, along the East County line, to the place of beginning.

Commissioner's Precinct Number Two is described by metes and bounds as follows:

BEGINNING at the SE county line corner of Cochran County, for SE corner of Precinct 2.  
 THENCE West, along South county line to the point of intersection of State Hwy. 214;  
 THENCE North, along State Hwy. 214 to the point at intersection of the North line of Tract 99, League 117, Knox CSL, Slaughter Subd.  
 THENCE East, along North line of Tracts 99, 100, 101, 102, 103, Knox County School Land; 104, 105 Brewster CSL, to the intersection of the East right-of-way line of State Hwy 214.  
 THENCE North along East right-of-way line of State Hwy 214 to South line of Labor 22 and 23, League 102, Jeff Davis CSL.  
 THENCE North along East line of Labors 23 and 6 to a point in the South line of State Hwy 116.  
 THENCE N. 44° 04' W. along State Hwy. 116, to a point at the intersection of Grant Ave.  
 THENCE West along Grant Ave. to a point at the intersection of East 5th St. ;  
 THENCE North along East 5th St. to a point at the intersection of Madison Ave. ;  
 THENCE East, along Madison Ave. to a point at the intersection of the East right-of-way line of East 8th St. ;  
 THENCE South, along the East right-of-way line of East 8th Street to a point of intersection of the North right-of-way line of State Hwy 116;  
 THENCE S. 44° 04' East along said State Hwy. right-of-way line

to a point at the intersection of the North line of tract 4, Sec. 20, Block V, continuing East along South line of tracts 1, 2, 3 and 4, League 84, Greer CSL, continuing East along South line of Labors 21, 22, 23, and 24, League 84, Shackleford CSL, to a point in East county line.  
 THENCE Southerly, along East county line to the place of beginning.

Commissioner's Precinct Number Three is described by metes and bounds as follows:

BEGINNING at Southwest corner of Cochran County for the Southwest corner of Precinct 3.  
 THENCE Northerly, along the West line of Cochran County to a point in the West line of Tract 4, H. C. Ferguson Survey;  
 THENCE Easterly, across Tract 4, continuing along North line of South 120 acres of Section 11, Block U;  
 THENCE North to a point in the East line of Section 11 and the SW corner of Section 12;  
 THENCE Easterly along South line of Sections 12 and 13, Block U, to a point in West line of League 157, Hall CSL;  
 THENCE South to SW corner of said League 157;  
 THENCE Easterly along North line of Leagues 156, Sherman CSL, League 148, Stonewall CSL, League 137, Hemphill, CSL and continuing to the NE corner of League 128, Coke CSL ;  
 THENCE South along East line of League 128 to a point at the intersection of 25' North of North line of Labors 100, 101, 102, 103, Slaughter Subd. of League 117, Knox CSL, and 104, 105, League 100, Brewster CSL to the point in the West right-of-way line of State Hwy. 214.  
 THENCE North, along the West line of said State Hwy. 214, pass the South city limits of Morton to the point of intersection of Harding Ave.  
 THENCE East, along Harding Ave. to the point of intersection of E. Third St.  
 THENCE North, along E. Third St. to the point of intersection of Grant Ave.  
 THENCE West, along Grant Ave. to the point of intersection of E. Second St.  
 THENCE North along East 3rd St. to the point of intersection of Grant Ave.  
 THENCE West along Grant Ave. to the point of intersection of East 2nd Street;  
 THENCE North along East 2nd Street to the point of intersection of Washington Ave.  
 THENCE West along Washington Ave. to the point of intersection of East 1st St.  
 THENCE North, along East 1st St. to the point of intersection of Madison Ave.  
 THENCE East, along Madison Ave. to the point of intersection of East 5th St.  
 THENCE South along East 5th St. to the point of intersection of Grant Ave.  
 THENCE East along Grant Ave. to a point in the West right-of-way line of State Hwy. 116.  
 THENCE Southeasterly along West right-of-way line of State Hwy 116 to a point in the East line of Labor 6, League 102 C. C. Slaughter, Block 1;  
 THENCE South along East line of Labor 6 and 23, to SW corner of said Labor 23.  
 THENCE West along South line of Labor 22 and 23 to the point of intersection of the East right-of-way line of State Hwy. 214.  
 THENCE South along East right-of-way line of said State Hwy.

214 to a point 25' South of Labor 91, League, Brewster CSL;  
 THENCE West 25' South of and parallel to the North line of Labors 100, 101, 102, 103, 104, 105 to a point in the East line of League 128, Coke CSL;  
 THENCE South along East line of League 128, Coke CSL, League 129, 130, 131, 132, Carson CSL;  
 THENCE continuing South along State Hwy 214, to a point in the South line of Cochran County;  
 THENCE West along South line of Cochran County, To the place of beginning.

Commissioner's Precinct Number Four is described by metes and bounds as follows:

BEGINNING at the Northwest corner of Cochran County, for the NW corner of Precinct 4.  
 THENCE Easterly along North line of said Cochran County to a point in the East line of League 121, Childress CSL.  
 THENCE South, along East line of said League 121 and 120 to a point in the East line of League 119 & SW cor League 104, Jeff Davis CSL;  
 THENCE East along South line of League 104, to the SE corner of Labor 26;  
 THENCE South along Labors 8 and 11, pass North city limits of Morton, continuing South along State Hwy. 214 to the point of intersection of Jackson Ave.  
 THENCE West, along Jackson Ave. to the point of intersection of West 1st St.  
 THENCE South, along West 1st St. to the point of intersection of Buchanan Ave. ;  
 THENCE West along Buchanan Ave. to the point of intersection of West 3rd Street.  
 THENCE North, along W. 8th St. to the point of intersection of State Hwy 116;  
 THENCE Northwesterly along said Hwy 116 to the point of intersection of the East line of League 126, Coke CSL;  
 THENCE South along East line of Coke CSL to SE corner of League 127;  
 THENCE West along South line of League 127, Coke CSL, League 138, Hemphill CSL; League 147, League 157, Hall CSL to East line of Block U;  
 THENCE North to the SE corner of Section 13;  
 THENCE West, along South line of Section 13 and 12, Block U.  
 THENCE South along East line of Section 11 to the North line of South 120 acres of Section 11;  
 THENCE West, along North line of said 120 acre tract and H. C. Ferguson Survey to point in the West county line of Cochran County;  
 THENCE Northerly along said West County line to the place of beginning.

The question was called for, WHEREUPON, the Commissioners voted as follows:

Commissioner Mike Walden, Precinct 1, voted "aye".  
 Commissioner E. J. McKissack, Precinct 2, voted "aye".  
 Commissioner H. H. Rowson, Precinct 3, voted "aye".  
 Commissioner U. F. Wells, Precinct 4, voted "aye".

The County Judge then declared that the motion setting up the Commissioner's Precincts in and for Cochran County, Texas had carried unanimously.

Upon motion of Commissioner Walden and seconded by Commissioner McKissack the effective date changing the precincts as hereinabove set out shall be January 1, 1974.

The question was called for, WHEREUPON, the Commissioners voted as follows:

- Commissioner Mike Walden, Precinct 1, voted "aye".
- Commissioner E. J. McKissack, Precinct 2, voted "aye".
- Commissioner H. H. Rosson, Precinct 3, voted "aye".
- Commissioner U. F. Wells, Precinct 4, voted "aye".

The County Judge then declared that the motion carried unanimously and that the effective date changing the precincts as hereinabove set out shall be January 1, 1974.

DONE in open court at Morton, Cochran County, Texas setting in regular session on this the 13th day of August, 1973.

*Glenn Thompson*  
County Judge

*Mike Walden*  
Commissioner Mike Walden, Precinct 1

*E. J. McKissack*  
Commissioner E. J. McKissack, Precinct 2

*H. H. Rosson*  
Commissioner H. H. Rosson, Precinct 3

*U. F. Wells*  
Commissioner U. F. Wells, Precinct 4

# Carbon monoxide is a potential killer

"You can't see it, taste it or smell it, but it can kill you if it's present. It's the silent killer—carbon monoxide!"

"Carbon monoxide is an odorless, tasteless, colorless, deadly gas produced when fuels such as wood, coal, oil and natural gas are incompletely burned," explains Wayne Keese, agricultural engineer for the Texas Agricultural Extension Service.

Properly working heating equipment in the home produces only a small amount of carbon monoxide, but when heating equipment is not functioning properly, dangerous amounts of carbon monoxide gas may be produced.

"So check your heating equipment now or have a reliable heating company serviceman check it for you, and avoid an encounter with the silent killer," advises the Texas A&M University System specialist.

Symptoms of carbon monoxide poisoning are drowsiness, headaches, dizziness, confusion, nausea, muscular weakness and unconsciousness. If these symptoms are recurring, take action

immediately. However, do not depend on these symptoms to warn you of possible danger. If the victim is overcome by carbon monoxide gas, get him to fresh air and immediately begin mouth-to-mouth rescue breathing.

Keese lists some safety precautions to help free your home of carbon monoxide poisoning during the coming season.

Assure that heating equipment is vented into a safe chimney. Keep the chimney clean: remove soot, broken bricks, bird nests and anything that might keep gas from escaping. Test the chimney to see if it draws well by placing a lighted match near the clean-out or other opening. If smoke is drawn up the chimney, it is drawing properly.

Check vent pipes to make sure there are no holes where gas fumes can escape back into the home. Allow fresh air into space where heating equipment is used, especially if unvented space heaters are used. Be sure the burner of an unvented

heater is clean and adequate air is reaching the burner.

Use habachies and other charcoal grills outdoors only, unless proper ventilation for gas fumes is provided. Never be tempted to grill a steak in the garage or closed-in porch.

"As for your automobile, all fuel-burning engines emit carbon monoxide. Since your car exhaust contains carbon monoxide, make sure doors in any enclosure are open before starting your car or other gasoline engines," advises Keese.

Carbon monoxide can also leak into an auto from a faulty exhaust system. So check the exhaust system regularly and repair any defects, including manifold gaskets, joints between muffler and pipes, and any holes in the system.

"Take steps now to make this winter a safe one," cautions Keese, "by guarding against the silent killer."

Revenue from cigarette sales increased from \$19.8 million in November 1972 to \$20.1 million last month.

Estimated total value of construction authorized in October by Texas communities that issue building permits increased 17 per cent over September, according to the University of Texas Bureau of Business Research.

## PECANS!

The Morton Choir Boosters have received a new shipment of pecans just in time for your holiday baking! Pick up some today at the Tribune office, Great Plains Nat. Gas or from any choir member.

# Texas teachers form political action arm

Texas teachers have formed a new statewide political action arm to work for improvements in public education.

The Texas Educators Political Action Council (TEPAC), an independent arm of the 157,000-member Texas State Teachers Association, was officially organized in Austin recently by a majority of the TSTA executive committee acting as individuals.

TSTA Pres. Johnny Clark said the Council is comparable to those formed by the Texas Medical Association and other professional groups.

"Educators realize that, more and more, educational decisions are controlled by political decisions," Clark said. "Those in education must,

therefore, participate in those political decisions."

TEPAC will raise its own funds through voluntary contributions and membership. It will neither receive nor expend funds of TSTA.

The TEPAC "articles of association" describe the organization as follows:

"TEPAC is a non-profit, unincorporated, multi-partisan political committee organized for the purpose of advancing public education in Texas.

"TEPAC shall solicit contributions and make all decisions on the expenditures of TEPAC funds."

**STATE CAPITAL**  
*Highlights AND Sidelights*  
By Bill Boykin  
TEXAS PRESS ASSOCIATION

By—Bill Boykin  
Texas Press Association

...Hearings will be held by the State Insurance Board to see if any or deceptive "sales pitches" are used by the insurance industry.

Joe Christie, Chairman of the Insurance Board, says the goal of the board is to protect the consumer and confidence in the insurance industry.

People need insurance. The Board wants to make certain they are getting information about the product," he said at an Austin Ad Club last week.

One of the troubles of the insurance industry are caused by failure to communicate properly with the buyer. We are getting life insurance rates, and hold hearings to compare rates. We will issue comparisons on life insurance policies and rates for the public."

Insurance is the largest industry in Texas, and a difficult industry to regulate.

The board started publishing names of agents and agents who have been guilty of abusing the public, and we have seen a decrease of complaints," he continued.

Another goal is to clean up deceptive advertising, he told the ad group.

He asked the ad leaders to help him make certain the buying public is not being misled by rates in fire and life insurance.

Look for your insurance as you would for any other product. You can get a 10 percent reduction on your fire insurance for example if you take defensive driving courses. Watch for personal coverage on personal injury. It will be on your bill if you do not say that you "do not" want it.

Are you going to study "no-fault" insurance and health care in Texas too. "No-fault" will lower insurance rates, and what the buyer has to give up in rights to get the rates.

The Board plans to set up a Health Insurance Organization to see how insurance is delivered in Texas.

Do not question the quality of care in Texas, but we want to know quantity of health care," he said.

**GOVERNORS CRANK UP**—Texas Democrats are looking down the road to the 1976 national party conventions. A meeting for December 15 here a State Executive Committee rules on hearing to consider delegate election procedures for the December "mini-convention" or policy conference.

Party officials must, by December, provide for compliance with the delegate selection and "active action" to assure wide open participation in lower-level conventions.

Party must take steps to encourage party activities by youth, minorities, women and other groups traditionally under-represented in its ranks. The same requirement is over to the 1976 national nominating convention.

Don Wynne Jr. of Wills Point led the "mini-convention" full-time program to be agreed on by the party in Austin next month as the "winner" of the 1976 concert to be

followed in presidential nominating procedures.

SDEC's resolution on delegate selection and affirmative action must be submitted to the Democratic National Committee prior to Feb. 1, 1974.

**HOSPITAL PROGRAM CHANGED**—The Governor declined to sign an agreement with the Department of Health, Education and Welfare to implement state and local review of health care facility construction in Texas.

His action left hospitals and nursing homes eligible to participate in federal programs without getting a state certificate of need.

Aides to Briscoe said the Department of Health, Education and Welfare in Washington has assured them there is no penalty to the health care industry if a state does not participate in the review program.

Briscoe advised new construction proceed cautiously so as not to build a facility where it is not needed.

**COURTS SPEAK**—A three-judge federal court in Austin heard arguments over whether state House members should be elected from individual districts in nine metropolitan counties.

—The court will rule in January whether Travis, Nueces, Tarrant, McLennan, Lubbock, Jefferson, Galveston, El Paso and Hidalgo counties should have single-member districts. Bexar, Dallas and Harris counties already have such districts.

—A divided Court of Criminal Appeals held marijuana offenders convicted before April 23 and appealing for lighter sentences cannot be resentenced under the new Texas drug act.

—The State Supreme Court refused a motion for rehearing in Toyah school district's fight to avoid annexation by Pecos-Barstow Consolidated Independent School District.

—A Deaf Smith County man lost an appeal from a 99-year sentence for rape—for holding his own wife while another man attacked her.

**APPOINTMENTS**—L.D. Whitehead of Del Rio was named by Gov. Briscoe to the Advisory Council on Community Affairs.

—Briscoe appointed Robert R. Ashworth of Amarillo, Leon Stone of Austin and Dr. W.T. White of Dallas to the board of trustees of her teacher retirement system of Texas.

—Named to the board of directors of Brazos River Authority were W.C. Wiese Jr. of Calvert, Clint M. Walker of Tahoka, Kermit Ashby of Plainview, Billy Joe Wilson of Hamlin, Harry H. Moore of Navasota, Lyndon Olson Sr. of Waco and Don Coppedge of Waxahachie. Moore, Olson and Coppedge are reappointees.

—Briscoe placed on the Youth Camp Safety Advisory Council Raymond B. Bean of Dallas, Paul L. Bisenherz of Austin, Mrs. Garza A. Boggs of Austin, Miss Louise Fargher of Fort Worth, Hugh Hornsby of Austin, Rodney James Kidd of Austin, Armah F. Leuhr of Dallas, Tom Manison of Friendswood, Miss Alice H. Mulkey of Dallas and Silas B. Ragsdale Jr. of Hunt.

**SHORT SHORTS**

Harrison Vickers of Houston resigned as executive director of the State Democratic Executive Committee.

Lee Godfrey of Austin has been named state campaign manager for Lt. Gov. Bill Hobby.

# PLANNING SOMETHING BIG?

The Wonders of the ancient world called for big plans. In the modern world of 1974 there are many wonders, such as the power of advertising. People who plan for big economic gain appreciate the daily newspaper and its Classified Section. They know about money-saving bargains and services. They know how easy it is to sell things with a low-cost Classified Ad. So, chief architect of the Pharaoh, or the chief cook and bottle washer of the family, THINK BIG. Think of the BIG RESULTS offered in the Classified Want Ads.

**CLASSIFIED ADS** The start of Something big!

Your new home or apartment could be in the Want Ads now, or perhaps the Want Ads can serve you best by transforming those worthwhile items that you no longer use into very useful cash. They are easy to place, too, a courteous Ad-Visor will be happy to help you with your ad.

**DIAL 266-5576**  
CLASSIFIED ADVERTISING DEPARTMENT

**MORTON TRIBUNE**

**BIG BARGAINS**  
6 PACK

**COCA-COLA**

BUY ONE AT REG. PRICE

GET

ONE 6 PACK OF

SPRITE FREE

PLUS DEPOSIT ON BOTTLES



**HOURS**

OPEN 7 DAYS A WEEK  
FROM 7 A.M. TO 10 P.M.

FOR YOUR LATE EVENING  
SHOPPING CONVENIENCE

FROM THE DELICATESSEN

**FRITOS CORN CHIPS**

KING SIZE BAG,  
BUY ONE AT REG.  
PRICE GET ONE FREE

**BURRITOS**

BUY TWO AT REG. PRICE  
GET ONE FREE

BUY 1/2 GALLON BORDENS  
BUTTERMILK GET ONE QUART

CHOCOLATE MILK FREE

BUY 1/2 PINT BORDENS  
SOUR CREAM

GET 1/2 PINT DIP FREE

**BAR-B-Q BEEF LB. \$1.79**

BURRITOS  
BUY TWO AT REG. PRICE GET ONE FREE

**BAR-B-Q SANDWICHES EACH 55c**

WE HAVE A GOOD SELECTION OF COOKED  
FOOD. POTATO SALAD, CORN DOGS,  
HOT LINKS, BAR-B-Q CHICKEN,  
FRIED CHICKEN, SPARE RIBS AND  
MANY MANY MORE

DAIRY CASE  
BORDENS  
**SWEET MILK**

1/2 GAL  
BUY ONE GET  
ONE QUART FREE

**10c BAR CANDY**

ONLY **5c**

IN THE DRUG DEPARTMENT

**ANISEPTIC LISTERINE** 1 PT. 4 OZ.  
**99c**



**VASELINE INTENSIVE CARE LOTION**

10 OZ. **79c**

MISS BRECK  
**HAIR SPRAY**



13 OZ. **99c**

**BAYER ASPIRIN**



50 TABLETS **49c**



CLOSE-UP  
**TOOTHPASTE**

LARGE SIZE **59c**

FROM THE FREEZER

6 OZ. GOLDEN FRESH  
**ORANGE JUICE 5 CANS \$1**

BANQUET  
**PIE SHELLS 10 OZ. 39c**

COOL WHIP TOPPING  
4.5 OZ. **35c**

BRING THESE COUPONS IN FOR BIG SAVINGS. DROP THEM IN OUR REGISTRATION BOX, WITH OUR STORE NAME STAMPED ON IT, AND GET A CHANCE TO WIN ONE OR MAYBE ALL OF THE FOLLOWING PRIZES.

**coupon**  
GOOD FOR 15% DISCOUNT AT THE NEW YORK STORE FOR ANY PURCHASE  
STORE STAMP \_\_\_\_\_  
VALID ONLY IF STAMPED

**coupon**  
GOOD FOR (FIVE DOLLAR) PURCHASE \$500 AT BEN FRANKLIN  
STORE STAMP \_\_\_\_\_  
VALID ONLY IF STAMPED

**coupon**  
GOOD FOR TWO ADULT TICKETS TO THE ROSE THEATER  
STORE STAMP \_\_\_\_\_  
VALID ONLY IF STAMPED

**coupon**  
GOOD FOR A \$250 TIRE CHANGE AT LUPER TIRE  
STORE STAMP \_\_\_\_\_  
VALID ONLY IF STAMPED

**coupon**  
THIS COUPON IS GOOD FOR A FREE NOBILITY STATE RADIO A \$24.98 VALUE  
STORE STAMP \_\_\_\_\_  
VALID ONLY IF STAMPED

**coupon**  
GOOD FOR A \$350 PURCHASE AT RAMBY DRUG  
STORE STAMP \_\_\_\_\_  
VALID ONLY IF STAMPED

**coupon**  
THIS COUPON GOOD FOR A FREE CAR WASH WITH \$1500 PURCHASE OF GROCERIES AT THE COIN-O-MATIC  
STORE STAMP \_\_\_\_\_  
VALID ONLY IF STAMPED

*Grand*

**AT MARIN M**

**CHRM STON SLS**

WILSON'S CERT  
**BONELES**  
NO BONE, SKIN, WASTE

WILSON'S CERT  
**CANNED**  
SO TENDER YOU CAN

WILSON'S CERT  
**TURKEY**  
NO BONE, SKIN OR WASTE

WILSON'S CERT  
**COUNTRY**  
PRIME CUT, SWEET AND

WILSON'S CERT  
**COLD CU** 49  
MARVELOUS MEATS

WILSON'S CERT  
**FRANKS** 87  
TENDER, JUICY, NUTRIT

WILSON'S CERT  
**BRAUNSCHW** 97  
MADE WITH OUR OLD

WILSON'S CERT  
**BOLOGNA** 89

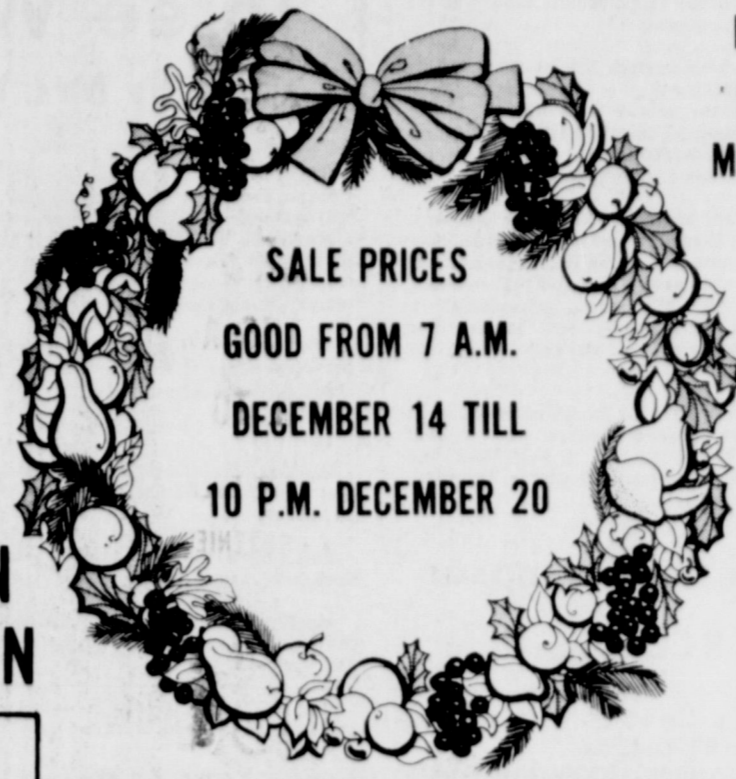
WILSON'S CERT  
**SPICED LUNC** 9  
MAKE HOLIDAY  
SON'S QUALITY

AS  
V  
BRA

S M

# Opening Sale

**MINI-MART** 219 NORTH MAIN AVENUE, MORTON



SALE PRICES  
GOOD FROM 7 A.M.  
DECEMBER 14 TILL  
10 P.M. DECEMBER 20

FREE COKES FOR EVERYONE  
REGISTER FOR A FREE RADIO  
MADE BY NOBILITY SOLID STATE  
REG. PRICE \$24.98  
ABSOLUTELY FREE

**JELL-O GELATIN**

3 OZ. BOX

ONLY **10c**

PUREX BLEACH  
HALF GALLON EACH **37c**

NORTHERN  
**NAPKINS**

60 CT.

2 FOR **29c**

DOWNY 33 OZ. WITH 8c OFF LABEL **67c**  
FABRIC SOFTENER

CORN-KITS  
CORNBREAD MIX 6 OZ. 4 FOR **\$1**

RED MARACHINO  
CHERRIES 4 OZ. WHITFIELD 2 FOR **39c**

AJAX CLEANER 14 OZ. 2 FOR **35c**

DOVE LIQUID 32 OZ. 20c OFF **77c**

BATH  
ZEST AQUA 2 FOR **49c**

**PAPER TOWELS**

JUMBO ROLL 3 FOR **\$1**  
170 SQ.FT.

KING  
**TIDE**  
WITH 25c OFF LABEL  
**\$1.34**

DAIRY CASE  
WHITE SWAN  
BISCUITS  
8 OZ. EACH **10c**  
ROYAL SCOTT  
MARGARINE  
POUND BOX **39c**

**BIG SAVINGS IN OUR MEAT DEPARTMENT**

USDA GOVERNMENT INSPECTED  
**CLUB STEAKS** LB. **99c**

USDA GOVERNMENT INSPECTED  
**FAMILY STEAKS** LB. **99c**

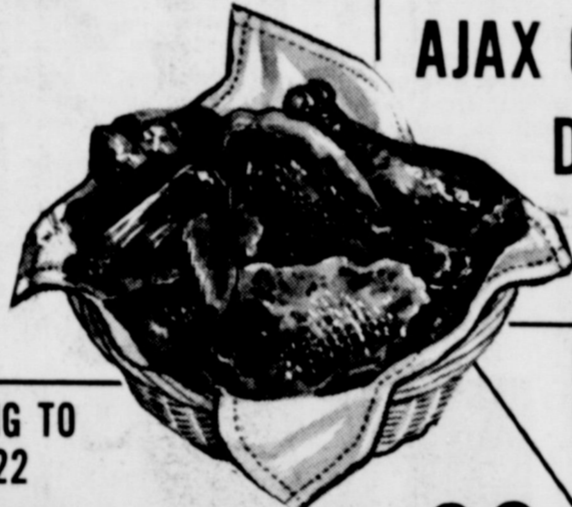
USDA GOVERNMENT INSPECTED  
**ARM ROAST** LB. **\$1.09**

USDA GOVERNMENT INSPECTED  
**7-BONE ROAST** LB. **99c**

USDA GOVERNMENT INSPECTED  
**HAMBURGER** LB. **79c**

USDA GOVERNMENT INSPECTED  
**BEEF RIBS** EVTRA LEAN LB. **39c**

**FRYERS**  
WHOLE GRADE A  
POUND **39c**



REGISTER FOR DRAWING TO  
BE HELD DECEMBER 22

**INSTANT TEA** WHITE SWAN 3 OZ. JAR **83c**

DEL MONTE  
**SPINACH** 15 OZ. 4 FOR **\$1**

HUNTS  
**CATSUP** 14 OZ. 4 FOR **\$1**

WHITE SWAN  
**FRUIT COCKTAIL** 17 OZ. 3 FOR **\$1**

DEL MONTE  
**PUMPKIN** 16 OZ. 4 FOR **\$1**

WHITE SWAN  
**ORANGE JUICE** UNSWEETENED 46 OZ. **39c**

SMUCKERS  
**GRAPE JELLY** 18 OZ. JAR **67c**

WHITE SWAN  
**ASPARAGUS SPEARS** 14.5 OZ. CAN **49c**

WHITE SWAN CREAM STYLE OR WHOLE KERNEL  
**CORN** 17 OZ. 5 FOR **\$1**

WHITE SWAN FRENCH SLICED  
**GREEN BEANS** 15.5 OZ. 4 FOR **\$1**

CONTADINA  
**TOMATO SAUCE** 8 OZ. CAN 8 FOR **\$1**

GERBER STRAINED  
**BABY FOOD**  
12c A JAR

DEL MONTE  
EARLY GARDEN  
**SWEET PEAS**  
17 OZ.  
4 FOR **\$1.00**

VISTA SALTINES  
**CRACKERS**  
1 POUND ONLY BOX **37c**

**TOMATO SOUP**  
campbells  
10 3/4 OZ. 7 FOR **\$1.00**

**PRODUCE**

**BANANAS**  
POUND **10c**



ICE BURG  
**LETTUCE**  
POUND **17c**

US NO. 1 RUSSET  
**POTATOES**  
10 POUND BAG **89c**

TEXAS SWEET  
**ORANGES**  
5 POUND BAG **49c**

WE HAVE A FULL  
LINE OF PECANS  
WALNUTS, ALMONDS,  
FILBERTS, AND BRAZIL  
NUTS FOR THE  
HOLIDAY SEASON

**CHRISTMAS  
TREATS  
SALES**

**\$1.97**

**\$4.99**

**\$3.19**

**\$1.03**

**49c**

**87c**

**97c**

**89c**

**97c**

MAKES AND THE  
HOLIDAY WITH WIL-  
SON'S QUALITY BRAND FINE

**MINI-MART**

## Looking back

**LOOKING BACK  
27 Years Ago**

Mr. Fred D. Brock recently bought the Standard Abstract Company from S.L. Pierce and is now operating the abstract business with the help of Mrs. Pierce. The Brocks are from Aspermont.

A comedy in three acts, "Never Too Late," by Don Elser, will be presented Friday night, December 13, by the Senior Class of Morton High School in the school auditorium, at 7 p.m.

Mrs. W.B. Evans left last Friday for Des Moines for a visit with her son, Max and wife.

Nearly 2,000 steel folding cots located at the former POW Camp at McClean, Texas, and some 50,000 double deck wooden beds with steel springs are being offered by the Fort Worth WAA Office in a sealed bid sale which closes December 17.

Pvt. Lawrence Nesbitt, son of Mr. and Mrs. G.G. Nesbitt, received an honorable discharge on December 2, at Camp Beale, California.

Home Demonstration Women are having a bazaar in front of Piggly Wiggly Saturday, December 14, at 10 a.m., featuring home-baked pies.

Mr. and Mrs. Raymond Strickland of Carlsbad visited his parents and sisters family this weekend.

A baby boy was born to County Attorney and Mrs. M.C. Ledbetter, early Tuesday morning, in the Payne-Shotwell Hospital at Littlefield. They have three other children, all girls.

The Business Women's Circle of the First Baptist Church, entertained their husbands with a covered dish dinner in the home of Dr. and Mrs. Travis Ferguson, Tuesday night, December 10.

### 15 YEARS AGO

Paula Burnett and Dickie Walker were among those over the district to receive Gold Star 4-H awards at the Gold Star Bazaar in Lubbock.

A combination Turkey Shoot and Marine Corps Weapons Demonstration will be held here Saturday under the auspices of the American Legion.

A demonstration of the Fowler Bull Puller, by Raymond Hoffman, local dealer, is set for Friday afternoon from 2 to 3 o'clock at the Svl Greener farm.

The Morton High School Band received a Division II rating in marching and a Division I rating in inspection last Saturday in Regional Band Competition at Plainview.

The Morton Jaycees voted Monday to co-sponsor with the Wallace Theatres, their annual "free benefit show" at the Rose Theatre here.

The Morton High School Band, under the directorship of John Brown, will travel by school bus to El Paso, December 30, to take part in the annual Sun Carnival Parade and to march during the halftime in the Sun Bowl.

Mr. and Mrs. Fred Kelly, Mr. and Mrs. Weldon Houghton and Mr. and Mrs. Bob Scott were in Fort Smith, Arkansas last weekend to visit their son and brother, Pvt. Alvin Kelly, who is stationed at Ft. Chafee. Pvt. Kelly left Monday for Germany where he will be stationed for two years.

Mr. and Mrs. J.J. Watts returned from Graham, Monday, where they visited Mrs. Watts' father, C.A. Cloud and sisters, Mrs. Hettie Middleton, and Mrs. Hester Daniels.

## Martin, Thompson on RCD board

The County Resource Conservation and Development Organization has elected Cochran Soil and Water Conservation District Chairman George Martin and county judge Glenn Thompson to the six county board of directors. Martin and Thompson will represent Cochran County on the Sandyland RCD Board.

The County Organization also discussed the needs of the Bledsoe, Whiteface, and Morton communities. Members of the Commissioners Court, the Cochran Soil and Water Conservation District, and the Morton City council were present.

The organization will meet again on Tuesday, January 8 at 7:00 A.M. in the Tic Toc Restaurant. The purpose of the meeting will be to formulate a list of project proposals for Cochran County and determine the order of their priority.

All members of the Commissioners Court, City Councils, School and Hospital Boards, Officials and members of all garden and study clubs are urged to be present.

# Three Way News

By Mrs. H.W. Garvin

Three Way basketball teams went to Pottion Center Tuesday night to play ball losing all games to Cotton Center. Friday night Three Way played Elida, N.M. on their home court with Three Way boys losing their games and both A and B girls teams winning their games.

Mr. and Mrs. Johnnie Wheeler spent the weekend in Comanche visiting their son, the Joe Wheeler family.

Mr. and Mrs. Charles Abbe spent the past week in Kansas City attending A Co-Op meeting.

Pattie Herd from Shallowater spent the weekend visiting Christine Powell.

Mr. and Mrs. Ed Fagen from Mangum, Oklahoma visited the Fred Kelleys the past week.

Mr. and Mrs. Monte Toombs from Shallowater spent the weekend with their

parents, the H.C. Toombs.

Sidney Key spent a few days last week visiting his cousins, the Carl Millers and Marvin Long, in Canyon.

Mr. and Mrs. George Tyson spent the weekend in Lubbock visiting their daughter, the Tommy Durhams.

Mr. and Mrs. Jack Ferguson were in Lubbock Thursday.

Mr. and Mrs. H.W. Garvin visited their daughter and family, the James Gillentine family, in Lubbock Sunday.

Mrs. D.S. Fowler and Mrs. Don Richardson were in Lubbock Wednesday.

Several from the community were in the piano recital held in the Enoch Methodist Church Sunday afternoon. Mrs. John Gunter presented her pupis.

Mrs. T.D. Davis and Mrs. Tommy Terrell were in Clovis, N.M. Thursday.



MRS. EVELYN SEAGLER and MRS. LESLIE DENDY took the 5B and SC art on a Career Education excursion to the Morton Wood Shop. Mr. Guy Reed, operator of the shop explained the uses of the various machines, and showed the some of the finished products. He recommended his career for those who want their own boss"; who like to make things with their hands; who want a business interesting because there are so many kinds of things to be made from wood. He gave each child several pieces of wood to take back to their art class and make projects resulted. The craft pieces were stained to bring out the wood-grain and varnished to preserve the finish. Some were decorated with tile.

## Enochs-Bula News

J.B. Vanlandingham and Mrs. J.B. Vanlandingham both were patients in the Methodist Hospital. He was transferred to the Morton Hospital and she was able to come home Monday. Mr. Vanlandingham was able to come home Wednesday. Mrs. Ann McDonald, a granddaughter, from Calif., will be staying with them until after Christmas.

Charlie Byars has been a patient in the Littlefield Hospital since last Monday.

Roy Bayless of Muleshoe visited in the home of his brother, Mr. and Mrs. J.D. Bayless, Sunday afternoon.

## Morton school menu

- MORTON SCHOOL MENU**  
**Monday, December 17, 1973**  
 Meat loaf, whipped potatoes, green beans, apricot cobbler, rolls, milk.
- Tuesday, December 18, 1973**  
 Ham salad, lima beans, tossed green salad, 1/2 peach, cookies, rolls, milk.
- Wednesday, December 19, 1973**  
 Tamales with meat sauce, Spanish Rice, Mexican salad, applesauce cake, cornbread, milk.
- Thursday, December 20, 1973**  
 Turkey and dressing with gravy, June peas, cranberry salad, pumpkin custard, rolls, milk.
- Friday, December 21, 1973**  
 Mgr. Choice.

## Thoughts

From The Living Bible

The Lord says, "The people of Israel have sinned again and again, and I will not forget it. I will not leave them unpunished any more. For they have perverted justice by accepting bribes, and sold into slavery the poor who can't repay their debts; they trample the poor in the dust. "And a man and his father defile the same temple-girl, corrupting my holy name. At their religious feasts they lounge in clothing stolen from their debtors, and in my own Temple they offer sacrifices of wine they purchased with stolen money.

Amos 2:6-8  
Religious Heritage of America

# VITAMINS MAKE YOU FEEL GOOD

## COLD WEATHER SPECIALS



**NEO-VADRIN VITAMIN C**  
500 MG TABLETS-100 COUNT

**\$1.99**

250 MG. TABLETS-100 COUNT  
**99c**



**OPTILETS M-500**  
100 COUNT WITH 30 FREE **\$3.88**

**THERAGRAN**  
100 COUNT WITH 30 FREE **\$3.88**

**THERAGRAN-M**  
100 COUNT WITH 30 FREE **\$3.99**



**Neal Ellis**  
Pharmacy and Gift Shop  
One Thousand College



## The "who-would-have-thought-of-it" Christmas gift.

Telephones are so useful, you start to think the only thing they can be useful. And you forget how beautiful they can be.

That's why some people completely overlook phones as a Christmas gift.

Well, General Telephone has phones that are absolute knockouts—a joy to look at and to use.

For instance, that supermodern Style-line® phone. The dial is hidden till you pick up the phone; then it's right in the palm of your hand.

We have Candlestick phones with styling

straight out of the Roaring Twenties. We have old-fashioned phones. And phones that hardly look like phones. And phones so elegant they look like they belong in a castle.

Most likely you have their pictures in full color right in your own home. (They come in a variety of lovely colors.) Just look between the White Pages and the Yellow Pages of your phone book.

To order, call the Gift Specialist at your phone company's business office.

Give the kind of gift that makes people think only you could have thought of it.

**GTE**

**GENERAL TELEPHONE**

by John Attorney... With th... many or... dity to app... generosity... times this... through the... recipient m... often, ti... d charitabl... worthwhil... times, how e... which sp... sympathy b... value, o... income for the... recipient... decide wond... system if use... of I don't w... answer's no... federal laws... of words... tending to a... people who... decide have... it or to r... thaise was... happens, the b... accidenta... under... addition, t... organization... July, 19... ne protection... of us an... Anr

We offer Christmas... Sugar Pin... bouquet Christmas... tive suga... crystal ci... Or the Ci... pictured... garden as... day orna... Christmas... available... range of Christmas... Can't vi... today. W... send you... selection... anywhere

MORTC... 605 I... COV... "Nav... car... a r... staff me... y training... business fin... changing ec... rains. If y... discuss it w... Fin





# The Consumer Alert

by John L. Hill  
Attorney General

With the holiday season in full swing, many organizations take the time to appeal to the public's good nature and generosity of spirit to solicit donations.

At times this is done by sending letters through the mail and requesting that the recipient make a donation to the organization.

Often, these direct mail solicitations come from well-known, established charitable organizations that have a worthwhile service.

Sometimes, however, they come from groups which specialize in preying on the sympathy for a cause that may be of little value, or one that produces no benefit for the charity it purports to support.

Recipients of unneeded merchandise wonder, "Do I have to pay for it if I don't want it?"

There are both state and federal laws that now protect recipients of unneeded merchandise. According to a law passed in Texas in 1971, people who receive unsolicited merchandise have no obligation either to pay for it or to return it, unless the merchandise was sent accidentally. If it happens, the burden of providing a return label is on the sender.

In addition, the Federal Postal Inspection Act, which became effective in July, 1971, provides virtually complete protection.

Most of us are familiar with the

Items that are often mailed out at this time of year include greeting cards, neckties, pins, various types of buttons, key rings, handkerchiefs, name and address labels, and other similar small items.

If you have any questions about the organizations sending these or other items to you, check with the Consumer Protection Division of the Attorney General's office, your county or district attorney, or local better business bureau.

As co-chairman of the Texas Organized Crime Prevention Council, along with Department of Public Safety Director Wilson Speir, I am acutely aware that one of the major crimes which Texans fall victim to is car theft.

An average of almost 100 car thefts are reported in this state every day of the year. And despite the coordinated efforts of local and state police, only between 80 and 85 per cent of stolen cars are recovered for their owners.

There are several ways in which vehicle owners can help to prevent car theft.

In fact, one precaution is required by the state law which dictates that the operator of an automobile must take four steps when leaving a vehicle unattended: 1) Stop the engine; 2) lock the ignition switch; 3) remove the key from the ignition switch; and 4) set the parking brake. Also, by law, if the car is on a grade, the operator must turn the front wheels to the curb before leaving it.

Ordinary prudence would prompt a person also to roll up the car windows and lock the doors, and to be certain (especially during the Christmas shopping season) not to leave any valuable articles in view.

It is also advisable to park your automobile in a public and well-lighted place as possible. Avoid side streets and dark alleys.

Do not hide an extra key under the floor mat, in the sun visor, under the seat or any other "safe place." It has been

estimated that more than 40 per cent of cars are stolen by the use of the owner's own keys.

Keep your car locked even when it's in your own driveway or garage. Most car thefts, including the "borrowing" of cars for "joy rides," occur in residential districts at night.

It's a good idea to keep records of your state license plate number as well as your motor vehicle identification number in a handy place of business, to speed police work in the event your car is stolen.

In that case, report the theft immediately to the nearest law enforcement agency—your police department, your local sheriff, or the D.P.S.

The enforcement agencies will quickly feed information about the loss and a description of your vehicle into the statewide Texas Crime Information Center Computer. Then the report will be entered with the F.B.I.'s National Crime Identification Center.

Commercial, or organized, car theft operations do not limit themselves to the boundaries of a city or a state. And car thefts are a big business. In 1971, a total of 37,677 cars estimated at a total worth of \$50 million were reported stolen in Texas.

In 1972, the total had been reduced to 31,569, reflecting an increased law enforcement pressure against professional auto thieves.

Your state and local enforcement officials, keep strengthening their cooperative efforts, with each other and the F.B.I., to protect Texan consumers against auto theft and related crimes, such as the stealing of auto license plates.

You can help, too, by making the car thief's work harder by taking the suggested preventive measures; by being on the lookout for any suspicious activities, and by making an immediate report to police authorities if your car is stolen.

## Announcing a new way of Christmas shopping.



We offer exciting new ideas in Christmas gift giving. The FTD Sugar Plum Bouquet™ A bouquet of fresh, colorful Christmas flowers with decorative sugar plums in a clear crystal candy dish.

Or the Christmas Garden, pictured above, a planted garden accented with holiday ornaments for a distinct Christmas feeling. Also available is a full range of other Christmas gifts.

Call or visit us today. We can send your selection almost anywhere.

Sugar Plum Bouquet

**MORTON FLORAL & GIFT SHOP**  
605 E. LINCOLN 266-8816

### COW POKES By Ace Reid



"Now, we ain't got gasoline 'er water but if your car can run on cold beer fer fifty miles—there's a nice station there that might fix you up!"

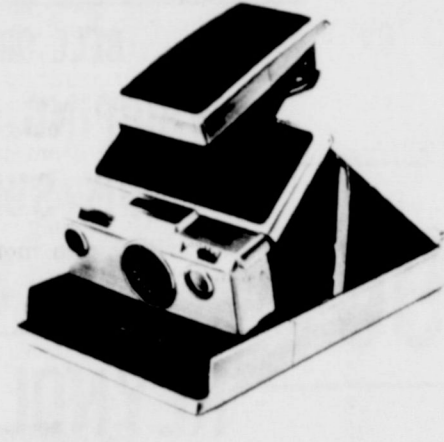
Staff members at The First State Bank are highly qualified in training and experience to help you with your farm, ranch or business financial problems. They are finely tuned to the ever changing economic conditions in Cochran county and on the High Plains. If you have a financial problem, give us the opportunity to discuss it with you and find out how we can be of service to you.

**First State Bank**

# WRAP UP... CHRISTMAS ...HERE!

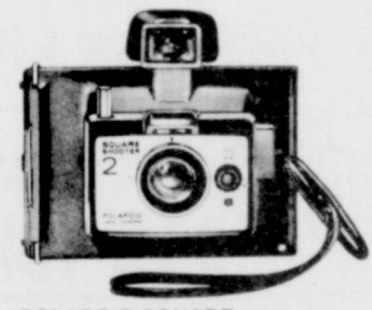
Shop Neal Ellis Pharmacy and Gift Shop's complete camera department for the gift that remembers Christmas. The excitement of Christmas time is reflected in the eyes of a child. What better way to remember the magic of Christmas this year? We have the complete line of Kodak Instamatic pocket cameras and Polaroid cameras as well as film, instruction books, accessories, and photofinishing service. Take slides snapshots, movies—capture all the excitement and happiness that will happen on Christmas!

## NEW! POLAROID SX-70 CAMERA



COME IN FOR A DEMONSTRATION!  
ONLY A FEW IN STOCK  
FIRST COME, FIRST SERVED

POLAROID SQUARE SHOOTER II \$1995



POLAROID SQUARE SHOOTER 2 LAND CAMERA



KODAK POCKET INSTAMATIC POCKET 10 OUTFIT \$1595

### KODAK INSTAMATIC

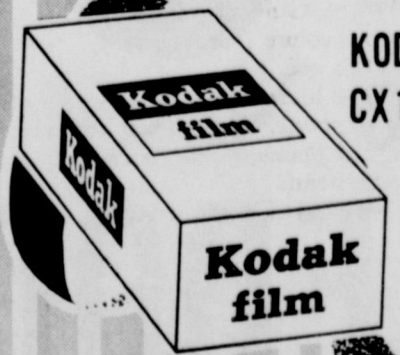
POCKET 20 OUTFIT \$1995



### FILM POLAROID

KODAK CX126. \$119

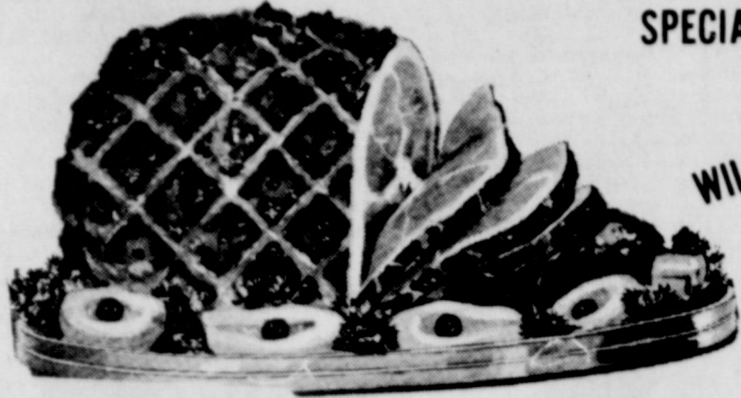
WE HAVE FILM AND FLASHBULBS FOR MOST CAMERAS



PHARMACY AND GIFT SHOP  
ONE THOUSAND COLLEGE

EVERYTHING FOR YOUR  
**Christmas Feast is Here**

SPECIALS GOOD DEC. 14 THRU DEC. 24.



WILSONS

**CURED HAM**  
HALF OR WHOLE LB. **95c**

**CHEESE**  
YELLOW RIND POUND **\$1.29**



**FRANKS**  
GLOVER 12 OZ. **85c**

**SAUSAGE**  
GLOVER 1 LB. PKG. **98c**

**PAPER PLATES**  
LILY 100 COUNT **69c**

**MARSHMALLOW CREME**  
HIP-O-LITE 9 OZ. **3/\$1.00**

**GOLDEN KRUST BROWN & SERVE ROLLS**  
**3/\$1.00**

**BUTTERSCOTCH MARSELS**  
NESTLES 6 OZ. **3/\$1.00**

**BELL OR BORDENS WHIPPING CREAM, DIP & CHIP, SOUR CREAM**  
**39c**

**NABISCO PINWHEEL OR HEYDAY COOKIES** **59c**

**REYNOLDS WRAP**  
18" x 25' **49c**

**WIN-YOU CHERRY PIE FILLING** 21 OZ. **69c**

**POTATO CHIPS**  
MORTON 16 OZ. **79c**

**DEL MONTE TOMATO JUICE** 32 OZ. **3/\$1.00**

**WHITFIELD SPANISH OLIVES** 5 OZ. **74c**

**WHITE SWAN WHOLE GREEN BEANS** NO. 303 CAN **3/89c**

**DASH DETERGENT**  
JUMBO 30c OFF LABEL **\$2.09**

**PEARS**  
FANCY POUND **19c**



**BANANAS**  
POUND **10c**

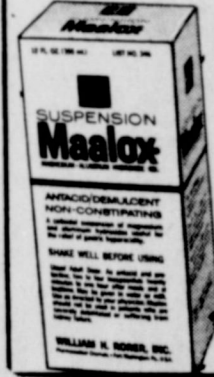
**ORANGES**  
5 POUNDS **49c**

**COCONUTS**  
FRESH EACH **39c**



**LISTERINE**  
14 OZ. **99c**

**PEPSODENT TOOTH PASTE**  
MED. 8c OFF **45c**



**MAALOX LIQUID**  
12 OZ. **\$1.39**

**BE SURE & REGISTER FOR OUR GIANT SANTA CLAUS STOCKING TO BE GIVEN AWAY DECEMBER 22**

**100 GOLD BOND Stamps**  
When you present this Valuable Coupon at  
**RAMSEY'S FOOD STORE**  
210 SOUTH MAIN MORTON, TEXAS  
that displays the Gold Bond Stamp Sign  
**FREE** WITH PURCHASE OF \$5.00 OR MORE.  
GOOD NOW THROUGH NEXT WEEK  
LIMIT 1 TO A FAMILY

**RAMSEY'S FOOD STORE**