

The Sudan Beacon - News

FORTY-FOURTH YEAR

NUMBER 36

SUDAN, LAMB COUNTY, TEXAS

THURSDAY, OCTOBER 31, 1968

10 CENTS PER COPY



DOES YOUR pooch have fleas? Well, lots of dog owners would indignantly deny it, but most dogs probably have fleas at one time or another. Consequently, most dog owners usually have to use flea powder occasionally (on their dogs).

Now comes the American Cyanamid Company, with a new pill which you give your dog in relation to the flea problem. Says the company's handout:

"American Cyanamid Company has developed PROBAN Cythioate, a new systemic insecticide that controls dog fleas by oral treatment without harmful side reactions."

Now there are several ways you could read that. One is that you have to give the pills to the fleas, which is no mean trick. Sounds to me like you'd need terribly small pills or monstrous-sized fleas.

However, most folks would assume you give "the insecticide that controls fleas" to the dog. So what do you get? Controlled fleas, that's what. Fleas that won't fly into a rage or disobey the government.

BY THE TIME you read this, I suppose the Olympics will be over. I never could get too excited about the Olympics, but certainly there are some astounding accomplishments. Some guy jumped 29 feet in the broad jump. This is a heck of a jump, and to be able to do a broad jump of such distance certainly would seem to be an asset, although I personally never have seen a broad that wide.

But if you don't think that's an incredible leap, step it off somewhere and take a look at it.

Imagine what a halfback could do if he could jump 29 feet. He could run to the line of scrimmage and take off, and unless someone tackled him in midair, he'd just be a foot shy of a first down. Might even be close enough for a measurement.

Same way with the high jump. The guy who could jump 7 feet high likely would be good for going over from the one-yard line. And he might even make a good pass receiver if you had someone who could get it up there to him.

Mrs. Willard Cox and Mrs. Jimmy Carpenter are attending a Scout Leadership Course in Lubbock each Wednesday.

HORNETS ROLL ON, RIP VEGA 49-0

Playday Program Slated Sunday

Littlefield Sheriff's Posse will have a playday program at the arena near the Co-op Gin at Sudan Sunday afternoon, with an express race as one of the highlights of the program. Also featured will be barrel racing.

Anyone who wants to enter will be charged a can of food, with all the canned goods to be taken to Girlstown, near Whiteface. Although there will be no admission charge to spectators, any spectator donations of canned food also will be appreciated.

The program will get underway about 1:30 p. m., at which time entries will be accepted.

SUDAN ESA CHAPTER HOSTS DISTRICT MEET

The Epsilon Chi Chapter of Epsilon Sigma Alpha Sorority was host for the District 9 meeting Sunday in Muleshoe when the event was held at the Country Club.

Carroll Johnson, president of the Muleshoe Sorority, extended the welcome. The response was by Martha Markham of Sudan, District 9 vice-president.

Guest speaker was Jim Evans, vice-president of the Coca Cola Co. in Lubbock. His subject topic was "Personal Motivation".

The new chapter at Tulia was welcomed into District 9. A Leadership Seminar was conducted by special guests who are officers of the State organization, including Chlorene Miller, Marg Condon, Martha Hewitt, Carleen Aiken, Ann Helmstetter.

The door prize was won by Chlorene Miller. Forty four were present, representing six sororities of the District.

Attending from Sudan were Maxine Nichols, Educational Director; Loretta Reid, Jan Brown, Mary Wood, Charlotte Brown, Betty Martin, Alma Lumpkin, Arlene Provence, Martha Markham.

Mr. and Mrs. Lynn Olds returned home Friday from a month's fishing trip at Lake Brownwood.



TOUCHDOWN BOUND - Larry Hanna (30) is shown above as he goes in for six points Friday night in the game against Vega when the Hornets rolled-up their sixth victory of the season. The Hornets will see action here tomorrow night in another conference tilt when they meet Springlake. Game time will be 7:30 p.m.

Sudan Now Ranked No. 5 In Texas Class A

By ELRAY RASCO
Sudan's explosive Hornets ran their season record to 6-1 Friday night as they won their second conference game, whitewashing district newcomer Vega 49-0.

Coach Jim Cain's black and gold aggregation advanced from sixth to fifth this week in the Dallas News statewide poll of Top 10 Class A football teams, and to fourth place in the Fort Worth Star-Telegram's statewide poll. Clarendon, whose last defeat was at the hands of Sudan in last season's regional playoff game, is ranked third in the state in the News' poll.

Sudan got on the scoreboard early as QB Steve Martin directed a drive all the way in just 10

GAME AT A GLANCE	
Sudan	Vega
27 first downs	9
359 yards rushing	46
87 yards passing	120
3 completed pass	9
2 intercepted pass	0
1 fumbles lost	0
2-20 penalties	1-15
4-42 punts, avg.	8-36.5

plays, starting with FB Larry Hanna's 25-yard scamper on the Hornets' first play from scrim-

SENIOR CITIZENS

The Sudan Senior Citizens will meet Friday, Nov. 8, in the Sudan Community Center. The meeting will begin at 2:30 p. m. The Women's Society of Christian Service is sponsoring the meeting. Everybody is invited to attend.

FOUR ARRESTED HERE ON CHECK LAW CHARGE

Four Abernathy Latin-Americans were arrested by Lamb County Deputy Homer McLary in Sudan last Friday and charged with attempting to pass a forged instrument. Three were processed at Littlefield as juveniles, while bond of \$2,000 was set for a 23-year-old accused as an accessory to the crime.

Roy D. Day has been confined to the Littlefield Hospital.

Mr. and Mrs. Clovis Bridwell returned last week after visiting a number of days in the home of their son and family, Mr. and Mrs. Jerry Bridwell in Houston.

Mexican Supper Set

Sudan senior class will sponsor a Mexican Supper at the high school cafeteria from 5 to 7 p. m. Friday, prior to Sudan's game with Springlake-Earth. Enchiladas, Spanish rice, beans, salad and cobbler make up the menu. Cost is \$1.25 for adults and 75 cents for children under 12.

"We especially hope that all the Sudan exes who will be attending the homecoming football game will also attend the supper," said a class spokesman.

GIRL SCOUTS ATTEND EVENT IN LITTLEFIELD

The Girl Scouts attended Play Day in Littlefield, Saturday, Oct. 26. The program was in honor of Juliet Low, founder of Girl Scouts in the United States.

Those attending were Nelda Carpenter, Carolyn Carpenter, Bernadette May, Rene Jordan, Pam Nelson, Deborah Hall, Terri Chester. Also attending were the Brownies and adult sponsors, Mrs. Jimmy Carpenter and Mrs. Robert Nelson.

Sisters Hurt In Car-Train Wreck

Two teenage sisters remained hospitalized in Muleshoe today—one in critical condition—after a car-train collision Tuesday night on U. S. Hwy. 70 in Muleshoe.

In critical condition is Brenda Harper, 17. Her sister Joan Harper, 15, was listed in fair condition at West Plains Hospital in Muleshoe.

The girls are daughters of Mr. and Mrs. Ed Harper.

Their car was in collision with a westbound Santa Fe freight train, en route from Slaton to Clovis, N. M. Impact of the collision drove the car 100 feet west and 30 feet south of the original point of impact.

Investigators said the crash occurred about 8:20 p. m. near the Santa Fe depot, Muleshoe.

Engineer of the train was J. A. Smith of Slaton, authorities said.

Mr. and Mrs. O. L. Turner were in Plainview Saturday to attend a supper honoring members of the Wayland Baptist Holy Land tour at the home of Mrs. Louis Pool. Pictures of the tour were shown.

OPEN HOUSE SET AT AMHERST MANOR

Amherst Manor Nursing Home, under new manager Ernest Borovka, has remodeled and will be adding 8 to 12 beds this year. Open house is scheduled at the facility from 2 to 4:30 p. m. Sunday.

With a nursing staff qualified for full Medicare accreditation, the supervisors are two well-known Amherst nurses, Mrs. Thelma Love, LVN, who has been with the home since 1966, and Mrs. Floyd Young, LVN, who accepted the position in August.

Two newcomers are from

Muleshoe. They are Mrs. Mable Bristow, LVN, in charge of the evening shift, and Mrs. Beola Burge, LVN, hired in October.

Mrs. Dorothy Weaver, B. S., R. N., is director of nurses and comes to Amherst with many years of experience in nursing. She was employed in her home community of Kearney, Neb. as surgical and obstetrical supervisor five years (1952-56), during which time she also was R. N. instructor for the licensed practical nursing program in the state.

In 1956 she moved to Los

Angeles, Calif. to accept a position on the teaching staff of professional nursing of St. Vincent's Hospital.

Quite accidentally, she stated, in 1960 she was "drafted" into the nursing home field to cover for a friend who had to give up her home due to a fatal heart attack. It was two years later when she leased her own facility and operated it until 1966. The past two years she was actively engaged in opening up new nursing homes and assisting other homes to meet Medicare accreditation. She accepted the posi-

tion offered in Amherst by Borovka, he said, because it was a small town more like where she was born, and was nearer to her home in Nebraska.

Borovka said that he hopes many friends of the Amherst Manor will come to open house Sunday and meet all the staff members.

Fourteen students of the Kindergarten School made a field trip recently to the Bobby Jack Markham farm.



THE ONE THAT DIDN'T GET AWAY-Lynn Olds of Sudan and Tony Goodson, an employee of Lakehaven at Brownwood Lake, are shown above with a 23 pound yellow catfish caught by Olds last week at Lake Brownwood.

mage. Martin scored the touchdown himself from 2 yards out. Jerry Bellar kicked the first of four successful conversion points and it was 7-0. Later in the first period Bellar blasted 20 yards for a touchdown, then saw his kick blocked, making it 13-0 as the teams changed ends of the field.

Early in the second quarter Martin passed to David Weaver for 35 yards to the Longhorn 8, and a few plays later Martin moved over from the 1. The extra point try fizzled as the ball was centered over Bellar's head.

Later in the period Bellar returned a Longhorn punt 50 yards to the Vega 10, from where Hanna scored on the ensuing play. Bellar kicked to make it 26-0, and on the Hornets' next possession, Weaver, running at fullback, barreled 34 yards for a touchdown, followed by another Bellar conversion.

You could hardly tell the difference after Sudan's second team offense took over, still in the second quarter, as quarterback Rex Boyles scored from the Vega 1 after Weaver had loped 39 yards to that point. Bellar converted and it was 40-0 at the half.

The Hornets struck early again in the third period and QB Steve Martin passed to end Bobby Brown for a 38 yd. TD as Brown went all the way into the end zone. Bellar's kick was blocked. The Hornets had a lot of newcomers in the game in the third quarter and all did a good job. It was about the middle of the third period before the Hornets were forced to punt on a fourth down.

The third quarter ended with the Hornets leading 46-0.

About the middle of the 4th quarter, Jerry Bellar made another fine punt return of 35 yds. to the Longhorn 15 yd line. As the Hornets were unable to move the ball, Bellar came in to kick an 18-yd. field goal. The Hornet defense really did a fine job especially late in the final period as the Longhorns moved the ball all the way to the Hornet 1 yd. line, but the Hornets stopped them on a fourth down play to take over at the 1.

Late in the ballgame guard Billy Ford intercepted a Longhorn pass and returned it 22 yds. before he was brought down on the Longhorn 13 yd. line. The Hornets fumbled the ball just 1 yard short of the goal line, and the Longhorns recovered the fumble. Time ran out, and the Hornets had a 49 to 0 victory.

The Hornet defense led by Billy Ford, Monte Roberts and Larry Hanna, did a great job to hold the Longhorns to 174 yards. All the Hornet running backs did a good job picking up yardage. QB Martin hit 3 out of 5 passes for 87 yds. with one of these a TD pass.

The Hornets will play Springlake - Earth Friday night Hornet Stadium at 7:30.

AERIAL SPRAYING DEFOLIATION ACID OR DROPLEAF AERIAL APPLICATION FOR ALL YOUR SPRAYING NEEDS Agri-Sprayers

SUDAN
227-4391

BOVINA
238-4861

A vote FOR Amendment 9 will permit career teachers to improve and strengthen their retirement programs.

Teachers will be allowed to contribute to the Teacher Retirement System on the basis of full salary earned each year during their tenure of professional service to the school children of Texas. Approval of Amendment 9 will ATTRACT the best qualified college graduates into teaching. Experienced teachers will be assured the security needed to HOLD them in the classroom.

VOTE FOR 9
TEACHER RETIREMENT
AMENDMENT
Nov. 5.

Paid Political Ad by Texas State Teachers Association



TENDER STEAKS ARE
OUR SPECIALTY

DELUXE CAFE

OMAL & ERNEST PENNINGTON

Finley-Shannon Vows Exchanged

Shirley Finley and Donald Lee Shannon exchanged wedding vows Saturday, Oct. 19, 6 p. m. in the home of the groom's brother, Mr. and Mrs. Lynn Shannon, with O. L. Turner officiating.

The bride is the daughter of Mr. and Mrs. L. N. Parris, Rt. 2, Slaton, former Sudan residents, and the groom is the son of Mr. and Mrs. O. L. Shannon of Sudan.

Mrs. Mack Templeton of Sudan was matron of honor.

Best man was Lynn Shannon, brother of the groom.

The couple will reside in Sudan.

Those attending the ceremony were Mr. and Mrs. O. L. Shannon, Mr. and Mrs. Mack Templeton, Mr. and Mrs. Glenn Testerman, Cliff and Linda Shannon.

FRANKLIN D. ROOSEVELT

"More than an end to war, we want an end to the beginning of all wars." Address written for Jefferson Day Dinners Broadcast, April 13, 1945. (President Roosevelt died suddenly, April 12, at Warm Springs, Georgia.)

Buy U.S. Savings Bonds, new Freedom Shares

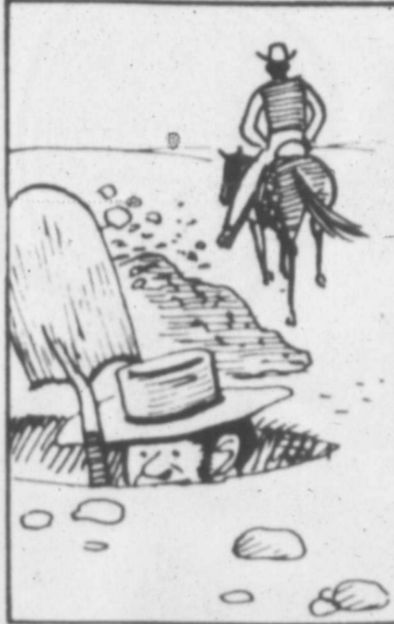
FORD SPEAKS TO SUDAN GROUP

Frank Ford, candidate for State Representative, spoke to a group of men at Sudan Livestock Tuesday afternoon.

Ford also addressed a group of persons at the Community Center, where refreshments of coffee and cookies were served.

Ford spoke in Bailey County Tuesday night.

Mrs. J. W. House, Jr. has been confined to South Plains Hospital, Amherst.



RECKON THE DEEP-
EST THINKER I
KNOW IS JED DIGBY
THE WELL DIGGER.

ROTARY CLUB MEETING HELD

The Sudan Rotary met at noon Wednesday when the president, H. H. Potter, presided.

Rev. Robert Brown gave the invocation.

Gene Duval conducted the program "Rotary Membership and Participation" which was very informative to attending members.

Other business included the postponement of the Teacher's Appreciation banquet. A definite date has not been set for the occasion.

In closing Potter urged that all members vote in the upcoming election.

Four guests were present along with 27 members.

O.E.S. OFFICIAL VISITS SUDAN

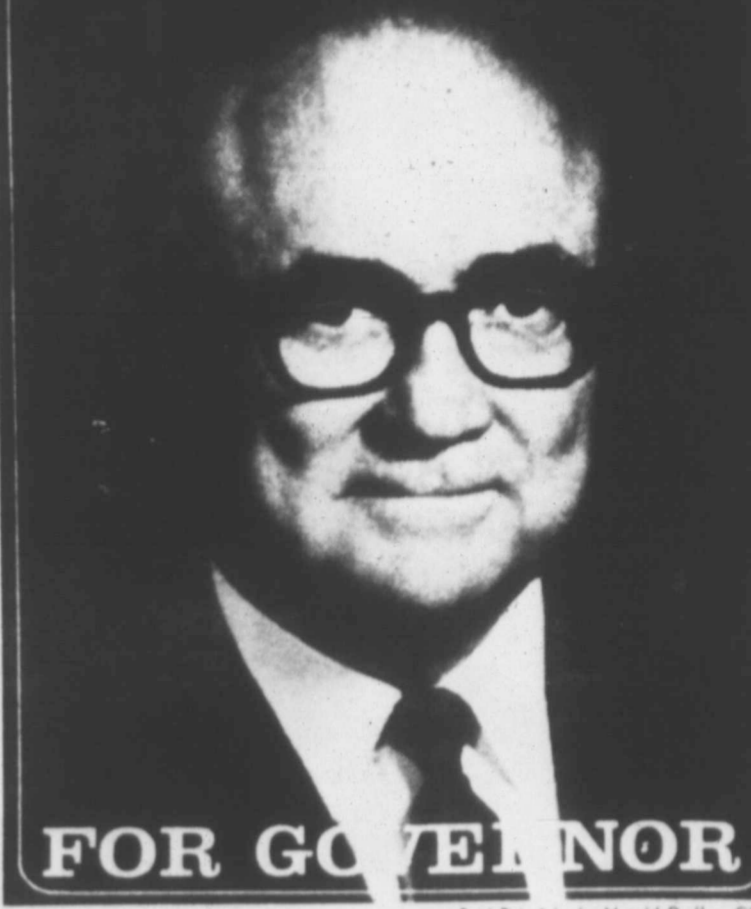
Mrs. Elizabeth Marbut, Deputy Matron, Section 4, District 2, Order of Eastern Star Grand Chapter of Texas made her official visit to the Sudan Chapter O.E.S. Worthy Matron Winona Dudgeon and Worthy Patron Noble Dudgeon presided.

A salad supper was served to those present. The hall was decorated with a fall scene.

Hostesses were Rosabel Coldiron and Annie Chester.

Those present were Mayfair Graves, Willie Terrell, Lora Blanchard, Mary Pearl Bellar, Rosabel Coldiron, Anna Lee Sterr, Edith Humphreys, Belle Olds, Oleta Reece, Virginia Rone, Celia Dryden, Ramona Ingram, Lela Chester, Annie Chester, Rosie Pinkerton, Edna Bellamy, Bess Stark, Vena Everett and Mr. Marbut.

PRESTON SMITH



FOR GOVERNOR

Paid Pol. Adv. by Harold Dudley, Chmn.

IF YOU NEED

HELP!

ON REPAIRING YOUR

WASHER & DRYER, REFRIGERATOR OR

AIR CONDITIONING

SEE

HOMER MORRIS

OR CALL

227-5811

New Location At 403 Boesen Street

SPOOK HOUSE



Thursday, October 31, 7:15 p.m.

COMMUNITY CENTER

Sponsored By P.T.O.

A TIME FOR DECISION

A Presidential election, the most important one in our lifetime, is close upon us. With three candidates in the race Texans are confronted with such a variety of appeals that some confusion is not surprising. We see some of our top state political leaders urging support of Hubert Humphrey on the self-serving appeal of party loyalty. We see fine Texans tempted to support George Wallace because they like his outspoken position on certain issues and are thus swayed by an appeal of sheer emotion. With full respect for the right of every Texan to make a personal decision, this message in behalf of Richard Nixon is offered as

...AN APPEAL TO REASON!

HUBERT HUMPHREY WILL NOT

change. He has proved consistently anti-Texas. He is famous for his filibuster against Texas owning its tidelands. He has fought our right-to-work laws and sought to destroy our vital oil depletion allowance. On every issue of world importance his position is contrary to that of most Texans. Humphrey, an ultra-liberal founder of the ADA organization, would gain executive authority for radical minority viewpoints should he become president. This cannot happen by popular vote. In view of his vicious attacks upon George Wallace, what a ghastly miscarriage of intent it would be if Wallace supporters themselves should throw the election into the House of Representatives where every Wallace vote in Texas would automatically go to Humphrey!

GEORGE WALLACE CANNOT

be denied his impressive showing. A number of fine people heed his third party call. The very least that can be said is that he has dramatized the desires of many people for a change of direction in the affairs of our government. However, the very most his supporters can hope for is to split the popular vote so that all of us would be at the mercy of Washington politicians who would elect our president for us. This is Hubert Humphrey's only hope for election. The more positive way to vote for change is to recognize the many fine merits of Richard Nixon and his program, then vote for Nixon to assure the election of our president by the people instead of by the Congress!

RICHARD NIXON CAN...AND WILL

supply dynamic, experienced leadership for an immediate change of direction—at the top—in all our national affairs at home and around the world. Your concerns are his concerns!

• **NIXON ON LAW AND ORDER** is pledged to help improve local police protection, to appoint an Attorney General dedicated to rooting out crime, to restore balance in our courts strengthening peace forces against criminal elements and to cease freeing so many of the guilty on technicalities.

• **NIXON ON VIET NAM** will call upon his experience as vice-president during eight great Eisenhower years of peace to reform world alliances now in disarray, to redirect our strategy on new global terms. He will end this war and avoid future ones by dealing with adversaries in the only way they respect—through strength, collective security and patience.

• **NIXON ON LOCAL GOVERNMENT** is pledged to move control of local schools and all other governmental functions which properly belong at the local level closer to the people.

• **NIXON ON OTHER PROBLEMS** has solid solutions PLUS solid backing of enough members of Congress to implement those solutions.

IF YOU REALLY WANT A CHANGE... AND IF YOU WANT TO BE
SURE YOU REALLY GET IT... VOTE FOR NIXON/AGNEW

NIXON'S THE ONE!

Political Advertising Paid for By Texans for Nixon

BEN H. CARPENTER
Chairman
P.O. Box 9159
Austin, Texas 78757

TEXANS for NIXON



BECAUSE TUNA are heavier than salt water, they must keep swimming or else they will sink to the ocean floor, says a University of Wisconsin researcher.

DAIRY BEE DRIVE-INN



HAMBURGERS -- FOUNTAIN SERVICE

ICE CREAM

BASKET LUNCHES ---- SANDWICHES

MR. and MRS. TED WALKER, Props.
Phone 227-3892

Forney INDUSTRIES, INC.

ARE PROUD TO ANNOUNCE

G & C AUTO SUPPLY

AS AN AUTHORIZED

Forney Dealer

WE NOW HAVE

A COMPLETE LINE OF

WELDING SUPPLIES

& ELECTRIC WELDERS

Come See Us!



FORNEY
ELECTRIC
WELDER

G & C Auto Supply
Phone 227-3212
SUDAN

SAMPLE

GENERAL ELECTION

Lamb County, Texas
November 5, 1968

Official Ballot

SAMPLE

GENERAL ELECTION
Lamb County, Texas
November 5, 1968

Note: Voter's signature to be affixed on the reverse side.

INSTRUCTION NOTE:

Vote for the candidate of your choice in each race by placing an X in the square beside the candidate's name.

You may vote a straight ticket (that is, vote for all the candidates of a certain party, and for no candidates outside that party's column) by placing an X in the square beside the name of the party of your choice at the head of the party column. (If you use this straight-ticket method of marking, do not mark squares beside the names of individual candidates.)

Candidates For:	<input type="checkbox"/> DEMOCRATIC PARTY	<input type="checkbox"/> REPUBLICAN PARTY	<input type="checkbox"/> AMERICAN PARTY	WRITE-IN
PRESIDENT AND VICE PRESIDENT	<input type="checkbox"/> HUBERT H. HUMPHREY and EDMUND S. MUSKIE	<input type="checkbox"/> RICHARD M. NIXON and SPIRO T. AGNEW	<input type="checkbox"/> GEORGE C. WALLACE and S. MARVIN GRIFFIN	
U. S. REPRESENTATIVE, 18th CONGRESSIONAL DISTRICT	<input type="checkbox"/> J. R. (DICK) BROWN	<input type="checkbox"/> BOB PRICE		
GOVERNOR	<input type="checkbox"/> PRESTON SMITH	<input type="checkbox"/> PAUL EGGERS		
LIEUTENANT GOVERNOR	<input type="checkbox"/> BEN BARNES	<input type="checkbox"/> DOUG DeCLUITT		
ATTORNEY GENERAL	<input type="checkbox"/> CRAWFORD C. MARTIN	<input type="checkbox"/> SPROESSER WYNN		
COMPTROLLER OF PUBLIC ACCOUNTS	<input type="checkbox"/> ROBERT S. CALVERT	<input type="checkbox"/> JOHN M. BENNETT, JR.		
STATE TREASURER	<input type="checkbox"/> JESSE JAMES	<input type="checkbox"/> MANUEL SANCHEZ		
COMMISSIONER OF GENERAL LAND OFFICE	<input type="checkbox"/> JERRY SADLER	<input type="checkbox"/> MILLARD K. NEPTUNE		
COMMISSIONER OF AGRICULTURE	<input type="checkbox"/> JOHN C. WHITE	<input type="checkbox"/> E. G. SCHUHART, II		
RAILROAD COMMISSIONER	<input type="checkbox"/> JIM C. LANGDON	<input type="checkbox"/> JIM SEGREST		
ASSOCIATE JUSTICE, SUPREME COURT, PLACE 1	<input type="checkbox"/> SEARS McGEE			
ASSOCIATE JUSTICE, SUPREME COURT, PLACE 2	<input type="checkbox"/> TOM REAVLEY			
ASSOCIATE JUSTICE, SUPREME COURT, PLACE 3	<input type="checkbox"/> ZOLLIE STEAKLEY			
JUDGE, COURT OF CRIMINAL APPEALS, PLACE 1	<input type="checkbox"/> W. A. MORRISON			
JUDGE, COURT OF CRIMINAL APPEALS, PLACE 2	<input type="checkbox"/> LEON DOUGLAS			
STATE REPRESENTATIVE, DISTRICT 72	<input type="checkbox"/> BILL CLAYTON	<input type="checkbox"/> FRANK FORD		
MEMBER, STATE BOARD OF EDUCATION, DISTRICT 19	<input type="checkbox"/> WILLIAM H. EVANS			
ASSOCIATE JUSTICE, COURT OF CIVIL APPEALS, DISTRICT 7	<input type="checkbox"/> JAMES A. JOY			
DISTRICT ATTORNEY, 154th JUDICIAL DISTRICT	<input type="checkbox"/> JACK D. YOUNG			
COUNTY JUDGE	<input type="checkbox"/> G. T. SIDES			
COUNTY ATTORNEY	<input type="checkbox"/> CURTIS R. WILKINSON			
COUNTY SHERIFF	<input type="checkbox"/> E. D. McNEESE			
COUNTY TAX ASSESSOR-COLLECTOR	<input type="checkbox"/> HERBERT DUNN			
COUNTY COMMISSIONER, PRECINCT NO. 1	<input type="checkbox"/> A. J. SPAIN			
COUNTY COMMISSIONER, PRECINCT NO. 3	<input type="checkbox"/> JACK PEEL			
JUSTICE OF THE PEACE, PRECINCT NO. 1	<input type="checkbox"/> W. G. FINNEY			
JUSTICE OF THE PEACE, PRECINCT NO. 6	<input type="checkbox"/> C. G. STURGIS			
CONSTABLE, PRECINCT NO. 4	<input type="checkbox"/> J. L. DRAKE			

PROPOSED CONSTITUTIONAL AMENDMENTS

Instruction Note: Place an X in the square beside the statement indicating the way you wish to vote.

- | | | | |
|--|---|---|---|
| <p>No. <input type="checkbox"/> FOR
1 <input type="checkbox"/> AGAINST</p> | <p>The Constitutional Amendment amending Subsection (a) of Section 62, Article XVI of the Constitution of the State of Texas relating to the Employees Retirement Fund and the Employees Retirement System of Texas, revising provisions for investments of moneys and other assets of the Fund, and changing other existing provisions and making other new provisions with respect to the administration of the Employees Retirement System.</p> | <p>No. <input type="checkbox"/> FOR
7 <input type="checkbox"/> AGAINST</p> | <p>The Constitutional Amendment continuously reducing State ad valorem property taxes and abolishing all State ad valorem property taxes after December 31, 1978, except the tax levied by Article VII, Section 17, for certain institutions of higher learning.</p> |
| <p>No. <input type="checkbox"/> FOR
2 <input type="checkbox"/> AGAINST</p> | <p>The Constitutional Amendment raising the limit on the amount that may be expended in any one year out of state funds for Public Assistance payments only to Seventy-five Million Dollars (\$75,000,000).</p> | <p>No. <input type="checkbox"/> FOR
8 <input type="checkbox"/> AGAINST</p> | <p>The constitutional amendment removing certain provisions relating to purchase of fuel and refurbishing the rooms and halls of the Legislature and the requirement that the Governor, the Secretary of State, and the Comptroller must approve certain contracts of purchase.</p> |
| <p>No. <input type="checkbox"/> FOR
3 <input type="checkbox"/> AGAINST</p> | <p>The constitutional amendment providing for investment of the Permanent University Fund by the Board of Regents of The University of Texas in certain types of securities within the prudent man rule.</p> | <p>No. <input type="checkbox"/> FOR
9 <input type="checkbox"/> AGAINST</p> | <p>The amendment to Section 48a of Article III allowing contributions to be made on the basis of full salary of members of the Teacher Retirement System of Texas.</p> |
| <p>No. <input type="checkbox"/> FOR
4 <input type="checkbox"/> AGAINST</p> | <p>The amendment of Article III of the Constitution to provide that Dallas County may issue road bonds under Section 52 of Article III upon a vote of a majority of the resident property taxpayers voting thereon who are qualified electors of said county, and to provide that bonds heretofore or hereafter issued under Subsections (a) and (b) of said Section 52 shall not be included in determining the debt limit prescribed in said Section.</p> | <p>No. <input type="checkbox"/> FOR
10 <input type="checkbox"/> AGAINST</p> | <p>The constitutional amendment authorizing the Legislature to provide for the refund of the tax on cigars and tobacco products sold at retail within the corporate limits of Texarkana, Texas or any incorporated city or town in Texas contiguous to Texarkana.</p> |
| <p>No. <input type="checkbox"/> FOR
5 <input type="checkbox"/> AGAINST</p> | <p>The constitutional amendment providing the members of the Legislature shall receive as salary an amount not exceeding Eight Thousand Four Hundred Dollars (\$8,400) per year.</p> | <p>No. <input type="checkbox"/> FOR
11 <input type="checkbox"/> AGAINST</p> | <p>The constitutional amendment authorizing the legislature to provide for consolidating governmental offices and functions and allowing political subdivisions to contract for performance of governmental functions in El Paso and Tarrant counties.</p> |
| <p>No. <input type="checkbox"/> FOR
6 <input type="checkbox"/> AGAINST</p> | <p>The Constitutional Amendment giving permissive authority to the Texas Legislature to exempt from ad valorem taxation by the State of Texas and its political subdivisions equipment installed on real property to eliminate or abate the harmful effect of air emissions and water effluents, provided that the capital investment in such equipment complies with the air and water quality standards established by the State of Texas.</p> | <p>No. <input type="checkbox"/> FOR
12 <input type="checkbox"/> AGAINST</p> | <p>The constitutional amendment to give the Legislature the power to authorize cities and counties to issue the revenue bonds for industrial development purposes.</p> |
| | | <p>No. <input type="checkbox"/> FOR
13 <input type="checkbox"/> AGAINST</p> | <p>The constitutional amendment to exempt certain property temporarily stored in a public warehouse from ad valorem taxation.</p> |
| | | <p>No. <input type="checkbox"/> FOR
14 <input type="checkbox"/> AGAINST</p> | <p>The constitutional amendment fixing the time during which members of the Legislature shall be ineligible to hold other offices.</p> |

INDIVIDUAL STATISTICS.

PLAYER	SCORING			TP
	TD	EP	FG	
Bellar	14	24	2	114
Hanna	9	0	0	54
Brown	4	0	0	24
Gore	1	0	0	6
Martin	4	0	0	24
Weaver	1	0	0	6
Boyles	1	0	0	6

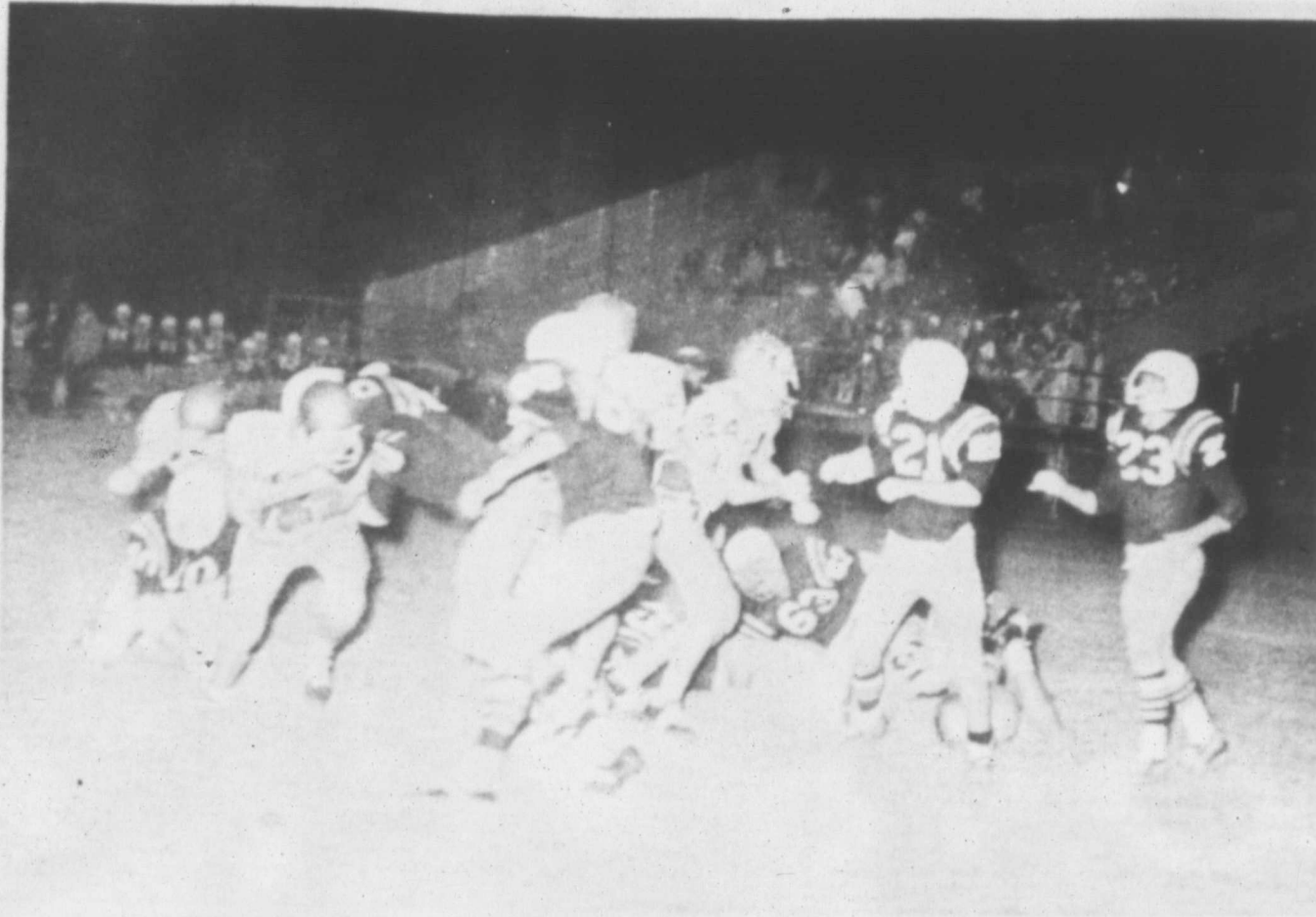
PLAYER	RUSHING			AVG
	TC	YDS		
Martin	57	303		5.3
Bellar	86	755		8.8
Hanna	102	516		5.1
Gore	32	191		6.0
Weaver	26	187		7.1
Drake	5	15		3.0
Pierce	8	18		2.2
Boyles	16	90		5.6
R. Boyles	7	15		2.1

PLAYER	PASSING			YDS
	ATT	C	INT	
Martin	36	17	0	411
Boyles	3	0	1	0

PLAYER	RECEIVING		YDS
	NO.	CAUGHT	
Brown	8		224
Hines	4		82
Gore	2		23
Bellar	2		47
Weaver	1		35

PLAYER	TOTAL OFFENSE			TOTAL
	RUSH	REC	PASS	
Martin	303	0	411	714
Bellar	755	47	0	802
Hanna	516	0	0	516
Gore	191	23	0	214
Weaver	187	35	0	222
Brown	0	224	0	224
Hines	0	82	0	82
Drake	15	0	0	15
Pierce	18	0	0	18
Boyles	90	0	0	90
R. Boyles	15	0	0	15

LET'S BEAT THE WOLVERINES



WHOA! - Two of Vega's defensive men hang on to a Hornet ballcarrier but to no avail as Sudan blanked Vega 49-0 in a conference game.



GAME TIME
7:30 P.M.

SPRINGLAKE AT SUDAN

LOOK AT ALL THESE SUDAN HORNET BOOSTERS

FRIDAY

Dairy Bee Drive In	Reed's Shamrock Service	DeLuxe Cafe
Foxworth - Galbraith Co.	The First National Bank	Feeder's Grain, Inc.
Baccus Chevrolet	Tom Henderson Grocery	G & C Auto Supply
Knox Texaco	Central Compress & Whse	Harlin Radio & TV
Fairview Gin	Nix & Grigsby <small>DELINTING & SEED</small>	Sudan Tire Service
Melson Cleaners	Homer Morris	Stuart's Flowers
Nichols Oil Co.	Lamb County Butane Co.	Watkins Gins
Williams Body Shop	Farmers Co-op Gin	Doty's Garage
Sands Cafe	Clarke's Dry Goods	Sudan Elevators <small>J. H. VINCENT</small>
ordon's Gulf Service	Nichols Insurance Agency	Brownd Implement Co.
Sudan Beacon-News	Olin Nix Implement Co.	Andy's "66" Station

WANT ADS

REPOSSESSED 1968 model Singer sewing machine in walnut cabinet. Will zig-zag, buttonhole, blind hem, etc. Balance \$27.85 or five payments at \$6.40. Write Credit Manager, 1114 19th St., Lubbock, Texas.

FEEDERS GRAM, INC.

DAILY BUYERS FOR CATTLE FEEDERS
Federal Storage License 3-4451
We Can Use Your Grain
Have Semi-Lift - Location
SUDAN LIVESTOCK & FEEDING COMPANY
Phone 227-5311 Sudan

TRUCK SEATS EXCHANGED
15 MINUTE SERVICE
MCCORMICK'S AUTO SUPPLY AND TRIM SHOP
PHONE 385-4555
227 MAIN
LITTLEFIELD

FILM SERVICE
ALL FILM DEVELOPED
QUICK SERVICE
HENDERSON GROCERY

USED CAR

DON'T YOU WORRY, PA DIDN'T GO FAR, HE'LL BE HOME SOON, IN A FINE USED CAR

BACCUS CHEVROLET
BOX 356 227-3501
Sudan, Texas

IF YOU DON'T KNOW USED CAR, ASK YOUR DEALER



Best of thoughts most always start From the region of the heart, That's the place where we acquire Thoughts that prove our hearts desire. Evil thoughts won't stay around Where the best of thoughts are found, So when searching for the best, Take a look within your breast.

PAYNE FUNERAL HOME
PHONE 246-3351
AMHERST, TEXAS



ELECT
Ben Barnes
Lt. Governor

(Pol. Adv. - Paid for by The Committee To Elect Ben Barnes Lt. Gov., Ralph Wayne, Chrm.)

ESA MEETING HELD

Members of the Epsilon Sign, Alpha Sorority and husbands were entertained with a dinner and Halloween party Thursday evening in the home of Mr. and Mrs. Noel Lumpkin. Co-host and hostess were Mr. and Mrs. Emery Blume.

Decorations were of the Halloween theme. White Elephant bingo was played during the social hour.

Those present were Mr. and Mrs. Billy Baker, Mr. and Mrs. Donnie Cowart, Mr. and Mrs. Edward Fisher, Mr. and Mrs. Bobby Jack Markham, Mr. and Mrs. O. D. Martin, Jr., Mr. and Mrs. Bud Provence, Mr. and Mrs. Dan Wood, Mr. and Mrs. Darwin Reid, and guests Mr. and Mrs. Radney Nichols.



VOTE TUESDAY! RE-ELECT

CRAWFORD MARTIN

ATTORNEY GENERAL FOR A SECOND TERM
Pd. Pol. Ad. Crawford Martin for Attorney General.
Searcy Bracewell, State Chairman.

CARD OF THANKS

We want to express our thanks to our many friends and neighbors for the prayers, beautiful flowers, food, to the blood donors, and for every kindness shown during the illness and death of our beloved husband, father and son. God bless all of you.

Mrs. Arthur Shuttlesworth
Mrs. Teresa Green
Larry Shuttlesworth
Mrs. J. M. Shuttlesworth

QUALITY Printing

JOB PRINTING

Letterpress and Offset At Lower Prices!

SUDAN BEACON NEWS

SUDAN BEACON-NEWS
Published Each Thursday At
SUDAN, TEXAS 79371

And entered as second-class mail matter at the post office in Sudan, Texas, June 26, 1924, under the Act of Congress of March 3, 1879.

J. W. House Jr. ----- Publisher
Dalton Wood ----- Editor

SUBSCRIPTION RATES
Lamb County --- \$2.50 per year
Elsewhere --- \$3.00 per year

CLASSIFIED RATES
2¢ per word, first insertion, 1¢ per word for subsequent insertions, minimum charge 50¢ per first insertion.

DISPLAY RATES: Upon request



YOU CAN BANK ON OUR DEPOSIT SERVICES

The First National Bank of Sudan

Member Federal Deposit Insurance Corporation
All Deposits Insured Up To And Including \$15,000.00
DEPENDABLE BANKING SERVICE FOR 45 YEARS
OLDEST BANK IN LAMB COUNTY

OPERATION WITNESS

"A TOTAL EFFORT - FOR TOTAL COMMITMENT."



Rev. Jim Boswell
First United Methodist Church
Panhandle, Texas

NOVEMBER 3 THRU 7
SUNDAY 11 A.M. - 7 P.M.
MONDAY THRU THURSDAY
7 A.M. - 7 P.M.

First United Methodist Church
Sudan, Texas

You Are Cordially Invited
To Attend Each Service

You Are Cordially Invited
To Attend

OPEN HOUSE

AT THE

**Amherst Manor
Nursing Home**

700 MAIN - AMHERST

Sunday - Nov. 3rd
2 to 4:30 P.M.

Medicare And Welfare Patients Excepted.

Open To All Races, Color, Creed Or Nationality.

Refreshments Will Be Served--Ice Cream Cones For The Children.

Now Under New Management
Ernest Borovka, Owner

Miss Dorothy Wegver, B.S., R.N., Educational Director

WSCS NEWS

The Women's Society of Christian Service met Monday, Oct. 28 in the home of Mrs. Webb Watts for their regular session.

Mrs. Tray Gaston introduced the guest speaker, Mrs. W. T. Robinson from Happy, who is district president of the W. S. C. S. Her topic was "To Engender You Afresh".

Mrs. Gaston also presented a small gift to Mrs. Robinson in appreciation for her visit and very interesting program.

Mrs. Robinson gave the closing prayer.

Refreshments of spiced tea, coffee and cookies were served to Mesdames W. H. Lyle, E. L. Whitmire, Tom King, Radney Nichols, C. M. Furneaux, Webb Watts, Joe Rone, Tray Gaston, Frank Lane, Bruce Newman, Frances Blair, T. B. Adair, J. S. Smith, Ocie Willingham, Ray May, Joe Markham, Matt Nix, Jr., A. Pinkerton, Wix Gaston and Mrs. S. D. Hay, coordinator from the Guild.

SCHOOL MENU

MONDAY, NOV. 4 - Macaroni and cheese with bacon, green beans, lettuce and tomato salad, rolls, butter, fruit salad, milk.

TUESDAY - Beef stew with vegetables, crackers, pickles, doughnuts, milk.

WEDNESDAY - Pinto beans, spinach, potato salad, cornbread, chocolate cake, milk.

THURSDAY - Turkey and noodles, broccoli, yams, rolls, butter, milk.

FRIDAY - Ham, English peas, corn, rolls, butter, jello, milk.

STUDY CLUB MEETS

"The Giant Republic of the Amazon Basin" was the subject topic for the meeting of the 1935 Study Club held Monday night in the home of Mrs. J. W. Olds.

Roll call was answered with Mrs. S. D. Hay, discussing "Poetry", Mrs. Marvin Tollett, "Education", Mrs. Frank Rone, "Science".

The motto for the evening was "Territory is but the body of a nation. The people who inhabit its hills and valleys are its soul, its spirit, its life" by Garfield.

Mrs. R. S. Gatewood gave "The Story of Brazil" and displayed items from Brazil, courtesy of Mrs. Homer Morris.

Those present were Mesdames

WMS NEWS

The W. M. S. of the First Baptist Church met Tuesday morning for their Bible Study. Mrs. Halbert Harvey was in charge of the Calendar of Prayer. Mrs. R. E. DeLoach brought the study from Romans.

Everybody is invited to a book review "Columbia, Land of Conflict and Promise", Tuesday, Nov. 5, 10:00 a.m. at the home of Mrs. James P. Arnold. This will be a covered dish luncheon and Mrs. Fred Meeks will review the book.

Those attending the study were Mesdames Halbert Harvey, R. E. DeLoach, Fred Meeks, James P. Arnold, Aubrey Ray, Sammy Adrian, Dick West, Jimmy Carpenter, Jim Cain.

Webb Watts, W. O. Willingham, Marvin Tollett, Harold May, R. D. Nix, C. E. Nichols, S. D. Hay, Frank Rone.

VETERANS LAND BOARD SALE

The Veterans Land Board will receive sealed bids at the General Land Office, Austin, Texas, until 11:00 o'clock A.M., November 19, 1968, for the sale of 65 tracts of land. There will be 32 tracts offered to eligible Texas veterans only in Brown, Callahan, Cameron, Clay, Dickens, Gaines, Guadalupe, Hidalgo, Hunt, Jasper, La Salle, Liberty, Milam, Potter, Rains, Randall, Reeves, Yoakum and Zavalla Counties. There will be 33 tracts offered to non-veterans and eligible Texas veterans in Cameron, Dimmit, Hidalgo, Maverick and Newton Counties.

Tracts may be financed through the Veterans Land Board. For information and listing of tracts write to:

JERRY SADLER

Commissioner of the General Land Office
Chairman of the Veterans Land Board
Austin, Texas 78701

PERSONALS

Mrs. Jacky Van Ness and daughters of Austin are visiting this week in the home of her parents, Mr. and Mrs. Guy H. Walden. Mrs. Ves Patterson was hostess to a bridge club meeting Thursday afternoon when those present

included guest, Mrs. F. M. Smith and Mrs. Audrey West; members, Mrs. Cleo Whitmire, Mrs. Clovis Bridwell, Mrs. R. E. Scott, Mrs. J. B. Harper, Mrs. Hershell Olds, Mrs. Glenn Gatewood. Mrs. W. V. Terry has been confined to a hospital in Muleshoe.

IMPORTANT!

To vote for Nixon AND the Texas Democratic Candidates:

1. SKIP the line of party squares across the top of the ballot.
2. MARK the square by Nixon/Agnew.
3. THEN go to the square by U.S. Representative IN THE DEMOCRATIC COLUMN, mark it AND the squares by Preston Smith, Ben Barnes, Crawford Martin and on down.

Whatever your interest -- responsible law enforcement; curbing runaway inflation; tidelands' school fund protection; improved foreign relations; expanded education; social security and medicare, instead of political throwaways.....

'NIXON is best for TEXAS DEMOCRATS!

Pd. Pol. Adv. Texas Democrats for Nixon, Ottis Lock, Chm'n.



AT THE HIGH SCHOOL CAFETERIA

5 to 7 p.m. Friday

ADULTS \$1.25 CHILDREN UNDER 12 75¢

Sponsored by the Senior...er, Senior, Class

ON TUESDAY, NOV. 5th...

VOTE FOR AMENDMENT **3**

FOR BETTER MAJOR EDUCATION IN TEXAS

Pd. Pol. Adv. by Committee of 300 for Amendment 3
Jack S. Blanton and Jeff Montgomery, Co-chairmen

PRESTON SMITH



FOR GOVERNOR

- Pol. Adv. Paid for by Guy H. Walden

PUGGY



PUGGY



THE FIZZLE FAMILY



THE FIZZLE FAMILY



THE 72nd DISTRICT NEEDS BILL CLAYTON

The Economy Of West Texas And Particularly The 72nd Legislative District Is Based On Water Supply For Agriculture, Municipal And Industrial Needs.

We Need The Help, Assistance And Proven Leadership Of People like BILL CLAYTON Who Have The Influence, Seniority, Integrity And Ability To Get The Job Done.

Your Effective

Voice In

State Government



BILL CLAYTON

Voting Record & Position

BILL CLAYTON'S RECORD STANDS FOR ITSELF. IT REFLECTS THE WORK OF A CONSCIENTIOUS YOUNG MAN.

The 72nd District

IS IN GOOD HANDS.

★ WATER DEVELOPMENT

Bill Clayton has been directly associated with every major piece of water legislation passed during the last six years. He is recognized by his colleagues as being one of the most effective and well informed members of the Texas Legislature on water and soil resource development and conservation. Bill Clayton knows the vital importance of water, not only to your future, but to the future of the entire State. Past accomplishments and effective leadership have made Clayton vital to continued progress in development of water resources for the High Plains.

★ EDUCATION

Child by child we build our nation... tomorrow depends on today's children and young adults. Bill Clayton is ever mindful of the need to raise our standard of excellence in the Texas school systems. This can only be done through the uprating of the Texas schools, and dedicated recruitment of the finest teachers. Clayton co-authored a bill that created the coordinating Board of Texas Colleges and University systems. His voting record shows a continued support of teacher pay-raise and the strengthening of all educational systems in Texas.

★ LAW ENFORCEMENT

Today, law enforcement agencies are facing new problems. Bill Clayton is concerned about the breakdown of law and order. Clayton has been active in seeking higher salaries for law enforcement officials and uniform standard procedures. Bill Clayton served on a special House Committee which will suggest revision of our obsolete liquor laws. Clayton believes that all people must respect the law and that proper enforcement is essential to maintain law and order.

★ INDUSTRIAL DEVELOPMENT

Bill Clayton knows that industrial development helps to stabilize the economy of any given city or area. During his six years in the Legislature, Bill Clayton has worked aggressively for industrial development for our area of the State. Several smaller cities in our 72nd Legislative District now have airports as a result of Clayton's assistance in starting a program of State grants. These State grants are financed with unclaimed gas tax refund on aviation fuel. Bill Clayton knows that airports help encourage industry in less densely populated areas.

★ TOURISM

Bill Clayton has worked hard for tourism during his six years as State Representative. Clayton, House Speaker Ben Barnes and other interested legislators were successful in establishing a National Park in the Big Bend area of West Texas. The water importation program being led by Clayton will develop many new recreational opportunities with huge water reservoirs for fishing and boating. Bill Clayton realizes both the need for more recreational facilities in his district and increased business activity from tourist trade.

★ COUNTY, CITY & LOCAL GOVERNMENT

Bill Clayton has been a strong advocate of local government. He is currently serving as chairman of the Committee on Counties of the Texas House of Representatives. Clayton believes that government at the county and city level are more responsive to the people and whenever possible they should take the lead and the responsibility of many governmental programs and functions. Clayton has authored many bills that benefit the cities and support the idea of allowing cities the option to choose their own method of taxation. Bill Clayton is needed on the job for more effective and responsible county, city, and local government action.

Take advantage of this opportunity to keep your firm grip in the State Legislature by going to the polls on November 5th, and casting your ballot for BILL CLAYTON.

Pd. Pol. Adv. by the BILL CLAYTON FOR BETTER GOVERNMENT FUND, Virgie Helle, Chairman.

Shurfine TREMENDOUS SAVINGS of 1968
 SAVE ALL WINTER! STOCK UP NOW!

COFFEE SHURFINE REGULAR or Drip VACUUM PACKED 1 LB. CAN 59¢
APPLE SAUCE SHURFINE 5 303 CANS \$1

FLOUR SHURFINE 25 LB. PRINT BAG \$1.89

TUNA SHURFINE CHUNK STYLE 4 6 1/2 OZ. CANS \$1

PANCAKE MIX SHURFINE 3 2 LB. BOXES \$1

TOMATO SAUCE SHURFINE 9 8 OZ. CANS \$1

PEANUT BUTTER SHURFINE CREAMY 3 12 OZ. JARS \$1

CRANBERRY SAUCE SHURFINE STRAINED 4 300 CANS \$1

WAFFLE SYRUP SHURFINE 2 32 OZ. BOTTLES 79¢

VIENNA SAUSAGE SHURFINE 5 4 OZ. CANS \$1

FRESH BLACKEYES SHURFINE SHELLED 7 300 CANS \$1

SWEET POTATOES SHURFINE WHOLE 3 13 SQT. CANS \$1

BATHROOM TISSUE SOFLIN ASST'D COLORS 2 PLY 10 ROLL PAK 79¢

ORANGE JUICE SHURFINE FROZEN CONCENTRATE 5 6 OZ. CANS \$1

SHORTENING SHURFINE 3 LB. CAN 59¢

VEGETABLE OIL SHURFRESH 2 24 OZ. BOTTLES 89¢

GRAPE JUICE SHURFINE 3 24 OZ. BOTTLES \$1

PINEAPPLE SHURFINE CRUSHED 3 NO. 2 CANS 89¢

FRUIT COCKTAIL SHURFINE 4 303 CANS \$1

TOMATO JUICE SHURFINE FANCY 3 46 OZ. CANS 89¢

ASPARAGUS SHURFINE ALL GREEN CUT 3 300 CANS \$1

APPLE BUTTER SHURFINE 3 28 OZ. JARS \$1

FROSTING MIX SHURFINE WHITE or CHOCOLATE 4 13 1/2 OZ. BOXES \$1

PORK & BEANS SHURFINE 8 300 CANS \$1

EVAPORATED MILK SHURFINE 6 TALL CANS \$1

SALAD DRESSING SHURFINE 32 OZ. JAR 39¢

RED SALMON SHURFINE ALASKA TALL CAN 98¢

SLICED CHEESE SHURFRESH AMERICAN or PIM 12 OZ. PKG. 59¢

GRAPE JELLY SHURFINE 3 18 OZ. JARS \$1

FLOUR SHURFINE 10 LB. PAPER BAG 79¢

NAPKINS SOFLIN ASST'D COLORS CELLO WRAP 2 200 CT. PKGS. 59¢

TOMATOES SHURFINE WHOLE PEELED 5 303 CANS \$1

SPINACH SHURFINE 7 303 CANS \$1

CHERRIES SHURFINE R S P 3 303 CANS \$1

CAKE MIX SHURFINE ASSORTED FLAVORS 4 18 1/2 OZ. BOXES \$1

POP CORN SHURFINE YELLOW or WHITE 2 7 LB. BAGS 49¢

BISCUITS SHURFRESH SWEET or BUTTERMILK 13 8 OZ. CANS \$1

CRACKERS SHURFRESH 1 LB. BOX 19¢

PUMPKIN SHURFINE 7 300 CANS \$1

PRESERVES SHURFINE STRAWBERRY 2 18 OZ. JARS \$1

MARGARINE SHURFRESH 6 1 LB. BOXES \$1

DETERGENT ENERGY POWDERED 49 OZ. BOX 59¢

DOG FOOD ROXEY 12 NO. 1 CANS \$1

PINEAPPLE JUICE SHURFINE 4 46 OZ. CANS \$1

CUCUMBER CHIPS SHURFINE FRESH 4 16 OZ. JARS \$1

PEACHES SHURFINE HALVES OR SLICED YELLOW CLING 4 NO. 2 CANS \$1

GREEN BEANS SHURFINE 3 SV CUT REFUGEE 6 303 CANS \$1

PEAS SHURFINE EARLY HARVEST 5 303 CANS \$1

CATSUP SHURFINE 5 14 OZ. BOTTLES \$1

CORN SHURFINE GOLDEN CS - WK 6 303 CANS \$1

TREMENDOUS SAVINGS A-LA-CART

TREMENDOUS SAVINGS A-LA-CART

PRICES GOOD FRIDAY AND SATURDAY ONLY

Apples ROME BEAUTY LB. 13¢

Celery PASCAL 2 FOR 25¢

AVOCADOS 2 FOR 29¢

TURNIPS LB. 8¢

OCEAN PERCH SNO-BIRD LB. PKG. 39¢

PICNICS FRESH LB. 39¢

BACON BAR-S LB. 59¢

FRANKS BAR-S LB. 59¢

HAMS BAR-S 5 LB. \$4.19

FRYERS GRADE A WHOLE LB. 29¢

LUMPKIN FOOD STORE

DOUBLE FRONTIER STAMPS ON WEDNESDAYS
 with purchase of \$2.50 or more



FREE DELIVERIES

NO DELIVERIES ON WEDNESDAY