

The Sudan Beacon - News

FORTY-SECOND YEAR

SUDAN, LAMB COUNTY,

THURSDAY, NOVEMBER 3, 1966

10 CENTS PER COPY

NUMBER 37

WOODWORK

BY DALTON

AS A SAXOPHONE player, I was rather amused and interested in a recent article about a new electronic saxophone. The author of the article, Leonard Feather of the Los Angeles Times and Washington Post, said it better than I can.

(This possibly explains how he can work for papers in Los Angeles and Washington at the same time, making a whole bunch of money, while I struggle along in West Texas.)

Anyway, this Feather, who apparently has little use for saxophone players (who needs 'em?), reported that there really is such a thing as an electronic saxophone, "because some instrumental Frankenstein has created them, and one major company already has put them on the market."

He pointed out that all this is an inevitable step in a trend begun back in the late 30s. Some scientific genius discovered that the guitar, mostly hidden deep in the background of the rhythm section, could, as Feather put it, "dominate the whole conservation" by means of amplifying equipment.

This really grew into a monster, particularly in recent years. Guitar players who know just six chords (but know those six well) now have \$1,500 gui-

tars and amplifiers half as big as the generators at Plant X, which they turn up on full power and the walls go in and out with every twang.

Recently I heard three peculiar-looking specimens from Topeka, Kas., who were getting \$500 a night for their performances, doing something they called playing for a group of high school students. When they hit their notes, the crash was devastating. It was so loud, you couldn't have heard the music even if there had been any. It was then that I appreciated for the first time the full meaning of the "big boom in teen-age music."

So with such as this, I think we saxophone players have every right to fight back to be heard. I can't hardly wait to get one of these electric amplifiers, so I can curl the hair of those strang-twangers with a high note. With a deep breath and full volume, I should be able to make contact with every dog in town.

SENIOR CITIZENS TO MEET NOV. 14

The Senior Citizens Young In Heart Club will meet in the Community Center, Nov. 14 at 2:30 p. m.

In charge of the program and refreshments will be members of the Church of Christ. Everyone is invited and urged to attend.

HORNETS TRAP WOLVERINES, 33-6



THIS IS THE WAY IT'S DONE - Mike Bellar (30), Sudan's leading scorer for this season is shown as he adds more yardage in the game against Springlake, which the Hornets won 33-6. The Hornets take on perhaps their strongest opponents Friday night when they play Kress at Kress. Attend the game and back the Hornets to Victory No. 9.

(Staff Photo)

GAME AT A GLANCE		SUDAN	SPRINGLAKE
15	First Downs	9	
258	Yards Rushing	127	
17	Yards Passing	96	
1-5	Completed Pass	8-5	
1	Intercepted Pass	0	
0	Fumbles Lost	2	
5-55	Penalties	8-90	
4-35.0	Punts, Avg.	2-30.0	

The determined Sudan Hornets downed the Springlake Wolverines 33 to 6 in Masten Stadium Friday night before a jam-packed crowd. This was victory number 8 for the Hornets and their second conference win.

Sudan's hard hitting defensive unit allowed the Wolverines only six points, bringing the total to 26 points to be scored against the Hornets this season.

The Hornet offense stacked up 33 points against the Wolverines with QB Ronnie Hill and the running backs, Mike Bellar, Jerry Bellar and Larry Morgan doing a fine job especially on the rushing attack.

M. Bellar kicked off and the Wolverines came out strong to open the game, moving the ball all the way to the Hornet 16 yard line, where the Hornets took over. After several attempts to move the ball, HB Jerry Bellar broke loose and ran 70 yards for the first TD. M. Bellar kicked the extra point and the quarter ended 7-0, Hornets.

early Sunday morning when he noticed the rear door open.

It seems the thief or thieves gained entrance by breaking the glass and wooden panels from a storeroom door and then breaking the glass on an inside door, before reaching the main part of the store.

All the watches were not taken from the display case and no other merchandise is reported to have been bothered.

Break-ins were also attempted at DeLuxe Cafe and Heard's Grocery, but entrance was not gained at either place.

Early in the second quarter the Hornets recovered a Wolverine fumble on the Springlake 15 yard line with M. Bellar running over for the TD and also kicking the extra point.

The Wolverines were stopped on fourth down, when they failed to get the punt off due to a bad pass from center. The Hornets took over on the 23 and drove to the 1 yard line, where M. Bellar made the TD and kicked the point after making the score Sudan 21, Springlake 0, to end the first half.

Sudan had two players injured in the first half, Ronnie Brown, who was unable to play any of the remaining game; and End Danny Martin, who suffered a knee injury but continued to play.

In the second half, the Hornets moved the ball down to the Wolverines three, and M. Bellar went over for the TD, but failed to kick the extra point. Late in the third quarter Mike Bellar was slightly injured, and Coach Cain took him out for the remainder of the game.

The Wolverines made their first and only score in the fourth quarter when FB Washington passed to QB Messer for 26 yards for the TD with the try for extra point failing.

Then Van Seymore recovered a Wolverine fumble on their 14 yard line and the Hornets moved down to the 6, where Morgan ran the TD. J. Bellar's try for extra point was off to the left.

With approximately a minute left in the game, Hill intercepted a pass on the Wolverine 30 and the Hornets had possession of the ball when the gun sounded ending the game 33-6, Hornets.

The Hornets go against a Kress team this Friday night at Kress. The Kangaroos have a fine season record, also having won two conference games.

Coach Cain stressed that this is "The game" for the Hornets, since a win would cinch the district crown, as Farwell, the remaining Hornet foe, has already lost two conference games.

TUESDAY IS ELECTION DAY

The polls will open at 7 a. m. Tuesday, Nov. 8 for the General Election.

Joe West will be the local election judge and assisting him will be clerks, Fred Meeks, Eunice Baccus, Elmarie King,

Mildred Chisholm, Louise Parish, Edna Bellamy and Margaret Smith.

Spotlighting the local interest will be the race for Justice of Peace for Precinct 5 with C. T. Wright and W. T. (Tobe) Veeren as write-in candidates.

There will be 16 amendments to the Texas constitution for the citizens to vote for or against.

Also the race for U. S. Senator with Democratic Waggoner Carr and Republican John Tower vying for the position.

Dee Miller, democratic candi-

date and Bob Price, republican both from the Panhandle area, are running for the seat of congressman for the 18th Congressional District of Texas. Lamb County has only recently been added to this district.

The polls will remain open until 7 p. m. and all eligible voters are urged to exercise their right as a citizen of the United States and vote, whatever your choice of candidates, but VOTE!!

Local Store Burglarized

Roark Jewelry, located on Main Street, was burglarized Saturday night, according to Olan Roark owner, who reported the theft of approximately 12 watches valued at \$500.00.

Roark said that Henry Cody, owner and manager of Opal's Cleaners located next door to the jewelry store, called him

Bob Price Visits Sudan

"The American people are losing ground in the struggle between income and outgo," Congressional candidate Bob Price said in an interview Saturday night as he visited with voters at the annual Halloween Carnival here.

"Rising prices, accelerated tax collections, artificial money problems and terrible waste in government spending eat up our income before it reaches the bank," he said.

Price also warned of run-away inflation "unless the federal government stops non-essential spending, deficit financing and increasing national debt."

He said that the dollar is worth only 43.9 cents compared to 25 years ago and at today's pace it will be worth 5¢ in 1986.

The 18th Congressional candidate said "The choice in this race is whether you want to elect a man who will be obligated to vote for such things as increased foreign aid and rent subsidies, which keep the inflationary spiral going, or whether you want to vote for a man such as myself whose obligation will be to vote only for programs which we need and can afford."

Price, a Pampa rancher and businessman has been involved in the water problem of the area for several years.



ROYALTY REIGNS - Shown above are the Halloween Queens crowned Saturday night and their escorts. At left Gina Duvall with her escort Roy Don Dudgeon, and right Pam Nix, escorted by Lonnie McKenzie.

Halloween Winners Chosen

Gina Duvall and Pam Nix were crowned queens Saturday evening at the coronation services of the Halloween Carnival sponsored by the PTA and held at Sudan schools.

Roy Don Dudgeon was escort to grade school queen Gina Duvall; and Lonnie McKenzie escorted Pam Nix, high school queen. Crown bearers were Cindy Baldrige and James Humphreys.

Mrs. R. L. Kamp was Mistress

BI-COUNTY COUNCIL MEETING HELD

Rev. Jack Riley attended the PTA Bi-County Council meeting Tuesday at Spade.

Mrs. Jack Strong of Lubbock gave the program with a 3-point emphasis. The first emphasis

of Ceremonies and Judi West was pianist. Ushers were Danny Martin and Harry Williamson.

The Carnival and coronation services were well attended and approximately 40 children participated in the Spook Parade.

Flowers highlighted the stage decorations centered with the Queen's thrones. In charge of the decorations were Mrs. R. L. Kamp and Mrs. Joe Taylor.

was on the PTA State Convention to be held in Austin Nov. 15-18; second, the Emphasis on Education for family living; she suggested the local PTA could discover through questionnaires what parents would like to study and what time would be convenient for the study; third, that the PTA would establish a health advisory committee for the Bi-County Council. The PTA would encourage each community to complete a personal health record on each child prior to the end of the school term.

A nominating committee was appointed and the next meeting will be held in February at Bula.

Mrs. Dorothy Drake and Mrs. Martha Meridian plan to attend the PTA State Convention.



CONGRESSIONAL CANDIDATE VISITS - Congressional candidate Bob Price is shown above as he visits with local residents Saturday night. Shown from left to right are Audrey West, Dick West, Jim Davidson and Mr. Price. (Staff Photo)

The Sudan Beacon - News

FORTY-SECOND YEAR

SUDAN, LAMB COUNTY,

THURSDAY, NOVEMBER 3, 1966

10 CENTS PER COPY

NUMBER 37

WOODWORK

BY DALTON

AS A SAXOPHONE player, I was rather amused and interested in a recent article about a new electronic saxophone. The author of the article, Leonard Feather of the Los Angeles Times and Washington Post, said it better than I can.

(This possibly explains how he can work for papers in Los Angeles and Washington at the same time, making a whole bunch of money, while I struggle along in West Texas).

Anyway, this Feather, who apparently has little use for saxophone players (who needs 'em?), reported that there really is such a thing as an electronic saxophone, "because some instrumental Frankenstein has created them, and one major company already has put them on the market."

He pointed out that all this is an inevitable step in a trend begun back in the late 30s. Some scientific genius discovered that the guitar, mostly hidden deep in the background of the rhythm section, could, as Feather put it, "dominate the whole conservation" by means of amplifying equipment.

This really grew into a monster, particularly in recent years. Guitar players who know just six chords (but know those six well) now have \$1,500 gui-

tars and amplifiers half as big as the generators at Plant X, which they turn up on full power and the walls go in and out with every twang.

Recently I heard three peculiar-looking specimens from Topeka, Kas., who were getting \$500 a night for their performances, doing something they called playing for a group of high school students. When they hit their notes, the crash was devastating. It was so loud, you couldn't have heard the music even if there had been any. It was then that I appreciated for the first time the full meaning of the "big boom in teen-age music."

So with such as this, I think we saxophone players have every right to fight back to be heard. I can hardly wait to get one of these electric amplifiers, so I can curl the hair of one of those strang-twangers with a high note. With a deep breath and full volume, I should be able to make contact with every dog in town.

SENIOR CITIZENS TO MEET NOV. 14

The Senior Citizens Young In Heart Club will meet in the Community Center, Nov. 14 at 2:30 p. m.

In charge of the program and refreshments will be members of the Church of Christ. Everyone is invited and urged to attend.

HORNETS TRAP WOLVERINES, 33-6



THIS IS THE WAY IT'S DONE - Mike Bellar (30), Sudan's leading scorer for this season is shown as he adds more yardage in the game against Springlake, which the Hornets won 33-6. The Hornets take on perhaps their strongest opponents Friday night when they play Kress at Kress. Attend the game and back the Hornets to Victory No. 9.

(Staff Photo)

GAME AT A GLANCE	
SUDAN	SPRINGLAKE
15 First Downs	9
258 Yards Rushing	127
17 Yards Passing	96
1-5 Completed Pass	8-5
1 Intercepted Pass	0
0 Fumbles Lost	2
5-55 Penalties	8-90
4-35.0 Punts, Avg.	2-30.0

The determined Sudan Hornets downed the Springlake Wolverines 33 to 6 in Masten Stadium Friday night before a jam-packed crowd. This was victory number 8 for the Hornets and their second conference win.

Sudan's hard hitting defensive unit allowed the Wolverines only six points, bringing the total to 26 points to be scored against the Hornets this season.

The Hornet offense stacked up 33 points against the Wolverines with QB Ronnie Hill and the running backs, Mike Bellar, Jerry Bellar and Larry Morgan doing a fine job especially on the rushing attack.

M. Bellar kicked off and the Wolverines came out strong to open the game, moving the ball all the way to the Hornet 16 yard line, where the Hornets took over. After several attempts to move the ball, HB Jerry Bellar broke loose and ran 70 yards for the first TD. M. Bellar kicked the extra point and the quarter ended 7-0, Hornets.

early Sunday morning when he noticed the rear door open.

It seems the thief or thieves gained entrance by breaking the glass and wooden panels from a storeroom door and then breaking the glass on an inside door, before reaching the main part of the store.

All the watches were not taken from the display case and no other merchandise is reported to have been bothered.

Break-ins were also attempted at DeLuxe Cafe and Heard's Grocery, but entrance was not gained at either place.

Early in the second quarter the Hornets recovered a Wolverines fumble on the Springlake 15 yard line with M. Bellar running over for the TD and also kicking the extra point.

The Wolverines were stopped on fourth down, when they failed to get the punt off due to a bad pass from center. The Hornets took over on the 23 and drove to the 1 yard line, where M. Bellar made the TD and kicked the point after making the score Sudan 21, Springlake 0, to end the first half.

Sudan had two players injured in the first half, Ronnie Brown, who was unable to play any of the remaining game; and End-Dammy Martin, who suffered a knee injury but continued to play.

In the second half, the Hornets moved the ball down to the Wolverines three, and M. Bellar went over for the TD, but failed to kick the extra point. Late in the third quarter Mike Bellar was slightly injured, and Coach Cain took him out for the remainder of the game.

The Wolverines made their first and only score in the fourth quarter when FB Washington passed to QB Messer for 26 yards for the TD with the try for extra point failing.

Then Van Seymore recovered a Wolverine fumble on their 14 yard line and the Hornets moved down to the 6, where Morgan ran the TD. J. Bellar's try for extra point was off to the left.

With approximately a minute left in the game, Hill intercepted a pass on the Wolverine 30 and the Hornets had possession of the ball when the gun sounded ending the game 33-6, Hornets.

The Hornets go against a Kress team this Friday night at Kress. The Kangaroos have a fine season record, also having won two conference games.

Coach Cain stressed that this is "The game" for the Hornets, since a win would cinch the district crown, as Farwell, the remaining Hornet foe, has already lost two conference games.

TUESDAY IS ELECTION DAY

The polls will open at 7 a. m. Tuesday, Nov. 8 for the General Election.

Joe West will be the local election judge and assisting him will be clerks, Fred Meeks, Eunice Baccus, Elmarie King,

Mildred Chisholm, Louise Parrish, Edna Bellamy and Margaret Smith.

Spotlighting the local interest will be the race for Justice of Peace for Precinct 5 with C. T. Wright and W. T. (Tobe) Veeren as write-in candidates.

There will be 16 amendments to the Texas constitution for the citizens to vote for or against.

Also the race for U. S. Senator with Democratic Waggoner Carr and Republican John Tower vying for the position.

Dee Miller, democratic candi-

date and Bob Price, republican both from the Panhandle area, are running for the seat of congressman for the 18th Congressional District of Texas. Lamb County has only recently been added to this district.

The polls will remain open until 7 p. m. and all eligible voters are urged to exercise their right as a citizen of the United States and vote, whatever your choice of candidates, but VOTE!!

Local Store Burglarized

Roark jewelry, located on Main Street, was burglarized Saturday night, according to Olan Roark owner, who reported the theft of approximately 12 watches valued at \$500.00.

Roark said that Henry Cody, owner and manager of Opal's Cleaners located next door to the jewelry store, called him

Bob Price Visits Sudan

"The American people are losing ground in the struggle between income and outgo," Congressional candidate Bob Price said in an interview Saturday night as he visited with voters at the annual Halloween Carnival here.

"Rising prices, accelerated tax collections, artificial money problems and terrible waste in government spending eat up our income before it reaches the bank", he said.

Price also warned of run-away inflation "unless the federal government stops non-essential spending, deficit financing and increasing national debt."

He said that the dollar is worth only 43.9 cents compared to 25 years ago and at today's pace it will be worth 5¢ in 1986.

The 18th Congressional candidate said "The choice in this race is whether you want to elect a man who will be obligated to vote for such things as increased foreign aid and rent subsidies, which keep the inflationary spiral going, or whether you want to vote for a man such as myself whose obligation will be to vote only for programs which we need and can afford."

Price, a Pampa rancher and businessman has been involved in the water problem of this area for several years.



ROYALTY REIGNS - Shown above are the Halloween Queens crowned Saturday night and their escorts. At left Gina Duvall with her escort Roy Don Dudgeon, and right Pam Nix, escorted by Lonnie McKenzie.

Halloween Winners Chosen

Gina Duvall and Pam Nix were crowned queens Saturday evening at the coronation services of the Halloween Carnival sponsored by the PTA and held at Sudan schools.

Roy Don Dudgeon was escort to grade school queen Gina Duvall, and Lonnie McKenzie escorted Pam Nix, high school queen. Crown bearers were Clady Balbridge and James Humphreys.

Mrs. R. L. Kamp was Mistress

BI-COUNTY COUNCIL MEETING HELD

Rev. Jack Riley attended the PTA Bi-County Council meeting Tuesday at Spade.

Mrs. Jack Strong of Lubbock gave the program with a 3-point emphasis. The first emphasis

of Ceremonies and Judi West was pianist. Ushers were Danny Martin and Harry Williamson.

The Carnival and coronation services were well attended and approximately 40 children participated in the Spook Parade.

Flowers highlighted the stage decorations centered with the Queen's thrones. In charge of the decorations were Mrs. R. L. Kamp and Mrs. Joe Taylor.

was on the PTA State Convention to be held in Austin Nov. 15-18; second, the Emphasis on Education for family living; she suggested the local PTA could discover through questionnaire's what parents would like to study and what time would be convenient for the study; third, that the PTA would establish a health advisory committee for the Bi-County Council. The PTA would encourage each community to complete a personal health record on each child prior to the end of the school term.

A nominating committee was appointed and the next meeting will be held in February at Bala. Mrs. Dorothy Drake and Mrs. Martha Matham plan to attend the PTA State Convention.



CONGRESSIONAL CANDIDATE VISITS - Congressional candidate Bob Price is shown above as he visits with local residents Saturday night. Shown from left to right are, Audrey West, Dick West, Jim Davidson and Mr. Price. (Staff Photo)



Devotional

By HAZEL HOUSE

BASICALLY, LOVE
FOR GOD IS LOVE!!

Scripture: Genesis 2:7; Revelation 4: 11; St. Matthew 11: 28-30; St. John 21: 15-17.

Life in the world is sometimes like a merry-go-round: A person gets into the crowd and is swallowed up into nonentity, lost among so many other persons. Who am I?

Joining with others, the merry-go-round starts to whirl. Occasionally, one person jumps off, another, and yet so few. Above the rush and noise, excitement and clamor of the crowd, he hears a faint whispering challenge, "Lovest thou Me?"

Sometimes in the busy-ness, tension, the whirl, one is shoved off or one falls off the merry-go-round. Then, in the silence, the aloneness of forced isolation, he asks again "Who am I? What is this all about and where am I going?"

And God calls again "Come unto me, all ye that labour and are heavy laden, and I will give you rest. Take my yoke upon you, and learn of me: for I am meek and lowly in heart; and ye shall find rest unto your souls." And this person may hear only a whisper, but the sharp memory of a father and mother's love, a Christian praying and singing praises to God may increase his hearing

so that the call of God again is audible and heard anew.

Who am I? God's word says "and the Lord God formed man of the dust of the ground, and breathed into his nostrils the breath of life; and man became a living soul." So, I am God's creation with the breath I breathe being a part of the eternal God, my creator; and also my Father as I have accepted Jesus Christ, God's only begotten Son, as my Savior and Lord.

Why am I here? God made you and me for His pleasure, His fellowship, in His image, to be stewards here over all His other creation. Jesus said in Acts 1: 8 "...ye shall be witnesses unto me both in Jerusalem, and in all Judea, and in Samaria, and unto the uttermost part of the earth". So, I was made for fellowship with God. I am here as a steward, and a witness to Him and His Almighty power to save through Christ by my faith, and to give me abundant life without eternal life!

Where am I going? I am a pilgrim and a stranger on the earth, for I am a citizen of a better country and, after I serve here as an Ambassador and servant for Christ the Lord, I desire to go to this city which God has prepared for them who

Crossword Puzzle

ACROSS

- Atomizer
- Determine
- Ascend
- Implore
- Blink
- Be grudge
- Fact collection
- Dawn goddess
- Poker stake
- Suffix: plural
- Falls in drops
- Stopped
- Face part
- Month: abbr.
- Sun god
- Fishes
- Made ready
- Chinese measure
- Those in power
- Painful
- Serving dish
- Feel
- Myself
- Birds' bills
- Beverage
- Mimic
- Top cards
- Ventilates
- Birds' bills
- Over
- Formal speech
- Europeans
- Courteous
- Opposite
- Before
- Father
- Perfumes
- High peak
- Nothing
- Refer to casually
- Revise
- Tall grass
- Give food
- Relieves
- College degree
- Candlenut tree
- Cushion
- Epoch
- Arab garment
- Argon: chem.
- Public notice

DOWN

- Used a cutting tool
- Previous
- Washing lightly
- Inquire
- You: archaic
- Leases
- Enfolds
- Pig pen
- Either
- Fewest
- Moving truck
- Greek letter
- Half an em
- Agree
- Whole

Answer to Puzzle

```

S E N D I   S E R   D D I
E A O R V   D E T   R M A
S T I V   S E C V   B E A
E B L   S E B N   E W
E S S E S   S M I   I T
S E   S O S   S I O N
D E B L I V S   S E I T O
S E   S I N V   S O P
V W   A A N E   X N I T A
L V B A N E   E S I R V
S I A   S O S E V   A V R J S
    
```

love Him.

But the first challenge a person hears in seeking and listening is "Come, follow me." As we follow we hear "Lovest thou me more than these? Feed my lambs."

"Lovest thou me... more than these? Feed my sheep."

Lovest thou me? Feed my sheep."

Can you say with Peter "Lord, Thou knowest all things; Thou knowest I love Thee."

Truly, the love — yoke of Christ that binds me to Him is easy, and His burden is light!

PTA MEETING SET TUESDAY AFTERNOON

G. B. Morris, Guidance Coordinator of Lubbock Public Schools, will be the guest speaker at the meeting of the Sudan PTA, Tuesday afternoon, Nov. 8. His subject topic will be "The Individual Learner".

The Rev. Willie Hazel will bring the devotional. An executive committee meeting will be held at 2:30 preceding the program at 3 p.m.

Hostesses will be fourth grade parents.

GO TO CHURCH SUNDAY!

High Plains Records Data

The High Plains Underground Water Conservation District has recently compiled detailed records on five tail water installations within the Water District. These records were compiled from data gathered during the past four years.

The five systems showed that an average of 87.93 acre feet of irrigation tail water was recovered per system during this time.

Installations with three years study reveal an average recovery of 90.71 acre feet per system.

In three of the systems studied records were compiled on the amount of water that was pumped from the Ogallala formation through the irrigation wells. The average recovery per system was 83.52 acre feet of water. The average recovery per contributing well was 35.79 acre feet per year and the average per cent of the total water recovered in comparison to the water pumped from the formation was 22.40% per well contributing to the system.

These facts prove that a return system can be of great value to farmers and landowners. Now is the time to make conservation plans for your particular situation.

INTERMEDIATE GA'S TO MEET MONDAY

The Intermediate GA's of the First Baptist Church will be meeting each Monday at 4 p. m. in the old parsonage with leaders Betty Beavers and Janelle Hargrove.

WSG Meets

Wesleyan Service Guild of the First Methodist Church met Tuesday evening in the home of Mrs. Bob Drake.

Mrs. Marvin Tollett presided at the meeting in the absence of president, Mrs. O. L. Shannon.

Invocation was given by Mrs. Jack Riley. Roll call was answered by those present.

Mrs. Bill Olds introduced the

Bible Study which will begin at the next meeting in the home of Mrs. Tom Wood.

Business session was conducted after which the Guild Benediction was repeated.

Refreshments were served to Mesdames Tollett, Riley, Olds, Wood, Bill Curry, J. H. Wallace, H. H. Potter, Kenneth Burgess, W. C. Masten, Simon Hay, a guest, Mrs. J. T. Agee; and the hostess, Mrs. Bob Drake.

LAMB COUNTY RED CROSS TO MEET TOMORROW

The Lamb County Chapter of the American National Red Cross Board will meet tomorrow, Nov. 4, at 4 p. m. in the Red Cross Office located in the basement of the courthouse.



A team for a better Texas for you!

Governor John Connally and Attorney General Waggoner Carr have worked together for 4 years to give Texas and YOU a better state and better opportunities.

As a United States Senator in Washington, Waggoner Carr will co-operate with Governor Connally to work for better education, more jobs, benefits for our elderly, and better prices for our farmers, ranchers and dairymen. He will do what is right for Texas!

Vote Democratic Tuesday, Nov. 8, 1966

Elect Democrat

WAGGONER CARR

United States Senator

Texas Courts for Carr Committee, Thomas W. Bailer, State Chairman

Banks Used to Be

All Dollars and Cents

Now, I depend on my bank for much more than "dollars and cents" service. That's where I go for sound financial advice, geared to my personal needs, plus the best in full banking service.

The First National Bank of Sudan

Member Federal Deposit Insurance Corporation
All Deposits Insured Up To And Including \$10,000.00

DEPENDABLE BANKING SERVICE FOR 43 YEARS
OLDEST BANK IN LAMB COUNTY

10-20-42c

'67 CHEVROLET

Impala Super Sport Coupe—a clean new sweep in roof lines.

Now that you've seen all the daring new things our stylists did, get in and sample some of the safest, soundest ideas on the road!

What you feel is as new as what you see—thanks to all the fresh thinking that's gone into the way it rides, steers, stops and looks after your safety.

It's got a remarkable new road feel—beginning with a ride so hushed and gentle you'll feel like calling this the '67 Shhchevrolet. The steering is as much as 10% easier. And you'll find the stopping smoother, too.

We put safety features on top of safety features. For example, an energy-absorbing steering wheel atop the new GM-developed energy-absorbing steering column. A dual master cylinder brake system with warning light. And seat belts front and rear with pushbutton buckles. All standard, to be sure.

And there's a new SS 427 performance package—complete with 385-hp Turbo-Jet V8 and flat-cornering suspension. You can order it for either the Impala Super Sport Coupe or Convertible.

Of course, there are all sorts of new custom features you can add, too, such as tape or FM stereo. But if you find so much that's new a bit too much to remember—drop down to your dealer's and take a drive. It'll all become unforgettable.

Everything new that could happen...happened! Now at your Chevrolet dealer's.

BACCUS CHEVROLET
SUDAN, TEXAS

42-8240



DEAD-EYE NEWMAN - Jaycee Bobby Newman is shown as he takes aim at the target when participating in the Turkey Shoot sponsored by Sudan Jaycees last weekend. (Staff Photo)

Bookmobile Schedule

WEDNESDAY, Nov. 9 - Circulation, 8:45-9:45; Bula, 10:15 until 1 p. m.

THURSDAY, Nov. 10 - Amherst, 9:15-10:15; Springlake, 11:00-1:00; Earth, 1:15-3:45.

FRIDAY, Nov. 11 - Pleasant Valley, 10:00-11:00; Sudan, 12:00-4:00.

METHODIST YOUTH COLLECT FOR CROP

Members of the MYF, the Methodist Church and their counselor, Hazel House, want to thank the people of Sudan for their response in donating more than \$100.00 to the house to house CROP collection Sunday. Also a special thanks to co-workers Ronnie Duvall, to the Woman's Society of Christian Service for refreshments, to Ruth Newman and Gina Nichols for serving refreshments to the youth workers.

Youth participating were Brenda Drake, Monte Rogers, Cynthia Parrish, Marshall Allen, Burck Tollett, Van Wallace, Bobby Drake, Shawn Potter, Bonner Markham, Danny Martin.

TECH MEETS OKLAHOMA IN LUBBOCK SATURDAY

Think Oklahoma State and Texas Tech haven't been well-matched over the years?

Take, for example, the last six games played in Lubbock, site of the Nov. 5 clash. After totaling the scores, each team has scored the same number of points in the six contests.

Texas Tech won last year by three points, 17-14.

Two biggest scores in Texas Tech football history were attained by teams captained by men who will be inducted into Tech's Athletic Hall of Honor Nov. 5. Winfield W. Nicklaus of Amarillo led the 1925 team that posted a 120-0 victory over Wayland. Next biggest score was the 79-0 triumph over Trinity managed by the 1932 team, headed by Brig. Gen. Ross Ayers, now of Friona.

SUNRAY DX ACQUIRES RED BARN CHEMICALS, INC.

Sunray DX Oil Company today announced completion of the acquisition of Red Barn Chemicals, Inc. of Shreveport, which formerly was a subsidiary of Chemical Enterprises, Inc. of Dover, Delaware.

Red Barn manufactures, formulates and markets fertilizers and other agricultural chemicals, and operates in a six-state area of the South and Southwest including Texas and New Mexico.

Nix & Grigsby Delinting is one of the over 100 retail outlets for the company.

SPC 4 HERBERT BLAIR PARTICIPATES IN EXERCISE

Army Specialist Fourth class Herbert W. Blair Jr., 20, son of Mrs. Frances E. Blair of Sudan, is participating in a three week communication field training exercise conducted throughout western Germany.

He is a clerk in Company C of the 25th Signal Battalion near Kaiserslautern, Germany. His wife, Bobbie, is with him in Germany.

SUDAN BEACON-NEWS THURSDAY, NOV. 3, 1966

ESA PLANS TALENT SHOW

The Iota Eta Chapter of the Epsilon Sigma Alpha Sorority is sponsoring a "Talent Show", to be held in the school auditorium at 7:30 p. m. Nov. 19.

This contest, which offers a \$25 cash prize for first place, is open to all local and area residents and will feature all types of talent including both solo and group acts.

No entry fee will be charged with the deadline for entering set as Nov. 12. Any person requiring more information is asked to contact Mrs. Donnie Cowart, 227-6501.

Admission for the Saturday night show will be \$1.00 for adults and 50 cents for children.

ESA CHAPTER MEETS FOR CLUB SOCIAL

The ESA Iota Eta chapter met Thursday night in the home of Mr. and Mrs. Dexter Baker for a club social. Mr. and Mrs. Bud Provence were co-hosts.

The Halloween theme was carried out in the decorations including the tables which were highlighted with miniature pumpkins in orange and black settings.

Bingo was played with White Elephant prizes awarded to the winners.

Present were Mr. and Mrs. Gayle Brown, Donnie Cowart, Ronnie Fisher, Neol Lumpkin, Bobby Markham, Kenneth Wiseman, Dan Woods, Billy Baker, C. E. Nichols, and the hosts and hostesses.

SENIORS TO SELL MUMS FOR HOMECOMING GAME

The senior class of Sudan High School will sell mums for Homecoming activities scheduled Nov. 11 and 12.

The homecoming football game will be played against Farwell, Nov. 11, and Saturday's activities will begin with a reception and registration, to be followed by a dinner.

The seniors are asking that all orders for mums be turned in to a member of the senior class by Wednesday, Nov. 9. Also you are asked to specify the time of delivery, as the corsages will be delivered by class members.

C. W. ROSSON HAS FIRST LOAD OF CASTOR BEANS

C. W. Rosson of Sudan supplied the first load of castor beans for this area. The load was cut by Matt Nix and hauled to Boothe Elevators in Anton on October 28.

The load weighed 10,360 pounds, averaging over a ton per acre. The market price was \$5.00 per hundred.

The elevator, who is receiving beans for the Baker Castor Oil Company of Plainview, reports that the recent freeze hurt the yield of the crop. And reports that these beans will be shipped directly to the factory at Bayonne, N. J.

FOR YOUR Linoleum needs and Cabinet Tops, see FOXWORTH CALBRAITH LUMBER CO.

DAIRY BEE DRIVE-INN

HAMBURGERS--FOUNTAIN SERVICE
ICE CREAM
Basket Lunches----Sandwiches

MR. AND MRS. TED WALKER, PROPS.
PHONE 227-3892

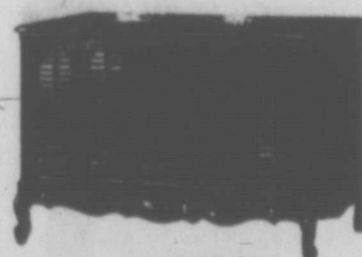


for color so real you'll think you are there!



football on RCA VICTOR COLOR

This year—there are more games telecast in color than ever. Thrill to all the action in vivid color—so lifelike, so real—you'll think you are there. New rectangular RCA Hi-Lite Tube features Perma-Chrome for locked-in color fidelity. New Vista® 25,000-volt chassis gives you unsurpassed TV reception in any signal area. Get set for all the colorful action this year!



The CHERBOURG Series GH-786 25" tube (overall diag.) 295 sq. in. picture



The MANFREDO Series GH-772 25" tube (overall diag.) 295 sq. in. picture

THE MOST TRUSTED NAME IN ELECTRONICS

JUST ARRIVED!!
A NEW SHIPMENT OF RCA VICTOR COLOR TV'S FOR THE BEST BUYS--SEE US BEFORE YOU TRADE. WE HAVE FACTORY TRAINED TV SERVICE. OUR TECHNICIAN HAS MANY YEARS EXPERIENCE IN THE ELECTRONIC FIELD. WE SERVICE ALL MAKES OF TV'S, RADIOS, AND STEREOS.

Lloyd Pryor Hardware & Appliance, TV

SALES AND SERVICE

PHONE 246-3460

AMHERST, TEXAS



GRAND CHAMPION RESERVE Angus, Sugar, is shown with his owner, Rodney Bowling, in Dallas as Sugar was named Grand Champion Reserve at the Texas State Fair.



Dee Miller has made an outstanding record as a District Attorney, and will make you an excellent Congressman. We, the following attorneys, heartily encourage his election.

- Richard S. Morris, Claude Norman W. Boys, Muleshoe
- Pat R. Bobo, Muleshoe
- Roger L. Garrell, Muleshoe
- Karl L. Lovelady, Muleshoe
- Jack D. Young, Muleshoe
- Don W. Cihak, Muleshoe
- Frank P. Dove, Panhandle
- Marshall Sherwood, Panhandle
- H. M. Smith, Panhandle
- Russell A. Moran, Dimmitt
- Jack R. Miller, Dimmitt
- Richard D. Bird, Childress
- C. C. Broughton, Childress
- John T. Forbis, Childress
- Charles C. Bishop, Wellington
- Paul Spillman, Wellington
- R. L. Templeton, Wellington
- W. S. Hoarty, Paducah
- Roy A. Jones, Paducah
- John L. David, Dalhart
- Homer A. Davis, Dalhart
- William A. Hunter, Dalhart
- Harry H. Schultz, Dalhart
- John E. Gilliam, Clarendon
- John C. Knorr, Clarendon
- William J. Lowe, Clarendon
- Clyde Slovin, Clarendon
- John M. Deaver, Memphis
- Som J. Hamilton, Memphis
- Jackie Ben Boone, Memphis
- John Chamberlain, Memphis
- Robert Montgomery, Memphis
- J. D. Helms, Spearman
- James P. Linn, Spearman
- T. D. Sansing, Spearman
- Will Crow, Canadian
- William J. Jackson, Canadian
- Ronald H. Allen, Borger
- Charles L. Ballmon, Borger
- Ernest Dunning, Borger
- Robert G. Galloway, Borger
- Clyde M. Gosaway, Borger
- H. M. Hood, Borger
- John "Jack" Hood, Borger
- R. C. Marshall, Borger
- Doc H. Massie, Borger
- Glen E. Milner, Borger
- Homer L. Moss, Borger
- Cecil M. Pruett, Borger
- John T. White, Borger
- Rosa Jane White, Borger
- Norman Coffee, Stinnett
- Guy Hazlett, Stinnett
- Arthur P. Duggan, Littlefield
- Jerome W. Kirby, Littlefield
- Louis M. Ratliff, Jr., Littlefield
- Curtis R. Wilkinson, Littlefield
- Ted L. Sanson, Littlefield
- Donald R. Buchner, Follett
- Charles Mack Sansing, Higgins
- Roy W. Sansing, Higgins
- L. Dean Cobb, Dumas
- James E. Lovell, Dumas
- Bill Sheahan, Dumas
- Hugh T. Lyle, Dumas
- Eli Willis, Dumas
- Rudolph A. Renfer, Jr., Dumas
- Jack M. Allen, Perryton
- William H. Allen, Perryton
- Don E. Archer, Perryton
- James G. Baker, Perryton
- Robert D. Lemon, Perryton
- Gene E. Steed, Perryton
- Richard W. Brainerd, Vega
- John Aldridge, Farwell
- Sam Aldridge, Farwell
- Ethan E. Cox, Canyon
- George Dowlen, Canyon
- A. W. Lair, Canyon
- Gene McGlosson, Jr., Canyon
- Roy F. Formway, Kress
- Donald L. Bookout, Tulia
- Burris E. Evans, Tulia
- George J. Jennings, Jr., Tulia
- H. L. Jordan, Tulia
- Andrew F. Vogel, Tulia
- Thurmon W. Adkins, Shamrock
- Guy S. Hardin, Shamrock
- Lester Sitter, Shamrock
- R. H. Forrester, Wheeler
- G. W. McThony, Wheeler
- Joy Cowart, Hereford
- J. Edward Line, Hereford
- Harlow Sprouse
- W. P. Sturdivant
- W. L. McConnell
- Boyd Knutson
- Richard E. Stokes, Jr.
- Richard A. Barras
- W. A. Baker
- Jerry Hollingsworth
- Warren E. Zimmerman
- John W. Hazlewood
- A. J. Folley
- Toby Priolo
- Roy Snodgrass, Jr.
- Donald E. Jackson
- Don L. Patterson
- Don H. Culton
- Moston C. Courtney
- Harold W. Ochsner
- H. A. Berry
- Allan B. Adkins
- William Q. Boyce
- R. A. Wilson
- Jerry Kolander
- John D. Curtis
- William Lampe
- Jerry F. Lyons
- Hudson Moyer
- Jim H. Fullingim
- Seldon Simpson
- James G. Lumpkin
- Robert E. Sanders
- Oscar P. Fields, Jr.
- Joe Bob Brown
- Thos. V. Priolo
- Russell Sohn
- Deane C. Watson
- Jess C. Dickie
- B. M. Britain
- J. C. Collins
- Ben H. Stone, Jr.
- Frank J. Baughman
- Edward B. Nobles
- H. M. Adkins
- A. J. Robinson
- Jack Hazlewood
- Jerome W. Johnson
- Charles Neal
- Jerry Hopson
- E. H. Foster
- Clayton Heare
- Walter Wolfram
- Tom J. Fotheringham
- W. M. Sutton
- A. B. Hankins
- Dean Dunlap
- Oth O. Miller
- Henry T. Ray
- Robert M. Carnahan
- J. E. Collins
- Morris G. Cobb
- O. M. Callahan
- Robert McClendon
- John C. Chambers
- Dick Cazzell
- Lahroy A. White
- B. L. Morgan, Jr.
- R. A. Stone
- Don M. Dean
- Don Hom
- Robert R. Bradshaw
- Jack Little
- Tom Seay
- Gene Compton
- John Broadfoot
- Robert Slough
- Charles McPherrin
- James H. Doares
- James M. House
- Jon T. Oden
- Max R. Sherman
- S. Tom Morris
- J. Hadley Edgar
- Charles W. Fairweather
- Naomi Harney
- George McCarthy
- Hugh Montgomery
- Wales Madden, Jr.
- John B. Reese
- Bill R. Sherbert
- Frank Killough
- Wayne Cummins
- Col. Carl E. Burget
- Sterling Kinney
- Kenneth W. Gentry
- Robert L. Smith
- Jack Ritchie
- Charles Moss
- Charles Rittenberry
- Enos Jones
- E. E. Finney
- Herbert C. Martin
- Judge E. E. "Gene" Jordan
- Branch T. Archer, Jr.
- Allan M. Reader
- W. W. Gibson

and the following Amarillo Attorneys

- Edward H. Hill
- Jewett E. Huff
- Robert Templeton
- D. Barry Stone
- K. B. Watson

A political advertisement paid for by Miller, Co. Congress Committee, Gene Hall, Chairman



FOOTBALL QUEEN-Miss Candy Fleming, granddaughter of Mr. and Mrs. Lee Hardy, was named Football Queen at Bovina Friday night. She is a former Sudan resident.

Chest X-ray Unit Scheduled Nov. 17

The Mobile Chest X-ray unit is scheduled to be in Sudan, Thursday, Nov. 17, from 9 a. m. to 5 p. m. and will be stationed in front of the school cafeteria. The chest x-ray unit is a project of the Health committee of the PTA with Mrs. Harold May as chairman and Mrs. Noble Dudgeon assisting.

All area residents are urged to take advantage of the service as not only Tuberculosis but other diseases also are detected through the chest x-ray. A donation of \$1.00 per x-ray is being asked; but, those not able to pay may have the services free.

Mrs. Bob Drake, spokesman for the PTA, urges all farmers and others to pass on information of the service especially to the farm laborers who may not read of the project.

The Mobile Chest X-ray is sponsored by the West Texas Tuberculosis Association of Lubbock.

Area and local organizations

sponsoring the unit here include the Amherst Lion's Club, Sudan Jaycees, 1935 Study Club, and the Sudan PTA.

The National Tuberculosis Association says "A mountain of money... a pot of gold... a chestful of treasure... what are they worth? Not much compared to good health. Protect your priceless good health with a chest x-ray. Each x-ray takes only a moment or two—well worth the time!

Mrs. Phyllis Drake of Lubbock visited Friday night in the home of her brother and family the Bob Drakes. While here she attended the Sudan-Springlake football game.

Carol Harper of Lubbock was home to spend the weekend with her parents, Mr. and Mrs. J. B. Harper.

Mrs. Leo Mann of Littlefield visited Sunday in the home of her mother, Mrs. H. W. Qualla.

Legal Notice

CITATION BY PUBLICATION

THE STATE OF TEXAS

TO: The Unknown Heirs of ERVIN PARKS

You are hereby cited, required and commanded to be and appear before the County Court of Lamb County, Texas, to be held in the county courtroom in the courthouse of said county in the City of Littlefield, Lamb County, Texas, such appearance to be at or before ten o'clock A. M. of the first Monday next after the expiration of ten days from the date of service, exclusive of the day of such service, which day and date of service shall be the date of publication that this newspaper bears, and which appearance shall be at such times on such Monday, which will be the 14th day of

November, A. D. 1966, by filing a written answer to the petition hereinafter mentioned, to answer to the petition of JACK PARKS, Filed in the County Court of Lamb County, Texas, in Probate, on the 20th day of October, A. D. 1966, against you, the unknown heirs of ERVIN PARKS, deceased, as Defendant, said suit being numbered 1482 on the docket of said Court, and the nature

of such proceeding being to determine and declare who are the heirs and the only heirs of ERVIN PARKS, deceased, and their respective shares and interests, under the laws of this State, in the estate of such decedents, and a copy of such petition to be served is here referred to for a more particular showing of the nature of such proceeding.

If this citation is not served within 90 days after date of its issuance it shall be returned unserved.

Herein fail not, but have you before said Court at or before such hour on the said First Monday after such service is perfected, which will be the said 14th day of November, A. D. 1966, this citation with your return thereon showing how you have executed the same.

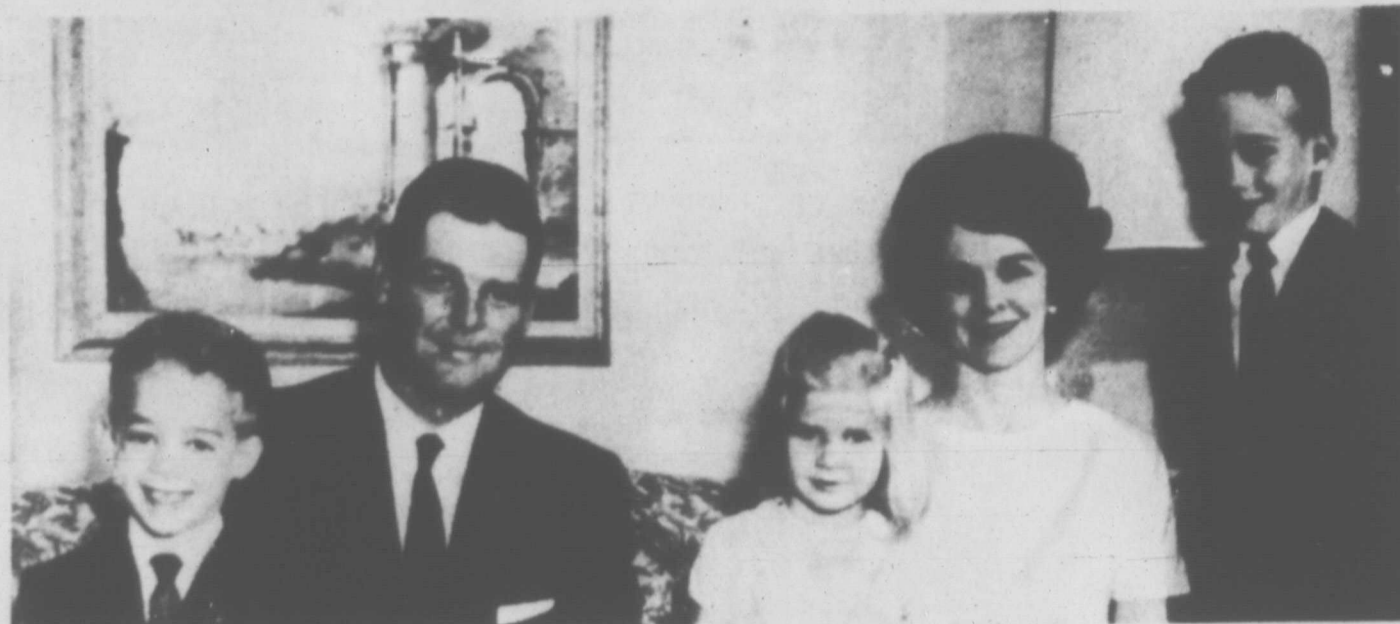
Witness, Charles Jones, Clerk of the County Court of Lamb County, Texas.

Given under my hand and seal of said Court, at office in the City of Littlefield, this 19th day of October, A. D. 1966.

Clerk of the County Court Lamb County, Texas
By: Tom McKeown, Deputy

PRICE IS RIGHT

FOR U.S. CONGRESS



BOB PRICE... the family man

Bob Price is a man whose interests are centered around his family. It's his desire to help create a better America for his children that led Bob Price into seeking the office of Representative to Congress. Bob and his wife Marty, along with their children, Janice, Carl and Grant, are a family we can be proud to send to Washington.



BOB PRICE... wants to stop inflation

Food, clothing and house payments must be paid out of take home pay after taxes. Inflation makes this more and more difficult for every family in the Panhandle. As a man operating his own business, Bob Price knows the effect of inflation on earnings.

BOB PRICE

a man known for his vital interest in water

Bob Price's family started ranching in the Panhandle in 1907. Following in his father's footsteps as a businessman and rancher, Bob Price knows that we must use greater water conservation to raise food and to attract new industry to the Panhandle. City and County alike are concerned with this problem. Bob Price has the knowledge and experience to plan ahead for our future water needs.



BOB PRICE...

knows about war... he's been there

As a jet pilot, Bob Price experienced first hand the effects of war on the young men of today. This knowledge acts as a guideline to decision in regards to foreign policy. Experience is a valuable teacher.



BOB PRICE... keeps in touch

Over the past 2 years, Bob Price has talked to citizens of every county in this district. He has learned the problems facing us today and has the experience to work toward their solutions. Bob Price owes no debt to any single group and can give all of you representation in our nation's capital.

VOTE FOR BOB PRICE FOR U.S. HOUSE OF REPRESENTATIVES

*Yes, you can vote for BOB PRICE regardless of your choice of other candidates. A split vote ticket is a legal ballot and will be counted.

PRICE IS RIGHT

FOR U.S. CONGRESS

(PAID FOR BY THE PRICE IS RIGHT COMMITTEE, E.J. MCCARTT JR., CHAIRMAN. JAMES E. DAVIDSON, SUDAN)

INDIVIDUAL
STATISTICS

Player	SCORING			
	TD	EP	FG	TP
M. Bellar	13	18	2	102
Morgan	9	0	0	54
Hill	3	0	0	18
Hanna	1	0	0	6
J. Bellar	3	0	0	18
Gatewood	1	0	0	6

Player	RUSHING			AVG.
	TC	YDS		
M. Bellar	110	776		7.1
Morgan	105	621		6.1
J. Bellar	30	248		8.3
Gatewood	23	92		4.0
Hill	32	129		4.0
Gore	1	3		3.0

Player	PASSING				
	ATT	C	INT	YDS	PCT
Hill	28	7	3	138	25

Player	RECEIVING		YDS
	No. Caught		
J. Bellar	3		78
D. Martin	2		27
Gatewood	1		16
S. Martin	1		17

Player	TOTAL OFFENSE			
	RUSH	REC	PASS	TOTAL
M. Bellar	776	0	0	776
Morgan	621	0	0	621
J. Bellar	248	78	0	326
Gatewood	92	16	0	108
Hill	129	0	138	267
D. Martin	0	27	0	27
Gore	3	0	0	3
S. Martin	0	17	0	17

LET'S BEAT THE KANGAROOS!



GO BIG TEAM- The photo above shows a sign erected in front of the Sudan High School, this week by the student body boosting the Hornet team toward their 9th victory Friday night against Kress.

GO!



**SUDAN
At
KRESS**

TAKE A LOOK AT THE NAMES
OF ALL THESE
SUDAN HORNET BOOSTERS

**7:30 P.M.
FRIDAY**

Lumpkin Food		Heard's Grocery
Dairy Bee Drive In	Fairview Gin	Frank Rone, Gulf Dist.
Bowman Insurance Agency	Feeder's Grain, Inc.	Stuart's Flowers
Nichols Oil Co. Phillips 66	Sands Cafe	Farmers Co-op Gin
The First National Bank	Dood's Barber Shop	Sudan Texaco
Brownd Implement Co.	Reed's Shamrock Service	Woody's TIRE & TRACTOR SERVICE
Melson Cleaners	F. O. Masten	Central Compress & Whse
Harlin Radio & TV	Sudan Beacon-News	Lamb County Butane Co.

**LAYMEN'S DAY HELD
HERE SUNDAY**

Joe T. Salem brought the message at the Laymen's Day program held Sunday at the First Methodist Church. Others having parts on the program were Bob Drake, Adrian Martin, Joe Burt Markham.

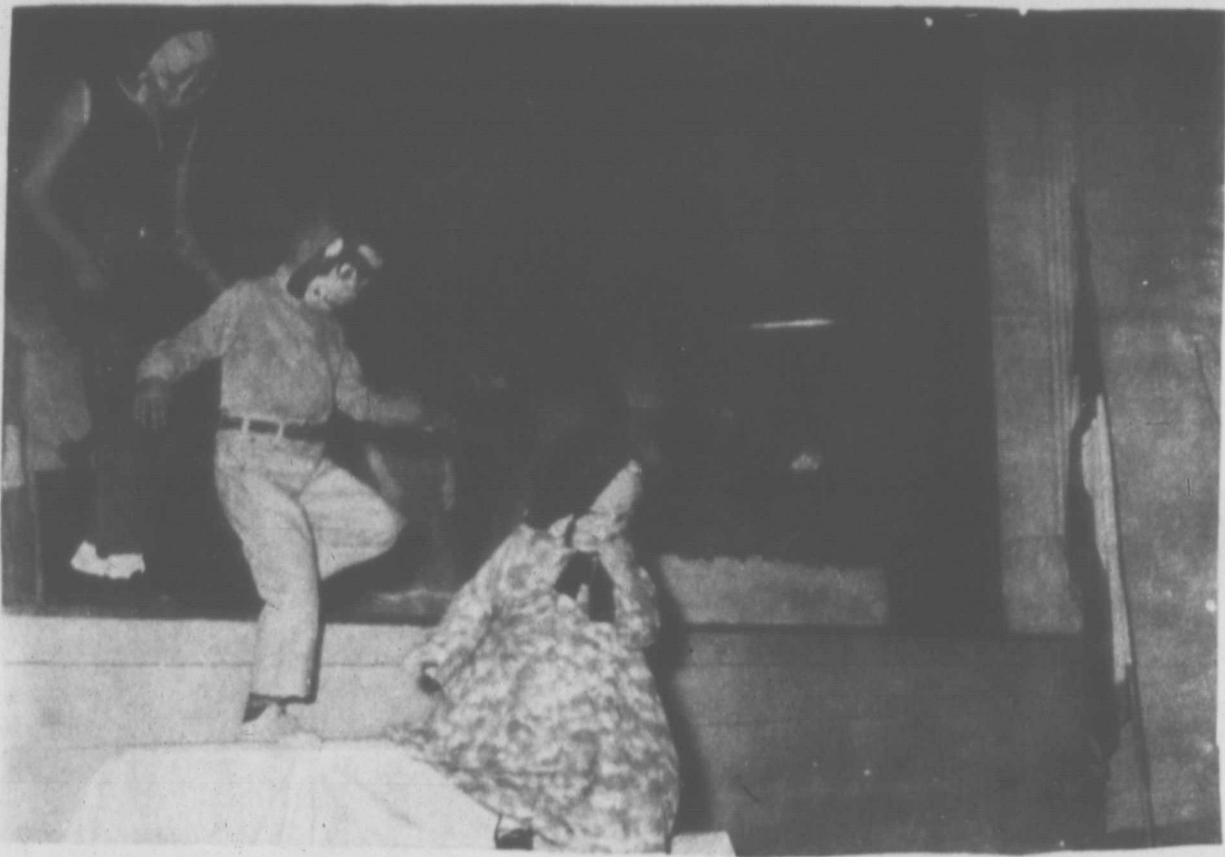
Special music was presented by a trio composed of Bill Nix, Frank Lane and Danny Martin.

Ushers for the service were Jay House, Rodney Nichols, James Wallace, Jack Van Ness, Claude Rosson and F. M. Smith.

CHURCH NEWS

The Rev. and Mrs. Willie Hazel are in Dallas this week attending the Baptist Convention. In charge of the Wednesday night services was Jack Noblett.

The Primary department of the First Baptist Church is planning a Parent's Night to be held Nov. 7 at 7:30 p. m. and all parents are urged to attend with their children. Leaders for this department are Mrs. Homer Morris, Mrs. J. V. Hill, Mrs. W. L. Rice, Mrs. John Burnett, Mrs.



SPOOKS GALORE was what you saw Saturday night when approximately 40 youngsters paraded across the stage following the Coronation Service (Staff Photo)

Russell Ingle, Paul Gordon and Miss Sherry Whiteaker, Royal Ambassadors, ages 9-11, of the First Baptist Church will meet each Monday afternoon at 5 p. m. in the Young People's Department. Coun-

sellor and assistants are Charles Burnett, Danny Rhoades and Marcus Padilla.

PERSONALS

Mr. and Mrs. Wallace Gosdin are spending the weekend at Ruidoso.

Mr. and Mrs. Jiggs Mathis have moved to San Angelo to make their home.

Mrs. Lynn Drum and Mrs. Glen Testerman were Lubbock visitors Tuesday afternoon.

**FIRST SCREWORM CASE
CONFIRMED IN COUNTY**

The first screwworm case in Lamb County for 1966 has been confirmed here, according to Agricultural Agent Buddy Logsdon.

The case was reported by Sudan Livestock on Oct. 14 when specimens were mailed to the Screwworm Eradication Laboratory at Mission, Texas by Glen Cardwell.

The area has since been "hot-spotted" with sterile flies as any area with a confirmed case of screwworms will be.

This was the first reported case in Lamb County since 1963 and the fall screwworm outbreak state-wide is the largest since that year with 679 cases reported thus far this season.

Livestock producers in the county are urged to continue their animal inspection activities and to collect and mail specimen worm samples to the Screwworm Eradication Laboratory at Mission. Vials for sending in the specimens may be obtained from the County Agent's office or Sudan Livestock and Feeding Company.

SANTA FE NEWS

A 2,450-mile microwave communications system between Chicago, Illinois and the Pacific Coast has been completed and placed in service by Santa Fe Railway, according to Ernest S. Marsh, president.

One of the largest private microwave systems in existence, the system stretches from Chicago to Los Angeles and Bakerfield, California, with a number of branches along the way.

"Our microwave fills a growing need for increased communications," Marsh said, "especially as it relates to the increasing volume of data handled by our computer center at Topeka, Kansas."

In addition to the transmission of data and other written communication, the microwave system also makes possible a direct telephone system between points along the road's main east-west line.

SCHOOL MENU

Monday, Nov. 7 - Chicken and egg noodles, blackeye peas, buttered carrots, hot rolls, butter, milk, pear salad.

Tuesday - Meat balls in barbecue sauce, buttered rice, English peas, hot rolls, butter, milk, canned peaches.

Wednesday - Brown beans, potato salad, seasoned spinach, cornbread, milk, banana pudding.

Thursday - Pork chops and catsup, golden hominy, cut green beans, hot rolls, butter, milk, vanilla wafers with peanut butter.

Friday - Beef roast and brown gravy, mashed potatoes, garden salad, hot rolls, butter, milk, baked apple.

**SUGAR BEET CORPORATION
MAILS FINAL PAYMENTS**

Dexter W. Lillie, agricultural manager for Holly Sugar Corporation, announced that final payment checks for the 1965 crop, totaling \$695,000.00, were mailed recently to some 450 growers who produced beets for the Hereford factory.

Lillie stated that last season's crops produced for Holly in the High Plains areas of Texas and eastern New Mexico were valued at \$9,108,000, including the Government Sugar Act payments.

Delivery of the 1966 sugar beet crop is now in progress with about 25 per cent of the total estimated tonnage already delivered to the Merrill E. Shoup plant at Hereford. Manager Lillie reports that field conditions are very satisfactory for the harvest operations as a result of the recent fine fall weather. Tonnage yields are said to be about normal.

FOR YOUR Light fixture needs shop our fixture display. FOX-WORTH GALBRAITH LUMBER COMPANY.



No greater life can we display
Than serving others day by day;
A life that's lived for selfish gain
Is one my friends that's lived in vain;
A life of envy, greed or hate,
Will overtake an endless fate;
The kind of seed we've daily sown
We'll reap the same when it has grown.

PAYNE
Funeral Home
PHONE 246-3351
AMHERST, TEXAS

*In Appreciation to
the people of
LAMB COUNTY*



I want to thank you, the people of Lamb County for the unswerving support and good will which you have extended to me through the years. It has been a source of inspiration and satisfaction to represent such grand people in the United States Congress.

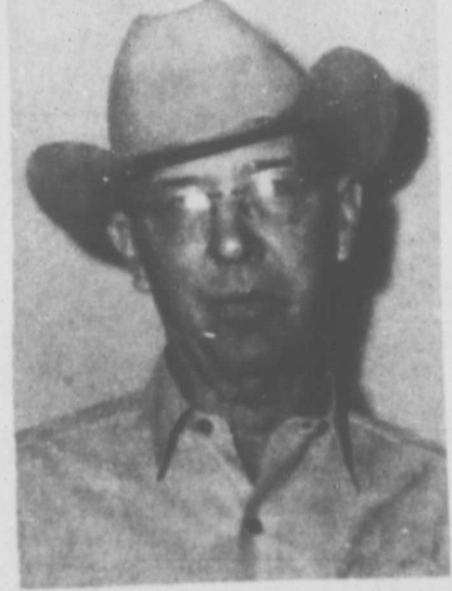
As a result of redistricting you cannot vote for me again this year, but I want you to know of my continued good will and friendship.

George H. Mahon

U. S. Representative
19th Congressional District

PL. POL. ADV.

VOTE FOR



W. T. (TOBE) VEREEN

WRITE-IN

CANDIDATE FOR

JUSTICE OF THE PEACE
PRECINCT 5



KELLY-SPRINGFIELD TIRES

SERVICE SPECIAL
TUES., WED., THURS. ONLY!

BRAKE OVERHAUL

ONLY

\$28.88
Most cars
Reg. \$49.95
value



ON ALL 4 WHEELS: we install new brake linings ■ turn and true brake drums ■ adjust brakes ■ adjust emergency brake ■ flush hydraulic system and refill with heavy duty fluid ■ rebuild wheel cylinders. IN ADDITION: we inspect master cylinder ■ grease seals and wheel bearings.

WE HAVE INSTALLED A TRACTOR HYDRAULIC HOSE MAKING MACHINE OR CAN MEND BROKEN OR CUT HOSES

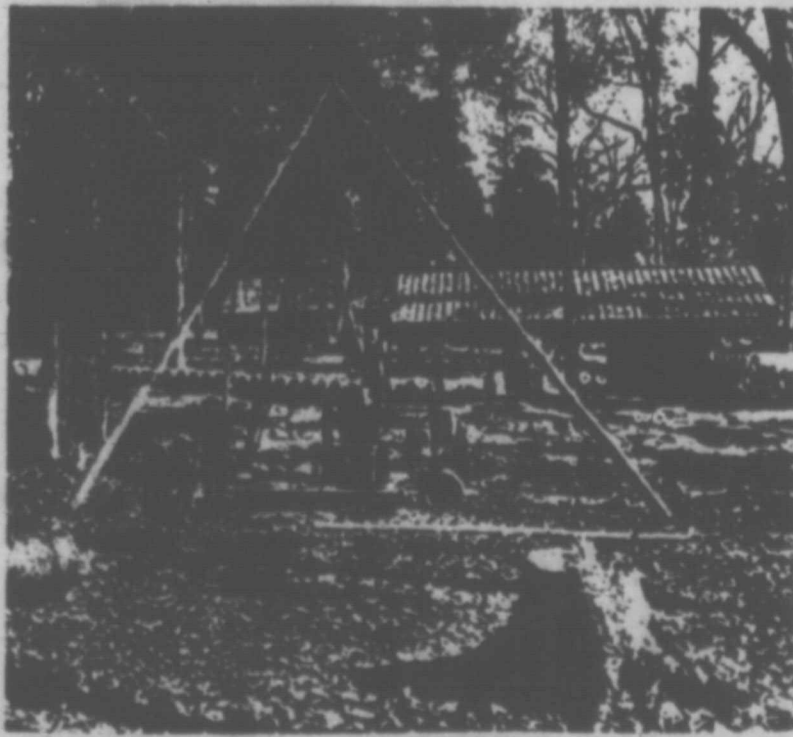
WOODY'S

TIRE & TRACTOR SERVICE

PHONE 227-3531

EAST HWY. 84

SUDAN, TEXAS



OIL SCENE IN 1880's - This rare photograph, appearing in an 1891 Texas Geological Survey report, shows workers filling barrels in Texas' first commercial oil field near Nacogdoches. It was developed about 20 years after the Barret well. Visitors to field today collect souvenir samples of oil from these wells.

TEXAS IS ON THE MOVE!

In virtually every field of endeavor, our state has made dramatic progress the past four years under the strong leadership of Governor John Connally. His administration's bold, yet sensible programs have helped provide new opportunity and a better way of life for all our people.

IMPROVED EDUCATION - Since 1963, state investment in higher education has doubled, and faculty salaries have increased 40%. State support of local public schools have increased 44% in four years, including a \$100 million teacher pay raise enacted in 1965. Technical and vocational training programs have been vastly increased; junior college enrollment doubled during the current bi-ennium. Special literacy programs for migrant workers and their children have been expanded. A college student loan fund of \$85 million has been established. And a special Governor's Committee on Public Education currently is studying all facets of elementary and secondary education.

WATER RESOURCES DEVELOPMENT - Long range planning and development have been given top priority. \$100 million in bonds has been issued for development of needed storage facilities; authorization has been granted to expand this program to \$200 million for the next two years.

CONCERN FOR THE AGED AND NEEDY - Since 1963, assistance to our elderly has been increased 27%. The Governor's Committee on Aging is continually working for the benefit of our senior citizens.

OUTDOOR RECREATION - More than \$2 million has been invested in improving ten of our most attractive state parks during the past two years to provide additional recreational facilities.

INDUSTRIAL EXPANSION - A record 855 new industrial plants have been established the past three years, moving Texas into second place in the nation in industrial expansion. Last year, more than 23,000 new jobs were created in manufacturing alone - the best year ever for the Texas labor force.

INCREASED TOURISM - More than 12 million tourists visited Texas last year, adding more than \$900 million to the state's economy, and creating 140,000 new jobs. The state's tourist advertising program has been sharply expanded.

MENTAL HEALTH AND MENTAL RETARDATION - New emphasis on prevention of mental illness and mental retardation has been achieved through establishment of new community centers, replacing the former practice of "warehousing" patients. Investment for research into causes of mental disorders has doubled the past four years.

BETTER HIGHWAY TRANSPORTATION - Texas has more farm-to-market roads than any other state - more than 35,134 miles. We lead the nation in construction of interstate highways, at a cost 40% below the nation's average.

COMBAT AIR AND WATER POLLUTION - New legislation for public health, "The Clear Air Act of Texas," provides state action to combat air pollution. Similar vigorous action has been initiated to control pollution of Texas streams, bays and estuaries.

NEW CULTURAL GROWTH - The Fine Arts Commission was established in 1965 to nurture the cultural enrichment of Texans. The state's cultural heritage will be preserved and portrayed in the state's pavilion at HemisFair '68 in San Antonio.

BUSINESSLIKE ADMINISTRATION - With unprecedented teamwork, our state government has operated responsibly and efficiently. The Legislature has finished its work on time in each session. Following a pay-as-you-go policy, we have maintained a healthy surplus in the general revenue fund without curtailing essential services.

HEALTHY, GROWING ECONOMY - Business activity rose 11% last year, as Texas continues one of the brightest growth areas. Employment and income are at an all-time high, unemployment at an all-time low. Despite increased responsibilities, our state government costs only \$168.78 a year per citizen, fourth lowest in the nation. No broad-based tax has been enacted the past four years. Texas still has no personal income or payroll tax, no corporate income tax, and is one of few remaining states with a limited sales tax of 2%.

LET'S KEEP THIS KIND OF PROGRESS AND PROSPERITY FOR TEXAS! HELP GIVE AN OVERWHELMING MANDATE FOR THE VISIONARY LEADERSHIP OF DEMOCRATIC GOVERNOR JOHN CONNALLY AT THE POLLS NOVEMBER 8TH!

RE-ELECT GOVERNOR JOHN

CONNALLY

FOR A GREATER TEXAS!



Political ad paid for by Connally for Governor Committee, Lewis Timberlake, Chairman

WANT ADS

FOR RENT OR SALE—Two bedroom house, phone 227-3021, or contact Ray May.

RELIANCE HOMES by FOX-WORTH GALBRAITH LUMBER COMPANY. Nothing down, up to 15 years to pay.

FOR RENT OR SALE—Two bedroom, two bath house with large utility room plumbed for washer and dryer; located on ten acres of land. Rent \$80 per month, call Durwood Chisholm at 965-2146 or Mobile phone, Muleshoe, unit 324. 9-8-tnc

GOOD CREDIT—Repossessed 1965 model zig-zag equipped Singer sewing machine in walnut console. Embroidery patterns, buttonholes, etc. Six payments of \$5.46. Cash discount. Write Credit Manager, 1114 19th Street, Lubbock, Texas. 9-16-tnc

FILM SERVICE
All Film Developed
Quick Service
HENDERSON GROCERY

HOUSE FOR SALE—Eight rooms, 2 full baths, large double garage, central heating, fireplace, concrete cellar, storm-proof windows and doors, floors fully covered. Might be interested in buying some land if price is right, using above house as part payment. Contact J. E. Dryden, 2 blocks East of bank, Sudan, Texas. 9-22-tnc

FOR ALL your plumbing needs, fixtures, repair parts, hot water heaters and pipe. See FOXWORTH GALBRAITH LUMBER CO.

GERT'S a gay girl—ready for a whirl after cleaning carpets with Blue Lustre. Rent electric shampooer \$1 at Lumpkin Foods.

FOR SALE—Good millet hay, call Robert DeLoach, 246-3640, collect, 10-27-2tc

FOR THE BEST in Aluminum Storm Doors and Windows. See Foxworth-Galbraith Lumber Co.

FOR SALE—177 acres 5 miles south of Sudan on FM 303. Two 4 inch wells, proved 740 pound lint average. See Harlan J. Reese at farm or at 710 East 16 St., Littlefield. 9-15-tnc

ASSEMBLY OF GOD CHURCH
Services Schedule:
SUNDAY SCHOOL—10 A. M.
WORSHIP—11 A. M.
Christ Ambassadors
Juniors and Seniors
6 P. M.
Worship—7 P. M.

TRUCK SEATS
EXCHANGED
15 MINUTE SERVICE
MCCORMICK'S
AUTO SUPPLY
AND
TRIM SHOP
PHONE 385-4555
227 MAIN
LITTLEFIELD

FEEDERS GRAIN, INC.
DAILY BUYERS FOR
CATTLE FEEDERS
Federal Storage License 3-4451
We Can Use Your Grain
Have Semi-Lift—Location
SUDAN LIVESTOCK
& FEEDING COMPANY
Phone 227-5311 Sudan

THE U. S. AIR FORCE
Has Openings For Ex-GIs
Any Branch of Service
Many career fields are now open for enlistment. Get Base of choice, longevity and and highest grade held if qualified.
Contact: Tsgt. Bill Whitt
U. S. A. F. Recruiting Service
1006 13th Street
Lubbock, Texas
Or Call Collect:
PO 5-8541—ext. 210 or 211

GENERAL CONTRACTING,
complete new buildings, repairs, additions, painting, concrete work. All labor and material, free estimates, financing arranged. See FOX-WORTH GALBRAITH LUMBER COMPANY.

SUDAN BEACON-NEWS
Published Each Thursday At
SUDAN, TEXAS
And entered as second-class mail matter at the postoffice in Sudan, Texas, June 26, 1924, under the Act of Congress of March 3, 1879.

J. W. House Jr. -----Publisher
Dalton Wood-----Editor
SUBSCRIPTION RATES
Lamb County---\$2.50 per year
Elsewhere-----\$3.00 per year
CLASSIFIED RATES
2¢ per word, first insertion, 1¢ per word for subsequent insertions, minimum charge 50¢ per first insertion.
DISPLAY RATES: Upon request

TEXAS PRESS ASSOCIATION
1966

PERSONAL

Mr. and Mrs. Mack Campbell and Mr. and Mrs. Charles Hefington of Littlefield attended the Sudan-Springlake football game Friday night.

A "Cotton Pickin'" bridge luncheon was held Tuesday at the home of Mrs. Frank Lane when approximately 40 attended. Place cards were red hearts centered with white cotton bolls. Assisting Mrs. Lane with hostess duties were Mrs. Bill Boyles and Mrs. Wayne Whiteaker.

Mrs. H. W. Qualls was hostess for a meeting of the Sudan Sew-

ing Club last Thursday afternoon when those present included Mrs. Lena Rollins, Mrs. Tom Kent, Mrs. Mike Carter, Mrs. Jinks Dent, Mrs. Annie Chester, Mrs. Joe West.

Vernon Baccus of Oklahoma visited last week in the homes of his brothers, Mr. and Mrs. Elgan Baccus, Mr. and Mrs. Roy Baccus.

Louise Williamson, daughter of Mr. and Mrs. D. W. Williamson, was confined to a hospital in Littlefield last week.

Mrs. Jack Downs and son, Keith, visited Sunday in the home of her sister, Mrs. Bill Eddy, and family in Denver City.

Lewis Fields and Jack Downs are fishing this week at Coleman.

Mr. and Mrs. Roy Martin of Abernathy visited Sunday after-

noon in the home of his sister, Mrs. Lynn Olds and family.

Mrs. Noel Lumpkin visited last week in the home of her grandmother, Mrs. H. W. Suits in O'Donnell.

Mrs. Jack Riley and daughter, Kelley Ann, were both ill and confined to their home during the weekend.

Mrs. Gilbert Masten has returned home after a three weeks stay at their farm near Alamosa, Colo.

Mr. and Mrs. Coleman Terrell have returned from Fort Worth where she recently underwent surgery. Accompanying them to Fort Worth was Mrs. Johnny Robertson of Hale Center.

Mr. and Mrs. Guy Walden have been in San Francisco where they attended a Bankers Convention.

Mrs. W. V. Terry visited Friday with Mrs. Bob Terry in Lubbock.

Mrs. S. D. Hay and Mr. and Mrs. W. V. Terry entertained with a dinner honoring Mrs. Walton McManus of Key West, Florida. The event was held Wednesday evening in the home of Mr. and Mrs. Terry. Guests included the honoree, Mrs. McManus, Mr. and Mrs. R. D. Nix, Mr. and Mrs. L. E. Slate, Mr. and Mrs. Lester LaGrange of Amherst, Mr. and Mrs. Bill Olds, Mr. and Mrs. Bob Terry of Lubbock, Mrs. C. M. Furneaux, Mrs. W. H. Lyle, Mrs. A. L. Robinson.

Mr. and Mrs. Bobby Jack Markham and family visited last weekend with Mr. and Mrs. C. L. Seefeld and family in Odessa. They also visited the Arthur Nelsons while there.

Miss Ruby Mince and Mrs. A. L. Robinson have been at

Lake Alamogordo and were to return home Wednesday.

Mr. and Mrs. Tom King Sr. returned last week after visiting in the home of their son and wife, Mr. and Mrs. Tom King Jr. in Chicago. While gone they also visited relatives in New York City.

Mrs. Walton McManus returned to her home in Key West, Florida, Saturday after visiting in the homes of her sisters, Mrs. L. E. Slate and Mrs. Lester LaGrange of Amherst.

Mrs. Charles Perry and son, Mike of Lubbock visited during the weekend in the home of her parents, Mr. and Mrs. L. F. Meeks.

Mrs. W. A. Kelly has been ill and confined to the hospital in Amherst.

Mr. and Mrs. Martin Maxwell are attending to business in Fort Sumner.

BUSINESS OPPORTUNITY

OPPORTUNITY FOR MEN OR WOMEN
Earning less than \$1,000 per month, you should be investigating auto accidents and other loss claims for insurance adjusting firms. Expenses paid and car furnished. We train you at home in your spare time and give free placement service; you keep your present job until ready to switch. Pick your location; full or part time people needed almost everywhere. For personal interview in this area to see if you can qualify for this specialized training write, giving phone number to: North American Claims Training Division, 3534 East Bayaud Ave., Denver, Colo. 80209

SUDAN ELEVATORS

YEAR AROUND BUYERS OF ALL GRAINS
We Can Handle Your Off-Grade and Moisture Grain at a—
NOMINAL DISCOUNT
J. H. VINCENT
Owner and Manager

USED CAR



BACCUS CHEVROLET
BOX 356 227-3501
SUDAN, TEXAS
IF YOU DON'T KNOW USED CAR KNOW YOUR DEALER



When the time comes
YOU WILL FIND US HELPFUL AND UNDERSTANDING
Warm and personal consideration, as well as efficient handling of details, characterizes our way of making arrangements.
HAMMONS FUNERAL HOME
AMBULANCE SERVICE
Phone 385-5121
503 E. 5th St.
Littlefield.

GO RIGHT VOTE WRIGHT

WRITE-IN
CLAUDE -C.T.- WRIGHT

(FORMERLY THE AVALANCHE-JOURNAL CITY ROUTE MAN)
UNTIL RECENTLY MR. WRIGHT WAS ABLE TO WORK, BUT DUE TO AN AUTO ACCIDENT HE HAD TO GIVE UP HIS PAPER ROUTE--HIS ONLY MEANS OF INCOME HE NEEDS YOUR VOTE AND SUPPORT.

WRITE-IN CANDIDATE FOR
JUSTICE OF PEACE
PRECINCT 5

SUPPORT THE WRIGHT CANDIDATE

A Green Tree Is A Safer Tree



10 days after household preservative solution was used in tree on right and plain water in the same amount used with tree on left.

A household formula that is simple to make at home has been developed by Harold C. Cook of Dixon, Illinois, nationally known lecturer and florist. The formula will effectively double the indoor life of most cut evergreens, including Christmas trees.

The formula uses light corn syrup, a horticultural iron preparation, a chlorinated bleach and hot water. For Christmas trees it is recommended that a large tree holder be used that will hold at least 1 gallon. To preserve cut evergreen boughs, use the same formulation and arrange boughs in vases or suitable decorative containers.

Household Formula For Keeping Evergreens Fresh
1/4 cup Green Gard micro-nized iron
1 gallon hot water
2 cups Karo light corn syrup
4 teaspoons chlorinated household bleach

Mix micronized iron into hot water. Stir in corn syrup and bleach. The iron does not completely dissolve. It makes a bluish, green mixture with particles which settle to the bottom. Saw about one inch from bottom of tree trunk to remove any clotted resins and to level the base. Pound or smash the base of the trunk with a hammer or axe to crush the fibers. Stand the tree in a tree holder and pour in the solution. Add warm tap water daily, as needed, to keep it filled.

Note: Green Gard with micronized iron, a natural horticultural iron, is available at florists, garden supply and hardware stores. Get Karo syrup and a chlorinated bleach at your favorite grocery store or supermarket.



TENDER STEAKS ARE OUR SPECIALTY
DELUXE CAFE
OPAL & ERNEST PENNINGTON



And Headquarters For All Your Auto Parts!

G & C Auto Supply
Phone 227-3212 SUDAN

The Professional Route

Trying to pick and choose the "right" stock from among the thousands traded daily on the nation's exchanges is a full-time job, one requiring certain tools of research and a depth of personal experience.

Millions of Americans over the years—recognizing that investing is more than a game of darts—have taken the professional route by putting their dollars to work in mutual funds.

The investor who buys shares in a mutual fund is actually acquiring a proportionate interest in a pool of assets making up the securities of as many as a hundred or more companies. He is getting, in a single package, a diversified equity investment under continuous professional management.

According to the Investment Company Institute, national organization of the mutual fund industry, such companies today manage a total in excess of \$35 billion—money belonging to nearly 3.6 million investors living in every one of the 50 states.

The funds have proven themselves to be a practical vehicle for those wanting to invest in the market, but who lack the time and experience to go it alone.

Actually, the ownership of a diversified portfolio such as the individual of average means acts with the purchase



of even one mutual fund share would be difficult, if not impossible, except through the medium of the mutual fund.
For as little as \$25 a month this investor may receive a part interest in many of the nation's top blue chip companies, and has the assurance that professional investment managers are at work for him.

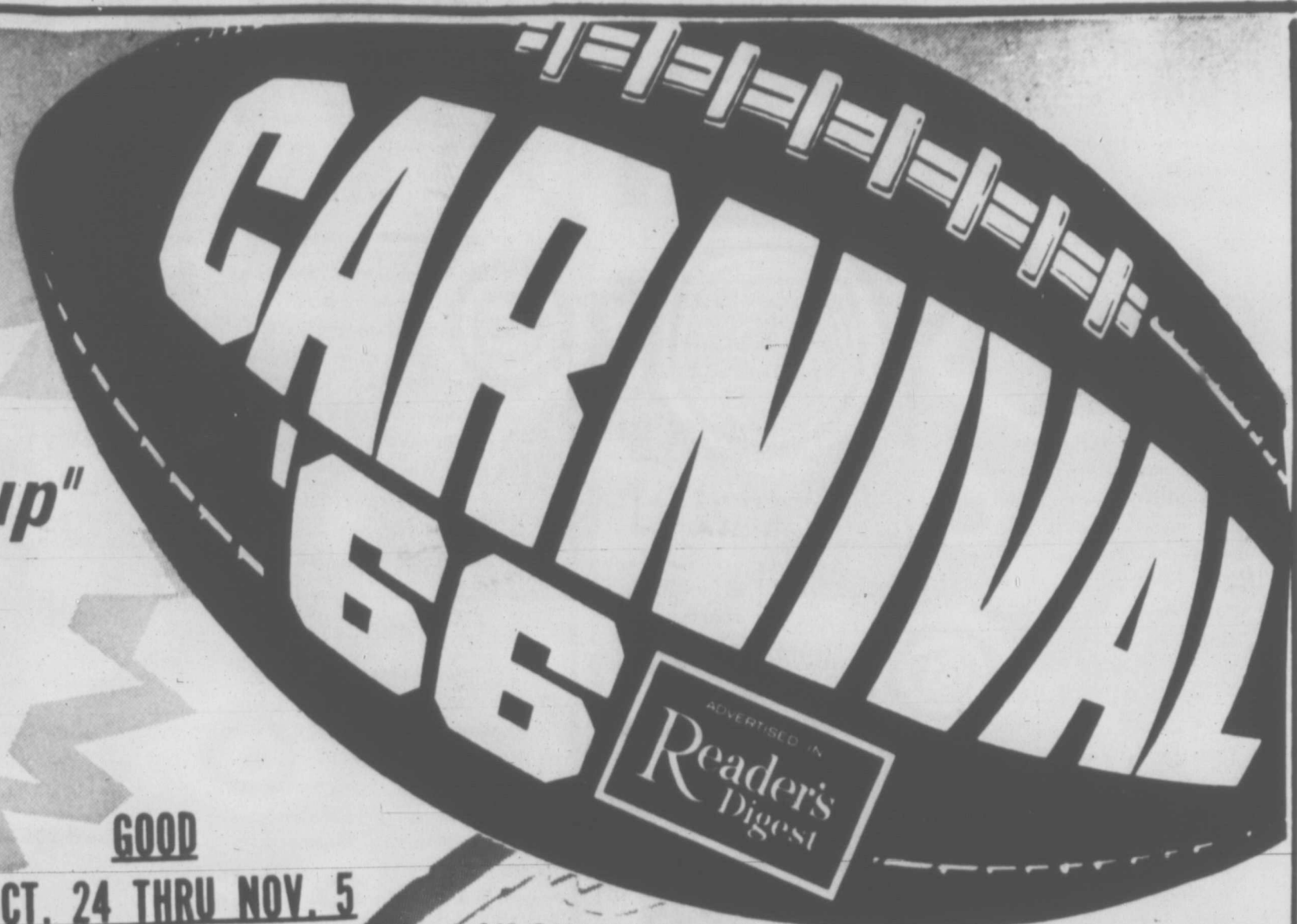
YE-E-A-A-A-A-SHURFINE

Shurfine

YE-E-A-A-A-SAM!



the year's
greatest "team-up"
for food
savings!!!



GOOD
OCT. 24 THRU NOV. 5

Team up with your independent supermarket for the biggest savings ever during the Shurfine Carnival of 1966! Score with the quality and goodness of Shurfine foods and other famous brands at storewide savings. Remember, because we are independent, our investment and income stay right here at home to benefit our community. Don't sit on the sidelines when there are savings to be won! Join in the Shurfine Carnival of 1966... the Year's Greatest Team-up-for-Savings Sale!

SCORE WITH QUALITY

- 8 OZ. SHURFRESH BUTTERMILK OR SWEETMILK **13 for \$1**
- BEETS 303 CAN SHURFINE CUT **8 for \$1**
- SWEET PEAS 303 SHURFINE EARLY HARVEST **5 for \$1**
- TUNA 6 1/2 CAN SHURFINE CHUNK STYLE **3 for 89¢**
- TOMATO SAUCE 8 OZ. SHURFINE **9 for \$1**
- CORN 303 CAN SHURFINE CS OR WK GOLDEN **5 for \$1**
- SALAD DRESSING QUART SHURFINE **39¢**
- 10 OZ. SHURFINE FROZEN BROCCOLI SPEARS **4 for \$1**
- SWEET POTATOES SQUAT CAN SHURFINE WHOLE **3 for \$1**
- PORK AND BEANS SHURFINE 300 CAN **9 for \$1**
- 300 CAN SHURFINE STRAINED CRANBERRY SAUCE **4 for \$1**
- 18 OZ. SHURFINE PRESERVES STRAWBERRY **2 for \$1**
- 2 1/2 CAN SHURFINE Y. C. PEACHES HALVES OR SLICED **4 for \$1**
- APPLE SAUCE 303 CAN SHURFINE **6 for \$1**
- SAUER KRAUT 303 CAN SHURFINE **6 for \$1**
- POTATOES 303 CAN SHURFINE WHOLE IRISH **8 for \$1**

- 303 CAN SHURFINE TOMATOES WHOLE PEELED **5 for \$1**
- LUNCHEON MEAT 12 OZ. SHURFINE **2 for \$1**
- SHURFRESH CRACKERS 1 LB. **2 for 45¢**
- SYRUP QUART SHURFINE WAFFLE **2 for 79¢**



- 303 CAN SHURFINE 4 SV GREEN BEANS CUT BLUE LAKE **5 for \$1**
- SPINACH 303 CAN SHURFINE **7 for \$1**
- CATSUP 14 OZ. SHURFINE **5 for \$1**
- FLOUR 25 LB. PRINT BAG SHURFINE **\$2.19**
- SALMON SHURFINE TALL RED ALASKA **89¢**
- FLOUR 10 LB. PAPER BAG SHURFINE **98¢**
- CORN 10 OZ. SHURFINE FROZEN CUT **5 for \$1**
- ORANGE JUICE 6 OZ. SHURFINE **5 for \$1**

- APRICOTS 303 CAN SHURFINE HALVES UNPEELED **4 for \$1**
- PEARS 303 CAN SHURFINE HALVES BARTLETT **4 for \$1**
- SHURFINE JELLY 18 OZ. GRAPE **3 for \$1**
- GRAPE JUICE 24 OZ. SHURFINE **3 for \$1**
- SWEET PICKLES 22 OZ. WHOLE **2 for 89¢**
- CAKE MIX 19 OZ. SHURFINE DEVILS FOOD, SPICE, WHITE **4 for \$1**
- 13 1/2 OZ. SHURFINE FROSTING MIX CHOCOLATE OR WHITE **4 for \$1**

MEATS
B A R - S
BACON LB. **79¢**

FRYERS GRADE A. WHOLE LB. **29¢**

FRANKS B A R - S LB. **59¢**

CLUB STEAK LB. **69¢**

TOKAY GRAPES Pound **13¢**

Grapefruit FLORIDA RUBY RED **3 For 29¢**

RUSSET
POTATOES 10 LB. BAG **49¢**

CELLO BAG
CARROTS 2 FOR **15¢**

PASCAL STALK
CELERY **15¢**

MARGARINE SHURFRESH QUARTERS 1 LB. **5 for \$1**

EVAPORATED MILK TALL CAN SHURFINE **7 for \$1**

FRUIT COCKTAIL 303 CAN SHURFINE **5 for \$1**

GREEN ASPARAGUS 300 CAN SHURFINE CUT ALL **4 for \$1**

BLACKEYED PEAS 300 CAN SHURFINE FRESH SHELL **7 for \$1**

APPLE BUTTER 28 OZ. SHURFINE **3 for \$1**



PEANUT BUTTER 12 OZ. JAR SHURFINE **3 for \$1**

CHEESE SPREAD 2 LB. BOX SHURFRESH **89¢**

TOILET TISSUE 10 PAK. SOFLIN WHITE, PINK, YELLOW 2 PLY. **79¢**

SHORTENING 3 LB. SHURFINE **79¢**

DOG FOOD NO. 1 CAN ROXEY **13 for \$1**

CUCUMBER CHIPS 16 OZ. SHURFINE F F **4 for \$1**

COFFEE

1 LB. SHURFINE **69¢**

LUMPKIN FOOD STORE

DOUBLE FRONTIER STAMPS ON WEDNESDAYS
WITH PURCHASE OF \$2.50 OR MORE

FREE DELIVERY

NO DELIVERIES ON WEDNESDAY