

# Church Programs Depict Meaning Of Christmas

Watchnight services will be at 8 p.m. December 31 with a fellowship and a film, "The Gospel Road" by Johnny Cash.

**FIRST CHRISTIAN**  
A Christmas Pageant involving youth of the First Christian Church will be held at 6 p.m. Sunday, December 21. Scriptures and the Christmas Story will be acted out to music.

The Church is also planning a Christmas Eve Communion, Candle-

light service at 6 p.m.

**CALVARY BAPTIST**  
Singing and the Christmas Story will be the program at the Calvary Baptist Church Sunday night starting at 7 p.m.

**CHURCH OF THE NAZARENE**  
A Christmas play entitled, "A Little Child Shall Lead Them" will be presented at 6 p.m. Sunday, December 21. The play will be under the leadership of the teenagers of the church.

## FIRST METHODIST

It will be a big day of music, colored slides of the Holy Land and the traditional candle lighting ceremony at The Floydada First United Methodist church Sunday.

The entire 11 a.m. service will feature the choir under the direction of Dennis Teasdale presenting John Peterson's "Night Of Miracles."

Soloists for the cantata include Fred Rink, Mary Tom Tooley, Olin Watson, Doris Drysdale and Wendell Tooley.

The music for the cantata will be Ann Reddy at the organ and Penny Bertrand at the piano. Pastor Jimmy Tidwell will read the Christmas story dialogue.

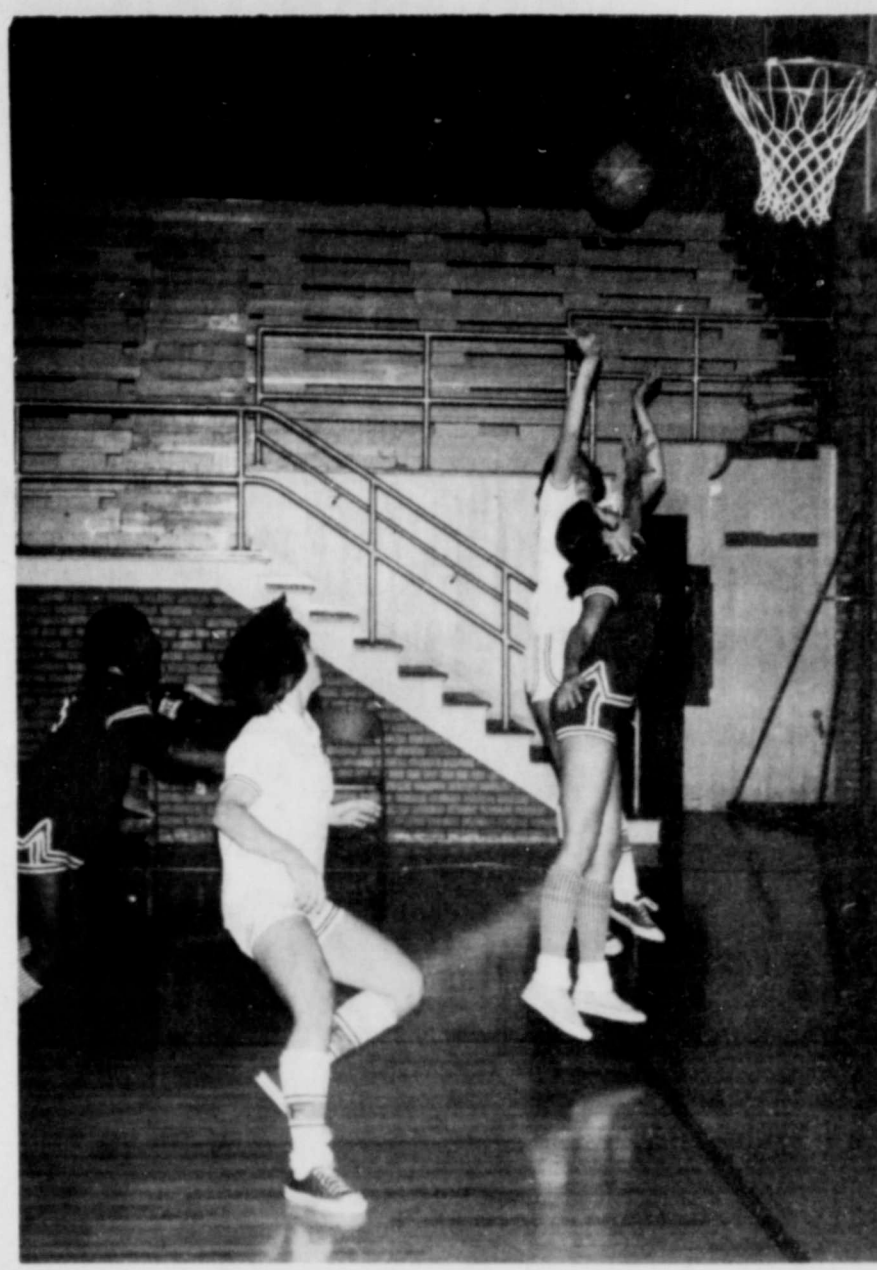
## SUNDAY NIGHT

Beginning at 6 p.m. Ed Cass, a professional photographer of Lubbock, who has visited the Holy Land and taken some 5,000 slides will present a unique program "where it all began." A program of about 35 minutes.

Cass uses several projectors and screens at the same time so the audience sees a panoramic view unlike any other slide presentation.

The youth choir, with Doug Frazier assisting, will present special musical numbers and lead the congregation in singing Christmas carols.

The "festival of candle lights" will follow.



DONETTE MARBLE shoots in the Canyon game and forward Debby Johnson is pictured at left. (Photo by Keith)

## Floyd County Hesperian

15¢  
Per Copy



16 Pages In Two Sections

FLOYDADA, FLOYD COUNTY, TEXAS 79235 SUNDAY, DECEMBER 21, 1975 NUMBER 101

## ng Toys To The Dairy Queen



INDS with second place trophy received at the Floydada Basketball Tournament last Saturday night. (Staff Photo)

## prock Chat

By Wendell Tooley

\*\*\*\*\*

DO YOU KNOW who Christine is? Apparently she lives in the suburbs, because she's submitted a clever letter to a mother to her son in the Lynn County News last week or so ago.

It is said that we didn't know the Lynn County News, although the letter didn't originate with either of us, here it is:

Wishes to let you know that I'm writing this letter to you because you cannot know that you cannot know the house we've moved. My father - he has a new job. Men under him. He is grass at the cemetery.

My washing machine in the house we moved in, but it's too good. Last week I put it, pulled the chain, and I the shirts since.

My Mary had a baby this week. I don't know whether it's a boy or a girl.

My brother drowned last week in the Dublin river. His workmates dived in, but he fought them off. Cremated his body, and it was put out the fire.

My brother didn't have much to do. I put a bottle of beer in the New Years Day. I kept it on Thursday and your mother. The doctor put a tube in my mouth and told me to wait for 10 minutes. Your mother to buy it from him.

My mother died twice last week. First then for 4 days, Monday then for 4 days, up she was egg four times.

My mother died yesterday from the heart. He said if the last wasn't paid on your mother within four days, up she was egg four times.

My mother, I'm sending you \$10.00 in the sealed envelope. (Slatonite)

My mother, I'm sending you \$10.00 in the sealed envelope. (Slatonite)

My mother, I'm sending you \$10.00 in the sealed envelope. (Slatonite)

My mother, I'm sending you \$10.00 in the sealed envelope. (Slatonite)

My mother, I'm sending you \$10.00 in the sealed envelope. (Slatonite)

My mother, I'm sending you \$10.00 in the sealed envelope. (Slatonite)

Fellow down the block is conserving energy. He used to put off things until tomorrow. Now he puts them off until day after tomorrow.

**MANY CHRISTMAS GREETINGS** appear in this edition of The Hesperian and there will be more in Thursday's edition (which you will receive Wednesday). These business firms are not only expressing Christmas greeting, but the message also expresses a thank you for your loyalty and patronage.

**THIS EDITION OF NEWSWEEK** magazine has a very good feature on the grain situation all over the world and says the Russians will probably be buying another five million tons next year.

The write-up very truthfully tells our farmer's plight of low prices... you may want to read this article for a very good overall picture and graphs of the situation.

**IF YOU MAKE** a left hand turn from a right hand lane, you are probably just careless or reckless, and not all of those things the guy behind you said you were.

**CONGRATULATIONS** to Donette Marble and Donzell Minner who were selected "all tournament" at the Floydada invitational tournament last week.

**A CHRISTMAS PRAYER** — Let us pray that strength and courage abundant be given to all who work for a world of reason and understanding, that the good that lies in every man's heart may day by day be magnified, that men will come to see more clearly not that which divides them, but that which unites them, that each hour may bring us closer to a final victory, not of nation over nation, but of man over his own evils and weaknesses, that the true spirit of this Christmas Season — its joy, its beauty, its hope, and above all its abiding faith — may live among us, that the blessings of peace be ours — the peace to build and grow, to live in harmony and sympathy with others, and to plan for the future with confidence. — Copied

**THE 1950 STUDY CLUB** saved a lot of Floydada folk hundreds of dollars in stamps and Christmas cards... and time, by publishing the page Christmas greeting in this edition of The Hesperian.

And... the money made by the club on this project stays in this community for many very good projects.

## More Money For Promotion Of Cotton

Washington, D.C., Dec. 16 - (Special) - Cotton industry leaders today urged passage of legislation that would enable growers to vote on increasing their present dollar-a-bale assessment for research and promotion.

Testifying before the House Cotton Subcommittee in support of HR-10930, Hervey Evans, Jr., Laurinburg, N.C., chairman of Cotton Incorporated (CI), said producers have made significant progress in developing markets and engineering better products to satisfy those markets.

Evans told the committee the dollar-a-bale assessment, established under the 1966 Cotton Research and Promotion Act, was worth 60 cents at July, 1975, purchasing power.

The proposed legislation would

amend the 1966 act to allow growers to vote on increasing the assessment in an amount not to exceed one per cent of each bale's value.

"What we simply ask is that you give us the opportunity to let us contribute more money so that we can work even more effectively and take advantage of the momentum we have developed," Evans stated.

He explained that a large cotton crop well marketed through improved, appealing new products - is good for consumers because they are provided with a greater choice of better products.

Dr. C. R. Sayre, CI vice chairman and president of Staple Cotton Cooperative Assn., Greenwood, Miss., testified that he strongly believes

growers will approve an increased assessment because of the benefits "we are starting to enjoy from our past investment. This is particularly the case in the area of processing and handling research."

He cited as an example development of the module system in cooperation with public and private groups, saying "we estimate that producers saved \$7 million in 1974" by using the seed cotton handling system.

Dr. Sayre said CI has launched a broad but intensive research program to solve the byssinosis problem. While such research is expensive and time-consuming, efforts must be continued or cotton's use as a textile fiber will diminish, he explained.

L. C. Unfred, a Tahoka, Tex., producer and president of the Plains

Cotton Cooperative Assn., Lubbock, said CI in recent years has adopted techniques used successfully by man-made fiber companies in capturing cotton markets.

He said CI helps mills use more cotton by providing research know-how, fabric ideas, technical support, and promotional push.

Unfred, CI board secretary, said this counterattack has "begun to turn the tide." He cited research advances which have enabled cotton to move into the doubleknit fabric market, as well as developments favorable to cotton in open-end spinning.

The chairman of the Council's Producer Steering Committee, C. Hoke Leggett of Hobgood, N.C., also urged passage of the bill.

## Nitrogen Fertilizer Production Curtailed

**COLLEGE STATION** - Nitrogen fertilizer production in the United States will be reduced about 4 per cent this winter, but Texas farmers should not be affected too much by the

cutback. That's the contention of Dr. Russell McDonald, an economist in marketing for the Texas Agricultural Extension Service.

He points out that the delivery of natural gas (the feedstock for ammonia used for nitrogen fertilizer) to ammonia plants will be curtailed as the winter season approaches. Current estimates are that the curtailment will total about 670,000 tons for the 12-month period ending March 1, 1976. Of course, severe winter conditions might further reduce the volume of natural gas going to ammonia plants.

"The expected curtailment of natural gas for ammonia production is almost double the curtailment during the year ending March 1, 1975," notes the Texas A&M University System specialist.

The 670,000 tons of natural gas that are expected to be curtailed means a reduction of 550,000 tons of ammonia for nitrogen fertilizer. Half of this reduction is scheduled for the period of January-March next year, a time when the need for fertilizer production increases sharply to meet demands for the spring planting season.

"The greatest curtailment in ammonia production will be in the Corn Belt where nearly 180,000 tons of nitrogen may be lost due to the curtailment of natural gas deliveries," says McDonald. "The northeastern part of the United States and the Appalachian region will also suffer, as ammonia production is expected to be down about 25 per cent from that of a year ago."

The remainder of the country should not be faced with a shortage of nitrogen fertilizer unless severe winter

conditions bring even more than the expected natural gas curtailments, add the economist.



THE WHIRLETTES with second place trophy received at the Floydada Invitational Basketball tournament Saturday night.



# Page's Thriftway No. 3

Lockney, Texas  
Phone: 652-2293

YELLOW CLING SLICED OR HALVES  
**SHURFINE PEACHES** 29 OZ. CAN **49¢**

**SHURFINE PEAS** TINY SWEET 2 17 OZ. CANS **89¢**  
**SUGARY SAM CUT YAMS** NO. 3 44¢  
**SHURFINE CHERRIES** RED MARASCHINO 4 OZ. JAR **35¢**  
**HEINZ SWEET PICKLES** 24 OZ. JAR **79¢**  
**SHURFINE PEPPER** GROUND BLACK 4 OZ. CAN **49¢**  
**MR. SALTY PRETZELS** NABISCO BOX **49¢**  
**MARSHMALLOW CREME** KRAFT 7 OZ. JAR **39¢**  
**KRAFT MARSHMALLOWS** MINIATURE 10-1/2 OZ. PKG. **33¢**  
**ALUMINUM FOIL** VIKTOR HEAVY DUTY 18" X25' ROLL **69¢**  
**BROWN IN BAGS** REYNOLDS FOR TURKEYS 2 CT. PKG. **59¢**  
**FUDGE BROWNIE** DUCAN HINES DELUXE 23 OZ. BOX **99¢**



SALAD DRESSING  
**MIRACLE WHIP**

**99¢**  
QUART JAR

## MORE HOLIDAY SAVINGS

**Maxim Instant Coffee** FREEZED DRIED 4 OZ. JAR **\$1.49**  
**FILTER RING COFFEE** MAX PAX 12 OZ. CAN **\$1.39**  
**Alka Seltzer** 69¢  
**PAPER TOWELS** CHIFFON SPILL MATE JUMBO ROLL **49¢**

## THRIFTWAY DAIRY VALUES

**Pillsbury Country Style or Buttermilk Biscuits** 8 OZ. CANS **3 39¢**

**Sour Cream** CLOVERLAKE 8 OZ. CTN. **3/\$1**  
**Cream Cheese** PHILADELPHIA 8 OZ. PKG. **45¢**

**MAXWELL HOUSE GROUND COFFEE** 1 LB. CAN **\$1.19**

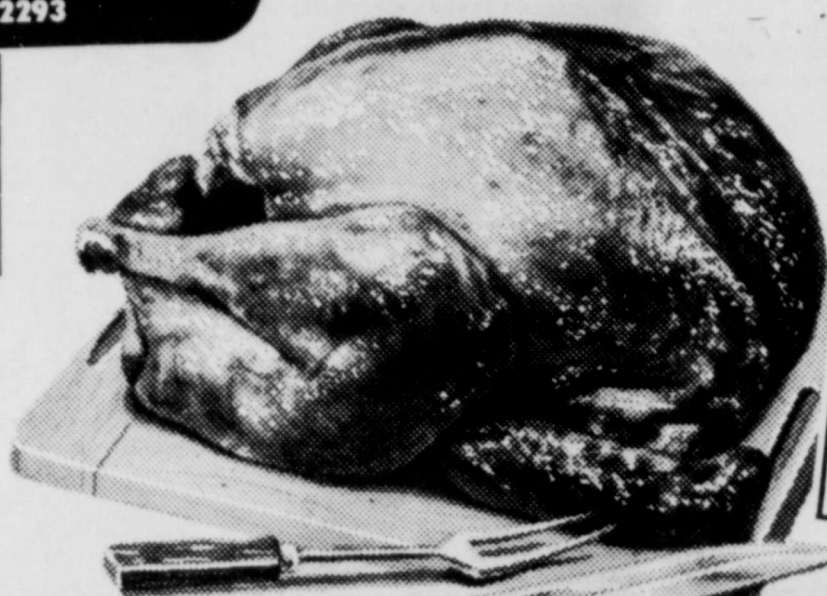
**CRISCO** PURE VEGETABLE COOKING OIL 48 OZ. BTL. **\$1.59**

## THRIFTY FROZEN FOODS

**JOHNSTON FROZEN Pumpkin Pies** 32 OZ. CTN. **\$1.19**  
**JOHNSTON'S FROZEN Pie Shells** 2 PAK PKG. **49¢**  
**JOHNSTON FROZEN Mince Pies** 32 OZ. CTN. **\$1.29**

# DOUBLE S&H GREEN STAMPS

MONDAY-TUESDAY-WEDNESDAY



**Shurfresh TURKEY** SELF BASTING HENS WITH POP UP TIMER 10-16 LB. AVERAGE **69¢**

**Boneless HAM** KAHN FULLY COOKED WATER ADDED HALF OR WHOLE **\$1.99**

# SHURFRESH TURKEYS

SELF-BASTING BROAD BREASTED WITH POP-UP TIMER



**59¢**

18 TO 22 LB. AVERAGE LB.

**Ham Slices** CENTER CUT 2 LB. **\$2.29**  
**Shurfresh Hams** 5 LB. CAN **\$8.99**  
**Sausage** RUDY'S FARM HOT OR MILD 1 LB. ROLL **\$1.49**

**Sausage** RUDY'S FARM HOT OR MILD 2 LB. ROLL **\$2.97**  
**Luncheon Meat** OSCAR MAYER OLIVE-PICKLE LOAF, LIVER CHEESE, COTTO SALAMI 8 OZ. PKG. **89¢**  
**Kosher Pickles** CLAUSSEN WHOLE QUART JAR **\$1.09**

**GRANULATED SHURFINE SUGAR** 5 LB. BAG **99¢**



HOLIDAY FAVORITE

**LARGE WALNUTS** LB. **59¢**

CALIFORNIA SUNKIST NAVELS

**ORANGES** 5 LBS. **\$1.00**

CALIFORNIA GREEN

**PASCAL CELERY** LB. **25¢**

ZEE NICE'N SOFT BATHROOM

**TISSUE** 4 ROLL PACK **69¢**

**POTATO CHIPS PRINGLES** 9 OZ. TWIN PACK **79¢**

**CLOVERLAKE WHIPPING CREAM** HALF PINT **3/8**

**SHURFRESH EGG NOG** QUART CTN. **69¢**



**FANCY RED DELICIOUS Apples** 4 LB. **\$1.00**  
**CALIFORNIA RED Emperor Grapes** LB. **39¢**  
**HONDURAS Coconuts** EACH **49¢**  
**SWEET Yellow Onions** LB. **19¢**  
**MARYLAND Sweet Yams** LB. **25¢**

**"DECEMBER SPECIALS"**  
**GE STEAM IRON**  
**3 SPEED MIXER CAN OPENER** **\$9.99**

**COKE** or **DR PEPPER** 32 OZ. 6 BOTTLE CARTON PLUS DEPOSIT

**PANTY HOSE** ONE SIZE 3 PAIRS **\$3**

**TENDER CRUST BROWN'N SERVED ROLLS** 12 CT. PKGS. **\$1**

**OCEAN SPRAY CRANBERRY SAUCE** 16 OZ. CANS **\$1**

**10¢ VALUABLE COUPON** NO. 23186  
GOLD MEDAL KITCHEN TESTED  
**FLOUR** 5 LB. BAG **69¢**  
WITH THIS COUPON VOID DECEMBER 24, 1975  
LIMIT ONE COUPON PER CUSTOMER  
**THRIFTWAY**

**10¢ VALUABLE COUPON**  
SHURFRESH IN-QUARTERS  
**Margarine** 1 LB. CTN. **35¢**  
WITH THIS COUPON VOID DECEMBER 24, 1975  
LIMIT ONE COUPON PER CUSTOMER  
**THRIFTWAY**

**10¢ VALUABLE COUPON**  
JELLY OR GLAZED FROZEN  
**Morton's Donuts** 6 CT. PKG. **69¢**  
WITH THIS COUPON VOID DECEMBER 24, 1975  
LIMIT ONE COUPON PER CUSTOMER  
**THRIFTWAY**

A BETTER WAY TO SAVE

# THRIFTWAY

SPECIALS GOOD DECEMBER 22-24



# Family Helping Silverton Join Medical System

By LILY WAFFORD  
G-N Correspondent

SILVERTON — When Silverton was part of the Regional Emergency Medical Services UHF Communications System sometime in the first of the year, the prospect of improved ambulance service will be remembered with memories of an old friend.

Most of the money for Silverton's participation in the project came from a contribution from a family couple in memory of their son who died in Los Lingos Canyon about 10 miles south of here in January 1960.

Mrs. P. A. Keplinger are ex-

pressing their gratitude to the Silverton community which turned out a force of volunteers to search the canyon and find the bodies of Robert Keplinger, 21, and his two companions from Texas Tech.

Funds donated by the Keplingers will be supplemented by proceeds from the sale of junk batteries by members of the Silverton Volunteer Ambulance Service.

J. W. Lyon Jr., Briscoe County judge and acting coroner in 1960, ruled that exposure was the cause of death of young Keplinger and his companions. Lyon said that John P. Arden, also 21, of Waxahachie, had fallen from a cliff and had apparently been knocked unconscious before dying of exposure in

snow and sub-freezing temperatures that set in the day after the young men entered the canyon on a field trip to collect wildlife specimens.

Officials at Tech said the three were members of a class which had scheduled and then canceled the field trip, and they apparently decided to make the trip on their own. They were trapped in a snowstorm that began as a cold rain on Feb. 3 and changed to snow the next day.

Their car was found on Feb. 6 near the edge of the caprock, parked on a dirt road near a fence around the canyon. The car was about 4 or 5 miles from the area where the bodies were found.

The search began the same day the

car was found, and the following day a party consisting of five light planes, two helicopters, two jeeps and about a dozen men on horseback began to comb the cedar-studded canyons. The first sign of the missing students was remnants of a camp fire, which was several days old and had been built near a bluff.

Officers thought the young men had made their way up the canyon, traveling north, apparently in search of help or trying to find their car. The bodies of Arden and Kelton Ray Conner Jr., 21, of Dallas, were found on the east side of the canyon wall, near the top.

Keplinger's body was found across the canyon about a half mile from the edge. It was in a wash about 75 yards

from a small earthen tank just above a steep ravine running from east to west toward the canyon.

The body was in a sitting position and one hand clutched a handkerchief. Searchers thought he had been headed for a light or a house, and tracks indicated he had been running.

When he came upon the shallow but steep rock-walled canyon between him and the house, he either sat down to rest or simply gave up. He had a paper sack on his head, apparently to provide some protection from the rain and snow.

The Regional Emergency Medical Services UHF Communications System will not be able to prevent tragedies

such as that which overtook the three college students in the canyon.

But it will save time — and lives — in many emergency rescue situations by providing a two-way communication link between the dispatcher and EMS personnel in the ambulance and supportive services including police, firemen and physicians.

The system, scheduled to be completed by Feb. 26, will give each ambulance voice communication with its home hospital, other ambulances and the Amarillo Emergency Receiving Center.

Thanks to the Keplinger's gift, Silverton will participate in the service without any expenditure of tax funds.

## Library Qualifies For Membership

Libraries in the area served by the Area Library System are qualified for membership for the year that began in 1960.

ship in ten Texas systems. A total of 86 percent of all Texans are served by these system member libraries. As members, they are participating in activities to improve public library service in the region.

Libraries qualifying for membership in the Lubbock Area Library System are Lubbock City-County Library, Howard County Library in Big Spring, Midland County Public Library in Midland, Ector County Library in Odessa, Unger

Memorial Library in Plainview, Andrews County Library in Andrews, Kendrick Memorial Library in Brownfield, Crane County Library in Crane, Crosby County Library in Crosbyton, Yoakum County Library in Denver City, Floyd County Library in Floydada,

Winkler County Library in Kermit, Dawson County Public Library in Lamesa, Hockley County Memorial Library in Levelland, Lamb County Library in Littlefield, Upton County Public Library in McCamey, Ward County Library in Monahans, Cochran County Library in Morton, Muleshoe Area Public Library, Yoakum County Library in Plains, Post Public Library, Rankin Public Library, and Gaines County Library in Seminole.

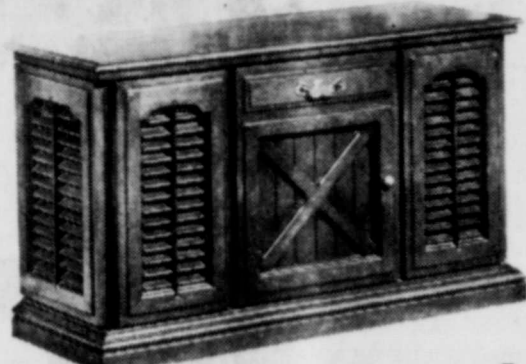
The regional systems are authorized under provisions of the Texas Library Systems Act and are supported by funds administered by the Texas State Library. In order to qualify for system activities, libraries must meet certain criteria concerning number of volumes, amount of local per capita support, and staff.

Each member participates in planning for system activities. Lay representatives from all member libraries attend the annual meeting of the Advisory Council at which council members are elected. The Systems Act gives the Major Resource Center responsibility for drawing up the annual program of service, and Rules and Regulations for its administration direct that the Advisory Council and librarians participate in formulation of the plan.

System funds are allocated according to a per capita formula. They may be used for a variety of cooperative activities, including purchase of materials for local collections, development of film collections to which all system members have access, and centralized purchasing of materials to obtain discounts for large orders, and technical assistance for small libraries. Books-by-mail and deposit collections extend service to persons who are isolated from library service.

## MONDAY ONLY 6 HOUR SALE!

SOUNDESIGN



42 inch Stereo AM/FM 8-TRACK WITH 8-TRACK RECORDER \$238.88



45 inch Stereo AM/FM 8-TRACK WITH 8-TRACK RECORDER \$258.88



60 inch Stereo AM/FM 8-TRACK WITH 8-TRACK RECORDER \$288.88

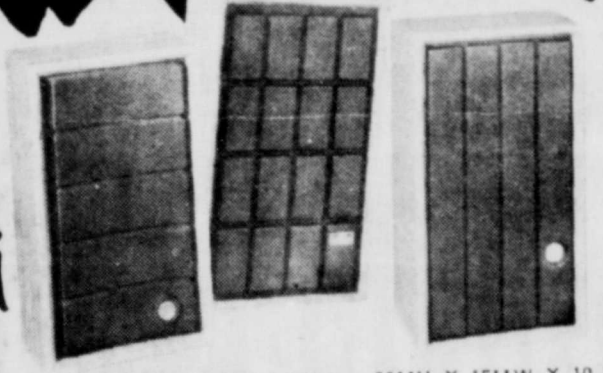
11:30 TO 5:30 AT BOTH MIZE STORES

SPECIAL PURCHASE!



\$74.95

CHOICE OF THREE SIZES SPEAKER SYSTEM



19" X 11" X 7" TWO-WAY 8" DUAL-CONE SPEAKER, TUNED PORT. 49.95

22" X 12" X 8" 1/2" DUAL-CONE SPEAKER, TUNED PORT. 69.95

26" X 15" X 10" 1" DUAL-CONE SPEAKER, TUNED PORT. 99.95



RCA The SEVILLE Model GUF108 25" diagonal

This great console brings you brilliant RCA XL-100 performance... in a cabinet rich with Old World embellishments. The molded plastic front has a carved effect. Surprisingly low cost. Come see it now!

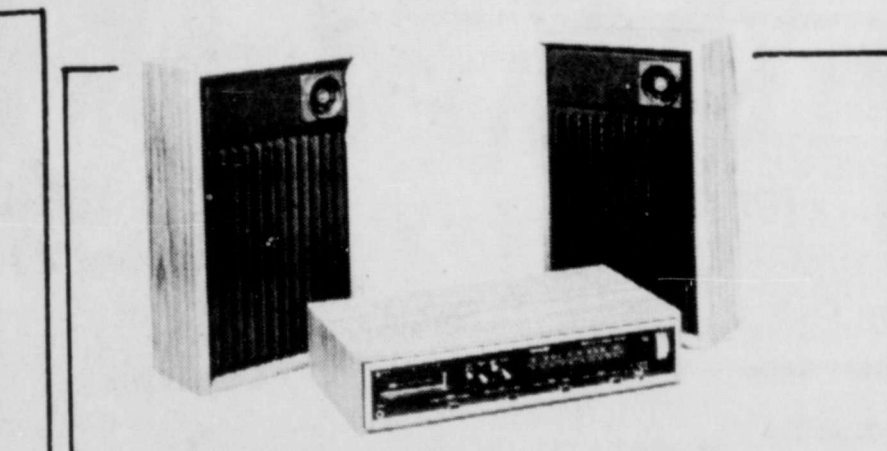
RCA XL-100, 100% solid state for reliability—no chassis tubes to burn out.

Super AccuColor black matrix picture tube for sparkling, sharply detailed color.

Automatic Fine Tuning pinpoints and holds the correct broadcast signal.

Plug-in AccuCircuit modules simplify servicing.

\$629.00



AM/FM Stereo 8 TRACK

- AM, FM, FM stereo radio
- 8-track stereo tape player
- Slide controls for volume, balance, treble, bass
- Deluxe speaker set and much more...

\$128.88



RCA XL-100, the reliability of 100% solid state—no chassis tubes to burn out. AccuLine black matrix picture tube system for brilliant, high contrast color. Automatic Fine Tuning pinpoints and holds the correct broadcast signal. Plug-in AccuCircuit modules simplify servicing.

\$338.00

MIZE PHARMACY & TV

652-2435 LOCKNEY 102 South Main

MIZE TV

FLOYDADA

983-3481 215 South Main

Season's Greetings

From.....

ERR - INCE

OIL

CO.

ANIS PARHAM

FLOYDADA

time for holly and candlelight... for gifts under the tree... and to recall both old and new friends and family. We sincerely hope that you enjoy the holidays. ... and we appreciate your business.



# Society



Louie Bybee, Cynthia Stoerner

## Stoerner-Bybee Engagement Announced

Mr. and Mrs. Wilfred Stoerner announce the engagement and approaching marriage of his daughter, Miss Cynthia Stoerner, and Louie Bybee.

Parents of the prospective groom are Mr. and Mrs. Don Bybee.

The couple has chosen

February 21 as the date of their wedding which will be in the Trinity Lutheran Church at Providence.

Miss Stoerner and Mr. Bybee are both graduates of Lockney High School and both attended Texas Tech University. Bybee farms in the Providence community.

on Monday, December 22nd at 6:30 p.m. We invite everyone to attend if at all possible.

Tuesday afternoon the staff members were shown a film on "Housekeeping." It was presented by Vesital Film Company and shown by Elmo Koen. It was educational.

Tuesday night we had a "get-together" for the employees and residents. The employees wanted to wish the residents a "Merry Christmas." We staff members sang Christmas carols. Cookies and hot chocolate

## Senior Citizens Have Christmas Dinner Program

Floydada Senior Citizens held a Christmas program and luncheon Thursday at Lighthouse Electric. After lunch was served the Hollis Payne family presented a number of Christmas and religious songs, after which Rev. Hollis Payne read the Christmas Story from Luke.

A report on the repair of toys and dresses being made for dolls by the senior citizens was given. These will be presented for Good Will Christmas gifts.

Santa Claus visited the group and presented each with a gift and in the afternoon games were played. There were 31 members present and guests, the Hollis Payne family and Susan Crawford from the Regional Office on Aging in Lubbock.

Next meeting of Senior Citizens will be January 21 at which time they will be guests of the 1950 Study Club.

were very good. They were served to everyone. Everyone visited before going home.

Wednesday night the young people from Primera Iglesia Bautista came and sang Christmas carols. They gave all the residents a Christmas card.

Wednesday afternoon the GA's from the Baptist Church came and passed out candy to our residents. Also the Act-Teens came and sang Christmas carols.

Also on Tuesday night Melissia Johnson played Christmas music on her flute. Everyone enjoyed it.

Thursday afternoon, the ladies from West Side Church of Christ came and passed out "fruit" plates to our residents. Also Janie Kline came and passed out candy.

We appreciate everyone's love and concern, especially at this season of the year. Our residents enjoy this so

## Mr. And Mrs. Walter Hollums Honored On 50th Anniversary

Mr. and Mrs. Walter Hollums were honored Sunday with a dinner in honor of their 50th wedding anniversary in the home of Mr. and Mrs. E.W. Newton in Kress. The Newtons were assisted with the dinner by Mrs. Faye Reynolds of Amarillo.

Hollums and the former Lela Gertrude Bartlett were married December 19, 1925. The couple have three sons, nine grandchildren and three great grandchildren. The sons are Melvin Hollums of Oceanside, Calif., Don Hollums of Bloomfield,

Mich., who were unable to attend, and Gene Hollums of Anderson, Mo., who was present for the dinner, along with his wife and son, Lindsey.

## Victory Baptist Church Has Christmas Dinner

Members of the Victory Baptist Church held a Christmas dinner Tuesday night in the community room of the First National Bank. The Ladies Fellowship of the church hosted the

Others attending included Mr. and Mrs. Mike Hollums of Petersburg; Mr. and Mrs. W. B. Hollums and Mr. and Mrs. Jack Hollums all of Midland; Mr. and Mrs. T.C. Hollums, Floydada; Mr. and Mrs. Eugene Byrd, Ernest, Lee and Diane of Stanton; Mr. and Mrs. Floyd Linch, Lee Elton and Elizabeth of Lubbock.

turkey dinner with all the trimmings, followed with a testimonial by Bo Johnson of Plainview.

Some 65 were in attendance.

Wednesday night the young people of the church presented the Christmas Story and a program. After the program, held at the church, the young people served an array of delicious refreshments, purchased through a recent project of theirs.

## Mr. And Mrs. Bill Wisdom Honored On 25th Anniversary

A silver wedding anniversary celebration for Mr. and Mrs. Bill Wisdom of Lockney was hosted Saturday by the children of the couple.

Eighteen persons attended the event in the Wisdoms' home.

The couple's children are Mrs. Darryl Dennis and Johnny Wisdom of Lockney and Joe Wisdom of Lubbock. They gave their parents an antique barrel trunk with "Happy 25th Anniversary 1950 to 1975, from your children" engraved on the top.

Also Thursday afternoon we played bingo. Had a good number playing with us. Our grand-prize winner was Lewis Roberts. He won a bag of candy "Christmas Bells."

Thursday night the ladies of B&PW club came and presented us a fine program. They sang Christmas carols. Even Santa Claus made a surprise visit. Gifts were handed out to each of our residents. The club presented our center with a book on crafts. We are ready to go to work now. Thanks ladies and Santa for the great time and gifts.

Thanks so much to everyone who has shared in morning devotionals this week. They have been great. This week we were saddened by the death of one of our residents, Mrs. Mollie Isom. We will all miss her very much. Love and sympathy to her family.

We would like to welcome a new resident this week. She is Mrs. Bettie George. We are so glad to have her with us. We hope she will make herself right at home

The refreshment table was laid with a beige table cloth. The centerpiece, a Christmas arrangement of white fern and red candles, completed the decor.

A tiered wedding cake and lime punch were served. Games of 42 were enjoyed by Mr. and Mrs. Red Daniels, Mr. and Mrs. Tommy Montandon, Mr. and Mrs. Wayne Bramlet, Mr. and Mrs. Dan Teuton, Mr. and Mrs. Glen Lewis, Mr. and Mrs. Darryl Dennis and Cody, Mr. and Mrs. Johnny Wisdom, and Joe Wisdom.

with us. The lovely poinsettias were shared this week by Rev. and Mrs. Clay Muncy.

Mrs. Adams and the H.E.W. girls brought us a lovely Christmas tree made out of branches of a tree and thread spools that were decorated. It is lovely.

The Friendship Social Club of Floydada brought us a turkey for Christmas.

The Southwestern Home Demonstration Club of Briscoe County brought us Christmas gifts for our residents. They were delivered by Mrs. Rex Holt and Kent.

Evans Chapel of Lockney brought us a box of gifts, fruit and nuts.

Mary Reeves went out for lunch on Tuesday with her niece Rena Nelson and her sister Willie Stouter.

Mrs. Woodall went to Plainview Tuesday with her sister Mamie Hayes. Also with Shirley Hayes and June Hayes.

Lena Brotherton came Monday and did the ladies hair for us. Those bringing us cards, egg cartons and magazines this week were Lon Colvin, Frank Brown, Wilma Adams, Virginia Taylor and Mr. and Mrs. Rose. Thanks, everyone for these items. Also thank you to anyone whose name I didn't get. We appreciate these items, as they can always be used in crafts.

We have had many local visitors this week. Thanks for coming and visiting with us.

We have had many out-of-town visitors. These were Mr. Word had Donna Yearry of Floydada, Mr. Turner had Matt Norrell from Floydada; Mr. Leal had

## Club Members Have Dinner

Harmony Home Demonstration members, with husbands as guests, held their Christmas dinner Monday night at the Congress Inn in Plainview. After the meal the group went to the Bob Hopper home for gift exchange and games.

Attending were Mr. and Mrs. Bob Hopper, former residents of the Harmony Community and Mr. and Mrs. Walter Hanna, Mr. and Mrs. Monroe Shultz, Mr. and Mrs. Carrick Snodgrass, Mr. and Mrs. Everett Miller, Mr. and Mrs. Zant Scott, Mr. and Mrs. J.R. Turner, Mr. and Mrs. Jimmy Kelley, Mr. and Mrs. Bob Ratjen, Mr. and Mrs. Lloyd Murry, Mr. and Mrs. J. R. Turner, and Mrs. Mather Carr.

FLOYD DATA Mrs. Lula Green is in Odessa at the bedside of a critically ill brother, Charlie Mastin of Midland. Mr. Mastin suffered a stroke last week and underwent brain surgery Thursday and again Friday for a blood clot.

THE FLOYD COUNTY HESPERIAN

Published each Sunday and Thursday at 111 E. Mo. St., Floydada, Texas 79235. Second class postage paid at Floydada, Texas 79235. Wendell Tooley, editor. Subscription rates: Local \$7.50 a year, out of state area: \$8.50.

## AT MUSEUM

## Display Of Depression Glass

There is now a display window at the Floyd County Historical Museum holding depression glass. Depression glass was at its height of popularity in 1929 and is considered now to be an antique.

The glass continued to be made throughout the years preceding World War II, due to the fact it was plentiful, pretty and cheap.

There is little doubt the main reason for the immediate popularity of this glassware was its price. Many of the pieces sold for as little as three or four cents each and as the depression dragged on and business for the glass houses decreased along with other businesses, the glass dinner and luncheon sets and giftware were used as give-away premiums to help promote the sale of other products and services.

SEE PICTURE, PAGE 4, SECOND SECTION

visitors from Quitaque; Mrs. Grider had Art and Yvonne Ratzlaff from Floydada; Mrs. Dyer had Florene Cobb from Quitaque; Mr. and Mrs. Leckett Payne had Mr. and Mrs. Elmer Cook from Matador and Mr. and Mrs. Nevada Cook from Northfield; Mr. and Mrs. William Hartley had Mrs. Jameson from Plainview; Mr. and Mrs. Herbert Hartley from Plainview and Mr. and Mrs. Merrill from Edmonson; Mrs. Jacobs had Mrs. Bert Grundy from Quitaque; Mrs. Edwards had Mr. and Mrs. Marvin Rape from Floydada, and Louise Jones from Floydada; Mr. and Mrs. D. W. Burke had Mildred Cates and Jonelle Fawver from Floydada; Mrs. Kitchens had Rubye Lee Kitchens from Silverton, Mr. and Mrs. Gordon Montague from Plainview; Stella Davis and Ann Bryant from Silverton; Ada Stewart from Oregon; Mrs. Rogers had Osia Smallwood and Evert from Matador; Mrs. Grundy from Quitaque; Ida and Georgia Lee Jones from Odessa; Mrs. Davis from Matador and Howard and B. Rogers from Flomot. Mrs. Carville had Mrs. Grundy from Quitaque. Rhonda Fortenberry visited with Eunice Christian and Leola Fortenberry. Mrs. Hamilton had Yvonne Ratzlaff from Floydada; Mrs. Ormond had Ruth Roberson from Olton; Mrs. Vick had Harlie Vick from Floydada; Mrs. George had Marjorie George from Quitaque; Mrs. Kellison had Tony and Ann Warecki from California; Mrs. Calvin had Emmett Scott from Leonard

Attending "dish the movies each one way of collecting set of glasses or service in a pretty Wednesday night towns from coast twenty-five cent ticket would buy feature pictures, selected short newsreels, and the family glass.

Many advertisements were made of glass. One could "free" set of glass bedroom or living suite. Sears Roebuck their customers services for food during the depression. Thousands of depression glass it is the representative of which it was made.

another thing party for the 22nd. We had up. It is now real gifts to be put tree. Be sure and for your residence everyone will under the tree, thrill and enjoy them to have give tree.

Will close for God Bless! Til ne

## Countless blessings



May the Blessed Shepherd lead you through the darkness to the heavenly light of His

C & J Floral Carolyn And Jack

## BROWN'S LAST-MINUTE HOLIDAY GIFT GUIDE



### FOR HIM:

- ☐ Suits
- ☐ Sport Coats
- ☐ Leisure Suits
- ☐ Sport Shirts
- ☐ Dress Shirts
- ☐ Sweaters
- ☐ Jeans
- ☐ Cologne
- ☐ Socks
- ☐ Ties
- ☐ Underwear
- ☐ Belts
- ☐ Dress Slacks

### FOR HER:

- ☐ Dresses (long & street length)
- ☐ Pant Suits
- ☐ Coordinates
- ☐ Shoes
- ☐ Robes ☐ Gowns ☐ Pajamas
- ☐ Hosiery
- ☐ Jewelry & Scraves
- ☐ Towels
- ☐ Sheets
- ☐ Electric Blankets
- ☐ Househoes & Scuffs
- ☐ Sweaters



104-06 North Main

Lockney, Texas



Christmas at our place, so that you may enjoy Christmas at your place. A very merry one from all of us.





## seroso Has Bicentennial Christmas Party

Christmas dinner was held Decem-ber 19 at the home of Barbara A. Cawley. A theme centered the bicentennial year. Members of the II Club and hus-bands all enjoyed a fine beginning meal. Ladies served dishes — rolls, and angel whipped cream berries accompan-ying the meal. Free given liberty made by a club favors to hang Christmas trees. Attending were Mrs. Randy Henderson, Mrs. Bill Evans, Mrs. Audrey McCormick, Mrs. Roy Kidd, Mrs. Bill

During the more than three score years he had worked for the Swenson, Matadors, Pitchforks, 666's, Triangle, A. B. Echols and Doc Burleson ranches as well as several others. Serving as cowboy on most of these ranches, he later became a ranch hand cook and was well known for his "mean pan of sour dough biscuits."

During the span of years on the ranches he always used from his bedroll, a pillow given him by his grandmother when he was eight years old. He moved to Floydada in 1949 and made his home with a daughter, the late Mrs. F. M. Marquis. A lover of good deeds, he delighted in "whipping up" a batch of his biscuits from his chuckwagon, to go along with a ranch meal he prepared for numerous organizations.

The pioneer cowboy once made the statement, "I don't intend to get old, but I can't

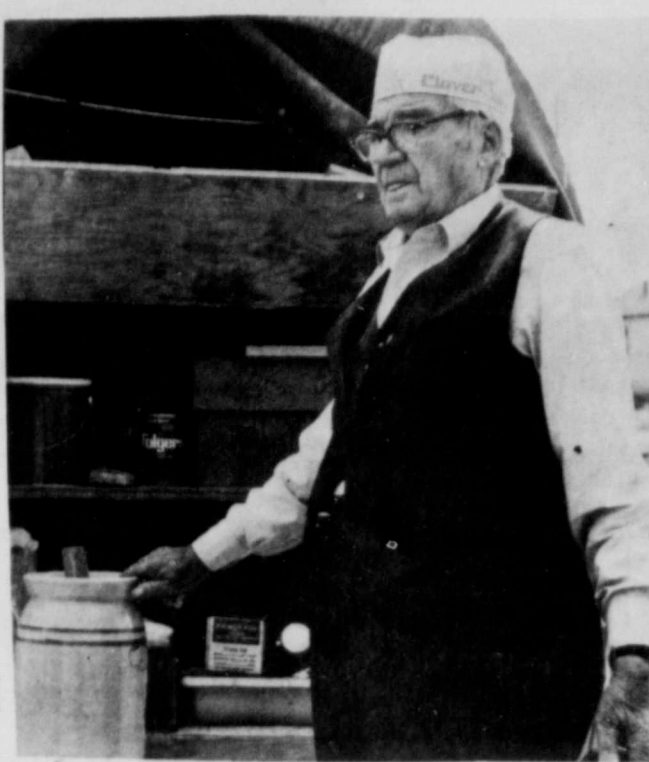
help having been here a long time."

He retired in 1958 and moved to Lubbock in 1971 from Floydada. He was a Baptist and a member of the Rodeo Club in Lubbock.

Survivors include three daughters, Virginia Briggs of 3003 42nd St., Lubbock, Mrs. Velma Rogers of Idalou and Mrs. Corine Moseley of Oklahoma City, Okla.; 10 grandchildren including Mrs. Joe Max Harrison and Jimmy Marquis of Floydada; and 14 great-grandchildren.

Rev. Larry Heard, pastor of the First Baptist Church of Idalou, officiated for the service. Interment was in Resthaven Memorial Park under the direction of Henderson Funeral Home.

Union wage rates for the building trades averaged \$8.46 an hour on January 2, 1975, according to the U.S. Department of Labor.



HUMPY BRIGGS



### LETTERS TO SANTA

Dear Santa,  
I am 5 years old and I go to kindergarden. I would like to have a Baby-That-A-Way and a Sit and Spin. My sister Jodie would like to have a baby with a bottle and blanket and some tinkertoys. Please don't forget all my cousins.  
Love you,  
Missy & Jodie  
Hayes

"The happiest families are those in which the children are properly spaced—about ten feet apart."

## Ford Family Presents Program

Ray and Ann Ford and their children Randy, Roxanne, Russell and Rachelle presented a program of Christmas music Tuesday night for Lockney Masons and their families.

About 60 persons were present for the program and a dinner which preceded the entertainment. Worshipful master Homer Ragland introduced the Ford family. Out-of-town guests included Mrs. Hattie Stelle,

mother of Mrs. Ford, and Mrs. J. E. Vaughn, mother of Mrs. Ragland. The sisters both live in Silverton.

### Work Force Facts

About one-third of all state, local and Federal employees are unionized, compared to about 20 per cent of the private workforce.

## OBITUARIES

### Mrs. Frank (Faye) Oglesby

Services for Mrs. Golia Faye Oglesby, 47, the wife of the Rev. Frank B. Oglesby, pastor of the First United Methodist Church in Tahoka are scheduled for 2 p.m. Saturday, December 20, in the Tahoka First United Methodist Church with Dr. O. A. McBrayer of Lubbock officiating.

Mrs. Oglesby died at 6:30 p.m. Wednesday in Lynn County Hospital here after a brief illness.

Born in Bunker, Mrs. Oglesby attended school in Hobbs, N.M. She married Rev. Oglesby June 26, 1946, in Carlsbad, N.M. They moved to Lynn County in 1973 from Lockney. Mrs. Oglesby was a member of the Order of the Eastern Star and of the First United Methodist Church here.

Survivors include her husband; two daughters, Mrs. Jack Myers of Fort Wayne, Ind., and Sherree Lynne of the home; a son, Terry Glenn of

the home; two brothers, L.B. Owen of Graham and A.L. Owen of Houston; and two grandchildren.

The family requests memorials be made in the form of donations to the First United Methodist Church here. Rev. Oglesby was pastor of the Lockney First United Methodist Church from 1969 to 1973.

### Humpy Briggs

Rites for Carey L. "Humpy" Briggs, 87, a well known Motley and Floyd County cowboy and ranch cook, were conducted Saturday morning, December 20, at 10 o'clock in Henderson Chapel in Lubbock. Briggs died at 1 a.m. Thursday in Lubbock Methodist Hospital after a brief illness.

Briggs was born in Limestone County July 2, 1888 and moved to the Paducah area in 1906.

## 3 More Days Til Christmas SOME GIFT SUGGESTIONS....



- Ladies Pantsuits
- Ladies Gown & Robes
- Ladies Hand Bags
- Tall Men's Shirts
- Men's Western Shirts
- Jr. Miss Pantsuits & Jeans

## Betty's Place

OPEN 10:00 a.m. to 6:00 p.m.

ON THE WYE IN FLOYDADA



# DOUBLE BUCANEER STAMPS

MONDAY,  
TUESDAY,  
WEDNESDAY

COLORADO RUSSETS  
5 LB. BAG  
**POTATOES**  
79¢

**23¢** LB

**CLOSED CHRISTMAS DAY**

NORBEST HEN 10-16 LBS

**TURKEYS** LB 69¢

YOUNG TENDER **HENS** LB 69¢

## HAMS

WRIGHTS SHANK PORTIONS L3 \$1.29

WRIGHTS BUTT PORTIONS LB \$1.49

WRIGHTS WHOLE LB \$1.59

**HAM STEAK** LB \$1.98  
1 1/2 - 2 INCHES THICK

PHILIDELIA 8 OZ. PKG

**CREAM CHEESE** 47¢

14 OZ. CAN **EAGLE BRAND MILK** 52¢

NO. 2 1/2 CAN **PEAR HALVES** 69¢

303 CAN **PUMPKIN PIE FILLING** 2/79¢

OCEAN SPRAY WHOE BERRY CRJELLIED 303 CAN

**CRANBERRY SAUCE** 49¢

DEL MONTE NO. 2 1/2 CAN **PUMPKIN** 39¢

KIMBELL FULL QT. **SALAD DRESSING** 79¢

CLOVERLAKE ALL FLAVORS 1/2 GAL **MELLORINE** 69¢

CLOVERLAKE **WHIPPING CREAM,**

DIP & CHIP, 3 FOR \$1.00

1/2 & 1/2, or SOUR CREAM

**PRESTON MILK** GALLON \$1.29

MONDAY-TUESDAY - & WEDNESDAY ONLY

# RITE-PRICE FOODS

HOME OWNED, HOME OPERATED

PHONE 652-2301 LOCKNEY, TEXAS

## SUGAR

WITH PURCHASE OF \$30.00 OR MORE

WITH \$20.00 - \$29.99 PURCHASE

WITH \$10.00 - \$19.99 PURCHASE



# Small Ads... Big Results!

# CLASSIFIED ADS!

## REAL ESTATE

NICE 2 bedroom home, den, bath, 716 W Georgia, Floydada, Texas. Call Lubbock 797 7643 or 799 1156. 1-4p

THREE bedroom house, carpeted, newly remodeled. Bond Real Estate, Wilson Bond 983 2151 or 983 3573. ttc

FOR SALE: Fuqua Feed Store Building, 3 lots, grinder and mixer. Call 983 2261. ttc

SEVERAL NICE two and three bedroom homes for sale. Loans can be arranged. Call Hale Insurance at 983 3261. ttc

BY OWNER: 42 room apartment and motel complex, service station and restaurant 9 lots, on Highway 287. Childress, Texas. Ideal for owner manager. Good profit potential. Will take some trade or will carry balance on 8% note. Call 806 763 6183. 12-28p

FOR SALE: J. B. Ave 3 bedroom, brick, newly painted trim, gas light and barbecue. Ralph V. Graham Realtors 293 4246 or 983 2817. 12-21c

OUR PRICE HAS BEEN reduced considerably on this 3 bedroom house, 804 West Georgia, shown by appointment only 983 3390. ttc

LIKE NEW Town & Country 14x72, 3 bedroom, 1 1/2 baths, C.H. & A.C. fully furnished, washer dryer, dishwasher, carpeted. Payments \$166.00. \$750 Equity. See by appointment. Call 983 2154 or 983 2368. Sundays and nights. ttc

THREE bedroom house, double garage, ten acres, well improved, one mile east of town. Call 983 8117 or 983 3673. ttc

## FARM & RANCHES

FOR SALE 160 ACRES 2 miles north of Lockney on 378. 652 2131. L-ttc

HOW ABOUT a half section with 10' water? Two irrigation wells tied together with underground pipe. All in cultivation, good deep soil, located 15 miles west Denver City. No improvements. Call 983 3982. ttc

## BUSINESS SERVICES

TV ANTENNAS and supplies. Mike's TV LAB, 315 South Second. Phone 983 5023. ttc

PIANO TUNING: Edward C. Lain 25 years experience. Write Box 425 Silvertown or call 823 2151 or 823 205. L-ttc

CARPET shampoo and shampooer. Rent the shampooer for \$1 day with purchase of shampoo. Davis Lumber Company, Lockney. L-ttc

## BUSINESS FOR SALE

GROCERY STORE in Dougherty, Texas. Gross \$100,000 yearly. Stock and fixtures \$20,000. Phone 806 983 2943. ttc

## FOR RENT

FOR RENT: Property Apartments, 2 and 3 bedroom houses, business buildings, clean. BARKER INSURANCE AGENCY, Lockney, 652 2642. L-ttc

## STORAGE SPACE FOR RENT

Furniture, campers, boats, etc. Clean out garage and store with us 652 2309. L-ttc

## WANTED

WILLIE GALVAN will buy your scrap iron. Call him at 983 5277 nights or 983 2503 days. ttc

WANTED TO BUY irrigated or dryland farm in Floyd or surrounding area. Write Box XRO, c/o Hesperian, Box 700, Floydada. ttc

WANT TO RENT: Former Lockney resident wants to rent Ruidoso cabin two or three nights at \$30 per night. Responsible adult church group of 10 or 12. Guarantee will leave clean. No smoking or drinking. Call collect after 5 p.m. 1 917 293 2766. 12-25c

C. H. BRADFORD Watch Repairs, 262 W. Crockett. ttc

## FARM SERVICES

CUSTOM FARMING: Breaking, listing, planting, crosscut, spraying, tandem and chisel. 293 2578. L-ttc

PORTABLE DISC ROLLING - Sammy Kemp. Work guaranteed 983 2347. ttc

MR. FARMER we have baling wire now - Babe's Service Center. ttc

NORRELL TRACTOR PARTS For Tractor and Irrigation Supplies and Accessories. ttc

## LOST AND FOUND

LOST: Volt-ohms meter in brown leather case with carrying strap. Call Dowell Brewer, 652 2125 after 5. L12-25p

REWARD: Lost set of 5 keys on a Montgomery Ward Auto Club key chain. Bring to the Hesperian if found. ttc

FOUND: Set of keys at 2nd and Grover. May pick up keys at Hesperian when ad is paid for. 12-21

LOST 3 yearlings, 2 notches in left ears, brand on left thigh, 1 Whiteface cow, W on left hip. Strayed 5 miles Southeast of Floydada. C. N. Walding 983 3291. ttc

## FREIGHT DAMAGED GOODS

Corningware, Pyrex Cooking Ware Samsonite Luggage Farberware, G. E., Mirro-Matic Thermos, Cosco King Gas Stoves, from 15,000 BTU up Ironing Boards Stock Tanks Aluminum Farm Gates Garbage Cans Lots of Shower Gift Ideas

**FOGGERSON LUMBER & SUPPLY**  
Silvertown, Texas



Auto Accidents DO Happen... If one happens to you, be protected. Our car insurance offers coverage to meet your special needs - repairs to personal liability.

**BAKER Insurance Agency**  
127 W. Calif.  
Ph. 983-3270

## COW POKES

By Ace Reid



"Wul sir, about all I growed here is impatient!"

THIS FEATURE SPONSORED BY  
**AUTO, FIRE & FARM INSURANCE**  
Floydada Real Estate & Insurance Agency  
Jim Word — — — Phone 983-2360

## PETS

FOR SALE: Silver miniature poodles after five p.m. Call Lockney 652 2183. L-ttc

JUST in time for Christmas. Five week old puppies to give away. Call 652 3747 after 6 p.m. L12-21c

MOVING: must sacrifice ten month old male English Pointer Bird Dog. Trained, and still in time for bird season. Call 652 3619. L12-25c

## AUTOMOBILES

FOR SALE: Economy 1975 Vega HB, AT, Air, 1600 miles, call after 5 p.m. 983 3358. Jimmie Lou Stewart. ttc

FOR SALE: 1968 Chevrolet pickup, extra gas tanks and air shocks. Kenneth Moody. Lockney 652 2417. L12-21c

FOR SALE: 1973 Monte Carlo, power steering, power brakes air conditioned, automatic, swivel seats, tape deck, 2 new tires. ttp

**FLOYD COUNTY ABSTRACT CO.**  
Abstracts Of Title  
Title Insurance  
Verna L. Stewart  
Owner, Manager  
217 W. California  
983 3728  
Floydada, Texas

**lightweight ALUMINUM CANES & CRUTCHES**

Sturdy  
Dependable  
Attractive

Wide selection for every prescribed need

Forearm and underarm crutches

Adjustable telescopic canes

Four legged canes

Seat Canes

**BISHOP-RAMSEY PHARMACY**  
208 West Houston  
983 3174  
FLOYDADA

**BEEF**

HEAVY GRAIN PFR  
FED ..... 83¢  
LIGHT GRAIN LB  
FED ..... 79¢  
LB.

CUT, WRAPPED AND FROZEN

\$30-\$50 BEEF PAKS  
LOCKNEY MEAT CO. Deer Processing. 652-3305. Sam Fortenberry, Mgr. L-ttc

SLEEP WHILE YOUR WANT AD WORKS....

**READY MIX CONCRETE**

QUICK AND EASY

You can't beat our price per yard for quality concrete—and quick, easy delivery to save you back-breaking labor. Give us a call today for a free estimate, and have your mixed concrete delivered where and when you want it.

CALL 983-2170

**BENNETT BUILDING MATERIAL**  
229 E. CALIFORNIA FLOYDADA

**Professional Service**

**DAN'S AUTO SERVICE**  
DAN TEUTON, Owner  
Specializing in Automatic Transmission, Motor Tune-Ups, Auto Air Conditioning.  
General Repair  
We Have A BRAKE LATHE to handle all passenger car brake drums. See us for complete brake service.  
Phone 652-2462

**DR. JOHN W. KIMBLE, O.D.**  
Contact Lenses - Visual Analysis  
Closed Tuesday Afternoon Saturday 9-3  
Floydada, Texas Phone 983-2496

**QUALITY SHAMROCK PRODUCTS**  
Always Make A Good Deal On SONIC TIRES and SOUTHLAND BATTERIES  
Dial 652-3366  
**JACKSON TIRE COMPANY**  
Richard Wiley

## FOR SALE

TV AND HOME ENTERTAINMENT PRODUCTS REPAIR SERVICE: MIKE'S TV LAB 315 South Second. Phone 983 5023. ttc

FOUR good used 878-14 tires. \$3.00 each or four for \$10. Phone 983 3982. ttp

FOR Trojan corn and milo seed contact Orba or Lyle Miller at 983 2021 or 983 2619. 1-8c

FOR SALE: Electric motor for irrigation. Vertical hollow shaft. 50 H.P. and 60 H.P. call 652 3133. L12-28p

FOR SALE: I have several hundred feet of good four and five inch aluminum pipe. 40 cents per foot. Phone 983 3982. ttp

FIREWOOD for sale. Randy Hicks. Call 347 2470 after 4 p.m. 12-28p

FOR SALE: 2 boys bicycles, like new, one Sears and one Brioni. Call 983 3881. 12-21c

FOR SALE: Vox Student Prince electric guitar. Call 983 3881. 12-21c

FOR SALE: CB whip antenna, complete. Call 983 3881. 12-21c

FOR SALE: Four piece drum set. Artist Ltd. Vildjian Ludwig concert snare drum also Barth electric guitar. Call 652 3771. L12-28c

WE have the Spanish Farm & Ranch book. Hesperian Office Supply. ttp

GOOD used Remington calculator. \$75.00 Hesperian Office Supply. Floydada. 983 3737. ttp

## CARD OF THANKS

WE wish to express our sincere thanks for the many acts of kindness shown us at the time of the death of our mother and grandmother. For the floral offerings, food sent in, and words of sympathy we are grateful. Special thanks to Dr. Mangold and the staff at Lockney General Hospital. May the Lord bless you. The Family of Mrs. J. T. (Addie) Perry

A NICE way to remember your friends and loved ones is with a Memorial Gift to the American Heart Association. A card will be sent to the family acknowledging your gift. Contact Olin Watson, Memorial Chairman at 983 2191.

## FOR SALE

SLENDERETTE REDUCING Machine. Call 983 5169. ttc

FOR SALE: 1972 Yamaha 350 Street bike. Lady Kenmore white portable dishwasher less than 2 years old. 983 5308. ttc

WEED EATERS - see at Don's Small Engine. 123 W. California. 12-25c

C.B. RADIOS in stock at Don's Small Engine. 123 W. California. 12-25c

WE SELL new and rebuilt Kirby Vacuum Cleaners and parts. Parker Furniture, Floydada. ttc

FOR SALE: Kirby Vacuum Cleaners new or rebuilt. Beginning at \$119.95. Also Kirsch heavy duty cafe drapery and curtain rods. All lengths. Parker Furniture, Lockney. L-ttc

FOR SALE: 5x10 Siding Trampoline with pads on rails. Call 983 2220 days or 983 2667 nights. 12-25c

FOR SALE: Two houses to be moved, located three miles South Aiken on Walter Taack farm. 28x40 five room and 26x24 four room, bath with some plumbing. Also, two propane tanks, 250 gal. One 1-H.P. Pressure pump with tank. Good One, 1H.P. Dempster rod type with 200", 2 1/2" pipe and rods good. L-ttc

COKE MACHINES: choice of three. Dougherty Grocery. 983 2943. 12-25c



WE WANT YOU TO KNOW - We sell all kinds of Goodyear tires... tractor, auto, truck, a good tire, good service. Best deals in West Texas. Truck winch and hauling service. B.A.B.E.'S SERVICE CENTER, FLOYDADA. ttc

**The Tye Company**  
MANUFACTURERS AND MARKETERS OF FARM EQUIPMENT

**MACHINE OPERATORS**

Wire and Stick Electrode Welders

PERMANENT WORK VACATION HOLIDAYS HOSPITALIZATION INSURANCE

PAY IN ACCORDANCE WITH QUALIFICATION AND EXPERIENCE.

Apply in Person

Hwy 70 EAST LOCKNEY, TEXAS

**INVENTORY CLEARANCE**

AGGRESSIVE INDIVIDUAL NEEDS INVENTORY DOCUMENTATION AND REVIEW. INITIAL COMPENSATION WILL BE ON QUALIFICATIONS AND EXPERIENCE. CONFIDENCE OUTLINE. SALARY HISTORY TO:

**The Tye Company**  
Box 218  
Lockney, Texas 7924

IF IT IS INSURANCE - SEE -

**Barker Insurance Agency**  
LOCKNEY  
Life - Fire - Casualty - H

**B. B. Wilkes Real Estate**  
LOCKNEY  
Farms - Ranches - City Properties - Business Leases - Loans

**FOR SALE Farm Land**

155 ACRES 3 MILES EAST AND 1/2 MILE SOUTH OF MC COY TWO GOOD WELLS 3/4 MILE OF UNDERGROUND PIPE RENT ADJACENT QUARTER SECTION WITH PURCHASE OF THIS FARM

97 ACRES 5 1/2 MILES NORTH OF RALLS ON PAVEMENT 8" WELL NATURAL GAS 3/4 MILE OF UNDERGROUND PIPE

OFFERED BY **PARKS REALTORS**  
Lubbock, Texas 744-2347

**Diamond Industrial Supply Co., Inc.**  
Phone Days 296 7418 - Nights 296 1200 or 296 7828  
1014 Broadway  
Plainview, Texas

Chain U-joints  
Sprockets Oil Seals  
V-belts O-rings  
Sheaves Wisconsin  
SKF BCA Timken Bower  
Cotton Stripper Brushes & Bats

"We Appreciate Your Business More"  
L-TTC

**OIL SALE**  
THRU JANUARY 20  
**TEXAS ENERGY COMPANY**  
652-3334 LOCKNEY

**SPARE TIME BUSINESS**

Own your own profitable vending business. \$200 to \$600 monthly earnings possible in your spare time (day or eve.) NO SELLING. If selected, you will be servicing company established EXCLUSIVE locations.

OUR COMPANY IS A SUPPLIER OF NABISCO SNACK ITEMS.

REQUIREMENTS: \$1,000 to \$5,000 CASH INVESTMENT, (secured by machines and merchandise) good character, dependable auto, and 6 to 9 spare hours weekly. Income starts immediately! We supply product, machines, locations, expansion financing, buy back option, and professional guidance. If you are sincerely interested in applying for this genuine opportunity toward financial success, please call or write (include phone number) for personal interview in your area to:

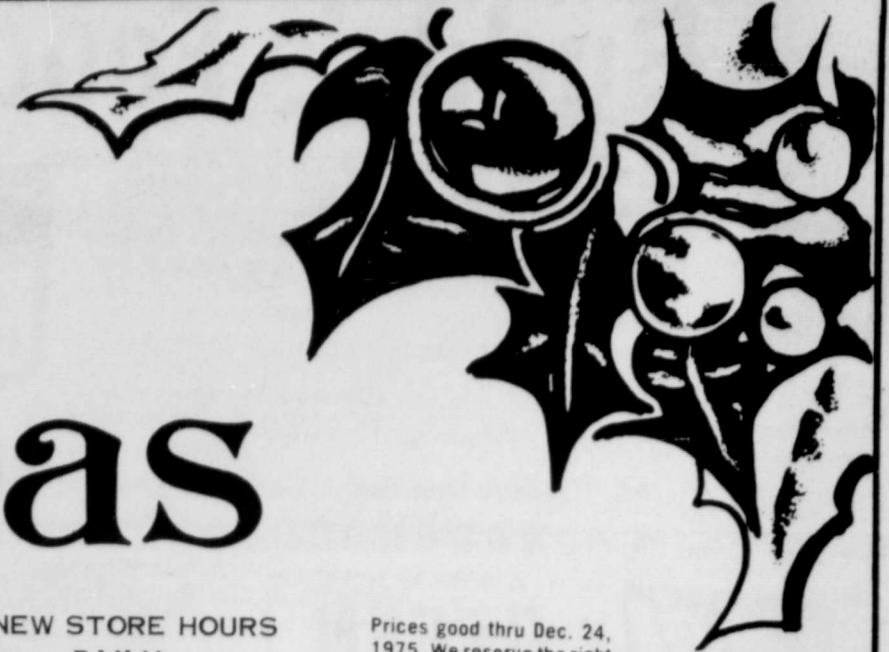
MR. ROBERT L. ANDERSON  
WORLD INDUSTRIES INC.  
Executive Suite 303  
1919 East 52nd Street  
Indianapolis, Indiana 46205  
Telephone (317) 257-5767

A  
WANT  
AD  
WILL  
FIND  
YOU  
A  
BUYER





# Merry Christmas



**WE WILL BE CLOSED**  
Christmas Day  
So that our employees can spend Christmas with their families.

**NEW STORE HOURS**  
DAILY  
8 AM-9 AM  
SUNDAY  
9 AM-8 PM

Prices good thru Dec. 24, 1975. We reserve the right to limit quantities. None sold to dealers.



Grade A, 16 to 18 Lb. Avg. Yearling

18 Lbs. & Up, Swift's Turkeys

Boneless, Water Added  
Swift's Premium, 6-10 Lb. Avg.

WESTERN RED DELICIOUS

## Turkeys Butterballs Smoked Ham Apples

**65¢**  
Lb.

PRESTO TURKEY  
Brown N Bags  
2-Ct. Pkg. 49¢

**79¢**  
Lb.

Pepperidge Farm  
Stuffing Mix  
8-oz. Pkg. 47¢

**\$1.98**  
Lb.

**5 \$1**  
Lbs.

Shuck  
Roast

**89¢**  
Lb.

Grade A, 4-7 Lb. Avg.,  
**Baking Hens**

**59¢**  
Lb.

Shank 1/2 Butt 1/2  
Water Added — Bone In  
**Smoked Hams**

**\$1.29**  
Lb.

East Texas Yams, or  
Maryland  
**Sweet Potatoes**

**19¢**  
Lb.

Butterball  
Turkeys

**85¢**  
Lb.

Farmer Jones, Boneless, 3-5  
**Rib et Roast**

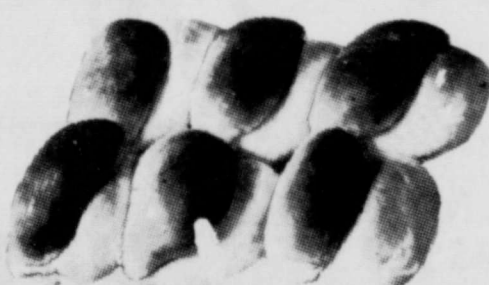
**\$1.39**  
Lb.

Whole (Water Added)  
**Smoked Picnics**

**99¢**  
Lb.

Sunkist, Extra Choice,  
**Navel Oranges**

**\$1.00**  
Lb.



6-32 oz. BOTTLE CARTON

**COKE OR DR PEPPER**  
**\$1.49**

**Eggs**  
**75¢**  
Doz.

**Rolls**  
**3 89¢**  
12-Ct. Pkgs.

**49¢**  
2-Ply Roll

Kraft's, Italian or  
**1000 Island Dressing**

**49¢**  
8-oz. Btl.

**Cake Mix**

**49¢**  
18 1/2-oz. Box

25-Ft. Roll **29¢**  
180-Ct. Pkg. **49¢**  
100-Ct. Pkg. **89¢**

Fancy  
**Le Sueur Peas**  
Shady Lane, Maraschino,  
**Salad Cherries**  
Kraft's  
**Orange Juice**

17-oz. Can **49¢**  
10-oz. Jar **69¢**  
1/2-Gal. Btl. **\$1.25**

Kraft's Marshmallow  
**Crepe Topping**  
Baker's, Flavored Baking  
**Chocolate Chips**  
Griffin, Flake  
**Coconut**

7-oz. Jar **49¢**  
12-oz. Pkg. **79¢**  
14-oz. Pkg. **89¢**

Delsey, Assorted  
500 Sheet, 2 Ply  
**Bath Tissue**

**39¢**  
2-Roll Pkg.

Carol Ann, Apricot, Peach, or  
**Strawberry Preserves**

**99¢**  
2-Lb. Jar

Red Label, Clear  
**Karo Syrup**

**99¢**  
Qt. Btl.

Ocean Spray,  
**Cranberry Cocktail**

**\$1.39**  
1/2-Gal. Jug



CLOVERLAKE  
**Whipping Cream** 3 8-oz. Ctn. **\$1.00**  
BELL  
**Egg Nog** Qt. Ctn. **79¢**  
CLOVERLAKE  
**Cottage Cheese** 12 oz. **73¢**



Mrs. Smith's, Apple, Dutch Apple, Cherry, Peach  
**Fruit Pies** 26-oz. Pkg. **89¢**  
Piggly Wiggly  
**Whipped Topping** 10-oz. Ctn. **49¢**  
Piggly Wiggly Cut Broccoli, Cauliflower Florets  
& Cut Broccoli, Cut Corn, Mixed Vegetables,  
or Green Peas  
**Frozen Vegetables** 18-oz. Pkg. **59¢**





# Small Ads... Big Results!

# CLASSIFIED ADS!

## REAL ESTATE

NICE 2 bedroom home, den, bath, 716 W. Georgia, Floydada, Texas. Call Lubbock 797 7643 or 799 1156. 14p

THREE bedroom house, carpeted, newly remodeled. Bond Real Estate, Wilson Bond 983 2151 or 983 3573. tfc

FOR SALE: Fuqua Feed Store Building, 3 lots, grinder and mixer. Call 983 2261. tfc

SEVERAL NICE two and three bedroom homes for sale-loans can be arranged. Call Hale Insurance at 983 3261. tfc

BY OWNER 42 room apartment and motel complex, service station and restaurant 9 lots, on Highway 287, Childress, Texas. Ideal for owner-manager. Good profit potential. Will take some trade or will carry balance on 8% note. Call 806 763 6183. 12-28p

FOR SALE: J. B. Ave 3 bedroom, brick, newly painted trim, gas light and barbecue. Ralph V. Graham Realtors 293 4246 or 983 2817. 12-21c

OUR PRICE HAS BEEN reduced considerably on this 3 bedroom house, 804 West Georgia, shown by appointment only. 983 3390. tfc

LIKE NEW Town & Country 14x72, 3 bedroom, 1 1/2 baths, C.H. & A.C. fully furnished, washer dryer, dishwasher, carpeted. Payments \$166.00 - \$750 Equity. See by appointment. Call 983 2154 or 983 2368. Sundays and nights. tfc

THREE bedroom house, double garage, ten acres, well improved, one mile east of town. Call 983 8117 or 983 3673. tfc

## FARM & RANCHES

FOR SALE 160 ACRES 2 miles north of Lockney on 378. 652 2131. L-tfc

HOW ABOUT a half section with 10' water? Two irrigation wells tied together with underground pipe. All in cultivation, good deep soil, located 15 miles west Denver City. No improvements. Call 983 3982. tfc

## BUSINESS SERVICES

TV ANTENNAS and supplies. Mike's TV LAB, 315 South Second, Phone 983 5023. tfc

PIANO TUNING, Edward C. Lain 25 years experience. Write Box 425 Silverton or call 823 2151 or 823 205. L-tfc

CARPET shampoo and shampooer. Rent the shampooer for \$1 day with purchase of shampoo. Davis Lumber Company, Lockney. L-tfc

## BUSINESS FOR SALE

GROCERY STORE in Dougherty, Texas. Gross \$100,000 yearly. Stock and fixtures \$20,000. Phone 806 983 2943. tfc

## FOR RENT

FOR RENT Property Apartments, 2 and 3 bedroom houses, business buildings, clean, BARKER INSURANCE AGENCY, Lockney, 652 2642. L-tfc

STORAGE SPACE FOR RENT: Furniture, campers, boats, etc. Clean out garage and store with us. 652 2309. L-tfc

## WANTED

WILLIE GALVAN will buy your scrap iron. Call him at 983 5277 nights or 983 2503 days. tfc

WANTED TO BUY irrigated or dryland farm in Floyd or surrounding area. Write Box XRO, c/o Hesperian, Box 700, Floydada. tfc

WANT TO RENT: Former Lockney resident wants to rent Ruidoso cabin two or three nights at \$30 per night. Responsible adult church group of 10 or 12. Guarantee will leave clean. No smoking or drinking. Call collect after 5 p.m. 1 917 293 2766. 12-25c

C. H. BRADFORD Watch Repairs, 262 W. Crockett. tfc

## FARM SERVICES

CUSTOM FARMING Breaking, listing, planting, crosscut, spraying, tandem and chisel. 293 2578. L-tfc

PORTABLE DISC ROLLING - Sammy Kemp. Work guaranteed. 983 2347. tfc

MR. FARMER we have baling wire now - Babe's Service Center. tfc

NORRELL TRACTOR PARTS For Tractor and Irrigation Supplies and Accessories. tfc

## LOST AND FOUND

LOST: Volt-ohms meter in brown leather case with carrying strap. Call Dowell Brewer, 652 2125 after 5. L12-25p

REWARD: Lost set of 5 keys on a Montgomery Ward Auto Club key chain. Bring to the Hesperian if found. tfc

FOUND: Set of keys at 2nd and Grover. May pick up keys at Hesperian when ad is paid for. 12-21

LOST 3 yearlings, 2 natches in left ears, brand on left thigh, 1 Whiteface cow, W on left hip. Strayed 5 miles Southeast of Floydada. C. N. Walding 983 3291. tfc

## FREIGHT DAMAGED GOODS

Corningware, Pyrex Cooking Ware, Samsonite Luggage, Farberware, G. E., Mirro-Matic, Thermos, Cosco King Gas Stoves, from 15,000 BTU up Ironing Boards, Stock Tanks, Aluminum Farm Gates, Garbage Cans, Lots of Shower Gift Ideas.

**FOGERSON LUMBER & SUPPLY**  
Silverton, Texas



Auto Accidents DO Happen... If one happens to you, be protected. Our car insurance offers coverage to meet your special needs - repairs to personal liability.

**BAKER Insurance Agency**  
127 W. Calif.  
Ph. 983-3270

## COW POKES

By Ace Reid



THIS FEATURE SPONSORED BY  
**AUTO, FIRE & FARM INSURANCE**  
Floydada Real Estate & Insurance Agency  
Jim Word — — — Phone 983-2360

## PETS

FOR SALE: Silver miniature poodles after five p.m. Call Lockney 652 2183. L-tfc

JUST in time for Christmas. Five week old puppies to give away. Call 652-3747 after 6 p.m. L12-21c

MOVING must sacrifice ten month old male English Pointer Bird Dog. Trained, and still in time for bird season. Call 652-3619. L12-25c

## lightweight ALUMINUM CANES & CRUTCHES

Sturdy Dependable Attractive Wide selection for every prescribed need Forearm and underarm crutches Adjustable telescopic canes Four legged canes Seat Canes

## BISHOP-RAMSEY PHARMACY

208 West Houston 983 3174 FLOYDADA

**BEEF**  
HEAVY GRAIN PER  
FED ..... 83¢  
LIGHT GRAIN LB.  
FED ..... 79¢  
LB.  
CUT, WRAPPED AND FROZEN  
\$30-\$50 BEEF PAKS  
LOCKNEY MEAT CO. Deer Processing. 652-3305. Sam Fortenberry, Mgr. L-tfc

SLEEP WHILE YOUR WANT AD WORKS....

## AUTOMOBILES

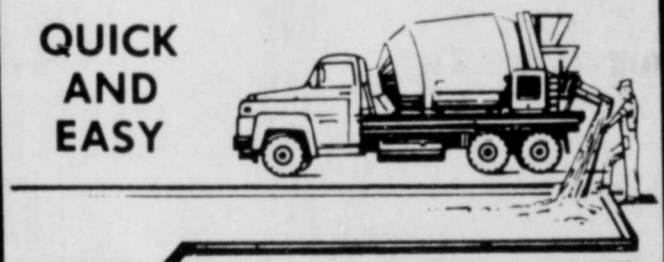
FOR SALE: Economy 1975 Vega HB, AT, Air, 1600 miles, call after 5 p.m. 983 3358. Jimmie Lou Stewart. tfc

FOR SALE: 1968 Chevrolet pickup, extra gas tanks and air shocks. Kenneth Moody. Lockney 652 2417. L12-21c

FOR SALE: 1973 Monte Carlo, power steering, power brakes, air conditioned, automatic, swivel seats, tape deck, 2 new tires. tfp

**FLOYD COUNTY ABSTRACT CO.**  
Abstracts Of Title  
Title Insurance  
Verna L. Stewart  
Owner, Manager  
217 W. California 983-3728  
Floydada, Texas

## READY MIX CONCRETE



QUICK AND EASY  
You can't beat our price per yard for quality concrete—and quick, easy delivery to save you back-breaking labor. Give us a call today for a free estimate, and have your mixed concrete delivered where and when you want it.

CALL 983-2170  
**BENNETT BUILDING MATERIAL**  
229 E. CALIFORNIA FLOYDADA

## Professional Service

**DAN'S AUTO SERVICE**  
DAN TEUTON, Owner  
Specializing in Automatic Transmission, Motor Tune-Ups, Auto Air Conditioning.  
General Repair We Have A BRAKE LATHE to handle all passenger car brake drums. See us for complete brake service.  
Phone 652-2462

**DR. JOHN W. KIMBLE, O.D.**  
Contact Lenses - Visual Analysis  
Closed Tuesday Afternoon Saturday 9-3  
Floydada, Texas Phone 983-2496

**QUALITY SHAMROCK PRODUCTS**  
Always Make A Good Deal On SONIC TIRES and SOUTHLAND BATTERIES  
Dial 652-3366  
**JACKSON TIRE COMPANY**  
Richard Wiley

## FOR SALE

TV AND HOME ENTERTAINMENT PRODUCTS REPAIR SERVICE\* MIKE'S TV LAB 315 South Second, Phone 983 5023. tfc

FOUR good used 878-14 tires. \$3.00 each or four for \$10. Phone 983 3982. tfp

FOR Trojan corn and milo seed contact Orba or Lyle Miller at 983 2021 or 983 2619. 1-8c

FOR SALE: Electric motor for irrigation. Vertical hollow shaft. 50 H. P. and 60 H. P. call 652-3133. L12-28p

FOR SALE: I have several hundred feet of good four and five inch aluminum pipe. 40 cents per foot. Phone 983 3982 tfp

FIREWOOD for sale. Randy Hicks. Call 347-2470 after 4 p.m. 12-28p

FOR SALE: 2 boys bicycles, like new, one Sears and one Brioni. Call 983-3881. 12-21c

FOR SALE: Vox Student Prince electric guitar. Call 983-3881. 12-21c

FOR SALE: CB whip antenna, complete. Call 983-3881. 12-21c

FOR SALE: Four piece drum set. Artist Ltd., Vidjian Ludwig concert snare drum also Barth electric guitar. Call 652 3771. L12-28c

WE have the Spanish Farm & Ranch book. Hesperian Office Supply. tfp

GOOD used Remington calculator. \$75.00 Hesperian Office Supply. Floydada. 983 3737. tfp

## CARD OF THANKS

WE wish to express our sincere thanks for the many acts of kindness shown us at the time of the death of our mother and grandmother. For the floral offerings, food sent in, and words of sympathy we are grateful. Special thanks to Dr. Mangold and the staff at Lockney General Hospital. May the Lord bless you. The Family of Mrs. J. T. (Addie) Perry

A NICE way to remember your friends and loved ones is with a Memorial Gift to the American Heart Association. A card will be sent to the family acknowledging your gift. Contact Olin Watson, Memorial Chairman at 983-2191.

## FOR SALE

SLENDERETTE REDUCING Machine. Call 983 5169. tfc

FOR SALE: 1972 Yamaha 350 Street bike. Lady Kenmore white portable dishwasher less than 2 years old. 983 5308. tfc

WEED EATERS - see at Don's Small Engine. 123 W. California. 12-25c

C B RADIOS in stock at Don's Small Engine. 123 W. California. 12-25c

WE SELL new and rebuilt Kirby Vacuum Cleaners and parts Parker Furniture, Floydada. tfc

FOR SALE: Kirby Vacuum Cleaners new or rebuilt. Beginning at \$119.95. Also Kirsch heavy duty cafe drapery and curtain rods. All lengths. Parker Furniture, Lockney. L-tfc

FOR SALE: 5x10 Sidlinger Trampoline with pads on rails. Call 983-2220 days or 983 2667 nights. 12-25c

FOR SALE: Two houses to be moved, located three miles South Aiken on Walter Taack farm. 28x40 five room and 26x24 four room, bath with some plumbing. Also two propane tanks, 250 gal. One 1-H.P. Pressure pump with tank. Good. One, 1H.P. Densifier rod type with 200', 2 1/2" pipe and rods good. L-tfc

COKE MACHINES: choice of three, Dougherty Grocery. 983 2943. 12-28c



WE WANT YOU TO KNOW We sell all kinds of Goodyear tires - tractor, auto, truck, a good tire, good service. Best deals in West Texas. Truck winch and hauling service. BABE'S SERVICE CENTER, FLOYDADA. tfc

## The Tye Company

MANUFACTURERS AND MARKETS OF FARM EQUIPMENT  
MACHINE OPERATORS PRODUCTION WORKERS  
Wire and Stick Electrode Welders  
PERMANENT WORK VACATION HOLIDAYS HOSPITALIZATION INSURANCE  
PAY IN ACCORDANCE WITH QUALIFICATION AND EXPERIENCE.  
Apply in Person  
HWY 70 EAST LOCKNEY, TEXAS

## INVENTORY CLERK

AGGRESSIVE INDIVIDUAL NEEDS INVENTORY DOCUMENTATION AND REVIEW. INITIAL COMPENSATION WILL BE ON QUALIFICATIONS AND EXPERIENCE. REPLY IN CONFIDENCE OUTLINE EXPERIENCE, EDUCATION, SALARY HISTORY TO:

The Tye Company  
Box 218  
Lockney, Texas 7924

## IF IT IS INSURANCE - SEE -

**Barker Insurance Agency**  
LOCKNEY  
Life - Fire - Casualty - H...  
**B. B. Wilkes Real Estate**  
LOCKNEY  
Farms - Ranches - City Properties  
Business Leases - Loans

**OIL SALE**  
THRU JANUARY 20  
**TEXAS ENERGY COMPANY**  
652-3334 LOCKNEY

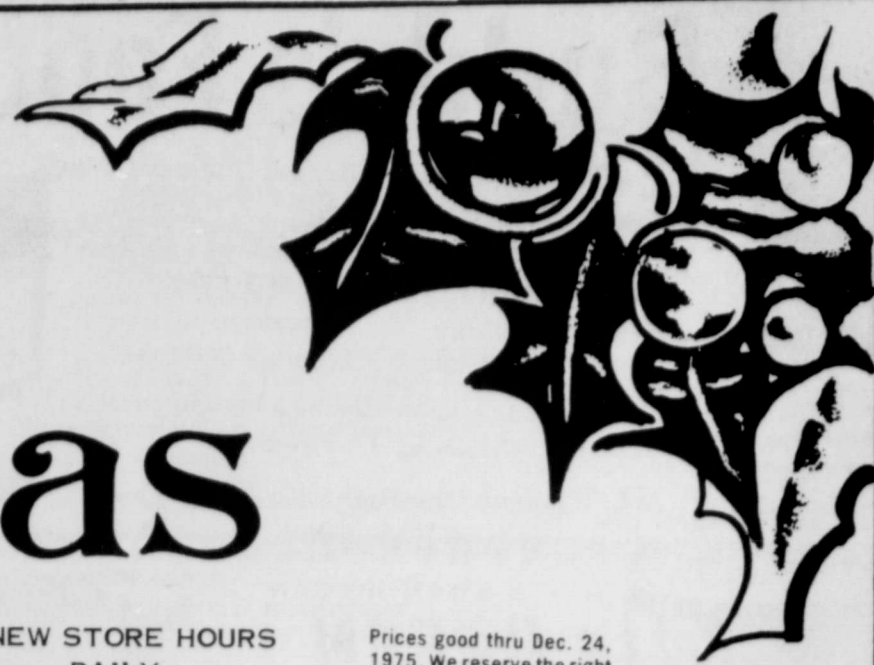
**SPARE TIME BUSINESS**  
Own your own profitable vending business. \$200 to \$600 monthly earnings possible in your spare time (day or eve.) NO SELLING. If selected, you will be servicing company established EXCLUSIVE locations.  
OUR COMPANY IS A SUPPLIER OF NABISCO SNACK ITEMS.  
REQUIREMENTS: \$1,000 to \$5,000 CASH INVESTMENT, (secured by machines and merchandise) good character, dependable auto, and 6 to 9 spare hours weekly. Income starts immediately! We supply product, machines, locations, expansion financing, buy back option, and professional guidance. If you are sincerely interested in applying for this genuine opportunity toward financial success, please call or write (include phone number) for personal interview in your area to:  
MR. ROBERT L. ANDERSON  
WORLD INDUSTRIES INC.  
Executive Suite 303  
1919 East 52nd Street  
Indianapolis, Indiana 46205  
Telephone (317) 257-5767

A  
WANT  
AD  
WILL  
FIND  
YOU  
A  
BUYER





# Merry Christmas



**WE WILL BE CLOSED**

**Christmas Day**

So that our employees can spend Christmas with their families.

**NEW STORE HOURS**

**DAILY**

8 AM-9 AM

**SUNDAY**

9 AM-8 PM

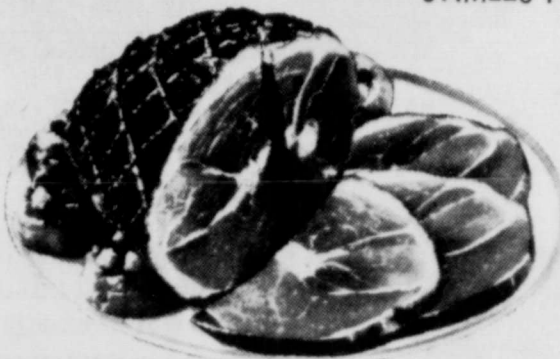
Prices good thru Dec. 24, 1975. We reserve the right to limit quantities. None sold to dealers.



Grade A, 16 to 18 Lb. Avg. Yearling



18 Lbs. & Up, Swift's Turkeys



Boneless, Water Added  
Swift's Premium, 6-10 Lb. Avg.



**WESTERN RED DELICIOUS**

**Turkeys**

**Butterballs**

**Smoked Ham**

**Apples**

**65¢**

**PRESTO TURKEY**  
Brown N Bags  
2-Ct. Pkg. **49¢**

**79¢**

**Pepperidge Farm**  
Stuffing Mix  
8-oz. Pkg. **47¢**

**\$1.98**

**5 \$1**

**Smuck Roast**

**89¢**

Grade A, 4-7 Lb. Avg.,  
**Baking Hens**

**59¢**

**Smoked Hams**

**\$1.29**

**Sweet Potatoes**

**19¢**

**Butterball Turkeys**

**85¢**

**Rib et Roast**

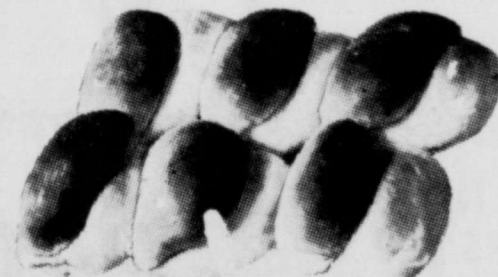
**\$1.39**

**Smoked Picnics**

**99¢**

**Navel Oranges**

**5 \$1.00**



6-32 oz. BOTTLE CARTON

**COKE OR DR PEPPER**  
**\$1.49**

**Eggs**  
**75¢**

**Rolls**  
**3 89¢**

**49¢**

**1000 Island Dressing**

**49¢**

**Cake Mix**

**49¢**

**29¢**

**Le Sueur Peas**

**49¢**

**Crepe Topping**

**49¢**

**49¢**

**Shady Lane, Maraschino, Salad Cherries**

**69¢**

**Chocolate Chips**

**79¢**

**89¢**

**Kraft's Orange Juice**

**\$1.25**

**Coconut**

**89¢**

**Bath Tissue**

**39¢ Strawberry Preserves**

**99¢**

**Karo Syrup**

**99¢**

**Cranberry Cocktail**

**\$1.39**



**Dairy**  
CLOVERLAKE Whipping Cream 3 8-oz. Ctn. **\$1.00**  
BELL Egg Nog qt. Ctn. **79¢**  
CLOVERLAKE Cottage Cheese 12 oz. **73¢**



**Frozen Foods**  
Mrs. Smith's, Apple, Dutch Apple, Cherry, Peach 26-oz. Pkg. **89¢**  
Piggly Wiggly Whipped Topping 10-oz. Ctn. **49¢**  
Piggly Wiggly Cut Broccoli, Cauliflower Florets & Cut Broccoli, Cut Corn, Mixed Vegetables, or Green Peas 18-oz. Pkg. **59¢**

## "Del Monte Sale"

- Del Monte Fruit Cocktail 3 17-oz. Cans **\$1.00**
- Del Monte Green Peas 3 16-oz. Cans **\$1.00**
- Del Monte Cream Style or Whole Kernel Golden Corn 3 16-oz. Cans **\$1.00**
- Del Monte, Italian or Whole Beans 3 16-oz. Cans **\$1.00**
- Piggly Wiggly Sliced Carrots 3 16-oz. Cans **\$1.00**
- Piggly Wiggly, Sliced, Cut, or Whole Beets 3 16-oz. Cans **\$1.00**
- Piggly Wiggly Mixed Vegetables 3 16-oz. Cans **\$1.00**
- Del Monte, Cut Green Beans 4 16-oz. Cans **\$1.00**
- Del Monte, Seasoned or French Beans 4 16-oz. Cans **\$1.00**
- Del Monte, Whole Potatoes 4 16-oz. Cans **\$1.00**
- Del Monte Pears or Pineapple 2 15-oz. Cans **89¢**
- Del Monte, Sliced or Halves, Cling Peaches 29-oz. Can **49¢**
- Del Monte Tomato Juice 46-oz. Can **49¢**
- Texsun Grapefruit Juice 46-oz. Can **49¢**



# Buddy's Food

Buddy Widener, Owner - Forrest Shannon, Mgr.  
in Floydada, 220 South Second



Double  
Stamps  
Wednesday

NEW  
STORE HOURS  
Monday - Friday  
8:00 am - 7:00 pm  
Saturday  
8:00 am - 8:00 pm  
Sunday  
9:00 am - 7:00 pm

THESE VALUES GOOD SUNDAY, DECEMBER 21  
THROUGH SATURDAY, DECEMBER 27

We Reserve The Right To Limit Quantities



15 OZ. DEL MONTE "IN JUICE" 55¢ VALUE  
**PINEAPPLE**  
**3/\$1.00**



ICE  
CREAM  
\$1.09

\$1.45 VALUE  
ALL FLAVORS

**DOUBLE  
STAMPS**  
SUNDAY-MONDAY-  
TUESDAY



WHITE SWAN 303 CAN  
**GREEN  
BEANS**  
**4/\$1.00**



ROAST RITE TOM  
**TURKEY**  
**59¢**

WE HAVE FRESH BAKING HENS

GOLD BAND HEN  
**TURKEY**

LB 69¢

BUTTER BALL HEN  
**TURKEY**

LB 79¢

POWERED OR BROWN LB BOX

**SUGAR** 3/99¢

15 OZ. HUNTS

**FRUIT COCKTAIL**

**3/\$1.00**

FOIL TURKEY \$1.29 VALUE

**ROASTING  
PAN**

**79¢**

49 OZ. GIANT



**TIDE**  
**\$1.09**

SOUTHERN BELL 6 OZ. 99¢ VALUE

**WALNUTS or  
PECANS**

**79¢**

MARYLAND CLUB ALL GRINDS  
LB CAN \$1.59 VALUE



**COFFEE**  
**\$1.19**

WHITFIELD SALAD 10 OZ. 75¢ VALUE

**MARCHINO  
CHERRIES**

**2/99¢**

COMSTOCK 83¢ VALUE

**CHERRY PIE  
FILLING**

**69¢**



**BUTTER  
MILK**

**69¢**

24 OZ. \$1.27 VALUE



**CRISCO OIL**  
**79¢**

10 COUNT BAGGIES \$1.33 VALUE

**TRASH  
BAGS**

**79¢**

DECKERS BONE IN



**HAM**  
**\$1.19**

LB

8 OZ. PHILADELPHIA

**CREME  
CHEESE**

**2/\$1.09**

LEAN AND TASTY

**SPARE  
RIBS**

**99¢**

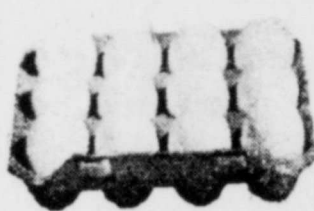
LB

LONGHORN CHEDDAR  
**CHEESE**

**\$1.49**

LB

GRADE 'A' LARGE



**EGGS**  
**77¢**

DOZEN



KRAFT 10 1/2 OZ  
WHITE OR PASTELS  
MINATURE

**MARSHMALLOW**

**3/\$1.00**

SOFT 'N' LITE 12 CT. 55¢ VALUE

**BROWN & SERV  
ROLLS**

**3/\$1.00**

30 OZ. SUGARY SAM 67¢ VALUE

**YAMS**

**2/8**



6-32 OZ. BOTTLE CARTON  
PLUS DEPOSIT

**COKE  
or  
7-U**

**\$1**

JUMBO ROLL

**TERRI-  
TOWELS**

**2/8**

DEL MONTE 303 CAN 41¢ VALUE



**PUMPKIN**  
**4/\$1.00**

BORDEN NONE SUCH 9 OZ. 75¢

**MINCEMEAT**

**5**

DEL MONTE 11



**MANDARIN  
ORANGES**

**3/\$1**

KEEBLER 100'S \$1.19 VALUE

**COOKIES** 2/

GOLD MEDAL 5 LB



**FLOUR** 6

WITHOUT COUPON  
GOOD AT BUDDY'S  
EXPIRES 12-24-75



MED SIZE NO 1  
**YELLOW  
ONIONS**

**15¢**

LB

GOLDEN RIPE LBS

**BANANAS**

**2.39¢**



CALIF PASCAL STALK  
**CELERY**

**29¢**

STALK

NEW MEXICO NO. 1

**SWEET  
POTATOES**

**4 LBS/\$1.00**



## Court Blocks

## Stamp Price Hike

Sirica ruled that the scheduled rate increases were illegal because

the required steps in raising postal rates were not taken.

A 1970 law requires the Postal Service to get approval of its board of governors for any new rates before filing for the increase with the Postal Rate Commission.

The Postal Service had discussed the general outline of new rates with the governors Sept. 4 and received their approval. On Sept. 18, the Postal Service filed for the new rates with the rate commission, an independent body.

The decision will worsen the Postal Service's financial situation. The service had forecast a record deficit of \$1.4 billion this fiscal year even with the Dec. 28 increase.

The Postal Service, which has printed billions of the 13-cent stamps, announced it would appeal

AUSTIN, Tex. — Many Texans will not be receiving new voter registration applications until after Christmas, Secretary of State Mark White said Monday.

White notified county tax assessor-collectors last week they could begin mailing the new registration cards at any time. A federal court ruled the cards must include a notification in Spanish and English that voters do not have to return them.

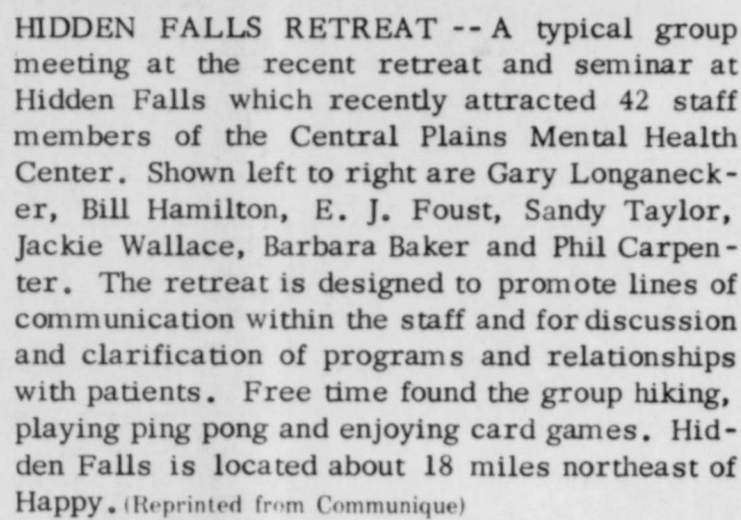
"I understand Travis County is trying to avoid the Christmas mailing rush by mailing them in early January," White said. "Each county will be sending them out on their own schedule. There is no deadline for currently registered voters, because those individuals will continue to be on the rolls."

"Any individual who has moved and who has not changed his voter registration should immediately return the card as a technique for updating his records."

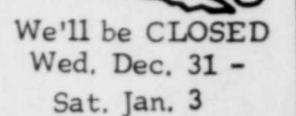
Buddy Shanks thus joined two dozen Peace Corps volunteers already in Mali and became one of nearly 7,000 volunteers now serving in 69 countries. They usually work in these

countries for two years to meet their requests for assistance in economic and social development. Their current average age is about 27 years, with roughly two thirds among them being

SEE PEACE PAGE 4



wishes to thank everyone who has helped make our business a success. your continued support is appreciated. We wish you a Merry Christmas and a Prosperous New Year



## Azteca Cafe

*Wilfred A. Peterson*

*Slow me down, Lord! Ease the pounding of my heart by the quieting of my mind. Steady my hurried pace with a vision of the eternal reach of time. Give me, amidst the confusion of my day, the calmness of the everlasting hills. Break the tensions of my nerves and muscles with the music of the singing streams that live in my memory.*

*Help me to know the magic restoring power of sleep. Teach me the art of taking minute vacations . . . of slowing down to look at a flower, to chat with a friend, to pat a dog, to read a few lines from a good book. Remind me each day of the fable of the hare and the tortise that I may know that the race is not always to the swift; that there is more to life than increasing its speed.*

*Let me look upward into the branches of the towering oak and know that it grew great and strong because it grew slowly and well. Slow me down, Lord, and inspire me to send my roots deep into the soil of life's enduring values that I may grow toward the stars of my greater destiny.*

*Amen.*

During this week, may each of us slow down and re-evaluate our lives and appreciate our blessings. We thank each of you for your patronage this past year!

## Willson & Son - Builders Mart

*John Walker*

*Anne Willson*

**"We Don't Want All The Business - JUST YOURS"**



SCATTER NOW DRILLING just  
of the Floydada Country Club  
southwest Floyd County.

A MERRY  
CHRISTMAS

Yuletide,  
for you and  
an abundance  
Christmas cheer,  
off with an  
helping of peace  
e. Thanks, all.

**PARKER FURNITURE**  
FLOYDADA



# Bentsen Report

BY LLOYD BENTSEN  
United States Senator

A young woman in Washington was recently shot in the back by four robbers. Today, after an operation, she walks with a cane, requires psychiatric care and has lost her job because of recurring health problems.

She also lives in constant fear. You see, her would-be killers were all released without bail pending trial. Now they have all disappeared. And the victim is afraid they may come back gunning for her.

This amounts to criminal negligence on the part of our criminal justice system itself.

How can we then wonder why the rate for all serious crimes has more than doubled since 1961? Just from 1973 to 1974, this rate shot up by 17 percent—the largest increase since we began keeping statistics.

Yet, the guilty are going free. The innocent are living

in fear. And, all because we have failed to make certain that punishment of criminals is swift and sure.

When criminals are apprehended, there are often appalling delays in bringing them to trial. In our own state of Texas, a man this year was arrested for theft and released eleven times in eighteen months without ever going to trial.

It has been said that justice delayed is justice denied. To that, we should add that it is also crime undeterred.

Even when offenders are brought to trial and convicted, the severity of punishment is far from sure. Nationwide, ninety percent of all serious crimes brought to court are disposed by plea bargaining. What this usually means is that the defendant pleads guilty to a lesser crime than the one he actually committed. In return, he receives a reduced sentence or probation.

This isn't justice. It makes a mockery of our court system and, at the same time, perpetuates the fear that today lives with every law-abiding American.

It's time to call it to a halt. It's time to set some clear standards, to insure that plea bargaining serves the interest of justice, and not the interests of hardened criminals.

Convictions for various crimes should carry mandatory sentences, which can be mitigated only within strict limits for specific reasons. These sentences should increase with the severity and violence of the crime, and they should become especially harsh for repeat offenders.

In many cases, punishment for first offenders does not need to be severe. Many of these law-breakers are young, and might only be hardened in their criminal careers by long terms in

prison. At the same time, I don't believe they should be allowed to go totally unpunished. Youthful first offenders don't seem to learn a lesson by a slap on the wrist, a lecture by the judge or a period of probation. All too often, they see non-punishment as evidence that the law is weak, and that it can be violated with impunity.

I feel they would learn better from even a short stay in prison. In Arkansas, 1-day sentences for minor offenses have proven effective in giving a therapeutic jolt to kids who cross the line of the law. These short but sure sentences can be a strong deterrent to criminal behavior in the young, and they can keep the first offender from becoming a repeat offender.

I am encouraged by the success of these short-term sentences in preventing further crime, and right now I am looking into the possibility of applying them in Federal courts.

This would be one way we can begin restoring hard meaning to the phrase, "Crime Does Not Pay," a phrase that our present system of justice is making virtually empty.



"O CHRISTMAS TREE, HOW LOVELY ARE YOUR BRANCHES"—This year for the first time, Christmas trees grown in East Texas will be on the market. This year's crop of nearly 3,000 trees was planted five years ago and carefully pruned and shaped to make attractive Christmas trees, according to Agriculture Commissioner John C. White.

## First Texas Trees Harvested For 1975 Christmas Season

AUSTIN--Selecting the "perfect" Christmas tree is one of the most important steps in decorating homes for the holidays, and this season, for the first time, nearly 3,000 Texas-grown trees are on the market.

This year's crop, planted five years ago and carefully groomed to the appropriate shape, was started on an experimental basis to see if Christmas trees could be grown in East Texas, according to Agriculture Commissioner John C. White.

Red cedar, Arizona cypress and Virginia pine, which closely resembles the popular Scotch pine, were the three types chosen because of their ability to withstand the winds of Texas weather.

To have an attractive,

fragrant tree through the holidays, be sure to select a new Texas-grown tree. Needles should be brittle, not a substantial number when the tree is cut. Before placing a stand, make a diagonal cut at the bottom of the tree well-supplied with water and place it on the television, but other heat sources.

DRIVE FREE THIS HOLIDAY SEASON.

## Seven Rural Accidents In November

The Texas Highway Patrol investigated seven accidents on rural highways in Floyd County during the month of November, 1975, according to Sergeant Thurman Keffer, Highway Patrol supervisor of this area.

These crashes resulted in no persons killed and three persons injured.

The rural traffic accident summary for this county during the first 11 months of 1975 shows a total of 65 accidents resulting in four persons killed and 34 persons injured.

The rural traffic accident summary for the 60 counties of the Lubbock Department of Public Safety Region for November, 1975, shows a total of 530 accidents resulting in 14 persons killed and 258 persons injured, as compared to November, 1974, with 497 accidents resulting in 10 persons killed and 229 persons injured. This was 33 more accidents, four more killed, and 29 more injured in 1975 at the same period of time.

The traffic deaths for the month of November, 1975, occurred in the following counties: Two each in Swisher and Wilbarger; and one each in Clay, Crosby, Lubbock, Montague, Palo Pinto, Parker, Wichita, Hutchinson, Oldham, and Wheeler.



May the peace of Christmas be in your hearts this the most joyous of seasons. Happy holidays to you.

JOYCE STEWART

STEWART PRINTING

983-5131 FLOYDADA

**Give The Gift They'll Enjoy 105 TIMES A YEAR**

WHAT BETTER CHRISTMAS PRESENT FOR THE ENTIRE FAMILY THAN A YEAR'S SUBSCRIPTION TO THE FLOYD COUNTY HESPERIAN OR THE LOCKNEY BEACON?

CALL THE HESPERIAN AT 983-3737, OR THE BEACON AT 652-3318 RIGHT NOW, GIVE THE NAME AND ADDRESS OF THE PERSON OR FAMILY YOU WANT TO GIVE THE SUBSCRIPTION TO, AND THE CIRCULATION DEPARTMENT WILL SEND A BEAUTIFUL CHRISTMAS CARD TO THE PERSON.

THE SUBSCRIPTION WILL BEGIN IMMEDIATELY THE FOLLOWING YEAR.

*Floyd County Hesperian*

**THE LOCKNEY BEACON**



# CHRISTMAS GREETINGS

Quiet thoughts turn to this time of peace, happiness and togetherness. It's a season when families and friends harvest many joys and blessings. Christmas is also a nice time to thank friends like you.

**Caprock Hospital District**

BOARD OF DIRECTORS

MEDICAL STAFF

HOSPITAL STAFF



# SILVERON YOUNG FARMERS SPONSOR TURKEY SHOOT

Silverton Young Farmers are sponsoring a turkey shoot to be held on Saturday December 20 from 9:30 til 5:30. The shoot will be held 2 miles west of Silverton on Highway 86.

Turkeys will be awarded as prizes. All proceeds from the turkey shoot will be used on community projects for the coming year.

Texas Department of Agriculture home economists remind grocery shoppers that even though a boneless roast is more expensive per pound than a bone-in roast, it has no excess fat and no bones, thus yielding more servings.

**DRIVE CAREFULLY DURING THE HOLIDAYS.....!**



THE HESPERIAN PHOTOGRAPHER shot several scenes of the Christmas program at the St. Mary Magdalen Church Friday night. Refreshments followed the program for a crowd of over 100 persons. (Staff Photo)

**FOOD PRICES UP, CONSUMPTION DOWN** - Americans are eating less, due at least in part to high food prices, believes an economist for the Texas Agricultural Extension Service. Americans are expected to eat 1.5 percent less

food in 1975 than last year; this will be the lowest level in several years. Most of the drop in consumption is showing up in animal-related food products due to higher prices for fed beef, pork and poultry. Although retail food prices are expected to

increase about 9 percent this year, that's considerably below the 12 percent increase of 1974.

**DRIVE CAREFULLY DURING CHRISTMAS**

## As It Looks From Here

Washington, D. C. - Last week the House of Representatives turned down Senate-passed Amendments to the Energy Research and Development Act proposing a \$6 billion loan fund for private industries to develop an oil shale pilot project and other sources of fuels such as solar, thermal and gasification of coal.

All these efforts are terrifically expensive and no one can be absolutely sure of the degree of success. Of course the scientists have their ideas but even the biggest companies are reluctant to make investments of high proportions in untried and unproved ventures of this kind. The loan fund was to be repaid after these developments were operationally profitable.

The fact remains that unless we find new sources of energy, not only will we run out of fuel but will increasingly have to depend upon imports of high-priced petroleum.

According to the scientists, there is available in this Country an abundance of fuel sources if we simply harness them.

For instance, a Dr. Rodney Kromann, animal scientist at Washington State University, says that cattle can be raised and fattened on human sewage. Dr. Kromann published an article in 1972 which makes the whole idea sound highly plausible. He shows a chemical analysis of sewage compared to alfalfa hay. He says that sewage provides more ash, nitrogen, cellulose, fiber and gross energy which cattle need than high quality hay. He points out that this source of food could not only save grain for human consumption but could solve monumental disposal problems. There never will be a shortage of sewage since human beings in the United States produce about 100 million tons of solid waste plus 45 million tons of liquids a year.

So what is preventing utilization of raising cattle on sewage? The Doctor says that it will take social conditioning for acceptance of meat produced by this method.

While many Americans, even the scientists, don't appear to be ready for sewage-fed beef, many are accepting Dr. Kromann's studies as feasible and practical.

Already technology has converted many kinds of wastes into useful purposes. In a limited way, natural gas is being recovered from garbage landfills. Near Los Angeles, at Palos Verdes, methane gas recovered from landfills services 3,500 homes. Staten Island, New York, has under way a project to provide this type of fuel for 20,000 homes.

Engineers at General Motors are developing substitutes for gasoline, natural gas, boiler fuel and some plastics from stubble left after harvest. These engineers say that properly utilized stubble can provide enough automobile fuel to power 100 million cars.

Even old Newspapers, according to the National Science Foundation, can be turned into sugar and protein by using certain chemical agents for conversion. They say that the process can be used to synthesize food from many materials with a high cellulose content such as ice

cream cartons. Researchers have produced substances from the shells of fish for the healing of wounds, for membrane, and to improve the strength of wood products, among other things.

Of course, all sorts of problems exist in addition to those of scientific development, for turning waste material into usable products. Having the right amount in the right place is one of them. Be this as it may, Americans, for the most part, are exceedingly wasteful, the assumption being that we will never run out of anything. For sure, we will never run out of garbage because we have a sea of it and, presently, don't know what to do about its disposal.

Members of Congress turning down loan funds for Research and Development of new sources of energy may be right but we are not doing very much to otherwise solve serious problems facing us in the not too distant future.

SHOP IN FLOYD COUNTY.

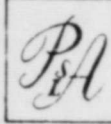
## Just for Today

JUST FOR TODAY ... I will do more. I will accept the challenge to greater accomplishment.

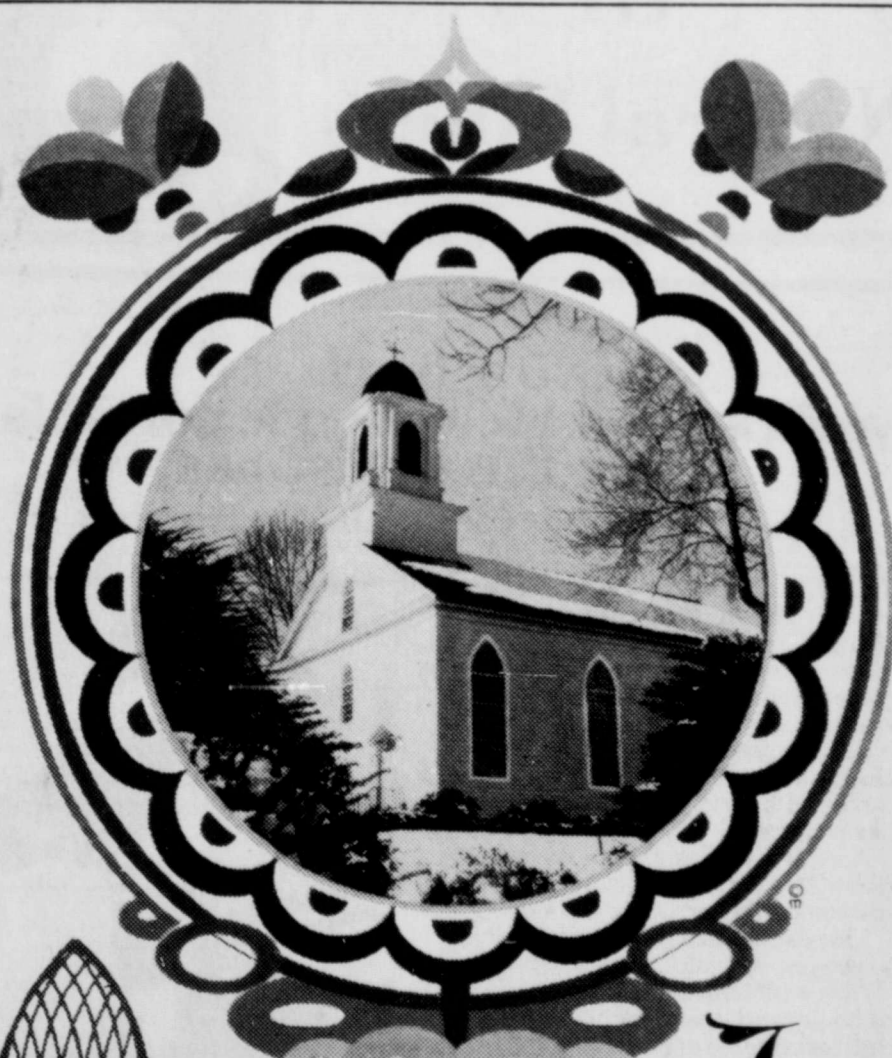
I will go the "extra" mile. I will assert my right to give full measure for all I receive and by example inspire others to do likewise today.

Plainview

SAVINGS & LOAN Association



716 Broadway



Joy AT Christmas



During this joyous holiday we would like to express sincere thoughts that this should be a blessed season for all. To our wonderful patrons, thanks.

**Hagood's**  
FLOYDADA, TEXAS

# SEASON'S BEST To All

We wish you and your loved ones a very bright,

and fun-filled holiday celebra-

Greetings from

JAMES LEE NICHOLS  
SPEEDY  
NICHOLS AND BILLY NICHOLS  
NICHOLS OIL COMPANY  
FLOYDADA

on Earth  
Will  
and

And suddenly  
there was with the angel  
a multitude of the heavenly host  
praising God, and saying,  
Glory to God in the highest,  
and on earth peace,  
good will toward men.



*Season's Greetings*

It's Christmas once again! May the season be a truly joyous one for you, our many fine customers. Thank you for your loyal patronage.

**Daniel Automotive**

TOM DANIEL

Lighthouse  
Electric Co-op



PEACE FROM PAGE 1

transportation to and from their sites, a living allowance that covers their lodging, food and other expenses, as well as medical assistance. In addition to 48 days of vacation with pay, the volunteers also receive a readjustment allowance of \$75 for each month overseas, payable on completion of their service.

Peace Corps, with an annual budget of \$80.8 million for fiscal year 1976, is part of ACTION, the Federal Agency for Volunteer Services, created by the President and Congress in 1971. More than 177,300 ACTION volunteers are presently serving worldwide, among them 4,100 VISTA's (Volunteers in Service to America), 150,000 Retired Senior Volunteers and 13,600 Foster Grand-

parents. University Year for Action and Youth Challenge Program are also part of the Agency.

During the following six months, Buddy and his Malian counterpart built for the regional agriculture center in Sikasso, one of the five operating in Mali, a grain storage house, a couple of small houses for the diseased chickens and set up the room for grinding and mixing the feed. These installations ready, they began traveling to the national hatchery in Bamako, some 250 miles northwest, returning each time with a thousand month-old chicks. Each ride with the truck took them about six hours. The Bamako hatchery was established in 1971 with the intention to produce chicks for Mali, Mauritania, and Senegal and financed by the

Agency for International Development (AID). Farmers living as far as 75 miles away came to the Sikasso agricultural center to buy the chicks and raise them at home. Although being chiefly a selling point, the center raised some of their own chicks to set an example to the farmers.

"I'd tell the men how to vaccinate the birds against diseases, give them medications, feed them regularly and keep them locked. Back in Stanton, my parents have a 60-acre farm so I was pretty much at home about the chicks, even though my degree from the Abilene Christian College in 1972 is in business administration. We'd visit the buyers from time to time on their farms to make sure they're doing it right. The concept was a simple one; it was mostly the matter of going over the



DEPRESSION GLASS WINDOW DISPLAY....at Floyd County Historical Museum. Mrs. Georgia Finley, Museum hostess and Green Thumb worker is pictured with the display. (Photo by Keith).

# YOUR FLOYD COUNTY FARM BUREAU

SUGGESTS  
Texas Agricultural  
Products



GOOD GIFTS  
FOR  
CHRISTMAS



Give Gifts  
Of  
Natural Fibers



In 3 seconds  
you'll know which electric portable  
to give this Christmas.

Smith-Corona's new Cartridge Ribbon Typewriter.

The only one with the 3-second ribbon change. The quickest, cleanest ribbon change there is.

Also, Coronamatic™ Ribbon Cartridges come in nylon and carbon film (usually available only with office typewriters).

So in the same 3 seconds it takes to change a cartridge, you can change to a carbon film cartridge for typing that looks like printing.

And for mistakes, there's a correction ribbon in a Coronamatic cartridge, so you can correct errors in seconds.

There's also an assortment of colors, so you can add color to your typing.

Now with Smith-Corona's new cartridge ribbon typewriters you know which electric portable to give.

The question is who to give it to.



SCM SMITH-CORONA  
SCM CORPORATION

Other Smith Corona Electrics As Low As \$149.00

THE LOCKNEY BEACON  
THE FLOYD COUNTY HESPERIAN

basic information and repeating it again. Feed is hard to come by in Mali so they're feeding the birds with corn, millet and ground fish." In March of 1975, the United States donated to Mali huge quantities of feed grain. The Sikasso agricultural center received 150 tons of it.

"Two to three months later," continues Buddy, "the farmers would sell the broilers on their local markets or through the center to the Europeans living in Bamako. The fact that the center was self-sustaining and actually showed a profit of \$2,500 when I left Mali in May of this year, was one of the best rewards for my Peace Corps service." There was no volunteer to replace him in Sikasso when he had left. Buddy trained his counterparts well and they took over his responsibilities completely.

A couple of weeks before his departure - Buddy has by then visited the famous Timbuktu, an ancient trading and cultural center of 6,000 which at its height boasted a million inhabitants - he received a telegram from the Peace Corps in Zaire (former Belgian Congo), inviting him to undertake a similar chicken project in Kilembé, near Angolan border. Buddy accepted the challenge and extended his service. He started working in Zaire last June and will return there in January. It was in Zaire that Muhammad Ali became the second man in boxing history to regain the world heavyweight championship by knocking out George Foreman.

"Basically, I'm doing the same thing as in Mali, but on a smaller scale," says Buddy, adding that the Zairian project is even more isolated and feed, medications and transportation are almost impossible to find in a

country twice the size of Mali. He will conclude his Peace Corps service next June.

After two years abroad, Buddy sees the United States in a light that could only be discovered by living in countries where "there's no planning the future and bare existence preoccupies their people's minds most of the time."

"You come back," he says, "and everywhere you go you see the luxury and consumption. In Sikasso or Kilembé, all they have is manioc. You learn so much about what these people can do with the little they have. I believe that Peace Corps is very viable because it helps Africa to develop her agriculture. To these nations agriculture is a fundamental importance."

Persons age 20 or older, interested in joining the Peace Corps or VISTA, may call collect Mr. Blue at (214) 749-1855, or write for details and an application to: ACTION Recruitment Office, 212 North St. Paul (Suite 1622), Dallas, Texas 75201.

## GREAT AMERICANS GEORGE S. PATTON



General George S. Patton, pictured beneath a silver-blue sky, symbolizes American soldiers of all wars. With face shaded he is depicted in statueque form watching protectively over future guardians of our country now attending the United States Military Academy at West Point. In full color this heroic poster, 2 by 3 feet in size is the first "Sculptograph" ever created. Patton, one of "The Super Soldiers," helped whip the Germans and conquered America's hearts at a time when heroes were important. May we regain that respect during our Nation's Bicentennial celebration. For information about how to obtain this magnificent poster, already a collector's item, write D.S.M., Inc., P.O. Box 614, New Canaan, Connecticut 06840.

## Coffee Break

By David and Eunice Bigelow  
Did you know that in ancient times coffee was ground between two smooth stones? Later on, the Romans used a simple mortar and pestle. Marie Antoinette, in her luxurious way, had a jewel-encrusted gold grinder while

## THE FARMER SEEKS TO CONSERVE FUEL

Change is inevitable in the farmer's search for ways to conserve fuel and maintain yields in the wake of petroleum shortages and higher prices, the national leader of the Soil Conservation Service, says.

"Some farming systems will increase rapidly and others will be virtually abandoned," R. M. Davis, Soil Conservation Service administrator, said in the October issue of Soil Conservation magazine.

Minimum tillage, including no-till, is emerging as the most promising fuel saver for farmers. "This practice," said Davis, "has especially high potential for feed grains, cereals, soybeans, and cotton - the crops most in demand on the world market."

In Texas, a switch from conventional tillage to minimum tillage saves an average of about 5 gallons of tractor fuel per acre per year. Since some 456,000 acres were farmed with minimum tillage last year, this amounted to a saving of some 2.3 million gallons of tractor fuel.

USDA predicts that by

Martha Washington relied on a plain wooden wall mill. Nowadays we have the ease of ready-to-make instant coffees with the delight of added flavors. Just heat water and try any one of R.C. Bigelow's six excitingly different flavors - chocolate, anisette, orange-and-spice, apricot, cinnamon and mint - and you're set for a new taste adventure.

Drive carefully  
during the  
holiday season.



Gather 'round the tree for song . . . laughter  
Rekindle friendships . . . extend good tidings to

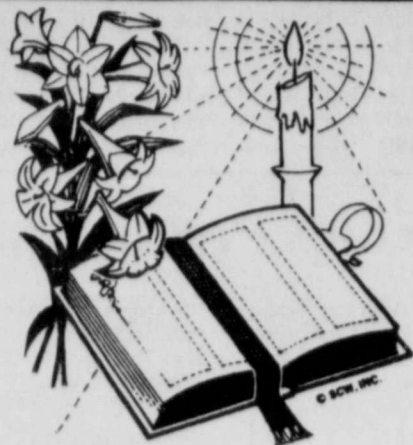
MOORE ROSE FUNERAL HOME

FLOYDADA

WE HAVE HAULED A BIG LOAD OF  
ALUMINUM PIPE  
INTO FLOYDADA. IT IS USED, BUT  
IN GOOD CONDITION.  
5" ..... 40¢ PER FOOT  
4" ..... 40¢ PER FOOT  
4" WITH SPRINKLERS. . . 50¢ PER FOOT  
PHONE 983-3737 OR 983-3982



# Come to Church



## ST. MARY MAGDALEN CATHOLIC CHURCH

Richard Cassey, Priest

**SUNDAY:**  
Mass ..... 11:15 a.m.

**MONDAY:**  
Religion Classes .....  
Grades 1-6 ..... 4:00 p.m.  
Mass and Prayer .....  
Service ..... 8:30 p.m.

**WEST SIDE CHURCH OF CHRIST**  
Sunday morning worship... 10:30 a.m.  
Sunday Evening... 6:00 p.m.  
Wednesday Evening... 7:30 p.m.

**FIRST UNITED METHODIST CHURCH**  
James Tidwell, Pastor  
Sunday School ..... 9:45  
Morning Worship ..... 11:00  
Youth Fellowship ..... 6:00  
Sunday Evening worship... 6:30 p.m.

**FIRST CHRISTIAN CHURCH**  
Ron Pingelton, Pastor  
Sunday School ..... 9:45  
Morning Worship ..... 11:00  
Youth Meeting ..... 6:00  
Evening Worship ..... 6:00

**FIRST BAPTIST CHURCH**  
F. C. Bradley, Pastor  
Sunday School ..... 9:45  
Morning Worship ..... 11:00  
Church Training ..... 6:00  
Evening Worship ..... 7:00

## CALVARY BAPTIST

Hollis Payne, Pastor

Sunday School... 9:45 a.m.  
Morning Worship... 11:00 a.m.  
Bible Study... 6:00 p.m.  
Evening Worship... 7:00 p.m.  
Wednesday Evening... 7:00 p.m.

**BIBLE BAPTIST CHURCH**  
Lloyd Hamilton, Pastor  
Sunday School ..... 9:50  
Morning Worship ..... 10:45  
Sunday Evening Prayer Meeting... 6:00  
Sunday Evening Services ..... 6:30  
Wednesday Evening Services... 8:00

**NEW HOPE PRIMITIVE BAPTIST CHURCH**  
Beathel Jeffrey, Pastor  
2nd Sunday  
2nd Sunday Morning Worship... 11:00  
2nd Saturday Afternoon... 2:00  
2nd Saturday Evening Worship... 7:00

**CEDAR HILL ASSEMBLY OF GOD CHURCH**  
Sunday School ..... 10:00  
Morning Worship ..... 11:00  
Evangelistic Service ..... 6:30

**ALDERSGATE SPANISH UNITED METHODIST CHURCH**  
Now Meeting at First United Methodist Church  
Thursday Evening Bible Study... 7:30

**CEDAR HILL BAPTIST CHURCH**  
Sunday School ..... 10:00  
Morning Worship ..... 11:00  
Evening Worship ..... 7:30

Nichols Oil Co.  
Russell's Equipment & Supply  
Floydada Real Estate & Insurance  
McDonald Implements  
Gilbreath Exxon  
Production Credit Assoc.  
Edmiston Plumbing



Floyd C. Bradley, Pastor  
First Baptist Church

## This Is What Christmas Is All About !!!

Suppose a pagan came to our home or community and saw all the activity on Christmas week, what do you suppose his impression would be? If we carefully analyze our own attitudes and activities, what do they say we think Christmas to be?

Most of us know we celebrate the birth of Jesus Christ to the virgin Mary nearly 2000 years ago. But what do our actions say? Where is our emphasis? Where do peak liquor sales, crowded night clubs, mountains of food and bags of gifts to each other fit into Luke's account of His birth?

So, the question still waits for an answer. What is Christmas, anyway? May I suggest the following things as a partial answer to the question?

**CHRISTMAS IS FOR WORSHIPING GOD.** This Luke describes for us in Chapter Two. The Angels and the shepherds, Anna and Simeon came to worship. What a day of opportunity for us. Deep joy should overflow our hearts at the thought of it.

**Christmas is for giving.** The supreme example is found in John 3:16. "For God so loved the world that He gave His only begotten Son..." The joy and blessing of extravagant giving was demonstrated by the Wise Men. Our greatest joy comes in giving to Him and to others.

**Christmas is for receiving.** Mary received the tiny babe into her arms. Simeon and Anna received Him into their hearts. The world needs to receive Him today as King of Kings and know Him as Prince of Peace. The individual needs Him to supply their greatest need.

**Christmas is for forgiving.** Supreme example of forgiveness is in God's offer of forgiveness thru Christ to every man. There would be no better opportunity for man to forgive other men than in the spirit of the Christmas season. (1 John 4: 9-11, 20)

**Christmas is for forgetting.** The past reveals many failures but this is a time for new beginnings. The Saviour's birth was preceded by centuries of failure and trouble. Now the Saviour has come. Salvation is provided for all. Best we forget the past and appropriate the victories of the future provided thru Jesus Christ our Lord.

This is what Christmas is all about.

This Inspirational Message Is Sponsored  
By The Following Firms.....

City Auto Inc.  
Parker Furniture  
Hale Insurance  
Floydada Co-Op Gins  
Collins Implement Co.  
Hesperian Office

Ponderosa Meat Co.  
Producer's Cooperative Elevators  
Bishop-Ramsey Pharmacy  
Reed Ford Sales  
Martin & Company  
Norrell Tractor Parts Co.

Adams Well Service  
Consumers Fuel Assoc.  
Babe's Service Center  
Thompson Pharmacy  
Solomon Jewelry  
Floydada Care Center

## FOURSQUARE GOSPEL CHURCH

202 Marivena St.  
Rev. Gerald Holder  
Sunday Afternoon..... 2:30 p.m.  
Bible Study Thursday..... 7:30 p.m.

## THE CHURCH OF THE NAZARENE

Tom Brown, Pastor  
Sunday School ..... 9:45  
Morning Worship ..... 10:45  
Evening Service..... 6:30  
Sunday Night Youth... 7:45

**CUMBERLAND PRESBYTERIAN CHURCH**  
Sunday School ..... 9:45  
Bible Study ..... 6:30

## DOUGHERTY BAPTIST CHURCH

Jim DeWese, Pastor  
Sunday Services ..... 10:00  
Morning Worship ..... 11:00  
Evening Worship ..... 7:00

## CITY PARK CHURCH OF CHRIST

Billy Melvin Byrd, Pastor  
Sunday Bible Study ..... 9:30  
Morning Worship ..... 10:30  
Evening Worship ..... 6:00  
Wednesday Bible Study ..... 7:30  
Ladies Bible Study, Wed. A.M. ... 9:30  
Young Ladies Bible Class  
Fri. A. M. .... 10:00

## CHURCH OF CHRIST

Newell Burk, Elder  
Sunday Communion and  
Morning Worship ..... 10:30  
Evening Worship ..... 6:00

## SOUTH PLAINS BAPTIST CHURCH

Rev. Mike Oden  
Sunday School ..... 10:00  
Morning Worship ..... 11:00  
Training Union ..... 6:00  
Evening Worship ..... 7:00

## CARR'S CHAPEL

Rev. Lee Crouch, Petersburg, Pastor  
Services Every Sunday  
Morning Worship ..... 9:30  
Sunday School ..... 10:30  
No Evening Services

## VICTORY BAPTIST CHURCH

Emmett Clampitt, Pastor  
Sunday School ..... 10:00  
Morning Worship ..... 11:00  
Evening Worship ..... 7:00  
Wednesday Services ..... 7:30

## NEW SALEM PRIMITIVE BAPTIST CHURCH

Joe M. Jackson  
Sunday Congregational Singing... 10:00  
Morning Worship ..... 10:30  
Evening Worship ..... 6:30

## SPANISH BAPTIST MISSION

Sunday School ..... 9:45  
Morning Worship ..... 11:00  
Training Union ..... 6:00  
Evening Worship ..... 7:00

## FIRST ASSEMBLY OF GOD CHURCH

Pastor: Gary L. Cook  
Sunday Morning... 9:45 a.m.  
Sunday Youth Service... 5:00 p.m.  
Sunday Evening Evangelistic... 6:00 p.m.  
Wednesday Night Service... 7:00 p.m.  
Thursday Womens Missionary... 9:00 a.m.

Peace

you and yours be greatly  
inspired by the spiritual radiance  
of Christmas. For your valued patronage  
express sincere Yuletide thanks.

**DYSON'S**  
MR. AND MRS. CARROLL SIMS  
FLOYDADA



## Letters To SANTA!

Dear Santa Claus

I think I've been a very good little girl, so please bring me a Doll and a movie camera. I am 9 yrs. old.  
Yours truly  
Mary Jane Chavez

Dear, Santa

Well Santa I'm here wondering if you will bring me something. Because I haven't been able to be good. So Santa if you decide you want to bring me something. I am David Chavez. I am 7 years old. And I want an airplane and some guns.  
Yours truly

Dear Santa

I am Andy Chavez Jr. I am three yrs old and I want a trian and a trator.  
Yours truly  
Andy Chavez Jr.

Dear Santa

My name is Gloria Chavez. I am 4 years old. And what I want the most is a tea service and a telephone. Say hi to Rudloh the Red nosed Reindeer for me.  
Yours truly  
Gloria Chavez

Dear Santa,

How are you. I am fine. For Christmas I want a typewriter, Ain Hockey Dr. Steel. My brother wants a air hockey a Big Jim and motorcycle. We have been very good.

Love Kevin Christy

Dear Santa

My name is Dee Lynn Casey. I am 6 years old I want a winnie-the-pooh bunny tree and a white

teddy bear with a red ribbon instead of a blue one. And I also would like a winnie-the-pooh house shoes and pajamas thats all I would like this year. Thank you very much for everything else you have given me.

Love,  
DeeLynn

P.S. There will be a snack for you on the table by the Christmas tree.

Dear Santa

I have been a good boy. I would like a pellet gun and train.

I love you  
Scott Howard  
Age 6

Dear Santa

I been a good boy this year. I want a football set and a bow and arrow and bring the outer boy's and girl's present to.

your fan,  
Jerry louis Mathis

**HOMELESS PETS PAY WITH LIVES** - Millions of dogs and cats die each year because pet owners don't care, contends a veterinarian with the Texas Agricultural Extension Service.

More than 13 million pets were destroyed last year at animal shelters in the United States because nobody wanted them. Another five million strayed from home and met death by starvation, disease or under the wheels of a vehicle. Pet owners must take precautions to keep their animals from straying and particularly to protect them against accidental breeding. This means confining them or having them neutered.

## How Healthy Is Your Personality ?

Miss Dix is with the Texas Agricultural Extension Service. The Texas A&M University System.

In order to assess a healthy personality seven qualities can be used. Ask them of yourself in this manner:

-What is the movement of the personality? Is it toward or away from others? Is there more like than dislike for others? Is there warmth or coldness?

"Each of us has an opportunity to create a climate of warmth when we are near others. In such an atmosphere each individual becomes his best self."

-Is there a balance between the give-and-take in relation to others?

"The healthy personality is able to accept or take as well as give. Most of us get a great deal of satisfaction out of giving but find it hard to accept as easily as we give. Talking and listening, our daily practice of give and take, are very effective ways of checking to see levels of individual give and take," she noted.

-Is there some skill developed?

Skill or competence in handling materials is essential to building self-confidence and gaining the confidence of others. Confidence is reflected in the responsibilities we take on voluntarily or accept when assigned.

-Is there pleasure in creative privacy?

"You are interesting if you are interested. The individual who enjoys his own

resources, his own self, has real texture in the quality of his living. If you like yourself, you will be liked. Do you plan time for creative privacy?"

-Is there capacity to suffer disappointment?

Our maturity shows in the ways we react to unwanted, disappointing experiences: resentment—a childish reaction; realization that disappointments happen to everyone; learning to translate personal loss into an understanding of how other people feel.

-Is there a sense of something greater than ones self?

"Recognition of the existence of something greater than ones self helps to avoid self-centeredness, uneasiness, unhappiness and an unhealthy personality," the specialist said.

**NITROGEN CUTBACK SLATED** - Although nitrogen fertilizer production in the United States will be reduced about 4 percent this winter, Texas farmers should not be affected too much by the cutback, believes an economist for the Texas Agricultural Extension Service. The cutback will be due to a curtailment of natural gas (the feedstock for ammonia used for nitrogen fertilizer) to ammonia plants. Current estimates are that the curtailment of natural gas deliveries will total about 670,000 tons for the 12 month period ending March 1, 1976. However, severe winter conditions could cause further curtailments.



## Holiday Greetings

May the seasons keep bringing  
happy holidays to you. Our  
wish is that they be merry and bright  
... filled with love and peace.  
Accept our thanks for your loyalty.

**LEONARDS CAFE**  
FLOYDADA

OPEN 24 HOURS A DAY RIGHT THROUGH THE  
HOLIDAY SEASON FOR YOUR CONVENIENCE

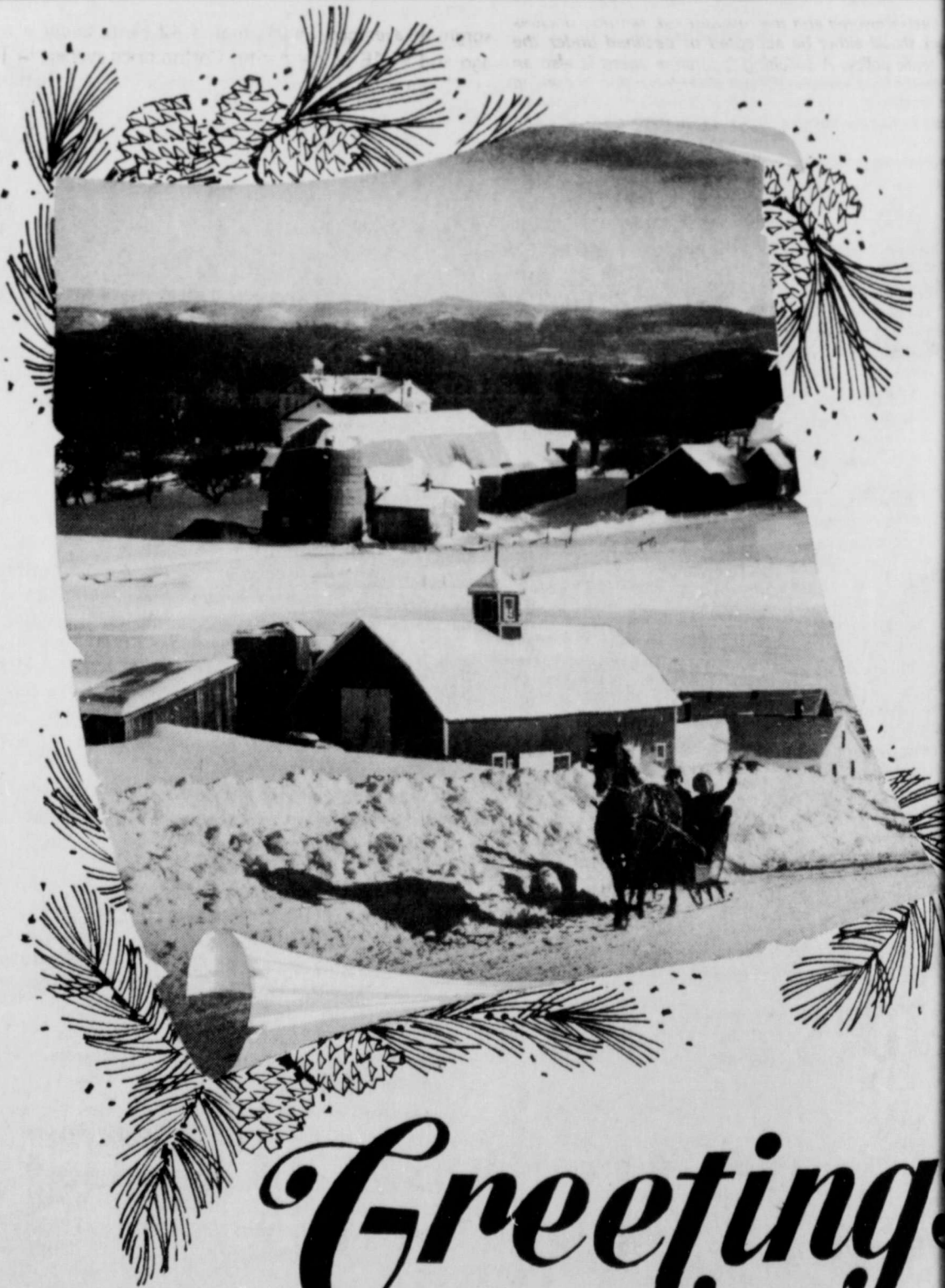


It's the greatest gift of all. On this special holiday, may you all enjoy the warmth and love that Christmas brings. We thank you for your support.

- \* ICE
- \* BARBEQUE
- \* SELF SERVICE GAS
- \* PICNIC SUPPLIES
- \* PASTRIES

**ALLSUP'S**  
CONVENIENCE STORE

MATADOR HIGHWAY IN FLOYDADA



## Greetings

The magical moment of Christmas is here again. In the spirit of the season we wish our neighbors and patrons many happy moments — rich in friendships, family get-togethers, heartfelt contentment. May all your holiday dreams come true. Thanks for your generosity.

Buddy Lutrick, Mgr.

**PRODUCTION CREDIT ASSN.**  
DEPENDABLE FARM FINANCING



# Prices Up, Consumption Down

STATION lower prices for beef, poultry, fresh fruits and potatoes. However, consumers will see higher prices for most other foods, with pork, eggs, dairy products and fish leading the way.

Turning to the food consumption issue, the economist points out that Americans will eat 1.5 percent less food in 1975 than last year and that this will be the lowest level in seven years.

"Most of the drop in consumption is showing up

in animal-related food products," notes the Texas A&M University System economist. "This is due to the fact that prices for fed beef, pork and poultry have been higher. Supplies of these products were restricted due to last year's drought and high-priced feed crops."

What can consumers expect during the first half of 1976?

"Food prices will likely average about 7 percent more than this year," estimates McDonald, "due to a strengthening in domestic demand and increased marketing costs."

Whether or not per capita food consumption will continue to decline in 1976 remains to be seen. "Americans are definitely becoming more cost conscious of food items and are paying more attention to their eating habits."

lives in the water and has a ravenous appetite for anything made of wood. That includes such things as submerged dock pilings which are in danger of being eaten away by the hungry little bugs. A marine biologist in Corpus Christi says the situation is worsening because the water is less polluted than in the past.

Dock owners in the Gulf Coast city are wrapping their pilings in plastic to stop the borers. Wraps are sealed, creating a thin layer of stagnant water inside. The gribbles soon use up all of the oxygen in that water and they die. Result: no more gribble nibbling.

Obviously it's better to have cleaner water with gribbles than dirtier water without gribbles. But the moral of this little tale is that everything has its price. And the price to the Corpus Christi marina, for wrapping some of its timber next year, is a hefty \$7,500.

All because the water in the harbor is cleaner and gribbles know a good thing when they're in it.

## Words on Water

QUALITY BOARD  
MARINE TEXAS 78711

## FOR GIBBLES?

who are not fami-  
City of Corpus  
"Sparkling City  
owns what is  
Corpus Christi  
where ships from  
world call to pick  
their cargoes.

the Inner Har-  
polluted body of  
much lived in it.  
very pretty and  
very nice.

intervening years,  
along the  
direction of the  
Board, have  
the harbor discharges so  
loading has de-  
creased. The peo-  
Christi like it  
the gribbles.

A gribble is a tiny  
(Crustacean) which

## INFORMATION

DAVID B. CATES  
Floyd County Farm Bureau  
Floydada, Texas



I've heard the term "underwriter" for  
years. I'm not sure I understand what it  
can you explain this?

An underwriter is the person who writes his name on the  
contract. Realistically the underwriter is the person in the  
of an insurance company who, after collating all facts  
prospective insured and the relevant risk factors, decides  
he not should either be accepted or declined under the  
specific policy. A soliciting insurance agent is also an  
that he does exercise the initial underwriting in making  
of prospects, thus eliminating the most obvious  
or finding the policy best suited to the particular

## SANTA'S HELPER

# SALE

Sleigh full of values on  
John Deere Products



Now  
Every John Deere  
cycle in stock

TOYS 25% OFF

—Was Now

Speed Racer (shown)	\$150	\$95
Speed Universal	\$135	\$90
Speed	\$115	\$80

Nothing runs  
like a Deere®

Collins Imp. Co.

Ralls Hiway  
Floydada, Texas



PICTURED ARE the members of the West Texas State University livestock judging team who recently entered the Panhandle State University livestock judging clinic held on December 6. The clinic is designed to give area college livestock judging teams practice and experience in judging competition. Front row (l-r) Harry Fulton, Wildaredo, Texas; Mark Hargrave, Happy, Texas; Mona Jamison, Lamesa, Texas; Larry Fulton, Wildaredo, Texas. Second row (l-r) J. H. Lain, Lockney, Texas; Mike Busley, Slaton, Texas; David Harber, Spearman, Texas; Jim McManigal, Coach.

A Weekly Report Of Agri-Business News

# Farm-facts

Compiled From Sources  
Of The Texas Department of Agriculture  
John C. White, Commissioner

## Up and Down Again... A Better Buy... Prospects Brighten.

Farm costs are up, farm prices are down. That's the summary of the latest agricultural price report from the Texas Crop and Livestock Reporting Service.

Parity is now down to 73; a month ago it was 76, as was the case a year ago. Only two commodities—oats and mohair—are above parity.

Meanwhile, prices paid by farmers showed a six per cent increase compared to a year ago. Lower prices for livestock feed were noted, but higher prices were paid by farmers for clothing and motor vehicles.

Hog prices showed a big decrease, averaging \$47.60 for November, which is \$7.20 under a month ago. Parity for hogs is \$48.80.

In other categories of livestock, beef cattle averaged \$31.20, up \$1.50 from a month ago but still more than 50 per cent below parity ratios. Calves averaged \$26.60 compared with parity at \$68.90. Sheep prices were only a dime below parity, averaging \$15.90.

Most crop prices are under levels of a month ago. Wheat averaged \$3.54 per bushel, which is 50 cents under a month ago and more than a dollar below parity. Grain sorghum averaged \$4.04; that is 42 cents under a month ago and \$1.16 below parity. Cotton price average in Texas, at 43 cents, is under a month ago and about half of the parity level.

Eggs showed an increase of 10 cents per dozen from a month ago; mohair was about 25 cents per pound above parity; oats were 19 cents a bushel above parity.

All this points up to one fact of agricultural life: while prices farmers receive decline, the cost of food to the consumer is continuing to increase.

**STILL A GOOD BUY FOR CHRISTMAS** this year is Texas farm produced food. One of the good buys you should consider now is citrus. The quality of grapefruit coming out of the Rio Grande Valley continues to be excellent. Another good suggestion is Texas pecans, now being harvested throughout the state.

**MEANWHILE, WHEAT AND OAT FIELDS** generally are making satisfactory progress, but a rain is needed to push them along; some areas report grain fields dying due to lack of moisture.

The only major crop yet to be harvested in the state this year is cotton. Harvesting of that commodity is more than 50 per cent complete.

**PROSPECTS FOR A GOOD COTTON YEAR** in 1976 are now shaping up, according to a number of economists and forecasters.

They point up the fact that demand for cotton is increasing while the supply is down.

The textile industry is reviving from its doldrums and it is anticipated that cotton will be a popular fabric in the coming fashion season.

Costs of producing cotton for some inputs are expected to be about steady in 1976 compared to this year.

Putting it all together, the forecasters say cotton has a bright prospect for 1976. A year ago, cotton was being relegated to extinction by some of its critics. But cotton has always managed to survive each crisis it has encountered in years past.

Cotton is proving again to be popular as well as durable. It should continue to be a major factor in Texas agriculture for years to come.

## Ag Exports Create Jobs

College Station—Many Americans are gainfully employed, thanks to the abundance of agricultural products that are shipped abroad.

"Agricultural exports provided jobs for more than a million people last year," points out a marketing economist for the Texas Agricultural Extension Service.

"The big business of exporting agricultural commodities provided jobs directly or indirectly for an estimated 1.2 million people," notes Dr. Russell McDonald.

Half a million of these jobs were held by farmers—about 14 percent of all the farmers

in the United States.

Jobs in the nonfarm sector that stem from agricultural exports included some 50,000 in food processing, 300,000 in trade and transportation, 100,000 in manufacturing and 200,000 in other services.

"A total of 5 percent of the U. S. work force was involved in some way in the agricultural export picture in 1974," adds the economist with the Texas A&M University System. "Four percent were producing food and related products and just under one percent of the non-agricultural labor force was producing goods and services needed for agricultural exports."

## CROSBY VOTERS APPROVE WEED CONTROL DISTRICT

A Crosby county Noxious Weed Control District will be formed. The proposition was approved by a 102 to 62 vote Saturday.

One person termed the balloting somewhat of a "ranch land owner vs. farm land owner" situation. In the Kalgary box, the proposal received no "yes" votes and 20 against. Owens box also turned thumbs down, by a 5-16 plurality.

Persons who cast ballots in the other five county voting precincts favored the weed control district.

## HEAVIEST TURNOUT

Heaviest turnout by a large margin was in Crosbyton where 41 voters favored formation of the district, and 14 persons voted against. The other four boxes also

## Buster Brown Drilling Co.

Drilled & Cased \$7.75

If We Do Pump Work

Fast Bailing & Gravel Pack.

HPC Pumps

Buster Brown

892-2742 Idalou

&

Raymond Poole

983-2285

## Covering Floyd County's Insurance Needs



JAMES RACE  
652-3869



DAVID CATES  
983-3273

WHEN YOU NEED INSURANCE SERVICE FOR YOUR HOME, RANCH, FARM, AUTO, CROPS, LIFE . . . . .

# FARM BUREAU INSURANCE

OFFICE PHONE 983-3777

FLOYDADA, TEXAS



The voice of Lubbock-based Plains Cotton Growers, Inc. was added to that of other cotton and general farm organizations favoring a producer referendum on funding of increased research and market development for U.S. cotton on December 16.

PCG President, W.B. Criswell of Idalou, presented PCG views in Washington at hearings before the Cotton Subcommittee of the House Committee on Agriculture. Committee Chairman David Bowen of Mississippi called the hearings for December 16 and 17 to obtain testimony on his bill to authorize a cotton producer vote on increased financing for Cotton Incorporated.

CI is the producer's national research and market development company set up under the Cotton Research and Promotion Act of 1966.

Criswell, reflecting the wishes of the PCG board, told the subcommittee that PCG wants "legislation that will permit producers to decide whether they want more research and market development of the kind they have been getting from Cotton Incorporated, and whether they want to pay for it."

The PCG official emphasized that any increased producer contributions should be as a percentage of bale value, not a fixed dollar amount. Such a system, he explained, will help to equalize CI revenue in high and low production years, and will tend to increase the number of dollars available to CI as inflation erodes each dollar's buying power.

Also, he said, "It is much more equitable to ask each producer to pay a percentage of his cotton's value than to ask him for a fixed dollar amount on each bale whether the bale sells for \$150 or \$300."

Producers have voluntarily supported CI activities since 1966 at the rate of \$1 per bale. This amount was supplemented in early years of the program by \$10 million a year and later by \$3 million a year from Commodity Credit Corporation funds. However, the \$3 million from CCC in 1975 is expected to be the last appropriated.

In addition to this loss of CCC funds, inflation has substantially cut the number and size of programs that can be carried out by CI with money from producers at \$1 per bale.

Chairman Bowen's proposal, made at the request of industry leaders, would permit a producer referendum in which each grower would have the opportunity to vote for or against an increase in his voluntary contribution to CI. The current \$1 rate is set by law and legislation authorizing a referendum, plus passage of the referendum, is required before it can be changed.

Under Bowen's bill as now written, producers would vote on whether to invest up to one per cent of the gross value of their production each year in addition to their current \$1 payment. Passage of the referendum would require either (1) a two-thirds majority of the producers voting or (2) a favorable vote from producers who grow two-thirds of the cotton produced, provided those producers also constitute a simple majority of all producers.

If the referendum passed, the percentage of gross bale value to be paid by producers would be set, not to exceed one per cent, by the Cotton Board with approval from the Secretary of Agriculture. The Cotton Board is made up of cotton producers appointed by the Secretary from nominations made by cotton interest organizations.

voted affirmatively: Ralls, 18-5; Cone, 12-0; Pansy, 11-3; and Lorenzo, 15-4.

Crosby County Noxious Weed Control District will operate with its own elected board of directors. A charge of three cents per acre is to be assessed to finance the district.

**We Will Be Closed  
Christmas Week,  
No Auction  
December 24**

THE McCANDLESS FAMILY

**Floydada Livestock Sales Co.**

FLOYDADA



Gene Arvines  
J. A. and Ethel Arvines  
Johnnie, Phyllis  
Todd, + Michelle  
Harris  
Wanda + Pete  
Hickerson  
Peggy Probasco  
+ Kids  
Robert, Darlean  
Ty + Grant Stovall  
Lessa + Woodrow  
Wilson  
Tommy + Lorie  
Harris  
Louise + Joyce  
Bilbray  
Bard Bishop  
Ken, Joyce and  
Joan Bishop  
Nola Bishop  
Lon, Sue, Donna  
Sammy and Little Don  
Chesher  
Mr + Mrs Don Davis Jr  
Clarence and Joy Linton  
John Harris  
Mrs. Jack Henry  
Loretta + J. L. Holland  
Chuck, Betty, Don Ed  
and Ricky Holmes  
Loretta + John  
Hatchkiss  
Mr + Mrs. Neil Langley,  
Andy, Cathy  
James + Sue Louie  
Mark + Matt Martin  
Johnny + Loma Miller  
The Morekels:  
Nancy, Harry and  
Mom Buchanan  
John + Jettie Mass  
Pamela, Francis + Melody  
Powell  
Farrest, Kay, Sharon  
and Lucretia Shannon  
Mr + Mrs L. D. Simpson  
Francis + Billy Stanforth  
The Dennis Tensdale  
Family  
Mr + Mrs Gladys Walker  
Gladys Wemherly  
Mr + Mrs. J. M. Williams  
Mr + Mrs Jim Ward  
Mr + Mrs. Glen Watson  
and Lou Ann  
Howard, Nancy + Greg Bishop  
Carolyn, Donk, Jett, Lane  
Don Brick + Karen Chuck  
Earl and Thelma Crawford  
The Jack Jordan Family  
Mr + Mrs. Clem Mc Donald  
Mrs. Helen Patterson  
Frank, Pat, Boone and  
Jim Barrow  
Johnnie + Marjorie Collins  
Bob, Nina, Ken and  
Kara Copeland  
Rickie, Sue and Jennifer  
Crow

Max, Peggy, Jim  
+ Suzanne Byers  
Craig, Betty, Chad  
and Shannon Edwards  
Claude + Francis  
Weatherbee  
The Louis Lloyd  
Family  
Nardy, Lynn, Harey,  
Laurie, Blake  
and Alan  
Ruth + Green  
Christian  
E. L. Cornelius  
R. J. + Helen Dunlap  
Mr + Mrs. Leale  
Harris  
Doris Mc Lain +  
Cliff  
Lillian Marble  
E. L. + Robbie Morgan  
Mr + Mrs. Doyle Waller  
Euell Gibbons  
Sherry + Andy  
Hale

The Kay  
Crafter Family  
John + Judy  
Dunlap  
The Adrain  
Thelma Family  
The Clarence  
Jones Family  
The Grace  
Jones Family  
The A. C.  
Platt  
Family



Tommy, Joy, Tom  
and Darla Asster  
Weldon + Ruth  
Wannonds  
Bill, Eleanor, Steve,  
Joy and Susan  
Hendrix  
Matt + Elmer Narrell  
Keith, Jesse, Jena,  
Debra + Becky Reeves  
R. L., Geneva, Mike,  
+ Elaine Giesecke  
Mrs. Elie Goin  
L. B. + Ferny Lynn  
Stewart  
Plainville Savings +  
Loan - + Loydada Branch  
Wayne, Jan, Michelle  
+ Mike Patel  
Boone, Ruth + Rayon  
Adams  
James, Jean, James,  
Joy + Debbie Hale  
Ray + Sunny McDonald  
Mrs. Margaret Springer

Hop + Eura Rabaton  
Mr + Mrs. Fred Stewart  
Mrs. Mae Muncy  
Mr + Mrs. Wendell  
Bodley + Family  
Bob, Francis, Allison +  
Jim Bob Hambright  
Mack, Sall and  
Joyla Hickerson  
Wayland, Margaret,  
Julie, Steve, Grey  
and Amy Jones  
Edell + Louise Moore  
Gladys + Catherine Peck  
Mr + Mrs. Allen Cochran,  
Carol + David  
Alton, Francis +  
Ray Rose  
Margaret Beggs  
+ Ricky  
Lawrence + Jo Davis  
Carl + Grace Garrett  
Leonard + Lakona  
Matisse  
Ernie, Lana, Shayla  
+ Eden Moore

The Corky Guffer  
Family  
The Alton  
Thigginbotham  
Family  
The Ray Maton  
Family  
Mama + Willie  
Bunch  
Mr + Mrs. Bob  
Veckers + Family  
Odell + Henell  
Brid  
The J. A. Welch  
Earl + Laura Reason  
Leroy + Loretta Burns  
Mr + Mrs. Ricky Burns  
Amy + Ryan  
Mr + Mrs. John C. Mues  
Linda, Jerry, Nancy  
+ Jeff  
Shirley + Louise, Turner  
Jo, Mary + Cindy Bay  
Hollie, Jo, Tammy  
+ Joy Palmer  
Wilby + Bobbie  
Rodgers  
Mr + Mrs Ray Smith  
Mr + Mrs J. C. Watson

Weldon, Jim  
Greg, Karen  
Christy  
Wilma +  
Winifred  
+ Helen  
Lous, Cheryl  
+ David  
Wanda, al  
+ Brian Wil  
Jerry + L  
Falle  
Dorothy  
Lana  
Camp  
Philip  
Michelle  
Mae  
Mon  
Smith  
Mark,  
Fred  
Nath  
Whe

**May the blessings of the first Christmas be yours to cherish now and always.**

**Season's Greetings 1975**  
**1950 Study Club**

Persons whose names appear in this greeting are taking this means to wish friends and relatives a Merry Christmas and a Happy New Year. Each donation helps the 1950 Study Club to promote many worthwhile projects.

Mr + Mrs. W. H. Simpson, Jr  
+ Family  
The Ted Allen Family  
Bill, Joanne, Reagan,  
John + Rusty, Cagle  
Jack + Ruth Mc Intosh  
Noma Lou, Bobbie,  
Thy Lyn + Mary Ramer  
Dab, Bobbie, Sonja,  
Christa + Kent West  
Arthur + Medred  
Wigley  
Sam H. + Audrey  
Spence  
Norman + Laine  
Hamilton  
Mr + Mrs. Claude Bates,  
Mark + Mike  
Billie + Walter Hanna  
Mrs P. D. Thelma + Alice  
Mr + Mrs David Kirk,  
Harry, Kusta + Laine  
Vernon + Eva Parker  
Dallas, Dale, Mike  
+ Le Feyn Ramsey  
Mr + Mrs. Johnny Lee,  
Sheldon + Kelly  
Norman, Mary, Shama  
+ Ronnie Ferguson  
Johnny, Jeanette, Maugh  
+ Robin Roberts  
Maurice + Kay Stein  
Mrs. Leila Stewart,  
Jimmie Lou + Joyce  
Harvey, Judy, Mike  
+ Norman Allen  
Allen + Jo V.  
Bingham  
Ray, Johnnie and  
Lana Reed  
Ann + Kenneth  
Bean  
Benton, Judy, Mark  
+ Todd Beedy  
Mr + Mrs D. M. Cogdell  
Melvin + Lou Davis  
The Bill Hale  
Mrs John Smitherman  
Joy, Bryson + Kelly  
Smitherman  
The Ronald Evans  
Family  
Richard, Teresa, Mitzi  
and Melissa Hale  
Burl + Doris Huckshen  
Beverly, Dale, Bonny,  
Dawn + Dale Kincaid  
John + Madge West  
Glen + Ola White  
Chlo, Nettie Ruth  
+ West Whittle

Me  
Robert  
The  
Bill Ha  
Fam  
Mr + T  
Roy Ha  
Jerry  
Edd  
+ Shue  
Mr + M  
L D M  
Mr + M  
Bill W  
Joe, Jo  
+ Tracy  
Mr + M  
Cecil Ba  
C O + M  
Huck  
The  
Nelle  
Buck  
Fam  
Loring  
Roe  
JOE  
Contrib  
that Mi  
the h  
Dev  
ing Su  
gme c  
ould i  
men in  
me th  
here  
Chas  
mity  
this e  
M  
E  
R  
R  
Y  
C  
H  
R  
I  
S  
T  
M  
A  
S  
next  
ristma  
guar  
Christ  
seve  
leading  
driv  
the ne  
enues  
BBO  
has t  
ways  
way  
ackne  
the Flo  
strie  
Lock  
some  
Year's  
FAS  
to thi  
the ti  
bur  
reuer  
laine  
is l  
Amari  
mate  
shabl  
ab  
on  
of C  
was  
th