

# Hornet Caught Up In A Whirlwind

## Win The Kid passes 1,000 Yard

Wendell Tooley  
Hornets got caught up in a whirlwind Friday night and subsided the Hornets' broken off, his wings were Floydada had another 31-7.  
played at Tulia was start to finish, I could entire story to the great "the Kid" Ratliff, Micky Womack, Donzell Minner, who all were stars in but I want to say it was the tremendous of the defense team and the line who should be after time they Tulia's running backs and Monty Cannon . . . 33 and 43. Although

### Rock Chair WENDELL TOOLEY

WILSON was in Abilene . . . comments Saturday had been here he would we are just extremely entire team . . . they about like the way we had  
coach Joe Paty that slightly injured his good everyone came out of Tulia in good physical

TEAMS THE Whirlwinds continue to gain steam and will be in the winner's circle of champs are declared. Slaton and it looks Littlefield will battle for win.  
we were feeling down and Post, we may not what good teams we we tied Littlefield and the stat sheet.

ABOUT IT . . . the fans showed they loved Tulia . . . they stood up almost constantly through suppose Floydada had a following as did the we travelled some 50

LADY ASKED me turkey shoot?" I suppose think the sportsmen may at turkeys at a turkey . . . they shoot at little and the best shots get to stressed turkey as the times there is a choice of for the prizes.

WOMACKS WERE REALLY in the early 1930's (for you back then, economics times). The LaFrance on the right of the Thursday was finally because the City of broke and could not

ST . . . we have the trip to Hawaii March the office and we'll give call me and I'll send mail. Believe we have 24 indicated an interest in

DO THINK watching our newspapers was really after seeing the gin in Floydada Cooperative press just isn't in the

gin 16 to 20 bales per the bale and wrap it in an automatic dryer, sampler . . . I suppose is automatic.

takes some smart people buttons on the control panel has over 70 red lights the electric motors are there is a total of over in all the electric

HAD an opinion from in this city about the constitutional proposal on all vote.

of my desk is a pile of and probably some revealing a complete of the new constitution,

pretty confused as to some November 4. All I point, I'm still studying I have.

most respect for Billy of the House who is constitution. I also respect Briscoe, who is against

easy way out would be . . . I don't understand against it." You know; the best voter is the . . . let's all try to vote November 4.

Williams chalked up 202 yards, he was allowed to score only once.

It took super effort to bring down these huge backs . . . and the Whirlwind defense accomplished the feat.

Kelvin had almost a repeat of the week before against Lockney . . . he made three touchdowns, 254 yards and extended his year's total to over 1,000 yards. He only made one play in the last quarter . . . some 59 yards for a TD with about 11 minutes left in the quarter. Coach L. G. Wilson used substitutes in the backfield most of the last quarter.

#### FIRST HALF

After the Hornet kick-off the Whirlwinds didn't give up the ball until they scored . . . a beautiful offensive attack with a total of five first downs. Quarterback Jay Womack ran for 35 of the yards, passed to Donzell Minner for ten, Kelvin made 32 of the yards in the series that led to the first TD. It was Micky Minnett who caught the TD pass from Womack from about the ten yard line. Micky kicked the extra point. (It might be mentioned here that this was a perfect game for Micky and his magic toe . . . great kick-offs, didn't miss a single PAT and also he kicked a 34 yard field goal. There was 6:29 left in the first quarter.

The Hornets took Micky's kick-off back to the 24 . . . couldn't go and quarterback Steve Brown punted a 32 yarder.

Floydada had the ball on their own 45 . . . good field position, couldn't go and Womack punted a 29 yarder. Tulia made one first down, then Jay Lackey intercepted his first Hornet pass.

Next play Floydada fumbled the ball right back to the Hornets.

Tulia made two first downs, had the ball down on the Floydada 12 yard line when Donzell recovered one of their fumbles. Womack made a fine 22 yard run that was called back on a penalty. Winds were in pretty bad shape on their own five yard line. Kelvin broke loose for 19, then two plays later broke out the right side for 78 yards and his first TD of the game. Floydada led 14-0 with 6:37 left in the second quarter . . . Floydada fans were screaming.

Tulia then began to look like themselves . . . 33 and 43 combined to make five first downs . . . two penalties against Floydada helped, and Williams crashed over the middle for the last 2 1/2 yards and the TD. Cannon kicked the PAT. The score was 14-7 with 1:20 left in the half.

Womack made a good nine yard gain first play after the Hornet kick-off, then had his pass intercepted. Next play Donzell intercepted a Hornet pass and the Winds were on the Hornet 46. Womack uncorked a beautiful pass to Minnett . . . good for 24 yards. Womack ran for nine and Kelvin for four. The ball was on the 17 yard line, first and ten, 18 seconds left in the half. Coach Wilson elected to try for the field goal and Micky did . . . Floydada went into the half ahead 17-7.

#### HALFTIME

The marching band from Whirlwind land put on a good halftime show . . . I was so cold, I was trying to warm up with a cup of coffee . . . so really couldn't describe the formations. I didn't hear them play "San Antonio Rose" or any of those tunes I recognized.

#### SECOND HALF

Hornets couldn't go after Micky's kick-off and Brown punted a high 22 yarder. Third play Kelvin rambled down the field . . . some 47 yards for his second TD of the night. Micky did and the score was 24-7 with 8:24 left in the third quarter.

Again Tulia's 33 and 43 buckled down to making yardage . . . five first downs as they marched down the field. However, the terrific Wind defense finally held on our 19 yard line and the ball went over on downs.

Kelvin made six, Larry Jones seven, then going into the last quarter Kelvin broke right through the middle for a 59 yarder and his third TD. Micky did . . . the score was 31-7 with 10:57 left in the game.

Coach Wilson played his back-up offense the rest of the game. Danny Nixon made a good run or two, Randy Ratheal made nine, Jay Lackey intercepted another Hornet pass.

Ricky Carthel managed to recover a Hornet fumble near the end of the game.

The game ended with Tulia on the Whirlwind seven yard line. Floydada is now 2-0, Tulia 0-2 in district play . . . Idalou is 2-0. Abernathy and Lockney 0-1.

Next week the Abernathy Antelopes invade Wester Field . . . kick-off at 7:30.

F	STATISTICS	T
13	First Downs	19
314	Yards Rushing	326
44	Yards Passing	8
10/3/1	Passes Att/Comp/Int.	12/1/3
1	Fumbles Lost	1
3/12 1/2	Penalties	3/15
2/63	Punts	2/54

## Floyd County Hesperian

15¢  
Per Copy

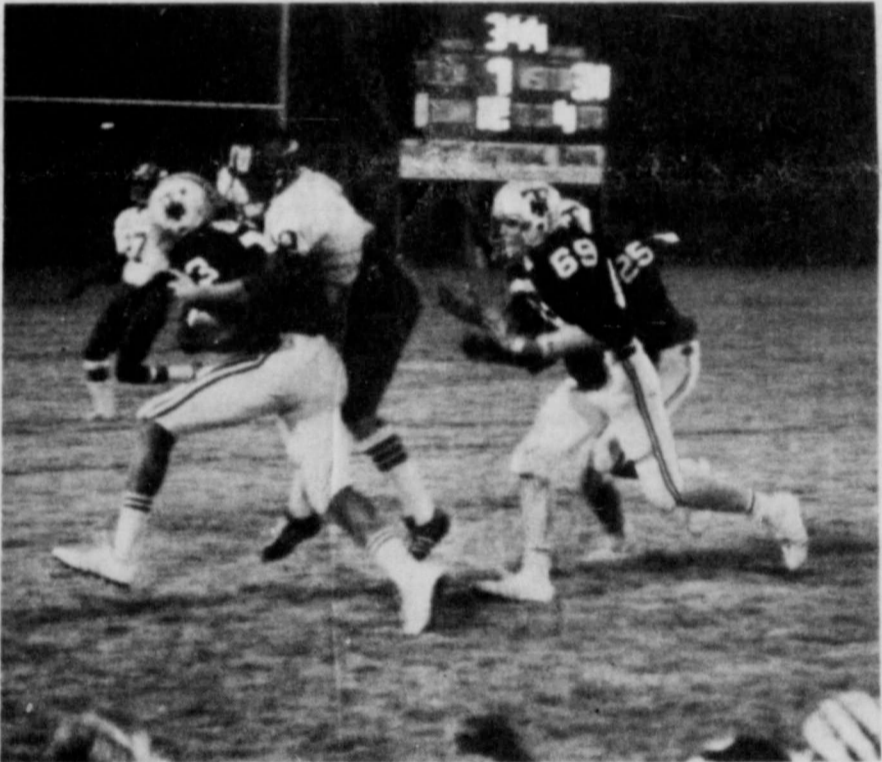


20 PAGES IN TWO SECTIONS

VOLUME 80 FLOYDADA, FLOYD COUNTY, TEXAS 79235 SUNDAY, OCTOBER 26, 1975 NUMBER 85



KELVIN THE KID darts around a Hornet tackler and heads out for another Whirlwind TD. (Photo by Keith)



JERRY MCGUIRE jumps on for a ride in bringing down Tulia's big Raymond Williams. (Photo by Keith)



MICKY MINNETT jumps high to take this first Whirlwind TD pass in the Tulia game. (Photo by Keith)



THE BALE OF COTTON COMES OUT SAMPLED, AND COMPRESSED in the new ginning process at the Floydada Cooperative Gins. W. H. Bunch gets ready to put poly covering on the bale. (Staff Photo).

### FLOYD COUNTY

## Fifth In Sorghum, Sixth In Soybeans

AUSTIN-Floyd County made an important contribution to Texas agriculture in 1974 by placing sixth in the state in the production of soybeans and fifth in sorghum production.

According to Agriculture Commissioner John C. White, local farmers harvested some 435,000 bushels of soybeans and over 11 million bushels of sorghum.

Compared with 1973 sorghum production fell 752,000 bushels while the county's soybean crop increased 44,000 bushels.

Dry weather on the High and Low Plains caused many planting problems for sorghum farmers, and many acres were left unplanted because of lack of adequate moisture.

Despite the problems associated with 1974, Texas farmers led the nation in sorghum production with 312 million bushels - down 105 million from 1973. The state ranked twenty-second in soybean production.

## Masons To Be Honored

Several Masons will be honored at an open meeting Tuesday night in the Floydada Masonic Hall.

Receiving recognition for 50 years service will be Carl Minor, Sr. and the following will receive 25 year pins: Lloyd Allen, W. H. Brock, Jr., A. W. Coltharp, Glen Jarnagin, Ralph Lemons, Lyndell Roberts, Carl Minor, Jr., Harold Woodson and J. R. King. Dinner is at 7 p.m., program following.

## Absentee Vote Slow

Only six absentee votes have been cast on the state constitutional election for November 4, according to a report from the county clerk's office.

Deadline for absentee voting is November 1.

## Free Blood Pressure Clinic

The public is invited to come into the Floydada First National Bank Community Room from 10 to 6 p.m. Saturday for a free blood pressure check-up.

The blood pressure clinic is sponsored by the Heart Association and through the years blood pressure check-ups have given many people tips that they may be in for heart or other health problems.

## No School Friday

Public school students in this area will enjoy a holiday October 31 when over 5,000 teachers and school administrators from 17 West Texas counties gather in Lubbock for the Eighth Annual Convention of District XVII, Texas State Teachers Association (TSTA).

Dr. William W. Purkey of the University of Florida will be principal speaker at the morning session. He is internationally recognized for his research, writing, and lectures on self-concept theory and processes for humanizing education.

The House of Delegates for the convention will convene Thursday evening, October 30, at Coronado High School. The business session will follow a 6:30 p.m. banquet.

The general session October 31 begins at 9:30 a.m. in Lubbock Municipal Coliseum. Dean Andrews, president of District XVII and superintendent of Lorenzo Public Schools, will preside. Mrs. Jewel Howard, immediate past president of TSTA, will bring greetings and a report from the state organization. Presentation of colors will be by Lubbock's Estacado High School Army Junior R.O.T.C. Music will be presented by the Lorenzo High School Band, and the invocation will be given by Rev. Fred Meeks, Pastor of the Lorenzo First Baptist Church.

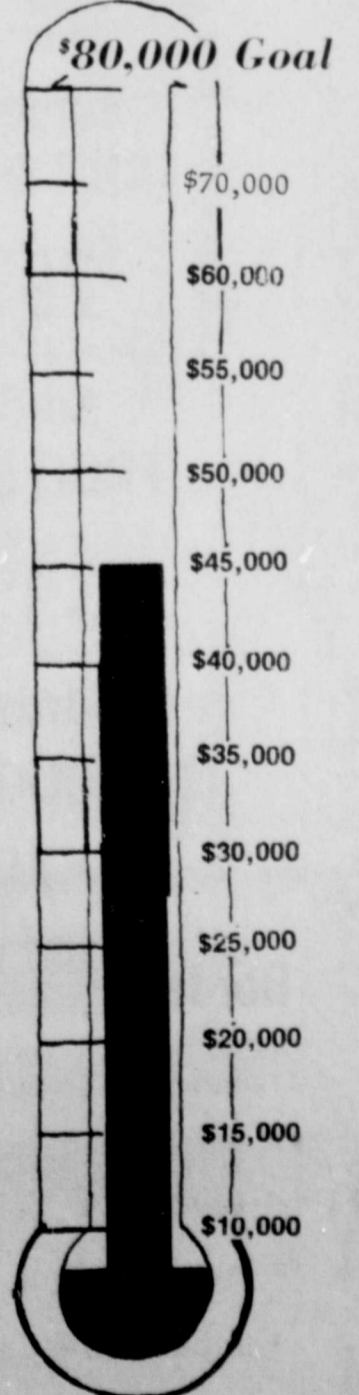
Numerous luncheon and afternoon sectional meetings are planned for members of several educator associations and teachers of subject matter areas. An afternoon session for elementary teachers will be at 2:15 p.m. in the Monterey High School Auditorium. This large group meeting will feature an address by Lewis Timberlake of Austin. He is president of Decision Dynamics, a corporation engaged in the development of human potential. Frank Mullican, principal of Lubbock's Maedgen Elementary School, will preside. Secondary teachers will attend the appropriate sectional meetings for their subject matter specialties.

Held concurrently with the teacher meetings will be sessions for members of the Texas Educational Secretaries Association and the Cafeteria Section of TSTA. Secretaries will register at 9 a.m. at Wilson Jr. High School. Members of the cafeteria group will meet at 8:30 a.m. at Estacado High School.

Members of the Retired Teachers Association will meet at noon in the Villa Inn Motor Hotel.

Counties included in District XVII are Bailey, Cochran, Cottle, Crosby, Dickens, Floyd, Garza, Hale, Hockley, Kent, King, Lamb, Lubbock, Lynn, Motley, Terry and Yoakum.

## A & M Training School Fund



Have You Given  
Your Fair Share?



### Dougherty 4-H Members, Parents Invited To Meeting

Members of the Dougherty 4-H Club and their parents are urged to attend a meeting of Dougherty 4-H Monday evening, October 27th at 7 o'clock at the Dougherty School. Assistant County Extension Agent, Steve Herber, will bring the program on 4-H projects.

### LOCKNEY GENERAL

## Hospital Report

October 16-23

John Leo Frizzell, Lockney, admitted 10-8, dismissed 10-20.  
 Gina Kay Byars, Lockney, admitted 10-10, dismissed 10-18.  
 Alvie Wilson, Lockney admitted 10-13, dismissed 10-22.  
 T. J. Word, Lockney, admitted 10-13, dismissed 10-21.  
 Ofilia Arellano, Floydada, admitted 10-13, dismissed 10-18.  
 Wilma Lee Stewart, Plainview, admitted 10-13, dismissed 10-18.  
 Leon Moody, Plainview, admitted 10-15, dismissed 10-17.  
 Agnes Frizzell, Lockney, admitted 10-15, dismissed 10-19.  
 Virginia Hernandez, Floydada, admitted 10-16, baby girl Mary, born 10-16, dismissed 10-18.  
 Maria Peralez, Lockney, admitted 10-17, baby girl Nancy born 10-17, dismissed 10-19.  
 Sisto Arredondo, Lockney, admitted 10-16, dismissed 10-20.  
 C. W. Starkey, Flomot, admitted 10-17, continues care.  
 Retha Wafford, Lockney, admitted 10-18, dismissed 10-19.  
 Linda Cate, Plainview, admitted 10-18, baby girl Amy, born 10-18, dismissed 10-20.  
 Joe Bedwell, Quitaque, admitted 10-18, dismissed 10-22.  
 Elizabeth Hernandez, Lockney, admitted 10-18, baby girl Amy born 10-18, dismissed 10-21.  
 Pearl Emert, Dougherty, admitted 10-18, dismissed 10-22.  
 Mary Charles, Floydada, admitted 10-19, baby girl Cindy born 10-19, dismissed 10-21.  
 Juanita Jimenez, Dimmitt, admitted 10-19, baby boy Pete, born 10-19, dismissed 10-21.  
 Hattie Tate, Lockney, admitted 10-20, continues care.  
 Juanita Self, Silverton, admitted 10-20, continues care.  
 Della Trevino, Plainview, admitted baby boy Steven born 10-20, dismissed 10-22.  
 Garbiel Ray Gonzales, Plainview, admitted 10-22.  
 Willie Roberts, admitted 10-12, continues care.  
 Anna Lou Shugart, Lock-

ney, admitted 10-21, continues care.  
 Estolia Gonzales, Lockney, admitted 10-22, continues care.  
 Lois Faye Williams, Crosbyton, admitted 10-23, continues care.

### LIONS PANCAKE SUPPER A BIG SUCCESS

The annual pancake supper sponsored by the Floydada Lions Club was a complete success. The Lions Club would like to thank everyone for their help in making it so successful. Over 300 people were served. Special thanks go to Newell Burk and Tommy Assiter for their time and expertise in pancake cooking. Also Borden Milk Company for the milk, the ladies at the Junior High School Cafeteria for their help. Boone Adams for the margarine and the list could go on and on. The Lions Club hopes everyone enjoyed the pancake supper and will try to attend next year.

STILL TIME FOR QUALITY HAY--Fall moisture is generally adequate over much of Texas, and with adequate use of fertilizer, top quality hay can still be produced for the coming winter feeding season. A lack of fertilizer use along with varying rainfall resulted in some rather poor quality hay this spring and summer, points out a forage specialist for the Texas Agricultural Extension Service. For good quality hay, use adequate amounts of nitrogen fertilizer and harvest the hay at the proper stage of growth. Producers are encouraged to enter hay samples in the State Hay Show set for Oct. 14 near Austin. Deadline for entries is Sept. 24.

VETERANS DAY MONDAY, OCT. 27



People once believed that tangles in the manes of horses were used by witches as stirrups.

### STEEL BUILDINGS SINCE 1950

YOU CAN ALWAYS BUY ONE CHEAPER, BUT NEVER ONE MORE COMPLETE.

### M.O. STAPLETON CONSTRUCTION CO.

CALL COLLECT  
 BUS, 296-7893, HOME 296-9237  
 BOX 84, Plainview, Texas 79072  
 1001 East 5th

Like a good neighbor, State Farm is there. with help for your car, home, life and health insurance.

See me. BRITT GREGORY  
 112 W. Missouri  
 Floydada 983-3125



# Shur-fine RED WHITE & WOW DAYS

★ CARNIVAL OF ALL-AMERICAN VALUES! ★

CLOVERLAKE 1/2 GAL. <b>ICE CREAM</b> SPECIAL 99¢	4 ROLL NORTHERN <b>TISSUE</b> 79¢ LARGE ROLL NORTHERN <b>TOWELS</b> 2/89¢	6 BOTTLE CARTON 32 OZ. <b>COKE or DR PEPPER</b> PLUS DEPOSIT \$1.59	BORDENS 1/2 GAL. <b>BUTTERMILK</b> 79¢
--	--	--	---

SHURFINE HALVES OR SLICES 16 oz. YELLOW CLING PEACHES MIX 'N' MATCH 2/69¢	SHURFINE ENRICHED 5 LB. FLOUR 69¢ SHURFINE MEDIUM GRAIN 2 LB. RICE 59¢ SHURFRESH SALTINE 16 OZ. CRACKERS 2/89¢ SHURFINE APPLE 20 OZ. OR SHURFINE CHERRY 21 OZ. PIE FILLING 59¢	17 oz. SHURFINE GOLDEN CREAM STYLE OR WHOLE CORN KERNEL 3/89¢ SHURFINE FANCY 46 OZ. TOMATO JUICE 59¢ SHURFINE CUT 15 OZ. ASPARAGUS SPEARS 2/79¢ SHURFINE EARLY 17 OZ. JUNE PEAS 3/\$1.00 SHURFINE WHOLE W SWEET 16 OZ. POTATOES 2/89¢ SHURFINE 16 OZ. SAUERKRAUT 4/\$1.00 SHURFINE CHUNK STYLE 6 1/2 OZ. TUNA 2/89¢ ROXEY RATION CANNED 15 1/2 OZ. DOG FOOD 7/\$1.00 SHURFINE 14 OZ. CATSUP 3/\$1.00 SHURFINE 28 OZ. APPLEBUTTER 59¢
---	---	---

### RED WHITE & WOW TOP GRADE MEATS

5 LB. SHURFRESH CANNED HAMS \$8.79  
 10-16 LB SHURFRESH TURKEYS LB. 69¢  
 12 OZ. SHURFRESH BOLOGNA EA. 79¢  
 6 OZ. SHURFRESH LUNCHEON MEAT EA. 49¢  
 12 OZ. SHURFRESH FRANKS EA. 79¢  
 1 LB. SHURFRESH BACON \$1.69

### wow HOUSEHOLD NEEDS

SOFLIN WHITE AND PINK 200 COUNT TISSUE 3/\$1.00  
 SHURFINE TRASH CAN 30 GALLON 79¢  
 LINERS 10 COUNT 79¢  
 VIKTOR HEAVY DUTY ALUMINUM 18X25 59¢  
 FOIL 59¢  
 SHURFINE GAL. BLEACH 59¢

### SHURFINE WHOLE SWEET PICKLES 22 OZ. JAR 69¢

SHURFINE 16 OZ. APPLESAUCE 3/76¢  
 SHURFINE HALVES UNPEELED 16 OZ. APRICOTS 2/89¢  
 SHURFINE RSP 16 OZ. CHERRIES 2/89¢  
 SHURFINE STRAINED OR WHOLE 16 OZ. CRANBERRY SAUCE 2/76¢  
 SHURFINE 16 OZ. FRUIT COCKTAIL 2/76¢  
 SHURFINE HALVES BARTLETT 16 OZ. PEARS 2/79¢

FOLLOWING ITEMS MUST BE MATCHED

SHURFINE WHOLE PEELED 16 OZ. TOMATOES 4 FOR \$1.00  
 SHURFINE 16 OZ. GREEN BEANS  
 SHURFINE 15 OZ. SPINACH  
 SHURFINE FRESH SHELLED 15 OZ. BLACKEYED PEAS  
 SHURFINE 16 OZ. PORK & BEANS

### wow FROZEN FOOD

SHURFINE PRECOOKED FISH STICKS 8 OZ. FISH STICKS 3/\$1.00  
 ORANGE JUICE 5/\$1.00  
 SHURFINE 10 OZ. BROCCOLI SPEARS 3 for \$1.00  
 BRUSSEL SPROUTS  
 CAULIFLOWER CUT CORN MIX 'N' MATCH

### WATCH THE SHURFINE RED, WHITE & WOW TV SPECIAL

★ Doc Severinson  
 ★ Dianne Warwick  
 ★ Wayne Newton  
 LUBBOCK KCBT-TV MONDAY OCTOBER 27 7-8 P.M.

### RED WHITE & WOW Fresh FRUITS & VEGETABLES

RED DELICIOUS APPLES 5lbs./\$1.00  
 CENTRAL AMERICAN BANANAS LB. 19¢  
 COLORADO YELLOW SWEET ONIONS 2lbs./29¢

### RED WHITE & WOW FARM FRESH Dairy Products

SHURFRESH BUTTERMILK OR SWEET MILK MIX 'N' MATCH 9/\$1.00  
 INDIVIDUAL SLICES CHEESE FOOD 12 OZ. 89¢

### BUCCANEER STAMPS

DOUBLE ON WEDNESDAY WITH \$2.50 PURCHASE OR MORE

## BILL'S CASH & CARRY

Lone Star Highway - Lockney - Phone 652-3346

Vertical text on the far left edge of the page, partially cut off.



### Floyd Philosopher Out A Way To Keep New City From Disappearing Down The Drain



The Floyd Philosopher on farm ranges far and wide week.

This appears in your paper every week. It has been saved or lost, the latter being brought by the environmentalists, who are in an injunction against it. Leading officials say that if you know the drain, you know the problem. It's not going to sit still and wait to be treated, to flow into the sea. It'd take years to get that done. The raw editors, the publishers, the financiers and such as the politicians who are in the present plight would do to it.

trouble - airlines and railroads maybe and a foreign country here and there, but not every Tom, Dick and Harry of a city that runs out of money - but New York, being the biggest and all, is a special case.

Therefore Washington ought to make a deal with New York: we'll bail you out this time if you'll bail us out next time. After all, the Potomac needs protecting just as much as the Hudson.

Changing the subject, I notice that Dr. Kissinger has made part of a deal with Russia. He's gotten Russia to agree to buy some more of our grain, but he hasn't gotten her to agree to sell us some of her oil.

That's the trouble with sending a college professor to horse-trade.

Changing the subject one more time, a flippant neighbor of mine said it looks like President Ford would know better than to run a red light without his seat belt fastened.

Yours faithfully,  
J.A.

Others there were Mr. and Mrs. Pete Calloway of Lubbock, Mrs. Anne Smith, Mrs. Donie Hanson and Mary Martin.

Our heartfelt sympathy is with the family of Mrs. C. M. Lyles. Mrs. Lyles was loved by all who knew her. Her funeral was Saturday morning in the First Baptist Church.

### Interview News

by Mrs. Clyde Bagwell

Mrs. Gracie Riggles spent the day Monday with Mrs. Jess Finley. Ms. Riggles was among the Senior Citizens going to Crosbyton Friday.

Mrs. Ruey Irwin received phone calls from three of her children last week. Calling their mother was J. B. Burgett from his home in Chandler, Arizona; George Burgett from Amarillo; and Mrs. Gene Pace from Skellytown.

Mr. and Mrs. C. H. Wise made a sightseeing drive over the country Thursday. They went to Flomott and Turkey and to Silverton, Lockney and South Plains. Mrs. Wise reports the cotton and wheat was real good except where a bad hail hit recently. They say cotton fields around Turkey that were a complete loss, stalks were stripped of all open and green bolls and leaves, and nothing was left but the stems.

Mrs. Gracie Riggles visited at the Rest Home Sunday afternoon and attended church services there.

Mr. and Mrs. A. S. Mize spent on Wednesday afternoon until Friday at Sherwood Shores fishing.

Sunday Mr. and Mrs. A. S. Mize were dinner guests in the home of Syd Brown.

### Ten Ducks Per Day

LUBBOCK - A daily bag limit of up to 10 ducks and reasonably longer waterfowl seasons on the High Plains of Texas were set by the Parks and Wildlife Commission in Austin.

The High Plains mallard management unit season is a straight 83 days October 28, 1975 - January 18, 1976.

The 100-point system will again be used but bag and possession limits have some slight changes.

Canvasbacks and red-head ducks will again count 100 points per bird and there are no changes in 70-point ducks which are mallard hens, wood ducks, and hooded mergansers.

The 10-point ducks which are very popular among waterfowlers include pintail, gadwall, scup, shoveler, all species of teal and mergansers except hooded species.

This is down five points for each bird over last year.

All other ducks are designated 20-point value including the popular green-head mallard in the High Plains management area.

If you hunt east of U.S. highway 81, check local waterfowl regulations for the different dates and bag limits.

"Many hunters still do not understand the current point system being used," said Max Traweck, Canyon waterfowl biologist, "and the main point to remember is add the total duck points and if you are still under 100 points, you are allowed one more duck of any point value including a canvasback or redhead."

The 93 day season on geese west of U. S. Highway 81 is October 18, 1975 - January 18, 1976. Daily bag and possession limits in the western management area are two and four respectively with not more than one Ross' goose included.

Shooting hours during regular waterfowl season is one-half hour before sunrise to sunset daily.

A federal waterfowl stamp will be required by anyone 16 years of age or older, taking or attempting to take waterfowl. These stamps can be purchased at most U.S. post offices.

P&WD waterfowl biologists are predicting a good waterfowl season as the opening dates near. Reports from the nesting areas of northern U.S. and Canada indicate a good hatch of young ducks and geese.

The use of retrievers in finding drowned ducks and geese will increase your chances for a full game bag. Many of the hunters are already building duck blinds around their favorite duck pond giving the waterfowl a chance to become accustomed to the structure.

New pamphlets listing all waterfowl seasons and regulations can be obtained at your nearest license vendor or P&WD office.

### FLOYD DATA

Mr. and Mrs. Larry Tubbs and son, Paul, of Richardson visited here last weekend with her sister and husband, Mr. and Mrs. Tom Farris.

Mr. and Mrs. John Speck Jr. and children of Plainview visited over last weekend with Mrs. Jack Henry. Other guests Saturday were Mrs. Henry's brother and wife, Mr. and Mrs. Carroll Hopkins of Artesia, New Mexico and Mrs. Hopkins' sister, Mrs. Blanche Calhoun of Amarillo.

**Shur Fine RED WHITE & WOW**  
\*\*\* CARNIVAL OF ALL-AMERICAN VALUES!

**TOP GRADE MEATS**  
SHURFRESH  
**BOLOGNA and FRANKS**  
12 OZ. PKG. **79¢**

SHURFRESH  
**CANNED HAMS** 5 LB. **\$8.79**

SHURFRESH  
**TURKEYS** LB. **69¢**

SHURFINE EVAPORATED  
**MILK** 4/\$1.00

SHURFINE  
**COFFEE** REG. DRIP OR ELEC. PERC. **\$1.09**

SHURFINE  
**SALT** IODIZED or FREE RUNNING **10¢**

**MACARONI & CHEESE DINNER**  
WHOLE PEEL TOMATOES 16 OZ. CAN  
PORK & BEANS 16 OZ. CAN  
BEANS CUT GREEN 16 OZ. CAN  
SPINACH 15 OZ. CAN  
BLACK EYE PEAS 15 OZ. CAN

**RED WHITE & WOW QUALITY FROZEN FOODS**  
SHURFINE PRE-COOKED  
FISH STICKS 8 OZ. **3/\$1**  
ORANGE JUICE 6 OZ. **5/\$1**  
CRINKLE POTATOES 32 OZ. **69¢**  
WHOLE SWEET PICKLES 22 OZ. **69¢**  
CRANBERRY SAUCE 16 OZ. **2/76¢**  
POTATOES RUSSET YELLOW SWEET **89¢**  
Onions **2 LBS/39¢**  
BLACK PEPPER PURE GROUND 4 OZ. **49¢**  
SHURFINE PEACHES HALVES or SLICES **2/69¢**

**ALLSUP'S CONVENIENCE STORES**  
HOT BAR-B-Q DAILY  
PARTY ICE DONUTS POPCORN  
ICEES BURRITOS MONEY ORDERS  
HOT LINKS We Accept Food Stamps

**RED WHITE & WOW**  
\*\*\* CARNIVAL OF ALL-AMERICAN VALUES!

**SHURFINE BACON** 1 LB. **\$1.79**

**MANDARIN ORANGES** 11 OZ. CAN **3 FOR \$1**

**EARLY JUNE PEAS** 17 OZ. CAN **\$1**

**CATSUP** 14 OZ. BOTTLE

**FLOUR** SHURFINE 5 LBS. **69¢**

**SHURFINE COFFEE** REG. DRIP OR ELEC. PERC. **\$1.09**

**SHURFINE SALT** IODIZED or FREE RUNNING **10¢**

**MACARONI & CHEESE DINNER**  
WHOLE PEEL TOMATOES 16 OZ. CAN  
PORK & BEANS 16 OZ. CAN  
BEANS CUT GREEN 16 OZ. CAN  
SPINACH 15 OZ. CAN  
BLACK EYE PEAS 15 OZ. CAN

**RED WHITE & WOW QUALITY FROZEN FOODS**  
SHURFINE PRE-COOKED  
FISH STICKS 8 OZ. **3/\$1**  
ORANGE JUICE 6 OZ. **5/\$1**  
CRINKLE POTATOES 32 OZ. **69¢**  
WHOLE SWEET PICKLES 22 OZ. **69¢**  
CRANBERRY SAUCE 16 OZ. **2/76¢**  
POTATOES RUSSET YELLOW SWEET **89¢**  
Onions **2 LBS/39¢**  
BLACK PEPPER PURE GROUND 4 OZ. **49¢**  
SHURFINE PEACHES HALVES or SLICES **2/69¢**

**ALLSUP'S CONVENIENCE STORES**  
HOT BAR-B-Q DAILY  
PARTY ICE DONUTS POPCORN  
ICEES BURRITOS MONEY ORDERS  
HOT LINKS We Accept Food Stamps

**SHURFINE FARM FRESH Dairy Products**

**BISCUITS** SWEETMILK OR BUTTERMILK **9/\$1**

**SLICED AMERICAN CHEESE FOOD** 12 OZ. **89¢**

**HALFMOON LONGHORN COLBY CHEESE** 10 OZ. **79¢**

**VIKING HEAVY DUTY 18 x 25 ALUMINUM FOIL**

**SHURFINE BLEACH** 1 GAL. **59¢**

**BOUNTY JUMBO TOWELS**

**MED. GRAIN RICE** 2 LB. **59¢**

**PANCAKE MIX** 32 OZ. **59¢**

**FANCY TOMATO JUICE** 46 OZ.

**CRUNCHY or CREAMY PEANUT BUTTER** 12 OZ. **2/\$1**

**CRISCO** **\$1.59**

**WAFFLE SYRUP** 32 OZ. **89¢**

**VIENNA SAUSAGE** 3/\$1

**GOLDEN CORN** 17 OZ. CAN **3/89¢**

**APPLESAUCE** 16 OZ. **3/76¢**

**FRUIT COCKTAIL** 16 OZ. **2/89¢**

**BARTLETT PEARS** 16 OZ. **2/79¢**

**ASPARAGUS SPEARS** 15 OZ. **2/79¢**

**CANNED DOG FOOD** ROXEY 15 1/2 OZ. **7/\$1**

**APPLES** RED DELICIOUS **5 LBS/\$1**

**SALTINE CRACKERS** 16 OZ. **2/89¢**

**APRICOT HALVES** 16 OZ. CAN

**RSP CHERRIES** 16 OZ. CAN

**CHUNK STYLE TUNA** 6 1/2 OZ. CAN

**WHOLE SWEET POTATOES** 16 OZ. CAN

# BE SWITCHED TO ELECTRIC HEAT

## BE SWITCHED TO ELECTRIC HEAT

Two hundred years ago, the witch hunters would have burned us at the stake for even daring to dream of a clean, practical means of heating our homes like electric heat. Fortunately, things have changed since then and today you can choose a heating system that is not only clean and efficient, but also economical and environmentally sound. You don't even have to look for a witch to give you a great deal like this one. Call the electric company... we'll show you how easy it is to BE SWITCHED to real comfort home heating that's as modern tomorrow as it is today.

**ASK ABOUT THE HEAT PUMP  
IT'S NOT MAGIC...IT JUST ACTS THAT WAY**

You'll think it's magic when you see what the heat pump does, but it's not at all. It probably will seem quite impossible that one unit can provide clean, efficient electric heating and cooling with only one unit, one thermostat setting. The important thing to remember is the heat pump is today's answer to improving your lifestyle - economically and efficiently. Sound like magic? Not at all.

**ELECTRICITY - IT DOES SO MUCH GOOD**

**ENERGY EFFICIENCY ALLOWANCE**

We, at Southwestern, are interested in your getting the most for your energy dollar. That's why we're offering an Energy Efficiency insulation allowance to our customers in existing homes who install electric comfort heating. Ask us about it.

**The ELECTRIC Company**  
FOR SO MANY PEOPLE

**CALL US FOR A FREE PERSONALIZED HOME HEATING COST SURVEY**

EQUAL OPPORTUNITY EMPLOYER

# Farmers Union President Favors New State Constitution

An official of a statewide farm organization today called the constitution election of November 4 "the most important single election in which we will have an opportunity to vote."

Texas Farmers Union President Jay Naman of Waco, made the remark during a statement when he called on farmers and ranchers to support the passage of the proposed state constitution. Naman said that while all citizens of the state will benefit from the passage of the document "farmers and ranchers particularly will benefit from several provisions in the state charter. I strongly urge all rural people to vote in favor of the measure."

Naman said that the decision by the Farmers Union to support the proposed document came after a careful analysis by the farm organization's Executive Board. "We feel that the proposed constitution incorporates many of our recommendations and policy statements."

Naman said that the overall impact of the proposed constitution will be to return control of the governmental processes to the people and away from "court house" government and government by agency control.

Among the provisions of particular importance to farmers and ranchers Naman emphasized two provisions in the Finance Article. "The provision which requires the legislature to establish a separate formula for the appraisal of agricultural land for ad valorem tax purposes is a major breakthrough in the state's property tax system," the farm leader said. "Agricultural producers, particularly those in area of rapidly expanding metropolitan and recreation areas, will benefit greatly by having their land taxed at its productive value rather than at its speculative value. In the end, this measure will help keep much valuable land in agricultural production."

The other provision which Naman said is important to the agricultural industry is the constitutionally guaranteed prohibition of a retail sales tax on agricultural machinery and parts, feed, seed and fertilizer. "Although we currently have such an exemption, it is statutory only. By protecting it in the constitution we will assure continued savings of millions of dollars in added production costs," the Farmers Union president explained.

Naman termed the argument that the document is "liberal" rather than "conservative" as "phony." "I do not believe you would find men such as GOP State Chairman Hutchinson or Speaker Bill Clayton supporting the document if it were. The proposed document is neither liberal nor conservative," Naman declared. "It is simply a viable working document which will bring good management practices to local and state governments as well as some needed budgetary

controls." "The issue boils down to that of the special interests in the state vs. the people. I urge rural people to vote in their best interest and that of the state and vote for the constitution," Naman said.

## Sheep Hunt Season Coming Up

LUBBOCK - Sportsmen are awaiting the 1975 aoudad sheep season which opens November 15 and continues through November 21 in four Texas Panhandle counties.

Landowners in Briscoe, Floyd, Armstrong and Randall counties were issued 202 aoudad permits by the Texas Parks and Wildlife Department.

These landowners can issue the same permits to sportsmen willing to pursue the elusive aoudad or barbary sheep.

Approximately 35 percent of the hunters are successful in bagging an aoudad as shown by the 1974 P&WD records. A total of 72 sheep were bagged from 203 permits issued last season. Each hunter spent 12.8 hours in the field after their sheep and fired an average of 7.4 shots for each aoudad collected.

Out of the 39 rams and 11 ewes weighed by P&WD personnel, each sheep averaged 140.5 and 81.9 pounds respectively.

Horn measurements taken from 50 animals indicated that the average horn length for rams was 22.7 inches and for ewes 16.2 inches. The largest horn was measured from a ram taken in Randall county that exceeded 32.5 inches.

All the hunters questioned by P&WD officials



The moratorium on grain sales to Russia and Poland, whatever the reason behind it, is a seriously disruptive element in agricultural trade, according to Donald A. Johnson, Executive Vice President of Plains Cotton Growers, Inc., Lubbock.

While cotton, per se, is not involved in the trade stoppage, PCG nevertheless is concerned for two reasons, Johnson says. Most of our cotton producer members are also grain producers, he points out, "and any government interference with international trade in any agricultural commodity is a dangerous precedent for all commodities."

The board of the Texas Association of Cotton Producer Organizations (TACPO), of which Johnson is a member, has taken a firm position against the moratorium, citing the fact that an average of about 35% of all U.S. cotton production goes into the export market. An even greater percentage of Texas cotton is sold to foreign countries.

"It is vital to the U.S. cotton industry and especially to our Texas industry that we have free and uninterrupted access to foreign markets," Johnson said, adding that the grain embargo casts a shadow of doubt in the minds of overseas customers on the dependability of the U.S. as a continuous supplier of agricultural commodities, cotton included.

Congressman George Mahon of Lubbock and Senator Carl Curtis of Nebraska met last September 24 with President Gerald Ford in Washington to convey the strong opposition of farmers across the country to the Administration's sales embargo.

Wilmer Smith, a New Home farmer and Past President of PCG, attended the meeting with the President and reported to the PCG board that the President then expected to lift the embargo by October 11. However, as this is being written on October 17, sales are still suspended.

Meanwhile, Ford's State Department is negotiating with Russian officials for an agreement under which Russia would buy a minimum amount of grain from the U.S. every year, and there is speculation that the moratorium may not be lifted until such an agreement is reached. There is conjecture that the agreement is all but ready for signing and that only its ties to related negotiations for Russian petroleum sales to the U.S. are holding up final resolution.

Greater stability in Russian purchases of U.S. grain from year to year would be good, Johnson concedes. "But an 'agreement' with the Soviets might or might not accomplish this purpose," he adds, "and there are many who believe the bad effects of the current embargo will outweigh the advantages of the Administration's efforts even if they are successful."

indicated they had spotted 863 aoudads and compared to the number bagged, this figure illustrates the difficulty hunters had in getting within range of the animals.

Hunters unfamiliar with the aoudad sheep should become acquainted with the habits and characteristics of this imported mountain climber.

The aoudad is rufous or tawny brown with dark brown areas about the head and fore-quarters. The inside of the legs, the chin, a line on

the under parts and the inside of the legs are whitish in color. There is no recognizable color variations between the sexes of between seasons.

The main on older males may nearly touch the ground even when the head is held upright. A distinctive characteristic is the long, tufted tail which normally reaches the vicinity of the rocks.

Horn characteristics on both sexes include horn tips that remain sharp throughout life and sweep outward,

**F**arm-fac  
A Weekly Report Of Agri-Business  
Compiled From Sources Of The Texas Department of Agriculture  
John C. White, Commissioner

Texas agriculture at this season of the contrasts. While harvesting of some crops is in progress, planting of crops is active in other parts of the state.

All in all, it shows the bigness of this state's production capacity, and the variety of crops. In northern sections of Texas, cotton seeding is continuing. About two-thirds of the cotton has been seeded thus far. Earlier stands have matured and grazing is available.

Meanwhile, in deep South Texas, cotton is underway, and indications now point to quality grapefruit crops on record.

Harvesting of major crops continues apace. Harvesting is nearing the finishing stages as cotton is about half through.

Although there were some disappointments generally were satisfied with sorghum yields. Acre yield set a new high for Texas with 80 bushels.

**ALTHOUGH THIS IS STILL OCTOBER** think about the giving of gifts this coming year. A sure-fire gift is food, produced here in Texas, wool or mohair.

A gift of food is always a welcome gift. It is more practical. The same is true for cotton garments.

Texas is the nation's leader in many of its products; it also is a leader in producing cotton and wool.

**IF YOU DEPEND ON NATURAL GAS** for your agricultural operations, now is the time to check your supplier to make sure supplies will be available when you need them.

Curtailements in natural gas supplies are common. Propane are among question marks. The best solution to this problem is to keep in touch with your supplier to make sure you meet your requirements.

backward, and then inward reaching a tip-to-tip spread of over 30 inches on some animals. A full curl is never reached by the aoudad as on native North American bighorn sheep.

The aoudad is gregarious and generally associates in small family groups consisting of an adult male and female with their young offspring of various ages. They escape detection by

### Covering Floyd County's Insurance Needs

**JAMES RACE** 652-3869  
**ROY KINARD** 983-2294  
**DAVID CATES** 983-3273

WHEN YOU NEED INSURANCE SERVICE FOR YOUR HOME, RANCH, FARM, AUTO, CROPS, LIFE . . . . .

## FARM BUREAU INSURANCE

OFFICE PHONE 983-3777 FLOYDADA, TEXAS

# We're Ginning And Making The Farmer Money



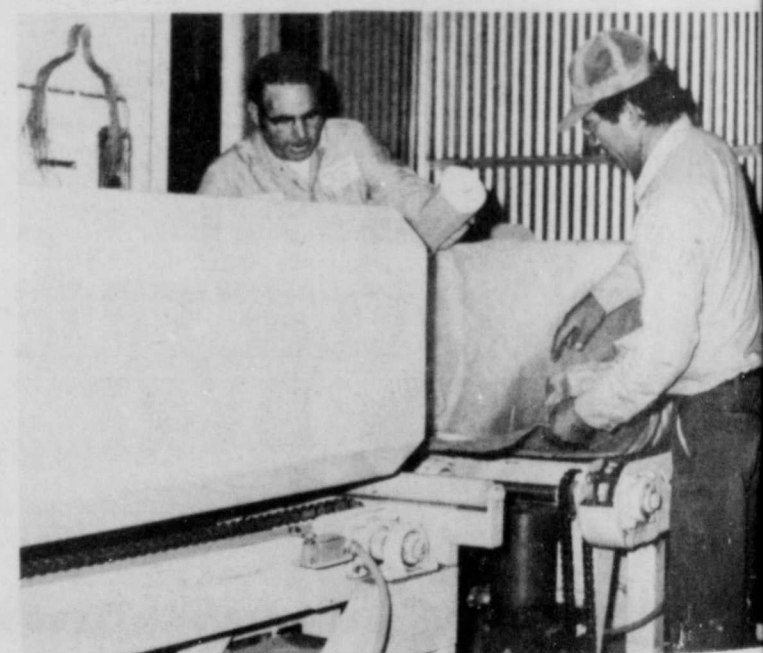
GIN MANAGER EDDIE MUNIZ AT CONTROL BOARD WITH MARCY MENDOZA.

MORE OF THE LATEST AND MOST MODERN GINNING EQUIPMENT IN THE WORLD WERE INSTALLED IN OUR GIN THIS PAST SUMMER IN ORDER TO BRING GREATER EFFICIENCY AND QUALITY OF GINNING TO OUR CUSTOMERS.

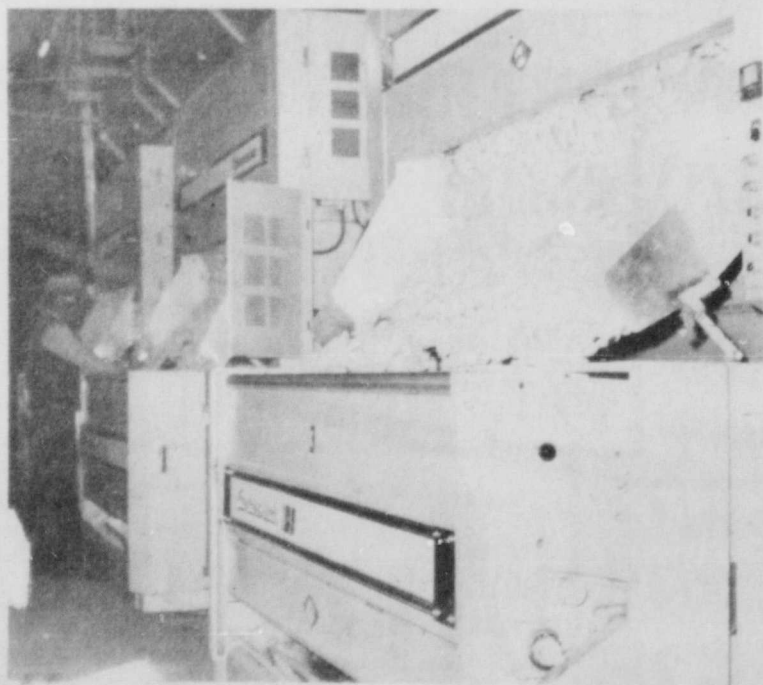
THESE IMPROVEMENTS MEAN MORE PROFIT FOR OUR MEMBERS. WE INVITE YOU TO BRING YOUR COTTON TO US FOR AN OUTSTANDING GINNING JOB AND YOU CAN SHARE IN THE PROFITS.

WE OFFER YOU.....

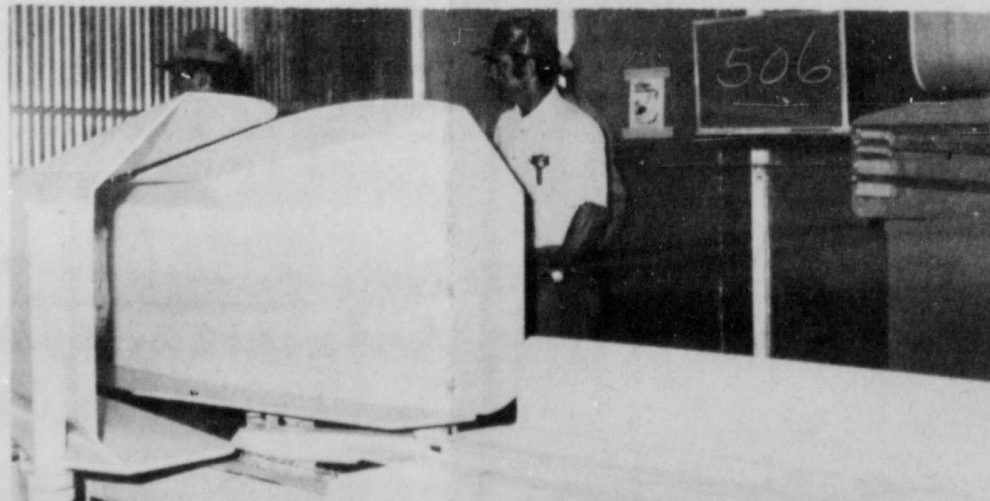
- FAST SERVICE, ALL OUR GINS GIN UP TO 35 BALES PER HOUR
- AUTOMATIC DRYER, HUMIDIFIER, SAMPLING, COMPRESSING
- EXPERIENCED GINNERS WHO WILL GET THE BEST GRADE AND TURN OUT POSSIBLE FOR YOU



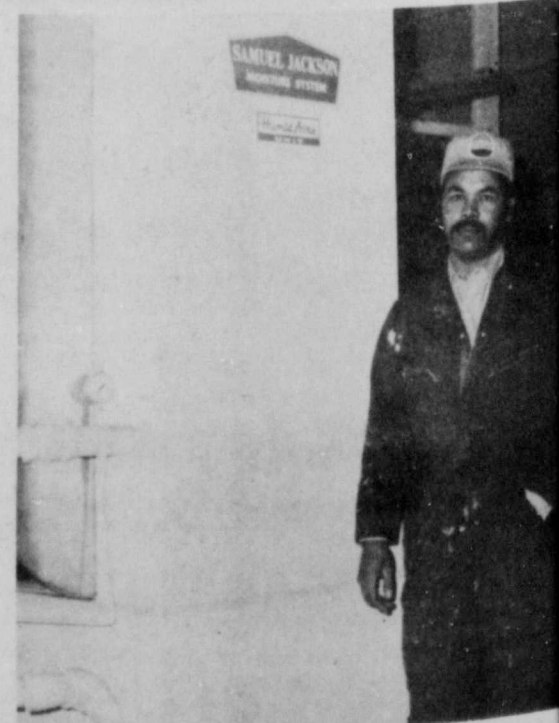
W. H. BUNCH AND JOE GALVAN WRAP COMPRESSOR IN POLY BAG. BUNCH HOLDS SAMPLE THAT GOES TO THE LABORATORY.



LUPE VALTERRA KEEPS AN EYE ON THE GIN STANDS



BOARD MEMBERS WATCH NEW BALE GO BY



MANUEL PARRINTOS WITH HUMAN BALE

# Floydada Co-op Gins, Inc.

### Thaxton Receives Award

...resident...  
...Company's...  
...employment...  
...Friday night...  
...Lubbock at...  
...Members...  
...were honored...  
...of service...  
...SHOULD...  
...ER STAY...  
...DATE?

This was the first of four service award dinners to be held throughout the Company's territory. Three hundred and twelve employees, with a combined service of 4,855 years, will be honored.

### THE PEOPLE COULD LOSE LOCAL CONTROL OF TAX VALUES

Under the proposed constitution, PROPOSITION 5, (Article 8) dealing with taxation, there is a question as to what taxes Texans will be paying in the future should PROPOSITION 5, pass under the new constitution. Article 8, Section 2-B provides "the legislature by general law shall provide for the establishment and enforcement of standards and procedures for appraisal of property for ad valorem tax purposes." This means that nobody at this time can say

how the legislature will provide for taxes especially as to the financing of cities and schools. During the legislative session this year, the legislature proposed that these standards and procedures would be established in Austin under the

direction of the State Comptroller. However, this bill was defeated as the people began to realize that all values would be established in Austin and that there would no longer be any local control of values for taxation purposes.

### Texas Monthly Endorses New Constitution

Austin-In its November issue, TEXAS MONTHLY endorses the passage of the new Texas Constitution in the special election November 4.

In his "Behind the Lines" column Editor William Broyles writes, "The real issue is not whether the new constitution is exactly the way we want it, but whether it represents a substantial improvement over the century-old constitution of 1876. We think the answer is clear: we have not found a single instance where the old is preferable to the new."

The old constitution has "lost its meaning," he writes. "The document has had to be amended 220 times and contains enough words (63,000-plus) to fill a short novel." The good parts of the 1876 constitution have been retained, he points out.

The new document will go a long way toward making state and county government more responsive and more accountable to the voter, he says. "We have scrutinized this document thoroughly and carefully, looking for hidden time bombs and booby traps, and

we didn't find any. Neither has anyone else." Broyles describes the objections of opponents to the new constitution as either "selfish, uninformed, or nit-pick-

WE HAVE HAULED A BIG LOAD OF  
**ALUMINUM PIPE**  
INTO FLOYDADA. IT IS USED, BUT IN GOOD CONDITION.  
5" ..... 40¢ PER FOOT  
4" ..... 40¢ PER FOOT  
4" WITH SPRINKLERS... 50¢ PER FOOT  
PHONE 983-3737 OR 983-3982

## Buddy's Food

Buddy Widener, Owner - Forrest Shannon, Mgr.  
in Floydada, 220 South Second

Store Hours Sundays 9-7  
Monday thru Saturday 8-8

THESE PRICES GOOD THRU SUNDAY,  
OCTOBER 26, 1975 TO SATURDAY  
NOVEMBER 1, 1975

Double Stamps  
Wednesday

We Reserve The Right To Limit Quantities



3 LB. CAN-\$2.19 VALUE  
**CRISCO**  
**\$1.59**

WHITE SWAN - LB.  
**CRACKERS**  
**2/79¢**

32 OZ. - 6 PAK - \$1.99 VALUE  
**COKE OR 7-UP**  
**\$1.59**



5 LB. BAG-\$1.17 VALUE SOFT N' LITE  
**FLOUR**  
**77¢**

9 OZ. DEL MONTE  
**TUNA**  
**2/\$1.59**

4 LB. ALAMO  
**DOG FOOD**  
**99¢**  
20 LB. BAG - \$4.49

PATIO - 8 COUNT PAKAGE-15 OZ. - \$1.31 VALUE  
**TAMALES**  
**69¢**

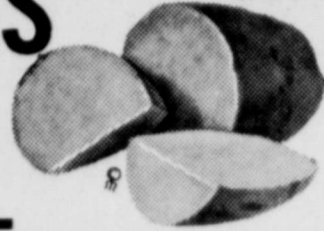
TONY'S ALL FLAVORS  
**PIZZAS**  
**\$1.29**

**BAYER ASPIRIN**  
100 COUNT BOTTLE \$1.40 VALUE  
**99¢**

**ALCOHOL**  
CLEAR-16 OZ.  
**29¢**

CENTRAL AMERICAN GOLDEN RIPE

**BANANAS**  
**2.35¢**  
LBS.



COLORADO - RED DELICIOUS  
**APPLES**  
**4 LBS \$1.00**

NEW CROP

**SWEET POTATOES**  
**4 LBS \$1.00**

10 LB. ALL PURPOSE  
**POTATOES**  
**\$1.19**

POUND LOAF - 59¢ VALUE

**ROMAN MEAL BREAD**  
**2/89¢**



CLOVERLAKE - 1/2 GALLON  
**ICE CREAM**  
**\$1.09**

DECKERS  
**BACON**  
**\$1.49**



U. S. D. A.  
**SIRLOIN STEAK**  
**\$1.39 LB.**



DECKERS 12OZ.  
**FRANKS**  
**79¢**



U. S. D. A.  
**ROUND STEAK**  
**\$1.39 LB.**

100% PURE GROUND BEEF  
**89¢ LB.**

**BURRITOS OR CORN DOGS**  
**4/\$1.00**

**SLICED PICNICS**  
**99¢ LB.**

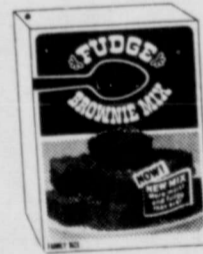
NORTHERN - 140 CT.-PILLOW PAK  
**NAPKINS**  
**2/89¢**

SWIFTS - 15 OZ. - NO BEANS  
**CHILI**  
**2/99¢**



17 OZ. PINE SOL BATHROOM  
**CLEANER**  
**79¢**

DUNCAN HINES - 22 OZ.  
**BROWNIE MIX**  
**89¢**  
\$1.29 VALUE



3 OZ. GELATIN 30¢ VALUE  
**JELLO**  
**4/\$1.00**

GIANT SIZE LIQUID  
**PALMOLIVE**  
— 99¢ VALUE  
**79¢**

59¢ WITHOUT COUPON  
**TENDER VITTLES**  
with coupon  
**49¢**  
EXPIRES 11-1-75  
GOOD ONLY AT BUDDY'S

**GLAD WRAP** EXTRA WIDE -  
69¢ VALUE  
**39¢**  
WITH THIS COUPON  
GOOD ONLY AT BUDDY'S  
EXPIRES 11-1-75  
WITHOUT COUPON.....49¢

32 OZ. LIQUID  
**ERA**  
**\$1.09** WITH COUPON  
WITHOUT COUPON.....\$1.29  
EXPIRES 11-1-75

HEAVY DUTY  
**TRASH BAGS**  
**79¢**

GOOD AT BUDDY'S WITH THIS COUPON \$1.29 WITHOUT COUPON  
EXPIRES 11-1-75

171 OZ. FAMILY SIZE  
with coupon  
**TIDE**  
**\$3.99**  
\$4.29 WITHOUT COUPON  
GOOD AT BUDDY'S  
EXPIRES 11-1-75 \$4.29 VALUE

**100 EXTRA S&H STAMPS**  
WITH PURCHASE OF  
2 - 18 OZ. KRAFT  
**BAR-B-Q SAUCE**

# HAVE FUN ... WIN PRIZES

**\$15** IN CASH PRIZES  
EACH WEEK

## FOOTBALL

## CONTEST

## AND QUARTERBACK FORECAST

DEADLINE FOR ENTRIES - 5 P.M. FRIDAY  
IN HESPERIAN OFFICE OR POSTMARK



### CONTEST RULES:

Anyone can enter except the employees of the Hesperian. Three cash prizes are given each week - ties will split prize money. Members of the sports department are sole judges of the contest and their decision is final.

It is not necessary to indicate scores on all the games....But score must be indicated on the tie breaker game at right.

Simply circle the team you choose to win in each of the footballs. Deadline for submitting entries is 5 p.m. Friday - winners will be announced the following week. Enter as many times as you wish, print name and address plainly on blank below and mail or bring entire page to The Hesperian office

Tie-breaker game will be considered only in case of ties.

### QUARTERBACK QUOTES

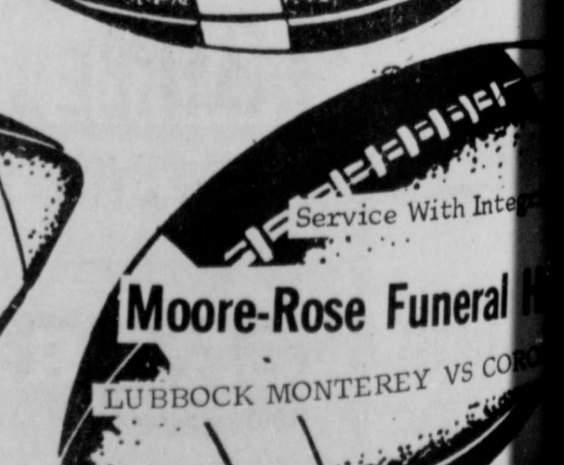
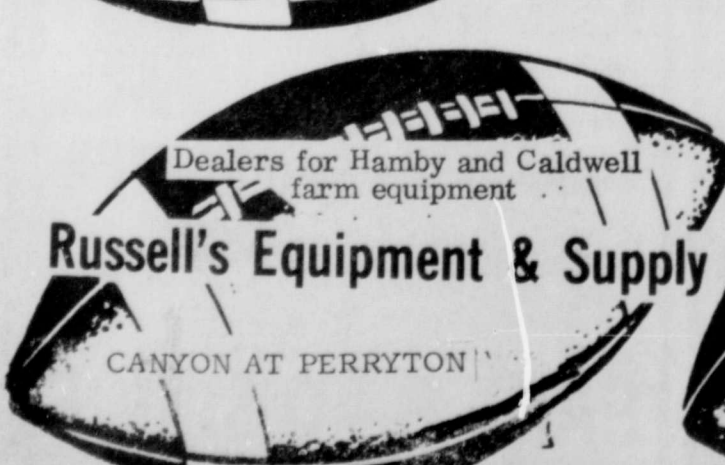
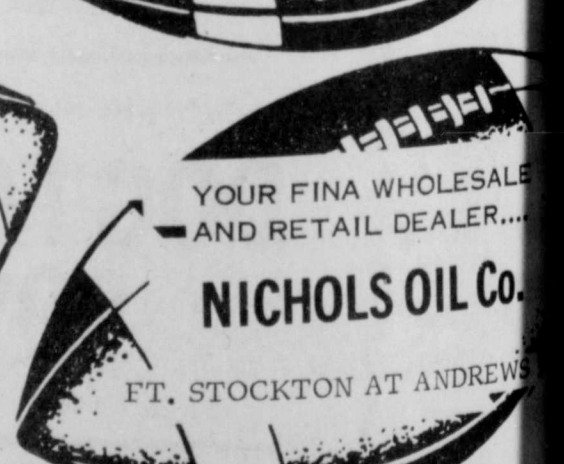
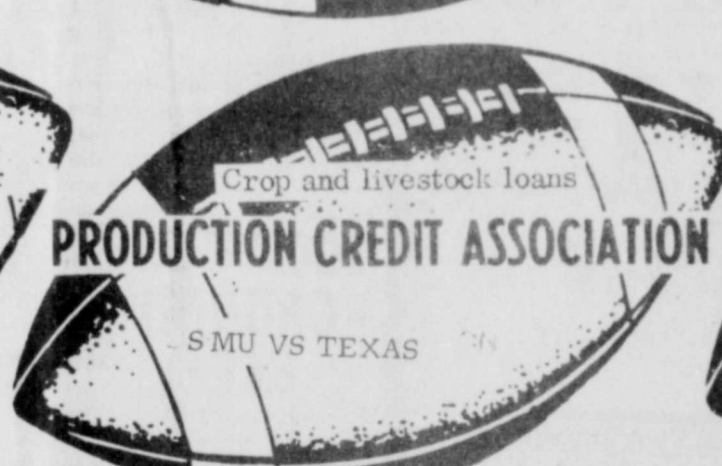
### TIE BREAKER-Guess Total Points AND CIRCLE WINNER

- 1ST PRIZE \$7.50
- 2ND PRIZE \$5.00
- 3RD PRIZE \$2.50

NAME \_\_\_\_\_  
ADDRESS \_\_\_\_\_  
CITY \_\_\_\_\_



JIMMY WILSON  
Floydada, . . 21  
Abernathy, . 14





### JV Winds Demolish Antelopes

By Doug Simpson

Calvin Reese scored three touchdowns and Steve Westbrook and Jesse Moralez accounted for two others, as the Floydada Junior Varsity demolished the Abernathy Antelopes Thursday, October 23, by a 35-6 margin. In chalking up their fourth straight victory the Whirlwinds continued to make sensational defense and big plays the key factors.

The Antelopes scored first on a 55 yard pass with 9:46 remaining in the first period. The conversion failed and the Antelopes led 6-0.

Floydada came right back, however, as Calvin Reese scored on a five yard run on Floydada's first series. Reese also kicked the point after, and the Winds led 7-6 with 7:16 left in the first quarter. The touchdown was set up by Steve Westbrook's 35 yard pass to Morris Keele.

Westbrook scored the second Whirlwind touchdown on a four yard run with 1:50 left in the first period. His pass to Keele was good for the two point conversion, making the score 15-6.

On Floydada's first series of the second half, Rick Covington returned the opening second half kickoff to the 40, where the Winds began first and ten. They marched 60 yards in just a few plays to put their third touchdown on the scoreboard. Reese's four yard run with 7:13 left in the third quarter increased the lead to 22-6. The 60 yard drive was highlighted by Westbrook's passes to Andy Rainwater and Morris Keele.

With 5:38 left in the third period, Bill Starkey intercepted a pass on the Abernathy 20 yard line, setting up Reese's 20 yard run with 4:59 remaining. The point after failed, and Floydada led 28-6.

Jesse Moralez scored the final touchdown of the night on a four yard run with 3:48 left in the final period. Reese's point after split the uprights, making the final Floydada 35 - Abernathy 6.

The Winds racked up 13 first downs and completed five of seven passes for 74 yards, while holding Abernathy to just five first downs. The Winds' offensive line did a good job of opening holes for backs Reese, Moralez and Cagle, and the defensive unit also did an excellent job.

years in England, and returned to the other side of the Atlantic with Captain John Smith in 1614 to act as interpreter on an exploratory expedition. He was kidnapped, sold into slavery in Spain, somehow made his way to England and back again to North America just in time to be there when the Pilgrims arrived.

"After all his experiences," writes Kate Caffrey in her book *The Mayflower*, "it seems astonishing that Squanto was willing to go anywhere near a Paleface ever again, but he proved to be worth his weight in gold to the Pilgrims."

In the spring of 1621, Squanto showed up at the Plymouth settlement and decided to remain with the newly arrived colonists. He taught them to plant and fish; he guided and piloted their early explorations; and he served as their go-between with the local Indians. With his help, the colony slowly recovered and started to put down roots.

Squanto was with the Pilgrims at the first Thanksgiving as an honored guest. The following year, he fell ill while on a trading voyage with his new friends and died. But he had done his job. And as Kate Caffrey sums up his contribution, "The debt owed to him by the United States is incalculable."

For a free copy of "Build Up, Don't Tear Down," send a stamped, self-addressed envelope to The Christophers, 12 E. 48th St., New York, New York 10017.

#### FLOYD DATA

Visiting in the Clay Henry home Saturday were Mr. and Mrs. Jack Kassahn of Bovina and their children, Jan, a student at Texas Tech, and Mr. and Mrs. Jim Kassahn of Lubbock, Mrs. Bessie Henry of Lubbock and Sam Henry and Rebecca

FOR THE SECOND TIME this year, Amarillo artist Michael McCullough will return to the Floydada Lion's Club's Christmas Preview of Arts and Crafts on November 1. His outstanding collection of painting and western bronze sculpture was a highlight of the summer show. He wrote the Floydada Lions Club, "We have had very good luck in your city and are looking forward to the November show." Michael McCullough has been a resident of the Texas Panhandle since 1966. He currently lives in Amarillo with his wife, Carla, and devotes full time to painting and bronze sculpture. While acquiring his Masters of Arts degree, Michael taught painting and Lettering Design for two years as a Graduate Assistant in the Art Department at West Texas State University. He has held watercolor workshops throughout the Panhandle, as well as several one-man shows in watercolor and bronze. Michael finds watercolor to be his favorite media because it is the most difficult to master. He is interested in painting the land and sculpting the people as well, and sees his work as belonging to no particular era, but as depicting the general nostalgia of our history. Forty West Texas artists, craftsmen, and organizations have reserved every inch of space in the Lemondrop Saloon for the November art event.



### Freshmen Lose To Abernathy

By Doug Simpson

The Abernathy Antelopes by taking advantage of a turnover later in the third quarter, staged a second half rally to defeat the Floydada freshman squad Thursday night, October 23, by a score of 20-10. The loss dropped the Winds season record to two wins and three losses.

Abernathy's first score came with 1:44 remaining in the quarter and a five yard touchdown run. The conversion attempt failed and the Winds trailed 6-0.

The Whirlwinds made a comeback in the second stanza, as Todd Vickers galloped 40 yards for a score and moments later tallied the point after. With 7:16 left in the first half, the Winds led 7-6.

Just before the half ended, Floydada blocked an Abernathy punt and took over on the 15 yard line. Vickers' 25 yard field goal with only 19 seconds left in the second period increased the lead to four. At intermission the Whirlwinds led 10-6.

Floydada fumbled on their third series of the second half and the Antelopes took over on the Winds' 10 yard line. Abernathy's two yard run with 28 seconds remaining in the third quarter and the three yard pass for the extra two gave them a 14-10 lead.

Coy of Waco, who spent the weekend.

Mr. and Mrs. Kinder Farris have returned home from Houston where they visited their son, Mr. and Mrs. George Farris and new baby daughter and Mrs. Kinder Farris' parents, Rev. and Mrs. R. C. White.

United States' balance of trade is concerned. In fact, it's the only trade area operating "in the black."

While the U. S. agricultural trade balance had a surplus of \$11.7 billion in 1974, the nonagricultural trade balance showed a deficit of \$14.7 billion, points out Dr. Russell McDonald, marketing specialist for the Texas Agricultural Extension Service.

The U. S. exported \$22 billion worth of agricultural goods last year and imported just over \$10 billion. The increase in exports was due mainly to higher commodity prices, notes McDonald.

Agricultural exports for fiscal 1975 were valued at \$21.6 billion. "Agriculture has enjoyed a surplus in the trade balance every year since 1971," says the specialist with the Texas A&M University System. "Except for a \$1.2 billion surplus in 1973, the nonagricultural trade balance has had a deficit over the past four years."

Trade balance is the difference between the value of exports and imports in one year of trading.

In 1974 nonagricultural imports were worth \$90 billion while exports were worth \$75 billion, says McDonald. This created a deficit of almost \$15 billion compared to a deficit of only \$8 billion in 1973. Over half this increase in the trade deficit was due to higher oil prices. The import value of petroleum and petroleum products jumped from \$7.6 billion in 1973 to \$24.2 billion in 1974.



BLACK goes up the middle in good yardage gain at Tulia. Other pictured Micky Minnett in foreground. (Photo by Keith)



ATHEAL makes good yardage in the Tulia game . . . with Danny . . . (Photo by Keith).

#### NOTICE TO BIDDERS FOR SALE

Floydada, Texas will receive sealed bids at the City Secretary at 114 W. Virginia, City Hall, November 10, 1975 for the following items of

Truck Chassis  
Station Wagon, 4 door,  
shredder  
shredder

Items will be sold separately, as is. Bids will be addressed to Mayor and City Council of the City of Floydada, Texas.

Parnell Powell  
Mayor

10-26c

### What One Person Can Do

On November 11, 1620, the Pilgrims, numbering 102 men, women and children, landed in the New World. By the following March, only 54 persons were left - 21 of them under sixteen.

This tiny band of survivors had the courage and determination to make the Plymouth Plantation a reality. What they needed most of all was some practical help. It arrived in the form of an Indian named Squanto, whom Governor William Bradford described as "a special instrument sent of God."

Squanto had spent eight

### ELECTRONIC CALCULATOR

SUPER BUY!

ROCKWELL  
405P

with Memory

TWELVE DIGIT PRINTOUT \*STANDARD ADDING  
MACHINE PAPER \*NEW SILENT INSTANT STOP/START  
ENTER \*MEMORY \*PERCENTAGE WITH ADD-ON AND  
DISCOUNT \*ADDMODE \*FLOATING DECIMAL \*FIXED  
DECIMAL WITH ROUND-OFF \*AUTOMATIC CONSTANTS  
ON ADD KEY \*INDICATOR LIGHTS FOR MEMORY,  
OVER ON AND OVERFLOW \*CREDIT BALANCE\*  
DESIGNED KEYBOARD AND BUFFER MAKE THIS  
PERFECT FOR THE FASTEST OPERATORS\*  
ONE YEAR GUARANTEE\*

\$189<sup>95</sup>

HESPERIAN OFFICE SUPPLY

FLOYDADA, TEXAS

BEACON OFFICE SUPPLY

LOCKNEY, TEXAS

Wilson's Certified  
**HAM PATTIES**  
9 Fully Cooked Patties  
Quick Simple  
Ready-to-Serve

Only \$2.49

Wilson's Certified LB 98¢

CHUNK STYLE BOLOGNA

200 SOUTH SECOND IN FLOYDADA, TEXAS

### BUDDY'S FOOD

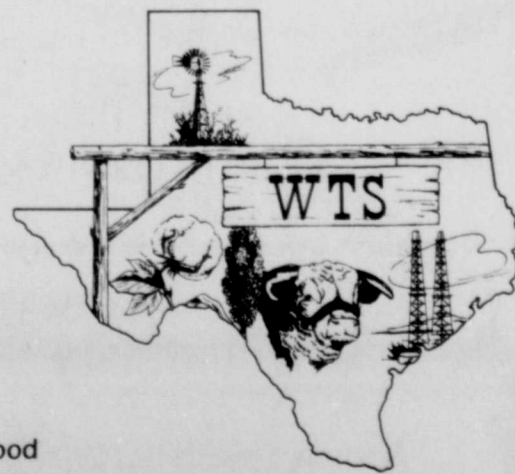
We're just plain folks at  
West Texas Savings Association!

We pay you the highest rates allowed by Federal Regulations—

From **5 1/4%** to **7 3/4%**

Savings are compounded daily—day in—day out on passbook savings.

Savings deposited by the 10th. earn from the 1st. on all savings plans other than passbook. Withdrawals prior to maturity are subject to prescribed penalties.



Friendly folks . . . friendly service . . . and good old fashioned West Texas hospitality . . . are key words that best describe West Texas Savings Association. The officers and directors, all home grown and dedicated to provide West Texas folks with the finest in savings and loan services.



### West Texas Savings Association

3400 50th. Street - Lubbock, Texas 79413 - Ph. 792-3755

### Farabee Urges Absentee Vote

Wichita Falls - State all citizens who expect to be away from their homes for Senator Ray Farabee urged

## INSUR-MATION

DAVID B. CATES  
Floyd County Farm Bureau  
Floydada, Texas



Must I keep up with all the premium dates on my policies to keep them in force?

Most companies and agencies have well thought-out, proven systems that do this for you. With property companies, usually your policy is renewed, issued and mailed to you with a letter in ample time for you to review the insurance and ask questions or increase your benefits. Many companies carry "errors and omissions" policies which protect you if they make a mistake. Life companies usually use bank draft or periodic notices to notify you of a premium due. If you don't get the notice, they follow up with a second notice and usually a personal call.

any reason on November 4 to vote absentee prior to November 1, 1975.

November 4 is the date of the Constitutional election. Voters will have the opportunity to vote for or against each of the eight separate articles in the proposed Constitution.

In November 1972, the voters of Texas approved a constitutional amendment calling for the Texas Legislature to act as a constitutional convention in 1974. The constitutional convention failed by three votes to obtain the necessary two-thirds majority for submission.

The 64th session of the Legislature voted in 1975 by

a two-thirds vote to submit the new Constitution to the voters, thus giving Texas voters their first opportunity in 100 years to vote on a new Constitution for Texas.

Senator Farabee, who was one of seven Senate members recently appointed by Lieutenant Governor Bill Hobby to the interim Committee on the Texas Constitution, stated, "The proposed Constitution should neither be adopted nor defeated by default. Sometimes there is a tendency to vote against things we don't understand, or worse, to not vote at all."

Farabee continued, "Although I personally favor adoption of the proposed Constitution, I hope each voter in the 30th District will take an opportunity to

study the document and make up his or her own mind on each article. Then vote for or against it on November 4 -- but vote."

**LOCKNEY JUNIOR HIGH HONOR ROLL FIRST SIX WEEKS**  
(Names overlooked by Mr. Hallmark on first six weeks honor roll.)

**SEVENTH GRADE**

A - John Cummings, Julie Ferguson.

B - Jill Whitfill, Adrian Ramirez, Darlene Prater, Julie Frizzell.

### Phil Cates For New Constitution

Today, State Representative Phil Cates announced his support of the proposed new State Constitution to be voted on in two weeks by the people of Texas. Representative Cates represents Armstrong, Briscoe, Childress, Collingsworth, Donley, Floyd, Gray, Hall, Motley and Wheeler Counties which comprise the 66th Legislative District.

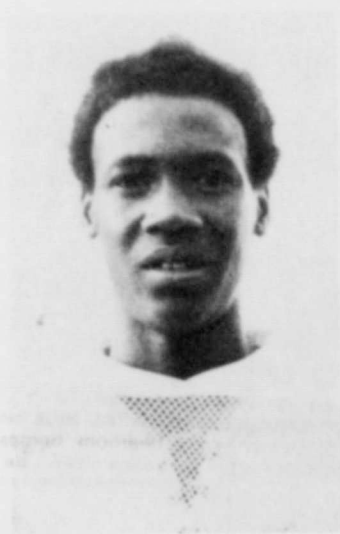
"There are two main reasons why I support the entire new document," Cates stated. "First of all, we either have to put up or shut up on the state government level. That is to say, we must either fish or cut bait. We will either turn

our state, county, and city government over to Washington or will adopt the new constitution giving us a strong state government to protect ourselves from Washington. Secondly, we have four branches of government in Texas today and the fourth branch is the bureaucracy of state government boards, agencies and commissions which administer the \$12.8 billion appropriated by the state legislature during the biennial period. There is no control over this governmental spending in Texas under the present constitution. There will be control of these boards, agencies and

commissions proposed by the people. The people should vote proposed on these reasons: the fact that shake small areas will get in state these facts of their ballots 4th and that for all the new FLOYD Mr. and Mrs. of Dallas will weekend with Mr. and Mrs. with plans to Tech home

# FOOTBALL CONTESTS

## MEET THE LONGHORNS



DANNY CLARK, No. 25, a 147 pound sophomore flanker for the Longhorns, is the son of Mr. and Mrs. Earl Ray Clark.



JOE ARAUJO, son of Mr. and Mrs. Arcadio Araujo of Lockney, is a junior on the Longhorn squad.

**WEEKLY PRIZES**  
1st \$750  
2nd \$500  
3rd \$250

**Longhorns**  
We're Behind You All The Way!

### Contest Rules

One game is listed in each of the advertisements on this page. Each team is numbered. In the "Official Entry Form," circle the number of these teams which you believe will win this week's game; circle both numbers to indicate tie. Indicate winner and total score in tie-breaker game, which also counts in determining number of misses.

Winners will be announced in the following week's Beacon. ALL ENTRIES MUST BE PLACED IN THE BEACON BOX BEFORE 5 P.M. FRIDAY OR POSTMARKED BEFORE THAT TIME TO BE CONSIDERED FOR PRIZES.

Prizes will not be given to members of the same immediate family on two consecutive weeks.

### Official Entry Form

Name \_\_\_\_\_  
Address \_\_\_\_\_  
City \_\_\_\_\_

### CIRCLE THE NUMBERS OF THE YOU PICK TO WIN

1	2	3	4	5	6	7	8	9
13	14	15	16	17	18	19	20	21
25	26	27	28	29	30	31	32	

TIE BREAKER:  
SEMINOLE AT PECOS

TOTAL SCORE \_\_\_\_\_

### LOCKNEY SCHEDULE:

Date	Opponent
Sept. 12	Frenship
Sept. 19	Olton
Sept. 26	Crosbyton
Oct. 3	Kress
Oct. 10	Dimmitt
Oct. 17	Floydada
Oct. 24	Post
Oct. 31	Tulia
Nov. 7	Abernathy
Nov. 14	Idalou

# GO FIGHT WIN

<p><b>Page's Thriftway No. 3</b> "A Better Way To Save" 1. TEXAS A-M AT 2. ARKANSAS</p>	<p><b>Mize Pharmacy &amp; TV</b> Your Complete Family Drug Store Gift Headquarters ★ RCA Television 3. OKLAHOMA AT 4. OKLAGOMA ST.</p>	<p><b>Webster Service &amp; Supply</b> "Where You're Always Welcome" 5. TULIA AT 6. LOCKNEY</p>	<p><b>Rite-Price Foods</b> "Choice Meats Priced Rite At Rite Price" 7. RICE AT 8. TEXAS</p>
<p><b>Baccus Motor Co.</b> Authorized Ford Dealer 9. ABERNATHY AT 10. FLOYDADA</p>	<p><b>Wilson Photography</b> 652-3731 11. NEBRASKA AT 12. MISSOURI</p>	<p><b>Floyd County Insurance Agency</b> "Around The Clock Protection" 13. LUBBOCK HIGH AT 14. HEREFORD</p>	<p><b>The Tye Company</b> On The Plainview Highway 15. PALO DURO AT 16. AMARILLO</p>
<p><b>Byrd Pharmacy</b> "Accurate Prescription Service" 17. SLATON AT 18. COOPER</p>	<p><b>Schacht Flowers, Jewelry &amp; Gifts</b> "Our Pleasure Is To Serve You" 19. DENVER CITY AT 20. POST</p>	<p><b>The Lockney Beacon</b> 21. CROSBYTON AT 22. PETERSBURG</p>	<p><b>Longhorn Inn</b> "Where School Friends Meet" 23. SPRINGLAKE-EARTH AT 24. BOYS RA</p>
<p><b>Davis Lumber Co.</b> "Where Customers Send Their Friends" 25. ARMY AT 26. AIR FORCE</p>	<p><b>Lockney Lumber &amp; Supply</b> 27. DIMMITT AT 28. MORTON</p>	<p><b>First National Bank In Lockney</b> Member of F.D.I.C. 29. MONTEREY AT 30. CORONADO</p>	<p><b>Brown's Department</b> 31. PHILLIPS AT 32. BOYS RA</p>



**Easter Seal To Hold Annual Meet**

The 1975 Texas State Easter Seal Society annual meeting and House of Delegates will convene in Houston on Friday, October 17 at 12:00 p.m. The meeting will be conducted at the Astroworld Hotel in Houston for volunteers and staff from Easter Seal County affiliates and chapters throughout the state.

The theme of the State Convention - "Extending our Reach" - is designed to bring together volunteers, consumers of Easter Seal services, rehabilitation specialists, parents, educators, doctors, students and others to explore the common concern and needs of the handicapped.

In addition to meetings to be held during the convention, participants will visit the Harris County Easter Seal Treatment Center where a special program on recreation for the handicapped will be presented.

Underscoring the concern of Easter Seal on behalf of all physically disabled, the theme is designed to bring to the public's attention the role of Easter Seals, not only in direct services to physically disabled, but in advocacy for the rights of the disabled, transportation problems faced by the disabled, access to buildings, the removal of architectural barriers, and other matters of daily concern to the physically disabled and others with mobility problems.

Addressing the full convention at noon on Friday, October 17, Richard E. Verville, Washington, D. C., legal consultant to the National Easter Seal Society who will speak on health related legislation and its impact on rehabilitation and on Easter Seals in general.

Verville, born in Haverhill, Massachusetts, was admitted to the Massachusetts Bar in 1965 and the District of Columbia Bar in 1973. A graduate of Williams College, he received his L. B. at Columbia University. Originally associated with a Boston law firm, he soon moved to the Office of Planning and Evaluation at the Department of Health, Education and Welfare, with emphasis on education and social services. He became a Special Assistance to then-Secretary Elliot Richardson, dealing with education and other issues.

In 1973, he became a Deputy Assistant Secretary for Legislation in the Department of Health, Education and with the general responsibility for all congressional relations and with special responsibility for the development and management of legislative programs relating to health services, health manpower, older Americans, vocational rehabilitation, and other social health fields.

Following Verville's address, convention participants will board busses and be transported to the Harris County Easter Seal Center, located in the Cullen Rehabilitation complex, Jacqueline Gleckler, Ph.D., Executive Director, and her staff, will conduct a tour of the center for those attending.

Lois Hardt, Ph.D., Director of the Program Service of the National Easter Seal Society in Chicago, will conduct a program on Recreation and the Handicapped.

Dr. Hardt, a former director of Education for the Illinois Association of Health Care Facilities, has been an Assistant Professor of Therapeutic Recreation of the University of Wisconsin, a committee chairman of the National Therapeutic Recreation Society, and is a member of the National Accreditation Board National Park and Recreation Association, the National Advisory Committee on Scouting for the Handicapped and, among others, the National Camp Executive Group of the American Camping Association. She will discuss therapeutic recreation for the handicapped.

Opening the Saturday morning General Session, at 9:00 a.m., which will be presided over by Thomas N. Jenness, Jr., President of the Easter Seal Society for Crippled Children and Adults of Texas, will be Miss Sallyanne Payton, Chief Counsel of the Urban Mass Transportation Administration of the U. S. Department of Transportation, Miss Payton will address the General Session on Systems of Transportation for the Handicapped, of interest to physically disabled, the elderly, and others with

mobility problems.

Miss Payton, appointed Chief Counsel on June 20, 1973, came to the position from the White House Domestic Council Staff, where she had responsibility for the District of Columbia. A Lecturer in Law at the

University of Virginia Law School, she is chief legal advisor to the Administrator with respect to program, legislative and regulatory matters, and will provide coordination with the Department's of the General Counsel and the Department of Justice. Miss Payton is admitted to practice in California and the District of Columbia.

An Address by Curtis Ballinger, Fund Raising consultant of the National Easter Seal Society in Chicago, "Issues and Options in Fund Raising," will direct the attention of volunteer and staff to the continuing problem of raising funds through voluntary sources for the support of Easter Seal programs.

At 11:00 a.m., the annual

meeting of the Texas House of Delegates, governing body of the State Easter Seal Society, will convene. Traditionally, the annual reports of the State Society President, Treasurer, and Executive Director will be made to Delegates and non-voting convention participants. The house will elect nine citizens to the Texas Easter Seal State

Board of Directors as well as new officers for the House of Delegates.

The Awards Luncheon at 12:30 p.m. on Saturday will honor outgoing State Society President, Thomas N. Jenness, Jr., of Fort Worth. Also to be honored is Miss Greer Garson, the 1975 Texas State Easter Seal Chairman, who will relinquish her post to another

Texan for 1976. The 1975 Texas State Easter Seal Child will be presented to the convention and the Gallantry Award, presented to the convention and the Gallantry Award, presented to an outstanding handicapped Texan who has overcome his or her disability, will be made on behalf of the National and Texas Easter Seal Society. The nominee

for "Outstanding Seal Volunteer" made, an award when the Board feels merits it. It is that winners outstanding raising and will be announced. The Annual open to the



- Piggly Wiggly Cut **Green Beans** Rosedale
- Green Peas** Piggly Wiggly
- Applesauce** Piggly Wiggly Whole or
- Sliced Potatoes**

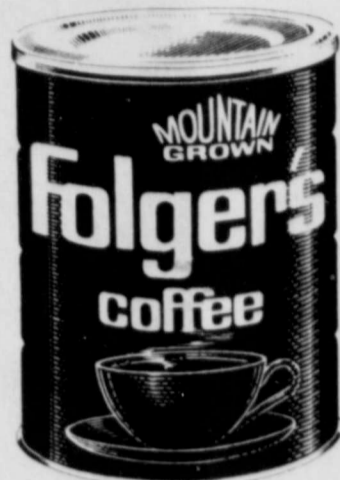
**4 \$1**  
16-oz. Cans

- Larson's Mixed Vegetables
- Veg-All** Trappey's With Jalapenos
- Pinto Beans** Piggly Wiggly Cream Style or Whole Kernel

- Golden Corn** Piggly Wiggly Stewed or
- Whole Tomatoes**

**3 \$1**  
15-oz. Cans

Prices thru Oct. 29, 1975. Limit 2 per dealer. None sold to...



All Grinds

**Folger's Coffee**

**99¢**

1-Lb. Can



Betty Crocker, All Layer Varieties

**Cake Mix**

**59¢**

18 1/2-oz. Pkg.

- Sunshine **Krispy Crackers** 16-oz. Pkg. **49¢**
- Del Monte, Light **Chunk Tuna** 6 1/2-oz. Can **39¢**
- Betty Crocker, All Varieties **Hamburger Helpers** 5 1/2-oz. Pkg. **59¢**
- Co'fee Creamer **Borden's Cremora** 22-oz. Jar **\$1.39**

- Piggly Wiggly **Grape Juice** 24-oz. Btl. **73¢**
- Piggly Wiggly, 2 Ply, 375 Sheets **Bath Tissue** 4-Roll Pkg. **69¢**
- Piggly Wiggly, Jiggly Assorted **Facial Tissue** 200-ct. Boxes **79¢**
- Piggly Wiggly **Cinnamon Rolls** 9 1/2-oz. Pkg. **49¢**

**OLD FASHIONED SAVINGS**

**Fresh Produce**



Red

**Delicious Apples**

**4 \$1**  
Lb.

- Three Sizes, Jack O' Lantern **Pumpkins** Lb. **10¢**
- In Shell **Roasted Peanuts** 12-oz. Pkg. **65¢**
- Ocean Spray **Cranberries** 1-Lb. Pkg. **49¢**
- Good Baked **Sweet Potatoes** Lb. **29¢**

**Ruby Red Grapefruit** Lb. **17¢**



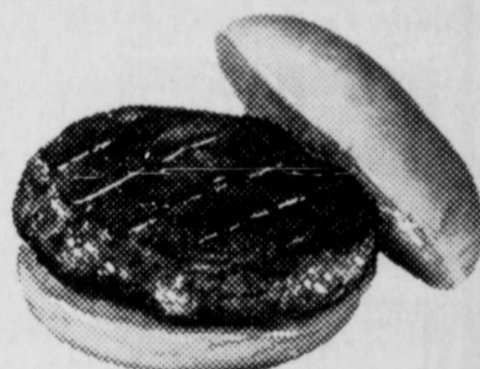
Blade Cut, Superb Valu-Trim

**Chuck Roast**

**89¢**

Lb.

- Rib Steak** Lb. **\$1.49**
- Superb Valu-Trim, Boneless **Chuck Roast** Ea. **\$1.39**
- Farmer Jones **Sliced Bologna** 12-oz. Pkg. **89¢**



3-Lbs. or More, Fresh

**Ground Beef**

**89¢**

Lb.

- USDA Good **Chuck Steak** Lb. **\$1.09**
- Shoulder Roast** Lb. **\$1.09**
- Farmer Jones **Meat Franks** 12-oz. Pkg. **89¢**

Farmer Jones, 2-Lb. Pkg. 00¢ **Roll Sausage** 1-Lb. Pkg. **00¢**

**STORE HOURS DAILY**

8:00 a.m. to 10:00 p.m.  
**SUNDAY**  
9:00 a.m. to 9:00 p.m.

**OLD FASHIONED Everyday Low**

All Varieties **Kellogg's Poptarts**

All Flavors **Wagner Drinks**

Piggly Wiggly Regular or Non-Phosphate **Laundry Detergent**

Ranch Style **Pinto Beans**

Kraft 1000 Island **Dressing**

Morton **Blueberry Muffins**

All Varieties, **Kitty Cat Food**

Kellogg's **Corn Flakes**

Fudge Stripes or Keebler's **Deluxe Graham's**

All Flavors, Ragu **Spaghetti Sauce**

Piggly Wiggly Creamy or Crunchy **Peanut Butter**

Piggly Wiggly **Dry Dog Food**

Franco American **Spaghettios**

Piggly Wiggly, **Margarine** 16-oz. Pkg.