

Winds Lose To Post 17-13

Win On Stat Sheet, Lose On Scoreboard

yards. Dudley's 23 yard field goal was good and Post led 17-7 with 6:34 left in the third quarter.

Kelvin and Micky combined to make a first down, Womack hit Micky with the first 'Wind pass completion of the game and good for 16 yards. Running plays brought the ball down to the 25 yard line and the Post defense held... ball went over to the Antelopes.

The Antelopes made a couple first downs then punted. At this point, it seemed the Whirlwinds had decided to play football. They made five first downs Womack and Kelvin made some

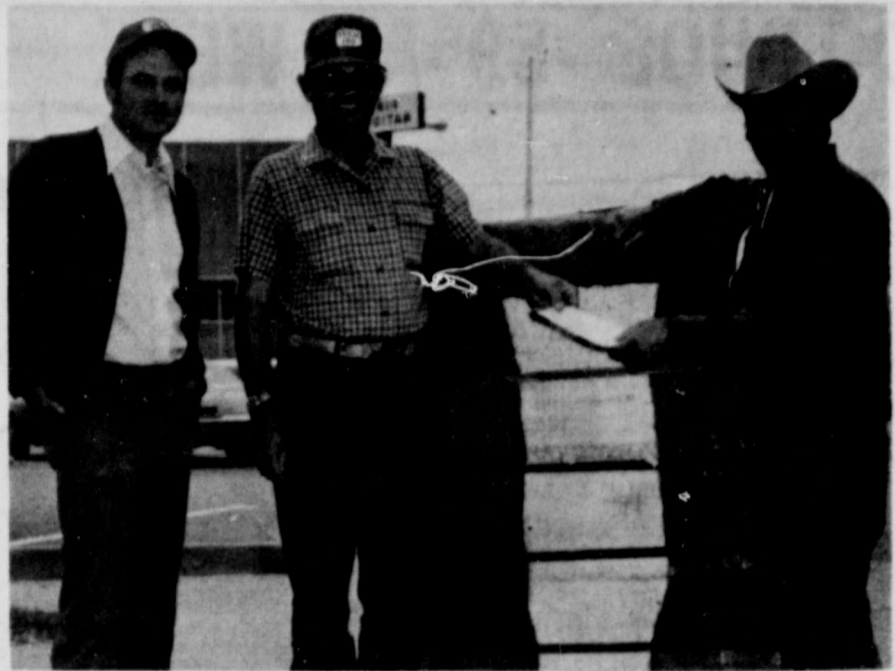
fine runs, then Micky threw a long 43 yard pass to Donzell... Womack threw a 19 yarder to Greg Goen out in the west flat, Womack threw Donzell a nice eight yard pass. The ball was on the Antelope five yard line and Womack crashed through the middle for the second 'Wind TD. Running try for extra two points failed. Post led 17-13 with 5:03 left in the game.

The strong 'Wind defense held and Post had to kick after not being able to make a first down. Whirlwind fans went wild with only two minutes left in the game, they hadn't given up on a

'Wind victory. Their hopes were short lived... Post's Mike Shepherd intercepted a Womack pass, then the Antelopes ran out the clock.

It was a sad loss for the 'Winds and their fans... and there were plenty of fans out for the game and a pleasant night. There was standing room only on the Floydada side of the stadium and Post's side was just about full.

If you want to know the in depth details of the game, be at the Quarterback Club meeting Monday night. Next week the 'Winds travel to Olton to meet another strong AA team.



FIRST FLOYD BALE was ginned by Joe Richard Noland (center). Director of the Floydada Chamber of Commerce board Louis Pyle hands a \$100 check to Noland. At right is ginner and chamber board of director member Darrell Mayo of Scott Gin in Floydada. (Staff Photo)

Joe Richard Noland Harvests First Cotton

The first bale of cotton ginned in Floyd county was five days later than last year's and produced by Joe Richard Noland, farmer eight miles north east of Floydada.

Noland brought the cotton to Scott Gin in Floydada about 4:30 Thursday afternoon. From the 2140 gross weight the 470 pound bale of cotton was ginned and there were 800 pounds of seed. The first bale was hand pulled from 6 1/2 acres.

Noland said Stripper 31 cotton was planted the first week of May and only irrigation was pre planting. He estimated the crop would make a bale to the acre and he has some 250 acres of cotton this year. He said all his cotton was early and the cold spell of last week didn't hurt it.

Noland received a \$100 check from

the Floydada Chamber of Commerce, premium price of \$120 a ton for the seed, and 65 cents a pound for the bale of cotton.

COLD SPELL

Last Friday and Saturday a wet cold spell hurt the late cotton... some estimates from the Lubbock area as much as one third. The cold spell of this past Friday and Saturday is not expected to cause further damage. A Lubbock cotton specialist said the first cold spell damaged cotton all over the South Plains.

The temperature dropped into the 40's. When temperatures drop below 60 degrees, cotton's cellulose production stops. Cotton exposed to long periods of 60 degree weather will be of lower quality.

Special Program At Methodist Church

Sunday evening, September 21, the youth of the First United Methodist Church are sponsoring a special program for everyone at the church. Services are scheduled at 7 p.m.

Doug Wood, youth director of the First Baptist Church in Muleshoe, will present a "Chalk Talk" program, utilizing his talent as an artist, special lighting effects and music to interest all ages.

Wood will be accompanied to Floydada by 25 youth from his church.

Everyone is invited and urged to attend this special presentation.



DOUG WOOD TO BRING Chalk Talk... to First United Methodist Church Sunday night.

LET'S GO.....MEAN GREEN, BEAT THE OLTON MUSTANGS...



MAYOR PARNELL POWELL signs "National Highway Week" proclamation and Floydada Texas Highway Department employees look on. (left to right) Engineering Technician Sam Spence, Maintenance construction foreman J. D. Davis and Engineering technician Louis H. Newell.

PROCLAMATION

WHEREAS, the State Department of Highways and Public Transportation system encompasses more than 70 thousand miles of the nation's finest roads and highways in 1975; and

WHEREAS, these vital travelways are essential to the continued growth of the Texas economy and for the "Backbone of Total Transportation" in the Lone Star State; and

WHEREAS, beauty and safety, as well as service and efficiency, are factors that govern the construction and maintenance of the highways of Texas; and

WHEREAS, for more than 43 years the Texas Highway Department, now the State Department of Highways and Public Transportation has taken a leading role nationally in highway beautification; and

WHEREAS, there are approximately 1,100 safety rest areas, roadside parks, and scenic turnouts on the Texas Highway System, all designed to make driving a pleasurable experience; and

WHEREAS, the State Department of Highways and Public Transportation, oftentimes known as the "State's Largest Gardener," plants more trees, more wildflowers, and more ornamental shrubs than any other organization in the State; and

WHEREAS, erosion control and drainage projects not only prevent pollution, but also protect the taxpayers' investment in their highway programs;

NOW, THEREFORE, I Parnell Powell, Mayor of the City of Floydada, Texas do hereby proclaim September 21-27, 1975, as NATIONAL HIGHWAY AND TRANSPORTATION WEEK in Floydada and urge all citizens to lend their support to the State Department of Highways and Public Transportation.

IN WITNESS WHEREOF, I have hereunto set my hand and caused the Seal of the City of Floydada to be affixed this 19th day of September, 1975.

/s/ Parnell Powell Mayor

Floyd County Hesperian

15¢ Per Copy



12 Pages in one section

VOLUME 30 FLOYDADA, FLOYD COUNTY, TEXAS 79235 SUNDAY, SEPTEMBER 21, 1975 NUMBER 75

Schools To Dismiss

Early Monday

Floydada schools will dismiss earlier than usual Monday, September 22, so youngsters may attend the Panhandle South Plains Fair at Lubbock if they wish.

Schools will dismiss at 2:30, according to officials. The Floydada Whirlwind Band will be marching in the Fair Parade Monday morning at 10 o'clock along with 43 other area bands.

Caprock Chat

BY WENDELL TOOLEY

I HAVE NOTHING BUT admiration for the parents of Patricia Hearst. The father was asked for comment Thursday when his daughter was arrested. His first reply, "I'm just thankful that she is unharmed."

Here's a father that has continually shown his love for his daughter... he spent some two million dollars buying food for the poor hoping to ransom her back after the kidnapping. He has continually maintained that she was innocent and possibly brainwashed to do the crimes for which she is charged.

No doubt justice will be done... if Miss Hearst is guilty, she will suffer the consequences. In the meantime, the loving father and mother did the natural thing... they love their daughter no matter what.

If Miss Hearst is blind to that love... we can only hope that someday her eyes will be opened.

Judge: "Are you a property owner?" Prospective juror: "Yes, your honor."

"Married or single?"

"I've been married 20 years, your honor."

"Have you formed or expressed any opinion?"

"Not for 20 years, your honor."

GLAD TO HEAR THAT Houston Bradford is improving and back home. There's no place like home, and I don't know of anyone who loves Floydada and its people more than Houston.

WELL YOU LOSE a football game and there are a lot of ideas about how the game could have been won. It seemed to me another five minutes of play we could have beat Post. We had lost the game before we really caught fire.

I don't mind losing to a good team, though. Post was big, strong, played good consistent football, and have a huge quarterback, who knows and plays the game. I just figure the Antelopes will take their district championship.

Sign in an optometrist's window: "If you don't see what you want, you've come to the right place."

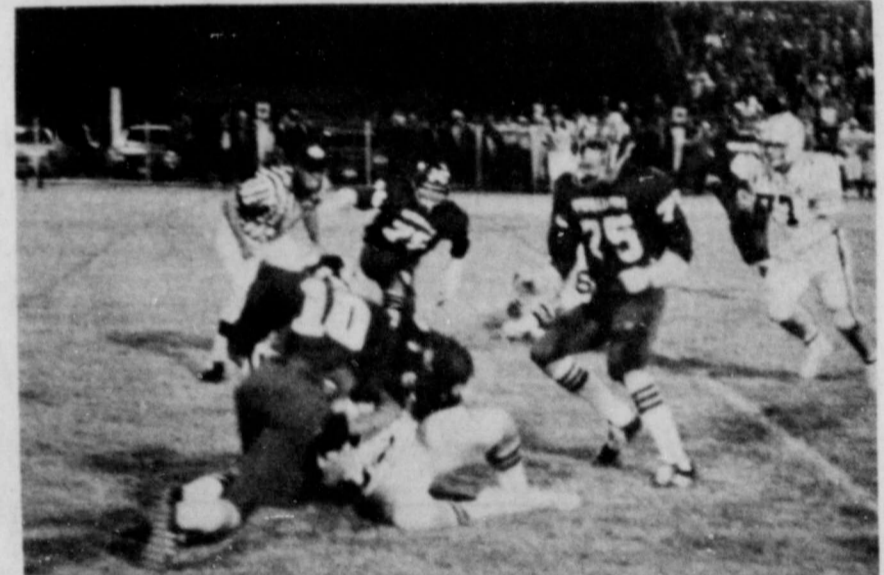
OTHER POST GAMES

It was sorta split with all the teams that played Post last week. The Seventh Graders lost 14-0, the eighth graders won 44-0 in games with Post here.

The Junior Varsity tied Post 8-8 and the Freshmen won 32-14. These games were played at Post Thursday night. Larry Jones made the JV touchdown and ran the extra points.



GREG GOEN takes a pass in the Post Game. (Photo by Keith).



Billy Marricle, Steve Moore, and Jerry McGuire bring down Post quarterback.

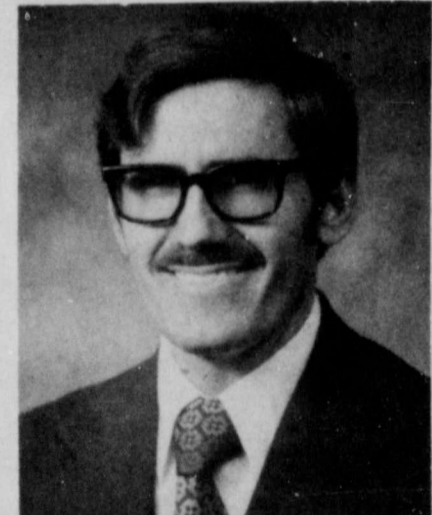
Coach's Comments

"We can only look at the Post game optimistically, and hope that we can profit by our mistakes," coach L. G. Wilson said Saturday morning. "Although we made some costly mistakes, our boys came right back and played good football... especially our defensive team," Coach Wilson continued.

He said he needed three starters who were on the sideline: Jay Lackey, Leslie Soto and Monte Williams, and the mistakes of not fielding kick-offs correctly. Post's good kicking game kept Floydada in a bad field position much of the game.

"I believe this is the best Post team I have ever faced, they were very physical, they played good football and let us make the mistakes," he added.

Coach Wilson said he thought Steve Moore recovered the Post fumble and kept another TD from occurring. He also praised the defensive work of Randy Duke.



MELVIN BYRD

Gospel Meeting At City Park Of Christ

A three day Gospel Meeting will be held at City Park Church of Christ in Floydada next week, September 23, 24, and 25. Services will begin at 7:30 a.m. and 7:30 p.m. Tuesday, Wednesday, and Thursday. The morning services will be over at 8:00 to allow for everyone to get to their jobs. In these morning meetings the topic will be the christian home. The evening lessons will deal with man's salvation through Jesus Christ.

Speaker for this series of meetings will be Melvin Byrd, evangelist at City Park, who recently moved here from Aberdeen, Washington.

The public is cordially invited to these and all the services at City Park Church of Christ.

P	P
16	11
180	159
4/63	2/63
14/3	5/0
0	1
2/83	4/181
5/22 1/2	6/47



carrying the ball, Jay Womack leading

DQ DUDE -59¢-ALL WEEK

SPECIALS EACH DAY

FUN



You Are Invited



TO THE

Grand Opening

OF THE DAIRY QUEEN

IN

FLOYDADA, TEXAS

ON THE WYE

SEPT. 22 thru SEPT. 28, 1975

DQ DUDE -59¢- ALL WEEK

COLOR CONTEST

FUN FOR ALL

EACH DAY



Hey Kids!

Be on the lookout for "Fun Fighter McDoom," (that Arch Villian that likes to steal fun! He is on his way to Floydada, Texas. BUT don't you worry! Cause I'm hot on his trail! And I'll see you on Saturday, September 27, 1975 from 11:00 am - 5:00 pm at the Dairy Queen. Lots of fun and Surprises too!

"The D.Q. Kid"



REWARD!

FUN AND SURPRISES FOR CAPTURE ALIVE OF

FUN FIGHTER McDOOM



★ FUN FOR ALL!

★ ICE CREAM

★ COME TO THE DQ

★ THRILLS

★ GOOD TIMES

★ EXCITEMENT!

★ DRINKS

★ COLOR CONTEST!

★ FOOD

★ FUN!

SEE YOU THERE!!!!

SPECIALS

DQ DUDE -59¢-ALL WEEK

COLOR CONTEST

ALL

Conservation Leaders To Attend Meeting

G. L. Fawver, R. G. Dunlap, Herman King and Gerald Lackey, directors from the Floyd County Soil and Water Conservation District will be in Fort Worth September 23-25 to attend the Thirty-fifth Annual Meeting of Texas Soil and Water Conservation District Directors.

Others attending from the Floyd District are the directors' wives and Jon J. LaBaume, District Conservationist for the Soil Conservation Service. The theme of this year's meeting is "Land Use Decisions-Private versus Public." Approximately 800 are expected to attend the

meeting.

The purpose of the meeting is to review developments affecting conservation programs and to plan future conservation district programs and activities.

Other items which affect individual landowners will also be studied.

U. S. Representative Sam Steiger, (R-Arizona) a nationally noted opponent of federal intervention in land use planning, will address the group on Wednesday evening at the annual banquet.

Other dignitaries to address the group are State Representative Ed Mayes of

individual land rights in the last legislative session.

Bauer, a Kansas wheat farmer and rancher, is a member of the U. S. Department of Agriculture's Public Advisory Committee on Soil and Water Conservation. He was appointed to that position by the Secretary of Agriculture in 1970.


Dr. Gramm is a noted consultant to numerous federal agencies on econom-

ic, health, and energy problems. He has served as a special consultant on energy, environment and taxation to the Ministry of Natural Resources of the Canadian Government.

Discussion sessions will take into account moves being made on many fronts to control land use. Management of conservation programs will also be a key issue.


Buddy's Food


BUDDY WIDENER, OWNER-FORREST SHANNON, MGR.
 IN FLOYDADA, 220 SOUTH SECOND
 STORE HOURS- SUNDAYS 9 TO 7
 MONDAY THROUGH SATURDAY 8 TO 8
 WE GLADLY ACCEPT U.S.D.A. FOOD STAMPS
 DOUBLE STAMPS VALUES GOOD SEPTEMBER 21 THROUGH WEDNESDAY SEPTEMBER 27
 WE RESERVE THE RIGHT TO LIMIT QUANTITIES

32 OZ. BOTTLES 6 PAK \$1.99 VALUE

7up or COKES \$1.59

2 ROLL BATHROOM
AURORA TISSUE 2 / 89¢

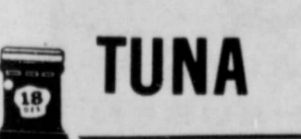
6 PACK MARS 87¢ VALUE
CANDY BARS 69¢


CLOVERLAKE 65¢ VALUE YOUR CHOICE

WHIPPING CREAM SOUR CREAM CHIP & DIP 1/2 & 1/2 3 / \$1.00

50% SWIFTS 44¢ VALUE

VIENNA SAUSAGE 4 / \$1.00
 6-12 OZ. CANS
DR PEPPER OR COKE 99¢

12 OZ. NABISCO
VANILLA WAFFERS 2 / 99¢
 8 TRACK
STEREO TAPE \$1.98

18 OZ. JIF
PEANUT BUTTER 87¢

9 OZ. DEL MONTE 9¢ VALUE

TUNA 2 / \$1.29

18 OZ. KRAFT 89¢ VALUE

BAR-B-Q SAUCE 2 / 99¢

6 PACK CARNATION \$1.03 VALUE
INSTANT BREAKFAST 69¢
 TONY'S ASSORTED
PIZZA \$1.19
 CHEESE PIZZA 99¢





US NO 1 POUND
SWEET POTATOES LB. 23¢
 NEW CROP RED DELICIOUS
WASHINGTON STATE APPLES 3 LBS \$1.00
 1 LB. BAG, CALIFORNIA

CARROTS 2 / 39¢
 SUNKIST CALIFORNIA
ORANGES 4 LBS \$1.00
 COLORADO GREEN

CABBAGE 12¢ LB

19 OZ. SWANS DOWN 9¢ VALUE
BROWNIE MIX 77¢

CLOVERLAKE SLIM & TRIM 89¢
 1/2 GALLON \$1.19 VALUE

SWEET N MILD SAVORY

BACON LB \$1.59
 100% PURE

GROUND BEEF LB 89¢
 USDA

CHUCK STEAK LB 98¢
 USDA

ARM ROAST LB 98¢


PURE VEGETABLE SHORTENING

CRISCO \$1.69
 \$2.39 VALUE 3 POUND CAN

EXPIRES 9-27-75
 SAVE
 LIMIT 1 COUPON PER PURCHASE
 3 OZ. INSTANT TEA

NESTEA \$1.19
 WITH COUPON
 \$1.39 WITHOUT COUPON
 GOOD ONLY AT BUDDY'S


17 OZ. JOAN OF ARC CREAM STYLE OF WHOLE KERNEL GOLDEN OR WHITE
CORN 3 / 89¢

GIANT SIZE \$1.05 VALUE

DETERGENT PUNCH 69¢
 ELECTRIC DISHWASING DETERGENT 50 OZ.
ALL \$1.09
 \$1.67 VALUE

EXPIRES 9-27-75
 SAVE
 LIMIT 1 COUPON PER PURCHASE
 32 OZ. KINGSIZE LIQUID

IVORY 89¢
 WITH COUPON
 ONLY GOOD AT BUDDY'S
 WITHOUT COUPON 99¢
 25 LB. GOLD MEDAL WITH COUPON
FLOUR \$3.59
 \$3.99 WITHOUT COUPON EXPIRES 9-27-75

EXPIRES 9-27-75
 SAVE
 LIMIT 1 COUPON PER PURCHASE
 1 LB WHITE SWAN WITH COUPON
COFFEE 99¢
 WITHOUT COUPON \$1.19
 ONLY GOOD AT BUDDY'S

KEEBLER

Zesta 45¢
 16 oz. saltine crackers 59¢ WITHOUT COUPON
 LIMIT ONE PER CUSTOMER GOOD THRU 9-27-75
BUDDY'S
 Coupon subject to sales tax as required by state law

EXPIRES 9-27-75
 SAVE
 LIMIT 1 COUPON PER PURCHASE
 BETTY CROCKER

HAMBURGER HELPER 2 / 89¢
 ALL FLAVORS WITH COUPON
 73¢ VALUE WITHOUT COUPON
 EXPIRES 9-27-75

Society



CAROL COGDELL (to participate in Rose Festival)

Carol Cogdell To Participate In Texas Rose Festival At Tyler

Miss Carol Cogdell, Floydada High School graduate, of Lockney will participate as royalty in the Coronation and parade pageantry of Queen Nanette Oge of the Texas Rose Festival in Tyler, October 15 through 19. Miss Cogdell is the daughter of Mr. and Mrs. D. M. Cogdell.

Miss Cogdell is attending Mary Baldwin College, where she is sophomore class treasurer. She has also been a Senator to the Student Government Association at Camp Waldemar for eight years.

She will participate in the

elaborate Queen's Coronation of the Festival the nights October 16, 17, wearing a beautiful gown designed to portray her role in the Coronation, a glamorous pageant presenting the theme "Fragrances". The various eras of world history will be unveiled in costume and song.

She will be honored at a number of teas, dances, and other social activities, and will ride on a rose-adorned float in the mammoth Rose Festival Parade at 10 a.m., Saturday, October 18.

Miss Cogdell will be presented at the Queen's Ball, sponsored by the Order of the Rose, along with many other beautiful coeds from many states. She is the daughter of Mr. and Mrs. D. M. Cogdell Jr., Route Q, Lockney.

The Texas Rose Festival, now in its 38th year, is the largest floral fiesta in the Southwest. It is attended annually by more than 150,000 persons.

The five days of festivities feature a Rose Show in which tens of thousands of blooms are displayed, a more than three-mile-long parade, tours of a selected group of rose fields Queen's Tea, art shows, dances and many other festivities.

Mrs. Bertrand Hostess For Alpha Mu Delta

Alpha Mu Delta met Tuesday night in the Farm Bureau conference room. Debbie Bertrand was the hostess.

The transfer ceremony was held for the chapters newest member, who has transferred to the chapter from Childress. Becky Pingelton has previously been a member in Alpha Mu Omega

Senior Citizens Enjoy Outing At Encampment

Floydada Senior Citizens, along with the Crosbyton Senior Citizens enjoyed a bountiful covered dish luncheon, program and an afternoon of games at the Baptist Encampment last Wednesday. Thirty-three persons were present for the occasion.

Bill Brown of the Encampment brought the program on "How God Speaks to His People Through Nature." Several handmade animal and reptile species were on display which the speaker

Dougherty 4-H Club To Meet

Dougherty 4-H Club will meet Monday, Sept. 22 at 7 p.m. in the Dougherty School House. All members are urged to attend.

There will be the installation of officers and recreation held during the meeting.

FLOYD DATA

Georg Muhrer of Heilbronn, Germany is in Floydada visiting the C. O. Woody family. Mr. Muhrer will leave Tuesday for Boston where he will visit his sister-in-law, before returning to Heilbronn. He was the landlord of the Woody family when C. O. was stationed in Germany in 1965-66.

LOCKNEY LOCALS
MRS. LEITA KECK, from Houston, visited her parents, Mr. and Mrs. C. D. McCandless last Thursday. She also visited her brother and family Glen McCandless at Stamford.

MR. AND MRS. B. B. WILKES visited in Austin recently with their son and family, Leslie Wilkes and daughter Patty.

MRS. RUTH BROWN spent a week in El Paso with the Jackie Don Calahan family while Jackie Don was in New York on business.

DR. STEVEN BELT has been in Morristown, New Jersey, since July. He is at Morristown Memorial Hospital where he is an intern.

MR. AND MRS. BRYAN KARR from Dallas visited over the weekend with relatives in Lockney and Plainview.

The Ritual of Jewels ceremony was performed for Linda Jackson. Linda had qualified for the degree earlier in the year.

The regular business meeting was held following these rituals. The chapter held hands and repeated Mizpah before they had refreshments. Attending the meeting were: Becky Pingelton, Linda Jackson, Debbie Bertrand, Brenda Watson, Donna Henderson, Barbara Koch, Judy Warren and Jan Nichols.

Items Needed For Cancer Crafts And Rummage Sale

A plea is going out to the public from the Floydada Unit of the American Cancer Society, for items needed for a crafts and rummage sale they plan to hold October 18th. The event, with all proceeds going to the Cancer Society, will be held all day Saturday, October 18th., from 10 a.m. until 6 p.m. at the Lemon Drop Inn, next to Beall's Dept. Store. Donations of white ele-

phant items, baked goods, arts, crafts, garage sale items, etc., will be appreciated. These articles will be picked up by volunteer workers if you wish. Call Wanda Hickerson, 983-2816; Phyllis Harris, 983-3487 or Barbara Arwine, 983-2393.

The Floydada group is asking everyone to help make this year's cancer fund drive go over their goal.

Lockney Ladies' Auxiliary Meets

Lockney Fire Department Ladies' Auxiliary held its monthly meeting September 16 at Wanda Moats' house with Wanda Dudley as co-hostess.

The Auxiliary decided to give a party for Lockney Care Center residents on Halloween, and voted to give the Sterlings, whose home burned in July, a set of sheets.

Those present were Juandell Giles, Nellie Webb, Sandra Jones, Vicki Hutton, Dorothy Hooten, Barbara Carthel, Wanda Moats, Wanda Dudley, Sue Zorger and Katy Ansley.

The Auxiliary still has some cookbooks for sale.



RICKY COLLIE, 2301 West 11th the winner of an electric skillet given by the Lighthouse Electric Booth during the 1975 and Surrounding Counties Fair. Ricky guessed the total number owned by the 79 Rural Electric Texas to be 202,000. The actual is He is pictured receiving the gift from Lighthouse Service Advisor.



AT MENTAL HEALTH ANNUAL DINNER at Strickland Lockney Thursday night sixteen members of the staff and board. Following the dinner Billie Jordan made a few introductory remarks and introduced Sandy Taylor, outreach director of the Floyd County Mental Health Center. In turn introduced members of the staff who discussed centered around the Parent Effectiveness Training of September 25 in the First National Bank community room in Lockney. (Staff members pictured above are Phil Alexander, Sandy Taylor, Roy Alexander and Bill Norton.)

FLOWERS for all occasions

- * WEDDINGS
- * FUNERALS
- * ALTAR ARRANGEMENTS
- * HOSPITAL
- * SHOWERS
- * GIFT ITEMS

We wire all over the world
Florafax
"We Specialize In Expressions Of Love"

C & J Floral

319 S. 2nd 983-3964

I SEE A FUTURE OF FREEDOM FROM HEATING WORRIES

Even the gypsy fortune-teller is impressed by the performance of the heat pump. She, of course, thinks the heat pump is magic. But it's not at all... it just acts that way.

BE SWITCHED

to electric heat, now and for the future. Electric heat is 100% efficient at the point of use. Call Southwestern for a FREE personalized heating cost survey and we'll give you all the details about the heat pump without gazing into a crystal ball. Call us this week.

ELECTRICITY-IT DOES SO MUCH GOOD

The Electric Company

FOR SO MANY PEOPLE

ENERGY EFFICIENCY ALLOWANCE

We at Southwestern are interested in your getting the most for your energy dollar. That's why we're offering an Energy Efficiency Insulation Allowance to our customers in existing homes who install electric comfort heating. Ask us about it.

CALL US FOR A FREE ELECTRIC HEATING COST ESTIMATE

EQUAL OPPORTUNITY EMPLOYER

More Moving to the Country

AUSTIN--Retirees and young people are moving back to the country, reversing a 30-year trend, Agriculture Commissioner John C. White reports.

Citing USDA figures for the nation, Commissioner White stated that between 1970 and 1973, population in small towns and cities grew by 4.2 per cent, while urban areas increased only 2.9 per cent.

Some growth of the Claude Lockney areas is reported as a result of the expansion of the PUE and the activity of the birthrate outside the area.

Outmigration in the areas, White said, is down 2.7 million of age 18 and over. The work force will be 34,000.

will be calling on each resident.

Students welcome your new subscriptions as well as renewals.

Profits from the magazine sales go toward purchasing major equipment for Junior High, which in past sales, has enabled the school to acquire new stage drapes, visual equipment and a PA system.

Junior High Magazine Sales Start Sept. 26

Students at Floydada Junior High School will commence their annual magazine sale September 26th and will conclude October 6th. They

YOU HAVE TO TOUCH IT TO BELIEVE IT

Q
100% Qiana nylon
VAN HEUSEN

So soft, silky and sensual, it's Van Heusen's Qiana. It's the softest, most beautiful, most comfortable fabric ever made. It's the most luxurious, most elegant, most sophisticated fabric ever made. It's the most beautiful, most elegant, most sophisticated fabric ever made. It's the most beautiful, most elegant, most sophisticated fabric ever made.

Brown's IN LOCKNEY

FLOYDADA SCHOOL LUNCH MENU

Strawberry Fruit Float
1/2 pint milk

WEDNESDAY
Bar-B-Que Wieners
Fluffy Whipped Potatoes
Oven Baked Broccoli
Oatmeal Cake with Icing
Hot Cornbread Squares
1/2 pint milk

THURSDAY
Peanut Butter and Pimento Cheese Sandwiches
French Fries
Tomato & Lettuce Salad

Annual Spaghetti Supper Before The Littlefield-Floydada Game

Everyone is invited to a spaghetti supper before the Littlefield game Friday night in the Floydada Junior

High cafeteria. The supper will be served from 5 until 8 p.m. Proceeds from the

supper go to help finance the cost of operating the Floydada Day Care Center. President of the Day Care Center board Louis Anderson said, "This fund raising project is an annual event and very instrumental in

maintaining the Day Care Center... it has served this community for the past six years and community support has been a key factor in its operations." Jan Thompson is food chairman and Alton Rose is

in charge of ticket sales. Anderson said tickets could be purchased from the following officers: Mrs. Arthur Wylie, secretary; Wendell Tooley, vice president; Mrs. Wayne Fuller, executive director.

One of these members will be contacting you to support our Day Care Center by buying a ticket: John Campbell, Alton Rose, Jack McIntosh, Newell Burk, Sam Baker, Fred Stewart, Bill Hardin, Parnell Powell, Mrs. Annie Taylor, Mrs. John (Ella) Reue, Mrs. J. M. (Ann) Wilson, Mrs. G. J. (Elizabeth) Armstrong, Mrs. J. S. (Kay) Hale, Jr., Mary Pearl Cowan, Mrs. J. M. (Ruth) Williams, Mrs. Jerry (Jan) Thompson, Mrs. Jack (Billie) Jordan.

Give one of these board members a call today and reserve your ticket for the supper. MENU: Spaghetti and Meat Sauce Green Salad with Tomatoes, Toasted Bread Sticks Cake Squares Tea and Coffee A generous serving of each for only \$2.00 for adults and \$1.50 for children.

FFA Elects Officers

president; Brenda Fulton, secretary; Mike Marble, treasurer; Curtis Smalley, reporter; and Mark Noland, sentinal. President Williams announced that the election of chapter sweetheart and plowgirl would begin this week, with the election run by penny votes.

learned to live with what I have left." In 1961, at the age of 40, Mrs. Allen returned to college. She earned a bachelor's degree at Stanford, graduating third in her class and Phi Beta Kappa. Then she went on to a master's in speech pathology. She began teaching in the California school system, and was named "most innovative teacher" for her work with deaf children.

Mrs. Allen credits her husband, her children and people, in general, for what she has accomplished. "Because you need help, wherever you are, you seem to develop a caring group around you. Other people may hurt as much as I, but it isn't a visible thing," she explains. "You become a different person because of the love and job and neat things that are fed into you." But a lot of credit must also go to her acceptance of life on its own terms. As she puts it, "When I was young, I had a 2-year plan and a 3-year plan and a 5-year plan. I guess I let go of all that and am willing to accept what's coming." For a free copy of The Time of Your Life, send a stamped, self-addressed envelope to The Christo-



TWO MEMBERS OF A LAKEVIEW FAMILY... were injured in the above auto Wednesday afternoon on FM 1471, three miles east of the Ralls Highway. The 1974 Buick was said to have been totaled when it was struck by a pick-up. Injured were Odell Breed and his mother, Mrs. B. L. Breed. (Staff Photo)

HOSPITAL NEWS

LOCKNEY GENERAL
September 11 to 18
Bille Olive, Silvertown, admitted 9-5, dismissed 9-12.
Josie L. Williams, Floydada, admitted 9-5, dismissed 9-12.
Janice Ragland, Lockney, admitted 9-8, dismissed 9-12.
Richard Soliz, Plainview, admitted 9-8, dismissed 9-12.
Rosa Linda Garcia, Lockney, admitted 9-9, dismissed 9-12.
Baby girl Patricia born 9-9, dismissed 9-12.
Vic H. Tunnell, Floydada, admitted 9-9, dismissed 9-14.
L. A. Payne, Lockney, admitted 9-9, dismissed 9-13.
Nell Watson, Lockney, admitted 9-9, dismissed 9-18.
Donette Martinez, Plainview, admitted 9-10, dismissed 9-17.

Odell Breed And Mother In Hospital From Wreck Injuries

Odell "Bud" Breed and his mother, Mrs. B. L. Breed remain in Lubbock Methodist Hospital with injuries sustained in a car-pick-up crash about 2:45 Wednesday afternoon on FM 1471, some three miles east of the Ralls Highway. Breed, his wife, Genell "Fish", and his mother were returning from Lubbock, and traveling east going to their Lakeview homes when the mishap occurred. Breed was driving his mother's car. The pick-up, traveling south on a dirt road, struck the view, admitted 9-14 transferred. Alfreda Osborn, Plainview, admitted 9-14, dismissed 9-17. Twin girls Carola and Corala born 9-15, dismissed 9-17. Rickey Titus, Lockney, admitted 9-14, dismissed 9-16. Maria Sancedo, Plainview, admitted 9-14, dismissed 9-17. Baby boy Fernando born 9-15, dismissed 9-17. Amada Martinez, Plainview, admitted 9-15, dismissed 9-16. Clara Gomez, Plainview, admitted 9-15, dismissed 9-17. Baby boy Thomas born 9-15, dismissed 9-17. Minnie Cantu, Lockney, admitted 9-15, dismissed 9-17. Juanita Reynaga, Lockney, admitted 9-15, dismissed 9-18. Baby boy Able born 9-16, dismissed 9-18. Martha Burke, Lockney, admitted 9-15, continues care. Dick Reeder, Plainview, admitted 9-16, dismissed 9-17. John L. Frizzell, Lockney, admitted 9-16, continues care.

Yours Sign National Highway Week Proclamation

Honorable Parnell Powell, Mayor of the City of Floydada and the Mayor of the City of Lockney have each signed proclamations proclaiming September 25, 1975 as NATIONAL HIGHWAY PUBLIC TRANSPORTATION WEEK in their respective

employees of the State Department of Highways and Public Transportation cordially invite the citizens to attend their open house to be held September 25, 1975 from 12:00 noon to 5:00 p.m. at their headquarters in Floydada at 708 North 2nd Street. The open house is to be held as part of NATIONAL HIGHWAY TRANSPORTATION WEEK. Plans will be on hand to answer questions and to show you their

resident Engineer, Sam Fowler, and his forces have completed the construction projects since the National Highway Week: Floyd County: FM 2286 South Community 4.0 miles new

Worth County: Rebuild and widen mile SH 86 in Tulia, Construct FM 1881 near Happy. Floyd County: Rebuild and widen FM 54 west of Abernathy, Railroad Flashing Light at FM 54 and Ft. Worth and Railroad at Petersburg.

concerned about the lack of new projects in 1975 unless new or additional revenue is found. Cost of everything has risen in the past year while highway

revenue has not. In the year September 1, 1973 through August 31, 1974, motor fuel tax provided 37.8 per cent, federal funds provided 29.3 per cent and license fees provided 26.1 per cent. These three sources provide 93.2 per cent of funds available. The amount of money furnished by each one is, more or less, fixed with very little

increase in revenue from 1973 to 1975 with no provision for the jump in costs of all items used in construction and maintenance. The State may spend only money it has; therefore, fewer roads may be built and less maintenance may be done. Let's therefore keep Texas No. 1 in highways - a position they have enjoyed for many years.

J. D. Davis, the maintenance foreman said that his crew maintains 708 lane miles of road in Floyd and Hale County. They have 2,700 acres of grass and weeds to mow and they sure wish the State had more money so they could do a better job but the surface must be maintained first then any money left may be used for other things such as mowing and ditch work.

Austin Congressman Jack Pickle says "Transportation pervades and influences ever sector of the economy... Transportation accounts for about one-fifth of our GNP; it brings in about 17 per cent of our taxes it represents nearly 10 per cent of our privately owned tangible assets; it employs over 13 per cent of our civilian work force; it consumes about 75 per cent of our rubber, 56 per cent of our petroleum, 30 per cent of our Steel."

Teachers offer guidance in the development of intellectual capacities, the attainment of social skills and the formulation of moral values. Three million of them teach America's nearly 60 million students.

INFORMATION
DAVID B. CATES
Floyd County Farm Bureau
Floydada, Texas

owned by someone other than the insured... a gift tax when the insured dies and the proceeds are paid to beneficiaries other than the insured. If a wife owns a policy on the life of her husband and names their children as beneficiaries, there is a gift tax when the husband dies. The value of the policy would be the value of the entire proceeds and the gift tax which is 75% of the estate tax for the same amount. If the insurance had been split so each child owned a life of the father, then there would have been no gift taxes on the proceeds.



"A person eating spaghetti is too busy to feel lonely."

"THE FAMILY PLACE TO EAT" IN FLOYDADA

Mr. Burger

OPEN DAILY
10:30 am til 11:00 pm

FOR BACK TO SCHOOL SPECIAL

LARGE BURGER
FRIES
14 oz. DRINK
95¢

14 oz. Fountain Drinks 10¢

FOR FAST READY TO GO ORDERS
PHONE 983-2558

You Are Invited To A

GOSPEL MEETING

Tuesday Wednesday Thursday
SEPTEMBER 23-24-25

MORNING SERVICES - 7:30
Tuesday Morning
Parents & Children - Who's In Charge?
Wednesday Morning
Woman, Wife, Mother
Thursday Morning
Man, Husband, Father

EVENING SERVICES - 7:30
Tuesday Evening
The Unknown God
Wednesday Evening
Christ The Sacrifice
Thursday Evening
The Way Back To God

Melvin Byrd
CITY PARK
Church Of Christ
FLOYDADA, TEXAS

ELECTRONIC CALCULATOR

SUPER BUY!

ROCKWELL 405P

with Memory

*BIG TWELVE DIGIT PRINTOUT *STANDARD ADDING MACHINE PAPER *NEW SILENT INSTANT STOP/START PRINTER *MEMORY *PERCENTAGE WITH ADD-ON AND DISCOUNT *ADDMODE *FLOATING DECIMAL *FIXED DECIMAL WITH ROUND-OFF *AUTOMATIC CONSTANTS *NON ADD KEY *INDICATOR LIGHTS FOR MEMORY, POWER ON AND OVERFLOW *CREDIT BALANCE* USER DESIGNED KEYBOARD AND BUFFER MAKE THIS UNIT PERFECT FOR THE FASTEST OPERATORS* FULL ONE YEAR GUARANTEE*

\$189⁹⁵

HESPERIAN OFFICE SUPPLY
FLOYDADA, TEXAS

BEACON OFFICE SUPPLY
LOCKNEY, TEXAS

ON DISPLAY NOW!

Smith-Corona[®]
Coronamatic[™]
Cartridge

7000 only \$319⁰⁰

HESPERIAN OFFICE SUPPLY



DECA GOLD CHAPTER OFFICERS: (l to r) Elaine Giesecke, President; Karan Cox, Vice-President; Eddie Muniz, Secretary; Mary Ann Morales, Treasurer; Susie Towler, Parliamentarian; Melanie Gilly, Reporter; Johnny Huerra, Sergeant at Arms; Keith Tooley, Photographer; Mike Nichols, Committee Chairman; Benny Locke, Advisor.

V. O. E. Open House At FHS

Vocational Office Education class in conjunction with the Office Education Association Club is sponsoring an open house at the Floydada High School on Monday, September 20 from 7:00 until 9:00.

The purpose is to let the public meet the students involved in this course and to see the facilities and the equipment which have been provided by the school board and from government assistance.

A variety of typewriters, calculators, dictation equipment, and duplication equipment will be on display. Businessmen, parents, students, and other interested people are invited to come to room 119 on Monday.



V. O. E. OFFICERS (l to r) Kim Lackey vice president, Ilano secretary, Martina Cervantes treasurer, Anita er historian and Julie Ratheal president. (Staff Photo)



Texas No. 1 In '74 Export Of Livestock

AUSTIN—Texas remained a leading state in livestock exportation in 1974, Agriculture Commissioner John C. White has reported.

Statistics from the USDA show the state to be the number one exporter of beef-breeding cattle in the U.S., having sold 13,450 head in 1974.

Texas hog producers placed the state second in exports of breeding swine, shipping 3,055, only 168 fewer than the first-ranking state of Illinois. In the sales of dairy breeding cattle, the state was eighth with a total of 2,275.

White attributed the increase in exports from Texas to intensive marketing activities by the livestock industry.

"The Texas Department of Agriculture has stepped up efforts to bring in more foreign buyers," White said. "The Livestock Directory which the Department publishes has stimulated many sales."

Brahmans ranked highest in number exported from Texas with a total of 3,991. Santa Gertrudis, Herefords, and crossbreeds were other major choices of foreign buyers.

Texas supplied almost one third of the Charolais cattle shipped from the U.S.



CONGRATULATIONS To Joe Richard Noland Producer Of Floyd County's First 1975 Bale Of Cotton

OUR GIN IS IN GOOD CONDITION AND WE ARE PREPARED TO HELP THE COTTON FARMERS GET GOOD GRADE AND TURN-OUT WHEN THEY GINS HIS COTTON HERE

WE APPRECIATE YOUR BUSINESS

SCOTT GIN

Emmett Kelly Jr. for Southwestern Bell

60%

Weekend Travel Plan:

60% Savings on out-of-state Long Distance Calls.

Travel by Long Distance this weekend and save. When you call out of state the One-Plus way on weekends (all Saturday and Sunday until 5 p.m.) you save 60 percent over the day rate. These savings are also

in effect every night from 11 p.m. to 8 a.m. And when you travel to another state by Long Distance you can afford to stay awhile. Additional minutes always cost less than the first. Have a good trip.

Where One-Plus dialing isn't available, One-Plus rates apply on station calls. If you dial direct and reach a wrong number, call the operator. You won't be charged.

One-Plus Discount Rate Periods

	MON	TUES	WED	THUR	FRI	SAT	SUN
8:00 AM to 5:00 PM	Day Rate Period FULL RATE						
5:00 PM to 11:00 PM	Evening Rate Period 35% Discount						Eve 35%
11:00 PM to 8:00 AM	Night & Weekend Rate Period 60% Discount						

Want to know more ways to save on out-of-state Long Distance calls? Return this coupon and we'll send you a free calling guide.

Southwestern Bell
P.O. Box 787
St. Louis, Missouri 63188

Name _____
Address _____
City _____ State _____ Zip _____

Travel by Long Distance... and stay awhile. Southwestern Bell

For rates to Alaska and Hawaii, call the operator. One-Plus rates don't apply to person, coin, hotel-guest, credit card or collect calls, or calls charged to another number.

Outwit Winter Weather

...with a Heating Check-Up

Now's the time to have your electrical equipment serviced so that it will operate at top efficiency. By having a quality heating specialist service your heating equipment annually... you can avoid costly repairs and inconveniences caused by cold weather. Don't forget, dirty filters can cause your heating equipment to operate harder and use more energy. They should be examined once a month and cleaned or replaced at least every 90 days.

FLOYDADA LIGHT POWER

WHAT ONE PERSON CAN DO

GEORGE FERRELL
Artist

To people in the chemistry

building at Atlanta's Emory University, George Ferrell is the janitor. But at Washington's Smithsonian Institution, he is considered "one of the most talented and skilled self-taught wood carvers in the country."

"You know, some folks think I'm kiddin' when I tell them I'm an artist," he says, "but that don't bother me. I

don't have to prove nothing to nobody."

Mr. Ferrell first started doing sculpture in the late 1940s. "I saw a book about Picasso," he explains, "Picasso is something else - he sure did some really way out things. And I started thinking that I could do something way out, too." He started working in ceramics and plaster of Paris, but stopped because they broke too easily. Then he started

carving in wood, using pieces he finds around construction sites or while sweeping up the chemistry labs.

"Up in Washington (at the Smithsonian)," he says, "folks asked me if I buy expensive wood like cherry, mahogany, oak - I just tell them I carve what I find." His carvings sell well, but Mr. Ferrell has no intention of leaving his job. "I like being a janitor. The people

here are good to me and there is always time to do sculpture during the breaks," he says.

He is actually a little wary of success: "What I gotta watch out for is becoming a professional," he says. "Then I'm gonna be in trouble 'cause when that happens I ain't gonna be able to be myself and I ain't gonna be able to spend my nights playing dominoes with the boys."

For George Ferrell, the ability to be himself is the key to a successful artistic career and a full life. It's a key that's available to everyone.

For a free copy of the

Christopher News Notes, "There's Nobody Like You," send a stamped, self-addressed envelope to The Christophers, 12 E. 48th Street, New York, NY 10017.

★ **DEMPSEYS** ★ after

Tel. 983-3552 **PICTURE FRAMES** 4 p.m.
made to order
602 W. Miss. - Floydada, Tx.



LOW PRICES & FRIENDLY SERVICE

Prices Good thru Sept. 27, 1975. We reserve the right to limit quantities. None sold to dealers.

Prices good thru September 20, 1975. We reserve the right to limit quantities. None sold to dealers.

STORE HOURS
DAILY
8 A.M. - 10 P.M.
SUNDAYS 9 A.M. - 9 P.M.

US NO 1

Russet Potatoes
99¢
10 LB. BAG

Kiddies Love 'Em
Jonathan Apples Lb. 39¢

Full of Vitamin C
Valencia Oranges Lb. 39¢

All Varieties, Frozen
Morton Dinners 11-oz. Pkg. 49¢

Texsun Frozen
Orange Juice 6-oz. Can 19¢

Freshing
Italian Prune Plums Lb. 49¢

For An Afternoon Snack
Tokay Grapes Lb. 49¢

To Garnish Most Anything
Sunkist Lemons Lb. 59¢

Noted for Vitamin A
Cello Carrots 1-Lb. Cello 25¢

The Vegetable Powerhouse
Baker Potatoes Lb. 79¢

Crisp and Crunchy
Celery Hearts E.A. 29¢



Solid Head
Firm Cabbage
Lb. 15¢

"Sunshine Sale"

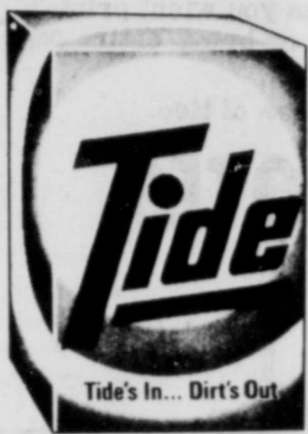
Sunshine Crackers Lb. Box 49¢

Hi-Ho 16-oz. Box 75¢

Cheez-Its 10-oz. Box 65¢

Hydrox Cookies 15-oz. Pkg. 79¢

Chip-A-Roos 14-oz. Pkg. 89¢



Powder Detergent

Tide Detergent
99¢
49 oz. Box



Piggly Wiggly

All Purpose Flour
69¢
5-Lb. Bag



Blade Cut, Superb Valu-Trim

Chuck Roast
89¢
Lb.

Van Camp's
Pork & Beans 4 \$1
15-oz. Cans

Piggly Wiggly, Buttermilk
Pancake Mix 2-Lb. Box 59¢

Piggly Wiggly
Peanut Butter 18-oz. Jar 85¢

Piggly Wiggly, 1 Ply
Paper Towels 2 89¢
145-Ct. Rolls

Grape Jam or
Welch's Jelly 10-oz. Jar 69¢

Quarters
Parkay Oleo 16-oz. Pkg. 59¢

Piggly Wiggly, Instant
Orange Drink Mix 18-oz. Jar \$1.19

Bread & Butter
Fanning Pickles 14-oz. Jar 49¢

Piggly Wiggly Twin Pack
Potato Chips 8-oz. Pkg. 69¢

Reg. or Sugar Free, 16-oz. Bottles
A&W Root Beer 6-Pack \$1.29

Piggly Wiggly Layer Varieties
Cake Mix 18 1/2-oz. Box 69¢

Cooking Spray
Pam 9-oz. Can 99¢

Piggly Wiggly
Shortening 3-Lb. Can \$1.69

PIGGLY WIGGLY
Marshmallow Pies 14-oz. Pkg. 73¢

Assorted Flavors
Wagner Drinks 32-oz. Btl. 45¢

Borden's Coffee Lightener
Cremora 16-oz. Jar \$1.65

Concentrated Liquid Formula
Enfamil Formula 13-oz. Can 57¢



Chef Pride

Pinto Beans
59¢
2-Lb. Pkg.

Piggly Wiggly
Chunk Tuna 6 1/2-oz. Can 39¢

Piggly Wiggly, Waffle and
Pancake Syrup 32-oz. Btl. 89¢

Plain
Wolf Chili 15-oz. Can 59¢

PIGGLY WIGGLY CUT
Green Beans 3/89¢

Piggly Wiggly
Instant Tea 3-oz. Jar \$1.49

Tomato
Heinz Ketchup qt. 93¢

Del Monte
Fruit Cocktail 17-oz. Can 49¢

Piggly Wiggly
Golden Corn 16-oz. Can 38¢

Piggly Wiggly
Whole Tomatoes 16-oz. Can 37¢

All Flavors
Royal Gelatin 3-oz. Pkg. 23¢

Piggly Wiggly, Dry
Dog Food 25-Lb. Bag \$4.29

Pace's
Picante Sauce 16-oz. Jar 89¢

Piggly Wiggly
Fabric Softener 64-oz. Btl. 59¢

Piggly Wiggly, Electric Dishwasher
Detergent 35-oz. Box 79¢

Piggly Wiggly, Leaf and
Lawn Bags 10-Ct. Pkg. \$1.05

Piggly Wiggly
Macaroni Dinners 7-oz. Pkg. 4/\$1.00

Piggly Wiggly
Tomato Soup 10 1/4-oz. Can 5/\$1.00

Kraft
Miracle Whip 16-oz. Jar 69¢



LARGE Piggly Wiggly Grade "A"

Eggs
65¢
Doz.

Fresh
Ground Beef Lb. 99¢

Superb Valu-Trim
Rib Steak Lb. \$1.49

Lean & Meaty
Short Ribs Lb. 79¢

Superb Valu-Trim
Round Steak Lb. \$1.49

Superb Valu-Trim, Bone In
Rump Roast Lb. \$1.49

Superb Valu-Trim
Arm Swiss Steak Lb. \$1.39

Boneless
Stew Meat Lb. \$1.49

Superb Valu-Trim, Boneless
Round Steak Lb. \$1.69

Superb Valu-Trim, Tenderized
Round Steak Lb. \$1.79

Superb Valu-Trim
Sirloin Tip Steak Lb. \$1.79

Superb Valu-Trim
Pikes Peak Roast Lb. \$1.49

Superb Valu-Trim
Boneless Rib Steak Lb. \$1.79

Superb Valu-Trim, Boneless
Chuck Roast Lb. \$1.39

Superb Valu-Trim
Boneless Brisket Lb. \$1.79

Superb Valu-Trim
Sirloin Steak Lb. \$1.39

Superb Valu-Trim, Seven Bone
Shoulder Roast Lb. \$1.19



Superb Valu-Trim

Chuck Steak
\$1.09
Lb.

HAVE FUN ... WIN PRIZES

\$15 IN CASH PRIZES EACH WEEK

FOOTBALL CONTESTS

HESPERIAN

AND QUARTERBACK FORECAST

DEADLINE FOR ENTRIES - 5 P.M. FRIDAY IN HESPERIAN OFFICE OR POSTMARK

CONTEST RULES:

Anyone can enter except the employees of the Hesperian. Three cash prizes are given each week - ties will split prize money. Members of the sports department are sole judges of the contest and their decision is final.

It is not necessary to indicate scores on all the games....But score must be indicated on the tie breaker game at right. Simply circle the team you choose to win in each of the footballs. Deadline for submitting entries is 5 p.m. Friday - winners will be announced the following week. Enter as many times as you wish, print name and address plainly on blank below and mail or bring entire page to The Hesperian office

Tie-breaker game will be considered only in case of ties.

QUARTERBACK QUOTES

TIE BREAKER-Guess Total Points AND CIRCLE WINNER



BILL GILBRETH
FLOYDADA, 21
OLTON, 0



JERRY THOMPSON
FLOYDADA, 19
OLTON, 8



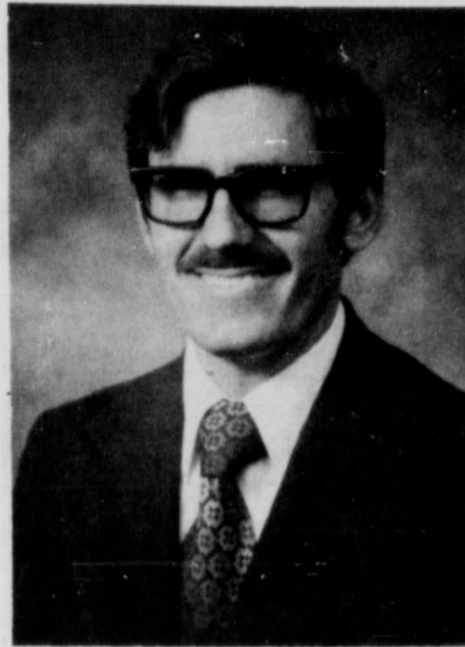
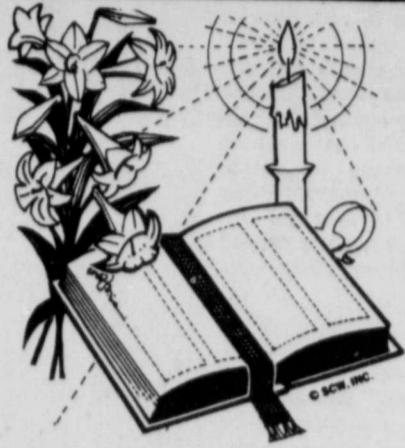
JAMES LEE NICHOLS
FLOYDADA, 21
OLTON, 7

NAME
ADDRESS
CITY

1ST PRIZE \$7.50
2ND PRIZE \$5.00
3RD PRIZE \$2.50

<p>Fender bender mender QUALITY BODY SHOP RICE VS LSU</p>	<p>We have what you need in auto parts, housewares & hardware CAPROCK AUTO PARTS & HARDWARE TCU VS ILLINOIS</p>	<p>Good cars, good deals! ODEN CHEVROLET OLDS BAYLOR VS MICHIGAN</p>	<p>AC & New Holland equip MCDONALD IMPLEMENT HOUSTON VS SMU</p>
<p>Tires For Everything! Babe's Service Center TEXAS ST. VS OKLAHOMA ST.</p>	<p>Supplies For The Farmer Consumer's Fuel Assoc. TAHOKA AT DIMMITT</p>	<p>Crop and livestock loans PRODUCTION CREDIT ASSOCIATION STINNETT AT SPEARMAN</p>	<p>Your IH Dealer MARTIN & COMPANY TULIA AT FRIONA</p>
<p>Service with a smile! GILBREATH EXXON SERVICE MULESHOE AT LITTLEFIELD</p>	<p>Dairy Queen IS EVERYBODY'S EVERYTHING.... FRENSHIP AT MORTON</p>	<p>Massey-Ferguson equipment FLOYDADA IMPLEMENT COOPER AT IDALOU</p>	<p>Custom Processing PONDEROSA MEATS QUALITY MEATS POST AT COLORADO CITY</p>
<p>"For your health needs" THOMPSON PHARMACY LUBBOCK HIGH VS DUNBAR</p>	<p>Everything in Insurance BAKER INSURANCE MCCAMEY AT COAHOMA</p>	<p>See us for your auto parts needs DANIEL AUTOMOTIVE DENVER CITY AT CRANE</p>	<p>YOUR FINA WHOLESAL AND RETAIL DEALER. NICHOLS OIL CO. ABERNATHY AT SLATON</p>
<p>Dealers for Hamby and Caldwell farm equipment Russell's Equipment & Supply AMARILLO AT PLAINVIEW</p>	<p>Mr. Burger "THE FAMILY PLACE TO EAT" HEREFORD AT CANYON</p>	<p>Buick-Pontiac-GMC CITY AUTO INC. BORGER AT DUMAS</p>	<p>Service With Int Moore-Rose Funerals CAPROCK VS PERRYTON</p>

Come to Church



MELVIN BYRD
Minister
City Park Church of Christ

"An Experiment On Life"

The man was a man of great wealth. A man with a depth of understanding. A man with a desire to know the true purpose of life on earth. One day this man decided to perform an experiment which was designed to find the way man ought to live in order to satisfy his true purpose for being. The plan was simple; Experience every aspect of life to its fullest. The experimenter decided to approach life from three different angles - wisdom, pleasure and hard work.

Here are the results of his findings:
1) WISDOM - "I have acquired great wisdom, surpassing all who were before me." Conclusion: Wisdom "is but a striving after wind. For in much wisdom is much vexation."

2) PLEASURE - "I will make a test of pleasure . . . to cheer my body with wine, singers and many concubines." "And whatever my eyes desired I did not keep from them; I kept my heart from no pleasure." Conclusion: Just the brief pleasure of the moment "was my reward. What use is it?"

3) GREAT WORKS - "I made great works; I built houses and planted vineyards for myself; I made myself gardens and parks, and planted in them all kinds of fruit trees. I made myself pools from which to water the forest of growing trees. I bought male and female slaves, and has slaves who were born in my house; I had also great possessions of herds and flocks . . . I also gathered for myself silver and gold."

Conclusion: "evin in the night his mind does not rest . . . because sometimes a man who has toiled with wisdom and knowledge and skill must leave all to be enjoyed by a man who did not toil for it."

This man closed the record of his experiment with these words, "The end of the matter; all has been heard. Fear God, and keep his commands, for this is the whole duty of man. For God will bring every deed into judgement, with every secret thing whether good or evil."

The full account of this experiment can be found in your bible, the book of Ecclesiastes.

Jesus said, "a man's life does not consist in the abundance of his possessions." (Luke 12:15). "But seek first his kingdom and his righteousness. . ." (Matthew 6:33).

Many may accomplish great things in life, but without Jesus Christ, it is all without meaning.

Melvin Byrd

This Inspirational Message Is Sponsored
By The Following Firms.....

Consumers Fuel Assoc.

- | | | | |
|----------------------------------|-----------------------|----------------------------------|-----------------------|
| Nichols Oil Co. | City Auto Inc. | Ponderosa Meat Co. | Adams Well Service |
| Russell's Equipment & Supply | Parker Furniture | Producer's Cooperative Elevators | Tastee Freez |
| Floydada Real Estate & Insurance | Hale Insurance | Bishop-Ramsey Pharmacy | Babe's Service Center |
| McDonald Implements | Floydada Co-Op Gins | Reed Ford Sales | Thompson Pharmacy |
| Gilbreath Exxon | Collins Implement Co. | Martin & Company | Solomon Jewelry |
| Production Credit Assoc. | Hesperian Office | Norrell Tractor Parts Co. | Floydada Care Center |
| Edmiston Plumbing | | | |

FOURSQUARE GOSPEL CHURCH

202 Marivena St.
Rev. Gerald Holder

Sunday Afternoon.....2:30 p.m.
Bible Study Thursday.....7:30 p.m.

THE CHURCH OF THE NAZARENE

Tom Brown, Pastor

Sunday School.....9:45
Morning Worship.....10:45
Evening Service.....6:30
Sunday Night Youth...7:45

CUMBERLAND PRESBYTERIAN CHURCH

Sunday School.....9:45
Bible Study.....6:30

DOUGHERTY BAPTIST CHURCH

Jim DeWese, Pastor

Sunday Services.....10:00
Morning Worship.....11:00
Evening Worship.....7:00

CITY PARK CHURCH OF CHRIST

Billy Patton, Minister

Sunday Bible Study.....9:30
Morning Worship.....10:20
Evening Worship.....6:00
Wednesday Bible Study.....7:30
Ladies Bible Study, Wed. A.M. . . 9:30

WALL STREET CHURCH OF CHRIST

Newell Burk, Elder

Sunday Communion and
Morning Worship.....10:30
Evening Worship.....6:00

SOUTH PLAINS BAPTIST CHURCH

Rev. Mike Oden

Sunday School.....10:00
Morning Worship.....11:00
Training Union.....6:00
Evening Worship.....7:00

CARR'S CHAPEL

Rev. Lee Crouch, Petersburg, Pastor

Services Every Sunday
Morning Worship.....9:30
Sunday School.....10:30
No Evening Services

VICTORY BAPTIST CHURCH

Emmett Clampitt, Pastor

Sunday School.....10:00
Morning Worship.....11:00
Evening Worship.....7:00
Wednesday Services.....7:30

NEW SALEM PRIMITIVE BAPTIST CHURCH

Joe M. Jackson

Sunday Congregational Singing . 10:00
Morning Worship.....10:30
Evening Worship.....6:30

SPANISH BAPTIST MISSION

Sunday School.....9:45
Morning Worship.....11:00
Training Union.....6:00
Evening Worship.....7:00

FIRST ASEMBLY OF GOD CHURCH

Pastor: Gary L. Cook

Sunday Morning...9:45 a.m.
Sunday Youth Service...5:00 p.m.
Sunday Evening Evangelistic...6:00 p.m.
Wednesday Night Service...7:00 p.m.
Thursday Womens Missionary... 9:00 a.m.



DO YOU WANT ME TO WALK OFF FISHING OR LEFT ONE OR THE RIGHT ONE?"

Hunting And Fishing Day

Each fall, a hunting and fishing day is held in Texas. Dolph Briscoe, Sept. 27, official Texas fishing day. Sports and clubs will hold events and discuss the benefits of fishing. Conservation is ideal to meet and many of the high plains. Sportsmen should be proud of their support and achievement over the last 40 years as they pumped over \$1.7 billion dollars from hunting license sales alone into the various state game and fish departments. Contact your local sportsman and his club and say "well done" on September 27 as they celebrate Texas hunting and fishing day.

Young Farmers Attend Area Convention

Young Farmers of the area at Plainview. Don Davis, Frenship, was named Outstanding Associate Member. Harry C. Bogusch, Spur, was named Outstanding Agri-businessman. Bobby Richey, Frenship, was named Outstanding Area Officer. Outstanding Young Farmer Chapter went to Frenship. Outstanding New Chapter was Abernathy. Silverton Young Farmer Chapter received the Newspaper and Magazine Public Relations Award, and also the Radio-Television Award. Area winners will compete for state awards at the state convention January 16-17, 1976 in Houston.

EXTENSION HORTICULTURIST BECOMES MORE SPECIALIZED

Dr. John Larsen, who has served as a horticulturist in vegetable production with the Texas Agricultural Extension Service for the past 14 years, has assumed a more specialized role. He will now be devoting his full time to the nutrition of greenhouse vegetables. Larsen will develop and conduct intensive educational programs to help greenhouse vegetable growers with specific problems, especially those related to nutritional requirements of the various greenhouse crops.

STEEL BUILDINGS
SINCE 1950
ALWAYS BUY ONE CHEAPER,
NEVER ONE MORE COMPLETE.
MAPLETON CONSTRUCTION CO.
CALL COLLECT
296-7893, HOME 296-9237
Box 84, Plainview, Texas 79072
East 5th

Farmer's Union President Says Ford's Veto Would Cost Farmers \$1 1/2 Billion

President Ford's veto of the Emergency Petroleum Allocation Act could end up costing the nation's farmers an additional \$1 1/2 billion a year in increased production costs, Jay Naman, President of the Texas Farmers Union warned today.

"We are already paying two to three times as much for petroleum products as we did a year ago," Naman said. "In addition to the increased costs experienced this past year, we now have reports that at least one of the major oil companies anticipates that it will have to increase its price of gasoline some seven to eight cents a gallon to recover increased crude oil prices."

"It can be reasonably expected that increases in all other petroleum based products, including fertilizer and transportation services, will occur along with that of gasoline," Naman explained. "Of significance to farmers is the fact that they will also

lose their priority in allocation of fuel and propane."

Naman said that with price controls lifted, "old" oil would be allowed to rise

Texas Expects New Record In Corn Yield

AUSTIN—Texas farmers are expected to harvest the third largest corn crop on record this year, Agriculture Commissioner John C. White reported.

A 111.1 million bushels yield is estimated by the Texas Crop and Livestock Reporting Service for Texas. This will be the largest since the 111.2 million bushels produced in 1919. Texas' record crop of 117 million was harvested in 1910.

"In 1910, it took five million acres to produce those 117 million bushels," White noted. "This year, our farmers are going to produce that near-record crop on only 1.1 million acres."

White attributed this ability to produce more on fewer acres to an increase in irrigated acreage on the Texas High Plains.

Yield per harvested acre is expected to reach 101 bushels per acre—a record for Texas.

According to the July crop report, production for other grain crops has also shown significant increases. Oat yield is expected to top 18 million bushels; barley, 3 million bushels; and rye, 594,000 bushels.

from the ceiling price of \$5.25 a barrel to the current price of foreign and uncontrolled domestic oil, about \$13 a barrel.

"What this all adds up to," Naman warned, "is an increase in the cost of production for farmers and eventually increases in the

cost of food to consumers."

Naman recalled that President Ford had promised farmers in a speech to the Kansas Legislature on February 11, 1975, that a rebate program would be established "to compensate the American farmer for increased energy costs caused by our conservation program."

"However, no such program has been put forth by the President," Naman said. "Even a forty-five day extension of the present controls will not help the situation, based on the attitudes of the President and Congress," Naman added. "Congress must get on with the business of establishing a national energy policy. This policy must assure agricultural producers of continued adequate supplies of petroleum products at stable prices. Farmers cannot cut back on their use of petroleum products, on the one hand, and meet the challenge of the government for all out production, on the other," the farm leader said.

Farm-facts

A Weekly Report Of Agri-Business News

Compiled From Sources Of The Texas Department of Agriculture
John C. White, Commissioner

Who Took The Worst Decline? ... Slide, Parity, Slide ... Farm Prices Not All That Good ... One More Time.

Now that most of the experts are agreed that the recession may have finally bottomed out and perhaps things are going to get better, here's a question for you: which group took the worst decline in income? Corporate profits? Agriculture?

FARMERS' INCOMES suffered the most. From 1973 to 1975, farmers' incomes dropped almost 40 per cent. Corporate profits were down only around 10 per cent.

And in spite of recent upturns in farm prices, the Texas Crop and Livestock Reporting Service notes that parity as of the middle of August slid to 74, down a point from a month ago and down five points from a year ago.

And despite all the things you might have read or heard about how high the farmer's wheat price had advanced, the farm price for wheat as of mid-August was still almost \$1 below parity. Average Texas wheat price is \$3.77 per bushel; parity is \$4.63. A year ago, the average Texas wheat price was considerably higher than it is now; in 1974 it was \$4.05 per bushel as of Aug. 15.

TAKE A LOOK at other farm prices and it's the same old story: most all of them continue below parity, some by wide margins.

On the bright side, corn is above parity—by one cent per bushel.

Oats are 11 cents per bushel above parity. Other grains, however, are below parity. Sorghum, the major cash crop for Texas, is 49 cents per 100 pounds below parity.

One category of livestock—hogs—is above parity. Hog price average in Texas is \$54.70; parity is \$48.40. But other categories of livestock are way below parity. Beef cattle price average is \$29.90; parity is \$56. Calf price parity is \$68.40; average market price is \$24.50.

Look at the cotton price, too. Although cotton prices have firmed up slightly in recent weeks, the average cotton price in Texas is 38.5 cents per pound. Parity is 78.69 cents per pound.

Egg prices are about 16 cents per dozen below parity; turkeys are 15 cents under parity.

MEANWHILE, CROP HARVEST over the state continues in stride. Corn harvest is more than a fourth completed; cotton harvest is something more than 10 per cent finished; sorghum harvest is nearing the two-thirds completion mark.

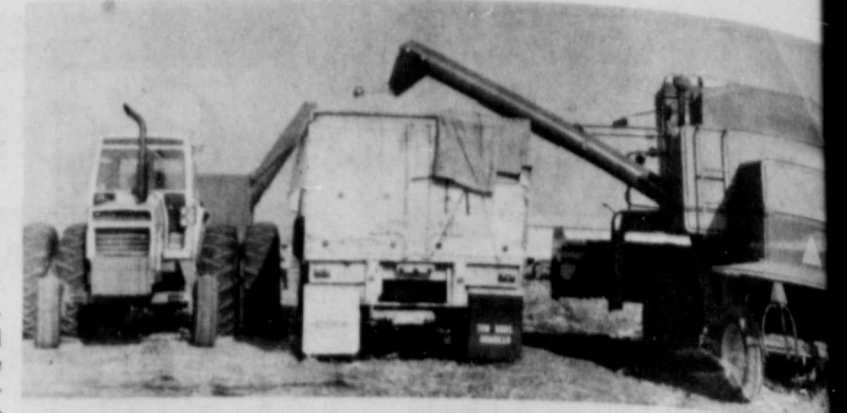
Rice harvest is nearly complete and sunflower harvest on the Low Plains is underway. Soybean progress is good with most of the acreage setting an excellent crop. Peanut harvest is about 20 per cent complete.

LET'S REPEAT IT, one more time.

Livestock producers need to continue to submit suspected screwworm samples to the fly lab at Mission. The annual Fall build-up of the pest is and will increase until cold weather puts it to a halt.

Screwworms were widely spread across Texas, from Cameron County on the south to Wichita on the north; from Hudspeth on the west to Brazoria, Walker and Houston Counties on the east, during August.

Officials also recommend that you delay surgery on your livestock as long as possible and use screwworm-approved remedies on wounds on livestock.



CORN HARVEST IN FULL SWING ... this truck load of corn is area cattle feed lot. It is from an around 300 acre field of corn on the farm south of Floydada.

Land Bank Directors Re-Elected Re-elected

In the recent Federal Land Bank of Floydada annual meeting directors Malvin Jarboe and Carroll Garrison were re-elected to the board of directors. Raymond Rucker continues as president of the board. Other members of the

board include: Edgar Lee and Tate Jones and John Irwin of Matador Garrison lives

King Cotton Said Dethroned

HARLINGEN, Tex. (AP) — King Cotton has been dethroned in the Lower Rio Grande Valley.

After years of reigning supreme among Valley crops, the current cotton harvest is going to be the smallest here since 1941, the Valley Chamber of Commerce says.

In 1941, growers harvested 53,713 bales of cotton in the Valley. This year, as the harvest nears an end, only 71,224 bales have been ginned.

"There's more supply than demand," said Jack Funk of Harlingen, who operates Sebas-



Texas cotton interest organizations caucused in Lubbock September 5 and selected fourteen farmers, twelve of them from the High Plains, to fill or serve as alternates in important positions in the national cotton industry. The High Plains area was represented at the caucus by W.B. Criswell of Idalou, President of Plains Cotton Growers, Inc.; PCG Executive Vice President Donald Johnson; and J.D. Smith, a PCG Past President, of Littlefield.

Three members and three alternates were named as directors to Cotton Incorporated (CI), the company which conducts the dollar-a-bale program for producers under the Cotton Research and Development Act.

Two members and two alternates were nominated for a single position on the Cotton Board, the administrative body responsible for collections, disbursements and project approval in the CI program. The Secretary of Agriculture is required by law to appoint one of the "pairs" submitted by interest organizations and normally chooses the one for whom the organizations express a preference.

Three men and three alternates were named as producer delegates to the National Cotton Council (NCC), the industry's research, promotion and service organization which embraces all seven segments of the cotton industry.

On the CI governing body the group placed J.D. Smith, L.C. Unfred of New Home and Donnell Echols of Lamesa. Echols is also a Past President of PCG. Alternates on this board were named as Robert Warren of Lamesa, Clifford Hoelscher of St. Lawrence, and Don Marble of South Plains. Marble is current Chairman of the PCG Board.

Nominated for members and alternates, respectively, on the Cotton Board were Dan Davis and Donald Johnson, both of Lubbock, Wilmer Smith of Wilson and Lloyd Cline of Lamesa. Davis is General Manager of the regional Plains Cotton Cooperative Association and Smith is another PCG Past President. Cline is current PCG Vice President.

For the NCC Board of Directors to represent producer interests, the organizations selected PCG President Criswell, Cline, and Bill Reid of Lamesa. Respective alternates to the three were named as Joe Pate of Lubbock, Echols, and J.G. Dobbs of Grandview, Texas.

In addition to PCG, six other regional cotton producer associations and the Texas Farm Bureau take part in the naming of producer representatives on the board of the National Cotton Council. All of these, plus the Texas Farmers Union, the Texas Federation of Cooperatives, Texas Cotton Growers Cooperative, Southwestern Irrigated Cotton Growers, and Greenbelt Cotton Growers, Inc., are certified by the Secretary of Agriculture as interest organizations for the selection of Cotton Board and CI Board members.

sponsored by the Family Living Youth Task Forces of Dallam, Hartley, Randall and Parmer counties. The task forces operate under the auspices of the Extension Service-sponsored Panhandle Economic Program.

The program will deal with characteristics of grass-fed and grain-fed beef and baby beef, the selection and preparation of beef cuts, how to stretch the beef dollar and the preparation and serving of beef.

According to District Extension Agent (home economics) Sue Farris, the two meats experts will use demonstrations, slides and film in presenting the topics.

Guests will get an opportunity to whet their appetite for beef cookery by sampling choice pieces during the two-hour sessions.

At Dalhart on Tuesday, the meeting gets underway at 2 p.m. at the XIT Rangers Club.

The Canyon meeting is slated to begin at 1:30 p.m., Wednesday, at the Farm Bureau Building. The third and final session will be at the Friona Community Center in Friona beginning at 1:30 on Thursday.

MOBILE PET CLINIC

Robert H. Faulk, D.V.M. Announces the opening of his practice of Veterinary Medicine beside City Hall in Floydada.

Thursdays 9:00 a.m. until 6: p.m.
806-763-9598 Office
806-797-2340 Home

POWDER RIVER

CATTLE SQUEEZE CHUTES

SPECIAL \$545⁰⁰

CALF TABLES

SPECIAL \$285⁰⁰

PRODUCERS COOPERATIVE ELEVATORS

FLOYDADA

Covering Floyd County's Insurance Needs



JAMES RACE
652-3869



ROY KINARD
983-2294



DAVID CATES
983-3273

WHEN YOU NEED INSURANCE SERVICE FOR YOU HOME RANCH, FARM, AUTO, CROPS, LIFE,

FARM BUREAU INSURANCE

OFFICE PHONE 983-3777 FLOYDADA, TEXAS

Beef Fiestas In Dalhart, Canyon And Friona

AMARILLO—Folks in and around the areas of Dalhart, Canyon and Friona will have a chance to get some tips on selecting, buying and preparing beef in one of three beef-fiestas to be held September 23, 24 and 25.

A special two-hour program will be held on those dates, starting with Dalhart on September 23, Canyon, September 24, and ending in Friona on September 25.

Dr. Frank Orts, Texas Agricultural Extension Service meats specialist from College Station, and Miss Jane Hager of the National Livestock and Meat Board, Chicago, will conduct each of the sessions.

The beef-fiestas are being

THESE LOCKNEY FIRMS ARE MAKING THIS FARM NEWS POSSIBLE

PERRY IMPLEMENT CO.

LOCKNEY'S JOHN DEERE DEALER

LOCKNEY OIL & BUTANE

N.H. GAMMAGE

PATTERSON GRAIN CO.

GRAIN-FERTILIZER

FARM PAGE SPONSOR NEEDED HERE

THE NATIONAL CORN GROWER CHAMP

1973 -- 267.45 Bu. Acre 1974 -- 258.09 Bu. Acre

For the second straight year an O'sGOLD hybrid placed 1st in The National Corn Growers Contest.

In fact, 3 of the top 4 NCGA winners won with O'sGOLD.

IT PROVES SOMETHING: CONSISTENCY

See your O'sGOLD dealer and find out for yourself why farmers across the America are switching to the Proven Profit Hybrids of O'sGOLD.

JERALD BRIGHT
983-3014 FLOYDADA

O's Gold Seed Co.
PARKERSBURG, IOWA
FARMER CITY, ILLINOIS

WANT ADS

...WILL WORK FOR YOU!

...TO BUY? TO SELL? RESULTS?

CLASSIFIED ADS SELL

CLASSIFIED ADVERTISING RATE: 7 CENTS PER WORD FIRST INSERTION, 5 CENTS PER WORD EACH SUBSEQUENT INSERTION. MINIMUM CHARGE: \$1.00.

CLASSIFIED DISPLAY RATE: \$1.15 PER COLUMN INCH. CARDS OF THANKS: \$1.00.

COPY DEADLINES: 5 P.M. TUESDAYS FOR THURSDAY EDITION; 10:00 A.M. FRIDAYS FOR SUNDAY EDITION. Call 983-3737 in Floydada.

REAL ESTATE FOR SALE

SEVERAL NICE two and three bedroom homes for sale. Loans can be arranged. Call Hale Insurance at 983-3261. tfc

NICE 3 Bedroom Brick Home. Attached Garage. Utility area. Fenced Back Yard. Carpeted and Draped. Can pay equity and assume low interest loan or new loan can be obtained. Shown by appointment only. Hale Insurance Agency, 106 S. Main, 983-3261. tfc

THE OLIVER ALLEN Home, 416 W. Miss. Floydada. Call Abernathy, 298-4166 after 6 p.m. tfc

A 3 bedroom house for sale, 804 West Georgia, shown by appointment only. 983-3390. tfc

3 BEDROOM house only 4 years old, west part of city. 983-3268 after 6. tfc

522 WEST Lee, 2 bedroom, 1 bath, dining room, large kitchen & living room; 2 car unattached garage, basement. Phone 293-7164. Plainview. tfc

OUR home for sale at 1020 South Wall. 3 bedrooms, 2 baths, 26' x 15' living room and 26' x 13' den, also garage and cement cellar. Lawrence Stovall, 983-2847, after 5 p.m. tfc

2 BEDROOM house, dining, a new garden area. Wilson Bond, Bond Real Estate, 983-2151 or 983-3573. tfc

2 BEDROOM house for sale; \$7,000, call 983-5105 or 983-3536. 9-21c

FOR SALE

"Venus Cosmetics" The best money can buy. With Stabilized Aloe Vera. Please call after 6 or weekends. Dewanda Blendon, 652-2563. L-tfc

FOR SALE - Kirby Vacuum Cleaners new or rebuilt. Beginning at \$119.95. Also Kirsch heavy duty cafe drapery and curtain rods. All lengths. Parker Furniture, Lockney. L-tfc

4000 BTU Refrigerated air conditioner. Reduced for clearance. Was \$137.20 now \$99.95. Sears, Floydada. tfc

UPRIGHT piano - good condition. 983-3043. 9-25p

USED T.V.'s - Griffin T.V., 201 South Wall, Floydada. tfc

FOR SALE

TV AND HOME ENTERTAINMENT PRODUCTS REPAIR SERVICE. MIKE'S TV LAB, 315 South Second, Phone 983-5023. tfc

WE SELL new and rebuilt Kirby Vacuum Cleaners and parts. Parker Furniture, Floydada. tfc

COPISTATE roll paper feed copy machine. Legal, letter and up to 11" wide and as long as you want. Very fast... 8 1/2 x 11 one every four seconds. Pickup all colors. See at Hesperian. Cost \$1495. Will sell for \$625 tfp

FRESH VEGETABLES - Floydada Onions and Mixed Vegetables now open, on Metador Highway, 505 E. Houston, Floydada. tfc

FOR "The Original" imitation vanilla, butter and nut flavor, call 983-3334 or come to 123 J. B. Ave. 9-25p

COW POKES By Ace Reid



"Jake, if you ever get in trouble again—it better be for singing too loud in church!"

THIS FEATURE SPONSORED BY AUTO, FIRE & FARM INSURANCE Floydada Real Estate & Insurance Agency Jim Word — Phone 983-2360

CARDS OF THANKS

We would like to take this means of expression and thank everyone so much for all the lovely acts of kindness shown us during our time of sorrow.

For all the lovely flowers, cards, food and visits. To all the staff members of Lockney Care Center for all the loving care you gave Todie while he was a resident there. Words could never express how thankful we are for your kindness and concern. It is great to have such wonderful friends as you. We will never forget you and your loving kindness. May God bless each and everyone of you.

Dollie Cardinal and Family L9-21C

LOST AND FOUND

LOST - 3 yearlings, 2 notches in left ears, brand on left thigh, 1 WHITEFACE cow. W on left hip. Strayed 5 miles South East of Floydada. C. N. Walding, 983-3291. 9-28

I LOST the drive shaft to a Service Shredder between Lakeview and Floydada Thursday afternoon. Please call 657-2782. Drew Cumbie will pay reward. 9-28p



WE WANT YOU TO KNOW - We sell all kinds of Goodyear tires... tractor, auto truck, a good tire, good service. Best deals in West Texas. Truck winch and hauling service. BABE'S SERVICE CENTER, FLOYDADA. tfc

WANTED

EARN MONEY at home. Homeworkers needed in this area to lace leather goods at home. No experience necessary. Send \$1.00 (refundable) and long stamped envelope to Appalachian Leather Goods, 100 Main St., Williamsville, Va. 24487. L9-25

WANTED TO RENT. Farm land in or near the Lockney area. Phone 652-3868 at noon or after 6:00 p.m. L-tfc

WANT to buy or rent three bedroom home in Lockney. Contact Travis Templeton at Sherman's Real Estate, Plainview 296-6833 or night 293-1855 L102C

BUSINESS SERVICES

GRIFFIN T.V. SERVICE Serving the Floydada - Lockney area, all makes & models, antenna supplies & installation. AUTHORIZED R.C.A. SERVICE CENTER. Phone 983-2146. tfc

TV ANTENNAS and supplies. Mike's TV LAB, 315 South Second, Phone 983-5023. tfc

CARPET shampoo and shampooer. Rent the shampooer for \$1 per day with purchase of shampoo. Davis Lumber Company, Lockney. L-tfc

PIANO TUNING, Edward C. Lain 25 years experience. Write Box 425 Silverton or call 823-2151, or 823-2052. L-tfc

FARM MACHINERY

4 DEMPSTER deep furrow wheat drills. 983-3561 or 983-3907. tfc

NEW baled hay grazer - Thomas Pierce, 983-2578. tfc

55JOHN Deere Combine, factory L.P., power steering, good tires, new cylinder bars, excellent motor. 347-2796 9-28p

MASSIE Ferguson 6 Row Cornhead, good condition, will fit 750 or 760. Call 293-2902 or 293-5638. 9-25c

FOR SALE, 85 International Harvester Stripper. Three Thousand dollars. W. N. Gant, Aiken, 652-3659 L10-2C

NEW Smith Corona adding machines 45.00. Hesperian & Beacon Office Supply, Floydada & Lockney. tfp

FARMS & RANCHES

WANTED TO BUY irrigated or dryland farm in Floyd or surrounding area. Write Box XRO, c/o Hesperian, Box 700, Floydada. tfc

20 ACRE farm with irrigation well house and out-building, 3/4 miles from Floydada. \$30,000. 1/2 down-will finance. Farm Equipment available. 983-3043. 9-25p

AUTOMOTIVE

ONE 1962 Thunderbird, loaded. One, 1963 Thunderbird, loaded. Lockney, call 652-3122 after 5:30. L-tfc

1974 DODGE Mobil Scout House Car, 19 foot, self-contained, 360 V8 engine, less than 11,000 miles. A. L. Wylie, 983-3721. tfe

1970 PLYMOUTH - 2 door 6 cylinder. 306 East Mississippi after 2 p.m. 9-21p

1971 VW 411-4 door sedan, excellent shape, 28 M.P.G. See at 725 West Kentucky or call 983-2847. tfc

1968 Chrysler, P.B., P.S., 4-dr hardtop, electric seat, factory stereo tape deck, new tires. See at 725 West Kentucky or call 983-2847. tfc

CHEVROLET grain trucks for sale, models 1952 and 1960. B. B. Wilkes, Lockney 652-3542. L-tfc

1974 TOYOTA Corolla 4-dr sedan too small for growing family. We're getting larger Toyota so will sell this great gas-saving car for \$2400. Call 296-5079. L-2tc 9-24

PETS

FREE PUPPIES - Three months old, mixed breed. Call 983-5128. 9-21p

FOR RENT

STORAGE SPACE FOR RENT - Furniture, campers, boats, etc. Clean out garage and store with us. 652-2309. L-tfc

FOR RENT - Property Apartments, 2 and 3 bedroom houses, business buildings, clean. BARKER INSURANCE AGENCY, Lockney, 652-2642. L-tfc

BUSINESS FOR SALE

GROCERY Store in Dougherty, Texas. Gross \$100,000 yearly. Stock and fixtures \$20,000. Phone 806-983-2943. 9-28c

lightweight ALUMINUM CANES & CRUTCHES

Sturdy Dependable Attractive Wide selection for every prescribed need Forearm and underarm crutches Adjustable telescopic canes Four legged canes Seat Canes

BISHOP-RAMSEY PHARMACY 208 West Houston 983-3174 FLOYDADA

BEEF

HEAVY GRAIN PER 83¢ LB.
FED.....
LIGHT GRAIN PER 79¢ LB.
FED.....
CUT, WRAPPED AND FROZEN
\$30-\$50 BEEF PAKS
LOCKNEY MEAT CO. 652-3305. Sam Fortenberry, Mgr. L-tfc



Auto Accidents DO Happen... If one happens to you, be protected. Our car insurance offers coverage to meet your special needs - repairs to personal liability.

BAKER Insurance Agency
127 W. Calif.
Ph. 983-3270

IF IT IS INSURANCE - SEE -

Barker Insurance Agency
LOCKNEY
Life - Fire - Casualty - Hospital
B. B. Wilkes, Real Estate
LOCKNEY
Farms - Ranches - City Properties
Business Leases - Loans

READY MIX CONCRETE

QUICK AND EASY

You can't beat our price per yard for quality concrete—and quick, easy delivery to save you back-breaking labor. Give us a call today for a free estimate, and have your mixed concrete delivered where and when you want it.

Registered Sage Wheat Seed cleaned & in the bulk
Maurice Campbell
983-3046

Diamond Industrial Supply Co., Inc.
Phone Days 296-7418 - Nights 296-1200 or 296-7828
1014 Broadway
Plainview, Texas

Chain	U-joints
Sprockets	Oil Seals
V-belts	O-rings
Sheaves	Wisconsin
SKF BCA Timken Bower	
Cotton Striper Brushes & Bats	

"We Appreciate Your Business More"
L-TFC

Professional Service

FLOYD COUNTY ABSTRACT CO.
Abstracts Of Title
Title Insurance
Verna L. Stewart
Owner, Manager
217 W. California
983-3728
Floydada, Texas

DAN'S AUTO SERVICE
DAN TEUTON, Owner
Specializing in Automatic Transmission, Motor Tune-Ups, Auto Air Conditioning.
General Repair
We Have A BRAKE LATHE to handle all passenger car brake drums. See us for complete brake service.
Phone 652-2462

DR. JOHN W. KIMBLE, O.D.
Contact Lenses - Visual Analysis
Closed Tuesday Afternoon Saturday 9-3
Floydada, Texas Phone 983-2496

QUALITY SHAMROCK PRODUCTS
Always Make A Good Deal On SONIC TIRES and SOUTHLAND BATTERIES
Dial 652-3366
JACKSON TIRE COMPANY
Richard Wiley

tye Company
PRODUCERS AND MARKETERS OF FARM EQUIPMENT

PRODUCTION WORKERS

Electrode Welders needed

PERMANENT WORK
VACATIONS
HOLIDAYS
EMPLOYMENT INSURANCE

t ye

WIRELESS STEEL

SCISSORS

Sturdy cutting blade. Plastic orange easy to use. Lightweight, a must for seamstress. Enjoy terrific savings

OUR SUPER PRICE!

\$5.95

HESPERIAN

PRICE SUPPLY

IMPORTED ENGLISH DINNERWARE . . . FROM THE FAMOUS STAFFORDSHIRE DISTRICT

BLUE HERITAGE IRONSTONE DINNERWARE

THIS WEEK'S ITEM: **BREAD/BUTTER PLATE**

EACH BASIC PLACE SETTING WITH EVERY \$5.00 PURCHASE OR MORE

49¢

FAMILY CIRCLE DO-IT YOURSELF ENCYCLOPEDIA



Build your set a Volume each week

VOLUME NO. FIVE ONLY **\$1.79**

Volumes 2-16 \$1.79 each



EAGLE BRAND **MILK 53¢**

15 OZ. CAN

32 OZ. 6 BOTTLE CARTON



COKE OR DR PEPPER \$1.59

PLUS DEPOSIT



LIQUID DETERGENT

IVORY 89¢

20¢ OFF LABEL 32 OZ. BTL.



50% OFF LABEL DETERGENT

CHEER \$3.49

FAMILY SIZE BOX



DETERGENT (10 OZ. FREE)

DASH \$1.09

59 OZ. BOX

FROZEN FOOD & DAIRY VALUES

- TATERLAND CRINKLE CUT **Potatoes** 3 2-LB. BAGS **\$1.00**
- SHURFINE FROZEN **Green Peas** 3 10 OZ. PKG. **\$1.00**
- MRS. SMITH'S BOSTON **Cream Pies** 20 OZ. CTN. **99¢**
- DELUXE SLICED AMERICAN OR PIMENTO **Kraft Cheese** 12 OZ. PKG. **89¢**
- DIET PARKAY **Margarine** LB. BOWL **59¢**
- PILLSBURY CINNAMON **ROLLS** 8 1/2 OZ. CAN **49¢**

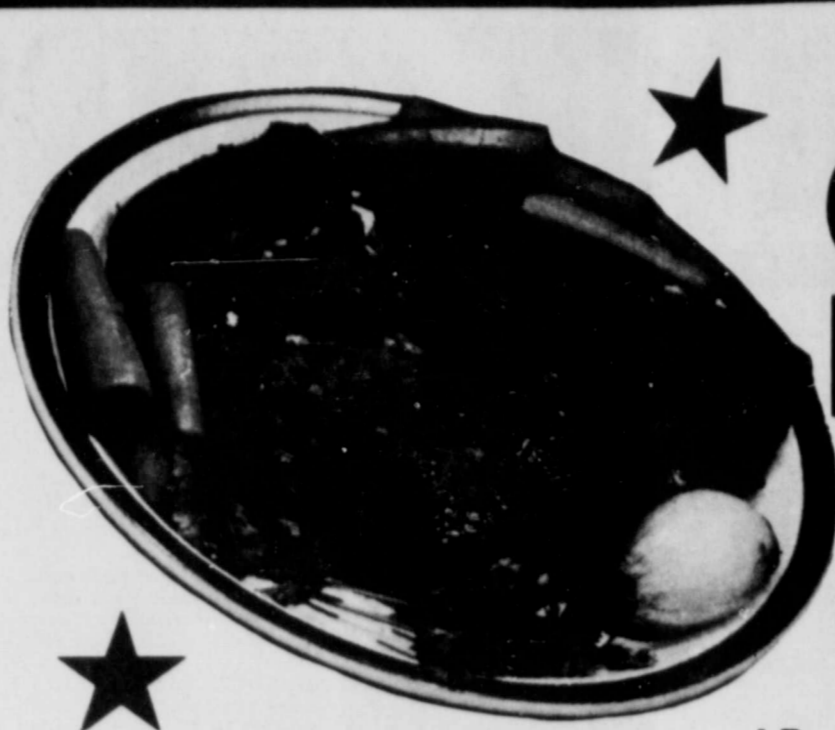
THRIFTY GROCERY BUYS

- ROXEY-MAKES ITS OWN GRAVY **Dry Dog Food** 5-LB. BAG **89¢**
- MAXWELL HOUSE ALL GRINDS **Coffee** 2-LB. CAN **\$2.37**
- HEINZ **Ketchup** 14 OZ. BTL. **44¢**
- KRAFT-GREEN GODDESS-FRENCH-ITALIAN COLESLAW CATALINA **Dressing** 8 OZ. BTL. **59¢**
- AMERICAN BEAUTY **Elbo Roni** 10 OZ. PKG. **35¢**
- SHURFINE -STEMS & PIECES **Mushrooms** 4 OZ. CAN **49¢**
- DAYTIME DISPOSABLE **Soflin Diapers** 30 CT. BOX **\$1.69**

MORE GROCERY VALUES

- MAXWELL HOUSE ALL GRINDS **Coffee** LB. CAN **\$1.19**
- WEIGHT WATCHER'S **Diet Drinks** 6 12 OZ. CANS **\$1.00**
- DEL MONTE WHOLE KERNEL **Golden Corn** 12 OZ. CAN **39¢**

Page's Thriftway No. 3
Lockney, Texas
Phone: 652-2293



GRAIN FED BEEF BONELESS

CHUCK ROAST 99¢

LB.

- OSCAR MAYER **Variety Pack** 12 OZ. PKG. **\$1.39**
- OSCAR MAYER CHOPPED HAM OR **Ham & Cheese** 8 OZ. PKG. **\$1.09**
- OSCAR MAYER-REG., THIN, OR BEEF **Bologna** 12 OZ. PKG. **\$1.09**
- OSCAR MAYER WIENERS OR **Beef Franks** 16 OZ. PKG. **\$1.29**
- RUDY'S FARM WHOLE HOT OR MILD **Hog Sausage** 1-LB. ROLL **\$1.59**
- RUDY'S FARM WHOLE HOT OR MILD **Hog Sausage** 2-LB. ROLL **\$2.99**
- FARM FRESH **CHANNEL CATFISH** LB. **\$1.59**

GRAIN FED BEEF BONELESS **CHUCK STEAK** LB. **\$1.29**

GRAIN FED BEEF BONELESS **Shoulder ROAST** LB. **\$1.19**



DOUBLE S&H GREEN STAMP EVERY WEDNESDAY WITH \$2.50 PURCHASE OR MORE

HEALTH & BEAUTY AI

SINE-AID FOR SINUS HEADACHE **SINE-AID** 24 CT. TABLETS **99¢**

HAIR SPRAY **MISS BRE** 11 OZ. CAN **79¢**



BATH SIZE-6" OFF LABEL

ZEST SOAP 2 BARS 59¢

CHIFFON SPILLMATE OR SUN FRESH

PAPER TOWELS JUMBO ROLL 49¢

CHUNK LIGHT

SHURFINE TUNA FLAT CAN 44¢

DEL MONTE

FRUIT COCKTAIL 303 CAN 39¢



CALIFORNIA VINE RIPE **TOMATOES 29¢**

FANCY WASHINGTON RED DELICIOUS

APPLES 3 LBS. \$1.00

- CALIFORNIA RUBY RED **Grapefruit** LB. **19¢**
- PURPLE TOP **Turnips** LB. **17¢**
- GARDEN FRESH **Green Cabbage** LB. **12¢**



PURE VEGETABLE SHORTENING

CRISCO 3 LB. CAN \$1.16



SHURFINE ASSORTED FLAVORS

Ice Cream 6 PITCHER SIZE ORANGE TANG \$1.89

6 PITCHER SIZE ORANGE TANG **TANG** 27 OZ. BOX **\$1.89**

VALUABLE COUPON 17¢ 6 PITCHER SIZE PACKETS **Orange Tang** 27 OZ. PKG. WITH THIS COUPON VOID SEPT. 29, 1975. LIMIT ONE COUPON PER CUSTOMER. **THRIFTWAY**

A BETTER WAY TO SAVE

THRIFTWAY

SPECIALS GOOD SEPT. 22-29