

J. T. Myrick  
Route 3  
Floydada, Texas 79235

"Serving The Floyd County Trade Area Since 1896"

# Floyd County Hesperian

Floydada, Floyd County, Texas 79235 Sunday, September 22, 1974 10 Pages In One Section Number 75

## Winds And Rain Post's Pain

### Floydada 6, Post 0

Whirlwinds brought home the hardest fought victory of the year as they made it three in a row.

The win increased the Winds spot in state ranking from the previous sixth place by UPI and 13th place by the Harris rating system.

The Whirlwinds played their best before a standing room only crowd (on the Floydada side) who braved rain that began in downpours about thirty minutes before kick-off time. It was a heartbreaker for Post fans who had their homecoming festivities literally "drowned out."

#### SPLASH BY SPLASH

Now friends, I want to say in the beginning, I don't guarantee my facts and figures in this write-up. My stat clip board sheets were wet and smeared... but this report is somewhere near perfect in describing a really great Whirlwind team that braved the elements and brought home a hard fought victory.

Floydada took the Antelope kick-off and returned the ball to the 25 yard line. Kelvin Ratliff really set the mood of the Whirlwind team as he made a fine 20 yard run right up the middle the second play of the game.

Then quarterback Vickers made another first down with an 11 yard run. Ratliff made another first down, then was thrown for an eight yard loss on a slippery hand-off from the quarter-back.

A costly fumble of the wet ball and the 'Winds lost the ball to the Antelopes on the 22 yard line.

The Antelopes showed they knew the game... they made four first downs all on running plays and had the ball on the Whirlwind 17 yard line when they ran out of steam. The Whirlwinds suffered a costly 15 yard penalty and had to punt.

Leslie Soto booted a nice 40 yarder... some feat in the hard rain.

The Antelopes brought the ball back to around the 50 yard line... and they fumbled and lost the ball.

Floydada made a couple of plays... and you guessed it... fumbled the slippery ball again. The Antelopes tried two running plays, a couple of hand-off passes and relinquished the balls on downs at the 26 yard line.

At this point the 'Winds looked great... three first downs with Kelvin Ratliff making most of the yardage... 18 yards, 10 yards... Collins made 10... Vickers hit Collins on a short 6 yard pass completion.

The next play the Antelopes intercepted a Vickers pass, but it was halftime and the team sloshed off the field.

#### HALFTIME

At halftime there were no marching bands, the fans poured down all the hot coffee they could and wrung the water out of their clothing... quite a sight!

STATISTICS	F	P
First Downs	11	9
Yards Rushing	178	168
Yards Passing	6	1
Passes Intercepted	1	1
Passes Attempted	2	7
Fumbles Lost	2	2
Punts	2-80	1-4
Penalties	1-15	0

### Cotton Doesn't Like Drought Breaking Rain

"Rain, rain, go away, where were you the first of May?" might be a typical song by Floyd farmers at this time. The crops suffered through a long hot dry spring and summer... and now when it's time to start maturing and harvest... it rains.

Of course the wheat farmers and the cattlemen really like this continued rainfall... so, it is pleasing some Floyd folk.

With a total of 15.30 for the year recorded at Producers Co-op Elevator in Floydada early Wednesday, another 2.38 of rainfall came Wednesday night and Thursday.

County agricultural officials say there is no doubt the cotton crop is suffering, and some grain sorghum is beginning to darken due to the cool wet weather. "Only good thing as far as cotton is concerned, very few of the bolls are open to hurt the grade," one commented.

#### RAINFALL REPORTS

Rainfall totals in the Lockney area were near two inches Wednesday night/Thursday morning. Aiken received 1.75 inches. The total at Lone Star was two inches. At Muncy, the total was 3.3 inches for the week, including about an inch Sunday. It rained 1 1/2 inches in Sterley Wednesday night to bring the total for the week to three inches. In the Providence area, it looked like this Wednesday night: 1.4 inches a mile west of Providence, 1.7 a mile north, and 2.1 two miles east.

#### COLD FRONT

A Friday night cold front dropped temperatures to 52 degrees and an additional .11 of moisture was reported at the official weather station in Floydada.

### Hospital Board

#### Quate Prospects

The hospital board president, said applicants will be interviewed "as early as possible" at the meeting Thursday.

The board president, said applicants will be interviewed "as early as possible" at the meeting Thursday.

### Attend State Conventions

Representatives from Floyd County are attending the state conventions in Austin and Houston.

The Democrat Convention at Austin was attended by Mr. and Mrs. Hubert Frizzell of Lockney, Randy Hollums, Mr. and Mrs. M. J. McNeill of Floydada.

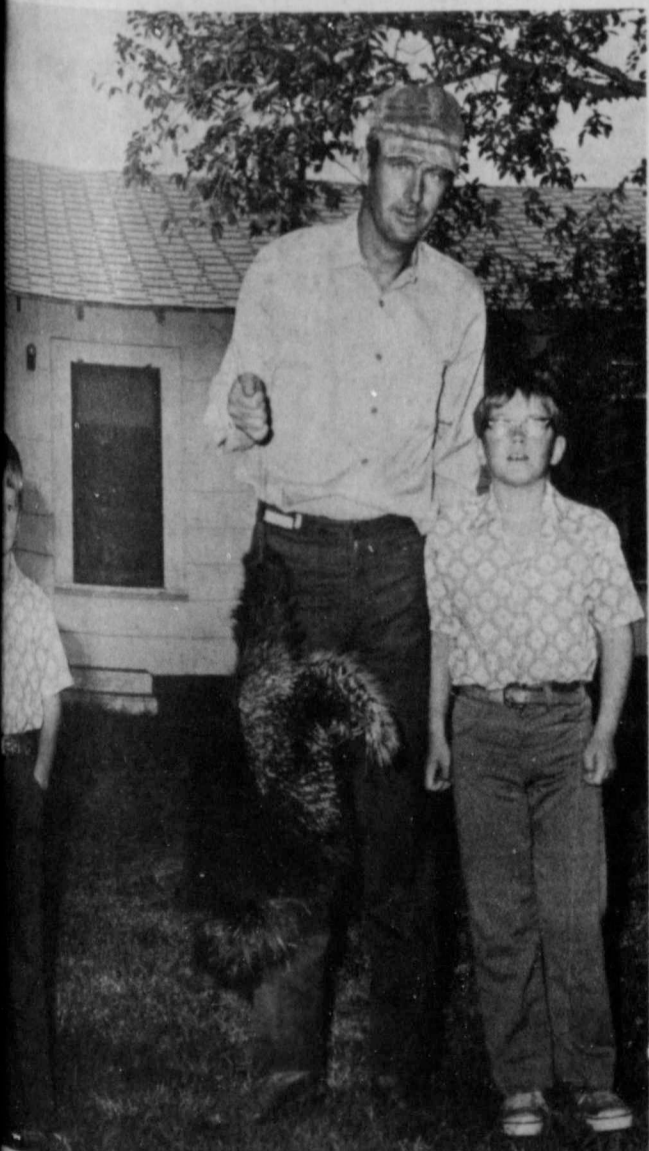
### Rock Chat

By Wendell Tooley

ALL THESE YEARS we have been led to believe that it was the Southern people who could not accept school integration with the black people. Now they start integrated busing up in Boston... and I'll be cotton pickin' if they aren't picketing the buses... rioting, and considerably unhappy about it all "up there in Yankeeland."

WE ARE BEGINNING TO GET inquiries about the nine day trip to Europe, and it isn't too early to make your deposit of \$25.00 for your reservation on the trip. This will guarantee no price increase, and I really feel that this is a trip worth the money.

Let me know if you need a brochure with more details.



IN FLOYDADA? — yes, this one was discovered at the Paul Atteberry home, 301 N. 14. Clarence Ed Wayne Pope first saw the porcupine.



MAYOR PARNELL POWELL signs National Highway Week Proclamation. Standing (left to right) are J. D. Davis of Floydada, maintenance-construction foreman; James W. King of Lubbock, district administrative engineer and Sam Fowler of Floydada, Senior Resident Engineer. (Staff Photo)

## Open House At Floydada Highway Department Wednesday

National Highway Week September 22 through 28 is sponsored by the American Association of State Highway and Transportation Officials and member State agencies in Texas. Highway Departments sponsor a variety of activities during the week according to State Highway Engineer Luther DeBerry.

September 22-28 was officially proclaimed Highway Week during the signing of a proclamation by Parnell

Powell, Mayor of the City of Floydada. Open house will be held Wednesday, September 25, between the hours of 10 a.m. to 6 p.m. All are invited to visit your local highway offices located at 708 North 2nd.

Even though regular work will go on as usual there will be highway personnel at the offices to welcome you and show you around the buildings and yards or if you wish, just visit with you.

## JV And Freshmen Beat Post

The Whirlwind Junior Varsity and Freshmen teams joined the Breezers in beating Post this week, winning both games here Thursday night.

In the first half of the Junior Varsity game Gordon Bond scored on a six yard run. Jay Womack made a couple of TDs with a nice 35 yard run and a 12 yarder. The JV led 18-12 at halftime.

And that was all for Post as the Floydada defensive team went to work.

In the last half Womack made another TD scampering some 47 yards and Bond broke loose on a 55 yarder for the final TD. The JV looked good except for not making a single extra point conversion. The final score was Floydada 30, Post 12.

Coach Joe Paty praised Jay Lackey for making six unassisted and 18 assisted tackles, and named defensive standouts Danny Colston, Rick Carthel, Curtis Robinson and Steve Westbrook.

Outstanding offense linemen were Mark Noland, Steve Jones, Mike Rainwater, Monte Covington and

Leslie Sinor. The JV plays Canyon here next Thursday night... you all come!

The Freshmen beat Post 14-6 with Ricky Covington running some 65 yards for paydirt on the first play of the game. Larry Jones ran over the two extra points.

In the second quarter Guy Ledbetter made a touchdown from four yards out. Try for extra points was no good.

Post line TD came in the second quarter.

Coach Don Rainer said that there were some fumbles due to the wet field, "and we were just mighty glad to win this one." It was the second victory for the Freshmen. The Freshmen play Hereford here next Thursday... you all come.

Three Post varsity football players were injured when their pickup ran off into a draw two miles south of Ralls Thursday night, coming to the JV game in Floydada.

None were considered seriously injured.

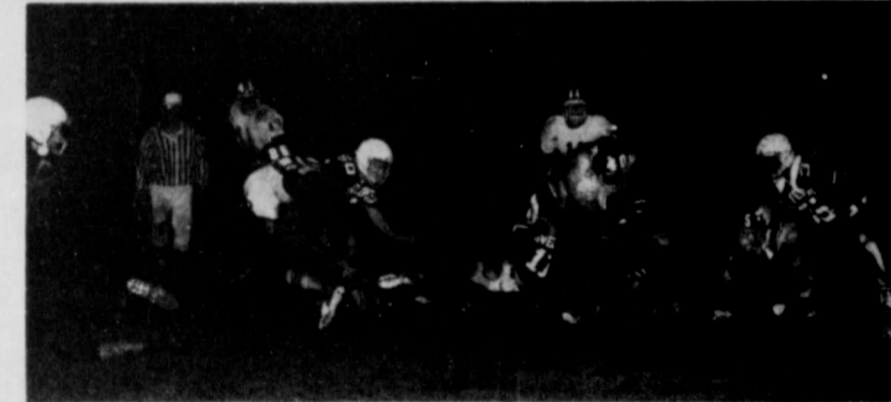
### Coach's Comments

"Although weather conditions were awful, I feel like the Post game really jelled our Whirlwinds... they really put it all together." Whirlwind coach L. G. Wilson said Saturday morning.

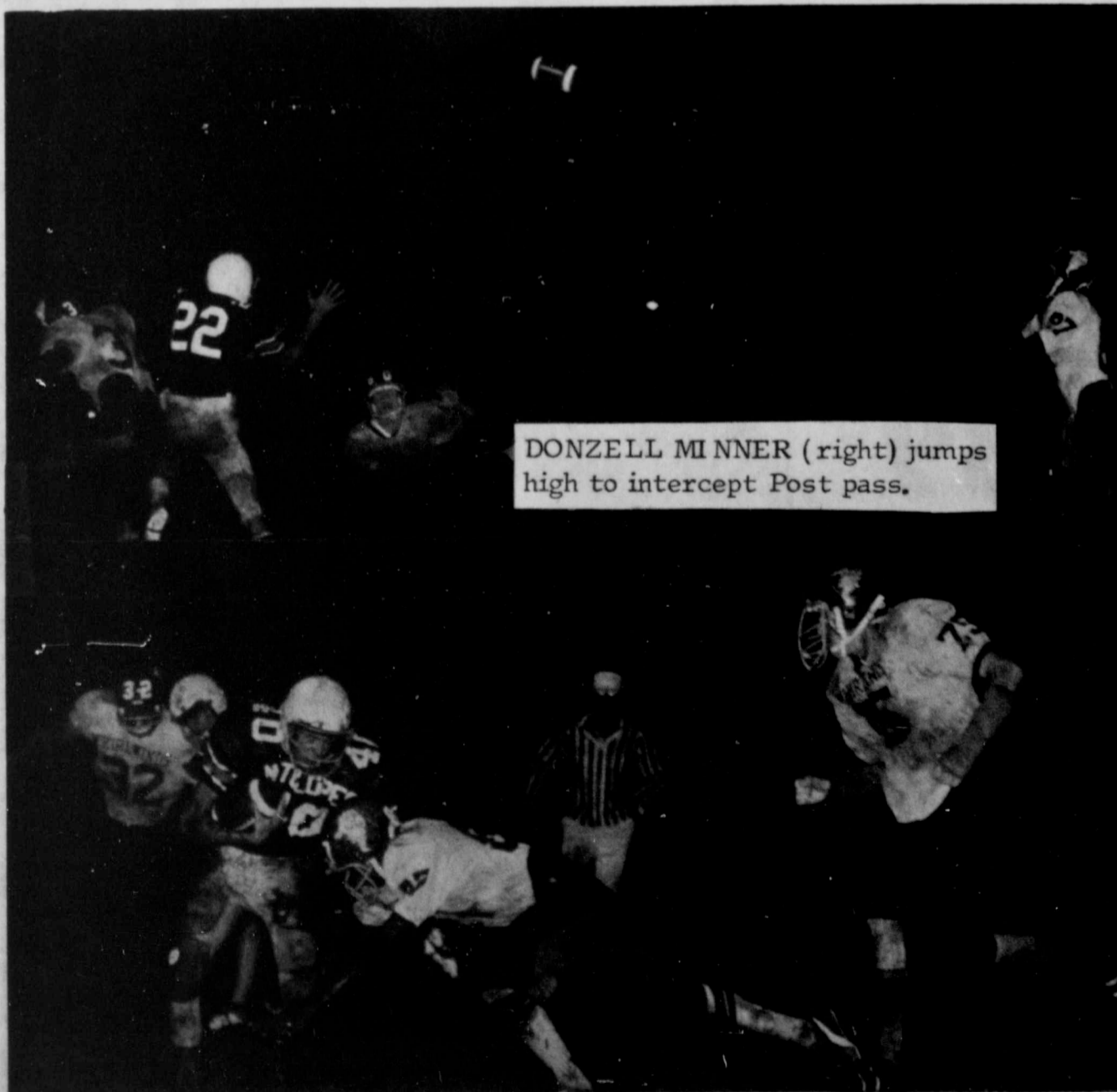
"Donzell Minner was really the game saver, as he pulled in Post's Dennis McDonald on the ten yard line and intercepted the pass to put us in good field position for our TD," coach Wilson added.

Wilson also praised offensive standouts Joel Hendrix, Elton Ratliff, Gary Nixon, Billy Fulton, Tony Hesson and Mark Craig in making the holes for Malvin Collins, Rex Yeary and Kelvin Ratliff. He said Collins learned to really use his weight charging through the line.

"All in all, it's been a great week with five wins and no losses over Post this week... 118 to 18 points," coach Wilson concluded.



MALVIN COLLINS crashes in for the 'Wind TD.



DONZELL MINNER (right) jumps high to intercept Post pass.

ELTON RATLIFF tackles Post's Dennis McDonald, McArthur Mitchell and Steve Moore also close in on McDonald. (Staff Photo).

We Give S&H Green Stamps  
Double On Wednesdays  
With \$2.50 Purchase Or More

# THRIFTWAY A BETTER WAY TO

WITH IN AD COUPON



LEMON FRESH

## JOY LIQUID DETERGENT

### 79¢


32-oz. BTL.

U.S.D.A.

## CHUCK ROAST

### 88¢

LB.



GOOCH GERMAN STYLE

## SAUSAGE LB. 79¢

GOOCH BEEF FRANKS 12-oz. PKG. 69¢

GOOCH HOT LINKS LB. 79¢



PRICES EFFECTIVE SEPT. 23 THROUGH SEPT. 29  
WE RESERVE THE RIGHT TO LIMIT

U.S.D.A. INSPECTED

## FRYER

WHOLE ONLY LB. 49¢

U.S.D.A. INSPECTED

FRESH CUT-UP FRYERS ..... 59¢

FRESH FRYER BREASTS ..... 89¢

FRESH FRYER THIGHS ..... 79¢

FRESH FRYER DRUMSTICKS ..... 79¢

REGULAR OR THICK SLICED

## SHURFRESH BACON.....LB. \$1.19

U.S.D.A.

RIB STEAK .....LB. \$1.29

GROUND BEEF .....LB. 89¢

BEEF SHORT RIBS.....LB. 79¢

6¢ OFF LABEL FOR 2 BAR PACK



## ZEST

2 BATH SIZE BARS

### 49¢



PETER PAN SMOOTH OR CRUNCHY

## PEANUT BUTTER

18-oz. JAR 79¢

MORTON FROZEN

## HONEY BUNS

9-oz. BOX 49¢



MOON MIST

Fine China Translucent Porcelain

## SPECIAL THIS WEEK

BREAD & BUTTER PLATES .....EA.

KRAFT SLICED DELUXE AMERICAN OR PIMENTO

## CHEESE

12-oz. PKG. 79¢

VASELINE INTENSIVE CARE

## LOTION

10-oz. BTL. 79¢

FOLGER'S MOUNTAIN GROWN

## COFFEE

1-LB. CAN 99¢

LIQUID CLEANER



## TOP JOB

28-oz. BTL.

### 89¢

HEALTH & BEAUTY AIDS

WHITE RAIN HERBAL OR SALSAM SHAMPOO..... 14-oz. BTL. 89¢

TAME CREME RINSE..... 8-oz. BTL. 99¢

VASELINE INTENSIVE CARE LOTION FRESH HERBAL ..... 10-oz. BTL. 99¢

MOUTHWASH



## CEPACOL

14-oz. BOTTLE

### 99¢

EXCEDRIN TABLETS

BTL. OF 36'S

### 79¢



EXCEDRIN P.M.

BOTTLE OF 30'S

### 89¢

THRIFTWAY AND READER'S DIGEST PRESENT FROZEN FOOD VARIETY SHOWCASE DEAL!

REDEEM YOUR READER'S DIGEST COUPON AT THRIFTWAY STORE

BIG FROZEN FOOD VALUE ADVERTISED IN READER'S DIGEST

BIRDS EYE FROZEN CORN-ON-THE-COB.....	4-EAR PKG.	59¢
ORE-IDA FROZEN TATER TOTS.....	1-LB. BOX	39¢
MORTON FROZEN APPLE OR PEACH PIES.....	24-oz. PIE	69¢
MORTON FROZEN HONEY BUNS.....	9-oz. CTN.	49¢
FLEISHMANN'S FROZEN EGG BEATERS.....	16-oz. CTN.	89¢
SHURFINE FROZEN PERCH FILLETS.....	16-oz. PKG.	89¢

KEEBLER

1 LB. BOX ZESTA

## Saltines 49¢

WITH EGG DISPLAY GAINES BURGER.....	6-oz. PKG.	10¢
MAXWELL HOUSE COFFEE.....	1-LB. CAN	\$1.31
INSTANT MAXWELL HOUSE COFFEE.....	10-oz. JAR	\$2.59
GERBER'S STRAINED FRUITS & VEGETABLES.....	3 4 1/2-oz. JAR	45¢
LOG CABIN BUTTERED SYRUP.....	24-oz. BTL.	89¢
HEINZ KEG-O-KETCHUP.....	32-oz. BTL.	79¢
SHURFINE SALAD DRESSING.....	32-oz. JAR	97¢
SUNSHINE VANILLA WAFERS.....	11-oz. BOX	49¢
NABISCO NUTTER BUTTER COOKIES.....	13 1/2-oz. PKG.	59¢

WITH FREE GLASSWARE

## DUZ

WITH IN AD COUPON

### 99¢

GIANT BOX



PILLSBURY COUNTRY STYLE OR BUTTERMILK

## BISCUITS.....2 8-oz. CANS 29¢

MAXI-CUP

## SOFT PARKAY

1-LB. BOWL 69¢

FABRIC SOFTENER

## DOWNY

KING SIZE BOTTLE

### \$1.49



HAIR TONIC

## VITALIS

LARGE 7-oz. BTL.

### \$1.19



ULTRA BAN DEODORANT

DRY POWDER REGULAR UNSCENTED

### 99¢

5-oz. CAN



Thriftway's Farm Fresh Produce Specials!

LODI TOKAY GRAPES LB. 39¢

MIX OR MATCH RADISHES CELLO BAG 2 FOR 25¢

NEW CROP RUBY RED GRAPEFRUIT .... LB. 25¢

GREEN CABBAGE ..... LB. 9¢

GOLDEN DELICIOUS APPLES LB. 29¢

TEXAS YAMS.....LB. 25¢

VALUABLE COUPON

FOLGER'S MOUNTAIN GROWN COFFEE 1-LB. CAN 99¢

WITH THIS COUPON VOID AFTER SEPT. 29

VALUABLE COUPON

No. 00 - 2

LEMON FRESH LIQUID DETERGENT 32-oz. BTL. 79¢

WITH THIS COUPON VOID AFTER SEPT. 29

VALUABLE COUPON

No. 00 - 15

WITH FREE GLASSWARE DUZ 99¢

WITH THIS COUPON VOID AFTER SEPT. 29

VALUABLE COUPON

MAXWELL HOUSE INSTANT COFFEE 10-oz. JAR 2.59

WITH THIS COUPON VOID AFTER SEPT. 29

VALUABLE COUPON

No. 93770

BISQUIC 40-oz. BOX 89¢

WITH THIS COUPON VOID AFTER SEPT. 29

PAGE THRIFTWAY IN LOCKNEY



# FARM REVIEW

## COTTON TALKS

FROM PLAINS COTTON GROWERS, INC.

Plains Cotton Growers, Inc., 25-county, Lubbock-based cotton producer organization, is urging the U.S. Department of Agriculture to set the loan level for 1975-crop U.S. upland cotton at "the highest level permissible under the language of current law," and to not sell Commodity Credit Corporation stocks of cotton at less than 115 per cent of the target price for the year plus carrying charges.

In a letter to the USDA on September 12, PCG Executive Vice President Donald A. Johnson pointed out that unless the market price of cotton improves substantially, these two actions will be badly needed to prevent acreage being shifted from cotton to feed grains, soybeans or other more profitable crops in 1975. The 1974 crop loan level is 27.06 cents per pound, basis Strict Low Middling 1-1/16 inch cotton, 3.5 to 4.9 micronaire at average location.

CCC's minimum resale price is now 115 per cent of the loan level, as opposed to PCG's recommended 115 per cent of the 38-cent target price for 1975.

Under the Agriculture and Consumer Protection Act of 1973, the USDA can set the 1975 loan at 90 per cent of the average market price for American cotton in world markets for the 1971-72 through 1972-73 marketing years. Or, if the Secretary so decrees, the loan can be 90 per cent of the "then current" world market price for American cotton—which would be considerably lower.

Johnson's letter points out that current market prices for cotton offer little or no return on producer investment and that "Unless USDA uses every means at its disposal to encourage cotton production, the acreage needed to meet domestic and export demands for cotton will not be planted."

The 1974 Annual Meeting of the Plains Ginners Association will be held on Saturday, September 21, at the Lubbock Country Club from 9:30 a.m. to 2:00 p.m., according to PGA President Bill Weaver of Lamesa. Over 300 High Plains ginners and allied industry people are expected to attend.

The meeting will feature addresses by Donald A. Johnson, Executive Vice President of Plains Cotton Growers, Inc., Lubbock; Tony Price, Executive Officer of the Texas Cotton Ginners Association, Dallas, and Charles Russell, Foreign Trade Economist of the National Cotton Council, Memphis, Tennessee.

Johnson will speak on expanded market opportunities opening up for High Plains cotton as a result of spinning research on the revolutionary open-end spinning system and other new technology.

Price will talk to the ginners about practical solutions to problems arising out of existing and pending government regulations on air pollution and safety.

Russell is expected to give an overview of world cotton trade conditions and possible ways to improve the market position of U.S. cotton in world markets.

Luncheon speaker will be the widely known Dr. Charles Jarvis of San Marcos, Texas, dentist turned motivational speaker and humorist.

PCG members will elect nine directors at the meeting and the new directors will elect officers for the coming year. Current officers, in addition to Weaver, are Bill McCasland, Vice President, and Dixon White, Secretary, both of Lubbock.

Preceding the business meeting on Saturday will be the Association's annual golf tournament, with players teeing off at the Lubbock Country Club from 9:30 to 11:00 a.m. on Friday, September 20.

### USDA PROPOSES NEW FOOD STAMP ELIGIBILITY RULE

Students who receive more than half of their support from a household

### LaBaume At Fort Worth Meeting

Jon J. La Baume, District Conservationist for the Floyd County Soil Conservation Service attended a one week employee development course last week in Fort Worth, Texas.

The development course was the First Line Management and Supervision (Level III) course.

The course was attended by Soil Conservation Service personnel from Florida, South Carolina, North Carolina, Georgia, Tennessee, Kentucky, Alabama, Mississippi, Louisiana, Arkansas, Oklahoma and Texas.

La Baume was one of only four SCS personnel in the state of Texas selected to attend the course.

The course consisted of training and information in such fields as administration, training, management fundamentals, resource analysis, management production, information and education, civil rights and equal employment opportunity, self improvement and development and other related fields.

# Triticale Crop Contracts Available

By Wendell Tooley  
Floydada farmer-businessman J. S. Hale Jr. told the Floydada Rotary Club at its noon luncheon Wednesday about the latest grain in making flour and bread, new Triticale.

Hale said that Triticale bread, buns and pancake flour have been selling well in Plainview, Floydada, Lockney, Lubbock and Amarillo grocery stores and the company is now going into the El Paso area.

"We have contracts signed with Mead's bakeries and all we need now is to produce more Triticale seed," Hale said.

In telling about the history of Triticale Hale explained that the new grain is basically a cross between a wheat and rye seed, and the main advantage over wheat bread is its high protein content.

"We now have on the market new hybrid 72-S Triticale seed that was developed at the Halfway experiment station, and its yield is much more than twice as much as wheat, plus we pay better prices for Triticale than wheat seed," Hale added.

Hale also said that Floyd County farmers have produced the best Triticale protein rating of any produced on the high plains.

**OVERCOMING PAST**  
Hale said that his company had a good product, but has had to overcome bad past experiences. He emphasized that the company now has the financing that will be adequate to pay farmers it owes for Triticale raised in the past, and that current seed contracts guaranteed payment at harvest time.

Hale said it takes millions of dollars to finance seed, milling process, advertising and merchandising just to get a new product like Triticale on the shelf for the consumer.

Hale, who is owner of the Texas Triumph Seed Company in Ralls, said the Triticale seed will be sold out of the Ralls plant and he invites anyone to call or write him for more information about growing Triticale for profit.

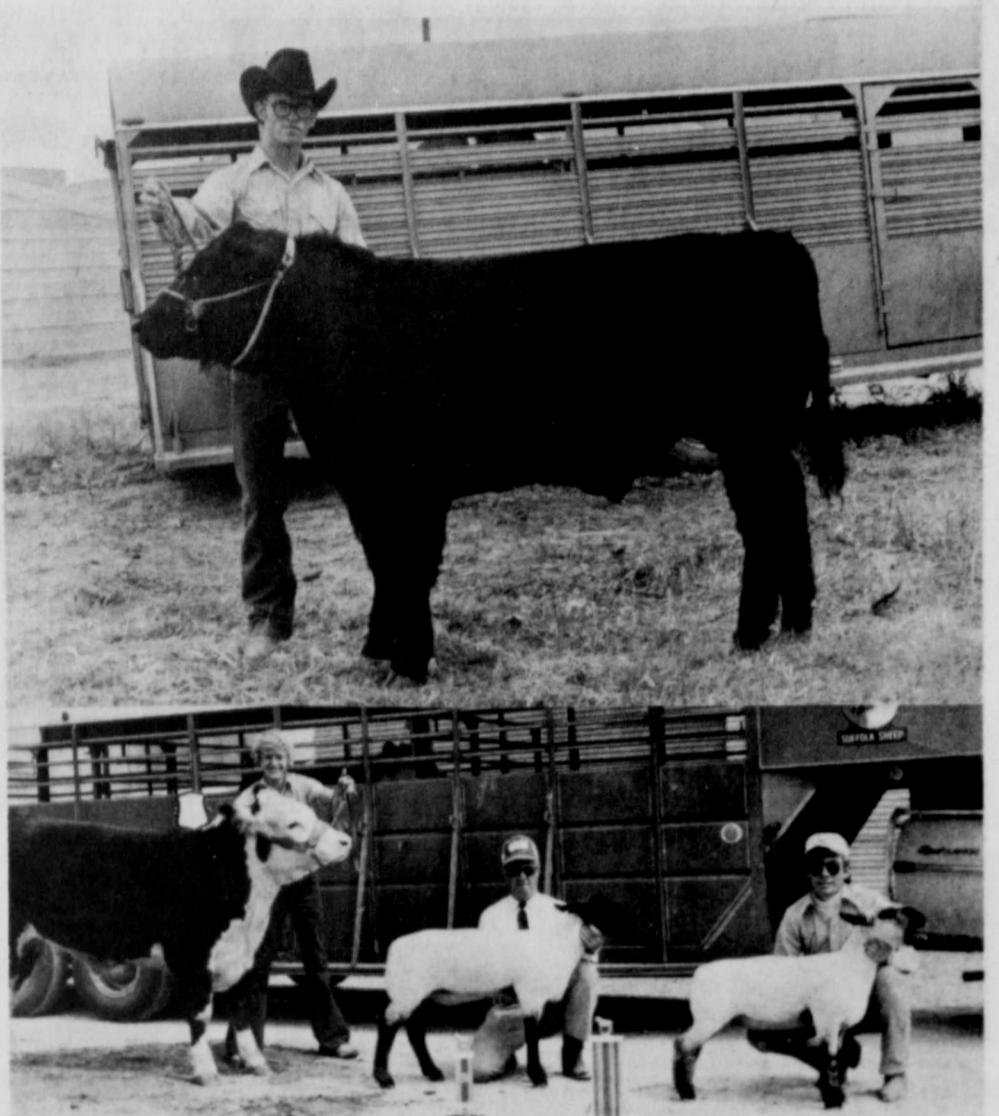
He suggests that Triticale be planted in October; it can be grazed, and as an experiment, he even planted some near his home in March of this year that made 19 bushels per acre.

Headquarters for Triticale is at Muleshoe, milling is done near Hereford.

which is ineligible for the food stamp program would also be ineligible for food stamps under a proposed regulation announced today by the U.S. Department of Agriculture.

The proposed rule applies to any student, age 18 or over, who attends an educational institution beyond high school and is claimed as a tax dependent by an ineligible household (i.e. receives over half his support from that household). It applies only to the individual who is claimed as a tax dependent; other members of the student's household can receive food stamps if they are otherwise eligible. The individual would also have an opportunity to prove that he does not receive over half his support from an ineligible household.

The proposed regulations are scheduled for publication in the Federal Register of September 16. Written comments should be sent to P. Royal Shipp, Acting Director, Food Stamp Division, Food and Nutrition Service, U.S. Department of Agriculture, Washington, D.C. 20250. Comments must be received by October 16 and will be open to public inspection.



PICTURES OF THE FLOYD COUNTY FAIR... (top photo) Jackie Elliott with breed champion Angus. (Next photo) Dean Hinton with breed champion Hereford, Floydada. Ag teachers Orville Harris and Dale Bullock hold Dean's champion lambs. (Staff Photo)

## Conservation District Director Election October 1

G. L. Fawver, chairman of the Floyd County Soil and Water Conservation District announced this week that the election for the purpose of electing a district director for zone 1 will be held Oct. 1, 1974 at the Sterley Elevator at 8 p.m. Herman R. King is

the current director for zone 1.

Zone 1 boundaries are the Floydada - Lockney - Plainview highway (south boundary) the east boundary is the Floydada-Silverton highway, the north boundary is the Floyd-Briscoe county line, and the west boundary is the Floyd-Hale county line.

The director that is elected will serve on the board for a period of five

years. All who own land in zone 1 and lives in the county may vote. Husband and wife are entitled to one vote each.

The Floyd County SWCD directors encourage all landowners who have land in the zone and who live in Floyd County to be present for the open type convention for the purpose of electing a director.

Coffee and donuts will be served.

## Lockney School Menus

- Sept. 23-27, 1974
- MONDAY:**  
Hot chicken sandwich  
Potato salad  
Carrot stick  
Sliced peaches  
Chocolate cake  
Milk
- TUESDAY:**  
Spaghetti rings w/meat balls  
Celery sticks  
Cauliflower  
Sliced tomatoes  
Ice cream  
Milk
- WEDNESDAY:**  
Chicken fried steak  
Scalloped potatoes  
Green beans  
Hot rolls  
Orange whip  
Milk
- THURSDAY:**  
Turkey spoonbread  
Candied sweet potatoes  
Hot rolls  
Yellow cake w/strawberry icing  
Milk
- FRIDAY:**  
Barbecue Burger  
Baked beans  
Lettuce salad  
Peanut butter pudding  
Milk

**TRITICALE**

**Now Being Contracted**

- WITH GUARANTEED MARKET -

Outyields wheat on irrigated and dryland. Can plant behind cotton or sorghum and still make grain. There is a difference in varieties of Triticale. Plant the specified variety - (72-S), for Contract with guaranteed market.

CONTACT OR CALL

**Texas Triumph Seed Co. Inc.**

P.O. Box 387  
Ralls, Texas 79357  
806 - 253-2424



TRACTOR DRIVER?...Nancy Carthel tractor driving contest at the week. She is pictured with her (Staff Photo)

### Senior Serves As Officer

Other officers are Michelle Mitchell, president; Margaret Garcia, secretary; and Rosa Ann Vargas, club advisor, all of PHS; and Sylvia Rodriguez, treasurer; Sandra Espinosa, reporter; and Delores Anderson, parliamentarian, all of Hale Center.



### Culture's outpost Wall Street

anchers don't realize the Federal loan funds from the sale of bonds is no government money in the quality of Land Bank Bonds, which the Farm Credit System's works on behalf of agriculture, flow of low-cost financing from the market. Come in... and let's talk bank money is bought—and sold—borrower.

MAIN ST. 2480 TEXAS



Baseboard

Ceiling Cable

**LOOK TO THE BRIGHT STAR IN THE GALAXY OF ELECTRIC HEAT**

one of them is just right for your home... and now you can have wise use electric heating and cooling with one unit - the heat pump, the Bright Star in the Galaxy of Electric Heating!

Call us for a free electric home heating survey, this week.



Electricity Is Electric!

# Society

## 34 Club Has First Meeting Of New Year

Members of the 1934 Study Club held the first meeting of the new club year Tuesday evening, Sept. 17, in the home of Mrs. Jay S. Hale. Prayer was voiced by Mrs. L. B. Stewart Jr., after which a cowboy supper of cow camp stew, Poke salad, Jalopeno cornbread and handcranked ice cream was served by the hostesses, Mrs. J. M. Willson Jr., Wm. F. Bertrand, J. P. Moss, A. L. Wylie and Mrs. J. S. Hale. President, Mrs. W. O. Newberry gave the message "Dippers in Your Bucket", encouraging each club member to give more of herself, her talents and continue dipping in her bucket for new ideas.

Mrs. Hale, program chairman, introduced the new year books and course of study. Theme is "Our World: Culture and Customs". Mrs. Newberry proudly announced that the 1934 Study Club F.C.F. Queen candidate, Miss Christi Stringer, was chosen as Miss Congeniality and first runner-up to the queen.

Club members voted to give \$25 to Girlstown in support of the Girlstown project, and also to give \$10 to help buy a pair of shoes for one of the girls.

Mrs. Hale announced plans for the spaghetti supper to be held Oct. 11 at the Jr. High cafeteria, and asked for voluntary help to furnish food.

Information for committees and chairman duties were given to each member for the 1974 board meeting and workshop to be held in Floydada Oct. 12.

Members attending the meeting were Mmes. Bob Alldredge, Wm. Bertrand, Allen Bingham, Wilson Bond, Dennis Dempsey, R. G. Dunlap, Leon Ferguson, Garland Foster, Kyle Glover, Floyd Lawson, W. O. Newberry, Vernon Parker, John Reue, George Springer, Fred Stewart, L. B. Stewart, Jake Watson, J. M. Willson Jr., A. L. Wylie Jr. and Jay S. Hale.

The next meeting will be Sunday, Oct. 6, when members may invite their families as guests to go to Lubbock for a tour of the Ranch Headquarters Museum at Texas Tech University.

## Beta Sigma Phi Chapter Has Meeting

The Alpha Mu Delta Chapter of Beta Sigma Phi met for its regular meeting Sept. 17 at the Farm Bureau. President, Barbara Koch, presided over the business meeting.

The September social will be held Saturday, Sept. 21 at the First National Bank. Special guest will be prospective rushees.

A coke party will be held Sept. 24 at the home of Barbara Koch.

The chapter voted Pat Selman Chapter Queen.

Members volunteered to bake sheet cakes for the Day Car Center Spaghetti Supper.

Babysitting for the Sept. 27 Floydada Football game was discussed. Sitters will be Debbie Bertrand, Wendy Montandon and Pat Selman. Floydada Day Care Center is the location for babysitting for home games. For information call any member.

Program was given by Wendy Montandon on "Painting the Person."

Those attending were Wendy Montandon, Debbie Bertrand, Pat Selman, Bonnie Lightfoot, Barbara Koch, Donna Henderson, and Jo Ann Patterson.

## Tea To Honor Roy Davidsons

A get-acquainted tea in honor of Mr. and Mrs. Roy Davidson, missionaries on furlough from Malawi, will be held in Fellowship Hall of the First Baptist Church, Floydada, Sunday afternoon, September 22. Calling hours are from 3 until 4 p.m.

## Ann-Marie Ulmer Gets UT Degree

Anne-Marie Ulmer, daughter of Mr. and Mrs. M. A. Ulmer, Rt. 2, Lockney, Texas, was among recipients of degrees during August commencement exercises at the University of Texas at Austin. Miss Ulmer, a 1971 graduate of Lockney High School, received a Bachelor of Arts degree in psychology. She maintained a grade point of 4.0 this summer while carrying the maximum course load allowable.

## 'Total Woman' Seminar Scheduled

A "Total Woman" seminar will be in Lubbock October 15, 16 and 17. Sessions will be at 9:30 a.m., 2:30 p.m. and 8 p.m. To get more information or make reservations, call 797-1512 or 763-9261.

The seminar will be held in Lubbock at New Dimensions, 3202-21st Street. The cost is \$15.00.

## Students Guests At Clubs

Robert Murdock is guest student of the month during September at Rotary Club luncheons each Friday in Lockney.

Honored by the Lockney Lions Club members this month, and attending the club luncheons each Thursday are Zach Cummings and Sandra Dorman.

The LHS students are recognized for being outstanding students in the school community.

In Morocco, the pounded and roasted liver of the hedgehog is given to school boys to make them remember their lessons.



Miss Anne-Marie Ulmer

## Miss Ulmer, Bobby Ham Engagment Announced

Mr. and Mrs. M. A. Ulmer, Rt. 2, Lockney, announce the engagement and approaching marriage of their daughter, Anne-Marie, to Bobby Max Ham, son of Mrs. Ross Herrington and Bob Ham, both of Quitaque. The couple plans a December 1 wedding at St. Alice Catholic Church in Plainview.

Miss Ulmer was a 1971 graduate of Lockney High School and received her B.A. from the University of Texas in August.

Ham is employed by the First National Bank in Quitaque and received his B.B.A. in finance from the University of Texas this past summer.



THE PERMANENT MURAL in the top photo was painted on an entrance wall in the fair building by the 1956 Study Club, designed and painted by Mrs. Randy Bertrand, Mrs. A.C. Pratt and Mrs. Bill Dawson. In the lower photo some of the fair queen contestants are pictured on parade. (Staff Photo)



Miss Gail Davis

Mr. and Mrs. William C. Davis of San Angelo have announced the engagement of their daughter, Gail Davis, to Bill Stanton of Petersburg.

The wedding will be February 1, in the First United Methodist Church of San Angelo.

The bride-elect is a graduate of Central High School of San Angelo and the University of Texas at Austin and is presently teaching in Baytown.

The prospective bridegroom is a graduate of Petersburg High School and Texas Tech University and is farming in Petersburg.

## New Arrivals

Mr. and Mrs. James Pufal of El Paso are parents of a daughter, Stephanie Marie, who was born September 17, weighing seven pounds and eight ounces. She has an older brother, James Patrick, who is seven. The mother is the former Carolyn Cates. Pufal is football and baseball coach at Eastwood High School in El Paso.

Grandparents include Mr. and Mrs. Johnnie Cates, Floydada and Mrs. Edward Pufal of El Paso. Great grandparents are Mr. and Mrs. D. W. Burke, Lockney Nursing Home.

A baby daughter was born Monday, Sept. 16 at 7:42 a.m. to Mr. and Mrs. Ernie Widener of Lockney. Elizabeth Ann weighed 7 lbs. 2 1/2 oz. at birth in Central Plains Hospital, Plainview.

Elizabeth Ann has three big brothers: Daron, 8 years old; Joseph, 6; and Jerome, 4.

Maternal grandparents are Mr. and Mrs. H. L. Lawhon of O'Donnell, and

Mrs. Zadie Sellars of Oklahoma City is the maternal great-grandmother.

Mr. and Mrs. Dale Widener of Lockney are paternal grandparents.

Mr. and Mrs. Roy Mercado of Lockney are parents of a baby daughter. She weighed three lbs. and has been named Roxanne. The mother is the former Elza Enriquez.

Grandparents are Mr. and Mrs. Chris Enriquez of Floydada and Mr. and Mrs. Hector Mercado of Barwise community.

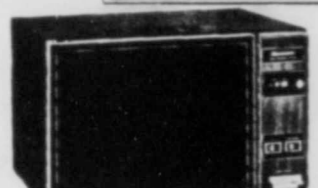
Mr. and Mrs. Bob Gilliland of Midland are parents of a son, Bobby Michael Jr., who was born September 13, weighing eight pounds and two ounces.

Grandparents are Mr. and Mrs. Randall Collis of Lockney and Mr. and Mrs. Levis Gilliland of Floydada. Great grandparents include Mrs. Ora Collis of Lockney, Mrs. Vera Vickers and Mrs. Ora Gilliland, both of Floydada.

In parts of Ireland, iron is considered such a sacred metal that thieves will not steal it!

**THE GREAT LITTON**  
MICROWAVE COOKING

**STARBUCKS TUBE**  
**ENERGY SAVER**



A GREAT DEMONSTRATION HERE  
Time and date:  
**Thursday, September 26**  
10 a.m. to 3:30 p.m.

Suggested retail price  
**\$499<sup>95</sup>**


**The Litton Minutemaster® "416" microwave oven**

Come and see a Litton-trained demonstrator in action: cook and defrost foods in 1/4 the normal time while using up to 75%\* less energy than a conventional electric oven.

Trend-setting features of the Litton "403" include: 60-minute Micro-Timer™ digital control, Litton automatic defroster. Large 1.2 cu. ft. usable oven interior (room enough for a 20 lb. turkey.)

COME IN AND SEE AN ENERGY SAVING DEMONSTRATION TODAY!

**SPECIAL OFFER**  
20-piece ovenware set



Micro-Temp™ Food Thermometer

\*Based on independent reports of the Electrical Energy Association and Litton product testing.

**IN-STORE Demonstration**

XIE COLLINS, HOME SERVICE ADVISOR FOR SOUTHWESTERN PUBLIC SERVICE CO., WILL BE AT MIZE PHARMACY THURSDAY DEMONSTRATING THE LITTON MICRO-WAVE OVEN.

**XIE COLLINS**

**DROP BY ANY TIME**

BETWEEN 10 And 3:30

AND SEE XIE DEMONSTRATE

THIS FABULOUS OVEN

**MIZE**  
PHARMACY & TV  
LOCKNEY

**THE FLOYD COUNTY HESPERIAN**  
Published each Sunday and Thursday at 117 E. Mo. St., Floydada, Texas 75235. Second class postage paid at Floydada, Texas 75235. Wendell Tooley, editor. Subscription rates: Local, \$6.50 a year, out of trade area \$7.50.



NEW DECA OFFICERS AT FLOYDADA HIGH SCHOOL...Gold Chapter (top photo left to right) Eddie Muniz, sgt. at arms; Bob Alldredge, supervisor; Tony Richards, historian; Bill Whitaker, president; Mary Morales, photographer; Freddy Selman, vice president; Elaine Giesecke, secretary; Dana Woody, reporter and Karan Cox, treasurer. Blue Chapter (lower photo left to right) Jackie Covington, sgt. at arms; Benny Locke, supervisor; Nila Bryant, secretary; Brad Tooley, reporter; Cathy Clappitt, president; Lyle Suggs, photographer; Vickie Smith, vice president; Becky Bertrand, treasurer; Pam Nichols, parliamentarian; Oscar Murillo, historian. (Staff Photo)

# FOOTBALL CONTEST

## THE LONGHORNS

**WEEKLY PRIZES**  
**1st \$750**  
**2nd \$500**  
**3rd \$250**

### Contest Rules

One game is listed in each of the advertisements on this page. Each team is numbered. In the "Official Entry Form," circle the number of these teams which you believe will win this week's game; circle both numbers to indicate tie. Indicate winner and total score in tie-breaker game, which also counts in determining number of misses.  
 Winners will be announced in the following week's Beacon. ALL ENTRIES MUST BE PLACED IN THE BEACON BOX BEFORE 5 P.M. FRIDAY OR POSTMARKED BEFORE THAT TIME TO BE CONSIDERED FOR PRIZES.

### Official Entry Form

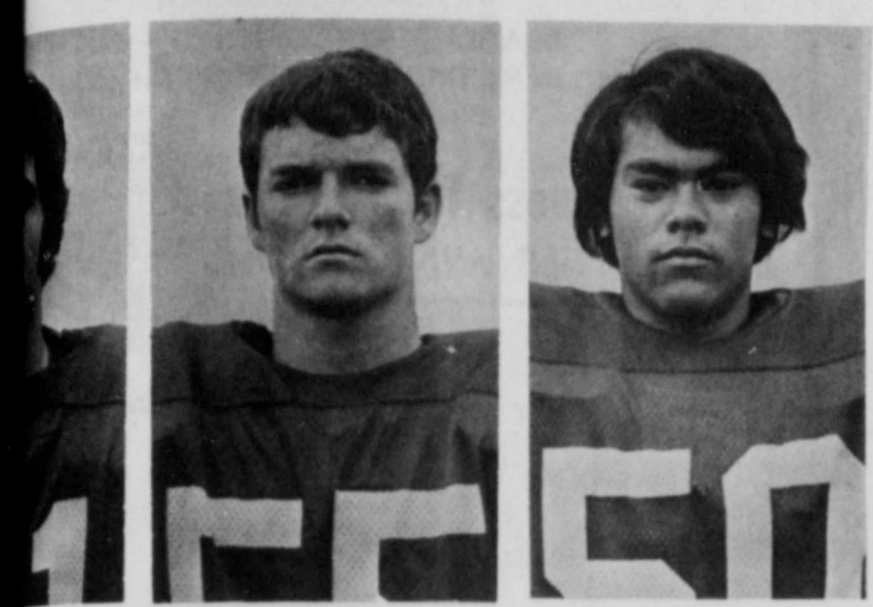
Name \_\_\_\_\_  
 Address \_\_\_\_\_  
 City \_\_\_\_\_

### CIRCLE THE NUMBERS OF THE TEAMS YOU PICK TO WIN

1	2	3	4	5	6	7	8	9	10	11	12
13	14	15	16	17	18	19	20	21	22	23	24
25	26	27	28	29	30	31	32	33	34	35	36
37	38	39	40	41	42	43	44	45	46	47	48

TIE BREAKER:  
 TEXAS AT TEXAS TECH  
 TOTAL SCORE \_\_\_\_\_

Date	Opponent	Place	Time
Sept. 6	Post	Here	8:00
Sept. 13	Frenship	Here	8:00
Sept. 20	Olton	Here	8:00
Sept. 27	Crosbyton	There	8:00
Oct. 4	Kress	There	8:00
Oct. 11	Dimmitt	There	8:00
Oct. 18	Floydada	Here	7:30
Oct. 25	Open		
Nov. 1	Tulia	There	7:30
Nov. 8	Abernathy	Here	7:30
Nov. 15	Idalou	There	7:30




**ROLAND HAYES**, Longhorn number 55, is a center and cornerback.

**FORTUNATO DELGADO**, a Longhorn center and nose-guard, wears number 50.

## Longhorns

**We're Behind You All The Way!**

**GO FIGHT WIN**

<b>Department Store</b> NEARBY AT 2, CROSBYTON	<b>Consumers Fuel Association</b> GO BIG RED! 3, TULSA AT 4, ARKANSAS	<b>Page's Thriftway</b> A BETTER WAY TO SAVE 5, OKLAHOMA STATE AT 6, BAYLOR	<b>White Auto</b> HOME OF GREATER VALUES 7, ABERNATHY AT 8, SLATON
<b>Walker Insurance</b> LIFE-CASUALTY-HOSPITAL VIEW AT 10, AMARILLO	<b>Mize Pharmacy &amp; TV</b> YOUR COMPLETE FAMILY DRUG STORE GIFT HEADQUARTERS RCA AND ZENITH TV 11, OLTON AT 12, FLOYDADA	 CORN, SORGHUM AND PAYMASTER COTTON SEED 13, LSU AT 14 RICE	<b>First National Bank</b> MEMBER OF F.D.I.C. 15, RALLS AT 16, O'DONNELL
<b>Auto Service</b> FASHIONED QUALITY WORK, MODERN METHODS" OTAN AT 18 SPUR	<b>Gene's Cafe</b> "WE BACK THE LONGHORNS ALL THE WAY" 19, SMU AT 20 OHIO STATE	<b>Smith's Supermarket</b> WE GIVE BUCCANEER STAMPS 21, TEXAS A AND M AT 22, WASHINGTON	<b>Schacht Flowers, Jewelry &amp; Gifts</b> "OUR PLEASURE IS TO SERVE YOU" 23, TULIA AT 24, FRIONA
<b>Pharmacy</b> ALOU AT 26, COOPER	<b>Davis Lumber Co.</b> "WHERE CUSTOMERS SEND THEIR FRIENDS" 27, HALE CENTER AT 28, SHALLOWATER	<b>Providence Farm Supply</b> PROVIDENCE, TEXAS. 29, VALLEY HIGH AT 30 MOTLEY COUNTY	<b>Floyd County Insurance Agency</b> AROUND THE CLOCK PROTECTION 31, DENVER CITY AT 32, CRANE
<b>Post Service &amp; Supply</b> YOU'RE ALWAYS WELCOME" CU AT 34, MINNESOTA	<b>Floyd County Farm Bureau</b> James Race, Agent Lockney Area 35, WICHITA STATE AT 36, WTSU	<b>Baccus Motor Co.</b> AUTHORIZED FORD DEALER 37, MICHIGAN STATE AT 38, UCLA	<b>Lockney Cooperatives</b> COTTON-GRAIN-FERTILIZER-CATTLE FEEDING FEED-SEED-CHEMICALS 39, COLORADO CITY AT 40, POST
<b>Tye Company</b> PLAINVIEW HIGHWAY LEFIELD AT 42, MULESHOE	<b>Wilson Photography</b> 652-3731 43, TENNESSEE AT 44, AUBURN	WE NEED A LONGHORN SPONSOR 45, PURDUE AT 46, NOTRE DAME	WE NEED A LONGHORN SPONSOR 47, DUNBAR AT 48- LUBBOCK HIGH

# HAVE FUN ... WIN PRIZES

## \$15 IN CASH PRIZES EACH WEEK

# FOOTBALL CONTEST

## HESPERIAN

# AND QUARTERBACK FORECAST

DEADLINE FOR ENTRIES - 5 P.M. FRIDAY  
IN HESPERIAN OFFICE OR POSTMARK

### CONTEST RULES:

Anyone can enter except the employees of the Hesperian. Three cash prizes are given each week - ties will split prize money. Members of the sports department are sole judges of the contest and their decision is final.

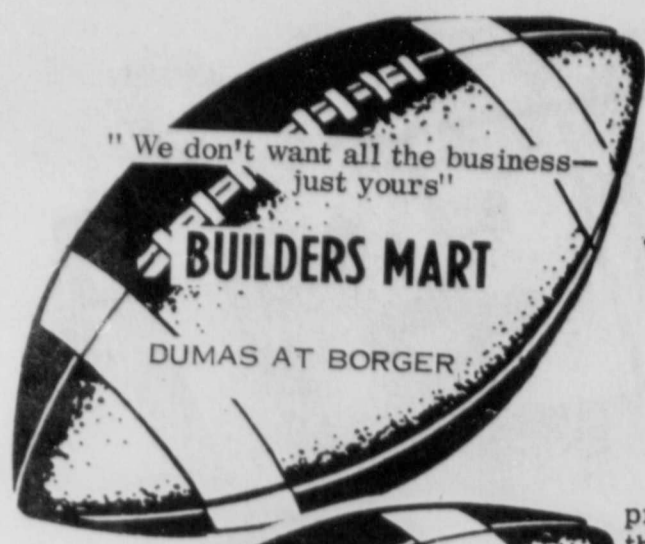
It is not necessary to indicate scores on all the games....But score must be indicated on the tie breaker game at right.

Simply circle the team you choose to win in each of the footballs. Deadline for submitting entries is 5 p.m. Friday - winners will be announced the following week. Enter as many times as you wish, print name and address plainly on blank below and mail or bring entire page to The Hesperian office

Tie-breaker game will be considered only in case of ties.

## QUARTERBACK QUOTES

### TIE BREAKER-Guess Total Points AND CIRCLE WINNER



"We don't want all the business— just yours!"

**BUILDERS MART**

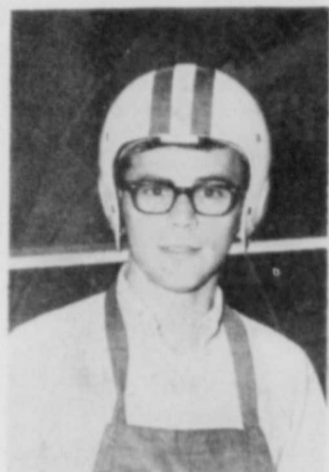
DUMAS AT BORGER



Good food and friendly folk

**BUDDY'S FOOD**

LITTLEFIELD AT MULESHOE



JOHNNY HARRIS  
FLOYDADA..... 24  
OLTON..... 13



BATES McCLUNG  
FLOYDADA..... 27  
OLTON..... 13



BUDDY LUTRICK  
FLOYDADA..... 21  
OLTON..... 12

NAME
ADDRESS
CITY

1ST PRIZE	\$7.50
2ND PRIZE	\$5.00
3RD PRIZE	\$2.50



Fender bender mender

**QUALITY BODY SHOP**

SNYDER AT ANDREWS



We have what you need in auto parts, housewares & hardware

**CAPROCK AUTO PARTS & HARDWARE**

LOCKNEY AT CROSBYTON



Good cars, good deals!

**ODEN CHEVROLET OLDS**

NEW HOME AT KRESS



AC & New Holland equip

**MCDONALD IMPLEMENT**

MATADOR AT VALLEY



Tires For Everything!

**Babe's Service Center**

MORTON AT FRENSHIP



Supplies For The Farmer

**Consumer's Fuel Assoc.**

DIMMITT AT TAHOKA



Crop and livestock loans

**PRODUCTION CREDIT ASSOCIATION**

PLAINS AT NEW DEAL



Your IH Dealer

**MARTIN & COMPANY**

AMHERST AT HAPPY



Service with a smile!

**GILBREATH EXXON SERVICE**

TULIA AT FRIONA



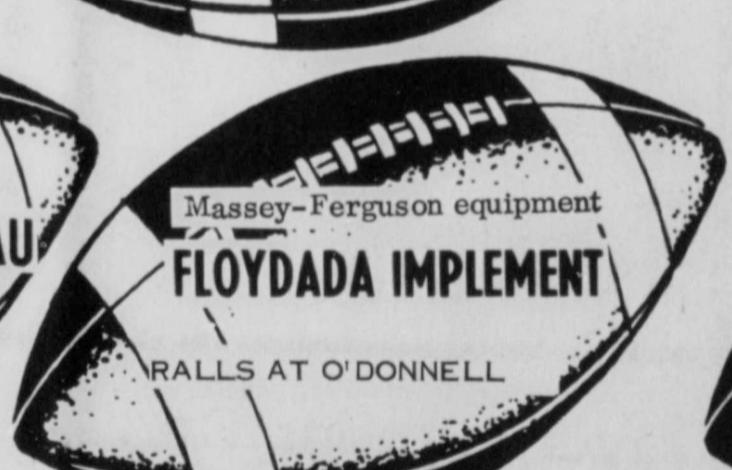
Insurance Headquarters

**FLOYD COUNTY FARM BUREAU**

Don Grantham, Agency Manager

Roy Kinard, Agent

COLORADO CITY AT POST



Massey-Ferguson equipment

**FLOYDADA IMPLEMENT**

RALLS AT O'DONNELL



Custom Processing

**PONDEROSA MEAT**

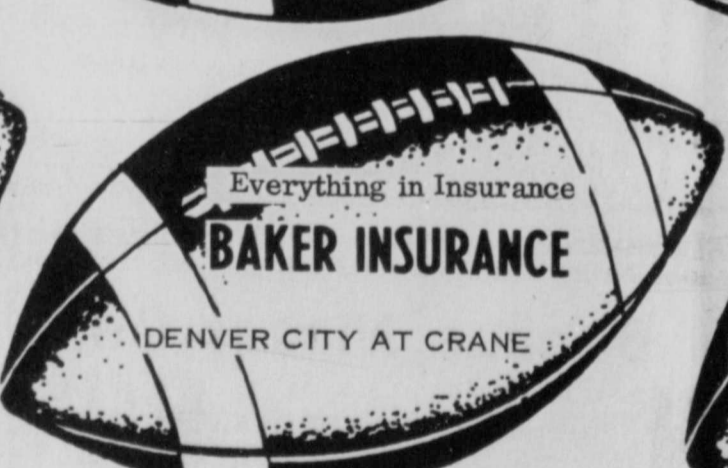
CANYON AT HEREFORD



"For your health needs"

**THOMPSON PHARMACY**

ABERNATHY AT SLATON



Everything in Insurance

**BAKER INSURANCE**

DENVER CITY AT CRANE



See us for your auto parts needs

**DANIEL AUTOMOTIVE**

HALE CENTER AT SHALLOWATER



Delicious Food

**TASTE FREEZE**

SEMINOLE AT LEVELLAND



Dealers for Hamby and Caldwell farm equipment

**Russell's Equipment & Supply**

IDALOU AT COOPER



Hot or cold, call us!

**HAMMOND SHEET METAL**

HART AT PETERSBURG



Buick-Pontiac-GMC

**CITY AUTO INC.**

LORENZO AT SEAGRAVES



Service With Int

**Moore-Rose Funeral**

SWEETWATER AT GRAHAM

### School Personnel Listed

Lydia Watson, secretary; James Ansley, math; Jody Baccus, soc. st.; Charles Ball, C.V.A.E.; Robbie Biggerstaff, P.E.; Doug Bowles, soc. st./P.E.; Sally Carthel, Eng./read./sp.; Alice Cruz, mig.; Melva Dorman, science; Alma Dutton, Eng./art/math; Lucille Frizzell, library aide; Polly Gilbert, soc. st./math; Gail Gregg, science/P.E.; Jane Lynn, science/math; Raul Vera, C.V.A.E.; Lela Warren, Eng.

**LOCKNEY ELEMENTARY SCHOOL:**  
Weldon Dodson, principal; Gladys Bobbitt, secretary; Linnie Abbott, kindergarten; Dinah Bean, title I reg.; Dorothy Bradely, 2nd grade; Rita Burleson, 5th grade; Virginia Byrd, 1st grade; Felicitia Castro, teacher aide; Edythe Clarke, 1st grade; Glenda Cooper, 2nd grade; Arla Copeland, 3rd grade; Cheryl Essex, 4th grade; Connie Garcia, teacher aide; Richard Gonzales, all level music; Lesca Hayes, P.E. aide; Faye Holmes, 3rd grade; Kathy Hunter, kindergarten; Hazel Johnson, library; Naomi Johnston,

teacher aide; Pat Jungman, title I reg.; Bettie Knox, 5th grade;  
Virginia Lyon, 4th grade; Mary McCarter, 4th grade; Johnta Mercer, 2nd grade; Sheri Roberts, 3rd grade; Kathleen Thornton, teacher aide; Maria Tarrab, 1st grade; Evelyn Ulmer, nurse; Bettie Washington, 1st grade; Wavely Washington, 5th grade; Juana Whigham, kindergarten; Sue Zorger, title I mig.  
PLAN "A":  
Janie Carter, resource; Joy Daniel, resource; Ruby

Higginbotham, aide; Jan Mize, speech therapist; Vicky Schaeffer, early childhood; Ethelyn Vernon, resource; Leona Watson, resource; Diane Ward, aide; Rubie Webb, aide.

**CAFETERIA:**  
Elsie Clark, lunchroom; Annie Craver, lunchroom; Mildred Martin, lunchroom; Wilma Mathis, lunchroom; Charlotte McCulloch, lunchroom; Barbara Ross, lunchroom; Jimmie D. Whitlock, supervisor.

**CUSTODIANS:**  
T. J. Askew, custodian; Ray Dilalrd, head custodian; Farrell Dollar, custodian; Helen Dollar, custodian; Aubria Kent, custodian.

**BUS DRIVERS:**  
Omar Burleson, route 7, a.m.; Mary Rose McCreedy, route 7, p.m.; William Prater, route 9; Frank Ramos, route 8; C. L. Record, route 4; D. C. Rose, route 1; Milton Schaeffer; Bill Sesson, route 5; Robert Wright, route 6.

**FLOYD DATA**  
F. A. Faulkenberry, who has been a surgical patient in Plainview's Central Plains Hospital, was able to be brought home Thursday. He is reported to be progressing well.



THIS LIFE SIZE BETSY PLAYMATE DOLL [size 4] was worth a blue ribbon at the Floyd Fair. Betsy was made by the child development class at FHS. Carol Fisher's child play suit won a red ribbon. [left to right] Vicky Alvarez, Sharon Johnson, Donna Powell, Deanne Love, Lezlie Simmons, Loreta Walker, Carol Fisher and Fleata Black. [Staff Photo by Brad.]

# Buddy's Food

**BUDDY WIDENER - OWNER**  
**FORREST SHANNON - MANAGER**  
**STORE HOURS**  
8 A.M. TO 8 P.M. MONDAY THRU SATURDAY  
SUNDAY - 9 A.M. TO 7 P.M.  
THESE VALUES GOOD SEPTEMBER 22  
THROUGH SEPTEMBER 28, 1974  
IN FLOYDADA AND PLAINVIEW  
220 S. 2ND 2800 W. 10TH  
WED. WED.  
WE RESERVE THE RIGHT TO LIMIT QUANTITIES

CLOVERLAKE 1/2 GALLON-ALL FLAVORS

**SLIM & TRIM**  
**79¢**

32 OZ. BOTTLE - 6 BOTTLE CARTON

**COKE** \$1.59  
PLUS DEPOSIT

KEEBLER LB. BOX - 65¢ VALUE

**CRACKERS** 2/99¢

DEL MONTE - 303 CAN-CREAM OR WHOLE KERNEL

**GOLDEN CORN** 4/99¢

NABISCO - 11 OZ. BOX - 59¢ VALUE

**VANILLA WAFERS** 2/99¢

JUMBO GALA

**Towels** 2/89¢

PEPSODENT-5 OZ. TUBE

**TOOTHPASTE** 63¢

THROAT LOZENGES-24 COUNT

**SUCRETS** 79¢

6 OZ. MINUTE MAID

**LEMONADE** 6/\$1

BLUEBERRY-BUTTERMILK-PLAIN-DOWNY FLAKE

**PANCAKE BATTER** 2/99¢

SAVORY

**BACON** 89¢

LEAN AND MEATY

**Spareribs** 69¢

6 OZ. WILSON'S

6 OZ. WILSON'S BOLOGNA-P AND P, OLIVE-MAC AND CHEESE

**Lunch Meats** 2/99¢

12 OZ. WILSON'S

**FRANKS** 77¢

ROUND-SIRLOIN-RIB

**STEAK** 1.49

**CHUCK ROAST** 97¢

**BONELESS HAM** 1.39

COLORADO WHOLE EARS

**Sweet Corn** 3/29¢

CALIF. LARGE FIRM HEADS

**LETTUCE** 19¢

CALIF.-FIRM SLICES

**Tomatoes** 4 LBS. \$1

SUNKIST VALENCIAS

**Oranges** 5 LBS. \$1

**FRITOS** HANDY 2/69¢

**CHEETOS** 6 PAKS 49¢ VALUE YOUR CHOICE

**DORITOS** BORDEN'S - 8 OZ. WHIPPING CREAM CHIP & DIP 1/2 & 1/2 SOUR CREAM 3/\$1

LIPTON'S - 3 OZ. JAR - \$1.59 VALUE

**INSTANT TEA** 89¢

303 CAN - 39¢ VALUE

**CUT GREEN BEANS** 3/89¢

GIANT

SWANSDOWN - 22 OZ. BOX - 83¢ VALUE

**BROWNIE MIX** 59¢

24 OZ. WILSON'S \$1.29 VALUE

**CHILI** 89¢

NESTLE'S MUNCH-CRUNCH-ALMOND-KING SIZE

**CANDY BARS** 3/99¢

SWANSDOWN - 18 1/2 OZ.

**CAKE MIX** 2/89¢

WITH THIS COUPON

GOOD ONLY AT BUDDY'S FOOD EXPIRES 9-28-74

WITHOUT COUPON 2/\$1.19

5 Lb. 4 Oz. King Size

**OXYDOL** \$1.49 ONLY

Good Only At Buddy's EXPIRES 9-28-74

PRICE WITHOUT COUPON \$1.69

VALUABLE COUPON

5 LBS. **GOLD MEDAL FLOUR** 79¢

Good at BUDDY'S FOOD EXPIRES 9-28-74

WITHOUT COUPON 99¢

### SITUARIES

#### Ray Robert Canon

Services for Ray Robert Canon, 79, of Lockney, were held Friday at Third and College Church of Christ with Frank Duckworth, minister, officiating.

Burial was in Lockney Cemetery under direction of Carter Funeral Home of Lockney.

Canon was found in his auto in a cotton field two miles east of the Plainview city limits on Texas 70. He died of an apparent heart attack about noon Wednesday and was discovered later by a passerby.

Born in Whitewright, Canon had been a long-time resident of Lockney. He worked here as a service station attendant.

He married the former Minnie Lenore Ragle Sept. 7, 1919, in Rencoona, N.M.

Survivors include his wife of Lockney; his son, Bill W. of Santa Fe, N.M.; a daughter, Mrs. John Lee Carthel of Lockney; a sister, Mrs. Lornie Turney of Whittier, Calif.; two brothers, Tommy Canon of Pioneer, Calif., and Lee Canon of Caldwell; 14 grandchildren and 6 great-grandchildren.

### Professional Service

**DAN'S AUTO SERVICE**  
DAN TEUTON, Owner

Specializing in Automatic Transmission, Motor Tune-Ups, Auto Air Conditioning.

General Repair

We Have A **BRAKE LATHE** to handle all passenger car brake drums. See us for complete brake service.

Phone 652-2462

**JOHN W. KIMBLE, O.D.**

Contact Lenses - Visual Analysis

Monday Afternoon Saturday 9-3  
Texas Phone 983-2496

**QUALITY SHAMROCK PRODUCTS**

Make A Good Deal On BATTERIES and SOUTHLAND BATTERIES

Dial 652-3366

**WILSON TIRE COMPANY**

Richard Wiley

**Farmer's Union Insurance**

J. D. Copeland

Phone 652-3813

Ferguson Bldg.

North Main Street  
LOCKNEY

LOCKNEY AREA CHURCH PAGE

# time out for GOD

### MAIN STREET

#### CHURCH OF CHRIST

Bobby Hise, Minister  
Sunday

Bible School ..... 9:30  
Morning Worship ..... 10:30  
Evening Worship ..... 6:00  
Wednesday  
Ladies Class ..... 9:30  
Mid-Week Service ..... 7:30

Evans Chapel Baptist Church  
Rev. Bennie Anderson, pastor  
Sunday School ..... 10 a.m.  
Morning Worship ..... 11 a.m.  
Training Union ..... 6 p.m.  
Evening Worship ..... 7 p.m.  
Wednesday Prayer Meeting 7 p.m.

### FIRST UNITED METHODIST CHURCH

Hugh Daniel, Pastor  
Sunday

Sunday School ..... 9:45  
Worship Service ..... 10:55  
UMY ..... 6:00  
Evening Worship ..... 7:00  
United Methodist Women .....  
First Tuesday of Month  
Circles ... Monday (2nd & 4th  
Monday nights) Tuesday and  
Wednesday mornings

TRINITY LUTHERAN CHURCH  
Providence Community  
L. J. Durkop  
Sunday School and  
Adult Bible Class ..... 10:00  
Divine Worship Service ..... 11:00

### ASSEMBLY OF GOD CHURCH

Sunday School ..... 10:00  
Morning Worship ..... 11:00  
Evening Worship ..... 7:00  
Prayer Service Wed. .... 7:00

Rev. Bob Wright, Pastor

### TEMPLO BAPTISTA SALEM

Frank Ramos, Pastor  
Sunday School ..... 9:45  
Worship Service ..... 11:00  
Christian Training Time ..... 5:00  
Evening Worship ..... 6:00  
Wednesday Prayer Meeting and  
Choir Practice ..... 7:30

### AIKEN BAPTIST CHURCH

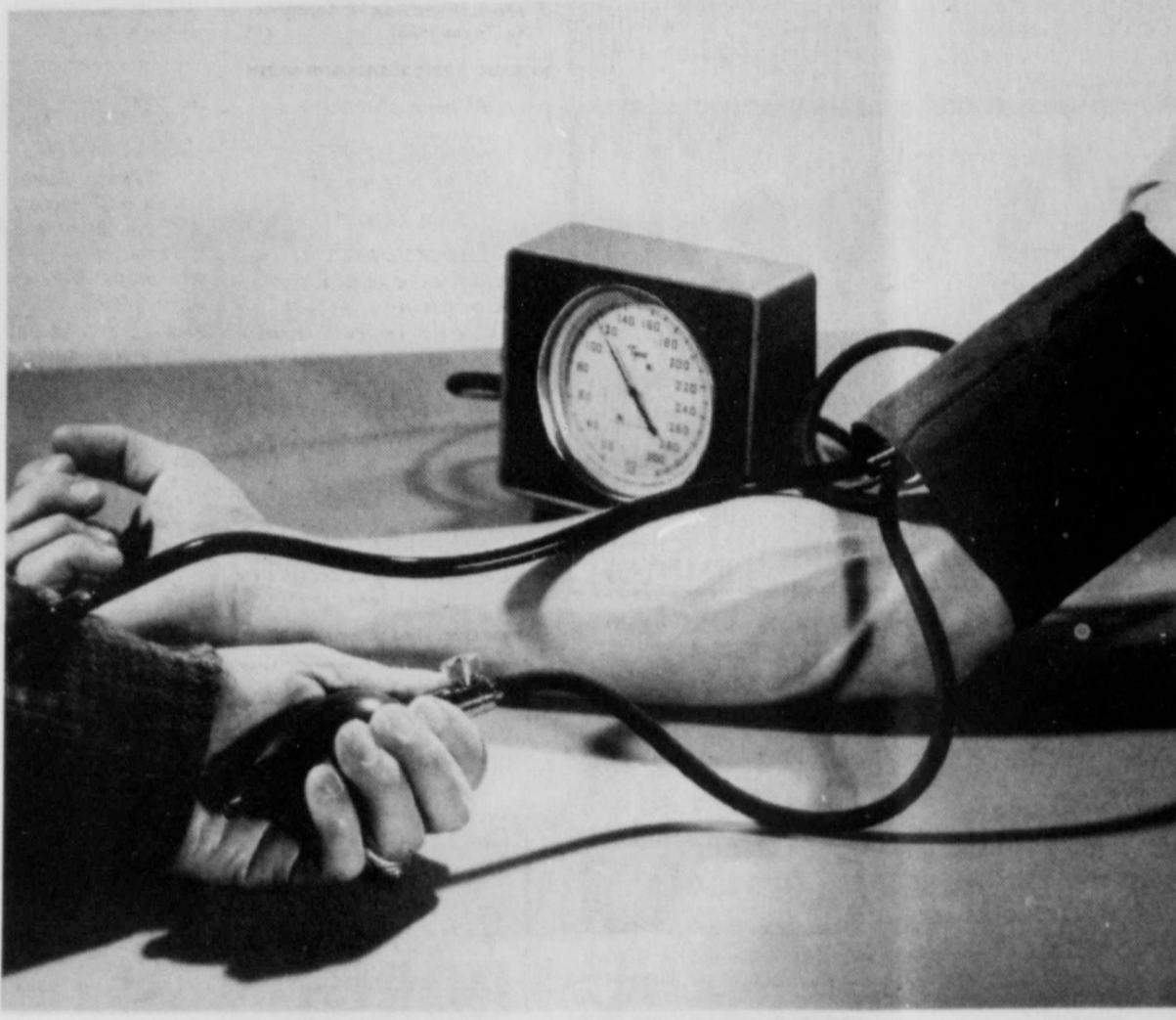
Bill Sessom, Pastor  
Sunday School ..... 10:00  
Morning Worship ..... 11:00  
Training Union ..... 6:00  
Evening Worship ..... 7:00  
Prayer Service Wednesday ... 7:30  
Brotherhood, W.M.U. and Auxil-  
iary Wednesday ..... 7:30

SAN JOSE CATHOLIC CHURCH  
Father Richard Thomas Casey  
Sunday Morning Mass ..... 8:30  
Saturday Evening ..... 8:30  
Wednesday Evening ..... 8:30  
Each Service Preceded By  
Confessions

Baptism - 1st Sunday of the  
month at 9 a.m.  
Church Council - Meets 1st Sunday  
of month at 3 p.m.

### EVANS CHAPEL BAPTIST CHURCH

Sunday Afternoon Worship ... 2:00



## KNOW WHAT SENDS MY PRESSURE UP?

It's thinking about that \$250 seat—the one that was empty last Sunday.

Haven't you figured out what your seat at church is worth? Say the building—at yesterday's prices — cost roughly a hundred thousand. And there are four hundred seats. That's an investment of \$250 per seat.

That's little enough for a seat occupied regularly by a person eager to worship the Lord. (Men have given their lives for the Gospel.)

But to preach Christ to an empty seat—\$250 is a lot of investment in the man who isn't there!

I realize my kind of arithmetic isn't likely to save souls. But it would do a lot for my blood pressure if just a few people in every congregation across the land would start thinking about that empty seat the way I do!

I don't mean the money. Just the fact that spiritual opportunities are here to be claimed . . . and only when wasted do they cost us dearly.

Scriptures Selected By The American Bible Society

Copyright 1974 Keister Advertising Service, Inc., Strasburg, Virginia

Sunday Matthew 13:1-23	Monday Colossians 1:15-20	Tuesday Ephesians 1:3-14	Wednesday Romans 8:18-23	Thursday Genesis 18:1-10	Friday Psalms 86:1-12	Saturday Jeremiah 23:1-6
------------------------------	---------------------------------	--------------------------------	--------------------------------	--------------------------------	-----------------------------	--------------------------------

## This Inspirational Message Sponsored By The Following.....

**Smith's Supermarket**  
We Give Buccaneer Stamps

**Jackson Tire Company**  
Shamrock Products - National Tires

**Plains Electric**  
Electrical Irrigation Installation

**Brown's Department Store**  
Ready-to-wear-Quality Cleaning

**Davis Lumber Company** **Baccus Motor Company**  
Lumber and Building Supplies "Where To Buy Them"

**Sun-Vue Fertilizers**  
Your Smith-Douglas Dealer

**Farmers Union Insurance**  
J.D. Copeland

**Byrd Pharmacy**  
Fred D. Byrd, Pharmacist

**Page's Thriftway**  
Friendly Service Every Day of the Week

**Mize Pharmacy**  
Expert Prescription Service

**Consumers Fuel Association**  
Everything for the Farmers

**Dan's Auto Service**  
Repair Specialists

**Carter Mortuary**  
Phone 652-2211

**Patterson Grain Company**  
Lockney

**Perry Implement  
Company**  
Lockney's John Deere Dealer

**Lockney Lumber  
& Supply**  
We Appreciate Your Business

**Schacht Jewelry & Floral**  
"It's Our Pleasure To Serve You"

**Lockney Co-Op Gin  
& Elevator**  
Serving Yourself thru Ownership

**Lockney Beacon**  
Your Hometown Newspaper



## Dear Abby

### Uncle wants ap for his wedding nephew

By Abigail Van Buren  
© 1974 by The Chicago Tribune

DEAR ABBY: I was recently married, my uncle handed me an envelope. I had a check, but I put it in my pocket without knowing there were over 300 people at the reception accepting congratulations.)

Before we started for our honeymoon, I found a handsome check in the envelope and found a handsome check in the letter of advice on how to stay happily married and his wife had been married for 34 years.

On our honeymoon, my wife and I thought was a very nice letter of thanks, my uncle and aunt.

When we returned home, we found a letter from my uncle ripping me up one side for not having the "good manners" to envelope at the reception, announcing his letter. I was shocked!

Abby, had I opened the envelope at the reception, wouldn't have made such an announcement? Was I in error? If so, I will apologize.  
BEWILDERED

DEAR NEPH: It would have been interesting to have announced your uncle's gift at the imposition on your guests. Your "apology" unnecessary; but your publicity-seeking one.

DEAR ABBY: Ours was an office romance. I was an accounting and I was a secretary to the opposite do attract, because I'm the giggly type, and Mert is quiet and more never met a kinder, more thoughtful man.

After three years of marriage, we're baby in five months. I'm 28 and Mert is 35. I plan to take a six-month leave from baby and to return to work when the baby is old. Mert is going to quit his office job to keep house and care for our child. He has with children. I don't. Mert loves housekeeping. I hate it. Mert finds off boring. I love it. I've always earned much more than he. Do you think this could work out? Or is it crazy?

DEAR REVERSED: Why not? If it's married to the plan. And no, I don't think you are to be envied. Few people have thumb their noses at the rule of thumb.

DEAR ABBY: I read a claim of psychology average person tells about 1,000 lies per year.

DEAR DESIRES: What "psychology" statistics for such a study could be acquired every word uttered in one year by an "average" there's another trap for you—who's average? and then separating the truth from the lies. I doubt that such was every made. Make everything you read.

CONFIDENTIAL TO KEEPING SECRET: You may mean well, but progress toward a better relationship civilization itself. The word—even the word—preserves contact. It is silence (Thomas Mann)

**HOLLAND • GERMANY • SWITZERLAND • BELGIUM**

**More For Your Travel Dollars**

9-Day Budget European Holiday  
From **\$628.00**  
LUBBOCK, TEXAS

**Why Pay More?**

- Take off just 5 working days
- Price includes your jet accommodations, meals, sightseeing, and a professional escort
- First Class and Student rates also available

TRAVEL ARRANGEMENTS  
**Wholesale Tours International, Inc.**  
FOR INFORMATION WRITE  
W.M. Tooley  
Box 700  
Floydada, Texas

Please rush me your free tour literature for the 9-day budget tour of Europe

Name \_\_\_\_\_  
Address \_\_\_\_\_  
City \_\_\_\_\_ State \_\_\_\_\_  
Home Phone \_\_\_\_\_  
Business Phone \_\_\_\_\_





### Baler Converts Local Waste Problem Into A Natural Resource



THE MUNCHER — Waste paper baling machine at Page's Thriftway.

While you're shopping you'll never see it, but the backroom of Page's Thriftway #3 has helped ease the paper shortage and to relieve the pressure on landfill.

"Before we installed our Muncher, a waste paper baling machine," said John Page, "we were forced to haul tons of cardboard boxes to the dump. Or worse yet, pollute the air by burning them."

Now Page Thriftway #3 is baling boxes and selling them to Affiliated Foods Inc. for recycling.

"Not only does baling and recycling preserve the environment and natural resources, but it also helps

keep the cost of what we sell down," John Page added. "The \$35.00 per ton we get from the paper company and the space we save keep the store at a dollar efficiency we couldn't get any other way."

The Muncher, simple and safe enough for all store personnel, compresses cardboard boxes for efficient hauling. The bales are then shredded and the fibers re-woven by the paper company.

"When saving trees and sparing on overflowing landfill become a way to cut store expenses," said John Page "you realize that social conscience and free enterprise can accomplish the same goals."

**FLOYD DATA**

Hazel Sneed continues treatment in Lockney General Hospital, where she was admitted September 14. Mrs. Sneed, a medical patient, is reported to be about the same.

**FLOYD DATA**

Kelli McDowell was able to be brought home Thursday from Lockney General Hospital where she had been a patient since the previous Friday.

**FLOYD DATA**

Mrs. Ted Allen remains in traction in St. Mary's Hospital in Lubbock where she has been since September 11. She is also undergoing therapy treatment. Mrs. Allen's problems stem from a car accident which occurred some two years ago, according to her husband.

**FLOYD DATA**

Mrs. Bill Hopper was taken by Moore-Rose ambu-

lance to Lubbock Methodist Hospital Thursday where she continues medical treatment.

SHOP FLOYD COUNTY AND

### Railway Purchase Plans Abandoned

By George Works  
State Editor

million.  
—Wichita Falls Record News

Fort Worth & Denver Railway President George Defiel said Tuesday plans have been abandoned for purchase of the 104-mile Quana, Acme & Pacific Railway.

Defiel said further study of the proposed purchase had proved it not feasible and negotiations have been terminated.

Tentative agreement to purchase the section between Acme, Tex., and Floydada, Tex., had been announced by the board of Burlington Northern, parent company of Fort Worth & Denver and QA&P on Dec. 4, 1973. The QA&P is a wholly-owned subsidiary of St. Louis-San Francisco Railway Co.

Burlington Northern had sought the railroad for replacement of company tracks between Quana and Floydada, rendered unusable by a tunnel cave-in in August of 1973.

John Spitz, Fort Worth & Denver trainmaster in Wichita Falls, said Burlington Northern will rework a fallen tunnel near Quitaque, Tex., and rebuild tracks which have not been used since the cave-in.

"I assume the work will begin immediately," Spitz said. He estimated it would take until next June or July to complete the renovation.

Until then, Spitz said, the railroad will continue to use the QA&P tracks which were leased shortly after the cave-in.

Spitz said the western line "means a great deal to us as far as business in that area is concerned." He said the railroad generated a lot of business in the area and additionally takes a lot of business into the area.

Presently one train a day runs each way over the QA&P track. Tracks from Quitaque to Estelline are used once a week. Tracks from Quitaque to Plainview have not been used since the accident.

At the time of the 1973 accident, railroad officials estimated the cost of cleaning up the debris and scraping off the top of the more than 100-foot tunnel would run from \$1 to \$2

EDDIE ARNOLD  
CHAIRMAN  
HIGHWAY WEEK

AUSTIN — Country music star Eddy Arnold is the national chairman for the observance of National Highway Week, September 22-28.

Arnold has used his role as national chairman to call attention to the need for improved highway safety.

"Much has been done to improve highways in recent years," he said. "Our modern Interstate Highways are the safest man has built. Increased emphasis has been placed on safety features in the motor vehicle itself. That leaves you and me — the drivers," he said.

Highway Week is sponsored by the American Association of State Highway and Transportation Officials and member state agencies.

In Texas the Texas Highway Department will sponsor a variety of activities during the week, according to State Highway Engineer Luther DeBerry.



FAIR PET SHOW WINNERS — [left to right] Dale Gibson, showmanship; D'Lee Marble, most roly poly best trick; Dwayne Marble, most unusual; Misty Adams, happiest face; and Amy Nance, saddest eyes.

# PIGGLY WIGGLY

OPEN SEVEN DAYS A WEEK

Daily: 8 A.M. - 10 P.M. Sundays: 9 A.M. - 9 P.M.

USDA Good, Superb Valu-Trim, Full Cut

## Round Steak

Lb. **\$1.29**

Piggly Wiggly Chub Pack Fresh

## Ground Beef

Lb. **79¢**

USDA Good, Superb Valu-Trim, Blade Cut

## Chuck Roast

Lb. **79¢**

2-Lb. Pkg. Breakfast

## Sausage

Lb. **49¢**

FARMER JONES

Bologna Lb. **\$1.19**

Neuhoff Sliced Bacon 1 1/2-Lb. Pkg. **\$2.19**

Boneless Ham Lb. **\$2.39**

Piggly Wiggly Individually Wrapped Cheese Slices Lb. **\$1.19**

Kraft's Half Moon Longhorn Cheese 10-oz. Pkg. **98¢**

PIGGLY WIGGLY 12 OZ. Cheese **89¢**

Kraft Sliced American Cheese 12-oz. Pkg. **\$1.09**

FOOD STAMP CUSTOMERS WELCOME

**Chuck Steak**

Crisp Red Cabbage Lb. **25¢**

Nutrition Squash Lb. **25¢**

Crisp Carrots Lb. **25¢**

Red Onions Lb. **25¢**

Tender Green Onions 2 Lb. **35¢**

Turnips Lb. **25¢**

Rib Steak Lb. **\$1.29**

Firm Cabbage Lb. **12¢**

Valencia Orange Lb. **25¢**

Smoked Hot Links Lb. **\$1.09**

Framer Jones, Juicy And Tender Franks 12-oz. Pkg. **89¢**

Farmer Jones Old Fashioned Flavor Sliced Bologna 12-oz. Pkg. **89¢**

Delicious Fresh Cauliflower Lb. **49¢**

Ripe Golden Corn 3 Ears **39¢**

Crispy-Fresh Potatoes from Piggly Wiggly

32 OZ BOTTLE 6 BOTTLE CARTON

## Coca Cola

Lb. **\$1.49**

PLUS DEPOSIT

Red Or Golden Delicious Apples Lb. **3/\$1**

Del Monte Corn Cream Style Or Whole Kernel 4 Cans 17-oz. **\$1**

Beauty Aids Mouthwash Listerine 20-oz. Btl. **99¢**

Grooms & Conditions Hair Naturally 4.5-oz. Tube **\$1.29**

Palmolive, Cologne Scent Rapid Shave 6.25-oz. Can **49¢**

Great Fitting Nude To The Waist Cinnamon, Coffee, Taupe Pantyhose Pair **69¢**

Deodorant Arrid Extra Dry 9-oz. Can **\$1.19**

Fresh Dairy Farmer Jones Fresh Butter Lb. **89¢**

Piggly Wiggly Low-Fat Milk SLIM #1 TRIM Milk 1/2-Gal. Ctn. **87¢**

1/2-Gal. Ctn. **89¢**

8-oz. Ctn. **59¢**

CLOVERLAKE Sour Cream 8-oz. Ctn. **59¢**

CLOVERLAKE Cottage Cheese 12 oz. Ctn. **49¢**

Frozen Foods Pepper Pine, Frozen Shoestring Potatoes 20-oz. Bags **3 \$1**

Kraft Orange Juice 1/2-Gal. Btl. **99¢**

Piggly Wiggly, Frozen Broccoli Spears 8-oz. Pkg. **3/\$1**

Piggly Wiggly, Frozen Whole New Potatoes 20-oz. Pkg. **63¢**

Sparetime, Beef, Chicken Or Turkey Pot Pies 6-oz. Pkg. **6 \$1**

Daytime Pampers Diapers 15-Ct. Box **\$1.39**

Luncheon Meat Hormel's Spam 2-oz. Can **99¢**

Chicken Of The Sea, Chunk Style Tuna 2 Cans 6 1/2-oz. **99¢**

46-oz. Can **39¢**

All Purpose Gold Medal Flour Biscuit Mix Piggly Wiggly, Twin Pack Potato Chips

**ON SALE THIS**

La Mesa DINNER PLATE With Each \$3.00 Purchase **49¢**