

"Serving The Floyd County Trade Area Since 1896"

# The Floyd County Hesperian



Floydada, Floyd County, Texas 79235

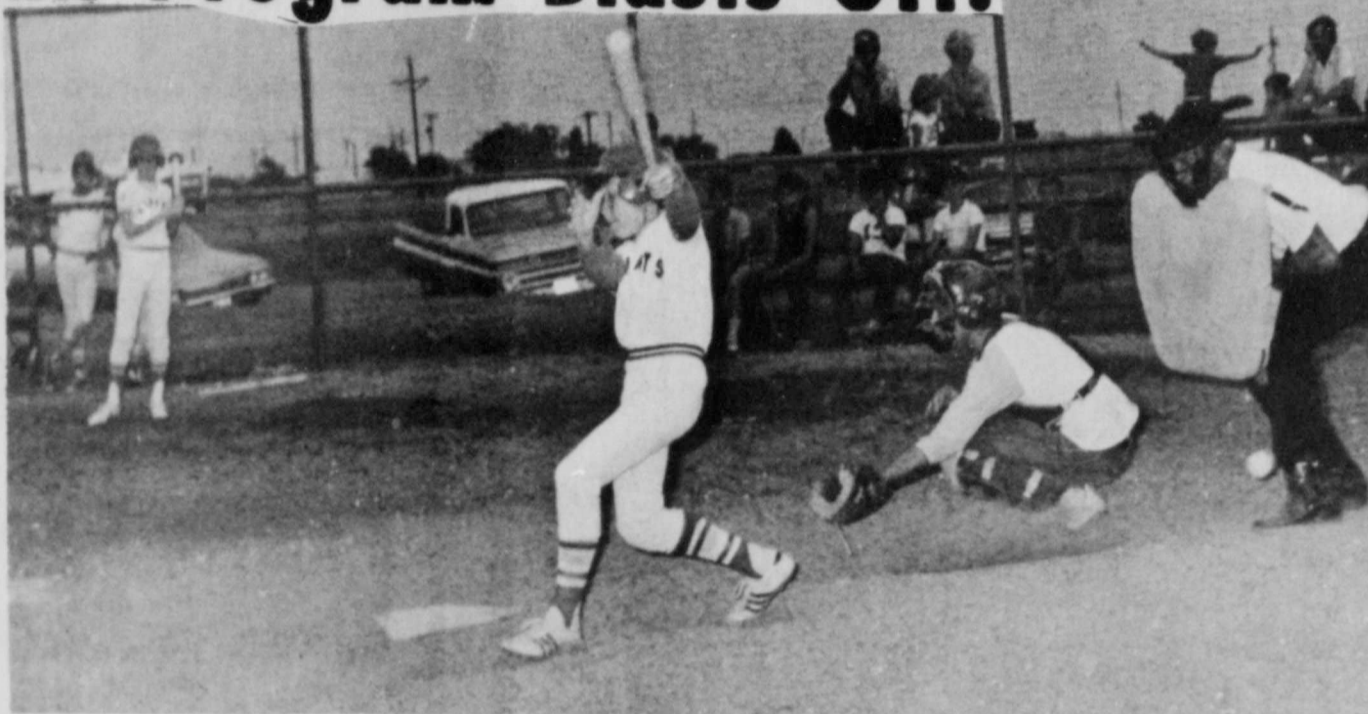
Sunday, June 2, 1974

12 Pages in two sections.

10¢ Copy

Number 43

## Floydada Youth Baseball Program Blasts Off!



A BIG SWING BY BRAD FEUERBACHER

## Country Club Swim

### Pool To Open June 9

Jim Word, President of the Floydada Country Club, anticipates a June 9 opening of the swimming pool. Unforeseen circumstances such as adverse weather conditions may delay the expected opening date a few days.

Word states that concern for the health of the swimmers is the principal reason the opening of the pool has been delayed. It is being completely renovated and a new filter system is to be installed as a safeguard against health hazards. The old filter system was not providing adequate circulation of water.

The delay is deeply regretted by the directors, but it is anticipated that swimming facilities will not be interrupted for the rest of the summer.

...the beginning of youth baseball games have been following: LEAGUE played the Cubs won 9 to 2. The Yankees was the pitcher for Colson. Pirates beat the winning pitcher for Nelson. Kevin were the White LEAGUE were played in the week with the night between the Red Sox with two winning and David Red Sox were Larry and Norman

The Giants took a 6-4 win over the Mets Tuesday. An account of pitchers for this game was not made available. The other Freshman game played was on Thursday night in which the Dodgers were victors over the Giants 12-8. Pete Castillo was pitcher for the Dodgers and Andy Holcomb pitcher for the Giants.

### SOPHOMORE LEAGUE

Floydada No. 1 took out Floydada No. 2, 14 to 1 in their first game of the Sophomore league's season last Tuesday. Winning pitchers for the No. 1 team were Guy Ledbetter and Carmen Soliz. Losing pitcher was Lynn Wood who pitched three innings, and other pitcher for the No. 2 team was Ricky Luna.

### HI-JUNIORS

The first game of the Hi-Junior league was played here with Abernathy Thursday night. Abernathy defeated Floydada 14 to 6 with Floydada player Greg Goen losing pitcher.

## Consumer Debt In Floyd, \$1,350 Per Family

May 25 - To what County residents the large amount of available to them? they owe at the cars, washing, furniture and they have been

drawback, however, making it harder for families to come up with their monthly payments.

According to the latest Federal Reserve Board report, installment debt in the United States now totals \$147 billion, which is \$19.2 billion more than it was a year ago.

In Floyd County, based upon the average earning and expenditure picture locally and upon national credit reports, the installment debt locally is estimated at \$1,350 per family.

That is the average, equivalent to about 16 cents of every dollar of income, after taxes. Some families owe much more than this and others owe little or nothing.

For the entire local population, the installment debt outstanding comes to an estimated \$4,700,000.

This takes into account loans for automobile purchases credit for the purchase of other consumer goods, personal loans and loans for home repair and modernization. Not included are mortgage debt, charge accounts and single payment loans.

With repayments taking \$1 out of every \$6 or so out of the average family's net income, they amount to

approximately \$110 per month per month per Floyd County family.

Nationally, according to the American Bankers Association, the percentage of delinquent loans has been rising. Their latest report shows 2.69 percent of them more than 30 days past due, as compared with 2.53 percent at the same time in 1973.

## Grapes A Good Crop

LUBBOCK, May - Preliminary results indicate that commercial grape production may have considerable promise in the Lubbock plains area.

Field trials by the Texas Agricultural Experiment Station show that yields of several cultivars (cultivated varieties) of grapes topped 13,000 pounds per acre in 1972 and 16,000 in 1973.

Two to five-year-old vines of 238 cultivars of wine, table and juice type grapes are being evaluated in the Abernathy vicinity to gauge yield, quality and adaptability to plains conditions.

Grape quality, so far, has been good, especially for wine potential. Sugar levels have hit as high as 32 per cent, and 21 per cent is considered a minimum for wine making. However, research is not complete enough to recommend wine varieties.

Siebel 9110 (Verdelet), Golden Muscat, 23-4 and Niagara have shown promise as fresh market or juice types.

Dr. W.N. Lipe, TAES researcher at the Texas A&M University Agricultural Research and Extension Cen-

ter at Lubbock, says grape feasibility studies for the plains began in 1968 with the planting of a vineyard east of Abernathy.

Although grapes have been grown in this region for many years in home plantings, recent developments in the industry — the wine industry in particular — have enhanced chances for a commercial grape business for the Texas plains, Lipe pointed out.

"Favorable climatic, soil, biological and economic considerations indicate that the plains and far West Texas are the most likely areas of the state for industry," he said. Also, cool nights and relatively low heat in late August and September favor good quality for wine production. Low rainfall during July and August encourages sugar accumulation in grapes.

Lipe said French Columbar, Meyers 16-20, Refosco, 259077 and Ravat 51 have come up with extremely high sugar levels, with some samples reaching 32 per cent.

The researcher empha-



TIE CUTTING EPISODE netted "Meals On Wheels" over \$50 at the joint Lions and Rotary luncheon last week. Dr. Charles Craig (left) and Dr. Floyd Bradley (right) lost their neckties via the scissors. Aldine Williams wound up with his tie and counting the money.

(Staff Photo)

sized that the plains area is free from cotton root rot and Pierce's disease. These maladies, along with downy mildew, are real troublemakers for grapes in the more humid sections of the state.

Summing up, Lipe said grape production potential appears to be excellent for the Lubbock region, and continued research "promises to be very fruitful."

However, he recommend-

ed caution in choosing varieties for commercial production. Selections should be based on proven performance records — and such records are still unavailable.

## Rock Chat

BY WENDELL TOOLEY

...we get some... and someone... We refer to the... of the Women's... of Commerce... They just get the... E. E. Hinson's... one steals it. Wish... something like

TOMMY FARRIS gave me an interesting news release from the Department of the Treasury about the shortage of pennies. It says,

"I'm calling on every American to get the penny back in circulation and keep it there. Mrs. Mary Brooks, Director of the Mint, said today, I'm calling on the banking industry to welcome the return of pennies during the month of June. I'm urging schools, churches and charities to examine ways and means to involve their members in collecting pennies for deposit.

The price of copper has retreated, closing at \$1.15 per pound on May 20. There will be no aluminum penny. The 62 billion pennies produced during the past 15 years have no numismatic value and because of the huge mintage they will never attain great value.

Nevertheless, speculators and hoarders of pennies have caused what seems to be a shortage of pennies in certain areas of the country.

But there is not shortage of a supply of pennies.

Creating a shortage where it does not exist can adversely affect every public spirited citizen, taxpayer and conservator of the earth's resources. It is inflationary should merchants start to round off sales to the next nickel due to lack of pennies to make change.

Again, I'd like to emphasize. There are plenty of pennies. But they are in the wrong places.

It is estimated that over 30 billion pennies are in circulation — doing the job for which they were intended. Somewhere in this vast country of ours, however, in excess of 30 billion pennies are in hiding. These are the pennies I'm looking for. They are in dresser drawers, shoe boxes, pickle jars; most anyplace you can think of that will get them out of pocket and out of sight. They are unwanted, unused and unappreciated.

For the Mint to be forced to continue increasing its penny production to meet the current extraordinary demand is wasteful. Wasteful of a natural resource — copper — that cannot be replenished by man. And wasteful of the taxpayers' hard earned money. One billion pennies returned to circulation will save the taxpayers \$10,000,000."

BOTH OPTIMISTS and pessimists contribute to society. The optimist invents the airplane and the pessimist invents the parachute.

## State Wide Junior Tour Golf Tournament Set

A state-wide Junior Golf Tournament is scheduled for Wednesday, June 5, at the Floydada Country Club. The event is for both boys and girls between the ages of 12-17, and will get underway at 9 a.m. sharp, according to pro Richard Hale.

There will be a \$2 entry fee and trophies will be awarded in the 18 hole stroke play.

Youngsters will be playing three age groups, the 12 and 13 year olds; 14 and 15, and 16 and 17. The tournament is open to all area and surrounding youngsters.

Last year there were some 2100 boys and girls entered in the state-wide tournament over Texas.



EMPLOYEE OF THE MONTH IS LAURA CAMPBELL (center) employee of Thompson Pharmacy. Plaque-trophy presentation is made by Phyllis Harris of the Women's Division of the Floydada Chamber of Commerce. Jerry Thompson, Laura's employer is also pictured at the presentation. (Staff Photo by Brad)

# SCS OBSERVES 40th Anniversary

"If we do not conserve our natural resources today, what can we expect for tomorrow" states Jon J. La Baume, District Conservationist, speaking for the Floydada office of the Soil Conservation Service (SCS). The statement was issued today as he and co-workers Joe Platt, Layton Koch, Fay Gooch observed the 40th anniversary of the Soil Conservation Service this week.

The SCS was established by house bill 7054 during the 74th Congress, in 1934. The bill said "... it is hereby recognized that wastage of soil and moisture resources on farms, grazing lands and forest lands of the nation, resulting from soil erosion is a menace to the nation's welfare...."

Many other government agencies and conservation groups and individuals in the last several years have had programs and other means of informing people about our state of environment and these were created only a few years ago; the United States Department of Agriculture recognized this fact 40 years ago when the SCS was created.

La Baume notes that the Floyd County Soil and Water Conservation District, assisted by the SCS, was originated here in 1941, some seven years later. The district was created due to the 1939 Texas Soil Conservation Law created by the Texas State Legislature

which places conservation in the hands of individual landowners. The district is a self-governing body responsible for soil and water conservation within Floyd County boundaries. SCS works with the landowner or operator through the district to furnish information about the landusers' land whereby he can make a decision on conservation practices to install, then the SCS assist in designing and installing the practices.

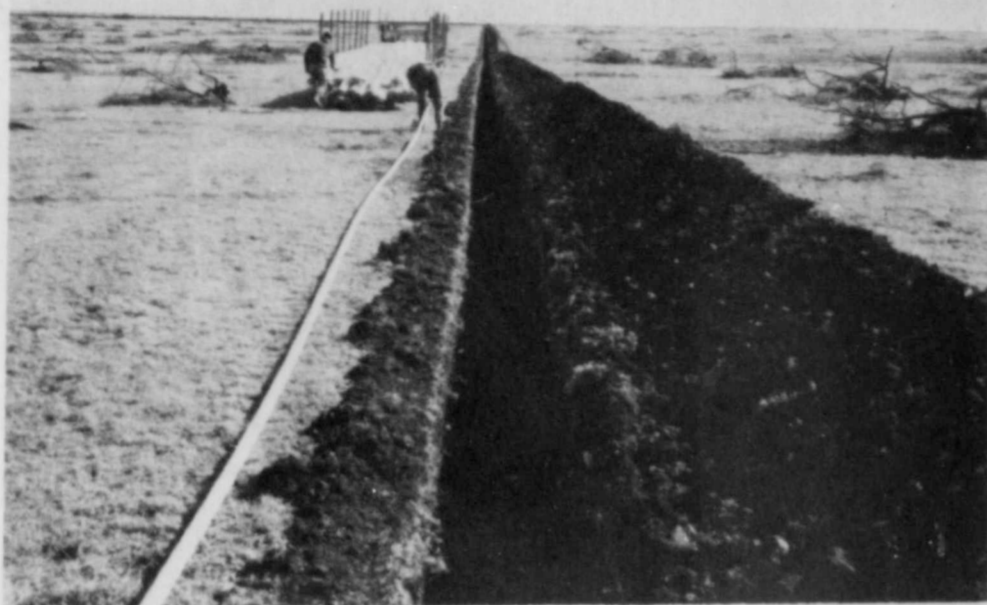
Mr. Cecil Purcell, director for zone #2 has served on the board since its creation and has seen many changes during his tenure of 33



C. L. "MIKE" MOONEY knows the value of good conservation work. Without our natural resources, America would not be strong. [SCS Photo]



POTTER COUNTY - Bob Morris, right, Fain Ranch Manager and Bob Beef Cattle representative for the Panhandle look at one of the new ranch.



R. W. OVERSTREET installed a livestock pipeline and watering facilities to have even grazing throughout his ranch. [SCS Photo]

## Green House Sale

Starts Immediately

Bedding Plants

Reduced In Price

Peppers & Tomatoes 5¢ ea.

GOOD SELECTION OF PLANTS TO CHOOSE FROM

### Windsong Growers

3 MILES EAST OF MT. BLANCO

years. The district at this time has 1238 district cooperators. Cost share programs have done much to improve the land in Floyd County. One hundred sixty-seven Great Plains Conservation Program contracts have been developed by the SCS in Floyd County since the program was established in 1958 to cost share conservation work on all of the operating unit over a three year or longer period of time. Two of the participants in the program in past years have stated time and again what the program has done for them. These two and many others have been able to improve their land and protect the soil from erosion and improve the environment.

R. W. Overstreet, who ranches east of Floydada did several rangeland practices, such as fences to improve grazing distribution, brush

control and management to increase forage for both livestock and wildlife, watering facilities and pipeline to have water available in each pasture and on his cropland installed diversion terraces to prevent water erosion. Overstreet completed his GPCP contract in 1970.

C. L. "Mike" Mooney, who has been a district cooperator since 1948, north of Lockney, also entered into a GPCP contract with the SCS to install practices on his irrigated farm to save irrigation water and prevent soil erosion. He installed diversion terraces, benches, grassed waterways and irrigation pipeline and pasture planting. He completed his contract in 1970 also. Both of these men along with the other 165 spent as much of their own money as cost share money to improve the land and part of the contracts was management items without cost share assistance.

To meet the needs of the American public, La Baume stated that a strong agriculture program and all phases of controlling the environment from pollution is necessary whereby all Americans can enjoy by providing QUALITY in the natural resource base for sustained use, QUALITY in the environment to provide attractive, convenient and

# FARM REVIEW

The SCS thanks all individuals who are doing their part to achieve this goal.

## Farm-facts

A Weekly Report Of Agri-Business News

Compiled From Sources Of The Texas Department of Agriculture  
John C. White, Commissioner

**COTTON, STILL** the Number 1 crop in Texas, brought in a total of \$1,056,000,000 in 1973 from 4,673,000 bales, compared to \$469,000,000 from 4,246,000 bales in 1972. The figures are from the Texas Crop and Livestock Reporting Service which said that total United States production in 1973 was 12,958,000 bales, compared to 13,704,100 bales in 1972. Lint cotton averaged 47.10 cents a pound in 1973, compared to 23 cents in 1972, and cottonseed brought an average of \$94 a ton, compared to \$48.60 in 1972.

**TEXAS' 1973** cotton production was from 5,200,000 acres, which gives Texas a record 431 pounds of lint per acre, but below the 519 pounds national average. Arizona had the highest yield per acre with 1,063 pounds of lint, followed by California with 891 pounds, Mississippi with 645 pounds per acre. Mississippi was second to Texas in total production, with 1,800,000 bales, followed by California with 1,749,000 and Arkansas with 1,041,000 bales. Texas produced about 40 per cent of the nation's total cotton.

**LIVESTOCK OWNERS** are reminded to watch out for screwworms, because they are making an appearance over Texas. Samples of suspected screwworms should be mailed to the laboratory at Mission. Kits in which they may be mailed can be obtained from county agents. There were 176 identified cases of screwworms found in Texas during April, 1973. Cases were found in the following counties: Webb, Duval, Zapata, Starr, LaSalle, Dimmitt, Hidalgo, Live Oak, Kenedy, Jim Wells, Jim Hogg, Zavala, Dewitt, Kinney, San Patricio, Cameron, Goliad, Atascosa, Medina, Bee, Karnes, Victoria, Brooks, Willacy, Guadalupe, Wilson, Frio, Presidio, Real, Gillespie, Pecos, Terrell, Val Verde, Llano, Concho, Coleman, Bastrop, Fayette, Gonzales, Jackson, McMullen, Kleberg, Crockett, Kimble, Kerr, Kendall, and Comal.

**PARITY RATIO** is reported to have dropped seven per cent during the month ending April 15, hitting 83 per cent. Prices paid farmers went down on many commodities, including cattle, eggs, corn, wheat, hogs, soybeans, rice, rye; and prices on cotton went up three cents a pound and on potatoes 73 cents a hundred. Wheat prices dropped almost a dollar, to \$3.98 a bushel, which was 103 per cent of parity, but the price was still declining at last report. Texas' wheat crop, plagued by drought, was estimated to be 69,300,000 bushels, compared to 98,600,000 bushels from the previous crop. Recent rains came to late to save the wheat in North and West Texas.



Five representatives of the High Plains Cotton Shippers' Association took part in the Universal Cotton Standards Conference May 14 and 15 in Memphis, Tenn., and approved "Key Sets" of cotton grades to be used as the basis for trading American cotton throughout the world.

Attending were W.B. Criswell of Idaho, Lubbock-based Plains Cotton Growers, Littlefield, PCG board member; Bill Palmer, retired director of USDA's Lubbock Cotton Office; J.R. Tindall, President of the Lubbock Cotton Producers Association; and Jim Bass of the Plains Cotton Cooperative Association.

Criswell, Bennett and Palmer were cotton producer and ginners interests who were cotton trade spokesmen. They were cotton officials and industry leaders in overseas countries.

Foreign nations with "Signatory Associations" represented at the Conference included France, Germany, India, Italy, Japan, Poland and Spain. Pursuant to the Standards agreement, first effected in 1967, the Standards Association are given the opportunity to approve Key copies of the Universal Cotton Standards.

In addition to producer-ginner, manufacturers and other segments of the cotton industry were also represented.

The "First Reserve Set" of standards and since sealed in the National Bureau of Standards in Memphis, Tenn., for 1974, with opportunity for comments and suggestions from all delegates. A first set and Key Sets for all Signatory Associations are given the opportunity to approve Key copies of the Universal Cotton Standards.

Delegates also discussed proposed standards, to become effective in 1975, recommended (1) elimination of the descriptives Strict Good Middling White, Good Middling White, and Good Middling Tinged, and (2) change descriptive the standards for Good Middling Tinged. The Conference will be published in the Federal Register. Interested parties will be given opportunity before final action is taken.

There is wide agreement that the classification and pricing of cotton by hand and by machine does not always reflect the end-use value of the fiber. Criswell reported discussion among delegates of classing cotton until that time the Standards Conference present marketing system, imperfectly and as fairly as possible.

**HARVEST OF** peaches in South Texas is underway, with the crop expected to be the same as last season when 312,500 bushels were produced. North and East Texas peach growers report damage from last winter's freezes, but reports almost no damage from cold weather. The 1974 peach crop is expected to be around 75,000 bushels, slightly above the 1973 crop.

**PLANTING OF** grain sorghum is complete in Texas at the end of the month according to the Texas Crop and Livestock Reporting Service. Rice seeding is almost complete, but not quite a fourth complete, corn is almost complete, and soybean planting is in some areas of the Upper Gulf Coast. Cotton planting, about a third complete, is expected to be a third complete of last year. The 1974 pecan crop is expected to be "promising."

That's right, you can store stuff on top of an electric water heater, because there's no flue or vent to take up valuable storage space. And, an electric water heater can be installed practically anywhere... all it takes is a water source and an electrical outlet. You can also store stuff right next to an electric water heater, because it's insulated on all sides. It's cool to the touch. So do yourself a favor and find out all the details.

It's so easy to obtain this insurance service at low net cost - a dividend was paid to 1971, '72 and '73 Crop Hail Policyholders. Just call your Farm Bureau Insurance Agent.

**TEXAS FARM BUREAU INSURANCE CO.**

Prevent those visions of loss in your mind during the storm and the real ones in your farm account book after the storm. Insure your growing crops against loss from Hail.

It's so easy to obtain this insurance service at low net cost - a dividend was paid to 1971, '72 and '73 Crop Hail Policyholders. Just call your Farm Bureau Insurance Agent.

**TEXAS FARM BUREAU INSURANCE CO.**

Prevent those visions of loss in your mind during the storm and the real ones in your farm account book after the storm. Insure your growing crops against loss from Hail.

It's so easy to obtain this insurance service at low net cost - a dividend was paid to 1971, '72 and '73 Crop Hail Policyholders. Just call your Farm Bureau Insurance Agent.

**TEXAS FARM BUREAU INSURANCE CO.**

Debit +

\$ %

% -

\$ \$ -

+ Loss

**THESE LOCKNEY FIRMS ARE MAKING THIS FARM NEWS POSSIBLE**

<b>PERRY IMPLEMENT CO.</b> LOCKNEY'S JOHN DEERE DEALER	<b>LOCKNEY OIL &amp; BUTANE</b> N.H. GAMMAGE
<b>PATTERSON GRAIN CO.</b> GRAIN-FERTILIZER	<b>ACCO SEED</b> "SORGHUM FOR THE SEVEN
<b>LOCKNEY COOPERATIVES</b> MEMBER-OWNED	<b>THE LOCKNEY BEACON</b> BOOSTING FLOYD COUNTY AG

### Scholarship Awarded To Miss Bilbrey

AMARILLO - LaDonna Kay Bilbrey, 1974 graduate of Floydada High School, has been awarded a \$500 Residence Hall Scholarship for the 1974-1975 school term at West Texas State University.

Miss Bilbrey is the daughter of Mr. and Mrs. William L. Bilbrey (115 JB Ave..)

"The Residence Hall Scholarships were established in order to attract outstanding students, such as LaDonna Bilbrey to West Texas State University. They are substantial scholarships, and will be of great benefit, not only to the recipients, but to WTSU. This scholarship program is another element in our continuing quest for excellence," said Dr. Lloyd I. Watkins, WTSU president.

The awards consist of funds derived from rentals and services available to WTSU residence halls.

About 450 applications were submitted for the RH Scholarships, and from these 50 \$500 awards were made, according to Jack Edmondson, Director of Public Services and Scholarship Committee chairman.

Selection criteria were academic qualifications, demonstrated student and community leadership and extra-curricular activities and honors received.

Miss Bilbrey, a National Honor Society member, is a member of FTA, FHA, DECA, and editor of the school newspaper. She was named Most Valuable Staff member of the Whirlwind.

#### FLOYD DATA

Mr. and Mrs. Arthur Savage of Amarillo visited here last Friday with Mrs. Jack Henry. Mrs. Salvage is the former Vertha Snodgrass.

#### THE FLOYD COUNTY HESPERIAN

Published each Sunday and Thursday at 111 E. Mo St., Floydada, Texas 79235. Second class postage paid at Floydada, Texas 79235. Wendell Tooley, editor. Subscription rates: Local \$6.50 a year, out of state area: \$7.50.

Floydada has been named to Dean's List for the spring semester at McMurry College in Abilene.

Linda is a 1973 graduate of Floydada High School. She is a freshman at McMurry.

McMurry College, affiliated with the United Methodist Church, is a liberal arts college celebrating its 50th year. McMurry ranks among the recognized colleges of the Southwest.

Thousands of alumni are serving with distinction in significant positions throughout America. In recent years, McMurry has made a particularly enviable record in the sound preparation of young men and women for careers in science, education, and the Christian ministry.

Out of an enrollment of 1,350, 138 students were named to the Dean's List for this past semester. Of that number, 29 had a perfect 4.0 or "A" average.

**ROSANNE ELS ON PRESIDENT'S LIST AT BETHANY**

Rosanne Els was listed among other students at Bethany Nazarene College, Bethany, Oklahoma as being on the President's List for the 1973-74 school year. She was recently initiated into the Cardinal Key Honor Society, exclusively for juniors. Rosanne is the daughter of Pastor and Mrs. Herbert Els, Floydada.

### To Present Musical Floydada Methodist

the Floydada Methodist Church Sunday night. Services begin at 7:30.

The Floydada Methodist Youth will host the Ralls youth to refreshments and fellowship following the service.

Everyone is invited to attend.

GIVE TO CANCER FUND

# Beall's

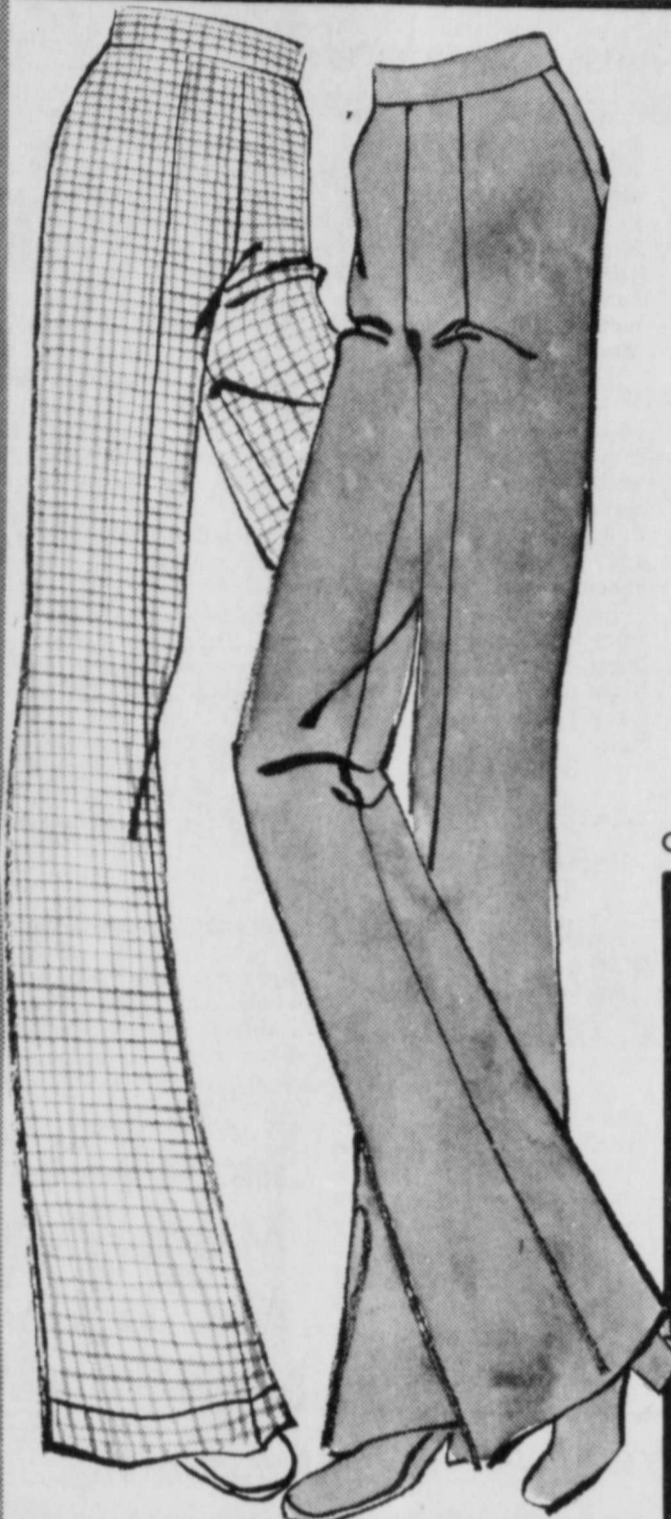
DEPARTMENT STORES

# DOLLAR DAY

Monday, June 3

# SAVINGS

**Shop & Save on Our \$Dollar Day Items Monday**



**Special For Monday Dollar Day**

LARGE SELECTION OF

## LADIES CAPRIS

DOUBLE KNIT  
VALUES TO \$10.00  
SIZES 8 TO 20

**\$6<sup>88</sup>**

ONLY A PR.



**Also Nice Selection Of Ladies Shirt Jacs**

SIZES 8 TO 18

COMPARE AT \$12.00 EA.

**\$6<sup>88</sup>**

ONLY EA. MONDAY

**\$Dollar Day Special**

WASHABLE

## DACRON KNIT

60" WIDE  
VALUES TO \$3.99

**\$1<sup>99</sup>**

NOW A YD. MONDAY ONLY

**CLEARANCE**

ON TWO COUNTERS OF

## Spring Piece Goods

\$3.98 AND \$4.98 POLYESTER NOW **\$2.99**

SEERSUCKER-TRIGGER-KETTLE CLOTH  
\$2.29 VALUES NOW **\$1.66**

**\$Dollar Day Special**

SHORT SLEEVE

## MENS SHIRTS

IDEAL FOR FATHER'S DAY  
VALUES TO \$9.00  
SIZES 14 1/2 - 16 1/2

**\$5<sup>88</sup>**

NOW

**ONE GROUP**

## MENS KNIT PANTS

IDEAL FOR FATHER'S DAY  
VALUES TO \$18.00

**\$10<sup>88</sup>**

NOW NOT ALL SIZES

**\$Dollar Day Special**

## Muslin Floral Sheets

81 x 104 Double Fitted Reg.	\$4.49	.....	\$3.97
72 x 104 Twin Fitted Reg.	\$3.49	.....	\$2.97
Cases 42 x 36 Reg. 2 for	\$2.99	.....	\$2 for \$2.47
King Sizes Reg.	\$9.49	now	..... \$7.97
Queen Sizes Reg.	\$7.49	now	..... \$5.97
King Size Cases Reg. 2 for	\$3.79	.....	2 for \$2.97

SAVE 52¢ ON EACH OF THESE ITEMS

**\$Dollar Day Special**

ONE ONE GROUP OF

## Ready Made Drapes

BROKEN LOT NUMBERS

\$6.95 AND \$7.95 VALUES NOW **\$4<sup>88</sup>** A PR.

\$8.95 TO \$10.50 VALUES NOW **\$6<sup>88</sup>** A PR.

**\$Dollar Day Special**

ONE GROUP OF LADIES

## CANVAS SHOES

ALSO CHILDRENS CANVAS SHOES  
COMPARE AT \$6.00 A PR.

**\$3<sup>99</sup>**

\$DOLLAR DAY ONLY A PR.

**\$Dollar Day Special**

ONE GROUP OF

## LADIES SANDALS

REG. \$9.00 VALUES NOW **\$6<sup>88</sup>**

REG. \$8.00 VALUES NOW **\$5<sup>88</sup>**

REG. \$6.00 VALUES NOW **\$4<sup>88</sup>**



# 10 BIG BONUS DAYS

Save By 10th - Earn From The 1st of The Month

Pay highest rates allowed Federal Regulations on -

- BOOK ACCOUNTS
- DAY ACCOUNTS
- MONTH CERTIFICATES
- MONTH CERTIFICATES
- YEAR CERTIFICATES

**TULIA SAVINGS**

**and LOAN ASSOCIATION**

TULIA, TEXAS 995-3521

# Society

## Heritage Trip To State Capitol Highlight Of Cadette Year

Cadette Girl Scout Troop 283 will have eight girls and their adult leader, Mrs. Dewie Parson, on the two chartered buses leaving Lubbock Monday morning; June 3, at 7 a.m. Floydada girls, with troop members from Levelland,

Lorenzo, Lubbock, Morton, O'Donnell, Muleshoe, Ropesville, Whiteface, Tahoka, Ralls, and Plainview will stop at Brownwood Park for lunch on Monday; will tour Fredricksburg's historical sites that afternoon, visit Johnson City, including the Johnson boyhood home and part of the Lyndon Johnson ranch. The group will arrive at Rocky River Ranch at Wimberly about 6:30 p.m. where they will headquarter for the trip.

## Shower Fetes Miss Crawford

A lingerie shower honoring Miss Jacque Crawford, bride-elect of Jody James, was given Wednesday night in the Sammy Hale home. Mrs. Andy Hale greeted guests upon their arrival. A special guest was the mother of the bride-elect, Mrs. Roy Crawford.

The serving table was laid with a white and yellow checked cloth with a centerpiece of yellow and white roses. Guests were served finger sandwiches, thumbprint cookies, mints and punch from pewter appointments.

Hostesses for the shower were Mmes. George Quisenberry, Mike Smith, Kenneth Bloys, Dane Gollightly, Miss Katie Taylor and Mrs. Andy Hale.

The Heritage trip for Cadette Girl Scouts is offered by Caprock Council every other year, and is not only an exciting trip, but will help all girls toward the completion of My Government proficiency badge and the Citizenship Challenge.

Tuesday, June 4, the Cadettes and their leaders will tour Austin; the Capitol, the House building, the Governor's Mansion and grounds, the University of Texas campus and the Lyndon B. Johnson Library. They will have lunch at Wyatt's Cafeteria, then travel to San Marcos to visit the Submarine Theater before returning to Wim-

berly that evening. Tuesday night, the six patrols of girls will present campfire skits and the Scouts Own at the ranch after dark.

Enroute from the Austin area to Lubbock on Wednesday, the tour will include interesting sights in Llano and Brownwood. The group will arrive at the Caprock Council office in Lubbock at approximately 6 p.m. Wednesday.

The seven sponsors for the Heritage trip are: Mrs. Ted Forsythe and Mrs. Glenn Markham, Lubbock, co-leaders; Mrs. Dewie Parson, Floydada; Mrs. J.L. McHam, Whiteface; Mrs. Lester Winters, Mrs. Ralph Ragsdale, Lubbock; Alarah Russell, Council staff, Lubbock.

Cadette Girl Scouts from Floydada Troop 283 are: Kelli Parson, Renee Grimes, Ann Campbell, Caren Campbell, Tammie Chesshir, Donna Chesshir, Suzanne Dyess, and Angie Turner.



SET FOR AUSTIN STATE CAPITOL TOUR are Cadette Girl Scouts Renee Grimes, Angie Turner and Ann Campbell. Back row, left to right, Kelli Parson, and Suzanne Dyess. Trip leader is Mrs. Dewie Parson, assistant troop leader.



DRESSED IN GIRL SCOUT TRAVEL Heritage Trip to Austin are Donna Campbell, Leader, Mrs. Dewie Parson, checks each girl will take on the trip.



YARD OF THE WEEK — Mrs. E. E. Hinson is pictured in her yard which was given the title by the Women's Division of Floydada Chamber of Commerce. The event is a new project just started by the chamber women. (Staff Photo)

## Yard Of The Week

The Women's Division of the Floydada Chamber of Commerce, in order to encourage improvement and help make Floydada a clean, beautiful and more attractive community, has announced "The Yard Of The Week" project. A selection

committee will select a yard of the week during the summer months and a sign will be placed on the chosen yard to denote this selection. This weeks selection, the first chosen, is the yard of Mrs. E.E. Hinson's at 230 West Marivena.

Neatness, freshness, and simplicity are the hallmarks of this yard. Lush green grass and shrubbery surround the home of Mrs. Hinson. The house was built in 1928. It has been remodeled twice.

This family has been its only occupants, having raised their family here.

Mrs. Hinson now cares for her own yard and it is most attractive in winter as well as summer. Enjoy a treat and drive by and look at this beautiful yard.

What yard will be next selected?

## LAKEVIEW NEWS (continued from Thursday)

Thursday, Mr. and Mrs. Buren Forman of Anton visited Mr. and Mrs. Henry Brewer. The Formans were on their way home from Wichita Falls.

Saturday dinner guests in the Henry Brewer home were Mr. and Mrs. Ken Robison and Kris of Lubbock and Mr. and Mrs. Dean Watson and Deanna. The group was joined Saturday night for supper by Mr. and Mrs. H. Watson and all enjoyed home made ice cream.

Monty Lynn Brewer, son

## Sandhill Club Meets With Mrs. Jackson

Sandhill Community Club met in the Fred Jackson

home Thursday during which time members made Friendship Books.

Mrs. Jackson served refreshments to Mmes. P. D. Helms, Walter Hanna, Ruth Trapp, T. C. Hollums, R. L. Bullock, C. B. Carmack, B. A. Robertson, W. G. Kinard, R. B. Hatley, J. W. Becker and Gene Bloys.

## Dance Recital Monday Night

Several Lockney area girls will participate in the Pat Owens School of Dance recital Monday night. Friends and relatives are invited to attend the event to begin at 8 p.m. in the Plainview High School auditorium.

Ballet, tap, gymnastic and jazz dances will be demonstrated by the dance students, including from Lockney, D'Lyn and Karen Mathis, Dar Lee McPherson, Amy Shaw, Jerri Ann McCormick, Sherese Cannon, Shawnda Brock, Laura and Ginny Watson, Latonia Belt and Libby Williams.



A 7-DAY CRUISE to San Juan, Nassau on board the Tss Mardi Cruise Lines was part of a vacation for Mr. and Mrs. W.J. Williams.

## JANE WILLSON ON HONOR ROLL

MAY 25 - Sara Jane Willson of Floydada, who is a student at Angelo State University in San Angelo, is listed on the Dean's Honor Roll for the spring semester at the University.

Ms. Willson, daughter of Mr. and Mrs. J.M. Willson, Jr. of Floydada, is a 1970 graduate of Floydada High School. She is a 1974 spring graduate with a bachelor of arts degree at ASU. She is listed on the 3.00 to 3.49 honor roll.

## SERIE DE SERVICIOS

MAIN STREET CHURCH OF CHRIST LOCKNEY, TEXAS

### JUNIO 6-8

LA BUSQUEDA QUE HA HECHO DIOS. (ISA. 59:1; JER. 11:3)

Se Contestara Toda Pregunta De La Biblia

JUEVES — 8:00 P.M. "BUSCANDO UN JUSTO"

Predicador del Evangelio Armando Barres El Salvador, Centro America

VIERNES — 8:00 P.M. "BUSCANDO PECADORES"

Predicador del Evangelio Elnoy Guerra Monterrey, Mexico

DIA SABADO — 8:00 P.M. "LOS ESCOGIDOS DE DIOS"

Predicador del Evangelio Arnulfo Santillan Monterrey, Mexico



CONGRATULATIONS TO JOHN T. AND RUTH CARTHEL 50 WONDERFUL YEARS TOGETHER

652-3731

Wilson Photography LOCKNEY

WHEN IT COMES TO DIAMONDS, WE'RE THE PEOPLE YOU SHOULD BE TALKING TO

- Any Size - No Size to Large -

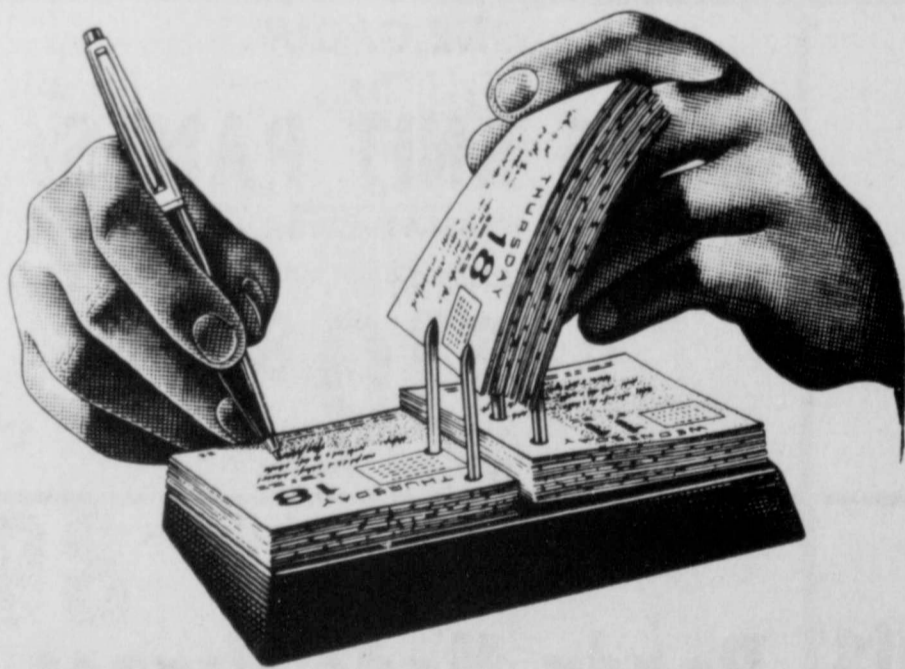
We have solid gold Wedding bands too!

**H.E. HARPER'S JEWELRY**

DIAMOND MERCHANTS OF THE CAPROCK

983-2586 126 W. CALIF. FLOYDADA

## Make Every Payday..... Your Savings Day!



Circle it on your calendar. Then stash away a sum you can reasonably spare. EVERY payday. Savings add up fast so make payday the most important day in your plans for the future.

REMEMBER - Savings made by the 10th of each month earn from the 1st.

Floydada Branch Plainview SAVINGS & LOAN Association

217 W. CALIFORNIA PHONE 983-3725

Serving This Area For Over 37 Years

# Seniors Honored

School class members who were honored at the seniors' luncheon, with the parents of the seniors, were present at the luncheon. The group enjoyed a lunch of fried chicken and trimmings. Parents assisting with the outing were Mr. and Mrs. Cecil Boedeker, Mr. and Mrs. Barry Barker, Mrs. Lynn Ray Smith, Mr. and Mrs. Bill Wisdom, Mrs. Max Smith, Mr. and Mrs. Keith Stansell.

First United Methodist Church women hosted a breakfast Friday morning at 8 for the seniors, their sponsors, and the school administration. General theme was "The Sky's the Limit", and quotations from Jonathan Livingston Seagull were used to illustrate the theme.

## Know Safety Rules Before Plunging In

With spring fever just around the corner, the Texas Safety Association urges that eager swimmers review basic safety rules before taking the first plunge of the season. No matter how elated the adventurous swimmer is at the prospect of mixing sunshine and water after a long winter, it is still foolish to swing from trees into water, dive from cliffs or jagged rocks or swim in swift-moving waters or near waterfalls. Swim only in protected areas, obey safety rules enforced by lifeguards, and stay out of the water altogether during thunderstorms or when tired.

## Providence

By Gayle Jackson

all of Tulsa. Mr. and Mrs. Fritz Schacht and Margaret Schacht of Lockney hosted a birthday party Sunday for David Brittain of Amarillo, which was attended by Mr. and Mrs. Arnold Dietrich, Mr. and Mrs. Virgil Brasher, Mike Dietrich, Mrs. Tom Word of Floydada, Mrs. Brittain of Amarillo, Mrs. Calvin Brittain and sons of Amarillo, Miss Anna Schacht and Herman Schacht.

Ted Boedeker recently returned after visiting at San Antonio and Pearsall with friends. He accompanied Robert Wilson on the trip. Shannon Boedeker has been visiting this week with her grandparents, Mr. and Mrs. Ted Boedeker. Shannon's parents Mr. and Mrs. Larry Boedeker will be moving this weekend from Garland to Plainview where Larry is employed with American Grain.

Mr. and Mrs. Ronnie Thornton recently spent a weekend at Ruidoso, N.M. while their children Ronee and Ritchie visited at Pantex with their aunt Mr. and Mrs. Ricky Kellison.

The Thornton family was at Tucumcari, N.M., this past weekend participating in a quarter horse show. Mr. and Mrs. O.D. Tarpley recently went to open their cabin between Capitan and Ruidoso, N.M. They were accompanied by Rhonda Lyles.

Miss Erma Walker of Hereford is spending this week visiting with her sister Mr. and Mrs. O.D. Tarpley. Terry Boedeker is leaving this weekend to visit in Escondido, California, with his sister Mr. and Mrs. Milton Mickey.

Mr. and Mrs. John David Turner, Loretta and Amy visited Sunday at Rock Creek with his parents Mr. and Mrs. John Turner, and with his brother, Mr. and Mrs. Donald Ray Turner of Odessa.

Mr. and Mrs. Sam Jones and the Turners visited Saturday in Lockney with Mr. and Mrs. Arthur Nigh to see Eric Bayley who is stationed at Fort Hood, Texas. Also present was Sharon Reves of Lockney.

## Obituaries

### Mrs. Adams

Services for Mrs. Tennie Cupp Adams, 87, mother of Mrs. Gordon Mayfield of Floydada, were pending at this writing at Spade, but were expected to be Saturday, June 1. Mrs. Adams was found dead at her home five miles east of Spade Wednesday morning. Mrs. Adams, who lived alone, was found about 9:30 a.m. Her death was ruled of an apparent heart attack suffered some time Tuesday. Mrs. Adams had visited

Sunday, June 2, 1974, Page 5

numerous times in Floydada with her daughter and was well known here by the Mayfields' friends.

Survivors include five daughters, Mrs. Mayfield of Floydada, Mrs. LaJean Adams of Toyah and Mrs. Lorena Davenport, Mrs. Hellon Green and Mrs. Lona Bell Sutton, all of Antioch; 13 grandchildren and 16 great grandchildren.

Services for Mrs. Tennie Cupp Adams, 87, mother of Mrs. Gordon Mayfield of Floydada, were pending at this writing at Spade, but were expected to be Saturday, June 1. Mrs. Adams was found dead at her home five miles east of Spade Wednesday morning. Mrs. Adams, who lived alone, was found about 9:30 a.m. Her death was ruled of an apparent heart attack suffered some time Tuesday. Mrs. Adams had visited

Survivors include his wife, four sisters and three brothers.

### Homer Laird

Mrs. R. A. Dyson received word Thursday of the death of her brother, Homer Laird, who was 61 years old May 10. Laird had been ill for some time with a malignancy and suffered a stroke May

Floyd County Hesperian

20. He was hospitalized in Austin at the time of his death.

Laird and his wife visited in Floydada in May of 1973. This was the first time Mrs. Dyson had seen her brother in 54 years. He was an engineer and employed by the State of Texas for many years.

Survivors include his wife, four brothers and the sister.

### Charles Wilson

Charles M. Wilson, 85 year old former Floydada resident and photographer, died May 24 in Rialto, California.

Wilson was a native of Dallas County and moved to Floyd County when he was a year old with his parents, Mr. and Mrs. John Wilson, who settled west of Lockney in the Sand Hill Community. He opened his photographic studio in Floydada in 1911.

Wilson and Cordelia Finger were married in 1918. The couple moved to Huntington Park, Calif., where they lived until he retired. He was a member of the United Methodist Church and of the Professional Photographers in Southern California.

Survivors include his wife, Cordelia, who resides at 7503, Avenue 44, Rialto, Calif.

### Mrs. Hammonds

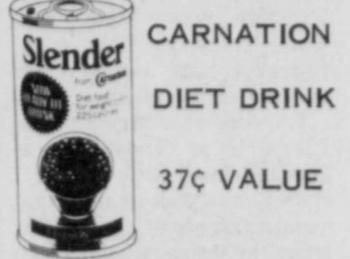
Services for Mrs. Maggie Alice Hammonds, 90 year old resident of Thalia, and mother of Gus Hammonds of Floydada, were conducted Friday in the Thalia Baptist Church. Mrs. Hammonds died Wednesday in Foard County Hospital in Crowell.

A resident of Thalia most of her life, Mrs. Hammonds was the wife of the late Jim Hammonds. She was a member of the Baptist Church in Thalia.

Survivors include two sons, Fred of Thalia and Gus of Floydada; and two brothers. Burial was held in Thalia

# Buddy's Food

BUDDY WIDENER - OWNER  
FORREST SHANNON - MANAGER  
STORE HOURS  
8 A.M. TO 8 P.M. MONDAY THRU SATURDAY  
SUNDAY - 9 A.M. TO 7 P.M.  
THESE PRICES GOOD JUNE 2 THROUGH JUNE 8, 1974  
IN FLOYDADA AND PLAINVIEW  
220 S. 2ND 2800 W. 10TH  
WE RESERVE THE RIGHT TO LIMIT QUANTITIES



CARNATION DIET DRINK  
37¢ VALUE  
**Slender 8 FOR \$1**

**COKE 3 FOR 89¢**  
OR  
**DR PEPPER 3 FOR 89¢**

CRISP - N - LITE - TWIN PACK - 69¢ VALUE  
**POTATO CHIPS 2 FOR 89¢**



## PLAY LUCKY STARS

Mrs. Raymond Evans-600 S&H Stamps  
Cody Christian-600 S&H Stamps  
Mrs. W. S. Simmons-600 S&H Stamps  
Belinda Covington-Purchase Free  
Mrs. D. L. Bearden-20 Gals. Gas  
Mrs. Roger Poage-20 Gals. Gas  
Mrs. Roy L. Fawver-Purchase Free  
Mrs. Alva Sparks-20 Gals. Gas  
Rhonda Henderson-1200 S&H Stamps  
Ida Bell Womack-1200 S&H Stamps  
Mrs. J. W. Pelsworth-1200 S&H Stamps  
Mrs. A. L. Wylie-600 S&H Stamps  
Shirley Beedy-Purchase Free  
Robert Luna - 600 S&H Stamps  
Viola Rowell-600 S&H Stamps  
Kim Marquis-600 S&H Stamps  
Lorrie Farris-600 S&H Stamps  
Nancy Welborn-1200 S&H Stamps  
Mrs. Margaret Spring-20 Gals. Gas  
Randy Fleming-1200 S&H Stamps

CLOVERLAKE - ALL FLAVORS  
1/2 GALLON - 99¢ VALUE

**SLIM FREEZ 69¢**

PETER PAN - 28 OZ. JAR  
PLAIN OR CRUNCHY  
**Peanut Butter \$1.19**

WHITE SWAN-WHOLE-31¢ VALUE  
**TOMATOES 5 FOR \$1**

BETTY CROCKER-ALL VARIETIES  
**HAMBURGER HELPERS 2 FOR 89¢**

BORDEN'S-1/2 GALLON  
**Buttermilk 67¢**

FRISKIES-BOX-47¢ VALUE  
**CAT FOOD 5 FOR \$1**

BOUNTY-JUMBO ROLLS  
**Paper Towels 2 FOR 89¢**

TEXAS SWEET RIPE  
**Cantaloupe 4 FOR \$1**

ARMOUR'S 1 1/2 LB. CAN  
**BEEF STEW 69¢**

AUTOMATIC DISHWASHING DETERGENT  
**ELECTRA SOL \$1.29 VALUE 79¢**

CALIF. SUNKIST VALENCIA ORANGES  
6 lbs. \$1.00

AIR FRESHNER 63¢ VALUE  
**GLADE 2 FOR 89¢**

BIRDSEYE ORANGE DRINK-12 OZ. CAN  
**AWAKE 3 for 89¢**

SAVORY BRAND-MILD AND SWEET  
**BACON 69¢ LB.**

SAVE VALUABLE COUPON SAVE  
GIANT SIZE IVORY LIQUID 2 FOR 89¢ ONLY WITH COUPON  
GOOD ONLY AT BUDDY'S  
WITHOUT COUPON 2 for \$1.29  
EXPIRES 6-28-74

HORMEL'S "LITTLE SIZZLERS" 12 OZ.  
**Sausage 59¢**

KRAFT SINGLES AMERICAN  
**CHEESE 89¢**

SAVE VALUABLE COUPON SAVE  
**TIDE With Coupon 79¢**  
GIANT SIZE  
No. OC50-Good only at Buddy's  
Without Coupon 99¢  
OFFER EXPIRES 6-8-74  
LIMIT 1 COUPON PER PURCHASE

BONELESS-SAVORY FULLY COOKED  
**HAMS \$1.19 LB.**

BONELESS FRESH HEAT 'N' EAT  
**Bar-B-Que \$1.79 LB.**

JEWEL SHORTENING  
WITH THIS COUPON AND PURCHASE OF 4 LIGHTBULBS  
**59¢**  
EXPIRES 6-8-74

U.S.D.A. GRADE A WHOLE  
**FRYERS 39¢ LB.**

# Featuring Lockney Ag Co-Op Students



JOHNNY WISDOM, who farms with his father on the Lockney High School Ag Co-op program, picks up a load of chemicals. (Staff Photo by Jim Huggins)

# Lockney Teens To Work At Six Flags, Ruidoso

Two vacation places that are favorites for Lockneyites — Ruidoso, N.M. and Six Flags Over Texas at Arlington — will employ Lockney teenagers this summer.

Waitresses at different restaurants at Ruidoso will be Donna Davis, Diane Fry, Lisa Cooper, Kay McCarter and Tonya Beedy. The five will leave for Ruidoso Tuesday where they will share housing. This is a repeat of last summer for several of the girls.

Leaving Saturday for Six Flags Over Texas were Cynthia Stoerner and Tony Bybee, who plan to share an apartment about two miles from the amusement park.

Cynthia wrote for information about securing positions, then she and Tony were invited to personal interviews during the Easter vacation. Neither girl was sure just what her exact job will be, expecting to receive assignments Monday or Tuesday. Uniforms will be furnished by the amusement park.

So, vacationing Lockneyites, when you are treated especially courteously at Ruidoso or Six Flags — look again, the girl helping you might be from Lockney.

### Lockney Local

Visitors in the Jake Smith home Sunday were their children and grandchildren, John and Louise from Carson City, Nevada; Spencer and Gay Bayley and Charles and Mildred from Plainview; Randy, Kathy, Vanessa and Heather from Merced, California; Wilson, Pat, Julie and Tony DeCuffa from Bovina; Dan, Janie, Lori, Jeff and Jennie Bayley of Lockney.

### FLOYD DATA

John Walker was transferred by Moore-Rose ambulance to Lubbock Methodist Hospital Thursday morning where he was admitted for additional treatment. Walker is also undergoing tests, family members said.

# Methodist NW Texas Conference Scheduled Next Week In Amarillo

The Northwest Texas Annual Conference of the United Methodist Church will take action on equalizing the number of lay and clergy delegates when it gathers at Polk Street United Methodist Church in Amarillo, June 4-6.

The conference will develop its own plan for increasing the number of lay members in keeping with the decision of the denomination's 1972 General Conference that called for an equal number of lay-clergy delegates in the 76 annual conferences of the nation.

Theme for the 65th session of the Northwest Texas Conference will be "Never Failing." Dr. Alsie H. Carleton, bishop of the Northwest Texas and New Mexico Annual Conference, will preside.

The opening session of the conference is scheduled for next Tuesday at 10 a.m. with the Service of Holy Communion and the Memorial Service. Dr. I. Kenneth

Shamblin is slated to preach Tuesday evening, Wednesday morning and evening and Thursday morning. Dr. Shamblin is minister of St. Luke's United Methodist Church in Houston. Dr. Robert W. Thornburg of Nashville, Tenn., will speak for the Board of Ministry

Report on Ministerial Education Tuesday afternoon, to be followed by the report of the district superintendents. Wednesday's morning business session will include Council on Ministries reports and advance specials and ordaining of elders and deacons.

The Board of Ministry reports will be presented Wednesday afternoon. A Health and Welfare Agencies dinner, an official session of the conference, is slated Wednesday evening at the Amarillo Senior Citizens' Center at 1300 South Polk Street.

## FLOYDADA

# SPORTING EVENTS



## Introducing the players...

### High Juniors Roster

Paul Westbrook, coach. Players: Mickey Minnitt, Greg Goen, Leslie Soto, Randy Duke, Billy Marricle, Randy Fry, Rick Reddy, Steve Westbrook, Ricky Carthel, Leslie Sinor, Gordon Bond, Alvin Stofel, Charlie DeLeon.

You may want to clip and save this listing of all the players in the Floydada Youth baseball program. . . . and the schedule of play. Scorekeepers are reminded to leave score books in concession stand for reporter.



THE GIANT THIRD BASEMAN prepares to take a throw as the runner in background rounds second base. (Staff photo by Brad).

### RONALD GASTON GRADUATES FROM NORTH TEXAS

DENTON - Some 1,276 students, representing the largest class in the university's history, were awarded degrees Tuesday (May 14) in the 84th annual spring commencement at North Texas State University.

Among the 828 participants in the ceremonies were 706 from the spring class and 122 December graduates who returned to participate in formal ceremonies.

Among the record spring graduating class was Ronald Len Gaston, son of Mrs. Oleta L. Gaston, 1007 Menefee, Floydada. He received the bachelor of arts degree in journalism.

### STERLEY COMMUNITY RECREATIONAL CENTER

## NOW OPEN

For Parties, Picnics, Family Reunions, Etc.

SEE JOE REEVES FOR RENTAL 652-2176 Lockney

Save Money — Have Fun — Shop

## DOWNTOWN PLAINVIEW TEXAS

# DOLLAR DAYS

## Monday, June 3

### Super Savings For The Family

- |                     |                         |                      |
|---------------------|-------------------------|----------------------|
| C. R. Anthony       | Ragland's Western Wear  | J. C. Penny Co.      |
| Home Beautiful      | Payne's Gifts & Jewelry | Levine's Dept. Store |
| Yardstick           | Gales Prescription Shop | Sears                |
| Allen Sewing Center | Shook Tire Company      | Bentley's            |
| Army & Navy Store   | Western Auto Store      | Corcorran's          |
| Popular Store       | Vanderpoel Jewelry Co.  | Dixie Shop           |
| Blair's Drug        | Ramsowers               | Dargan's Dept. Store |
| Doc Cross Carpet    | Montgomery Ward         | Kristis              |
| Goodyear            | Oswalds Office Supply   | Firestone            |
| Zales Jewelry       | West Pharmacy           | Haydon Shoes         |
| Marse & Son         | Furr's Super Market     | Travel Time          |
|                     | Travelodge              |                      |

### 1974 T-Shirt League Schedule

Tuesday, May 28 - Cubs Vs. Yankees.  
 Thursday, May 30 - Pirates Vs. White Sox.  
 Monday, June 3 - Pirates Vs. Yankees.  
 Tuesday, June 4 - Cubs Vs. White Sox.  
 Thursday, June 6 - Pirates Vs. Cubs.  
 Friday, June 7 - Yankees Vs. White Sox.  
 Monday, June 10 - White Sox Vs. Pirates.  
 Tuesday, June 11 - Yankees Vs. Cubs.  
 Thursday, June 13 - Yankees Vs. Pirates.  
 Friday, June 14 - White Sox Vs. Cubs.  
 Monday, June 17 - Cubs Vs. Pirates.  
 Tuesday, June 18 - White Sox Vs. Yankees.  
 Thursday, June 20 - Pirates Vs. White Sox.  
 Friday, June 21 - Cubs Vs. Yankees.  
 Monday, June 24 - Yankees Vs. Pirates.  
 Tuesday, June 25 - White Sox Vs. Cubs.  
 Thursday, June 27 - Pirates Vs. Cubs.  
 Friday, June 28 - Yankees Vs. White Sox.

Lockney; Abernathy at Idalou; Roosevelt at New Deal.

### Tr-County-Sophomore Age 13-14 Tim 8 p.m. Tues. & Fri.

May 28 - New Deal at Roosevelt; Lockney #1 at Abernathy #1; Abernathy #2 at Lockney #2; Floydada #2 at Floydada #1; Idalou Bye.  
 May 31 - Floydada #1 at Abernathy #1; Idalou at Floydada #2; Abernathy #2 at Roosevelt; New Deal at Lockney #1; Lockney #2 Bye.  
 June 4 - Lockney #2 at Idalou; Floydada #2 at Roosevelt; Abernathy #1 at New Deal; Lockney #1 at Abernathy #2; Floydada #1 Bye.  
 June 7 - Abernathy #1 at Lockney #2; Abernathy #2 at Floydada #2; Floydada #1 at Roosevelt; Idalou at New Deal; Lockney #1 Bye.  
 June 11 - Lockney #2 at Roosevelt; Floydada #2 at Lockney #1; Idalou at Abernathy #1 at Abernathy #2; New Deal Bye.  
 June 14 - Roosevelt at Abernathy #1; Lockney #1 at Idalou; Floydada #2 at Lockney #2; New Deal at Floydada #1; Abernathy #2 Bye.  
 June 18 - Abernathy #2 at Idalou; Floydada #1 at Lockney #2; Abernathy #1 at Floydada #2; Lockney #1 at New Deal; Roosevelt Bye.  
 June 21 - Lockney #2 at New Deal; Idalou at Abernathy #1; Abernathy #2 at Lockney #1; Floydada #2 Bye.  
 June 25 - Floydada #1 at Abernathy #2; Idalou at Roosevelt; Lockney #1 at Floydada #2; New Deal at Lockney #2; Abernathy #1 Bye.  
 June 28 - New Deal at Idalou; Roosevelt at Lockney #2; Floydada #2 at Abernathy #1; Lockney #1 at Floydada #1; Abernathy #2 Bye.  
 July 2 - Abernathy #1 at Lockney #1; Floydada #1 at Floydada #2; Abernathy #2 at New Deal; Lockney #2 at Idalou; Roosevelt Bye.  
 July 5 - Floydada #2 at New Deal; Roosevelt at Abernathy #2; Abernathy #1 at Floydada #1; Lockney #2 at Lockney #1; Idalou Bye.  
 July 9 - Abernathy #1 at Roosevelt; Floydada #1 at

Lockney #1; Idalou at Abernathy #2; Lockney #2 at Floydada #2; New Deal Bye.  
 July 12 - New Deal at Abernathy #2; Roosevelt at Idalou.

### Tri County Hi-Junior Age 15-16 Time 8 p.m. Mon. & Thurs.

May 30 - New Deal at Lockney; Idalou at Roosevelt; Abernathy at Floydada.  
 June 3 - Lockney at Idalou; Floydada at New Deal; Roosevelt at Abernathy.  
 June 6 - Abernathy at Lockney; New Deal at Idalou; Floydada at Roosevelt.  
 June 10 - Roosevelt at Lockney; Idalou at Floydada; Abernathy at New Deal.  
 June 13 - Lockney at Floydada; Idalou at Abernathy; New Deal at Roosevelt.  
 June 17 - Lockney at New Deal; Roosevelt at Idalou; Floydada at Abernathy.  
 June 20 - Idalou at Lockney; New Deal at Floydada; Abernathy at Roosevelt.  
 June 24 - Lockney at Abernathy; Idalou at New Deal; Roosevelt at Floydada.  
 June 27 - Lockney at Roosevelt; Floydada at Idalou; New Deal at Abernathy.  
 July 1 - Floydada at Lockney; Abernathy at Idalou; Roosevelt at New Deal.

### Sophomore League

Floydada #1: Coach — Waldo Soliz; Asst. — Ruben DeLeon.  
 Players: Marty Daniel, Kerry Helms, Larry DeLeon, Bobby Don Green, Carmen Soliz.  
 Robert Soliz, Rusty Cagie, Guy Ledbetter, J. Griggs, Ernest Johnson, David Green, Jo Covington, K. Griggs.  
 Floydada #2: Coach — Jimmy Vickers; Asst. — Bobby Welborn.  
 Players: Todd Vickers, Jimmy Jackson, Adam Appellano, Carl Apellano, Lynn Wood, Ricky Luna.  
 Larry Jones, Ricky Day, Kevin Davis, Ricky Jackson, Derek Cheek, Max Cadillio, Terry Gilmore, Jr. Ceuvas.

# CLASSIFIED ADS

## THE PLACE TO LOOK



### FARMS & RANCHES

WANT TO BUY irrigated or dry-land farm in Floyd or surrounding area. Write Box XRO, c/o Hesperian, Box 700 Floydada. tfc

### FARM WORK

NORRELL TRACTOR PARTS For Tractor and Irrigation Supplies and Accessories. tfc

CUSTOM Spraying & Treflan Application in Lockney call, 652-3541 or 652-2616. Bill Wisdom, Johnny Wisdom or Dar-ryl Dennis. L1-tfc

MR. FARMER - Spring & summer plowing ahead, and our portable disc rolling equipment is available to work in your field or our shop on the Matador Highway. Call of come to Russell's Shop & Equipment, 983-3751. tfc

MR. FARMER - Come to Floyd County Hesperian in Floydada or Lockney Beacon in Lockney and buy 23" x 35" aluminum sheets to cover your truck beds and granary floors so the grain won't leak out. 10 cents a sheet. tfp

WINCH TRUCK SERVICE - On everything. We'll go anywhere. Babe's Service Center, Phone 983-5042, Floydada. tfc

CUSTOM FARMING - Breaking, listing planting, crosscut, spraying, tandem, & chisel. 293-2578. L-tfc

CUSTOM FARMING - Offset discing and deep chiseling. Let us farm your dry land and leave out ground. Also want to rent dry land. Can handle large tracts. Lockney, 652-2309. tfc

BEST DEAL IN WANT ADS

### AUTOMOTIVE

FOR SALE...1966 Oldsmobile, almost new tires, air conditioner; clean and in good condition. 208 East Hallie St. tfc

FOR SALE - 1964 Dodge Van - slant six engine. Good condition. 726 West Grover. Phone 983-3546. tfc

FOR SALE - 1970 Maverick, 2 door, 6 cyl., with air. Call 983-3357. tfc



WE WANT YOU TO KNOW - We sell all kinds of Goodyear tires... tractor, auto, truck, a good tire, good service. Best deals in West Texas. Truck winch and hauling service. BABE'S SERVICE CENTER, FLOYDADA. tfc

SPRING SPECIAL. CRUISE CONTROLS - \$93.00 installation included. Fits all cars with automatic transmission. Daniel Automotive. tfc

FOR SALE...1967 Mustang, vinyl top, good tires; priced reasonable. 983-2912. tfc

FOR SALE - 1966 Dodge pickup. Call after 6 p.m. 652-2653. L-6-9p

FOR SALE...1972 Honda 350. City Auto, 983-3767 or 983-2298. 6-9c

QUICK SALE FOR CASH - Half ton Dodge Pickup Camper, factory built; see at Charlie Berrys, 304 East Georgia St. 6-2c

### COW POKES

By Ace Reid



"No I can't help you git yore money from Jake you loaned him, but I can help you git committed!"  
AUTO, FIRE & FARM INSURANCE  
Floydada Real Estate & Insurance Agency  
Jim Word - - - Phone 983-2360

### SERVICES

CARPET shampoo and shampooer. Rent the shampooer for \$1 per day with purchase of shampoo. Davis Lumber Company, Lockney. L-tfc

LAWNMOWER REPAIR - Reel & rotary mowers sharpened, complete stock of engine parts. Toro Mowers for sale. Spears Small Engine Service, 105 North Main St., Floydada. tfc

ALL TYPES REPAIR & SERVICE - Day Heating & Air Conditioning. Installation and service on all makes and models. Phone 983-2440 or 983-2456. tfc

PROFESSIONAL Rug Cleaning. Phone 652-2500, Lockney. tfc

### FARM MACHINERY

FOR SALE - 30 A.P.G.E. motor 200 ft. 6" B.J. pump. New 10" Bowls. 652-3616 or 652-3855. L5-tfc

FOR SALE - green pump 240 foot setting, all complete. Dorsey Baker. L-tfc

FOR SALE - 17 1/2 foot Krause one-way plow. Perfect condition. Dorsey Baker, Lockney. tfc

FOR SALE - 1-4 row cultivator for 560 IHC; 1-4 row cultivator for 3 point hitch; both good. W.B. Eakin, 667-2289. tfc

### LOST AND FOUND

LOST - Wire rimmed glasses, lost at Jr. High School. Call 983-3676. 6-6c

### EMPLOYMENT

WANTED - Taking applications for Director of Nurses. Apply in person at the Lockney Care Center. L-tfc

WANTED - Dog catcher. Must be Floydada resident. See city manager, City Hall, Floydada. tfc

HELP WANTED - Top Pay for a hand that can cultivate and irrigate. 652-3753. L-tfc

WANTED: Parts Manager. Ideal working conditions. 5 day week - group insurance. Don Riersen, Pontiac-Cadillac, Inc. Plainview, Texas. 6-2c

ENROLL NOW for summer gymnastics classes. For more information call 983-3357. 6-2c

### FOR SALE

WE HAVE DEEP FREEZES \$199.95 and up. White's Auto Store in Lockney. L1-tfc

FOR SALE - 1969 RCA color TV, New 25" Picture Tube, excellent condition, UHF-VHF \$275.00; Excellent 1969 RCA Victor Color TV, new 25" Picture Tube, Beautiful cabinet, \$325.00; 25" Curtis Mathis UHF-VHF Color TV \$150.00; Real Nice 25" Admiral Color with new picture tube \$275.00; 1964 21" Round RCA Color TV with converter for Channel 28, \$100; 1962 RCA Color TV with Channel 28 Converter, \$50. MIZE PHARMACY AND TV, 652-2435, LOCKNEY IN-STORE FINANCING AVAILABLE. L-tfc

FOR SALE - 1969 Sears Kenmore Washer and 1973 Dryer. Call 652-2688 after 5 p.m. L5-tfc

FOR SALE - Air conditioners, evaporative and G.E. Refrigerated types. Pads and supplies. Parker Furniture, Lockney. L-tfc

FOR SALE - Frigidaire Stove, 2 ovens. 652-2259. L-tfc

FOR SALE - New and used Kirby Vacuum cleaners from 109.95 up. Parker Furniture in Lockney. L-tfc

FOR SALE - Roll-A-Way bed and mattress; 16" refrigerator; lounge chair. 313 W. Jeffie, 983-2989. tfc

FOR SALE - Fast barrel-horse. Shown by appointment only. 667-3600, Petersburg. 6-2p

SEE OUR FREEZERS in stock - from 15 to 31 cu. ft. Sears, 100 South Main. 983-2862. tfc

PRICES SLASHED - 19" color T.V. was \$373.95, now \$303.00. Sears, 100 South Main. 983-2862. tfc

FOR SALE - Magic Chef gas range, Hot Point Frost free refrigerator and dinette with four chairs. All in excellent condition. Mrs. James Mallett, 720 South Main. 983-5319. 6-2c

"Venus Cosmetics" - the greatest. Try our new Vera Tanning Lotion with stabilized Aloe Vera. Please call Dewanda Blenden, 652-2563.

FOR SALE - We have the Royal typewriters for \$139.95, new guarantee. Hesperian Office Supply in Floydada, & Beacon Office Supply in Lockney. tfp

FOR SALE - We have some more \$25 typewriters. Come see. Hesperian Office Supply, Floydada. tfp

UNCLAIMED Lay-a-ways, 12 only - no balances over \$39.95. 3 Singer Touch & Sew 1973 models. 6 Universal, zig-zag, buttonholes, blind stitch, fancy patterns, \$29.95. 3 Dress-makers 1973 models, zig-zag, \$24.70. All sew double knit. Guarantee - terms 1913-19th, Lubbock, 762-3126. 6-2c

FOR SALE...Camper trailer - sleeps 4 - needs new tent. 208 East Hallie. tfc

### FLOYD COUNTY ABSTRACT CO.

Abstracts Of Title  
Title Insurance  
Verna L. Stewart  
Owner, Manager  
217 W. California  
983-3728  
Floydada, Texas

### Diamond Industrial Supply Co., Inc.

Phone Days 296-6225 - Nights 293-1200 or 296-7828  
1014 Broadway  
Plainview, Texas  
Chain U-joints  
Sprockets Oil Seals  
V-belts O-rings  
Sheaves Wisconsin  
SKF BCA Timken Bower

"We Appreciate Your Business More"  
L-TFC

### TEXAS ENERGY CO.

Formerly Northern Propane  
PROPANE - DIESEL - GASOLINE  
DRIP OIL - ANTI-FREEZE -  
WATER HEATERS  
CHAMPLIN MOTOR OILS

PHONE 652-3334 or 652-3335

## LEGAL NOTICES

### LEGAL NOTICE

The Board of Trustees, Lockney Independent School District, is taking bids for lighting the existing tennis courts. Specifications may be obtained from the Superintendent's office in Lockney.

All bids must be returned to the Superintendent in a sealed envelope with "Bid Proposal" on the outside. Bids must be submitted on or before June 10, 1974. They will be opened at the regular board meeting on June 10, 1974.

The Board of Trustees reserves the right to refuse any or all bids.

Lockney Board of Trustees  
Lockney Independent School Dist.  
(5-26, 6-2, 6-9c)



WHEN YOU NEED INSURANCE SERVICE FOR YOUR HOME

RANCH FARM AUTO CROPS LIFE

Think of Low Net Cost with Service.

IF IT IS INSURANCE - SEE -  
**Barker Insurance Agency**  
LOCKNEY  
Life - Fire - Casualty - Hospital  
**B. B. Wilkes, Real Estate**  
LOCKNEY  
Farms - Ranches - City Properties  
Business Leases - Loans

## READY MIX CONCRETE

QUICK AND EASY



You can't beat our price per yard for quality concrete—and quick, easy delivery to save you back-breaking labor. Give us a call today for a free estimate, and have your mixed concrete delivered where and when you want it.

CALL 983-2170  
**BENNETT BUILDING MATERIAL**

229 E. CALIFORNIA FLOYDADA

**all-electric**

WASHING COOKING DRYING RELAXING HEATING COOLING

No matter what it may be you'll do it better in an all-electric home!

**FLOYDADA LIGHT POWER**

for better living, you can't beat electric living!



Every day **THIS BRAND**

REPRESENTS THE

**HIGHEST QUALITY**

OF FOOD YOU CAN BUY FOR THE MONEY

...and for the next week - it will cost you even less money

Prices Good Thru June 5, 1974. We Reserve the right to Limit Quantities. None Sold

**Announcing PIGGLY WIGGLY BRANDS SALE!**

Announcing Piggly Wiggly Brands Sale. A Brand you've come to rely on for representing the best food buy for the money. And now this brand costs even less money. Come in and look around. Every Piggly Wiggly brand you see has been reduced.



**Hours Daily 8 A.M.-10 P.M.**  
**Sunday 9 A.M.-9 P.M.**

U.S.D.A. CHOICE  
**Round Steak**  
**\$1.19**  
LB.

USDA Choice, Superb Valu Trim, Heavy Aged Beef, TOP OR BOTTOM Lb. \$1.59  
U.S.D.A. CHOICE  
Sirloin Tip Steak \$1.59  
U.S.D.A. CHOICE  
Chuck Steak 98¢  
Boneless Stew Meat \$1.19  
U.S.D.A. CHOICE  
Sirloin Steak **\$1.19** LB.

U.S.D.A. CHOICE  
**Rib Steak**  
**\$1.19**  
LB.

PRIME  
Rib Roast  
WAFFER THIN  
Pork Chops  
Spareribs  
FULL QTR. LOIN  
Pork Chops  
U.S.D.A. CHOICE  
Chuck Roast

**Yellow Onions**  
**10¢**

Delicious  
Cantaloupe 29¢  
Sweet Cherries Lb. 99¢  
Fresh Cabbage Lb. 15¢  
Fresh Ripe Peaches Lb. **59¢**  
Fresh Golden Corn 10 Ear **\$1**



Piggly Wiggly, Pink Grapefruit

**Juice**  
**39¢**

46-oz. Can  
PIGGLY WIGGLY  
Tortilla Chips **49¢**  
8 OZ. PKG.



Piggly Wiggly

**Fruit Cocktail**  
**3 89¢**

16-oz. Cans  
Piggly Wiggly  
Black Pepper **39¢**  
4-oz. Can



Piggly Wiggly

**Jumbo Towels**  
**3 \$1.19**

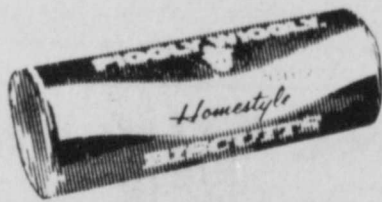
175 Sheet 1 Ply Rolls  
PIGGLY WIGGLY  
CORN CHIPS **49¢**  
11 OZ. PKG.



Piggly Wiggly, Stick

**Margarine**  
**35¢**

16-oz. Ctn.  
Piggly Wiggly, Reg. or Iodized Salt 26-oz. Ctn. 12¢  
Piggly Wiggly Toaster Pastries 11-oz. Box 53¢  
Piggly Wiggly Pancake Mix 2-Lb. Box 59¢  
Piggly Wiggly, Pancake & Waffle Syrup 32-oz. Btl. 67¢  
Piggly Wiggly, Instant Orange Breakfast Drink 18-oz. Jar \$1.01  
Piggly Wiggly Macaroni Dinner 7-oz. Pkg. 25¢



Piggly Wiggly, Sweetmilk or Buttermilk

**Biscuits**  
**10¢**

Limit 6 Please  
8-oz. Can  
Piggly Wiggly, Creamy Peanut Butter 12-oz. Jar 69¢  
Piggly Wiggly Facial Tissue 3 200-Ct. Box \$1.00  
Piggly Wiggly, Dry Dog Food 5-Lb. Bag 85¢  
Piggly Wiggly, Moist Patties Dog Food 36-oz. Pkg. 97¢  
Piggly Wiggly Bleach 1/2-Gal. Btl. 34¢  
Piggly Wiggly Fabric Softner 64-oz. Btl. 49¢



Piggly Wiggly

**Orange Juice**  
100% Pure Florida Frozen  
**5 \$1**

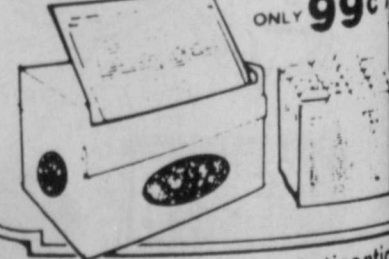
6-oz. Can  
Piggly Wiggly, Halves Strawberries 10-oz. Ctn. 47¢  
Piggly Wiggly Whipped Topping 10-oz. Ctn. 49¢  
Piggly Wiggly Hush Puppies 16-oz. Pkg. 42¢  
Piggly Wiggly Frozen Waffles 2 6 1/2-oz. Pkg. **29¢**

The Complete Family **RECIPE CARD COLLECTION**

This week get **SERIES # 4 & 5 Each 39¢**

**RECIPE FILE**

CONTAINS:  
• 23 Divider Tab Cards with valuable help  
• 46 Additional Blank Cards for including your own recipes  
• A Master Index of recipes



ONLY 99¢  
Antiseptic Listerine **\$1.69**  
32-oz. Btl.

**PIGGLY WIGGLY**