

dinner...
as Warren...
d Mr. ...
wen...
lanley...
preached...
tivist...
nd evening...
"Barley...
s. Stovall...
riday get...

ch, registration
top entertainment

aw
na

who know...
m the...
is a good...
cause...
On...
ms, Don...
Every...
ill be big...
him show...
od dollar...
onnie Gall...

HAMIL

Chat
LL TOOLEY

NE EDITION off to
y scheduling news
edition. Looking on
obvious that we'll
a story.
ere Saturday to vote
ity council, hospital
ht go by and vote

9 P.M.

have more informa-
chool board election
South Plains and

Prizes given

event coming up
annual Lighthouse
g and barbecue
ails about this in

DA TENNIS CLUB
nded to be at the
courts at 1 p.m.
beginning of a two
les round robin

at the courts at 10
ning of men's and
in doubles.

ICDONALDS are
ation in Hawaii...
sday or Wednesday.
ad the enjoyment of
uple of days back in
the trip around the
really like the looks
it to come back and
time.

& Chickie
has come about, as
able to make
Trade Wind Tours
of Hawaii about the
you want to go to
me now. (983-3737)
The seven day tour
paid except meals
cluding flight out of
cludes sightseeing
This price is good
to let me know real
to go.

TIONS TO FLOYD
ers Jimmy Jones and
nmy will go on to the
petition and we wish
he continues to be a

WORK in pictures
the Jr. High history
can. Some are in this
be more Thursday...
a picture of almost
Jr. High. Evidently,
ually good fair.

DRIBBLERS BAS-
ON is over and the
ers wish to express
to everyone who
possible: co-directors
ed Clarence Denton,
Don Reyes, score
pton, referees Gary
nougher, Denton and
Jonny Cantrell, Paul
y Lock, Jerry Parr,
Glen Bertrand and
...and of course the

ILLARS were crawl-
ass when a butterfly
They looked up, and
other said: "You
up in one of those
on dollars!"

RS WILL appreciate
he card to get the
e of flight and wind

and takes his stance,
to his dance.
squats a little,
sucks in middle,
d, positions feet,
ow complete.
a, ball on wing?
practice swing.

Administrator House Speaker

ch, registration
top entertainment



HAMIL
Chat
LL TOOLEY

NE EDITION off to
y scheduling news
edition. Looking on
obvious that we'll
a story.
ere Saturday to vote
ity council, hospital
ht go by and vote

have more informa-
chool board election
South Plains and

Prizes given
event coming up
annual Lighthouse
g and barbecue
ails about this in

DA TENNIS CLUB
nded to be at the
courts at 1 p.m.
beginning of a two
les round robin

at the courts at 10
ning of men's and
in doubles.

ICDONALDS are
ation in Hawaii...
sday or Wednesday.
ad the enjoyment of
uple of days back in
the trip around the
really like the looks
it to come back and
time.

& Chickie
has come about, as
able to make
Trade Wind Tours
of Hawaii about the
you want to go to
me now. (983-3737)
The seven day tour
paid except meals
cluding flight out of
cludes sightseeing
This price is good
to let me know real
to go.

TIONS TO FLOYD
ers Jimmy Jones and
nmy will go on to the
petition and we wish
he continues to be a

WORK in pictures
the Jr. High history
can. Some are in this
be more Thursday...
a picture of almost
Jr. High. Evidently,
ually good fair.

all will be features of the 35th Annual Membership meeting of Lighthouse Electric Cooperative, April 6, 1974. Starting with registration at 11 a.m. to be followed by the dinner at 11:30, the meeting will be officially called to order by President, Gerald Lackey at 1 p.m.

Election of two directors and a report on operations for 1973 will highlight the business session.

Music during lunch and throughout the program will be provided.

David Hamil, R.E.A. Administrator, from Washington, D.C. will be the featured speaker.

Prizes will be drawn throughout the day for Lighthouse members. The grand prize, to be drawn at the close of the meeting, will feature a choice to be selected from 7 major appliances by the lucky winner.

Another item of special interest will be a free movie for the kids.

Lighthouse Electric Cooperative, headquarters in Floydada serves electric power in 7 counties with over 2,200 miles of line.

David A. Hamil of Colorado was nominated January 24, 1969, by President Nixon to be Administrator of the Rural Electrification Administration in the U.S. Department of Agriculture. He was confirmed by the Senate on February 28, 1969, and was administered the oath of office by Secretary of Agriculture Clifford M. Hardin on March 6, 1969.

Mr. Hamil previously served as REA Administrator under President Eisenhower for nearly five years — from June 26, 1956, to February 3, 1961. He has served in this office longer than any other Administrator.

At the time of his nomination by President Nixon, Mr. Hamil was serving as Executive Director of the Department of Institutions for the State of Colorado, under an appointment made January 8, 1963, by Governor John A. Love.

Since college days, Mr. Hamil has been a rancher engaged in the cattle-feeding business in Logan County, Colorado. He and a brother, Donald, operate Hamil Bros., Inc., of Atwood. Their principal business is the fattening of cattle. They also are producers of sugar beets, alfalfa and corn.

During Mr. Hamil's first tenure as REA Administrator, nearly a half million rural consumers were added to the lines of REA-financed rural electric systems, and hundreds of thousands of others received improved service. In the rural telephone program, the number of subscribers receiving new and improved service tripled from about 370,000 to more than 1.1 million. Mr. Hamil is a strong advocate of community development, encouraging the REA-financed systems to use their good influence and own resources in helping to develop their areas.

Mr. Hamil first became active in the rural electrification program in 1939 when he helped organize the B section of the Highline Electric Association of Holyoke, Colorado. He served as director of the Association for five years. Its consumer membership has grown from 180 to 5,500.

In 1938, Mr. Hamil was elected to the House of Representatives of the Colorado General Assembly, and served in that capacity for 10 years. He was a member of the Joint Budget Committee for six years, and was its chairman for four.

Mr. Hamil returned to the General Assembly in 1950 and served until June 1956, when he resigned to accept appointment as REA Administrator. He was Speaker of the House for the last six of his 16 years in the General Assembly.

Mr. Hamil was born on a ranch near Proctor in Logan County, Colorado, on December 3, 1908, and son of James N. and Ada G. Hamil.

He was graduated cum laude with an A.B. degree from Hastings College in 1930. There he was president of his freshman class, the student body and the student YMCA. He also won seven letters in athletics.

In 1968, Mr. Hamil was the recipient of the 1968 Merit Award by the alumni of Colorado State University in recognition of his continued support of higher education, and the University.

In May 1971, Secretary of Agriculture Clifford M. Hardin presented him with the Department of Agriculture's Distinguished Service Award. Mr. Hamil, personally chosen by the Secretary for this honor, was recognized "for exceptional leadership and vision in administering the rural electrification program."

Mr. Hamil is a member of the First Presbyterian Church of Sterling; an honorary member of the Sterling Rotary Club; a past Exalted Ruler of BPOE Lodge No. 1336, Sterling; and past District Deputy Grand Exalted Ruler for Colorado North. He is a member of the Rocky Mountain Masonic Consistory, an honorary 33rd Degree Mason and a member of El Jebel Shrine Temple, Denver. He is one of six Coloradans who have received the National 4-H Alumni Award.

He is a member of the Board of Trustees of the United Presbyterian Foundation, and the Board of Trustees of Hastings College.



RALPH JOHNSTON is sworn in to office by county clerk Margaret Collier. (Staff Photo).

Johnston Appointed Precinct 4 Commissioner

Floyd County Judge J. K. Holmes officially appointed Ralph Johnston to fill the unexpired term of the late Bill McNeill as commissioner of Precinct 4 in the commissioners meeting room of the county courthouse Friday morning. Johnston will serve from now until the general election in November. Four persons are seeking election to the office subject to the May Democratic Primary election.

In appointing Johnston Commissioner Judge Holmes said, "I, J. K. Holmes, acting in my official capacity as County Judge of Floyd County, do this day appoint Ralph C. Johnston County Commissioner of Precinct 4 of Floyd County to serve until the General Election in November in the office made vacant by the death of Bill O. McNeill on March 12, 1974, appointment effective today."

Johnston, a resident of Floyd County some 48 years and farmer in the Dougherty community since 1948, was appointed county judge from May of 1953 to January of 1955 when the late Judge Frank Moore died. He has also served on the Floydada school board for 15 years and on the Dougherty school board two years.

He is a graduate of Floydada High School, Texas Tech and served in the Air Force in World War II.

In a statement to the Hesperian Friday morning Johnston said, "I am well acquainted with the people of Precinct 4 and I pledge my best efforts to serve them fairly and efficiently as I try to fulfill the requirements of this office. Please feel free to call upon me at any time."

"Serving The Floyd County Trade Area Since 1896"

Floyd County Hesperian

Volume 79 Floydada, Floyd County, Texas 79235 Sunday, March 31, 1974 12 pages in one section 10c Copy Number 26

Floydada Sixth-Grader Spelling Champ



FLOYD COUNTY'S CHAMPION SPELLERS were both from Floydada. At left champion Jimmy Jones, alternate Doug Simpson. Floydada Jr. High principal A. W. Coltharp, right was director of the spelling bee. (Staff Photo).

Eight spelling champions from Lockney and Floydada schools started spelling in the Floyd County Spelling Bee Thursday evening at 7:30. Nine hundred twenty six words and nearly two hours later, Jimmy Jones, a sixth-grade student at Andrews Elementary School in Floydada, became the county champion when he spelled "arbitrer", after Floydada Junior High speller Doug Simpson missed the word, and went on to spell the next word, arbitrate." Randy Davis, a Lockney sixth-grader, was the next-to-last competitor to go down in the marathon spell-down. The spellers went through the entire

first group of words in the "Words of Champions" word book and started on the intermediate word list before the champion was decided.

The county champ is the son of Mr. and Mrs. Albert Jones of the McCoy community. He advances to the Lubbock bee in April. The winner at Lubbock goes on to the National Spelling Bee in Washington, D.C. in June.

Other entrants in the Floyd County bee were Jody Nance, Brenda Williams and Cindy Frizzell of Lockney and LeShay Chandler and Terri Kinard of Floydada.



MAYOR PARNELL POWELL signs Cancer Crusade proclamation. Head of the Floydada campaign is Kay Flynt, pictured with the mayor. (Staff Photo)

Mayor Signs Cancer Control Proclamation

April 2 is Floydada's "Cancer Control" Kick Off Day. Volunteers will be going door to door for your donations. Solicitors say, "Please have your checks ready to save your time and the volunteer's time. The American Cancer Society wants to wipe out cancer in your life time."

PROCLAMATION
APRIL "CANCER CONTROL MONTH"

Whereas the President of the United States designates April as "Cancer Control Month";

Whereas the Gov. of Texas designates April as "Cancer Control

Month". Whereas one out of every four people are affected by the dreaded disease of Cancer. The American Cancer Society asks for your support for its program of research, education and service to Cancer patients.

Therefore, I, Parnell Powell, Honorable Mayor of the city of Floydada, Floyd County — do proclaim April as "Cancer Control Month" and April 2nd as "Cancer Control Day".

/s/ Parnell Powell
MAYOR
March 28, 1974

Girl's Softball Field Next

The Floydada Girls' Softball Association is getting a field! Work started this week just adjacent to the Little League Park across from High School. City maintainers began clearing space for the field and the Green Thumbers and other volunteer workers will erect fences and a back stop as time permits.



NANCY PUCKETT, Floydada Whirllette was second highest scorer in the East-West game in Amarillo last week. She played about ten minutes of the game, had scored eight of the 17 points the east had at halftime. Nancy made 2 out of three field goals and 7 of 9 free shots. The West won 43-42. (Staff Photo)

At present the girls are needing about 240 feet of wire, some six foot high, along with additional pipe. Hammond Sheet Metal donated a good quantity but more is still needed. It must be of steel and small enough that a softball cannot go through openings. Anyone wishing to donate these items may contact Mrs. Jerry Finley at 983-2832 or call the Hesperian.

The Association is also needing coaches and others willing to work out with the girls. If interested call Mrs. Finley.

But Where Is The Consumers Meet?

The Hesperian published a story Thursday about the 51st annual meeting of the Stockholders of Consumers Fuel Assn. It was a pretty good front page story, but omitted one important fact...where the meeting was scheduled.

Okay...let's try again.
Where: Massie Activity Center in Floydada.

When: 2:30 p.m. Monday, April 1.
Why: 51st annual meeting, one director to be elected.

What: There'll be door prizes.
How come... "you all come!"

BASEBALL MEET MONDAY

Monday night, April 1, at 7:30 is BASEBALL SIGN-UP for boys and their parents. Andrews Elementary School cafeteria is the place of registration and there is no fee, according to a spokesman for the Baseball Association.

Floydada firms are donating gifts for door prizes and names will be drawn by the boys. Everyone interested in the baseball association is urged to attend.

During the meeting a number of changes in the baseball program will be discussed therefore a good turn-out is needed. The support of the public is also needed to keep the program going.



THE LAKERS WERE CHAMPIONS of the Floydada Little Dribbler program Thursday night. (Left to right) Larry Westbrook, Alex Torrez, Henry Gonzales, Sammy Bradley, Jett Cheek, Richey Reyes and Troy Marquis. Coach is Paul Westbrook. (Staff Photo)

CUT YOUR COST ON QUALITY FOODS...

THRIFTWAY

PRICES EFFECTIVE APRIL 1 THRU APRIL 6, 1974.

WE RESERVE THE RIGHT TO LIMIT QUANTITIES.

SINUS SPRAY
SINUS OFF
1 FL. OZ.
1/2-oz. BTL. **88¢**

REGULAR TINTED
CLEARASIL MEDICATION
.65-oz. TUBE
79¢

VITALIS
HAIR TONIC
LARGE 7-oz. BTL. **\$1.09**

REG. - OILY - EXTRA HOLD
HAIR CONTROL
DRY LOOK
7-oz. CAN **\$1.09**

Excedrin
THE EXTRA-STRENGTH PAIN RELIEVER
TABLETS BTL. OF 36 **66¢**

DEODORANT
BAN ROLL-ON
1.5-oz. BTL. **89¢**

KLEENITE
DENTURE CLEANER
3oz. SIZE **39¢**

FASTEETH
DENTURE ADHESIVE
2-oz. SIZE **79¢**

FIXODENT
DENTURE ADHESIVE
1 1/2-oz. SIZE **79¢**

REGULAR - UNSCENTED OR POWDER DEODORANT
ULTRA BAN
5-oz. SPRAY CAN **88¢**

SHOP
WE REDEEM
U.S. GOVERNMENT
FOOD STAMPS



GOVT. INSPECTED USDA GRADE "A"
FRESH WHOLE FRYERS
LB. **43¢**

FRESH 16 CHOICE PIECES
BEST-O-CHICKEN
INCLUDES BREASTS, WINGS, THIGHS, DRUMSTICKS
LB. **59¢**

- FRESH WHOLE OR SPLIT CHICKEN BREASTS LB. 69¢
- FRESH CHICKEN DRUMSTICKS LB. 65¢
- FRESH CHICKEN THIGHS LB. 65¢
- FRESH SM. 3-4 LB. ROASTING CHICKENS FOR CHICKEN SOUP LB. 49¢
- BACKS & NECKS LB. 25¢

GROUND BEEF
FRESH
LB. **89¢**

(HALIBUT) TURBOT
FISH FILLETS
FRESH
LB. **89¢**

- CHUCK WAGON BRAND SLICED **BACON** LB. **89¢**
- CUDAHY BAR-S STORE SLICED **BOLOGNA** BY THE PIECE LB. 79¢
- WISLONS CERTIFIED - BY THE PIECE **BRAUNSCHWEIGER** LB. 79¢
- LITTLE BOY BLUE **CORN DOGS** LB. 89¢
- GLOVER'S MEXICAN STYLE **CHORIZZOS** LB. 79¢
- GLOVER'S **HOT LINKS** LB. 89¢

PAGE'S PACKING PLANT CAN BUTCHER AND PROCESS YOUR BEEF

SHURFINE VAC PAC
COFFEE
1-LB. CAN **89¢**

Slender
ASSORTED FLAVORS
CARNATION SLENDER
12-CANS TO A CASE **5 \$1**
10-oz. CANS \$1.99

Check Rated
MINUTE MAID FROZEN ORANGE JUICE 12-oz. CAN 59¢
MORTON REG. FROZEN DINNERS FRIED CHICKEN, FISH & CHIPS, MEAT LOAF, SALISBURY STEAK, TURKEY DINNER EACH CTN. 49¢
REG. OR DIET - ASST. FLAVORS SHASTA DRINK 10 12-oz. CANS \$1.00
SHURFINE CHUNK STYLE TUNA 6 1/2-oz. CAN 49¢

WHITER CLOTHES **PUREX BLEACH** 1/2-GAL. JUG **29¢**
GRAVY TRAIN **DOG FOOD** 25-LB. BAG **\$4.49**
SHURFINE **SALAD DRESSING** 32-oz. JAR **79¢**

WITH .50¢ IN AD COUPON
FOLGER'S INSTANT **COFFEE CRYSTALS** 10-oz. JAR **\$1.59**

THRIFTWAY'S FARM FRESH PRODUCE

- LARGE BELL PEPPERS LB. 25¢
- CENTRAL AMERICAN BANANAS 2 LBS. 25¢
- LARGE SIZE CANTALOUPE CELLO BAG 3 FOR \$1.00
- CARROTS 2 1-LB. BAGS 29¢
- LONG GREEN SLICERS CUCUMBERS 2 LBS. 29¢

TEXAS RUBY RED **GRAPEFRUIT** 5 LB. BAG **49¢**

- SHURFINE FROZEN PRE-COOKED **FISH STICKS** 8-oz. PKG. **69¢**
- KLEENEX DESIGNER OR BOUTIQUE TOWELS JUMBO ROLL **39¢**
- PINE-SOL FOAM BATHROOM CLEANER 17-oz. AERD. CAN **83¢**
- FOLGER'S MOUNTAIN GROWN COFFEE 16-oz. CAN **\$1.19**
- FOLGER'S MOUNTAIN GROWN COFFEE 2-LB. CAN **\$2.37**
- AMERICAN BEAUTY ELBO RONI 10-oz. POLY BAG **35¢**
- KRAFT ROKA DRESSING 8-oz. BTL. **55¢**

CHOCOLATE CHIP, PEANUT BUTTER AND SUGAR
Pillsbury Cookies
PER ROLL **69¢**

FRENCH ONION, GREEN GODDESS AND GARLIC
Kraft Téez Dips
8-oz. CTN. **49¢**

DETECTO **BATHROOM SCALES**
EA. **\$2.99**

DO-IT YOURSELF **BAR STOOL KIT**
2-STOOLS PER KIT **\$5.95**

WOOD WIND **SALAD FORK**
EA. **39¢**
WITH \$5.00 PURCHASE

PAGE'S THRIFTWAY
STORE HOURS - 7 A.M. TO 8 P.M.
PHONE 652-2293 211 N. MAIN
IN LOCKNEY

WE GIVE S&H GREEN STAMPS -- DOUBLE ON WEDNESDAY

Lockney High School Honor Roll

HONOR ROLL, 1973-74

4th Six Weeks FRESHMEN:

A — Joe Araujo, Pam Bradley, Karen McCarter, Rosemary Ulmer;

B — Norma Arellano, Karla Broussard, Patsy Burt, Tammy Carthel, Jaime Charles, Tina Dipprey, Danny Fry.

SOPHOMORES

A — Kirby Collins, Kyle Degge, Bernie Ford, Bonnie Jack, Edith Reves, Cari Roberts, Marilyn Smith, Tina Sparkman, Kelly Turley;

B — Linda Arellano, Melanie Frizzell, Desiree Isom, Lou Ann Stallings, Mitzi Terrell.

JUNIORS

A — Connie Bradley, Carol Brock, Becky Bybee, Sara Degge, Kim McCarter, Joann McCormick, David Quisenberry, Lisa Scheele, Lesa Wilson;

B — Tonya Beedy, Lee Blasingame, Joe Charles, Lonny Hooten, Ana Martinez, Anna Murdock, Robert Murdock, Teresa Strickland.

SENIORS:

A — Donna Davis, Diane Fry, Carl Gibson, Ginger Henderson, Regina Jack, Carol Lyon, Marie Molina, Mary Quisenberry, Richie Reece, Cynthia Stoerner, Rusty Thornton;

B — Larry Abbott, Margarito Arellano Jr., Wendy Blasingame, Larry Bramlett, Ron Carthel, John

Clark, Yolanda Garza, Joan King, Glenda Lewis, Mary John Race, Robbie Sparkman, Sandra Stansell, 2nd Semester

FRESHMEN:

A — Joe Araujo, Tina Dipprey, Karen McCarter, Rosemary Ulmer;

B — Pam Bradley, Karla Broussard, Tammy Carthel, Jaime Charles, Kristie Ford, Danny Fry.

SOPHOMORES:

A — Kirby Collins, Kyle Degge, Bernie Ford, Edith Reves, Marilyn Smith;

B — Melanie Frizzell, Desiree Isom, Bonnie Jack, Cari Roberts, Tina Sparkman, Mizi Terrell, Kelly Turley.

JUNIORS:

A — Connie Bradley, Carol Brock, Becky Bybee, Sara Degge, Lonny Hooten, Anna Murdock, Robert Murdock, Kim McCarter, Joan McCormick, Lisa Scheele, Lesa Wilson.

B — Tonya Beedy, Ana Martinez, David Quisenberry.

SENIORS:

A — Larry Abbott, Wendy Blasingame, Larry Bramlett, Ron Carthel, Donna Davis, Diane Fry, Carl Gibson, Ginger Henderson, Regina Jack, Carol Lyon, Marie Molina, Rusty Thornton;

B — Alva Alaniz, Yolanda Garza, Joan King, Glenda Lewis, Mary Quisenberry.



FLOYDADA PHOTOGRAPHER Vernon Parker [right] is pictured with Joe Zeltsman, Master Photographer from Morris Plains, New Jersey. Some 20 professional photographers from several states gathered in Perryton last weekend to attend classes of advanced professional portrait techniques taught by Zeltsman.

Lockney School Menus

April 1-5, 1974

MONDAY:

1/2 peanut butter sandwich, 1/2 cheese sandwich
Lettuce and tomatoes
Baked beans
Peach crisp
Milk

TUESDAY:

Macaroni and beef
Blackeyed peas
Mustard greens
Hot rolls
Rolled wheat cake
milk

WEDNESDAY:

Baked ham
Cauliflower with cheese sauce
Pea salad
Cornbread
Pudding
Milk

THURSDAY:

Tacos
Mexi corn
Lettuce and tomatoes
Sopapillas
Cherry cobbler
Milk

FRIDAY:

Hot dogs
French fried potatoes
Fruit jello
Cookies
Milk

from Irving, Mr. and Mrs. Jim Thomas, Mr. and Mrs. Tom Thomas and children, all from Plainview, and Miss

Brenda Thomas, Canyon.

Tom Duvall, Robert McCrary, Dub and Tim Mercer left for a bit of fishing in Del Rio last Friday and are due home today. From all reports, a bit of a bite was all they got, sorta cold down that way.

Miss Glenda Cooper visited in Dallas during the spring break. Some of the folks she saw were Jane and Johnny Barnes, and Mary Johnson.

Guests of the Jeff Terrell Family last week were their daughter Kay, and Karen Smith and Debbie Fine from Shawnee, Oklahoma. The girls are students at Oklahoma Baptist University.

If you've not seen the "Little" girls play basketball yet, take a look some Tuesday night. They are a hustlin' bunch of young ladies and the future Lady Longhorns.

Jack Smith, former Lockneyite, visited with friends this week at Jr. High. Jack, son of Mrs. Roxie Smith, is now a student at Smiley Wilson Jr. Hi in Lubbock.

Mary Leslie Degge spent her spring break March 23-31 with her family.

THE FLOYD COUNTY HESPERIAN

Published each Sunday and Thursday at 111 E. Mo. St., Floydada, Texas 79225. Second class postage paid at Floydada, Texas 79225. Wendell Tooley, editor. Subscription rate: Local \$4.50 a year, out of state area: \$7.50.

LOCKNEY STUDENTS ON NORTH TEXAS

STATE HONOR ROLL

DENTON — Dr. Gustave Ferre, vice president of academic affairs at North Texas State University, has named 1,272 students to the fall semester honor roll.

Some 287 students earned all "A's" to make the 4.0 honor list, and 985 achieved

the 3.5 listing, which includes those students whose grade average is midway between and "A" and a "B".

Among the 3.5 honor roll students were Melisa Lynne Cooper, daughter of Jerry P. Cooper, Lockney; and Tony Clay Ford, son of Mr. and Mrs. Byron C. Ford, Route 2, Lockney.

Richie Reece, Robin Smith, Robbie Sparkman, Sandra Stansell, Cynthia Stoerner.

CUSTOM APPLICATION IN LOCKNEY
TREFLAN, CAPAROL, PROPAGINE AND ATRAZINE
CALL BILL AND JOHNNY WISDOM 652-3541 OR DARRYL DENNIS 652-2616

DAN'S AUTO SERVICE
DAN TEUTON, Owner
Specializing in Automatic Transmission, Motor Tune-Ups, Auto Air Conditioning.
General Repair We Have A BRAKE LATHE to handle all passenger car brake drums. See us for complete brake service.
Phone 652-2462

DR. JOHN W. KIMBLE, O.D.
Contact Lenses - Visual Analysis
Closed Tuesday Afternoon Saturday 9-3
Floydada, Texas Phone 983-2496

QUALITY SHAMROCK PRODUCTS
Always Make A Good Deal On SONIC TIRES and SOUTHLAND BATTERIES
Dial 652-3366
JACKSON TIRE COMPANY
Richard Wiley

Farmer's Union Insurance
THIS SPACE FOR RENT
J. D. Copeland
Phone 652-3813
Ferguson Bldg.
North Main Street
LOCKNEY

Dear Abby

should specify secretary's duties

Abigail Van Buren
by Chicago Tribune-N. Y. News Synd., Inc.

The other day you published a letter from a woman who professed to like her job and her boss, but about being sent on non-clerical errands, and other employees or shopping for the house this wasn't part of the job, she said, and it seemed to me that if the boss sends her on errands she does them on company time, then a part of the job and she does not have a right. I could see her gripe if she were in these things on her own time, but this is the case. The problem is simply that she is being paid for her typing, and the boss obviously being paid for her time. I tend to agree with her as he is footing the bill, what does it mean to the secretary is taking dictation or doing

When one advertises for a typist, if "legitimate" the applicants should be so advised does not buy "time"—he buys "talent, skill." A woman hired to do secretarial work isn't expected to sit with the kiddies and man hired to sell real estate should be on the floors.

I saw you on a talk show recently, and at what age do you think children should be of life? You replied, "When they're old enough to know."

I'm with Planned Parenthood, and this is from a group of angry mothers in one area fuming about our week-long education for 7th and 8th graders, so we've arranged together so we can talk about it. By the way, those parents will be saying: "We wish we were kids." I know it will happen. It's true. Hang in there, Abby!

LYN IN YAKIMA, WASH.

Education is the answer to V.D., illegitimate sex. Count me as another who wishes that the schools when I was a kid, I could know, CAN hurt them.

can't resist writing this letter to "HAD," who wanted to have his wife's teeth kept from talking. It will never estimate the powers of a woman.

and had to have my teeth wired together because the dentist was putting the wires on, I thought I wouldn't be able to eat—but to my surprise I could eat and said: "Honey, I have yet to I could shut up by wiring her teeth

confirm the fact that I had no trouble for six weeks. BEEN THERE IN S.C.

I'll feel better if you get it off your chest. Write to ABBY: Box No. 69700, L. A., use stamped, self-addressed envelope.

LOCKNEY LOCALS
By Peggy Wiley

the home of Mr. and Mrs. Tom Rogers and family

Purcell from Albuquerque, N.M. Visiting in the home of Mr. and Mrs. W. L. Thomas last weekend were Mr. and Mrs. Tom Rogers and family

THINGS GO TO WAIT!

JUNE 6

MEALS \$5.10

OUT OF LUBBOCK

Up Deadline

il 8 - So Hurry

ill Me Now!

Wendell Tooley

33-3982

FLOYDADA

A Message to the High School and College Age Students of Floydada . . . (and those who love them)
From the President of West Texas State University

You are standing on the threshold . . . perhaps the threshold of greatness, but at least on the threshold of what can be a rewarding career. West Texas State University is also on the threshold . . . we think it is the threshold of greatness.

There is a new excitement on our campus. Everyone associated with the University tells me they feel it, students, faculty, alumni and our many boosters throughout the Panhandle.

The excitement started ten years ago when we achieved University status. We began getting many new facilities including a new library, science building, research center, classroom and administration buildings and a new Student Activities Center which is second to none in the United States. We have new programs of a dozen different kinds . . . even one for horsemanship.

Much of the money for these programs and facilities has come from individual citizens, companies and foundations. These benefactors say, in effect, that our area should be the site of a significant university . . . a university with facilities and programs which attract outstanding faculty and students from all over the nation, even the world.

WTSU is growing but it is not so big but that our teachers can take a personal interest in each student and relate to him as the individual he is. Though we have a higher percentage of Ph.D.'s on our faculty than most universities, (over 50%) our classes average fewer students than most, (under 20).

Our students are very much a part of making things happen at WTSU. They are interested, involved and excited. Their learning experience is bigger than the classroom . . . it is as big as life itself.

Tell us which of these areas of study interests you and we will tell you more about that program at WTSU. Clip this coupon and mail it to me personally. I'll see that you get the whole exciting story without obligating you in any way.

Dr. Lloyd Watkins, President
West Texas State University

Lloyd D. Watkins

P. S. Don't let financial considerations keep you from exploring the idea of coming to WTSU this summer or fall. Scholarships and other financial assistance are readily available.

PAID FOR FROM PRIVATE FUNDS

Here are some of the areas in which you'll find the excitement of learning at WTSU.

*Accounting	Music Therapy
*Agriculture	Nursing
Agricultural Business & Economics	Physical Education
*Animal Science	*Physics
*Art	Plant Science
*Biology	*Political Science
Biomedical Sciences	Pre-Professional
*Business	Agriculture Education
*Chemistry	Clinical Chemistry
Commercial Art	Cytotechnology
Data Processing & Computer Science	Inhalation Therapy
*Economics	Occupational Therapy
*Education	Physical Therapy
Elementary	Radiologic Technology
*Education	Medical Records Administration
Secondary	Engineering
Education All Levels	Pharmacy
*English	Veterinary Medicine
Finance	Psychology
French	Public Administration - Law Enforcement
Geography	*History
*Geology	Industrial Distribution - Business
German	Education - Industrial Technology
Education	International Relations
*History	Journalism
Industrial Distribution - Business	Liberal Arts & Dentistry
*Industrial Education - Industrial Technology	Liberal Arts & Law
International Relations	Liberal Arts & Medicine
Journalism	Management
Liberal Arts & Dentistry	Marketing
Liberal Arts & Law	*Mathematics
Liberal Arts & Medicine	Medical Technology
Management	*Music Education
Marketing	
*Mathematics	
Medical	
Technology	
*Music Education	

Circle the subject(s) of interest to you. I'll see that you get complete information.

Check here if you are interested in the graduate level program.

Name _____
Address _____
City _____
State _____ Zip _____

Mail to: Dr. Lloyd Watkins
P. O. Box 997, Canyon, Texas 79016

Society



Miss Susan Denise Gaston
(bride-elect)

Louis Reid Cardinal To Wed Muleshoe Miss

Mrs. Joan Gaston of Muleshoe announces the engagement and approaching marriage of her daughter, Susan Denise, to Louis Reid Cardinal, son of Mr. and Mrs. Fred Cardinal of Floydada.

The couple will wed April 21 in the Chapel of the Chimes of First United Methodist Church in Muleshoe.

Miss Gaston is a 1972

graduate of Muleshoe High School and attended Texas Christian University and West Texas State. Her fiancé is a 1970 graduate of Floydada High School, attended WTSU and is a graduate of the Texas Highway Patrol Academy. He is presently stationed in Muleshoe.

ELECT BOONE ADAMS

Commissioner
Prec. 4
* Experience
* Integrity

PAID POL. ADV. BY
BOONE ADAMS

FLOYD DATA

Dwayne Morren, three and a half year old son of Billie and Jan Morren of Snyder, is reported recovering from a major operation for an abscess on the liver, performed March 19 in M. D. Anderson Hospital in Houston. The youngster was taken ill and was in the Snyder Hospital a week for treatment before being transferred to Houston. The Morrens are expected to be able to return the boy home in another week or so. Grandparents of Dwayne,

Mrs. Trapp Hostess For Homebuilders

The Homebuilders Extension Club met Tuesday in the home of Mrs. W.W. Trapp, President, Mrs. John Walker, presided over the business meeting, Mrs. Trapp gave the devotional. Mrs. Ernie Widener gave the Council report.

Mrs. Wm. H. Smith gave the program "Car-Talk." She advised one to read and study their car manual, so they would know and understand their automobile better and to listen for unusual noises that might indicate something is going wrong.

Mrs. W.I. Moore had Anti-Lib rules and closed her thoughts by reading a poem by Grace Noel Crowell. Mrs. Raymond Williams led the recreation "Know your Car from A to Z."

Roll call "My every day pleasures" was answered by: Mrs. O.G. Mayfield, Elmer Norrell, H.W. Roberts, Lee Rushing, Ernie Widener, Wm. H. Smith, Raymond Williams, W.I. Moore, John Walker, Mrs. Trapp and one guest, Mrs. B.A. Robertson.

One-Act Play Monday Night

The One-Act Play, "Antic Spring" with a cast of six, will be presented in the Floydada High School Auditorium April 1, at 9 p.m. The play is 35 minutes in length. There will be no admission charge.

Mr. and Mrs. Fay Gooch of Floydada were in Houston for the operation, and the maternal grandmother, Mrs. James Morren, stayed in Snyder caring for the Morrens' older son. Mr. and Mrs. Gooch have also been spending some time in Wichita Falls with a son-in-law, Arthur D. Selman, husband of the former Lou Ann Gooch. Selman was dismissed this week from the hospital. He has been critically ill following a ruptured appendix and complications of the liver.

New Animals Banquet Honors Employers Of HECE Girls

Mr. and Mrs. William Perry Gaut of Lawrence, Kansas, are parents of a son, Joseph Perry, who was born in Lawrence Memorial Hospital Tuesday, March 19, at 6:45 p.m. The baby weighed six pounds and 15 ounces at birth and is the first child of the Gauts. The mother is the former Snowdrop Dunn.

Grandparents are Mr. and Mrs. Joe Dunn of Floydada and Mrs. Perry Gaut of Pampa. Great grandparents include Mrs. Hattie Fauga of Amarillo and R. W. Tucker of Allen, Okla.

Home Economic Cooperative Education girls honored their employers Thursday night with an appreciation banquet in the high school cafeteria. The first annual event was given by the girls to express their gratitude for their employers' cooperation in the HECE program. Connie Anderson, president of the organization gave the welcome address followed with the invocation

by Janet Vick.

A Mexican buffet supper, consisting of South of the Border Casserole, salad, beans, Sopapillas, tea and coffee were served, and Carolyn Hribek, Home Ec teacher, added to the fiesta with her musical talent.

Introduction of the HECE Advisory board and special guests was made by Phyllis Guffee. A toast to the Advisory committee was made by Nan McCulley and a toast to the training sponsors was made by Debbie Medley. Response was given by Dr. Andrew McCulley. The HERO and HECE story was given by Sherry Willis and Terry Stovall.

Each HECE girl received an Encounter Recognition pin for achieving personal goals set for herself during the year. Mrs. Mary Alice Craig, Home Ec teacher, made presentations to Sherry Willis, Sylvia Vasquez, Phyllis Guffee, Nan McCulley, Terry Stovall, Janet Vick, Marta Martinez, Debbie Medley and Connie Anderson.

The banquet closed with a piano and flute duet "Color My World" by Debbie Medley and Nan McCulley.

Deadline Set In Contest

Deadline for entering the Beta Baby Photo Contest is Friday, April 5. Proceeds from the contest will go into a fund for the Floydada Nursing Home patients.

First, second and third place winners in the contest will be announced in the Easter Sunday edition of the Floyd County Hesperian and Lockney Beacon. The first place prize will be an 8 x 10 photo and second and

third-place prizes will be a 5-7 photo, courtesy of Parker Studio.

Those wishing to enter photos in the contest may do so by contacting Mrs. Larry Emert, or Mrs. Richard Bertrand in Floydada, or Mrs. Phil Green in Lockney. Babies must be between the ages of birth and four years old. There is a \$1 entry fee.



EASTERN STAR PINS were awarded to each of the above group at Masonic Hall Thursday night. Front row, left to right, Mrs. Cleo Goins, 45 year pins; Mrs. Crystine Colston, Mrs. Carrie Cline and Anne Swepston, 35 year pins; back row, left to right, Mrs. Roberta Russell, Mrs. Marjorie Hollums, Letha Wilkins and Ruth Trapp, 25 year pins.

Eastern Star Pins Given In Program

A number of Eastern Star members were honored Thursday night for the presentation of year pins during a meeting held at Floydada Masonic Hall.

Mrs. Helen Patterson presented the program on early day membership in Eastern Star and as each

group by the year was invited to the front, Mrs. Patterson gave brief interludes on Eastern Star for that particular year. Eastern Star hopes to make the pin award an annual affair.

Those awarded 45 year pins were Mrs. Cleo Goins, presented by her daughter, Mrs. Jo V. Bingham; J. A. Folley of Amarillo and Miss Hattie Thorp of Hale Center, both unable to be present.

Three 35 year pins were awarded to each, Carrie Cline by Helen Patterson; Crystine Colston by Flora McNeill, and Anne Swepston by Hazel Swepston. Those unable to be present for their 35 year pins were Belva Henderson, Hal Scott and Marivena Kemp, the latter of Fort Lauderdale, Fla. Twenty-five year pins went to Marjorie Hollums, presented by Walter Hollums, presented by Walter Hollums; Roberta Russell by

Wayne Russell; Ruth Trapp by Grace Robertson and Letha Wilkins by Carl Wilkins. Others due 25 year pins but unable to attend were Eudria Holcomb, Crosbyton, Jennie Gaunt and Doyle and Jackie Walls.

The announcement was made that Eastern Star would entertain Masons and their wives with a dinner at 7:30 Thursday night, April 4 at the Masonic Hall.

A report was given on Friendship Night held March 21 when eight area chapters were represented and 11 Grand Officers present. At this gathering the group was entertained by Mrs. Sharon Kinard and Rick Hunt.

The announcement was also made of the death of Mrs. Jackie Walls' mother.

Hosts for the social event Thursday night were Hazel and Hershel Swepston and Dora L and H. E. Woodson.

Jolly Stitchers

The Lockney Jolly Stitchers Club met March 28 with Mrs. Royce Latimer. They spent two hours mending for the nursing home. Then Mrs. Latimer gave a demonstration on felling and cutting glass bottles.

Refreshments of caramel cake and iced tea were served to Mes. Dow Colston, Harman Handley, Hilburn Casey, Andy Jolley, Hugh Marble and C. H. Andrews.

FLOYD DATA

Mrs. Lawrence Stovall was able to return home from Caprock Hospital Thursday.

Rehearsal Dinner

Miss Vicki McCormick and Ben Richard King, members of their wedding party and guests were honored at a rehearsal dinner hosted by Mr. and Mrs. Herman King at the Gridiron Restaurant in Lubbock, Friday, March 22 at 6:30 p.m.

Present at the dinner were Dr. and Mrs. J. W. McCormick, Dumas; Prof and Mrs. John Gillas, Dr. and Mrs. Kline E. Nall, Mr. and Mrs. Randy Jordan, Mrs. Elvora Allen, Kathy Wattenbruger, David McCormick, Kerry Whitworth, Lamar Mallett, Darryl Knapp, all of Lubbock; Robert Moore, Kansas City, Missouri; Debra Canterbury and Sandra Sage, both of Hobbs, N.M.; Vicki McFarlin, Amarillo; Joan King, Mr. and Mrs. Van Bradley, all of Lockney; Jody McCormick, Canyon, and Michael McCormick, Dumas.

You and your pretty legs. Seen everywhere in very feminine clothes and beautiful sandals. Sandals made with slim heels and petite platforms to dramatize the real you... the soft you. And your lovely legs!



joyce

QUADRILLE
White, Yellow or
Green Kid 26.00

Briercroft 5302 Avenue Q
Suburban 4906 - 50th

DIAMOND

Duster SALE 20% OFF

Through the cooperation of our New York diamond suppliers, Payne's Jewelers has again obtained a very large memorandum selection of loose diamonds for you to choose from. All popular shapes are included: round, marquise, pear, and oval.

Payne's Jewelers is offering these memorandum diamonds through the entire month of April at 20% off the regular market value and 10% off our regular stock of mountings...the largest in Lubbock.

Payne's Jewelers only has one sale a year and this is it! Do come by and select your diamond during April at Payne's Jewelers Annual "Diamond Duster" Sale.

Payne's Jewelers

DIAMONDS - GOLD - PRECIOUS GEMS
MEMBER AMERICAN GEM SOCIETY (AGS)

ert
ght
th Co
Mond
7:30
nter.
invie
nia" w
ed, fr
offeri

MISS JEANETTE
Miss Vicki Jones To
The engagement approaching marriage of Jeanette Vick to Wayne Jones, is announced by the elect's parents, Mr. and Harlie Vick of Floydada. Parents of the bridegroom are Mr. and Mrs. Doc Jones of Floydada. Miss Vick and Jones will be wed June 1 in the

Girl Of
Running from High School to the Dental Office, changing into white and "scrubbing up" began work afternoon of Dr. McCulley's business. She is a member of the Home Economic Cooperative Education program in job training program by Mary Alice Craig of Floydada High School. At the dental office, she is constantly on the making and developing X Rays, making teeth most sterilizing instruments cleaning rooms and in taking calls and performing a hundred other duties with an open ear for Dr. McCulley's business. When she gets the signal she becomes a "charismatic" assistant with patients. "This is where I really get feeling of satisfaction, when I'm doing a service for

HECE
NAN

Me
Plainview

OBITUARIES

Mrs. Moore

Services for Mrs. A. H. Moore, 72, mother of Mrs. Doyle Walls of Floydada, were held in the First Baptist Church in Clarendon Thursday. Mrs. Moore died Tuesday in Lakeside Nurs-

ing Home in Lubbock where she had resided for the past two years. Mrs. Moore had lived in Clarendon some 30 years. She was a native of Pattonville. Her husband, Andrew Moore died in 1967. Survivors other than Mrs. Walls include two other daughters, six sons, five sisters, 21 grandchildren and 49 great grandchildren.

APRIL IS CANCER CONTROL MONTH

1950 STUDY CLUB TO MEET APRIL 16

Members of the 1950 Study Club will meet April 16 rather than April 2 as reported last week. Barbara Arwine and Joy Smitherman are hostesses.

Therapy
The treatment of disease.



WILLSON LECTURE DIGNITARY VISITS FLOYDADA... Dr. A. Donald Bell, outstanding writer, lecturer, and psychologist from Arizona spoke to the Floydada Rotary Club Wednesday. He has been lecturing at Wayland this week. Pictured following his talk at Rotary, (left to right) Dr. and Mrs. Bell, Mrs. J.M. Willson Sr., Dr. Roy McClung, Wayland president, Rotarian Jerry Thompson and Joe Wood of Wayland.

Church of Christ

W. College & 3rd.

Lockney, Texas

INVITES YOU

TO THE FOLLOWING SERVICES

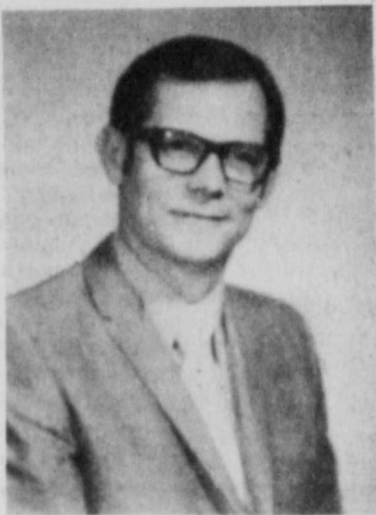
MARCH 31-APRIL 7

SUNDAYS

10:30 a.m. and 6:00 p.m.
Lunch at building both Sundays

MONDAY - SATURDAY

7:30 a.m. to 8 a.m. - Short, Inspirational Services
8:00 p.m. each evening except Thursday 6:45 p.m.
FRIDAY - "SPECIAL TEACHING FOR YOUTH"



ROLAND HAYES Preaching of Houston, Texas

What One Person Can Do

Chico Morales, Revolutionary

Chico Morales is a revolutionary. There is no question about that. Because of him, the tiny village of San Marcos Huista in the mountains of Guatemala will never be the same. A young father with a growing family, Sr. Morales deals not in violence but in ideas - the most powerful of all agents for change. He persuaded 40 farmers to grow garlic instead of corn. The yield was \$700 per acre compared to \$30 per acre for corn. He studied a home

medical guide and took a course in rural medicine. Today, Sr. Morales runs the town's public health dispensary. He gives vaccinations, pulls teeth and treats common ills and injuries. The fee he charges - from a nickel to 15 cents - puts his services within reach of everyone. It's hard to say what lighted the spark in Chico Morales. Even as a schoolboy, he decided to study Spanish as a second lang-

uage to his Indian dialect. But for a time, night-life and parties claimed his attention while he played in a marimba band. Perhaps what changed his life was the Bible study a friendly missionary encouraged. After that, he decided to learn more and to put his knowledge to work for others. He took courses in conservation, community development and animal husbandry. Yet, the role of prophet is

ELECT BOONE ADAMS

Commissioner Prec. 4
* Experience
* Integrity

PAID POL. ADV. BY BOONE ADAMS

CUT YOUR COST ON QUALITY FOODS....

THRIFTWAY

A BETTER WAY TO SAVE



GOVT. INSPECTED USDA FRESH WHOLE FRYERS
LB. **43¢**

HAND SELECTED FOR QUALITY PILLSBURY Fryers
LB. **49¢**

- FRESH WHOLE OR SPLIT CHICKEN BREASTS 69¢
- FRESH CHICKEN DRUMSTICKS 65¢
- FRESH CHICKEN THIGHS 65¢
- CENTER CUT PORK CHOPS LB. \$1.09

WITH HTVP **GROUND BEEF** FRESH LB. **69¢**

(HALIBUT) TURBOT **FISH FILLETS** FRESH LB. **89¢**

- CHUCK WAGON BRAND SLICED BACON LB. **79¢**
- CUDDY BAR'S STORE SLICED BOLOGNA BY THE PIECE 79¢
- WILLSON CERTIFIED BRAUNTSCHWEIGER LITTLE BIT BUNS 79¢
- CORN DOGS 89¢
- BEEF LIVER 79¢
- QUICKLY HOT LINKS 89¢

NOTICE TO OUR CUSTOMERS
We Need Your HELP!!
Paper bags are in short supply due to the critical paper shortage. We ask all our customers to help us. Please bring your bags with you and place in your shopping cart to be used with your own order. Please take boxes when possible.
Thank You For Your Cooperation.

SHURFINE VAC PAC **COFFEE** 1-LB. CAN **89¢**

WITH .50¢ IN AD COUPON **FOLGER'S INSTANT COFFEE CRYSTALS** 10-OZ. JAR **\$1.59**

INSTANT TEA **NESTEA** 3-OZ. JAR **99¢**

ASSORTED FLAVORS **CARNATION SLENDER** 10-OZ. CANS **\$1.59**

Chek & Bated
MINUTE MAID FROZEN ORANGE JUICE 12-OZ. CAN 59¢
MORTON REC. FROZEN DINNERS 12-PK. 49¢
SANTITAS SANGRIA DRINK 12-OZ. CAN \$1.00
SHURFINE CHUNK STYLE TUNA 5-OZ. CAN 49¢
WHITER CLOTHES **PUREX BLEACH** 25-LB. BAG 29¢
SHURFINE **DOG FOOD** 25-LB. BAG \$4.49
SHURFINE **SALAD DRESSING** 32-OZ. JAR 79¢

SHURFRESH FORTIFIED LOW-FAT **MILK** 1/2 GAL. **57¢**

SHURFRESH SOFT **MARGARINE** (DOUBLES) 8-OZ. TUBS **49¢**

THRIFTWAY'S FARM FRESH PRODUCE
LARGE BELL PEPPERS 1 LB. 25¢
CENTRAL AMERICAN BANANAS 2 LBS. 25¢
LARGE SIZE CANTALOUPE 3 FOR \$1.00
CELLO BAG CARROTS 2 LBS. 29¢
LONG GREEN SLICERS CUCUMBERS 2 LBS. 29¢

SHURFINE FROZEN PRE-COOKED **FISH STICKS** 8-OZ. PKG. **69¢**
KLEENEX DESIGNER OR BOUTIQUE TOWELS JUMBO ROLL 39¢
FINE S&S FOAM BATHROOM CLEANER 17-OZ. AERO CAN 83¢
OUR DARLING FOR TORTILLAS **FLOUR** 25 LBS. **\$2.99**
AMERICAN BEAUTY ELBO ROM 10-OZ. POLY BAG 35¢
HEART ROMA DRESSING 8-OZ. BTL 55¢

TEXAS RUBY RED **GRAPEFRUIT** 5 LB. BAG **49¢**

BRIM FREEZE DRIED DECAFFEINATED **COFFEE** 4-OZ. JAR **\$1.19**

CHOCOLATE CHIP PEANUT BUTTER AND SUGAR **Pillsbury Cookies** PER ROLL **69¢**

FRENCH ONION GREEN GODDESS AND SUGAR **Kraft Teez Dips** 8-OZ. CTN. **49¢**

OFFICE BATHROOM SCALES **\$2.99**

DON'S THRIFTWAY
HOME OWNED AND OPERATED ON THE WYE IN FLOYDADA

VALUABLE COUPON NO. 50812
CEREAL **CHEERIOS** 10-OZ. BOX **39¢**
WITH THIS COUPON THRIFTWAY FOOD STORES VOID AFTER APR. 6, 1974
VALUABLE COUPON NO. 50812
FOLGER'S INSTANT **COFFEE CRYSTALS** 10-OZ. JAR **\$1.59**
WITH THIS COUPON THRIFTWAY FOOD STORES VOID AFTER APR. 6, 1974

IF WE DON'T GET RAINED OUT...



Our 51st Annual Stockholders Meeting Will Be Held MONDAY, APRIL 1

2:30 p.m. Massie Activity Center

In Floydada
● DOOR PRIZES
● ONE DIRECTOR TO BE ELECTED

"You All Come"

CONSUMERS FUEL ASSOCIATION

FLOYDADA

COUNTY RECORDS

(Marriage Licenses)
 Noe C. Gonzales and Yolanda Balderas, March 25.
 Robert Stephen Reeves and Phyllis Ann Barton, March 22.
 Teodora Cantu and Juana Amador, March 15.
 (Warranty Deeds)
 Joe Neil Rexrode etux to Herbert A. Dudley etux, three acres out of the D. F. Davis Survey.
 Anderson, Clayton & Co., to Tri-C Corp., all of the west one-half of the south one-half of Survey No. 7 in Block D-5, containing 160 acres.
 Veterans Land Board of Texas to Ruth J. Van Wickel, 79,932 acres of land in Floyd County being the west one-fourth of the north one-half of Survey 31 in Block 1.
 Kenneth E. Probasco etux to Denzil V. Probasco etux, all of the northwest one-fourth of Survey 54 in Block 1.
 Denzil V. Probasco etux to Kenneth E. Probasco etux, Blocks 23, 24, 25, 26, 41, 42, 43, 44 in League No. 1, Callahan County School Lands.
 Wm. H. Dougherty to Ray Gene Carthel, Lots 2 and 3 in Block 4 in Dougherty.
 Wm. H. Dougherty to Ray Gene Carthel, Lots 13 and 14 in Block 3 in Dougherty.
 Martha Coffman Robertson to Lillian Coffman, all of the southeast one-fourth of Survey 68, Block G.E.L. & RR Co., containing 160 acres in Floyd County and the southwest one-fourth of said Survey.
 Anderson, Clayton & Co., to J. W. Kidd etux, 1.94 acre tract out of the southwest one-fourth of Section 12, Block D-5.
 Beth Leach and Glenn White to Richard Ward etux, Lots 12, 13, 14, 15, and 16 in Block 4 in Dougherty.
 Jewell Kenady to Johna Bilbrey, the east one-half of the south 243 acres of Section 41 in Block D-1.
 Beth Leach and Glenn White to J. R. Pernell etux, Lots 16, 17 and 18, all in Block 7 in Dougherty.
 Frank Probasco etux to Kenneth E. Probasco, an

undivided one-half interest in and to all the oil and gas royalty and royalty in other minerals in and under or that may be produced from all of Blocks 1,2,3,4,19, 20, 21, 22, 23, 24, 25, 26, 41, 42, 43 and 44 in League No. 1, Callahan County School Lands.
 Charles L. Meador etux to David C. Hale etux, Lot 18 in Block 1, Steen Place in Floydada.
 Geraldine Tucker etal to Eula Clark etal, one-fourth interest in and to 235.127 acres out of the east 240 acres of the south one-half of Survey 71 in Block 1 and one-sixth interest in and to Lot 6, Block 116 in Floydada.
 Lane Allen Decker to Wanda Lavene Decker, an undivided one-fourth remainder interest in and to 320 acres of farm land being the west one-half of Survey 44, Block K; the east one-half of Section 10; approximately 323.7 acres consisting of three tracts described as all of the J. D. Arnold 160 acre Survey; all of the G. M. Arnold 180 acre Survey; all of the W. A. Shipley 89.7 acre Survey 370; also the northwest one-fourth of Section 127, Block 1 and the north one-half of Section 8 and one-fourth non-participating royalty interest in and to the following; the southwest one-fourth of Survey 33; five acres immediately south of above described tract; and an undivided one-fourth interest of oil, gas and other minerals in and under the following three tracts; Survey 328, 160 acres; acres being Abstract 1157, and four acres out of Survey 366.
 Denzil V. Probasco etux to A. C. Pratt etux, all of the northwest one-fourth of Survey 54, Block 1.
 Edna Payne Cox to Joan A. Dorman etux, 247.3 acres of land in three tracts; 160 acres being all of the C. H. George Homestead Survey No. 7, Block G-3; 80 acres being all of the J. W. Rainey Survey 8, Block G-3; and 7 3/10 acres being all of the C. F. Ramsey Survey SF 12291.
 Sherwyn Bennett Otero etal to Mary Louise McCar-

ter, all of a 100 acre tract of land out of the northwest portion of the north one-half of Survey 67 in Block G.
 Mary Sue Owen to Jack Ragland etux, the south 85 feet of Lots 14, 15, 16 in Block 1, Guest and Ramsey Addition in Lockney.
 Virginia Sissney etvir to Claude Brown etux, all of the west one-half of Lots 8, 9 and 10, Block 3, A. J. Byars Addition in Lockney.
 Oscar Golden etux to Claude Brown etux, the east one-half of Lots 8, 9 and 10, Block 3, A. J. Byars Addition in Lockney.
 D. J. Phillips etux to Eathyl Marble, the south one-half of Lots 11, 12 and 13 in Block 8 in Lockney.
 Anderson, Clayton & Co., to Martin Bradley etux, 158.06 acres being all of the southeast one-fourth of Section 12, Block D-5 save and except 1.94 acres out of the southwest one-half of Section 12, Block D-5.
 W. A. Massie to Francisco S. Morales etux, Lot 6 in Block 79, in Floydada.
 Florence Merriott to H. F. Pratt, 160 acres being off the west end of the 626 and two-thirds acre tract described as Survey 268; 141.8 acres being a part of 626 and two-thirds acres in Survey 268 and 80 acres out of the northeast part of the J. A. Sparks Survey 268.

DISTRICT COURT RECORDS
 (Cases Filed)
 M. M. Smitherman vs Lane Decker, suit for damages.
 Carmen Pauline Brandt etal vs Eula Victoria Shurley, partition suit.
 John B. Stapleton vs Victor D. Cascillas etux, suit for title and possession of property.

MAC Board Meet Monday Night

The Massie Activity Center board meeting will be held at 7:30 Monday night in the community room of the First National Bank in Floydada.
 It will be the first board meeting for new members Tommy Assiter, Mrs. Eugene Beedy, Bill Hardin, and Mrs. Cleo Whittle.
 President of the board Bill Brown urges all board members to be present.

FLOYD PHILOSOPHER Claims Panic Over The Arab Oil Embargo Showed Ignorance Of



Editor's note: The Floyd Philosopher on his Johnson grass farm thinks he knows why the oil embargo was lifted, his letter this week claims.
 Dear editor:
 I used to think that getting elected and sent to Washington meant you must have a fairly good knowledge of human nature, but I have begun to doubt it.
 Take the Arab oil embargo. When the Arab nations decided to exert their power and teach the United States and a bunch of other countries a lesson, I guess that was the reason, everybody in Washington gnashed his teeth and said what are we going to do — this country doesn't produce enough oil for its own use and without imports we're in for years and years of shortages. Washington even printed up 12 million dollars worth of gas rationing coupons and got set for the worst.
 Five months later the Arab nations lift the embargo, and oil will flow again, as long as it lasts. You want to know why? You can attribute it to high-level diplomacy if you want to, but I have a notion there's a better

reason. MONEY.
 When the Arab nations launched the embargo, they stopped selling 3 million barrels of oil a day. At \$12 a barrel, F.O.B. the sheik's tent, that's 36 million dollars a day. How long do you think any group of people is going to give up 36 millions of dollars a day? That's over a billion dollars a month, including February. In five months they lost over five billion dollars, and for countries needing rain as bad as they do, that's a lot of money. In fact, it's a lot of money, rain or shine.
 Anybody with a fair knowledge of human nature should have known the embargo wouldn't last. Nobody for long is going to turn away a cash customer when there's nobody else to take his place. The market for oil is in the U.S. with our 100 million cars, not in Russia or China where only a few top politicians get to ride.
 I don't know if the Arabs taught us a lesson in world politics but I figure they learned one themselves about recognizing a good thing when they see it.
 Yours faithfully,
 J.A.

County Easter Seal Appeal Going Well


Floyd County's Easter Seal Representative reported today that the 1974 Easter Seal Appeal of the Easter Seal Society for Crippled Children and Adults is going well. Lyda Walding of Floydada serves as Easter Seal Appeal Treasurer for Floyd County.
 The 1974 Easter Seal Appeal will finance the Easter Seal Society's rehabilitation program for crippled children and adults in Texas. Last year the Society helped 20,570 disabled persons through its program of assistance in finding and making effective use of services for the disabled and their families.
 The Easter Seal Society helps support 18 treatment facilities in Texas where children and adults not eligible for other assistance are treated. These centers offer physical therapy, medical diagnosis, speech and hearing programs and related services to help the disabled build happier and more useful lives.
 As Easter Seal Represent-

tative, Lyda Walding is the person to contact for services from the Easter Seal Society. She can be contacted at First National Bank.
 When contacted for services, Miss Walding will provide the request form to be sent to the Texas Easter Seal Society in Dallas to determine the needs of the disabled person. The Society will provide the service where possible or will advise the handicapped person of

the best resources available to help him.
 Miss Walding added that contributions to the Easter Seal Appeal should be sent to her as soon as possible.

Easter Pageant

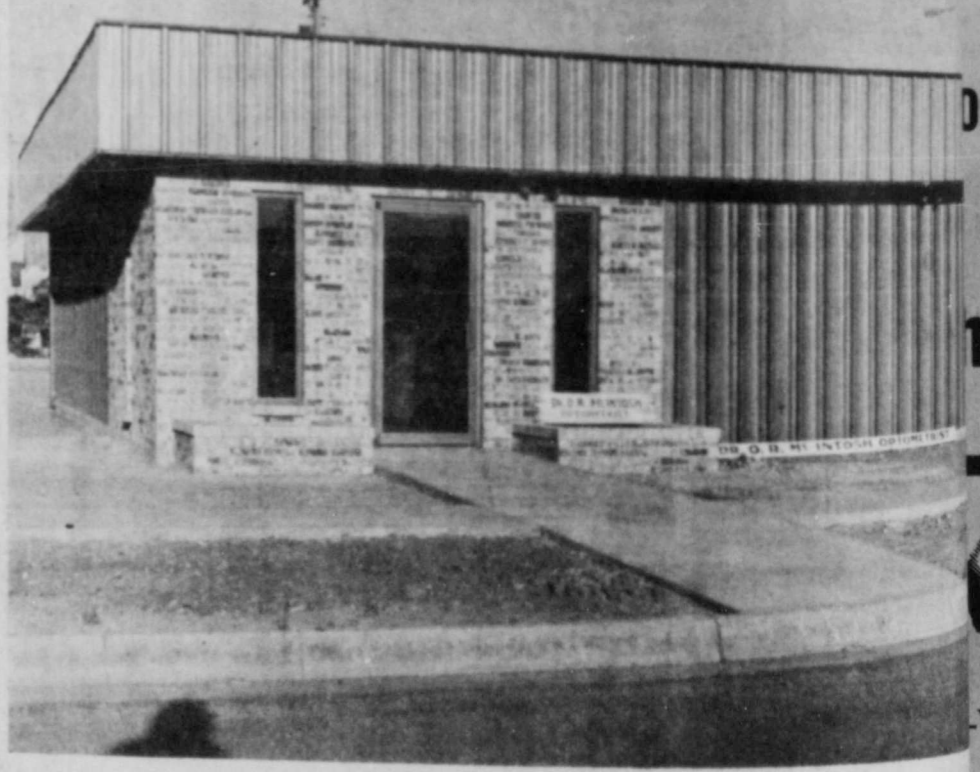
Make plans to attend the 10th Annual Kendrick Easter Pageant, April 14, 1974, beginning at 3:30 a.m., portraying the life of Christ



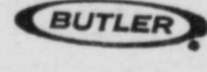
YOUR LAWN TODAY WITH
 ZIPP
 15 - 5 - 10
PRODUCERS COOPERATIVE ELEVATOR
 DOUGHERTY FLOYDADA

Congratulations...Dr. and Mrs. O.R. McIntosh

This beautiful new office building is certainly a step in the progress of the Floydada business community. The combination steel and brick exterior combined with beautiful carpet and inside panelling make it modern in every respect.
 Our congratulations and best wishes to Dr. and Mrs. McIntosh on the completion of this fine new office building, and we look forward to building more fine Butler Systems Buildings in the Floydada Area.



316 South Main Street, Floydada



Building Systems

GENERAL CONTRACTOR

TUSHA BUILDING, INC.

1001 Slaton Highway Lubbock Phone 747-4631
 CONSULTING ARCHITECT WAS BILL COX

SUB CONTRACTORS

- CARPETING BY BILL SCOTT
- CONCRETE AND MASONRY BY J.D. COOK
- GLASSWORK BY TYSON GLASS
- HEATING AND AIR CONDITIONING BY STATE HEATERS AND AIR CONDITIONING

- PLUMBING BY GLEN WILLIAMS PLUMBING
- FLOOR COVERING BY PAUL GRAHAM COMPANY
- CEILING BY SOUTHWESTERN SPECIALTY
- ELECTRICAL WORK BY ALLIED ELECTRIC

Who is this man? Meet Donnie Gallaway our friendly Piggly Wiggly store manager.

This is the final week of his special Store Manager's Sale.



People who know Donnie trust him to give them the best food for the money. And this is a good week to get to know him. Because Donnie is having a sale all his own. On meat, produce and grocery items, Donnie will help you save money. Everywhere you look, the bargains will be big. Come in, meet Donnie and let him show you how to stretch your food dollar. You'll see why in Floydada, Donnie Gallaway is a good man to know.

STORE HOURS-

DAILY - 8 A.M. TO 10 P.M.

SUNDAYS-

9 A.M. TO 9 P.M.


Prices good thru April 3, 1974.

Flower & Garden Book


This Week's Features:

Chapter 10
"Techniques & Tools"

Chapter 11
"Multiple Favorite Plants" Each



39¢



Large

Tomatoes

4 **\$1**

LBS.

Peppercorns 3 for \$1.00

Apples 4 lbs. \$1.00

10 **\$1**

EARS



Piggly Wiggly, Lb. Chub Pack, Fresh

Ground Beef

89¢

Lb.

Booth Catfish Fillets	16-oz. Pkg	\$1.45
Fully Cooked, Breaded Perch Fillets	Lb.	\$1.19
Farmer Jones, No. 1 Quality, 2-Lb.	2-Lb.	\$2.17
Sliced Bacon	Lb.	\$1.09
Superb Valu Trim, Heavy Aged Beef, Boneless		
Chuck Roast	Lb.	\$1.29



Ranch Style

Sliced Bacon

88¢

Lb.

Hormel's Little Sizzlers Pork Sausage	12-oz. Pkg	99¢
Dallas City Packing Hot Links	Lb.	98¢
Farmer Jones, 4 to 6 Lbs. Avg. Boneless Hams	Lb.	\$1.99
Piggly Wiggly, Fully Cooked		
Canned Ham	3-Lb Can	\$4.79



Alpo, Beef or Broiled Bits Dinner

Dog Food

5 **\$1**

6 1/2-oz. Cans

Chicken n Dumplings	Sliced Turkey	Salsbury Steak	
Banquet Suppers	Frozen	32 oz	\$1.63
Morton, Frozen			
Cream Pies		14 oz	38¢
Swanson, Pancakes & Sausage Egg	Sausage & Caki		
Breakfast Dinners		5 1/2-oz	55¢
Assorted Facial			
Kleenex Tissue		200-Ct Boxes	3 \$1



Piggly Wiggly Grade A Large

Eggs

59¢

Lb.

Ice Cream	qt.	68¢
Complete Mix	2-Lb Box	79¢
any		\$1.49
eties		
netti	15 1/2-oz. Jar	49¢



Farmer Jones

Fresh Butter

79¢

Lb. Ctn.

Log Cabin Syrup	24-oz Btl	87¢
Betty Crocker Brownie Mix	23-oz Box	79¢
Irish Spring Bar Soap	Bath Bar	31¢
Piggly Wiggly, Cut Green Beans, Cream or Whole Kernel		
Golden Corn	16-oz Cans	5 \$1




CLOVERLAKE

Ice Cream

89¢

1/2-Gal. Round Ctns.

Piggly Wiggly Tortilla Chips	3 8-oz Pkgs	\$1.00
Chicken or Beef Rice-A-Roni	8-oz Pkg	41¢
Piggly Wiggly, Plain or Iodized Table Salt	26-oz Pkg	11¢
Frozen, Zig-Zag, French		
Fried Potatoes	20-oz Bags	3 \$1



Plus Deposit, 7-Up or

Dr. Pepper

6 **\$1**

32-oz. Btls.

Rainbo Sliced Dills		32 oz Jar	67¢
Hamburger Pickles			
Vaseline Petroleum Jelly		1 1/4-oz Jar	23¢
Medical Center White Alcohol		16 oz Btl	19¢
Bic Disposable Butane Lighter		Ea	99¢

We Redeem



FEDERAL FOOD COUPONS

We Welcome Food Stamp Customers

We Redeem



FEDERAL FOOD COUPONS

PIGGLY WIGGLY



FLOYDADA JR. HIGH SCHOOL HISTORY FAIR WINNERS...Top Photo, first place winners (left to right) Hope Robertson, Beverly Vickers, Judi Bean, Brenda Jackson, Kim Warren, Mark Beedy, Shelby Shurbet, Kary Helms, Rodney Ratheal, and Andy Langley. Middle Photo second place winners: (left to right) Doug Simpson, Clay Hamilton, Lisa West, Jon Jones, Roy Munez, Rosemary Hardin, Nancy Moss, Susan Stovall. Bottom Photo more second place winners: (left to right) Kara Copeland, Susan Dyess, LaDelle Noland, Lisa Welborn, Jeanne Ferguson, Ricky Day and Greg Pruitt. (Staff Photo)

PERSON FROM S

never easy. Mayan Indians deify corn and Sr. Morales's ideas about new crops sounded like heresy. His work with young people led to an accusation that he was undermining authority. Disension still discourages him at times. But Chico Morales knows he can cure the sick and improve the lives of his people. That makes it all seem worthwhile.

For a free copy of The Christopher News Notes, "Leadership & You," send a stamped, self-addressed envelope to The Christopher, in care of this newspaper.

Agriculture Commissioner John C. White recently reported that pintos were selling at \$32.50 per hundred pounds in January compared to \$27 in November, 1973, and \$9.85 in November, 1972.

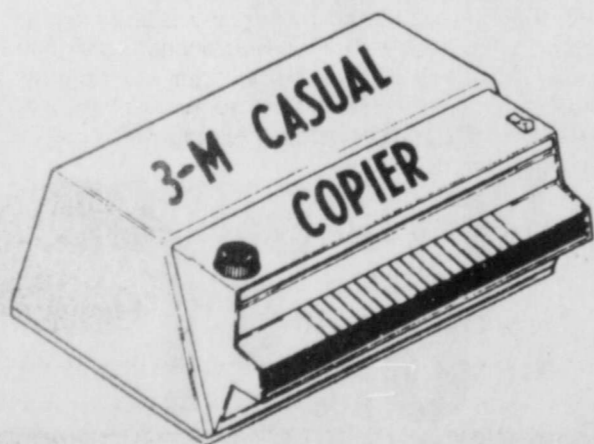
Lowered production coupled with increased demand domestically and abroad have brought the sharp increase in pintos and all other classes of beans. Despite relatively high prices at planting time, U.S. bean growers did not increase their 1973 acreage, probably because farming alternatives looked better at the time, White said.

Thar's Gold In Them Thar Beans

AUSTIN-Texas pinto bean growers are no longer working for "beans" as the price for pintos has risen to unprecedented highs in 1974.

ELECT BOONE ADAMS
Commissioner Prec. 4
* Experience
* Integrity
PAID POL. ADV. BY BOONE ADAMS

COPY MACHINE SALE!



\$89.95 PERMANENT DRY COPIER PICKS UP ALL COLORS

HESPERIAN OFFICE SUPPLY FLOYDADA
BEACON OFFICE SUPPLY LOCKNEY

Come to



Rev. Thomas E. Fisher
Pastor
First Assembly of God Church
Floydada, Texas

ST. MARY MAGDALEN CATHOLIC CHURCH

Sunday: 11:00 a.m. Service of the Word of God and Holy Communion
The Service of the Word of God and Holy Communion is also celebrated on Monday and Thursday at 9:00 p.m.
Religion Classes
Sunday 10:00 a.m.
Grades 1-8 - 4:00 to 5:15 p.m.

WEST SIDE CHURCH OF CHRIST

Sunday morning worship . . . 10:30 a.m.
Sunday Evening 6:00 p.m.
Wednesday Evening 7:30 p.m.

SANDHILL BAPTIST CHURCH

Craig Wilcox, Pastor
Sunday School 10:00
Morning Worship 11:00
Training Union 6:30
Evening Worship 7:30
Wednesday Evening Services . . 7:30

FIRST UNITED METHODIST CHURCH

James Tidwell, Pastor
Sunday School 9:45
Morning Worship 11:00
Youth Fellowship 6:00
Sunday Evening worship . . . 6:30 p.m.

FIRST CHRISTIAN CHURCH

Dwayne Grimes, Pastor
Sunday School 9:45
Morning Worship 11:00
Youth Meeting 6:00
Evening Worship 6:00

FIRST BAPTIST CHURCH

F. C. Bradley, Pastor
Sunday School 9:45
Morning Worship 11:00
Church Training 6:00
Evening Worship 7:00

CALVARY BAPTIST

Sunday School 9:45 a.m.
Morning Worship 11:00 a.m.
Bible Study 6:00 p.m.
Evening Worship 7:00 p.m.
Wednesday Evening 7:00 p.m.

BIBLE BAPTIST CHURCH

Lloyd Hamilton, Pastor
Sunday School 9:50
Morning Worship 10:45
Sunday Evening Prayer Meeting . 6:00
Sunday Evening Services . . . 6:30
Wednesday Evening Services . . 8:00

NEW HOPE PRIMITIVE BAPTIST CHURCH

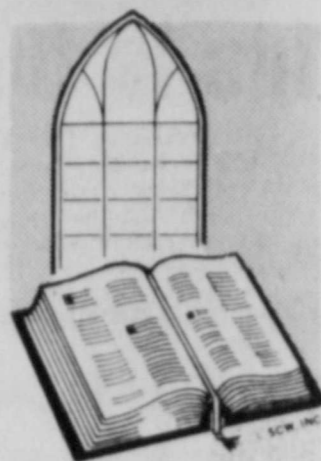
Beathel Jeffrey, Pastor
2nd Sunday
2nd Sunday Morning Worship . . 11:00
2nd Saturday Afternoon 2:00
2nd Saturday Evening Worship . . 7:00

CEDAR HILL ASSEMBLY OF GOD CHURCH

Sunday School 10:00
Morning Worship 11:00
Evangelistic Service 6:30

ALDERSGATE SPANISH UNITED METHODIST CHURCH
Now Meeting at First United Methodist Church
Thursday Evening Bible Study . . 7:30

CEDAR HILL BAPTIST CHURCH
Sunday School 10:00
Morning Worship 11:00
Evening Worship 7:30



"It Is A Fearful Thing To Fall Into The Hands Of The Living God"

Hebrews 10:31 says "It is a fearful thing to fall into the hands of the living God." If we stop and think seriously about this, we have to agree. Most of us have a nodding acquaintance with God. We acknowledge that he exists. We acknowledge that he is concerned about us. We go to church when it is not too inconvenient. We try to say the right things in the right places, but we are not really sure that it makes that much difference.

But what if we were to come face to face with God? Would it not make a big difference in the way we respond, and act, and live? Would our lives not take a dramatic turn in other directions? Would our lives not have a new magnetic focus? Would we not hear the voice of God spelling out the needs of his kingdom, and be ready to respond, "Here am I, Lord! Send me."?

Just imagine what it would be like to be in a church that had people who had fallen into the hands of the living God. It would not be an easy experience. It would be demanding, challenging, costly, time-consuming. It would be upsetting as we tried to work out what God's call to us today means and our old walls of inertia and apathy began to crumble. But, then, think of the excitement and the glory of it.

Rev. Dwayne Grimes
Pastor
First Christian Church
Floydada, Texas

This Inspirational Message Is Sponsored By The Following Firms

- Nichols Oil Co.
- Russell's Shop & Equipment
- Floydada Real Estate & Insurance
- McDonald Implements
- Gilbreath Exxon Products
- Production Credit Association

- Hale Insurance
- Edmiston Plumbing & Heating
- Thompson Pharmacy
- Consumers Fuel Association
- Parker Furniture
- City Auto Inc.
- Hesperian Office Supply

- Builders Mart
- Martin & Co.
- Reed Ford Sales
- Floydada Co.
- Collins Implement
- Ponderosa

Speakers of Credit Texas Briscoe Interbank of meeting
B...
THE...
Sunday Morning...
Sunday Evening...
He's high...
ation pro...
very best...
DOUG...
Sunday Morning...
Evening...
by soon...
And wh...
latest ad...
ation eq...
Check v...
you mo...
Sunday...
Morning...
Evening...
Ladies...
Sunday...
Morning...
Evening...
Rev. Le...
Ser...
Morning...
Sunday...
No Even...
VICTOR...
Em...
Sunday...
Morning...
Evening...
Wednesday...
PRIMIT...
Sunday...
Morning...
Evening...
SPAN...
Sunday...
Morning...
Evening...
Training...
Evening...
ASSEMB...
Rev...
Sunday...
Morning...
Evening...
Soul Winn...
Wednesday...
Thursday...
Women's...
Council...
Saturday...
Christ Amb...

Demand For Soybeans All Over The World

HONEY GROVE, Texas — A greater desire for an improved standard of living throughout the world has produced a greater demand for soybeans and soybean products, according to Don Blacketer, president of the Texas Soybean Association.

"As per capita income in the U.S. increases," Blacketer said, "very little of the increase is used for food. But in developing countries, practically all of the increased income goes to improving and developing the diet."

Developing countries — countries in Central America, South America, Africa and Asia — are switching from starch or carbohydrate diets to diets containing more protein as per capita income increases.

Nutritionists representing countries of the world recently illustrated their interest in protein by attending the World Soy Protein Conference held in Munich, Germany, last November.

The conference, underwritten by growers through the American Soybean Association (ASA), would have been termed successful with a turnout of 300 to 400 persons. However, more than 1,100 persons from 47 countries attended the conference.

The ASA had decided to spend up to \$25,000 in staging the conference, but the large turnout meant there was no cost to the soybean producers of the U.S. who compose the ASA, Blacketer said.

Another illustration of the booming interest in protein is the building and expanding of soybean processing plants throughout the world.

In Greece, the country's first soybean crushing plant recently began operation. The plant has the maximum capacity of processing 220,000 metric tons per year.

Archer Daniels Midland (ADM) Co. has purchased a soybean processing plant

and edible oil refinery in Brazil. The firm plans to expand the operation and produce textured soy protein, a line of full fat and defatted soy flours and specialty protein products.

Cargill is constructing a processing plant in The Netherlands that will produce soy protein and soy flour. The \$5.5 to \$7.5 million investment will eventually have storage capacity of 60,000 metric tons of soy protein and 200,000 metric tons of soy flour.

ADM has also purchased a solvent extraction soybean plant in The Netherlands and plans to expand the production capacity to 1,500 tons per day. ADM will also build a textured soy protein plant and soy flour production plant on adjacent property.

"With this type of interest and active building and expansion, it's apparent that the U.S. soybean producer has a challenge in meeting the demands of these potential world markets."

"The world is only beginning to show its need for soybeans and its products," he said.

ARM REVIEW

Speak To PCA Meeting

April 5 in San Antonio. PCA Manager James A. Rogers of Plainview said area participants include board members, Loyd Widener, Lockney, president; Billy W. Carthel, Friona, vice president; A.W. Anthony, Friona; H.L. Porter, Jr., Petersburg; Ray Robertson, Dimmitt. Widener serves as Plainview PCA's official delegate. PCA officers attending

Bill Pigg Gifford-Hill in this area.

He's highly qualified to help you with any irrigation problems you may have and he's got the very best equipment available to do it with.

Gifford-Hill's 360, Gifford-Hill's Side Wheel Roll, Vanguard PVC Plastic Pipe and Aluminum Pipe. Plus a long list of accessories.

If you haven't already met our irrigation expert,

by soon and get acquainted. And while you're there, let him show you the latest additions to Gifford-Hill's line of irrigation equipment.

Check with us before you buy. We can save you money!

Gifford-Hill & Company, Inc.
P.O. Box 188, Floydada, Tx 79235
office (806) 983-5231
home (806) 983-5367



Highway Sign Regulations

AUSTIN — Political campaign signs erected along Interstate or Federal Aid Primary Highways are subject to the same regulations as other advertising signs, the Texas Highway Department said today.

The Highway Beautification Act limits the erection of signs along most major highways to areas zoned for commercial or industrial use in urban areas and to within 800 feet of a commercial or industrial activity in rural areas.

Within those limits, the owner also must have a license plus a permit for each sign. Detailed information and application forms for licenses and permits can be obtained from Texas Highway Department district offices.

Rep. Finnell Says County Judges Should Not Have To Be Lawyers

AUSTIN — State Rep. Charles Finnell of Holliday, candidate for State Senator said this week that County Judges should not be required to be lawyers in order to hold this very important office.

"Many able men of various backgrounds serve admirably as our County Judges without law licenses. The position of County Judge calls for a business-like common sense approach," Finnell said. The present constitution states that a County Judge "shall be well informed of the law."

Finnell serves on the Judiciary Committee of the Constitutional Convention in Austin. The committee is working on Section 6 of the Judicial Article which deals with the office of the County Judge. Following that, the next order of business will be Section 9 which treats the question of election or appointment of judges.

Finnell said, "We are finally getting down to the nitty-gritty in this commit-

tee. In a recent poll of my constituents, more than four out of five citizens felt that all state judges should be elected rather than appointed."

"Appointive judges smack of the federal court system, and I don't think Texans want any part of that," Finnell said.

During his eight years in the House of Representatives, Finnell has worked closely with the West Texas Association of County Judges and Commissioners and the Texas Association of Counties.

In his race for Senator of the 30th District, Finnell plans to visit Memphis, Big Spring and Archer City this week as his legislative duties permit.

LOCKNEY LOCAL

Mr. and Mrs. Loyd Widener and Mr. and Mrs. Loyd Lee Widener, Jr. attended funeral services for Mrs. Loyd Widener's grandmother, Mrs. D. T. Petree, in Abilene Wednesday.



Emphasis on markets for High Plains cotton, "especially for use on new textile processing systems such as open-end spinning," will be continued and intensified by Plains Cotton Growers, Inc. under its newly elected President, Don Marble of South Plains.

Marble, a Floyd County Director to PCG since 1965 and Secretary-Treasurer for the past two years, was chosen by the PCG Board at a meeting in Lubbock March 19. Following the election he said "PCG is in the midst of a program of spinning research, and promotion based on that research, that promises real benefits to High Plains cotton producers, and I want to do all I can to further those efforts."

Marble succeeds Ray Joe Riley of Hart who this year completed the maximum two-year term permissible under PCG By-laws, and automatically becomes Chairman of the PCG Board. W. B. Criswell of Idalou was elected Vice President, succeeding Paul Bennett of Littlefield, and the Secretary-Treasurer position held by Marble was filled by Lloyd Cline of Lamesa. Criswell is a member of the PCG Executive Committee and has been a PCG Director from Lubbock County since 1970. Cline has been a Dawson County Director since 1966, is a member of the Executive Committee and also serves as Chairman of the Finance Committee.

The Board meeting at which officers were elected followed the PCG annual membership meeting at which two speakers spoke in glowing terms of the potential for High Plains cotton in open-end spinning mills and of the possibility that many of those mills will be located in the High Plains area.

James Parker, Director of the Textile Research Center at Texas Tech University, told the group that in his opinion "There has not been any development in the textile industry for almost 100 years that could compare with the potential of open-end spinning." Someone has estimated that 20 percent of all yarn produced in the world will come from open-end spinning frames by 1980, he said, adding "We have no facts on the future, of course, but it does appear that as far as High Plains cotton is concerned, this type of yarn manufacturing will be fantastic."

Paul Cook, who is President of Feather Fabrics, Inc., a joint open-end spinning venture by local investors and Nijverdal-Ten Cate, the largest textile firm in the Netherlands, stated that the High Plains could well become a new center of textile activity for the U.S. He pointed out that because of the open-end system's ability to efficiently utilize low micronaire cotton, and the huge supply of such cotton normally available on the Plains, that textile mills in this area will enjoy at least a 10 percent profit advantage over open-end mills located in the Southeastern states. FFI, he said, is installing a \$3,500,000 open-end plant in Lubbock which, along with Southwest Textiles at Abernathy and the Daiwa plant to be built by the Japanese in Levelland, should clearly demonstrate this advantage.

Another highlight of the producer organization's annual gathering was an address by Nick Hahn, Director of Sales and Marketing for Cotton Incorporated of New York and Raleigh, North Carolina. Hahn presented a detailed outline of the research and market development being carried on by CI to make cotton the "optimum fiber for the textile world of the future."



PIONEER PLAQUE — displayed by James Race (left) and Jake Colvin of Lockney Co-op Elevator.

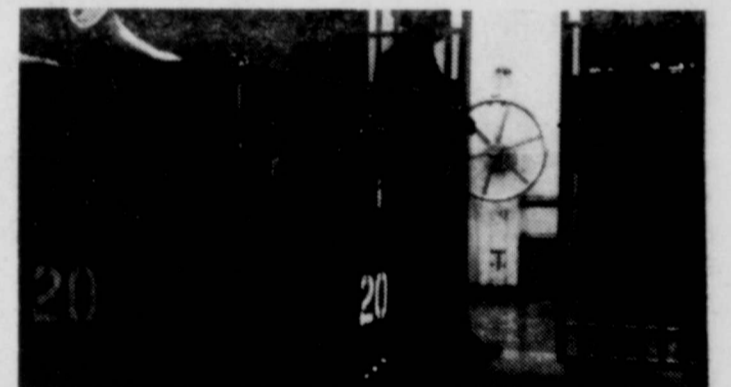
Lockney Resident Receives Honor

Jake Colvin of Lockney Co-op Elevator of Lockney has been honored by Pioneer Hi-Bred Company of Plainview for his six years of service as a dealer for Pioneer brand seeds. To mark the honor he received a plaque bearing his name and years of association with the Company.

Lockney Co-op Elevator joined Pioneer as a dealer in 1968. In giving the award, Pioneer officials draw attention to the importance of

individual effort in their sales and marketing team with the view that "The most vital ingredient for the success of our company is People."

Pioneer Hi-Bred Company of Plainview is a division of Pioneer Hi-Bred International, Inc., Des Moines, Iowa. Through more than 450 dealers, Pioneer Hi-Bred Company markets hybrid grain sorghum, corn, forages and alfalfa throughout Texas and New Mexico.



A "cash crop" worth nearly \$3 billion in 1972

A dependable supply of long-term credit for farm and ranch loans is vital as agriculture's need for new money expands. Isn't it reassuring to know the Federal Land Bank has loan money available? You can count on your Land Bank going to the money market every 90 days or so — buying financing for you on the best terms it can. You also can count on us here at the local Association to do everything possible to turn this low-cost money into sound loans. Let's talk about it.

319 SOUTH MAIN ST.
PHONE 983-2480
FLOYDADA, TEXAS



NOTICE!
35TH ANNUAL MEMBERSHIP MEETING OF
LIGHTHOUSE ELECTRIC COOPERATIVE INC.
FLOYDADA HIGH SCHOOL AUDITORIUM
SATURDAY — APRIL 6, 1974
REGISTRATION BEGINS AT 11 A.M.
Barbecue Lunch 11:30 a.m.
MEETING CALLED TO ORDER 1 P.M.



FEATURED SPEAKER
DAVID HAMIL
R.E.A. ADMINISTRATOR
● PRIZES

Electric Ice Cream Freezer, Electric Knife, Deluxe Handmixer, Electric Blender, Electric Edge Trimmer, AF/AM Table Radio, Electric Skillet, Electric Casserole, Electronic Calculator, Air Compressor.

GRAND PRIZE: Choice of - Frost Free Refrigerator - Freezer Combination, Electric Range, Portable Dishwasher, Washer & Dryer, Type Player, Electric Welder, Electric Fireplace.

● DON'T FORGET BARBECUE LUNCH AT 11:30 A.M.

THESE LOCKNEY FIRMS ARE MAKING THIS FARM NEWS POSSIBLE

PERRY IMPLEMENT CO. LOCKNEY'S JOHN DEERE DEALER	LOCKNEY OIL & BUTANE N.H. GAMMAGE
PATTERSON GRAIN CO. GRAIN-FERTILIZER	ACCO SEED "SORGHUM FOR THE SEVENTIES"
LOCKNEY COOPERATIVES MEMBER-OWNED	THE LOCKNEY BEACON BOOSTING FLOYDA COUNTY AGRICULTURE

LAKEVIEW

By Mrs. Clyde Bagwell

LAKEVIEW, March 25 — Mr. and Mrs. D. C. Harrison, Mr. and Mrs. Milton Harrison, Mr. and Mrs. G. W. Smith, Mr. and Mrs. R. C. Smith from this area; and Mr. and Mrs. Roy Smith of Tulsa, and Mrs. Travis Dunn and Jean of Plainview attended the

50th wedding anniversary of Mr. and Mrs. Roy Smith in Levelland Sunday. The women whose names appear above, were hostesses for the celebration. Two hundred fifty registered. Mr. and Mrs. Dale Smith and family of Bayfield, Colorado were there, and friends and

relatives from Floydada there were Mr. and Mrs. Riley Teague, Mrs. and Mrs. Earl Bishop, Mr. and Mrs. Lee Trice.

On the way home from Levelland, Mr. and Mrs. D. C. Harrison stopped in Lubbock and visited their son and family, Mr. and Mrs. Jerry Bob Harrison. Marty and Amy came home with them to spend a week, during spring break at school. Tracy Harrison of Floydada spent today, Monday, at the home of her

grandparents, the D. C. Harrisons and to visit her cousins, Marty and Amy.

Mr. and Mrs. W. M. Hambright visited after church Sunday night with Mr. and Mrs. Odell Breed.

Tuesday night Mrs. Dean Watson attended the fish fry at Andrews Ward school cafeteria sponsored by Case Power and Equipment.

Mr. and Mrs. Dean Watson and Deanna spent Wednesday night in Lubbock with Mr. and Mrs. Ken Robison and Kris.

Mr. and Mrs. Herbert Thornton of Houston and Mr. and Mrs. Van Thornton of Lubbock visited Thursday afternoon with Mr. and Mrs. B. L. Breed.

Frank Breed visited Friday afternoon with Mr. and Mrs. B. L. Breed. Odell Breed visited them Sunday.

Mr. and Mrs. Milton Dunavant and family of Fort Worth and Mr. and Mrs. John Redding and children of Idalou arrived Friday night and visited over the weekend in the home of their parents, Mr. and Mrs. Grady Dunavant. Ronnie Dunavant of Bayfield, Colorado is here spending a week with his grandparents, Mr. and Mrs. Grady Dunavant and his grandmother, Mrs. A. B. Clark.

Mr. and Mrs. Grady Dunavant and Ronnie Dunavant visited Mrs. E. T. Williamson Sunday afternoon.

Thursday night, Mr. and Mrs. Michael Hinsley and girls, and Mr. and Mrs. Dean Watson and Deanna attended the ABC rodeo at Lubbock.

After church Sunday Mr. and Mrs. Dean Watson and Deanna were dinner guests of her parents, Mr. and Mrs. Tom Moore.

Q. D. Williams, Monte and Joe went to Crowell Saturday to the Rattlesnake Hunt.

Mike Bishop of Tech came home Friday and spent the weekend at home with his parents, Mr. and Mrs. Howard Bishop and Greg.

Mr. and Mrs. O. R. Tabor of Lamesa were here Sunday and Monday visiting her mother, Mrs. R. F. Hall at the Floydada Nursing

Home, and with other relatives in this area.

Mr. and Mrs. Floyd Anderson visited Mr. and Mrs. Ted Anderson, Angie, Quint and Libby Sunday night and had supper with them.

Ricky Leatherman of Amarillo had Saturday night supper with his sister and family, the Ted Andersons.

Mr. and Mrs. Joe Dunn have a new grandson, Joseph Perry Gaut, born March 19 in a Lawrence, Kansas hospital. He weighed 6 lbs. 15 oz. and is the first child of Mr. and Mrs. William Perry Gaut. Mrs. Gaut is the former Snow Drop Dunn.

Mr. and Mrs. Joe will be moving in a short time to Denver, Colo. where they will make their home. Mr. and Mrs. Dunn plan to visit them as soon as they get settled in Denver.

Mrs. Joe Dunn visited Mr. and Mrs. Frank Probasco Thursday afternoon.

Dr. and Mrs. Cogswell of Plainview visited Mr. and Mrs. Leonard Alexander Tuesday.

Mr. and Mrs. Ronnie Autry, Wendy and Amy of Grand Prairie came Thursday night and stayed until Monday with her parents, Mr. and Mrs. Homer Newberry. Others there for the weekend were Mr. and Mrs. Nathan Woody, Nathalie, Jeff and Kevin of Amarillo, Mrs. M. J. Mosley and Mrs. Gladys Crawford of Crosbyton spent Sunday in the Homer Newberry home.

Mrs. A. L. Smith spent the weekend in Lubbock with her mother, Mrs. Bird Oats.

Cynthia Williams of Houston was here Wednesday until Monday with the Fred Lloyd family.

Mr. and Mrs. Greg Williams and Shelley of Lubbock joined the above group for the day Sunday.

Friday Mrs. Fred Lloyd and her daughter, Cynthia Williams went to Lubbock to visit Mrs. Lloyd's parents, Mr. and Mrs. Lee Keese.

Mr. and Mrs. Henry Price returned March 19 from a visit to Arizona where they visited her uncle R.D. DeBusk at Bisbee and got to see a number of other relatives, including cousins she had not seen in nearly 30 years. Mr. and Mrs. Price visited their grandson, Dan Price who is stationed at the

Military Base at Huachuca, Arizona. In sightseeing, they saw the open pit mines at Tombstone and went to Nogales and Tucson. Mrs. Price reported they found no shortage of gasoline while on the trip and weather in Arizona was hot in the day and cold at night.

Linda Thurston of Lubbock came Saturday to spend several days with her parents, Mr. and Mrs. Joe Thurston. Johnnie Thurston, who had been home for several days, went back to Abilene Sunday.

Mr. and Mrs. Delmas McCormick, Mark and Dorman, Amy and Anita went to Bowie over the weekend to visit her father, H.S. Ward. They came back by Burk Burnett and visited her grandmother.

Delmas McCormick's mother, Mrs. Jewell McCormick, is a patient at this time in Lockney General Hospital.

We congratulate Dorman McCormick and Connie Anderson who are both members of the high school band which won a sweepstake trophy at Dimmitt.

Henry Brewer went back to Caprock Hospital Thursday where the doctor removed the 70 stitches due to surgery on his ear a week or so back. Mrs. Brewer reports her husband is recovering nicely. Those visiting the Brewer home during the weekend were Mr. and Mrs. Millard Watson, Friday, Mrs. Fred McDougle, Mr. and Mrs. Dean Watson and Deanna Saturday, and Sunday, there were Mr. and Mrs. Ervin Brewer, Monty and Latonya Brewer are staying this week with Mr. and Mrs. Henry Brewer and the Millard Watsons during spring break at their school.

Wednesday, Mr. and Mrs. Henry Brewer and Mr. and Mrs. Dean Watson and Deanna were dinner guests of Mr. and Mrs. Millard Watson.

Monday morning visitors in the Henry Brewer home were Mrs. G.W. Smith and Mrs. Dale Smith and children of Bayfield, Colorado.

Mrs. Harvey Nicholas, Kelli, Lance and Chad of Oklahoma City and Mrs. C.W. Payne visited in the Bagwell home Monday afternoon.

Mr. and Mrs. C.H. Wise



F. DALE SIMPSON

VICE PRESIDENT and LOAN OFFICER

Res. (806) 355-0982
2322 Victoria
Amarillo, Texas 79106

THIS ANNOUNCEMENT IS NEITHER AN OFFER TO SELL NOR A SOLICITATION OF OFFERS TO BUY ANY OF THESE SECURITIES.

THE OFFERING IS MADE ONLY BY PROSPECTUS AND ONLY TO TEXAS RESIDENTS

NOT A NEW ISSUE

71.021

Shares of Beneficial Interest

CHURCH LOANS & INVESTMENTS TRUST

(A REAL ESTATE INVESTMENT TRUST)

PRICE \$8.00 PER SHARE



ALSO

SECURED SAVINGS CERTIFICATES

Amounts	Period	Rate of Interest
\$1,000.00 & up	6 months	7%
\$5,000.00 & up	1 year	7 1/4%
\$10,000.00 & up	1 year	7 1/2%
\$15,000.00 & up	2 years or more	7 3/4%
\$25,000.00 & up	1 year	8%
\$100,000.00 & up	Negotiable	Negotiable, but not to exceed 8 1/4%

TEXAS RESIDENTS MAY OBTAIN THE APPLICABLE PROSPECTUS FROM THE LICENSED SECURITIES DEALER OR ITS LICENSED DISTRICT REPRESENTATIVE SHOWN HERE.

AFFILIATED MANAGERS, INC.

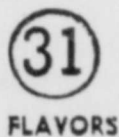
4102 West 51st, P.O. Box 7648
Amarillo, Texas 79109
Phone 806/352-5603 collect

- Please mail me a Prospectus
- Send a Registered Representative to visit with me.

NAME _____
Address _____
City _____ Zip Code _____

CLIT CHURCH LOANS & INVESTMENTS TRUST

BASKIN-ROBBINS
ICE CREAM STORE



Allied Finance Company

KEN'S
"The Man's Shop"

"WHERE SHOE FASHIONS REALLY BEGIN"

K-Bob's
STEAK HOUSE

Casa De Taco
—MEXICAN FOOD—

LORDS and LADIES
3402 A OLTON ROAD (The Village) 293-5454

MERLE NORMAN COSMETIC STUDIO

Village
Flowers



BILL'S
BICYCLES & MOWERS



PLAINVIEW'S EASTER
SHOPPING HEADQUARTERS

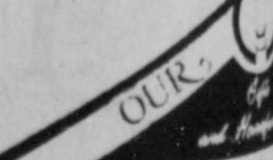


Friendly, Courteous Sales People
Convenient, Spacious Parking
Hastings Books and Records, Inc.

We Have Everything
From Soup To Nuts



The Village
Jr. and Hines Apparel



visited Mrs. J.L. ...
Wayne Saturday ...

Baseball Sign Monday Night

Everyone is reminding the Monday, April 1st baseball sign-up for the da area boys and girls parents at Andrews elementary School campus. There will be door prizes. Anyone interested in a baseball program will be welcome to attend. During the meeting a number of programs will be discussed. The public is urged to keep the program going.

FLOYD DATA

Mrs. Jack Henry ... to Floydada last ... after an absence since the Christmas holidays. Henry was taken to a hospital in Dallas where he was visited by his sister and was hospitalized for a lengthy time with a rare disease called amyotrophic lateral sclerosis. She is recuperating at the home of her son in San Antonio. Mrs. Henry was brought home by her son, Joyce Herd, who is spending several days in Floydada before returning to Dallas.

FLOYD DATA

Kyle Glover is a patient in Central Hospital in Plainview.



TED ALLEN

PAID POLICE

esperian
visited Mrs. J.L. ...
Wayne Saturday ...

Baseball Sign
Monday Night

Everyone is ...
Monday, April ...
baseball sign-up ...
the area boys and ...
parents at Andrew ...
mentary School ...
There will be ...
Anyone interested ...
baseball program ...
welcome to attend ...
During the ...
number of changes ...
baseball program ...
discussed. The ...
he public is urged ...
to keep the ...
program going.

FLOYD DATA
Mrs. Jack Henry ...
Floydada last ...
an absence since ...
Christmas holidays ...
Henry was taken ...
siting in Dallas ...
ster and was ...
a lengthy time ...
ire disease called ...
apathy. She has ...
cuperating at the ...
r son in San Antonio ...
ing dismissed from ...
spital. Mrs. Henry ...
ought home by her ...
nce Herd, who is ...
se in several days ...
fore returning to ...

FLOYD DATA
Kyle Glover is a ...
tient in Central ...
spital in Plainview.

Ross, ...
Ward ...
m, liv-
hard-
ed for ...
5,500- ...
983- ...
tfc

PAID POL ...
offer ...
Dallas, ...
3-21tc

to 8 hours a day? Would ...
11 them with the

Rad ...

PIRIT ...
of ...
NURSING?
morning classes to ...
er of your Community

Village Po ...
Olga Ferguson, R. N. ...
ctor of Nursing Service ...
al Plains General Hospital ...
96-5531

BROWN ...

PET SHOPPE

at our price per yard for quality ...
d quick, easy delivery to save ...
aking labor. Give us a call today

Village S ...
and Houses Appa

CALL 983-2170
ETT BUILDING
ATERIAL
ORNIA FLOYDADA

OUR ...

FARMS & RANCHES
WANT TO BUY irrigated or dry-land farm in Floyd or surrounding area. Write Box XRO, c/o Hesperian, Box 700 Floydada. tfc

FARM WORK
CUSTOM Spraying & Treflan Application in Lockney call 652-3541 or 652-2616. Bill Wisdom, Johnny Wisdom or Darryl Dennis. L1-tfc

CUSTOM FARMING - Offset discing and deep chiseling. Let us farm your dry land and leave out ground. Also want to rent dry land. Can handle large tracts. Lockney, 652-2309. tfc

WINCH TRUCK SERVICE - On everything. We'll go anywhere. Babe's Service Center, Phone 983-5042, Floydada, tfc

MR. FARMER - Spring & summer plowing ahead, and our portable disc rolling equipment is available to work in your field or our shop on the Matador Highway. Call or come to Russell's Shop & Equipment, 983-3751. tfc

RENTALS
FOR RENT - Property-Apartments, 2 and 3 bedroom houses. Business Buildings, clean. BARKER INSURANCE AGENCY, Lockney, 652-2642. L1-tfc

CARDS OF THANKS
We would like to thank everyone who assisted during our sorrow at the passing of our loved one. For the comforting words, the ones who sent flowers, donated books to various libraries, memorial to children's homes, and food. We thank Bro. Bradley and Bro. Payne for the beautiful service; also, Edell Moore and Alton Ross for their personal concern. May God bless and be with you in your hour of need.
Mrs. Elmer Warren
Elvis Warren & Family
Billy Gene Warren & Family
Johnny Lynn Warren & Family
3-31p

FARM MACHINERY
FOR SALE - 2" green pumps 240 foot setting, all complete. Dorsey Baker. L1-tfc

FOR SALE - 300 irrigation tubes, 3-in. to 1-1/4; half price; slightly used. 1 sand fighter, drag type; 3 electric motors, 1-HP; lot of shovels, seed forks, garden rakes. G. S. Payne, Matador, Texas 79244. 4-7tc

NORRELL TRACTOR PARTS - For Tractor and Irrigation Supplies and Accessories. tfc

MR. FARMER - Come to Floyd County Hesperian in Floydada or Lockney Beacon in Lockney and buy 23" x 35" aluminum sheets to cover your truck beds and granary floors so the grain won't leak out. 10 cents a sheet. tfp

AUTOMOTIVE
FOR SALE - 1965 Mustang, 6 cyl, automatic, \$650 cash. 983-3924. 3-31p

CRUISE CONTROLS - \$93.00 - installed free. Fits all cars with automatic transmission. Daniel Automotive, 3-21tc

FOR SALE OR TRADE - 1967 Lincoln 4 door, all power & tape deck. Would trade for pickup. Call 983-3779 or 983-5298. 3-7tfc

WANTED
WANTED - to rent nice 2 or 3 bedroom unfurnished house for Air Force Officer's family; would like fenced yard if possible. Needed by May 1. Call Ralph Rucker at 983-3370 or 983-2222. 3-28tfc

LIVESTOCK
REGISTERED Polled Hereford Bulls for sale: Henry Hinton, 983-2696. tfc

ELECT BOONE ADAMS
Commissioner Prec. 4
* Experience
* Integrity
PAID POL ADV. BY BOONE ADAMS

Livestock Supply Headquarters
ANIMAL HEALTH PROTECTION
Let Us Show You How To - Your Needs For VACCINES & BACTERINS, INSECTICIDES, INSTRUMENTS - TREATMENTS, REMEDIES
Producers Co-Op Elevator tfc

Henry Block has 17 reasons why you should come to us for income tax help.
Reason 3. We take all the time we need when it comes to preparing your return. We conduct in-depth interviews to make sure we understand your personal tax situation. And we keep all information completely confidential.

HENRY BLOCK
THE INCOME TAX PEOPLE
106 W. Missouri
OPEN: 9 to 6, 9-5 Saturday
COME IN SOON
Phone 983-5233

COW POKES By Ace Reid



"Doc, when you find out what's the matter with Domino, maybe you'd look at maw. She's got about the same symptoms!"
AUTO, FIRE & FARM INSURANCE
Floydada Real Estate & Insurance Agency
Jim Word - - - Phone 983-2360

SERVICES
ALL TYPES REPAIR & SERVICE - Day Heating & Air Conditioning. Installation and service on all makes and models. Phone 983-2440 or 983-2456. tfc

WANTED
DON'T REROOF (expensive at \$50 a square) WET JET SEAMLESS SPRAY roof renew. Ten year guarantee against leaks. 70c square foot. Material and labor. Schools, churches, city, commercial buildings. Pace Products, Box 1213, Plainview, Texas. 3-14tfc

WANTED
WANT TO DO Yard Work and minor repair and painting. Charles Dean, 328 W. Tenn. tfp

WE BUY used furniture and appliances. 983-2474. 2-10tfc

WANTED - Household help one or two days a week. 652-2111. 3-31c

WANTED - Dog catcher. Must be Floydada resident. See city manager. City Hall, Floydada. tfc

TRAVELERS MOTOR CLUB

Home Improvement
Does the old house need repairing?
Ceramic Tile, masonry works, carpenter work, and painting....
Call Emmitt Clampitt 983-5185 tfc

THIS SPACE FOR RENT

lightweight ALUMINUM CANES & CRUTCHES
Sturdy
Dependable
Attractive
Wide selection for every prescribed need
Forearm and underarm crutches
Adjustable telescopic canes
Four legged canes
Seat Canes

BISHOP-RAMSEY PHARMACY
208 West Houston
983-3174
FLOYDADA

CLASSIFIED ADS SELL
CLASSIFIED ADVERTISING RATE: 7 CENTS PER WORD FIRST INSERTION, 5 CENTS PER WORD EACH SUBSEQUENT INSERTION. MINIMUM CHARGE: \$1.00.

CLASSIFIED DISPLAY RATE: \$1.00 PER COLUMN INCH. CARDS OF THANKS: \$1.00.

COPY DEADLINES: 5 P.M. TUESDAYS FOR THURSDAY EDITION; 12 NOON FRIDAYS FOR SUNDAY EDITION. Call 983-3737 in Floydada or 652-3318 in Lockney

EMPLOYMENT
ROUTE SALES - Milk routes now available. Good benefits. Bell Dairy Products 201 N. University in Lubbock, Ph. P05-8833. L8-tfc

WANTED - L.V.N. for 3-11 shift. Lockney Care Center. L1-tfc

WANTED ASSISTANT COOK - apply at Caprock Hospital, Floydada, 983-2875. 3-31tc

WANTED - Taking applications for Director of Nurses. Apply in person at the Lockney Care Center. L1-tfc

MACHINE OPERATORS
PRODUCTION WORKERS
PRODUCTION WELDERS
Pay in accordance with qualification and experience.

ALSO PART-TIME AND AFTER SCHOOL POSITIONS AVAILABLE.

THE TYE CO.
Hwy. 70 East
Lockney, Texas

FOR SALE
WE HAVE DEEP FREEZERS \$199.95 and up. White's Auto Store in Lockney. L1-tfc

CARPET shampoo and shampooer. Rent the shampooer for \$1 per day with purchase of shampoo. Davis Lumber Company, Lockney. L1-tfc

FOR SALE - Brand new Remington Electric Cash Registers, \$225.00. Hesperian Office Supply, Floydada, Texas. tfp

FOR SALE - Used Kimball Piano - "74967 Chicago". Call 983-2367, Mrs. W. D. Newell. tfc

FOR SALE - 1 hair dryer and 1 hydraulic chair and 1 shampoo chair. See at Tommie's Beauty Shop. Home - 652-2336. L3-31p

USED LUMBER - over 50,000 board feet of 2 x's and up to choose from. Save 50% or more. Located Spur Compress, Spur, Texas. Call 983-3944 in Floydada. 4-18tp

FOR SALE - 1800 Bales Milo Stubble. Call 652-3183. L4-4c

FOR SALE - We have in stock two very good IBM electric typewriters, one with carbon ribbon, one with nylon ribbon. Your choice \$275. Hesperian Office Supply. tfp

"Venus Cosmetics" - the greatest. Try our new Vera Tanning Lotion with stabilized Aloe Vera. Please call Dewanda Blenden, 652-2563.

It's here! "The Balm." 85% stabilized Aloe Vera enriched with vitamin E and moisturizing creme. Relief from all aches and pains. THE RUB ONE. Call Dewanda Blenden, 652-2563, Lockney.

A Want Ad Will Find A Buyer

FOR SALE
FOR SALE - New 3-wheel bicycle heavy duty tubes. Frank Brown, 652-3130. L4-4p

KIRBY Vacuum cleaners rebuilt - \$109.95 and up. Also check our prices on 1974 Models. Parker Home Furnishings in Lockney. L2-tfc

FOR SALE - Fresh shelled peanuts - 40c per pound. Minimum 5 lbs. Boyce Mosley, Lockney. night 652-2686. 3-7tfc

FOR SALE - 1969 RCA color TV, new 25" picture tube, excellent condition, \$300. 1968 Admiral color TV, new 25" picture tube, \$250. 25" Curtis Mathis color TV, good condition, \$175. 1971 Sylvania color TV, 25", \$250. 1969 Magnavox 25" color TV, \$200. 25" RCA color TV, beautiful early American cabinet, \$275. 1 sold here - \$299.95. Mize Pharmacy, Lockney. L1-tfc

FOR SALE French Provincial Chair and Settee. 652-3542. L3-31-c

FOR SALE - Used secretarial chairs, \$15 and up. Hesperian Office Supply, Floydada. tfp

Miscellaneous
Pure gel extracted from the mature aloe leaf. Stabilized - does not require refrigeration. Used by thousands. Please call Dewanda Blenden, 652-2563, Lockney.

PROFESSIONAL Rug Cleaning. Phone 652-2500. Lockney. tfc

EVERYTHING FOR THE ARTIST

YOUR PRESENT TV OR REFRIGERATOR IS WORTH MORE WHEN YOU TRADE FOR
Magnavox Frigidaire
During Spring Tradin Days!
Liberal Trade Allowances
Come Out To
Bailey's TV & APPLIANCE CENTER
YOUR 100% SOLID STATE TV CENTER
900 W. 5th PLAINVIEW 293-4401

HESPERIAN OFFICE SUPPLY
POLITICAL CALENDAR
May 1974
Democratic Primary Election
TEXAS SENATE
30TH DISTRICT
RAY FABREE
CHARLES FINNELL
COUNTY
TREASURER
DELL YANDELL
GLENNA ORMAN
FLOYD COUNTY
COMMISSIONER
PRECINCT 2
BOB JARRETT
RAYMOND MARTIN
FLOYD COUNTY
COMMISSIONER
PRECINCT 4
JACK LACKEY
BOONE ADAMS
TED ALLEN
J. B. COLSTON
COUNTY CLERK
MARGARET COLLIER
COUNTY JUDGE
J. K. HOLMES
DISTRICT CLERK
MARY L. McPHERSON
JUSTICE OF PEACE
PRECINCTS 1 and 4
H. E. PORTER
MAY 1974
REPUBLICAN
PRIMARY ELECTION
TEXAS SENATE
30TH DISTRICT
MRS. MARY VIRGINIA KIRCHHOFF

District Managers (Not Insurance)
Salary + Commission
2 Weeks Training School
Bonuses: Car Payment, Group Insurance, U.S. Savings Bonds and other Fringe Benefits.
IF YOU ARE NOT MAKING \$300 A WEEK AND UP
CALL COLLECT WALT EVERTON 805-744-8800
SUNDAY - WEDNESDAY OR SEND RESUME Write Box 12689 Okla. City, Okla. 73112

Diamond Industrial Supply Co., Inc.
Phone Days 296-6225 - Nights 293-1200 or 296-7828
1014 Broadway
Plainview, Texas
Chain Sprockets U-joints
V-belts Oil Seals
Sheaves O-rings
SKF BCA Timken Bower
Wisconsin
"We Appreciate Your Business More" L-TFC

WHEN YOU NEED INSURANCE SERVICE FOR YOUR ... HOME RANCH FARM AUTO CROPS LIFE
Think of Low Net Cost with Service.
Texas Farm Bureau Insurance Company
Floydada
Office Phone 983-3777
Home Phone 983-3586

IF IT IS INSURANCE - SEE -
Barker Insurance Agency
LOCKNEY
Life - Fire - Casualty - Hospital
B. B. Wilkes, Real Estate
LOCKNEY
Farms - Ranches - City Properties
Business Leases - Loans

FLOYD COUNTY ABSTRACT CO.
Abstracts Of Title
Title Insurance
Verna L. Stewart
Owner, Manager
217 W. California
983-3728
Floydada, Texas

Auto Accidents DO Happen ...
If one happens to you, be protected. Our car insurance offers coverage to meet your special needs - repairs to personal liability.

BAKER Insurance Agency
127 W. Calif.
Ph. 983-3270



FLOYDADA LITTLE DRIBBLER ALL STARS (1 to r) Troy Marquis, David Wellborn, Tracy Womack, Larry Westbrook and Henry Gonzales. In second row (1 to r) Lion representative Art Ratzlaff, coach Curtis Chatham and Clarence Denton. (Staff Photo).

Melanoma
A pigmented, highly malignant form of cancer of the skin.

Metastasis
The spread of cancer cells from the original site in the body to other sites, resulting in so-called secondary tumors.

Pathogenesis
The study of the course, or progress, of diseases.

Perfusion
The technique of introducing a chemical agent to an isolated part of the circulatory system for limited treatment of a single part or organ of the body.

Pathology
The medical specialty which deals with the causes, processes and effects of diseases, as well as with changes in form and behavior which result from disease.

Mastectomy
Surgical removal of a breast.

ELECT BOONE ADAMS

Commissioner
Prec. 4
* Experience
* Integrity

PAID POL. ADV. BY
BOONE ADAMS

Dr. O.R. McIntosh

Optometrist

Announces the removal of his office to 316 S. Main Street, in Floydada (1 block south of former location) Phone 983-3460

New Protein Substitutes Inadequate

AUSTIN--Textured vegetable protein products are satisfactory protein supplements but inadequate substitutes for meat, poultry, eggs and fish, Agriculture Commissioner John C. White said recently.

White said research has indicated that vegetable proteins do not contain an ideal balance of amino acids and all the minerals and trace minerals essential for good health.

Recent predictions have said that by 1980 as much as 20 percent of all processed meat items could be made of vegetable protein. The big push has been toward soybean extenders which are

low in cost and can be added to processed meat.

In 1971 the U.S. Department of Agriculture permitted use of up to 30 percent soybean extenders to meet the protein requirements of some school lunches.

White mentioned that some ground beef extenders have been criticized for leaving an after-taste. Other vegetable protein products have been shown to be gas-producing and indigestible to some people. These are undesirable for use in baby food and certain other products.

"The rising cost of living has created a rush to find cheap substitutes for animal protein," White said. "Research thus far has indicated there are none. Protein from meat, eggs and poultry remain an essential part of well-balanced diets."

LEGAL NOTICES

The Board of Trustees, Lockney Independent School District, is taking bids for roofing the original junior high school. Specifications may be obtained from the Superintendent's office in Lockney.

All bids must be returned to the Superintendent in a sealed envelope with "Bid Proposal" on the outside. Bids must be submitted on or before May 13, 1974. They will be opened at the regular board meeting on May 13, 1974.

The Board of Trustees reserves the right to refuse any or all bids.

Lockney Board of Trustees
Lockney Independent School District
3-31, 4-7, 14, 1974

TRUNK SHOWING

WEDNESDAY, APRIL 3

TURQUOISE

FROM

GALLUP, NEW MEXICO

SHOWING

10 A.M. TO 6 P.M.

THE SQUASH BLOSSOM

620 BROADWAY

PLAINVIEW

293-5819

Buddy's Food

BUDDY WIDENER-OWNER, FORREST SHANNON-MANAGER

220 South 2nd Floydada, Texas
STORE HOURS
8:30 a. m. to 8 p. m. Monday thru Friday
Sunday 9 a. m. - 7 p. m.
THESE PRICES GOOD MARCH 31 THROUGH APRIL 6, 1974
We Reserve The Right To Limit Quantities!

28 OZ. 37¢ VALUE NO DEPOSIT

Coke-Dr Pepper 3/87¢
1 LB. WHITE SWAN SOFT MARGARINE 2/99¢
200 COUNT KLEENEX FACIAL TISSUE 3/\$1

1/2 GAL. CLOVERLAKE SLIM FREEZ 69¢
16 OZ. ATKINS KOSHER DILL PICKLES 3/\$1

17 OZ. DEL MONTE WHOLE KERNEL OR CREME STYLE CORN 3/\$1

RUBY RED GRAPEFRUIT 2 LBS. 29¢
10 LBS. U.S. NO. 2 POTATOES \$1.27

FRESH EAR CORN 6/81¢
JUMBO SWEET POTATOES 5 LBS. \$1

CELLO PACK TOMATOES 33¢
CALIFORNIA AVOCADOES 3/\$1

12 OZ. PLANTERS PEANUT CANDY 2/99¢
40 COUNT KOTEX TAMPONS 99¢

5 OZ. ARMOUR VIENNA SAUSAGE 3/\$1
14 OZ. SPRAY DISENFECTANT LYSOL \$1.09

24 OZ. SLIM TRIM COTTAGE CHEESE 89¢
1 1/2 LB. SOFT 'N' LITE BREAD 2/89¢

49 OZ. (3 LB. 1 OZ.) GIANT SIZE Bold 69¢
BUDDY'S FOOD WITH THIS COUPON PRICE WITHOUT COUPON 84¢

12 OZ. WILSON'S BIF LUNCH MEAT \$1.09
BETTY CROCKER Hamburger Helper \$1.09

15 OZ. NABISCO OREO COOKIES \$1.09
18 OZ. SAVORY PEACH, PINEAPPLE-PRESERVES \$1.09

25 LBS. FLOUR \$4.69 VALUE

25 LBS. CRISCO \$4.69 VALUE

2 LB. CAN OF Maryland Club Coffee \$1.89

EXPIRES 4-15-74

EXPIRES 4-6-74

PLAY LUCKY

WIN YOUR PURCHASE FREE, A WIN 20 GALLONS GAS, WIN 1200 S AND H GREEN, WIN 600 S AND H GREEN, DETAILS AT OUR STORE, NO PURCHASE NECESSARY.

CURED "BONE IN" 1/2 OR WHOLE HAM

U.S.D.A. BEEF RIBS

LEAN AND MEATY SLAB BACON

LEAN AND MEATY PORK ROAST

2 LBS. OWENS SAUSAGE

U.S.D.A. RANCH STEAK

25 LBS. FREEZER PACK

5 LBS. ROAST-5 LBS. STEAK-5 LBS. FRYERS-5 LBS. GROUND

12 OZ. WILSON'S BIF LUNCH MEAT

BETTY CROCKER Hamburger Helper

10 ROLL DELTA BATHROOM TISSUE

15 OZ. NABISCO OREO COOKIES

18 OZ. SAVORY PEACH, PINEAPPLE-PRESERVES

25 LBS. FLOUR \$4.69 VALUE

25 LBS. CRISCO \$4.69 VALUE

2 LB. CAN OF Maryland Club Coffee \$1.89

EXPIRES 4-6-74