

Will Take A Write In City Council Election

never happened before in Floydada, but when the time came March 6, only filed for three places in city council election.

Gary Carthel and Leroy re-election, but Johnny t, and no one else filed.

ite-in candidate must be the third spot.

League Baseball

Monday Night

Baseball Association day night, the 11th of o'clock in the First to elect officers and important matters of meeting is for everyone sted in Little League ydada. You all come!

FLOYDADA SCHOOL BOARD

Incumbents Thomas Warren, Betty Holmes and Jerrold Vinson have all filed for re-election in the April 6 election.

CAPROCK HOSPITAL BOARD

Alton Higginbotham filed for a place on the Caprock Hospital Board Friday, for the vacancy of Clay Henry, who will not seek re-election. Two incumbents have also filed. Deadline for filing on this board is midnight, March 12. Petition with 25 names should be submitted for filing on the hospital board.



STOCK SHOW BEAUTIES — Marcia Fortenberry, winner of the Floyd County Junior Livestock Show queen's trophy, is flanked by Nesa Jackson of Floydada and Vicki Boedeker of Lockney, runners-up in the queen contest at the stock show banquet Thursday. (Staff Photo by Jim Huggins)

Livestock Auction Sets New Record

When the auction was over Wednesday, all premiums and floor bids totaled, the Floyd County Jr. Fat Stock Show had set another record with gross sales of \$72,647.72.

The total sales would have been much higher, but current market prices hit a slump and the floor bids were lower than last year.

Swift Packing Company of San Antonio paid \$40.50 for the steers. Last year the price was \$44.00. Armour & Company paid \$35.10 for the lambs. Last year the price was \$39.75.

High Plains Hog Market of Plainview paid \$35.00 for the hogs. Last year the price was \$38.50.

The overall gross sales last year was just a little over \$71,000.

A complete listing of all sales is published on page eight of this edition.

The Livestock Board also expresses its thanks to auctioneers Raymond Akin and Gene Harris... judges Bob Kropp, Billy Roach and Ed Garnett.

'A Time To Rejoice' Revival Begins At First Baptist Sunday

With the theme of "A Time To Rejoice" the First Baptist Church in Floydada begins a week's revival Sunday.

O. Byron Richardson of Dallas will be the revival speaker and Royce Thornal of Waco will lead the singing.

Services begin as usual for the March 10 and 17 services, and there will be a 12 o'clock noon luncheon service during the week. Week night services begin at 7:30.

Pastor Floyd Bradley invites everyone in the community to attend the services and makes this statement.

"Dr. Richardson has been the Revival Evangelism Associate in the Evangelism Division of the Baptist General Convention of Texas since 1960, and I think you will enjoy hearing him."

Dr. Richardson pastored churches for more than 20 years prior to his evangelism work. A native Texan, he received the B.A. degree from Baylor, and the M.A. degree from the University of Houston. He did additional work at Southwestern Baptist Theological Seminary and received the D.D. degree from Howard Payne College.

Dr. Richardson has trained 50 pastors and education directors as Revival Resource Persons. At request, these Resource Persons help churches prepare for local revivals.

ROYCE THORNAL

Religious musician Royce Thornal has worked in revivals, crusade choirs, he sings solos, made recordings and concerts. He also entertains the youth with juggling and has a very keen sense of humor. He is reported as being "an outstanding musician and dedicated Christian."

Rites Pend For Mrs. Patterson

Funeral rites were pending Friday at Moore-Rose Funeral Home for Mrs. Minnie Patterson, 79 year old former Floydada school teacher, who died at 9:30 Friday morning in Highland Hospital in Lubbock. Mrs. Patterson had been hospitalized some six weeks with a terminal illness.

Mrs. Patterson moved to Floydada in 1961 shortly after the death of her late husband, L.B. (Pat) Patterson. Both she and her husband were school teachers and formerly taught at Meadow before coming to Floydada.

Survivors include two sons, Robert Patterson of Houston and Billy Patterson of Denver, Colo.; a daughter, Mrs. Buck (Patsy) Galloway of Idalou, formerly of Floydada; a sister of Fort Worth; a brother of Big Spring; eight grandchildren, one step-grandchild and several great grandchildren.

Young Farmers Dinner Monday Night

Everyone is reminded about the Floydada Young Farmers dinner at King's Restaurant in Floydada Monday night. It will begin at 7:30 and Craig Edwards extends an invitation to everyone to attend.

★ Tennis Schedule ★

Floydada tennis coach Raymond Jones has released the following tennis scheduled:

March 15-16 — Canyon Tournament at WTSU, small-schools division (Class AA, A, B).

March 22-23 — Plainview Tournament at Plainview High School, small-schools division.

March 25-26 (tentative) — Pre-district tournament (Floydada-Lockney-Tulia, high school and junior high). First- and second-place winners advance to district finals.

March 29-30 — Amarillo Relays.

April 3 — District finals, high school and junior high, at Abernathy. First-place winners advance to regional tournament, date to be set later.

"Serving The Floyd County Trade Area Since 1896"

Floyd County Hesperian

Volume 79 Floydada, Floyd County, Texas 79235 Sunday, March 10, 1974 12 Pages In One Section 10c Copy Number 20

4-H, FFA Showmen Honored

Caprock Chat

BY WENDELL TOOLEY

AGREED that girl's ayed on the two ends of the players not allowed ster line. This is the only 's basketball I can ling. lled me Thursday and remember when girl's played with the court se sections. ll if you can remember ketball and what year it e present system.

RE IN WEST TEXAS ve gas running over the re is some burn-off to excess. Sure wish the ergy people would wise service stations sell it.

ING THIS EARLY ing, and perhaps it will me this paper hits the r, for posterity's sake, I report that there was a f moisture in the air Friday.

thought the "delicious ing from the courthouse rinklers were spraying, was not the case, there in the air!

of washing mud from believe I have had except dust for the last onths.

hoping some sort of s...and real soon!

big fat letter...with so n it, I almost threw it in ading it. However, after believe it's worth the man who wrote the Witt C. LeFevre from New York. Here's what

roups throughout the mounted a campaign to to repeal auto emission ation. Some of these or dealers interested in s and those of their hers are farm organiza- ble for food production. t the general welfare of above pressures from lists to stymie their

nt House committee automobile emission eral Motors President testified that removal of save about 2.7 billion oline a year.

nt car dealers in central e banded together to ask port in their plea to end trols. The dealers, all he Syracuse Automobile eiation, are taking their lie, seeking support for a ill which would tempor- auto emission standards of the current energy

vertisement in the SYRACUSE HERALD. e, they ask for public e bill. A blank petition d for supporters to fill in ongressmen, senators, or Automobile Dealers' As-

s are joined in their ove emission controls by ncies such as the Service

Station Operators of Central New York, the Syracuse Auto Club, the New York Farm Bureau and the Eastern Milk Producers' Cooperative.

They say that faced with gas rationing prospects, and higher gasoline prices and taxes, removal of emission controls seems the only logical way both to avoid these possibilities and at the same time partially stem the fuel shortage at the consumer level.

Dealers point out, however, that once the government has given permission to rescind the controls, it will be up to the car manufacturers to determine how many of the controls can be removed safely without harming the cars.

A Missouri Congressman became the second national legislator to call for suspension of emission control devices on automobiles as Rep. Jerry Litton, Chillicothe Democrat, introduced a bill which would permit their removal.

Litton joined Rep. William Stuckey of Georgia in seeking removal of the devices during the current energy emergency. Litton's bill would suspend the controls until 1981, while Stuckey's would provide for reinstallation at the end of the crisis as determined by the President. Litton also announced he was planning to introduce legislation designed ultimately to improve gasoline supplies by discouraging auto makers from manufacturing cars which produce poor gas mileage.

The legislation proposed by Stuckey would suspend motor vehicle emission standards until the end of the current emergency, and permit the removal of existing control devices.

Removal or modification of emission controls, according to central New York dealers, would increase mileage on most cars and could be done with relative ease.

According to Jim Barr, owner of Barr-Llewellyn Buck, Syracuse, "Any experienced mechanic could learn how to perform the operation in an hour or two."

William Clark, president of the Syracuse dealers' organization, said mileage had dropped some 15 to 18 percent in his cars since 1970. And a test conducted by a SYRACUSE HERALD JOURNAL staff reporter revealed 20 to 35 percent more mileage when emission controls were removed.

Use of oil is much more widespread than heating our homes and powering our cars and boats and driving the trucks of commerce. It provides electricity to light our cities and helps keep the crime rate down; it provides power to drive the wheels of industry; and oil is the base raw material with which a score of industries survives. The plastics industry, petrochemical and other industries cannot exist without the raw material-oil.

"WHAT ARE YOU READING?" asked the prison librarian. "Nothing much," replied the prisoner. "Just the usual escape literature."

THE GYPSY WOMAN looked up from her crystal ball at the gentleman seated before her. "I will answer any two questions you ask me," said the gypsy, "for \$50."

"Isn't that price rather high?" asked the man.

"Yes, it is," said the gypsy. "Now what is your second question?"

Kenneth Wyatt, minister-artist-public speaker from Tulla, addressed an overflow crowd at the Floyd County Junior Livestock Show Banquet in Lockney Thursday. About 350 were expected to attend, but over 450 showed up to hear Wyatt and see the presentation of stock show awards to Floyd County 4-H Club and FFA members.

Marcia Fortenberry of the Floyd County 4-H received the stock show queen trophy. FFA sweethearts Nesa Jackson of Floydada and Vicki Boedeker of Lockney were runners-up in the queen contest. Chris Johnston, Lockney FFA member, was the winner of the giant "sweepstakes" trophy, presented by "a friend of the Floyd County Junior Livestock Show."

Receiving exhibition awards at the banquet were Ricky Hrbacek, beef; Rodney Edwards, sheep; and Steve Becker, swine.

Herdsmen awards went to Ricky Carthel in the steer division, the Harmony 4-H Club in the sheep division, and the Lockney FFA in the swine division.

Winning trophies for first place in the livestock judging contest were Steve Jones, swine; Jody Foster, steers; and Van Miller, sheep. Miller took the high individual trophy in the judging contest.

Claiming trophies for champion animals exhibited in the show were Mark Beedy, grand champion steer; Larry Abbott, grand champion barrow; Jimmy Parker, reserve champion barrow; Kelly Marble, champion finewool lamb; Todd Williams, champion finewool cross; and Joe Womeak, champion Shropshire.

Breed champion steer trophies went to Mark Beedy in the Angus division, Jon Jones for the top Hereford, and Deneen Johnson for the cross champion.

Todd Beedy, Johnny Dorman and Vanda Carthel won the trophies for reserve breed champions in the Angus, Hereford and cross breeds, respectively.

Before the awards presentation, Wyatt entertained the audience with humorous story after story. He told how, as a boy, he did yard work for a

lady in Stephenville, where he grew up. One day he did a special job of yard work and was paid five dollars when he had been getting two dollars tops. And he realized that, that day, he had done the best he could for a full day — he was a "five-dollar-a-day man." At the end of his speech he urged everyone present to "...pick out something you can do well and say 'Today, I'm going to be a five-dollar-a-day man,' and do the best you can for one whole day."

There is nothing in the world that has given me a bigger thrill than knowing I was the best there was, at what I could do, for a full day," he said.

The awards were presented by Doyle Warren, county agent, and agriculture teachers Elvin Lyon and Joe Henson of Lockney and O. L. Harris, Larry Smith and Milton Kirby of Floydada.

Paul Schacht, president of the Floyd County Farm Bureau, was master of ceremonies. Marc Smitherman of Floydada sang "A Kind of Hush," "The Shadow of Your Smile," "Can't Help Falling In Love," and "How Great Thou Art." Penny Bertrand accompanied Smitherman and played dinner music at the banquet. Chris Johnson gave the invocation.



TROPHY WINNERS — for champion steers and barrows at the Floyd County show pose after receiving the awards at the show banquet Thursday. Mark and Todd Beedy, top steer exhibitors, are in front, and Larry Abbott and Jimmy Parker, grand and reserve champion barrow showmen, are in back. (Staff Photo by Jim Huggins)

JAN HOPPER SLIGHTLY IMPROVED

Jan Hopper, who was critically injured in a motorcycle accident Tuesday night, is showing a slight improvement but said to be still unconscious in the intensive care unit of Lubbock Methodist Hospital.

.....and one little lamb brought \$2200!

When the Floyd County Jr. Livestock auction was over Wednesday, Billy Hinkle decided to give a lamb to be auctioned off with proceeds to go to the state 4-H club center in

Brownwood.

Well, the lamb sold and sold...possibly some eight or nine times, with each buyer giving it back for auction.

When it finally sold, it brought a whopping \$2200!

THRIFTWAY A BETTER WAY TO SAVE



SWIFT'S PREMIUM OR RATH BLACKHAWK

CORNER BEEF
SMALL 2/3-LB. PIECES
\$1.39
LB.

FRESH **PORK BUTT STEAK** LB. **89¢**
FRESH BONELESS **PORK ROAST** LB. **99¢**
BEEF & PORK **MEAT LOAF MIX** LB. **99¢**

LIVER LOAF, SPICED LUNCH, COMB. LOAF, SALAMI
SHURFRESH MIX OR MATCH 6-OZ. PKG. **49¢**
OSCAR MAYER PORK **SAUSAGE LINKS** LB. **\$1.19**
RAMIREZ BRAND FRESH CORN 50 PACK 15¢ 12-CT. PACK **59¢**

FRESH LEAN **PORK BUTT ROAST**
WHOLE OR HALF LB. **79¢**

FRESH FROZEN **TURBOT FISH FILLETS**
LB. **89¢**

BAR-S TOP QUALITY **SLICED BACON**
LB. **\$1.09**

SHURFRESH **LUNCH MEAT**
BOLOGNA-PICKLE PIMENTO-OLIVE LOAF
6-OZ. PKG. **39¢**

INTRODUCING 5 NEW WILSON'S MEAT ITEMS

WILSON'S CERTIFIED RING BOLOGNA LB. **\$1.15**

PLUMP & JUICY HOG CASING **FRANKS** LB. **\$1.15**

WILSON'S KNOCKWURST A REAL TREAT LB. **\$1.19**

SUMMER SAUSAGE LB. **\$1.19**

DO IT YOURSELF KIT **BAR STOOLS**
2 STOOLS IN A KIT NEW PRICE
EA. KIT **\$5.95**

WITH \$5.00 OR MORE PURCHASE **WOODWIND DINNER KNIFE**
EA. **39¢**

ASST. FLAVORS 6-OZ. PKG. **79¢**

DRY MIX ASST. FLAVORS 4 PACK BOX **69¢**

Feel Really Clean—**DEODORANT Zest**
5.75 Oz. Bath Bar Only **29¢**

8¢ OFF LABEL FABRIC SOFTENER DOWNY
32-oz. BTL. **69¢**



COBBLERS OLE SOUTH FROZEN APPLE OR PEACH 32-oz. CTN. **89¢**
INST. COFFEE MAXWELL HOUSE WITH 50¢ IN AD COUPON 10-oz. JAR **\$1.79**
TUNA SHURFINE CHUNK STYLE 6 1/2-oz. CAN **49¢**
KETCHUP HEINZ TOMATO 26-oz. BTL. **59¢**
SALAD DRESSING SHURFINE 32-oz. JAR **69¢**
PHILLIPS MILK OF MAGNESIA (REG. OR MINT) 12-oz. BTL. **69¢**
DRINKS "WAGNER" ASST. BREAKFAST FLAVORS 3 32-oz. JARS **89¢**
CREST TOOTH PASTE REG. OR MINT (FAMILY SIZE) 7-oz. TUBE **79¢**

32 OZ. **COCA COLA**
6 BTL. CTN. **97¢**
PLUS DEPOSIT

Check Rated

EFFECTIVE **KAOPECTATE** 8-oz. BTL. **99¢**
REGULAR OR UNSCENTED **SURE DEODORANT SPRAY** 9-oz. CAN **\$1.29**
REG. \$1.29 SIZE **Jergens Hand Lotion** 10-oz. BTL. **99¢**

DRISTAN TIME CAPSULES **DRISTAN** PKGS. OF 6'S **79¢**

CRAFT SPAGHETTI W/MEAT SAUCE **DINNER** 19-oz. CTN. **79¢**
SHURFINE HALVE'S BARTLETT **PEARS** 2 16-oz. CANS **69¢**
DAYTIME KIMBIE'S DISPOSABLE **DIAPERS** 30-CT. BOX **\$1.69**
OVERNITE KIMBIE'S DISPOSABLE **DIAPERS** 12-CT. BOX **89¢**
NABISCO PREMIUM SALTINE **CRACKERS** 16-oz. BOX **49¢**

Thriftway Dairy SPECIALS That Save You Money

SHURFRESH — ASSORTED FLAVORS **YOGURT** 4 8-oz. CTNS. **\$1.00**
PILLSBURY — WITH ICING **CINNAMON ROLLS** 2 10-oz. CANS **89¢**
KRAFT CRACKER BARRREL — SPREAD **SHARP CHEDDAR** 8-oz. PKG. **69¢**

THRIFTWAY PRODUCE SPECIALS

CALIFORNIA JUMBO **TANGERINES**
4 \$1.00
LBS.

IDAHO YELLOW SWEET **ONIONS**
19¢
LB.

WE GIVE S&H GREEN STAMPS
DOUBLE ON WEDNESDAY

MEXICO **STRAWBERRIES** BOX **39¢**
TEXAS **ORANGES** 5-LB. BAG **59¢**
CALIFORNIA **CELERY HEARTS** PKG. **39¢**
GR. EXT. **GREEN CUCUMBERS** LB. **25¢**



CLIP-REDEEM

30¢ **MAXWELL HOUSE COFFEE**

10¢ **Buc. Wheats**

20¢ **GOLD MEDAL FLOUR**

50¢ **MAXWELL HOUSE INST. COFFEE**

10¢ **SKIPPY SUPER CHUNKY Peanut Butter**

PAGE'S THRIFTWAY
STORE HOURS—7 A.M. TO 10 P.M.
PHONE 652-2293
IN LOCKNEY



'Mr. Your Job' should learn power of praise

By Abigail Van Buren

© 1974 by Chicago Tribune-N. Y. News Synd., Inc.

DEAR ABBY: After living with "Mr. Your Job" for 20 years, I have had it.

I used to love to cook but it's no fun anymore, because no matter how hard I try, my husband never says it was good. If I ask him if he enjoyed the meal, he says: "Yes, but why should I say anything? That's your job."

I made draperies and curtains for the whole house, and even slip-covered the furniture myself, and he never said one word. When I asked him if he thought the house looked nice, he said: "Sure, but that's your job."

Funny how if he washes the car or mows the lawn and I don't rave about what a wonderful job he's done, he pouts for a week.

Please print this, Abby. Maybe "Mr. Your Job" will see it, and take the hint. "MRS. YOUR JOB"

DEAR "MRS. YOUR JOB": Too bad "Mr. Your Job" hasn't learned the power of praise. Most people need only to know they're appreciated to keep them whistling while they work.

DEAR ABBY: Will you please settle a family disagreement? We've decided to abide by your decision.

We have two children, ages 10 and 12. I require them to write thank-you notes for all the gifts they receive for Christmas, their birthdays, or for any other occasion.

My husband says they are too young to be required to write such notes. What do you think? OHIO MOM

DEAR MOM: A big fat vote for you! As soon as children can print they should be taught to write thank-you notes for gifts. The habits they form when they are very young (and this is a good one) will carry over into their adult lives. This goes for boys as well as girls. For some strange reason boys are more inclined to neglect this important courtesy. Stick to your guns, Mom.

DEAR ABBY: I like the way you tell people who have to live with something they can't change to accept it. [In my son's case, it was being the shortest one in his class, and it really helped him.]

Along that line, I am reminded of this story: A friend of mine lost a thumb and his forefinger in an accident—a very awkward handicap for a man who is in business and has to shake hands several times a day. My friend adjusted to this defect beautifully. I once asked him how he did it. He replied, "Everybody has a defect. It just happens that mine shows." BOSTON READER

DEAR READER: Beautiful!

CONFIDENTIAL TO "BROWNIE": I think you should

\$95,000 Is Goal For Scouts

The goal for the Annual Boy Scouts Sustaining Membership Enrollment is \$95,000 according to Jack Baker, President of the 20 county South Plains Council.

W. Robert McKinsey, Vice-President and General

Manager of KCBT-TV, Lubbock is the chairman for this year's drive.

District Chairmen include John Kendrick, Brownfield, David Wilder, Plainview, Farnk Watts, Levelland, Ransom Galloway, Spur, Dr.

Robert Arnold, Harold Hariger, all of Lubbock.

Kick Off breakfasts are set in 40 communities for March 9. McKinsey and other Key Scouters will tell the "Scouting in the South

Plains" story via television at 7 a.m. The 30 minute show will include Scouting action and how Scouting is financed.

The total need to serve over 13,500 boys and leaders for a full year is \$212,916.00. Of this amount, \$111,000. will be provided by 14 United Funds and Community Chests that support the Boy Scout Council.

McKinsey pointed out that while it takes just under \$25.00 to support a boy a full year in Scouting - it costs over \$10,000. to support a boy a year in a correctional institution.

Other Council leaders in the 1974 Sustaining Membership Drive includes W.B. Rushing, Lubbock, and Kinder Farris of Floydada who serve as Area Chairmen. Dr. James Granberry, Lubbock, is the Scouts Finance Chairman for this year.

Community Chairman for Lockney is Thurman Davis, for Floydada it is Dallas Ramsey.

AT VALLEY HIGH

Volleyball Tournament

The junior class of Valley High School is sponsoring an outsiders volleyball tournament March 21, 22, and 23. Both men and women's teams are invited. There will be no entrance fee; admission will be 50 cents at the

gate. There will be a concession stand for your convenience. If any team is interested in entering contact Betty Nan Tiffin phone 3641, Valley High School, Matt Chalmers phone 2636 Turkey, or Eva Cheatham

phone 2541 in Quitaque.

Deadline Set For Students To Transfer

Parents are reminded that their school children who will be transferring from a rural school in Floyd County to Floydada Independent School District, must fill out forms for transfer by May 1. Forms are available at the administration office on Main Street.

Students are not automatically transferred from a rural school to a city school.

Corporation Taxes Due

PLAINVIEW - Friday, March 15, is a Federal tax deadline for corporations whose tax year ends December 31, 1973.

Corporations must file a calendar year 1973 income tax return, or Form 7004 - an application for automatic extension of time for filing, by March 15. Walter I. Perry Administrative Officer of Internal Revenue for the Plainview area said

today. Corporations must deposit in an approved commercial bank or a Federal Reserve bank at least 50 percent of the balance of the tax due when they file the return or when they request the extension on March 15.

Deposits should be made using Form 503, "Federal Tax Deposit, Corporation Income Taxes."

take all those letters and file them under "Y" for "yesterday." And if you find yourself reading them [which you admit depresses you immensely], throw out the file! He is gone, and it is over.

Problems? You'll feel better if you get it off your chest. For a personal reply, write to ABBY: Box No. 69700, L. A., Calif. 90069. Enclose stamped, self-addressed envelope, please.

For Abby's new booklet, "What Teen-Agers Want to Know," send \$1 to Abigail Van Buren, 132 Lasky Dr., Beverly Hills, Cal. 90212.

Mr. Jeweler, will you check my ring? Sir, how much is it worth, what size are the stones? Why the questions, the ring is still new. Well, it was bought from a place other than a jeweler.

*****Why the Uneasiness*****

HARPER'S JEWELRY

Diamond Merchants of the Caprock
983-2586 126 W. Calif. Floydada



Tree & Shrubbery Spraying

WE ARE EQUIPPED TO DO ALL KINDS OF SPRAYING IN YOUR YARD OR ORCHARD FOR PEST CONTROL.

WE CAN ALSO SPRAY YOUR ALLEY OR LOT WHERE YOU WANT WEEDS KILLED PERMANENTLY.

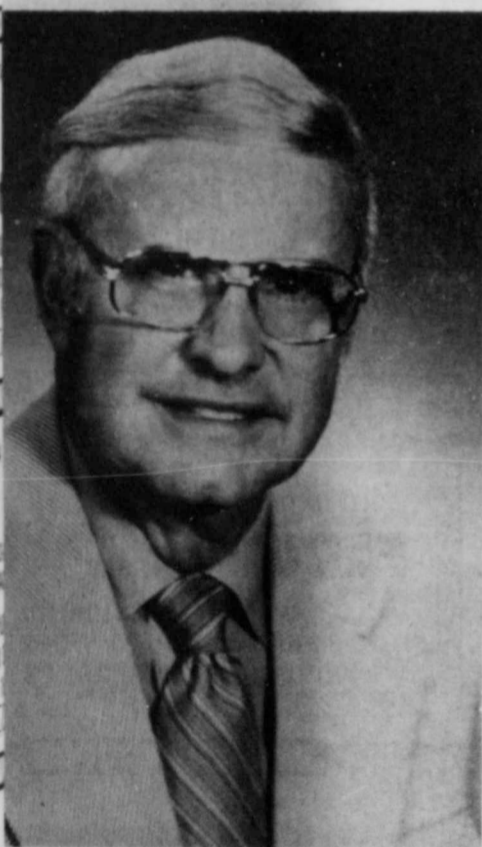
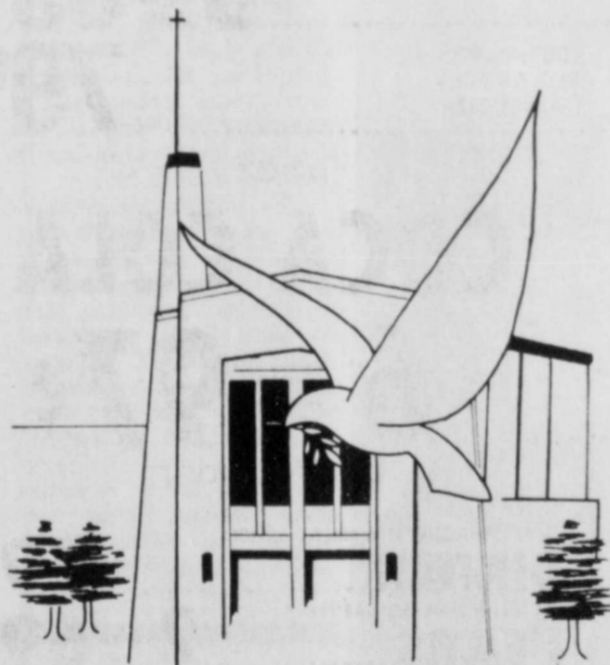
WE ALSO SPRAY CATTLE FOR LICE

A.C. CARTEL

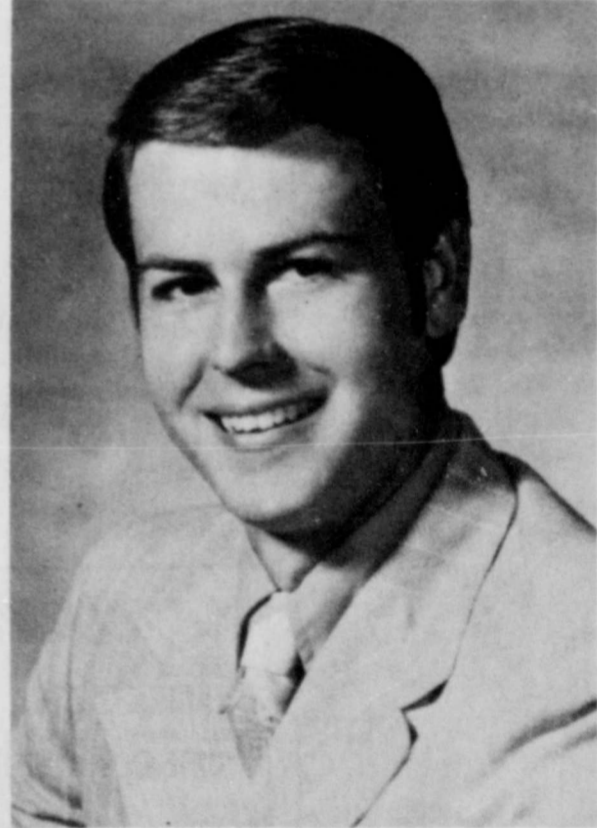
FLOYDADA

983-3200

A TIME TO REJOICE



BYRON RICHARDSON



ROYCE THORNAL

YOU ARE INVITED TO HEAR THESE MEN IN REVIVAL SERVICES

MARCH 10-17

12:00 NOON - 7:30 P.M.

EVERYONE IS INVITED TO COME REJOICE WITH US.....

FIRST BAPTIST CHURCH

BLOCK ON S. MAIN

FLOYD C. BRADLEY, PASTOR

FLOYDADA, TEXAS

Society



Connie Anderson
(Girl of the Week)

Heart disease may not be in your stars, but it could be in your genes. Learn more about heredity and heart disease from your local Heart Association. Help your heart by helping your Heart Fund.

Girl Of The Week

Good food served attractively is foremost in Connie Anderson's thoughts as she prepares the trays for lunch in Caprock Hospital kitchen. Being responsible for the trays is one duty Connie has. She also washes and dries dishes, helps Bettye Baker, her training sponsor, with diet selections, and occasionally does some cooking. Getting acquainted in the field of Health Service is a learning experience Connie enjoys. As a member of Home Economics Cooperative Education, Connie has class room study in the area of Food Service, Attitudes, the world of work, and success for the future are also stressed in Connie's class. Her class room study will give one

Mrs. O. C. Rampley

credit while the job training gives two. Getting a worthwhile education, job experience, credits toward graduation and a salary, all contribute to the satisfaction of being a Home Ec coop student. Connie feels this job will be very helpful in her future. Learning the different diets and the nutritional value of food will make her a better meal provider. Working with people develops a new confidence that can help her relax around strangers and gain self-confidence.

Will Hollums Honored On 80th Birthday

Hollums relatives went to Midland for the birthday celebration honoring their brother, Will Hollums, who observed his 80th birthday, March 3.

A six o'clock dinner was given in his honor at the home of Mr. and Mrs. Jack Hollums in Midland.

Will Hollums and family lived in the Sandhill community for several years, moving to Midland in the late fifties.

Relatives attending from Floydada includes Mr. and Mrs. Walter Hollums, Mr. and Mrs. T. C. Hollums, Mr. and Mrs. Ernest Newton, and Mrs. Faye Reynolds, Amarillo. Other relatives attending were Mr. and Mrs. Lee Strickland Wayne,

JUDY JAMESON STUDENT TEACHER IN ABILENE

Judy Nell Jameson, a senior speech pathology major at Abilene Christian College, has been assigned to do her student teaching at two Abilene schools, Bowie Elementary and Crockett Elementary. She will be working with the speech and hearing therapy departments.

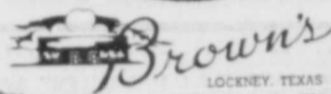
Judy is the daughter of Mr. and Mrs. Jodie Jameson, 1004 S. 3rd. She is a 1970 graduate of Floydada High School and is currently a member of Ko Jo Kai social club. Judy will be student teaching during the spring semester of 1974.

Scholl Casuals... the shoe a woman can live with.

Smartly styled to flatter the feminine foot... comfortably. Scho-Peds from Scholl. Beautifully supple glove leathers. Soft-stepping soles. Relaxingly firm support. Feeling great and looking good!



\$19.98



When the lights are low, so are the Long Distance rates.

Eleven every night till eight every morning. That's when our one-minute rate is in effect. You just dial direct the One-Plus way. The first minute costs just 35¢. Each additional minute is only 20¢. Those are coast-to-coast rates. Phone someone closer and the one-minute rate can be even less. So brighten your night. With One-Plus.



Rates above do not include tax. One-Plus rates do not apply on calls made from coin telephones.

Caprock District TFWC Convention March 29-30

Caprock District, TFWC, will hold its Fourteenth Annual Convention on March 29 and 30, 1974, at the Ko Ko Inn, Lubbock. The Convention Theme, "American Youth," promotes the District Theme, "Sustaining American Youth - through Love and Understanding."

Mrs. O.C. Rampley, Caprock District President from Silverton, has announced that Friday's Pre-Convention Activities will include an 11 a.m. Executive Committee Meeting and Luncheon, followed by a Caprock District Board Meeting at 1 p.m.

The Convention will formally be opened at 1:30. The Cadette Girl Scout Troop from Mackenzie Junior High, Lubbock, will present the colors; and the National Anthem will be led by Mrs. Eddie Teeter, of Lockney, accompanied by Mrs. Marvin Montague, of Silverton. Mrs. E.H. Boedecker, Third Debbie and Eddie.

Mr. and Mrs. Cecil Hughes, Randy David; Mr. and Mrs. Mark Bradshaw, Leslie Paula Raspberry; Mr. and Mrs. Jack Hollums, Eddie Robney, Susan, and Jackie; Mr. and Mrs. John Dagenhart, Michale Toby; Mr. and Mrs. Mark Longuine Danny, Melissa; Mr. and Mrs. Jim Yardy, Pam, Tommy; Mr. and Mrs. Don Hollums, Donna, Jerry, Patricia, Debbie; Carl Ray and Charles Hollums; Mr. and Mrs. Eugene Byrd, Lee, Ernest Diane;

Nig, Gary, Joe Womack.

Friends calling were Mr. and Mrs. Elzy Brantly, Mr. and Mrs. Eddie Ward and Tracy; Mr. and Mrs. Hub Cook, Mr. and Mrs. Bob Coffee, Sherry, Debbie, Robert;

Rev. Ray Simmons and daughter.

The brother and sister attended church service Sunday morning at the Tower Baptist Church with the Will Hollums family.

Club Meets In Henry Home

Members of the 1929 Study Club met in the Clay Henry home Thursday for a program given by Floydada's American Field student, Peter McGoldrick.

The meeting opened with Mrs. Q. D. Williams presiding. Mrs. Vance Campbell gave the American Creed.

During business a donation was given to Girls' Town, one of the club's projects. Mrs. Clarence Goins was appointed to represent the club at the Federation Convention in Lubbock March 29.

The nominating committee gave the following selection of new officers to serve the next term: Mrs. J. A. Colston, president; Mrs. W. Ian Moore, vice president; Mrs. Q. D. Williams, 2nd vice president; Mrs. S. W. Ross, recording secretary; Mrs. J. M. Willson Sr., corresponding secretary; Mrs. Lee Rushing, reporter; Mrs. Clarence Goins, treasurer; and Mrs. C. M. Meredith, custodian.

In presenting the pro-

Vice President from Lubbock, will make introductions.

District Officers, Department Chairmen, Standing Committee Chairmen, Projects Chairmen, and Club Presidents from a 19-county area will give reports throughout the Friday afternoon and Saturday morning sessions. A report of special interest will be given by Mrs. Bill W. Davis, Project Chairman from Lubbock. She will tell of the work being done by Caprock District Clubs to promote the Girlstown, USA, Project.

An Awards Banquet will begin at 7 p.m. Presidents of each of Caprock District's 73 clubs will be formally presented to the audience by Mrs. Harold Green, District First Vice President from Tahoka, and Mrs. Jack Akin, District Second Vice President from Denver City.

The Banquet Speaker will be Dr. C.L. Kay, of Lubbock Christian College. His address will be entitled, "What's Right With American Youth." Guests are encouraged to attend this banquet. Mrs. Inez Ferrell, Lubbock, will provide dinner music.

Mrs. Louis Fry, Director of Junior Clubs from Lockney, will preside over the Breakfast for Junior Clubwomen on Saturday morning and also the Junior Conference that will follow.

A Buffet Luncheon for all clubwomen will be held at 12:30. Mrs. W.C. Harrison, Jr., Denver City, and Mrs. Joe Beckham, Tahoka, will present a Fashions for Fun Style Show and a Spadea Contest Style Show.

A tea honoring out-going and in-coming Caprock District Officers will follow the luncheon session.

Pre-registration will be necessary in order to attend the Banquet and the luncheon Sessions.

gram, Peter McGoldrick, who resides in Townsville, Queensland, Australia, showed slides of his hometown and surrounding country and gave highlights of their culture, crops, schools, climates, churches and occupations.

Peter was accompanied to the meeting by his Floydada mother sponsor, Mrs. Lon Davis.

Members attending the meeting were Mmes. H. O. Cline, C. M. Meredith, C. W. Denison, Sam Green, W. Ian Moore, J. M. Willson Sr., S. W. Ross, Clarence Goins, Vance Campbell, Clay Henry, Lee Rushing and Q. D. Williams.

Next club meeting will be April 4 in the Vance Campbell home.

Easter Seal Appeal letters are being delivered this week in Floyd County according to Miss Lyda Walding, the Easter Seal Representative of the Easter Seal Society for Crippled

Children and Adults of Texas. As Representative, Miss Walding serves as contact representative for disabled persons needing Easter Seal rehabilitation services and also serves as Treasurer of the Easter Seal Appeal in Floyd County.

The Easter Seal Society offers physical and occupational therapy, speech and hearing programs, and special equipment loans to enable disabled persons to make the best use of their abilities to overcome handicaps. These services are financed by the annual Easter Seal Appeal.

The Society also finances public education programs, provides scholarships for training of professional personnel to staff rehabilitation centers, and helps provide for national research into



Miss Laura Jacobs

Tea Reveals Engagement

The engagement of Miss Laura Jacobs, daughter of Mrs. W.F. Jacobs and the late Mr. Jacobs of Matador, and Earl Ray Rowan of Floydada, and the date of their approaching marriage were announced at a Sunday afternoon, March 10, by Mrs. Jacobs. The prospective bridegroom is the son of Mr. and Mrs. J. Rowan of Floydada.

Assisting with hospitalities were aunts of the bride-elect, Mrs. R.E. Campbell Jr., who greeted the guests, Mrs. W.N. Pipkin and Mrs. Robert Darsey, and her cousins, Mrs. Jim Allison of McLean, Mrs. Neal Pipkin of Lubbock, and Miss Charise Cullin of Matador and Santa Fe, New Mexico.

Mrs. Larry Nolan of Floydada presided at the guest book.

Featuring Miss Jacobs' chosen colors of azalea pink and white, the refreshment table was laid with a white organdy cloth over pink and centered with a crystal candelabrum containing an

Children and Adults of Texas. As Representative, Miss Walding serves as contact representative for disabled persons needing Easter Seal rehabilitation services and also serves as Treasurer of the Easter Seal Appeal in Floyd County.

The Easter Seal Society offers physical and occupational therapy, speech and hearing programs, and special equipment loans to enable disabled persons to make the best use of their abilities to overcome handicaps. These services are financed by the annual Easter Seal Appeal.

The Society also finances public education programs, provides scholarships for training of professional personnel to staff rehabilitation centers, and helps provide for national research into



Big Jobs Need An Electric Water Heater

When you have water heater problems, give us a call. We'll take care of everything... installation, financing, even the removal of your old water heater. And, we'll guarantee a new electric water heater, too!

We sell Electric Water Heaters... CALL US...!



Women In News

Out Cookie Sales Are Extended

Cookie sale to March 10. Proceeds go to the Girl Scouts. Mrs. Ken Cox, Mrs. Ken Burns, or Neighborman. The sale is especially for the Girl Scouts on camperships to Camp session at... are a few Girl Scout remember be put in

Refrigerator Dessert
Two 3-oz. pkg. raspberry or strawberry flavored gelatin 1/2 cup butter or margarine
1 cup sugar

Mrs. Smith Club Hostess

Mrs. Weldon Smith was hostess to members of the Sandhill Community Club Thursday, for a program on drug abuse, given by Mrs. Arlon Miller. Following the program and business session, Mrs. Smith served refreshments to Mrs. T. C. Hollums, R. L. Bullock, C. B. Carmack, R. B. Hatley, Arlon Miller, Ruth Trapp, Walter Hanna, Rosie Helms and two visitors, Frances Kinchloe and Myrtle Payne.

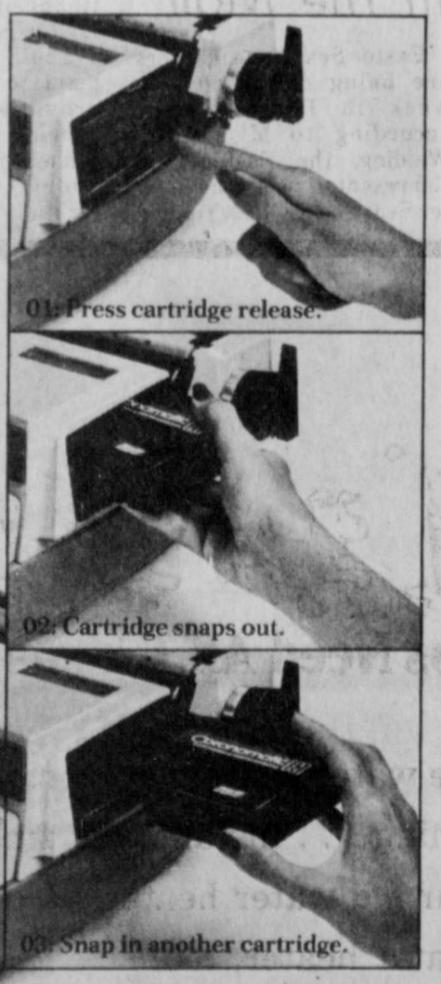
Missionary Conference

First annual Missionary Conference will be held March 21-March 24 at First United Methodist Church of Lockney. Three missionary speakers are scheduled to be in Lockney for the conference. Speakers will be Fred W. Yazzie, a Navajo minister; Bill Eddy of Wilmore, Kentucky, who has been an educational missionary to both Cuba and Panama; and Miss Doris Trefren, also of Wilmore, who was recently returned from Taiwan.

In 3 seconds I know which electric portable to give this Christmas.

Smith-Corona's new Cartridge Ribbon Typewriter.

One with the 3-second ribbon change is the quickest, cleanest ribbon change in the world. The new Cartromatic™ Ribbon Cartridges (don't use carbon film) usually only with office typewriters. In the same 3 seconds it takes to change a cartridge, you can change to a new cartridge for typing that looks like new. No mistakes, there's a correction in 3 seconds. Also an assortment of colors, add color to your typing. With Smith-Corona's new cartridge typewriters you know which one to give. The question is who to give it to.



REGULAR \$229.95
\$189.95
THE LOCKNEY BEACON
THE FLOYD COUNTY HESPERIAN

Sprinkle 1/2 of cookies in greased 1 1/2 quart casserole. Mix next 5 ingredients. Spread half the mixture on top of cookies and repeat layers. Cover with remaining cookies. Drizzle with butter mixed with juice and water. Cover and bake in preheated moderate oven (375°F) 40 minutes. Uncover and bake 20 minutes longer. Serve warm with cream. Makes 6 servings.

Savannah Toffee Torte
1/2 cup butter or margarine
1 cup confectioners sugar
3 eggs separated
1 1/2 oz (1 1/2 sq.) unsweet-

ened chocolate, melted
Dash salt
14 Savannah cookies, crushed into crumbs (including filling)
1/2 cup chopped nutmeats
Beat together butter and sugar until fluffy. Beat egg yolks; add to creamed mixture. Add melted chocolate and salt. Beat egg whites until stiff, fold into creamed mixture. Sprinkle half of cookies crumbs and nutmeats in 8-inch square pan. Pour mixture over crumbs. Then sprinkle with remaining crumbs and nutmeats. Refrigerate at least 12 hours before serving. Makes 9 servings.

Date and Nut Roll
18 Scot-Tea cookies, crumbled
3/4 cup chopped dates
14 large marshmallows, cut up
1 cup chopped nutmeats
1/2 cup whipped cream
Combine all the ingredients; mix well and roll up with 1/2 cup additional Scot-Tea cookie crumbs on the outside. Wrap in waxed paper and put in refrigerator at least 5 hours. Cut in slices and top with whipped cream. Makes 8 servings.

Minted Brownie Pie
14 chocolate Mint cookies
3 egg whites
Dash salt

3/4 cup sugar
1/2 teaspoon vanilla
1/2 cup chopped nutmeats
1 cup whipped cream
Curls of shaved chocolate
Chill cookies in refrigerator, then roll between waxed paper to make crumbs. Beat egg whites and salt together until soft peaks form. Gradually add sugar, beating constantly until stiff. Fold in cookie crumbs, vanilla and nutmeats. Spread in buttered 9-inch pie plate and chill several hours. Spoon into dessert dishes. Serve with whipped cream garnished with shaved chocolate curls. Makes 6 servings.

Coffee Icebox Cake
1/2 cup butter or margarine
1/2 cup sugar
5 egg yolks
1/4 cup very strong coffee (including filling)
16 Savannahs, separated
Beat butter and sugar. Beat in egg yolks one at a time; gradually stir in coffee. Line the bottom of an 8-inch square baking dish with half of the cookies. Pour in the coffee mixture. Cover the top with the remaining cookies. Chill the pudding for 12 hours or more. Serve garnished with whipped cream. Makes 8 servings.

Buddy's Food

BUDDY WIDENER-OWNER, FORREST SHANNON-MANAGER
220 South 2nd Floydada, Texas
STORE HOURS
8:30 A.M. - 8 P.M. MON. - SAT.
SUN. 9 A.M. - 7 P.M.
THESE PRICES GOOD MARCH 10 THROUGH MARCH 13, 1974
We Reserve The Right To Limit Quantities!

6 - 32 OZ. \$1.59 VALUE
COKE 97¢ PLUS DEPOSIT
17 OZ. DEL MONTE **PEAS** 4 FOR \$1
BETTY CROCKER **HAMBURGER HELPER** 2 FOR 99¢
32 OZ. WAGNER'S **FRUIT DRINK** 4 FOR \$1
1 1/2 LB. SOFT 'N' LITE **BREAD** 2 FOR 77¢

25 LBS. OUR DARLING **FLOUR** \$2.99
1/2 GAL. CLOVERLAKE \$1.19 VALUE **ICE CREAM** 89¢
10 OZ. CARNATION 37¢ VALUE **SLENDER** 4/\$1

10 OZ. WHITE SWAN TOMATO OR VEGETABLE **SOUP** 7/\$1
4 ROLLS DELTA BATHROOM 57¢ VALUE **TISSUE** 2/89¢
SAVORY BONELESS **HAM** 1 LB. \$1.49
OWENS SAUSAGE 2 LBS. \$1.87

PORK ROAST LEAN AND MEATY LB. 89¢
BUTTERBALL **HEN TURKEYS** 10 PIECES "HOT AND READY" **FRIED CHICKEN**
LB. 83¢ LB. \$2.29
TENDERIZED STEAK U.S.D.A. LB. \$1.59

U.S.D.A. **SIRLOIN STEAK** LB. \$1.19
ECKRICH'S **SMOKED SAUSAGE** LB. \$1.59

YELLOW ONIONS 2 LBS. 29¢
10 LBS. U.S. NO. 2 **POTATOES** \$1.27
1 LB. TEXAS **CARROTS** 2/39¢
RUBY RED **Grapefruit** 2/25¢

4 BARS CASHMERE BOUQUET **SOAP** 55¢ VALUE 44¢
8 OZ. WHITE SWAN **BISCUITS** 15¢ VALUE 9 FOR \$1
1 LB. MEADOWLAKE **Margarine** 59¢ VALUE 2 FOR 89¢

18 OZ. BAMA GRAPE **JELLY** 57¢ VALUE 2 FOR 99¢
10 OZ. KRAFT **Marshmallows** 33¢ VALUE 4 FOR \$1

12 COUNT BALL "WIDE MOUTH" **QUART JARS** WITH COUPON \$2.29
GOOD ONLY AT WITHOUT COUPON \$2.39
BUDDY'S FOOD EXPIRES 3-13-74

GIANT 49 OZ. **CHEER** WITH COUPON 77¢
GOOD ONLY AT WITHOUT COUPON 87¢
BUDDY'S FOOD EXPIRES 3-13-74

TASTER'S CHOICE No. 23053
FREEZE-DRIED COFFEE 8 OZ. SIZE
ONLY \$1.99
WITHOUT COUPON \$2.29
GOOD AT BUDDY'S FOOD EXPIRES 3-13-74

32 OZ. QT. **MIRACLE WHIP** WITH COUPON 79¢
WITHOUT COUPON 99¢
GOOD ONLY AT BUDDY'S FOOD EXPIRES 3-9-74

14 OZ. DISENFECTANT **LYSOL SPRAY** WITH COUPON \$1.09
WITHOUT COUPON \$1.39
GOOD ONLY AT BUDDY'S FOOD EXPIRES 3-13-74

Drilling Of Irrigation Wells Continues To Rise In 73

Drilling of irrigation wells on the High Plains of Texas continues on the upswing, as the 1973 total of new wells increased nearly eight percent over 1972.

In 1973 a total of 670 wells were completed as compared to 618 in 1972, an increase of 8 percent. However, 1,137 permits were issued in 1973, leaving 467 not completed, or only 59 percent of the wells actually drilled.

For 1972, 618 wells were completed out of a total of 821 applications for permits received by the Water District—a total of 75 percent.

A few counties within the District in which well drilling is the most active are Bailey, Castro, Deaf Smith, Lamb and Parmer. Statistics in those counties for permits issued and wells completed are as follows:

PERMITS ISSUED			
County	1972	1973	Percent of Increase
Bailey	60	123	105
Castro	79	139	75
Deaf Smith	121	163	34
Lamb	91	186	104
Parmer	133	201	51

WELLS COMPLETED			
County	1972	1973	Percent of Increase
Bailey	54	86	59
Castro	55	80	45
Deaf Smith	83	98	18
Lamb	69	123	78
Parmer	103	127	23

Considering the eight-percent rise in wells completed in 1973 as compared to 1972, it might seem surprising that well permits received by the District increased 38 percent during the year and more than 100 percent during the months of peak drilling from 1969 to 1972.

However, it is suspected that the primary reason for the increase in applications for water well permits may

be due to the removal of acreage limitations on agricultural production.

These increases in applications may also be attributed to the decline of the water table, competition for well sites and the fear of waiting until supplies of drilling equipment are exhausted. And, as is evident today, this increased rate of drilling wells is, in itself, creating shortages in drilling supplies.

The accelerated irrigation development within the sandhills area of Bailey and Lamb Counties is reflected in the large increase in well applications in those counties. The well applications tendered by only two large farm corporations account for most of these wells.

May Be Due To Shortages

The fact that so many of the wells applied for are not completed may be attributed to these shortages, and it also may be traced to a delayed schedule on the part of local drillers due to a backlog of orders.

Additionally, expiration of the four month period provided for in the permit applications might be creating part of the numerical increase in issued permits.

Local irrigation well drillers say they have not been so busy in years—at least as long as their supplies are adequate.

As the availability of supplies increases, one might expect more wells to be completed on the High Plains. However, within the boundaries of the Water District, certain spacing procedures must be followed.

This is, in itself, a conservation measure in that it promotes orderly drilling. Only time will tell how quickly available well sites are developed.

FARM REVIEW

DRILLING STATISTICS FOR 1972

County	Permits Issued	New Wells Drilled	Replacement Wells Drilled	Reported Dry Holes
ARMSTRONG	0	0	0	0
BAILEY	60	54	4	0
CASTRO	79	55	6	1
COCHRAN	26	15	0	0
CROSBY	10	7	2	0
DEAF SMITH	121	83	2	2
FLOYD	72	57	9	2
HALE	16	9	6	1
HOCKLEY	51	38	2	2
LAMB	91	69	15	1
LUBBOCK	100	79	9	6
LYNN	28	32	1	2
PARMER	133	103	13	3
POTTER	3	1	0	0
RANDALL	31	16	1	4
TOTALS	821	618	70	24

DRILLING STATISTICS FOR 1973

County	Permits Issued	New Wells Drilled	Replacement Wells Drilled	Reported Dry Holes
ARMSTRONG	0	0	0	0
BAILEY	123	86	7	2
CASTRO	139	80	4	1
COCHRAN	21	13	0	2
CROSBY	11	8	0	0
DEAF SMITH	163	98	5	2
FLOYD	90	35	4	1
HALE	21	11	3	0
HOCKLEY	56	20	0	0
LAMB	186	123	5	0
LUBBOCK	64	29	9	3
LYNN	10	4	1	0
PARMER	201	127	8	1
POTTER	4	3	1	0
RANDALL	47	33	2	2
TOTALS	1137	670	49	14

History of Controls Called All Bad

Government-imposed food controls have a perfect record—they have failed for some 5,000 years, the *Industrial News Review* reports.

The *Review* quotes a U.S. Department of Agriculture paper published 50 years ago, tracing the record of government attempts to freeze food prices back to as early as 2830 B.C. in ancient Egypt, through Confucian China, up to the Athenian city-state around 400 B.C.

The USDA paper, "Food Control During 46 Centuries," concludes that: "The history of government limitation of price seems to teach one clear lesson: that in attempting to ease the

burdens of the people in a time of high prices by artificially setting a limit to them, the people are not relieved but only exchange one set of ills for another which is greater. Among those ills are:

- (1) the withholding of goods from the market;
 - (2) the dividing of the community into two hostile camps; and
 - (3) the practical difficulties of enforcing such limitation in prices which in the very nature of the case requires the cooperation of both consumer and producer to make it effective.
- "One thing can be said of attempts to freeze prices," the *Review* says, "they have an unblemished record of unworkability."

Nueces, Kleberg, Kenedy, Brooks, and Willacy.

The Texas Department of Agriculture is responsible for the program on a state level. Other agencies cooperating include the Texas Agriculture Experiment Station, and The Texas Rodent and Predator Control Service as well as the Extension Service. The project is in cooperation with the Environmental Protection Agency.

Producers who participate in the experiment must keep records of all results with the M-44. Violation of the regulations can result in loss of eligibility for a county. The program will continue through June, 1975.

Further details may be obtained from the Texas Department of Agriculture or your county agent.

CATTLE feeding in Texas has shown a resumption of increasing numbers, the Texas Crop and Livestock Reporting Service notes. In Texas, there were 2,340,000 cattle and calves on feed for slaughter markets as of February 1. This is six per cent above a year ago and six per cent above the number on feed a month ago.

Placements into Texas feedlots during January totaled 467,000 head which is a gain of 44 per cent above January of 1973 and 69 per cent more than the previous month.

However, marketings of fat cattle during January totaled 332,000 head, which is six per cent below a year ago.

Nationwide, the number of cattle on feed in the seven major cattle feeding states—Texas, Arizona, California, Colorado, Iowa, Nebraska and Kansas—totaled 9,632,000 head. This is a three per cent increase from a month ago but four per cent less than those on feed a year ago at this time.

SALES for all kinds of livestock at Texas auctions compared to a year ago and a month ago are higher. Cattle and calves marketed through auctions during January were 54 per cent above a year ago and 17 per cent above a month ago.

Sheep sales were 37 per cent above a year ago and 90 per cent above a month ago. Goats sold during January were 25 per cent above both last year and last month.

Hogs sold during January were seven per cent above a year ago and 31 per cent above last month.

A Weekly Report Of Agri-Business News

Farmcast

Compiled From Sources
Of The Texas Department of Agriculture
John C. White, Commissioner

Now Is The Time... Cattle On Feed Resumes Upward Trend... Auction Sales Report Increases... Broiler, Egg-Type Chicks On The Rise.

The experimental predator control program for 44 Texas counties is now in operation. County agents are responsible for setting up training schools in approved counties.

To be eligible to participate in the program, your county must be approved; then you must attend a training school relating to use of the M-44 sodium cyanide spring ejection device.

Counties in Texas eligible for the program are Cottle, King, Dickens, Borden, Scurry, Mitchell, Taylor, Callahan, Midland, Glasscock, Sterling, Coleman, Crane, Upton, Jeff Davis, Pecos, Presidio, Kinney, Uvalde, Medina, Bexar, McCulloch, San Saba, Mills, Stephens, Erath, Brown, Comanche, Hamilton, Bosque, Coryell, Lampasas, Bell, McLennan, Burnet, Williamson, Hood, Milam, Jim Wells,

AUCTION TO SETTLE THE ESTATE OF GALEN HOLLAND

The Following Items Will Be Sold At Public Auction Saturday, 1 P.M., March 16, 1974 Corner East Kentucky & 12th Street or Across Road West Of Davis Gin Office, Floydada, Texas

- 1-1961 CHEV. PICK-UP V-8 SHORT NARROW
- 1-MATTRESS AND SPRINGS
- 1-17" T.V. BLACK AND WHITE
- 1-OLD UPRIGHT RADIO
- 1-SEWING MACHINE-1917 MODEL MONTGOMERY WARD TREADLE
- 1-UPHOLSTERED ROCKING CHAIR ANTIQUE
- 1-SWIVEL CHAIR
- 1-RECLINER CHAIR-PLASTIC COVER
- 1-OLD ROCKER AND STRAIGHT CHAIR BUILT IN 1907
- 1-HIDE-A-BED SOFA
- 1-CHROME DINETTE TABLE AND 6 CHAIRS WITH PLASTIC COVERS
- 1-POLE LAMP
- 1-TABLE LAMP
- 14-HAND-PIECED HAND-QUILTED QUILTS
- ASSORTED BED CLOTHES-SEVERAL PAIRS EMBROIDERED PILLOW SLIPS
- 1-HAND SAW, 1 HAMMER, 1 AXE

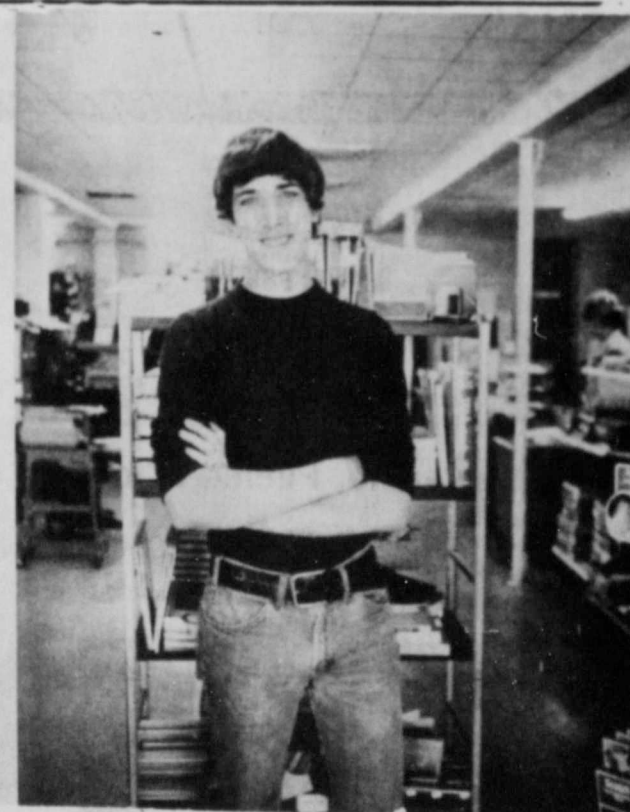
ENTIRE PROCEEDS OF THIS SALE WILL BE DONATED TO THE AMERICAN CANCER SOCIETY



Agriculture's outpost on Wall Street

Most farmers and ranchers don't realize the Federal Land Bank gets its loan funds from the sale of bonds to investors. There is no government money in the Land Bank system. The quality of Land Bank Bonds, plus the skill with which the Farm Credit System's own Fiscal Agency works on behalf of agriculture, means a constant flow of low-cost financing from the nation's money market. Come in... and let's talk over how Land Bank money is bought—and sold—at a fair price to the borrower.

319 SOUTH MAIN ST.
PHONE 963-2480
FLOYDADA, TEXAS



DOUGHERTY'S RICK CARTHEL received the Showmanship Award for steers at the Floyd County Jr. Livestock Show.

THESE LOCKNEY FIRMS ARE MAKING THIS FARM NEWS POSSIBLE

PERRY IMPLEMENT CO. LOCKNEY'S JOHN DEERE DEALER	PROVIDENCE FARM
PATTERSON GRAIN CO. GRAIN-FERTILIZER	ACCO SEED "SORGHUM FOR THE SEED"
LOCKNEY COOPERATIVES MEMBER-OWNED	THE LOCKNEY BOOSTING FLOYDADA COUNTY

Appreciation

FOR CUSTOMERS
Providence Farm
 THURSDAY, MARCH 14
 CALL 296-5088 FOR

"From planting to harvest
 PCA MONEY, to stabilize
 status, and replace
 MY CROP HAIL INSURANCE
 PCA ON FALL TERMS



PCA / the go to
 talk to
 BUDDY
 your local
 IN FLOYDADA

105 S. 5TH

Region's windiest, area prime energy source

...place to go. In a recent letter to several Texas and U.S. elected representatives, Nelson and Gilmore outlined in detail their reasons for believing that the Panhandle would be the ideal location for introduction of small wind conversion units. They oppose the current trend among national science foundations to build wind conversion units on a massive scale. The two physicists' report that their calculations indicate that the average annual demand for electrical energy in the United States from 1970 to 1972 is roughly equal to the amount of total energy capturable in the Panhandle.

"Should the actual energy potential be only a few percent of that estimated, we can ill-afford to ignore it," the professors state. "Moreover, this energy resource is non-depletable and its capture and conversion would involve minimal pollution." Nelson noted in a recent interview that it would be virtually impossible to tap the total energy available from the Panhandle winds, but he's enthusiastic about the possibility that enough energy could be captured to diminish the energy crunch. "The Texas Panhandle region by no means bounds this resource," Nelson and Gilmore say, "but all the data we have

processed up to now indicate this resource to be centered in this region." They state that "the wind energy data indicate that this region has an energy content higher than in any other part of the nation and over a wide expanse of area." Nelson and Gilmore don't minimize the problem of converting that energy from the wind into energy which can be used by heat and cool homes or provide lighting. "Of course the technical feasibility of capturing wind energy and using it to perform many types of useful work has long been demonstrated and is not in question," they say. "The problem is to design, construct and prove capture and conversion systems that are economically successful in a setting where energy from other sources is present." If economical energy is sought, wind energy is currently not a leading source for the thrifty.

"The first cost per kw in large mass-produced wind energy installations is understandably difficult to estimate because no such technology exists, nevertheless, estimates that have been made range from \$200 per kw to \$660 per kw," they say. Nelson and Gilmore point out that both the National Science Foundation and the National Aeronautics and Space Administration are considering experiments on wind energy conversion which would involve construction and use of windmills with wheels measuring from 100 feet to 300 feet in diameter. While the experiments are justified on the basis that the nation's energy problems will continue, data could be obtained on first costs and operating expenses for a large unit and the cost of energy sources might increase where large windmills might be feasible, Nelson and Gilmore doubt that a large-scale approach to the problem will lead

to rapid utilization of wind energy to help alleviate the country's energy problems. They say that "at best it appears that a minimum time of eight to 10 years would be required" to perfect the large-scale wind conversion operations. "On the other hand," they contend, "if design details are worked out for considerable smaller units of high performance and reasonable cost, and with a particular region and class of consumer in mind, the chances should be good that a large number of units could be in use in a much shorter period of time." Nelson and Gilmore propose that that approach to wind energy use be taken in the Texas Panhandle with farmers, ranchers and others living in the rural areas of the region. "Many such consumers use from 15,000 to 30,000 kwh (kilowatt hours) of electricity annually, a demand that would require wheels (windmill blades) in

the range of from 15 to 25 feet in diameter," they write. Nelson and Gilmore list seven basic reasons why they believe a small-windmill approach would be most feasible. "The fact that the Panhandle has a high energy resource in the wind increases the chances that economic wind energy capture and conversion can be brought about. "The possible consumers could afford to pay more first cost because such consumers pay several times as much for electrical power than it costs to produce it. "Cost of the fuel for the conversion is nothing and the cost can't increase. "A rural customer can deal more effectively with problems caused by the wind's intermittency than could a large company. The consumer could use the current electrical power system as a back-up for his wind conversion system. "Land acquisition problems

would be minimal since most rural consumers own and live on the land over which the wind energy flows. "Appeal of wind energy units would be greater in rural areas because interruptions in electrical service do occur and are most likely to occur during cold spells with high north winds. "Most rural dwellers have had experience with windmills for pumping water and could perform their own maintenance, thereby lessening initial costs. Nelson and Gilmore point out that extensive use of wind energy conversion units in the Panhandle would reduce the demand for electrical energy from fossil or other depletable fuels. "Moreover, once these systems justify their existence on economic grounds, they can be used in times of wind energy surpluses to feed energy into the existing distribution systems for use elsewhere, thus further reducing the consumption of depletable fuels," they state.

PIGGLY WIGGLY

people pleasin' store

STORE HOURS:
WEDNESDAY: 8 a.m. - 10 p.m.
THURSDAY: 9 a.m. - 9 p.m.

Creamy Ripe Avocados 29¢

Cucumbers Lb. 39¢
Cabbage Lb. 15¢
Carrots 1-Lb. Cello Bag 23¢


29¢

potatoes Lb. **29¢**

2 FOR 25¢

HELP PIGGLY WIGGLY SAVE ENERGY

Piggly Wiggly has taken many steps to help save energy including lowering our thermostats, reducing operating hours, using recycleable egg cartons and many more. We want you to help us

Piggly Wiggly POUND Chub Pack Ground Beef 89¢

For Seasoning
Smoked Ham Hocks Lb. 89¢
Farmer Jones — 1-Lb. Pkg. 00c
Tasty Franks 12-oz. Pkg. 85¢
Superb Valu Trim, Heavy Aged Beef, Top or Bottom, Cubed Round Steak Lb. \$1.59
FARMER JONES WAFER THIN
Lunch Meats 3 OZ., PKG. 49¢

SUPERB VALU-TRIM SIRLOIN STEAK LB. \$1.39



SUPERB VALU-TRIM ROUND STEAK \$1.39

Lb. **89¢**

Superb Valu Trim, Heavy Age Rib Eye Steaks Lb. \$2.69
Superb Valu Trim, Heavy Aged Beef Boneless Rib Steak Lb. \$1.89
Fresh Lean Ground Beef Lb. \$1.19
Superb Valu Trim, Bone In Beef Rump Roast Lb. \$1.19

SLICED SLAB Bacon LB. 89¢

Prices good Thru March 13, 1974.



Flower & Garden Book
Collect Chapters Weekly at Piggly Wiggly

This Week
Chap. 4—"Shrubs and Vines"
Chap. 5—"Trees for Flowers and Shades"

39¢ Each

Big Daddy Frozen Steak Cut Potatoes 39¢

2-Lb. Bag

Trophy Sliced Frozen Strawberries 3 \$1

10-oz. Pkg.

Piggly Wiggly, Frozen Whipped Topping 49¢

10-oz. Ctn.

32 OZ. BOTTLES

COCA COLA \$1

FOR PLUS DEPOSIT

Buns 9-oz. Pkg. 49¢
Beef, Chicken, Turkey

5 \$1

6-oz. Pkgs.

3 \$1

175 Sheet 1 Ply Rolls

— 30% More Free

69¢

5.2-oz. Can



Contadina, Peeled Whole Tomatoes 5 \$1

14-oz. Cans

Piggly Wiggly Frozen 4 Ear Corn-on-the-Cob 4 Pack 63¢

Piggly Wiggly **Frozen Waffles 2 25¢**

6 1/2-oz. Pkgs.

Del Monte **Tomato Catsup 45¢**

26-oz. Btl.

Pillsbury Sweetmilk or Buttermilk **Canned Biscuits 3 39¢**

10-Ct. Cans



Detergent Tide 69¢

49-oz. Box

With \$7.50 or more purchase excluding CIGARETTES

Old South, Frozen 9" **Pie Shells 2 Pack 33¢**

Sunny Delight **Citrus Punch 64 OZ. 69¢**

Imperial **Soft Oleo 16-oz. Ctn. 64¢**

Del Monte 46 Oz. Can **Pineapple Grapefruit Drink 39¢**

Piggly Wiggly 11-oz. Corn Chips or **Tortilla Chips 3 \$1**

8-oz. Pkg.



Piggly Wiggly, Cream Style or Whole Kernel Golden Corn 5 \$1

16-oz. Can

Pillsbury **Cinnamon Rolls 10-oz. Pkg. 45¢**

Piggly Wiggly **Tomato Soup 10 3/4-oz. Can 14¢**

Piggly Wiggly **Mac & Cheese Dinner 4 7-oz. Pkgs. \$1.00**

Piggly Wiggly, Pink **Liquid Detergent 39¢**

32-oz. Btl.

Kal Kan Stew, Chicken Stew, Chicken Parts **Dog Food 3 \$1**

14-oz. Can

A GREAT BIG THANK YOU

TO THE BUYERS OF THE SHOW ANIMALS FROM THE FLOYD COUNTY JR. LIVESTOCK BOARD....

FARMERS AND BUSINESSMEN WHO ALSO CONTRIBUTED TO THE AUCTION SALE:

Mark Beedy, Grand Champion Steer, 989, \$1.16, \$1,147.24, Floydada Co-Op.
 Todd Beedy, Reserve Grand Champion Steer, 926, \$5, \$787.10, South Plains Grain.
 Larry Abbott, Grand Champion Barrow, 238, \$2.50, \$595.00, First National Bank, Lockney; Jimmy Parker, Reserve Champion Barrow, 234, \$1.80, \$421.20, Producers Cooperative Elevator; Kelly Marble, Champion Finewool, 102, \$2.10, \$214.20, Sun-Vue Farm; Kyle Degge, Champion Finewool Cross, 112, \$2.10, \$235.20, First National Bank, Lockney.
 Joe Womack, Champion Shropshire, 97, \$2.10, \$203.70, Floydada Businessmen & Farmers; Dean Hinton, Champion Southdown, 85, \$3.00, \$225.47, Dougherty Farm Supply; Todd Williams, Champion Medium Wool, 107, \$2.20, \$235.40, Lighthouse Electric Cooperative.

LAMB DIVISION

Joel Hendrix, 1st, 81, \$1.50, \$121.50, Floydada Businessmen; Monte Covington, 1st, 94, \$1.50, \$141.00, City Auto Floydada; Mike Marble, 1st, 100, \$1.70, \$170.00, Lockney Co-Op; Darla Assiter, 2nd, 86, \$1.75, \$150.50, Jim Simpson.
 Darlene Broseh, 2nd, 103, \$1.75, \$180.25, Sterley Gin; Darlene Broseh, 2nd, 94, \$1.85, \$173.90, Patterson Grain, Lockney; Rodney Edwards, 2nd, 107, \$1.30, \$139.10, L.N. Johnson; Nancy Lloyd, 2nd, 105, \$1.35, \$136.50, Robertson Purina Feed, Producers Elevator; Brent Henson, 2nd, 98, \$1.75, \$171.50, Sterley Gin, Plainview Acid and Delinting;

Clay Hamilton, 2nd, 97, \$1.90, \$184.30, Floydada Co-Op Gin; Bryant Higginbotham, 3rd, 92, \$1.80, \$165.60, L.N. Johnson; Susan Hendrix, 3rd, 101, \$1.70, \$171.70, McCoy Farm Supply; Norman Allen, 3rd, 91, \$1.75, \$159.25, Producers Co-Op Elevator; Rodney McCulloch, 3rd, 103, \$1.85, \$190.55, Consumer's Fuel Association of Lockney; Adeana Morris, 3rd, 81, \$2.15, \$174.15, Floydada Acid Delinting Plant; Leslie Sinor, 3rd, 93, \$2.15, \$199.95, Consumer's Fuel Association of Floydada; Leslie Sinor, 3rd, 93, \$2.15, \$199.95, Consumer's Fuel Association, Floydada;
 Bryant Higginbotham, 3rd, 101, \$1.50, \$151.50, South Plains Grain; Dean Hinton, 3rd, 109, \$1.40, \$152.60, Producers Co-Op Elevator, Dougherty; Gary Vick, 4th, 93, \$1.65, \$153.45, Bill McNeil; Steve Westbrook, 4th, 92, \$1.50, \$138.00, Jake Colston; Lori Bayley, 4th, 99, \$2.00, \$198.00, Jeff Bailey; Steve Jones, 4th, 97, \$1.45, \$140.65, Producers Co-Op Elevator, Dougherty; Glen Watson, 4th, 97, \$1.90, \$184.30, Bob Lane;

Brenda Vick, 4th, 113, \$1.60, \$180.80, Dougherty Community; Lori Bayley, 5th, 93, \$3.00, \$279.00, Jeff Bailey; Tom Assiter, 5th, 101, \$1.60, \$161.60, Muncy Elevator.
 Greg Jones, 5th, 106, \$1.30, \$137.80, Floydada Businessmen & Farmers; Joe Womack, 5th, 80, \$1.35, \$108.00, Johnny West; Clinton Stephan, 5th, 97, \$1.45, \$140.65, Plainview Acid & Delinting; Monty Williams, 5th, 113, \$1.30, \$146.90, Floydada Businessmen;
 Mike Allen, 6th, 89, \$1.50, \$133.50, Bill McNeil; Greg Jones, 6th, 104, \$1.20, \$124.80, Floydada Businessmen & Farmers; Tracy Womack, 6th, 81, \$1.30, \$105.30, Larry Fulton; Drew Shurbet, 7th, 97, \$1.65, \$160.05, Barwise Gin; Kevin Martin, 7th, 97, \$3.00, \$291.00, Floyd County Ag. Company; Jay Womack, 7th, 109, \$1.40, \$152.60, Rilcott Seed Co.; Glen Lane, 8th, 101, \$1.85, \$186.85, Sterley Gin & Plainview Moore Seed; Monty Hulcy, 8th, 103, \$1.70, \$175.10, Lockney Businessmen & Farmers; Ricky Ford, 8th, 114, \$1.45, \$239.40, Razz Ford;

Ashley Wester, 9th, 97, \$1.45, \$140.65, Producers Co-Op; Christi Hulcy, 9th, 106, \$1.65, \$174.90, Patterson Grain; Jay Womack, 10th, 94, \$1.40, \$131.60, Muncy Elevator.
 Ricky Ford, 10th, 112, \$2.05, \$229.60, Upton Grocery; Tracy Womack, 11th, 94, \$1.35, \$126.90, Floydada Seed & Delinting; Curtis Ford, 12th, 87, \$1.85, \$160.95, Lockney Businessmen & Farmers;

Kyle Degge, 12, 110, \$1.45, \$159.50, Lockney Businessmen & Farmers; Laura Watson, 13th, 85, \$1.50, \$127.50, Muncy Elevator & Riverside Chemical; J. Royce Bradshaw, 13th, 114, \$1.50, \$171.00, Hail Trailer Producers Co-Op; Clinton Stephan, 14th, 91, \$1.55, \$141.05, Consumers Fuel Lockney; Ashley Wester, 14th, 107, \$1.35, \$144.45, Vernon Moore & Northrup King; Ralph Scheele, 15th, 101, \$2.00, \$202.00, Crume Gin; Norman Allen, 15th, 114, \$1.40, \$159.60, Muncy Elevator; Shele Morris, 16th, 92, \$1.35, \$124.20, Consumers Fuel, Floydada; Monte Covington, 16th, 109, \$1.40, \$152.60, Floydada Co-Op Gin; Randy Ratheal, 17th, 108, \$1.30, \$145.80, Producers Co-Op Elevator;

SWINE

Danny Daniel, 1st, 234, \$1.25, \$292.50, Floydada Businessmen & Farmers; Lori Johnston, 1st, 200, \$1.35, \$270.00, G.E. Jones Electric, Staniforth Gin; Darlee McPherson, 1st, 225, \$1.70, \$382.50, Perry Implement, Lockney; Lori Johnston, 1st, 216, \$1.30, \$280.80, Heston Bennett; Chris Johnston, 1st, 200, \$1.30, \$260.00, Bob Lane; Jay Lacey, 1st, 243, \$1.30, \$226.60, Floydada Co-Op Gin, Producers Elevator; Darla Assiter, 1st, 210, \$1.15, \$259.90, Lockney Co-Op; Larry Abbott, 1st, 226, \$1.15, \$259.90, Lockney Co-Op;
 Marty Daniel, 2nd, 198, \$1.25, \$247.50, Floydada Businessmen & Farmers; Bruce Williams, 2nd, 214, \$1.30, \$278.20, Lockney Oil & Butane, Webster Service Station; Gary Nixon, 2nd, 209, \$1.30, \$271.70, Producers Elevator; Rhonda Bennett, 2nd, 240, \$1.25, \$300.00, Consumers Fuel; Chris Johnston, 2nd, 212, \$1.45, \$307.40, Lockney Businessmen & Farmers; Greg Bishop, 2nd, 243, \$1.30, \$315.90, Producers Co-Op - Oreal Seed; Jimmy Parker, 2nd, 218, \$1.25, \$272.50, Floydada Businessmen & Farmers;
 Lynn Becker, 2nd, 213, \$1.30, \$276.90, Producers Elevator; Zach Zachary, 2nd, 219, \$1.45, \$317.55, Sterley Gin Plainview Seed; Marty Daniel, 4th, 218, \$1.25, \$256.25, Floydada Businessmen & Farmers; D'Lynn Mathis, 3rd, 217,

\$1.70, \$368.90, Crume Gin; Kyle Brock, 3rd, 214, \$1.30, \$278.20, Lockney Co-Op; Martin Stoerner, 3rd, 234, \$1.25, \$292.50, Providence Farm Supply, Crume Gin; Ronnie Mahagan, 3rd, 216, \$1.30, \$280.80, Higgins Gin, Plainview; Mark Craig, 3rd, 204, \$1.25, \$255.00, Producers Elevator; Jessie Garza, 3rd, 221, \$1.25, \$276.25, Lockney Co-Op; Ronnie Mahagan, 4th, 210, \$1.25, \$262.50, Lockney First National Bank; John Cagle, 4th, 224, \$1.30, \$291.20, Floydada Co-Op Gin;

John Cagle, 4th, 213, \$1.45, \$308.85, Consumers Fuel Floydada; Mark Craig, 4th, 225, \$1.25, \$281.25, Floydada Businessmen & Farmers; Kristi Edwards, 4th, 214, \$1.35, \$288.90, Providence Farm Supply;

Joe Araujo, 5th, 212, \$1.50, \$318.00, Johnny West; Tony Gross, 5th, 231, \$1.20, \$277.20, Lockney Cooperatives; Archie Jones, 5th, 194, \$1.35, \$261.90, Warren Mathis; Tom Assiter, 5th, 231, \$1.30, \$300.30, Bill Cagle; Vonda Mahagan, 5th, 208, \$1.35, \$280.80, Higgins Gin Plainview; Kyle Brock 5th, 204, \$1.20, \$244.80, First National Bank, Plainview; Rodney Ratheal, 5th, 243, \$1.25, \$303.75, Floydada Businessmen & Farmers; Monty Meriwether, 6th, 206, \$1.25, \$257.50, Lockney Cooperatives; Karen Pruitt, 6th, 243, \$1.40, \$340.20, Producers Co-Op Elevator; Nancy Lloyd 6th, 200, \$1.25, \$250.00, Consumers Fuel; Mike Mathis, 6th, 228, \$1.60, \$364.80, Crume Gin.

Mark Nutt, 6th, 212, \$1.30, \$275.60, Producers Co-Op; Steve McPherson, 6th, 220, \$1.40, \$308.00, Lone Star Elevator; Lonny Hooten, 7th, 208, \$1.20, \$249.60, Riverside Chemical;

Lonny Hooten, 7th, 196, \$1.20, \$235.20, Lockney Businessmen & Farmers; Tony Gross, 7th, 234, \$1.20, \$280.80, Lockney Businessmen & Farmers; Mark Miller, 7th, 212, \$1.25, \$265.00, Floydada Businessmen & Farmers; Van Miller, 7th, 224, \$1.25, \$280.00, Floydada Co-Op Gin; Mike Mathis, 8th, 216, \$1.60, \$266.22, Gifford Hill Western; Robert Nixon, 8th, 242, \$1.25, \$302.50, Floydada Co-Op Gin; Lee Blasingame, 8th, 198, \$1.45, \$214.34, L.N. Johnson; Dan Mercer, 8th, 212, \$1.20, \$176.49, Lockney Co-Op; Danny Nutt, 8th, 219, \$1.30, \$284.70, Lighthouse Electric Cooperative; Keith Nixon, 9th, 239, \$1.25, \$298.75, Floydada Businessmen & Farmers; Danny Nutt, 9th, 194, \$1.35, \$284.70, Muncy Elevator; Greg Pruitt, 10th, 217, \$1.30, \$282.10, Floydada Co-Op Gin; Greg Bishop, 10th, 235, \$1.25, \$293.75, Lakeview Gin & Elevator; Hugh Miller, 10th, 194, \$1.30, \$252.20, Muncy Elevator; D'Lyn Mathis, 10th, 219, \$1.60, \$350.40, Pages Thriftway, Redbarn Chemical; Wilmer Archer, 11th, 213, \$1.30, \$276.90, Muncy Elevator; Gary Nixon, 11th, 220, \$1.25, \$275.00, Ponderosa Meat; Hugh Miller, 11th, 218, \$1.25, \$272.50, Floydada Businessmen; Danny Daniel, 11th, 229, \$1.30, \$297.70, City Auto Floydada; Rick Jordan, 12th, 209, \$1.25, \$184.45, Producers Co-Op; Rusty Cagle, 12th, 238, \$1.30, \$309.40, Floydada Businessmen & Farmers; Mark Nutt, 12th, 201, \$1.30, \$261.30, Floydada Co-Op Gin; Randy Ratheal, 12th, 235, \$1.25, \$293.75, Floydada Businessmen & Farmers;

Keith Nixon, 13th, 208, \$1.25, \$260.00, Floydada Businessmen & Farmers; Stanley Stoerner, 13th, 227, \$1.50, \$257.08, Lighthouse Electric Cooperative; Keith Marriele, 13th, 194, \$1.25, \$242.50, Producers Co-Op; Stephen Becker, 13th, 234, \$1.40, \$327.60, Floydada Co-Op Gin; Danny Fry, 14th, 198, \$1.65, \$326.70, Red Mathis, Paul Hrbache; Lee Blasingame, 14th, 227, \$1.35, \$306.45, Lockney Co-Op; Jessie Garza, 15th, 202, \$1.40, \$282.80, R.C. Mitchell Seed; Rhonda Bennett, 15th, 226, \$1.25, \$282.50, Floydada Businessmen & Farmers;

Leah Wyatt, 16th, 234, \$1.45, \$339.30, Dougherty Community; Vanda Mahagan, 16th, 200, \$1.20, \$232.80, Lockney Gin, PEW Grain; Harold Molinar, 18th, 233, \$1.25, \$282.50, Hi-Plains Farm;

STEERS

Deneen Johnson, 1st CC, 1104, .76, \$839.04, Lockney Co-Op Feed Yard; Johnny Dorman, 2nd RCH, 986, .71, \$700.06, Barwise Gin, Vanda Carthel, 2nd RCC, 1061, .66, \$700.26, Dougherty Community;
 Ronnie Cunyus, 1st, 883, .65, \$573.95, Lockney Feed Yards; Ty Williams, 1st, 918, .70, \$642.60, Eastbound Gin, Plainview; Shelia Hrbacek, 1st, 888, .74, \$657.12, Lockney Feed Yard; Byron Brock, 1st, 973, .65, \$632.45, First National Bank, Lockney;
 Marcia Fortenberry, 1st, 934, .67, \$625.78, Lockney Feed Yards; Clay Hamilton, 1st, 983, .66, \$648.78, Producers Co-Op, Floydada; David Foster, 2nd, 873, .67, \$584.91, Lockney Feed Yards; Carl Gibson, 2nd, 883, .65, \$573.95, Consumers Fuel, Lockney;
 Bernie Ford, 2nd, 972, .68, \$660.96, Patterson and Southwestern Grain; Carrla Burleson, 2nd, 922, .81, \$746.82, Wilson Electric, Floydada; Beverly Barker, 2nd, 1056, .68, \$707.52, Patterson Grain and Barker Insurance; Jacky Carthel, 3rd, 878, .65, \$570.70, Dougherty Community.
 Loreto Trevino, 3rd, 907, .75, \$680.25, Johnny West, Eugene Beedy, Joy Smitherman; Denise Johnson, 3rd, 947, .75, \$710.25, South Plains Grain, Plainview; Brent Barker, 3rd, 1016, .65, \$660.40, Jack Morris Ford; Ricky Hrbacek, 3rd, 1101, .83, \$913.83, Bob Gardner, Jo Thornton, First National Bank, Lockney;

Jonna Kay West, 4th, 873, .81, \$707.13, First State Bank, Silvertown; Becky Bybee, 4th, 969, .70, \$678.30, Pages Thriftway, Crume Gin, Providence Farm Supply;
 John Fortenberry, 4th, 1079, .66, \$712.14, First National Bnk, Lockney; Kevin Turner, 4th, 880, .68, \$698.40, Loren Rodes, Eddie Fortenberry; Danny Colston, 4th, 1031, .64, \$659.84, Producers Cooperative Elevator, Floydada Co-Op Gin; Ricky Carthel, 4th, 1083, .60, \$449.80, Dougherty Community;
 Stephanie Turner, 5th, 1072, .70, \$750.40, Consumers Fuel, Lockney; Brent Henson, 5th, 938, .67, \$628.46, Sterley Gin, Moores Cotton Seed, Ecomy Seed; Jody Foster, 5th, 1033, .80, \$826.40, Lockney Feed Yards; Jon Jones, 5th, 1159, .71, \$822.89, Floydada Co-Op, Producers Elevator; Dara Carthel, 6th, 876, .68, \$595.68, Dougherty Community.

- FIRST NATIONAL BANK OF FLOYDADA
- SCOTT GIN
- MCCOY GRAIN STORAGE, INC.
- RUSSELL'S EQUIPMENT & SUPPLY INC.
- CITY AUTO INC.
- AMERICAN GRAIN & CATTLE INC., PLAINVIEW
- CONE GIN INC.
- BROWN GIN
- MARTIN & CO.
- THE HAMBY CO., PLAINVIEW
- MCCOY GIN INC.
- PARKS OIL CO.
- ODEN CHEVROLET OLDS.
- PRODUCTION CREDIT ASSN.
- FLOYD COUNTY HESPERIAN
- CRUTCHFIELD TIRE CO.
- MOORE ROSE FUNERAL HOME
- FAULKENBERRY AUCTION SERVICE
- FEDERAL LAND BANK
- REED FORD AND MERCURY SALES
- KIRK & SONS
- BARWISE ELEVATOR & FERTILIZER
- FLOYDADA IMPLEMENT CO.
- HINTON WELL SERVICE INC.
- PARKER STUDIO
- CASE POWER & EQUIPMENT
- WARD MILLING CO., LUBBOCK
- FIRST STATE BANK OF MATADOR
- ARWINE DRUG
- MONTGOMERY WARD CATALOGUE SALES
- PETERSBURG CO-OP GIN
- BILL TYE PUMP SERVICE
- HALE'S DEPARTMENT STORE
- PANHANDLE COMPRESS & WAREHOUSE INC.
- SOUTHWESTERN BELL TELEPHONE CO.
- HOLLIS BOND REAL ESTATE
- DON'S THRIFTWAY SUPER MKT.
- FLOYDADA REAL ESTATE & INSURANCE
- HIGGINBOTHAM BARTLETT CO.
- SPARKS & WYLIE CONOCO SERVICE
- QUALITY BODY SHOP
- SOUTHWESTERN PUBLIC SERVICE CO.
- BROADVIEW STEEL TRAILERS, LUBBOCK
- FARM BUREAU INSURANCE
- CAPROCK MOTOR PARTS & HARDWARE
- MAGGARD NALL MOTOR CO, PLAINVIEW
- RUCKER'S OK TIRE STORE
- PLAINVIEW SAVINGS AND LOAN ASS'N.
- RENNETT BLDG. MATERIALS
- GREEN MACHINERY CO., INC., Plainview

LOCKNEY BUSINESSMEN WHO GAVE TO THE COUNTY LIVESTOCK BOARD

- EDDIE JOE FOSTER, JR.
- J. R. BELT
- JERRY WILLIAMS
- LONE STAR GIN CO.
- CENTER PLAINS IND.
- TEXAS FARM MACHINERY
- AMERICAN STATE BANK
- RONNIE THORNTON
- C. L. KING
- DEANIE HENDERSON
- GREEN MACHINERY
- JERRY FORD
- L. L. RHODES
- N. M. CALDWELL
- HARMON L. HANDLEY
- POOLE AUTOMOTIVE SERVICE
- TED CARTEL
- DAVIS LUMBER COMPANY
- WHITE'S AUTO STORE
- R. H. FORD
- FLOYD COUNTY INSURANCE AGENCY
- BIGHAM FARMS
- PIONEER NATURAL GAS
- SCHAFFT FLOWERS & JEWELRY & GIFTS
- FRED GARRISON OIL
- DR. HUGH L. RITCH.
- LOCKNEY LUMBER & SUPPLY
- RAY ASTON
- BACCUS MOTOR COMPANY
- JAMES A. BOBBITT
- SOUTHWESTERN PUBLIC SERVICE
- BILL SHERMAN
- B. & D. AUTOMOTIVE
- BOYCE MOSLEY
- E. J. FOSTER
- PAT FRIZZELL
- BYRD PHARMACY
- CARTER FUNERAL HOME
- HI-PLAINS GIN COMPANY
- G. B. JOHNSTON, JR.
- GALE McPHERSON
- BAKER INSURANCE AGENCY
- BARRY BARKER
- JOE CUNYUS
- BEEDY SPRAYING SERVICE
- ANSLEY & SON FARM EQUIPMENT
- J. D. COPELAND
- PANHANDLE COMPRESS

DAVIS FARM SUPPLY AND LON DAVIS GRAIN gave each steer \$5.00, each barrow and each lamb \$3.00.
 JIMMY WILLSON AND ARTHUR WYLIE gave \$5.00 on each steer, each lamb and barrow.

THE FLOYDADA LIVESTOCK AUCTION SALES COMPANY gave \$5.00 on each steer sold.

THANKS FOR THE FINE BANQUET GOES TO: FLOYD COUNTY PLAINVIEW SAVINGS & LOAN ASS'N, SCOTT GIN, BABE'S SERVICE, PRODUCERS COOPERATIVE ELEVATORS, LOCKNEY COOPERATIVE, DADA COOPERATIVE GINS, CONSUMERS FUEL ASSOCIATION OF FLOYD COUNTY, DAVIS FARM SUPPLY, CONSUMERS FUEL ASSOCIATION OF FLOYD COUNTY IRRIGATION AND LIGHTHOUSE ELECTRIC COOPERATIVE.

LAMB T...
s (front)
v banque
It's a
crack
double with m
ly shrink yo
on. In fact, sily
past year. You
tions from N
or call today
DELIVER
more facts
ownership:
BROADVIEW STE
BABE'S SERVICE
JOHN W. KIMBLE
LEONARD S CARP
PIONEER NATU
STEWART PRIN
THOMPSON PH
LAWSON BROG
PEERLESS PUM
MILTON WEEMS
GOEN & GOEN
CARTHEL OIL CO
HAGOOD'S DEPA
BAKER INSURAN
BEALL BROS.
DANIEL AUTOM
DON HARDY RAG
EDMISTON PUM
FLOYD COUNTY
MCDONALD IMP
PARK FLORIST
RETAIL MERCH
NORRELL TRAC
WHITE AUTO ST
HALE & HALE
W. A. MASSIE
BILL FULTON
KENNETH BEAN
HOWARD G. BISE
CHARLES R. BA
MARBLE BROS.
BILL BEEDY
LOUIS PYLE
WELDON PRUITT
LARON FULTON
WATSON JONES
DORRIS JONES
PARNELL POWEL
ALTON HIGGINB
CORKEY GUFFEE
DON GRANTHAM
BUD RAINEY
MALVIN A. JARB
CHARLES CRAIG
TOMMY ASSITER
NG
DOUG
WALTER
RAYMOND
F. E. F
ALTON
ROY
CREI
11 CO
ALL
REG
PRIC
CON
L
ERIAN
F



LAMB TROPHIES — are shown by winners Kelly Marble and Kyle Degge, Joe Womack and Dean Hinton (back) at banquet. (Staff Photo by Jim Huggins)



CHRIS JOHNSTON — won the huge "Sweepstakes" trophy presented at the stock show banquet. (Staff Photo by Jim Huggins)



STEER TROPHIES — Exhibitors of breed champs and reserve champs in the county steer show: (front, left to right) Mark Beedy, Dada Carthel (who accepted sister Vanda's trophy), Todd Beedy; (back, left to right) John Dorman, Deneen Johnson, Jon Jones. (Staff Photo by Jim Huggins)

Respect your body. Eat sensibly, exercise and don't smoke. You'll feel better and reduce your risk of heart disease. Ask your Heart Association for more information. And give Heart Fund.



EXHIBITION AWARDS — and winners Ricky Hrbacek, Steve Becker and Rodney Edwards. (Staff Photo by Jim Huggins)

SMILE SILVER.
It's a nest egg that crack under pressure.
Double with money in the bank is inflation. It can shrink your nest egg. Silver stands up to it. In fact, silver buyers saw their money grow 70% past year. You can own .999 pure silver bullion and coins from North American Bullion. Send the more facts ownership:
DELIVERY
PHONE
STATE ZIP
NORTH AMERICAN BULLION
For Information Write Or Call Collect Joe Dick Moore
419 Executive Center Blvd. Paso, Texas 79902 (915) 542-1561



TOP LIVESTOCK JUDGES — Winners in the livestock judging contest at the stock show were (left to right) Jody Foster, steers; Van Miller, sheep and high individual; and Steve Jones, swine. (Staff Photo by Jim Huggins)



HERDSMAN AWARDS were won by the Lockney FFA, the Harmony 4-H Club, and Ricky Carthel. Lockney FFA president Martin Stoerner (left) accepted the award for his chapter, Van Miller (center) accepted for the Harmony 4-H, and Dara Carthel accepted for brother Ricky. (Staff Photo by Jim Huggins)

FANCY TA!
IN TODAY'S ARMY, EVERYONE RECEIVES EQUAL PAY FOR EQUAL WORK. ALL ENLISTEES BEGIN AT THE SAME MONTHLY RATE - \$326.10 - WITH THE SAME OPPORTUNITIES FOR REGULAR PROMOTIONS AND RAISES.
ACCORDING TO THE U.S. BUREAU OF CENSUS, WOMEN MAKE A LITTLE MORE THAN HALF OF THE EARNINGS OF MEN WITH THE SAME EDUCATIONAL BACKGROUND.

Columbia
GEABLE MINI DISPLAYS, BRIGHT, BEST BUY
X CARRY CASE, GER INCLUDED, GUARANTEE \$4.95
\$65.00
CON OFFICE SUPPLY LOCKNEY
ERIAN OFFICE SUPPLY FLOYDADA

Wylie's Travelling Carpet Store
Free Home Demonstration
Call: 296-9654 Plainview after 5 p.m.
Owned & Operated by Cleon Wylie
We sell and install all our own carpet. Very Competitive Prices!
All Material & Installation Guaranteed!

LOCKNEY LOCAL
Jody Nance, daughter of Mr. and Mrs. Joe Nance, competed in the Tau Beta Sigma Twirling contest held in Canyon on March 2, where she won a divisional II Rating. Jody's instructor is Jeanie Baer of Plainview. Mrs. Preston Sanders from San Jose, California, visited her niece, Mrs. Willie Mae Taylor and sons last weekend.
TIPS ON TIPPING
Whether in Rome, New York, or Rome, Italy, when it's time to tip, do as the Romans do. In Rome (New York) and across the United States, 15 percent is acceptable in most average priced restaurants, but in expensive cateries and the larger cities, be prepared to put down about 20 percent.
In 1511, coffeehouses had to be banned in Mecca, because they were drawing people away from the mosques!
This may sound strange, but until the 16th century, deaf people were considered intellectually deficient!

ENVOYE TRAVEL TOURS PRESENTS HAWAIIAN HOSPITALITY HOLIDAY
SCHEDULED DEPARTURE FROM DALLAS ON JUNE 7, 1974 DIRECTLY TO HONOLULU VIA BRANIFF INTERNATIONAL.
7 DAYS-6 NIGHTS....\$499
WAIKIKI, HONOLULU, OAHU WITH TWO NEIGHBORING ISLAND COMBINATIONS FEATURING FAMOUS HOTELS
Envoye Travel Tours of Hawaii in cooperation with Braniff International presents HAWAIIAN HOSPITALITY HOLIDAY.....an exciting tour to Hawaii. . . . 7 days, 6 nights, and with a Trade Wind activities counselor in the lobby of your hotel in Waikiki.
Your holiday begins when you board your Braniff Jet to Hawaii. You get Braniff's famous service and gourmet meals and upon arrival, you are met with a flower lei by a Trade Wind Tour host.
1ST DAY ARRIVE HONOLULU
Depart Dallas on Braniff International. While in flight, you will enjoy Wahine Punch, a movie and a "Luau" Braniff style. On arrival Honolulu you will receive the traditional flower lei greeting and transfer to your hotel in Waikiki.
2ND DAY GET ACQUAINTED BRIEFING
This morning, there is a brief orientation meeting with your Trade Wind host who will tell you of the exciting days and nights to come. The balance of the day is reserved for your leisure activities.
3RD DAY WAIKIKI - LEISURE
Today is at leisure to enjoy Waikiki, sightsee, shop, relax on the beach or you may wish to take an optional cruise to Pearl Harbor.
4TH DAY CITY-PUNCHBOWL TOUR
This morning you will enjoy a half-day tour visiting main points in the City of Honolulu including Punahou School, University of Hawaii, Manoa residential district, Punchbowl Memorial Cemetery and Mt. Tantalus, Iolani Palace and the Civic Center.
5TH DAY HONOLULU-MAUI-IAO VALLEY-KAANAPALI
This morning depart for Maui. Visit Iao Valley and continue via Maui's famous Amalfi Drive to Lahaina, the old whaling center. Continue to Kaanapali and your hotel for the night.
6TH DAY MAUI - HAWAII - HILO - KILAUEA VOLCANO
This morning, depart for Hilo, where you will visit orchid and anthurium nurseries and Rainbow Falls. Continue to the Hawaii National Park and Kilauea Volcano to see Giant Tree Fern Forests, lava tube, sulphur banks and steam vents. Return to your hotel in Hilo for the night.
7TH DAY HAWAII - HILO - DEPARTURE
Today is your last day in Paradise - enjoy it to the fullest before you transfer to the airport to board your Braniff Jet home.
8TH DAY ARRIVE DALLAS
THIS OFFER GOOD ONLY UNTIL CHARTERED PLANE FILLED, GET YOUR \$25.00 IN NOW FOR YOUR RESERVATION.
The \$499 pays for round trip, jet, all hotels, tours. Round trip air fare to Dallas from Lubbock or Amarillo is \$29.00. Meals not included, except while on jet, and one free oriental and one free polynesian meal while in Hawaii.
PHONE 983-3982 Nights Or Write Hawaiian Tour, Box 700, Floydada, Texas 79235

ROYAL DELUXE
CREDIT BALANCE
11 COLUMN TOTAL
ALL STEEL PARTS
REGULAR \$109.95
\$89.95
PRICE . . .
CON OFFICE SUPPLY LOCKNEY
ERIAN OFFICE SUPPLY FLOYDADA

READY MIX CONCRETE
QUICK AND EASY
You can't beat our price per yard for quality concrete—and quick, easy delivery to save you back-breaking labor. Give us a call today for a free estimate, and have your mixed concrete delivered where and when you want it.
CALL 983-2170
BENNETT BUILDING MATERIAL
229 E. CALIFORNIA FLOYDADA

PROFESSIONAL DIRECTORY

CUSTOM APPLICATION IN LOCKNEY

TREFLAN, CAPAROL, PROPAGINE AND ATRAZINE

CALL BILL AND JOHNNY WISDOM 652-3541 OR DARRYL DENNIS 652-2616

DAN'S AUTO SERVICE
DAN TEUTON, Owner

Specializing in Automatic Transmission, Motor Tune-Ups, Auto Air Conditioning.

General Repair We Have A BRAKE LATHE to handle all passenger car brake drums. See us for complete brake service.

Phone 652-2462

DR. JOHN W. KIMBLE, O.D.

Contact Lenses - Visual Analysis

Closed Tuesday Afternoon Saturday 9-3
Floydada, Texas Phone 983-2496

QUALITY SHAMROCK PRODUCTS

Always Make A Good Deal On SONIC TIRES and SOUTHLAND BATTERIES Dial 652-3366

JACKSON TIRE COMPANY
Richard Wiley

Farmer's Union Insurance

J. D. Copeland
Phone 652-3813
Ferguson Bldg.
North Main Street
LOCKNEY

THIS SPACE FOR RENT

Floydada Lion's "Little Dribbler" Program In High Gear

LITTLE DRIBBLERS PLAY SCHEDULE

Friday, March 1, 5:15, Globetrotters vs. Lakers
6:15, Knicks vs. Bucks
Globetrotters beat Lakers 21-20, Bucks beat Knicks 18-12
Tuesday, March 5, 5:15, Knicks vs. Lakers
6:15, Globetrotters vs. Bucks
Knicks beat Lakers 26-25, Bucks beat Globetrotters 17-15
Friday, March 8, 5:15, Bucks vs. Knicks
6:15, Lakers vs. Globetrotters
Tuesday, March 12, 5:15, Bucks vs. Knicks
6:15, Lakers vs. Globetrotters
Friday, March 15, 5:15, Bucks vs. Globetrotters
6:15, Lakers vs. Knicks
Tuesday, March 19, 5:15, Bucks vs. Lakers
6:15, Knicks vs. Globetrotters

A double elimination tournament will follow league play, to decide a city champion.
All coaches and officials are volunteers, please give them your support.

GLOBE TROTTERS
Coaches: Johnny Cantrell, Ricky Carthel.
Players: Sammy Bradley, Troy Marquiz, Rodney Rodriguez, Danny Nutt, Dan Rodriguez, Todd Hambricht, Vincent Lara, Jimmy Jones, Ben Salazar.

BUCKS
Coaches: Benny Lock, Jerry Parr, MacAurthur Mitchell.
Players: Jay Griggs, Pete Castillo, David Welborn, Mike Allen, Jessie Maldonado, Mike Campbell, Charles Whitfield, Frank Romero Jr., Arturo Reyes.

LAKERS
Coach: Paul Westbrook.
Players: Henry Gonzales, Larry Westbrook, Willie Windom, Ricky Reyes, Alex Torrez, Jett Cheek, David Peralez, Andy Holcomb, Bobby Bramlett.

KNICKS
Coaches: Larry Barbee, Glen Bertrand.
Players: Isreal Gutierrez, Tracy Womack, Robert Armstrong, Duncan Woody, Mike Arwine, Robby Thrasher, Keith Nixon, Dwayne Marble, Neal Becker.

TOTALS
Globetrotters: 4-7-8-2

Totals 21; Troy Marquiz 12, Lakers 2-8-6-4 - Total 20. G.T. - TDroy Marquiz 12; Rodney Rodriguez 2; Vincent Lara 2; Todd Hambricht 2; Daniel Rodriguez 2; Sammy Bradley 1. Lakers - Henry Gonzales 11; Larry Westbrook 2; Alex Torrez 7. Bucks: 4-6-2-6 - Total 18. Knicks: 0-0-4-8 - Total 12. Bucks: Jay Griggs 8; Pete Castillo 4. Jessie Maldonado 2; Charles Whitfield 4. Knicks: Isreal Gutierrez 4; Robert Armstrong 2; Robby Thrasher 2; Neal Becker 4. Lakers: 4-6-2-14 - Total 26. Lakers: 10-6-7-2 Total 25. Knicks: Isreal Gutierrez 4; Robert Armstrong 4; Robby Thrasher 4. Lakers: Henry Gonzales 11; Larry Westbrook 5; Recky Reyes 2; Alex Torrez 7. Bucks: 2-2-5-8 - Total 17. Globetrotters: 3-4-0-8 - Total 15. Bucks: Jay Griggs 2; Pete Castillo, 6; Mike Allen 2; David Welborn 4; Charles Whitfield, 2. Globetrotters: Troy Marquiz 11, Vincent Lara 2.

Caprock Girl Scouts To Observe Anniversary

Some 7,000 girls and adult leaders in the Caprock Girl Scout Council will observe the 62nd anniversary of Girl Scout Week March 10-16. Unique as a voluntary girls' organization, Girl Scouting links girls worldwide throughout the World Association of Girl Guides and Girl Scouts in 90 countries. There are 3,538,000 girls in the U.S.A. who are members, or one out of every seven girls.

The Caprock Girl Scout Council was chartered in 1917 and serves 18 counties throughout the South Plains area. The Council office is located at 2600 Avenue P in Lubbock.

A total of 5,612 girls and 1,213 adult leaders are members of the Caprock Council which is supported by federated and nonfederated campaigns throughout the Council.

The annual cookie sale, just concluded, provides proceeds for camp maintenance and development, camp equipment, programs. The Council has two camps - Camp Rio Blanco near Crosbyton and Camp Haynes near Silverton, and summer day camping is offered at 17 sites in the Council.

Miss Pat Harris is executive director of the Caprock Council which covers 40,704 square miles. Assisting her is a director of program services, four field directors, a registrar-bookkeeper, and a secretary.

Each of the seven days of Girl Scout Week are service days and have a special meaning for Girl Scouts. The days are observed in various ways by girls and troops: Girl Scout Sunday, March 10, girls are encouraged to attend the church of their choice, in uniform.

Monday, March 11, Home-making Day.

Tuesday, March 12, Citizenship Day and the Girl Scout Birthday.

Wednesday, March 13, Health and Safety Day.

Thursday, March 14, International Friendship Day.

Friday, March 15, The Arts Day.

Saturday, March 16, Out-of-Doors Day.



HERSCHELL HINSON

Hinson Named Sales Manager

Herschell Hinson, son of Mrs. E.E. Hinson of Floydada, has been named southern regional sales manager for plastics at Gulf States Paper headquartered in Dallas, Texas. He succeeds Hank Holman.

Hinson is a native of West Texas. He attended Texas Technical College in Lubbock, Texas, and studied aerodynamics at the College of Idaho.

He was employed by the Marathon Division of American Can, Dallas, for two decades. His position there at the time of his coming with Gulf States Paper in 1971 was regional industrial specialist. His first position with Gulf States Paper was as plastics district sales manager, Dallas.

During World War II Hinson was a military fighter pilot while in the U.S. Air Corps. Just after the war he was engaged in commercial aviation.

Foster, their daughter and grandson from Las Cruces, N.M., Mrs. Betty Steelman and James Edward, Helen Huffmann, Rex Jackson, Dimple McGavock, Versie Perry, Josie Taylor, Ruth Cox, Elva Perry, Peggy Wiley and Mr. and Mrs. Edd Whitfill.

LOCKNEY LOCALS

BY PEGGY WILEY

The Ruth Sunday School class of First Baptist Church met in the home of Mrs. Edythe Clarke last Tuesday evening for fellowship and to reveal secret pals. Refreshments of hot and cold punch and cake were served to the following members and associate members. Sue Casey, Sandy Ragland, Lucille Frizzell, Marjorie Martin, Laverne Thompson, Rita Webster, Pat Frizzell, Jontha Mercer, Jackie Holt, Rubye Terrell, Willie Mae Taylor, Sheryl Bybee, Shelia Poole, and Peggy Wiley.

In observance of Texas Public School Week, Eastern Star members were invited to eat lunch at the elementary school last Wednesday. Those attending were Mr. and Mrs. Joe

REVIV MARCH EVENING SERVICE

Ruben Calles
Samuel Medina
OF CROSBYTON

TODOS BIEN

Salem B
Temp

Lone Star
Frank Ramos
Lockney

NEW LOW PRICE!

NOW IN STOCK!

THE LIVING BIBLE

PARAPHRASED

IN ONE VOLUME

The entire Bible paraphrased in the clear and direct style of today's language. This skillful and scholarly contemporary version by Kenneth N. Taylor gives new understanding to every page of Scripture.



REG. \$9.95

In comparison to King James version, we quote one passage from Heb. 11:1:

King James - "Now faith is the substance of things hoped for, the evidence of things not seen."

The Living Bible - "What is faith? It is the confident assurance that something we want is going to happen. It is the certainty that what we hope for is waiting for us, even though we cannot see it up ahead."

NOW **\$7.95**

BEACON OFFICE SUPPLY
LOCKNEY

HESPERIAN OFFICE SUPPLY
FLOYDADA

MOR-COT

M-70-A

PEDIGREED COTTON SEED

MOR-COT SEED, Inc.

PLAINVIEW ACID DELINTING CO.
BOX 1741 EAST 24TH ST. PHONE 806-296-7574

A New Field proven semi-storm proof stripper cotton adapted to this area - both irrigated and dryland

MOR-COT

M-70-A

FEATURES

- HIGH YIELDING...HAS SHOWN TO OUT-YIELD MOST OTHER POPULAR VARIETIES.
- GOOD MICRONAIRE...UNDER NORMAL CONDITIONS MICRONAIRES HAVE BEEN IN PREMIUM RANGE.
- QUICK EMERGENCE...STRONG VIGOR - COMES UP A'GROWING.
- MEDIUM STAPLE...STAPLE LENGTH 15-16 TO 1 INCH.
- FAST MATURING...LOADS UP FAST - EARLY MATURITY.

WE WOULD LIKE TO CONGRATULATE THE FLOYD COUNTY STOCKSHOW. WE WERE HAPPY TO HAVE A SMALL PART IN THE SHOW.

BOOK EARLY - OUR SUPPLY IS LIMITED!

HERE IS WHAT FARMERS GROWN MOR-COT M-70-A

"I believe MOR-COT M-70-A is the best cotton I have ever seen for the yield and quality. I will grow MOR-COT in 1974."

"I planted M-70-A in 1973 with Vigor. It was some of the best priced cotton. Staple is good micronaire. I plan to plant MOR-COT in 1974."

"I like the way MOR-COT M-70-A grows off over other popular cottons. It is a fast maturing cotton with a micronaire and staple area."

CLASSIFIED ADS

THE PLACE TO LOOK



FARMS & RANCHES

WANT TO BUY irrigated or dry-land farm in Floyd or surrounding area. Write Box XRO, c/o Hesperian, Box 700 Floydada, tfc

FOR SALE - Farm land, 220 acres 8 1/2 miles S.E. of Floydada. Dry land with water on all sides. Call Floyd Teutsch or Travis Templeton, 293-4594 or 296-6833, Tullis Real Estate, Plainview, Texas. 3-10tc

160 Acres of farming land, Friona, 983-3241. 3-21tc

SERVICES

ALL TYPES REPAIR & SERVICE - Day Heating & Air Conditioning, Installation and service on all Makes and Models. Phone 983-2382 or 983-2855, Floydada, tfc

Home Improvement
Does the old house need repairing?
Ceramic Tile, masonry works, carpenter work, and painting....
Call Emmitt Clampitt 983-5185 tfc



WE WANT YOU TO KNOW - We sell all kinds of Goodyear tires, tractor, auto, truck, a good tire, good service. Best deals in West Texas. Truck winch and hauling service. **BABE'S SERVICE CENTER, FLOYDADA, tfc**

FLOYD COUNTY ABSTRACT CO.
Abstracts of Title
Title Insurance
Verna L. Stewart
Owner, Manager
217 W. California 983-3728
Floydada, Texas

lightweight ALUMINUM CANES & CRUTCHES
Sturdy
Dependable
Attractive
Wide selection for every prescribed need
Forearm and underarm crutches
Adjustable telescopic canes
Four legged canes
Seat Canes
BISHOP-RAMSEY PHARMACY
208 West Houston 983-3174
FLOYDADA

IF IT IS INSURANCE - SEE -
Mer Insurance Agency
LOCKNEY
Fire - Casualty - Hospital
B. Wilkes, Real Estate
LOCKNEY
Ranches - City Properties
Business Leases - Loans

FARM MACHINERY

MR. FARMER - Fall plowing ahead, and our portable disc rolling equipment is available to work in your field or our shop on the Matador Highway. Call or come to Russell's Shop & Equipment, 983-3751. tfc

WINCH TRUCK SERVICE on cotton baskets and everything else. We'll go anywhere. Babe's Service Center, Phone 983-5042, Floydada, tfc

MR. FARMER - Come to Floyd County Hesperian in Floydada or Lockney Beacon in Lockney and buy 23" x 35" aluminum sheets to cover your truck beds and granary floors so the grain won't leak out. 10 cents a sheet. tfp

NORRELL TRACTOR PARTS - For Tractor and Irrigation Supplies and Accessories. tfc

PORTABLE DISC ROLLING - Sammy Kemp. Work guaranteed. 983-2347. 3-14tc

RENTALS

FOR RENT - Property-Apartments, 2 and 3 bedroom houses. Business Buildings, clean. **BARKER INSURANCE AGENCY, Lockney, 652-2642.** L-tfc

FOR RENT - 7 room house - 2 baths - garage - plumbed for washer & dryer - fenced backyard - close-in. Call 983-2202. 3-7tfc

CARDS OF THANKS

To all of you who shared our love for Mother, for your prayers while she was sick - For the beautiful flowers, cards and thoughtful memorials; to the ladies who brought food and helped in so many ways. To Bro. Bradley, Bro. Tidwell, Rick & Nina, for the beautiful message and Edell and Alton for the lovely service. For all of this we shall always be grateful. May God Bless each of you.
Mr. & Mrs. Doyle Moore and Family
Mr. & Mrs. Wendell Jordan and Family
Mr. & Mrs. Wayne Jordan and Family
Mr. & Mrs. Max Jordan and Family
Mr. & Mrs. Glen Jordan and Family
3-10tp

Words cannot adequately express our deep appreciation for the many kind acts shown by our neighbors and friends during illness and death of Mr. Andy Bratton. A special thanks to the Lockney Baptist men who sat with our father during his illness; to the Lockney Care Center staff and the Lockney Hospital Drs. and staff. Such kindness will never be forgotten. May God bless each of you is our prayer.
Mr. & Mrs. Gerald Lackey
Mr. & Mrs. Bob Bratton 3-10tc

We'd like to thank the ones who bought our stock in the Floyd County show auction: Stanforth Gin, GE Jones Electric, Bob Lane, Heston Bennett, Lockney Businessmen & Farmers. We'd also like to give our thanks to Jimmy Willson, Arthur Wiley, Davis Farm Supply, Chris and Lori Johnston 3-10p

Diamond Industrial Supply Co., Inc.
Phone Days 296-6225 - Nights 293-1200 or 296-7828
1014 Broadway
Plainview, Texas
Chain U-joints
Sprockets Oil Seals
V-belts O-rings
Sheaves Wisconsin
SKF BCA Timken Bower
"We Appreciate Your Business More"
L-TFC

LEGAL NOTICES

NOTICE TO BIDDERS
The City of Lockney, Texas, will receive bids at the office of the City Secretary at 215 E. Locust until 9:00 a.m. March 25, 1974 for the following:
One Ford Galaxie 500 4 dr. or equal (1974 model)
Automatic transmission
Power brakes
Power steering
400 engine
Air conditioning
Rear bumper guards
Radio and heater
Tinted glass
Remote mirror
Vinyl body side mouldings
Vinyl interior
Spot light
The City Council of the City of Lockney, Texas reserves the right to waive all formalities, to reject any or all bids and to negotiate with the bidder of their choice.
SIGNED: Claude Brown
MAYOR
ATTEST:
/s/ Erma Lee Duckworth
City Secretary
3-10c, 3-17c, 1974

COW POKES



"Wul, we may never cure poverty, but it looks like we're fixin to cure wealth!"

AUTO, FIRE & FARM INSURANCE
Floydada Real Estate & Insurance Agency
Jim Word - - - Phone 983-2360

BUSINESS OPPORTUNITY

FOR SALE - PEANUT, CANDY & GUM VENDING BUSINESS in FLOYDADA. ASSURED INCOME. Few hours weekly. Expansion aid. RESALE AGREEMENT. Total price \$1,238.00 cash. Write TEXAS KANDY COMPANY, Inc. 1327 Basse Rd., San Antonio, Texas 78212. include your phone number. 3-10p

WANTED

TRAVELERS MOTOR CLUB

District Managers (Not Insurance)
Salary + Commission
2 Weeks Training School
Bonuses: Car Payment, Group Insurance, U.S. Savings Bonds and other Fringe Benefits.
IF YOU ARE NOT MAKING \$300 A WEEK AND UP CALL COLLECT WALT EVERTON 805-744-8800 SUNDAY-- WEDNESDAY OR SEND RESUME Write Box 12689 Okla. City, Okla. 73112

We Have In Stock
Two Very Good IBM Electric Typewriters, One With Carbon Ribbon - One With Nylon Ribbon
Your Choice \$275
HESPERIAN OFFICE SUPPLY

By Ace Reid



"Wul, we may never cure poverty, but it looks like we're fixin to cure wealth!"

AUTO, FIRE & FARM INSURANCE
Floydada Real Estate & Insurance Agency
Jim Word - - - Phone 983-2360

LOST AND FOUND

LOST - Nanny Goat, tan and white. Reward. Call Lockney 652-2408 or 652-2139. 3-7tfc

REWARD \$400.00 - Stolen tools, chains & jacks from Childress Dozer Service pickup at Holiday Inn locale in Plainview on Nov. 13, 1973. Call collect 817-937-8455, Jerry Smith. 3-10tc

Miscellaneous

Protect Your Skin From The Cold Winter Wind With Venus Body Lotion & Hand Cream. Call Dewanda Blendon 652-2563 in Lockney.

LAWN MOWER REPAIR
We Sell Briggs & Stratton & Lawson Engines & Parts
New Toro Lawn Mowers
SPEARS SMALL ENGINE SERVICE
105 N. Main
Floydada
983-2396

Wet Jet Roofing
10 Year Guarantee
Against Leaks
5 CENTS PER SQUARE FOOT
CHURCHES, SCHOOLS, COUNTY, COMMERCIAL BUILDINGS.
1900 10th Street In Plainview, Texas
CALL - 293-4786

WHEN YOU NEED INSURANCE SERVICE FOR YOUR ... HOME
Think of Low Net Cost with Service.
RANCH FARM AUTO CROPS LIFE
Don Grantham
Texas Farm Bureau Insurance Company
Floydada
Office Phone 983-3777
Home Phone 983-3586

MAGNAVOX
ANNUAL SALE '74
NOW IN PROGRESS
SAVE....SAVE....SAVE....
UP TO \$100.00
BAILEY'S TV & Appliance Center
YOUR 100% SOLID STATE TV CENTER
900 W. 5TH, PLAINVIEW, TEXAS
PHONE 293-4401

CLASSIFIED ADS SELL

CLASSIFIED ADVERTISING RATE: 7 CENTS PER WORD FIRST INSERTION, 5 CENTS PER WORD EACH SUBSEQUENT INSERTION. MINIMUM CHARGE: \$1.00.

CLASSIFIED DISPLAY RATE: \$1.00 PER COLUMN INCH. CARDS OF THANKS: \$1.00.

COPY DEADLINES: 5 P.M. TUESDAYS FOR THURSDAY EDITION, 12 NOON FRIDAYS FOR SUNDAY EDITION.
Call 983-3737 in Floydada or 652-3318 in Lockney

EMPLOYMENT

ROUTE SALES - Milk routes now available. Good benefits. Bell Dairy Products 201 N. University in Lubbock. Ph. P05-8833. L3-tfc

MACHINE OPERATORS

PRODUCTION WORKERS

PRODUCTION WELDERS

Pay in accordance with qualification and experience.

ALSO PART-TIME AND AFTER SCHOOL POSITIONS AVAILABLE.

THE TYE CO.

Hwy. 70 East
Lockney, Texas

WANTED - L.V.N. for 3-11 shift. Lockney Care Center. L-tfc

WANTED - Someone who needs extra income to sell "Shaklee Organic Food Supplement." Call 652-2394 in Lockney for more information. L3-10tc

WANTED - HERDSMAN, CATTLE BREEDER AND FEEDER - must have three years experience in working with cattle breeding program. Must be able to maintain mechanical equipment, compute formulas and mix cattle feeds. House available, four rooms with bath. SALARY: \$4.00 per hour, 44 hours per week. Transportation advances. Will pay bus ticket from place of recruitment. Contact or phone DON MARBLE, South Plains, Texas, or call 983-3600, South Plains, Texas. 3-14tc

THIS SPACE FOR RENT

FOR SALE

WE HAVE DEEP FREEZERS \$199.95 and up. White's Auto Store in Lockney. L1-tfc

CARPET shampoo and shampooer. Rent the shampooer for \$1 per day with purchase of shampoo. Davis Lumber Company, Lockney. L-tfc

FOR SALE - Upright piano and stool; James Wington, 652-2590 after 3 p.m. 511 SE Spruce, Lockney. L-tfc

FOR SALE - good used gray steel Hon Desk. \$75.00. Hesperian Office Supply. tfp

FOR SALE - Brand new Remington Electric Cash Registers. \$225.00. Hesperian Office Supply, Floydada, Texas. tfp

FOR SALE - 30 Wiener Pigs. In Lockney call 652-3469. L3-10tc

FOR SALE - 11 used TV's starting at \$100.00. One Excellent 25" Sylvania 71 Model \$300.00. Two RCA Color TV's with Converters \$100.00. One Curtis Mathis 25" Color TV \$175.00. One Admiral Color TV with New Picture Tube \$175.00. One 1969 RCA Color TV Excellent Condition \$225.00. One 1968 Sears Color TV \$175.00. One 1968 RCA Color TV Beautiful Cabinet. \$300.00. Two 19" RCA Color & Sylvania Color TV's Portables. Your choice, \$195.00 and One 1971 Magnavox 19" Table Model TV with stand, \$195.00. Mize Pharmacy, Lockney. L1-tfc

FOR SALE - A Necchi sewing machine. Call 652-2189 in Lockney. L2-14tc

KIRBY Vacuum cleaners rebuilt - \$109.95 and up. Also check our prices on 1974 Models. Parker Home Furnishings in Lockney. L2-tfc

FOR SALE - 1971 Honda 350 Dirt Bike - Excellent condition - see at Whites Auto. 983-3514. 3-7tfc

FOR SALE - Fresh shelled peanuts - 40c per pound. Minimum 5 lbs. Boyce Mosley, Lockney, night 652-2686. L3-7tfc

FOR SALE - We have in stock two very good IBM electric typewriters, one with carbon ribbon, one with nylon ribbon. Your choice \$275. Hesperian Office Supply. tfp

FOR SALE - good used cash register. \$125.00 Hesperian Office Supply, Floydada, tfp

YES, WE BELIEVE IN LOVE AND MARRIAGE - order your wedding invitations at the Beacon Office Supply in Lockney. tfp

FOR SALE - 21" Console B&W TV, Early American, save \$80. Now \$152.95. Sears. 3-10tc

FOR SALE - Best Air Conditioner sale of the year, 90% of stock on sale. Ends March 12. Sears. 3-10tc

FOR SALE

FOR SALE - Puppies half terrier and half chihuahua. 10 weeks old. Lockney, 652-3778. L-1tfc

FOR SALE - 4 tie bed planters, good condition. \$175.00. Ph. 652-3646, Lockney. 3-17tc

TYPEWRITER PAPER SALE - 500 sheets - 20 lb. weight mimeo. \$2.75 Floyd County Hesperian in Floydada and Lockney Beacon in Lockney. tfp

FOR SALE - 4 drawer steel filing cabinets. \$49.95 Hesperian Office Supply, Floydada. tfp

PORTABLE Hoover washer. \$75.00 or best offer. Also, combination TV-Stereo-Radio. Needs new TV tube. Best offer 983-5017. 3-17tp

FOR SALE - Portable feeder pig pens for 50 pigs, complete with feeders and sprinklers. Call 667-2289, Petersburg. 3-17tc

AUTOMOTIVE

FOR SALE - 1950 Pontiac. \$60.00. Call Ed Wester 983-3330. 3-17tc

FOR SALE - 1965 Chevrolet Impala. 4 door-V-8 - Power & Air. \$300.00. 348-3411 or 348-2311, Roaring Springs. 3-10tc

FOR SALE - 1969 Chevrolet pickup: L W B-V-8 - Automatic - \$190.00. 348-3411 or 348-2311, Roaring Springs. 3-10tc

FOR SALE - 1967 Chev. Impala Hard Top. Power & Air, nearly new tires. Extra Clean. 983-3690. 2-17tfc

FOR SALE OR TRADE - 1967 Lincoln 4 door, all power & tape deck. Would trade for pickup. Call 983-3779 or 983-5298. 3-7tfc

ferti-lome
YOUR ECOLOGICAL CHOICE
Weed and Feed Special
Kills Weeds and Feeds Lawn in One Operation...
40# Bag \$4.95
Producers Cooperative Elevator tfc

POLITICAL CALENDAR
May 1974
Democratic Primary Election
TEXAS SENATE 30TH DISTRICT RAY FARABEE CHARLES FINNELL
COUNTY TREASURER DELL YANDELL GLENNA ORMAN
FLOYD COUNTY COMMISSIONER PRECINCT 2 BOB JARRETT RAYMOND MARTIN
FLOYD COUNTY COMMISSIONER PRECINCT 4 BILL McNEILL JACK LACKEY
COUNTY CLERK MARGARET COLLIER
COUNTY JUDGE J. K. HOLMES
DISTRICT CLERK MARY L. McPHERSON
JUSTICE OF PEACE PRECINCTS 1 and 4 H. E. PORTER
MAY 1974 REPUBLICAN PRIMARY ELECTION TEXAS SENATE 30TH DISTRICT MRS. MARY VIRGINIA KIRCHHOFF

Higginbotham Bartlett Co.
300 EAST 6th
PLAINVIEW, TEXAS
PLUMBING
Bradley Sink
Faucets \$21.95
3/4" Blk. Pipe .32
1" Blk. Pipe .43
1 1/2" Blk. Pipe .57
STEEL GATES
16" 52"-5 panel
With Hardware 29.95
CORRUGATED IRON
Heavy Gauge
6' thru 12' 15.95
HOT WATER TANKS
30 gal. Glass Lined
10 yr. guarantee 62.95
SHELVING
1x12 10' Particle Board
each 2.59
LUMBER
1x6 Rough Fencing
lin. ft 11 1/2
2x4 12' each .79
2x4 14' each .99
PANELING
Prefinished 4x8 3.29
STORM DOORS
2-8x6-8 28.95
GYPSUM WALL BOARD
4' x 8' - 1/4" 1.25
CEILING TILE
Pure White-12"x12" 10.95
CEDAR SHINGLES
18" Certigrade 23.95
PAINT
Latex Wall Paint
White & Colors 3.45 gal.
Latex House Paint
White 4.55
L-tfc

Lockney Girls Are Honored

—Twenty-nine junior high girls who have participated in athletics were honored recently at an appreciation party in the Sterley Community Center. Sponsor of the party was the Girls Athletic Booster Club.

Recognition was given to the following girls: Karla McCarter and Melinda Wilson, leadership; Cindy Frizzell and Mona Henderson, best attitude; Rise Taylor and Jo Beth Stallings, desire; Karla McCarter, Cindy Frizzell, Stephanie Turner, Sheila Hrbacek and Lupe Gonzales, outstanding forwards; Vickie Dudley and Regina Dudley, outstanding guards.

Awards also were made to girls having the most rebounds and offensive assists. Most improved defensive players were Vonda Mahagan and Kay Tannahill. Most improved offensive players were Karla McCarter, Stephanie Turner and Kim Spencer.

Hostesses for the party were Mmes. Pat Frizzell, Bill McCarter, Paul Hrbacek, Bill Turner and Chuck Wilson. Coach is Robbie Biggerstaff. Other adult sponsors attending were Bill McCarter, Pat Frizzell, Mr. and Mrs. Louis Fry, Mr. and Mrs. Deanie Henderson.

As Milan Goes...



La Scala, Milan's opera house, is world-renowned, for the talent of its artists and the beauty of its performances. Also music to the ears of the city's visitors is the best hotel in town, the Milano Hilton, which is located a short distance from the opera house. Its many services are entirely in harmony with the comfort of guests.

OBITUARIES

Mrs. Roach

Services for Mrs. Mollie Roach, former resident of the Cedar Hill Community in Floyd County, and mother of Guy Davis of Cedar Hill, were held Saturday in Hugo, Okla. Mrs. Roach died Thursday morning in the Golden Age Rest Home in Hugo.

Survivors include two daughters, Mrs. Louise Dunn and Mrs. Beatrice Mareum both of Hugo.

John T. Pittman

Funeral rites for John Thomas Pittman, 74 year old Amarillo resident and brother of Mrs. Mary Smith of Floydada, were held Friday in Blackburn-Shaw Memorial Chapel, Pittman, a resident of Amarillo since 1942, died in Northwest Texas Hospital Wednesday morning.

Survivors include a son; a brother and seven sisters.

Mrs. Trusty

Services for Mrs. Mamie Trusty, 69, former resident of Floydada, were conducted last Sunday in the chapel of Callahan Funeral Home in Grand Junction, Colo. Mrs. Trusty, a former resident of Floydada, died the previous Thursday night in a convalescent home in Grand Junction.

A native of Arkansas, she was a member of the Church of Christ, and resided in Floydada with her husband, the late John Trustee, in the 1930s.

Survivors include two sons, Vernie Trusty of Olton and J.T. of Moab, Utah; four

daughters, Mrs. Edna Mae Anderson of Rifle, Colo., Betty and Barbara Nell (married names unavailable) and Mrs. Luther (Marie) Byerly all of Grand Junction; two sisters, Mrs. Dale (Pearl) Self of Levelland and Mrs. Wanda Lee Heatherington of Grand Junction.

George Sparks

George Dewey Sparks, 74, a former resident of the Iriek community, died March 5. Sparks had been ill for three years and died in a rest home in Portales, where he had been a resident for a year and a half.

Funeral services were held Thursday afternoon, March 7, in Wheeler Starlight Chapel. Interment was in the Portales Cemetery, beside his father, Nathan Sparks. He is survived by two sisters, Mrs. C. R. Wofford of Lockney and Mrs. Walter Mathis of Portales. Mr. and Mrs. Wofford, accompanied by their three daughters, Mrs. Mary Waggoner of Claude, Mrs. Lena Faye Alford and Mrs. Claudell Norman of Plainview, attended the funeral. John Holmes of Lockney also attended the services.



In Gulliver's Travels, Jonathan Swift mentions Mars' two moons and their unique motions, 156 years before they were discovered!

Ranked in Order: 14 Complaints Secretaries Have About Bosses

By S. R. Redford

Sometimes when there's a problem, people forget to ask the real experts. As demand for competent secretaries has risen during the last few years, everyone from personnel manager to corporation president has issued lists of "do's" and "don'ts" for creating goodwill between boss and secretary. But it's difficult to find any in-depth study of what secretaries themselves want and don't want in a job and in a boss.

Since 1960, "P.S. for Private Secretaries," a biweekly newsletter of information for secretaries published by the Bureau of Business Practice Inc., has featured a lively section called "Secretarial Clinic." From all over the U.S. and Canada, secretaries write to air their job problems and to request advice from other secretaries. We asked Mrs. Irene Stone, editor of "P.S. for Private Secretaries," to review her files of letters and find the most important problems and complaints as the secretaries saw them.

As you read the list, which is numbered in the order of the items' importance, remember no secretary may ever tell you any of these things directly, not even if she quits. Long ago, industrial psychologists proved that most people don't tell the complete truth when they leave. Typical explanations such as, "I need a job closer to home," "My husband doesn't want me to work," "My children's school lets a boss into believing it wasn't the job and it certainly wasn't him. But an alert supervisor has to realize that in many cases a secretary would keep the job, almost no matter what—if she enjoyed it sufficiently. Many people do not understand that being a boss in the year 1974 in a democratic society is a complicated skill. Far more is involved than just giving sensible orders. The first two kinds of secretarial complaints make this fact clear.

1. His method of dealing with people is difficult to understand, and he's aroused a great deal of resentment.

2. He doesn't know much about office procedures and sharing ideas with others. He's inconsiderate and immature, and won't accept new ideas or other people's ideas readily.

In our modern, classless world, the power of the boss's position can take a boss just so far. Tact and human relations skill are business necessities. Says an expert quoted recently in "Personnel Journal": "The difference between the man who has a topnotch secretary and one who does not, may be the man. Personnel departments can do just so much for a boss in finding candidates...

3. My boss expects too much of one person.

4. He doesn't believe in vacations for secretaries. But he doesn't mind asking me to work overtime without extra pay or giving me extra duties. And he rarely expresses his appreciation.

5. I work for more than one person and get conflicting assignments.

6. He's too stiff to work for. There's never any variation from the norm.

7. My boss and I are both "drivers" — and sometimes our drives conflict.

8. We're both sticklers for detail and sometimes our ideas of detail differ.

9. He asks me to handle personal chores like buying gifts for his wife, typing his son's term paper, etc. etc.

10. He's unwilling to let me loose some detail work that only clutters his desk and day.

11. He doesn't believe in delegating. He doesn't mind personal chores as long as I have my lunch break and after-work hours free to do his personal typing, bookkeeping, and shopping on his time." And yet another group of secretaries is adamant in insisting all these tasks demeaning. If No. 9 is an old problem, No. 10 is rather new. More than in the past, many secretaries today are ambitious for responsibility and promotion.

12. He's too busy to give me any help.

13. He doesn't give me any credit for my work.

14. He doesn't give me any feedback on my work.

indicate that some bosses may be so busy pushing through their day's output that they become insensitive to the fact that secretaries are people.

3. My boss expects too much of one person.

4. He doesn't believe in vacations for secretaries. But he doesn't mind asking me to work overtime without extra pay or giving me extra duties. And he rarely expresses his appreciation.

5. I work for more than one person and get conflicting assignments.

When any of these situations occurs regularly, it tells a secretary her boss doesn't think enough of her to develop a reasonable overall workload for her; nor does he consider how many work hours are needed for her to carry out individual tasks he assigns. The problem runs far deeper than inconvenience—though that in itself is serious. As one secretary put it, "When he acts like that, I feel like an extension of the office furniture. Sure, he's routinely polite, but I can't help feeling he values me as just a cog that's useful to him." A recent job-turnover survey of office workers revealed that when a secretary believes her boss has stopped seeing her as a person, her mind often turns to job hunting.

The next complaint is a fine example of chronic personality conflict between boss and secretary:

6. He's too stiff to work for. There's never any variation from the norm.

Problems like this are no one's fault. Yet in any job, personality differences can induce a feeling of chronic fatigue when endured five days a week, eight hours a day. Other personality-conflict examples:

7. My boss and I are both "drivers" — and sometimes our drives conflict.

8. We're both sticklers for detail and sometimes our ideas of detail differ.

It all depends on how serious the personality conflict seems to the secretary involved. Suggesting that a person "adjust"—especially the secretary—is one usual solution. Frankly, though, for a competent secretary there are plenty of good jobs in the world. If problems like Nos. 6, 7, 8 become really important to her, probably the healthiest solution is a change of position to a boss whose temperament is more congenial.

And then there's the famous problem: the Go-fer, or Personal Chores, problem:

9. He asks me to handle personal chores like buying gifts for his wife, typing his son's term paper, etc. etc.

Though "P.S. for Private Secretaries" found that this is one of the 14 most common complaints secretaries make against their bosses, there is a wide range of secretarial reaction. Some secretaries were informed when they accepted the position that they'd be expected to do such chores. Others object not to the work itself but to how they're asked. They prefer, "Do you have time?" or "Would you mind?" This provides the opportunity to refuse gracefully.

10. He's unwilling to let me loose some detail work that only clutters his desk and day.

11. He doesn't believe in delegating. He doesn't mind personal chores as long as I have my lunch break and after-work hours free to do his personal typing, bookkeeping, and shopping on his time." And yet another group of secretaries is adamant in insisting all these tasks demeaning. If No. 9 is an old problem, No. 10 is rather new. More than in the past, many secretaries today are ambitious for responsibility and promotion.

12. He's too busy to give me any help.

13. He doesn't give me any credit for my work.

14. He doesn't give me any feedback on my work.

15. He doesn't give me any feedback on my work.

16. He doesn't give me any feedback on my work.

17. He doesn't give me any feedback on my work.

18. He doesn't give me any feedback on my work.

19. He doesn't give me any feedback on my work.

20. He doesn't give me any feedback on my work.

21. He doesn't give me any feedback on my work.

22. He doesn't give me any feedback on my work.

23. He doesn't give me any feedback on my work.

24. He doesn't give me any feedback on my work.

25. He doesn't give me any feedback on my work.

26. He doesn't give me any feedback on my work.

27. He doesn't give me any feedback on my work.

28. He doesn't give me any feedback on my work.

29. He doesn't give me any feedback on my work.

30. He doesn't give me any feedback on my work.

THRIFTWAY A BETTER WAY TO SAVE SAVE

SWIFT'S PREMIUM OR RATH BLACKHAWK

CORNER BEEF SMALL 2/3-LB. PIECES \$1.39 LB.

PORK BUTT STEAK 89¢

PORK ROAST 99¢

Salt Pork 79¢

OSCAR MAYER PORK SAUSAGE LINKS \$1.19

TORTILLAS 2/29¢

WILSON'S CERTIFIED RING BOLOGNA \$1.19 LB.

FRANKS \$1.15 LB.

Smoked Jowls 49¢ LB.

FRYERS 57¢ LB.

PREMIUM QUALITY HAND SELECTED PILLSBURY FRYERS 55¢ LB.

FRESH CATFISH CLIP-REDEEM & SAVE

MAXWELL HOUSE COFFEE 1-LB. CAN 89¢

Buc. Wickets 45¢

FLOUR 10-LB. BAG \$1.99

MAXWELL HOUSE INST. COFFEE 10-oz. JAR \$1.79

Peanut Butter 18-oz. JAR 69¢

COBBLERS INST. COFFEE 89¢

TUNA 49¢

KETCHUP 59¢

SALAD DRESSING 69¢

PHILLIPS DRINKS 89¢

CREST 79¢

6 BOTTLE CARTON COCA COLA 95¢

PLUS DEPOSIT

DINNER 79¢

PEARS 69¢

DIAPERS \$1.69

DIAPERS 89¢

CRACKERS 49¢

32 OZ. YOGURT 4 \$1.00

CINNAMON ROLLS 2 89¢

SHARP CHEDDAR 69¢

DRIFTWAY DAIRY SPECIALS That Save You Money

BORDEN'S ICE CREAM 1/2 GAL. 79¢

THRIFTWAY PRODUCE SPECIALS

CALIFORNIA JUMBO TANGERINES 4 \$1.00 LBS.

IDAHO YELLOW SWEET ONIONS 19¢ LB.

MEXICO STRAWBERRIES 39¢

TEXAS ORANGES 59¢

CALIFORNIA CELERY HEARTS 39¢

OR EXT GREEN CUCUMBERS 25¢

Your Home Power Suggests 6 WAYS TO CONSERVE AND SAVE ON ELECTRICITY

- For best results, use fitting covers. Utensils aluminum conduct heat and respond quickly to temperature changes.
- Match the utensil to the units for large utensils to average sized pans.
- Use high setting for a cooking, or to boil water temperature is reached.
- Do not pre-heat the oven but do pre-heat the oven in the recipe for baking.
- Select correct, measured selector switch or oven select, exactly, the same time you use it.
- For good heat distribution baking, they should not be done at minimum heat. Keep opening oven door...

Henry Block has 17 reasons why you should come to us for income tax help.

Reason 16. We'll try to do everything we can to save you money. After all, we want your business again next year.

DOOR BLOCK
THE INCOME TAX PEOPLE
Address: 106 W. Missouri
OPEN: 9 to 6-95
COME IN SOON
Phone 983-5233
Sat. Open 9-6

DON'S THRIFTWAY
HOME OWNED AND OPERATED
ON THE WYE IN FLOYDADA