

# The Floyd County Hesperian



FLOYDADA, FLOYD COUNTY, TEXAS 79235 THURSDAY, MARCH 2, 1972 10¢ COPY NUMBER 9

## Miss Floydada' Pageant Saturday Night

### 14 Contestants

The annual Miss Floydada Pageant will be presented Saturday night, March 4, at 7 o'clock in the high school auditorium. Fourteen young girls will be competing for the title.

Theme of the event, given each year by the Floydada senior class, will be "The Star Spangled Girls." Tickets are \$1 for adults and 75¢ for students.

Mrs. Keith Buhrman will narrate the show and entertainment will be furnished by the "Road", a group comprised of Kirk McIntosh, David Battey and Shawn Feuerbacher.

The pageant is being sponsored by Coach L. G. Wilson, Helen Patterson, Ann Swenson, Mrs. Don Ford and Jerry Livingston.

Girls will be judged on poise, personality and appearance by out of town judges. The winner will be crowned by the present Miss Floydada, Lisa Gregory.

Contestants are Margwyne Giles, daughter of Mr. and Mrs. Troy Brooks; Kim Campbell, daughter of Mr. and Mrs. Maurice Campbell; Carla Suggs, daughter of Mr. and Mrs. Gene Arwine; Mitzi Reddy, daughter of Mr. and Mrs. Lewis Reddy; Nancy Puckett, daughter of Mr. and Mrs. Sam Puckett; Susan Cozby, daughter of Mr. and Mrs. L.B. Cozby; Patsy Schulz, daughter of Mr. and Mrs. Monroe Schulz; Karen Willis, daughter of Mr. and Mrs. Kenneth Willis; Cindy Simpson, daughter of Mr. and Mrs. W. H. Simpson, Jr.; Krista Simpson, daughter of Mr. and Mrs. Jim Simpson; Darla Milton, daughter of Mr. and Mrs. Doodle Milton; Kathy Lake, daughter of Mr. and Mrs. Elver Lake; Linda Beaver, daughter of Mr. and Mrs. Alfred Beaver, and Carol Cogdell, daughter of Mr. and Mrs. D. M. Cogdell Jr.

### SCHOOL WEEK

## School Board, Administration Honored By Masonic Lodge

Floydada Masonic Lodge No. 1000 members of the Independent School Board and Administration were honored at a barbecue Saturday.

of the Texas Citizens' Committee on Public Schools Week, addressed the group, stressing the importance of the involvement of the public in the school system.

### Re'Generation Here Tonight

The Re'Generation, an exciting and expressive new musical group will be appearing in concert at the First United Methodist Church, Thursday, March 2, at 7:30 p.m.

### Quarantine Enforcement Tightened

Agent Doyle Warren reminded area farmers that the quarantine is still in effect requiring on-premises inspection of livestock before being moved.

### Cross Unit Meets Tonight

A meeting of the Cross Unit of the American Red Cross will be held at 7:30, in the Courtroom in Floydada.

### Caprock Chat

BY WENDELL TOOLEY

APPRECIATION to Jim Word and other key people who keep the news of the Indian find on the Cogdell ranch could be published. The big city newspapers could very well have scooped us, as the discovery was made a week ago, after we had hit the street.

WANT TO URGE everyone to take time tonight at 7:30 to attend the musical concert of the Re'Generation. This is a group of college students who will be at the Methodist Church.

local candidates who are seeking the office of tax collector in Floyd County should be interested in a ruling which was taken from The Kleinkecht Encyclopedia. It concerns the tax assessor who visited a poor man of the Gospel one day to determine the amount of the tax assessor would have to pay.

"What property do you possess?" asked the assessor. "None," replied the minister. "List your possessions," the assessor instructed.

First, I have everlasting life (John 3:16)  
Second, I have a mansion in Heaven (John 14:2)  
Third, I have a peace that passeth understanding (Phil. 4:7)  
Fourth, I have a joy unspeakable (1 Peter 1:8)  
Fifth, I have divine love that never falleth (1 Corin. 13:13)  
Sixth, I have a faithful, pious wife (Proverbs 31:10)  
Seventh, I have healthy, happy, obedient children (Exo. 20:12)  
Eighth, I have true, loyal friends (Proverbs 18:23)  
Ninth, I have songs in the night (Psalms 42:8)  
Tenth, I have a crown of life (James 1:12)  
Eleventh, I have a Saviour, Jesus Christ, who supplies my need (Philippians 4:19).

LETTERS - At press time in the school board election Floydada filed for re-election and Lawrence Stovall had filed. City council election Johnny Bill Sue had filed for re-election and Frank Goen and Gayle Baucum had filed.

"The school teachers of today are appreciated as the true builders of tomorrow's America," Wilson said. "... it is appropriate that these people should receive a glowing tribute from all concerned parents and citizens."

But, too often, they don't, especially in larger cities. Wilson cited a newspaper editorial entitled "Situation Impossible" which read, in part: "You are, let us say, a teacher in a Dallas classroom. You observe one of your pupils engaged in the act of choking another one of your pupils."

### Massie Activity Board To Meet Monday Night

Wendell Tooley has called a board meeting of the Massie Activity Center on Monday night at 7 o'clock in the community room of the First National Bank building.

Several items of business will be discussed and all board members are urged to attend. Anyone interested in the Center is invited to the meeting.

Construction of the MAC began a couple of weeks ago and the foundation will be poured this week.

Board members include: Wendell Tooley, president; Clay Henry, vice president; Kenneth Bain, secretary-treasurer; Jack McIntosh, Member-at-Large; R. L. Giesecke, Lions Club; Bob Aldredge, Lions Club; Bill Brown, Rotary Club; Sam Fowler, Rotary Club; Aldine Williams, American Legion; Sharon Hutchins, 1956 Study Club; Jim Dempsey, Student Council; Leigh Ann Weathersbee, Student Council; Mrs. J. H. Barnard, 1922 Study Club; Martha Farris, Girl Scouts; Mrs. Q. D. Williams, Girl Scouts; Wilster Bond, Boy Scouts; Ed Wester, Boy Scouts; Gerald Lackey, Floyd County Old Settlers.

### John Fowler Will Not Seek Re-Election

Commissioner of Precinct 1, John Fowler this week announced that he has changed his mind about seeking re-election to the office and has notified election officials.

"In making this decision, I want everyone to know that I make it on a personal basis, as I consider the enjoyment of retirement and the future for me and my wife.

"I leave the office with the knowledge that the county is in good financial condition, knowing that I have endeavored to do my best to serve the people of precinct 1 and Floyd County.

"I want to thank the members of the commissioners court for the many years of friendly association, it has been a pleasure and a privilege to work with each of them.

"However, now I feel that the right decision is to retire, catch up on my fishing (if that's possible) and continue to live here with the people that we know and appreciate. In the meantime I will continue to fulfill the duties of this office through 1972.



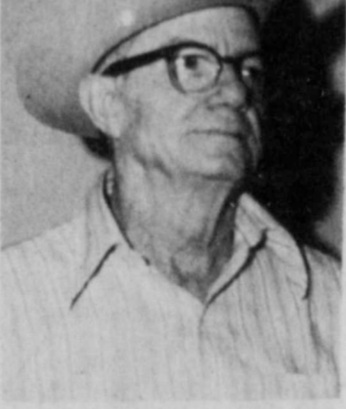
CELEBRATES SECOND BIRTHDAY... Jim Edd Waller, with help from his second-grade classmates, celebrated his second birthday anniversary Tuesday. Jim Edd, son of Mr. and Mrs. J.E. Waller of Floydada, is a Leap-Year-Day baby, and February 29, 1972, was only the second February 29 since he was born on that date in 1964. A fellow's birthday is a pretty special event, especially when you only have one every four years, so Jim Edd's 2-B classmates at Duncan School got in on the celebration, helping him polish off the birthday cake. (Staff Photo)

### W. H. "Bill" Yandell Seeks JP Office

W. H. "Bill" Yandell has authorized The Hesperian to publish his announcement seeking election to the Justice of Peace office for Precincts 1 and 4 in the May Democratic Primary.

Howard is a veteran peace officer of Floyd County and has lived in Floydada since 1922.

In his announcement statement, he said, "I am 59 years old, married, SEE YANDELL, PAGE 9



W. H. "BILL" YANDELL

### Lee Howard Seeks JP Office

Lee Howard has authorized The Hesperian to announce his candidacy for the office of Justice of the Peace, Precincts 1 and 4 of Floyd County in the May Democratic Primary.

Howard is a veteran peace officer of Floyd County and has lived in Floydada since 1922.

In his statement to the public concerning his announcement, Howard said, "I feel that the many years I have experienced associating with law officials and actively working in law enforcement qualify me for election to this office.



(Courtesy Producers Co-op)

DATE	H	L	PREC.
Feb. 23	81	37	
Feb. 24	73	36	
Feb. 25	79	31	
Feb. 26	73	33	
Feb. 27	75	40	
Feb. 28	82	49	
Feb. 29	84	39	
Total Prec. for Week	-	-	None
Total Prec. for Feb.	-	-	.13
Total Prec. for Year	-	-	.18

### H. E. "Ed" Porter Announces For JP Office

The Hesperian has been authorized to announce the candidacy of H. E. "Ed" Porter for the office of Justice of the Peace for Precincts 1 and 4 of Floyd County in the May Democratic primary.

Porter has lived in Floydada 34 years. He worked six years for Consumers Fuel Assn., and is presently employed at Higginbotham-Bartlett Lumber Co., where he has worked for the past 22 years.

I appreciate your vote, and I will be visiting everyone before the May election."



H.E. "ED" PORTER

## Contributions To Museum Deductible

According to a report from District Attorney George Miller, the Floyd County Museum has been approved as a non-profit organization and all contributions to the museum are tax deductible under section 501 of the Internal Revenue Code.

Miller and county attorney Kenneth Bain donated the time and work involved in getting the corporation set up and approved.

In regard to the financial needs of the museum the following letter has been given to The Hesperian for publication: "Dear Friends of Floyd County,

A few times in our lives we have the opportunity to be in the forefront and pioneer in a new field.

The Floyd County Historical Museum needs members who want to preserve our record of development from the days of the Southwestern Indians and Coronado's explorers to families who arrived by covered wagon and horseback.

That we and future generations might look and remember the work and sacrifice of those men, women and children who pioneered our county, we must save the remaining historic artifacts data.

SEE MUSEUM, PAGE 9

## Food Stamp Program Prospects Dim For Floyd County

Judge J. K. Holmes and Commissioner Bill McNeill were in Austin this week to attend a meeting of Texas Department of Welfare officials on the federal food stamp welfare program. Judge Holmes indicated yesterday that prospects for the Food Stamps in Floyd County

are dim, however no definite decision has been made. County welfare officials have until Sept. 1 to decide whether or not to enter the program.

Judge Holmes said switching from the present commodity program to food stamps would more than double the present county welfare rolls and increase local costs considerably. At present there are 501 families on the commodity program in Floyd County.

In switching to the Food Stamp program, Judge Holmes said much of the cost to the county would be due to an increase in personnel needed as caseworkers, supervisors and office workers, along with requirements under the program that the county furnish office, equipment, and other miscellaneous items.

SEE STAMP, PAGE 9

## Comanche Indian Found On Cogdell Ranch

By Wendell Tooley

A Cedar Hill community cowboy riding his horse near the caprock breaks last week discovered the remains of what is thought to be a Comanche Indian woman in a small cave.

Bruce McFall was riding near the caprock about a mile east of his home on the D. M. Cogdell ranch, and while digging around in a small cave discovered the remains of the Indian, along with many beads, bracelets, parts of a saddle and other items of interest.

Although Bruce has lived near the cave for some ten years, it was his first time to explore the cave.

He said the skeleton of the Indian was lying with the skull toward the south in the approximately 10' x 8' cave, with one arm under the body part, the other extended. One leg was bent, the other straight out. D. M. Cogdell brought the remains of the Indian to Jim Word in Floydada, who accompanied some Tech archaeology students back to the cave on Saturday morning, where a few more items were found, including one of the fingers.

Word surmised that the Indian was female, possibly 30 years old (almost complete set of teeth) and could have been buried in the cave 125 to 150 years ago. Word said the Comanches were small people and the Indian woman was approximately 5'2" tall.

Although Word has discovered many Indian graves in this area, he was elated at the find of items buried with the body. . . beads, bracelets, conchos, hair braid accessory, parts of saddle, mirror, ring on one of the fingers, abalone shell ornaments, blanket and clothing.

Also at the cave site exploring Saturday morning were L. D. Britton, Mrs. Word, Mr. and Mrs. D. M. Cogdell.

Bruce is a senior at Flomot High School and works on the Cogdell ranch.

The Cogdells stated that the Indian skeleton would be given to the Floyd County Museum SEE INDIAN, PAGE 9



REMAINS OF COMANCHE INDIAN WOMAN are pictured above with beadwork, bracelets, mirror, abalone shell ornaments, wooden saddle horn, cinch, conchos, and digging hoe. (Staff Photo)



# County Youngsters Get Awards At Stock Show Banquet

Over 300 FFA and 4-H livestock exhibitors and their parents and livestock show association members crowded Duncan Elementary School cafeteria here last Thursday for the annual Floyd County Junior Fat Stock Show banquet.

Guest speaker Jim Ravenelli, Director of Development at Lubbock Christian College, defined success by saying "Success is when you give more to life than you take", and said "You are successful if you are doing what you want to do more than anything else in the world."

He told the crowd "If you have the will to win and the will to work, you can succeed."

Ravenelli asked each listener to stop and picture in his mind a goal that he had set for himself, then to repeat what he termed the "ten most important two-letter words" in the language - "If it is to be, it is up to me."

Awards were presented to exhibitors of the champion animals in last week's Floyd County Junior Fat Stock Show. They included the following:

The grand champion steer trophy to Kay Russell, the grand and reserve champion barrow trophies to Tom Assiter, and the reserve champion steer trophy to Ricky Hrbacek. Champion lamb trophies went to Danny Martin, Randy

Ward, Lee Sinor and Ashley Wester.

Trophies were also presented to winners of the Floyd County Junior Livestock Show Exhibition Awards. The winners were Tim Mercer, beef; Donnie Fortenberry, sheep; and Larry Guffee, swine.

Awards were presented to Jackie Elliott, Craig DuBois and Richard Wooten, for beef, sheep, and swine herdsmanship, respectively.

The winners of the livestock

judging competition were also presented trophies; they included Ricky Gross, the high over-all scorer; Karin Kunkel, winner in the beef division; Ladell Noland, winner in the sheep division; and Sam Fortenberry, swine division winner.

Boyce Mosley, president of the Floyd County Farm Bureau, emceed the event. Lynn Becker gave the invocation. Dinner music was provided by Robin Smith.

The awards were presented by Doyle Warren, Floyd County Agent; Richie Crow, assistant County Agent; O. L. Harris, Troy Harris, and Homer Jones, Floydada High School Agriculture teachers; and Lockney agriculture teacher Elvin Lyon.

The banquet was sponsored by the Floyd County Farm Bureau, Plainview Production Credit Association, and the Floyd County "co-ops" - Lockney Feed Yard, Lockney Co-op Elevator, Sterley Co-

op Elevator, Consumers Fuel Association of Lockney, Producers Co-op Elevators of Floydada and Dougherty, Farmers Co-op Gins, Floyd County Co-op Gin, and Consumers Fuel Association of Floydada.

\$48,000, with the addition of sifted animal and floor bid sales and extra awards.

The Floydada First National Bank paid an \$8 bonus for each steer, a \$3 bonus for each barrow, and a \$2 bonus to each sheep in the auction ring.

Floydada businessmen boosted floor bids of 36.25 on steers, 26.¢ on barrows, and 29.25 on lambs to 50¢, 60¢, and 80¢, respectively, and boosted all champion lamb prices to \$1.50/lb.

Businesses and individuals who went together to up the floor bids were:

Members of Floyd County NFO, Martin & Co., Brown Gin, Parks Oil, W. A. Massie, Scott Gin, Carthel Oil, First State Bank (Silverton), Eugene Beedy, Floydada Livestock Sales, Plainview Production Credit, Oden Chevrolet-Olds, Leonard Matsler,

Floydada Real Estate & Insurance Agency, Panhandle Compress & Warehouse, Hollis R. Bond Real Estate, Cobb Gilly, Bill McNeill, Marble Brothers, Kirk & Sons, Rucker's OK Tire Store, Crutchfield Tire Co., Floydada Grain, Inc., Barwise Elevator & Fertilizer, Barwise Onion Shed, Gerald Lackey, Hinton Well Service, Green Machinery Co., Inc., Stewart Printing, Kimble Optometric Clinic, Floydada Implement Co., Arwine Drug, Henry Hinton, Weldon Hammonds, Broadview Steel Co. (Lubbock), Milton Weems Texaco, Dougherty Farm Supply, Eddie J. (Ed) Leary, Robert Heflin, Norrell Tractor Parts, Edmiston Plumbing &



JIM KROPP MEMORIAL SWEET AWARD . . . Mrs. Beth Kropp (right) won the 1972 award to Kay Russell at the Show Banquet last Thursday. (Staff Photo)

Moore-Rose Farm Equipment, Pines Gas, Morton Iron United Transport County Hesperian tham-Bartlett Co. dy Shop, Ward (Lubbock), Bortegard-Nall Motor Store, Watson Johnson Lowrance Frigance Center, MoorMan Feeds, gine Service, Ig Store, Beall's Dept. SEE SHOW, M



LIVESTOCK JUDGING WINNERS . . . Left to right: Ladell Noland, winner in the sheep division; Ricky Gross, high over-all individual; and Karin Kunkel, beef division winner. Not pictured is Sam Fortenberry, swine division winner. (Staff Photo)

AT THE TASTE FREEZ - every Thursday, from 5 until 10 p.m. Three Hamburgers, loaded, \$1.25. Owned and operated by Neil Joyce, Vicki and Terry Smith.

## Stock Show Auction Totals \$35,955

Animals sold in the Floyd County Junior Fat Stock Show auction February 23 totaled 172, including 32 steers, 80 barrows and 60 lambs. The animals sold through the ring brought a total of \$35,955. Auctioned were 32 steers weighing 31,271 lbs. and bringing \$18,465.45; 80 barrows weighing 16,570 lbs. and going for \$11,704.53; and 60 lambs weighing 5,685 lbs. and selling at \$5,787.60.

The \$35,955 auction compares to last year's \$31,135.44. Total money paid to the stock show boys and girls will crowd

## REED'S SPECIAL

FOR THE WEEK!

FOUR LOW MILEAGE  
SIX PASSENGER

1971 MERCURY  
STATION WAGONS

AIR CONDITIONED, POWER,  
MANY OTHER EXTRAS

**\$2999.**

YOUR CHOICE OF FOUR

**REED**

FORD & MERCURY SALES

RALLS HIGHWAY

## FLOYDADA PUBLIC SCHOOLS

A. E. BAKER, SUPERINTENDENT

FLOYDADA, TEXAS

DEAR PARENTS,

LAST YEAR A GREATER NUMBER OF PEOPLE VISITED SCHOOLS DURING TEXAS PUBLIC SCHOOL WEEK THAN EVER BEFORE. THIS IS AN ANNUAL EVENT THAT BECOMES MORE IMPORTANT EACH YEAR TO THE TEACHER, THE PUPIL AND THE PARENT.

THE SCHOOL LIFE OF YOUR CHILD.....AND HIS FUTURE IS MOST IMPORTANT TO YOU. ASIDE FROM PARENTS, YOUR PUBLIC SCHOOLS HAVE MORE INFLUENCE IN SHAPING YOUR CHILD'S LIFE THAN ALL OTHER INSTITUTIONS AND INDIVIDUALS COMBINED.

FRIENDS DON'T ALWAYS RESPOND TO AN INDEFINITE INVITATION SUCH AS "COME TO SEE US SOMETIME" OR "LOOK US UP IN THE PHONE BOOK." SOMETIMES IT TAKES A SPECIAL INVITATION FOR A SPECIFIC TIME TO BRING THEM OUT.

THAT'S WHAT OUR SCHOOLS ARE DOING DURING THE WEEK OF MARCH 6-10 THOSE ARE THE DATES FOR TEXAS PUBLIC SCHOOLS WEEK, AND ALL ARE WELCOME TO VISIT THE SCHOOLS IN OUR COMMUNITY. THE USUAL WELCOME FLAG IS FLOWN A LITTLE HIGHER AT THIS TIME.

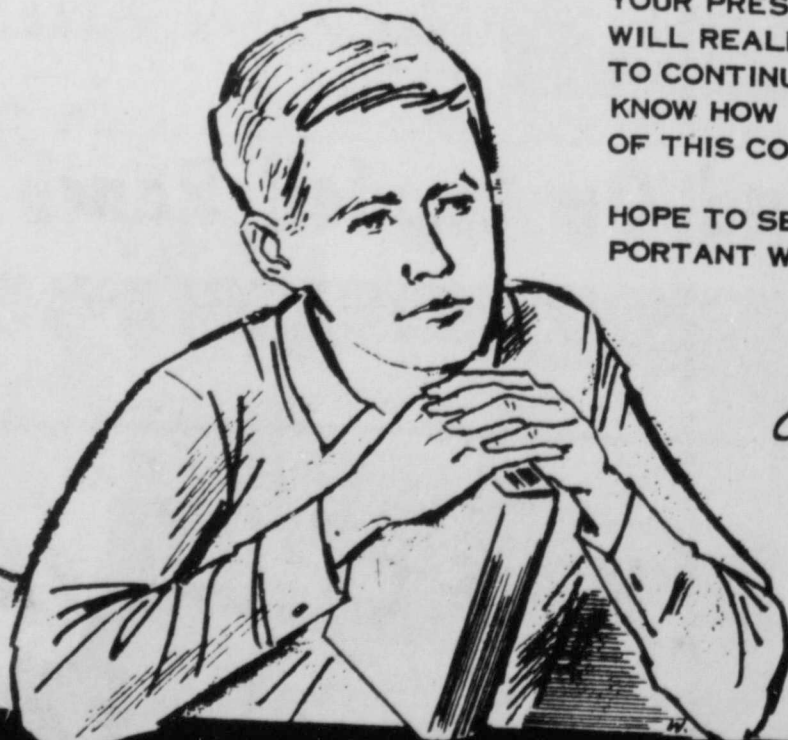
YOUR PRESENCE DURING THIS WEEK WILL REALLY ENCOURAGE ALL OF US TO CONTINUE DOING THE BEST WE KNOW HOW IN EDUCATING THE YOUTH OF THIS COMMUNITY.

HOPE TO SEE YOU DURING THIS IMPORTANT WEEK.

SINCERELY YOURS,

*A. E. Baker*

A. E. BAKER  
SUPERINTENDENT



TEXAS PUBLIC  
SCHOOLS WEEK

MARCH 6-10



CHAMPIONS LAMB EXHIBITORS . . . were awarded trophies at the Floyd County Junior Fat Stock Show Banquet last Thursday. From left to right: Randy Ward, Ashley Wester, Lee Sinor and Danny Martin. (Staff Photo)

# ATTENTION

## CASTOR PRODUCTION AND PURCHASE CONTRACT

This AGREEMENT made between Plains Cooperative Oil Mill, Plains, Texas, (hereinafter referred to as "BUYER"), and

NAME OF GROWER \_\_\_\_\_

ADDRESS \_\_\_\_\_

COUNTY \_\_\_\_\_

TELEPHONE \_\_\_\_\_

(hereinafter referred to as "GROWER").

In consideration of the terms, conditions, and mutual covenants hereinafter set forth and of other good and valuable consideration, the parties hereto agree as follows:

GROWER agrees to grow \_\_\_\_\_ acres of castors in the crop year \_\_\_\_\_

GROWER agrees to grow \_\_\_\_\_ acres of castors in the crop year \_\_\_\_\_

GROWER agrees to grow \_\_\_\_\_ acres of castors in the crop year \_\_\_\_\_

GROWER AND BUYER agree that the price to be paid for the castor seed shall be \$5.00 per cwt. for a one (1) year contract; \$5.25 per cwt. for a two (2) year contract; and \$5.50 per cwt. for a three (3) year contract with the amount above \$5.50 per cwt. to be paid at the completion of this contract. GROWER shall deliver all clean marketable castor seed purchased hereunder to BUYER'S facilities.

BUYER shall arrange for the weighing, sampling, and grading of the delivered seed which the "delivered weight" shall be determined and shall be corrected to weight by the conventional grading procedures, and according to the total moisture and any moisture over 6.0 per cent.

Title to castor seed will remain with the GROWER until such time as seed has been completed into BUYER'S receiving, storage or other facilities.

It is further agreed that the castor seed will be handled as a separate department of the BUYER'S operations. All margins made from the handling and crushing of seed subject to allocations to the patrons entitled and due in the manner provided by and in accordance with the BUYER'S bylaws.

In WITNESS WHEREOF, the parties have caused this agreement to be executed and signed by their respective authorized officers on this \_\_\_\_\_ day of \_\_\_\_\_ A. D. 197 \_\_\_\_\_

GROWER \_\_\_\_\_

Return one copy to BUYER. Retain one copy for GROWER'S files.

PLAINS COOPERATIVE OIL MILL (BUYER)

By JOHN F. HERZER

The above contract is being offered to all producers by Plains Cooperative Oil Mill. Anyone interested in castor production, please complete and return to:

**PLAINS COOPERATIVE OIL MILL**  
Post Office Box 1889 Lubbock, Texas 79408





**CHAMPIONS' TROPHIES . . .** Awarded at Stock Show banquet to (left) Ricky Hrbacek, Reserve Champion Steer exhibitor; Kay Rusland Champion steer exhibitor; and Tom Assiter, who showed Grand and Reserve Champion swine in the Floyd County Show. (Staff Photo)



**STOCK SHOW SWINE EXHIBITION AWARD** went to Larry Guffee. (Staff Photo)



**HERDSMANSHIP AWARDS . . .** for the Floyd County Show went to Tim Mercer (left), Donnie Fortenberry (right) and Larry Guffee (not pictured). (Staff Photo)

Donnie Fortenberry, 4th, 85, 85¢, \$72.25, Muncy Elevator.  
 Craig DuBois, 4th, 98, \$1.00, \$98, Floyd County Coop Gin.  
 Mitch Probasco, 4th, 108, \$1.05, \$113.40, Farmers Co-op Gin.  
 Lynn Becker 4th, 102, \$1.45, \$147.90, Texas Triumph Seed.  
 Karen Kunkel, 4th, 79, 75¢, \$59.25, L. N. Johnson.  
 Randy Flemming, 4th, 85, 70¢, \$59.50, Davis Farm Supply.  
 Darlene Broseh, 5th, 87, \$1.65, \$143.55, Sterly Gin.  
 Max Yeary, 5th, 98, \$1.10, \$107.80, Texas Triumph Seed.  
 Leslie Sinor, 5th, 103, 95¢, \$97.85, Farmers Co-op Gin.  
 Barton Cooper, 5th, 109, \$1.35, \$147.15, Lockney Gin and Delinting.  
 Jill Probasco, 5th, 89, \$1.20, \$106.80, Farmers Co-op Gin.  
 Clay Hamilton, 5th, 106, \$1.25, \$132.50, Calvin Steen.  
 Johnny Guzman, 6th, 81, 70¢, \$56.70, Floyd County Co-op Gin.  
 Arnold Lipham, 6th, 98, 65¢, \$63.70, Producers Coop Elevator.  
 Ray Hinton, 6th, 104, 80¢, \$83.20, Wake Grain Co.  
 Sam Fortenberry, 6th, 87, \$1.45, \$126.15, First National Bank, Lockney.  
 Max Probasco, 6th, 84, \$1.10, \$109.20, SunVue Fertilizer.  
 Johnny Guzman, 6th, 97, 70¢, \$67.90, Phil Cates.  
 Dean Hinton, 6th, 108, 75¢, \$96, Dougherty Farm Supply.  
 Jackie Covington, 7th, 86, \$1.00, \$86.00, Texas Triumph Seed.  
 Quinn DuBois, 7th, 100, \$1.10, \$110, D. M. Cogdell.  
 Wayne McHam, 7th, 102, 65¢, \$86.30, Rhodes Pipe.

**CONTINUED IN NEXT WEEK'S HESPERIAN**

**HERDSMANSHIP AWARD WINNERS . . .** Jackie Ott (left) and Craig DuBois won awards for pig and sheep herdsman, respectively. Not pictured is the swine herdsman winner, Richard Wooten. (Staff Photo)

**HOW FROM PAGE 2**

First National Bank, Lockney.  
 Wayne Gilbreath, 1st, 92, 75¢, \$69.00, Texas Triumph.  
 Bobby Dan Roberts, 2nd, 93, 75¢, \$69.75, Floydada Businessmen.  
 Michael Fortenberry, 2nd, 97, 80¢, \$73.00, Texas Triumph Seed.  
 Ross Hamilton, 2nd, 103, 90¢, \$92.70, Muncy Elevator.  
 Roy Newkirk, 2nd, 96, 75¢, \$72, Floydada Businessmen.  
 Randy Quisenberry, 2nd, 96, \$1.00, \$96.00, Barwise Gin.  
 Blake Hickerson, 2nd, 113, \$1.15, \$129.95, Lockney Coop.  
 Tommy McHam, 3rd, 93, 65¢, \$60.45, Floydada Businessmen.  
 Gary Nixon, 3rd, 97, \$1.10, \$106.70, Floyd County Co-op Gin.  
 Marcia Fortenberry, 3rd, 98, \$1.25, \$122.50, Lockney Businessmen.  
 Jay Womack, 3rd, 91, 70¢, \$63.70, Producers Co-op Elevator.

**AT THE TASTEEFREEZ -** every Thursday, from 5 until 10 p.m. Three Hamburgers, loaded, \$1.25. Owned and operated by Neil Joyce, Vicki and Terry Smith.

**AND**

Russell, Grand Champion, \$5.00 per pound.  
 Burns, Davis Farm Supply, Producers, Co-op Rust-Equipment, Hamby, and Electric.  
 Hrbacek, Reserve Champion Steer, 1115, \$338.25, First National Bank, Lockney.  
 Andy Ward, Champion Steer, \$9, \$2.00, \$198, Dou-Grain.  
 Larry Martin, Champion Steer, \$100, \$1.00, \$108, Lyn-Black, Custom Farm Service.  
 Larry Martin Shropshire, \$9, \$1.15, \$102.25, Farm Service.  
 Mike Sloop, Champion Steer, \$9, \$1.15, \$120.15, Farm Service.  
 Wiley Wester, Champion Steer, \$11, \$1.30, \$130, Custom Farm Service.  
 Tom Assiter, Grand Champion, \$22, \$1.70, \$377.40, Jim-Dean.  
 Tom Assiter, Reserve Grand Champion, \$216, \$1.05, \$226.80,

# Beall's

DEPARTMENT STORES

SHOP AND SAVE  
 THESE SPECIALS  
 THIS WEEKEND

## SPECIALS



# LEAP YEAR



### TEXTURED DOUBLE KNIT PANTSUITS

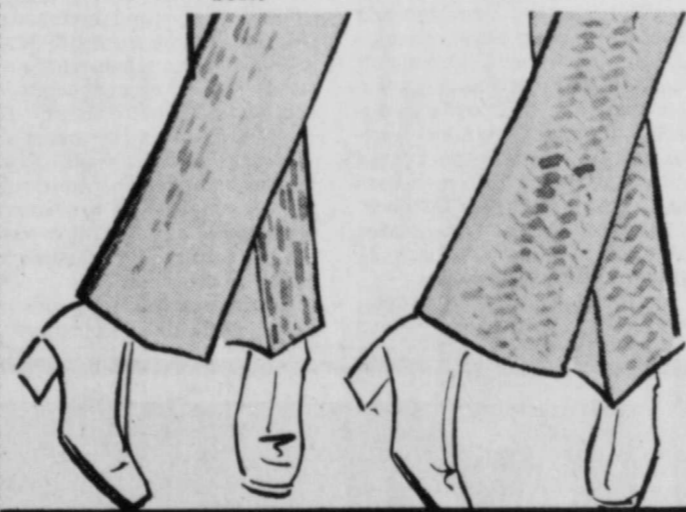
REG. \$24.00 VALUES

**\$15<sup>88</sup>**

THIS WEEKEND

EA.

Now is the time to stock up on easy-care Double Knit Pantsuits from Beall's! There is a fantastic collection of designs in an array of colors and styles to please you. Long tunics and reed-slim pants in figure flattering two-piece designs. Textured for extra fashion interest and beauty. Find them in sizes 10 to 20, now while the selection is best!



### WEEKEND SPECIAL

LARGE GROUP OF

## MENS DACRON KNIT PANTS

COMPARE AT \$20.00 A PR.

**\$12<sup>88</sup>**

ONLY

A PR.

ALTERATIONS EXTRA ON THESE

10 ONLY

## MENS SUITS

ASSORTED DARK COLORS

VALUES TO \$65.00

**\$39<sup>88</sup>**

NOW ONLY

A SUIT

SPECIAL

## LADIES WESTERN CUT PANTS

JUNIOR SIZES 3-5-7-9-11

VALUES TO \$6.00 A PAIR

ASSORTED STYLES

**\$3<sup>88</sup>**

AND COLORS

ONLY A PR.

THIS WEEKEND

WEEKEND SPECIAL

FAMOUS BRAND OF

LADIES

## CANVAS SHOES

VALUES TO \$6.00 A PR.

ASSORTED STYLES AND COLORS

**\$3<sup>88</sup>**

ONLY

A PR.

WEEKEND SPECIAL

## DACRON BED PILLOWS

REG. \$3.98 VALUE

SIZE 21 X 27

**\$2<sup>99</sup>**

ONLY

EACH

WEEKEND SPECIAL

## LARGE BATH TOWELS

REG. \$2.50 VALUE

NOW ONLY . . . . . **\$1.88** EA.

## HANDTOWELS

REG. \$1.50 VALUE

NOW ONLY . . . . . **88¢** EA.

## WASHCLOTHS

REG. 70¢ VALUE

NOW ONLY . . . . . **48¢**

SPECIAL

## BEAUTIFUL DACRON KNIT

REG. \$4.99 A YD.

FANCIES AND SOLIDS

**\$3<sup>88</sup>**

ONLY

A YD.

REG. \$3.99 A YD. VALUE

**\$2<sup>88</sup>**

ONLY

A YD.

THIS WEEKEND ONLY

SPECIAL

ON ONE TABLE

## MENS CASUAL PANTS

VALUES TO \$14.00

**\$7<sup>00</sup>**

NOW ONLY

A PR.

VALUES TO \$10.00

**\$5<sup>00</sup>**

NOW ONLY

A PR.



**THE FLOYD COUNTY HESPERIAN**  
 Published at 111 E. Mo. St., Floydada, Texas, 79235 each Thursday.  
**WENDELL TOOLEY, EDITOR-PUBLISHER**  
**PEGGY MEDLEY, Society Editor**  
**SHARRON HUGGINS, Circulation, classified Adv. Mgr.**  
**FLOR REED, Bookkeeper**  
**GWEN COGDELL, Typesetter**  
**CAROLYN SELLARS, Composer, Advertising**  
**JAMES HUGGINS, Reporter-Photographer**  
 Second class postage paid at Floydada, Texas 79235  
**NOTICE -** Any erroneous reflections upon the character, standing or reputation of any person, firm or corporation which may appear in the columns of the Floyd County Hesperian will be corrected gladly upon its being brought to the attention of the publishers.  
**SUBSCRIPTION RATES: LOCAL \$4.00 year**  
**OUT OF TRADE AREA: \$6.00 year**



## Contestants In Miss Floydada Pageant



KIM CAMPBELL



MITZI REDDY



NANCY PUCKETT



SUSAN COZBY



PATSY SCHULZ



KAREN WILLIS



CINDY SIMPSON



KRISTA SIMPSON



MARGWYNE GILES



LINDA BEAVER



DARLA MILTON



KATHY LAKE



CARLA SUGGS



CAROL COGDELL

### Mrs. Schulz Is Club Hostess

Harmony Home Demonstration Club met Feb. 28 in the club room with Mrs. Monroe Schulz as hostess. Roll call was answered by 11 members with "What's Cooking?" Plans were made for the second meeting in March which will be a trip to Abernathy to see some of the work being done by a Special Education group in a school, then on to view a doll collection, belonging to a woman south of Abernathy. Mrs. Schulz brought the pro-

gram on "Let's Cook it Right". She spoke of her experience with Weight Watchers and told of different foods allowed to be eaten by weight watchers. Mrs. Zant Scott held a demonstration on Consumer Frauds. She said each year the public is victimized by a wide variety of schemes and outright frauds. These range from a growing number of various home improvement schemes to the sale of worthless - sometimes dangerous - medicines promoted as "cures" for a long list of serious chronic ailments. The annual cost to the public in these frauds is in the hundreds of millions of dollars, Mrs. Scott said. Various areas

where frauds are found were cited and members told of instances they had known where people had been victimized. Key rules to follow in avoiding consumer frauds are: get guarantee in writing; never sign a blank contract or blank papers; read and understand everything in the contract before signing and also keep a copy; if in doubt, consult your local Better Business Bureau, Chamber of Commerce or a lawyer. Mrs. Glenn Pool conducted recreation. Refreshments were served by Mrs. Schulz to Meses, Mather Carr, R. B. Gary, R. N. Hopper, Everett Miller, Orba

Mittler, Glenn Pool, Bob Ratten, Zant Scott, W. C. Snodgrass and Mrs. Glen Curtis. **Jim Word Is Speaker For LCC Meeting** "Pot hunters are souvenir hunters who dig into archeological sites without studying the location or recording their discoveries," said Floydada Museum director, Boy Scout leader and area-wide known archeologist Jim Word, to members and guests of the Lubbock Christian College Associates at their meeting February 21 in the Ned Bradley home. Introduced by the president, Mrs. Q. D. Williams, Word

showed slides of spear and arrow points from thousands of years ago to more modern points of a century past. The caves along the Amistead Dam area have yielded some of the best Indian pictographs in North and South America. They are now under Federal protection from untrained explorers, Word reported. Floyd County was important in the lives of the Southwestern Indians because of live water in Blanco Canyon and the abundant supply of game for food. Word showed maps pinpointing several Indian campgrounds up and down Blanco River. His professional quality maps and drawings of sites made it clear to the audience how important it is for historians to preserve what they find rather than merely digging and destroying clues of their culture. During the business session, Mrs. Williams appointed a

**FLOYD DATA**  
Mrs. Floyd Starkey had minor surgery in Methodist Hospital Wednesday and returned home Thursday. She is reported to be doing nicely.

**FLOYD DATA**  
Claude Ring underwent major surgery in University Hospital yesterday morning. It was not known how long he would be hospitalized at this date.

**FLOYD DATA**  
Capt. and Mrs. J. C. Cates and two children emplaned for Schweinfurt, Germany February 21 where he will be stationed with the Army's 3rd Infantry Division for the next two years. The family spent a month at Dougherty visiting his parents, Mr. and Mrs. J. D. Cates. Capt. Cates just returned from a tour of duty in Vietnam. His wife and children resided in Denver, Colo. during his absence.



**SENIOR GIRL SCOUTS PREPARE INVITATIONS . . .** to First Class ceremonies which will be held Sunday. The five Floydada Scouts who will receive the rank, highest in U.S. Girl Scouting, (left to right) Nan McCulley, Phyllis Guffee, Carla Suggs, (right) Sheryl Burns and Margwyne Giles.

### Five Girl Scouts To Receive First Class

Sunday afternoon at 3 o'clock at the First Baptist Church, five members of Senior Girl Scout Troop #97 will receive their First Class Rank, the highest award given in Girl Scouts of the U.S.A. Recipients are Sheryl Burns, daughter of Mr. and Mrs. LeRoy Burns; Margwyne Giles, daughter of Mr. and Mrs. Troy Brooks; Nan McCulley, daughter of Dr. and Mrs. Andrew McCulley; Phyllis Guffee, daughter of Mr. and Mrs. Corky Guffee; and Carla Suggs, daughter of Mr. and Mrs. Gene Arwine.

As a culmination of their preparations for the award, each Scout was required to write a paper expressing her attitude about scouting, what it had meant to her and how she felt it had prepared her for the future. On February 7, the five Girl Scouts appeared before a Board of Review. They were interviewed by Neighborhood Chairman, Mrs. Kinder Farris; teacher Mrs. R. G. Dunlap; Boy Scout Council Vice-President Jim Word; and Caprock Girl Scout Council Board of Directors member, Mrs. J. M. Willson Jr.

Three staff members of the Caprock Girl Scout Council will accompany Mrs. Willson to the ceremony - Executive Director, Sharon Washburn; and Mrs. Willson, former area director. Mrs. Willson will present the rank to the five girls. Reception in the council room will be held following the ceremony. Mrs. Willson is a member of the council's board of directors.

### Dougherty HD Club Meets

Dougherty Home Demonstration Club met in the council room in Floydada February 16. Mrs. A. H. Kreis had the devotion and read a Bible scripture. The program was presented by Mrs. Ray Carthel during which time a tape was played and pictures shown of the Vietnamese children receiving gifts and candy sent them from people of this area. An introduction explaining the people, their customs and their area was also given. Mrs. C. A. Caffee gave a demonstration of points and warnings involving purchases and repairs. She named some examples of frauds incurring, especially to the older and younger people. Refreshments were served by Mrs. Carmel Eastham and Mrs. Carthel to ten members.

### New Arrivals

Mr. and Mrs. Gary Daniel of Floydada are parents of a daughter, Tisha Gay, who was born in University Hospital in Lubbock Feb. 22. The young lady weighed six pounds, five and one half ounces at birth. Daniel is employed by the Hale County Sand and Gravel. The mother is the former Patsy Pierce.

Grandparents are Mr. and Mrs. Cecil Daniel of Ralls and Mrs. Evelyn Pierce of Floydada, and J. C. Pierce of Lubbock.

Mr. and Mrs. Larry Agee of Lubbock are parents of a daughter, Misty Lee, who was born Feb. 20, weighing eight pounds and four ounces. The mother is the former Jodie Johnson. Agee is in the Air Force stationed at Reese Air Force Base.

Grandparents are Mr. and Mrs. M. W. Johnson of Floydada and Mr. and Mrs. Bill Agee of Henryetta, Okla.

### Student Council News

By Martina Cervantes  
The Floydada Junior High Student Council has been active this past month.

For Valentine, the Student Council members decorated Valentine sacks for all home-rooms and teachers. The sacks were put on the bulletin board in the hall. The Council also had "Single Valentines". Persons sending Valentines would make up a verse and girls from the Student Council would sing them to the persons to whom they were sent. The event was held Feb. 14 during seventh period.

The Council has also been selling photos left over from

Caprock Girl Scout Council will accompany Mrs. Willson to the ceremony - Executive Director, Sharon Washburn; and Mrs. Willson, former area director. Mrs. Willson will present the rank to the five girls. Reception in the council room will be held following the ceremony. Mrs. Willson is a member of the council's board of directors.

Orland Bowen went to the University Hospital to his home in the latter part of the week reported to be doing nicely.

Mrs. G. Gives On Africa

"African social groups at every together so that butter cup can be bettered. Broken Communion" and Spoon Glover in her pinch her cook yolks, a boiler u when add white dish and progress. Once they ed they will in African union. PLATE from Western made harmful. TAKE - Glover.

The setting of the Wesleyan home of Mrs. 12 b. Whip. G. L. Bryant, John L. F. Martin, John Shipley, M. L. Baker, P. A. Smith, Glover, Juanita Thompson, hostess, Mrs. Ass. The next meeting March 13 in the John McKinney.

Grandparents are Mr. and Mrs. Cecil Daniel of Ralls and Mrs. Evelyn Pierce of Floydada, and J. C. Pierce of Lubbock.

Mr. and Mrs. Larry Agee of Lubbock are parents of a daughter, Misty Lee, who was born Feb. 20, weighing eight pounds and four ounces. The mother is the former Jodie Johnson. Agee is in the Air Force stationed at Reese Air Force Base.

Grandparents are Mr. and Mrs. M. W. Johnson of Floydada and Mr. and Mrs. Bill Agee of Henryetta, Okla.

### Student Council News

By Martina Cervantes  
The Floydada Junior High Student Council has been active this past month.

For Valentine, the Student Council members decorated Valentine sacks for all home-rooms and teachers. The sacks were put on the bulletin board in the hall. The Council also had "Single Valentines". Persons sending Valentines would make up a verse and girls from the Student Council would sing them to the persons to whom they were sent. The event was held Feb. 14 during seventh period.

The Council has also been selling photos left over from

## CAPADA DRIVE-IN

FRIDAY, SATURDAY AND SUNDAY

From MGM, producers of David Lean's "Doctor Zhivago"



A story of love. Filmed by David Lean

## Ryan's Daughter

Starring ROBERT MITCHUM · TREVOR HOWARD · CHRISTOPHER JONES · JOHN MILLS · LEO MCKERN and SARAH MILES

Original Screenplay by ROBERT BOLT Produced by ANTHONY HAVELock-ALLAN

METROCOLOR and SUPER PANAVISION

**SALE**  
NOW IS THE TIME TO FILL YOUR SHURLINE SHOPPING LIST FOR LESS!  
FEBRUARY 28 THROUGH MARCH 11, 1972

- |   |  |
|---|--|
| <input type="checkbox"/> Shurline Apple Butter 28 oz. . . . . 3/\$1.00            | <input type="checkbox"/> Shurfresh Margarine Reg. Quarters 16 oz. . . . . 5/\$1.00 |
| <input type="checkbox"/> Shurline Apple Sauce 16 oz. . . . . 5/\$1.00             | <input type="checkbox"/> Shurline Milk Evaporated 14 1/2 oz. . . . . 5/\$ .89      |
| <input type="checkbox"/> Softin Bathroom Tissue Ass't'd Col. 10 Roll . . . \$ .79 | <input type="checkbox"/> Shurline Peaches YC Hivs.-Sliced 29 oz. . . . . 3/\$ .89  |
| <input type="checkbox"/> Shurfresh Biscuits Sw.-But. Milk 8 oz. . . . . 13/\$1.00 | <input type="checkbox"/> Shurline Peanut Butter Cr/Sm 12 oz. . . . . 2/\$ .89      |
| <input type="checkbox"/> Shurline Blackeyes Fr. Shl. 15 oz. . . . . 6/\$1.00      | <input type="checkbox"/> Shurline Pears Bartlett Halves 16 oz. . . . . 4/\$1.00    |
| <input type="checkbox"/> Shurline Cake Mix D/S/L/W/Y 18 1/2 oz. . . . . 3/\$ .89  | <input type="checkbox"/> Shurline Peas Early June 3 sv. 17 oz. . . . . 5/\$1.00    |
| <input type="checkbox"/> Shurline Catsup 14 oz. . . . . 4/\$1.00                  | <input type="checkbox"/> Shurline Pepper Black 4 oz. . . . . \$ .29                |
| <input type="checkbox"/> Shurline Corn Golden CS-WK 17 oz. . . . . 5/\$1.00       | <input type="checkbox"/> Shurline Pork & Beans 16 oz. . . . . 7/\$1.00             |
| <input type="checkbox"/> Shurline Cucumber Chips Fresh Pak 16 oz. . . . 3/\$1.00  | <input type="checkbox"/> Shurline Potatoes Whole Irish 16 oz. . . . . 6/\$1.00     |
| <input type="checkbox"/> MC#2 Detergent All Purpose 49 oz. . . . . \$ .49         | <input type="checkbox"/> Shurline Preserves Red Plum 16 oz. . . . . 2/\$ .79       |
| <input type="checkbox"/> Shurline Tuna Chunk Style 6 1/2 oz. . . . . 2/\$ .79     | <input type="checkbox"/> Shurline Preserves Strawberry 18 oz. . . . . 2/\$1.00     |
| <input type="checkbox"/> Roxey Dog Food Ration 15 oz. . . . . 11/\$1.00           | <input type="checkbox"/> Shurline Salad Dressing 32 oz. . . . . \$ .49             |
| <input type="checkbox"/> Shurline Waffle Syrup 32 oz. . . . . 3/\$ .79            | <input type="checkbox"/> Shurline Shortening All-Veg. 48 oz. . . . . \$ .69        |
| <input type="checkbox"/> Shurline Flour 5 lb. Paper Bag . . . . . \$ .39          | <input type="checkbox"/> Shurline Soup CN/CM/CC/CR 10 1/2 oz. . . . . 6/\$1.00     |
| <input type="checkbox"/> Shurline Frosting Mix L.C.W 13 1/2 oz. . . . . 3/\$ .89  | <input type="checkbox"/> Shurline Spinach 16 oz. . . . . 6/\$1.00                  |
| <input type="checkbox"/> Shurline Fruit Cocktail 16 oz. . . . . 4/\$1.00          | <input type="checkbox"/> Shurline Tomato Juice Fancy 46 oz. . . . . 3/\$1.00       |
| <input type="checkbox"/> Shurline Green Beans Cut 16 oz. . . . . 5/\$1.00         | <input type="checkbox"/> Shurline Tomato Sauce 8 oz. . . . . 10/\$1.00             |
| <input type="checkbox"/> Shurline Ham Fly. Ckd. Boneless 3 lb. . . . . \$2.49     | <input type="checkbox"/> Shurline Tomatoes Whole Peeled 16 oz. . . . . 5/\$1.00    |
|   | <input type="checkbox"/> Shurline Jam Grape 18 oz. . . . . 2/\$ .79                |

WE GIVE BUCCANEER STAMPS - DOUBLE EACH WEDNESDAY!

## HULL & MCBRIEN

CALL 983-3164 -- WE DELIVER



### Rotarians Enjoy Musical Sweet-heart Banquet

Floydada Rotarians, their Rotary Anns and guests enjoyed a musical sweetheart banquet in Duncan Cafeteria Tuesday night with over 80 in attendance.

Preceding the musical program, Rotary president Wendell Tooley presented perfect attendance awards to the following Rotarians: Sam Fowler, 14 years; Jimmy Willson, 26, Doyle Walls 5, A. E. Baker 7, Bill Hardin 20, Tom Daniel 11 and Clement McDonald 7.

Not present to receive their awards were J. M. Willson Sr., 25 years and Alton Higginbotham five years.

The musical program featured a stage band composed of Ihez Ferrell, Lubbock; Dalton Wood, Slaton; Dr. Clovis Clough, Dr. Curtis Baldwin, Dr. Gayle Sigler, Dr. Wayne Alford, Arch Keys, all of Plainview, and Jack Sutton of Silverton.

Invocation was given by C. B.

Melton, sing song led by Floyd Bradley, accompanied by Rotary Sweetheart Lyn Fowler on the piano.

Rotarian Charles Tyer introduced the guests.

Decorating committee included Hilda McDonald, Alice Henry, Betty Miller, Flora McNeill, Aline Bradley and Mary Tom Tooley.

mon juice for 1/4 teaspoon cream of tartar. Contrary to popular belief, salt actually lowers the stability of egg whites."

"The amount of beating before and after adding the sugar is the key factor in creating a successful meringue. Beating whites only to the "soft peak" stage before AND after adding sugar can help prevent such common meringue problems as beading, weeping, slipping and dryness.

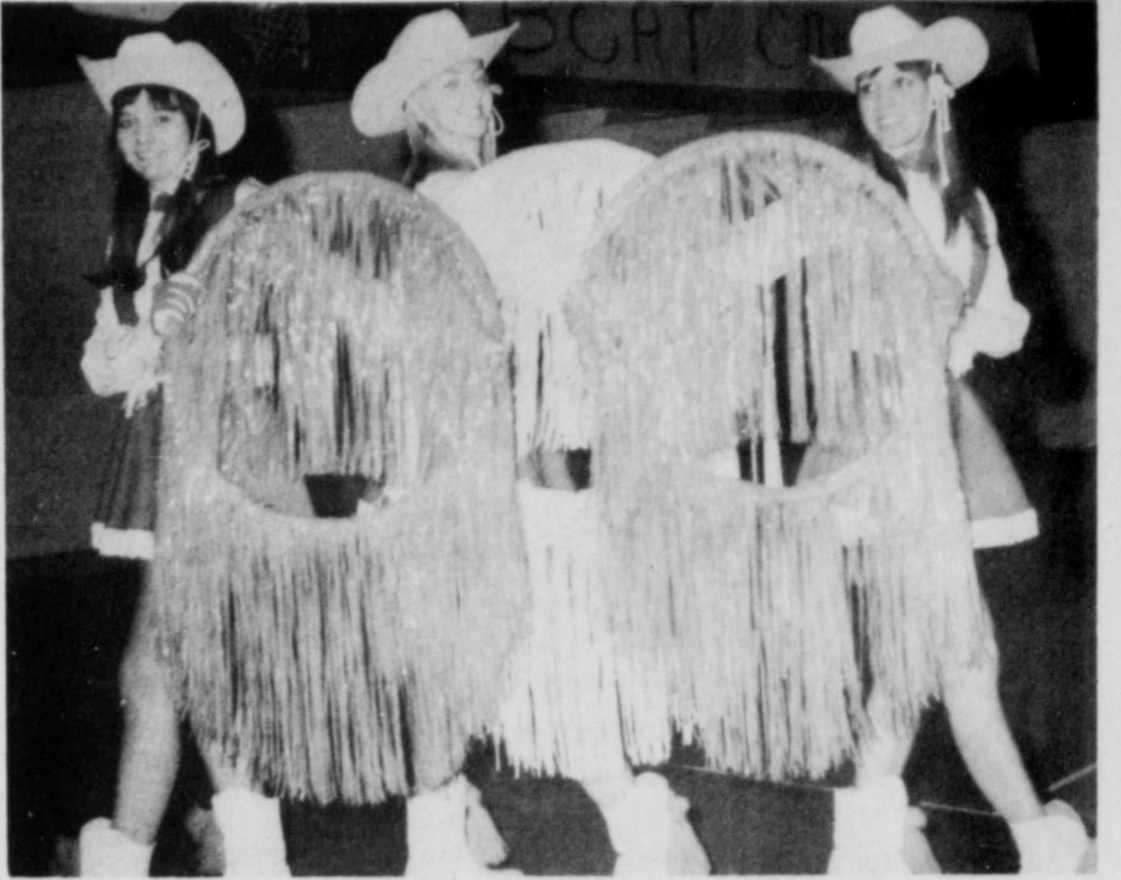
The key here is "soft peak". The term "stiff but dry", commonly used in many recipes is one stage beyond "soft peak" and will not give you a tender perfect meringue. Practice makes perfect. It won't take long to know the "just right" stages of adding sugar and beating. Just as pie techniques have changed, so have pie plates. They are sized more accurately and are slightly larger. This means that a three egg white meringue will not be as high because it is spread over a large area."

#### WASHABLE FABRICS AND NOTIONS ARE NEEDED

Home sewing is a creative form of self-expression as well as an economic practicality for more and more women. The frequently-used home sewing machine represents substantial savings, even when working with expensive fabrics.

Not only are the machines more versatile and easier to use than ever, but fabrics, patterns, trimmings and notions are available in vast variety. The great developments in fabrics allows the sewer to whip up everything from lingerie to rainwear. The range of fabrics includes stretch materials, knits, bonded, fake furs, suede, vinyl and polyurethane. Manufacturers keep pace with the home-sewer's desires for style, color and individuality.

A big bonus is washability and it's easy to incorporate. The homesever, faced with almost unlimited choice, should exercise care and caution and be well-informed before making selections. Look for compatible component parts. This means choosing trim, pocketing, interfacing and lining fabrics, ribbons, binding tape, thread, zippers and other notions with an eye to how each will work with the basic fabric being used. Why sew a permanent press garment if the trim or lining has to be ironed? What is to be done if a zipper shrinks more than the fabric and results in puckering and



APPEAR AT TOURNAMENT: Kathy Chappell and Denise Cates of Floydada and Mary Lee Cray of Petersburg, members of the South Plains College Tex-Ann Drill Team will be appearing with the group during halftime activities when SPC Texans play in the Regional Junior College Basketball Tournament March 1 at Texas Tech University Coliseum. Kathy is the daughter of Mr. and Mrs. Ozell Chappell, Denise is the daughter of Mr. and Mrs. Johnnie Cates. (SPC Photo)



**BARRY BARKER** . . . first woman president of the Floyd County Association. The Lockney resident is well qualified for the office worked with the Fair Board several years. Looking over the Catalogue with Mrs. Barker are Kenneth Holt, left, vice-president; King, secretary; and Eddie Foster, treasurer. Incoming directors for three year terms are Tom Johnson and Omar Bursleson both Lockney; and Benny Reagan of Silverton. Two directors from Floyd will be named at a later date. (Lockney Beacon Photo)

**Peggy's Meddlin's**  
FLOYD COUNTY  
PEGGY MEDLEY

Probably you've already known that those "green" clads creatures have invaded your neighborhood. They're more than just a nuisance, they're filling your yard and your Girl Scout cookies. My ability I'm sure they succeeded in selling you cookies than you and you can really eat so here are recipes to use up the

**SOUFFLE**  
butter flavored shorted, 2 cups scalded milk, 12 (broken), 4 egg yolks, 1/2 cup sugar, 1/2 cup cocoa mix, 1/2 cup salt, 1/2 teaspoon vanilla, 4 egg whites, 1/2 cup pinch of salt. Pour over cookies, add well beaten egg yolks, and cook in a boiler until thickened. Then add vanilla and stiffen whites and salt. Put in a greased dish in pan of warm water. Bake for 35 minutes at 350 degrees. May be served with chocolate sauce.

**DATE CREAM ICE CAKE** - 1 cup heavy cream, 1/4 cup sugar, 1/2 cup instant sweet cocoa mix, 1/2 cup salt, 1/2 teaspoon vanilla, 4 egg whites. Whip cream mixed with cocoa mix, salt, and vanilla. Spread some of mixture on each cookie and roll together in a roll. Put in a rectangular dish. Bake outside with remaining cream. Store in refrigerator 8 hours or over. Then cut in diagonal slices 1/2 inch thick. For a variation, when ready to top with sweetened condensed cream and add sliced cherries.

**CHOCOLATE MINT COOKIES**, 3 cups chocolate mint cookies, 3/4 cups dash of salt, 3/4 cup chopped nut meats, 1 cup sweetened whipped cream. Chill cookies in refrigerator a few minutes if they are stored in warm place. Break, cut or roll between waxed paper to 1/4 inch. Beat egg whites until stiff peaks. Gradually beat in cream. Gradually beat in nut meats. Fold in cream and chopped nut meats. Bake in buttered 9-inch square pan. Bake in slow oven at 325 degrees F, 35 minutes. Cool thoroughly. Spread with whipped cream over top. Bake 2 to 4 hours and garnish with curls of shaved un-dusted chocolate.

**PALACE**  
Fri. & Sat.  
John Wayne  
Rock Hudson  
"The Undefeated"  
PLUS  
THE PLAGUE OF THE ZOMBIES  
ANDRE MORELL, DIANE CLARE, JOHN CARSON  
Sunday Only

Keep your eyes on what she cannot see  
**MIA FARROW**  
A MARTIN RANSOFF PRODUCTION  
SEE NO EVIL  
THIS FILM CONTAINS MATERIAL GENERALLY TOO INTENSE FOR PRE-TEENAGE CHILDREN

ULAR housing is slated for the coming decade. The impact of manufacturing on the building industry is so great that by 1980 to buy a house will be two-thirds of the

housing units built in this country will be factory built. That production will also include mobile homes as well as modular and panelized housing. The selling and moving of mobile homes has become a thriving business. Understand. Neal Bertrand and Clyde Hodges have gone from farming to moving new mobile homes by truck.

THE consumer, the stockholder, the worker and the average guy on the street as well as business and industry in general are all about to fall victim to an effort by leaders of organized labor to isolate the United States from the rest of the world. If the Foreign Trade and Investment Act of 1971 (commonly known as the Hartke-Burke bill) is passed, this bill, it is said, could cost the US up to 6000,000 domestic jobs, billions of dollars in remitted earnings from abroad, up to 30 percent of its total exports, and billions of dollars in increased prices. Labor's concern for United States jobs is shared by all of us, but the answer to the problem is not the reactionary approach suggested in the Hartke-Burke bill. The answer lies in making President Nixon's economic policy work.

If anyone needs a good lawyer, I would recommend Brian Vickers even though he doesn't have a lawyer's degree. He was superb as the prosecuting attorney in the drama play, "Night of January 18th". All of the youngsters in the cast did equally as well and I'm sure they have been commended by their drama teacher, Sallye Harris. Brian was voted best actor; Leigh Weathersbee, best actress; Nancy Davis, best supporting actress and Enrico Pizzini, best supporting actor.

TODAY'S look is natural, so says a former Floydada girl, Becky Dunlap, now clothing specialist for the Texas Agricultural Extension Service at

College Station. Shapes and patterns conform to those of nature, whether through the use of accessories, prints or appliques. Miss Dunlap says that fabrics are returning to the honest-to-goodness homespun look. Fresh gingham, seersuckers, denims and piques are gaining dominance and clear, bright and natural colors such as sand, grass green, sun yellow and poppy red dominate the spring fashion scene.

MENTIONING Becky makes me think of something. R. G., what on earth did you do to Mrs. Christensen to make her fall from the jury box at the play Thursday night?

POLITICS are really getting dirty. A guy running for a county office wouldn't help me on with my coat the other night just because I don't live in his precinct.

FLOYD DATA  
Mrs. Alvie Jackson continues treatment in Lubbock Methodist Hospital. Her condition remains serious, according to friends.

TEXAS INDEPENDENCE DAY, MARCH 2

### NEWS FOR HOMEMAKERS

by Billie Vahlenkamp  
Floyd County H.D. Agent

Recently I received some questions on making Meringue. These questions include how to prevent beading, weeping, slipping and dryness.

The following information will be of interest and help to those of you with these problems:  
For A Tall Tender Meringue: "The white and beaters must be free of any grease or oil. The tiniest speck of fatty substance causes great volume loss."

"Beaten egg whites reach maximum volume when whites are at room temperature." "The early addition of cream of tartar stabilizes the egg whites. The cell walls become stronger, permitting them to hold more air without breakdown. If cream of tartar is old or not available, substitute 1 teaspoon of fresh squeezed le-

Surround yourself with  
**ELECTRIC HOME CONDITIONING**  
designed for your personal comfort - all year long!

The versatility of electric home conditioning equipment makes it possible to fit heating, cooling, air cleaning and humidification to the personal requirements of your family.

Electric heating equipment, for example, is selected after competent engineering studies of your home requirements. Taken into consideration are cost of equipment, installation, operating cost and warmth factors. A variety of equipment is available including baseboard, ceiling cable, furnace, wall heaters, duct heaters.

On the cooling side, electric equipment comes in numerous sizes so that you do not unnecessarily pay for too large an installation nor are you forced to use, in order to save equipment costs, a too small unit that won't do the cooling job your family needs. Automatic humidification is easily available as is automatic cleaning of the air.

Whatever it takes for your personal comfort - electric has!

**SALE**  
NOW IS THE TIME TO FILL YOUR BASE CUPBOARDS... FOR LESS!  
FEBRUARY 28 THROUGH MARCH 11, 1972

<ul style="list-style-type: none"> <li>Shurfine Apple Butter 28 oz. . . . . 3.41.00</li> <li>Shurfine Apple Sauce 16 oz. . . . . 5.41.00</li> <li>Softlin Bathroom Tissue Ass't'd Col. 10 Roll. . . . . \$ .79</li> <li>Shurfine Biscuits Sw.-But. Milk 8 oz. . . . . 13.41.00</li> <li>Shurfine Blackeyes Fr. Shl. 15 oz. . . . . 6.41.00</li> <li>Shurfine Cake Mix D.S./L.W/Y 18oz. . . . . 3.4.89</li> <li>Shurfine Catsup 14 oz. . . . . 4.41.00</li> <li>Shurfine Corn Golden CS-WK 17 oz. . . . . 5.41.00</li> <li>Shurfine Cucumber Chips Fresh Pak 16 oz. . . . . 3.41.00</li> <li>MC-2 Detergent All Purpose 48 oz. . . . . \$ .49</li> <li>Softlin Diapers Overnight Disp. 12's . . . . . \$ .59</li> <li>Roxey Dog Food Ration 15 oz. . . . . 11.41.00</li> <li>Shurfine Drinks Grp./Ort/Frt 46 oz. . . . . 3.4.79</li> <li>Shurfine Fish Sticks Frozen Pre-Ckd. 8 oz. . . . . 3.41.00</li> <li>Shurfine Flour 5 lb. Paper Bag . . . . . \$ .39</li> <li>Shurfine Frosting Mix L.C.W 13 1/2 oz. . . . . 3.4.89</li> <li>Shurfine Fruit Cocktail 16 oz. . . . . 4.41.00</li> <li>Shurfine Green Beans Cut 16 oz. . . . . 5.41.00</li> <li>Shurfine Ham Fiy. Chd. Boneless 3 lb. . . . . \$2.49</li> <li>Shurfine Jam Grape 18 oz. . . . . 2.4.79</li> <li>Shurfresh Luncheon Loaf P&amp;P/D/SP/6 oz. . . . . 4.41.00</li> </ul>	<ul style="list-style-type: none"> <li>Shurfresh Margarine Reg. Quarters 16 oz. . . . . 5.41.00</li> <li>Shurfine Milk Evaporated 14 1/2 oz. . . . . 5.4.89</li> <li>Shurfine Peaches YC Hlvs.-Sliced 29 oz. . . . . 3.4.89</li> <li>Shurfine Peanut Butter Cr/Sm 12 oz. . . . . 2.4.89</li> <li>Shurfine Peas Bartlett Halves 16 oz. . . . . 4.41.00</li> <li>Shurfine Peas Early June 3 sv. 17 oz. . . . . 5.41.00</li> <li>Shurfine Pepper Black 4 oz. . . . . \$ .29</li> <li>Shurfine Pork Golden CS-WK 17 oz. . . . . 5.41.00</li> <li>Shurfine Pork &amp; Beans 16 oz. . . . . 6.41.00</li> <li>Shurfine Potatoes Whole Irish 16 oz. . . . . 6.41.00</li> <li>Shurfine Preserves Red Plum 18 oz. . . . . 2.4.79</li> <li>Shurfine Preserves Strawberry 18 oz. . . . . 2.41.00</li> <li>Shurfine Salad Dressing 32 oz. . . . . \$ .49</li> <li>Shurfine Shortening All-Veg. 46 oz. . . . . \$ .69</li> <li>Shurfine Soup CN/CM/CC/CR 10 1/2 oz. . . . . 6.41.00</li> <li>Shurfine Spinach 16 oz. . . . . 6.41.00</li> <li>Shurfine Tomato Juice Fancy 46 oz. . . . . 3.41.00</li> <li>Shurfine Tomato Sauce 8 oz. . . . . 10.41.00</li> <li>Shurfine Tomatoes Whole Peeled 16 oz. . . . . 5.41.00</li> <li>Shurfine Tuna Chunk Style 6 1/2 oz. . . . . 2.4.75</li> <li>Shurfine Waffle Syrup 32 oz. . . . . \$ .49</li> </ul>
--	---

GRADE A FRYERS LB. 29c  
VINE RIPENED TOMATOES LB. 29c  
JOHNNY'S HOT OR MILD SAUSAGE 2 LB. \$1.29  
LETTUCE HEAD 25c  
GLOVER'S HALF OR WHOLE HAMS LB. 59c  
RUSSETT POTATOES 10 LB. BAG 49c

SPECIALS GOOD THROUGH SATURDAY  
DOUBLE STAMPS ON WEDNESDAYS....

**shurfresh MILK**

YOUR HOME OWNED AND HOME OPERATED GROCERY

**L & J FOOD STORE**  
DOUBLE BUCCANEER STAMPS ON WEDNESDAY  
116 NORTH 2ND PHONE 983-3105  
WE DELIVER

Call us for free electric home conditioning analysis - personally yours!



# NEW! Playtex Double Diamonds WAIST CONTROLLER Girdle



Keeps you under control... gives you a smoother waistline... Exclusive, self-adjusting "Comfort Band" controls waistline bulge... without bones, stays, or zippers—yet it's easy on and off.

**MAXIMUM CONTROL** — Made of cool, lightweight Lycra with double thigh, hip, and seat panels. Famous Double Diamonds design. Waist Controller Panty—now with extra panels for even more tummy control.

Available in: two figure flattering styles...  
Waist Controller Panty \$16.00\*  
Waist Controller Girdle \$14.00\*  
S, M, L, XL, XXL  
(\*XL, \*XXL \$1.00 more)

**HALE'S  
DEPARTMENT  
STORE**

Body and reinforcement panels: Nylon Spandex. Crotch: 100% Nylon. Elastic: Rayon, Cotton, Rubber, Nylon. Exclusive or other elastic.  
© 1971 BY INTERNATIONAL PLAYTEX CORPORATION. PRINTED IN U.S.A.

## OBITUARIES

### Mrs. L.B. Wiles

Services for Mrs. Lawrence Burton (Marion) Wiles, 51, a resident of Floydada since 1961 were conducted Tuesday afternoon in the First Baptist Church in Floydada. The body was flown to Memphis, Tenn., where rites were held there yesterday in the Memphis Funeral Home Chapel. Interment was in Memory Hills Garden in Memphis, Tenn.

Dr. Floyd C. Bradley conducted local rites with Moore-Rose Funeral Home in charge of arrangements.

Mrs. Wiles, the former Marion Hamilton, died shortly after midnight Feb. 28, in Nichols Hospital in Plainview. She underwent surgery in August and became seriously ill several weeks ago. She was admitted to the hospital Feb. 9.

The deceased was born in Vardaman, Miss., Oct. 17, 1920. She and L.B. Wiles were married July 19, 1941. The family resided in Memphis, Tenn., until moving to Floydada in Nov., 1961. Wiles is employed by United Transport.

While residing in Memphis Mrs. Wiles was a member of Highland Heights Baptist Church, a member of WMU, taught an adult Sunday School class, was a Training Union teacher for young people and in charge of the GAs.

In Floydada she was a member of the First Baptist Church, Past Noble Grand of Floydada Rebekah Lodge, was a member of the Floydada Chamber of Commerce.

Mrs. Wiles was employed at one time for Park Florist,



Mrs. L.B. Wiles

Survivors include her husband, two daughters, Mrs. Ralph E. (Twyla) Gee Jr., of Lubbock and Mrs. Kenneth E. (Janet) Green of Ft. Hood; two granddaughters and one grandson; also three sisters, Mrs. P. R. McKamey of Six Mile, S. C., Mrs. Jack Woodard, Greenville, Tenn., and Mrs. Howard E. Johnson of Atlanta, Ga.; two brothers, Spencer Hamilton of Memphis, Tenn., and CWO2 Howard T. Hamilton of Temple.

Palbearers in Floydada were Norman Niederbrach, Maurice Cunningham, Dr. Tommy McIntosh, Elton Goen, Joe Jones and Ray Thedford.

### Mrs. Walls

Funeral rites for Mrs. Thurman Walls, 43, of Houston, the former Glenna Fay Robertson, were held this week in that city. Mrs. Walls died Monday morning about 4 o'clock in a Houston

hospital of a malignancy.

The deceased was the daughter of Mr. and Mrs. Joe R. Robertson of Spring Branch, Texas, former residents of Floyd County. She grew up in this area and is a graduate of Floydada High School. Mrs. Walls is the niece of Fred Robertson and Mrs. B. C. Hinsley of Floydada.

Other survivors include her husband, one son and two daughters, her parents, six brothers, James Robertson of San Antonio, Melvin of College Station, Bob, George Earl and Jerry Mack of Houston and Kenneth of Kansas; and three sisters, Patsy Dunn of Lubbock, Patricia McDonald of New Caney and Karen Pratt of Houston.

### Howe H. Hines

Funeral rites for Howe Hines, Floyd County stock farmer, were conducted yesterday afternoon in the First Baptist Church. Hines, ill the past six weeks, succumbed in Caprock Hospital shortly after midnight February 28.

A native of White Flat, Hines was born April 20, 1910. He and Elsie Mable Thomas were married March 27, 1940 in Matador. The family moved from there to Floyd County in 1949.

Hines was a member of the First Baptist Church, was a Mason and a member of the Floydada Eastern Star.

Survivors include his wife, one son, Hal Dean Hines of Dallas; two daughters, Mrs. Jeanie Carpenter of Roaring Springs and Mrs. Alita Beth

Hawkins of Floydada; five grandchildren and four brothers, Clay Hines of Eagle Nest, New Mexico; E. J. of Carlsbad, Coe of Clayton and Ott of Matador.

Dr. Floyd C. Bradley officiated for the services. Interment was in Floyd County Memorial Park under the direction of Moore-Rose Funeral Home. Pallbearers were W. E. Burleson, Wayne Russell, Bob Vickers, R. D. Holly, Elgie Groves, Furman Vinson, Jimmy Ross and Travis Jones.

### R.L. Powell

Funeral rites for R. L. Powell, 81 year old former resident of Floyd County, were conducted Friday in St. John's Methodist Church in Plainview. Powell died Wednesday morning of last week in Central Plains Hospital. Burial was in Plainview Cemetery.

A native of Mississippi, Powell moved to Floyd County in 1928 and resided in the Baker and Campbell communities. He had resided in Plainview for the past eight years after retiring from farming. He was a member of the St. John's Methodist Church, the Oddfellows and Rebekah Lodge.

Survivors include his wife, Carrie; two sons, Avon Powell of Pomona, Calif., and Garth Powell of Nogales, Ariz.; three sisters, including Mrs. Juanita Holland of Lockney; three brothers, five grandchildren and eight great grandchildren.

### TOO LATE TO CLASSIFY

FOR SALE — Modern two-bedroom brick home near park in Kress. Two baths, attached garage, central heat and air conditioning. Call 983-3982.

### Future Leaders Of Business State Meeting

More than 2,000 leaders and faculty members met in San Antonio Friday, March 3, for the 1972 Annual State Leadership Conference of the Education Clubs of the State, generally called DECA. Delegates from Floyd County School DECA Chapter, Johnny Soliz, Mike and Sherry Harris, representing some 17,000 members in 525 high schools, delegates will be nationally-known speakers, marketing, education, and management during two days of shop and seminars which end on Saturday.

A special feature of the conference will be the election of State winners in various categories, public advertising, display, demonstration, job and student of the first-place winners competition are to compete, and state winners will be announced Friday night at the conclusion of the session. Johnny Soliz, competing in Outstanding Vice Station Training and Mike Lightfoot competing in Job Interview. Harris is Area Vice President. Recipients of State DECA scholarships will be announced at the evening's Awards Dinner. These awards recognize outstanding students in the field of advanced marketing, management, and business education. DECA operates a national's public school training program to attract young people into marketing and business.

## The Re'Generation

# HERE TONIGHT!

7:30 p.m.

First United Methodist Church

NO ADMISSION

Young people, adults, everyone is invited to come hear The Re'Generation an exciting and expressive new musical group appearing in concert.

Ten super-talented collegians, selected from over 1,000 auditions nationwide, have blended their abilities into an effective and provocative communicating force.

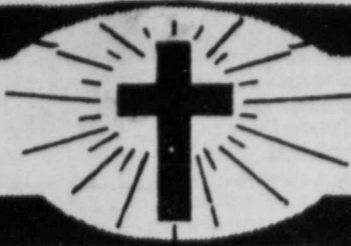
The group's musical style is smooth and soft, and covers a broad range of selections from the traditional to the contemporary. Blending solos and the lush eight part choral sound with the full orchestration recorded in London. The Re'Generation is the ultimate in easy listening.



the Re'generation



# Come to Church Sunday



LLOYD HAMILTON  
BIBLE BAPTIST CHURCH

**ST. MARY MAGDALEN CATHOLIC CHURCH**  
REV. ROLAND BUXKEMPER  
SUNDAY: 11:00 a.m. Service of the Word of God and Holy Communion  
The Service of the Word of God and Holy Communion is also celebrated on Monday and Thursday at 9:00 p.m.

MONDAY: Christian Education Classes:  
Grades 1-8 - 4:00 to 5:15 p.m.  
Adults - Monday night after Mass

**SANDHILL BAPTIST CHURCH**  
James Rawls, Pastor  
Sunday Night Service . . . . . 7 p.m.  
No Training Union

**WEST SIDE CHURCH OF CHRIST**  
Sunday Morning Worship . . . . . 10:30  
Evening Services . . . . . 7:00  
Wednesday Evening . . . . . 7:00

**SANDHILL BAPTIST CHURCH**  
CRAIG WILCOX, Pastor  
Sunday Services  
Sunday School . . . . . 10:00  
Morning Worship . . . . . 11:00  
Training Union . . . . . 8:30  
Evening Worship . . . . . 7:30  
Wednesday Evening Services . . . . . 7:30

**FIRST UNITED METHODIST CHURCH**

C.B. MELTON, Pastor  
Sunday Services  
Sunday School . . . . . 9:45  
Worship Service . . . . . 11:00  
Youth Fellowship . . . . . 6:00  
Evening Worship . . . . . 7:00

**FIRST CHRISTIAN CHURCH**

WAYNE GRIMES, Pastor  
Sunday Services  
Sunday School . . . . . 9:45  
Worship Service . . . . . 11:00  
Youth Meeting . . . . . 6:00  
Evening Worship . . . . . 6:00

**FIRST BAPTIST CHURCH**

F.C. BRADLEY, Pastor  
Sunday Services  
Sunday School . . . . . 9:45  
Morning Worship . . . . . 11:00  
Church Training . . . . . 8:00  
Evening Worship . . . . . 7:00

**CALVARY BAPTIST CHURCH**

HOLLE PAYNE, Pastor  
Sunday Services  
Sunday School . . . . . 9:45  
Morning Worship . . . . . 11:00  
Training Union . . . . . 6:00  
Evening Worship . . . . . 7:00

**BIBLE BAPTIST CHURCH**

LLOYD HAMILTON, Pastor  
Sunday School . . . . . 9:50  
Morning Worship . . . . . 10:45  
Sunday Evening Prayer Meeting . . . . . 6:00  
Sunday Evening Services . . . . . 6:30  
Wednesday Evening Services . . . . . 8:00

**NEW HOPE PRIMITIVE BAPTIST CHURCH**

BEATHEL JEFFREY, Pastor  
Sunday Services  
2nd Sunday . . . . . 11:00  
Morning Worship . . . . . 10:45  
2nd Saturday Afternoon . . . . . 2:00  
2nd Saturday . . . . . 7:00  
Evening Worship . . . . . 7:00

**CEDAR HILL ASSEMBLY OF GOD CHURCH**

Cedar Hill Assembly of God Church  
Sunday Services  
Sunday School . . . . . 10:00  
Morning Worship . . . . . 11:00  
Evangelistic Service . . . . . 6:30

**ALDERSGATE SPANISH UNITED METHODIST CHURCH**

NOW MEETING AT FIRST UNITED METHODIST CHURCH  
Thursday Evening Bible Study . . . . . 7:30

**FULL GOSPEL CHURCH OF GOD OF PROPHECY**  
200 Marivena  
W.A. HOWARD, Pastor  
SUNDAY MORNING  
Sunday School . . . . . 10 a.m.  
Morning Worship . . . . . 11 a.m.  
SUNDAY NIGHT  
Evening Service . . . . . 6:30 p.m.  
TUESDAY NIGHT . . . . . 7:30 p.m.

**THE CHURCH OF THE NAZARENE**

HERBERT ELS, Pastor  
Sunday Services  
Sunday School . . . . . 9:45  
Morning Worship . . . . . 10:45  
N.Y.P.S. . . . . 5:45  
Evening Worship . . . . . 6:30  
Prayer Meeting, Wed. . . . . 7:30

**CUMBERLAND PRESBYTERIAN CHURCH**

Sunday School . . . . . 9:45  
Bible Study . . . . . 6:30

**FULL GOSPEL CHURCH**

202 Marivena  
Sunday Services  
Sunday School . . . . . 10:00  
Morning Worship . . . . . 11:00  
Evening Worship . . . . . 7:30  
Prayer Meeting, Thursday . . . . . 7:30

**DOUGHERTY BAPTIST CHURCH**

JIM DEWESE, Pastor  
Sunday Services . . . . . 10:00  
Morning Worship . . . . . 11:00  
Evening Worship . . . . . 7:00

**CITY PARK CHURCH OF CHRIST**

Sunday Services  
Bible Study . . . . . 9:30  
Morning Worship . . . . . 10:20

Evening Worship . . . . . 6:00  
Bible Study Wednesday . . . . . 8:00  
Ladies Bible Study, Wed. . . . . 9:30 a.m.  
STEVE BRACKEN, Minister

**WALL STREET CHURCH OF CHRIST**

NEWELL BURK, Elder  
Sunday Services  
Communion and Morning Worship . . . . . 10:30  
Evening Worship . . . . . 6:00

**SOUTH PLAINS BAPTIST CHURCH**

REV. TROY CARTMILL, Pastor  
Sunday Services  
Sunday School . . . . . 10:00  
Morning Worship . . . . . 11:00  
Training Union . . . . . 6:00  
Evening Worship . . . . . 7:00

**CARRS CHAPEL**

Services Every Sunday  
Rev. Lee Crouch of Petersburg, Pastor  
Morning Worship . . . . . 9:30 a.m.  
Sunday School . . . . . 10:30 a.m.  
No Evening Services

**VICTORY BAPTIST CHURCH**

BILL CLAMPITT, Pastor  
Sunday Services  
Sunday School . . . . . 10:00  
Morning Worship Service . . . . . 11:00  
Sunday Evening Worship . . . . . 7:00  
Mid - Week Worship - Wed. Eve. . . . . 7:30

**NEW SALEM PRIMITIVE BAPTIST CHURCH**

JOE M. JACKSON  
Sunday Services  
Congregational Singing . . . . . 10:00  
Morning Worship . . . . . 11:00  
Regular Conference Meeting each  
Second Saturday Night . . . . . 8:00

**SPANISH BAPTIST MISSION**

Sunday Services  
Sunday School . . . . . 9:45  
Morning Worship . . . . . 11:00  
Training Union . . . . . 6:00  
Evening Worship . . . . . 7:00

**FIRST ASSEMBLY OF GOD CHURCH**

W.L. HOPKINS, Pastor  
Sunday School . . . . . 9:45 a.m.  
Morning Worship . . . . . 10:45 a.m.  
Youth Service . . . . . 5:00 p.m.  
Evangelistic Service . . . . . 5:00 p.m.  
Mid-Week Wednesday . . . . . 6:00 p.m.

**CEDAR HILL BAPTIST CHURCH**

Sunday Services  
Sunday School . . . . . 10:00  
Morning Worship . . . . . 11:00  
Evening Worship . . . . . 7:30

## Why Should You Fail As A Parent ?

"Oh dear God, why did this have to happen?"  
A distraught mother stood agonizing beside the ambulance while the attendant placed the lifeless body of her little boy on a stretcher. The lad had been struck by a passing motorist. It wasn't the driver's fault. The lad had dashed off the curb directly in the path of the on-coming car. There wasn't time to stop. The weeping mother sought to fix the blame.  
"I TOLD HIM A HUNDRED TIMES NOT TO GO INTO THE STREET!"  
HERE WAS THE PROBLEM, TOLD INSTEAD OF TRAINED.  
She merely TOLD him. Telling is not enough. She should have TRAINED him to stay off the street. Parents do not get off the hook by telling their kids what to do. They must train them as God asks. Training is the rubbing of COUNSEL into one's spirit.  
You can tell your child thousands of times, but there is no guarantee he will do as you say, BUT IF YOU TRAIN HIM SO THAT IT BECOMES A HABIT, he can no more depart from it then he can run from himself.  
(PROVERBS - 22-6)  
"Train up a child in the way HE SHOULD GO and h will not depart from it."  
"PLEASE DADDY, LET'S GO!"  
A little girl with shining eyes, Her little face aglow,  
Said: "Daddy, it is almost time for Sunday School, Let's go!  
They teach us there of Jesus' love, of how He died for all,  
Those who on Him will call."  
"Oh no!" said Daddy, "not today, I've worked hard all week; I'm going to the creek,  
For there I can relax and rest, And fishing's fine they say.  
So run along; don't bother me, We'll go to church someday."  
Months and years have passed away but Daddy hears that plea no more - "Let's go to Sunday School."  
Those childish days are o'er, And now that Daddy's growing old,  
When life is almost through, he finds some time to go to church -  
But what does Daughter do? She says: "O Daddy, not today - I stayed up almost all night;  
I've just got to get some sleep, Besides I look a fright."  
Then Daddy lifts a trembling hand to brush away the tears, As again he hears the pleading voice distinctly through the years.  
He sees a small girl's shining face upturned, with eyes aglow,  
As she says, "It's time for Sunday School - please, Daddy, won't you go?"

- Copied

This Inspirational Message Is Sponsored By The Following Civic-Minded Firms:

Production Credit Association  
Federal Land Bank Of Floydada  
Hale & Hale Insurance  
Edmiston Plumbing & Heating  
Russells Shop & Equipment  
Floydada Real Estate & Insurance

McDonald Implements  
Gilbreath Humble Products  
Consumer Fuel Association  
Parker Furniture  
Wylie Butane  
City Auto Inc.

Thompson Pharmacy  
Martin & Company  
Holbert's Conoco  
Reed Ford Sales  
Farmers Co-op Gins  
Goen & Goen Insurance

Collins Implement Co.  
Builders Mart  
Quality Body Shop  
Solomon Jewelry  
Hesperian Office Supply  
Ponderosa Meat Co.





**MITCHUM MARRIES** - In a role that is a far cry from his hard-bitten image, Robert Mitchum portrays the shy, self-effacing village schoolmaster who marries the passionate young Irish girl of the title in David Lean's new film "Ryan's Daughter." Showing Friday, Saturday and Sunday at the Capada Drive In Theatre.

### HOSPITAL NEWS

Victor Herrera, admitted 2-20, dismissed 2-24.  
Maude Day, admitted 2-13, dismissed 2-28.  
Garner Weems, admitted 2-21, dismissed 2-23.  
Howe Hines, admitted 2-21, expired 2-29.  
Almeta Watts, admitted 2-21, dismissed 2-23.  
Elmer Lipham, admitted 2-21, dismissed 2-23.  
Claude Ring, admitted 2-22, transferred 2-25.  
Lee Ring, admitted 2-22, dismissed 2-25.  
Diann Washington, admitted 2-24, dismissed 2-25.  
Edwin Nutt, admitted 2-25, dismissed 2-28.  
Tommy Cochran, admitted 2-24, dismissed 2-25.  
Lola Dawson, admitted 2-24, dismissed 2-25.  
Vada Pittman, admitted 2-29, continues treatment.  
Baby Boy Pittman, born 2-29, continues treatment.  
Arnoldo Trevina, admitted 2-25, continues treatment.  
Darlene Vick, admitted 2-27, continues treatment.  
Ruby Snider, admitted 2-29, continues treatment.  
Eula VanLeer, admitted 2-29, continues treatment.

**NOW'S**

**THE TIME . . . .**  
to get your lawn mower ready to go. We repair small engines and lawn mowers, sharpen reel or rotary blades.  
**SPEARS SMALL ENGINE SERVICE**  
105 N. Main Ph. 983-2396  
Floydada

Brint Henson, admitted 2-29, continues treatment.  
Polly Cardinal, admitted 2-29, continues treatment.  
Kelly Helms, admitted 2-29, continues treatment.  
Sula Fawver, admitted 2-25, continues treatment.  
Horace Carr, admitted 2-28, continues treatment.  
Marjorie Womack, admitted 2-25, continues treatment.  
Mary Henderson, admitted 2-23, continues treatment.  
Rhonda Pierce, admitted 2-25, continues treatment.  
Gladys Simpson, admitted 2-25, continues treatment.  
Verba Jackson, admitted 3-1, continues treatment.

### Willsons To Attend LCC Lectures

Mr. and Mrs. Jim Willson will attend the Willson lectures in Lubbock Christian College next week. Minister of the City Park Church of Christ Steve Bracken will also attend. This lecture series is the 31st for the Willsons. The Willson lectures at West Texas State University in Canyon also begin on Monday, featuring Dr. Erwin D. Canham, editor of The Christian Science Monitor.

**AT THE TASTEE FREEZ-** every Thursday, from 5 until 10 p.m. Three Hamburgers, loaded, \$1.25. Owned and operated by Neil Joyce, Vicki and Terry Smith.

## SOUTH PLAINS NEWS by Mrs. Murray Julian

By Mrs. Melvin Myers  
**SOUTH PLAINS, Feb. 28** - There were 74 in Sunday School here this week. Visitors were four students of Wayland College with Eddy Curry, song leader, and Mr. and Mrs. Joe Taylor and children of Lockney, and Jeffrey Taylor with Mr. and Mrs. J. P. Taylor. Much of our news this week will be the accomplishments and honors won by the younger folks during the past several days. Congratulations to all of you.

Several won ribbons in the Fat Stock Show held in Floydada. Those who placed with steers were Mark Beedy, first place, Angus; Carla Bean, second place, Crossbreed; Shari Johnson, third, Crossbreed; Lisa West, fifth, Angus. Swine entries placing were Gary Sanders, fifth, Chesterwhite; Larry Bradford, eighth with Chesterwhite, ninth with Duroc; and Mike Reves, ninth, Hampshire. South Plains businesses were well represented at the auction held in connection with the Fat Stock Show. Upton Grocery purchased swine shown by Mike Reves and Larry Bradford. Lockney Cooperatives at South Plains bought swine shown by Gary Sanders and Larry Bradford, South Plains Grain Inc. bought the steer of Mark Beedy.

Honors came Dee Earle Cummings' way this past week. She was selected Betty Crocker Homemaker of Tomorrow of Lockney High School. She was chosen on the basis of her score in a written examination taken December 7. She was a unanimous selection as All District guard on the basketball team in District 3 AA. She was chosen as one of the outstanding science students from Lockney High School and was honored during Southwestern Bell's annual Science Recognition Day in Lubbock Friday.

Paula Cummings received honorable mention as forward on the basketball team in District 3 AA.

Arlaine Hamm and Rhonda Teeple left Thursday for Dallas with a group to attend the Future Teachers of America State Convention. Paula Cummings went with the Lockney High School group.

The Acteen Mission Banquet was held at the Pansy Baptist Church Thursday night. Attending from here were Mrs. Jim Roberts, Carl Roberts, Ester Luna, Wanda and Kathryn Powell, Diane Arredondo, Vicki Rathel of Floydada and Mrs. L. T. Wood.

Mrs. L. H. Parks is recovering from a flu-like illness and bronchitis.

Kristie Kirk and Jimmie Sales of Floydada spent Friday night and Saturday with Carl Roberts.

Raymond Upton attended the annual oyster fry of the Lodge at Matador Monday night.

South Plains Women's Volleyball team placed second in the Invitational Volleyball tournament held last week in Floydada. They were sponsored by South Plains Grain Inc. Members of the team were Sherry West, Nancy Marble, Margie Young, Willie Mae Taylor, Pat Wood and Valerie Kinibrough, with Bessie Myers, substitute.

Mildred Hamm, Jewel Fortenberry, Trudie Taylor and Ruby Lee Higginbotham enjoyed a birthday dinner at Plainview Friday night.

Bro. and Mrs. Cartmill and girls visited Mrs. Cartmill's parents, Mr. and Mrs. M. E. Sales, of Post Friday night and Saturday.

Mr. and Mrs. Philip Smitherman, Marc and Monte attended the track meet in Brownfield Saturday. While there they visited with Mr. and Mrs. Roy Bledsoe.

Mrs. Jim Roberts with Carl, Kristie Kirk, Jimmie Sales and Pam Probasco attended the high school drama performance of "The Night of January 16th" Friday night. Others from here who attended were Cam and Maury Probasco, Marc Smitherman, Mike Marble and Mr. and Mrs. Doodle Milton and Darla.

Mr. and Mrs. Fred Marble and Mr. and Mrs. Claude Jarrett were guests of Mr. and Mrs. Raymond Upton at the annual Washington's birthday observance Friday night at the Masonic Temple. A delicious barbeque supper was served. School teachers were honored.

Bro. and Mrs. Troy Cartmill, Dana and Diane were dinner guests of Mr. and Mrs. Fred Fortenberry Sunday.

March 5-12 will be observed in Baptist churches as Week of Prayer for Home Missions. Women of the South Plains Baptist Church will meet in the homes for their observance. Following is a list of the homes and meeting time:

March 6 - Mrs. Walter Wood, 2 p.m.

March 7 - Mrs. Sterling Cummings, 2 p.m.

March 9 - Mrs. W. J. Epperson, 2 p.m.

March 10 - Mrs. Keith Marble, 9 a.m.

PTA will meet at the school house Thursday, March 2, at 2:45 with the Foreign Exchange student as speaker.

Mrs. Sylvan Kinnibrough reports that her mother, Mrs. Spivey of Truscott and Sylvan's mother, Mrs. J. A. Kinnibrough of Vera remain about the same.

Mrs. Jerry Calahan is now home and has been visiting with Mr. and Mrs. Shelby Calahan and Randy and her parents, Mr. and Mrs. Herman Graham of Muncy. Jerry is expected home Tuesday. He is already in the States after his tour of duty to Germany.

Word was received this morning that Mrs. Troy Cart-

mill's grandmother had passed away.

Mr. and Mrs. Don Marble attended funeral services for Nancy's uncle, R. L. Powell in Plainview at 10 Friday at St. John's Methodist Church. Powell at one time lived in the South Plains community.

Mr. and Mrs. J. W. Powell of Van Alstyne, Tex. were overnight guests of Mr. and Mrs. Don Marble Thursday.

The annual Pastors' and Laymen's Conference was held in Plainview last Monday and Tuesday. Among those attending were Bro. and Mrs. Troy Cartmill, Fred Fortenberry, Travis Young, Mrs. L. T. Wood, and Mrs. E. P. Pritchett.

Mr. and Mrs. Don Marble, Donette and Brett visited with Mrs. Marble's parents, Mr. and Mrs. R. L. Holland, in Lockney Friday night. Several relatives from Grayson County were also there.

Mike Reves and Randy Calahan were motorcycle riding Sunday afternoon when the front brake on Mike's cycle hung and threw him off. He suffered scratches and bruises but no broken bones.

### Light Turnout For Water, Crop, Stock Day

A light turnout of Floyd County farmers attended the annual Water, Crop and Stock Day held Saturday in Lockney, County Agent Doyle Warren told a Hesperian reporter, but the group that did attend carried on a lively discussion on Floyd County farm problems.

Dr. Robert Metzger gave talks on hard-to-control weeds and cotton production practices.

Dr. Don Rummel presented the latest research information on biological insect control.

Dr. George Teetes gave a pest-management program for control of grain sorghum and small grain insects, the greenbug in particular.

Dr. James Supak brought the Floyd County farmers up to date on soil test research and fertilizer recommendations.

The following Lockney businesses donated door prizes which were given away:

Consumers Fuel Association, Davis Lumber, Lockney Co-operatives, Sun-Vue Fertilizer, Patterson Grain, Perry Implement Co., Lockney Oil and Butane, Bill Fowells Seeds, First National Bank and R. C. Mitchell Seed Co.

The annual Floyd County Water, Crop and Stock Day is co-sponsored by the Lockney Chamber of Commerce and the Floyd County Extension Service.

**FLOYD DATA**  
Mr. and Mrs. V. D. Turner spent the weekend in Dallas visiting her sister, Mrs. Virgil Boyd and husband.

### Toklat Coming To Palace

Take a thousand-pound grizzly and put him in one of the few remaining wilderness areas of the country, the high Uintah Mountains of Utah; then add about twenty other North American wild animals, a fine performance by Leon Ames, and you have TOKLAT, an extraordinary new family film.

The film follows the development of Toklat from a cub to a giant, during which time one enjoys rare glimpses of a grizzly living, thriving, surviving, in a natural mountain wilderness.

Enter Leon Ames, a mountain man, whose respect and understanding of animals, especially Toklat, is based on a lifetime's experience in the wilderness. His heart-rending task of seeking out the bear for the crime of self-defense, is a social statement on man's way and nature's way.

Ames' commentary is amusing, educational and poignant as he describes how he witnessed Toklat's growth for the years he knew him.

The picture also gorgeously captures the natural beauty of the wilderness and its changing seasons.

The picture was a labor of love. Its gentle plea to consider the possibility that wild animals have an inalienable right to the wilderness is well made.

It is important as a family film, because its message is important to everyone. TOKLAT - a beautiful movie.

**FLOYD DATA**

Mrs. Sam Baker returned home last Thursday after undergoing kidney surgery at Nichols Clinic in Plainview. She is reported to be recovering nicely.



Keep your eyes on what she cannot see

COLUMBIA PICTURES and FILMWAYS Present **MIA FARROW** A MARTIN RANSOHOFF LESLIE LINDER PRODUCTION

**SEE NO EVIL**

SEE NO EVIL - is a suspense thriller starring Mia Farrow presented by Pictures and Filmways. Miss Farrow is terrified by what she cannot see. She plays the role of a blind girl, Showing Sunday at The Palace Theatre.



DISCRETION IS OFTEN THE BETTER PART OF VALOR - (to the delight of countless picturegoers) The fact is, "TOKLAT" from the movie of the same name, advantage in this scene from the showing Monday only, March 6 at the Theatre in Floydada.

## Official Records

(Probate Docket)  
S. J. Handley, deceased, application to probate will.

James L. Cox, application to probate will.

(Marriage Licenses)  
Buddy Arnold Williams and Loretta Kay Cranford, Feb. 18, (Warranty Deeds)

Joe E. Webb et al to Morris Webb and Dale Webb, two-fifths interest in all of the west one-half of survey 102 in Floyd County.

Herman Temple Jr., to George L. Johnson et ux, the east 60 feet of lot 2 and the west 15 feet of lot 3, both in

Temple's Replat of Block No. 7, Honerhea Addition in Floydada.

John C. Moss et ux to Jimmy L. Gentry et ux, all of the east 31.1 of lot 7, all of lot 8 in block 6, Bartley Heights in Floydada.

Silas Duncan Hollums et ux to L. P. Harston, lots 1, 2 and 3 in block 7, Livesay Addition in Lockney.

Helen Dickason etvir to Joe E. Webb, the northwest one-fourth of section 63 in block D-2.

Jane Pigg to John Pigg, all the interest in and to survey

101, block 4

John Pigg to John Pigg, undivided one-half and to all of survey 4, T & P Ry. Co. County of Floyd Independent School City of Floydada et ux, lots 10 and 31 in Floydada.

W. R. Smith et ux, half acres of land part of survey 102

Menard Field et ux, lot Howard et ux, lot New Home Addition Floydada.

Graham Enters et ux, 1.81 acres southwest part of block G and 2.94 section 63 in block J. R. Belt et ux Foster Jr., the west of survey 47 and Lula M. Green et ux and H. L. acres being all west one-fourth of block 1.

R. L. Neil et ux mer to Lula M. Green 42 feet of lot 11 and the west side all in block 1, Newton in Floydada.

Melvin E. Cox et ux, L. C. Crader et ux, feet of lots 11, block 19 in Lockney

Menard Field etvir, as one-half interest in survey D-1.

Dwight Keith et ux to Paul T. Hall et ux, Minnie A. Pelgrum survey and land out of the P-8359 Pre-empted Floyd County.

A. R. Haley et ux, Keith Jackson, one-fourth of block D-6.

RELIGIOUS WEEK SCHEDULE MARCH 19 -

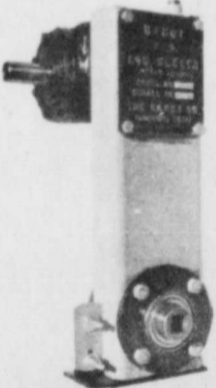
The week of has been set as Emphasis Week at Floydada Community week is sponsored by the Floydada Ministerial and several churches during revival week.

The school calendar is cleared, and all are urged to discontinue meetings during that everyone in church of his church.

Further publication of the plans of each special week.

## PTO RODWEEDER

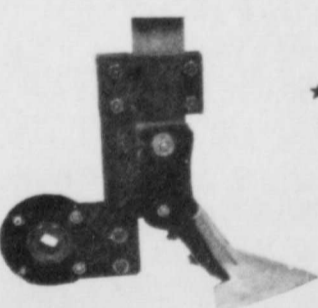
\* Standard single chain & new double chain models are oil-lubricated to prolong life of chain & sprockets



\* The unique drive sleeve insures longer trouble-free operation eliminating U-joints



\* Bed knives are optional & are recommended for double chain models



\* The adjustable shank mount bracket allows better alignment of rod & bearings. Adapts to 2 1/2 & 3" shanks

\* A heavy duty 14N drive line is standard on all 1972 models  
\* All bearings are triple sealed for durability and long life

A Quality Product Of ASK YOUR LOCAL DEALER OR CONTACT



**Russell's Equipment & Supply**  
Phone 806 983-3148 608 East Houston  
FLOYDADA, TEXAS 79235

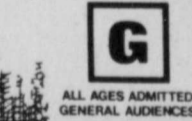
### Palace Theatre Monday Only-March 6

# Toklat

The stirring saga of a Grizzly Monarch's conflict with man



featuring **Leon Ames** as the old man of the mountain



Sun International Productions Inc.\*  
\*Wholesome Family Entertainment Always  
5-7-9 P.M.  
Produced by MHP Studios Inc.



## LAKEVIEW NEWS by Mrs. Clyde Bagwell

LAKEVIEW, Feb. 21 - Farmers are busy getting their land ready for spring planting. Mr. and Mrs. Henry Price attended the Rebekah Lodge chili supper Friday night, and took as their guests, Mr. and Mrs. Harold Bertrand. Later the Bertrands visited in the Price home.

Mr. and Mrs. W. H. Bunch spent the weekend at Midland, guests of their daughter and family, Mr. and Mrs. James Finley, Kristi, Suzanne and Melanie.

Mr. and Mrs. W. H. Bunch went to Lubbock Monday on business and while there visited Mr. and Mrs. Rodney Bunch and Kallisa.

Mr. and Mrs. Homer Newberry attended the regional basketball tournament in Lubbock Saturday at Coronado High School.

Mr. and Mrs. Jerry Towler of Lubbock visited Sunday with her parents, Mr. and Mrs. Odell Breed.

Mrs. Henry Price visited at Nichols Clinic in Plainview Thursday with Mrs. Marion Wiles.

Tuesday morning Mrs. W. H. Bunch was among those attending a coffee at the home of Mrs. Arnold Rathel.

Mr. and Mrs. Odell Breed visited Friday night with Mr. and Mrs. W. M. Hambricht. Mrs. W. H. Bunch attended the Craft and Hobby Club at the home of Mrs. Glen White Tuesday afternoon.

Mr. and Mrs. Ted Anderson, Angie, Quint and Libby and Mrs. A. W. Anderson were Sunday dinner guests of Mr. and Mrs. Floyd Anderson. In the afternoon Mrs. C. M. Leatherman and the granddaughter, Tracy Leatherman of Floydada, rode on their bicycles out to the Floyd Anderson home and had coffee and cake with the group, and then rode back into town a distance of 14 miles there and back.

Kathy Patzer of Waco visited Friday night with Mr. and Mrs. Dean Watson.

Visitors during last week in the home of Mr. and Mrs. B. L. Breed were Dr. Floyd C. Bradley, Mr. and Mrs. Earl Edwards, Mr. and Mrs. Ray Lloyd, Mr. and Mrs. Odell Breed, Frank and Rex Breed.

Mr. and Mrs. Henry Brewer had Sunday dinner with Mr. and Mrs. Millard Watson. Others there were Mr. and Mrs. Ken Robinson of Lubbock, Mr. and Mrs. Dean Watson. In the afternoon Mr. and Mrs. Fred McDougle and Sharon of Crosbyton and Fred's parents, Mr. and Mrs. W. H. McDougle of Tyler, and cousins of Fred, Mr. and Mrs. Ervin Finkbeal of Georgia.

Sunday night visitors of Mr. and Mrs. Dean Watson were Mr. and Mrs. Ken Cockrell and Mr. and Mrs. Jimmy Nichols.

Wednesday afternoon Mrs. Dean Watson visited her parents in Floydada, the Tom Moores, Brenda's grandmother, Mrs. W. F. Moore of Northfield, was also visiting in the Tom Moore home.

Mr. and Mrs. Delmas McCormick and family visited Saturday night with Mr. and Mrs. Jerry Perry and daughters.

Sunday Mr. and Mrs. Edwin Leatherman, Michael and Tammy visited in the home of Mr. and Mrs. Delmas McCormick and family.

Mr. and Mrs. Earl Edwards visited at Petersburg Sunday with her brother and wife, Mr. and Mrs. J. V. Porterfield. Later in the day Mr. and Mrs. Edwards visited Mr. and Mrs. Weldon Hammonds.

Mr. and Mrs. Jerry Bob Harrison, Kay, Marty and Amy of Lubbock came over Friday and spent the weekend with his parents, Mr. and Mrs. D. C. Harrison. Others there for Sunday dinner were Mr. and Mrs. Max Kim Harrison and Sharon Decker visited with the children in the D. C. Harrison home.

Sunday visitors with Mrs. R. C. Smith and Floyd were Mr. and Mrs. Bill Smith.

Mr. and Mrs. Millard Watson visited Saturday with Mr. and Mrs. Henry Brewer and had dinner with them.

Mr. and Mrs. Henry Brewer had a call Sunday from their

son and family, the Harry Glen Brewers of Pettus, wishing them a "Happy Birthday". Her birthday was Feb. 11 and his was Feb. 20.

Mr. and Mrs. Q. D. Williams attended Kooky Kapers talent show Friday night.

Greg Bishop, Mark Gilly and Bud Taylor spent Saturday night with Monte Williams.

Mr. and Mrs. Grady Dunavant kept their grandchildren Rebecca and Matthew Redding, Friday and Saturday while their parents, Mr. and Mrs. Johnny Redding were in Spur for the funeral on Saturday for Mrs. Jack Copeland.

Saturday late, Mr. and Mrs. Johnny Redding of Halou, Mrs. Dorothy Redding of Lubbock, and Mrs. Faye Foyner of Muleshoe came and visited in the Grady Dunavant home and to get Rebecca and Matthew.

Mr. and Mrs. Grady Dunavant and Mrs. E. T. Williams went to Plainview Sunday afternoon and visited in the home of Mr. and Mrs. Carrol Hayes and family. Others there were Mr. and Mrs. Ray Williams and son, Doug of Dumas, Mr. and Mrs. Dale Weatherford and children, also of Dumas, and Mrs. Robert Hayes. Later in the afternoon, Mr. and Mrs. Grady Dunavant and Mrs. Williams visited in Plainview with Mrs. N. R. Austin, and on to Floydada where they visited Myra Dunavant.

## INDIAN, FROM PAGE 1

after archaeological study was completed.

## SCHOOL, FROM PAGE 1

by wading in and physically rescuing the victim? Do you initiate administrative action, through proper channels, to obtain a restraining order from the court running the schools this week?

"Do you draw up a petition to the Tri-Ethnic Committee or the PTA...? Do you attempt to make the event a positive learning experience by asking the rest of the class to vote on the matter of possible alternatives?..."

Willson went on to say "Teachers are human beings. They should not be treated like machines. They should be encouraged and supported by parents and given the confidence that they greatly need. Any community is fortunate that has built and developed fine schools and has outstanding men and women teaching in them. We applaud their work and the achievement made through the year."

Honored at the dinner were the following Floydada School Board members and their spouses: Howard Gregory, Mrs. Flo Davis, Bill Hale, Mrs. Betty Holmes, Thomas Warren, Louis Pyle and Jerrold Vinson.

Also honored were Floydada Schools Superintendent A. E. Baker and his wife, High School Principal Charles Tyer and wife, Junior High Principal A. W. Coltharp and wife, Andrews Elementary School principal Bob Copeland, and Duncan Elementary Principal W. P. Nicholson and wife, along with Dougherty School Principal Dale Townsend and his wife, and South Plains Principal Claude Jarrett and wife.

Floydada public schools join public schools throughout the state in holding open house next week (March 6-10).

The public is invited to visit any of the five Floydada public schools at any time during this special week, sit in on classes, and eat in the school cafeteria.

Floydada schools superintendent A. E. Baker said local school officials believe that parents and other interested citizens get a truer picture of the operation if they visit during actual school hours.

The open house week gives those who are interested the opportunity of seeing how our schools are equipped, how they are staffed, and how the children are taught.

## YANDELL, FROM PAGE 1

have two children, Judy and Lane. I was employed at Solomon Jewelry for a number of years and for five years at ASCS office.

I was appointed to fill the vacancy in the Justice of the Peace office created by the passing of Mr. S. J. Handley. I would like to assure the people that with my experience and ability I am capable of carrying on the duties of this office.

This office represents the people's court, which means I am color blind, and a square shooter.

I need the job and I also need your vote and influence to get it.

and Training Union at Center Baptist Church - sweet, brilliant, dependable. We grieve with her loved ones.

She is survived by her husband and three children; parents, Mr. and Mrs. Joe R. Robertson of Spring Branch, six brothers and three sisters,



BRUCE McFALL is pictured at left telling Jim Word about finding the Indian skeleton in the cave at right behind bush. D.M. Cogdell and Tech students are pictured looking for beads and other Indian relics. (Staff Photo)



TECH ARCHEOLOGICAL STUDENTS Ed Mimiaga write up data on cave where Indian skeleton was found. (Staff Photo)

## FAIRVIEW NEWS by Mrs. Clyde Bagwell

FAIRVIEW, Feb. 28 - We are still having springlike weather and many fruit trees have bloomed out and even the elms are showing green. Hope it means spring is here butas we are not "newcomers" to this country, we wonder if winter is about gone?

We are sorry to report that R. M. Cannon was taken to Lockney Hospital Friday where he is still a patient. Mr. and Mrs. J. W. Cannon are going

## PORTER, FROM PAGE 1

In his announcement Porter said, "I feel it will do me best to be fair to the people, diligently work the required hours of the office and devote my best effort in cooperation with all law officials."

I feel that the years of experience in meeting the public and business knowledge I have acquired qualify me for this office.

I am well acquainted with the people of this area and want to serve sincerely and efficiently.

In the days from now until election day I will do my best to visit with every voter in the two precincts, and I earnestly seek your vote and influence."

back and forth to see about him. Sunday afternoon, R. M. Cannon's niece and husband, Mr. and Mrs. Dan Green of Duncan, Okla. came by to see him, but found no one at home, not knowing he was in the hospital. They were on their way to Lubbock to attend to business.

Mr. and Mrs. Earl Huckabee of Dumas visited Thursday with Mr. and Mrs. Lee Burton and had dinner with them. Mmes. Burton and Huckabee are sisters.

Friday Mrs. Bill Tye and Mrs. Fred Marble prepared dinner at the home of Mrs. Tye, in honor of Mrs. W. O. Tye's birthday. Others enjoying the get-together were Fred Marble and Cindy of South Plains, Jim and Bill Tye, sons of Mrs. W. O. Tye and Mrs. W. B. Wilson. Kerry Tye, son of Jim Tye, was there for dinner with the group. Mrs. Clinton Brown of Amarillo came in the afternoon and joined the above group.

Mr. and Mrs. Kay Crabtree and family have moved to their new brick 3 bedroom, 2 bath home. J. C. Bullard and Mrs. Kate Crabtree helped with the moving job. The new house is located near the place where they have lived for a number of years on the Matador Highway. We congratulate Kay and Hope on having this new home.

Mrs. Ruey Irwin enjoyed a visit Monday morning from former neighbors Claude Wiggins and his sister, Winnie Bell.

Mrs. Ruey Irwin's daughter, Mrs. Naomi Mercer is a grandmother. A baby daughter, Carrie Rebecca, was born Feb. 23 to Mr. and Mrs. Kelly Brown of Midland. The little girl weighed 7 lbs. and 6 oz.

Tuesday Mr. and Mrs. Bill Beedy of Claude, Charles Beedy and son, Randy of Midland, Eugene Beedy of South Plains, and Mr. and Mrs. A. S. Mize were all in town attending the Fat Stock Show, and were dinner guests in the home of Mrs. W. B. Wilson and Mr. and Mrs. Bill Tye. Those having supper Tuesday night in the Tye and Wilson home were Mr. and Mrs. Weldon Pruitt, Greg, Karen and Christy, and Mrs. Eugene Beedy, Mark and Todd.

Thursday evening Mrs. Kate Crabtree, Mrs. Mable Smith, and Mrs. Mary Stanley met at the home of Mrs. Ella Cummings where they enjoyed supper and games of 42.

Mr. and Mrs. Gus Hammonds visited Sunday night with Mr. and Mrs. Ray Cook.

Mr. and Mrs. O. J. Percy of Wichita, Kan. spent Thursday night with Mr. and Mrs. E. W. Walls. The Percys were on their way to El Paso to the home of Mrs. Lena Myers, where a group of the family met last week to celebrate Mrs. Myers' birthday.

Mr. and Mrs. Ray Cook attended the home wedding Saturday afternoon at 2 p.m., of Mrs. Dorothy Helms and Bob Crawford at the bride's home.

We were saddened on receiving word of the passing of Mrs. Glenna Faye Walls of Houston, daughter of Mr. and Mrs. Joe Robertson, former residents of the Center community.

This writer knew Glenna Faye when she was growing up at Center. We express sympathy to the family in their sorrow.

## STAMP, FROM PAGE 1

laneous items. Compared to the present Commodity program, however, two good things would be realized if the stamp program was adopted, Judge Holmes said.

First, it would allow elderly persons and others on special diets to buy their own groceries, and it would add to the local economy since stamps are spent like cash in local stores.

The stamp program would bring an increase in the amount a family could earn and still be eligible for aid. The present cutoff level on the commodity program is \$390 per month. With the stamp program, for example, a family of 10 could have an income of \$710 per month and still be eligible to receive food stamps, according to state figures.

## GSPA Urges Use Of Reseal

The huge grain sorghum and corn crop of 1971 is still taking its toll on market prices. We still feel that with the settlement of the dock strikes, a good sign up in 1972 Feed Grain programs, and farmers holding for higher prices, there is a fair chance that market prices will strengthen.

USDA announced last month that they would extend the reseal program to the 1971 crop of grain sorghum that is in commercial storage. The 1970 crop will be called in. This means that a farmer can continue to hold his 1971 grain sorghum under the government loan program throughout the coming year. Without this announcement, a farmer would be forced to redeem his grain by June 30 or CCC would foreclose on the loan and take over ownership.

After June 30, CCC will pay storage costs on resealed grain, and the farmer pays only the interest on the loan. The reseal program had been extended to farm-stored grain last fall. GSPA had been insisting that this provision should be made for commercially stored grain also.

## CENTER NEWS by Mrs. J.E. Green

CENTER, Feb. 28 - Sunday was a beautiful day as was most of last week.

Mr. and Mrs. William Anderson of Everett, Washington visited from Tuesday to Friday with his mother, Mrs. A. W. Anderson. Local brothers, Louis, Floyd and Otis and their families were also on hand to visit with the relatives. William and wife had been visiting in Irving with their daughter and husband.

Mr. and Mrs. Neal Wright of Rotan came Saturday and spent the night with her mother, Mrs. Ava Jackson. Sunday Mrs. Jackson went home with them for a few days' visit.

Leonard Finley of Plainview visited Saturday with his mother, Mrs. C. E. Finley. He reports that Bertha Lee's mother, Mrs. Jernigan, convalescing in their home, continues to improve.

Mr. and Mrs. Earl Cooper of Lockney visited Mrs. Finley Sunday p.m. Mrs. Ethel Thomas came one day last week.

Mr. and Mrs. Leo Frizzell visited Mr. and Mrs. Elmer Warren Sunday p.m.

Mrs. Frank Dunn visited two or three days in Lubbock with her children last week.

Mr. and Mrs. Floyd Montfomery visited briefly with Mrs. Dunn late Sunday.

Mrs. Ross and Mrs. Hartline have been on the sick list some of last week.

Sunday afternoon Mr. and Mrs. C. W. Denison accompanied by Mrs. May Garrett, Mrs. Simmons and Mrs. Cline, were in Halou for an "open house" of the beautiful new home of Mr. and Mrs. Harmon. The archi-

tect was H. G. Denison of Lubbock, son of the C. W. Denisons.

Mr. and Mrs. James Hartline of Littlefield came Sunday, Feb. 20, to pick up their son, Grant, who had been visiting his grandparents for a few days.

Mr. and Mrs. Bill Spence and baby girl of Sherman visited from Tuesday until Friday with his grandparents, Mr. and Mrs. Charley Spence, Mr. and Mrs. Adriel Spence also visited in the parental home with the relatives.

A phone call from James David Welborn Sunday from Ft. Worth informed his parents, the J. D. Welborns, all the kin in that area were well. Mrs. Eunice Lewis of near Monahans visited recently with her parents, the Welborns.

Mr. and Mrs. Hal Thomas visited Sunday in Post with his sister and husband, Mr. and Mrs. Milton Hester, and with a nephew and family, the Wayne Thomases.

Thomas Warren had surgery Monday, Feb. 21, at Methodist Hospital, Lubbock. He was accompanied to the hospital by his wife, mother and Mr. and Mrs. Fred Battey. He returned home by the middle of the week. Friends and relatives who have visited him are Lee Burton, William Bertrand, the Bob Alldredges, Juanita Chappell, Mr. and Mrs. Battey, Mrs. Ola Warren, and also Mr. and Mrs. Earl Huckabee of Dumas.

Mr. and Mrs. Earl Huckabee spent Wednesday night with Mrs. Ola Warren.

The latest news of Mrs. Alvie Jackson is, she is believed to be slowly improving.

We received word this morning that Mrs. Thurman Walls of Houston, the former Glenna Fay Robertson, who grew up at Center, passed on early this Monday in a Houston hospital. She was one of those dear young people in our Sunday School

## Accepted Academy

Lee Reber, son of Pearl Moore of Alaska, is one of two accepted at the U. S. Air Academy of Colorado. He graduated from East High School last year and is now in basic training at Lackland Air Force Base, San Antonio.

Recognition for the Academy came from Sen. Mike D. Alaska. His acceptance to the Academy came as a result of his active participation in the school and his outstanding record.

A paper written in answer to an Anti-Corruption article was chosen for the school paper several that were submitted by P. Ry, Co.

As a senior Reber was nominated for Military Academy.

The grandson of Mrs. Simmons of Floydada and early life here.

## MEMBERS & SERVICE

Mowers, Briggs, Patton, Lawson, and Parts.

REPAIRS SMALL

PHONE SERVICE 806-983-2396

# Floyd County Historical Museum

## APPLICATION FOR MEMBERSHIP

Please fill in and return for our records

Name \_\_\_\_\_ Type Membership \_\_\_\_\_ Enclosed \$ \_\_\_\_\_

Address \_\_\_\_\_ City \_\_\_\_\_ State \_\_\_\_\_ Zip \_\_\_\_\_

Names of family members if this is a family membership \_\_\_\_\_

Please indicate whether you have artifacts or records that would be suitable for display. Yes \_\_\_\_\_ No \_\_\_\_\_

Types of Annual Membership		
Student (under 18)	\$1.00	Contributing \$25.00
Family (Children under 18)	\$5.00	Sustaining \$100.00
		Benefactor \$250.00

Life Membership \$500.00

Contributing, Sustaining and Benefactor memberships are cumulative toward Life Membership.

All contributions are tax deductible under section 501 of the Internal Revenue Code.

Return to Floyd County Historical Museum  
P. O. Box 304  
Floydada, Texas 79235

420 S. SECOND 983-2154

## We Have B.F. Goodrich Tires

YES, WE DO WASH & GREASE JOBS

WE SELL AND INSTALL

SHOCK ABSORBERS

CONOCO BATTERIES - FRAM FILTERS

CHAMPION SPARK PLUGS - NIEHOFF IGNITION PARTS

## SPARKS & WYLIE

BUD SPARKS TOMMY WYLIE

OPEN 7 A.M. - CLOSE 8 P.M.

MONDAY-SATURDAY



# HORN OF ABUNDANCE

FILL YOUR BARE CUPBOARDS FOR **LESS!**



KING SIZE **COKE or SPRITE**

6 BOTTLE CARTON PLUS DEPOSIT

**39¢**

# Shurfine YOUNG MOTHER HUBBARD SALE



SHURFINE FROZEN FISH STICKS PRE-COOKED

3 8 oz. PKGS. **\$1.00**



Shurfine **boneless fully cooked HAM**

3 LB. CAN **\$2.00**

**EGGS**  
Carmack's Grade A Large Cage Doz.

**T  
H  
R  
I  
F  
T  
W  
A  
Y**

**CATSUP** SHURFINE 4 16 OZ. CANS **\$1.00**

**PORK & BEANS** SHURFINE 7 14 OZ. BTLS. **\$1.00**

**MARGARINE** SHURFRESH REG. QUARTERS 5 16 OZ. PKGS. **\$1.00**

**SHORTENING** SHURFINE ALL VEGETABLE 48 OZ. CAN **69¢**

**PEAS** SHURFINE EARLY JUNE 3 SIEVE 5 17 OZ. CANS **\$1.00**

FRESH LEAN **GROUND CHUCK** 5 LB. BAG **\$3.95**

**T-BONE STEAK** LB. **\$1.19**

**ARM ROAST** LB. **85¢**

GLOVER'S DUTCH OVEN **BACON** LB. **65¢**

Soflin Overnight Disposable

**Diapers**

First 5 Pkgs. 59¢

Thereafter 79¢



12 Ct. Pkg.

**59¢**

**POTATOES**

RUSSETT

10 LB. BAG

**49¢**

**LETTUCE**

FRESH FIRM HEADS CALIFORNIA PER HEAD

**TOMATOES**

MEXICO VINE-RIPENED LB.

**RADISHES**

FLORIDA CELLO-PKG.

SHURFINE **BLACK PEPPER** 4-oz. CANS **29¢**

SHURFINE DUTCH CHOCOLATE, CAKE MIX, SPICE LEMON, WHITE, YELLOW **CAKE MIX** 3 18 1/2-oz. BOXES **89¢**

SHURFINE RED PLUM PRESERVES OR **GRAPE JAM** 2 18-oz. SIZE **79¢**

SHURFINE CHUNKY OR CREAMY **PEANUT BUTTER** 2 12-oz. SIZE **89¢**

SHURFINE CREAM STYLE OR WHOLE KERNEL **GOLDEN CORN** 5 17-oz. CANS **\$1.00**

CREME PIES Morton's 4 for \$1.00

POT PIES Morton's 5 for \$1.00

**SPINACH** SHURFINE 6 16-oz. CANS **\$1.00**

**EVAP. MILK** SHURFINE 5 14 1/2-oz. CANS **89¢**

**FRUIT COCKTAIL** SHURFINE 4 16-oz. SIZE **\$1.00**

**TOMATO JUICE** SHURFINE FANCY 3 46-oz. CANS **\$1.00**

**GREEN BEANS** SHURFINE CUT 5 16-oz. CANS **\$1.00**



SHURFINE **PEACHES** Y.C. sliced or halves 3 2 1/2 CANS **89¢**



**THRIFTWAY SUPER MARKET**

FORMERLY POWELL'S SUPER MARKET  
On The Wye PHONE 983-2444  
OPEN 8 TO 7 MONDAY THRU SATURDAY  
Closed Sundays



SHURFRESH Sweetmilk or Buttermilk **BISCUITS** 10-ct. CANS **13¢**

THESE PRICES EFFECTIVE MARCH 2, THROUGH MARCH 8, WE RESERVE THE RIGHT TO LIMIT QUANTITIES.







# FHS Track Team Second At Brownfield Relays



**WHIRLWIND RELAY TEAM . . .** Members of the FHS 440-yard and mile relay teams: Walter Harris (front), Mark Vinson, Charles Jackson and Rex Rose. (Back, left to right), They captured first place in the 440 and second in the mile relay at the Brownfield meet last week. (Staff Photo)

The Whirlwind track team placed second to the host team in the Brownfield Relays last weekend. The Whirlwind thin-clads racked up 103 3/4 points to Brownfield's 130, good enough for a second-place finish in the 16-team field.

Floydada picked up a first place in the 440-yard relay with a 44.4-second clocking, and ran a 3:33.1 mile relay to take second place in that event. Members of the 440 and mile relay teams are Walter Harris, Mark Vinson, Rex Rose and Charles Jackson.

Langston Williams finished first in the 120-yard high hurdles, with a time of 15.1 seconds, and came in second in the 330-yard hurdles with a 41.8-second effort.

Kim Rose placed second in both the shot put and discus, with distances of 49'11 1/2" and 136'8", respectively.

Rex Rose placed second in the 440-yard dash, clocking 52.7 seconds. Steve DeLeon placed second in the two-mile run with a time of 11:18.7; Danny Bradford came in third in the two-mile event, with a 11:25.6 timing.

Fourth place finishes were recorded by Whirlwinds Charles Jackson in the 220-yard dash (22.9) and Randy Quisenberry in the high jump (5'6").

Placing fifth for the "Winds" were Jay Jones in the 880 (2:08); Mark Vinson in the 440 (53.8) and Jim Kunkel, shot put (44'7").

**ENTER VERNON RELAYS**  
This week the Whirlwind track team will compete in the Vernon Relays on Friday and Saturday.

Finals in field event and prelims in running events will be Friday afternoon, and finals in the running events begin at 2 p.m. Saturday.

This will be the first time the "Winds" have entered the Vernon meet.

The Floydada entries at Vernon will include these:  
Shot put and discus - Kim Rose, Jim Kunkel and Lynn Becker  
High jump - Randy Quisenberry, Marc Smitherman and Danny Quisenberry  
Pole Vault - Terry Jester, John Cagle and Jim Jordan

## SPORTING EVENTS



### Girls' Track Meets Scheduled

A new addition to Floydada High School and Junior High athletic programs this spring is the fielding of girls' track teams.

Girls' track coach Don Ford told a Hesperian reporter that the Floydada girls will be in District 2-A, along with Malou, Roosevelt, Ralls, Friona, Littlefield, Morton, Lockney, Abemathy and Frenship.

Girls' track events include the 60-yard dash, 100-yard dash, 220, 440, and 880, the 80-yard hurdles, 440 relay,

mile relay, shot put, discus, high jump, long jump and triple jump.

The team will go to four meets, including the district meet at Malou April 17.

Dates and locations for the girls' meets are:  
March 11 - Springlake  
March 18 - Frenship (includes seventh and eighth-grade girls)  
April 1 - Malou  
April 17 - District meet at Malou  
April 19 - Junior High meet at Malou



**VARSITY TRACK GIRLS . . .** Front, left to right: Susan Conwright, Terry Stovall, Sara Eastham, Linda Grigg. Back, right: Linda Norman, Cindy Moore, Joyce Warren, Vanda Carthel, Nancy Puckett, Sonja Curry, Not pictured: Kimson, Charlotte Nelson and Margwyne Giles.



**FRESHMAN TRACK GIRLS . . .** Left to right (front): Kathy Howard, Dianna Grimes, Nancy Lloyd, Sharon Decker, Karen West. (Back) Belinda Covington, Kathy Hinsley, Karen Alldredge, Carol Cozby. (Staff Photo)

100-yard dash - Charles Jackson, Walter Harris and Kim Rose  
220-yard dash - Rex Rose, Bill Norman and Larry Jackson  
440-yard dash - Mark Vinson, Bill Norman and Larry Jackson  
880-yard dash - Rick Watts, Erick Jones and Ray Cortez  
Mile Run - Jay Jones, Steve DeLeon and Danny Bradford  
High hurdles - Langston Williams, Danny Quisenberry and Randy Quisenberry  
Intermediate Hurdles - Langston Williams, Danny Quisenberry and Terry Jester  
440 and mile relays - Walter Harris, Rex Rose, Mark Vinson and Charles Jackson.

### Floydada CAP To Expand Unit

The Floydada Composite Squadron of the Civil Air Patrol held a reorganizational meeting Sunday and made plans to expand the local CAP unit, according to the unit commander, Richard Thomas.

Thomas said the expanded Floydada CAP will include a Senior Program with a flying program, the present Ranger Program will be continued, and the unit will be enlarged to include a Cadet program for ages 13-18. The Cadet program will include aerospace education, leadership training, and various tours and activities, Thomas said.

A General Aviation Membership is to be initiated for pilots and aircraft owners who would like to be in the CAP but do not have time to attend regular meetings.

Thomas will continue as commander of the Floydada Composite Squadron. James Hale will serve as deputy commander of the Senior group, and Captain Hamilton will be deputy commander of cadets.

Meetings are scheduled for the first Thursday (8 p.m.) and third Sunday (2 p.m.) of each month, at the Floydada Municipal Airport.

Anyone interested in flying, Red Cross, Civil Defense or the Cadet program is invited to the meetings, Thomas said.



**VOLLEYBALL WINNERS . . .** City Auto Inc., team with trophy. (Standing left to right) Pam Bennett, Sue Lindsey, Cindy Ogden and Judy Payne. With trophy, Judy Daniel and Rhonda Guthrie. Peggy Lee is not pictured. (Staff Photo)



**MEN'S VOLLEYBALL WINNERS . . .** (left to right) Dennis White, Jackie Duke, Weldon Emert, Anthony Whitfill, Bud Edwards and Junior Martinez. (Staff Photo)

### SCHOOL CAFETERIA MENU

For Week of March 6, 1972  
MONDAY:  
Meat loaf with zippy sauce  
Potato salad  
Mixed greens

Hot rolls and butter  
Wild cherry cake  
1/2 pint milk  
TUESDAY:  
Tacos  
Tossed vegetable salad with French dressing  
Hot cornbread and butter  
Applesauce and cookie  
1/2 pint milk  
WEDNESDAY:  
Fish sticks with tartar sauce  
Buttered squash  
Early June pea salad  
Hot rolls and butter  
Pineapple delight  
1/2 pint milk  
THURSDAY:  
Oven baked chicken  
Candied sweet potatoes  
Buttered green beans  
Pickle stick  
Hot rolls and butter  
Ice cream cup  
1/2 pint milk  
FRIDAY:  
Hamburgers  
Tomato slice, lettuce, dill pickles  
Potato chips  
Apricot cobbler  
1/2 pint milk

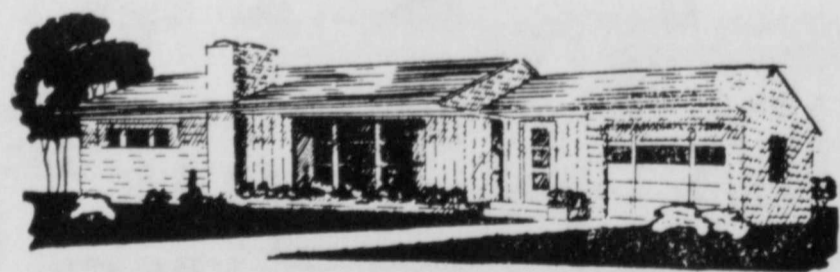
### Willson & Son Lumber Co.

- WE HAVE A FULL LINE OF.....
- AERMOTOR WINDMILLS AND REPAIRS
  - STOCK TANKS AND OVERHEAD TANKS
  - CEDAR AND STEEL FENCE POSTS
  - FULL LINE OF LUMBER AND BUILDING SUPPLIES
  - WALLPAPER AND LINOLEUM
  - PLUMBING SUPPLIES
  - CHECK US FOR FINANCING
- S.W. ROSS MANAGER

**TREFLAN**  
**\$100.00 CASH**  
Producers Cooperative Elevator

WATCH THIS SPACE  
EVERY WEEK  
SPECIAL THIS WEEK  
GILLETTE PLATINUM PLUS  
**RAZOR BLADES**  
REG. \$1.20 VALUE **68¢**  
**WHITE AUTO STORE**  
FLOYDADA, TEXAS

IF YOUR PLANS FOR  
1972 INCLUDE A  
NEW HOME OR  
A BETTER HOME



See the folks whose business it is to help you buy one with the least delay and the lowest cost through the help of a well-planned mortgage loan.

**TULIA SAVINGS and LOAN ASSOCIATION**  
200 N. Maxwell  
TULIA, TEXAS  
995-3521

OUNCE  
ADA Chap  
Arch M  
hold their  
in the first  
of the sec  
ADA Maso  
A.F. & A  
stated me  
Saturday 1  
at 7:30  
ADA BOOF  
play for the  
All-Sta. gam  
every T  
at 8 p.m. El  
Grand,  
Post 5616  
each first  
at 8 p.m.  
arged to  
Winter and  
doubles mat  
chus and Pa  
Mark Craig  
fell to Tim  
Cunus 6-4  
man lost, 4-1  
with us at  
upper Fric  
appreci  
on and su  
A.F. and R  
There will  
and adult ed  
thank ever  
night (Thurs  
7:30 in the  
School agric  
according to  
Your thro  
tor Orville  
John Huter,  
sor at Texas  
will present  
life conserva  
want to take  
thank all  
sors for  
ess show  
while I  
and also i  
at home at  
all this w  
Sincerely,  
Betty a  
POLITIC  
CALEND  
May, 197  
Democr  
Primary  
SHER  
ould like  
ity to the  
wers, cat  
and othe  
Connie B  
Fred Car  
Bud Raine  
the hos  
ve good  
I have b  
ess each  
TAX ASSE  
COLLEC  
FLOYD C  
Jonelle F  
G. B. Joh  
Bud Goen  
Wanda Zak  
of kind  
the los  
and Mr  
COMMISS  
PCT.  
FLOYD C  
Reav  
and Mr  
Hack  
and Mr  
Elmer W  
Doyle Moo  
Lou)  
Aaron Car  
Dent  
W. R. Dan  
COMMISS  
PCT.  
FLOYD C  
e would  
ns to s  
our frie  
rs and  
helped  
's stay  
reston a  
ly grate  
of ye  
Eb  
JUSTICE O  
PRECINCTS  
FLOYD C  
H. E. "Ea  
Lee Howar  
W. H. "Bill  
MEN  
UNITED ST  
CONGRES  
Omar Bu  
STATE  
LEGISLAT  
Phil Cate  
Eddie J.  
will y  
se. Fo  
the toda  
d, and  
press an  
STATE  
LEGISLA  
ATTLE  
Tom Chri



# USE ACTION-PACKED WANT ADS

## ANNOUNCEMENTS

**ADA Chapter No. 227**  
Arch Masons Lodge hold their stated meeting the first Tuesday following the second Saturday of each month at 8:00 tfc

**ADA Masonic Lodge No. 34**  
A.F. & A.M. will hold their stated meeting the second Saturday night of each month at 7:30. tfc

**ADA Masonic Lodge No. 34**  
A.F. & A.M. will hold their stated meeting the second Saturday night of each month at 7:30. tfc

**ADA Masonic Lodge No. 34**  
A.F. & A.M. will hold their stated meeting the second Saturday night of each month at 7:30. tfc

**ADA Masonic Lodge No. 34**  
A.F. & A.M. will hold their stated meeting the second Saturday night of each month at 7:30. tfc

**ADA Masonic Lodge No. 34**  
A.F. & A.M. will hold their stated meeting the second Saturday night of each month at 7:30. tfc

**ADA Masonic Lodge No. 34**  
A.F. & A.M. will hold their stated meeting the second Saturday night of each month at 7:30. tfc

**ADA Masonic Lodge No. 34**  
A.F. & A.M. will hold their stated meeting the second Saturday night of each month at 7:30. tfc

**ADA Masonic Lodge No. 34**  
A.F. & A.M. will hold their stated meeting the second Saturday night of each month at 7:30. tfc

**ADA Masonic Lodge No. 34**  
A.F. & A.M. will hold their stated meeting the second Saturday night of each month at 7:30. tfc

**ADA Masonic Lodge No. 34**  
A.F. & A.M. will hold their stated meeting the second Saturday night of each month at 7:30. tfc

**ADA Masonic Lodge No. 34**  
A.F. & A.M. will hold their stated meeting the second Saturday night of each month at 7:30. tfc

**ADA Masonic Lodge No. 34**  
A.F. & A.M. will hold their stated meeting the second Saturday night of each month at 7:30. tfc

**ADA Masonic Lodge No. 34**  
A.F. & A.M. will hold their stated meeting the second Saturday night of each month at 7:30. tfc

**ADA Masonic Lodge No. 34**  
A.F. & A.M. will hold their stated meeting the second Saturday night of each month at 7:30. tfc

**ADA Masonic Lodge No. 34**  
A.F. & A.M. will hold their stated meeting the second Saturday night of each month at 7:30. tfc

**ADA Masonic Lodge No. 34**  
A.F. & A.M. will hold their stated meeting the second Saturday night of each month at 7:30. tfc

**ADA Masonic Lodge No. 34**  
A.F. & A.M. will hold their stated meeting the second Saturday night of each month at 7:30. tfc

**ADA Masonic Lodge No. 34**  
A.F. & A.M. will hold their stated meeting the second Saturday night of each month at 7:30. tfc

**ADA Masonic Lodge No. 34**  
A.F. & A.M. will hold their stated meeting the second Saturday night of each month at 7:30. tfc

**ADA Masonic Lodge No. 34**  
A.F. & A.M. will hold their stated meeting the second Saturday night of each month at 7:30. tfc

**ADA Masonic Lodge No. 34**  
A.F. & A.M. will hold their stated meeting the second Saturday night of each month at 7:30. tfc

**ADA Masonic Lodge No. 34**  
A.F. & A.M. will hold their stated meeting the second Saturday night of each month at 7:30. tfc

**ADA Masonic Lodge No. 34**  
A.F. & A.M. will hold their stated meeting the second Saturday night of each month at 7:30. tfc

## REAL ESTATE

**FOR SALE - 83 acre farm** with three bedroom brick home, good improvements. Dorothy Helms, 983-2616 or 983-5031. tfc

**FOR SALE - Story and a half** brick home. Four bedroom, 3 baths. Mile west on Sandhill Highway. Call 983-2276. tfc

**FOR SALE - Five room house** with bath on Leonard, and 5 room house with bath on Thornton in Floydada. 652-3105, Lockney. tfc

**FOR SALE - 3 bedroom house,** attached apartment, good location. Wilson G. Bond, 983-2151 or 983-3573. tfc

**FOR SALE - Nice 2 bedroom** house, plumbed for washer, dryer, electric stove. Wall to wall carpet, wall heater. 415 W. Calif. Call 983-3457. tfc

**FOR SALE - Three bedroom** house, paneled kitchen, utility area, carpeted, central heating and air conditioning. Wilson G. Bond, 983-2151 or 983-3573. tfc

**FOR SALE - 8 room house,** plenty storage, good location. Wilson G. Bond, 983-2151 or 983-3573. tfc

**FOR SALE - My property at** 231 W. Calif. in Floydada. Large modern office with 2 baths, large modern living quarters with 2 baths. Includes nice efficiency apartment in rear. Contact Tom Snead, Morton, Texas, 266-5454. tfc

**FOR SALE OR TRADE - 3** bedroom home, storm cellar, store building at Lakeview. Good well, on 1 1/3 acre. Phone 983-2989. tfc

**FOR SALE - L. A. Marshall** home. Large 3 bedroom house, large living room with wall to wall carpet, basement, worth the money. Hale & Hale Insurance, 983-3261 or 983-3457. tfc

**FOR SALE - Our home at 102** East Hallie. Call 983-3436, Floydada, or 758-5591, Arkansas Pass, Texas. E. J. Cantrell. 3-2p

**FOR SALE to settle estate.** Two bedroom house. \$3500. Phone 983-3015. 3-2p

**FOR SALE - Real nice small** two bedroom house, wall to wall carpeting, plumbed for washer and dryer and electric stove. Also have three room house with bath, wall to wall carpet, wall furnace, Hale & Hale Ins. 983-3261 or 983-3457. tfc

**FOR SALE - 1 1/2 lots with** duplex (2 private apartments, one furnished) 211-213 East Georgia. Call 983-2963. tfc

**FOR SALE - 4 room house** and bath, on Kentucky Street. 983-5255. tfc

**The LANDMAN**  
935-5010  
Dumas, Texas

**FOR SALE**  
3 Bedroom House  
Well Located  
Loan Can Be  
Arranged.

**HALE & HALE**  
INSURANCE  
983-3261

**FLOYD COUNTY**  
ABSTRACT CO.  
Abstracts of Title  
Title Insurance

**Verna L. Stewart**  
Owner and Manager  
217 W. Calif.  
983-3728  
Floydada, Texas

**CATTLE**  
AND  
LIVESTOCK  
BUYERS

**Wanted men in this area.** Buy cattle, sheep and hogs.

**Will train qualified men** in some livestock experience. For local interview, call today with your background. Include your full address and phone number.

**CATTLE BUYERS, INC.**  
4420 Madison  
Kansas City, Mo. 64111

## RENTALS

**FOR RENT OR SALE - 2 bed-** room house, 327 W. Jeffie. R. C. Bullock, (806) 495-2883, Post, Texas. tfc

**FOR SALE OR RENT - Two** bedroom house at 405 W. Jackson. Inquire at 920 S. Third. 3-2c

**case**  
TRACTORS  
for RENT by LEASE  
Call 983-2836  
Case Power & Equipment  
Floydada, Texas

## FARMS & RANCHES

**FOR SALE - 1/4 section farm** near Sandhill, good water. Call or write John White, Box 2824, Lubbock, Phone 762-0481. tfc

**FOR SALE - 320 acres two** miles west of town. Call 983-3490. tfc

**LETINGS wanted on irrigated** or dryland farms. Also on stock farms. A. N. (OTT) Gamble, 912 Lubbock National Bank Building, Of. 762-3122, Res. 795-1225. tfc

## PERSONALS

**REDUCE safe & fast with** Go-Bese Tablets & E-Vap "water pills." Thompson Pharmacy. 3-30p

**NEW X-11 Reducing Plan,** 42 Tablets \$3.00. Money Back Guaranteed. Arwine Drug. 3-3c

**UNWED MOTHERS - The** Confidential help you need is available at the METHODIST HOME. Best medical care - helpful counseling, warm acceptance - continuing high school classes - and adoption service. Contact a Methodist Pastor in your home town or write Dr. S. L. Stockwell - P.O. Box 28410 - San Antonio, Texas 78228. 3-16c

**FOR SALE - 11/2 lots with** duplex (2 private apartments, one furnished) 211-213 East Georgia. Call 983-2963. tfc

**FOR SALE - 4 room house** and bath, on Kentucky Street. 983-5255. tfc

**The LANDMAN**  
935-5010  
Dumas, Texas

**FOR SALE**  
3 Bedroom House  
Well Located  
Loan Can Be  
Arranged.

**HALE & HALE**  
INSURANCE  
983-3261

**FLOYD COUNTY**  
ABSTRACT CO.  
Abstracts of Title  
Title Insurance

**Verna L. Stewart**  
Owner and Manager  
217 W. Calif.  
983-3728  
Floydada, Texas

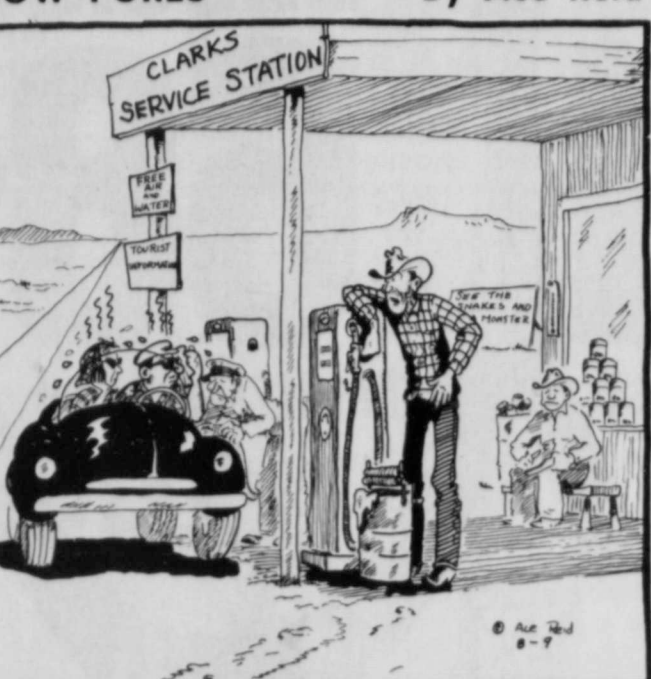
**CATTLE**  
AND  
LIVESTOCK  
BUYERS

**Wanted men in this area.** Buy cattle, sheep and hogs.

**Will train qualified men** in some livestock experience. For local interview, call today with your background. Include your full address and phone number.

**CATTLE BUYERS, INC.**  
4420 Madison  
Kansas City, Mo. 64111

## COW POKES By Ace Reid



"No, it ain't always terrible hot here, sometimes it's miserable windy or unbearable cold!"

**AUTO, FIRE & FARM INSURANCE**  
Floydada Real Estate & Insurance Agency  
Jim Word----Phone 983-2360

## WANTED

**CUSTOM FARMING - Offset** discing and deep chiseling. Can handle large tracts. Lockney, 652-2309. tfc

**WANTED - Farm house to** be moved. Call Happy Union 895-3582. 3-9p

**WANTED - 15 ft. Krause** one-way. Edd Muncy, 983-2272. 3-16c

**WANTED - Good feeder** shoats and pigs. W. B. Eakin, 667-2289, Petersburg. tfc

**WANTED BAKING TO DO -** Will bake your pies and cakes. Call Mrs. Monroe Schulz, 983-2023. tfc

**WANTED TO BUY - Cotton** stripper No. 30 International basket stripper, preferred on 560 Diesel International tractor. 983-3638. tfc

**CUSTOM FARMING - C-** complete land preparation, fertilizer and herbicide application. Victor and Billy Joe Smith, 983-2604. tfc

## DR. O. R. McINTOSH

**Optomtrist**  
211 South Main Street  
Floydada, Texas  
Telephone 983-3460

## YOUR ASSURANCE IS INSURANCE

**Protect Your Auto**

**Our auto insurance** gives you more protection at a reasonable cost. Plus, you can get many extra features not available in many policies.

**Call or visit us today**

**BAKER**  
Insurance Agency  
127 W. California  
Ph. 983-3270

**Office on South East** Corner public square. Corner California and Wall, Floydada, Texas.

**"The Oldest Abstract Plant** in Floyd County"

## NEED A RUBBER STAMP?

**CALL**  
983-3737

## HESPERIAN CLASSIFIEDS SELL

Call 983-3737

**CLASSIFIED ADVERTISING** RATE: 6 CENTS PER WORD FIRST INSERTION, 4 CENTS EACH SUBSEQUENT INSERTION, MINIMUM CHARGE 75 CENTS.

**CLASSIFIED DISPLAY** RATE: 90 CENTS PER COLUMN INCH.

**CARDS OF THANKS, \$1.** COPY DEADLINE 5 P.M. TUESDAYS.

## MISCELLANEOUS

**KING'S DIETETIC CHOCOLATES.** No sugar or salt. Satisfaction guaranteed. BISHOP-RAMSEY PHARMACY tfc

**GEARHEAD REPAIR - Pickup** and delivery. Darden Machine and Welding. Ph. 983-2566. tfc

**STRAYED from farm five** miles northeast of Floydada, a polled Hereford bull, weighing between 500 and 600 lbs. Marked by round hole in right ear. Contact Clarence Guffee at supt. office or at home, tfc

**21 DAYS IN EUROPE** Everything paid for Only \$849 ... from Dallas See Holland, Germany, Switzerland, Austria, Italy, France and England. Contact Mrs. Luther Kirk, 3005 - 59th St., Lubbock. Call 799-6585. tfp

**STRAYED from our place** Friday, 350 lb. Black Angus Steer. Leon Ferguson, 983-3820. 3-9c

**FOR YOUR portable** disc rolling needs call Lawson Bros. Welding and Equipment, 983-3940. tfc

**FOR SALE - Used Farm** Machinery. Lawson Bros. E. Missouri St. tfc

## EMPLOYMENT

**OPENING FOR LVN - With** Christian concern and compassion for elderly. Good salary, pleasant working conditions. Floydada Nursing Home, Dortha Westbrook, 983-3704 or 983-5198. tfc

**BARGAIN TOUR - Rev. and** Mrs. Luther Kirk invite you to go on a tour to Lisbon, Estoril, Sistra, Badajoz, Seville, Tangier, Fez, Casablanca, Malaga Granada, Toledo and Madrid. May 30th, 15 days for only \$599 from New York. If interested write to Rev. and Mrs. Luther Kirk, 3005 19th St., Lubbock, Texas 79413, or phone 799-6585. tfp

## THIS SPACE FOR RENT

**FOR RENT - 1 1/2 lots with** duplex (2 private apartments, one furnished) 211-213 East Georgia. Call 983-2963. tfc

**FOR RENT - 4 room house** and bath, on Kentucky Street. 983-5255. tfc

**The LANDMAN**  
935-5010  
Dumas, Texas

**FOR RENT**  
3 Bedroom House  
Well Located  
Loan Can Be  
Arranged.

**HALE & HALE**  
INSURANCE  
983-3261

**FLOYD COUNTY**  
ABSTRACT CO.  
Abstracts of Title  
Title Insurance

**Verna L. Stewart**  
Owner and Manager  
217 W. Calif.  
983-3728  
Floydada, Texas

**CATTLE**  
AND  
LIVESTOCK  
BUYERS

**Wanted men in this area.** Buy cattle, sheep and hogs.

**Will train qualified men** in some livestock experience. For local interview, call today with your background. Include your full address and phone number.

**CATTLE BUYERS, INC.**  
4420 Madison  
Kansas City, Mo. 64111

## FOR SALE

**WE MAKE COPIES - Come in** and let us make a copy for only 25¢ on our 3M copy machine. Hesperian Office Supply. tfp

**DOG FOR SALE - Full blood,** 6 month old female Rat Terrier. Mrs. Francis Moore, 1105 Thunderbird Dr., Plainview, Texas 79072, or call 293-1470. 3-2c

**GARAGE SALE - Friday noon,** 1 1/2 miles north on Silverton Highway. 3-2c

**REPOSSESSED 1971 model** swing needle, zig-zag sewing machine, DELUXE MODEL, sews on buttons, makes buttonholes, blind hems, fancy patterns. Five payments at \$7.62; will discount for cash. Straight stitch sewing machine guaranteed at \$14.95. Write Lubbock Sewing Center, 1913 - 19th Street, Lubbock; or call 806-762-3126. tfc

**FOR SALE - 2 overhead** garage doors, 9 ft. x 7 ft., with hardware. Call 983-3417 days, 983-3328 nights. 3-2c

**FOR SALE - Good used** manure adding machine. \$25.00. Hesperian Office Supply. Ph. 983-3737. tfp

**MR. FARMER - Come to** Blanco Offset in Floydada and buy 23" x 35" aluminum sheets to cover your truck beds and granary floors so the grain won't leak out. 10¢ a sheet. Phone 983-3739. tfp

**KEEP carpets beautiful** despite footsteps of a busy family. Buy Blue Lustre. Rent electric shampooer \$1. Perry's, 104 California St., Floydada, Texas. 3-2c

**FOR SALE - Two slightly** used portable typewriters with cases. Your choice \$25.00. Hesperian Office Supply. Phone 983-3737. tfp

**FOR SALE - We have** bought six good used Royal typewriters, recent models. Your choice \$75. Hesperian Office Supply. tfp

**FOR SALE - Eight new** tires, size 7-14-5, 8-ply, for airplanes or trailers, 1/2 price. 983-3504. tfc

**FOR SALE - Good used** Remington calculator \$100. Hesperian Office Supply, Ph. 983-3737. tfp

**FOR SALE - Baldwin** upright piano. Excellent condition. Call 983-5169. tfc

**SPECIAL - Brand new** steel executive size desks (30 x 60) for only \$105.00. Hesperian Office Supply. Phone 983-3737. tfp

**FOR SALE - Slightly** damaged steel desk, \$65.00. Hesperian Office Supply. Phone 983-3737. tfp

## QUANTA OLIVETTI ADDING MACHINES

**\$ 82<sup>95</sup>**

**SMITH CORONA TYPEWRITERS**

**\$ 89<sup>95</sup>**

**ROYAL 440 TYPEWRITERS**

**DEMONSTRATORS \$169<sup>95</sup>**

**SLIGHTLY USED \$99<sup>95</sup>**

**ELECTRICS \$149.95 UP**

**UP**

**ROYAL 440 TYPEWRITERS**

**DEMONSTRATORS \$169<sup>95</sup>**

**SLIGHTLY USED \$99<sup>95</sup>**

**Hesperian Office Supply**

## SERVICES

**BOOKKEEPING SERVICE-208** W. California, Raymond Williams, 983-3512 or 983-3068. tfc

**SUBMERSIBLE PUMP SERVICE** and Repair - New Pumps. Exchange for all submersible pumps. Call 983-3353, Day or Night. Water Pumps - Bill Tye. 3-16p

**ALL PARTS for some** washers, some parts for all washers. Complete line of belts for all washers and dryers. Home Appliance Service, 116 W. Missouri St., 983-2846. tfc

**GEARHEAD REPAIR - Pickup** and delivery. Darden Machine and Welding. Ph. 983-2566. tfc

**PROFESSIONAL Rug** Cleaning. Phone 652-2500, Lockney. tfc

**WANT TO DO Yard Work** and minor repair and painting. Charles Dean, 415 W. Virginia. tfp

**MATTRESSES - New or** renovated. For appointment call City Trim Shop. 983-2332. tfc

**COMPLETE Vacuum** Sweeper Service including hose installed on all makes. Home Appliance Service, 116 W. Missouri Street, 983-2846. tfc

## FOR SALE

**MR. FARMER - In Stock:** Batteries for Tractors. L.H.C. 806 to 1260 - 185 amp. to 210 amp. - \$29.95 to \$32.95; John Deere 3010-4520 - 105 amp. - \$28.95; Massie Ferguson - Case Tractor 30EH Battery, \$31.95. Rainer & Co., Western Auto. 3-16c

**FOR SALE - Used** Signature double oven green cook stove. Call 983-5112. tfc

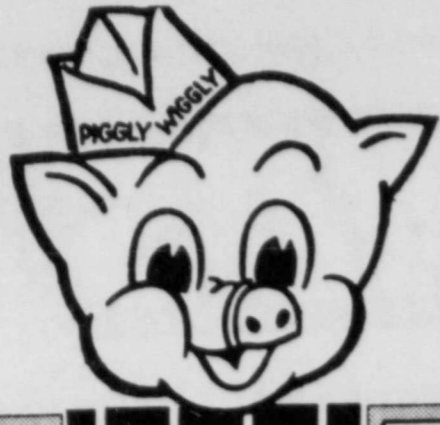
**1972-73 TEXAS** ALMANACS are now here. Buy at Hesperian Office Supply, \$1.95 ea. tfp

**NOW ON SALE - the new** "FARMER'S SPANISH BOOKS" - just what the farmer needs to communicate with the Spanish people. \$3.50 per book. Hesperian Office Supply. tfp

**FOR SALE - Good used** Remington calculator \$100. Hesperian Office Supply, Ph. 983-3737. tfp

**FOR SALE - Baldwin** upright piano. Excellent condition. Call 983-5169. tfc





**BONUS**

100 EXTRA S & H Green Stamps  
With \$5.00 Purchase or More

OR 200 EXTRA S & H Green Stamps  
With \$10.00 Purchase or More

OR 300 EXTRA S & H Green Stamps  
With \$15.00 Purchase or More

Excludes Cigarettes  
EXPIRES March 5, 1972

Redeemable only in Piggly Wiggly stores operated by Shop Rite Foods, Inc.

Farmer Jones  
USDA Grade A

**LARGE EGGS**

**3 \$1**

Dozen

Cottage Cheese **29¢**

Farmer Jones Large or small curd 16 Oz Carton

Thick Sliced Bulk Pak

**SLICED BACON**

**68¢**

Lb.

First Grade Quality Ranch Style

Fruit Cocktail **29¢**

Del Monte 17 Oz Can

There's more in store at Piggly Wiggly

Family Pak, Quarterloin

**Pork Chops**

**79¢**

Lb.

USDA Grade A, from Checker Board Farm

**Honeysuckle White**

**49¢**

Turkeys 12-22 Lb. Avg.

Fresh Picnic Cuts

**Pork Roast**

**49¢**

Lb.

Chuck Roast **49¢**

Boneless Beef Roast **49¢**

Beef Roast **49¢**

Short Ribs **49¢**

Chuck Steak **49¢**

Lean Boston Butt Cuts

**Pork Steak**

**79¢**

Lb.

**Canned Hams**

Swift's Premium **3**

5 Lb. Can \$5.19

Beef Roast **49¢**

Round Steak **49¢**

Rib Steak **49¢**

Cubed Steaks **49¢**

**Potatoes**

Russet ALL PURPOSE **15**

Lb. Bag

**69¢**

Apples **88¢**

Delicious Red or Golden, 4 Lb.

Grapes **13¢**

Ruby Red Lb.

Fresh & Crisp Celery	Stalk 29¢	Garden Fresh Green Onions	2 Bunch 29¢
California Navel Oranges	5 Lb. \$1	Clip Top Turnips	Lb. 19¢
Salad Lettuce Romaine	Each 49¢	A Salad Favorite Red Cabbage	Lb. 25¢
Sweet & Juicy Pineapple	Each 59¢	Garden Fresh Yellow Squash	Lb. 49¢
Snow White Heads Cauliflower	Each 49¢	Cello Carton Tomatoes	Each 35¢

Holly

**SUGAR**

**549¢**

PRICE THEREAFTER 69¢

**Cream Cheese**

Farmer Jones 8 Oz. Pkg. **37¢**

**Mellorine**

Farmer Jones All Flavors 1/2 Gal. Ctn **39¢**

Piggly Wiggly All Purpose

**FLOUR**

**39¢**

5 Lb. Bag

Macaroni & Cheese Dinners **6 \$1**

American Beauty 7 Oz Pkg.

**Fish & Seafood**

Fried Fish Fillets **69¢**

Buttered Fish Fillets **69¢**

Ocean Perch Fillets **69¢**

Breaded Shrimp **69¢**

Cheese for Lent

Cheese Slices **79¢**

Longhorn Cheese **69¢**

Halfmoon Cheese **79¢**

**Dr Pepper**

KING SIZE PLUS DEPOSIT **37¢**

These prices good March 2 - 8, 1972 at 309 S. Wall St., Floydada, Texas.

valuable coupons to help you SAVE!

**SAVE 40¢**

Off the Regular Price of One (1) 10 Oz. Jar of Nescafe Instant Coffee

Good Only at Piggly Wiggly Feb. 28 through March 5, 1972

**Piggly Wiggly Del Monte Sale! Buy Now!**

Whole Potatoes	Del Monte	6	15 Oz. Can	\$1
Del Monte Spinach		5	16 Ounce Cans	\$1
Del Monte Green Beans	Cut	5	16 Oz. Can	\$1
Del Monte Golden Corn	Cream Style or Whole Kernel	5	16 1/2 Oz. Can	\$1
Del Monte Tomato Catsup		3	20 Oz. Bottle	\$1
Del Monte Pear Halves		3	16 Oz. Can	\$1
Del Monte Green Peas	Early Garden	3	16 Oz. Can	69¢

**Fresh Frozen Foods!**

Pot Pies	Morton's All Varieties Beef Chicken Turkey	4	8 Ounce Pie	69¢
Ida Treat French Fries	Ida Treat Frozen	10	9 Oz. Pkg.	\$1
Vegetables	Kounty Kist Cut Corn Green Peas or Mixed Vegetables	3	20 Oz. Pkg.	\$1
Lemonade	Libby's Frozen	6	6 Oz. Can	14¢
Pound Cake	Sara Lee Frozen	12	12 Oz. Size	83¢
Fox Deluxe Pizza	Frozen Hamburger (cheese) (saus. cheese)	14	14 Oz. 79¢	
Fruit Cobblers	Ole South	32	32 Oz. Size	99¢
Libbyland Dinner	Safari Supper, Sundown Supper or Pirate Picnic	11	11 Oz. 69¢	
Erichilada Dinner	Patio Frozen	12	12 Oz. 59¢	
Okra	Libby's Frozen	20	20 Oz. 89¢	
French Fries	Ida Treat Frozen	5	5 Lb. 89¢	
Chow Mein Dinner	Chun-King Shrimp	11	11 Oz. 89¢	
Country Waffles	Aunt Jimima	9	9 Ounce 49¢	

50 EXTRA With This Coupon And Purchase Of One (1) 3 Lb. Can Piggly Wiggly All Purpose Shortening Coupon Good Only At Piggly Wiggly Feb. 28 through March 5 1972

50 EXTRA With This Coupon And Purchase Of One (1) 5 Lb. Bag Gold Medal Flour Coupon Good Only At Piggly Wiggly Feb. 28 through March 5 1972

100 EXTRA With This Coupon And Purchase Of ONE (1) Pc. Hormel Cure 81 Ham 4-6 Lb. Avg. or Larger Coupon Good only at Piggly Wiggly Feb. 28 through March 5, 1972

50 EXTRA With This Coupon And Purchase Of One (1) 100 Ct. Bottle Anacin Tablets Coupon Good Only At Piggly Wiggly Feb. 28 through March 5 1972

50 EXTRA With This Coupon And Purchase Of One (1) Lb. Can All Grinds Maryland Club Coffee Coupon Good Only At Piggly Wiggly Feb. 28 through March 5 1972

50 EXTRA With This Coupon And Purchase of One (1) 2 Lb. Bag or More Jimmy Dean's Sausage Coupon Good Only at Piggly Wiggly Feb. 28 through March 5, 1972

50 EXTRA With This Coupon And Purchase Of Three (3) Lbs. or more of California Navel Oranges Coupon Good Only At Piggly Wiggly Feb. 28 through March 5 1972

50 EXTRA With This Coupon And Purchase Of One (1) 5 Lb. Bag Frozen Ida Treat French Fries Coupon Good Only At Piggly Wiggly Feb. 28 through March 5 1972

100 EXTRA With This Coupon And Purchase of One (1) Three Lb. or Larger Boneless Beef Roast Coupon Good only at Piggly Wiggly Feb. 28 through March 5, 1972

50 EXTRA With This Coupon And Purchase Of Three (3) Lbs. or more of Ruby Red Grapefruit Coupon Good Only At Piggly Wiggly Feb. 28 through March 5 1972

50 EXTRA With This Coupon And Purchase Of One (1) 14 Oz. Frozen Fox Deluxe Pizza Coupon Good Only At Piggly Wiggly Feb. 28 through March 5 1972

50 EXTRA With This Coupon And Purchase of Three (3) or More Lbs. Ground Meat Coupon Good only at Piggly Wiggly Feb. 28 through March 5, 1972

Low Prices to Fit Your Budget

**PIGGLY WIGGLY**

1st in Savings!