

# The Floyd County Hesperian



20 PAGES FLOYDADA, FLOYD COUNTY, TEXAS 79235 THURSDAY, SEPTEMBER 18, 1969 10¢ PER COPY NUMBER 37

## 1969 Floyd County Fair Begins Today



The day the sun was shining.....

JUST FOR THE RECORD, the sun was shining and some of the Floydada area grain sorghum was harvested this past Monday and Tuesday. Raymond Rodriguez turns a happy face up to el sol as he harvested grain sorghum on the Henry Price farm in the Lakeview community. (Staff Photo)



## Parade In Lockney 2:30 This Afternoon

Today is the big day - opening day of the three day Floyd County Fair in Lockney. Interest in the fair is greater than ever and thousands of people are expected to pass through the turnstiles today, Friday and Saturday. The event is billed as "the best small fair in West Texas." First day highlight will be the colorful parade, scheduled to advance down Lockney's Main Street at 2:30 p.m. today. O. T. Billington is heading the parade committee. He is assisted by J. D. Copeland, Eddie Fortenberry, Don Bybee and Bill Turner. Persons wishing to place entries in the parade may contact any of the above mentioned.

### Caprock Chat

By Wendell Tooley  
EVERYONE to notice the lead story on the second page pertains to a night college for Floydada. . . if you know of someone who is interested, please call the 4:30 meeting this afternoon at the bank.

ARE missing a lot of fun if you fail to attend the pep rally each Friday afternoon in the high school at 8:30. Why not plan now to be there tomorrow afternoon for the "MEAN GREEN" on to victory? . . .

ED A New typewriter for a customer last week, and get one or two day delivery on it. . . it still is on Tuesday. We called the warehouse, it was shipped on last Friday.

ER example of poor freight service from the east, utilizing the local freight boys. . . they usually deliver when it reaches their dock, and of course have no idea of the two freight companies who haul into Floydada.

ED the Ralls-Floydada game last Friday night, it was quite possible that I was seeing two district teams. . . more I think about it, the more I believe.

ON the subject of football, I'd just like to guess that Floydada will beat Tulia 21-12 Friday night.

OF Ochiltree County and Perryton, Texas did go all the way to buy a meat packing plant last week. Many people voted a million dollar bond to build an abattoir. . . the Perryton residents voted another \$275,000 to improve water and sewage system to suit the city.

HE airport election passed by a margin of 5-1. The voters approved their proposition 9-1. The city will employ around 500 people.

AKES a lot of faith and optimism to go out and work for industry. Like they say, "nothing ventured, nothing gained."

"This is the beginning of a new day. God has given me the use of my hands. I can waste it or use it for the good of my fellow man. Today is important because I'm exchanging a day for it. When tomorrow comes, this day will be remembered in its place something that I have traded for it to be gain, not loss; good, not evil; success, not failure. In order that I shall not regret the price I paid for it."  
-H. Wilson

AKER in The Fort Stockton Pioneer: The young man was about to begin her first day in a hospital. The advice of the head nurse she resolved to accept. Seeing an elderly man sitting in bed, she cheerfully said, "Well, you don't look like you'll last longer."

EMAN in The Slaton Slatonite: At the recent West convention, three publishers and three journalism students from Angelo State University had an informal panel discussion of interest to the newsmen gathered for the annual convention.

DISCUSSION, Melvin Young of Hereford told the members of every town should have a good newspaper and a good publisher. The Hereford publisher stated to say, "Every community should have a newspaper and a conservative newspaper!"

URGED To Attend Quarterback Meetings  
The Quarterback Club will meet next Monday at 8 o'clock at the school cafeteria. The club is interested in back-logged meetings, held on the following dates:

club president, These meetings are for football lovers for anyone, men who are interested in school system activities. They especially attend to the meetings to familiarize

feeding Seminar Today  
A seminar will be held from 9:30 a.m. to 3:30 p.m. on September 18, in the Agricultural Center, Texas. It begins at 9 a.m., with a barbecue at noon. The course, sponsored by the Agricultural Center, will cover the following:

erinarian, Producers Grain Corporation, Amarillo, Texas, health programs; Dr. Ray Hinder, PGC Nutritionist, pre-condition cattle; Grady Shepard, Hale Center Feedlot Owner, disposing of fat cattle.

Also, Moody Taylor, Manager of PGC's Feed Yard Division, procurement of livestock; Don Roddy, Federal-State Livestock Market Reporter, Amarillo, types of cattle that grade best; C. E. (Chuck) Key, Commodities Specialist, Goodbody & Company, Lubbock, cattle hedging; and Dr. Kenneth Eng, Consulting Nutritionist, PGC, feedyard rations and nutritional requirements of feedlot cattle.

A representative of the Texas Cattle Feeders Association, headquartered in Amarillo, will discuss the growth of cattle feeding in West Texas.

SEE CATTLE, PAGE 8

## Commissioners Court Issues Its Views About Fire Department Question

The problem of "RURAL FIRE PROTECTION" in Floyd County was presented by the Floydada City Council in articles appearing in last week's Hesperian, in which the citizens of the County were called on to let the County Commissioners of Floyd County and the City Councilmen of Floydada to know their feelings. The purpose of the following is to give additional information to you the people to assist you in understanding our mutual problem, and working toward a solution for the welfare and benefit of all.

The customary way of getting Rural Fire Protection is for the Commissioners Court of the County to contract for these services with the different cities within the county which already have City Fire Departments of their own. In the past few years, such contracts have been as follows: Beginning in 1957, the county paid \$75.00 a month plus paid for the insurance on the fire truck, for the towns of Floydada and Lockney each. Then in February 1964, a new contract was made with each city, whereby the County paid to each city \$125.00 a month (\$1,500.00 a year to

SEE FIRE, PAGE 10

## Whirlwinds Host Tulia Hornets In First Home Game Friday

The Floydada Whirlwinds will be out to repeat last year's performance as they take on the Tulia Hornets at 8 p.m. Friday in Wester Field. They defeated Tulia 14-12 last year. The 'Winds are in good physical condition following the victory over A Ralls last week, and jump to a AAA team this week. Tulia is untied this year and Friday night will be opener for the new season.

Tulia tied Slaton 2-2 in a scrimmage a couple of weeks ago and scouting reports indicate the Hornets are stronger this year.

Tulia boasts a lean fastbackfield with senior quarterback Jerry Dickens at the helm. Dickens is a 175 pounder, can pass and run with the ball. He is flanked by halfbacks J.K. Milam (162) Aubrey Rogers (162) and Odell Moffett (151). The Hornets feature a long tall end, 6'4" Mike Gleason, who stretches his 157 pounds for the long passes.

On the line big 225 pound Lonnie Treadway is a threat at tackle and 184 pound Jimmy Kiker is another good defensive tackle.

Senior Daryl Tucker is a veteran center.

FLOYDADA  
Floydada's Stan Pierce is back in the lineup after an early scrimmage shoulder injury; Steve Puckett is in good condition and no injuries were sustained in the Ralls game last week.

Whirlwind captians for the Tulia game are Pierce, Stan

## 1970 Autos Show Today

The 1970 automobiles go on display in Floydada auto dealer showrooms today.

The new Fords and Mercurys will show at Reed Ford Sales, the new Oldsmobiles and Chevrolets at Oden Chevrolet, and the new Buicks and Pontiacs at City Auto Inc.

The new automobiles are showing about a week early this year.

## The WEATHER

(Courtesy Producers Co-op)

DATE	H	L	PREC.
Sept. 11	62	58	.10
Sept. 12	65	59	trace
Sept. 13	73	60	
Sept. 14	79	60	.30
Sept. 15	83	64	
Sept. 16	87	59	
Sept. 17	80	59	
Total Prec. for Week			.40
Total Prec. for Month			2.70
Total Prec. for Year			20.70

## Funeral Rites Pending For Dave Summers

Funeral rites were pending yesterday at Moore - Rose Funeral Home for David John Summers, 60 year old retired mechanic, who died about noon yesterday in Lubbock Methodist Hospital. Summers had been ill for the past several months. He had been a patient in the Veterans Hospital in Amarillo recently and was admitted to the Methodist Hospital Sunday night.

Summers was born in Missouri March 10, 1909. He and Mrs. Virgie Lacy were married in 1934.

## Rotary Speaker Tells Of Eye Bank

He explained how ham radio operators, highway patrolmen, ambulance drivers, doctors and area hospitals aid in the eye bank effort. Headquarters for the eye bank is in the Herring Hotel in Amarillo.

Anyone interested in donating eyes should contact the office at once, Setliff said.

Setliff was introduced by Rotarian Doyle Walls.

## City Council Informs Public About State Law Which Allows Joint Fire Protection Contracts

Floydada City Council wishes to publish the following facts in support of their present position and wishes concerning fire protection for the rural area outside the city limits of Floydada.

The Council has been trying to negotiate with the County Commissioners for some 3 1/2 months concerning a joint effort on fire protection in the rural area surrounding Floydada.

The Council would further like to clarify its position as to the legality of a contract by and between the Commissioners (Commissioners Court) that would make this joint effort possible.

For your consideration the following quote is taken from the Texas Revised Civil Statutes, Article 2351a-1: "Art. 2351a-1. Fire Protection and fire fighting equipment in all counties; contracts, liability of municipalities for firemen's acts

Section 1. The Commissioners Court in all counties of this State shall be authorized to furnish fire protection and fire-fighting equipment to the citizens of such county residing outside the city limits of any incorporated city, town or village within the county and/or adjoining counties. The Commissioners Court shall have authority to purchase fire trucks and other fire-fighting equipment by first advertising and receiving bids thereon, and is hereby authorized to issue

## Folk Group Booked

Jerry Williams, president of the fair board, says that "The Colors," a folk singing group from Lubbock has been booked. "The Colors" replace the talent show as Thursday night entertainment feature.

Williams says that Thursday night has been designated as "Family Night."

One end of numbered tickets secured at the gate will be placed in a container for a big drawing each night. Persons holding the opposite end of ticket drawn each night will be recipient of a \$100 gate prize.

Individuals securing tickets are eligible for drawing that night. The winner must be present, Williams says.

JUDGING SLATED  
Judging of community exhibits, women's division, agricultural department also are on the agenda for opening day. A tractor driving contest is slated for 4 p.m.

The ladies' day program - complete with prizes - starts Friday at 9 a.m. Livestock judging will be conducted throughout the morning and early afternoon in the stock building.

Gospel Singers from a wide area again are expected for the gospel singing program at 7:30 Friday night in the entertainment building.

QUARTERHORSE SHOW  
Another of the fair's more popular events - Quarterhorse show - kicks off at 9 a.m. Saturday. Baby beef are to be judged at 9:30 in the livestock barn while the horse show continues in the rodeo arena.

Young ladies from Floyd County and surrounding communities participate in the Miss Floyd County Queen Pageant preliminaries Saturday afternoon in the entertainment building. Finals start at 7:30 that evening.

Mrs. Jerry Williams says "as many as 25" misses may compete in the pageant.

EDUCATIONAL FEATURES  
Three educational booths will be set up in an attempt to better acquaint the public with health aspects.

Mrs. Cliff Hardy is to bring her home dialysis machine for investigation of fair visitors. Mrs. Hardy, who has had both kidneys removed, utilizes the machine in her home to cleanse her blood.

"Many persons would not want to come to my home to see the machine," she says, "But I believe they would be interested in seeing it."

Keeter Grocery has donated its booth to the Satellite School to allow the public to learn more about the program for slow learning youngsters. A free slide show also will be shown during the fair in the entertainment building.

Officials say a "smoking machine" will be placed in the main building to allow fairgoers to learn the dangers of smoking. The machine normally is used in conjunction with

SEE FAIR, PAGE 8



The Mercury Montego has been completely redesigned inside and out for 1970. It is lower, wider, nearly four inches longer overall, and the wheelbase has been increased one inch to 117 inches for true family size proportions. A four-door hardtop is offered in the Montego line for the first time. Concealed headlights are standard equipment on the Montego MX Brougham (above). Concealed windshield wipers, bias-belted tires, and oval steering wheel have been added to the list of standard equipment on all models. Two completely new 351-cubic-inch engines and a 429 power plant have been added to the list of available engines.



Interior and exterior design refinements, several new comfort and convenience features, mechanical improvements and a host of new options highlight Lincoln-Mercury's Marquis line for 1970. Completely redesigned for the 1969 model year, Marquis for 1970 retains the Continental look with minimal use of bright trim. New grille and taillamp treatment, new upgraded sound package, an optional rear window defroster, a fresh flow air ventilation system as standard and wider front seats also are among the changes for 1970. There are nine Marquis and Marquis Brougham models offered in 1970 including the Marquis Brougham four-door hardtop, pictured above.

## Reed Ford - Mercury Sales Features New Mercury

**MONTEGO AND CYCLONE**  
Lincoln-Mercury's new intermediates have been completely redesigned - the silhouette is longer and lower with a handsome hug-the-road appearance. Both wheelbase and overall length have been increased. There are two new grilles and two new rooflines.

Three new youth-oriented models - the Cyclone, Cyclone GT and Cyclone Spoiler - give the division broader coverage in the intermediate market. All of the Cyclone models are two-door hardtops with rakish rooflines that accentuate their top performance capability. The Cyclone Spoiler has front and rear air spoilers as standard equipment.

In addition to the Cyclone models, a smart family-size four-door hardtop model is offered for the first time as an addition to the Montego Brougham series.

Interiors are distinguished by all-new trim styles, a new instrument cluster centered by a horizontal speedometer and new oval-design steering wheels. Sporty new high-back bucket seats with contemporary design and superb seating comfort are standard on the Cyclone Spoiler and the Cyclone GT.

In addition to dramatic new front-end appearance, new side ornamentation, and completely new rear-end design, the 1970 Montego line has new concealed windshield wipers, new standard concealed headlights on the MX Brougham and Cyclone GT. Also, there are vertical, European-type running lights in the grilles of the Cyclone, Cyclone GT and Cyclone Spoiler.

Completely new designs only part of the story. Significant engineering improvements and the addition of five new engines highlight the Montego and Cyclone lines for 1970.

Last year's 351-cubic-inch engines have been replaced by a completely new 351-cubic-inch engine with significant design improvements even though the displacement is the same. The engine is available in both regular and premium fuel versions and incorporates many of the design improvements and durability features proven with Lincoln-Mercury's competition engines.

The new engine features cylinder heads with larger, more efficient ports; larger intake valves that are canted in the direction of air flow; stronger more durable valve train components; larger runner intake manifold, and larger header-type exhaust manifold. The engine is available in two-barrel and four-barrel versions, with horsepower of 250 and 300, respectively.

In addition to the new 351 engine there are three versions of the 429-cubic-inch engine in the Montego line-up. The first version is standard on the Cyclone, while a second more powerful version, the 429 CJ, is standard with the Cyclone Spoiler. There also is a 429 Super CJ generating 375 horsepower.

The Traction-Lok rear axle

is optional on all 1970 Montego models. It replaces the optional limited-slip rear axle used with smaller engines last year. Advantages include more traction on ice or snow.

**MARQUE, MERCURY MONTEREY AND MARAUDER**  
Introduced last year as completely new models, Marquis, Mercury Monterey and Marauder receive engineering and design refinements for 1970. They retain their market posture by covering all three segments of the medium price field - the upper medium, the lower medium and the sports specialty. All three car lines have their own distinctive features yet share in the classic design heritage of the Lincoln Continental.

New front and rear end design treatments give the cars a clean crisp appearance. The Marquis, Marquis Brougham, Marauder and Marauder X-100 have a new die-cast grille with a horizontal pattern and concealed headlights. The grille on the Mercury Monterey and Monterey Custom is anodized extruded aluminum with a horizontal theme. Headlamps are exposed and combination parking lights/turn signals/front side marker lights are set in the leading edge of the fenders.

Rear lights on the Marquis run full-width above the massive bumper, enclosed in three separate horizontal units trimmed in bright metal. Back-up lights are in the center of the outboard units. Monterey have a similar appearance, with twin horizontal taillamp assemblies and Marauders retain their performance-oriented rear appearance.

Interior improvements include two-inch wider seat backs; more comfortable armrests; pull-type door handles; and new seat trim patterns. Approximately 35 pounds of additional soundproofing materials have been added to reduce exterior road noises.

A noteworthy addition to the option line-up for 1970 is an electric rear window defroster. This device quickly clears the back window of fog and frost and melts small amounts of snow and ice. Traction-Lok rear axle is optional on all models.

An important advancement in ride control, freon filled shock absorbers, are standard on all models. This improved design features a plastic bag filled with inert freon gas submerged in the shock absorber hydraulic fluid reservoir. It takes the place of the air space in the conventional design shock absorber.

Three engines including the smooth and durable 390-cubic-inch V-8 and the higher performing 429-cubic-inch engines in both two-barrel and four-barrel versions are available to meet all road and load conditions.

**COUGAR**  
Cougar, America's most completely equipped sports compact car, continues into 1970 with evolutionary design changes, a number of mecha-

nical improvements, new interior luxury and new power teams.

The Cougar design has been refined modestly with a new vertical grille and forward thrusting front end. The highly styled Cougar XR-7 grille has a unique bright and black trim scheme giving it a luxury appearance.

Overall length has been increased 2.3 inches to 196.1 inches. All of the extra length is at the front, increasing the sporty flair appearance of the long-hood/short rear deck proportions.

On the interior, high back bucket seats are standard and a sprightly accent is offered by a cloth and vinyl houndstooth check in two colors with matching vinyl roof. Glove-soft natural grain leather is sued on the seating surfaces of the Cougar XR-7.

For 1970, Cougar is available in five models - a hardtop and convertible in both the base series and the richly appointed XR-7 line and the high-performance Eliminator featuring front and rear air spoilers.

The Eliminator has special ornamentation, identification and performance equipment. The base engine is the completely new 351-cubic-inch 4V engine. Optional engines are the Boss 302 4V V-8, the CJ 428 4V, the CJ 428-4V with ram air, and the new Cougar Boss 429-4V V-8.

The standard power team for the Cougar and Cougar XR-7 is the 351-cubic-inch 2V engine with a three speed manual transmission. SelectShift and four-speed manual transmissions also are available. The high performance Hurst Shifter is standard with the four-speed manual transmission on all Cougar models.

Vinyl roof availability for 1970 has been increased to seven colors - black, parchment, blue, brown, green, black houndstooth and ginger houndstooth.



A meeting was held on September 15 in the Eugene Gilly home for members of the Cedar Hill 4-H Club. Craig Gilly was in charge and the motto and prayer was led by Max Yeary. Donnie Fortenberry led the pledge.

During business new officers for the coming year were elected. Donnie Fortenberry was named president; Max Yeary, vice president; Stephanie Fortenberry, secretary - reporter; Rex Yeary, parliamentarian; Craig DuBois and Jerry Lackey, council delegates; Stephanie Fortenberry and Bud Taylor, recreation; Mark Gilly and Bryan Fortenberry, calling committee.

After the meeting adjourned refreshments were served by Jerry and Jay Lackey.

## New Report On "Drinking And Driving"

A driver may become a traffic hazard only two minutes after taking a drink, according to a new book, "Alcohol . . . or Highway Safety?" published by Texas Alcohol Narcotics Education (TANE).

"If alcohol is consumed on an empty stomach, it may reach the brain within two minutes. If it is consumed rapidly, the effect on the brain centers may last up to five hours after ingestion of the alcohol," according to the new book, written by Lindsay R. Curtis, M.D., author of several books on alcohol and drug problems.

Drinking alcohol is the major contributor in 10,000 injured in car crashes each day, 1,000 persons killed each week, and nearly \$1 billion in direct economic losses each month, Dr. Curtis said.

The book, designed for use in driver education classes, will also be distributed through churches and retail book outlets.

The book is illustrated with cartoons by Dean Hurst.

Dr. Curtis has written many books, published by TANE, including subjects of alcohol, LSD, glue-sniffing, goofballs and pep pills, and marijuana. The cartoon-illustrated books have also been the basis for film strips, also produced by TANE.

TANE is a non-profit, educational organization, supported by the churches of Texas and by individual contributions. Though it is a Texas organization, and much of TANE's program is free to Texas schools and churches, the organization's books and film strips are distributed nationally.

"Drinking drivers kill more than war. We need to face up to the realities of this needless slaughter, and do something about it. TANE hopes that this book will help," said Albert F. Tucker, TANE executive Director.

The organization has been active in alcohol and narcotics

education since 1935. Programs include public school assembly programs, a free film lending library, publishing books, producing audio visual aids, a 100-man speakers bureau, research, and an annual school on alcohol and narcotics problems sponsored jointly with Baylor University.

## Dan Drysdale Receives Award

LONG BINH, VIETNAM (AH-TNC) - Army Private Dan H. Drysdale, 20, son of Mr. and Mrs. Howard A. Drysdale, 811

W. California St., Floydada, Tex., was awarded a Certificate of Achievement Aug. 18 while serving with the U.S.

Army Depot, near Vietnam. Pvt. Drysdale was awarded for driving vehicles more than 100,000 miles with no accidents or violations. He is a driver

Righteousness exalteth a Nation: but sin is a reproach to any people. Proverbs 14:34.

If my people, which are called by name, shall humble themselves, and pray, and seek my face, and turn from their wicked ways; then will I hear from Heaven, and will forgive their sin, and will heal their land. 2 Chronicles 7:15.



## REVIVAL Victory Baptist Church

607 West Lee  
Floydada, Texas

Sept. 29 Oct. 5

7:30 P.M.

EVANGELIST  
HARVEY E. HUDSON  
VICTORY BAPTIST  
STINNETT, TEXAS

PASTOR  
PETE LOOMIS  
VICTORY BAPTIST  
FLOYDADA, TEXAS

Confess your faults one to another, and pray one for another, that ye may be healed. The effectual fervent prayer of a righteous person availeth much. James 5:16.

If you can't come, you can Pray for Revival in Floydada, Tex.

## For 1970, your Mercury dealer has the password for action and elegance.



**1970 Mercury Cyclone GT. The action intermediate.**  
Even standing still it looks like action. Comes with a sporty hood scoop and a unique Cyclone grille flanked by amber Cyclone running lights. A 351 cu. in. V-8 is standard; options to a Super CJ 429-4V Ram Air V-8 with 375 hp. Inside: Hi-back buckets in cool "breathable" Comfort-weave vinyl. Cyclone GT, Mercury's sporty new street machine that looks like a racing car.



**1970 Mercury Cougar XR-7.**  
Where wild meets elegant. Cougar XR-7 has more standard equipment than competition. Hi-back vinyl buckets accented with built-in map pockets. Tachometer. Elapsed time. Concealed headlights, sequential rear turn signals. 351 cubic inch V-8, and much more. Catch a Cougar the wildly elegant one for 1970.



**1970 Marquis Brougham.**  
The medium-priced car with the most dramatic styling since the Continental Mark III. Comes with concealed headlights. Emerald-cut taillights. A big 429 cubic inch V-8 powerplant. Select Shift automatic transmission. 1970 Marquis. The most beautiful thing that's ever happened to a medium-priced car.

LINCOLN-MERCURY



REED FORD SALES

HIGHWAY 62 AND CROCKETT ST.  
FLOYDADA, TEXAS



For action in the see your Lincoln-Mercury

# OBITUARIES

**Survivors** include one son, Robert Lee Evans of Hobbs, N.M.; one daughter, Mrs. Ada Marie Freeman, who teaches in the Dallas Public School system; several grandchildren; three brothers, Manuel and Oscar Evans of Hobbs and Shirley of Albuquerque and one sister, Velma McCrimmon of Hobbs.

**Moody Lackey**  
Funeral services for Moody Lackey, 69, father of Mrs. Betty Holmes of Floydada, were held Tuesday in the Chapel Hill Baptist Church in Lubbock. Rev. Cook officiated for the rites.

Lackey, a retired gas company employe and a resident of Lubbock since 1949, died at 10:45 p.m. Sunday in Ray's Hospitality Home.

Survivors include his wife, Sophia; two sons, Jerry Lackey of Lubbock and Wendell Lackey of Kilgore; two daughters, Mrs. Holmes of Floydada and Mrs. Sandra Darby of Lubbock; four brothers, three sisters and 11 grand children.

Burial was in Vega Cemetery Tuesday afternoon.

Marjorie, a daughter, Mrs. Diane Lamb and a sister, Mrs. Pauline Atherton both of Oklahoma City and his mother of Floydada.

Mrs. M.A. Wood returned to Floydada with Mrs. Annie Webb, Tommie Assiter, and Leon Ferguson, who also attended last rites.

Burial was in Resthaven Cemetery near Oklahoma City.

**Wood**  
Funeral services for Barney Wood, 67 year old long time resident, were held Tuesday afternoon in the Chapel Hill Baptist Church in NE Floydada. He was found dead in his home by his daughter, Mrs. M. A. Wood.

He was born in Oklahoma, Sept. 9, 1902, a member of the Methodist Church. He died in Floydada, Sept. 17, 1962.

Survivors include his wife, Mrs. M. A. Wood; two sons, Jerry and Wendell; two daughters, Mrs. Holmes and Mrs. Darby; four brothers, three sisters and 11 grand children.

Burial was in Vega Cemetery Tuesday afternoon.

Marjorie, a daughter, Mrs. Diane Lamb and a sister, Mrs. Pauline Atherton both of Oklahoma City and his mother of Floydada.

Mrs. M.A. Wood returned to Floydada with Mrs. Annie Webb, Tommie Assiter, and Leon Ferguson, who also attended last rites.

Burial was in Resthaven Cemetery near Oklahoma City.

**Wood**  
Funeral services for Barney Wood, 67 year old long time resident, were held Tuesday afternoon in the Chapel Hill Baptist Church in NE Floydada. He was found dead in his home by his daughter, Mrs. M. A. Wood.

He was born in Oklahoma, Sept. 9, 1902, a member of the Methodist Church. He died in Floydada, Sept. 17, 1962.

Survivors include his wife, Mrs. M. A. Wood; two sons, Jerry and Wendell; two daughters, Mrs. Holmes and Mrs. Darby; four brothers, three sisters and 11 grand children.

Burial was in Vega Cemetery Tuesday afternoon.

Marjorie, a daughter, Mrs. Diane Lamb and a sister, Mrs. Pauline Atherton both of Oklahoma City and his mother of Floydada.

Mrs. M.A. Wood returned to Floydada with Mrs. Annie Webb, Tommie Assiter, and Leon Ferguson, who also attended last rites.

Burial was in Resthaven Cemetery near Oklahoma City.

**Wood**  
Funeral services for Barney Wood, 67 year old long time resident, were held Tuesday afternoon in the Chapel Hill Baptist Church in NE Floydada. He was found dead in his home by his daughter, Mrs. M. A. Wood.

He was born in Oklahoma, Sept. 9, 1902, a member of the Methodist Church. He died in Floydada, Sept. 17, 1962.

Survivors include his wife, Mrs. M. A. Wood; two sons, Jerry and Wendell; two daughters, Mrs. Holmes and Mrs. Darby; four brothers, three sisters and 11 grand children.

Burial was in Vega Cemetery Tuesday afternoon.

Marjorie, a daughter, Mrs. Diane Lamb and a sister, Mrs. Pauline Atherton both of Oklahoma City and his mother of Floydada.

## T.L. Shipman

Funeral services for Thomas Luther Shipman, 75 year old former Floydada resident were held Monday of last week in the chapel of the Wise Funeral Home in Bonham. Tommy Marshall, pastor of the Seventh and Main Street Baptist Church, officiated. Interment was in Paris, Texas.

Shipman died September 6 at 10:45 a.m. in the Veterans Hospital in Bonham. He was in the wholesale oil business in Paris before moving to Floydada where he and his wife, Sally, owned and operated Shipman Grocery and Market on East Houston Street for some 20 years. He retired eight years ago and moved to Bonham.

Survivors include his wife; one sister, Mrs. Pearl Gilbreath of San Antonio; two brothers, Bob Shipman of Honey Grove and Don Shipman of Dallas.

Pallbearers of the deceased were nephews. They are Lyndell Shipman, John Wayne Shipman, Billy Shipman, Johnny Mills, Vester Crutchfield and Leroy Crutchfield.

## WTCC Sponsors Ag. Meet

The West Texas Chamber of Commerce will sponsor an "Agricultural and Ranching Committee" meeting September 24 at the Raiderland Convention Center in Lubbock.

Henry Spears of Hereford will be chairman of the all day program which begins at 10 a.m.

Topics included in the program include "The Cotton Market Situation, the Wool and Mohair Situation, Promotion of Natural Fibers, Profit Potential in Pork Production, Vertical Integration of Beef Cattle."

At the noon luncheon Dr. Thad Box of Texas Tech will speak on "The Role of West Texas in International Agricultural Development."

All farmers, ranchers and agri-businessmen are invited to attend.

## Bobby Tilley Receives Citation

An official State Health Department citation for work proficiency has been awarded to Bobby D. Tilley, plant operations specialist for the Floydada sewage control system.

Signed by the State Health Commissioner and authorities of the Texas Water Utilities Association, the certificate of competency is awarded only to those utility plant operators who have successfully demonstrated their skill and knowledge in modern principles of plant management.

To qualify for certification, a plant operator must have accumulated a prescribed amount of actual work experience. He must also have attended both regional and statewide short schools at which the techniques of water treatment and waste water disposal are taught, and must have passed an examination given by State Health Department sanitary engineers.

State law requires that at least one operator per shift be certified for competency by health department engineers, but many operators seek certification on their own time and at their own expense to increase their efficiency as key public servants to their community and state.

## Dana Galloway In Montana With VISTA

Dana Scott Galloway, son of Mr. and Mrs. Albert A. Galloway, Jr., Route 1, Floydada, Texas was among 454 trainees receiving certificates and project assignments from the University of Colorado Vista Training Center in graduation ceremonies held August 7, in Boulder, Colorado. Galloway is presently assigned to the Blackfeet Tribal Council with headquarters centered in Browning, Montana; he will be serving on the Blackfeet Indian Reservation in Babb, Montana.

The primary work areas covering this project are tutoring, adult education, recreation, community development, legal aid, counseling, welfare advisement, public health and job employment.

Individuals who join VISTA and become volunteers in service to America are assigned to communities which have requested help, and the programs are locally developed and locally supervised. During their term of one year, VISTAs live and work in a poverty environment. Through their understanding, sensitivity, patience and dedication, they help inspire those who are now isolated, to participate in community life. (With its total commitment, that of eliminating poverty, Vista service offers individuals the opportunity to express ideas in practical and tangible terms, by taking a personal stand against poverty on behalf of full economic opportunity. The ultimate objective of a Vista Volunteer is to staidence, and to replace despair with hope.

Galloway is a senior at Baylor University, with a double major in Sociology and Radio-Television-Film.

Topics included in the program include "The Cotton Market Situation, the Wool and Mohair Situation, Promotion of Natural Fibers, Profit Potential in Pork Production, Vertical Integration of Beef Cattle."

At the noon luncheon Dr. Thad Box of Texas Tech will speak on "The Role of West Texas in International Agricultural Development."

All farmers, ranchers and agri-businessmen are invited to attend.

State law requires that at least one operator per shift be certified for competency by health department engineers, but many operators seek certification on their own time and at their own expense to increase their efficiency as key public servants to their community and state.



SHOP AND SAVE ON THESE WEEKEND SPECIALS THURSDAY, FRIDAY AND SATURDAY



**WEEK END SPECIAL**  
ON  
**MENS CORDUROY JACKETS**  
WITH 4 WAY INSULATION  
SIZES S-M-L-XL  
VALUES TO \$12.99  
**\$8.88** EACH

**WEEK END SPECIAL**  
100%  
60" WASHABLE DACRON  
**POLYESTER KNIT**  
ASST. FALL COLORS  
REG. \$4.99 VALUES  
THURS., FRI., AND SAT. **\$3.99** A YD.

**WEEK END SPECIAL**  
ON  
**LARGE BATH TOWELS**  
BY CALLAWAY MILLS  
FIRST QUALITY  
REG. \$2.29 VALUE  
THURS., FRI., AND SAT. **\$1.67** EACH

**WEEK END SPECIAL**  
ON  
THERMAL BLANKETS  
**SLEEP-CRAFT THERMAL BLANKET**  
ONE GROUP **\$4.88**  
ONE GROUP **\$3.88**  
LIGHT WEIGHT COMFORT WITH ALL OF THE WARMTH OF STANDARD BLANKETS. CHOOSE FROM SOLID COLORS OF HOT PINK, ORIENTAL BLUE, MOSS GREEN, ANTIQUE GOLD, ROYAL, FLAME AND MANY MORE, A PERFECT GIFT FOR ALMOST ANY OCCASION.

**POLYESTER KNIT THE SEASONS SPANNER**  
OPEN YOUR FALL SEASON WITH EASY-GOING POLYESTERS THAT SHOW NO TEMPERMENT. ANYONE OF THESE TRANSITIONAL DESIGNS COULD BE A REAL BOON TO ANY WOMAN'S WARDROBE. EASY CARE WASH AND WEARABLE AND NEVER NEED IRONING. FIND THEM IN MISSES! AND HALF SIZES IN A VARIETY OF STYLES AND COLORS.  
14.00 TO 16.00 VALUES **\$12.88** ONLY

**WEEK END SPECIAL**  
LADIES AND GIRLS  
**NYLON VELVET SHOES**  
REG. \$5.00 VALUE  
ONLY **\$3.88** A PAIR  
THURSDAY, FRIDAY AND SATURDAY

**WEEK END SPECIAL**  
LADIES NYLON VELVET OXFORDS  
BLACK AND BROWN  
NARROW AND MEDIUM WIDTHS  
REG. \$7.00 VALUE **\$5.88** A PAIR  
WEEKEND ONLY

**SPECIAL**  
BOYS PERMA PRESS SCHOOL JEANS  
ASST. COLORS SLIMS AND REG.  
VALUES TO \$2.99 A PR.  
NOW ONLY **\$1.88** A PAIR

**SPECIAL**  
BOYS SPORT SHIRTS  
SHORT SLEEVES  
PERMA PRESS  
REG. \$1.99 VALUE  
NOW ONLY **99¢** EACH

**BOYS IVY STYLE LONG SLEEVE SPORT SHIRTS**  
VIVID TONE STRIPES AND RICH SOLIDS GO BACK TO SCHOOL IN STYLE. EACH HAS TAPERED TAILS FOR EXACTING FIT. NO IRONING WHEN LAUNDERED AS RECOMMENDED. IN SIZES 6-20.  
\$2.99 TO \$4.50  
ONLY **\$1.99** EACH

**IT'S RAINING GOOD SAVINGS!**

SONS CERTIFIED THICK SLICE  
ON 2 LBS. \$1.75

MONTE CHUNK  
1/2 FLAT CAN 2 for 65¢

FINE CRUSHED OR SLICED  
APPLE FLAT CAN 2 for 35¢

VERLAKE  
CREAM 1/2 GAL. 69¢

FRESH  
MARGARINE 5 LBS. 95¢

BELLS  
POTATO SOUP 2 can 25¢

IN BATHROOM 2 PLY  
TOILET PAPER 10 ROLL 79¢

FRESH  
FRUIT 6 can 49¢

SH POTATOES 10 LBS. 50¢

IN  
TOILET TISSUE 200 COUNT 5 \$1.00

WE GIVE BUCCANEER STAMPS  
DOUBLE ON WEDNESDAY

**MULL & McBRIEN**  
DELIVER 953-3164



HERE TUESDAY  
SEPTEMBER 23  
THE BEAUTIFUL NEW  
**1970 DODGE**

SINCE THERE IS NO DODGE DEALER IN THE FLOYDADA AREA, WE INVITE EVERYONE TO COME TO OUR SHOW-ROOMS IN PLAINVIEW TO SEE THE ALL NEW 1970 DODGE LINE.

WE WILL MAKE YOU A GOOD DEAL ON YOUR AUTO ON THE NEW DODGE.

**McBeth Dodge Inc.**  
2408 W. 5TH  
PLAINVIEW, TEXAS

**NEWSPAPER ASSOCIATION 1969 CONTESTS**

THE FLOYD COUNTY HESPERIAN  
212 South Main St., Floydada Texas, 79235

BELL TOOLEY, Editor-Publisher  
MEDLEY, Society Editor  
HUGGINS, Circulation, Classified Adv. Mgr.  
REED, Bookkeeper  
COGDILL, Typesetter  
LYN SELLARS, Composer  
MYRICK, Advertising

Established 1896 by Claude V. Hall. Entered as second class mail at the post office at Floydada, Texas April 1971 under the act of Congress of March 8, 1879.

Any erroneous reflections upon the character or reputation of any person, firm or corporation which may appear in the columns of The Floyd Hesperian will be corrected gladly upon its being brought to the attention of the publishers.

Subscription Rates: LOCAL \$4.00 year  
OUTSIDE TRADE AREA \$5.00 year



Offered exclusively in a Holiday Coupe body style, the 1970 Delta 88 Royale represents the top of Oldsmobile's '88' line of cars. A vinyl-covered top, distinctive grille, front fender louvers and specific exterior ornamentation easily identify the Delta 88 Royale. Standard engine on this 1970 Oldsmobile is a 455-cu.-in. V-8. A high output engine option, designated W-33, is available on the Delta 88 Royale and on all other Oldsmobile '88' models for 1970.

## Oldsmobiles Display New Oldsmobiles Today

**OLDS 1970 PRODUCT STORY**  
DETROIT — A new and luxurious personalized car heads Oldsmobile's line of impressively-styled 1970 models, all of them featuring history-making engineering advancements aimed at added durability and further reduction in the need for service, it was announced today by John B. Beltz, the division's general manager and a vice president of General Motors.

"The newest Oldsmobile is the elegant Cutlass Supreme Hardtop Coupe," he reported. "It is a distinctive car designed to answer growing customer demand for sporty luxury in a personalized kind of automobile. It is identified by its own roof line, its own body shape, its own external ornamentation, and its own ultra-luxurious interior."

He said the new coupe and a companion convertible represent an important added element in Oldsmobile's 1970 intermediate model lineup, complementing the 4-4-2 and Cutlass 'S' series whose fast-back coupes have been Oldsmobile's most popular.

"These cars, too," Beltz said, "have been restyled to emphasize their youthful image to an even higher degree. "Meanwhile," he continued, "the successful look of elegance in our 88's and 98's has been further enhanced in 1970 to make them even more appealing, and the Toronado has undergone the most extensive change in appearance since its introduction in 1965.

"It is a sleeker looking automobile, with a distinctive new shape to the wheel openings, a new front end, including a new grille and exposed headlamps, and an interior to match the more elegant concept of decor which is added in 1970 to the Toronado's many other front drive virtues," he added.

He mentioned the car's excellent handling, its superior traction, and its flat floor. He further noted that in 1970 the Vista Cruiser type of station wagon, with its panoramic roofline windows and forward-facing third seat, is exclusive to Oldsmobile.

In addition to the division's restyling program for the new model year, Oldsmobile's long-held reputation for engineering leadership will be re-emphasized with the introduction of several major and far-reaching engine advancements designed to curtail the need for service.

"Particularly important, and exclusive to Oldsmobile in 1970, is the incorporation of a positive valve rotating system on all Oldsmobile V-8 engines, which extends valve life beyond anything available on today's passenger car engines," Beltz said.

"Automobile engine valves, after many miles of use, are subject to distortion and wear," he explained. "The resultant poor valve seating causes loss of engine efficiency. However, with controlled rotation of intake and exhaust valves, as in Oldsmobile's 1970 V-8 engines, valve seating is tremendously improved. This prevents loss of compression and permits the engine to operate at top efficiency — constantly — for the life of the car.

"Another important engineering achievement being introduced by Oldsmobile on its 1970 cars is a new concept in connecting rod bearing design that greatly enhances engine durability," Beltz continued. "The new rod bearing increases oil system pressure and substantially improves engine lubrication."

Oldsmobile has also elimi-

nated the exhaust manifold heat valve on all 1970-V-8 engines for further improvement in engine reliability. The engine's heated air intake system, combined with a newly designed choke mechanism, provides more rapid engine warmup. In a major revision of engine availabilities for 1970, Oldsmobile has introduced the 455-cu.-in. V-8 as the 4-4-2's standard power plant. It replaces the 400-cu.-in. engine which is no longer required. The 455 will also be used as part of the performance option for the new Cutlass Supreme coupe and convertible. With the engine, the Cutlass SX package will include a 2.56 axle, wide-rim wheels, and dual exhausts.

"The Cutlass SX," said Beltz, "is only one of several options developed by Oldsmobile engineers for the buyer who wants the ultimate in performance. They particularly include Oldsmobile's now famous 'W' machines, headed by the all-new W-30, 455 cubic inch force-air package, optional on the 4-4-2 coupes. Available again on the Cutlass 'S' and F-85 coupes will be the highly successful W-31 option with the 350 cubic inch force-air engine.

He said the newly designated W-33 option is a high output engine selection available on all '88' models, while the W-34 will again identify the performance package in the Toronado. "Front wheel power disc brakes," Beltz explained, "are standard on the 1970 Toronado and the '98' models. On our '88's, if the customer orders power brakes, front disc brakes are included in the option. Both power drum brakes and power assisted front discs remain options on our F-85's."

The automatic transmissions available on 1970 Oldsmobiles are 3-speed. The Turbo Hydra-Matic 350 replaces the 2-speed Jetaway as the automatic transmission option on F-85 models equipped with the 350 cubic inch V-8 engine.

The Turbo Hydra-Matic 400 continues for use with Oldsmobile's 455 cubic inch engine. A unique convenience feature offered exclusively on Oldsmobile's full-size cars, is a fingertip windshield washer-wiper control located in the shift lever handle. It offers greater safety by permitting the driver to operate the wiper without taking his eyes from the road.

As a further theft deterrent, Oldsmobile has developed a hood catch lock that prevents opening of the hood except through the use of an "inside-the-car" release control.

All 1970 Oldsmobile coupes and convertibles equipped with the power door lock option will feature a mechanism that automatically unlocks the front seat back when a door is opened. Power door locks and deck lid releases are electrically operated for 1970, allowing unlimited use of these features.

The electric rear window defogger, introduced recently on the Toronado, becomes a new option on the 1970 '88's' and '98's'.

All air conditioning systems are powered by larger blower motors, reducing cool-down time. Two additional air outlets in the F-85, Cutlass, Cutlass Supreme, 4-4-2 and Vista Cruiser further improve air conditioning performance in those models.

Fiberglass belted tires, for improved traction, reduced tire wear, better handling characteristics and greater resistance to road hazards, are standard on all cars.

Oldsmobile's variable ratio power steering is now available in 1970 across-the-line, including all F-85's. The division's 1970 product lineup consists of 10 series and 29 models.

**CONE NEWS**  
CONE, Sept. 15 — Sunday afternoon callers in the Edd Martin home were Mrs. Earl Martin and Mr. and Mrs. Jerry Vaughn of Lubbock.

Mrs. R. L. Heflin of Sherman arrived Saturday for a few days stay with Mrs. Morris Wideman. They spent Saturday night and Sunday with Mr. and Mrs. Clyde Wideman in Lubbock.

Miss Ruth Bartley accompanied Dr. and Mrs. John Cherry Jr. of Crosbyton for a visit with their brother and father, Olen Bartley, who is recovering satisfactorily in a San Antonio hospital from a recent car wreck.

Mr. and Mrs. Herman Cornelius, Dannie and Eugene of Ralls spent Sunday in the Howard Harris home. Suzanne and Timmie Dyess of Floydada spent Saturday night with their grandparents, Mr. and Mrs. Earl Martin.

Mrs. Peachie Parrish, Mr. and Mrs. Clinton Denning visited Joe Parrish in Lockney Friday evening. Parrish is recovering from recent surgery.

Mr. and Mrs. L. M. Powell and Mr. and Mrs. Wesley Edwards are on vacation in Red River, N.M.

Mr. and Mrs. C. L. Davis, Glenn, Kayla, Melony, Trea Dee and Clay Brian and Mr. and Mrs. Noel Davis, DeLoyce and Rod spent Sunday with their mother and grandmother, Mrs. Lois Davis in Lubbock.

Mr. and Mrs. O. L. Billingsly spent Friday night with Mr. and Mrs. D. A. Barnhart. They were on their way home to San Bernardino, Calif.

Peggy West of Floydada spent Friday night and Saturday with Jean Harris.

Mrs. C. O. Gilbreath visited Mrs. Len Johnston in the Crosbyton Hospital Saturday afternoon.

Mrs. Edmund Crump of Ralls visited Mrs. Morris Wideman Thursday afternoon.

Mr. and Mrs. Haney Wideman and Mardi visited Ray Tinnery in Dougherty Saturday afternoon. Tinnery is recovering from burns received in an air plane accident.

Mrs. Morris Wideman and sister-in-law, Mrs. R. L. Heflin visited T. D. Diggs in Parkway Nursing Home in Lubbock Sunday afternoon.

Diane Harris spent Friday night and Saturday with Leo Anne Bates in Ralls.

Mr. and Mrs. Marvin Little called in the Bud Cox home Sunday afternoon.

D. A. Barnhart accompanied John Goin to Lubbock Sunday afternoon to visit Mrs. Goin who is in a nursing home.

Mr. and Mrs. Noel Davis and Rod spent last Tuesday night with Mr. and Mrs. Kermit Davis in Deming, N.M.

Mrs. A. J. Cowley visited Mrs. Morris Wideman Friday afternoon.

Rev. and Mrs. Harvey Wampler, Timmy and Greta spent from Tuesday until Saturday with their parents and grandparents, Mr. and Mrs. M. E. Williamson.

Mr. and Mrs. Haney Wideman and Mardi were supper guests Saturday of Dr. and Mrs. Harold Reese and Cheryl in Plainview.

Mr. and Mrs. Tom Godin of Cleburne spent Friday night with Mrs. R. L. Martin Sr. Mr. and Mrs. C. O. Gilbreath called in the evening.

Mr. and Mrs. Wesley Edwards, Mr. and Mrs. Joe Beaudoin, Chuck and Dannie of Lubbock were Sunday dinner guests in the C. W. Edwards home.

## COURT RECORDS

(Probate Docket)  
Application to probate the will of Oran Weathers.  
Application to probate the will of A. B. Muncy.  
Application to probate the will of Fannie C. Terry.  
Application for temporary administrator in the estate of Leo V. Hay.  
Application for guardianship of Dollie Nita Stapp.

**MARRIAGE LICENSES**  
Richard Roy Bertrand and Carrie Aurilla Thayer, August 27.  
Mary Tomie Asebedo and Frank Aguilar, August 29.  
Don Wayne Vickers and Connie Sue Trimble, Sept. 3.  
George W. Winn and Nancy E. Breckenridge, Sept. 12.  
Noble Murphy and Linda Harper, Sept. 12.

**WARRANTY DEEDS**  
B. P. Woody etal to O. D. Noyes, an undivided one-half interest in lots 2, 4, 6, 8, 10, 12, 13 and 16 in block 2, Childers Addition in Floydada.  
John E. Hoffmann to Thelma K. Hoffman, all of his undivided one-half interest in lot 2 and the west 10 feet of lot 3 in block 2, Caprock Addition in Floydada.

Mr. and Mrs. Lonnie King of Plainview visited Mr. and Mrs. Clinton Denning Sunday afternoon.  
Mr. and Mrs. Noel Davis and Rod accompanied Mrs. H. J. Cornelius, Gene and Herman Cornelius to Hachita, N. M. Tuesday where they attended the funeral of Gene Cornelius Wednesday.

Mrs. Peachie Parrish and Mrs. Clinton Denning visited Mrs. Len Johnston in the Crosbyton Hospital Saturday afternoon.  
Mr. and Mrs. W. O. Wheeler celebrated their 60th wedding anniversary Sunday. Those present were Mr. and Mrs. Dan James, Mr. and Mrs. Paul Wheeler and Billie, Mr. and Mrs. Silas Wheeler, Mr. and Mrs. Porter Wheeler, Mr. and Mrs. George Wilson and Rob of Ralls.

Inez Nichols to James L. Nichols, an undivided one-sixth interest in and to 160 acres of land which is all of the M. F. Hager Survey.  
Gary Don Carthel etux to Alma Dunn, lot 11 and the east one-half of lot 10 in block 1, Barker Addition in Floydada.  
Wm. H. Dougherty, Independent Executor under the will of F. M. Dougherty and trustee of Testamentary Trust of F. M. Dougherty to Zeff McLelland, lot 10 in block 20 in Dougherty.

Jake Carthel etux to Municipal Investment Corp., lot 4 in block 1, Carthel Addition in Lockney.  
Henry J. Ellison etux to William E. Brown Jr., etux and Gerald Hall etux, lots 9, 10 and 11 in block 80 in Floydada. Floyd County Memorial Park Inc., to C. O. and Josephine Lyles, Garden No. 1 in block 133, lots 1, 2, 3 and 4.  
Anna Dietrick etal to Arnold Dietrich, a 5.0 acre tract out of the northwest part of the J. W. Hough Homestead.

Marion Curry to Carl W. Denison, lots 13, 14 and 15 in block 106 in Floydada.  
B. P. Woody etal to Carl W. Denison etux, lots 13, 14 and 15 in block 106.  
Sarah Lillie Greeneto James C. Greene etux, all of the undivided one-half interest to the east one-half of survey 29 in block C.

Pearl W. Poole to Doyle B. Poole, an undivided one-half interest to lots 13, 14 and 15, block 1, Muncy Addition in Lockney.  
Lockney Independent School District to Donald Reecer etux, the south 20 feet of the north one-half of lots 11, 12, and 13 in block 8, Walling Addition in Lockney.

**DISTRICK RECORD**  
(Cases Filed)  
L. R. Stringer and the First Wichita National Bank of Wichita Falls, trustees, vs Tom L. Snead, suit for possession of land.

## Peace Corps Placement Test To Be Held On September 20

Lubbock area residents interested in putting their skills to use in developing nations around the world are invited to take the Peace Corps Placement Test at 1:30 p.m. on Saturday, September 20, at Room 206, New Post Office, 1515 Ave G.  
The Peace Corps uses the Placement Test to determine how an applicant can best be utilized overseas. The test measures general aptitude and the ability to learn a language, not education or achievement. The test requires no preparation and is non-competitive; an applicant can neither pass nor fail.

Persons interested in serving with the Peace Corps must fill out an application, if they have not already done so, and present it to the tester before the test. Application forms are available from post offices or from the Peace Corps in Washington, D.C. 20525.

Fifteen thousand volunteers are currently serving in Asia, Africa, Latin America and the Pacific Islands, working with the people of those nations in self-help projects ranging from food production to health to education. More volunteers are needed for programs which will begin training soon.

**DO PEOPLE READ A TWO INCH AD? YOU ARE RIGHT NOW**

**FLOYD DATA**  
Mr. and Mrs. Otho Sanders, Mr. and Mrs. Walter Hollums and Mrs. Lillie Co. luncheon guests C. E. Bartlett.

### WHEAT FARMERS! DEKALB PALO DURO WHEAT MEANS MORE PROFIT

IT'S WHEAT SOWING TIME AND HAVE A GOOD SUPPLY OF REGISTERED DE KALB PALO DURO WHEAT SEED. RECENT FIELD STUDIES SHOW PALO DURO

- \*24% INCREASE IN YIELD
- \*25% to 35% INCREASE IN GRAZING
- \*GRAIN QUALITY SECOND TO NONE TO NONE

## CARMACK'S FEED & SEED



Day in. Day out. Same old order-taking world. Wouldn't it be nice to have an Escape Machine

## Introducing the totally new Cutlass Supreme from Oldsmobile. The 1970 Escape Machine that delivers elegance in a trim new size.



See Youngmobile Thinking for 1970 at your Oldsmobile dealer's today: Toronado, Ninety-Eight, Delta 88, Cutlass, 4-4-2 and Vista-Cruiser.

# Women In News



## Social Club Meets With Mrs. Durham

The 1960 Social Club met in the home of Mrs. Lois Durham September 11. All members were present with the exception of Clyde Frizzell, who was unable to get into town due to muddy roads.

Those present included Vera Meredith, Ola Warren, Alma Dunn, Eula Battery, Flora Warren, Josie Ross, Buelah Burton, Ava Jackson, Kate Crabtree, Maudie Muncy, Vada Meredith, Ruby Williams, Ethel Frizzell, Maggie Vinson, and a guest, Maxine Ross Ragsdale of Muleshoe, who accompanied her mother, Josie Ross.

Members exchanged secret pal gifts.

The next meeting is October 9 with Kate Crabtree.

## Mrs. Barnard To Show Film On Far East

The Harmony Community Club will meet Thursday (tonight) at 8 o'clock at which time a film will be shown by Mrs. Jim Barnard, on her trip to the Far East.

Everyone is extended a cordial invitation to attend.

## New Officers Elected For Community CC

The directors of the Community Clothing Center met Sept. 11 at the Arthur B. Duncan Elementary School. The primary purpose of the meeting was to elect officers. Mrs. J. P. Moss, President, presided at the meeting. The newly elected officers are Mrs. W. H. Finley, president; Mrs. J. C. Martin, secretary; Mrs. J. P. Moss, Treasurer.

The members of the board of directors present were Mrs. L. B. Cozby Jr., Mrs. Enoch Fuller, Mrs. J. C. Martin, Mrs. W. H. Finley, Mrs. Jack Jordan, Mrs. P. L. Orman, Mrs. Wesley Carr, and Mrs. J. P. Moss.

The Community Clothing Center was organized in 1964. An elected board of nine directors and a supervisor, at this time Mrs. W. S. Simmons, are responsible for seeing that the center functions properly. The center is located in the basement of the Court House and is open every Tuesday afternoon from 1 - 5. Many individuals and groups have been instrumental in the success of this project, and workers wish to thank them all. The churches and community organizations have been very helpful in supplying workers, clothing and monetary gifts.

An accurate record is kept of every family who has been given aid, and they have been numerous. It is a fact that without this assistance a number of children would not be able to

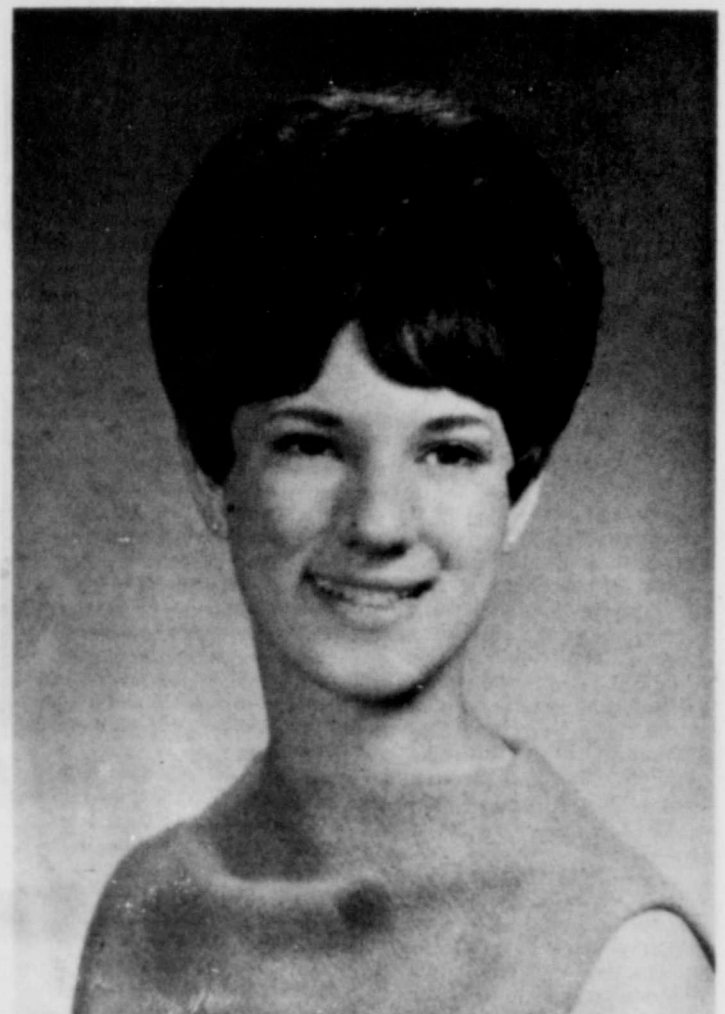
## Miss Preston And Larry Hunter Make Plans For December Vows

Mr. and Mrs. Jack Preston of Utopia, Texas, announce the engagement and approaching marriage of their daughter, Ruth Ann, to Larry Hunter, son of Mr. and Mrs. Turner Hunter of Floydada.

Miss Preston has been a student majoring in home econo-

mics at Texas Tech University at Lubbock. Her fiancé is a student at Sul Ross University at Alpine, majoring in range management. Miss Preston and Hunter plan to attend Sul Ross this fall.

Plans are being made for a December wedding.



RUTH ANN PRESTON

## Wedding Shower Honors Mr. And Mrs. Dan Hale

A wedding shower honoring Mr. and Mrs. Dan Hale was held in Harmony Community Center Friday night, September 5. Guests were received by Mrs. D. S. Battey Sr., and presented to the honored couple and the groom's parents, Mr. and Mrs. Roy Hale.

Mrs. R. B. Gary presided at the guest register. Displayed on the registering table were pictures of the wedding ceremony and reception which took place in Kermit August 16. The serving table was laid with a white linen cutwork cloth accented by a centerpiece of autumn flowers of the bride's chosen colors.

Guests were served lime green punch and decorated cookies from crystal appointments. White and green napkins completed the table setting.

Presiding at the table were Mrs. Glendale King of Amarillo, Mrs. James Cox and Mrs. Aubrey Neff, both of Lubbock.

Entertainment of games and contests were led by Mrs. David Battey Jr., and Mrs. King after which gifts were presented to the couple, then passed around to be viewed by the circle of friends and relatives gathered for the occasion.

start or continue school.

It has been some time since this project has been brought to the attention of the community, and the board of directors of the Clothing Center wanted to give those who might desire to do so, an opportunity to contribute.

## Mrs. Thornton To Head Floyd ACS Chapter

LOCKNEY - Mrs. Ronnie Thornton has been named president of the Floyd County Chapter of American Cancer Society. Officers were elected at a recent morning meeting held in First National Bank in Floydada.

Selected to serve with Mrs. Thornton were: Mrs. Woodrow Wilson, Floydada, vice-president; Mrs. Ewald Quebe, secretary-treasurer; Mrs. Weldon Becker, Floydada and Mrs. Jim Reynolds, reporters; Mrs. Carrick Spodgrass, Floydada, service chairman; Mrs. Owen Thornton, education; Mrs. Kenneth Holt, Crusade Chairman for Lockney and Mrs. Joe Max Harrison for Floydada; Mrs. Wilson Mrs. Alma Holmes of Floydada and Mrs. Barry Barker compose the memorial committee.

It was revealed at the meeting that the county committee exceeded their campaign goal and topped the best record of \$4,894 which was collected in 1966. The total collected this year was \$4,923.

A pretty vest is one thing every girl must have for back-to-school this fall!

## Births

Mr. and Mrs. Rickie Hodges announce the birth of a new son, Geoffrey Todd, who was born in Caprock Hospital at 7:21 a.m., Thursday, September 11. The baby weighed six pounds and nine ounces at birth. The mother is the former Phyllis Fortenberry. Hodges is employed by QA&P.

Granparents include Mr. and Mrs. J. Cephus Fortenberry of Cedar and Mr. and Mrs. Clyde Hodges of Floydada. Great grandparents are Mrs. Vonnie Fortenberry of Cedar Hill; Mr. and Mrs. J. A. Hodges of Kingsland and Mrs. Roberta Crow of Abernathy.

## Club Meets At Lighthouse

The 1950 Study Club members met Tuesday night in Lighthouse Electric with Mrs. Dallas Ramsey as hostess. Theme for the meeting was "Home Life" and members answered roll call with "Experience in Renovation." The program, given by Mrs. Bob Copeland, was on "New Rooms for Old."

During business two new members were voted on and Mrs. Cleo Whittle, club president, read a letter from Vivian Bunch, who was recipient of the club's scholarship presented last spring.

Attending the meeting were Mrs. Charles Naderson, Gene Arwine, J. W. Cannon, Bob Copeland, Billy Hendrix, Doris McLain, Doyle Moore, John Moss, Dallas Ramsey, W. A. Rucker, Jimmie Seay, Jake Webb, and Mrs. Cleo Whittle. The next meeting is October 7 with Mrs. Moore.

things she heard in connection with programs and programming. Among them were "Programs should lift not just entertain. There must be ACTION! What am I doing to improve? What CAN BE DONE to resolve human problems? Be somebody who is DOING something."

Mrs. Nowlin said the wittiest remark she heard was "Being a leader may not bring much cheer, but is better than always looking at someone's rear."

The group sang "The Delta Kappa Gamma Song" for the closing number of the program, with Mrs. Malcom Atwood at the piano. Mrs. Nowlin led the singing.

Tulia hostesses were Miss Linda Jeffers, Miss Pat Porter,



BRENDA SUE CARTHEL

## Carthel, Swaffer Engagement Announced, Plan Fall Vows

Mr. and Mrs. W. L. Carthel wish to announce the engagement of their daughter, Brenda Sue, to Elmer Eugene Swaffer. Swaffer is the son of Mr. and Mrs. Elmer Swaffer of the Barwise community.

The bride-elect is a spring graduate of Lockney High School. Her fiancé is a 1963 graduate of Floydada High

School. He also attended South Plains Junior College at Levelland for a year and a half. His education was interrupted by a tour of the service.

Swaffer is employed by Southwestern Electric Supply Company in Lubbock.

The couple plan a fall wedding.

## Mrs. Stewart Is Club Hostess

Mrs. L. B. Stewart Jr., was hostess for a meeting of the 1934 Study Club Tuesday night. The program was on Ventures into Texas Law and members answered roll call by naming an outdated Texas law.

Alton Griffin, a Lubbock attorney, gave the program which was followed by a question and answer session. Attending the meeting were Mrs. Allen Bingham, W. H. Bunch, Dennis Dempsey, R. G. Dunlap, Garland Foster, Clyde Hodges, J. S. Hale Jr., Mrs. Reta Gatewood, Mrs. Francis Mitchell, Mrs. Lenna Cloer, and Mrs. Marjorie Brewer.

Floydada members attending included Mrs. Ruth Baker Dickerson, Miss Mary Pearl Coward, Mrs. D. W. Kirby, Mrs. Edna Phillips, Mrs. G. C. Springer, Mrs. Fred Stewart, and Miss Vera Meredith.

Jump Into a Jumper. The schoolgirl look that fashion's mad about for every age now. And how a jumper does stretch your wardrobe! Wear it with a turtle-neck one day, with a shirt the next—add a belt, a scarf, a muffler—play all the new necessary tricks. Sketched here, the new Sears front-buttoned jumper, in colorful plaid to accent with a "pick-up" solid color in sweater, shirt, knee-socks.

CHILDREN & CONTACT LENSES? New York (NAPS)—Would you put contact lenses on your year-old child? Probably not, but science is blazing a trail of new vision potential for very young children with several sight problems.

## Check! Compare! Save!

USDA CHOICE <b>T-BONE STEAK</b> LB. <b>98¢</b>	USDA CHOICE <b>SIRLOIN STEAK</b> LB. <b>98¢</b>
SHURFRESH <b>BUTTERMILK</b> 1/2 GAL. <b>39¢</b>	PURINA GRADE A SMALL <b>EGGS</b> DOZ. <b>3 for \$1.00</b>
SHURFINE REG. OR DRIP <b>COFFEE</b> LB. <b>65¢</b>	CLOVERLAKE <b>MELLORINE</b> 1/2 GAL. <b>39¢</b>
SOFLIN <b>TISSUE</b> 10 ROLL PKG. <b>89¢</b>	LARGE HEADS <b>LETTUCE</b> 2 for <b>25¢</b>
SHURFINE TALL CANS <b>MILK</b> 3 for <b>45¢</b>	WILSONS <b>VIENNA SAUSAGE</b> 4 OZ. CAN 2 for <b>45¢</b>
SHURFINE PURE VEGETABLE <b>SHORTENING</b> 3 LB. CAN <b>69¢</b>	REG. 6 BOTTLE CTN. <b>COKES</b> PLUS DEPOSIT <b>39¢</b>
SHURFINE CRUSHED 303 CAN <b>PINEAPPLE</b> 3 for <b>\$1.00</b>	

MILK

NO LIMIT ON PURCHASES OF ANY ITEM SPECIALS GOOD THROUGH SATURDAY ONLY

## L & J FOOD STORE

DOUBLE BUCCANEER STAMPS ON WEDNESDAY

316 NORTH 2ND PHONE 983 3105

WE DELIVER

# Florsheim

WOMEN'S SHOE COLLECTION

Fashion's favorite story: the great look plus wondrous fit. Easily Florsheim.

## Marse & Son

Plainview's Leading Department Store



SISTERS AND BROTHERS of the Franklin family posed for the "Forward Times" camera during their annual reunion in the home of Eddie and Mattie Marshall in Houston recently. Floydada school teacher Annie Taylor is pictured in center of picture.



### Mrs. Willson Is Secretary Of GS Council

Mrs. Jimmy Willson has been elected to fill the unexpired term of office as secretary for the Caprock Girl Scout Council. Mrs. Willson was notified of the decision by Mrs. Don Gillispie, chairman of the nominating committee. Mrs. W. O. Lockwood of Lorenzo serves as president of the Caprock Council which is comprised of 15 counties. Mrs. Willson's term expires November, 1970.

Mrs. Willson has worked with Girl Scouts a number of years, receiving her ten year pin Tuesday of last week, along with her daughter, Jane, who has been a member ten years.

Mrs. Willson has also been an active community worker, serving the Floydada Hospital Auxiliary five years; served as chairman of the Heart Fund three years and is at present a Den Mother for her son's cub scout troop. She is a member of the First Methodist Church where she teaches a Sunday School class and is a former Study Club member.

Mrs. Willson will meet with the board of directors of the Caprock Council six times each year.

NEW SECRETARY - of the Caprock Girl Scout Council. Mrs. Jimmy Willson was recently elected to fill the unexpired term. She will serve until November of 1970.

Lightning is nature's most striking phenomenon, as the sun goes. It strikes the earth six thousand times a minute. In just the brief period it took you to read this, lightning has struck the earth somewhere a hundred times. Hopping planters not only are attractive but they help bring a touch of nature indoors.

Peggy's Meddlin's

BY PEGGY MEDLEY

ITS good to be back in Floydada and out of the LA smog. We found in California beautiful weather with the exception of Los Angeles. Their smog problem there is something to be solved I agree. We were at North Island for the arrival of the Kitty Hawk and so were thousands of other parents, wives and families of the sailors. So many people swarmed aboard the ship when it docked from Vietnam that those already aboard were unable to get off. The steel supported gangways groaned and swayed under the weight of humanity and one of the three double-tired supports blew out causing a small fire. The 80,000 ton carrier was 45 minutes late and some families were pretty well bushed having driven several days and some sleeping in cars the night before on the pier awaiting the ship's arrival. The Red Cross workers were on hand distributing coffee and doughnuts and even had a first aid station set up which was needed. We thought we would be the only one there with a banner of some description so it would be easy for Danny to spot us, but the entire throng of people had the same idea and the Red Cross

crew was even making banners free of charge. After some 2500 men came off the ship we finely spotted our sailor. We were then taken aboard the ship for a tour and mingle with another 2000 sailors who remained on the ship. It would take up to much of my column to tell you everything we did and saw while in California. I'll just say we put over 3,000 miles on the car during our two weeks of travel, encountered no trouble, going or returning, and had a glorious time. Danny returned home with us and will be here until the weekend when he will fly to Miramar NAS at San Diego where he will be stationed the remainder of his Navy time.

COL. and Mrs. Loyce Turner of Fairfax, Va., have been in this area visiting relatives and to enroll their son, Gary in the New Mexico Military Institute at Roswell. Col. Turner retires from the Air Force next year and the family plans to settle in Colorado Springs, their former home. Col. Turner flew home last week and Mrs. Turner remained for a longer visit, leaving her Sunday for Colorado Springs for a week, then home. She is the daughter of Mrs. R. J. Gary and the

late Mr. Gary of the Harmony community and her husband's parents are Mr. and Mrs. Wheeler Turner of Lubbock, former Floydada residents. Both Loyce and his wife, Estelle, were reared in Floyd County and attended schools here.

SPEAKING of Turners we visited Elton and his family in Flagstaff on our return trip. Elton is assistant manager of the Valley National Bank and Sandra is employed as bookkeeper for a doctor in Flagstaff. They have a lovely little daughter, who will soon be five months old and they plan to show her off in Floydada during the Christmas holidays. Elton and Sandra are former employees of the First National Bank in Floydada.

DON'T forget to participate and visit our 16th annual Floyd County Fair scheduled today, tomorrow and Saturday in Lockney.

SPEAKING of the Fair I heard that a woman, associated with the carnival that is to be at the Fair grounds this week end was't given a very good reception when passing through Floydada one night this week. Seems her car and threw a rock through the cotton candy making machine being pulled on a trailer.

THE little VanHoose girl told her mother after the first day of school, "I think I'm going to pass to the second grade." How about that for positive thinking?

DID'NT get back in time from vacation to attend the Ralls-



BRENDA NELSON



CHARLOTTE DECKER

### Girls In Fair Queen Contest

Miss Brenda Nelson and Miss Charlotte Decker of Floydada are among the 22 contestants entered in the Floyd County Fair Queen Contest slated for Saturday evening at 7:30. Preliminaries are set for 2:30 Saturday afternoon.

Floydada football game but understand it was a good one. Hope to see our boys in Friday night's game against Tulla.

If you want to see a hard hitting ball playing bunch of youngsters go see the 7th and 8th graders play some Tuesday evening.

The Floydada Junior High school is selling candy clusters with proceeds to be used for

sored by the 12th and Miss Decker of Floydada High School and the Floydada High School Club. Both are graduates of Floydada High School.

Raymond Akin will serve as master of ceremonies for the game and the Junior-Senior always a struggle. Youngsters to see the banquet on Friday and every other night. THREE days but much time to be had next week. The contest did and didn't be in the paper sneaky????

## Cadillac presents the Spirit of the Seventies!



### The elegantly spirited 1970 Cadillac

The brilliant new 1970 Cadillac is styled to reflect the quality of life in the spirited seventies. Its striking new beauty suggests the tempo of people on the move. Richly tailored appointments welcome you to a new era of Cadillac taste and elegance. Sparkling performance invites you to experience an entirely new dimension of motoring pleasure. In all eleven

Cadillac models, you'll discover new ideas attuned to the seventies. You may choose a new radio that will seek out your AM, FM or stereo-only station. The aerial is neatly concealed windshield. This year, Cadillac engineers have again made sure the Cadillac ride continues to be the most enjoyable in motoring pleasure.



### The newly spirited 8.2 litre Eldorado

The Spirit of the Seventies is nowhere more evident than in the handsome 1970 Eldorado. Behind its smartly recessed grille is a new 8.2 litre V-8 engine (500 cubic inches), the largest V-8 ever offered in a production passenger car. Created exclusively for the front-wheel-drive Eldorado, this new power plant harbors an ample reserve to operate the power

assists one usually associates with a luxury car, while yielding a performance that will set the pace for personal cars for years to come. The instant you feel the new 8.2 litre V-8 in action, you'll know the Fleetwood Eldorado is the world's finest personal car. The moment you drive it, you'll know that Cadillac has left the sixties far behind!

See the spirited new 1970 Cadillacs at your authorized dealer's—they herald a decade of motoring pleasure.

## Four Great TRAGEDIES

A man struck a match to see if the gasoline tank in his auto was empty. It wasn't.

A man patted a strange bull dog on the head to see if the critter was affectionate. It wasn't.

A man speeded up to see if he could beat the train to the crossing. He couldn't.

A man stopped his advertising to see if he could save money. He didn't.

... Newspaper Advertising ...

Is The Strongest Force  
In Business Today

# Floyd County Hesperian

# Winds Take Ralls 27-13 In Season Opener

## At Halftime

DELL TOOLEY  
Floydada Whirlwinds hit Ralls with hardly a game in the books. Ralls 7-0 Friday night. However, Ralls turned out to be an explosive team in the final whistle. Floydada led 27-13. In the last quarter surge, the Whirlwinds were able to overcome a halftime. Both teams were "nervousness," and looked pretty dis-

Although the score was tied 7-7 at halftime, Floydada was ahead on first downs 13-5. Gregory passed a total of 115 yards and Selman was the big ground gainer with 181 yards gained by running and pass receiving.

Watson chalked up a total of 63 yards on 23 carries, mostly right through the middle of the Jackrabbit line.

Mike Burk was outstanding on defense, making eight tackle assists and two unassists; Sam Green had six assists and three unassists; Glen Switzer made five assists and three unassists.

Bob Marler, Tom Wylie and Walter Harris made fumble recoveries.

Watson tallied up a total of 91 yards, mostly right through the middle of the Jackrabbit line.

STATISTICS  
FLOYDADA RALLS  
21 First Downs 7  
115 Yards Passing 7  
294 Yards Rushing 179  
3 Fumbles 4  
45 Penalties 35  
69(3) Punts 77(5)

## Buffs, Raiders Play At Home

Football Season '69, already a week old in high school circles, opens Saturday night for West Texas State and Texas Tech. Both play at home.

National powerhouse Kansas invades Lubbock for a tilt with the Red Raiders. The Buffaloes tangle with Northern Arizona in their curtain raiser.

Both area universities were hard hit by graduation.

## HURRICANE UP

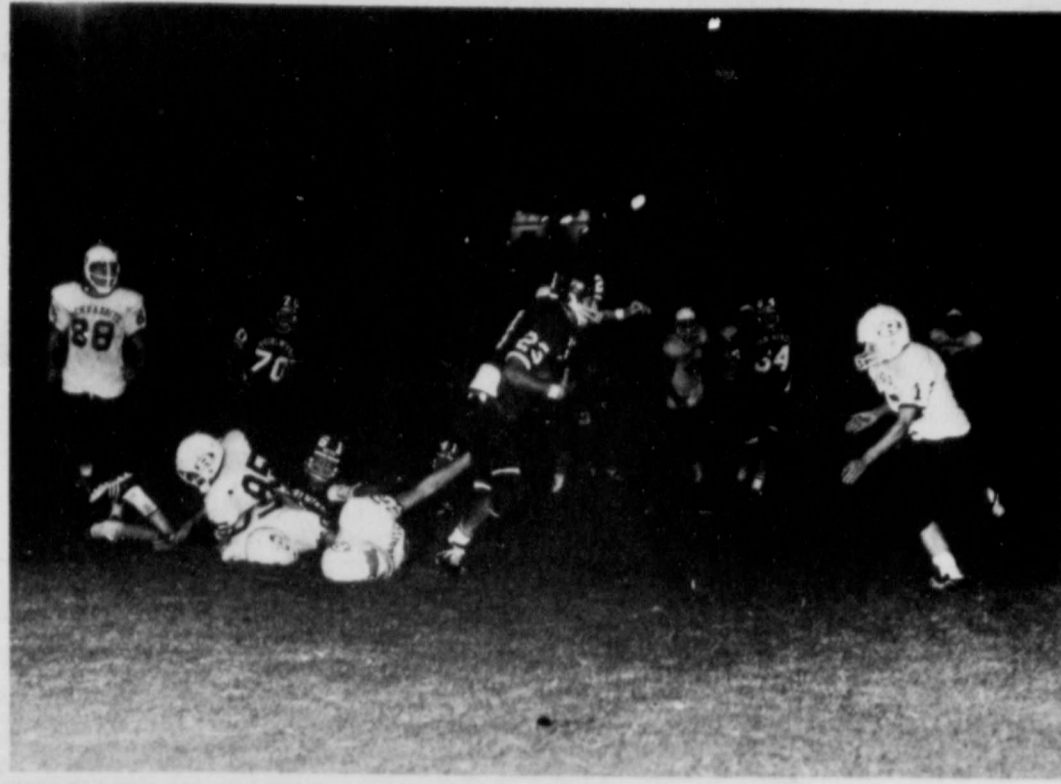
MIAMI (AP) — Whipping the Atlantic with up to 80-mile-an-hour winds, Hurricane Holly packed up speed Tuesday as Project Stormfury pilots prepared to bomb the big storm with silver iodide crystals.

The aerial attack, second in the U.S. project aimed at weakening tropical storms, was tentatively scheduled for Thursday.

An Air Force plane reported that Holly was moving northwest at 8 to 10 m.p.h. Earlier in the day, Holly had dawdled along at about half that speed.

The hurricane hunter pilot reported Tuesday night that Holly was located at Latitude 16.7 north and Longitude 51.2 west, or about 1,000 miles east southeast of San Juan.

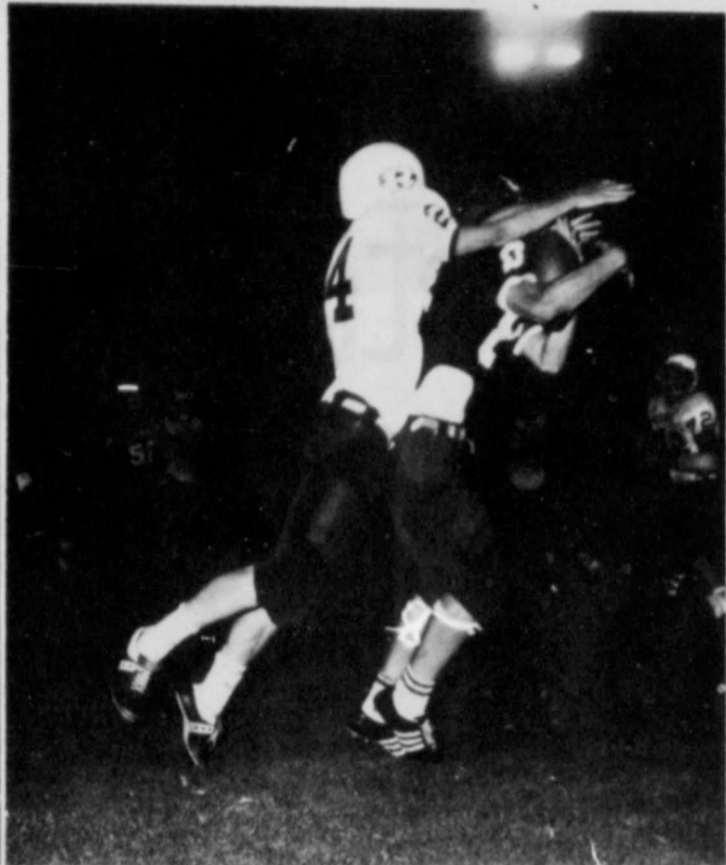
If maintained, Holly's course would take her to the north of the Leeward Islands and Puerto Rico, over open water in which she could be safely seeded.



ANDY SELMAN GOES FOR more yardage against Ralls. He made more yards than the entire Ralls team. (Staff Photo)



BOB MARLER GOES HIGH IN ATTEMPT to catch pass in the Ralls game. He caught the first pass of the game for a TD. (Staff Photo)



MIKE MOORE pulls in pass for big gain in Ralls game Friday night. (Staff Photo)

## Floydada, Lockney, Dimmitt Win

District 3-AA's three expected powerhouses - Lockney, Floydada and Dimmitt - broke fast Friday night in their grid campaign openers. The shocker came at Abernathy, where the Antelopes frolicked to a 20-6 upset victory over a strong Petersburg eleven, relying heavily on an aerial attack.

Pre-season favorite Dimmitt was the most impressive 3-AA club. The Bobcats clawed weak AAA Muleshoe to an unbelieving 50-0 count. Lockney's Longhorns kicked Crosbyton, 34-6.

Floydada rallied for a pair of fourth period TDs to claim a 27-13 verdict over Ralls and give the district a winning mark in first week action.

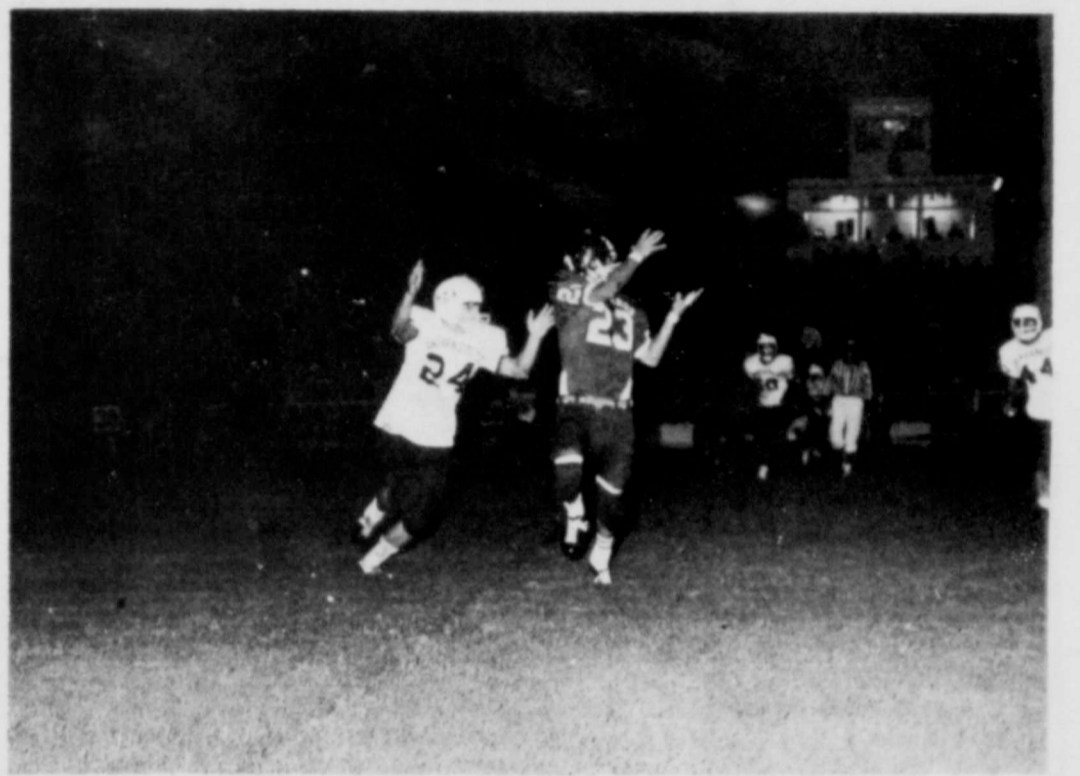
Hale Center took its lumps from an underrated Post crew, 21-7, in a match rated even. Graduation riddled Olton may be stronger than figured. The Mustangs, twice kingpins in 3-AA, bowed only 7-19 to AAA Levelland.

The league's greatest disappointment was a 34-0 setback administered to Friona by perennial roughhouse Farwell.

3-AA clubs may be hard pressed Friday to equal their opening night output. Lockney and Dimmitt try to even the score against Post and Farwell, respectively, for losses administered to their fellow loop members.

Floydada takes on Tulia, and Olton battles another AAA squad, Canyon. Friona tests Morton, Abernathy strives for another victory at the expense of Muleshoe, and Hale Center tries Springlake-Earth.

GO  
WHIRLWINDS  
GO  
BEAT TULIA



SELMAN TAKES PASS...for more yardage in the Ralls game Friday night. (Staff Photo)

## Bill Hendrix Wins Football Contest

Bill Hendrix, 711 W. California, came through with a very good contest entry in the first week of the Hesperian football contest and missed only three contests. He will receive the \$7.50 cash first prize. He missed the Hale Center-Post, Farwell-Friona and Odessa-Amarillo games.

The second place \$5.00 cash award goes to Sammy Hale, who missed four contests. He missed the Hereford-Pampa, Phillips-Canyon, Hale Center-Post and Denver City-Seminole games.

In third place with six misses is Tommy Weathersbee. He will receive the \$2.50 third prize. Several contestants missed six games and the tie breaker Floydada-Ralls game was used to determine the winner. Weathersbee picked Floydada to win with a total score

of 36 points. The game ended 27-13 for a total of 40 points. It should be noted that some contestants failed to circle the winner on the tie-breaker game. The winner should be circled and the total score

written in the box. Others who missed six contests included A. E. Richards, Marc Smitherman, Mark Estes, W. O. Baker, Mrs. Jake Webb, Mrs. Elton Goen.

One contestant from Abernathy failed to write his name on his entry.

Another big contest appears in this edition of the Hesperian. . . . turn to it now and turn all that pigskin knowledge into cash!

ment broadcast said. The Western state has been plagued with tax troubles which authorities have linked to political agitators. In 1968, more than 70 persons were reported killed.

Most opposition to taxes comes from farmers in outlying areas.

## HIGH SCHOOL FOOTBALL SCHEDULE 1969-70

16	Crosbyton	Here	5:30
23	Tulia	There	5:00
30	Hale Center	There	5:30
37	Plainview	Here	5:30
44	Olton	Here	5:30
51	Abernathy	There	5:30
58	Plainview	There	5:00
65	Hale Center	Here	5:30
72	Lockney	There	5:30

## VARSITY AND FRESHMAN FOOTBALL SCHEDULE

J.V. & Fresh.	Post	Here
J.V. & Fresh.	Olton	There
J.V.	Hale Center	Here
Fresh.	Petersburg	Here
J.V.	Canyon	Here
Fresh.	Slaton	Here
J.V. & Fresh.	Tulia	Here
J.V. & Fresh.	Abernathy	Here
J.V. & Fresh.	Lockney	There
J.V. & Fresh.	Idalou	Here
J.V. & Fresh.	Dimmitt	There



WIND CAPTAINS FOR THE TULIA GAME (left to right) Bob Marler, Stan Wilson and George Quisenberry. (Staff Photo)

## DREDS ESCAPE

## Agodians Open Prison

Agodi Prison, in the northeast part of the Western state capital, escaped. Tax riots during the summer killed several dozen persons in surrounding villages. The group that marched on Agodi released about 60 chiefs and other leaders awaiting trial on various counts connected with the summer disturbances. The govern-

ment radio said most of the 400 prisoners at

ed for tax rioting. At least five men were killed as police and army units opened fire.

The government radio said most of the 400 prisoners at

This new 3M Brand "Copy-Mite" Copier costs only \$199 ... yet it makes better copies than expensive electrostatics!

**HESPERIAN OFFICE SUPPLY**

Compact, desk-top size. Makes sharp, clean copies from any originals.

- Gives "original like" copies on white bond-weight paper.
- Copies from books and magazines.
- Copy quality equals those from any machine at any price!
- Also makes overhead projection transparencies.

...warm as toast

# Electric Heat

IN A TOTAL ELECTRIC GOLD MEDALLION HOME!!!

**TOTAL ELECTRIC GOLD MEDALLION HOME LIVE BETTER ELECTRICALLY AWARD**

**Southwestern Public Service Company**  
Comfort Electric Heating

**Willie  
Wiredhand  
NOTES**

LIGHTHOUSE ELECTRIC COOPERATIVE, INC.  
MARY PHILLIPS, HOME ECONOMIST

When Westinghouse asked housewives this question, they found that she hates ironing the most. Then, the most obnoxious chores, in order, are cleaning the stove, scrubbing floors, cleaning closets, washing windows, scrubbing bathrooms, washing walls, and cleaning the refrigerator. This is no real surprise to most of us!

Does your family use Blue Cheese occasionally? American Blue Cheese can be kept in the home freezer. However, the cheese should be allowed to thaw in the refrigerator at normal temperatures for 24 hours before being removed from the protective wrapping.

After opening a package of American Blue Cheese, be sure to re-wrap it carefully in foil or another air-tight material. A tightly covered glass jar or plastic container also may be used.

American Blue Cheese may be stored in the refrigerator for periods up to three months.

A new fiber out that makes possible upholstery with easy care features and modern colors and designs. The fiber, new for upholstery, is olefin or polypropylene, the indoor-

outdoor carpet fiber. Fabrics made of olefin fiber shrug off spots and stains. Most common household stains can be sponged away with water and light detergent suds without fear of fuzzing or pilling. Olefin is also mildew-proof and non-allergenic.

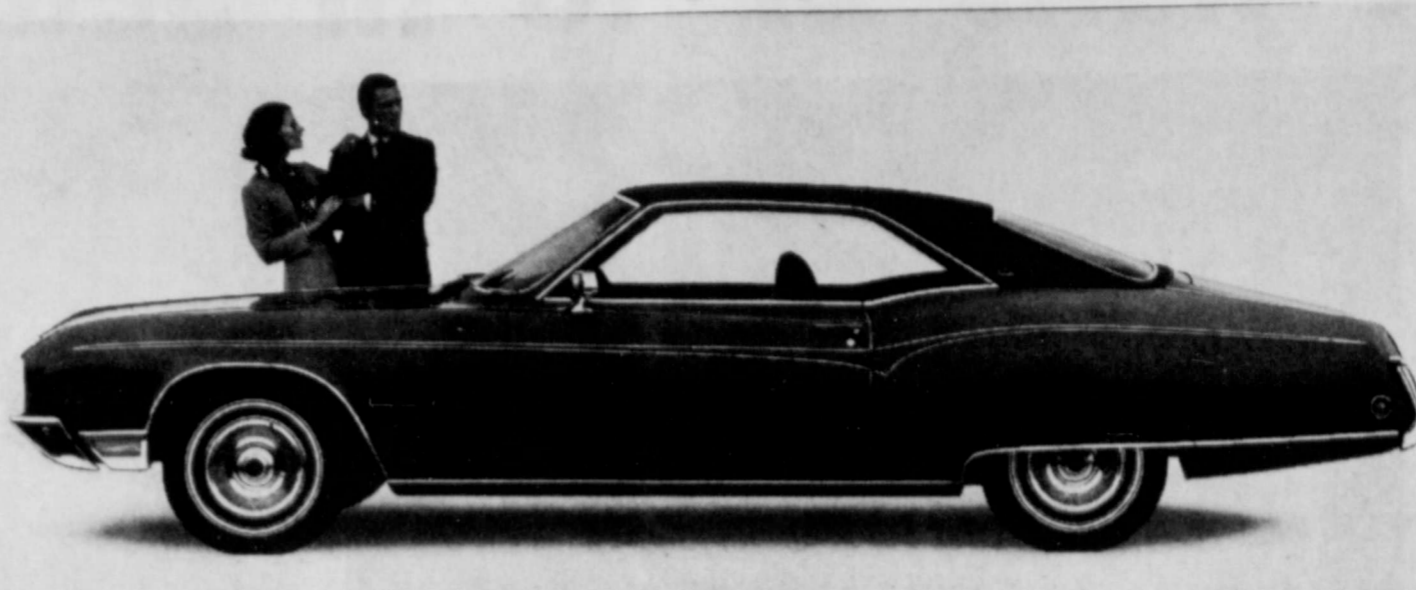
Buying a new shirt for the man in the family? New styles in men's cotton shirts show the wide-reaching effect of the Thirties on the fashion world. Shirts have bigger collars and are worn with wider ties. Moreover, the outlook calls for lots of color. In both cotton dress shirts and sports styles, designers are featuring blue, pink, yellow, spruce green, and reds from melon to mulberry. An advantage over the thirties—most of the new styles need only to be tossed in the washer and dryer and hung up for the next wearing. And remember ironing is the chore most hated by housewives.

Do you enjoy making beautiful pie crust or are you one of the people that would rather not? The following is a good pie if you fall in the latter category.

**IMPOSSIBLE PIE**

- 4 eggs, well beaten
- 1 3/4 cups sugar
- 1/2 cup self-rising flour
- 1/2 stick melted margarine
- 1 teaspoon vanilla

**1970 Buicks On Display At City Auto**



1970 Buick Riviera. An all new 455-cubic inch V8 combined with a beautifully behaved 3-speed automatic transmission are a small part of what's standard.

**CATTLE.**

FROM PAGE 1

Sponsoring the short course are Edmonson Wheat Growers; Hale Center Wheat Growers; Olton Grain Co-op; Lockney Cooperative Elevator; Producers Cooperative Elevator, Floydada; Petersburg Co-op Grain Company; Co-op Grain Company, Abernathy; Tullia Wheat Growers; Kress Farmers Elevator; Silverton Cooperative, Inc.; Briscoe Co-op Grain Inc., and Plainview Wheat Growers.

- 2 cups milk
- 7 oz. coconut (fresh or canned)

Mix sugar, flour, add beaten eggs, then add remaining ingredients. Pour into two greased 9-inch aluminum foil pie tins. Bake at 350 degrees until browned on top, usually about 35 minutes. Serve cooled.

**FAIR.**

FROM PAGE 1

the TB mobil unit. Virtually all inside booth space has been booked, according to Boyce Mosley.

D. S. Dudley Shows set up early this week.

**Study Of Liquor Laws Arranged**

AUSTIN (UPI) — Sen. Joe Christie, D-El Paso, Tuesday was named to head a Senate interim committee to reevaluate Texas liquor laws.

L. Gov. Ben Barnes also named Sens. H. J. Blanchard, D-Lubbock, Chet Brooks, D-

Pasadena, O. H. Harris, R-Dallas, and Murray Watson, D-Waco, to the panel.

Barnes said enforcement of state liquor laws has "become increasingly difficult, and the effectiveness of the law in regulating the sale and handling of alcoholic beverages in Texas has been reduced" by numerous amendments to the liquor code.

**FALL DISCOUNT SALE**

POP A BALLOON FOR A DISCOUNT ON FRIDAY AND SATURDAY. 5 TO 20% DISCOUNTS ON ANY ORDER (EXCEPT FASHIONS).

(EXCEPT FASHIONS).

**DISCOUNT SPECIALS**

- 16 Cu. Ft. Freezer..... \$179.95
- \$349.95 Color TV Set..... \$319.95
- B & W TV..... \$179.95

- Frosted Light Bulbs..... \$5.00
- Bed Pillows..... \$5.00

- 20 lb. Detergent..... 2 boxes \$5.00
- 6 Transistor Radio..... \$5.00

- Men's Polo Shirts..... \$5.00
- Recliner was \$129.95..... \$99.95

**MONTGOMERY WARD**

**CAPADA  
DRIVE IN**

Friday & Saturday

**"Yours,  
Mine and  
OURS"**

COLOR by Deluxe UNITED ARTISTS

Sunday & Monday

CHEROKEE PRODUCTIONS  
Presents

**"SUPPORT  
YOUR  
LOCAL  
SHERIFF"**

COLOR by Deluxe United Artists



JOAN HACKETT and JAMES GARNER. . . . share stellar honors in Cherokee Productions' "Support Your Local Sheriff," which United Artists a Transamerica Corporation, brings to the Capada Theatre on Sunday and Monday, September 21-22.

**Introducing  
the 1970 Buicks.**

Three of 36 great new Buicks.  
Three of the finest Buicks ever.  
Built with all the care and craftsmanship possible.  
Built with product integrity.  
Right down to the fine details.  
As a few of these fine details will prove.

Every 1970 Buick has a new cooling system that should never ever overheat. • Every 1970 Buick equipped with a V8 engine has an exclusive carburetor time modulated choke control. It will make for easy starts in any weather. • Every 1970 Buick is equipped with fiberglass belted tires as standard equipment. • Every 1970 LeSabre, Wildcat, Estate Wagon, Electra 225 and Riviera has an exclusive suspension system called AccuDrive. Never has handling been easier. • All the 1970 Buicks have the look that makes people look twice.

No wonder Buick owners will keep on buying Buicks. Buicks are automobiles you can believe in.

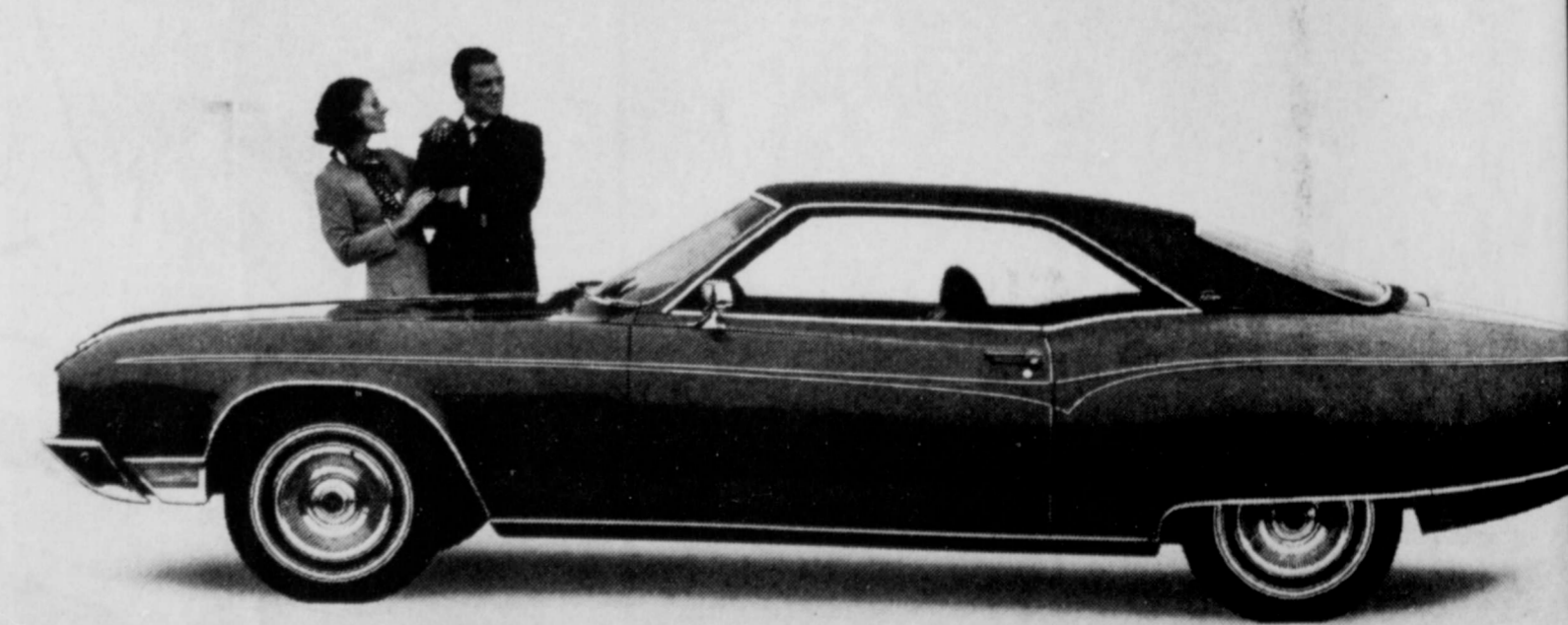
**Something to believe**



1970 Buick LeSabre Custom 2-door Hardtop. With a 124-inch wheelbase. Now available with a 455-cubic inch V8.



1970 Buick Estate Wagon. Total length with a 124-inch wheelbase. Total length with a 124-inch wheelbase. Total length with a 124-inch wheelbase.



1970 Buick Riviera. An all new 455-cubic inch V8 combined with a beautifully behaved 3-speed automatic transmission are a small part of what's standard.

Wouldn't you really rather have a Buick?

**TULIA  
LIVESTOCK AUCTION, INC.**  
IS NOW RECEIVING THEIR FALL RUN OF  
**WHEAT PASTURE  
and  
LIGHT STOCKER CATTLE**

GOOD AND CHOICE BLACK AND BLACK-WHITEFACE STEERS WEIGHING 350 POUNDS.

ONE CLASS OF GOOD AND CHOICE STEERS WEIGHING 200-250 POUNDS.

GOOD AND CHOICE CHAROLAIS STEERS WEIGHING 375 POUNDS.

THIS IS JUST A FEW OF THE CLASSES WE HAVE AT ALL TIMES.

THESE CATTLE WILL BE SOLD AT ANY TIME THROUGH THE WEEK. BUYERS ARE WELCOME AT ANY TIME.

IF WE DON'T HAVE THE CLASS OF CATTLE YOU NEED WE WILL BE MORE THAN PLEASED TO SPECIAL ORDER FOR YOU.

USE OUR COMPLETE FACILITIES FOR BRANDING, VACCINATING, AND DOCTORING CATTLE FOR PASTURE.

WE HAVE TRUCKS AVAILABLE FOR PICK-UP AND DELIVERY.

**AUCTION SALE EVERY FRIDAY 10:00 A.M.**  
**CONTACT  
EUGENE NOTE, MGR.**  
DIMMITT HIGHWAY TULIA, TEXAS PHONE 995-2202



Thursday- Saturday

# SALE

LIGHT GREEN

**ADDING MACHINE**

**PAPER, 2 1/4"**

PER ROLL

# 15¢

## BIGGEST PORTABLE TYPEWRITER

**Underwood 21** Strongly built; fully equipped; totally reliable. Fills the gap between standard machines that are more than enough and portables that are not quite enough for the busy professional man who does his own typing at home, or in his own office, or in a studio. Touch control, full tabulation, erasing table, card holders, two-color ribbon and stencil control. With sturdy carrying case . . .

Suggested retail price \$104.50



SALE **\$79<sup>95</sup>**

### HESPERIAN OFFICE SUPPLY

**Floydada**

**983-3737**

# Final State Tax Bill Completed

By Vern Sanford  
Texas Press Association

AUSTIN - Legislators closed out 44 days of special session conferences over taxes and finance.

Texas' \$348 million tax bill, which takes effect October 1, includes:

An increase from 3 to 3.25 percent in the general sales tax rate and inclusion of beer and liquor in the tax base for the first time.

A boost in the cigarette taxes from 11 cents to 15.5 cents a pack.

Increase in corporation franchise tax from \$2.75 to \$3.25 per \$1,000.

Change in corporation franchise tax allocation formula to include out-of-state concerns which sell products in Texas (food and drugs exempt).

Raise in natural gas tax from seven to 7.5 percent of value. Levy of five cents a drink on alcoholic beverages sold in private clubs.

A record \$5.8 billion biennial appropriations bill - \$313.8 million above the present general revenue spending level - would provide a \$205.6 million increase for education, \$58 million more for health, hospitals and youth corrections, \$62.2 million increase for medical aid to the needy and a 10.4 percent increase in state employees' pay.

When the major business of the session was over, legislature turned to other matters submitted by Gov. Preston Smith which included:

Creation of 28 new district courts over the state. Establishment of an antiquities code, setting state policies for historic and scientific explorations on state-owned lands.

Removal of the statutory interest rate limits on state and local government bonds.

A variety of "clean beach" legislation. Authority for creation of a non-profit corporation to provide deposit insurance for state banks and savings and loan associations in the \$15,000 to \$100,000 range.

LAWMAKERS RAISE \$ ALLOWANCE - Before departing for the hinterlands, legislators voted themselves increases in their contingency funds.

House raised its allowance for each representative from \$450 to \$875 monthly during the interim between legislative sessions. Senators raised their expense maximum from \$1,000 a month to \$1,700.

Legislators in both houses are paid a salary of only \$4,800 a year.

INSURANCE PROBE ENDS - Governor's committee studying a proposed 11.4 percent auto insurance rate increase recommended that the State Board of Insurance reduce insurance companies' expense allowance for acquisition of physical damage insurance from 25 percent to 22.5 percent of the premium dollar. This would scale down the proposed \$43 million overall increase by about \$6.6 million.

Committee found an increase in premiums "inevitable primarily because of the large increase in automobile accidents and costs of repairs in 1968."

Otherwise, said former Gov. Price Daniel, chairman of the nine-member committee, the increase is "conservative compared with rates in other states, lower than most states."

Committee also recommended that investment income derived from auto insurance premiums and loss reserves be considered directly by the Board in determining allowance for profits and contingencies.

Governor Smith said he would make no statement on the report until he has studied it with his staff.

NEW COURTS CREATED - Total of 28 new courts will begin functioning over the state as soon as Governor Smith appoints judges to fill the benches. Twenty-seven were created in a package bill and another in a single-shot measure.

Big cities will get the bulk of the courts. Harris County alone will have six, Dallas five, Bexar and Tarrant two each. One new court each will serve the counties of Nueces-Cameron-Willacy, Anderson-Henderson-Houston, Kerr-Bandera-Kendall-McMurrin-Concho-Kimble McCulloch, Potter and Randall, Bell, Jefferson, Brazoria, Denton, Angelina, El Paso, Gregg and Hunt.

AG OPINIONS - A person whose driver's license has been suspended must furnish proof of a valid policy of auto liability insurance or other proof of financial responsibility to get an occupational license, Atty. Gen. Crawford Martin has held.

In other recent opinions, Martin concluded that:

All dredging of bay bottoms requires a permit from the Texas Parks and Wildlife Department since they are owned by the state. Burden of proof of private ownership is on the claimant. No permit is required for land owned under fresh water.

Banking Commissioner has no power to force national banks to stop accepting deposits on Saturdays or other days they elect not to close. He can permit state banks to accept deposits on days they designate to be closed for general banking purposes but they would lose some protection against liability by having available only limited banking services.

Texas Aeronautics Commission has jurisdiction to regulate "or-hire air transportation (i.e. helicopters) wholly confined within the limits of any city or town. Agency also has power to seek injunctive relief against violators of its orders.

Though the personal representative of an estate is not required to give security for costs, he is required to pay specified costs set out in law at the time of filing a proceeding in probate.

Office of the ex-officio member of the Texas Air Control Board has been abolished by the Texas Clean Air Act effective September 1.

Psychologist licensing act is not in violation of the constitution, but proposed terms of the new board members - three years - are not in conformity with the constitution which prescribes six, four or two year terms.

## Grain Sorghum Ballots Approved

The Grain Sorghum referendum ballots for the October 6 producers check-off vote were approved today, according to Agriculture Commissioner John C. White.

Grain Sorghum producers in a twenty-nine county area of the high plains and panhandle will be involved in the referendum vote, White said. They will be

required to complete three major sections on the ballot.

required to complete three major sections on the ballot.

required to complete three major sections on the ballot.

required to complete three major sections on the ballot.

required to complete three major sections on the ballot.

required to complete three major sections on the ballot.

required to complete three major sections on the ballot.

required to complete three major sections on the ballot.

required to complete three major sections on the ballot.

required to complete three major sections on the ballot.

required to complete three major sections on the ballot.

required to complete three major sections on the ballot.

# Letter To The Editor

Mr. Wendell Tooley  
Floydada County Hesperian  
Floydada, Texas  
Dear Wendell:  
I have just seen your fine editorial on the subject of my Boys State address. I just want to thank you for your publicity and complimentary remarks.  
Come to see me when you are in Austin and thanks again.  
Yours very truly,  
/s/ Waggoner  
Waggoner Carr

Whirlwind Parents and Fans,  
Thank you for your support at Ralls last week. Your presence there helped us win our first victory. This week we are playing Tulla here, and we know that YOUR continuing support will add to our Whirlwinds' first try at a home game victory. Help us to back them by coming to the pep rally Friday at 3:30 in the high school gym. See you there and at the game Friday night at 8. Beat the Hornets!!!  
Jill Bertrand, Judy Probasco, Reagan Cagle, Terri Shipman, Polly Cardinal, Alison McLain, Lisa Gregory

The first section includes the self-assessment proposition. Candidates for a twelve-man Commodity Producers Board are listed in the second section. Growers must indicate last year's production in the third section of the ballot.

"All voters," Commissioner White stressed, "are eligible to vote on members of the Commodity Producers Board regardless of whether they voted 'yes' or 'no' on the referendum proposition. The decision of the Board will affect all producers in that area if the referendum passes."

Growers who had no production during the last crop year are still eligible to vote, White explained. However, they must certify on the ballot that they are new producers.


Ballots must be mailed to the polling sites before midnight, October 6. They will be counted by a committee consisting of the County Judge for the area affected, a representative of the Texas Agricultural Extension Service, a representative of the Texas Department of Agriculture, observers from the Grain Sorghum Producers Association of Lubbock, and other persons deemed necessary. All election proceedings must be approved by the Commissioner of Agriculture.

FIRE, FROM PAGE 1  
Floydada, and \$1,500.00 a year to Lockney) plus, paid for the insurance on the fire truck, which contract is still in force at this time.

About four months ago, the City Council of Floydada asked the Commissioners Court to increase its payments to the city for the rural fire protection. The City Council of Floydada asked "that \$8,000.00 per year be the County's share of a joint fire department plus \$11,000.00 needed now for the purchase of a new fire truck". The Commissioners Court has been advised that there cannot legally be a "joint fire department", but that the County can contract with the different cities for such services upon such terms and conditions as shall be agreed upon.

According to the five year study made by the City of Floydada, the interpretation of such study by the Floyd County Commissioners Court, is that on a per year average that \$1,086.00 paid to Volunteer Firemen and \$1,442.00 (43% of such fires being rural) of the cost of maintenance and supplies, with the total annual sum being \$2,528.00, is all of the items shown on such survey pertain-

**FLOYD PHILOSOPHER**  
Solves The Problem Of The Cities  
The Generation Gap, And So Fourth



Editor's note: The Floyd Philosopher on his Johnson grass farm tackles a couple of big problems this week, but we won't say with what results.

Dear editor:  
I had been reading about it in newspapers turning up out here on this Johnson grass farm but hadn't paid much attention to the great problem the big cities are having these days until I had to go into Lubbock the other day.

As I understand it, the cities are in deep trouble, they're over-crowded, the streets are constantly wearing out and the plumbing is breaking down and they don't have enough money to fix them, traffic is so bad you can walk faster than you can drive at certain times of the day, they don't have enough policemen, the schools are overflowing, tempers are short, etc.

I don't know that Lubbock has all these problems, but after fighting traffic in it a while - well I wasn't actually fighting it myself, I wasn't driving, I was sitting on the back seat throwing up my arms to ward off what

I thought were sure collisions every two or three minutes - as I say, after fighting this traffic for a while I got to thinking.

The trouble with cities is they've been built in the wrong place.

Why pick out a crowded place like that to build a city? They ought to be built out in the country where there's plenty of room and not nearly as much noise.

Now that I have disposed of that problem and still have some room left on this piece of tablet paper, there's another problem I'd like to discuss.

For the last couple of years I've been listening to grown men on television agonizing over their inability, as they put it, "to understand the young." They say all the college ruckuses stem from the adults' failure to understand youth, and they wring their hands and say they're going to try harder. They even let their sideburns grow longer to prove they're trying to get with it.

Thunderation. The way I see it, the young ought to be trying to understand us. It looks to me like the wrong hands are being wrung.

Yours faithfully,  
J.A.

## Miss Nuncio Receives Praise For Training

Miss Rose Nuncio, 22, daughter of Mr. and Mrs. Santos Billegas, 321 East Tennessee, Floydada, Texas, received high praise for her on-the-job training at the New Mexico Motor Vehicle Department recently. She will graduate at 10 a.m. Monday, September 22, as a clerk-typist in public graduation ceremonies.

"As manager of this office," Mrs. Bonnie C. Davies of the New Mexico Motor Vehicle Department, said, "I can only praise the good training Rose is getting at the Albuquerque Job Corps Center for Women."

Miss Nuncio has been in the Center in training in Albuquerque, New Mexico for the past 15 months. An eighth grade drop out, she plans to take the five-part high school equivalency test from the University of Albuquerque to earn her General Education Diploma. She plans to continue her education in night school and hopes to become a secretary.

While in the Center, Rose



MRS. BONNIE G. DAVIES, manager of MVD. Instructs Rose Nuncio (standing) and Celsa

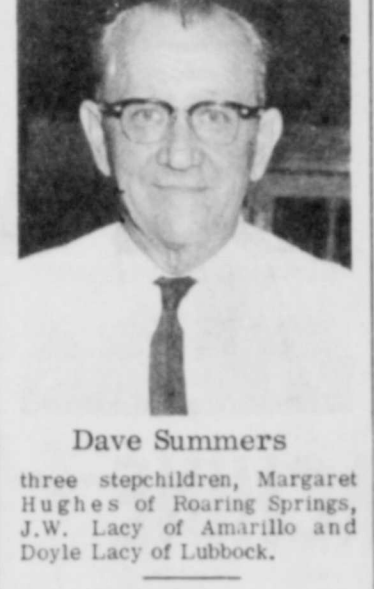
served as Treasurer of the Student Council, was a Telephone Monitor, Lobby Hostess, and was Assistant Secretary and Co-captain to the Lobby Hostess Club.

She worked as a Teacher's aide, in the cafeteria, snack bar and was active in the local Catholic church.

Declaring Job Corps has given her "more than I can say," Miss Nuncio said, "my training has opened the door to the world of business" and has given her "a start to a new life."

Mrs. Davies said that Rose has worked beside regular permanent employees and has answered telephones, filed driver's license applications, typed forms, performed general office work and has been "eager to do any job" asked of her. "I am especially pleased that she answers the telephone promptly," Mrs. Davies said, "and that she turns the phone over to someone else promptly if there is a question she cannot answer."

The once shy Rose Nuncio has become a competent, trained clerk-typist.



Dave Summers

three stepchildren, Margaret Hughes of Roaring Springs, J.W. Lacy of Amarillo and Doyle Lacy of Lubbock.

GO, WHIRLWINDS, GO

# AUTO SHOW

**HERE TODAY!**

The beautiful new

## 1970 CHEVROLETS OLDSMOBILES

Refreshments  
Door Prizes



CHEVROLET

NEW STYLING

NEW LUXURY



OLDSMOBILE

PLEASE ACCEPT THIS PERSONAL INVITATION TO COME IN AND SEE ALL THAT'S NEW IN THE 1970 AUTOS.... WE BELIEVE YOU'LL LIKE WHAT YOU SEE

# ODEN CHEVROLET - OLDSMOBILE

NEW SAFETY

- Hospital News**
- Leo Davis, admitted 9-13, continues treatment.
  - Ard Howard continues treatment.
  - Henry Bloodworth continues treatment.
  - Laura Burns continues treatment.
  - Mrs. Lewis Jones, admitted 9-15, continues treatment.
  - John Smitherman, admitted 9-10, continues treatment.
  - Gaines Teeple continues treatment.
  - Mark Craig continues treatment.
  - Don Ed Holmes, admitted 9-17, continues treatment.
  - Mrs. Marie Tardy, admitted 9-14, dismissed 9-17.
  - Sylvia Jimenez, OB, admitted 9-15, dismissed 9-16, baby boy.
  - Danny Carpenter, admitted 9-13, dismissed 9-14.
  - Sharon Hale, admitted 9-13, dismissed 9-14.
  - Lydia Romos, OB, admitted 9-13, dismissed 9-15, baby boy.
  - Ruth Rendon, admitted 9-11,

- dismissed 9-16.
- Phyllis Hodges, OB, admitted 9-11, dismissed 9-14, baby boy.
- Gilbert Pittman, admitted 9-10, dismissed 9-14.
- Margaret Hughes, admitted 9-10, dismissed 9-11.
- Erice Johnson, admitted 9-10, dismissed 9-12.
- Mary Torres, admitted 9-9, dismissed 9-11.
- Mattie Poole, admitted 9-8,
- dismissed 9-13, transferred to nursing home.
- Maud Hollums, admitted 9-15, dismissed 9-16.
- Ila Bailey, admitted 9-6, dismissed 9-15.





UNUSUAL SUNFLOWER in the backyard of Mrs. H. R. Stanley, 320 West Kentucky, has 13 flowers topping plant. (Staff Photo)

## FAIR SCHEDULE

**THURSDAY**  
 1:00 p.m. Judging of Community Exhibits  
 2:00 p.m. Judging of Women's Division  
 2:30 p.m. Parade in Downtown Lockney  
 3:00 p.m. Judging in Agricultural Department  
 4:00 p.m. Tractor Driving Contest  
 6:30 p.m. Satellite School Show  
 7:30 p.m. "The Colors" Program  
**FAMILY NIGHT**  
 9:30 p.m. Drawing for \$100

**FRIDAY**  
 9:00 a.m. Ladies' Day Program and Prizes  
 9:00 a.m. Swine Judging  
 10:00 a.m. Sheep Judging  
 11:00 a.m. Junior Heifer Judging  
 1:00 p.m. Beef Cattle Judging  
 6:30 p.m. Satellite School Show  
 7:30 p.m. Gospel Singing  
 9:30 p.m. Drawing for \$100

**SATURDAY**  
 9:00 a.m. Quarterhorse Show  
 9:30 a.m. Junior Showmanship Contest  
 10:00 a.m. Baby Beef Judging  
 2:30 p.m. Miss Floyd County Fair Pageant Preliminaries  
 6:30 p.m. Satellite School Show  
 7:30 p.m. Queen Finals  
 9:30 p.m. Drawing for \$100

HI--HO, COME TO THE FAIR...

**NOW!**

WE STOCK GENUINE

**THERMOFAX  
 PAPER**

500 SHEETS **\$19.00**  
 WHITE

**HESPERIAN  
 OFFICE SUPPLY**

PHONE 983-3737

### WAR AND PEACE

1775-1968

**1,161,007**

AMERICANS DIED  
 IN  
**ALL THE U. S. WARS**

REVOLUTIONARY WAR	4,435
WAR OF 1812	2,260
MEXICAN WAR	13,283
CIVIL WAR	529,332
SPANISH AMERICAN WAR	2,446
WORLD WAR I	116,563
WORLD WAR II	407,828
KOREA	54,246
VIET NAM*	30,614

\*VIET NAM CASUALTIES THROUGH 12-31-68

1900-1968

**1,721,754**

AMERICANS DIED  
 IN  
**U. S. HIGHWAY  
 ACCIDENTS**

TEXAS DEPARTMENT OF PUBLIC SAFETY - STATISTICAL SERVICES

**You all come see the new**

Be Sure To Register  
 For Door Prizes  
 And Grand Prizes!

**1970  
 FORDS  
 MERCURYS**



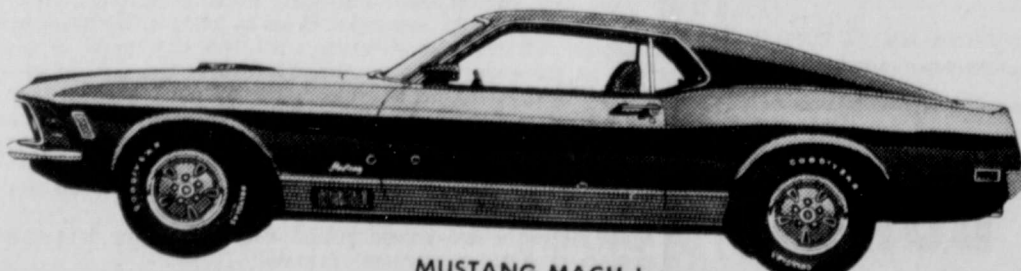
MERCURY



FORD



MAVERICK



MUSTANG MACH I

THURSDAY IS THE BIG DAY, AND WE CORDIALLY INVITE EVERYONE IN TO OUR SHOWROOMS TO SEE THE MOST BEAUTIFUL NEW FORDS AND MERCURYS EVER.

DOOR PRIZES

REFRESHMENTS

**REED FORD - MERCURY SALES**

RALLS HIGHWAY

**POWELL'S** PRICES GOOD THROUGH SEPT.

ON THE WYE - YOUR HOME OWNED STORE

GET GOLD BOND STAMPS FREE WITH EVERY PURCHASE

**CASHEW CHUNKS**

TOM SCOTT 12 OZ. CAN **89¢**

ZEE **PAPER TOWELS** JUMBO ROLL 2

LIGHT CHUNK **VAN CAMP TUNA** 3 FOR 7

**CRISCO OIL** 38 OZ. BOTTLE 6

HIPOLITE PINT JAR **MARSHMALLOW CREME**

KRAFTS **MIRACLE WHIP** QUART 5

PATIO BEEF **ENCHILADA DINNERS** EACH 3

MAXWELL HOUSE **COFFEE** POUND 6

**KERN'S TOMATO SAUCE** 11 FOR 22 OZ. SIZE

**PALMOLIVE LIQUID** 4

SOFLIN BATHROOM **TISSUE** 10 ROLL PKG. 7

**NAPKINS SOFLIN** 200 COUNT PKG. 2

LEMON FRESHENED BORAX **Fab** LAUNDRY DETERGENT WITH THIS COUPON. KING SIZE SAVINGS with this coupon **84 oz. 99¢ only**. COUPON EXPIRES ON SEPT. 24. This coupon redeemable only at POWELLS.

KERN'S PURE 20 OZ. JAR **STRAWBERRY PRESERVES**

GLADIOLA **CORN MEAL** 5 LB. 4

BETTY CROCKER **BROWNIE MIX** LARGE 23 OZ. BOX 4

KING SIZE **COCA COLA** 6 BTL. CTN **39¢**

SHURFRESH **OLEO** POUND **19¢**

SHURFRESH **BISCUITS** 3 CANS 2

POWELL'S SUPER MARKET FEATURES **WILSON CERTIFIED FRANK**

CENTER CUT **PORK CHOPS** LB **99¢**

USDA CHOICE **CHUCK ROAST** CENTER CUTS LB. **77¢**

**GROUND BEEF** LB. **49¢**

**FRYER BREAST** 2 LB. BOX **\$1**

Save Shurfresh COUPONS FOR VALUABLE PRIZES ABSOLUTELY **Free**

## Meeting To Organize Floydada Night College Today

Because of the interest shown by several persons in beginning a night college in Floydada, a meeting has been called for today at 4:30 p.m. in the bank community room to further plan the college.

The college will operate under Texas Tech's extension program with instructors coming to Floydada High School to teach the courses. Twenty persons must be enrolled to begin each class and the tuition charge is \$15.00 per hour. Each course will be 13 three hour meetings per semester plus an examination period. Persons may obtain 18 hours on a bachelor degree and six on a master through the program.

Because of the good interest shown in the extension program, Floydada Chamber of Commerce manager John Reue has called today's meeting.

Ten area towns now have the Tech extension courses going. Courses that might be taught include English, history, accounting, psychology, math,

Spanish, French, German, management, philosophy, government and marketing.

The education department also has a listing of courses available.

**Good Customer**  
A film actor, married and divorced five times in three years, came to the registrar's with his sixth bride. It was the same registrar who had married the actor on the previous occasions. After the ceremony the actor reached into his wallet, but the registrar waved the money aside. "Not this time," he said. "This is one on the house."



WINDMILL LOCATED SCIENTIFICALLY... Jr. High Principal A. W. Coltharp "witches" location of Breezer windmill in front of school building. (Staff Photo)

### Science Class Presents "Breezer Windmill" To Jr. High

DELL TOOLEY  
The grade science fair presented a presentation of the windmill to principal Coltharp this week. The windmill was located in front of the Jr. High building at the northeast corner of

on back fan. Just to make sure that the windmill was located where there was water, principal Coltharp said that the location was good for drinking water, but located stronger water when his witching stick pointed down in an area south of the windmill location.

Science teacher Reeves said it was possible that the windmill was located over a city water main, indicating a "very good supply of underground water."

### Winter, Music Mark Pike Rites

ARK (AP) — Laughing music rippled through the Episcopal Church as a high requiem Mass was read for James A. Pike, Episcopal bishop emeritus, who was informal in the spirit of the man who was found dead in a desert in Israel he had gone to in search of Christianity. The congregation sat in a

semicircle, many of them in sandals or miniskirts, beneath a futuristic, chrome-plated cross. William Stringfellow, Pike's friend and biographer, sat on a desk and spun tales of Pike's confrontations with the forces of church orthodoxy. He often evoked laughter.

Duke Ellington then came to the stage, led the congregation in a hymn, and played a melancholy piano piece from his latest jazz text.



CARROT HARVEST on the Truitt Hartsell farm, 20 acres go to market.



All eyes are on the  
**1970**  
● PONTIACS  
● BUICKS  
● GMC TRUCKS

COME IN TODAY, SEE THE MOST BEAUTIFUL PONTIACS AND BUICKS EVER BUILT. WE THINK YOU'LL BE DELIGHTED WITH THE NEW 1970'S.....WE KNOW YOU WILL LIKE OUR DEAL, WHEN IT COMES TO PRICE AND TRADING.

- REFRESHMENTS
- DOOR PRIZES

**City Auto Inc.**

NORTHEAST CORNER SQUARE FLOYDADA, TEXAS

### Shop Our Newly Stocked Frozen Foods

WHOLESALE  
**ORANGE JUICE** 6 OZ. CAN **19¢**

LIBBY  
**ORANGE DRINK** 6 OZ. CAN **2/29¢**

PEPPERIDGE FARM  
**BREAD** WHITE LOAF **39¢**

**GOLD BOND STAMPS**  
With the purchase of  
**1/2 GALLON CLOVERLAKE ICE CREAM**

**GOLD BOND STAMPS**  
With the purchase of  
**IMPERIAL PURE CANE SUGAR** 5 LBS.

**GOLD BOND STAMPS**  
With the purchase of  
**S AND W COFFEE** 1 LB.

**GOLD BOND STAMPS**  
WITH \$5.00 PURCHASE OR MORE

NEW MEXICO DELICIOUS NEW CROP  
**APPLES**  
5 POUNDS FOR **\$1**  
BUSHEL \$4.95

SUNRAY **BACON** 2 POUND **\$1.69**

BLUE MORROW **BEEF STEAKS** FRESH FROZEN REG. \$1.00 VALUE **77¢**

KING SIZE **COOKIES** PLUS DEPOSIT **39¢**

KIMBELL **GRAPEFRUIT JUICE** 46 OZ. CAN **28¢**

**THE BIG SWITCH IS TO GOLD BOND STAMPS**  
**HALL MART**  
QUALITY IS OUR HALL MARK  
PRICES GOOD SEPT. 18 THRU SEPT. 24  
PHONE 983-3928

DIAMOND **OLEO** 1 LB. SOLID **2 for 25¢**

GLADIOLA **FLOUR** 5 LB. BAG **55¢**

STOKLEY **CORN** CREAM STYLE OR WHOLE KERNEL NO. 303 CAN **4 for \$1**

LAYS **POTATO CHIPS** REG. 59¢ **44¢**

We Feature Home Grown Produce Daily  
**CABBAGE** 5¢ lb.  
**GREEN BEANS**  
**BLACK EYE PEAS**  
**OKRA** **19¢** LB.

CLOVERLAKE **ICE CREAM** 1/2 GAL. CTN. **69¢**



### SOUTH PLAINS NEWS by Mrs. Murray Julian

SOUTH PLAINS, Sept. 15 - South Plains Baptist Revival services closed out Sunday night after a week of wonderful, uplifting services by Rev. Robt. Perrin of Dublin, and beautiful singing services led by Vance Zinn of Floydada. Rainy weather held the attendance down, but many decisions were made and those who could not come because of the roads missed a blessing. Rev. Perrin stayed at the parsonage with Rev. and Mrs. W. L. Trice and family, with meals being brought in for the supper hour, and other meals eaten in the homes of the members at the noon hour.

The visiting minister and the home minister and wife had dinners during the week in the homes of Mrs. L. T. Wood, Mrs. M. M. Julian, Mrs. Kendis Julian, Mrs. Early Pritchett, Mrs. Travis Young, Mrs. Keith Marble, and Sunday they were all in the home of Mrs. Sterling Cummings and family. Suppers were brought to the parsonage by Mrs. Bryan Karr, H. L. Marble, Don Marble, Sylvan Kinnibrugh, Frank McClure, Arby Mulder, Bryant Higginbotham, and Tillman Powell.

We are very sorry to hear of the illness of Jim Reeves of Memphis, who formerly lived here. He is in the Hi Plains Hospital in Amarillo in Room 458 and was taken there last Tuesday. This Monday they are still taking tests to define his illness. Mr. and Mrs. Bob Reeves and Mr. and Mrs. Raymond Reeves have been there during this time, and Mr. and Mrs. Philip Smitherman also have been to see him.

Mr. and Mrs. Tommy Edwards of White Flat visited here last week with Mr. and Mrs. Arby Mulder. They all visited with Mr. and Mrs. Ernest Smitherman in Floydada.

Visitors during the past week at the revival services included Rev. Murphy and family from Silvertown Baptist Church; Rev. and Mrs. Hollis Shewmake and Randy of Hale Center; Mr. and Mrs. Toby Guzman and son; Rev. and Mrs. Nathan Mulder; Mr. and Mrs. Bob Jackson and Bobby of Hallandale, Fla., and Mr. and Mrs. David Julian, and Susan of Hollywood, Fla.

Rain during the past week has amounted to about five inches everywhere, and more in spots. The roads have been bottomless, and the school bus-

es ran on the pavements. Saturday it rained again, one half inch here in South Plains, and since the roads have been recently graded, they were indeed hard to navigate. It was foggy and rainy Tuesday, rainy all day Wednesday, cloudy and foggy Thursday, so the sun looks good this Monday, after such a damp, dark week.

Mr. and Mrs. Bryan Karr took advantage of the wet weather to take a trip to Fort Worth and Dallas, leaving here Tuesday. They are still away at this time.

We are glad to hear from Mr. and Mrs. Kenneth Bean and to find out that Carla, who spent several days in the University Hospital at Lubbock, was able to come home last Saturday. She has been having therapy on her knee.

Mrs. Kendis Julian is teaching this Monday in the first grade at the South Plains Public School, in the absence of Miss Barbara Selman, who is ill.

Mr. and Mrs. Travis Young took their daughter, Lori, to Lubbock Thursday for a medical checkup. She has been ill with bronchial asthma and other complications, but is back in school at this time, and doing fine.

Mr. and Mrs. Don Marble went to Halfway Thursday where Mrs. Marble attended the Style Show at the Holiday Inn, and enjoyed lunch there.

On account of the rain and the tours Field Day for the Agriculture Station at Halfway were cancelled, but the exhibits and other parts of the tour went on. Bob Price, Congressman, who lives at Pampa, spoke to the men and later a reception was held at the Plainview Country Club, where Price was honored.

Mr. and Mrs. Frank McClure accompanied Mr. and Mrs. George Weast and their house guest, Mrs. W. N. Weast of Brownfield to Ruidoso Tuesday, where they enjoyed a cool few days at the Weast Ruidoso home. They all returned home Thursday evening.

Miss Cindy Whitfill of Sweetwater came here to the home of her grandparents, Mr. and Mrs. Alvin Nichols, and stayed until Saturday morning, when she left for Canyon. Cindy is enrolled as a freshman at WT and will live at Cousins Hall.

Mr. and Mrs. Bud Higginbotham of Wellington arrived Saturday to spend the weekend here with his mother, Mrs. Bryant Higginbotham. They at-

tended a banquet in Plainview Saturday night.

Mr. and Mrs. Raymond Upton spent Sunday in Lubbock where they were in attendance at an Affiliated Foods meeting which was held at the Holiday Inn in Lubbock.

Mr. and Mrs. Price Pritchett of Austin spent the past week end here with his parents, Mr. and Mrs. Early Pritchett and Stevie. The young folks recently moved to Austin where Price is commuting to Temple, where he works at Scott and White. Patty is teaching school in Austin. Susie and Grant, children of the Robt. O. Turners of Floydada came Thursday to stay until this Thursday at the home of the grandparents, the Pritchetts, while their parents are away on a vacation at Las Vegas, Nev.

Mrs. L. T. Wood went to Canyon Friday to attend an Area Meeting of the Associational Officers of the W.M.U., which was held at the First Baptist Church in Canyon. A group of five women accompanied Mrs. Wood to the meeting.

Mr. and Mrs. David Julian and Susan, from Hollywood, Fla., and Mr. and Mrs. Robert Jackson and Bobby from Hallandale, Fla. arrived by jet from Florida Saturday afternoon, to visit here for two weeks with David's and Mrs. Jackson's uncle, Mr. and Mrs. Murray Julian, and Mr. and Mrs. Kendis Julian and girls.

Some of them have never been west, so the hosts are planning on showing them around the country. They hope to visit the Terry Julians in Roscoe and meet the Bruce Julians of Austin there.

#### NO INJURIES, FOUR FLOYD COUNTY ACCIDENTS

The Texas Highway Patrol investigated four accidents on rural highways in Floyd County during the month of August, according to Sergeant Thurman Kaffer, Highway Patrol supervisor of this area.

These crashes resulted in no persons killed, no persons injured and an estimated property damage of \$6,875.00.

The rural accident summary for this county during the first eight months of 1969 shows a total of 48 accidents resulting in one person killed, 16 persons injured, and an estimated property damage of \$44,076.00.

### I REMEMBER.....I REMEMBER..... On Spoofing A Dog

A little dog slips up and bites you on the heel before you are aware, but a big dog meets you from the front and you are mighty glad to hear the dog's master's voice calling the animal to heel.

Sometimes the dog's owner is not in sight and that makes a different story. What to do if you are 75 yards from any cover and your home or car much too far away for a retreat when the big dog sees you coming toward the place which is his domain.

I have a Floyd County acquaintance who had to do something under these circumstances once, and did.

In his boyhood he had been told of a trick you could use to "spoo" the dog, and save a mauling. This is the way it worked:

**A Bewildered Animal**  
As the dog menacingly advanced the man dropped on all fours behind a fence post. Peeping around the post from one side to the other, he confused the animal. For where there had been a man advancing in open ground, he was now gone.

In his stead was a peeping eye, first on one side of the post, then the other. The dog stopped flat in his tracks. The bewilderment was evident. It was more than his dog "mind" could stand.

For thirty seconds or so the dog seemed to ponder the enigma. Then, my friend said, the dog's front feet just seemed to roll up forward under him, his long hard tail flailed the air, then he turned for the house as fast as his legs could carry him.

The dog's owner came around the corner of the house just as the dog swooshed by. At first puzzled by the dog's behavior he then sensed that the animal was consumed by fear.

Chagrined by the sudden change in his dog's behavior he said to the visitor, "I can't see what you wanted to scare my dog for that way."

(The above procedure is not recommended for amateurs nor for exercises in the study of dog behavior. It did actually occur, but my friend made a deadly serious gamble.)  
Homer Steen

ter and family, Mr. and Mrs. Harvey Allen, Mike and Norman and had dinner with them.

Mrs. Louie Caffee called her parents Saturday night and talked with the Mr. and Mrs. Caffee and children, Marc and Nancy have recently moved to Turlock, Calif. Mrs. Caffee is working in a hospital there.

Mr. and Mrs. Bill Beedy of Claude were here last week, Monday until Wednesday, visiting in the home of Mrs. W. B. Wilson and Mrs. Bill Tye. Others visiting with this group during this time were Mr. and Mrs. Weldon Pruitt, Greg, Karen and Christy, Mr. and Mrs. A. S. Mize, Mr. and Mrs. Walton Wilson, Mr. and Mrs. Eugene Beedy, Todd and Mark,

Woodrow Wilson and Cotton Wilson.

**SCRIPTURE READING**  
The Christian Science Lesson-Sermon this Sunday includes a prophecy from Isaiah: "And the loftiness of man shall be bowed down, and the haughtiness of men shall be made low; and the Lord alone shall be exalted in that day." The subject of the sermon is "Matter."

Another passage in the Lesson, from "Science and Health with Key to the Scriptures" by Mary Baker Eddy, reads: "Mortals are inclined to fear and to obey what they consider a material body more than they do a spiritual God."

**BID NOTICE**  
THE FLOYD COUNTY TRACT will receive bid sale of one (1) 1968 International Pickup (see FC46892A) until 4:00 P.M. 3, 1969 in the office of the FLOYD COUNTY NOXIOUS WEED CONTROL AGENT, Agriculture Building, Floydada, Texas. Bids will be open and read aloud. No holds the right to reject all bids.  
Telephone 4-2300

## TO THE PEOPLE OF FLOYD COUNTY

THE PROBLEM OF "RURAL FIRE PROTECTION" IN FLOYD COUNTY WAS PRESENTED BY THE FLOYDADA CITY COUNCIL IN ARTICLES APPEARING IN LAST WEEK'S HESPERIAN IN WHICH THE CITIZENS OF THE COUNTY WERE CALLED ON TO LET THE COUNTY COMMISSIONERS OF FLOYD COUNTY AND THE CITY COUNCILMEN OF FLOYDADA TO KNOW THEIR FEELINGS. THE PURPOSE OF THE FOLLOWING IS TO GIVE ADDITIONAL INFORMATION TO YOU THE PEOPLE TO ASSIST YOU IN UNDERSTANDING OUR MUTUAL PROBLEM, AND MOVING TOWARD A SOLUTION FOR THE WELFARE AND BENEFIT OF ALL.

THE CUSTOMARY WAY OF GETTING RURAL FIRE PROTECTION IS FOR THE COMMISSIONERS COURT OF THE COUNTY TO CONTRACT FOR THESE SERVICES WITH THE DIFFERENT CITIES WITHIN THE COUNTY WHICH ALREADY HAVE CITY FIRE DEPARTMENTS OF THEIR OWN. IN THE PAST FEW YEARS, SUCH CONTRACTS HAVE BEEN AS FOLLOWS: BEGINNING IN 1957, THE COUNTY PAID \$75.00 A MONTH PLUS PAID FOR THE INSURANCE ON THE FIRE TRUCK, FOR THE TOWNS OF FLOYDADA AND LOCKNEY EACH. THEN IN FEBRUARY 1964, A NEW CONTRACT WAS MADE WITH EACH CITY, WHEREBY THE COUNTY PAID TO EACH CITY \$125.00 A MONTH (\$1,500.00 A YEAR TO FLOYDADA, AND \$1,500.00 A YEAR TO LOCKNEY) PLUS, PAID FOR THE INSURANCE ON THE FIRE TRUCK, WHICH CONTRACT IS STILL IN FORCE AT THIS TIME.

ABOUT FOUR MONTHS AGO, THE CITY COUNCIL OF FLOYDADA ASKED THE COMMISSIONERS COURT TO INCREASE ITS PAYMENTS TO THE CITY FOR THE RURAL FIRE PROTECTION. THE CITY COUNCIL OF FLOYDADA ASKED "THAT \$8,000.00 PER YEAR BE THE COUNTY'S SHARE OF A JOINT FIRE DEPARTMENT PLUS \$11,000.00 NEEDED NOW FOR THE PURCHASE OF A NEW FIRE TRUCK". THE COMMISSIONERS COURT HAS BEEN ADVISED THAT THERE CANNOT BE A "JOINT FIRE DEPARTMENT", BUT THAT THE COUNTY CAN CONTRACT WITH THE DIFFERENT CITIES FOR SUCH SERVICES ON SUCH TERMS AND CONDITIONS AS SHALL BE AGREED UPON.

ACCORDING TO THE FIVE YEAR STUDY MADE BY THE CITY OF FLOYDADA, THE INTERPRETATION OF SUCH STUDY BY THE FLOYD COUNTY COMMISSIONERS COURT, IS THAT ON AN AVERAGE THAT \$1,086.00 PAID TO VOLUNTEER FIREMEN AND \$1,442.00 (43% OF SUCH FIRES BEING RURAL) OF THE COST OF MAINTENANCE AND SUPPLIES, WITH THE TOTAL ANNUAL SUM BEING \$2,528.00, IS ALL OF THE ITEMS SHOWN ON SUCH SURVEY PERTAINING DIRECTLY TO RURAL AREAS. THEREFORE, THE COMMISSIONERS COURT OFFERED TO PAY TO THE CITY OF FLOYDADA THE SUM OF \$3,000.00 PER YEAR PLUS THE COUNTY PAY FOR THE INSURANCE ON ONE FIRE TRUCK FOR SUCH RURAL FIRE PROTECTION, WHICH AMOUNTS TO ALMOST \$100.00 PER RURAL FIRE, AS THE FIVE YEAR AVERAGE SHOWS 32 RURAL FIRES IN A YEAR. THIS SAME OFFER WAS MADE TO THE CITY OF LOCKNEY, AND THEY AGREED TO ACCEPT THIS OFFER. THIS TOTAL EXPENDITURE TO BOTH CITIES OF APPROXIMATELY \$6,000.00 IS INCLUDED IN THE 1970 BUDGET OF THE COUNTY WITHOUT ANY TAX INCREASE. HOWEVER, IF THE REQUEST OF THE CITY OF FLOYDADA FOR THE \$8,000.00 PER YEAR FOR TEN YEARS PLUS THE \$11,000.00 NOW, WAS GRANTED, IT WOULD COST THE COUNTY \$9,100.00 AVERAGE PER YEAR OR A TOTAL OF \$91,000.00, AND THEN THE COMMISSIONERS COURT FEEL THAT THEY WOULD BE OBLIGATED TO PAY TO THE CITY OF LOCKNEY AN EQUAL AMOUNT, MAKING A TOTAL COST TO THE COUNTY OF \$182,000.00 ON A TEN- YEAR CONTRACT. THE MONEY IS NOT AVAILABLE FOR THIS EXPENDITURE, AND IN ORDER TO GET THIS KIND OF MONEY IT WOULD REQUIRE FLOYD COUNTY TO HAVE A TAX INCREASE.

ON A FIVE-YEAR AVERAGE, THE FLOYDADA FIRE DEPARTMENT HAS FOUGHT 32 RURAL FIRES PER YEAR. THE \$3,000.00 PER YEAR PLUS INSURANCE, WHICH THE COMMISSIONERS COURT HAS OFFERED TO PAY THE CITY OF FLOYDADA, AMOUNTS TO ALMOST \$100.00 PER RURAL FIRE, WHICH AMOUNT NO OTHER COUNTY IN THIS AREA IS EXCEEDING.

J.K. HOLMES - COUNTY JUDGE  
JOHN B. FOWLER - COMMISSIONER  
C.E. (BOB) JARRETT - COMMISSIONER  
W.C. PLUMLEE - COMMISSIONER  
BILL McNEILL - COMMISSIONER

# We are ready!

If and when disaster strikes, thousands of telephone men and operators, and tons of equipment are available to help restore communications.

Emergency phone service for police, hospitals and city officials is the first order of action. Then attention is turned to

customer telephones that may be crippled.

It's a job we would rather not have to do. But when necessary—whatever the emergency... floods... hurricanes... tornadoes—we're ready. We may be the only phone company in town, but we try not to act like it.

### Monte Carlo Coupe for 1970



Concept of elegance is the distinctive Monte Carlo Sport Coupe. This newest addition to the line is characterized by smooth flowing lines and sculptured surfaces dramatically by the longest hood ever produced by Chevrolet. The plush interior includes a simulated instrument panel and extra-thick foam cushioned front and rear seats. The car will be at dealerships on September 18.

### Chevrolet's Newest Caprice Coupe



At the top-of-the-line, the Caprice Coupe for 1970, is dressed up with a new front styling of fenders. Recessed vertical taillights and color-accented wheel covers are only two of the new features found in the Caprice this year. The new Chevrolet line of passenger cars will be shown at dealerships on September 18.

### 400 Chevrolets Available At Odens

The Monte Carlo is a new personal luxury car. The headlines Chevrolet has for 1970, DeLorean, General Motors president and Chevrolet manager, said the new cars will be an un-derstandable choice. DeLorean said Chevrolet will continue to lead the industry with a new line of cars and options for each buyer to choose his or her personal car. DeLorean adds a new line of cars by offering a wide, sophisticated blend of individual fashion styling and size handling and performance. DeLorean said seven distinct Chevrolet lines will be available at dealerships on August 18, Sept. 18. Chevrolet has new models added power for the 1970 Chevelle has an all-terrain, DeLorean said. DeLorean said improvements in these cars are incorporated in both Chevrolet station wagon and fast-selling Nova. DeLorean said the appeal in its new models of the popular Chevrolet Corvette and will be continued to the 1970 year with new models scheduled for later in the model year. DeLorean said that among the 1970 engine changes, the V-8 of the big Chevrolet increased to 350 cubic inches and the V-6 engine added power for 250 cubic inches as air conditioning continues to grow in popularity. DeLorean said the six cylinder engine is also increased to 250 cubic inches in the 1970 models. DeLorean said the new four cylinder 427 cubic inch V-8's torque 427 cubic inches offered on the Chevrolet in 1969. DeLorean said other engine improvements through the use of electronic controlled valves. DeLorean said the extended use of electronic power steering will be more responsive in turns and is now available on all models except station wagon and Nova models with four engines. DeLorean said, fiberglass-belted roof standard on all Chevrolet models.

Every 1970 model has extensive safety features for occupant protection, accident prevention and anti-theft (see full list). New for 1970 among Chevrolet's more than 400 options and accessories are improved electric door locks, replacing vacuum locks. With the electric door locks is a new automatic front seat back release for coupes which unlatches when either front door is opened, for easier access to the rear seat. The latch re-locks securely when the door is closed. Also new is an electric rear deck lid release operated from inside the glove box. A new Headlight Delay option reminds the driver with a warning buzzer if he opens his door without turning off his headlights. After the lights are off, he may push a timer button on the instrument panel and lights will turn on for about two minutes to provide illumination after he leaves the car. Radio antennas contained within the windshield glass will be factory installed when radios are ordered on all 1970 Chevrolets. They replace outside mast antennas used previously and are not subject to being broken or bent. A new highly compact combination AM or AM-FM stereo radio and tape player unit fits snugly in the instrument panel. Also available is a broader than ever variety of trailering, towing and recreational vehicle accessories. Chevrolet offers 15 colors, most of them new, for 1970. There are up to seven two-tone combinations, five vinyl top colors and two convertible top colors. Here are additional details by car line: MONTE CARLO - This totally new Chevrolet blends action and elegance in a sporty personal luxury car. There is one model - a 2-door hardtop coupe. It has the longest hood of any car in Chevrolet history - a full six feet from grille to concealed windshield wipers. The distinctive front has a die cast plated metal grille which gives precise detail and brilliance. New single-unit headlights are up to 14 per cent brighter than other single lamp systems. Body side panels have smooth, flowing lines accented by a low, full length bright molding and brushed chrome wheel covers. Roof styling is formal. The deck is short and trim. Vertical taillights complete the image of an all-new car from Chevrolet. Monte Carlo is built on an easy handling 116-inch wheel base. Compared to an Impala Coupe, it is 9 inches shorter

in overall length, more than one inch lower and is four inches less in width. The interior is finely tailored in keeping with the car's luxury concept. The distinctive instrument panel - which groups precision-faced gauges and controls in a wide cluster - has the look of rich burl grain elm, as does the steering wheel. Conventional seats are standard with buckets and floor console optional. Besides a wide selection of options, all advanced features of other Chevrolet models are incorporated in Monte Carlo. There is Astro Ventilation, full door-glass styling, complete sound insulation and corrosion-resistant fiberglass inner fenders. Both body and chassis construction emphasize a smooth, quiet ride and nimble handling. There is a new separate perimeter-type frame and full coil suspension. Five V-8 engines give the buyer a wide choice in Monte Carlo performance. The base V-8 is the same 250 horsepower 350 cubic inch engine standard on the 1970 big Chevrolet. There are also 400 cubic inch engines and exclusive on the Monte Carlo SS is a 454 cubic inch V-8 developing 360 horsepower. Four transmissions include Powerglide and Turbo Hydramatic automatics. REGULAR CHEVROLET - The industry's top selling car has a new front end appearance in 1970 with a richer looking fine mesh grille and more prominent headlights. The exclusive Caprice and Impala Custom Coupe roofline with full-width rear window continues in 1970. This is the largest selling single body style among regular-sized cars in the industry. Fine-line vertical taillights located in the new rear bumper are a clear change identity from the horizontal lights in 1969. Caprice models have color-matched side moldings and for the first time have wheel covers which are accented with body color. The popular raised vinyl protective side molding is continued on Impala in five harmonizing colors. Fifteen inch wheels are now standard on all big Chevrolets. There are a total of six engines with horsepower range from 155 to 390. The base six cylinder engine is 250 cubic inches. Five V-8's range from the new base 350 cubic inch engine to the new 454 cubic inch engines. A total of 9 big Chevrolet models are available on a 119-inch wheelbase. CHEVELLE - The industry's top-selling intermediates, whose sport coupe is the largest selling single body style on the market, has a completely new look for 1970. The bold front end design emphasizes the engine with a projecting, split grille. Dual headlights blend back into the fenders.

Sculptured sides have a strong family resemblance to the big Chevrolet, as does the new shape of rear quarter windows on the coupe which are enlarged for greater visibility than in 1969. The coupe and convertible have full door-glass styling. Simplicity keynotes the rear with rectangular taillights recessed in a larger bumper. On the SS Chevelles, a special dent-resistant resilient black insert is part of the rear bumper. The pace setting SS 396 Chevelle now takes nearly one out of every five Chevelle sales. For 1970 its base 396 cubic inch V-8 is increased from 325 to 350 horsepower. It also has a special domed hood. Optional on the SS hood is a new "cowl induction" system in which a valving door at the rear automatically admits cooler outside air to the carburetor on demand. Included in the SS 396 Chevelle is a black-accented grille, special performance front and rear suspension for improved handling, special sport wheels with 7-inch rims, wide oval white lettered tires and SS 396 identification. Twin sport stripes for the hood and rear deck are a new SS 396 option for 1970. Chassis improvements in the 1970 Chevelle give a smoother ride. There is better brake performance from cooler-operating finned rear drums. Variable-ratio power steering is an option on all models. All 1970 Chevelles have increased side impact protection due to new safety guard door beams. Interiors of Chevelles are all-new and feature an instrument panel of molded fiberglass-reinforced plastic with integral glove compartment. Astro Ventilation is standard on the Sport Coupe and Convertible. There are a total of five Chevelle engines with a horsepower range from 155 to 350. The base six is the bigger displacement 250 cubic inch engine. The four V-8's begin with the 307 cubic inch base V-8. Four transmissions are available. Chevelle coupe and convertible models are on a 112-inch wheelbase and the two sedans are on a 116-inch wheelbase. NOVA - Chevrolet's Nova

showed substantial sales increases in 1969 and continued to be the industry's top selling small domestic family car. For 1970, Nova continues its blend of clean styling and economy. It features a new finer mesh grille and larger front, side and rear lamps. Interior and exterior trim and colors are new. Chassis refinements give an even smoother ride. Variable-ratio power steering is a new addition to the wide range of Nova options. The sporty Nova SS coupe includes a 300 horsepower 350 cubic inch V-8 engine with special SS identification, black-accented grille and rear panel, 7-inch wide wheels with white stripe wide oval tires and special suspension. A four-cylinder, two sixes and three V-8 engines give a horsepower range from 90 to 300. Among the five transmissions is Chevrolet's low cost "clutchless" Torque-Drive for four- and six-cylinder engine Novas. There is a 2-door coupe and 4-door sedan on 111-inch wheelbase. STATION WAGONS - To again give the station wagon buyer opportunity to select exactly the size and features he wants, Chevrolet's eight station wagon models are grouped in a single line with two sizes in 1970. All have dual action tailgates. On a 119-inch wheelbase and incorporating the styling of the big Chevrolet are the Kingswood Estate, Kingswood, Townsman and Brookwood. On a 116-inch wheelbase with Chevelle styling are the Concours Estate, Concours, Greenbrier and Nomad. The Kingswood Estate and Concours Estate wagons have woodgrained panels on body sides and tailgate. All but the Brookwood and Nomad are available in 3-seat as well as 2-seat versions. Chevrolet wagons again offer the comfortable "walk-in" rear design. Using the Chevrolet dual-action tailgate that includes a step built into the rear bumper, a passenger can step upright into the wagon and sit down easily in the rear-facing third seat. The 119-inch wagons all have V-8 engines with a horsepower range from 250 to 390. Fif-

teen-inch wheels are standard on all 119-inch wheelbase models. The 116-inch wagons have one six and four V-8 engines with a horsepower range from 155 to 300. Side-guard door beams are introduced in this size wagon and continued on bigger wagons. All wagons have improved ride and handling. They include the engineering, styling and safety advances of Chevrolet cars of comparable wheelbases and offer a wide variety of options and accessories. CORVETTE AND CAMARO - Current models of these companion excitement cars will be continued to the end of 1969 with new models to be introduced later in the model year. The prestige CORVETTE sports car is offered in two Stingray models - a convertible and the unique "semi-convertible" Aero coupe with removable roof panel sections and rear window. There is a wide choice of performance - five V-8 engines ranging from 300 to 435 horsepower. Chevrolet's CAMARO continues to build its enthusiastic following in the sporty car market. It, too, is offered in a convertible and a sport coupe. The Z-28 Camaro continues to be a sales standout. It has a 302 cubic inch engine and special handling equipment. Camaro offers two six-cylinder and four V-8 engines with a horsepower range from 140 to 325. A wide variety of appearance and mechanical options allow the buyer to order Camaro to suit his or her particular taste. FLOYD DATA Mrs. Vernon McPeak is expected to be home by the weekend from Lockney General Hospital where she underwent surgery last week. She is reported to be doing nicely. FLOYD DATA Mrs. Delores Crabtree is doing nicely following surgery recently in Caprock Hospital. She is now home and able to be about. FLOYD DATA Mr. and Mrs. Randy Bertrand visited over the weekend with Mr. and Mrs. Doug Rainbolt at San Saba.

### Eddie Morgan Elected To Cadet Board

ABILENE - The Reserve Officers' Training Corps Cadet Officers' Club met recently to elect officers for the 1969-70 school year. Cadet John K. Simons of Artesia, N.M., was elected to serve as president and Robert C. King of Burk Burnett, as treasurer. Six cadets were elected to serve on the board of governors. They were seniors Eddie D. Morgan of Floydada, Billy W. McBride of Sweetwater, and David M. Brownlee of Odessa, juniors Wayland G. Kidd of Lamesa, Larry W. Duke of Oklahoma City, Okla., and David L. Nowlin of Tucumcari, N. M. Kidd was also elected as recorder for the board. The Cadet Officers' Club

### Fawver And La Baume Attend Meet

G. L. Fawver, Chairman of the Floyd County Soil Conservation District and Jon J. La Baume, District Conservationist for the Soil Conservation Service, Floydada, attended a meeting of the South Plains Assoc. of Soil and Water Conservation Districts in Tahoka last week. Fifteen Soil Conservation Districts make up the Assoc. The purpose of the meeting was to discuss old business and new business since the last meeting held in Feb. at Plainview.

## PERSONAL PRESCRIPTION SERVICE

**YOUR GOOD HEALTH IS OUR MOST IMPORTANT CONCERN**

Our many years in this community and our dedication to the cause of better health provide the basis for our deep personal interest in the well-being of you and your family.



**ARWINE DRUG**

PHONE YU 32856 FLOYDADA, TEXAS  
OUR LABEL IS YOUR PROTECTION



# On the move. The Chevrolet '70s.



**Our new one: Monte Carlo**



**Our big one: Caprice**



**Our tough one: Chevelle SS 396**

Monte Carlo. Our whole new field of one. The first truly luxurious personal car even us guys who work for a living can afford. Big 350-cubic-inch V8. Power disc brakes. Deep twist carpeting. All standard. Some car, the Monte Carlo. Some cars will be wishing we had never brought it out. Moving on. Caprice. The perfect car for "the big car man." For 1970 we gave it a new grille, new 250-hp standard V8, new fiberglass-belted tires, new colors, new trim. New headaches for higher priced cars. Moving on. Chevelle SS 396. The Chevellest Chevelle yet. Now you can order a Cowl Induction Hood to help the horses breathe. All 350 of them. Move on. To your Chevrolet dealer's. Putting you first, keeps us first.



**JOHN DEERE FARM MACHINERY**  
**COLLINS IMPLEMENT CO.**  
 MORTON VS. FRIONA

**YOUR BUSINESS APPRECIATED**  
**BAKER INSURANCE CO.**  
 MEADOW VS. HART

**THE BEST IN FARMING EQUIPMENT**  
**CASE POWER & EQUIPMENT**  
 DIMMITT VS. FARWELL

**YOUR AUTHORIZED BUICK-PONTIAC DEALER**  
**CITY AUTO, INC**  
 ABERNATHY VS. MULESHOE

**RENDON TEXACO SERVICE**  
 LITTLEFIELD VS. COLORADO CITY

**"GOOD LUMBER"**  
**HIGGINBOTHAM BARTLETT LUMBER**  
 HALE CENTER VS. SPRINGLAKE

**WE APPRECIATE YOUR SOYBEAN AND MILO BUSINESS**  
**WYLIE GRAIN**  
 ANTON VS. NEW DEAL

**"SALES-INSTALLATION-SERVICE OUT OF TOWN INQUIRIES INVITED"**  
**HAMMOND SHEET METAL**  
 RALLS VS. KRESS

**PALACE BARBER SHOP**  
 LEVELLAND VS. LAMESA

**"QUALITY WORK AND SERVICE"**  
**SUPERIOR CLEANERS**  
 PLAINVIEW VS. HEREFORD

**AC AND NEW HOLLAND EQUIPMENT**  
**McDONALD IMPLEMENTS**  
 OLTON VS. CANYON

**"PERSONALIZED SERVICE"**  
**EDDIES FINA SERVICE**  
 DUNBAR VS. BROWNFIELD

# HAVE FUN .. WIN PRIZES ..

**\$15** IN CASH PRIZES EACH WEEK

# HESPERIAN FOOTBALL CONTEST

## AND QUARTERBACK FORECAST

DEADLINE FOR ENTRIES - 5 P.M. FRIDAY IN HESPERIAN OFFICE OR POST MARKED

### CONTEST RULES

Anyone can enter except the employees of the Hesperian, Three cash prizes are given each week - ties will split prize money. Members of the sports department are sole judges of the contest and their decision is final.

It is not necessary to indicate scores on all the games... But score must be indicated on the tie breaker game at right.

Simply circle the team you choose to win in each of the footballs. Deadline for submitting entries is 5 p.m. Friday - winners will be announced the following week. Enter as many times as you wish, print name and address plainly at top of the page you turn in and mail this newspaper.

**TIE BREAKER-Guess Total Points AND CIRCLE WINNER**

### QUARTERBACK QUOTES



Clinton Fyffe  
 Floydada... 14  
 Tulia... 6



Clem McDonald  
 Floydada... 13  
 Tulia... 12

### FLOYDADA VS. TULIA

- 1ST PRIZE \$7.50
- 2ND PRIZE \$5.00
- 3RD PRIZE \$2.50

**A MODERN SUPER DRUG STORE**  
**THOMPSON PHARMACY**  
 LOCKNEY VS. POST

**ODEN CHEVROLET**  
 CHEVROLET-OLDSMOBILE  
 WELLMAN VS. BULA

**MASSEY-FERGUSON EQUIPMENT**  
**FLOYDADA IMPLEMENT CO.**  
 AIR FORCE VS. MISSOURI

**RCA AND FRIGIDAIRE SERVICE**  
**FLOYDADA SERVICE CENTER**  
 AMHERST VS. SUDAN

**"LARGE OR SMALL 75¢ WASHES THEM ALL"**  
**ROBO WASH**  
 TEXAS VS. CALIFORNIA

**HAPPY TO SERVE YOU**  
**PRODUCERS COOPERATIVE ELEVATORS**  
 BORGER VS. TASCOSA

**CARTHEL OIL CO.**  
 SOUTHERN CAL VS. NEBRASKA

**\*WORTHINGTON PUMPS \* WESTERN PUMPS COMPLETE WELL DRILLING & SERVICE**  
**SANDERS PUMP & DRILLING SERVICE**  
 CORONADO VS. ANDREWS

**FARMALL TRACTORS AND EQUIPMENT**  
**MARTIN AND CO.**  
 KANSAS STATE VS. BAYLOR





completely new for 1970 with 13 models offering from hot performance to elegant luxury. The first time, a four-door hardtop is offered in the Ford Division intermediate line. The hardtop is available in the Torino and Torino Brougham (top) series. The Torino GT (bottom) is available with seven engines from the standard 302 V-8 to the red hot 429 V-8.

**NEW FEATURES**  
Several new security, comfort, convenience and performance features are included in Ford Division's 51 models for 1970.

Standard tires on Fords, Torinos, Mustangs and Thunderbirds will last longer, have greater resistance to puncture and provide better traction. Radial-ply tires will be installed on all 1970 Thunderbirds, and fiberglass belted bias-ply tires will be standard on all Fords, Torinos and Mustangs.

An all-new 351-cubic-inch-displacement V-8 engine, developed with the latest computerized technology and assembled on the auto industry's most advanced production line, will be offered on 1970 Mustangs and Torinos. The engine is compact, relatively lightweight and delivers excellent performance and economy.

All bucket seats offered on Ford Division cars are of high-back design. The higher seat backs incorporate integral head restraints and provide added comfort.

For the performance buffs, all optional four-speed manual transmissions feature the competition Hurst Shifter, known for fast, smooth shifting.

An automatic release for the two-door safety latch is available on Ford, Torino, Mustang and Thunderbird models. Both front seat-back latches are automatically released when either door is opened, thereby making it easier to get into and out of the back seat.

New steering wheels on Ford, Torino, Mustang and Thunderbird models are semi-oval in design for easier driver entry and exit and better visibility of the instrument cluster.

On all models except Falcon, odometers are tamper-resistant and non-reversing.

A three-way locking steering

column on all models except Falcon is designed to deter car thefts by locking the ignition, the transmission linkage and the steering wheel with the ignition switch.

A new three-point Uni-Lock Safety Harness lap and shoulder belt system - available on all models except Mavericks, Falcons and convertibles - permits outboard front seat occupants to "buckle-up" faster. The separate buckle for the shoulder belt has been eliminated and the three remaining front seat buckles are only half the previous size. The result - a neater, more convenient, more comfortable system that is as safe as ever.

Externally adjustable headlamps on Ford, Torino, Mustang, Maverick and Thunderbird make it unnecessary to remove the headlamp rims to adjust the beams.

On the same models, standard front and rear side marker lamps - amber in front and red in the rear - flash with the turn signals to provide side visibility of the driver's intention to turn.

All cars manufactured for delivery in the state of California will be equipped with an evaporative emission control system.

**TORINO**  
The 1970 Torino has all-new design inside and out. It is longer, lower and wider than its 1969 predecessor, the Fairlane, and offers the first four-door hardtop models in Ford Division's intermediate line.

Five series provide a choice of economy, luxury and performance. Thirteen models are available in Fairlane 500, Torino GT, Torino Brougham and Torino Cobra series.

All have new grilles, tail-lamps and ornamentation. Concealed headlamps are optional with Torino and Torino GT models and standard on Torino LTD, LTD Brougham and Country Squire and optional on all other models, and Ford's 250-h.p., 351-c.i.d. two-barrel V-8 is now standard on XL, LTD, LTD Brougham and all station wagon models. It is the base V-8 engine option on Galaxie 500 models.

New exterior paint and vinyl roof colors are offered. Vinyl roofs and plaid cloth and vinyl interior trims also are available on station wagons.

**MUSTANG**  
The 1970 Mustang offers a completely redesigned front and rear. Interiors offer bold new colors and optional patterned upholstery.

Seven models are available including the hardtop, convertible, fastback-designed SportsRoof, Grande hardtop, Mach I, Boss 302 and the limited production Boss 429.

A three-quarter Landau-style vinyl roof is standard on the luxurious Grande, and the hot Mach I comes on stronger than ever with stem-to-stern design changes.

Mustang's technical changes enhance its reputation for fine riding quality, easy road handling ability and responsive steering.

Engines range from the base 200-c.i.d. Six to the powerful 429 V-8's. Optional Sport Slats and a rear deck air spoiler add to the performance theme of the SportsRoof models.

**MAVERICK**  
Maverick remains basically unchanged since its introduction in April. Its popular assets remain low purchase price, good performance, economy of operation, easy serviceability, durability and sporty design.

Available only as a two-door sedan model, Maverick boasts average gas economy of 22-1/2 miles per gallon with the standard 170-c.i.d. six-

cylinder engine. Options include a larger 200-c.i.d. engine, SelectShift Cruise-O-Matic transmission, air conditioning and several appearance items.

**FALCON**  
Falcon retains its long hood and short deck design for 1970. New are a revised model lineup and option list and an improved standard six-cylinder engine.

This year's Falcon line includes two-door and four-door sedans and a four-door station wagon in both the Falcon and Futura series.

**Nursing Home Visitors**

Rev. L. J. Willmeen of Winona, Mo., and Rev. R. C. Van Amber visited Paul Luttrell, Mrs. Arthur Cheves of Hart and Judy Helbert and children of Plainview visited Mr. and Mrs. John Newton; W. R. Sedgwick of Big Spring and Callie Winegar of Roaring Springs visited Mrs. Mollie Sedgwick; Mr. and Mrs. Ralph McGee of Lockney visited George E. King; Mrs. George Wexler visited Mrs. Irons, Mrs. Elza and Mrs. Wise; Mr. and Mrs. Bob Alldredge visited Mrs. Maggie Battey and Mrs. Earl Holmes and children of Houston visited C. A. Breeding.

The First Christian Church held church services for the residents of the Nursing Home Sunday afternoon.

**FLOYD DATA**  
Mrs. R. L. Kendrick visited last week in Littlefield with her daughter, Mrs. Mike Carver and family.

## Ford Displays 70 Fords Today

Division passenger cars for 1970 are highlighted by the Torino and Thunderbird. A new ultra-compact Torino Brougham series, mid-range engine, radial-ply tires standard, safety belts and more convenience, safety and features.

The model year may be the first year in which the intermediate-size car surpasses sales in the hard-size market," Naughton, Ford Motor vice president and

offered in the standard-size Ford. The entire Ford line presents a more formal appearance with new grilles, ornamentation and rear-end design.

"Mustang comes on stronger and sportier than ever with design changes, hotter engines, bright 'Grabber' colors, and interiors with upbeat stripes and houndstooth checks.

"Maverick, introduced in April as the first car of the Seventies, will remain our 'simple machine' with very few changes. Mavericks produced after September 30 will have side marker lights which flash with the turn signals, and a three-way locking steering column.

"Falcon moves in to the 1970 market with proven features of fuel economy, roomy interior and durable performance," Naughton said.

## RURAL FIRE PROTECTION TO DISCONTINUE OCTOBER 1, 1969

THE CITY COUNCIL HAS BEEN NEGOTIATING WITH THE COUNTY COMMISSIONERS FOR THE PAST 3 1/2 MONTHS IN AN ATTEMPT TO ORGANIZE A JOINT FIRE DEPARTMENT FOR THE CITY OF FLOYDADA AND ITS SURROUNDING RURAL AREA.

A FIVE YEAR STUDY WAS MADE OF EXPENSES INCURRED IN OPERATING THE FIRE DEPARTMENT. THE EXPENSES WERE PRORATED FOR CITY FIRES AND RURAL FIRES.

THE COUNCIL HAS APPROACHED THE COUNTY COMMISSIONERS ON THE BASIS OF THIS STUDY AND AS OF THIS DATE HAVE NOT BEEN ABLE TO REACH AN AGREEMENT.

THE COUNCIL ASKED THAT \$8,000 PER YEAR BE THE COUNTY'S SHARE OF A JOINT FIRE DEPARTMENT PLUS \$11,000 NEEDED NOW FOR THE PURCHASE OF A NEW FIRE TRUCK.

THE COUNTY COMMISSIONERS HAVE OFFERED \$3,000 PER YEAR, WHICH ON THE BASIS OF THE STUDY WILL NOT COVER THE NECESSARY EXPENSES.

THE CITY COUNCIL FEELS THAT THE MOST SENSIBLE THING TO DO WOULD BE TO CREATE A JOINT OWNED CITY-COUNTY FIRE DEPARTMENT. BY HAVING A JOINT FIRE DEPARTMENT THE COST WILL BE LESS THAN TRYING TO MAINTAIN TWO SEPARATE DEPARTMENTS, A CITY FIRE DEPARTMENT AND A COUNTY OWNED RURAL FIRE DEPARTMENT.

WE ENCOURAGE YOU, THE TAX PAYERS, TO TAKE AN INTEREST IN THIS PROBLEM THAT CONFRONTS ALL OF US AND TO CONTACT YOUR COUNTY COMMISSIONERS AND YOUR CITY COUNCILMEN. LET US KNOW YOUR FEELINGS ON THIS IMPORTANT MATTER.

JIMMY SEAY, MAYOR  
WAYNE RUSSELL, COUNCILMAN  
RAY GENE FERGUSON, COUNCILMAN  
BOONE ADAMS, COUNCILMAN  
ED HAMMOND, COUNCILMAN  
W. H. SIMPSON JR., COUNCILMAN



## Today is 1970 at your Ford Dealers!

**1970 Ford.** Take a Quiet Break. Move into the quiet world of the sleek new Fords for 1970. Take your choice of five great V-8's and 21 different models including the elegant LTD and popular Galaxie 500. The new Ford gives you a ride so smooth and vibration-free that you have to test-drive it to believe it.

**1970 Mustang.** Run with Number One. No doubt about America's favorite sporty car: it's Mustang all the way! Take your choice of six different models. Three different rooflines. Nine different engines. Mustang's designed to be designed by you. Find out why Mustang's really Number One for so many drivers.

**1970 Torino.** All new clear through. No matter which 1970 Torino you choose, you'll be driving the most completely changed car of the year. New shape. New size. New style. New power. There are 14 models in all. And you're sure to find one that gives you the value, performance or luxury you want.

## Ford gives you Better Ideas. It's the Going Thing!

REED FORD SALES  
HIGHWAY 62 AND CROCKETT ST.  
FLOYDADA, TEXAS

## LAKEVIEW NEWS by Mrs. Bagwell

LAKEVIEW, September 15- Mr. and Mrs. V.W. Bradshaw went to Graham Sunday, Sept. 7 and visited until Tuesday with their daughter and family Mr. and Mrs. Bob Elsom and children.

Mr. and Mrs. Donnie Guess of Levelland spent the past weekend with her parents, Mr. and Mrs. F.D. McClintock.

Mrs. Larry McCurdy had surgery Saturday, Sept. 6 at University Hospital in Lubbock. She is home now and getting along nicely.

Sunday, Sept. 7, Mr. and Mrs. W.H. Bunch went to El Paso to visit until Wednesday with her mother, Mrs. J.C. Raby. On the way home they came by Ruidoso, N.M., where they visited for a while with Mr. and Mrs. Thurman Batten and had dinner at the Whispering Pines, operated by Mr. and Mrs. Batten. Wednesday afternoon Mr. and Mrs. Bunch drove to Roswell where they visited for awhile with her cousins, Rev. and Mrs. R.L. Swanner before driving home that night.

Mr. and Mrs. Rudolph McCurdy spent Thursday in Lubbock visiting her mother, Mrs. J.H. Watson and with Mrs. Morgan Taul.

Mr. and Mrs. W.H. Bunch visited Saturday and Sunday at Litan with their brother and sister, Mr. and Mrs. R.T. Bunch.

Mr. and Mrs. Earl Edwards Sr. spent last week at Llano with their grandchildren Cynthia, Jammie, and Bill who are in school. Mr. and Mrs. Earl Edwards Jr. and Marilyn were here to plow and sow wheat.

Fred Alexander of Lewisville spent last Sunday night here in the home of his cousins Mr. and Mrs. Leonard Alexander. Fred had been to Nora Vista, N.M., on a hunting trip.

Jerry Robinson, who is a student at North Texas State University at Denton, was home Thursday until Monday with his parents, Mr. and Mrs. Edd Robinson.

Mr. and Mrs. Max Harrison, Debbie and Tracy and Mrs. D.C. Harrison went to Lubbock Thursday to visit Mr. and Mrs. Jerry Bob Harrison and family.

Thursday night guests in the home of Mr. and Mrs. Howard Bishop were Mr. and Mrs. Earl Edwards Jr. and daughter, Marilyn of Llano and Mr. and Mrs. Bill Grundy of Floydada.

Mrs. Edd Robinson spent Monday (today) at Crosbyton Hospital with her father, Charlie McDermitt, who is ill.

Mr. and Mrs. Davis Bishop and Donnie of Shallowater visited here Sunday, Sept. 7 with Mr. and Mrs. Howard Bishop.

Mr. and Mrs. Grady Dunavant and Mrs. E.T. Williamson went to Dumas Friday where they visited Mr. and Mrs. Marvin Williamson and family.

Sherry Moss of Floydada spent Friday night with Kathy Hambricht.

Jack Ruggles and his daughter and husband, Mr. and Mrs. Bob Hawkins all of Phoenix, Ariz. spent from Monday until Thursday of last week visiting

in the homes of Mrs. R.C. Smith and Floyd and Mr. and Mrs. D.C. Harrison. Others visiting in these homes during this time were Mr. and Mrs. Travis Dunn and Jean of Plainview, Mr. and Mrs. Milton Harrison, Kim and Gail, Mr. and Mrs. Max Harrison, Debbie and Tracy, and Mr. and Mrs. G.W. Smith.

Thursday Mr. and Mrs. Grady Dunavant went to Lubbock where they visited at Methodist Hospital with Mrs. Albert Dunavant, who has been a patient there for several weeks. Mrs. Dunavant is improving and hopes to be able to go back to her home in Brownwood soon.

On the way to Lubbock Thursday Mr. and Mrs. Grady Dunavant stopped at Idalou and visited their daughter and family, Mr. and Mrs. John Redding and children, Rebecca and Mathew.

Mr. and Mrs. O.D. Orr and children of Tahoka spent last Sunday with her father, W.J. Weeks.

Sept. 7, Mr. and Mrs. C.E. Morris and Carla of Lubbock and Mr. and Mrs. John Redding, Rebecca and Mathew of Idalou visited Sunday afternoon with Mr. and Mrs. Grady Dunavant.

Mr. and Mrs. B.L. Breed and Mr. and Mrs. Odell Breed spent Monday in Lubbock.

Mike Breed left Saturday for College Station where he enrolled for the fall semester at A&M.

Mr. and Mrs. W.M. Hambricht visited Sunday afternoon with Mrs. H.M. Thomas in Floydada and after church Sunday night the Hambrichts visited their son and family, Mr. and Mrs. Bob Hambricht.

Mrs. A.L. Smith spent last Monday and Tuesday with her mother, Mrs. Bird Oats, who was a patient in West Texas Hospital in Lubbock. Mrs. Oats is at home now and improving.

Friday Mr. and Mrs. A.L. Smith had their grandchildren, Jody and Tye Hunter Smith of Floydada, with them for the day.

Mr. and Mrs. John Hambricht of Olton visited Mr. and Mrs. W.M. Hambricht Monday afternoon.

Mr. and Mrs. Weldon Thornton of Lubbock and Mr. and Mrs. Ray Lloyd visited Mr. and Mrs. B.L. Breed Sunday afternoon.

Mr. and Mrs. Nathan Woody and family spent the weekend with her parents, Mr. and Mrs. Homer Newberry.

Mrs. Viola Brown was a Sunday dinner guest of Mrs. Effie Roland in Floydada.

John Cherry of Crosbyton spent the weekend with Rex Brown.

Saturday dinner guests in the home of Mr. and Mrs. D.C. Harrison were Mrs. F.M. Marquis of Floydada and Mr. and Mrs. Max Harrison, Debbie and Tracy.

Mr. and Mrs. Edmond Brown and family went to Muleshoe Sunday where they visited her parents, Mr. and Mrs. E.V. Bartlett.

Mrs. Homer Newberry and Mrs. Nathan Woody and Nathalie visited in Crosbyton Sat-

urday with Mrs. Newberry's mother, Mrs. M. J. Mosley.

Friday night Debbie and Tracy Harrison stayed with their grandparents, Mr. and Mrs. D.C. Harrison.

Mrs. S.G. Appling visited Tuesday, Sept. 2, with Mrs. Viola Brown.

Mr. and Mrs. Homer Newberry went to Tulla Sunday afternoon where they met his nephew and wife, Mr. and Mrs. Phillip Newberry of Amarillo, who were visiting in the home of her parents, Mr. and Mrs. O.A. Arnold.

Wednesday, Mr. and Mrs. Milton Harrison, Mrs. Bob Hawkins and Mrs. D.C. Harrison visited in the home of Mr. and Mrs. Travis Dunn and Jean in Plainview.

Saturday night visitors in the D.C. Harrison home were Mr. and Mrs. Mutt Harrison of Ralls.

## SCHOOL Menu

Week of September 22

- MONDAY:  
 Pizza  
 Seasoned Pinto Beans  
 Buttered Spinach  
 Hot sliced Bread and Butter  
 Fruit Cup  
 1/2 Pint Milk
- TUESDAY:  
 Chicken Pot Pie  
 Buttered Corn  
 Lettuce and Tomato Salad  
 Hot Rolls and Butter  
 Banana Cake  
 1/2 Pint Milk
- WEDNESDAY:  
 Meat Loaf with Zippy Sauce  
 Cheese Sauce Potatoes  
 Seven Minute Cabbage  
 Hot Rolls with Butter  
 Jello with Whipped Topping  
 1/2 Pint Milk
- THURSDAY:  
 Hamburgers with Cheese Slices  
 Tomato Slices, Lettuce and Dill Pickles  
 Potato Chips  
 Peach Cobbler  
 1/2 Pint Milk
- FRIDAY:  
 Baked Ham  
 Seasoned Green Beans  
 Creamed Potatoes  
 Hot Rolls with Butter  
 Homemade Cookie  
 1/2 Pint Milk

## TEXAS TO OBSERVE YOUNG FARMER WEEK, SEPT. 20-27

September 20-27 has been officially designated as Young Farmer Week in Texas by proclamation of Governor Preston Smith.

The proclamation gives additional recognition to this rapidly growing farm group. The Young Farmer Association is sponsored under the auspices of vocational agriculture departments in high schools across Texas and the Texas Education Agency.

Over 260 Young Farmer chapters have been organized on local school district or county wide basis to carry out educational activities which will help the members keep abreast of the technological advancements in the field of agriculture

## Ayres In Austin Conference

D. G. Ayres, Veterans County Service Officer for Floyd County is now attending the 22nd Annual Statewide Rehabilitation Conference for Veterans Service Officers, which is being held at the Austin Hotel in Austin, Texas, September 8-11, 1969.

This conference is being conducted by the Veterans Affairs Commission of Texas, in cooperation with the American Legion, Disabled American Veterans, Veterans of Foreign Wars, Veterans of World War I, and the Veterans County Service Officers Association of Texas. The purpose of the meeting is to offer Service Officers from the entire State of Texas an opportunity to gain first-hand knowledge of recently enacted legislation dealing with benefits to veterans and their dependents and survivors. Topics to be discussed during the four-day Conference include disability compensation and pension, Government insurance, GI loans, education and training for veterans and children, hospitalization and medical treatment, and veteran employment and reemployment rights.

Conducted annually, this Conference serves as an in-service course of training for all National, State, County, Post and Chapter Veterans Service Officers.

to develop greater skill and efficiency in management, production, and marketing.

In closing the proclamation the governor predicted that as the organization continues to grow it will play an increasingly important role in the life of rural America.

## FLOYD DATA

Mr. and Mrs. Steve Minich of Gunnison, Colo., have been here to visit her parents, Mr. and Mrs. Doyle Walls and other relatives.

GO WINDS, GO



NO GRASS - NO MEAT

## Time To Plant Cool Season Pastures

From all weather indications, fall is officially here. During this period of the season the Soil Conservation Service is forcing its attention on fall crops and cool season pasture plantings.

Since winter grazing is in demand to livestock producers, a cool season grazing plant is worth its weight in gold. Tall Fescue and Western Wheatgrass are the grasses widely used in this area. These grasses do not provide grazing during the summer but are restricted to the winter months. They begin their growth during the early fall. They should be planted during September, October and November, yet they can be planted as late as March.

Native Western Wheatgrass is found in many of the lake beds in this county. Tall Fescue and Western Wheatgrass should be planted in a firm clean tilled seedbed. These grasses should

be irrigated. Tall Fescue will produce a high amount of foliage. Orchardgrass and Perennial Ryegrass are also good winter grasses. All these grasses help prevent water and wind erosion.

See your local Soil Conservation Service for information in establishing a cool season pasture.

**Burglars Given Perfect Tipoff**  
 MINNEAPOLIS (UPI)—Burglars cleaned out Whiteway Cleaners here during the weekend with help that wasn't planned.

Two bank bags containing \$85 and hidden under a pile of newspapers were emptied by the burglars after they broke in and found a message left by an employe for the next day's staff, telling where the cash was concealed.

## Sorghum Board Nominations Received

The Grain Sorghum Producers Association revealed today that 24 nominations have been received for the Grain Sorghum Producers Board. The grain farmers within a 29 county area, of the High Plains and Panhandle of Texas, will elect 12 men from this list to serve as the governing board for their research and promotion activities, provided the grain sorghum referendum carries by a two-thirds majority.

The election will be held October 6. It will be on the same ballot with the referendum proposition. On this ballot the farmers decide whether or not they favor an expanding research and grain sorghum promotion campaign, which will be aimed at improving the net profit in grain sorghum production by assessing themselves an amount not to exceed 5 cents per ton to carry out this important program.

The names will appear on the ballot in the order of receipt by the Grain Sorghum Producers Association. This 12 man board will receive no pay for their services and will be charged with the responsibility of seeing that the 5 cents per ton is spent on the projects yielding the best returns for the farmers.

The nominees are: A. W. Anthony Jr., Friona; Don Marble, South Plains; K. B. Par-

ish, Springlake; Jack Brown, Abernathy; Paul L. Cut, Silverton; Walter Dimmitt; H. L. Brownfield; Coy Gray; E. C. Witten; Gene Smith; Dalhart; Vernon T. Delbert Watson; Glendon H. Elting; N. Gamblin; S. Reed; Kress; C. F. Center; Charles H. zareth; Gaston W. Larry Witten, Olton.

## MRS BAIRD'S



The yeast-rising



FORD PONTIAC CHEVROLET

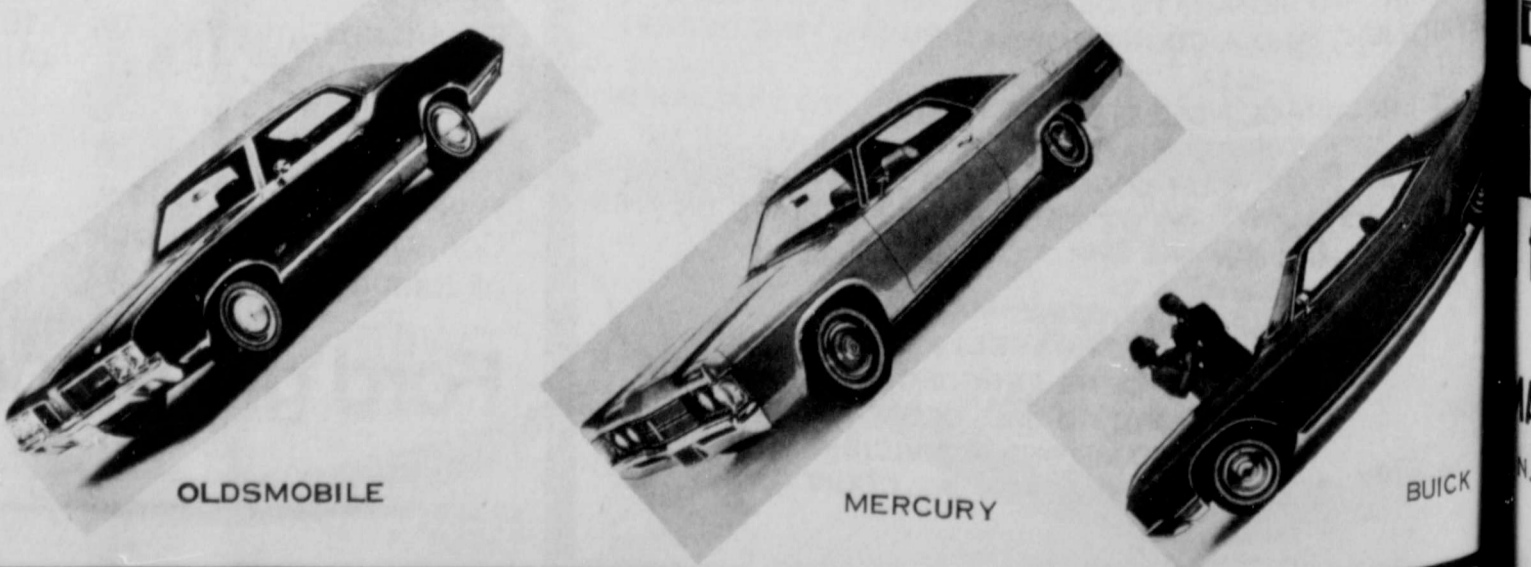
## The First National will help you buy a new 1970 AUTOMOBILE!

THE 1970 MERCURYS, OLDSMOBILES, BUICKS, PONTIACS, CHEVROLETS, AND FORDS WILL BE ON DISPLAY TODAY IN FLOYDADA AUTO DEALERS SHOWROOMS.

SELECT YOUR FAVORITE OF THESE BEAUTIFUL NEW AUTOMOBILES THEN LET THE FOLKS AT THE FIRST NATIONAL BANK WORK OUT A LOW COST FINANCE PLAN FOR ITS PURCHASE.

WE CAN SAVE YOU FINANCE MONEY IN COMPARISON WITH THE OUT OF TOWN FINANCE COMPANIES.....AND WE APPRECIATE THE OPPORTUNITY TO SERVE YOU.

## THE FIRST NATIONAL BANK OF FLOYDADA



OLDSMOBILE MERCURY BUICK

## We're All Ready For YOUR MILO

You are assured of Prompt, Courteous and Efficient Service when you deliver Grain to our Elevators.



WE APPRECIATE YOUR BUSINESS

MUNCY ELEVATOR  
 SANDHILL ELEVATOR  
 CEDAR HILL GRAIN

## Pontiacs Reflect Grand Prix Influence



1970



1970

The styling of the big Pontiacs reflects the influence of the pace-setting Grand Prix (top) and its classic vertical center grille as shown on this 1970 Bonneville. The grille between the center grille and headlamps not only serves as the sound of the horns, but also admit additional engine cooling air. The Bonneville is powered by a new 455 cubic-inch engine that also is offered as an option on the Grand Prix. All 1970 Pontiacs go on sale September 18.

## 10 Pontiacs On Display At City Auto Inc.

**GRAND PRIX**  
The Executive and Bonneville models reflect the styling of the Grand Prix up front. The Bonneville features a clean, new front end. The Grand Prix features a new front end including new hood and fenders. The front of the Catalina, Executive and Bonneville for 1970 features the classic vertical center grille. The Horn outlets are exposed this year on either side of the grille adjacent to the headlamps.

**EXTERIOR STYLING**  
The Pontiacs have new front and rear ends including new hood and fenders. The front of the Catalina, Executive and Bonneville for 1970 features the classic vertical center grille. The Horn outlets are exposed this year on either side of the grille adjacent to the headlamps.

**Also new up front are the bumper, headlight mounting panel and wraparound parking lights that are mounted in the bumper to serve as side markers. When cornering lamps are ordered, they are integrated with the side markers.**

**Fifteen exterior colors are offered for 1970... 11 of which are new... along with five color choices in vinyl tops and four in convertible tops.**

**The wheelbase of the Catalina is 122 inches, and 125 inches on the Executive and Bonneville and 118 inches in the Grand Prix.**

**The Wide Track on the Catalina, Executive and Bonneville is 64 inches front and rear.**

**Major advantages of the plastic tank include lighter weight and greater shaping flexibility than steel.**

**Bias-ply, glass-belted tires and a concealed radio antenna in the windshield are standard on all 1970 models.**

**The 16 models in the Catalina, Executive and Bonneville series and the Grand Prix go on sale September 18.**

**On the Grand Prix it's 62 inches in front and 60 in back. Overall length of the Catalina is 217.9 inches, the Executive 223.9, the Bonneville 224.6 and the Grand Prix 210.2.**

**POWER PLANTS**  
A new 455 cubic-inch V-8 engine is standard on the 1970 Bonneville and optional on the Catalina, Executive and Grand Prix. The Executive and Grand Prix have 400 cubic-inch engines as standard. The Catalina offers a 350 cubic-inch two barrel power plant on all models except convertibles and station wagons which have a 400 cubic-inch engine. This 400 cubic-inch engine is also optional on all other Catalina models.

**Also available on all Catalina, Executive, Bonneville and Grand Prix models is a 400 cubic-inch two-barrel engine that uses regular fuel.**

**The three-speed manual transmission is standard on the Catalina, Executive, Bonneville and Grand Prix with the Turbo Hydra-matic optional. A four-speed floor shift transmission also is available on the Grand Prix.**

**The hidden radio antenna, pioneered by Pontiac on the 1969 Grand Prix will be used on all 1970 models. This antenna, which is fabricated in the windshield, provides a cleaner exterior appearance and eliminates bent or broken antennas.**

**INTERIOR STYLING**

A new trend in colors, all new trims and redesigned instrument panels add to the interior beauty of the 1970 Pontiacs.

The trend in colors is toward leather tones with considerable use of saddle, sandalwood and dark brown.

The instrument panels on the Catalina and Executive models have walnut grain under the instrument cluster, while the Bonneville has elm burl. The instrument faces, radio and automatic shift indicator have a new black finish.

The Grand Prix offers a bench seat with a specially designed instrument panel as an option. Both the bench and bucket seats on the Grand Prix knit and expanded Morrokide, or cloth and expanded Morrokide trims.

The new Grand Prix also has more sound insulation in the rear seat areas to give passengers an even quieter ride.

The Grand Prix continues to feature its flush design outside door handles. The Bonneville and Grand Prix have an industry exclusive this year: a new pull type inside door handle. This flush-design handle is more conveniently located for easy exit.

New on all 1970 Pontiacs is a headlamp delay option. This feature allows the driver to set the headlights so that they will stay on for 60 seconds after turning off the light switch.

Also available is a rear lamp monitoring system. The driver is able to check the taillights while inside the car with this option. It is offered on all cars except convertibles and station wagons. The system uses fiber optics to transmit light

from the lamps to an indicator on the rear shelf.

Also available on all models, except convertibles, is a dome reading lamp. This option consists of three lamps. The center lamp serves as a conventional dome light, while the side lamps operate from separate switches on the lamp housing and shine over the shoulder of the front seat occupants.

Pontiac customers ordering a rear window defogger have two choices in 1970. They can select either the conventional blower-type defogger or a silent electrically-heated rear window. These options are offered on all cars except station wagons and convertibles.

All 1970 Pontiacs have a new slide action windshield wiper switch for easier operation.

### CENTER NEWS

The rainy, misty weather last week tapered off to a sunny, pleasant weekend.

Mr. and Mrs. Leo Frizzell got caught in town in the rain last Monday and didn't get out home until Wednesday due to muddy roads. Good time to visit the kin in town.

Mrs. R. C. Ross reached home Wednesday after spending a week with a daughter and husband, Mr. and Mrs. (Maxine) Buck Ragsdale of Ballyboro, Maxine brought her home. It was good to see Mrs. Ross at church at the evening service. She spent Sunday night in the home of Mr. and Mrs. Elbert Parks.

Mrs. C.E. Finley, with the Earl Coopers of Lockney, visited a sick grandson in Lub-

bock Sunday afternoon.

Mr. and Mrs. Troy Leonard visited the J.E. Greens Thursday afternoon.

Friday afternoon visitors at the Greens were Mr. and Mrs. Zolan Melton of Coleman.

Mrs. Frank Dunn visited over the weekend in Lubbock with her children, the Jimmy Dunsns, and the Tony Bollos families. The Dole Millers are still "staying in" but the cold is better.

Last Tuesday visitors in the C.W. Denison home were Mrs. Mary Gear of Los Angeles, Calif., and her daughter, Mrs. J.R. Hartsfield of Lubbock.

Mrs. O.C. Vinson's guests the first of last week were Mrs. Keller Holmes, city, and her daughter Mrs. Leone O'Hare of Kimball, Neb.

Jerrold Vinson of the Harmony Community dined Friday

with his mother, Mrs. O.C. Vinson.

Mr. and Mrs. W.L. Hartline have a small grandson James boy, spending a few days with them. His mother, Addie is in a Lubbock hospital with their older son Blake, who has pneumonia. We hope Blake will soon be well.

Mr. and Mrs. W. C. Plumlee spent over the weekend at Possum Kingdom.

We were at the camery this morning where business is going full blast.

"GO WINDS, GO!"

**TIME AND LABOR SAVING**

**READY-MIXED CONCRETE**

**INDUSTRIAL • RESIDENTIAL**

When your job calls for concrete, call on us. Prompt delivery, specialized mixes will insure you of quality concrete at low, low prices. Call today!

**Bennett Building Material**

229 E. CALIFORNIA 983-2170

**SAME DAY SERVICE**



LeMans Sport



GTO



Bonneville

(We take the fun of driving seriously.)

## This is the way it's going to be. Pontiac's 70's

Surprised that Pontiac's setting the style for the umpteenth straight year? Of course not.

But you may be a bit dazzled to find out that Pontiac finally outdid Pontiac.

Take Bonneville. From the strong, new bumper grille to the standard 455 under the hood, it's a rouser.

Inside: instant limousine. So luxurious some of the traditional big boys are already screaming.

One of the nicest things we could have done for Grand Prix's luxury was to leave it alone. We did. But we popped in a 455 V-8 for you to order. (It's an old Pontiac proverb that luxury

should have power.)

Enter LeMans Sport. A brand-new series in the Pontiac stable. Wait'll competition sees it pull the new 400-cubes-under-the-hood trick. We'll show you that one if you check the right box on the order form.

By now, you've spotted our '70 GTO. But maybe you haven't heard it. A sound so tough we've thrown modesty to the wind and dubbed GTO "The Humber."

This is Pontiac '70. And we figure this is the way driving's going to be. So why wait?

It's at your Pontiac dealer's now.



Get me now  
wheat seed!

DEKALB BRAND  
LO DURO  
for this area



WHEAT  
WHEAT  
WHEAT

983-3404

# DISCOUNT PRICES PLUS STAMPS



Prell, Liquid  
**SHAMPOO**  
Regular \$1.55 Retail

Family Size **99c**

Macleans, Regular or Spearmint  
**TOOTHPASTE**  
Regular 69c Retail

Giant Tube **49c**

DISCOUNT PRICE PLUS STAMPS

**TIDE**  
DETERGENT GIANT BOX  
**66**

BONNIE DETERGENT  
GIANT, BOX **59c**

DISCOUNT PRICE PLUS STAMPS

**SWEET PEAS**  
Libby's, Fancy **6** \$1  
Number 303 Cans

Kounty Kist  
**SWEET PEAS** Number 303 Can **19c**

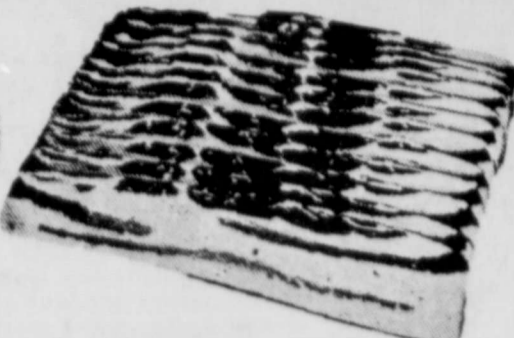
**GOLDEN CORN**  
Libby's, Cream Style **6** \$1  
Number 303 Cans

Kounty Kist Whole Kernel  
**GOLDEN CORN** 2 12-Ounce Cans **35c**



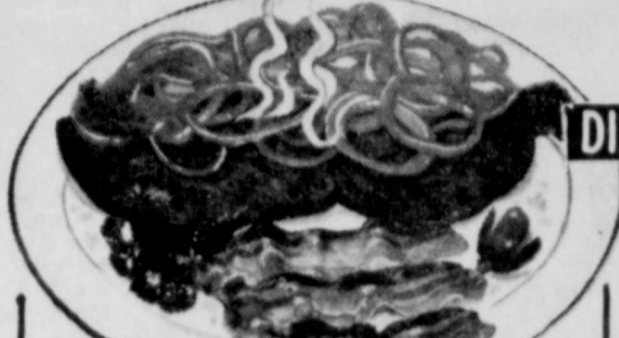
**ROUND STEAK**

Full Cuts,  
U.S.D.A. Choice Beef  
Pound **98c**



**SLICED BACON**

Farmer Jones,  
First Grade Quality  
Pound **79c**



**BEEF LIVER**

Thin Sliced  
Skinned & Deveined,  
Pound **59c**

These Values Good  
SEPT. 18, 19, 20, 1969  
in FLOYDADA, TEXAS

DISCOUNT PRICE PLUS STAMPS

*Dairy Specials!*

Pillsbury, Raisin Danish  
**ROLLS** 12-Ounce Package **45c**

Chiffon, Whipped  
**MARGARINE** 1-Pound Package **49c**

Kraft's American  
**CHEESE** 1-Pound Loaf **89c**

*Bakery Specials!*

Morton's Tortilla  
**CHIPS** Giant Bag **59c**

Keebler  
**FIG BARS** 16-Ounce Package **39c**

Keebler Club  
**CRACKERS** 1-Pound Box **45c**

**CHICKEN FRIED STEAKS**

Hi-Brand, Frozen, Just Heat and Eat  
Pound **89c**

Only USDA Choice Beef is sold at Piggly Wiggly! No tenderizers added! Always specify USDA Grade Choice—for the most tender, flavorful beef every time! Guaranteed to please or double your money back!

**LONGHORN CHEESE**

Farmer Jones  
Half Moon, Chunks  
10-Ounce Package **63c**

**SLICED CHEESE**

Farmer Jones  
Individual Slices  
6-Ounce Package **35c**

**DETERGENT**

Bonne Pink,  
30c Off Label **49**

1/2-Gallon  
Bonne Liquid, 25c Off Label  
**DETERGENT**

**RIB ROAST**

Oven Ready, Semi-Boneless  
Pound **98c**

DISCOUNT PRICE PLUS STAMPS

**ICE CREAM**

Farmer Jones,  
Assorted Flavors  
1/2-Gallon **58c**

Plains  
**MELLORINE** 1/2-Gallon **49c**

**CHUNK TUNA**

Van Camp's, Chunk  
Number 1/2 Can **19c**

Hi Note  
**GRATED TUNA** Number 1/2 Can **23c**

**GOLD MEDAL**

Kitchen Tested  
5-Pound Bag **48c**

Sunlight  
**FLOUR** 5-Pound Bag **43c**

**POTATO CHIPS**

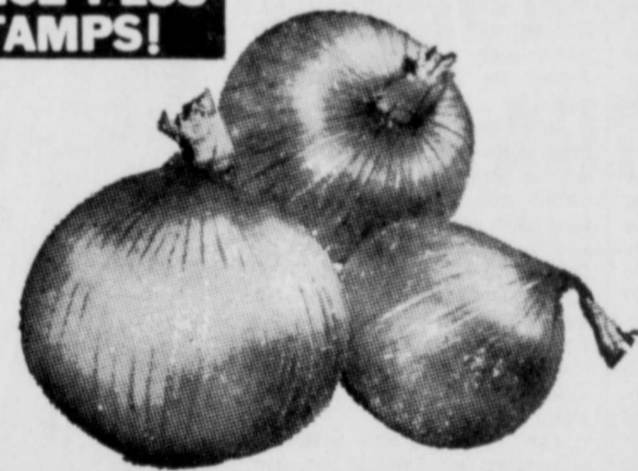
Farmer Jones,  
Regular or Dip Style  
Large Bag **38**

Farmer Jones  
**CORN CHIPS** Large Bag

**SPECIAL DISCOUNT PRICE PLUS GREEN STAMPS!**



TOKAY  
**GRAPES** Large Clusters  
Pound **19c**



**ONIONS** Yellow, Mild  
Pound **5c**

DISCOUNT PRICE PLUS STAMPS

**CANDY BARS**  
Assorted Varieties **5** 10c Bar **39**

**CRACKER JACKS** 3-Pack

**CAKE MIX**  
Betty Crocker, Assorted Layer Cakes **3** 18-Ounce Boxes

Good N Rich, Assorted  
**CAKE MIXES** 17-Ounce Boxes

**DETERGENT**  
Bonne, Controlled Suds **1**

Jumbo Box  
Bonne Laundry, 30c Off Label  
**DETERGENT** King Size Box **99c**

We Reserve the Right to Limit Quantities

DISCOUNT PRICE PLUS STAMPS

**MEAT PIES**  
Morton's, All Varieties  
8-Ounce Package **17c**

**GREEN PEAS**  
Silverdale **6** \$1  
10-Ounce Packages

**CHERRIES**

River Garden, R.S.P.  
Number 303 Cans **25c**

**PAPER NAPKINS**

Soft Ply,  
Assorted Colors  
180-Count Package **25c**

Soft Ply  
**PAPER NAPKINS** 60-Count Package **13c**

**CORN FLAKES**

Farmer Jones  
18-Ounce Box **33c**

Farmer Jones  
**CORN FLAKES** 12-Ounce Box **29c**

